

Spring 2018

# *the* CRESCENT

*of Gamma Phi Beta*





## FOR A LIFETIME

*"It's not four years, it's for life."* While our collegiate years are a formative time in our life and our Gamma Phi Beta connection, our Sorority membership is lifelong. When you are initiated, your eyes are opened to the everlasting rituals and deep bonds of our sisterhood. You make a promise to uphold our ideals and purposes, and that promise is for a lifetime. In return, Gamma Phi Beta can do so much to enrich your life.

You may not think of Gamma Phi Beta every day, but she is there. Whether you learned leadership skills, patience or formed long-lasting friendships, our sisterhood has taught every woman something about herself.

In this issue of *The Crescent*, we reflect on how the Sorority influences our sisters at every stage of life. My membership has impacted me throughout my life. My mother joined Gamma Phi Beta and served as an excellent example of lifetime commitment for my two sisters and me. The friends I made at Psi Chapter (Oklahoma) and as an alumna continue to support me through the ups and downs of life. As International President, I see how our members live our mission and vision, and it inspires me every day.

In 2017, we lost two great examples of lifetime commitment: Gloria Swanson Nelson (Oklahoma, 1940) and Mary Jane Hipp Misthos (Colorado College, 1940). These outstanding sisters were devoted to serving our sisterhood. They are recognized in *The Crescent* alongside a few other incredible sisters who show how every member can be influenced by our sisterhood no matter where she is in life. Mary Jane and Gloria will always serve as incredible examples of lifetime commitment and devotion to our sisterhood, and their stories will inspire generations of Gamma Phi Betas to come.

As you turn the pages in this issue, you'll learn more about these inspirational women, and a few others whose names you might not know. One sister is an alumna initiate who helped start Delta Nu Chapter (Missouri State) in 1977 but was unable to be initiated as a collegian. Two collegiate sisters are making an impact in their communities on campus and abroad. One alumna wrote a letter to share how much Gamma Phi Beta taught her, and continues to teach her, almost 70 years after her initiation.

As you read these stories, I encourage you to reflect upon your own lifetime membership in Gamma Phi Beta. How has our Sorority influenced your life? Do you exemplify the leadership skills you learned in an executive council position? Do you feel confident in job interviews after talking with potential new members during recruitment? Have your sisters remained your closest support system? Do you find ways to live our Core Values in your volunteerism, career and family life?

No matter what stage of life you are in, Gamma Phi Beta can help you through it or has already taught you the lessons you need to thrive. Reflect on your past, focus on the future and consider the present. Gamma Phi Beta has always, and will always, be part of you.

In LIKE,

Annabel Jones  
International President

### ON THE COVER

Eta Lambda Chapter's (Central Florida) executive council enjoyed participating in a photoshoot with Jackie Mangar from Moments with J. Mang.

### 2016-18 INTERNATIONAL COUNCIL

International President  
Annabel M. Jones, *University of Oklahoma*

Alumnae Vice President  
Autumn L. Hansen, *University of Idaho*

Collegiate Vice President  
Tanya N. Jordan, *Purdue University*

Education Vice President  
Melinda J. Sutton Noss, Ph.D., *Southern Methodist University*

Financial Vice President  
C. Shannon Ballew, *Clemson University*

Membership Vice President  
Caitlin M. Capozzi, *Syracuse University*

Panhellenic Affairs Vice President  
Sandy Biegelman Burba, *Miami University*

### MISSION

To inspire the highest type of womanhood.



24 | Meet Nancy Culbert (Missouri State, pictured center) and learn about her Gamma Phi Beta journey from collegian to alumna initiate.

## IN THIS ISSUE

### Go Gamma Phi

- 9 Points of Pride
- 15 Vintage  
*Take a look at photos from Convention 1966!*
- 16 Inspiration Board
- 20 Gamma Phi Beta at Every Stage of Life  
*Our sisterhood lasts beyond our four years in college. Read about some incredible sisters who have incorporated Gamma Phi Beta into every stage of their lives.*
- 32 Sorority Life

### Campus Life

- 18 Welcome Home, Zeta Chi (Texas Christian)!  
*Zeta Chi Chapter recently moved into the Texas Christian University Greek Village. Turn to page 18 to see their beautiful Gamma Phi home!*

### Sorority News

- 12 Convention 2018 Schedule  
*Gamma Phi Beta's 78th Convention is taking place June 27 to July 1, 2018, in Dallas, Texas! Check out this overview of the schedule to see what's in store.*
- 14 2018-20 International Council Nominating Committee Slate

### Shining On

- 6 Life Loyal's Newest Members  
*View the list of Life Loyal members and see which of your sisters have joined!*

### Foundation News

- 38 The Spirit of Generosity  
*The Gamma Phi Beta Foundation is incredibly thankful for the generosity of donors. See the support sisters have given to the Foundation and Sorority over the course of 2017.*
- 40 In Celebration
- 41 Memorial Gifts

# GAMMA PHI GETS SOCIAL

## International Headquarters

12737 E. Euclid Drive, Centennial, CO 80111  
Phone: 303.799.1874 Fax: 303.799.1876  
Website: GammaPhiBeta.org  
Email: TheCrescent@gammaphibeta.org

## The Crescent Staff

Editor  
Laura Mishkind (Colorado-Boulder),  
lmishkind@gammaphibeta.org

Managing Director of Marketing and Communications  
Maureen Walker, mwalker@gammaphibeta.org

Executive Director  
Megan Wick (Washington State),  
mwick@gammaphibeta.org

## Graphic Design by Shelle Design, Inc.

### SUBMISSION DEADLINES

Spring – February 1 Summer – May 1  
Fall – August 1 Winter – November 1

©2018 Gamma Phi Beta Sorority  
*The Crescent* of Gamma Phi Beta (USPS 137620)  
is published quarterly by Gamma Phi Beta Sorority,  
12737 E. Euclid Drive, Centennial, CO 80111.  
Periodicals postage paid at Englewood, CO, and at  
additional mailing offices. Produced in the U.S.A.

Postmaster: Send address changes to *The Crescent*,  
Gamma Phi Beta Sorority, 12737 E. Euclid Drive,  
Centennial, CO 80111.

**Parents** – While our members are in college, their  
copy of *The Crescent* is sent to your home address –  
we hope you enjoy reading our magazine, too! If your  
daughter is no longer in college, or is no longer living  
with you, feel free to send us her new address by  
emailing TheCrescent@gammaphibeta.org.

**Join Our Green Team!** Receive each issue of  
*The Crescent* before everyone else by going digital!  
We'll send the current issue directly to your inbox  
so you can enjoy it anywhere you go. Email  
TheCrescent@gammaphibeta.org today to let  
us know you're joining the Green Team!



@anjelynroberts



@bri\_ludwig



@calgammaphi



@embembert



@gammaphibeta\_csub



@gammaphidallas



@gammaphimgill



@jaymilowenthal



@katieyoungans



@saykayhay



@tcugammaphibeta



@vickyzzl

# SAVE TODAY. VACATION TOMORROW.

Gamma Phi Beta sisters could save even more money on auto insurance with a special discount.

Simply mention that you're a member of Gamma Phi Beta and see how much you could save.



**GEICO**<sup>®</sup>

**#MemberDiscount**

For a free quote 24 hours a day, visit  
[geico.com/greek/gammaphibeta](http://geico.com/greek/gammaphibeta)  
or call **1-800-368-2734**.

GAMMA PHI BETA

Some discounts, coverages, payment plans and features are not available in all states, in all GEICO companies, or in all situations. GEICO contracts with various membership entities and other organizations, but these entities do not underwrite the offered insurance products. Discount amount varies in some states. One group discount applicable per policy. Coverage is individual. In New York a premium reduction may be available. GEICO may not be involved in a formal relationship with each organization; however, you still may qualify for a special discount based on your membership, employment or affiliation with those organizations. GEICO is a registered service mark of Government Employees Insurance Company, Washington, D.C. 20076; a Berkshire Hathaway Inc. subsidiary. GEICO Gecko image © 1999-2018. © 2018 GEICO

# Life Loyal Members

*Life Loyal is a special program available for all Gamma Phi Beta members to continue their lifelong support of our beloved Sorority beyond their collegiate years while receiving exclusive benefits. This is just one way to continue your lifetime involvement as a member of Gamma Phi Beta while fulfilling your financial obligations with an easy, one-time payment. The dedication of our alumnae members who continue to be involved and financially supportive helps ensure the future of our traditions and sisterhood.*

*Thank you to the following sisters who joined Life Loyal between November 1, 2017 through January 31, 2018.*

## Alpha – Syracuse

Gina Schiraldi Chapman  
Phyllis Grant Earls  
Katrina Lenden Jackman

## Beta – Michigan

Katherine DenBleyker  
Traci Huie  
Donna Babak Mrozek  
Dana Smith  
Margaret Thumm

## Gamma – Wisconsin-Madison

Laurie Smith Lowson  
Barbara Sallade Oliver

## Delta – Boston

Dorothy Roberts Matheson  
Virginia Hill Rice

## Epsilon – Northwestern

Linda Bockover Shanley  
Sue Sayer Wernecke

## Eta – California-Berkeley

Ginger Schechter Gong  
Stella Kondonijakos  
Constance Leonard

## Theta – Denver

Elizabeth McNichols

## Iota – Columbia

Sarah Whittenburg

## Kappa – Minnesota-Twin Cities

Teddy Ziegler Gesell

## Lambda – Washington

Kris Hunter Lamberson  
Darcy Hume Wise

## Nu – Oregon

Julia Baker  
Katherine Breene  
Molly Johnson  
Patricia Hallin Luse  
Rosie Skinner

## Xi – Idaho

Morgan McGee  
Michael Shea O'Donnell

## Omicron – Illinois

Lauri Trapp Marshall  
Suzanne Miller

## Pi – Nebraska-Lincoln

Linda Parker Cumming  
Jamie Holland  
Amanda Lewis  
Angela Nims Miller  
Nesha Neumeister Schumann

## Rho – Iowa

Laura Blunk  
Julie Sladek Harrigan  
Lisa Ward Smith

## Sigma – Kansas

Kelle Burmeister Gilmore  
Bonnie Strickler Green  
Dorothy Taylor Howard  
Lesley Hagood Kennedy  
Jill Remsberg McGee  
Sally Maag Neal

## Tau – Colorado State

Anna Godwin  
Linda Bjerkelund Hensley

## Phi – Washington University

Jill Ferguson Wilkis

## Chi – Oregon State

Barbara Brown Coles  
Kathleen Sandoz Kesler

## Psi – Oklahoma

Amy Hansen Hammons  
Mary Myers Heck  
Amelia Nill  
Sandra Davis Roberson  
Jennifer Schmidt  
Mary Clausing Talkington

## Omega – Iowa State

Deborah Houghton Bentzinger  
Patricia Gose Perrin  
Sally Collins Tucker  
Mariana Whitmore Williams

## Alpha Alpha – Toronto

Lauren Auciello  
Michele Henry

## Alpha Gamma – Nevada

Sara Cobbley Lauritzen

## Alpha Delta – Missouri-Columbia

Helen Mortensen Fiorio  
Stacey Nentwig Greer  
Susan Camarata Hewitt

Sally Rice Markland  
Natalie Severns  
Joyce Tassej Wink

## Alpha Epsilon – Arizona

Mary Bayless  
Brittney Buell  
Linda Holmes Fritsch  
Natalie Scibilia  
Juliana Zappone

## Alpha Zeta – Texas-Austin

Mary Montgomery Irwin  
Carolyn Coe Rogers

## Alpha Eta – Ohio Wesleyan

Ann Bowyer Boren  
Esther Klemme Schmitt

## Alpha Theta – Vanderbilt

Isabel Barbosa  
Linda Collins Harp

## Alpha Iota – California-Los Angeles

Courtney Cirks  
Sharon Ryan Graves  
Marie Koulos Kokenis  
Ashley Ayres Matkin  
Dorothy Moon Stanton

## Alpha Lambda – British Columbia

Kristin Armstrong  
Lindy Chow  
Nicole Alvernaz Da Rosa  
Miranda Tsuyuki

## Alpha Xi – Southern Methodist

Margaret Godbold Briscoe  
Carol Turner Chappell  
Susan Ward Ragsdale  
Katherine Parrish Whitbeck

## Alpha Tau – McGill

Melanie Thompson Dulos  
Jasmine Savoy  
Elena Kreek Wagner

## Alpha Upsilon – Penn State

Mary Jane Clark Wild

## Alpha Chi – William & Mary

Mary Carlson Coffey  
Kathleen Oberg Di Stasio  
Sharon Eggen Gale  
Kelsey Vita

## Alpha Psi – Lake Forest

Eva Ann Byrnes Elmer

## Beta Alpha – Southern California

Megan Ely  
Tess Jordan  
Janice Rohrlich Lang  
Madelynn Taras

## Beta Beta – Maryland

Ramona Randall

## Beta Gamma – Bowling Green

Lisa Adams-Gibbons  
Susan Sir Meek  
Ilana Millberg

## Beta Delta – Michigan State

Mildred Runnells Martin  
Carol Stoner Short  
Florence Kolata Wojan

## Beta Epsilon – Miami-Ohio

Marjorie Hiegel Lawson  
Diane Downie Luechauer  
Kathleen Maney  
Kristen Blose Ryan  
Valerie Stocke Usner  
Nancy Beyring Watts

## Beta Zeta – Kent State

Loreen Haas Martin  
Beth Johnson Towner

## Beta Eta – Bradley

Pamela Griffin  
Susan Kaiser-Chrisman  
Sally Erikson Lewis

## Beta Kappa – Arizona State

Annette Worthington Kleber

## Beta Lambda – San Diego State

Patricia Norton Chong  
Alexis Lagos Parkes  
Janet MacKerras Sandstrom  
Deanna Hosea Weeks

## Beta Mu – Florida State

Livy Davey  
Rhonwyn Whitehead Ratchford

## Beta Xi – Ohio State

Rosalind Gallogly Etling  
Patricia Toby

## Beta Omicron – Oklahoma City

Jessica Salerno

## Beta Pi – Indiana State

Stacey Roller Higgins  
Marsha Mattax Thompson

## Beta Rho – Colorado-Boulder

Suzanne Culley Bounous  
Megan Gillispie Charles  
Candace Hertneky Crumb  
Emily Haigh  
Ann Momyhan McFadden  
Susan Henderson Sieber  
Melinda Sherman Swift

## Beta Sigma – Washington State

Megan Smiley Wick

## Beta Upsilon – Kansas State

Stacy Clark  
Martha Steps Frank  
Angela Katterhenry Gipson  
Tonya Hoobler  
Taylar Morgan

## Beta Phi – Indiana

Rebecca Johns Beiter  
Kimberly Geissman  
Jacqueline Foster Godfrey  
Pamela Hoffman Sanders  
Barbara Dietrich Thompson

## Beta Chi – Wichita State

Shannon Loofs

## Beta Psi – Oklahoma State

Jill Hamilton Hainkel  
Kristen Hopper  
Kathryn Walker Plotkowski  
Gayln Gray Zajic

## Beta Omega – Northern

Arizona  
Patricia Ball Blanchard

## Gamma Alpha – Memphis State

Linda Scott Cody

## Gamma Beta – Gettysburg

Marcia Walker Boote  
Bonda Schafer Garrison  
Linda Tarlo Padden

Gamma Gamma – Wisconsin-Milwaukee  
Kathryn Skull Kinsley

Gamma Epsilon – Puget Sound  
Heather Herrod Doran  
Melanie Kelsey

Gamma Zeta – Texas A&M-Commerce  
Mecca Jenke Givens  
Mariah Brand May

Gamma Eta – California State-Long Beach  
Diane Donaldson  
Susan Sutherland Meyers  
Daniella O'Neill

Gamma Iota – Midwestern State  
Amy Burleson Duckworth  
Megan Piehler

Gamma Kappa – Nebraska-Kearney  
Sierra Welsh Wentworth

Gamma Lambda – Louisiana State  
Christina O'Daniel Elguezabal

Gamma Nu – Lamar  
Susan Saterbak Chapman

Gamma Tau – St. Louis  
Abbey Norton

Gamma Phi – Auburn  
Lana Holland Carlson  
Jane Ballance Maguire

Gamma Chi – Texas State-San Marcos  
Kira Clouser  
Leslie Hildreth Masters

Gamma Omega – Wisconsin-Platteville  
Rebecca Dow  
Kenzie Larsen  
Heather Trumpy

Delta Delta – California State-Fullerton  
Sarah Girton Geddes  
Kristine Recchia

Delta Eta – California-Irvine  
Amanda Evans

Delta Theta – California Polytechnic State  
Ashley Lucas Alvernaz  
Julie Moser Cesare  
Brenda Darley

Delta Iota – Purdue  
Sara Sieveking Fuelling

Delta Lambda – California-Riverside  
Patricia Kelly-Mick

Delta Mu – Rutgers  
Kasey O'Sullivan  
Sharon Weiss

Delta Nu – Missouri State  
Susan Douglas Newton

Delta Xi – Bucknell  
Sandra Solomon

Delta Omicron – Southern Polytechnic State  
Sarah Compton Catala

Delta Pi – Illinois State  
Paige Beach Saba

Delta Sigma – Florida Institute of Technology  
Regina Fluellen-Reitwiesner  
Allison Swint

Delta Tau – Colgate  
Julie Gibbons  
Erin Santos

Delta Upsilon – Georgia  
Kori Patterson Bishop  
Kathryn Nichols Gunter  
Linda Tedder

Delta Chi – California State-Sacramento  
Katherine Kline

Delta Psi – California-Santa Barbara  
Erin Butts  
Lynn Etkins  
Lanie Minami Michaud  
Melissa O'Farrell Woolley

Delta Omega – Oakland  
Hannah Tadros

Epsilon Beta – Alma  
Kathleen McCrudden Dobrovic

Epsilon Gamma – San Diego  
Sophia Davis

Epsilon Delta – Creighton  
Mary Gloeb Govier  
Kelli Peterson  
Rebecca Adams Vandenbosch

Epsilon Epsilon – Union College  
Claire Crosier

Epsilon Theta – Clemson  
Jessica Burger  
Courtney Tresslar

Epsilon Iota – Christopher Newport  
Jasmine Pike

Epsilon Kappa – California State-Chico  
Kelly Carson

Epsilon Lambda – Alabama  
Courtney Rollings Latham  
Mary Andrews Lawley  
Claire Parker

Epsilon Nu – Chapman  
Alexa Burnstine

Epsilon Omicron – California-Santa Cruz  
Samantha Smith Dazey  
Havens Ratchye

Epsilon Pi – George Mason  
Samantha Hacherl

Epsilon Rho – Stephen F. Austin State  
Laura Redondo Bovo

Epsilon Tau – Rochester  
Michele Flint

Epsilon Omega – Maimi  
Suzanne Harris Pfeiffer

Zeta Beta – Virginia  
Rebecca Nelson

Zeta Gamma – Sonoma State  
Natalie Wanner

Zeta Delta – Southeast Missouri State  
Karli Larson

Zeta Epsilon – Duquesne  
Andrea McCullum Mejia

Zeta Theta – Pepperdine  
Tatiana Tilley

Zeta Iota – Valparaiso  
Elyse Steuer Browne  
Theresa Swift

Zeta Nu – Detroit-Mercy  
Jennie Furgal

Zeta Rho – Texas A&M-College Station  
Ann Diebel  
Annie McGinnis  
Anna Miller

Zeta Sigma – South Carolina  
Anna Book  
Peyton Francum  
Andrea Lane  
Kimberly Sears

Zeta Phi – Arkansas-Fort Smith  
Connie Phillips

Zeta Chi – Texas Christian  
McLaren Martin  
Darcy Tedford

Zeta Psi – Texas-San Antonio  
Whitlee Baimbridge

Zeta Omega – Kennesaw State  
Morgan Cargle Blalock

Eta Gamma – Delaware  
Nicole Burbridge

Eta Epsilon – Virginia Polytechnic  
Jordan Bryan  
Caitlin Fernandez  
Lauren Tappan

Eta Iota – Rockhurst  
Jenna Heiney

Eta Kappa – Tennessee-Chattanooga  
Erica Kistner

Eta Lambda – Central Florida  
Meghan Bickle  
Jonell Gregor

Eta Mu – Duke  
Bonnie St. Charles  
Julia Thielhelm  
Iris Yang

Eta Nu – James Madison  
Sky Meadows

Eta Xi – Florida  
Olivia Baruch  
Natalie Bergeron  
Ashton Greusel

Eta Omicron – Ohio  
Angelina Moore



Jen enjoyed college years at Alpha Xi Chapter (Southern Methodist) and is proud to be a Life Loyal Gamma Phi as an alumna.

## Life Loyal: A CONSTANT DURING TIMES OF CHANGE

Big changes often happen for sisters after graduating from college, including moving away from college towns and finding new jobs. Jen Grey (Southern Methodist) experienced this last year as she moved from Texas back to her home state of California to start her career. Luckily, she was familiar and comfortable with the area, but she wanted to stay connected to Gamma Phi Beta, so she joined Life Loyal. "I have found the program beneficial in keeping me connected, not only to my chapter, but to Gamma Phi Betas all over the country and world," Jen shared.

She chose to become Life Loyal as she began alumna life because it was important to stay connected and reaffirm her love for the Sorority. Jen's

favorite part of being Life Loyal and staying connected is continuing to receive *The Crescent*. It reminds her of her commitment to Gamma Phi Beta and keeps her up-to-date with Sorority happenings.

In addition to her Life Loyal membership, Jen joined an alumnae chapter in her area to meet new sisters and create a strong network outside of her college town. "Being in Gamma Phi Beta means being a part of a sisterhood and a cause bigger than myself," she said. "It means trying to live up to the ideals of being the best person I can be, with a support system to help me do just that."

In college, Jen was surrounded by supportive sisters who showed her just how much she could love

Gamma Phi Beta. Now, she's committed to maintaining that passion for our sisterhood and exemplifying our Core Values in all she does. Since starting a new career, Jen is happy to have our values to guide her. "I try to live the Core Values by volunteering, working hard in my career and being loving and kind to everyone I meet."

Life Loyal gave Jen the opportunity to stay connected and show her lifetime commitment to the organization that has given her so much. By signing up as a young alumna, Jen is able to save a great deal of money on alumnae dues for the rest of her life. Now she never has to worry about remembering to pay each year and will always receive



Jen loves to show her Gamma Phi pride anywhere she goes!

*The Crescent*. Gamma Phi Beta is an organization that goes beyond your four years of college. Jen reflected, "Even after graduation, you are a member of a sisterhood that truly lasts a lifetime."

Would you like to give Life Loyal as a graduation gift or sign up yourself? Visit [GammaPhiBeta.org/LifeLoyal](https://GammaPhiBeta.org/LifeLoyal) today!

# points of Pride

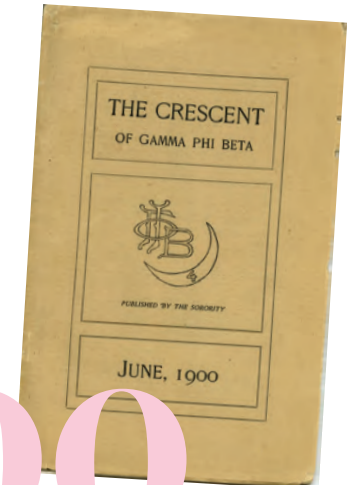
Shining bright since 1874, here's a snapshot of some notable Gamma Phi Beta moments and accomplishments!

Every year a group of Gamma Kappa Chapter (Nebraska-Kearney) sisters get together for a mini reunion. This year they celebrated their upcoming 50th birthdays and **30 years** of sisterhood and friendship!



Pictured: Bottom row: Tracy Wells Stuehm, Kristy Dohrman Swain, Lori Brown Schievelbein; Second row: Shauna Dicke Talbert, Jamie Gutierrez Mora, Kristin Olson Kudrna, Becky Theis Bachle; Third row: Pam Kenkel, Leah Murphy Wall, Darci Dillman Karr, Tami Perlinger Williams, Karen FitzGerald Albers; Top row: Jana Stewart, Erika Richardson Moore, Lisa Tonkin Cope, Amy Monke, Kris Panagiotis Tucker

The Crescent was first published in **1900** and has been produced ever since! Now you can read every issue of the magazine on our new archives site: [GammaPhiBeta.org/TheCrescentArchives](http://GammaPhiBeta.org/TheCrescentArchives).



# 1900



Nancy Culbert (Missouri State) and her husband run an urban community farm that provides fresh, organic produce to food pantries in St. Louis, Missouri. They feed approximately **300** people a week during their peak harvest season! Turn to page 24 to learn more about this outstanding alumna initiate!



A huge thank you to our generous members and friends for helping the Gamma Phi Beta Foundation raise more than **\$35,000** for the areas of greatest need during the 2018 Chapter Challenge. Congratulations to Psi Chapter (Oklahoma) for being crowned the 2018 Chapter Challenge champion!



We want to show off what our young alumnae and collegiate members have achieved with Gamma Phi Beta's 30 Under 30 program! Visit [GammaPhiBeta.org/30Under30](http://GammaPhiBeta.org/30Under30) to fill out a nomination form and tell us about your accomplishments or those of a sister.



Share your point of pride for an opportunity to be featured! Email [TheCrescent@gammaphibeta.org](mailto:TheCrescent@gammaphibeta.org) with your chapter's inspiring accolades.

# Giving Back to *Gamma Phi*

In 2012 Lindsay Young (Southern Methodist) moved to Seattle, Washington, and didn't know anyone in the area. She heard Lambda Chapter (Washington) was in need of advisors, so she jumped at the opportunity to stay connected to Gamma Phi Beta. Five years later, she recently transitioned from Lambda Chapter's advisor to a regional coordinator role. She is proud of all she's been able to accomplish with the chapter over the last five years and was excited to share more about her experience with the readers of *The Crescent*.

**The Crescent: Describe yourself in three words.**

**Lindsay Young:** Dedicated, driven and loyal.

**TC: Why did you choose to become an advisor?**

**LY:** I knew I was in a place in my life where I could give that time. I owed it to the Sorority to give to Lambda Chapter.

**TC: What has been your favorite experience as chapter advisor?**

**LY:** Truly the best part of being an advisor is seeing the women grow up, mature, get jobs, start relationships and graduate.

**TC: How have you been inspired by the collegiate members in your chapter?**

**LY:** I was truly inspired by the 2017 executive council's dedication to confidentiality and respect for the process and their sisters. They banded together as a single unit. It was their strength as a single unit that allowed them to persevere through difficult decisions.



Lindsay, pictured far right, spends time with Lambda Chapter (Washington) sisters.



**TC: How do you encourage the women in Lambda Chapter to inspire the highest type of womanhood?**

**LY:** I always try to lead by example. If we expect the women to be in formal chapter attire with their badge on and on time, I need to do the same. I also remind them they have alumnae volunteers supporting them. We volunteer because we value our Sorority and the growth of the future.

**TC: Why did you make the change to regional coordinator, and how has your chapter advisor role prepared you for this new role?**

**LY:** After advising for more than five years, I felt it was time for someone else to take over. A fresh perspective is always great and needed and can inject new energy and ideas into a situation. I think I bring a unique perspective to the Regional Coordinator Team after being a chapter advisor for so long. I can see where we can make tweaks and changes to improve the support we offer our advisors and collegians

and am excited to be a part of the team during this growth!

**TC: What advice do you have for women looking to volunteer for Gamma Phi Beta?**

**LY:** Do it! There are women that need your love and support, so if you are wanting or willing to give it, give it.

.....  
**Do you know an advisor or volunteer you would like to see in *The Crescent*? Email [TheCrescent@gammaphibeta.org](mailto:TheCrescent@gammaphibeta.org) to nominate them today!**  
.....





## IT STARTS WITH US JUNE 27 TO JULY 1, 2018!

Convention 2018 will be here before you know it! We have plenty of exciting Convention business, programming and sisterhood prepared for members at every stage of life, so don't miss out and join us in Dallas, Texas. Take a look at a few exciting highlights of what is coming when It Starts With Us!

### Wednesday, June 27

#### Welcome Dinner

- o Join us as we kick-off our 78th Convention with some Dallas flair!

#### Opening Business Session

- o Flag Processional
- o State of the Facilities Management Company
- o State of the Foundation



### Thursday, June 28

#### Coffee and Conversation

#### Business Session

- o State of the Sorority
- o 2018-20 International Council elections
- o 2018-20 Nominating Committee elections
- o Bylaws Forum

#### Interfraternal Luncheon

#### This Heart is For You

This interactive session will take you on a journey through the Foundation's mission and purpose, and what the Foundation is doing to impact your membership experience now and in the future.

#### Educational Breakout Sessions

Over the course of Convention, attendees will have the opportunity to engage in both keynote and breakout sessions. Session topics include sisterhood; Building Strong Girls; chapter president success; alumnae chapter success; advising philosophy; Gamma Phi Beta history; collaboration and resiliency in leadership.

#### Awards Dinner

This special event honors the achievements of our collegiate and alumnae chapters and individual members – all who made exceptional accomplishments over the past biennium.



## Friday, June 29

### CLC Diamond Jubilee Anniversary Breakfast

#### Business Session

- o Articles of Incorporation and Bylaws Amendments

#### Educational Breakout Sessions

#### Lunch on Your Own

### Keynote Speaker: Tina VanSteenbergen – Better Friends, Better Sisters, Better Women

Joining a sorority allows for us to make big changes in our own lives and the lives of others. In keeping with the Convention theme, Tina VanSteenbergen will discuss how to bring the heart back to leadership styles, and the voices back to women in their organizations and relationships. Tina speaks to audiences across North America on these topics, while captivating listeners with her quick wit, addictive charisma and authentic storytelling.



### Confirmed Conventioneers Dinner: Eddie Deen's Ranch

Our most infamous event will take place at Eddie Deen's Ranch for a true Texas experience with a Gamma Phi Beta twist. Enjoy mouth-watering Texas bar-b-que and celebrate our sisters' Convention attendance with carnation-decorated hats at the Confirmed Conventioneers parade.

## Saturday, June 30

#### Coffee and Conversation

#### Closing Business Session

- o Resolutions and Carnation Awards will be presented.

#### Lunch on Your Own

#### Ritual and Memorial Service

#### Pink Carnation Banquet

- o Convention closes with an elegant banquet to install the new 2018-20 International Council and celebrate service in Gamma Phi Beta.



For more information and to register, visit  
[GammaPhiBeta.org/Convention](http://GammaPhiBeta.org/Convention).  
*We hope to see you in Dallas!*

# 2018-20 INTERNATIONAL COUNCIL AND NOMINATING COMMITTEE SLATE

In February, the members of the 2016-18 Nominating Committee met privately at International Headquarters to determine the slate for the Sorority's 2018-20 International Council and Nominating Committee. The Committee worked diligently to evaluate the many talented and qualified candidates who expressed their interest in these roles.

At Convention, delegates from collegiate and alumnae chapters will vote to elect our 2018-20 officers and Nominating Committee. The following is the slate, as presented by the Nominating Committee:

## International Council

As a reminder, the 2018-20 International Council will be comprised of one International President and six Vice Presidents.

### International President

Annabel Jones (Oklahoma)

### Vice President

Fraya Lynn Hirschberg Black (Michigan)

Stephanie Gauchat Carriere (Arizona)

Mary Angela "Angie" Jordan Dimit  
(Illinois at Urbana-Champaign)

Autumn L. Hansen (Idaho)

Tanya N. Jordan (Purdue)

Melinda "Mindy" Sutton Noss (Southern  
Methodist)

## Nominating Committee

As a reminder, the 2018-20 Nominating Committee will be comprised of five members and two alternates.

Caitlin Capozzi (Syracuse)

Jeannie Panton Deakyne (Arizona)

Melissa Childress Ford (Rutgers)

Teresa Jones Haney (Northern Arizona)

Katherine Pezzella (Colgate)

Jamie Schultz Pickel (Oklahoma)

Shauna Revello Wilson (Washington State)

## 2016-18 Nominating Committee

Thank you to the following individuals who dedicated themselves to guiding the Sorority by serving as the 2016-18 Nominating Committee.

### Chairwoman

Krista Spanninger Davis (Bowling Green)

### Northeast District

Susan Lutz Lupo (Oakland)

### North Central District

Magnes Welsh (Memphis)

### Southeast District

Barbara "Barbie" Chadwick (Vanderbilt)

### South Central District

Susan "Susie" Knetter McCracken  
(Kansas State)

### West District

Diane Soderstrom Goff (Idaho)

### Far West District

Cinda Keating Lucas (Southern California)

### Collegiate Delegates

Katlyn Carr (Quinnipiac)

Kathleen Donelan (Northern Iowa)

To read the full Report of the Nominating Committee, including the Committee's rationale for slating these teams of candidates, please visit [GammaPhiBeta.org/Convention](http://GammaPhiBeta.org/Convention).

The 2016-18 Nominating Committee thanks the many sisters who helped shape the future of our Sorority by running for office and/or submitting a Referral or Candidate Comment form.

*In accordance with the Sorority's Bylaws, if a candidate wishes to run from the floor, she must contact Nominating Committee Chairwoman Krista Davis (Bowling Green) at [nominatingchairwoman@gammaphibeta.org](mailto:nominatingchairwoman@gammaphibeta.org) seven days before the opening Business Session of Convention to submit a Candidate Information Form. All information on candidates nominated from the floor should be prepared for distribution to the delegates using the same template as the candidate information in the 2018 Report of the International Nominating Committee.*

# *Vintage* ΓΦΒ

This year we are celebrating our 78th Convention in Dallas, Texas. In 1966, Gamma Phi Beta hosted the 52nd Convention in Hot Springs, Arkansas. With 82 collegiate chapters and 78 alumnae chapters represented, there were more than 400 members in attendance.



*In 1966, there was a daily Convention newspaper called *The Crescent Moon*. Sisters are pictured here using a typewriter to write it on site!*



*Sisters take a break from the excitement of Convention to spend some time relaxing in one of their rooms.*



*Pictured here are the presidents of new chapters at the 52nd Convention.*

# inspiration board

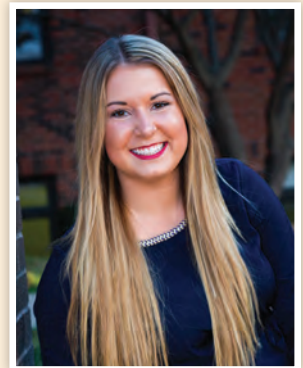


## ASSISTIVE MAPPING PROJECT

In her freshman year, Ashlyn Pedersen (Texas A&M-College Station) and two friends came up with the idea of 3D printed maps, which could be felt by the blind and visually impaired to help them get around their college campus. After about a year of work, Ashlyn and her friends were able to install a map in their campus's student center. They have since created a nonprofit called the Assistive Mapping Project and hope to bring their maps to more universities. Ashlyn coordinates the public relations, communications and strategic operations to help spread awareness of the maps. She said, "One of my passions in life is giving back to others, especially when it means helping others have a better daily life experience. Bringing more attention to the environment on campus for those who have impairments is so important to me, as I believe Texas A&M should be a place where anyone and everyone should feel comfortable and supported."

## CAPITOL HILL STUDENTS

Each year, the Fraternal Government Relations Coalition sends approximately 100 fraternity and sorority members to Washington, D.C. to lobby and advocate for issues important to the fraternity/sorority community. Gamma Phi Beta is proud to have collegians Kaela Juarez (Minnesota-Twin Cities) and Jackie Lawler (Iowa State) represent our organization to lobby for the fraternity/sorority experience this spring.



### ONCE IN A BLUE MOON

This group of women get together whenever there is a fifth Monday in a month, which happens to be once in a blue moon! They call themselves the “blue mooners” and love to show their lifetime commitment to Gamma Phi Beta by assisting Zeta Chi Chapter (Texas Christian) whenever they are able. These sisters range in age from 60 to 92!



### WOMAN OF THE YEAR

Julie Wright (Wittenberg) was recently named Woman of the Year by the Inter-Service Club Council of Arlington, Virginia, an association which acts as a liaison between the various service organizations of the city. She earned this honor after years of contribution to various leadership positions and fundraising initiatives for Kiwanis Club. The Kiwanis Club’s mission is to empower communities to improve the world by making lasting differences in the lives of children. Congratulations, Julie!

### SHINE IN NEW SPRING APPAREL

As the snow melts and the sun starts shining, sisters are ready to pull out those short sleeves again! If your Gamma Phi Beta wardrobe needs some updating before the weather really warms up, check out [CrescentCorner.com](http://CrescentCorner.com). You can find this deep teal V-neck and much more!



# Welcome Home

## ZETA CHI (TEXAS CHRISTIAN)

From the pink front door to the Gamma Phi Beta coat-of-arms in the entryway, Zeta Chi Chapter's (Texas Christian) new facility represents the Sorority brand with style. The Zeta Chi Affiliated House Corporation (AHC) worked hard to ensure they incorporated the symbols and colors of the sisterhood into every aspect of the decor. Sisters recently moved into the Texas Christian University Greek Village, which includes 11 facilities that accommodate 13 sororities and 12 fraternities, housing all 25 of the University's Greek chapters in one place.

"Our new house means so much to the chapter; even the simplest things make us smile. We now have the luxury of holding chapter meetings in our chapter room, as well as utilizing the space to make new memories," shared Panhellenic Affairs Vice President Kayla Prager. "I enjoy getting to know each and every sister who walks through the perfect pink double doors and giving back to my chapter all they have given to me!"

The AHC thoroughly enjoyed working with Zeta Chi sisters to create their new four-story facility. The dedication for this beautiful home coincided with the chapter's 10th anniversary, celebrating two chapter milestones at once.



When sisters enter their home, they are first greeted by a tile inlay of our coat-of-arms.



Zeta Chi's AHC was sure to include canvas photos of members in order to make them all feel right at home.



This student kitchen is available for sisters to gather and enjoy meals together.



All are welcomed to the Gamma Phi Beta facility by these stunning, pink double front doors.



In this space, sisters can view their composite, and a rendering of their home gives the area a special touch.



Elements of our Sorority are incorporated throughout Zeta Chi's four floors, including our letters on the back of the chairs on the main floor!

*Gamma Phi Beta*

AT EVERY

STAGE

OF LIFE

*By The Crescent Editor Laura Mishkind  
(Colorado-Boulder)*

## ***My favorite part of being a Gamma Phi Beta***

serving as *The Crescent* editor is the opportunity to tell the stories of our sisters. I love talking with every woman who is featured in the magazine, learning more about her past, seeing what she's doing in the present and discovering her goals for the future. Every issue is a new opportunity for me to rediscover my love for the Sorority that has shaped me.

This issue in particular has reminded me of the incredible strength of our sisterhood. Whether you are a newly-initiated member, soon-to-be alumna or a 50-year member, I truly believe you will be reminded of how great this organization is when you read the next few stories. These women are all in different stages of their lives and Gamma Phi Beta membership but all have made a tremendous impact on the sisters and world around them.

I encourage you to take your time and enjoy the following stories. These sisters are wonderful inspiration, and I am proud to share their stories.

*Photo Credit: Jackie Mangar from Photos with J. Mang*



# Remembering MARY JANE AND GLORIA

Mary Jane Hipp Misthos (Colorado College, 1940) and Gloria Swanson Nelson (Oklahoma, 1940) were incredible examples of lifelong sisterhood and dedication to Gamma Phi Beta. Unfortunately, in late 2017, we lost these two women. Mary Jane and Gloria were true friends and sisters who served our organization with grace, dignity, dedication and happy hearts.

Mary Jane and Gloria collectively served the Sorority for 154 years in a variety of roles. They led the Confirmed Conventioneers parades at Conventions and enjoyed keeping in touch with one another and many sisters they met over the years. Sally Lewis (Bradley), a dear friend of Mary Jane's, shared, "Several times a year, Mary Jane and Gloria would visit by phone to share family news and reminisce. These phone visits could be lengthy at times as they never ran out of things to say."

"It is hard to think of Gloria without thinking of Mary Jane," said Ann Bronsing (Indiana State), Grand President (now International

President) from 1982-86. "They met when Gloria was still in school at Oklahoma and have been close friends since then."

## LEADER AND FRIEND

Mary Jane was initiated into our sisterhood in 1940 at Colorado College. After graduation she became a traveling secretary, now known as collegiate leadership consultant. Mary Jane served in the role from 1947 to 1951. In 1951, she began her tenure as executive director of Gamma Phi Beta, a position she held until 1956. Mary Jane served on the Gamma Phi Beta Foundation Board of Trustees and went on to serve as Chair of the Foundation from 1972-76. In 1978, Mary Jane was elected to Grand Council (now International Council) as Director of Finance, serving until 1982.

Mary Jane's vast service in Gamma Phi Beta included research chairwoman, a member of the Publications Committee and Financial Advisory Board as well as a role

on the organization's National Panhellenic Conference (NPC) Delegation as second alternate from 1982-84.

"She recognized the value of sororities working together to accomplish their common goals and the advancement of the sorority experience," 1996-2000 International President L'Cena Rice (Southern California) shared.

In 2015, Mary Jane celebrated 75 years as a member of Gamma Phi Beta and had a record 31 pink carnations on her Confirmed Conventioneers hat, celebrating her attendance at 31 Gamma Phi Beta Conventions. She also sported a vest that was made for her by Mary Creevy (Kentucky). The vest had a list of all Convention locations Mary Jane had attended, and was decorated with painted pink carnations.

With her vest and hat filled with carnations, Mary Jane was often placed in a seat of honor at Convention, and alumnae and collegians enjoyed taking pictures and talking with her. She also earned multiple Gamma Phi Beta awards and honors, including the Service Roll, Merit Roll, Honor Roll and Loyalty Award.

## MENTOR AND SISTER

In 1940, Gloria was initiated into Psi Chapter at the University of Oklahoma. She was a dedicated collegiate member and continued to exemplify that dedication for more than 75 years. She served on Grand Council as Director of Finance from 1974-78, while simultaneously acting as Foundation Vice President. In 1978, she became Gamma Phi Beta's NPC delegate and served in that role until 1984. Gloria was a member of the Gamma Phi Beta Foundation Board of Trustees from 1978-82. She went on to serve as the first and second alternate NPC delegate from 1984-90.



Sally Lewis (Bradley, pictured left) and Mary Jane were close friends. Here they are pictured enjoying Mary Jane's 30th Convention in Cincinnati, Ohio.



Left: Mary Jane (pictured far left) and Gloria (next to Mary Jane) enjoyed attending Convention and visiting with sisters. Right: Pictured from left to right, Karen Kline (Iowa State), Mary Jane and Gloria enjoyed a reunion of past Grand Council members in 2013. Inset: Mary Jane's vest listed all Convention locations she had attended and was covered with pink carnations.

Ann Bronsing served as Grand President while Gloria was the NPC delegate. She shared, "It was obvious to all that she was regarded with great respect by the other NPC leaders. When Gloria expressed her opinion, everyone listened."

In 2015, Gloria celebrated 75 years as a member of Gamma Phi Beta and had 24 pink carnations on her Confirmed Conventioneers hat. She earned multiple Gamma Phi Beta awards and honors, including the Service Award, Merit Award, Honor Roll and the Beatrice Locke Hogan Award.

"She was so full of life and fun, always bringing the spirit of sisterhood to any event," said Vicki Read (Arizona), who served as International President from 2000-04.

### **DIGNITY, GRACE, KNOWLEDGE AND LAUGHTER**

When one speaks to those who knew Gloria and Mary Jane well, a common theme is laughter. These two women shared a lot of laughs with one another and those around them. Randy Allard (California State-Long Beach) served as Grand President from 1986-90 with Mary Jane and Gloria on the Council. What she remembers best is the laughter. "One or the other would say something funny, and we would all start laughing. Gloria laughed so hard she would cry, wipe her eyes and start

laughing again," Randy reminisced. "Mary Jane had a very dry wit and was often way ahead of us. She would wait for us to get her joke and delight in the giggles that followed."

Karen Kline (Iowa State), 1978-82 Grand President, agreed with Randy. "Gloria represented Gamma Phi Beta with such dignity and grace, and yes, laughter," Karen said. "I found them both to have the best sense of humor."

They loved to laugh and delighted in sharing their jokes and Gamma Phi Beta knowledge with others. Those who worked with them said they were often utilized as walking history books. Between Mary Jane and Gloria, they had learned about and experienced a lot of Gamma Phi Beta history.

"Between the two of them, they knew everything," Randy marveled. "Their memories were amazing."

### **LIFELONG COMMITMENT**

Mary Jane and Gloria served in many Gamma Phi Beta roles but were continuously mentors to all the sisters they encountered. 1990-92 International President Joey Stiver (North Dakota State) loved seeing the two women act as role models for our members. Her favorite memory of Mary Jane and Gloria occurred in Orlando at the 2010 Confirmed Conventioneers dinner. Mary

Jane and Gloria's hats were decorated with many pink carnations, and the collegiate members couldn't get enough of them. "They were a living example of lifetime loyalty and involvement with Gamma Phi Beta, and it was an important message for those who had just begun their Gamma Phi journey," Joey shared.

When Linda Malony (Southern California), who served as International President from 2008-12, attended her first Convention as a new volunteer, Mary Jane and Gloria warmly welcomed her and helped her feel at ease. "They took the time to make me feel like I was a valuable volunteer though I was just starting out," Linda recalled.

Gamma Phi Beta is thankful for the dedication and perseverance of Mary Jane Hipp Misthos and Gloria Swanson Nelson. They made an incredible impact on our organization and the many sisters who were fortunate enough to spend time with them. We will forever honor their legacy and lifetime commitment to our sisterhood.

"Gamma Phi Beta is the progressive, successful and caring organization that we all love today due in no small part to the devotion and positive influence of Gloria and Mary Jane," said Ann Bronsing, 1982-86 Grand President.

# A Gamma Phi Beta Sister 40 YEARS IN THE MAKING

One day Nancy Murphy Culbert (Missouri State) mustered up her courage and knocked on the door of Carol Smith Markle-Hull (Missouri State) and Janice Martin (Missouri State), who lived across the hall from her in her dorm. She had the idea of creating a new sorority on their campus because the four that were in existence didn't appear to have the opportunities Nancy and a few of her friends were looking for. The women agreed to help Nancy create what they would call the Sisters of Aphrodite.

"I am still stunned by the level of enthusiasm and energy that the other six women who took on that initiative put in and the effort that it took."

Their goal was to celebrate their differences in the hopes that a unique bond of sisterhood would form, and it did. The Sisters of Aphrodite figured out the nuts and bolts to act on their vision and met with Judy Geisler, the university's

dean of women. Nancy shared, "She very enthusiastically supported and encouraged our efforts. She too saw that there were insufficient options on campus." Judy provided guidelines and next steps, including obtaining a seat on the Panhellenic council, developing their own bylaws and attending and actively participating in Panhellenic meetings.

The Sisters of Aphrodite held an election, and Nancy was elected president. Sharon Cole Davis (Missouri State), the corresponding secretary, began researching international and national sororities that the sisters might like to affiliate with, and discovered Gamma Phi Beta. When asked what attracted them to Gamma Phi Beta, Nancy said, "It was what we saw that Gamma Phi stood for and Gamma Phi's response. I believe they saw something in us. For me, it was the leap of faith that the Founders

of Gamma Phi exhibited so early on, and their strong belief that being founded on a rock, they could withstand what challenges might come."

## CHALLENGES ARISE

While all this excitement was occurring, Nancy enjoyed forming new relationships and loved serving the Sisters of Aphrodite. However, she struggled with the adjustment to university life. Nancy was the fifth of seven children and had never been on her own. The novelty of going to a big college where no one knew her last name or her siblings was a big deal.

She scrambled to maintain her studies, job, form new relationships and everything else that comes with attending a big college. Nancy began to struggle with alcohol

consumption and faced her own mental health challenges. "I never would have called what I had depression," Nancy shared. "I will tell you I didn't know how to overcome these challenges and shortcomings."

Though she had her sisters and the excitement of the potential of joining an international sorority, Nancy was unable to find healthy ways to deal with her stress. Just as the Sisters of Aphrodite had established their strong foundation and were taking the necessary steps to become Gamma Phi Beta's Delta Nu Chapter, Nancy left school. She wasn't initiated into the bonds of Gamma Phi Beta.

"It was a really traumatic time," she said. "I just left. I just moved out and went back to Saint Louis."

## MAINTAINING THE SISTERHOOD

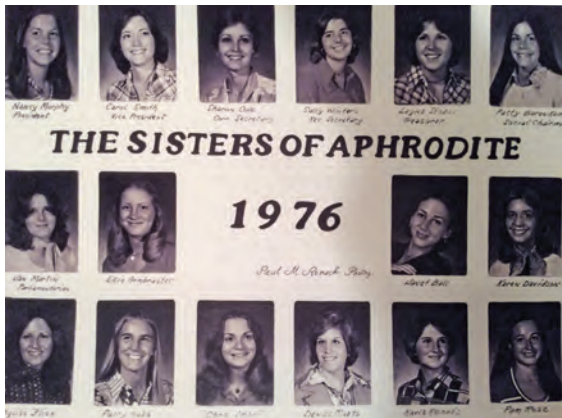
While it was hard to walk away, Nancy was confident the group would succeed in becoming a Gamma Phi Beta chapter, and she was right. On November 12, 1977, Delta Nu Chapter was installed at Missouri State University in Springfield, Missouri.

"I felt confident that the group would be able to continue, because it was never about me," Nancy shared. "It was about the formation of this group of people who were very close and lifelong friends."

When she left school, Nancy did not share much with her sisters. But over the years she shared bits and pieces. Her lifelong friends stuck by her side and stayed in touch for many years to come. They wrote letters, visited as often as possible and dedicated the time it took to maintain their relationships.

Nancy said these women are people she has always deeply cared about. "We held each other's hands even across many miles. I think as a result, we have emerged as more complete women."





Left: Nancy is pictured in the top left photo of this composite from the 1975 Sisters of Aphrodite. Right: In celebration of 40 years of Gamma Phi Beta, Delta Nu Chapter alumnae gathered together. The seven women who are seated were originally part of the Sisters of Aphrodite. Opposite Page: On October 21, 2017, Nancy was initiated into the bonds of Gamma Phi Beta.

### BUILDING STRENGTH AND COMMUNITY

“Fast forward about 25 years, I was offered a position at Saint Louis University.” Nancy took this position because she wanted to be able to provide a college education to her two daughters, even more important to her as she was unable to finish her own. Working at the university allowed her daughters to have some tuition benefits, and Nancy soon learned that those same benefits applied to her.

After five years of working and studying, Nancy graduated with an undergraduate degree in organizational studies. She loved graduating so much that she said to her family, “I want to do that again!” And she did. A few years later, she earned her master’s in higher education.

In September 2017, Nancy achieved 30 years of sobriety. She has her two degrees, is happily married and has two daughters – her older daughter, Beth Patton Peters (Saint Louis), is a Gamma Phi Beta.

In her professional life, Nancy had the opportunity to bring graduate student groups together so they had university support and weren’t operating in isolation. She helped develop a student services council. Ultimately, she brought groups of people together to operate more smoothly and effectively, just as she did with the Sisters of Aphrodite.

“I found it to be really exhilarating to meet with and talk with the students about what was missing from their lives or what they thought would improve their experiences,” Nancy shared. “A part of my hope, and that was realized, was that they would feel more of a connection with their university.”

After her retirement, Nancy’s passion for making a difference and bringing people together remained. She and her husband, Arthur, began a community garden called Central West End Farm. The garden is built on an empty lot in Saint Louis, and provides food to local food pantries.

Once again, Nancy helped bring a community together, and Central West End Farm had plenty of help getting the first eight beds prepared and fruit trees planted. In April, the garden will celebrate its seventh anniversary, and now feeds nearly 300 people every week. Other people have been inspired to begin their own “gift gardens,” as Nancy calls them. “Everything we grow is a gift to others,” she explains. As the gift garden thrives, Nancy and Arthur are writing a book in the hopes of inspiring communities across the world. It’s a children’s book, which they plan to call *A Gift Garden*.

### ENTERING THE BONDS OF SISTERHOOD

Nancy has accomplished and conquered so much since her days as president of the Sisters of Aphrodite, but how has Gamma Phi Beta played a role in her life? The friendships she has maintained have helped her stay connected to the sisterhood. These sisters are the ones who encouraged Nancy to join Gamma Phi Beta as an alumna initiate.

“My friends worked with me to break down the barriers that I saw,” Nancy said. “Their encouragement and enthusiasm really fostered in me a sense of belonging with Gamma Phi that I hadn’t expected.”

After she retired, Nancy felt the timing was right to become a Gamma Phi, since she now had more time to dedicate to the Sorority. She started volunteering at the local Shakespeare festival with the Saint Louis Alumnae Chapter and went through the old papers and notes that she had kept from her time with the Sisters of Aphrodite as inspiration. Nancy shared that it was clear many of their dreams from that time had come true.

“It was appropriate that Gamma Phi adopted us. There was never a beat missed, nor was there ever a need to try to fit a square peg into a round hole – the ideals, the beliefs, those Core Values that have been exhibited by the women of Gamma Phi since its inception – it’s a remarkable gift in our lives.” Nancy reflected with love overflowing in her voice.

After 40 years of exemplifying our Core Values and conquering challenges, Nancy was initiated as a Gamma Phi Beta on October 21, 2017. It feels official now. She has always had a deep sense of belonging with Gamma Phi, but now she feels fully connected. As an initiated member Nancy feels she can give more and sees more possibilities for her involvement with the Sorority.

“The one thing I feel can’t be overstated, and still overwhelms me as I think about it, is how a small group of committed women could come together and create a community that will grow and thrive,” Nancy shared. “To be at this point now, it overwhelms me. My cup runneth over. It took a group of us. It was my idea, but if the first door I knocked on had said no, I don’t know if I would have taken it any further.”

# A VOICE FOR *Change*

Being part of a sorority is a special opportunity. It's a unique college experience that can help you improve your academic career and expand your social circle. After college, alumnae are an incredible network to help provide support to sisters all over the world. It's an opportunity most of us don't think twice about taking. What if you signed up for Panhellenic recruitment and were told you shouldn't bother? You wouldn't be able to accept a bid at the end of the process because you were involved with a different program at your university.

That's what happened to Madison Essig (George Mason). Madison has Down syndrome and is a Mason LIFE student at George Mason University. Mason LIFE is a program that creates a supportive academic environment for students with intellectual and developmental disabilities. They have academic courses, but they

also have life-skills classes. "The program is more certificate based compared to degrees. We don't really have GPAs either," Madison explained. "We do get the same education as everyone else."

In 2016, Madison signed up for recruitment and was told she couldn't join a sorority because she was a Mason LIFE student. Like many of us would be, Madison was disappointed. However, unlike many of us, Madison decided to figure out how to change this rule.

She wrote a letter to the University explaining her situation and why Mason LIFE students should be reclassified. Madison's parents are attorneys, so they were able to help with some of the logistics in the letter and shared their own opinions. "Mason LIFE students live on campus. They study on campus and embody a lot of the values of Greek organizations," Kimberly Templeton, Madison's mom, explained.

Madison spoke in front of plenty of people to get her message out there, and it worked. Mason LIFE students are now able to participate in recruitment.

"We were very proud of Mason for the change it made," Kimberly said. "I commend them."

## FINDING HER HOME

Madison went through recruitment and fell in love with Gamma Phi Beta, just as so many have before her. "I really liked how I connected with all the

women," Madison shared. "They are all very smart, kind and friendly."

Our Core Values resonated with Madison, and she felt passionate about our mission. Madison loved Gamma Phi Beta and the chapter was thrilled to extend a bid and welcome her home on Bid Day.

Epsilon Pi Chapter provided Madison with love and support and helped give her the kind of college experience her parents were hoping she would find. "They're a phenomenal bunch of young women, that I truly only could have dreamed about," her mother said. "Once she was welcomed into the Sorority, her life changed. She's never home! She's either studying with her Big Sister or at a social event."

Madison embraced Gamma Phi Beta and all that comes with it, but she knew her work wasn't done. She wants to be a voice for those with disabilities and knew there was more to be done on her campus.

## ADVOCATING FOR CHANGE

For the past year and a half, Madison served as a Mason LIFE liaison on the University's student senate, but she wasn't a full-fledged senator because of her affiliation with Mason LIFE. Just as Mason LIFE students couldn't join Greek organizations, they were restricted in their student government involvement. They couldn't vote in elections or run for student government positions. Madison was determined to make another change.

"It all started with the Sorority," she said. "I think when I joined Gamma Phi that was the start of the impact. It just kept going."

Madison knew she had the capability to persuade the Senate to amend its constitution, and with her Gamma Phi sisters backing her, she discovered a renewed sense of strength and determination. It took more than two years to make the change.



*Madison is often found spending time with her Epsilon Pi sisters, especially Lily Parshenov, her Big Sister.*



Left: Madison was thrilled to receive her bid day card. Top Right: Celebrating Bid Day was a highlight of Madison's Gamma Phi experience so far. Bottom Right: Madison is proud to show off her Gamma Phi Beta letters.

She worked with a student government senator to craft a bill and began campaigning for inclusion on campus. The bill became known across campus as Madison's Bill. She spoke at a senate meeting in support of the bill, and Epsilon Pi Chapter was there to show their support. "They have really been with me every step of the way."

Ultimately, Madison's Bill passed. Madison herself was voted into George Mason's student senate in January as a true member with the opportunity to advocate for all students.

### MORE TO COME

Believe it or not, Madison's not done yet. After graduation, she hopes to work in a field where she can continue to advocate for those with disabilities. Since Mason LIFE doesn't offer traditional majors, Madison submitted an application to become a degree-seeking student. Her application was accepted and Madison plans to graduate in 2022.

She began her studies in Mason LIFE because it was a fantastic transition to university life and living independently. Madison was able to gauge the level of academics in college, and now feels she can

be successful as a degree-seeking student. "I have a very strong work ethic and the motivation to get things done," Madison shared, which is no surprise based on all she has accomplished.

While this motivation can't be taught, Madison's passion for advocacy has only been enhanced through her Gamma Phi Beta membership. She is a model of what it means to build strong girls, and her sisters help her inspire others through their support of all she does. "Madison is being held to the same standard of excellence that everyone is," her mother explained. "Gamma Phi Beta provided the spirit that Madison needed."

# Education: CHANGING LIVES ACROSS THE WORLD

Most college students opt for a beach or ski vacation during their spring break. Mackenna Judge (Clemson) decided to take a trip unlike any other. She traveled to a remote village in Nepal with Circle of Sisterhood to help build a school. Mackenna had only been outside of the United States once and had never participated in a service trip before but decided to take advantage of the incredible opportunity.

The Circle of Sisterhood Foundation began in 2010 to support organizations working to remove barriers to women's education across the world. The organization gives sorority women the opportunity to come together to give women and girls an equal chance for rewarding lives and livelihood. Across the United States, Panhellenic women donate their time and money to the cause, and Mackenna was thrilled to give her time to Circle of Sisterhood.

Before the opportunity for the Nepal trek presented itself, Mackenna's involvement with

Circle of Sisterhood had consisted mostly of participating in fundraisers. This trip gave her a chance to make a more personal change in her own life and the lives of others. Though when she applied she didn't realize how much she was about to learn.

To be considered for the trip, Mackenna had to submit an application and go through an interview process, much like an internship or job. One member from each sorority on the Clemson campus was selected, and Mackenna was shocked when she was chosen. She couldn't believe that she would have this incredible experience and be able to give back to others. "If I wasn't in Gamma Phi Beta, I never would have been able to go."

## CULTURE SHOCK

Upon their arrival in Nepal, Mackenna and the rest of the Circle of Sisterhood team received new names for the trip. Their English names would be difficult for the locals to pronounce. They learned to say important words

like "hello," "thank you" and "no more food."

Next, they learned more about the school they were building. "Women's rights there are very new to say the least," Mackenna explained. This school was built with the intention of putting an emphasis on women's rights and giving women and girls opportunity for intellectual and personal growth. Fifty percent of the school board would be women and women and girls would have the same rights to education as men and boys.

*"I value my education, so I wanted to give that opportunity to other women."*

Gamma Phi Beta's mission is to inspire the highest type of womanhood, and Mackenna reflected on that quite a bit on her trip. Seeing how hard women had to work to get an education, reminded her that she's lucky to be able to have the opportunity to not only study at a university, but be surrounded by strong, confident women of character in her sisterhood and on campus. Mackenna has always been aware that she was lucky to have the opportunity to go to college, but she never realized just how fortunate she was until she visited Nepal. "I learned that I live in a very wonderful place," she shared. "I have opportunities that a lot of other people don't have."

For example, the translator on her trek was not always sure she would receive an education. Her parents wanted her to be able to do anything she wanted with her life, but their friends, family and community didn't understand why they would allow their daughter to go to college. Mackenna was inspired by her translator's story. "She's an incredible example of how education can change lives!"



The Circle of Sisterhood Trek group wore traditional clothing with some of the people living in the village where they built a school.



The Panhellenic women wore their letters and held their school's flag to show their sorority pride!



Mackenna (in the yellow shirt) enjoyed being on the worksite and helping build a school for women and girls to receive educations.

As she learned about the people in the village, Mackenna learned more about herself. She discovered her own strength and desire to help others, especially, when she began to connect with her host family.

The mother of the family wasn't sure how old she was. She estimated she was between 19 and 21. Mackenna couldn't imagine not knowing her own age! In fact, she celebrated her 20th birthday there in the village.

Her host mother was right around Mackenna's age and the two of them could not have more different experiences. The woman lived in this small village, didn't have an education, had a four-year-old daughter and was married. Mackenna is pursuing a degree in computer engineering and is responsible for only herself. While both are happy in their own lives, it was eye opening for Mackenna. "It just shows the different dynamics," she said.

### **BREAKING THROUGH PERSONAL BARRIERS**

Learning about these people and their experiences that were so different from her own broadened Mackenna's view of the world. She was pushed outside of her comfort zone with this trip but learned so much about the opportunities in her own life and what she is able to conquer.

Simply taking the leap and heading to Nepal was a life-changing moment for

Mackenna. "It showed that I could do things outside of my comfort zone," she explained. "The world is an amazing place and there's so much to see and do."

While this was a huge personal feat and journey for Mackenna, she credits the opportunity to Gamma Phi Beta. She only applied because sisters encouraged her, and she wouldn't have had the opportunity at all if she weren't in a sorority.

When she was deciding whether she should apply or not, her Big Sister pushed her to give it a try. They talked a lot about what could go wrong and what could go right, and Mackenna is glad she received the encouragement to apply.

Now, Mackenna is eagerly anticipating the chance to help plan the next Circle of Sisterhood trip, while planning a trip of her own. She and her Gamma Phi Beta Little Sister recently booked their flights to Switzerland, something Mackenna wouldn't have done prior to her trip to Nepal.

Thanks to Circle of Sisterhood and her friends in Nepal, Mackenna is more thankful for her education and the opportunities in her life. She plans to make the most of any prospects that come her way, including further

involvement on campus and in Gamma Phi Beta. In regard to the trip that changed her life, Mackenna said, "The opportunity 100 percent came from Gamma Phi."

Mackenna (pictured right) celebrated her 20th birthday in Nepal with her host mother. The red on her forehead is part of their birthday traditions.



# GAMMA PHI BETA *Always*

*The Crescent* received the following letter from Sonia Dalrymple Schork (Syracuse) in late 2017. We were inspired by how much the Sorority has influenced Sonia over the years and felt sisters everywhere might also be inspired. Enjoy this letter, and never forget how much of an impact Gamma Phi Beta can have on her members!

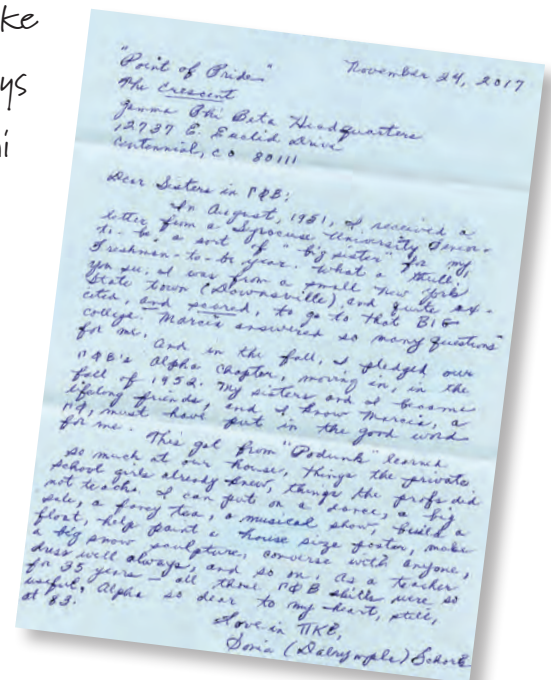
Dear Sisters in ΓΦΒ:

In August 1951, I received a letter from a Syracuse University senior to be a part of "big sister" for my freshman-to-be-year. What a thrill! You see, I was from a small New York state town (Downsville), and was quite excited and scared to go to that big college. Marcie answered so many questions for me, and in the fall, I pledged Gamma Phi Beta's Alpha Chapter, moving in in the fall of 1952. My sisters and I became lifelong friends, and I know Marcie, a Gamma Phi, must have put in the good word for me.

This gal from "Podunk" learned so much at our house — things the private school girls already knew, things the profs did not teach. I can put on a dance, a big sale, a fancy tea, a musical show, build a float, help paint a house size poster, make a big snow sculpture, converse with anyone, dress well always and so on. As a teacher for 35 years, all these Gamma Phi Beta skills were so useful. Alpha is so dear to my heart, still, at 83.

Love in IIKE,

Sonia (Dalrymple) Schork



*Freshly picked styles for  
every Gamma Phi*



[crescentcorner.com](http://crescentcorner.com)

CRESCENT  
CORNER

# SORORITY Life

It's collegiate and alumnae chapter updates – at a glance! Read all about our shining chapters across the continent and their recent activities. For submission guidelines, visit [GammaPhiBeta.org](http://GammaPhiBeta.org).

## Region 1

### CONNECTICUT

#### Eta Theta Chapter (Connecticut)

Spring semester began with a university-wide fundraiser. The chapter has raised more than \$11,000 so far!

### DELAWARE

#### Eta Gamma Chapter (Delaware)

At the fall sisterhood retreat, sisters visited Sandy Hill Camp and enjoyed the bonding experience. They are looking forward to another wonderful semester.

### MASSACHUSETTS

#### Epsilon Eta Chapter (Bridgewater State)

The chapter welcomed 24 new members this semester. Bid Day was enjoyed by all, and everyone had a blast with the 90s theme!



Region 1 | Rochester Alumnae Chapter and Epsilon Tau Chapter (Rochester) sisters volunteered at a Girls on the Run 5k.

#### Epsilon Phi Chapter (Bentley)

In December, sisters volunteered and participated in a Girls on the Run 5k. They are looking forward to another successful semester and are excited to welcome their new members!

#### Eta Pi Chapter (Quinnipiac)

A few sisters are studying abroad this semester, and Eta Pi Chapter is wishing them safe travels. Members can be found in Italy, Ireland, Australia and more!

### PENNSYLVANIA

#### Alpha Upsilon Chapter (Penn State)

In January, the chapter welcomed 54 new members after formal recruitment. They are looking forward to getting to know their newest members.

#### Zeta Epsilon Chapter (Duquesne)

Members enjoyed sharing why they love our Core Values with potential new members during recruitment and were thrilled to welcome 36 new members.

### ONTARIO

#### Alpha Alpha Chapter (Toronto)

Sisters welcomed their parents to the annual parent's tea. Everyone enjoyed spending time at the chapter facility, and members are looking forward to visits from their chapter advisor and regional coordinator.

## Region 2

### FLORIDA

#### Delta Sigma Chapter (Florida Institute of Technology)

This semester, Delta Sigma Chapter is looking forward to everything their new executive council will accomplish and is proud to welcome their newest members!

### Gamma Phi Beta Sorority by Regions



### **Eta Beta Chapter (Florida Southern)**

In December, the chapter initiated their new members and participated in a Girls on the Run 5k. They ran, helped set up and cheered from the sidelines. Everyone enjoyed Building Strong Girls!

### **Naples Alumnae Chapter**

Sixteen sisters attended a cooking class in January. They learned about local purveyors of organically-grown and sustainably-produced ingredients and enjoyed the food prepared in front of them, which included a molten chocolate cake!

## **SOUTH CAROLINA**

### **Epsilon Theta Chapter (Clemson)**

Several sisters are studying abroad this spring semester. From Australia to Italy, sisters are exploring the world, and the chapter is excited to see all that they accomplish and learn.

### **Zeta Zeta Chapter (Coastal Carolina)**

In April 2017, the chapter participated in the Coastal Carolina University tradition of Mock Rock, an event that wraps up Greek Week where a sorority and fraternity team up to compete. Zeta Zeta Chapter and Phi Gamma Delta Fraternity placed second.

### **Zeta Sigma Chapter (South Carolina)**

The chapter welcomed 17 new members in the spring. Sisters are proud to watch their chapter grow.

## **TENNESSEE**

### **Eta Kappa Chapter (Tennessee-Chattanooga)**

The chapter celebrated Bid Day in the spring and enjoyed utilizing the #Shels campaign at their Bid Day and sisterhood retreat. A few sisters who are interior architecture majors spent a week in New Orleans, Louisiana, studying architecture.

## **VIRGINIA**

### **Alpha Chi Chapter (William & Mary)**

During the holiday season, the chapter celebrated the end of the semester with a holiday sweater party. They are excited for what is to come in spring semester with Moonball and other activities!

### **Epsilon Iota Chapter (James Madison)**

Epsilon Iota Chapter kicked off the semester by welcoming 36 new members. The chapter is over the moon to have these strong women join them and cannot wait to see what wonderful things they will contribute to the chapter!

### **Eta Nu Chapter (James Madison)**

Nineteen teams participated in the chapter's fall 2017 Moonball tournament. The gymnasium was alive with friendly competition and lots of love for Girls on the Run!

### **Fairfax County Alumnae Chapter**

Alumnae joined Epsilon Pi Chapter (George Mason) members for a Founders Day luncheon featuring awards, a photo booth, songs and a ceremony. Programs for 2018 include luncheons, dinners, a gathering with their children, a tea and craft events.

## **Region 3**

### **TEXAS**

### **Alpha Xi Chapter (Southern Methodist)**

In January, Alpha Xi Chapter welcomed new members. They enjoyed Bid Day and getting to play arcade games with their new sisters.

## **Region 4**

### **INDIANA**

### **Zeta Iota Chapter (Valparaiso)**

Sisters concluded spring recruitment in January and

celebrated their new members at Bid Day! They also hosted a sisterhood retreat to get to know the new members and set chapter goals.

### **Zeta Kappa Chapter (Southern Indiana)**

The chapter is preparing for their campus philanthropy event, Lip-Sync, in which campus organizations compete in a lip-sync battle to raise money for The Pirouette Project. This organization teaches girls self-confidence through dance.



*Region 2 | After winter break, Beta Beta Chapter (Maryland) sisters reunited to prepare for recruitment and the new year.*



*Region 3 | Sisters are happy to be reunited for the new year and semester. They look forward to adding new members to Zeta Psi Chapter (Texas-San Antonio).*



**Region 4** | Beta Epsilon Chapter (Miami-Ohio) attended a Girls on the Run 5k and made up a cheer zone near the finish line.



**Region 5** | In December, Chicago Northwest Suburban Alumnae Chapter enjoyed a gift exchange and came together to celebrate sisterhood.

**MICHIGAN**

**Beta Chapter (Michigan)**

Beta Chapter had so much fun at their ice skating sisterhood where they welcomed new members into Gamma Phi Beta. Members enjoyed skating around Yost Hockey Arena, spending time together and taking a break from the busy semester!

**Beta Delta Chapter (Michigan State)**

The chapter welcomed new sisters with a candy-themed Bid Day filled with sweet treats and sisterhood. New members got their first taste of how sweet it is to be a Gamma Phi, and everyone is looking forward to future bonding.

**Delta Omega Chapter (Oakland)**

A few sisters began the new semester with a fun-filled weekend in New York City.

**Epsilon Beta Chapter (Alma)**

Members kicked off the first round of recruitment with a festive carnival theme. This recruitment has been one of the best yet, and members are very excited to welcome their newest sisters to the chapter.

**Zeta Nu Chapter (Detroit-Mercy)**

The chapter is working hard to ensure their new members are enjoying their sisterhood. Members gathered to share their favorite Sorority memories with all their sisters, and new members loved hearing all about others' experiences.

**Eta Delta Chapter (Grand Valley State)**

At the beginning of the semester, Eta Delta Chapter had their winter sisterhood retreat. The day was spent planting flowers, doing team-building activities and ice skating. Sisters felt the day brought everyone closer together and was a great bonding experience.

**OHIO**

**Beta Xi Chapter (Ohio State)**

The chapter began spring semester with a successful recruitment. They cannot wait to get closer with their new members.

**Zeta Omicron Chapter (John Carroll)**

Zeta Omicron Chapter is proud to announce Maura Wallace was recognized for her outstanding dedication to community service and social justice! The chapter could not be prouder of Maura, as this award was presented to only one sophomore in the entire university.

**Eta Zeta Chapter (Cincinnati)**

This fall, the chapter hosted their inaugural Moonball tournament and it was a great success! Sisters worked hard to raise awareness and funds for Girls on the Run. The chapter will have their sisterhood retreat in February and formal in April.

**Eta Omicron Chapter (Ohio)**

Sisters traveled and volunteered over winter break but are happy to be back for the spring semester. The chapter is excited to start the new year strong with the newly-elected executive council and can't wait to add new members to the sisterhood.



**Region 6** | Pi Chapter (Nebraska-Lincoln) installed their new executive officers. They can't wait to see how the chapter continues to thrive under new leadership!

## Region 5

### ILLINOIS

#### Chicago Alumnae Chapter

Twenty-seven sisters enjoyed the chapter's annual holiday party hosted by Gamma Phi Beta Foundation Trustee Rosemary Milew. They raised \$800 for the Foundation to go toward loyalty grants and honored two 50-year members.

#### Evanston-North Shore Alumnae Chapter

In October, the chapter hosted a Northwestern University tailgate and football outing. They were joined by members of the [Chicago, Chicago Northwest Suburban](#) and [Chicago Far West Alumnae Chapters](#). Alumnae were given access to the field for a photo opportunity after the Wildcats won in triple overtime.

### IOWA

#### Omega Chapter (Iowa State)

Omega Chapter enjoyed a holiday sisterhood that included decorating ornaments, eating yummy snacks and exchanging gifts. They utilized Loyalty Circles and connected with sisters, played fun games and wrote encouraging messages to one another.

### MINNESOTA

#### Gamma Mu Chapter (Minnesota-Moorhead)

Members elected a new executive council and are excited to see what they are going to accomplish. The chapter is proud to share they raised their chapter GPA!

#### Gamma Pi Chapter (Minnesota State-Mankato)

The chapter elected new officers and thanked the previous officers for all their hard work. Sisters are now preparing for spring recruitment and are excited for what is to come this semester.

### WISCONSIN

#### Gamma Chapter (Wisconsin-Madison)

This fall, sisters came together to raise money for Girls on the Run. They also volunteered their time and efforts at the 9th annual Girls on the Run 5k in South Central Wisconsin.

#### Gamma Rho Chapter (Wisconsin-Oshkosh)

During fall recruitment, the chapter gained amazing new members. Sisters enjoyed volunteering at a Girls on the Run 5k and the community's holiday parade. They gave thanks at a Thanksgiving sisterhood to show their love for Gamma Phi Beta and are looking forward to the spring semester.

## Region 6

### COLORADO

#### Tau Chapter (Colorado State)

The new executive council enjoyed a photoshoot to spend time together. The chapter is very excited to see what they accomplish this year!

### KANSAS

#### Sigma Chapter (Kansas)

The chapter held an officer retreat in January and hosted more than 14 alumnae mentors. Active members were able to network and glean advice from their new counterparts. These partnerships are sure to provide expertise and guidance to executive council officers in 2018.

### MISSOURI

#### Alpha Delta Chapter (Missouri-Columbia)

The women of Alpha Delta Chapter participated in a gingerbread house competition to help fellow members of the Greek community support their philanthropic partners. Gamma Phi Beta won the competition and took home the gold!

#### Gamma Tau Chapter (Saint Louis)

During the fall semester, the chapter welcomed more than 50 new members on Bid Day. They have made so many memories already and cannot wait to share many more in the future.

#### Zeta Delta Chapter (Southeast Missouri State)

This spring, the chapter participated in recruitment. Sisters are proud to welcome new members into Gamma Phi Beta and are excited to see what they have in store.



**Region 7** | Delta Eta Chapter (California-Irvine) participated in a Girls on the Run 5k. They were excited to cheer on the girls running and can't wait to volunteer again!

**Eta Iota Chapter (Rockhurst)**

Members were thrilled to welcome home 25 amazing new women into their sisterhood and to officially join Region 6.

**Eta Sigma Chapter (Central Missouri)**

Sisters hosted their inaugural Moonball tournament. The event was successful in raising money for Girls on the Run, and there were many laughs and great memories made.

**Saint Louis Alumnae Chapter**

More than 150 collegiate members from Phi Chapter (Washington), Gamma Tau Chapter (Saint Louis) and Zeta Delta Chapter (Southeast Missouri State) joined Saint Louis Alumnae Chapter to cheer on and provide water for 5,200 Girls on the Run participants on November 18. Several coaches and parents said the positive and consistent cheering from the sisters were just what they needed.

**NEBRASKA**

**Gamma Kappa Chapter (Nebraska-Kearney)**

The chapter's newly-elected executive council participated in an escape room to work on their abilities to act under pressure, work together and listen to one another. They also discussed their goals and plans for the chapter.

**OKLAHOMA**

**Psi Chapter (Oklahoma)**

Sisters welcomed 17 new members on Bid Day and are so excited for the semester ahead!

**Beta Omicron Chapter (Oklahoma City)**

The chapter enjoyed a Breakfast at Tiffany's event and held a chapter retreat. Sisters designed coffee mugs and watched a movie in their pajamas.

**Region 7**

**ARIZONA**

**Beta Omega Chapter (Northern Arizona)**

Sisters are gearing up for spring recruitment and are excited to meet potential new members. They are ready for a new semester full of sisterhood, bonding and making memories.

**Phoenix Northwest Valley Alumnae**

Alumnae gather for monthly luncheons and meetings at Tivoli Gardens on the second Friday of the month from October through May. They are looking forward to what the year brings.

**CALIFORNIA**

**Beta Alpha Chapter (Southern California)**

After welcoming new sisters to the chapter, Beta Alpha hosted several bonding events. Women bonded during a sisterhood retreat and REAL Wellness Week, then enjoyed supporting the USC football team together throughout the semester.

**Epsilon Nu Chapter (Chapman)**

Sisters were thrilled to welcome 70 new members into the bonds of Gamma Phi Beta. Bid Day was enjoyed by all and there is plenty of excitement for the year to come.

**Los Angeles Alumnae Chapter**

In January, Los Angeles Alumnae Chapter revamped their Facebook page, created an Instagram and hosted two events. The first was a brunch where they planned out the calendar year, and the second was a hike to Inspiration Point in Runyon Canyon Park.

**Region 8**

**IDAHO**

**Xi Chapter (Idaho)**

In the fall, the chapter was first overall in grades and intramural sports. They also had a few members participate in an alternative winter break volunteer trip, where they traveled abroad to help communities in need.

**OREGON**

**Nu Chapter (Oregon)**

After a week of winter recruitment, sisters welcomed their new member class with a roller-skating event. Despite all the falls, sisters had a blast spending time together and skating!

## WASHINGTON

### Beta Sigma Chapter (Washington State)

In December, the chapter earned the award for Outstanding Philanthropic Efforts at the Greek community's annual Arete Awards. It was an honor for the chapter to be recognized, and they extend their thanks to their advisors and volunteers for their help with putting on an award-winning Moonball volleyball tournament!

## BRITISH COLUMBIA

### Alpha Lambda Chapter (British Columbia)

A group of sisters are pursuing their academic excellence through serving on the executive council for Order of Omega, and have recently been hard at work recruiting new officers for the organization.



Region 8 | Zeta Gamma Chapter (Sonoma State) hosted their Moonball volleyball tournament and raised \$2,800 for Girls on the Run.



## Jewelry that shines.

- A. Barre Necklace, #BARRE SP...\$50    B. Chapter President Ring, #0453 SS...\$133 10K...\$315  
C. Belle Bracelet, #BELLE SS...\$59    D. Crescent Slide Necklace, 18", #1668 SS...\$57 10K (with GF chain)...\$154  
E. Treasured Letters Necklace, #TREASURE SS...\$50    F. Juliette Watch, #JULIETTE \$50

GAMMA PHI BETA OFFICIAL JEWELRY AND ACCESSORIES  
[HJGreek.com/GPB](http://HJGreek.com/GPB) or call 1-800-451-3304



K-karat gold, SS - sterling silver, GF - gold-filled



# THE SPIRIT OF GENEROSITY

As we reflect on this past year, there is one word that embodies our donors, sisters and friends—generous. The definition of “generous” is the quality of being kind, understanding, giving and selfless. It is reflected in the amount of time spent by volunteers planning, dreaming big and educating about our mission to help Gamma Phi Beta grow and in the amount of support the Foundation provides to our members and communities. These numbers represent the Gamma Phi Beta giving spirit during the 2016-17 fiscal year. Thank you for supporting the Foundation and Gamma Phi Beta!



Leadership **\$63,033**

Philanthropy **\$583,690\***

Financial Aid **\$122,827**

Total Paid Out in Grants  
**\$769,552**

**102** Total Grants Awarded

Awarded **18** Loyalty Grants

**14** New Endowments Created  
**4** Leadership, **10** Financial Aid

**112** Members of The 1874 Society

One Heart campaign has raised  
**\$11 Million** since 2012



Total Donor Contributions  
**\$1,699,563**

View our annual report at  
[GammaPhiBeta.org/AnnualReport](http://GammaPhiBeta.org/AnnualReport)

**Numbers as of July 31, 2017**

*\*This number represents the funds raised by our collegiate and alumnae chapters and donors for Girls on the Run and other philanthropic organizations, including the Gamma Phi Beta Foundation.*



# GIVE A Heart!



Honor that special someone with a Heart, your heart!  
The Gamma Phi Beta Foundation is once again providing a simple, fun way to show your gratitude for others while supporting the organization you love.

For just \$5 each, you may give Hearts in appreciation of your Gamma Phi Beta sisters or loved ones who have impacted your life. Your honorees will receive emails acknowledging your gift to the Foundation in their honor. If your recipients are attending Convention 2018, they will receive Hearts to wear proudly on their nametags, indicating they have been honored. Neither you nor your honoree have to attend Convention to participate in this celebrated tradition!

Whether you give or receive Hearts, you are part of what makes the Foundation's mission possible. For more information and to purchase Hearts, please visit [GammaPhiBeta.org/Hearts2018](http://GammaPhiBeta.org/Hearts2018).



# In Celebration

*Celebrate a special sister, loved one or event with an "In Celebration" gift to the Gamma Phi Beta Foundation. Thank you to the following donors, whose gifts were recorded as of January 31, 2018. Lists are printed as received from the Foundation.*

Alpha Tau Chapter (McGill), in honor of my collegiate chapter.  
Anne Layton

Kendra Bocher (California State-Long Beach), in celebration of our 30 years of friendship.  
Anne Layton

Delta Rohn Carlson (Nebraska-Lincoln), in celebration of your 100th birthday.  
Phoenix Northwest Valley Alumnae Chapter

Meghan Copen (Oakland), in your honor.  
Catherine Ives Jones

Linda Hall Davis (Arizona), in your honor.  
Mary Helen Hall

Kitty L. deKieffer, in celebration of your birthday.  
Frances Griffin

Eta Eta Chapter (South Florida), in celebration of your 5th Anniversary.  
Natalie Pearson

Eta Tau Chapter's (Colorado Mesa) first executive council, in celebration of Christy, Emily, Brooke, Haley, Marissa, Ashlyn and Bridgett. Thank you for your time and talents as you

led the new chapter in its first year. It was a privilege to work alongside you as your advisor.  
Shellie Hodges

Fort Collins Alumnae Chapter Officers: Roseanna Biletto Graves (Colorado-Boulder), Linda Hinshaw (Colorado State) and Karen Brayden (Colorado State).  
Sharon Green

Taylor Estes Foster (Southern Methodist), in celebration of the birth of Max.  
Fran Stevenson

Richard "Gerry" Frank, in honor of my husband.  
Jeanne Jacob

Frances Rea Griffin (Texas-Austin), in celebration of your 50 years of membership in Gamma Phi Beta.  
Sally Lewis

Shellie Hodges (Oregon), in celebration of the safe arrival of your legacy granddaughter, Hadley Brooke Hodges.  
Anne Layton

Barbara Hurt-Simmons (Nebraska-Kearney), in celebration of our event hostess.  
Naples Area Alumnae Chapter

Judy Ingersoll (Bradley), in celebration of our event hostess.  
Naples Area Alumnae Chapter

Annabel Jones (Oklahoma), in celebration of your Oklahoma Sooners.  
Camille Favre

Emilie Macfie (McGill), thank you so much for letting us use your house for our pledging ceremony. We look forward to future events with you and the other members of the Greek community.  
McGill Alpha Phi Fraternity  
Ashley Haugh

Allyson Argo McMaken (Georgia), in your honor.  
John Argo

Sarah Maher O'Neil (Colorado-Boulder), in your honor.  
Aaron and Sarah O'Neil

Jamie Pickel (Oklahoma), in celebration of the birth of your beautiful legacy, Blakely.  
Fran Stevenson

Mary Vanier (Kansas State), Jessica Jecmen (Oklahoma City), Fran Stevenson (Kansas State) and Krista Davis (Bowling Green), in celebration of my own four founders

in Gamma Phi Beta, who each instilled in me their own piece of what it means to inspire to the highest type of womanhood.  
Susie Knetter

Lori Hofsess Whitesides (Missouri-Columbia), in celebration of the birth of you and Corey's daughter and legacy, Luella Jo.  
Megan Valli Minnick  
Danielle Roden

Renee Wrubel Wattenberg (Oakland), in celebration of your marriage to Darryl Wattenberg. Best wishes my dear friend.  
Susan Lupo

Katie Yenrick (Boston), in celebration of your 32nd birthday.  
Carolyn and David Yenrick

Zeta Rho Chapter (Texas A&M-College Station), in honor of the chapter.  
Julia Delgado

*To make an "In Celebration" gift, visit [GammaPhiBeta.org/Donate](http://GammaPhiBeta.org/Donate) or call 303.800.2890. The minimum donation is \$25. Gifts received by April 31, 2018, will be acknowledged in the summer 2018 issue.*

# Memorial Gifts

*We acknowledge the following individuals and groups who contributed to the Gamma Phi Beta Foundation in memory of a loved one as of January 31, 2018. Lists are printed as received from the Foundation.*

George Bowling, husband of Catherine Gardner Bowling (Vanderbilt)  
Gwen Rogers

Geraldine and Jack Byrne, parents of Megan Bynre Krueger (Indiana)  
Megan Krueger

Marilyn Bachnik Callahan (Wisconsin-Oshkosh, 1966)  
Judy Graham

Claudene Christian (Southern California, 1991)  
Tracy VanDenBerg

Jan Williams Clark (University of Washington, 1940)  
Anne Moldrem

Karen Bailey Cooper (Bowling Green, 1962)  
Heather Foote Seber

Elsie Detweiler, grandmother of Krista Spanninger Davis (Bowling Green)  
Anne Layton

Karen Dombrowski Cienki (Wisconsin-Oshkosh, 1972)  
Theresa Dombrowski

Bill Eichenberg, father-in-law of Julie Dunn Eichenberg (Florida State)  
Kitty L. deKieffer  
Frances Griffin  
Annabel Jones

Arthur Francis Eichorn Jr., father of Kim Eichorn (California-Santa Barbara)  
Valerie Freeman

Herbert Farber, partner of Elizabeth Brophy Kulemin (Arizona)  
Marin County Alumnae Chapter

Shirley Davidson Flanagan (Southern California, 1952)  
Carol Blanchard

Kirk Thomas Flemming, son of Nancy Thomas Flemming (Gettysburg)  
Delta Kappa Chapter  
Denise Vollert-Parrotto

Melissa Mehofer Freund (Missouri State, 1981)  
Cathy Bufano  
Tracy Gadberry  
Leigh Griggs-Gartland  
Phyllis Gross  
Jan Owings  
Connie Vreeland  
Cheryl Wiltsch  
Renee Winchester

Latane Jordan Graham (Auburn, 1968), mother of Judy Graham (Oklahoma)  
Judy Graham

Verda Hansen, grandmother of Autumn Hansen (Idaho)  
Anne Layton

Lucinda Harrold (Colorado-Boulder, 1963)  
Geri Jacobowski

Robin Uecker Holloway (Nebraska-Lincoln, 1988)  
Nicki Hitz Ayer

Clara Jacob, mother of Jeanne Jacob (Iowa)  
Jeanne Jacob

Barbara Thompson Kerr (Colorado State, 1952)  
Elizabeth Coley Phillips

Barbara Lyman, mother of Lisa Lyman Gray  
Kitty L. deKieffer  
Julie Dunn Eichenberg  
Kathy George  
Frances Griffin  
Sally Lewis  
Nancy Miller  
Joey Stiver  
Karen Urette  
Mary Vanier

Suzanna Hays Davis Malony, mother-in-law of Linda Lyons Malony (Southern California)  
Karen Kline

Catherine Eyraud Matz, mother of Rene Matz Thompson  
Valerie Freeman  
Annabel Jones

Carol Grinstead Maupin (Oklahoma, 1955)  
Terri Baker

Megan Wynne-Jones McKee (Toronto, 1944)  
Naples Alumnae Chapter

Mary Jane Hipp Misthos (Colorado College, 1940)  
Randy Allard  
Fraya Black  
Barbara Boenzli  
Alison Bond  
Becky Boyd-Obarski  
Ann Bronsing  
Rosemary Bunn  
Sandy Burba  
Ann Campbell  
Barbie Chadwick  
Chicago Alumnae Chapter  
Julie Dunn Eichenberg  
Jacqueline Ennis Falkenroth  
Camille Favre  
Judy Graham  
Cathy Griffin  
Frances Griffin  
Colette Hays  
Shellie Hodges  
Joyce Hultgren  
Barbara Hurt-Simmons  
Annabel Jones  
J.J. Kaelin  
Karen Kline  
Anne Layton  
Sally Lewis  
Cathy Lindauer  
Verona Lynam  
Corinne Martinez  
Vicki Read  
L'Cena Rice

Kris Riske  
Joanne Roman  
Ruth Seeler  
Cheryl Speer  
Joey Stiver  
Karen Urette  
Liz Ware  
Magnes Welsh  
Julia Wright

Gloria Swanson Nelson (Oklahoma, 1940)  
Randall Allard  
Jeanne Swanson Beach  
Barbara Boenzli  
Alison Bond  
Ann Bronsing  
Sandy Burba  
Barbie Chadwick  
Chi Omega Fraternity  
Phyllis Chocat  
Jennifer Chuang  
Kitty L. deKieffer  
Christy Ehrenreich  
Julie Dunn Eichenberg  
Nancy Enright  
Jacki Falkenroth  
Camille Favre  
Judy Graham  
Cathy Griffin  
Frances Griffin  
Shellie Hodges  
Joyce Hultgren  
Barbara Hurt-Simmons  
Linda Johnson  
Annabel Jones  
J.J. Kaelin  
Karen Kline  
Kappa Delta Sorority  
Anne Layton  
Sally Lewis  
Cinda Lucas  
Mary Ruth Manthey  
Corinne Martinez  
Mary Jane Misthos  
Ginny Myer  
Sandra Nauman  
Judy O'Neill  
Margaret Pape  
Amy Peterson  
Betty Quick  
Vicki Read  
L'Cena Rice  
Kris Riske  
Joanne Roman  
Heather Foote Seber  
Cheryl Speer  
Joey Stiver  
Karen Urette  
Laurie Veldhuizen  
Magnes Welsh  
Julia Wright

Veralie "Lee" Brookins Nicoll (Southern California, 1952)  
Carol Blanchard

Gwendolyn James Nixon (Colorado College, 1957)  
John Nixon

Dr. Laurence V. Oberhill, husband of Donna Jason Oberhill (Northwestern)  
Donna Jason Oberhill

Clyde Ongaro, husband of Merle Morris Ongaro (San Jose State)  
Marin County Alumnae Chapter

Robert Lee Price, father of Leigh Ann Price (Texas Tech) and Tracey Price Kriauciunas (Texas Tech)  
Ann Campbell  
Frances Griffin  
Annabel Jones  
Anne Layton  
Amy Peterson  
Heather Foote Seber

Katherine Rose (Texas Tech, 1992)  
Jennifer Moody

Bob Schumann, husband of Judy Wilkins Schumann (Iowa State)  
Karen Kline

Anne Hofer Shepard (Colorado State, 1952)  
Elizabeth Coley Phillips

Cornelia "Connie" Clausen Spanier (Oregon State, 1935)  
Lynne Towle

Donna Sprague Stagg (Wittenberg, 1975)  
Cheryl Petty

Beverly Gould Stern (Southern California, 1954)  
Paula De Young  
L'Cena Rice

Sharon Aston Stewart (Texas-Austin, 1981)  
Julie Angle  
Karen Benz  
Karin Dale  
Nancy Enright  
Donna Laitkep  
Ann and Michael Lieb  
Barbara and Greg Mathews  
Lisa Merwin  
John and Martha Page

Susan Storey (Idaho, 1966)  
Mary Gin Kennedy

Lorraine Dey Summers (Florida State, 1965)  
Deborah Reid Mountsier

Kathleen Madland Trakofler (Wisconsin-Madison, 1963)  
Katherine Miller

Laurie McKay Unbehand (California-Irvine, 1982)  
Jessica Aguirre  
Gigi Eyre

Beverly Kallman Heissler Weber (Northwestern, 1949)  
Leslie Munger

Mary Susan Palowsky West (Wittenberg, 1976)  
Cheryl Petty

Caroline Reigle Williams (Oklahoma, 1955)  
Noel Moody

Filomena "Phyllis" Wilson, mother of Rachel Wilson Schenkemeyer (Florida State) and Becky Wilson Magdaleno  
Becky Wilson Magdaleno  
Rachel Wilson Schenkemeyer

Connie Brandon Woodham (Vanderbilt, 1972)  
Barbie Chadwick  
Marjory Jones  
Joanne Roman

Mary Margaret Thomas Wrausman (Washington University, 1948)  
Joan LaRock Hofmeister  
Betty Ittel Marting  
Janet Anderson Morse  
Helen Friton Quick

*\*For deceased members, The Crescent lists their first, maiden and last names in accordance with their school and year of initiation. To make an "In Memory" gift, visit [GammaPhiBeta.org/Donate](http://GammaPhiBeta.org/Donate) or call 303.800.2890. The minimum donation is \$25. Gifts received by April 31, 2018, will be acknowledged in the summer 2018 issue.*

# In Memory

*We acknowledge the passing of the following members and celebrate their part in our circle of sisterhood. This list reflects notifications received at International Headquarters between November 1, 2017 and January 31, 2018. First, maiden, last names and year of Initiation are listed for each deceased member.*

## Alpha – Syracuse

Margaret Peck Delpriore, 1938  
Elizabeth Reiser Williams, 1943  
Doris Patterson Sumner, 1945  
Patricia Bull, 1946  
Nancy Nilles McLaughlin, 1947  
Mary Irwin, 1950  
Nancy Oman Dailor, 1951  
Beverly Woods Edwards, 1953  
Beverly Staples Foster, 1958  
Rozanne Gibbs Brand, 1964  
Marguerite Crary Samuel, 1964  
Linda Ginsburg Depaoli, 1967  
Karen Traynor, 1976  
Nancy Kemper, 1978

## Beta – Michigan

Molly Hoffman Matson, 1941  
Jane Stellwagen Polk, 1953  
Dorothy Cant Tyler, 1954  
Noel Baron Reynolds, 1963

## Gamma – Wisconsin-Madison

Constance Wolcott Walker, 1938  
Mary Newell Zahn, 1943  
Joyce Pease Smith, 1950  
Gretchen Friday Gallagher, 1954  
June Delambre Walker, 1968  
Cynthia Irby, 1979

## Delta – Boston

Phyllis Hannah Schroeter, 1942  
Margaret Cowan Norton, 1944  
Carol Brassard, 1960

## Epsilon – Northwestern

Elizabeth Kellogg Melchior, 1938  
Anne Hardy Thurman, 1939  
Shirley Warren Martin, 1946  
Betty Fleming Hanson, 1947  
Janet Frost Jung, 1950  
Elizabeth Robinson Lacock, 1953  
Barbara Porter Smith, 1955  
Joan Daugherty Ivy, 1957  
Nancy Plumb Forrest, 1958  
Carelyn Yerkes Reeburgh, 1958  
Paula Dowdy Gebhard, 1975

## Zeta – Goucher

Nancy Callaghan, 1945  
Mary Ritchie, 1948  
June Michaelson Taylor, 1949  
Barbara Berg Chick, 1950

## Eta – California-Berkeley

Louelle Jackson, 1910  
Mary Cutting Arlen, 1956

## Theta – Denver

Jenella Taylor McCance, 1943  
Virginia Gebhard Stein, 1943

## Kappa – Minnesota-Twin Cities

Marguerite McDonnell Warosh, 1948  
Norma Falz Brown, 1952

## Lambda – Washington

Jan Williams Clark, 1940  
Joan Browne Malone, 1949  
GeorgeAnn Thompson Reinholt, 1954  
Mary Rowland, 1958

## Mu – Stanford

Barbara Tupman Poe, 1942

## Nu – Oregon

Geraldine Tripp Leiman, 1938  
Sharlee Heimann Wilson, 1944

## Xi – Idaho

Dorothy Geertsen Michaelson, 1947  
Barbara Hamlet Morse, 1955

## Omicron – Illinois at Urbana-Champaign

Eleanor Schlecht Cox, 1943  
Luella Broaddus Dennis, 1956

## Pi – Nebraska-Lincoln

Anne Marshall Doyle, 1947  
Joanne Pyle Peterson, 1950  
Joyce Finney Norris, 1952  
Robin Uecker Holloway, 1988

## Rho – Iowa

Anne Irwin Thornton, 1946  
Jane Johnstone Hanel, 1949

Marilyn Rath Dempster, 1951  
Lois Tollinger Simpson, 1951  
Ann Wayner Lambeth, 1966

## Sigma – Kansas

Beverly Gaines, 1943  
Patricia Armstrong Matchulat, 1943  
Cheri Montgomery Doty, 1950  
Vinita Bradshaw Sturgeon, 1950  
Martha Heywood Van Rheen, 1950  
Marilyn Bailey Wise, 1950  
Lenore Matthews Strong, 1953  
Marilyn Mundon Breidenthal, 1955  
Linda Day Conger, 1959  
Pamela Pohl Close, 1983  
Shannon Smith Fuller, 1992

## Tau – Colorado State

Vivian Akin Blase, 1939  
Jacqueline Vincent Summers, 1942  
Carolyn Cochran Pomonis, 1944  
Iris Parker McGinnies, 1945  
Virginia McClain Carroll, 1950  
Charlene McCain, 1954  
Judith Fouret Alexander, 1961  
Barbara Gale Martinez, 1962  
Diane Saltgaver Lau, 1966

## Phi – Washington University

Marie Matthey Wilson, 1936  
Virginia Morsey Talley, 1939  
Marie Brennan Bond, 1943  
Harriet Arey Davidson, 1945  
Virginia Rau Knittle, 1948  
Katherine Jones, 1952

## Chi – Oregon State

Cornelia Clausen Spanier, 1935  
Caroline Armstrong Teaford, 1942  
Janice Fortier Sarvis, 1950

## Psi – Oklahoma

Gloria Swanson Nelson, 1940  
Carolyn Althouse Burke, 1951  
Nancy Williams McKissick, 1953  
Mary Shamblin Rice, 1954  
Carol Grinstead Maupin, 1955  
Katherine Cornelison Kravitz, 1969  
Suzanne Moore, 1981  
Annette Beck Hessin, 1984

## Omega – Iowa State

Kathleen Kildee Minard, 1940  
Annabel McQuown Brimhall, 1944  
Phyllis Wearer Miller, 1954

## Alpha Beta – North Dakota

Shirley Gilbert Slupsky, 1950  
Bette Brocopp Shafae, 1956  
 Sylvia Hage Wright, 1957

## Alpha Delta – Missouri

Joan Rufi Craig, 1943  
Donna Miller Braxdale, 1948  
Patricia Watkins Lawrence, 1948  
Doris Jennings Palmaer, 1948  
Marcia Arnold Schildberg, 1952  
Joan Zepf Zierenberg, 1954  
Patricia Patton Grossman, 1958  
Caryn Hill, 1987

## Alpha Epsilon – Arizona

Mary Jones Higley, 1940

## Alpha Zeta – Texas-Austin

Bettie Vallance Ross, 1935  
Rose Franklin Haynes, 1940  
Lena Welch Steele, 1947  
Walta Sturgis Smith, 1949  
Doris Bletsch Stallings, 1953  
Janelle Jacobson Taylor, 1968  
Juanita Barr Johnson, 1979  
Sharon Aston, 1981

## Alpha Eta – Ohio Wesleyan

Sally Carter Gould, 1949  
Marian Wolf Rettenmeyer, 1949  
Joan Lawrence Simmons, 1949  
Louise LePontois Breese, 1950  
Carol Vogt Ross, 1953  
Suzanne Marston Borck, 1962  
Mary Ferrall Smith, 1962

## Alpha Theta – Vanderbilt

Martha Feldkircher Shedden, 1946  
Martha McIntyre Baldridge, 1947  
Connie Brandon Woodham, 1972  
Rozalia Lamprinakos, 1979

**Alpha Iota – California-Los Angeles**

Marilyn Perrin Parker, 1948  
Merriam Lewis, 1959  
Marjorie Percival Fetter, 1962  
Gralen Edam, 1986

**Alpha Nu – Wittenberg**

Janet McKenzie Gilmore, 1933  
Patricia Wehn Moll, 1946  
Carol Cutshall Loomis, 1955  
Barbara Florey White, 1963

**Alpha Xi – Southern Methodist**

Florence Hall, 1957  
Ann McConnell Glynn, 1964  
Elizabeth Smith Darnall, 1968  
Elizabeth Haren Lynch, 1977

**Alpha Pi – West Virginia**

Edda Robbins Agee, 1959  
Kathleen Kilgore Poling, 1959  
Michelle Moulton Shaw, 1982

**Alpha Rho – Birmingham-Southern College**

Dora Henley Going, 1934  
Jomarion Lackey Holland, 1937  
Katherine Thomas Brooks, 1944

**Alpha Sigma – Randolph-Macon Women's College**

Marien Abshire Beukema, 1937  
Marian Rippeteau, 1947

**Alpha Tau – McGill**

Joan Currie Jackson, 1943  
Valerie Matthew Hyman, 1949

**Alpha Upsilon – Penn State**

Vivian Doty Hensch, 1937  
Mary Frye Steele, 1937  
Ruth Billington Toothman, 1940  
Nancy Zartman Struck, 1942  
Wyllian King Yockey, 1946  
Marilou Croop Kaye, 1950  
Barbara Kreider Tyndall, 1956

**Alpha Phi – Colorado College**

Mary Jane Hipp Misthos, 1940  
Betty Thaxton Wilson, 1945

Mary Morrow Fuhrer, 1948  
Virginia Brown Smith, 1948

**Alpha Chi – William & Mary**

Ruth Schank Stevens, 1945  
Bolling Conner Carter, 1948  
Suzanne Kates Edwards, 1961  
Jennifer Golik, 1992

**Alpha Psi – Lake Forest**

Rose Petty Bailey, 1944  
Marilyn Crawford Hanzel, 1949

**Alpha Omega – Western Ontario**

Jean Morningstar Smith, 1942  
Isobel Brown Campbell, 1958

**Beta Alpha – Southern California**

Bertha Webster Cartee, 1944  
Shirley Davidson Flanagan, 1952  
Beverly Gould Stern, 1954  
Katheryn Maher Infante, 1969  
Leda Mathias Connor, 2000

**Beta Beta – Maryland**

Phyllis Brooks Jones, 1942  
Elizabeth Anderson Tilghman, 1942  
Ruth Blackwell Law, 1943

**Beta Gamma – Bowling Green**

Katherine Bonfiglio Romaker, 1944  
Ann Sullivan Eickmeyer, 1947  
Ann Clark Arnold, 1973

**Beta Delta – Michigan State**

Stacy Campbell, 1998

**Beta Epsilon – Miami-Ohio**

Janet Gausman Sparka, 1947  
Barbara Hendry Mader, 1952  
Lillian Parker, 1958

**Beta Zeta – Kent State**

Dana Davis, 1968

**Beta Eta – Bradley**

Sandra Otto Foli, 1959

**Beta Theta – San Jose State**

Marian Ingham Day, 1948  
Virginia Russell, 1948  
Denise Hittel Gill, 1954

**Beta Iota – Idaho State**

Mary Schwerman Burgess, 1958

**Beta Kappa – Arizona State**

Mary Lewis Sudbrack, 1951  
Edith West Shankland, 1962

**Beta Mu – Florida State**

Mary Wells Montague, 1950  
Lorraine Dey Summers, 1965  
Amy Flanagan, 2001

**Beta Xi – Ohio State**

Shirley Drake Salsinger, 1954

**Beta Omicron – Oklahoma City**

Carol Laity McNeil, 1954  
Stephanie Roth Borgrett, 1989

**Beta Rho – Colorado-Boulder**

Janet Baker Vassallo, 1955

**Beta Sigma – Washington State**

Carolyn Nelson MacPhee, 1955

**Beta Tau – Texas Tech**

Linda Beard Moore, 1957

**Beta Upsilon – Kansas State**

Jnell Quanz Ruetz, 1960

**Beta Omega – Northern Arizona**

Lucy Meloy Walkup, 1958  
Elizabeth Rhyan Dohrmann, 1959

**Gamma Beta – Gettysburg**

Mary Schmidt Estler, 1959  
Kathleen Hampton, 1996

**Gamma Zeta – Texas A&M-Commerce**

June McAllister Duke, 1962  
Patricia Myers, 1962  
Martha Freeman Cowan, 1964

**Gamma Rho – Wisconsin-Oshkosh**

Janis Dexheimer Lukasavage, 1966  
Karen Dombrowski Cienki, 1972

**Gamma Phi – Auburn**

Leslie House Morris, 1999

**Delta Eta – California-Irvine**

Anna Choi, 1997

**Delta Iota – Purdue**

Elaine Enick, 1975

**Delta Lambda – California-Riverside**

Frankie Green Dietzman, 1976

**Delta Mu – Rutgers**

Diane Cocchia McGee, 1983

**Delta Nu – Missouri State**

Melissa Meihofner Fruend, 1981

**Delta Rho – Dickinson College**

Karen Walters Drysdale, 1984

**Delta Upsilon – Georgia**

Camron Gardner Wilkins, 1984

**Zeta Alpha – Eastern Washington**

Kelly Pack Gapinski, 1995

**Zeta Mu – St. John's**

Johanna Lynch, 2000

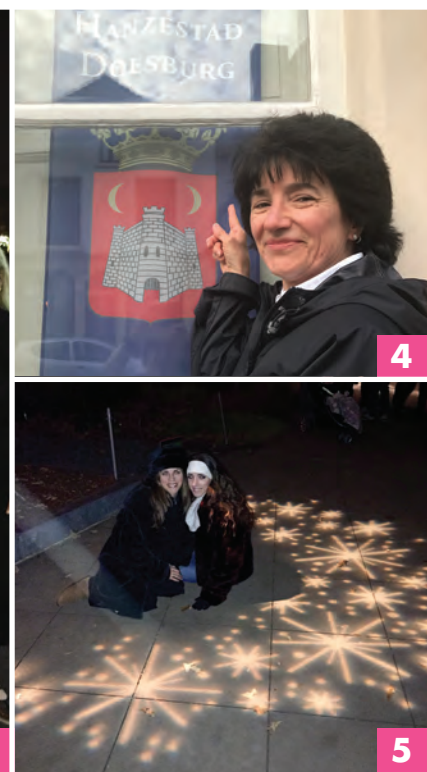
**Zeta Sigma – South Carolina**

Kimberly Cox, 2006

*\*To report the passing of a sister, please email [gammaphibeta@gammaphibeta.org](mailto:gammaphibeta@gammaphibeta.org) so we may honor the member on this page in a future issue.*

# Capture a Crescent:

Spot it, snap it and email your capture a crescent photos to [TheCrescent@gammaphibeta.org](mailto:TheCrescent@gammaphibeta.org) for a chance to be featured on the back cover of a future issue. Tip to get featured: We prefer crescents that wax left!



1. Indiana: Beta Phi Chapter (Indiana) sisters gathered in Evansville, Indiana, for some shopping and sisterhood prior to the holidays. Pictured left to right: Melody Grand, Patti Jennings Davis, Sally Stevenson and Kim Casey.

2. Switzerland: Fellow law students and Gamma Phi sisters Angelina Moore (Ohio, pictured left) and Kristen Levin (Pepperdine, pictured right) were reminded of the crescent moon in this harbor in Switzerland.

3. Missouri: Beta Rho Chapter (Colorado-Boulder) alumnae Janet Levi Sarbaugh, Julie Moriarty McCarty, Jan O'Brien, Mary Marren and Alice Cannon reunited in Kansas City, Missouri, and noticed a crescent moon in the sky.

4. Netherlands: Pattie Siegal (Washington-Saint Louis) kept her eyes open for a crescent moon while traveling in the Netherlands. On her second to last day, she spotted this one in Doesburg, Gelderland!

5. Georgia: Mother-daughter duo Katie and Catherine Bray (both Georgia) spotted a crescent moon made of lights while walking through the botanical gardens lights in Atlanta, Georgia, over the holidays.