

DONOR SUPPORT OPENS DOORS

Meet members whose scholarships, fellowships and leadership opportunities were made possible by Foundation donors.

PAGE 22



Research

THE

The
Foundation
Issue

Spring 2026

GAMMA PHI BETA

IN THIS ISSUE

3 SENTIMENTS

Letter from Foundation Chair Barbie Chadwick (Vanderbilt)

4 BUILDING STRONG GIRLS

How Zeta Sigma's (South Carolina) philanthropy event brings Building Strong Girls to life

6 GROWING OUR INCLUSIVE LEADERSHIP

A look at the 2026 Belonging, Equity, Diversity and Inclusion (BEDI) Summit

8 GIVING WITH INTENTION

Understanding unrestricted giving to the Foundation

10 CIRCLE OF SISTERHOOD

An overview of the Foundation's giving societies

12 CHAPTER SWEET CHAPTER

Rho Chapter (Iowa)

14 IMPACT STARTS HERE

Learn about Carnation Nation

17 FACILITIES MANAGEMENT COMPANY

Delta Theta's (California Polytechnic State) new study space

18 CHAPTER SWEET CHAPTER

Naples Alumnae Chapter

20 GAMMA PHI GIVES DAY

Help us raise \$1M

21 FOUNDATION FINANCIAL HIGHLIGHTS

Stewarding support with care

22 DONOR SUPPORT OPENS DOORS

The stories behind the scholarships and programs made possible by donors

34 YOUR FOUNDATION DOLLARS AT WORK

38 IN OUR HEARTS

40 LIFE LOYAL

42 BUILDING ON YESTERDAY

Rewind to 1958, when the Foundation was first established

Corrections and Clarifications:

In the winter 2026 issue, we incorrectly listed the signing date of the New Echota Treaty as December 29, 1935. The correct date is December 29, 1835. We apologize for this oversight.

get in touch

Send us snail mail, join our newsletter and find us on social.

✉ 9155 E. Nichols Ave. Suite 330, Centennial, CO, 80112

📷 @gammaphibetasorority  Gamma Phi Beta

🖥️ GammaPhiBeta.org



DEAR *Sisters*

This issue of *The Crescent* is dedicated entirely to the Gamma Phi Beta Foundation and to the role it plays in supporting our members. At its heart, the Foundation exists to support the sustainability of Gamma Phi Beta's educational and philanthropic legacy. While much of this work happens behind the scenes, its impact is felt every day across our sisterhood.

When you first see the cover of this issue, you'll notice a woman stepping through an open door, with many more doors stretching out before her. This cover reflects the many opportunities the Foundation helps make possible and the paths opened through donor generosity. Each gift becomes an invitation for a sister to grow, learn and move forward with confidence, expanding what she believes is possible and strengthening the Gamma Phi Beta experience for generations of women.

I especially hope you'll read the cover story on page 22, which features five women whose lives have been shaped by Foundation-supported programs. Their reflections offer a meaningful look at how donor investment turns into confidence, growth and opportunity. Throughout the issue, you'll also find highlights that show how Foundation dollars were at work this past year, along with financial information that reflects our commitment to transparency and stewardship.

As Chair of the Foundation, I have the privilege of seeing this impact up close. I see it when collegians return from leadership experiences more confident in who they are. I see it when volunteers feel better equipped to support chapters. I see it in the relief of sisters who receive scholarships or assistance during difficult moments. None of this would be possible without the generosity and trust of our donors.

As you turn these pages, I hope you recognize your impact reflected throughout this issue and gain a deeper understanding of how the Foundation supports Gamma Phi Beta and her members. I also invite you to join us for **Gamma Phi Gives Day on March 24–25, 2026**, as we come together to continue this important work.

Thank you for being part of what we are building together.

Warmly in IIKE,



Barbie Chadwick (Vanderbilt)
Foundation Chair



WHO IS BARBIE?

Barbie Chadwick is serving her first full term as Foundation Chair on the Gamma Phi Beta Foundation Board of Trustees. Previously, she spent three years on the Facilities Management Company (FMC) Board of Managers, including two years as FMC Chair. Barbie has also held several other volunteer roles within the Sorority, including Collegiate Vice President on International Council, member of the Nominating Committee, and president of the Nashville Alumnae Chapter.

A member of Alpha Theta Chapter at Vanderbilt University, Barbie earned her bachelor's degree in English. She spent more than 30 years in the nonprofit sector before retiring from the Boys and Girls Clubs of Middle Tennessee in 2019.

SOMETHING THAT ALWAYS MAKES YOU SMILE?

My garden

EARLY MORNINGS OR LATE NIGHTS?

Early morning

SOMETHING YOU'VE LEARNED TO DO MORE SLOWLY?

Drive

SWEET HOME GPHIB

How Zeta Sigma's secondary philanthropy event brings Building Strong Girls to life.

On a November evening at the South Carolina State Fairgrounds, cowboy boots lined the floor, barbecue filled the air and line dancing took center stage. Sweet Home GPhiB, Zeta Sigma Chapter's longtime philanthropy tradition, drew in roughly 450 people, each contributing to the unmistakable energy of a Gamma Phi Beta chapter doing what it does best: bringing people together in support of something meaningful.

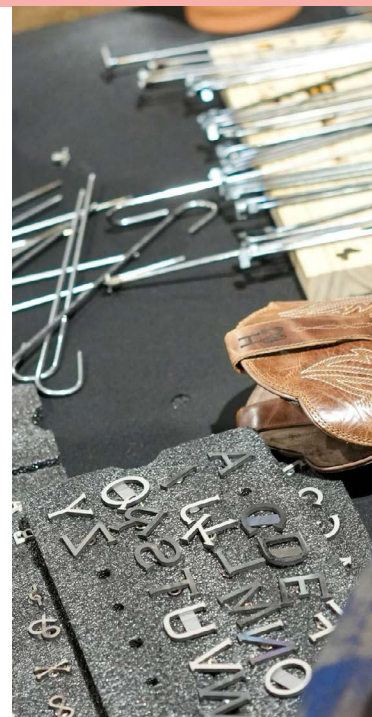
For Zeta Sigma Chapter (South Carolina), Sweet Home GPhiB isn't a one-off fundraiser or a passing theme. It's a tradition of nearly eight years in the making, shaped by the chapter's personality, its community and its commitment to Gamma Phi Beta's philanthropic focus of Building Strong Girls.

Held on November 5, 2025, this year's event raised nearly \$25,000 in support of Girls on the Run and the Gamma Phi Beta Foundation. Together, those beneficiaries reflect the many ways Gamma Phi Beta builds strength, both outward and inward.

"Building Strong Girls isn't solely about raising money," says Cecelia Kreh, a senior and Zeta Sigma's 2025 public relations vice president. "While reaching our goal was a huge achievement, it means so much more than fundraising. We can truly impact these girls' lives by inspiring them to be creative, confident and unafraid to push beyond their limits."

That philosophy shows clearly in how Sweet Home GPhiB is designed. Throughout the evening, members volunteered to teach line dances from the front stage, inviting attendees to step outside their comfort zones together. The result was a room full of participation rather than performance, marked by laughter, connection and shared energy.

"My favorite part of the event is always the line dancing," Cecelia shares. "It's so fun to be surrounded by friends,



learning new dances together and supporting something bigger than ourselves. The energy in the room is always contagious."

The chapter's support of Girls on the Run feels especially personal to many members. Catherine Igoe, a junior and Zeta Sigma's 2025 philanthropy chair, participated in the program as a child, coached by her own mom.

"I remember how much I loved building strength and resilience through all of their program offerings," Catherine says. "It was something we did together, which made it even more special for me." That connection to confidence, resilience and mentorship at a young age is one many Gamma Phi Betas recognize.

Sweet Home GPhiB also highlights what comes next. In addition to supporting Girls on the Run, half of the event's proceeds went to the Gamma Phi Beta Foundation, with Zeta Sigma choosing to give to the Sorority's area of greatest need. It was a decision rooted in trust.

"As members, it can be hard to stay fully educated on the Foundation's needs," Cecelia explains. "Giving the Foundation more room to be flexible better benefits all."

That flexibility is a quiet but essential part of Building Strong Girls. While Girls on the Run focuses on young girls at the starting line, the Foundation supports Gamma Phi Beta women across every stage of life,



through leadership development, scholarships, emergency assistance and programs that strengthen the Sorority as a whole.

The Foundation did not help plan Sweet Home GPhiB. It didn't select the venue, teach the dances or organize the raffle. But what it does is steward the generosity chapters like Zeta Sigma create, ensuring that one night of fundraising becomes lasting support for members who need it most.

For Catherine, that broader view of philanthropy feels deeply aligned with the Sorority's culture.

"I love that Gamma Phi Beta continues this mission not only through supporting Girls on the Run, but through every sister in the organization always wanting to help each other thrive to their fullest potential," she says.

Zeta Sigma plans to continue Sweet Home GPhiB in future years as a secondary philanthropy event benefiting both Girls on the Run and the Foundation. While the details may change, the purpose remains steady: create a space where community, confidence and generosity intersect.

In the end, Sweet Home GPhiB is a reminder that Building Strong Girls is not a single program or moment. It's a continuum that begins with young girls learning to believe in themselves and continues through a sisterhood committed to supporting women wherever life takes them.

Where Do Chapter Philanthropy Dollars Go?



When Gamma Phi Beta chapters host philanthropy events like Sweet Home GPhiB, proceeds are split between our philanthropic partner, Girls on the Run, and the Gamma Phi Beta Foundation.



Girls on the Run supports young girls in local communities.



The Foundation supports Gamma Phi Beta members.



Foundation dollars help fund leadership and educational programs (like REAL Leadership Academy, the REAL Leadership Institute and more!), scholarships and fellowships, emergency assistance through Loyalty Grants and other initiatives that strengthen the Sorority and ensure members are supported throughout every stage of life.



Together, these two beneficiaries bring Gamma Phi Beta's philanthropic focus of Building Strong Girls to life, supporting girls as they grow into confident women and women as they continue to learn, lead and thrive.

GROWING OUR INCLUSIVE *Leadership*

The sixth annual Belonging, Equity, Diversity and Inclusion (BEDI) Summit took place on February 21, 2026, and it was truly a transformative day of learning and growth. Collegians, alumnae, International Headquarters staff, volunteers and family and friends of Gamma Phi Beta gathered online to connect with two inspiring keynote speakers, learn about the latest BEDI updates from Sorority leadership and access exclusive resources. The event brought together a diverse group of attendees – across backgrounds and generations – all united by a shared commitment to fostering a more just, equitable and inclusive Gamma Phi Beta for both current and future members.

Since its inception in 2021, the BEDI Summit has evolved each year, reshaping its programming based on member feedback, to deliver relevant, impactful content. This year's summit focused on one central theme: inclusive leadership. This topic explored the practices that enhance our leadership to foster belonging in our communities, even when we don't hold a formal role. Our hyperconnected world expects us to be culturally competent while we lead and interact with diverse communities. Inclusive leadership skills are the pathway to being strong leaders in our chapters, campus communities and beyond.

The carefully curated programming, keynote speakers and resources were designed to empower members to engage more intentionally to foster belonging in our sisterhood. Our hope is that the summit served as empowerment for each sister to practice and grow in her inclusive leadership skills.

AWARD-WINNING IMPACT

The BEDI Summit has become the Sorority's signature leadership event, engaging nearly 6,500 attendees since its inception in 2021. In 2024, it was proudly honored with the Elevation in Practice – Impact Award from the Association of Fraternity/Sorority Advisors (AFA). This prestigious award recognizes programs that demonstrate creativity in advancing the modern fraternal movement, with a focus on initiatives that drive meaningful, positive changes in communities. The BEDI Summit remains committed to creating a more just, equitable and inclusive Gamma Phi Beta, and its continued success makes it the Sorority's most highly attended event year after year. The BEDI Summit also won AFA's Excellence in Educational Programming in 2021 and the Award of Distinction for Best Use of a Foundation Grant from the Foundation for Fraternal Excellence in 2023.



KEYNOTE SPEAKERS

This year's summit featured two dynamic keynote speakers, both recognized experts in belonging, equity, diversity and inclusion. They shared invaluable insights and actionable strategies to inspire attendees to engage inclusive leadership skills. Their expertise enriched the event and empowered participants to foster inclusion and belonging within our sisterhood and beyond.



Michelle Enjoli

Michelle Enjoli is a career development coach and keynote speaker who teaches college students how to successfully connect for career growth. She is a first-generation American and college graduate who, following her own experiences, now coaches others toward their dream job. She provides practical strategies for building self-esteem and connecting with others in the workplace. Among her professional accomplishments is establishing the first business resource group at Mercedes-Benz USA to connect young professionals for growth and development. She developed a curriculum called Connect that teaches others how to build an entrepreneurial mindset focusing on networking, personal branding and self-esteem. Her goal is to help others uncover their unique values to connect and own their career growth and fulfillment journey authentically.

Learn more at CampuSpeak.com/Speaker/Michelle-Enjoli



Kipp Colvin

Kipp Colvin is an empowerment coach and speaker who believes every interaction is an opportunity to build relationships grounded in equity, intersectionality and value-based leadership. Kipp previously served as the director of communities and volunteer relations at the Human Rights Campaign (HRC), where he created an inclusive volunteer experience for more than 6,000 volunteer leaders and was influential in establishing the HRC as the most prominent LGBTQIA+ organization in the country. Kipp is the founder of Colvin Coaching, a client-centered space that allows people to discover their values, purpose and dreams. Kipp currently serves as the assistant dean of student success at Oberlin College. He envisions community where all, especially the most marginalized members, have resources to thrive as their authentic selves.

INCLUSIVE LEADERSHIP RESOURCES

For those who attended the BEDI Summit, you can continue to explore your companion guide for ongoing learning and resources on inclusive leadership. If you want to engage beyond the companion guide or



were unable to attend the BEDI Summit and are interested in learning resources, check out the Inclusive Leadership Resources page of GammaPhiBeta.org.

The 2026 BEDI Summit was made possible in part through the support of Gamma Phi Beta Foundation donors. We extend our sincere gratitude to the many generous sisters whose support continues to enable the creation of this impactful programming.



GIVING WITH

Understanding Unrestricted Giving To The Foundation

When you choose to support the Gamma Phi Beta Foundation, you may find yourself asking a simple question: *Where can my gift do the most good?* No matter the amount, every gift helps support Gamma Phi Beta and her members. Understanding how gifts are directed helps you see the many ways your generosity makes a difference.

At the Foundation, gifts generally fall into two categories: unrestricted giving, often referred to as the area of greatest need, and restricted giving. Both play an important role in supporting Gamma Phi Beta, but they do so in different ways.

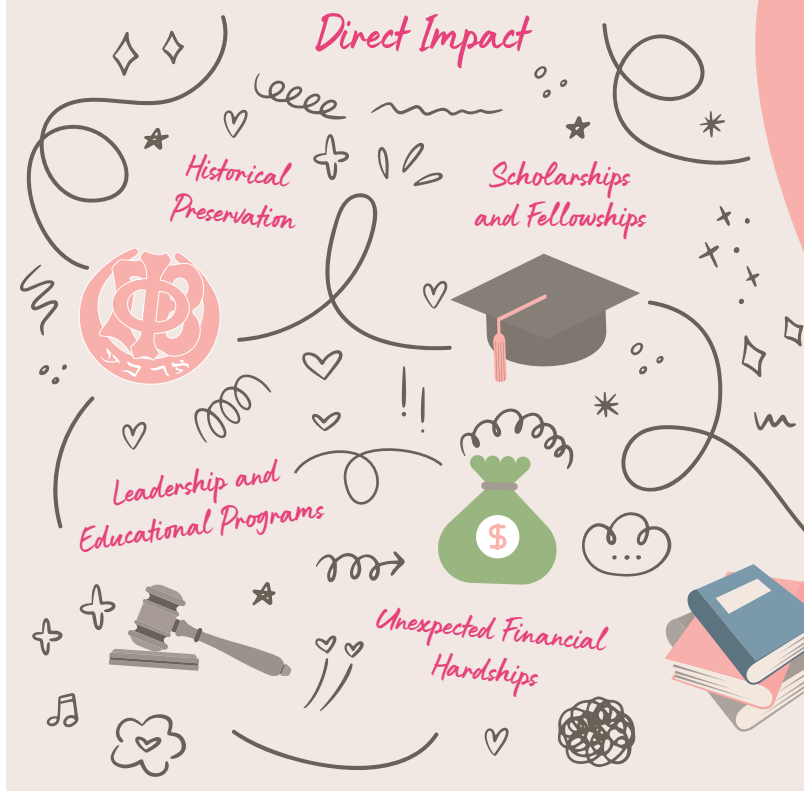
Restricted giving allows you to direct your gift to a specific purpose that matters to you. This might include scholarships and fellowships, leadership and educational programs, historical preservation or Loyalty Grants for members facing unexpected financial hardship. These gifts make focused impact possible and help ensure the longevity of programs and initiatives you care deeply about.

Unrestricted giving, also known as giving to the area of greatest need, provides flexibility. These gifts allow the Foundation to respond to the most pressing needs of the Sorority as they arise, even when those needs shift from year to year.

That flexibility matters.

Each year, the Foundation works closely with Sorority leadership to assess where support is needed most. Sometimes that means expanding leadership development opportunities as

Restricted Giving



participation grows. Other times, it means responding quickly when members experience unexpected challenges or ensuring essential programs continue without interruption.

Unrestricted gifts make that responsiveness possible. They allow the Foundation to allocate resources thoughtfully and responsibly, ensuring support reaches members where and when it is needed most.

This does not mean restricted giving is less important. In fact, many of Gamma Phi Beta's most meaningful initiatives exist because donors chose to direct their gifts with intention. Restricted gifts and endowments provide stability and

INTENTION



Unrestricted Giving

Where can my gift do the most good?

It's up to you!

Area of Greatest Need

Responds to emerging needs

Allows for flexibility

Supports year-to-year priorities

Loyalty Grants

long-term support for programs that shape the member experience and preserve the Sorority's legacy.

The difference comes down to focus versus flexibility.

Restricted gifts allow you to support a specific passion. Unrestricted gifts allow the Foundation to balance priorities and meet evolving needs across the sisterhood. Together, they create a strong and sustainable future for Gamma Phi Beta.

If you ever find yourself unsure where to direct your support, giving to the area of greatest need is a powerful way to trust the Foundation

Not Sure Where to Give?

If you're not sure where your Foundation gift should go, the area of greatest need allows the Foundation to use funds where they're needed most at the time. That flexibility helps support members, programs and priorities as they evolve.

Every gift makes a difference.

to steward your generosity. It reflects confidence in the Foundation's leadership and in the shared vision of supporting Gamma Phi Beta members at every stage of life.

At its heart, every gift to the Foundation shares the same purpose: supporting Gamma Phi Beta and her members. Whether you choose to give with focus or flexibility, your generosity helps continue to strengthen Gamma Phi Beta and the women who call it home.

Circles of Support

AN OVERVIEW OF THE FOUNDATION'S GIVING SOCIETIES

Giving societies are one way Gamma Phi Beta pauses to say thank you. They exist to honor Foundation donors' generosity and commitment and ensure that their support for the Foundation becomes part of Gamma Phi Beta's living history.

Each society reflects a different way donors choose to give, but all are connected by shared commitment to our sisterhood and belief in the women who make it what it is.

So, what are those giving societies? Here's a quick breakdown.

Parent And Family Giving Society

(New in 2025)

Launched in 2025, the Parent and Family Giving Society offers parents and family members of Gamma Phi Beta sisters a way to support the Foundation's work and the student experience it sustains. Members of this society give \$250 or more annually.

Parent AND Family GIVING SOCIETY

Gifts from the Parent and Family Giving Society support a wide range of student needs, including leadership development, well-being resources, career preparation and emergency financial assistance.

Because these gifts are directed to the area of greatest need, families help ensure support can be applied where it matters most, when it matters most.

For many families, this society is a way to stay connected to their Gamma Phi Beta's experience and to invest in the opportunities and support systems that help members grow.



Parent and Family Giving Society: Why Families Choose to Join

The Parent and Family Giving Society was created to give families a meaningful way to support Gamma Phi Beta and stay connected to their daughter's sorority experience.

Members of this society receive:

- Recognition as part of Gamma Phi Beta's giving community
- Invitations to select Foundation and Sorority events
- A special Gamma Phi Beta charm, updated on a four-year cycle
- Opportunities to engage alongside other Gamma Phi Beta families



Parents and family members interested in joining the Parent and Family Giving Society can learn more at GammaPhiBeta.org/Giving-Societies/Family-Giving-Society.



Annual Giving Societies

Annual giving societies recognize donors who make yearly gifts to the Foundation's area of greatest need. These gifts allow the Foundation to support Gamma Phi Beta's most immediate priorities and respond as member needs evolve.

Unrestricted, annual support plays a critical role in sustaining the Sorority's operations, leadership development and educational programs. Together, these gifts reflect collective confidence in Gamma Phi Beta and the women she supports.



Legacy Circle of the 1874 Society
\$20,000+



Pearl Circle of the 1874 Society
\$10,000 - \$19,999



Founders Circle of the 1874 Society
\$5,000 - \$9,999



1874 Society
\$1,874 - \$4,999



Crescent Society
\$751 - \$1,873



Sisterhood Society
\$187.40 - \$750



Carnation Nation
Collegiate members giving \$18.74+

Lifetime Giving Societies

Lifetime Giving Societies honor donors whose cumulative support to the Gamma Phi Beta Foundation reaches \$10,000 or more. These societies recognize long-term investment in scholarships, emergency grants, leadership development and educational programming that shape the Gamma Phi Beta experience over time.

Lifetime giving reflects sustained belief in the mission and future of Gamma Phi Beta and helps ensure stability and continuity for generations of members. Learn more at GammaPhiBeta.org/Giving-Societies.



The Syracuse Order
\$1 million+



The Mary A. Bingham Order
\$250,000 - \$999,999



The E. Adeline Curtis Order
\$100,000 - \$249,999



The Frances E. Haven Order
\$50,000 - \$99,999



The Helen M. Dodge Order
\$25,000 - \$49,999



The Clara Worden Order
\$10,000 - \$24,999

COLLEGIATE

Chapter Sweet Chapter



Photo Credit: Dan Reuling Photography

RHO CHAPTER

University of Iowa

Did you know collegiate chapters can create chapter-specific endowments — funds designed to support the experiences members value most, now and for generations to come? For Rho Chapter at the University of Iowa, that vision became reality in 2024 with the creation of the Rho Chapter Leadership Endowment.

At its heart, this endowment is about access. It helps fund officer training, personal development programs, Convention attendance and other opportunities that build leadership skills, confidence and character, regardless of a member's financial circumstances. As Ryan Maley, the chapter's former president, shares, "By supporting these initiatives, the endowment strengthens the collegiate member experience while advancing Gamma Phi Beta's mission of building confident women." Ryan and her executive

council were instrumental in creating the endowment during their term.

The Rho Chapter Leadership Endowment also reinforces an important truth: Gamma Phi Beta is not just a four-year experience, but a lifelong commitment and shared responsibility. When collegiate members give back, they invest in something larger than themselves. In Rho Chapter's case, contributing to the endowment allows members to honor the legacy built by generations of Rho sisters before them. This participation fosters gratitude and long-term thinking, while ensuring meaningful opportunities for future members and strengthening the chapter for years to come.

Ready to give back to your chapter sisters today and in the future? Learn how to set up a collegiate endowment by emailing foundation@gammaphibeta.org.



Photo Credit: Dan Rolling Photography

EXPLORE Iowa City



1. SCHOOL SPIRIT!

At the University of Iowa, school spirit runs deep. At every home football game, fans and players pause for “The Iowa Wave,” a heartwarming tradition in which they wave to children watching from the nearby Stead Family Children’s Hospital.

2. PED MALL MURALS


Explore Downtown Iowa City’s Pedestrian (Ped) Mall, home to restaurants, shops and vibrant murals. With new murals popping up regularly, there’s always something fresh to admire.

3. 110 YEARS OF RHO!

In October 2025, Rho Chapter turned 110! Collegiate members and alumnae gathered for a weekend filled with sisterhood, laughter and reminiscing.

4. LOCAL HOTSPOTS

Visiting Iowa City? Looking for local favorites? Take it from Rho Chapter members who can’t say enough about St. Burch Tavern, Java House for a pick-me-up brew or Airliner for delicious \$1 pizza slices.



Impact Starts Here

What is Carnation Nation?

Carnation Nation is the Gamma Phi Beta Foundation's giving society for collegiate members. With an unrestricted gift of \$18.74 or more, collegians help support the programs, resources and scholarships that shape the Gamma Phi Beta experience, both now and in the years ahead.

Why Should I Join?

For many members, joining Carnation Nation is a first step into lifelong giving. It's a way to give back while still in college and to better understand how Foundation support strengthens Gamma Phi Beta at every level. This year, members who join also receive a pair of Carnation Nation socks and exclusive donor insights designed to help collegians see their impact in action.



"I decided to join Carnation Nation during my very first Convention. As a senior, past executive member and four-year member, I have been given countless opportunities to grow through leadership, education and meaningful friendships. Joining Carnation Nation felt like a natural way to give back to an organization that has given so much to me. Donating \$18.74 a year is a manageable commitment for me as a collegian. While it may seem like a small amount, every contribution counts and helps create a meaningful difference." - Kaylin Joy Searcy (Texas State-San Marcos)



"I wanted to join Carnation Nation because I have received so many opportunities for growth and engagement. I really felt, after being involved in leadership and attending international events such as Convention and the 150th celebration in Syracuse, that I wanted to support future sisters in getting the support and opportunities I have. Giving back to the Foundation now, in a small way, is impactful to begin a lifelong journey of being engaged in sisterhood." - Chloe Elise Anderson (Alma)

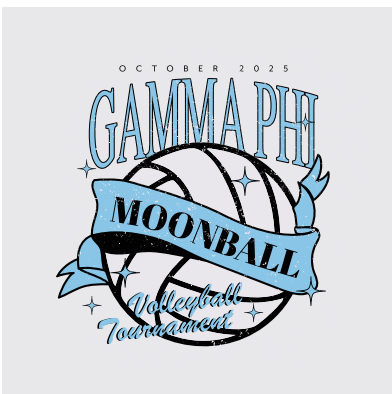


"As a collegian, I have held many officer positions and seen firsthand the impact Gamma Phi Beta resources have on our sisters. I chose to donate to the Foundation to support chapter educational programs like Fidelity. These resources allowed me, as PRVP, to educate my chapter on alcohol safety for social functions. Some of my favorite collegiate memories come from dancing the night away with my sisters at date parties and formals." - Sarah Reed (Kentucky)



"I joined Carnation Nation because I love the idea of sisters supporting sisters, which is exactly what our Foundation does. Every donation adds up to create real impact. Giving back is meaningful to me because of the positive difference Gamma Phi Beta has made in my life." - Samantha Carriere (Arizona)

"I joined Carnation Nation to be a part of something outside just my small chapter. It's cool to know that my contribution helps sisters from all across North America. I've always loved to help people and organizations, so this was a way I could give back to an organization that means so much to me." - Chloe Polizzi (Grand Valley State)



Planning Moonball? We're Obsessed Already.

Reminder: All Moonball group orders need to go through Crescent Corner.

Get started at CrescentCorner.com

From Garage to Gathering Space

Delta Theta (California Polytechnic State) turned an ordinary garage into an extraordinary study space for members.

By Elizabeth Liberatore

Delta Theta Chapter at California Polytechnic State University looked at their unused garage and saw potential. Rather than letting the space function as a glorified storage unit — as garages so often do — the chapter's Affiliated House Corporation (AHC) chose to reimagine it as something far more valuable: a much-needed study space for members.

Leading the charge on this project was Delta Theta AHC President Jenell Reinstein Burk (California Polytechnic State). Before the transformation could begin, however, funding was essential. To bring the vision to life, Jenell turned to the Gamma Phi Beta Foundation for support, partnering with them to help her and her team get the project off the ground.

"We encouraged alumnae to donate to the Foundation, which allowed us to offer donors a tax deduction. Those funds were then routed back to the facility to be used toward the new study room," Jenell says. "We were incredibly grateful for the Foundation's help in bringing this project to life."

With funding secured, the transformation began. New cement was poured and carpet installed, followed by fresh paint and an inspired mural that adds character to the space. One wall was transformed entirely into a whiteboard,

giving members the creative freedom to jot down ideas whenever inspiration strikes. Wainscoting, a TV (great for presentations), new chairs, lockers and tables tie the room together, creating a quiet retreat where sisters can truly lock in and focus in a comfortable, inviting environment.

Members on Their New Study Space



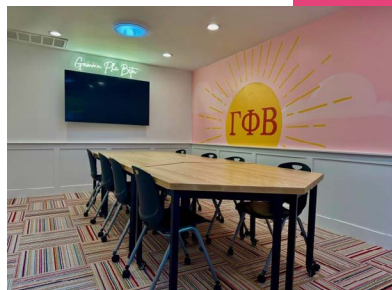
"My favorite thing about the new study space is the opportunity it gives our members to come together. The space allows us to learn from one another, practice our leadership and professional skills and prepare us for the workforce." —Chapter President Katelyn Nightengale

"This study space fosters the very sisterhood and togetherness that we know and love by supporting our academic and career goals." —Education Vice President Adrianna Gutierrez

"What I love about our new study space is that I can stay as long as I need to finish homework, essays or projects without worrying about a building closing. Having a study space right in our home is so convenient and motivates me to get my work done." —House Manager Sadie Kutch



Before



After

ALUMNAE

Chapter Sweet Chapter



NAPLES ALUMNAE CHAPTER

The Naples Alumnae Chapter is made up of women who care deeply about Gamma Phi Beta and about one another. Year after year, they show up for our sisterhood with generosity, consistency and a clear belief that education and opportunity matter.

A defining part of the chapter's story is its commitment to scholarship support through the Gamma Phi Beta Foundation. Beginning in 2004, the Naples Alumnae Chapter established an unrestricted scholarship endowment, allowing financial assistance to be awarded to qualified Gamma Phi Beta members regardless of chapter or location. This intentional choice ensures that the scholarship can be awarded each year and reach sisters wherever the need is greatest.

In addition to their endowment, Naples alumnae provide ongoing pass-through support* to the Foundation and maintain a close relationship with the Eta Xi Chapter (Florida). Through mentorship, encouragement and financial support, they continue to invest in the next generation of Gamma Phi Beta leaders.

Together, these efforts reflect a chapter that believes sisterhood is sustained not only through connection, but through action.

**Pass-through support refers to funds that are directed to the Gamma Phi Beta Foundation and awarded directly to scholarship recipients, rather than being added to the Foundation's long-term investment portfolio.*



1. ROLLING THROUGH HISTORY

A Naples Trolley Tour is a favorite way to explore the city's history and landmarks. The narrated journey allows visitors to hop on and off while learning more about the area along the way.

2. WILD AT HEART

Audubon Corkscrew Swamp Sanctuary is a 13,000-acre nature preserve managed by the National Audubon Society, featuring boardwalk trails and the chance to experience Southwest Florida's unique wildlife up close.

3. GULF COAST GLOW

Fifth Avenue South and Third Street South anchor downtown Naples, offering boutique shopping, art galleries and dining that ranges from casual cafés to gourmet restaurants.

4. DRIVEN BY DESIGN

Revs Institute is a world-renowned automobile museum and research facility dedicated to the history of automobiles and their cultural impact, making it a standout stop for car enthusiasts and curious visitors alike.

Gamma Phi
**GIVES
DAY** ♥

Help Us Hit \$1M!

This Gamma Phi Gives Day, we're close to raising one million dollars. Will you help us get there?

One million dollars. That's a lot of zeros and not one, but two commas. Wowzah.

This year, Gamma Phi Gives Day (March 24-25) brings us closer than ever to an incredible milestone: raising \$1 million collectively through Gamma Phi Gives Day since it began. Crossing that mark isn't about the number; it's about the lives it will touch and the sisters it will help lift up.

In just a few short years, Gives Day has transformed what's possible for our members. Your support has opened doors to scholarships, funded meaningful educational experiences and helped cultivate the next generation of Gamma Phi leaders. Every gift, big or small, has pushed our sisterhood forward in extraordinary proportions.

Now, we're counting on you to keep this incredible momentum going.

On March 24-25, will you help us hit our ambitious goal with a gift of any size? Every dollar pushes us forward. Every donor strengthens our future. And together, we can ensure Gamma Phis thrive today, tomorrow and for years to come.

Make your gift today!



Give.GammaPhiBeta.org

hood

FOUNDATION FINANCIAL HIGHLIGHTS



For a deeper look at the Foundation's financials, visit the Foundation's Donor Impact Report.

Stewarding Support with Care

Understanding how the Gamma Phi Beta Foundation stewards its resources helps bring donor impact into focus. These financial highlights offer a snapshot of how contributions are managed and invested to support programs, scholarships and the long-term strength of the sisterhood.

The data below includes excerpts from the Gamma Phi Beta Foundation's audited financial report for the fiscal year ending July 31, 2025.



Financial Highlights

Revenue, Gains and Other Support

Contributions With Donor Restrictions	\$771,321
Contributions Without Donor Restrictions	\$1,208,514
Contributions to Girls on the Run	\$674,282
Net Investment Return	\$1,881,665
Other Revenue	\$327,126
Total Revenue, Gains and Other Support	\$4,862,908

Expenses

Program Services	
Philanthropy	\$743,148
Financial Aid	\$757,735
Educational and Leadership Development	\$595,850
Convention and Conferences	\$5,713
Total Program Services	\$2,102,446
Support Services	
General Administration	\$589,588
Development	\$304,692
Total Support Services	\$894,280

Total Expenses **\$2,996,726**

Increase in Net Assets **\$1,866,182**

Total Assets

2017-18: \$9,717,082	2021-22: \$14,737,696
2018-19: \$10,026,127	2022-23: \$18,833,306
2019-20: \$12,306,171	2023-24: \$20,135,534
2020-21: \$15,235,607	2024-25: \$21,965,483



Donor Support Opens Doors

Meet Gamma Phi Beta members whose scholarships, fellowships and leadership opportunities were made possible by Foundation donors and discover how these gifts have helped them reach their full potential.

Intro by Elizabeth Liberatore
Story by Laura Mishkind (Colorado-Boulder)



For many Gamma Phi Beta members, donor support is more than a line item — it's the reason they could say yes to an opportunity that changed their path. From scholarships and fellowships to leadership and educational initiatives, donor-funded programs ease financial burdens and open doors that might otherwise remain closed. Every dollar given to the Foundation becomes an investment in a member's growth, confidence and ability to reach her limitless potential.

In this cover story, you'll meet members whose lives have been directly shaped by Foundation donors. They include collegiate leadership consultants, a member who attended REAL Leadership Experience thanks to donor support, a former International Vice President whose early experience as a Gamma Phi Beta camp counselor for underserved girls continues to influence her life nearly five decades later and a two-time scholarship recipient with dreams of a career in medicine. These women span generations and backgrounds, but they all share in our True and Constant sisterhood — and they've all had doors opened for them because of it.

A Formative Foundation

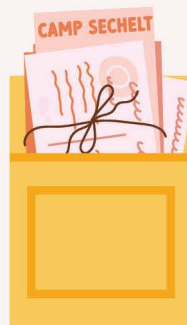
When Dr. Judy E. Graham (Oklahoma) joined Gamma Phi Beta, sisters supported Camping for Special Girls. Similar to Girls on the Run, the focus was to create a safe space for young girls to build their confidence and have fun. One of the camps, Camp Sechelt in Canada, loved having Psi Chapter members serve as counselors, and that was just the beginning of Judy's journey.

"I volunteered four summers at Camp Sechelt, as a counselor and camp director. That experience provided me with the needed real-world experience to get into graduate school," she says. "Years later, while working on my Ph.D., the Foundation entered my life again in the form of a fellowship which helped me pay for my education."

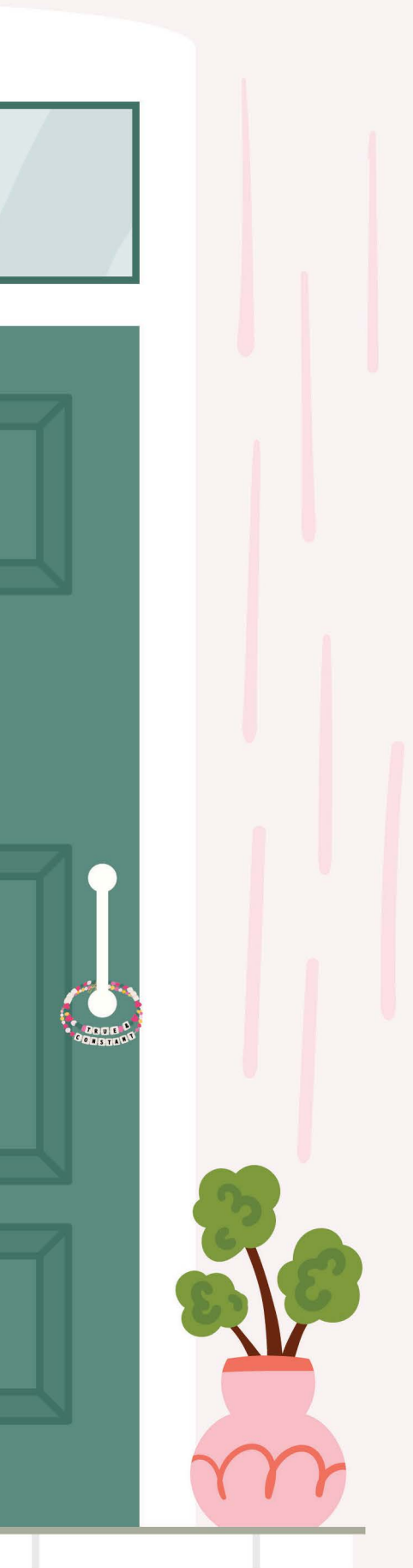
Today, Judy is a content expert/peer



Judy (top right) pictured in 1977 with Camp Sechelt counselors.



A FORMATIVE FOUNDATION



reviewer for the U.S. Department of Health and Human Services and has 25 years of experience as a clinician, executive director, social worker, therapist and more. This wealth of work experience benefited her in many Gamma Phi leadership roles as well. She served as a Foundation Trustee in 1981 until 1988 and was a 2020-2024 International Council Vice President – just to scratch the surface.

While Judy has given much of her time to the organization, she believes donating is also an important piece of the puzzle. She is part of the Tau Epsilon Pi Society for planned giving and a multi-year member of the 1874 Society. “My donations are born of appreciation and hope. I want to leave the world a bit better than I found it. The Gamma Phi Beta Foundation is a great way to do that.”

Judy supports the Sorority because, “much of who I am reflects Gamma Phi Beta’s influence on me. Gamma Phi Beta provided me with friends who became lifelong sisters. The Sorority has given me opportunities for leadership training and personal growth that have served me both personally and professionally. I am grateful and want to pass the same experience on to other individual sisters and the organization. Being able to pass on to others what was given to me is both a privilege and a responsibility.”



"My donations are born of appreciation and hope. I want to leave the world a bit better than I found it."





A Confidence Cultivator

Just as Judy could not have expected that her decision to volunteer at Camp Sechelt would benefit her in work and her lifelong Sorority connection, Morgan Pisarski (Alma) couldn't know that applying to be a Collegiate Leadership Consultant (CLC) would impact her life and career path.

The CLC program is partially funded by donations and enables recent college graduates to travel to collegiate chapters to support members. While these consultants focus on others, personal benefits include cultivating further sisterhood connections and their own professional skills.

In 2013, Morgan began her role as a CLC and today, she is director of chapter services at International Headquarters. She says the skills she learned early on, even in her college years, are still in use in her professional role, especially self-awareness, delegation and balance.

"Being a CLC really built my

confidence in my ability to quickly problem solve a wide array of challenges in a way that prioritizes the member experience. I still use this in my role today," she says.

During her time as a CLC, Morgan was a resident at Eta Iota Chapter (Rockhurst) for a semester and spent the next semester traveling to nearly 25 different chapters – broadening her network with each visit.

"I loved connecting one-on-one with chapter members and leaders," Morgan reflects. "I still have people who now volunteer come up to me at various events and say, 'You were the CLC at my chapter when I was in college.'"

This continued connection highlights just one of the many benefits the CLC program provides. Morgan says, "I wouldn't be the person or professional I am today without my time as a CLC. I gained so much self-awareness and confidence throughout my time as a CLC that I still rely on today."

And while this formative time benefited Morgan as an individual, she has been able to pour all her experience and expertise back into the Sorority. "Throughout my time here professionally starting as a CLC, I've seen many iterations of Gamma Phi Beta. I've seen what has worked, what hasn't, where we are really strong and where we have opportunities for short- and long-term success and I've been able to continue building on that to make the best member experience possible for our collegiate members."



"I wouldn't
be the
person or
professional
I am today
without my time
as a CLC."

“It isn’t until you see through the thoughts and feelings of others that you truly understand empathy and compassion.”



A Compassionate Communicator

Like Morgan, Bailee Nguyen (Loyola-New Orleans) decided to apply to the CLC program and has been thrilled with the personal and professional growth she experienced.

Bailee became a CLC because it was a chance to give back to the organization that she felt had given her so much in her years as a collegian. She had the unique opportunity to be part of a CLC team of just three women. The trio became very close – continuing the bonds of sisterhood beyond their individual chapters. “We were there for each other throughout everything for the whole entire year when it came to things like finding solutions to problems, exchanging great ideas we witnessed and sharing memories of our separate time on the road,” Bailee says. “I am so grateful to have become such close friends through this experience.”

Connecting with her team and the members of the chapters she visited helped Bailee significantly develop her communication skills – something she says she still uses today. She can communicate effectively and clearly with different people through any medium. This skill, along with her expanded confidence in her own abilities, are what she carries with her.

“My experience as a CLC has opened me up to so many different perspectives and experiences someone can have as a Gamma Phi Beta,” Bailee says. “I think as people,

we get so comfortable with our day-to-day routines and rituals of doing things, but it isn’t until you see through the thoughts and feelings of others that you truly understand empathy and compassion. I feel so much more insightful and understanding, and with that has come so much love and respect. Everyone has their own things going on and it’s important to always bear that in mind.”

She takes this perspective into her daily work as a medical assistant. “Listening to collegians’ wants and needs in order to support them in reaching their goals has prepared me to do the same for my current patients,” Bailee elaborates. Learning to work with others and learning more about herself were vital lessons for this former CLC that she will carry into her career in medicine.





A Legacy in Medicine

Connection and compassion are essential for those working in the medical field, as Bailee can attest. Janee Hitaj (Oakland) agrees. As a second-year medical student, Janee is focused on ensuring she becomes a physician who advocates and cares for all her patients.

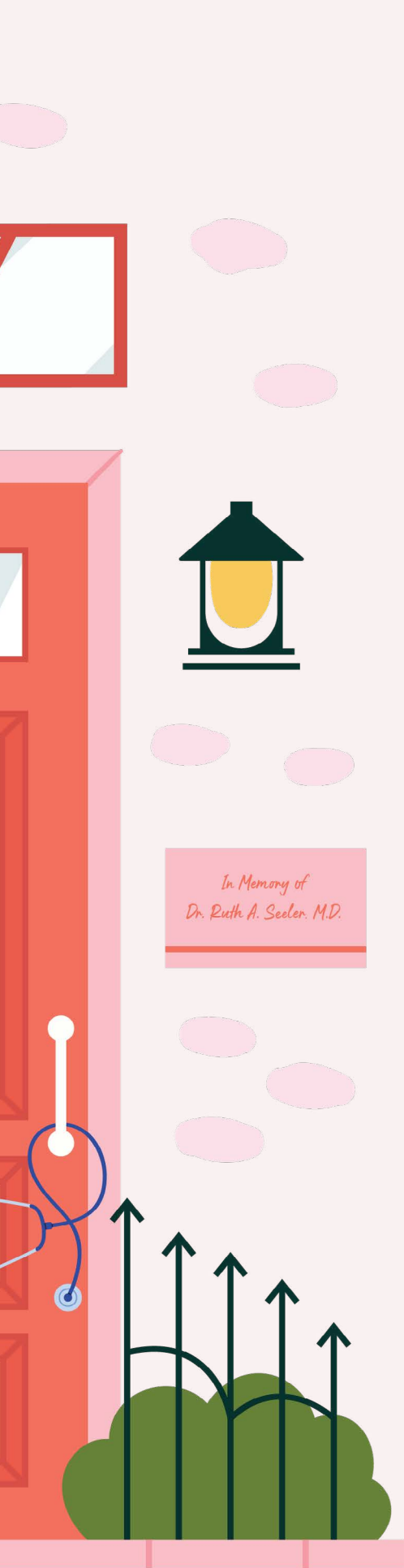
“Growing up, I helped care for my grandmother after she was diagnosed with both breast cancer and diabetes concurrently, often accompanying her to doctor appointments and even administering her insulin at a young age. Watching her navigate chronic illness, language barriers and the healthcare system showed me how compassionate care matters.”

While medical school has been a goal of Janee’s for a long time, she didn’t realize Gamma Phi Beta could help her get there. She was Chapter President and shared scholarship opportunities with members. That’s when she discovered the Dr. Ruth A. Seeler, M.D. Fellowship.

“Dr. Seeler was the first woman to attend medical school at her institution, and her courage and perseverance continues to inspire generations of women in medicine,” Janee explains. “Being a recipient feels deeply humbling, as it connects my journey to hers and reminds me of the responsibility and privilege of carrying her legacy forward.”

Janee was shocked when she was awarded the fellowship for her first year of medical school. “It meant so much to know that





*In Memory of
Dr. Ruth A. Seeler, M.D.*

Gamma Phi believed in me and was willing to support me during such an important and demanding time in my life. That support felt incredibly personal and reassuring, especially knowing it came from an organization that has always felt like home to me.”

She applied again and was awarded the fellowship for a second year. This time was just as meaningful as the first for Janee. She realized support from the sisterhood was continuous and felt grateful to know the organization she invested so much in felt drawn to invest in her as well.

This ease in the financial stress of medical school has greatly benefited Janee’s path. She is able to focus more fully on her studies, while serving as president of a student organization and regularly volunteering at a community health center. “This fellowship didn’t just help financially. It gave me the freedom to invest my time and energy into serving others, growing as a leader within my school and the broader community and fully embracing my medical school journey,” Janee explains.

To donors, she says, “Your support is the reason students like me can focus on school, show up for our communities and grow into the kind of physicians and leaders we hope to become. It has a real impact, and it makes a lasting difference in how we move through this journey.”



“Your support has a real impact, and it makes a lasting difference in how we move through this journey.”



A REAL Opportunity for Growth

Donations to the Foundation can help shape the careers of many women in their alumnae years, but the impact truly begins when members are active in their collegiate chapters. The REAL Leadership Experience (RLE), a fully donor-funded event, is a clear, tangible example of Sorority programming that helps build confident women of character through leadership training.

Bella Rios (Northern Arizona) learned the value of the REAL Leadership Experience in 2025. Now Chapter President, she says she feels more prepared to handle the challenges of the role and tackle anything that comes her way.

“I walked away from RLE with a better understanding of goals and aspirations I have for my collegiate experience, the image and foundation I wish to leave as part of my leadership legacy and an understanding of how powerful the sisterhood of Gamma Phi Beta truly is.”

In addition to her improved confidence in her leadership abilities, Bella speaks highly of the connections she made with fellow sisters, both collegians and the facilitators. She even spent time with International President Stephanie Gauchat Carriere (Arizona).

“RLE allowed me and other collegian sisters to feel so much more connected to the organization at a higher level. I am much more

prepared to utilize this valuable information as I take on a higher leadership role within my own chapter and navigate my professional life as well. I have the biggest thank yous for Gamma Phi Beta Foundation donors that allowed RLE to happen,” Bella says.

She is now connecting with other Gamma Phi Betas across North America and beyond through the Sorority’s social media accounts. After RLE, Bella and a few other attendees were asked to work with the International Headquarters marketing team to create content about day-to-day life on their campuses.

This additional opportunity for development showed Bella that she wants to continue to grow her skillsets and encourage others to do the same.

Her professional goal is to earn a Ph.D. in forensics or behavioral psychology with an emphasis on trauma and development. Thanks to RLE and Gamma Phi Beta, Bella feels more equipped to tackle any challenges that come her way on this path.

“RLE is a wonderful experience. It absolutely changed me for the better, and I genuinely could not have imagined a better way to spend my time. I never wanted it to end, but I knew that the end of RLE meant a new beginning for myself and my leadership experience!”



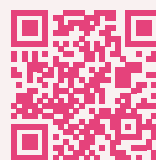
“I gained an understanding of how powerful the sisterhood of Gamma Phi Beta truly is.”





Open a Door

The choice to create a home in Gamma Phi Beta allowed these five women to build a strong foundation in their lives, ultimately expanding past their collegiate years. The Gamma Phi Beta Foundation allows for women of all ages to strengthen their leadership and communication skills and advance their professional lives. If you would like to help open a door for a sister, visit GammaPhiBeta.org/Donate.





DOLLARS AT WORK

When you see the Your Foundation Dollars at Work logo, it's a visible reminder that your generosity is in motion, supporting programs, scholarships and experiences that build Confident Women of Character.

This new logo was created to help members recognize the Foundation's impact in everyday moments.

You'll see this logo across Gamma Phi Beta, on our website, in social media posts and at events like the Belonging, Equity, Diversity and Inclusion Summit, REAL Leadership Experience and Recruitment Summit. It signals that donor dollars are actively shaping the member experience and creating opportunities for growth and connection.

On the next pages are reflections from members who directly benefited from Foundation-funded programs during Fiscal Year 2025 (August 1, 2024, to July 31, 2025). Shared in their own words, these quotes offer a glimpse into how Foundation support shows up in real, personal ways across Gamma Phi Beta.

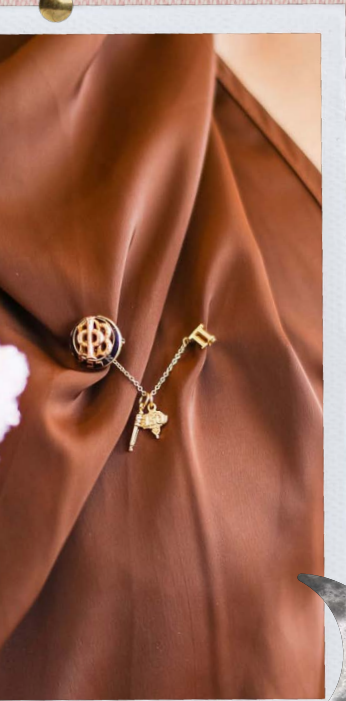
For a deeper look at each program, including what it is, who it supports and the broader impact behind the numbers, the Foundation's FY25 Donor Impact Report provides additional detail and context.





Fidelity For Volunteers

“In my professional life, I lead teams and emphasize strong communication. Learning the top 20 characteristics people look for in leaders, based on research from Kouzes and Posner, was incredibly insightful. I can apply these practices both at work and in my volunteer service with Gamma Phi Beta.” —2025 Fidelity participant



Belonging, Equity, Diversity and Inclusion (BEDI) Summit

“The most important thing I learned [at the BEDI Summit] was some good techniques for having difficult conversations. As a member of my chapter's exec, I have found myself occasionally in situations where I have to have a tough conversation with a member, and the BEDI Summit really helped me think about better ways to navigate those scenarios.” —2025 BEDI Summit participant

Loyalty Grants

“Being a Gamma Phi Beta has been one of the highlights of my life. After Hurricanes Helene and Milton, my life turned upside down. We lost everything in our home. I am eternally grateful for this Loyalty Grant. There is nothing my family can do to reverse time, but we can start to rebuild. I am so thankful for the kindness of the Foundation and donors for helping me through these hard times.” —2024 Loyalty Grant recipient

REAL Leadership Retreat (RLR), Formerly Called Executive Council Retreats

“I gained valuable teamwork and communication skills that I can apply to group projects in school and work.” —RLR participant



Fidelity for Initiated Members

“Gamma Phi Beta’s educational programs have helped me grow not only as a sister but also as a leader. Each lesson challenges me to reflect on my values and teaches me skills I can carry into my Sorority life, academics and future career. I’m so grateful for the opportunity to learn and grow alongside such an inspiring sisterhood.” —2025 Fidelity for Initiated Members participant

REAL Leadership Experience (RLE)

“I learned so much about myself during this experience, and looking at e-board positions, I’ve learned so much about how I can lead and be myself. I thought of leadership as stern and now I look at leadership as trust.” —2025 RLE participant



REAL Leadership Institute (RLI)

“This was a wonderful time to connect with the regional teams that I work with!! I found it so special and incredibly valuable.” —2025 RLI participant

Recruitment Summit

“This weekend was phenomenal! I made new connections with other regional advisors and was able to share my expertise with them and learn from them.” —2025 Recruitment Summit participant





Scholarships and Fellowships

“As the first in my family to pursue higher education and now a master’s degree at Yale, this support is more than financial — it’s a powerful reminder that my dreams are valid and within reach. It reflects the sisterhood’s belief in my potential and reaffirms my commitment to lead with purpose, uplift others and carry forward the values of Gamma Phi Beta in every step of my journey.” —Thin Rati Oo (California-Berkeley)



Historical Preservation

"I think preserving our history keeps us true to the Core Values of our Founders. It doesn't mean we shouldn't change, but it provides a guiding star to ensure that our changes align with these values. Let's keep Gamma Phi Beta's history alive and well for future sisters to enjoy." —Karen Kendall (Vanderbilt)



Collegiate Leadership Consultant (CLC) Program

“[Our CLC] helped me delegate my workload to the other positions. She also helped me realize that some of the jobs I was doing were technically not necessary in my position. She made my life easier. Additionally, I have gained a better understanding of my position, its role within the Sorority and where to find resources that will answer any questions I may have. I can pass this information down to the next PRVP to ensure that she has all the necessary information to do her job efficiently.” —Collegiate chapter member

The Clara Project (TCP)

“The Clara Project provides sisters with the opportunity to learn, grow and use real leadership skills both professionally and personally. The relationships built among the cohort serve to inspire trust, curiosity and friendships in a way not typically offered in other leadership programs.” —2025 TCP participant



in our
HEARTS

We acknowledge the passing of the following members and celebrate their part in our circle of sisterhood. This list reflects notifications received at International Headquarters between October 16, 2025, and January 31, 2026. First, maiden, last names and year of Initiation are listed for each deceased member.

To report the death of a sister, please email thecrescent@gammaphibeta.org with her first, maiden and last name and chapter of Initiation. Reported sisters will be honored in a future issue of The Crescent's "In Our Hearts" section.

Honor a sister with an In Memory Gift. To make an In Memory Gift, visit GammaPhiBeta.org/Donate or call 303.800.2890. View Memorial gifts online at GammaPhiBeta.org/InMemory.

BETA (*Michigan*)
Ann Petrie Oliver, 1952
Shirley Farnsworth Horn, 1946

GAMMA (*Wisconsin-Madison*)
Betty Gross Soe, 1951

EPSILON (*Northwestern*)
Anita Kuehl Klever, 1956
Carol Beachler Wagner, 1954

KAPPA (*Minnesota-Twin Cities*)
Kim Elaine Geissert, 1976

LAMBDA
(*University of Washington*)
Eleanore Newton Jones, 1952

NU (*Oregon*)
Emma Vallandigham Williams, 2010

OMICRON
(*Illinois at Urbana-Champaign*)
Sheryl Fiester Ross, 1959

PI (*Nebraska-Lincoln*)
Peggy Larson Hirschberg, 1953

RHO (*Iowa*)
Jackie Dailey Johnson, 1952

SIGMA (*Kansas*)
Rebecca Lynn Stuber, 1991
Sammy Peete Scott-Stark, 1947

PSI (*Oklahoma*)
Sherry Johnston White, 1963

OMEGA (*Iowa State*)
Nadine Bright Bell, 1946
Sandra Gowan Kirk, 1962

ALPHA GAMMA (*Nevada*)
Joyce Harris Grove, 1947
Sheri Brantingham, 1980

ALPHA DELTA
(*Missouri-Columbia*)
Genevieve Bublitz Bratschie, 1949

ALPHA EPSILON (*Arizona*)
Barbara Corr O'Rielly, 1955
Elaine Vincent Cederquist-Stolpe, 1956
Randi Sue Rolle, 1979
Virgie Parker Cortner, 1952

ALPHA ZETA (*Texas-Austin*)
Joann Boggus Oakes, 1950
Sharon Carnes Renfro, 1955

ALPHA ETA (*Ohio Wesleyan*)
Ellen Ratkovich Hill, 1957

ALPHA THETA (*Vanderbilt*)
Jere Cobb Tate, 1957

ALPHA IOTA
(*California-Los Angeles*)
Jacqueline Lea Incho, 1950

ALPHA LAMBDA
(*British Columbia*)
Shirley Dean English, 1949

ALPHA NU (*Wittenberg*)
Linda Neff Colehower, 1959
Mary Morris Weiss, 1962

ALPHA XI (*Southern Methodist*)
Lois Novey Bowles, 1934

ALPHA OMICRON
(*North Dakota State*)
Joann Willert Fogel, 1953
Judith Hammer Vermeland-Wendt, 1955

BETA ALPHA (*Southern California*)
Dee Cooper Atkinson, 1948
Rita Kreiziger Holman, 1947

BETA GAMMA (*Bowling Green*)
Phyllis Briggs Dalton, 1949

BETA ETA (*Bradley*)
JoAnne Hinrichs Hungate, 1952
Margie Schaechter Frakes, 1953

BETA KAPPA (*Arizona State*)
Shirley Hall Greener, 1956

BETA OMICRON
(*Oklahoma City*)
Jo Hogue Stansberry, 1951

BETA TAU (*Texas Tech*)
Glory Martin Fuller, 1962
Brenda Dunn Rickert, 1959

GAMMA BETA (*Gettysburg*)
Patricia Anne Porter, 1981

GAMMA EPSILON (*Puget Sound*)
Terri Murphy Gietzen, 1978

GAMMA ZETA
(*Texas A&M-Commerce*)
Jeanenne Grammer Oglesby, 1963

EPSILON MU
(*Loyola-New Orleans*)
Margarita Maria Perez, 1994



JERE COBB TATE

ALPHA THETA (*Vanderbilt, 1957*)

Born in Nashville, Tennessee in 1938, Jere Beverly Tate was described as a hard worker who

was smart, generous, caring and strong-willed. She earned her degree in English from Vanderbilt University, where she joined Gamma Phi Beta in 1957. Jere began her career in the classroom, teaching in Tennessee and New Jersey, before turning her full attention to the role she cherished most: raising her family. Her faith was a steady presence throughout her life, reflected in her deep involvement in her church and the countless young children she guided through Bible classes over the years. Curious, thoughtful and generous with her time, Jere found meaning in both tradition and service through her involvement with the Daughters of the American Revolution and the Jamestowne Society. Above all, she will be remembered for the quiet strength, devotion and love she poured into her family and the many lives she touched.



EMMA VALLANDIGHAM WILLIAMS

NU (*Oregon, 2010*)

Born in San Francisco in 1989, Emma Vallandigham Williams spent her childhood in Sausalito, California. She

attended the University of Oregon, where she joined Gamma Phi Beta and graduated in 2011 with a degree in Public Policy, Planning and Management. Emma began her career working for the benefit of others at the Orange County Food Bank and the American Diabetes Association before transitioning to corporate event planning and marketing, eventually moving to London, England in 2023. After an eight-month battle with non-Hodgkin's T-Cell Lymphoma, Emma passed away in 2025 in London in the company of family. She will be remembered for her generosity, optimism and wicked sense of humor, and for the care she showed to everyone around her.

LIFE LOYAL

Life Loyal is a special program available for all Gamma Phi Beta members to continue their lifelong support of our beloved Sorority beyond their collegiate years while receiving exclusive benefits. This is just one way to continue your lifetime involvement as a member of Gamma Phi Beta while fulfilling your financial obligations with an easy, one-time payment. The dedication of our alumnae members who continue to be involved and financially supportive helps ensure the future of our traditions and sisterhood.

Thank you to the following sisters who joined Life Loyal between October 16, 2025, and January 31, 2026.

ALPHA (*Syracuse*)
Lois A. Ritarossi

GAMMA (*Wisconsin-Madison*)
Doris Laufenberg Van Houten

ETA (*California-Berkeley*)
Isabel Escobedo
Elizabeth Quinonez
Betsy Ruth Rosenthal

THETA (*Denver*)
Kimberly Kirven

KAPPA (*Minnesota-Twin Cities*)
Katie Michele Shatirishvili

LAMBDA
(*University of Washington*)
Nellie Elsbeth Thompson

NU (*Oregon*)
Linda Hollenbeck Cohn
Mallory Richards Deleon

OMEGA (*Iowa State*)
Margy Molden Wiltamuth

ALPHA EPSILON (*Arizona*)
Sammy Chase
Natalie Zorilla Jenkins

ALPHA ZETA (*Texas-Austin*)
Karen Mary Benz
Tiffany Gideon Bills
Cynthia Maxwell Johnson

ALPHA OMICRON
(*North Dakota State*)
Joan Nelson Tuma

ALPHA UPSILON (*Penn State*)
Lynn Dailey Clancy

ALPHA PSI (*Lake Forest*)
Tish Spunar Sheats

BETA GAMMA (*Bowling Green*)
Janice Bair Mejia

BETA DELTA (*Michigan State*)
Julia Marie Breza

BETA EPSILON (*Miami-Ohio*)
Katelyn Evans Lehman

BETA NU (*Vermont*)
Carol Conner Frei

BETA UPSILON (*Kansas State*)
Johanna Ryckert Anderes

BETA CHI (*Wichita State*)
Autumn Tello
Gayle Capsey Wilson

BETA PSI (*Oklahoma State*)
Jeanette Banduch Coker

GAMMA ZETA
(*Texas A&M-Commerce*)
Nikki Ellerbrock
Laura Rogers Harris

GAMMA IOTA (*Midwestern State*)
Josie Howard

GAMMA KAPPA (*Nebraska-Kearney*)
Kari Jo Swanson Onken

GAMMA PI (*Minnesota State-Mankato*)
Charlotte Ann Pflingsten

GAMMA TAU (*St. Louis*)
Monika Langenstroer Hill

DELTA IOTA (*Purdue*)
Natalie Cantieri
Kathleen Gallagher Gatewood

DELTA LAMBDA
(*California-Riverside*)
Wendy Burson Bowers

DELTA CHI
(*California State-Sacramento*)
Carole Landrith Hanna

DELTA PSI (*California-Santa Barbara*)
Renee Alexandra Lee

EPSILON OMICRON
(*California-Santa Cruz*)
Reema Patel
Sharon Williams Schafer

ZETA DELTA
(*Southeast Missouri State*)
Meagan Hull

ZETA THETA (*Pepperdine*)
Rebecca McClelland

ZETA LAMBDA
(*Texas A&M-Corpus Christi*)
Gabriela Ibanez

ZETA CHI (*Texas Christian*)
Katherine Sowell

ETA BETA (*Florida Southern*)
Amo M. Oehler

ETA IOTA (*Rockhurst*)
Giovanna Marie Caime

ETA XI (*Florida*)
Laura Bremenkamp
Sami Carol Ewing
Emily Jean Prins
Kenna Carol Prins
Alessandra Michelle Steinmuller

ETA OMICRON (OHIO)
Hannah Brooklynne Hartman



nugammaphibeta Meet Ashlyn and Ruby! Ashlyn and Ruby are the two collegiate leadership consultants (CLCs) on campus and can't wait to meet you! 🌙💕🌸

♥️ Ashlyn is from Arlington Heights, IL and she studied Neuroscience at University of Minnesota - Twin Cities. Learn more about Ashlyn: "Growing up 30 minutes from Northwestern, I was so excited to hear Gamma Phi Beta was coming to campus! GPhi made my college experience. It brought me numerous leadership opportunities, continuous skill development, and my closest friends. I am a better and stronger person because of GPhi, and I cannot wait to offer that experience to our new members. My favorite GPhi memory is having a double snow day my sophomore year living in the house! All the roads closed and all the live out sisters came over to study, play games, and hang out.

♥️ Ruby is from Spring Hill, FL and she studied Psychology and Communication at Florida Southern College. Learn more about Ruby: "As a senior consultant, I have had the privilege of getting to know so many different Gamma Phi Beta chapters. I feel so lucky to now be working on such a special project here at Northwestern and can't wait to bring the joy of GPhi to others so soon! | look forward to seeing the Epsilon chapter and its' members grow and create a lasting impact for years to come! My favorite GPhi memory is big-little reveal! I'm so grateful for the relationships I've made through GPhi and can't wait to see the close connections our future Epsilon members form!"

Stop and say hi on campus if you see Ashlyn and Ruby, and keep an eye on our stories to see where they'll be!



bradleygphi Our amazing president, Milly, had the opportunity to attend REAL Leadership Academy this past weekend! We are so happy to have her represent Beta Eta! 🤍🥰 Here is what Milly has to say about her experience: "REAL Leadership Academy has been nothing short of a blessing. From connecting with current chapter presidents to share ways to run chapter operations, to discussing with advisors and alumnae to gain wisdom beyond my years, these past few days have given me the knowledge to run my chapter with confidence. Not only did I learn ways to foster my own leadership skills, but I also learned how to cater to my executive boards leadership skillsets to delegate responsibilities and set achievable goals. The connections I made in these 3 days show just how much our sisterhood is set in love. I am returning to my chapter with an achievable plan to set goals I never thought I could accomplish before, but now know, I can. I am beyond grateful I get to represent Beta Eta as their president and am forever thankful to have attended this event. Forever staying constant and true."



gammaphibetaunk What a fun night of Moonball!! Thank you so much for supporting @girlsontheruninternational with us and making this such a special week 🥰💕🦋

Seen on Social!

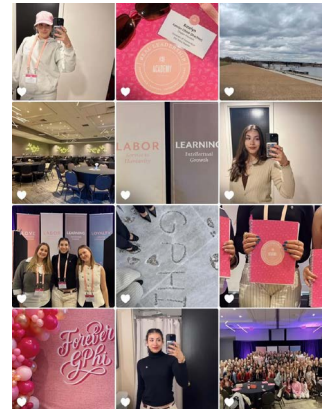
A roundup of Gamma Phi Beta members' posts that celebrate sisterhood. Here's a snapshot of what our members have been sharing lately.

Pssst: Don't forget to tag us @GammaPhiBetaSorority for a chance to be featured on our official IG or here!

FOLLOW US ON SOCIAL MEDIA



@gammaphibetasorority



gammaphiuconn Katelyn's favorites folder from the Real Leadership Academy 🤍 "This weekend in St. Louis was truly unforgettable. Being surrounded by the presidents and advisors of Gamma Phi Beta chapters from across the country reminded me just how powerful our sisterhood truly is. We spent the weekend learning how small, intentional efforts each day can create lasting change not only in our chapters, but in ourselves as leaders. I feel so lucky to have connected with such driven, passionate women and to bring this inspiration back to our chapter. My heart is full, and I'm so excited for what's ahead." Love, Katelyn

BUILDING ON *Yesterday*



*Pictured above:
Gamma Phi Beta Foundation and Volunteers in June 1960.*

1958

THE GAMMA PHI BETA FOUNDATION IS ESTABLISHED

At the Sorority's 48th Convention in Victoria, British Columbia, delegates voted to establish the Gamma Phi Beta Foundation as a "trust organized solely for the promotion and encouragement of educational and charitable purposes." Although the Foundation and the Sorority are legally separate, they work closely together, along with Facilities Management Company, to

form what we know today as One Gamma Phi Beta. Together, these three entities advance the Sorority's mission and vision. In 1974, the Foundation introduced its first official logo. Over the years the logo has appeared in several color variations, including pink and gray, but the original palette featured bold red and orange.



SPRING 2026 Volume 128, No. 2

International Headquarters

9155 E. Nichols Ave. Suite 330 Centennial, CO 80112

P 303.799.1874 F 303.799.1876

GammaPhiBeta.org

thecrescent@gammaphibeta.org

The Crescent Staff

CREATIVE MANAGER

Maddy Chapman

(Minnesota-Twin Cities)

mchapman@gammaphibeta.org

CHIEF MARKETING OFFICER

Tara Foristal

tforistal@gammaphibeta.org

CHIEF EXECUTIVE OFFICER

Megan Wick (Washington State)

mwick@gammaphibeta.org

CONTRIBUTING WRITERS

Elizabeth Liberatore

Melissa Scott

Laura Mishkind (Colorado-Boulder)

Parents

While our members are in college, their copy of *The Crescent* is sent to your home address — we hope you enjoy reading our magazine, too! If your daughter is no longer in college, or is no longer living with you, feel free to send us her new address by emailing thecrescent@gammaphibeta.org.

Join Our Green Team!

Receive each issue of *The Crescent* before everyone else by going digital! We'll send the current issue directly to your inbox so you can enjoy it anywhere you go. Email thecrescent@gammaphibeta.org today to let us know you're joining The Green Team!

©2023 Gamma Phi Beta Sorority The Crescent of Gamma Phi Beta (USPS 137620) is published quarterly by Gamma Phi Beta Sorority, Inc., 9155 E. Nichols Ave. Suite 330 Centennial, CO 80112. Periodicals postage paid at Greenwood Village, CO, and at additional mailing offices. Produced in the U.S.A.

POSTMASTER: Send address changes to The Crescent, Gamma Phi Beta Sorority, 9155 E. Nichols Ave. Suite 330 Centennial, CO 80112.

Looking to connect with a sister?

Visit GammaPhiBeta.org/Find-A-Member for a full directory of Gamma Phi Beta members!

GAMMA PHI BETA

Convention 2026

For the first time ever, we're headed to Louisville, Kentucky for our 82nd Convention!

July 16-19, 2026



Gamma Phi
**GIVES
DAY** 

**Gamma Phi
Gives Day is
March 24-25**

*Together, we can make
a lasting difference!*

Join your sisters and donate
now to Gamma Phi Gives Day.



Give.GammaPhiBeta.org