



True and  
Constant

Syracuse University

## All About Our Founders

*Dive into the captivating lives of our four Founders, the trailblazing women who paved the way for 150 years of True and Constant sisterhood.*

PAGE 22



150



Winter 2024

GAMMA PHI BETA



# IN THIS ISSUE

## 3 SENTIMENTS

*Letter from International President Autumn L. Hansen (Idaho)*

## 4 BUILDING STRONG GIRLS

*Colleen Hardcastle (Vanderbilt) and her 10+ years of serving Girls on the Run*

## 6 PACE, PLEASE!

*Celebrating 40 years of PACE programs*

## 7 ALUMNAE INITIATE PROGRAM

*Learn more about our alumnae initiate program*

## 8 CONFIDENT WOMEN

## 12 CHAPTER SWEET CHAPTER

*Meet our Alpha Chapter (Syracuse) sisters*

## 14 LIFE LOYAL

## 17 GAMMA PHI VIBES

*The Gamma Phi aesthetic in everyday places*

## 18 OUR PODCAST HOSTS

*Get to know the sisters behind our limited-series podcast*

## 20 150TH NEWS AND EVENTS

*A glimpse into the Long Beach and Napa Valley Coast-to-Coast Celebrations*

## 22 ALL ABOUT OUR FOUNDERS

*To commemorate 150 years, let's look back at the four courageous women who started our sisterhood*

## 32 GAMMA PHI BETA'S ROOTS

*Explore the Sorority's beginnings at Syracuse University*

## 34 TRUE AND CONSTANT

*Tori Repka-Geller (Southern California) and her impactful nonprofit, Trace of Hope*

## 36 FACILITIES MANAGEMENT COMPANY

*Unveiling the remarkable journey of Beta Chapter's time-honored home*

## 38 THE FOUNDATION

*Gamma Phi Gives Day 2024*

## 40 IN OUR HEARTS

## 42 BUILDING ON YESTERDAY

*Recruitment through the decades*

---

### get in touch

Send us snail mail, join our newsletter and find us on social.



✉ 9155 E. Nichols Ave. Suite 330, Centennial, CO, 80112

📷 @gammaphibetasorority    📺 Gamma Phi Beta

💻 [GammaPhiBeta.org](http://GammaPhiBeta.org)

# DEAR *Sisters*

This will be my last letter in *The Crescent* as your International President (IP). As I reflect on the incredible journey of my tenure as your IP from 2020 to 2024, my heart swells with gratitude and pride. It has been an honor beyond words to lead this remarkable sisterhood that has stood the test of time for 150 years now.

I couldn't have done it alone. To my fellow International Council (IC) members and each sister who has played an integral role in my life and in shaping the legacy of the collective Gamma Phi Beta (that's you!), thank you. Together, we have embraced challenges, celebrated victories and strengthened the bonds that make us a formidable force in the world around us.

As we embark on the culmination of our 150th anniversary celebrations this year, I am overwhelmed with excitement for what lies ahead. Our upcoming Convention in Chicago will celebrate our Founders' vision and the enduring spirit that unites us. The pages of our history will come alive as we share stories, laughter and inspiration, honoring the journey that brought us here. And this year, all four issues of *The Crescent*, beginning with this one, will celebrate those tenants as well.

I am immensely grateful for serving as your IP during this historic moment.

Here's to 150 years, sisters, and a promising future!

In IIKE,

*Autumn L. Hansen*

**Autumn L. Hansen (Idaho)**  
International President



## WHO IS AUTUMN?

Autumn L. Hansen is currently serving her second term as IP of Gamma Phi Beta. She also serves as the IC-appointed Gamma Phi Beta Foundation Trustee and is a member of the Audit and Finance Committee, the Bylaws Committee and the Governance and Personnel Committee.

Autumn has served on IC since 2012 as Education Vice President (2012-16), Alumnae Vice President (2016-18) and Vice President (2018-20). In the 2018-20 biennium, she chaired the Sorority's Governance and Personnel Committee and was also a member of the Leadership Development Committee. A member of Xi Chapter at the University of Idaho, Autumn has bachelor's degrees in sociology, psychology and criminal justice studies and a master's degree in social work from Indiana University.

# A DECADE OF DEDICATION

*Explore the impactful 10+ years of Colleen Hardcastle's service to Girls on the Run (GOTR)*

In the heart of Oakland, New Jersey, Colleen Hardcastle (Vanderbilt) wears many hats — a devoted partner, a loving friend and a dedicated advocate for empowering young girls through her role as the Passaic County coordinator for GOTR New Jersey North. Colleen's decade-long journey with GOTR is marked by a profound commitment to the organization's mission and a genuine passion for positively impacting her community.

Colleen's community engagement traces back to her collegiate years with Gamma Phi Beta. The Sorority supported Camp Fire Girls then; however, there was no opportunity for Colleen and her sisters to offer local, hands-on aid to the organization during the school year. Instead, she and her sisters donated their time to other Nashville-based organizations. Reflecting on this experience, Colleen shares, "Philanthropy was an important focus [to us]. My sisters and I wanted to increase the impact we individually could make in our communities by volunteering and fundraising together."

After transitioning to alumna status, Colleen's community involvement continued to expand. She joined Bergen County Alumnae Chapter and has served in various leadership roles, including chapter president. She first learned about GOTR here, which marked the beginning of her long volunteer tenure with the organization.

In 2014, she began donating and volunteering at GOTR New Jersey North's 5Ks. In 2016, she started coaching, and in 2018, she created her first SoleMate fundraiser. Girls on the Run New Jersey North nominated Colleen for the Volunteer Award for her outstanding contributions. After receiving a pool of applications, GOTR International honored Colleen with the award in 2023.

More recently, Colleen took her commitment to the next level, joining the GOTR New Jersey North staff as the Passaic County coordinator. Drawing on over 30 years of professional experience in information technology and her roles in another nonprofit organization, Colleen is uniquely positioned to share her passion for GOTR and foster relationships within the multiple communities she serves.

For Colleen, the most rewarding aspect of her job is the opportunity to bring GOTR to more girls in her community. She finds joy in witnessing the emotional growth of the girls in the program, recognizing the positive impact of the organization's lessons in fostering empathy, authenticity and empowerment.

Throughout all her GOTR experiences, one moment stands out more than most. During one 5K, Colleen supported a participant struggling



with negative self-talk. She guided the girl to finish the race with renewed energy through encouragement and a strategic approach (alternating walking and running). Colleen shares, “I hope [that girl] remembers her star power when things get tough and breaks a big task down into smaller, more manageable pieces to help her through it.”

Reflecting on her own childhood, Colleen envisions the profound impact a program like GOTR could have had on her own confidence and resiliency. She elaborates, “I grew up feeling I had to hide my authentic self to be likable, as girls weren’t supposed to do well in school, participate in team sports or speak except when spoken to. In GOTR, I would have learned to celebrate what makes me special and unique and choose friends who support me.”

Beyond her professional achievements, Colleen enjoys outdoor activities, from hiking to kayaking and skiing to snowshoeing. In addition to GOTR, she supports Catskill 3500 Club, a nonprofit that fosters an interest in outdoor recreation, education and stewardship.

As Colleen continues to dedicate her time and energy to GOTR, she remains grateful for the support of her Alpha Theta and Bergen County Alumnae Chapter sisters, saying, “My chapter sisters always made me feel comfortable as a collegian, and my alumnae chapter sisters continue to make me feel welcomed and cherished. And to all my GOTR volunteers, thank you for Building Strong Girls!”

Find a GOTR council nearest you by visiting [GirlsOnTheRun.org/Connect-Locally](https://GirlsOnTheRun.org/Connect-Locally).



BUILDING  
**STRONG**  
*girls*  
Gamma Phi Beta

## Celebrating 40 Years of Personal and Chapter Enrichment

As the Sorority prepares to commemorate its 150th anniversary this year, let's reflect on the transformative programs that have shaped our sisterhood over the decades. One such milestone is the evolution of the Personal and Chapter Enrichment (PACE) programs, a legacy that began in 1982 and continues to thrive today!

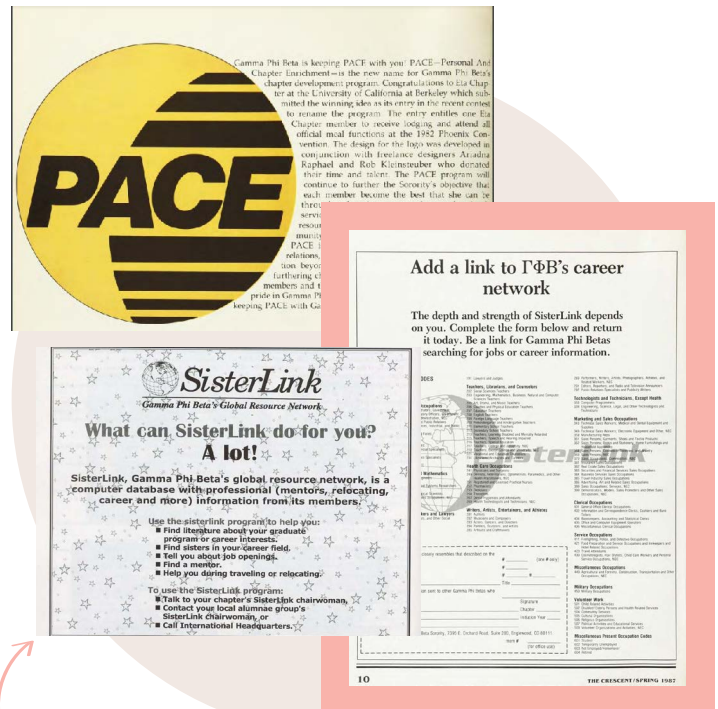
In the early '80s, Gamma Phi Beta recognized the need for comprehensive programming that went beyond the traditional academic sphere. Thus, in 1982, PACE was born. The new initiative aimed to provide collegians and alumnae with skills extending beyond the classroom curriculum. Through PACE, members gained insight about chapter programming and skills in public relations, career development and problem-solving. Fostering personal growth and leadership qualities was, and still is, the intention of PACE programs.

In 1983, a questionnaire at the Area Leadership Conference (now called REAL Leadership Conference) paved the way for a groundbreaking addition to PACE – the Gamma Phi Beta career network. An astounding 81% of conference attendees completed the questionnaire, expressing a desire for an international career network. This led to the establishment of SisterLink, a program designed to provide job information, career contacts and mentoring for both collegians and alumnae.

SisterLink quickly gained momentum, with articles in *The Crescent* expanding on job-seeking skills and resources. Convention 1984, held in Chicago, Illinois, marked a historic moment as the program and SisterLink received unanimous approval, both becoming an integral part of the Gamma Phi Beta experience.

As the years passed, SisterLink evolved into the SisterLink Global Resource Network, adapting to the changing times and needs of its members. Remarkably, this forward-thinking initiative paved the way for the Sorority's embrace of LinkedIn, the world's largest professional network. Gamma Phis are now seamlessly connected in the digital landscape, a testament to the foresight embedded in the SisterLink and PACE programs.

As we celebrate 40 years of PACE, we honor the visionaries who propelled Gamma Phi Beta into a future where personal and professional enrichment are pillars of our sisterhood. Here's to the next 150 years of empowerment, growth and sisterly support!



These SisterLink pages were recurring features in several issues of *The Crescent* throughout the '80s, '90s and '00s. This dedicated space served as a valuable resource, offering practical guidance and insights to help our members build up their career contacts.

## Did you know...

...that Gamma Phi Beta welcomes into membership qualified women who may have never attended college, attended a college or university without a Greek community or never became an initiated member of a National Panhellenic Conference sorority while in college? It's true! That's why we have the alumnae initiate program, designed to welcome women who meet the above criteria into our ever-growing circle of sisterhood.

Becoming an alumna initiate has never been easier, thanks to the program's newest aspect: virtual initiation. Even if a potential candidate doesn't live geographically close to a collegiate chapter for initiation services, she can still join our sisterhood through virtual initiation.

Learn more at [GammaPhiBeta.org](https://www.GammaPhiBeta.org) >  
Alumnae > Alumnae Initiate Program.

## The Gamma Phi Beta Alumnae Initiate Program

For Megan Weinstein (Indiana), the alumnae initiate program allowed her to finally become a Gamma Phi Beta, a dream of hers ever since she dropped out of primary recruitment in college. She graciously shared her story with us:



*I always found Gamma Phi's mission and vision to directly align with my values and aspirations in life; I was just missing the fellowship of the sisterhood.*

*Little did I know that accepting the marketing manager position at College Fresh four years ago would finally put all the pieces into place. My first assignment in my new position was to visit the Gamma Phi Beta International Headquarters in Colorado. Upon meeting the amazing Executive team, walking through the halls of the building and admiring the museum's historical artifacts, my desire to be part of this organization was greater than ever.*

*In June 2022, I attended Gamma Phi Beta's Convention in St. Louis for College Fresh. Through our sponsorship, I was able to talk on stage during lunch for a few minutes. While I did promote College Fresh, I used much of my time to tell my story about always wanting to be a part of Gamma Phi Beta. To my surprise, that little speech caught the attention of my sponsor, Dr. Judy E. Graham (Oklahoma), who advocated for me to be an alumna initiate. She saw the same qualities in me that I always saw in the women of Gamma Phi Beta and thought I would be a great fit. She and Autumn L. Hansen (Idaho) offered me a bid that day, which I happily accepted.*

*I was initiated at Beta Phi Chapter at Indiana University on February 26, 2023, one of the proudest days of my life. Something I dreamt of for such a long time had finally come true. Now, I look forward to volunteering within the organization, honoring the sacred traditions and making lifelong friendships with my wonderful sisters.*





# Confident Women



# Emma Safon

BETA MU (Florida State)

JOY SEEKER AND PERFORMER

---

Ever since she was a little girl, Emma Safon has found solace and joy in the world of music. From composing her own melodies to covering songs by her favorite artists, Emma's voice has been a constant companion throughout her life, a source of unbridled joy. As she grew older, she dabbled in other artistic expressions, like dance and acting, both finding a place in her heart as well.

She pursued her passions further in college, earning a fine arts degree in musical theater from Florida State University in 2020. Hoping to broaden her social circle beyond her tight-knit musical theater program, she joined Gamma Phi Beta at Beta Mu Chapter. Reflecting on her decision, Emma shares, "I loved the people in my program, but I wanted to make friends in other majors and find a community of girlfriends." Her instincts proved right, and she adds, "I felt immediately connected and comfortable with the Gamma Phis I met during recruitment. I knew I was where I was meant to be."

After college, Emma made the move of all moves and relocated to New York City to pursue a career in Broadway, TV and film. However, the reality of auditions and the competitive industry quickly became overwhelming. Seeking balance and structure, Emma found support at Bodyrok, a Pilates studio where she began working.

"It's super important to find other avenues, whether it's a hobby or your day job, that make you happy while auditioning regularly. It is very easy to let theater take over every aspect of your life, so I find it beneficial to expand my horizons and find other outlets of joy," Emma emphasizes.

As a lead instructor at Bodyrok, Emma teaches 20 classes a week, providing education, training and support to her team of Pilates instructors. Her passion lies in helping others feel strong and confident in their own skin, and she expresses, "I love motivating people to be their best selves. There's nothing more rewarding than a client telling me how strong and confident they feel after class."

Beyond auditions and studio sessions, Emma embraces the vibrant energy of New York City. "I'm always in awe that I live here, and there is always something new to explore. I am never bored in New York City, that's for sure!"

Emma's journey is not just a narrative of artistic pursuits but also a testament to the importance of finding balance and other joy outlets. As she continues to navigate the bustling streets of New York and the competitive performance industry, she remains open and excited to explore new passions and opportunities that come her way.

## More With Emma

---

### WHAT WAS YOUR FAVORITE PERFORMANCE/SHOW YOU EVER BOOKED?

*I worked for a summer theatre in college where I got to play Beth in the musical production of "Little Women." It was the most rewarding role I've ever played. The story is beautiful and the music is amazing.*

### DO YOU STAY IN TOUCH WITH YOUR GAMMA PHI SISTERS POST-COLLEGE?

*I do! In fact, one of my chapter sisters also lives in New York City, and we've become a lot closer since moving to the city. I am really grateful to have her so close by.*

### HOW DO YOU LIKE TO UNWIND AFTER A LONG DAY?

*I love to cook a nice meal, put on my favorite show and hang out with my roommates!*

# Kristin Lowrey

**GAMMA KAPPA** (Nebraska-Kearney)  
**ACCESS PERIOD FOUNDER**

Kristin Lowrey (Nebraska-Kearney) juggles various roles in her day-to-day life, including wife, friend, mother to two littles, community service leader, volunteer and visionary founder of a nonprofit. In the nonprofit realm, she shoulders various responsibilities, a common experience for those familiar with the sector. As the Access Period founder and executive director, Kristin passionately advances the organization's mission, providing free menstrual products to those in need across Nebraska.

"I genuinely believe it's our duty as humans to use what we have to help others. If everyone fortunate enough to have something extra — whether it's time, money or social capital — dedicated it to assisting their neighbors and alleviating suffering in some way, our world would be transformed. [Access Period] is my contribution to my community, and I take great pride in being part of the effort to enhance access to basic needs in Nebraska," Kristin shares.

Established in early 2022, Access Period originated from Kristin's experiences serving on the board of directors for an organization aiding young adults who were formerly foster care children. Witnessing these individuals navigate the world independently, often without parental support, she observed a recurring challenge. Kristin adds, "There was an extreme lack of access to essential items, including period products and hygiene supplies." Unfortunately, these necessities are not covered by government safety net programs, so Access Period emerged as a response to this firsthand need.

The initiative kicked off modestly in Kristin's basement — a space she initially thought wouldn't run out of room. However, as word about Access

Period spread, the demand for supplies increased, prompting more individuals to join forces with Kristin to fulfill growing needs. With requests piling up, the operation transitioned from Kristin's basement to two storage units to a classroom in a church.

"We are now in a warehouse space that allows us to receive large donations and can more comfortably host volunteers," Kristin shares.

Access Period distributes products in three ways. Firstly, through community partnerships with 30 organizations, primarily in the Omaha metro area. These organizations distribute Access Period's three-month kits to the people they

serve. Secondly, via statewide access points — 10 locations across Nebraska offer free period products in cabinets to anyone who needs them. Kristin emphasizes, "[A person] doesn't need to be connected to any agency or prove financial need to take products from an access point. We trust the people we serve." Lastly, Access Period collaborates with schools, treating period products as the essential school supplies that they are. The nonprofit

partners with school districts, directly supplying educators with these necessary items. If none of these options are viable for someone in the state, especially for people in rural areas, Kristin encourages them to reach out to Access Period directly, adding, "We will find a way to get you what you need."

Thanks to Kristin and her incredible team, Access Period has distributed 700,000 products to nearly 10,000 people in two years alone.

"That's over 100,000 worry-free days [for people who need menstrual products]!"

Learn more at [AccessPeriod.com](https://AccessPeriod.com).







ACCESS  
PERIOD



*"I genuinely  
believe it's our duty  
as humans to use  
what we have to  
help others."*



# Chapter Sweet Chapter



## **ALPHA** (Syracuse)

Because this issue of *The Crescent* kicks off our 150th commemorative issues for the year, it's only fitting we spotlight the chapter where our sisterhood first started: Alpha Chapter at Syracuse University.

New York and bagels are inextricably linked, which inspired Alpha Chapter's ancillary philanthropy event, G-Phi Bagels. As well as Moonball, Alpha Chapter sisters host G-Phi Bagels annually to raise funds for Girls on the Run (GOTR). This past fall, the chapter's facility turned into a bustling pop-up bagel

shop for students on campus. G-Phi Bagels triumphed, raising a commendable \$700 for GOTR Upstate New York.

Reflecting on the success, Lilly Coleman, a junior at Syracuse, shared, "It was so great to have the entire chapter at the house for bagels. We raised a lot of money for Girls on the Run, which was so great to see. And the line to place orders was all the way to the other side of the street!"



### 1. LOCAL DELIGHT

Savor pasta perfection at Pastabilities, a cherished Italian gem in Syracuse. Locals adore it, and rumor has it that stars like Daniel Levy are fans!

### 2. CHAMPION VIBES

Cheer on the national champs! Syracuse University's basketball and lacrosse teams boast multiple titles. Look out for Otto the Orange, Syracuse's mascot, who attends all games!

### 3. WINTER STYLE

As winter takes hold, Syracuse students embrace coziness, bundling up in Uggs and puffer jackets to brave the East Coast climates with style.

### 4. ALPHA CHAPTER PERSONIFIED

Chapter President Samantha Wagner defines her chapter as hardworking, charismatic and friendly.



EXPLORE  
*Syracuse*

# LIFE LOYAL

Life Loyal is a special program available for all Gamma Phi Beta members to continue their lifelong support of our beloved Sorority beyond their collegiate years while receiving exclusive benefits. This is just one way to continue your lifetime involvement as a member of Gamma Phi Beta while fulfilling your financial obligations with an easy, one-time payment. The dedication of our alumnae members who continue to be involved and financially supportive helps ensure the future of our traditions and sisterhood.

*Thank you to the following sisters who  
joined Life Loyal between August 1 through  
October 31, 2023.*

## **ALPHA** (*Syracuse*)

Connie Ostrom Cerroni  
Joan Alberts Jones  
Jessica Warm Millen  
Dawn Nelson

## **BETA** (*Michigan*)

Paula Schoenberg Bermont  
Angie Kelic

## **GAMMA** (*Wisconsin-Madison*)

Jill Hatfield Colvin  
Lynn Dannenfelter Johnson

## **DELTA** (*Boston*)

Hilary Keates  
Karen Kazanjian Lilla

## **ETA** (*California-Berkeley*)

Elizabeth O'Conner Keenan  
Galena Vaguine Miller-Horii  
Riya Shah

## **THETA** (*Denver*)

Ashley Miers  
Beverly Yuchs Petry

## **KAPPA** (*Minnesota-Twin Cities*)

Emily Wennerlind Conley  
Nancy Rutledge Haggart  
Virginia Vanderpool

## **LAMBDA**

(*University of Washington*)

Bailey Aggen  
Ali Kroon Hedin  
Holly Heltzel Lewry  
Juli Roehl Lindquist  
Karina Birkeland Stark

## **NU** (*Oregon*)

Grace Himsl  
Veronica Hinkes  
Karen Koch

## **XI** (*Idaho*)

Robin Peters Chatfield  
Judy Conklin Isaacson  
Suzanne Groff Lierz  
Jennifer Brun Schindele

## **OMICRON**

(*Illinois at Urbana-Champaign*)

Sheri Hess  
Ashley Lackovich Mazurkiewicz

## **PI** (*Nebraska-Lincoln*)

Danielle Bivins  
Kennedy Christensen  
Gillian Coolidge  
Katie Kenagy Horner  
Michaela Mapes  
Isabelle Schmidt  
Rachel Dickey Swim

## **RHO** (*Iowa*)

Tory Holland Hurst  
Barbara Mores Johnson  
Ann Berner Sexton

## **SIGMA** (*Kansas*)

Pamela Henderson Adams  
Ruthie Wenstrand Baron  
Keri Dobbins Halgren  
Brenda Press Harden

## **TAU** (*Colorado State*)

Meg Schott Dawson  
Mary Ann Maloney Sheely

## **PHI** (*Washington University*)

Libby Holland Kozak

## **CHI** (*Oregon State*)

Tina Miller Salter

## **PSI** (*Oklahoma*)

Judy Hall Barnett  
Jamie Goldstein Hokett  
Kristen Lason  
Megan Hardwick Leone  
Imogen Parkinson  
Ethel Moore Parrington  
Ashley Strain

## **OMEGA** (*Iowa State*)

Theresa Rayburn Bamrick

Michelle Hunziker Bilyeu  
Darlene Stavens O'Neill  
Christine Lankford Toole

## **ALPHA BETA** (*North Dakota*)

Darcie Seboe Einarson  
Bethany Kathlena Hoffman  
Tami Kartio  
Nicole Iverson Neesham

## **ALPHA DELTA** (*Missouri-Columbia*)

Judith Haverfield Beaupre  
Andrea Boulais  
Marilyn Bolling Lewis  
Nancy Willis Litzinger  
Carol Buchmueller Stelmach

## **ALPHA ZETA** (*Texas-Austin*)

Denise Shukis Bender  
Bernadette Rossi Ellis  
Leigh Harmon  
Jeanette Waltz Poole

## **ALPHA ETA** (*Ohio Wesleyan*)

Donna DeFabritus Binzer

## **ALPHA THETA** (*Vanderbilt*)

Colleen Hardcastle  
Eva Madison  
Christy Monaco  
Lisa Uiberall-Noble



#### **ALPHA IOTA**

*(California-Los Angeles)*

Michelle Futterman Popowitz  
Connie Petersen Russo  
Felicia Settle  
Cory Unruh

#### **ALPHA MU** *(Rollins)*

Mary Joe MacCubbin Clark  
Dot Porter Morgan

#### **ALPHA NU** *(Wittenberg)*

Maria Cashy  
Jill Withers Morgan  
Lynn Eckel O'Neill

#### **ALPHA XI** *(Southern Methodist)*

Madeline Osborne  
Aparna Subramanian

#### **ALPHA PI** *(West Virginia)*

Charlotte Detch Dietz  
Paulette Justice

#### **ALPHA TAU** *(McGill)*

Deena Altman

#### **ALPHA PHI** *(Colorado College)*

Tracy Lees-Grant

#### **ALPHA CHI** *(William & Mary)*

Anne Blakistone Austin  
Dottie Gilbert Jordan  
Julie Lillard Roberts

#### **ALPHA OMEGA**

*(Western Ontario)*  
Nadine Fletcher Manson

#### **BETA ALPHA**

*(Southern California)*  
Charlotte Hebert Hennington  
Karin Bolich McPherson  
Susie Delahooke Rhodes

#### **BETA DELTA** *(Michigan State)*

Gail Madar Perkins

#### **BETA EPSILON** *(Miami-Ohio)*

Joyce Griffin Crone  
Susan Kettle Dienes  
Cheryl Hunter Nevenhoven

#### **BETA ZETA** *(Kent State)*

Linda Reynolds Andiric  
Betty Hoy Kentosh

#### **BETA ETA** *(Bradley)*

Rebecca Borchert

#### **BETA THETA** *(San Jose State)*

Sue MacGregor Rauzy

#### **BETA IOTA** *(Idaho State)*

Lynn Pattis Francis  
Valorie Wilson Watkins

#### **BETA KAPPA** *(Arizona State)*

Elizabeth O'Malley Hanahan  
Rebecca Myers  
Sarah Imig Slessman

#### **BETA MU** *(Florida State)*

Suzie Anderson Cox  
Dawn Benton Elkins  
Elizabeth Bell Scholze

#### **BETA NU** *(Vermont)*

Margaret Fowler Veazey  
Pamela Juckett Zarb

#### **BETA OMICRON**

*(Oklahoma City)*  
Lynette Loren Miller  
Tami Murphy Moore  
Judy Willingham Johnson Ransom  
Amanda Michaels Riesen

#### **BETA PI** *(Indiana State)*

Mary Mooney McDowell  
Marla Stitt Pisarek  
Margaret Cooper Raplee  
Andrea Riffel-Stack  
Brianna Ulery

#### **BETA RHO**

*(Colorado-Boulder)*  
Mary Reeder

#### **BETA SIGMA**

*(Washington State)*  
Lisa Bliss

#### **BETA TAU** *(Texas Tech)*

Kathy Cook Anderson  
Denise Vidal Davis  
Janice Oldham-Torgeson  
Shari Posey Watson

#### **BETA UPSILON** *(Kansas State)*

Dianne Sayers Boren

Erin Clopine Kays

#### **BETA PHI** *(Indiana)*

Jill Diaforli Griffiths  
Isabella Hill

#### **BETA CHI** *(Wichita State)*

Tamara Neff Breeden  
Jessica Crumrine  
Ann Clark Wommack

#### **BETA PSI** *(Oklahoma State)*

Eowana Peters Jordan  
Shannon Ragsdale Muret  
Lisa Bryant Steves

#### **BETA OMEGA** *(Northern Arizona)*

Debbie Rice Burris  
Pamela England Lasher  
Marilyn Faris Scholl  
Katie Underwood

#### **GAMMA BETA** *(Gettysburg)*

Carol Paton  
Jean Vendig Smith

#### **GAMMA GAMMA** *(Wisconsin-Milwaukee)*

Renee Passis Thaler

#### **GAMMA DELTA** *(Wyoming)*

Vickie Zimmer

#### **GAMMA EPSILON** *(Puget Sound)*

Rebecca Pollack

#### **GAMMA ZETA**

*(Texas A&M-Commerce)*  
Amy Oxner  
Julie Fugler Willis

#### **GAMMA ETA**

*(California State-Long Beach)*  
Nancy Edgecomb Lowman  
Allison Lee Maguire  
Anne Burns Pollinger

#### **GAMMA IOTA**

*(Midwestern State)*  
Rachael Yukiko Miyahara

#### **GAMMA KAPPA**

*(Nebraska-Kearney)*  
Trudy Martin Else  
Ashley Stutzman

#### **GAMMA LAMBDA**

*(Louisiana State)*  
Deidri Lockwood Spaulding

#### **GAMMA MU**

*(Moorhead State-Moorhead)*  
Dagne Lund Forbes

#### **GAMMA NU** *(Lamar)*

Barbara Cummings Boynton  
Holli Sanderson Sims





**GAMMA XI**  
(Tennessee-Knoxville)  
Linda Redding

**GAMMA OMICRON**  
(Kentucky)  
Kayla Allison  
Linden Hinkle  
Julie Mudd

**GAMMA PI**  
(Minnesota State-Mankato)  
Michelle Pexa Hertaus  
Katie Roecker Kerkvliet  
Lindsay Benay Morgan

**GAMMA UPSILON** (Drake)  
Vicki Asprooth Roy

**GAMMA PHI** (Auburn)  
Caren Davidson Hosmer  
Elizabeth Benning Knott

**GAMMA CHI**  
(Texas State-San Marcos)  
Kelsey Ryan Bertrand  
Aneece Philip Hughes  
Lauryn Kelley Simmons  
Melissa Ueckert

**GAMMA PSI** (Northern Iowa)  
Christine Mineart Turnipseed

**GAMMA OMEGA**  
(Wisconsin-Platteville)  
TJ Heller  
Michelle Brennan Julius  
Stephanie Sutton

**DELTA DELTA**  
(California State-Fullerton)  
Sue Brunelli Leas  
Valerie Turner Linker

**DELTA EPSILON**  
(Texas Wesleyan)  
Kelly Dawn Calcote

**DELTA ETA** (California-Irvine)  
Wendy Blair Chudner

**DELTA THETA**  
(California Polytechnic State)  
Jane Hodge Athanasakos

**DELTA IOTA** (Purdue)  
Kassandra Burkhart

**DELTA KAPPA** (Lehigh)  
Joy Cooper Widding

**DELTA LAMBDA**  
(California-Riverside)  
Stacey Stilwagen Edwards  
Mandy Felix  
Lori Lee Montigel

**DELTA RHO** (Dickinson)  
Nancy Pierce

**DELTA SIGMA**  
(Florida Institute of Technology)  
Heather Rau Geisert  
Sarah Goodyear  
Hannah Lin

**DELTA TAU** (Colgate)  
Anna Bamber  
Karen Lyski Beatty  
Tana Bachert Brown

**DELTA PSI**  
(California-Santa Barbara)  
Bethany Wilson Abele  
Rebecca Bedell  
Aislinn Jones  
Sarah Tri Oliver

**EPSILON BETA** (Alma)  
Marion Gillis

**EPSILON DELTA** (Creighton)  
Michele Aust DeSmet  
Amanda Steier Russell

**EPSILON ZETA** (Jacksonville)  
Andrea Atran  
Nancy Giocondo Peavy

**EPSILON ETA**  
(Bridgewater State)  
Denise Brymer Sturtz

**EPSILON THETA** (Clemson)  
Emily Gaskins

**EPSILON KAPPA**  
(California State-Chico)  
Azita Houshang

**EPSILON LAMBDA**  
(Alabama)  
Kerri Doherty Rice

**EPSILON NU** (Chapman)  
Jennifer Beattie Baiocchi  
Leanne Orr  
Alicia Adams Seevers

**EPSILON PI** (George Mason)  
Veronique MacDonald

**EPSILON RHO**  
(Stephen F. Austin State)  
Melissa Carter Daigle

**EPSILON SIGMA**  
(Morehead State)  
Laura Worthington Heading

**EPSILON TAU** (Rochester)  
Tiffany Stern Larkowski

**EPSILON PSI**  
(North Carolina-Asheville)  
Monica Sain

**ZETA ALPHA**  
(Eastern Washington)  
Madyson Rigg

**ZETA BETA** (Virginia)  
Marthe Ledoux Mann  
Rachel Potula

**ZETA DELTA**  
(Southeast Missouri State)  
Marlaina Holtgrave Cleveland  
Katy Norkus Sternau

**ZETA IOTA** (Valparaiso)  
Nike Roe Fleming

**ZETA KAPPA**  
(Southern Indiana)  
Katrina Gramelspacher  
Christina Winn

**ZETA LAMBDA**  
(Texas A&M-Corpus Christi)  
Rachel Christine

**ZETA RHO**  
(Texas A&M-College Station)  
Monica Canchola Anderson  
Julianne Handy  
Traci Toone Jaedicke

**ZETA PHI**  
(Arkansas-Fort Smith)  
Felicia Wright Jamell

**ZETA CHI** (Texas Christian)  
Kerry Hines  
Natalie McDonald  
Alexandra Preusser

**ZETA PSI**  
(Texas-San Antonio)  
Jana McElwrath Clarke  
Ashley Smith

**ETA DELTA**  
(Grand Valley State)  
Alyssa Mroz

**ETA ZETA** (Cincinnati)  
Maria Cassidy

**ETA XI** (Florida)  
Hailey D'Angelo  
Hannah Lewis  
Sarah Niesen  
Brooke Peck

**ETA RHO**  
(Nevada-Las Vegas)  
Julia Kang





## *Celebrate Our 150th In Style!*

This year is a big year for Gamma Phi Beta (in case you didn't know, we turn 150 in November!). Celebrate our sesquicentennial anniversary in style with Shop Gamma Phi! This one-stop shop has everything you need to showcase your love for our enduring sisterhood. We're talking high top sneakers clad in carnations, commemorative souvenirs and trending threads. There's even a puzzle for all you dissectologists! Find these items and more on **ShopGammaPhi.com**.



## Meet Our Hosts

Leading "The True and Constant Podcast" are co-hosts Lex Stewart (Ohio) and Emma Oremus (St. Louis)

Now that we have officially entered the Sorority's 150th year, it's time to commence the celebration! One of the ways we're doing just that is through "The True and Constant Podcast," a limited-series podcast that showcases the incredible members and their stories of Gamma Phi Beta sisterhood. Leading the podcast are co-hosts Lex Stewart (Ohio) and Emma Oremus (St. Louis), each bringing a unique set of skills, professional backgrounds and Gamma Phi Beta experiences to the forefront. Together, they conduct truly magical conversations with other sisters. Join Lex, Emma and their special guests throughout 2024 by streaming "The True and Constant Podcast" on Spotify, Apple Podcasts, Amazon Music or wherever you get your podcasts.

*The Crescent* sat down with Austin-based Lex and Denver-based Emma to learn more about them and how they plan to work together throughout the next year.



**The Crescent (TC): What inspired you to join Gamma Phi Beta?**

**Lex Stewart (LS):** I was really excited about the possibility of making friends from different backgrounds. Because we all came to the Sorority in different ways, from various programs, you got to meet people you might have never crossed paths with otherwise.

**Emma Oremus (EO):** As a movie lover, my first encounter with sorority life was through the empowering depiction in “Legally Blonde.” The image of women supporting each other resonated, inspiring me to seek a similar experience in college. Despite the intimidating primary recruitment, the women of Gamma Phi Beta made me feel at home with their fun spirit and community involvement. Their authenticity endured beyond recruitment, allowing me to embrace values of Love, Labor, Learning and Loyalty.

**TC: Can you each share what you do for work and how that work is meaningful/fulfilling to you?**

**LS:** I'm a writer, community manager and facilitator/coach, focusing on creativity, storytelling and community. As a writer, I cover Austin's arts and culture, aiming to connect readers with its diverse creativity. As a community manager, I bring people together through events and online forums. Lastly, as a facilitator/coach, I assist individuals in reaching their goals through one-on-one sessions and group workshops, witnessing and supporting their transformational journeys.

**EO:** I work in communications and development for a nonprofit that provides mental health services and wellness programming to families with incomes below the poverty line. I feel honored that each day I'm contributing to a greater mission of connecting people to accessible support when they need it most. Spreading awareness of our aims is an exciting challenge that intersects with my personal and professional goals.

**TC: What encouraged you to co-host the Sorority's official podcast?**

**LS:** When Gamma Phi Beta posted the volunteer opportunity to work on the podcast, it came at a time when I finally felt I had the space and energy to get more involved! I know that my strengths lie in storytelling and interviewing people. It felt like the right place, right time.

**EO:** I've always believed Gamma Phi Beta could be an incredible platform to share the wisdom of diverse individuals, fostering a virtual community for members, regardless of their location. I was eager to be part of this project in any way I could!

**TC: What strengths do you bring to the podcasting table?**

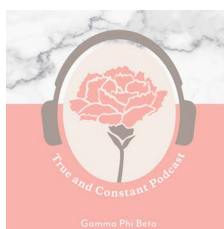
**LS:** I've been told I have a good voice for radio! I also think I bring my skills of storytelling, curiosity and levity. I have a knack for synthesizing information, so I'm really good at listening to people talk and pulling out the overarching themes and patterns from our conversation.

**EO:** I adore collecting knowledge and can never get enough of what guests have to share! I find a wide breadth of subject matter interesting, so I truly feel excited and eager to speak with every guest that joins the podcast.

**TC: How will you two prepare for each episode?**

**LS:** It's a mix of research and then following where my questions take me. I read through the bios, websites and other available information on the guest to get a sense of what they've done and where they're coming from. From there, I generate a list of questions I'm interested in knowing more about. I tend to find myself drawn to the question of “why” when it comes to some of our guests. Why did you pursue this path? Why did you join Gamma Phi Beta? These answers can tell you a lot about a person.

**EO:** Episodes can vary significantly — some are information-based, others lighter in discussion and some exploratory with an expert. The common thread is thorough research with an adaptable mindset. I delve into the topic, identify question marks and amplify them in discourse. Starting with context, I stay present, organically flowing with conversations. New question marks often emerge, sometimes more intriguing than the ones initially in mind. It's about adapting, learning and exploring as the dialogue unfolds.



To learn more about Lex and Emma and “The True and Constant Podcast, visit [Gamma Phi Beta.org](https://www.gphibeta.org) > Events > 150th Celebration > The True and Constant Podcast



# Coast-to-Coast Close-Up

Here's a look at our first two Coast-to-Coast events in Long Beach and Napa Valley

One of the ways we are celebrating our sesquicentennial is through a series of events known as Coast-to-Coast Celebrations, taking place across North America! The tour kicked off in Long Beach, California, from January 26-28, and continued in Napa Valley, California, from February 9-11. Both events were dedicated to celebration and fostering sisterly connections, all in honor of our 150th anniversary. Attendees enjoyed fun activities, dinner and captivating keynote speeches delivered by Gamma Phis respected in their fields. Here's a glimpse into the first two Coast-to-Coast Celebrations in Long Beach and Napa Valley and all the fun festivities that took place.

Learn more and register for a Coast-to-Coast event at [GammaPhiBeta.org/150/CoastToCoast](https://GammaPhiBeta.org/150/CoastToCoast).



All attendees are given a 150th Passport where they can add stickers for each event attended. Members can also purchase commemorative Coast-to-Coast tour shirts upon registration!



Members enjoyed a special 150th public ritual service.



Gabrielle Carreon (California State-Fullerton) performed at both events.







# 150 Years of Sisterhood



Attendees enjoyed our Traveling Exhibit, which was specially curated for Coast-to-Coast events, full of meaningful items from our Sorority archives.







True and  
Constant

*Syracuse University*



Siste  
hood





# 150

*Faithful  
and True*

## All About Our Founders

*Dive into the captivating lives of our four Founders, the trailblazing women who paved the way for 150 years of True and Constant celebration.*



In her comprehensive dissertation on coeducation and the history of women's fraternities from 1867-1902, fraternity and sorority historian Fran Becque, Ph.D., reveals the challenges faced by women during this transformative period in higher education.

In 1870, less than 1% of American females aged 18-21 enrolled in higher education, with even fewer attending coeducational institutions. Fran's research illuminates the landscape: 582 higher education institutions existed in the United States, of which only 29% were coeducational. On campuses like Syracuse University, women often encountered open hostility from their male counterparts. Seeking solidarity, they formed protective leagues for moral and academic support.

Gamma Phi Beta's four Founders — Helen M. Dodge, Frances E. Haven, Mary A. Bingham, and E. Adeline Curtis — were part of this small cohort of women on coeducational campuses, facing gender alienation from peers and professors daily. In this challenging atmosphere, their friendships strengthened. In 1874, they formalized their sisterhood by establishing Gamma Phi Beta Sorority.

Today, with over 250,000 members, Gamma Phi Beta remains a protective and encouraging space for women, mirroring the values of our Founders. As we commemorate 150 years of our True and Constant bonds this year, let's honor the resilience of these pioneering women who brought us to this historic moment.

# 18 74



*Gamma Phi Beta*







# 150



*True and Constant*



# Helen M. Dodge



## Founder Facts

First Founder to graduate from college

Nicknamed "The Scholar"

A Libra

Helen M. Dodge, the oldest Founder, was born on September 26, 1850, in Verona, New York, to William S. Dodge and Margaret E. Armitage Dodge. Helen's journey was marked by resilience and a thirst for knowledge.

Tragedy struck in her childhood when her father passed away, propelling Helen, along with her mother and younger brother, to forge a new life in Syracuse. In an era when societal expectations for young women rarely extended beyond marriage, Helen's mother became a guiding light, urging her daughter to pursue education. Reflecting on a pivotal conversation with her mother, Helen once remarked, "If I were a young man, I would never stop short of a college education." Her mother, a visionary, responded, "Why should you as it is?"

Choosing a path less traveled, Helen embarked on a transformative educational journey, attending Cazenovia Seminary and later, Wesleyan Academy (renamed Wilbraham Academy) in Wilbraham, Massachusetts. However, the quest for knowledge didn't end there. In the fall of 1872, she became a trailblazer, entering Syracuse University as a member of its second freshman class.

On September 18, 1872, Helen and her Syracuse housemates opened their doors to 14 female students seeking a haven, a place of unity in a world often hostile to them. In the eloquent words of Martha Foote Crow, an Alpha Phi co-founder, these women craved a space where they could "blossom forth in a free atmosphere of encouragement and approval." Among those 14 women, 10 became the founders of Alpha Phi Fraternity on September 30, 1872. Although

Helen was appointed the task of writing the fraternity's constitution, she declined the offer, saying that she had "conscientious scruples against taking an oath." This unique decision would lead to the establishment of the first-ever Greek-letter Sorority.

In June 1876, Helen was the first of the founders to receive her undergraduate degree. She was one of 10 students from her class selected to read their senior thesis at the commencement ceremony, and her Gamma Phi sisters honored her with a bundle of flowers in a white and gold basket to mark the special occasion. Post-graduation, she considered a teaching career but instead chose to care for her ailing mother.

Helen was always steadfast in her faith, once noting, "While at Cazenovia (Seminary), I made the one great and all-important decision, and consecrated my life to the service of God." On October 12, 1886, she married Reverend J. V. Ferguson, and together, they dedicated their lives to scholarship and charitable work that spanned the globe.

Despite facing adversity, including the death of her husband in 1905, Helen remained committed to education and philanthropy. Her benevolence manifested in a \$15,000 bequest to Syracuse University upon her death, forming the foundation for scholarships benefiting Alpha Chapter members. Even in her passing on October 21, 1937, Helen left an indelible mark on both Gamma Phi and the countless organizations she served.





*Faithful and True*



# Sisterhood



# Mary A. Bingham



## Founder Facts

Nicknamed  
“The Aristocrat”

Very intuitive  
and always  
knew the right  
thing to do in  
any situation

A Virgo

Mary A. Bingham, affectionately known as “Minnie” among her close friends, was born on August 30, 1856, in Watertown, New York, and spent her formative years in the affluent backdrop of Rome, New York. Hailing from a prosperous family with a business-owning father and a mother deeply committed to both family and the burgeoning Temperance Movement, Mary's early life was marked by extensive travels through North America and Europe.

Mary, the youngest Founder, embarked on her educational journey at Syracuse University in the fall of 1873. She faced a brief hiatus from academia in 1875 due to health challenges but returned in 1876 to complete her studies. Two years later, in 1878, she received her fine arts degree alongside E. Adeline Curtis, or Addie. After graduation, Mary accompanied her parents on an extensive European trip, missing the opportunity to attend Addie's wedding as a bridesmaid.

In January 1883, Mary married Edward A. Willoughby, a successful carriage manufacturer also from Rome, New York. Edward continued to provide Mary with the affluent lifestyle she had grown accustomed to. The couple established a home in Utica, New York, living close to Helen, and enjoyed hosting elaborate dinners for friends and business associates. Mary was particularly known for her informal gatherings, where 20 to 30 friends enjoyed piano playing, singing and dancing. Those get-togethers would eventually conclude after the couple welcomed their children into the world.

Mary's life was a testament to devotion – to family, Gamma Phi Beta, the arts and her church. Her profound legacy resonates not only within Gamma Phi Beta's history but also through the sacred halls of First Presbyterian Church. A choir member and Sunday school mentor, Mary enriched her faith community with her wisdom. In her town, her cherished bond with Helen was evident in shared moments and mutual support. Beyond local ties, Mary actively participated in Gamma Phi Beta Conventions in Syracuse and bridged distances between sisters through mail and submissions to *The Crescent*.

Sadly, on January 14, 1916, Mary passed away at her Utica home after a one-week battle with grippe (influenza) and pneumonia. This sorrowful event occurred just a year before her husband's death. Mary was buried in the Rome Cemetery in Rome, New York, on what would have been the couple's 33rd marriage anniversary.



# 18 74

*Gamma Phi Beta*



*“The [upcoming] 150 anniversary reminds me of the Sorority’s centennial celebration in 1974. I vividly remember my grandmother, Alida Moss Skinner (daughter of Frances) attending that anniversary as a featured speaker. She was thrilled to be a part of it, and to share family stories as well as her experience with Gamma Phi Beta at the University of Illinois, Urbana. Although I am not a Gamma Phi Beta, it pleases me to know that there is a wonderful celebration planned to mark 150 years.”*

— Janet Skinner Wells (Frances’ living great-granddaughter)





# Frances E. Haven



## Founder Facts

Nicknamed  
"The Artist"

Frances' only sister, Mira, joined Gamma Phi Beta during Frances' senior year.

A Gemini

A certified Mayflower descendent (10th generation)

Born on May 27, 1854, in Ann Arbor, Michigan, Frances E. Haven was the daughter of Dr. Erastus O. Haven and Mary Frances Coles Haven. Erastus, a distinguished Latin professor and later the president of the University of Michigan, championed education for women despite none being enrolled during his tenure at Michigan. The family relocated to Evanston, Illinois, in 1869, where Frances became one of the first female students admitted to Northwestern University under her father's presidency.

Frances faced challenges during her time at Northwestern, particularly the infamous Chicago fire of 1871, which disrupted her studies. Following this incident, she spent a year studying music in Brooklyn before her father assumed the role of chancellor at Syracuse University in 1874. Frances promptly enrolled at Syracuse, joining the fine arts department as a sophomore.

Living with her parents during her undergraduate years, Frances devoted herself to diligent studies and creative pursuits, showcasing her talent as a painter. A chance encounter at a church social introduced her to Charles Moss, a fellow classmate who later became her husband. Through him, she became acquainted with the members of Alpha Phi Fraternity but declined the invitation to join, sharing a sense of isolation with Helen. Their shared predicament led them to connect with two more like-minded women facing a similar situation.

Frances graduated with a degree in fine arts from Syracuse in 1877, her diploma personally signed by her chancellor father. After a brief stint

teaching, she married Charles in 1878, and together they welcomed five children into the world, with their youngest, Alida Helen, later becoming a proud member of Gamma Phi Beta.

As Charles pursued a career in classics, moving the family to Bloomington and then Urbana for his roles at Illinois Wesleyan University and the University of Illinois, Frances remained actively engaged in various organizations. Her involvement extended to the University of Illinois Women's League, the Social Science Club, the League of Women Voters, the Daughters of the American Revolution and the Women's Christian Temperance Movement.

In Urbana, Frances played a pivotal role in establishing Omicron Chapter (Illinois at Urbana-Champaign) of Gamma Phi Beta. In 1912, approximately 20 women held meetings in her home, officially installing Omicron Chapter in 1913, marking the only chapter founded by a Founder. Frances and her husband even provided financial assistance to Omicron Chapter for the purchase of their facility.

Frances died on June 16, 1937, at age 83 following a prolonged illness due to heart complications. Her funeral was held in the front parlor of her home, with many Gamma Phis in attendance.





*Syracuse University*





# E. Adeline Curtis

Eunice Adeline Curtis, more commonly known as “Addie,” was born on December 22, 1854, in Moravia, New York, to Reverend E. C. Curtis and Susan D. Curtis.

Fate guided Addie to Syracuse University in the fall of 1874, with her father serving as the University's financial officer. Her college years were not just marked by academic achievements; she graduated in 1878 with a fine arts degree, showcasing her talents as both a vocal and instrumental musician. After college, Addie's path led her to Boston, where she studied under J. C. D. Parker, the esteemed organist of Trinity Church.

On July 3, 1878, Addie exchanged vows with Frank Lionel Curtis shortly after her graduation. The wedding, presided over by her father, culminated in a reception at their home, where her father's gift of a concert grand piano graced the occasion. The couple welcomed two sons yet one sadly passed away in his infancy.

Addie's life composed a melody of commitment to family, art and friendship. Settling in Syracuse, she sang soprano in the St. Paul's Episcopal Church choir for an impressive 33 years.

Following her husband's passing, she transitioned to an apartment complex, confronting various health challenges, including the onset of Bright's disease, a serious kidney condition.

Despite adversities, Addie maintained a connection to Alpha Chapter members as an alumna. Her passing on January 14, 1923 (exactly seven years from Mary's death), prompted Frances to beautifully express Addie's enduring affection for the Alpha Chapter members. “She spoke so kindly of the Alpha girls. Of what a privilege it was to be associated so closely with a constant succession of choice young spirits and how much their companionship had enriched her life.”

The unforgiving Syracuse cold postponed Addie's burial until the summer of 1923. In a poignant tribute, members of Alpha Chapter paid their respects in Oakwood Cemetery, Syracuse, as Addie found her final resting place. Her casket was adorned with a beautiful blanket of pink carnations.



## Founder Facts

Addie's fine arts degree was in music.

Known to befriend and attract people from all walks of life, she was nicknamed “The Friend.”

A Capricorn



*The last photo  
of all four  
Founders  
together at  
Convention  
1907.*





# Explore Gamma Phi Beta's Roots at *Syracuse University*

## 1 Hall of Languages College of Liberal Arts

When our Founders attended Syracuse University, the campus consisted of a single building: the Hall of Languages. Completed in 1873 at a cost of \$136,000, this historic structure underwent expansion in 1886 with the addition of the iconic central tower. Originally housing the College of Liberal Arts, the building also accommodated various schools and departments, including the registrar's and chancellor's office. In 1979, a comprehensive interior renovation revitalized the structure and subsequent updates enhanced its instructional spaces in 2017. The building was recognized on the National Register of Historic Places in 1973, honoring its enduring significance in the university's history.

## 2 Jennie Real's (Syracuse, 1882) Residence

The first-ever Gamma Phi Beta Convention took place in Syracuse on November 8-9, 1883. A total of 69 Alpha Chapter (Syracuse) members attended, along with Isadore Thompson (Michigan, 1882), who journeyed from Ann Arbor as Beta Chapter's (Michigan) sole delegate. Following Sorority business and the observance of cherished rituals, the closing banquet was hosted at the residence of Jennie Reals (Syracuse, 1882) at 297 South Salina Street, about five minutes from campus.

## 3 Myers Block

The upper floors of Myers Block, a commercial building situated in downtown Syracuse, served as a temporary campus during the construction of the Hall of Languages. The second floor accommodated classrooms, a library, a reading room and faculty offices. There were additional classrooms and a chemistry lab on the third floor, while the fourth floor housed a chapel and an assembly room. It is probable that Helen M. Dodge, the oldest Founder, attended her initial college-level courses in this building before the Hall of Languages was completed.

## 4 The Syracuse Triad

Three extraordinary women's sororities made their mark at Syracuse University, becoming known as The Syracuse Triad. The legacy began in 1872 with the founding of Alpha Phi, followed by the establishment of Gamma Phi Beta in 1874. In 1904, the triad was complete with the creation of Alpha Gamma Delta. The sororities continue to celebrate their unique sisterhood through special events and ceremonies on campus, with all three groups in attendance.

5

### Alpha Chapter Facility

On November 11, 1938, Gamma nationwide came together to mark the dedication of Alpha Chapter's brand-new facility on Founders Day. The new building was the third Syracuse home since the Sorority's founding, and it graced a double terrace overlooking Syracuse University's "fraternity row." With its elegant English Georgian design, the red brick facility provided housing for 30 women, featuring additional spaces for returning alumnae and guests. At the time, it proudly stood as the largest Greek-letter chapter house on campus.

6

### Supporting Male Figures

Gamma Phi Beta received unwavering encouragement from key figures like Frances' father, Erastus O. Haven, the second chancellor of Syracuse University. Haven was a strong advocate for women's higher education. Syracuse professor Dr. John J. Brown played a pivotal role by generously providing a furnished room for the Founders' early meetings. In gratitude for Dr. Brown's support, the Founders chose light and dark brown as the Sorority's official colors. Additionally, Latin professor Frank Smalley referred to the Gamma Phi Beta Society as a "sorority," marking its historical distinction as the first Greek-letter organization to be referred to as a sorority.

7

### Haven Hall

In 1904, Haven Hall Dormitory for Women was constructed at the price tag of \$57,000. Named for the University's second chancellor and Frances E. Haven's father, Erastus O. Haven, the building housed 73 rooms, with the kitchen and dining facilities located in the basement. The original Haven Hall was demolished in 1962 to make room for a collaborative media center. Today, Haven Hall exists as a coed-by-room dormitory that houses approximately 375 students.

Sources: [FranBecque.com](http://FranBecque.com), [GammaPhiBeta.org](http://GammaPhiBeta.org), [Library.Syracuse.edu](http://Library.Syracuse.edu) and [Syracuse.edu/150Years](http://Syracuse.edu/150Years)



3

2

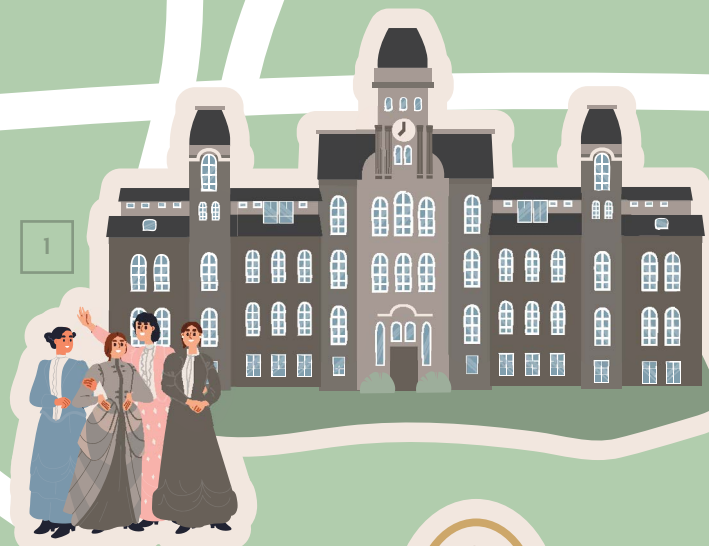
4



HAVEN HALL

7

1



6



Dr. John J. Brown



Erastus O. Haven



Frank Smalley

5





# TRUE AND CONSTANT

Manhattan-based Victoria “Tori” Repka-Geller (Southern California) felt compelled to forge her own professional path after spending more than 20 years in marketing/advertising in the for-profit sector. Although she loved the people on her team, she found working on for-profit brands demoralizing because of the sale of unnecessary products. Tori decided to redirect her expertise toward something positive, with a focus on making a meaningful impact on the lives of others. In October 2021, that ‘something’ materialized into Trace of Hope, Inc., a nonprofit dedicated to empowering students in pursuing higher education by alleviating financial burdens through tax-deductible, direct-to-recipient donations. This ensures that students receive 100% of a given donation through Tori’s nonprofit. Since its inception, Trace of Hope has positively impacted the lives of 24 students, with a total of \$100,000 in donations allocated toward their educational expenses. We chatted with Tori to delve deeper into what inspired Trace of Hope, how she turned her vision into reality and the future of her nonprofit that invests in tomorrow’s leaders.



## 1 WHAT INSPIRED YOU TO LAUNCH TRACE OF HOPE?

*In 2021, my son started applying to colleges. One day, he came home and said, ‘Mom, there are kids at my school who can’t even afford to apply to college.’ Having experienced firsthand how higher education made a difference in my life and feeling blessed that I could provide that for my son, it was disheartening to hear that some kids were being left behind. I decided then and there to establish Trace of Hope to give kids a chance to fulfill their educational dreams by offsetting some of their costs through grants.*

## WHAT IS YOUR NONPROFIT’S MISSION AND VISION?

*A college education is a valuable investment for both students and society. Graduates earn 53% more and contribute 3.5 times more to charitable donations than their peers. Unfortunately, many students can’t afford to apply to school, and those who do face approximately \$30,000 in debt, leading to financial struggles and concerns about basic needs. Tragically, 33% of students drop out with debt, perpetuating a cycle of educational insecurity and poverty.*

**2** *Trace of Hope aims to break this cycle through our direct-to-recipient giving rounds. We accept donations of any size and deliver 100% of the contribution directly to students, allowing donors to witness the immediate impact of their generosity.*



**3 NAME SOME CHALLENGES YOU FACED WHEN FIRST ESTABLISHING TRACE OF HOPE. HOW DID YOU OVERCOME THOSE OBSTACLES?**

*The biggest personal hurdle for me was leaving my career behind to start something from scratch. There is a significant mindset shift one must go through when that first paycheck stops coming in, and you need to stay focused on developing your business. I'm just so glad I did because with each grant I give, I can see the hope and joy in the recipients' eyes, confirming for me that I am on the right path.*

*The most significant hurdle for the nonprofit, though, was setting it up properly. I had no background in establishing a nonprofit. Fortunately, I was able to tap into my network and found people, including a few sisters, who had experience and helped me navigate the process successfully.*

**4 CAN GAMMA PHIS NOMINATE A STUDENT TO RECEIVE GRANT MONEY THROUGH TRACE OF HOPE?**

*Absolutely; I would love that! Our two criteria to nominate someone include:*

- *Students must have financial needs.*
- *Students should have a desire to make a positive impact on the world through their education, whether it's addressing climate change, becoming a doctor to help communities facing barriers or any other way they envision leaving the world in a better place through their education.*

**5 WHAT ARE SOME SHORT- AND LONG-TERM GOALS YOU HAVE FOR TRACE OF HOPE?**

*Short-term goals include increasing the number of grants from one to two per month, expanding grant distribution to at least 10 additional states beyond our current reach and initiating online fundraising efforts such as Venmo challenges to engage a broader audience beyond our core donors who have been instrumental in our success.*

*Long-term objectives include awarding a full ride scholarship to a student annually in addition to our bimonthly grants. We also aim to expand the nonprofit globally. Furthermore, I plan to cultivate more*



*partnerships like those established with organizations like Life Literacy Group, The Thurman Perry Foundation and Gamma Phi Beta. These partnerships would involve supporting needs-based students within these organizations and ensuring a minimum of one grant per year for each.*

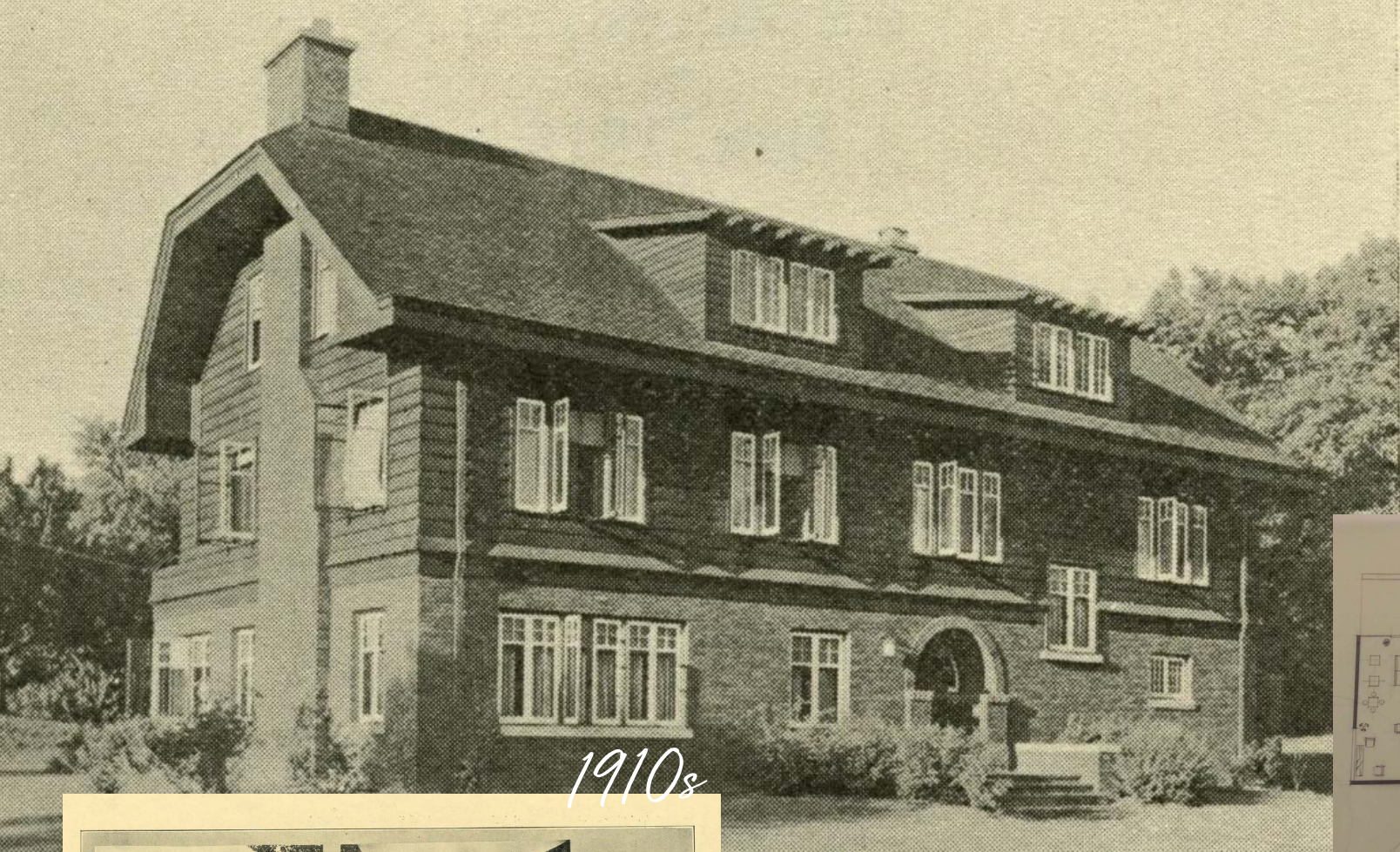
**6 FINALLY, WHY IS THIS WORK MEANINGFUL TO YOU?**

*Higher education was my escape from a challenging and unhealthy situation. It provided me with the independence to carve out my own path, leading to a fulfilling career that allows me to live life on my terms. I am eternally grateful for the emotional, social and financial benefits that attending University of Southern California and graduate school brought into my life. My desire is for everyone to have that opportunity, as I believe society benefits from an educated populace.*

*To clarify, not all our students attend four-year institutions; some opt for community colleges or vocational schools. However, the common thread is their shared commitment to self-improvement and helping others. This is what makes our work at Trace of Hope so meaningful — we are supporting a new generation that aspires to have a positive impact.*

Learn more about Trace of Hope and meet past student grant recipients at [TraceOfHope.org/StudentRecipients](https://TraceOfHope.org/StudentRecipients).





1910s

## From Humble Origins to Modern Excellence

*Unveiling the remarkable journey of Beta Chapter's time-honored home*



VIEWS OF BETA CHAPTER-HOUSE

Exterior

Living-room

Sun Parlor

Glimpse of Dining-room

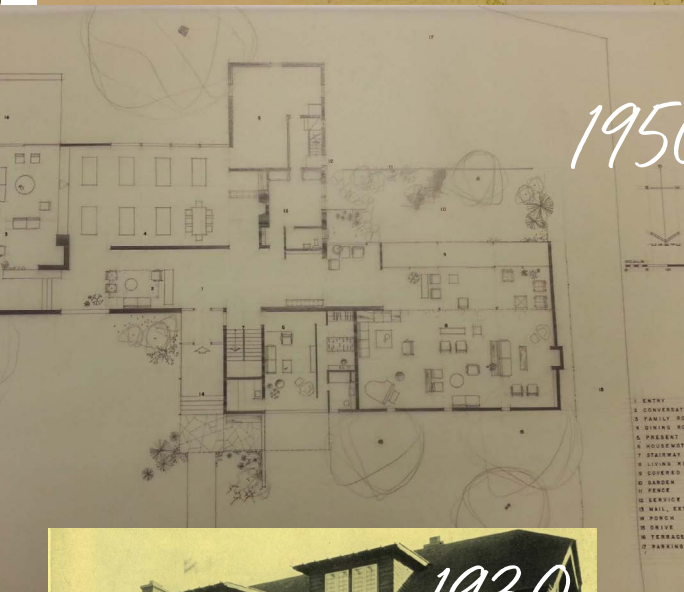


1920s

Typical Room in Beta Chapter House

In 1904, the first-ever Gamma Phi Beta facility was built at Beta Chapter at the University of Michigan. Initially, the property was owned and operated by Gamma Phi Beta-affiliated entities that steered the ship until 2014, when the Sorority's Facilities Management Company (FMC) took over. Over the years, the facility has shape-shifted to cater to the contemporary needs of its live-in members yet echoes of its historic allure persist. The original bedroom doors and transom windows remain intact, preserving the charm of yesteryears. Here is a look at the metamorphosis of Beta Chapter's facility from 1904 to the present day.





1950s



1930s

BETA... Each initiate of Beta becomes a member of Gamma Phi Beta, Incorporated, which controls the chapter house.



Today



## Before And After At Beta, University Of Michigan

Yes, this was the last word in interior decoration back in 1890, and the Gamma Phi Beta girls of that era were proud of their new floor lamp with beaded glass shade, their hand-woven piano and bench, their potted fern on a mahogany plant stand.

1890



1951

Although many changes were wrought over the years, Beta chapter's newest decorating spree was finished just in time for rushing this spring. Its theme is casual modern with emphasis on comfort. Soft, cushioned walls and handwoven disperses provide a subdued background for the grey, modern furniture, and the simple, Italian pottery lamps.

The adjoining dining room has ash-colored walls and island furniture. Above the mantelpiece is hung a modern abstraction by George Cole, a former professor in Michigan's Art School, painted especially for the Gamma Phi Beta. Beta girls are proud of their newly decorated home, and grateful to Miss Linda Everbaugh, Mrs. W. S. Wallace and the loyal Ann Arbor alumni who worked on the project.

JAMES WOODS/REUTERS '51

## Gamma Phi Beta Presents Portraits To Phi Delta Theta

(Reprinted from the Scroll of Phi Delta Theta)

The entire Fraternity will want to join in extending deep thanks to Nancy Wilberding, F & B, talented daughter of Brother John H. Wilberding, for her generosity in painting and presenting to General Headquarters and the Memorial Library life-like and lifelike head and shoulders portraits of Brothers George Banta, Sr., Franklin '56, and Walter B. Palmer, Emory '72.

Every Phi familiar with the history of the Fraternity knows that George Banta, the second of four generations of this distinguished F & B family, was the first President of the General

Council, 1880-84. Historically minded brothers also recognize the name of Walter Palmer as the Historian of F & B whose efforts on the monumental work of more than a thousand pages of *The History of Phi Delta Theta* were largely responsible for his premature death. The Fraternity has received Nancy Wilberding's wonderful work with sincere gratitude. These portraits of F & B's "Second Founders" are now on display in General Headquarters.

17

## Fast Facts

- The facility has the capacity to accommodate 59 residents.
- Nancy Barnes serves as the chapter's facility director.
- The facility director's suite, located in the property's basement, is the largest in the FMC's property portfolio.
- The facility has undergone two major remodels since 1904.
- In the 2016 remodel, numerous rooms were renovated and a new wing and patio area were added. There was a focus on blending the original building and earlier addition to make a more cohesive-looking house.



# Gamma Phi GIVES DAY

March 19-20, 2024

Gamma Phi Gives Day 2024 is a 1,874-minute online campaign that raises funds to help Gamma Phi Betas. It is an opportunity to celebrate our sisterhood's dedication to friendship, scholarship and philanthropy.

**Last Year's Outcome:** Gamma Phi Gives Day 2023 raised \$200,509 from 978 donors within a 24-hour period!

More specifically, we raised:



\$179,673 in unrestricted funds.



\$9,645 for belonging, equity, diversity and inclusion (BEDI) programs.



\$11,191 for Loyalty Grants that support sisters in crisis.

Did you miss Gamma Phi Gives Day?  
You can still show your support by visiting  
[GammaPhiBeta.org/Donate](https://GammaPhiBeta.org/Donate).

## A N IMMEASURABLE *Impact*

Gamma Phi Beta Gives Day profoundly impacts members like Eliza Bennett, president of Epsilon Tau at the University of Rochester. Since joining Gamma Phi Beta in 2021, Eliza has been pursuing a dual-degree in political science (bachelor's) and educational policy (master's). Eliza's passion for educational equity and inclusion drives her ambition to contribute to real change in students' lives. Post-graduation, she aspires to make a difference in public school administration, public policy or higher education. Despite a rigorous academic schedule, Eliza, committed to doing work that benefits others, served as her chapter's risk management chairwoman before becoming president. Through Gamma Phi Gives Day donations, she attended an Executive Council Retreat (ECR), enhancing her leadership skills and benefiting her chapter members. Keep reading to learn more about Eliza's experience!



*Sister  
hood*

**What was your biggest takeaway from attending an ECR with your fellow officers?**

*The most important thing I learned was how to set goals and craft a vision, especially as new officers with varying ideas. Goal-setting was challenging due to varied passions within the chapter. However, ECR enabled us to refine our ideas, resulting in three specific goals and a vision. These goals have held us accountable in our actions and kept our passion alive for this chapter when things get busy.*

**How have you used your ECR learnings within your chapter as president?**

*I've dedicated part of our weekly executive board meetings to discuss progress on goals and aligning our actions with the vision. While it might seem minor or time-consuming, revisiting our goals ensures we are making strides in a positive direction. We assess goal fulfillment, strategize if we're on track or off and make plans for the way forward.*

**Did you learn anything at the ECR that you have applied outside of your chapter?**

*I learned that understanding individuals' personality traits and how they function helps to comprehend their perspectives on issues, especially during disagreements. Stepping into others' shoes and viewing things from a different lens is essential for making informed and responsible decisions.*

**For donors supporting programs like ECR who don't attend, what message would you convey about the importance of their funding?**

*The ECR is a great opportunity for new officers to bond, figure out each other's leadership styles and set the chapter up for success for the coming year. Funding for the retreat is crucial, otherwise the experience would be limited, and each chapter would not be able to receive the individual help that they need in order to succeed.*

**What advice or words of wisdom would you offer to a collegiate officer attending the retreat for the first time next year?**

*Make the most of it! Find a space where your executive board can go on the call together and*



*really take the activities seriously. The activities will help you out tremendously for the entire year. You also get to learn more about your executive board and how you all function together, which is vital as you navigate chapter decisions and tackle big events such as planning recruitment, formals and membership activities.*

**As the chapter president, what has been the most rewarding aspect of your role, and how would you describe your leadership style in the position?**

*The most rewarding aspect is witnessing the chapter's growth and advocating for our achievements. I handle award applications and serve as Gamma Phi's representative in the Greek community on campus. Seeing our hard work recognized was evident in spring 2023 when we won the University of Rochester's Excellence in Equity Award. This achievement not only showcases our dedication to BEDI but also reinforces that our accomplishments are acknowledged and celebrated within and beyond our chapter.*

*I would describe my leadership style as people-focused and appealing to the heart. I believe that it is important to take people's emotions into account when making decisions and talking with others. My chapter members know I am always here to listen to them and if there is something stressing them out or if they feel like something needs to change, I will hear them out and address the situation to the best of my ability.*





# *in our* HEARTS

---

*We acknowledge the passing of the following members and celebrate their part in our circle of sisterhood. This list reflects notifications received at International Headquarters between August 1 to October 31, 2023. First, maiden, last names and year of Initiation are listed for each deceased member.*

*Honor a sister with an In Memory Gift. To make an In Memory Gift, visit [GammaPhiBeta.org/Donate](https://GammaPhiBeta.org/Donate) or call 303.800.2890. View Memorial gifts online at [GammaPhiBeta.org/InMemory](https://GammaPhiBeta.org/InMemory).*

**GAMMA** (*Wisconsin-Madison*)  
Mary Steffen Dowling, 1959

**EPSILON** (*Northwestern*)  
Bonnie Frederick Halls, 1959  
Kathryn Johnston, 1949  
Barbara Burroughs Meadows, 1962  
Jay Byrnes Morand, 1947

**KAPPA** (*Minnesota-Twin Cities*)  
Judy Youngblood Tyler, 1962

**LAMBDA**  
(*University of Washington*)  
Nancy Stender Crim, 1955

**XI** (*Idaho*)  
Janet Kayler Conley, 1961

**PI** (*Nebraska-Lincoln*)  
Linda Parker Cumming, 1966

**RHO** (*Iowa*)  
Jane Jackson Bates 1951  
Virginia Husman Cheney, 1942

**SIGMA** (*Kansas*)  
Karen Kreider Sweeney, 1964

**TAU** (*Colorado State*)  
Shirley Layton Benson, 1956

**PHI** (*Washington University*)  
Susan Klein Berkbigler, 1965

**PSI** (*Oklahoma*)  
Teresa Kalman Brown, 1959  
Lou Ann Roach Garrett, 1961  
Lori Yost Nelson, 1982

**OMEGA** (*Iowa State*)  
Judy DeHaan Hetzer, 1953

**ALPHA GAMMA** (*Nevada*)  
Ann Serpentine Kinnison, 1952

**ALPHA DELTA**  
(*Missouri-Columbia*)  
Virginia Stewart Peterson, 1943  
Janet Klawiter Poppen, 1960  
Sandy Brewer Sullivan, 1984

**ALPHA EPSILON** (*Arizona*)  
Elizabeth Marschall Moody, 1938  
Dodie Wilson Urias, 1956

**ALPHA ZETA** (*Texas-Austin*)  
Barbara Waters Field, 1953

Pauline Lucia Gramatges, 1959  
Elaine Williams Parker, 1961

**ALPHA ETA** (*Ohio Wesleyan*)  
Mary Elder Spencer, 1951

**ALPHA NU** (*Wittenberg*)  
Joyce Yerty Pavelak, 1966

**ALPHA OMICRON**  
(*North Dakota State*)  
Patricia Scheel Crary, 1941  
Patti Roach Kratky, 1959

**ALPHA UPSILON** (*Penn State*)  
Mary Jo Hall, 1959  
Tippy Strawn Sheraw, 1952

**BETA DELTA** (*Michigan State*)  
Ruth Koffel Morris, 1944

**BETA EPSILON** (*Miami-Ohio*)  
Jane Dewey Gano, 1947  
Linda Biegelman Kvistad, 1971  
Shirley Keats Moser, 1949  
Anne Dewey Williams, 1950

**BETA ZETA** (*Kent State*)  
Laverne Honsberger Lantz, 1948

Mary Lou Noel Pollak, 1951

**BETA ETA** (*Bradley*)  
Nicole Tomsovic, 2014

**BETA IOTA** (*Idaho State*)  
Allene Chehey Bacca, 1954

**BETA PI** (*Indiana State*)  
Donna Hunt Burgner, 1962

**BETA PHI** (*Indiana*)  
Nancy Gould Adams, 1963  
Janet Berman MacKay, 1965

**BETA PSI** (*Oklahoma State*)  
Jetta McCaskell Moulin, 1966

**GAMMA ZETA**  
(*Texas A&M-Commerce*)  
Linda Vance O'Brien, 1965

**GAMMA KAPPA**  
(*Nebraska-Kearney*)  
Jody Clark Stenehjelm, 1987

**EPSILON XI** (*Rhodes*)  
Christina Pierce Belden, 1992



## NANCY STENDER CRIM

**LAMBDA**  
(*University of Washington, 1955*)

Nancy Stender Crim, a cherished wife and mother, peacefully passed away on March 23, 2023, surrounded by family. Born in Spokane, Washington, she went on to the University of Washington, where she studied journalism and joined Gamma Phi Beta at Lambda Chapter. In 1957, she married the love of her life, James Crim, a Phi Kappa Sigma. An accomplished professional, Nancy excelled in public relations and real estate, retiring in 2010. A devoted Rotarian and philanthropist, she contributed to causes like the Seattle Milk Fund and Evergreen Health Hospice. Known for her zest for life, Nancy leaves behind a legacy of passion, generosity, dedication and adventure. Nancy gifted everyone who knew her an abundance of love and joy, and her presence, which was a shining light for many, will forever be missed but never forgotten.



## JUDY DEHAAN HETZER

**OMEGA**  
(*Iowa State, 1953*)

Judith "Judy" DeHaan Hetzer was a beloved soul who left a lasting legacy of love and learning. Born in Des Moines, Iowa, she graduated from Roosevelt High School and Iowa State University with a master's degree in child development. In 1956, she married Robert Hetzer, and their journey led them to Oregon in 1958. Moving to Portland in 1987, Judy dedicated her life to family and education. She is survived by her husband, Robert, and son, Bob, who fondly remembers her warmth and wisdom. Judy passed peacefully on Aug. 31, 2023, at the age of 89, reunited with her other son, Jim.





# BUILDING ON *Yesterday*



Alpha Mu (Rollins), 1928



Eta (Berkley), 1980



Pi (Nebraska-Lincoln), 1966



Mu (Stanford), 1988



Psi (Oklahoma), 2017



Alpha Lambda (British Columbia), 2009



Gamma (Wisconsin-Madison), 1941



Delta Phi (California State-Bakersfield), 2011

In fall 2023, Gamma Phi Beta proudly initiated its **250,000th member**, marking a momentous milestone in our sisterhood's 150-year journey. As we stand on the threshold of this historic anniversary, our hearts swell with pride and gratitude for the countless bonds forged and memories created. Here is a mesmerizing picture collage capturing the spirit, strength and sisterhood of Gamma Phi Beta recruitment over the years.



Delta Tau (Colgate), 1981



## International Headquarters

9155 E. Nichols Ave. Suite 330 Centennial, CO 80112

P 303.799.1874 F 303.799.1876

GammaPhiBeta.org

thecrescent@gammaphibeta.org

## The Crescent Staff

### EDITORIAL MANAGER

Elizabeth Liberatore

eliberatore@gammaphibeta.org

### CHIEF MARKETING OFFICER

Tara Foristal

tforistal@gammaphibeta.org

### CREATIVE MANAGER

Maddy Chapman

(Minnesota-Twin Cities)

mchapman@gammaphibeta.org

### CHIEF EXECUTIVE OFFICER

Megan Wick

(Washington State)

mwick@gammaphibeta.org

## Corrections and Clarifications

In the fall 2023 issue, we misprinted Carly Ghafouri's chapter of initiation. She is a member of Alpha Iota Chapter at the University of California-Los Angeles.

## Parents

While our members are in college, their copy of *The Crescent* is sent to your home address — we hope you enjoy reading our magazine, too! If your daughter is no longer in college, or is no longer living with you, feel free to send us her new address by emailing [thecrescent@gammaphibeta.org](mailto:thecrescent@gammaphibeta.org).

## Join Our Green Team!

Receive each issue of *The Crescent* before everyone else by going digital! We'll send the current issue directly to your inbox so you can enjoy it anywhere you go. Email [thecrescent@gammaphibeta.org](mailto:thecrescent@gammaphibeta.org) today to let us know you're joining The Green Team!

©2024 Gamma Phi Beta Sorority

The Crescent of Gamma Phi Beta (USPS 137620) is published quarterly by Gamma Phi Beta Sorority, 9155 E. Nichols Ave. Suite 330 Centennial, CO 80112. Periodicals postage paid at Englewood, CO, and at additional mailing offices. Produced in the U.S.A.

Postmaster: Send address changes to The Crescent, Gamma

Phi Beta Sorority, 9155 E. Nichols Ave. Suite 330 Centennial, CO 80112.

## Looking to connect with a sister?

Visit [GammaPhiBeta.org/Find-A-Member](https://GammaPhiBeta.org/Find-A-Member) for a full directory of Gamma Phi Beta members!

# Register Now!

# 150 years

## Convention 2024

### Gamma Phi Beta Chicago, Illinois

[GammaPhiBeta.org/Convention](https://GammaPhiBeta.org/Convention)





A.\*

\*Badges must be ordered through Headquarters.



L.



H.

I.

150TH  
DANGLES!

J.

K.



B.

D.

C.

C.

E.

F.

G.

## JEWELRY WITH MEANING

Celebrating 150 YEARS of Gamma Phi Beta

Introducing the Sesquicentennial Collection!

A. Crown Pearl Badge, #0104 | B. Snake Chain, #SNAKE | C. Sesquicentennial Seal Charm, #25561 | D. Rope Chain, #013R | E. Demi Necklace, #DEMI | F. Cora Ring, #RP3400 | G. Forever Ring, #001RS | H. Crown Pearl Double Letter Chapter Guard, #J0600 | I. Belonging Equity Diversity and Inclusion Chairwoman Dangle, #3081 | J. Scholarship Pearl Dangle, #41 | K. 150th Dangle, #0150 | L. Single Link Charm Bracelet, #2629 | M. Sesquicentennial Logo Charm, #25558

Double-sided  
charm!

M.



**HJGreek.com | 800.542.3728**

Enter code **GPBWINTER24** for FREE SHIPPING\*\*

\*\*Valid on HJGreek.com orders only. Offer valid through April 30, 2024.  
Canadian orders will receive a savings of \$9.95 off their shipping fee.

