



THE
Rescuer

**A COLLECTOR OF
EXPERIENCES**

Multifaceted Mady Rigg (Eastern Washington) and her journey of balancing passion and purpose.

PAGE 20

Summer 2023

GAMMA PHI BETA

IN THIS ISSUE

3 SENTIMENTS

*Letter from Facilities Management Company Chair
Jennifer Ogden Moody (Texas Tech)*

4 BUILDING STRONG GIRLS

*Arianna Flores (Midwestern State) and her journey
as a Girls on the Run coach*

6 PACE, PLEASE!

How to craft an elevator pitch

8 CONFIDENT WOMEN

11 THEN AND NOW

*Sisters from the same chapter, with 29 years between
them, compare their college experiences*

12 CHAPTER SWEET CHAPTER

Alpha Lambda (British Columbia) Chapter

14 GAMMA PHI GET-TOGETHER

A look at events that foster sisterhood and connection

20 A COLLECTOR OF EXPERIENCES

*Multifaceted Mady Rigg (Eastern Washington) and
her journey of balancing passion and purpose*

26 BUILDING ON YESTERDAY

*110 years of Omicron Chapter (Illinois at Urbana-
Champaign)*

27 GAMMA PHI VIBES

The Gamma Phi aesthetic in everyday places

28 TRUE AND CONSTANT

*Meet corporate cat lady Maraina Frabbiele (Northern
Arizona)*

30 LIVING WELL

How to give your junk drawer a little TLC

32 SHOP GAMMA PHI

Our new Gamma Phi marketplace

34 THE FOUNDATION

2022-23 financial aid by the numbers

36 FACILITIES MANAGEMENT COMPANY

*A look at Delta Psi's (California-Santa Barba) facility, a
unique property within the FMC's portfolio*

38 LIFE LOYAL

40 IN OUR HEARTS

43 OUR 150TH CELEBRATION

get in touch

Send us snail mail, join our newsletter
and find us on social.

✉ 9155 E. Nichols Ave. Suite 330, Centennial, CO, 80112

📷 @gammaphibetasorority  Gamma Phi Beta

🖥️ GammaPhiBeta.org



ON THE COVER Mady Rigg.
Photo by: Kate Loose and Gracia Butcher.

DEAR *Sisters*

The start of a new academic year is so exciting for our collegians. Old friends can reconnect after spending the summer months apart while new friendships blossom. And excitedly, our ever-evolving circle of sisterhood will widen to include new members from across the United States and Canada, many of whom will live in our welcoming facilities.

Speaking of facilities, we explore Delta Psi's at the University of California-Santa Barbara in this issue of *The Crescent*. What's unique about this facility is that it's the only apartment-style facility within the Facilities Management Company's (FMC) property portfolio. Delta Psi sisters reside within separate units that open to an outdoor courtyard. Learn more about this unique facility and what live-in members say have to say about it on Page 36.

As always, we share inspired stories of our sisters in this issue, like in our Confident Women feature on Page 8 and True and Constant on Page 28. We also focus a lot on Gamma Phi Get-Together, which takes place next month from September 23-30 (mark your calendars!). To gear up for this annual event dedicated to forging sisterly connections, we reflect on what a few groups of members did in past years for their Gamma Phi Get-Together. From an event that took place abroad to an alumnae chapter gathering, check out how sisters celebrated on Page 14.

To all our collegians, I wish you a successful start to the new academic year!

In LIKE,



Jennifer Ogden Moody (Texas Tech)
FMC Chair



WHO IS JENNIFER?

Jennifer Moody Ogden is serving her first term as the FMC Board of Managers Chair. Jennifer was initiated at Delta Epsilon Chapter (Texas Wesleyan) and graduated from Texas Tech University (Beta Tau) with a bachelor's degree in political science. She then earned her master's degree in accounting at the University of North Texas. Jennifer is a longtime Gamma Phi Beta volunteer, having served in various roles at the local, regional and international level over the years. She is also an 1874 Society member.

VACATION OR STAYCATION

Vacation. The further from home, the better!

CURRENT READ

"The Celebrants" by Steven Rowley

CANNOT LIVE WITHOUT

Scented candles, comfy pjs and a needlepoint project

Coach by Day and Night

Arianna Flores (Midwestern State) impacts the lives of the students she teaches, both in and outside her classroom



Arianna Flores moved to Wichita Falls, Texas, to attend Midwestern State University in 2012. Like most other first-year students, Arianna started college not knowing anyone. She went through primary recruitment, hoping to find a solid group of friends to accompany her on her college journey. She found exactly that at Gamma Iota Chapter of Gamma Phi Beta.

“[The Gamma Phis] I met were so welcoming. The conversations I had were genuine, and [the Sorority itself] felt like a place I belonged,” Arianna says.

Arianna, who graduated in 2016 with a bachelor’s degree in applied arts and sciences, still finds a home within Gamma Phi Beta. She has remained close to many of her sisters, namely her Big and Little. She adds, “They are such a big part of my life, and my favorite memory as an alumna was being a part of my Big Sister’s wedding day.”

Something else that has remained central to Arianna’s life is Girls on the Run (GOTR). First introduced to the organization during her collegiate years, Arianna now participates in a coaching capacity. Her first season coaching for GOTR took place in the spring of 2022 and again the following spring.

“The GOTR curriculum works and is so beneficial to its participants because it gives girls tools and resources on processing emotions and social settings. We go through a lot of scenarios that allow them to practice reacting to a situation or how to process their

feelings regarding it,” Arianna says.

Coaching GOTR comes naturally for this Gamma Phi, as she is an elementary physical education (PE) teacher by day. She even coaches at the same school she teaches at, and her GOTR teams were her students. Of this unique twist, Arianna says, “I absolutely love being a GOTR coach at my school because I already know the girls from class and love getting to dive into their lives through their eyes.”

In 2022, Arianna coached a GOTR team of eight that were a mix of third, fourth and fifth graders. Because the program was new to her school, Arianna, her co-coach and the team leaned on each other to get through those first-year challenges. The girls were so eager to dive into the curriculum and participate that each obstacle was an easy feat. The program positively impacted Arianna's first-season team so much that she decided to coach again this past spring. This time, her team included 12 girls, some of whom were repeats from the year prior.

Regarding her teaching style in the classroom, Arianna likes to keep a well-oiled and structured ship afloat. Doing so allows her to manage behaviors and use the allotted time to complete all activities. This Gamma Phi is a little more relaxed outside the classroom since there are fewer students to wrangle and more time for discussion.

Arianna plans to coach more GOTR seasons. There

“The GOTR curriculum works and is so beneficial to its participants because it gives girls tools and resources on processing emotions and social settings.”

are so many rewarding aspects to the role of coach, like watching girls reach their limitless potential and advance in their problem-solving skills. But Arianna loves how much she learns from her team as well. She encourages all alumnae to get involved in GOTR and start learning from its amazing participants.

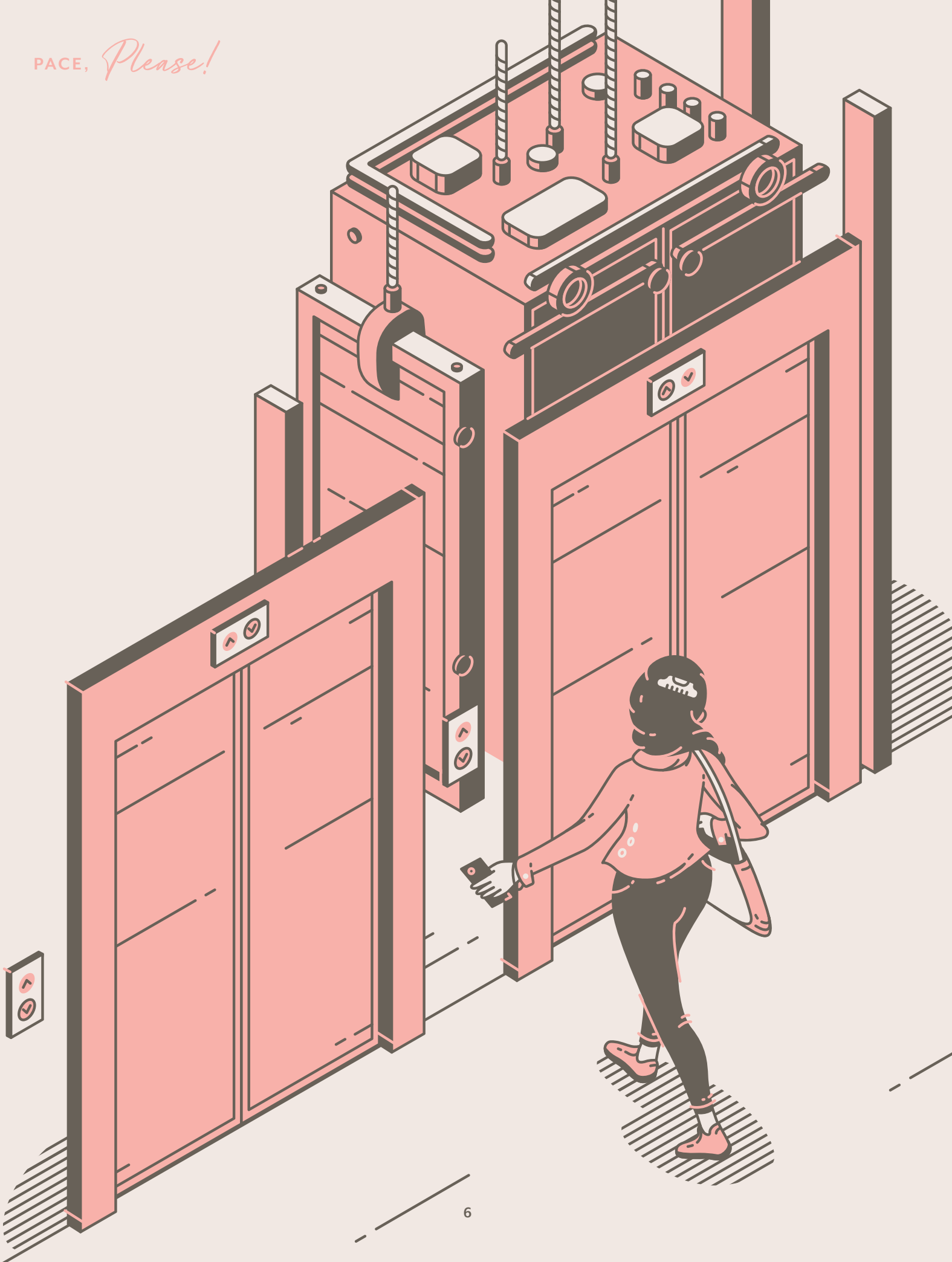
“[Coaching] may be out of your comfort zone, especially if you’ve never worked with children before. But it is so rewarding. The curriculum is scripted, and the program provides everything you need. I promise just showing up and smiling means the world to the girls!”

Girls on the Run is always looking for volunteers to make a difference in the lives of its participants. Learn more about GOTR volunteer opportunities by searching for a local council near you at GirlsOnTheRun.org/Connect-Locally.



BUILDING
STRONG
girls
Gamma Phi Beta

PACE, Please!



How to Craft an Elevator Pitch

The executive of a company you really care about shares an elevator ride with you. You know this is your moment to make a stellar first impression, but you haven't prepared anything. Your hands clam up. Your mind is racing a mile a minute. Suddenly your clothes feel too tight. Right as you compose yourself to strike up a conversation, the elevator doors open and the executive walks out. Facepalm.

Save yourself from this happening to you with an elevator pitch, a succinct and persuasive sales pitch that can be understood in the amount of time it takes to ride an elevator (about 30 seconds). You can sell a product, idea, company or yourself in an elevator pitch. It is a way to network with important industry professionals or prospective clients and, if executed correctly, opens a dialogue for future communication.

Use the following steps as they appear to craft your very own elevator pitch. **Pro tip:** Be yourself and let your personality shine in your elevator pitch. If something doesn't sound natural to you, rework it so that it does.

- 1 **Introduction.** Introduce whatever it is you're trying to sell by name (e.g., yourself, your company, a product, an idea, etc.). This may seem like a "duh" first move, but it's easy to forget something as simple as an introduction when nerves take over.
- 2 **Give some background.** In a sentence or two, expand on your professional experience, state your current job title or area of study, your company's mission or the purpose of the product or idea you're selling.

- 3 **Make the connection.** Ask yourself why you want this person you're pitching to listen. Maybe it's because they're an executive at a company you care about or a startup investor who can help your company grow. Connect who you're talking to with what you're putting down.
- 4 **The ask.** Are you looking for a new investor, a mentor, an internship, a job opportunity, a new contact in your professional network? Whatever it is you're looking to gain from this interaction, be sure to ask for it directly.
- 5 **The closing.** Be kind and professional with your closing. Thank the individual for their time and answering your questions. Leave them with your business card, but only if they ask for one. Otherwise, tell them you'd love to keep in touch.

Let's give it a try!

- 1 *Hi there! My name is Dani Delta,*
- 2 *and I'm a junior at Penn State double majoring in political science and criminal justice.*
- 3 *I did a project on your company for one of my classes last semester and really fell in love with your organization's mission and vision during my research.*
- 4 *I'm interested in interning with your company next summer to get a more hands-on experience. What are some qualities you look for in interns?*
- 5 *Thank you so much for providing me with more details about your different internships. I'll be sure to send my application to your team before the end of this week. Thanks for your time!*

Cailey Hansen-Mahoney

Beta Xi (Ohio State)
A Community-Driven Sister

Cailey Hansen-Mahoney has a heart for helping others. It's what guided her studies at The Ohio State University, where she earned a bachelor's degree in international studies last fall. Her altruistic spirit also led her to pursue a career in government and politics, hoping to make positive changes for the people within her community.

"I enjoy helping groups work well together, connecting people and feeling like I am making an impact," Cailey says.

Cailey currently participates in the Legislative Service Commission Fellowship Program, a 13-month program ending this December. Through this program, she became a fellow for the Ohio State Senate. From writing speeches to attending local events to connecting residents to community resources, no day is the same for Cailey, which she loves. She also loves gleaning advice and insight from the many government workers she interacts with daily. Of those interactions, the ones with women in leadership positions, like her supervisor Lucy, stick out the most.

"[Lucy] has become both a mentor and friend to me. I am inspired daily by her faith, determination and kindness toward others," Cailey says.

Cailey's former internships prepared her for her current role with the Ohio State Senate. During her freshman year, she interned at The Alexander Hamilton Society, a non-partisan professional organization for people interested in global politics and current events. And as a junior, she was a legislative intern for the Ohio House of Representatives. Of the latter experience, she says, "I loved working directly with constituents, helping them access resources in their community and troubleshooting their issues with state agencies. I discovered that helping folks directly was very meaningful work and my favorite part of the job!"

Her time as a collegiate member of Beta Xi Chapter also equipped her to succeed, especially when she took

Confident Women



on the roles of risk management chair and chapter president. Cailey adds, "My time as chapter president shaped my career goals and taught me more than I could have ever learned in a classroom."

The connections Cailey gained and opportunities she received through Gamma Phi would not have been possible without her now late grandmother, a proud sorority woman who encouraged Cailey to participate in recruitment in 2019. She says, "The lifelong friendships [my grandmother] found through her sorority brought her comfort, laughter and professional support, and I wanted the same."

Cailey is eager and excited to see what opportunities come from her time with the Ohio State Senate. For now, she is absorbing everything like a sponge and assisting others at every available turn. This Gamma Phi urges you to do the same, adding, "Stay engaged in your community, sisters! Confident women of character will make a difference in our world."

Wendi Aarons

Nu (Oregon)

Humor Writer and Author

The New Yorker Daily Shouts, Scary Mommy and *Huffington Post* are just a few outlets where you'll find Wendi Aaron's byline. The Austin-based humor writer confesses, "I've been doing this so long that I don't always remember where my work has been. Sometimes I have to Google myself."

If you, like Wendi, ever Google "Wendi Aarons," her two books will likely be your top search results. Her first book, "Ginger Mancino, Kid Comedian," is a laugh-out-loud read for middle schoolers. The book follows the life of Ginger Mancino, a 12-year-old professional comedian. And her second, "I'm Wearing Tunics Now," is a candid and hilarious memoir about second acts, self-acceptance and the realities of a woman getting older and embracing a good tunic.

Although her books engage different audiences, humor is the common thread. In her first book, Wendi adds, "I didn't dumb down the jokes because I know kids are more sophisticated than we give them credit for sometimes." And if you're wondering if the book's protagonist is at all a reflection of the author when she was younger, think again.

"I wasn't then, or now, someone comfortable performing comedy on a stage. I was the kid whispering funny things to another kid who'd then say it aloud and get a laugh. I was too shy to show my funny until I got into my late 30s," she says.

Second acts are a big theme in Wendi's memoir since she fully stepped into her writing career later in life. Previously, she worked in the film industry and pivoted into advertising as a copywriter. It wasn't until she survived her tenure as a stay-at-home mom that she decided it was high time to pursue her longtime passion for writing. She adds, "I knew I didn't want to be a journalist or a serious writer, but I had no idea that writing satire and then a book were options until many years later."

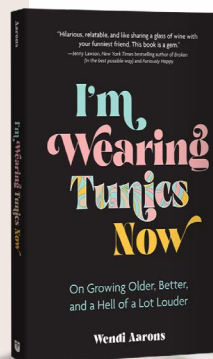
Admittedly, the writing part of Wendi's career isn't the fun part. It's reading her finished work that elicits the most

pride and joy. And of her books, she says, "Both are fun to read!"

When she isn't writing or reading, Wendi does speaking engagements at bookstores throughout the year and teaches humor writing to children and adults. She also keeps busy with her other life roles, like wife, human mom, dog mom (to Teddy), daughter, sister, friend and, she laughs, "Woman who lives next door to a man who scowls at me when I don't take my trash cans inside in a timely manner."

If you are interested in a writing career like Wendi, start writing...like about anything! She elaborates, "You can't call yourself a writer unless you're writing. That said, you don't have to write perfectly or even well when you're starting. You don't have to be paid to write to be a writer. You just have to type something here and there and find your voice and your sensibilities. You'll start to notice what's easiest or the most fun for you to work on and what gets you the most attention. That's the direction to follow and it's where you'll find the most success." Wendi continues, "Also, if you don't have a story to tell just yet, that's to be expected. Let life happen. Meet people and observe situations. Then use and draw upon all of that when it's time to put it on paper."

To learn more about Wendi and her work, visit WendiAarons.com.



Malvi Dangi

Epsilon Omicron (California-Santa Cruz)
Future Oncologist

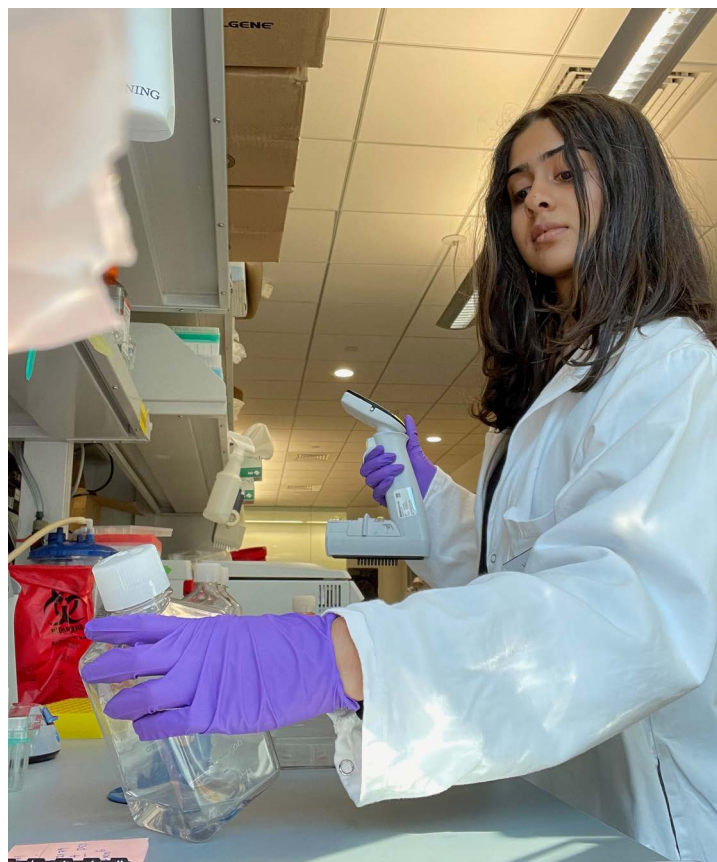
By Harper Lawson (Maryland)

When a global event as catastrophic as the COVID-19 pandemic occurred, the world opened its eyes to how crucial and hardworking health care workers are and how important those interested in this field are, like Malvi Dangi (California-Santa Cruz). Malvi, a human biology major at the University of California-Santa Cruz (UCSC), has pursued multiple internships at medical research institutions as an undergrad. She intends to attend medical school next to pursue a career in oncology or cardiology.

Malvi first knew she wanted to pursue a career in health care in high school, specifically oncology, after losing her grandmother, a fixture in her life, to breast cancer. She says, “My passion for oncology has defined my journey through science [since losing my grandmother].” In high school, Malvi wasted no time pursuing her dreams. She participated in a research program at the University of California-Irvine, which exposed her to academic research. That experience further validated her passion for health care.

Since starting undergrad, Malvi has interned with two very notable research labs. First, she interned at the UCSC Treehouse Cancer Research Lab. Here, she helped find genetic mutations in the genome sequences of pediatric cancer patients. “My work consisted of analyzing and pinpointing irregularities in genomic data from pediatric oncology patients around the world,” she explains. This internship also awakened her interest in the clinical side of her field. She has explored this area more by working at public health, pharmaceutical and academic labs.

The second was with Novartis Institute of Biomedical Research, where Malvi was one of only 10 USCS students selected to participate in an internship. As an oncology intern with the Institute’s Small Molecule Drug Discovery Team, Malvi got invaluable hands-on experience in her field of interest. Some of her tasks included assisting in research, mentoring incoming



researchers, attending important seminars and spearheading her own research project.

Malvi applied her internship skills toward her senior thesis research project this past spring. Her thesis focused on the effects of inflammation due to age differentiation of hematopoietic stem cells. For this project, Malvi conducted hands-on in vivo and in vitro experiments and analyzed her results through her bioinformatics experience.

Amid her rigorous studies and internships, Malvi finds balance by spending time with her Gamma Phi sisters and Building Strong Girls. Our philanthropic focus is what initially drew Malvi to Gamma Phi during recruitment. She says, “It spoke to me, and the women I’ve met in my time in the Sorority have undoubtedly made me who I am today.”



Then and Now

Dana Rogahn Fredericks and Lauren Casetta joined Gamma Phi Beta at Gamma Chapter at the University of Wisconsin-Madison, just 29 years apart. Dana joined in 1992, and Lauren in 2021. For the past five years, Dana, an account manager in sales, has stayed connected with sisters as a member of Atlanta Alumnae Chapter. Lauren is a current collegian majoring in consumer behavior and marketplace studies and minoring in leader studies. Lauren hopes to become an attorney one day. We asked Dana and Lauren the same questions to compare their college and sorority experiences. Let's see what these sisters had to say!



Dana Rogahn Fredericks		Lauren Casetta
TLC, Snoop Dogg, Dr. Dre. and Coolio.	Popular musicians/bands?	SZA, Rihanna and anything in the electronic dance music (EDM) realm.
The chapter facility was regal and classy, as were the women I met during recruitment. What set them even more apart was their down-to-earth nature, which resonated with me as someone who did not have any Greek family members and was unfamiliar with the process.	Why Gamma Phi?	The philanthropy events and strong sense of sisterhood pulled me in. I love the value behind Girls on the Run, and all the Gamma Phis I spoke to during recruitment were so genuine!
So many. The O.J. Simpson case was a big one. I remember watching [the trial] in my sociology class.	Biggest social issues?	In my opinion, women's health and rights.
I will never forget how cool I felt going to the school library and sending an email back home! Snail mail and care packages were popular ways of communicating, too.	How did/do you communicate with loved ones back home?	I live very close to home, so I call my family members often and sometimes I will meet them halfway for dinner.
Fashion was all over the place! It's hard to remember one thing.	Fashion trends?	Moon boots, large sunglasses, low-rise jeans, thin scarves, silk flowy blouses and off-the-shoulder sweatshirts.

Do you know two sisters who initiated at the same chapter, just with 10+ years between them? Email TheCrescent@gammaphibeta.org for a chance to see them featured on this page in the future!

Chapter Sweet Chapter



ALPHA LAMBDA *(British Columbia)*

Belonging, equity, diversity and inclusion (BEDI) are part of Alpha Lambda's everyday chapter life. The chapter's BEDI Chair Isabel Everson works tirelessly to ensure current and future Alpha Lambdas feel seen and safe to share their unique experiences with sisters. One way Isabel achieved this was through a potluck, where she had sisters share family recipes representative of their backgrounds and cultures. Chapter President Sara Morrow said of the potluck, "Our members got to share a little piece of their homes and lives with sisters through food, making the event a major success."

The chapter's BEDI department regularly invites speakers to come and present topics on equity and inclusion to chapter members. These presentations allow members to continue their learning to, as Sara says, "create necessary growth for our members and community." The chapter's executive council and collegiate leaders also view their work through a BEDI lens, ensuring that every event is equitable and accessible.

"BEDI is an extremely important aspect of our chapter," Sara says.

EXPLORE *Vancouver*

1. A GREEN CAMPUS

The University of British Columbia (UBC) is a global leader in sustainability and climate action.

2. TAKING HOLLYWOOD

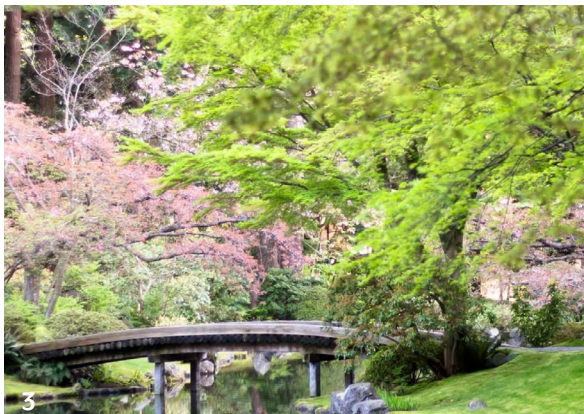
The university's stunning campus has appeared on the silver screen in "Riverdale," "Night at the Museum: Secret of the Tomb" and "Josie and the Pussycats," to name a few.

3. A NEIGHBORHOOD GEM

Vancouver tourists and UBC students find calm at the Nitobe Memorial Garden, a traditional Japanese stroll garden and authentic tea house on campus.

4. LOAFE CAFE

Located on campus, Loafe Cafe is a convenient and popular study spot among students, especially Alpha Lambda sisters.



Celebrating Sisterhood Through Gamma Phi Get-Together

On September 24, 1875, Gamma Phi Beta's four Founders first met "in the room kindly furnished by Professor Brown," whose namesake we draw our colors of brown and light brown (mode). To honor the sisterhood experienced that day, which has continued for 149 years, Gamma Phi Get-Together launched in 2020. Sisters this year are invited to host/attend a Get-Together between September 23-30 to foster sisterly connections and demonstrate the breadth of our True and Constant bond. In 2022, a recording-breaking 47 Gamma Phi Get-Togethers took place across the globe! Here's a look at a couple of them and one event that took place in 2021.





Gamma Phi
Get-Together





Domestic Event

Human beings crave connection. Even at the height of the pandemic, people found ways to stay connected safely (remember social distancing and virtual hangouts?). In this post-pandemic world, virtual hangouts are still a popular way for friends living in different places to stay connected. Just ask Diane Brown Ditman (Iowa State), who hosted her first Gamma Phi Get-Together over Zoom in 2021.

“We shared life updates, and everyone seemed to enjoy themselves. It was so great to reconnect and express our collective gratitude for our sisterhood,” Diane shares.

Joining Diane at the September 2021 event was Carol Ervin Gassen, Barb Klein Mochal and Kim Nelson Roper, all of whom, including Diane, joined Gamma Phi Beta in 1980 at Omega Chapter at Iowa State University. Since their 2021 virtual get-together, the sisters have stayed in touch through a shared GoogleDoc, email and more virtual hangouts, where other Omega Chapter initiates have joined.

“No one lives in Iowa anymore. We are scattered across eight states (with different time zones!) and have prioritized staying connected.” Diane adds, “The Gamma Phi Get-Together has shown us that our sisterhood is True and Constant, no matter where we are in life.”

Top: Expanded virtual events featuring other Omega Chapter alumnae.

Middle: Septemeber 2021's Virtual Get-Together with Carol, Diane, Barb and Kim.

Bottom: Expanded virtual events featuring other Omega Chapter alumnae.





Abroad Event

Sisters Cheryl Speer (California State-Fullerton) and Karen Floyd Pulvers (Northern Arizona), who were introduced through one of Cheryl's chapter sisters, might have been the only two at their Gamma Phi Get-Together, but goodness, did they plan quite the event! Their get-together was in L'Alqueria de la Comtessa, Spain, where Cheryl resides throughout the year. On the other hand, Karen divides her time between Bremerton, Washington, and Xeresa, Spain, about 20 minutes from Cheryl.

Cheryl and her husband had already signed up for a winery trip when the Sorority shared information about Gamma Phi Get-Together. Cheryl recalls, "I immediately contacted Karen to see when she was coming out next [since we always see each other quite a bit when she's in Spain] and asked if she wanted to go on our winery trip. Her answer was

an enthusiastic yes!"

And so, the vino lovers spent their get-together at a winery in the Utiel-Requena wine region known for its reds and rosés. The sisters harvested grapes, placed their pickings in half barrels and stomped away!

"I am an experienced grape picker, but this was my first time stomping them. I have to say that was my favorite part of our get-together. I was surprised my feet weren't covered with seeds, leaves and skins," Cheryl shares.

After stomping on some grapes, these Gamma Phis toured the winery and concluded their day with a hearty lunch and wine tasting. The wine was so superb that the two sisters brought some back home with them.



Alumnae Chapter Event

Pasadena Alumnae Chapter members took advantage of California's scenic views for their Gamma Phi Get-Together last year. The sisters enjoyed breakfast in a private room at La Cañada Flintridge Country Club and panoramic views of the club's sprawling golf course and the majestic San Gabriel Valley.

The best part of the event for Susan Purciel, the chapter's vice president, was meeting Flora Zhang (Southern California) and Ronny Hu (Southern California), two new graduates who joined Pasadena Alumnae Chapter's Gamma Phi Get-Together after seeing the invitation posted online.

"It was fun hearing about how things are going at their chapter of Initiation, Beta Alpha, as well as learning the details of their budding, post-graduation careers. As a bonus, Flora and Ronny plan to join our alumnae chapter and participate in our activities as their schedules permit. It is wonderful having new, young members join us," Susan says.

After last year's successful event, Pasadena Alumnae Chapter is excited to participate in the Gamma Phi Get Together again this year and encourages area-alumnae to join them!

The background features several pink carnations and two light pink envelopes. One envelope is open, showing a white card with text. The overall aesthetic is soft and celebratory.

You're Invited!

What: Gamma Phi Get-Together

When: September 23-30, 2023

Where: Anywhere! Put together your own event or search for open events near you.

Why: This annual event is a way to connect with sisters near and far and celebrate our True and Constant sisterhood. By coming together in September, we can show just how far our bond reaches – across collegiate and alumnae chapters, distance, generations and more.

Gamma Phi Get-Together

To search for open events, get inspired event ideas, shop Gamma Phi Beta Get-Together merch, download Zoom backgrounds and more, visit **GammaPhiBeta.org/GammaPhiGetTogether**.

For additional support, email Alumnae Engagement Manager Carrie Loveless at **cloveless@gammaphibeta.org**.



A Collector of *Experiences*

Multifaceted Mady Rigg and her journey of balancing passion and purpose

By Elizabeth Liberatore

Madyson “Mady” Rigg (Eastern Washington) is not one to shy away from new experiences and challenges. From her involvement in high school sports to collegiate extracurriculars and beauty pageants to local volunteering, Mady has consistently sought out opportunities for personal growth and community engagement. Her diverse resume showcases her passion for learning and dedication to making a difference.

When asked about her extensive list of involvements, Mady humbly acknowledges her various roles, including being a Rotarian, an ambassador of the Kalispell Chamber of Commerce, and a member of the advisory committee for the Flathead Area Young Professionals. While she finds joy and fulfillment in these activities, she jokingly wonders if they can be considered hobbies. Her authenticity and down-to-earth nature reflect her approachable and compassionate personality. In the words of her current favorite podcaster, Glennon Doyle (#PodSquad – if you know, you know), Mady is truly untamed.

For these reasons and many others, Mady was crowned Miss Montana 2023 this past summer. Outshining 14 other talented contestants, Mady's exceptional qualities earned her the opportunity to represent her beloved state at the esteemed Miss USA 2023 pageant. Let's take a closer look at the collection of experiences that have shaped

Mady and paved the way for her remarkable achievement.

True and Constant, Always

From a young age, Mady had a strong desire to join a sorority. Her participation in school sports throughout high school fostered a love for camaraderie and teamwork. She knew she could find a similar sense of community and gain leadership and service opportunities within Greek life. Taking a leap of faith, she left Montana to attend James Madison University in Virginia in hopes of finding exactly that.

In 2014, she joined Eta Nu Chapter of Gamma Phi Beta at James Madison University, a relatively new chapter that had been installed just a year prior. The chapter's enthusiastic participation in the Greek community on campus and their genuine desire to share the values of Gamma Phi Beta resonated with Mady. Joining the sorority was a natural step for her.

Reflecting on her time as a collegian, Mady shares, "I was fortunate to join Gamma Phi at one of our new chapters that still had a collegiate leadership consultant (CLC) living with members at the time. So, within the first week of becoming a Gamma Phi Beta, I had exposure to this awesome program and set the goal of becoming a CLC myself. I then sought out every opportunity and experience I could to help me achieve that goal."

At Eta Nu, Mady served as the chapter's administrative membership vice president. After her freshman year, she transferred to Eastern Washington University, where she continued to seize leadership opportunities at Zeta Alpha Chapter, her new home-away-from-home. Her commitment to leadership extended beyond Gamma Phi, as she also joined the Associated Students of Eastern Washington, a student-run group that promotes diversity and inclusion on campus.

In 2019, Mady graduated from Eastern Washington University with a bachelor's degree in communication and a wealth of leadership experiences. She was ready to tackle her CLC application next, and after a rigorous interview process, Mady joined the 2019-20 CLC team.

CLC and Beyond

Mady's time as a CLC was filled with both challenges and meaningful connections. Despite the unprecedented circumstances brought on by the COVID-19 pandemic, Mady and her CLC team visited nine collegiate chapters, offering guidance and support to chapter officers and members.

Reflecting on her experience, Mady says, "This sisterhood is the best! From incredible volunteers to new members and everyone in between, it was so special to get to spend time with such a wide range of our sisters. I was blown away by everyone's hospitality, openness and their vision for the future of their chapter and our world."

Mady's experience as a CLC allowed her to form deep connections with the women she met along the way. Living out of a suitcase and constantly adapting to new cities and chapters came with its challenges, but the rewarding relationships she developed made it all worthwhile. Mady adds, "There are many women I met during my travels that I think of to this day, and I hope they know they made a major impact on my life, even if I only get to see them on social media now."

To aspiring seniors considering the CLC program, Mady's advice is clear: go for it. The experiences and friendships gained through the program are life changing. She encourages graduating seniors, saying, "If you are even slightly interested in this role, apply! You have an important perspective that is so valuable to share. You will learn so much about yourself and meet the most incredible sisters along the way!"

Following her time as a CLC, Mady pursued various professional roles in marketing and communications, leveraging her skills and experiences to make a meaningful impact in her local community. Currently, she serves as a marketing manager for Glacier Institute, a nonprofit organization dedicated to fostering connections with the natural world through guided hikes and educational programs in Glacier National Park.

"The thing I love most [about my job] is getting to spend time outdoors, helping people enjoy the beauty and majesty of Glacier National Park and providing important and lifesaving information about how to recreate safely in remote areas and bear country."

Miss Montana USA

Beauty pageants entered Mady's life as an exciting addition to her already diverse experiences. It all began in high school when she got cut from the volleyball team. In true Mady fashion, she was quick to find a replacement experience to fill volleyball's place. The Miss Montana Teen USA competition was her unexpected answer.

Recalling this time, she adds, "I didn't and still don't like to feel like I'm wasting time that could be spent growing or gaining experience! I got a letter in the mail about signing up for the Miss Montana Teen USA competition, and I decided to do it on a total whim."

Despite being a novice to the pageant world, Mady's determination and perseverance propelled



Photography credit on Page 42.



her forward. After placing as the fourth runner up in her first pageant, she was hooked and eagerly anticipated the opportunity to return stronger and more prepared the following year.

Over the years, Mady participated in multiple pageants, including Miss Model Montana Teen, Miss Montana Teen USA for a second time, where she won the title, and Miss Teen USA. However, it was her victory as Miss Montana USA in 2023 that marked a significant milestone in her pageant journey.

When her name was announced as the winner of Miss Montana USA this past summer, Mady was in utter disbelief. The competition was fierce, and she had not anticipated winning in her first year competing in the Miss division. Especially since the last time she competed was more than a decade ago. What made the moment even sweeter was that she shared the stage with a Panhellenic sister.

“Megan Brewer was the first runner up, a Chi Omega from Montana State University, and she is also a former Miss Montana Teen USA. To share that moment with someone who has so many overlapping experiences with me...let’s just say I would have felt the same joy regardless of whose name was called.”

In addition to donning the Miss Montana USA crown, Mady walked away from the competition earning the People’s Choice Award, the Spirit Award and Miss Congeniality.

“Each of those awards were a huge shock and a major honor. I had not expected to top it off with the crown at all! Mady continues, “I still believe every woman on stage that night could have won, as it was an incredibly tight competition with really exceptional women.”

Preparing for Miss USA

Looking ahead, Mady is eager to prepare for the Miss USA 2023 pageant. The journey includes intense physical and mental preparations,

collaborating with sponsors to design custom gowns, perfecting her walk and sharpening her interview skills (thanks to her CLC days, this step should be a breeze). Despite the demanding schedule, Mady remains committed to serving her state by volunteering at events, making appearances at community gatherings and promoting causes close to her heart.

“I love to stay busy, and with only one year to do everything I want to with this title, I hope to fill my schedule as much as my sanity allows,” she laughs.

Philanthropy and advocacy play a significant role in the Miss USA pageant, and Mady intends to shine a light on various important issues. Her work with the Glacier Institute aligns with her focus on promoting safe and responsible recreation in Glacier National Park while emphasizing the importance of inclusivity in outdoor activities. Additionally, she plans to emphasize the importance of voter registration and turnout as well as support organizations like Girls on the Run Western Montana.

The Miss USA program and Gamma Phi Beta share a common goal of empowering women to make a difference in the world. Mady believes that both pageants and sororities provide spaces for women to connect, uplift one another, develop leadership skills and have fun. She cherishes the overlap between her experiences as a pageant contestant and a Gamma Phi Beta sister, recognizing the value of sisterhood, personal growth and service to others.

While the date of the Miss USA pageant has yet to be announced, Mady is eager and excited to represent Montana on the national stage. Her journey as a collector of experiences continues, and she is poised to make a lasting impact as a confident woman and empowered advocate for positive change.



CAN YOU GIVE US A SNAPSHOT OF AN ORDINARY MOMENT IN YOUR LIFE THAT BRINGS YOU TRUE JOY?

The most joyful moments in my life these days are ones where I experience nature. Slowing down to notice wildlife doing its thing brings me unparalleled joy and peace. Working in Glacier National Park gives me so many opportunities to slow down and enjoy the present, which is an important daily practice of mine.

HOW DO YOU LIKE TO UNWIND AFTER A BUSY DAY?

I love cooking, so making a delicious meal is a great way for me to relax. I am very obsessed with the apps on my phone for meditation and breathwork; I fall asleep every night to a Yoga Nidra meditation. I also love going for walks to get fresh air and attending a yoga class when my schedule permits. Yoga is a surefire way to help me ground myself after a stressful day or week.

WHAT'S THE COOLEST THING ABOUT MONTANA?

Montana is home to the most majestic landscapes and incredible outdoor activities. I am and always have been a huge advocate for my sisters to come visit my state and let me be their tour guide. I grew up boating on Flathead Lake and Flathead River in the summers, so my favorite memories to this day are the ones spent on the water.

WHAT ARE YOU CURRENTLY READING?

I am reading and rereading young adult favorites. I just finished “The Hunger Games” and the Harry Potter series. Now, I’m on the Twilight series. It has been such a delight, and I highly recommend dusting off your old copies of your favorite books, even the guilty pleasure ones.

BUILDING ON

Yesterday



Top: Omicron Chapter (Illinois at Urbana-Champaign) juniors in 1917, including Frances E. Haven's daughter – Alida Moss – sixth from left. Right: Omicron Chapter (Illinois at Urbana-Champaign) Senior Breakfast, 1914. Frances Haven Moss (Syracuse, 1874) can be seen farthest left.



1913

On May 24, 1913, 110 years ago, Omicron Chapter was installed at the University of Illinois at Urbana-Champaign in Urbana, Illinois. Omicron Chapter is the first and only chapter founded by a Founder. After the death of one of her sons, Frances E. Haven found herself upset and needed a way to alleviate her sadness. Her husband, Charles Moss, suggested she establish a Gamma Phi Beta chapter at the University of Illinois at Urbana-Champaign. And the rest is history! In 1915, Frances' daughter, Alida Moss Skinner, joined Gamma Phi at the chapter her mother founded.



The Omicron Chapter facility in the 1920s.

Your guide for finding the Gamma Phi Beta aesthetic in everyday places.



treat yourself

1. Amazon | Crescent Moon Trinket Dish \$9
2. The Container Store | Acrylic Drawer Organizer by The Home Edit \$28
3. Kate Zarella | Muse Blush Removeable Wallpaper \$5+*
4. Amazon | Earbud Organizer in Pink \$8
5. Amazon | Reusable Cable Ties in Pink \$5

**Support women-owned businesses!
Products and prices were compiled in July 2023 and are subject to change.*



TRUE AND CONSTANT

That exciting shade of red. A recognizable bullseye that, if you are lost, makes you feel right at home. The Dollar Spot: Always full of the latest must-haves and seasonal decorations. Ah, Target. The best place to decompress during your day. Target's stellar reputation comes from the employees curating it, with every section they build and each product they buy. These employees, like Maraina Frabbiele (Northern Arizona), are crafting that feel-good experience consumers get when strolling the store's aisles. More specifically, Maraina is tasked with curating that experience for two different consumers: humans and cats. In May 2022, Maraina joined the Target Headquarters team as an inventory analyst, where today, she is responsible for purchasing cat essentials like litter, dry and wet food and treats. We chatted with this corporate cat lady to learn more about her unique role within Target and what inspired her to pursue the world of merchandising and supply chain.



1 TELL US A LITTLE ABOUT YOUR PROFESSIONAL BACKGROUND AND HOW IT GOT YOU TO WHERE YOU ARE TODAY.

I found my way to where I am today because I started my career in retail. One of my first jobs was as a sales associate for a major fashion chain. My role started working more closely with the store's district merchandiser, and I used that opportunity to ask her every question under the moon. That was one of the most pivotal moments in my career because it prompted me to pursue a minor in fashion merchandising. After college, I landed a merchandising internship with a company that later brought me on as a department manager. The position was an incredible learning opportunity and opened my eyes to the world of inventory placement and how much I wanted to make it my career. Fast-forward a few years plus a master's degree later, I was a home decor buyer for a small company when, one day, a Gamma Phi sister reached out to me on LinkedIn. She told me about an opportunity at Target, and I jumped for it!



2 WAS THIS CAREER PATH ALWAYS YOUR GOAL?

I am probably one of few that worked in retail initially and liked it so much that I decided to make a career out of it. My initial plan was to be a store merchandiser because I wanted to create inviting store fronts and displays that inspired customers. That idea turned into a minor in fashion merchandising, where I learned everything about what the world of merchandising has to offer. From there, the dream of purchasing inventory for stores was born.



3 WHAT DOES YOUR ROLE ENTAIL AS AN INVENTORY ANALYST FOR TARGET?

I oversee and purchase all the inventory, like cat essentials, for Target's Cats Commodities Desk. I am largely responsible for orchestrating the movement of inventory from our vendors to our warehouses and from warehouses to the 1,900+ stores across the U.S.

4 WHAT ARE SOME THINGS YOU CONSIDER BEFORE PURCHASING CAT ESSENTIALS?

Target has a saying that has become my daily work mantra, which is: The right product, at the right place, at the right time. Overall, I have to consider the needs of our customers but also work within common deciding factors such as budget and cube (how much space do these items take up in a warehouse in relation to other items).

5 WHAT DO YOU LIKE MOST ABOUT YOUR JOB?

I like knowing what I do daily makes an impact. My work is important. I am the one and only person coordinating the cat supplies to your local Target and therefore, my work has meaning. Secondly, I love my team. They are all so supportive, friendly and high-energy.

6 WHAT'S THE MOST CHALLENGING PART ABOUT YOUR ROLE? HOW DO YOU OVERCOME THAT?

The work itself can be stressful. Just as it is rewarding, it can be taxing because I know so many people depend on me. To overcome challenges in the workplace, I've learned to take breaks. Creating space between myself and the task at hand can often generate a new way to approach the situation, or I like to lean on my team for support. Talking through scenarios with my co-workers has added perspective. Outside of work, I tend to work through challenges by going for a run and redirecting my energy in the gym.

7 SINCE YOU'RE IN THE CAT BUSINESS, WE HAVE TO ASK, ARE YOU A CAT PERSON?

I am an animal lover through and through! Although I was raised with cats, I do not currently own a cat. I am, however, a proud dog mom! Because I am a remote employee, I consider my dogs Leia (a Siberian husky) and Charles (a Carolina dog) honorable Target employees.

8 WHAT DO YOU ENJOY DOING IN YOUR SPARE TIME?

I love reading. When early COVID-19 shut the world down, I picked up reading as a new hobby. I'm 120 books in and still reading! I am also deeply committed to staying up to date on watching true crime documentaries. Lastly, I love staying involved with Gamma Phi Beta as a volunteer! Currently, I am a human resources specialist. Previously, I was a chapter advisor, a BEDI specialist, a small group facilitator at REAL Leadership Experience and, more recently, I facilitated two virtual Executive Council Retreats.

9 NAME A CONFIDENT WOMAN OF CHARACTER YOU ADMIRE. WHY HER?

Vice President Teresa Jones-Haney (Northern Arizona). Teresa is my go-to-gal when I need a reminder of who I am and what I am capable of. Teresa is always authentically herself, which makes her an absolute joy to be around. She is my personal piece of sunshine because her positive energy is contagious; her smile could melt icebergs; her laugh could wash away any worries. She is fiercely passionate, determined and driven and has been a contributing force for some of the volunteer opportunities I have acquired over the years.




A Junk Drawer *Makeover*

The Crescent staff loves a good organization story. But instead of encouraging you to overhaul a bigger, more intimidating space, like a pantry, start small so that you don't overwhelm yourself. Take the dreaded junk drawer. You know, a wasteland for unruly cords, change, keys, random papers, pens without caps, tape scissors, floss, gum, batteries and all those other misfit household items. Just because "junk" is in the name doesn't mean this drawer deserves any less TLC on the organizing front. With just a few supplies, you can turn this dreaded drawer into a delightful space that better serves you.

If you want to tackle a big project like this, we walk you through the process on Page 26 of the spring 2021 issue of *The Crescent*.

For more deets, go to [GPBArchives.org](https://www.gpb.org/archives) > 2020-2059 > 2021 > Spring.



Removeable wallpaper or contact paper has some serious transformative powers. Use it to cover the bottom of your drawer, and voila. Your sad, boring junk drawer is now the best-dressed drawer on the block.

Organize containers by category. For instance, a tech container for headphones, phone chargers and the like. A trinket dish for jewelry or change. A narrower container works great for office supplies like scissors and pens.

Junk drawer essentials:
A mini flashlight, hand sanitizer, a pad of paper and pen, a stain remover pen, tape, a multi-tool, lip balm, spare keys, phone charger, gum.

Pro tip:
Velcro the containers to the drawer's bottom so they stay in place.

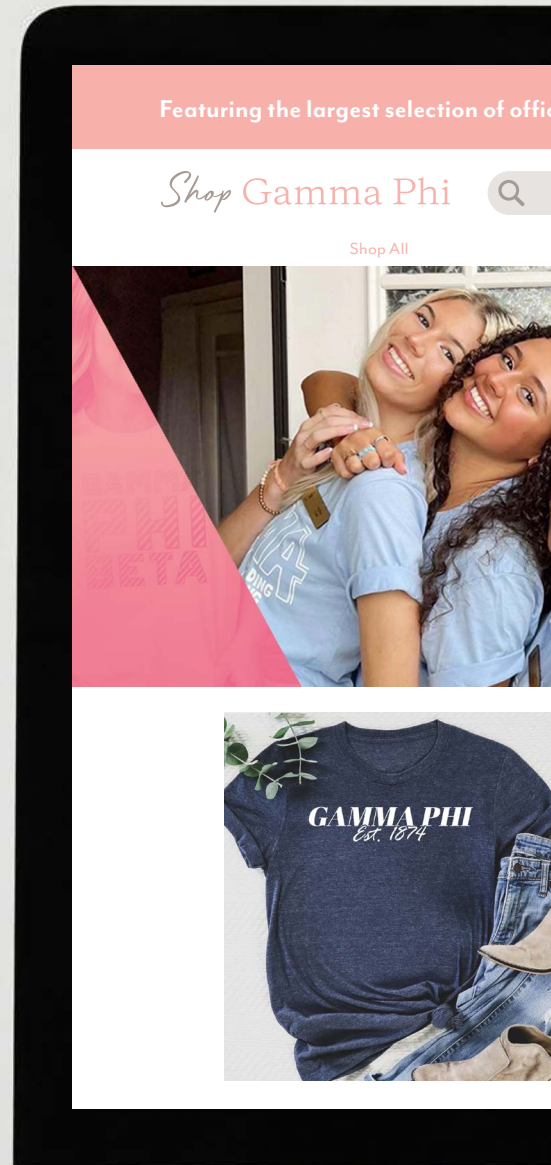
Snag different-sized containers (TJ Maxx has The Container Store-like containers for half the price) to give your drawer's odds and ends permanent homes.

Check out Gamma Phi Vibes on Page 27 for more organizing inspiration.

Shop Gamma Phi

Did you hear? We recently launched Shop Gamma Phi, a marketplace of licensed vendors, including Crescent Corner. From graduation stoles to gifts to clothing, Shop Gamma Phi is the place to go for all your True and Constant gear.

Visit ShopGammaPhi.com now!



Shop Gamma Phi



2022-23 Financial Aid By The Numbers

Financial aid is made possible by the generosity of Gamma Phi Beta donors. Thank you to our incredible donors for assisting sisters in their educational pursuits and goals. If you would like to support our members today and members tomorrow, please consider donating to the Foundation at GammaPhiBeta.org/Donate. Each dollar has a lasting impact.

257 Applicants

\$135,731.00

scholarship dollars awarded

Total dollars of scholarships: **\$116,268.00**

Total dollars of fellowships: **\$19,463.00**

There were **17 multi-year** recipients and **64 first-time** recipients.

212 scholarship applicants
45 fellowship applicants
1,043 applications started
945 scholarship applications started
98 fellowship applications started

Top three chapter officer positions held by our recipients:

- 16 chapter presidents
- 13 education vice presidents
- 10 administrative vice presidents and 10 panhellenic affairs vice presidents



42 chapters with a recipient



69

recipients served/are serving on an executive council



61

held a non-executive officer position

13

recipients with a 4.0 GPA (or higher)



"This scholarship means so much to me not only because Gamma Phi Beta holds a special place in my heart but

because I felt that my hard work and dedication were noticed. I am forever grateful to the donors that felt I was deserving enough to be selected. I now have assistance to help pay for graduate school so I can continue working toward my career goals and be successful!"

—Victoria Smith (Tennessee-Chattanooga)



"Thank you so much for providing me with this opportunity! This scholarship directly supports me in

pursuing a law degree and a career in children's law. While this financial support eases the burden of loans and will better enable me to enter public interest law directly upon graduation, the support of Gamma Phi Beta's sisterhood inspires me each day to continue working toward this goal and my chosen path to Building Strong Girls." —Rose Wehrman (Nebraska-Lincoln)



Year in school
for 2023-24

Junior: 38
 Sophomore: 22
 Freshman: 7
 Current graduate student: 7
 Stating graduate school in fall 2023: 7



Top five states with a recipient:

California: 13
 Michigan: 9
 Missouri: 7
 Kansas: 5
 (Tie) Colorado: 4; Oklahoma: 4; Virginia: 4



73%

of undergraduates
with work or
professional
commitments

3.77
average grade point average

28
states/provinces
with a recipient

19
double
majors

Eta Chapter (California-Berkley) had the most recipients, and **Theta Chapter (Denver)** had the most recipients without a chapter-specific fund.



31
undergraduate
recipients living in a
facility for 2023-24

THANK YOU!

Gamma Phi Beta wouldn't be where she is today if it weren't for our dedicated volunteers. The Foundation consists of several committees that oversee critical functional areas within the organization, helping to drive the work of the Sorority forward. One is the Scholarship Committee, which provides advice and counsel to the Foundation Board of Trustees regarding applications and awarding of scholarships and fellowships. Thank you to our Scholarship Committee members for the critical work you do!



A DIFFERENT KIND OF DWELLING

The Facilities Management Company (FMC) strives to offer Gamma Phi Betas a welcoming, inclusive space — a home away from home — that promotes sisterhood and community. The FMC supports 64 chapters, 27 of which have physical space, across the country. These include free-standing facilities or a specified space, such as a suite, dorm floor or meeting room. However, one facility deviates from the rest in the FMC's portfolio. It is Delta Psi's facility at the University of California-Santa Barbara in Santa Barbara, California.

Delta Psi's facility is an apartment-style property, the only of its kind among Gamma Phi Beta facilities. There are 17 individual units that offer a combination of two-, three- and four-bedroom apartments. Anywhere from two to four members reside in an apartment.

The units open to a central courtyard, which, according to Delta Psi Facility Director Mika Anderson* members love to use as their main hangout. Outfitted with patio tables, a water fountain and trees that provide ample shading, Delta Psi's courtyard is a quiet retreat for members to enjoy the sunny California weather year-round. Mika adds, "It's too beautiful to not utilize!" Apart from their outdoor hangout, members also like to convene in their living room, otherwise known as the "Chappy Room," and kitchen.

Mika, who has been Delta Psi's facility director since September 2022, has a separate living space from members. She resides in a one-bedroom apartment, with a bathroom, living room and a full kitchen. Her apartment was recently renovated to include new flooring, furniture and an updated bathroom.

Over the next few years, all apartments will be renovated to mirror Mika's new digs. So far, each apartment has received all new desks and chairs, bed frames and mattresses, dressers, patio furniture, camera systems, burglar alarm systems and an encrypted e-credential access control system. All living rooms will receive new furniture next. And while furniture in each room will be silently different, will have the Gamma Phi Beta look and feel.

Until renovations are complete, members will happily be soaking up some sun and enjoying sisterly connections in their private courtyard.

**Mika Anderson resigned from her position as Delta Psi's facility director when this issue was already sent to our printer.*





Delta Psi Chapter

LIFE LOYAL

Life Loyal is a special program available for all Gamma Phi Beta members to continue their lifelong support of our beloved Sorority beyond their collegiate years while receiving exclusive benefits. This is just one way to continue your lifetime involvement as a member of Gamma Phi Beta while fulfilling your financial obligations with an easy, one-time payment. The dedication of our alumnae members who continue to be involved and financially supportive helps ensure the future of our traditions and sisterhood.

Thank you to the following sisters who joined Life Loyal between February 1 through April 30, 2023.

GAMMA (*Wisconsin-Madison*)
Yvette Luna Gregory

THETA (*Denver*)
Linda Stephens Relyea

KAPPA (*Minnesota-Twin Cities*)
Taylor Alexander

LAMBDA
(*University of Washington*)
Anne Kronschnabel Gravrock

NU (*Oregon*)
Audrey Graser

OMICRON
(*Illinois at Urbana-Champaign*)
Andrea Cooney Cusick
Julie Pawelczyk

PI (*Nebraska-Lincoln*)
Caitlin Drummy Feldmann

PSI (OKLAHOMA)
McClaine Bray

OMEGA (*Iowa State*)
Mary Ellen Porter Burchfield
April Heider
Juliet Thompson

ALPHA GAMMA (*Nevada*)
Nicole Fitzsimonds Hanifan
Helen Wright

ALPHA DELTA
(*Missouri-Columbia*)
Amanda Gauer Lambricht

ALPHA EPSILON (*Arizona*)
Anne Achee Devarenes
Amy Harries

ALPHA IOTA
(*California-Los Angeles*)
Megan Ngai

ALPHA XI (*Southern Methodist*)
Allen McAdams Thrasher

ALPHA UPSILON (*Penn State*)
Mary Ann Raynak Alberry

ALPHA CHI (*William & Mary*)
Amy Hobbs Davis
Charlene Baumbach Smith

ALPHA OMEGA
(*Western Ontario*)
Jennifer Dainty Vlaad

BETA ALPHA
(*Southern California*)
Carolyn Kolts McAllister

BETA BETA (*Maryland*)
Madison Jackson

BETA DELTA (*Michigan State*)
Susan Locking Richards

BETA KAPPA (*Arizona State*)
Brooke Hall Lee
Shira Spencer

BETA LAMBDA (*San Diego State*)
Susan Spencer Joseph

BETA MU (*Florida State*)
Lyndsey Guy Struthers

BETA OMICRON (*Oklahoma City*)
Leta Bills Barry
Abigail Billings
Madison Leslie

BETA PI (*Indiana State*)
Linda Pearson

BETA SIGMA
(*Washington State*)
Rebecca Turner
Breanna Wilkerson

BETA TAU (*Texas Tech*)
Tracey Price Kriauciunas

BETA UPSILON (*Kansas State*)
Lori Schumann Thomas

BETA CHI (*Wichita State*)
Amanda Cline
Heather Hastings Gullic

BETA PSI (*Oklahoma State*)
Nancy Frank Shonka

BETA OMEGA
(*Northern Arizona*)
Holly Storch Norris

GAMMA GAMMA
(*Wisconsin-Milwaukee*)
Judith Kubnick Goeckermann

GAMMA EPSILON (*Puget Sound*)
Catherine Adamson Robinson

GAMMA MU
(*Moorhead State-Moorhead*)
Jaime Milne Brown
Sandra Pursley

DELTA DELTA
(*California State-Fullerton*)
Lisa O'Connell Emarid

DELTA IOTA (*Purdue*)
Leslie Wojtyś Gum

DELTA PSI
(*California-Santa Barbara*)
Jenna Cambalargiu

EPSILON DELTA (*Creighton*)
Gaby Hansen

EPSILON LAMBDA (*Alabama*)
Sara Buxton
Kaetlyn Martel Green
Marcia Warren Nally
Jennifer Wurm

EPSILON NU (*Chapman*)
Katherine Hembree

EPSILON XI (*Rhodes*)
Sarah Lindsey Harrison

EPSILON OMICRON
(*California-Santa Cruz*)
Kylie Ward

EPSILON PI (*George Mason*)
Kathleen Mayone Mumper
Erin VanDell

ZETA ZETA (*Costal Carolina*)
Abbiy Ward

ZETA THETA (*Pepperdine*)
Lauren Koep Crawshaw

ZETA IOTA (*Valparaiso*)
Alyssa Wennlund Hecke
Sarah Robertson

ZETA KAPPA
(*Southern Indiana*)
Tabitha Roser

ZETA NU (*Detroit Mercy*)
Giulia Pink

ZETA RHO
(*Texas A&M-College Station*)
Allison Precise

ZETA CHI (*Texas Christian*)
Hailey Moore

ZETA OMEGA (*Kennesaw State*)
NICOLE HILL

ETA ZETA (*Cincinnati*)
Melonie McDonel

ETA XI (*Florida*)
Megan Kloft
Taylor Myers
Catelyn O'Farrell

ETA CHI
(*California State University-San Marcos*)
Kyle Shimono



THE GIFT OF *Life Loyal*

Celebrate a Gamma Phi in your life with the gift of Life Loyal! A one-time payment of \$299* will fulfill the recipient's international alumnae dues obligations for life and unlock exclusive benefits to them (like a lifelong subscription to *The Crescent*). Don't know a specific Gamma Phi who would appreciate this gift? No problem! Consider supporting a graduating senior with a Life Loyal membership to keep them connected to their Sorority as they transition from a collegian to an alumna.

To learn more, visit GammaPhiBeta.org/Membership/Life-Loyal/About-Life-Loyal.

*We are pleased to offer Gamma Phi Betas who initiated in or before 1971, a reduced one-time membership dues fee of \$189.

in our HEARTS

We acknowledge the passing of the following members and celebrate their part in our circle of sisterhood. This list reflects notifications received at International Headquarters between February 1 to April 20, 2023. First, maiden, last names and year of Initiation are listed for each deceased member.

Honor a sister with an In Memory Gift. To make an In Memory Gift, visit GammaPhiBeta.org/Donate or call 303.800.2890. View Memorial gifts online at GammaPhiBeta.org/InMemory.

ALPHA (*Syracuse*)

Catherine Hammond Boyd, 1947
Grace Simpson Ellison, 1937
Elizabeth McCumber Merkel, 1956
Joanne Jores Peters, 1947

BETA (*Michigan*)

Maude Minto Bray, 1947
Jessica Hermenitt Faath, 1996

GAMMA (*Wisconsin-Madison*)

Virginia Becker Beckett, 1946
Martha Ludden Hatleberg, 1947
Susan Jacobs Lockhart, 1953
Mary Hoffman Smith, 1946
Joan Peterson Stueber, 1946
Christine Kohl Warnick, 1972

EPSILON (*Northwestern*)

Elisabeth Ulbrich McArthur, 1946
Patricia Miller Murphy, 1947
Joan Schladen Shanley, 1947
Patricia Vaaler, 1946

ZETA (*Goucher*)

Virginia Brooks Price, 1947

ETA (*California-Berkeley*)

Catherine Higbee Beardsley, 1959
Imra Wann Buwalda, 1914
Sheila MacMillan Levine, 1956
Robin Haseltine Robinson, 1949

THETA (*Denver*)

Jacqueline Robins Hall, 1946
Shirlie Dickerson Ward, 1947

KAPPA (*Minnesota-Twin Cities*)

Barbara Maurin Arnest, 1945
Elaine Cipra Broughton, 1947
Jean Lanpher Longbotham, 1947
Rosemary Degonda Streitmatter,
1947

LAMBDA

(*University of Washington*)
Helen Butzirus Crum, 1951
Kerry Hagen Johansen, 1976
Helen Lundin Kester, 1961
Mary Lou Cleave Mickelson, 1947
Aldalee Simonson Nugent, 1950

NU (*Oregon*)

Christie Lee Couch, 1975
Joan Hoppe Lemire, 1947
Janet Easterday Tupper, 1947

XI (*Idaho*)

Nella Bartleson Beck, 1946
Edna Earl Dingle, 1946

OMICRON

(*Illinois at Urbana-Champaign*)
Marilyn Schnirring Kennedy, 1949
Irene Ther Watt, 1947

PI (*Nebraska-Lincoln*)

Marilyn Duffack Dale, 1946
Jane Jones Davis, 1947
Phyllis McFarland Dowling, 1947
Barbara Hunter Funk, 1947
Diane Hayes Jacobsen, 1947
Janice Wolford Power, 1947
Joan Holden Wallace, 1951
Mary Lamar Wissing, 1951

RHO (*Iowa*)

Bonnie Kutter Brandenburg, 1955

Sherri Savareid Hays, 1975
Elizabeth Weitz Johnson, 1946
Elizabeth Maiwurm Morrell, 1982
Martha Humphry Palmer, 1946
Janet Nelson Pedersen, 1953
Barbara Harderson Rich, 1947
Nancy Ann Romine, 1945
Betty Janssen Smith, 1947

SIGMA (*Kansas*)

Peggy Graber Ambrose, 1947
Elizabeth Scott Burton, 1971
Judy Bailey McIntire, 1965

TAU (*Colorado State*)

Jean Butler Coyle, 1947

PHI (*Washington University*)

Nancy Auchmoody Zintek, 1947

CHI (*Oregon State*)

Margaret Paxson Coons, 1947
Catherine Moran Hobbs, 1947
Donna Hill Marsh, 1943
Margaret McLucas Tetlow, 1947

PSI (Oklahoma)
Marilyn Massey Carter, 1946
Wilburta Cartwright Locke, 1947
Mary Ansel Roney, 1947
Doris Dresser West, 1947

OMEGA (Iowa State)
Dorothea Kuschmann Duncan,
1947
Barbara Smith Kinney, 1955

ALPHA ALPHA (Toronto)
Alice Kozner Breglia, 1947
Georgina Choras, 1947
Jean Jarvis Connor, 1946

ALPHA BETA (North Dakota)
Madge Nickeson Smith, 1947

ALPHA DELTA (Missouri-Columbia)
Virginia Collins Gayou, 1947
Mary Ragland, 1947
Barbara Beckett Vilips, 1949

ALPHA EPSILON (Arizona)
Edith Sykes Lowell, 1947
Sylvia Haynes Pfersdorf, 1947
Jacqueline Moore Romeo, 1947
Ann Willyard, 1966
Janice Falk Windsor, 1947

ALPHA ZETA (Texas-Austin)
Betty Pendergraft Angelo, 1954
Marilyn McBride Culp, 1953
Diane Dupree Dill, 1955
Cheryl Davis Reno, 1971

ALPHA ETA (Ohio Wesleyan)
Barbara SchAAF Kortwich, 1952
Martha Kinkel McLain, 1952

ALPHA THETA (Vanderbilt)
Aurelia Bond Adams, 1947
Joanne Talbott Bradshaw, 1947
Patricia Jewett Crawford, 1947
Mary Cathcart Douglas, 1947
Aline Brown Graham, 1947
Nell Baird Huddleston, 1947
Mary Vonsprecken Wolff, 1947
Betty Renn Zuccarello, 1947

ALPHA IOTA (California-Los Angeles)
Joan Thorpe Lord, 1947
Marion Parke Newton, 1947
J'nan Morse Sellery, 1947

ALPHA KAPPA (Manitoba)
Pamela Weiss Agius, 1946
Jocelyn Williams Campbell, 1947
Helenrea Crawford, 1947
Marjorie Bull Morse, 1946

Jeanne Beatty Scargall, 1946

ALPHA LAMBDA (British Columbia)
Mary Tremaine Carl, 1946
Rita Hutt Hincks, 1947
E. Hamilton Sawers, 1946
Rosemary Byrn Schubert, 1947
Pauline Fairweather Smith, 1946
Mavis Coleman Standfield, 1947
Nancy Rennie Zwolinski, 1946

ALPHA NU (Wittenberg)
Nancy Hundley Boger, 1951

ALPHA XI (Southern Methodist)
Doris Baxley Bresnan, 1946
Evelyn Cole Hailey, 1947
Anne Kerin Thomas, 1947
Jacquelyn Altenau Williams, 1947
Evelyn Culwell Wright, 1947

ALPHA OMICRON (North Dakota State)
Mary Niebels Hannaher, 1947
Patricia Lee Melby, 1947

ALPHA RHO (Birmingham-Southern)
Carol Latham Thompson, 1947
Lila Stacey Berthon, 1947
Lottie Turner Clariday, 1947
Cenae Templeton Cocke, 1947
Beulah Crabtree Harrison, 1947

ALPHA SIGMA (Randolph-Macon)
Lulu Clements Dupuy, 1947
Josephine Meade Gryder, 1947

ALPHA TAU (McGill)
Margot McDougall Cloutier, 1946
Phyllis Harris Eastman, 1946
Ann Purcell Fuller, 1946
Joan Koltz MacDonald, 1946
Lois Parkhill, 1946
Kathleen Root Saunderson, 1946
Sibyl Coulter Stairs, 1946
Anne Talbot, 1946
Eileen Paul Wallace, 1946
Dorothy Walter Simpson, 1946

ALPHA UPSILON (Penn State)
Phyllis James McKim, 1947

ALPHA PHI (Colorado College)
Elisabeth Apeland Burgess, 1947
Lavon Rouse Lynch, 1947
Carol Weigen Rogers, 1947
Jeanne Ham Thompson, 1947

ALPHA PSI (Lake Forest)
Helen Chase Cheatham, 1945

Barbara Hahn Conklin, 1947
Sara Irvin Trueheart, 1947

ALPHA OMEGA (Western Ontario)
Margaret Hardie Beck, 1946
Ruth Dalton Burgess, 1946
Elizabeth Cottrill Dobbie, 1946
Denise Tomlin Fleischauer, 1946
Joyce Vanderheiden Godden, 1946
Pamela Curtis MacGregor, 1946
Patricia Bourdeau McKeegney, 1946
Helen Pardo McQuigan, 1946
Barbara Bethune Souter, 1946
Pauline Tomlin, 1946
Mary Macpherson Williams, 1946

BETA ALPHA (Southern California)
Doris Behneman Reed, 1956

BETA BETA (Maryland)
Mary Dyer Brockman, 1946
Nancy Schroeder Morton, 1947
Mary Middleton Mowrey, 1946

BETA GAMMA (Bowling Green)
Lillian Gray Bingman, 1947

BETA DELTA (Michigan State)
Helen Parmenter Bytwerk, 1946
Sally Miller Calhoun, 1946
Jacqueline Frost Deline, 1946
Joy Scott Gulbrandsen, 1947
Marilyn Stein Lheureux, 1946
Betty Richardson Presnal, 1946
Donna Polczynski Ryder, 1947
Shirley Tess Skoien, 1947

BETA EPSILON (Miami-Ohio)
Shirley Lostetter Lucas, 1950

BETA ETA (Bradley)
Darlene Grieger Kearns, 1950
Alice Kasky McCully, 1951
Mary Duncan Schmitt, 1952

BETA THETA (San Jose State)
Patricia Haley Davis, 1954

BETA LAMBDA (San Diego State)
Betty Baldessari Sokol, 1949

BETA NU (Vermont)
Geraldine Babson Kane, 1962

BETA XI (Ohio State)
Sheryl Braumiller Gray, 1961

BETA SIGMA (Washington State)
Margaret McDermott Crook, 1959

Louise Vik Hudson, 1959

BETA TAU (Texas Tech)
Sandra Ballew Murray, 1961

BETA OMEGA (Northern Arizona)
Holly Hardy Holiday, 1958

GAMMA BETA (Gettysburg)
Linda Merriam-Kuc, 1971

GAMMA EPSILON (Puget Sound)
Janet McLellan Cochran, 1964

GAMMA ZETA (Texas A&M-Commerce)
Janet Tankersley Kirby, 1962
Lesby Daniel Ray, 1962

GAMMA NU (Lamar)
Nancy Dubois Donald, 1971

GAMMA PI (Minnesota State-Mankato)
Anna-Lisa Carlson, 1974

GAMMA OMEGA (Wisconsin-Platteville)
Linda Smith Hays, 1966
Debra Schwark Schoenfeldt, 1985

ZETA EPSILON (Duquesne)
Holly Sue Quinn, 2003

*At the blueness of
the skies and in the
warmth of summer,
we remember them.*

Visit GammaPhiBeta.org/Foundation each month to view updated Memorial Gifts and In Celebration pages.



Thank you to everyone who participated in The Gamma Phi Beta 150th Anniversary Oral History Project! We heard from nearly 24,000 members and collected more than 16,000 oral histories. If you have questions about a purchase you made, please contact our partner and industry leader, PCI, at 1.800.982.1590 or customerservice@publishingconcepts.com. We are excited to share the Oral History printed book with you in February 2024!



Each 2023 issue of *The Crescent* will contain an ad that reveals a larger picture dedicated to our 150th Celebration (happening next year!). Here's what you need to do:

- Tear out each issue's ad (there will be four in total).
- Piece the images together each season to reveal the bigger image.
- Once you have the completed image, post it on social and tag us @GammaPhiBetaSorority.



Parents

While our members are in college, their copy of *The Crescent* is sent to your home address — we hope you enjoy reading our magazine, too! If your daughter is no longer in college, or is no longer living with you, feel free to send us her new address by emailing thecrescent@gammaphibeta.org.

Join Our Green Team!

Receive each issue of *The Crescent* before everyone else by going digital! We'll send the current issue directly to your inbox so you can enjoy it anywhere you go. Email thecrescent@gammaphibeta.org today to let us know you're joining The Green Team!

©2023 Gamma Phi Beta Sorority

The Crescent of Gamma Phi Beta (USPS 137620) is published quarterly by Gamma Phi Beta Sorority, 9155 E. Nichols Ave. Suite 330 Centennial, CO 80112. Periodicals postage paid at Englewood, CO, and at additional mailing offices. Produced in the U.S.A.

Postmaster: Send address changes to The Crescent, Gamma Phi Beta Sorority, 9155 E. Nichols Ave. Suite 330 Centennial, CO 80112.

Looking to connect with a sister?

Visit GammaPhiBeta.org/Find-A-Member for a full directory of Gamma Phi Beta members!

SUMMER 2023 Volume 125, No. 3

International Headquarters

9155 E. Nichols Ave. Suite 330 Centennial, CO 80112
P 303.799.1874 F 303.799.1876

GammaPhiBeta.org
thecrescent@gammaphibeta.org

The Crescent Staff

EDITORIAL MANAGER
Elizabeth Liberatore
eliberatore@gammaphibeta.org

CREATIVE MANAGER
Maddy Chapman
(Minnesota-Twin Cities)
mchapman@gammaphibeta.org

CHIEF MARKETING OFFICER
Tara Foristal
tforistal@gammaphibeta.org

CHIEF EXECUTIVE OFFICER
Megan Wick (Washington State)
mwick@gammaphibeta.org

CONTRIBUTING WRITERS
Harper Lawson (Maryland)

CONTRIBUTING PHOTOGRAPHERS
Brynn Marie Photography
Gracia Butcher
Jennifer Lloyd
Kate Loose

Connect Members



Dinner with 12 Sisters



THE Rescend



THE WORLD OF WOO

Alice Hu (Boston) opens up about finding purpose and launching her holistic health business Woo Company

Save the
Date!

Convention 2024

150
Years

Gamma Phi Beta
Chicago, Illinois

June 26-29, 2024

