

Winter 2019

the CPB JOURNAL *of* Gamma Phi Beta

Thirty
UNDER 30
Page 6





30 OUTSTANDING SISTERS

Dear Sisters,

College years and the few years after graduation are an incredibly formative time in any person's life. It is amazing to see our friends and sisters grow from eager 18-year-olds to confident and caring college graduates, ready to make a difference in the world around them.

Much can change between the age of 18 and 30, but success is possible at any time of life if you work hard and have confidence in your own abilities. In this issue of *The Crescent*, you will meet Gamma Phi Beta's very first 30 Under 30 class.

Some of these women work in science while others are creating their own marketing companies. All of these women cover a wide variety of skill sets from politicians and advocates to athletes and NFL employees. I'm sure you will be inspired by these strong, confident women because they serve as a reminder that there is no limit to what women can do.

As Gamma Phi Betas and women, we are empowered to excel, push boundaries, break through the glass ceiling and soar. And the best part of being Gamma Phi Betas is that we are surrounded by strong, confident women of character. Women who live our Core Values to the fullest and represent what it means to build strong girls and women.

I hope that you are inspired by the women featured in this issue. Their passion, grit, determination and confidence in their abilities is remarkable. Each has a unique and special story to tell. With more than 217,000 members, these women represent just the start of awesome Gamma Phi Beta women.

One of the most amazing things about this group of young women? If they've accomplished all this before the age of 30, I can't wait to see what else is in store for these Gamma Phi Betas. Congratulations to our 2019 30 Under 30 class!

In LIKE,

Annabel Jones
International President

ON THE COVER

Chloé Coriolan (St. John's) is part of Gamma Phi Beta's 30 Under 30 class and has more than 86,000 subscribers to her YouTube channel. Turn to page 6 to learn more about Chloé and the rest of our 30 Under 30.

2018-20 INTERNATIONAL COUNCIL

International President
Annabel M. Jones, *University of Oklahoma*

Vice President
Fraya Lynn Black, *University of Michigan*

Vice President
Stephanie Gauchat Carriere, *University of Arizona*

Vice President
Angela Jordan Dimit, *University of Illinois at Urbana-Champaign*

Vice President
Autumn L. Hansen, *University of Idaho*

Vice President
Tanya N. Jordan, *Purdue University*

Vice President
Melinda J. Sutton Noss, Ph.D., *Southern Methodist University*

MISSION

To inspire the highest type of womanhood.

— IN THIS ISSUE —

Go Gamma Phi

- 32** Sorority Life
What's new with your chapter? Turn to page 32 find out.
- 43** Vintage ΓΦΒ
Take a look at a photo from the 1959 Gamma Phi Beta European tour and learn more about our new travel program, Travel Gamma Phi!

Shining On

- 28** Life Loyal Members
More than 500 sisters signed up for Life Loyal between August 1 and October 31, 2018. Do you see any names you recognize?

Foundation News

- 38** Eta Tau's Culture of Giving
TEta Tau Chapter (Colorado Mesa) is part of The 1874 Society and a few members joined Carnation Nation, the Foundation's giving society designed for collegians. Turn to page 38 to learn more about the culture of giving in Eta Tau's sisterhood!
- 40** In Celebration
- 41** Memorial Gifts

6 | Gamma Phi Beta is proud to introduce the inaugural 30 under 30 class!



International Headquarters

12737 E. Euclid Drive, Centennial, CO 80111
Phone: 303.799.1874 Fax: 303.799.1876
Website: GammaPhiBeta.org
Email: TheCrescent@gammaphibeta.org

The Crescent Staff

Editor
Laura Mishkind (Colorado-Boulder),
lmishkind@gammaphibeta.org

Graphic Designer
Maddy Schroeder (Minnesota-Twin Cities),
mschroeder@gammaphibeta.org

Managing Director of Marketing and Communications
Maureen Walker, mwalker@gammaphibeta.org

Executive Director
Megan Wick (Washington State),
mwick@gammaphibeta.org

SUBMISSION DEADLINES

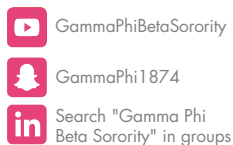
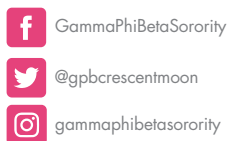
Spring – February 1 Summer – May 1
Fall – August 1 Winter – November 1

©2019 Gamma Phi Beta Sorority
The Crescent of Gamma Phi Beta (USPS 137620)
is published quarterly by Gamma Phi Beta Sorority,
12737 E. Euclid Drive, Centennial, CO 80111.
Periodicals postage paid at Englewood, CO, and at
additional mailing offices. Produced in the U.S.A.

Postmaster: Send address changes to The Crescent,
Gamma Phi Beta Sorority, 12737 E. Euclid Drive,
Centennial, CO 80111.

Parents – While our members are in college, their
copy of *The Crescent* is sent to your home address –
we hope you enjoy reading our magazine, too! If your
daughter is no longer in college, or is no longer living
with you, feel free to send us her new address by
emailing TheCrescent@gammaphibeta.org.

Join Our Green Team! Receive each issue of
The Crescent before everyone else by going digital!
We'll send the current issue directly to your inbox
so you can enjoy it anywhere you go. Email
TheCrescent@gammaphibeta.org today to let
us know you're joining the Green Team!



points of Pride

Shining bright since 1874, here's a snapshot of some notable Gamma Phi Beta moments and accomplishments!



Beta Alpha Chapter (Southern California) sisters gathered for the 90th birthday of one sister's husband. Three of these sisters have performed on the violin at past Conventions and two are biological sisters!
Back row: Sabrina Dorr, Elizabeth Pitcairn, Louise Thomas, Leslie Stewart Kenny, Cary Stewart Singleton, Una Mae Naulty
Front row: Carol Fox, Joyce Stewart, Roger Stewart, L'Cena Rice



Alumnae of Eta Chapter (California-Berkeley) planned a reunion they called "Etas of the Eighties," which was attended by 27 sisters initiated during the 1980s!



GAMMA PHI BETA FOUNDATION

The Gamma Phi Beta Foundation is proud to provide a total of **\$220,216** in financial aid for our sisters. Visit GammaPhiBeta.org/2018FinancialAid to see a complete list of our

50

Pi Chapter (Nebraska-Lincoln) sisters earned a 4.0 GPA during the spring 2018 semester! The all-chapter GPA was 3.712.



*Share your point of pride for an opportunity to be featured!
Email TheCrescent@gammaphibeta.org with your chapter's inspiring accolades.*

OH SO SPECIAL DISCOUNT.

Gamma Phi Beta sisters could save even more money on GEICO auto insurance with a special discount. Get a quote and see how much you could save.

GEICO® #MemberDiscount

geico.com

1-800-368-2734



Some discounts, coverages, payment plans and features are not available in all states, in all GEICO companies, or in all situations. GEICO contracts with various membership entities and other organizations, but these entities do not underwrite the offered insurance products. Discount amount varies in some states. One group discount applicable per policy. Coverage is individual. In New York a premium reduction may be available. GEICO may not be involved in a formal relationship with each organization; however, you still may qualify for a special discount based on your membership, employment or affiliation with those organizations. RCI is indirectly compensated by GEICO for inquiries generated by this insurance program. RCI and related marks are registered trademarks and/or service marks in the United States and Internationally. GEICO is a registered service mark of Government Employees Insurance Company, Washington, D.C. 20076; a Berkshire Hathaway Inc. subsidiary. GEICO Gecko image © 1999-2018. © 2018 GEICO



Meet Karli Kubik (Kansas State) on page 27.

Thirty UNDER 30

Gamma Phi Beta is proud to introduce 30 outstanding women under the age of 30. These sisters have accomplished awesome things and showcase the range of talent within our sisterhood. From women in STEM and marketing to mental health advocates and military personnel, our 30 Under 30 class will leave you feeling inspired and proud to be a Gamma Phi Beta.

In the pages to follow, you will learn more about these 30 sisters, but in most cases, we could not fit all their accomplishments into this issue of *The Crescent*. Please visit GammaPhiLeaders.com to read full interviews and learn a bit more about where these women grew up and what motives them to find their own versions of success.



LAUREN LOMBARDO
(Sacramento State)
The Data Scientist

As a senior data scientist for Nielsen Media Research, Lauren creates methodologies used to measure digital content consumption, meaning she utilizes data to create solutions that can inform clients on who is viewing and consuming their digital content.

"Primarily, Nielsen is a data company with the ability to measure and analyze consumption. Nielsen has two main business – watch and buy," Lauren explained. "I currently work in the watch business, which focuses on measuring what people are watching, reading or listening to."

Before she began this job, Lauren was pre-law. While writing her thesis she realized she enjoyed using data to quantitatively tell stories about how people react to or interpret the world. She applied to Nielsen just to see what would happen but ended up accepting a role as an associate in Nielsen's Emerging Leaders Program and took the leap into this unexpected field.

In college, Lauren was incredibly involved. She served as student body president and chair of the California State Student Association. The association represents the 23 campuses in the California State University system and has a 46-person board. Lauren and her team championed state and federal legislation to improve the lives of students, lobbied for bills at the state and federal level, led monthly meetings on campuses across California and met with system administrators and state leaders to discuss issues pertinent to students.

"I've never learned more, worked harder and had more fun in a role," Lauren said. "My job was to represent the student's voice and advocate on behalf of students."

Her hard work showed, too. California State University, Sacramento gives out the Made at Sac State Award every year to alumni who represent the university well in whatever they pursue after graduation. Lauren earned the honor before she even graduated. She shared, "It remains one of the largest compliments I have ever received because the team was so invested in my future that they were comfortable including me in the campaign so early in my relationship with the university."

"For me, servant leadership is genuinely listening to the wants and needs of the group I represent and then building my policy agenda and strategy from what they care about, not from what I care about."



Photo by Goodwin Photography

HALLIE HOVEY-MURRAY (Southern Methodist) *The Autism Advocate*

Academically, Hallie never struggled in school, but socially, she did. In the third grade, she was expelled for the second time. Her parents couldn't figure out what was happening, but a therapist finally discovered the proper diagnosis. Hallie is on the autism spectrum.

"It really brought about more clarity which was helpful," Hallie shared. "I was finally able to get the type of therapy I needed with the proper diagnosis, and I got taken off a lot of medications I didn't need to be on."

Hallie competed in her first pageant to improve her confidence and have fun but decided to continue when she realized she could use it as a platform to raise awareness for autism. She competed in Miss Virginia 2018 and held two titles: Miss Southwestern Virginia and Miss Historic Hanover.

In addition to competing in pageants, Hallie is a speaker and author, runs a nonprofit and is in her third year of law school. The nonprofit is called One in 68 Foundation. The name comes from the statistic showing that one in 68 Americans falls on the autism spectrum. The foundation provides college preparatory resources for high school students on the autism spectrum. Hallie and her board are determined to teach people that those on the spectrum can have successful lives utilizing their own talents.

Hallie also wrote a book, *Overcoming Expectations*, about her experiences as a young woman on the autism spectrum. "It was difficult to look back at the hard parts of my childhood, but it was important to share it with families who are going through similar things."

Hallie travels across the country to share her story and advocate for those with autism. She is determined to teach people that living on the spectrum is not a limitation.



Chelsey created Select-A-Sis with her now husband when they were in college.

CHELSEY RONEY (Texas A&M-College Station) *The Creator of Select-A-Sis*

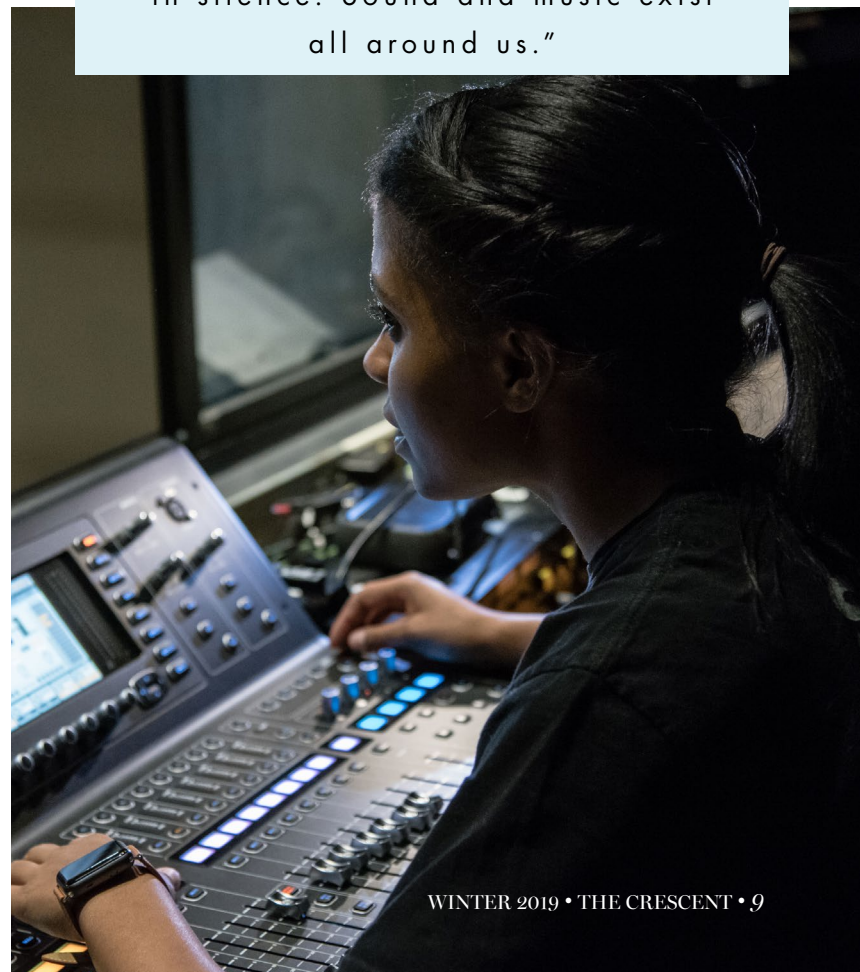
Currently, Chelsey works at Microsoft focusing on digital marketing campaigns for Surface and Windows products, but in college, she created Select-A-Sis, a membership selection software. Before the program, all recruitment voting was done on paper, and in fall 2010, Chelsey and her boyfriend (now husband) Aaron worked together to launch Select-A-Sis. Chelsey did the marketing and sent emails explaining the benefits to National Panhellenic Conference organizations. "The explosive growth we experienced was truly unexpected," she said. "I think this is because we solved a niche need with a product that went above and beyond expectations." In 2018, Chelsey and Aaron sold Select-A-Sis, but Chelsey is still a part-time consultant for the product, and she has plenty of ideas for her next entrepreneurial opportunity!

BAILEY TRIERWEILER (Colorado-Boulder) *The Sound Designer*

Bailey discovered her love for live theater sound design in high school. She went on to earn a Bachelor of Fine Arts degree in theater design, technology and management and a Bachelor of Science degree in ecology and evolutionary biology. Bailey was the first person in her family to graduate from college, and now she's studying at Yale to earn her Master of Fine Arts in sound design.

During her undergraduate years she earned multiple Meritorious Achievement Awards in Sound Design for her work. These awards come from the Kennedy Center American College Theater Festival, an organization that offers student artists individual recognition through awards and scholarships. Bailey first earned one of these awards after designing a production of *Winter's Tale* by William Shakespeare. "It was the first time I remembered being proud of original composition and the overall design of the piece," she said of her favorite project. "We were sitting in a tech rehearsal, when the lights shifted, the transition music swelled, the actors moved through the space with grace and I was completely swept up in the magic that was presented on stage."

"The world we live in does not exist in silence. Sound and music exist all around us."



PAIGE MARTINDELL (Kansas)

The Fitness Studio Director

As a fitness studio director, fitness instructor and freelance graphic designer, Paige's days are pretty packed. She wakes up at 4:30 a.m., teaches a class, then works on the studio's social media, crafts newsletters, plans events and manages all their community efforts – though maybe not all at once. Then she teaches another class in the evening and does it all again the next day.

"I've always led an active lifestyle, but now I get to express both my love for fitness and visual communication through all of the studio's marketing and social media initiatives," Paige shared. "When I was asked to open Class Studios alongside owner Jasmine Zutter, I jumped in without any hesitation. I felt called to be a big part of this company, and it's been such a blessing watching it grow."



LAURA LEVENTHAL (Colorado-Boulder)

The Branding Entrepreneur

In 2014, Laura founded Social•SynerG, an experiential consultancy specializing in the connection of branding, social media, social responsibility and events. Today, she leads the consultancy and manages production for G'Day USA, Australia's premier public and economic diplomacy program in America. She is an avid volunteer, and in 2015, worked as the director of the host town program at the Special Olympics World Summer Games LA, managing communications and events for more than 80 communities. "Being a part of that experience and bringing the games to LA is something I'm really proud of. It was a rewarding experience to see people work together for a cause like that," Laura shared. "I also had the opportunity to work on the LA Olympic bid, and I cannot wait to see the LA 2028 games come to life."



CHLOÉ CORIOLAN (St. John's) *The YouTube Star*

One day after school, Chloé was bored and decided to start a YouTube channel. She loved watching YouTube videos and had a few ideas of her own. Her first video was a hair tutorial. "I remember having no idea what I was doing but it was still so much fun," Chloé reminisced.

Since posting that first video, Chloé's YouTube fame has grown exponentially. She now has more than 86,000 subscribers and more than 3 million views across her channel.

Chloé films and edits all of her videos. She learns new editing skills through online tutorials and lots of trial and error. Her videos include makeup, hair and fashion tutorials, but her favorite videos to make are vlogs. In these, she shares more about her life and experiments with new editing styles.

Over the years, Chloé felt she got caught up in comparing herself to other popular YouTubers. She found herself trying to be more like them rather than just being herself, so she took a break from YouTube. She reflected on what she truly wants her channel to be and who she is as an individual.



"My YouTube channel has always been a great creative outlet for me to express myself and connect with other people through my videos."

Now, she's back on YouTube and ready to continue creating. "I plan to stop comparing myself to other people, and to start being unapologetically myself," Chloé shared. "It's always important to stay true to who you are and know that you are more than enough. That's part of the journey that I'm currently on, and the best part? I get to do it with a community."



STEPHANIE SEUFFERT
(Florida Institute of Technology)

*The NASA Mission
Control Officer*

Stephanie grew up watching space shuttle launches on TV and visiting Space Center Houston as often as she could. She always knew she wanted to work at NASA, and now she does. As a visiting vehicles officer, Stephanie coordinates rendezvous and departures of any visiting vehicles that go to the International Space Station. If you've seen a NASA



movie, you're familiar with Mission Control and the people at the big desk on Earth sharing information with those in space – that's what Stephanie does.

Stephanie is also a certified flight controller and part of a mentorship program at NASA. Students come in and NASA employees guide them through a project. Stephanie often tries to pick groups with multiple women. "I just want to show a presence as female in NASA," she explained. "Just showing that women can advance and be high up here is important."

While Stephanie's parents were incredibly supportive of her desire to work for NASA and study aerospace engineering, not everyone she encountered was as encouraging. In college she said it was difficult being one of the only females in the aerospace program. Many of the men in her program were dismissive of her abilities. The professors shot down that behavior when they saw it, but Stephanie often stood up for herself.

At one point during her senior design project, the male team captain handed her a broom and told her to clean up the machine

shop while the men worked. Stephanie refused to be humiliated and ended up being one of the highest contributing members of her team and pushed them to compete at a national competition where they won third place.

Now, Stephanie is thriving at NASA and working hard to help women rise with her and show that it is possible for a woman to work at NASA. She's also trying to be a positive role model to her two-year-old daughter and immerse her in STEM.

Her daughter is in the NASA day care, which is very STEM focused and even at her age, she's working on science projects. "I don't want to force it on her," Stephanie explained, "I just want her to know that she has options and she's encouraged to pursue that if she wants. I want my daughter, and every little girl with a dream, to know that no matter how large your dream is, it is always possible to achieve it. I am proof of that! I've had my obstacles being a woman in a professional field dominated by men. But no obstacle is too great for a passionate woman with a dream to achieve."

Stephanie loves her job at NASA but always enjoys taking the time to be with her daughter.

CASSIE PETTY (Rutgers)

The NFL Philanthropist

As the community relations coordinator for the New York Giants, Cassie handles 6,000 donation requests per year, coordinates game day drives for food, coats and toys and assists with getting players out into the community for volunteer opportunities. "Working in community relations for the Giants allows me to see the philanthropic side of professional football that some people don't know exists," she shared.

Cassie also leads the My Cause, My Cleats campaign for the Giants. She helps players select a charitable group to bring awareness to by wearing customized cleats. For the last two years, the Giants have had the most players participate and Cassie plans to continue that streak. In her free time, she volunteers for Girls on the Run and Gamma Phi Beta and is creating her own nonprofit called Pocket Full of Sunshine to spread happiness and help others.

"It involves a lot of sacrifice, but the places you travel to, the friends you make and the people you meet make it all worth it."



Cassie Petty (Rutgers) on a volunteer visit she coordinated for New York Giants' players.



Photo by Scott A. Miller

LINDSEY WEAVER (Arizona)

The Professional Golfer

Lindsey started golfing when she was two and fell in love. Now, she's a full-time pro golfer. "I always wanted to play professionally after I graduated and one day make it to the LPGA," she shared.

Unfortunately, in March 2018, Lindsey's rookie season was cut short with a severe case of tendinitis. She had both golf elbow and tennis elbow causing her forearm to swell to the size of a baseball. The only cure was rest and as the injury began to affect her performance, Lindsey decided to take a medical for the remainder of the 2018 season.

After five months of not hitting golf balls and spending lots of time in physical therapy, she's preparing for the 2019 season. Lindsey is playing golf again, feeling healthy and ready to travel the world while competing in the sport she loves.

TARA SULLIVAN

(Oregon)

The Peace Corps Volunteer

Tara fell in love with East African culture when she studied abroad in Tanzania. Ultimately, she wanted to get back to East Africa and study a language, so she applied to the Peace Corps. In the spring of 2014, Tara accepted her assignment as an English-teaching volunteer in Rwanda.

For 26 months she lived in a village teaching English, changing the lives of those around her and seeing her own life change. "I learned that I am stronger than I ever imagined," she shared. "I learned to live with a lot of homesickness and loneliness during my service, and yet I knew that it was worth it to stay and embrace my time there."

And she truly did embrace her time in Rwanda. Tara secured a \$5,000 grant to expand the computer lab in the school she worked at, received an additional grant to create a community library and literacy training and created a program called Let Girls Work.

Tara and three other Peace Corps volunteers designed this program to combat the challenge young women face when trying to enter the workforce in Rwanda. They recruited volunteers who were already teaching career-building classes at their schools and asked them to select three female students to bring to a regional town to job shadow Rwandan women. They also had a weekend filled with mentorship opportunities, college visits and workshops for each volunteer to bring one student to in the capital city, Kigali.

In addition to her work with Let Girls Work, Tara served on the Peace Corps' Gender and Development committee. She worked on projects to empower young women and educate young men on gender equality issues. She created a new curriculum for school clubs, planned healthy living workshops and trained new Peace Corps volunteers on gender equality issues in Rwanda.

Tara formed lasting friendships with the teachers, students, neighbors and other community members in Rwanda and is still involved with her village. "I am helping to facilitate another small grant there," she shared. "The library committee is busy doing trainings and other educational programs for that grant. I also still talk with people from my village daily."



"You don't have to go all the way around the world to do service. There are plenty of issues here right at home."





HOLLY MAGLIN (Christopher Newport) *The Career Services Advisor*

Thanks to a Gamma Phi Beta alumna, Holly fell into an internship in college with the Center for Career Planning. "I found that it was intriguing to play matchmaker between a student and their dream career," she said of the experience. "It was fascinating to talk about their goals and find a connection with a company that would bring them to fruition."

Now, Holly is continuing to help students find their dream job as her own career. She meets with students to prepare their resumes, cover letters, LinkedIn profiles and help them feel confident in interviews and salary negotiations.

Salary negotiation tends to be a topic that Holly feels is overlooked. She had the opportunity to speak about it at the Future Business Leaders of America State Leadership Conference. For her talk, she stressed the importance of knowing your own worth. Holly says, "Half the battle of salary negotiation is believing in yourself and being able to convey that to the other person."

She also shared that you should always ask for more in a negotiation. The worst thing is they say no, but there is more to ask for than just an increase in pay. Holly encourages outside-of-the-box thinking: negotiate your paid time off, future raises and office space. Be creative!

One of her important tips she practices in her own career is to always ask. It's easy to get in your own head and tell yourself no before even asking for a raise, but ultimately, there is no worst-case scenario. Just ask!

Are you looking for a new career? Are you
a recruiter looking for qualified applicants?
Check out the Sorority's new career center at
GammaPhiBeta.org/CareerCenter!

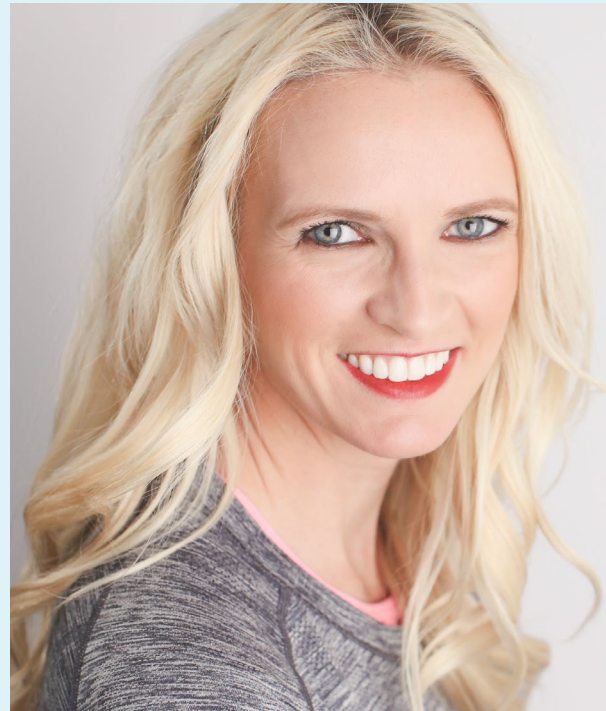


ALYSSA PIETROPAOLO (Duquesne)

The Attorney

Alyssa always knew she wanted to be a legal services attorney and while she was in love with her university, they did not offer a major that would provide her the necessary background for her career path, so she opted to create her own. This process involved presenting a letter of intention and a coursework proposal to the dean of the Liberal Arts college. She received approval and worked with a faculty mentor each semester to graduate on time, while studying political science, communications, sociology and women's studies.

Now, she is living her dream providing civil legal assistance to poor and vulnerable populations in her community. Her primary cases involve helping victims of intimate partner violence obtain child custody orders against their abusers. Alyssa shares, "Every time a client allows me to fight for custody on their behalf, especially when the child's safety is threatened, I thank them for the privilege because I understand what they have entrusted me with and how important the outcome is to them and of course, to their children."



MEGAN TOMASKO (Chapman)

The Entrepreneurial Public Health Officer

Megan served as a public health officer in the Air Force after graduate school and took her oath in the Apollo 13 Mission Control Room in Houston. The textbook definition of the position is someone who protects the health of armed forces, but Megan said the real-life version is short notice deployments for bioterrorism protection, outbreak investigations and more. In 2014, she helped develop the Ebola outbreak response plan. Megan was responsible for getting medical personnel deployed. She was trained in risk communication by the Pentagon so writing the plan was exactly what she was prepared to do.

Ultimately, Megan decided to create her own consulting company, Called Up Strategies, to continue her career in public health no matter where she lives. She drives program planning and evaluation development efforts through data analysis, strategic planning and partner engagement. Currently, she's working on a program to reform criminal justice in Oklahoma City through a proposal that shares data to link at-risk individuals to services to improve the overall well-being of the community.



MARINA DEBIASI
(Florida Institute of Technology)
The Scholar Athlete

During track season, Marina competed in the 10k, 5k, 3k and 1,500m races and 5k/6k when it came time for cross country. This star runner graduated with a degree in chemical engineering and a 3.92 GPA. Even after recovering from a fractured vertebra during her sophomore cross country season, Marina was named both Sunshine State Conference Female Scholar Athlete of the Year and FIT Female Scholar Athlete of the Year by the Sunshine State Conference. She never expected to be nominated for either of these awards. "To me, this honor symbolizes the greatness that I did not know I had and that I did not know others noticed," she shared. "It is one of my biggest reminders of the value of discipline, integrity and patience."

MALLORY CURTICE
(Texas Christian)
The Fighter Jet Buyer

Mallory works in subcontract management for the F-35 program at Lockheed Martin Aeronautics negotiating contracts to purchase parts for the F-35 war fighter jets. A normal day for Mallory is filled with meetings with engineers, internal and external customers, leadership and suppliers to locate parts and support services for aircrafts in the field. "In my area, I negotiate and issue contracts, track parts and services to delivery, including any issues that may arise until the contract has been closed out," she explains. "I get a proud feeling every time I leave in the evening because I see the F-35 flying on my way out of the plant. Knowing I was a part of helping that plane fly is an amazing feeling."





Jenna is pictured left.

JENNA LENSKI (Wisconsin-Milwaukee) *The First Lieutenant*

As chief of public affairs at the 128th Air Refueling Wing, Wisconsin Air National Guard, First Lieutenant Jenna Lenski blends her passion for photography, journalism, public relations and serving in the military. She shares Air Force and Air National Guard stories with the public and travels to wherever that story may be. Jenna has gone on deployments to tell the story of wartime air operations and stayed in the U.S. to work on media coverage of responses to natural disasters.

When it came time for college, she chose to join the Air National Guard because of the school benefits. They paid for her college and her commitment was only six years, but now it's been 12 years, and Jenna is still serving and loving what she does.

"I've traveled throughout the U.S. and to several different countries; gone through extensive skills and leadership training; supported global and domestic operations; and met amazing people and some of my best friends in these 12 years," Jenna said. "The military is a community, a culture and a network that you can't find anywhere else."

In addition to sharing the efforts of the Air Force and Air National Guard, Jenna is trained for wartime operations. She is weapons-qualified and trained in chemical, biological, radiological and

nuclear defense, like all service members are required to be for deployment, and Jenna was deployed to Qatar and Afghanistan for six months.

Her deployment was one of the best things she could have done for her career. She coordinated media operations and strategic communications involving fighter planes, bombers, cargo planes, helicopters and remotely piloted aircraft. Jenna is very thankful for the support of her husband and family because it was challenging to be away from them, especially during the holidays.

Jenna enjoys her work because she's serving in an era where women are still accomplishing a lot of "firsts." She said, "There has been a lot of progress made for women serving in today's military, but I think there is still progress to be made in regard to normalizing our service." And she plans to continue to be a part of that progress.

"If you're finding purpose,
even in the small things
in life, and you are happy
doing it, then I think
you've found success."



ABBEY HOLDEN

(Denver)

The Artist

Abbey never saw herself doing anything other than creating art. She turned her passion into her career and never looked back. Right after college, she worked as a print designer for Lilly Pulitzer. She spent her days painting prints and was thrilled to be surrounded by creative women.

Now, Abbey has her own studio and works independently, though she recently began doing more collaborative projects with female-run businesses. While she had concerns about venturing out on her own, Abbey talked with other female artists to get advice and gain confidence. "Quieting these fears and hesitations is the best thing you can do. Going in fully confident that you're pursuing the right career is the best advice I have!"

Check out more of Abbey's work at AbbeyHoldenStudio.com.





KENDRICE NEWMAN (California-Berkeley)

The Teacher

Through an undergraduate research program, Kendrice learned she loved talking about math with people. She went on to learn she loves the classroom, too, so it only made sense to become a math teacher.

Kendrice is a natural, and in just her second year of teaching, she was asked to rewrite a middle school math curriculum. She took on the project, studied numerous resources and created exactly what was needed for the students.

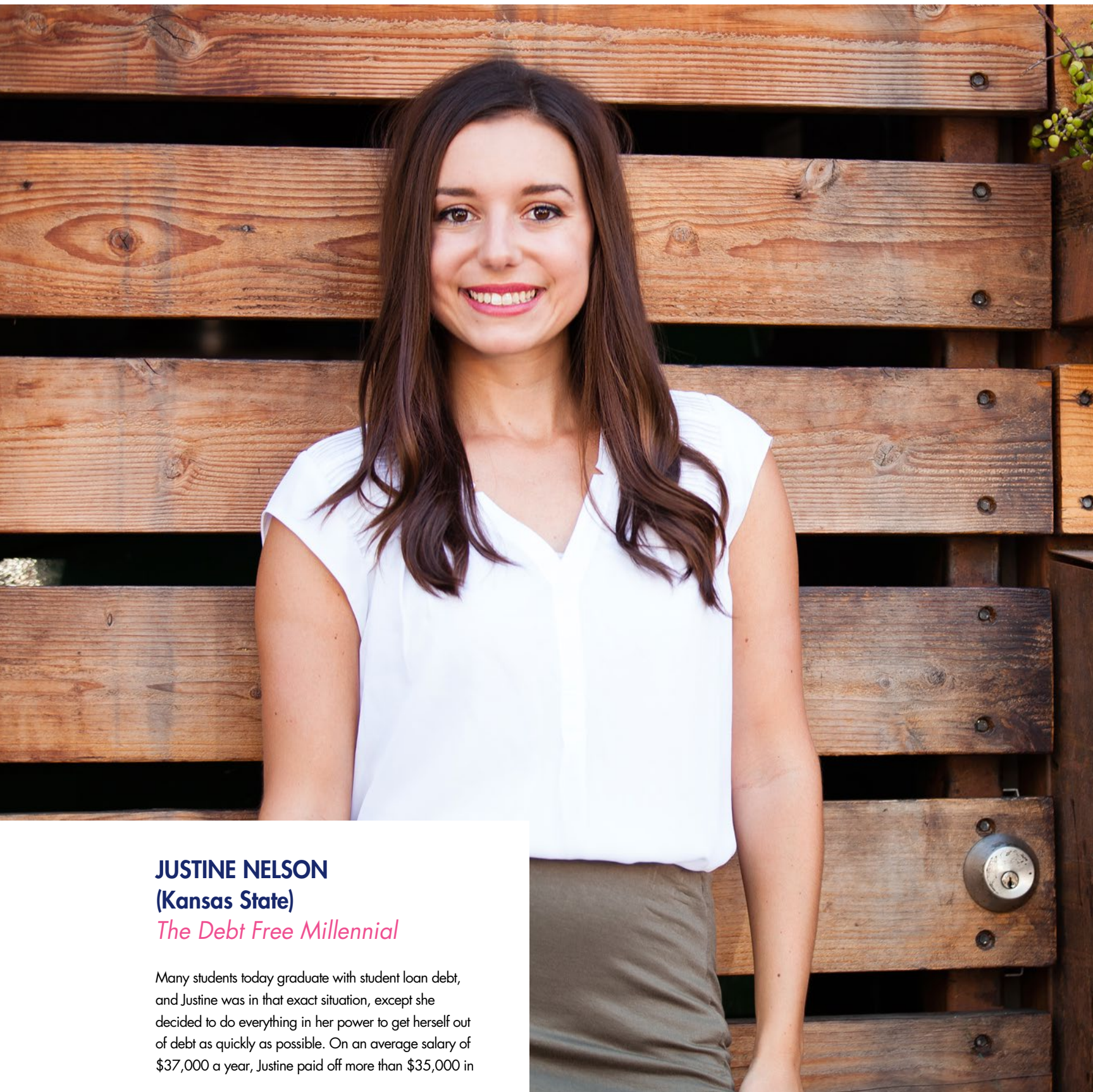
Just two years later, she was asked to tackle a math curriculum for special education students. "After a few years in the classroom it was becoming more and more obvious to me how important finding an access point to curriculum was for students with learning disabilities," Kendrice said. She was thrilled to have the opportunity to create this curriculum and it is used to make a difference in the lives of the students who are now able to access fundamental mathematical concepts.

ALYSSA GALLAGHER (San Diego)

The Accountant

As the lead accountant for Sharp Healthcare, Alyssa does detailed accounting calculations for the company's medical groups and analyzes the financials from a big picture perspective to identify trends and tell the story behind the numbers. For example, were there more surgeries in a month or what were the effects of flu season? Often, she presents her financial findings on how hospitals are doing to their CEOs and CFOs. This allows them to have opportunities to grow and improve. "I love what I do because I feel challenged, well-rounded, fulfilled and part of something bigger than myself," Alyssa explained. "I love that I found an organization where I was able to utilize my skills while also being part of something that means so much to me."





JUSTINE NELSON
(Kansas State)

The Debt Free Millennial

Many students today graduate with student loan debt, and Justine was in that exact situation, except she decided to do everything in her power to get herself out of debt as quickly as possible. On an average salary of \$37,000 a year, Justine paid off more than \$35,000 in

student loan debt in two and half years. After accomplishing this feat, she realized she just might have a knack for personal finance.

“When I started my debt free journey in 2012, I had a mindset that I wasn’t going to have debt payments ever again. I became fiercely passionate about money,” Justine explained. “Once I became debt free in 2014, I realized how much my knowledge could help others and it stirred something within me that personal finance was going to play a role in my career later in life.”

In 2015, Justine and her husband moved to San Diego, California, an area full of startups, online business owners and entrepreneurs. This attracted Justine because she wanted the opportunity to collaborate with others and stretch her entrepreneurial legs. And she did.

Justine is now running Debt Free Millennials, a business she created to help millennials learn how to pay off debt and become financially independent. Debt Free Millennials started as an online course and it has grown into much more. From live classes, YouTube videos and blog posts, Justine shares resources with her clients to help them understand how to manage their money.

Since launching in January 2018, Debt Free Millennials has impacted more than 1,300 people and there’s more on the horizon. “The sky is the limit!” Justine said. “I plan to push Debt Free Millennials into a larger YouTube presence and I am expanding my services through speaking events. My mission is to provide financial knowledge to millennials in a way that’s relevant, fun and friendly.”

In addition to creating her own company from her personal finance savvy, Justine was recognized on the Dave Ramsey Show, a radio show all about taking a disciplined approach to finances. Justine had the opportunity to share her story with more than eight million listeners. She describes the experience as surreal, nerve-racking and surprisingly easy. She was thankful for the opportunity to share her story with others in the hopes of helping and inspiring them.

With the opportunity to share her story and help millennials through her business, Justine says she aims to provide people with money tips and strategies to live a debt free life. “When you no longer have debt payments, you can move across country, travel internationally without guilt, even start your own business.”

Want to learn more about Justine's business?
Visit DebtFreeMillennials.com.

DEBT FREE MILLENNIALS

10 STEPS TO BECOMING *Financially Fearless*

1. **Create a debt free mindset.** Understand your relationship with money and how you’d like to change it.
2. **Set aside minimum of \$1,000 for emergencies.** Having cash set aside for emergencies like a car repair or phone replacement prevents you from going into further debt.
3. **Write down income and expenses each month.** Track spending habits with a written budget. Use an app, spreadsheet or whiteboard and see where you could change your habits.
4. **Organize your debt.** List out your total debt, interest rate, minimum payment and repayment terms. You can quickly see which debt you need to tackle first.
5. **Create long-term money goals and save for them monthly.** Set up monthly contributions for retirement, a car or next year’s vacation to hit your goals.
6. **Find contentment.** People often mistake spending money as a way to find joy. List out three fun and free activities to get you back to being content in your life.
7. **Share your money goals with a loved one.** The more you share that you are paying off debt, the more accountable you will be to that goal!
8. **Move as fast as cash.** Pay for things only when you have the cash.
9. **When in doubt, do without.** Take 24 hours to think through big purchases before handing over your money.
10. **Remember your future self.** Investing just two percent toward your retirement now is going to help you in the long run. Start with an employer 401k or traditional IRA.

JENNIFER GREY
(Southern Methodist)
The Movie Trailer Editor

After taking a film editing class in college, Jennifer discovered her passion for movie trailers. She had always loved the music and the story, but learning the logistics sparked an idea. "I loved how creative the trailer editing process was and the freedom of storytelling you got as an editor," she shared.

Now, Jennifer is one of the youngest assistant editors for one of the top five movie trailer companies in the world. She has worked on countless trailers including "Black Panther," "A Quiet Place," "Creed 2" and "Venom." "I love that movie trailers can capture the soul and intention of the film," she said. "From the sound design and music choices, trailers can capture the true intention of the film."



MADISON MARTIN
(McGill)
The Mental Health Advocate

Madison struggled with depression and anxiety in high school and always felt alone. Eventually, she spoke out through an Instagram post, and began her advocacy journey. In college, she got involved with Jack.org, a Canadian organization focused on improving mental health awareness. She pledged to raise \$500 during a Tough Mudder race, and more than doubled her goal by raising \$1,400, earning an invitation to the Jack.org National Summit. There, Madison was one of 200 students listening to speakers and learning more about how to be an advocate for the cause. "While I'd already spent three years increasing mental health awareness, this was the first time I felt I had become a mental health advocate."

BRIANA LEE
(Central Florida)
The Research Scientist

Technically nanotechnology is the study and application of extremely small things. Think about something that's 1,000 times smaller than a human hair. But ultimately, there's more to it.

Briana studies nanotechnology and said, "Nanotechnology is this beautiful amalgamation of engineering, chemistry, biology and physics where we take holistic and interdisciplinary approaches to examine what it is we are studying."

In her research, Briana characterized a novel target biomarker for Alzheimer's disease. To do so, she worked with collaborators to use instruments that characterize the properties, shape and function of amyloid beta fibers, which are known to cause Alzheimer's disease. The team was able to detect a new formation and structure that better allows for the detection of Alzheimer's. Briana shared, "There are a lot of things that can cause Alzheimer's, so this study specifically was to help identify it quicker."

For the last two years, Briana has been working on a project focusing on the interaction of multivalent nanoparticles with agricultural bacteria. Essentially, it allows the researchers to create pesticides that have lower amounts of copper that can be sprayed into fields where food is being grown. They are working to reduce the amount of copper runoff in our food and water. This project has been applied in small scale field trials, but the ultimate goal would be to get it commercialized.

Briana thoroughly enjoys working as a research scientist and conquering new challenges every day, but the reason she started in her lab was to gain research experience for medical school. She loves what she's doing now but plans to apply to medical school in the summer to study radiation oncology.



"My favorite part about working in the lab is that every day is different and so is every situation."



ELIZABETH SCHECHTER (Emory)

The Digital Marketing Associate

Elizabeth started at Response Media as an intern because she thought she might like to pursue a career in advertising. During her internship, she realized digital advertising was a great career fit, and after graduation, Response Media offered Elizabeth a full-time job. She accepted and 10 months later earned a promotion. "Making an effort to go above and beyond what was expected of me impressed my company enough to promote me," Elizabeth shared. Last summer, with only two years of full-time employment, she was promoted again.

For sisters who are looking to be hired by the companies they intern for, Elizabeth recommends transparency. "Don't be afraid to be honest about wanting to be hired full-time and ask your boss how you can demonstrate how you would be a valuable full-time employee during your internship."

Elizabeth recommends
transparency with supervisors if
you want to become a full-time
employee after an internship.

AMBER MARIANO (Central Florida)

The State Representative

Amber is the youngest state representative in the Florida House of Representatives. She began her campaign when she was 20, still in school and an active member of her Gamma Phi Beta chapter. In 2018, she ran for reelection and won. She said it was easier because she and her team knew what worked before – and what didn't. Amber loves public service because it gives her the opportunity to bring a unique perspective to the legislature about the tools her generation needs to succeed. She has wanted to be president since she was six and doesn't plan on changing that dream any time soon!



"I love what I do because every
day I get to solve problems and
help change my community for
the better."



KARLI KUBIK
(Kansas State)

The Survivors' Advocate

Karli researched sexual violence in college and has always loved working with teens, so when she found a job that aligned with these interests, it seemed like an opportunity she couldn't miss. She began working at Wichita Children's Home as a mentor coordinator for the youth mentoring program, and recently became the survivor after care program coordinator. She's also working to obtain her master's degree in social work.

In her most recent role, Karli focuses on offering after care services that continue to support youth after they leave Wichita Children's Home. While they are there, teenage girls who have been identified as victims of human trafficking can heal from their trauma in a safe space. They are provided with services including, but not limited to, therapy, life skills training, education opportunities and mentoring programs.

When they leave, Karli helps connect them to a network of services in the community, such as resource families to help them as they transition from the foster care system into society. "Every day I get to help girls heal from their trauma, begin to rediscover who they are and dream about who and what they want to become someday," Karli shared.

As you can imagine, Karli has some hard days at work hearing the stories of these young women. She stays positive and motivated by leaning on her strong support system at home.

Karli also traveled to Thailand on a mission trip. Her team consisted of four other women and they served in Thai schools and juvenile prisons, focusing on building relationships. They were able to share encouragement, laughs and authentic compassion with all the people they encountered.

Overall, Karli loves the work she does and helping others. She has always wanted to help people, and after she completes her master's, she will work to become a licensed clinical social worker. This would allow her to council clients. Ideally, she wants to council youth in the foster care system or adopted children.

"It's difficult to describe
the urge I feel to love
others with what I have.
I have been blessed beyond
all measure and it feels
selfish to not to share some
of myself with others."

SHELBY DUFF (Michigan) *The Engineer*

After completing two internships with General Motors, the company saw potential in Shelby and offered her a full-time job as an associate process engineer. In March 2018, she was promoted to group leader, overseeing the daily operations of a portion of the assembly line and championing change that increases quality and quantity while reducing cost and waste.

Shelby loves the fast-paced world of manufacturing, which allows her to grow and learn as a leader and individual. She is thankful to work for a company that has both a female CEO and CFO who serve as a constant reminder that if she continues to work hard and learn from every opportunity, she could be in their positions someday. She encourages women looking to succeed in engineering to seek out the support of other women. And if you don't have a role model? Shelby says, "You are more than welcome to reach out to me!"



REBEKAH MENA (Florida Institute of Technology) *The D.C. Public Affairs Coordinator*

As a public affairs coordinator for the District of Columbia Homeland Security and Emergency Management Agency (HSEMA), Rebekah's day is often dictated by what is happening in Washington, D.C., and across America. Rebekah's main responsibilities are digital and external communications for the Agency. She runs their social media accounts and creates digital designs that help get information to the right people at the right time so decisions can be made. Surprisingly, Rebekah never expected to be in this role. She wanted to be a forensic psychologist but discovered her passion for this career path after becoming her chapter's public relations vice president. "If you would have told me five years ago that I'd be working for HSEMA, I probably would have laughed!"



"In practicing patience and empathy, I am better able to relate to others, identify their needs and provide the best kind of support to elevate others to the best version of themselves."

LIZA MOSKOWITZ (Boston)

The Generational Leader

"Generational leadership is a philosophy that reminds leaders to learn from the people who came before them and make decisions for people who will come after," Liza explained. "To practice generational leadership, your actions in the present day take all generations - past, present, and the future - into account."



As a program manger for Moishe House Without Walls (MHWOW), Liza practices generational leadership in her work with the Jewish nonprofit, focusing on the alumni engagement program. MHWOW supports young Jewish leaders as they create meaningful experiences for themselves and their peers by building communities based on their own interests.

Participants are called hosts and they invite peers to programs that Liza helps them plan. She often encourages hosts to think about the frequency and variety of program content to help keep their communities engaged and energized.

As a host herself, Liza showcases her passion for being a generational leader and has traveled to New York City, San Diego and Ukraine to meet with other MHWOW hosts. She also built the curriculum and facilitated the first MHWOW-exclusive retreat.

In addition to her work at MHWOW, after Hurricane Harvey, Liza got involved with relief efforts. Moishe House worked with a team to clean up a home, and Liza and 13 others completed almost a week's worth of work in two days. They also worked with another nonprofit to spread the word and help people navigate all the available recovery services.

Of her overall experience with Moishe House, Liza said, "The MHWOW hosts around the world are doing really incredible things for their communities, and I get to see the impact they are making."

Life Loyal Members

Alpha – Syracuse

Trudy Vanthoen Baylis
Ann Vandemark Butler
Nancy Ferris Hammer
Joan Smith McShane
Martha Jensen Miller
Amy Huber Moritz
Eileen Day O'Brien
Helen Rubinstein
Brandi Shaddick
Emilia Slotnick

Beta – Michigan

Jill Peterson Entner
Martha Johnson Mayer
Kathleen Lally Poczik

Gamma – Wisconsin-Madison

Carol Hardgrove Fritschel
Gabrielle Silvers Griffin
Jann Pantor Joseph
Kathleen Bay Lichte
Katherine Miller
Lynne Clark Nordhoff
Christine Ibe Rotsch
Amanda Nelson Sasse

Delta – Boston

Beverly Peterson Davis
Amy Jennette
Elaine Fumiatti Pegolo
Terri Baxter Tanielian
Elizabeth Thornton Troy

Epsilon – Northwestern

Andrea Woolard Borch
Shirley Somers Calhoun
Patricia McKiel Cork
Judith Daily Graham
Una Corley Groves
Joan LeSage
Carol Miller Robinson
Carol Beachler Wagner
Barbara Parke Weaver

Eta – California-Berkeley

Gailyn Awenius
Keli Henson Forsman
Joan Foster Nugent
Drew Daine Vranicar

Theta – Denver

Judith Lang Lacy
Linda Stratford Larsen
Jean Lotz Miller
Natalie Wuertz

Kappa – Minnesota-Twin Cities

Janet Boss Albers
Marilyn Cowden Buscher
Megan Juffer
Stephanie Jakubiec Ostlie
Laura Smith
Jane Widseth

Lambda – Washington

Malika Abdou
Beverly Clarke Law
Jacqueline Carpenter Minor
Lisa Kohlwes Torgersen
Cynthia Chipman Wendle

Nu – Oregon

Kimery Taylor Bilusak
Diane Mead Donovan
Rosie Gurman
Tammy Brenton Lindemuth
Rosemary Knight Long
Michlen Taylor Manning
Kathy Rovner
Jacqueline Jordan Wiedman

Xi – Idaho

Carol Bennett Chipman
Shelley Smith Eichmann
Judy Kempton Felton
Pamela Albertson Masciotra
Nancy Ruth Peterson
Kathleen Harms Wall
Katherine Lewis White

Omicron – Illinois

Joy Bartsch Bloodworth
Peggy Nolan French
Sheera Lall
Desiree Boyks Malone
Jacqueline Tatman Matthews
Betty Wright Smykal
Carolyn Beaty Southern

Pi – Nebraska-Lincoln

Eileen Hepperly Arpke
Lucinda Pauley Burchett
Karen Martinson Higgins
Sally Copple Jacob
Kimberly Osborne Salistean
Shannon Smith
Joan Beerline Szabo
Tracy Zumwalt Wells

Rho – Iowa

Mary Jo Novak Abbott
Karma Burford
Andrea Fitzgerald
Anna Armsbury McClaskey
Maryada Johnson Ritchie

Sigma – Kansas

Jane Marshall Campbell
Marcia Nelson Cassidy
Kelli Ferguson Gargas
Stephanie Hearn
Mary Schaechtele Lake
Margaret Peach Maupin
Janis Biehler Milham
Rhonda LaHue Mordy
Karen Anne Zupko

Tau – Colorado State

Elizabeth Brent
Cynthia Johnson Captain

Life Loyal is a special program available for all Gamma Phi Beta members to continue their lifelong support of our beloved Sorority beyond their collegiate years while receiving exclusive benefits. This is just one way to continue your lifetime involvement as a member of Gamma Phi Beta while fulfilling your financial obligations with an easy, one-time payment. The dedication of our alumnae members who continue to be involved and financially supportive helps ensure the future of our traditions and sisterhood.

Thank you to the following sisters who joined Life Loyal between August 1 and October 31, 2018.

Jo Anna Bole Jeffers
Sandra Ludwick Steinruck

Phi – Washington University

Nicolette Langland
Joanne Scholes Rossnagel

Chi – Oregon State

Cynthia Anderson
Diane Fisher Cheyne
Mary MacGillivray Cox

Psi – Oklahoma

Leni Lundh Burrow
Cecile Gray Crabtree
Chelsie Crosthwait Gabel
Ann Foreman Lason
Linda Marburger
Lindsay Rayburn McIntyre
Taylor Freeman Peshehonoff
Katelyn Phillips
Julia Ford Schweitzer
Sarah Whipps Smith
Susan Turk Sullinger
Ann Griffith Thomas
Kari Ferguson Watkins
Jerri Snow Wesley

Omega – Iowa State

Anne Fischer Brummett
Jane Dunlap Carver
Nancy Chase Coolley
Betty Burke Farwell
Carol Nordskog Fischer
Vicky Erusha Garnsey
Ann Hawthorne
Catherine Guthrie Lindauer
Mary Barrett Medberry
Cheryl Stoner Myhra
Kristine Plogman Pultorak

Alpha Alpha – Toronto

Marilyn Cook Doherty
Brenda Sparling Howe
Chie Iwai-Biske
Allison Norman
Catherine Deacon Russell

Alpha Beta – North Dakota

Carola Robinson List

Alpha Gamma – Nevada

Donna Cooper-Watts
Kathryn Ryan Davis
Esther Calkins McKinley
Bobbie Wiley Vaden

Alpha Delta – Missouri-Columbia

Jennifer Graham Bond
Christy Woltzen Ehrenreich
Karen Olson Ellis
Allie Steiner Fujarski
Beverly Klund Hana
Frances Cox Hervey
Jane George Johnson

Barbara Derr Kolkmeier
Barbara Wendel Lujin
Dorothy Knight Marsh
Marcia Lankford Plankinton
Diane Anton Ryll
Audrey Allen Walsworth
Susan West
Karen Tate Wilson
Corinne Fischer Wipke
Jeannette McDonald Zesch

Alpha Epsilon – Arizona

Linda Stern Bergstrom
Janice Wilson Booth
Linda Burns Brake
Mary Cumming Edwards
Jacklyn Ellis
Bonnie McNabb Harris
Joanne Bloomfield Hunter
Mary Walker King
Suzanne Dresser May
Celia Denny Olson
Nancy Pearson Rodolph
Margaret Laos Savko
Mara Vitolins Tyree
Betty Skaggs Vinall
Peggy Puntenney Withers

Alpha Zeta – Texas-Austin

Sara Segrest Kennedy
Claudia Lovett Taylor
Julia Vowell
Ann Damon Weeks

Alpha Eta – Ohio Wesleyan

Carolyn Watt Long
Merle Twining McKown
Carolyn Callenbach Nelson

Alpha Theta – Vanderbilt

Linda Williamson Bramblett
Mary Lloyd Johnson
Jere Cobb Tate
Cindy Heinemann Waites
Elizabeth Jorgensen White

Alpha Iota – California-Los Angeles

Makenna Beigh
Rachelann Thompson Daniel
Kimberly Flaster
Katherine Harmon
Christine Hayes King
Marilyn Swengel Lee
Margaret Stevens Lefler
Raleigh Warner Nickles
Kathleen Colclasure Ryness
Barbara Sanders Sorenson
Mary Stewart
Mackenzie Swan
Katie Whan
Leslie Brochner Zentner

Alpha Kappa – Manitoba

Cecilia Lonergan Humphreys

Alpha Lambda – British Columbia

Patricia Grespan Johnson

Alpha Nu – Wittenberg

Linda Neff Colehower
Mary George
Karen McGinnis Hopper
Jill Hutto Kunde

Alpha Xi – Southern Methodist

Jeanne Swanson Beach
Karol Hargis Davis
Stephanie Gordon Grimes
Kara Hallam
Suzanne Cundiff Stelmach

Alpha Omicron – North Dakota State

Sheila Miedema Peterson

Alpha Pi – West Virginia

Jo Chetock Shepherd

Alpha Rho – Birmingham-Southern College

Elise Berthon

Alpha Tau – McGill

Christina Tanner

Alpha Upsilon – Penn State

Eileen Dolan
Doris Montuori Levi
Lisa Viola
Constance Sterner Wright

Alpha Phi – Colorado College

Thora Hodge
Charlotte Presti
Janet Smith Sims
Sandra Lazzari Terry

Alpha Chi – William & Mary

Elizabeth Keppel
Elizabeth Ramsey
Alice White Tomlinson

Alpha Omega – Western Ontario

Kellie Roberts Pence

Beta Alpha – Southern California

Juliana Coleman
Courtney Dal Pozzo
Dorothy Folgner Foster
Cristina Grossu
Cheryl Davis Helm
Annabel Hickey
Joan Chapman Jani-Mimms
Darlene Wenger
Kelly-Cederstrand
Diana Willhoit Kendall
Margileth
Sharon Klass

Carol Mahdesian MacDougall
Jessica Chen Moore
Sheri Taylor Nikolakopoulos
Meredith Williams Rosenthal
Joan Jahnke Virgo
Erin Walsh

Beta Beta – Maryland
Amy Costello Crowley
Beverly Stubbs Gill
Marion Benson Hastings
Barbara Hughes Parsons
Bette-Lynne Brendel Rheinhardt

Beta Gamma – Bowling Green
Mary Kesson Mellon
Mary Jo Hyde Meyer
Christine Sayers Yokajty

Beta Delta – Michigan State
Dana Hirt Casson
Patricia Keefe Hene
Andrea Moeck Needham
Jane Fetters Peters
Dona DeSantis Reynolds
Sarah Wells Van De Mark

Beta Epsilon – Miami-Ohio
Marcella Colson-Love
Pamela Cartwright Dehart
Carol Glos Hinshaw
Linda Biegelman Kvistad
Nicola Pribich
Ruth Shape Ray
Barbara Vinsel Tallman

Beta Zeta – Kent State
Valerie Fitting Clark
Cheryl Gooding
Betty Kalish

Beta Eta – Bradley
Elizabeth Beck
Jennifer Goff Johnson
Vicki Mizen Landstrom
Mary McClane Owens

Beta Theta – San Jose State
Lois Kirchner Abbott-Jacobs
Robin Woolever Kieffer
Eileen Bureau McDonald

Beta Iota – Idaho State
Mary Pond-Bell

Beta Kappa – Arizona State
Racquel Beall Evdokimo
Jo Glasson
Tomijo French Moore
Nancy Anderson Rotman
Sashaun Wood

Beta Lambda – San Diego State
Jennifer Myhra Aadnesen
Linda Honey
Betty Arbon Peterson
Kathleen Meadows Smith

Beta Mu – Florida State
Serena Bowen Finn
Bonnie Keefe Goodman
Elizabeth Marshall Green

Rebecca Ross Harkness
Dawn Ingalls
Joan "Ginger" Van Sant
McDonald
Karin Wells Schultz

Beta Nu – Vermont
Harriet Pratt Peterson

Beta Xi – Ohio State
Mary Ehrensberger Giachino
Hailey Wischmeyer

Beta Omicron – Oklahoma City
Patricia Milligan Daniel
Beta Pi – Indiana State
Margie Calvert Bianchetta
Marylynn Colvin Boatright
Deborah Woerner Dodson
Jessica Lee
Nancy Ingersoll Livesay
Katherine Kruger Scott
Mary Stubbeman
Brittney Williams
Maxine Perry Zwermann

Beta Rho – Colorado-Boulder
Taylor Arnold
Karen Heckendorf Case
Virginia Harris Hammond
Lauren Hanzlik
Geri Pittman Jacobowski
Jessica Mefford
Karlin Lanz Morris
Diane Hertneky Phillips
Heidi Rothberg
Suzanne Parr Sposato

Beta Tau – Texas Tech
Valerie Kilgore Briscoe
Gabrielle Duimich Gordon
Carolyn Schmidt Mitchell
Stacie Enders Winter

Beta Upsilon – Kansas State
Sheryl Raglow Becker
JoAnn Goetz Heasty
Cindy Cox Horchem
Mary Eaton Matuszak
Kathy Alexander Rasmussen
Sandra Gutru Reilly
Shirley Crail Sanford
Katelin Cooper Shane
Amber Blake Warner
Amber Stanley Wiens

Beta Phi – Indiana
Karen Whitman Bunnell
Leslie Double Murphy
Julia Short
Martha Kincaid Shuck
Michelle Wood

Beta Chi – Wichita State
Nancy Boman Mattingly
Laura Whitehead Nagy
Ashtin Songster
Cathleen Waters Sullivan
Sandra Thompson Torre
Amiee Windholz White
Paula Shanbour Zarich

Beta Psi – Oklahoma State
Lisbeth Dyer Anderson
Ramona Stanfield Barnett
Jeni Ellis Halliday
Leigh Harlan Kearney
Eryn Larsen
Julianne Wilson Lillie
Kimberly Perry
Linda Baker Sealey-Holtz
Linda Newman Steer
Deborah Parker Strickland
Karon Champion Wheat

Beta Omega – Northern Arizona
Wendie Gard Black
Kimberly Stradling

Gamma Alpha – Memphis State
Nancy Watts Alexander

Gamma Beta – Gettysburg
Brenda Nye Gindin

Gamma Gamma – Wisconsin-Milwaukee
Karen De Rath

Gamma Delta – Wyoming
Martha Dougherty DeLanoy
Carolyn Hansen Dorn

Gamma Epsilon – Puget Sound
Gail Bouldron Adams
Annie Vela

Gamma Zeta – Texas A&M-Commerce
Susan Brown Cashman
Mary Bullard Pool

Gamma Eta – California State-Long Beach
Patricia Andersen Ashauer
Susan Black
Suzanne DesRochers
Mary-Ann Sweetman Gutierrez
Madeleine Lundgren Viden
Janet Parker Whitcomb

Gamma Theta – University of the Pacific
Mary Noble Barnett
Sarah Hudspeth
Diann Robb Lebow
Claudia Merrick Olsen

Gamma Kappa – Nebraska-Kearney
Jenny Gierhan Fisher
Karlee Nuttelman
Lindsay Klassen Potthoff

Gamma Xi – Tennessee-Knoxville
Constance Burnett Burnette
Donna Downen
Shirley Crouse Hoch
Nancy Pearce Jones

Gamma Omicron – Kentucky
Sharan Hudson Eikelberger
Carol Brandon Timmons
Elizabeth Wilson Turner

Gamma Pi – Minnesota State-Mankato
Bridget Bregel
Gail Wik Einerson
Mariah Niver

Gamma Rho – Wisconsin-Oshkosh
Pamela Zuehlke Wheless

Gamma Sigma – Western Michigan
Barbara Brown Petru

Gamma Tau – Saint Louis
Carolyn Smith Bruns

Gamma Phi – Auburn
Carol Hendrickson
Rachel Fisher Horton
Amanda Justice
Martha McGill Kasper
Barbara Krogland Korzan
Kathryn Patrick Lewis
Georgia Olsen O'Daniel
Susan Hawkins Painter
Erika Torres

Gamma Chi – Texas State
Carol Riedel Bruemmer
Margaret Freed Davidson

Gamma Psi – Northern Iowa
M. Parsons Griesenbrock
Shelley Neville
Emily O'Connell

Gamma Omega – Wisconsin-Platteville
Jean Lunowa Damm

Delta Alpha – Wisconsin-River Falls
Jodie Stewart Falde

Delta Beta – Boise State
Patricia Crepps

Delta Delta – California State-Fullerton
Savanna Crawford
Patricia Laventure Wagner

Delta Eta – California-Irvine
Gisele Samaan Koulakis
Dara Ziegelmeier Patton

Delta Theta – California Polytechnic State
Robin Wilson Carrier
Marcelle Alldaffer Hampton
Trish Hannon Madge
Ellen Sanders Way

Delta Iota – Purdue
Carolyn Schnirring Dungan
Kerri O'Connor
Diane Grieger Parks

Delta Lambda – California-Riverside
Jennifer Noble Gjovig
Ashley Hart
Carol Hendershot
Sukeshi Bhalani O'Neal

Delta Mu – Rutgers
Joanne Divita Neustater
Pamela Southard
Julie Tung

Delta Nu – Missouri State
Melanie Ewy
Christine Coleman Sandwell

Delta Xi – Bucknell
Jane Blake
Ann Isban Metz

Delta Pi – Illinois State
Elizabeth Giles Glenn
Kelly Rufa Johnson

Delta Rho – Dickinson
Andrea Paoella Stutler

Delta Sigma – Florida Institute of Technology
Jamie Brisbin Breslin
Norma Molina Costello
Deborah Cobb Felts
Coleen Vaccaro Taylor

Delta Tau – Colgate
Amy Abshier
Kimberly Morris Larsen

Delta Upsilon – Georgia
Tessa Cierny
Holly Lane
Kelli Huskey Southern
Jennifer Dushku Von Bargaen
Sharon Anderson White

Delta Phi – California State-Bakersfield
Casey Vontz Zacks

Delta Chi – California State-Sacramento
Karen Johnston Larkin

Delta Psi – California-Santa Barbara
Samantha Fallon
Robin Grossman Kanowsky
Alexandra Beck Pierce

Delta Omega – Oakland
Danielle Kolomyjec Boots
Maria Reed

Epsilon Gamma – San Diego
Kristin Boettger

Epsilon Delta – Creighton
Andrea Baalman Taylor
Cassandra Wieseler Ward

Epsilon Zeta – Jacksonville
Tonya Hoag Ritchey
Megan Todd

Epsilon Eta – Bridgewater State
Emily Bradley
Alexis Kay
Carrie Kulick-Clark

Epsilon Theta – Clemson
Marlene Alexander
Mary Flynn Hartley
Mary Hardin Linebaugh

Epsilon Kappa – California State-Chico
Heather Jackson
Noelle Matteson

Epsilon Lambda – Alabama-Tuscaloosa
Laura Sterling Davenport
Rachel Dodson
Michelle Patterson Evans
Emily Hoskins
Michelle Belcher Hubbard
Carrie Kleifgen
Haley Loflin
Heather Carter McSwain

Joyce Walker Meyer
Jessica White
Rachel Wilson
Gina DeVictor Wilson
Angela Hanners Wilson

Epsilon Mu – Loyola-New Orleans
Summer Bosch
Christine Blom Callahan
Diane Farmer McLendon

Epsilon Xi – Rhodes College
Elizabeth Young

Epsilon Pi – George Mason
Maura Conte
Nicole Pearson
Jody Barefoot Ralston

Epsilon Rho – Stephen F. Austin State
Elizabeth Crabb Judge
Lori Sorensen Lee

Epsilon Sigma – Morehead State
Leah Kelly Matthews

Epsilon Tau – Rochester
Catherine Mets Darbyshire
Rebecca Cole Doyle
Raisa Dukas

Epsilon Upsilon – South Dakota
Sandra Youngworth

Zeta Alpha – Eastern Washington
Paula Strom Crawford
Tika Melroy

Zeta Beta – Virginia
Caroline Gardiner

Zeta Eta – Lander
Ashley LeGette Wallace
Brittany Way

Zeta Theta – Pepperdine
Kathryn Maidlow
Taylor Palmer
Anna Rogers

Zeta Iota – Valparaiso
Aimee Smith Gibson
Amber Will

Zeta Kappa – Southern Indiana
Kerstin Deckert
Katelyn Henning
Ambree Kight Miller

Zeta Xi – College of Idaho
Jessica Hayward Michaelson

Zeta Pi – Penn State-Altoona
Andrea Paul Weeks

Zeta Rho – Texas A&M-College Station
Kristin Werner Brown
Sandy Lester Miles
Chelsey Meek-Beck Roney

Zeta Sigma – South Carolina
Alexandria Beard
Chelli Nottoli

Zeta Phi – Arkansas-Fort Smith
Breeanna Borum Boyd

Zeta Chi – Texas Christian
Ariel Selzer

Zeta Psi – Texas-San Antonio
Jessica Alexander
Kaitlin McGaughey Cotner
Megan Tompkins
Kaitlynn Whitman Williams

Eta Beta – Florida Southern
Jamie Everett
Ashton Mallicoate
Amelia Summersbee

Eta Eta – South Florida
Kara Cain
Shannon Urban

Eta Kappa – Tennessee-Chattanooga
Chelsie Keef
Neha Patel
Abigail Scott

Eta Lambda – Central Florida
Hailey Steuer

Eta Mu – Duke
Carolyn Fishman

Eta Nu – James Madison
Jessica Tamis

Eta Xi – Florida
Carol Coxon Falvey

Eta Pi – Quinnipiac
Kara Murphy

Eta Rho – Nevada-Las Vegas
Abby Dimond

Eta Sigma – Central Missouri
Machale Mallicoate

Official jewelry and accessories to enhance your membership experience. **HJGreek.com**

INSPIRE.

HJGreek.com/GPB || 1.800.451.3304



A. Polished Badge with Pearl Phi and Diamond Points*, #0103/0104D
[*Must be ordered through HQ.]

B. Crown Pearl Double Letter Guard, #J0600
GP \$68 SS \$81 10K \$128

C. President Dangle, #JDNGLO01A
GP \$11 SS \$18 10K \$32
Visit **HJGreek.com** to see the entire collection.

D. Juliette Watch, #JULIETTE \$50

E. Chapter President's Ring, #0453
SS \$125 10K \$315 14K \$435

F. Lyanna Layered Necklace, #LYANNA \$50

G. Belle Bracelet, #BELLE SS \$59



K – karat gold, SS – sterling silver,
GF – gold-filled, GP – gold-plated

SORORITY Life

It's collegiate and alumnae chapter updates – at a glance! Read all about our shining chapters across the continent and their recent activities. For submission guidelines, visit GammaPhiBeta.org.

Region 1

CONNECTICUT

Eta Pi Chapter (Quinnipiac)

New sisters were thrilled to be initiated into Gamma Phi Beta on Founders Day! The chapter held a Founders Day ceremony shortly after Initiation was complete.

NEW JERSEY

Bergen County Alumnae Chapter

In October, Bergen County Alumnae joined [Princeton Alumnae Chapter](#) at Kristin Chenoweth's (Oklahoma City) show, and Kristin met up with the women after her performance! The chapter also participated as coaches and hair stylists at the New Jersey North Girls on the Run 5k and celebrated Founders Day.

NEW YORK

Epsilon Epsilon Chapter (Union)

Throughout the semester, Epsilon Epsilon Chapter hosted multiple sisterhood events. They went apple picking, held movie nights and competed in chapter Olympics. The events allowed new sisters to meet more members and promoted teamwork within the chapter.

ONTARIO

Alpha Alpha Chapter (Toronto)

The chapter hosted a Moonball volleyball tournament and had more than 200 people in attendance. They were thrilled to spread the word about Girls on the Run and raise more than \$3,000 for our philanthropic partner.

PENNSYLVANIA

Alpha Upsilon Chapter (Penn State)

Sisters are proud to have raised funds and awareness for Girls on the Run during their Moonball basketball tournament. They also enjoyed celebrating Founders Day with [State College Alumnae Chapter](#).

Region 2

FLORIDA

Naples Area Alumnae Chapter

The chapter is thrilled to share they have 18 Life Loyal members as of the end of October. With approximately 45 members in the chapter, they can claim 40 percent of their members are Life Loyal!

Tampa Bay Alumnae Chapter

At Convention, the chapter received the Clara Worden Award and honorable mention for the Chicago Award. Alumnae chapter member Christie Kroeger (Kansas) received the Shining Star Award from the Foundation. In October, sisters gathered to support Girls on the Run (GOTR) through the GOTR Dinner Hop. The group enjoyed an appetizer, entrée and dessert from three different restaurants. Members showed their support in the fight against breast cancer by participating in the American Cancer Society's Making Strides Against Breast Cancer 5k walk. Two of the chapter members celebrated 10 and 13 years of being cancer free.



Region 1 | Sisters of Epsilon Eta Chapter (Bridgewater State) enjoyed apple picking and other fall activities in addition to reconnecting with alumnae members during their Founders Day celebration.

KENTUCKY

Epsilon Sigma (Morehead State)

The chapter has enjoyed getting to know their newest members and making them feel welcome in the sisterhood. They also hosted an alumnae mixer during homecoming week to connect with sisters of all ages.

SOUTH CAROLINA

Epsilon Theta Chapter (Clemson)

To celebrate Founders Day, sisters invited alumnae from their chapter and the surrounding area to join them for a ceremony. The chapter also enjoyed participating in homecoming community service events.

MARYLAND

Beta Beta Chapter (Maryland)

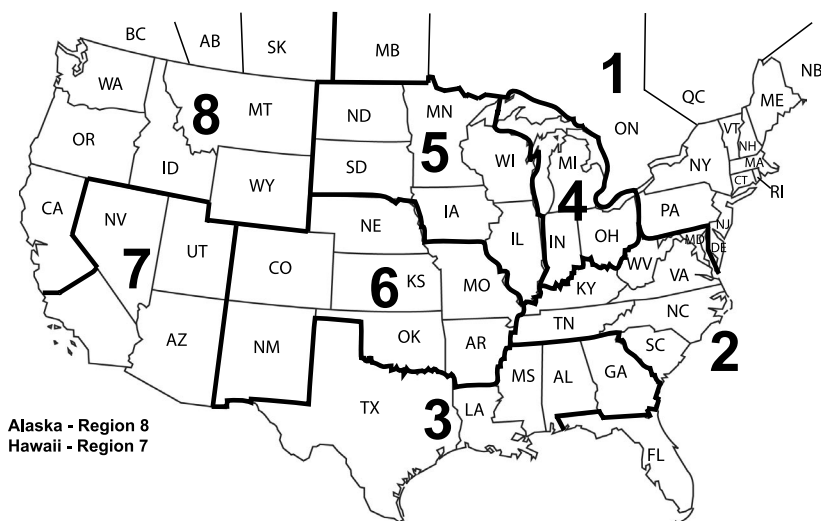
The chapter initiated 52 new sisters and raised more than \$12,000 for Girls on the Run during their Moonball basketball tournament.

VIRGINIA

Alpha Chi Chapter (William & Mary)

Sisters enjoyed hosting a philanthropy event for Hampton Roads Girls on the Run. They had a great turnout and look forward to Moonball in the spring!

Gamma Phi Beta Sorority by Regions





Region 2 | Members of the Knoxville Alumnae Chapter met at the home of a sister for a luncheon and business meeting.



Region 4 | Beta Chapter (Michigan) welcomed new members with coffee chats, trips to a local cider mill and a chapter retreat.

Epsilon Iota Chapter (Christopher Newport)

Epsilon Iota sisters are very proud of their involvement with Girls on the Run. A few sisters volunteer as coaches for teams every week, and during this year's Moonball tournament, they raised more than \$2,000 for our partner.

Fairfax County Alumnae Chapter

The chapter invited members and their families to enjoy a scenic jaunt around Burke Lake as part of the Founders Four Mile Walk/Run. Everyone enjoyed spending time outdoors and collecting donations for Girls on the Run.

Region 3

GEORGIA

Zeta Tau Chapter (Emory)

Sisters enjoyed celebrating Founders Day with alumnae at a brunch. The chapter is excited to see what their new executive council will accomplish during their term.

TEXAS

Gamma Iota Chapter (Midwestern State)

The chapter hosted their inaugural alumnae mixer this semester and competed in a lip sync battle, cardboard boat race and float building during homecoming. They were thrilled to initiate their newest sisters just a week after Founders Day.

Zeta Lambda Chapter (Texas A&M-Corpus Christi)

Sisters spent plenty of time with one another this semester through a chapter retreat, Big/Little Sister event, monthly sisterhoods and volunteering for Girls on the Run. They were proud to bust Quota during recruitment and initiated their new sisters on November 10.

Region 4

INDIANA

Zeta Kappa Chapter (Southern Indiana)

The chapter celebrated Founders Day and their 20th anniversary in November. For the event, they spent time with their local alumnae during a ceremony and ice cream bar. In the fall, sisters also enjoyed hosting a Moonball volleyball tournament with 13 teams helping the chapter raise money for Girls on the Run.

Zeta Iota Chapter (Valparaiso)

In September, the chapter hosted their third Moonball tournament. They enjoyed cheering on the teams playing volleyball and had a representative from Northwest Indiana's Girls on the Run share more about the organization with all those in attendance.

MICHIGAN

Beta Delta Chapter (Michigan State)

On November 7, the chapter initiated 54 women. They have enjoyed bonding with all their new sisters. They are so excited to grow the sisterhood and have the newest members become even more involved in the chapter.

Epsilon Beta Chapter (Alma)

On November 2, the chapter held an initiation for an alumna initiate and later hosted a fall retreat where they saw exotic animals and ate donuts with cider. This Founders Day, sisters headed to Lansing, Michigan, to celebrate with Beta Delta Chapter (Michigan State).

Eta Delta Chapter (Grand Valley State)

Sisters have enjoyed connecting with alumnae since school began. They invited alumnae to a brunch during homecoming for the opportunity to meet the chapter's newest sisters.

Detroit Metro Alumnae Chapter

Sisters enjoyed spending time together over cheese trays and popcorn in downtown Rochester Hills, Michigan.



Region 5 | Gamma Rho Chapter (Wisconsin-Oshkosh) had a great time at their chapter retreat getting to know their new members and celebrating sisterhood. alumnae.

OHIO

Alpha Nu Chapter (Wittenberg)

The chapter enjoyed a carnival-themed Bid Day and continued to welcome their new members throughout the semester. They had a sisterhood event specifically for the chapter to get to know each individual better and initiated the new sisters at the end of November.

Beta Xi Chapter (Ohio State)

During homecoming, the chapter participated in competitions for banner decoration, blood drive donations and social media. Sisters won the banner and social media contests, which put them in first place overall! The prize was \$450 donated to Girls on the Run.

Region 5

ILLINOIS

Beta Eta Chapter (Bradley)

Earlier in the academic year, the chapter had a movie and game night with new members to help them feel welcome in the sisterhood. Sisters also enjoyed celebrating Founders Day and initiating their new members on November 11.

Delta Pi Chapter (Illinois State)

Everyone has enjoyed getting to know their new members through many sisterhood events. A chapter favorite was a visit to a pumpkin patch and haunted house. They held their initiation on Founders Day, which was special for all sisters!

Chicago Northwest Suburban Alumnae Chapter

The chapter said farewell to summer and kicked off their fall planning with a tropical-themed dinner. A highlight of the evening was sharing favorite serenade songs from members' collegiate years.

IOWA

Omega Chapter (Iowa State)

This fall, Omega Chapter hosted a centennial celebration. The chapter invited alumnae to visit for the weekend, gave tours of the facility and wrapped up the events with a dinner. Members of all ages enjoyed getting to know one another and celebrate 100 years of Omega.

MINNESOTA

Gamma Pi Chapter (Minnesota State-Mankato)

The chapter has enjoyed spending time with their newest members and helping them feel welcome in the sisterhood. They had a sisterhood retreat where they played games, had camp fires and a photoshoot to help everyone get to know one another better. They also hosted a few socials and spontaneous outings with new sisters.

NORTH DAKOTA

Alpha Beta Chapter (North Dakota)

In the fall, sisters participated in the University's homecoming parade and hosted a brunch for alumnae. They also held their Moonball basketball tournament and raised more than \$3,000 for Girls on the Run.

Region 6

COLORADO

Tau Chapter (Colorado State)

The chapter has worked to connect with alumnae this year. They hosted alumnae members for a dessert party and ritual ceremony for Founders Day, and members of nearby alumnae chapters helped out during recruitment.

Denver Alumnae Chapter

In early November, International Council attended a dinner with Denver Alumnae Chapter. Sisters loved the opportunity to meet the leaders from International Council and everyone enjoyed talking about the future of Gamma Phi Beta.

KANSAS

Sigma Chapter (Kansas)

To get to know their new members better, Sigma Chapter hosted a sisterhood in their courtyard. They projected movies onto a screen and everyone loved spending time together and eating ice cream sundaes. The chapter connected with alumnae by inviting them to speak at PACE meetings. Sisters enjoy hearing from these alumnae because many are doing amazing things in their careers.

Beta Upsilon Chapter (Kansas State)

Members of the chapter worked hard to ensure their newest members felt at home. Initiated members invited new members to attend philanthropy events or just do homework at the chapter facility. The chapter also connected with Beta Chi Chapter (Wichita State). They invited the chapter to their home for the weekend and everyone enjoyed exploring the town and a Sunday morning brunch.

Beta Chi Chapter (Wichita State)

Sisters were thrilled to initiate 25 new members! Everyone has made these sisters feel welcome by inviting them to get coffee, attend events on campus and participate in game nights. In November, the chapter hosted their Moonball volleyball tournament and raised almost \$3,000 to benefit Girls on the Run.



Region 6 | Tulsa Alumnae Chapter gathered downtown to enjoy the beautiful September weather, kick off the new year and celebrate winning two awards at Convention.

Greater Kansas City Alumnae Chapter

Alumnae enjoyed attending their annual Top Chef dinner. They gathered in a member's home, and a local chef taught them how to prepare a delicious meal!

MISSOURI

Gamma Tau Chapter (Saint Louis)

The chapter has enjoyed getting to know their new members through sisterhood events, study sessions and one-on-one dinners. Founders Day was celebrated with a brunch downtown and new members were initiated on November 17.

Delta Nu Chapter (Missouri State)

Sisters were thrilled to initiate 53 new members this fall! They also hosted a Moonball volleyball tournament where they raised more than \$1,300 for Girls on the Run.

Eta Iota Chapter (Rockhurst)

This semester, the chapter hosted their Moonball volleyball tournament. They raised more than \$1,400 for Girls on the Run and enjoyed inviting their campus community to learn more about our philanthropic partner. The chapter looks forward to volunteering at the next 5k, and a few sisters will be coaching their own teams for the second semester in a row!

Saint Louis Alumnae Chapter

A few sisters visited the Saint Louis Art Museum's exhibit Sunken Cities: Egypt's Lost Worlds. Museum docent and sister Denise Sandage (Purdue) provided a private tour for the chapter.

NEBRASKA

Pi Chapter (Nebraska-Lincoln)

This year, Pi Chapter won their University's homecoming competition for the third year in a row! They placed first in a talent show dance and a pep rally lawn display and had a large percentage of members donate blood and volunteer.

Epsilon Delta Chapter (Creighton)

For their sisterhood retreat, Epsilon Delta stayed in cabins in their local state park and participated in many bonding and sisterhood-building activities. They also raised a chapter record of \$6,000 for Girls on the Run at their Moonball kickball tournament!

Region 7

ARIZONA

Beta Omega Chapter (Northern Arizona)

The chapter celebrated their 60th anniversary and their new members after recruitment. They are looking forward to volunteering at a Girls on the Run 5k and attending formal.

CALIFORNIA

Beta Alpha Chapter (Southern California)

Sisters celebrated Founders Day in Orange County, California, with alumnae and collegiate chapters from the area. Beta Alpha Chapter also hosted their Moonball basketball tournament to raise funds for Girls on the Run.

Delta Eta Chapter (California-Irvine)

For the semester's Greek Songfest, Delta Eta sisters rewrote a musical to feature an all-female cast. They won the Biggest Impact Award as the chapter with the most money donated to Make-A-Wish Foundation. Sisters donated more than \$2,000 to the organization.

Epsilon Gamma Chapter (San Diego)

Sisters celebrated Founders Day in Orange County with chapters from the surrounding areas. After a brunch, sisters headed to the beach to play games and bond.

Epsilon Nu Chapter (Chapman)

The chapter is preparing for January's Panhellenic recruitment and their Moonball tournament!

Los Angeles Alumnae Chapter

The chapter stays busy with fun activities. They explored the Huntington Library and Botanical Gardens and took a goat yoga class! Sisters also hosted a blood drive in September.

HAWAII

Hawaii Alumnae Chapter

The chapter is very proud of their sister Leigh Anne Eaton (Florida State)! She is a general forecaster for the National Oceanic Atmospheric Administration's National Weather Service. During Hurricanes Lane and Olivia, she served as the liaison between the forecast office and the state. After a recent promotion she became the first Pacific Region Regional Operation Center duty officer/emergency response meteorologist. Congratulations, Leigh Anne!

Region 8

CALIFORNIA

Zeta Gamma Chapter (Sonoma State)

In October, the chapter hosted their Moonball tournament. They invited Girls on the Run participants and had a table set up to style their hair and paint their faces. The girls and the Moonball participants had a great time!

Epsilon Kappa Chapter (California State-Chico)

Sisters celebrated Founders Day with alumnae members in their area. They hosted everyone for a brunch where all could get to know one another better and current members could inform alumnae of chapter happenings. The event concluded with a Founders Day ceremony.



Region 7 | Delta Phi Chapter (California State-Bakersfield) welcomed 20 sisters home on Bid Day and hosted a new member week filled with activities for the chapter to bond.

Diablo Valley Alumnae Chapter

For their first event of the academic year, sisters were joined by Eta Chapter's (California-Berkeley) facility director for a wonderful pizza dinner from their favorite pizza maker. They are hoping to have new members join them soon!

Marin County Alumnae Chapter

The chapter is proud to be going strong and welcome any interested alumnae in the North Bay area.

IDAHO

Xi Chapter (Idaho)

Sisters celebrated Founders Day by inviting alumnae members to a dinner. They were able to reunite with graduated members and share memories with one another. The chapter also hosted their Moonball kickball tournament and raised more than \$1,800 for Girls on the Run!

Zeta Xi Chapter (College of Idaho)

The chapter enjoyed initiating their new members on November 10 and can't wait to see their chapter's continued growth.

OREGON

Nu Chapter (Oregon)

In November, the chapter held their Big/Little Sister reveal event. The duos were thrilled to spend more time with one another and everyone enjoyed participating.

WASHINGTON

Lambda Chapter (Washington)

The chapter hosted alumnae and their children for a trick-or-treating event at the chapter facility and held their Initiation on November 8, just a few days before a Founders Day brunch with alumnae.

Beta Sigma Chapter (Washington State)

Sisters enjoyed hosting their Moonball basketball tournament to raise funds for Girls on the Run. They also participated in homecoming activities and placed first in a lip sync competition. On October 18, almost 60 new members were initiated into Beta Sigma Chapter.

Gamma Epsilon Chapter (Puget Sound)

Gamma Epsilon joined Lambda Chapter (Washington) sisters for a combined sisterhood event. They participated in a cookie decorating activity and then had a tour of the Lambda facility.

Zeta Alpha Chapter (Eastern Washington)

The chapter celebrated their 25th anniversary with a dinner in downtown Spokane with collegiate and alumnae members. They also hosted their Moonball basketball tournament and had approximately 120 people in attendance and a total of 12 teams competed!

BRITISH COLUMBIA

Alpha Lambda Chapter (British Columbia)

Sisters connected with alumnae at their Founders Day event. They hosted a brunch and reflected on what the chapter and Sorority mean to them.

ETA TAU'S CULTURE OF GIVING

During Convention 2018, the Gamma Phi Beta Foundation introduced the newest giving society – Carnation Nation. After donating, the sister would place a carnation on a map representing her chapter. Ashlyn Kirschner (Colorado Mesa) and a few of her fellow executive council members placed their carnations for Eta Tau Chapter.

"It was something new and a way that we felt we could contribute as college students," Ashlyn explained. "Since we don't have much extra spending money, Carnation Nation was a manageable donation we could make."

Eta Tau Chapter's executive council wanted to donate to the Foundation as individuals because they recognize any contribution can help. All of the Foundation's giving societies benefit Gamma Phi Beta sisters whether it's through a scholarship or our many leadership development events.

When Ashlyn thinks of the Foundation, the leadership conferences she attended are front of mind. She was able to grow as a leader and served her chapter as president. As a graduating senior, Ashlyn is confident she will use her leadership skills in her career and hopes her donations to the Foundation can help do the same for other sisters.

She shared, "Gamma Phi Beta has been so amazing, and I cannot believe how much I have learned as a collegian. As a new chapter, the REAL Leadership events have helped build two strong executive councils and will continue to help grow our chapter."

Since Eta Tau was installed in 2016, they are one of Gamma Phi's newest chapters, but like Ashlyn, the chapter recognizes the importance of donating to the Foundation. In 2017, Eta Tau sisters voted to become a member of The 1874 Society.

Named for the year the Sorority was founded, The 1874 Society recognizes annual gifts of \$1,874-\$4,999 for the areas of greatest need. These



gifts help the Foundation support and inspire the lifelong development of women for members like Ashlyn and the sisters of Eta Tau.

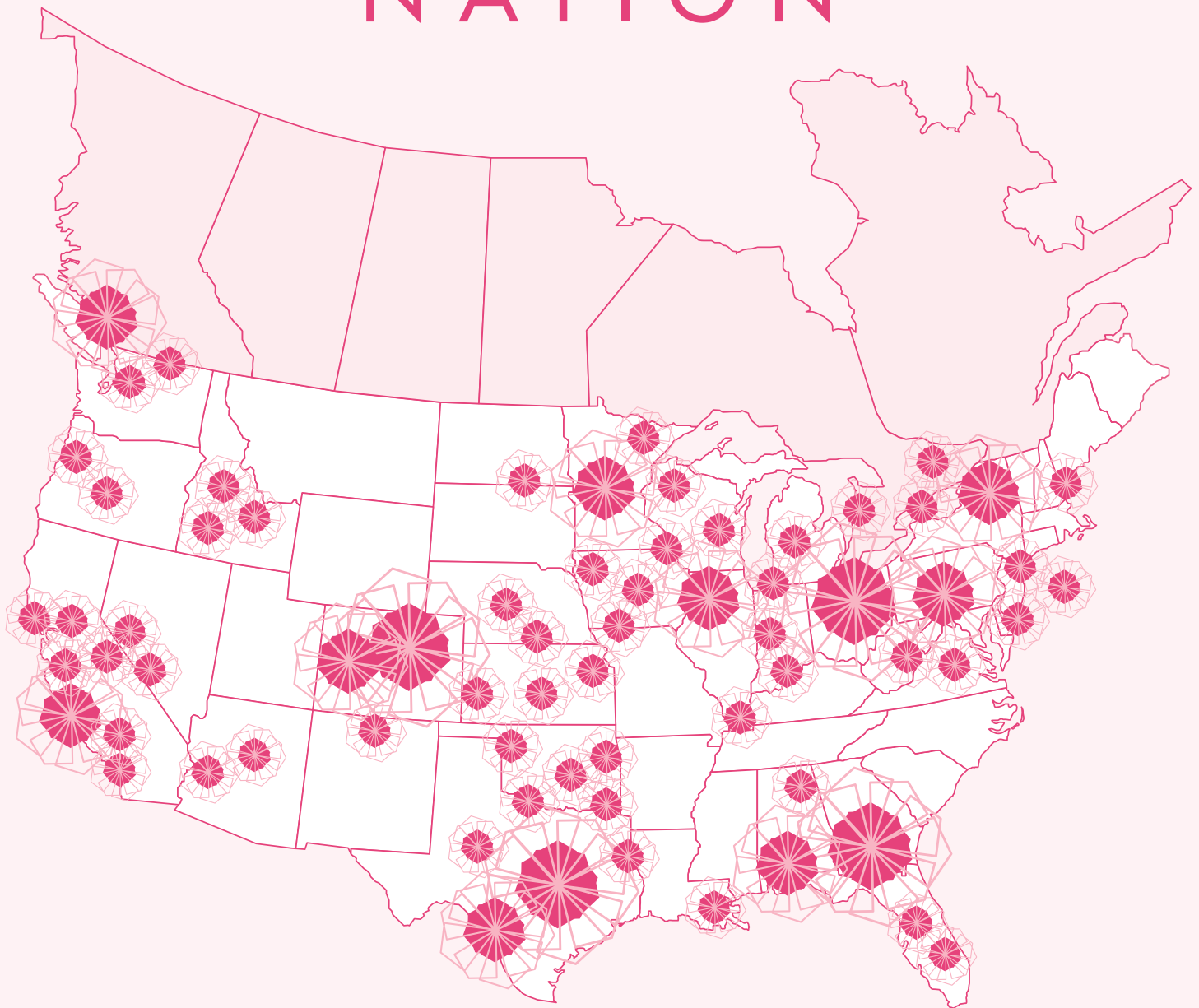
"As a new chapter we saw how much the Foundation does for other chapters and wanted to contribute to that," Ashlyn explained of the chapter's decision. "It is something we want to continue contributing to in the future."

Whether your chapter is interested in joining The 1874 Society or you would like to give individually to Carnation Nation or one of the Foundation's other giving societies, you would make a positive impact in a sister's life.

If you would like to join Ashlyn and the sisters of Eta Tau in giving to the Foundation, please visit GammaPhiBeta.org/Donate. You can make a donation and learn more about our giving societies.

Ashlyn said her executive council chose to give because they felt it was a way for them to contribute to something they love. "Giving is important because you can make a difference in someone's life," she said. "I believe that if you have the means to give, then you should because you never know when someone around you is in needs and how much it will actually help."

CARNATION NATION



Will you join your collegiate sisters who are part of Carnation Nation?

Visit GammaPhiBeta.org/Donate to join collegians across
North America in placing a carnation on our map.

In Celebration

Celebrate a special sister, loved one or event with an "In Celebration" gift to the Gamma Phi Beta Foundation. Thank you to the following donors, whose gifts were recorded as of October 31, 2018. Lists are printed as received from the Foundation.

2018-20 International Council, in your honor

Sharon Brubaker

Alpha Epsilon Chapter (Arizona), in celebration and appreciation for the alumna initiation of Tamara Read (Arizona), my daughter.

Vicki Read

Beta Mu Chapter (Florida State), in celebration of a great recruitment and thank you for the sisterhood and hospitality during recruitment.

Sandy Burba

Fraya Lynn Black (Michigan), in celebration of you being elected as an International Council Vice President.

**Frances Griffin
Sally Lewis**

Daniela Caputo-Noriega (Northwestern), in celebration of you.

Katherine Caputo

Stephanie Carriere (Arizona), in celebration of you being elected as an International Council Vice President.

Vicki Read

Krista Davis (Bowling Green), in celebration of you winning the International President's Award.

**Cathy Griffin
Fran Stevenson**

International Council 2018-20, in celebration of your newly-elected council.

Vicki Read

Christie Kroeger (Kansas), in celebration of your receiving the Foundation Shining Star Award at Convention 2018 in Dallas, and for your commitment to volunteer for the Tampa community and for Gamma Phi Beta.

Bette Bartow Newberger

Sally Lewis (Bradley), in celebration of you winning the International President's Award.

**Cathy Griffin
Fran Stevenson**

Cathy Lindauer (Iowa State), thanks for hosting Panhellenic lunches at our retirement community.

Sharon Brubaker

Nancy Mattingly (Wichita State), in celebration of your role as Gamma Phi Beta alternate delegate for the St. Louis Alumnae Panhellenic Association.

Christy Ehrenreich

Omega Chapter (Iowa State), in celebration of your 100th anniversary celebration.

Kathryn Pollard

Ariel Peele (Colorado-Boulder), in celebration of your years of service as Beta Rho chapter advisor.

**Beta Rho Affiliated House
Corporation**

Leigh Ann Price (Texas Tech), in celebration and support of your first of many anniversaries.

**Crissy Carlisle
Krista Davis
Autumn Hansen
Mary Vanier
Laurie Veldhuizen
Megan Wick**

Psi Chapter (Oklahoma), in celebration of your centennial and the class of 1988.

**Stephanie Brickman
Camille Favre**

Melissa Kieffer Rice (Jacksonville), in celebration of the birth of your legacy, Raleigh Ann Rice.

**Lauren Bowser
Stefanie Brickman
Betsy Hendrick
Lindsay Healles
Brittany Kelly
Brittany Slamons
Anna Starks**

Pamela Southard (Rutgers), in celebration of your appointment as the newest principal of the Primary Centers of the Summit School District.

Cathy Griffin

Maeve Stewart (Coastal Carolina), in celebration of your graduation from Coastal Carolina.

Sharon Brubaker

Joey Stiver (North Dakota State), in celebration of you being named to Gamma Phi Beta's Honor Roll.

**Cathy Griffin
Sally Lewis
Fran Stevenson**

Tampa Bay Alumnae Chapter, in celebration of your chapter receiving the Chicago Award for commitment to loyalty and sisterhood, and for receiving the Clara Worden Award for alumnae chapter growth at the 2018 Convention in Dallas.

Bette Bartow Newberger

Mary Vanier (Kansas State), in celebration of you being named Foundation Philanthropist of the Year.

**Cathy Griffin
Fran Stevenson**

Natalie Wanner (Sonoma State), in celebration of your marriage to Tyler Nethaway.

Gigi Eyre

Megan Wick (Washington State), in celebration of you representing Gamma Phi Beta on the NPC Governance Structure Transition Committee.

Sandy Burba

Zeta Rho Chapter (Texas A&M-College Station), in celebration and appreciation for initiating Allie Meger (Texas A&M-College Station), my granddaughter.

Vicki Read

**To make an "In Celebration" gift, visit GammaPhiBeta.org/Donate or call 303.800.2890. The minimum donation is \$25. Gifts received by January 31, 2019, will be acknowledged in the spring 2019 issue.*

Memorial Gifts

We acknowledge the following individuals and groups who contributed to the Gamma Phi Beta Foundation in memory of a loved one as of October 31, 2018. Lists are printed as received from the Foundation.

Dixie Dupre Bartell (Oklahoma, 1952)
Psi Chapter Affiliated House
Corporation

Ruth Giles Beach (Syracuse, 1999)
Judy Kaspar

Beverly Cannon, mother of Kitty L.
deKieffer
Sharon Brubaker

Carol Caruso (Arizona State, 1975)
Darla Dakin

James Davis Sr., father-in-law of Krista
Davis (Bowling Green)
Barbara Boenzli
Julie Dunn Eichenberg
J.J. Kaelin
Mary Vanier

Jo Ann Fanning Durham (Texas A&M-
Commerce, 1973)
Linda Gafford Belota
Ann Barger Bracey
Diane Cohen Drago
Sharon Gale
Lucy Hefner
Maxine Kruse
Jackie McGinnis Melcher
Carlotta Norman
Sue Ott
Sally Glenn Parmelee
Ann Baird Smith
Beverly Stevens
Carol Meyers Stewart
Anna Stucker

Mary Howe Franck (Washington, 1944)
Anne Moldrem

Peter Gerhold, father of Ginger Gerhold
(Lehigh)
Delta Kappa Chapter Affiliated
House Corporation

Josh Guerra, son of Randy Allard
(California State-Long Beach)
Barbara Boenzli
Sandy Burba
Julie Dunn Eichenberg
Cathy Griffin
Frances Griffin
Barbara Hurt-Simmons
J.J. Kaelin
Betty Kurkjian
Sally Lewis
Karen Urette
Janet Whitcomb

Lucinda Harrold (Colorado, Boulder,
1963)
Geri Jacobowski

Robert Bernard Hoffman, father of Cele
Eifert (Southern California)
Atlanta Southern Crescent
Alumnae Chapter
Cindy Davidson
Fay Hardy
Kim Mason

Mary Andrews Posthill Huber (Syracuse,
1949)
Syracuse Alumnae Chapter

Ryan Linduff, brother of Marcie Linduff
Plumtree (Oklahoma)
Ann Ross

Ann Griffin Neighbors (Auburn, 1970)
Carole Hines

Noel Baron Reynolds (Michigan, 1963)
Sharon Brubaker

Bruce Sampsell, husband of Jacqueline
Sampsell (Syracuse)
Syracuse Alumnae Chapter

Kevin Stewart, husband of Irene Stewart
(Rutgers) and father of Maeve Stewart
(Coastal Carolina)
Sharon Brubaker

Sharon Aston Stewart (Texas-Austin,
1981)
Cindy Moore

Lorraine Dey Summers (Florida State,
1965)
Carole Hines

Sally Kay Twenhafel Tankersley (Texas
State-San Marcos, 1972)
Barbara Steidinger

Dorothy Allen Wiegelman (Washington
University, 1944)
Christy Ehrenreich

Ruth Winters, mother of Sandra Winters
Hawk (Oklahoma)
Ann Ross

Joshua Zion, brother of Mikayla Zion
(Lehigh)
Delta Kappa Chapter Affiliated
House Corporation

** For deceased members, The
Crescent lists their first, maiden
and last names in accordance with
their school and year of initiation.
To make an "In Memory" gift, visit
GammaPhiBeta.org/Donate or
call 303.800.2890. To be listed
in The Crescent there is a minimum
donation of \$25. Gifts received
by January 31, 2019, will be
acknowledged in the spring 2019
issue.*

In Memory

*We acknowledge the passing of the following members and celebrate their part in our circle of sisterhood.
This list reflects notifications received at International Headquarters between August 1 and October 31, 2018.
First, maiden, last names and year of Initiation are listed for each deceased member.*

Alpha – Syracuse

Frances Lowman Mahler, 1939
Susan Place Duncan, 1941
Margaret Cunningham
Hathaway, 1945
Prudence Baker Tylenda, 1954
Lisa Wood Gutenberg, 1974
Ruth Giles Beach, 1999

Epsilon – Northwestern

Myrtle Wright, 1895
Betty Barrett Butterwick, 1944

Eta – California-Berkeley

Virginia Bentley Williams, 1955

Kappa – Minnesota-Twin Cities

Marilyn Dean Hagerman, 1943

Lambda – Washington

Mary Howe Franck, 1944
Patricia Carpenter Ostlund, 1944

Nu – Oregon

Kay Russell Tompkins, 1959

Omicron – Illinois

Mary Lou Zielinski Haas, 1965

Rho – Iowa

Patricia Faulds Blackman, 1966

Sigma – Kansas

Janet Rohrer Colvin, 1940
Joan Squires Campbell, 1951
Meridee Phillips Jordan, 1967

Tau – Colorado State

Dolores Davies Blanc, 1952
Katherine Blennerhasse
Robinson, 1956
Ethyl Bartlett Riecss, 1961

Phi – Washington University

Dorothy Allen Wiegelman, 1944
Elizabeth Berndt Caraway, 1953

Chi – Oregon State

Gretchen Clinton Laird, 1941

Psi – Oklahoma

Alyce Lawrence Klick, 1949
Judith Janzen Alexander, 1957
Talesa Rose Shores, 1969

Omega – Iowa State

Anne Miller Beaubien, 1941
Mary Smith Hanger, 1944
Dorothy Porter Vance, 1944
Dorothy Olson Donielson, 1949

Alpha Gamma – Nevada

Linda Hoover Meadows, 1966

Alpha Delta – Missouri-Columbia

Dorothy Langdon Timmons, 1937

Alpha Epsilon – Arizona

Florence Puntenney Chandler, 1934
Elizabeth Sergeant Par Gibson, 1949
Helen Harbison Kroese, 1951
Alice Hall Bayer, 1957

Alpha Zeta – Texas-Austin

Birmah Warrington Kearns, 1947
Marian Garner Heller, 1949

Alpha Eta – Ohio Wesleyan

Mary Fish Barnes, 1943
Jo Smart Walker, 1949

Alpha Theta – Vanderbilt

Kathleen Campbell Deskins, 1970

Alpha Lambda – British Columbia

Elizabeth Ridley Bestwick, 1949

Alpha Nu – Wittenberg

Joanne Feichter Trimble, 1945

Alpha Omicron – North Dakota State

Louise Darrow Froeschle, 1939

Alpha Tau – McGill

Eleanor Blanchard Rooks, 1952

Alpha Upsilon – Penn State

Marilyn Williams Black, 1949
Irene Horvath Lawrie, 1957

Alpha Phi – Colorado College

Barbara Simboli Sherman, 1948
Jean Wilfong Fricks-Glenn, 1958

Alpha Psi – Lake Forest

Betty McNabb Rich, 1946

Beta Beta – Maryland

Josephine Porlino Hochheimer, 1950

Beta Gamma – Bowling Green

Louise Roberts Myers, 1953

Beta Delta – Michigan State

Sandra Prince Lekin, 1959

Beta Zeta – Kent State

Ruth Mills Jameson, 1954
Lois Jones Chimbidas, 1955

Beta Eta – Bradley

Alicia Zipprich Butler, 1982

Beta Iota – Idaho State

Yvonne Phillips Draper, 1959

Beta Kappa – Arizona State

Jo Glasson, 1966

Beta Mu – Florida State

Marjorie Flammer Crosswell, 1954
Abigail Waterman Hock, 1957

Beta Pi – Indiana State

Martha Cox Eckelman, 1952

Beta Rho – Colorado-Boulder

Lydia Miller Ruyle, 1954

Beta Psi – Oklahoma State

Staci Sparks, 1989

Gamma Zeta – Texas A&M-Commerce

Betty Banks Larue, 1962

Gamma Theta – University of the Pacific

Linda Barbour Kambe, 1970

Gamma Omicron – Kentucky

Mary Bitting Windberg, 1968

Gamma Rho – Wisconsin-Oshkosh

Ashley Kopczynski, 2014

Gamma Phi – Auburn

Ann Griffin Neighbors, 1970

Gamma Chi – Texas State

Sally Twenhafel Tankersley, 1972

Epsilon Nu – Chapman

Christine lanev, 2018

Zeta Sigma – South Carolina

Katherine Schlegel, 2017

Zeta Omega – Kennesaw State

Margarett Klein, 2014

**To report the passing of a sister, please email gammaphibeta@gammaphibeta.org so we may honor the member on this page in a future issue.*

Vintage ΓΦΒ

Gamma Phi Beta hosted a European tour in 1959, and 61 members boarded a cruise ship for a great adventure. A story about their travels was featured in the December 1959 issue of *The Crescent* complete with pictures including the one below.

We're offering a new, modern travel experience for our sisters in 2019! It's called Travel Gamma Phi and with destinations like Italy, Alaska and Iceland, you can connect with sisters while experiencing different cultures, cuisine and coastlines.

Visit TravelGammaPhi.com for more information about this incredible program!



Capture a Crescent:

Spot it, snap it and email your capture a crescent photos to TheCrescent@gammaphibeta.org for a chance to be featured on the back cover of a future issue. Tip to get featured: We prefer crescents that wax left!



1. New York: Chris Gies McBarnette (Texas A&M-Commerce) was visiting friends in New York when she discovered this crescent moon in a shop window.
2. Michigan: While vacationing with her family in Michigan, Jessica Budzianowski (College of Idaho) spotted this crescent and had to snap a picture!

3. North Carolina: Shelley Pulliam and Terri Pulliam Baker (both Oklahoma State) came across this small crescent moon in downtown Asheville, North Carolina.