



CRESCENT

OF GAMMA PHI BETA

Fall 1989

CHAPTER
ADVISORS

SEXUAL
HARASSMENT

LEADERSHIP
TRAINING
SCHOOL



COMMENTARY



*By Ann Mullen Bronsing,
Foundation Chairman*

During September, all Gamma Phi Beta alumnae will receive an annual appeal letter requesting a contribution for the Foundation. Whether you are a recent graduate receiving your first letter or a loyal donor, the Foundation needs your financial support.

The Gamma Phi Beta Foundation was established in 1958 as an independent public foundation authorized by the United States Internal Revenue Service to receive tax deductible donations. By law, Foundation funds can be used only for philanthropic and educational purposes.

Each year the Foundation Board of Trustees estimates the income that will be realized from contributions and budgets it to do the most good.

Camping

As a Gamma Phi Beta, you know that our international philanthropy is camping for special girls. Each year Foundation funds provide the opportunity for girls to spend 10 days away from unpleasant and unhealthy home conditions by attending our own Camp Sechelt. Thanks to Vancouver alumnae and Gamma Phi Betas from all over the world, these girls are given wholesome recreation, outstanding role models and love.

Many other special girls have their lives enhanced as a result of Gamma Phi Beta alumnae groups that apply for Foundation supplemental grants to provide camperships in their own communities. Last year the Trustees were able to designate \$20,000 for local camperships and camps.

Financial Aid

Financial aid for deserving Gamma Phi Betas has been a Foundation service since 1958. Most financial aid is in the form of grants to collegians and alumnae seeking scholarships and fellowships, which are financed by interest income from permanently endowed trusts.

One fairly recent and unique endowment is the Doris Bird Gordon Special Sister Grant established by Doris (Bowling Green) and her husband. It provides financial support to sisters who have experienced major changes in their lives. For example, a Gamma Phi Beta stricken by multiple sclerosis used a Special Sister Grant to purchase a specially equipped wheelchair that enables her to participate more fully in the lives of her husband and infant son.

Educational Programming

Sorority educational programming has become a major

focus of the Foundation. From your own experience in Gamma Phi Beta you realize that much of the Sorority's service to members is educational. Many times members have told me that success in careers or community service or family relationships is a direct result of Sorority training.

Foundation donors recognize the value of Sorority educational programming and welcome the opportunity to expand it through tax deductible gifts. This year the Foundation was able to designate \$55,000 to help underwrite Leadership Training School and PACE programs. It is the goal of your Trustees for the Foundation to fund *all* qualifying Sorority programs.

On behalf of the Trustees, I want to thank all of our past contributors and extend a challenge to our new alumnae to continue the Gamma Phi Beta tradition of generous support. When you receive your Foundation appeal, whether as a new alumna or a long-time, loyal Foundation donor, remember that a gift to the Foundation is your chance to assist Gamma Phi Beta in its ultimate goal of developing the highest type of womanhood.

CONTENTS

DEADLINES

Winter September 1
Spring December 1
Summer March 1
Fall June 1

EDITORS

Editor-in-Chief

Kris Brandt Riske
2405 W. Gregg Drive
Chandler, AZ 85224

Alumnae Editor

Margy Molden Wiltamuth
1700 Kiva Road
Silver Spring, MD 20904

Collegiate Editor

Lin Schafer Sanford
808 Lake Felicity Court
Slidell, LA 70461

Feature Editor

Natalie Meyer McKenzie
531 S. Burton Place
Arlington Heights, IL 60005

Business Manager

Marjory Mills Shupert
International Headquarters

FEATURES

Leadership Training School 4
The Gamma Phi Beta Foundation funded the 1989 Leadership Training School for international officers, advisors and collegiate chapter officers.

Advising: intangible rewards 6
Four chapter advisors share their thoughts about working with collegiate chapters.

Capital Endowment Campaign 8
Letters from chapters and members reveal their commitment to the Capital Endowment Campaign.

Sexual Harassment 14
Sexual harassment on campus and in the work environment is defined in a PACEletter written by the International PACE Committee.

DEPARTMENTS

Foundation Grants 16

Officers 29

Honors 30

In Memoriam 40

Directory 42

Alumnae News 44

Catalog 46

THE CRESCENT OF GAMMA PHI BETA Fall 1989

Gamma Phi Beta USPS
137-620

THE CRESCENT is published quarterly in Fall, Winter, Spring and Summer by the Gamma Phi Beta Sorority, Inc., 7395 E. Orchard Rd., Ste. 200, Englewood, CO 80111-2509. Subscription price-\$1.50. Produced in the U.S.A. by Maruy Boyd & Associates. Second class postage paid at Englewood, CO and additional mailing offices. Copyright 1989, Gamma Phi Beta Sorority.

Postmaster: Please send notice of undeliverable copies on Form 3579 to Gamma Phi Beta, 7395 E. Orchard Rd., Ste. 200, Englewood, CO 80111.

Subscribers: Send changes of address, notices of marriages and deaths to Gamma Phi Beta, 7395 E. Orchard Rd., Ste. 200, Englewood, CO 80111.



Cover

Allyson Rosen (Rhodes), Amy Jo Olson (Iowa St.), Jen Dallavo (Iowa) and Melissa Mounce (Illinois St.) attend Gamma Phi Beta Leadership Training School.



4

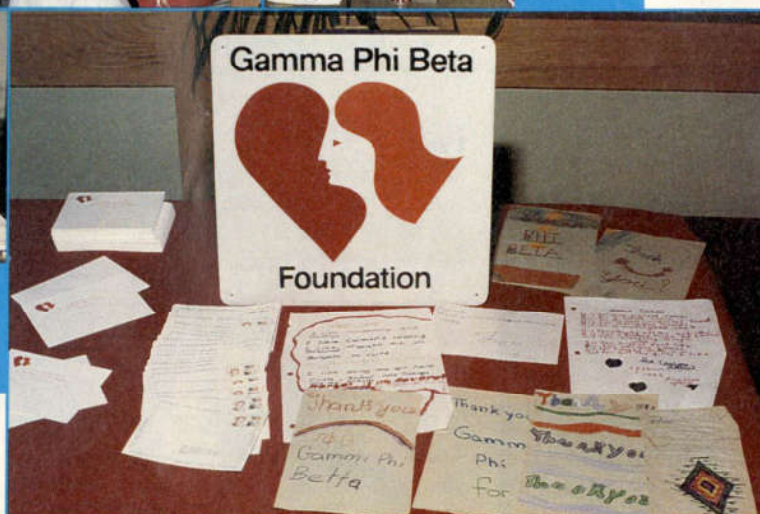
14



Γ



Φ



B

Leadership Training School

Colorado State University was the site of the 1989 Leadership Training School, which was funded entirely by the Gamma Phi Beta Foundation. More than 150 international officers, advisors and collegiate chapter officers experienced a June weekend of learning, sisterhood and Gamma Phi PRIDE.

The first evening, International President Randy Stevens (Calif. St.-Long Beach) welcomed those attending and reviewed the state of the Sorority. Indicating that Gamma Phi Beta's future looks bright, she cited an improved financial picture, an increase in the number of women pledged and initiated, and general chapter excellence. And the dream of a Sorority-owned International Headquarters will soon be reality.

Randy also spoke about challenges facing Gamma Phi Beta and the Greek system. "Each one of our undergraduates must look long and hard at the Greek system on her campus and ask some hard questions," she said. "Do the Greeks enhance university life? Do we abuse alcohol and party irresponsibly? Do we live up to the ideals and purposes of our organizations?" She challenged collegians to take the lead and work within the Greek system to make necessary improvements.

Speaking about Gamma Phi Beta's founding premise "to promote a higher spiritual, mental and social culture," Randy emphasized the need for good scholarship and intellectual growth. "Are we working as hard as we can to develop women who value intellectual achievement," she asked, "who are curious about the world around them, who aren't necessarily satisfied with the status quo, who see themselves as vital, thinking, reasoning human beings?"

Members were encouraged to promote and maintain high standards. "As a voluntary social organization we have the absolute right to expect good behavior from our members," Randy said. If every member strives for excellence, "by looking for the best, and expecting it, we can insure a bright future for Gamma Phi Beta."

With those key thoughts in mind, an intensive weekend of learning, growing, sharing and striving began.

Individual leadership training sessions were held for advisors, collegians, International Rush Consultants, Province Alumnae Directors, Province Collegiate Directors and Area Financial Advisors. While international officers were learning how to better serve and guide collegiate and alumnae chapters, advisors and collegians explored the specifics and basic philosophy of rush, pledge programming, recommendations, public relations, scholarship and finances.

Leadership Training Coordinator Brenda Dunn Rickert (Texas Tech) conducted individual sessions for International Rush Consultants, collegians, advisors and international officers. All attendees benefitted from her four-hour presentation on values and ethics, which focused on the nine basic expectations listed in the summer 1989 issue of *THE CRESCENT*. Brenda reminded everyone that "being a Gamma Phi Beta is a private choice and a public commitment." In turn, she received a commitment from collegians to post the basic expectations where all chapter members will see them.

Kevin Oschner, a member of Alpha Gamma Rho and past national secretary of the Future Farmers of America, gave a motivational presentation Friday evening in which he echoed the words of Randy Stevens. "The Greek system is on the auction block, up for grabs," he said, and challenged collegians to begin with themselves and their chapters to institute changes. "The Greek system is all about building better people."

A highlight of the Pink Carnation Banquet Saturday evening was the message of Sonia Im-Masche, a member of Alpha Phi and Colorado State University Greek Life Coordinator. She reviewed the history of Greek societies since the 1776 founding of Phi Beta Kappa and then focused on current trends. "The largest challenge facing us today is responsibility," Sonia said, "and our survival depends on proactive programming." Particular areas of concern are: alumnae involvement, cultural diversity, the non-traditional student, single sex status, values and ethics, and pledge programming.



FEATURE

Advising: intangible rewards

Would you accept a position that required overtime, flexibility, dependability, extensive listening, confidence, assertiveness, and management and leadership skills—and paid nothing?

Hundreds do each year when they volunteer to be Gamma Phi Beta collegiate chapter advisors.

Some say being an advisor is the most rewarding position within the Sorority. "Helping collegians, sharing in their successes and failures, growing personally and seeing things from another viewpoint," is how Karen Hohenstein Nelson (Drake) views her role as chapter advisor for Epsilon Delta, Creighton University. Corinne Johnson Mutchler (Colorado St.), who advises Tau Chapter, Colorado State University, along with Annie Peters Wimmer (Bucknell), says the biggest reward is in "feeling that you are making a difference."

Each Gamma Phi Beta collegiate chapter has an Alumnae Advisory Committee that meets periodically as scheduled. The chapter advisor serves as chairman and works primarily with the chapter president and executive council. She advises the chapter as a whole, attends executive council and chapter meetings, and serves as a liaison with the alumnae group.

"A quota plus pledge class of excellent young women," is the reward for Nina Comito Freeman (Calif.-Riverside), rush advisor for Delta Lambda, University of California-Riverside. Her position involves assisting the membership chairman in planning and executing rush.

The alumna who serves as pledge advisor attends pledge class meetings and advises the pledge director in planning the pledge program and Inspiration Week. Her guidance is invaluable in ensuring a pledge program free from hazing that emphasizes Gamma Phi Beta expectations.

The scholarship advisor works with the schol-

arship chairman to ensure high scholastic achievement and adherence to international Sorority guidelines. While the challenge may be "to keep grades up," Delta Lambda Scholarship Advisor Doris Havercamp Nelson (Iowa) knows the reward: "The Scholarship Tray!"

Assistance with budgeting and chapter accounts is the role of the financial advisor. She works with the treasurer and also serves on the house corporation board.

Other advisors work in the areas of PACE, ritual, philanthropy, social and Panhellenic. Each has a vital role in Gamma Phi Beta.

International resources available to advisors are manuals, international officers with specific areas of expertise, the Advisor's Advisor newsletter and the Assistant to the Collegiate Vice President-Advisors. Leadership training is offered at Convention, Leadership Training School and Area Leadership Conference. Advisors usually have a close working relationship with the Province Collegiate Director as she is the alumna most familiar with individual chapter strengths and areas needing improvement. Melba Quick Spurrier (Oklahoma St.), chapter advisor at Beta Psi, Oklahoma State University, says advisors achieve a solid working relationship with collegians "by being scrupulously fair, meticulously honest and very dependable." She encourages advisors to withhold initial judgments and intrude as little as possible into chapter activities. Corinne agrees, noting that 95 percent of the time the collegians will solve their own challenges. "I guess we're here for the other five percent of the time when they truly need direction," Corinne says.

All advisors cite scholarship, dependability, sisterhood, organization, compatibility, appearance, interpersonal relationships, responsibility and adherence to Gamma Phi Beta rules, procedures and policies as collegiate strengths to be encouraged.



HELP WANTED

An advisor's job description

- * Must be able to bite tongue frequently and effectively.
- * Must have good eyesight and be able to distinguish a mountain from a molehill at 50 paces every time.
- * Must have tough hide, for she will frequently take the brunt if things go wrong.
- * Must have selective hearing and be able to tune out stereotypes during a serious conversation, yet be able to pick up slightest rumblings of chapter unrest.
- * Must have flexible timetable, for many meetings and serious crises will occur between 11 p.m. and 4 a.m.
- * Must have complete set of fingernails, which are suitable for biting during chapter meetings.
- * Must have a relatively poor memory, and never begin a sentence with "When I was in college..."

Melba sums it up as "those strengths that are born of mature actions and decisions," and Karen says advisors should promote new ideas without interference "as long as the plans conform to policy."

And advisors do have their challenges. Corkie Fossum Mensinger (Calif.-Riverside), chapter advisor for Delta Lambda, University of California-Riverside says patience is one of

hers. She also finds it difficult "to watch them ignore my wonderful advice and let them learn from their own mistakes." Dealing with collegians' personal problems is especially trying for Karen and Corinne, and Melba strives to "unobtrusively influence young adults into making mature decisions."

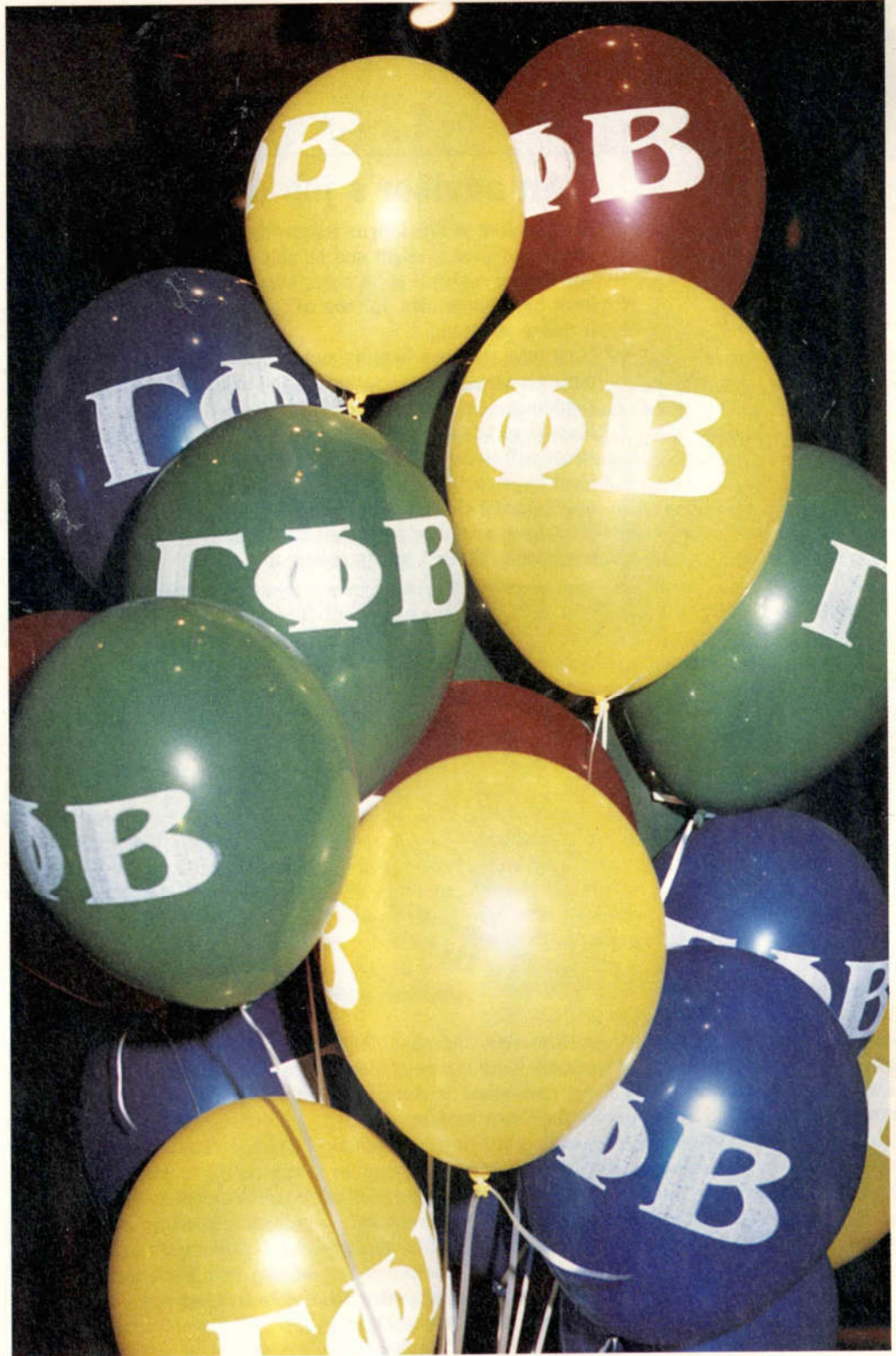
When asked what advice to give new advisors, they responded: Corkie—"Don't panic!

Be flexible and listen and hang in there." Melba—"Listen and try to withhold judgement until all facts are in and all sides are heard." Karen—"Don't try to run things or mold the chapter 'your way.' Let them try their ideas!" Corinne—"Use your best judgment, but when in doubt call the Province Collegiate Director."

Interested in volunteering?

Contact your Province Collegiate Director or the Assistant to the Collegiate Vice President-Advisors. Their names and addresses are listed in the Directory on page 42.

CAPITAL ENDOWMENT CAMPAIGN



Dear Gamma Phi Beta,

The 1988 pledge class of Alpha Delta Chapter held a fundraiser for the Capital Endowment Campaign. Though the fundraiser was limited in scope, it enabled us to work together and experience a few of the responsibilities we will soon accept as members of Gamma Phi Beta. We are able to donate \$195 in the name of our pledge class.

1988 Pledge Class
University of Missouri

Dear Sisters,

Enclosed please find a check in the amount of \$1,000 which is to be applied towards the Capital Endowment Campaign. The Gamma Eta Chapter chose to donate its annual M&M fundraiser funds to this very important and special project. The women here in Long Beach, California have definitely caught the pride and love contributing to the growth of this wonderful organization.

Gamma Eta Chapter
California State-Long Beach

Dear Karen,

It is with a great deal of pleasure and love that I send you a pledge for \$1,000 for the Capital Endowment Campaign in memory of my parents. Gamma Phi Beta has been a wonderful influencing factor in my life—all the opportunities, challenges, leadership training and friendships. I hope my contribution will help our great tradition of Gamma Phi Beta to continue to enrich women's lives, as it has mine, for many generations to come.

Love in II K E,
Babs Hansen Weinberg
(Nebraska)

Dear Gamma Phi Sisters,

Enclosed is my pledge for \$2,000 for the Capital Endowment Campaign. In a way, this is in repayment for college years enriched by the valuable Sorority experience offered by Gamma Phi Beta. When I arrived at USC in 1962, I was very green, charmless and unsophisticated. My years at Beta Alpha taught me social graces, poise and responsibility. I emerged much more confident, ready to go on to further studies with a sound foundation and a rosy smile.

While in medical school at Johns Hopkins University, I ran out of money. I was able to get a job at the Blood Bank and a loan from the school, but it wasn't enough. I wrote to my dear friend, then president Bea Wittenberg, and she quickly responded with a grant (not a loan) to cover my needs. I'll never forget how Gamma Phi Beta saved the semester for me.

Now I have been practicing medicine for almost 15 years (I finished specialty training in rheumatology in 1974). I have four daughters, some in college. By this Endowment Fund contribution, I feel I am only partially repaying my Big Debt to Gamma Phi Beta.

You'll be hearing from me in the future, beyond this pledge, for many years to come. I have been to many reunions lately—high school, medical school, residency, fellowship, internship—but our recent southern California 'reunion' brought back together such treasured friends and warm memories. I spent four wonderful years with these women. I have to say that my Sorority memories are the most precious and that my Sorority friendships have been the most enduring.

In gratitude,
Elizabeth Spencer Smith, M.D.

Gamma Phi PRIDE— Catch It!

FEATURE

Experiences in Vietnam define values



Linda Hallenbeck Pelegrino

Linda Hallenbeck Pelegrino (Calif. St.-Long Beach) has turned her philanthropic instincts into a lifetime of service—from Red Cross “Doughnut Dolly” in Vietnam to current Gamma Phi Beta International Philanthropy Chairman.

She called on Vietnam experiences in March when she appeared on a special television episode of ABC’s *China Beach*. Entitled “Vets,” the program matched interviews with real life Vietnam veterans, sharing their personal experiences and emotions, with scenes from shows that had been filmed during the past two seasons.

Linda’s feelings about her Vietnam experience:

“Up until the last two or three years, I have never felt that what I did was important to others. I have always looked at my experience as something fantastic and unique that I did for myself. I gave myself an opportunity to experience a different part of the world—to live in a very strange situation by being in a war zone and living on a military base with only six women and 50,000 men. I took a risk, and I allowed myself to grow. It is only now that I realize I made a difference to others.

“At 22, it was hard for me to articulate my reasons for going to Vietnam. Almost 25 years later it is easy to see that my desire to do something for others was a strong motivating force. I arrived in Vietnam a wide-eyed young woman armed with a social science degree. When I left a year later, I had replaced my once shy demeanor with seasoned self-confidence.

“I went to Vietnam during this country’s raging debate over the war. One reason I went was to decide for myself whether it was right or wrong. So I signed up to work with an American Red Cross Clubmobile and was one of about 1,600 Red Cross workers rotated through Vietnam from 1962 to 1973, the year American troops left.

“In Vietnam we were affectionately known as

‘doughnut dollies’ and ‘Kool-Aid Cuties’ though we never really served doughnuts. We manned Red Cross recreation centers and flew by helicopter to visit soldiers in isolated areas, where we conducted recreational programs with the men for an hour before hopping another chopper to reach another group. To a lot of people we represented the girl next door. For one hour we took soldiers’ minds off the war, the loss of a buddy, or no news from home. For one hour men could pretend they were in a normal situation sitting around talking to friends.

“We played concentration games or asked trivia questions on music, cars, movies or sports. Even reluctant observers found themselves jumping into a contest when they knew an answer.

“Since our purpose was to boost spirits, we always had to be bright and cheery. We were taught never to cry. Often we would do eight to 10 helicopter runs a day, leaving at sunrise and returning at sunset. At dinner we still had to be cheerful and smiling. I always thought rush was great training for this job!

“The job in Vietnam was both physically demanding and emotionally challenging, but being a Gamma Phi Beta gave me confidence that I could live and work with a variety of people, and I had some of the skills the Red Cross needed. I knew I could learn the rest.

“Each group was different every time we saw it. The men may have been mortared by rockets all night or have been sitting three weeks doing nothing. A hundred things could be going on which changed the feeling of the group, and we had to be sensitive to this. Sometimes we noticed men in various units were missing, but it was almost taboo for us to discuss why. Maybe they were on leave. Maybe they had rotated home. Maybe they had been killed. Often their buddies would run up to us to talk about it. It was then that we became



China Beach star Brian Wimmer and Linda Pelegrino look at photos for the "Vets" episode. Linda is technical advisor for China Beach.

good listeners.

"I feel I made a difference. In Vietnam I was able to help someone while gaining a great deal for myself. Living in a war zone and being faced with death every day helps one define one's values. I learned that friendship, love and joy are what's important in life. I look for experiences that continue to challenge me and make me take risks and grow. I look for career and volunteer experiences that help others and bring joy into my

life. This is what philanthropic projects are all about.

"Through service to others in Gamma Phi Beta, we work hard. As a byproduct, we learn about team work, fundraising, organizational skills and sisterhood. We also learn to define our values. I knew after my year in Vietnam that I always wanted to make what I do matter—to make a difference."

In addition to numerous Red Cross positions during her 12 years with that organization,

Linda, currently a management and marketing consultant for non-profit organizations and corporations, has served as executive director for the Cystic Fibrosis Foundation and vice president and chief operating officer of the Hugh O'Brien Foundation. For the past six years she has been an advisor for Alpha Iota Chapter at the University of California-Los Angeles.

FEATURE

"P

rofitable self employment for a minimum of 5 years and achieving business goals despite personal or economic hardship" qualified Sydney Stoeppelwerth (Kansas) as one of five 1988 Women of Enterprise winners, an award co-sponsored by Avon Products and the U.S. Small Business Administration saluting the courage and determination of America's 3.7 million self-employed women.

Profitably self-employed for more than five years? Sydney started a second business, Tandem Routes, a motivational speaking company, in 1985. This is in addition to the career she's made running her own oil company since 1977. Personal hardship? Sydney has been blind since she was 27.

Why an oil wildcatter? "When people explore for oil no one can see it, so we're all blind," she says. "I knew I had a fair chance to compete simply by using my head." In addition, oil flows in her veins through a grandfather who pioneered the industry in the early years of this century and a father who carried on the business. She and her mother bought producing oil wells in Kansas and Nebraska.

Words to motivate come naturally to this former teacher who had to convince the graduate school dean that someone who was blind could earn a degree. (One semester on a trial basis with an A average was convincing enough.) She then became the only blind teacher hired by the Shawnee Mission School District. Only a desire for greater financial independence led her to start her own business.

Sydney fills as many as 50 speaking engagements annually, custom designing remarks for audiences that are as diverse as Hallmark Cards, of whom she is a great favorite, to Coldwell Banker or the National Association of Plumbing, Heating, and Cooling Contractors of America. She motivates her listeners to challenge themselves to further personal and professional growth, always employing wit and humor to help her audience learn through laughter. "I'm going to play tennis when I find someone who manufactures tennis balls with buzzers in them," she quips.

Some of Sydney's words of wisdom:

On Blindness:

- "I get to meet you inside, first. I see more sometimes by not seeing."
- "Blindness is incredibly inconvenient but not a handicap. Once I've learned to control physical inconveniences, I believe in ignoring them."
- "Without sight one is totally aware of reality (with the exception of color). What good would eyes be without a brain?" . . . "Our human thinking process recognizes the unique, and that is where we get our most precious resources. If we think in stereotypes, we're doomed, because stereotypes don't allow for differences."

On General Living:

- "Literacy is one of America's most urgent national needs."
- Use the direct approach to deal with the world.
- "Luck is when opportunity and talent blend."

On Women in Business:

- "Set a goal. Then worry about how to achieve it."
- Stay flexible. Inflexibility retards progress.
- Have a sense of humor.
- Enjoy being women. "While it might not be fair, appearance does matter. It is the first language that talks. So keep a clean, groomed, tailored look."
- Focus on service and followup. Profit will flow naturally.
- You can't operate well in the marketplace until you feel very confident about yourself.
- "Don't be intimidated by a challenge."
- Learn to be competitive. Men are trained for competition. Women need to learn. But make it a positive competition, for the love of the game. "Let me do it the best that I can."
- "You have to care about what you do."

On Good Leaders:

- They are risk takers.
- They are compassionate.
- They are bright.

By Talie Meyer McKenzie,
Feature Editor

Motivation is



Sydney Stoeppelwerth (Kansas)

- They recognize change is constant in the universe. Persevering and persistent, they believe in their own capabilities; can admit failure; grow from failure; are self-respecting.

- They assume leadership qualities—assertiveness, good communications skills, boldness.

- They are honest.

- They are energetic. They motivate themselves. They are not clock watchers. They assume responsibility,

are patient, proud, have purpose and direction.

Sydney refuses to use a seeing eye dog ("I'd wear him out with my travels."). And she certainly feels a jewel-encrusted ebony cane is much classier than a white one. "It conveys dignity and confidence. I ignore my blindness except when I need assistance in mobility. It is not the center focus of my life. I do everything I ever did, except read print ink and drive a car."

Sidney's expertise

PACELETTER

Sexual Harassment

*By PACE Committee
members Carol Seigal
Geller, Kendra Gates and
Lynn Towsley Hamblin*

Susan, a college junior majoring in German, was invited to the department head's campus office for a conversation practice session. Wondering if the meeting would be in her best interest, she was afraid to go because he was known as a tyrant and, at the same time, hesitant to say no because of possible consequences regarding her grade point average. Susan discounted these thoughts as childish and told no one about the scheduled appointment.

The practice session proceeded as planned and Susan's fears diminished. However, she gradually became aware that the professor was moving closer to her while engaging in conversation. Suddenly, he began caressing her face, and Susan was afraid. She does not remember how she left the office, only that she left without making a scene. While walking home, she kept asking herself, "was this my fault . . . was it something I did?" Mingled with her feelings of guilt and embarrassment was the fear of what would happen in class the next day. She did not know where to turn for help.

Judy returned to work after her children entered elementary school. Before accepting the position, she advised her prospective employer that occasional time off would be needed to attend school functions. He agreed, telling her this was his unwritten policy and that others could cover for her.

Five months later Judy confidently requested several hours off. Her employer granted the request providing she would work late that evening. After all other employees had left, he called her into his office and alluded to the necessity of special favors for special requests. Alarmed, Judy thought it best to leave the office immediately. She was moving toward the door when her employer grabbed her arms and tried to hold her. Breaking free, she ran from the building.

Judy and Susan were victims of sexual harassment, defined as unwanted sexual advances and visual, verbal or physical conduct of a sexual nature.

Many people believe sexual harassment happens rarely, but it has been estimated that between 20 and 30 percent of women students have been sexually harassed in one form or another. Estimations for working women are between 50 and 80 percent, regardless of age or physical attributes.

To identify, report or confront sexual harassment, students need to understand when the label applies. It is important to note there are major differences between male/female peer relationships and student/faculty relationships. The two are governed by different rules, because sexual harassment on campus implies a misuse of power by the faculty member.

The Project on the Status and Education of Women sponsored by the Association of American Colleges includes a descriptive list of actions that may constitute sexual harassment. It is intended only as a guide and covers a broad range of behavior:

*Verbal harassment or abuse.

*Subtle pressure for sexual activity.

*Sexist remarks about a woman's clothing, body or sexual activities.

*Unnecessary touching, patting or pinching, or leering or ogling at a woman's body.

*A demand for sexual favors which is accompanied by implied or overt threats concerning one's job, grades, letters of recommendation and so forth.

Sexual harassment in the work place can be defined according to the State of California Department of Fair Employment and Housing (Title VII of the Civil Rights Act of 1964) as:

*Unwanted sexual advances.

*Offering employment benefits in exchange for sexual favors.

*Taking action or threatening reprisals after a negative response to sexual advances.

*Visual conduct: leering, sexual gestures, displaying sexually suggestive objects, pictures, cartoons or posters.

*Verbal conduct: making or using derogatory comments, epithets, slurs and jokes.

*Verbal sexual advances or propositions.

*Verbal abuse of a sexual nature, graphic verbal commentaries about an individual's body, sexually degrading words used to describe an individual, suggestive or obscene letters, notes or invitations.

*Physical conduct: touching, assault, impeding or blocking movement.

According to the study, Sexual Harassment in the Federal Workplace—Is it a Problem? (WDC, 1981), in most cases the harasser is a coworker or employer. However, in a many instances women are harassed by supervisors at any level.

Sexual harassment is against the law.

In any work or campus situation, knowledge is prevention. Know the company or university rules and policies before anything happens. If something

PACEletters, such as this one about sexual harassment, are educational tools dealing with individual and chapter issues. Although previously available only through the chapter president, these resources may now be requested by any member. If you are interested in receiving any of the PACEletters listed below, check the appropriate line.

- _____ Date Rape
- _____ Chemical Dependency #1 and #2
- _____ Voting
- _____ Alumnae Ritual
- _____ Corporate Sponsorship
- _____ Why Join an Alumnae Group
- _____ Membership Retention and Recruitment
- _____ Effective Meeting Management

Name _____

Address _____

Send to: Gamma Phi Beta Sorority International Headquarters,
7395 E. Orchard Road, Suite 200, Englewood, CO 80111.

If you are interested in writing a PACEletter on a current topic, contact International Headquarters at the above address.

does happen, keep records of what happened, stating times, dates, what was said, and the kind of harassment. Inform

company management or university authorities in writing of what took place. If the company or university chooses to ignore



the issue, consider seeking the advice of an attorney. Do not feel you need to go through it alone. Seek the support of friends and sisters.

This article is intended as an informational guide. If you believe you are a victim of sexual harassment, professional assistance is required. Bibliography:

The Department of Fair Employment and Housing, State of California, DFEH 185 (Temp 04/89).

Dzeich, Billie Wright, and Weiner, Linda. *The Lecherous Professor*. Boston, Mass.: Beacon Press, 1984.

The Woman's Changing Role. Instructional Aides, Inc., Plano, Tex. ISBN 0-936474-18-1.

FOUNDATION GRANTS



Michele Trumler (Creighton)

Lindsey Barbee Fellowship

Michele Trumler (Creighton) of Boelus, Neb. is a first year medical student at Creighton University who plans to specialize in pediatrics or dermatology. As an undergraduate biology major, she maintained a 4.0 GPA while working part time and participating in campus and chapter activities. Michele taught two biology labs her senior year, served as chapter recording secretary, freshman guide/mentor and medical school ambassador, and was active in Omicron Delta Kappa, Phi Sigma and Biology Club.

Audrey Weldon Shafer Fellowship

Pam Shafer Burke (Missouri) of Kansas City, Mo. is studying for a master's degree in education with concentration on multi-disciplinary studies. A student at Western University, she is a substitute teacher with a B.S. in elementary education. Pam is a member of the American Association of University Women, P.E.O. Sisterhood and Phi Beta Fraternity for speech and music.

Fern Holcomb Heath Fellowship

Patricia Pearce (Colorado) of San Anselmo, Calif. is enrolled in the Master of Divinity program at San Francisco Theological Seminary. Before beginning her current studies, she earned an M.A. in education, volunteered in the U.S. Peace Corps and was a teacher in the Denver area. After completing her degree, Patricia plans to enter the ministry and work within a church congregation. She is especially interested in counseling and the area of cross-cultural relations.



Patricia Pearce (Colorado)

Founders Fellowships

Judy Graham (Oklahoma) of Dallas, Tex. is a doctoral student in social work administration at the University of Texas-Arlington. Currently a family therapist with the Salesmanship Club Youth and Family Centers, her career goals include an execu-



Judy Graham (Oklahoma)

tive position in human service management, teaching and research in the psychiatric hospitalization of children and adolescents. Judy has served Gamma Phi Beta as a Foundation Trustee, Camping Committee Chairman, Philanthropy Chairman and Camp Sechelt director and counselor.

Michelle Iriggs Madsen (N. Dakota St.) of Fargo, N.D. is completing an M.S. in addiction counseling at North Dakota State. While fulfilling her immediate goal as a counselor in an inpatient treatment center, she plans to continue graduate study in marriage and family therapy to eventually work with families affected by addiction. The mother of two girls, Michelle was a Gamma Phi Beta Colorado camp counselor and assistant director in the early 1970s.

Kathy Vitton (Nebraska) of Omaha, Neb. is in her first year of medical school at the Univer-



Pam Burke (Missouri)



Michelle Madsen (N. Dakota St.)

sity of Nebraska and plans a career in pediatrics. She earned her undergraduate degree in psychology with chemistry and biology minors, and was a member of Beta Beta Beta, Mortar Board, Golden Key and the Student Alumni Association, while serving as a volunteer counselor and health aide. Kathy has served Gamma Phi Beta as chapter president and, most recently, as Collegiate Consultant.



Kathy Vitton (Nebraska)

Julia Bunton (Indiana) of La Porte, Ind. is a first year law student who plans a career in family law especially as it relates to women and children in crisis situations. As an undergraduate she studied criminal justice and psychology and was a member of the Criminal Justice Student Association, Phi Eta Sigma, Golden Key and Pan-

hellenic Judicial Board. Other activities included service as chapter activities chairman, Women's Wheels volunteer driver, Red Cross volunteer and the Student Foundation.



Julia Bunton (Indiana)

Foundation Fellowship

Theresa Lisnich (Illinois) of Downers Grove, Ill. is in her second year of medical school at Loyola University in Maywood, Ill. While studying for her undergraduate degree in journalism, she served her chapter as rush chairman and was a member of Kappa Tau Alpha and the Honors Society. Theresa plans to do her residency in neonatology and/or pediatric surgery and is considering eventually combining her journalism and medical skills as a television medical editor.



Theresa Lisnich (Illinois)

Eta Fellowships

Margaret Parsons (Calif.-Berkeley) of Carmichael, Calif. is a second year medical student at Tulane University who is doing research in dermatology. A member of the American Medical Student Association and the Student Board Housing Committee, she also was elected to serve as a student liaison to faculty and administration. Melissa was chapter president and secretary of the Greek Judicial Committee.



Margaret Parsons (Calif.-Berkeley)

Phyllis Tien (Calif.-Berkeley) of Berkeley, Calif. is in her second year of medical school at the University of California-San Diego, and plans a career in pediatrics, infectious diseases and public health. As an undergraduate, Phyllis served her chapter as scholarship chairman and was active in the Honor Students Society. She has a bachelor's degree in molecular biology and a master's in population sciences.

Lori Henson (Calif.-Berkeley) of Castro Valley, Calif. is studying for a master's degree in social work with emphasis on special children. After earning a B.A. in psychology and social welfare, she taught English at the Institute of Foreign Languages in Japan and volunteered at a hospital for children

FOUNDATION GRANTS

with cerebral palsy. Lori has served Gamma Phi Beta as a Camp Sechelt counselor and as chapter pledge director and house manager.



Holly Stuck (Calif.-Berkeley)

Holly Stuck (Calif.-Berkeley) of Redlands, Calif. is studying for a law degree. After graduating with a B.A. in political science, she worked for one year on the staff of U.S. Congressman Jerry Lewis in Washington, D.C. Holly studied with the Education Abroad Program in Bordeaux, France her junior year, served her chapter as philanthropy chairman and pledge director, and was a member of the Student Music Association.



Christine Roloff (Calif.-Berkeley)

Christine Roloff (Calif.-Berkeley) of Orinda, Calif. is a first year student at McGeorge School of Law. A former environmental consultant who plans to practice environmental law,

she earned her undergraduate degree in political economy of natural resources and also holds a certificate in German as a foreign language. Christine served her chapter as activities chairman and was involved in its elementary school tutoring program.

Melissa Guider (Calif.-Berkeley) of Mar Vista, Calif. is a second year law student at USC. She earned her undergraduate degree in social sciences and was active in the Undergraduate Real Estate Association, Berkeley Model United Nations and Professional Women's Association. Melissa is a member of the Women's Law Association and has worked part time at a law firm and municipal court.

Elizabeth Gunn Prettyman Scholarship

Carisa Lane (Missouri) of St. Louis, Mo. has served on several chapter committees and is a junior design management major.

Eta Scholarships

Catherine Doherty (Calif.-Berkeley) of San Francisco, Calif. is assistant pledge director and a senior majoring in English.

Kimberly Rittenhouse (Calif.-Berkeley) of Walnut Creek, Calif. is a senior genetics major who is active in campus and chapter activities.

Dallas Alumnae/ Alpha Xi Scholarship

Stacey Fitzpatrick (S. Methodist) of Plano, Tex. is a senior studying political science, and serving her second term as chapter social chairman.

Orra Spencer Reid Scholarship

Carlene Miller (Florida St.) of Clearwater, Fla. is a junior majoring in interior design and business, and chapter membership chairman.

Laura Frances Cottingham Scholarship

Lisa Soibel (Kansas) of Northbrook, Ill. is chapter historian, served on the scholarship committee and is a senior majoring in textile design.

Winchester Scholarship

Connie Haag (Denver) of Norman, Okla. is a junior biology major who is chapter scholarship chairman and a member of Spurs.

Betty Luker Haverfield Scholarship

Jeanne Lawler (Missouri) of Manchester, Mo. is active on campus and in Panhellenic, and a junior majoring in special education.

Foundation Scholarships

Lisa Hallmark (Oklahoma City) of Sapulpa, Okla. is a senior majoring in performing arts and dance, and chapter house manager.

Heather Taylor (Wis.-Milwaukee) of Milwaukee, Wis. is serving her chapter as pledge direc-

tor, and is a junior international relations major.

Michelle Hartman (Oregon) of Beaverton, Ore. is a senior studying marketing, and chapter president.

Lambda Scholarship

Kathleen Vail (Washington) of Olympia, Wash. is a senior psychology education major who is active on campus and has been chapter vice president.

Ladyfood Scholarship

Elizabeth Warner (Minnesota) of Cedar Rapids, Iowa has a 3.93 grade point average and is a senior studying international relations.

Ardis McBroom Marek Scholarship

Janet Chleborad (Creighton) of Des Moines, Iowa is chapter treasurer and a senior majoring in organizational communication.

Ellender Dickson Scholarship

Karlynn Schramm (Denver) of Lakewood, Colo. is a senior majoring in finance and real estate, and a member of Golden Key and Order of Omega.

Ruth B. Fox Scholarship

Ashleigh Taylor (Denver) of Ashland, Ore. is chapter membership chairman, and a junior studying computer science with emphasis on software systems.

Irma Latzer Gamble Scholarship

Holly Gough (Wis.-Milwaukee) of Eagle River, Wis. is a senior majoring in biology/pre-medicine, and serves as chapter membership chairman.

Virginia Hill Thayer Dick Scholarship

Carol Montplaisir (N. Dakota St.) of Fargo, N.D. is a junior pharmacy major who serves as chapter membership chairman. Her name is listed in Outstanding College Students of America.

Arnold-Wittenberg Scholarships

Michele Smith (Wisconsin) of Pewaukee, Wis. has been chapter pledge director, and is a senior studying accounting and marketing.

Maria Denegri (British Columbia) of Vancouver, B.C. is a French and fine arts major now serving her chapter as PACE chairman.

1990-91 Scholarships and Fellowships

Graduate Fellowships

Lindsey Barbee—Restricted to study in the fields of law, business, engineering (including architecture), social work or health science professions.

**Fern Holcomb Heath
Audrey Weldon Shafer
Founders
Foundation**

Beta—Restricted to members of Beta Chapter, University of Michigan.

Eta—Restricted to members of Eta Chapter, University of California-Berkeley.

Fellowship applicants are considered on the basis of contribution to community and/or Gamma Phi Beta, academic record, promise of achievement and financial need, and must be accepted in a graduate program before fellowship is granted. Awards will be made only to members in good standing. Fellowships for 1989-90 ranged from \$1,500 to \$5,000.

Undergraduate Scholarships

Elizabeth Fee Arnold—Beatrice Hill Wittenberg

Ellender Dickson—Restricted to members attending colleges and universities with Gamma Phi Beta chapters.

Ruth B. Fox

Kathryn and John F. Winchester—Preference given to members of Arizona or Colorado chapters.

Ardis McBroom Marek—Preference given to members studying journalism or related fields.

Irma Latzer Gamble

Betty Luker Haverfield

Orra Spencer Reid

Laura Frances Cottingham—Restricted to members of Missouri, Kansas or Colorado chapters.

Lambda—Restricted to members of Lambda Chapter, University of Washington.

Dallas Alumnae/Alpha Xi—Restricted to members of Alpha Xi Chapter, Southern Methodist University.

Eta—Restricted to members of Eta Chapter, University of California-Berkeley.

**Ladyfood
Virginia Hill Thayer Dick
Foundation**

Scholarship applicants are considered on the basis of academic record, contribution to campus and/or Gamma Phi Beta and financial need. Awards will be made only to members in good standing. Scholarships for 1989-90 ranged from \$1,000 to \$3,000.

Financial Assistance

Grant-in-aid—Available at any time during the year to members of Gamma Phi Beta who have unforeseen financial need that might force withdrawal from college. Province Collegiate Director approval must accompany application.

All Applicants

Forms and additional information may be obtained by writing after January 1, 1990: Gamma Phi Beta Foundation, 7395 E. Orchard Road, Suite 200, Englewood, CO 80111. Completed applications, including transcripts and letters, must be filed no later than March 1, 1990.

NOMINATIONS

This is your opportunity to take an active part in the future of Gamma Phi Beta. The Nominating Committee needs your recommendations in order to have a qualified, capable and dedicated slate of officers to present to the 1990 Convention.

A strong team of international officers is necessary to

maintain the high quality of leadership needed for the continued growth and success of Gamma Phi Beta. We need you to tell us who you would like considered for these important positions, and would like to have many members recommended for each position. Recommendations may be sub-

mitted by members or collegiate or alumnae chapters.

The Nominating Committee will meet in Denver the first weekend of March, 1990. Committee members are Cynthia Chapman Colvin (Area I), Jean Brooks Oliver (Area II), Mary Jane Hipp Misthos (Area III), Leonite Selzer Moore (Area IV),

Judith Nesbitt McMahon (Area V) and Eleanor Baker Merz (Area VI).

Show us you care about the future of Gamma Phi Beta! Let us hear from you!

Cheri Lamont Brumleau
International Nominating
Committee Chairman

Elective International Offices

☒ **Grand Council** (five members to be elected)

☒ **International President**—Presides at all meetings of Grand Council and the Sorority; coordinates activities of Grand Council members and approves all departmental policies; supervises work of all officers and chairmen not supervised by other members of Grand Council; serves as a director of the Endowment-Loan Board.

☒ **Alumnae Vice President**—Aids in the establishment and maintenance of alumnae chapters and crescent circles and stimulates interest in the Sorority among all alumnae; supervises work of her assistants and the province alumnae directors; acts as International President only in the case of the temporary absence or disability of the International President; is involved in planning for Area Leadership Conferences, Leadership Training School and Convention.

☒ **Collegiate Vice President**—General director of the Greek-letter chapters; supervises work of her assistants, the province collegiate directors and the collegiate consultant program; is involved in planning for Area Leadership Conferences, Leadership Training School and Convention.

☒ **Financial Vice President**—Informs Grand Council as to its ability to undertake any proposed project; serves as chairman of the budget committee; supervises the financial operations of chapters and their affiliated house corporations; serves as a director of the Endowment-Loan Board; supervises her assistants and the area financial advisors.

☒ **National Panhellenic Conference Delegate**—Represents the Sorority at all sessions of the National Panhellenic Conference; serves as assigned to committees by the NPC Executive Committee; advises chapters on Panhellenic affairs.

☒ **Endowment-Loan Board** (four members to be elected)

Qualifications: Education and/or experience in business or finance.

Duties: Manage and administer the Endowment Fund and the Loan Fund.

☒ **Nominating Committee** (six delegates and six alternates to be elected by geographical area)

Qualifications: Previous service at local, province or international level, and attendance at Convention in the last 10 years.

Duties: Meet early in the spring before Convention to consider recommendations for elective international office and prepare a slate of officers.

Recommendation for Elective International Office

Name _____
(first) (maiden) (last) (husband's)

Address _____
(street)

(city) (state) (zip)

Telephone _____
(home) (office)

Unlisted phone numbers will remain confidential.

Chapter and year of initiation _____

Degree or course of study _____

Recommended for _____
(office)

Why is the nominee especially qualified to hold office?

Additional Comments:

Recommended by _____

Date _____

Address _____
(street)

(city) (state) (zip)

Attach an additional sheet if necessary and return by February 1, 1990 to International Nominating Committee Chairman Cheri Brumleau, 18612 Mariposa Drive, Villa Park, CA 92667.



Initiated members and pledges gather in front of the chapter house at the conclusion of formal rush.

Beta Beta's success story

By Heather Caldwell (Maryland)

Gamma Phi Beta reorganized Beta Beta Chapter at the University of Maryland in the fall of 1986 with a determined group of 33 women. Today, the chapter has tripled in size and become successful and competitive.

The University of Maryland has a large Panhellenic system—18 sororities. Each group has its own house with living space ranging from 34 to 65.

Under the direction of Collegiate Consultants and other international officers, the chapter participated in informal rush the next three semesters and worked hard to gain the respect and friendship of other campus Greeks. Awards included the Greek Unity Award and first place in softball, and the chapter supported Greek philanthropic events such as Zeta Beta Tau's Dancers Against Cancer,

Alpha Phi's Aerobication for the American Heart Association, Beta Theta Pi's Rock-a-thon and Tau Epsilon Phi's clothing drive. On Parent's Day family and friends toured the house and campus and viewed a Gamma Phi Beta slide show. Social events were fraternity parties, formals and the Panhellenic Debut Ball.

Located just 20 minutes from the nation's capital, the chapter is fortunate to work with alumnae from the Washington, D.C., Northern Virginia and Baltimore Alumnae Chapters. They provide needed and appreciated support during rush and other activities, and serve as house corporation board members and advisors.

By the fall of 1988, Beta Beta was prepared to participate in its first formal rush and meet approximately 1,200 women.

Theme for the two-week rush schedule was In Search Of . . . Around the World With Gamma Phi Beta, with each set of parties featuring a different country, including Gamma Phi Land. Rush techniques, conversation skills, singing and skit practice kept them busy spring semester and the finishing touches were added in practice sessions held every day for a full week before rush.

The chapter's hard work, dedication and enthusiasm paid off handsomely with a quota pledge class of 48.

Beta Beta continues to strive to make Gamma Phi Beta the best it can be at the University of Maryland. Last spring, a Twister fundraiser for Camp Sechelt was cosponsored by Kappa Alpha Theta and the chapter participated in many

interfraternal activities. Individuals are members of Order of Omega and other honor societies, perform in theater productions, help the needy, are listed in Who's Who, dance on the pom pon squad, study abroad and serve as resident assistants. The chapter has experienced international Gamma Phi Beta by being the initiating chapter for the Christopher Newport College colony, attending Area Leadership Conference, visiting the Lehigh University chapter and holding its retreat at Gettysburg College.

By working toward the ideals of the Sorority and maintaining high standards for its members, Beta Beta Chapter can be proud of what it has accomplished for Gamma Phi Beta.

EXTENSION



**Epsilon Iota Chapter
Christopher Newport College
Newport News, Virginia**

By Vonda Lynch (Christopher Newport)

In historic Virginia, only 30 minutes from Williamsburg and Virginia Beach, is Newport News and Christopher Newport College, site of Epsilon Iota Chapter. Gamma Phi Beta is the first National Panhellenic Conference group on campus.

The 23 former members of a local sorority were initiated on April 30, 1988 by Beta Beta Chapter, University of Maryland. National Panhellenic Conference Delegate Karen Gamel Urette (Oklahoma), Assistant to the Collegiate Vice President-Pledge Debbie Dykes Misiag (Calif. St.-Fullerton) and Collegiate Consultant Cathy Kennedy (Idaho) participated in the ceremony conducted at the Unitarian Church in Newport News.

The installation banquet was held at the Chamberlain Hotel in Hampton. After dinner, proud parents and friends gathered as Epsilon Iota received many gifts, including a Gamma Phi Beta Foundation donation of \$1,000 to the Sarah Bonwell Hudgins Center for the Handicapped in celebration of the new chapter. Karen Urette presented the chapter charter and the pearl and turquoise chapter president's badge.

The Province XIV gift was a chapter banner.

By chapter vote, three members were recognized for their contributions: Bonnie Neal—Learning Award, Kelly Van Dyke—Loyalty Award and Vonda Lynch—Love, Labor and Outstanding Pledge Awards. Cathy Kennedy received a brass-framed photo of the charter initiates.

Christopher Newport Student Life Director Tisa Johnson Mason and Epsilon Iota Faculty Advisor Betty Helm were among the honored guests.

President Vonda Lynch and Pledge Director Deborah Queen had the opportunity to attend the 1988 Convention and felt privileged to be members of the last chapter installed before Convention. They met Gamma Phi Betas from all over the continent and brought ideas, memories and knowledge home to their chapter. Last spring, Deborah Queen, Wendy Moskowitz and Jackie Scull attended Area Leadership Conference and learned teamwork, leadership skills and how to better utilize chapter potential.

Epsilon Iota philanthropic projects include making items for Camp Sechelt, volunteering and visiting the Hudgins Center, and working as ushers for handicapped and elderly people attending college graduations. Through PACE programs they have learned alcohol awareness, makeup tips, etiquette, songs and rush conversation skills. Retreats for rush, the chapter and officers, and campus and Greek activities fill the chapter's calendar, as do formals and fundraisers. Members are active in the Student Government Association, Order of Omega and Greek Council, and the chapter was recognized as the Greek group with the highest 1988-89 grade point average.

Charter members of Epsilon Iota are Charlotte Campbell, Miki Carson, Andrea Foley, Amber Freeman, Kathleen Gallae,



Faculty Advisor Betty Helm welcomes Karen Moore and Deborah Queen to the spring formal.



Spirited Epsilon Iotas build a pyramid after the chapter picnic.

Angel Hagmaier, Kim Hart, Lisa Hudson, Amy Keever, Vonda Lynch, Dolores Mainous, Stephanie Mayhew, Bonnie Neal, Janet Ogden-Day, Deborah Queen,

Amy Riffle, Jackie Scull, Dana Smith, Kelly Van Dyke, Tracy Westmoreland and Tami Winbourne.

EXTENSION

Epsilon Mu Chapter Loyola University New Orleans, Louisiana

April 22, 1989 was a magic day for 53 Loyola University women and one alumna initiate as they became charter members of Epsilon Mu Chapter.

On the first day of New Orleans' February Mardi Gras cele-

bration, prospective pledges, international officers and members of Beta Mu Chapter at Florida State battled traffic jams to arrive at the preference party. In a campus room decorated with balloons and streamers, Beta

Mus performed a candlelight ceremony after dessert. Later in the evening, Panhellenic representatives distributed bids, and new pledges received ribbons and gifts and learned songs.

Local alumnae served as guides for formal pledging, which was conducted the next week at the Beauxregoud Keyes House, an historical home in the French Quarter. Lloyd Huber, husband of Caryl Peterson Huber (Arizona St.), is president of the foundation which maintains the home. Caryl and other alumnae shared collegiate stories and photos with new pledges during the courtyard reception after pledging.

Colony members quickly jumped into Gamma Phi Beta and Greek activities and were thrilled to win their first Greek Week. They also participated in a campus philanthropic project and three others sponsored by sororities, and decorated cups for Camp Sechelt.

Two representatives attended the South Eastern Panhellenic Conference meeting, where they met other Gamma Phi Betas and learned about the Greek system. A colony member was Junior Panhellenic president, the chapter representative is Panhellenic activities chairman and several other members serve on committees.

PACE activities included a dating discussion, a day at the zoo and a retreat, which focused on getting to know each other. Social events were fraternity mixers, pledge party and a formal.

Inspiration Week featured the days of Love, Labor, Learning, Loyalty and Laughter. Poems, guest speakers, goal setting, creating a scrapbook, serenading, a rush workshop and a fireside added to the anticipation of initiation at the end of the week. It was conducted Saturday afternoon at St. Matthias Catholic Church by Gamma Nu Chapter members from Lamar University.

That evening, international officers, local alumnae, and new initiates and their parents and guests gathered at the New Orleans Hilton for the installation banquet and dance. The theme for the black tie affair, "What a Marvelous Night for a Moondance," was reflected in the silver, white and pink balloon, ribbon and glitter decorations. National Panhellenic Conference Delegate Karen Gamel Urette (Oklahoma) welcomed the new initiates to Gamma Phi Beta and presented the Epsilon Nu charter to Amy Atkinson, chapter president.

Father Rodney Manko accepted a \$1,000 donation from



Chapter President Amy Atkinson displays an installation gift.



Modeling their first Gamma Phi Beta shirts, colony members show their pride after pledging.

the Gamma Phi Beta Foundation in celebration of the chapter's installation. The donation will provide camperships at a local camp which serves deaf children and children of deaf parents. Father Manko spoke and signed his thanks and then invited Jim Gibbs, husband of Winona Aguzin Gibbs (Louisiana St.), to sign a message while Winona spoke.

Chapter gifts included a silver candelabra from Panhellenic, a silver platter from Province VIII and a silver platter from the Sorority. Joan Howard Jones, a 1930 initiate of Theta Chapter at Denver University, donated her badge to be used by each succeeding chapter president.

Loyola University Panhellenic Advisor Lanita Hanson welcomed Gamma Phi Beta to campus. Other university representatives were Vice President of Student Affairs Vince Knipf-

ing, Assistant Vice President of Student Affairs Vickie McNeil and Gamma Phi Beta Faculty Advisor and Director of Residential Life Joy Raulerson.

Other Gamma Phi Betas in attendance were Province VIII Collegiate Director Sandra Rettke Nauman (Arizona), Province VIII Alumnae Director Anne Sturgis Phillips Hartje (Vanderbilt), THE CRESCENT Collegiate Editor Lin Schafer Sanford (Arizona), Collegiate Consultants Fran Mayfield (Kansas St.) and Carleen Rose (Oregon), Patricia Crowley (Northwestern), Shirley Hedrick Price (Tennessee) and Lucinda Reppel (Georgia).

Loyola University was founded by the Society of Jesus on April 15, 1912 "to offer a liberal arts education on the undergraduate level to all who seek knowledge and truth."

The university was named

one of the top 10 colleges in the South by *U.S. News and World Report*, is ranked in the top seven percent of colleges by *Barrons* and was named one of America's 200 Best Buys in College Education by *The New York Times*. Degrees are offered from four colleges and enrollment is 3,750.

The 19-acre campus is located on oak-lined St. Charles Avenue in the heart of the New Orleans garden district. Architecture ranges from Tudor-Gothic to modern.

Gamma Phi Beta joins Alpha Chi Omega, Delta Gamma, Theta Phi Alpha, Alpha Delta Gamma and Sigma Phi Epsilon on campus.

Charter members are Laura Anthony, Alicia Atchison, Amy Atkinson, Kim Beattie, Julie Bergen, Christine Blom, Jayne Boyd, Tina Campanaro, Jennifer Campbell, Martha Carr, Nicole

Cass, Taty Costa, Shelley Costello, Liz Covelli, Faith Dawson, Kathleen Foley, Stephanie Giambruno, Mary-Beth Golden, Dottie Green, Liza Helbush, Jennifer Herrington, Kerri Heyd, Lisa Hinojosa, Jennifer Huguenin, Tess Hunt, Jill Katigan, Sara Kienast, Tracy Klauder, Ellen MacDonald, Abby Marshall, Anne Mayher, Christy McCarthy, Tracy Minucci, Bridget Murray, Sandy Örellana, Maria Paredes, Angie Pulido, Paula Raymond, Mary Roarty, Caroline Robertson, Melinda Roig, Kristin Sasser, Joan Schuette, Kathleen Sweeney, Julie Thomas, Kore Thompson, Cheryl Vogelpohl, Lisa Waddick, Kim Weathersby, Elizabeth Whitfield, Jennifer Yoeckel, Kim Young and Suzie Zeretzke. Alumna initiate is Jessica Kuilen Hew.

EXTENSION



**Epsilon Nu Chapter
Chapman College
Orange, California**

Some say southern California has it all, from the beach to the mountains to the desert. The installation of Gamma Phi Beta's twelfth chapter in that area completes the image.

Gamma Phi local sorority at Chapman College in Orange, Calif. was pledged on February 6, 1989 and installed as Epsilon Nu Chapter on April 29, 1989.

Carol Goshaw Blanchard (USC) had assisted the local sorority, since its formation four years previously, in achieving this goal.

With much anticipation for their upcoming initiation, colony members experienced Inspiration Week and the days of Love, Labor, Learning and Loyalty. Activities included dinner with Delta Delta Chapter at California State-Fullerton, making visors for Camp Sechelt, creating a scrapbook, meals together, and a friendship circle. They exchanged bookmarks and pillows, were surprised with decorated rocks and pink carnations from nearby chapters, and received corsages from the seniors and study break boxes from the juniors. Initiation was conducted Friday evening at the Beta Alpha Chapter house at the University of Southern California.

The installation banquet and dance added to the dream come true for the 30 determined and dedicated charter members. Held at the Westin South Coast Plaza, Chapter President Mindy Jewell accepted the coveted charter from Alumnae Vice President Sally Erikson Lewis (Bradley).

Collegiate Consultant Gina Bleile (Wichita St.) served as mistress of ceremonies for the banquet which began with a reception in the garden court. After dinner, gifts were presented by Province XVIa Alumnae Director Susan Jacobsen Rose (UCLA), Province XVIa Colle-

giate Director Cheryl Speer (Calif. St.-Fullerton) and Laura Pounders, president of Delta Lambda Chapter at the University of California-Riverside. The chapter received a banner from area alumnae groups, a file cabinet from area collegiate chapters and an engraved gavel from Delta Lambda Chapter. Gina gave each member a gold crescent collar pin.

In attendance were Chapman College Assistant Director of College Activities Anna Carey and Director of College Activities Jeff Quick who welcomed Gamma Phi Beta to campus. The \$1,000 Gamma Phi Beta Foundation grant in celebration of the new chapter was accepted by Mona Ware, representative of the Girl Scout Council of Orange County.

Marta Lombardi Brown (Boston) presented the chapter president's badge, which will be worn by succeeding Epsilon Nu presidents. It had belonged to her late sister, Sandra Lombardi Farrell (Boston).

The program concluded with a preview showing of the chapter's 1989 fall rush slide show, and a song written and sung by chapter member Amy Carter.

As a colony the group captured first place in Greek Week. PACE programs were held on dating and stress management, and the chapter retreat was at Laguna Beach. Members attended the taping of Love Connection, the all-sorority luncheon and social events with Delta Sigma Phi and Sigma Phi Epsilon.

Chapman College, originally part of California Christian College, acquired its name in 1934 in honor of its founder, Charles C. Chapman. It was moved from Los Angeles to Orange in 1954, and its motto is "the college is an individual as you are."

The college offers programs of study leading to undergradu-

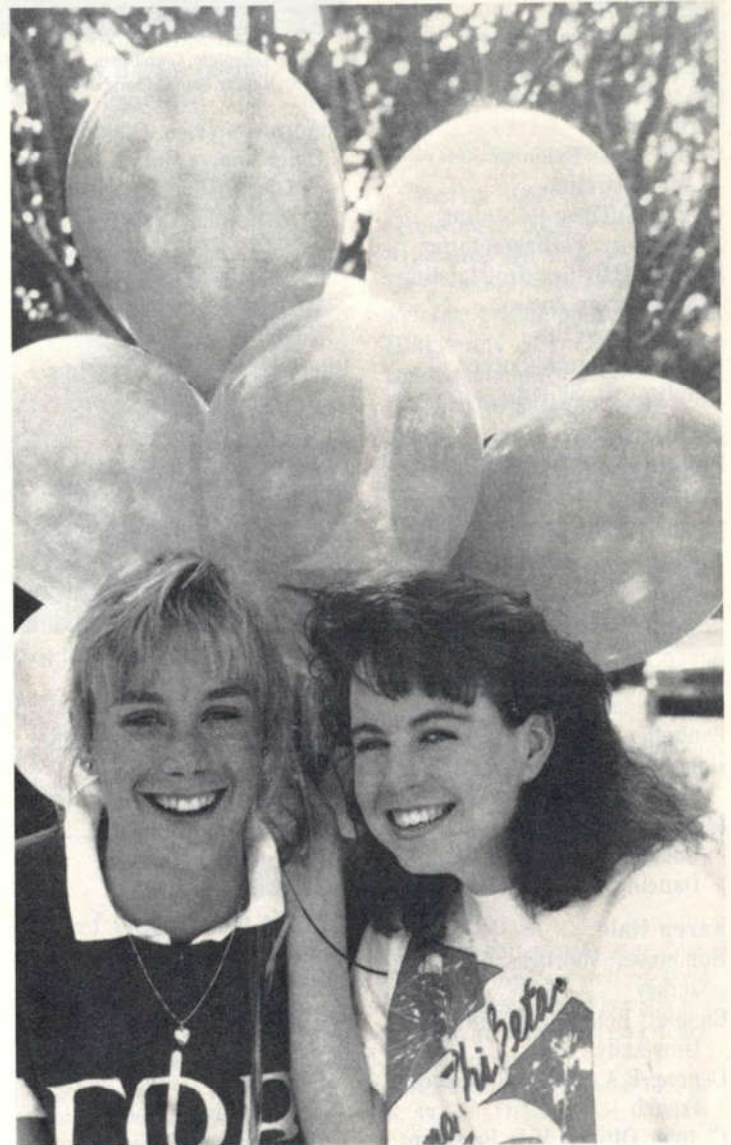
ate degrees in arts, music, science, fine arts and business administration, and graduate degrees in arts, business administration, fine arts, health administration and physical therapy. Undergraduate enrollment is approximately 2,000.

Gamma Phi Beta joins Delta Gamma, Phi Sigma Sigma, Alpha Phi and five fraternities on campus.

Chapter advisors are Terri Waite Blatnik (Colorado St.), Kay McFarlin Wilms (Colorado St.), Karen Weaver (Colorado St.) and Teresa Jones (Calif. St.-

Long Beach).

Charter members are Elsa Acar, Heidi Ankenbrandt, Allison Browne, Amy Carter, Judy Doyle, Amie Dunn, Elise Finley, Lisa Gagnon, Doris Hartigan, Leslie Hein, Heidi Huebner, Cathy Jamison, Mindy Jewell, Jane Kessinger, Susan Knight, Mary Lamance, Jenna Lander, Charlene Lou, Carri Masters, Elena Moore, Nyla Newman, Kellie Oosten, Gina Pachiano, Stephanie Prince, Kathryn Richards, Jay Rosenberg, Judy van Wingerden, Chris Voss, Kelly Weirich, Shelly Williams.



Elise Finley and Susan Knight celebrate a successful spring rush.

COLLEGIATE CONSULTANTS

Jennifer Bortle

Hometown: Villa Park, California
 Chapter: Gamma Eta, California State-Long Beach
 Degree: B.A., Fashion Merchandising/Human Resource Management
 Chapter Offices: Scholarship Chairman, President
 Honors/Activities: Omicron Nu, Panhellenic Scholarship Award, Student Government Senator, Personnel Industrial Relations Association
 Interests: Toll Painting, Craft Design, Shopping, Traveling, Sightseeing

Cheryl Broyles

Hometown: Broomfield, Colorado
 Chapter: Tau, Colorado State University
 Degree: B.S., Business Administration
 Chapter Offices: Recording Secretary, Parliamentarian
 Honors/Activities: Outstanding Scholarship Award, Marketing Club
 Interests: Church, Soccer, Volleyball, Skiing

Laurie Davies

Hometown: Highland, California
 Chapter: Delta Lambda, University of California-Riverside
 Degree: B.A., Psychology/Sociology
 Chapter Offices: Philanthropy Chairman, Social Chairman
 Panhellenic Office: President
 Honors/Activities: Dean's List, Student Leader
 Interests: Music, Sports, Cooking, Crafts, Reading, Dancing

Karen Hale

Hometown: Voorhees, New Jersey
 Chapter: Beta Mu, Florida State University
 Degree: B.A., Political Science/French
 Chapter Offices: Vice President, Social Chairman



1989-90 Collegiate Consultants are (standing) Karen Hale, Molly Maguire, Lynn Jorgenson, Laurie Davies, Kris Harlan, Linda Parker, (seated) Jennifer Bortle, Cheryl Broyles and Lee Ann Herdman.

Honors/Activities: Omicron Delta Kappa, Gold Key, Order of Omega, Rho Lambda, Florida State University Hall of Fame, Senior Class secretary, Scholarships to study in France and Australia

Interests: Dancing, Traveling, Politics, Running

Kris Harlan

Hometown: Kearney, Nebraska
 Chapter: Gamma Kappa, Kearney State College
 Degree: B.A., Public Relations/Advertising
 Chapter Offices: President, Vice President, Alumnae-Collegiate Relations Chairman
 Honors/Activities: Spurs, Rho Lambda, Society for Collegiate Journalists, Ambassadors, Envoys, College Newspaper Advertising Staff
 Interests: Traveling, Sightseeing, Reading, Outdoor Activities, Cooking

Lee Ann Herdman

Hometown: Huntington Beach, California
 Chapter: Delta Lambda, University of California-Riverside

Degree: B.A., Administrative Studies

Chapter Offices: Standards Chairman, Membership Chairman

Honors/Activities: Choral Society, Dean's List, Yearbook Staff

Interests: Music, Piano, Dancing, Tennis, Volleyball, Skiing, Cooking, Arts and Crafts

Lynn Jorgenson

Hometown: Devils Lake, North Dakota
 Chapter: Alpha Beta, University of North Dakota
 Degree: B.A., Political Science
 Chapter Offices: President, Membership Chairman, Standards Chairman
 Honors/Activities: Order of Omega, Who's Who, Alpha Tau Omega LeaderShape Institute, Presidential Leadership Scholarship, Student Activities Committee, Union Advisory Board, University Fees Committee
 Interests: Reading, Running, Cross Country Skiing, Traveling

Molly Maguire

Hometown: Lexington, Nebraska

Chapter: Gamma Kappa, Kearney State College
 Degree: B.S., Public Relations
 Chapter Offices: THE CRESCENT Correspondent, Public Relations Chairman
 Honors/Activities: Mortar Board, Rho Lambda, Horizons, Spurs, Order of Omega, Student Alumni Board, Yearbook Staff
 Interests: Reading, Running, Bicycling, Traveling, Museums, Attending Musicals and Theater Productions

Linda Parker

Hometown: Marie Glen, Pennsylvania
 Chapter: Alpha, Syracuse University
 Degree: B.A., Advertising/Asian Studies
 Chapter Offices: Scholarship Chairman, Corresponding Secretary
 Honors/Activities: Marching Band, Pep Band, Campus TV Station Staff, Campus Magazine Sales Staff
 Interests: Movies, Sports, Acting, Writing Comedy

OFFICERS

Corinne Martinez (Calif.-Berkeley), **Area Financial Advisor**—*Alumnae Chapter*: San Francisco *Career*: Tesseract Corporation project manager *Interests*: golf, traveling, cooking

Janet Leigh Wyche (Georgia), **Alumnae-Collegiate Relations Chairman**—*Alumnae Chapter*: Atlanta *Career*: Xerox printing systems representative *Interests*: golf, skiing, reading



Anne McEvoy (British Columbia)

Melinda Risse Nutter (Kentucky), **Area Financial Advisor**—*Alumnae Chapter*: Dayton, Ohio *Career/Activities*: Children's Medical—Center Board of Trustees, United Methodist Women's Association, Miami Valley School Parents Association *Interests*: golf, flying, scuba diving, children's activities

Anne McEvoy (British Columbia), **Province XII Alumnae Director**—*Alumnae Chapter*: Vancouver *Previous International Offices*: Vancouver Camp Board member and officer *Career/Activities*: teacher of the hearing impaired, Vancouver Camp Board *Interests*: sports, swimming, outdoor activities, reading, entertaining, plays, movies

Shirley Mueller West (Wash.-St. Louis), **Province IV Collegiate Director**—*Alumnae Chapter*: Greater Lafayette, Ind. *ΓΦΒ Relative*: Jill West Duncan (Purdue) *ΓΦΒ Award*: Merit Roll *Career/Activities*:

medical records administrator, civic and church activities *Interests*: art, needlecraft, choral music, gardening, gourmet cooking

Joan Welty Ingle (USC), **Province XVIa Collegiate Director**—*Alumnae Chapter*: North Orange County, Calif. *ΓΦΒ Relative*: Denise Ingle (Cal. Poly-San Luis Obispo) *Career*: Chapman College instructor *Interests*: golf, reading, traveling

Brenda Dunn Rickert (Texas Tech), **Leadership Training Coordinator**—*Career*: management trainer and consultant *Interests*: reading, traveling



Brenda Dunn Rickert (Texas Tech)

Barbara Hurt-Simmons (Kearney State), **New Chapter Director**—*Alumnae Chapter*: Atlanta, Ga. *Previous International Offices*: Collegiate



Shirley Mueller West (Wash.-St. Louis)



Joan Welty Ingle (USC), Denise Ingle (Calif. Poly-San Luis Obispo)

Consultant, *Alumnae-Collegiate Relations Chairman Career/Activities*: Kellogg Co. sales territory manager, Alpharetta Presbyterian Church youth group advisor and wedding guild chairman *Interests*: scuba diving, skiing, traveling

Cathy Balzer Lorino (Texas Tech), **Province VIIb Alumnae Director**—*Alumnae Chap-*



Cathy Balzer Lorino (Texas Tech)

ter: Houston, Tex. *ΓΦΒ Relative*: Ann Balzer Rothrock (Texas Tech) *Career/Activities*: homemaker, school volunteer,

Parent-Teacher Association, Houston Museum Natural Science Guild, Brownie leader, Panhellenic yearbook chairman Interests: reading, needlepoint, children's activities



Melba Quick Spurrier (Oklahoma St.)

Melba Quick Spurrier (Oklahoma St.), **Province IX Alumnae Director**—*Alumnae Chapter*: Stillwater, Okla. *ΓΦΒ Relative*: Donna Spurrier Garrett (Oklahoma St.) *Career/Activities*: American Red Cross board member, hospital auxiliary president, Woman's Club president, Faculty Wives president *Interests*: china painting, antiques, bridge

Roberta Martinez Bollin (Calif.-Riverside), **Province XIIIb Alumnae Director**—*Alumnae Chapter*: Long Beach and Monterey Bay, Calif. *Career*: homemaker, mother *Interests*: needlework, crafts, cooking, volunteering

Position Available

Chief Operating Officer

Work in Gamma Phi Beta International Headquarters in Denver, Colo. in a creative managerial capacity. Travel required as well as good communicating skills. Financial knowledge and fundraising background desirable. Four years equivalent work and/or volunteer experience necessary. Beginning salary \$30,000-35,000 per year.

Send resume to Gamma Phi Beta International Headquarters, 7395 E. Orchard Road, Suite 200, Englewood, CO 80111; Attention: Marjory Shupert, Executive Director

HONORS

Panhellenic President

Calif.-Riverside—Laurie Davies
 Calif.-Santa Barbara—Shireen Ghani-Banki
 Kansas St.—Ginger Cline
 Lamar—Tamara Jones
 Mankato St.—Lisa French
 Nevada—Sarah Griffin
 N. Iowa—Michelle Jefferson
 Oklahoma City—Jeffri-Lynn Webster
 Puget Sound—Pam Robertson
 St. Louis—Chrissie Grandcolas
 Wash.-St. Louis—Lore Geisse
 Wichita St.—Pam Keeny
 Wis.-Oshkosh—Gina Reimer

Panhellenic Vice President

Boise St.—Ronni Sheets
 Bradley—Ellie Folsom
 Calif. St.-Fullerton—Robin Roberts
 Chapman—Heidi Ankenbrandt
 Illinois St.—Jennifer Cienkus
 Mankato St.—Melissa Evers,
 Angie Adams, Lori Winning
 N. Dakota—Julie Woutat
 Northwestern—Lisa Long
 Oklahoma City—Kristi Chenowith
 Purdue—Ann Fry
 Rutgers—Kirsten Lepick
 San Diego St.—Rachel Gordon
 Wash.-St. Louis—Lori Lighthill
 Wichita St.—Kim Melcher

Panhellenic Secretary

Bowling Green—Kristine Studer
 Bradley—Cheryl Fritz
 Calif.-Santa Barbara—Margie Norton
 Calif. St.—Fullerton—Lisa Dailey
 Chapman—Mindy Jewell
 Clemson—Tricia Curreri
 Colgate—Susan Gitzendanner
 Florida St.—Susie Snayd
 Idaho—Kelli Robinson, Shelley Black
 Kearney St.—Julie Goings
 Lamar—Angi Widener
 McGill—Janice Cross
 Oklahoma—Shane Hainzinger
 Washington—Carrie Reed

Panhellenic Treasurer

Bradley—Carol Blaine
 Calif.-Berkeley—Kendall Baker
 Chapman—Mindy Jewell
 Colgate—Laura Kimball,
 Interfraternity/Sorority Council
 E. Texas St.—Terri Kokoszka

Iowa St.—Sally Everhart
 Jacksonville—Michelle Willard
 Missouri—Diane Frimel
 N. Dakota—Pauline Lindberg
 Wittenberg—Lisa Lotko

Panhellenic Committee Chairman

Calif.-Riverside—Tammi Sonnier
 Calif. St.-Long Beach—Cindy Pearson
 Chapman—Jay Rosenberg
 Colgate—Susan Gitzendanner
 Colorado—Laura Hatch
 Florida St.—Cathy Early
 Idaho—Anna Ross
 Illinois—Jennifer White, Jill Blotevogel
 Illinois St.—Talpa Lehnen, Kelli Clausen
 Indiana—Michelle Chocholek, Jana Kiess
 Jacksonville—Cindy Bennett, Genei Castellucci
 Kansas St.—Susa Goss
 Kearney St.—Kathy Kempf
 Mankato St.—Kate Kaelke
 Miami—Nicole Sacco
 Michigan—Wendy Stripling, Katie Hubert
 Missouri—Patricia Purcelli
 N. Dakota—Jackie Kalk, Stephanie Brown
 N. Iowa—Andrea Neighbors, Kris Turner, Shelley Neville, Susan Rolinger
 Oklahoma—Suzy Brewer
 Oklahoma City—Tiffany Johnson
 Oklahoma St.—Shawna Bruner, Judi Wittow, Michelle Smith, Amy Kahle, Alice Kahle
 Purdue—Kristen Nei
 Rutgers—Louise Valli
 St. Louis—Michele Butkiewicz
 San Diego St.—Carrie Steerman
 SW Texas St.—Emily Lemon, Kim Daughtry, Laura Breiner
 Wash.-St. Louis—Susan Haberman
 Wittenberg—Karen Clark

Junior Panhellenic Officer

Boise St.—Sheila Wilson
 Bowling Green—Cathy Vincent
 Bradley—Michelle Kolet
 Calif.-Riverside—Tammi Sonnier
 Calif.-Santa Barbara—Tracy Grossman, Terri Wettmarshausen
 Calif. St.-Fullerton—Tammy Mufich, Mary Palazzola, Jenifer Lockard, Felisa Gear
 Clemson—Betsy Malcom
 Colorado—Julie Wilson, Amanda

Reeder, Rebecca Scanga
 Illinois—Mala Byanna
 Kansas St.—Nicole Barringer
 Kearney St.—Kristine Foreman
 Lamar—Liz Leakey
 Mankato St.—Angie Adams, Lori Rhodes
 McGill—Wendy Wakshinski
 Miami—Chris Nelson
 Nebraska—Becky Ingles
 Northwestern—Rachel Fagan
 Purdue—Kristen Nei
 Rutgers—Amy Carrola
 St. Louis—Amy Fehlig
 San Diego St.—Danielle Donahue

N. Dakota St.—Rhonda Smith
 Rutgers—Kelli Hendricks, Pamela Southard, Gee Rios, Jackie DaSilva, Jessica Baines, Joanne Seltsam, Karin Girtitz, Lori Simer, Lisa Ogg, Kristen Walker

Order of Omega (Greek)

Bradley—Gina Wille, Carol Stephan, Carol Blaine, Ellie Folsom, Vicki Moss, Laura Roulier



Iowa State—first place, Varieties Sweepstakes

SW Texas St.—Kim Daughtry
 Wash.-St. Louis—Stephanie Shack
 Wichita St.—Stephanie Harris, Doreen Schoendaller, Anne-Marie Suarez

Greek Woman of the Year

Calif.-Santa Barbara—Shireen Ghani-Banki
 Calif. St.-Long Beach—Lori Mahoney
 Denver—Vandna Jerath
 Mankato St.—Monica Anderson
 Oklahoma—Shannon Butterfield (Top 10 Greek Women)
 St. Louis—Laura Salava

Rho Lambda (Greek)

Denver—Vandna Jerath, Rose Barry, Diane Gustafson, Mary Kurtz
 Florida St.—Kari Bishop, Karen Hale
 Iowa St.—Shyla Swan, Kathy Nutt
 Jacksonville—Kristi Loyd
 Kearney St.—Kathy FitzGerald, Tracy Kirtley, Ericka Richardson, Amy Monke, Gail Brokke, Kristy Dohrman, Kris Harland, Molly Maguire, Kathy Kempf, Susan Rademacher, Becky Theis

Calif.-Berkeley—Christine Kwak, Monique Morris
 Calif. Poly-San Luis Obispo—Ellen Saunders
 Calif.-Riverside—Carol Ambrose, Laurie Davies
 Calif.-Santa Barbara—Shireen Ghani-Banki, Chele Comarsh, Trish Ochoa, Janet Dudley
 Calif. St.-Fullerton—Danielle Menadier, Missy Solis, Karen Lesk, Kristie Mancino
 Colorado—Becky Runkle, Christy Jones, Anne Masse
 Colorado St.—Amy Gathright, Deidre Marrin, Annette Ruggiero
 Denver—Mary Kurtz, Karlynn Schramm, Kristi Davis, Vandna Jerath
 E. Texas St.—Mari Gaman, Lynn Harrington, Melanie Dunlap
 Florida St.—Karen Hale
 Idaho—Kelly Busch, Shelley Watson, Kelli Robinson, Jill Hammrich, Audra Krussel, Laura Woodworth, Kirsten Rosholt
 Illinois—Mala Byanna, Jennifer White, Lisa Davis
 Illinois St.—Mary Sue Reeves; Cheryl Krebs; Kelli Clausen, vice president; Kai Inskeep; Tricia Kroening
 Iowa St.—Robin Shaffer, Dawn Hall, Sally Everhart, Jessie Berg, Shyla Swan
 Kansas St.—Ginger Cline, Heidi

Hixson, Melanie Michals, Karen Jones, Mardy Stout, Tammy Saviano
 Kearney St.—Kristy Dohrman, Karen Fitzgerald, Molly Maguire, Gail Brokke, Kathy Kempf
 Mankato St.—Renee Gehrt, Lori Winning
 Miami—Kristen Hanacek, Audra Osmena, Katina Janas
 Michigan—Michele Knapp, Laura Steuk, Wendy Stripling
 Missouri—Diane Frimel
 N. Dakota—Lynn Jorgenson, Julie Woutat, Ann Kerian
 N. Dakota St.—Rhonda Smith, Joan Marso, Jacque Sundquist
 N. Iowa—Beth Henry, Shelley Neville
 Northwestern—Kim Wilhelmsen; Stephanie O'Connell, secretary
 Oklahoma—Jennifer Johnson
 Oregon St.—Leah Kuhns, Jennifer Jacobsen
 Penn St.—Stacy Ruch, Julie Britton, Dorothy Rosener
 Puget Sound—Jen Lanegraff, Pam Robertson
 Purdue—Jennifer Croxall, Kelli White
 San Diego St.—Heather Winokur, Noelle Shapiro, Rachel Gordon, Crystal Garcia, Kathie Brown, Carrie Steerman, Carla Conrad
 SW Texas St.—Deborah Phillips; Lisa Joy, secretary; Dana Hiller, president
 Syracuse—Meg Sudlik, Carolyn Hill, Alecia Mathog, Beth Churchill, Andrea Jeanette, Mindy Luxemburg
 Wichita St.—Pam Keeny, Mary Malicoat, Kathi Welton, Susan Wiles

Alpha Phi Omega (Greek)

Idaho—Kelli Robinson, Kirsten Rosholt, Shelley Watson, Judy Moulton, Courtney Nottingham

Tassels (Greek)

Oklahoma—Samantha Alexander

Crimson and Creme (Greek)

Oklahoma—Kaari Nelson, Shane Hainzinger

Beta Kappa Alpha (Greek)

Florida St.—Holly Chordas, Amy Hines, Kristi Messer, Michelle Miller, Debbie Reap

Skull and Crescent (Greek)

Purdue—Melissa Campbell

Golden Gavel (Greek)

Purdue—Michelle Simmons, Jennifer Croxall, Cindy McCreary, Lisa Rosander

Phi Beta Kappa (Scholastic)

Calif.—Berkeley—Erica Leonard, Julie Ruiz
 Colgate—Eileen Putsis, Melina Higgins, Bernadette O'Leary
 Colorado—Becky Runkle
 Denver—Karen Kaplan
 Georgia—Courtney Cook, Amy Copeland
 Idaho—Laura Woodworth
 Illinois—Linda Travis
 Indiana—Julia Bunton
 Miami—Tracy Hensler
 Michigan—Kelly Costello
 Nebraska—Kari Kratke
 N. Dakota—Laura McCallum
 Puget Sound—Liana Mezo
 Purdue—Sara Beineke
 Rutgers—Ariadne Kosmos
 St. Louis—Kelly Clark
 Wash. St. Louis—Elizabeth Holland



Amanda Seymour (Lamar)—Campus Hostess

Phi Kappa Phi (Scholastic)

Bradley—Angie Stuckey, Carol Stephan
 Illinois—Laura Ladewski
 Iowa St.—Jessie Berg, Mindy

Schaer, Michele Plunge, Sally Everhart
 Jacksonville—Missy Kelly
 Kansas St.—Susan Goss, Heidi Hixson, Andrea Krug
 N. Dakota St.—Joan Marso
 Purdue—Sara Beineke, Liesl Bayouth
 San Diego St.—Noelle Shapiro

Mortar Board (Leadership)

Arizona—Lisa Willet
 Bowling Green—Joanna Sweebe
 Bradley—Carol Blaine, Laura Roulrier
 Calif.—Santa Barbara—Shireen Ghani-Banki, Chele Comarsh, Genelle King, Janet Dudley
 Colorado St.—Amy Gathright
 Denver—Julie Clark, Michelle Rose, Mary Kurtz
 Idaho—Jane Haggart, Judy Moulton, Laura Woodworth
 Iowa St.—Anna Freymann, Shyla Swan
 Kansas St.—Mary Beth Gilliam, Melanie Michals
 Kearney St.—Tracy Kirtley, Molly Maguire, Karen Fitzgerald, secretary
 Nebraska—Joni Asleson
 Northwestern—Stephanie O'Connell, Kim Wilhelmsen, Kristin Berndt, Sally Zettergren
 Oklahoma—Kim Lindsey, Mary Johansen
 Oklahoma St.—Pam Walters, Shawna Bruner, Alice Kahle, Amy Kahle
 Puget Sound—Liana Mezo, Jenn Greene
 Rhodes—Jennifer Gaines
 Wash.—St. Louis—Stephanie Peel
 Wichita St.—Pam Keeny, Susan Wiles
 Wittenberg—Debbie Lenschow, Lisa Nelson, Paula Johnson, Tricia Tanner

Chimes (Junior)

Arizona—Audrey Wystrach
 Kansas St.—Ginger Cline
 Wash.—St. Louis—Stephanie Peel

Alpha Lambda Delta (Scholastic)

Bowling Green—Wendy Kramer, Joanna Sweebe
 Bradley—Angie Stuckey, Carol Stephan, Kenna Pope, JoAnn Sullenberger, Kari Kennedy
 Calif.—Santa Barbara—Cheryl Rode, Genelle King, Janet

Dudley, Annie Ogostalick
 Clemson—Liz Yow
 Idaho—Brooke Bailey, Christie Herzog, Camille Fraley
 Illinois—Jill Constantino; Annie Gile; Kimberly Fitzgerald; Anjali Shah; Dawn Smith, president; Melissa Temple; Jenniffer Thompson; Kristy Tatooles
 Illinois St.—Mary Sue Reeves
 Indiana—Beth Bateman, Carrie Jacob, Siobhan McCambridge, Laura Muzzarelli, Nicole Nichols, Cathy Prybill
 Kansas St.—Angie Dunshee, Karyn Mosier
 Lamar—Sheri Abel, Kyung Sook Norwood, Teresa Burwick, Kavita Murthy, Stephanie Savanich
 Miami—Kristen Hanacek, Audra Osmena
 Nebraska—Nikki Hitz, Becky Ingles
 N. Dakota—Stephanie Brown, Allison Steinwand, Jill Kohlman, Lea Farstveit
 Oklahoma—Amy Osborn, Susan Battin, Mary Johansen, Kim Lindsey, Shannon Butterfield, Samantha Alexander, Shelle Kirby
 Oklahoma City—Kari Cannedeey
 Oregon St.—Katie Irwin, Kelly Crocker
 Penn St.—Kelli Acker, Michele Wise
 Wichita St.—Lori Koehler; Jennifer Volz, vice president
 Wis.—Platteville—Kim Morris
 Wittenberg—Chris Metzger, Kara Kyle, Alli Bealle, Laura Hillman, Stacy Doclovik

Omicron Delta Kappa (Leadership)

Bradley—Gina Wille, Carol Blaine, Laura Roulrier
 Clemson—Jennie Graviss
 Denver—Rose Barry, Vandna Jerath
 Florida St.—Karen Hale, president
 Jacksonville—Kristi Loyd, president
 Rhodes—Jennifer Gaines
 Wash.—St. Louis—Debbie Dougher
 Wittenberg—Debbie Lenschow, Lisa Nelson, Paula Johnson, Lisa Lotko

Alpha Chi (Scholastic)

E. Texas St.—Rebecca Erb, Melanie Dunlap
 Oklahoma City—Ardeth Snell, Angelique Herring
 St. Louis—Kelly Clark

HONORS



Missy Hettich (Wichita St.)—Miss Wichita

Phi Eta Sigma (Scholastic)

Bowling Green—Wendy Kramer, Joanna Sweebe
Bradley—Angie Stuckey, Carol Stephan, Kenna Pope, JoAnn Sullenberger, Kari Kennedy
Clemson—Paige Addison, Liz Yow
Colgate—Jeanette Lyons
Florida St.—Michelle Martinelly, Michelle Miller
Idaho—Christy Johns, Brooke Bailey, Tami Cann, Tanya Meyer, Camille Fraley, Julie Willmes
Illinois—Patricia McKnight, Annie Gile, Jill Constantino, Athena Tapales, Melanie Dufner, Melissa Temple
Illinois St.—Mary Sue Reeves
Indiana—Beth Bateman, Maresa Beazley, Julia Bunton, Carrie Jacob, Siobhan McCambridge, Laura Muzzarelli, Nicole Nichols, Cathy Prybill
Iowa St.—Shyla Swan, Kathy Adams
Kearney St.—Karen FitzGerald, Kathy Kempf, Bobbi Lykke, Kellie

Ilg, Geri Gohr
Miami—Kristen Hanacek, Audra Osmena
Nebraska—Nikki Hitz, Becky Ingles
N. Dakota—Stephanie Brown, Jill Kohlman, Heidi Fettig, Laura McCallum
Northwestern—Karen Gerbosi, Rachel Silver, Kristin Berndt
Oklahoma—Amy Osborn, Susan Battin
Oklahoma City—Barbie Schrick, Kara Williams, Kelly Bawmgartner
Oregon St.—Katie Irwin, Kelly Crocker, Dana Linquist
Penn St.—Stacy Ruch, Kellie Ryan, Michele Wise, Kim Wilson
St. Louis—Chrissie Grandcolas, Kelly Clark, Laura Salava
San Diego St.—Carrie Steerman, Toni Perdigo
Syracuse—Lauren Arky, Jessica Schwartz, Carolyn Hill, Alecia Mathog, Amanda Huntzinger, Beth Churchill, Robin Lance
Wichita St.—Heather Hodson, Lori Koehler, Jennifer Volz

Queen

Alma—Lisa Elbers, Homecoming Queen; Amy Kunse, Homecoming Court
Arizona—Tammy Powers, Miss Frontier
Bradley—Carol Stephan, Homecoming Queen
Clemson—Julie Junkin, Miss Greek
E. Texas St.—Melissa Potter, Miss Greek Week; Amy Dooley, Greek Goddess
Idaho—Darcy Morgan, Gault Hall Snow Ball Queen; Laura Woodworth, Homecoming Princess
Illinois St.—Mary Beth Buedel, Miss Center Court runner-up
Indiana—Michelle Chocholek, Homecoming Queen
Jacksonville—Teresa Willis, Homecoming Queen
Lamar—Tamara Jones, Christmas Queen; Liz Leakey, State Fair Queen
Missouri—Liz Ablen, Greek Week Queen
Nebraska—Kristen Sittler, State Cattle Queen; Kari Kratke, Miss Midlands
N. Dakota St.—Allison Olson, Homecoming Queen
Northwestern—Stephanie O'Connell, Homecoming Court
Purdue—Leslie Popplewell, Indianapolis 500 Princess; Wendy Lewis, Grand Prix Queen finalist
Rutgers—Jennifer Giannone, Miss Rutgers finalist
St. Louis—Amy Fehlig, Homecoming Court
Wichita St.—Kim Graves, Miss Teen Kansas U.S.A.; Missy Hettich

Lambda Sigma (Sophomore)

Miami—Erika Haupt

Horizons (Scholastic)

Kearney St.—Kellie Ilg

Orange and Black Quill (Junior)

Oklahoma St.—Shawna Bruner, Alice Kahle

Spurs (Sophomore)

Denver—Connie Haag, Brandi Anderson, Pam Goren
Kearney St.—Shannon Monnier

Gamma Sigma Sigma (Service)

Clemson—Sara Kelly, treasurer

Who's Who

Bradley—Laura Roulier, Gina Wille, Suzanne Newton
Denver—Vandna Jerath, Karlynn Schramm, Chris Chinn, Tammy Nakamura, Michelle Rose
E. Texas St.—Melanie Dunlap
Illinois St.—Lisa Sayles
Jacksonville—Adrienne Trent, Michelle Crispin, Teresa Willis, Missy Kelly
Kearney St.—Karen FitzGerald
Lamar—Kyung Sook Norwood, Angi Widener, Tamara Jones, Christi Tucker, Debbie Davis, Jennifer Bachman, Melanie Bergeron
LaSalle—Gina Rose, Kim Hause
Mankato St.—Sandy Peterson
Missouri—Cindy Squires
N. Dakota—Theresa Noltmier, Lynn Jorgenson, Laura McCallum
Oklahoma—Kim Lindsey, Shannon Butterfield
Oklahoma City—Kristi Chenowith, Kim Frankenfeld, Dana Lord, Catherine Ledbetter, Kim Johnson, Meeghan Donahue, Barbie Schrick
Oklahoma St.—Shawna Bruner
St. Louis—Kelly Clark, Laura Salava
San Diego St.—Noelle Shapiro
Syracuse—Meg Sudlik, Alecia Mathog, Carolyn Hill, Kristie Perry, Despi Moschonas

Talarians (Junior)

Denver—Mary Kurtz, Julie Clark, Karlynn Schramm, Heather Grob, Meredith Sanderow, Vandna Jerath

Individual Campus Awards

Boston—Kathy Murray, Scarlet Key Award
British Columbia—Darlene Westerlund, Commerce and Business Administration Outstanding Graduate
Calif.-Santa Barbara—Carolyn Cawley, Chancellors Award for Campus Service
Chapman—Soccer Most Valuable Player
Clemson—Jennie Graviss, Diver of the Year
Colorado—Katie Simonen, Outstanding Civil Engineering

Senior
 Denver—Michelle Rose, Outstanding Junior Woman; Tammy Nakamura, Scholastic All American, Academic All American; Vandna Jerath, Outstanding Sophomore Woman, Chancellor's Leadership Corps, Scholastic All American
 Florida St.—Karen Hale, Florida State Hall of Fame
 Idaho—Laura Woodworth, Outstanding Senior Woman; Kelli Robinson, Salute to Campus Leadership; Audra Krussel, Associated Students Merit Award; Judy Moulton, Associated Students Service Award, Alpha Phi Omega Outstanding Service Award
 Illinois—Linda Travis, Senior 100
 Illinois St.—Kelli Clausen, All-Greek Sisterhood of the Year
 Iowa St.—Shyla Swan, Outstanding Sorority President
 McGill—Vanessa Wilkinson, Kathleen Capreol, Great Distinction
 N. Dakota—Laura McCallum, Outstanding School of Communication Graduate
 Oklahoma—Samantha Alexander, Rhonda Hajiney, President's Leadership Class; Samantha Alexander, Panhellenic Outstanding Member
 Oklahoma City—Catherine Ledbetter, Outstanding Marketing Graduate; Kristi Chenowith, Scholastic All American, Academic All American; Ardeth Snell, Magna Cum Laude Graduate
 Oregon St.—Leah Kuhns, National Greek Merit Award
 Penn St.—Kellie Cluff, President's Freshman Award
 Purdue—Kristina Hoffman, Outstanding Agricultural Communications Sophomore
 Rhodes—Kathy Wheeler, Freshman Award
 San Diego St.—Carrie Steerman, Heather Winokur, National Collegiate Greek Merit Award
 Syracuse—Carolyn Hill, Andrea Jeanette, Kristie Perry, Academic All American
 Wittenberg—Debbie Lenschow, Presidential Scholar

Fraternity Sweetheart

Bradley—Lisa Adams, Sigma Chi
 Calif.-Santa Barbara—Dianne Young, Sigma Nu
 Calif. St.-Fullerton—Felisa Gear, Sigma Pi
 Colorado—Suzanne Williams, Sigma Alpha Epsilon
 E. Texas St.—Christina Yates, Sigma Chi

Florida St.—Jodi Popper, Sigma Chi
 Idaho—Kim Matthews, Delta Sigma Phi
 Illinois—Audra Brown, Phi Kappa Tau; Elizabeth Dupuis, Triangle; Nina Waldherr, Sigma Nu
 Illinois St.—Julie Rosensteel, Sigma Chi; Antella Armers, Sigma Nu
 Jacksonville—Teresa Willis, Phi Delta Theta
 Kansas St.—Melanie Michals
 Missouri—Beth Schuler, Kappa Sigma
 N. Dakota—Pauline Lindberg, Delta Tau Delta
 Northwestern—Colleen Kelly
 Penn St.—Christine Zinzer, Delta Sigma Phi; Karen Bell, Phi Kappa Theta; Kira Bukowski, Kappa Sigma; Molly Scanlan, Karen Shriner, Delta Tau Delta
 Puget Sound—Sue Klein, Sigma Nu; Lesley Milhem, Sigma Chi
 Purdue—Michelle Mitchell, Sigma Pi
 Rutgers—Kirsten Lepick, Courtney Parker, Chi Psi
 San Diego St.—Kathie Brown, Tau Kappa Epsilon
 Washington—Tracy Goodpaster, Tau Kappa Epsilon
 Washington St.—Erin Myrin, Lambda Chi Alpha; Shannon Kulle, Delta Tau Delta



San Diego State—first place, Greek Week

Student Government Representative

Arizona—Amy Thompson, Allison Lindsay, Lisa Merchant, Pia Pialiorsi, Jennifer Armstrong, Dawn Ferguson, Noelle Fishel
 Bradley—Laura Roulter
 Calif.-Riverside—Lisa Nichols
 Calif.-Santa Barbara—Lisa Gillispie
 Chapman—Chris Voss, Susan Knight, Cathy Jamison
 Clemson—Nancy Hermiston,

Sarah Penick
 Colgate—Stacy Shepatin, Pam Ross, Kay Sickles, Shelley McDonald
 Colorado St.—Elise Marks
 E. Texas St.—Laurel Brenner
 Florida St.—Deena Lombardi, Karen Hale
 Idaho—Shelley Watson
 Illinois—Judi Pierce
 Illinois St.—Sallie Mawles
 Iowa St.—Robin Shaffer
 Jacksonville—Naomi Ferguson, Helen Antipov, Teresa Willis, Adrea Atran, Brenda Encarnacion
 Kansas St.—Anita Krug, Michaleane Muhlenbruch, Monica Connet, Lindsey Knox
 Kearney St.—Julie Goings, Leah Murphy, Lisa Tonkin, Tracy Kirtley, Johnette Tovey
 Lamar—Debbie Davis, Christi Tucker
 Missouri—Melissa Westbrook
 Nevada—Sherry Rader
 N. Dakota St.—Carla Campbell
 Northwestern—Anne Fitzsimmons, Vicky Singh, Kat Scudder, Diane Devilbiss, Ami Shah, Karola Schwartz, Debbie Hazuka
 Oklahoma City—Barbie Schrick
 Oklahoma St.—Andrea Hix, Missy McConnell, Carri Bush
 Purdue—Michelle Blazier
 Rutgers—Kelly Yakow
 St. Louis—Beth Effertz, Laura

Salava
 San Diego St.—Sue Harvey, Nicol Cifre, Noelle Shapiro, Carla Conrad
 Wichita St.—Pam Keeny, Stephanie Taylor, Robyn Whitten
 Wis.-Platteville—Patricia Schwartz

Campus Event Chairman

Bradley—Amber Bertolino
 Calif.-Riverside—Mindy Yeager, Michelle Kutesky
 Calif.-Santa Barbara—Chele

Mothers Clubs

Mothers, daughters, alumnae! Reach out and touch someone through Mothers Clubs! Have you considered starting a Mothers Club to help your or your daughter's collegiate chapter? It's easy. For more information contact International Headquarters or the Mothers Club Chairman listed in the Directory in this issue.

Comarsh
 Calif. St.-Long Beach—Isabel Davalos, Leslie Schilling
 Chapman—Chris Voss
 Clemson—Nancy Hermiston
 Denver—Karlynn Schramm, Vandna Jerath, Michelle Rose
 Idaho—Shelley Watson, Kelli Robinson, Camille Fraley
 Illinois—Lisa Davis
 Iowa St.—Allison Chapman
 Lamar—Jennifer Bachman, Tamara Jones
 Mankato St.—Michelle Eastburn, Monica Anderson
 Miami—Amy Kleinman
 N. Dakota St.—Carla Campbell
 N. Iowa—Susan Rolinger Hecker
 Oklahoma—Becky Schmit, Debra Roff, Rae Dorsey, Samantha Alexander, Shane Hainzinger
 Oklahoma City—Tiffany Johnson
 Oklahoma St.—Jules Moss, Amy Kahle, Angela Temples, Sam Alexander
 Wash.-St. Louis—Pam McGowen
 Wis.-Platteville—Barb Goodweiler
 Wittenberg—Debbie Lenschow

Student Government Officer

Boston—Julie Silvester
 Clemson—Leigh Walker
 Colgate—Theri Adams
 Denver—Heather Grob
 Indiana—Cindy Turner, Lorraine Buck, Student Foundation
 Jacksonville—Kristi Loyd, Cindy Bennett
 Kearney St.—Darci Dillman, Jana Stewart
 Lamar—Angi Widener
 Northwestern—Megan Brady, Vicky Singh
 Oklahoma—Shane Hainzinger
 Puget Sound—Arden Maynard
 St. Louis—Kelly Clark
 San Diego St.—Noelle Shapiro

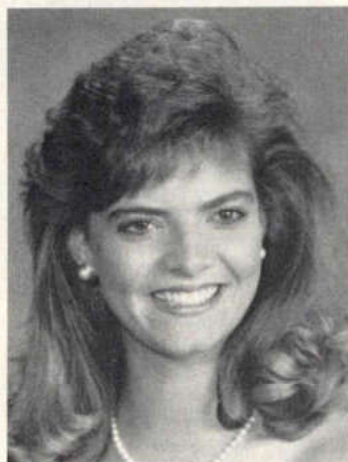
Golden Key (Service)

Bowling Green—Joanna Sweebe
Calif.-Berkeley—Holly Razzano,
Kendall Baker, Erika Leonard
Calif.-Santa Barbara—Stefanie
Gluska, Melisa Pera, Janet
Dudley
Clemson—Melanie Meyers, Jennie
Graviss
Colorado—Becky Runkle
Denver—Mary Kurtz, Michelle
Rose, Tammy Nakamura, Diane
Gustafson, Karlynn Schramm
Florida St.—Karen Hale, Cathy
Harrell, Amy Hines, Missi Holt
Illinois—Jill Blotevogel, Jennifer
Johnson, Joan Johnson, Laura
Ladewski, Beverly Sorkin,
Elizabeth Wright, Sara
Honcharuk
Indiana—Julia Bunton, Laura
Muzzarelli
Iowa St.—Kristi Dierks, Nanette
Ehlert, Missy Caster
Kansas St.—Tammy Saviaro, Lisa
Connell, Andrea Krug, Amy
Dodson, Marybeth Gilliam
Miami—Kristen Hanacek, Julie
Matthews, Molly Hammer, Jessie
Lehrer, Michelle Franks
Missouri—Debbie Garrison, Diane
Frimel
Nebraska—Jill Jensen, Cindy
Ryman, Beth Langemeier, Jill
Barelman
Oklahoma—Kim Lindsey, Amy
Osborn, Sherri Lindsey, Jenny
Conrad, Mary Johansen, Susan
Battin
Oklahoma St.—Shelly Wright, Kerri
Ingram
Penn St.—Stacy Ruch, Stacy
Macneal, Dawn Johnston
Purdue—Sara Beineke, Liesl
Bayouth
Rutgers—Jessica Baines, Jackie
DaSilva
San Diego St.—Hallie Freeman,
Noelle Shapiro
SW Texas St.—Dana Hiller
Wichita St.—Mary Malicoat, Susan
Wiles

Greek Week Officers/ Committee Chairmen

Boston—Ifen Sung
Bradley—Chris Rychtanek
Calif.-Riverside—Giao Duong
Calif.-Santa Barbara—Michelle
Kiely, Lisa Katz, Terri
Wettmarshausen
Chapman—Shelly Williams, Mindy
Jewell
Clemson—Amanda Tieder
Colorado—Cathy Manning
E. Texas St.—Christina Yates,
Terri Kokoszka
Idaho—Shelley Watson, Camille

Frale
Iowa St.—Kerri Whitehead, Suzi
Henry, Jill Yoder, Sandra
Mikulina, Leslie Roland, Julie
Hughes, Ann Kestel, Carrie
Stover, Kathy Adams, Amy Jo
Olson
Jacksonville—Helen Antipov
Kearney St.—Stacey Hughes
Lamar—Tamara Jones, Deborah
Camacho, Debbie Davis, Melanie
Bergeron
Mankato St.—Kate Kaelke
Miami—Michelle Davidson, Audra
Osmena, Kathy Rogovon, Amy
Kleinman
Missouri—Kelly Kaps, Lana
Kramme, Cari Lane
Nebraska—Kim Muirhead
N. Dakota—Jackie Kalk



Julie Junkin (Clemson)—Miss Greek

N. Iowa—Angela Berns, Andrea
Neighbors
Northwestern—Amanda Lightfoot,
Tiffany Ramos
Oklahoma—Samantha Alexander,
Shannon Butterfield
Oklahoma City—Tiffany Johnson,
Jeffri-Lynn Webster
Puget Sound—Jen Basset
Purdue—Ann Fry
Rutgers—Kelli Hendricks, Jackie
DaSilva
St. Louis—Chrissie Grandcolas,
Michele Butkiewicz, Amy Fehlig
San Diego St.—Kathie Brown,
Heather Winokur, Cathy
Slemmons, Kristin Craig
SW Texas St.—Melissa Frietsch,
Ronny Carrales
Wash.-St. Louis—Beth Dawson
Wichita St.—Kelli Frazier, Deanna
Schuster, Stephanie Taylor,
Kathi Welton
Wis.-Oshkosh—Cheryl Backerman,
Melissa Winnie

Yearbook Editor

Alma—Colleen Ryan
Calif.-Berkeley—Julie Friedman
Chapman—Susan Knight
Clemson—Adrienne Onop
Kearney St.—Molly Maguire, Pam
Kenkel
Miami—Shelly Costello

Michigan—Michelle Saterthwaite,
Dee Jenkins
Washington—Liz Quain
Wash.-St. Louis—Jill Stein

Class Officer

Colgate—Kati Fritzsche, Eileen
Putsis, Maddy Lynden
Denver—Meredith Sanderow, Julie
Clark
Florida St.—Karen Hale
Kansas—Gina Simunaci
Rutgers—Carole Moran

Newspaper Editor

Bradley—Gina Grueneberg
Chapman—Chris Voss
Clemson—Kim Gorman
Colgate—Erin Read, Diane
Romley, Pam Ross, Karen
Weiss, Jennifer Finnegan, Alison
Bryant
Colorado St.—Jeanne McGovern
Illinois—Kate Coughlin, Marcy
Engelbreton, Erika Amstadt
Jacksonville—Adrienne Trent
LaSalle—Kimberlee Saab
N. Dakota—Christen Rennich
Northwestern—Martha Parsons,
Kimberly McGaw, Melissa
Mulroony, Cathy Brooks
Oklahoma—Holly Todd
Oklahoma City—Jeffri-Lynn



Michelle Chocholek (Indiana)—
Homecoming Queen

Webster, Gayle Mika
Oregon St.—Lisa Corrigan
St. Louis—Ellen Buck
Syracuse—Carolyn Hill

Campus Hostess

Arizona—Elizabeth Baird, Christine
Brown, Wendy Carpenter, Diana
Christenson, Debbie Devoy,
Tracy Frazzini, Kelly Gauger, Kim
Grace, Laura Grace, Shelly
Harris, Nancy Jorgensen, Jill
Mundinger, Pia Pialiorsi, Lisa
White
Boston—Michelle Martz, Lisa
Murphy
Bowling Green—Heather Chase,
Nancy Gulick
Bradley—Kristina Torisky, Lisa

Johnson
Calif.-Riverside—Kathryn Walck,
Shannon Jordan, Jill Koch, Lisa
Nichols, Giao Duong, Angela
Lowe, Heather Evans, Cynthia
Snyder
Clemson—Leigh Walker, Sobeth
Bouharoun, Sandy Harmon
Colgate—Ashley Fawcett, Eileen
Putsis, Julie Moran, Carolee
Bongiori, Susan Gitzendanner
Colorado—Laura Hatch, Sandy
Bonhert, Ann Masse
Florida St.—Merry Anders, Cathy
Harrell, Dawn Ingalls, Kim
Martin, Gini Perry
Idaho—Christie Herzog, Shelley
Watson, Kelli Robinson, Camille
Frale, Sheila McClanahan
Jacksonville—Michelle Crispin,
Kristi Loyd
Kearney St.—Melinda Holcomb,
Kathy Kempf, Jodi Travis, Kristy
Dohrman, Ericka Richardson
Lamar—Debbie Davis, Amanda
Seymour
Mankato St.—Kate Kaelke
McGill—Vanda Sebben
Miami—Jennifer Molski
Nebraska—Dawn Elloe, Natalie
Foster, Kristen Sittler
Nevada—Cindy Fearnow
N. Dakota—Jackie Kalk, Ann
Kerian
Northwestern—Tiffany Ramos, Kat
Scudder, Holly Hall, Lisa Long,
Anne Fitzsimmons, Kim
Egerman, Chris Johnson, Lisa
Pitner, Angela Townsend, Jodi
Willard, Susie Cho, Liza Diaz,
Amy Keith, Heather McGibbon,
Vicky Singh, Aimee Feuer, Jodi
James, Jenny Scott, Rachel
Fagen, Kelly McDermott
Oklahoma—Shannon Butterfield,
Rae Dorsey, Samantha
Alexander, Melanie Burris
Oklahoma St.—Jean Wohlhuter
Oregon St.—Danette Wilson
Puget Sound—Sarah Richards,
Tara Austin, Jen Stewart,
LianaPurdue—Gail Gates,
Kristina Hoffman
St. Louis—Jennifer Daugherty,
Beth Effertz, Amy Fehlig, Kelly
Clark
San Diego St.—Sue Harvey,
Ginnean Musich
Washington—Heather Hardin, Lara
Groenveld, Christy Chandler,
Kari Locknane, Linda Coppess,
Kelly Polson, Laura Velkers
Wis.-Oshkosh—Stacie Hasser

Student Alumni Association

Arizona—Christine Brown, Jill
Mundinger
Calif.-Santa Barbara—Chele
Comarsh, Carolyn Cawley
Colorado—Jill Devillier, Stephanie
Sandoval, Laura Hatch
Florida St.—Karen Hale, Mary
Beth Holzbach, Jenifer

Dingfelder
Idaho—Shelley Watson, Camille Fraley, Sheila McClanahan, Audrianna Jones, Gigi Blick
Illinois—Tracy Betts, Katrina Ross, Susanna Ross, Alpita Shah, Linda Travis
Iowa St.—Robin Shaffer, vice president; Carrie Duffy; Sally Everhart; Lara Schaffer; Susan Clabaugh
Jacksonville—Diane Wright
Kansas St.—Ginger Cline, Heidi Hixson, Connie Trentman Travis
Mankato St.—Chris Kaufenberg, Lori Sandquist
Miami—Jacky Woods
Nebraska—Cindy Ryman
N. Dakota St.—Rhonda Smith, Jacque Sundquist, Rachel Klosterman, Kate Lieberg, Kathy Garcia
Oklahoma City—Tiffany Johnson, Jeffri-Lynn Webster, Student Foundation
Oklahoma St.—Alice Kahle, Missy McConnell
Oregon St.—Jennifer Jacobsen, Katie Irwin, Lisa Corrigan, Julie Lyons
Purdue—Kerri Stracco, Student Foundation
SW Texas St.—Deborah Phillips
Wichita St.—Michelle Beach, Joanne Blanchat, Lara Crowe, Kelli Frazier, Pam Keeny, Mary Malicoat, Kim Melcher, Heather Rising, Deanna Schuster, Kitty Smith, Caroline Stephen, Kathi Welton, Laura Wharff, Robyn Whitten, Kim Woods

Orientation Leader

Arizona—Wendy Carpenter, Jennifer Evans, Shelley Harris, Jennifer Henderson, Ann Hutchins, Pia Pialorsi, Stacey Schlegal, Michele Speranza
Bradley—Lisa Auffarth
Calif.-Santa Barbara—Christina Sterrett
Calif. St.-Fullerton—Karen Lesk, Joanne Parker, Tina Espinola, Denise Maestras, Kirstin Loeffler, Mary Palazzola, Marian Mulligan Carter
Clemson—Sobeth Bouharoun
Colgate—Kim Daub, Patti Samperi
Denver—Geneva Glen, Brandi Anderson, Vandna Jerath, Mary Kurtz
E. Texas St.—Christina Yates, Kristen Tolle



Jennifer Giannone (Rutgers)—Miss Rutgers finalist

Florida St.—Susie Snayd
Illinois—Linda Travis
Illinois St.—Christa Hardwick
Iowa St.—Robin Shaffer
Jacksonville—Kristi Loyd
Lamar—Sheri Abel, Christi Tucker, Amanda Seymour, Liz Leakey
Mankato St.—Laura Lee
McGill—Stephanie Fowler, Tracy Fernandez
Miami—Jacky Woods
Nevada—Sherry Rader, Ingrid Engdahl
N. Dakota St.—Rhonda Smith
Northwestern—Lisa Long, Patty Moyer, Tiffany Ramos, Anne Fitzsimmons, Charlotte Zarter, Michelle Robinette, Kristin Berndt
Oklahoma City—Tiffany Johnson
Oregon St.—Jen Draper
Puget Sound—Arden Maynard, Lara Zaccaro, Liana Mezo, Piper McGregor
Rutgers—Louise Valli
St. Louis—Jennifer Daugherty, Kelly Clark, Amy Fehlig, Lisa Tellez, Kathy Armbruster
San Diego St.—Sue Harvey, Jolene Logue, Carla Conrad
SW Texas St.—Deborah Phillips

Syracuse—Andrea Pappas, Alicia Mathog
Washington—Kelley Polson
Wash.-St. Louis—Janelle Wilson, Jeannette Garber, Glenna Anderson, Amy Blackburn
Wittenberg—Laurie Hoefter, Lisa Lotko, Paula Johnson, Joi Shortz, Christine Mawhinney, Debbie Lenschow, Karen Clark, Paula Johnson, Shelly Herald, Jen Graham, Suzi Clare, Gail Shannon

Society of Professional Journalists

Kansas—Christina Kroeger, Amy Jo Roberts, Kerry Townsend
Kearney St.—Pam Kenkel, Kris Harlan, Shelly Jansky, Amy Miller, Molly Maguire, Amy Monke
N. Dakota—Laura McCallum
Syracuse—Stacy Bierlein



Tamara Jones (Lamar)—Panhellenic President

Cheerleader

Arizona—Jacque Brown, Patty Lopez, Terri Peters, Tracy Shapiro
Boston—Terri Baxter
Bradley—Karen Sandberg
Calif.-Riverside—Jennifer Petler
Calif.-Santa Barbara—Ashlee Jones
Calif. St.-Fullerton—Kristie Mancino
Calif. St.-Long Beach—Ann-Marie Bria
Chapman—Lisa Gagnon, Amie Dunn
Colgate—Jayne Bowen, Pam Gallagher, Jeannette Green, Jennifer Adams
E. Texas St.—Janeen Doolin
Illinois—Bella Schmidt
Illinois St.—Jackie Jeffers, Christy



Kelli Clausen (Illinois St.)—Panhellenic Sisterhood Award

Vesper, Julie Wisniewski
Indiana—Mary Warner
Iowa St.—Kathy Adams
Jacksonville—Teresa Willis, Lea Satelle
Kansas—Tracy Morgason, Laura Lester
Kansas St.—Brenda Paquette
Mankato St.—Kerrie Cronin, Missy Wenz, Robyn Fine
Michigan—Kristin Willson
Nebraska—Cassy Usher
N. Dakota—Cari Henke, Sarah Larsen, Ann Werth
N. Iowa—Chris Besler
Northwestern—Stellar Kim
Oklahoma—Rae Dorsey
Oklahoma St.—Lauryn Lovegrove, Kelly Lynch
Oregon St.—Sherry Davis
Puget Sound—Jessica Hardyman
Rhodes—Allyson Rosen
San Diego St.—Jo Cordova
Washington—Ann Wedge
Wichita St.—Missy Hettich, Christy Rowsey
Wittenberg—Becky Patterson

Student Union Officer/Committee Chairman

Alma—Karen Ruedinger, Stephanie Cole, Missy Cross
Calif.-Santa Barbara—Lisa Gillispie, Carolyn Cawley
Chapman—Lisa Gagnon
Clemson—Beth Scarborough
Colgate—Zoe Friedman, Robin Greenstein
Iowa St.—Allison Chapman
Kearney St.—Amy Monke, Darci Dillman, Shannon Monnier, Widener
N. Iowa—Angela Berns
Northwestern—Anne Fitzsimmons
Oklahoma—Lara Tacker, Shane Hainzinger
Oregon St.—Katie Irwin
Penn St.—Dorothy Rosener
Puget Sound—Barb Farrar
Rutgers—Louise Valli, Pamela Southard
San Diego St.—Sue Harvey, Noelle Shapiro
Wash.-St. Louis—Melissa Hensley, Pam McGowen
Wittenberg—Stacey Lansdale

Twirler

Iowa St.—Dawn Hall

Radio/TV

Colgate—Laurette Smith, Elissa Lieberman, Kay Sickles, Aimee Saiger
Colorado—Laura Hatch
Florida St.—Patty Crawford, Susan Yaffe, Geneva Mier
Kansas—Heatheryn Higgins
Miami—Jessica Lehrer
Missouri—Debbie Majka, Tami Pratt, Laura Hendrikson
N. Dakota—Ann Kerian, Laura McCallum
N. Iowa—Angela Berns
Northwestern—Cathy Brooks, Kimberly McGaw
Penn St.—Erica Spence
Puget Sound—Barb Farrar, Kathy



Jacksonville—Michelle Crispin, 1988 Homecoming Queen; Teresa Willis, 1989 Homecoming Queen

Jenkins, Anne Becker, Julie Lau, Karen Kuhn
 Rutgers—Maryann Lences
 Syracuse—Jessica Warm, Caryn Bruce, Debi Lichtenstein, Kristie Perry
 Wash.-St. Louis—Emily Sundfors, Inese Radzins
 Wichita St.—Joanne Blanchat, Missy Hettich
 Wis.-Oshkosh—Wendy Melnick
 Wis.-Platteville—Kim Ellsworth, Janet Peters, Joyce Socha, Debbie Marty, Diana Berlin, Barb Goodweiler
 Wittenberg—Lore Pierson, Fiona Osborn, Jennifer Aitken, Liz Meszaros, Lisa Stroup, Brenda Grogg, Kelly O'Neile, Andy Smith, Mickey Smith, Julie Vasquez

Resident Assistant

Alma—Anne Couch, Wynne Kinder, Mary McDonald, Colleen Moore, Shevonne Peacock, Sarah Vogel, Amy King, Carlee Olsen, Carol Childs
 Boston—Lisa Murphy, Karen Cohen, Amy Steinberg
 Bradley—Suzanne Newton
 Clemson—Jennifer Ledbetter, Darla Koerselman
 Denver—Chris Chinn
 Florida St.—Dawn Ingalls
 Illinois—Annie Gile, Patricia McKnight, Jennifer White
 Jacksonville—Susan Salvaggio,

Jackie Leduc, Tammy Loyd, Naomi Ferguson
 Kansas—Tracy Wilkenson, Jackie Babka-Oliver
 Lamar—Melanie Bergeron
 LaSalle—Kim Hause
 Miami—Laurie Hannah
 Michigan—Zoe Kircos
 N. Dakota—Stacey Schroeder
 N. Iowa—Lori Seggerman
 Northwestern—Saily Joshi
 Oklahoma City—Gayle Mika
 Purdue—Liesl Bayouth
 Rutgers—Louise Valli, Sonia Garcia
 SW Texas St.—Dee Anna Smith
 Syracuse—Caryn Bruce, Kristie Perry
 Wash.-St. Louis—Inese Radzins
 Wis.-Platteville—Sara Schlough
 Wittenberg—Gail Shannon, Carol Casey, Ann Gilcrest, Andy Smith, Becky Patterson

PRSSA (Public Relations)

Chapman—Doris Hartigan, Judy van Wingerden
 Illinois St.—Patti Hopkins, Outstanding Member
 Kansas—Karla Koeppen, secretary
 Purdue—Amy Brill, Gail Gates

Kappa Tau Alpha (Journalism)

Oklahoma—Shannon Butterfield

Pom Pon Squad

Arizona—Diane Dickson; Kate Lockley; Carrie Lundquist, captain
 Boston—Annette Mangubat, Lisa Cardona
 Bradley—Sheri Ladas, co-captain
 Colgate—Patti Samperi, captain; Laura Kimball, Rebecca Davey, Susan Deitrick
 Illinois—Jamie Stirrett
 Illinois St.—Liz Corbin, Melissa Mounce
 Indiana—Kris Kellum
 Iowa St.—Lisa Tice, Krista Kurth
 Mankato St.—Amy Haugan, Missy Wenz
 Nebraska—Janelle Marcotte
 N. Iowa—Randa Ruppert
 Northwestern—Melissa Mulrooney
 Oklahoma City—Kara Williams, Kelly Baumgartner
 Purdue—Leslie Poppellwell
 St. Louis—Ellen Geppert, Ruthie Rochman, Heidi Faller, Amy Verdu, Kay Katubig
 Wis.-Platteville—Mary Pinchot, captain; Laurie Dischler

Drill Team

Michigan—Andrea Sokoloski, Amanda Carlson, Kimberly Weiss

Outstanding Young Women of America

Calif.-Santa Barbara—Shireen Ghani-Banki

American Society of Interior Designers

Oklahoma St.—Cindy Harris

Flag Corps

Boston—Caryn Ball
 Mankato St.—Sandy Peterson
 Nebraska—Leigh Anne Albert, Jill Weiler
 Nevada—Racheal Lawrence
 Northwestern—Stephanie O'Connell, captain; Jennifer Betts
 Purdue—Tammy Schoening, captain; Kate Bereman

Theta Sigma Phi (Communications)

Illinois—Katrina Ross, Audra Manno

Zeta Phi Eta (Communications)

Northwestern—Stephanie O'Connell

Outstanding College Students of America

Arizona—Belinda Watt
 Bradley—Ellie Folsom, Carol Blaine, Gina Wille, Suzanne Newton, Kenna Pope
 Calif.-Santa Barbara—Margie Norton, Genelle King, Lisa Gillispie, Vicki Berkebile, Melisa Pera, Annie Ogostalick
 Colgate—Stacey Shepatin
 Illinois—Kris Wilhelm, Elizabeth Wright, Patricia Etzkorn, Kristy Tatoles
 Indiana—Julia Bunton, Michelle Chocholek
 Iowa St.—Shyla Swan
 N. Dakota—Debbie Schaffer
 Oregon St.—Katie Irwin
 SW Texas St.—Deborah Phillips, Dana Hiller
 Syracuse—Stacy Berlein, Leigh Ann Soltysiak, Meg Sudlik, Lauren Arky, Tammi Hayes, Eileen Townsley, Despi Moschonas, Angela Strother, Michelle Bernard

Honors for THE CRESCENT

Gamma Phi Beta claimed the first place four color cover award in recent College Fraternity Editors Association competition. The winning entry was the summer 1988 issue cover.

Last year, the fall 1987 honors section won a first place award, and AIDS: The Reality (winter 1987-88) earned second place. The AIDS article also received a first place award last December in competition sponsored by the National Interfraternity Foundation.



Chorus and Choir

Alma—Beth Christenson, Mindy Kunding, Laren Marce, Carlee Olsen

Boston—Julie Silvester

Calif.-Santa Barbara—Vicki Berkebile

Chapman—Allison Browne, Amy Carter

Clemson—Julie Junkin

Illinois—Kim Hubert, Elizabeth Weismehl

Illinois St.—Karen Peterson, Jenni Tews

Indiana—Carolyn Filak, Katherine Hempton

Iowa St.—Tricia Besett, Betsy Poffenberger, Allison Chapman, Michelle Knott, Susan Clabaugh

Jacksonville—Michelle Crispin, Charity James, Dorothy Stern

Kansas—Susana Terrell, Sarah Terrell

Kansas St.—Jean Phelps

Kearney St.—Melinda Holcomb, Monica Yelken, Stacy Hughes

Michigan—Zoe Kircos

Nevada—Racheal Lawrence

N. Dakota—Molly Bleecker

N. Dakota St.—Jodi Carvel, Dina Christ

Northwestern—Jodi James, Rachel Silver

Oklahoma—Caryn Hickman, Rachel Smith

Oklahoma City—Kristi Chenowith, Michelle Plischke, Amy Parker, Stephanie Roth, Brenda

Chandler, Tricia Curtain

Oklahoma St.—Missy McConell, Angie Christesson, Becky Pitts

Rhodes—Liz Awsumb

SW Texas St.—Laura Breiner

Syracuse—Tammi Hayes

Wash.-St. Louis—Stephanie Shack

Wichita St.—Shay Stwalley

Wis.-Platteville—Lisa Chittwood

Wittenberg—Liz Mumford, Corinne

Johnston, Gwen Tickner

Band

Bradley—Cheryl Rudnick, Lisa Johnson

Clemson—Jennifer Brooks

Idaho—Jane Haggart, Becky Hill

Illinois St.—Debbie Phlaum

Iowa St.—Laurie Herman

Jacksonville—Adrienne Trent

Kearney St.—Melinda Holcomb

Lamar—Kavita Murthy

Michigan—Patty McEvoy

Nevada—Sherry Rader, Laurie Mitchell

N. Dakota St.—Dina Christ

Northwestern—Charlotte Zarter, Aimee Feuer

Oklahoma St.—Kelle Shafer

Penn St.—Kellie Ryan, Alyce Johnston

Puget Sound—Betsy Branch, Carolyn Keatts

St. Louis—Michele Butkiewicz

SW Texas St.—Dee Anna Smith

Wash.-St. Louis—Laura Hourican, Pam McGowen
Wittenberg—Lisa Nelson, Kathy Leidich

Upsilon Pi Epsilon (Computer Science)

Clemson—Karen Rawls

Lambda Mu Epsilon (Math)

Oklahoma—Kim Lindsey

Mu Kappa Tau (Marketing)

Oklahoma—Holly Todd

Student Education Association

Nebraska—Kristen Sittler, Joni Asleson



Angi Widener (Lamar)—Panhellenic Secretary

Phi Beta Lambda (Business)

Kearney St.—Kathy FitzGerald, Kris Panigotis, Gail Brokke

Oklahoma City—Catherine Ledbetter

Phi Chi Theta (Business)

Nebraska—Tara Spady

Oregon St.—Katie Irwin, DeDe Schmitt, Sawna Sawyer

Delta Sigma Pi (Business)

Colorado—Lisa Foster

Lamar—Kyung Sook Norwood

Nevada—Jennifer Moore

Alpha Gamma Sigma (Agriculture)

Calif. St.-Fullerton—Robin Roberts

Gamma Sigma Delta (Agriculture)

Kansas St.—Andrea Krug

Alpha Zeta (Agriculture)

Oklahoma St.—Donelle Allison



North Dakota State—Joan Marso, Blue Key; Allison Olson, Homecoming Queen



California Poly-San Luis Obispo—Suzi Cashman, 1989 Greek Goddess; Sandra Stirling, 1988 Greek Goddess

American Society of Mechanical Engineers

Kansas—Linda Zimmermann

Society of Women Engineers

Clemson—Jennifer Ledbetter
Nebraska—Dawn Elo, Leigh Anne Albert

Northwestern—Charlotte Zarter, Karen Gerbosi, Stephanie Miller

Purdue—Candee Cline, Cindy Holmes, Kellie Petroskey, Renee

Heiser, Kelli White

Rutgers—Beth Cheney, treasurer;

Lisa Tagert

Alpha Pi Mu (Engineering)

Illinois—Jennifer Johnson
Purdue—Cindy Holmes

Alpha Epsilon (Engineering)

Oklahoma—Sylvia Stokes

Chi Epsilon (Civil Engineering)

Colorado—Katie Simonson

Illinois—Jennifer Hanson

Financial Management Association

E. Texas St.—Jinger Brown, secretary

Illinois—Nancy Schuster, president

Oklahoma St.—Kim Scott, Debra

Pokorny

Syracuse—Heidi Schwartz

Beta Alpha Psi (Accounting)

Arizona—Susan Rooney

Denver—Diane Gustafson

Indiana—Kelly Nemeth

Kansas St.—Andrea Krug, Amy

Dodson, Susan Goss

Miami—Kristen Hanacek

Nebraska—Sheila Dose

Purdue—Liesl Bayouth

St. Louis—Beth Effertz

Syracuse—Mindy Luxemburg

Music Business Association

Oklahoma St.—Angie Christesson

Omicron Delta Epsilon (Economics)

Colgate—Laura Kimball, treasurer;
Carolee Bongiori

Oklahoma—Amy Osborn, Rae
Dorsey

Sigma Iota Rho (International Studies)

Denver—Michelle Rose, Karen
Kaplan

Sigma Tau Delta (English)

Clemson—Felicia Hamilton

Idaho—Laura Woodworth

Kearney St.—Karen FitzGerald

Oklahoma City—Terri Trammell

Alpha Kappa Psi (Business)

Illinois—Mala Byanna, vice president

Beta Gamma Sigma (Business)

Boston—Kerri Kunkel
Purdue—Liesl Bayouth
Wash.-St. Louis—Stephanie Peel

Phi Gamma Nu (Business)

Illinois—Denise Maple, president;
Pamela Brady

Biomedical Engineering Society

Northwestern—Stephanie Miller

Keramos (Engineering)

Clemson—Jennifer Ledbetter

Tau Beta Pi (Engineering)

Colorado—Katie Simonen

Pi Tau Sigma (Engineering)

Kansas—Linda Zimmermann

Kappa Phi Kappa (Education)

Illinois—Elizabeth Wright

Omicron Nu (Home Economics)

Colorado St.—Susan Schmaudy
Oklahoma St.—Jean Wolhuter

Phi Upsilon Omicron (Home Economics)

Illinois—Joan Johnson
Kansas St.—Diane Plodug, Dana Schanefelt, Heidi Hixson, Tammy Saviaro
N. Dakota St.—Jacque Sundquist
Oklahoma St.—Jean Wolhuter, president

Sigma Delta Pi (Spanish)

Illinois—Kathy McCormick
Kansas St.—Melanie Michals

Pi Delta Phi (French)

St. Louis—Laura Salava, Jennifer Daugherty, Ruthie Rochman

Alpha Mu Gamma (Foreign Language)

Kearney St.—Kathy FitzGerald
Oklahoma City—Gayle Mika, Angeliue Herring



California Poly-San Luis Obispo—Mas Creative Float, Poly Royal Parade

Pi Alpha Xi (Floriculture)

Kansas St.—Christine Struckhoff

Alpha Kappa Delta (Sociology)

Miami—Missy Lepley

Phi Gamma Mu (Sociology)

Florida St.—Amy Armstrong

Psi Chi (Psychology)

Arizona—Noelle Fishel, Melissa Gillespie
Calif.-Santa Barbara—Romy Guntman
Clemson—Jill Jakelis
Idaho—Kelli Robinson
Illinois—Chris Olt
Kearney St.—Kristy Dohrman
Lamar—Kavita Murthy
Nebraska—Beth Langemeier
N. Dakota—Jackie Kalk
Puget Sound—Amy Barret, Betsy Solomon, Jenn Greene
SW Texas St.—Colleen Gaides
Syracuse—Andrea Jeanette
Wittenberg—Joi Shortz

Phi Rho Epsilon (French)

Kearney St.—Karen FitzGerald

Delta Phi Alpha (German)

Illinois—Tina Schoeneweiss, Linda Travis
Penn St.—Dorothy Rosener

Kappa Pi (Art)

Kelly Delaney

Alpha Psi Omega (Theater)

Kearney St.—Johnette Toye



Wittenberg—Margot Grammas, school record for total career points in women's basketball; Pam Evans, present coach and former record holder

Orchestra

Calif.-Berkeley—Lorien Benet
Chapman—Leslie Hein
Colgate—Honnie Bermas, Julie Moran, Suzanne Convertino
Puget Sound—Wendy Ellner
Rhodes—Jennifer Gaines, Anna Becher
Wis.-Platteville—Kim Morris

Alpha Delta Sigma (Advertising)

SW Texas St.—Deborah Phillips

Alpha Upsilon Alpha (Education)

Iowa St.—Laurie Herman

Kappa Delta Pi (Education)

Iowa St.—Nanette Ehlert
Oklahoma St.—Jean Wolhuter, Gaylin Gray
Rutgers—Jessica Baines

Delta Kappa Phi (Education)

Kearney St.—Susan Rademacher, Karen FitzGerald, Tracy Kirtley

Pi Mu Epsilon (Math)

Denver—Mary Kurtz
Nebraska—Leigh Anne Albert
Oklahoma—Kim Lindsey

Mu Phi Epsilon (Music)

Indiana—Carolyn Filak, Katherine Hempton
Oklahoma—Janna Johnson

Sigma Alpha Iota (Music)

Northwestern—Megan Brady

Tau Beta Sigma (Music)

Purdue—Tammy Schoening

Tau Beta Sigma (Band)

Oklahoma—Janna Johnson

Omicron Rho Chi (Dance)

Kearney St.—Johnette Toye

Phi Alpha Delta (Prelaw)

Oklahoma City—Meeghan Donahue
St. Louis—Kelly Clark

Pi Gamma Theta (Restaurant/Hotel)

Purdue—Michelle Mitchell, Marsha Beck

Pi Sigma Alpha (Political Science)

Clemson—Greta Thomason
E. Texas St.—Rebecca Erb
Florida St.—Amy Armstrong
Wash.-St. Louis—Elizabeth Holland
Wittenberg—Dina Assad

Beta Beta Beta (Biology)

Jacksonville—Brenda Encarnacion
Kearney St.—Kelley Colvin
Wittenberg—Debbie Lenschow, Lisa Nelson

Sigma Pi Sigma (Physics)

Oklahoma—Kerry Greenfield
Rhodes—Jennifer Gaines

Alpha Epsilon Rho (Broadcasting)

Bradley—Lisa Fielding
Indiana—Elizza Verder
Wichita St.—Joanne Blanchat

Women in Communications

Indiana—Lorraine Buck, vice
president; Kezia Endsley
Oklahoma St.—Amy Kahle
Syracuse—Meg Sudick, Stacy
Bierlein

Student Nurses Association

Nebraska—Jill Bareman
St. Louis—Michele Butkiewicz

Sigma Theta Tau (Nursing)

Bradley—Angela Stuckey

Alpha Epsilon Delta (Premed)

Florida St.—Holly Chordas
Penn St.—Lari Scorza
Purdue—Danielle Turnak

Phi Chi (Medicine)

Oklahoma St.—Jules Moss,
Melody Hagan, Stacey Mann

Phi Delta Chi (Pharmacy)

Purdue—Michelle Simmons, Laurie
Kallenbach, Marla Scheider

Eta Sigma Gamma (Health Sciences)

Purdue—Carolyn Hubert

**1990
Convention
Hyatt Denver
Tech Center
Englewood,
Colorado
July 24-19
Registration
Fee: \$75
Hotel/Meals:
Approximately
\$500**

Phi Sigma (Biology)

Puget Sound—Candace Ito, Suzie
Drinkwater, Julie Lau

Phi Psi (Textile Arts)

Clemson—Shannon Rice

Kappa Omicron Phi (Home Economics)

Kearney St.—Becky Theis

Society of Professional Supervisors

Purdue—Kim Weston

1987-88 A Awards

Bowling Green—Donna Difiore**
British Columbia—Deidre
MacDonald*, Yifen Lin*, Gina
Wilson, Julia Uyeda
Calif.-Berkeley—Kathy Crupi
Calif.-Irvine—Patty Koehler
Colorado St.—Annette Ruggiero
Creighton—Lynne Nowatzke*,
Susan Orth, Michele Loritz, Vicki
Klassen, Michele Trumler**
Denver—Jeanette Eirich
E. Texas St.—Melanie Dunlap
Georgia—Courtney Cook, Moira
Plotnik, Wende Sparling
Idaho—Camille Fraley, Kirsten
Rosholt
Illinois—Jennifer Johnson, Mirka

Sulc
Indiana St.—Nadia Rayes, Julie
Smith
Iowa—Elizabeth Otis
Kansas—Lisa Lusk
Kansas St.—Anita Krug, Jane
Lauer
Lamar—Melanie Bergeron, Kavita
Murthy
Miami—Anna Simmons*, Jesse
Lehrer
Missouri—Katrice Kormeier
Nebraska—Barbara Briggs, Sarah
Cada, Elizabeth Langemeier,
Wendy Reed
N. Arizona—Jodi Callahan
N. Iowa—Brenda Hughes
Oklahoma St.—Alice Kahle*,
Shawna Bruner, Lisa Van
Wassenhove*
S. Tech—Melissa Carroll
SW Missouri St.—Jadyne Forest
USC—Leslie McWilliams
Wash.-St. Louis—Jennifer Walters,
Sandra Liu
Wis.-Oshkosh—Erin O'Toole
Wittenberg—Nancy Cleary*,
Deborah Lenschow, Margaret
McIver

*A Award 1986-87

**A Award 1985-86 and 1986-87

Chapter

Boise St.—1st pl., Panhellenic
Scholarship
Boston—1st pl., Greek Week
Bradley—2nd pl., Pledge Class
Panhellenic Scholarship; 1st pl.
Campus Carnival
Calif.-Riverside—1st pl., Scot's
Week; 1st pl., Greek Games;
Riverside Alumnae Panhellenic
Scholarship Tray
Calif. St.-Fullerton—1st pl.,
Panhellenic Scholarship
Chapman—1st pl., Greek Week
Colgate—1st pl., Football
Denver—1st pl., Volleyball
Florida St.—Pledge Class of the
Year
Idaho—1st pl., Homecoming; 2nd
pl., Greek Week; 1st pl.,
Songfest
Illinois—1st pl., Greek Week; 4th
pl., Mom's Day Sing; 2nd pl.,
Panhellenic Scholarship; 1st pl.,
Senior Program
Indiana—2nd pl., Blood Drive
Iowa St.—1st pl., Panhellenic
Scholarship; 1st pl., Varieties
Sweepstakes; Homecoming
Spirit Award
Jacksonville—1st pl., Pledge Class
Scholarship
Kearney St.—1st pl., Homecoming
Lamar—1st pl., Songfest; 1st pl.,
Sports
Miami—5th pl., Songfest; 5th pl.,
Greek Week
Michigan St.—2nd pl., Songfest
Minnesota—1st pl., Homecoming;
2nd pl., Volleyball

Continued on page 45



Gamma Phi Betas selected for Semester at Sea last spring are (seated) Jill Henehan (S. Methodist), Danielle Bittner (San

Diego), Jill Dufour (USC), Christen Clark (Purdue), Letitia Tomasky (USC), (standing) Lora Miethe (Penn St.), Jill Meskin (Col-

orado), Pamela VanEckhout (Colorado), Molly Montgomery (San Diego) and Lisa Zwerdinger (Colorado).

IN MEMORIAM

ALPHA

Doreen Lyman Farnham
Mary Delavan Lewis

BETA

Betty Lou Royal
Helen Ely Charlton
Carroll Jenks Farr
Shirley Shambaugh Beaman
Marilyn Pittner Muenchinger

GAMMA

Mary Hall Davol

EPSILON

Ann Gemmell Durant
Roz Rupp Corcoran
Helen Avis MacVicar DeVoto
Kathryn Squire Badow
Eugenie Doran Greenman
Helen Jane Behlke Wambolt****
Kathleen Wright Dempsey

ETA

Beatrice Farrar Ryan
Nancy Butcher Chapot

THETA

Doris Peterson Anderson*
Marie Coleman Cooper
Patricia Schuessler Lentz

IOTA

Jean Shaw Horn

KAPPA

Lorraine Hanson English
Gwenyth Owen Richardson
Marian Jones Johnston

LAMBDA

Sally Gyde Moffitt
Rose Williams Worthington
Joan Vilas Art
Jean Lowman Gallaher
Doreen Kennedy Blake
Erna Meerscheidt Bouillon

MU

Mary Haylett Butts
Virginia Woodruff Gifford
Jane Rumbley Brookbank
Anna Lundstrom-Rand
Alice Hamilton Sterry

NU

Marjorie Kay Huntington
Wenona Dyer Martin
Hope Riley Nordby

OMICRON

Marion Irman Connell
Melba Miller Blauvelt

RHO

Margaret Decker*
Margaret Andrew Jurgemeyer

TAU

Phyllis Amelia Feucht Mays

UPSILON

Anna Bohannan Carter

PHI

Martha McGirk Mann

CHI

Anne M. Lindsay
Nona Becker Hubbard
Dianne Ariel Gallagher
Summers

PSI

(Eleanor) Keith Spence Wilson

OMEGA

Mildred Ethel Hawkins

ALPHA BETA

Norma Ellestad Dawson

ALPHA GAMMA

Catharine Curieux Pennebaker
Lois Kimmell Meacham

ALPHA DELTA

Hilma Black Marvin
Marian Rix Thurlow

ALPHA EPSILON

Elizabeth (Betty) Shouse
Woodward

ALPHA ZETA

Leeann Cole

ALPHA THETA

Nelle Schell Hanson
Jeanne Cummings Edmonds

ALPHA LAMBDA

Audrey Jones Drummond
Campbell

ALPHA SIGMA

Emily Wood Penn
Anna Guy Cain

ALPHA TAU

Margaret Ruth Steeves Briggs

ALPHA UPSILON

Ruth Glenn Degling

ALPHA CHI

Rochelle Joy Schlappizzi
Thunstrom

BETA GAMMA

Jane Harman Ryder

BETA ZETA

Patricia Sellars Kalal

BETA RHO

Paula Louise Swanson Markel

GAMMA LAMBDA

Caroline Foster Neal Nichols

*Merit Roll

****Carnation Award

Proof of death must be submitted to International Headquarters before a member's name will be listed in the In Memoriam column. A newspaper obituary is preferred, but consideration will be given to a letter from a family member or executor of estate.

The Sorority appreciates the return of a deceased member's badge, when possible, so that it might be preserved and bring joy to others.

MEMORIAL GIFTS

Donors' names are listed below the names of those in whose memory gifts were given.

Virginia Adkins
Helen Brandt

Doris Anderson
Pat Pinney
Betsy Lyle
Denver Alumnae Chapter
Virginia Purdy

Elizabeth Fee Arnold
Los Angeles Alumnae Chapter

Marian Miller Baker
Nancy Cullers Claridge

Doreen Blake
Anne Adams Moldrem

Melba Miller Blauvelt
Theodore Blauvelt

Erna Meerscheidt Bouillon
Seattle Alumnae

Dollie McClean Callow
Seattle Alumnae

Lois McBride Dehn
Betsy Torrance
Anne Adams Moldrem
Lambda Chapter

Mollie Ellis
Margaret Newton

Dorothy Manhard Erb
Mary Froschauer

Laura Finley Feldkamp
Delphine Andrews

Elvera Woolner Fitzgerald
V. Lynn Muller
Lake County, Ill. Alumnae
Carlyn Whitehand

Adele Shea Franey
Jeanne Swallows

Jane Benton French
Mr. and Mrs. James H. Joyce

James Godfroy, Sr.
Mary Sieger

Gwen Heilman Griffin
Wendy Lozano

Katherine Harris Grimes
Hazel Richards

Marjorie Archer Haggart
Helen Sand

Lutie Mae Hoffman
Margaret Newton

Catherine Conlisk Holmes
Gamma Phi Beta Bridge Club

Pamela and Dick Holzgrafe
Phyllis Johnson

Eleanor A. Horn
Helen Tunstall
Celilia R. Bouma

Jean Shaw Horn
Susan H. Potterton

Dolly Virginia Hughes
Shirley Stahlheber
Stillwater, Okla. Alumnae

Eloise White Hutchinson
Martha Mackenzie

Helen Fales Irion
Dorothea Edwards

Lulu Anderson Ives
Delphine Andrews

Carol Janis
Joan Braitsch
Ann Bronsing
Sally Lewis

Abigail Donohue Jensen
Milwaukee, Wis. Alumnae

Laurie Koenig
Robin Dureger

Beulah Laird
Freemont, Neb. Mothers Club
and Alumnae

Eleanor Applegate Lambert
Lois Fleming Norman
Nu Chapter
Marjorie Smith Credik
Peggy Cullers Boone
Mary Wright Bay

Virginia Lippert
Margaret Newton

Wenona Dyer Martin
Jane Peterson Kochenderfer

Virginia Singleton McGehee
Margaret Newton

Williard Deberry Michelson
Patricia Michelson Davis

Alda Joy Matteson
Charles Matteson

Sally Gyde Moffitt
Anne Adams Moldrem

Mary Kelly Norton
North Houston, Tex.
Alumnae

Emily Wood Penn
Mary Louise Klauer Turner

Louise Hoover Perry
Harrisburg, Penn. Alumnae

Ruth Price Payo
Marion Stowell Younger

Katherine Eddy Powers
Jocelyn Burdick

Jean Anthony Rebelsky
Jeanne MacDuff

Helen Wisdom Redman
Odessa, Tex. Alumnae

Florence Breed Robinson
Clareda Allen McCombs

Janice Houston Romerman
Oklahoma City, Okla.
Alumnae

Mary Bernard Sand
Susan Kelly Wheeler

Mrs. E. H. Schellenberg
Mr. and Mrs. Wade H. Hicks
Mr. and Mrs. K. M. von
Hahmann

Margaret Kline Smalley
Houston, Tex. Alumnae

Byron Votaw
Ft. Worth, Tex. Alumnae
Barbara Ford
Sharon Renfro
LaVaun Sears

Helen Jane Wamboldt
Latane Graham

Alice Waters
Helen Tunstall

Evelyn Courtney Wood
Ft. Worth, Tex. Alumnae
Barbara Ford
Sharon Renfro
Jo Ann Durham

Katherine Condon Woods
Beta Psi Chapter

Donations in memory of friends, sisters and loved ones may be sent to: Gamma Phi Beta Foundation, 7395 E. Orchard Road, Englewood, CO 80111. A card recognizing your memorial gift will be mailed to the family.

DIRECTORY

Founders

Helen M. Dodge Ferguson
Frances E. Haven Moss
E. Adeline Curtis Curtis
Mary A. Bingham Willoughby

The Grand Council

International President: Randall Stevens (Ms. R.), 8928 W. 124th #117, Overland Park, KS 66213
Alumnae Vice President: Sally Erikson Lewis (Ms. S.), 535 N. Michigan Ave. #907, Chicago, IL 60611
Collegiate Vice President: Jolene Lessard Stiver (Mrs. K.), 15944 Ashville Ln., Granger, IN 46530
Financial Vice President: Frances Rea Griffin (Mrs. D.), 830 Warwick Rd., Deerfield, IL 60015
NPC Delegate: Karen Gamel Urette (Mrs. M.), 532 Riviera Dr., Tampa, FL 33606
Executive Director: Marjory Mills Shupert (Mrs. T.), 7395 E. Orchard Rd., Suite 200, Englewood, CO 80111

Directors

Extension: Karen Wander Kline (Mrs. T.), 11819 Laneview, Houston, TX 77070
Services: Phyllis Donaldson Choat (Mrs. N.), 2116 S. 113th Ave., Omaha, NE 68144

Alumnae Department

Alumnae Vice President: Sally Erikson Lewis (Ms. S.)
Alumnae Initiates: Marsha McCollum Schumacher (Mrs. T.), 271 Oldham Way, Hudson, OH 44236
Bylaws: Doris Bird Gorden (Mrs. W.), 22 Andrews Rd., Malvern, PA 19355
Personnel: Corinne Pliester Richman (Mrs. L.), 911 N. Evergreen, Arlington Heights, IL 60004
Recommendations: Liz Crosby Martin (Mrs. H.), 10706 E. Powers Dr., Englewood, CO 80111
Province Alumnae Directors:
I: Paula Janis Dean (Mrs. P.), 10 W. 66th St., New York, NY 10023
II: Carolyn Vick Anderson (Mrs. C.), 1625 Connor Dr., Library, PA 15129
III: Patricia Pivonka Wagar (Mrs. P.), 9675 Martinique, Concord, OH 44060
IV: Barbara Magnus Small (Mrs. B.), 1932 Shipman, Birmingham, MI 48009
V:
VI: Marianna Revell Mandl (Mrs. H.), Rt. 2, Box 104, Colton, SD 57018
VII: Donna Snyder Scarborough, 7817 Kenosha Ave., Lubbock, TX 79423
VIII: Catherine Balzer Lorino (Ms. C.), 2131 Goldsmith, Houston, TX 77030
IX: Anne Sturgis Phillips Hartje (Mrs. R.), 4579 Corrientes Cir. S., Jacksonville, FL 32217
X: Melba Quick Spurrier, 815 Hillcrest, Stillwater, OK 74075
XI: Virginia Knight Crowley (Mrs. W.), 8141 Pershing Ave., St. Louis, MO 63105
XII: Eileen Bureau McDonald (Mrs. C.), 4309 Royene NE, Albuquerque, NM 87110
XIII: Anne Elizabeth McEvoy, 1305 W. 13th Ave. #102, Vancouver, BC, Canada V6H 1N7
XIV: Jacki Ennis Falkenroth (Mrs. C. F.), 89 Tumbleweed Ct., San Ramon, CA 94583
XV: Roberta Martinez Bollin, 1831 Redondo Way, Salinas, CA 93906
XVI: Elizabeth Roessler Griffin (Mrs. J.), 2837 Brook Dr., Falls Church, VA 22042
XVII: Sharon Witt Dunham (Mrs. T.), 6411 S. 75th Ave. Circ., Ralston, NE 68127
XVIII:
XIX: Barbara Davis McKewen (Mrs. R.), 4416 Mt. Herbert Ave., San Diego, CA 92117

Awards: Martha Payne Mendenhall, 157 Woodstone Dr., Athens, GA 30605

Bylaws (International): A. Patricia Denton (Ms. P.), 747 Willis, Glen Ellyn, IL 60137

Collegiate Department

Collegiate Vice President: Jolene Lessard Stiver (Mrs. K.)
Advisors: Cinda Keating Lucas, 4565 Vista de la Tierra, Del Mar, CA 92014
Bylaws: Sue Herzog Johnson (Mrs. D.), 5538 McCommas, Dallas, TX 75206
New Chapters: Marilyn Bachnik Callahan (Mrs. L.), 2437 Fairway Dr., Richardson, TX 75080
Operations: Diane Tjaden Thompson, PO Box 246, Eldora, IA 50627
Pledge: Debbie Dykes Misiag (Mrs. J.), 6912 Stratford Dr., Sykesville, MD 21784
Policies: Connie Lynne Brandon (Mrs. C.), 200 Bentre Ln. #J3, Florence, SC 29501
Rush: Linda Lyons Malony, 8304 High Dr., Leawood, KS 66206
Scholarship: Joanne Callis Roman (Mrs. J.), 7215 Shaftsbury Ave., University City, MO 63130
Province Collegiate Directors:
I: Carol Stott St. Jean (Mrs. C.), 71 E. Wyoming Ave., Melrose, MA 02176
II: Barbara Myhre Koch, 7 Madison Dr., Ogdensburg, NJ 07439
III: Anne Louise Layton (Miss A.), 88 Gothic Ave., Toronto, Ontario, Canada M6P 2V9
IV: Shirley Mueller West, 824 Essex St., West Lafayette, IN 47906
V: Camille Antoinette Cestone (Ms. C.), 1120 N. LaSalle #11G, Chicago, IL 60610
VI: Cindy Shirley Schultz, 1990 Selby Ave., St. Paul, MN 55104
VII: Linda Daniel Johnson (Mrs. P.), 12110 Rhett, Houston, TX 77024
VIII: Sandra Retke Nauman (Ms. S.), 136 Great Oaks Ln., Roswell, GA 30075
IX: Ellen Matthews Duncan (Mrs. J.), 902 Meadow Ridge, Clinton, OK 73601
X: Judy Hubbard White, 8841 Foster Ln., Overland Park, KS 66212
XI: Vicki Carlson Read, 5825 Camino Hombro de Oro, Tucson, AZ 85718
XII: Mary Michele Pond-Bell (Mrs. N.), 1573 Shasta, Pocatello, ID 83201
XIII: Diane Soderstrom Golf (Mrs. D.), 18148 NW Dustin Ln., Beaverton, OR 97006
XIV: Karen Hewett Scarlett, 1018 Adcock Rd., Lutherville, MD 21093
XV: Mary Anne Fitzgibbon Rennebohm, 520 Valley West Ct., West Des Moines, IA 50265
XVI: Joan Welty Ingle (Mrs. R.), 9321 Hidden Valley Dr., Villa Park, CA 92667
XVII: Cheryl Anne Speer, 1440 N. Harbor Blvd. #520, Fullerton, CA 92635
New Chapter Directors:
A: Kris Baack, 2902 Raleigh, Lincoln, NE 68512
B: Barbara Hurt-Simmons, 11065 Pinehigh Dr., Alpharetta, GA 30201
C: Camille Antoinette Cestone (Ms. C.), 1120 N. LaSalle #11G, Chicago, IL 60610
Collegiate Consultants: Jennifer Bortle, Cheryl Broyles, Laurie Davies, Karen Hale, Kristina Harlan, LeeAnn Herdman, Lynn Jorgenson, Molly Maguire, Linda Parker

Convention Chairman: Catherine Guthrie Lindauer (Mrs. J.), 5051 S. Beeler, Englewood, CO 80111

The Crescent

Editor: Kris Brandt Riske (Mrs. P.), 2405 W. Gregg Dr., Chandler, AZ 85224
Alumnae Editor: Margy Molden Willamuth (Mrs. R.), 1700 Kiva Rd., Silver Spring, MD 20904

Gamma Phi Beta Sorority

Founded November 11, 1874;
Syracuse University

Central Office
7395 E. Orchard Rd., Suite 200
Englewood, CO 80111
(303) 771-3031
FAX (303) 771-1150

Collegiate Editor: Lin Schafer Sanford (Mrs. A.), 808 Lake Felicity Ct., Slidell, LA 70461
Feature Editor: Natalie Meyer McKenzie (Mrs. G.), 531 S. Burton Pl., Arlington Heights, IL 60005
Business Manager: Marjory Mills Shupert (Mrs. T.), International Headquarters

Financial Department

Financial Vice President: Frances Rea Griffin (Mrs. D.)
Area Financial Advisors:
Jean Anne Hall Booth, 3303 B Pecos, Austin, TX 78703
Virginia Heck Gottfredson (Mrs. J.), 1401 San Felipe Ct., Boulder City, NV 89005
Corinne Yvette Martinez, 3650 Sacramento St., San Francisco, CA 94118
Karen Hohenstein Nelsen (Mrs. L.), 8222 Castelar St., Omaha, NE 68124
Melinda Risse Nutter, 2750 Nantucket Rd., Beavercreek, OH 45385
Ann Williams Ross (Mrs. J.), 1213 Woodstock Ct., Norman, OK 73072
Kathleen Sage (Ms. K.), 2624 E. Blackledge, Tucson, AZ 85716
Shirley Busch Tice, 1810 Northwestern, Ames, IA 50010
Fran Berrigan Wade, 90 Berlioz #1504, Nuns Island, Quebec, Canada H3E 1N1
Ann Cibula Zultner (Mrs. R.), 12 Wallingford Dr., Princeton, NJ 08540
House Corporation-Bylaws: Donna Arnold Smith (Mrs. V.), 6998 S. Ketcham Rd., Bloomington, IN 47401
Tax Matters: Julia Lynn Wright (Mrs. G.), RR #3, Box 166, Girard, KS 66743

Historian: Beverly Smith Gosnell, 3609 Serra Rd., Malibu, CA 90265

National Panhellenic Conference

National Panhellenic Conference Delegate: Karen Gamel Urette (Mrs. M.)
1st Alternate Delegate: Gloria Swanson Nelson (Mrs. L.), 3521 Royal Ln., Dallas, TX 75229
2nd Alternate Delegate: Betty Ahlemeyer Quick (Mrs. J.), 6009 Foxland Dr., Brentwood, TN 37027
3rd Alternate Delegate: Catherine Guthrie Lindauer (Mrs. J.), 5051 S. Beeler, Englewood, CO 80111

Nominating Committee Chairman: Cheri Lamont Brumleau, 18612 Mariposa Dr., Villa Park, CA 92667

Parliamentarian: Jennie K. Curtis (Mrs. J.), 6222 Revere, Dallas, TX 75214

Public Relations: Cyndy Meisner Howes (Mrs. R.), 1617 Ashgrove Ct., Franklin, TN 37064

Research: Margaret Godbold Briscoe, 4523 Haverleigh Ter., St. Louis, MO 63128

Rituals: Audrey Weldon Shaler (Mrs. C., Jr.), 6808 Rockhill Rd., Kansas City, MO 64131

Services

Director: Phyllis Donaldson Choat (Mrs. N.)
Alumnae Collegiate Relations: Janet L. Wyche, 219 Spring Creek Ln., Dunwoody, GA 30350
Crossroads: Leona Davis Drouet (Mrs. R.), 10482 E. Grandeur Dr., Baton Rouge, LA 70815
Leadership Training Coordinator: Brenda Dunn Rickert (Mrs. G.), 6224 S. Galena Way, Englewood, CO 80111
Mothers Club: Georgiana Post McClenaghan (Mrs. R.), 6212 Brownlee Rd., Nashville, TN 37205
PACE Committee Chairman: Carol Seigal Geller, 3530 Oleander St., Seal Beach, CA 90740
Alumnae PACE: Lynn Towsley Hamblin, 6901 Loch Lomond Dr., Bethesda, MD 20817
Collegiate PACE: Kendra Gates, 362-A Newport Ave., Long Beach, CA 90814
Philanthropy Coordinator: Linda Hallenbeck Pellegrino (Mrs. D.), 2706 Midvale Ave., Los Angeles, CA 90064
SisterLink: Barbara Misserl Sassaman, 4842 Hyde Rd., Manlius, NY 13104
TransSister: Marjory Letner Jones (Mrs. B.), 1116 Stonewall Jackson Ct., Nashville, TN 37220

Song: Jeannette Stoll Kaelin (Mrs. W.), 19690 Top O' The Moor W., Monument, CO 80132

Endowment-Loan Board

Directors:
Leona Davis Drouet (Mrs. R.), 10482 E. Grandeur Dr., Baton Rouge, LA 70815
Emerald L. Erickson (Ms. E.), 136 Glendale Dr., Ewing, NJ 08618
Leslie Davis Storr, 1333 Schoolhouse Rd., Santa Barbara, CA 93108
Rebecca Syverson Young (Mrs. G.), 5956 S. Colowor Dr., Morrison, CO 80465
Randall Stevens (Mrs. R.)
Frances Rea Griffin (Mrs. D.)
Marjory Mills Shupert (Mrs. T.)

Gamma Phi Beta Foundation

Trustees:
Chairman: Ann Mullen Bronsing (Mrs. R.), 31 Chesterton Ln., Chesterfield, MO 63017
Camp Committee Chairman: Barbara J. Junker, #18-960 W. 13th, Vancouver, BC, Canada V5Z 1P3
Financial Aid Committee Chairman: Sally Ramseyer Beck (Mrs. C.), 20205 W. 121st Ln., Olathe, KS 66061
Finance and Investment Committee Chairman: Barbara Endres (Miss B.), 1950-D S. Helena St., Aurora, CO 80013
Grand Council Representative: Jolene Lessard Stiver (Mrs. K.)
Public Relations Committee Chairman: Mary Agnes Welsh (Ms. M.), 625 Huntington Commons Unit 312, Mt. Prospect, IL 60056
Secretary-Treasurer: Marjory Mills Shupert (Mrs. T.)

CHAPTER DIRECTORY

GREEK-LETTER CHAPTERS

ALPHA (Syracuse U.) November 11, 1874 (I)
 BETA (U. of Michigan) June 7, 1882 (IV)
 GAMMA (U. of Wisconsin) November 14, 1885 (V)
 DELTA (Boston U.) April 22, 1887-1970, Reactivated 1985 (I)
 EPSILON (Northwestern U.) October 13, 1888 (V)
 *ZETA (Goucher College) 1893-1950
 ETA (U. of California-Berkeley) April 29, 1894 (XIII)
 THETA (U. of Denver) December 28, 1897 (XI)
 *IOTA (Barnard College) 1901-1915
 KAPPA (U. of Minnesota) May 23, 1902 (VI)
 LAMBDA (U. of Washington) May 17, 1903 (XII)
 *MU (Stanford U.) January 9, 1905-1944, Recolonized 1987 (XIII)
 NU (U. of Oregon) December 18, 1908 (XIII)
 XI (U. of Idaho) February 3, 1910 (XII)
 OMICRON (U. of Illinois) May 24, 1913 (V)
 PI (U. of Nebraska) June 22, 1914 (XV)
 RHO (U. of Iowa) June 15, 1915 (XV)
 SIGMA (U. of Kansas) October 9, 1915 (X)
 TAU (Colorado State U.) October 16, 1915 (XI)
 *UPSILON (Hollins College) 1916-1929
 PHI (Washington U.) February 23, 1917 (X)
 CHI (Oregon St.) April 26, 1918 (XIII)
 PSI (U. of Oklahoma) September 13, 1918 (IX)
 OMEGA (Iowa State U.) December 21, 1918 (XV)
 ALPHA ALPHA (U. of Toronto) October 30, 1919 (III)
 ALPHA BETA (U. of North Dakota) June 16, 1920 (VI)
 ALPHA GAMMA (U. of Nevada) May 14, 1921 (XIII)
 ALPHA DELTA (U. of Missouri) May 20, 1921 (X)
 ALPHA EPSILON (U. of Arizona) April 29, 1922 (XI)
 *ALPHA ZETA (U. of Texas) 1922-1988
 *ALPHA ETA (Ohio Wesleyan) 1923-1984
 ALPHA THETA (Vanderbilt U.) June 25, 1924 (XIV)
 ALPHA IOTA (U. of California-Los Angeles) June 26, 1924 (XVib)
 *ALPHA KAPPA (U. of Manitoba) 1925-1975
 ALPHA LAMBDA (U. of British Columbia) April 28, 1928 (XII)
 *ALPHA MU (Rollins College) 1928-1971
 ALPHA NU (Wittenberg U.) June 8, 1929 (III)
 ALPHA XI (Southern Methodist U.) September 21, 1929 (VII)
 ALPHA OMICRON (North Dakota State U.) February 1, 1930 (VI)
 *ALPHA PI (West Virginia U.) 1930-1984

*ALPHA RHO (Birmingham-Southern College) 1930-1957
 *ALPHA SIGMA (Randolph-Macon Women's College) 1930-1951
 ALPHA TAU (McGill U.) September 26, 1931 (I)
 ALPHA UPSILON (Pennsylvania State U.) May 21, 1932 (II)
 ALPHA PHI (Colorado College) October 15, 1932 (XI)
 ALPHA CHI (College of William and Mary) January 14, 1933 (XIV)
 *ALPHA PSI (Lake Forest College) 1934-1961
 ALPHA OMEGA (U. of Western Ontario) October 24, 1936 (III)
 BETA ALPHA (U. of Southern California) September 24, 1938 (XVla)
 BETA BETA (U. of Maryland) October 23, 1940 (XIV)
 BETA GAMMA (Bowling Green State U.) Oct. 23, 1943 (III)
 BETA DELTA (Michigan State U.) June 3, 1944 (IV)
 BETA EPSILON (Miami U.) April 12, 1947 (III)
 *BETA ZETA (Kent State U.) 1947-1972
 BETA ETA (Bradley U.) April 3, 1948 (V)
 *BETA THETA (San Jose State U.) 1948-1984
 *BETA IOTA (Idaho State U.) 1949-1985
 BETA KAPPA (Arizona State U.) December 3, 1949 (XI)
 BETA LAMBDA (San Diego State U.) October 15, 1949 (XVib)
 BETA MU (Florida State U.) April 29, 1950 (VIII)
 *BETA NU (U. of Vermont) 1950-1974
 *BETA XI (Ohio State U.) 1951-1967
 BETA OMICRON (Oklahoma City U.) November 3, 1951 (IX)
 BETA PI (Indiana State U.) September 13, 1952 (IV)
 BETA RHO (U. of Colorado) March 13, 1954 (XI)
 SIGMA (Washington State U.) March 5, 1955 (XII)
 BETA TAU (Texas Tech U.) March 10, 1956 (VII)
 BETA UPSILON (Kansas State U.) March 23, 1957 (X)
 BETA PHI (Indiana U.) November 16, 1957 (IV)
 BETA CHI (Wichita State U.) February 1, 1958 (X)
 BETA PSI (Oklahoma State U.) February 3, 1958 (IX)
 BETA OMEGA (Northern Arizona U.) February 15, 1958 (XI)
 *GAMMA ALPHA (Memphis State U.) 1958-1984
 GAMMA BETA (Gettysburg College) February 21, 1959 (II)
 GAMMA GAMMA (U. of Wisconsin-Milwaukee) March

19, 1960 (V)
 *GAMMA DELTA (U. of Wyoming) 1961-1973
 GAMMA EPSILON (U. of Puget Sound) April 29, 1961 (XII)
 GAMMA ZETA (East Texas State U.) March 3, 1962 (VII)
 GAMMA ETA (California State U.-Long Beach) March 10, 1962 (XVib)
 *GAMMA THETA (U. of the Pacific) 1963-1972
 GAMMA IOTA (Midwestern State U.) March 16, 1963 (VII)
 GAMMA KAPPA (Kearney State College) May 11, 1963 (XV)
 *GAMMA LAMBDA (Louisiana State U.) 1964-1977
 GAMMA MU (Moorhead State U.) April 25, 1964 (VI)
 GAMMA NU (Lamar U.) February 20, 1965 (VII)
 *GAMMA XI (U. of Tennessee) 1965-1977
 *GAMMA OMICRON (U. of Kentucky) 1965-1982
 GAMMA PI (Mankato State U.) February 5, 1966 (VI)
 GAMMA RHO (U. of Wisconsin-Oshkosh) May 14, 1966-1976, Reactivated 1985 (V)
 *GAMMA SIGMA (Western Michigan U.) 1968-1975
 GAMMA TAU (St. Louis U.) November 11, 1967 (X)
 *GAMMA UPSILON (Drake U.) 1968-1983
 *GAMMA PHI (Auburn U.) 1968-1983
 GAMMA CHI (Southwest Texas State U.) February 3, 1968 (VII)
 GAMMA PSI (U. of Northern Iowa) November 23, 1968 (XV)
 GAMMA OMEGA (U. of Wisconsin-Platteville) March 29, 1969 (V)
 *DELTA ALPHA (U. of Wisconsin-River Falls) 1969-1984
 DELTA BETA (Boise State U.) February 21, 1970 (XII)
 *DELTA GAMMA (U. of Nebraska-Omaha) 1970-1976
 DELTA DELTA (California State U.-Fullerton) April 3, 1971 (XVla)
 DELTA EPSILON (Texas Wesleyan College) April 28, 1973 (VII)
 DELTA ZETA (Southwestern Oklahoma State U.) May 5, 1973 (IX)
 DELTA ETA (U. of California-Irvine) January 29, 1974 (XVib)
 DELTA THETA (California Polytechnic State U.-San Luis Obispo) January 18, 1975 (XVla)
 DELTA IOTA (Purdue U.) April 19, 1975 (IV)
 DELTA KAPPA (Lehigh U.) January 31, 1976 (II)
 DELTA LAMBDA (U. of California-Riverside) January 24,

1976 (XVla)
 DELTA MU (Rutgers State U.) April 23, 1977 (II)
 DELTA NU (Southwest Missouri State U.) November 12, 1977 (X)
 DELTA XI (Bucknell U.) December 2, 1978 (II)
 DELTA OMICRON (Southern Technical Institute) January 26, 1980 (VIII)
 DELTA PI (Illinois State U.) April 19, 1980 (V)
 *DELTA RHO (Dickinson College) 1980-1987
 DELTA SIGMA (Florida Institute of Technology) May 30, 1981 (VIII)
 DELTA TAU (Colgate U.) November 14, 1981 (I)
 DELTA UPSILON (U. of Georgia) February 5, 1983 (VIII)
 DELTA PHI (California State College-Bakersfield) April 23, 1983 (XVla)
 DELTA CHI (California State U.-Sacramento) May 14, 1983 (XIII)
 DELTA PSI (U. of California-Santa Barbara) November 19, 1983 (XVla)
 DELTA OMEGA (Oakland U.) April 7, 1984 (IV)
 EPSILON ALPHA (LaSalle U.) December 10, 1983 (II)
 EPSILON BETA (Alma College) September 22, 1984 (IV)
 EPSILON GAMMA (U. of San Diego) October 27, 1984 (XVib)
 EPSILON DELTA (Creighton U.) February 22, 1986 (XV)
 EPSILON EPSILON (Union College) May 3, 1986 (I)
 EPSILON ZETA (Jacksonville U.) November 21, 1987 (VIII)
 EPSILON ETA (Bridgewater State College) November 22, 1987 (I)
 EPSILON THETA (Clemson U.) April 9, 1988 (XIV)
 EPSILON IOTA (Christopher Newport College) April 30, 1988 (XIV)
 EPSILON KAPPA (California State U.-Chico) November 12, 1988 (XIII)
 EPSILON LAMBDA (U. of Alabama) February 4, 1989 (VIII)
 EPSILON MU (Loyola University) April 22, 1989 (VIII)
 EPSILON NU (Chapman College) April 29, 1989 (XVib)
 Rhodes Colony (XIV)
 U. of California-Santa Cruz Colony (XIII)

*Chapter is no longer active.

TO CONTACT AN ALUMNAE OR COLLEGIATE CHAPTER, SEND CORRESPONDENCE TO INTERNATIONAL HEADQUARTERS.

ALUMNAE CHAPTERS AND CRESCENT CIRCLES

ALABAMA (VIII)
 Birmingham, 1931
 Huntsville, 1989
 ALASKA (VII)
 Arctic Circle Crescent Circle
 ARIZONA (XI)
 Flagstaff Crescent Circle
 Phoenix, 1939
 Tucson, 1937
 Yuma Crescent Circle
 CALIFORNIA (XIIIa, XIIIb, XVla, XVb)
 Bakersfield, 1953 (XVla)
 Balboa Harbor, 1964 (XVb)
 Berkeley-East Bay, Reactivated 1988 (XIIIb)
 Beverly Hills-Westwood, 1955 (XVla)
 Chico Crescent Circle (XIIIa)
 Diablo Valley, 1984 (XIIIb)
 Fresno, Reactivated 1979 (XIIIa)
 Glendale, 1939 (XVla)
 La Jolla, 1957 (XVb)
 Leisure World-Laguna Hills Crescent Circle (XVb)
 Long Beach, 1939 (XVb)
 Marin County, 1984 (XIIIb)
 Modesto, 1955 (XIIIa)
 Monterey, 1951 (XIIIb)
 Napa-Sonoma, Reactivated 1988 (XIIIb)
 North Orange County, 1954 (XVb)
 Palo Alto, 1939 (XIIIb)
 Pasadena, 1939 (XVla)
 Peninsula, 1948 (XIIIb)
 Pomona Valley, 1956 (XVla)
 Riverside Area, Reactivated

1978 (XVib)
 Sacramento Valley, 1937 (XIIIa)
 San Diego, 1939 (XVb)
 San Fernando Valley, 1953 (XVla)
 San Francisco, 1902 (XIIIb)
 San Jose, 1948 (XIIIb)
 San Luis Obispo Crescent Circle (XIIIa)
 Santa Barbara, 1982 (XVla)
 Santa Clara, 1986 (XIIIb)
 Santa Cruz Crescent Circle (XIIIb)
 South Bay, 1956 (XVb)
 South Orange County, 1976 (XVb)
 South Peninsula, 1964 (XIIIb)
 Stockton Crescent Circle (XIIIa)
 Whittier Crescent Circle (XVla)
 COLORADO (XI)
 Colorado Springs, 1932
 Denver, 1907
 Fort Collins, 1945
 CONNECTICUT (I)
 Hartford County, 1984 (XIIIa)
 DELAWARE (XIV)
 Northern Delaware Crescent Circle
 DISTRICT OF COLUMBIA (XIV)
 Washington, D.C., 1935
 FLORIDA (VIII)
 Brevard County Crescent Circle
 Fort Myers, 1987
 Jacksonville, 1953
 Lake-Sumter Crescent Circle
 Miami, 1948
 Orlando-Winter Park, 1935
 Palm Beach Crescent Circle
 Pinellas County Crescent Circle
 Sarasota/Manatee Counties, 1987
 Tallahassee, 1954

Tampa Bay Area, 1981
 Treasure Coast Crescent Circle
 GEORGIA (VIII)
 Athens Crescent Circle
 Atlanta, 1940
 HAWAII (XIIIa)
 Hawaii, 1938
 IDAHO (XII)
 Boise, 1928
 Moscow, 1941
 Pocatello, 1988
 ILLINOIS (V)
 Aurora Crescent Circle
 Bloomington-Normal Crescent Circle
 Champaign-Urbana, 1929
 Chicago, Reactivated 1978
 Chicago Northwest Suburban, 1955
 Deerbrook Crescent Circle
 Evanston-North Shore, 1949
 Glen Ellyn Area, 1967
 LaGrange Area Crescent Circle
 Lake County, 1950
 Peoria, 1947
 Quad Cities, 1938
 INDIANA (IV)
 Bloomington, 1956
 Evansville, 1956
 Indianapolis, 1942
 Lafayette Area, 1963
 Terre Haute, 1952
 IOWA (XV)
 Ames, 1940
 Cedar Rapids, 1948
 Des Moines, 1919
 Iowa City Crescent Circle
 Quad Cities, 1938
 Waterloo-Cedar Falls, 1941
 KANSAS (X)
 Hutchinson Crescent Circle
 Kansas City Crescent Circle

Lawrence, 1941
 Manhattan, 1956
 Topeka, 1955
 Wichita, 1925
 KENTUCKY (XIV)
 Lexington, 1965
 Louisville, Reactivated 1970
 LOUISIANA (VIII)
 Crescent City Crescent Circle
 MARYLAND (XIV)
 Delmar E. Shore Crescent Circle
 Greater Baltimore, 1987
 Mid-Maryland Crescent Circle
 MASSACHUSETTS (I)
 Boston West Suburban, 1963
 Bridgewater Crescent Circle
 Greater Springfield Crescent Circle
 MICHIGAN (IV)
 Ann Arbor, 1936
 Greater Lansing, 1948
 Jackson, 1953
 Rochester, 1984
 MINNESOTA (VI)
 Duluth, 1957
 Hiawatha Land Crescent Circle
 Minneapolis-St. Paul, 1904
 MISSISSIPPI (VIII)
 Jackson Crescent Circle
 MISSOURI (X)
 Columbia, 1941
 Greater Kansas City, 1923
 Rolla Crescent Circle
 St. Louis, 1919
 Springfield, 1917
 MONTANA (XII)
 Big Sky Crescent Circle
 NEBRASKA (XV)
 Kearney, 1962
 Lincoln, 1938
 Omaha, 1919

NEVADA (XIIIa)
 Las Vegas Crescent Circle
 Reno, 1921
 NEW JERSEY (II)
 Bergen County, 1965
 Central Jersey, 1974
 New Jersey Metropolitan, 1965
 Princeton, Reactivated 1984
 South Jersey, 1987
 NEW MEXICO (XI)
 Albuquerque, 1952
 Santa Fe, 1983
 NEW YORK (I)
 Buffalo, 1940
 New York City, Reactivated 1977
 Rochester, 1945
 Syracuse, 1892
 Tri-City Crescent Circle
 NORTH CAROLINA (XIV)
 Raleigh, 1967
 Triad Crescent Circle
 NORTH DAKOTA (VI)
 Fargo-Moorhead, 1929
 Grand Forks, 1946
 OHIO (III)
 Greater Akron Crescent Circle
 Canton-Massillon Crescent Circle
 Cincinnati, 1941
 Cleveland, 1916
 Cleveland East, 1955
 Cleveland West, 1961
 Columbus, 1929
 Dayton, 1941
 Lima Crescent Circle
 Oxford Crescent Circle
 Sandusky Crescent Circle
 Springfield, 1929
 Toledo, 1945
 OKLAHOMA (IX)
 Bartlesville, 1952

Muskogee, 1957
 Norman, 1930
 Oklahoma City, 1921
 Stillwater, 1957
 Tulsa, 1929
 Western Oklahoma, 1973
 OREGON (XIIIa)
 Corvallis, 1947
 Eugene, 1940
 Portland, 1913
 Salem, 1944
 PENNSYLVANIA (II)
 Lehigh Valley, 1975
 Philadelphia North, 1957
 Philadelphia West, 1935
 Pittsburgh, 1940
 State College, 1941
 SOUTH CAROLINA (XIV)
 Charleston Crescent Circle
 Midlands South Carolina Crescent Circle
 Tri-County Crescent Circle
 TENNESSEE (XIV)
 Memphis, 1952
 Nashville, 1929
 TEXAS (Vla, Vlb)
 Amarillo, 1955 (Vla)
 Arlington, 1965 (Vla)
 Austin, 1947 (Vlb)
 Beaumont, 1956 (Vlb)
 Collin County Crescent Circle (Vla)
 Corpus Christi Crescent Circle (Vlb)
 Dallas, 1930 (Vla)
 Denton Area Crescent Circle (Vla)
 East Texas Area Crescent Circle (Vla)
 El Paso Crescent Circle (Vla)
 Fort Worth, 1946 (Vla)
 Houston, 1941 (Vlb)
 Lubbock, 1951 (Vla)

Midland, 1951 (Vla)
 North Houston County, 1982 (Vlb)
 Odessa, 1965 (Vla)
 San Angelo Crescent Circle (Vla)
 San Antonio, 1946 (Vlb)
 San Marcos Crescent Circle (Vlb)
 Wichita Falls, 1961 (Vla)
 UTAH (XI)
 Salt Lake City Crescent Circle
 VERMONT (I)
 Champlain Valley Crescent Circle
 VIRGINIA (XIV)
 Northern Virginia, 1956
 Hampton Roads Crescent Circle
 WASHINGTON (XII)
 Seattle, 1915
 Southwestern Washington Crescent Circle
 Spokane, 1918
 Tacoma, 1947
 WEST VIRGINIA (XIV)
 Morgantown, 1959
 WISCONSIN (V, VI)
 Green Bay Crescent Circle (V)
 Fox Valley, Reactivated 1985 (V)
 Madison, 1913 (V)
 Milwaukee, 1902 (V)
 Platteville, 1969 (V)
 BRITISH COLUMBIA (XII)
 Vancouver, 1928
 ONTARIO (III)
 Toronto, 1919
 QUEBEC (I)
 Montreal, 1938

ALUMNAE NEWS

Albuquerque, N.M. alumnae have adopted Cuidando Los Ninos Day Care Center for their new philanthropy. The non-profit organization provides child care for children of the homeless and near-homeless while their parents look for work or receive training. Funded by community contributions, it is available for children up to six years of age.

A Palm Sunday brunch and a speaker who highlighted travel areas of interest in New Mexico and neighboring states were favorite chapter events. Mazie Conanty has joined the group as an alumna initiate.

Washington, D.C. alumnae staged a formal Valentine tea for their daughters and sons. The younger guests made valentines and had their portraits done by a caricature artist.

Chapter members learned napkin folding and how to



Former Northern Virginia Alumnae Chapter presidents are Lynn Worline Lady (Michigan St.), Jeanne O'Donnell Norton (Wisconsin), Judy Oakland Willis (Northwestern), Joan Herzig Braitsch (San Diego St.), Betty Roessler Griffin (Nebraska), Eleanor Anderson Lauer (Idaho), Mary Wilcox Rietman (William and Mary) and Renee Harrison (Purdue).

wisely choose upholstered furniture. Both programs were presented by Carolyn Boyd Gomez (Oregon St.). The newest accessories were displayed by Gina Lauber (Nebraska), manager of an accessory store, and a career fashion show completed the year.

Houston, Tex. alumnae added to their ranks when three alumnae initiates became

Gamma Phi Betas. New alumnae are Margaret Spencer, daughter of Elizabeth Higgins Rilal (Texas); Lisa Hecht, daughter-in-law of Lola Joy Laune Payne (Nebraska); and Kimberley Carma Knop, daughter of Frances Bailey Van de Venne (Iowa) and granddaughter of Carma Wagner Bailey (Iowa).



Four alumnae attending the Indianapolis 500 are Marty Kuhn Pool (Indiana St.), Sandy Branstetter (Purdue), Ann Mullen Bronsing (Indiana St.) and photographer Kris Brandt Risko (Wyoming).

The New York City Alumnae Chapter visited the Costume Institute of the Metropolitan Museum of Art for a private tour conducted by Jean Lawrence Druesedow (Miami), associate curator. She explained that the institute houses a permanent costume collection—real clothes worn by real people in real times and places. It includes items that are up to 300 years old and from cultures throughout the world. The group admired items in the permanent collection storage area (not open to the public) before touring the current exhibit. Chinese New Year was then celebrated at a Chinese restaurant.

The Baltimore, Md. Alumnae Chapter had a camp night featuring a Camp Sechelt video and a presentation by former counselor Mary Moore (Fla. Inst. of Tech). They even ate camp fare—hot dogs, chili, sauerkraut, baked beans and, of course, s'mores.



Santa Fe, N.M. Alumnae Chapter President Sue Hansen (Oklahoma St.) presents a note from International President Randy Stevens to Edith Dodd Culver (Wisconsin). It is in honor of her 75-year membership.

Grand Forks, N.D. alumnae held a Christmas Open House last fall. Orders were taken for personalized Christmas cards, monogrammed stationery and Christmas door wreaths. The project raised \$1,100 for the home improvement fund for Alpha Beta Chapter at the University of North Dakota.

Corporation Meetings

Theta Chapter, Oct. 2, 1988, 7:30 p.m., 2233 S. Josephine, Denver, Colo.

Tau Chapter, Nov. 13, 1989, 7:00 p.m., 733 S. Shields, Ft. Collins, Colo.

Alpha Xi Chapter, Nov. 6, 1989, 6:30 p.m., University Club of Dallas, 13350 Dallas Pkwy., Dallas, Tex.

Beta Kappa Chapter, Nov. 9, 1989, 7:30 p.m., 2405 W. Gregg Dr., Chandler, Ariz.

Gamma Nu Chapter, Nov. 4, 1989, 10:00 a.m., 4115 University, Beaumont, Tex.



Gina Lauber (Nebraska) visits with Sylvia Smith McPherson (Penn St.) at the Washington, D.C. tea for sons and daughters.



Greater Baltimore, Md. alumnae get together for a holiday party.

Continued from page 39

Oklahoma—1st pl., Homecoming;
3rd pl., Sooner Scandals
Purdue—1st pl., Homecoming

Vanderbilt—1st pl., Homecoming
Wash.-St. Louis—1st pl., Greek
Sing; 3rd pl., Panhellenic
Scholarship
Washington St.—2nd pl.,

Homecoming
Wichita St.—Panhellenic
Outstanding Sorority;
Community Awareness Award;
1st pl., Hippodrome
Choreography; 2nd pl.,
Homecoming Float; 1st pl.,
Panhellenic Scholarship
Wis.-Oshkosh—2nd. pl., Winter
Carnival
Wis.-Platteville—1st pl.,
Homecoming Cheer

Gamma Phi Beta thanks all alumnae who wrote recommendations for young women going through rush this fall, and hopes you will recommend others in the future.

Rings

| | | Rose | Gold | Silver |
|-----------------------------|------------------------------|---------|----------|----------|
| 1. SR/366-G | Signet | \$33.35 | \$120.20 | \$35.65 |
| 2. SR/135-G | Signet | — | 132.80 | 40.50 |
| 3. SR/531-G | Signet | — | 139.15 | 43.10 |
| 4. SR/731-G | Pierced Mini-Monogram | — | 69.00 | 34.50 |
| 5. BR/01-G | Pin-On Badge Ring* | — | 125.00 | \$135.00 |
| 6. SR/803-C | Sisterhood (not illustrated) | — | 85.00 | 65.00 |
| *Badges not illustrated. | Five illustrated badges | | | 50.00 |

| | | NEW | USED | OLD | SILVER |
|-----|---------------|--|-------|---------|---------|
| 23. | MG/11-G | Monogram | — | \$ 7.75 | \$23.00 |
| 24. | CR/25-G | Crest | — | 7.75 | 23.00 |
| 25. | MP/G | Mother's Pin | — | 6.45 | — |
| 26. | CB/G | Crescent Collar Button | — | 7.75 | — |
| 27. | CG/G | Crest Guard-Enameled | — | — | 23.00 |
| 28. | SP/02-V-G | Vert. Monogram Stick Pin | 10.35 | — | 26.70 |
| 29. | SP/Crescent-G | Crescent Stick Pin | 13.80 | — | 26.45 |
| — | SP/1896-G | 1896 Monogram Stick Pin (Not illustrated) | 13.80 | — | 26.45 |
| 30. | SP/Crest-G | Crest Stick Pin | 17.25 | 22.70 | 27.60 |
| | | | | | 20.10 |

| | | <u>GOLD PLATE</u> | <u>GOLD KASE</u> | <u>GOLD FILLED</u> | <u>10K GOLD</u> | <u>STERLING SILVER</u> |
|---------|--|-----------------------|----------------------|------------------------|---------------------|----------------------------|
| SL/40-G | Crescent | — | \$11.50 | — | \$ 32.20 | \$10.35 |
| SL/58-G | 1896 Monogram | — | 11.50 | — | 24.15 | 10.35 |
| L/37-G | Crescent-Enamel | — | 17.25 | — | 49.45 | 16.10 |
| L/100-G | Founder's Crest (Not illustrated) | — | 9.80 | 24.15 | 161.00 | 29.90 |
| G | Paddle Charm | — | — | — | 44.30 | 21.55 |
| | Script Charm | — | — | — | — | — |
| | Crescent Bracelet (Not illustrated) | — | 17.25 | — | 31.05 | 24.15 |
| | | — | — | 44.30 | — | 36.80 |

| 10K WHITE GOLD | | STERLING SILVER | | | GOLD KASE | GOLD FILLED | 10K GOLD | 10K WHITE GOLD | STERLING SILVER |
|----------------|---|-----------------|---------------|--|-----------|-------------|----------|----------------|-----------------|
| 0 | — | — | 11. ML/11-S-G | Staggered Monogram with Cultured Pearl | \$17.25 | — | \$34.50 | — | \$21.85 |
| 5 | — | \$11.80 | 12. ML/33-D-G | 3-D Extra Heavy | 20.70 | — | 38.50 | — | 20.70 |
| 5 | — | 11.80 | 13. ML/15-G | Mini Monogram | 8.05 | — | 14.95 | — | 8.05 |
| 0 | — | 13.20 | 14. CC/07-G | Crest Lavalier | — | — | 27.00 | — | 19.00 |
| 0 | — | 13.20 | 15. C/01-G | 18" Chain | — | 3.60 | 31.60 | — | 3.60 |
| 0 | — | 14.40 | 16. BP/G | Pin-On Badge Pendant* | — | — | 85.00 | \$95.00 | 40.00 |

*Badges not included. Fits all existing badges. Pendants come with 26" endless chain. Optional 18" Gold Filled or Sterling Silver neckchains (C/01-G) available. See above.

| QTY. | NO. | DESCRIPTION | EACH | TOTAL | | | | | | | | |
|--|-----|-------------|------|-------|------------------------|----|----------------------------|----|--|----|--------------|----|
| <div> <div> Name _____ Address _____ City/State _____ Ring size _____ Greek name and letters for chapter _____ </div> <div> <input type="checkbox"/> Check Enclosed <input type="checkbox"/> Money Order </div> <div> <table border="1"> <tr> <td>Price (Total of Above)</td> <td>\$</td> </tr> <tr> <td>Sales Tax IL. & MO Only 8%</td> <td>\$</td> </tr> <tr> <td>Postage Handling & Insurance (min. \$2.25) 6% of Total</td> <td>\$</td> </tr> <tr> <td>TOTAL</td> <td>\$</td> </tr> </table> </div> </div> | | | | | Price (Total of Above) | \$ | Sales Tax IL. & MO Only 8% | \$ | Postage Handling & Insurance (min. \$2.25) 6% of Total | \$ | TOTAL | \$ |
| Price (Total of Above) | \$ | | | | | | | | | | | |
| Sales Tax IL. & MO Only 8% | \$ | | | | | | | | | | | |
| Postage Handling & Insurance (min. \$2.25) 6% of Total | \$ | | | | | | | | | | | |
| TOTAL | \$ | | | | | | | | | | | |

MAKE CHECKS PAYABLE TO: Gamma Phi Beta Jewelry
DIRECT ORDERS TO: Gamma Phi Beta

Dept. NB
7395 E. Orchard Rd. Suite 200
Englewood, CO 80111-2509

CATALOG

GΦB Stamps

Imagine having or giving a replica of an antique Gamma Phi Beta stamp. Syracuse alumnae are offering reproductions of an old stamp belonging to an Alpha alumna. Use the stamp for correspondence, name tags, place cards, rush favors, etc. Also available are brown stamp pads specially made to be used with the stamps. The stamps sell for \$3 each and the pads are \$4. For orders of \$10 or less, add \$1 postage to the U.S. and Canada and \$2 for orders to foreign countries. For orders over \$10, add \$2 for U.S. and Canadian orders and \$3 for foreign. Send orders to Judy Kaspar, 101 Harwinton Ct., Camillus, NY 13031.

Note Paper

Shirley Jean Hay Bills (Miami) designed carnation note paper for Cleveland West alumnae to sell. It features a lovely carnation tied with a pink bow and printed on heavy paper. A set of 10, with envelopes, sells for \$5 plus 90 cents postage. Checks should be made payable to Cleveland West Alumnae Chapter, and orders sent to Dorothy Cibula, 3270 W. 159th St., Cleveland, OH 44111.

Postcards

Bergen County, N.J. alumnae are selling regulation size postcards which are perfect for meeting reminders because they signal Gamma Phi Beta. With

these cards, corresponding secretaries will always have the appropriate invitations. Two kinds are available: traditional brown design (carnations, coat-of-arms or logo) on parchment cards are \$10 for 50; pink cards with carnation motif printed in black are \$5 for 50. Add \$1 shipping and order from Virginia Leritz, 385 Franklin Turnpike, Allendale, NJ 07401.



Cookie Stamps

The Corvallis Alumnae Chapter is once again offering RyCraft cookie stamps as a great gift or keepsake of Gamma Phi Beta. The ceramic cookie press has the crescent moon with a long stem carnation across it and imprints beautifully in shortbread or cookies. A recipe book is included. The chapter prefers that orders be limited to a minimum of 10, but individual stamps may be ordered at \$3.50 each. For orders of 10 or more, the cost is \$3 plus 10 percent for postage and handling. Send orders to Becki Metzger, 2215 NW 17th St., Corvallis, OR 97330.

Lapel Pins

Gamma Phi Beta lapel pins are available from the St. Louis Alumnae Chapter. These lovely pins feature the Greek letters in gold and enclosed in a white enameled crescent embellished with three pink carnations. They make ideal gifts for pledging, initiation, graduation or any special occasion. Each pin is \$4 postpaid. For orders of 24 or

more, the rate is \$3 per pin, postpaid. Send orders to Deb Krumme, 12967 Bellerive Estates Dr., St. Louis, MO 63141, and make checks payable to St. Louis Alumnae of Gamma Phi Beta.

Ballpoint Pens

Minneapolis-St. Paul alumnae are selling pink pearl ballpoint pens with Gamma Phi Beta logo. They come in a pink vinyl carrying case and grey suede finish gift box and carry a lifetime guarantee. The perfect gift for pledging, initiation, holiday, birthday or as a reward for yourself, each pen is \$15 plus \$2 shipping and handling. (Minnesota residents add 90 cents for sales tax.) Make checks payable to Minneapolis-St. Paul Alumnae Chapter and send orders to Beverley Edwards, 2401 W. 96th St., Bloomington, MN 55437. Allow three to four weeks for delivery.

Nametags

The Atlanta Alumnae Chapter has what every other alumnae chapter needs—Gamma Phi Beta nametags. Collegiate chapters can use them for mixers, alumnae functions and rush. They are \$8 per 100, or \$2.50 for 25, plus 90 cents postage and handling. Make checks payable to Atlanta Alumnae Chapter of Gamma Phi Beta and order from Peggy Marlatt, 2428 Windon Ct. NE, Atlanta, GA 30360.

Convention Boutique

Start planning now to sell your chapter's specialty item at the Gamma Phi Beta Convention Boutique. Details will be sent to all alumnae and collegiate chapters.

International Headquarters Request Form

Please send me information about:

- | | |
|---|---|
| <input type="checkbox"/> Closest alumnae chapter | <input type="checkbox"/> TranSISter Program |
| <input type="checkbox"/> Sister Link Program | <input type="checkbox"/> Crescent Catcher Program |
| <input type="checkbox"/> Convention | <input type="checkbox"/> Mothers Clubs |
| <input type="checkbox"/> Alumnae Initiate Program | <input type="checkbox"/> Gamma Phi Beta Visa Card |
| <input type="checkbox"/> Other _____ | |

Please send me these forms:

- ☐ Recommendation
☐ Legacy Introduction
☐ Other _____

☐ Enclosed is a check for \$15 annual membership dues. Alumnae dues are not tax deductible.

Name _____
 (first) (maiden) (last)

Address _____
 (street)

 (city) (state) (zip)

Collegiate Chapter _____

Mail to: Gamma Phi Beta Sorority, 7395 E. Orchard Road, Suite 200, Englewood, CO 80111



ΓΦΒ Magazine Agency

Gamma Phi Beta Central Office, 7395 E. Orchard Road, Suite 200, Englewood, CO 80111

Here is a "GOLDEN" opportunity to immediately assist in the development of important programs.

Most of us receive magazines at home and have relatives and friends who receive them too. As you would normally expect to purchase your magazine subscriptions directly from the publisher, or purchase them from the newstand, we are offering you and your circle of family and friends the opportunity to subscribe through Gamma Phi Beta.

Just think, that by ordering your magazines through Gamma Phi Beta you will be helping our EDUCATIONAL and PHILANTHROPIC programs. Expand LEADERSHIP TRAINING, provide RUSH TRAINING, ADVISORS TRAINING, AD SUPPORT, CHAPTER EXPANSION, HOUSING and much more.

HOW TO PARTICIPATE:

1. Detach at perforation, complete all information requested. If gift subscription ensure givers name is given, as an attractive gift card will be mailed to the recipient.
2. If you have a special offer at a lower price than shown on the listing we will honor it. Please attach the coupon to the order form showing the lower price.
3. New subscriptions will start service in approximately 6 to 12 weeks. Please PRINT name and address exactly as shown on your mailing label.
4. Please make your check payable to "Gamma Phi Beta Magazine Agency". Your check is your receipt, please make a note of the magazine (s) ordered.

PRICES GOOD THROUGH DECEMBER 31, 1989.

-----YOUR PARTICIPATION IS GREATLY APPRECIATED.-----

| | | | | | | | | |
|-------|--|-------|-------|-------------------------------------|-------|-------|---|-------|
| 10049 | Alfred Hitchcock's Mystery Magazine (9) | 11.97 | 12904 | Decorating Digest (6) | 15.97 | 12880 | MS (12) | 10.97 |
| 10090 | American Health (10) | 14.95 | 16257 | Discover (12) | 27.00 | 13247 | Nation's Business (12) | 12.97 |
| 10102 | American Heritage (8) | 27.00 | 16915 | Disney's Ducktales (6) | 11.70 | 13437 | Newsweek (51) Free Gift Offer | 29.97 |
| 10126 | American Photographer (8) | 5.98 | 11472 | Dog Fancy (12) | 10.99 | 13502 | 1001 Home Ideas (8) | 11.97 |
| 10140 | American Spectator, The (10) | 14.95 | 11561 | E. M.-Ebony Man (12) | 12.50 | 13312 | Outdoor Life (12) | 8.97 |
| 17448 | Aquarium Fish (6) | 7.97 | 11510 | Early American Life (6) | 15.00 | 13627 | Parents Magazine (12) | 12.95 |
| 16992 | Art & Antiques (10) | 19.95 | 11546 | Ebony (12) | 12.50 | 13641 | PC Magazine (18) Free Gift Offer | 19.97 |
| 10316 | Artist Magazine, The (9) | 15.00 | 11559 | Economist, The (51) | 98.00 | 17145 | Pet Health News (12) | 8.99 |
| 10328 | Asimov, Isaac, Science Fiction (8) | 11.97 | 11597 | Ellery Queen's Mystery Magazine (9) | 11.97 | 15331 | Popular Mechanics (12) | 9.97 |
| 10355 | Atlantic, The (12) | 9.95 | 17107 | Esquire (12) | 9.95 | 13476 | Popular Science (12) | 9.97 |
| 11460 | Automobile (12) | 11.95 | 11623 | Essence (12) | 10.96 | 13781 | Popular Woodworking (6) | 17.00 |
| 16384 | Barbie (6) | 11.70 | 12967 | European Travel & Life (10) | 12.00 | 16803 | Premiere (12) | 11.95 |
| 10470 | Baseball Digest (10) | 11.97 | 11852 | Executive Fitness Newsletter (12) | 36.00 | 13829 | Prevention (12) | 15.97 |
| 10482 | Basketball Digest (8) | 11.95 | 11700 | Family Handyman, The (10) | 12.97 | 15091 | Pro Football Weekly (28) | 55.00 |
| 10544 | Better Homes & Gardens (12) | 11.97 | 11926 | Farm & Ranch Living (6) | 15.98 | 13553 | Psychology Today (10) | 15.95 |
| 10571 | Bicycle Guide (9) | 9.95 | 11813 | Field & Stream (12) | 8.97 | 17095 | Redbook (12) | 9.97 |
| 10619 | Bird Talk (12) | 11.99 | 11914 | Football Digest (10) | 11.97 | 13932 | Runner's World (12) Free Gift Offer | 15.97 |
| 10595 | Black Collegian, The (4) | 10.00 | 11940 | Forbes (15) | 22.50 | 13944 | Sail (12) | 19.00 |
| 10607 | Black Enterprise (12) | 11.95 | 11965 | Fortune (27) | 23.99 | 14011 | Saturday Evening Post, The (9) | 12.97 |
| 10621 | Boating (12) | 16.97 | 12272 | Games Magazine (6) | 11.97 | 14035 | Savvy Woman (12) | 9.00 |
| 10660 | Boys' Life (12) | 13.20 | 12094 | Golf Digest (12) Free Gift Offer | 13.77 | 16802 | Science Digest (6) | 9.95 |
| 17398 | Business Week (51) | 39.95 | 12106 | Golf Illustrated (10) | 8.97 | 14086 | Self (12) | 14.97 |
| 10809 | Car & Driver (12) | 12.99 | 12284 | Golf Magazine (12) | 9.97 | 13716 | Seventeen (12) New Subs Only | 15.95 |
| 17436 | Car Audio & Electronics (12) | 12.00 | 12132 | Gourmet (12) | 17.97 | 14112 | Skating (7) | 8.97 |
| 10850 | Cat Fancy (12) | 17.97 | 12219 | Harper's Magazine (12) | 14.00 | 14163 | Soccer Digest (6) | 9.95 |
| 11155 | Changing Times (12) | 9.97 | 17071 | Harper's Bazaar (12) | 16.97 | 14249 | Sport (12) | 9.97 |
| 10898 | Charisma (12) | 16.97 | 12221 | Health (12) | 13.97 | 14302 | Sporting News, The (33) | 22.77 |
| 16927 | Child (6) | 9.97 | 12296 | Hockey Digest (8) | 11.95 | 15343 | Sports Afield (12) | 9.97 |
| 10912 | Child Life (8) | 11.95 | 17552 | Hockey News, The (42) | 37.95 | 14276 | Sports Illustrated (10) Free Gift Offer | 14.89 |
| 11080 | Children's Album (6) | 15.00 | 16891 | Horse Care (12) | 19.92 | 17677 | Sports Illustrated For Kids (12) | 15.95 |
| 10924 | Children's Digest (8) | 11.95 | 12411 | Horse Illustrated (12) | 11.97 | 14326 | Stereo Review (12) | 6.97 |
| 10936 | Children's Playmate (8) | 11.95 | 12435 | Hot Rod (12) | 11.95 | 16232 | Successful Woman In Business (4) | 18.00 |
| 10948 | Christian Herald (6) | 12.97 | 17069 | House Beautiful (12) | 15.97 | 14009 | Taxi (8) | 11.97 |
| 17463 | Christian Parenting Magazine (6) | 14.97 | 12486 | Humpty Dumpty (8) | 11.95 | 14391 | Tennis (12) | 8.97 |
| 11229 | Christian Science Monitor, The (63) | 18.00 | 12498 | Hunting (12) | 10.97 | 14454 | Time (45) Free Gift Offer | 34.95 |
| 11015 | Classroom Computer Learning (8) | 24.00 | 17525 | I Love Cats (6) | 15.97 | 17119 | Town & Country (12) | 14.95 |
| 12714 | Collector's News & The Antique Reporter (12) | 15.97 | 17018 | In-Fashion (12) | 9.95 | 14504 | TQ (Teen Quest) (8) | 7.95 |
| 17044 | Colonial Homes (6) | 14.97 | 12524 | Inc. (12) | 25.00 | 17347 | Transworld Skateboarding (12) | 21.00 |
| 11104 | Computer! (12) | 9.97 | 12536 | Incider (12) | 24.97 | 17350 | Transworld Snowboarding (6) | 14.00 |
| 12777 | Computer's Gazette (12) | 18.09 | 12548 | Income Opportunities (18) | 11.97 | 14581 | True Story (10) | 9.97 |
| 17487 | Computer Shopper (12) | 19.97 | 12613 | Jack & Jill (8) | 11.95 | 14593 | Turtle (8) | 11.95 |
| 11268 | Conde Nast Traveler Magazine (12) | 14.97 | 12688 | Ladies Home Journal (12) | 12.97 | 10494 | TV Guide (52) | 37.44 |
| 17083 | Connoisseur (12) | 12.55 | 18046 | Life (13) | 31.96 | 14656 | US (26) | 17.95 |
| 11130 | Consumer Reports (12) | 18.00 | 12854 | MacUser (12) Free Gift Offer | 14.97 | 14668 | US News & World Report (52) Free Gift Offer | 39.75 |
| 11142 | Consumer Reports Travel Letter (12) | 37.00 | 14783 | McCall's (12) | 9.95 | 14694 | Vanity Fair (12) | 11.97 |
| 11128 | Consumers Digest (6) | 9.97 | 16220 | Media & Methods (6) | 24.00 | 14074 | Video Magazine (12) | 9.97 |
| 11181 | Cook's (10) | 25.00 | 12955 | Metropolitan Home (12) | 12.00 | 14744 | Video Review (12) | 8.97 |
| 11179 | Cookbook Digest (6) | 11.97 | 16473 | Mickey Mouse (6) | 11.70 | 15154 | Walking Magazine, The (6) | 9.95 |
| 11407 | Country Handicrafts (6) | 15.98 | 13122 | Mother Earth News (6) | 14.95 | 14985 | Working Mother (12) | 7.95 |
| 11270 | Cruise Travel (6) | 9.97 | 17057 | Motor Boating & Sailing (12) | 15.97 | 14946 | Working Woman (12) | 11.97 |
| 11320 | Cycle World (12) | 7.97 | 13159 | Motor Cyclist (12) | 8.97 | 14997 | Writers Digest (9) | 15.75 |
| 11332 | Cyclist (8) | 12.80 | 13146 | Motor Trend (12) | 9.97 | 15026 | YM (10) | 12.95 |

| Code No. | Magazine Selection | Dollar Amount Paid | Term | Check One | | Name | Street | City | St. | Zip |
|------------------|--------------------|--------------------|------|--------------------------------------|------|------|--------|------|-----|-----|
| | | | | New | Ren. | | | | | |
| | | | | | | | | | | |
| | | | | | | | | | | |
| | | | | | | | | | | |
| | | | | | | | | | | |
| | | | | | | | | | | |
| | | | | | | | | | | |
| TOTAL AMOUNT DUE | | \$ | | If Gift Show Name & Address of Donor | | | | | | |

Send orders to: Gamma Phi Beta Central Office, 7395 E. Orchard Road, Suite 200, Englewood, CO 80111.

Form No. 4725

Celebrate!

What do birthdays, anniversaries, promotions, weddings, births and graduations have in common? Celebrations!

The celebration can begin with a donation to the Gamma Phi Beta Foundation. A special

card will be sent to the honoree and his or her name listed in a future issue of THE CRESCENT. Both names (honoree and donor) and the special event will be written on the card.

Donations may be sent to the

Gamma Phi Beta Foundation by using this form. Or, send the honoree's name, address and special event along with a donation. The celebration will soon be in the mail!

Foundation Donor Form

| | | |
|----------------------------------|----------|--------|
| Name _____ | _____ | _____ |
| (first) | (maiden) | (last) |
| Address _____ | | |
| (street) | | |
| _____ | _____ | _____ |
| (city) | (state) | (zip) |
| Donation in memory of _____ | | |
| Donation in celebration of _____ | | |
| Send card to _____ | | |
| (name) | | |
| Address _____ | | |
| (street) | | |
| _____ | _____ | _____ |
| (city) | (state) | (zip) |
| Donation Amount \$ _____ | | |

CHANGE OF ADDRESS OR NAME REPLY

Members are responsible for all address changes. Allow 4 weeks.

Maiden Name _____ Chapter _____

New name if different from label

| | | | |
|-------|-------|-------|--------|
| _____ | _____ | _____ | _____ |
| Title | Last | First | Middle |

Entire new address

Street _____

City _____ State _____ Zip _____

☐ Check here if change of address is for other than addressee.

PLEASE DO NOT REMOVE OLD LABEL

Clip form, place in stamped envelope and mail to Gamma Phi Beta Sorority, 7395 E. Orchard Rd., STE. 200, Englewood, CO 80111-2509

GPB 064-0301*Beta Pi 63
Ann Mullen Bronsing
31 Chesterton Lane
Chesterfield MO 63017