

the CRESCENT

of Gamma Phi Beta



22 | Then and Now: Learn more about our collegiate leadership consultants and the program's history!



GAMMA PHIS CONQUER

Gamma Phi Beta sisters are confident women of character. Because we are human, that confidence may waver at some point in our lives. As sisters, we should try to lift one another up and help when we are able. All of us face challenges. Whether it is working for a top grade in your hardest class, getting a promotion, running a 5k or recovering from an illness or personal loss, challenges can help us find a purpose in our lives. Often, our challenges can make us better people.

In this issue of *The Crescent*, you will meet two sisters who were dealt difficult hands, and due to their own strength and the support of their sisters, have overcome their individual challenges. Sarah Kim (Columbia) has cerebral palsy, a neurological disorder that affects body movement and muscle coordination. Sarah has persevered through obstacles with grace and pride, and discovered her passion for social justice. She is striving to become a voice and advocate for the disabled community.

Katlyn Carr (Quinnipiac) lost her mother to cancer when she was 19 years old. She has stepped in as a role model for her two younger sisters, and with the support of her family and Gamma Phi Beta sisters, she is back at school and making the most of her collegiate years. And she is sharing her experience and positivity to help others who are struggling through their own personal challenges.

These two women exemplify what it means to inspire the highest type of womanhood and conquer a challenge. For me, I think the most important thing to do in difficult times is keep a positive attitude. While that can be a challenge, if you think you can accomplish something, you're halfway there!

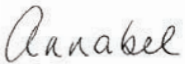
In addition to reading more about Katlyn and Sarah, you will meet the 2017-18 collegiate leadership consultant (CLC) team. These hardworking women will support our collegiate chapters and members through their travels over the next year. Since its formation more than 60 years ago, our consultant program has been an important part of our Gamma Phi Beta culture.

Service as a CLC is not always easy – traveling for nine months out of a suitcase away from home can be challenging, so our current CLCs spoke with former consultants to get some advice and to better prepare them for their journey ahead. You will get to read all about their conversations and the lessons they learned on page 22.

All the women came away with valuable insights and advice from the women who have helped grow Gamma Phi in the past. Armed with advice and the best training possible, our CLCs will have the opportunity to see the full picture of Gamma Phi Beta and make a difference in the lives of sisters everywhere.

No matter what challenges you face in your life, remember that you are a confident woman of character, surrounded by sisters who wish you the best and will lift you up when you need the support. As Gamma Phi Betas, I encourage you to face your challenges head on and conquer them with grace. The women in this issue of *The Crescent* will serve as examples of how to overcome the most difficult obstacles. Always remember that Gamma Phi Beta sisters will support you through whatever comes your way.

In LIKE,



Annabel Jones

International President

ON THE COVER

The 2017-18 collegiate leadership consultants (CLCs) are hitting the road to visit Gamma Phi Beta's collegiate chapters. Turn to page 22 to read more about them and the history of the traveling consultant program.

2016-18 INTERNATIONAL COUNCIL

International President
Annabel M. Jones, *University of Oklahoma*

Alumnae Vice President
Autumn L. Hansen, *University of Idaho*

Collegiate Vice President
Tanya N. Jordan, *Purdue University*

Education Vice President
Melinda J. Sutton Noss, Ph.D., *Southern Methodist University*

Financial Vice President
C. Shannon Ballew, *Clemson University*

Membership Vice President
Caitlin M. Capozzi, *Syracuse University*

Panhellenic Affairs Vice President
Sandy Biegelman Burba, *Miami University*

MISSION

To inspire the highest type of womanhood.



22 | Meet the 2017-18 collegiate leadership consultant team and find out what they learned from the women who came before them.

IN THIS ISSUE

Go Gamma Phi

- 5 Points of Pride
- 6 An Update From the Nominating Committee
- 8 Crescent Corner Gift Guide
Need some holiday gift inspiration for the Gamma Phis in your life? Check out our Crescent Corner Gift Guide!
- 12 Conquering Obstacles
Everyone has challenges in life, and these two sisters have overcome some pretty big ones. Turn to page 12 to see how Sarah Kim (Columbia) and Katlyn Carr (Quinnipiac) have persevered despite great odds.
- 20 Inspiration Board
- 22 Collegiate Leadership Consultants: Then and Now
- 33 Sorority Life

Shining On

- 17 Then. Now. Forever.
Meet Joey Draeger (San Diego State), a Life Loyal member who was inspired to join because of her special bond with her grandmother.
- 18 Life Loyal

Foundation News

- 38 2017-18 Financial Aid Recipients
Take a moment to help us congratulate the women who received the Foundation's undergraduate scholarships and graduate fellowships this academic year.
- 40 Memorial Gifts
- 41 In Celebration

International Headquarters

12737 E. Euclid Drive, Centennial, CO 80111
Phone: 303.799.1874 Fax: 303.799.1876
Website: GammaPhiBeta.org
Email: TheCrescent@gammaphibeta.org

The Crescent Staff

Editor

Laura Mishkind (Colorado-Boulder),
lmishkind@gammaphibeta.org

Director of Marketing and Communications

Lisa Zeller, lzeller@gammaphibeta.org

Managing Director of Marketing and Communications

Maureen Walker, mwalker@gammaphibeta.org

Executive Director

Megan Wick (Washington State),
mwick@gammaphibeta.org

Graphic Design by Shelle Design, Inc.

SUBMISSION DEADLINES

Spring – February 1 Summer – May 1

Fall – August 1 Winter – November 1

©2017 Gamma Phi Beta Sorority

The Crescent of Gamma Phi Beta (USPS 137620)
is published quarterly by Gamma Phi Beta Sorority,
12737 E. Euclid Drive, Centennial, CO 80111.
Periodicals postage paid at Englewood, CO, and at
additional mailing offices. Produced in the U.S.A.

Postmaster: Send address changes to *The Crescent*,
Gamma Phi Beta Sorority, 12737 E. Euclid Drive,
Centennial, CO 80111.

Parents – While our members are in college, their copy of *The Crescent* is sent to your home address – we hope you enjoy reading our magazine, too! If your daughter is no longer in college, or is no longer living with you, feel free to send us her new address by emailing TheCrescent@gammaphibeta.org.



GAMMA PHI GETS SOCIAL

Gamma Phi Beta loves to see what our sisters are doing throughout the year, and social media is the perfect way to show us! If you're interested in having your photos shared or published in *The Crescent*, tag @GammaPhiBetaSorority on Instagram and use #GammaPhiBeta. Be sure to follow all our social media accounts to see our chapters and members in action.



@ccugammaphibeta



@clemsongammaphi



@elizzevans



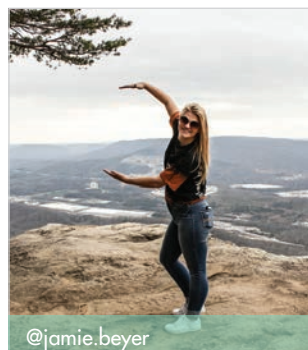
@gammaphibeta_bradleyu



@gammaphibeta_ucr



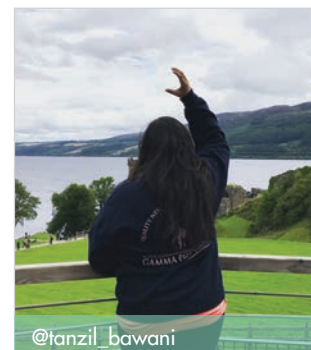
@iowastate_gammaphibeta



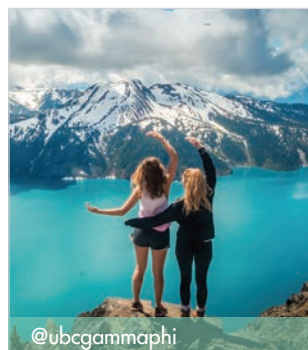
@jamie.beyer



@ougphi



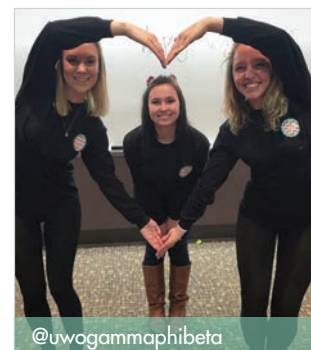
@tanzil_bawani



@ubcgammaphi



@ucigammaphi



@uwogammaphibeta

points of **Pride**

Shining bright since 1874, here's a snapshot of some notable Gamma Phi Beta moments and accomplishments!



On November 11, Gamma Phi Beta will celebrate our **143rd** Founders Day! Follow our official social media accounts to participate in our Founders Day celebration!



Cornelia Spanier (Oregon State) and Karen Nilson Grafe (Indiana State) are pictured here celebrating Cornelia's **102nd** birthday! Every year since Cornelia turned 99, Karen donates the dollar amount of Cornelia's age to the Gamma Phi Beta Foundation. Thank you both for your lifetime commitment to our sisterhood!

Check out Bit.ly/GPhiHighlightVideo to see our 2016-17 Gamma Phi Beta highlights video. We have **35,000** views and counting!

35,000



In June 2017, Gamma Phi Beta hosted our biennial REAL Leadership Institute (RLI). Geared toward volunteers, professional staff and chapter advisors, the event provides skill-building, reflection, planning and of course, fun! This year, RLI had **244** attendees!

244

We are pleased to announce that we have surpassed **2,000** Life Loyal members! Turn to page 17 to read about a sister who is honoring her grandmother's legacy through Life Loyal membership.



Thank you to the **1,642** alumnae members who responded to our comprehensive alumnae survey. Visit GammaPhiBeta.org/AlumnaeSurveyHighlights to view survey highlights.

1,642



Share your point of pride for an opportunity to be featured! Email TheCrescent@gammaphibeta.org with your chapter's inspiring accolades.



AN UPDATE FROM THE NOMINATING COMMITTEE

By Nominating Committee Chairwoman Krista Spanninger Davis (Bowling Green)

Each biennium, Gamma Phi Beta holds elections to fill leadership roles at some of its highest levels of leadership, specifically International Council and the Nominating Committee. At Convention 2018, alumnae and collegiate delegates will cast their important vote for the future leaders of our organization.

As Gamma Phi Beta shifts the way it is governed from a board with an operational focus to one with a governance oversight, the election process will be different than in years past. Previously, delegates elected a Nominating Committee delegate and alternate with geographical representation, and two collegiate delegates were appointed at a later date, representing each half of the continent.

In 2018, voting delegates will elect a slate of five candidates and two alternates. Two collegiate delegates will still be appointed to the Nominating Committee. The collegiate delegates will be appointed at the beginning of the biennium and will serve for two full years on the Committee. The current Nominating Committee will be slating the best team to serve on the Nominating Committee, regardless of geographic representation.

Additionally, the duties of the Nominating Committee have changed. Previously, members of the Committee sat idle for most of a biennium, until meeting in February prior to Convention to create the slate of Nominating Committee members and Council members to be voted on in the upcoming summer. Nominating Committee members were prohibited through the Bylaws to hold other volunteer roles or participate in the Sorority in other ways. Now the

You can help by recommending a member or members who you believe are qualified to serve at this level at GammaPhiBeta.org/Convention.

Nominating Committee is actively seeking and recruiting members to serve at the highest levels in Gamma Phi Beta through conversations and participation in Sorority events and conferences due to Bylaws changes at Convention 2016.

For nearly the entirety of the Sorority's history, or at least over the past 100 years, Gamma Phi Beta has operated under the same or similar structure in

how we lead and select our leaders. This biennium, the Nominating Committee will be slating an International President and six vice presidents, with the goal of creating the best team to collectively lead our organization.

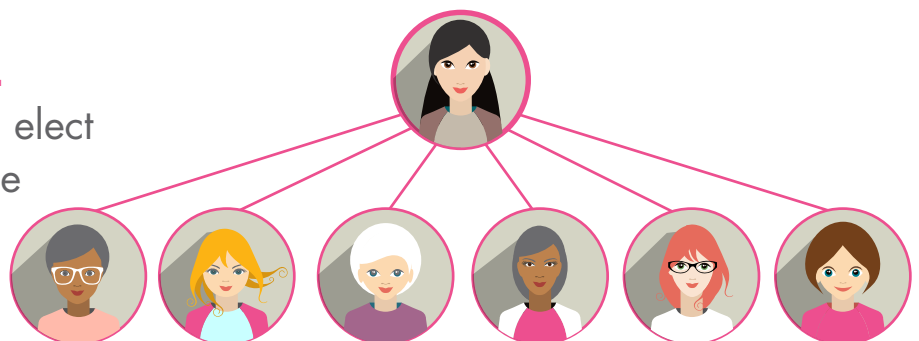
Previously, leaders were selected based on specific experience and skill sets within a department or specialty area. Now, the Nominating Committee will be looking to slate a team of women who exemplify identified leadership skills and competencies (learn more on page 7). Leadership competencies for Gamma Phi Beta's highest level of leadership have been identified and will be used by the Nominating Committee along with the newly-created International Council responsibilities document and revised job descriptions. You can view these documents in the My Member News section of GammaPhiBeta.org.

The Nominating Committee's role is as important as ever when preparing to slate the most qualified leadership teams to continue to advance Gamma Phi Beta.

Questions? Contact Nominating Committee Chairwoman Krista Davis at nominatingcommittee@gammaphibeta.org.

INTERNATIONAL COUNCIL

In 2018, Convention delegates will elect a slate of six Vice Presidents and the International President.



NOMINATING COMMITTEE

In 2018, Convention delegates will elect a team of five Nominating Committee members and two alternates, with no geographical representation. Two collegiate delegates will also be appointed at the beginning of the biennium.



MEMBER COMPETENCIES



Be Yourself

Confidence SELF-AWARENESS
RESILIENCY



Grow with Others

Communication MENTORSHIP
DIVERSITY AND INCLUSION **Teamwork**



Lead Your Community

PHILANTHROPIC SPIRIT
Community Participation



Learn for a Lifetime

ΓΦΒ KNOWLEDGE **APPLIED LEARNING**
Personal Excellence CRITICAL THINKING

Gamma Phi Gift Guide

crescentcorner.com



CRESCENT CORNER



Gamma
Phi Beta



Sherpas have arrived at Crescent Corner!

crescentcorner.com

CRESCENT
CORNER



CONQUER OBSTACLES

By The Crescent Editor Laura Mishkind (Colorado-Boulder)

*T*he women you are about to meet have overcome challenges few of us have experienced. While their journeys are very different, they have each conquered life with grace and determination. One sister lives each day moving with more difficulty than most, and the other is navigating life without her greatest role model. Their stories are inspiring, but they certainly don't end here. They will continue to have difficult days, but persevere to find the positives in life. Let these women serve as a reminder that even on the darkest days, there is something to be thankful for, and with the help of Gamma Phi Beta sisters around the world, you can conquer anything.

UERING



CONQUERING HER GREATEST CHALLENGE

Sarah Kim (Columbia) graduated from Barnard College, Columbia University in May 2017. As a collegian, she kept herself busy with multiple activities and leadership positions in Gamma Phi Beta and on campus. "Looking back on my college years, I have no idea how I did it all," Sarah said. "I think the key was that I was extremely organized and always stayed on top of my work and responsibilities. And I really depended on coffee!"

While Sarah had a wonderful college experience and is now pursuing a Master of Science in Journalism at Columbia, she had a more difficult time accomplishing day-to-day activities than her sisters and classmates. She is slower to speak than most, has difficulties typing and sometimes it takes her almost two hours to get ready in the morning. Sarah has cerebral palsy.

Cerebral palsy, or CP, is a neurological disorder that primarily affects body movement and muscle coordination. This makes things like getting

dressed in the morning, taking notes and even walking more difficult for Sarah. But she has never allowed CP to prevent her from working hard to reach her goals.

"Throughout the early years of my life, people severely underestimated me, and perhaps hearing them say I can't do this or that made me want to do everything even more," Sarah said. "I started to dream big." Those big dreams led her to the realization that she wants to be a role model and an advocate for those with disabilities. Sarah knows how hard it is to grow up without seeing yourself represented well in society. She decided a long time ago that if she had to live with her disability, she would make it something bigger. Now she's on the path to doing just that.

Sarah has an extensive résumé from her time at Barnard. She graduated as an Athena Scholar, a program which trains select women in leadership studies in three different areas – leadership classes, labs and a practicum. In addition to the Athena Scholars program, Sarah worked in the office of admissions as a social media intern, was a member of the Student Affairs Subcommittee for Campus Accessibility and served in other student government roles. On top of all of this, she is a proud charter member of Gamma Phi Beta's re-established Iota Chapter and became scholarship chairwoman and then financial vice president.

In between her activities, Sarah honed in on her passion for writing. "It was my outlet for

self-expression and creativity ever since I was a young girl," Sarah shared. However, she chose to major in economics and didn't take her first creative writing class until her junior year. That one class completely reshaped her life.

"Each week, the works read for class spoke to me on a level of deepness and peacefulness that I was not expecting.

Each author made me re-evaluate the state of mind and the sequence of events that happened to me during the week the reading was assigned," she said. "I truly enjoyed writing every piece, as the time I took writing was usually the only time of the week when I could pause the chaos of life and do something for myself, for my sanity."

From this moment of peace in a chaotic college career, Sarah became a published author and even found a job writing for DoSomething.org. She also has pieces published on HuffPost and Teen Vogue's websites.

Thanks to all her experiences, Sarah says she graduated from college a completely

different person than she was when she began her education. "To my surprise, I became the woman I've always aspired to be."

As a child, she thought someday her CP would disappear and she would be able to run and play with the other kids. When she was about 10 years old, she realized her disability was permanent, but she also learned to accept it and become okay living with CP. This acceptance has allowed her to find something to smile about in everything. She said, "This positive mindset gets me through life. It has become my coping mechanism. Perception is everything!"

While this positivity helps Sarah persevere through life with CP, it doesn't come easy. She says her greatest challenge is the depression and anxiety she struggles with daily. "The main difference between my cerebral palsy and mental illness is that one is visible while the other is not. My strong mentality has always

to smile at a sunny day and doesn't let little inconveniences get her down. Ultimately, she has turned one of her greatest struggles into her greatest strength.

Now she is working hard to share that strength with others. Sarah wants to be an advocate and voice for those with disabilities.

She hopes to improve the rights and living conditions of people with disabilities. "I think my passion and drive for becoming an advocate come from my personal experiences with injustice as a woman with a disability," Sarah said. "I feel like people with disabilities often get the lesser end of the stick when it comes to advocacy for equality."

Armed with her own experiences, education and deep-rooted passion, Sarah is prepared to take on her new path through graduate school and whatever else may come her way. She serves as an example that no obstacle is too great to be conquered. Her advice to those who are struggling with their own challenges is to never call anything "impossible" if you haven't tried it. "Don't be

afraid of failure because the least you'll get out of it is a valuable life lesson."

Sarah plans to publish a memoir in the next five to 10 years to share the lessons she has learned and further educate people on what it's like to live with a disability. "You should never judge a person based on another person's story. That being said, I'm very lucky that my cerebral palsy only affects me physically and my cognitive abilities are not affected. However, the most common mistake strangers make is equating my physical disability to a cognitive one. As cliché as this saying is, you can never judge a book by its cover!"



As a charter member of Iota Chapter, Sarah, pictured right, is proud to wear her letters alongside her sisters.

"The main difference between my cerebral palsy and mental illness is that one is visible while the other is not."

gotten me through my daily life with CP, but my depression and anxiety affect my mentality, which was the only thing I could depend on," Sarah shared. "Overcoming this through therapy and a change of lifestyle has been one of my greatest accomplishments."

Sarah has been able to lean on her Gamma Phi Beta sisters while overcoming the obstacles put in her way. With the support of those who care about her, she has learned to appreciate the little things in life. She says her disability makes tasks that seem easy much more difficult. But, instead of getting frustrated or angry, she finds something to smile about. Sarah is quick



Laura, Kathleen, Mackenzie, Eric and Katlyn enjoying time together before Kathleen passed away.

FINDING HER WINGS

Sisterhood has been the theme of Katlyn Carr's (Quinnipiac) life for as long as she can remember, but she had no idea how important it would become as she got older. Just over a year ago, when she was 19 years old, her mother, Kathleen, passed away. Katlyn and her two younger sisters had always been close, but losing their mother changed everything.

Kathleen was first diagnosed with breast cancer at the beginning of Katlyn's junior year of high school, and went into remission the fall of her senior year. A year later, the cancer returned, and had spread to her brain and bones. Unfortunately, there was nothing that could be done. After a courageous three-year battle, Kathleen lost her fight to cancer.

When Kathleen passed away, the Carr sisters came together to get through such a difficult time. Katlyn's Gamma Phi Beta sisters were also by her side. She hadn't told many people what she and her family were going through with her mother's cancer, but on the day of the funeral, she received a gift from her chapter: flowers, chocolate and a card signed by the entire chapter. The card

read, "As your sisters of Eta Pi, we send you these flowers to remind you we are here, and we love you unconditionally. Brown and mode – through the shadows and the light."

"Before I got ready, the flowers arrived," Katlyn said. "To read that card on one of the toughest days of my life, made me feel that I wasn't alone. I had the support of 150 sisters."

A few of her closest friends even came to the viewing to show their support. With the help of these sisters and her family, Katlyn was able to go back to school after things calmed down at home. While her friends may not have realized how much their presence at the viewing meant to Katlyn, she said her family will always remember that moment, and have since shared how proud they are that Katlyn is a part of the Gamma Phi Beta family.

Knowing she would have the support of her sisters at school, and that her family would be supported by one another and the community in

their small town, Katlyn felt comfortable returning to Quinnipiac. She said, "The people who love you most will get you where you need to be."

Ultimately, the Carr family has become stronger. Each member of the family has their own unique talents and qualities to help support one another. Katlyn says, "I'm persistent and optimistic. Our family motto is take every day one step at a time." Her father, Eric, is strong, brave and caring and has taken on the role of two parents for his daughters. Laura, Katlyn's 17-year-old sister, is empathetic and kind. She puts others first and always looks for the best in people. The youngest Carr, Mackenzie (13) isn't afraid of anything, confident and stubborn, but will do anything for those she loves, especially her family. With each family members' unique qualities, the Carrs can support one another through anything that may come their way.

You might be thinking, where does Katlyn find her positivity? She said that through

"The people who love you most will get you where you need to be."

everything, watching her sisters grow up makes her happy and keeps her optimistic. When she spends time at home with her family, she says she captures those moments and stores them for a rainy day. Her Gamma Phi Beta sisters help as well. Katlyn has even reached the point where she tries to help her chapter sisters who have been through serious loss. She takes her positivity and turns it into a purpose. Katlyn will pull sisters aside if she hears about something difficult they're going through, share her experiences and let them know she's available if they need anything.

"There's never been the right words to describe it," Katlyn says about losing her mother. But she feels that if you can share your story with someone who has been through something similar, you can just tell the story and not have to think about whether your feelings make sense or not.

Katlyn's biggest piece of advice for those who have lost loved ones is that you have to think about what the person you lost would want. "I don't really think about how my life has changed.

I just think about what my mother would have wanted me to do."

One memory stands out to Katlyn when she thinks about what her mom would want her to do in any situation. Kathleen had just finished her infusions to restore her platelet counts, and it was the high school homecoming game. Katlyn had been nominated for homecoming queen, and her mother was there to support her. "I remember her standing next to me before the crowning, and she looked at me and said, 'The world is yours.'" The next thing she knew, Katlyn was named homecoming queen. "Even in my darkest, toughest times, I look back and imagine the smile on her face."

With memories like this one, Katlyn and her family are working together to push through the tough times. Katlyn has the support of her father, sisters, aunts, uncles and Gamma Phi Beta. "Gamma Phi Beta has been there for me throughout everything, which is something I really appreciate."

Katlyn felt the love of her chapter so strongly over the last year, she was inspired to write a letter to share with sisters and potential new members on preference night. In this letter, she wrote about how thankful she was for the support of her sisters on the day of her mother's funeral and every moment after. She said, "We focus on Building Strong Girls and on this day, I was reminded that while I might have lost the one that built me into the strongest version of myself, I gained 150 sisters that would continue to do this."

Gamma Phi Beta is a sisterhood that inspires the highest type of womanhood and lifts one another up when they are at their weakest. Katlyn experienced this firsthand with all that she has been through. "To me, sisters are angels who lift us to our feet when our wings have trouble remembering to fly, and mine did exactly that when my strength was tested."

The support of loved ones can help through the most difficult challenges and allow a person to grow and heal. Katlyn has continued on with grace, the support of her family and the strength she didn't realize she already possessed. She has learned valuable lessons from all she has experienced and found ways to keep a positive outlook on life for herself and her family. "We're moving on, we're getting through this. Taking it one day at a time like we always do."

"I was reminded while I might have lost the one who built me into the strongest version of myself, I gained 150 sisters who would continue to do this."



Katlyn, pictured far left, poses with her Gamma Phi sisters who have been by her side through all the hardships she has faced.



One of Katlyn's fondest memories is having her mother by her side when she was crowned homecoming queen her senior year.



"I knew I was a loyal member, but the Life Loyal program just sealed the deal for my commitment to being an even stronger advocate for Gamma Phi Beta."

***- Joey Page
(San Diego State)***

THEN. NOW. Forever.

Mary Ann Diepenbrock Draeger (California-Berkeley, 1945) joined Gamma Phi Beta in 1945, and without knowing it, began Joey Page's (San Diego State) Gamma Phi journey. Joey felt a connection to Beta Lambda Chapter immediately, in part thanks to her legacy status. When she told her grandmother they were a part of the same sisterhood, Mary Ann was delighted. "She immediately rushed to her room and returned with her very own badge," Joey said. "She gifted it to me and I will never forget that in that moment, we sang a song together in a room full of people that had no idea what was going on. We didn't care. That was our bond."

Since forming that special bond with her grandmother, Joey's dedication to Gamma Phi Beta has only grown. Unfortunately, Mary Ann passed away during Joey's sophomore year, but Joey stayed connected to

the Sorority because of the home she found and the ties to her grandmother. When she became an alumna, Joey discovered how easy it was to give back to Gamma Phi Beta after her collegiate years.

"I had the opportunity to recruit seniors to work for my company. For quite a few years I would visit Beta Lambda Chapter to help educate Gamma Phi women on how to create a strong résumé and dress professionally, while offering advice for those big interview moments," Joey shared. "During that time, I was also able to support recruitment efforts and even participate in Initiation."

Joey is determined to stay connected to our beloved Sorority. She credits Gamma Phi Beta for helping her become the successful, strong and happy woman she is today.

When Joey was married in July 2016, she chose to keep a

piece of Gamma Phi Beta and her grandmother close to her heart. She incorporated pink carnations and Mary Ann's badge into her bouquet. Joey said, "Gamma Phi Betas are leaders, who lead gracefully with courage and conviction. To be a Gamma Phi Beta is to be a positive influencer in the community. It means everything to me."

Joining Life Loyal gave Joey another connection to her grandmother and of course, our sisterhood as a whole. "Since joining Life Loyal, I have never felt more in touch," she said. "It has been so fun to be a part of the Gamma Phi Beta Life Loyal program. Gamma Phi Beta has done an amazing job at continuing to innovate, create and be inclusive to our members so that we never lose this connection."



Joey's grandmother, Mary Ann Diepenbrock Draeger (California-Berkeley), was a dedicated member of Gamma Phi Beta from 1945 until 2006.

If you would like to stay connected to Gamma Phi Beta and show your loyalty to our sisterhood, visit GammaPhiBeta.org/LifeLoyal for more information and to sign up today.

Life Loyal Members

Life Loyal is a special program available for all Gamma Phi Beta members to continue their lifelong support of our beloved Sorority beyond their collegiate years while receiving exclusive benefits. This is just one way to continue your lifetime involvement as a member of Gamma Phi Beta while fulfilling your financial obligations with an easy, one-time payment. The dedication of our alumnae members who continue to be involved and financially supportive helps ensure the future of our traditions and sisterhood.

Thank you to the following sisters who joined Life Loyal between May 1 and July 31, 2017.

Beta – Michigan

Yasmeen Antone
Farah Muller
Ann Petrie Oliver
Alaina Skotak
Becky Weiland

Gamma – Wisconsin-Madison

Suzanne Wilmeth Anderson
Katharine O'Brien Batterman
Johanna Steggert Hunsaker
Catherine Lotocki Miller

Delta – Boston

Carolyn McSheen Flemings

Epsilon – Northwestern

Catherine Goodnetter Kaduk
Gina Lupica

Eta – California-Berkeley

Anjou Grace Kato
Dolores Sackett Whitley

Theta – Denver

Wingate Unger Johnson

Lambda – Washington

Nicole Gudmundson Di Re
Marianne Costacos
Rigopoulos
Rheta Whitman Rutherford
Julie Anas Sass

Nu – Oregon

Susan Schember Dahlem
Meghan Small

Xi – Idaho

Brooke Jardine
Barbara White Merkel
Nancy Andrus Patterson
Marilyn Dalby Sabella

Omicron – Illinois

Marilyn Schnirring Kennedy
Lina Dohse Rojas

Pi – Nebraska-Lincoln

Sally Riha Bane
Carrie Ziegenbein-Gottsch

Rho – Iowa

Ann Hedberg Kieffaber
Patricia Koch

Sigma – Kansas

Paige Lueker
Lex Uhler

Tau – Colorado State

Vicki Stahly Baur
Betsy Moore Clapp

Phi – Washington University

Susan Schwartz Winter

Chi – Oregon State

Leslie Groves

Psi – Oklahoma

Susan Kaefer Almen
Leah Pearce Bond
Lindsay McConnell Hawkins
Corinne Smith Nelson
Cherie Qualls Spencer

Omega – Iowa State

Susan Himstreet Deheck
Marilyn Mayfield Demars
Erin McHale
Julie Miller-Saladino

Alpha Alpha – Toronto

Alexandra Bates-Toth

Alpha Beta – North Dakota

Michelle Balko Lewis

Alpha Delta – Missouri

Blair Akers
Barbara Odell Nichols

Alpha Epsilon – Arizona

Nancy Lea Cella
Allison Goodman
Jennifer Hanley Kaiser

Alpha Zeta – Texas-Austin

Deborah Wipff Hall
Patricia Simpson Moore

Alpha Iota – California-Los Angeles

Jennifer Badger Stojanovich
Georgina Morgan Street

Alpha Kappa – Manitoba

Elizabeth Antenbring Walton

Alpha Lambda – British Columbia

Victoria Johnson

Alpha Xi – Southern Methodist

Jennifer Grey
Virginia Shane Hartman
Heather Robinson Laskin

Alpha Tau – McGill

Grace Lin

Alpha Phi – Colorado College

Susan O'Hanlon Crotteau

Alpha Chi – William & Mary

Christina Hoffman Walaski

Beta Alpha – Southern California

Sarah Coleman
Marilyn Webb English

Carol Klein

Joanna Massey
Joyce Canavan Stewart

Beta Beta – Maryland

Rachel Grafman
Marilyn Holland Reichard
Nancy Spicknall Rice

Beta Gamma – Bowling Green

Kimberly Bode

Beta Delta – Michigan State

Jane Gustafson
Margaret Vogan Lucansky

Beta Epsilon – Miami

April Adams Oakes
Virginia Spaven

Beta Eta – Bradley

Lila Firnhaber Bolinger
Candace Jacobson Gordon
Ruth Kengott Grockis
Kayla Albers Hranka
Judith Benthous Ingersoll
Patricia Raines Logan
Joanne Garrott Long
Caroline Maddalozzo
Carolyn Harshbarger Orsi

Beta Theta – San Jose State

Barbara Lanning LaMarca

Beta Kappa – Arizona State

Susan Lawhead

Beta Lambda – San Diego State

Betty Ragenovich Kurkjian
Frances Maloney Mehling

Beta Mu – Florida State

Nicole Brown
Margarette Francis Kennerly

Beta Pi – Indiana State

Charity Chase
Jannette Sparks-Scully

Beta Rho – Colorado-Boulder

Sydney Baker
Erin Bode
Patricia Cugia
Debra Johnson
Brandi Ring
Rachel Strelecky

Beta Sigma – Washington State

Bree Nielsen Wolfe

Beta Upsilon – Kansas State

Sally Smith Coffman
Megan Davis Migianti
Caroline Schuckman

Beta Chi – Wichita State

Caroline Stephen Elson

Beta Psi – Oklahoma State

Shirley Curtis-Klein
Jill Wells Doerflinger
Teresa Heck
Teresa Stangl Leger

Beta Omega – Northern Arizona

Rene Humphrey Brofft
Cynthia Calabrese Holmes
Haley Michael

Gamma Alpha – Memphis State

Betty Robison Shanks
June Love Zeigler

Gamma Gamma –
Wisconsin-Milwaukee

Dominika Steinova
Sheree Kropfl Yates

Gamma Epsilon –
Puget Sound

Lynette Pappas Loucks

Gamma Zeta – Texas A&M-
Commerce

Judy Sandidge Barnes
Summer Duncan
Vickie Storey Robison
Cynthia Fry Vaughan

Gamma Eta – California
State-Long Beach

Emily Lachman
Kathleen Sheffer
Judith Dirksen Wheatley

Gamma Kappa – Nebraska-
Kearney

Laurie Fink Hannan

Gamma Mu – Moorhead
State

Kay Severson McGirr

Gamma Nu – Lamar

Joy McClure Drummond

Gamma Phi – Auburn

Nicole Arnett

Gamma Chi – Texas State

Daryl Kato Cartwright
Lauren Darby
Kathleen Kostelnik Gisin
Victoria Jamison

Gamma Omega –
Wisconsin-Platteville

Lisa McLean
Emily Yenter

Delta Gamma – Nebraska-
Omaha

Nancy Burrell Herrod

Delta Delta – California
State-Fullerton

Jessica Aguirre
Marybeth Norgren
Haley Watkins

Delta Theta – California
Polytechnic State

Mia Musso

Delta Iota – Purdue

Megan Groetsch DeJager
Katrina Larson
Sarah Port

Delta Lambda – California-
Riverside

Lisa Hendershot Cheung
Karen Kravcov Malcolm
Lisa Nichols Paul

Delta Mu – Rutgers

Kathleen Dolce Modes

Delta Nu – Missouri State

Sarah Wienke

Delta Omicron – Southern
Polytechnic State

Amy Jalutkewicz Grau

Delta Upsilon – Georgia

Laura Spooner King
Kelly Mondock

Delta Phi – California State-
Bakersfield

Susan Loperena Flint

Delta Psi – California-Santa
Barbara

Katrina Botell
Scarlett Sijia Jia

Epsilon Alpha – LaSalle

Diana Ladd

Epsilon Gamma – San
Diego

Lisa Peterson

Epsilon Theta – Clemson

Katharine Grottko

Epsilon Iota – Christopher
Newport

Vonda Lynch Bryant

Epsilon Kappa – California
State-Chico

Julie Cogert
Justine Dutra

Epsilon Lambda – Alabama-
Tuscaloosa

Gillian Costallos
Helen Hardin
Jordan Mitchell
Samantha Oliver
Nicolette Stasiak

Epsilon Mu – Loyola-New
Orleans

Mary McNeil

Epsilon Nu – Chapman

Nicole Renard

Epsilon Omicron –
California-Santa Cruz

Kelsey Meyers

Epsilon Pi – George Mason

Katherine Faust Di Mantova

Epsilon Tau – Rochester

Heather Rowlands

Epsilon Phi – Bentley

Ashleigh Casey

Zeta Alpha – Eastern
Washington

Katelyn Lee Coon

Zeta Beta – Virginia

Caroline Knight

Zeta Gamma –
Sonoma State

Sarah Davis Walling

Zeta Theta – Pepperdine

Melanie Knopp

Zeta Kappa – Southern
Indiana

Danielle Wire

Zeta Lambda – Texas A&M-
Corpus Christi

Hannah Hergenrother

Zeta Xi – College of Idaho

Jessica Jewell Budzianowski

Zeta Rho – Texas A&M-
College Station

Amanda Little Lang
Jenny White

Zeta Phi – Arkansas-Fort
Smith

Chelsea Young Neal

Zeta Chi – Texas Christian

Blair Bokelman

Eta Epsilon – Virginia
Polytechnic

Suzanne Murphy

Eta Zeta – Cincinnati

Veronica Hay

Eta Kappa – Tennessee-
Chattanooga

Natasha Heenie

Eta Lambda – Central
Florida

Katie Duranceau
Allyson Shatz

Eta Mu – Duke

Zoe Lipman

Eta Nu – James Madison

Samantha Flohr
Alexis Painter

Eta Xi – Florida

Mary Stubbs

Eta Pi – Quinnipiac

Maria Capetta

Eta Sigma – Central Missouri

Maranda Smith



inspiration board

SISTER EARNS STUDY ABROAD SCHOLARSHIP

Every year Alpha Lambda Delta National Honor Society presents James G. Stemler Scholarships to 20 outstanding undergraduate students across the United States who plan to study abroad. This year, Julia Harth (Oklahoma) received one of these prestigious scholarships, which allowed her to enroll in universities in both Mexico and Spain. "With my majors of international studies and art history, as well as a Spanish minor, this travel promises to be an integral step in my collegiate education," Julia said. "I am so excited to pursue my passions in this global context, immersing myself in international art and culture with the aim of promoting a greater understanding of our interconnected world."



DISTINGUISHED ENGINEER

The Volgenau School of Engineering at George Mason University honored Dr. Margaret Myers (Colorado College) with the Distinguished Alumni Award. She was the first female engineering Ph.D. to graduate from the school and a member of the School of Engineering Advisory Board. Margaret is also a recipient of the U.S. Defense Department Distinguished Civilian Service Award and three Presidential Rank Awards. She has been the director of the Institute for Defense Analysis Information Technology and Systems Division since 2009 and served on active duty in the U.S. Army. She retired from the Army Reserve at the rank of colonel. Congratulations on all your accomplishments, Margaret!



EMMY-AWARD WINNING SISTER

After graduating from Syracuse University, Sydney Lampe (Syracuse) moved to San Diego, California and started working at Fox News. She worked on a segment that was nominated for and won an Emmy that she is pictured with here!



SISTERS WORKING TOGETHER

Kristen Heptinstall (Alabama, right) and Lauren Hernandez (Florida Southern, left) are digital strategists on the Hearst Television Digital Strategy Desk. They advise television stations and their anchors, reporters and meteorologists all over the country on their social media, websites and smartphone applications. The two were thrilled to realize they were working with a Gamma Phi Beta sister!

DISCOVERING TALENTS

Patricia Adams Purdy (Colorado State) is an excellent example of a sister who is continuing to grow and master new abilities. After working in occupational therapy for years, Patricia moved to a retirement home in Pennsylvania and began taking art lessons. Recently, she was honored with a month-long gallery display of her artwork.



THE SISTER BEHIND THE PINK HAT

Did you know the voice behind Despicable Me's Edith is a Gamma Phi Beta? Dana Gaier (California-Los Angeles) is a junior at the University of California, Los Angeles and balances working as a voice actor, studying and Gamma Phi. She auditioned for the role of the pink-hat wearing middle sister when she was just 11-years-old, and has been adventuring with Margo, Agnes and Gru ever since!

Collegiate Leadership Consultants: THEN AND NOW



The Collegiate Leadership Consultant (CLC) Program has been in existence for 74 years. When the program began in 1943, it was one woman with the title of traveling secretary. Evelyn Gooding Dippell (Illinois Urbana-Champaign, 1933) traveled across North America for three years supporting our chapters and helping grow Gamma Phi. Since Evelyn's travels began, the world has changed quite a bit. The traveling secretary title became CLC and is now staffed with 13 women. Instead of relying on trains, our CLCs travel in airplanes (they average 843 flights a year!) and rental cars. In these next few pages, you will meet the 2017-18 CLCs and a few consultants of the past. This year's team interviewed former traveling secretaries and consultants to learn some valuable tips and lessons from those who came before them.

Annie Lambert (Northern Iowa)

Annie is a familiar face to many as she is one of our four second-year CLCs. This year, she had the opportunity to interview the second traveling secretary in Gamma Phi Beta history! Mary Jane Hipp Misthos (Colorado College) is 96 years old, has 32 pink carnations on her Confirmed Conventioneers hat and celebrated 75-years of membership in 2015. Mary Jane shared with Annie that the program began because World War II made it difficult for Grand Council, now International Council, to travel. It was simpler to have one person who traveled to visit and assist collegiate chapters, rather than arranging for different Council members to do so.

Annie decided to apply to be a CLC last year because of her experiences with past CLCs. Mary Jane decided to apply because she was the first woman to come up with the concept of traveling secretaries, Louise Robinson Wyatt (Denver, 1916), recommended her for the job. She held the position for four years and told Annie that she loved every minute of it.

Mary Jane and Annie connected on how it was difficult to be away from family and close friends at times, but now they both have friends and sisters across the country because of their Gamma Phi Beta travels. In fact, Mary Jane even spent some time visiting Annie's initiating chapter at the University of Northern Iowa. The two enjoyed talking about how Gamma Phi Betas everywhere have the same ideals and values, but every chapter brings their own culture to our organization. Mary Jane said, "We were on the right track 75 years ago and here we are as a really successful Sorority."

One of the most important things Annie learned from Mary Jane is that no matter our age, region or background, we are all Gamma Phi Betas for a reason. Annie said, "I could feel the love and

passion in Mary Jane's voice. I share her wishes that every Gamma Phi Beta will experience this kind of fulfillment and sisterhood from our beloved Sorority."



Then: Mary Jane's experience in 1950

Mary Jane traveled mostly by train to visit chapters.

Central Office in Chicago, Illinois

The carnation was our official flower, but pink was not the sole color until 1950.

Movie tickets were less than 50 cents!

Our 44th Convention took place in 1950 in Glenwood Springs, Colorado.

Women wore dresses and heels most of the time, even when they were traveling.

Now: Annie's experience in 2017

CLCs travel by airplane or car for their visits.

International Headquarters in Centennial, Colorado

Pink carnations only!

Movie tickets are now at least nine dollars.

Convention 2018 in Dallas, Texas, will be our 78th Convention.

CLCs wear business casual during visits, which consists of pants, skirts and dresses. However, they are more casual on travel days.

Lauren McGuire (Michigan State)

While attending the 2017 REAL Leadership Institute (RLI), Lauren began chatting with a woman whom she discovered was a CLC in 1984. Since she already had a year of experience under her belt, Lauren was curious to meet a former CLC and was delighted to learn that she had helped reinstall Lauren's initiating chapter Beta Delta (Michigan State). Diane Goff (Idaho) said that reinstallation was the highlight of her year as a CLC. Lauren told *The Crescent*, "It is amazing to know her proudest moment was working with them that semester. It is especially meaningful as I helped start Eta Sigma Chapter (Central Missouri) as a CLC last year and have had those same feelings of pride and accomplishment!"

A few months after RLI, the two reconnected to talk more about Diane's CLC experience so Lauren could learn about how the CLC program has developed over the years. When talking about travel, Diane said, "Back in the day, the airlines didn't charge you for your luggage. We had our Gamma Phi Box because there were no computers. We had the president's manual, ritual manual and all the paperwork. It was at least double the size of a briefcase." In addition to this bag, Diane carried a large suitcase for her clothes, but that was when suitcases with wheels were just coming out, so her bag didn't have them!

Lauren and the rest of the CLC team are fortunate to have rolling suitcases, and talking to Diane reminded Lauren of what a luxury that can be. Another big difference between Lauren's and Diane's CLC experiences are the way reports and paperwork were done. Diane said she would have to find someone at every chapter who had a typewriter and carbon paper. "It seems so antiquated, but it was just 30 years ago," she shared. Luckily for Lauren, all the CLCs need now is a laptop to fill out their paperwork and access manuals since everything is online.

Despite these differences in their experiences, Lauren and Diane found common ground outside their Michigan State connection. Diane said she used postcards to keep in touch with family and friends, and

had a phone card to make long distance calls or called collect. The two started talking about postcards and discovered that they both have scrapbooks of postcards they collected while traveling!

"Speaking with Diane was impactful," Lauren said. "It was great to see how the CLC experience shaped the rest of her life and service in Gamma Phi Beta." With the reminder of the amenities she has and her passion for growing Gamma Phi, Lauren is prepared to take on her final year as a CLC.



"Back in the day, the airlines didn't charge you for your luggage. We had our Gamma Phi Box because there were no computers. We had the president's manual, ritual manual and all the paperwork. It was at least double the size of a briefcase."

- Diane Goff (Idaho), former CLC

"I learned a sense of self-confidence that I never would have gained otherwise. I was representing our international organization and all of the women who stand behind it, so I felt a sense of responsibility to reflect those women and our ideals."
- Susie Knetter McCracken (Kansas State), former CLC

Alaina Davis (Puget Sound)

Alaina (Lainie) has one year of experience as a CLC under her belt and is ready to hit the road, armed with even more knowledge from her conversation with Susie Knetter McCracken (Kansas State). Susie was a CLC in 2006 and then became a sorority coordinator-collegiate extension and now she's a member of the Nominating Committee.

Lainie was thrilled to get the chance to talk with someone who is involved in Gamma Phi Beta, since this will be her last year traveling as a CLC. She plans to move to her "soul city," St. Louis, Missouri, which she fell in love with when she lived there to assist the newly-re-established Phi Chapter (Washington University).

While Lainie learned a lot about herself and where she'd like to live from her first year as a CLC, Susie was still able to offer up some advice to help her. Susie said from her experiences, "I learned a sense of self-confidence that I never would have gained otherwise. I was representing our international organization and all of the women who stand behind it, so I felt a sense of responsibility to reflect those women and our ideals." This is a feeling that Lainie can certainly relate to after representing Gamma Phi for a year and earning the opportunity to continue to do so this year.

When asked how this self-awareness inspired a change in her life, Susie told Lainie she still has that self-confidence and responsibility of representation in her. When she faces challenges at work, she pulls on that self-confidence and thinks about what she was able to accomplish as a CLC to help her find perspective in the situation.

Reflecting on her conversation with Susie, Lainie said that something she always notices when talking with former CLCs is how supportive and understanding they are. She said, "It is comforting to know people like Susie, that are able to affirm and encourage you to be yourself, soak it all in and not worry about the little mishaps here and there. Even going into this role for a second year, I still find myself needing that reminder, and I'm thankful to have a long list of fellow road warriors to call upon in times of need!"

Lainie is looking forward to using her self-confidence and fantastic network in her future career, but for now, she's focused on helping Gamma Phi Beta be the best she can be! Her favorite memories from last year are the final chapter meetings of the semester at the two chapters she lived with: Phi Chapter and Eta Omicron Chapter (Ohio). Though it was bittersweet, Lainie said, "Taking the time to reflect on how far each chapter had come in four months was humbling and exciting." Lainie is carrying that excitement into the 2017-18 academic year. This passionate CLC is ready to share her knowledge with Gamma Phis everywhere!



Danie Edwards (Oakland)

Back for another year of CLC traveling, Danie Edwards (Oakland) is thrilled to be a part of such an incredible program! She planned to attend the University of Michigan to pursue a Master's degree in social work, but deferred for a year so she could continue to travel for Gamma Phi a bit longer.

Before Danie headed out again, she sat down with Julie Dunn Eichenberg (Florida State), the chair of the Gamma Phi Beta Foundation and vice president of Brand Distribution at Turner Broadcasting, to learn more about the history of the CLC program.

Julie was a CLC in 1995 and has stayed involved with Gamma Phi Beta ever since. She explained to Danie how much things have changed in the program and in travel. CLCs used to book flights through a travel agent, instead of an International Headquarters staff member setting it all up. In fact, CLCs used to call when another team member was on the line, and the travel agent would connect them so they could talk about their travel plans or even catch up a bit! Through technological developments and funding, the CLC program has been able to grow and has improved vastly since Julie held the position.

While things have changed since Julie was a CLC, she still feels it's important to stay connected to Gamma Phi Beta and other CLCs. "When you go to a city, if there are past CLCs that live in town, reach out! I love having CLCs over to the house and giving them a slice of home when they're on the road," Julie told Danie. "Reach out and build connections."

Danie learned that as part of the Foundation's One Heart Campaign Julie works to endow CLC positions. Julie said, "I am personally committed to it and I'm going to be asking my CLC class and everyone else I know to also contribute. I want every CLC to contribute what they can, and I want every sister whose life was impacted and inspired by a CLC to contribute as well."

This sentiment reminded Danie of her favorite quote from Margaret Mead, "Never doubt that a small group of thoughtful, committed citizens can change the world. Indeed, it is the only thing that ever has."

With the Foundation and donor support of the CLC program, Danie can head out to assist our chapters for another year. "My conversation with Julie gave me a new appreciation of the CLC program. I realized how far the consultant program has come and how many wonderful opportunities I have that haven't always existed," Danie shared. "Gamma Phi Beta cares about our well-being and wants to provide us the best experience possible. It's humbling to realize how much we have because of how much others give."



*"When you go to a city, if there are past CLCs that live in town, reach out!
I love having CLCs over to the house and giving them a slice of home when
they're on the road. Reach out and build connections."
- Julie Dunn Eichenberg (Florida State), former CLC*

Kelsey Arneson (Creighton)

Kelsey visited with 1989-90 CLC Cheryl Moore (Colorado State) to learn more about her CLC experience. Cheryl advised Kelsey to pack clothing that can be interchangeable, but don't try to pack everything. "We had to wear suits with big shoulder pads back then and it made things crazy when trying to pack!"

Kelsey is thankful she doesn't have to bring shoulder pad suits along, and realizes how lucky she is to have a cell phone. When Cheryl was traveling email and cell phones weren't around, so she had to use calling cards to make long distance calls home and typewriters to fill out her CLC reports. "I honestly cannot imagine not being able to pick up the phone and shoot my fellow teammates a text when I need some extra encouragement, and I certainly cannot imagine having to go through the extra effort just to keep in touch with family and friends," Kelsey said.

Along with the reminder of how the CLC program has developed thanks to technology and trends, Cheryl taught Kelsey that thanks to her CLC experience, she's able to adapt and problem solve to get the job done. Kelsey shared, "It is reassuring to see the success of CLCs in the past and know that we all faced the same challenges and opportunities as we set out on this journey with Gamma Phi Beta."



Maddy Barbour (California State-Fullerton)

"I love everything this organization stands for, and love the genuine relationships and support this organization fosters," Maddy said. As a first-year CLC, Maddy is excited to help foster genuine relationships in all the chapters she will visit. Sophie Wilson (Northwestern) had a similar feeling when she became a CLC in 2013.

The two women talked about meeting people on the road, combating homesickness and being sure to maintain close relationships with the friends they don't get to see every day. Sophie told Maddy that it's important to utilize her time in airports, whether that's catching up on paperwork or calling her family and friends. She also advised Maddy to, "really get to know your teammates because they will be your best friends. Utilize them to help you through difficult times on the road." And she recommended purchasing a neck pillow for the plane, something she wishes she had done!

Knowing she has the support of her CLC team and the advice to stay connected to those she loves, Maddy is ready to begin fostering relationships with all the women she visits.

Kelly Carson (California State-Chico)

With a willingness to listen and a love for adventure, Kelly is confident she will be an excellent CLC. She chatted with 2001-02 CLC Lillian Lamers (Denver) to figure out what other skills she should work to enhance in order to be the best resource for collegiate chapters.

Lillian advised that for the first day or two of Kelly's visits she should spend a lot of time listening and understanding the dynamics of the chapter prior to beginning to assist. She also opened up about being a CLC on September 11, 2001. Lillian was in western New York on the day of the attacks, and was set to fly out on September 16. She said airport security was changing constantly, and though it was still scary to fly, she and her team promised they would all finish their terms. With their strong connections to one another and trust in Gamma Phi, they continued their job until the end of the academic year.

Kelly said, "I appreciated Lillian sharing her experience of being a CLC around the time of September 11. There must have been so much uncertainty at that time, and I appreciate how open she was in sharing that experience."

Overall, Kelly said she learned a lot from her conversation with Lillian. "I appreciated her sharing with me how important relationship building is in this role," Kelly said. "While CLCs only visit a chapter for a few days, the relationships built during that time are key to empowering chapter members to accomplish their goals. This is definitely something I will be taking on the road with me!"



Angelica Chhikara (California-Riverside)

Though she was born and raised in California, Angelica is excited to begin her travels across North America! She thinks she'll be a great CLC because she has well-developed thought-processing and reasoning skills that will allow her to help the chapters she's visiting.

Angelica took the time to talk with Liza Moskowitz (Boston), who served as a CLC for the 2015-16 academic year. Since Liza held the position fairly recently, she helped Angelica realize how important the role of a CLC is and what a unique opportunity Angelica has this year. She also shared that she felt the peer-to-peer relationship model can be challenging. Liza said, "Establishing credibility is hard when the women are only six months or so younger than you." However, Liza was able to use this to her advantage to connect with the women and earn their trust. Angelica will be able to do the same with her fantastic reasoning skills!

While Liza and Angelica enjoyed discussing the logistics of connecting with our collegiate members and utilizing Gamma Phi Beta resources to the best of their abilities, they also took the time to talk about some smaller ideas. One of the most important? Angelica learned that she should absolutely pack a stain remover pen!

Emily Mullins (Wichita State)

One thing Emily is hoping to gain from her experience as a CLC is the opportunity to learn about different leadership styles and how they can be used effectively. Her leadership style involves asking a lot of questions and remaining transparent about her goals, which makes her curious about how others operate in the various situations she may encounter as a CLC.

Emily talked to 2001-02 CLC and current Dean of Students at Metropolitan State University of Denver Braelin Pantel (Union) about how to best utilize her leadership style to help collegiate chapters. Braelin shared with Emily that one of the things she was most nervous about was not having all the answers. "But it wouldn't be possible for everyone to have every experience," she said. "That's not what consulting is. It's about working with them and helping them find answers for themselves."

This really resonated with Emily. She told *The Crescent* that it is daunting to visit chapters that are expecting her to know everything, but it's reassuring to hear that she can absolutely be of assistance, even without having all the answers. Emily said, "It's impossible to know everything there is to know, but that doesn't mean I won't be able to answer and respond to the questions members have, even if it means finding the answers with them."



Annelise Newman (Chapman)

Annelise talked with 1986-87 CLC Kendra Bocher (California State-Long Beach), who now works as managing director of Member Experience at International Headquarters. Both women were inspired to apply to be a CLC because of the CLCs who visited their chapters and formed relationships with them.

Kendra told Annelise that every CLC learns something about themselves that they truly needed to learn. "I credit so much about who I am, how I lead, how I volunteer my time and how I raise my daughters to being a CLC," she said. "I always say everything I needed to learn, I learned as a CLC. Keep your eyes open, externally and internally!"

Annelise shared that her biggest hope as a CLC is to gain a larger perspective of Gamma Phi Beta on an international level and learn more about our collegiate members and their experiences. Kendra's advice will carry her far in keeping her eyes open for opportunities to learn and grow. Kendra also shared that loving and taking care of one's self is vital to helping chapters effectively.

This resonated with Annelise and she said, "It's exciting to think about all that I will gain from this year. I can't wait to learn more about myself and the world, and to take those lessons with me wherever I go!"



Megan Piehler (Midwestern State)

Midwestern State University had never had a student give a commencement speech, until Megan Piehler did so at her own graduation! Now that she's made history at her university, she's ready to begin traveling and experience Gamma Phi Beta from an international perspective. Before she headed out, Megan spoke with J.J. Kaelin (Colorado-Boulder). J.J. served as a CLC in the 1978-79 academic year and learned that she's able to juggle multiple responsibilities at a time.

She explained to Megan that being a good multitasker is an important skill for CLCs to possess. J.J. said, "Life is about inspiring and helping others realize their own talents, skills and worth, which in turn strengthens your own."

While balancing responsibilities, J.J. told Megan to always remember that, "Gamma Phi Beta is a way of life and our membership is to be valued." Megan has always upheld our Core Values and cannot wait to share her love of Gamma Phi with our collegiate chapters. J.J. also reminded Megan to document her travels, because one thing she couldn't live without as a CLC was her camera! With this friendly reminder, Megan is ready to take on any challenges that come her way and share our incredible sisterhood with everyone she encounters.

Ashleigh Salyers (James Madison)

Ashleigh began her Gamma Phi Beta journey as a charter member of Eta Nu Chapter at James Madison University. She worked closely with CLCs and those women inspired her to develop and maintain the values of our Sorority and become the best version of herself. After meeting these inspiring women, Ashleigh knew she wanted to have the opportunity to inspire others, and now she's hitting the road to do just that!

Ashleigh took the time to talk with Lauren Nottoli (South Carolina), a 2013-14 CLC, and get a bit of advice. Lauren shared travel and packing tips, as well as important advice on how to best assist chapters. "You have to be flexible and not let having a perfect plan slow you down," Lauren said. "It's more worth it to enjoy the journey than to worry about things not being exactly as you want."

Lauren stressed the importance of enjoying the CLC journey because it goes by quickly. She said, "I will have moments where I suddenly have this memory of something that happened when I was a CLC that I forgot about: a really cool goal my fellow CLCs and I accomplished or a fun adventure."

Armed with the advice to have fun and believe in yourself, Ashleigh is excited to begin visiting chapters and creating her own incredible memories!



Katelyn Zam (Cincinnati)

Katelyn is most proud of the lasting impact she made on her chapter, and now she is ready to make similar impacts on all the collegiate chapters she will visit this year! Terri Briggs (Oregon State), a 1981-82 CLC, also set out ready to make her own mark, so the two women had a lot to talk about.

Terri shared the most important lesson she learned as a CLC was how much people can accomplish if they believe in themselves and know others believe in them, too. She explained that supporting and empowering our members is vital to helping them succeed in their chapters and communities. Terri also told Katelyn that while she needs to put others first, she also needs to remember to take care of herself.

The two also talked about the differences in the times they were traveling. Katelyn asked Terri what she could not have lived without, and she said her address book because they didn't have cell phones, and writing letters and long-distance calls were the only way to stay in touch. She also had to carry a big leather bag full of manuals in addition to her luggage.

Luckily for Katelyn, all our manuals are online so all our CLCs need is a laptop and cell phone to stay in touch with family, friends, and of course, International Headquarters! Katelyn said, "What resonated with me is that despite the technological differences of then and now the overall impact of the CLC program is still the same. CLCs today have the same highs, lows, triumphs and defeats working with collegiate women as CLCs did in the 80s. To me, this is something very special because it is such a unique experience."



Are you interested in being part of Gamma Phi Beta history? Apply to be a CLC to help shape our Sorority for the future! Visit GammaPhiBeta.org/CLC for the application and more information. Apply by January 5, 2018!

Supporters of the Heart

CLCs are valuable pillars in the Sorority's structure and success, working to educate, train and motivate members to be the best that Gamma Phi Beta knows they can be. The Gamma Phi Beta Foundation supports the CLC program by providing funds that help CLCs present educational and leadership development workshops for chapters.

The Foundation has three donors who have recognized the importance of the CLC program and have established named endowments to support the educational portions of the CLC program in perpetuity. Dr. Ruth Seeler, M.D. (Vermont), Barbara Hurt-Simmons (Nebraska-Kearney) and Evelyn Gooding Dippell (Illinois at Urbana-



Champaign, 1933) generously established collegiate leadership consultant endowments to ensure that the future of the CLC program continues to flourish.

These endowments leave a legacy of inspiration for Gamma Phi Beta and their gifts will forever support and inspire the lifelong development of women.

Support the CLC Program

Interested in supporting the CLC program? Give a gift to the CLC endowment or create your own named endowment through the Gamma Phi Beta Foundation.

Donate to the CLC endowment at GammaPhiBeta.org/Donate or create your own named endowment by contacting Foundation Executive Director Kitty L. deKieffer at 720.457.1279.



Savings are in Season

Fall is here and now's the time when Gamma Phi Beta sisters could save even more on GEICO car insurance with a **special discount!**



GEICO® *#MemberDiscount*

geico.com/greek/GammaPhiBeta | 1-800-368-2734



GAMMA PHI BETA



Some discounts, coverages, payment plans and features are not available in all states or all GEICO companies. Discount amount varies in some states. One group discount applicable per policy. Coverage is individual. In New York a premium reduction may be available. GEICO is a registered service mark of Government Employees Insurance Company, Washington, D.C. 20076; a Berkshire Hathaway Inc. subsidiary. © 2015 GEICO

SORORITY Life

It's collegiate and alumnae chapter updates – at a glance! Read all about our shining chapters across the continent and their recent activities. For submission guidelines, visit GammaPhiBeta.org.

Region 1

CONNECTICUT

Eta Theta Chapter (Connecticut)

Sisters attended a local Girls on the Run event to help build strong girls. The chapter also started the "sisterhood of the traveling flag" to help everyone stay in touch while away from school.

DELAWARE

Eta Gamma Chapter (Delaware)

The summer was filled with travels and relaxation for sisters, but they look forward to returning to school.

NEW JERSEY

Bergen County Alumnae Chapter

At a Girls on the Run 5k, Gamma Phi Betas served as coaches and hair stylists. In addition, the alumnae celebrated another successful year with a scenic boat tour and year-end brunch.



Region 1 | In June, alumnae of Delta Tau Chapter (Colgate) enjoyed reconnecting with one another at the chapter facility during a reunion weekend.

NEW YORK

Iota Chapter (Columbia)

Over the summer, sisters worked hard at their jobs, internships and research opportunities in New York City and all over the world, but they made time to have fun with their sisters. Iota Chapter is looking forward to another year of sisterhood!

Epsilon Epsilon Chapter (Union)

Sisters maintained a 3.39 average chapter GPA and received nine awards at the annual Greek Awards at Union College. A few sisters even won individual awards including Greek Woman of

the Year, Greek Scholar Award and the Sorority President's Cup. The chapter as a whole won the Sorority Philanthropy of the Year award and the Sorority Chapter of the Year award.

Region 2

MARYLAND

Beta Beta Chapter (Maryland)

Sisters have been hard at work this summer with excellent internships all over the country and meeting about how to make this semester the best one yet!

VIRGINIA

Fairfax County Alumnae Chapter

Alumnae cheered for the home team at a baseball game, gathered for a family bowling event and organized a picnic lunch.

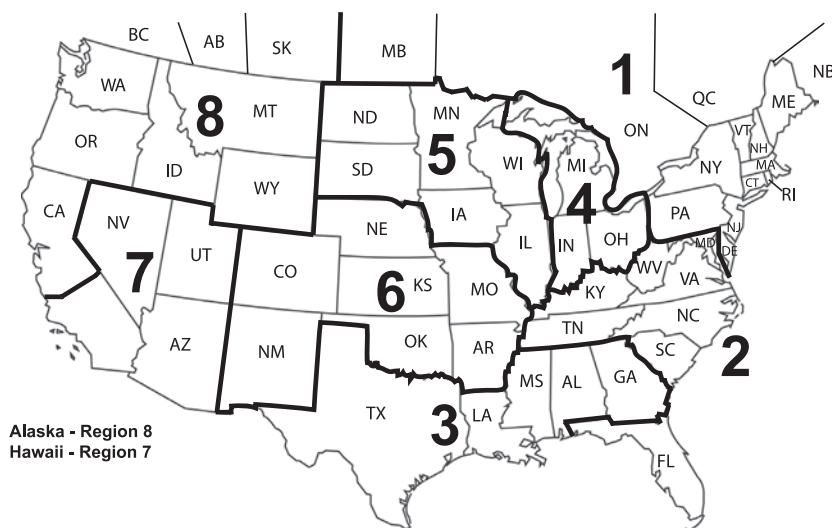
Region 3

TEXAS

Gamma Chi Chapter (Texas State-San Marcos)

Gamma Chi Chapter will celebrate its 50th anniversary February 3-4, 2018, in San Marcos, Texas. If you are interested in helping or attending the celebration, please email laurenvdarby@gmail.com or call 254.592.8549.

Gamma Phi Beta Sorority by Regions





Region 2 | Naples Alumnae Chapter enjoyed having lunch every month to reconnect over the summer.

Houston Alumnae Chapter

In April, Houston Alumnae Chapter celebrated their 75th anniversary. Congratulations, sisters!

Region 4

INDIANA

Beta Pi Chapter (Indiana State)

During the spring semester, Beta Pi Chapter celebrated their senior members and will miss them all dearly. Congratulations on graduating from Indiana State University, Class of 2017!

Beta Phi Chapter (Indiana)

Gamma Phi Beta won the Chapter of Excellence award in the spring! In addition, Olivia Wagner was crowned Miss Greek IU 2017. She helped raise more than \$62,000 for cancer research at the event.

Zeta Kappa Chapter (Southern Indiana)

Over the summer many sisters studied abroad in Australia and Europe. The chapter is so excited for fall recruitment and cannot wait to welcome new sisters into the sisterhood!

MICHIGAN

Beta Chapter (Michigan)

Sisters had an exciting summer filled with travels across the world, summer internships, music festivals and concerts, relaxation and endless amounts of fun! Everyone is excited to return to Ann Arbor to reunite and prepare for formal recruitment.

Eta Delta Chapter (Grand Valley State)

Philanthropic work doesn't stop just because it's summer! Eta Delta sisters enjoyed a day mentoring and Building Strong Girls with Girls on the Run. The chapter is so excited to be reunited and begin the school year.

OHIO

Alpha Nu Chapter (Wittenberg)

Spring recruitment went well for Alpha Nu Chapter. They reached Total and added 17 new members to our sisterhood!

Beta Xi Chapter (Ohio State)

The chapter was awarded the Order of 1874 status for the 2016-17 academic year. Members had exciting summers studying abroad, tackling new internships and getting ready for the fall semester.

Zeta Omicron Chapter (John Carroll)

Sisters participated in Greek Week with other sororities and fraternities on campus at the end of the spring semester.

Eta Zeta Chapter (Cincinnati)

The women of Eta Zeta Chapter have been exploring the country and the world this summer. Many sisters explored the world through study abroad, vacation and volunteer opportunities.

Region 5

ILLINOIS

Epsilon Chapter (Northwestern)

Last spring, Epsilon Chapter hosted their inaugural Moonball kickball tournament. Sisters enjoyed hosting the event despite a little bit of rain.

Delta Pi Chapter (Illinois State)

Over the summer, many sisters traveled to different countries including Portugal, Spain, Italy and the Netherlands. One sister even traveled to Haiti where she volunteered at a children's orphanage.

IOWA

Gamma Psi Chapter (Northern Iowa)

Sisters are excited to reconnect after their summer travels and can't wait to begin preparing for fall recruitment.

MINNESOTA

Gamma Pi Chapter (Minnesota State-Mankato)

During the spring semester, sisters had so much fun volunteering and participating in the annual Girls on the Run 5k and bonding at formal. Gamma Pi Chapter was awarded the most improved chapter and the chapter with the best public relations! Sisters are so excited for recruitment to start!

WISCONSIN

Gamma Chapter (Wisconsin-Madison)

Sisters enjoyed their retreat at Devils Lake State Park. Everyone enjoyed bonding, hiking and taking in the scenery. Kelsey Davis had the opportunity to attend REAL Leadership Experience and enjoyed attending seminars and taking part in discussions about the different aspects of leadership.

Gamma Gamma Chapter (Wisconsin-Milwaukee)

Administrative Vice President Maddy Hein recently began an internship with Girls on the Run. She is so excited to build strong girls every day! The chapter is also prepared to welcome new members to Gamma Phi Beta this semester.



Region 3 | Eta Upsilon Chapter (Nicholls State) organized their first formal and enjoyed dancing all night long!

Region 6

COLORADO

Tau Chapter (Colorado State)

Sisters are looking forward to fall recruitment. The Panhellenic slogan for this year's recruitment is "Be More You." The chapter is excited to encourage future Greek life and Gamma Phi Beta members to be themselves and inspire the highest type of womanhood.

Beta Rho Chapter (Colorado-Boulder)

Gamma Phi Betas focused on sisterhood and positivity last semester and throughout the summer. In the spring, the chapter placed second in Greek Week, and is looking forward to fall recruitment.

KANSAS

Sigma Chapter (Kansas)

Kristin Chenoweth (Oklahoma City) surprised Sigma Chapter, and stopped by to share stories about her Gamma Phi Beta experience!

NEBRASKA

Pi Chapter (Nebraska-Lincoln)

Pi Chapter was thrilled to welcome home a new member class full of amazing women. They can't wait to grow the bonds of Gamma Phi together.



Region 5 | After a summer of traveling, volunteering and fun, Kappa Chapter (Minnesota-Twin Cities) is thrilled to be preparing to open their home to new members this fall semester. They cannot wait to see how they will grow as a chapter!



Region 6 | For the 12th year in a row, St. Louis Alumnae Chapter and friends served as ushers at the Shakespeare in the Park festival. More than 25 sisters volunteered as ushers and then shared a picnic dinner while watching the performance.



Region 8 | The Diablo Valley Alumnae Chapter hosted a baby shower for their president who is expecting her first child.

Gamma Kappa Chapter (Nebraska-Kearney)

Chapter member Brooklynn Venteicher accepted a position as special projects fellow at Girls on the Run Nebraska. The chapter is very proud of her and the nine coaches and 30 volunteers they had this past season!

OKLAHOMA

Psi Chapter (Oklahoma)

The chapter will celebrate its 100th anniversary September 14-15, 2018. If you are interested in helping with the celebration, please email gammaphipsi100@gmail.com.

Tulsa Alumnae Chapter

Tulsa alumnae had a very successful and eventful 2016-17! Highlights included Founders Day with a special appearance by International President Annabel Jones and their annual flip flop party.

Region 7

ARIZONA

Phoenix Alumnae Chapter

The chapter's executive council visited members' homes to surprise them with pink carnations and a hand-written thank you note for paying their dues. They welcomed new members at a taco Tuesday dinner and are happy to announce that they have a new administrative vice president and Panhellenic delegate!

CALIFORNIA

Alpha Iota Chapter (California-Los Angeles)

Chapter President Courtney Cirks was the recipient of the San Fernando Valley Alumnae Panhellenic Association's Achievement Award this year. Courtney and her mother attended a luncheon to accept the award and get to know the members of the association.

Beta Alpha Chapter (Southern California)

Last semester, the chapter competed in the Panhellenic intramural soccer league. Through teamwork and communication, sisters were able to win the championship! They look forward to more intramural games and fun.

Beta Lambda Chapter (San Diego State)

While Beta Lambda's facility has been going through some renovations to get ready for recruitment, sisters have been traveling all over the world to places like Italy, Ireland and Portugal. They can't wait to be reunited with the chapter!

Delta Phi Chapter (California State-Bakersfield)

Isabella Ozuna participated in the 2017 REAL Leadership Experience in Norman, Oklahoma, this summer. She was the first Delta Phi member to attend and learned a lot to take back and implement at the chapter.

Region 8

IDAHO

Xi Chapter (Idaho)

Sisters excitedly await potential new members as they prepare for fall recruitment. They are so happy these women have made the life-changing decision to go Greek.

WASHINGTON

Beta Sigma Chapter (Washington State)

Over the summer, the bathrooms and shower room were remodeled in the chapter facility. The sisters are so excited about the renovations as they head back to school for the fall semester.

BRITISH COLUMBIA

Alpha Lambda Chapter (British Columbia)

Alpha Lambda Chapter wished their sister Sukhi Dhindsa good luck as she spent her summer in India marking the one-year anniversary of her NGO charity foundation, which provides impoverished children with shoes, school supplies and much more.

FALL in love with ΓΦΒ accessories!

Wynterlce Watch
\$40



Barre Necklace
\$50

Available in rose-plated, silver-plated, and two-tone silver-plated with gold-plated chain.

Juliette Watch
\$50



Rose Lux Bracelet
\$50



Yellow Lux Bracelet
\$50



Loyalty Crest Ring
SS \$95 10K \$205 14K \$290



Chapter President Ring
SS \$122 10K \$311 14K \$435

[EXCLUSIVELY FOR CHAPTER PRESIDENTS!]



2017-18 Financial Aid Recipients

Through the generous support of our members and friends, the Gamma Phi Beta Foundation is able to offer undergraduate scholarships and graduate fellowships each year so that members have the opportunity to achieve their academic goals. Take a moment to congratulate all of our 2017-18 recipients.

Fellowships

Amanda Barry (Cincinnati)
The Naples Area Alumnae Chapter Scholarship and Fellowship
The Susan A. West Scholarship and Fellowship
Olivia Carr (Michigan)
The Beta Chapter Fellowship
Brittany Cox (Southern Methodist)
The Cheryl D. Gunter Financial Aid
The Eleanor Garm Hemminger Financial Aid
Audrey Graser (Oregon)
The Ruth Hillman Carter Scholarship and Fellowship
Kailey Hughes (Delaware)
The Audrey Weldon Shafer Fellowship
Lauren Koziel (Colorado State)
The Denver Alumnae Chapter Fellowship
Shelby Kruse (Nebraska-Lincoln)
The Ruth A. Seeler M.D. Scholarship and Fellowship
Paige Lueker (Kansas)
The Jane Benton French Scholarship and Fellowship
Elizabeth May (Arizona)
The Sandra Rettke Nauman, Diana Nauman Wilcher and Louise de Waart Nauman Scholarship and Fellowship
Ashley McDonough (Minnesota-Twin Cities)
The Virginia Forsythe Vint Scholarship and Fellowship
Michele Pelzer (Iowa)
The Cherie M. Olsen Rho Chapter Fellowship
The Mary Jane Soechtig Rho Chapter Financial Aid
Clair Visconti (Missouri-Columbia)
The Tucky Wheeler Hobbs Fellowship
The Lindauer Legacy Fellowship

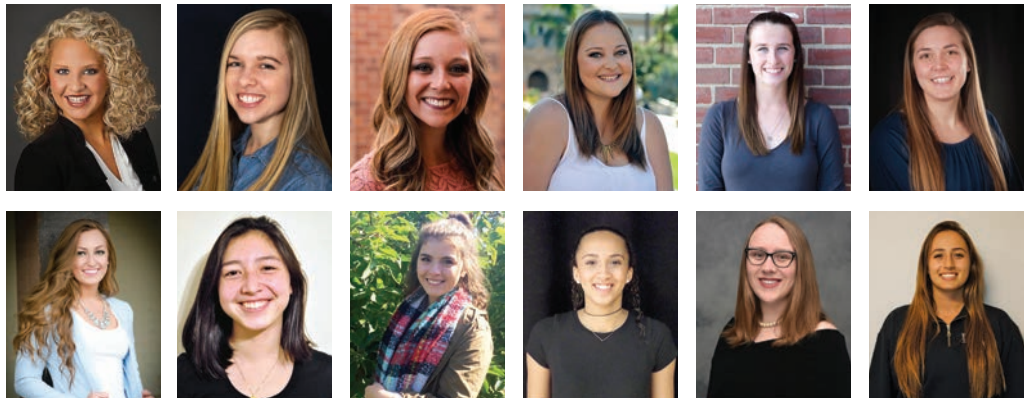
Scholarships

Rebecca Anderson (Nebraska-Lincoln)
The Gamma Phi Beta Foundation Scholarship
Becca Andrus (Kansas State)
The Beta Upsilon Chapter Scholarship
The Mary L. Vanier Beta Upsilon Chapter Scholarship
Sierra Blohm (Nebraska-Kearney)
The Orra Spencer Reid Scholarship
Mackenzie Boss (San Diego State)
The Beta Lambda Chapter Scholarship and Fellowship
Meghan Brandley (Bridgewater State)
The Elizabeth Fee Arnold and Beatrice Hill Wittenberg Scholarship
The Shirley A. Hill Scholarship and Fellowship
Michelle Bruer (Minnesota State-Moorhead)
The Alpha Omicron Chapter Scholarship
The Roger and Mary Hoffmann Scholarship
Ally Carlson (Missouri-Columbia)
The Suzanne Sames Alpha Delta Chapter Scholarship
Margaret Cherry (Virginia)
The Zeta Beta Chapter Scholarship
Sydney Chitjian (Northwestern)
The Josephine Hall Graham Scholarship
Caitlin Connelly (Boston)
The Ellender Dickson Scholarship
The Delta Chapter 130th Anniversary Scholarship Fund
D'Jonita Cottrell (Colgate)
The Delta Tau Chapter Scholarship in honor of Gretchen Oostenink
The Little Blue House Scholarship and Fellowship

Laura Cowell (California-Berkeley)
The Eta Chapter Ellender Dickson Financial Aid
Dorna Ektefaie (San Diego State)
The Beta Lambda Chapter Scholarship and Fellowship
Sarah Epelman (Syracuse)
The Alpha Chapter Scholarship
Sara Faruqi (Columbia)
The Katie Woodard and Tari Vickery Scholarship
The Ladyfood Scholarship
Karagan Fisher (Iowa State)
The Mary Ellen Porter Burchfield Omega Chapter Scholarship and Fellowship
Keely Flis (Iowa)
The Jeanne Jacob Rho Chapter Memorial Scholarship
Lana Floer (Michigan State)
The Virginia Forsythe Vint Scholarship and Fellowship
Bridgit Flom (Minnesota-Twin Cities)
The Ardis McBroom Marek Scholarship
The Noreen Linduska Zahour Scholarship
Maren Gandlmayr (Missouri-Columbia)
The Suzanne Sames Alpha Delta Chapter Scholarship
Meradieth Garcia (Texas State-San Marcos)
The Barbara B. and Jimmie E. Steidinger Gamma Chi Chapter Scholarship
Nicole Ghattas (San Diego State)
The Beta Lambda Chapter Scholarship and Fellowship
The Gayle Christiansen Scholarship and Fellowship
Jena Graves (Oklahoma)
The Irma Latzer Gamble Scholarship
The Josephine T. Robinson Ballard and Katherine Trice Wenig Psi Chapter Scholarship
Gianna Hansen (Iowa)
The Rho Chapter Scholarship
Haynes Jordan (Arizona)
The Kathryn Herbert Winchester Scholarship
Morgan Heimes (Nebraska-Lincoln)
The Elizabeth Ahlemeyer Quick Scholarship
Kerry Hemelgarn (Florida Southern)
The Joyce Canavan Stewart Scholarship and Fellowship Endowment
Kimberly Hill (Northwestern)
The Dorothy Somers Hoehn Memorial Scholarship
Margaret Hom (Duke)
The Eta Mu Chapter Scholarship
Olivia Howland (University of Washington)
The Lambda Chapter Scholarship
The Virginia Forsythe Vint Scholarship and Fellowship
Amber Johnson (Kansas)
The Jane Benton French Scholarship and Fellowship
Katie Johnson (California-Berkeley)
The Eta Chapter Ellender Dickson Financial Aid
Jennifer Kloster (California-Santa Barbara)
The Kathryn Herbert Winchester Scholarship
Sierra Lai (Southern California)
The Beta Alpha Chapter Scholarship
The Kathryn Herbert Winchester Scholarship
Imogene Legrand (Toronto)
The Greater Toronto Area Alumnae Chapter Alpha Alpha Scholarship
The Gamma Phi Beta Foundation Scholarship
Emily Liang (California-Berkeley)
The Eta Chapter Ellender Dickson Financial Aid

Elissa Lichtman (Virginia Tech)
The Eta Epsilon Chapter Scholarship in Honor of Priyanka Mohan
Shannon Loofs (Wichita State)
The Janna Hobbs Beta Chi Chapter Memorial Scholarship
Kaytlyn Marcotte (College of Idaho)
The Betty Lucker Haverfield Scholarship
The Dorothy Taylor Henderson Scholarship and Fellowship
The Ruth B. Fox Scholarship
Morgan McGee (Idaho)
The Gamma Phi Beta Foundation Scholarship
The June Williams Smith Xi Chapter Scholarship and Fellowship
Shauna McLaughlin (California-Los Angeles)
The Kathryn Herbert Winchester Scholarship
Dana Outcalt (Ohio State)
The Gamma Phi Beta Foundation Scholarship
Jasmine Ramirez (Missouri-Columbia)
The Noreen Linduska Zahour Scholarship
The Suzanne Sames Alpha Delta Chapter Scholarship
Natalie Reinhardt (Missouri-Columbia)
The Suzanne Sames Alpha Delta Chapter Scholarship
Kylie Rellihan (Kansas)
The Jane Benton French Scholarship and Fellowship
The Kathryn Allen Woodward Greater Kansas City Alumnae Scholarship
The Sigma Chapter Scholarship
Samhaair Ruland (Southern California)
The Kathryn Herbert Winchester Scholarship
Sofia Sarmiento (Indiana)
The Beta Phi Chapter Scholarship Endowment in Memory of Hannah Wilson
Soyeon Shin (Northwestern)
The Evanston North Shore Alumnae Epsilon Chapter Financial Aid
Hannah Ship (California-Los Angeles)
The Kathryn Herbert Winchester Scholarship
Janelle Souza-Diangson (San Diego State)
The Beta Lambda Chapter Scholarship and Fellowship
Jill Thomas (Maryland)
The Evelyn Wiley Alpha Rho Chapter Financial Aid
The Helen Griffiths Kaiser Scholarship
Nikki Tolido (San Diego State)
The Beta Lambda Chapter Scholarship and Fellowship
Veronica Turturillo (Minnesota-Twin Cities)
The Kappa Chapter Financial Aid Scholarship
Audrey Walker (Colorado-Boulder)
The Lynne Abdnor Barnett Beta Rho Chapter Scholarship and Fellowship
Danielle Wenger (California-Los Angeles)
The Kathryn Herbert Winchester Scholarship
Rachel White (Missouri-Columbia)
The Loreen Mohler Dorsey Scholarship
The Suzanne Sames Alpha Delta Chapter Scholarship
Mary Wichmer (Rockhurst)
The Gamma Phi Beta Foundation Scholarship
The Laura Frances Cottingham Scholarship
Emily Wollenberg (Oklahoma City)
The Beta Omicron Chapter Scholarship and Fellowship
The Katie Lunn "Keep the Smile Alive" Beta Omicron Memorial Scholarship and Fellowship

Fellowship Recipients



Scholarship Recipients



Memorial Gifts

We acknowledge the following individuals and groups who contributed to the Gamma Phi Beta Foundation in memory of a loved one as of July 31, 2017. Lists are printed as received from the Foundation.

Elizabeth Hutchinson Boedecker
(Penn State, 1944)
Marian Bickford

George Bowling, husband of
Catherine Bowling (Vanderbilt)
Marcia Etzkorn
Vicki Helling
Joanne Roman

Martha Ough Briggs
(Maryland, 1981)
Jackie Schlenger-Conover

Craig Bryant, husband of Vonda
Bryant (Christopher Newport)
Diane Goff

Ellen Sell Brynteson (Ohio
Wesleyan, 1975)
Deborah Swanson

John "Jack" Byrne, father of
Megan Byrne Krueger (Indiana)
Ann Campbell
Cathy Griffin
Frances Griffin
Shellie Hodges
Sally Lewis

Marilyn Bachnik Callahan (Wisconsin-
Oshkosh, 1966)
Leigh Ann Price
1968-69 CLCs: Joan Braitsch,
Evelyn Brzezinski, Mary
Hoffmann, Judy O'Neill

Melody Hooper Cathey
(Auburn, 1975)
Sandra Nauman

Karen Cooper (Bowling Green, 1962)
Grace Miller
Jane Mueller
Dennis and Allayne Reese

Nelma Cowser (Texas-Austin, 1957)
North Houston Alumnae Chapter

Diana Duncanson (Southern
Polytechnic State, 1980)
Don Duncanson

Anne Clements Eldred (Southern
California, 1950)
Carol Blanchard
L'Cena Rice

Homer Evans, husband of Peggy Evans
Judith Millen

Roy A. Hickman, father of Caryn
Hickman Short (Oklahoma)
Ann Ross
Suzanne Vicsek

Mary Ann Johnson (Southern
California, 1952)
Linda Babcock
Gamma Eta Chapter
New Member Class of 1968
Judith McMahon
Una Mae Naulty
L'Cena Rice

Lori Johnson Jorgensen (Minnesota-
Moorhead, 1973)
Linda Acosta
Amy Peterson

Margaret Ann Henderson Kershner
(Oregon, 1955)
Eugene Alumnae Chapter
Nu Chapter Affiliated
House Corporation

Ann Jakeman Lallman (Colorado
College, 1954)
Kathleen Murphy

Lorraine Tremblay Martini
(Vanderbilt, 1965)
Linda Harp

John Nieser, husband of Terri
McMurray Nieser (Texas Tech)
Sandra Nauman

Susan Jacobson Norborg (Lake
Forest, 1959)
Joey Stiver

Dawn Roper, mother of Bonnie Latour
(Toronto)
Alpha Alpha Affiliated
House Corporation

Jennifer Morton Ross (Southern
California, 1995)
L'Cena Rice

Jeanne Lauree Siegel
(Nebraska, 1959)
Karen Kendall

Arlene Erickson Simpson
(Northwestern, 1953)
Megan White

Catherine Spika (Iowa State, 1940)
Mary Jeckel

Rosemary Slagle Stoll, mother of J.J.
Kaelin (Colorado-Boulder)

Randy Allard
Barbara Boenzli
Elissa Brooks
Sandy Burba
Ann Campbell
Krista Davis
Julie Dunn Eichenberg
Frances Griffin
Shellie Hodges
Annabel Jones
Sally Lewis
Janelle Manning
Nancy Miller
Amy Peterson
Joanne Roman
Joey Stiver
Mary Vanier

Kathleen Magner Wakeham
(California State-Fullerton, 1984)
Rene Matz Thompson

**For deceased members, The Crescent lists their first, maiden and last names in accordance with their school and year of initiation. To make an "In Memory" gift, visit GammaPhiBeta.org/Donate or call 303.800.2890. The minimum donation is \$25. Gifts received by October 31, 2017, will be acknowledged in the winter 2018 issue.*

In Celebration

Celebrate a special sister, loved one or event with an "In Celebration" gift to the Gamma Phi Beta Foundation. Thank you to the following donors, whose gifts were recorded as of July 31, 2017. Lists are printed as received from the Foundation.

2017 REAL Leadership Experience event and Presentation Team, thank you.

Annabel Jones

Jeanne Beach (Southern Methodist), in celebration of your birthday.

Gloria Nelson

New member class of 2013, in celebration of your 2017 graduation and dedication to Delta Psi Chapter (California-Santa Barbara).

Lauren Cain

Merry Cosgrove (San Diego State), in celebration of the 2017 NBA Champion Golden State Warriors!

Sandy Burba

Krista Davis (Bowling Green), in celebration of your 50th birthday.

Melinda Nutter
Joey Stiver
Mary Vanier

Julie Dunn Eichenberg (Florida State), in honor of your reappointment as Foundation Chair.

Annabel Jones

Eta Tau Team (Colorado Mesa), thank you for a great first year 2016-17! Barbara Boenzli, Ariel Peele and the wonderful CLCs – Corey, Rachel, Ashley and Lauren.

Shellie Hodges

2017 REAL Leadership Institute speaker Ginny Carroll made a pledge to support the Foundation and asked attendees to join her. Thank you to the following members who answered the call and generously gave a gift.

Ginny Carroll
Barbara Boenzli
Kelly Boerner
Stephanie Carriere
Jennifer Chuang
Jennifer Cibor
Kathryn Cobb
Krista Davis
Kitty L. deKieffer
Kelly Dunne
Julie Dunn Eichenberg
Chrissy Farrell
Kim Frieze
Cathy Griffin
Frances Griffin
Kelly Hane
Amanda Hart
Annie Horrigan
Miranda Jones
J.J. Kaelin
Anne Layton

Susan Lupo
Alicia Matus
Jennifer Moody
Dawn Randolph
Karen Ray
Susan Reel
Betsie Reynolds
Milissa Rhodes
Melissa Rice
Tracy Stack
Joey Stiver
Mary Sullins
Rachel Taube
Karen Urette
Mary Vanier
Brandi Vess
Megan Wick
Kay Wilms

Tracey Frett (Florida Institute of Technology), in celebration of your marriage to Nicholas Cefaratti.

Liz Snape

Autumn Hansen (Idaho) and Nathan Hand, in celebration of the birth of your two new legacies, Mary Josephine Hand and Hazel Lynn Hand! We cannot wait to watch these two beautiful legacies become young women who are creative leaders of our future. Mary Jo and Hazel Lynn, you are much loved already!

Gigi De'Prey Eyre
Cathy Griffin
Shellie Hodges
International Council 2014-16
Annabel Jones
Anne Layton
Mary Vanier

Olivia Lee Heatley (Southern Methodist), in celebration of your confidence and leadership as an intern for Congressman Sam Johnson on Capitol Hill this summer! Pony up!

Angela Heatley
Clint Heatley

Jennifer Herbert (Georgia), in celebration of you going above and beyond for your sisters!

Stephanie Carriere

International Council 2016-18, in appreciation of a successful first year of your term.

Annabel Jones

Amylia Ruth Kosich (Kennesaw State), in celebration of your bravery and strength, both as a woman and a mother!

Rachel Prater

Megan Leone (Oklahoma).
Martha Hardwick

Cinda Lucas (Southern California), in celebration of your many years of service to the Beta Lambda Affiliated House Corporation.

Kelly Witt

Mary Jane Misthos (Colorado College), in celebration of your 96th birthday.

Frances Griffin
Annabel Jones
Sally Lewis

Gloria Swanson Nelson (Oklahoma), in celebration of your 95th birthday.

Jeanne Swanson Beach
Annabel Jones
Sally Lewis

The New Chapter Team of Gamma Phi Beta: Kris Baack, Robin Baskin, Shannon Bradley, Terri Briggs, Adra Cheek, Teresa Haney, Jennifer Herbert, Shellie Hodges, Anna Jankord, Linda Johnson, Lillian Lammers, Jordan Lyons, Laura Mayville, Erin McHale, Joanne Meloro, Jaime Miller, Victoria Phillips, Betsie Reynolds, Mary Jo Silsby, Kristen Slaughter, Tracy Stack, Mary Vanier, Megan Weber and Erin Wortman! Thank you for a stellar year!

Jamie Pickel

Jamie Pickel (Oklahoma), in celebration of your great work leading the New Chapter Team.

Mary Vanier

Psi Chapter Affiliated House Corporation, in appreciation of using their facility for REAL Leadership Experience.

Annabel Jones

Real Leadership Institute, in celebration of a wonderful RI in Tucson.

Ann Campbell

Sarah Simpson (Vermont), thank you for all your hard work and creativity on the Senior Gifts for Epsilon Chapter.

Evanston North Shore
Alumnae Chapter

Cornelia Spanier (Oregon State), in celebration of your 102nd birthday.

L'Cena Rice

Carey Stewart Singleton (Southern California), in appreciation for the thoughtfulness of a very special sister.

L'Cena Rice

Suzu Stasulis (Virginia Tech), in celebration of your service as sorority coordinator-alumnae resources for Region 2.

Anne Layton

Billie Trocke (Florida State), in celebration of you being awarded the 2016-17 Tampa Bay Alumnae Alana M. Bott Love, Labor, Learning and Loyalty Alumnae Award.

Tampa Bay Alumnae Chapter

Brittany Horowitz-Trujillo (California State-Fullerton), in celebration of your wedding and graduation.

Jessica Aguirre

Karen Urette (Oklahoma), in celebration of you being awarded the 2016-17 Tampa Bay Alumnae Community Impact Award.

Tampa Bay Alumnae Chapter

Mary Vanier (Kansas State), in appreciation for all you do for Gamma Phi Beta.

Annabel Jones

Laurie Veldhuizen (Florida State), thank you for your fearless leadership of our beloved Gamma Phi Beta International Sorority over the last seven years.

Stefanie Brickman
Stephanie Carriere
Annabel Jones
Melinda Nutter

Megan Wick (Washington State), in celebration of you being named executive director of Gamma Phi Beta International Sorority.

Stephanie Carriere
Annabel Jones
Katherine Pezzella
Mary Vanier

To make an "In Celebration" gift, visit GammaPhiBeta.org/Donate or call 303.800.2890. The minimum donation is \$25. Gifts received by October 31, 2017, will be acknowledged in the winter 2018 issue.

In Memory

We acknowledge the passing of the following members and celebrate their part in our circle of sisterhood. This list reflects notifications received at International Headquarters between May 1 and July 31, 2017. First, maiden, last names and year of Initiation are listed for each deceased member.

Alpha – Syracuse

Dorothy Poole McRae, 1930
Patricia Rogero, 1963
Lisa Barnato Jaurequito, 1975

Gamma – Wisconsin-Madison

Carol Dowdy Moreland, 1958
Lauren Eising Jacox, 1979

Epsilon – Northwestern

Barbara Zachman Vaughn, 1963

Eta – California-Berkeley

Janet Taylor Cotter, 1948
Consuelo Jaeger Thompson, 1950
Cornelia Eggleston Hatten, 1953
Harriet Hinds Anderson, 1955

Lambda – Washington

Jean Fisher McTavish, 1941
Mary Sackmann Nicholson, 1977

Nu – Oregon

Mary Perry Jenkins, 1953
Margaret Henderson Kershner, 1955

Xi – Idaho

Bonnie Kuehl Ford, 1945
Alice Taylor Hayes, 1945

Pi – Nebraska-Lincoln

Shirley Schaffer Walker, 1948
Harriet Ruegg Coble, 1954
Joyce Simon Cook, 1955
Jeanne Roquet Sigel, 1959

Rho – Iowa

Mary McTigue Thompson, 1949
Sandra Lohner Rieck, 1956

Sigma – Kansas

Patricia Kelly Davis, 1946
Helen Johnson Eubank, 1949

Tau – Colorado State

Norma Learned, 1937
Kim Anderson Steward, 1976

Omega – Iowa State

Betty Burns Frahm, 1944

Alpha Alpha – Toronto

Megan Wynne-Jones, 1944

Alpha Epsilon – Arizona

Sandra Kent Lord, 1965

Alpha Zeta – Texas-Austin

Lola Palmer Hood, 1952

Alpha Eta – Ohio Wesleyan

Marilyn Harner Caddle, 1963

Alpha Theta – Vanderbilt

Lucinda Riddle Rains, 1950
Lorraine Tremblay Martini, 1965
Jane Sasser, 1976

Alpha Iota – California-Los Angeles

Patricia Herlighy Stone, 1944
Eleanore Zacharias Bruck, 1947
Judith Flint Detamore, 1955

Alpha Nu – Wittenberg

Barbara Koehler Willmeth, 1947

Alpha Sigma – Randolph-Macon Women's College

Marie Walker Garner, 1942

Alpha Upsilon – Penn State

Elizabeth Hutchinson
Boedecker, 1944
Mary Stewart Fisler, 1946
Dorothy Yarnall Gay, 1948

Alpha Phi – Colorado College

Pattie Menefee Taylor, 1935
Carolyn Anderson
Nassimbene, 1958

Beta Alpha – Southern California

Anne Clements Eldred, 1950
Mary Ann Ryan Johnson, 1952
Jennifer Morton, 1995

Beta Beta – Maryland

Marilyn Sacks Brown, 1945
Martha Ough Briggs, 1981

Beta Gamma – Bowling Green

Karen Bailey Cooper, 1962

Beta Zeta – Kent State

Mary Peri Caldwell, 1954

Beta Theta – San Jose State

Dorothy Edinger Hill, 1950
Shirley Caletti Leick, 1956

Beta Kappa – Arizona State

Beverly Brown, 1954

Beta Mu – Florida State

Dorothy Douglas Whittle, 1951

Beta Xi – Ohio State

Nancy Howard Greeneisen, 1956

Beta Rho – Colorado-Boulder

Harriet Felten Bissell, 1955

Beta Tau – Texas Tech

Rebecca Young Clinton, 1967

Delta Delta – California State-Fullerton

Kathleen Magner Wakeham, 1984

Delta Lambda – California-Riverside

Alice Nicholson Lewis, 1976

Eta Upsilon – Nicholls State

Angelle Trahan, 2017

**To report the passing of a sister, please email gammaphibeta@gammaphibeta.org so we may honor the member on this page in a future issue.*

Vintage ΓΦΒ

In the December 1943 issue of *The Crescent*, the very first traveling secretary (now collegiate leadership consultant) was introduced. You read a bit about the consultant program and Evelyn Gooding Dippell on page 22, here is more about a true Gamma Phi Beta trailblazer.

DECEMBER, 1943

37

Grand Council Appointments

Evelyn Gooding
Traveling Secretary

EVELYN GOODING, former director of Province III, appointed traveling secretary by Grand Council of Gamma Phi Beta, began her duties early in September, and in this capacity will be the authorized representative of the council.

This office has been created to facilitate international government since in these days transportation and other difficulties prevent Council members from making their customary visits to chapters, and it is imperative that contacts between chapters and International be maintained. Also, because a planned schedule can be followed, greater economy and efficiency is possible under this new arrangement. While it is new for us, the plan is old in the sorority world since many of our contemporaries have had traveling secretaries for years and report that they have been outstandingly successful.

Miss Gooding is no stranger to Gamma Phi Beta and she brings to her new office an understanding of the college girl, basic loyalty for alumnae traditions and a keen trained mind for the executive tasks ahead of her.

A graduate of the University of Illinois in 1938 she went on to the University of Iowa to take her master's degree in dramatic art. The theater is her hobby and she has an appreciation of rare china, fine furniture and petit point. She is a member of the D.A.R., and Zeta Phi Eta, national speech honorary. She has taught in two Illinois high schools and has



Evelyn Gooding

kept in close touch with her own chapter, Omicron and with her alumnae chapter.

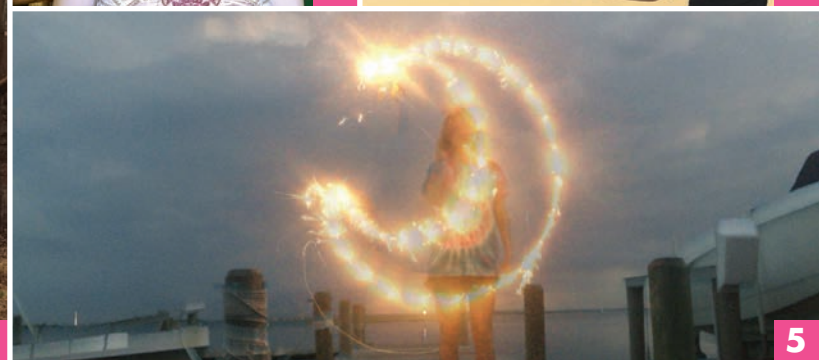
Slender, with dark hair and blue eyes she has charm and personality and is truly a real American girl who likes clothes and wears them remarkably well.

With the creation of this new office, province directors will function as usual and there will be no overlapping in the ground covered by each officer.

» » »

Capture a Crescent:

Spot it, snap it and email your capture a crescent photos to TheCrescent@gammaphibeta.org for a chance to be featured on the back cover of a future issue. Tip to get featured: We prefer crescents that wax left!



1. Spain: While traveling in Barcelona, Spain, Katie Swartwood (Tennessee-Chattanooga) found this crescent moon sculpture.

2. Colorado: Kylie Pickens (Texas A&M-Commerce) visited Colorado Springs and spotted this crescent, which reminded her of her Gamma Phi Beta sisters.

3. Nevada: During a breakfast with friends, Lorraine Fox Henson (Nevada) spotted a black bear snoozing on a crescent moon.

4. California: Ana Acuña (Rochester) was enjoying the Los Angeles Art District, when she came across this crescent moon.

5. New Jersey: Regan Mauger (Florida Southern) enjoyed celebrating Fourth of July and decided to represent Gamma Phi Beta by drawing a crescent moon with her sparkler!