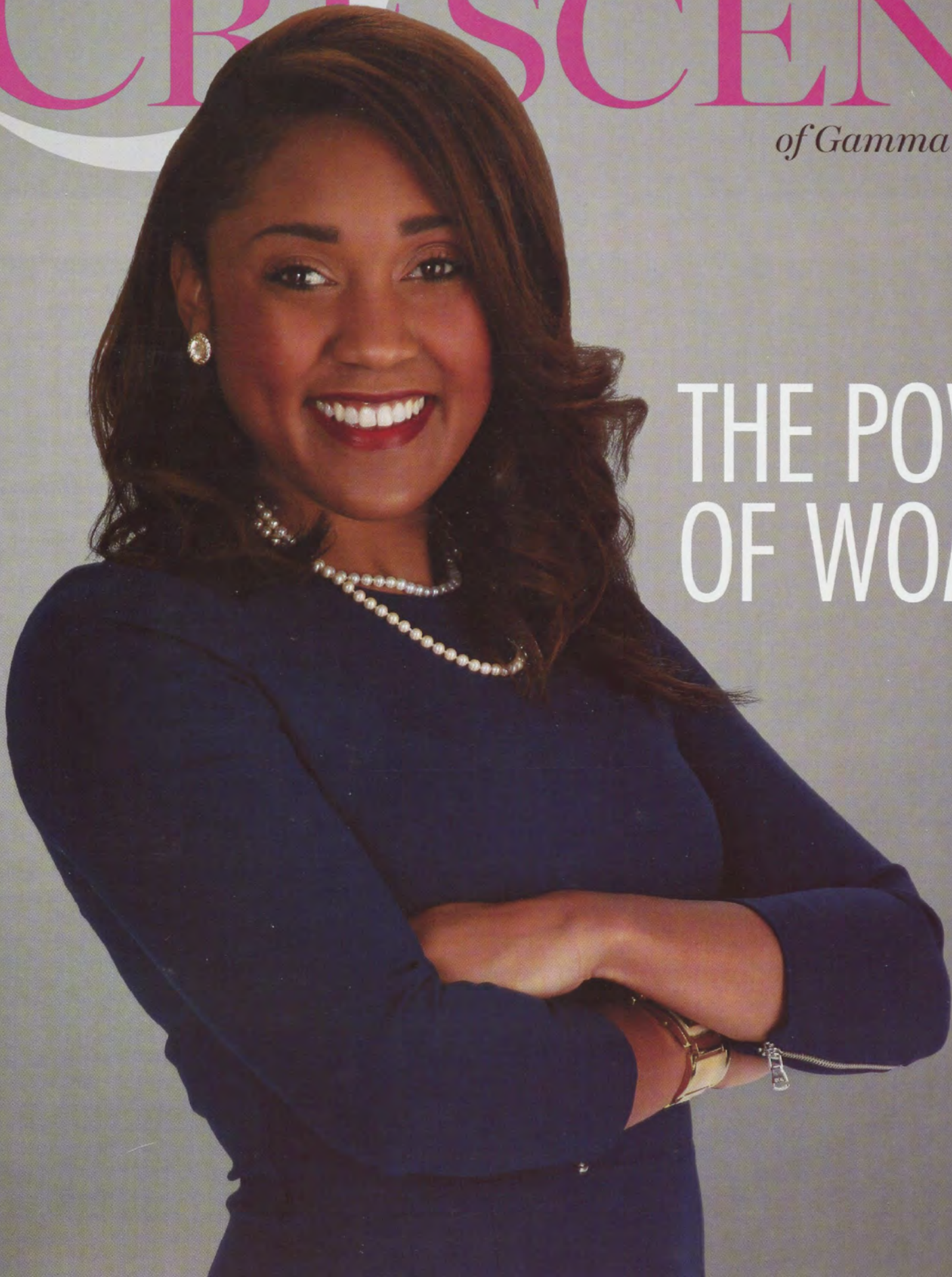


Winter 2016

the CRESCENT

of Gamma Phi Beta

THE POWER
OF WOMEN





Developing Leaders

INTERNATIONAL COUNCIL

International President
Krista Spanninger Davis
Bowling Green State University

Alumnae Vice President
Shellie King Hodges
University of Oregon

Collegiate Vice President
Mary L. Knaup
California State University-Fullerton

Education Vice President
Autumn L. Hansen
University of Idaho

Financial Vice President
Barbara Weiss Boenzli
Oregon State University

Membership Vice President
Nancy Ann Ostendorf Thompson
Iowa State University

Panhellenic Affairs Vice President
Sandra Biegelman Burba
Miami University

GAMMA PHI BETA FOUNDERS

Mary A. Bingham
E. Adeline Curtis
Helen M. Dodge
Frances E. Haven

MISSION

To inspire the highest type of womanhood.

On the cover: Turn to page 20 to meet sisters like Timpi Webber (Colorado State) who are demonstrating what it means to be a powerful woman.

Cover photo: Kerlchaff Photography and Design.

When “done right,” the sorority experience provides meaningful opportunities for women to gain valuable experiences that will allow them to positively impact countless others in their communities.

Sadly, too often we hear and see negative images and stories related to the fraternity and sorority experience through our local news and social media. However, the reality is that many women benefit from their sorority experience, applying lessons learned through the sorority to their internships, careers, volunteer opportunities and community involvement.

In this issue of *The Crescent*, you will learn how Gamma Phi Beta helps develop leaders and how membership in our Sorority contributes to personal and professional success. You will meet several sisters who attribute their accomplishments to their Gamma Phi experiences and opportunities.

Gamma Phi Beta's vision is to build confident women of character who celebrate sisterhood and make a difference in the world around us. I'm very proud to represent sisters who are making a difference in the world around us and applying all they've learned throughout their lives – including what they've learned as Gamma Phi Betas – to their efforts.

I'm often asked why I continue to choose to give back to our Sorority. The answer is quite simple – I have gained so much from my membership and I want as many other women as possible to have a similar opportunity for personal growth, sisterhood and friendship.

My Gamma Phi Beta experience as a collegiate member and an alumna has directly impacted not only my ability to make a difference in my community, but in my career as well. I graduated 25 years ago with a degree in education. My leadership experiences within my collegiate chapter, Beta Gamma (Bowling Green), combined with my education, allowed me to land my first job in the classroom. However, my continued volunteer work within the Sorority has provided me the opportunity to change my career and accept a new role as a director of communications for my local school district. The experiences, mentors and exposure to nonprofit business practices have enabled me to expand my professional work.

We have a great story to tell as sorority women about our sorority experience. We have endless tangible examples of women making a difference and excelling because of their membership in Gamma Phi Beta. Let's get out there and tell our story!

In IIKE,

Krista Spanninger Davis
International President

CONTENTS

Go Gamma Phi

Find the magazine's regular features in addition to other inspirational Sorority articles in this section.

4 $\Gamma\Phi\text{B}$ Mailbox

5 Points of Pride

11 International Badge Day

Save the date – International Badge Day is March 7.

14 Inspiration Board

19 What's Your $\Gamma\Phi\text{Q}$?

Think you're a G-Phi genius? Take the quiz and find out!

20 The Power of Women

Women have the power to change the world. Meet sisters from across the continent making an impact on those around them.

32 Sorority Life

42 In Memory

43 Vintage $\Gamma\Phi\text{B}$

Sorority News

Find the Sorority's latest news and opportunities here.

6 Legacy of Love

Jamie Fisher's (Florida) grandmother helped her understand the impact of sisterhood long before she joined Gamma Phi Beta.

8 New Chapter Roll Call

Meet our three new chapters.

9 Convention 2016: How Will You Make Your Mark?

30 Honoring Outstanding Alumnae

Congratulations to our Service Roll, Merit Roll and Circle of Excellence recipients!

Campus Life

Learn about our collegiate sisters and topics affecting them.

10 Chapter Profile: Epsilon Nu Chapter (Chapman)

16 Designed to Shine: Our Newest Chapter Facilities

Shining On

Find out how alumnae are making an impact and shining for $\Gamma\Phi\text{B}$.

12 Alumnae Chapter Profile: Fairfax County Alumnae Chapter

13 How is $\Gamma\Phi\text{B}$ Part of You?

Foundation News

Check out how the Foundation is supporting and inspiring the lifelong development of women.

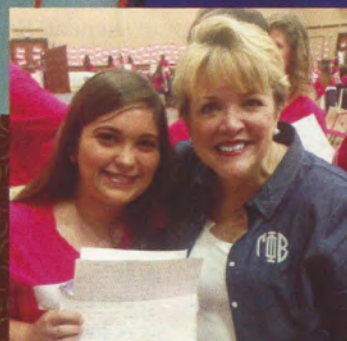
38 Supporters of the Heart

40 Memorial Gifts

41 In Celebration

20

Women have the power to make a difference. Learn about some sisters doing just that.



6

Jamie Fisher's (Florida) grandmother left a legacy of love.



16

Step inside our newest chapter facilities.

International Headquarters

12737 E. Euclid Drive, Centennial, CO 80111

Phone: 303.799.1874 Fax: 303.799.1876

Website: GammaPhiBeta.org

Email: TheCrescent@gammaphibeta.org

The Crescent Staff

Editor

Amanda Lubeck (Colorado-Boulder),

alubeck@gammaphibeta.org

Director of Marketing and Communications

Maureen Walker, mwalker@gammaphibeta.org

Marketing Coordinator

Teresa Tisserat (Denver), ttisserat@gammaphibeta.org

Executive Director

Laurie Veldhuizen (Florida State),

lveldhuizen@gammaphibeta.org

Crescent Advisory Board

Stefanie Brickman (Oklahoma)

Kristen Record Heptinstall (Alabama)

Yvonne Fetig Roehler (Minnesota State-Moorhead)

Brandon Weghorst

Graphic Design by Shelle Design, Inc.**SUBMISSION DEADLINES**

Spring issue – February 1

Summer issue – May 1

Fall issue – August 1

Winter issue – November 1

©2016 Gamma Phi Beta Sorority

The Crescent of Gamma Phi Beta (USPS 137620)

is published quarterly by Gamma Phi Beta Sorority,

12737 E. Euclid Drive, Centennial, CO 80111.

Periodicals postage paid at Englewood, CO, and at additional mailing offices. Non-member subscription price is \$25. Produced in the U.S.A.

Postmaster: Send address changes to The Crescent,

Gamma Phi Beta Sorority, 12737 E. Euclid Drive,

Centennial, CO 80111.

Parents – While our members are in college, their copy of *The Crescent* is sent to your home address – we hope you enjoy reading our magazine, too! If your daughter is no longer in college, or is no longer living with you, feel free to send us her new address by emailing TheCrescent@gammaphibeta.org.

Join Our Green Team! Receive each issue of *The Crescent* before everyone else by going digital! We'll send the current issue directly to your inbox so you can enjoy it anywhere you go. Email TheCrescent@gammaphibeta.org today to let us know you're joining the Green Team!



ΓΦΒ mailbox

#BeGammaPhiBeta

As we celebrated 141 years of sisterhood, service, scholarship and leadership this Founders Day, we encouraged our sisters to share what it means to be Gamma Phi Beta. Gamma Phi Beta is the experiences we share, the relationships we form, the skills we develop and the lessons we learn. Gamma Phi Beta is more than a social group. It is more than a title. Gamma Phi Beta is part of you.

Sisters reflected about what it means to #BeGammaPhiBeta on social media. Check out a few of our favorites!

> Happy Founders Day to the organization that has given me so much, and that I am so honored to give back to in return. I think the four women who decided to make an impact 141 years ago would be proud of the legacy we've carried on of inspiring the highest type of womanhood. #BeGammaPhiBeta -Allison Kilfoy (Northern Iowa)



> Being a Gamma Phi Beta means building a sisterhood that will thrive and last forever! #BeGammaPhiBeta -Eta Zeta Chapter (Cincinnati)

> Happy Founders Day to all my Gamma Phi Beta sisters. Thank you for being amazing sisters to me in the good and bad times. Thank you for the continued support and encouragement. I love you all to the moon and back. #BeGammaPhiBeta -Diana Madrigal-Barnitz (Loyola-New Orleans)

> I am lucky to call them my friends but now I'm even luckier to call them my sisters. Happy Founders Day! #BeGammaPhi -Kyndal Slaton (Oklahoma State)



YOU TWEETED IT

WE ♥ IT!

> I don't think I would be as strong of a woman as I am today, who stands up for what she believes in, without @gpberescentmoon. #gphinau -Kendall Regan (Northern Arizona)

> As I left class at my new university, I heard my professor say "in IIKE" to me. I couldn't be more excited. -Marisa Noe (Morehead State)

> It's the two-year anniversary of my Initiation into @gpberescentmoon and I couldn't ask for a better sisterhood. #IIKE -Cassidy Sansone (Indiana)

> Another great morning with my @GOTRNOVA (Girls on the Run Northern Virginia) girls! #BuildingStrongGirls #StayPositive -Anna Mahalak (William & Mary)

> We were so excited to have Gamma Phi alumna Kristin Chenoweth (Oklahoma City) stop by our house tonight! -Beta Delta Chapter (Michigan State)



Tell us what you think! Send your feedback to TheCrescent@gammaphibeta.org, post on our Facebook page or tweet using the hashtag #TheCrescent!

Like us at Facebook.com/
GammaPhiBetaSororityFollow our boards at
Pinterest.com/GammaPhiBetaSearch "Gamma Phi
Beta" in groupsFollow us
@gpberescentmoonFollow us
@GammaPhiBetaSorority

points of Pride

Shining bright since 1874, here's a snapshot of some notable Gamma Phi Beta moments and accomplishments!

Congratulations to Barbie Chadwick (Vanderbilt) who has been selected to serve as one of **SEVEN** trustees on the National Panhellenic Conference Foundation. Thank you for representing Gamma Phi Beta in the Panhellenic community!

7



The Facilities Management Company opened three new facilities in fall 2015 for Eta Omicron Chapter (Ohio), Eta Nu Chapter (James Madison) and Beta Xi Chapter (Ohio State). Together, they total **24,973** square feet! Turn to page 16 to learn more about these facilities.

More than **5,000** viewers watched our She Is video within its first week of going live. Check it out for yourself at GammaPhiBeta.org/Shels.



Engineering News-Record (ENR) – a weekly engineering publication – recently honored 20 people in each of their 10 regions for their work. Angela Cotie (Penn State) was named one of Texas and Louisiana's Top **20** Under 40. The mother of four has managed numerous high-profile projects including an interactive theater and a large-scale aquarium renovation. "I am one of only a few women who have a job like mine, so when I read The Crescent I am always excited to see my fellow sisters challenging themselves to follow their dreams," says Angela.

Our #REALSistersDontHaze campaign went viral! With more than **10 million** views of our posts on Facebook, Twitter, Instagram, Pinterest and Snapchat, Gamma Phi Betas really spread the word about the negative effects of hazing. Thank you for your shares, likes, favorites and retweets!



Share your point of pride for an opportunity to be featured! Email TheCrescent@gammaphibeta.org with your chapter's inspiring accolades.

Legacy of Love

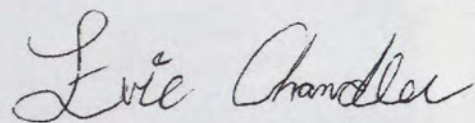
To my fellow Gamma Phi Beta women,

It is with all my pride and joy that I write this letter to introduce you to my granddaughter and Gamma Phi Beta legacy Jamie Fisher. I've been waiting 18 years to write this very important letter to my sisters.

Ever since she was a baby, Jamie has expressed all of our Core Values of Love, Labor, Learning and Loyalty while living a life committed to excellence and growth. Jamie is a very hard worker and always commits herself 100 percent to whatever is thrown her way. Jamie has always been surrounded by close friends that I've seen grow and blossom. Jamie never lets anyone down and stands up to bullies. My granddaughter is the smartest young woman I've ever met. She always has good grades and even did her school work while performing in New York. I am so proud to see her going off to university.

Most importantly, Jamie is the most loving and caring person. Her love for her family and friends warms my heart. My years as a Gamma Phi Beta sister have been the best of my life and every sister holds a strong place in my heart. I hope that my sweet Jamie can also have an amazing lifelong sisterhood. It is with all my love that I send this recommendation to you.

With Love, Labor, Learning and Loyalty,



Evie Chandler

"I think being a legacy has made me think of Gamma Phi Beta as the most prestigious sisterhood I could ever imagine," Jamie says. "From the moment I met my first Gamma Phi at the University of Florida I was looking for all the traits my grandmother instilled in me. I have been overwhelmed by how amazing my sisters are. We are all strong, spirited and determined to always uphold our sisterhood to the highest degree. My new sisters are the kindest and smartest women I've ever met."



Jamie and Merry show off Evie's reference letter at Bid Day.

For as long as she can remember, Jamie Fisher (Florida) has had an affinity for pink carnations and crescent moons. Jamie's grandmother Evelyn "Evie" Chandler (Randolph-Macon Women's, 1941) instilled in her Gamma Phi Beta's Core Values and traditions early on, teaching her the importance of Love, Labor, Learning and Loyalty, singing her Gamma Phi Beta songs as lullabies and sharing stories from her time as a collegian in Lynchburg, Virginia.

Growing up Jamie was taught the value of Greek life from her grandmother, so it was no surprise that Jamie planned to go through sorority recruitment. More than a year before Jamie even attended the University of Florida in Gainesville, Florida, her grandmother handed her a sealed envelope containing a reference letter for Gamma Phi Beta. Jamie explained to Evie that a Gamma Phi Beta chapter did not exist on the University of Florida's campus, but Evie insisted Jamie hold onto the recommendation. Unfortunately, Evie passed away in February 2011 and Jamie did not end up joining a sorority.

More than three years after her grandmother's passing, Jamie absent-mindedly perused her social media accounts while studying abroad

in Israel. Amidst her friends' various status updates and photos, a vibrant orange, blue and pink image caught Jamie's eye that read "ΓΦΒ is joining the Gator Nation." Jamie registered for Gamma Phi's extension recruitment without hesitation.



During her personal appointment with extension recruitment team member Merry Cosgrove (San Diego State, pictured above), Jamie handed Merry the letter Evie had written for her years ago, the envelope still sealed. When Merry asked Jamie why she had never opened the letter, she replied, "It wasn't addressed to me. It was meant to be read by a Gamma Phi Beta." Merry read the letter and was quickly overwhelmed by the deep connection she could feel between Jamie and her late grandmother. In the letter, Evie gushed over her granddaughter, describing her connection with Gamma Phi Beta's Core Values and expressing the desire she had for Jamie to experience the sisterhood Evie enjoyed herself. "It was one of the most beautiful experiences I've ever had during recruitment," says Merry.

At the conclusion of extension recruitment, Jamie was extended an invitation to become a charter member of Eta Xi Chapter (Florida) and celebrated with her sisters at Bid Day. During the event, Merry returned Evie's reference letter to Jamie, which she read for the first time after Bid Day had concluded. "The best part was seeing my grandmother's signature at the bottom of the page," she recalls.

Jamie's favorite story of Evie's was that of her Big/Little reveal, which was held in a forest near the Randolph - Macon Women's College campus. Evie hid behind a tree as her Little Sister Addie searched for her. Jamie says Evie's eyes lit up every time she told the story, remembering the strong sisterhood bonds that connected her chapter.

New Chapter Roll Call

Gamma Phi Beta is proud to present our three newest chapters!



Photo credit: Greek Yearbook



Photo credit: Greek Yearbook

Eta Xi Chapter

University of Florida

Gainesville, Florida

Installed November 1, 2015



Eta Omicron Chapter

Ohio University

Athens, Ohio

Installed November 22, 2015



Eta Pi Chapter

Quinnipiac University

Hampden, Connecticut

Installed December 6, 2015



Convention 2016 is June 22-25, 2016, in Atlanta, Georgia!
Want to join in on the fun? Make your mark on the Convention
conversation on our social media platforms! Follow the hashtag

#MakingOurMark

to participate in interactive discussions, keep up with Convention
news and check out photos and videos from the event. Learn more
about Convention 2016 at GammaPhiBeta.org/Convention.



@GammaPhi1874



@gpb crescentmoon



@GammaPhiBetaSorority



/GammaPhiBetaSorority

#MakingOurMark



Collegiate Chapter Profile

EPSILON NU CHAPTER (CHAPMAN)

"Being a powerful woman stems from empowering those around you," says former Epsilon Nu Chapter President Rachel Abbate (Chapman).

The 202-member chapter based in Orange, California, does just that. For the past five years, the chapter has hosted an event on campus called Love the Life You Live, where each day of the week has a call-to-action to spread positivity. "The most powerful message women can take away from this event is that we are here to build one another up in every aspect of life and to help remind one another that we are all amazing in our own way," says former Risk Management and REAL Wellness Consultant Danielle Pomeroy (Chapman).

The Crescent connected with members of Epsilon Nu Chapter to discover more about how our sisters build one another up!

The Crescent: Three words to describe Epsilon Nu Chapter:

Rachel Abbate: Relatable, hilarious and passionate.

How does the chapter promote confidence and leadership?

RA: While it's important to believe in yourself, when you see potential in others it's an indicator of internal strength. Each member of our chapter is powerful and has the capability to make a difference in the lives of those around her. Our collegiate years are a time to identify and develop our strengths and Gamma Phi Beta directly influences our growth. Opinion leaders can be just as influential as officers. We do our best to remind our members that they are leaders regardless of whether or not they hold a leadership title.



Epsilon Nu Bid Day Fall 2015.

What is Epsilon Nu's best quality?

RA: We aren't afraid to be ourselves. We embrace our differences and celebrate the individuality of each member.

Advice for Building Strong Girls?

RA: Building Strong Girls starts with being confident in your own strength. Inspiring others is accomplished by being an example others want to emulate.

What does our mission, To inspire the highest type of womanhood, mean to the chapter?

RA: We hold our mission close to our hearts! As a chapter we believe it means aiding each individual member in her decisions on a daily basis. Our mission is something we should constantly aspire to achieve and Epsilon Nu holds our members to this standard in order to benefit one another and the organization.

LOVE THE LIFE YOU LIVE WEEK

"Don't be afraid to go big and make sure to include your entire campus. Check out a few of our activities below." – Former Risk Management and REAL Wellness Consultant Danielle Pomeroy (Chapman)

Love the Body You Have:

Write down what you love about yourself.

Love the Life You'll Live Tomorrow:

Write a letter to your future self.

Live the Life You Love:

Write down your dreams.

FAST FACTS!

- There are eight National Panhellenic Conference organizations at Chapman University: AΓΔ, AΦ, ΔΓ, ΔΔΔ, ΓΦΒ, ΚΑΘ, ΚΚΓ and ΠΙΒΦ.
- Eighty percent of Epsilon Nu sisters are involved in another extracurricular activity on campus.
- In the last year, the chapter received Chapter of the Year, Philanthropy of the Year, Greek Woman of the Year and Emerging Leader of the Year at Chapman's Greek Awards.
- At Convention 2014 the chapter won the Mary A. Bingham award, Gamma Phi Beta's most prestigious award for collegiate chapters.



Our members love and cherish our beautiful badge – it's time to show it off! Don't forget to snap a picture of yourself and your friends wearing our badge and use the hashtag **#BadgeDay16** on March 7.

Since 1997, the Panhellenic community has selected one day each March when all sorority women wear their badges to celebrate and honor sisterhood. This year, International Badge Day is March 7, 2016. Join our Panhellenic friends in showcasing our pride in our community.

- A. Vintage Letters Charm, #1984
14K, KW...\$95 10K, KW...\$60 SS...\$30
GP...\$26
- B. Traditional Lavalier, #L2647
14K, KW...\$93 10K, KW...\$56 SS...\$26
- C. Snake Chain, #snake
14K...\$504 GF...\$30 SS...\$18
- D. Swirl Ring with rose sapphires*, #1000RS
14K, KW...\$375 10K, KW...\$268 SS...\$125
- E. Swirl Ring with diamonds, #1000
10K, KW...\$330
- F. Jeweled Blush Watch, #SUMMERTI...\$50
- G. Pearl Ring with engraved Greek letters,
#612013 (Whole sizes only, 6 – 9.)
SS...\$75
- H. Frost Bracelet with engraved tag, #076BR
SS...\$20
- I. Pink Frost Bracelet with engraved tag, #076BRPK
SS...\$20
- J. Frost Ring, #036038 ST...\$49
(Whole sizes 6 – 8 only.)
- K. Chapter President Ring, #0453
14K, KW...\$435 10K, 10KW...\$315 SS...\$125



*Colored stones are synthetic.
K – karat gold
KW – karat white gold
SS – sterling silver
GP – gold-plated
ST – stainless steel

TO ORDER:
Visit **www.HJGreek.com** or call **1.800.422.4348**



Alumnae Chapter Profile

FAIRFAX COUNTY ALUMNAE CHAPTER



"The Fairfax County Alumnae Chapter is a very inclusive group of alumnae with more love and caring for one another than I've ever seen." – Fairfax Alumnae Chapter President Julie Trkula

Fairfax County Alumnae Chapter is one of Gamma Phi Beta's newest alumnae chapters, installed in October 2012. The chapter's 30 sisters range in age from recent graduates to members with 50-year pins – one of whom was initiated 71 years ago! The chapter gets together one to two times per month in the Fairfax, Virginia, area for business meetings, socials, PACE events or philanthropic service. Alumnae Chapter President Julie Trkula (George Mason) states, "When we get together, we always have too much fun!" Get a glimpse of Fairfax County Alumnae Chapter in this interview with *The Crescent*.

The Crescent: *ΓΦΒ in three words.*

Julie Trkula: Loving, diverse and relaxed.

What events does the chapter host?

JT: We host a Fall Kickoff event, Hot Chocolate and Knitting Social, holiday party, fall festivals and Pi Day each year. For PACE, some topics we've covered include heart health, self-defense, kickboxing and Gamma Phi Beta ritual jeopardy.

How has the chapter made an impact in the community?

JT: Our chapter is passionate about supporting our local collegiate chapter, Epsilon Pi (George Mason). Many chapter members are advisors and we donate time and money toward recruitment and philanthropy events. We help make crafts for Big Sisters to give to new members, attend speed networking events to help with career advice and host a senior social to encourage a smooth transition to alumnae life. We also actively participate in Girls on the Run (GOTR) events, where we support GOTR NOVA (Northern Virginia) and GOTR at London Town Elementary School.

From the alumnae chapter's perspective, what does being a powerful woman mean?

JT: Being a powerful woman means being strong for yourself and others. It means helping others be a leader and setting an example for the next generation. Being powerful includes service and support to the community by holding positions, donating money and being present. It means offering advice and guidance

to younger sisters and those in need – being a rock and foundation for mental and emotional support.

TC: *How does the chapter encourage women to be powerful in all walks of life?*

JT: We offer a wide variety of programs and events to help us continue to learn in areas we want to develop. We like to encourage events that help challenge us in varied aspects of our minds, bodies and souls.


Why is it important to be a part of an alumnae chapter?

JT: For personal, professional and social growth and support. I love the mentorship I receive – each member has incredible life stories and experiences. I'm proud to call each woman my sister. I've never had another support group like them.

FUN FACTS:

- The chapter hosted accomplished violinist Elizabeth Pitcairn (Southern California) for dinner when she was on tour in the Washington, D.C., area with her red Stradivarius violin. And of course they supported our sister at her concert, too!
- Several members in the chapter are musicians.
- The chapter's favorite rainy day activity is knitting.
- Chapter sisters serve Gamma Phi Beta in several capacities from international parliamentarian to regional coordinators and advisors.

HOW IS GAMMA PHI BETA PART OF YOU?



Whether it was last year or 50 years ago when you joined the sisterhood of Gamma Phi Beta, you made a lifelong promise. By paying your \$25 international alumnae dues you are helping to fulfill your financial promise to our 141-year-old organization and are helping to make sure the traditions of our membership can continue on for generations to come.

CONTINUE YOUR PROMISE TO GAMMA PHI BETA

BY PAYING YOUR \$25 INTERNATIONAL ALUMNAE DUES.

Dues can be paid online at GammaPhiBeta.org/AlumnaeDues or through your local alumnae chapter.

inspiration board



ANGEL IN ADOPTION

This summer Georgia Senator David Perdue honored Amanda Alexander (Alabama-Tuscaloosa) as an Angel in Adoption. Amanda and husband Bryan adopted their daughter Anna from Krasnoyarsk, Russia, at the age of 23 months. Anna was diagnosed with reactive attachment disorder and fetal alcohol spectrum disorder, causing her to require a high level of attention and care. Since Anna's adoption, Amanda has become a source of support in the adoption community, offering assistance and advice to other adoptive families of children with disabilities.

Pictured from left to right are Amanda, daughter Sara (holding daughter Lucy), Anna and husband Bryan Alexander. Photo credit: Nicole Manning.



TONIGHT'S NEWS: BROUGHT TO YOU BY OUR SISTERS

Three Gamma Phi Betas deliver the news together in Louisville, Kentucky! From left to right, Shay McAlister (Missouri), Whitney Harding Higaki (Southern Methodist) and Michaela MacDonald (Boston) all report the news at the same television station. Though they typically work different shifts, they had the opportunity to all be on-air together this fall.

A CENTURY OF SISTERHOOD: THREE CHAPTERS TURN 100!

Three of our collegiate chapters celebrated centennial anniversaries in 2015 – Rho Chapter (Iowa), Sigma Chapter (Kansas) and Tau Chapter (Colorado State)! Pictured are members of Tau Chapter.



GRADUATE IN STYLE

Gamma Phi Beta helped shape your collegiate experience, so make sure it's part of your special day! Be sure to order your Gamma Phi Beta stoles from Crescent Corner early. Need 12 or more for your chapter's graduating seniors? Email sales@crescentcorner.com to get free shipping on your order!

SUMMER MIRACLES

This summer Yvette Lloyd (California-Irvine) opened her home to two orphans from Colombia through the Kidsave Summer Miracles program. This program matches orphans between the ages of 10 to 15 who have little chance to be adopted in their own country with host families in the United States. This opportunity helps children experience the joy of family and allows them to participate in activities they wouldn't normally be able to enjoy in their home country, such as summer camp and trips to the beach.



Designed to SHINE: Our Newest Chapter Facilities

This past fall the Facilities Management Company (FMC) opened three chapter facilities at Beta Xi Chapter (Ohio State), Eta Nu Chapter (James Madison) and Eta Omicron Chapter (Ohio). The FMC worked with interior designer Liz Toombs of Polka Dots & Rosebuds to furnish and design each of these facilities.

Liz worked with the chapter's local facilities advisory committees (LFACs) to learn more about how chapter members intended to utilize each room in their homes. Beta Xi and Eta Omicron each have free-standing facilities while Eta Nu calls a dorm their home at James Madison University. When designing these spaces Liz says it was important to make sure that the collegians, alumnae and the FMC were all involved with her team to ensure a collaborative effort.

Beta Xi and Eta Omicron's free-standing facilities were each previously fraternity facilities, creating an extra challenge when envisioning how the spaces would be utilized and decorated for Sorority members. Working with the Sorority's colors and brand, Liz was able to create fun, functional and fresh spaces for both chapters.

Eta Omicron's facility made Gamma Phi Beta history as the first facility leased by the FMC before charter members had even been recruited. The new chapter will utilize the facility this year for sisterhoods, monthly meals and study hours. Members will be able to move in to the facility in fall 2016.

Eta Omicron (Ohio)

- Square footage: 15,680
- Sleeps: 45
- Facility type: free-standing house

Eta Nu (James Madison)

- Square footage: 6,293
- Sleeps: 25
- Facility type: dorm

Beta Xi (Ohio State)

- Square footage: 6,000
- Sleeps: 22
- Facility type: free-standing house



Vibrant pops of pink in Eta Omicron's living room bring the space together.

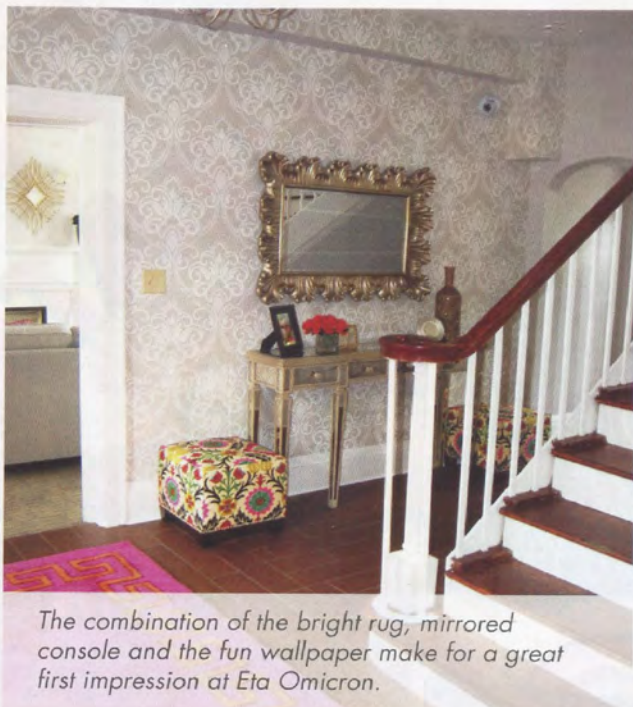


Eta Nu's twin sectionals provide plenty of seating.



The crest etched in glass in the entryway at Beta Xi was a surprise for members.

Photos by Liz Toombs



The combination of the bright rug, mirrored console and the fun wallpaper make for a great first impression at Eta Omicron.



Eta Omicron members enjoy watching movies and catching up on their favorite TV shows in their movie theater.



members.



Members of Eta Nu enjoy using the dining room table for group projects, meals and catching up with sisters.



Liz suggests fresh paint and fun accessories are effective ways to give a room new life, as shown here at Beta Xi.



A closer look at the crest etched in glass in the entryway at Beta Xi.



Brown and mode meet modern patterns at Beta Xi, tying fun furniture in with our brand.

NO MATTER THE WEATHER,



IT'S CUTER WITH LETTERS!

CrescentCorner.com has everything you need to show your Gamma Phi Beta pride during any season.

Crescent Corner can also help your chapter shine on campus with custom-designed apparel!
Email sales@crescentcorner.com to get started.

Black racerback tank: \$25.50; pink rain jacket: \$65.50; maroon long sleeve flowy tee: \$36.50;
seafoam lined-pocket tank: \$26.50; asphalt ikat fabric letter v-neck: \$28.50; lagoon blue sweatshirt: \$52.50

What's Your ΓΦQ?



Think you're a G-Phi genius? Time to put it to the test! Take this quiz to see how well you know Gamma Phi Beta.

1. What year was the term "sorority" coined for Gamma Phi Beta?

- a. 1874
- b. 1878
- c. 1882
- d. 1886

2. Which of the following would not be considered a Gamma Phi Beta legacy?

- a. A member's granddaughter
- b. A member's stepdaughter
- c. A member's niece
- d. A member's great-granddaughter

3. What is Gamma Phi Beta's mission?

- a. To inspire the highest type of womanhood.
- b. We will build confident women of character who celebrate sisterhood and make a difference in the world around us.
- c. Building Strong Girls
- d. We foster enduring friendships.

4. What is Gamma Phi Beta's vision?

- a. To inspire the highest type of womanhood.
- b. We will build confident women of character who celebrate sisterhood and make a difference in the world around us.
- c. Building Strong Girls
- d. We foster enduring friendships.

5. How many collegiate chapters have more than 300 collegiate members?

- a. One
- b. Three
- c. Four
- d. Six

6. Approximately what percentage of collegiate chapters have a chapter facility (house, residence hall, lodge, etc.)?

- a. 65 percent
- b. 75 percent
- c. 90 percent
- d. 95 percent

7. Which collegiate chapter has initiated the most members in its existence?

- a. Alpha Delta Chapter (Missouri-Columbia)
- b. Lambda Chapter (University of Washington)
- c. Pi Chapter (University of Nebraska-Lincoln)
- d. Psi Chapter (Oklahoma)

8. How many volunteers serve Gamma Phi Beta (volunteer leaders, affiliated house corporation officers, alumnae chapter officers and chapter advisory board members)?

- a. >750
- b. >1,200
- c. >1,800
- d. >2,300

Answers: 1. C; 2. C; 3. A; 4. B; 5. C; 6. B; 7. D (Psi Chapter has initiated more than 3,600 members!); 8. D

women are POWERFUL.

Undoubtedly, women possess the power to make a difference. We are leaders, innovators, adventurers and dreamers. We are researchers, scientists, teachers and entrepreneurs. We are mothers, daughters, sisters and friends. We are empowered, inspired, ambitious and intelligent.

Yes, women have the potential to be powerful – but how do we harness that power? What makes a woman powerful? Certainly, we all have moments when we don't feel powerful. We may find ourselves believing we cannot truly make an impact on the world or that we are too small or insignificant to be considered powerful – but these insecurities do not represent the truth. Every woman can be a heroine in her own right.

You don't have to win awards, gain big promotions or make new discoveries to be a powerful woman. The mark of a powerful person is not in a job title – it's in the impact she makes. We are powerful when we have the ability and the desire to change another person's life for the better.

Over the next several pages, you will meet Gamma Phi Betas from across the country doing just that. You will read stories of women exhibiting power in their everyday lives by making their communities a better place and improving the lives of those around them. You will also read articles written by sisters about the importance of developing the interest of young girls in science, technology, engineering and math (STEM) fields and becoming powerful through passionate work.

By joining a sorority we have already taken the initiative to become better versions of ourselves. Gamma Phi Betas value education, service, leadership and sisterhood and we create spaces where we can support others and be supported in return. Take a moment to read the stories in this section and rekindle your commitment to being a powerful woman.

Timpi Webber (Colorado State)

Government Professional and She Is Activist



Timpi Webber (Colorado State) demonstrates her power in government and in the community. Photo credit: Kerkhoff Photography and Design

By day, Tiimpi Webber (Colorado State) is director of finance for the Student Success and Academic Affairs division of the Colorado Department of Higher Education. In her position, she works primarily with budgeting, grant management and compliance, playing a fundamental role in fiscal responsibility within the division. Outside of work, Timpi is active in the Denver-metro community.

Dedicated to civic service

and giving back, Timpi has volunteered for many nonprofit organizations including Denver City LAX, a program that uses lacrosse to provide enrichment opportunities for underserved youth in Denver; Project C.U.R.E., an organization that donates medical supplies and equipment to developing countries around the world; the National Sports Center for the Disabled and Goodwill Industries. In addition to volunteering, Timpi engages in civic leadership opportunities, most recently Impact Denver, which provides up-and-coming leaders with an introduction to local business and civic issues, and Chamber Connect Leadership Program, which helps professionals become more effective leaders in business, politics and community leadership.

Beyond her numerous career, philanthropic and engagement successes, Timpi also recently helped Gamma Phi Beta promote Building Strong Girls by being featured in the She Is campaign. As confident women of character, Gamma Phi Beta recognizes that in order to build a strong girl, we must first acknowledge who she is as an individual. The She Is campaign is designed to guide members in this introspection and Timpi volunteered to share her thoughts about her role model on camera.

"In one word, I would say my experience with the She Is campaign was energizing," says Timpi. "It served as a reminder that Gamma Phi

Beta is still doing what it has aimed to do from day one – inspiring the highest type of womanhood."

Visit GammaPhiBeta.org/SheIs to watch the video and learn more about this powerful campaign!

Three Questions: Timpi Webber

Who inspires you?

My eight-year-old niece. She is the strongest individual I have ever met. Recently, she lost her mother. To so many young and mature women, their mother is their rock. I know mine is. However, my niece wakes up every morning with a smile. This little girl has the ability to bring a whole new perspective to your life.

When are you most happy?

When I'm with loved ones and my Great Dane Cosby.

How would your friends describe you?

They would describe me as an independent woman who is strong, caring and full of zest.

Andrea Leitch (Oklahoma)

Digital Director of Travel, National Geographic

Leading a team of seven talented content producers who reach millions around the world each day is no small feat, but Andrea Leitch (Oklahoma) isn't one to back down from a challenge. In her fast-paced position in Washington, D.C., Andrea produces and manages high-quality content for the National Geographic audience. "My favorite part of my job is the access to world-class storytellers – whether



Andrea Leitch (Oklahoma) is passionate about sharing travel stories with National Geographic's global audience. Photo credit: National Geographic

it's a photographer, writer, explorer, researcher or adventurer – and the responsibility to share their stories through a travel lens to a global audience,” says Andrea.

For Andrea, no day runs on the same schedule and each day brings something new and exciting to the table. She explains, “My team and I are always speaking with photographers, explorers and writers who travel across the globe to tell us their incredible stories through exciting visuals, research and text. National Geographic gives us unprecedented access to the world and my team spends each day educating our audience with stories about cultures, iconic and off-the-beaten-path destinations and the best places to travel.”

Three Questions: Andrea Leitch

How has Gamma Phi Beta helped you achieve your goals?

I lived in the sorority house for two years with more than 50 women and learned when to speak up and how to work with a strong, effective and positive group of women from all backgrounds.

Who inspires you?

Susan Goldberg, the first female editor-in-chief of National Geographic Magazine. I admire her rise in media as a woman at the top of a male-dominated executive industry and I appreciate her support of women in media. My teammates also inspire me because they are experts who have different skill-sets and talents, which enables us to create extraordinary content.

What makes you feel fearless?

Wearing red lipstick and smiling.

Allison Poss (Creighton)

Trailblazer for Girls with Ideas

Allison Poss (Creighton) was working as an elementary school psychologist in Cedar Rapids, Iowa, when she conceived the concept of Girls with Ideas, a curriculum designed for fourth- through eighth-grade girls to develop leadership skills. She recalls, “There was a large bullying problem in the sixth grade. The response from the school was to implement a leadership program for the sixth grade boys. I offered to start a similar program for the

girls myself because I felt it was an overlooked need. When I looked for leadership curriculums for girls in that age group, I couldn't find any that were modern and fun – so I made one myself.”

Allison's group of students met twice each week for a semester and called themselves the Girl Bosses. They participated in activities to learn about qualities and styles of leadership, how to communicate with others and how to put ideas into action.

Additionally, Allison challenged the Girl Bosses to brainstorm two ideas they could implement that would help improve the school – ultimately, the students agreed to start a buddy program to assist the kindergarten teachers with their classrooms and to build a reading garden. “The school is in a low-income area and had the lowest reading scores in the school district,” Allison explains. “The girls thought having a nice place in the neighborhood to get free books and read outside would encourage reading, thereby improving the school's reading scores.” The Girl Bosses raised more than \$1,000 and secured donations of books, plants and volunteer hours from the community, allowing them to build a garden with benches and a small, free library.

Empowered by the success of her local program, Allison partnered with a friend to refine and write a curriculum for programs across the nation, both at schools and in homes. Girls with Ideas features four key sections – Discovering Your Leadership Style, Ideas Make a Difference, Making Ideas Happen and Leading with Confidence. “I know there are lots of ideas from girls across the nation that need to be heard. I want to hear those ideas and help teach girls how to make their ideas a reality,” says Allison.



Frustrated with the lack of leadership programming for young girls, Allison Poss (Creighton) created her own. Photo credit: BirdsDream Design

Three Questions: Allison Poss

What does it mean to you to be powerful?

To me, being powerful is about being passionate and having the ability to influence others to be part of your passion. I feel most powerful when I have a killer idea that I put into action.

How has Gamma Phi Beta helped you achieve your goals?

Gamma Phi Beta has provided me with a network of strong women role models. These women have given me leadership and career advice, guided my self-discovery and been the cheerleaders to all of the crazy ideas I've had along the way.

How do you define success?

Being confident but never satisfied.

Michelle McFarlin (Southern Methodist)

Speech-Language Pathologist and Director of White Rock Autism



Michelle McFarlin (Southern Methodist) poses with Milo, a two-foot-tall humanoid robot designed to interact with children on the autism spectrum. Photo credit: BrianCoats.com

During the summer before her junior year, Michelle McFarlin (Southern Methodist) toured The Callier Center for Communication Disorders, a treatment center that offers speech and language therapy for patients of all ages. While there, Michelle was led into a room full of young toddlers demonstrating early signs of autism. "What I saw immediately grabbed my heart," Michelle remembers. "I saw a little girl in full meltdown mode, crying and rocking,

and a graduate student patiently attending to her. As I watched, the graduate student somehow connected with this little girl. The girl stopped crying, sat up, looked deep into the graduate student's face and reached out and touched it – and I was hooked. From that moment I knew my professional passion was to help young children with autism and their families."

Since then, Michelle has studied autism spectrum disorders and therapy techniques, eventually co-authoring a book entitled "Facilitating Early Social Communication Skills: From Theory to Practice" with Dr. Pamela Rollins. After the book's completion, Michelle and Pamela were approached by a start-up robotics company with the goal to create a "humanoid robot" to assist in delivering a social skills curriculum to children with autism. Five years later, the Robots4Autism project has produced Milo, a two-foot-tall human-like robot who interacts with children using words written by Michelle and Pamela.

Always looking for new ways to make a positive impact, Michelle founded White Rock Autism in Dallas, Texas, in 2014. Michelle explains, "The mission of White Rock Autism is my mission: to educate and empower families of children newly diagnosed with autism spectrum disorders." Leveraging her expertise in the field of autism and her own experience as a mom, Michelle has designed a menu of services seeking to help families understand their child's strengths, weaknesses and needs in a different light.

For more information about Milo and the Robots4Autism program, check out RoboKindRobots.com/Robots4Autism-home.

Three Questions: Michelle McFarlin

What is your personal philosophy?

I believe with my whole heart that we are all put on this planet to serve our fellow man. For me personally, I view my role as three-fold: service to my family, service to the community and service to families affected by autism.

What's on the top of your bucket list?

To own a second home that is a quiet retreat from the rest of the world, a place to recharge and connect with family surrounded by nature.

How would your friends describe you?

My friends would describe me as busy. I'm happiest when I have lots of balls in the air.

Marian Bergeson (California-Los Angeles)

Legislator and Thrill-Seeker

In 1940, Marian Bergeson (California-Los Angeles) landed her first job at the age of 16 working part-time in the lamp department at a Sears in Los Angeles. Three quarters of a century later, Marian is still demonstrating her incredible work ethic.

Since 1964, Marian has been a staple of the Orange County, California, educational and political landscape. First elected to the Newport-Mesa Unified School District Board of Education in 1964, Marian worked her way through the political ranks and was voted to the California State Assembly in 1978. After serving on the State Assembly for six years, Marian was elected to the California Senate in 1984, becoming the first woman to have won election in both the California State Assembly and Senate.

Marian has won many awards throughout her career including the University of California, Irvine Medal in 2003, given to men and women who, "dared to think big and imagine the impossible, passing on an enduring spirit of creativity and innovation" (University of California, Irvine). Additionally, Marian established the Marian Bergeson Excellence in Public Service Series, which seeks to prepare women for positions in government.

Currently, Marian serves on a number of boards including for the Marian Bergeson Excellence in Public Service Series, the Center for Public Policy and Samueli Academy – a charter school in Santa Anna, California – all while recuperating from pancreatic and breast cancer. This past summer, Marian celebrated her 90th birthday by skydiving – this was her sixth time taking the leap. She also stopped by Marian Bergeson Elementary School, located in Laguna Niguel, California.

Three Questions: Marian Bergeson

Who has been a role model in your life?

My mother taught me the value and necessity of education. She was a college graduate, born in 1896. She knew how to set high standards of behavior for myself and my brothers and sisters.

When are you happiest?

I'm happiest when I'm spending time with family, especially my grandkids (all 11 of them).

What did you want to be when you were five years old?

My dad used to take me to an airfield to watch airplanes take off and land. I wanted to become an aviatrix. I built my own airplane out of cardboard boxes – it didn't fly.



Marian Bergeson (California-Los Angeles) blows out her candles on her 90th birthday with a Marian Bergeson Elementary student who celebrates his birthday on the same day. Photo credit: Leonard Ortiz, The Orange County Register



Marian Bergeson skydiving.

Laura Winters (Northwestern)

Co-Founder and Artistic Director of Equalitoys

During her senior year Laura Winters (Northwestern), a theater major at Northwestern University in Evanston, Illinois, was waiting backstage at a show she was working on when her friend brought over a princess coloring book. The pages shocked Laura: "The blatant sexism in the images and captions appalled me. Each page was about being beautiful, getting married or waiting for the prince to come home." It was at that moment she realized the need for toys that empowered young girls and promoted positivity, equality and inclusivity. —

Laura joined forces with her twin sister Beth – a Kappa Kappa Gamma at Elmhurst University – to create Equalitoys, a company whose mission is to combat harmful stereotypes in children's toys and games by creating products all children can enjoy. Their first product, a 42-page coloring book entitled "Her Highness Builds Robots," flips the damsel-in-distress trope on its head, showcasing princesses who have jobs such as robot designer, chemical engineer and playwright in addition to being royalty. The seven princesses featured in the pages represent diverse ethnicities, abilities and passions. The princesses are drawn with realistic body types and demonstrate many different types of outer- as well as inner-beauty.

"My Gamma Phi network has been essential to creating Equalitoys. While at Northwestern I was amazed by all of the projects, research grants and activities my sisters pursued outside my (wonderful but small) theater world. Some of their names and jobs are actually in 'Her Highness Builds Robots!'" Laura says.

Three Questions: Laura Winters

What does it mean to you to be powerful?

To be powerful is to positively influence someone's opinion of her own self-worth.

Who inspires you?

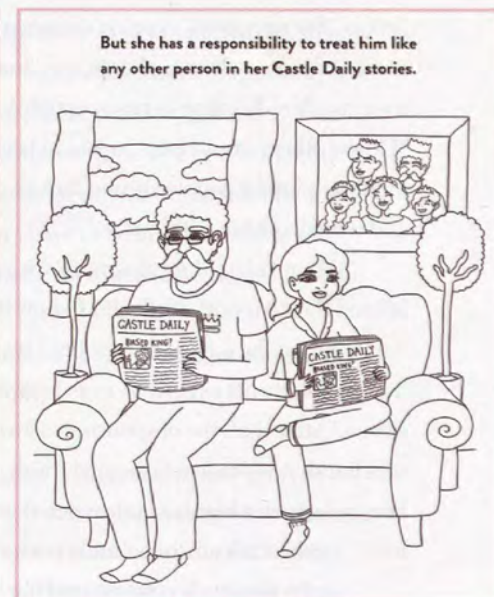
Geena Davis. In addition to being an actress, film producer, writer and more, she founded the Geena Davis Institute on Gender in Media which conducts research on the effects of the media on girls and women. I also love Amy Poehler and her media platform Smart Girls.

What would your perfect day include?

Writing in a bookstore that carries "Her Highness Builds Robots," babysitting a five-year-old who will make up plays with me, singing, working out, going out to dinner with family, performing in (or seeing) a show, then eating a chocolate peanut butter cookie from Levain Bakery.



Co-founder and artistic director of Equalitoys Laura Winters (Northwestern) shows off her first product, "Her Highness Builds Robots." Photo credit: Val Borovinskiy



Illustrations from "Her Highness Builds Robots."

Northwestern Chapter (Epsilon)

Alumnae, Supportive Sisters



Cindy Hamilton (Northwestern) was instrumental in creating an expansive support group of sisters for Sarah Macias (Northwestern, 1996) before her death in October. Photo credit: Hallie Duesenberg

It started with a Facebook update. Cindy Urman Hamilton (Northwestern) discovered her longtime friend and sister Sarah Pich Macias (Northwestern, 1996) had been diagnosed with liver cancer after Sarah posted about it on social media, hoping to inform her close friends and family about her prognosis. Understanding Sarah and her family were in need of support, Cindy and other Epsilon Chapter (Northwestern) sisters sprang into

action. “We wanted to focus on the practical matters that could help Sarah – dinners, cleaning her house, financial support – as well as find a way to show her that so many people were rooting for her,” says Cindy. “I knew others would want to join in because not only are my sisters the kindest, loveliest people around, but I knew everyone was fond of Sarah and our friendship with her.”

“When I shared my diagnosis with my sisters, they unfailingly offered their support. Little did I know it would not stop there,” said Sarah before she passed in October. “It started with a delivery of two dozen pink carnations; as soon as I saw the box I knew it was from my sisters.” After that, the outpouring of love continued – the support group sent Sarah pre-made refrigerated meals, a gift certificate to have her house cleaned, a blanket embroidered with the phrase “Founded upon a rock,” a gift certificate for a family portrait session and more.

Sarah’s sisters also encouraged her with the help of social media. Sarah remembered, “During my uncomfortable and often sleepless

nights, I would scroll through Facebook to keep up with what was going on in ‘the land of the healthy.’ One night, I saw that I had an invitation to a private Facebook group called ‘Get Well from G-Phi.’ Curious, I accepted the invitation and was immediately deluged with posts from Gamma Phi sisters. They shared messages of hope, memories, laughs and often silly pictures from formals and date nights past. Some people even posted personal videos to me and my family urging me to stay strong and reminding me that I have a huge network of support behind me. As you can imagine, I was overwhelmed. I started responding to posts, replying to comments, laughing – and I wasn’t thinking of cancer at all.” The support group continued to grow, ultimately blossoming to more than 70 sisters.

Though Sarah passed away in October, the support group served as a way to not only comfort Sarah and her family during their time of need, but also as a way for the Epsilon Chapter alumnae to strengthen their connections with one another. “I was lucky to hear from old friends and be reminded of how special my Sorority experience is. It was gratifying to see everyone in their current lives – all my sisters have, not surprisingly, built amazing lives for themselves, both professionally and personally,” says Cindy. “Putting this together was a lovely walk down memory lane. Nearly 20 years later, we all connected to help someone, which was an amazing reminder of how lucky I was to find Gamma Phi, and how lucky we all were to know Sarah.”

Sarah Macias informed The Crescent of her amazing support group before her death in October. She hoped the publication of the story would serve as a way for her to share her gratitude and love for her sisters. Since Sarah’s passing, the support group has continued to aid Sarah’s family through the creation of a memory book and monetary donations to help fund Sarah’s son’s future college education.



Sarah’s support group of 70 sisters spread across the United States and even included a supporter in Switzerland.

PASSIONATE Work Makes for Powerful Women

By Denen Boyce (Rochester)

When you woke up this morning, were you excited to get out of bed or did the thought of facing your day make you want to crawl under the covers and hide? If it was the latter you are not alone. According to a 2014 report by the Conference Board, a New York-based nonprofit research group, 52.3 percent of Americans are unhappy at work.

I have a radical proposal: do what makes you happy and the money will follow. Sounds simple, maybe too simple, and yet millions of people spend years toiling away at jobs that are more soul-diminishing than fulfilling. Many times this stems from a belief that one must pick a career and stick with it until retirement like our parents or grandparents did. But in today's world it is much more common for a person to go through several career changes during her lifetime. It makes sense that the person you were when you were picking a major in college is not the same person who is attending her 10- or 20-year college reunion. The important question to ask yourself is "what am I passionate about right now?"

You may be reading this and saying to yourself "I'm not passionate about anything" or "I can't make a living doing what I love to do." Those are self-limiting beliefs that keep us from living bigger, more purposeful lives. With today's technology it is almost impossible to have downtime away from work, which makes it more important than ever to be happy with your job.

To discover what you are meant to be doing, think of a time when you felt really alive and excited. When a career coach asked me this question I immediately thought of my time as membership vice president for my chapter. I loved the process of putting together new member education materials and leading recruitment school. After lengthy conversations with my career coach I realized that what I love to do is stand up in front of a group of people to teach things I care about and begin a dialogue within the group. I also love connecting with people in a one-on-one setting. Now, as an entrepreneur and life coach, I get to follow these passions. I am happiest when I finish a call with a client because I value watching a client see her own life from different perspectives, shutting down the saboteurs in her head and agreeing to try things outside her comfort zone. This is my story. What



Denen Boyce enjoys helping her clients utilize their passion to pursue a fulfilling career. Photo credit: Cedric Terrell

is yours? What do you really want in your own life? It is never too late to wipe the slate clean and start fresh.

Finding what you are passionate about is not just important for your own happiness, it is important because it affects those around you. When people see and feel that you are excited and nourished by your life and your work they will gravitate toward you. The best leaders are the ones who are true to themselves and recognize the impact they have on the world around them. You don't have to be in a "leadership role" to be a leader, to be powerful or to make an impact. We can all do these things every day.

Be powerful by living a passionate life. Life is an adventure and the greatest adventure is living life fully.

Denen Norfleet Boyce (Rochester) is an entrepreneur and life coach. After more than a decade as a practicing attorney she decided to do something radical and start her own business, The Be3Group, LLC. You can learn more about her on her company's website at Be3Coaching.com

WHERE are ALL the Women in Tech?

By Dori Farah (Oklahoma City)



Dori Farah is helping spur young girls' interests in computing.

Did you know that early car airbags failed to protect women – and in fact, sometimes killed them – because they were not designed with the female anatomy in mind? Or that initial voice recognition software could not recognize women's voices because it was created and tested only by men?

Women comprise 18 percent of U.S. undergraduate computer and information science

graduates and fill just 26 percent of computing occupations. Of that 26 percent, black women comprise three percent and Latinas only one percent. Doesn't it make you wonder how the world would change if women were not so absent from technical innovation? What problems would we solve that aren't even being addressed – let alone thought about – today?

With an expected 1.2 million computing-related jobs to fill by 2022, inspiring and supporting the largely untapped talent pool of future female technologists is a major domestic issue. As women building strong girls, every Gamma Phi Beta should be equipped with talking points and strategies to help close this gender gap.

Why the focus on the 'T' in science, technology, engineering and math (STEM)?

- Women's participation in STEM is low, but increasing across many disciplines; however, women's participation in computer science has been on the decline since the late-1990s. Meanwhile, computing professions are predicted to grow at a faster rate than the science, engineering and mathematics average.

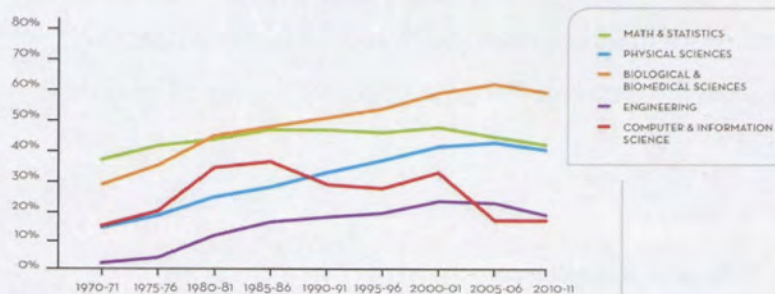
Why does this matter?

- Increasing representation is not a "women's issue." Everyone stands to benefit from expanding gender norms and including diverse perspectives in the creation of technology.
- This is a business issue. The bottom line thrives when underrepresented groups occupy innovative roles. When racial and gender diversity increases, sales, customers and market share follow.
- This is an equity issue. Computing jobs are among the fastest-growing and highest-paying, yet few women are enjoying these benefits. This gap exacerbates social inequalities and barriers to girls' future life opportunities.

How can I help?

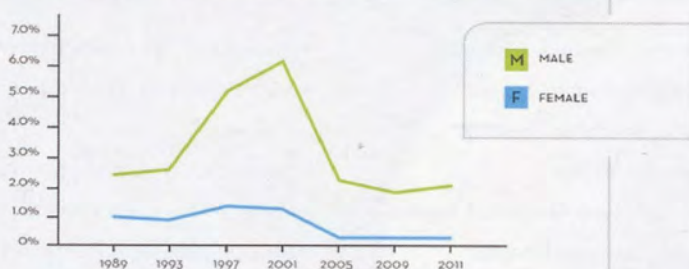
- Build awareness: Partner with your university's computer science department to host an event to build awareness on campus. For example, your chapter can host a screening of "CODE: Debugging the Gender Gap," followed by an intro to coding workshop. Visit CodeDoc.co to get started.
- Be an activist: Get engaged in your community and advocate for a computer science curriculum in your local K-12 schools. Go to CSEdWeek.org/Help to learn how you can make an impact.
- Encourage young girls: Don't mistake experience for ability. Expose girls to computing experiences (the earlier, the better) and help them see how it ties to their other interests. The National Center for Women & Information Technology (NCWIT) provides talking points at NCWIT.org/YoungWomen.

FEMALE PERCENTAGE OF SELECT STEM UNDERGRADUATE DEGREE RECIPIENTS: A LONGITUDINAL LOOK



© NCWIT. Source: U.S. Department of Education, National Center for Education Statistics, Integrated Post-secondary Education Data System.

PERCENTAGE OF AMERICAN FRESHMEN INTENDING TO MAJOR IN COMPUTER SCIENCE: A LONGITUDINAL LOOK, 1989-2011



© NCWIT. Source: Higher Education Research Institute, The American Freshman, Forty-Year Trends 1966-2006; Higher Education Research Institute, The American Freshman: National Norms Fall 2011.

- Interrupt bias. Messages from popular media can be damaging. For example, did you hear about Mattel pulling "Barbie: I Can Be A Computer Engineer" from the shelves, due to its blatant gender bias? Pay attention and interrupt bias in the moment by asking girls questions about the representations they see.

Inspiring diverse innovation is something that benefits everyone, and everyone can be involved in making it happen. Research shows that simple encouragement is one of the most significant factors in a young girl's decision to stay in technology. Never underestimate the difference you can make.

Dori Farah (Oklahoma City) is a former collegiate leadership consultant and sorority coordinator-new chapters for Gamma Phi Beta. She now lives in San Francisco, California, and works with the National Center for Women & Information Technology (NCWIT) to increase girls' and women's meaningful participation in computing.

For more information and resources, visit NCWIT.org.

Women in Information Technology: By the Numbers

57 percent of professional occupations in the U.S. workforce were held by women in 2014, but only **26** percent of professional computing occupations were held by women

5 percent of the computing workforce was Asian women in 2014

3 percent of the computing workforce was African-American women in 2014

1 percent of the computing workforce was Hispanic women in 2014

6 percent of corporate chief information officer (CIO) positions were held by women in 2014

1.2 million U.S. computing-related job openings expected by 2022

56 percent of Advanced Placement (AP) test-takers in 2014 were female but women only represented **20** percent of AP Computer Science test-takers

57 percent of 2013 bachelor's degree recipients were women. However, women only made up

18 percent of Computer and Information Sciences bachelor's degree recipients

"Source: National Center for Women and Information Technology, "By the Numbers."

Sources: Ashcraft, Catherine. "10 Actionable Ways to Actually Increase Diversity in Tech." Bureau of Labor Statistics, National Center for Women and Information Technology, "By the Numbers." National Center for Women and Information Technology, "Girls in IT: The Facts."

HONORING OUTSTANDING ALUMNAE

Gamma Phi Beta is proud to announce its 2015 Service Roll and Merit Roll recipients. Each alumna who is bestowed one of these awards has made exceptional contributions to the Sorority. Gamma Phi Beta sincerely thanks all of our prestigious award winners for their commitment to our sisterhood.

Service Roll

Acknowledges 15 or more years of alumnae volunteer service with a minimum of five years at the International level and five years or more of financial support.

- Gaye Grimsley Bricker (Ohio State)
Kent Alumnae Chapter

Merit Roll

Recognizes a minimum of 15 years of alumnae volunteer service at the local level.

- Susan Jack Banks (Texas Tech)
Houston Alumnae Chapter
- Christine Boyett Barr (Auburn)
Katy Alumnae Chapter
- Ruth Giles Beach (Syracuse)
Syracuse Alumnae Chapter
- Faith Bevitz (Rochester)
Philadelphia West Alumnae Chapter
- Nancy Egerton Kenry (Colorado College)
Denver Alumnae Chapter
- Kimberly Storm Kochert (Miami-Ohio)
Columbus Alumnae Chapter
- Dawn Schriver McSavaney (Puget Sound)
Denver Alumnae Chapter
- Carolyne Pascoe (Toronto)
Toronto Alumnae Chapter
- Julie Vowell Ramirez (Texas-Austin)
Houston Alumnae Chapter
- Sandra Riedl Stump (Wichita State)
Wichita Alumnae Chapter

Circle of Excellence

Congratulations, sisters! More than 100 alumnae chapters achieved Circle of Excellence for 2014-15. Special snaps to the following alumnae chapters who achieved Founders Circle of Excellence, the highest attainable level of excellence for alumnae chapters! For a complete list of Circle of Excellence recipients, visit GammaPhiBeta.org/Alumnae.

- Arlington Alumnae Chapter
- Atlanta Alumnae Chapter
- Atlanta Southern Crescent Alumnae Chapter
- Cleveland East Alumnae Chapter
- Boston Alumnae Chapter
- Denver Alumnae Chapter
- Evanston North Shore Alumnae Chapter
- Fort Collins Alumnae Chapter
- Grand Rapids Alumnae Chapter
- Greater Kansas City Alumnae Chapter
- Greater Lansing Alumnae Chapter
- Greater Orange County Alumnae Chapter
- Lincoln Alumnae Chapter
- Long Beach Alumnae Chapter
- Milwaukee Alumnae Chapter
- Minneapolis-St. Paul Alumnae Chapter
- Naples Alumnae Chapter
- Omaha Alumnae Chapter
- Philadelphia West Alumnae Chapter
- Princeton Alumnae Chapter
- Puget Sound Alumnae Chapter
- Rochester Alumnae Chapter
- Sacramento Valley Alumnae Chapter
- Saint Louis Alumnae Chapter
- San Diego Alumnae Chapter
- South Bay Alumnae Chapter
- Syracuse Alumnae Chapter
- Tulsa Alumnae Chapter
- Washington D.C. Alumnae Chapter

Know a shining sister who meets the qualifications for the awards above who has not yet been recognized? Visit GammaPhiBeta.org/AlumnaeAwards to fill out a recommendation form, due to International Headquarters April 1.

Savor the flavor of savings.

Gamma Phi Beta members could save even more with
a special discount from GEICO!

Visit us online at geico.com/greek/GammaPhiBeta to
see how much you could save.



GAMMA PHI BETA

GEICO
#MemberDiscount



GEICO contracts with various membership entities and other organizations, but these entities do not underwrite the offered insurance products. Some discounts, coverages, payment plans and features are not available in all states or all GEICO companies. Discount amount varies in some states. One group discount applicable per policy. Coverage is individual. In New York a premium reduction may be available. GEICO may not be involved in a formal relationship with each organization; however, you still may qualify for a special discount based on your membership, employment or affiliation with those organizations. GEICO is a registered service mark of Government Employees Insurance Company, Washington, D.C. 20076; a Berkshire Hathaway Inc. subsidiary. © 2015 GEICO

SORORITY Life

It's collegiate and alumnae chapter updates – at a glance! Read all about our shining chapters across the continent and their recent activities. For submission guidelines, visit GammaPhiBeta.org.

Symbol Key:



Region 1

NEW YORK

♥ Delta Tau Chapter (Colgate)

The chapter hosted a chili cook-off to raise money for the Madison County Children's Camp. The money raised will help ensure children at local schools can experience summer camp.

🌸 Epsilon Epsilon Chapter (Union)

Members spent a beautiful day picking apples at a local orchard for a fun fall sisterhood retreat.

🌸 Epsilon Tau Chapter (Rochester)

More than 100 members, parents and alumnae attended the annual Gamma Phi Beta Brunch during Meliora Weekend, a weekend on campus celebrating reunions, family weekend and homecoming.

PENNSYLVANIA

🌸 Zeta Epsilon Chapter (Duquesne)

Sisters enjoyed a fall sisterhood retreat where they picked pumpkins, went on a

hayride and bonded over a campfire. This fall they also hosted their Annual Walk Miles for Kids' Smiles 5k run/walk, benefitting Girls on the Run and the Children's Institute of Pittsburgh.

ONTARIO

🌸 Toronto Alumnae Chapter

The chapter enjoyed afternoon tea together at the Park Hyatt Hotel in downtown Toronto during the Toronto International Film Festival and even spotted a few movie stars!

QUEBEC

🌸 Alpha Tau Chapter (McGill)

The chapter had a busy fall welcoming 26 new members. Sisters look forward to making lifelong connections with the newest members.

Region 2

DISTRICT OF COLUMBIA

🌸 Washington, D.C. Alumnae Chapter

A combination business meeting/philanthropy event to collect supplies for Girls on the Run D.C. was a great success. Sisters also celebrated Founders Day and held an alumnae engagement rally to help prepare for the return of Beta Beta Chapter at the University of Maryland.

FLORIDA

🌸 Eta Beta Chapter (Florida Southern)

The chapter had an exciting semester with their Crescent Classic, Founders Day, Big/Little Reveal, Initiation and semi-formal all taking place between October and December.

♥ Emerald Coast Alumnae Chapter

Sisters gathered to write letters for Girls Love Mail, a charitable letter-writing organization that sends hand-written letters to women recently diagnosed with breast cancer.

KENTUCKY

♥ Epsilon Sigma Chapter (Morehead State)

The chapter held its second annual Gammies, a short-film contest. Attendance doubled this year and the chapter is looking forward to seeing it grow in the future.

NORTH CAROLINA

🌸 Eta Mu Chapter (Duke)

Promoting our philanthropic focus, the chapter launched its own Building Strong Girls photo campaign this fall. Every member was asked to fill in the blank in the statement "I am _____ because I am Gamma Phi Beta."

SOUTH CAROLINA

♥ Epsilon Theta Chapter (Clemson)

On the morning of Halloween, Epsilon Theta Chapter hosted its first Gamma Phivek Crescent Classic. The event boasted an incredible turnout and raised more than \$5,000.

🌸 Zeta Sigma Chapter (South Carolina)

After a hard-working week of formal recruitment, sisters were excited to welcome new members on Bid Day.

VIRGINIA

🌸 Zeta Beta Chapter (Virginia)

Sisters volunteered at the Central Virginia Celebration Girls on the Run 5k. The chapter also hosted its sixth annual Shoot for the Moon soccer tournament and raised \$3,500.

Gamma Phi Beta Sorority by Regions



Alaska - Region 8
Hawaii - Region 7

☪ Eta Epsilon Chapter (Virginia Tech)

The chapter celebrated its fourth annual Crescent Classic. This year the chapter raised more than double their earnings from last year, totaling more than \$18,500. The chapter will also host a Girls on the Run 5k in the spring.

☪ Eta Nu Chapter (James Madison)

This fall the chapter experienced its first formal recruitment and welcomed home 79 new members.

☪ Fairfax County Alumnae Chapter

Fairfax sisters gathered for an afternoon of crafting to support the new Big Sisters of Epsilon Pi Chapter (George Mason). Sisters created and donated items for Big/Little gift baskets including picture frames, bookmarks, plaques and unfinished items for the Big Sisters to personalize.

☪ Northern Virginia Alumnae Chapter

Sisters gathered for a haunted history tour of popular landmarks and restaurants in Old Town Alexandria. The guide shared tales of ghosts, eerie encounters and historical events.

☪ Richmond Alumnae Chapter

A Founders Day afternoon tea was hosted at a member's home. Attendees each brought a dish to share.

Region 3

ALABAMA

☪ Epsilon Lambda Chapter (Alabama-Tuscaloosa)

Sisters were excited to initiate more than 150 new members this fall. The chapter also participated in numerous holiday drives on campus for the Tuscaloosa community.

☪ Birmingham Alumnae Chapter

Members enjoyed sisterhood and wonderful food at their fall kickoff brunch.

TEXAS

♥ Alpha Xi Chapter (Southern Methodist)

The chapter won Delta Gamma's Anchor Splash for the second year, competing in a cannon ball competition and synchronized swimming. Members also attended events to raise money for the Make-A-Wish Foundation and domestic violence awareness.



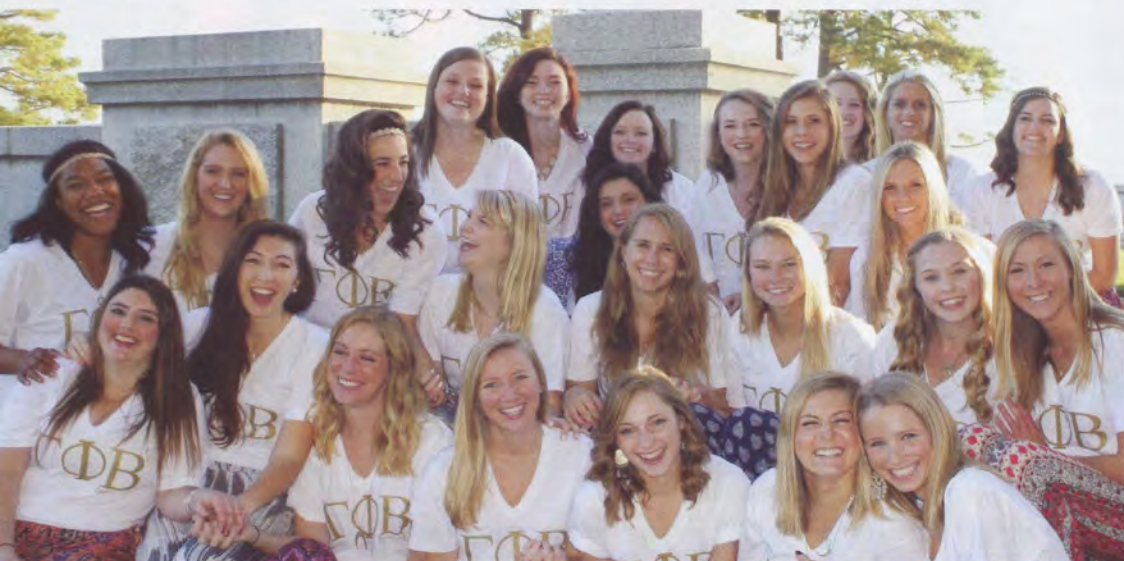
Region 1 | Sisters of Eta Gamma Chapter (Delaware) enjoyed a fun photo shoot during the fall semester. The chapter also hosted its second annual Women's Week to promote positive relationships and self-esteem.



Region 1 | Members of Epsilon Eta Chapter (Bridgewater State) hosted an information table at Homecoming, promoting a positive image of Greek life on campus. The chapter also held its annual Crescent Classic road race and raised \$3,000 for Girls on the Run.



Region 1 | Bergen County Alumnae Chapter celebrated Founders Day with brunch at a unique venue – a restaurant that had been converted from a bank!



Region 2 | Members of Epsilon Iota Chapter (Christopher Newport) share a laugh together before their sisterhood event at the Lion's Gate Bridge in Newport News, Virginia.



Region 4 | Sisters wore their favorite Michigan gear during Beta Chapter's (Michigan) private tour of the University of Michigan football stadium, The Big House.

🌀 **Gamma Iota Chapter (Midwestern State)**

The chapter went on their annual fall retreat with their new members, enjoying an afternoon at Jumpstreet Trampoline Park. It was a great way to welcome new members into the Sorority.

🌀 **Gamma Chi Chapter (Texas State-San Marcos)**

Sisters celebrated at their facility dedication ceremony. The chapter had the honor of hosting members of International Council as well as dozens of alumnae from around the San Marcos area.

Region 4
INDIANA

↪ **Zeta Iota Chapter (Valparaiso)**

The chapter held its annual 5k this fall. More than 150 people signed up to participate in the run. Sisters were proud to have some Girls on the Run participants join in on the fun as well.

🌀 **Zeta Kappa Chapter (Southern Indiana)**

Members welcomed 40 new sisters into the chapter and Big Sisters were excited to be paired with their new Little Sisters at Big/Little Reveal. The chapter also enjoyed a sisterhood bonfire.

MICHIGAN

🌀 **Epsilon Beta Chapter (Alma)**

Sisters had a great time at their fall retreat and meeting Gamma Phi Beta alumnae at the Homecoming alumnae barbeque.

↪ **Zeta Nu Chapter (Detroit-Mercy)**

The chapter beat their own record for money raised for Girls on the Run this fall! Sisters were also excited to welcome new members on Bid Day.

↪ **Eta Delta Chapter (Grand Valley State)**

On Halloween, sisters participated in the Girls on the Run Trunk or Treat event where they volunteered by leading games and handing out candy.

OHIO

♥ **Alpha Nu Chapter (Wittenberg)**

The chapter raised money for Girls on the Run and their local philanthropy On the Rise Farm through a community volleyball tournament.

🏆 **Beta Epsilon Chapter (Miami-Ohio)**

Three members had the opportunity to participate in Acropolis, a Greek leadership retreat. The sisters had a lot of fun learning how to be effective leaders within the chapter and Greek community.

♥ **Beta Xi Chapter (Ohio State)**

The chapter's first annual Crescent Classic was a great success. Members enjoyed serving pancakes and coffee to those who attended, raising nearly \$2,000.

🌀 **Cleveland East Alumnae Chapter**

Sisters enjoyed a special evening of sisterhood as they celebrated the chapter's 60th anniversary. Chapter members shared an anniversary ritual, dinner and raffled off a Gamma Phi Beta Alex and Ani bracelet. The group is looking forward to many more years together.

Region 5
ILLINOIS

↪ **Omicron Chapter (Illinois at Urbana-Champaign)**

The chapter had a wonderful time hosting Moonball and raising money for Building Strong Girls. Additionally, members have enjoyed volunteering for Girls on the Run Champaign and seeing the impact of their efforts on the lives of young girls.

🍁 Beta Eta Chapter (Bradley)

An event that was first hosted a few years ago has quickly become a favorite Beta Eta tradition – the annual sisterhood trip to Tanner's Orchard. Apple cider donuts, pumpkins and corn mazes were enjoyed by all.

♥ Chicago Northwest Suburban Alumnae Chapter

The chapter was proud to become members of the Gamma Phi Beta Foundation's 1874 Society.

IOWA

↪ Rho Chapter (Iowa)

The chapter once again hosted its annual philanthropy event for Building Strong Girls this fall.

↪ Gamma Psi Chapter (Northern Iowa)

The chapter was proud to receive a letter from Girls on the Run stating that they were among the top 10 fundraising chapters of Gamma Phi Beta!

MINNESOTA

↪ Gamma Mu Chapter (Minnesota State-Moorhead)

This fall the chapter participated in the first annual Girls on the Run 5k in Cass/Clay County. Before the event day, sisters enjoyed spending time with participants. On race day, the chapter joined forces with Alpha Beta Chapter (North Dakota) to cheer on runners.

WISCONSIN

↪ Gamma Chapter (Wisconsin-Madison)

The chapter held its annual philanthropy event this fall. The event boasted an outstanding turnout and the chapter raised more than \$4,500 for Girls on the Run.

🍁 Gamma Pi Chapter (Minnesota State-Mankato)

This fall the chapter welcomed 24 new sisters. At a sisterhood retreat members discussed how to use personal experiences to help build strong girls. Some sisters also ventured to an apple orchard to enjoy a fun afternoon.

↪ Gamma Rho Chapter (Wisconsin-Oshkosh)

The women of Gamma Rho loved volunteering with Girls on the Run this past semester. Running buddies had a blast spending time with participants and sisters ran a hair station to help runners get excited for the race.



Region 5 | On a beautiful fall day, members of Gamma Pi Chapter (Minnesota State-Mankato) visited an apple orchard.

Region 6

COLORADO

🍁 Tau Chapter (Colorado State)

With the chapter turning 100 years old, spirit has never been higher at Tau! This excitement showed during recruitment — sisters were thrilled to welcome new members into the chapter.

Beta Rho Chapter (Colorado-Boulder)

During the fall semester sisters welcomed a wonderful new member class after one of their most successful recruitments yet. Since then, the chapter has had multiple sisterhoods to bond and focus on the Core Value of Love.

🍁 Denver Alumnae Chapter

On March 19, the chapter will celebrate spring with their Spring Salad Luncheon at the Theta Chapter (Denver) house. The chapter also held its annual meeting at the Theta house.

KANSAS

↪ Beta Chi Chapter (Wichita State)

With the amazing success of their second Gamma Phivek, Beta Chi raised more than \$10,000 for Girls on the Run. They also enjoyed Initiation Week, Founders Day and Big/Little Reveal this past semester.

🍁 Greater Kansas City Alumnae Chapter

Alumnae gathered at a member's home in Mission Hills, Kansas, to learn the art of making Italian food from a local chef. She explained spices, techniques and other culinary skills while sisters watched and dined on the delicious food.

🍁 Wichita Alumnae Chapter

A mix-and-mingle event called Fall in Love with Gamma Phi Beta All Over Again was hosted for alumnae in the area to reconnect.



Region 8 | In Orinda, California, Diablo Valley Alumnae Chapter enjoyed a fun and productive fifth annual pizza kickoff. The chapter planned events for the upcoming year while enjoying delicious homemade pizza.

MISSOURI

☪ Delta Nu Chapter (Missouri State)

Members were excited to initiate 69 women into the chapter this fall.

♥ Zeta Delta Chapter (Missouri State)

The chapter hosted its sixth annual spaghetti dinner and raised nearly \$2,000 in just two hours. It was the highest-earning spaghetti dinner the chapter has ever hosted.

☪ Eta Iota Chapter (Rockhurst)

The women of Eta Iota enjoyed a fun and festive sisterhood retreat at Cider Hill Family Orchard. Apple picking, hay rides, a fall photo shoot and sisterly bonding were all included on this special day.

☪ Saint Louis Alumnae Chapter

More than 30 members joined together for a fall kickoff. This year, the chapter was excited to welcome many new young alumnae.

NEBRASKA

☪ Pi Chapter (Nebraska-Lincoln)

New members ran to the loving arms of sisters on Bid Day. The new member class bonded with a fun fall photo shoot.

☪ Epsilon Delta Chapter (Creighton)

An overnight sisterhood retreat helped sisters get to know one another on a deeper level. Members roasted s'mores and shared stories of sisterhood.

OKLAHOMA

☪ Beta Omicron Chapter (Oklahoma City)

Sisters celebrated an immensely successful Building Strong Girls Week, raising more than \$5,000 with an incredible week of fundraising and community involvement.

Region 7

ARIZONA

☪ Alpha Epsilon Chapter (Arizona)

Nothing beats Gamma Phi Betas and game day! Sisters came together to don the school colors and celebrate the Arizona Wildcat football team this season. The chapter even appeared on ESPN's College GameDay.

☪ Northwest Phoenix Area Alumnae Chapter

Monthly luncheon meetings were hosted at Briarwood Country Club to kick off the 2015-16 year. Sisters from the area gathered in fellowship and to welcome new members.

CALIFORNIA

♥ Gamma Eta Chapter (California State-Long Beach)

The chapter hosted a goody bag-decorating booth at their local Camp Fire fall carnival to help them raise money to make renovations to their facility.

☪ Delta Delta Chapter (California State-Fullerton)

The chapter had a very successful recruitment, welcoming 64 new members. Sisters have been bonding at various events including an 80s-themed roller skating retreat, paddle boarding and movie nights.

☪ Delta Theta Chapter (California Polytechnic State)

After a successful recruitment the chapter welcomed 99 new members.

☪ Delta Lambda Chapter (California-Riverside)

Sisters welcomed their new members by starting the year off at Newport Beach for a fall retreat. At the beach sisters enjoyed playing games, watching the sunset and roasting s'mores.

♥ Epsilon Nu Chapter (Chapman)

Each year the chapter hosts a lip-synching and dancing competition to raise money where different organizations on campus pair up and compete. This year was the most successful so far – the chapter raised more than \$15,000.

☪ Inland Empire Alumnae Chapter

A time-honored tradition, Inland Empire Alumnae Chapter and Delta Lambda Chapter (California-Riverside) celebrated Founders Day at Riverside's Old Spaghetti Factory. It was a great time for sisters of all ages and stages of membership to connect.

HAWAII

☪ Hawaii Alumnae Chapter

The chapter celebrated Ruth Merz (Wittenberg) receiving her 50-year pin. In the chapter's 77th year they will recognize two more 50-year alumnae, Bernadette Bettencourt (Northern Arizona) and Marlene Tom (Indiana State).

Region 8

CALIFORNIA

☪ Eta Chapter (California-Berkeley)

Sisters enjoyed a trip to G&M Farms where they picked pumpkins, snapped photos and bonded with one another.

☪ Epsilon Omicron Chapter (California-Santa Cruz)

After fall recruitment the chapter welcomed more than 60 new members into their sisterhood.

♥ Zeta Gamma Chapter (Sonoma State)

The chapter hosted its 17th annual Crescent Classic Powderpuff Tournament.

☼ Diablo Valley Alumnae Chapter

Sisters met for their fifth annual pizza dinner with a member's husband taking on the chef responsibilities as sisters conducted their meeting. Activities in the fall included Founders Day with Eta Chapter (California-Berkeley) and painting pumpkins for a local adult care facility.

IDAHO

♥ Xi Chapter (Idaho)

In only its second year, the chapter's grilled cheese event brought together the Greek community. The event proceeds were donated to an alumna to help her pay her medical bills as she battles cancer.

OREGON

☼ Nu Chapter (Oregon)

Sisters skated the night away at Skateworld, a retro roller rink in Eugene, Oregon. Sisters dressed up in their favorite 80s outfits, skated to 80s music and bonded with their rad new member class.

WASHINGTON

♥ Gamma Epsilon Chapter (Puget Sound)

The chapter put on a fall-themed Crescent Classic. The main attraction of the event was a complex obstacle course. There was also apple bobbing, face painting and pies and cider available for purchase.

BRITISH COLUMBIA

☼ Alpha Lambda Chapter (British Columbia)

A member of the chapter has been instrumental in bringing Jack.org to the campus. Jack.org is a network for young leaders who work to change the way we think about mental health. Jack.org even submitted a video for the chapter's annual philanthropy film festival, The Gammies.

Email your chapter news to TheCrescent@gammaphibeta.org

A. Heart Bead \$59.00

B. ΓΦΒ Pearl and CZ Drop Earring \$99.00

C. ΓΦΒ Necklace w/ Crystal Ball Accent \$59.00

D. ΓΦΒ Pearl Bracelet \$79.00

E. Black Enamel Lavalier Charm \$39.99

F. Pink CZ Necklace \$99.00

COLLEGE JEWELRY

To Order
visit www.collegejewelry.com
or call 248.250.9663

OFFICIAL LICENSED PRODUCT

WHAT IS **YOUR HEART'S** DESIRE?



GAMMA PHI BETA
FOUNDATION

GAMMA PHI BETAS ARE **CONNECTED** AT THE **HEART** ...

The bonds of our Sorority are rooted in an unwavering devotion to educational and charitable purposes. The desires of one heart, **your heart**, play an influential role in enhancing the lives of countless young women.

The One Heart campaign provides a formal mechanism for you to preserve the past, inspire the present and ensure the continued growth and ongoing success of Gamma Phi Beta for future generations.

Your generosity in giving to Gamma Phi Beta reflects heartfelt philanthropic values and further bonds you to a sisterhood that has positively impacted women's lives for more than a century.

Can one person really make a difference?

Ask your heart...it will answer.

HOW TO GIVE

1. One-time gift
2. Multiple gifts over time
3. Giving through your estate

Please, make a gift or pledge today.

303.800.2890

GammaPhiBeta.org/OneHeart

ONE
HEART
CAMPAIGN

THE IMPACT OF FINANCIAL AID!

Gamma Phi Beta values intellectual growth. The Foundation supports our members' educational goals by providing undergraduate scholarships and graduate fellowships. Each year outstanding women continue their education because of the generosity of alumnae, chapters and friends of the Foundation who have created or contribute to financial aid endowments.

The Foundation granted 98 financial aid awards for the 2015-16 academic year, totaling nearly \$154,000. Collegiate and alumnae members of Gamma Phi Beta in good standing are eligible to apply for merit-based and/or financial need-based scholarships and fellowships.

Foundation scholarship and fellowship applications for the 2016-17 academic year are due **MARCH 15, 2016!**
Visit GammaPhiBeta.org/FinancialAid to learn more or to apply.



"Medicine has been my calling since I was a little girl, sticking bandages on my 'patients' who happened to be the family pets. Receiving the Lindauer Legacy Fellowship has allowed me to pursue this dream. I will continue the work and vision of the Foundation through my contributions to the community."

-Natalee Wilson (Emory)



"As the recipient of the Denver Alumnae Chapter Fellowship I have the opportunity to focus on my education with my financial burden lifted. I love this organization and to receive a fellowship recognizing my commitment to Gamma Phi Beta and my studies is an honor."

-Alisa Phillips (Denver)



"It is a privilege to receive the Katie Lunn 'Keep the Smile Alive' Beta Omicron Memorial Scholarship. One of the best decisions I ever made was joining Gamma Phi Beta, a strong group of sisters who support my dreams. I am eternally thankful to this organization."

-Alexis Miles (Oklahoma City)

Memorial Gifts

We acknowledge the following individuals and groups who contributed to the Gamma Phi Beta Foundation in memory of a loved one as of October 31, 2015. Lists are printed as received from the Foundation.

Anona Adair (Oklahoma, 1958)

Kitty L. deKieffer
Annabel Jones
Psi Chapter (Oklahoma)
Ann Ross

Kent Anderson, husband of Linda

Clarke Anderson
Psi Chapter (Oklahoma)
Ann Ross

Robin Rattray Benesh

(Oklahoma, 1981)
Psi Chapter Affiliated
House Corporation

Mary Lynne Fink Blank (Bradley, 1978)

Joan Verhoeff

Olive Blazek, mother of Beverly Ingram

Cleveland West Alumnae Chapter

Bonnie Bland Brauer (Texas-Austin, 1945)

Houston Alumnae Chapter

Marilyn Sacks Brown (Maryland, 1945)

Marion Hastings

James Broyles, father of Cheryl Moore

Beta Alpha Chapter Affiliated
House Corporation
Ann Campbell
Cathy Griffin
Annabel Jones

Lorraine "Lori" Kellogg Capria (Florida State, 1976)

Alana Bott
Nancy Montgomery
Bette Newberger
Tampa Bay Alumnae Chapter
Billie Trocke

Lynda Middendorf Cast (Illinois at Urbana-Champaign, 1960)

Janet Alleman
Dixie Borus
Jane Chalupny
Jo Ellen Dutton
Linda Franklin
Penelope Hill
Mary Hirsch
Valerie Kiefe
Sally Pope
Carolyn Southern
Sandy Starnes
Sharon Traynor
Nancy Wilen

Lori Christiansen, mother of Rachel

Christiansen Taube
Kris Baack
Sandy Burba
Stephanie Carriere
Lauren Chomiczewski
Lily Eyraud
Jessica Faath
Kim Fries
Michelle Hammond
Shellie Hodges
Allison Kilfoy
Maegan Krahn
Ariel Peele
Joanne Roman

Mildred "Miki" Christophersen

(Kansas, 1968)
Dee Clifford
Terrie Huntington
Janet Koertge
Mary Kreeger
Cynthia MacArthur
Juhree Ring

Joan Heath Copello (Northwestern, 1951)

Joyce Dunn

Fred Dorsey, grandfather of Laurie

Veldhuizen
Barbara Boenzli
Kitty L. deKieffer
Julie Dunn Eichenberg

Sylvia Cramb Dorsey (University of Washington, 1953)

Janet Poteete

Irene Bergum Mitchell Donoghue

(Southern California, 1948)
Carol Blanchard

Shirley McKinney Ealum (Oklahoma, 1950)

Patricia London

Judy Allman Englehardt (Bowling Green, 1953)

Linda Bryson
Patricia Hene
Laverne Lantz
Jean Oliver

Margaret "Jane" Swift Fair (Oklahoma, 1935)

Houston Alumnae Chapter
Shila Smith

Erica Goeckel, daughter of Dianne

Weidner
Dianne Weidner

Beverly Smith Gosnell (San Diego

State, 1950)
Betty Kurkjian

Claudia "Anne" Hardy Hitchcock

(Oklahoma, 1960)
Oklahoma City Alumnae Chapter

James "Jim" Hogue, father of Rashel

Hogue Carnefix
Cathy Griffin
Cristin Henry

Paul Ingram, husband of Beverly

Ingram
Cleveland West Alumnae Chapter

Elouise Phelps Jeffries (California-

Berkeley, 1951)
Marguerite Stanley

Mubina Jiwa (British Columbia, 1997)

Greater Toronto Area Alumnae
Chapter

Nancy Ellis Keith (Colorado

College, 1955)
Albuquerque Alumnae Chapter
Sandra Boyd

Lorelei Wilkening Kley (Colorado

College, 1949)
Naples Alumnae Chapter
Lynne Clark Nordhoff

Heidi Kunitz (Southern Methodist, 1981)

Martha Denise Ciccarelli

Diana Wickman Lillevig (Maryland,

1952)
Joe and Norma Heffernan
Anne Slater

Elizabeth "Betty" Gingery O'Neill (San Diego State, 1962)

Paula Centeno
April Hart
Carole "Sue" Hotz
Betty Kurkjian
Kathleen Nolan
Betty Peterson

Karen Phillips, mother of Kristy

Phillips
Region 8 Team

Shirley Fenner Reidenbaugh

(Syracuse, 1951)
Deidre Elleman
Judy Kaspar
Margo Koten
Syracuse Alumnae Chapter
Barbara Wessel

Brooke Rhodes (California-Riverside,

1988)
Stephanie Carriere

Robert Rice, husband of L'Cena

Brunskill Rice
Kris Baack
Carol Blanchard
Rosalind De'Prey
Carol Fox
Rosemary Humphrey
Marissa Luning
Betsie Reynolds
Shirley Spalla
Joan Virgo

Alfred Rios, father of Mercedes "Sadie"

Reeves-Rios
2015-16 Collegiate Leadership
Consultants
Betsie Reynolds

Katherine "Kay" Blennerhasset

Robinson (Colorado State, 1956)
Denver Alumnae Chapter

Margaret Northrop Seeley

(Syracuse, 1946)
Margo Koten

Tom Shupert, husband of Marjory

Shupert
Frances Griffin

Nancy Coates Smith (Southern

California, 1952)
Carol Blanchard

Jeffery Sorem, husband of Loretta

"Shelly" Sorem
Corvallis Alumnae Chapter

Patricia Murrell Thompson-Fabry

(Oklahoma, 1950)
Louann Schulze

Devonne Marsh Villafuerte (Southern

California, 1953)
Shirley Hoffman
Joan Virgo

**For deceased members, The Crescent lists their first, maiden and last names in accordance with their school and year of initiation. To make an "In Memory" gift, visit GammaPhiBeta.org/Donate or call 303.800.2890. The minimum donation is \$25. Gifts received by January 31, 2016, will be acknowledged in the spring 2016 issue.*

In Celebration

Celebrate a special sister, loved one or event with an "In Celebration" gift to the Gamma Phi Beta Foundation. Thank you to the following donors, whose gifts were recorded as of October 31, 2015. Lists are printed as received from the Foundation.

The birth of my granddaughter
Ariabella Zofia Gray on May 12,
2015.

Ruth Ann Gray

The birth of Quinlan Payge, legacy of
Susan Gurwell (Kansas) on October
4, 2015.

Greater Kansas City Alumnae
Chapter Board Members

Linda Daniel Johnson (Vanderbilt)
receiving the 2015 Outstanding
Foundation Volunteer Award from
North-American Interfraternity
Conference Foundation.

Kitty L. deKieffer

Julie Dunn Eichenberg

Mary Jane Mithos (Colorado
College) for her 75 years of
membership.

Randy Allard

Chicago Alumnae Chapter

Frances Griffin

Stephanie Hearn

Joyce Hultgren

Anne Layton

Sally Lewis

Ruth Seeler

Joey Stiver

Karen Urette

Jennifer Moeller (Missouri-
Columbia) for her years of service
and contributions to the Board of
Trustees of the Gamma Phi Beta
Foundation.

Chicago Alumnae Chapter

Gloria Swanson Nelson (Oklahoma)
for her 75 years of membership.

Randy Allard

Frances Griffin

Stephanie Hearn

Joyce Hultgren

Anne Layton

Sally Lewis

Joey Stiver

Karen Urette

Rosemary Milew Pilch (California-
Irvine) for being appointed to the
Board of Trustees of the Gamma Phi
Beta Foundation.

Chicago Alumnae Chapter

The birth of Monita Albert Rice IV,
son of Melissa "Mo" Kieffer Rice
(Jacksonville).

Shellie Hodges

L'Cena Brunskill Rice (Southern
California) for receiving the USC
Half-Century Hall of Fame Award
October 1, 2015.

Beta Alpha Chapter Affiliated

House Corporation

Linda Babcock

Mary Busche

Carol Blanchard

Mitzi Ritzman (Nebraska-Lincoln)
for her 10 years of dedicated service
as the regional coordinator of
Region 6.

Stefanie Brickman

Marina Walker (British Columbia),
congratulations on your engagement
to Dean!

Gigi Eyre

Magnes Welsh (Memphis) for her
years of service and contributions to
the Board of Trustees of the Gamma
Phi Beta Foundation.

Chicago Alumnae Chapter

*To make an "In Celebration"
gift, visit GammaPhiBeta.org/
Donate or call 303.800.2890. The
minimum donation is \$25. Gifts
received by January 31, 2016, will be
acknowledged in the spring
2016 issue.*

In Memory

We acknowledge the passing of the following members and celebrate their part in our circle of sisterhood. This list reflects notifications received at International Headquarters between August 1, 2015, and October 31, 2015. First, maiden, last names and year of Initiation are listed for each deceased members.

Alpha – Syracuse
Shirley Fenner Reidenbaugh, 1951

Beta – Michigan
Roberta Hornsby Catton, 1943
Diantha Lundin Naftali, 1956

Gamma – Wisconsin-Madison
Margaret Becker Klipstein, 1944
Marian Miller Cook, 1947

Delta – Boston
Mary Cronin Bianculli, 1945

Epsilon – Northwestern
Sarah Pieh Macias, 1996

Eta – California-Berkeley
Jean Searle Richardson, 1943
Carolyn Robinson Storer, 1948
Elouise Phelps Jeffries, 1951

Kappa – Minnesota-Twin Cities
Margaret Lynch Ronning, 1936
Marjorie Sherman McMillan, 1944
Betty Larsen Lillehei, 1946

Lambda – University of Washington
Norma Hill Bothwell, 1944
Ruth Diebert Delbert, 1949
Janice Wood Peterson, 1959

Xi Chapter – Idaho
Janet Long Gray, 1944
Colleen McMahon Galligan, 1954
Emilie Davidson Shupe, 1955
Renata Winters, 1996

Omicron – Illinois at Urbana-Champaign
Jean Sager Robertson, 1941
Lynda Middendorf Cast, 1960

Pi – Nebraska-Lincoln
Doris Emry McKay, 1953

Rho – Iowa
Camilla Smith Hill, 1946

Sigma – Kansas
Melissa Weeks Matthes, 1960
Mildred Richardson
Christophersen, 1968

Tau – Colorado State
Mary Peasley Rivers, 1935
Alice Robinson Hawkins, 1936
Elizabeth Young Davis, 1939
Marilyn Vais, 1976

Chi – Oregon State
Donna Priefert Beltz, 1949
Marcia Ward, 1959

Psi – Oklahoma
Janet Oliver Carlson, 1939
Mary Ford Wallis, 1942
Marie Whitehead Turvey, 1947
Judy Drake Clay, 1952
Anona Adair, 1958

Omega – Iowa State
Patricia Sandell Gustofson, 1953

Alpha Alpha – Toronto
Jane Bell McCaldon, 1956

Alpha Delta – Missouri-Columbia
Sherry Peek Huber, 1967

Alpha Zeta – Texas-Austin
Bonnie Bland Brauer, 1945
Patricia Crook Rudy, 1947
Beverly Ward Schroeder, 1958

Alpha Eta – Ohio Wesleyan
Adelia Tilton Muir, 1937
Dorothy Clay Truscott, 1947
Mary Turnbull Davenport, 1953
Mary Warren Wheat, 1954
Sandra Wigg Knapp, 1965

Alpha Theta – Vanderbilt
Jean Dusenberry Sanders, 1938
Lee Notowitz Gryll, 1976
Barbara Beagle Lambert, 1979

Alpha Iota – California-Los Angeles
Mary Graham Connelly, 1948
Ferne Geissinger Nielsen, 1950
Betty Ward Caraway, 1958

Alpha Lambda – British Columbia
Margaret Maccorkindale Smith, 1951
Gillian Smith Wilson, 1967
Mubina Jiwa, 1997

Alpha Mu – Rollins
Margaret Shaw Moon, 1946

Alpha Nu – Wittenberg
Susanne Ramsey Ankeny, 1948
Ann McGee Young, 1984

Alpha Xi – Southern Methodist
Mary Willis Patterson, 1952
Heidi Kunitz, 1981

Alpha Omicron – North Dakota State
Audrey Houghlum Rusness, 1932

Alpha Upsilon – Penn State
Pauline Riemer Stratton, 1945

Alpha Phi – Colorado College
Alice Anderson Northeutt, 1942
Elizabeth Hugins Ellenberger, 1951
Nancy Ellis Keith, 1955

Alpha Chi – William & Mary
Margaret Camp Dennis, 1953

Alpha Psi – Lake Forest
Adeline Altergott Guerrero, 1943
Deborah Dickson Mahlman, 1956

Beta Alpha – Southern California
Louise Conrad Jay, 1944
Irene Bergum Donoghue, 1948

Beta Beta – Maryland
Martha Jackson Delphey, 1953

Beta Gamma – Bowling Green
Judith Mesnick Stock, 1961

Beta Delta – Michigan State
Joy Loveland Viskochil, 1944
Jean Welch Funk, 1945

Beta Epsilon – Miami-Ohio
Marcia Beier Hebbeler, 1953
Janice Schick Cizek, 1958
Helen Beronius Fuller, 1965

Beta Zeta – Kent State
Violet Jawke Gardner, 1947
Yvonne Brewer Hill, 1952

Beta Eta – Bradley
Mary Cook Deverie, 1954

Beta Kappa – Arizona State
Barbara Wedge Alberts, 1949
Mary Graham Johnston, 1952

Beta Lambda – San Diego State
Courtney Enriquez Pene, 1999

Beta Mu – Florida State
Lorraine Kellogg Capria, 1976

Beta Nu – Vermont
Dorothy Post Stevens, 1950

Beta Omicron – Oklahoma City
Sharon Shaklee Segress, 1960

Beta Pi – Indiana State
Sharon Dickey Meyer Hubbard, 1964

Beta Phi – Indiana
Karen Skubish, 1963
Brenda Harper Barkey, 1964

Beta Chi – Wichita State
Carolyn Donlevy Black, 1964

Beta Psi – Oklahoma State
Susan Helmers Blaco, 1963

Gamma Alpha – Memphis
Rhonda Williams Tolbert, 1970

Gamma Beta – Gettysburg
Julia Gatter Hirsch, 1959

Gamma Gamma – Wisconsin-Milwaukee
Dorothy Clark Nagy, 1961

Gamma Zeta – Texas A&M-Commerce
Erin Cobb Ivey, 2009

Gamma Kappa – Nebraska-Kearney
Phyllis Milne Ely, 1963

Gamma Omicron – Kentucky
Frances Smith, 1968

Gamma Tau – St. Louis
Julice Nowland McWilliams, 1969

Gamma Phi – Auburn
Marian Naylor Davies, 1975

Delta Lambda – California-Riverside
Brooke Rhodes, 1988

**To report the passing of a sister, please email contactus@gammaphibeta.org so we may honor the member on this page in a future issue.*

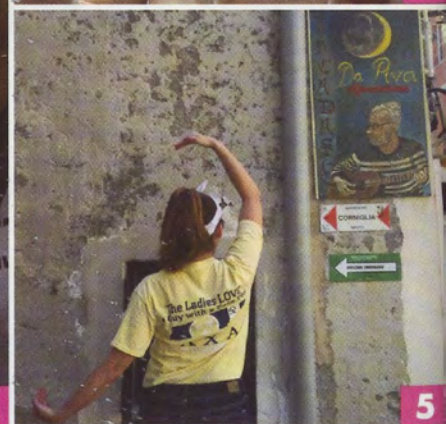
Vintage ΓΦΒ

Check out this totally rad cover of The Crescent from 1988! Do you see a sister you know? Email us at TheCrescent@gammaphibeta.org.



Capture a Crescent:

Spot it, snap it and email your capture a crescent photos to TheCrescent@gammaphibeta.org for a chance to be featured on the back cover of a future issue. Tip to get featured: We prefer crescents that wax left!



1. Florida: Ten Alpha Delta Chapter (Missouri-Columbia) alumnae gathered in Watercolor, Florida, to celebrate their 75th birthdays. Since their graduation in 1962, the women have consistently gotten together to renew their bonds of friendship and loyalty. They found this crescent in The Zoo Gallery, an eclectic art store.

2. France: Former Delta Delta Chapter (California State-Fullerton) Presidents (and Big and Little Sisters) Teri Schneider Smits and Cindy Carlisle Cattern captured this crescent in the Alsace region of France while traveling with Greek friends from their college days including Teri's Delta Chi husband and his Delta Chi Little Brother.

3. Philadelphia: During a visit to "The City of Brotherly Love," sisters Amy Jo Jacobson Fleming (left) and Katie Jo McQuillen Boydston (right, both Iowa) found a sparkling representation of Gamma Phi Beta's "sisterly love" and took a moment to capture it.

4. Germany: While shopping in Munich, Germany, on a family vacation, Jamie Wells Behrendt (California-Berkeley) found a crescent moon ornament.

5. Italy: On a trip to Cinque Terre, Italy, with her family to celebrate her college graduation, Delaney Kurras (Tennessee-Chattanooga) spotted this crescent in the town of Riomaggiore.