

# *the* CRESCENT

of Gamma Phi Beta



I AM A RESPONSIBLE, ETHICAL AND  
**AUTHENTIC**  
LIFELONG MEMBER OF GAMMA PHI BETA.

I AM A CONFIDENT WOMAN OF CHARACTER WHO  
**CELEBRATES SISTERHOOD**  
AND MAKES A DIFFERENCE IN THE WORLD AROUND ME.

I INSPIRE THE HIGHEST TYPE OF  
**WOMANHOOD.**

I AM ACCOUNTABLE FOR MY ACTIONS.  
I HOLD MY SISTERS ACCOUNTABLE FOR MODELING THE HIGH IDEALS OF OUR FOUNDERS  
AND PROTECTING THE LEGACY OF GAMMA PHI BETA.

I UNDERSTAND OUR CORE VALUES AND  
**HAVE THE COURAGE**  
TO LIVE THEM IN ALL PARTS OF MY LIFE.

I AM SELF-AWARE AND GENUINE.  
I LEAD WITH MY HEART AND MY MIND.

I AM COMMITTED TO LEADERSHIP TODAY, TOMORROW AND ALWAYS.  
**I AM COMMITTED**  
TO PASSING THE GIFT OF LEADERSHIP ON TO THOSE AROUND ME, YOUNG AND OLD.

**REAL  
LEADERSHIP**  
*page 18*





# REAL Leaders

## INTERNATIONAL COUNCIL

International President  
Krista Spanninger Davis  
*Bowling Green State University*

Alumnae Vice President  
Shellie King Hodges  
*University of Oregon*

Collegiate Vice President  
Mary L. Knaup  
*California State University-Fullerton*

Education Vice President  
Autumn L. Hansen  
*University of Idaho*

Financial Vice President  
Barbara Weiss Boenzli  
*Oregon State University*

Membership Vice President  
Nancy Ann Ostendorf Thompson  
*Iowa State University*

Panhellenic Affairs Vice President  
Sandra Biegelman Burba  
*Miami University*

## GAMMA PHI BETA FOUNDERS

Mary A. Bingham  
E. Adeline Curtis  
Helen M. Dodge  
Frances E. Haven

## MISSION

To inspire the highest type of womanhood.

**On the cover:** The REAL Leadership Affirmation outlines the commitments of REAL Leaders. Through REAL Leadership, Gamma Phi Betas learn valuable lessons to help them uphold these statements.

Gamma Phi Betas are REAL Leaders. We are responsible. We are ethical. We are authentic. And our leadership skills and traits are instilled and developed in us throughout our lifetime. In the fall of 2014, Gamma Phi Beta introduced a new leadership brand: REAL (Responsible, Ethical, Authentic and Lifelong) Leadership. Our in-person events and chapter leadership programs have been rebranded to reflect our REAL Leadership initiative.

REAL Leadership is the core of Gamma Phi Beta because REAL Leadership potential is at the core of every member. Some are born with it. Some grow into it. Some mentor others to find it in themselves. Some encourage their sisters to ignite the spark of REAL Leadership potential.

Gamma Phi Beta fosters an environment where every woman, and every girl, can develop and demonstrate her gift of REAL Leadership. My own leadership journey truly began when I joined Gamma Phi Beta as a sophomore in college. My leadership potential developed and blossomed because I was in a place where I could safely express my views and share my vision. I began to take leadership roles because I believed in our organization, believed in what it stood for and was supported and encouraged by my sisters every step of the way. Because of this I was able to learn through my experiences that being responsible and authentic brought about positive change, and made a difference. Due to the support of my sisters I was able to gain skills from experiences that have allowed me to grow and continue to hone my leadership skills throughout my adult life.

In this issue of *The Crescent*, you will learn more about Gamma Phi Beta's REAL Leadership movement and meet women who are displaying their REAL Leadership potential on their campuses and in their communities. As you read this issue, I ask you to ponder your own REAL Leadership qualities and potential. How has Gamma Phi Beta made you a REAL Leader? How will you continue to grow as a leader and a member of Gamma Phi Beta?

Remember, REAL Leadership doesn't end when a strong girl becomes a REAL Leader or when a REAL Leader graduates from college. It continues as women raise families, take leaps in their careers, lead teams, give back to their communities and give back to Gamma Phi Beta.

In IIKE,

Krista Spanninger Davis  
International President





# CONTENTS

## Go Gamma Phi

Find the magazine's regular features in addition to other inspirational Sorority articles in this section.

- 4 ΓΦΒ Mailbox
- 5 Points of Pride
- 8 An Inspiring Journey to Sisterhood  
*Meet Hayley Minear (Wichita State), an uplifting alumna initiate.*
- 31 Panhellenic Excellence: Gamma Phi Beta's Panhellenic Award Winners
- 32 Sorority Life
- 42 In Memory
- 43 Vintage ΓΦΒ: Alpha Theta Chapter (Vanderbilt) Flashback

## Sorority News

Find the Sorority's latest news and opportunities here.

- 6 By the Numbers  
*Find out more about our newest chapters – Beta (Michigan) and Eta Nu (James Madison).*
- 18 REAL Leadership  
*REAL Leadership is more than educational programming. It's a movement.*
- 22 Gamma Phi Beta's REAL Leaders  
*Discover how to develop your leadership potential and meet four REAL Leaders who serve as positive role models to those around them.*
- 28 Quiz: What is Your Leadership Style?

## Campus Life

Learn about our collegiate sisters and topics affecting them.

- 10 Chapter Profile: Delta Omega Chapter (Oakland)
- 16 Collegian Spotlight: Paige Martindell (Kansas), around-the-world fashion intern.

## Shining On

Find out how alumnae are making an impact and shining for ΓΦΒ.

- 11 Alumna Spotlight: Mary Jo Hope (Oklahoma City), manager of event presentation for the Oklahoma City Thunder
- 12 Alumnae Chapter Profile: Naples Alumnae Chapter
- 13 International Alumnae Dues: Protecting Our Sisterhood

## Foundation News

Check out how the Foundation is supporting and inspiring the lifelong development of women.

- 38 Supporters of the Heart
- 40 Memorial Gifts
- 41 In Celebration



# Leadership

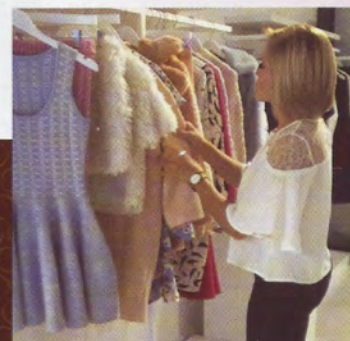
GAMMA PHI BETA

18 [ REAL Leadership builds responsible, ethical, authentic and lifelong leaders. ]



6

Check out our newest chapters!



16

Meet Paige, a globetrotting fashion intern.



### International Headquarters

12737 E. Euclid Drive, Centennial, CO 80111  
Phone: 303.799.1874 Fax: 303.799.1876  
Website: GammaPhiBeta.org  
Email: TheCrescent@gammaphibeta.org

### The Crescent Staff

Editor  
Amanda Lubeck (Colorado-Boulder),  
alubeck@gammaphibeta.org

Director of Marketing and Communications  
Maureen Walker, mwalker@gammaphibeta.org

Marketing Coordinator  
Teresa Tisserat (Denver), ttisserat@gammaphibeta.org

Executive Director  
Laurie Veldhuizen (Florida State),  
lveldhuizen@gammaphibeta.org

### Crescent Advisory Board

Stefanie Brickman (Oklahoma)  
Kristen Record Heptinstall (Alabama)  
Yvonne Fetig Roehler (Minnesota State-Moorhead)  
Brandon Weghorst

### Graphic Design by Shelle Design, Inc.

#### SUBMISSION DEADLINES

Spring issue – February 1  
Summer issue – May 1  
Fall issue – August 1  
Winter issue – November 1

©2015 Gamma Phi Beta Sorority  
The Crescent of Gamma Phi Beta (USPS 137620)  
is published quarterly by Gamma Phi Beta Sorority,  
12737 E. Euclid Drive, Centennial, CO 80111.  
Periodicals postage paid at Englewood, CO, and at  
additional mailing offices. Non-member subscription  
price is \$25. Produced in the U.S.A.

Postmaster: Send address changes to The Crescent,  
Gamma Phi Beta Sorority, 12737 E. Euclid Drive,  
Centennial, CO 80111.

**Parents** – While our members are in college, their  
copy of The Crescent is sent to your home address –  
we hope you enjoy reading our magazine, too! If your  
daughter is no longer in college, or is no longer living  
with you, feel free to send us her new address by  
emailing TheCrescent@gammaphibeta.org.

**Join Our Green Team!** Receive each issue of The  
Crescent before everyone else by going digital! We'll send  
the current issue directly to your inbox so you can enjoy it  
anywhere you go. Email TheCrescent@gammaphibeta.org  
today to let us know you're joining the Green Team!



# ΓΦΒ mailbox

## #FoundedUponARock

During the 140th celebration of our Founders Day, we asked you to tweet, post and share why you are proud to be a Gamma Phi Beta by participating in our #FoundedUponARock social media campaign. Check out a few of our favorite responses!

Happy Founders Day, ΓΦΒ! I am so thankful to be a part of this amazing organization that is 140 years strong. Gamma Phi will always be close to my heart and has given me the strength and courage to be myself and pursue my dreams. #FoundedUponARock  
-Taylor Derchin (Florida Institute of Technology)

ΓΦΒ is my home away from home and has taught me to be a strong, resilient woman. #FoundedUponARock  
-Emilee Shearer (Minnesota State-Mankato)

Proud to carry on a 140-year legacy of inspiring the highest type of womanhood. #FoundedUponARock  
-Zeta Iota Chapter (Valparaiso)

Cheers to 140 years of sisterhood! Blessed to have found a chapter full of so much love and inspiration. Words cannot express how grateful I am to have such amazing ladies by my side! #FoundedUponARock  
-Ally Puga (Northern Arizona)



## YOU TWEETED IT WE ★ IT!

Working with Girls on the Run was so much fun this morning! We love having the opportunity to support our philanthropic partner!  
-Zeta Psi Chapter (Texas-San Antonio)

We are proud to announce that Nu Chapter completed 4,780 hours of community service this past year! -Nu Chapter (Oregon)

So proud of Beta Rho Chapter for winning the Chapter Academic Excellence award!  
-Brooke Harris (Colorado-Boulder)

Get excited! Invitations just went out to all St. Louis area collegians for the 16th annual Mother Daughter Tea!  
-Saint Louis Alumnae Chapter

**Tell us what you think!** Send your feedback to TheCrescent@gammaphibeta.org, post on our Facebook page or tweet using the hashtag #TheCrescent!



# points of Pride

Shining bright since 1874, here's a snapshot of some notable Gamma Phi Beta moments and accomplishments!



Gamma Phi Beta's #LeadByChange anti-hazing campaign posts during National Hazing Prevention Week had more than 3.4 million views each day – combine them and we had more than **16.8 MILLION** views! Way to spread the word that there is no hazing under the crescent moon!



In the last decade, Gamma Phi Beta's total collegiate membership increased **67 percent!** Our average new member class size has also doubled in the last 10 years.

# 2

Gamma Phi Beta is proud to welcome **two new chapters** into our chapter roll – Beta Chapter (Michigan), reinstalled on January 24, 2015, and Eta Nu Chapter (James Madison), installed on December 6, 2014. Turn the page to find out more about these chapters.

Taylor Sutcliffe (Denver) was recently awarded one of **eight** national fellowships from Mortar Board – a national honor society for college seniors. Taylor graduated from the University of Denver in 2014 with degrees in biology and psychology and is now enrolled at Northwestern University Feinberg School of Medicine.



# eight

# 3

Congratulations to Debbie Jarosz Caldwell (Southern California), Linda Babcock (California State-Long Beach) and Nora Spiess Grabar (Southern California), **THREE** Gamma Phi Beta alumnae who were inducted into the University of Southern California's Greek Hall of Fame in November 2014.

The Foundation has achieved nearly **80%** of our \$3.5 million goal for the One Heart campaign. One person can make a difference in securing the Gamma Phi Beta legacy for future generations. Visit [GammaPhiBeta.org/OneHeart](http://GammaPhiBeta.org/OneHeart) to give a gift today.



Share your point of pride for an opportunity to be featured! Email [TheCrescent@gammaphibeta.org](mailto:TheCrescent@gammaphibeta.org) with your chapter's inspiring accolades.



# New Chapters BY THE NUMBERS



Beta Chapter was reinstalled at the University of Michigan on **JANUARY 24, 2015**



Michigan Stadium – or The Big House – **SEATS 109,901** making it the largest college football stadium in the United States.



**3.58** average charter class GPA

**215 WOMEN** accepted bids on Bid Day

**29** NCAA Division 1 intercollegiate men's and women's teams



**190 WOMEN** involved in campus activities outside of Gamma Phi Beta

**16 National Panhellenic Conference** member organizations on campus



**#1 reason why they are excited to be Gamma Phi Betas:** To leave a lasting legacy at Michigan through a **STRONG** and **VIBRANT** sisterhood!

**10**

**10 legacies** including four Beta Chapter legacies



**#1** major among the charter class: **Neuroscience**

**28,395 undergraduates** enrolled at the University of Michigan in fall 2014







**Eta Nu Chapter was installed at James Madison University on DECEMBER 7, 2014**

**3.24** average charter class GPA - the chapter has the highest cumulative GPA of all Panhellenic organizations on campus



JMU's Greek community spends more than **30,000 hours** volunteering and participating in community service.



*legacies*

**More than 300** clubs and organizations on campus

**16:1**

student to faculty ratio



**#1 reason why they are excited to be Gamma Phi Betas:** *To have the opportunity to watch a chapter that they started grow and flourish!*

Fraternities and sororities on campus raise more than **\$125,000** each semester for philanthropic endeavors.



**13 National Panhellenic Conference**

member organizations on campus



**215 WOMEN**

accepted bids on Bid Day



**18,000 undergraduates** enrolled at JMU in fall 2014





# An Inspiring Journey to Sisterhood

Last spring, Beta Chi Chapter (Wichita State) had the opportunity to initiate seven new members. One of these new members had a slightly different journey in life than the rest of her sisters.

Hayley Minear is a 23-year-old woman with Turner syndrome, cerebral palsy and scoliosis. Due to the daily challenges Hayley faces with her condition, she is unable to work or attend college traditionally. Despite these obstacles, she found a home in Gamma Phi Beta.

Hayley began attending Sorority events with Gamma Phi Beta sister Corissa “Cori” Wright (Wichita State) in 2012 and the women of Beta Chi Chapter immediately felt a connection with her. “I have known Hayley for about three years,” says Cori. “I see her every week to help her run errands and volunteer. In that time we have volunteered together at Wesley Hospital and Rainbows United preschool – a school that commonly works with children with disabilities.”

In 2013, Hayley devoted her time to helping the chapter prepare for recruitment by critiquing the chapter’s door chants and working with members on practice conversations. It was during that time the chapter realized Hayley would be a perfect fit for Gamma Phi Beta’s alumnae initiate program.

Hayley was excited about the opportunities that she could gain from joining Gamma Phi Beta. She explained on her alumna initiate application, “I am very loyal to my friends and family and enjoy being a part of a group that does something purposeful. I am looking forward to getting to know new people and developing friendships.”

This past April, Gamma Phi Beta and Beta Chi Chapter were proud to welcome Hayley into our circle of sisterhood. “Nothing touched our hearts more than participating in Hayley’s Initiation ceremony where this amazing woman was able to pledge herself to our Sorority. Our



Hayley Minear (Wichita State, center) joins other local alumnae for a photo while volunteering during Beta Chi Chapter’s (Wichita State) preference event during recruitment.

chapter is glad to be a part of an organization that embraces strong women like Hayley,” says Beta Chi sister Deby Nouanlasy.

Since Initiation, Hayley has continued her volunteer work and enjoys visiting Beta Chi Chapter.

“I am so lucky to have gotten the chance to get to know such a smart, charismatic and selfless young woman. She is constantly thinking of others and how she can give back. Hayley is a magnificent example of what a Gamma Phi Beta woman should aspire to be.”  
– Cori Wright (Wichita State)



Hayley (left) and Cori Wright (right) attend Beta Chi Chapter’s (Wichita State) Crescent Classic together.

“Hayley exemplifies what it means to be a Gamma Phi Beta. She lives our Core Values in a way I didn’t know was possible. Her love for life is so inspiring and made me want to see the world the way she does. I am very grateful that Hayley is my sister and she continues to inspire me every day.”  
– Erica Gaither (Wichita State), Hayley’s alumna initiate sponsor

“Hayley’s positive outlook and willingness to serve are contagious. She is an inspiration to us all,”  
– Michelle Eastman with Rainbows United, Inc.



## Thank you Camp Fire and Girl Guides!



Girl Guides  
of Canada  
Guides  
du Canada

Gamma Phi Beta Sorority, Inc. will end our partnerships with Camp Fire and Girl Guides effective May 31, 2015. At the end of the partnership term, our organizations will have enjoyed many years of mutual support and providing experiences and resources that better the lives of youth across North America.

In 2012, Gamma Phi Beta announced a new philanthropic focus, Building Strong Girls.

Building Strong Girls is the embodiment of the organization's philanthropic mission: to provide experiences and resources that build spiritual, mental and social resiliency in girls.

As Gamma Phi Beta's philanthropic mission and focus continue to evolve, the decision was made to not continue a relationship with Camp Fire and Girl Guides. Gamma Phi Beta will continue to cherish the importance of camping in our philanthropic history. Building Strong Girls would not be what it is today without the hands-on service and generous financial contributions of thousands of women to provide life-changing experiences to girls throughout our 140-year history.

Gamma Phi Beta thanks Camp Fire and Girl Guides for years of partnership, and we

wish them the best as they continue to provide opportunities to young people.










































































































































































































































































































































































































## Collegiate Chapter Profile

# DELTA OMEGA CHAPTER

Leadership – this is the word past Delta Omega Chapter President Danielle Edwards (Oakland) uses to describe Gamma Phi Beta Sorority. Delta Omega Chapter exemplifies leadership in many ways – from being role models to young girls to directing campus organizations and being active in their community.

**The Crescent: Delta Omega in three words.**

**Danielle Edwards:** Close-knit, philanthropic and compassionate.

**What qualities does the chapter value in a leader?**

**DE:** We recently hosted a Personal and Chapter Enrichment (PACE) event focused on leadership where our PACE chairwoman collected a list of qualities our executive council members and chairwomen believe future candidates need to succeed in their respective position. She then compiled this information into a PowerPoint so that emerging leaders could learn about the leadership opportunities within our chapter. Throughout the activity, the qualities that were repeated several times were role model, respectful and good time-management skills.

**What does the chapter do to promote leadership?**

**DE:** Delta Omega Chapter's executive council leads by example. We believe it's important that we attend not only Gamma Phi Beta events, but events on campus and in the community as well. When you are serving as a leader, you're leading in all aspects of life, not just during your job duties.

**How does the chapter support Building Strong Girls?**

**DE:** Each fall we host Girls Night Out. This event is for young girls ages 8-13. The girls



*"The women of Delta Omega Chapter believe in making every sister feel empowered to make a difference. The chapter creates assistant positions to encourage sisters to learn about the different roles within the chapter and how they directly make an impact on a process or event," says Delta Omega Chapter's Education Advisor Natalie Juronoc (Oakland).*

come to Oakland University's Student Center and we do activities together to promote Building Strong Girls. This year, our theme was game night. One game we played was Jenga, but each piece of the game had a question or topic related to Building Strong Girls for us to discuss with the girls in attendance.

We host our annual Crescent Classic each spring. In the last two years, we raised more than \$14,000 by selling gift baskets. As a chapter, we participate in at least one Girls on the Run race each summer or fall by cheering on the girls and helping out at water stations.

**What does our mission mean to the chapter?**

**DE:** Our chapter focuses on inspiring the highest type of womanhood in various ways. Around 75 percent of our members have a job outside of Gamma Phi Beta or are involved in an outside organization. We take the values of Gamma Phi Beta and share them in the community and, in turn, we take what we learn from the community and inspire our Sorority.

**Want to create your own Building Strong Girls activity? Here are a few questions Delta Omega Chapter used for their game night.**

- Who is your hero?
- What does a strong girl look like to you?
- What is your favorite part of school?

## FAST FACTS!

**What is the current chapter size?**

81 members

**How many NPC organizations are on campus?**

Four: ΑΔΠ, ΑΣΤ, ΓΦΒ and ΦΣΣ.

**What are some unique facts about the chapter?**

- Our chapter facility only houses four people. We call it the Gamma Phi Beta Cottage.
- On campus, Delta Omega Chapter has won the award for best philanthropy event for the past four years!
- At Convention 2014 we received our first-ever Convention awards: Most Improved Recruitment for our chapter size and Honorable Mention for Building Strong Girls.

**Chapter Website**

GammaPhiBetaOU.org



Alumna Spotlight

# MARY JO HOPE

**"Never be too good to take out the trash,"** advises Mary Jo Hope (Oklahoma City), who is in her fifth season as manager of event presentation for the Oklahoma City Thunder. Mary Jo believes it is important to understand all aspects of your job, even if they aren't very glamorous. She works hard to ensure fans have a safe and enjoyable experience during the Thunder's 41 home games and more than 35 community events each year, all while pursuing a master's degree in nonprofit leadership and continuing to serve Gamma Phi Beta.

*The Crescent spoke with this inspirational volunteer leader to find out how she manages to balance her busy career and her involvement with Gamma Phi Beta.*



*"In every facet of my life, I have found someone that I want to emulate. In Gamma Phi Beta, there have been many women who have inspired me by their vision, passion and dedication."*

***You in three words.***

Get'er-done, leader and detail-oriented.

***ΓΦΒ in three words.***

Sisterhood, support and mentor.

***What leadership positions have you held in Gamma Phi Beta?***

I held two executive council positions in college. After I graduated I worked as a collegiate leadership consultant. I have held many different volunteer positions throughout the years and now serve as sorority coordinator-new chapter for Eta Eta Chapter (South Florida) and am a member of the Presentation Team.

***What are your main responsibilities in your professional role with the Oklahoma City Thunder?***

My job is two-fold – I manage event presentation for home games and community events. I handle everything from facility maintenance and permits to Fanfests and giveaways. I work to make sure that fans have a top-notch experience when they attend home games and serve as an ambassador of our brand in the community.

***Did you always know that you wanted to go into the sports industry?***

My job is really in entertainment, not just sports. I've always had a love for sports and entertainment and knew that I wanted to lead a team. I am passionate about making sure our guests enjoy every aspect of their time with the Thunder from the moment they enter the arena or event.

***With such a busy schedule, how do you find time to stay involved with Gamma Phi Beta?***

When I was young, I watched my mom volunteer for her sorority, Sigma Kappa. It was modeled to me that being in a sorority is a lifelong commitment. I feel like I owe it to Gamma Phi Beta to give back because it has given so much to me.

***What does being a leader mean to you?***

Being a good leader means being a good listener. There is a responsibility as a leader to be a teacher and educator, but also to know when to grab the reins and direct someone. It is all about trust, integrity and consistency.



## Alumnae Chapter Profile

# NAPLES ALUMNAE CHAPTER



*"Joining an alumnae chapter keeps you connected to Gamma Phi," says Alumnae Chapter President Lynne Nordhoff. "You develop friendships you might not have otherwise."*

The Naples Alumnae Chapter is full of women who embody the lifelong commitment of Gamma Phi Beta. From following our Sorority's guiding principles to exemplifying our Core Values, the chapter is dedicated to giving back to their community and supporting their sisters' leadership endeavors. *The Crescent* connected with Naples Alumnae Chapter President Lynne Nordhoff (Wisconsin-Madison) to learn more about this dedicated group of women.

***The Crescent: Three words to describe the chapter.***

**Lynne Nordhoff:** Friendly, supportive and retired.

***How does the chapter embody lifelong commitment?***

**LN:** Naples Alumnae Chapter has members who have been loyal for 50, 60 and 70 years. Lifetime commitment is just that – for life!

***How does the chapter build leaders?***

**LN:** We are a small alumnae chapter, but we are really good at working together and developing leadership skills within each other. If a sister wants to expand on her computer or writing skills, there is always a sister willing to share some pointers. As a chapter, we believe training, mentoring and enhancing skills in each other will create successful future leaders of our chapter. For instance, during my term as president, I am doing my part by guiding our president-elect, so that she will be well-prepared to take over.

***How does the chapter promote personal growth?***

**LN:** At three out of our five annual membership meetings, we include a guest speaker. Our speakers vary in topic, from learning life skills for personal needs to becoming aware of

the needs of the community at large. Many speakers focus on a topic of interest, are educational and feature a local nonprofit. Our March 2015 guest speaker is a representative from our local Girls on the Run council.

***How does the chapter stay involved in the community?***

**LN:** We care about our community and members who are leaders in the community. We make sure to support organizations that have personal ties to our alumnae chapter members. If someone is a board member or a volunteer, we like to support their cause.

***How does the chapter support collegiate chapters?***

**LN:** As an alumnae chapter we support Omicron Chapter (Illinois at Urbana-Champaign). Vanessa Grisko (Illinois at Urbana-Champaign) reached out to us when she came home to Florida during a school break. She attended one of our luncheons and that was just the start to our relationship! Vanessa now contributes to our quarterly newsletter as our collegiate correspondent. We have set up a scholarship fund through the Foundation and our recipient for 2014-15 is also from Omicron Chapter.

*"Seeing a group of sisters from different chapters coming together after all these years shows me the true bond and commitment our members have for Gamma Phi. It is more than just four years; it's a lifetime of true friendship."*  
— Vanessa Grisko (University at Urbana-Champaign)





GAMMA PHI BETA

Γ Φ Β

# “PROTECTING LIKE THE ROCK

those who enter our fold, a sure help in time of need, enduring to the end of time  
— this is our wish for Gamma Phi Beta.” – *Founder Eunice Adeline Curtis*

## ARE YOU PROTECTING OUR ROCK, OUR SISTERHOOD?

Join your fellow alumnae members in supporting and protecting Gamma Phi Beta by paying your \$25 international alumnae dues. For just \$2 a month, you can continue to offer the traditions and lifelong benefits of membership to sisters across the continent.

Our Founders built Gamma Phi Beta on solid principles, and with your loyalty, we continue to protect and ensure a prosperous future for our sisterhood!

**Visit [GammaPhiBeta.org/AlumnaeDues](http://GammaPhiBeta.org/AlumnaeDues) to pay your \$25 international alumnae dues today.**



# inspiration board



## A WELL-DESERVED HONOR

The Association of Fraternity/Sorority Advisors has awarded Elizabeth "Betty" Ahlemeyer Quick (Indiana) the Jack L. Anson Award. This prestigious award recognizes an individual who is not employed in higher education who has demonstrated a long-term commitment to the fraternal movement beyond her respective organization. Betty has shown her commitment to the Greek community by serving the National Panhellenic Conference (NPC) for 30 years. During this time, Betty has served as NPC Chairman, NPC Collegiate Panhellenic Chairwoman, NPC Secretary and NPC Treasurer in addition to representing  $\Gamma\Phi\beta$  as our NPC Delegate. Congratulations, Betty!



## BREAKING NEW GROUND

This year marks the 25th anniversary of the groundbreaking ceremony for International Headquarters in Centennial, Colorado. In 1990, the 64th Convention was held in Denver, and Conventioneers were invited to attend the special ceremony. A small brick with our Greek letters was given as a favor. Two years later, the 10,000-square-foot structure was finished, including an expansive museum boasting historical Gamma Phi Beta artifacts and documents for visitors to enjoy.

*Pictured are members of the 1989-90 Grand Council at the groundbreaking ceremony.*

## BRING ON THE RAIN!

A pink Gamma Phi Beta rain jacket is a must-have for spring. This waterproof and breathable coat is the perfect piece to add to your wardrobe so you can brave the upcoming spring showers in style. Get yours today at [CrescentCorner.com](http://CrescentCorner.com)!





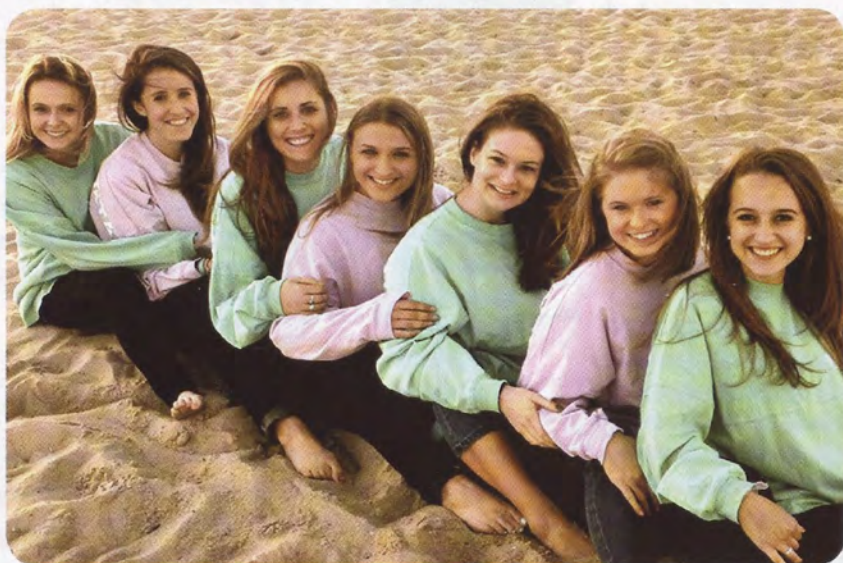
*Home is*

See how Gamma Phi Beta is home  
to so many amazing women!

Watch our *Home is* video!

#### HOME IS GAMMA PHI BETA

Home can be found outside of the traditional four walls of a structure. Home is where you can be relaxed and comfortable. Home is where you are in harmony with your surroundings. Home is where you are on familiar ground. Watch our video to find out how home is Gamma Phi Beta on our official YouTube channel!



#### AN ADMIRABLE ENDOWMENT

Sisters of Eta Gamma Chapter (Delaware) established a financial aid endowment in honor of Joanne Shaffer Meloro (Rutgers) and her service as their sorority coordinator-new chapter. This endowment will provide continuous support for members of Eta Gamma with undergraduate scholarships and graduate fellowships.

#### JUSTICE OF THE PEACE

In March 2014, former Toronto Alumnae Chapter President Paula Konstantinidis (Toronto) was appointed Justice of the Peace in Ontario, Canada. "I believe each of us should be an advocate for our communities. I am grateful to my wonderful Gamma Phi Beta sisters who guided my steps along the way, sharing their wisdom with incredible humor and grace. I face each day keeping in mind our Core Values – Love, Labor, Learning and Loyalty," Paula shares.





## Collegian Spotlight

# PAIGE MARTINDELL

**"Hard work really pays off. If you aim high and believe in yourself, anything is possible,"** former Sigma Chapter President Paige Martindell (Kansas) says. That inspirational catchphrase is one that Paige truly lives by. Networking through Gamma Phi Beta led Paige to a series of brand ambassador jobs, one of which was through ASOS, an internationally renowned fashion company. ASOS boasts many internship positions including a once-in-a-lifetime opportunity to travel the world for a summer – all expenses paid. Even though the around-the-world internship sounded too good to be true, Paige's work ethic and drive gave her the courage to apply. After a series of Skype interviews, she was offered the internship of her dreams.

The Crescent talked to Paige and got the inside scoop on her globetrotting adventure.



**"If you're going to follow a trend or style, don't be afraid to make it your own. I like to make my own trends – and I'm not afraid to bring style from different cultures to my hometown,"** says Paige.



### Three words to describe you.

Driven, outgoing and comedic.

### ΓΦΒ in three words.

Inspirational, strong and sisterhood.

### What are you studying?

I'm pursuing a degree in visual communications with a focus in graphic design and a minor in business.

### Where did you get to travel with your internship?

I traveled for seven weeks and got to visit New York, London, Paris, Germany, China and six cities in Australia. I was actually in Australia during Gamma Phi Beta Convention and was sad to have missed it.

### What were your day-to-day duties?

The internship was in marketing so my job duties varied in every city due to the different markets. Overall, many of my duties included doing research to provide insight on what teenagers and college-aged students are inspired by. I was able to provide new, innovative ideas for social media. I got to work with clients such as *Glamour* Magazine, Refinery 29 and even on a campaign for Nike!

### How have Gamma Phi Beta and this internship prepared you for the future?

Gamma Phi Beta's leadership programming helped me be the leader I am today. My internship taught me to have confidence in a professional environment, and I know these experiences will help me with future career endeavors.

### What are your future goals?

I want to go into fashion branding. I can see myself working in the marketing and advertising side of fashion. Ultimately, it would be awesome to be an art director for a magazine. Additionally, I've felt a connection to our philanthropic focus of Building Strong Girls since its announcement at Convention 2012. Seeing young girls throughout the world made Building Strong Girls mean so much more to me. I'd love to help young girls and inspire them to be leaders.

### What was your favorite part of your travels?

I loved every aspect of my internship, but one of my favorite memories occurred outside of work. When I was in Berlin, I took a night trip to Regensburg, Germany, to see one of my chapter sisters Jaime Eschrich (Kansas) while she was studying abroad. It was so neat to see her campus. It just goes to show that Gamma Phi is always there and you will see your sisters no matter where you are in the world!





# WINTER

## ESSENTIALS

### BLACK PASHMINA

This chic scarf is perfect for cold days.



### FLEECE BLANKET

Snuggle up with this cozy fleece blanket.



### CANVAS CHEVRON TOTE

Add a pop of color to any dreary winter day with this vibrant tote.



### LIGHT GREY 1/4 ZIP

A comfy winter go-to.

### MONOGRAMMED NECKLACE

Update your favorite outfit with this adorable necklace.



Visit [CrescentCorner.com](http://CrescentCorner.com) today to find these winter essentials and much more!



CONFIDENT WOMAN OF CHARACTER  
CELEBRATES SISTERHOOD  
MAKES A DIFFERENCE IN THE WORLD

INSPIRE THE HIGH

WOMAN

AM ACCOUNTABLE

OLD MY SISTERS ACCOUNTABLE FOR CODES OF ETHICS  
D PROTECTING THE LEGACY OF

UNDERSTAND OUR CODE OF VALUES

HAVE THE COURAGE

LIVE THEM IN ALL PARTS OF THE WORLD

AM SELF-AWARE AND CONFIDENT

LEAD WITH MY HEART AND MIND

COMMITTED TO LEADERSHIP TODAY, TOMORROW AND ALWAYS

AM COMMITTED

Responsible · Ethical · Authentic · Lifelong ·

REAL

Lead

## REAL Leadership

**Responsible.**

**Ethical.**

**Authentic.**

**Lifelong.**

Gamma Phi Betas are leaders on their campuses and in their communities. Our sisterhood strives to mentor the next generation of leaders and provide young girls with the courage, knowledge and resiliency to become confident women of character who celebrate sisterhood and make a difference in the world around us. Because our members

value leadership development, Gamma Phi Beta is proud to introduce REAL Leadership.

REAL Leadership is more than just educational programming. It is a movement. Gamma Phi Betas are responsible, ethical and authentic lifelong members and REAL Leadership will provide all Gamma Phi Betas with opportunities and resources to develop their leadership skills.

How do we build REAL Leaders? It starts with Building Strong Girls and through mentoring young women to find their confidence and reach their potential. REAL Leadership continues with access to ground-breaking, responsible leadership education, giving our members





the tools to become better mentors. Strong girls become REAL Leaders, who will in turn inspire the next generation of strong girls.

Leadership development should not focus solely on members who hold executive positions. It should not focus solely on members while they are in college. Rather, it should be readily available – 365 days a year and through multiple channels – for all members. To that end, REAL Leadership will consist of comprehensive and accessible online resources, leadership events and social media initiatives as well as in-chapter and educational programming.

REAL Leadership doesn't end when a strong girl becomes a REAL Leader or when a REAL Leader graduates from college. It continues as women raise families, take leaps in their careers, lead teams, give back to their communities and give back to Gamma Phi Beta. In the pages that follow, you will learn more about REAL Leadership programming and get to know some of Gamma Phi Beta's REAL Leaders.

*The REAL Leadership Affirmation on the cover outlines the commitments of REAL Leaders. Through REAL Leadership, Gamma Phi Betas learn valuable lessons to help them uphold these statements.*



## REAL Leadership Events

In addition to online and in-chapter resources, REAL Leadership boasts four special events that cater to leaders in different stages of their Gamma Phi Beta membership experience – emerging leaders, collegiate chapter officers and presidents, and alumnae volunteer leaders.



### REAL Leadership Experience

The REAL Leadership Experience is our new three-day intensive leadership event modeled after our leadership event for chapter presidents – the REAL Leadership Academy

– but has been developed for emerging collegiate leaders who are ready to take the next step in their leadership journey. The REAL Leadership Experience is a place for emerging leaders to shine, dream big, take chances, examine their innermost selves and learn the principles of REAL Leadership that they can apply in their chapters, careers and communities. This event will give emerging leaders the skills and confidence they need to tackle future leadership roles and challenges they never dreamed possible.

NEW



### REAL Leadership Conference

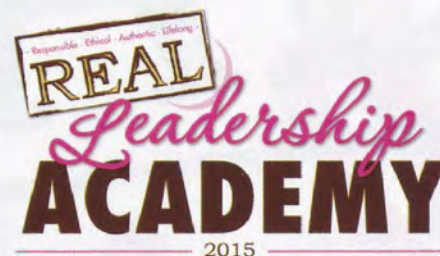
Held in non-Convention years, the REAL Leadership Conference brings small groups of collegiate chapter officers and chapter advisors from different

chapters in the same geographic area together for a weekend of inspiring and interactive workshops, professional speakers, roundtable discussions and unique networking opportunities. The REAL Leadership Conference focuses on REAL Leadership development, chapter programming and the exchange of successful ideas between members.

### REAL Leadership Academy

Specifically tailored for collegiate chapter presidents, the REAL Leadership Academy is a weekend retreat held each spring that includes sessions designed to help our collegiate chapter presidents

and chapter advisors understand and enhance their strengths through workshops, interactive presentations and professional speakers. Chapter presidents leave the REAL Leadership Academy learning to lead with purpose and integrity and equipped with the tools to empower their chapter and members toward a successful year.



### REAL Leadership Institute

The REAL Leadership Institute is a three-day in-person leadership event for Gamma Phi Beta volunteer leaders and chapter advisors. The purpose of

this conference is to provide the opportunity to enhance existing talents and develop relevant skills essential to volunteering for Gamma Phi Beta.



The REAL Leadership Institute is the single biggest and best venue Gamma Phi Beta has to provide thorough, in-person skills development, REAL Leadership training and essential on-the-job volunteer training to our volunteer leaders and chapter advisors. The event is a balance of in-depth skill-building, reflection, future planning and fun. We are excited that our 2015 REAL Leadership Institute will include chapter advisors for the first time.

*These and other leadership opportunities are made possible in part by the Gamma Phi Beta Foundation.*



# REAL Leadership Online

Gamma Phi Beta is committed to developing members who actively contribute to their community and are successful and motivated leaders. Always endeavoring to provide enhanced leadership training and resources, Gamma Phi Beta created REAL Leadership Online – a comprehensive approach to leadership development that will impact sisters of all ages and stages of membership.



## REAL Leadership Online Objectives:

- Deliver ongoing and engaging leadership development.
- Provide exposure to leadership development to all members of Gamma Phi Beta.

Gamma Phi Beta believes that leadership development should not be reserved for only collegiate chapter officers. Rather, all Gamma Phi Betas should have access to leadership development tools and lessons, 24 hours a day, 365 days a year. This online resource is creative, professional, engaging and constantly changing.

To account for various learning styles and to help create an appealing online environment, various forms of lessons, media, assessments and tips will be available in this online resource. Topics will be comprehensive and varied, ranging from accountability and time management to mediation techniques and relationship building. The site will feature blogs, videos, book reviews and more.

*Check out the example below of what you can find on [GammaPhiBeta.org/REALLeadershipOnline](http://GammaPhiBeta.org/REALLeadershipOnline).*

## Four Invaluable Skills You Learn From Volunteering

Whether you're lending a hand at a local women's shelter or helping to plan your chapter's philanthropy event, volunteering is one of the best ways to develop your leadership potential. Here are a few skills that can be gained while giving.

**1. Teamwork** - While volunteering you will work with many different types of people. Volunteering is the perfect way to get comfortable working with people you don't know to achieve something great! Working toward a common goal with others will help you appreciate diversity, develop mutual respect and acknowledge the cooperation needed to succeed.

**2. Organizational/time management skills** - Every volunteer opportunity looks different, but as a volunteer you might be attending meetings, planning an event or coordinating other volunteers. People will be relying on you to get a job done and this is a great opportunity to gain experience setting goals and achieving results. Adding volunteering to your schedule will mean a personal commitment to time management as you will need to plan for work or school, family and friends, Gamma Phi Beta and volunteering.

**3. Learn new skills** - Organizations that are in need of volunteer assistance are usually more than willing to train you in a new skill or program to help you get the job done. This means you can add something to your résumé or practice a leadership skill you struggle with in a stress-free environment. Volunteers are frequently needed as mentors for program participants or other volunteers that are new to the organization. As a mentor you will hone your listening skills, become a better role model and be an effective communicator. Every time you volunteer, challenge yourself to learn something new.

**4. Grow your network** - Volunteering can be a very social activity and a fantastic way to meet new people. This is a great way to expand your social circle or make a connection that might help further your career.





# Discover Your Le

**Leadership development plays an integral role in shaping a person's identity, no matter your gender. But for women, the path to becoming a strong leader is often more challenging to navigate than it is for men.**

While women are continuing the battle for equal pay and equal opportunity – and are making great strides in these battles – the disparity between men and women in the workforce is still astounding. In 2014, less than five percent of Fortune 500 companies were led by female CEOs, even though women comprise nearly half of the American workforce.

When women take on leadership roles, they face stigmas that men typically do not. Popular media often paints females in powerful positions as lonely spinsters or ice queens, feeding the common misconception that a woman cannot successfully hold a powerful position at work while maintaining a happy homelife. All too often, women taking on leadership roles are faced with the paradox of simultaneously being cast as “too strong” – overbearing, tough and pushy – and “too weak” – delicate and hypersensitive.





# Leadership Potential

So how do we as sorority women – strong women who want to be successful in all we do – counter these stigmas and be the leaders we know we can be, whether at home, in the community or in the boardroom?

REAL Leadership teaches Gamma Phi Betas to be well-rounded leaders by helping members embrace their strengths, identify and improve upon their weaknesses and develop their leadership style over time. REAL Leadership gives women the tools they need to hone their leadership skills and recognize their potential. The lessons learned through Gamma Phi Beta's leadership development will help sisters become responsible, ethical and authentic lifelong leaders.

Through REAL Leadership, Gamma Phi Betas can come into their own as role models, employees, mentors, managers, parents, sisters and individuals. You don't need to be the CEO of a Fortune 500 company to be a strong leader. Learning to be a strong leader is an important part of becoming a strong individual.

Not all leaders are the same. In order to develop as a leader, it is important that you discover your own leadership potential and commit yourself to improving upon that potential.

In the pages that follow, you will meet four REAL Leaders who make an impact on their campuses, in their communities and on those around them. Though they are each very different, they all exemplify what it means to be a REAL Leader.



# Responsible Role Model

Liza Moskowitz (Boston) juggles multiple leadership positions with grace and humble confidence.

**“I’m a big advocate for generational leadership – you as a leader stand on the shoulders of those who came before you, but you’re also paving the path for future leaders. You need to put the leaders that will come after you in a position of success. It’s all about advancing forward and accomplishing new things.”**

Liza Moskowitz (Boston) is a shining example of what it means to be a responsible leader. Last year, she served as Delta Chapter’s (Boston) education vice president in addition to serving as Panhellenic president, all while working to earn a degree in public relations, pursuing a minor in political science, working as a student admissions representative and fulfilling the requirements needed to remain a student of Boston University’s Honors College. Somehow, Liza not only manages to excel with everything on her plate, but she makes it seem simple: “It’s all about identifying what is important to you now and in the future. You need to think ahead.”

To Liza, being responsible is all about setting goals and using them to frame the bigger picture. “Being a responsible leader is working toward your personal goals while also prioritizing the goals of the broader community,” she says. “You, as a leader, need to honor your position, the position doesn’t honor you. It’s not about you as an individual. It’s about all of the people you represent.”

When Liza was elected Panhellenic president, she worked to identify what was important to the community and what goals would be attainable within her term. She and the Panhellenic council agreed that one of their primary goals should be connecting with parents. Despite the importance of family support to the overall health and success of the Panhellenic community, Greek organizations had never come together to actively reach out to students’ families to provide education about Greek life at Boston University.

Under Liza’s leadership, the Panhellenic council hosted its first-ever Panhellenic Parents Reception during Parent’s Weekend on campus. Current and potential new members were encouraged to attend the event with their parents to learn more about each sorority and the Panhellenic



community. The event was a huge success – parents mingled with sorority women and learned about the positive impact the organizations have on their members. “I am so proud of the community for not being afraid of trying something new,” Liza shares.

Throughout her many experiences in leadership positions, Liza has realized the importance of developing her leadership style. Even though she focuses on accomplishing goals that improve the community as a whole, she also understands the importance of developing those within the community on a personal level. “I believe in expanding people’s comfort zones rather than pushing them out of their comfort zones,” she says. “I want everyone I lead to feel comfortable and confident and know they are capable of accomplishing whatever they’re working toward.”

Her advice to women looking to develop their leadership skills? “Remember that leadership roles come in all shapes and sizes. If you want to be a leader, you don’t necessarily need to hold a ‘position.’ Anyone can be a leader within their community. The definition of a leader is not someone who has ‘president’ or ‘vice president’ associated with her name. It is someone people trust and feel comfortable following.”



# Ethical Educator

Phyllis Larsen (Nebraska-Lincoln) values moral actions in her professional and personal life.

**“When you’re a leader, you have an impact not only on those in your direct circle, but on so many others. Having a strong sense of personal ethics puts you in a position to do good work and have a positive impact.”**

As a professor of practice at the college of journalism and mass communication at the University of Nebraska-Lincoln, Phyllis Larsen (Nebraska-Lincoln) impacts students, faculty members and the community as an ethical leader. Phyllis considers good leaders to be those who have a strong personal sense of ethics based on their own values that guide one’s decisions and actions. While Phyllis admits she feels like she is still learning to be a leader, she works hard to serve as a positive role model to those around her.

In her career, Phyllis has had the opportunity to demonstrate ethical leadership by serving as a mentor to her students and colleagues. Oftentimes, she is surprised by who she has impacted: “A handful of times, someone has introduced me by saying, ‘this is my mentor,’ and I had no idea they thought of me that way. It makes me stop and think who else I am influencing without even knowing it.” Because leaders like Phyllis find themselves in a position to influence many people around them, Phyllis believes they should consciously act with integrity and honesty.

While Phyllis promotes fair and honest behavior on a personal level in her role at the University, she has also educated others on the importance of principled behavior by serving as the ethics officer for the Nebraska chapter of the Public Relations Society of America, an organization that promotes ethics and standards of excellence for public relations professionals. One way Phyllis educated members was by presenting an “ethics moment” at each of the chapter’s monthly meetings. Phyllis would present an example of good or poor ethics – typically a case study from a current event – and raise questions for the audience to debate. This way, the chapter could keep ethics in mind while discussing topical public relations matters.

Despite her busy career, Phyllis also exemplifies ethical action by making time to volunteer in the community. She currently serves on the board of directors for Habitat for Humanity of Lincoln/Lancaster County and as



the faculty adviser for the University’s Public Relations Student Society of America. She also volunteers for Girls on the Run of Nebraska, Friends of Cozumel and Husker Cats — a volunteer group that cares for feral cats on campus. Additionally, for the last several years she has participated in the 300-mile, multi-day Nebraska United Methodist Bike ride to support hunger relief programs. Riders have raised more than \$700,000 in the event’s 19 years by getting pledges from supporters. “It’s a great outlet for my competitive spirit,” Phyllis says.

Phyllis also serves as a role model for Pi Chapter (Nebraska-Lincoln) members and recognizes the influence that Gamma Phi Beta has in shaping strong women. “Gamma Phi Beta is a great environment to practice leadership skills. You have great role models, mentors and opportunities to lead all around you,” says Phyllis. “I remember admiring Diane Korinek Johnson (Nebraska-Lincoln), the chapter president my sophomore year. She was a master of diplomacy and never lost her cool. Watching her, I thought, ‘I’m going to be like that someday.’” Through her genuine and principled style of leadership, Phyllis has certainly accomplished that goal.



# Authentic Ally

Lucy Kapsch (Northern Iowa) strengthens her chapter by being a friend to each of her sisters.

**“Being authentic is having a genuine purpose. It’s having a shared vision and shared values with those you are working with, and to me, that is Gamma Phi Beta.”**

Lucy Kapsch is the passionate, intelligent and fun-loving former chapter president of Gamma Psi Chapter (Northern Iowa). As one of 12 members of Gamma Phi Beta’s collegiate advisory board – the board of collegiate members who provide feedback and ideas related to International Council and Gamma Phi Beta priorities and projects – Lucy exhibits her authenticity on a local and international level for our organization. In addition to her commitment to Gamma Phi Beta, Lucy is seeking a degree in public relations, works as assistant membership and communications coordinator for the University of Northern Iowa’s Alumni Association, serves as her local Order of Omega chapter’s social media coordinator and was director of marketing and recruitment for Advocate’s for Alzheimer’s Quest to Unravel Alzheimer’s Scavenger Hunt on her campus.

“Learning to juggle school, Gamma Phi and my other commitments is a continual learning experience,” says Lucy. “I am the type of person who enjoys being busy and productive and feeling like I’m making a difference. Being busy is a good problem to have! I have learned to rely on others to help me out – collaborating as a team and delegating tasks helps take some responsibilities off my shoulders when I’m feeling overwhelmed.”

Despite her busy schedule, Lucy demonstrated her authenticity by fostering respect and care for all of her sisters throughout her presidency. In her first semester as president, Lucy noticed that her chapter’s morale was lower than usual. Remembering her goal of supporting each member on a personal level, Lucy planned the chapter’s first-ever sisterhood retreat. Sisters participated in team-building activities and personal reflection in order to boost self-esteem, reconnect with one another and be reminded of their love for Gamma Phi Beta. Because Lucy genuinely cared about the well-being and happiness of each of her sisters, she was able to strengthen the chapter as a whole.

Lucy thanks her Gamma Phi Beta sisters for helping her realize her potential to be an authentic leader. “Gamma Phi Beta has helped me discover confidence inside myself that I wouldn’t have seen otherwise. My sisters



*Photo credit: UNI University Relations*

have helped me see my potential. You grow up a lot in college and these women have been by my side through everything – the good and the bad. My collegiate experience would not have been the same without that support,” she says.

Lucy believes that being authentic can be a key to success when taking on a new leadership role: “Do what you love. It is hard to get into a position that requires a large commitment without having your heart and soul in it. Your passion will not only motivate you, but it will encourage others around you. Be courageous – it may seem scary to be a leader, but if you are up to the challenge, it will show. Always remember your purpose and be genuine.”

After she graduates, Lucy hopes to continue doing what she loves – being involved in Gamma Phi Beta. She explains that Gamma Phi Beta has opened her eyes to many new opportunities and she wants to ensure the Sorority’s future so that sisters can continue to be inspired for generations.



# Lifelong Leader

After winning her battle with cancer, Jill Almeas Giuricich (Rutgers) hopes to raise awareness for future generations.

**"If today is a dark day, there is always tomorrow. You just have to stay strong," says Jill Almeas Giuricich (Rutgers)**

Jill's positive outlook on life is contagious and her upbeat and gracious personality is even more inspiring after hearing her story. In 2008, Jill was diagnosed with stage IIIC triple-negative breast cancer and told to get her affairs in order. Despite the dismal diagnosis, Jill told her doctor "not to back her into a corner" and began her courageous fight to recovery.

During her freshman year at Rutgers University, Jill's mother passed away at age 47 from ovarian cancer, and at that point doctors warned Jill and her sister Victoria "Vicki" Almeas Corabi (Rutgers) of their own genetic predisposition to cancer. Years later, the sisters agreed to undergo genetic testing to discover if they were BRCA gene positive – a mutation that significantly increases one's risk of breast and ovarian cancer. Jill's results came back positive and doctors told her that she would need to remove her ovaries prophylactically. After that surgery, Jill was diagnosed with an aggressive and deadly form of breast cancer. "I never thought it would happen to me," Jill admits.

Throughout her battle with breast cancer, Jill stayed strong for her family, never telling her children – between the ages of 2 and 10 years old when she was diagnosed – so they would not worry about her. "It's not an option when you have children," she says. "You have to be brave and you have to be a leader. You live with dignity, respect and courage. Once you have children, it's not about you anymore."

Jill attributes much of her recovery to the support she received from her family and her drive to stay strong for them: "Family is crucial. They will always be by your side. They are permanent. Throughout everything, I knew they would always be there for me."

Jill's sister Vicki – also a Gamma Phi Beta from Delta Mu Chapter (Rutgers) – accompanied Jill to all of her doctor's appointments and supported her throughout her recovery. Vicki remembers that even when Jill went in for treatment, she was more concerned about the doctors' well-being than with her own pain. "That is her gift – she can make anyone feel good and important," says Vicki.



Her Gamma Phi Beta sisters, too, helped give her the strength she needed to survive. "Gamma Phi Beta is a home away from home. It is so wonderful to have sisters that are your family and are always on your side. I feel loved and cherished and I can love and cherish others. Since my diagnosis I have received an outpouring of love and support from my sisters."

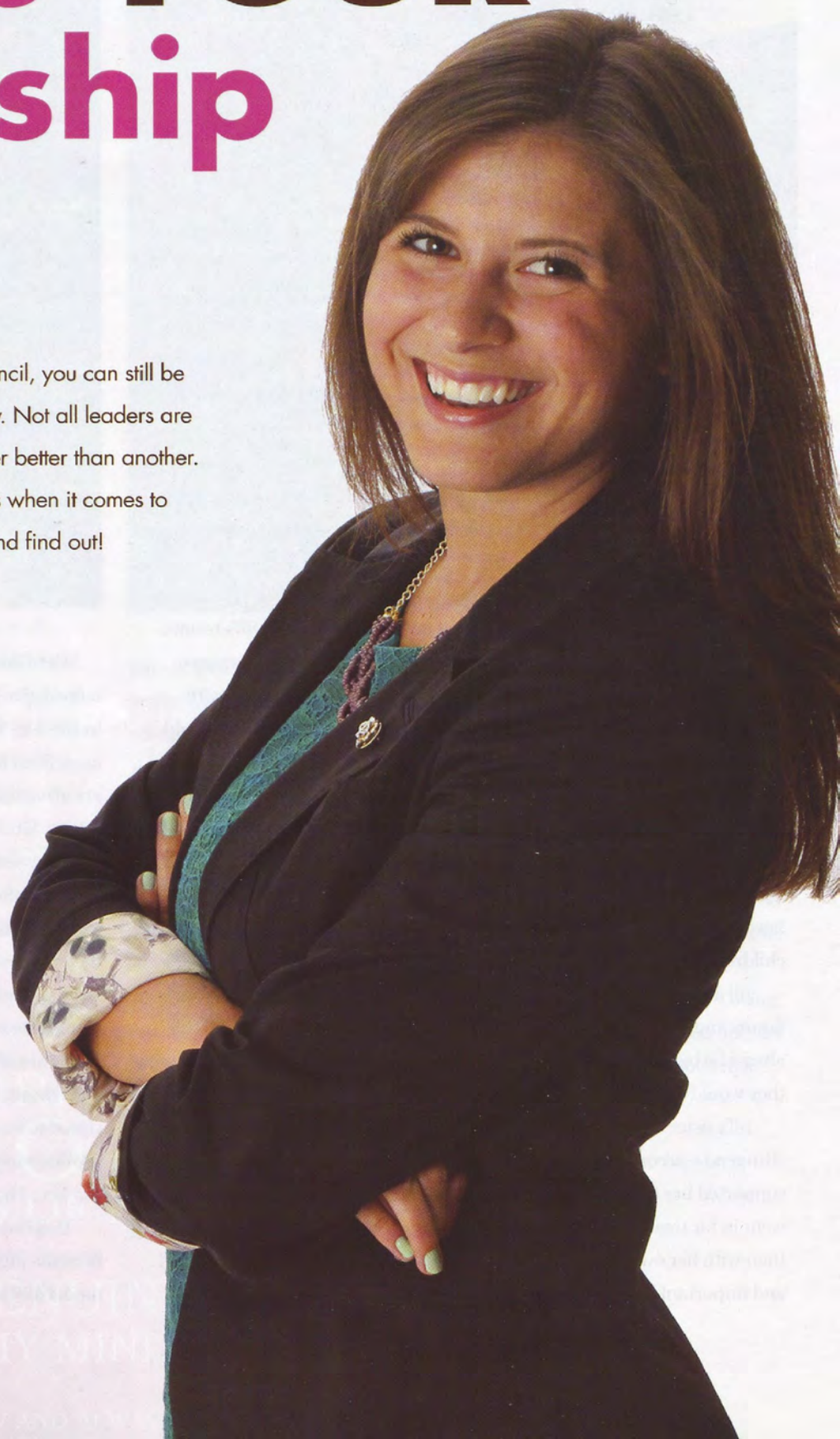
Now, after a full recovery, Jill is enjoying being a mother of five, a wife and a leader. This October, she was honored by the New York Giants as part of their campaign to raise awareness for breast cancer. Jill's goal is to promote BRCA gene testing so that at-risk women understand the importance of being tested early. She also plans to volunteer for Facing Our Risk of Cancer Empowered (FORCE) to help support women who are BRCA gene positive and educate the public about the genetic mutation. Additionally, she has vowed to make an impact by establishing a foundation with her sister to provide monetary support for charitable organizations, including the Gamma Phi Beta Foundation.

With an astonishing amount of courage and strength, Jill has proven herself a lifelong leader and hopes to continue to serve as a positive role model for her children and her community.



# What is **YOUR** Leadership Style?

Even if you're not on your chapter's executive council, you can still be a leader in your chapter, workplace or community. Not all leaders are the same, but that doesn't make one type of leader better than another. Everyone has their own strengths and weaknesses when it comes to being a leader – what are yours? Take the quiz and find out!





**It's Bid Day and you are a collegiate member. Where are you?**

- A.** Right in the center of it all, leading chants and hugging everyone you can get your arms around.
- B.** Snapping pictures! Your new sisters will want to remember this day for the rest of their lives.
- C.** Greeting new members individually. You can't wait to get to know each one on a personal level.

**It's time for executive council elections. Which position are you running for?**

- A.** Public relations vice president – You're passionate about making your chapter truly shine in the community.
- B.** Administrative vice president – Organization and responsibility are the keys to a successful chapter.
- C.** Education vice president – You're excited to help your chapter understand the importance of sisterhood, scholarship and ritual.

**Your presentation group is arguing about the topic for your school/work project, but you know your idea is the best. What do you do?**

- A.** Explain the pros and cons behind each of the topic options, allowing the group to see why choosing your topic is the way to go.
- B.** Participate in the conversation, but thoughtfully take everyone else's opinions into consideration. You've been wrong before – someone else's idea could be better!
- C.** Propose a vote. Suggest that each person explains the merits of their topic; then the group will vote on which topic they think is best.

**Your group school/work project didn't go over very well. What's your next step?**

- A.** Ask your professor/supervisor if you can serve as the group leader next time. Collaboration is important to a project, but a group leader taking charge may help streamline the processes.

- B.** Ask your professor/supervisor if she can break up the next project into pieces that can be tackled independently by group members according to their strengths.
- C.** Host a meeting with your group to discuss what went well and what can be improved next time. You like to learn from your mistakes.

**One of your friends is really upset. What do you do?**

- A.** Gather a big group of sisters to take her out and cheer her up. Nothing a little fun can't fix!
- B.** Ask her what you can do to help her feel better. Maybe a shopping spree would perk her up; maybe she would prefer to stay in and watch a movie. You never know until you ask.
- C.** Print out your favorite picture of the two of you and put it in a fun frame to give to her. Reminding her that she has a true and constant friend will brighten her day.

**Your local Girls on the Run Council is hosting their annual 5k. How do you help out?**

- A.** Be a running coach – You're excited to serve as a role model to a group of young girls.
- B.** Work the registration and t-shirt table – Making sure check-in runs smoothly will help the event be a huge success.
- C.** Cheer girls on during the race – Runners will need a little extra encouragement for that last mile!

**Which set of words best describes you?**

- A.** Passionate, creative, positive.
- B.** Considerate, responsible, objective.
- C.** Reliable, motivated, attentive.

*While many people fit easily into one leadership style, it is important to develop many different types of leadership skills to become a responsible, ethical and authentic lifelong leader. You can find additional personality assessments, blog posts, videos, articles and more by visiting [GammaPhiBeta.org/REALLeadershipOnline](http://GammaPhiBeta.org/REALLeadershipOnline).*

**Mostly A's: The Bold Leader**

You enjoy coming up with innovative ways to improve your projects and yourself, and you are admired for your ability to motivate those around you. Bold Leaders are often natural-born leaders and find it easy to take on different leadership positions; but be careful – some may find your leadership style intimidating. You may need to work on accepting suggestions from others and knowing when it's okay to let others take the lead.

**Mostly B's: The Fair Leader**

Your friends love you for being the voice of reason. You are organized and can always be counted on to produce quality work. Your ability to approach conflict with a level head makes you a great leader for any team. While the Fair Leader is valued for her reasoning skills, she can often be afraid of stepping on other peoples' toes. The Fair Leader may need to work on suggesting new approaches to solve difficult problems and speaking up when she feels passionately about something.

**Mostly C's: The Lead-by-Example Leader**

People look to you in difficult situations. You are thoughtful in the way you interact with others and conscious of the results that will come of your decisions. Your greatest weakness can often be your stubbornness to open yourself up to negative feedback. Since the Lead-by-Example Leader is often methodical in planning ahead, unforeseen change can shake her resolve. Allow yourself to be open to constructive criticism and be flexible with your plans – these factors play an integral part in learning to lead.



*'Tis the season for*  
**SAVINGS!**



**GEICO®**



**Gamma Phi Beta sisters could save more with an additional discount on auto insurance!**

**Get a quote today!**

[geico.com/greek/GammaPhiBeta](http://geico.com/greek/GammaPhiBeta) • 1-800-368-2734

Some discounts, coverages, payment plans and features are not available in all states or all GEICO companies. Discount amount varies in some states. One group discount applicable per policy. Coverage is individual. In New York a premium reduction may be available. GEICO is a registered service mark of Government Employees Insurance Company, Washington, D.C. 20076; a Berkshire Hathaway Inc. subsidiary.

GEICO Gecko image © 1999-2014. © 2014 GEICO



# Panhellenic Excellence: Gamma Phi Beta's Panhellenic Award Winners

At each Convention, three awards are given that are named after Gamma Phi Beta's National Panhellenic Council Chairmen to-date – Lillian Thompson (Michigan, 1892), Beatrice Locke Hogan (Oregon, 1912) and Elizabeth "Betty" Ahlemeyer Quick (Indiana). Find out more about our Lillian Thompson and Beatrice Locke Hogan Award winners below. Special recognition also goes out to Epsilon Eta Chapter (Bridgewater State), winner of the Elizabeth A. Quick Panhellenic Leadership Award, for making outstanding contributions to their local Panhellenic council.



## **Franchesca McDowell (Oklahoma City), Lillian Thompson Award Winner**

Named after Gamma Phi Beta's first Chairman of the National Panhellenic Conference (NPC), the Lillian Thompson Award honors a collegiate member whose outstanding individual contribution to a collegiate Panhellenic exemplifies the ideals within the interfraternal system and community. Franchesca McDowell (Oklahoma City) was named 2012-14's Lillian Thompson Award winner at Convention 2014 in Seattle, Washington.

Franchesca's term as Panhellenic president at Oklahoma City University was anything but ordinary – the Greek community had voted to open for extension, hoping to add a new NPC organization to campus. Franchesca led the extension committee and Panhellenic council through the entire extension process and, ultimately, Phi Mu was established on campus in fall 2013.

Oklahoma City University Panhellenic advisor Lee Hall shared her pride in Franchesca's poise and dedication during her term: "Franchesca is respected by her peers. She has all of the qualities we hope to find in a sister. She is most worthy of being chosen for this award."

"It is essential for Gamma Phi Betas to be involved with their local Panhellenic council," says Franchesca. "It is important to remember that Greek life would not exist without the involvement of the other NPC organizations."

Franchesca also served as Beta Omicron Chapter's (Oklahoma City) president. She is a junior studying marketing and moving image arts.



## **Missy Wagner (Purdue), Beatrice Locke Hogan Award Winner**

The Beatrice Locke Hogan Award – named after the second Gamma Phi Beta member to serve as NPC Chairman – is given each biennium to an alumna who exemplifies and promotes Panhellenic ideals within the alumnae Panhellenic

and local community. At Convention, Melissa 'Missy' Wagner (Purdue) was honored with this award.

Since Missy joined the Chicago Northwest Suburban Alumnae Chapter in 1996, she has shown her commitment to Gamma Phi Beta and the Panhellenic community through her dedicated service and leadership. Missy served as alumnae chapter president from fall 1999 to spring 2002, during which time Gamma Phi Beta's alumnae Panhellenic delegate for the Chicago Northwest Suburban Alumnae Panhellenic Association moved out of state. Missy volunteered to fill the role and has remained an active member of the association since. In the last 14 years, Missy has served 14 terms in various leadership positions, from scholarship banquet chair to president.

"Missy's work reminds us that in addition to keeping our lifetime commitment to Gamma Phi Beta, it is important to stay engaged with Panhellenic. In college, all the sororities had to work together to ensure the health of the Greek system, but now we choose to work together as alumnae because we know we are all dedicated to promoting the positive ideals of our founders," says Jenna Howen (Wisconsin-Milwaukee), regional coordinator-alumnae, Region 5. "We are so proud of the way Missy represents our alumnae chapter and Gamma Phi Beta."

"Gamma Phi Betas serving their local Panhellenic associations allows our voice to contribute to the future of all sororities," Missy says. "Fostering sisterhood across sorority lines strengthens all alumnae chapters, and making new friends along the way is a wonderful bonus!"



# SORORITY Life

It's collegiate and alumnae chapter updates – at a glance! Read all about our shining chapters across the continent and their recent activities. For submission guidelines, visit [GammaPhiBeta.org](http://GammaPhiBeta.org).

## Symbol Key:



## Region 1

### CONNECTICUT

#### ☪ Eta Theta Chapter (Connecticut)

After welcoming more than 70 new sisters into the chapter on Bid Day, chapter members spent the day in a sister's backyard getting to know one another with a cookout and private concert.

### DELAWARE

#### ☪ Eta Gamma Chapter (Delaware)

Sisters always have a blast going to Lewes Beach for their annual sisterhood retreat. The chapter also teamed up with Lambda Chi Alpha Fraternity to host a Watermelon Bash where teams participated in multiple activities involving watermelons such as watermelon smashing and relay races.

### MASSACHUSETTS

#### ☪ Epsilon Eta Chapter (Bridgewater State)

The Greek community came together for Homecoming and the chapter was proud to have five sisters representing Gamma Phi Beta in the Homecoming pageant.

Sisters were also excited to invite their families to the chapter's first annual Family Brunch.

#### ☪ Epsilon Phi Chapter (Bentley)

The chapter spent Homecoming enjoying Falcon football, eating fall cider doughnuts and celebrating Gamma Phi Betas old and new.

### NEW JERSEY

#### ☪ Bergen County Alumnae Chapter

Members participated in two philanthropic activities this fall – sisters volunteered for the Girls on the Run 5k at the Happy Hair Station and manned a water station at the 21st annual Spectrum for Living Walk to support individuals with developmental disabilities.

#### ☪ Princeton Alumnae Chapter

Sisters enjoyed an outing to Winterthur Museum to see "The Costumes of Downton Abbey" exhibition. Chapter members enjoyed seeing the costumes from the television show firsthand and discovering the historical relevance of the styles.

### NEW YORK

#### ☪ Alpha Chapter (Syracuse)

This fall, the chapter hosted its annual Crescent Classic. Despite the gloomy Syracuse weather, various organizations on campus participated in the fun-filled fitness competition to help raise money for Girls on the Run.

#### ☪ Epsilon Tau Chapter (Rochester)

Sisters enjoyed spending time with their parents at a tea party during Homecoming weekend.

### PENNSYLVANIA

#### ☪ Delta Kappa Chapter (Lehigh)

Sisters hosted their annual Crescent Classic volleyball tournament to support Girls on the Run. The Lehigh community came together to support Building Strong Girls with 22 teams participating in the event.

#### ☪ Zeta Epsilon Chapter (Duquesne)

The chapter hosted Walk Miles for Kids Smiles – an annual 5k walk/run around campus. Before the event, the chapter made sure to snap pictures together, especially with seniors to celebrate their last 5k with the chapter.

### ONTARIO

#### ☪ Greater Toronto Area Alumnae Chapter

The chapter was thrilled to kick off the year by teaming up with collegians from Alpha Alpha Chapter (Toronto) to support Girls on the Run Ontario at the Women on the Run 5k. The chapter also participated in Sacramento Valley Alumnae Chapter's Four-Mile Founders Run/Walk.

### QUEBEC

#### ☪ Alpha Tau Chapter (McGill)

On Bid Day, the chapter welcomed 29 new members – a record for the chapter! Sisters spent the day on McGill's Mount Royal together.

## Gamma Phi Beta Sorority by Regions



Alaska - Region 8  
Hawaii - Region 7

## Region 2

### DISTRICT OF COLUMBIA

#### ☪ Washington, D.C. Alumnae Chapter

The chapter held a business meeting and fundraiser with a representative from Party Light, a candle and candle accessories company. Proceeds from chapter sales benefitted Camp Fire Patuxent and Girls on the Run. The chapter hosted a Founders Day luncheon for all nearby sisters, including those from Fairfax Alumnae Chapter, Northern Virginia Alumnae Chapter and Epsilon Pi Chapter (George Mason).





**Region 1** | Members of Boston Alumnae Chapter showed their Gamma Phi Beta pride at the finish line of Mudderella, a 7k obstacle course designed to empower women to show their physical and mental strength. Members set up personal fundraising Web pages for the race to raise money for Girls on the Run.

## FLORIDA

### 🌸 Beta Mu Chapter (Florida State)

This fall, the chapter initiated 82 new members including nine legacies. The new members were excited to learn the traditions and values of Gamma Phi Beta that sisters hold so close to their hearts.

### 🌸 Eta Eta Chapter (South Florida)

The chapter started off the school year strong by welcoming 53 new sisters on Bid Day. Shortly after, members enjoyed a 90s-themed sisterhood event. This fall, the chapter also held its second annual Chili Cook-Off to support their local Girls on the Run chapter.

### 💖 Emerald Coast Alumnae Chapter

The chapter participated in the American Heart Association's Heart Walk in Niceville, Florida, this fall. They raised \$300 to donate to the American Heart Association and had a great day walking and giving back to the community.

### 💖 Greater Miami Alumnae Chapter

Sisters gathered not once, but twice, to collect school supplies for children and teens in need before the start of the school year to donate to the Covenant House in Fort Lauderdale. The Covenant House's mission is to provide shelter and service to children and youth who are homeless or at great risk.

### 💖 Naples Alumnae Chapter

The chapter collected supplies to donate to the Shelter for Abused Women and Children in Naples. Sisters also celebrated Founders Day over brunch.

### 🌸 Tampa Bay Alumnae Chapter

This fall was a busy one for the chapter, starting with a lovely luncheon and meeting in September and a kickoff business meeting in October, which was followed by a PACE program about organization. Several members participated in the Making Strides Against Breast Cancer Walk and the chapter held its annual garage sale.

## SOUTH CAROLINA

### 🌸 Epsilon Theta Chapter (Clemson)

The chapter hosted its first campus-wide Lip Sync competition and fundraiser. Sisters love to raise money for our philanthropic partners, especially because they get to work hand-in-hand with their local Girls on the Run council!

### 💖 Zeta Zeta Chapter (Coastal Carolina)

During the chapter's annual "Think Pink" week, sisters raised awareness for breast cancer by raising money for a local organization, Caring in our Lifetime. Sisters also participated in multiple Girls on the Run activities, including a fundraiser at a local restaurant.

## TENNESSEE

### 🌸 Eta Kappa Chapter (Tennessee-Chattanooga)

The chapter held its first annual Crescent Classic this fall. The carnival-themed event raised more than \$4,200 for Girls on the Run and Camp Fire.

## VIRGINIA

### 🌸 Fairfax County Alumnae Chapter

Sisters celebrated the beauty of fall with an outing at a local orchard. The group picked apples, pumpkins, squash and other veggies, followed by lunch at The Apple House – a Shenandoah Valley landmark.



**Region 1** | Delta Mu Chapter (Rutgers) hosted its fifth annual Crescent Classic. Fraternities, sororities and organizations across campus were invited to compete in volleyball, dodgeball and basketball. The proceeds from the event supported Building Strong Girls.



**Region 2** | This fall, Alpha Chi Chapter (William & Mary) hosted its annual philanthropy event, Gamma Phire. Sisters sold tickets to the community to enjoy bonfires, s'mores, baked goods and live entertainment. The chapter was able to break its record for money raised for Camp Fire!



## Region 3

### ALABAMA

#### ☪ Epsilon Lambda Chapter (Alabama)

Sisters are eagerly awaiting the completion of their new chapter house. The house will consist of four floors, a coffee shop and a grand chapter room. The house is expected to be finished in April 2015.

#### ☪ Birmingham Alumnae Chapter

The chapter celebrated Founders Day at The Melting Pot. Members enjoyed dinner and sisterhood while honoring our Founders.

### GEORGIA

#### ☪ Zeta Omega Chapter (Kennesaw State)

Sisters spent a weekend in the beautiful north Georgia Mountains at the Amicalola Falls Lodge for a sisterhood retreat. The chapter had a great time creating skits, setting goals and bonding with one another.

## Region 4

### INDIANA

#### ☪ Beta Pi Chapter (Indiana State)

This fall, a house dedication was held for the chapter's new housing facility, Reeve Hall, at Indiana State University. Many Beta Pi alumnae, volunteers and International Headquarters representatives were able to attend the event to help sisters celebrate their new home.

#### ☪ Beta Phi Chapter (Indiana)

The chapter hosted its inaugural GloRun to raise money for Girls on the Run. The event included food, a bounce house and a 3k run with paint and glow sticks.

#### ☪ Delta Iota Chapter (Purdue)

Sisters were excited to welcome 51 new members into the chapter! They celebrated with a flower power-themed Bid Day. Big Sisters met their Little Sisters and gave them matching flower headbands.

### MICHIGAN

#### ☪ Delta Omega Chapter (Oakland)

Twenty-nine new members were welcomed into the chapter after recruitment. The fall was filled with exciting sisterhood events such as a haunted hayride, a trip to the cider mill and a Halloween movie night.

#### ☪ Lansing Area Alumnae Chapter

The chapter recently held its fall Coffee and Carnations event where sisters had the chance to catch up with one another. Members also celebrated Founders Day with **Beta Delta Chapter (Michigan State)**.

### OHIO

#### ☪ Beta Xi Chapter (Ohio State)

Sisters met on the Oval early on a Saturday morning for yoga. The time was used for relaxation in the midst of midterms, promoting sisterhood and recognizing the importance of exercise as a stress reliever. Sisters also started writing letters to be read at chapter to show appreciation for one another.

#### ☪ Cleveland East Alumnae Chapter

The chapter enjoyed a pizza party and business meeting. At the meeting, donations were collected for a women's shelter in support of the Cleveland Alumnae Panhellenic Association's philanthropy. Sisters also made ribbon wreaths at a craft night.

## Region 5

### ILLINOIS

#### ☪ Beta Eta Chapter (Bradley)

During formal recruitment this fall the chapter was excited to welcome 36 new members. Big Sisters also celebrated Little Sisters with a week full of sisterhood and surprises.

#### ☪ Chicago Alumnae Chapter

In honor of Sally Erikson Lewis' (Bradley) 80th birthday, Dr. Ruth Seeler (Vermont) established a leadership endowment for **Beta Eta Chapter (Bradley)** collegians.

#### ☪ Chicago Northwest Suburban Alumnae Chapter

The chapter held a "Virtual Sisterhood Walk" to benefit Girls on the Run and the Gamma Phi Beta Foundation. Sisters also participated in fundraising for their local Panhellenic association and celebrated Founders Day with the **Chicago Alumnae Chapter** and **Chicago Far West Suburban Alumnae Chapter**.

### IOWA

#### ☪ Rho Chapter (Iowa)

Sisters were excited to host their annual philanthropy event which helped raise money for Children's Cancer Connection. An invitation was extended to the entire campus community to come enjoy delicious grilled cheese and tomato soup on a lovely fall afternoon for a good cause.

#### ☪ Omega Chapter (Iowa State)

The chapter took first place in Iowa State University's Homecoming activities, thanks in part to having the most participation of any Greek organization during the blood drive.

#### ☪ Gamma Psi Chapter (Northern Iowa)

The chapter raised more than \$6,000 for Building Strong Girls during their annual Crescent Classic Golf Tournament.

#### ☪ Cedar Rapids Alumnae Chapter

Sisters gathered to congratulate Sara Fry Howard (Kansas) on 50 years of membership and to bid farewell to Ann Menzner Kiesling (Northern Iowa), who is moving to Lake Forest, Illinois.

### MINNESOTA

#### ☪ Kappa Chapter (Minnesota-Twin Cities)

The chapter hosted a high tea-themed Crescent Classic this fall. Members of the community came together to drink tea, eat pastries and raise money for Girls on the Run.

#### ☪ Gamma Pi Chapter (Minnesota State-Mankato)

The chapter was proud to welcome 22 members into their sisterhood. Sisters also hosted their Crescent Classic event this fall.

#### ☪ Gamma Mu Chapter (Minnesota State-Moorhead)

The chapter celebrated Halloween by hosting Gammaween at the chapter facility. The event was held the day before Halloween and sisters watched festive movies, enjoyed spooky desserts and gave each other fun makeovers. Sisters loved seeing one another dressed up in fun costumes.

### WISCONSIN

#### ☪ Gamma Rho Chapter (Wisconsin-Oshkosh)

The chapter had a successful recruitment, welcoming home 19 new members, busting Quota and exceeding Total. Sisters cannot wait to see how the new members will help the chapter grow.

## Region 6

### COLORADO

#### ☪ Theta Chapter (Denver)

The chapter hosted a booth at the Hot Chocolate 15k/5k to spread the word about Girls on the Run! Sisters were also running buddies for The Great Candy Run, a Girls on the Run 5k held in Denver.



#### ☪ Tau Chapter (Colorado State)

Sisters enjoyed a fun-filled photo shoot before a successful recruitment – the chapter welcomed 60 new members on Bid Day!

#### ☪ Beta Rho Chapter (Colorado-Boulder)

The chapter had a wonderful recruitment and Bid Day. Sisters are especially excited to welcome many legacies into the chapter, some of whom are third generation Gamma Phi Betas. Sisters are proud to help the tradition of Gamma Phi continue through these families. The chapter also won first place during Homecoming!

#### ☪ Denver Alumnae Chapter

Sisters were falling in love with fall in Denver! Members attended a ghost tour and found their way through a corn maze. Spending time with **Theta Chapter (Denver)** during recruitment and Homecoming was also a treat for alumnae!

### KANSAS

#### ☪ Beta Upsilon Chapter (Kansas State)

Sophomore Katie VanDever (Kansas State) was named 2015 K-State Student Ambassador at the University's Homecoming football game. She will represent the student body at Alumni Association events and University activities. The chapter also placed third overall in the Homecoming competition.

#### ☪ Beta Chi Chapter (Wichita State)

The chapter hosted its first Gamma Phive k this fall. More than 300 runners participated in the walk/run and the chapter raised more than \$6,000 for Girls on the Run.

#### ☪ Wichita Alumnae Chapter

Sisters spent an evening learning some life-saving skills from sister Cindy Cushing Coughenour (Wichita State), owner of Fearless and Female, after their fall business meeting. Members also grabbed their paint brushes for a sisterhood event at Paint the Towne, where they painted pictures complete with a crescent moon.

### MISSOURI

#### ☪ Delta Nu Chapter (Missouri State)

The fall semester was busy for the chapter. After a successful recruitment, the chapter initiated 63 members – its largest class yet. During Homecoming, their float took second place and Panhellenic Vice President Libby Shannon (Missouri State) ran for Homecoming queen.

#### ☪ Eta Iota Chapter (Rockhurst)

Sisters got in touch with nature by staying overnight at a campground for their sisterhood retreat this fall. Members showed support for each other by writing notes of appreciation and encouragement. At the end of the night, time was spent bonding and laughing around the campfire.

### NEBRASKA

#### ☪ Pi Chapter (Nebraska-Lincoln)

The chapter was proud to co-host their annual event, Do It Sober, in loving memory of sister Laura Cockson (Nebraska-Lincoln, 1996). The event raises awareness among students about drinking culture, associated risks and how to have fun responsibly through an interactive speaker.

#### ☪ Gamma Kappa Chapter (Nebraska-Kearney)

The chapter welcomed 39 new members on Bid Day. New members were excited to learn about Gamma Phi Beta before Initiation.

#### ☪ Lincoln Alumnae Chapter

Sisters celebrated Andrea Green Hines (Nebraska-Lincoln) at her baby shower. Chapter members also visited **Pi Chapter (Nebraska-Lincoln)** to share why Gamma Phi Beta is so dear to their hearts.

#### ☪ Omaha Alumnae Chapter

Sisters spent an enjoyable evening painting striking landscapes at a local paint gallery. The paintings featured a bright crescent moon in a beautiful night sky.

### OKLAHOMA

#### ☪ Psi Chapter (Oklahoma)

The chapter hosted its 26th annual Chili Cook-Off this fall. The competition is the oldest and largest philanthropic event on campus. All proceeds raised benefit the United Way of Norman.

#### ☪ Beta Omicron Chapter (Oklahoma City)

Sisters welcomed new Little Sisters into their Gamma Phi Beta families this fall. The new Big Sisters anxiously waited two long weeks until the day of Big/Little reveal. The chapter celebrated with a "Breakfast at Tiffany's" – themed sisterhood event.



**Region 3** | Zeta Chi Chapter (Texas Christian) sisters had a blast at their fall formal, held at Ranger's Stadium in Arlington, Texas.



**Region 4** | Sisters of Zeta Omicron Chapter (John Carroll) participated in the American Cancer Society's Making Strides against Cancer. The three-mile race took place at the Cleveland Metropark Zoo. The team raised \$1,080 for cancer research.



**Region 6** | Sisters of Epsilon Delta Chapter (Creighton) enjoyed a weekend of bonding during their annual fall sisterhood retreat in Papillion, Nebraska.





**Region 7** | Members of Bakersfield Alumnae Chapter collected toys, DVDs, craft supplies and books to be donated to the Lauren Small Children's Medical Center. Several sisters personally delivered the items to the hospital and were happy to spread cheer to a few children.



**Region 7** | San Diego Alumnae Chapter sisters met for their annual sisterhood luncheon at their favorite Mexican restaurant. Members gave updates from Convention, caught up with old friends and met new sisters.

## Region 7 CALIFORNIA

### 🌸 Beta Alpha Chapter (Southern California)

The chapter hosted a jukebox-themed event at the Border Grill in downtown Los Angeles. Attendees dressed in costumes representing different genres of music – country, disco, hip-hop and grunge. Sisters also participated in Kicks for Kids, hosted by members of the LA Galaxy. The event aimed to promote healthy lifestyles for children with special needs through soccer.

### 🌸 Beta Lambda Chapter (San Diego State)

The chapter hosted a fun sisterhood retreat at California Adventure Park in Anaheim, California. Sisters were also happy to welcome 70 new members on Bid Day.

### 🌸 Delta Delta Chapter (California State-Fullerton)

The chapter had a very successful recruitment, welcoming 71 new members into the chapter with a country-themed Bid Day. The chapter has also been enjoying time with new members through retreats, sisterhood events and philanthropy events.

### 🌸 Delta Theta Chapter (California Polytechnic State)

Sisters were excited to welcome 89 new members into the chapter. The chapter also celebrated its 40th anniversary and honored Rosemary Talley (California-Berkeley) who

was instrumental in the chapter's installation and has been involved with the chapter since its start.

### 🌸 Delta Lambda Chapter (California-Riverside)

The chapter kicked off the school year with a memorable Bid Day and welcomed 51 new members. At the beach, sisters enjoyed kayaking, watching the sunset and expanding their sisterhood at yet another fun-filled fall retreat.

### 🌸 Delta Phi Chapter (California-Bakersfield)

Members had a blast at a sisterhood retreat this fall at Shaver Lake where they enjoyed activities such as paddle boarding and canoeing. Sisters also stayed in a three story cabin where they had multiple sisterhood events and a breakfast specially prepared by the executive council for the chapter.

### 🌸 Delta Psi Chapter (California-Santa Barbara)

The chapter hosted its annual Crescent Classic pancake breakfast and raised more than \$9,000, which will be donated to Building Strong Girls and local Santa Barbara county organizations for girls. Sisters also wish to thank Recruitment Advisor Cinda Lucas (California - Santa Barbara) for dedicating her time and effort to the chapter's success.

### 🌸 Epsilon Gamma Chapter (San Diego)

The chapter's fall retreat was held at the UCSD Outback Adventure Ropes Course. The experience allowed sisters to encourage

and support one another, ultimately strengthening the overall trust and cooperation within the chapter. Sisters also partnered with Sigma Pi Fraternity to clean up Mission Beach.

### 🌸 Epsilon Nu Chapter (Chapman)

The chapter's annual philanthropy event, Airbands, sold out both nights this year! Twelve Greek and non-Greek teams participated. Judges included Dean of Students Jerry Price, actress Liana Liberato, Girls on the Run Board Chair Tanya Jordan (Purdue) and Regional Coordinator Stephanie King (California-Riverside).

### 🌸 Pasadena Alumnae Chapter

The chapter kicked off the year with a western barbecue-themed dinner, attended a Founders Day celebration with more than 800 collegians and alumnae from Southern California and enjoyed their annual holiday party with good food and a gift exchange.

## HAWAII

### 🌸 Hawaii Alumnae Chapter

The chapter received both the Diamond and Founders Circle of Excellence awards. Past Chapter President Betty Bussey Demarke (San Diego State) and Treasurer Marilyn Killebrew Picard (Bowling Green) deserve special recognition for their organizational skills and tireless efforts in the development and progress of the chapter.



## Region 8 CALIFORNIA

### ♥ Epsilon Kappa Chapter (California State-Chico)

This fall, the chapter hosted a philanthropy event with all-you-can-eat nachos, a DJ and the Major League Baseball World Series game on television. The chapter raised more than \$1,500 in just two hours!

### ◆ Diablo Valley Alumnae Chapter

During the first meeting of the fall, sisters met to elect new officers, share information about recruitment at **Eta Chapter (California-Berkeley)**, discuss upcoming activities and enjoy a wonderful pizza dinner prepared by the hostess's husband in an Italian pizza oven. It was a productive and delicious day! Sisters also decorated pumpkins for an assisted living complex.

### ◆ Sacramento Valley Alumnae Chapter

The chapter hosted an elegant tea party. More than 20 guests enjoyed a wide variety of British tea party staples as well as cookies decorated with their favorite Greek letters – ΓΦΒ!

### ◆ South Peninsula Alumnae Chapter

Sisters celebrated the 50th anniversary of the chapter's charter with a weekend of activities. A gathering was hosted at the home of a member and a dinner the following evening at a local restaurant. The next morning, sisters gathered for a brunch at another member's home. Former members of the chapter who had moved away traveled from all over the continent to attend.

## OREGON

### ◆ Nu Chapter (Oregon)

This fall, sisters welcomed 75 new members into the chapter while rain poured down over their beach-themed Bid Day. This new member class is one of the largest in the chapter's history and sisters are thrilled to welcome so many new women into our circle of sisterhood.

## WASHINGTON

### ◆ Lambda Chapter (University of Washington)

Sisters pride themselves on their strong alumnae relations. The chapter hosted a trick-or-treat event and enjoyed seeing alumnae celebrate Halloween with their children. Sisters dressed up in costume and handed candy out to kids around their chapter facility, giving alumnae the opportunity to mingle with one another.

### ◆ Gamma Epsilon Chapter (Puget Sound)

The chapter participated in an 80s-themed Greek Week. Members had a blast attending events such as trivia, a Greek-wide barbecue and Lip Sync. The chapter also implemented a program where one sister each week is named "Gammie of the Week" to celebrate her accomplishments.

## BRITISH COLUMBIA

### ◆ Alpha Lambda Chapter (British Columbia)

The chapter loves the 40 new members they recruited this fall – a chapter record. The chapter also hosted a film festival to raise money for Girl Guides of Canada and made more than \$2,100.

Email your chapter  
news to [TheCrescent@  
GammaPhiBeta.org](mailto:TheCrescent@GammaPhiBeta.org)

# Sisterhood.

*Wrapped around your wrist, fastened to your heart.*



Check out our full line at [www.collegejewelry.com](http://www.collegejewelry.com)





# SUPPORTERS OF THE *Heart*



GAMMA PHI BETA  
FOUNDATION

Named endowments are an impactful way to create a legacy in your area of passion. Most endowments require a minimum gift of \$25,000 and can be paid over a five-year period. An endowment fund for Gamma Phi Beta provides continuous support in perpetuity for various programs and services, including benefiting a specific chapter, providing financial aid, gifting leadership education or supporting the current areas of greatest need.

*Thank you to the generous support of members and friends for partnering with the Gamma Phi Beta Foundation through the creation of the following endowments:*

50th Anniversary General Fund Endowment  
Lois Abbott Delta Psi Chapter Collegiate Advisor Development Endowment  
Alpha Chapter Scholarship Endowment  
Alpha Omicron Chapter Endowment  
Tiffany Barnard Andres Leadership Education Endowment  
Elizabeth Fee Arnold and Beatrice Hill Wittenberg Scholarship Endowment  
Josephine T. Robinson Ballard and Katherine Trice Wenig Psi Chapter Scholarship Endowment  
Lindsey Barbee Fellowship Endowment  
Lynne Abdnor Barnett Beta Rho Chapter Scholarship and Fellowship Endowment  
Beta Alpha Chapter Collegiate Advisor Development Endowment  
Beta Alpha Chapter Scholarship Endowment  
Beta Chapter Fellowship Endowment  
Beta Lambda Chapter Leadership Endowment  
Beta Lambda Chapter Scholarship and Fellowship Endowment  
Beta Omicron Chapter Scholarship and Fellowship Endowment  
Beta Upsilon 1959 Pledge Class Endowment in Honor of Suzanne Thies Foster, Martha Steps Frank and Judy Mai Millen  
Beta Upsilon Chapter "Celebrating Our Past, Ensuring Our Future" Leadership Endowment

Rosemary Stone Bunn Beta Mu Chapter Collegiate Advisor Development Endowment  
Mary Ellen Porter Burchfield Omega Chapter Scholarship and Fellowship Endowment  
Ruth Hillman Carter Scholarship and Fellowship Endowment  
Shelley Alford Chandler International Convention Endowment  
Gayle Christiansen Scholarship and Fellowship Endowment  
Laurel Blair Salton Clark, M.D. Memorial Leadership Endowment  
Collegiate Advisor Development Endowment  
Connect. Impact. Shine Leadership Endowment  
Laura Frances Cottingham Scholarship Endowment  
Dallas Alumnae Chapter Alpha Xi Scholarship Endowment  
Paula Janis Dean General Fund Endowment  
Delta Tau Chapter Scholarship Endowment in Honor of Gretchen Oostenink  
Denver Alumnae Chapter Fellowship Endowment  
Vera Virginia Hill Thayer Dick Scholarship Endowment  
Ellender Dickson Scholarship Endowment  
Evelyn Gooding Dippell Leadership Development Endowment  
Loreen Mohler Dorsey Scholarship Endowment  
Susan Schlessman Duncan Scholarship Endowment  
Eta Chapter Elender Dickson Financial Aid Endowment  
Eta Chapter Scholarship Endowment in Memory of Michelle Bernadette Gaudier Yaeger  
Eta Gamma Chapter Financial Aid Endowment in Honor of Joanne Meloro  
Eta Zeta Chapter Scholarship Endowment in Memory of Jessica Galley

Lee and Virginia Hoots Evans Special Camping Endowment  
Evanston North Shore Alumnae Epsilon Chapter Financial Aid Endowment  
Dr. Deborah Floyd Fellowship Endowment  
Terry S. Foster Scholarship and Fellowship Endowment  
Ruth B. Fox Scholarship Endowment  
Jane Benton French Leadership Convention Endowment  
Jane Benton French Leadership Education Endowment  
Jane Benton French Scholarship and Fellowship Endowment  
Jane Benton French Sigma Chapter House Memorial Endowment  
Irma Latzer Gamble Scholarship Endowment  
Josephine Hall Graham Scholarship Endowment  
Cathy B. Griffin Leadership Endowment in Loving Memory of Rita T. Boudreaux  
Cheryl D. Gunter Sorority History Endowment  
Dr. Sue M. Hall and Mrs. Jean Hall Dugher Camping Endowment  
Virginia Harris Hammond Endowment  
Betty Luker Haverfield Scholarship Endowment  
Fern Holcomb Heath Financial Aid Endowment  
Eleanor Garm Hemminger Financial Aid Endowment  
Dorothy Taylor Henderson Scholarship and Fellowship Endowment  
Virginia Griffin Hickey Memorial Leadership Education Endowment  
Becky Hilger Gamma Phi Beta Sisterhood Scholarship Endowment  
Shirley A. Hill Scholarship and Fellowship Endowment  
Tucky Wheeler Hobbs Endowment  
Bunny Hodas Beta Delta Chapter Legacy of Service Endowment  
Dorothy Somers Hoeft Memorial Scholarship Endowment  
Roger and Mary Hoffmann Scholarship Endowment



Barbara Hurt-Simmons Collegiate Leadership  
Consultant Endowment  
Betty Mae Conner Jones Psi Chapter Leadership Endowment  
Helen Griffiths Kaiser Scholarship Endowment  
Kappa Chapter Financial Aid Endowment  
Karen and Tom Kline "Joined by the Heart" Endowment  
Ladyfood Scholarship Endowment  
Lambda Chapter Scholarship Endowment  
Leadership Development Endowment  
Sally Erikson Lewis Leadership Endowment  
Lindauer Legacy Endowment  
Little Blue House Scholarship and Fellowship Endowment  
Cinda Keating Lucas Beta Lambda or Epsilon Gamma  
Chapter Collegiate Advisor Development Endowment  
Lenore Markham and Cinda Keating Lucas Collegiate  
Leadership Endowment  
Katie Lunn "Keep the Smile Alive" Memorial Scholarship  
and Fellowship Endowment  
Ardis McBroom Marek Scholarship Endowment  
Corinne Y. Martinez Eta Chapter Collegiate  
Advisor Development Endowment  
Virginia Place Myer and Charles Myer III  
Convention Endowment  
Naples Area Alumnae Chapter Scholarship  
and Fellowship Endowment  
Sandra Rettke Nauman, Diana Nauman Wilcher,  
Louise de Waart Nauman Scholarship and  
Fellowship Endowment  
New Chapter Leadership Endowment  
Northern Virginia Grant-in-Aid Endowment  
Cherie M. Olsen Rho Chapter Fellowship Endowment  
Linda Daniel Johnson Endowment in Honor  
of Past Foundation Chairs  
Bonnie Payne General Fund Endowment  
Marion Kaeser Piper Museum Endowment  
Helen Ward Pustmueller Museum Endowment  
Elizabeth Ahlemeyer Quick Gamma Phi Beta  
Scholarship Endowment (NPC)  
Elizabeth Ahlemeyer Quick Scholarship Endowment  
Orra Spencer Reid Scholarship Endowment  
Rho Chapter Scholarship Endowment  
L'Cena Brunskill Rice Collegiate Advisor  
Development Endowment  
Suzanne Sames Alpha Delta Chapter  
Scholarship Endowment  
Susan Grant Schneider Scholarship and  
Fellowship Endowment  
Ruth Andrea Seeler, M.D. Collegiate Leadership  
Consultant Endowment  
Ruth Andrea Seeler, M.D. Scholarship and  
Fellowship Endowment

Senior Carnation Appeal Endowment  
Audrey Weldon Shafer Fellowship Endowment  
Marjory Mills Shupert Endowment  
Dru Sjodin Alpha Beta Chapter Scholarship Endowment  
Geraldine Epp Smith Camping Endowment in Honor  
of Polly Shannon Bangert and Grace Stemme  
June Williams Smith Xi Chapter Scholarship  
and Fellowship Endowment  
Mary Jane Soechtig Rho Chapter Financial Aid Endowment  
Barbara B. and Jimmie E. Steidinger Gamma Chi  
Chapter Scholarship Endowment  
Joyce Canavan Stewart Scholarship and  
Fellowship Endowment  
Jolene Lessard Stiver Leadership Endowment  
Benefitting New Chapters  
Charlotte Brightman Stone Leadership Endowment  
Rosemary Clinebell Thomson Endowment  
Louise B. Tillotson Alpha Epsilon Chapter  
Scholarship Endowment  
Mary L. Vanier Beta Upsilon Chapter Collegiate  
Advisor Development Endowment  
Mary L. Vanier Beta Upsilon Chapter  
Scholarship Endowment  
Virginia Forsythe Vint Scholarship and  
Fellowship Endowment  
Susan A. West Scholarship and Fellowship Endowment  
Greta Weston Philanthropy Endowment  
Evelyn Wiley Alpha Rho Chapter Financial  
Aid Endowment  
Kathryn Herbert Winchester Scholarship Endowment  
Katie Woodard and Tari Vickery Scholarship Endowment  
Kathryn Allen Woodward Greater Kansas City  
Alumnae Scholarship Endowment  
Gretchen Young Beta Psi Chapter Scholarship Endowment  
Noreen Linduska Zahour Scholarship Endowment

*Thank you to those members and friends of  
Gamma Phi Beta who support our mission through  
thoughtful estate planning with the following  
endowments established in their wills:*

Janice Wendler Batt Xi Chapter Financial Aid Endowment  
Delta Chapter Convention and Leadership Endowment  
Dr. Judy E. Graham and Neal C. Griffith  
Fellowship Endowment  
Melanie Ann Kelsey Fellowship Endowment  
Melanie Ann Kelsey Leadership Endowment  
Ann Vurgason Smith Scholarship Endowment  
Jane K. Todd Leadership Endowment

## **DR. RUTH ANDREA SEELER, M.D. COLLEGIATE LEADERSHIP CONSULTANT ENDOWMENT**

In 2003, Dr. Ruth  
Seeler (Vermont)  
generously established  
a collegiate leadership  
consultant (CLC)



endowment. Her gift  
will forever fund a significant portion of  
the annual expenses for one traveling  
consultant. Ruth has left a legacy of  
inspiration for Gamma Phi Beta.

"Many donors have endowed financial aid  
to provide perpetual funding for educational  
support. In my opinion, the collegiate  
leadership consultant program has proved  
its worth over many years and is a perfect  
choice for a major gift," Ruth said.

The opportunity to name a CLC  
endowment is available for more visionary  
leaders. Ruth hopes to motivate others to  
also leave a legacy of giving to strengthen  
our Sorority.

For more information regarding  
donating to the CLC program or  
establishing an endowment, please  
contact Kitty L. deKieffer at [kdekieffer@  
gammaphibetafoundation.org](mailto:kdekieffer@gammaphibetafoundation.org) or  
720.457.1279.



# Memorial Gifts

We acknowledge the following individuals and groups who contributed to the Gamma Phi Beta Foundation in memory of a loved one as of October 31, 2014. Lists are printed as received from the Foundation.

**Elise Pritchett Alexander**  
(Vanderbilt, 1938)

Sue Dorsey Durrett

**Sherry Ward Dyce Barba**  
(Colorado-Boulder, 1954)

Louise Warren Glynn

**Kathleen "Ann" Brasfield**  
**Beier** (Denver, 1944)

Jacquelyn Graves

**Helen Dent Bond**  
(West Virginia, 1959)

Barbara Tucker Bucy

**Geraldine Lilie Brischetto**  
(Missouri-Columbia, 1939)

Patricia McGahey Henderson

**Arliss Davis, mother-in-law of**  
**Krista Spanninger Davis**

Barbara Weiss Boenzli  
Sandy Burba  
Kitty L. deKieffer  
Julie Dunn Eichenberg  
Cathy B. Griffin  
Laurie Veldhuizen

**Silvio Gerbi, father of**  
**Denise Gerbi Leath**

Evanston North Shore  
Alumnae Chapter

**Jake Lane Giles, father of**  
**Betsy Giles Glenn**

Fraya Lynn Black

**Marti-Lou Workman Glover**  
(West Virginia, 1961)

Barbara Tucker Bucy

**Barbara Work Hagenson**  
(Iowa, 1952)

Sally E. Lewis

**Brandi Renee Hennessey**  
(Oklahoma City, 1993)

Beth Dukleth  
Stephanie Kammer  
Robin Miller  
Sarah Patterson  
Becky Salter  
Carla Shinn  
Keely Tidrow  
Stephanie Torbik  
Jennifer Wallis

**Judith Ann Smith Hill**  
(Oregon State, 1962)

Patricia May Shaw Gaunt

**Harriette Harcum Hobbes**  
(William & Mary, 1952)

Margery Wiltamuth

**Jerry L. King, mother of**  
**Shellie King Hodges**

Sandy Burba  
Linda Daniel Johnson  
Susan M. Lupo

**Darwin Klinetob, husband of**  
**Judy Naujkos Klinetob**

Houston Alumnae Chapter

**Wayne Krueger, father-in-law of**  
**Megan Byrne Krueger**

Cathy B. Griffin

**Barbara Grim Littlefield**  
(Maryland, 1964)

NW Phoenix Area Alumnae  
Chapter

**Betty Boone Lowson**  
(Stanford, 1935)

Hawaii Alumnae Chapter

**Linda Gorsuch Mayer**  
(Bowling Green, 1960)

Cleveland West  
Alumnae Chapter  
Karen and Doug Cooper  
Jane Pihringer Mueller

**Maxine Mayhew McDermott**  
(Colorado State, 1935)

Patti Blanchard  
Beverly Ochsner  
Helen C. Potts  
Sara Louise Turner

**Nancy Nygren, sister of Melinda**  
**Nygren Pierce**

Evanston North Shore  
Alumnae Chapter

**Judy Barrow Patterson**  
(Georgia, 1983)

Thoedora "Tia" Demaria  
Peg and Ted Zotto

**Melissa Petersen (California-**  
**Santa Barbara, 2002)**

Kristine Phillips

**Lisa Perry, daughter of**  
**Susan Voltz Perry**

Sue Bloch  
Natalie Campbell-Kircher  
Linda Dudman  
Janet Kendrick  
Susan Peachey  
Fay Privatera  
Pat Mahan  
Sharon Mink  
Patricia Quagrello

**June Williams Smith (Idaho, 1944)**

Nancy Alexander  
Mark Dunn  
Patricia Greenwood

**Sheila McGuiness Spung**  
(Northwestern, 1952)

Mimi Spung Bradley

**Laurie Strano (McGill, 1994)**

Dominique Groulx

**Esther Golick Vacchina**  
(Nevada, 1944)

Bonnie Vacchina

**Jane Newcomb Whiting**  
(Southern California, 1938)

Beta Alpha Chapter  
Beta Alpha Affiliated House  
Corporation  
L'Cena Rice

*\*For deceased members, The Crescent lists their first, maiden and last names in accordance with their school and year of initiation. To make an "In Memory" gift, visit [GammaPhiBeta.org/Donate](http://GammaPhiBeta.org/Donate) or call 303.800.2890. The minimum donation is \$25 per listing. Gifts received by January 31, 2015, will be acknowledged in the spring 2015 issue.*



# In Celebration

*Celebrate a special sister, loved one or event with an "In Celebration" gift to the Gamma Phi Beta Foundation. Thank you to the following donors, whose gifts were recorded as of October 31, 2014. Lists are printed as received from the Foundation.*

Randy Stevens Allard (California State-Long Beach) being named to the Gamma Phi Beta Honor Roll.  
Mary Jane Mithos

The 2014 executive council of the Alpha Delta Chapter (Missouri-Columbia). Thanks for all your hard work, ladies!  
Jenn Wood

The safe arrival of Isabella, legacy daughter of Lauren Auciello (Toronto).  
Anne Layton

The birth of Jeni Rone Becker's (Jacksonville) son, Abe Becker.  
Shellie King Hodges

Beta Chapter's (Michigan) return.  
Fraya Black

The birth of Angie Burtsfield's (Purdue) legacy, Emma Marie. Congratulations!  
Susan M. Lupo

Barbie Chadwick (Vanderbilt), for everything she has done serving as Alpha Omicron Pi Foundation director.  
Shauna Cavins

The weddings of Jenna Howen Chenow, Missy Herlache Faber, Amanda Wagner Haering, Selina Martire-Fletcher, Caitlin Krieger Patek (all Wisconsin-Milwaukee) and Brooke Buntrock Tabbert (Wisconsin-Oshkosh). We wish you a lifetime of happiness and love.  
Milwaukee Alumnae Chapter

Alicia Cole (McGill), for her time as scholarship advisor for Alpha Alpha Chapter (Toronto).  
Elena Kreek Wagner

Tracy Dietz Collinsworth (California State-Sacramento) – a forever friend and sister.  
Stacy Lowrance

The birth of Sawyer Grace Coulter to Nancy Dennis (Rochester) and Rich Coulter.  
State College Alumnae Chapter

Kitty L. deKieffer on her election to the North-American Interfraternity Conference Foundation (NICF) Board.  
Stephanie Hearn

Marion Downs (Minnesota-Twin Cities), in celebration of her 100th birthday and going strong! And for her life's work for screening newborns for hearing.  
Ruth Seeler, M.D.

Caitlin Drummy (Nebraska-Lincoln), 2014-15 collegiate leadership consultant. I am so proud of you!  
Mitzi Ritzman

Congratulations to Julie Dunn Eichenberg (Florida State) as the new Chair of the Foundation. I am so proud of you!  
Rosemary Stone Bunn

Julie Dunn Eichenberg's (Florida State) birthday.  
Marcille Metaxas

Rachel Falk (Wisconsin-Milwaukee) on the birth of her legacy daughter, Lillian.  
Milwaukee Alumnae Chapter

The birth of Caden Farkas, grandson of Virginia Farkas (Idaho).  
Carleen Rose Sullivan

In recognition and appreciation for Melissa Ford's (Rutgers) service as sorority director-advisor development.  
Region 3

The fantastic Foundation staff and their exceptional effort during my time as Chair of the Foundation.  
Linda Daniel Johnson

Lily Friedman's (Ohio State) April 2014 Initiation at Beta Xi Chapter.  
Sophie Friedman

The Gamma Phi Beta 2012-14 Presentation Team.  
Megan Wick

Doris Gorden's 90th birthday.  
Anne Layton

The birth of Katrina Gramelspacher's (Southern Indiana) legacy, Emily Ann on September 11, 2014.  
Robin Thomas Baskin

2012-14 International Council for a job well done!  
Linda Daniel Johnson

In celebration of Jenny Keltz (Virginia).  
Amy Lambrecht

Mareena Kohtala's (Auburn) service to Region 3. You will be missed!  
Region 3

The safe arrival of Maximillian, son of Bonnie Latour (Toronto).  
Anne Layton

Sally Lewis' (Bradley) 80th birthday.  
Randy Allard  
Fraya Black  
Rebecca Boyd-Obarski  
Ann Bronsing  
Ann Campbell  
Barbie Chadwick  
Chicago Alumnae Chapter  
Jennifer Chuang  
Phyllis Choat  
Kitty L. deKieffer  
Elizabeth Dickey  
Julie Dunn Eichenberg  
Frances Griffin  
Stephanie Hearn  
J. J. Kaelin  
Susanne Keller  
Karen Wander Kline  
Anne Layton  
Verona Lynam  
Linda Malony  
Mary Jane Mithos  
Rosemary G. Milew  
Meredith Malony Patterson  
Leona Ponish  
Vicki Carlson Read  
L'Cena Rice  
Ruth Seeler, M.D.  
Marjory Shupert  
Joey Stiver  
Genie Street  
James N. Thomson  
Gina Trimarco  
Karen Gamel Urette  
Mary Vanier  
Sally Wallace  
Elizabeth Ware  
Barbara M. Wessel  
Amy Williams  
Julie Wright

The birth of Will Linehan to Katie Squire Linehan (Creighton) and in gratitude for her service as Epsilon Delta Chapter (Creighton) chapter advisor.  
Mitzi Ritzman

The birth of Ava Jade Matheny, legacy of Katelyn Lewandowski Matheny (Bradley).  
Ann Campbell

Kim Lewis Mundhenk (California-Los Angeles), Mary Wiley Smith (California State-Sacramento) and Ruthe Wynne-Taliaferro (California State-Long Beach) for a great time spent together at Convention 2014!  
Stacy Lowrance

Amy Myers (Creighton) for her selfless service as a Pi Chapter (Nebraska-Lincoln) chapter advisor.  
Mitzi Ritzman

Margaret West Pape (Oklahoma), in celebration of our 50 years of friendship and sisterhood in Gamma Phi Beta.  
Ann Williams Ross

Amanda Parker's (Iowa) marriage to Jeremy Wood.  
Region 3

The birth of Jamie Shultz Pickel's (Oklahoma) son Caden James.  
Shellie King Hodges

Our member and sister, Ruth A. Seeler, M.D. (Vermont), for being the first million dollar donor to the Gamma Phi Beta Foundation.  
Chicago Alumnae Chapter  
Sally E. Lewis

Welcome to new initiate Victoria Shioi (Oregon).  
Hawaii Alumnae Chapter

Heather Holland Swindells (Clemson) on the arrival of Carter Swindells.  
Melissa Childress Ford

Elena Kreek Wagner (McGill) on the birth of her legacy, Violet.  
Lauren Auciello

Megan Wick (Washington State) on the arrival of her little legacy, Stella Chicago Wick.  
Stephanie Gauchat Carriere  
Melissa Childress Ford  
Shellie King Hodges

*To make an "In Celebration" gift, visit [GammaPhiBeta.org/Donate](http://GammaPhiBeta.org/Donate) or call 303.800.2890. The minimum donation is \$25 per listing. Gifts received by January 31, 2015, will be acknowledged in the spring 2015 issue.*



# In Memory

*We acknowledge the passing of the following members and celebrate their part in our circle of sisterhood. This list reflects notifications received at International Headquarters between August 1 and October 31, 2014. First, maiden, last names and year of Initiation are listed for each deceased member.*

## Alpha – Syracuse

Janet Paxton Cummings, 1947

## Beta – Michigan

Nancy Upton Underwood, 1941  
Helen Whiting Meyer, 1943  
Mary Eastman Johnson, 1954  
Barbara Hansen Drake, 1957  
Pamela Tominac O'Rourke, 1965

## Epsilon – Northwestern

Jean Zahringer Burke, 1947  
Beverly Kallman Weber, 1949

## Eta – California-Berkeley

Jean Burns Reel, 1936  
Elizabeth Ingram Yankwich, 1942  
Marilyn Price Evans, 1946  
Victoria Clarke Smith, 1948

## Theta – Denver

Nancy McCallum Faulkner, 1935  
Kathleen Brasfield Beier, 1944  
Joan Dickman Schaefer, 1951

## Lambda – University of Washington

Joyce Fowler Tuggle, 1953

## Mu – Stanford

Betty Boone Lowson, 1935  
Elizabeth Gerrard Blackwelder, 1938

## Nu – Oregon

Jodi Bailey Skinner, 1989

## Xi – Idaho

Sally McMullan Minor, 1948  
Joanne Heller Olson, 1960

## Omicron – Illinois at Urbana-Champaign

Echo Hyde Rhodes, 1931  
Lillian Thiesen Love, 1939

## Pi – Nebraska-Lincoln

Marcia McKee Lyon, 1944  
Marilyn Moss Hatcher, 1946

Joan Myhren Hughes, 1959  
Jacqueline Johnston Butts, 1960  
Theresa Heisler, 1987

## Rho – Iowa

Barbara Work Hagenson, 1952

## Tau – Colorado State

Maxine Mayhew McDermott, 1935

## Phi – Hollins

Gloria Grafe Krimmel, 1942  
Virginia Sowinski Poulet, 1962

## Chi – Oregon State

Judith Smith Hill, 1962

## Omega – Iowa State

Joan Smith Moore, 1943  
Katharine McDonald Martin, 1943  
Frances Manker Vargason, 1948

## Alpha Delta – Missouri-Columbia

E. Schaeffer Fleming, 1935  
Geraldine Lillie Brischetto, 1939  
Josephine Kane Kirkland, 1952

## Alpha Zeta – Texas-Austin

Agnes Amelung Anguish, 1948

## Alpha Eta – Ohio Wesleyan

Linda Byers Gilmore, 1962

## Alpha Iota – California-Los Angeles

Beulah Helm Roick, 1955

## Alpha Kappa – Manitoba

Dulcie Ellershaw Sniker, 1943

## Alpha Nu – Wittenberg

Virginia Hundley Buckley, 1949

## Alpha Omicron – North Dakota State

Joyce Johnson Poalillo, 1950

## Alpha Pi – West Virginia

Mary Moore Jones, 1934  
Marti-lou Workman Glover, 1961

## Alpha Tau – McGill

Elizabeth Murray Boyd, 1939  
Laurie Strano, 1994

## Alpha Upsilon – Pennsylvania State

Betty Patton Allen, 1939

## Alpha Phi – Colorado College

Valerie Vela, 1983

## Alpha Omega – Western Ontario

Mary Wright, 1936

## Beta Alpha – Southern California

Jane Newcomb Whiting, 1938

## Beta Gamma – Bowling Green State

Phyllis Wendel Conroy, 1945  
Grace Shiffer Clayton, 1948

## Beta Zeta – Kent State

Carole Petti Monaghan, 1949

## Beta Eta – Bradley

Ila Mooberry Miller, 1949

## Beta Theta – San Jose State

Jean Minor Moi, 1959

## Beta Iota – Idaho State

Miriam King Bilyeu, 1949

## Beta Kappa – Arizona State

Maxine Norr Furphy, 1949  
Mary Moore Braniff, 1957

## Beta Mu – Florida State

Kara Sergio Harpest, 1997

## Beta Nu – Vermont

Priscilla Dixon Cameron, 1963

## Beta Xi – Ohio State

Sally Sandefur Burton, 1956  
Sally Hoefflinger McAlister, 1964

## Beta Omicron – Oklahoma City

Ginger Hall Underwood, 1966

## Beta Rho – Colorado-Boulder

Sherry Ward Barba, 1954

## Beta Sigma – Washington State

Patti Stowell-Weiss, 1976

## Beta Tau – Texas Tech

Nan Keenum Carpenter, 1958

## Beta Omega – Northern Arizona

Paget Wilson Hinch, 1970

## Gamma Alpha – Memphis

Edna Barham Young, 1963

## Gamma Omega – Wisconsin-Platteville

Marnie Jones Bloyer, 1974

## Delta Gamma – Nebraska-Omaha

Louise Lewis Rohrbough, 1970

## Delta Kappa – Lehigh

Kathy Mitchell, 1976

*Correction: In the fall issue, Denise Wilson Schaefer (Gettysburg, 1995) was misidentified as Denise Wilson Oliver. We apologize for the error.*

*To report the passing of a sister, please email [contactus@gammaphibeta.org](mailto:contactus@gammaphibeta.org) so we may honor the member on this page in a future issue.*



# *Vintage* ΓΦΒ



We love this flashback photo of Alpha Theta Chapter (Vanderbilt) members with a crest-adorned hand-hooked rug from 1974! Do you see a sister you know? Tell us at [TheCrescent@gammaphibeta.org](mailto:TheCrescent@gammaphibeta.org)!



# Capture a Crescent

Spot it, snap it and email your capture a crescent photos to [TheCrescent@gammaphibeta.org](mailto:TheCrescent@gammaphibeta.org) for a chance to be featured on the back cover of a future issue. Tip to get featured: We prefer crescents that wax left!



1



2



3



4



5

1. Nebraska: Megan Stewart Bowder and her mother Dora "Susie" Smith Stewart (both William & Mary) spotted this crescent at Lauritzen Gardens, Omaha's Botanical Center.

2. Colorado: While on her way to Denver, Lynn Ayers Pelz (Colorado College) stopped at The Barn, a gift shop in Castle Rock, Colorado. She was over the moon when she saw this crescent and couldn't resist the opportunity to snap a photo!

3. South Carolina: During her vacation to Charleston, South Carolina, Laura Kobsa (Toronto) posed with a giant crescent while visiting the Moon Pie General Store.

4. United Kingdom: Eileen "Teddi" Howard Pensinger (Maryland) and her husband marveled at "The Moon Seat" while on a train tour throughout the United Kingdom. The wicker crescent bench sits near the childhood cottage of Anne Hathaway – the wife of William Shakespeare – in Stratford-upon-Avon.

5. New Hampshire: Jeanne Gonseth Robichaud (Arizona State) captured this crescent while dining at a local Mexican food restaurant in Concord, New Hampshire. Jeanne was dining with her husband – her college sweetheart from 1971 – when they saw the decoration near their table.