

Spring 2015

the CRESCENT

of Georgia



**CELEBRATING
140 YEARS!**

page 18





Celebrating Our History

INTERNATIONAL COUNCIL

International President
Krista Spanninger Davis
Bowling Green State University

Alumnae Vice President
Shellie King Hodges
University of Oregon

Collegiate Vice President
Mary L. Knaup
California State University-Fullerton

Education Vice President
Autumn L. Hansen
University of Idaho

Financial Vice President
Barbara Weiss Boenzli
Oregon State University

Membership Vice President
Nancy Ann Ostendorf Thompson
Iowa State University

Panhellenic Affairs Vice President
Sandra Biegelman Burba
Miami University

GAMMA PHI BETA FOUNDERS

Mary A. Bingham
E. Adeline Curtis
Helen M. Dodge
Frances E. Haven

MISSION

To inspire the highest type of womanhood.

On the cover: A colorized photograph of
Alpha Chapter (Syracuse), 1888.

"How much more satisfactory it would be if I could take each one of you by the hand and tell you how happy I am to belong to the four who 30 years ago made it possible for each one of you to be a sister in Gamma Phi Beta. We started with high ambitions and exalted dreams of the future, and you have nobly fulfilled them. I wish I could make you realize how proud we are of your achievements and how great is our trust in you for the future."

Eunice Adeline Curtis, The Crescent, November 1904, addressing the Sorority membership

Whenever I have the opportunity to install a new chapter of Gamma Phi Beta, I am reminded what an incredible feat our Founders accomplished 140 years ago. Despite the challenges facing young collegiate women in the 1870s, four courageous, intelligent, risk-taking young women came together to build a foundation of mutual support, scholarly discourse and sisterhood. These women bonded together over shared interests and values, founding an organization on those principles. What I find most remarkable is that those values are still relevant to our members today. Gamma Phi Beta is filled with courageous, intelligent, risk-taking women who gather and bond together for the same kind of mutual support our Founders envisioned and who demonstrate our Sorority's Core Values of Love, Labor, Learning and Loyalty. Gamma Phi Beta has provided a home for hundreds of thousands of women seeking friendship and support among those with shared values.

Throughout the decades, Gamma Phi Beta's history is overflowing with stories, letters and accounts of smart, successful women forging new paths and adapting to the challenges of the times. Our organization has evolved because of the accomplishments of our members and their steadfast dedication to keeping our organization relevant. As we reflect on our Sorority's legacy, there is much of which to be proud. From sharing our values and goals across the continent, to working together to support war efforts, to providing meaningful experiences for young girls who would benefit from strong role models and guidance, Gamma Phi Betas continue to make a difference in the world around us.

In this edition of *The Crescent*, you will learn how our Founders grew an organization of four women into a sisterhood impacting the lives of more than 195,000 and discover how Gamma Phi Beta has thrived and evolved throughout the decades. Because *The Crescent* can only provide a snapshot of our extensive heritage, I encourage you to continue to explore our Sorority's history by visiting GammaPhiBetaHistory.org, our new online history resource. Through this expansive and engaging website, Gamma Phi Beta's rich history will come to life for our members as we celebrate our past and look to the future.

In HKE,

A handwritten signature in cursive script that reads "Krista".

Krista Spanninger Davis
International President

CONTENTS

Go Gamma Phi

Find the magazine's regular features in addition to other inspirational Sorority articles in this section.

4 $\Gamma\Phi\text{B}$ Mailbox

5 Points of Pride

14 Inspiration Board

32 Sorority Life

42 In Memory

43 Vintage $\Gamma\Phi\text{B}$: Vintage (In Reverse!)

Sorority News

Find the Sorority's latest news and opportunities here.

18 The History of Gamma Phi Beta

Learn more about our Sorority's rich heritage through the decades.

28 Explore the Legacy

We are proud to present GammaPhiBetaHistory.org, $\Gamma\Phi\text{B}$'s exciting and expansive history website.

Campus Life

Learn about our collegiate sisters and topics affecting them.

6 Alpha Chapter (Syracuse): Then and Now

See how our flagship chapter has grown over the years through the eyes of its members.

8 Recruitment Rewind

Check out how recruitment has evolved in our 140-year history, meet Frances E. Haven's legacies and learn about the origins of references and why they are now more important than ever.

16 Collegian Spotlight: Sami Benko (Purdue), peripheral blood stem cell donor and life-changer.

Shining On

Find out how alumnae are making an impact and shining for $\Gamma\Phi\text{B}$.

31 Alumnae Chapter Profile: Chicago Alumnae Chapter

Foundation News

Check out how the Foundation is supporting and inspiring the lifelong development of women.

38 Supporters of the Heart

A walk through our Foundation's history.

40 Memorial Gifts

41 In Celebration

Tell us what you think! Send your feedback to TheCrescent@gammaphibeta.org, post on our Facebook page or tweet using the hashtag #TheCrescent!

18

Learn more about Gamma Phi Beta's 140-year history.



6

See Alpha Chapter (Syracuse) through the eyes of its members.



8

Recruitment rewind! Find out how recruitment has changed over the years.

International Headquarters

12737 E. Euclid Drive, Centennial, CO 80111

Phone: 303.799.1874 Fax: 303.799.1876

Website: GammaPhiBeta.org

Email: TheCrescent@gammaphibeta.org

The Crescent Staff

Editor

Amanda Lubeck (Colorado-Boulder),

alubeck@gammaphibeta.org

Director of Marketing and Communications

Maureen Walker, mwalker@gammaphibeta.org

Marketing Coordinator

Teresa Tisserat (Denver), ttisserat@gammaphibeta.org

Executive Director

Laurie Veldhuizen (Florida State),

lveldhuizen@gammaphibeta.org

Crescent Advisory Board

Stefanie Brickman (Oklahoma)

Kristen Record Heptinstall (Alabama)

Yvonne Fetig Roehler (Minnesota State-Moorhead)

Brandon Weghorst

Graphic Design by Shelle Design, Inc.

SUBMISSION DEADLINES

Summer issue – May 1

Fall issue – August 1

Winter issue – November 1

Spring issue – February 1

©2015 Gamma Phi Beta Sorority

The Crescent of Gamma Phi Beta (USPS 137620)

is published quarterly by Gamma Phi Beta Sorority,

12737 E. Euclid Drive, Centennial, CO 80111.

Periodicals postage paid at Englewood, CO, and at

additional mailing offices. Non-member subscription

price is \$25. Produced in the U.S.A.

Postmaster: Send address changes to The Crescent,

Gamma Phi Beta Sorority, 12737 E. Euclid Drive,

Centennial, CO 80111.

Parents – While our members are in college, their copy of *The Crescent* is sent to your home address – we hope you enjoy reading our magazine, too! If your daughter is no longer in college, or is no longer living with you, feel free to send us her new address by emailing TheCrescent@gammaphibeta.org.

Join Our Green Team! Receive each issue of *The Crescent* before everyone else by going digital! We'll send the current issue directly to your inbox so you can enjoy it anywhere you go. Email TheCrescent@gammaphibeta.org today to let us know you're joining the Green Team!



ΓΦΒ mailbox

SUCCESSFUL WOMEN

Gamma Phi Beta is filled with successful women – sisters who serve as role models in their community, lead teams to success, achieve impressive goals in their careers and inspire those around them. Who is a powerful sister in your life?

Do you know a sister who is using her position in the office to propel her business forward? Is there a sister from your chapter who started a groundbreaking organization

that has benefitted the community? What about a woman who is advocating for change to better the world around her? Do you know an entrepreneur who is chasing her dreams? Nominate a sister who you believe is a successful woman by submitting her story to TheCrescent@gammaphibeta.org. The powerful woman you nominate could be featured in an upcoming issue of *The Crescent*.

YOU TWEETED IT WE ★ IT!

I was asked to help with employee retention at work. I guess you never really stop using your sorority skills!

-Tory Stangl (Arizona State)

Our #4MileFoundersRunWalk raised more than \$12,000 for Girls on the Run and the Gamma Phi Beta Foundation!

-Sacramento Valley Alumnae Chapter

I'm so lucky to be part of a sisterhood that makes me so unbelievably HAPPY. #RLC2015

-Megan White (Nebraska-Lincoln)

After training tonight I'm even more excited to start coaching Girls on the Run!

-Paige Mans (Wichita State)

Alpha Theta Chapter (Vanderbilt) Flashback

The winter issue included a throwback photo of sisters holding a crest-adorned hand-hooked rug. Check out what we learned about this unique picture!

"The hooked rug is from Alpha Theta Chapter (Vanderbilt) from either 1973 or 1974. Pictured left to right are Mary Fern Tate Ritchie, Anne Wright Brown and Luann Daugherty Pratka (all Vanderbilt). If I remember correctly, it hung on the wall in the chapter room or foyer. Loved seeing it – brought back many memories!"

-Connie Brandon Woodham (Vanderbilt)

"The rug was made from a kit sometime in 1973 – most sisters participated in completing the rug. It was a fun project!" -Linda Daniel Johnson (Vanderbilt)



points of Pride

History Edition

Shining bright since 1874, here's a snapshot of some notable Gamma Phi Beta moments and accomplishments!

Gamma Phi Beta became the **FIRST** Greek-letter organization to be known as a "sorority" in 1882, thanks to Professor Frank Smalley of the Syracuse University Latin department who first attributed the term to our sisterhood. Only two years later, Professor Smalley's sister, Honta Smalley (Michigan, 1884), became a member of Beta Chapter (Michigan).



Building Strong Girls was announced as Gamma Phi Beta's philanthropic focus at Convention **2012**. We are proud to teach girls how to be intelligent leaders who contribute to their communities and make a positive difference in the world!

NPC

Gamma Phi Beta was one of **seven** sororities that founded the Intersorority Conference in 1902 – later named the National Panhellenic Conference.

In **1985**, the Gamma Phi Beta Foundation called the first meeting of all National Panhellenic Conference Foundation leaders. This gathering was soon established as the first Panhellenic Foundation Conference, a conference which is still held annually.

\$15 million

During World War II, sisters raised just under **\$15 million** to aid U.S. troops. With inflation, that is the equivalent of more than \$190 million today!

The first Convention, held in Syracuse on November 8-9, 1883, boasted **70 attendees** – 69 from Alpha Chapter (Syracuse) and one representative from Beta Chapter (Michigan).



Share your point of pride for an opportunity to be featured! Email TheCrescent@gammaphibeta.org with your chapter's inspiring accolades.

Alpha Chapter: *THEN and NOW*



SINCE 1874,

there has been a special place reserved for Alpha Chapter (Syracuse) in the heart of each Gamma Phi Beta.

As a member, when you

hear about Syracuse University in the news, meet an alumni from the school or are traveling to the New York area, it's easy to think of the four courageous women who came together to found our beloved Sorority.

For more than 140 years, every Gamma Phi Beta has carried out the legacy of Founders Frances E. Haven, E. Adeline Curtis, Helen M. Dodge and Mary A. Bingham, but only our sisters at Alpha Chapter have been able to experience the Syracuse campus daily, just as our Founders did.

Whether you are a freshman living in Haven Hall – a dormitory named after Frances's father that sits directly behind the Gamma Phi Beta facility – ice skating at Tennity Ice Pavillion, donated by Marilyn Tennity (Syracuse, 1942), or visiting the Women's College at Syracuse University where there is a bronze plaque honoring our Founders, you are sure to feel the history of the women who set out to inspire the highest type of womanhood.

"When I walk through campus, I think of how close the Founders really are to me and my chapter sisters – both physically and spiritually. Just knowing that they spent time on this campus is something special," says former Alpha Chapter President Megan Marshall (Syracuse).

Alpha Chapter has always been cherished by Gamma Phi Betas – but how has it evolved over the decades? We asked Alpha Chapter members to share their memories.

Katrine Haddleton Keller
Initiated
1946

What would you like to share with sisters currently attending your alma mater?

"Many of the young women I met in my new member class 69 years ago are still some of my very best friends and favorite people." – Katrine Haddleton Keller (Syracuse)

Megan Marshall
Initiated
2012

What would you like to share with Alpha Chapter alumnae?

"We love looking through all of the scrapbooks from the sisters who came before us. We have photos that date back to the late 1800s and it's fun to see how close our sisters were to each other then." –Megan Marshall (Syracuse)

How many sisters were in your new member class?

Then

KK: I remember recruitment well. I still have my Panhellenic Rushing Handbook (today this is known as a recruitment handbook). It cost \$2 to sign up for recruitment and it took place each weekend in September. Bid Day was October 3, and there were 15 members in my new member class.

Now

MM: My new member class had 49 members. With each new member class after me, we've grown significantly in number. Our newest new member class has 74!

What's your favorite place on campus?

Then

KK: The Gamma Phi house; I loved living there! My second favorite place was Lyman Hall because I was a science major. I spent many hours there – in labs, meeting with interesting professors and learning wonderful things.

Now

MM: Carrier Dome, which holds all football, basketball and lacrosse games. It has such an amazing atmosphere when it's full of screaming fans and passionate students. Some of my absolute favorite memories have taken place there.

What is your favorite piece of Gamma Phi Beta merchandise?

Then

KK: All I remember having is Gamma Phi writing paper and the Greek letter insignia of Gamma Phi Beta for our family car window. And of course my Gamma Phi Beta badge.

Now

MM: Last spring our chapter got a mix of melon and honeydew tank tops that read Gamma Phi Beta Syracuse on the front. They are adorable and comfy!

Pictured top left are Alpha Chapter members in the early 1900s.

Favorite Alpha Chapter Memories throughout the Decades

What is your favorite Gamma Phi Beta memory?

1959

"There are so many wonderful memories – being the 'birthday girl,' playing bridge with the Sigma Nus from next door, fathers' weekends, winning the Winter Weekend sculpture contest and the Homecoming Weekend poster contest, our glorious chapter room...I could go on and on!"
–Barbara Missert Wessel (Syracuse)

1966

"Our rush (now recruitment) skit was hilarious, featuring a chirping tree, a babbling brook and a lot of other goofy characters." -Linda Zingerline Fitzgerald (Syracuse)

1987

"I was so happy when my Little Sister Tammi Hayes Guidi (Syracuse) picked me for her Big Sister, and I so clearly remember the night she was initiated." -Karen Carmody Palmieri (Syracuse)

1974

"I loved the first time I saw the chapter room!" -Catherine Fritts Tydelski (Syracuse)

2010

"Big/Little Sister reveal. My Gamma Phi Beta family is very big (lots of 'twins'), yet we are very close. I still keep in touch with my great-great-great-grand-Big, all the way down to my great-grand-Little. I'll never forget the excitement every year when we welcomed a new sister into our amazing family!" -Elizabeth Evans (Syracuse)

1999

"Standing up and speaking to a room full of potential sisters during recruitment is up there on my list of favorite memories. It gave me an opportunity to really put into words what being a part of the Sorority meant to me."
-Kristen Kane Fuerst (Syracuse)



What are your favorite Gamma Phi Beta memories? Share with us on social media using #GammaPhiMemory.

Pictured are Alpha Chapter members during spring 2015 recruitment.



“I know that many girls are glad to have the opportunity to join our number, that our venture has proved a success, that such association has proved helpful, that if they come in the right spirit they will gain those qualifications for leadership in a richer, broader life than they could attain through individual effort.”

—Founder Frances E. Haven Moss, 1918



Recruitment Rewind: *a look back*

Do you ever wonder what recruitment was like 20-, 50- or even 100-years ago? Have you ever considered what recruiting new members was like for our Founders? How did they grow from an organization of just four women to a sisterhood of more than 195,000?

In a letter published in the January 1918 issue of *The Crescent*, Frances E. Haven Moss (Syracuse, 1874) mused, "My mind leaps backward to the little group of Founders and I recall how we used to wonder among ourselves whether other girls would like us well enough to join our little band, whether we should have chapters in other universities, whether we should ever grow into such a large organization as the fraternities to which our brothers and gentlemen friends belonged..."

The Sorority's growth began gradually with Clara Worden (Syracuse, 1875), the first initiate into Gamma Phi Beta after the Founders. At this time, the Sorority operated as a College Literary Society – meetings were used primarily to discuss poetry, essays, literature, current events and news. After her Initiation, Clara was thrilled to be selected as "Critic" at her first meeting, giving her the responsibility of ensuring the group's grammatical perfection. In a letter to *The Crescent* more than 40 years after she was initiated, Clara wrote, "The four Founders were personal friends, and, of course, it did not take long for me to decide whether I would be a true Gamma Phi. I've tried to be one all these years."

By 1882, Alpha Chapter (Syracuse) had made great strides in growing their group, counting 59 collegiate and alumnae members

among them. At that time, the decision was made to pursue expansion and within a matter of months, a new chapter was opened at the University of Michigan with five members, all ready to continue the work of the Founders in growing Gamma Phi Beta.

Since the very beginning, recruitment has been a vital aspect of Gamma Phi Beta's success. Now, it is each member's responsibility to secure the legacy our Founders created by projecting a positive image of Gamma Phi Beta so we can continue to attract intelligent, compassionate and motivated women to our Sorority.

In this section, you will see how recruitment has evolved in our 140-year history, meet Frances E. Haven's legacies and learn about the origins of references and why they are so important. In short, you will discover why Gamma Phi Betas continue to recruit the very best – and how to do just that!

Gamma Phi Beta is growing our sisterhood across the continent. Check out some of our incredible accomplishments:

- **7,280 new members accepted bids in the 2014-15 school year**
- **195,000+ initiated members in our 140-year history**
- **Nearly 500 legacies joined our circle of sisterhood this academic year**
- **Average chapter size: 137**
- **17,700 collegiate members**



"Since that day in 1874 when four young women at Syracuse University founded Gamma Phi Beta, invitations to membership have been extended with care on the basis of congeniality and friendship. It is because of this care in membership selection that each Gamma Phi Beta can be truly a sister to all who wear our badge." – Elizabeth Fee Arnold (Colorado State, 1923)



the evolution of Recruitment

When the Founders laid the framework for Gamma Phi Beta in 1874, much attention was given to outlining their expectations for women who wished to become members of the Sorority.

The original Constitution, written in 1874 by Helen M. Dodge (Syracuse, 1874) and adopted on January 7, 1875, stated that sisters should consider three criteria in the selection of new members: scholarship, intelligence and deportment.

In the earliest years of sororities, recruitment rules and procedures varied greatly from campus to campus. By 1890, seven out of every

10 colleges admitted women, but female students still remained an overwhelming minority. Because there were so few women to choose from, rivalries were formed on campuses where two or more sororities existed. When Greek-letter organizations first began hosting more formal, scheduled recruitment events, some local rules were established to ensure fairness in member selection. Soon after, the Intersorority Conference – now the National Panhellenic Conference (NPC) – created recruitment guidelines for all sororities to ease the tension and stress of recruiting new members.

Throughout the decades, recruitment has evolved to become a more uniform, streamlined and effective process. In the early 1900s,



recruitment on some campuses lasted 10 weeks or more, consisting of lavish parties, dinners and dances. By the 1920s, recruitment schedules had become more restricted, though recruitment events still featured over-the-top décor, themes, favors and foods. Party-goers in this era enjoyed card playing, dancing and entertainment provided by members such as skits and talent exhibitions. During those earlier decades, recruitment events were not limited to chapter facilities; rather, the more elegant, elaborate events were held at hotels or in the homes of local alumnae. Some recruitment events lasted all day – breakfast, lunch and dinner were provided to rushees – now called potential new members – before they were invited to attend a dance in the evening.

As time went by, recruitment events became shorter, allowing potential new members to attend events hosted by multiple sororities on campus in the same day. Even though the structure of recruitment changed, themed parties continued to prevail through the following decades and creativity in decorations and entertainment was valued. Popular themes in the 1950s through the 1980s included country fairs, carnivals, cruises and luaus. Chapters also favored Gamma Phi Beta

traditions – crescent moons and pink carnations have always been popular décor for more formal recruitment events.

In the 1990s, NPC aimed to shift the focus of recruitment. The elaborate skits and themes that had dominated in the past had blurred the importance of one-on-one communication. Recruitment rules became more stringent in this decade in order to help chapters recognize how crucial it is to get to know potential new members on a personal level rather than aiming simply to entertain them – budgets were enforced, decorations were limited and entertainment was to be lessened. NPC reiterated the importance of conversation in order to enhance interaction and decrease competition and spending.

Although recruitment has changed over the last century, Gamma Phi Beta's primary purpose for recruitment has remained the same throughout our 140-year history. We continue to maintain the standards of our Founders and recruit women who are friends, scholars and who embrace the Core Values of our organization.



continuing her Legacy

During Frances E. Haven's senior year at Syracuse University, her sister Mira Haven Draper (Syracuse, 1876) was initiated into Alpha Chapter (Syracuse), becoming the first legacy to enter our circle of sisterhood. Years later, three of Mira's four daughters – Winifred Frances Draper (Syracuse, 1908), Marion Romer Draper (Syracuse, 1910) and Charlotte Draper Smith (Illinois at Urbana-Champaign, 1934) – also became members of Gamma Phi Beta, along with Frances' own daughter Alida Moss Skinner (Illinois at Urbana-Champaign, 1915).

Of the four Founders, Frances is the only one to have produced legacies through her direct bloodline. Frances' Gamma Phi Beta heritage continues today through two of her great-great-granddaughters, Jennifer Wiley Cibor (Indiana) and Caroline "Carly" Moore (Grand Valley State).

When Jennifer left for Indiana University in 1994, she was unaware that she was a descendant of a Gamma Phi Beta Founder. At that time, her cousin Megan, a Kappa Alpha Theta at Albion College, informed her of their great-great-grandmother's lifework of establishing and growing the Sorority. "Megan was pretty in-tune with Greek life, so she was able to tell me about Frances," Jennifer says, "but I didn't understand the magnitude of what it meant to be a descendant of a Founder until I was initiated." Even though Jennifer didn't recognize

the importance of her family's lineage until she was a collegian, she has always had a close connection with Frances. In fact, growing up, her summers were spent at The Hemlocks, the cabin Frances and her husband Charles Moss built together in Ephraim, Wisconsin, which has remained in the family for more than a century.

Jennifer quickly became highly involved in Gamma Phi Beta and even served as chapter president. During that time, she made sure her cousin Carly knew the significance of their family lineage. Carly recalls, "I had a Gamma Phi Beta shirt when I was a little kid. I remember we used to visit Haven Hall at the University of Michigan, which is named after Frances' father who was president of the University at one time. Even my brother's name is Haven." Fifteen years after Jennifer was initiated at Beta Phi Chapter (Indiana), Carly became a charter member of Eta Delta Chapter (Grand Valley State).

Jennifer was thrilled that her cousin would soon become her sister and in 2010, she jumped at the opportunity to surprise Carly at her Initiation. "I didn't have sisters growing up, so Carly and I were very close," Jennifer says. "I remembered when legacies in my chapter had relatives who were able to attend their Initiation and how special that was." Both Jennifer and Carly say this surprise is one of their favorite Gamma Phi Beta memories.

Frances E. Haven remained devoted to growing Gamma Phi Beta and ensuring the Sorority's success throughout her lifetime. Even now, she leaves a lasting impression on her beloved Sorority through her descendants as they carry on her legacy.



Carly graduated from Grand Valley State University in Allendale, Michigan, in April 2014 and now lives in New York City. Jennifer lives in College Park, Maryland, with her husband and children. She looks forward to volunteering with Beta Beta Chapter (Maryland) when it returns to the University of Maryland in spring 2016.

Pictured above: Frances Haven's daughter, Alida Moss Skinner (Illinois at Urbana, Champaign, 1915), 1915.

Pictured on opposite page, left: Frances E. Haven Moss (Syracuse, 1874), approximately 1874.

Pictured on opposite page, middle: The Hemlocks – the cabin built by Frances and Charles Moss – has remained in the family for more than a century.

Pictured on opposite page, right: From left to right, past International President Linda Lyons Malony (Southern California), Carly Moore (Grand Valley State) and Jennifer Cibor (Indiana) at Eta Delta Chapter's (Grand Valley State) Installation.

THE TWO SIDES OF REFERENCES

Did you know that the reference system was introduced more than 130 years ago? In the 1884 Constitution, it was declared that a new member must receive a written endorsement from three initiated collegiate members before she was officially invited into membership. By the 1920s, this system was updated so alumnae references became more widely revered, as the number of women who wished to join a Sorority quickly became too large for collegians to assess on their own.

Even though the reference process has changed over the last century, references still play a crucial role in recruitment and provide alumnae members with a way to stay engaged with Gamma Phi Beta and make a direct impact on our Sorority's growth.

Writing References

During recruitment season, alumnae can assist collegiate chapters in identifying women who would make excellent members of Gamma Phi Beta by completing Reference Forms. A Reference Form is a simple, one-page document used to collect information about a woman's qualifications for membership in our Sorority.

While simply filling out a Reference Form is a sufficient way to recommend a member, alumnae are encouraged to take extra steps to better the recommendation process. If you know the potential new member personally, brag about her! Send the chapter a personal letter so they know she is a perfect fit for Gamma Phi Beta. On the other hand, if you do not know the potential new member well – perhaps you were connected through your alumnae chapter or local alumnae Panhellenic – make the effort to get to know her. By spending an hour to meet the potential new member for coffee or even just talk on the phone, you will not only be able to better review her qualifications, but you will also act as a wonderful first impression for our Sorority and ambassador for Greek life.

Once you have submitted your reference, make sure the potential new member feels comfortable approaching you with questions prior to recruitment. Being a great reference writer means being a positive and informed resource about Gamma Phi Beta and the exciting collegiate and lifelong experience it offers.

Receiving References

References are a great way to get to know potential new members before they even walk through the door on the first day of recruitment. Whether your chapter receives tens of references or hundreds, it is important to fully utilize the reference process for recruitment success.

Contacting local alumnae is a great way to increase the number of references you receive prior to recruitment. Host an event for local alumnae to talk about recruitment and the importance of references, or send reminders to nearby alumnae chapters about how and when to complete Reference Forms. You should also provide alumnae with information about Gamma Phi Beta to share – either deliver flyers to the alumnae chapter to distribute to potential new members or send information about your chapter via email so they may pass it along electronically.

Don't forget, a thank you note is a great way to show appreciation for reference writers. By writing thank you notes, you're not only showing reference writers that you value their recommendations, but you are also providing them with the encouragement to continue meeting potential new members, writing references and spreading the word about Gamma Phi Beta.

Check out GammaPhiBeta.org/CustomPrintShoppe to create custom information cards, thank you cards and more!

**Reference Forms can be found at
GammaPhiBeta.org/RecommendAMember.**

inspiration board

THE CRESCENT OF GAMMA PHI BETA



PUBLISHED BY THE SORORITY

JUNE, 1900

HAPPY BIRTHDAY TO US!

This June, *The Crescent* celebrates its 115th birthday. The first issue of the magazine was circulated in June 1900 and consisted of poems, stories, member news and chapter updates from our eight established collegiate chapters and three alumnae chapters. Here's to many more years!



ADMIRABLE VETERAN

Dorothy Groner Pickup (Syracuse) recently celebrated her 93rd birthday in a very memorable way. A dietician in the medical corps who earned the rank of first lieutenant during World War II, Dorothy's service to her country was commemorated with an honor flight to Washington, D.C. Once she and other veterans arrived at the Capitol, they were given tours of memorials and historical sites around the area. Gamma Phi Beta is proud of Dorothy and all our sisters who have served their country.

the 1874 society



1874 AND MORE

In 1991, The 1874 Society was established to recognize generous members and friends whose unrestricted gifts to the Foundation total \$1,874 or more annually. Since its creation, The 1874 Society has raised nearly \$3 million for Gamma Phi Beta's areas of greatest need.



LIVE BY THE SUN, LOVE BY THE MOON

We love this trendy grey pocket t-shirt with chalkboard-style print. This is the perfect shirt for every sister to show her Gamma Phi Beta pride – wear it with jeans and boots, shorts and flip flops, or a colorful skirt and flats. With so many ways to wear it, how's a Gamma Phi to decide?



CHIEF OF STAFF

Carmen Hernandez Villar (California-Berkeley) is chief of staff for the Centers for Disease Control and Prevention (CDC), where she is responsible for ensuring the organization focuses on its highest priority initiatives. Carmen has received numerous awards for her work including the Health and Human Services Secretary's Award for Distinguished Service – an award that recognizes leadership, skill, ability and customer service – and the State Department's Meritorious Honor Award for her outstanding and innovative contributions to the Department.

Collegian Spotlight

SAMI BENKO

It's not every day that you hear about a college student saving the life of a complete stranger, but that is exactly what sophomore Sami Benko (Purdue) has set out to do. Sami is not studying pre-med nor is she rushing to the scene of accidents. Rather, she has selflessly helped someone she doesn't know fight a life-threatening illness by donating peripheral blood stem cells (PBSCs), a procedure that helps patients restore stem cells that have been destroyed.

During Sami's freshman year, she became involved with an organization called Be the Match, a national registrar for PBSC donors. Through her partnership with the organization, she has found a voice to help others: "I've always enjoyed helping people, so I decided to become a donor. When I got the email that I was a match, I was nervous, but after an hour or so, my fear switched to excitement and strength. I knew that the recipient had to be scared, too – the unknown of what's to come, not knowing if she could beat her disease. Stranger or not, I could never imagine what someone battling a deadly illness is going through. In that moment, I knew I wanted to help."

The Crescent had the opportunity to talk to Sami in-depth about her decision to make a difference.

What is the purpose of donating PBSCs?

Donating blood stem cells is a less invasive way to donate bone marrow. The blood-forming cells that can be found in our peripheral blood are the same cells found in bone marrow. Donations are important because they help people who have blood cancer and other chronic illnesses. The stem cells can be modified to fit the needs of the recipient.

How did you prepare for the procedure?

Before the procedure, I had blood tests to verify that I was in fact the best match for the recipient in need. I also had a physical exam that included an electrocardiogram (EKG) and some x-rays. Then, four days prior to the procedure I received shots of filgrastim, which stimulates the cells in your bloodstream.

What did the procedure entail?

The outpatient procedure took seven hours. The doctors extracted blood from one of my arms. The blood then went into a machine that separated out and collected the cells needed, and the remaining blood was inserted back through my other arm.

Are you able to meet your recipient?

I am able to get updates after a certain time period in regard to the recipient's health. However, I do not know the name of the woman to whom I donated. After a year, if we both agree, we can choose to know each other's identities. I'm interested and I hope she is, too!

What advice do you have for anyone considering donating?

Really think about what you are signing up to do. This type of donation isn't for recognition or glamour. It's life or death for some people. If you sign up, then change your mind, it truly can affect someone's life.

One of Sami's goals is to spread awareness for PBSC donation. In going through this courageous process, Sami made an impact on chapter sister Jordan Engel-Walworth (Purdue):

"My cousin was among one of the first children to obtain a bone marrow transplant, so I understand how important donating can be to a family. Sami is part of the reason why I am not afraid to donate myself. Seeing her excitement after helping someone has inspired me to want to do the same." – Jordan Engel-Walworth (Purdue)



How do you make an impact on others? Send your story to TheCrescent@gammaphibeta.org for a chance to be featured.



Gear up for summer with these fresh looks from
CrescentCorner.com.

Don't forget to order your custom Bid Day shirts today!

Emroidered hats: \$18.50, tanks: \$26.50, V-neck: \$28.50

No design fees for custom orders!



THE HISTORY OF



At a time when women were discouraged from attending college because of their “insufficient brainpower” and “delicate health,” Gamma Phi Beta’s four Founders – Helen, Frances, Adeline and Mary – came together to form a women’s society at Syracuse University.

Helen was the first of the Founders to attend Syracuse University in the fall of 1872. At this time, only 19 women were enrolled at the University, and as Helen wrote, she and many of the female students “needed a social center, a place of conference, a tie which should unite

us in the midst of a more or less hostile atmosphere, a circle of friends who could sympathize with each other in the perplexities of our situation.” On September 18, 1872, Helen and her housemates hosted a group of 14 women in their home with the hopes of developing the supportive group dynamic for which they were searching. Of those 14 women, 10 were initiated as founders of Alpha Phi Fraternity. Though Helen Dodge had been appointed the task of writing their constitution, she ultimately chose not to be initiated.



GAMMA PHI BETA



Two years later, Helen, Frances, Adeline and Mary set out to form their own group. On November 11, 1874, the four met informally and decided to organize their own society. The Founders were, as Frances E. Haven said, "a serious minded group of girls," each of whom appreciated the rarity and value of the opportunity they had been given for scholastic achievement. In the face of adversity, this like-minded group of women created a space where they could offer one another the kind of constructive criticism and encouragement that would make it possible for them to prove themselves worthy of the

opportunity they had been given. They consoled and celebrated one another and created the sense of solace that Helen began looking for two years prior.

Now, 140 years later, we celebrate the vision, dedication and legacy of our Founders – and all who have come since – in building Gamma Phi Beta into one of the largest and most well-respected sororities in the world. The history of Gamma Phi Beta continues to be written by its members today, but it is important to look back to truly understand and appreciate the legacy our Founders created.

1870s

Images left to right: **1.** Young Founders. **2.** The first page of original 1874 Constitution, signed by the Founders. **3.** Gamma Phi Beta badge from 1900. **4.** Frances Haven's husband, Charles Moss. **5.** Beta Chapter (Michigan) charter members and early initiates, 1880s.



1

2

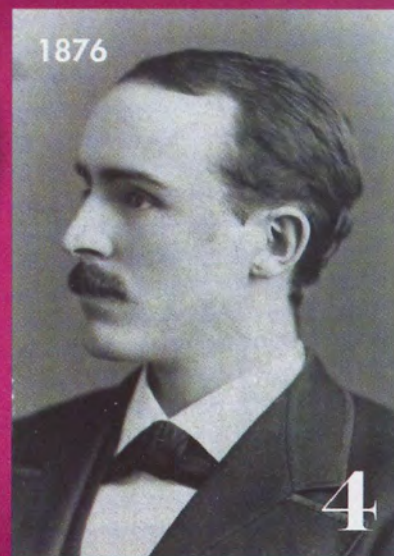
*Constitution
of the
Γ. Φ. Β. Society
of
Syracuse University
Founded Nov. 11th 1874.
By: Helen M. Dodge,
Frances E. Haven,
E. Adeline Curtis,
Mary A. Bingham*

1874



1874

3



1876

4



5

1874: The Founders' First Meeting

Helen M. Dodge, a junior; Frances E. Haven, a sophomore; E. Adeline Curtis and Mary A. Bingham, both freshmen, met informally for the first time on November 11, 1874, and decided to organize as a "College Literary Society." At their first official meeting, Frances served as secretary and Helen, the eldest of the group, presided over the meeting and was appointed to draft a constitution. Adeline was tasked with devising a secret grip, which was approved at the November 20 meeting.

1874: Gamma Phi Beta

In 1874, Syracuse University was home to four male and one female fraternity, Alpha Phi. All of them were Greek-letter societies, so the Founders asked Chancellor Erastus O. Haven, a Greek scholar, Latin professor and Frances' father, to suggest appropriate Greek letters for the newly formed Literary Society. From among six suggestions, they chose Gamma Phi Beta.

1874: Designing the Badge

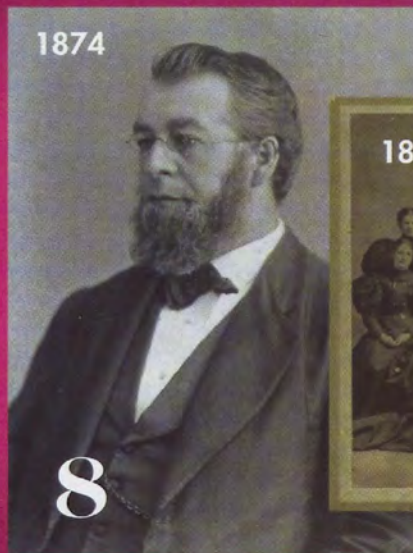
Not long after their first meetings, the Founders sought to design a badge, a public symbol of their bond. There are many versions of the story of the badge's beginning, but the process appears to have begun with Charles Moss, a friend and later the husband of Frances E. Haven. According to Helen, the Founders "readily agreed upon a monogram," and the design was submitted to Tiffany & Co. shortly thereafter to add some final touches to the badge. Though some minor modifications have been made throughout the years, the design of the badge remains the same today.

1876: The Founders Graduate

In June of 1876, Helen Dodge became the first of the Founders to receive her undergraduate degree. She was one of 10 students from her class selected to read their senior thesis on Commencement Day, and her sisters honored her with a bundle of flowers in a white and gold basket. Frances Haven was next to graduate in 1877 with a degree in fine arts. She became a teacher until her marriage to Charles Moss in 1878.

1880s-90s

6. Gamma Chapter (Wisconsin-Madison), approximately 1885. 7. Professor Frank Smalley (second from left) with Syracuse faculty including Erastus Haven and Professor Brown, 1875. 8. Dr. John Brown, professor who allowed Founders to meet in his parlor. 9. Alpha Chapter (Syracuse), 1890s.



1882: A Time for Expansion

At the beginning of 1882, Alpha Chapter (Syracuse) had 59 collegiate and alumnae members, many of whom felt it was time for expansion. Kate Gardner (Syracuse, 1883) took the initiative of inquiring to a friend at the University of Michigan as to whether there might be women there who would be suitable for forming another Gamma Phi Beta chapter. The friend sent her a list of six women and Kate and Ella French (Syracuse, 1877) left for Ann Arbor to meet and determine their suitability. All went well and on June 7, 1882, Beta Chapter (Michigan) was installed.

1882: The First "Sorority"

After Beta Chapter's (Michigan) Installation, Jessie Decker (Syracuse, 1878) hosted a party to announce and celebrate the new chapter. Upon reading the announcement in the newspaper, Professor Frank Smalley of the Latin department at Syracuse University remarked to a Gamma Phi Beta sister, "I presume that you young women feel very elated over being members of a sorority." Up to that time, the word fraternity had been used in reference to both men's and women's organizations. Delighted with the feminine-sounding word that meant "sisterhood," they immediately adopted it, becoming the first Greek-letter organization to identify themselves as such.

1883: The First Convention

After installing a second chapter, sisters experienced a need to host a Convention to conduct the business of the Sorority. The first Convention was held in Syracuse on November 8-9, 1883. Sixty-nine initiated members of Alpha Chapter attended, along with one delegate from Beta Chapter. Most of the discussion revolved around expansion, including the price of chartering new chapters. The Constitution was revised to state that Conventions ought to be held on or as near as possible to November 11. The password, the same used to this day, was also agreed upon.

1890: A Panhellenic Meeting

By 1890, there were seven national sororities on campuses across the

country, each with several chapters. As chapters on different campuses began to set their own rules for recruiting new members, the sororities decided to come to some universal agreements. Kappa Kappa Gamma extended invitations to Alpha Phi, Gamma Phi Beta, Delta Gamma, Delta Delta Delta, Kappa Alpha Theta and Pi Beta Phi to send delegates to Boston for a two-day convention. All sororities accepted and sent delegates, marking the first Panhellenic meeting among the women's organizations.

1892: Organizing Alumnae Chapters

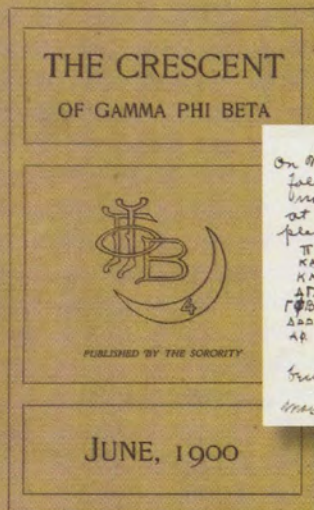
By 1892, the growing numbers of alumnae were eager for an avenue for maintaining their connections with the Sorority. Chicago alumnae had formed an association and were granted the first alumnae charter without debate at Convention. Charters for alumnae chapters in Syracuse and Boston followed close behind.

1900s-10s

Images left to right: **1.** The first issue of *The Crescent*, 1900. **2.** Intersorority Conference invitation. **3.** Kappa Chapter (Minnesota-Twin Cities), 1910. **4.** Gamma Phi Beta's crest. **5.** Omicron Chapter (Illinois at Urbana-Champaign) juniors, 1917. Frances Haven's daughter Alida Moss (Illinois at Urbana-Champaign, 1915) is sixth from left.

1900

1



1902

Inter sorority conference, Chicago.
On May 24 (Saturday) at 2:30 p.m. (sharp), the following representatives of Greek letter fraternities and sororities will meet at Maude's Tea Room to discuss reaching a pledge.
T.B.A. Miss Gaudin, Detroit, Mich.
K.A.D. Mrs. Laura Norton, 2556 N. Ashland Ave. Chicago.
K.K.T. Miss Margaret Jean Patterson, 6117 Kimbark Ave.
A.P. Miss Mildred F. Howard, Chicago, Ill.
G.P.B. Miss William Thompson, 326 N. 6th Place.
S.S. Miss Kellerman
A.P. Miss Ruth Terry, 1812 Hinman Ave., Sault Ste. Marie, Mich.
We trust nothing will prevent your being present. Margaret Mason Whitney Pres. A.P.
May 27, 1902.

2

1900: The Crescent

Gamma Phi Beta's newsletter, *The Crescent*, debuted in June 1900. The first issue contained a poem by Sarah Satterthwaite Leslie (Michigan, 1883), a story by Frances Gearhart (California-Berkeley, 1897), an article on fraternity life at the University of Michigan and a description of the Theta Chapter house (Denver). There were also two pages of personal notes and chapter letters.

1902: The Intersorority Conference

In 1902, Margaret Mason Whitney, president of Alpha Phi, called a meeting to be held in Chicago. Delegates from each of the seven sororities which had met in Boston 11 years prior were invited, and an additional invitation was extended to Chi Omega. The conference created a set of bylaws for recruitment to be adopted by all national organizations, but the suggestions made were rejected at each of the sorority's conventions shortly after. The Intersorority Conference continued to work toward uniform recruitment guidelines for many years.

3

1910



1917



4

1915



5

1914: Gamma Phi Betas in World War I

Immediately after the declaration of World War I, Gamma Phi Beta collegians and alumnae volunteered with the Red Cross folding bandages, sewing and knitting. Gamma Phi Betas also recognized a need in German-occupied Belgium and northern France, areas that had found their food supplies requisitioned to feed the German army. A Belgian Relief Committee was formed and a milk bottle campaign established – chapters across the country placed two-quart milk bottles on wooden stands throughout their cities so that passersby could put place their change inside. By the completion of the campaign, Gamma Phi Beta was able to give approximately \$7,000 in aid for Belgian children.

1915: The Crest

In 1915, a contest was announced for the Convention body to select a crest for our Sorority. Several designs were entered and Gertrude Comfort Morrow (California-Berkeley, 1913) submitted the design chosen. This design – now referred to as our crest or coat-of-arms – remains in use today.

1919: An International Sorority

Gamma Phi Beta became an international sorority with the installation of the first Canadian chapter, Alpha Alpha Chapter (Toronto), on October 30, 1919. Eight members from Alpha Chapter (Syracuse) assisted in the installation of the chapter.

1920s-30s

6. Alpha Zeta (Texas-Austin) members on their chapter house porch, 1926. 7. Alpha Mu Chapter (Rollins College) Installation, 1928. 8. Members at a Gamma Phi Beta camp, 1932. 9. Nu Chapter (Oregon), 1930s. 10. Alpha Psi Chapter (Lake Forest College) members in the baggage car on a college student trip, 1935.



1926

6



1928

7



1932

8



1930

9



1935

10

1924: The 50th Anniversary

To help celebrate the Sorority's 50th anniversary, Convention 1924 was fittingly hosted by Alpha Chapter (Syracuse) and Syracuse Alumnae Chapter in Lake Placid, New York, in the heart of the Adirondack Mountains. This Convention was the first at which the Memorial Service was held to honor E. Adeline Curtis (Syracuse, 1874). Founders Helen M. Dodge and Frances E. Haven (both Syracuse, 1874) received diamond and platinum badges, which they wore with great pride. Helen Dodge Ferguson bequeathed her badge to the Sorority, and after her death in 1937, her diamond pin became the Grand President's badge, to be worn during each woman's term in office. Today, International Presidents pass down

their own badges to their successors and receive a replica of this badge in gratitude from the Sorority for her faithful service at the highest international level.

1925: Gamma Phi Beta's First Camp

In 1925, Kittie Lee Clarke (Denver, 1908) led Denver alumnae in organizing a summer camp for underprivileged children in the mountains of west Denver. The children who were given an opportunity to visit the camp were selected from the Denver City Charity Office. Denver alumnae continued operating the camp as a local project until Gamma Phi Beta adopted camping as a national project in 1929.

1929: Finalizing a Central Office

The year 1929 saw the realization of a longtime dream for Lillian Thompson (Michigan, 1892), past Grand President and Gamma Phi Beta's first National Panhellenic Conference delegate. The Convention body voted to create a new permanent home for the Sorority's Central Office in the Pittsfield Building in downtown Chicago, an idea that had initially been discussed a decade earlier.

1929: The Great Depression

The Roaring Twenties ended abruptly with news of the stock market crash on October 29, 1929. That chaotic and desolate day – known as Black

Tuesday – marked the beginning of the Great Depression, a worldwide economic crisis that lasted into the mid-1940s. Some families found it difficult to keep their daughters in college and enrollment decreased. With fewer members living in chapter facilities, keeping mortgage payments current posed a challenge, though, astonishingly, not one chapter house was lost during those difficult years.

1937: The Last Founder

On October 21, 1937, Helen Dodge Ferguson, the last living Founder, passed away. Her commitment to Gamma Phi Beta was evident even in her death when she bequeathed \$15,000 to Syracuse University, which served as the basis of scholarship awards for members of Alpha Chapter.

1940s-50s

Images left to right: **1.** Eta Chapter (California-Berkeley) members in 'buy a bond and ride in a jeep' national bond campaign, 1944. **2.** Beta Alpha Chapter (Southern California) sold war bonds to buy two Northrop Black Widows, this one named 'Gamma Girl', 1945. **3.** Evelyn Gooding Dippell (Illinois at Urbana-Champaign, 1933), ΓΦΒ's first traveling secretary. **4.** Beta Omega Chapter (Northern Arizona) president receives the charter from Grand President Arnold, 1958.



1944

1



1940

2



1943

3



1946

4



1958



1961

1940: Aiding the War Effort

Even before the United States became formally involved in World War II, Gamma Phi Betas were preparing for war. At the 1940 Convention in Washington, D.C., a check for \$500 – which would have normally been spent on favors and decorations – was presented to the American Red Cross. Following the donation, Gamma Phi Betas made it their mission to provide medical and rehabilitative care for wounded soldiers.

After the attack on Pearl Harbor, four "Bonds Buy Mercy" campaigns were set into motion. Between 1944 and 1946, Gamma Phi Betas raised just under \$15 million through these campaigns, more than \$190 million in 2015 dollars.

1943: Traveling Secretary Program

In 1943, the traveling secretary position was created to facilitate communication and strengthen the bonds between International Gamma Phi Beta and collegiate chapters. Evelyn Gooding Dippell (Illinois at Urbana-Champaign, 1933) served as the first traveling secretary until 1946. Even though the name of the position was later changed to collegiate leadership consultant, the key purpose of the role remains the same today.

1946: The Creed

The 42nd Convention assembled June 22-27, 1946, in Bretton Woods, New Hampshire. At this Convention, Harriet Ross Wilcutt (Boston, 1901), serving as standards chairwoman, delivered an address entitled "Our Creed." The Creed was adopted and Gamma Phi Beta's Core Values of Love, Labor, Learning and Loyalty were derived from its lines.

1950: The Pink Carnation

In 1950 at the 44th Convention, the pink carnation was named Gamma Phi Beta's official flower. Though the carnation had been specified as the Sorority's flower in 1888, the color was not established. Pink was the

preferred color among chapters, and the declaration was officially entered into the Articles of Incorporation and Bylaws.

1958: The Gamma Phi Beta Foundation

During the 48th Convention in Victoria, British Columbia, in 1958, legislation enacted established the Gamma Phi Beta Foundation, "a trust organized solely for the promotion and encouragement of education and charitable purposes." At the same time, Gamma Phi Beta Sorority itself was incorporated, and the two became distinctive entities.

1960s-70s

5. Omicron Chapter (Illinois at Urbana-Champaign) members in front of their chapter house, 1946. 6. Gamma Eta Chapter (California State-Long Beach) charter members before Installation, 1961. 7. Cedar Rapids alumnae entertaining collegiate members and their mothers, 1969. 8. Lambda Chapter (University of Washington) members making pillows, 1969. 9. Alpha Theta Chapter (Purdue) members with handhooked rug, 1974. 10. Delta Epsilon Chapter (Texas Wesleyan), Greek Week winners, 1978.



6



1969

8



1969

7



1974

9



1978

10

1960: Growth in the Face of Adversity

With the rise in popularity of the counter-culture hippie movement came a rise in anti-Greek sentiment, causing new problems for Greek communities across the country. Despite these challenges, Gamma Phi Beta managed to install 23 new collegiate chapters during the 1960s. The National Panhellenic Conference (NPC) released a report in 1961 stating that total collegiate and alumnae members in NPC organizations had surpassed the one million mark.

1965: The Crest

Originally created by Gertrude Comfort Morrow (California-Berkeley, 1910) for a design competition held

during Gamma Phi Beta's 30th Convention in 1915, the crest was updated in 1965 to include four colors – dark brown, pink, white and gold. These colors are still in use today.

1966: The First Grand President's Badge

Gamma Phi Beta's 52nd Convention was held in Hot Springs, Arkansas, June 19-24, 1966. Much important Sorority business was conducted during this Convention, but the highlight occurred during the Carnation Banquet when Grand President Orra Spencer Reid (Michigan, 1926) received the first white crescent badge set with diamonds – the badge design still used for International (then known as Grand) Presidents.

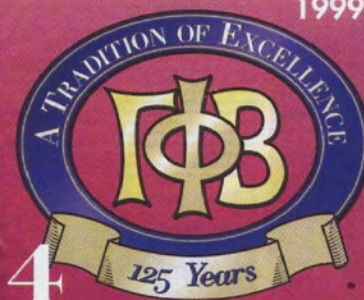
1974: A Century of Sisterhood

In 1974, Gamma Phi Beta turned 100 years old. Plans for the centennial celebration began as early as 1964 when the production of a film was authorized to depict the Sorority's history. The 11-minute film, which premiered at the 56th Convention in Kansas City, Missouri, was distributed to all chapters. During this same Convention, each of the former Grand Presidents cut a slice from an enormous birthday cake as the Confirmed Conventioneers parade began and sisters marched proudly among the tables, hats overflowing with paper carnations. One thousand brightly colored balloons, emblazoned with Gamma Phi Beta Centennial, were released over the Kansas City area.

Eleven hundred attended the Pink Carnation Banquet on the last night of the 56th Convention. Honored guests included Alida Moss Skinner (Illinois at Urbana-Champaign, 1915), daughter of Frances Haven Moss, and Lois Cobb Smith (Syracuse, 1918), daughter of Charles Cobb, one of the designers of Gamma Phi Beta's badge. The Carnation Award was introduced to honor those women who have achieved great distinction outside the Sorority.

1980s-90s

Images left to right: **1.** Eta Chapter (California-Berkeley) members on Bid Day, 1980. **2.** Photo from The Fashion Scene on Campus article in *The Crescent*, Summer 1988. **3.** Epsilon Mu Chapter (Loyola-New Orleans), 1989. **4.** 125th Anniversary logo, 1999.



1980: A Time for Expansion

For Gamma Phi Beta, the 1980s and 1990s were characterized by expansion. Between 1980 and the new millennium, Gamma Phi Beta installed an unprecedented 45 collegiate chapters. During these decades, more women than ever sought college degrees and aimed to earn more prestigious positions in the workforce. During this time these cultural shifts led to a greater interest in honing leadership and interpersonal relationships skills during young adulthood, causing more women to take interest in Greek life during college.

1982: Personal and Chapter Enrichment (PACE)

Due to this increased desire within the collegiate membership for personal and professional development, Gamma Phi Beta focused on educating members on topics like public relations, problem solving and networking. To that end, Personal and Chapter Enrichment (PACE) was developed to fit the changing role of women in leadership positions. Gamma Phi Beta chapters still utilize PACE to provide valuable educational programming to their members.

1992: A Home for Headquarters

In 1992, International President Jolene 'Joey' Lessard Stiver (North Dakota State) served as mistress of ceremonies for the dedication of the new International Headquarters at 12737 East Euclid Drive in Centennial, Colorado. The building, which is still occupied by Gamma Phi Beta, the Facilities Management Company and the Foundation today, boasts office space, two conference rooms, a mailroom and a kitchen. Visitors can also stop by to tour Gamma Phi Beta's museum, complete with artifacts ranging from 1874 through present day.

1999: The 125th Anniversary

In 1999, Gamma Phi Beta celebrated its 125th anniversary. Though the celebration landed on a non-Convention year, chapters across the continent honored our Founders and their legacy. The Sorority announced the construction of Sisterhood Plaza at International Headquarters – sisters could purchase inscribed bricks and dedicated benches for the plaza, with the profits benefitting the Gamma Phi Beta Foundation. The plaza was completed only a few years later. Additionally, a number of commemorative items were created and adorned with the 125th anniversary logo – a gold monogram in the center of a royal blue oval, topped with the words "A Tradition of Excellence."

2000s-10s

5. Theta Chapter (Denver) members, 2007. 6. Gamma Phi Beta graduates, 2008. 7. Members volunteer at a Girls on the Run 5k in Denver, 2013. 8. Delta Chapter (Boston) members, 2013. 9. Alpha Iota Chapter (California-Los Angeles) members, 2014. 10. Alpha Iota Chapter (California-Los Angeles) members, 2014.



2000: A New Strategic Plan

At the turn of the millennium, Gamma Phi Betas were ready to make updates to our more than 125-year organization to improve its structure and impact. The first goal was to create a new strategic plan. Developed over the course of several years, the strategic plan focused on raising the Sorority's public and private profile, strengthening the organization's infrastructure and continuing to develop programs that empower women.

2002: Improving Our Philanthropic Mission

As part of the new strategic plan, Gamma Phi Beta sought to improve the Sorority's philanthropic mission. At the 70th Convention in Washington, D.C., Convention delegates adopted a new philanthropic mission that reflected the changing role of women and girls in today's society: "To provide experiences and resources that build spiritual, mental and social resiliency in girls." In 2012, Gamma Phi Beta strengthened its philanthropic mission by partnering with Girls on the Run and announcing the Sorority's philanthropic focus: Building Strong Girls.

2003: Making Technological Advances

The 2000s and 2010s were a time of technological development for the Sorority. On June 21, 2003, the Sorority rolled out its new website at the Leadership Development Institute – now called REAL Leadership Institute. A few years later, Gamma Phi Beta introduced its progressive online advisor training, which proved to be so successful that the National Panhellenic Conference utilized the model as a basis for their online advisor training program. Gamma Phi Beta also established its social media presence in 2010, providing faster and easier communications between the Sorority and its collegiate and alumnae chapters.

2010: New Educational Programming and Resources

Gamma Phi Beta was proud to announce two new educational programs in 2010: Rock Solid Relationships and Safety & Wellness – now called REAL Relationships and REAL Wellness. Both programs aim to develop sisters personally and professionally by providing them with the skills to build healthy relationships, identify the importance of safety and wellness for women, hone mentoring skills and improve self-awareness.



EXPLORE THE LEGACY AT GAMMAPHIBETAHISTORY.ORG

More than 140 years ago, Gamma Phi Beta was humbly founded by four collegiate women seeking support in a world that made them feel alienated because of their gender. Little did Helen, Frances, Adeline and Mary know that Gamma Phi Beta would become the first-ever “sorority,” impacting the lives of more than 195,000 sisters to date who have followed in their footsteps.

Our organization's past plays such an integral role in understanding the importance of membership; therefore, Gamma Phi Beta has created a website specifically dedicated to helping users explore the legacy our Founders created. From the Founders' first meeting in 1874, to the introduction of new initiatives to improve the membership experience in the 21st century, GammaPhiBetaHistory.org provides an inside look into our past and present.

In addition to boasting an expansive timeline that chronicles Gamma Phi Beta through the decades, GammaPhiBetaHistory.org allows users to view

items displayed in the International Headquarters museum, explore the histories of each of our collegiate chapters and learn more about Gamma Phi Beta's past Grand and International Presidents. Sisters can also record their own chapter's historical achievements by submitting information and photographs to the website through a simple online form.

Gamma Phi Beta is excited to share our rich history through this comprehensive and interactive website. Visit GammaPhiBetaHistory.org to explore the legacy today.





Spring into **SAVINGS.**

Gamma Phi Beta sisters could get a
special discount on car insurance.



G A M M A P H I B E T A



GEICO®

geico.com/greek/gammaphibeta | 1-800-368-2734

Some discounts, coverages, payment plans and features are not available in all states or all GEICO companies. Discount amount varies in some states. One group discount applicable per policy. Coverage is individual. In New York a premium reduction may be available. GEICO is a registered service mark of Government Employees Insurance Company, Washington, D.C. 20076; a Berkshire Hathaway Inc. subsidiary. GEICO Gecko image © 1999-2015. © 2015 GEICO

Alumnae Chapter Profile

CHICAGO ALUMNAE CHAPTER

When our four Founders finished their studies, there were no alumnae chapters to join. However, their vision for Gamma Phi Beta was for a lifetime of sisterhood and connections beyond the college years. Their dream of keeping Gamma Phi Betas connected as alumnae was realized at Convention 1892 when Chicago Alumnae Chapter became the first alumnae chapter to be installed.

Now, with more than 160 alumnae chapters, our sisters can find comfort in knowing the support of our sisterhood can be cherished for a lifetime.

"If you are torn about joining an alumnae chapter, I encourage you to try out an event where you will be comfortable. For instance, I first began my alumnae experience by attending a Founders Day event. That event inspired me to stay involved," says Chicago Alumnae Chapter President Tamara Sprull (Jacksonville).

Read on to learn more about what alumnae life is like for members of our oldest alumnae chapter.

The Crescent: Three words to describe Chicago Alumnae chapter.

Tamara Sprull: Supportive, engaging and fun!

What are some activities the chapter participates in?

TS: We are a very active chapter. We host monthly gatherings, whether it's getting together at a local restaurant or at the house of a sister for a luncheon or dinner gathering. We have a book club and are working on hosting some young alumnae activities, such as networking over coffee and a night at the movies. We attend two Girls on the Run races each year to cheer and pass out medals. Additionally, we participate in Chicago area Panhellenic events with alumnae from other National Panhellenic Conference organizations.



Chicago Alumnae Chapter celebrates Founders Day with Evanston North Shore Alumnae Chapter, Chicago Far West Alumnae Chapter, Chicago Northwest Suburban Alumnae Chapter and Epsilon Chapter (Northwestern) each year. Pictured are Chicago Alumnae Chapter sisters at their Founders Day celebration in 2014.

How does the chapter promote personal growth?

TS: Each month we have a new topic or activity for Personal and Chapter Enrichment (PACE). We've learned about domestic violence, goal setting and the policies advocated for by the Fraternal Government Relations Coalition. We've even created outings, such as museum tours, that can further our learning about history, art and culture in the Chicago area.

What Core Value best describes the chapter?

TS: Loyalty. We have 50- and 75-year members, along with young alumnae in our chapter. This range of ages among our members shows dedication to Gamma Phi Beta across the decades.

What are some unique facts about the chapter?

TS: We have four past International Council members, one of whom was the second traveling secretary (today known as a collegiate leadership consultant), one former Foundation Trustee and two current Foundation Trustees who are all members of our alumnae chapter.

How does the chapter support local collegiate chapters?

TS: We support Epsilon Chapter (Northwestern) with advisors and affiliated house corporation support. We also assist with Initiation.

If you're interested in connecting with alumnae in your area we encourage you to reach out to an alumnae chapter near you! You can locate and contact local alumnae chapters by visiting GammaPhiBeta.org/ChapterLocator.

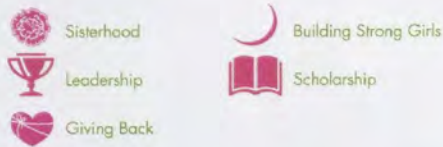
"When we are together, age doesn't make a difference!"

— Sally Lewis (Bradley), member of Chicago Alumnae Chapter

SORORITY Life

It's collegiate and alumnae chapter updates – at a glance! Read all about our shining chapters across the continent and their recent activities. For submission guidelines, visit GammaPhiBeta.org.

Symbol Key:



Region 1

CONNECTICUT

☪ Delta Tau Chapter (Colgate)

A sisterhood event held before chapter functioned as a great way for the chapter's newest members to meet women who had been abroad during the fall semester. Members enjoyed learning about one another's study abroad experiences and bonding.

☪ Eta Theta Chapter (Connecticut)

Sisters headed to New York City to participate in the preference ceremony during extension recruitment at Columbia University. Sisters are excited that they were able to help bring back Iota Chapter (Columbia).

DELAWARE

☪ Eta Gamma Chapter (Delaware)

Many members spent up to six weeks in countries around the world studying abroad during the winter session. From Australia to Spain, sisters have been studying hard while also embracing the various cultures around them.

MASSACHUSETTS

☪ Epsilon Eta Chapter (Bridgewater State)

Winter break was a time for service and travel as sisters volunteered in their community and visited places such as Hawaii and Italy. Sisters enjoyed formal recruitment with a Lily Pulitzer inspired theme – as Lily said, “anything is possible with sunshine and a little pink.”

NEW JERSEY

☪ Bergen County Alumnae Chapter

Members celebrated both a Founders Day luncheon and a holiday brunch at the end of 2014. In addition, sisters volunteered at their second Girls on the Run New Jersey North 5k, recording the time of each participant as she completed her race.

PENNSYLVANIA

☪ Alpha Upsilon Chapter (Pennsylvania State)

Sisters are proud of the academic success they have achieved. Members have truly upheld our Core Value of Learning and 11 women in the chapter received 4.0 grade point averages.

☪ Epsilon Alpha Chapter (La Salle)

The chapter was excited to welcome 21 new members on Bid Day. Members are looking forward to sharing life experiences as sisters.

QUEBEC

☪ Alpha Tau Chapter (McGill)

Sisters enjoyed the Montreal premiere screening of “Kingsman: The Secret Service.” The sisterhood event was the perfect opportunity to bond with the chapter's nine new members.

Region 2

FLORIDA

☪ Beta Mu Chapter (Florida State)

Fun was had by all during Moms' Weekend, a weekend filled with trunk shows, brunches and bonding between sisters and family. Thank you to Jamie Storm (Florida State) for planning the unforgettable event.

☪ Epsilon Zeta Chapter (Jacksonville)

Members paired with Sigma Chi Fraternity to win trivia night on campus.

☪ Eta Beta Chapter (Florida Southern)

The Greek community enjoyed coming together to raise money for Girls on the Run. The chapter's Crescent Classic event, Mission Possible, boasted teams competing in physical challenges, such as a “laser beam” obstacle course.

☪ Eta Lambda Chapter (Central Florida)

The chapter hosted its first annual Crescent Classic event to raise money for their local Girls on the Run council. Sisters also volunteered as running buddies for the Lake Eola 5k.

☪ Tampa Bay Alumnae Chapter

Founders Day was celebrated with sisters from Eta Eta Chapter (South Florida) with a brunch and program. The chapter also held its annual ornament exchange in December. Members are excited about growing Gamma Phi with a new chapter at the University of Florida in the fall.

KENTUCKY

☪ Epsilon Sigma Chapter (Morehead State)

The chapter hosted its first-ever Gammy's, a video-making contest to raise money for Building Strong Girls.

Gamma Phi Beta Sorority by Regions



Alaska - Region 8
Hawaii - Region 7

NORTH CAROLINA

❁ Eta Mu Chapter (Duke)

The chapter had a successful first official recruitment welcoming 29 members, two of whom are legacies. Members are excited to continue to grow their sisterhood!

SOUTH CAROLINA

❁ Epsilon Theta Chapter (Clemson)

The chapter was fortunate to gain three new sisters during the spring semester. These women exemplify our Core Values and sisters cannot wait to continue to build bonds with them.

❁ Zeta Sigma Chapter (South Carolina)

This fall, the chapter was featured on College Gameday. With short notice, sisters came together to create posters and banners and performed Gamma Phi Beta cheers the next morning on ESPN.

TENNESSEE

❁ Eta Kappa Chapter (Tennessee-Chattanooga)

The chapter was excited to host its second spring recruitment and was thrilled to welcome 17 new sisters.

VIRGINIA

❁ Epsilon Pi Chapter (George Mason)

Sisters spent the winter preparing for spring recruitment. With a new executive council in place, the chapter happily welcomed its newest members.

❁ Epsilon Iota Chapter (Christopher Newport)

The chapter aided girls who aspire to enter the math and science fields by volunteering at an overnight camp at the Air and Space Museum in Hampton, Virginia. Sisters were even able to help the girls build their own rockets.

❁ Zeta Beta Chapter (Virginia)

The chapter was proud to have more than 45 sisters complete the "0.2 Challenge," where sisters strived to raise their grade point average by at least 0.2 from one semester to another.

❁ Eta Nu Chapter (James Madison)

Since chartering the chapter, members have been busy forming connections on campus, giving back to the local community and bonding with sisterhood events.

Region 3

ALABAMA

❁ Epsilon Lambda (Alabama)

The new executive council is excited to lead the chapter to success this year.



Region 2 | In addition to initiating 12 new sisters, growing Gamma Phi families during Big/Little Sister reveal and supporting runners at a Girls on the Run 5k, Epsilon Psi Chapter (North Carolina-Asheville) bonded with a fun photo shoot on campus this past winter.

GEORGIA

❁ Delta Omicron Chapter (Southern Polytechnic State)

The chapter wishes to thank an anonymous alumna who donated a special gift to members. At the end of the semester, each sister was surprised with a crescent charm for her lavalier.

❁ Delta Upsilon Chapter (Georgia)

Sister Erin Munger (Georgia) was recently elected to serve as vice president for Panhellenic standards on the local Panhellenic council. The chapter is proud that she is able to serve Panhellenic in such a notable capacity.

❁ Atlanta Alumnae Chapter

In December, the chapter hosted its annual holiday party and ornament exchange. Members also brought donations for Mary Hall Freedom House, the local nonprofit supported by Atlanta Alumnae Panhellenic Association that aids impoverished women and their children.

LOUISIANA

❁ Epsilon Mu Chapter (Loyola-New Orleans)

In celebration of Martin Luther King, Jr. Day, members volunteered to work on service projects at local schools. Sisters were happy to spend the day giving back to the community.

TEXAS

❁ Alpha Xi Chapter (Southern Methodist)

Excited new members ran home to Gamma Phi Beta on Bid Night. The chapter celebrated with a DJ, videographer, dance party and an Italian meal. New members bonded on an overnight retreat at the Rosewood Crescent Hotel in uptown Dallas.



Region 3 | Sisters of Zeta Rho Chapter (Texas A&M-College Station) gathered at their chapter house before spring recruitment 2015. The chapter welcomed new sisters with open arms and was excited to grow their Gamma Phi families.

❁ Gamma Chi Chapter (Texas State-San Marcos)

Members of the executive council traveled to Dallas for the REAL Leadership Conference. Sisters had a great time connecting with other Gamma Phi Betas and brainstorming ways to better the chapter for the coming year.

❁ Zeta Chi Chapter (Texas Christian)

The chapter hosted a fun roller-skating sisterhood event this winter, which was a great way to bond with sisters while doing something active. As a chapter, long- and short-term goals for the semester were also set.



Region 4 | Members of Greater Akron Alumnae Chapter met for a painting party at Strand Theater in Wadsworth, Ohio. They chose to paint an image that included pink carnations and a crescent moon, of course!

Region 4

INDIANA

☪ Zeta Kappa Chapter (Southern Indiana)

The chapter hosted its annual volleyball tournament to raise money for The Pirouette Project, a project to teach young girls the art of ballet and the importance of living a healthy lifestyle.

☪ Zeta Iota Chapter (Valparaiso)

Sisters enjoyed time together during a carnival-themed sisterhood event. They played games, ate popcorn, painted canvases and crafted decorative bowls from recycled magazines.

MICHIGAN

☪ Beta Chapter (Michigan)

Newly-initiated members, family and friends gathered for the reinstallation of the chapter. The ceremony included a look into Beta Chapter's history, individual awards, the installation of officers and kind words from the chapter's collegiate leadership consultants. Tears were shed as International President Krista Spanninger Davis (Bowling Green) presented the original Beta Chapter charter to members.

☪ Delta Omega Chapter (Oakland)

Sisters were excited to meet many wonderful women through informal recruitment during the spring semester.

♥ Epsilon Beta Chapter (Alma)

Sisters teamed up with Alma College Football to hold a "Pink Game" to support the American Cancer Society and the Gamma Phi Beta Foundation.

☪ Zeta Nu Chapter (Detroit-Mercy)

The chapter, along with peers and family, was proud to support Girls on the Run with their philanthropy event, PhiveK. Participants enjoyed a marathon around campus. The race was the chapter's most successful philanthropy event in years.

☪ Eta Delta Chapter (Grand Valley State)

The chapter had a very successful spring recruitment. Sisters were over the moon with excitement to welcome eight new members into Gamma Phi Beta.

OHIO

☪ Alpha Nu Chapter (Wittenberg)

Sisters enjoyed making signs, spray painting hair and cheering on runners at the Girls on the Run 5k in Dayton, Ohio.

☪ Zeta Omicron Chapter (John Carroll)

Three sisters from the chapter studied abroad at Regent's University London in the United Kingdom. In addition to furthering their education, they were immersed in another culture for the spring semester.

☪ Cincinnati Alumnae Chapter

The chapter held a group yoga night to start off the year with good health and sisterhood.

☪ Cleveland East Alumnae Chapter

The chapter presented the Shirley LaGore (Kent State) Leadership Award to Leah Rose (John Carroll) and the Judith Koonce (Kent State, 1954) Leadership Award to Amber Sherman (Lake Erie) at the Founders Day celebration held at John Carroll University.

Region 5

ILLINOIS

♥ Omicron Chapter (Illinois at Urbana-Champaign)

Two years ago, the chapter created Sweep Away Cancer, an event to raise money for cancer research where students compete in a broom ball tournament. Sisters are proud of the success of the event and the bright ideas of the event coordinators.

☪ Beta Eta Chapter (Bradley)

The chapter held its first annual sisterhood skate night. Sisters had the ice to themselves and were able to share laughs and make memories.

♥ Chicago Northwest Suburban

Alumnae Chapter

Chapter members once again assembled care packages that were sold to parents to send to their Gamma Phi Beta daughters to raise money for the Gamma Phi Beta Foundation and other nonprofits.

IOWA

☪ Rho Chapter (Iowa)

Members supported the more than 700 enthusiastic runners participating in the Girls on the Run 5k. The chilly race was a special celebration for runners, coaches, running buddies and community. Seeing the thrill and confidence in the eyes of the girls as they crossed the finish line was an inspiring experience.

☪ Omega Chapter (Iowa State)

The chapter's annual Crescent Classic event raised nearly \$4,000. The money raised from the event was given to Girls on the Run and Camp Hantesa in Boone, Iowa.

☪ Gamma Psi Chapter (Northern Iowa)

Eight inspiring sisters transitioned into alumnae status. The chapter is sad to see them go, but excited to see all they accomplish in the future!

MINNESOTA

☪ Kappa Chapter (Minnesota-Twin Cities)

After sisters returned to school for the spring semester, they set their sights on growing the chapter. They were happy to welcome 10 new members into their sisterhood this past spring.

♥ Gamma Mu Chapter (Minnesota State-Moorhead)

The chapter hosted a 48-hour philanthropy event for Hope, Inc., an organization that provides sports and recreational opportunities to children and young adults with mobility challenges. Sisters held a bake sale, set up yard games on campus and had a bonfire with s'mores to raise awareness and money for the nonprofit.

☪ Gamma Pi Chapter (Minnesota State-Mankato)

The chapter was proud to earn the top grade point average on campus. Sisters also hosted a successful Crescent Classic, raising \$1,300 for Girls on the Run.

WISCONSIN

☪ Gamma Gamma Chapter (Wisconsin-Milwaukee)

Sisters volunteered as Wonder Girls at a Girls

on the Run 5k, walking behind the runners to ensure no one was left behind and providing them with the support needed to finish the race.

🏆 Gamma Omega Chapter (Wisconsin-Platteville)

Executive council members enjoyed a productive and fun retreat together. The council worked on communication, collaboration and working together more efficiently.

Region 6 COLORADO

🏆 Tau Chapter (Colorado State)

Every Gamma Phi girl knows that school comes first. But combine school with Greek life activities, work, volunteering and more and it can be easy to feel overwhelmed. Sisters took a stand against stress and enjoyed a hike at Horsetooth Mountain to promote mental wellness.

🏆 Beta Rho Chapter (Colorado-Boulder)

The chapter earned the highest grade point average of all the sororities on campus and was given special recognition at Greek Awards. Sisters are also proud of their success during recruitment and the turnout at their Crescent Classic.

🏆 Denver Alumnae Chapter

Sisters have been getting fresh air hiking in the foothills, dining at new restaurants and spending time with nearby collegiate chapters. After their annual meeting at International Headquarters, members are ready for more sisterhood.

🏆 Fort Collins Alumnae Chapter

Members delivered carnations and a hand-embroidered handkerchief to Betty Ann Husted (Colorado College) to honor her as a 75-year member.

KANSAS

🏆 Sigma Chapter (Kansas)

Executive council members improved their leadership skills at the REAL Leadership Conference. Armed with new ideas for sisterhood events and how to improve attendance, executive members took away skills that they are excited to implement in their chapter.



Region 5 | Gamma Chapter (Wisconsin-Madison) sisters supported Girls on the Run of Dane County at their 5k race. Members helped with registration, cheered on runners and directed the course. Girls on the Run of Dane County celebrated 10 years of building strong girls in the community this year and the chapter was able to meet Molly Barker (bottom, center), founder of Girls on the Run.

🏆 Beta Upsilon Chapter (Kansas State)

The chapter was excited to learn about topics explored by executive council members at the REAL Leadership Conference.

🏆 Beta Chi Chapter (Wichita State)

The executive council had the opportunity to attend the REAL Leadership Conference in Dallas. While there, they not only learned useful leadership techniques, but were also able to collaborate with executive councils from other chapters.

🏆 Greater Kansas City Alumnae Chapter

The chapter welcomes two new members who entered our sisterhood as alumnae initiates. The pair was initiated by their daughters at Beta Upsilon Chapter (Kansas State), where they both attended school more than 30 years ago. Welcome Kathy and Jan!

MISSOURI

🏆 Alpha Delta Chapter (Missouri)

Sisterhood continues to flourish at Alpha Delta Chapter. Members are encouraging their sisters to inspire the highest type of womanhood every day by actively making an effort to show how much they care for one another.

🏆 Zeta Delta Chapter (Southeast Missouri State)

The chapter hosted a successful 20th anniversary celebration. More than 100 alumnae were in attendance to commemorate the occasion, including many of the chapter's charter members. The chapter also hosted an event-filled philanthropy week and their Crescent Classic volleyball tournament.

🏆 Eta Iota Chapter (Rockhurst)

Sisters welcomed 28 new members during formal recruitment in the spring. Members



Pi Chapter (Nebraska-Lincoln) Celebrates 100 Years of Sisterhood

More than 400 sisters from across the country returned to Lincoln, Nebraska, for Pi Chapter's Centennial celebration. Alumnae were thrilled to tour the chapter facility to see recent renovations and reminisce on their own days living in the house. After a full schedule of activities and connecting with sisters, the anniversary weekend concluded with a Gala Celebration dinner and Founders Day ceremony with special guest International President Krista Spanniger Davis (Bowling Green).

are proud to introduce their new sisters to the lifelong bonds of Gamma Phi Beta. The chapter celebrated with a baseball-themed Bid Day.

NEBRASKA

🏆 Gamma Kappa (Nebraska-Kearney)

Siera Becker, Caitlin Graf and Brittany McGregor (all Nebraska-Kearney) had the opportunity to study abroad in Ireland during the spring semester.

🏆 Epsilon Delta Chapter (Creighton)

Formal recruitment was a huge success for the chapter. For Bid Day, members enjoyed a meal at Mamma's Pizza and bonded over fun activities like crafting and making baked goods.

OKLAHOMA

❁ Psi Chapter (Oklahoma)

The chapter partnered with Alpha Tau Omega and Beta Upsilon Chi fraternities for Homecoming festivities. The team's theme was "Charlie and the Chocolate Factory." Teammates designed a float for the Homecoming parade, which won first place overall.

❁ Beta Omicron Chapter (Oklahoma City)

The chapter hosted a retreat where sisters shared what they loved about one another on posters. The retreat reminded the chapter that the bond of sisterhood can never be broken.

♥ Beta Psi Chapter (Oklahoma State)

The chapter paired with the men of Alpha Tau Omega Fraternity for an Oklahoma State tradition, Freshman Follies. Each team performs a 10 minute play complete with singing, dancing, costumes and lighting. All proceeds from the event benefitted Hearts for Hearing, an organization that supports families affected by hearing loss.

❁ Norman Alumnae Chapter

Friends old and new gathered for a Founders Day celebration with Psi Chapter (Oklahoma). On this special day, International President Krista Spanninger Davis (Bowling Green) surprised Margaret West Pape (Oklahoma) with her 50-year pin.

Region 7

ARIZONA

♥ Alpha Epsilon Chapter (Arizona)

The chapter spent time during their sisterhood retreat making blankets for Teen Challenge for Girls of Tucson, Arizona. The blankets were fun to make and the chapter enjoyed spending time together while giving back to the community.

❁ Phoenix Alumnae Chapter

The chapter hosted a Rite of Passage celebration for the women of Beta Kappa Chapter (Arizona State). Members enjoyed getting to share memories and make new ones with sisters.

CALIFORNIA

❁ Eta Chapter (California-Berkeley)

On Bid Day, the chapter celebrated with a trip to Sky High trampoline park. Sisters jumped



Region 8 | Shelby Calman (British Columbia, right) led Vancouver Alumnae Chapter sisters on a snowshoe trek through Cypress Mountain. The view from the top provided a perfect backdrop for this sisterly photo. The event was a refreshing way to enjoy the winter season.

the day away and had a blast bonding with the chapter's newest members.

❁ Alpha Iota Chapter (California-Los Angeles)

SoulCycle was taken over by Gamma Phi Betas. Sisters let their inner athletes shine as they completed the killer workout. The chapter's strong sisterhood helped members work hard and stick with it to the sweaty end!

❁ Beta Alpha Chapter (Southern California)

Many sisters have traveled abroad together to places such as London, Madrid and Italy. The chapter also held its Presents Ceremony, where newly-initiated members were formally presented as members of Gamma Phi Beta in front of their families during Parents' Weekend. The ceremony was followed by brunch.

❁ Gamma Eta Chapter (California State-Long Beach)

The chapter had the opportunity to celebrate sisterhood at their overnight retreat at Lake Gregory. Sisters were able to bond, make new memories and reflect on what it means to be a Gamma Phi Beta.

❁ Delta Delta Chapter (California State-Fullerton)

Members have enjoyed many fun sisterhood events, including hiking the cliffs overlooking Crescent Bay or observing the stars at Griffith Observatory in Los Angeles.

∩ Delta Lambda Chapter (California-Riverside)

The chapter is so grateful for the opportunity to work with Girls on the Run Orange County. Sisters are able to get involved and show support by making posters, handing out water and cheering on the girls as they run. Some

sisters were lucky enough to run in the race and get an insight into what Girls on the Run is all about.

∩ Delta Psi Chapter (California-Santa Barbara)

The chapter raised more than \$9,000 to support Building Strong Girls. Sisters hope to help start a local Girls on the Run council in their area soon.

❁ Epsilon Gamma Chapter (San Diego)

Bid Day was filled with hugs, smiles and happiness! Together, sisters enjoyed dinner at a chapter advisor's home, then went to the beach. With ice cream sandwiches in hand, members watched the beautiful sunset as a chapter.

∩ Epsilon Nu Chapter (Chapman)

The chapter is enjoying supporting Girls on the Run Orange County. Sisters showed their dedication to our philanthropic partner by completing a 5k with Girls on the Run participants.

❁ Bakersfield Alumnae Chapter

The chapter has had a packed schedule! From Founders Day and a Toys for Tots dinner, to a t-shirt-making PACE and welcoming three new alumnae initiates into sisterhood, sisters have been enjoying spending time with one another.

❁ Pasadena Alumnae Chapter

The chapter continues to enjoy a full schedule and has recently hosted a card-making workshop, breakfasts and dinners at local restaurants, book club and a volunteer opportunity with Operation Gratitude, an organization that sends care packages to United States military troops.

Region 8 CALIFORNIA

☪ Zeta Gamma Chapter (Sonoma State)

The chapter supported their local Girls on the Run council by volunteering at the celebration table where runners could get their face painted and hair styled before the big race.

☪ Marin County Alumnae Chapter

Sisters enjoyed their annual holiday party to close out 2014. Fun was had by all over hors d'oeuvres, desserts and white elephant gifts. Members also brought children's books to donate to a Marin County nonprofit.

IDAHO

♥ Xi Chapter (Idaho)

Before returning to school for the spring semester, many sisters went on service trips to countries such as Georgia, Peru and Nicaragua to help rebuild communities. They stayed in local churches or shelters and worked each day to give back.

OREGON

♥ Nu Chapter (Oregon)

Sisters participated in Miracle Madness where they danced for six hours. The event raised more than \$20,000 for Children's Miracle Network and Gamma Phi Beta's team received awards for being the most spirited and the top fundraisers.

WASHINGTON

☪ Gamma Epsilon Chapter (Puget Sound)

The chapter had a very successful recruitment season during which members strengthened their bonds with one another and had the pleasure of welcoming more than 30 new members to Gamma Phi Beta.

☪ Zeta Alpha Chapter (Eastern Washington)

Senior Abby Madison and junior Cassidy France (both Eastern Washington) represented Gamma Phi Beta on a leadership retreat for Eastern Washington University's student body association. The pair is inspiring the highest type of womanhood with each idea they bring back to campus.

BRITISH COLUMBIA

☪ Alpha Lambda Chapter (British Columbia)

The chapter put a twist on weekly sisterhood events and came together to perform a musical number. Members portrayed the Spice Girls for Battle of the Bands, which was a special way of strengthening sisterhood both on-stage and off.

Email your chapter news to TheCrescent@gammaphibeta.org

HERFF JONES
A Varsity Achievement Brand

A. Polished Crescent Necklace, 18", #1668
10K (with GF chain)...\$154 SS...\$57

B. Vintage Letters Charm, #1984
14K, KW...\$122 10K, KW...\$97 SS...\$37.50 GP...\$32.50

C. Pearl Bracelet, 7.5", with white crystal heart and ΓΦΒ heart lavalier, #631046
SS...\$75

D. Large Letter Lavalier, #L2647
10K, KW...\$56 SS...\$26

E. Snake Chain, #snake
14K...\$504 GF...\$30 SS...\$18

F. Chapter President Ring, #0453
14K, KW...\$435 10K, 10KW...\$311 SS...\$122

G. Swirl Ring with rose sapphires, #1000RS
14K, KW...\$380 10K, KW...\$268 SS...\$123

H. Swirl Ring with diamonds, #1000
10K, KW...\$330

I. Loyalty Crest Ring, #30304
14K, KW...\$290 10K, KW...\$206 SS...\$87

J. Oval Crest Signet Ring, #0345
14K, KW...\$410 10K...\$292 SS...\$90

K. Pearl Ring with engraved Greek letters, #612013 (Whole sizes only, 6-9)
SS...\$67

TO ORDER:
Visit www.HJGreek.com
or call **1.800.422.4348**

Find us on Facebook: www.facebook.com/hjgreek

OFFICIAL LICENSED PRODUCT

K - karat gold, KW - karat white gold, SS - sterling silver, GF - gold-filled, GP - gold-plated

SUPPORTERS OF THE *Heart*

A WALK THROUGH FOUNDATION HISTORY

Gamma Phi Beta Foundation 1915-2015

\$11

First endowment created with \$11 to support the work of the Sorority

1915

1917



First graduate fellowship awarded – the Lindsay Barbee Fellowship was awarded to a female student in a social service field

The Foundation is incorporated

1959

1960

First Foundation undergraduate scholarship awarded



1974

First logo created

Foundation calls first meeting of all National Panhellenic Conference Foundation leaders, which established the current Panhellenic Foundation Conference



1985

1991



Giving societies established – TEII honors planned gifts and The 1874 Society recognizes unrestricted annual giving

2014



One Heart campaign publicly announced with \$2.5 million raised

2010

Current Foundation logo created



120

Record number of members of The 1874 Society

2014

2014

Dr. Ruth Seeler (Vermont) becomes the first **\$1 million donor**

2015

131 total endowments



Leadership funds distributed to date: **\$4.8 million**



Philanthropy funds to date: **\$2.9 million**



Financial aid funds to date: **\$3.1 million**



WHAT IS **YOUR HEART'S** DESIRE?

GAMMA PHI BETAS ARE **CONNECTED** AT THE **HEART**...

The bonds of our Sorority are rooted in an unwavering devotion to educational and charitable purposes. The desires of one heart, **your heart**, play an influential role in enhancing the lives of countless young women.

The One Heart campaign provides a formal mechanism for you to preserve the past, inspire the present and ensure the continued growth and ongoing success of Gamma Phi Beta for future generations.

Your generosity in giving to Gamma Phi Beta reflects heartfelt philanthropic values and further bonds you to a sisterhood that has positively impacted women's lives for more than a century.

Can one person really make a difference?

Ask your heart...it will answer.

HOW TO GIVE

1. **One-time gift**
2. **Multiple gifts over time**
3. **Giving through your estate**

Please, make a gift or pledge today.

303.800.2890

GammaPhiBeta.org/OneHeart

**ONE
HEART
CAMPAIGN**

Memorial Gifts

We acknowledge the following individuals and groups who contributed to the Gamma Phi Beta Foundation in memory of a loved one as of January 31, 2015. Lists are printed as received from the Foundation.

Margaret Bradshaw Adams (Colorado College, 1955)
Elizabeth Coley Phillips

Helen A. Baker, mother of Kirsten M. Baker
Cynthia Sung

Gabriel Boenzli, father-in-law of Barbara Weiss Boenzli
Sandy Biegelman Burba

Pamela Shafer Burke (Missouri-Columbia, 1966) daughter of past International President Audrey Shafer and sister of Alison Shafer Bond

Alison Shafer Bond
Margaret Godbold Briscoe
Vicki Benitz Helling
Patricia M. Henderson
Judy Mai Millen
Joanne Callis Roman

David Cantu, brother of Cheryl Cantu-Mireles
Zeta Chi Affiliated
House Corporation

Patricia McDonald Chandler (Idaho, 1952)
Harriet Pratt Peterson

Cecile Cunningham (Maryland, 1965)
Dixie Reynolds Primosch

Marion Pfaender Downs (Minnesota-Twin Cities, 1932)
Dianne Dyatt Hornbrook
Dr. Ruth A. Seeler

Ruth McCampbell Eskew (Southwestern Oklahoma State, 1973)
Psi Chapter Affiliated
House Corporation

Priscilla Gail Henry Farrell (Michigan State, 1969)
Cindy Bartz Coffman

Reverend Dr. Charles W. Forman, grandfather-in-law of Katherine Pezzella
Anne Layton

The deceased sisters from Gamma Upsilon Chapter (Drake): Linda Allen Bolgulski (1977), Mary Neel Larson (1978), Nancy Jo Mathews (1976), Carol Pellett Mead (1976), Anne Trent Reed (1978), Susan Stark (1973) and Stefanie Luke Shoemaker (1980)
Carol Dworak
Christie Kaye

Beatrice Madeleine Ghikas, mother of Anne Layton and grandmother of Norah Ishister

Alpha Alpha Chapter Affiliated
House Corporation
Greater Toronto Area
Alumnae Chapter
Katherine A. Pezzella
Jolene Lessard Stiver
Erin Rowe Wortman

Erica C. Goeckel, daughter of Dianne C. Weidner
Dianne C. Weidner

Beverly Smith Gosnell (San Diego State, 1950)

Karen Wander Kline
Betty Ragenovich Kurkjian
Judi Nesbitt McMahon
Linda Hallenbeck Pelegriano
Joanne Gladden Reese
L'Cena Brunskill Rice

C. D. "Bob" Harris, father of Karen Harris Story
Colleen Hardcastle

Brandi Renee Hennessey (Oklahoma City, 1993)
Jessica Jeemen Brummel

Janice Brandenburg Hill (Colorado State, 1957)
Patricia Ball Blanchard
Julie Beall Fay
Sharon Reisig Green

Harriette Harcum Hobbes (William & Mary, 1952)
Adrienne Blackwell
Sylvia Smith McPherson
Washington D.C.
Alumnae Chapter

John Hocker, son of Elizabeth Campbell Hocker
Judith Mai Millen

Laurie Hultgren Hoffmeier, daughter of Joyce Cole Hultgren
Karen Wander Kline
Sally Erickson Lewis
Jolene Lessard Stiver
Karen Gamel Urette

Shirley Innes Hurst (San Jose State, 1953)
Lois Kirchner Abbott-Jacobs
Suzanne Price Lacabe
Barbara Lanning LaMarca

Clara Jacob, mother of Jeanne Jacob
Jeanne Jacob

Linda Kay Romerman Jennings (Oklahoma, 1965)
Sue Jennings Beard

Linda Griswold Kemper (Minnesota-Twin Cities, 1967)
Shila M. Smith

Joanne Sallee Kernitz (Wittenberg, 1949)
Judith Pike Coy
Julie Hill Flinchbaugh
Deborah Foulsham Freisheim
Elizabeth Sturges Fritz
Ann Porter Groves
Gwendolyn Whitnell McAdams
Jean Morrow McDaniel
Marion McLauchlan Mir
Philadelphia North Alumnae Chapter
Evelyn Rapee Schmitt
Kimberly Korpak Scott
Gertrude Fetzer Skelly

Harriett Gartner Keys (Nebraska-Lincoln, 1943)
Kitty L. deKieffer

Kristine K. Kimberly (Iowa State, 1973)
Susan Breckenfelder Thilo
Theresa Donohue Wolter

Mary Neel Larson (Drake, 1978)
Tammy J. Perkins

Richard E. Matz, father of Rene Matz Thompson
Carol G. Blanchard
Valerie Johnson Freeman
Shellie King Hodges
Mary Lee Knaup
Joanne Callis Roman
Alison Weber Sansone

Marian Rithmiller McKinney (Bradley, 1953)
Margie A. Frakes
Sally Erikson Lewis

Carol Brandon McRoberts (Bradley, 1948)
Jill Holliday Murrell

Gerald "Jerry" Meyers, father of Karen Meyers Ray
Annabel Jones

Margery Morrison Miller (St. Louis, 2005)
Caroline Nenonen

Edward Mooney, father of Laura Mooney Mayville
Annabel Jones

Marti Morrison, sister of Mariana Whitmore Williams
Gwen L. Rogers
Christine Toole

Floyd Newsom, husband of Susan Koch Newsom
Houston Alumnae Chapter

Melissa Petersen (California-Santa Barbara, 2002)
Kristine Phillips

James Markham "Mark" Piper, husband of Charlene Murphy Piper
Judith Mai Millen

Roena Pyle Sawyer (Iowa, 1931)
William Sawyer

Donna Sprague Stagg (Wittenberg, 1975)
Cheryl Petty

Bruce Steele, husband of Robyn Forsyth Steele
Linda Babcock
Beta Alpha Chapter Affiliated
House Corporation
Judi Nesbitt McMahon
L'Cena Brunskill Rice

Mary Jane Bentley Storrs (California-Los Angeles, 1949)
Virginia Bentley Williams

Melinda Powell Tuttle (Texas Wesleyan, 1976)
Zeta Chi Chapter Affiliated
House Corporation

Edward Vollert, father of Denise Vollert-Parrotto
Barbara Weiss Boenzli
Princeton Alumnae Chapter
Joanne Callis Roman

Beverly Kallman Geissler Weber (Northwestern, 1949)
Leslie Geissler Munger

Mary Susan Palowsky West (Wittenberg, 1976)
Cheryl Petty

Jane Newcomb Whiting (Southern California, 1938)
Una Mae Naulty

Ruth Wilson, mother of Shelby Wilson McGirr
Linda Babcock
Linda Hallenbeck Pelegriano
South Bay Alumnae Chapter

Correction: In the winter issue, Jack Lane Giles was misidentified as Jake Lane Giles. We apologize for the error.

**For deceased members, The Crescent lists their first, maiden and last names in accordance with their school and year of initiation. To make an "In Memory" gift, visit GammaPhiBeta.org/Donate or call 303.800.2890. The minimum donation is \$25 per listing. Gifts received by May 1, 2015, will be acknowledged in the summer 2015 issue.*

In Celebration

Celebrate a special sister, loved one or event with an "In Celebration" gift to the Gamma Phi Beta Foundation. Thank you to the following donors, whose gifts were recorded as of January 31, 2015. Lists are printed as received from the Foundation.

Randall Stevens Allard (California State-Long Beach) being named to Gamma Phi Beta's Honor Roll.
Sally Erikson Lewis

In loving honor of my new 2014 Gamma Phi Beta Convention alumna initiate sister, Linda M. Allison (Alabama), Aloha in HKE.
Ruth D. Merz

Lauren Auciello (Toronto) on the birth of legacy Isabella.
Elena K. Wagner

Callie Cox Bauer (Minnesota-Twin Cities) on completing her long journey to becoming an OB-GYN doctor!
Tucky Hobbs

Congratulations to the Beta Alpha Chapter (Southern California) advisors and affiliated house corporation for your commitment and support of the chapter.
L'Cena Brunskill Rice

Jeanne Swanson Beach (Southern Methodist). Christmas blessings!
Gloria J. Nelson

Erin Bode's (Colorado-Boulder) election to serve as chapter president of Beta Rho Chapter.
Valerie Johnson Freeman

My wonderful Gamma Phi Chapter (Auburn) sisters Tiffany Ramos Cardwell, Jennifer Huguenin Moeller and Dina Lababidi Wiggins!
Melissa Richards-Person

Brittany Chan (Purdue), for her service as new member advisor for Alpha Alpha Chapter (Toronto).
Elena K. Wagner

Carol Edgar and Adele Finlayson (both McGill), alumnae initiates of Ottawa-Gatineau Alumnae Chapter.
Anne Layton

Julie Dunn Eichenberg (Florida State) for leading the Gamma Phi Beta Foundation. You are truly an inspiration!
Natalie Black Muir
Jennifer Putensen Zatchka

Michelle Foote (Central Florida) on her initiation at Eta Lambda Chapter.
Christine Rodli Stopps

In honor of my husband, Gerry Frank.
Jeanne Jacob

Mary Elizabeth "Betsy" Hendrick's (Minnesota-Twin Cities) service as resident collegiate leadership consultant for Eta Lambda Chapter (Central Florida).
Annabel Jones

Robin Lance Henry (Chapman), outgoing president of South Jersey Alumnae Chapter. Thank you for your service.
Anne Layton

Cecilia Lonergan Humphreys (Manitoba), outgoing president of Ottawa-Gatineau Alumnae Chapter. Thank you for your service.
Anne Layton

Martha A. Hutchings's (Tennessee-Chattanooga) graduation.
Hayley Ciara Eisnagle

Rebecca Ingold (Auburn) for being named Alumna of the Year for Atlanta Alumnae Chapter. A well-deserved honor!
Miranda Jones

Judy Kaspar's (Syracuse) 80th birthday and her years of service to the collegians of Alpha Chapter (Syracuse).
Carole Gilbert Frazier

Karen Keasbey (Southern California) and **Betty Redman Keasbey** (California-Los Angeles).
Christen Wilmer Wise

My fellow Alpha Xi Chapter (Southern Methodist) sisters - Elizabeth Hixon Kerr, Heidi Kunitz-Levy, Renee Roucheleau-Lucero and Katherine Parrish Whitbeck.
Kathleen Roberts Stevenson

Emily Lerner (Clemson), legacy of charter chapter member Elizabeth "Libby" Dennis Lerner (Clemson).
Lisa Davidson McKinnon

Megan V. Mullaney's (Tennessee-Chattanooga) graduation.
Hayley Ciara Eisnagle

To Jana Nobles (Oklahoma City) in honor of the 20th anniversary of our initiation and friendship. Love you.
Jessica Jecmen Brummel

Margaret West Pape's (Oklahoma) 50 years of sisterhood!
Jill Duty Tran

The birth of Caden James to Steven and Jamie Pickel (Oklahoma).
Jessica Jecmen Brummel
Julie Heft Shultz

Elizabeth "Betty" Ahlemeyer Quick (Indiana) on receiving the Jack L. Anson award.
Cathy Boudreaux Griffin
Dana and Marc Katz

Joanne Nootbaar Rogers (Southern California), former alumnae coordinating council chair, for receiving the prestigious Alumnae Service Award from your proud Beta Alpha Chapter (Southern California) and affiliated house corporation!
Linda Babcock

In celebration of outgoing Regional Coordinator-Education Michelle Cimarusti Samplawski (California-Berkeley). Thanks for all you've done for Region 8.
Gig DePrey Eyre

Jaclyn M. Shultz (Oklahoma) on her engagement to Mike Miller.
Julie Heft Shultz

Kelli Spencer (Bridgewater State), outgoing president of Southern New England Alumnae Chapter. Thank you for your service.
Anne Layton

Kathleen Roberts Stevenson (Southern Methodist) for being selected Oklahoma City Gamma Phi Beta Woman of the Year.
Elizabeth Hixon Kerr

Katherine J. Yenrick's (Boston) 29th birthday.
David and Carolyn Yenrick

Jaclyn Yetter (Texas Christian) on her recent engagement! Congratulations, Jac! I am SO happy for you and Andrew!
Victoria Phillips

To make an "In Celebration" gift, visit GammaPhiBeta.org/Donate or call 303.800.2890. The minimum donation is \$25 per listing. Gifts received by May 1, 2015, will be acknowledged in the summer 2015 issue.

In Memory

We acknowledge the passing of the following members and celebrate their part in our circle of sisterhood. This list reflects notifications received at International Headquarters between November 1, 2014, and January 31, 2015. First, maiden, last names and year of Initiation are listed for each deceased member.

Alpha – Syracuse

Marjorie Northridge Gordon, 1935
Judith Blanchard Reichel, 1961
Elizabeth Hallenbeck Daly, 1979

Beta – Michigan

Martha Chapman Nyboer, 1932
Gladys Bock Jamieson, 1939
Josephine Fitzpatrick Anacker, 1941

Gamma – Wisconsin-Madison

Janet Monsen Eisele-Heiliger, 1942
Patricia Bayles Burrington, 1949
Greta Grabinsky Roberts, 1951
Pamela Lynch McDonald, 1955
Margo Twiss Heegeman, 1956
Kay Howe Castagna, 1959

Delta – Boston

Phylis Blake Palmer, 1941
Dianne Pullo, 1964

Epsilon – Northwestern

Larrie Cornell Magnuson, 1937
Dorothy Marshall Dain, 1939
June Zettergren Cooke, 1975

Eta – California-Berkeley

Elizabeth Sauer Fitzsimmons, 1938
Marguerite Ruisinger Payne, 1948

Theta – Denver

Marsha Northington Lee, 1956

Kappa – Minnesota-Twin Cities

Barbara Burnap Donoho, 1939
Barbara Tanner French, 1948
Linda Griswold Kemper, 1967

Mu – Stanford

Joan Kester Armstrong, 1939
Kathryn Stewart Crookshanks, 1939

Xi – Idaho

Miriam McFall Starlin, 1935
Joyce Lattig Schnabel, 1943
Barbara Wright Hopkins, 1946

Omicron – Illinois at Urbana-Champaign

Elaine Geidel Aschenbrener, 1932
Roberta Hall Peak, 1939
Mildred Kaulfuss Mueller, 1957

Pi – Nebraska-Lincoln

Helen Sornberger Langdon, 1942
Harriett Gartner Keys, 1943
Catherine Diers Dwiggins, 1945
Joyce Lindley Lemkau, 1948

Rho – Iowa

Ardyth Sornson Newberg, 1949
Diane Quarton Geiger, 1961

Sigma – Kansas

Marjorie Frater Back, 1918

Frances Riley Dutton, 1918

Clara Brown Smith, 1923
Mary Becker Cory, 1932
Barbara Johnson Piper, 1947
Margaret Herschberg Hinkle, 1949
Doris McConnell Owens, 1950
Janice Manuel Stewart, 1950
Carolyn Carmean Bradley, 1953
Marilyn Evans Hill, 1957

Tau – Colorado State

Janice Bradenburg Hill, 1957
Carol Wyatt Norman, 1959

Chi – Oregon State

Betty Hudson Lovell, 1941
Joan Wassenar Forrest, 1946

Psi – Oklahoma

Jane Smith Davis, 1941
Ann Bennett Shank, 1955
Carole Green Wright, 1956
Linda Romerman Jennings, 1965
Angelique Roland Sickman, 1974
Hayden Burke, 2003

Omega – Iowa State

Betsy Cassady Nims, 1943

Alpha Alpha – Toronto

Sheila McCartney Brown, 1953

Alpha Beta – North Dakota

Beth Hartman Moritz, 1937

Alpha Gamma – Nevada

Esther Golick Vacchina, 1944
Pauline Leveille Quilici, 1944
Helen Brania Friel, 1945
Linda Digesti Charlebois, 1970

Alpha Delta – Missouri-Columbia

Patricia Peden Block, 1954

Alpha Epsilon – Arizona

Sally Marshall Brooks, 1955
Mary Case Beck, 1958

Alpha Zeta – Texas-Austin

Carol Evans Crenshaw, 1948

Alpha Eta – Ohio Wesleyan

Patricia Parkinson Seymour, 1945
Jennifer Brown Lidecis, 1963

Alpha Theta – Vanderbilt

Marjorie Smith Kartinos, 1942
Mary Rowe Besztercezi, 1959

Alpha Iota – California-Los Angeles

Barbara McAllister Paige, 1944
Elsie Ward Treadwell, 1945
Jeannette Schwoerer McGee, 1947
Gwendolyn Lomison Bailey, 1948
Margaret McKnight Russell, 1949
Joyce Battu Erickson, 1955

Alpha Kappa – Manitoba

Molly Phair, 1936

Alpha Nu – Wittenberg

Doris Sealock Cox, 1935
Rita Langenhan Hollis, 1948
Joanne Sallee Kernitz, 1949
Nancy Corwin Knudson, 1950

Alpha Xi – Southern Methodist

Vera Engdahl Anderson, 1932
Sammie Williams Russell, 1949

Alpha Omicron – North Dakota State

Helen Warner Hook, 1940
G. Fredcen Eggan, 1957

Alpha Sigma – Randolph Macon Women's

Ruth Spangler Richards, 1935
Rebecca White Graham, 1937

Alpha Upsilon – Pennsylvania State

Dorothy Foebr Huck, 1941
Mary Harris Stuller, 1961

Alpha Phi – Colorado College

Sheila Bush Myhre, 1954
Margaret Bradshaw Adams, 1955

Alpha Chi – William & Mary

Suzanne Brooks O'Neal, 1948
Martha Robey Mattox, 1953

Alpha Psi – Lake Forest

Marilyn Randall Kelly, 1947

Alpha Omega – Western Ontario

Helen Millen Blenkhorn, 1936

Beta Alpha – Southern California

Patricia Muller Hickey, 1942
Marilyn Muller Stockemer, 1947

Beta Beta – Maryland

Betty Baker Chaney, 1948
Jean Happ Hudson, 1952
Barbara Grim Littlefield, 1964

Beta Gamma – Bowling Green State

Jane Wilkinson Slessman, 1943
Janet Sauer Herwig, 1945
Ruth Deconick Flanders, 1947
Vivian Muething Meuser, 1950
Patricia Ketchum Sparks, 1962

Beta Delta – Michigan State

Dolores Fisher Busard, 1944
Louise Pinney McGlone, 1952
Audrey Graber McManus, 1955

Beta Eta – Bradley

Marian Rithmiller McKinney, 1953
Alice Crisp Mattioda, 1954

Beta Theta – San Jose State

Norma Tate Stewart, 1948
Jeanne Murphy Cribbins, 1950

Beta Lambda – San Diego State

Beverly Smith Gosnell, 1950

Beta Xi – Ohio State

Marjorie Morton Rummel, 1952

Beta Omicron – Oklahoma City

Margaret Houk Helveston, 1957
Patricia Sailors Kirtan, 1961

Beta Rho – Colorado-Boulder

Ann Rehm Fink, 1956
Joan Kaiser New, 1958

Beta Tau – Texas Tech

Joe Ashby Paulsen, 1958
Trena Roddy, 1985

Beta Upsilon – Kansas State

Patricia Callen Valko, 1964

Beta Chi – Wichita State

Beryl Webb Davis, 1958
Vinita Hood Hoffman, 1958
Kelli Frazier, 1987

Gamma Beta – Gettysburg

Suzanne Bower, 1959

Gamma Zeta – Texas A&M-Commerce

Donna Gardner Dixie, 1962
Jennie Haggard Little, 1968

Gamma Nu – Lamar

Jill McCarthy Avery, 1973

Gamma Pi – Minnesota State-Mankato

Harriette Hathaway Conley, 1968

Gamma Phi – Auburn

Edna Delamar Kendrick, 1968

Delta Upsilon – Georgia

Arlis Husfeldt Anderson, 2002

Epsilon Epsilon – Union

Kathryn Traux, 2001

Correction: In the winter issue, Phi Chapter (Washington University) was misidentified as Hollins College. We apologize for the error.

To report the passing of a sister, please email contactus@gammaphibeta.org so we may honor the member on this page in a future issue.

Vintage ΓΦΒ *in Reverse!*



We spent so much of this issue highlighting Gamma Phi Beta's impressive history, so we wanted to share today's members capturing tomorrow's moment in history.

We love this photo from Delta Eta Chapter (California-Irvine) that truly demonstrates our vibrant sisterhood! Send your high resolution photos to TheCrescent@gammaphibeta.org so we may document Gamma Phi Beta moments in our magazine and on our official social media pages.

Capture a Crescent

Spot it, snap it and email your capture a crescent photos to TheCrescent@gammaphibeta.org for a chance to be featured on the back cover of a future issue. Tip to get featured: We prefer crescents that wax left!



1



2



3



4



5

1. Oregon: Heather Hamilton (Oregon State) was at Bauman Farms near Salem, Oregon, with her family when she spotted crescent moons in their selection of decorative shrubs.

2. Georgia: While visiting historic Brunswick Manor in Brunswick, Georgia, Cindy Hall Nall (George Mason, left) was surprised to meet another Gamma Phi Beta – Susan Lloyd Wright Sullivan (Bradley, right). The pair captured this crescent at the bed and breakfast in a sea of more than 2,000 Christopher Radko ornaments.

3. South Dakota: While on a quick getaway to South Dakota with her mother, sister and daughter, Charissa Hauff (North Dakota) and her family

took some time to visit Storybook Land where she found this giant crescent from the nursery rhyme "Hey Diddle Diddle."

4. Oklahoma: Lori Bautista (Oregon State), member of the Oklahoma City Roller Derby team, sports crescent moons on the toe guards of her skates during matches. Many roller derby participants skate under pseudonyms or "derby names" – Lori fittingly goes by Galaxy Inferno.

5. North Carolina: Spotted – a beautiful gold crescent at the Balsam Mountain Inn! Julie Dunn Eichenberg (Florida State) found this crescent while visiting the inn, located at the base of Balsam Mountain in North Carolina, where her family has owned a cabin for nearly 100 years.