

the CRESCENT

of Gamma Phi Beta

Frances E. Haven's Diploma

Gamma Phi Betas
Advocate for
Action on
Capitol Hill

ACADEMIC
SUCCESS

FOCUS TODAY FOR A
BRIGHTER TOMORROW

page 16

MUSIC OF OUR TIME
E. ADELIN CURTIS

A Beginner's Guide to
Growing Pink Carnations



LEARN
TO
SPEAK
GREEK



Inspiring Academic Excellence

INTERNATIONAL COUNCIL

International President

Krista Spanninger Davis
Bowling Green State University

Alumnae Vice President

Shellie King Hodges
University of Oregon

Collegiate Vice President

Mary L. Knaup
California State University-Fullerton

Education Vice President

Autumn L. Hansen
University of Idaho

Financial Vice President

Leigh Ann Price
Texas Tech University

Membership Vice President

Nancy Ann Ostendorf Thompson
Iowa State University

Panhellenic Affairs Vice President

Sandra Biegelman Burba
Miami University

GAMMA PHI BETA FOUNDERS

Mary A. Bingham

E. Adeline Curtis

Helen M. Dodge

Frances E. Haven

MISSION

To inspire the highest type of womanhood.

On November 11, 1874, Helen, Frances, Addie and Mary did something remarkable — they founded a women's society based on a desire to develop a higher spiritual, mental and social culture. Why was this remarkable? They founded Gamma Phi Beta during an era when women were discouraged from attending college.

The perseverance of Gamma Phi Beta's Founders and other women like them, moving forward against the sometimes glacial pace of social evolution, has made it possible for today's young women to assume their right to enjoy all the opportunities afforded their male counterparts. Even after women were allowed admission in co-educational institutions they still faced many challenges and often hostile environments within schools. Many of the classes were segregated and some classes that were offered for men remained off-limits for women. Women were frequently barred from participating in extracurricular activities such as musical groups, debate societies and other clubs. There is little wonder, then, that when the four Founders of Gamma Phi Beta arrived at Syracuse University, they sought the comfort and solace of each other's company.

I am thankful everyday for the four women who not only started an organization that is now 139 years and more than 191,000 members strong, but for their resolve in creating a strong foundation of academic excellence for generations of members. We are so fortunate to have these women as role models.

Today's member is faced with a plethora of distractions that can keep them from attaining a higher mental culture. Social media, extracurricular activities, work, friends and yes, even sorority life, can prove to be roadblocks on the road to academic success. But Learning is a Gamma Phi Beta Core Value for a reason. We value learning, academic achievement and personal development. Gamma Phi Beta encourages you to take advantage of every opportunity to learn — in and out of the classroom.

In this issue of *The Crescent*, we celebrate academic achievement. Our chapters and members — alumnae and collegiate — are making an academic impact as teachers, mentors, supporters and achievers. Six women — six inspiring sisters — also contributed articles for this issue. They share everything from how to use your resources and network to be academically successful, to how education can liberate women and the need for women in science, technology, engineering and math.

Gamma Phi Beta believes its members need to be academically successful to participate, lead, serve and enjoy Sorority membership — and so many other aspects of life — to the fullest. As you read about the importance of academic success in the pages that follow, I hope you are inspired to continue your education in and out of the classroom. I hope you are inspired to celebrate your achievements and the achievements of others. I hope you are inspired to value learning for a lifetime.

In IIKE,

Krista Spanninger Davis
International President

On the cover: Three of Gamma Phi Beta's Senior Collegiate Leadership Consultants uphold GΦB's Core Value of Learning. Photograph: Kerkhoff Photography and Design.

CONTENTS

Go Gamma Phi

Find the magazine's regular features in addition to other inspirational Sorority articles in this section.

4 ΓΦΒ Mailbox

5 Points of Pride

7 Hosting a Successful Scholarship Event

16 Academic Success

Are you getting all you can from your academic experience? Learn from an expert about how to utilize campus resources, hear from professionals about their academic journeys, discover why education is so important for women and more!

28 Inspiration Board

31 Sorority Life

42 In Memory

43 Vintage ΓΦΒ: Documenting Achievment

Sorority News

Find the Sorority's latest news and opportunities here.

6 Introducing ΓΦΒ's 2014-15 Collegiate Leadership Consultants

8 Gamma Phi Betas Advocate for Action

Each April, fraternity and sorority members travel to Washington, D.C., to advocate for issues that impact the Greek community. Learn more about our members' experience on Capitol Hill.

Campus Life

Learn about our collegiate sisters and topics affecting them.

11 Chapter Profile: Gamma Epsilon Chapter (Puget Sound)

13 Collegian Spotlight: Jordyn Baker (Wittenberg), Mary Louis Roller Scholarship Winner

14 Award-Winning Chapters

From academic to philanthropic excellence and more, see how our chapters excelled this year!

Shining On

Find out how alumnae are making an impact and shining for ΓΦΒ.

27 Alumna Spotlight: Meredith Holt (Christopher Newport), educator and inspiration

Foundation News

Check out how the Foundation is supporting and inspiring the lifelong development of women.

38 Supporters of the Heart: Linda Daniel Johnson (Vanderbilt)

40 Memorial Gifts

41 In Celebration



Promote academic excellence with a scholarship event.



Check out some of ΓΦΒ's award-winning chapters.

International Headquarters

12737 E. Euclid Drive, Centennial, CO 80111
 Phone: 303.799.1874 Fax: 303.799.1876
 Website: GammaPhiBeta.org
 Email: TheCrescent@gammaphibeta.org

The Crescent Staff

Editor
 Amanda Lubeck (Colorado-Boulder),
 alubeck@gammaphibeta.org

Director of Marketing and Communications
 Maureen Walker, mwalker@gammaphibeta.org

Marketing Coordinator
 Teresa Tisserat (Denver), ttisserat@gammaphibeta.org

Executive Director
 Laurie Veldhuizen (Florida State),
 lveldhuizen@gammaphibeta.org

Crescent Advisory Board

Stefanie Brickman (Oklahoma)
 Kristen Record Heptinstall (Alabama)
 Kris Brandt Riske (Wyoming)
 Yvonne Felig Roehler (Minnesota State-Moorhead)
 Brandon Weghorst

Graphic Design by Shelle Design, Inc.**SUBMISSION DEADLINES**

Fall issue – August 1
 Winter issue – November 1
 Spring issue – February 1
 Summer issue – May 1

©2014 Gamma Phi Beta Sorority
The Crescent of Gamma Phi Beta (USPS 137620)
 is published quarterly by Gamma Phi Beta Sorority,
 12737 E. Euclid Drive, Centennial, CO 80111.
 Periodicals postage paid at Englewood, CO, and at
 additional mailing offices. Non-member subscription
 price is \$25. Produced in the U.S.A.

Postmaster: Send address changes to *The Crescent*,
 Gamma Phi Beta Sorority, 12737 E. Euclid Drive,
 Centennial, CO 80111.

Parents – While our members are in college, their
 copy of *The Crescent* is sent to your home address –
 we hope you enjoy reading our magazine, too! If your
 daughter is no longer in college, or is no longer living
 with you, feel free to send us her new address by
 emailing TheCrescent@gammaphibeta.org.

Join Our Green Team! Receive each issue of *The
 Crescent* before everyone else by going digital! We'll send
 the current issue directly to your inbox so you can enjoy it
 anywhere you go. Email TheCrescent@gammaphibeta.org
 today to let us know you're joining the Green Team!



FRATERNITY
 COMMUNICATIONS
 ASSOCIATION

**ΓΦΒ mailbox****Where do you read The Crescent?**

We want to know where you read *The Crescent*! Take a photo
 of yourself reading our award-winning magazine and upload
 it to Instagram. Mention @GammaPhiBetaSorority and use
 #TheCrescent for a chance to be featured in a future issue!

f Just finished reading the latest issue of *The
 Crescent* and discovered I have two Convention
 mementos! My mom Jeanne Cribbins (San Jose
 State) gave me her carnation from 1968 and I
 have the brick from 1990. Fun!
 – Karen Kuklin (California Polytechnic State)

t Got my first issue of *The Crescent* today.
 Ahhh. The excitement is so real!
 – Bree Brown (Christopher Newport)

t Just got my spring #TheCrescent
 in the mail. I love my Sorority.
 – Cece Rolow (Lander)

i I was just thinking about how much I
 missed my sisters and looky here!! Excuse me
 while I immerse myself in Gamma Phi Beta land.
 – Rebecca Farinash
 (Tennessee-Chattanooga)

*The spring 2014 issue of The Crescent
 incorrectly reported Jolene 'Joey' Lessard
 Stiver's collegiate chapter. Joey attended
 North Dakota State University where she
 was a member of Alpha Omicron Chapter.
 We apologize for the error.*

Calling All Alumnae! Gamma Phi Beta is conducting an alumnae engagement survey
 this fall, and we want to hear from you! Our survey will be distributed via email, so be sure to visit
 GammaPhiBeta.org or email us at contactus@gammaphibeta.org to update your contact
 information. Thanks in advance for your participation – shine on!



Like us at Facebook.com/
 GammaPhiBetaSorority



Follow our boards at
 Pinterest.com/GammaPhiBeta



Search "Gamma Phi
 Beta" in groups



Follow us
 @gpbccrescentmoon



Follow us
 @GammaPhiBetaSorority

points of Pride

Shining bright since 1874, here's a snapshot of some notable Gamma Phi Beta moments and accomplishments!



Gamma Phi Beta is proud to welcome 5,169 members to alumnae life. We are so proud of your collegiate accomplishments and welcome you to a lifetime of sisterhood, love and fun! Shine on, sisters!

Pictured are Beta Mu Chapter (Florida State) graduating seniors, winners of The Crescent's graduation photo contest!

For more than **30** years, Lois Abbott-Jacobs (San Jose State) has dedicated her time and talents to Gamma Phi Beta, serving as chapter advisor for Delta Psi Chapter (California-Santa Barbara). The University's Panhellenic Council recently named an award after Lois, which will be given to outstanding Panhellenic advisors. We can't wait to see her legacy continue through the Lois Abbot-Jacobs Award!



The Gamma Phi Beta Foundation wrapped up its first-ever Chapter Challenge in February. More successful than we could have hoped, the challenge raised \$28,350 in unrestricted funds. Thank you to our 688 new donors and the 59 percent of Greek-letter chapters that gave at least one gift!



An incredible **460** Convention award applications were submitted for Convention 2014! See a full list of award winners at GammaPhiBeta.org/Convention.



Madeline 'Maddie' Kopp (Duke) broke Duke University's school record for the 400-meter dash with a time of 54.07!

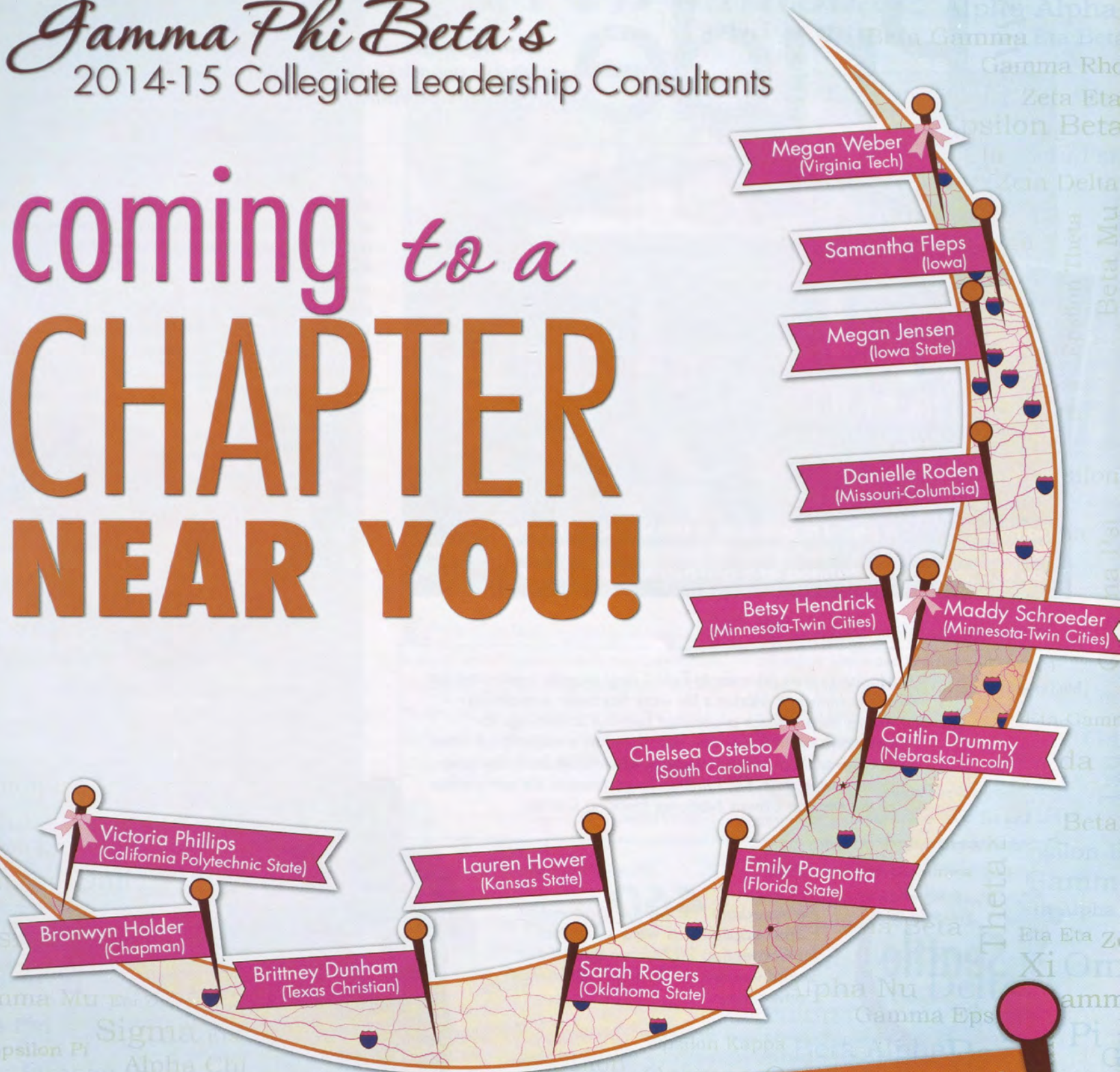
Photo credit: Annelise Hansson



Share your point of pride for an opportunity to be featured! Email TheCrescent@gammaphibeta.org with your chapter's inspiring accolades.

Gamma Phi Beta's
2014-15 Collegiate Leadership Consultants

coming to a
**CHAPTER
NEAR YOU!**



Check out the fall issue of
The Crescent for full profiles
on the 2014-15 CLCs!

Senior CLCs



Balboa Harbor Alumnae Chapter

For more than 10 years, Balboa Harbor Alumnae Chapter has hosted a spring tea to raise funds for a scholarship they give to a collegiate sister at Delta Eta Chapter (California-Irvine). Six to eight weeks before Senior Celebration, the alumnae chapter distributes a scholarship application to the collegiate chapter. The alumnae chapter reviews the applications and awards the scholarship to an outstanding sister that is loyal to Delta Eta Chapter.

"Balboa Harbor Alumnae Chapter looks for more than the applicant with the highest GPA. We review the entire application and look for a balance of academics and community and campus involvement," Balboa Harbor Alumnae Chapter President Sita Beasley (California-Irvine) says. "We hope to award one to two scholarships each year, to help offset the cost of books."

What does your chapter do to promote academics? Send your event details to TheCrescent@gammaphibeta.org!



Members of Balboa Harbor Alumnae Chapter celebrate a successful scholarship tea.

Hosting a Successful Scholarship Event

Many chapters host scholarship events, but how can you make yours truly shine? Take a page out of these chapters' books and learn how you can effectively promote academic excellence in your collegiate or alumnae chapter.



Two senior members stand with past International President L'Cena Brunskill Rice (Southern California) after receiving Senior Awards for embodying IΦB's Core Values, mission and vision.

Beta Alpha Chapter (Southern California) Scholarship Dinner

Each spring, Beta Alpha Chapter (Southern California) hosts their annual Spring Scholarship Dinner. Parent's Club, advisory board and house corporation board members are encouraged to attend. To place an emphasis on scholarship and community, chapter members invite their professors as guests. A guest speaker, usually a professor, shares his or her advice on the importance of academic achievement. During the event, the chapter also recognizes women with high GPAs and sets academic goals for the next semester.

The secret to the event's success? Bridging the gap between the chapter and the University. Beta Alpha establishes a strong connection between members and the faculty by giving them the opportunity to see the chapter's dedication to academics and get to know sisters on a personal level.

Gamma Phi Betas *Advocate for Action*

Each April, as part of the Fraternity Government Relations Coalition (FGRC), fraternity and sorority members travel to Washington, D.C., to lobby for issues important to the Greek community.

This year, Gamma Phi Beta was proud to be represented by collegians Alexis Barranca (Auburn), Amanda Hart (Iowa) and Vanessa Cortez (Texas State-San Marcos), as well as International President Krista Spanninger Davis (Bowling Green), Panhellenic Affairs Vice President Sandy Biegelman Burba (Miami-Ohio), First Alternate NPC Delegate Elizabeth 'Betty' Ahlemeyer Quick (Indiana) and Sorority Director-Government Relations Julie Pawelczyk (Illinois at Urbana-Champaign).

The Crescent spoke with these knowledgeable women to learn more about the impact of the FGRC Hill Visits on Greek life.

The Crescent: How did you prepare for the FGRC Hill Visits?

Amanda Hart (Iowa): Before traveling to Washington, D.C., I never imagined I would have the opportunity to advocate on behalf of the Greek community. Prior to the trip, I was unfamiliar with the lobbying process, and

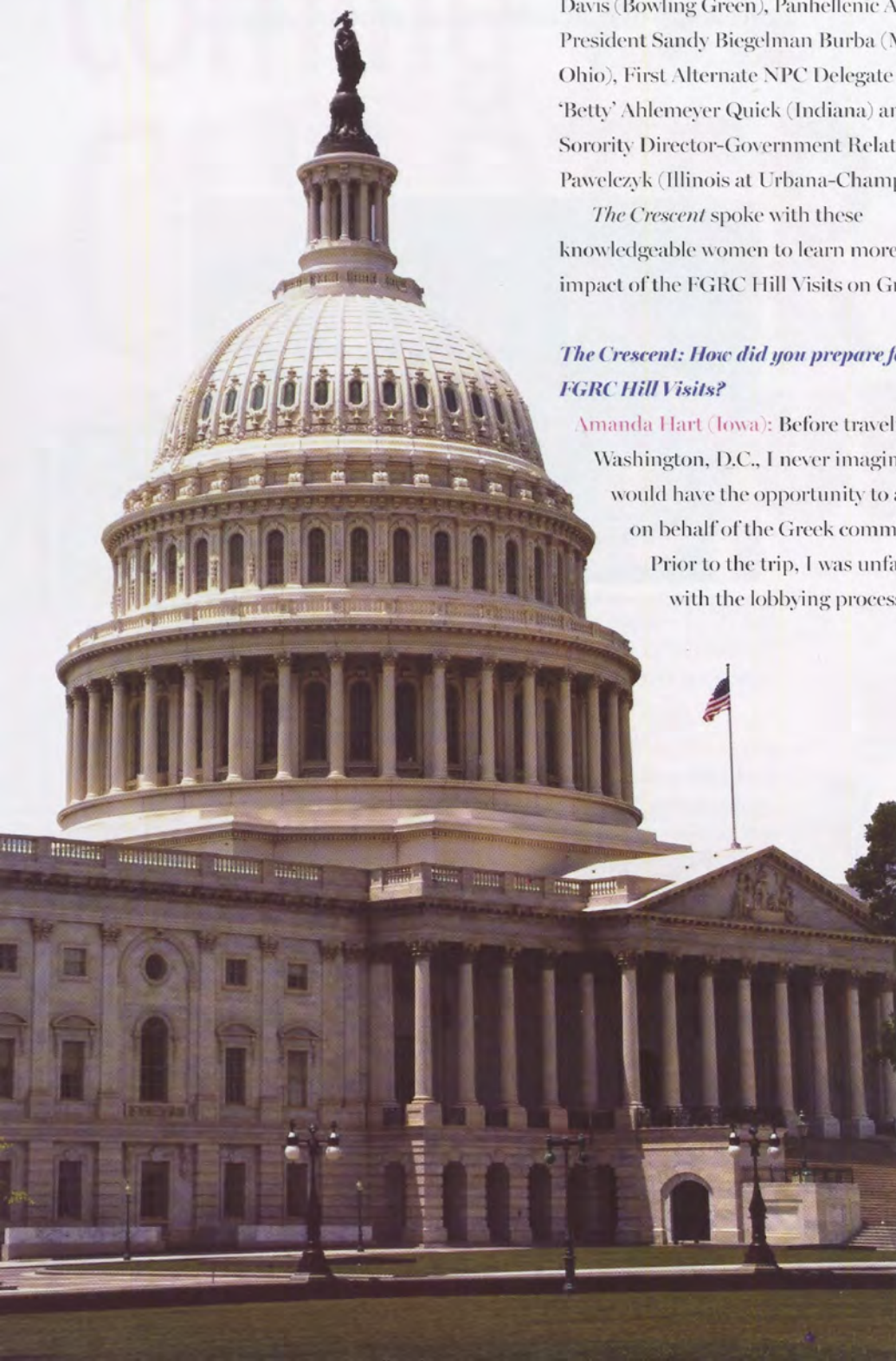
no amount of training and practice could prepare me for the incredible feeling of actually lobbying on Capitol Hill. Meeting with representatives and senators was an experience I will never forget! It was an amazing chance to learn more about advocacy and how it works at the federal level.

TC: What was it like speaking to policymakers about Greek life?

Alexis Barranca (Auburn): Being able to educate members of Congress and their staff about Greek-member institutions was such an honor. During the Hill Visits I was able to talk about all of the great attributes that Greek organizations possess – one of my favorite topics! Describing in detail all that Gamma Phi Beta does to give back to the community made members of Congress and their staff realize the benefits Greek organizations provide and the opportunities they create.

TC: Why are congressional visits so important to the Greek community?

Krista Davis (Bowling Green): Having an annual opportunity for student and alumni leaders to speak to legislators about the relevance of our fraternal community is invaluable to the vitality and future of our organizations. Oftentimes, one does not immediately realize the direct impact federal laws and policies have on our fraternity and sorority community. Several laws directly influence Greek students and alumni today. For example, maintaining tax deductions for charitable giving remains a top priority for the fraternal community, as our Foundations rely heavily on these contributions to support our educational and leadership development programs. The Hill Visits secure a platform





Pictured Left: International Council members Krista Davis (Bowling Green) and Sandy Burba (Miami-Ohio) snap a quick photo after discussing issues important to the Greek community with policymakers and fellow Greek lobbyists.

Pictured Right: (Left to right) Betty Quick (Indiana), Amanda Hart (Iowa), Vanessa Cortez (Texas State-San Marcos) Alexis Barranca (Auburn) and Julie Pawelczyk (Illinois at Urbana-Champaign).

to educate policymakers on the needs of the interfraternal community.

TC: What were some of the topics discussed during the Hill Visits?

Betty Quick (Indiana): We advocated for improving student safety in not-for-profit housing, maintaining college affordability, eliminating hazing and creating jobs in college and university towns. These are issues that affect all students and it is important for members of fraternities and sororities as well as other college students to have a consistent voice in advocating for these issues.

TC: Why is the Collegiate Housing and Infrastructure Act (CHIA) such an important issue?

Sandy Burba (Miami-Ohio): Fraternities and sororities are the nation's largest not-for-profit student housing option with 250,000 residents across the country. Passing CHIA would allow fraternities and sororities to use tax-deductible donations to make improvements to existing housing, making housing safer for future generations of students.

TC: Julie, as a registered lobbyist, what makes the FGRC Hill Visits unique?

Julie Pawelczyk (Illinois at Urbana-Champaign): I am always impressed to see our collegians do such an amazing job as lobbyists for the day when they descend upon Washington, D.C., each April. They are passionate about their sorority experience and that enthusiasm comes through when they are speaking to senators and representatives about their organizations. Students are their own best advocates for issues that affect them directly, as they are the ones burdened with the outcomes.

It is also enjoyable to see members of Congress engage with students and learn about their positions as campus leaders. Similarly, students are not surprised to learn that roughly 27 percent of current U.S. Congress are members of a fraternity or sorority – organizations that provided the leadership training essential to their current jobs!

For more information on the FGRC, visit FGRC.org.

SPEAKING FOR THE GREEK COMMUNITY



Vanessa Cortez (Texas State-San Marcos) was one of two students chosen to speak in front of senators, representatives and fellow Greek lobbyists about the impact of Greek life on emerging leaders. In her speech, Vanessa – who was already heavily involved on campus before joining Gamma Phi Beta – shared her unique experience as a charter member of a collegiate chapter: “My hope when I joined Gamma Phi Beta was to mentor my sisters to become leaders on campus. I thought I knew all there was to know about leadership, so I thought my role would be to teach others. But in fact, my sisters have all taught me so much more. I am constantly inspired by their enthusiasm to do more for the chapter and take on leadership roles in and out of the Sorority.”



*Crescent
Corner*

Have you worked with
Crescent Corner on your
chapter's group order?
Free Shipping! Free Artwork!
Lowest Prices Guaranteed!



CRESCENTCORNER.COM

Find a lower price with another
licensed vendor? Crescent
Corner will match that price
and still offer you all of our
other great services. Email
sales@crescentcorner.com to
get started today!



Collegiate Chapter Spotlight

GAMMA EPSILON CHAPTER

Chartered in 1961 at the University of Puget Sound in Tacoma, Washington, our Gamma Epsilon Chapter truly embraces our Sorority's Core Value of Learning. The chapter has been recognized for their academic achievement on campus, where they have had the highest grade point average for eight consecutive semesters.

The Crescent spoke to Chapter President Rachel Bowdle about this studious bunch of women.

The Crescent: Gamma Epsilon Chapter in three words.

Rachel Bowdle: Diverse, intellectual and loving.

What type of housing facility do members occupy?

RB: Our chapter house is located on campus and owned by the University. Thirty-three sisters reside in our chapter house, which has been nicknamed 'Big Green' due to its eye-catching exterior!

What makes your campus or Greek community unique?

RB: The Greek community's average GPA has been higher than the average undergraduate GPA for the past two years, which shows our Greek community takes pride in being leaders and demonstrating academic excellence.

How does your chapter engage local alumnae?

RB: Our chapter recently participated in an alumnae networking event with Puget Sound Alumnae Chapter. We were able to ask questions and the alumnae members shared advice on post-graduation topics, such as finding a job.



When Gamma Epsilon Chapter (Puget Sound) members aren't studying, they enjoy giving back to their community – volunteering at local food banks, hospitals, Habitat for Humanity, Global Brigades (summer service trips to Central America) and outdoor clean-up projects.

How does the chapter promote academics and scholarship?

RB: Gamma Epsilon strives to support a culture of putting academics first. Our chapter has a scholarship plan that includes study hours at various times each week. It's very normal for a sister to be studying on a Saturday night. To be diligent in school, our sisterhood supports and encourages this culture.

Our Personal and Chapter Enrichment (PACE) activities revolve around our Core Value Learning. We typically invite campus and student services speakers to present on important matters. We typically invite campus and student services speakers to present on important matters – such as mental health, safety and well-being, race, gender and sexuality – as we believe in lifelong learning in addition to academic learning.

What does our Core Value Learning mean to the chapter?

RB: Learning means a couple of different things to Gamma Epsilon Chapter – first,

it's having pride in academics. Second, it's being aware of issues on campus, in your community and around the world. Whether a sister is looking for a new activity, signing up for a class or leading an intellectual conversation, there are always additional sisters willing to participate.

FAST FACTS!


What is the current chapter size?
110 members


How many NPC sororities are on campus?
There are four: ΑΦ, ΓΦΒ, ΚΑΘ and ΠΒΦ.

What are some unique facts about the chapter?

- Gamma Epsilon has received Excellence in Scholarship and Chapter of Excellence from the University for both the 2012-13 and 2013-14 academic years.
- Our chapter was also recognized by the Spirituality, Service and Social Justice Office as Campus Group of the Year for the 2013-14 academic year for our volunteer service and our consistent willingness to participate in campus events.
- We have a really active chapter on campus – sisters are involved in student government, residence life, numerous honor societies, the Relay for Life committee and serve as orientation leaders. We also have sisters on the Repertoire Dance Group and on the lacrosse, basketball, swimming, tennis and golf teams.

Want to see how our sisterhood was shining in Seattle? Find full Convention 2014 coverage in the fall issue of *The Crescent*, or check out news and updates on GammaPhiBeta.org and our official social media platforms.

 /GammaPhiBetaSorority

 @gpbcrescentmoon



#ShineinSeattle



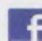
styles for

TO ORDER:

visit www.HJGreek.com
or call 1-800-422-4348

- A. Wynterlce Watch, #Wynteric...\$40
- B. Drop Pearl Earrings, #622054 SS...\$65
- C. Drop Pearl Necklace, 18", #682054 SS...\$47
- D. Pearl Ring with engraved Greek letters, #612013 SS...\$67
- E. Pearl Bracelet, 7.5", with white crystal heart and ΓΦΒ heart lavalier, #631046 SS...\$75



 Find us on Facebook: www.facebook.com/hjgreek

SS – sterling silver



Collegian Spotlight

JORDYN BAKER

"Leaders who lead for what is right – not for recognition – inspire me," recent graduate Jordyn Baker (Wittenberg) says. Jordyn, a self-described learner, is a change-focused leader who strives to reach her goals. "If I didn't get a position within the chapter or on campus, Gamma Phi Beta challenged me to find the inspiration to keep trying." Jordyn, who was heavily involved as an undergraduate, held leadership positions within the Greek community, among other campus organizations. Her hard work paid off, and although she's received well-deserved recognition from Wittenberg University, Panhellenic Council and the National Panhellenic Conference (NPC), she remains truly humble and very inspiring!

In May, Jordyn received her Bachelor of Arts in communication with a double minor in women's studies and psychology. She is also the 2014 recipient of the Mary Louis Roller Scholarship from NPC. The scholarship recognizes an undergraduate woman who has displayed outstanding service to her local College Panhellenic during her undergraduate years. Jordyn is putting the scholarship to use, and achieving a life-long goal, as she starts graduate school this fall.

The Crescent talked to this impressive young woman and learned more about her leadership and future academic endeavors.

"This summer, I am studying abroad in Lesotho, a country located in southern Africa, where I will learn about the country's history and customs and provide service in the community by building houses, working on schools, painting and even hosting a carnival for local children at the Baylor Pediatric AIDS clinic," Jordyn says.

Three words to describe you.

Caring, persevering and innovative.

GΦB in three words.

Core Values focused.

Post-graduation plans?

In the fall, I'll be attending graduate school at Southern Illinois University in Carbondale where I'll be part of the college student personnel program studying higher education and student affairs. The University also offers a women, gender and sexuality studies certificate that I plan to obtain as well. I'm really interested in identity development in college students.

What leadership positions have you held?

Within Alpha Nu Chapter (Wittenberg), I was education vice president and secretary, and on Panhellenic Council I served as the assistant vice president of public relations and recruitment and was the director of recruitment counselors.

One achievement I'm proud of is being the president and a founding member of the No Woman Left Behind (NWL) chapter at Wittenberg. NWLB is a bystander intervention program that helps prevent sexual assault on campus and encourages women to talk about it.

What does our Core Value Learning mean to you?

Learning in reference to Gamma Phi is not only in the classroom – you're learning when you are interacting with your sisters, other community members and in every day experiences.

Have you won any awards or honors?

I've been awarded the Wittenberg Alma Mater 2013, which is the highest honor bestowed upon a junior woman at Wittenberg University. I was named Wittenberg Woman of the Year 2013, an award for those who display confidence, pride, strength and serve as a role model, as well as Greek Woman of the Year 2013. I am also a member of Order of Omega, a national Greek leadership honor society.

And the award goes to...

The 2013-14 academic year was one for the record books! Gamma Phi Beta chapters across North America received countless honors for their excellence on campus, within Greek life and in their communities. We are so proud that our collegiate chapters strive to inspire the highest type of womanhood every day. Featured on these pages are just a handful of chapters showcasing the hard work and dedication that is instilled in every sister.



1. Kappa Chapter (Minnesota-Twin Cities) had an outstanding night at their campus Greek awards banquet, taking home Chapter of Excellence, Outstanding Member Development and Outstanding Greek Relations. Special recognition to Katelyn Wright, who was honored as Panhellenic Council's Greek Woman of the Year!

2. Congratulations to Zeta Iota Chapter (Valparaiso)! This inspiring chapter was honored for having the highest GPA for spring 2013, as well as for Outstanding Academic Programming, Outstanding New Member Education and Outstanding Chapter Management. In addition, the chapter was recognized as the 2013-14 Sorority of the Year. Senior Sarah Tiemann was awarded 2014 Sorority Woman of the Year and junior Molly Hetzner received the admirable Outstanding Individual Community Service Award.



3. Eta Theta Chapter (Connecticut) was named Chapter of the Year at their Arête Greek Banquet! Not only did they bring home the Excellence in New Member Programming Award, but the Arête Outstanding Greek Scholar Award went to sister Jillian Kowaski.

4. Our Zeta Tau Chapter (Emory) stood out at their awards banquet, receiving Best Programming for Health and Wellness as well as Diversity and Inclusion. Sophomore Julia Wahl (pictured far right) was presented with the Overall Panhellenic Member of the Year Award. We are so proud of these accomplishments!

5. Gamma Psi Chapter (Northern Iowa) was bestowed with an array of outstanding awards – Outstanding Sisterhood, Outstanding Education Program and Outstanding Chapter! Way to shine, sisters!



6. Brennan Taylor (Midwestern State) was thrilled to be named Greek Woman of Year. What an honor for **Gamma Iota Chapter (Midwestern State)!**

7. Zeta Phi (Arkansas-Fort Smith) took home a handful of honors at this year's annual awards ceremony. Not only did the chapter receive the Greek Chapter Excellence Award, but Chapter President Jasmine Hattabaugh was named Greek Woman of the Year and received the Chancellor's Spirit Award, awarded by the chancellor to one outstanding female and male senior each year. In addition, Greek Advisor of the Year went to Brittany Slamons (Arkansas-Fort Smith) and Outstanding Advisor of the Year went to Stephanie London (Arkansas-Fort Smith).





8 **Xi Chapter (Idaho)** was presented Council Chapter Choice, an award chosen by other chapters on campus. Our sisters also received Outstanding Campus Involvement and Sierra Turner and Kelsey Matthews received the awards for New Member of the Year and Chapter President of the Year, respectively.



9 **Delta Delta Chapter (California State-Fullerton)** sisters were honored for their hard work at their University's Pursuit of Excellence Awards. Not only were they the only sorority to receive all five stars for exceeding expectations, they were also honored with the Dean's Cup – the award for the top Greek organization on campus – for the sixth time in eight years. To cap it all off, former Chapter President Lauren Lucore was named Greek Woman of the Year!

ASPIRE TO EXCELLENCE

Are you ready to take your chapter to the next level? Here are some ideas that can help you promote the great things your chapter already does and get recognized on campus!

- Have a high level of participation in other Greek philanthropy and educational events.
- Write notes of encouragement and thank-you notes to all campus organizations.
- Utilize study hours and encourage your sisters do to the same. Having the highest GPA on campus is noteworthy!
- Service is key – whether you volunteer on campus, in the community or for one of our philanthropic partners.
- Be a role model and leader in your chapter, community and on campus.
- Live our mission, and inspire the highest type of womanhood every day!

go gamma phi

Academic Success:

Focus Today for a Bright Tomorrow

By Shana Makos (Chapman), Sorority Director-Chapter Life





Shana is Gamma Phi Beta's sorority director-chapter life and works with chapters to strengthen scholarship, sisterhood and sensibility. She is the sorority programming intern at Gamma Phi Beta International Headquarters and a curriculum design intern with Synergos, AMC in Fort Collins, Colorado. She is currently earning her master's degree in communication studies at Colorado State University, specializing in health intervention and behavior change.

One of the most obvious goals of college is to graduate and prepare yourself for a career that will lead you to a successful, happy future. That being said, that whole preparation thing can be really tough.

While I was at The Academy 2014 – the yearly leadership training experience for newly-elected chapter presidents and their advisors – I had the opportunity to talk one-on-one with collegiate and alumnae members about chapter scholarship. I realized that the majority of us are struggling with the same things and are asking the same questions. For example:

1. Why does Gamma Phi Beta make scholarship such a big deal?
2. Do we have to have study hours?
3. How do we motivate members when they feel like scholarship doesn't matter?

Not only does Gamma Phi Beta proudly make a big deal out of scholastic achievement, but the Sorority can *assist you* in getting scholarships. The Gamma Phi Beta Foundation provides members – collegiate and alumnae alike – the opportunity to apply for financial aid.

In fact, during the 2013-14 fiscal year, \$221,000 was given to more than 135 members to fund scholarships, fellowships and grant-in-aid.

To be awarded those scholarships, you have to earn a 3.0 grade point average or above. For some of us, that's not easy. It requires long hours in the library, memorizing information in study groups and visiting professors in office hours. This is why Gamma Phi Beta requires collegiate chapter members to complete study hours. Devoting time to your academic success creates the foundation necessary to get those scholarships, become a member of an honor society or be a chapter officer. No grades, no glory.

And then there's that third, all-important question – how can we motivate our sisters (and ourselves) to make scholastic excellence a priority? Academic success can be tough when you are not motivated, but it's important to recognize that the hard work you put in now will pay off later, for instance, when you're looking to score an internship.

Not too long ago, I brought one of my Gamma Phi Beta water bottles to a yoga class. In doing so, I had this secret hope that someone would say something about it one day. It finally happened when another yoga student noticed my Gamma Phi merchandise and struck up a conversation. It turns out that she works with several of the largest leadership development

programs related to fraternities and sororities in the United States. This woman has my dream job, and her firm is *in my town*.

I asked if we could meet for coffee, and I later asked for an internship. I asked for the internship because I knew I was prepared. If it wasn't for the serious pursuit of scholarship during my collegiate years, I may not have had the opportunity to pursue graduate school, and ultimately make an impression on this woman, even while doing downward facing dog.

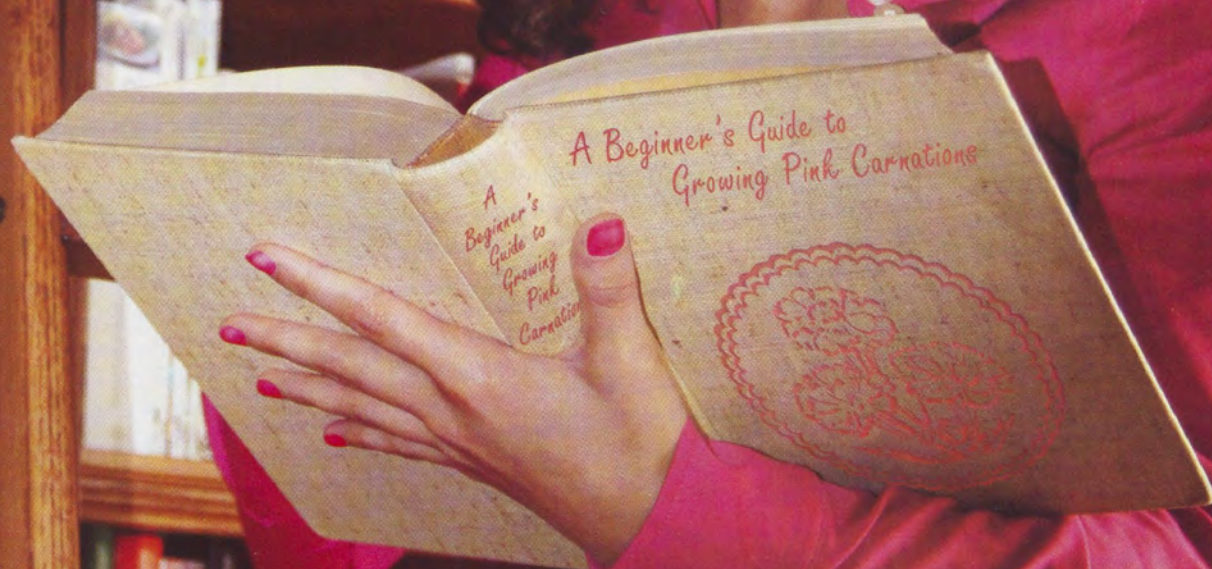
So often, finding the right job opportunity is about meeting the right people. However, there's no use in knowing the right people if you're not prepared when the opportunity comes your way. Truly, one of the best ways to actually be prepared is to be diligent in completing your collegiate schoolwork.

Now do you see why all of this is so important?

Do yourself a favor: work hard now, and learn it right the first time. In the pages that follow, you'll learn how to do just that – you will read about effective study habits, learn from an expert how to use your campus resources to the fullest and hear from fellow Gamma Phi Betas why education and academic success is so important – now and in your future.

There is nothing to lose, and everything, including internships, time management skills and professionalism, to gain.

Supportive sisters make an impact. Motivation matters; and for some, the motivation to study is not intrinsic. If you struggle to make time in your day to read for class, ask a sister to be your study buddy. Set up times to meet on campus or at your chapter facility. The accountability of meeting another person somewhere can help motivate you to study when all you really want to do is take a nap.



Study Smarter: Tips and Tricks to Ace Your Fall Semester and Beyond

For many college students, summer is a time to relax, hang out with friends and maybe even travel. But as fall draws near, keep in mind that summer can represent something even better: a fresh start at school.

Gamma Phi Beta values learning – in and out of the classroom – but getting good grades isn't always easy. It takes hard work and dedication. As you venture into your next academic term, keep these tips and tricks in mind so you can study smarter!

Plan It Out

Designate your study time. As a general rule of thumb, students should plan to study two hours each week outside of class for every credit hour they take. Balancing studying with work, meetings and your social life can be stressful, but budgeting time for your studies in advance can help. Block off time in your agenda, type in a study session on your iCal or try downloading a free time management app on your Smartphone.

Organize and prioritize. Sometimes it can seem like professors all agree to schedule their exams in the same week. When you're feeling overwhelmed by a mountain of tasks, take time to get organized. Evaluate which assignments you need to spend the most time on and plan accordingly.

Where You Study Matters

Don't get too comfortable. Have you ever gone into a test feeling prepared but suddenly draw a blank once you sit at your desk? Your study spot may be to blame. Many students have one special place where they always do their

schoolwork, but getting into a study spot rut may actually hinder learning. According to *The New York Times*,* research suggests that our brain makes connections between our surroundings and the material we are trying to learn. By varying where you study, you can make sure you're really learning the material rather than associating it with your location. Change up your study spots so you don't freeze up on that big exam.

Make a Game Plan

Quit cramming. When you focus on one topic for too long, it's easy to get bored and lose concentration. Instead of spending hours studying for one class, try alternating between subjects for shorter periods of time. Intensive immersion may seem like a great way to learn material quickly, but the facts learned during a long cram session don't stick. Just as you mix up your workout to get the best results for your body, you should mix up the subjects you are studying to get the best results for your brain.

Aim to understand. Have you ever finished reading a page in your textbook only to realize you have no idea what it said? Instead of focusing on getting through your assignment or memorizing facts for a test, try to truly understand what you're seeing. As you go, relate new material to what you've learned in the past, conceptualize big ideas and try to identify important concepts. Slow down and be intentional about what you study.

Try Something New

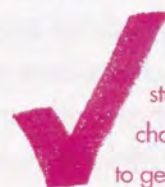
Set clear and attainable goals. Not everyone can get straight A's, and that's okay. Personal

academic goal setting can vary from having a stellar attendance record in your lecture to setting aside 20 minutes each day to get through your Shakespeare reading. Make sure your goals are right for you and stick to them.

Test out a new study method. Current study plan not working? Try taking a different approach. Making flashcards, rewriting your notes or having a sister quiz you on key concepts can help you connect to information in a different and more meaningful way than strict memorization.

Take a breather. When all else fails, take a walk with a sister and start fresh when you get back! Taking frequent breaks helps your brain achieve optimal retention.

Remember, everyone learns differently. To be successful, customize your study plan to work for you!



Need help coming up with a study plan? Talk to your scholarship chairwoman. She can show you how to get your studying on track for success.

Try the SQ3R Method for better reading comprehension!

- Survey
- Question
- Read
- Recite
- Review

Following these steps can help you link complex ideas, remember key facts and understand important concepts.

Francis Pleasant Robinson, Effective Study

*Carey, Benedict. "Forget What You Know About Good Study Habits." *The New York Times*. 7 Sept. 2010.



Making the Most of YOUR *Academic Experience*

By Melinda Sutton, Ph.D. (Southern Methodist)

Students often start a new academic year with goals that include succeeding academically in their courses. But how does one put that general goal into actual steps that will ensure success? As a campus administrator, faculty member and recent doctoral candidate myself, I offer the following suggestions of resources I've seen successful students utilize on their quest for academic excellence.

Take advantage of on-campus resources that support student academic success.

Whether you need some additional assistance to pass a class, you'd like to raise your grade from a B to an A or you want to improve your writing, every college and university provides resources to help students succeed academically. Professionals on campuses across the nation offer workshops on a variety of topics that can help you achieve your academic goals, including time management techniques, study skills and learning about

your most productive study environment. Almost every school offers supplemental instruction sessions for some of the more traditionally challenging courses, one-on-one or group tutorial services for specific courses or subjects and individual feedback and assistance to help students improve their writing. While these services are sometimes provided at an additional cost to students, they are often included in the tuition and fees you already pay. So get your money's worth!

Make sure you're in the right major.

Succeeding academically is much easier when you're actually interested in and motivated by the subject matter. Not to mention, you want to find satisfaction and fulfillment in your chosen career! If you're deciding on a major or questioning whether you've selected the right major, visit your school's career center. Career centers often have trained career counselors or advisors who administer assessments that help students discern what field may be best for them. Although visiting the career center before you determine what career you want to pursue may seem counter-intuitive, it's actually a great place to start!

Get to know your faculty members.

Perhaps cliché, but you really should get to know your faculty members. No matter the size of the class, making a personal connection with faculty members improves student engagement in courses, and ultimately, the overall learning and grade for the course. Visit your faculty members during their office hours – even if it's simply to make an introduction. You might also ask them to: explain a concept you're having a hard time grasping; help you brainstorm a paper topic; or provide advice about applying to graduate school or career opportunities in their field. Then, demonstrate engagement in the classroom by asking questions, answering questions and trying not to be totally engrossed in what's on your laptop. Bottom line: investing in relationships with your faculty members can reap big rewards for you academically.

Get to know your academic advisor.

Along those same lines, get to know your academic advisor. Whether or not you're required to meet with an academic advisor prior to registering for classes each term, visiting and getting to know them will help ensure you are taking the correct classes to make steady progress toward your degree and academic goals. They can also help connect you with other resources on campus that will help you succeed academically.

Use your campus library.

In today's digital age, you may not even have to step foot in the campus library, but you should check out what's available to you online for papers and projects. Wikipedia can be helpful for general information about a topic, but your faculty members typically want to see that you've gathered research from more reliable sources. If you're not sure where to begin, you can usually "chat" with a librarian online from the comfort of your room to help you find the resources you need. Libraries also host workshops on research techniques and related topics to help you ace your assignment.

These are just a few ideas to help you start strategizing your pursuit of academic success in the upcoming year. After you've gained experience with these resources, consider sharing your new-found knowledge with your sisters one-on-one or through a PACE program so that the chapter has the support to reach its academic goals as well. Learning is one of Gamma Phi Beta's Core Values, and pursuing academic success helps you demonstrate that value in tangible ways!

Academic Success and Learning Disabilities

According to the National Center for Learning Disabilities, nearly 2.4 million students in school today have been diagnosed with a learning disability. If you are affected by a learning disorder, you may qualify for special accommodations through your university's disability services including extended deadlines, private testing rooms and access to note takers. Talk to your school's disability services staff to get the assistance you need to succeed.

Gamma Phi Beta recognizes the impact of a learning disability on your grade point average. It is important to note that members who are registered with the college or university disability support program can be accommodated in Gamma Phi Beta with regard to grade point average requirements. Members diagnosed with a learning disability should alert their scholarship chairwoman so she may assist in creating an individualized scholarship plan and offer additional scholastic guidance when needed.

Helping Sisters with Learning Disabilities

Focusing during lectures, completing assignments on time and keeping track of your course reading can be difficult, but for students with learning disabilities, it is even harder. If one of your sisters has been diagnosed with a learning disability, remember that patience and flexibility is key. "I didn't realize how much more difficult school can be for someone with a learning disability," Epsilon Nu Chapter (Chapman) scholarship chairwoman Audrey Reedy says. "In my chapter, we have very high standards for our GPA requirements and study hours. However, I've found that the way to be most helpful in encouraging academic success in sisters with learning disabilities is reducing unneeded stress and creating alternative study plans for those who need them. Just being a confidant and being flexible is the best thing a scholarship chairwoman can do to help sisters with learning disabilities."

Melinda (Mindy) Sutton, Ph.D. is the assistant vice chancellor for Student Affairs and dean of students at the University of Mississippi. She has held positions in student affairs on a number of campuses and taught courses to both undergraduate and graduate students. She also volunteers for Gamma Phi Beta and is a team leader for the National Panhellenic Conference's Something of Value program. She enjoys working with college students and helping to support them in the achievement of their goals.



The Power of Networking

By Sarah Barton (Chapman), Epsilon Nu Chapter (Chapman)
Faculty Advisor



Networking. That big, intimidating buzzword that introduces itself during our early collegiate years and can grow into a big scary monster by graduation – if we let it. Networking is technically defined as the cultivation of productive relationships for employment or business, but for many wide-eyed college students, it is viewed as a daunting task that involves introducing yourself to strangers. Weren't we explicitly told not to talk to strangers when we were young? That has all changed now, and for many of you, networking will be the key to your livelihood over the next, I don't know, rest of your life.

The first five years after college are crucial to the resiliency and success of women in the workplace. I have watched many of my fellow graduates become disengaged from the workforce because the “dream jobs” they hoped for did not come to fruition as quickly as they anticipated. Avoiding this frustration starts with doing two things in college: learning how to get along with people and learning how to use networking to your advantage. Creating a personal connection with the companies and individuals you'd like to work with significantly increases the likelihood of landing your ideal job. In fact, 80 percent of today's jobs are landed through networking.

It is especially important for young women to take advantage of as many networking opportunities as they can in college. The barrier that used to keep women from many high-level positions has been referred to as “the glass ceiling.” Today, women have access to the highest, most powerful positions, yet still represent a fraction of the workforce in these positions. In a day and age where it is estimated that 57 percent of college graduates are women, the percentage of women serving in top-level management positions is dismal. Building professional relationships as early as freshman year can set you up to succeed in a working world that can be difficult to navigate.

Young women need to build their social capital and develop professional networks. How do we make that happen? All networking does not need to take place in the “Hi my name is...” formal environment that comes to mind when we hear the word *networking*. There are a variety of formal and informal ways to network of which we should be taking advantage.

Sarah is the founder and CEO of Accountable in Action, a nonprofit organization created specifically to help women pursue personal excellence, cultivate leadership and discover career potential through the powerful tool of accountability. In her roles as a women's soccer coach at her alma mater, Chapman University, and as a middle school teacher in southern California, she constantly reminds others that there is no greater vehicle than optimism. Read more of Sarah's work at AccountableInAction.org/Blog/.

With access to social media outlets such as Twitter, Facebook and LinkedIn, informal networking is literally a click away. If you have a couple of target jobs or goal companies, then why wait to let them know who you are? Send an introduction letter or a statement of purpose now. Treat that professor as if she was going to be the one interviewing you for your first job, and let people know your career aspirations. You never know who could be listening.

Go to networking events, reach out via social networks and proactively introduce yourself to the companies for which you want to work. I have you heard the old saying, “It's not what you know, it's who you know?” Well, the reality is, it is both what and who you know. You have set yourself up to succeed by attending a great academic institution and grounding yourself in Gamma Phi Beta's Core Value of Learning. Attending college was a calculated move, so do not leave getting the career you want up to chance. Nobody is merely defined by what they are capable of doing. More often than not, we are defined by what we are actually willing to do. Put yourself out there. Be bold. Be persistent. And get where you want to go.

Passion and Educational Excellence

By Michelle Miller Wiebe, ASID (Florida State)

Pablo Picasso once said, "The meaning of life is to find your gift. The purpose of life is to give it away."

As a young girl, my passion (or gift) became evident in interior design. One of my fondest memories was watching my grandparents' historical home, built in the early 1800s, be renovated by a "big city" interior designer. Even before that, I remember spending countless hours drawing floor plans of dream homes and decorating my many Barbie™ houses. Throughout middle and high school, I was inspired through incredible art, drafting and business classes. I realized then how important education would be in preparing me for a future career.

I graduated from Florida State University (FSU) with a bachelor's degree in interior design. Attending such a top notch program – FSU boasts one of the top interior design programs in the nation – made me want to achieve and excel in the world of design. I was fortunate to study with some of the best and brightest design students out there.

In addition, I joined Gamma Phi Beta my freshman year, which also equipped me for success by teaching me so much about sisterhood, working as a team for a common goal and leadership. My years as membership vice president and then chapter president were instrumental in having my people and time management skills honed and developed.

With an excellent education supporting me, I founded Studio M 23 years ago, soon after graduating from FSU. We are a national interior design firm, based in Tampa, specializing in luxury residential new construction. Current projects can be found in Florida, Georgia and Colorado, with international projects as our goal! Our current team of 10 includes three other FSU graduates, including one past Gamma Phi Beta chapter president. What fun it is to recruit from my alma mater – I love being able to give high-achieving FSU graduates opportunities because I know they are equipped with the tools and knowledge to flourish in this field.

As I am so grateful for my exceptional education at Florida State University, I was thrilled to be asked several years ago to join the board of the department of Interior Design. In this role, I promote fundraising and increased exposure for the students. But my favorite part is meeting with this



Photo credit: Kismet Ink Photography

Michelle is the founder and president of Studio M and is a professional member of the American Society of Interior Designers. In addition to her involvement with the FSU Interior Design department, her interior design work has been published in national newspapers and magazines. Michelle is also writing a book and speaks across the nation on design and social media. She has been married to her husband for 15 years, and they have three children. You can see more of Michelle's work at InteriorsByStudioM.com.

talented new generation and giving advice on their portfolios and upcoming careers. It is exciting to see the potential these students have – they will be able to accomplish so many great things because of their dedication to learning and drive to develop as designers.

Passion. This is what I always look for in hiring. *Passion.* This is what I tell college students they must possess to be successful. *Passion.* This is what I tell my children is so important for any career they may pursue. *And passion is linked to excellence in education!* You must learn all you can about your interests, and then practice all you can. I hope that you realize that passion and educational excellence go hand-in-hand.



*Pictured is one of Michelle's striking designs.
Photo credit: Daniel Newcomb Photography*

The It Girls – Finding “It” through IT Education

By Dori Neff Farah (Oklahoma City)

We watch as the charter buses pull up to campus, eager to see our guests – nearly 100 high school junior and senior girls, mostly from the New York City and Washington, D.C., areas – rush out of them. The It Girls are here! Some are groggy, others are wide awake; almost all have over-packed. Then again, it's tough to know what to bring to your first college overnight, where you'll stay in real college dorms with real college women. You just might need those cute sandals, even though it's 35 degrees in Syracuse this glorious November morning.

The It Girls Overnight Retreat is a slumber party meets hack-a-thon designed to engage, inspire and celebrate high school women and their potential in technology. Launched in 2011 and hosted annually by the School of Information Studies (iSchool) at Syracuse University and industry partners like JPMorgan Chase, Facebook, Splunk and SendGrid, the Retreat has encouraged 250 young women from 52 high schools and eight states around the nation to explore the world of technology. The goal is to open their eyes to the impact they could make with the right tools and information and expose them to barrier-breaking role models. They are immersed in hands-on workshops where they find tech-savvy solutions to everyday teenage-world problems such as texting and driving, cyber bullying, body image and college prep. The whole operation is a celebration in their honor. It's a time to recognize their passions and dreams – their “it” factors, if you will – and show them how to pair and develop those “it” factors with information technology (IT) to expand the possibilities, both for them and our world.



It Girls take a break to pose for a group shot during their Retreat where they discovered empowerment through education.



the **it** girls

Dori is the graduate recruitment manager for the School of Information Studies at Syracuse University and an advocate for women in computing and IT. She has served Gamma Phi Beta as a sorority coordinator-new chapter for three years. To learn more about the It Girls program, visit iSchool.syr.edu/iLife/WomeninTech.

After a jam-packed 24 hours, it's time for goodbyes. We ask if anyone would like to say a few words. Not a minute later, our first It Girl steps up. As she reflects on her experience, a line of more than 30 It Girls forms. They say things that make us – the staff, students, faculty and industry mentors who are hosting them – cry. “It was life-changing,” one says.

“The number one thing I’m taking home is confidence in myself and my capabilities,” another boasts. “I’m not alone.”

No, they're not alone. They are everywhere, these It Girls who could become IT girls, and we desperately need them. Our global competitiveness in science, technology, engineering and math (STEM) depends on them. There are, and will be jobs. There are urgent challenges that need creative solutions. And we as a nation are very behind. Of the It Girls who have graduated high school, 80 percent have applied to Syracuse, and nearly half of them for an iSchool major. The It Girls Overnight Retreat represents one of many efforts to move the national needle for women in STEM. It's going to take time, attention and a collaborative effort – from education to industry and organizations to individuals – to make real, sustainable change. You don't need to be in STEM (or even a woman!) to support women in STEM. As women Building Strong Girls, I hope we shout that message from the rooftops.

Education is the Best Way to Liberate a Woman

By Meg Tompkins (Texas-San Antonio)

At some point in my first year or two of college, a few sisters and I went to listen to a guest speaker on campus. I couldn't tell you what the lecture was specifically about, who the speaker was or why we even attended; but I can tell you one thing the speaker said. It has forever resonated with me.

"Education is the best way to liberate a woman."

As a woman and as a Gamma Phi, I am proud, strong, ambitious, passionate, assertive, tenacious, enduring, energetic, relentless and stubborn. I am strong in my convictions and am proud of what I have overcome. I believe that my education has liberated me. I believe as long as I continue educating myself, I will continue to be liberated.

Through education – and I'm not talking about just in a classroom – a woman grows. Through education, something awakens deep in her soul. From the new member counting the days to Initiation to the alumna that has been out of school for 30 years, education can and will unite us.

The new member will learn how to balance her new sisterhood and collegiate classes all while attempting to maintain her social life. The skills in leadership and time management she will develop will help her later on down the road when she is trying to maintain a work-life balance in her career. She will become the alumna that has been out of school for 30 years that is successful, driven and tenacious. Her education will teach her to rely on herself, and it will open doors beyond her wildest dreams. Her education will be her liberation.

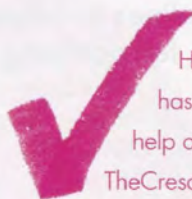
When you liberate a woman, you liberate a community. Liberated women care about other's well-being and will continue to fight for what is right and what is important. Liberated women are the women who create new philanthropies, rebuild communities and will continue to fight for their education and the education of the generations after them.



Photo credit: Kissin's Ink Photography

Meg is a proud Gamma Phi Beta and University of Texas-San Antonio alumna working in San Antonio. She currently serves as the financial advisor of Gamma Phi Beta's Zeta Psi Chapter (Texas-San Antonio) and works to teach other women the importance of resiliency through her own story. Meg's goals in life are to make a difference for those around her and to make memories all over the world. Meg is a published writer. You can read her work at ThoughtCatalog.com.

I don't have any children, but one day when I do, I hope I'll have a daughter. I want to teach her the value of education. Not just the education you get in a classroom and not one provided by the public education system, but one she seeks herself. I hope she surrounds herself with people completely different than her. I want her to grow up always seeking more knowledge and more ideas. I hope she pursues anything her heart desires. These experiences, when combined with academic excellence, can be powerful in shaping her identity. These experiences will be the ones that liberate her.



How have you made the most of your education? How has your academic experience inspired you? How do you help others see the value of education? Send your story to TheCrescent@gammaphibeta.org.

Thinking about graduate school?

Nationally, about nine percent of undergraduate students go on to complete an advanced degree. Graduate school is an important decision and a lot of questions may arise when considering such a significant decision. No matter if you're a future law or medical student, Ph.D. candidate or businesswoman, Gamma Phi Beta's ShineBeyond.org provides resources and answers to help you get where you want to go!



Making the Decision to Go to Grad School

Grad school is a big decision! Through grad school, you can focus your energies on learning about the things that you care about the most, and are given the time and opportunity to explore things you might find interesting. While grad school is a great next step, it's also a big commitment, so you need to weigh all of the pros and cons of attending.

ShineBeyond.org is here to help!



Resources, Timelines and Tips for Applying

You did it – you've made the decision to apply to graduate school. Congratulations! Now all you need to do is complete those applications. Fall is graduate admissions time – check out our resources on ShineBeyond.org for timelines to follow and other great tips for applying to grad school.

Accepted!



You've Been Accepted to Graduate School – Now What?

Congratulations – enjoy this fantastic moment! Before accepting the offer, take a step back to think a few things through thoughtfully. How many applications did you submit? Is this your first acceptance letter? Carefully consider the offer and the program before accepting or declining an offer of admission. Visit ShineBeyond.org for some great tips and advice.

Lifelong Learning

Whether you are about to start your senior year, have recently graduated or are a career-oriented alumna, ShineBeyond.org is a great resource to help you reach your goals!

Alumna Spotlight

MEREDITH HOLT, TOP TEACHER



"I want to make a positive impact on today's youth." That is what Epsilon Iota

alumna Meredith Holt (Christopher Newport) said when asked what inspired her to teach.

Meredith, a first grade teacher, was recently named a top teacher in *Virginia Coastal Magazine* after she was nominated by a student's parent. The student had a hard year in kindergarten; she lacked motivation and didn't like school. When the child was enrolled in Meredith's first grade class, Meredith made it her mission to make school a different experience for that child – and she succeeded. "It

was a huge honor to be named a top teacher," Meredith says.

"I felt very special – not only for making an impact, but for the support from my friends and family."

The Crescent had the honor of speaking to this top teacher, and leaning about her passion for education.

What does inspiration mean to Meredith? "Inspiration is having the utmost respect for someone, looking up to them and wanting to emulate some of their finer characteristics. I'm inspired by my teachers and my Gamma Phi sisters. The kids I teach inspire me by overcoming obstacles and persevering. I hope that I inspire them, too!"

You in three words

Kind, loving and devoted.

ΓΦΒ in three words

Friendship, loyalty and love.

Tell us about your teaching experience.

I teach first grade at Saunders Elementary in Newport News, Virginia. I've been teaching here my entire career, eight years.

Favorite thing about teaching?

The kids! They are so fun to be around. First grade is a really cool year – students come to school excited and ready to learn. The kids are independent for the first time in their reading, writing and math, and are learning that they can do it without someone standing over them. It's rewarding to see the 'I got it' and 'I can do it' expressions on their faces.

What's been your most incredible moment as a teacher?

I've had some students who have been unhappy and very angry kids. When they come back and say 'you were my favorite teacher ever' or 'I miss you so much' it verifies that you've made an impact.

What does our Core Value Learning mean to you?

It means so much to me, as you are always learning. I've learned to be patient and to learn how to work with what I am given. My students teach me, I don't just teach them.

Have you had any fun ΓΦΒ run-ins since entering the work field?

I work with two Gamma Phi Betas right now, and at one time we had five at our school, all from Epsilon Iota Chapter. It was a running joke among the faculty, 'Is she one of your sorority sisters, too!?'

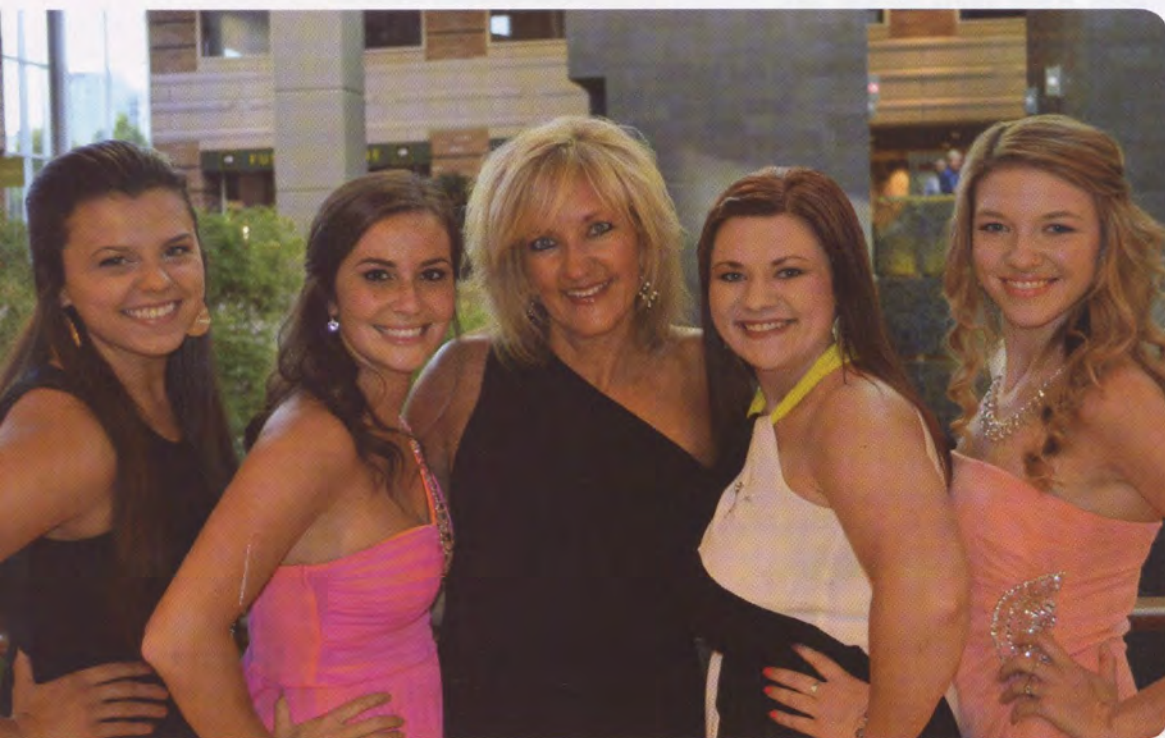
What is your advice for sisters who are pursuing a career in education?

Get into the classroom – that is where you really learn. Everyone will have the opportunity to student teach, but if you're able to volunteer in or observe a classroom, it will show you what teaching is like.

inspiration board

ONE LOVE

Spread the love with these fun phrases – add them as captions to photos, post them on social media or paint them on canvases to hang in your room to give you a daily reminder of the love and support your sisters give you.



CONGRATS, SISTER!

This February, Fran Mayfield Lapham (Kansas State; third from left) was awarded the prestigious Wilford A. Butler Award at the Association of Fraternal Leadership and Values (AFLV) Conference in Indianapolis. This award recognizes an outstanding fraternity or sorority alumna/us volunteer who supports the fraternal movement, but is not a campus fraternity/sorority advisor.

"Over the past two plus decades, Fran has served $\Gamma\Phi\beta$ in a varied number of volunteer roles, consistently giving exceptional leadership and service to our Sorority in every position she has held. Fran is one of those leaders we know will push for excellence every time, challenge the status quo, come up with new and innovative ways to accomplish the goal and take $\Gamma\Phi\beta$ to a higher level each time she accepts a new responsibility," International President Krista Davis says.

$\Gamma\Phi\beta$ made a \$1,000 donation to AFLV in Fran's name, which was also announced at the Conference Banquet. We are so proud of you, Fran!



Sisters make the perfect best friends





FOUNDATION FELLOWSHIP RECIPIENT HEATHER SCOTT

"The fellowship I received for law school symbolizes the Foundation's dedication to inspiring the lifelong development of women. My goal is to one day give back to the organization that enriched my life by providing the same honor to another young woman pursuing her own dreams." – Heather Scott (Denver).

To learn more about financial aid opportunities visit GammaPhiBeta.org/Foundation. The deadline to apply for 2015-16 awards is March 15, 2015.

3.173

ROCK SOLID GPA

During the 2012-13 academic year Gamma Phi Beta collegiate chapters had an average grade point average of 3.173. That's the highest recorded overall chapter GPA in Gamma Phi Beta history! Way to go, smarties!

The fall 2013 issue of The Crescent incorrectly reported Marguerite Higgins Hall (California-Berkeley, 1938) as the first female Pulitzer Prize winner when she was in fact the first female to win the Pulitzer Prize for International Reporting. We apologize for the error.

STUDY IN STYLE

Who says taking notes has to be boring? Brighten up your desk with this vibrant pen and trellis notepad! Get yours at CrescentCorner.com.



DANCE IT OUT

Each spring, Dance and Theater students at Minnesota State University-Mankato are given the opportunity to apply for scholarships provided by sponsors of the Dance and Theatre Program.

This year, Matilda Buffum (bottom) and Emily Higgins (both Minnesota State-Mankato) were each selected to receive a scholarship for the 2014-15 academic year.

"Gamma Phi Beta has taught us to inspire the highest type of womanhood and continue to grow as leaders and individuals.

Every day, whether we are in dance class, rehearsals or with our sisters, we use the values and lessons the Sorority has given us," scholarship winner and Gamma Pi Chapter Membership Vice President Emily says.



SUN SOAKED SAVINGS.

GAMMA PHI BETA SISTERS COULD SAVE MORE ON AUTO INSURANCE!



GEICO®

geico.com/greek/GammaPhiBeta | 1-800-368-2734

SOME DISCOUNTS, COVERAGES, PAYMENT PLANS AND FEATURES ARE NOT AVAILABLE IN ALL STATES OR ALL GEICO COMPANIES. GEICO IS A REGISTERED SERVICE MARK OF GOVERNMENT EMPLOYEES INSURANCE COMPANY, WASHINGTON, D.C. 20076; A BERKSHIRE HATHAWAY INC. SUBSIDIARY. GEICO GECKO IMAGE © 1999-2014. © 2014 GEICO

SORORITY Life

It's collegiate and alumnae chapter updates – at a glance! Read all about our shining chapters across the continent and their recent activities. For submission guidelines, visit GammaPhiBeta.org.

Symbol Key:



Region 1

DELAWARE

♥ Eta Gamma Chapter (Delaware)

For UDance, a dance marathon for pediatric cancer, the chapter raised more than \$41,100 and 14 courageous sisters donated their hair to be made into wigs for children with cancer.

MASSACHUSETTS

∩ Epsilon Eta Chapter (Bridgewater State)

The chapter spent time with members of Girls Inc. of Taunton to teach them about positive self-image. Sisters also treated the girls to "Spa Night," where chapter members acted as manicurists.

♥ Epsilon Phi Chapter (Bentley)

The chapter raised the most money of any group on campus for Colleges Against Cancer's Relay for Life with \$8,300.

NEW JERSEY

⊗ Delta Mu Chapter (Rutgers)

This spring, the chapter hosted a brunch at their chapter house to celebrate inspirational women.

Each chapter member was encouraged to invite a woman who inspires her to the event.

NEW YORK

⊗ Alpha Chapter (Syracuse)

The chapter enjoyed their annual Initiation brunch to welcome their newest members and honor chapter traditions like awarding senior superlatives.

♥ Epsilon Epsilon Chapter (Union)

"Team Truax" raised more than \$6,000 selling bows and bracelets to benefit The Leukemia and Lymphoma Society in honor of late sister Kate Truax.

∩ Epsilon Tau Chapter (Rochester)

The chapter hosted Gamma Phive k Relay, doubling event proceeds from the previous year. Chapter members also honored seniors with their 23rd annual senior celebration dinner.

PENNSYLVANIA

♥ Epsilon Alpha Chapter (La Salle)

Chapter members participated in Relay for Life and raised \$2,616 for the American Cancer Society. The chapter walked to celebrate sister Molly Gibbons, a survivor of thyroid cancer.

⊗ Zeta Epsilon Chapter (Duquesne)

The chapter took home second place in both Greek Week and Greek Sing!

ONTARIO

∩ Alpha Alpha Chapter (Toronto)

During the annual Panhellenic Awards, members were honored to receive recognition for Most Outstanding Recruitment, Most Outstanding New Member Program and Most Outstanding Chapter.

QUEBEC

♥ Alpha Tau Chapter (McGill)

The chapter's annual Crescent Classic Chili Cook-Off was a huge hit! Sisters also enjoyed their spring formal at the beautiful Delta Hotel.

⊗ Montreal Alumnae Chapter

The chapter has been busy with book club planning, spring tea, Saturday brunch and a Girl Guide Cookie Sale. Contact the chapter at gpbmontreal@gmail.com to get involved.

Region 2

DISTRICT OF COLUMBIA

∩ Washington, D.C. Alumnae Chapter

At the University of Maryland's centennial celebration of Greek life, six Beta Beta (Maryland) alumnae were honored for their impact on the community, including two Washington, D.C. Alumnae Chapter members. Their names can now be found on engraved bricks in the Centennial Honor Roll Garden at the University.

FLORIDA

∩ Beta Mu Chapter (Florida State)

The chapter hosted its philanthropy event this spring. Members invited the local Girls on the Run council to participate in obstacle courses and games.

⊗ Delta Sigma Chapter (Florida Institute of Technology)

In addition to being named Greek Week champions for the first time since 2005, the chapter took first place in "Construction," where they created a globe using 570 cans of food that were later donated to the North American Food Drive.

Gamma Phi Beta Sorority by Regions



Alaska - Region 8
Hawaii - Region 7

☪ **Eta Beta Chapter (Florida Southern)**
Sisters enjoyed an end of the year Sisterhood Soirée to celebrate their accomplishments throughout the semester. The theme was Kentucky Derby – sweet tea, sunhats and sisters – what could be better?

☪ **Eta Eta Chapter (South Florida)**
This spring, the chapter introduced a new philanthropy event and held a recruitment workshop with **Eta Lambda Chapter (Central Florida)**. Sisters also celebrated graduating seniors at a tea party luncheon.

☪ **Eta Lambda Chapter (Central Florida)**
Members hosted a movie night with girls from a local elementary school. Everyone had a blast eating pizza and watching “The Princess Diaries 2.”

☪ **Tampa Bay Alumnae Chapter**
The chapter joined the Tri-City Panhellenic Alumnae for a lunch and informative presentation by a former foster child who is now an author and advocate for foster children.

KENTUCKY

☪ **Epsilon Sigma Chapter (Morehead State)**
The chapter held a philanthropy week consisting of Penny Wars, glow-in-the-dark Zumba and a volleyball tournament to benefit Building Strong Girls.

NORTH CAROLINA

☪ **Epsilon Psi Chapter (North Carolina-Asheville)**
Sisters welcomed three new members into the chapter this spring. On Bid Day, the chapter celebrated by painting neon hats.

☪ **Eta Mu Chapter (Duke)**
In their first semester as a new chapter, sisters started working with their local Girls on the Run council as volunteers and running buddies.

SOUTH CAROLINA

☪ **Epsilon Theta Chapter (Clemson)**
The chapter had a blast at Crescent Classic Moonball, a nighttime volleyball tournament. Members also participated in campus-wide philanthropy events like a softball tournament, tug-of-war and a karaoke competition.

☪ **Zeta Zeta Chapter (Coastal Carolina)**
The chapter participated in Relay for Life and raised \$33,825, more money than any other team, thanks in part to one sister who single-handedly raised \$10,000!

☪ **Zeta Eta Chapter (Lander)**
Chapter members hosted their third annual Crescent Classic, raising more than \$1,750 for Girls on the Run.

☪ **Zeta Sigma Chapter (South Carolina)**
The chapter held its second annual Crescent Classic Superhero 5k, raising more than \$5,000 to support Building Strong Girls. Members also enjoyed a sisterhood retreat at a trampoline park.

TENNESSEE

☪ **Eta Kappa Chapter (Tennessee-Chattanooga)**
Chapter members donated more than 150 formal dresses to girls attending a local high school's Military Ball. Sisters also helped with hair and makeup on the day of the dance.

VIRGINIA

☪ **Alpha Chi Chapter (William & Mary)**
The chapter hosted its most successful Crescent Classic event yet! Moonball, the chapter's annual volleyball tournament, boasted an incredible turnout and raised more than \$3,000 for Building Strong Girls.

☪ **Epsilon Pi Chapter (George Mason)**
Sisters loved getting to know one another while traveling to Washington, D.C., together this semester.

☪ **Zeta Beta Chapter (Virginia)**
To commemorate the end of the academic year, seniors presented speeches to impart wisdom on chapter members.

☪ **Fairfax County Alumnae Chapter**
Girls on the Run team members at London Towne Elementary School were delighted to receive gift bags and personalized notes of encouragement created by chapter members.

☪ **Greater Norfolk Alumnae Chapter**
The chapter enjoyed a private session at Paint 'n Sit in Virginia Beach. Sisters created beautiful paintings that included a crescent moon.

☪ **Richmond Alumnae Chapter**
Chapter members volunteered at Toys for Tots 5k with Girls on the Run of Greater Richmond.

Region 3

ALABAMA

☪ **Epsilon Lambda Chapter (Alabama-Tuscaloosa)**
Sisters hosted a special ceremony for their new chapter house, signing a commemorative steel beam that is now part of the house.

☪ **Huntsville Alumnae Chapter**
The chapter spent an afternoon creating Pinterest crafts and eating chili and grilled cheese sandwiches with fellow sisters and their children.

GEORGIA

☪ **Delta Omicron Chapter (Southern Polytechnic State)**
Chapter members ordered their first coastal jerseys, representing their close-knit sisterhood.

☪ **Delta Upsilon Chapter (Georgia)**
Sisters enjoyed their annual Crescent Ball formal this spring at the Cotton Warehouse in historic downtown Monroe. Members also cheered on runners at a Girls on the Run 5k.

LOUISIANA

☪ **Epsilon Mu Chapter (Loyola-New Orleans)**
The chapter celebrated its 25th anniversary with an alumnae reunion. Sisters gave alumnae tours of the house, giving them the opportunity to relive their own sorority experience.

TEXAS

☪ **Gamma Zeta Chapter (Texas A&M-Commerce)**
Chapter members teamed up with **North Texas Alumnae Chapter** to host a family-friendly Easter egg hunt at the chapter house. Many alumnae brought their children to experience this fun afternoon.

☪ **Gamma Iota Chapter (Midwestern State)**
From a sisterhood retreat at the Fort Worth Zoo to winning Greek Week for the third year in a row, the chapter had an incredible spring!

☪ **Gamma Chi Chapter (Texas State-San Marcos)**
Members hosted their first Crescent Classic Moonball event. Teams competed against each other in a black light volleyball tournament, helping the chapter raise more than \$3,000 for Building Strong Girls!

☪ **Zeta Chi Chapter (Texas Christian)**
Chapter members had fun in the sun at Lake

Grapevine. The chapter rented a boat and spent time bonding with one another, which provided much needed relaxation before final exams!

🌸 **Zeta Lambda Chapter (Texas A&M-Corpus Christi)**

Sisters enjoyed taking Regional Coordinator Brenda Dever (Texas A&M-Commerce) out to eat during a visit to the chapter.

🌸 **Zeta Psi Chapter (Texas-San Antonio)**

Sisters enjoyed a luncheon at Tower of the Americas with **San Antonio Alumnae Chapter**.

🌸 **Greater Forth Worth Alumnae Chapter**

The chapter celebrated sisterhood at G Phi B Tea, where members donned fancy hats and enjoyed a formal high tea at the Ashton Hotel.

Region 4 INDIANA

🌸 **Beta Phi Chapter (Indiana)**

Four chapter members formed a team to compete in Little 500, the largest collegiate bicycle race in the United States.

🌸 **Delta Iota Chapter (Purdue)**

The chapter hosted a successful Crescent Classic basketball tournament to support Girls on the Run.

🌸 **Zeta Iota Chapter (Valparaiso)**

Sisters welcomed 17 excited new members this spring. Songs of the Sorority were happily chanted by current members as they welcomed their new sisters.

MICHIGAN

🌸 **Beta Delta Chapter (Michigan State)**

The chapter won Greek Week, raising more than \$29,000 for Relay for Life with fraternity partners Psi Upsilon and Zeta Beta Tau!

🌸 **Epsilon Beta Chapter (Alma)**

Many members are excited to study abroad! Sisters will be traveling to all corners of the world in the upcoming school year.

🌸 **Eta Delta Chapter (Grand Valley State)**

The chapter hosted a Gamma Phive k race raising more than \$2,000 for Girls on the Run of Western Michigan.



Region 1 | Members of Eta Theta Chapter (Connecticut) raised more than \$15,000 to benefit Connecticut Children's Medical Center for HustyTHON, UConn's annual 18-hour dance marathon.



Region 2 | For the ninth consecutive year, members of Naples and Greater Fort Myers Alumnae Chapters enjoyed their annual luncheon, where they were gifted a book and a summer reading list from their local bookstore.



Region 3 | Zeta Tau Chapter (Emory) members crafted handmade tutus for their local Girls on the Run council. Many sisters were able to cheer on runners at the Girls on the Run Atlanta 5k and see the tutus in action.



Region 4 | Sisters of Alpha Nu Chapter (Wittenberg) had a blast cheering on their local Girls on the Run council at a 5k race despite the gloomy weather.

OHIO

🌀 Beta Gamma Chapter (Bowling Green)

Chapter members and their house corporation board held a House Cleaning Ceremony in April. The University is building new Greek housing, so the afternoon was filled with fond memories of the 70-year-old house.

🌀 Beta Epsilon Chapter (Miami-Ohio)

The chapter honored their new member advisor with a surprise luncheon. Stories and tea cakes were shared in honor of her lifetime of dedicated love and labor for Gamma Phi Beta.

🏠 Eta Zeta Chapter (Cincinnati)

The chapter established a scholarship in memory of sister Jessica Galley. The scholarship winner will be a member who shows dedication to her academics and to the Sorority.

🌀 Cincinnati Alumnae Chapter

Members were able to partner with **Eta Zeta (Cincinnati)** twice in the spring – they supported the Greater Cincinnati Area Spring Girls on the Run 5k and honored seniors at a celebration dinner together.

🌀 Cleveland East Alumnae Chapter

Members and their guests enjoyed a visit to the newly remodeled Cleveland Museum of Art.

Region 5

ILLINOIS

🌀 Epsilon Chapter (Northwestern)

After a week of sisterhood events, the chapter happily initiated 39 members!

🌀 Omicron Chapter (Illinois)

The chapter was excited to have International Education Vice President Autumn Hansen (Idaho) speak at their sisterhood retreat, where they got to know their newly-implemented loyalty circles through fun bonding activities.

🤍 Beta Eta Chapter (Bradley)

Members gathered to watch a sister shave her head for St. Baldrick's, an organization that supports children diagnosed with cancer, for the second year in a row.

🌋 Delta Pi Chapter (Illinois State)

The chapter raised \$2,500 for Girls on the Run through their annual Crescent Classic event, where the Greek community competed in relay races.

🤍 Chicago Northwest Suburban Alumnae Chapter

The chapter participated in an annual trivia night fundraiser hosted by the local Kappa Delta alumnae group.

IOWA

🌀 Rho Chapter (Iowa)

The chapter hosted its annual Mother's Day brunch where sisters enjoyed fresh fruit, mini sandwiches, pastries and pink lemonade in their brightly decorated house. Brunch was followed by a silent auction.

🏆 Omega Chapter (Iowa State)

Omega was one of two chapters at Iowa State University to win the Fraternal Award of Excellence at the annual Greek awards ceremony. The award is given to chapters with exceptional academics, finances and programming.

MINNESOTA

🤍 Kappa Chapter (Minnesota-Twin Cities)

The chapter held its 11th annual Kris 5k Memorial Run/Walk in honor of sister Kristin Marx. More than \$6,000 was raised for the National Meningitis Association and a scholarship in Kris's memory.

🤍 Gamma Pi Chapter (Minnesota State-Mankato)

Sisters were proud to raise the most money for the campus Dance Marathon and take second place in Greek Week. The chapter also volunteered at a 5k for their local Girls on the Run council.

NORTH DAKOTA

🌀 Alpha Beta Chapter (North Dakota)

Commemorating the 10-year anniversary of Dru Sjodin's abduction and death, the chapter dedicated a bench in Dru's honor. Dru's family was able to visit the chapter house and witness the moving dedication ceremony on campus. "She reminds us every day how precious life is," Becca Roberts, former chapter president, says.

🤍 Minneapolis-St. Paul Alumnae Chapter

The chapter partnered with seniors from **Kappa Chapter (Minnesota-Twin Cities)** to volunteer for Feed My Starving Children. Members also participated in Twin Cities Alumnae Panhellenic Association's Benefit Bunco fundraiser.

WISCONSIN

🌀 Gamma Chapter (Wisconsin-Madison)

Sisters took to the ice during a sisterhood outing at a local ice skating arena. The ladies skated to the best of their abilities and mastered the art of "wiping out."

🌋 Gamma Rho Chapter (Wisconsin-Oshkosh)

Chapter members joined forces with their running buddies from their local Girls on the Run council to make blankets for Madison's Project Linus, an organization that donates blankets to ill children and teens.

🤍 Gamma Omega (Wisconsin-Platteville)

The chapter hosted and participated in many philanthropy events, including their first annual Gamma Phive k Halloween Run.

🌋 Milwaukee Alumnae Chapter

The chapter co-hosted a fabulous trunk show to help raise more than \$1,500 for Girls on the Run-Greater Milwaukee.

Region 6

COLORADO

🌀 Tau Chapter (Colorado State)

The chapter hosted Dad's Day this spring at a Colorado Rockies baseball game. Seven new members were also welcomed into the chapter. Bid Day boasted a bouncy castle, Twister and many other childhood favorites!

🌀 Beta Rho Chapter (Colorado-Boulder)

The chapter hosted a Cupeakes and Canvas sisterhood event at Boulder's local Posh Studio. Sisters had a blast eating cupeakes, painting and getting to know Collegiate Leadership Consultant Alison Sibley.

🌋 Denver Alumnae Chapter

The chapter collected donations for Gates Camp at their Spring Salad Luncheon. Sisters are also looking forward to an outing at the theater. Visit DenverGammaPhiBeta.com for future events!

KANSAS

🤍 Sigma Chapter (Kansas)

Sisters had a blast serving pancakes and sausage, socializing with guests and working a raffle table at their Crescent Classic pancake breakfast.

♥ Beta Upsilon Chapter (Kansas State)

The chapter helped raise \$4,700 during the spring semester for local philanthropies. They also hosted their first Grilled Cheese with the G Phi Bs philanthropy event.

MISSOURI

🌸 Alpha Delta Chapter (Missouri-Columbia)

This spring, members welcomed their mothers to the chapter's annual Mom's Weekend. Sisters enjoyed brunch, house tours and arts and crafts with their mothers at the chapter house.

🌸 Delta Nu Chapter (Missouri State)

The chapter loved taking professional photos this spring to be used for recruitment. Sisters enjoyed bonding with one another and spending time outside on a beautiful sunny day.

🌸 Zeta Delta Chapter (Southeast Missouri State)

The chapter placed second in the Mark Hudson Classic Volleyball Tournament, an event that supports suicide prevention and awareness.

🌸 Eta Iota Chapter (Rockhurst)

Chapter members supported Girls on the Run by showing off their inner-diva at Diva Dash 5k. Sisters cheered on the runners, handed out medals and even participated in this women-only race.

NEBRASKA

♥ Pi Chapter (Nebraska-Lincoln)

Sisters raised \$6,578 at their annual Crescent Classic French Toast Feed. Unlimited toast drew members of the Greek and Lincoln communities alike for fun, friendship and philanthropy!

♥ Gamma Kappa Chapter (Nebraska-Kearney)

The chapter hosted a pancake fundraiser for the Kearney Public School Poverty Fund. Sisters loved spending time with members of the Kearney community.

🌸 Epsilon Delta Chapter (Creighton)

Sisters enjoyed a fun night of dancing at their spring formal. The night served as a great celebration of graduating seniors.

🍷 Omaha Alumnae Chapter

Members attended the Omaha Alumnae Panhellenic Association's annual brunch. The chapter is elated to congratulate Babs Weinberg (Nebraska-Lincoln) for being named Panhellenic Woman of the Year.



Region 4 | Seniors of Zeta Omicron Chapter (John Carroll) stopped to take a quick photo before boarding the bus to the chapter's spring formal at the Cleveland Zoo.



Region 5 | Gamma Psi Chapter (Northern Iowa) members took this photo to show their gratitude for the community's support of their pancake breakfast fundraiser, Crescent Cakes.



Region 6 | Sisters of Beta Chi Chapter (Wichita State) participated in CARE Walk for Heartspring, an organization that assists children who have autism or other learning disabilities.



Region 6 | Members of Beta Omicron Chapter (Oklahoma City) worked together to create goodie bags for local Girls on the Run participants.

OKLAHOMA

Ψ Psi Chapter (Oklahoma)

The chapter won both Outstanding Campus Involvement and Outstanding Scholarship Achievement at this year's President's Trophy Awards.

Region 7

ARIZONA

♥ Alpha Epsilon Chapter (Arizona)

The chapter hosted its second annual Go for Glow Crescent Classic, a glow-in-the-dark walk and relay race benefitting Raising Awareness of Cancer Early-on (R.A.C.E.) Charities.

♥ Beta Omega (Northern Arizona)

The Boys and Girls Club of Flagstaff joined sisters for a spring carnival. Chapter members loved helping the kids enjoy bounce houses, obstacle courses, games and face painting.

☪ Northwest Phoenix Area Alumnae Chapter

If you live in one of the Sun Cities, Peoria, Glendale, Surprise or Northwest Phoenix, please email jmbish@cox.net to join members for a lunch get-together, held monthly.

CALIFORNIA

☪ Alpha Iota Chapter (California-Los Angeles)

On a sisterhood retreat to the beach, the chapter enjoyed setting goals and taking photos against the beautiful scenery.

⌋ Gamma Eta Chapter (California State-Long Beach)

The chapter hosted a successful basketball tournament, donating all proceeds to Girls on the Run. They also participated in Relay for Life, raising more than \$1,275 for the American Cancer Society.

☪ Delta Delta Chapter (California State-Fullerton)

The chapter dominated in Greek Week, winning Lip Sync for the fifth consecutive year, the theme award and the overall award. The chapter also raised nearly \$8,000 at their Crescent Classic event.

⌋ Delta Eta Chapter (California-Irvine)

Seventy-eight Girls Scouts from the Orange County area joined chapter members at Kickin' It with GPhi, a kickball tournament where the girls could earn their Staying Fit badge.

♥ Delta Theta Chapter (California Polytechnic State)

The chapter hosted its annual philanthropy event, Flags for Frances, a capture the flag tournament in memory of a late sister. The funds raised are donated to Transitions Mental Health Association in San Luis Obispo.

☪ Delta Lambda Chapter (California-Riverside)

Members danced the night away at semi-formal in Los Angeles. The night kicked off with a delicious dinner and was followed by dancing with sisters and dates.

☪ Delta Phi Chapter (California State-Bakersfield)

The chapter implemented a new scholarship plan that includes group-study proctored hours. The new plan is benefitting the chapter greatly!

☪ Delta Psi Chapter (California-Santa Barbara)

The chapter was elated to welcome 14 new members this spring.

☪ Epsilon Gamma Chapter (San Diego)

Sisters showered graduating members with gifts and treats during Senior Week. The chapter also hosted a celebratory senior brunch.

⌋ Epsilon Nu Chapter (Chapman)

An Evening Under the Crescent, the chapter's annual philanthropy gala, featured a silent auction, music, photos and a dinner to raise money for Camp del Corazon.

☪ Bakersfield Alumnae Chapter

Sisters got together for a Crafter-Noon PACE where they made coasters and hair ties. Members also enjoyed an outing at Café Med.

☪ Long Beach Alumnae Chapter

The chapter celebrated its 75th anniversary with a Diamond Year Gala. The evening included great food, dancing and an award ceremony.

Region 8

CALIFORNIA

♥ Eta Chapter (California-Berkeley)

The chapter won first place and \$200 for Building Strong Girls during Phi Psi's Water Carnival, a philanthropy event for the Boys and Girls Club of Oakland.

⌋ Delta Chi Chapter (California State-Sacramento)

The chapter partnered with local Girl Scouts to offer a badge workshop. The 53 girls in attendance had the opportunity to earn their Making Friends badge by visiting stations that included games and crafts.

Ψ Epsilon Omicron Chapter (California-Santa Cruz)

The executive council had a wonderful retreat by the beach, which helped the council become a more cohesive and united team.

☪ Diablo Valley Alumnae Chapter

Members enjoyed spending time with one another at an ice cream social. A meet-and-greet with executive members produced many new and exciting ideas for the chapter.

☪ Marin County Alumnae Chapter

On President's Day, the chapter gathered to celebrate with a patriotic potluck. Red, white and blue foods were served.

☪ Sacramento Valley Alumnae Chapter

Sisters were proud to welcome their first alumnae initiate, Jayme Burkhalter, into the chapter. Members held a celebratory brunch in her honor following Initiation.

IDAHO

Ψ Xi Chapter (Idaho)

The chapter was honored to be awarded Chapter President of the Year, New Member of the Year, Outstanding Campus Involvement and Chapter Choice at the University's Greek Awards.

☪ Zeta Xi Chapter (College of Idaho)

The chapter was proud to receive the Highest Chapter Scholarship Award for earning the highest GPA among Greek chapters on campus.

OREGON

♥ Nu Chapter (Oregon)

The chapter raised more than \$9,000 during their Breakfast at Gamma Phi Crescent Classic.

WASHINGTON

Ψ Lambda Chapter (Washington)

The chapter was honored to be awarded the Greek Relations Award and be chosen as finalists in the categories of environmental awareness and risk management.

🏆 **Gamma Epsilon (Puget Sound)**

The chapter won the Chapter of Excellence award for outstanding overall performance as a Greek organization.

🌸 **Zeta Alpha Chapter (Eastern Washington)**

Sisters partnered with local alumnae to bond on a two-mile nature hike near campus.

🌸 **Puget Sound Alumnae Chapter**

Many chapter members enjoyed attending Convention and showing off their beautiful city to sisters.



Region 7 | Sisters of Beta Lambda Chapter (San Diego State) had a blast at a sisterhood retreat at the beautiful San Diego Zoo.



Region 8 | Alpha Lambda Chapter (British Columbia) donned fun aprons during their annual Spagammi Dinner.



SPRIT WITH *Style*

-STERLING SILVER BEADS AND JEWELRY-
-BEADS FIT MOST BEADED CHARM BRACELETS-
-MADE IN THE USA-












OFFICIAL LICENSED PRODUCT



CHECK OUT THE FULL LINE ON: WWW.COLLEGEJEWELRY.COM



SUPPORTERS OF THE *Heart.*

Linda Daniel Johnson (Vanderbilt)



After 10 consecutive years in leadership for Gamma Phi Beta Sorority (four years as International President, six years as Foundation Chair), I've had many opportunities to

experience and reflect upon our sisterhood. And for me, Gamma Phi Beta is relevant, life-changing and forever.

Relevant for me as an 18-year-old college freshman in 1975 meant a place where I felt at home, could make friends for a lifetime and find new opportunities outside the classroom in a supportive environment. College academics were high pressure and I knew no one the first day I arrived on campus. Gamma Phi Beta was an oasis of friendship, laughter and support. As time went on I grew more confident and my sisters recognized in me leadership gifts I didn't know I had and encouraged me to utilize those gifts.

Today, collegians have their own set of challenges. Many chapters have grown to more than 150 members; one chapter is more than 300 members! Imagine the confidence and leadership skills required to be the 20-year-old chapter president in charge of meetings and activities each week, or the financial vice president collecting dues and managing payments each month.

I'm struck by the intentional and very successful way that Gamma Phi Beta has evolved over the 38 years since I was initiated. We are still relevant and it is a great time to be a Gamma Phi Beta!



Linda Daniel Johnson (left) is wrapping up her volunteer leadership after four years as International President and six years as Foundation Chair.

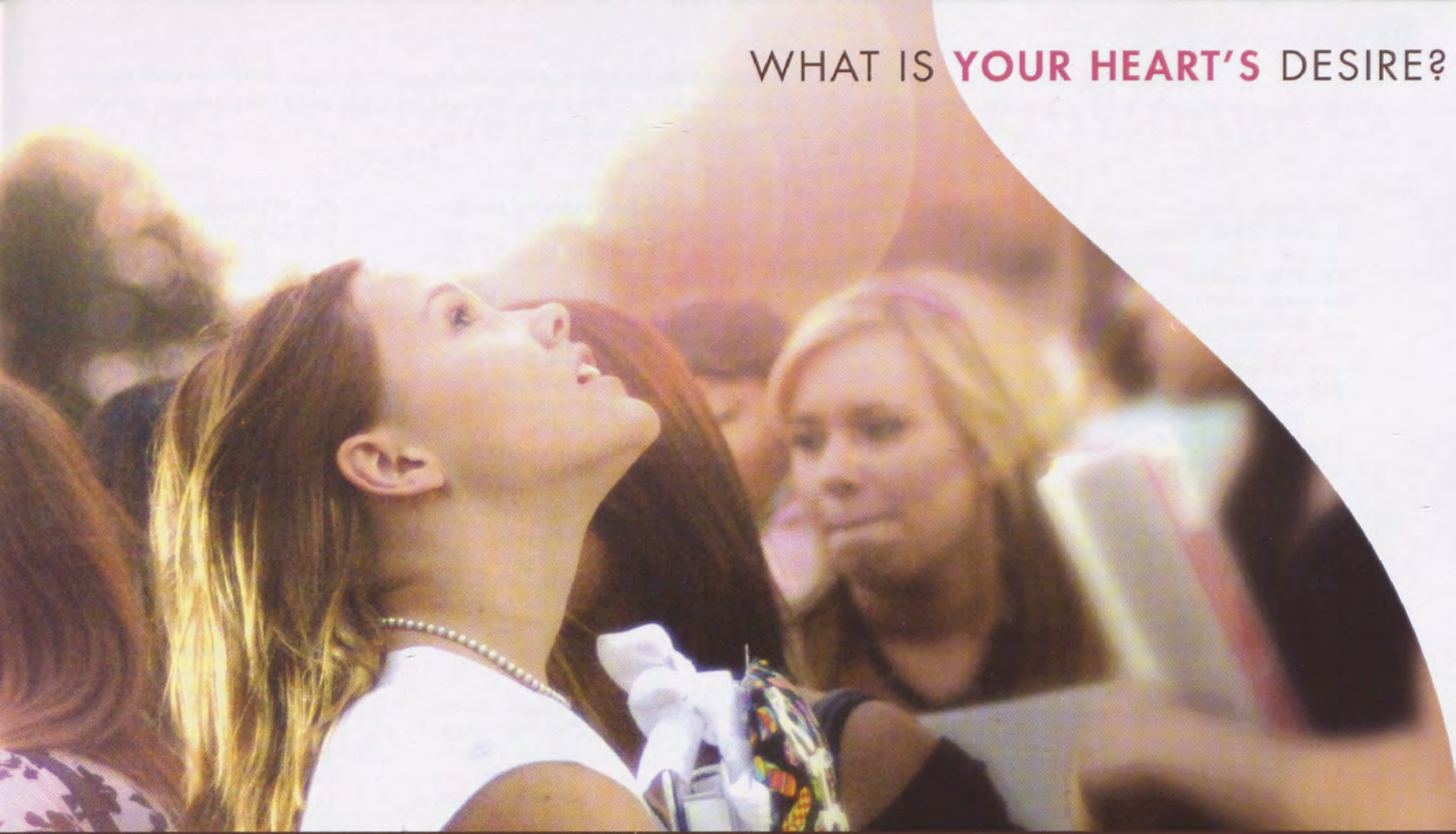
"My Gamma Phi Beta sisters inspire me to be better than I think I am," is a testimony to Gamma Phi Beta's power to be life-changing. I first heard this testimony from a collegian about to be initiated as a charter member of a brand new collegiate chapter. She wanted me to understand how her sorority experience had changed her life for the better. That statement resonated with me then and continues to impact me today.

Since then, I've heard this testimony echoed in the stories of sisters, old and young. I hear it from young women who talk of what a scholarship from a sister means to them in reaching their goals; women who speak of what their sisters meant to them during a rough time in their lives;

sisters who share how they overcame shyness, or tried a new experience and found their life's work; sisters who struggled to pay the bills every day of their college experience, but who now find themselves with the ability to ease that same struggle for a young woman today. Gamma Phi Beta is made up of women who inspire the highest type of womanhood. And that is life-changing.

Gamma Phi Beta is forever. Sisters who came before leave a legacy for sisters to come. Within the legacy left for us are the seeds of our unique legacy to be left by living a life that matters, a life that leaves the world a better place than we found it. This is the sisterhood of Gamma Phi Beta.

WHAT IS **YOUR HEART'S** DESIRE?



GAMMA PHI BETAS ARE **CONNECTED** AT THE **HEART** ...

The bonds of our Sorority are rooted in an unwavering devotion to educational and charitable purposes. The desires of one heart, **your heart**, play an influential role in enhancing the lives of countless young women.

The One Heart campaign provides a formal mechanism for you to preserve the past, inspire the present and endow the future by ensuring the continued growth and success of Gamma Phi Beta from generation to generation.

Your generosity in giving to Gamma Phi Beta reflects heartfelt philanthropic values and further bonds you to a sisterhood that has positively impacted women's lives for more than a century.

Can one person really make a difference?

Ask your heart... it will answer.

Please, make a gift or pledge today.

GammaPhiBeta.org/OneHeart

**♥ ONE
HEART
CAMPAIGN**

Memorial Gifts

We acknowledge the following individuals and groups who contributed to the Gamma Phi Beta Foundation in memory of a loved one,* as of May 1, 2014. Lists are printed as received from the Foundation.

Glen Abbott
Joan Nielsen Abbott

Emily Hellie Blandin
(Minnesota-Twin Cities, 1943)
Barbara Arnest

Nancy Gebhardt Bonser
(Bowling Green, 1952)
Beta Phi House
Corporation Board
Bloomington Area
Alumnae Chapter

Donna Grunden Burt
(Boston, 1946)
Jean Yarian Horne

Corinne Thorne Collins (Southern
Methodist, 1938)
Cathyrne G. Melton

**Thomas Patrick Corrigan, father
of Devin Corrigan**
Jamie Pickel

V. Carolyn Feld Fedak (Washington
University, 1960)
Patricia M. Henderson

Elizabeth Printz Freeman
(Bradley, 1977)
Lori Hughett
Ellen Japczyk
Jo Ann Sabin Miley
Joan Verhoef
Gail Zimmerman

Barbara Person Greven (Minnesota-
Twin Cities, 1961)
Naples Area Alumnae Chapter

**Irene "Nan" Hallenback, mother
of Linda Hallenbeck Pelegrino**
Linda Babeock
South Bay Alumnae Chapter

Mary Jane Reiney Harvey
(Maryland, 1945)
Houston Alumnae Chapter
Shila Smith

**John Hillman, father of
Stephanie Jamison**
Jamie Pickel

Marian Ryan Hitchings
(Goucher, 1945)
Donald Hitchings

Joan Myhren Hughes
(Nebraska-Lincoln, 1959)
Sylvia Lee Jenkins

Mathilde "Till" Hutchison
(Arizona, 1947)
NW Phoenix Area
Alumnae Chapter

**John (J.D.) Kailer, husband
of Pat Stangebye Kailer**
Albuquerque Alumnae
Chapter

Nancy Beecher Kleeb
(Nebraska-Lincoln, 1972)
Barbara Lien Bader
Vicki Thompson Johansen
Jennifer Fix Reck
Patsy O'Connor Rohrig

**Aidas Vlasdas Kriauciunas, husband
of Tracey Price Kriauciunas and
brother-in-law of Leigh Ann Price**
Ann Campbell
Cathy B. Griffin
Leigh Ann Price

Katalin Kutasi (Michigan
State, 1975)
Debbie Block Curtiss
Susan Henning Kirkpatrick
Susan Hoban Workman
Karen R. Zielinski

Linda Jill Lee, mother of Chelsea Lee
Beta Phi House
Corporation Board
Beta Phi Chapter
Bloomington Area
Alumnae Chapter

**Paul Lewis, father of
Kristin Lewis Norfleet**
Alpha House Corporation Board
Judy Ann Kaspar
Syracuse Alumnae Chapter

Jeannien Gustavison Ludwig (Illinois
at Urbana-Champaign, 1950)
Mary Crawford Pedersen
NW Phoenix Area
Alumnae Chapter

**Doris Mager, grandmother
of Beth Mager**
Jennifer Herbert

Margery Morrison Miller
(St. Louis, 2005)
Marianne Adoor
Carrie Morrison Alexander

Robert Berger and Family
Miquel Blackford
Alison L. Bond
Lisa Boyce
Jean Ann Morrison Bozell
Ann Bronsing
Joseph M. Dolan
James Easterby
Christy Ehrenreich
Denise Eschenbrenner
Deborah Fratini
Pamela Getman
Jane P. Gleason
Elen L. Gross
Vicki Benitz Helling
Barbara, Debby and
Doug Henderson
Patricia M. Henderson
John and Lois Himpel
Ann A. Hirsch
Nancy L. Hope
Sandra P. Kirkbride
Carol S. Latimer
Suzanne G. Levin
Linda Lowry
Joyce Merrill
Maryam Miller
Mr. and Mrs. William R. Piper
Joanne Roman
Victor and Mitzie Schroeder
Patti Berendzen Siegel
Silvanus Products, Inc.
Anita Waninger Steck
Ann L. Straw
Dena Suftko
Harry and Judy Taub
Kurt and Lindsay Taub
Carolyn Terry
Larry and June Van Klaveren
Cozette Vaught
Jeff Ware
Ronnie and Rylie Ware
Jill Wilkis
Jennifer Wood

Catherine Ham Munson
(Nebraska-Lincoln, 1947)
Marin County
Alumnae Chapter

Charlotte Doughty Patch
(Iowa State, 1936)
Grace W. Gilmore
Marilyn G. Gilmore

**David Record Jr., father of
Kristen Record Heptinstall
and Cheryl Record McClune**
Robin T. Baskin

Marie Morfeld Rolle
(Northern Arizona, 1958)
Lucette Rojeck Barber

Patti Ball Blanchard
Letty Lloyd David

Helen Harris Schanep
(Arizona, 1955)
Georgina Street
Amy Street Williams

**Thomas Schulte, husband
of Diane Schulte**
Greater Fort Myers Alumnae
Chapter

Sheila McGinnis Spung
(Northwestern, 1952)
Joyce Dunn

**Scott J. Thomson, son of Rosemary
and James Thomson**
Sally Lewis

Katheryn Madden Votaw
(Texas-Austin, 1935)
Linda Gafford Belota
Ann Barger Bracey
Jo Ann Fanning Durham
Dortha Gilbert Erwin
Greater Fort Worth
Alumnae Chapter
Lucile Steward Hefner
Maxine Henderson Kruse
Carolyn Blumhof Lombard
Irita Donahue Nicholas
Maria Nicholas
Sally Glenn Parmelee
Sharon Carnes Renfro
Carol Walker Searcy
Ann Baird Smith
Anna Muhlenbruch Stucker

Kasey Waychoff (Oklahoma
State, 2012)
Psi Chapter House
Corporation Board

Pat Hannan Weigen (Illinois, 1944)
Mary Welge

Virginia Pucci Zorio
(Nevada-Reno, 1956)
Linda Charlebois

**For deceased members, The Crescent lists their first, maiden and last names in accordance with their school and year of initiation. To make an "In Memory" gift, visit GammaPhiBeta.org/Donate or call 303.800.2890. The suggested minimum donation is \$25. Gifts received by July 31, 2014, will be acknowledged in the fall 2014 issue.*

In Celebration

Celebrate a special sister, loved one or event with an "In Celebration" gift to the Gamma Phi Beta Foundation. Thank you to the following donors, whose gifts were recorded as of May 1, 2014. Lists are printed as received from the Foundation.

Amber Alford (Chapman)
on the birth of her second
legacy, Mia Isabella.
Greater Orange County
Alumnae Chapter

**To honor our wonderful
American and Canadian
Olympic hockey teams.**
Deidre Elleman
Anne Layton

**Sarah Barton (Chapman) and
her service on the Region 7 team.**
Linda Babcock
Beta Alpha House
Corporation Board

**Jocelyn "Jocie" Birch Burdick
(Northwestern), with gratitude
for your years of service to
Gamma Phi Beta.**
Laura Hinderaker

**Dr. Kathryn Cobourn Cvar
(California-Riverside) for
delivering my legacies Ava
Valentina in 2010, and Mia
Isabella in 2014. Thank you!**
Amber Alford

**Convention 2014 being held
in Region 8.**
Region 8 Alumnae Chapters

**Caitlin Drummy (Nebraska-
Lincoln) being selected as a 2014-15
collegiate leadership consultant.**
Amy L. Myers

**Thank you to Jane Edison (Iowa
State) and Patty Senn (Minnesota-
Twin Cities) for hosting our
alumnae meetings!**
Naples Alumnae Chapter

**For the work and effort of Julie
Dunn Eichenberg (Florida State)
and Tracy Stack (Florida State)
and all they do for Gamma Phi.
You make me smile!**
Rosemary S. Bunn

Epsilon Nu's 25th Anniversary.
Epsilon Nu Chapter

**Camille Favre (Bowling Green)
on the high school graduation
of her daughters Vivienne
and Dominique.**
Julie Dunn Eichenberg

**The Financial department –
top performing rock stars
and maintaining our "Fun
department" status.**
Leigh Ann Price

**The amazing resident CLCs, Sophie
Friedman (Northwestern), Amee
Frodle (Chapman) and Victoria
Phillips (California Polytechnic
State), at Eta Lambda! Thank you
for your Love, Labor, Learning and
Loyalty! Good luck in your future
endeavors. In HKE.**
Karen Ray

**My Gamma Phi Beta mentors.
I am humbled and delighted to
learn from you.**
Leigh Ann Price

**Janet Allison Glaser (Northwestern)
on her birthday.**
Cynthia Shull

**Epsilon Zeta graduates, Rebecah
Horowitz, Bridget Korezyk, Maura
Nee and Olivia Talbot.**
Jane K. Todd

**Zeta Mu (St. John's) welcomes
Jasmine Macies (Delaware) and
Samantha Sipler (South Carolina)
to our advisory board! We are so
excited to work with you, ladies!**
Zeta Mu Chapter

Eta Zeta seniors, class of 2014.
Eta Zeta Chapter

**My big sister, Linda Daniel
Johnson (Vanderbilt)**
Catherine I. Jones

**Craig and Danielle Biondi Kaniecki
(Penn State) on the birth of their
daughter, Juliana.**
Elizabeth S. Phillips
State College Alumnae Chapter

**The birth of Charlotte Rose
Kennedy, the daughter and
legacy of West and Missy Ray
Kennedy (Florida State). She's
simply beautiful!**
Rosemary S. Bunn

**Paula Konstantinidis (Toronto),
who was recently appointed as
a justice of the peace by the
attorney general of Ontario.**

Anne Layton
Grace Lin

**Tracey Price Kriauciunas (Texas
Tech) for always leading the way
with courage and grace.**
Leigh Ann Price

**Fran Mayfield Lapham (Kansas
State), the CLCs, International
Headquarters staff, alumnae and
collegians who participated in
the overwhelmingly successful
recolonization of Beta Xi Chapter
at The Ohio State University. Love
and thank you from all of the
original Beta Xi initiates.**
Maria De Maggio Cioffi

**Karen Lesyna (San Jose State) for
making a presentation on women's
health at the Alpha Omicron Pi
Delta Sigma Chapter of San Jose
State University.**
Trish Moxon

**The Long Beach Alumnae
Chapter's 75th Anniversary.**
Long Beach Alumnae Chapter

**Thanks to Emily Lowry (William
& Mary) for her dedication and
service to Region 2. Best of luck
in your new role as sorority
coordinator-public relations.**
Jennifer Herbert

**Emma McCracken, daughter
of Zach and Susie McCracken
(Oregon) – welcome to the world
little legacy!**
Jamie Pickel

**The New Chapter team – thank
you for inspiring me every day, for
making a HUGE difference to our
women and for growing Gamma
Phi Beta.**
Jamie Pickel

**Traci Nottoli (South Carolina) –
a wonderful mother, friend and
Gamma Phi Beta.**
Lauren Nottoli

**Connie Pope (Georgia) on her
installation as Atlanta Alumnae
Panhellenic Association president.**
Atlanta Alumnae Chapter
Julie Dunn Eichenberg
Mareena Kohtala

**The marriage of Tamara
Sprull (Jacksonville) to Nathan
Rudnicki on May 17, 2014.**
Chicago Alumnae Chapter

**The birth of Marissa Sweazy's
(Bradley) new legacy Rosie
Elizabeth Sweazy.**
Shellie Hodges

**Heather Swindells (Clemson)
on the birth of her son, Carter!**
Stephanie Carriere

**Allison Swint's (Florida Institute
of Technology) marriage to Bill
Danel on October 5, 2013.**
Jennifer Herbert

In Celebration of Kristen Vaughn.
Naples Alumnae Chapter

**Sarah Walling (Sonoma State),
our outgoing regional coordinator-
at large. Thank you for all you've
done for Region 8!**
Gigi De'Prey Eyre

**Valerie Carbone Wingfield
(San Diego State) on the birth
of her daughter Paige.**
Krista Lundgren Lamp
Lori Carlson Lundgren

**Zeta Beta's graduating fourth-
year sisters! Congratulations!**
Zeta Beta Chapter

**In celebration of our eight
graduating seniors.**
Zeta Nu Chapter

*To make an "In Celebration" gift,
visit GammaPhiBeta.org/Donate
or call 303.800.2890. The suggested
minimum donation is \$25. Gifts
received by July 31, 2014, will be
acknowledged in the fall 2014 issue.*

In Memory

We acknowledge the passing of the following members and celebrate their part in our circle of sisterhood. This list reflects notifications received at International Headquarters between February 1 and April 30. First, maiden, last names and year of Initiation are listed for each deceased member.

Alpha - Syracuse

Dorothy Beckley Des Granges, 1937

Beta - Michigan

Frances Thompson Schmidt, 1942
Margaret Gage Lamont, 1944
Kathryn Lynch Macpherson, 1946
Marilyn Howell Davies, 1947
Beverly Luce Green, 1952

Gamma - Wisconsin-Madison

Mary Atwood Binet, 1922
Betty Barth Berg, 1944
Zolitta Lamb Kussow, 1944

Delta - Boston

Helen Bailey Kinsman, 1946
Donna Grunden Burt, 1946

Epsilon - Northwestern

Laurie Cornell Magnuson, 1937
Marjorie Melville Leahy, 1947
Sheila McGinnis Spung, 1952
Nancy Paddock Lindsey, 1952
Joy Buelens Svenson, 1967
Mary Brooks Vreeland, 1969

Zeta - Goucher

Marian Ryan Hitchings, 1945

Eta - California-Berkeley

Barbara Oakley Hoyt, 1937
Betty Wilson Goff, 1943
Anita Person Stone, 1953
Edie Lunde Hodge, 1954
Sharon Chew Huguet, 1958
Katherine Gomez Crooker, 1984

Theta - Denver

Joanne Rabb Noble, 1943
Kathryn Miller Spady, 1946

Kappa - Minnesota-Twin Cities

Elizabeth Mattson Wessen, 1950

Lambda - Washington

Molly Greif Tarbill, 1948
Nancy Mace, 1952

Nu - Oregon

Janet Bradbury Carlile, 1948
Claire Helm Johnson, 1955

Xi - Idaho

Margaret Jackson Smith, 1943
Beverly Burke Hon, 1950

Omicron - Illinois at Urbana-Champaign

Sarah Ellis Walker, 1941
Mary Ann Swanson Dykstra, 1941

Paula Temple Patterson, 1980

Pi - Nebraska-Lincoln

Catherine Ham Munson, 1947
Lori Shane Roh, 1978

Rho - Iowa

Ruth Knight Lundquist, 1944
Marsha Coats Ablard, 1956
Natalie Corson North, 1956

Sigma - Kansas

Joan Hendrickson Relihan, 1945
Roberta Taylor Levand, 1950

Tau - Colorado State

Edith Thompson Byers, 1946

Phi - Washington University

Mary Burris Koelkebeck, 1940
Beverly McLeod Vandervoort, 1942
Gertrude Krimmel Appel, 1943
Betty Zeller Fugel, 1945
Bernadine Gift Morgan, 1953
Carolyn Feld Fedak, 1960

Chi - Oregon State

Ella Boston Hafenrichter, 1953

Psi - Oklahoma

Bernice Smith, 1933
Charlene Iske Lane, 1950
Sue Cloud Clayton, 1956

Omega - Iowa State

Jean Sigmond Harper, 1935
Charlotte Doughty Patch, 1936
Beverly Matson Callahan, 1940
Joyce Wilson Seeli, 1942
Becky Vonbergen Wallway, 1964

Alpha Beta - North Dakota

Mary Olson McManus, 1950

Alpha Gamma - Nevada

Virginia Pucci Zorio, 1956
Cynthia Pyzel, 1970

Alpha Delta - Missouri-Columbia

Betty Bichler Bulkeley, 1930
Betty Bond, 1938
Nell Damerval Lafferre, 1955

Alpha Epsilon - Arizona

Betty Berning Dobbins, 1941
Betty King Kane, 1946
Mathilde French Hutchison, 1947
Mary Carroll Sinclair Morris, 1951
Helen Harris Schannep, 1955
Anja Calhoun, 1985

Alpha Zeta - Texas-Austin

Katheryn Madden Votaw, 1935
Susan Henry Kealhofer, 1945
Elizabeth Madden Welch, 1953

Alpha Eta - Ohio Wesleyan

Nancy Gedge Wilt, 1940
Ruth Jeffery Oviatt, 1942
Louise Still Armstrong, 1948

Alpha Theta - Vanderbilt

Millbrey Rogers Dugger, 1931
Lucile Cate Spain, 1935
Dorothy Ryan Schneider, 1950

Alpha Iota - California-Los Angeles

Barbara Foley Heron, 1936
Doris Killingsworth Rastello, 1945

Alpha Kappa - Manitoba

Virginia Guy Stikeman, 1935
Cynthia Bennest Burbidge, 1938

Alpha Nu - Wittenberg

Elizabeth Redding Snyder, 1933
Carol Elliott Kendig, 1948
Mary Snyder, 1981

Alpha Xi - Southern Methodist

Theresa Curtis Kantenberger, 1956

Alpha Tau - McGill

Gwendolyn Floud, 1932
Hazel Dynes Brodie, 1933
Isobel Kneeland, 1937

Alpha Upsilon - Penn State

Janet Lynch Rodgers, 1936

Alpha Chi - William & Mary

Carol Cowan Johnson, 1952

Alpha Psi - Lake Forest

Barbara Giertz Krich, 1946

Beta Alpha - Southern California

Martha Preble Carter, 1941

Beta Beta - Maryland

Mary Reiney Harvey, 1945
Harriet Compe Roll, 1954
Sharon Eisenhart Woods, 1968

Beta Gamma - Bowling Green

Gloria Lumley Serbus, 1944
Catherine Berry Franke, 1970

Beta Epsilon - Miami-Ohio

Collette Weaver, 1974

Beta Eta - Bradley

Marilyn Schwankoff, 1965

Beta Lambda - San Diego State

Laurel Higgins Morgan, 1956

Beta Nu - Vermont

Barbara Hughes Campbell, 1950
Judith Watson Keene, 1957
Marcia Beals Brown, 1957

Beta Pi - Indiana State

Florence Martin Cooper, 1954

Beta Sigma - Washington State

Lynne Katryniuk Sanders, 1970

Beta Phi - Indiana

Carolyn Hollis Borski, 1962

Beta Psi - Oklahoma State

Charlie Miller Rouse, 1969
Kasey Waychoff, 2012

Beta Omega - Northern Arizona

Marie Morfeld Rolle, 1958

Gamma Alpha - Memphis

Wanda Smith, 1963

Gamma Epsilon - Puget Sound

Polly Boone Hickman, 1964

Gamma Kappa -

Nebraska-Kearney

Londa Harless Sanburg, 1979

Gamma Lambda - Louisiana State

Ann Syrek Daniel, 1966

Gamma Psi Chapter -

Northern Iowa

Kimberly Tekippe Bautista, 1984

Delta Nu - Missouri State

Mary Dotson Rose, 1979

Epsilon Nu - Chapman

Charity Gumbetter, 1992

To report the passing of a sister, please email contactus@gammaphibeta.org so we can honor the member on this page in a future issue.

Vintage ΓΦΒ: Documenting Achievement

Scholar. Artist. Friend. World Traveler.

While each of our Founders is remembered for a unique talent or affiliation, it can be said that they all had a strong belief in education. At the time of Gamma Phi Beta's founding, less than one percent of the collegiate population in the United States was female. During an era when women were discouraged from attending college, Mary, Adeline, Helen and Frances came together to form a women's society. They bonded together to face adversity and encourage one another's intellectual growth.

It was with one another's encouragement that all four matriculated: Helen in 1876 with a degree in Classics; Frances in 1877 and Mary and Adeline in 1878, all with degrees in Fine Arts.

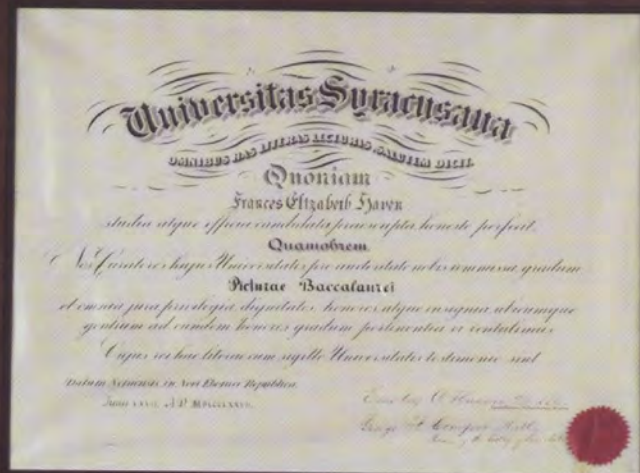
Frances Elizabeth Haven's diploma from Syracuse University (pictured top right) is proudly displayed at International Headquarters. Frances became familiar with university life in Ann Arbor, Michigan, where her father, Erastus O. Haven, was a professor of Latin, then president of the University of Michigan. She entered into university life in Evanston, Illinois, as a student at Northwestern University where her father was president. When a massive fire closed the University, Frances took some time to study music in Brooklyn. In the fall of 1874, Frances's father became chancellor of Syracuse University and Frances enrolled as a student.

Upon her graduation in 1877, she became a teacher until her marriage. She married Charles M. Moss in 1878. Together, they had five children and spent the majority of their married lives in Urbana, Illinois, where Charles was a professor at the University of Illinois at Urbana-Champaign. Known among the Founders as the "artist," Frances painted many works of art that she presented to Omicron Chapter (Illinois at Urbana-Champaign).

Today, we pay tribute to Frances and honor her father in many ways, most notably through Convention awards in their honor. The Chancellor E. O. Haven Award is presented at each Convention to the Greek-letter chapter with the highest chapter grade point average for the biennium. The Frances E. Haven Award is presented to the Greek-letter chapter that has made the most improvement in the fulfillment of Gamma Phi Beta standards in the biennium and demonstrates outstanding improvement in all areas of chapter life.

"...if you will only cherish our high ideals of scholarship and gracious womanhood, I feel sure that you will always be proud to be counted members of Gamma Phi Beta."

Frances in a letter to new members in 1919



Replicas of original artwork by Frances E. Haven, displayed at International Headquarters. The original pastels are kept in the Sorority archives.

Capture a Crescent

Spot it, snap it and email your capture a crescent photos to TheCrescent@gammaphibeta.org for a chance to be featured on the back cover of a future issue. Tip to get featured: We prefer crescents that wax left!



1



2



3



4



5

1. Portugal: During her semester studying abroad, Kaitlyn Absher (Eastern Washington) took a trip to Sintra, Portugal, and spotted this crescent at an outdoor sculpture exhibition.
2. Missouri: After watching the Wichita State Shockers crush their competition at the Missouri Valley Basketball Tournament, Sandra 'Sandy' Stump (Wichita State) found this giant crescent atop the Moonrise Hotel.
3. Spain: On a trip to Spain with her husband, Hallie Anderson Dillon (Alabama-Tuscaloosa) captured this crescent in Córdoba. The pair was on a tour of the eighth century Mosque-Cathedral of Córdoba and found this sign on Calleja de la Luna, just off the main plaza.

4. California: While shopping in Westminister, California, Julie Tran (California-Irvine) found this plush crescent buried under a pile of assorted toys. Julie was looking for a gift for her Gamma Phi Beta roommate.
5. Mexico: Wandering the streets of the small town of Loreto, Mexico, sorority (and biological!) sisters Kristi Steers McClain and Becki Steers Carnivale (both Oregon State) spotted a crescent on the gate of a restaurant and hotel.