

the CRESCENT

of Gamma Phi Beta

Women, War and ΓΦΒ
Learn about our impact.

Meet Miss Oklahoma 2013!



**ON THE ROAD
TO INSPIRE**

MEET THE
2013-14 CLCS!

page 8



Inspiring Others

INTERNATIONAL COUNCIL

International President
Krista Spanninger Davis
Bowling Green State University

Alumnae Vice President
Shellie King Hodges
University of Oregon

Collegiate Vice President
Mary L. Knap
California State University-Fullerton

Education Vice President
Autumn L. Hansen
University of Idaho

Financial Vice President
Leigh Ann Price
Texas Tech University

Membership Vice President
Nancy Ann Ostendorf Thompson
Iowa State University

Panhellenic Affairs Vice President
Sandra Biegelman Burba
Miami University

GAMMA PHI BETA FOUNDERS

Mary A. Bingham
E. Adeline Curtis
Helen M. Dodge
Frances E. Haven

MISSION

To inspire the highest type of womanhood.

Do you ever stop to think about how perfectly timeless our values are? How inspiring the highest type of womanhood may not have always been the exact words of our mission, yet it is something Gamma Phi Beta members have always strived for and achieved?

As one of the oldest women's organizations in North America, Gamma Phi Betas boast a rich history of demonstrating our Core Values and making significant contributions to our communities.

As you'll learn in this issue, our sisters stepped up in times of national and world crisis, making their own mark on history. During World War II, our members served their countries in countless ways by volunteering, serving, adjusting their way of life and sacrificing.

Members of our Canadian chapters enlisted in the Royal Canadian Air Force (RCAF), the Women's Army Corps and the Royal Canadian Naval Service. Patsy Griffin (Manitoba, 1934) was a flight officer in the RCAF and was decorated by King George VI of England with the Order of the British Empire. Marguerite Higgins (Berkeley, 1938) won a Pulitzer Prize for her brilliant reporting on European and Pacific war fronts. Gamma Phi Betas volunteered for the Red Cross on the home front and overseas, sold \$15 million in war bonds and raised funds for the Army and Navy-Marine Corps Relief Societies.

Even in times of peace, sisters could still be found serving others. Lindsey Barbee (Denver, 1897), Grand President from 1919-24, once remarked, "...in service lies our opportunity to be of permanent aid to others."

When a need exists, time after time, Gamma Phi Betas rise to provide meaningful service and stand up for a better world, especially for women and girls. Our own Alice Carpenter (Barnard, 1901) led efforts to help women win the right to vote in 1920. Today, we have members serving in the armed forces and serving as elected officials on local, state, provincial and national levels. Through these endeavors, members make meaningful contributions to our world, each and every day.

For nearly 140 years, Gamma Phi Betas have led efforts and pitched in to make a difference and help others. I am so proud of my sisters from yesterday, today and tomorrow – the type of women they are – and their positive impact on our world. I am confident our members will continue to find ways to be their best, inspire others and serve where they are needed for many years to come.

In IIKE,

Krista Spanninger Davis
International President

On the cover: ΓΦΒ's 2013-14
collegiate leadership consultants!
Photos: Kerkhoff Photography

CONTENTS

Go Gamma Phi

Find our regular features in addition to other inspirational Sorority articles.

4 ΓΦΒ Mailbox

5 Points of Pride

20 ΓΦΒ and World War II

Our members and organization had a profound effect on WWII – learn about our significant contributions.

26 Inspiration Board

32 Sorority Life

42 In Memory

43 Vintage ΓΦΒ: The Legend of Peanuts and Olives

Sorority News

Discover the Sorority's latest news!

6 Convention 2014 – Shining in Seattle

Schedule highlights, location features, volunteer opportunities and more!

7 Explaining the Process: How to Recommend a ΓΦΒ for International Election

8 On the Road to Inspire

The Sorority's 2013-14 collegiate leadership consultants have hit the road – get to know them!

14 Three Things You (Probably) Never Knew about the National Panhellenic Conference's Beginnings

15 Introducing Fidelity!

Forward-thinking, dynamic, personal, practical, interactive: all words that describe the Sorority's innovative member education programming, Fidelity.

Campus Life

Learn about our collegiate sisters and topics affecting them.

16 Chapter Profile: Gamma Phi Chapter (Auburn)

19 Collegian Spotlight: Kelsey Griswold (Oklahoma City), Miss Oklahoma 2013

Shining On

Find out how alumnae are making an impact and shining for ΓΦΒ.

29 Alumna Spotlight: Ashley Miers (Denver), songwriter and actress

30 Alumnae Chapter Profile: Denver Alumnae Chapter

Foundation News

Check out how the Foundation is supporting and inspiring the lifelong development of women.

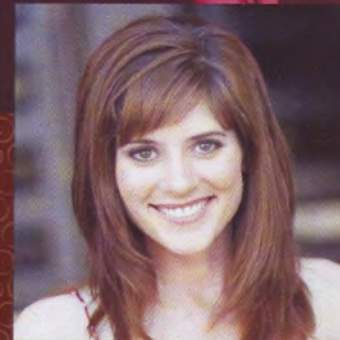
38 Ways You Can Become a Supporter of the Heart!

40 Memorial Gifts

41 In Celebration

8

Hitting the road with your 2013-14 collegiate leadership consultants.



16

Collegiate chapter profile... get to know our Gamma Phi Chapter sisters!

29

Meet a sister with a gift of song that inspires.

Fall 2013 | Volume 114 | Number 4

International Headquarters

12737 E. Euclid Drive, Centennial, CO 80111
Phone: 303.799.1874 Fax: 303.799.1876
Website: GammaPhiBeta.org
Email: TheCrescent@gammaphibeta.org

The Crescent Staff

Publications and Communications Manager
Nicole Banes, nbanes@gammaphibeta.org

Director of Marketing and Communications
Maureen Walker, mwalker@gammaphibeta.org

Crescent Advisory Board

Stefanie Brickman (Oklahoma)
Kristen Record Heptinstall (Alabama)
Kris Brandt Riske (Wyoming)
Yvonne Fetig Roehler (Minnesota State-Moorhead)
Brandon Weghorst

Graphic Design by Shelle Design, Inc.

SUBMISSION DEADLINES

Winter issue – November 1
Spring issue – February 1
Summer issue – May 1
Fall issue – August 1

©2013 Gamma Phi Beta Sorority

The Crescent of Gamma Phi Beta (USPS 137620)
is published quarterly by Gamma Phi Beta Sorority,
12737 E. Euclid Drive, Centennial, CO 80111.
Periodicals postage paid at Englewood, CO, and at
additional mailing offices. Non-member subscription
price is \$25. Produced in the U.S.A.

Postmaster: Send address changes to *The Crescent*,
Gamma Phi Beta Sorority, 12737 E. Euclid Drive,
Centennial, CO 80111.

Parents – While our members are in college, their
copy of *The Crescent* is sent to your home address –
we hope you enjoy reading our magazine, too! If your
daughter is no longer in college, or is no longer living
with you, feel free to send us her new address by
emailing TheCrescent@gammaphibeta.org.

Join Our Green Team! Receive each issue of *The
Crescent* before everyone else by going digital! We'll send
the current issue directly to your inbox so you can enjoy it
anywhere you go. Email TheCrescent@gammaphibeta.org
today to let us know you're joining the Green Team!



ΓΦΒ mailbox

Dear Gamma Phi Betas,

As I was preparing for this issue, I had the
opportunity to read many past issues from
the 1930s and 40s. A particular line in an
article written in 1943 by Eleanor Gearhart
(Northwestern, 1929) caught my attention:
“When the Marine Corps admits women, I’ll be
one of the first ones in.”

A little bold? Perhaps. But I soon learned
Eleanor wasn’t one to just talk the talk. Two
years later, she became one of the first 25
women ever accepted into the Marine Corps,
becoming Lt. Eleanor Gearhart, USMCWR.

And Eleanor wasn’t the only Gamma Phi
Beta who served her country during World War
II – there were thousands. Some served while
wearing a uniform, while others contributed by

selling Sorority war bonds or hosting letter-
writing drives. Women – ΓΦΒs – became
America’s “secret weapon.” Our 1940–46 Alumnae
Vice President Florence Allebaugh Mathiesen
(Idaho, 1919) single-handedly raised more than
\$5,000 in Lander, Wyoming, in a three-day
Bonds Buy Mercy campaign; today that total
would equate to nearly \$65,000! If only we could
personally thank each of these sisters for what they
did to help protect our freedom.

“So after all, I got my wish!” Eleanor reported
back to *The Crescent* upon receiving news she was
accepted as one of the first female Marines in
history. We are so proud that you did, Eleanor.

Sincerely,

Nicole Banes, *The Crescent* Editor
TheCrescent@gammaphibeta.org



Dear ΓΦΒ Mailbox,

After reading my summer issue of *The Crescent*,
I decided to send you all a note of thanks.

When I was a student at the University of
Texas, I became a member. I loved being a part
and lived in our house for a year. I loved my
sisters, and even at 87 years, I still have special
Gamma Phis that are part of my life.

The purpose of this letter is to say that the
last publication was the best of all, I think.
Continue writing such a most wonderful
magazine for us all.

In ΓΦΒ love,
Eleanor Kathryn
Gish Connell
(Texas-Austin)



Congratulations to our Epsilon Lambda Chapter (Alabama)
and their house corporation board for breaking ground
on their new chapter house! Pictured are the renderings
of the home, which is set to be completed fall 2015. The
40,000 square-foot home featuring more than 60 rooms
is the largest housing project in ΓΦΒ history. Learn more
at GammaPhiHCB.com for all the latest on the chapter’s
exciting housing initiatives!



Like us at Facebook.com/
GammaPhiBetaSorority



Follow our boards at
Pinterest.com/GammaPhiBeta



Search “Gamma Phi
Beta” in groups



Follow us
@gpbccrescentmoon



Follow us
@GammaPhiBetaSorority

points of Pride

Shining bright since 1874, here's a snapshot of some notable Gamma Phi Beta moments and accomplishments!

More than a century ago, our Gamma Chapter (Wisconsin-Madison) became the **1st** sorority in Wisconsin to own its home and the first Gamma Phi Beta chapter to own its home.

As told in *The Crescent*, "Quietly we laid our plans and from the dreams of those first few months there grew tangible results. A stock company was formed, and on December 29, 1904, letters were written to alumnae asking them to subscribe for stock. Six weeks later a sufficient amount had been subscribed to go ahead."



More than **111 years** ago, the design for the Sorority's new member pin was approved at Convention 1902 in Berkeley, California. The new member pin is to be worn over the heart with the outer points of the crescent pointing up.



Our **1906** Convention was hosted in Seattle, Washington, by our Lambda Chapter (University of Washington), making Gamma Phi Beta the 1st sorority to ever host a Convention in the Northwest. Page six has lots of exciting info on our upcoming return to Seattle for Convention 2014!



"Friendly lines to fighting," was the **1st** known letter-writing campaign in the United States during World War II, and was headed by Eleanor Hutchison (Vanderbilt, 1941), vice president of the University of Illinois' Student-Alumni Association at the time. Here, Omicron Chapter (Illinois at Urbana-Champaign) members work under the supervision of Helen (standing right) to write men in the armed forces. Turn to page 20 for complete coverage on the Sorority's WWII involvement.



We tweeted 'I love being a ΓΦΒ!' via our official Sorority handle, @gpbcrestmoon, and it was re-tweeted **137** times and favorited **53** times. Shout that Gamma Phi Beta pride from the social media rooftops!



Snap to Zeta Delta New Member Advisor Danielle Healy (Southeast Missouri State) for being selected out of more than **250 CANDIDATES** as the Missouri Speech-Language-Hearing Association 2013 Outstanding Graduate Student!



Do you have a point of pride to share?
Email TheCrescent@gammaphibeta.org.

Explaining the Process: How to Recommend a $\Gamma\Phi\beta$ for International Election

Each biennium, Gamma Phi Beta holds elections to fill the crucial offices of International Council and the Nominating Committee. At Convention 2014, delegates will again vote on the future leadership of our organization.

Even if you are unable to attend Convention, did you know that you, too, can play a role in the election process? Learn how simple it is to recommend a sister for one of these Sorority leadership roles today. The potential candidates you recommend should demonstrate leadership skills and have Sorority experience that has prepared them to serve.

Who is eligible for office?

To be eligible to serve on International Council or the Nominating Committee, a member must:

- Be in good standing with the Sorority.
- Have attended a Convention in the past 10 years.
- Not hold another international office at the time of service if being considered for election to the Nominating Committee.

How can I recommend members for International Council or the Nominating Committee?

- Visit GammaPhiBeta.org/Convention and identify the potential leaders by completing a Candidate Prospect Form 47e by December 15, 2013.

Who can complete a Candidate Prospect Form 47e?

- Any $\Gamma\Phi\beta$ collegian or alumna can complete a Candidate Prospect Form 47e.

How is the slate determined?

- Prior to Convention, Nominating Committee members meet at International Headquarters privately to review the submitted Candidate Prospect, Candidate Information and Candidate Comment Forms to determine the best slate of officers.



The 2014-16 Nominating Committee slate will have two alumnae from each of Gamma Phi Beta's six districts. At Convention, chapter delegates will vote only for the Nominating Committee candidates from the district where her chapter is located.

- During this meeting, the six alumnae and two collegians who are members of the 2012-14 Nominating Committee determine the slate of candidates for consideration at Convention 2014.

Who is on the slate?

- One alumna will be slated for each International Council position.
- Two alumnae from each of Gamma Phi Beta's six districts are slated candidates for the Nominating Committee.

How are International Council officers and Nominating Committee members elected?

- Convention delegates elect International Council officers and the successive 2014-16 Nominating Committee during the formal business session.
- Each chapter delegate votes only for the Nominating Committee candidates from the district where her chapter is located.

Complete a Candidate Prospect Form 47e at GammaPhiBeta.org/Convention by December 15!

Our International Council has been known by several titles over the years!



[1893]

Executive Board



[1911]

Sorority Council



[1917]

Grand Council



[1990-Present]

International Council

Our 76th Convention is less than a year away – we can't wait to see how our sisterhood shines in Seattle! Join us from July 9-13, 2014, for this memorable experience. Registration will be available online at GammaPhiBeta.org/Convention in early 2014.

We'll be staying in the heart of Seattle's Eastside at one of the city's most contemporary hotels and meeting destinations, the Hyatt Regency Bellevue. In addition to an elegant meeting space, we'll be surrounded by some of the best views, dining and shopping in the Pacific Northwest.

Arrive early or stay late to experience some of Seattle's exciting attractions! Convention guests can even receive the same discounted Hyatt Regency Bellevue Hotel rate for several days leading up to Convention by mentioning you're with Gamma Phi Beta.

Convention Schedule Highlights

Welcome Dinner
State of the Sorority
State of the Foundation
Foundation Luncheon
Inspirational Programming
Awards Dinner
Confirmed Conventioneers
Pink Carnation Banquet



Live in or near Seattle and want to help with the Convention fun? Email Convention@gammaphibeta.org to become a Convention 2014 volunteer!



Visit the Space Needle! • Experience the Chihuly Garden and Glass Exhibition! • Sip a cup of coffee from the original Starbucks! • Explore the Pike Place Market, one of the country's oldest farmers' markets! • Spend a day visiting the incredible Seattle Art Museum, Aquarium or Waterfall Garden! • Ride the Seattle Great Wheel! • Shop at Pacific Place, Seattle's premier shopping center!

A photograph of six young women in pink dresses and high heels walking across a paved area, each carrying a suitcase. In the background, there are large circular emblems with the text 'NORTH CAROLINA' and 'Friendship Before Statehood'.

On the road to INSPIRE

[ONE YEAR. *12 Women.*
128 Collegiate Chapters. FOUR COLONIES.
Countless sisters *impacted.*]



SIXTY YEARS AGO, Evelyn Gooding Dippell (Illinois at Urbana-Champaign, 1943) became the first traveling secretary for Gamma Phi Beta. A Grand Council announcement stated the office was established to: "facilitate international government since in these days transportation and other difficulties prevent Council members from making their customary visits to chapters ... because a planned schedule can be followed, greater economy and efficiency is possible under this new arrangement."

Since then, the name of the traveling secretary position has evolved, and so have its nature and duties. Gone are the days of one Gamma Phi Beta consultant

– this year the Sorority hired a record number of CLCs to provide the necessary leadership, guidance and support to our collegiate chapters and colonies.

Some of the women you'll meet over the next several pages are travelling to various chapters to promote and facilitate effective chapter development and management, some are residents at last year's new chapters and some are helping to lead one of our four colonies this fall and spring as they become established on their respective campuses. No matter where the road takes them, our members can feel confident that these motivated young women are there to assist, inform and inspire their chapter!

On the **road** to INSPIRE



Morgan Bauman (Alma)



Sophie Friedman (Northwestern)



Carly Foerster (Chapman)

Meet Our 2013-14 Collegiate Leadership Consultants!

Morgan Bauman (Alma)

Greek Leadership: Chapter President; Safety & Wellness Consultant

Describe yourself in three words: Genuine, driven and passionate.

What are you most looking forward to as a CLC: I am beyond excited to meet sisters from all over North America. Every sister is so unique, and I can't wait to connect with so many of them!

What Founder do you most relate to and why: Helen M. Dodge, 'the scholar.' She was organized, driven, service-oriented and a respected role model. I do my best to exemplify these same attributes while living our mission of inspiring the highest type of womanhood.

Sophie Friedman (Northwestern)

Greek Leadership: Panhellenic Vice President of Membership; Panhellenic Vice President of Programming

What Core Value describes you: Loyalty; I am so excited for all the fun ΓΦΒ volunteer and alumnae experiences that await me!

What inspired you to apply to be a CLC: I realized my senior year that I wasn't ready for my ΓΦΒ experience to end! I knew I wanted to give back to the organization that made it possible for me to have so many great experiences in college.

What do you love about ΓΦΒ: Each member is so unique. We all come from different campus cultures, traditions and experiences, but we all still believe in the same values and ideals of the Sorority.

*Carly Foerster (Chapman) *second-year consultant*

Greek Leadership: Chapter President

Describe yourself in three words: Driven, optimistic and passionate.

What Core Value describes you: I strive to embody all four of our Core Values! Each holds equal importance in my life and guides my actions through all endeavors.

What do you love about ΓΦΒ: From leadership and personal development opportunities to an ever-growing network of amazing sisters across the world, this is a lifetime journey with which we are truly blessed.

Amee Frodle (Chapman)

Greek Leadership: Chapter President

How would you describe your leadership style: My leadership style is collaborative; I love helping others develop their leadership abilities by helping them discover their strengths and finding the perfect role for them within a team.

What inspired you to apply to be a CLC: It seemed like the perfect way to give back to an organization that I credit with inspiring me to become the woman I am today.

What do you love about ΓΦΒ: I love that ΓΦΒ focuses on developing leaders as well as interpersonal relationships. Our Sorority not only gave me new sisters and lifelong friends, but it also pushed me to grow and develop personally.

Samantha Kane (McGill)

Greek Leadership: Chapter President; Education Vice President; Panhellenic Vice President of Recruitment

Describe yourself in three words: Passionate, inquisitive and confident.

What Core Value describes you: Labor; I am a hard worker and my passion for ΓΦΒ has helped me further develop this value in myself.

What are you most looking forward to as a CLC: I am looking forward to connecting with ΓΦΒs from across the U.S. and Canada while serving as a resource to our collegiate chapters and colonies by working to further the incredible success and growth of our organization.

Lauren Nottoli (South Carolina)

Greek Leadership: Chapter President; Administrative Vice President

How would you describe your leadership style: Confident, decisive and relational; when I lead a team, I want us to complete our goals and feel like we did it together. Accomplishing goals is most rewarding when you have a team to celebrate with at the end!

What Founder do you most relate to and why: Helen M. Dodge. She said, "Let us strive to make the utmost of the time allotted to us." I really relate to this sentiment and believe we should serve others, inspire them and be the best person we can be.

What do you love about ΓΦΒ: I love that our Sorority provides experiences where women can grow academically, socially and in their leadership abilities.



Amee Frodle (Chapman)



Samantha Kane (McGill)



Lauren Nottoli (South Carolina)



Chelsea Ostebo (South Carolina)



Victoria Phillips
(California Polytechnic State)



Maddy Schroeder
(Minnesota-Twin Cities)

Chelsea Ostebo (South Carolina)

Greek Leadership: Panhellenic President; Education Vice President; Panhellenic Vice President of Programming

What inspired you to apply to be a CLC: My first interaction with a $\Gamma\Phi\beta$ volunteer leader was with Melissa Ford (Rutgers), and she really demonstrated what lifelong commitment and love for the Sorority meant. Since then, I have been constantly inspired by women like Melissa who give so much to our organization; I want to do the same.

What are you most looking forward to as a CLC: Sometimes all a sister needs is someone to believe in them. I want to be that person!

What do you love about $\Gamma\Phi\beta$: Our Sorority is empowering women across the country in so many different ways, and I couldn't be more proud of that.

Victoria Phillips (California Polytechnic State)

Greek Leadership: Chapter President; Public Relations Vice President

How would you describe your leadership style: My number one objective when in a leadership position is communication and transparency.

What are you most looking forward to as a CLC: Helping other sisters find their special role within our Sorority by being a resource that can help them take advantage of all the programming, sisterhood and leadership opportunities Gamma Phi Beta offers.

What Core Value describes you: Learning; I value academics and the power of knowledge, and also enjoy learning about people and what makes them tick.

Maddy Schroeder (Minnesota-Twin Cities)

Greek Leadership: Chapter President; Public Relations Vice President

Describe yourself in three words: Positive, sincere and supportive.

What inspired you to apply to be a CLC: I wanted the opportunity to be a leader, mentor and sister to Gamma Phi Betas I would have otherwise not had the chance to impact. Two previous CLCs, Anna Sturdevant and Ashley Howard, and my Chapter Advisor Jenna Aaland (all Minnesota-Twin Cities), encouraged me to apply as a way to continue my passion for $\Gamma\Phi\beta$.

What do you love about $\Gamma\Phi\beta$: The genuine sisterhood and support system the Sorority provides. $\Gamma\Phi\beta$ is a place where you will find women who inspire you and push you to be your very best.

Alison Sibley (Texas State-San Marcos)

Leadership Experience: Student Body Vice President; Gamma Chi Charter Member

How would you describe your leadership style: My leadership style is heavily team-oriented; I enjoy collaborating with others who are passionate about what they do.

What Founder do you most relate to and why: I most relate to E. Adeline Curtis. Addie was described by others as kind, generous, cheerful and sympathetic, and I aim to live every day by exemplifying those traits.

What inspired you to apply to be a CLC: I was inspired to apply to be a CLC by Foundation Chair Linda Daniel Johnson (Vanderbilt). She encouraged me throughout the entire application process, and knowing she believed in me gave me the confidence I needed during interview weekend.

Megan Weber (Virginia Tech)

Greek Leadership: Chapter President; Administrative Vice President

Describe yourself in three words: Loyal, compassionate and persistent.

What Founder do you most relate to and why: Helen M. Dodge. Helen's drive to accomplish goals, serve others and her vast dreams for our Sorority have always inspired me to work harder for each past, present and future sister.

What are you most looking forward to as a CLC: I am thrilled to work for an organization that truly changes the lives of its members. I hope to have the same positive impact on our sisters that past CLCs had on my $\Gamma\Phi\beta$ experience.

Jaclyn Yetter (Texas Christian)

Greek Leadership: Membership Vice President

Describe yourself in three words: Passionate, ambitious and enthusiastic.

What Core Value describes you: Learning; I value education because it's a key to success and progress. Education is empowerment.

What inspired you to apply to be a CLC: The Sorority has offered me so many opportunities to learn about myself and others that I wanted more; I wanted a chance to give back. Becoming a CLC is one of the happiest and easiest decisions I have made. It's a perfect fit.

Want to continue the legacy of inspiration? Apply!

Visit GammaPhiBeta.org/CLC to learn more about the program and to apply. The CLC application deadline is January 5, 2014.



*Alison Sibley
(Texas State-San Marcos)*



Megan Weber (Virginia Tech)



Jaclyn Yetter (Texas Christian)

3 Things You (Probably) Never Knew about the National Panhellenic Conference's Beginnings

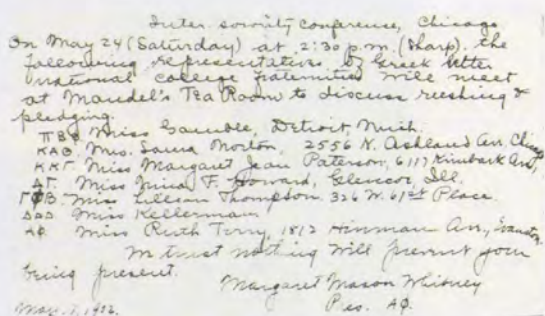


The National Panhellenic Conference (NPC), the umbrella organization for 26 women's fraternities/sororities, was founded more than 111 years ago by Gamma Phi Beta and six other women's groups.

According to the latest NPC Annual Report, members are represented on more than 655 college and university campuses in the United States and Canada and in more than 3,800 alumnae associations, making up more than three million sorority women in the world.

For more than a century, Gamma Phi Beta has worked alongside our Panhellenic sisters to advance sorority life. But how did it all begin? Here are some fun and lesser-known facts about NPC's beginnings!

1 The first NPC meeting was held May 24, 1902, in Chicago, Illinois. Pictured below is the original NPC invitation postcard that was sent to Gamma Phi Beta's first NPC delegate, Lillian Thompson (Michigan, 1892). The delegates resolved to convene annually after this first meeting, and Laura Hills Norton of Kappa Alpha Theta Fraternity was elected as the first NPC chairman. Lillian Thompson became the first ΓΦΒ to serve as NPC chairman in 1913.



2 Where was the first NPC meeting held in Chicago? According to FraternityHistory.com, at the Columbus Memorial Building (pictured below) in a safety deposit vault! In 1912, Lillian wrote in *The Crescent*: "Miss Minnie Ruth Terry, the delegate from Alpha Phi, whose duty it was to make all the arrangements, had found a most appropriate place for our meeting — a safety deposit vault; and before long we were admitted through heavy iron gratings to a long passageway, which led at last to a director's room, closed by a massive wooden door which seemed amply able to keep the biggest secrets from escaping to the outer world."



3 Just 15 years after NPC was founded, the Panhellenic Tower, now the 26-story Beekman Tower Hotel, was constructed in New York City. It was built as a residence and clubhouse for women belonging to NPC organizations and provided affordable housing for the women who were entering the workforce in record numbers in the 1920s.

Although the Panhellenic Tower was a financial success during its first years of operation, it soon became apparent that a hotel that limited its clientele to sorority women could not survive the Great Depression. Although today known as Beekman Tower, the building's original Greek-letter blocks (pictured below) are still visible near the hotel's entrance.



Annually, ΓΦΒ presents the Panhellenic Impact Award to four College Panhellenics across North America to recognize programs that promote the Greek community positively to students, faculty, administrators and members of the local community. Encourage your College Panhellenic to apply at GammaPhiBeta.org/PanhellenicImpactAward.

F I D E L I T Y

ΓΦΒ's Dynamic Member Education

By Epsilon Eta Administrative Vice President Ashley DeCosta (Bridgewater State)

Exciting things are happening with Gamma Phi Beta's member education! This fall, the Sorority launched Fidelity to our collegiate members. Fidelity is our dynamic member education program that combines online lessons, in-chapter programs, campus-sponsored activities and personal engagement to provide comprehensive education on key areas of chapter and campus life. Fidelity's programming prepares members to navigate social and cultural issues by introducing key concepts in an interactive and relevant way.

Ten collegiate chapters and more than 650 collegians had the opportunity to test-pilot Fidelity last year. Read firsthand from a sister who participated in this powerful programming!



Ashley DeCosta
(Bridgewater State)

Last spring, Epsilon Eta Chapter (Bridgewater State) piloted the Hazing and Harassment program of Fidelity. After completing the online component of the program on my own time, my chapter sisters and I were challenged to talk about being bullied, bullying others and past bullying experiences. Bullying can be a difficult topic to discuss, but Fidelity made it easier for us to open up because of the comfortable and safe

environment created. Instead of speaking in front of the entire chapter, we held discussions in smaller, more intimate groups. We talked freely about how we could stop others from bullying or being bullied in the future. This format helped us feel more comfortable navigating the difficult topic and more receptive to learning from one another.

My favorite part of Fidelity was its structure. The program never turned into a lecture – it was more like an interactive workshop combined with meaningful discussion. Everyone was given the opportunity to express their thoughts through a variety of channels, whether verbally in discussion

or with one of the hands-on interactive pieces. I liked that there was more than one way we could express our feelings or thoughts on a topic. When we completed the program, I not only felt more aware about the issue, but also closer to my sisters. We all even changed our Facebook profile photos to the “No Hazing Under the Crescent Moon” icon to remind us of our promises and impacts.

Fidelity is relevant and challenges you to create and achieve personal and chapter missions. Those who identified as never experiencing bullying found it beneficial to hear the stories of those who had experienced it; we left with a greater understanding of who our sisters are, and how to support them. Personally, Fidelity programming empowered me to be a better ΓΦΒ and Greek life member because it helped me figure out what I can specifically do to support other members who have been bullied and what I can do to help prevent it from occurring in the future.

Ashley is a junior majoring in elementary and special education as well as biology. She enjoys being involved in agriculture and community service and looks forward to becoming an elementary school teacher and joining a ΓΦΒ alumnae chapter upon graduation!

What others are saying about Fidelity!

♦♦ *“The interaction piece of Fidelity is very important and helped discussion flow more naturally. I also think Fidelity programming made talking about a difficult topic easier and progressed into challenging topics nicely.”*

-Kaitlyn Murray (Bridgewater State)

♦♦ *“My favorite part about Fidelity was when we took a moment to reflect on a personal story related to the topic, and then shared it with a small group of just one or two other sisters.”*

-Jocie Coombs (Bridgewater State)

Collegiate Chapter Spotlight

GAMMA PHI CHAPTER

From Panhellenic Council to the Student Government Association to Tiger Paws, a 16-member cheer and dance team, our Gamma Phi Chapter (Auburn) sisters do it all! With at least one sister involved in every campus organization, it's safe to say Gamma Phi Beta is well-represented at Auburn University.

We chatted with Chapter President Robin Lancaster and learned lots of fun facts about our sisters down South!

The Crescent: Gamma Phi in three words.

Robin Lancaster: Compassionate, dedicated and outgoing.

What type of housing facility do members occupy?

RL: The sororities at Auburn University occupy on-campus dormitories, and there are six sororities per dormitory. Each sorority has their own floor that includes a chapter room and kitchen. Our sisters live in apartment-style dorms that have four bedrooms, a living area and a kitchenette.

What makes the Auburn University Greek community unique?

RL: Greeks have a remarkable influence on the Auburn campus. In addition to holding Greek leadership positions, we also hold numerous positions with on- and off-campus organizations in an effort to positively shape Auburn and our community. It is a true honor for students to graduate from Auburn University, but even more so when they can say, 'I have the privilege of being an Auburn Greek.'

Describe your relationship with local alumnae.

RL: We are fortunate to have lots of amazing sisters who remain very involved with



"Our chapter lives our mission by striving for greatness in all activities," says Chapter President Robin Lancaster. "We have high standards for our behavior as well as our academic and career pursuits, and we help each other achieve our goals by lending a hand whenever possible. We lead our peers through example by representing ourselves and Gamma Phi Beta positively at all times."

Gamma Phi Beta and our chapter by serving as advisors and on our house corporation board. In turn, their loyalty has proved to be very helpful in growing and strengthening our sisterhood.

How does the chapter support Building Strong Girls?

RL: Our chapter supports Building Strong Girls by volunteering at Camp Fire's Camp Fletcher in Birmingham each year. Before the girls get there, we paint signs, plant flowers and make necklaces for them to wear all week. We also host our annual Crescent Classic, which raises money to help even more young girls enjoy Camp Fletcher.

FAST FACTS!

What is the current chapter size?

190 sisters

How many NPC sororities are on campus?

There are 17: AXΩ, ΔΔΠ, ΑΓΔ, ΑΟΠ, ΑΞΔ, ΧΟ, ΔΔΔ, ΔΓ, ΔΖ, ΓΦΒ, ΚΑΘ, ΚΔ, ΚΚΓ, ΠΒΦ, ΦΜ, ΣΚ and ΖΤΑ.

What are some fun facts about the chapter?

- Our chapter is made up mainly of women from out-of-state. We have sisters from California, New York, Florida and more!
- We have won Relay for Life for the past four years.
- We have lots of University pride and often win pep rallies by being the loudest and most energetic organization – War Eagle!

Has your chapter received any awards or honors in the last year?

We are a five-crescent chapter in Order of the Crescent, and at Convention 2012, our chapter was honored with the Most Improved Recruitment Award and the Overall Programming Excellence Award.



Shine on campus! Email
sales@crescentcorner.com
to start creating your
chapter's custom order
from Crescent Corner!

You say 'CUSTOM'
We say 'ORDER!'

Custom... Orders! Custom... Orders!



Crescent Corner will create the picture perfect tee, tank, tote, hat, sweatshirt, jacket or any custom apparel need to fit your chapter and its style! Contact sales@crescentcorner.com to place your chapter's order today.

Homecoming
and Greek Week

Bid Day
and Recruitment

Retreats and
Sisterhood Events

Philanthropy Events

Formals and
Socials

Big/Little Sister
Revealing

Check out even more custom designs by Crescent Corner on our Pinterest page at [Pinterest.com/GammaPhiBeta/](https://www.pinterest.com/GammaPhiBeta/).

new!



be an
inspiration

To order: Visit www.HJGreek.com or call 1.800.422.4348



- | | | |
|---|--|--|
| A. Pearl Bracelet, 7.5", with white crystal heart and ΓΦΒ heart lavalier, #631046 SS...\$75 | G. Vintage Letters Charm, #1984 14K...\$95 10K...\$60 SS...\$30 GP...\$26 | L. Chapter President Ring, #0453 10K, 10KW...\$311 SS...\$122 |
| B. Crescent Disk Charm, #1045 SS...\$26 | H. Drop Pearl Earrings, #622054 SS...\$65 | M. Sincere Ring, #1022 (Whole sizes 5 - 9) SS...\$36 |
| C. Rope Chain, #013R GF...\$27 SS...\$23 | I. Pearl Ring with engraved Greek letters, #612013 SS...\$67 | N. Swirl Ring with diamonds, #1000 10K, 10KW...\$321 |
| D. Vertical Letter Lavalier, #L2647 10K...\$56 SS...\$26 | J. Drop Pearl Necklace, 18", #682054 SS...\$47 | O. Swirl Ring with rose sapphires, #1000RS 10K, 10KW...\$268 SS...\$123 |
| E. Polished Crescent Necklace, 18", #1668 10K (with GF chain)...\$154 SS...\$57 | K. Wynterlce Watch, #Wynterlc...\$40 | P. Oval Crest Signet Ring, #0345 10K...\$293 SS...\$91 |
| F. Snake Chain, 18", #SNAKE GF...\$30 SS...\$18 | | |

K - karat gold, KW - karat white gold, SS - sterling silver, GF - gold-filled, GP - gold-plated



Find us on Facebook: www.facebook.com/hjgreek

Collegian Spotlight

KELSEY GRISWOLD

"I couldn't even cry because I was so happy," Kelsey Griswold (Oklahoma City) says about being crowned Miss Oklahoma.

"My dream had come true, and I wanted to bottle that moment up forever. I'm still on cloud nine and trying to ground myself in preparation for the Miss America competition."

Just a week after being crowned Miss Oklahoma, *The Crescent* had the opportunity to meet this delightful ΓΦΒ – get to know a little more about Kelsey!



Congratulations to our other state pageant-winning sisters! Sheridan Pope (Minnesota State-Moorhead) was crowned Miss Montana 2013. Alyson 'Ally' Wilhelmi Downs (North Dakota) was crowned Mrs. North Dakota 2013.

Shine on, Sister! Following her interview with The Crescent, Kelsey went on to place as second runner-up in the Miss America Pageant!

Three words to describe you

Unique, authentic and funny.

ΓΦΒ in three words

Family, character and love.

Most inspirational ΓΦΒ

I became a Gamma Phi Beta in 2010 because I was inspired by a past Beta Omicron Chapter president, Amanda Lee. I met Amanda during recruitment and you could just tell she had so much self-respect and self-love – she was a woman of character and I was inspired by her. I wanted to emulate that same type of character.

How long have you been competing in pageants?

I began my journey with the Miss Oklahoma Organization when I was eligible to compete for Miss Oklahoma's Outstanding Teen at age 13. I competed in the Teen Program for several years, placing in the top five, and finishing as first runner-up in 2008. I took a break from pageants for a few years when I started at Oklahoma City University because I wanted the full collegiate experience. Earlier this year, I chose to compete in the Miss Bricktown Pageant, and I won, making me eligible to compete for the title of Miss Oklahoma. Miss Bricktown was the first and only local title I held prior to competing for the title of Miss Oklahoma, which is pretty rare.

What talent will you perform in the Miss America competition?

I have a very fun performance planned that's inspired by the Broadway musical, "Anyone Can Whistle." I'll be singing, dancing and even interacting with members of the audience!

What is your pageant platform?

My platform is A.R.T. : Artists Reaching Together, a mentorship program that gives children with disabilities the opportunity to grow and develop creatively through the arts. When I was 15, my mom passed away, and after that, I felt I didn't have much of a place to feel needed, wanted or accepted. The A.R.T. community embraced me at an incredibly tough time in my life.

When I joined, I became a mentor to Nicole, a student with Down syndrome who had challenges communicating verbally. She was acting very upset one day and drew a photo of her stomach, conveying through her drawing that it was in pain. She was taken to the hospital, and we learned her appendix was about to burst. The program of course isn't meant to save lives in this sense, but it's because of A.R.T. that Nicole learned to express herself this way. I think it's important to educate people about the need for artistic development in children with disabilities.



ΓΦΒ AND WORLD WAR II

Learn about the impact our members and organization had during WWII.

Our Sorority has a rich and complex World War II history. Many Gamma Phi Betas contributed to war efforts on the home front by selling bonds through a series of Sorority war bond campaigns, while a proud number of other sisters served in the military. They served in the Army, Navy Nurse Corps, Women's Royal Canadian Naval Service (WRENS), Women's Army Corps (WAC), Navy (WAVES), Coast Guard (SPARS), Canadian Women's Auxiliary Air Force and Marine Corps Women's Reserves. Other sisters worked with the military through service with organizations such as the American Red Cross, the United Service Organizations (USO) and the Civil Air Patrol.

Sisters also took office and clerical jobs in the armed forces in addition to driving trucks, repairing airplanes, working as laboratory technicians, rigging parachutes, serving as radio operators and even test-flying newly-repaired planes. According to WomensMemorial.org, approximately 543 military women died in the line of duty during World War II, including at least two Gamma Phi Betas. Margaret Sanford Oldenburg (California-Berkeley, 1930), a member of the Women's Air Force, perished in an airplane crash while returning from a mission. Red Cross volunteer Anne Dingle Woodward (Minnesota-Twin Cities, 1945) died while on mission in Australia.

World War II was a great time of change. Women came to be viewed not just as a source of 'traditional female skills,' but as a valuable source of high-quality personnel to meet overall manpower needs to win the war. Gamma Phi Betas were not only the women to help change the expectations of females at the time; they were significant contributors who had a momentous impact on the war. Although just a snapshot, we are proud to highlight some of ΓΦΒ's incredible World War II contributions.

We're women, women of action.
The world is calling all.
So we must fight with all our might
To heed our country's call.

We're women, women of action,
And we don't need a gun.
We're busy at our specialty,
There's brainwork to be done!

Ta-ta-ta-ta-ta!
From China to New York;
From Pershing Square to Central Park
Yes (spoken) We have what it takes!

We're women, women of action,
We know its time to start
We're out to lend a helping hand
We're out to do, about to do,
Yes, we will do our part!

*-Words and music by Mary Finch,
Dorothy Baker and Phyllis Moister,
members of Alpha Iota Chapter's
(California-Los Angeles) choir
in 1943.*



Pictured opposite are Gamma Phi Betas who contributed to World War II efforts in a variety of capacities.



A SNAPSHOT OF ΓΦΒ'S WWII HISTORY

Collected here are images that capture some of what Gamma Phi Betas experienced and endured during World War II. These pages are a very modest snapshot!

MOBILE CANTEEN UNIT FOR BRITAIN



In 1940, Grand Council established the Gamma Phi Beta Emergency Relief Committee to raise funds to purchase two mobile canteen units. Mobile feeding units, or mobile canteens, were buildings where soldiers could eat. They were stocked with food and supplies and could respond locally wherever needed. The Committee created the Mobile Canteen Unit Drive, which lasted two months and involved two fundraising efforts: a series of nationwide "Blitz Balls," and a ticket raffle.

More than \$2,800 was raised, covering the cost of two mobile canteen units. Each canteen bore a placard that read, "Donated by Gamma Phi Beta Sorority of the United States of America and Canada for use in Great Britain." Elizabeth Ross Barnum (Syracuse, 1925; pictured) was the winner of the ticket raffle!



Gamma Phi Beta's name went into battle with two Northrop Black Widow P-61 night fighters, named "Gamma Girl" and "Gamma Phi Beta." More than \$200,000 was raised for the purchase of the Black Widows, the world's largest and most powerful pursuit planes at the time, by Beta Alpha Chapter (Southern California) in a whirlwind five-day war bond drive in 1944. Pictured are chapter members with one of the night fighters financed by their bond-selling efforts.



The Sorority held four war bond campaigns called 'Bonds Buy Mercy' during WWII.



Each campaign had lofty goals in an effort to generate crucial capital to support defense production and provide life-saving medical support. Incredibly, in just 20 months, ΓΦΒ sold \$14,745,191.75 in war bonds, supplying the below resources. Today, that amount would equate to more than \$200 million!*

- 6 hospital service planes, each bearing the pictured identification of ΓΦΒ sponsorship
- 5 convalescent hospitals
- 1 hospital ship
- 1,000 hospital beds
- 1,000 blood transfusion apparatus'
- Medical equipment for a 1,500 bed general hospital
- Rehabilitation services costs for more than 6,700 soldiers

*Source: DollarTimes.com

Although the courses had usually been reserved for experienced firemen and air raid wardens, in 1942, eight Beta Beta Chapter (Maryland) members completed an intensive bomb-training course. These members were part of the first organized group to take the classes and qualify as instructors in the work. "We are not interested in uniforms or glamour," 1942 Beta Beta Chapter President Ruth E. Buchanan said. "We just want to be useful."

By the end of training, the women could safely identify 16 different types of gases and how to prescribe treatment for each, and "...they learned how to control a fire by actually setting a bomb off and then putting it out," as reported in *The Crescent*. In this photo, the group is preparing for a bomb fire demonstration.



In 1941, Eloise Davison (Iowa State, 1928) was named assistant director of the Office of Civilian Defense. At the time, this was the most important post an American woman had been called for, and she directed many of the volunteer activities in the civilian defense program.

In the photo from left is former Indiana Governor Paul V. McNutt, Eloise Davison, First Lady Eleanor Roosevelt and Mayor Fiorello La Guardia at the Conference for Civilian Defense in Washington, D.C., on November 8, 1941. Two days after the Conference, Eloise called the heads of many women's national organizations to meet at the Labor Department Auditorium to coordinate resources to help with war relief needs.

"After the meeting, everyone came to drink tea and coffee at the White House and to talk over the day. The consensus of opinion was that Miss Davison had provided a very stimulating program about women coordinating the collection of wartime resources on a community basis," First Lady Eleanor Roosevelt said.

Hi Ms. Ruth!

Upon graduating, I will be commissioning into the Navy; I am so excited about it. I will be stationed in Norfolk, Virginia, for the next two years. I have heard much about you and am so thankful you are willing to give me some advice as a future officer.

I am so grateful to your service. I grew up in a military family, and service runs in our blood. I can't wait to hear any stories or advice you have for me!

Love in IIKE,
Laurin

Ms. Ruth,

I finally finished college and am an ensign in the U.S. Navy! I graduated last Saturday and commissioned on Friday. It was such an exciting time, and I still can't wrap my head around the fact that I am an officer. I report to Norfolk, Virginia, on September 2 and I cannot wait to start my official job.

What were your military experiences like?

I hope you are doing well!

Love in IIKE,
Laurin

Upon connecting with Ruth for this article, *The Crescent* learned of another $\Gamma\Phi B$ just about to begin her career of service – Laurin Okon (Southern Polytechnic State). Laurin was inspired by Ruth and was excited for the opportunity to communicate with another sister who had served in the military. *The Crescent* was happy to connect these two sisters!

Hello Laurin,

Now that we have connected, I am going to suggest we delay our communication until you finish finals and are commissioned.

What a hectic and exciting time. After Monday, you will enjoy the thrill of becoming a naval officer.

I am sure your family is very proud of you, not only for your accomplishments, but also for your desire to carry on a family tradition.

We will talk later.

Love in IIKE!
Ruth



Laurin (center) after being commissioned as an ensign in the Navy. She's pictured with her $\Gamma\Phi B$ Big Sister Leann Walker (left) and best friend and chapter sister Jessica Geiger.

inspiration board

Feel inspired by some of our favorite ideas, items and shining moments! Connect with **TheCrescent@gammaphibeta.org** to share your ΓΦΒ inspiration.



FALL FASHIONS

Accented with a cleverly-placed crescent, this asphalt-colored v-neck flaunts Gamma Phi Beta's founding year in a fun, playful font. Purchase yours at CrescentCorner.com.



SUPPORT BUILDING STRONG GIRLS!

Sisters across the country are volunteering with our philanthropic partner, Girls on the Run, as coaches, assistant coaches and running buddies! Alena Davis (pictured; University of Washington) volunteered and received this special thank you from her running buddy. Get involved by finding a local Girls on the Run council to connect with at GirlsOnTheRun.org.

CELEBRATE FOUNDERS DAY NOVEMBER 11

Celebrate 139 years of ΓΦΒ sisterhood this November!

"We four girls of long ago had no idea of starting such a big enterprise, but it has been wonderful to see it grow and makes us very happy when we think how many have found joy and inspiration in belonging."

- Frances Haven Moss
(Syracuse, 1874)



ΓΦ Be the INSPIRATION!

#IAMTHEINSPIRATION

How are you inspiring the highest type of womanhood? We want to know! Gamma Phi Beta is proud to spotlight ΓΦB sisters who are inspiring those around them via our social media outlets, communications and publications.

Use the hash tag #IAmTheInspiration in your posts and tweets, or nominate a sister by emailing TheCrescent@gammaphibeta.org. Be the inspiration!



FIRST FEMALE PULITZER PRIZE WINNER

Marguerite Higgins Hall (California-Berkeley, 1938) was an American reporter and war correspondent who began her career when she persuaded the management of the "New York Herald Tribune" to send her to Europe in 1944 to report during World War II. She went on to cover the Nuremberg war trials and the Soviet Union's blockade of Berlin and became the first female Pulitzer Prize recipient in 1951. She was buried at Arlington National Cemetery in 1966 in recognition of her outstanding war reporting.



OUTSTANDING SISTER

Vanessa Cortez was elected student body president of Texas State University-San Marcos and will represent more than 34,000 undergraduate students this academic year.

"As the newest sorority on our campus, I am honored to be in this position and serve as an example of the powerful young women we have in our chapter. I hope that through this position I will inspire more young women to realize their potential and accomplish their goals," Vanessa says.

Gamma Phi Beta

members could be eligible for
a special discount.



Get a free quote today.

GEICO

1-800-368-2734

geico.com/greek/gammaphibeta



Some discounts, coverages, payment plans and features are not available in all states or all GEICO companies. Discount amount varies in some states. Federal employee discount is not available in all states or in all GEICO companies. One group discount applicable per policy. Coverage is individual. In New York a premium reduction may be available. GEICO is a registered service mark of Government Employees Insurance Company, Washington, D.C. 20076, a Berkshire Hathaway, Inc. subsidiary. GEICO Gecko image © 1999-2013.

© 2013 GEICO

Alumna Spotlight

ASHLEY MIERS,

SONGWRITER AND ACTRESS

"I would love to help Gamma Phi Beta! When can we start?"

That was songwriter, actress and Theta Chapter alumna Ashley Miers' (Denver) response when International Headquarters (IH) staff asked if she'd contribute her time, talents and extraordinary voice to help create an inspiring video that tells the story of the Sorority's philanthropic history and commitment to Building Strong Girls.

After an afternoon of planning with IH staff in Denver, Ashley hopped on a plane back to Los Angeles, and the rest, as they say, is history. Watch the inspiring Building Strong Girls video Ashley was a part of at GammaPhiBeta.org! This video is perfect to play at recruitment, Building Strong Girls philanthropy events, chapter meetings, family weekends and more.

What artists inspire Ashley?

"Gwen Stefani and Kelly Clarkson. They write such compelling songs, and they're not afraid to show they are strong, successful women – I find that empowering."

You in three words

Genuine, caring and determined.

ΓΦΒ in three words

Welcoming, high-reaching and fun.

Favorite Gamma Phi Beta memory?

Senior Celebration. I remember going in a limo to dinner, and it meant a lot to be with my chapter sisters and have that special celebratory time. I really love my ΓΦΒ experience.

How did you get your start in singing and songwriting?

I've found inspiration in music since age 4. When I turned 12, I got a guitar as a birthday gift and taught myself how to play. I was constantly writing songs in private, but never shared my passion for music until I was much older. I didn't think being a singer/songwriter was a viable profession I could turn into a career. It was in college that I finally started feeling confident enough to share my passion – I moved to L.A. after graduation and a friend got me an audition with some music producers. Everything just fell into place from there, and I've been fortunate to have song placements with ABC Family, Bravo, Showtime and more.

What inspired you to provide the original music and voiceover for the Building Strong Girls video?

Supporting our philanthropic focus of Building Strong Girls is something that matters to me. I used to feel insecure about sharing my music, and most everything as a kid, so I understand why girls need this type of support. I wanted to be a part of spreading our Building Strong Girls message and movement, and this was a small way for me to do my part.

When people hear your music, what do you hope they feel?

I want my music to feel relatable and inspirational. I try to give others hope by expressing in my music that someone else knows how they feel and has been there, too.

Favorite song you've written?

It has to be "Open Up," the song featured in the Building Strong Girls video; it just has such a powerful purpose and feeling to it.

What's on the horizon for your career?

I'm traveling to Nashville to work on my second album. I'm so excited to see what comes of it!

Visit AshleyMiers.com to learn more about Ashley and listen to her energetic and inspiring music!

Watch the Sorority's inspiring Building Strong Girls video, featuring Ashley and her original song, at GammaPhiBeta.org!

Alumnae Chapter Spotlight **DENVER ALUMNAE CHAPTER**

More than a century old, Denver Alumnae Chapter is the Sorority's seventh oldest alumnae chapter. Over the years, the alumnae chapter has made many rich contributions to the Sorority, including helping host six of the seven Conventions held in Colorado! One member, Cathy Guthrie Lindauer (Iowa State), has attended nearly every Convention since she became a $\Gamma\Phi\beta$, for a grand total of 22 Conventions!

Get to know this vibrant alumnae chapter through *The Crescent's* intriguing interview with Denver Alumnae Chapter President Leanne Thompson (Colorado State).



Denver Alumnae Chapter members at the Theta Chapter (Denver) house last spring after hosting an inspiring Senior Celebration that welcomed the chapter's graduating members into alumnae life!

The Crescent: Three words to describe Denver Alumnae Chapter

Leanne Thompson: Traditions, creative and diverse.

What are some unique facts about the chapter?

LT: We have several!

- Sisters from more than 125 different collegiate chapters reside in the Denver-metro area!
- Lindsey Barbee (Denver, 1897) served as one of the first presidents of Denver Alumnae Chapter in 1908 and was the first editor of *The Crescent*. She also served as president of Denver Area Panhellenic and was Grand President of the Sorority from 1919-24.
- In 2008, our chapter funded a fellowship with the Gamma Phi Beta Foundation to support graduate students in Colorado.

How does the chapter support Building Strong Girls?

LT: We supported our first Girls on the Run 5k event in Denver this year and had fun highlighting the runners' hair with rainbow

streaks of color and cheering for the young girls participating! In the spring, we help prepare the Gates Camp for campers from the Denver Boys and Girls Club. This year we are having Bunco (a dice game) parties with the funds donated going to both Girls on the Run and the Gates Camp.

Are any members famous or especially accomplished?

LT: Our chapter is honored to have three Carnation Award Winners: Marion Pfaender Downs (Minnesota-Twin Cities), Jean Joliffe Yancey (Denver) and Helen Ward Pustmueller (California-Los Angeles, 1932). For more on Helen's legacy, turn to page 42.

What does our mission mean to the chapter?

LT: From our recent graduates to our "golden" members, as sisters in $\Gamma\Phi\beta$, we inspire each other to be and do our very best. Our smaller group events like book club or hiking help build strong relationships and promote

intellectual, physical and personal growth. Our traditional events like Founders Day are the foundation of our chapter, and other events focus on the giving of our time, talent or treasures to support our philanthropic focus of Building Strong Girls. Our support of collegiate chapters shows collegians the importance of the lifetime commitment.

FAST FACTS

Membership size: 1,200 sisters receive our monthly newsletter, *Mile High Crescent*

Charter date: October 19, 1907

Collegiate chapters supported:

Theta (Denver), Tau (Colorado State) and Beta Rho (Colorado-Boulder)

Website: DenverGammaPhiBeta.com



Teresa Jones Haney

(Northern Arizona) Anaheim, California

Teresa always makes time for others. Whether she's volunteering for ΓΦΒ as our sorority director-alumnae development, teaching dance lessons at Camp Fire or coaching the local high school cheer team, Teresa lives our Core Values daily and gets happiness not from what she gets, but what she gives. In addition to her various service roles, Teresa works professionally as a special education teacher for toddlers, and has a goal of relating, challenging and inspiring them. Not only does Teresa give altruistically of her time, she also always pays her international alumnae dues.

"When you look back at the experiences you had in Gamma Phi Beta, whether as a collegian or as an alumna, they are happening in part because of sisters who pay their international alumnae dues. For all the friends and memories the Sorority has given me, the least I can do is pay my dues annually."



Support our
sisterhood for
just \$2 a month!
Make your \$25
annual international
alumnae dues
payment online!

ARE YOU READY TO GIVE BACK?

There are three ways you can pay your \$25 international alumnae dues and Shine ON for Gamma Phi Beta!

1. Pay online at GammaPhiBeta.org/AlumnaeDues.
2. Pay through your local alumnae chapter.
3. Mail this form with a \$25 check to:
Gamma Phi Beta Sorority, Inc.
P.O. Box 731592
Dallas, TX 75373-1592

Yes! I am proud to Shine ON for Gamma Phi Beta and foster a strong future for our organization!

☐ \$25 Check enclosed First Name, Maiden, Last Name _____

Address _____ City _____

State/Province _____ Postal Code _____ Country _____

Collegiate Chapter _____ School _____

Seven-digit Member Number (located on back of magazine) _____ Email _____

Alumnae Chapter (if applicable) _____ Phone _____

*Dues and contributions made during the Sorority's fiscal year (August 1, 2013 – July 31, 2014) are not tax-deductible.

SORORITY Life

It's collegiate and alumnae chapter updates - at a glance! Read all about our shining chapters across the country and their recent activities. For chapter submission guidelines, visit GammaPhiBeta.org.

Symbol Key:



Region 1

CONNECTICUT

♥ Eta Theta Chapter (Connecticut)

The chapter collaborated with members of Alpha Epsilon Phi Sorority to host a fundraising event and split the proceeds to benefit each group's philanthropic mission!

DELAWARE

🌸 Eta Gamma Chapter (Delaware)

From hanging out at the beach, to sharing unforgettable vacations and adventures, sisters made summer one to remember! Several sisters even vacationed together in Israel!

MASSACHUSETTS

🍷 Epsilon Eta Chapter (Bridgewater State)

The chapter won Greek Week at the end of the school year and several members have taken on campus Orientation Leader roles to welcome new students to campus and make their transition to college easier.

NEW JERSEY

🌸 Princeton Area Alumnae Chapter

Members went to see "Far from Heaven," an off-Broadway musical starring Gamma Phi Beta Kelli O'Hara Naughton (Oklahoma City) and were thrilled to meet and talk with Kelli after the show.

NEW YORK

🌸 Epsilon Tau Chapter (Rochester)

Members represented Gamma Phi Beta as they traveled the world this summer! From sleeping in Bedouin tents in the middle of the Negav Desert in Israel to zip-lining in Maui to climbing more than 300 steps of the Vatican in Rome, sisters enjoyed a variety of exciting adventures.

PENNSYLVANIA

🍷 Zeta Epsilon Chapter (Duquesne)

The chapter became the first Greek organization to ever receive the prestigious Outstanding Student Organization of the Year Award, beating out more than 200 other campus organizations. The chapter also placed first in spring Greek Week competitions.

Region 2

DISTRICT OF COLUMBIA

🌸 Washington, D.C. Alumnae Chapter

For the second year, the chapter sponsored a fun day at Camp Fire Patuxent Area Council in Maryland. Tons of area collegians attended as well, and campers thoroughly enjoyed taking part in the various circus-themed activities, games and crafts put on by Gamma Phi Betas!

FLORIDA

🌸 Eta Beta Chapter (Florida Southern)

Members volunteered with sisters from Eta Eta Chapter (South Florida) at a Girls on the Run 5k in Tampa. The members who volunteered had an amazing experience and are now making plans for the whole chapter to get involved!

🌸 Eta Eta Chapter (South Florida)

Sisters are excited to welcome new members this fall and to host their first Crescent Classic to raise awareness for and support Building Strong Girls.

🌸 Naples Area Alumnae Chapter

This summer, the chapter's Lunch Bunch welcomed collegian, Vanessa Grisko (Illinois at Urbana-Champaign) for a fun afternoon of sisterhood. The 12 Gamma Phi Betas enjoyed each other's company at this get together!

NORTH CAROLINA

🌸 Epsilon Psi Chapter (North Carolina-Asheville)

Members enjoyed active summers, and many sisters had internships! One chapter member, Katy Hudson, bravely spent her summer chasing storms with a special team to help learn more about atmospheric science in the Midwest.

♥ Raleigh Area Alumnae Chapter

Members had a great time attending Lunafest, a national traveling festival of short films by, for and about women, while simultaneously supporting Girls on the Run. Each year, various organizations bring Lunafests to their communities and raise funds for their local non-profits. This year, proceeds benefitted the local Raleigh Girls on the Run council!

Gamma Phi Beta Sorority by Regions





Region 1 | Alpha Chapter (Syracuse) sisters who graduated between 1977 and 1980 reunited for a fun weekend in Syracuse. There was a total of 30 women in attendance, some of whom had not been back to the University or the chapter house in more than 35 years! Memories flowed, stories were told, songs were sung and the reconnection was 'beyond everyone's expectations' according to one sister!



Region 2 | Alpha Chi Chapter (William & Mary) members were excited to return to school and move into their new chapter house! Many sisters traveled abroad this summer together to destinations like Greece, Paris, Spain, Russia and more. Here the chapter's Education Vice President Lizzie Dabbs is rocking the crescent near the Palamidi Castle in Greece!

VIRGINIA

✓ Fairfax County Alumnae Chapter

Members proudly wore their ΓΦΒ letters at Camp Fire Patuxent Area Council's annual 'Gamma Phi Beta Day!' and were joined by **Washington, D.C. Alumnae Chapter** members. Sisters organized a circus-themed craft, provided treats and made friends with campers. A warm, but great, summer outing for all!

The Crescent *apologizes for incorrectly listing Fairfax County Alumnae Chapter's home state in the previous issue. Learn more about this fabulous alumnae chapter at FairfaxGammaPhiBeta.org.*

⊗ Zeta Beta Chapter (Virginia)

Many sisters studied abroad over the summer, exploring sites like London, the Caribbean, Dublin and Mexico!

Region 3

TEXAS

✓ Gamma Chi Chapter (Texas State-San Marcos)

Building sisterhood both inside and outside the chapter, members hosted the first-ever Panhellenic-wide executive brunch at the Embassy Suites in San Marcos. Each sorority was represented by members of their executive council, and the event was so well-received the chapter is looking forward to making this fun event an annual tradition.

⊗ Dallas Alumnae Chapter

Members were delighted to host a Senior Celebration event for **Alpha Xi Chapter (Southern Methodist)** seniors and are excited to plan new programming and events for the fall.

Region 4

OHIO

⊗ Beta Gamma Chapter (Bowling Green State)

The chapter was busy this fall preparing for its big 70th anniversary celebration on the Bowling Green State University campus and had an amazing time connecting with sisters old and new at the various anniversary events!

Region 5

ILLINOIS

✓ Epsilon Chapter (Northwestern)

After hosting a fundraising event to support Building Strong Girls, members attended a Girls on the Run 5k to cheer on a sister who coaches and the girls she mentors! Members made posters with positive words of encouragement and cheered along the sidelines as their chapter sister and participants completed the fun 5k.

✓ Omega Chapter (Iowa State)

The chapter is more excited than ever to begin formal recruitment. A campus record, the Iowa State University Greek community had more than 800 women register for formal recruitment, making for a very large-scale Omega Chapter recruitment!

⊗ Beta Eta Chapter (Bradley)

Over the summer, the chapter's house corporation board held its first social event! Members went to a local art studio in Peoria where the artist helped the women create a crescent-inspired piece of art for the chapter house. Everyone enjoyed spending the evening working together and just having fun!

MINNESOTA

⊗ Kappa Chapter (Minnesota-Twin Cities)

The chapter had a very exciting summer, with sisters studying abroad in Norway, France and Portugal. The chapter house underwent renovations over the summer that included new hardwood floors, updated lighting and fresh paint throughout the house. The chapter thanks its house corporation board for all of their hard work and can't wait to show off the updates during fall recruitment!

⊗ Gamma Pi Chapter (Minnesota State-Mankato)

A fun, one-night retreat was the perfect event to reunite sisters over the summer. Members made their plans for a successful fall recruitment and made Bid Day gifts for the chapter's future new members!

WISCONSIN

⊗ Gamma Gamma Chapter (Wisconsin-Milwaukee)

Members were extremely proud of the chapter's Public Relations Vice President

Kiersten Gonzales for being crowned Miss Milwaukee 2013!

Region 6

COLORADO

⊗ Tau Chapter (Colorado State)

From studying abroad together in Europe to road tripping to the Grand Canyon, sisters made it a priority to stay connected over the summer!

⊗ Denver Alumnae Chapter

Members enjoyed beautiful weather and sisterhood at the chapter's Summer Picnic in Denver. Sisters are looking forward to attending an upcoming baseball game as well as supporting the surrounding collegiate chapters during the recruitment season!

KANSAS

⊗ Sigma Chapter (Kansas)

Members were ecstatic to have earned a grade point average of 3.35 for the spring 2013 semester, one of the highest in Sigma Chapter history!

✓ Beta Upsilon Chapter (Kansas State)

The chapter received the President's Award for Fraternal Excellence, which is only attained by achieving 95 percent of available award points in areas of: academics, recruitment, retention, community service and philanthropy, leadership, risk prevention and administrative.

⊗ Beta Chi Chapter (Wichita State)

The chapter participated in Polish Week to prepare for fall recruitment. The week consisted of sisters learning recruitment conversation skills, setting chapter and personal goals and enjoying one another's company after a long summer!

MISSOURI

✓ Delta Nu Chapter (Missouri State)

Members watched their brand new chapter house be built from the ground up, and the house was ready for move in just in time for fall recruitment! Along with the excitement of the new chapter house, senior Molly Moran won first place in the Greek Goddess competition and Chapter Advisor Candice Wolf won the Best New Chapter Advisor Award.



Region 3 | Epsilon Lambda Chapter (Alabama) members hosted a celebratory dinner to award stand-out sisters who excelled in the areas of scholarship, campus involvement and leadership for the 2012-13 school year – a great way to cap off a fantastic year!



Region 4 | Evansville Alumnae Chapter members had a great time connecting with graduating collegiate members of Zeta Kappa Chapter (Southern Indiana) at a Senior Tea members hosted in their chapter room on campus.



Region 5 | At the end of the school year, Delta Pi Chapter (Illinois State) received All-Greek Awards for: Scholarship, Leadership and Outstanding Philanthropy and Service!



Region 6 | Prior to recruitment, Alpha Delta Chapter (Missouri-Columbia) members invited their moms, grandmas, aunts, sisters and friends to the chapter house for mock recruitment practice. The fun preparation paid off as the chapter welcomed more than 80 fabulous new sisters to the chapter!

🌀 Zeta Delta Chapter (Southeast Missouri State)

The chapter held its 'How Sweet it is to be a ΓΦΒ'-themed recruitment this fall and has set various chapter goals that promote the highest type of womanhood.

🌀 Eta Iota Chapter (Rockhurst)

Through pen pals and a baby photo guessing game, sisters stayed connected this summer. Many sisters are working hard to plan special sisterhood retreats and prepare for their second semester as a new Gamma Phi Beta chapter!

NEBRASKA

🌀 Gamma Kappa Chapter (Nebraska-Kearney)

Over the summer, members reconvened in Kearney for recruitment workshops and sisterhood bonding. Each sister worked diligently to create name tags, picture boards and house decorations for fall recruitment while catching up and listening to music.

OKLAHOMA

🌀 Beta Omicron Chapter (Oklahoma City)

Congratulations to Victoria Renard, Sarah White and Kelsey Griswold, the three sisters from the chapter who competed in the Miss Oklahoma 2013 Pageant and all earned spots in the top 11!! The chapter reported the women blew the audience away with their beauty, poise and performances. Member Kelsey Griswold was crowned Miss Oklahoma 2013 – flip to page 19 to learn more about Kelsey.

🌀 Beta Psi Chapter (Oklahoma State)

The chapter house received updates just before recruitment! Thanks to the chapter's house corporation board, updates included new beds, mattresses, dressers and a new TV lounge.

Region 7

ARIZONA

🌀 Alpha Epsilon Chapter (Arizona)

Sisters came back to a refreshed chapter house this fall! New pink and brown furniture, paint and décor make the home feel extra cozy, fresh and totally Gamma Phi Beta.

🌀 Beta Omega Chapter (Northern Arizona)

Members of the chapter's 1963 pledge class celebrated their 50th class reunion in May at Northern Arizona University Commencement Ceremonies.

🌀 Phoenix Northwest Valley Alumnae Chapter

Installed November 2012, members from colleges coast to coast enjoy meeting for monthly luncheons and are hoping to add sisters to their chapter roster! Contact Joanne Bishop (Bradley) at jmbish@cox.net to get connected to this new alumnae chapter.

CALIFORNIA

🌀 Gamma Eta Chapter (California State-Long Beach)

The chapter ended the school year with a Crescent Ball brunch. Family and friends were invited to the Lakewood Golf Club and a ceremony was hosted to share the year's events and chapter accomplishments.

🌀 Delta Delta Chapter (California State-Fullerton)

Sisters helped raise money to support Building Strong Girls with their annual Crescent Classic!

🌀 Delta Eta Chapter (California-Irvine)

Sister connection! Liz Yee, a recent Delta Eta graduate, was excited to connect with Margo Keeler (Southern Methodist) in North Carolina

after meeting at their company, IBM. "We initially met at the company's headquarters, but didn't realize we were both ΓΦΒs until we added one another on LinkedIn, and I noticed Margo had Gamma Phi Beta listed in her profile!" Liz says.

🌀 Delta Theta Chapter (California Polytechnic State)

The chapter hosted its annual Flags for Frances capture the flag tournament at the end of the school year in memory of sister Frances Chang. As a result of the support and participation from the whole Greek community, the event raised more than \$1,500 to donate in Frances' name to her two favorite local charities.

🌀 Delta Lambda Chapter (California-Riverside)

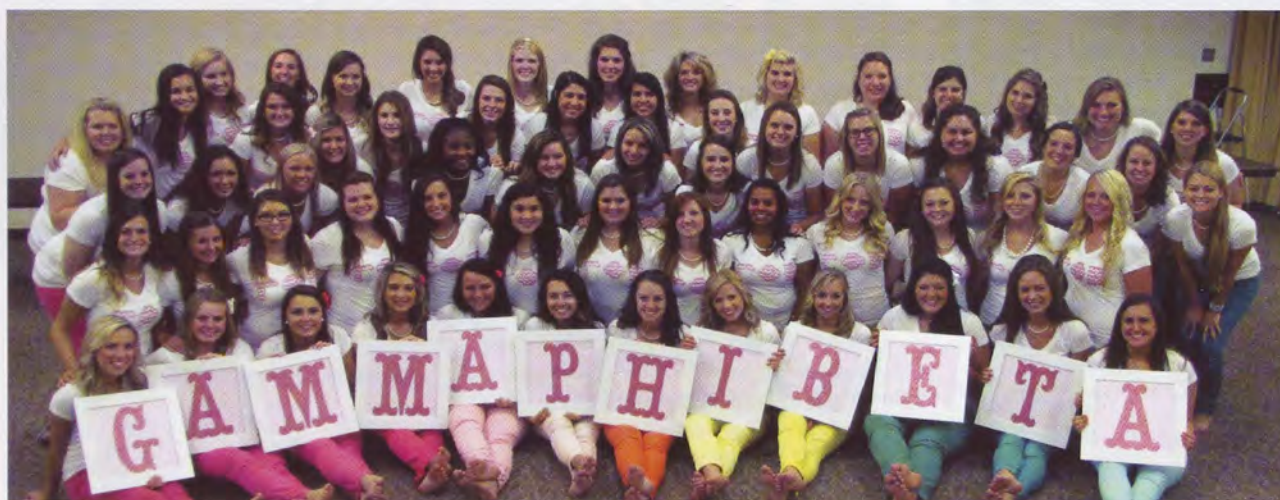
The chapter focused on maintaining a connected sisterhood throughout the summer with a variety of fun sisterhood events to bring everyone together and catch up! Sisterhood events included: going to a comedy show, having beach days and going to the U.S. Surf Open.

Region 8

BRITISH COLUMBIA

🌀 Alpha Lambda Chapter (British Columbia)

The chapter contributed to a Girl Guides of Canada garden program! Members helped water and harvest the vegetables weekly, and when they were ripe, delivered them to a nearby senior center where the vegetables are used as part of their lunch program.



Region 4 | Eta Delta Chapter (Grand Valley State) had a bright and colorful recruitment, welcoming nearly 50 new members and exceeding campus quota by more than 20!



Region 7 | Alpha Iota Chapter (California-Los Angeles) members had a blast volunteering at a Girls on the Run 5k event at the Rose Bowl Stadium! Chapter members made inspirational signs, volunteered as running buddies and helped with race logistics.



Region 7 | These four Beta Lambda Chapter (San Diego State) sisters spent the summer traveling together in Europe. They began their adventures in Ireland, studied for two weeks in Oxford and finished their adventure with more exploration of Europe!



Region 8 | Three sisters from Lambda Chapter (University of Washington) served as coaches for Girls on the Run last season. Pictured is Natalie Zimmer, one of the $\Gamma\Phi\beta$ coaches, with a girl she coached after they completed the culminating 5k event together!



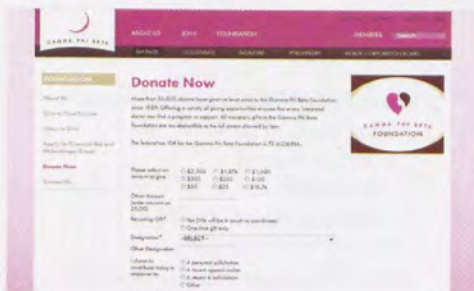
Ways You Can Become **SUPPORTERS OF THE** *Heart*

The Gamma Phi Beta Foundation helps ensure the future of our sisterhood by supporting the leadership development needs of our members, providing philanthropic support for Building Strong Girls and through financial assistance to further our members' educational goals.



In 2012-13, more than 3,400 donors enabled the Foundation to offer these life-changing opportunities! Did you know there are many ways you, too, can become a Foundation supporter of the heart?

ANNUAL GIVING



Annual gifts to the Foundation offer members, parents and friends an opportunity to impact sisters, the Sorority and community by providing immediate and consistent funding to their program of choice. Gifts can be made via the website, mailed or made over the phone, and can be set up as one-time or recurring gifts, making it easy for you to give back!

VOLUNTEER

Foundation volunteers help our organization support and inspire the lifelong development of women. Volunteering for the Foundation allows you the opportunity to connect with sisters from all over, while directly impacting the future of ΓΦΒ!



PLANNED GIVING

Join the numerous members and friends who have ensured a lasting legacy for the Sorority by naming the Foundation as the recipient of a planned gift such as a bequest, estate, life insurance policy, charitable trust or gift of stock.

CHAPTER GIVING

Chapter participation is critically important to the Foundation. Consider making a gift to the Foundation as a chapter; we had a record number of chapters join The 1874 Society in 2012-13, meaning they donated \$1,874 to the Foundation. Make a greater impact by joining forces with your chapter sisters!

MAKE A RECOGNITION GIFT IN THE CRESCENT

Remember someone special or celebrate an important milestone with a gift to the Foundation and we'll print your recognition in a future issue of *The Crescent*. Make a recognition gift online or by calling the Foundation; the suggested minimum is \$25.

CREATE AN ENDOWMENT

Establishing an endowment is a way to perpetually lend your support to Gamma Phi Beta. An endowed fund is a gift (\$25,000 minimum) that is invested and managed by the Foundation to generate a continuous resource stream through grants for future generations. Because these gifts deliver such powerful and long-lasting contributions, as a donor, you can name the endowment in honor of yourself or someone special.

AREA GRANTS

Area grants assist house corporation boards (HCB) with fundraising goals, while remaining in-line with existing tax law. The Area Grant program allows donors to make tax-deductible contributions to their selected HCB through the Foundation, which can be used for educational housing improvement projects.

SOCIAL MEDIA

Connect with us on the Sorority's Facebook page, Facebook.com/GammaPhiBetaSorority, to stay connected to Foundation news, opportunities and programs!



MATCHING GIFTS

An easy way to double or even triple your contribution to the Foundation is to determine if your company has a matching gift program. Such programs typically match all or a percentage of employee contributions and/or volunteer hours to charitable organizations. Simply obtain a matching gift form from your human resource representative and provide it to the Foundation with your contribution.

For further information, please contact the Gamma Phi Beta Foundation at 303.799.1874 or foundation@gammaphibeta.org.

Memorial Gifts

We acknowledge the following individuals and groups who contributed to the Gamma Phi Beta Foundation in memory of a loved one,* as of July 31, 2013. Lists are printed as received from the Foundation.

Jean Rheubotham Arnett
(Texas-Austin, 1948)

Joyce Bennett Ullom

Weldon Aston, father of Sharon Aston

Nancy Enright

Joseph Beard, husband of Brigitte Uhlig Beard

Ann Gregory

Robert (Bob) Bromley, husband of Marguerite Gilchrist Bromley

Barbara Boenzli
Corvallis Alumnae Chapter
Carleen Sullivan

Alice Babst Burch, (Nebraska-Lincoln, 1947)

Alice Cummins Lien

Donna Bottoms Carter
(Oklahoma State, 1962)

Ann Worley

Eric Coffin, son of Joan Coffin

Evanston North Shore
Alumnae Chapter

Lois McBride Dehn (University of Washington, 1913)

Diana Hillman Marshall

Dorothy Shigley Farwell
(Pennsylvania State, 1942)

From all her sisters in the
Round Robin

Nancy Wolfe Ginzel (Illinois at Urbana-Champaign, 1963)

Houston Alumnae Chapter

Anne Straznickas Hagerty (Illinois at Urbana-Champaign, 1985)

Victoria Dunn
Gigi De'Prey Eyre

Jane Pennell Haley (Arizona, 1952)

Joan M. Seaney

Jennifer Lynn Harley (Florida Institute of Technology, 2002)

Meredith Chandler

Marian Dehn Hillman Helmig (University of Washington, 1936)

Diana Hillman Marshall

Carol Simon Johnson
(Pennsylvania State, 1949)

Patricia Henderson
Donna Prior

Joan Widau Marshall
(Northwestern, 1950)

Charla Lee

Kenneth Louis Marshall, father of Victoria Marshall

Alpha Alpha House
Corporation Board

Elizabeth Faye Rice Mitchell (Birmingham-Southern, 1949)

Sally Johnson

Debra Alexander Moody
(Texas A&M-Commerce, 1975)

Linda C. Pettingell

Mary Sutherland Ohr
(Ohio Wesleyan, 1942)

Gloria Badgley Faulkner

Ernest John Pascoe, brother of Carolyn Pascoe

Anne Layton

Suzanne Anderson Peterson
(Washington, 1945)

Anne A. Moldrem

Eleanor Marjori Swift Putnam
(Oregon, 1938)

Jane Jones

Mavis Rasmussen, mother of Ann Rasmussen Vyhldal

Kathleen Murphy

Eleanor Connor Ricards
(Goucher, 1938)

Houston Alumnae Chapter

Hugh Rogers, husband of Gwen Lankford Rogers and brother-in-law of Chris Lankford Toole

Patricia Henderson
Donna Prior

Joanne Roman
Ann Steben

Londa Harless Sanburg
(Nebraska-Kearney, 1979)

Barbara Hurt-Simmons

Jean Willis Scholdt (Wisconsin-Madison, 1939)

Cleveland West
Alumnae Chapter
Jane Pihringer Mueller

James Smith, husband of Marsha Scheller Smith

Christine Barr

Helen Foster Swan (Idaho, 1941)

Albuquerque Alumnae Chapter

Barbara Wells Taylor
(Pennsylvania State, 1942)

From all her sisters in the
Round Robin

Joan Erdall Warner (Minnesota-Twin Cities, 1940)

Jenna Aaland
Jean Fawkes
Cynthia S. Schultz

Debra Ragsdale Watson
(Texas A&M-Commerce, 1975)

Candy Capper
Karen Fulbright
Jeanne Hargis
Cindy Fry Vaughn

Mary Wesselman, mother of Kim Berry
Jennifer Wood

Judy Hubbard White
(Kansas State, 1960)

Stasha A. Case

Forest Woodman, husband of Marilyn Woodman

Evanston North Shore
Alumnae Chapter

Frances Dawson Woodruff
(Northwestern, 1952)

Joyce L. Dunn

Marian Mueller Yochum
(Washington University, 1948)

Houston Alumnae Chapter
Mary Ann Strassburg

*For deceased members, *The Crescent* lists their first, maiden and last names in accordance with their school and year of initiation. To make an "In Memory" gift, visit GammaPhiBeta.org/Donate or call 303.799.1874. The suggested minimum donation is \$25. Gifts received by October 31, 2013, will be acknowledged in the winter 2014 issue.

In Celebration

Celebrate a special sister, loved one or event with an "In Celebration" gift to the Gamma Phi Beta Foundation. Thank you to the following donors, whose gifts were recorded as of July 31, 2013. Lists are printed as received from the Foundation.

Jeanne Beach's birthday,
Gloria Nelson

**In honor of my Little Sister
Laura Reguero Brennan on the
birth of her legacy, Olivia Lochlan
Brennan.**
Carrie Kleifgen

**Emma Crockett, outgoing
president of Canyon County
Alumnae Chapter. Thank you!**
Gigi De'Prey Eyre

**Darla Dakin: Thank you for your
dedicated service to the Panhellenic
Department. We will miss you!**
Sandy Burba

**The birth of Owen Douglas Flinn,
son of Marianne Menna Flinn.**
Marianne Flinn
Susan Lupo

**Amanda Kanwischer-Gutierrez's
graduation from optometry
school.**
Emily Adameik

**Candice Hopkins, outgoing
president of Boise Alumnae
Chapter. Thank you!**
Gigi De'Prey Eyre

**Annabel Jones for good health
and a speedy recovery!**
Jolene Stiver

**Zeta Omega Chapter Advisor
Miranda Jones, for receiving
the Carolyn Hendricks Hester
Outstanding Advisor Award
from Zeta Tau Alpha Fraternity.**
Zeta Tau Alpha alumnae
chapters of the Atlanta,
Georgia, area

**Leota Wagner Klingberg's
100th birthday.**
Fran Becque

**Shana Makos, outgoing regional
coordinator-advisors of Region 8.
Thank you!**
Gigi De'Prey Eyre

**Congratulations to Dr. Susie
Knetter McCracken for receiving
your Ph.D.!**
Fran Lapham

**Happy birthday to Elyssa M. B.
Meade!**
Nancy B. Meade

**Happy birthday to Gloria
Swanson Nelson!**
Jeanne Swanson Beach

**Katherine Pezzella, outgoing
regional director of Region 8.
Thank you!**
Gigi De'Prey Eyre

**Bridget Pitman, outgoing regional
coordinator-Safety & Wellness/
education, Region 8. Thank you!**
Gigi De'Prey Eyre

**In celebration of Shirley
Reidenbaugh.**
Syracuse Alumnae Chapter

**In honor of Lynsey Zitzer
Schmidt's beautiful legacy, Lola.**
Shawna Peters

**Ruth Seeler's generous gift
of new Initiation supplies for
Epsilon Chapter. Many, many
thanks, Dr. Ruth! Epsilon
Chapter truly appreciates
your wonderful donation!**
Epsilon Chapter
(Northwestern)

**In honor of my Gamma Phi Beta
daughter, Olivia Marie Townsend,
Gamma Phi Chapter (Auburn).**
Barbara Townsend

**The birth of Colton Kemper Webb,
son of Chris and Laura O'Dell
Webb and brother of Christopher.**
Rosemary Bunn

**Ruthe Wynne-Taliaferro, outgoing
president of Sacramento Valley
Alumnae Chapter. Thank you!**
Gigi De'Prey Eyre

**Katherine Yenrick (Boston)
for beginning her first term
as president of Boston
Alumnae Chapter. For her
willingness to serve and her
leadership capabilities, we
are extremely proud.**
Carolyn and David Yenrick

*"To make an In Celebration gift,
visit GammaPhiBeta.org/Donate
or call 303.799.1874. The suggested
minimum donation is \$25. Gifts
received by October 31, 2013, will
be acknowledged in the winter
2014 issue.*

In Memory

We acknowledge the passing of the following members and celebrate their part in our circle of sisterhood. This list reflects notifications received at International Headquarters between May 1 and July 31, 2013. First, maiden, last names and year of initiation are listed for each deceased member.

Alpha - Syracuse

Patricia Erskine Woodward, 1944

Gamma - Wisconsin-Madison

Florence Vellenga Spindler, 1941

Epsilon - Northwestern

Elizabeth Smith Ray, 1941
Marlynn Moeller Porter, 1943
Suzanne Hill Anderson, 1947
Constance Jackson Staats, 1948
Kathleen Mulcahey Post, 1949

Eta - California-Berkeley

Sheryl Fleming Consort, 1973

Theta - Denver

Jacquelynn Stuart Dickson, 1960

Kappa - Minnesota-Twin Cities

Joan Erdall Warner, 1940
Emily Hellie Blandin, 1943
Judith Basgen Salyards, 1974

Lambda - University of Washington

Suzanne Anderson Peterson, 1945
Arlene Hinderlie Wade, 1962

Nu - Oregon

Eleanor Swift Putnam, 1938

Xi - Idaho

Helen Foster Swan, 1941
Bettye Judd Meinecke, 1951
Teryll Willey Hall, 1951
Mary Mendiola Morgan, 1963

Omicron - Illinois at Urbana-Champaign

June Johnson Lewis, 1938
Patricia Hannan Weigen, 1944
Barbara Victor Wolfe, 1951
Anne Straznickas Hagerty, 1985

Pi - University of Nebraska-Lincoln

Bernette Hadan Hamel, 1944

Rho - Iowa

Janis Colby Joslyn, 1949
Carol Allison Eggert, 1954

Sigma - Kansas

Betty Shawver Reitz, 1936
Kathryn Crawford Rossman, 1948
Ann Kelly Steele, 1954
Barbara Binninger Hyatt, 1955
Karen Webb Friesen, 1964

Phi - Washington University

Nancy Dawson Schneider, 1950
Joyce Greene Zimmerman, 1953

Psi - Oklahoma

Emma McDermott, 1943
Barbara Bradford Mayo, 1948

Omega - Iowa State

Adele Mochl Fort, 1938
Harriette Little Shearer, 1940

Alpha Alpha - Toronto

Anna McAuslan Kennedy, 1935

Alpha Gamma - Nevada-Reno

Dorothy Sewell Gallagher, 1944
Nancy Damon Singley, 1957

Alpha Epsilon - Arizona

Jessie McCarthy Taylor, 1940
Barbara Young Morales, 1949

Alpha Zeta - Texas-Austin

Mary Loy Ellis, 1943
Jean Rheubotham Arnett, 1948

Alpha Eta - Ohio Wesleyan

Linda Hutchinson, 1971

Alpha Theta - Vanderbilt

Barbara Jewell Pond, 1947

Alpha Nu - Wittenberg

Margaret Hawk Schofer, 1932
Betty Turner White, 1940
Audrey Zaun Bladt, 1967

Alpha Xi - Southern Methodist

Sunshine Hollar Davis, 1953
Adeline Gatewood Meazle, 1957

Alpha Omicron - North Dakota State

Mary More Benno, 1951

Alpha Rho - Birmingham-Southern

Dorothy Maynor Green, 1937

Alpha Upsilon - Pennsylvania State

Jeannette Jones Phethean, 1943
Carol Simon Johnson, 1949

Alpha Phi - Colorado College

Adonis Whittecar Ritchie, 1936
Lorraine Morrison Rucker-Stroup, 1944

Alpha Chi - William & Mary

Betty Cutshall Allman, 1945
Dorothy Dettmer McLaughlin, 1946
Kathleen Byers Hoffman, 1950
Nancy Doushless Rowland, 1954

Beta Beta - Maryland

Ruth Haring Phelan, 1944

Beta Gamma - Bowling Green State

Helen Behrens Gustafson, 1943
Mary Kovach Lee, 1964
Jane Corbin Kaiser, 1972

Beta Kappa - Arizona State

Barbara Grim Woodroffe, 1964

Beta Lambda - San Diego State

Nancy Hall Pawka, 1968

Beta Nu - Vermont

Barbara Hughes Campbell, 1950
Alexa Rose Howell, 1964

Beta Omicron - Oklahoma City

Marilyn Guthrie Kawakami, 1966

Beta Chi - Wichita State

Mary Marsh Jackson, 1958

Gamma Phi - Auburn

Karen Martin McAlarney, 1978

Delta Sigma - Florida Institute of Technology

Jennifer Harley, 2002

**To report the passing of a sister, please email contactus@gammaphibeta.org so we can honor the member on this page in a future issue.*

In Loving Memory

We are saddened by the loss of Helen Postmueller (California-Los Angeles, 1932), who passed away on August 9, 2013. Helen was instrumental in helping to establish the Sorority Museum at International Headquarters and received a Carnation Award in 1998 for her work and contributions as curator for the Anthropology department at the University of Denver.



The Sorority sends its condolences to Helen's eight daughters, 10 grandchildren and 14 great grandchildren.

The Crescent sincerely apologizes for incorrectly spelling Roxanne Reber's (Kansas, 1978) name in the previous issue.

The Peanuts and Olives Legend

The tradition of serving peanuts and olives has existed for more than a century in Gamma Phi Beta. In 1895, the tradition even inspired Betsie Cowles Gibson (Syracuse, 1892) to write the "Peanut and Olive Song."

In its simplest form, the tradition has dictated that chapters served these two foods at events, both formal and informal. As is common for many long-standing traditions, much folklore has evolved surrounding the start of this practice. Over the years, three stories have been told – all centering around an alleged social event at Alpha Chapter (Syracuse).

How do you think the peanuts and olives tradition got its start? Here are the three most common versions!

Version #1

Members are preparing to enjoy a meal – possibly for recruitment or in celebration of a special occasion that consists of a colorful spread, with the best china and silver used. The members set out the spread and then moved outside to run errands or visit some friends. In their absence, members of one

of the local fraternities break into the house and eat the spread, leaving only peanuts and olives. The members find these sole remnants of food on their return to the house.

Version #2

It's a calm afternoon at the house. Some local friends call on the members, who, of course, want to offer them refreshments. When one members checks the cupboards, however, she finds them bare but for the peanuts and olives. In an effort to make the most of the situation, the creative hostess serves these two items with the silver and in a most gracious manner.

Version #3

An informal recruitment event is scheduled, and members have invited their friends who are not Greek to join. One of the chapter members is to oversee the refreshments for the event, but becomes so occupied with school work that she does not remember to shop. A few minutes before the arrival of potential new members, she realizes her



The legend of peanuts and olives has been incorporated into various Sorority memorabilia over the years.

omission and races to the cupboards to only find peanuts and olives. As she serves, she acts as if those were the intended treats all the time.

These three stories have served as the basis for many variations of this tradition, but alas, Gamma Phi Beta has never been able to verify the truth behind any of them. Whether fictitious or factual, the variations of the peanuts and olives tradition have been a part of the Sorority's culture for decades and are just plain fun.

The peanuts and olives tradition has even been applied to romance!

"The girl who becomes engaged during her college year does something to celebrate. Ordinarily her fiancé is expected to furnish a peanut and olive spread, but sometimes the girls prefer to announce their engagement by giving a spread themselves...the renowned peanut and olive spread is a great favorite. We sing the 'Peanut and Olive Song' on these occasions and crack our peanuts with a great deal of gusto."

-Marion Draper (Syracuse, 1910), niece of Founder Frances Haven Moss

Capture a Crescent

Did you capture a crescent in an interesting place? Send your photo to TheCrescent@gammaphibeta.org for an opportunity to be featured in a future issue!



1. Florida: While on vacation in the Siesta Keys, Jenna Siok Levon (Bradley) stayed at the Crescent Condos. "It was surely a sign!" Jenna said.
2. Massachusetts: Marge Calvert Bianchetto (Indiana State) found this crescent wind chime while visiting her son.
3. South Korea: While teaching English in South Korea, Erin Templeton (British Columbia) took a quick break in this giant crescent she found at a park!

4. Quebec: While exploring Montréal with a fellow sister, Shea Maness (California State-Fullerton) found a crescent moon on Sainte-Catherine Street, the primary commercial artery of Downtown Montreal.
5. Missouri: While visiting Springfield for her son's wedding, Shanon Glenn Fitzpatrick (Arizona) and her daughter were driving around the Missouri State University campus and spotted a familiar crescent on the beautiful new Delta Nu Chapter house! "I immediately jumped out of the car for a crescent photo!" Shanon says.