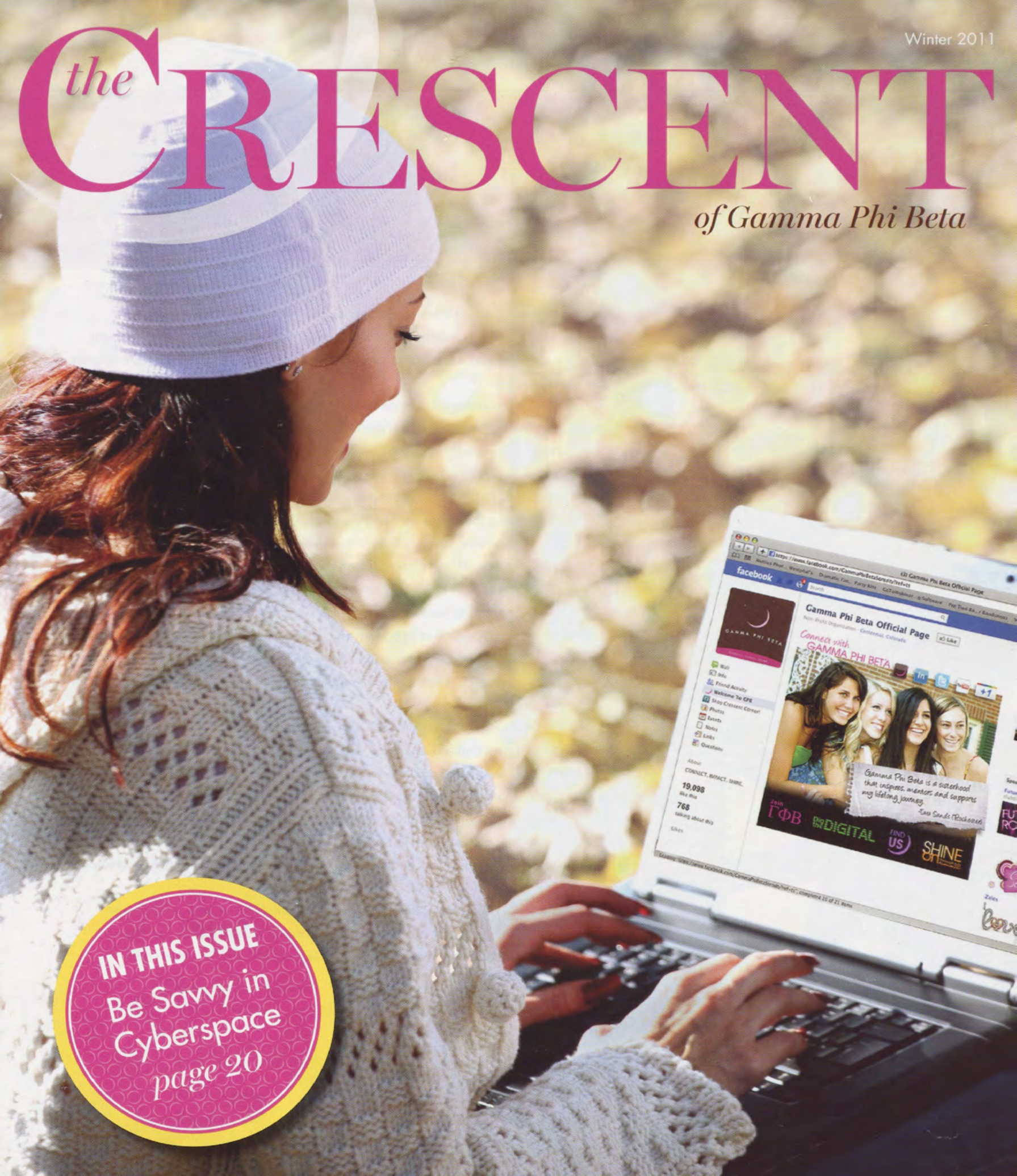


Winter 2011

the CRESCENT

of Gamma Phi Beta



IN THIS ISSUE
Be Savvy in
Cyberspace
page 20



A New Take on Our *Treasured Crescent*

INTERNATIONAL COUNCIL

International President
Linda Lyons Malony
University of Southern California

Alumnae Vice President
Mary L. Knaup
California State University-Fullerton

Collegiate Vice President
Annabel M. Jones
University of Oklahoma

Education Vice President
Rebecca Boyd-Obarski
University of Illinois at Urbana-Champaign

Financial Vice President
Leigh Ann Price
Texas Tech University

Membership Vice President
J.J. Stoll Kaelin
University of Colorado-Boulder

Panhellenic Affairs Vice President
Elizabeth Ahlemeyer Quick
Indiana University

Executive Director
Laurie Imperiale Veldhuizen
Florida State University

GAMMA PHI BETA FOUNDERS

Mary A. Bingham
E. Adeline Curtis
Helen M. Dodge
Frances E. Haven

SORORITY MISSION STATEMENT

To inspire the highest type of womanhood.

Did you notice? Thumb through the rest of this issue of *The Crescent* and you'll see we've upgraded Gamma Phi Beta's premium magazine! A new approach to design elements, eight additional pages per issue and a hardier paper stock for the cover all combine to create an even better Sorority magazine.

This is part of a major strategic direction to elevate our communications overall to keep our members connected to the Sorority and to each other. Gamma Phi Beta's presence on Facebook, Twitter and YouTube is constantly updated with relevant information and fun facts, and this winter Gamma Phi Beta will be among the first fraternal organizations to release an official mobile app. The Gamma Phi Beta website regularly features new photos and current events, and efforts to make the site as user-friendly as possible continue to yield improved results. The monthly *Buzz* – at one time simply a list of “buzz-worthy” accolades for our presidents and volunteer family – has morphed into *Crescent Connection*, a quality electronic document that includes relevant links so readers may easily bounce from one place to another with just a “click.” *Crescent Reflections*, Gamma Phi Beta's e-newsletter, is circulated to all members with good email addresses three to four times each year in between quarterly hard-copy distribution of *The Crescent*. And in a dual effort to provide quality merchandise and additional Gamma Phi Beta awareness, we've even opened up Gamma Phi Beta's official online retail store, *CrescentCorner.com*, and an aStore on *Amazon.com*.

Debate on the 2010 Convention floor and a survey about *The Crescent*, completed by many readers last winter, confirm that our members value the Sorority's magazine. Whether you flip immediately to favorite sections or read it cover to cover, I hope you enjoy this and future issues enough to help us continue to offer such a high-quality magazine four times per year. If you haven't yet paid your annual alumnae dues, go to gammaphibeta.org under the Alumnae tab: doing so helps perpetuate a great Gamma Phi Beta magazine, delivering wonderful news about the Sorority to our members and their families, and maintaining Gamma Phi Beta's presence at the forefront of the interfraternal world.

So become an official Gamma Phi Beta Facebook fan, Twitter follower, YouTube video geek, app user, website junkie, Crescent Corner shopper, loyal *Crescent* reader – all right at your fingertips. You'll see that pretty much every day, Gamma Phi Beta is on the GO!

In IIKE,

Linda Lyons Malony
International President

CONTENTS

Go Gamma Phi

- 4 ΓΦΒ Mailbox
- 18 Road Trip
Destination: Santa Barbara, California
- 20 Be Savvy in Cyberspace
Cyberspace can be a scary place. Are you doing what you can to protect yourself?
- 23 Mission Statement Pull-out
- 24 Sorority Life
- 43 Vintage ΓΦΒ
- 44 Capture a Crescent

Sorority News

- 6 Convention 2012
- 7 On the Go
We're celebrating milestone chapter anniversaries and The Academy!
- 8 Interfraternity
- 42 In Memory

Campus Life

- 10 Extension
Eta Zeta Colony gets its start in Cincinnati, Ohio.
- 16 Collegian Spotlight
Olivia Vilardi-Perez (Syracuse)

Shining On

- 32 Circle of Excellence
- 33 Service Awards
- 36 Alumna Spotlight
Bringing a compassionate approach, Lauren Lagoni (Iowa State) offers comfort to grieving pet parents.
- 37 Alumnae Chapter Profile
Meet our sisters at Princeton Alumnae Chapter in New Jersey.

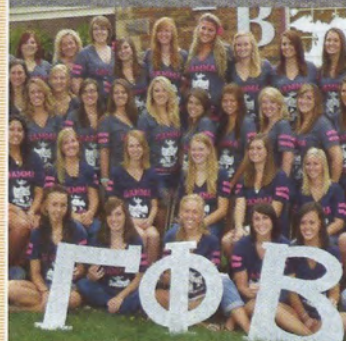
Foundation News

- 38 Donor Profile
We're recognizing Marjorie Mills Shupert (Colorado State) and her gift to the Foundation.
- 39 New Executive Director
Join us in welcoming Kitty deKieffer!
- 40 Memorial Gifts
- 41 In Celebration

12 [Shining Seniors]



Nanxi Liu
(California-Berkeley)
our region 8
shining senior



17

Chapter Profile...Meet our sisters from Gamma Psi Chapter (Northern Iowa).



34

Winter is the perfect time to curl up with a good book by one of your favorite ΓΦΒ Authors!

Winter 2012 | Volume 113 | Number 1

In the Spring Issue

- Recruitment
- Alternative spring break
- Greek advisors

International Headquarters

12737 E. Euclid Drive, Centennial, CO 80111
Phone: 303.799.1874 Fax: 303.799.1876
Website: gammaphibeta.org
Email: TheCrescent@gammaphibeta.org

The Crescent Staff

Editor: Mimi Burch McMann (California State-Bakersfield), mmcmann@gammaphibeta.org

Director of Marketing and Communications:
Maureen Walker, mwalker@gammaphibeta.org

Crescent Advisory Board

Stefanie Brickman (Oklahoma)
Kristen Record Heptinstall (Alabama)
Khrystyne Miller Keane (Boston)
Leanne Orr (Chapman)
Kris Brandt Riske (Wyoming)
Yvonne Fetig Roehler (Minnesota State-Moorhead)
Marcia Turner

Graphic Design by Shelle Design, Inc.

SUBMISSION DEADLINES – NEW!

Spring issue – February 1
Summer issue – May 1
Fall issue – August 1
Winter issue – November 1

©2012 Gamma Phi Beta Sorority

The Crescent of Gamma Phi Beta (USPS 137620) is published quarterly by Gamma Phi Beta Sorority, 12737 E. Euclid Drive, Centennial, CO 80111. Periodicals postage paid at Englewood, CO, and at additional mailing offices. Non-member subscription price is \$25. Produced in the U.S.A.

Postmaster: Send address changes to *The Crescent*, Gamma Phi Beta Sorority, 12737 E. Euclid Drive, Centennial, CO 80111.



Magazine Makeover

Creating a New Look for 2012!

Most women understand the morale boost that comes with a new hairstyle and a few updated items in the closet. A little pampering does our moods a world of good – we feel confident and get noticed more.

Keeping this in mind, your communications team at International Headquarters, with the blessing of International Council, has taken *The Crescent* to the spa and the mall, so to speak. We've massaged our features, colored our pages, added some fun accessories to come out with a whole new look:

- Design – Starting with the cover, *The Crescent* is using a new graphic design team to brighten our pages. We hope you'll find the overall effect fresh, engaging and modern.
- Sections – The articles are now organized into five categories: Sorority News, Go Gamma Phi, Campus Life, Shining On and Foundation News. See the table of contents to discover where your favorite features fall.
- More pages – We've boosted our page count to highlight more of our amazing sisterhood. Notice the expanded Sorority Life section with even more chapter news.
- New features – We're proud to show off the great groups that make up Gamma Phi Beta. In every issue, you'll find a collegiate and alumnae chapter profile. There's also a brand



new travel page – introducing you to the fun cities that host our Greek-letter chapters.

- Renamed features – Look for On the Go (formerly Out and About) and Pink Carnations (formerly In IIKE). Pacesetter and Spotlight On are now presented as collegian and alumna member spotlights.

In the midst of all this change, our commitment to delivering a magazine that inspires pride in Gamma Phi Beta stays the same. We'd love to hear your comments on the new design and features, so shoot an email to TheCrescent@gammaphibeta.org or add your comments to our Facebook or Twitter pages. And when you get a chance, pamper yourself a little. You deserve it, too.

Publisher's note: Gamma Phi Beta would like to thank Mimi Burch McMann (California State - Bakersfield) for her years of service as editor of The Crescent. During her tenure, Mimi helped elevate The Crescent's quality, content and design, resulting in the fantastic publication you are reading today. We wish Mimi well in her new endeavors!



ΓΦΒ mailbox

Reunited

Gamma Phis from Beta Chapter (Michigan) of 1978-81 had a wonderful vacation last July in Tybee Island, Georgia, during our first official reunion. We had a memorable time sightseeing, swimming, touring and holding a traditional candlelight ceremony. It's hard to imagine almost 30 years have passed since we were all together in the chapter house. The best part of the trip was reminiscing with our sisters on our past years of fun at the Sorority, catching up on current news and looking forward to another exciting reunion in the near future.

- Laurice Turkiewicz Zielinski (Michigan)



Over the Moon

I recently changed my company name to Choice Meetings and hired a graphic designer to develop a new logo. Among more than 30 logo concepts, the one that really stood out had a crescent moon. It seemed like destiny, and I selected this concept for my new logo! Gamma Phi Beta changed my life in 1987 when I received a bid to become a member. It is heartwarming to now pay homage to an organization that impacted me so profoundly. My daughter joined Zeta Epsilon Chapter (Duquesne)

in 2011, so I've been having a blast reliving the good old Gamma Phi days. I participated in her Initiation last March and a mother/daughter tea. It's just as much fun the second time around!

- Julie Britton Walker (Pennsylvania State)

UK Connections

(Fall 2011) I recently saw the article on Greeks in the United Kingdom (UK). I have been living in the UK for about three years, and I was wondering if it was possible for you to connect me to the Gamma Phis in the article? I'd love to meet them and join their get-togethers.

- Kathleen Redding Chrystie (Purdue)

Editor: You bet, Kathleen! I'm happy to put you in touch with sisters in your corner of the world. Enjoy your UK connections!

f As a sister moving to the UK next year for school, I thought it was fitting to find the article of others in the UK! I basically look forward to getting my issue every quarter!

- Sarah Krans (Wisconsin-Madison)

Fabulous Fall

f (Fall 2011) I live in Mexico and am not willing to wait to read my paper copy when I return to the U.S. for the holidays, so I read the online version. I love the latest copy of *The Crescent*! It is apparent that Gamma Phi Beta is really trying to reach out and connect to its diverse population of women. I was

happy to see the new alumnae chapters throughout North America, as well as the article about the women in the UK. I also enjoyed reading about the amazing athletes highlighted in this edition - it opened my eyes to possibilities I did not realize existed. Thanks for a great edition! I'm already looking forward to the next one!

- Ashley Kopf (Wittenberg)

SHINE on

Continue to shine brightly as a Gamma Phi Beta by paying your international alumnae dues for the 2011-2012 fiscal year.*

.....
Your payment ensures lifelong benefits such as leadership/training programs, chapter/alumnae support and sorority communications will sustain our ever-growing sisterhood.

• Visit gammaphibeta.org and click on Alumnae and Pay Alumnae Dues.

OR

• Mail a check payable to Gamma Phi Beta Sorority, to (note new postal address):
Gamma Phi Beta Sorority
P.O. Box 731592 Dallas, TX 75373-1592

Thank you for your loyalty and support. Let's continue a bright future for Gamma Phi Beta!

*Dues and contributions to the Sorority are not tax-deductible
August 1, 2011 - July 31, 2012

f Posted on Facebook **t** Posted on Twitter

ELEVATE

Your Sisterhood

June 27 - July 1, 2012

Denver, Colorado
The Mile High City

75th Convention



Keynote Speaker

Mike Dilbeck founded the RESPONSE ABILITY Project, and much of his time is spent as a professional speaker, traveling the country and empowering others to speak and act against hazing. His interactive presentation stresses the importance of living our values. He'll help us understand the far-reaching impact of bystander behavior and equip us with the skills to challenge the negative behaviors we see around us every day.

Find us online:

Facebook.com/gammaphibetasorority

Twitter: @gpbccrescentmoon

To volunteer a few hours at Convention, contact Susan Grant Schneider, local Convention arrangements chairwoman, at susangpb2012@mindspring.com.



Hotel Registration

The newly-renovated Sheraton Denver Downtown Hotel on the 16th Street Mall will host Convention 2012. Rooms are \$160 each plus tax. Book your reservation through the Sheraton by calling 1.800.325.3535 and mention the Gamma Phi Beta Convention for our special room rate. All reservations must be made with the hotel by June 6.

Come early or stay late and enjoy the many activities Denver has to offer: natural wonders, culture, sports and shopping. With more than 300 days of sunshine a year, Denver is bursting with amazing things to do.

Visit the Gamma Phi Beta website (gammaphibeta.org) for additional ideas on having a great vacation in Colorado.

Convention Registration

Registration for full- and part-time Convention attendance will be handled through the Gamma Phi Beta website, gammaphibeta.org, starting in February. Cost includes meals, programs and Convention special events.

- Early registration cost is \$800 through May 4
- Regular registration cost is \$850 from May 5 to June 1



Gamma Phi Beta
75th Convention
Denver, Colorado

On the GO!

Get Inspired to Lead

It's time for presidents and advisors to attend The Academy.

"Leadership. Inspired!" is the theme for 2012's The Academy training weekend, coming February 24-26 in Dallas, Texas. With motivational workshops and helpful how-tos, collegiate chapter presidents and advisors will gain valuable leadership skills to CONNECT.

IMPACT. SHINE. The Academy also provides an outstanding time to network with other leaders for shared inspiration, support and fun the Gamma Phi Beta way!

The deadline to register is January 30 – just days away – visit the events section at gammaphibeta.org to register and find information on preparing for the weekend. See you in Dallas!



Tourist Attraction: Italy



On vacation in Italy, Molly Hahn (Southern Indiana) shows her Gamma Phi Beta pride while taking a moment to "prop up" the Leaning Tower of Pisa.

Loyalty and Longevity

Congratulations to our Greek-letter chapters celebrating milestone anniversaries in 2012. Way to shine for Gamma Phi Beta, sisters!

125 years

Delta Chapter (Boston)
Celebration details pending
gammaphibetabu.com

50 years

Gamma Zeta Chapter
(Texas A&M-Commerce)
Celebrating March 9-11
netgammaphi.org

Gamma Eta Chapter
(California State-Long Beach)
Celebrating March 9-10
GammaEta50th@lbgammaphibeta.org

25 years

Epsilon Zeta Chapter (Jacksonville)

Epsilon Eta Chapter
(Bridgewater State)
Celebration details pending
[Shelby Bukhenik, Shelbygphib@gmail.com](mailto:ShelbyBukhenik,Shelbygphib@gmail.com)

10 years

Zeta Omicron Chapter
(John Carroll)
Celebrating April 2012



Interfraternity CELEBRATE the Scholar

We're surrounded by pink and red reminders of the upcoming Valentine's Day holiday, but the National Panhellenic Conference (NPC) has a different idea of what February is all about.

For the past 10 years, sororities have been encouraged to recognize the importance of learning during NPC's Month of the Scholar. In line with our Core Values, we wholeheartedly endorse the concept.

Our Panhellenic sisters at Chapman University annually host an Academic Excellence Dinner, according to Alli Segal (Southern Methodist), assistant director of student affairs. Greek students with a 3.75 GPA or higher are invited to enjoy a nice meal, certificates of recognition and a motivational speaker. Every semester, the council also brings treats to the sorority with the highest GPA and honors a scholarship star from each chapter.

Iowa State's Panhellenic Council purchases a large advertisement in the campus newspaper naming sorority women on the dean's list, says Erin McHale (Iowa State). And at Psi Chapter (Oklahoma), members put proof of an "A" from a test or assignment in a jar. "Every month a name is drawn from the 'A' jar, and the winner receives a gift card," Cierra Odom (Oklahoma) explains.

There are many creative ways to emphasize learning in celebration of Month of the Scholar. Be sure to coordinate any activities with other Panhellenic chapters on campus.

Collegians

Invite Panhellenic sisters with dean's list honors to a scholarship dessert. Each woman can bring a faculty member who inspired her to achieve her outstanding GPA.

Each week of February, select one sister as the chapter's Scholar of the Week. Recognize her at a chapter meeting and award her with a gift card to the campus bookstore.

Create a book scholarship for unaffiliated women based on an essay contest. Meet and interview the top three candidates before presenting gift cards to the campus bookstore. This is a great public relations strategy, and it shows that sorority women value good scholarship and their campus community.

Pick a day to distribute goodie bags containing candy, pens, pencils and study tips to fellow students. Tie the bags with tags that say, "Gamma Phi Beta loves learning!" or a similar Valentine's Day-themed message.



New alumnae of Delta Phi Chapter (California State-Bakersfield) jump for joy at graduation last year.

Alumnae

Organize a book club to encourage continuing education. See this issue's Authors feature for book recommendations (page 34).

Sponsor a night out for alumnae attending graduate school to support continuing education.

Consider raising funds for a Gamma Phi Beta Foundation scholarship or fellowship. Call 303.799.1874 for more information.

Support local collegians with midterm and/or finals study bags. Make plans during the Month of the Scholar and then distribute the bags at the appropriate time.

How did your chapter celebrate the scholar in February? *The Crescent* wants to know! Email your ideas to TheCrescent@gammaphibeta.org.



Special recognition goes to Helen Dodge Ferguson (Syracuse, 1874), whose love of learning has endeared her as the "scholar" of our Four Founders. When she died in 1937 at age 87, Helen left a substantial bequest to fund scholarships for Alpha Chapter (Syracuse) members.



Shop it. Wear it. Love it. CrescentCorner.com

By shopping CrescentCorner.com, your purchases directly support Gamma Phi Beta – together we can inspire the highest type of womanhood.

INDIVIDUAL ORDERS

1. Quilted Overnight Tote - \$30

There are places to go and people to see. With your snappy Gamma Phi Beta overnight tote, you can go in style. Gamma Phi Beta letters embroidered in pink tell fellow travelers you're proud to be GPhiB.

2. Seal Sweatshirt - \$49.50

Lazy days and cool nights require proper attire. Curled up in our warm and comfortable sweatshirt, you may never leave the house again. In your choice of colors: charcoal or pink.

3. Hot Pink Gamma Phi Beta est. 1874 Decal - \$4

A little decal goes a long way, and yours will travel to new heights of GPhiB love when you embellish your life with a hot pink Gamma Phi Beta decal. Bonus: the "est. 1874" is included.



CUSTOM GROUP ORDERS

Let CrescentCorner.com help you with your next group order for custom T-shirts, accessories or favors. Crescent Corner offers free, creative artwork to fulfill all your design needs. We have all the products and services a Gamma Phi Beta could ever want! Visit CrescentCorner.com today or call 303.799.1874, ext. 343 to fill your next group order.





Extension News

Growing our Sisterhood

Eta Zeta Colony establishes in Ohio

By Taylor Turner (Chapman), collegiate leadership consultant

On a crisp fall morning, 118 University of Cincinnati (UC) collegiate women gathered to receive one final piece of correspondence in Gamma Phi Beta's extension recruitment process. They waited in anticipation before simultaneously opening the mysterious bright pink envelopes clenched in their hands. Suddenly, a chorus of delight erupted from the group – inside the envelope was a Gamma Phi Beta bid card.

November 5, 2011, marked Bid Day for our newest colony members who, after weeks of learning about Gamma Phi Beta, can finally start an exciting and fresh chapter in their lives. In a spectacular celebration, the women received gifts including Sorority tote

bags, sweatshirts, T-shirts, water bottles, buttons and an issue of *The Crescent* before enjoying brunch, activities, a photo shoot and celebratory cake.

Under the guidance of Valerie Hall (Oklahoma) and Jordan Lyons (Clemson), resident collegiate leadership consultants (CLCs), the new members have received Sorority education, formed committees, planned events and elected officers in anticipation of being installed next month as our 174th chartered collegiate chapter. This exciting process blends Gamma Phi Beta history with the start of new campus traditions as we establish a strong sisterhood and create a distinguished reputation at UC.

On the Move

The journey to Cincinnati began last May, when Gamma Phi Beta's extension team was invited to address the extension committee at the University. Two other National Panhellenic Conference sororities were also vying for the opportunity to join the campus. Following the presentations, the Greek community voted and Gamma Phi Beta was selected to start a chapter on campus! Over the summer, volunteers and staff worked together to develop recruitment plans, marketing materials and new colony support initiatives to ensure our newest chapter would be off to a great start.



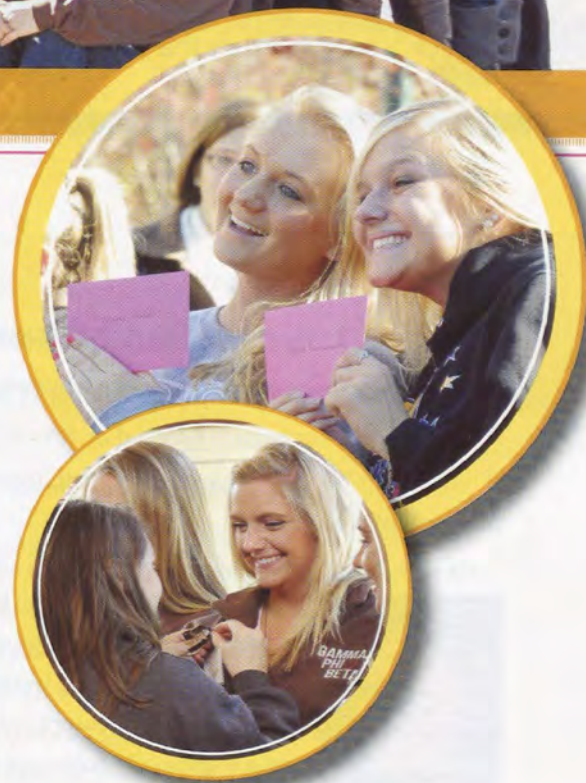
In the fall, a team of CLCs moved to Cincinnati to begin a public relations campaign, meeting more than 500 women and taking the campus by storm. UC was decorated with a “Go Gamma Phi” slogan on fliers, windows, walkways and yard signs. Even students got into the action – many fraternity and sorority members wore “Go Gamma Phi” T-shirts to support our colonization.

Next came a week of recruitment, coordinated by an extension team led by Sorority Coordinator-Collegiate Extension Caitlin Capozzi (Syracuse) and comprised of five CLCs and seven alumnae members. Collegiate members from Beta Epsilon Chapter (Miami-Ohio) and Alpha Nu Chapter (Wittenberg) assisted in the philanthropy and preference rounds, respectively, giving UC students the opportunity to hear from a peer perspective. With sisters from all corners of the nation lending a hand, the potential new members received a true glimpse of

the size and power of the Sorority and the lifetime commitment of Gamma Phi Beta’s members.

A Warm Welcome

Our success at the University of Cincinnati would not have been possible without the support of countless Gamma Phi Beta volunteer leaders and alumnae. Their support, excitement and guidance will surely lay the foundation for the Eta Zeta Colony to inspire the highest type of womanhood for many years to come. And we would be remiss if we didn’t thank the UC Greek community for their assistance. Our interfraternal friends eagerly sported Gamma Phi Beta T-shirts, buttons and stickers, welcomed our CLCs into their homes for dinner and tours and even extended invitations to connect with the future colony. These thoughtful gestures of hospitality only added to the excitement and honor Gamma Phi Beta feels to unite with such an outstanding Greek community.



A warm “Congratulations!” is offered to the newest colony members of Gamma Phi Beta, who can look forward to an exciting journey brimming with potential, honor and pride. Gamma Phi Beta continues to show its relevance in the modern world as we *connect* with women, *inspire* them to join a sisterhood that defies all boundaries and watch them *shine*.

Shining Seniors *Excel in Unique Ways*

With college graduation looming on the near horizon, many seniors in Gamma Phi Beta look forward to new careers, adventures and experiences in the "real" world. Several years of college study have prepared them to join the workforce, while their years in the Sorority have cultivated self-confidence, leadership ability and a lasting network of friendships to enrich their alumnae years.

In particular, this issue we single out one amazing senior from each of our eight regions who has what it takes to shine in her post-graduate years. These young women show, *"It is easy to be ordinary, but it takes courage to excel"* (author unknown). To them we give the honor of "Shining Senior" as we wish the brightest and best for their future. Congratulations to all.

Region 1:

Monica Hernandez (Colgate)

Major/Minor: Environmental economics/geography

Future Goals: Investment consulting with nonprofit organizations and universities.

Contributions to ΓΦΒ: Chapter president, former Panhellenic vice president of recruitment



Monica shines because she is well rounded and very involved in the community and on campus. She is a leader in many ways: as an elected student representative, an intern in the admissions office and a community volunteer in a local income tax assistance program. Monica has also worked to integrate Greek life with other student organizations and encourages diversity and inclusion. Because of her leadership, the chapter is more involved and respected on campus.

Thank you to Chapter Advisor Gretchen Meier Oostenink (Iowa) for nominating our region 1 shining senior.

Region 2:

Tammy Banton (Coastal Carolina)

Majors: Business marketing and business management

Future Goals: To own a marketing or event planning business.

Contributions to ΓΦΒ: Former administrative vice president, former membership vice president

Tammy shines because she personifies our Core Values. She is a role model for every sister as she dedicates her time to sisterhood, leadership and scholastic achievement. Tammy has been 100 percent devoted to Gamma Phi Beta since her new member days; she boosts morale and shares a positive attitude at every event. Even during her senior year, as she finishes school and works an internship, Tammy keeps the chapter focused on sisterhood and encourages her fellow seniors to stay involved. Each member of the chapter could tell a story of how Tammy has demonstrated true sisterhood, and how her outstanding leadership has made the chapter the best it can be.

Thank you to Chapter Administrative Vice President Katie Spero (Coastal Carolina) for nominating our region 2 shining senior.



Visit gammaphibeta.org and click on the collegians tab, Graduating Seniors, for more shining seniors.



Top row: Monica Hernandez, Kelly Peterson Bottom row: Michelle Thorn, Brina Dokich, Sammi Kerley, Nanxi Liu

Region 3:

Kelly Peterson (Auburn)

Major: Elementary education

Future Goals: To work as a student teacher in Ireland before graduation in May; later, to serve with Teach for America in low-income schools.

Contributions to ΓΦΒ: Chapter president



Kelly shines because she flawlessly represents Gamma Phi Beta's ideals. She has a love for all things beautiful and strong; she gives unselfishly to the community and Auburn University; she has a passion for learning as a future educator; and her loyalty to her sisters is unwavering.

Her kindness, dedication and grace inspire the highest type of womanhood in others.

Thank you to Ashley Chynoweth and Chapter Advisor Leigh Partain Cummings (both of Auburn) for nominating our region 3 shining senior.

Region 4:

Susan "Susie" Miller (Indiana)

Major/minor: Health administration/management

Future Goals: To attend graduate school and study public health or public affairs; later, to work in hospital management.

Contributions to ΓΦΒ: Former chapter president

Susie shines because she continues to improve herself and enhance her leadership skills. She is a very teachable woman with a high capacity for critical thinking and problem solving both within a team setting and individually. One of Susie's strengths is her ability to see situations objectively and apply her convictions to make ethical decisions. Since her term as president ended, Susie has mentored up-and-coming leaders and taken on additional leadership roles on campus. She has the enthusiasm, dedication and drive to succeed in any situation.

Thank you to Chapter Advisor Christina King (Purdue) for nominating our region 4 shining senior.



Our *shining*

Region 5:

Michelle Thorne (Illinois State)

Major: Marketing

Future Goals: To work in the integrated marketing communications field.

Contributions to $\Gamma\Phi\beta$: Standards chair, former chapter president



Michelle shines because she led her chapter with energy, wisdom and compassion. She motivated members to successfully complete requirements for good standing by building consensus and bringing the sisterhood together. A confident leader, Michelle approaches daunting challenges with courage, thought and the maturity to take the high road.

As a senior, Michelle continues to be involved while working a part-time job and achieving excellent grades. She was a Panhellenic recruitment counselor in the fall and will serve as a trip leader for the university's alternative spring break program. She is also a member of the American Marketing Association and Rho Lambda, a national sorority leadership recognition society.

Thank you to Chapter Advisor Harriett Bedwell Cogan (Indiana State) for nominating our region 5 shining senior.

Region 6:

Brina Dokich (Colorado-Boulder)

Major: Communications with a focus on digital media

Future Goals: To work in public relations or event planning (weddings).

Contributions to $\Gamma\Phi\beta$: Membership vice president



Brina shines because she is a hard worker who leads by example. This year, she balances a full course load with a job, internship and the duties of membership vice president after assuming a second term. She represents the highest type of womanhood daily and has earned the respect of her sisters and advisors.

"I always want to be communicating, working and helping others," Brina shares. "If I can stay involved with Gamma Phi Beta, and incorporate my Sorority and my passion into my future career, that would be ideal."

Thank you to Recruitment Advisor Ariel Mata (Colorado-Boulder) for nominating our region 6 shining senior.

seniors

Region 7:

Samantha "Sammi" Kerley (Arizona State)

Major/Minor: Political science/history, emphasis in American history

Future Goals: To attend graduate school in Washington, D.C. and study public policy; later, to be a lobbyist on Capitol Hill.

Contributions to ΓΦΒ: Public relations vice president (PRVP), former education vice president, former student lobbyist for Greek housing initiatives



Sammi shines because she puts the interests of others ahead of her own. As her chapter's PRVP, she strives to create fun and safe events and helped to better define Gamma Phi Beta's name on the large Arizona State campus. With her carefree personality, Sammi is best known for helping many sisters find their confidence and self esteem. She genuinely cares about each and every member and goes out of her way to make others feel special.

Thank you to Erica Keller (Arizona State) for nominating our region 7 shining senior.

Region 8:

Nanxi Liu (California-Berkeley)

Majors: Business administration and nuclear engineering

Future Goals: To build her internet business, Atactic Media; long term, to become the first Asian-American woman in the U.S. Senate.

Contributions to ΓΦΒ: Standards chair



Nanxi shines because she is extremely ambitious and proactive in the community. As vice president of student government, she worked to rebuild and secure financing for the student center; at the time, the project was the second-largest capital campaign in California. Nanxi won a campus award for creating a Smartphone app that helps decrease crime in college areas. She received a fellowship to conduct research on corporate social responsibility in Hong Kong last summer and is a classically trained pianist who volunteers as a piano teacher. Nanxi is also the reigning Miss Oakland California, winning the title on her platform of empowerment through education.

Thank you to Regional Coordinator Mariko Blakemore (California-Santa Cruz) for nominating our region 8 shining senior.

Finding CLOSURE

The awful, heartbreaking attacks of 9/11 are indelibly seared in our collective memories; the day we watched helplessly as those horrific events unfolded will never be forgotten. Many of our members were more personally affected by the loss of a friend, colleague or even a family member. Senior Olivia Vilardi-Perez (Syracuse) can relate.

A busy student managing the intense workload of a triple major – biology, anthropology and an integrated learning program in forensics – Olivia is pursuing a career as a forensic anthropologist. It's a "depressing" field, she says. "They work with human remains that don't have much tissue attached. They try to identify who the person is, how and where they died."

Olivia has known since sixth grade what she wanted to be when she grew up, all because of 9/11. At age 10, Olivia lost her father in the terrorist attacks in New York. He worked on the 103rd floor of the north tower for a financial service firm whose entire staff at work that day – 658 men and women – perished.

"I read about the forensic anthropologists who were at ground zero working to identify people," she continues. "Right then something lit up inside me, and I wanted to be one of those people who helped families find closure."

Her desire to help others led her to become the chapter's philanthropy chairwoman which, as it turns out, is the perfect way for Olivia to be involved with the Sorority and the community. Our camping focus, in particular, has special meaning for this Gamma Phi.

As a child, Olivia attended America's Camp in Massachusetts. The one-week summer camp serves children

who lost a parent or sibling in the 9/11 attacks and for children or siblings of firefighters and law enforcement officers lost in the line of duty at any time. All costs are covered by grants and donations.

"My first year, it was so hard to say goodbye to my mom and get on that bus to camp," she remembers. "I cried myself to sleep during the ride, and when I woke up, there was a sea of camp counselors, cheering because they were so happy to see us."

Olivia later spent two weeks as a counselor at America's Camp. "Being on the other side as a counselor is such a warming experience," Olivia says. "Knowing this one week a year can make the campers feel like kids again – I can't describe how happy it makes me feel to give back."

Olivia has recently been published in The Legacy Letters: Messages of Life and Hope from 9/11 Family Members (see page 109). Available through Penguin Group, the book sells for \$22 at major book retailers and benefits 9/11 families.

Olivia's ultimate dream is to work on crime scenes with the FBI. The academic road to this goal will require as much as 10 more years of education, training and certification. "It's killing me, but I really want it," she says with a laugh. Olivia is pictured on the left next to an Alpha chapter sister.



Get to Know ... *Gamma Psi Chapter*



On the University of Northern Iowa campus, there's a Sorority that SHINES – Gamma Phi Beta. Gamma Psi Chapter President Allison Kilfoy proudly shares what makes her chapter special.

The Crescent: What type of facility do you occupy?

Allison Kilfoy: We moved into our chapter house in 2004, although it was built in 1930. The live-in capacity is 16 women. We made some great updates last summer and we are very grateful for our wonderful house corporation board's help. We love the front staircase landing because it faces a big bay window. We also love our multi-layer decks that are overhung with grapevines, especially when they're decorated for recruitment! But the best feature of our home is the feeling you get inside: friendship, sisterhood, memories, support and positive energy.

What makes your campus unique?

AK: We are a tight-knit community that thrives on interactive networking. Our Greek community is very supportive of the university and other student organizations.

Describe your relationship with local alumnae.

AK: The closest alumnae chapters are in Cedar Rapids and Des Moines. We send an alumnae newsletter and we created a Facebook page to help us stay connected. We hosted an Alumnae Tea and open house during Homecoming, which was attended by a record number of alumnae.

What annual events do you enjoy?

AK: Every year we hold our fall retreat weekend at a Camp Fire USA site. We set individual and chapter goals, have sisterhood activities and complete a service project by preparing the camp for events. It's very rewarding to work with the camp firsthand.

What is Gamma Psi's biggest strength?

AK: We take pride in having 100 percent retention of new members. Our goal is to make our new members feel at home from day one. This effort takes the commitment and support of every member. We have a strong new member education program and our sisters do a great job of including our new members in all aspects of chapter life. We recently started a new member Facebook

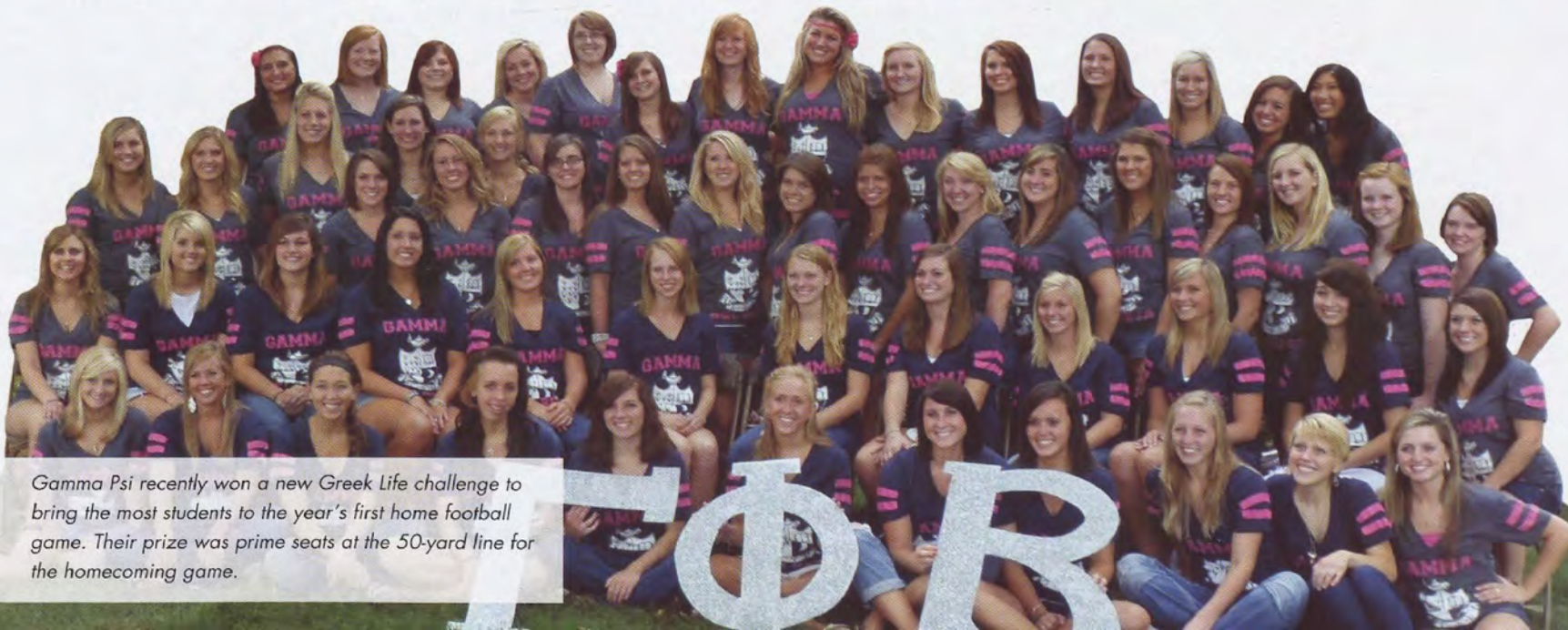
group with news, event information and opportunities to connect with each other as well as with advisors and chapter officers.

What philanthropies are supported by your chapter?

AK: We hold an annual kickball tournament to raise money for breast cancer awareness. Directly or indirectly, cancer affects our society and we are dedicated to helping find a cure! For our Crescent Classic, we hold a pancake breakfast in the spring to benefit Camp Fire USA. Finally, each year during recruitment, our families send us pink carnations for good luck. After Preference, we donate the flowers to patients at a local hospital to brighten their days.

Recommend a collegiate chapter for our spotlight!
Contact TheCrescent@gammaphibeta.org.

Gamma Psi Chapter
Chartered November 23, 1968
Current size: 60 members, campus Total
Number of NPC sororities on campus: Four



Destination: {Santa Barbara, Calif.}



As far as charming vacation spots, it's hard to beat the quaint town of Santa Barbara on the California coastline for its fantastic weather, family atmosphere and culture. Local alumnae chapter president Lynda Stevens Fairly (Southern California) introduces us to her beautiful city, known as the American Riviera.

community of Franciscan friars. There is also a retreat center with guest rooms, conference rooms, a commercial kitchen and dining room, a beautiful church, museum and gift shop, cemetery, mausoleum and 10 acres of beautifully landscaped gardens.

Outdoor things to do: Tour one of the many vineyards, walk the fantastic beaches or hike the scenic trails. There is an arts and crafts sale at the beach every weekend, as well as a skateboard arena and beach volleyball courts. Douglas Preserve has the best view of the coastline. The zoo is lovely and the grounds double as a botanic garden.

Indoor activities: We have lots of museums! Visit the Santa Barbara Museum of Art, Museum of Natural History, Historical Museum or the Maritime Museum. Take a free architectural tour of the Santa Barbara Courthouse (built in 1929) or visit the gracious Casa de Huerro estate, a National Historic Landmark.

Where you'd take a first-time tourist: The wharf, the Danish-style town of Solvang, the Santa Barbara Mission and, of course, the amazing beaches.

Other reasons to visit: We have super live theatre and the open-air Santa Barbara Bowl hosts major concerts and productions that pass through between big-city performances.

If your town is a Road Trip destination, email TheCrescent@gammaphibeta.org. We prefer to feature towns that host our collegiate chapters.

Little known fact about the place: John F. Kennedy Jr. and his bride Jacqueline honeymooned here at the San Ysidro Ranch.

Famous for: The best weather in California. The International Film Festival, January 26-February 5, will be attended by Michael Douglas and Catherine Zeta-Jones this year. The Music Academy of the West, funded by local patrons, is renowned for music students.

Nearest collegiate chapter: Delta Psi Chapter at the University of California at Santa Barbara. Members live in a modified apartment building which includes an

outdoor central patio with a fountain. Surrounded by flowers, the patio is a central location for members to meet up before events, study or just lounge around.

Best restaurants: Lucky's, Stella Mares, Downey's, Olio e Limone, Beachside Bar and Grill, Arts and Letters Café and Cold Springs Tavern. There are also many wonderful Thai, Chinese and sushi restaurants.

Historical significance: The Santa Barbara Mission, the 10th built in California, was founded in 1786 and is home to a

new!

Set of three rings features a band of topaz crystals and a band of pink crystals surrounding engraved band in the center. Perfect to wear individually and great-looking when worn as a trio!



A.



B.

Chapter President's Ring!



C.

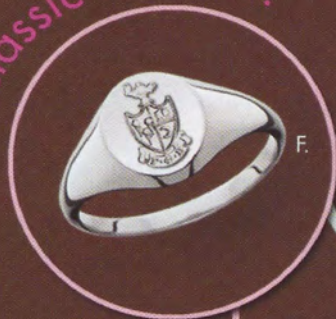
new!

D. (Chain sold separately.)

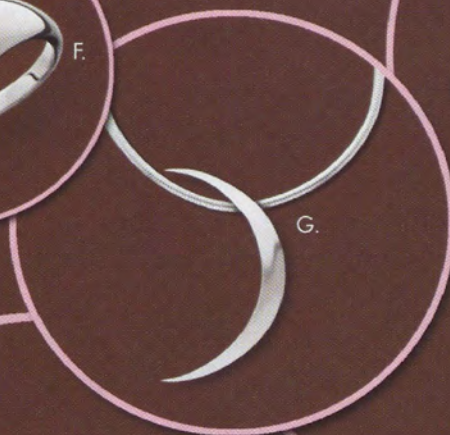
TO ORDER, VISIT WWW.HJGREEK.COM, OR CALL 1.800.422.4348



classic favorite!



F.



G.



E.



H.

new!

A. #335GR Stacked Ring Set stainless steel...\$50 (Available in whole sizes 6 - 8.)

B. #0453 Chapter President Ring 10K, 10KW...\$295 SS...\$119

C. #snake Snake Chain, 18" 14K...\$276 GF...\$28 SS...\$18

D. #1044CST Crescent Disk Charm SS...\$35

E. #stole Graduation Stole...\$35

F. #0345 Signet Ring with crest mounting 10K...\$275 SS...\$89

G. #1668 Polished Crescent Necklace, 18" SS...\$55 (Chain included.)

H. #SB497CST Wide Band Crescent Cuff Bracelet SS/GP...\$135

K-karat gold, KW-karat white gold, SS-sterling silver, GP-gold-plated

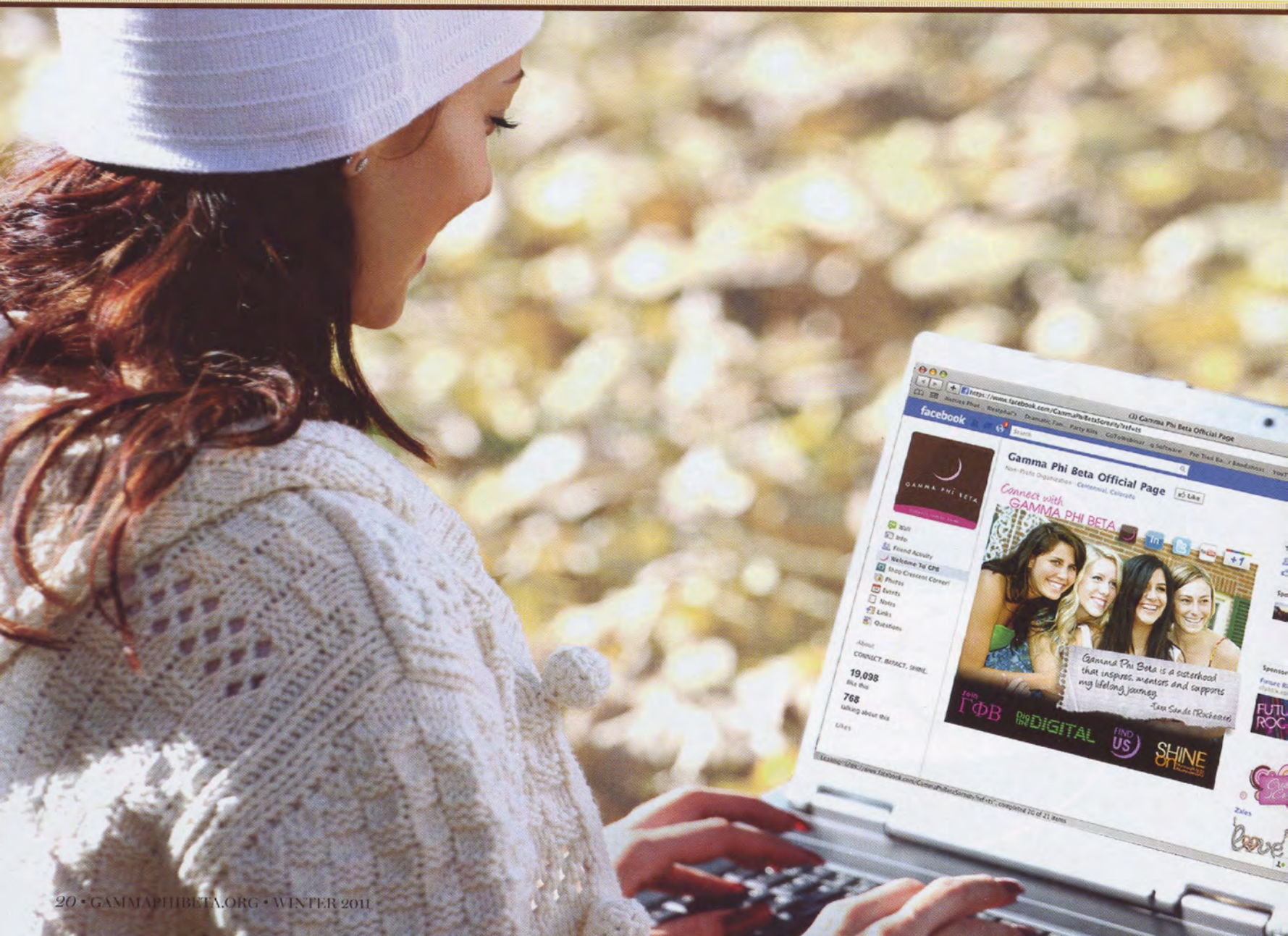


Find us on Facebook: www.facebook.com/hjgreek

By Kara Apel (South Carolina)

Be Savvy IN CYBERSPACE

SMART MOVES AND HABITS TO STAY SAFE ONLINE



It started out seemingly innocent.

A young woman who had just accepted her bid to Kappa Delta Sorority at Florida State University received a Facebook message from one of her new sisters.

The conversation started out normally – but then took a turn when the “sister” asked for nude photos, saying it was needed for her membership in the sorority. The new member went to the police, but other victims weren’t as savvy.

While this may seem like an isolated case, it proves an unfortunate reality – the Internet can be a very scary place.



Who's Your Friend?

While we all love the excitement of receiving new friend requests, it's essential to monitor your online connections.

Marissa Lewis Sweazy (Bradley), director of social and digital media at a full-service marketing agency, warns against accepting someone as a friend who you don't personally know. "If I don't recognize someone, I won't connect with him or her on Facebook or Twitter," Marissa explains. "I will write back and ask, 'How do I know you?'"

If you determine the request is from a complete stranger whom you have no reason to be connected to, pass up that friend request. "It's better to err on the side of caution and ignore it," Marissa advises.

Not sure if someone trying to "friend" you is legitimate? Do a little detective work on Google to make sure you know the person. Check out whether you have mutual friends. If you do an image search of this person, do the pictures match up with what's on his or her profile? Fake profiles generally only have one profile photo, are public with no privacy settings and the "interested in" and "looking for" sections are all checked

(e.g., interested in men and women, looking for friendship, dating, etc.).

Keep it Private

Marissa's specialty is helping her clients deal with crisis situations and bounce back from negative information spewed on the Internet. When teaching on the topic, she makes a startling point: Do you think a casual acquaintance, or perhaps even a friend, would pass up money when a media outlet comes calling for your information?

"It only takes five seconds to change your future when it comes to the Internet," she says.

Marissa's right – just because you think you're protected, doesn't mean you can post irresponsibly. What you post can and may be used against you later, especially if the situation arises for someone to benefit.

Social media websites differ from one another through the nature of information that is shared. For example, information on Facebook is more personal, while LinkedIn is career oriented. In either case, take the time to manage your privacy settings so only your approved list of connections can view your posts and photos.

"Your Facebook information should really only be for people you know and trust," Marissa says.

Chill with the Checking In

Location-based Smartphone applications like Foursquare and Gowalla, among a host of others, are a fun way to see what your friends are doing and where they're hanging out.

While these apps are entertaining, you could also be inviting in people you don't know by not keeping your account locked down. Two-thirds of burglars questioned in a recent study conducted by Sky News said they use social media to assist them with their crimes.

Kristen Record Heptinstall (Alabama) has launched major social media initiatives for news outlets and knows both the conveniences and dangers of applications like these.

"By following your check-in habits, one could easily see where you live, work and attend class," Kristen explains. "In essence, someone could learn your entire routine and be able to find you."

Checklist for Safe Postings

Social media expert Kristen Record Heptinstall (Alabama) gives the following advice about using location-based applications safely:

- Don't ever check-in at home or a friend's home and keep your check-ins to public places.
- If you're with a group of Sorority sisters, consider deciding together that you will only "check out" of a venue as you're leaving.
- Don't automatically share each check-in to Facebook or Twitter, especially if your accounts are available to the public.
- Be careful about broadcasting that you're on vacation or away from your dorm or apartment, making it an easy target for burglars. And while you're at it, never list your home address. A study recently released by the Ponemon Institute found that users of social media sites were at greater risk of physical and identity theft because of the information they were sharing.
- Never list your birth year with information about where you were born. This gives identity thieves critical clues to predict your social security number.

And the most important:

- Consider carefully who you add as a friend on these networks, and for the most safety, friend only those you know and trust.

She recommends trying a similar website like GetGlue or Miso, where you can still get the same competitive kick, but you're disclosing your interests, rather than your whereabouts.

Even if you don't use a location-based application, Facebook can still betray you. Last year, police uncovered a robbery ring in New Hampshire where the burglars were using Facebook to find vacant homes. They broke into more than 50 private residences.

Websites like PleaseRobMe.com can show you how vulnerable you are to being victimized by burglars based on check-ins you've accumulated recently and assessing your risk for being targeted.

To keep yourself safe, make sure the geotagging function on your Smartphone is turned off. Most phones have this option under location and security settings. To make sure your location is not being monitored by GPS, it's vital to keep this setting off. Also, make sure that your photo applications do not have geotagging enabled.

Way to Represent

No matter when you joined the electronic age, your Internet activity leaves a footprint. What you post affects not only how you are viewed by others, but how Gamma Phi Beta is viewed overall.

Before you post something that could be on the riskier side, take a second to reflect on Gamma Phi Beta's new mission statement. Does what you're about to post inspire the highest type of womanhood? Would you want it to represent all of your sisters? If not, take your hand off the trigger and either save that picture somewhere offline or vent about your thoughts in a private journal.

Another reason to censor your posts is to protect your career. Companies often buy



software for an all-access pass to Facebook. With the software, even secure profiles can be viewed by potential employers. According to online sources, up to 92 percent of employers check out applicants' social media profiles before making a hiring decision (davidhallsocialmedia.com).

Remember that everything you post online - from email to Twitter - is never completely safe. Tight privacy settings don't mean you have carte blanche to post on Facebook or Twitter.

"You should never put a photo or a video online that you wouldn't want to see on the front page of the newspaper," Marissa warns.

Even if you are having legal, appropriate fun, it's important to realize the persona you are conveying of yourself as an individual and your chapter as a whole.

"Keep in mind that whatever you put out there on the Internet is there forever - and not just for location-based apps, but for blogs, personal websites and networks like Facebook and Twitter," Kristen adds. "College is a lot of fun, but be prepared for the future, and safeguard not just your safety but also your reputation for future employers."

Thanks to Barbara Hurt-Simmons (Nebraska-Kearney) for this relevant story idea! Got something to share? Contact TheCrescent@gammaphibeta.org today!



GAMMA PHI BETA

Mission

TO INSPIRE
THE HIGHEST TYPE
OF WOMANHOOD.

Vision

We will build confident women of character
who celebrate sisterhood and
make a difference in the world around us.

Guiding Principles

We promote lifelong commitment, intellectual and
personal growth, and service to humanity.

We perpetuate our heritage as we commit to the
growth of our Sorority.

We foster enduring friendships.

We advocate ethical behavior, respect,
authenticity, accountability and integrity.

We aspire to excellence in all that we do.

CONNECT. IMPACT. SHINE.

SORORITY Life



Epsilon Phi Chapter (Bentley) During homecoming weekend, the four sororities on campus battled it out for the title of Sorority Football Champion. After weeks of practicing, sporty sisters at Epsilon Phi won the trophy for the second straight year.

Region 1

DELAWARE

🍎 Eta Gamma Chapter (Delaware)

Sisters hosted a hazing awareness presentation last fall for more than 200 Greek life members. Students learned about the damage that hazing can cause and how to prevent it.

NEW YORK

💖 Epsilon Epsilon Chapter (Union)

Before formal recruitment last fall, members were trained to use the new Select-a-Sis program. After a week of craziness and fun, they were rewarded with 38 amazing ladies.

ONTARIO

💖 Alpha Alpha Chapter (Toronto)

The chapter busted Quota, bringing 12 new women into the sisterhood after formal recruitment. With an enthusiastic new member class, they're looking forward to hitting 'Total this year through ongoing informal recruitment efforts.

PENNSYLVANIA

💖 Alpha Upsilon Chapter (Pennsylvania State)

The chapter and its 42 new members held the year's first sisterhood retreat. By celebrating our Core Values, members introduced newcomers to our sisterhood.

QUEBEC

💖 Alpha Tau Chapter (McGill)

This past semester, the chapter marked its 80th anniversary on campus. The weekend-long sisterhood celebration was a time for members to come together and rejoice in all Alpha Tau's achievements.

💖 Montreal Alumnae Chapter

Sisters from across North America representing several decades helped celebrate Alpha Tau Chapter's (McGill) 80th year on campus. At a mixer, banquet and brunch, they renewed friendships and strengthened the bonds of sisterhood.

Region 2

FLORIDA

🌺 Naples Area Alumnae Chapter

On Founders Day, the chapter celebrated its third year of scholarship giving. After being challenged by the Foundation to create a scholarship for students in need, they are well on their way to making a difference in the lives of our sisters.

🌺 Tampa Bay Alumnae Chapter

Members gathered for a fall "Camp Gamma Phi"-themed meeting where they discussed our Camp Fire USA philanthropy and plans to assist with Eta Beta Chapter (Florida Southern) recruitment.

💖 The Villages Alumnae Chapter

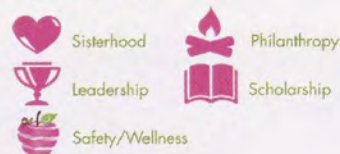
The alumnae chapter, formerly a crescent circle, was installed on Founders Day, November 11, 2011, with 11 members present. The chapter looks forward to an active year of sisterhood.

Gamma Phi Beta Sorority by Regions



Submit your chapter news for the spring issue by February 1. Crescent correspondent guidelines can be found on our website under the About tab — click Sorority Publications, then *The Crescent*.

Symbol Key:





Epsilon Iota Chapter (Christopher Newport) Sisters held a back-to-school cookout with their local philanthropy, Girls, Inc. and enjoyed spending time with the young girls. Crescent Classic was a success and enabled the chapter to donate nearly \$1,400 to Camp Fire USA. Several members also participated in a breast cancer walk, raising more than \$1,000.

MARYLAND

🔥 Washington D.C. Alumnae Chapter

In October, alumnae partnered with Chico's clothing store for a charity event, held annually since 2004. The store donates 10 percent of one evening's sales to Camp Fire USA's Patuxent Council; with supplementary funds from the Foundation, the event is a successful fundraiser.

NORTH CAROLINA

♥ Raleigh Area Alumnae Chapter

Area alumnae gather monthly for social activities and regular meetings. Recent events include comedy nights, trivia, Bunco and supporting the Angel Tree Program.

South Carolina Sisterhood

Members in region 2's South Carolina chapters really know how to share the Gamma Phi Beta love. When **Zeta Sigma Chapter** (South Carolina) needed help with a super-sized recruitment (1,380 potential new members), **Zeta Zeta Chapter** (Coastal Carolina) came to the rescue with less than a day's notice. A week later, Zeta Sigma sent sisters to help **Zeta Eta Chapter** (Lander) recruit. The result of all this teamwork was fabulous new members all around the state!

SOUTH CAROLINA

♥ Epsilon Theta Chapter (Clemson)

To celebrate Rock Solid Relationships, sisters held a fall-themed Big/Little Sister reveal event. It was a fantastic success and the perfect way to show the newest new member class how much they mean to the chapter!

VIRGINIA

🍎 Epsilon Pi Chapter (George Mason)

With 31 new members, the chapter held a retreat at a campground. One sisterhood activity included Jazzercise taught by a chapter member who is a trained fitness instructor.

Region 3

ALABAMA

♥ Gamma Phi Chapter (Auburn)

The chapter was thrilled to add 67 new members to their sisterhood. Together, the group attended an Atlanta Braves baseball game and played get-to-know-you games. New members were introduced to other

campus Greeks and enjoyed a sisterhood dinner catered by a local restaurant.

♥ Epsilon Lambda Chapter (Alabama)

Sisters had a successful recruitment, inviting 101 new members. The chapter celebrated at a tie-dye-themed bowling event.

GEORGIA

📖 Atlanta Alumnae Chapter

The chapter, together with **Zeta Tau Chapter** (Emory), hosted a Founders Day event in November. Alumnae proudly presented \$600 in scholarships to collegiate sisters – one woman from each Georgia chapter and an overall winner.

TEXAS

♥ Gamma Iota Chapter (Midwestern State)

The sisters paired up with **Gamma Zeta Chapter** (Texas A&M-Commerce) for a retreat and a tailgate party before the two schools played football at Cowboys Stadium in Arlington, Texas.



Delta Upsilon Chapter (Georgia)

Some of the chapter's seniors celebrate their last Bid Day, themed "Mi Casa Es Su Casa: Gamma Phieta 2011," on the house's front lawn.



Beta Phi Chapter (Indiana) To prepare for fall recruitment, members posed for promotional photos over the summer. This custom inlaid wood floor is certainly a point of pride for the chapter!

♥ Brazos Valley Alumnae Chapter

Alumnae celebrated the chapter's installation (formerly Brazos Valley Crescent Circle) October 15, 2011, and enjoyed a festive time of sisterhood.

♥ Dallas Alumnae Chapter

Members enjoyed a successful Fall Back Fashion Show with models from **Alpha Xi Chapter** (Southern Methodist). Alumnae went to the Alpha Xi house for a Halloween celebration in October and held a lovely Founders Day brunch and silent auction in November.

Region 4

INDIANA

♥ Delta Iota Chapter (Purdue)

At their first sisterhood retreat of the year, members and new members visited the Indianapolis Zoo. They spent the afternoon enjoying the animals, petting sharks and attending the dolphin show during a memorable and fun event.

OHIO

♥ Beta Gamma Chapter (Bowling Green State)

Sisters welcomed nine new members and held a fun chapter retreat.

♥ Cincinnati Alumnae Chapter

Area alumnae celebrated Founders Day twice this year! Their annual luncheon with **Dayton Alumnae Chapter** included Ritual and a silent auction. Members also attended a celebration with the colony at the University of Cincinnati and look forward to more interaction with the new sisters!

Region 5

ILLINOIS

♥ Epsilon Chapter (Northwestern)

Alumnae who graduated in the 1970s held a homecoming weekend reunion. Sisters enjoyed an outdoor welcome reception, homecoming parade, pep rally, campus tour, house tour, tailgate party, football game and a party at the John Evans Alumni Center, a mansion on Lake Michigan, where a 1970s

slideshow of collegiate life was presented. To join a 2013 reunion, email Bev Coscarelli at avantibev@att.net.

♥ Omicron Chapter (Illinois at Urbana-Champaign)

The chapter hosted an Alumnae Career Fair to reconnect with area alumnae while learning valuable advice for life beyond collegiate years. Five alumnae spoke to collegians about a variety of career-related topics.

♥ Beta Eta Chapter (Bradley)

New members enjoyed an exciting week in October as their "Moms" secretly filled gift baskets with goodies and clues. The big reveal event, held at the chapter house, was full of anticipation and sisterly love.

♥ Delta Pi Chapter (Illinois State)

The chapter held a sisterhood event with new members at a nearby campground where they grilled hot dogs and hamburgers, made s'mores and sang Gamma Phi songs around the campfire. Even the bugs couldn't dampen their spirit!

♥ Chicago Alumnae Chapter

Since 1977, the chapter has held an annual holiday party to raise funds for our camping philanthropy. Many thousands of dollars have been collected, and the event is still going strong.

♥ Chicago Northwest Suburban Alumnae

Members attended the Northwest Suburban Panhellenic fashion show to benefit scholarships for area high school senior girls. One member modeled representing Gamma Phi Beta. Alumnae

also sold wrapping paper and carnations to raise funds for camping and Foundation donations.

IOWA

🔥 Gamma Psi Chapter (Northern Iowa)

Members held the chapter's annual kickball tournament to raise money for breast cancer awareness. Eleven sisters also volunteered from 2-8 a.m. to help build a home for "Extreme Makeover: Home Edition"!

MINNESOTA

🔥 Gamma Mu Chapter (Minnesota State-Moorhead)

The chapter joined fellow Greeks to raise money for a local food bank. Members jumped in an inflatable castle for 48 consecutive hours to raise hunger awareness and donations.

💖 Minneapolis-St. Paul Alumnae Chapter

Last October, alumnae treated Kappa Chapter's (Minnesota-Twin Cities) seniors to ice cream and spoke about staying involved with Gamma Phi Beta after graduation. The alumnae reminisced about their experiences as collegians, and seniors shared their future goals and plans.

NORTH DAKOTA

🔥 Alpha Beta Chapter (North Dakota)

Members volunteered and walked in the Relay for Life event held last year, wearing matching "Viva La Cure" shirts. Sisters also made and sold pink frosted cupcakes for the cause – all while showing Gamma Phi Beta pride in a positive and fun way!



Omega Chapter (Iowa State) Sisters happily welcomed 32 new members after fall formal recruitment. The chapter went on a retreat to Camp Fire USA's Camp Hantesa to get to know their new sisters. Later, the chapter's annual Crescent Classic: Cakes philanthropy fed the Greek community and raised funds for camping.

💖 Fargo-Moorhead Alumnae Chapter

Alumnae were busy in 2011 with a Senior Tea in April, a lake gathering in August, a fall planning meeting and Founders Day. A Gamma Mu Chapter (Minnesota State-Moorhead) alumnae reunion was also held, attended by 20 sisters from across the United States.

WISCONSIN

💖 Gamma Rho Chapter (Wisconsin-Oshkosh)

Members welcomed 11 new sisters and are enjoying house renovations including hardwood floors and new carpet.

Region 6

COLORADO

💖 Beta Rho Chapter (Colorado-Boulder)

Sisters were proud to receive second place in the university's homecoming competition. The theme was "Colorado University

through the Decades" and Beta Rho rocked the 1950s in the parade, relay race and banner event.

MISSOURI

🔥 Greater Kansas City Alumnae Chapter

More than 20 alumnae volunteered at Camp Fire USA's National Youth Summit in Kansas City, Missouri. Sisters helped with registration, hosted rooms, took photos and directed attendees.

💖 St. Louis Alumnae Chapter

Sisters celebrated Founders Day with Gamma Tau Chapter (St. Louis) collegians. The luncheon was held on the Washington University campus and featured guest speaker and 50-year member Sally Erikson Lewis (Bradley) who spoke about the gifts of sisterhood.



Nebraska Safety & Wellness

Partnering with Sigma Alpha Epsilon Fraternity, sisters at **Pi Chapter** (Nebraska-Lincoln) cosponsored an alcohol-awareness event called "Do it Sober." Participants were given purple ribbons as a reminder not to drink and drive.

Purple was the favorite color of Laura Cockson (Nebraska-Lincoln, 1996), a popular 21-year-old junior. In 1998, Laura and her two sisters were en route to meet their parents when their car was struck by a drunk driver who was fleeing police and driving with a suspended license. When her parents arrived on the scene, they learned one of their daughters was killed instantly, and two were critically injured.

The annual awareness event is held in Laura's memory. "Her parents come each year to share this story," says Megan Lehl (Nebraska-Lincoln), chapter historian. "Each year, it's hard for them to talk about that night. It brings up a lot of emotions. Since most of us can't relate to losing a child, they talk about how Laura didn't get to get married or have children. It really impacts the students."

With all Greek chapters on campus in attendance, "Do it Sober" gave a clear message about the tragic side to driving under the influence of alcohol. Motivational speaker and comedian Michael Gershe used humor and audience participation to connect with the students before describing how a drunk driver changed his life. As an infant, Michael and his parents were struck by another motorist who was intoxicated. His mother was killed in the accident, and he suffered severe injuries.

"Since he had a comical approach instead of preaching to us, a lot of people came away thinking, 'We'll think twice before getting in the car with a drunk driver,'" Megan says.

The evening culminated with the awarding of two memorial scholarships. In Laura's name, the university community established the scholarships to recognize the efforts of students who promote responsible use of alcohol and who lead by example. Each is given \$500.

Congratulations, Pi Chapter, for your work to promote safety on the University of Nebraska-Lincoln campus. Gamma Phi Beta is proud of you!

NEBRASKA

♥ Omaha Alumnae Chapter

Members attended a cooking class where the author of "Greek Chic Cuisine" demonstrated easy and flavorful Mediterranean recipes. The delicious menu included tiropitas, Greek village salad, baklava salmon and phyllo cups with baklava ice cream. Alumnae helped prepare the recipes and sampled them at the end of class.

OKLAHOMA

♥ Psi Chapter (Oklahoma)

After a record-setting fall recruitment where chapters hosted almost 1,000 women, Psi busted Quota with 77 amazing new women. On Bid Day, they celebrated with music, pictures and a bounce house.



Beta Psi Chapter (Oklahoma State)

At a recent PACE event, members heard from a guest speaker on personal safety and learned self-defense moves.

Region 7

ARIZONA

♥ Beta Omega Chapter (Northern Arizona)

The annual Crescent Classic: Gamma Phi Golf went off without a hitch as teams of four came out dressed in costumes to play nine holes of golf with the Gamma Phis. The fun event supported Camp Fire USA.

♥ Phoenix Alumnae Chapter

The chapter hosted its "Fall Back into Gamma Phi Beta" event and attended the Kokopelli Krush in October, a fun night for sisters from around the Phoenix area to visit, celebrate the fall and stomp some grapes.




Gamma Kappa Chapter (Nebraska-Kearney) New members enjoyed seeing loyalty in action at the annual Heritage Supper provided by local alumnae.




Epsilon Gamma Chapter (San Diego) New members were recognized for having the highest all-Greek new member GPA last spring semester with an average of 3.36. The chapter ranks second in GPA among sororities on campus.

CALIFORNIA

 **Beta Alpha Chapter** (Southern California)
Sisters held their annual Crescent Classic: Handball Tournament. Proceeds supported the university's official philanthropy, Troy Camp, which provides underprivileged children from the surrounding community the opportunity to build leadership skills at summer camp.

 **Gamma Eta Chapter** (California State-Long Beach)
The chapter shined at the annual campus Greek Awards Ceremony as they brought home 11 awards including top sorority president, top chapter advisor and academic

achievement for highest GPA. Chapter alumnae are busy planning the chapter's 50th anniversary celebration, scheduled for March 9-10. See page 7 for contact information.

 **Delta Delta Chapter** (California State-Fullerton)
Sisters raised environmental awareness during a semester-long "Go Green" campaign. By educating students about recycling both in person and through the chapter's Facebook page, members increased their visibility on campus while promoting sustainable living.

Don't miss your chance
to win recognition at
Convention 2012! Award
nominations are due February
20; visit gammaphibeta.org to
download the applications.

Delta Psi Chapter (California-Santa Barbara)

At the chapter's annual Crescent Classic: Pancake Breakfast, fellow Greeks, students and families lined up around the block to enjoy all-you-can-eat pancakes. Sisters also welcomed children from a local elementary school into the chapter house for a fun Halloween carnival.

Epsilon Nu Chapter (Chapman)

Members were thrilled with their recruitment results when 67 new members accepted bids to join the sisterhood.

Zeta Theta Chapter (Pepperdine)

Members were excited to share our international philanthropy during formal recruitment, using a "Destination: Gamma Phi Beta!" theme. By creating scrapbooks for summer campers, sisters raised awareness about their local philanthropy, Camp Laurel, and Camp Fire USA.

Balboa Harbor Alumnae Chapter

At a planning meeting in October, members charted events such as movie night, Bunco and Thanksgiving dinner where families were invited to attend. Alumnae celebrated a successful Founders Day with **Epsilon Nu** (Chapman), **Delta Eta** (California-Irvine) and **Delta Delta** (California State-Fullerton) chapters.

Greater Orange County Alumnae Chapter

Many recent graduates attended their first alumnae event, a mixer before

Epsilon Nu Chapter's (Chapman)

Crescent Classic: Airbands. The chapter welcomed two alumnae initiates and achieved the Founders Circle of Excellence, the highest honor for an alumnae chapter.

Inland Empire Alumnae Chapter

Sisters helped **Delta Lambda Chapter** (California-Riverside) welcome their newest members into the "sweet life" of Gamma Phi Beta with a post-recruitment party at the home of an alumna. New members enjoyed food and treats while making great memories.

La Jolla Alumnae Chapter

Each December, area alumnae combine their monthly meeting with a holiday celebration. With many sisters in attendance, they tally more than 600 years of Gamma Phi Beta pride.

Pasadena Alumnae Chapter

Pasadena and Glendale alumnae chapters jointly celebrated Founders Day with a brunch and program at Oakmont Country Club in Glendale.

San Fernando Valley Alumnae Chapter

Alumnae of all ages met for happy hour to mix and mingle while sampling delicious

appetizer platters. Future plans include comedy clubs, soup and salad bar night and a girls' night out.

NEVADA

Las Vegas Valley Alumnae

Alumnae spent a fun and educational afternoon of sisterhood when they learned how to design and make their own pottery creations at the All Fired Up Pottery studio.

Region 8

BRITISH COLUMBIA

Alpha Lambda Chapter

(British Columbia)

Keeping a visible presence on campus, sisters collected canned food at Halloween and held their second annual "The Gammies" event, a film festival to benefit Girl Guides of Canada.

CALIFORNIA

Delta Chi Chapter (California State-Sacramento)

Sisters supported breast cancer research at a three-mile walk through the California State Capitol and Old Sacramento, raising \$400. At formal recruitment, the ladies made 20 blankets for local women who are fighting breast cancer.

Diablo Valley Alumnae Chapter

Following an ice cream social meeting to plan the year's events, area alumnae invited collegians from **Eta Chapter** (California-

Berkeley) to a philanthropy dinner and collected gifts for needy children. In November, they honored 50-year members and our Founders. Local sisters can keep in touch through Groupupdates@yahoo.com.

IDAHO

♥ **Zeta Xi Chapter** (College of Idaho)
Collegians started a health and wellness blog to encourage lifelong fitness. The chapter was also first in grades among the national sororities on campus last spring.

OREGON

🍷 **Corvallis Alumnae Chapter**
More than 20 alumnae attended the chapter's third annual tailgate party before the Oregon State vs. Arizona State football game last fall.

🍷 **Portland Alumnae Chapter**
Alumnae shopped at the Assistance League of Portland's Thrift Shop to support the organization's children's charity. They enjoyed a facilities tour and learned about the league's work in the community.

Collegiate presidents and advisors, don't miss The Academy! See page 7.



California Philanthropy

Joining more than 2,400 local residents, **Epsilon Kappa Chapter** (California State-Chico) participated in Love Chico, a community-wide work weekend to complete 70 service projects throughout the city.

"We were the only Greek organization on our campus to participate this year," says Megan Perron, administrative vice president.

Sisters helped paint colorful and educational games on an elementary school playground with highway grade paint. Local reports indicated about half of the 200 volunteers working on the school yard were from Epsilon Kappa. Volunteers spent Friday, Saturday and most of Sunday to finish the paintings. With a true service mindset, members stayed until the work was completed, even though Love Chico officially ended Sunday at noon.

In a letter to the community newspaper, school administrators said: "Our once drab blacktop is now decorated with beautiful, educational and interactive murals and games for our students to play and learn from for years to come. A special thanks to Caroline Roady [Caroline Kenny Roady, California State-Chico] and the Gamma Phi Beta Sorority. They stayed through the rainy weather...We really could not have done this project without all of their positive attitudes and hard work."



2011 Circle of Excellence

Founders Circle

This prestigious Founders Circle award is presented to chapters that attained either the Pearl or Diamond Circle of Excellence for the past five years.*

Arlington, Texas
Balboa Harbor, Calif.
Chicago, Ill.
Chicago Far West Suburban, Ill.
Chicago NW Suburban, Ill.
Columbia, S.C.
Evanston North Shore, Ill.
Fort Collins, Colo.
Greater Fort Myers, Fla.
Greater Orange County, Calif.
Houston, Texas
Indianapolis, Ind.
Naples, Fla.
North Houston, Texas
Pasadena, Calif.
Philadelphia West, Pa.
Portland, Ore.
Princeton, N.J.
San Diego, Calif.
South Bay, Calif.
St. Louis, Mo.
Tulsa, Okla.
Washington, D.C.

**Three of the five years must have been Diamond status, although Diamond years need not have been consecutive.*

Diamond Circle

The following chapters in the Diamond Circle have met Circle of Excellence criteria plus five additional criteria.

Arlington, Texas
Atlanta, Ga.
Atlanta Southern Crescent, Ga.
Balboa Harbor, Calif.
Bergen County, N.J.
Bloomington, Ind.
Boise, Idaho
Boston, Mass.
Cedar Rapids, Iowa
Charleston, S.C.
Charlottesville, Va.
Chicago, Ill.
Chicago Far West Suburban, Ill.
Chicago NW Suburban, Ill.
Cleveland East, Ohio
Cleveland West, Ohio
Columbia, S.C.
Corvallis, Ore.
Dallas, Texas
Dayton, Ohio
Denver, Colo.
Diablo Valley, Calif.
Eugene, Ore.
Evanston North Shore, Ill.
Fort Collins, Colo.
Grand Rapids, Mich.
Greater Baltimore, Md.
Greater Fort Myers, Fla.
Greater Kansas City, Mo.
Greater Lansing, Mich.
Greater Miami, Fla.

Greater Orange County, Calif.
Hawaii, Hawaii
Indianapolis, Ind.
Jacksonville, Fla.
Kearney, Neb.
Kent, Ohio
Knoxville, Tenn.
La Jolla, Calif.
Las Vegas Valley, Nev.
Lincoln, Neb.
Long Beach, Calif.
Manhattan, Kan.
Marin County, Calif.
Memphis, Tenn.
Minneapolis-St. Paul, Minn.
Montreal, Quebec
Naples, Fla.
New Jersey Metro, N.J.
New York City, N.Y.
North Houston, Texas
Northern Virginia, Va.
Omaha, Neb.
Ottawa-Gatineau, Ontario
Pasadena, Calif.
Philadelphia West, Pa.
Phoenix, Ariz.
Portland, Ore.
Princeton, N.J.
Puget Sound, Wash.
Raleigh, N.C.
Richmond, Va.
Rochester, N.Y.
Sacramento Valley, Calif.
San Antonio, Texas
San Diego, Calif.

Loyal Members **SHINE**

South Bay, Calif.
Spokane, Wash.
St. Louis, Mo.
State College, Pa.
Syracuse, N.Y.
Tampa Bay, Fla.
Tucson, Ariz.
Tulsa, Okla.
Tuscaloosa, Ala.
Vermont Green Mountain, Vt.
Washington D.C.
Wichita, Kan.

Pearl Circle

The following chapters have met Circle of Excellence criteria plus four additional criteria.

Cincinnati, Ohio
Houston, Texas
Milwaukee, Wis.
Reno, Nev.

Carnation Circle

The following chapters have met Circle of Excellence criteria plus three additional criteria.

Montgomery, Ala.
Palm Desert, Calif.

Circle of Excellence

The following chapters have met Circle of Excellence criteria.

Amarillo Area, Texas
Myrtle Beach, S.C.

Gamma Phi Beta sincerely thanks our outstanding alumnae volunteers and is proud to announce our 2011 service award winners!

Service Roll

Acknowledges 15 or more years of alumnae volunteer service, with a minimum of five years at the international level plus five years or more of financial support.

Linda Daniel Johnson (Vanderbilt)
Houston Alumnae Chapter

Loyalty Award

Honors a minimum of seven years of alumnae volunteer service at the international level, plus seven or more years of financial support.

Terri Kennedy Briggs (Oregon State)
North Houston Alumnae Chapter

Krista Spaninger Davis (Bowling Green State)
Columbus Alumnae Chapter

Leigh Ann Kudloff (Denver)
Denver Alumnae Chapter

Suzanne Slinn-Higgins Lee (McGill)
Puget Sound Alumnae Chapter

Grace Lin (McGill)
Toronto Alumnae Chapter

Merit Roll

Recognizes a minimum of 15 years of alumnae volunteer service at the local level plus five years or more of financial support.

Terri Pulliam Baker (Oklahoma State)
Tulsa Alumnae Chapter

Marilyn Pritchard Berkebile (Bradley)
Rochester Alumnae Chapter

Karen White Brienzo (Illinois)
Chicago Alumnae Chapter

Connie Trentman Casper (Kansas State)
Manhattan Alumnae Chapter

Karen Diehl Greening (Washington University)
St. Louis Alumnae Chapter

Lyn A. Hildenbrand (Wisconsin-Milwaukee)
Milwaukee Alumnae Chapter

Andrea Krug Krauss (Kansas State)
Manhattan Alumnae Chapter

Judy Powell Murphy (Maryland)
New Jersey Metro Alumnae Chapter

Denise Vollert-Parrotto
(California State-Fullerton)
New Jersey Metro Alumnae Chapter

Lorene Ritts Servos (Kansas State)
North Houston Alumnae Chapter

Ann Harris Straw (Northwestern)
St. Louis Alumnae Chapter

Susan West (Missouri-Columbia)
Arlington Alumnae Chapter

Recommend an alumna for one of our volunteer service awards! Go to gammaphibeta.org and click **ΓΦΒ Forms** on the homepage. Download, print and postmark the recommendation form to International Headquarters by April 1.

Shining Authors

Thank you to members of Denver Alumnae Chapter for reviewing our featured books. If your chapter wants to serve as book reviewers, contact TheCrescent@gammaphibeta.org.

Russian Orthodoxy Resurgent: Faith and Power in the New Russia

By John Garrard and Carol (Hamersen) Garrard (William & Mary) Princeton, \$29.95

"This book is an excellent account of the role religion played in the fall of the USSR and the rise of Russian democracy. The Garrards illustrate beautifully why attempts by Russia's Communist government to suppress the Russian Orthodox Church actually expedited the government's demise, using the church's rich history to convey the peoples' deeply-held beliefs. This book is accessible to scholars and readers interested in current world events."

– Amy Horn Dana (Colorado College)



Departings

By Mary A. (Schacchtele) Lake (Kansas) Tate Publishing, \$26.99

"I enjoyed how the story was told from three viewpoints

and how the same events were seen uniquely by each person. The story starts in 1913 and addresses social and domestic issues that were taboo topics in the day. I grew to feel for these women – at one point disliking one character, and then in the end feeling great

empathy and sadness for her. The husband's perspective brought more depth to the book and humbled this reader."

– Sandy Worley (Denver)



The Color of Rain

By Michael Spehn and Gina (Valenti) Spehn (Michigan State) Zondervan, \$22.99

"A touching true story of two families torn apart by

cancer, but brought together by love, this Christian nonfiction book is told from dual perspectives. 'The Color of Rain' will inspire you to cherish faith, friendship and family. Warning: readers should keep a box of tissue nearby."

– Mimi Burch McMann (California State-Bakersfield)

Books by Karen A. Stansbury (Vanderbilt) Lakeland Terrier Press
Stay Balanced! \$15.00

"Attorney Emma Carbury seems to have it all: she's attractive and athletic, with a successful career, loving husband, two beautiful homes, beloved pets and compassionate friends. But, as we all know, things are not always what they seem. It's enjoyable to read a book where we root for the perfect heroine, and then feel sad when her life starts unraveling. Just another example of 'there is no such thing as a perfect life.'"

– Kay McFarlin Wilms (Colorado State)

Eyes Up, Heels Down \$15.00

"In the sequel to *Stay Balanced!*, Emma takes a wild ride on a year-long life transformation. As her acrimonious divorce unfolds, she finds many ways to cope including spiritual, athletic and artistic pursuits. The unconditional love of her horse and the attention of various suitors keep Emma busy and entertained throughout the adventure."

– Lisa Gaskill Johannsen (Colorado State)

Liz Winks: There is an Angel Among Us

Order for \$15.75 at lizwinks1@hotmail.com

"This very pink little book wasn't written by an alumna, it was written about an alumna. Elizabeth 'Liz' Granlund Hacker (North Dakota, 2001) was married at age 23 in 2006 and just three months later passed away from a rare illness. 'Liz Winks' is a tribute to the guiding angel she continues to be from the many people she touched in her brief lifetime. The book was compiled by her parents, Michael and Margaret 'Peg' Walsh Granlund (North Dakota) and proceeds benefit a scholarship fund in Liz's name."

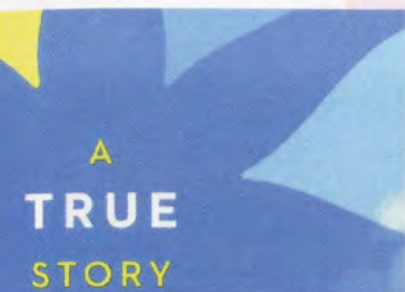
– Mimi Burch McMann (California State-Bakersfield)

FEATURED AUTHORS - ADULT FICTION

Journeys of the Mind

By Carol (Edler) Baumann (Wisconsin-Madison)

Trafford Publishing, \$16.95



Untraceable, The Nature of Grace, #1

By Shelli Johannes-Wells (Georgia)

Coleman & Stott, Ebook \$3.99,

paperback \$9.99

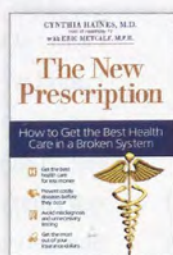
ADULT NONFICTION

The New Prescription: How to Get the Best Health Care in a Broken System

By Cynthia Haines, MD

(St. Louis), Health

Communications, Inc., \$14.95



Mom, What's for Dinner?

By Patricia (Schramek) Minta,

RD, LD (Bradley)

Order for \$12.95 at momwhatsfordinner.net

CHILDREN'S FICTION

The Magic Sandcastle

Written and illustrated by Suzanne

(Sprich) Coomber (San Jose State)

Authorhouse, \$10.95

The Word is Alphabet: Poems

Written and illustrated by Sharon

Dewey Word (Colorado-Boulder)

Intermedia Publishing Group, \$13.99

Autism Expert Offers Resources

Employing her expertise as an autism education professional, author Paula Kluth (Wisconsin-Madison), Ph.D., has written numerous books on designing inclusive learning experiences for autistic students.

Parents and educators of special-needs children will appreciate her positive approach to practical differentiated instruction. She also addresses social issues, family concerns and community building throughout her many texts.

Paula's books are not just geared toward parents and teachers. She has authored two children's books inspired by autistic children. *Pedro's Whale* is a result of ideas taught in *Just Give Him the Whale*, a teacher's guide that shares ways to turn an autistic student's fixations, often utilized by those with special needs to calm or motivate themselves, into powerful learning tools. *A is for All Aboard!* is a colorful alphabet book for train aficionados.

"As a Gamma Phi Beta, I learned to value both service and commitment," Paula says. "The most memorable lesson from these

years, however, was the power of community and collaboration. These values are central to my work in inclusive schools. All of my books communicate a common message of 'we are better together' and are focused on helping teachers, therapists and family members build better educational experiences not just for some, but for all."

Books by Paula Kluth

For more information or to order, visit brookespublishing.com.

• *A is for All Aboard!*, \$16.95

• *Pedro's Whale*, \$18.95

• *You're Going to Love this Kid!* \$34.95

• *From Tutor Scripts to Talking Sticks*, \$34.95

• *A Land We Can Share*, \$26.95

• *Just Give Him the Whale*, \$19.95



Gamma Phi Beta now has its very own aStore on Amazon listing books written by our sisters! Purchases through our aStore support the endeavors of the Sorority as we receive a small referral fee. To start shopping, visit the Gamma Phi Beta Authors page on gammaphibeta.org, under the About tab. Know a Gamma Phi Beta author who should be added to our aStore? Email gammaphibeta@gammaphibeta.org and let us know.

One Paw at a Time

By Lexi Sheehy (Pennsylvania State-Altoona)

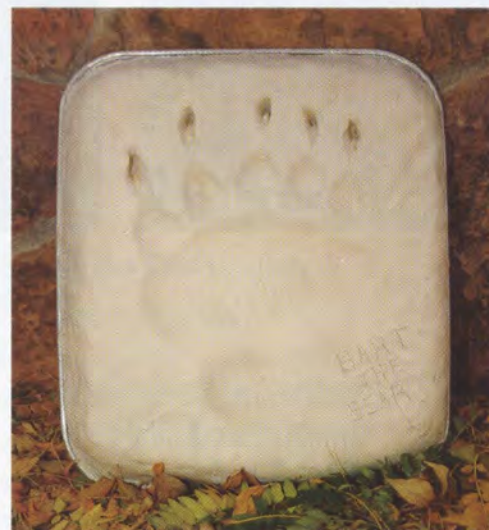
An experienced veterinary grief counselor, alumna Laurel Studt Lagoni (Iowa State) turned her compassion for pets and their owners into a thriving business, World by the Tail, Inc. Along with advocating for more sensitive treatment of grieving pet owners, the company offers its signature product, ClayPaws® the original paw print kit™.

"The idea for making paw prints began when I was a clinical grief counselor at Colorado State University's Veterinary Teaching Hospital," Laurel explains. "A client made a tearful request: she wanted something to help her feel connected to her dog while he underwent a very risky surgery. A veterinary student and I made an impression of her dog's paw using bright blue casting material."

Although the process was messy, time consuming and expensive, the client's response to the paw print – joy and gratitude – convinced Laurel this gesture was worth repeating. The company's clay kits are now marketed to veterinarians and pet "parents;" the finished product is a cherished keepsake.

ClayPaws® are just one way that Laurel has worked throughout her career to make the process of saying goodbye to a beloved pet more humane. While teaching at Colorado State University (CSU), she and her colleagues helped change euthanasia protocols so families could spend their final moments with their pet in a Client Comfort Room instead of a cold clinical exam room. She co-authored the first textbook for veterinarians on pet loss and end-of-life care, *The Human-Animal Bond and Grief*. Laurel is published in *Chicken Soup for the Pet Lover's Soul* and has contributed to several pet-related magazines and professional journals.

"Every conversation I have had with a grieving pet parent has given me more insight into the ways that companion animals impact our lives and the depth of grief felt when we lose them," she says.



While working with the Animal Cancer Center at CSU's Veterinary Teaching Hospital, Laurel co-founded a grief support and education program that is regarded as the "gold standard" for university-based veterinary grief counseling and training. She also created the first clinical rotation in grief support for veterinary medical students. Her program has been featured twice on ABC's "20/20," as well as in many other media outlets.

"Living in the chapter house taught me how to compromise and build relationships – both of which are essential elements of building a successful business or academic career," Laurel says. "It would have been a perfect time in my life if only we'd been allowed to have dogs in our rooms!"

Visit veterinarywisdomforpetparents.com for help with the loss of a pet and articles to strengthen the bond with your special animal friend.



Pictured left: Animal lover Laurel Studt Lagoni (Iowa State).

Pictured above: Bart the Bear was one of Hollywood's most remarkable animal stars. Before he died of cancer in 2000, Bart was the "spokesbear" for the Animal Cancer Center at Colorado State University, where he met Laurel and had his paw print made. "It took 25 pounds of clay and three hours to bake," she says.

Get to Know ...

Princeton Area Alumnae Chapter

Introducing the “small but mighty” Princeton Area Alumnae Chapter, recognized in the Founders Circle of Excellence. Alumnae Chapter President Diane Klawans Arons (Dickinson) shares a little about her proud group of sisters in New Jersey.

The Crescent: What is unique about your chapter?

Diane Klawans Arons: We are like the “little engine that could.” We are a small group of 15 but are able to make a large impact.

Which of the four Core Values describes your chapter best? Why?

DKA: Loyalty, because we represent all ages and have been together for years.

Describe one of your signature events.

DKA: We go to the theater once a year, especially to see musicals starring Gamma Phi Beta sisters. We saw Kelli O'Hara (Oklahoma City) in “South Pacific” and met her backstage. In 2010, we met Kristin Chenoweth (Oklahoma City) after “Promises Promises” and watched as International Council members presented Kristin with the Gamma Phi Beta Carnation Award.

Are any members famous or especially accomplished?

DKA: Four members served as international officers for the Sorority – Nancy Truesdale (Georgia), Cathy Boudreaux Griffin (Louisiana State), Ann Cibula Zultner (Purdue) and Denise Vollert-Parrotto (California State-Fullerton).



In 2011, members of Princeton Alumnae Chapter celebrated Founders Day with Delta Mu (Rutgers) collegians.

Who benefits from your chapter's philanthropic efforts?

DKA: We support Rise, a local organization that helps the working poor. Each year we collect holiday gifts for 12 girls, donate gift cards for Thanksgiving and provide supplies for the summer camp program. We have also helped Princeton Young Achievers by sponsoring camp tuition for girls and have sent girls to Camp Fire USA's Camp Adahi in Pennsylvania.

How does your chapter celebrate Founders Day?

DKA: We went out to dinner at a local restaurant last year. In the past we hosted an event for New Jersey alumnae, Philadelphia alumnae and Delta Mu Chapter (Rutgers) collegians.

Is there anything else our sisters should know about your chapter?

DKA: We are small but mighty – it is amazing what this intimate group can accomplish! We enjoy each other's company and truly care about each other. Most of us attended different colleges, so we all started out some place else but have ended up in this area.

Recommend an alumnae chapter for our spotlight! Contact TheCrescent@gammaphibeta.org.

Location: Princeton, New Jersey, in region 1
Membership size: 15
Charter date: 1975
Collegiate chapters supported: Delta Mu (Rutgers) and Eta Gamma (Delaware)

Shupert Models Loyalty for a Lifetime

Past Sorority executive director continues to give back



Marjy (center) attended a Grand Council 20th reunion in Hawaii last summer. Left to right: Frances Rea Griffin (Texas-Austin), Joey Lessard Stiver (North Dakota State), Marjy, Karen Gamel Urette (Oklahoma) and Randy Stevens Allard (California State-Long Beach).

As a child of the Great Depression, Marjory “Marjy” Mills Shupert (Colorado State) had plenty of occasions to see and experience financial need. But volunteering with Gamma Phi Beta’s Colorado camp board in the 1960s opened her eyes to extreme poverty.

“We visited every camper to explain to her family what camp would be like,” she says. “I knew there were poor areas of Denver, but I never knew anyone who lived in those places.”

Her compassion was further deepened during her time as executive director of the Sorority in the 1980s and ‘90s when she worked closely with the Foundation. “Many scholarships were given away – but still it

wasn’t enough,” Marjy remembers. “We could have used a whole lot more.”

The Foundation now has more, thanks to the Marjory Mills Shupert Endowment established last year. The scholarship/fellowship will leave a lasting legacy and honors Marjy’s many years of service to the Sorority.

“Gamma Phi Beta has been so good to me, starting in college,” she says. “I absolutely loved living in the house, taking part in homecoming, having people to support and encourage me. After graduation, there was the alumnae bridge group, art fundraiser and camp board. As my kids got older, I became executive director, and to earn my own money was

Time is running out to apply for 2012 financial aid. Find the application at gammaphibeta.org under the Foundation tab, and submit by January 31.

great. It allowed us to go on family vacations and afford the extras in life.”

During Marjy’s tenure, she oversaw the construction of International Headquarters in Centennial, Colorado. It was a time of great advancement for the Sorority.

“When I first started at International Headquarters, we had electric typewriters,” she recalls. “Around the mid-’80s, we got our computer. We only had one, and the staff had to sign up to use it in time slots. We could save forms on the computer and, oh my gosh, it was wonderful.”

Now retired, Marjy lives in Arizona with her husband, Tom, and enjoys needlepoint, volunteering and serving as a church elder. She also participates in the local historical society.

“It’s strange to think that in the 1870s, women back east were attending college while women in the west were traveling in covered wagons and fighting Native Americans,” Marjy says. “That’s just America.”

Major Donors Enjoy Convention Perks

Major donors will be honored at Convention when the Foundation hosts its elite event, The 1874 Society/Major Donor Luncheon. Details are being finalized for a fabulous time with your most generous and influential sisters in the Mile High City of Denver in June, so don’t miss out! Call MaryLynn Rector at 303.799.1874, ext. 303 to inquire about monthly or quarterly payments. This event is our “thank you” to our premier donors for supporting and inspiring the lifelong development of women. We hope to see you there!

A Perfect Fit

New Executive Director brings vital experience to lead the Foundation

If there was ever a job Kitty deKieffer was meant to do, it's serve as Executive Director of the Gamma Phi Beta Foundation – we'll give you four reasons why.

1. She has an impressive background in fundraising. In the Boulder and Broomfield areas alone, Kitty has raised as much as \$30 million for nonprofit organizations. She enjoys utilizing a mix of strategies including events, planned giving, corporate and individual appeals and major campaigns.
2. She is experienced in working with sorority foundations. Kitty was a Trustee for eight years at Alpha Chi Omega Foundation and the chairwoman for four. She is also a member of Alpha Chi Omega.
3. She has more than 30 years of work in nonprofit management under her belt, as well as extensive work in public relations, marketing and communications. Most recently, she worked as the executive director of the Boulder Mental Health Partners Foundation in Colorado.
4. She has a passion for mentoring women and girls. Empowering women to be economically self-sufficient is a particular area of interest.

"It's a perfect fit," Kitty says. "Being at the Gamma Phi Beta Foundation feels like coming home. The Sorority's values and goals are very similar to my experience with Alpha Chi Omega, and the entire Gamma

Phi Beta family has been so warm and welcoming to me."

Foundation volunteer leaders could not have been more thrilled when Kitty accepted the position.

"We were fortunate to find someone with Kitty's financial and fundraising experience to lead the Foundation into the future with enthusiasm," says Linda Daniel Johnson, Foundation Chair. "It's a new day for the Gamma Phi Beta Foundation, and we look forward to involving more members, increasing our support for the Sorority and pursuing our mission to support and inspire the lifelong development of women."

While Kitty has big plans for the coming year, she recognizes the economic challenges facing fundraisers today.

"We need to be competitive in reaching members who are not yet involved as donors," she says. "Challenges can also be seen as opportunities, and I think there is a great deal more that can be accomplished just by asking."

A graduate of California State University-Fullerton, Kitty holds a bachelor's degree in accounting. She lives in Boulder with her husband on a farm. Yes, an 11-acre farm with cows and llamas, surrounded by 700 acres of open space.

"I'm like the wife in the old TV show 'Green Acres' – a city girl that my husband plunked down onto a farm!" she laughs. "I now know more about farming than I ever thought possible."



Memorial Gifts

We acknowledge the following individuals and groups who contributed to the Gamma Phi Beta Foundation in memory of a loved one, as of October 31, 2011.*

Eleanor Joys Lindstrom (Wisconsin-Madison, 1946)

Karen Aman
Ellen Ryan
State College Alumnae Chapter
Mary Jane Wild

Mary Giamello, mother of Nancy Giamello (Bowling Green State)

Cindy Colvin

Marie-Louise Kean Ross (Pennsylvania State, 1951)

Suzanne Leinhaupel

William J. Stoll, father of J.J. Stoll Kaelin (Colorado-Boulder)

Kris Baack
Diane Goff
Amy Peterson

Martha Decker Wolz (Lake Forest, 1954)

Dorothy Devitt

Elizabeth Hutchison Hughes (Illinois at Urbana-Champaign, 1936)

Wilma Berg

Louella Bell Haarde (Pennsylvania State, 1937)

Doris Gorden

Elma Wenta Reaves (Lake Forest, 1938), stepmother of Carol Reaves Dark (St. Louis)

Margery Miller

Raymond Jones, father of Teresa Jones Haney (Northern Arizona)

Shellie Hodges

Gloria Burgess Salladay (Idaho, 1947)

Isabel Brassey

Barbara Lowe Barr (Denver, 1952)

Judy McKinley
Catherine Sweeney

Thomas Lee Kline, husband of Karen Wander Kline (Iowa State)

Kris Baack

Carl Gates, father of Kendra Gates Bocher (California State-Long Beach)

Kris Baack

Kathleen Wilson Bartholomew (Kent State, 1955)

Cleveland West Alumnae Chapter
Karen Cooper
Jane Mueller

Audrey Weldon Shafer (Missouri-Columbia, 1938)

Randy Allard
Alpha Delta Chapter
Kay Appleberry
Kris Baack
Carol Bailey
Robin Baskin
Sally Beck
Ann Bronsing
Chi Omega Fraternity
Columbia, MO Alumnae Chapter
Delta Psi Chapter
Ruth Engel
Denise Eschenbrenner

Peggy Evans
Susan Fischer
Jane Gleason
Sharon Green
Cathy Griffin
Frances Griffin
Forest and Janet Hanna
Vicki Helling
Patsy Henderson
Tucky Hobbs
Shellie Hodges
Joyce Hultgren
Ellen Johnson

Annabel Jones

Jean Jones

J.J. Kaelin

Sandie Kirkbride

Anne Layton

Susan Lupo

Mary Linda McDonnell

Judi McMahon

Judy Millen

Margery Miller

Gloria Nelson

Melinda Nutter

Bill Pfeiffer and Mary Kay McPhee

Kiki Phillips

Donna Prior

L'Cena Rice

Joanne Roman

Santa Barbara Alumnae Chapter

Sigma Sigma Sigma National

Headquarters

Peachy Smith

Joey Stiver

Ann Straw

Julie Wright

Marian Sawyer Frentzel (Washington University, 1963)

Ann Bronsing
Christy Ehrenreich
Vicki Helling
Patsy Henderson
Margery Miller
Donna Prior
Joanne Roman
Ann Straw

Jack Layton, cousin of Anne Layton (McGill)

Kathy Fox
Sally Mooney

Delena Powell Smith (West Virginia, 1959)

Marsha Stanley

Muriel Janzen Stephenson (North Dakota State, 1941)

Albuquerque Alumnae Chapter

Evelyn Peterson Bugg (Colorado College, 1936)

Susan Duncan

Kenneth Harold Rasmussen, husband of Judith Mehler Rasmussen (Pennsylvania State)

Lurene Frantz

Doris Lawler Gamble (Birmingham-Southern, 1948)

Sally Johnson

Barbara Morris Spahr (Pennsylvania State, 1948)

Faith Bevitz

Nancy Spencer King (Pennsylvania State, 1958)

Lurene Frantz
Jane Parkinson

Jane Kaiser Gordon (North Dakota State, 1959)

Suzanne Lervick

Marilyn Cooke Sullivan (Iowa, 1941)

Alpha Xi House Corporation Board
Gloria Nelson
Paula Rhea

Christine Woodall Hilderbrand (Oklahoma, 2005)

Tulsa Alumnae Chapter

Ruth Farley Ostroot (Idaho, 1933)

Corinne Ostroot McKean

Michael J. Gubitosi, husband of Lois Hebner Gubitosi (San Diego State)

La Jolla Alumnae Chapter

*For deceased members, we list their first, maiden and last names plus schools and initiation years. Gifts received by February 1 will be acknowledged in the spring issue.

In Celebration

*Celebrate a special sister, loved one or event with an "In Celebration" gift to the Gamma Phi Beta Foundation. Thank you to the following donors, whose gifts were recorded as of October 31, 2011.**

In celebration of...

Mary Jane Misthos, for her 90th birthday!

Frances Griffin
Rosemary Pilch

My mini-reunion with Beta Theta sisters Marlene Brandin Tilley and Antonia Wright Say

Eileen McDonald

The marriage of Amie Whitaker
René Thompson

The birth of legacy Maryanne Isabella to Terianne Lombardo Ramirez

René Thompson

The birth of Lian John Brumleu (first great-grandchild) to Cheri Lamont Brumleu

René Thompson

Kathy Meadows Smith, for her service to the Sorority
René Thompson

The birth of legacy Aubree Jane to Ryan and Meghann Reed Lehn on June 24, 2011

Mitzi Ritzman

Mary Vanier, for being selected as the North-American Interfraternity Conference Foundation Philanthropist of the Year!

Julie Eichenberg
Cathy Griffin
Susie Knetter
Fran Lapham

The birth of legacy Adeline Elizabeth "Addie Beth" Dillon on July 20, 2011, to Patrick and Hallie Anderson Dillon
Lori Cook

Gigi De'Prey Eyre as the regional coordinator for region 8

Rosalind De'Prey

Linda Lowry, for her two years of dedicated service as the president of St. Louis Alumnae Chapter – thank you!

St. Louis Alumnae Chapter

The birth of my legacy Emma Lynn Castro on September 12, 2011

Frances Griffin

The Oklahoma Sooners, for their football win over the Florida State Seminoles – Boomer Sooner!

Julie Eichenberg
Rosemary Bunn

The birthday of Susan Grant Schneider

Stephanie Hearn

The birth of legacy Eva Mae Threlkeld on March 11, 2011, to Erin Orozco Threlkeld

Linda Luce

The birth of legacy Reese Lynne Tesch, daughter of Cristina Desrochers Tesch

Jennifer Janowski

The 75th birthday of Dr. Ruth Andrea Seeler

Rosemary Pilch

The 50th birthday of Megan Krueger

Rosemary Pilch

The marriage of Fraya Hirschberg to Christopher Black

Fraya Black
Rosemary Pilch
Karla Stoebig

Adam Cantley, University of Delaware fraternity and sorority advisor, for being elected as national president of Kappa Kappa Psi

Fran Lapham

The wedding of Susie Knetter and Zach McCracken on September 17, 2011

Jessica Jecmen Brummel

The birth of Dylan James Orr, son of Allyson and Lee Orr

Balboa Harbor Alumnae Chapter

Roxanne Rockwell, past president, for her outstanding leadership and service to our alumnae chapter – her devotion to Gamma Phi Beta is inspirational to us all!

Diablo Valley Alumnae Chapter

Alpha Epsilon initiating class of 1961. Fifty years!

Nancy Groh

The wedding of Jessi Eckert and Brendan McGarry

Mary Jo Hope

The marriage of Abra Yeh to Douglas Friedman

Karla Stoebig

The engagement of Lindsay Woods to Dan Schlageter

Karla Stoebig

The engagement of Heather Magnuson to Dan Lanigan

Karla Stoebig

The birth of my nephew, Dylan James, on September 7, 2011, to Allyson Rice Orr and my brother, Lee Orr

Leanne Orr

*Gifts received by February 1 will be acknowledged in the spring issue.



Celebrate sisterhood with a gift to the Gamma Phi Beta Foundation!

In Memory

We acknowledge the passing of the following members, and celebrate their part in our circle of sisterhood. This list reflects notifications received at International Headquarters from August 1 to October 31, 2011. First, maiden and last names and initiation year are listed for each deceased member.

Alpha - Syracuse

Jeanne Rice Clark, 1944

Beta - Michigan

Rosemary Klein Okelly, 1943

Patricia McKenna Dye, 1946

Gamma - Wisconsin-Madison

Marguerite Baines Stevens, 1921

Pameila Jensen Kelly, 1945

Constance Crosby Miller, 1946

Nancy Jardine Furer, 1950

Epsilon - Northwestern

Anita Forch Frazer, 1932

Rebecca Best Ovitz, 1948

Beverly Graf Meaney, 1980

Zeta - Goucher

Amy MacIntosh Barnewall, 1936

Eta - California-Berkeley

Joan Young Keenan, 1949

Theta - Denver

Lenore Hays Ott, 1932

Georgette Dean Scifres, 1934

Elizabeth Mullare Messenger, 1938

Vivian Wall Norman, 1942

Nancy Green Worten, 1942

Barbara Lowe Barr, 1952

Kappa - Minnesota-Twin Cities

Lillian Hicks Rennix, 1934

Helen Titelmaier Clark, 1939

Lambda - University of Washington

Ann Parker Gordon, 1932

Lillian Goodwin Cereghino, 1946

Debra "Debbie" Agee Williams, 1980

Nu - Oregon

Joanne Wedel Brun, 1962

Xi - Idaho

Gloria Burgess Salladay, 1947

Janice Hartruft Severn, 1968

Omicron - Illinois at Urbana-Champaign

Lorraine Zeisler Schneider, 1937

Pi - Nebraska-Lincoln

Grace Nielsen Anderson, 1948

Joann Finney Stephenson, 1950

Rho - Iowa

Margaret "Peg" Leeper Nelson, 1937

Marilyn Cooke Sullivan, 1941

Janet Olson Morrison, 1955

Sigma - Kansas

Joan "Jody" Hise Fayman, 1945

Mary Schnitzler Coulson, 1945

Phi - Washington University

Mary Henby Schnure, 1932

Marian Sawyer Frentzel, 1963

Chi - Oregon State

Laura Mason Doyle, 1928

Thaye "Cynthia" Musgrave Smith, 1929

Dorothy Dunham Cornwell, 1937

Charlotte Latourette Miller, 1937

Psi - Oklahoma

Valeria Pinney Monroe, 1937

Omega - Iowa State

Bernice Umlandt Hahn, 1932

Evogene Wallace Sales, 1939

Susan Chapin Jolly, 1956

Alpha Alpha - Toronto

Barbara McLeod Gutsell, 1945

Alpha Beta - North Dakota

Joan Roberts, 1954

Alpha Delta - Missouri-Columbia

Aline "Peggy" Kitchen Phillips, 1946

Mollie Peebles Wyatt, 1956

Jan Sewing Moore, 1963

Alpha Epsilon - Arizona

Edith "Tita" Counter Knipe, 1936

Barbara Ballard Schindler, 1942

Joan Doughty Reynolds, 1948

Alpha Zeta - Texas-Austin

Fanelle Hankamer Thurman, 1939

Alpha Eta - Ohio Wesleyan

Beatrice Knapp McDowell, 1937

Elizabeth "Ann" Browne Whisenhunt, 1954

Alpha Theta - Vanderbilt

Martha Stanfill Lansden, 1930

Mary Frances Charlton Turney, 1942

Alpha Iota - California-Los Angeles

Jean Murray Mullen, 1936

Jane Runk Parmelee, 1949

Alpha Kappa - Manitoba

Molly Denison Palk, 1936

Alpha Mu - Rollins

Marilyn Tubbs Smith, 1936

Alpha Nu - Wittenberg

Noel Huston, 1956

Alpha Xi - Southern Methodist

Virginia Mullaney Gibbs, 1933

Alpha Omicron - North Dakota State

Muriel Janzen Stephenson, 1941

Jane Kaiser Gordon, 1959

Alpha Pi - West Virginia

Virginia Gross Davis, 1930

Alpha Rho - Birmingham-Southern

Alice "Ginny" Cambren Blocker, 1942

Doris Lawler Gamble, 1948

Alpha Tau - McGill

Joan Hooper Colbert, 1945

Alpha Upsilon - Pennsylvania State

Louella Bell Haarde, 1937

Barbara Morris Spahr, 1948

June Briant, 1951

Mary Mano Parker, 1952

Nancy Spencer King, 1958

Alpha Phi - Colorado College

Agnes Sands Johnson, 1935

Dorothy "Dottie" Davis Selby, 1964

Alpha Chi - William & Mary

Jeanne Hull Shinnars, 1933

Betty Bloxton Orrick, 1935

Sallie Elmore Palmer, 1935

Marjorie Henderson Roe, 1941

Alpha Psi - Lake Forest

Elma Wenta Reaves, 1938

Alpha Omega - Western Ontario

Jean Allison Holman, 1936

Elsie "Kay" Balls, 1936

Marion Dickson Barkwell, 1936

Mayme Farley Littlejohn, 1936

Gladys Freeborn Ward, 1936

Beta Alpha - Southern California

June Edwards Blair, 1943

Barbara "Barby" Hartwig

Hereford, 1972

Beta Delta - Michigan State

Florence McCall Bilger, 1947

Barbara Hartman Scheid, 1960

Beta Zeta - Kent State

Kathleen "Kathy" Wilson

Bartholomew, 1955

Noreen Schaefer Faix, 1961

Beta Eta - Bradley

Barbara Detrick Bell, 1955

Ruthanna "Nan" Lock Day, 1962

Cynthia Tiemann Stradal, 1982

Beta Theta - San Jose State

Judith Griggs Huff, 1949

Beta Kappa - Arizona State

Kay Conley Hile, 1955

Beta Lambda - San Diego State

Jane Jensen Hensel, 1949

Beta Pi - Indiana State

Betty Howells Sendmeyer, 1953

Karen Minderman Carender, 1960

Beta Sigma - Washington State

Jacqueline "Jackie" Cox White, 1952

Beta Phi - Indiana

Patricia Lewis Sutton, 1977

Gamma Eta - California

State-Long Beach

Kathleen Desmond Stang, 1962

Gamma Kappa - Nebraska-Kearney

Carole Wade Egge, 1964

Gamma Omega - Wisconsin-Platteville

Denise Touchette Hooker, 1980

Delta Pi - Illinois State

Linda Rotche Adler, 1981

BETA OMEGA CHAPTER

New Member Pin Pillow, 1963

It was the fall of 1963, and Paula and her 14 pledge sisters were instructed to wear the pin always, except at bedtime or with Levi's, which were only worn on Saturdays.

Almost 50 years later, Paula Franey-Berg (Northern Arizona) can still remember receiving her pledge [new member] pin pillow as if it were yesterday.

"When we finished preference and got our bids, we were given brown and tan pledge ribbons," says Paula. "After the pledge pin ceremony, our pledge director taught us how to wear our pins. 'Put your right hand over your heart as if you're saying the Pledge of Allegiance, open the pinky finger and the pin goes at the end of the V, so it's not too low and not too high.' We practiced putting our pins on correctly and then she gave us the pillow."

It was the fall of 1963, and Paula and her 14 pledge sisters were instructed to wear the pin always, except at bedtime or with Levi's, which were only worn on Saturdays. "Whenever we took our pins off, we put them on our pillow on the dresser. I kept the pillow and pin all these years because I couldn't bear to get rid of them." Paula donated this sentimental piece of Sorority history to the museum and it is now on display for others to enjoy.

According to Paula, the tradition of giving pin pillows continued in her chapter throughout her college years. Members prepared for their next new member class

by making the gifts assembly line style. While some sisters sewed the triangles, Paula vividly remembers "turning the pillows right side out and poking the corners with a knitting needle."

Stuffing was added and the final opening was hand sewn closed.

It was a fun time of bonding but at some point, the practice of pillow giving ceased, according to Bobbie Schauer Balthazor (Northern Arizona), Paula's pledge sister. "My daughter was also in Beta Omega Chapter in the late 80s and she didn't get one," Bobbie says.

Recruitment and the new member period hold many special memories for Paula, times she wouldn't trade for anything in the world. One memory especially stands out.

"We weren't supposed to talk to boys during rush [recruitment] week," she says. "Bobbie, some other girls and I were at a restaurant and there were two really cute college boys a little older than us sitting at a different table. They had the waitress bring over a napkin that had, 'Go Gamma Phi' written on it. Gamma Phi was our favorite already, but when we heard it from the cute boys, it was settled."



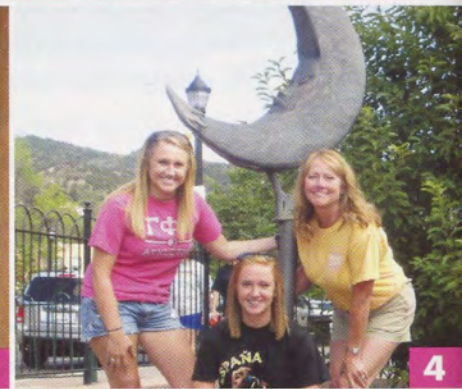
"I think they were football players, or they could have been fraternity men," Bobbie laughs.

To sum up her collegiate experience, Paula says, "There's no feeling like opening that envelope and seeing that the Sorority you want so badly wants you too. It's a great feeling of belonging, and I clearly remember it 50 years later. Being Greek helped me make the transition from the security of home and parents and rules. Study tables helped me, social events helped me. It was just a wonderful time."

Donate your vintage sorority treasures to Gamma Phi Beta. Contact the museum at 303.799.1874.

Capture a Crescent

For more crescent pictures, see our album at [Facebook.com/gammaphibetasorority](https://www.facebook.com/gammaphibetasorority).
Submit your photo to TheCrescent@gammaphibeta.org.



1. Colorado: At a pottery shop in Salida, Lisa Cole Koehn and Carole Sarver (both of Wichita State) found a crescent on a garden stake.
2. California: On her mom's front door, Madeline Spellerberg (Chapman) captured a Halloween crescent.
3. California: Alumna Lauren Saunders Graham (California-Santa Barbara) spotted a large crescent during the Pumpkin Festival in Half Moon Bay.
4. Colorado: Three members of the Omo family, Katie, Kara and their mom Kelli (all of Kansas State) climbed on a crescent statue in Manitou Springs.
5. New Jersey: Vacationing on the east coast, Rachel Messina (California-Irvine) found double crescents on an outdoor sculpture.

6. Nebraska: Amy Engle (Creighton) visited the Omaha Botanical Gardens, where she captured a crescent in a garden sculpture.
7. Missouri: Celebrating her 83rd birthday at a Mexican restaurant in Kirkwood, Ann Fickenscher Reese (Pennsylvania State) and her granddaughter, Shelby Fenster (Syracuse), found themselves dining under a crescent moon.
8. Illinois: Jenna Bates Chumbley (Illinois at Urbana-Champaign), center, takes time to pose with a crescent on her wedding day in Moline. Pictured left to right: Abby Johnson, Rachel Kindred, Jenna, Caitlin Ash, Kelly McCall (all of Illinois at Urbana-Champaign).