

Summer 2012

# *the* CRESCENT

*a Phi Beta*

**IN THIS ISSUE**  
Gamma Phi Beta for a  
lifetime! Meet Mindy  
Weiss and other alumnae  
who shine for ΓΦΒ.  
*page 20*





# Gamma Phi Beta is on the GO!

## INTERNATIONAL COUNCIL

International President

Linda Lyons Malony

University of Southern California

Alumnae Vice President

Mary L. Knaup

California State University-Fullerton

Collegiate Vice President

Annabel M. Jones

University of Oklahoma

Education Vice President

Rebecca Boyd-Obarski

University of Illinois at Urbana-Champaign

Financial Vice President

Leigh Ann Price

Texas Tech University

Membership Vice President

J.J. Stoll Kaelin

University of Colorado-Boulder

Panhellenic Affairs Vice President

Elizabeth Ahlemeyer Quick

Indiana University

Executive Director

Laurie Imperiale Veldhuizen

Florida State University

## GAMMA PHI BETA FOUNDERS

Mary A. Bingham

E. Adeline Curtis

Helen M. Dodge

Frances E. Haven

## SORORITY MISSION STATEMENT

To inspire the highest type of womanhood.

As International President, I've been exclaiming it for the past four years: Gamma Phi Beta is on the GO! If you haven't quite believed me, here's a summary of activity and progress from the past biennium that's sure to convince you!

The 2010-12 International Council set an important key priority in an effort to focus our resources: to make Gamma Phi Beta relevant through our mission, member engagement and signature programs. To that end, an amazing array of initiatives have been developed – some were officially “launched” at Convention in June – and our Sorority has never moved forward so far so fast! Throughout, the Sorority has operated “in the black” and maintained appropriate fiscal responsibility.

## Our Mission

A refreshed mission, vision and guiding principles were unveiled in October 2011, and the response has been phenomenal! Communications, programs and overall philosophies have been structured to complement and reinforce these concepts. A comprehensive review of the Sorority's governing documents led to the development or revision of six policies and position statements, including a new Personal Conduct Policy. It is up to every Gamma Phi Beta to live our mission: to inspire the highest type of womanhood. And it is up to the organization to provide opportunities to inch closer to our vision: to build confident women of character who celebrate sisterhood and make a difference in the world around us. Special projects are underway to reinforce these important concepts that define Gamma Phi Beta.

## Member Engagement

In this past biennium, our volunteer structure was adjusted to address needs identified in the previous biennium. We introduced new specialties and a renewed focus on chapter advisors as well as emphasizing greater flexibility among our regional teams. Gamma Phi Beta's communications continue to expand and improve with a slicker and thicker *The Crescent*, a solid presence in social media, multiple video projects and several regular electronic newsletters. The Sorority's leadership and reputation within the interfraternal world remains noteworthy, and ShineBeyond.org – a new resource to engage recent graduates – was introduced at Convention.

The growth the Sorority enjoyed this biennium is tremendous, with three new collegiate chapters (among our largest classes ever!) and 28 new alumnae chapters. Sites for seven future collegiate chapters – four next year alone! – have already been secured, and additional alumnae chapters are in development. Our total membership is just shy of 180,000; amazingly, our collegiate membership indicates 15 percent growth during this biennium and 56 percent growth in the past seven years!

Along with our wonderful volunteers, our progress is all supported by a dedicated International Headquarters staff; with new positions assisting Sorority growth initiatives, delivering innovative programming and developing additional revenue streams and member services with resources like Crescent Corner, Gamma Phi Beta's official online retail store.

Cover: Photographed by  
Jay Lawrence Goldman





Gamma Phi Beta's 2010-12 International Council.

### Signature Programs

Gamma Phi Beta is leading the pack with innovative programs including Safety & Wellness and Rock Solid Relationships. In revision for several years, collegiate chapter educational programming is close to launch, with revised new member programming leading the way this summer. Gamma Phi Beta's efforts to eradicate hazing have been recognized by peer associations, and a refreshed focus on our philanthropy and service meet the Sorority's official philanthropic mission statement: to build resiliency in girls. (See page 6 for more exciting information!)

This summer, the Sorority announced the formation of the Gamma Phi Beta Facilities Management Corporation; it will provide additional resources for house corporation boards and better manage Sorority-owned properties. This is a monumental step for Gamma Phi Beta!

Gamma Phi Beta conferences continue to provide meaningful training for officers and volunteers. In addition to our award-winning online advisor and volunteer leader training, more than 60 webinars provided distance learning for chapter officers and volunteers. Counting annual Academies, Regional Leadership Conferences, a housing conference, Recruitment and Safety & Wellness Summits, Leadership Development Institute and Convention, Gamma Phi Beta hosted 31 conferences and offered more than 60 formal long-distance learning opportunities in just one biennium!

### My Thanks

What an amazing adventure these past four years have been for me personally. I've installed seven new collegiate chapters, signed nearly 19,000 new member certificates, attended 27 interfraternal events and Gamma Phi Beta conferences, spoke at 10 special chapter and Founders Day celebrations, collaborated with our supportive Foundation, traveled to dozens of campuses and communities, met the most wonderful members across the continent, initiated my daughter at Convention 2010 and happily dreamed with two incredible International Councils all that Gamma Phi Beta could be.

It is simply impossible to quantify or qualify accurately my thanks to the women I've worked with, who made me feel welcome and appreciated at every turn, who collaborated with me on too many projects to list and who truly inspired me to be more than I thought possible. I am forever in your debt and ever enthusiastic that Gamma Phi Beta is on the GO!

Proudly, fondly, gratefully in IIKE,

Linda Lyons Malony  
International President 2008-12

Summer 2012 | Volume 113 | Number 3

### International Headquarters

12737 E. Euclid Drive, Centennial, CO 80111  
Phone: 303.799.1874 Fax: 303.799.1876  
Website: [gammaphibeta.org](http://gammaphibeta.org)  
Email: [TheCrescent@gammaphibeta.org](mailto:TheCrescent@gammaphibeta.org)

### The Crescent Staff

Publications and Communications Manager  
Nicole Banes, [nbanes@gammaphibeta.org](mailto:nbanes@gammaphibeta.org)

Director of Marketing and Communications  
Maureen Walker, [mwalker@gammaphibeta.org](mailto:mwalker@gammaphibeta.org)

### Crescent Advisory Board

Stefanie Brickman (Oklahoma)  
Kristen Record Heptinstall (Alabama)  
Khrystine Miller Keane (Boston)  
Leanne Orr (Chapman)  
Kris Brandt Riske (Wyoming)  
Yvonne Fetig Roehler (Minnesota State-Moorhead)  
Marcia Turner

### Graphic Design by Shelle Design, Inc.

#### SUBMISSION DEADLINES

Summer issue – May 1  
Fall issue – August 1  
Winter issue – November 1  
Spring issue – February 1

©2012 Gamma Phi Beta Sorority  
*The Crescent* of Gamma Phi Beta (USPS 137620)  
is published quarterly by Gamma Phi Beta Sorority,  
12737 E. Euclid Drive, Centennial, CO 80111.  
Periodicals postage paid at Englewood, CO, and at  
additional mailing offices. Non-member subscription  
price is \$25. Produced in the U.S.A.

Postmaster: Send address changes to *The Crescent*,  
Gamma Phi Beta Sorority, 12737 E. Euclid Drive,  
Centennial, CO 80111.



FRATERNITY  
COMMUNICATIONS  
ASSOCIATION





# 20 [ΓΦBs Shine]

We highlight some shining alumnae as well as special events and experiences that demonstrate the power of our sisterhood!



10

Meet our sisters from Zeta Mu (St. John's).



16

Inspiration Board: Be inspired by things we love this season.

## CONTENTS

### Go Gamma Phi

Find the magazine's regular features and other inspirational Sorority articles in this section.

5 ΓΦB Mailbox

9 Points of Pride

14 Swimming in Gold

Learn about our members and their connections to the Summer Olympics!

16 Inspiration Board

28 Sorority Life

43 Vintage ΓΦB: Jessie Wilson Sayre Wedding Invitation

### Sorority News

Discover the Sorority's latest news here!

6 Philanthropy Updates

Gamma Phi Beta is proud to unveil its new philanthropic focus!

8 On the Grow!

We're joining seven campuses over the next several years – learn how we got there and how to get involved!

13 Lobbying for Change on Capitol Hill

35 Meet Our 2012-13 Collegiate Leadership Consultants

### Campus Life

Learn about our collegiate sisters and topics affecting their campuses.

10 Chapter Profile: Zeta Mu

11 Shop Box: Crescent Corner's Hottest Trend!

12 Collegian Spotlight: Anna Mahalak (William & Mary)

### Shining On

Find out how our alumnae are making an impact and shining for ΓΦB.

19 Alumnae Chapter Profile: Ottawa-Gatineau

20 ΓΦBs Shine

### Foundation News

Check out how the Foundation is supporting and inspiring the lifelong development of women.

38 Planning Your Legacy

40 Memorial Gifts

41 In Celebration





# ΓΦΒ mailbox

## Dear Gamma Phi Betas,

When I began this issue of *The Crescent*, I was eager to learn more about the women who made up this 137-year-old organization. As I began connecting, a common theme quickly emerged: Gamma Phi Beta doesn't just inspire the highest type of womanhood during your four years as a collegian, it inspires for a lifetime. No matter where our featured sisters' lives have taken them, their connection and membership pride remain true and constant, never wavering or forgotten.

In this issue we highlight our shining alumnae, as well as a number of special events and experiences that demonstrate

the power of ΓΦΒ's sisterhood. From home design television to space engineering to Olympic athletes, our members have some pretty remarkable résumés and stories! You'll also read about five sisters who hadn't seen one another in 65 years – time that melted the moment they reunited. Why? Because *Gamma Phi Beta is for a lifetime*.

While we're on the topic of connecting, you'll notice some new repeated images throughout the magazine – they're calls of action, created to keep you connected to *The Crescent*, sisters and our organization. Whether it's a letter, email, social media or another form of communication, stay connected to Gamma Phi Beta. Stay connected to this sisterhood.

Here's to connecting, reconnecting and inspiring the highest type of womanhood!

Sincerely,

Nicole Banes

*The Crescent* Editor

[TheCrescent@gammaphibeta.org](mailto:TheCrescent@gammaphibeta.org)



This image prompts you to send *The Crescent* an email or letter on the topic at hand.



This image cues you to post to our Facebook timeline or tweet us about this topic!



This image signals you to find more information or resources online.

## Spring Issue

Just read the spring issue of *The Crescent*! So proud to be a Gamma Phi girl!  
– Brooke Jensen (Nebraska-Lincoln)

Love the shirts of the cover of the spring issue!  
– Amanda Art (Southern California)

**Editor:** Aren't they adorable!? They were a custom order from our official online retail store, *Crescent Corner* ([CrescentCorner.com](http://CrescentCorner.com))!

## Connecting, connecting, connecting!

A @gpberescentmoon car passed by me on the highway and held up a crescent to let me know she's a sister!! So awesome! :)  
– Erica Santiago (Florida Southern)

The @gpberescentmoon app is pretty fantastic. I downloaded to snoop for ideas for @KappaKappaPsi. Great job, ladies!  
– Adam Cantly, National President of Kappa Kappa Psi Fraternity

I loved the new *Crescent* layout, stories and news from alumnae and chapters. I found the yellow text on page 12, "Shining Seniors" hard to read though as it is so light. Thanks for all your hard work. I really enjoy our magazine.  
– Barbara Magnus Small (Michigan State)

**Editor:** Thank you for the kind words and great feedback, Barbara! Moving forward, you'll notice we only use the yellow text with large, easy-to-read formats. Great suggestion!



International Headquarters staff and Membership Vice President JJ. Kaelin (Colorado-Boulder) saw sister Kristin Chenoweth (pictured center, Oklahoma City) perform in concert in Denver and were thrilled to be welcomed backstage to meet her in person!

## Exciting ΓΦΒ Facility News!

Gamma Phi Beta is excited to announce it has created new Facilities Management Corporation. This corporation will handle housing initiatives and operations and revolutionize how Gamma Phi Beta approaches housing by developing various levels of services to house corporation boards (HCBs) asking for assistance. From tax preparation to property management and outright property ownership, the new Facilities Management Corporation will provide these resources and more to address much-needed services. Stay tuned for more information in future issues of *The Crescent*!



Like us at [facebook.com/GammaPhiBetaSorority](https://facebook.com/GammaPhiBetaSorority)



Follow our boards at [pinterest.com/GammaPhiBeta](https://pinterest.com/GammaPhiBeta)



Search "Gamma Phi Beta" in groups



Follow us @gpberescentmoon



# Gamma Phi Beta's New Philanthropic Focus:



## BUILDING STRONG *Girls*

According to a study produced this year, four out of 10 girls between ages 8 and 17 say that in the last school year they had no opportunities to interact with successful, positive female role models. What's more, the study found more than a third of girls were unsure if they were cut out to be a leader or even had leadership potential.

This study demonstrates that girls need women in their lives to promote positive change and provide support, advice, friendship, reinforcement and constructive examples. Girls need women in their lives who can help them develop the skills to succeed. As Gamma Phi Betas, we are those women! We are valuable female role models that make a positive impact in the world around us, and to that end, we are proud to announce our new philanthropic focus: **Building Strong Girls.**

In addition to our new focus, the Sorority is thrilled to unveil its newest philanthropic partner, Girls on the Run. "Gamma Phi Beta is excited to partner with Girls on the Run,

an outstanding organization committed to building strong girls by inspiring them to be joyful, healthy and confident," says International President Linda Malony (Southern California). "For more than 80 years, Gamma Phi Beta has supported initiatives that meet our philanthropic mission. We are proud to add Girls on the Run to our group of philanthropic partners."

A volunteer-led program, Girls on the Run weaves training for a 5K run with fun, experience-based lessons that improve self-awareness, build a collection of positive experiences and inspire life-changing confidence through accomplishment. Girls on the Run programming inspires self-respect and healthy lifestyles in girls, and their core curriculum addresses many aspects of girls' development.

"It's absolutely no surprise that Gamma Phi Beta and Girls on the Run have found each other!" expresses Girls on the Run Founder Molly Barker. "Both organizations are committed to creating a world where the strength, dignity and courage of women

can be honored, celebrated and activated. Providing girls and women with the life skills to be successful is what we are all about, and we look forward to seeing the power of our combined efforts in the years to come."

Wow! That's a lot of exciting and new information to digest that may prompt a few questions about our philanthropic focus and current partnerships. Let's make a few things clear:

**Q:** Our new philanthropic name is Building Strong Girls – does that mean our philanthropic mission: *To provide experiences and resources that build spiritual, mental and social resiliency in girls* changes too?

**A:** No. Our new name expresses our philanthropic mission in today's world. We look forward to strengthening the connection between Building Strong Girls and our member's philanthropic efforts. Our partnerships with like-minded organizations will build strong girls and make a difference!





*Girls on the Run founder Molly Barker, International President Linda Malony and Camp Fire Chief External Relations Officer Catherine Lufkin join together after our new philanthropic focus, Building Strong Girls, was announced at Convention 2012.*

**Q:** Are Camp Fire and Girl Guides of Canada still our philanthropic partners?

**A:** Absolutely! Our relationships with Camp Fire and Girl Guides of Canada are stronger than ever and continue to flourish. We remain steadfast in our belief in the value of camping, and over the years, Gamma Phi Beta has seen the growing need to build spiritual, mental and social resiliency in girls in all areas of their life.

**Q:** What if no local Camp Fire, Girl Guides of Canada or Girls on the Run organization exists near our chapter?

**A:** No problem! We encourage chapters to find local organizations that are building strong girls in their communities. Partner with groups that provide tutoring for girls and teach girls other life-enriching skills like swimming, dancing or even a

foreign language! Support local prom and business-wear recycling organizations with donation drives and fundraisers as we did at Convention in June with The Prom Exchange (more to come in the fall issue). Every community needs Gamma Phi Beta women to help build strong girls – the possibilities are endless.

We want girls to be confident, self-efficient and inspirational women. These girls may one day hold the answers to many of our global issues — but they need the confidence to speak up to address them. To have that confidence, they need positive female role models. They need Gamma Phi Betas!

## OUR PHILANTHROPIC PARTNERSHIPS

*Learn how you can get involved!*

### Girls on the Run | [girlsontherun.org](http://girlsontherun.org)



Through this partnership, Gamma Phi Betas will have the amazing opportunity to play a crucial role in positively impacting the lives of girls across the country. Members have the unique opportunity to act as role models, running buddies and coaches to members of Girls on the Run!

### Camp Fire | [campfire.org](http://campfire.org)



Camp Fire uses community resources to sponsor programming that leads girls toward self-awareness and personal achievement.

Gamma Phi Beta has also expanded their relationship with Camp Fire by sponsoring "I'm Peer Proof," an education program designed to help young people make prudent decisions, manage anger and peer pressure and heighten self-esteem and self-confidence.

### Girl Guides of Canada | [girlguides.ca](http://girlguides.ca)



With a focus on outdoor experiences as a means to building confidence and self-reliance in girls, Girl Guides of Canada has opportunities for members to become a Unit Guide, join a council or committee, help out at special events or share a talent with the girls – whatever suits your skills and schedule.



*How are you and your chapter Building Strong Girls? Tweet us @gpbcrscentmoon!*



# ΓΦΒ is on the **GROW**

Gamma Phi Beta's circle of sisters is expanding, and we're excited to bring our lifelong membership experience to even more women across North America. But how did we get there, and how does Gamma Phi Beta help our new colonies succeed once they join a campus? Let's take a look!

## What are Extension, Colonization and Re-colonization?

*Extension* is the addition of a National Panhellenic Conference (NPC) member organization to the Panhellenic system at a college or university, or the establishment of a sorority system on a campus where none previously existed.

*Colonization* is the method by which a new chapter is established on a campus. A *colony* is the group of new Gamma Phi Beta members on campus. Once ready, the colony is chartered, thereby becoming a full chapter of the Sorority.

*Re-colonization* is the re-establishment of a chapter on a campus where the original chapter previously closed.

Once NPC has approved a campus for extension (based on a myriad of factors), the information is included in a monthly bulletin, disseminated to all 26 NPC member organizations.

## And Then?

Upon receiving the bulletins, Gamma Phi Beta evaluates if the campus and Greek community are a good fit for the Sorority. Based on those evaluations, the Sorority will decide to send interest, or extension packets, to the campus' extension committee, outlining the qualities and characteristics that make our organization and their institution and Greek life system a match.

Based on the extension packets received, extension committees offer select organizations (usually two or three) an opportunity to make an extension presentation, or onsite presentation to the extension committee. In some instances, our extension teams present to the entire Panhellenic community! The sorority that best matches the needs of the campus, Greek community and culture is invited to colonize.

## What Happens When We Colonize at a Campus?

Prior to sorority-wide recruitment on the campus, Gamma Phi Beta generates awareness through various public relations efforts. Following the campus Panhellenic's guidelines, we recruit outstanding women interested in becoming charter members to be a part of our special sisterhood. Each

colony receives guidance from at least one resident collegiate leadership consultant (CLC) who helps establish order and tradition, select colony leaders and provide guidance and Sorority knowledge.

Upon successfully completing new member training, electing officers and making succession plans under the direction of the resident CLC and a special new chapter volunteer team, the colony is ready to become a chapter. Collegiate sisters travel from a nearby chapter to initiate the colony members, with local alumnae and International Council members present. Following Initiation, an installation reception is held, where everyone can celebrate the Sorority's newest chapter!



## OUR SOON-TO-BE SISTERS NEED YOU!

If you are interested in volunteering with a colony at the local level, please visit [gammaphibeta.org/colonies](http://gammaphibeta.org/colonies) for appropriate contact information for each university.

For more information about the extension process, please contact our Director of Sorority Growth, Whitney Brady, at [wbrady@gammaphibeta.org](mailto:wbrady@gammaphibeta.org).

## Colonization Timeline





# points of Pride

*As members of Gamma Phi Beta, we have so much that makes us proud. Here's a snapshot of some of our notable moments and shining accomplishments!*

## \$1.1 million

From 2002-11, Gamma Phi Betas gave more than **\$1.1 MILLION** to our philanthropic partners, helping build resiliency in girls.



This year marks our **110th Year** as a member of the National Panhellenic Conference. We were one of the seven founding organizations in 1902.

In a recent Gamma Phi Beta survey, we discovered that more than **70 PERCENT** of our volunteers hold full-time jobs in addition to their indispensable volunteer roles. In California alone, we have more than **270 SORORITY VOLUNTEERS**. Our sisters do it all!



## 800 sisters

More than **800 sisters** ELEVATED their Gamma Phi Beta experience at our 75th Convention in Denver, Colorado! Watch for complete Convention coverage in the fall issue.

## 3.47 GPA

Delta Tau Chapter (Colgate) earned the highest chapter GPA of any Greek organization on campus with a **3.47**. In fact, the chapter's GPA is 0.3 points higher than Colgate's average undergraduate GPA!



Do you have a point of pride to share? Send us an email at [TheCrescent@gammaphibeta.org](mailto:TheCrescent@gammaphibeta.org).



Sybil Bauer (Northwestern), the first Gamma Phi Beta to compete in the Olympics, won gold in the 100 meter backstroke, breaking the world record in 1924.

At the **2012 Summer Olympics** in London, cheer on Canadian windsurfer Nikola Girke (British Columbia) as she competes for gold. Turn to page 14 for more on our Olympic connections!



Of our nearly 14,000 collegiate members, **3,000** graduated this spring! With nearly **180** alumnae chapters across North America, they'll be able to connect for a lifetime! Find an alumnae chapter near you at [gammaphibeta.org/chapter-locator](http://gammaphibeta.org/chapter-locator).



# Get to Know ... Zeta Mu Chapter

*The Crescent* spoke with Zeta Mu Chapter President Kaytlin Barreira (St. John's) and got to know a lot more about one of our shining collegiate chapters in New York!

***The Crescent: What type of housing facility do you occupy?***

**Kaytlin Barreira:** We do not have a chapter house, but many sisters live together. Our sophomores room together in the dorms, while our juniors and seniors usually live in apartments or houses together.

***What makes your campus unique?***

**KB:** St. John's University prides itself on being a metropolitan and diverse campus. A large population of students commute, so joining a Greek organization is a great opportunity to meet new friends with common values – it's nice having our own little Greek family on a complex campus!

***Describe your relationship with local alumnae.***

**KB:** Our chapter has a great relationship with New York City Alumnae Chapter. In fact, many Zeta Mu alumnae currently hold leadership positions in the alumnae chapter.

***What is Zeta Mu's biggest strength?***

**KB:** Our commitment to philanthropy. Each sister completes a minimum of 20 volunteer hours per

semester, and oftentimes our sisterhood events revolve around giving back to the community. Our members thrive on that indescribable feeling you get when you help change an individual's life simply by lending a hand or giving your time.

***What is a fun fact about the chapter?***

**KB:** For the past seven years, at least one sister has been selected by the Greek community to go on a service trip to the Give Kids the World Resort in Orlando, Florida. The nonprofit resort treats children with life-threatening illnesses to a weeklong, cost-free vacation.

***What philanthropic organizations does your chapter support?***

**KB:** Our chapter hosts several annual philanthropic events, but this year for Gamma Phi Beta's Day of Service we created a new event: Girls Day Out. We invited middle school girls to spend the day with our chapter and taught them about our Core Values through various activities. With the value Labor, for example, we made bracelets and cards to donate to a local pediatric hospital while discussing the importance of giving back and charitable endeavors. It was

awesome and will definitely be an annual event for our chapter!

***What does being a lifetime member of Gamma Phi Beta mean to Zeta Mu?***

**KB:** Being a Gamma Phi is a lifelong commitment and privilege. As an international Sorority with sisters everywhere, it's one of the first facts we tell potential new members during recruitment. It's amazing to know there are thousands of sisters that have the same ideals, providing an instant connection to someone you thought was a stranger. The coolest part about wearing our letters is running into a Gamma Phi Beta alumna and hearing her story.

## FAST FACTS!

**What is the current chapter size?**

Fifty amazing sisters, exceeding the campus Total of 45!

**How many NPC sororities are on campus?**

Four (ΓΦΒ, ΦΣΣ, ΔΦΕ and ΘΦΑ).

**Has your chapter received any Greek-related awards or honors in the last year?**

- Sorority of the Year
- Chapter GPA above the all-women's average on campus
- First place in Greek Week

*Zeta Mu members connected with middle school girls at their "Girls Day Out" event, teaching them about our Core Values through various hands-on activities and discussions.*





# What to LOVE about *Crescent Corner's Shop Box!*



*Shop Box is Crescent Corner's latest trend among our collegiate chapters – simply contact [sales@crescentcorner.com](mailto:sales@crescentcorner.com) to set up a date and Crescent Corner will deliver the hottest Gamma Phi Beta apparel for members to purchase on site. What are the top five reasons to LOVE Shop Box? Keep reading!*

## **1. Perfect sisterhood event!**

What's more fun than shopping with your sisters? Now you can do it from the convenience of your chapter facility or home of a sister. "Sisters were modeling and having fun trying on all of the cute clothes – it was fabulous!" shares Chapter President Katie Bellows (Sonoma State).

**2. Shipping is FREE.** That's right, Crescent Corner will ship you all of the goodies at no cost – more to put toward apparel!

## **3. Ideal for Parents' Weekends.**

While your parents are having a blast meeting sisters and learning about the Sorority, what better opportunity to show them all the options Crescent Corner offers? If you let Crescent Corner know your parents will be there, they'll add special items just for them!

**4. Get the right fit.** We love virtual shopping, but with Shop Box, you can try on apparel on the spot – no returns, no hassle.

**5. New members can create their G-Phi wardrobe.** Now that they've joined Gamma Phi Beta, new members are eager to show off their Sorority pride. How fun would Shop Box be at your sisterhood retreat following Bid Day or Initiation? Shop Box is also perfect for Big/Little Sister gifts – spoil your sister with a gift she'll love!



"Crescent Corner sent so many cute tanks, tees and sunglasses – all things we love to give our new members on Bid Day. Shop Box helped us plan looks for recruitment, and I know our new members will love their Crescent Corner gifts come Bid Day!"

- Cassidy Browning (Sonoma State)



## Collegiate Spotlight

# Her Goal: Making a Difference



*"Sisterhood is not just what you get from it, but what you can give to it. It's all cyclical, and my Gamma Phi Beta sisters show me we can all grow, help and learn from one another."*

Anna Mahalak (William & Mary) aspires to quietly change the world. She envisions a world with education equality for all children, no matter their economic background.

"I spent last summer living and learning in Bosnia and Herzegovina through a student-run international service trip called the Bosnia Project," explains Anna, a Fulbright Peace Studies Research Grant recipient. "Our team taught English and non-violent communication in a fun, no-cost setting to 250 Bosnian students. The development of students' confidence in their communication skills was a challenging, yet dynamic process to facilitate."

Anna's passion for education began at age 13, when on her own, she made the decision to attend an elite all-girls boarding school. "I was already starting to think about college, and I knew this academy could help me achieve my educational objectives," Anna says. "It was at this school where I first found my love for global education equality; we visited schools in Africa, and they were a safe haven for kids to learn and feel safe."

Following her service trip to Africa, Anna continued to fuel her passion to connect with individuals and positively impact the world around her. Before college, she worked at a camp for children with special needs, supervising and coordinating activities for children with mental and physical disabilities

ranging from autism to Down syndrome. When she started college at William & Mary, she served as the teaching assistant for the freshman seminar "Disabilities in the Schools" where she coordinated community partnerships between students and local non-government organizations to promote service learning.

"Through all of my experiences, I have learned it's all about connecting," Anna shares. "Working with kids in particular – you see the commonalities – all kids react the same to Duck, Duck, Goose. We're all human, and we can connect on so many different levels."

While serving as Alpha Chi Chapter president, Anna applied the lessons she learned to lead her chapter. "It was important to me to focus on the wellness and connectedness of each chapter member – collegian or alumna," Anna says. "I applied for a grant to start an alumnae barbeque event to get everyone connected. When everyone puts in the effort, I've learned we all grow together."

Now a proud graduate, Anna is currently on the job hunt and networking with Gamma Phi Beta sisters. "Sisterhood is not just what you get from it, but what you can give to it. It's all cyclical, and my Gamma Phi Beta sisters show me we can all grow, help and learn from one another."

*During Anna's collegiate career she served as Panhellenic affairs vice president and chapter president and was honored by the Greek community this spring with the Outstanding Greek Woman Award.*



# Lobbying for Change on CAPITOL HILL

For 10 years Gamma Phi Betas have lobbied in Washington, D.C., advocating for the Greek community. This year was no exception. Directing their efforts at showing policymakers the positive impact of Greek life while preserving the existing rights of fraternities and sororities, members lobbied to ensure the quality of Greek life is enhanced through legislative action.

In April, several Gamma Phi Betas joined members of the North-American Interfraternity Conference and the National Panhellenic Conference to lobby in support of the Collegiate Housing and Infrastructure Act (CHIA). CHIA is proposed legislation that would make a simple change in the tax code. This change would go a long way in improving the condition and safety of Greek student housing facilities. Specifically, the bill would allow tax-deductible charitable contributions made to Greek educational foundations to be used for infrastructure improvements and the installation of fire detection and prevention systems in local not-for-profit student housing.

After several days of preparation, International President Linda Malony (Southern California), Panhellenic Affairs Vice President Betty Quick (Indiana), Sorority Director-Government Relations Julie Pawelezyk (Illinois at Urbana-Champaign), Sorority Coordinator-Officer Training and Resources Carmela Carr (Lander), University of Kansas Panhellenic President Kathryn Hoven and George Mason University Panhellenic Director of Public Relations Katie Hrkman spent a day on Capitol Hill, meeting with members of Congress and their staff and urging them to pass CHIA.

"In two days we had 11 new Congressional supporters of CHIA," Katie Hrkman reported. "They were really engaged and willing to listen – one representative I spoke with actually became one of the new co-sponsors of CHIA! Being on the Hill made me realize lobbying is what I want to spend my time doing. It's important to have Greeks represented and advocating in Congress to advance change."



Katie Hrkman (George Mason) and Linda Malony (Southern California) before a full day of lobbying on behalf of the Greek community. "Going into it I was extremely nervous," Katie says. "I was running on pure adrenaline, but seeing all of the student leaders was really encouraging – I knew we could make a difference."

Fraternities and sororities provide housing for more than 250,000 students each year, nearly one out of every eight students in America. While our members aren't currently lobbying on the Hill, the fight to pass CHIA cannot end. You can make a difference, too! Our members deserve safer and more affordable housing – declare your support at [fspac.org](http://fspac.org) today.

## Gamma Phi Beta Honors College Panhellenics with Impact Award

Annually, the Sorority presents the Panhellenic Impact Award to outstanding College Panhellenics that are participants in the Association of Fraternal Leadership and Values or Southeastern Panhellenic Association and implemented a program that positively enhances the Greek reputation to campus faculty/administration, the community, non-Greek students, parents, etc.

Gamma Phi Beta Sorority is pleased to recognize this year's recipients – the University of San Diego Panhellenic and Embry-Riddle Aeronautical University Panhellenic – for their positive interfraternal public relations efforts.



*Is your college Panhellenic shining for the Greek community? Apply for a Panhellenic Impact Award at [gammaphibeta.org/PanhellenicImpact](http://gammaphibeta.org/PanhellenicImpact).*



Sorority Director-Panhellenic Resources Darla Dakin (Arizona State) presents a Panhellenic Impact Award to University of San Diego's Panhellenic President Katie Decou at the Fraternal Leadership and Values West Conference.



# SWIMMING IN GOLD



## When London hosts the 2012 Summer Olympic Games

from July 27 to August 12, it will become the first city to host the Olympics three times. While this will be London's third go-around, it's not Gamma Phi Beta's first time around the Olympic block.

Dating back to 1924, Gamma Phi Betas haven't just competed in the Olympic Games – they've won gold. In fact, keep an eye out for Nikola Girke (British Columbia) who will compete on behalf of Canada at the London Olympic Games in the windsurfing event.

Dive into our Olympic past to learn about the Sorority's incredible connections to the Summer Games!

### THE RECORD BREAKER

Considered a legend in the backstroke, Sybil Bauer (Northwestern, 1920) set 23 world records in women's swimming and won 11 National Championships in just six years. Impressively, at one time she held every single existing women's backstroke record and was considered the "sweetheart" of the sports world in the early 1920s.

During an informal 1922 race, Sybil became the first woman to break an existing men's swimming record (the

440-yard backstroke by four seconds).

Although widely recorded, her time was never officially recognized as the meet was considered an unsanctioned contest.

In 1924, Sybil competed in the Summer Olympics, winning gold in the 100-meter backstroke. Finishing with a time of 1:23.2, four seconds ahead of the silver medalist, Sybil set her final world record.

At age 23, Sybil died suddenly of cancer. She was at the peak of her undefeated swimming career and engaged to future television host Ed Sullivan. Posthumously,

Sybil was inducted into the International Swimming Hall of Fame and made a charter member of the Northwestern Athletics Hall of Fame.

### THE MOTIVATOR

With 40 years of coaching experience behind her, Charlotte Jennings Davis (University of Washington) has helped synchronized swimming athletes earn eight Olympic medals, including six gold. A world-renowned coach, Charlotte's first Olympic experience dates back to 1984; the first year



*Do you have an Olympic story to share? Email [TheCrescent@gammaphibeta.org](mailto:TheCrescent@gammaphibeta.org).*





*At the 1984 Los Angeles Summer Olympics, the first year synchronized swimming was introduced to the Games, Charlotte (middle) coached the synchronized swimming duet team to gold. Here, Charlotte is being interviewed by an ABC Television sportscaster with Candy and Tracie just after discovering they won the gold.*

synchronized swimming was introduced as an Olympic sport.

"When the International Olympic Committee accepted the synchronized swimming event for the 1984 Olympics, the duet pair I coached, Candy and Tracie, were ranked third or fourth overall in the country," Charlotte explained. "I sat them down and told them if they continued to work hard and stay committed to the sport, they could win gold."

And they did. Not only that, but Tracie also earned another gold medal that Olympics in the first-ever solo synchronized swimming event. "To see the American flag go up during the medal ceremony in your own country is very impactful, incredible in fact," Charlotte says. "You just want to make your country proud."

In 1988, Charlotte coached another competitor to Olympic silver for the solo synchronized event. In 1992 and 1994, she coached all of the solo and duet gold medalists. "I have loved every minute that I've spent working within the sport of synchronized swimming. I wouldn't trade

the opportunity or experiences I've had for any other job in the world."

Currently Charlotte holds two world records in masters speed relay swimming and was inducted into the United States Synchronized Swimming Hall of Fame in 1994.

### THE TORCHBEARERS

Rounding out our Olympic connections are Marilyn Gilmore (Oregon State) and Amy Bartlett Thornton (Idaho). In 1996 at the historic centennial Olympic Games in Atlanta, Georgia, Marilyn became the 53rd Olympic Torchbearer to receive the flame on its 15,000 mile journey. At the time, Marilyn was the executive director of the Los Angeles Area Council of Camp Fire and was one of 80 "community heroes" selected for the honor.

Amy carried the Olympic Flame for a stretch near Kavala, Greece, for the 2004 games in Athens. Following her participation in the symbolic tradition, she told the "Portland Oregonian", "I've never done anything like this. It's such an honor."

### GOING FOR GOLD!

When tuning in to the Summer Olympics, watch for 2012 Carnation Award recipient Nikola Girke (British Columbia) as she competes for gold in the windsurfing competition! Nikola, a two-time Canadian Olympian, is among the few Olympic athletes who have made the transition from one sport to another and competed in two different events. At the 2004 Athens Olympic Games, Nikola crewed on a two person sailboat, finishing 13th in sailing. In 2005, Nikola switched to RSX windsurfing, launching another — yet completely different — Olympic campaign for Beijing 2008. A respectable 17th place finish at the 2008 Olympic Games inspired Nikola to continue in pursuit of bringing home an Olympic medal.

"Competing at both the 2004 and 2008 Olympic Games has given me invaluable experience. Making it to the Olympics is already a dream come true, but my ultimate goal has yet to be reached. I don't want to go just to compete, I want to win."





# inspiration board

## CUSTOM WALL VINYL

Add a fun splash of creativity with a custom wall decal or mural. At Gamma Phi Beta International Headquarters, we decorated the walls with some of our favorite Sorority quotes – talk about instant inspiration!

*To inspire the highest type of womanhood.*



## A FREE HANDY APP

Get connected to the latest Gamma Phi Beta news, events and social media by downloading the new Sorority iPhone app. Just visit the App Store on your iPhone, iPad or iPod and search Gamma Phi Beta for our free app!







#### TANKTASTIC

This designer inspired tank from CrescentCorner.com is perfect to rock when the temperature heats up. An instant summer favorite!

#### GIRLS ON THE RUN

Our new philanthropic partner, Girls on the Run, has a presence in more than 170 cities across North America and inspires girls to be joyful, healthy and confident. Study after study shows walking and exercise reduces your risk of breast and colon cancer, so enjoy the summer rays and stay healthy! See page 6 for more on our new partnership with Girls on the Run.



#### PUT A RING (OR TWO!) ON IT

These stylishly stackable, irresistibly versatile set of rings featuring pink or brown crystals are perfect individually or worn as a trio! Get 'em at [higreek.com](http://higreek.com).



#### INTERNATIONAL FRIENDSHIP DAY

Officially declared just last year by the United Nations, this day in August is the perfect opportunity to connect or reconnect with a special sister. Let them know just how much their friendship means to you! Even better, plan a girl's night with a group of sisters – you have the perfect excuse!



A. Snake Chain, 18", #SNAKE  
SS.....\$18.50, GF.....\$29

B. Vintage Letter Charm, #0800  
SS.....\$35, 10K.....\$56

C. Vertical Letter Lavalier, #L2647  
SS.....\$26, 10K.....\$56

D. Crescent Disk Charm, #1045  
SS.....\$26

E. Chapter President's Ring, #0453  
SS.....\$122, 10K.....\$310

F. Oval Crest Signet Ring, #0345  
SS.....\$91, 10K.....\$292

G. Pink Sapphire Crescent Necklace, 18", #MP63502P  
SS.....\$103, 10K.....\$522

H. Polished Crescent Necklace, 18", #1668  
SS.....\$65, 10K (with GF chain)...\$155,

I. Wynter Ice Watch, #Wynteric.....\$40

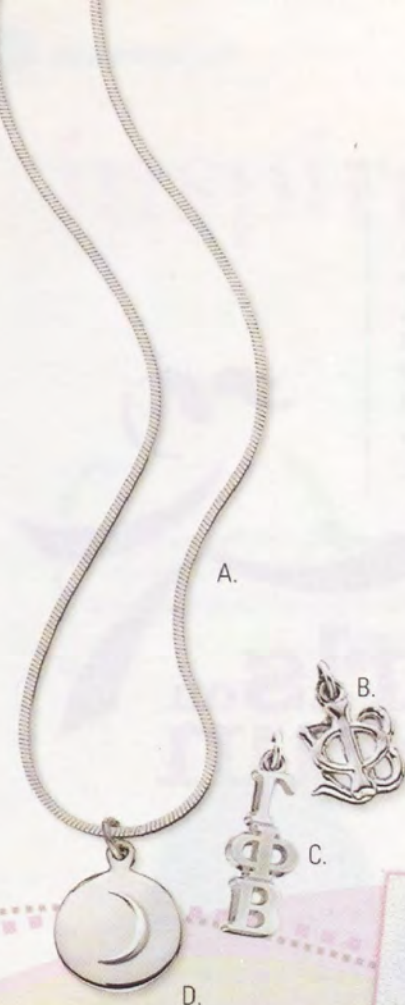
J. Wide Band Cuff Bracelet with Crest, #SB497  
SS/GP.....\$150

K. Wide Band Cuff Bracelet  
with Crescent, #SB497CST  
SS/GP.....\$150

L. Stack Rings, #335GR  
stainless steel.....\$50



**new watch!**  
"Wynter Ice"



**To order:**  
Visit **www.HJGreek.com**  
or call **1.800.422.4348**

Find us on Facebook: [www.facebook.com/hjgreek](http://www.facebook.com/hjgreek)





## Get to Know ...

# Ottawa-Gatineau Alumnae Chapter

At the beginning of 2011, Gamma Phi Beta proudly chartered its fourth Canadian alumnae chapter – our second in Ontario. Sisters from Ottawa-Gatineau Alumnae Chapter share what makes their chapter shine!

### *The Crescent: What is unique about your chapter?*

#### **Ottawa-Gatineau Alumnae Chapter:**

Ottawa, the capital of Canada, has a highly-varied international community. We have sisters from all corners of Canada and the world, which always makes for interesting conversations. For many years we were a loosely-knit group who met only on Founders Day; Dominique Groulx (McGill) began organizing additional events throughout the year, inspiring sisters to officially charter an alumnae chapter. Since chartering, we have already become a larger circle of sisters and friends.

### *Which Core Value describes your chapter best?*

**OGAC:** Love. This is what brings us together in sisterhood to share our lives and experiences.

### *Describe one of your signature events.*

**OGAC:** Recently we entertained 29 members from Alpha Tau Chapter (McGill) at the residence of the Ambassador to the Netherlands with a potluck dinner. We took over the industrial-sized kitchen and created a meal we enjoyed with the women that was worthy of Ambassador's Row!



*Ottawa-Gatineau Alumnae Chapter members with their new alumnae chapter charter!*

### *Are any members famous or especially accomplished?*

**OGAC:** We have three members who are all very humble but incredibly well-known and respected in their fields:

- Marianne Scott (McGill) received the Carnation Award at Convention 2008 and was the first woman to be appointed as the National Librarian of Canada.
- Kathy Fox (McGill) was inducted into the Quebec Air and Space Hall of Fame in 2004 because of her exceptional accomplishments in the aviation industry.
- Cecilia Humpheys (Manitoba) is the first female in Ottawa to open her own architect office.

### *How does your chapter celebrate Founders Day?*

**OGAC:** Sisters representing as many as 10 different chapters join together to

socialize over tea and enjoy a Gamma Phi Beta-themed cake. We perform Ritual and honor sisters celebrating 25 or 50 years of membership with the presentation of pins.

### *What does our mission mean to the chapter?*

**OGAC:** Inspiring the highest type of womanhood means different things to each of us. We accept our personal differences and value that collectively these differences make our chapter special. Our interactions and bonds together are authentic, enduring and provide a fruitful soil from which strong women can continue to grow over a lifetime.

Location: Ottawa, Ontario, in region 1

Membership size: 27

Charter date: February 27, 2011

Collegiate chapter supported: Alpha Tau (McGill)



*Recommend a chapter for our alumnae spotlight!*  
Email [TheCrescent@gammaphibeta.org](mailto:TheCrescent@gammaphibeta.org).





*shining on*

# SHINE on

## Since 1874, Gamma Phi Beta

has cultivated its members, one woman at a time, with unique opportunities in leadership, service, scholarship and lifelong friendship. We strive to equip each sister with the skills, confidence and tools they need to achieve their greatest potential at any stage in life.

As a sisterhood, we accomplish amazing things together, but we proudly acknowledge that our real strength lies in the originality of each member. Over the next several pages, we highlight some shining alumnae as well as a number of special events and experiences that demonstrate the power of our sisterhood. Gamma Phi Beta is proud to have shaped part of who these women are today!

No matter where you are, or how long it's been since you last connected with the Sorority, remember the spirit of Gamma Phi Beta shines wherever you are. Shine on!





## THE EVENT PLANNER

What do Heidi Klum, Billy Crystal, Jennifer Garner and Wolfgang Puck all have in common? Stumped? They've all had one-of-a-kind events planned by one of the most sought-after event planners and lifestyle experts in the United States – Mindy Hersch Weiss (San Diego State).

Listed in the "New York Times" as one of the top five wedding planners, Mindy's list of clientele looks similar to the invite list for the Oscars. Or the Grammys. Or, well, any award show for that matter!

"My introduction to party planning actually started at San Diego State with Gamma Phi Beta when I was social chair! I used to plan fun trips and events for us," Mindy remembers. "I never thought I would become a party planner, but after one of my invitation clients insisted on me planning his entire event, I got the bug!"

More than 20 years ago, Mindy launched her fast-paced career by creating custom invitations for social events. Recognizing her incredible attention to detail and unique, creative ideas, her clientele urged her to create a full-service event planning company, and thus, Mindy Weiss Party Consultants was born.

"I'm so privileged to be a part of one of the happiest days in my clients' lives," Mindy reflects. "The thing I love most about event planning is that I'm creating memories."

In addition to creating numerous well-known weddings and events for high-profile celebrities and athletes, Mindy also helped plan the wedding for the son of a Gamma Phi Beta in 2003. Remember the first-ever \$4 million "Bachelorette" wedding with

Trista Rehn and Ryan Sutter that aired live on ABC? Well, Mindy was the creative brains behind the extravaganza (including a ceremony with 32,000 roses!), with millions of viewers drooling over the fairy tale-like wedding.

While planning Trista and Ryan's wedding, Mindy was surprised to discover Ryan's mother, Barbara Sutter (Colorado State), was also a Gamma Phi Beta. "When you meet a fellow Gamma Phi it is an instant connection. I love when you ask, 'What sorority are you a member of?' and they say, 'GAMMA PHI!'" Mindy exclaims. "Barbara and I have stayed in touch because of our sister connection."

Out of all the amazing weddings, parties and spectacular events Mindy has planned, there's one that always makes the top of her list: her son's wedding. "It was one of the most special weddings I've ever worked on. I was so honored that he and his fiancé allowed me to be the wedding planner!" Mindy explains. "It was an absolute dream come true to bring to life what they had in mind. One of my favorite moments of the night was dancing with my son."

While Mindy has positioned herself as a top lifestyle expert with some of the biggest names, brands and retailers in the country, she still credits Gamma Phi Beta with shaping her. "You just don't realize how many things you learn and take with you when you graduate. The experiences keep popping up throughout your life. If I had to do it all over again...I would do it the same...with Gamma Phi Beta by my side!"



Mindy (far left) on the set of "The Bachelorette" wedding with Barbara Sutter (Colorado State), the groom's mother.



Photo by Elizabeth Messina

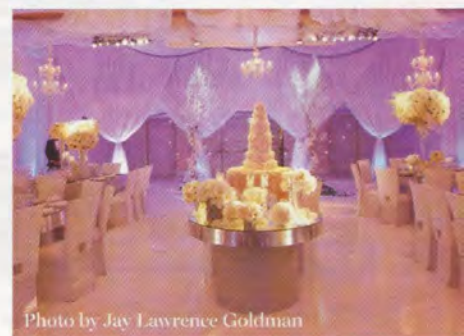


Photo by Jay Lawrence Goldman

From weddings to parties to corporate events and everything in between, Mindy has been creating one-of-a-kind events for more than 20 years.

### Get to Know Mindy in 3 Questions

#### **Where do you get your inspiration for each event?**

Inspiration for me is a daily discovery! I follow fashion trends and walk the Design Center to see shapes and styles. My favorite treat is going to flea markets every Sunday to walk and imagine where all those vintage items belonged and the stories behind them.

#### **Describe ΓΦΒ in three words.**

Respect. Love. Lifetime.

#### **What is your favorite way to relax?**

The second I get home...kisses for the kids and hubby and then into my pajamas (oh, how I love my pjs)! Then it's dinner, homework with the kids and bed...computer on my lap...playing Scrabble on my iPad and TV on.



# SHINE on THE MARS EXPLORATION MANAGER



*It was 1958 and Donna Shirley (Oklahoma), a shy, small town girl, had just arrived to the University of*

*Oklahoma, eager to register for fall classes. There to receive an education in aeronautical engineering, Donna walked briskly into the Building of Engineers, bright-eyed and ready to begin her scholastic future and pursue her long-time dream of becoming an aerospace engineer. Suddenly, as if an intruder, she was stopped in her tracks.*

"What are you doing in this building, young lady?" a college advisor asked Donna. Perplexed, Donna explained she was there to register for classes like everyone else.

"Girls can't be engineers," he quipped brashly, his voice stinging with distaste.

Unruffled, Donna registered for the classes anyway and was the only female in any University aerospace engineering class throughout her collegiate career. "My first year was the toughest – that same advisor who stopped me that day also determined my classes and how many credits I took," Donna remembers. "There were a few times I didn't know if I could pass a class because my schedule and curriculum were so challenging. Luckily, I had Gamma Phis like Anne Lynch

(Oklahoma) to help me out – she was my lab partner in chemistry. If it weren't for her, I never would have passed that class!" Donna says.

Fast forward nearly 30 years and Donna has a new challenge. This time, it's a little more complicated than passing chemistry: successfully landing the Sojourner Truth, the National Aeronautics and Space Administration's (NASA) first self-guided, microwave-oven-sized robotic rover, on Mars.

Selected to head the Mars Exploration Program, Donna was the first woman to manage a NASA program. During this assignment she oversaw the flight of Pathfinder (the Mars lander) and Sojourner to Mars in 1997, while leading a predominantly-male team. This highly successful mission of the little rover on Mars provided spectacular images from the surface of the red planet.

"That was the most meaningful and defining moment in my career," Donna reflects.

Now Donna is an active member of Tulsa Alumnae Chapter and stays busy with homework as she is in the midst of completing a doctoral program. "I lost touch with Gamma Phi for a bit while so involved with aerospace, but at my first alumnae chapter gathering, I was able to reconnect and pick right up where I left off."

In addition to being inducted into the Women in Technology International Hall of



*The rover, named Sojourner after American civil rights crusader Sojourner Truth, captured more than 550 unique images of Mars as well as extensive data on winds and other weather factors. Findings from both the Pathfinder lander and rover suggest that Mars was at one time warm and wet, with water existing in its liquid state and a thicker atmosphere.*

Fame in 1997, Donna also received NASA's Outstanding Leadership Medal and the National Space Society's Wernher Von Braun Memorial Award in 2001. After retiring from NASA in 1998, Donna returned to her alma mater for a stint and became assistant dean of the College of Engineering at the University of Oklahoma – the same place where the advisor once told her girls could not be engineers.

## Three Intriguing Facts About Donna

***Asteroid 5624 Shirley was named in her honor.***

***Donna is the founding director of the Science Fiction Museum and Hall of Fame in Seattle, Washington.***

***When she began her career with NASA in 1966, she was the only female among 2,000 engineers.***



# SHINE On THE LIFESTYLE TELEVISION HOST

*"If you can dream it, you can do it," Home and Garden Television (HGTV) host and producer Sarah Richardson (Western Ontario) says. "I can't say it will be easy, but if you are headed down the path that you are meant to travel, you will find what you are looking for."*

Sarah, the star of five – yes, five – HGTV design series, including "Room Service," "Design, Inc.," "Sarah's House," "Sarah's Cottage," and now her most recent adventure, "Sarah 101," knows a thing or two about going after your dreams.

"It hasn't been an instant express train to stardom, and the route has been paved with lots of long days, challenging moments and hard work – but I wouldn't change any part of my journey," Sarah explains. Always full of creative energy, Sarah first got her start in lifestyle television as a behind-the-scenes prop stylist and set decorator in 1994. Soon thereafter, Sarah found herself in high demand...this time in front of the cameras.

"Interior design can move at a slow pace on private client projects, but TV is a hungry beast that needs to be fed, so I am always on tight timelines and have to deliver incredible results," Sarah notes.

In her Toronto-based TV programs, Sarah and her team of designers solve problems and implement innovative, customized solutions for clients. Her award-winning programs are viewed in more than 50 countries worldwide (dubbed in at least five languages!) and reach more than 45 million homes. The cameras follow Sarah all day, every day – pulling back the curtain on the interior design process for those who want to know what really happens. It's the

unscripted trials, tribulations and triumphs in the "life of design."

"If you give me 30 minutes of your time, I owe it to you to make sure you get inspiration, ideas and knowledge out of it [the TV episode]," Sarah states.

Not only the host, but also the co-creator and co-producer of all five of her shows, Sarah has been on the air for 10 years, holding top spots on HGTV with an ever-growing base of loyal viewers. With more than 200 design episodes to her name, Sarah has set the standard for many lifestyle programs and is always thinking about her next design adventure.

"So far I've done five different TV series, and it's time for yet another direction," Sarah alludes. "Everyone needs something to aspire to. I think everyone should aim higher, try harder and never be satisfied with mediocrity."

Outside her ever-evolving career, Sarah enjoys celebrating the simple joys in life and has stayed loyal to her Gamma Phi roots. "I'm actually meeting five chapter sisters in 15 minutes to celebrate one of their birthdays," Sarah adds at the close of the interview. "Gamma Phi Beta gave me friends for life. My sisters were my roommates after school, bridesmaids and one has worked with me for a decade. What more can you ask for than lifelong friendship?"



*"...TV is a hungry beast that needs to be fed, so I am always on tight timelines and have to deliver incredible results."*

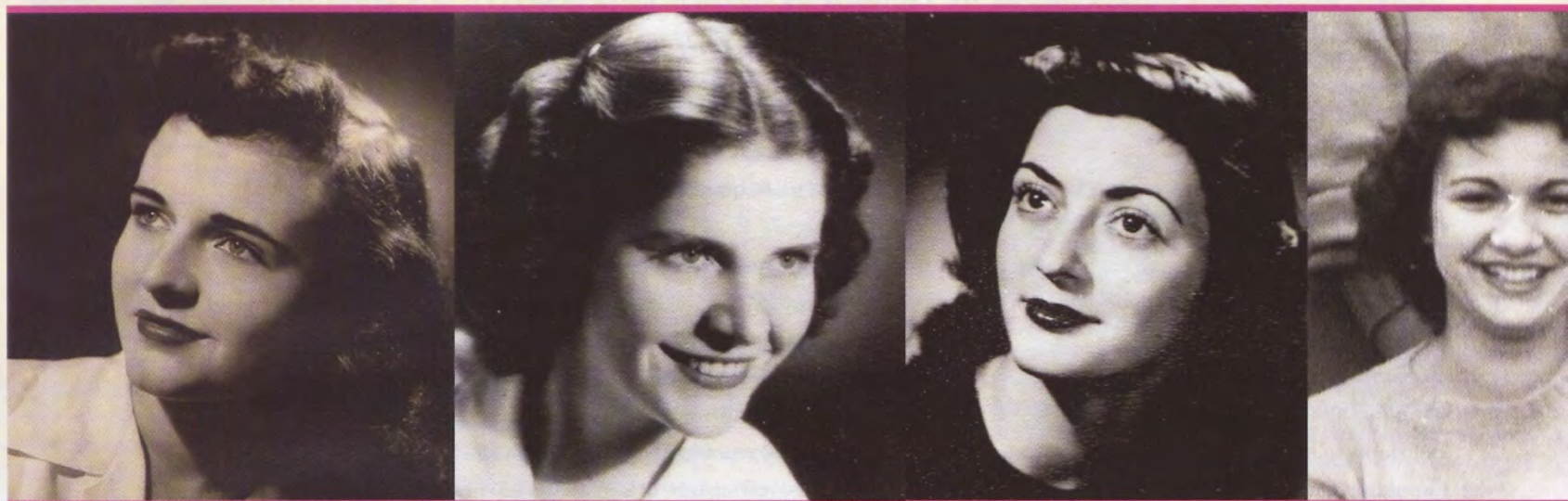
## What the Experts Say About Sarah

***"You know you've made it when you've attained single name status – all I have to say is 'Sarah,' and you know who I'm referring to!"*** –Gail Johnston Habs, Editor in Chief of *STYLE AT HOME* magazine

***"The positive, can-do image Sarah projects in each show appeals to viewers of all ages and conveys a positive image of Canada and Canadians. These programs also give viewers the confidence that they too can cost-effectively make their homes a better, happier place to be."*** –Robert A. Milton, long-time client



# SHINE on A SIMPLE STORY OF SISTERHOOD



"We all met between 1946 and 1948 at Omicron Chapter (Illinois at Urbana-Champaign)," Maggie Engel Brockhouse recalls. "We remember the time well – the war was finally coming to an end and that meant the guys were back. Glory be!"

"Gamma Phi Beta was everything I hoped for and more – the five of us would go to breakfast every Saturday morning, usually after we had been on double dates together the night before," Janice Ehleb Ahl (Illinois at Urbana-Champaign) chuckles. "Gamma Phi Beta was everything I wanted in a house."

Sixty-five years later, after graduating college and going on to have families, careers and so much more, five sisters, Barbara Clayton La Vigne, Margaret Engel Brockhouse, Lois Bolle Van Leeuwen, Millicent "Millie" Simonds Bates and Janice "Jan" Ehleb Ahl, reunited for one magnificent reunion in Santa Barbara, California.

"We had all stayed in touch and tried to reunite over the past few years, but finally got the opportunity when two of our daughters drove us. Millie's daughter drove her all the way from Ohio!" Maggie explained.

Millie, who turned 90 this July, was equally excited for the reunion hosted by Lois; she had

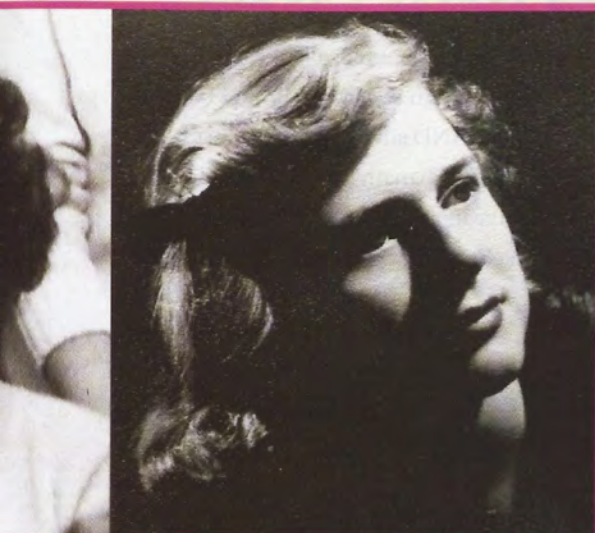
not seen her ΓΦΒ sisters since leaving school early to marry her late husband. "We all have silver or white hair, but we still have strong feelings for each other and Gamma Phi Beta," Millie reflects.

Millie remembers when she "rushed" thinking there was "no way" she would fit



"We went out every evening during our reunion, but the most fun was sitting in Lois' den and laughing about our college days," Jan says. "It had been 65 years, but we all felt so close."





*"We all met between 1946 and 1948 at Omicron Chapter (Illinois at Urbana-Champaign). We remember the time well – the war was finally coming to an end and that meant the guys were back. Glory be!"*  
*- Maggie Engel Brockhouse*

in with the Gamma Phis. "My family didn't have much money following the Depression, so I started school later than most women. I thought they would think I was an old maid!" Millie remembers. "But, as fate would have it, we hit it off just splendidly." In fact, one of Millie's older brothers went on to marry a Gamma Phi Beta he met through Millie.

The women's packed itinerary included a drive along the Southern California coast to visit the Ronald Regan Library, lots of laughter and tears, and a special final meal, fittingly hosted in a historical women's-only restaurant.

"We talked all afternoon there," Maggie says. "It was such fun to see that each of my sister's same delightful and unique mannerisms that characterized them 65 years ago are still who they are today. By the time we left, we felt just like we did in college."

Reigniting this longtime friendship meant so much to the women that plans are already in the works for a second reunion. "I'll do it again in a minute!" Jan declared.

To commemorate the special event,  
 Millie wrote this original poem.

#### **Our Reunion in Santa Barbara**

*The years simply melted away  
 Since our days at Illinois;  
 Our halcyon days had passed on,  
 And our reunion filled with joy.*

*'though our hair had turned to silver;  
 Our friendships were cast in gold;  
 And the years may reflect their toll  
 As we've watched our lives unfold.*

*Although we've all had challenges,  
 Tested by joys and sorrows,  
 We've kept our outlook positive  
 As we face our tomorrows.*

*Each of us is in her eighties,  
 But we're all still young at heart;  
 We still have sparkles in our eyes  
 Which I hope will ne'er depart.*

*Here's to Lois, our gracious host;  
 A toast to dear Barb and Jan;  
 To sweet Maggie and her Beth,  
 And to the fun of our "clan."*

*Our heartfelt thanks to Gamma Phi  
 Who brought us all together –  
 Once upon a time long ago  
 To whom we are a-gether.*

*I hope our paths will cross again,  
 But if that may not be,  
 You can be sure you will remain  
 In my heart and memory.*



# SHINE ON BEING A ΓΦΒ CHAPTER ADVISOR

My Greek life experience began at the University of Toronto when I accepted my bid to Gamma Phi Beta. I expected the experience was going to be fun, but never realized how much it would shape me.

I made friends I am still close with today and held leadership positions that provided incredible opportunities for growth. At one time I worked closely with Barbara Hurt-Simmons (Nebraska-Kearney), and the experience left a lasting impression – she emulates lifetime commitment.

Now an alumna, I continue to benefit from my Sorority membership. Inspired by ΓΦΒ volunteers I met as a collegian like Barbara and Tanya Jordan (Purdue), I stayed involved after graduation by becoming a chapter advisor for Alpha Alpha Chapter (Toronto).

I became an advisor to demonstrate to our collegiate members that being a Gamma Phi Beta is for a lifetime. I volunteer my time because being a part of these women's lives is rewarding, and I can stay connected to an organization that means so much to me. My role as chapter advisor was to share my

experiences and help the women see the “big picture.” I wanted to inspire them to be better than they knew they could be. I challenged them as women of Gamma Phi Beta to exceed expectations – I knew they were capable of achieving so much.

I did not come into this role knowing all there is to know. I grew into it. In fact, I am still learning today. I did learn, however, that advisors make the difference between a chapter that is getting by and one that shines. I encourage alumnae to work with any of our many collegiate chapters – if not in person, connect by email, phone or Skype.

I loved serving as an advisor, attending chapter meetings and talking with the women about their upcoming tests, job interviews, graduation plans and more. I was happy to be surrounded by women who enjoy their Sorority experience as much as I do. Looking back at the past three years, I am so proud of Alpha Alpha's successes. The chapter raised its GPA, increased volunteer hours, supported more women attending leadership conferences, identified new goals and achieved them!

This year I transitioned to my new role as regional coordinator-public relations, region 1. In this position I am thrilled to support both great chapters AND advisors! I have already enjoyed meeting so many new sisters and look forward to having a long career as a volunteer for Gamma Phi Beta.

## Make an Impact!

More than 66 percent of ΓΦΒ collegiate chapters are in need of advisors or house corporation board members. The closer-to-home efforts of alumnae in advisory and other volunteer roles is critical to the Sorority's overall success. Everyone has something to offer! It just takes a motivated individual who is willing to give her time to positively impact our sisterhood.

*Sign up to make a difference today by completing the Volunteer Interest Form at [gammaphibeta.org/volunteernow](http://gammaphibeta.org/volunteernow).*



In her new role as regional coordinator-public relations, Laura (fifth from the left, back row) had the opportunity to connect with sisters of Delta Tau Chapter (Colgate), Gretchen Meier Oostenink (Iowa, next to Laura), chapter advisor for 15 years, and Financial Advisor Courtney Jelaco (Idaho, next to Gretchen) during Parents Weekend.



You spent weeks looking for  
those perfect pumps...



**Luckily, you could save right now with  
GEICO'S SPECIAL DISCOUNT.**

All of us have one. You know, that perfect pair of pumps in the closet that took forever to find, but makes you feel (and look) just right. Fortunately, it only takes 15 minutes to save with a special discount from GEICO just for being a **member of Gamma Phi Beta**. Your membership status could help you save some money, and the savings will look great on you.

Get a free quote.

**GEICO**®

1-800-368-2734

[geico.com/greek/gammaphibeta](http://geico.com/greek/gammaphibeta)



**Mention your Gamma Phi Beta membership to save even more.**

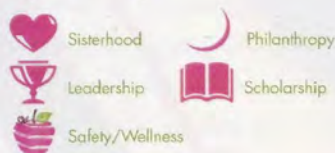
Some discounts, coverages, payment plans and features are not available in all states or all GEICO companies. Discount amount varies in some states. One group discount applicable per policy. Coverage is individual. In New York a premium reduction may be available. GEICO is a registered service mark of Government Employees Insurance Company, Washington, D.C. 20076; a Berkshire Hathaway Inc. subsidiary. GEICO Gecko image © 1999-2012.





# SORORITY Life

## Symbol Key:



## Region 1

### DELAWARE

#### ☪ Eta Gamma Chapter (Delaware)

The chapter and Greek community participated in "UDance," the university's annual 12-hour dance marathon. All proceeds benefitted the Andrew McDonough B+ Foundation to help find a cure for pediatric cancer.

### MASSACHUSETTS

#### ☪ Boston Alumnae Chapter

The chapter held its annual potluck meeting at Bentley College where brainstorming, elections and Ritual took place. The chapter sends a huge thank you to the outgoing board members for all their hard work!

#### ☪ Epsilon Phi Chapter (Bentley)

Members participated in Relay for Life, an overnight relay-style event benefiting the American Cancer Society, and raised more than \$1,000 for the organization.

### NEW YORK

#### ♥ Epsilon Epsilon Chapter (Union)

To promote sisterhood, each Friday afternoon the chapter hosts "Tea Time" in the chapter house. Over tea and cookies, sisters unwind and socialize before kicking off the weekend.

#### ☪ Epsilon Tau Chapter (Rochester)

Members were proud to receive the Community Building and Programming Award in addition to the Ready, Set, Collaborate! Award at the Greek Achievement Awards Reception.

### PENNSYLVANIA

#### ♥ Delta Kappa Chapter (Lehigh)

Members hosted a lunch to honor and celebrate graduating sisters.

#### ☪ Zeta Epsilon Chapter (Duquesne)

Shining bright, the chapter earned a second place finish in Greek Week competitions.

### QUEBEC

#### ♥ Alpha Tau Chapter (McGill)

Members celebrated the end of the school year with a pink-themed formal at a hotel in downtown Montreal, complete with a red carpet, photographer and DJ!

## Region 2

### FLORIDA

#### ☪ Epsilon Zeta Chapter (Jacksonville)

For Day of Service, the chapter visited a local elementary school and led a service event, helping students stuff teddy bears to donate to children in need.

#### ♥ Eta Beta Chapter (Florida Southern)

Sisters capped off the school year with an elegant formal that included horse-drawn carriage rides!

#### ♥ Jacksonville Alumnae Chapter

A "Girls Night Out" found sisters showing off their creative flair at a pottery painting class. Members also met with alumnae from the Syracuse Triad, the three sororities chartered at Syracuse University, for their annual gathering where they enjoyed lunch and Panhellenic camaraderie.

#### ☪ Naples Alumnae Chapter

At a luncheon, sisters thanked outgoing officers for their service and proudly awarded the Gamma Phi Beta IIKE Award, honoring the outstanding contributions of members to the chapter.

### MARYLAND

#### ♥ Washington, D.C. Alumnae Chapter

Chapter activities included dinner nights out on the town and themed potlucks. The chapter's future plans include a service event, Washington Nationals baseball game and a concert performed by fellow sister Kristin Chenoweth (Oklahoma City)!

### NORTH CAROLINA

#### ☪ Epsilon Psi Chapter (North Carolina-Asheville)

Members made an impact when they planted trees in honor of Asheville's Arbor Day celebration. The chapter also held a car wash and raised more than \$250 to support our philanthropies.

Gamma Phi Beta Sorority by Regions







**Region 1** | Bringing the community together for some fun, Delta Tau Chapter (Colgate) co-hosted a carnival for children, complete with face painting, cotton candy and game stands.



**Region 2** | Memphis Alumnae Chapter members had a blast trying on hats following a presentation from a sister about her millinery business.



**Region 2** | Raleigh Area Alumnae Chapter members volunteered for a local nonprofit food shuttle service by gardening and helping with green house activities.



## SOUTH CAROLINA

### ♥ Epsilon Theta Chapter (Clemson)

The chapter's Gamma Phis and Bowties-themed formal was a fun prelude to Senior Week when graduating sisters transitioned to alumnae life with fun and meaningful events like a potluck dinner with each senior's Big/Little Sister family.

### ♪ Zeta Eta Chapter (Lander)

During Big and Little Sister week, members visited a facility for children going through difficult situations to play and read books to them. During Initiation Week, members visited the children again and brought them decorated cupcakes they had baked.

### ♪ Zeta Sigma Chapter (South Carolina)

For the second consecutive year, the chapter was the top fundraising team for Dance Marathon, a 12-hour dance event that raises money to find a cure for pediatric cancer. In total, the chapter collected an astounding \$18,000 through year-long fundraising efforts!

## VIRGINIA

### ♪ Epsilon Iota (Christopher Newport)

At the chapter's annual CNU's Best Dance Crew event, multiple campus and local organizations competed for the title of champion, including girls from Girls Inc., the organization the event supports. In total, more than \$2,200 was raised at this fun dance competition.

### ♥ Epsilon Pi Chapter (George Mason)

Unique sisterhood events like a trip to an indoor giant trampoline arena and making matching tie-dye t-shirts kept sisters active and connected.

### ♥ Eta Epsilon Chapter (Virginia Polytechnic)

Members were thrilled to initiate the 46 women who make up the chapter's first-ever new member class. Initiation Week included fun events like crafting family trees, Gamma Phi Beta trivia and a fireside chat.

## Region 3

### ALABAMA

### ♥ Epsilon Lambda Chapter (Alabama)

Alongside Greeks and students, members participated in the University of Alabama's Day of Remembrance, picking up debris following last year's tornado. The chapter

also held a memorial service the same day in memory of a sister who died in the storms.

## GEORGIA

### ♥ Atlanta Alumnae Chapter

As a token of appreciation for the Sorority's hard-working volunteers, the chapter hosted a luncheon for all local women who volunteer their time and efforts to support the chapter.

## LOUISIANA

### ♥ Epsilon Mu Chapter (Loyola-New Orleans)

Relay for Life, an overnight relay-style event that benefits the American Cancer Society, was a special event for chapter members as they walked in honor of a sister who recently battled cancer and survived. The chapter proudly earned the Top Fundraising Award and plans to participate in the event annually.

## TEXAS

### ♪ Alpha Xi Chapter (Southern Methodist)

This spring the chapter held its first-ever Crescent Classic: Capture the Flag Tournament to support ΓΦΒ philanthropies and had more than 60 participants, raising \$500!

### ♪ Zeta Chi Chapter (Texas Christian)

Members were proud to earn the Blue Ribbon Award from their university for their outstanding service and dedication to supporting El Tesoro de la Vida, a local Camp Fire camp. Members volunteer regularly, and recently sisters from Delta Epsilon Chapter (Texas Wesleyan) started joining them!

### ♪ Zeta Rho Chapter (Texas A&M-College Station)

Members raised more than \$4,000 for Relay for Life at their annual Aggie Relay for Life campus event. Members bonded at the 12-hour event to benefit the American Cancer Society and received the award for Highest Fundraising Team.

## Region 4

### INDIANA

### ♪ Beta Pi Chapter (Indiana State)

Supporting their Greek community, chapter members participated in Pi Kappa Alpha Fraternity's philanthropy event, the Fire Truck Pull, to support the Special Olympics. The chapter took first place in the women's division for the third consecutive year.

### ♪ Zeta Iota Chapter (Valparaiso)

After initiating 12 women this spring, the chapter hosted its annual Crescent Classic: Breakfast for Dinner and had more than 150 students and community members in attendance. All proceeds supported ΓΦΒ philanthropies!

### ♥ Zeta Kappa Chapter (Southern Indiana)

At the Homecoming basketball game, members cheered on sisters nominated for Homecoming court with encouraging signs and banners they created.

## MICHIGAN

### ♪ Beta Delta Chapter (Michigan State)

Flipping pancakes for philanthropy helped the chapter raise more than \$1,200 at its Crescent Classic: Pancake Breakfast to support building resiliency in girls.

## OHIO

### ♪ Alpha Nu Chapter (Wittenberg)

Acting as positive role models, members invite girls from their local philanthropy, On the Rise, to join them for monthly activities like making crafts and dance parties. The chapter has also invited the girls to the chapter's upcoming Crescent Classic: Spaghetti Dinner where members will teach them about Gamma Phi Beta's commitment to service.

### ♥ Beta Epsilon Chapter (Miami-Ohio)

After welcoming more than 50 new sisters following spring recruitment, the chapter held various sisterhood events like pottery painting, hayrides, chapter dinners and Big/Little Sister revealing.

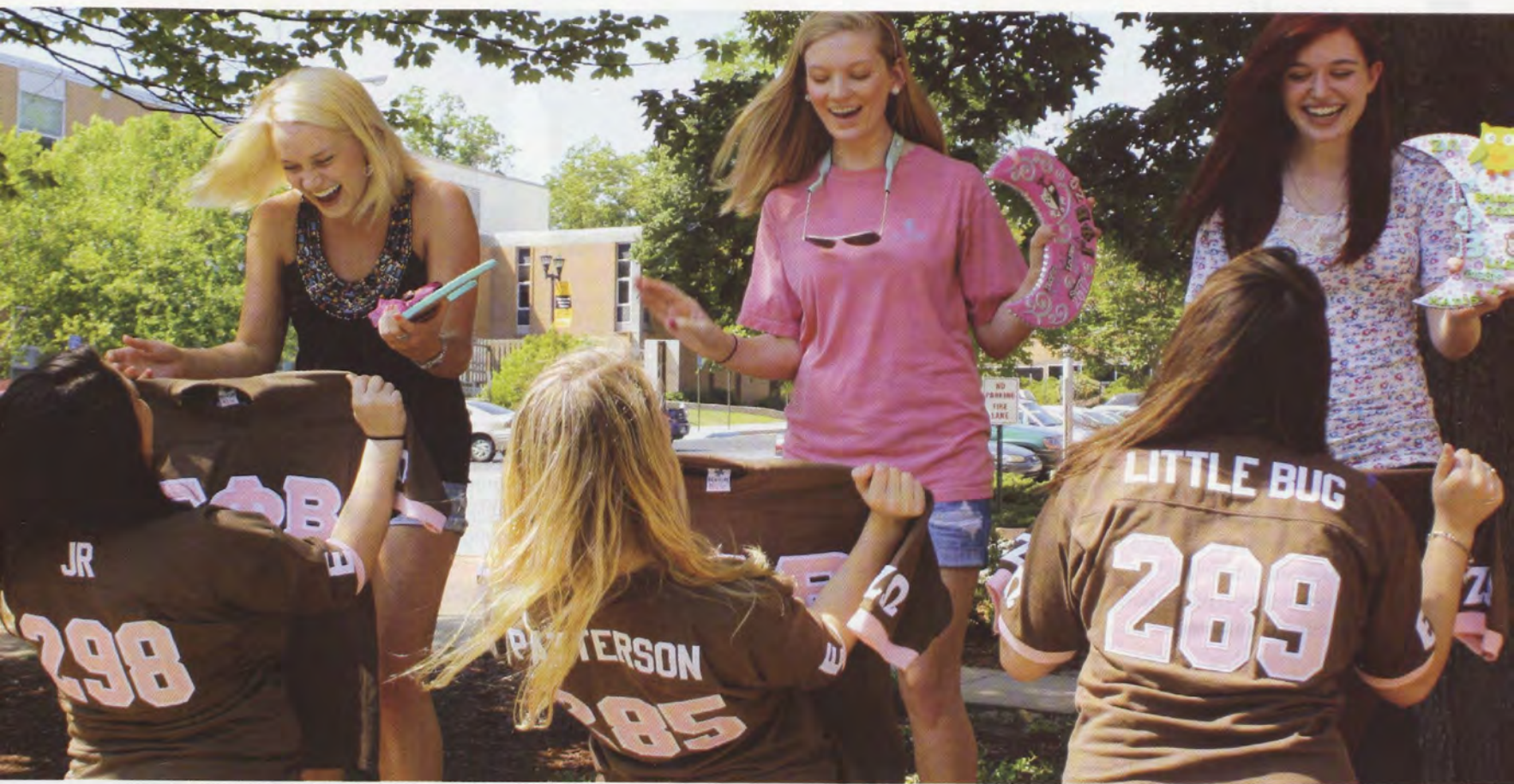
### ■ Zeta Omicron Chapter (John Carroll)

Shining in scholarship, the chapter earned the highest cumulative chapter GPA in the entire Greek community.

### ♪ Eta Zeta Chapter (Cincinnati)

Sisters broke out their dancing shoes to support the Cincinnati Dance Marathon, an annual 24-hour event that provides support for patients that are treated at Cincinnati Children's Hospital. The chapter partnered with Alpha Tau Omega Fraternity and raised \$6,800, the most out of any participating team.





**Region 3** | Showing off their rock solid relationships, Zeta Omega Chapter (Kennesaw State) started a fun new tradition for Big/Little Sister revealing! Big Sisters are surprised with decorated crescents and Little Sisters are given personalized Gamma Phi Beta jerseys.



**Region 3** | Alpha Zeta Chapter (Texas-Austin) members from pledge classes spanning five decades were in attendance for a reunion brunch at an Austin restaurant. Plans for a fall reunion are underway; contact [alphazetagpb@gmail.com](mailto:alphazetagpb@gmail.com) to receive updates.

## GREEKS NEED SAFE HOUSING!

Register your support of the Collegiate Infrastructure and Housing Act (CHIA) at [fraternalcaucus.org](http://fraternalcaucus.org). Turn to page 13 for more information.



**Region 4** | Beta Phi Chapter (Indiana) members cheered on their sisters as they prepared to start the Little 500, a bicycle race held annually at the Bill Armstrong Stadium on campus. After qualifying, racers compete in teams of four, racing relay-style for 200 laps (50 miles), with money raised going to a scholarship fund for University students.



## Region 5 ILLINOIS

### ┐ Omicron Chapter (Illinois at Urbana-Champaign)

Members hosted their annual Gamma Phieta Dinner, complete with maracas, sombreros and delicious Mexican food! The festivities collected more than \$3,000 with proceeds benefitting the Sarah Channick Memorial Scholarship (a scholarship created in honor of a new member who passed in 2005) and a local women's center.

### ┐ Delta Pi Chapter (Illinois State)

The chapter hit a homerun with its first-ever Crescent Classic: Hit it to the Moon! Softball Tournament. Between selling raffle tickets, ballpark snacks and admission fees, the chapter collected more than \$1,000 to support our philanthropies.

## IOWA

### ┐ Rho Chapter (Iowa)

The chapter's Crescent Classic: Three-Point Shootout scored big, with numerous teams participating and more than \$3,000 collected to support ΓΦΒ philanthropies.

### ♥ Gamma Psi Chapter (Northern Iowa)

The night before Initiation, sisters got together to grill food, play games and watch movies. To cap off the evening, they participated in a favorite chapter tradition, a carnation passing, where each sister gets a chance to discuss her ideas for ways to improve the chapter.

## MINNESOTA

### ┐ Gamma Pi Chapter (Minnesota State-Mankato)

A unique black light volleyball tournament hosted by the chapter collected nearly \$2,500 to support the chapter's local philanthropy, Campus Kitchen, an organization providing meals to the homeless. The chapter also gave back to the community when they spent a day cleaning a nearby highway they adopted.

## NORTH DAKOTA

### ┐ Alpha Beta Chapter (North Dakota)

The chapter hosted a Parents Formal, inviting parents to learn more about the Sorority and ΓΦΒ's philanthropic efforts. Member recognition awards were given and a silent auction was held to support ΓΦΒ philanthropic efforts, collecting more than \$2,000.

## Region 6 COLORADO

### ♥ Beta Rho Chapter (Colorado-Boulder)

Sisters invited their moms to campus for a special Mom's Day, complete with brunch, an in-house shopping event put on by Gamma Phi Beta's Crescent Corner and a silent auction that raised more than \$3,000 to support a local cancer treatment center.

## KANSAS

### ┐ Sigma Chapter (Kansas)

The chapter hosted its annual Crescent Classic: Pancake Breakfast on the large lawn of their chapter house and had a live DJ to provide entertainment for the 350 people in attendance. In total, more than \$3,000 was raised to support ΓΦΒ philanthropies.

### ┐ Beta Upsilon Chapter (Kansas State)

The chapter co-hosted an animal-friendly event with Delta Sigma Phi Fraternity called Delta Sig Dogs, where people in the community enjoyed a barbeque and could play with adoptable puppies from a local shelter for a minimal fee. The chapter collected \$2,000 for the shelter and provided many puppies with new homes!

## MISSOURI

### ♥ Gamma Tau Chapter (Saint Louis)

The chapter ended a shining semester with a fun spring formal that even included a photo booth!

### ┐ Zeta Delta Chapter (Southeast Missouri State)

Selected by the president of the University, the chapter received the President's Award, the highest honor given at the school, for the chapter's demonstration of leadership and commitment to service.

## NEBRASKA

### ♥ Omaha Alumnae Chapter

Sisters honored graduating members of Epsilon Delta Chapter (Creighton) at Senior Night and presented each woman with a pink satin graduation stole embroidered with the Sorority's Greek letters.

### ┐ Pi Chapter (Nebraska-Lincoln)

French-themed décor covered the chapter house during the chapter's annual French Toast Feed philanthropy event. The women served more than 1,200 guests during the event and even had a life-size French toast cut-out where people could stick their faces in for a fun photo opportunity.

### ♥ Gamma Kappa Chapter (Nebraska-Kearney)

Sisters closed out the school year with a fun ice cream social and participation in Greek Week events.

### ┐ Epsilon Delta Chapter (Creighton)

Prior to a senior send-off picnic, the chapter took home seven awards of excellence from the Greek Awards Ceremony.

## Region 7 ARIZONA

### ┐ Alpha Epsilon Chapter (Arizona)

With nearly 125 teams competing, the chapter's annual Kickball Tournament to benefit ΓΦΒ philanthropies has earned quite the positive reputation! In total, \$3,300 was raised.

### ┐ Beta Omega Chapter (Northern Arizona)

Winning Greek Week, the chapter was proud also to be honored as the competing organization with the title of "Most Philanthropy Money Raised."

### ┐ Phoenix Alumnae Chapter

Members of the chapter partnered with their sisters at Beta Kappa Chapter (Arizona State) to volunteer at the spring philanthropy event for the Phoenix Panhellenic Association. Sisters worked as concessions volunteers for the Phoenix Open Golf Tournament, an event the chapter participates in annually to raise money for scholarships for sorority women in the Phoenix area.

## CALIFORNIA

### ┐ Balboa Harbor Alumnae Chapter

Members installed the chapter's 2012-13 executive board at their elections retreat and set goals for a positive year.

### ♥ Beta Lambda Chapter (San Diego State)

At the chapter's spring luau-themed sisterhood retreat at Mission Bay, members played games, discussed chapter goals and enjoyed an authentic Hawaiian meal and performance.

### ┐ Delta Theta Chapter (California Polytechnic State)

The chapter's annual Forward for Frances walk event puts positive energy back into the community and commemorates a lost - but forever - sister. Students and community members participated in the walk, each wearing a matching yellow t-shirt (Frances'





**Region 5** | Omega Chapter (Iowa State) members hosted an open house for local elementary school students on Day of Service, educating the children on the importance of serving their community through fun crafts, games and interactive teaching lessons.



**Region 7** | Delta Phi Chapter (California State-Bakersfield) members spent their Day of Service at a local elementary school, reading and doing fun activities with the kids.



**Region 8** | After initiating their spring pledge class, members of Zeta Xi Chapter (College of Idaho) were surprised by their executive board with bright, fun new sweatshirts from Crescent Corner!



**Region 6** | Theta Chapter (Denver) partnered with Beta Theta Pi Fraternity in the incredible philanthropy event, "The Great Escape." Sisters threw a giant birthday party for terminally-ill children while they enjoyed activities like crafts, face painting and parachute games. To complete the birthday theme, each child received a present that had been wrapped by members the day before.

## Gamma Eta Celebrates 50 Years of Sisterhood

Gamma Eta Chapter (California State-Long Beach) held a 50th anniversary celebration in March that had hundreds of sisters buzzing. Was it because current Chapter President Daniella O'Neill shared about the 50 volunteer projects (equaling 1,000 hours of service!) the collegiate chapter members undertook in honor of the 50th chapter anniversary that had everyone overjoyed? Or, was it when Gamma Eta's first Chapter President Phoebe McAuley Lambeth surprised everyone by presenting her president's pin to the current chapter president? Or the moment everyone was asked to open an envelope and in it for many was a copy of a letter they had written to themselves decades ago on Initiation night? It was all this and so much more that made for the perfect 50th anniversary gala chaired by Linda Hallenbeck Pelegrino.

The two-day celebration included campus and sorority house tours, a casual Friday night reception that featured Gamma Eta through the decades and a luncheon themed "Sisterhood is Golden." Former International President Randy Allard Stevens and current International President Linda Lyons Malony (Southern California) presided over the ceremonial portion to recognize charter members. Nearly \$3,000 was raised for a house gift as sisters joyfully reunited.





favorite color) they received. In honor of Frances' love for dogs, participants are encouraged to bring their dogs along for the walk. All proceeds benefit the Frances Chang Seeds of Love Foundation.

#### ♥ Delta Psi Chapter (California-Santa Barbara)

The chapter welcomed 10 new members and introduced them to Gamma Phi Beta with fun activities like pizza making, a ropes course challenge and cookie decorating.

#### ♥ Epsilon Gamma Chapter (San Diego)

In preparation for spring recruitment, members made a fun video about sisterhood in Gamma Phi Beta, giving potential new members a glimpse at all the things that make our organization shine. The chapter also had a first place finish in Greek Week competitions.

#### 🍷 Epsilon Nu Chapter (Chapman)

Members had a blast taking part in the 5K Color Run as a way to show how fun it can be to stay well. Different color powders are splashed on participants at each kilometer of the race so everyone is turned into a moving canvas!

#### 🍷 Pasadena Alumnae Chapter

In response to a large local windstorm, the chapter held a PACE event led by local firemen that focused on preparedness and simple ways to stay organized and alert in an emergency.

#### ♥ San Francisco Alumnae Chapter

Members hosted a going away party for a sister at Chinese restaurant.

#### ♥ South Bay Alumnae Chapter

A fun PACE event cleverly titled the "Chocolate Diet Amnesia Tasting Party" had sisters cooking with chocolate in a variety of ways while being instructed by a Dove candy representative. For St. Patrick's Day, members enjoyed lunch at a sister's family-owned café, followed by a Laurel and Hardy Film Festival.

#### ♥ South Orange County Alumnae Chapter

Originally chartered more than 35 years ago, members were thrilled to reinstall the chapter. Even more, 14 sisters of the newly-installed chapter were original members of the alumnae chapter in 1976!

## Region 8

### BRITISH COLUMBIA

#### 🍷 Alpha Lambda Chapter (British Columbia)

At the Panhellenic Awards Ceremony, the chapter received the Sorority of the Year Award in addition to awards for Scholarship, Leadership, Activities, Greek Woman of the Year and Top Individual Philanthropist.

### CALIFORNIA

#### 🍷 Diablo Valley Alumnae Chapter

The chapter met with the Diablo Valley Panhellenic to discuss ideas for continued area alumnae involvement and fundraising opportunities.

#### ♥ Eta Chapter (California-Berkeley)

During senior week, graduating sisters got a wish granted by their sisters; wishes ranged from a sundae bar to a serenade by an octet to a kids-themed birthday party.

#### 🍷 Epsilon Kappa Chapter (California State-Chico)

The chapter participated in several philanthropic events including the Autism Awareness Walk, a school-wide community service event and a bake sale fundraiser to help raise money to cover medical expenses for a member's Gamma Phi Beta sister who was in a car accident.

#### 🍷 Zeta Gamma Chapter (Sonoma State)

After three months dedicated to learning several amazing dances (all choreographed by a sister!), the chapter was ecstatic to earn a first place finish in Alpha Gamma Delta Sorority's "Lipjam" philanthropy event.

### IDAHO

#### 🍷 Xi Chapter (Idaho)

Gamma Phi Beta was well represented at the University's Greek Awards Ceremony! The chapter was honored to receive awards for Academic Excellence, Excellence in Community Service, Excellence in Scholarship, Outstanding Public Relations and Outstanding House Corporation Board. Additionally, individual chapter members received the New Member of the Year, Outstanding Senior and Greek Woman of the Year Awards. Overall, the chapter received the most awards of any Greek organization on campus!

### OREGON

#### 🍷 Nu Chapter (Oregon)

The chapter hit it out of the park with more than 600 attendees at its Crescent Classic: Batter Up event. Doubling funds from last year, the chapter raised more than \$4,200 to support ΓΦΒ philanthropies.

### WASHINGTON

#### 🍷 Lambda Chapter (University of Washington)

Supporting a sister with Cystic Fibrosis, chapter members participated in the Great Strides National Walk and hosted philanthropic events like a Taco Feed and Ultimate Frisbee Tournament with proceeds benefitting the Cystic Fibrosis Foundation.

#### ♥ Beta Sigma Chapter (Washington State)

After initiating 14 new women in the spring, the chapter co-hosted its annual Mom's Weekend with Chi Omega Fraternity and raised nearly \$4,000 at a silent auction to go toward chapter house improvements.

## GEAR UP FOR RECRUITMENT WITH THE LATEST ΓΦΒ LOOKS!

Shine for recruitment and Bid Day by rocking the latest Gamma Phi Beta looks from Crescent Corner, the Sorority's official retail store. Crescent Corner will also meet all your group order needs! Whether it's custom t-shirts, accessories or favors, Crescent Corner has you and your chapter covered. Check out all the goods at [CrescentCorner.com](http://CrescentCorner.com) or email [sales@CrescentCorner.com](mailto:sales@CrescentCorner.com) to start creating your chapter's custom group order!





# Will Travel for ΓΦΒ

Introducing our 2012-13 Collegiate Leadership Consultants



## Beginning this fall, 11 collegiate leadership consultants (CLCs)

will travel North America with a mission to help inspire Gamma Phi Beta collegiate women to be the best they can be. Since 1943, the Sorority has employed consultants to visit our collegiate chapters and colonies and offer advice and resources for effective chapter management. In other words, they have the unique opportunity to influence the lives of young women while positively impacting our sisterhood!

Our CLCs are valuable pillars in the Sorority's structure and success and serve many roles while on the road. From teacher to motivator to confidante – these sisters are specially trained in all aspects of Gamma Phi Beta and are ready to help your chapter shine!

We are proud to introduce you to our 2012-13 consultants – if you're lucky enough, you may get the opportunity to connect with them in person!





**Emily Barbeau  
(Delaware)**

ΓΦΒ in three words:  
Shining since 1874!

What are you most proud of as a member of Gamma Phi Beta?

I am immensely proud to be a member of an organization that holds itself to such high standards in areas such as academics and service. What makes Gamma Phi Betas special is our constant drive to improve ourselves as individuals, chapters and an organization.

What is a fun fact about you?

I have an identical twin sister who is also a Gamma Phi Beta! We were charter members of Eta Gamma Chapter (Delaware) together, which was an awesome experience.



**Christine Cade  
(Christopher Newport)**

What ΓΦΒ has inspired you?

My Chapter Advisor Jenny Dean (Christopher Newport) has always been an inspiration. She helped me so much throughout my time as president and continues to encourage me to be the best I can be.

What does our mission mean to you?

Our mission inspires members to encompass our Ritual and Core values in every aspect of their lives. By staying loyal to our sisters and Gamma Phi Beta, we can live our mission daily.



**Brina Dokich  
(Colorado-Boulder)**

What are you most proud of as a member of ΓΦΒ?

I am proud of the constant enthusiasm and dedication our sisters show during recruitment each year. Though I know this passion and excitement is always within each woman, it is inspiring to see the rush of commitment when Gamma Phi Betas are filled with the thrilling thought of new sisters!

What excites you the most about being a CLC for Gamma Phi Beta?

I am so excited to meet and visit chapters from all over North America. I love to travel, see new places, try new food and learn various chapter traditions. I can't wait to experience all of this while meeting my fabulous sisters! I hope I can bring creative ideas to each chapter, and I know each chapter will have something fun and exciting to teach me in return!



**Carly Foerster  
(Chapman)**

What does our mission mean to you?

The most beautiful aspect of our simple, yet inspiring mission statement is that for each individual sister it creates a wonderfully unique experience. I have always lived by the idea that I was born to make a difference, with a life goal to have a positive impact on the people I meet. Our mission perfectly encompasses my own life goals to inspire my sisters and future generations of women to live life to its greatest potential and embrace the highest type of womanhood.

What excites you the most about being a CLC for Gamma Phi Beta?

I am most excited to connect with spectacular sisters across the country, have a positive impact on each person I meet and be a catalyst in helping our organization shine on!



**Jamie Haas  
(Pennsylvania State)**

What does our mission mean to you?

Before Gamma Phi Beta, I allowed my personal values to create my vision of what womanhood meant. Throughout my time with the sisterhood, I have been inspired to reflect more deeply on these values and strive to be a constant representation of them; it is essential to emulate everything Gamma Phi Beta has taught us.

What ΓΦΒ has inspired you?

My Regional Coordinator Cassi Tramm (Rochester) is 100 percent the reason I've turned into the Gamma Phi Beta woman I am today. She challenged me throughout my presidency to be a better leader and was an amazing source of encouragement.



**Valerie Hall  
(Oklahoma), second year consultant**

ΓΦΒ in three words:

Lifelong. Inspiring. Growing.

What excites you the most about being a CLC for a second year?

The chance to meet more Gamma Phis across the nation thrills me. I am excited to meet more sisters and experience different



universities and their regional cultures. Traveling to our wonderful chapters reassures my love for Gamma Phi Beta and inspires me to make our organization better each day.



**Allison Kilfoy  
(Northern Iowa)**

**What excites you the most about being a CLC for Gamma Phi Beta?**

One of the most exciting parts about the CLC experience is this is a Convention year! I am looking forward to giving back to Gamma Phi Beta, experiencing life at various chapters and meeting as many sisters as possible. This is a unique opportunity, and I'm looking forward to sharing it with all of the great women on the CLC team.

**What is a fun fact about you?**

I am a legacy and was fortunate enough to be in Gamma Psi Chapter at the same time as my biological older sister, Melissa. I wouldn't be where I am without her encouragement and advice to be involved with the Sorority as much as possible!



**Thao Le (California-Berkeley)**

**ΓΦΒ in three words:**  
Supportive. Inspirational.  
Lasting.

**What does our mission mean to you?**

Our mission describes how the Sorority's values work to shape and transform each

sister's life. Our commitment to respect, service, education and the development of well-rounded individuals shows in the Sorority's leadership development workshops, scholastic requirements and philanthropic participation. By instilling these ideals and principles, Gamma Phi empowers its members to be strong, inspirational leaders.

**What are you most proud of as a member of ΓΦΒ?**

The women that make up our sisterhood make me proud to be a Gamma Phi Beta. I love that there are so many funny, inspiring and poised women I get to call sisters!



**Jordan Lyons  
(Clemson), second  
year consultant**

**What ΓΦΒ has inspired you?**

Our Director of Ritual Margaret West Pape (Oklahoma) is the most impactful and inspirational Gamma Phi Beta I have met. She is vibrant, full of love for our Sorority and a wonderful role model of what it means to live our Ritual.

**What excites you the most about being a CLC for a second year?**

I am excited for the second opportunity to meet so many more women and continue to build relationships with those I have met on my journey thus far.



**Erin McHale (Iowa State)**

**What does the crescent moon mean to you?**

It represents the endless bounds of our sisterhood. Regardless of where we are, when we see a crescent moon we are all reminded of those we hold closest to our hearts.

**What are you most proud of as a member of Gamma Phi Beta?**

I'm proud of my sisters and what they have accomplished and learned because they chose to join Gamma Phi Beta. I find the fraternal movement imperative to the development of leaders in higher education, and I'm proud to say Gamma Phi Beta develops the best of the best.



**Ashleigh Scheidler  
(Clemson)**

**What ΓΦΒ has inspired you?**

Founder E. Adeline Curtis (Syracuse)! Her dedication to the ideals of friendship and loyalty were truly remarkable.

**What does our mission mean to you?**

Inspiring the highest type of womanhood means instilling the confidence and drive each Gamma Phi Beta needs to pursue and achieve her personal dreams and aspirations. Every woman desires something different out of life, and it is our job as sisters to help and encourage one another. On a daily basis I strive to provide positive reinforcement to my sisters through both verbal affirmation and supportive actions.



On Veteran's Day, Katie gave a speech to her alma mater about serving her country.



## PLANNING YOUR LEGACY

As a transfer student, Katie Alsup (Southeast Missouri State) was eager to meet new friends and get involved on her new campus. She noticed posters advertising sorority recruitment, but was hesitant, unsure if participating was the right decision for her. After waffling back and forth, Katie decided to go for it.



Upon meeting the women of Gamma Phi Beta, Katie was particularly drawn to the obvious sisterly bond that was shared. On Bid Day there was no other choice – Katie joined our Zeta Delta Chapter; soon, the women and Sorority became her home away from home.

After a year at Southeast Missouri State, Katie decided to join the Army National Guard, beginning a new chapter in her life. Inspired by her father, a retired Army major, Katie always had a strong desire to serve her country. Although she was excited to embark upon her new journey, she did not want to forget the sisterhood that had been her rock as a transfer student just one year prior.

As Katie began completing military paperwork, she was faced with the decision of who to list as the beneficiary on her military life insurance policy. “With the potential to be deployed to a war zone, I had to think about who would benefit the most if something were to happen,” Katie explains. “I thought of my sisters and the Sorority and decided the Gamma Phi Beta Foundation was the best option.”

So at age 24, after including the Foundation in her life insurance policy, Katie became the youngest member to join the Foundation’s Tau Epsilon Pi Society, the Foundation’s prestigious planned giving society. “I’ve received the brochures [about planned giving], and I thought, ‘I can do that,’” Katie remarks.

Katie’s designation emphasizes her commitment to give back to the Sorority that gave so much to her. Her decision ensures that her legacy will be a lasting one – one that has a positive impact on the future of Gamma Phi Beta and her sisters.

Another admirable Gamma Phi Beta who included the Gamma Phi Beta Foundation in her life insurance policy is the late Christina Delgado (California-Irvine, 1994). Christina designated the Gamma Phi Beta Foundation as a beneficiary of her life insurance policy before she passed in March at the young age of 35. We all share in the sadness of such an unexpected loss, and Christina’s final act of kindness will positively influence generations of Gamma Phi Betas to come, a wonderful legacy to leave.

It is never too early to consider a planned gift. Christina will never be forgotten, and her membership in the Tau Epsilon Pi Society will continue to enrich members of her beloved Sorority and further enable the Foundation to fulfill its mission to support and inspire the lifelong development of women. The Gamma Phi Beta Foundation sends their sincere condolences to her loved ones and friends as they mourn the loss of a wonderful woman.

*For more information about planned giving, or to join the Tau Epsilon Pi Society, please contact Kitty deKieffer at 303.799.1874 ext. 301 or [kdekieffer@gammaphibeta.org](mailto:kdekieffer@gammaphibeta.org).*

## ALL ABOUT THE TAU EPSILON PI SOCIETY

**Q:** What is the Tau Epsilon Pi Society?

**A:** A special recognition society named for the Greek letters in the Sorority’s open motto, “Founded upon a rock,” the Tau Epsilon Pi Society is the rock on which the future of Gamma Phi Beta is built. Membership is established by generously including the Foundation in estate planning.

**Q:** What do planned gifts to the Foundation include?

**A:**

- Wills
- Charitable annuities
- Life income gifts (trusts or annuities)
- Gifts of life insurance and real estate

**Q:** What does the Tau Epsilon Pi Society support?

**A:** Members of the Society enjoy knowing that even in perpetuity, their gift will continue to provide the same opportunities for growth, leadership development and lifelong friendship that they found in Gamma Phi Beta. Estate gifts to the Foundation can be designated or unrestricted, according to the donor’s wishes.

**Q:** Who do I contact for more information or to become a member of the Tau Epsilon Pi Society?

**A:** Please contact Gamma Phi Beta Foundation Executive Director Kitty deKieffer at [kdekieffer@gammaphibeta.org](mailto:kdekieffer@gammaphibeta.org).



# Memorial Gifts

We acknowledge the following individuals and groups who contributed to the Gamma Phi Beta Foundation in memory of a loved one,\* as of May 1, 2012. Lists are printed as received from the Foundation.

Georgiana Post McClenaghan  
(Oregon State, 1944)  
Barbara Boenzli  
Connie Woodham

Audrey Weldon Shafer (Missouri-  
Columbia, 1938)  
Katie Simac  
Karen Urette

Michael J. Gubitosi, husband of Lois  
Hebner Gubitosi (San Diego State)  
Marta Brown

Jane Jenson Hensel (San Diego  
State, 1949)  
Marta Brown

Hugh McGonagle, father of Megan  
McGonagle Klein (Florida State)  
Jenny Dieterle

Thomas Bassett, husband of Patricia  
Sibbert Bassett (Iowa)  
Shila Smith

Amy Belser (Michigan, 1957)  
Gigi De'Prey Eyre  
Marin County Alumnae Chapter

William Barnette, fiancée of  
Danielle Molle (Eastern Washington)  
Gigi De'Prey Eyre

Ronald Bosse, husband of Cynthia  
Lanza Bosse (Rutgers)  
Cathy Griffin  
Princeton Area Alumnae Chapter

Helen Titelmaier Clark (Minnesota-  
Twin Cities, 1939)  
Barbara Maurin Arnest

Kenneth E. Nutter, husband of  
Melinda Risse Nutter (Kentucky)  
Sandy Burba

John Grant, father of Susan Grant  
Schneider (Colorado State)  
Stephanie Hearn  
Karen Urette

Betty Lou Loomis Wisland (Wiscon-  
sin-Madison, 1943)  
Virginia Wells

Joyce Saunders (Oklahoma, 1926)  
Terri Baker

Esther Weakley Asperger  
(San Jose State, 1948)  
Barbara Ward

Henrietta Feyder Stine  
(Iowa State, 1940)  
Catherine Spika

Joseph Paterno, husband of  
Suzanne Pohland Paterno  
(Pennsylvania State)  
Dorothy Henderson

Marissa Parks (Auburn, 2006)  
Gamma Phi Chapter fall 2003  
pledge class:  
Catherine Hester Campbell  
Heather Cole Walters  
Katy Duning  
Rubino Eyyan  
Kelly Fehrmann  
Leigha Francis-Rubino  
Mareena Kohtala  
Amanda Justice  
Jessica Kidd Rozman  
Kara Klein  
Quinn McGill

Susanna Moore Whiteside  
Eyyan Mischke O'Keefe  
Jessica Simpson  
Emmy Smith  
Danielle Touart  
Heidi Walliser

Jean Matsumoto Baird  
(Wittenberg, 1954)  
Marjorie Rauh

Lillian Fisher Schnabel  
(Wittenberg, 1953)  
Marjorie Rauh

Art Knudsen, father of Christie  
Knudsen (Southern Methodist)  
Greater Ft. Myers  
Alumnae Chapter

Elizabeth Hutchison Hughes  
(Illinois, 1936)  
Mary Lou Gunter

Milford "Millie" Wilson Hollis  
(Arizona, 1947)  
Albuquerque Alumnae Chapter

San Marion Urschel Reetenwald  
(Bowling Green State, 1949)  
Lion Management Services, LLC

Betty Meyer Bartholomew  
(Michigan, 1937)  
Arthur Bartholomew

Patricia Vangellow Leidy (Witten-  
berg, 1970)  
The Dabrow Family  
Janice Leidy  
Rebecca Pyle  
Dorothy Romaine

James Merkel, husband of Elizabeth  
McCumber Merkel (Syracuse)  
Judy Kaspar

Jill Lowe Little (Syracuse, 1958)  
Judy Kaspar

Barbara Tatley Inch (Minnesota  
State-Moorhead, 1980)  
Beta Upsilon Chapter  
(Kansas State)  
Yvonne Roehler

Christina Delgado (California-  
Irvine, 1994)  
Balboa Harbor Alumnae Chapter  
Kristie Donavan  
Corrine Dugan  
Leanne Orr

Marcia Root Warner (California-  
Los Angeles, 1951)  
Joan Hawks

Paula McMichael Jones  
(Pennsylvania State, 1959)  
Lurene Frantz  
Mary Jane Wild

Ken Hamm, father of Gwenn Hamm  
Dillow (Nebraska-Lincoln, 1984)  
Kathy Murphy

\*For deceased members, *The Crescent* lists their first, maiden and last names in accordance with their school and year of initiation. Gifts received by August 1 will be acknowledged in the fall issue.



# In Celebration

*Celebrate a special sister, loved one or event with an "In Celebration" gift to the Gamma Phi Beta Foundation. Thank you to the following donors, whose gifts were recorded as of May 1, 2012. To make a gift, visit [gammaphibeta.org/foundation-donations](http://gammaphibeta.org/foundation-donations) and select "In Celebration" from the drop-down menu in the designation field.*

## In celebration of...

Christmas 2011 for Susan West's scholarship fund.

Gail and John Ridgley

Vancouver Alumnae Chapter for achieving its 2011-12 alumnae chapter goals.

Gigi De'Prey Eyre

Diablo Valley Alumnae Chapter for achieving its 2011-12 alumnae chapter goals.

Gigi De'Prey Eyre

Boise Alumnae Chapter for achieving its 2011-12 alumnae chapter goals.

Gigi De'Prey Eyre

Cinda Lucas for more than 25 years of service to Epsilon Gamma Chapter (San Diego) and La Jolla Alumnae Chapter.

Marta Brown

Diane Tietjen for more than 25 years of service to La Jolla Alumnae Chapter as the newsletter editor.

Marta Brown

Loraine Meech, alumnae coordinator at Gamma Phi Beta International Headquarters, for her many years of service to all the alumnae leaders in need of help and service.

Marta Brown

The birth of Zoey Lynn Twidell on January 11, 2012, to Tamara and Michael Twidell.

Emily Adamcik

The birth of Austin Sweazy, Jr. to Marissa and Austin Sweazy.

Robin Baskin

Amber Alford, for her years of service as alumnae chapter president and her new position as regional coordinator-alumnae for region 7.

Greater Orange County Alumnae Chapter

René Matz Thompson, lifelong Camp Fire girl, for her years of leadership and dedication as Foundation Philanthropy Chair.

Cathy Griffin

Foundation Scholarship Chair Carey Capra Bettencourt and Foundation Director of Grants Management Ryan Severts for the amazing work they did in implementing the online application process for scholarships and fellowships.

Cathy Griffin

Tracey Price Kriauciunas' golden birthday.

Leigh Ann Price

The advisory board of Zeta Omega Chapter.

Miranda Jones

Tracy Brunson Hood's new daughter Rayleigh Grace Hood.

Shellie Hodges

Princeton Area Alumnae Chapter members for being the super special sisters that you are!

Rashel Carnefix

Jill Gunjevic, thank you for your dedication and hard work on the Ritual Manual project.

Margaret Pape

Susan Grant Schneider in celebration of the terrific job she did as local Convention chairwoman.

Stephanie Hearn

Katie Vince, love, love, love you Lil Sis!

Rashel Carnefix

In honor of Karen Kline and Barbara Hurt-Simmons' dedication and years of service to Zeta Rho Chapter.

Whitney Brady

Cindy Hawkins Moore and Nancy Chuoke Enright for the Alpha Zeta Chapter reunion.

Stephanie Goldfield  
Susan Reeves

Mary Knaup's milestone birthday.

René Thompson

Miranda Jones for receiving the Outstanding Advisor Award from Atlanta Alumnae Panhellenic.

Cathy Griffin

The wedding of Katherine Allan and Brad Bisinger.

Cassi Tramm

Congratulations to Charlotte Patch on 75 years of sisterhood!

Balboa Harbor Alumnae Chapter

Miranda Jones, thank you for your continued dedication and service to Zeta Omega Chapter.

Laura Mayville

Kathy Cochev for receiving the Golden Apple Award for Excellence in Teaching and Community Service from the Diocese of Toledo.

Cindy Colvin

The 50th anniversary of initiation into Epsilon Chapter in 1961.

Epsilon initiates of 1961

Kathleen Pica of Auctions Neopolitan and Gallery.

Naples Alumnae Chapter

Jane Edison, Jennifer Johnson, Jo Ann Cordell and Mary Frey.

Naples Alumnae Chapter

Mary Vanier for her 12 years of service to Beta Upsilon Chapter as chapter advisor.

Michelle Abs  
Sumita Ahuja  
Robert Balthazor  
Robin Baskin  
Whitney Brady  
Tess Brensing  
Terri Briggs  
Barbara Boenzli  
Gaye Bricker  
Stefanie Brickman  
Jessica Budzianowski  
Sandra Burba  
Minisa Capozzoli  
Carmela Carr  
Heidi Cashman  
Rachel Christiansen  
Chandra Claassen  
Elizabeth Clark  
Erin Clopine  
Rebecca Crowl  
Kristen Cruce  
Krista Davis  
Mary Angela Dimit  
Kelly Dunne  
Judy Dyckman  
Julie Eichenberg

Nancy Enright  
Dori Farah  
Kris Fernandes  
Katherine Freedman  
Elyse Gieschen  
Molly Haase  
Autumn Hansen  
Amanda Henriksen  
Kristen Henriksen  
Shellie Hodges  
Jessica Jeeman Brummel  
Linda Johnson  
Ginger Joy  
Jeannette Kaelin  
Melanie Kelsey  
Susan Knetter  
Jojo Lam  
Amanda Lang  
Fran Lapham  
Megan Lazzo  
Meghann Lehn  
Lila Levin  
Grace Lin  
Stacy Lowrance  
Jennifer Lukor  
Laura Mayville  
Amanda McCabe  
Jill Mirts  
Ginny Myer  
Danielle Neal  
Jana Nobles  
Leanne Orr  
Suzanne Otto  
Margaret Pape  
Karen Pence  
Lindsay Preisinger  
Pamela Risley  
Danielle Roden  
Joanne Roman  
Kristin Russell  
Shelly Russell  
Julie Shultz  
Julie Shuss  
Kristen Slaughter  
Cynthia Stephenson  
Joey Stiver  
Melinda Sutton  
Rene Thompson  
Janie Tyler  
Caitlin Wagner-Hanneman  
Megan Wick  
Jennifer Willey  
Janice Wissman  
Jennifer Wood  
Leslye Woodard  
Betsy Young  
Mary Zey

\*In Celebration notes are printed as received from the Foundation.



# In Memory

*We acknowledge the passing of the following members and celebrate their part in our circle of sisterhood. This list reflects notifications received at International Headquarters from February 1 to April 30, 2012. First, maiden, last name and initiation year are listed for each deceased member.*

## Alpha - Syracuse

Joan Alexander Mills, 1943  
Priscilla Gillette Perrone, 1944  
Trauty Mohr Mercer, 1950  
Jill Lowe Little, 1958

## Beta - Michigan

Phyllis Bihn Potter, 1941  
Arlene Ely Chafey, 1945  
Carolyn Thomas Zerbel, 1952  
Amy Belser, 1957  
Patricia Hinman Clauser, 1962

## Gamma - Wisconsin-Madison

Betty Loomis Wisland, 1943  
Dawn Runge Murphy, 1979

## Epsilon - Northwestern

Suzanne Maurer Thorne, 1938

## Zeta - Goucher

Anne Ragland Ely, 1936  
Octavia Roemer, 1938

## Eta - California-Berkeley

Loie Judkins Shires, 1940  
Elizabeth "Ann" Smyth Bakewell, 1947  
Aileen "Bev" Campbell Bardet, 1948

## Theta - Denver

H. Adeline Graves Felix, 1933  
Dorothy Henry Borgeson, 1936  
Janet Kenyon Pishok, 1952

## Kappa - Minnesota-Twin Cities

Lois Quast Fritsche, 1934  
Martha Reed Michelsen, 1957  
Anne Hales Crystal, 1975

## Lambda - Washington

Ellen "Ann" Hutchinson  
McKinstry, 1933  
Margaret "Mardy" Swallow  
Paschke, 1944

## Mu - Stanford

Helen North Reynolds, 1926  
Elizabeth "Betty" McGlashan, 1935  
Elizabeth Case Kenady, 1943

## Nu - Oregon

Marjorie "Bobsie" Roehm  
Stevenson, 1939

## Xi - Idaho

Barbara Jean Brodrecht Corby, 1936  
Marion Wilson Carney, 1942  
Margaret "Peggy" Paulson  
Bolingbroke, 1955

## Omicron - Illinois at Urbana-Champaign

Marie Isherwood MacNutt, 1932  
Alicia Koehler Lindstrom, 1943  
Beth Widholm Campbell, 1969

## Pi - Nebraska-Lincoln

Mary Jones Leffer, 1936  
Cornelia "Connie" Matteson  
Lang, 1938

## Rho - Iowa

Ilene Doop Koehn, 1926  
Margaret Gardner Simpson, 1937

## Sigma - Kansas

Elizabeth "Betty" Pile Cushing, 1942  
Marjorie Austin Smith, 1945  
Margaret Overall Burnett, 1934

## Tau - Colorado State

Margaret Stone Swanson, 1936

## Phi - Washington University

Mary Wessel Campbell, 1944

## Chi - Oregon State

Sharon Keefe Henry, 1957

## Psi - Oklahoma

Joyce Saunders, 1926  
Marjorie Muchmore Crowe, 1942  
Margaret Burns Monk, 1943  
Judith Wilson Stallsmith, 1964  
Karen Cochran, 1974

## Omega - Iowa State

Henrietta Feyder Stine, 1940  
Nancy Smith Correy, 1959

## Alpha Gamma - Nevada

Beth Grant Miramon, 1945  
Melinda Mackie Denton, 1958

## Alpha Delta - Missouri-Columbia

Betty Embrey Denny, 1948

## Alpha Epsilon - Arizona

Betty Ruthrauff Krohn, 1930  
Nancy Mahalek Myers, 1944  
Martha Frazier Tod, 1947  
Doris Gridley Anderson, 1952

## Alpha Zeta - Texas-Austin

Janie Russ Patterson, 1943  
Mary Butler Middlebrook, 1958

## Alpha Theta - Vanderbilt

Margaret Avery Ritchie, 1949  
Frances Cheatham Womack, 1949  
Lillis Robertson McWhorter, 1949

## Alpha Iota - California-Los Angeles

Marcia Root Warner, 1951  
Suzanna "Suzy" Pierce Coxhead, 1965  
Leslie Miller Lindberg, 1974

## Alpha Lambda - British Columbia

Susan MacKenzie Roote, 1951

## Alpha Nu - Wittenberg

Margaret Kunkel Miller, 1936  
Gloria Wieber Newhof, 1939  
Joan Fisher McMahan, 1950  
Patricia Vangellow Leidy, 1970

## Alpha Xi - Southern Methodist

Mary Crampton Montgomery, 1935  
Betty Ballard, 1940  
Nina Gaines Brown, 1946

## Alpha Pi - West Virginia

Cecelia "Mary" Littman Rizer, 1934

## Alpha Upsilon - Pennsylvania State

Lois Sheeler Lewis, 1944  
Janet Evans Knaff, 1956  
Paula "Polly" McMichael Jones, 1959

## Alpha Phi - Colorado College

Katherine "Ann" Neudorfer Helt, 1945  
Jacqueline "Jackie" Burkey Cleary, 1946

## Alpha Psi - Lake Forest

Marilyn "Ducky" Tonigan Lea, 1952

## Beta Alpha - Southern California

Margaret "Jean" Vandegrift  
Biggerstaff, 1938  
Janet "Jan" Gooser Spiers, 1939  
Dena-Jeanne Zepeda Wood, 1946  
Gale Newton Melsheimer, 1955  
Loralce Lewis Cousins, 1963

## Beta Gamma - Bowling Green State

Virginia Hill Campbell, 1943  
Donna Schlembach Zaimor, 1948  
Rita Gamble Helfrich, 1949  
Lavonne Tonkinson Pedlow, 1949  
San Urschel Reetenwald, 1949  
Kristen Braucher Sims, 1989

## Beta Epsilon - Miami-Ohio

Martha "Joan" Williams  
Andrews, 1948

## Beta Zeta - Kent State

Eloise Stockman Clark, 1947

## Beta Theta - San Jose State

Juanita Smith Petersen, 1948  
Esther Weakley Asperger, 1948

## Beta Kappa - Arizona State

Robin Reid McEwen, 1979

## Beta Lambda - San Diego State

Geneva Shaw Thomas, 1950

## Beta Mu - Florida State

Billie Folsom Tadiach, 1955

## Beta Pi - Indiana State

Janice Cheesewright Hitch, 1958

## Beta Tau - Texas Tech

Mary "Carolyn" Johnson Aloia, 1966

## Beta Upsilon - Kansas State

Terry "Speedy" Thies Foster, 1959

## Beta Chi - Wichita State

Joyce Vallandigham Kennalley, 1958  
Dianne "Gloria" Wolff Brooks, 1964

## Beta Omega - Northern Arizona

Elizabeth Roberts Downing, 1962  
Nancy Norris Hughes, 1976

## Gamma Alpha - Memphis

Freda "Kay" Watts, 1962

## Gamma Delta - Wyoming

Dorothy Hagen DuPont, 1962  
Kathie Spiss, 1962

## Gamma Kappa - Nebraska-Kearney

Jeannetta Schweitzer Bycroft, 1963

## Gamma Mu - Minnesota State-Moorhead

Barbara Tatley Inch, 1980

## Gamma Nu - Lamar

Paula Browning Walsh, 1965

## Gamma Sigma - Western Michigan

Susan Heath, 1968

## Gamma Phi - Auburn

Pamela Morris, 1973  
Marissa Parks, 2006

## Gamma Omega - Wisconsin-Platteville

Lucille Dunn Ullsvik, 1969

## Delta Eta - California-Irvine

Christina Delgado, 1994

## Delta Lambda - California-Riverside

Barbara O'Brien Middaugh, 1977

## Delta Nu - Missouri State

Toni Ellis, 1988

## Epsilon Beta - Alma

Kristine Dentino DeLee, 1994

## Epsilon Zeta - Jacksonville

Jennifer Summers-Barrett, 1994



# White House Wedding Invitation, 1913

In more than 210 years, only 17 weddings have taken place in the White House. Extraordinarily enough, the 13th White House wedding belonged to one of Gamma Phi Beta's own: Jessie Wilson Sayre (Goucher, 1905), daughter of 28th U.S. President Woodrow Wilson, and one of the first sorority women to ever live in the White House.

In July 1913, just four months after her father assumed the presidency, the Wilson family announced Jessie's engagement to Francis (Frank) Bowes Sayre, a Harvard Law School graduate who was working in the office of a district attorney.

Just a few years earlier, Jessie attended Goucher College with her older sister Margaret where they joined Zeta Chapter. It is suspected both were introduced to Gamma Phi by their aunt Margaret Axon Elliot (Goucher, 1899). Jean Thoburn (Goucher, 1906), a dear friend and pledge sister of Jessie's wrote, "Jessie was one of the most wonderful and colorful girls in my college life. She wanted to be known as Jessie Wilson, not Woodrow Wilson's daughter, and her distaste for popularity was a keynote to her charm."

Not surprisingly, Jessie and Francis' wedding was the talk of the country, the press eager for fanfare. For months leading up to the high-profile wedding the press touted rumors about their "elaborate wedding cake." In fact, gossip became so fierce that Mrs. Wilson had an official White House statement released:

"On account of the erroneous and extravagant statements as to the size and cost of the cake which has been baked for the wedding of Miss Jessie Wilson, Mrs. Wilson wishes it stated that the cake is 9 inches high and 22 inches in diameter. It is the usual kind of bride's cake and is not at all elaborate."

Many believe the release was a result of Mrs. Wilson's frustration as she received numerous advance requests for a piece of Jessie's wedding cake.

On November 23, 1913, Jessie and Frank were wed in the East Room of the White House. The groom was actually an hour late to his own nuptials as the White House guards refused to believe his story and identity when he arrived. Jessie's sister Margaret was the maid of honor and her younger sister, Eleanor, and Goucher friends,

including several Gamma Phi Betas, were bridesmaids.

*The Crescent* (winter, 1914) reported: "Jessie was more beautiful than ever before. Only a few people were allowed to go into the Blue Room; there was no formal line nor anything to suggest that it was more than a quiet home wedding."

Following their "I dos," *The Washington Post* published Jessie and Frank's wedding vows and noticed the progressive couple did not include the traditional word, "obey." The paper also listed some of the extravagant gifts they received from important public officials, including a 6.25 carat yellow diamond for Jessie. When Jessie and Frank moved after the wedding to Williamstown, Massachusetts, they left many of their gifts in storage at the White House in an effort to begin a simpler life.

Jessie and Frank had three children and were married until their respective deaths. Jessie worked diligently for lower income children, women and workers, as well as on her father's Versailles Treaty and League of Nations.



Jessie's sister Margaret Wilson (left of Jessie; Goucher, 1914) was a gifted musician and even arranged a special wedding march for Jessie that included the Marine Corps Band and a choir.

*The President and Mrs. Wilson  
request the pleasure of the presence of  
Miss Handy  
at the marriage of their daughter  
Jessie Woodrow  
to  
Mr. Francis Bowes Sayre  
on Tuesday, November the twenty-fifth  
nineteen hundred and thirteen  
at half after four o'clock at  
The White House  
Washington, D.C.*



# Capture a Crescent

Have you captured a crescent? Send your crescent photos to [TheCrescent@gammaphibeta.org](mailto:TheCrescent@gammaphibeta.org) for a chance to be featured!



1



2



3



4



5

1. Arkansas: During a Sorority meeting, the 2010-12 International Council stopped to capture a crescent at the historic Crescent Hotel in Eureka Springs! Top row (from left): Panhellenic Affairs Vice President Betty Quick (Indiana), Financial Vice President Leigh Ann Price (Texas Tech) and Membership Vice President J.J. Kaelin (Colorado-Boulder). Second row from left: Education Vice President Rebecca Boyd-Obarski (Illinois at Urbana-Champaign), Collegiate Vice President Annabel Jones (Oklahoma), International President Linda Malony (Southern California) and Alumnae Vice President Mary Knaup (California State-Fullerton).
2. Morocco: Bethany McCain (Georgia) traveled more than 15 hours for her spring break in Marrakech where she spotted a neon-outlined crescent.

3. Italy: While studying abroad, legacy Taylor Stallcup (Auburn) discovered hundreds of crescents in tiles in the Duomo di Siena (Cathedral of Siena) in Siena, central Italy.
4. Nevada: Roseanna Bitetto (Colorado-Boulder) caught sight of this crescent while on spring break in Las Vegas.
5. British Virgin Islands: While staying at Bellamy Cay, an island in the British Virgin Islands, Liz Dewitt (Michigan) was seated next to an oversized crescent at a local restaurant!