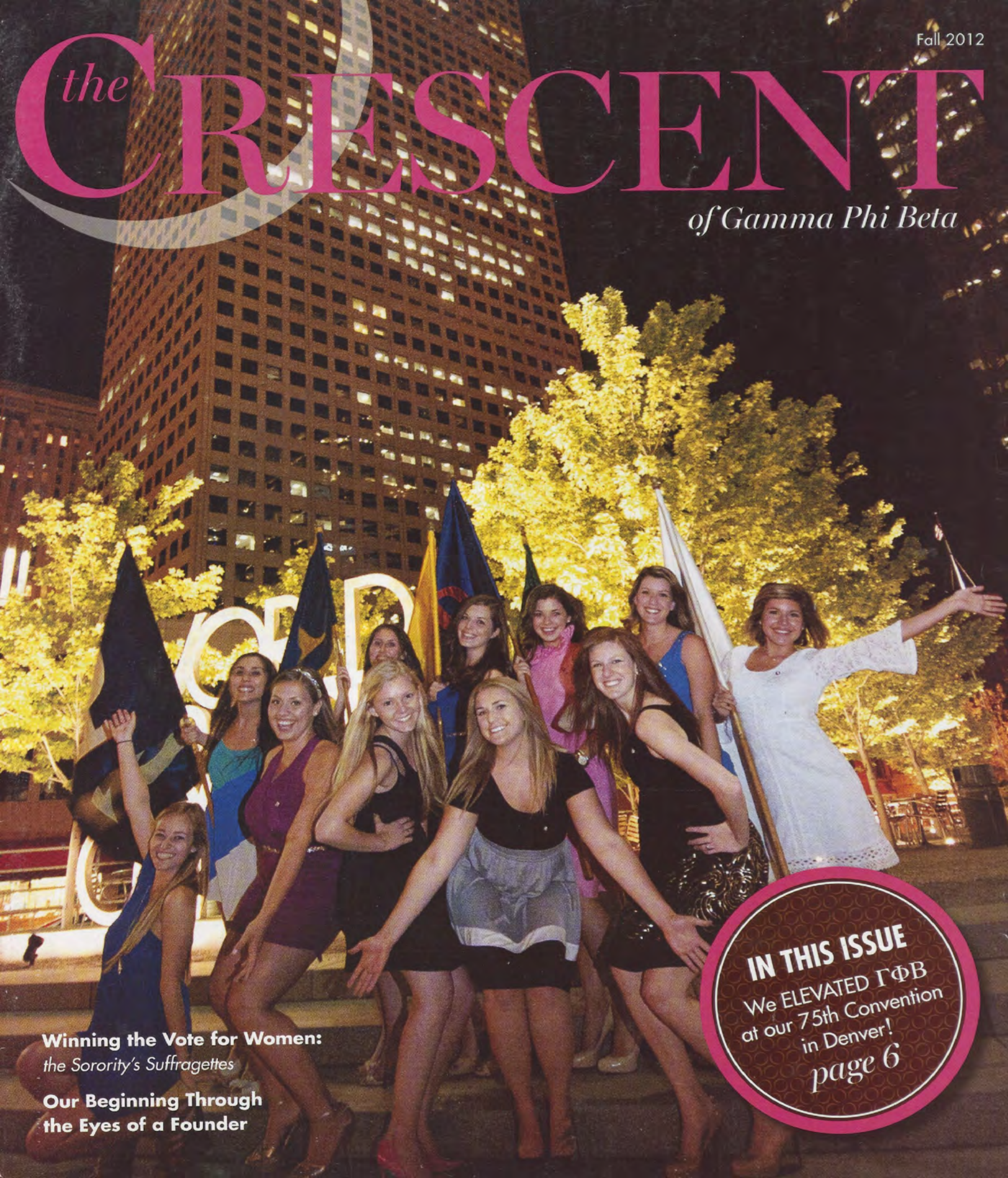


# *the* CRESCENT

*of Gamma Phi Beta*



**Winning the Vote for Women:**  
*the Sorority's Suffragettes*

**Our Beginning Through  
the Eyes of a Founder**

**IN THIS ISSUE**  
We ELEVATED  $\Gamma\Phi\beta$   
at our 75th Convention  
in Denver!  
*page 6*





# *Elevating to New Heights!*

## INTERNATIONAL COUNCIL

International President  
Krista Spaninger Davis  
*Bowling Green State University*

Alumnae Vice President  
Shellie King Hodges  
*University of Oregon*

Collegiate Vice President  
Mary L. Knaup  
*California State University-Fullerton*

Education Vice President  
Autumn L. Hansen  
*University of Idaho*

Financial Vice President  
Leigh Ann Price  
*Texas Tech University*

Membership Vice President  
Nancy Ann Ostendorf Thompson  
*University of Northern Iowa*

Panhellenic Affairs Vice President  
Sandra Biegelman Burba  
*Miami University*

## GAMMA PHI BETA FOUNDERS

Mary A. Bingham  
E. Adeline Curtis  
Helen M. Dodge  
Frances E. Haven

## SORORITY MISSION STATEMENT

To inspire the highest type of womanhood.

Imagine having the chance to celebrate the accomplishments of our members with hundreds of sisters while participating in the forward progress of our Sorority. It is truly an incredible experience! Gamma Phi Beta's 75th Convention did just that as we elevated our members and Sorority to new heights through the introduction of new programs for all members.

With the exciting announcement of our new philanthropic focus, Building Strong Girls, and the addition of our newest philanthropic partner, Girls on the Run, Gamma Phi Beta is definitely making a difference in the world around us. Additional programs designed to meet our members' needs at varying ages and stages of membership will also positively impact our membership experience. Pages 6-15 share an overview of the Convention excitement! I'd like to extend pink carnations to outgoing International President Linda Malony (Southern California) and the 2010-12 International Council, as they led well and contributed much to Gamma Phi Beta.

In addition to feeling an incredible sense of pride and excitement while learning about our new programs, partnerships and philanthropic focus, more than 875 Gamma Phi Betas gathered together in Denver to, quite simply, celebrate our wonderful sisterhood and each other!

Spending time with my sisters, mentors and dearest of friends at Sorority events like Convention continually inspires me to be the best person I can be. It is through our rich and beautiful sisterhood that our members – who make Gamma Phi Beta what it is today – inspire each of us to shine on our campuses, in our communities, in our work places and within our own families and support systems. In this issue you will meet sisters who have made a difference in the world around them and were recognized at Convention with the prestigious Carnation Award. You will also meet collegiate and alumnae members who make a positive impact as they shine confidently in the world.

As you read about our fantastic sisters, consider the countless ways in which YOU shine in your own world each and every day by living our mission, *to inspire the highest type of womanhood*, and by confidently reflecting our timeless values in the decisions you make and the opportunities you seek.

*Shine on, sisters!*

In IIKE,

Krista Spaninger Davis  
International President



# CONTENTS

## Go Gamma Phi

Find the magazine's regular features and other inspirational Sorority articles in this section.

4 ΓΦB Mailbox

5 Points of Pride

20 Inspiration Board

22 The Suffragettes

Nearly 100 years ago, several ΓΦBs fought for women's political voice and vote in some very unique ways!

29 Sorority Life

43 Vintage ΓΦB: How it Happened

Founder Frances E. Haven explains how Gamma Phi Beta was founded in 1874.

## Sorority News

Discover the Sorority's latest news here!

6 Convention in Denver

At our 75th Convention the Sorority announced a lot of exciting news that will positively impact the future of our organization!

## Campus Life

Learn about our collegiate sisters and topics affecting their campuses.

16 Collegiate Spotlight: Chiara Gustafson (Georgia)

18 Chapter Profile: Omega Chapter

19 Hazing Can't be Taken Lightly Anymore

## Shining On

Find out how our alumnae are making an impact and shining for ΓΦB.

24 Alumna Spotlight: North Dakota State Senator Carolyn Nelson

25 Alumnae Chapter Profile: Washington, D.C. Alumnae Chapter

26 Legacies, legacies, legacies...legacies!

Four Sorority sisters and best friends discover they're all having girls...and expecting within months of each other.

## Foundation News

Check out how the Foundation is supporting and inspiring the lifelong development of women.

36 Supporters of the Heart

39 Memorial Gifts

40 In Celebration

# 6 [Convention Highlights]

A look back at our 75th Convention!



GAMMA PHI BETA SORORITY

FOUNDED  
SYRACUSE UNIVERSITY  
NOVEMBER 11, 1874

INTERNATIONAL HEADQUARTERS  
DEDICATED  
APRIL 26, 1992  
FOUNDED UPON A ROCK



18

Chapter profile...Meet our sisters from Omega Chapter!



22

One woman, one vote. Learn about the Sorority's suffragettes.







# points of Pride

go gamma phi

*Shining bright since 1874, here's a snapshot of some notable Gamma Phi Beta moments and accomplishments!*



On **November 11**, Gamma Phi Betas across the world will celebrate our 138th Founders Day, honoring, Mary, Adeline, Helen, Frances and the incredible sisterhood they created. Read about our beginning through the eyes of a Founder on page 43.

## \$200,000

Incredibly, sisters gave more than to the Gamma Phi Beta Foundation at Convention, demonstrating We're One: Joined by the Heart. Learn more about this record-breaking total on page 36.

More than **50 years ago**, 21-year-old twins Jayne Knoerzer Schwartz and Joan Knoerzer Hackett (both Indiana) became household names as the original Doublemint twins. They were seen in TV commercials up to 20 times a day!

This is for you...  
from the Doublemint Twins



## 20 years of service



At Convention 2012, Gamma Phi Beta honored longtime Panhellenic Affairs Vice President Betty Quick (Indiana) with the International President's Award for her 20 years of service on International Council and the National Panhellenic Conference. Flip to page six for complete Convention coverage.



Nearly **250 sisters** served in campus Panhellenic positions in the past two years. Way to lead our Greek communities and reflect the best of Gamma Phi Beta!



According to the National Panhellenic Conference, sorority growth has been on the rise for the past four academic years, with undergraduate membership increasing by slightly more than 15 percent from 2008-11. In those four years, Gamma Phi Beta initiated more than **18,000 women!**



Do you have a point of pride to share?  
Email [TheCrescent@gammaphibeta.org](mailto:TheCrescent@gammaphibeta.org).



GAMMA PHI BETA

75<sup>th</sup>

CONVENTION

DENVER

2012

EVENTS

# Convention 2012







Sisters joined together in Denver, Colorado, for our diamond anniversary Convention to celebrate Gamma Phi Beta's many successes and help play a part in determining the Sorority's future. Many people worked diligently to make the event educational, memorable and fun! From workshops and bylaw amendments to awards and special ceremonies, every aspect of Convention 2012 was created to inspire Convention's theme – ELEVATE – and bring our Sorority to new heights.

Our historic time spent in the Mile High City was the perfect opportunity for members to make new friends, impact our sisterhood and take away valuable tools to help their chapter – and our Sorority – rise to the next level. At Convention, Gamma Phi Beta also announced A LOT of exciting news that we're proud to share with you over the next several pages.

If you weren't able to join us in Denver, mark your calendars for Convention 2014! We're headed to Seattle, Washington, from July 9-13 and hope to see you there.





# WELCOME TO COLORFUL COLORADO

day 1

**WELCOME TO DENVER** Sisters traveled from near and far to attend our 75th Convention in Denver. "Being from Canada, I don't often get a chance to feel the sisterhood that reaches beyond my chapter (the closest collegiate chapter is three hours away). As soon as I arrived, I saw countless collegians and alumnae, and I instantly felt a connection. Convention was undoubtedly a trip that my four chapter sisters and I will remember and value for years to come," Alpha Lambda Chapter President Rachel Lehman (British Columbia) says.



## LET'S BEGIN OUR 75TH CONVENTION!

At the Welcome Dinner, local Convention Chairwoman Susan Grant Schneider (Colorado State, pictured top) and the local organizing committee welcomed Conventioners with a special acapella performance by Face, a popular Colorado-based band.

Incredibly, more than 110 Sorority volunteer leaders attended Convention, helping our organization shine now and in the future.



**A CONVENTION TRADITION** At the flag processional, collegiate chapters are introduced in Greek alpha order, with a chapter representative carrying a flag featuring their Greek chapter letters and school colors. Three new collegiate chapters were represented (Eta Delta, Grand Valley State; Eta Epsilon, Virginia Tech; and Eta Zeta, Cincinnati) in addition to our other 122 collegiate chapters! "The pride I felt was overwhelming," says Eta Delta Chapter President Chelsea Hartinger (Grand Valley State). "It was such an honor to carry our chapter's flag at our first-ever Convention."



## INTERNATIONAL PRESIDENT'S MESSAGE

At the second of four Business Sessions, Linda Malony gave her International President's Message, captivating the attention of Conventioneers. "This is a really exciting time to be a Gamma Phi Beta!" Linda said during her address. "The growth our organization is experiencing and the way our members continue to stay connected to the Sorority is just amazing!" Turn to page 12 for more on Linda's speech.



**WE'RE ONE – JOINED BY THE HEART** At the Foundation Luncheon, sisters celebrated the Foundation's history, recognized special sisters and chapters who contribute to a greater community impact and presented five prestigious awards, four of which were awarded for the very first time. Foundation Public Relations and Marketing Chair Mary Vanier (Kansas State, pictured right) spoke to Conventioneers about her passion for the Sorority, inspiring sisters to embrace lifelong giving.



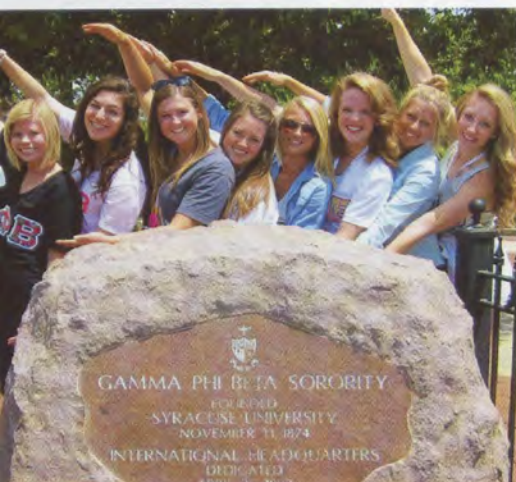
## VALUABLE WORKSHOPS PRESENTED

Throughout the week, 24 educational workshops were offered, equipping collegians and alumnae alike with the tools, resources, ideas and inspiration to ELEVATE their chapters to the next level. All presentations and handouts are available for download [GammaPhiBeta.org/Convention2012](http://GammaPhiBeta.org/Convention2012).



**SHOOT FOR THE MOON** During this elegant evening, Gamma Phi Beta proudly recognized its shining chapters and members with more than 40 awards for excellence at the Shoot for the Moon-themed Awards Dinner. For a complete list of award winners, visit [GammaPhiBeta.org/Convention2012](http://GammaPhiBeta.org/Convention2012).





## INTERNATIONAL HEADQUARTERS

**TOUR** A Convention first, International Headquarters opened its doors, welcoming more than 440 members with a tour of our beautiful facility. Sisters checked out amazing Sorority artifacts like our original Constitution, antique badges and personal items belonging to our Founders. A popular photo opportunity, many sisters posed by our legendary rock that boasts the Sorority's open motto: Founded Upon a Rock.



**BUSINESS SESSION** Led by Linda Malony and Bylaws Chairwoman Joanne Callis Roman (Vanderbilt), Convention delegates passed seven bylaws amendments to further Sorority business. One resolution to address programming for alumnae was passed without debate.



Former Alumnae Vice President Mary Knaup (California State-Fullerton) and Sorority Coordinator-Young Alumnae Lindsey Cooper (California-Santa Barbara) announced the launch of ShineBeyond.org, our new young alumnae website and resource for life after college. From graduate school to purchasing your first home to remaining involved with the Sorority, Shine Beyond provides advice for all those questions you encounter once you turn your tassel from left to right. Check it out at [ShineBeyond.org](http://ShineBeyond.org).



**BUILDING STRONG GIRLS** Conventioneers were over the moon with excitement when 2010-12 Education Vice President Becky Boyd-Obarski (Illinois at Urbana-Champaign, pictured right) announced Gamma Phi Beta's new philanthropic focus: Building Strong Girls. As advocates for women, our organization envisions a community where every girl and woman has the skills to succeed in life. All Building Strong Girls resources are available at [GammaPhiBeta.org/BuildingStrongGirls](http://GammaPhiBeta.org/BuildingStrongGirls).

In addition to a new philanthropic focus, the Sorority also announced its newest philanthropic partner – Girls on the Run. Founder Molly Barker gave a powerful speech saying, "Wouldn't it be awesome, just awesome, to give little girls an awareness of their own potential, worth and glory? Together, we can inspire girls to celebrate their unique identities and recognize their inner strength."



## CONFIRMED CONVENTIONEERS

**DINNER** 'How many carnations are in your hat?' was a common question at this fun and time-honored Convention event! Cathy Guthrie Lindauer (Iowa State, pictured right) had the most carnations with 22, each representing a past Convention she attended! Before the big Conventioneers Parade, led by sisters with five or more carnations in their hat, Conventioneers learned to line dance, putting their western-themed hats and boots to good use!





**GREEK UNITY** After opening the day with our final Business Session where we honored four Carnation Award recipients (turn to page 14 for complete coverage), we welcomed our interfraternal friends to Convention with the Interfraternal Luncheon. Representatives from all National Panhellenic Conference member groups were in attendance, in addition to several North-American Interfraternity Conference members. Violin virtuoso Elizabeth Pitcairn (Southern California) amazed the crowd with a breathtaking performance to culminate the event.



**PINK CARNATION BANQUET** We concluded our 75th Convention with the elegant Pink Carnation Banquet. The Mistress of Ceremonies Julie Dunn Eichenberg (Florida State) presented our outgoing and incoming International Council members, and the final, most prestigious Convention awards were presented. We honored our outgoing Council and Director of Ritual Margaret West Pape (Oklahoma) installed the incoming Council officers. Page 15 has complete Pink Carnation Banquet coverage.

**THAT'S A WRAP!** A big thanks to our hard-working Denver alumnae who served on the local organizing committee and helped us make Convention an event to remember!



**SEE YOU IN 2014!** In just four days we ELEVATED Gamma Phi Beta, and we're already looking forward to this gathering of sisters in 2014. Join us in Seattle, Washington, from July 9-13 for an experience to remember alongside your Gamma Phi Beta sisters!



*Watch highlights from Convention online! Visit [YouTube.com/GammaPhiBetaSorority](http://YouTube.com/GammaPhiBetaSorority) to watch a special Convention video and be inspired!*



# Highlights from the International President's Message



**While delivering her International President's Message, Linda Lyons Malony (Southern California)** shared all the great things our Sorority has achieved over the past biennium while painting a picture of the world in which Gamma Phi Beta exists. She explored the landscape for today's Greek-letter chapters, discussing topics ranging from increased university scrutiny and required accountability to impending legislation in Washington, D.C.

"It's just too easy to look only at ourselves; we need to understand our position as an organization in the greater community," Linda said. "It is up to each of us to represent the Sorority and ourselves as individual members at the highest levels possible."

As Linda began highlighting our historic biennium, she discussed the significance of

the Sorority's forward-thinking programs and initiatives that continue to make our organization relevant, impactful and successful. Specifically:

- Our revised mission, vision and guiding principles, in addition to developing the framework for a straightforward, balanced strategic plan to carry us well into the future.
- A renewed and visionary focus on our unique programs, including revised new member and educational programming for chapters, resources designed to keep young alumnae involved beyond graduation and increased hazing prevention initiatives.
- The Sorority's new philanthropic focus and programming provides even more opportunities for members to impact our communities and build strong girls.

- The new Gamma Phi Beta Facilities Management Corporation which will develop various levels of services to house corporation boards asking for assistance.
- Extraordinary membership growth and engagement, including a 56 percent growth in collegiate membership since 2005 and eight colonizations planned over the next several years!

Linda closed her speech by calling on members to elevate themselves as women and members of the Sorority: "Gamma Phi Beta is much more than a single International Council, one Convention, your chapter or team. What is your impact on Gamma Phi Beta and how much do you embrace your responsibility as a member of the Sorority we all cherish? Together we can truly elevate our Sorority and prove that Gamma Phi Beta is on the GO!"



GAMMA PHI BETA  
FOUNDATION



## Foundation Gives First-Ever State of the Foundation Address to Conventioneers

The Gamma Phi Beta Foundation's theme for Convention, "We're One: Joined by the Heart," was evident as Foundation Chair Linda Daniel Johnson (Vanderbilt) presented the State of the Foundation following the International President's Message.

Linda explained how the Gamma Phi Beta Foundation raises funds to meet the educational and leadership development needs of collegians and alumnae as well as supporting the philanthropic mission of Gamma Phi Beta. Together with the Sorority, the Foundation ensures a lifetime of benefits to our members. In her inaugural address, Linda emphasized:

- The hiring of new Foundation Executive Director Kitty L. deKieffer and evaluating all business operations, resulting in realigned support.
- Linda announced that Omicron Chapter (Illinois at Urbana-Champaign) became the first collegiate chapter member to join The 1874 Society, giving \$1,874 to the Foundation.
- Since 1959, the Foundation worked to fulfill its mission, granting:
  - o \$2.6 million in financial aid for members
  - o \$4.1 million for leadership and education grants
  - o Nearly \$2.3 million to support the philanthropic mission of Gamma Phi Beta



# A Convention Tale

By Sally Erikson Lewis (Northwestern)

From the moment you registered and got a hug from an old friend to the final goodbye at the bus for the airport, Convention 2012 was an exciting experience! As always, it was wonderful to see old friends and meet new sisters.

The opening business session Wednesday evening was very impressive with the parade of collegiate chapter flags. What a thrill and honor to stand when your collegiate chapter, as well as your alumnae chapter, is called.

The Awards Dinner on Thursday was an exciting evening when our collegiate and alumnae chapters were honored for their accomplishments during the biennium. There was clapping and snapping for all, and as a longtime house corporation board member, I was very proud when Epsilon Chapter (Northwestern) received the House Corporation Board/Collegiate Relations Award!

I love the Confirmed Conventioneers Dinner when we "old gals" really have fun! We march in the parade with a great deal of pride, and this is when the collegians see what lifetime commitment really means. I wore my 20 carnations in my pink cowgirl hat proudly, and was thrilled to march alongside Phyllis Donaldson Choat (Nebraska-Lincoln) and Marta Lombardi Brown (Boston). We were right behind Cathy Guthrie Lindauer (Iowa State) who led the parade with 22 carnations in her hat!

*We march in the parade  
with a great deal of  
pride, and this is when  
the collegians see what  
lifetime commitment  
really means.*



The Confirmed Conventioneers Parade began at Convention 1974 and has been a favorite tradition since. Here Sally (far right) and the other Confirmed Conventioneer Parade leaders (from left) Phyllis Donaldson Choat (Nebraska-Lincoln), Cathy Guthrie Lindauer (Iowa State) and Marta Lombardi Brown (Boston) await the start of the Parade.

The Confirmed Conventioneers Parade missed three of its longtime parade leaders. Denver's high altitude prevented Mary Jane Hipp Misthos (Colorado College; this would have been her 32nd Convention) and Gloria Swanson Nelson (Oklahoma; this would have been her 24th Convention) from attending this Convention, but were glad to hear Convention 2014 will be held at sea level. We were also missing 1970-74 International President Audrey Weldon Shafer (Missouri-Columbia, 1938), who smiled down from her heavenly perch.

In 1998, Mary Jane attended her 25th Convention in Newport Beach, California. Several of her Chicago Alumnae Chapter sisters felt this occasion should not go unnoticed, so a vest was purchased and hand decorated by Linda "Missy" Hearn Creevy (Kentucky). One side has the crescent moon, the other our crest. The back lists every Convention Mary Jane has attended since 1948, each location accented with a small pink carnation.

On Saturday, all sisters wore white to attend the Memorial Service and Ritual. What a joy to have three women initiated at Convention – we are so proud to have them as sisters.



This vest, belonging to Mary Jane Hipp Misthos (Colorado College), represents the 31 Conventions she attended. Although Mary Jane was unable to attend Convention 2012, Sally brought the vest in honor of her sister's longstanding Convention history.

The setting for the Pink Carnation Banquet was breathtaking – the room was adorned with candles and flowers. Following the installment of the International Council officers, the evening closed with our Ritual and hundreds of sisters connected in sisterhood – what a tribute to our leadership and heritage.

I loved Convention 2012! The Foundation Room was a beehive of activity with generous sisters giving their time and money to support and inspire the lifelong development of women. This is where I love to spend my time at Convention. Pink carnations to the 2012 local committee who planned, organized and executed a perfect Convention! And to see the shining faces on our collegians getting "the big picture" at Convention is very rewarding.

Love, Labor, Learning and Loyalty... and of course, laughter, all came together at Convention, and what a treat it was!



# Carnation Award

In 1917, Omicron Chapter (Illinois at Urbana-Champaign) received the first Convention award, the Scholarship Award, for having the best overall GPA. Their prize? A silver coffee urn. Since then, numerous Convention awards have been established, all affirming the positive efforts of our chapters and members.

The Sorority's most prestigious honor, the Carnation Award, was first awarded at Convention 1974. The award recognizes members whose outstanding achievements in fields outside the Sorority have brought them great honor or distinction. Since its creation, more than 75 sisters have received this esteemed honor, and this year we proudly added four more outstanding members to that list! Congratulations to these shining sisters!



**Jacquelyn Stuart**  
(Auburn)

Alabama Supreme Court Associate Justice Jacquelyn Stuart was elected

district judge in the state of Alabama in 1988 and was re-elected in 1994. Several years later she was appointed to the Circuit bench where she was elected, without opposition, to a six-year term. Active in her community, Jacquelyn is a member and past president of several civic organizations including the Alabama Council of Juvenile and Family Court Judges and the Blue Ridge Institute for Juvenile and Family Court Judges.

Pajama Game" and "Nice Work if You Can Get It." A talented vocalist, Kelli's second solo album, "Always" was released earlier this year.



**Nikola Girke**  
(British Columbia)

Three-time Canadian Olympian Nikola Girke just competed in the

London Olympic Summer Games in the sport of windsurfing, finishing 10th overall. Nikola is one of just a handful of Olympic athletes who have made the transition from one sport to another and competed in two different Olympic events. At the 2004 Athens Olympic Games, Nikola crewed on a two person sailboat, finishing 13th in sailing. In 2005, Nikola switched to RSX windsurfing, launching another Olympic campaign for the Beijing Olympic Summer Games in 2008, finishing in 17th.



**Elizabeth Pitcairn**  
(Southern California)

Violin virtuoso Elizabeth Pitcairn has earned a

reputation as one of America's most beloved soloists. Elizabeth performs with one of the world's most legendary instruments, the "Red Mendelssohn" Stradivarius of 1720, said to have inspired the Academy award-winning film "The Red Violin." Touring frequently she dazzles audiences at extraordinary venues across the globe.



**Kelli O'Hara**  
(Oklahoma City)

Actress, singer, songwriter and Broadway star Kelli O'Hara has been

nominated for four Tony Awards, including three nominations for best leading actress in a musical for her roles in "South Pacific," "The



*Do you know a Gamma Phi Beta deserving of this esteemed award? To nominate a sister for a Carnation Award, complete a nomination form at [forms.gammaphibeta.org/OnlineForms/](http://forms.gammaphibeta.org/OnlineForms/).*



Gamma Phi Beta's 2012-14 International Council. Back row, from left: Nancy Ann Ostendorf Thompson, Mary L. Knaup and Sandra Biegelman Burba. Front row, from left to right: Shellie King Hodges, Leigh Ann Price, Krista Spanninger Davis and Autumn L. Hansen.

## Pink Carnation Banquet Dazzles

In 1936, Gamma Phi Beta began the special tradition of holding the Pink Carnation Banquet. Originally titled Carnation Banquet, the word "Pink" was not added to the event's name until much later, as the specification of pink as the official carnation color was not affirmed until Convention 1950.

Fittingly themed a "Diamond Celebration" in honor of our 75th Convention, this year's Pink Carnation Banquet welcomed sisters, family and friends to celebrate our alumnae and collegiate chapters, thank our outgoing 2010-12 International Council, install our incoming 2012-14 International Council officers and share one final special evening with sisters.

To begin the celebration, Mistress of Ceremonies Julie Dunn Eichenberg (Florida State) enthusiastically introduced current and incoming International Council members. As a special surprise, 2008-12 Membership Vice President J.J. Kaelin (Colorado-Boulder) sang "In the Heart of a Pink Carnation" as Carnation Award recipient Elizabeth Piteairn (Southern California) accompanied on the violin.

Director of Ritual Margaret West Pape (Oklahoma) installed the 2012-14 International Council, each woman taking her oath of office in front of hundreds of Gamma Phi Betas dressed to the nines. As outgoing International Council members passed on their custom Council badges, specially adorned with a white-enamelled crescent to their successors,

our 2012-14 International Council was introduced:

### **International President Krista Spanninger Davis (Bowling Green State)**

A dedicated volunteer leader, Krista has served more than 21 years in a variety of volunteer leadership positions for Gamma Phi Beta and in her community. Krista will lead International Council in overseeing the Sorority's vision and strategic plan, as well as managing the affairs and property of International Gamma Phi Beta.

### **Alumnae Vice President Shellie King Hodges (Oregon)**

Prior to moving into the role of Alumnae Vice President, Shellie served Gamma Phi Beta in the capacity of sorority director-alumnae resources in addition to other Sorority volunteer roles for the past 19 years.

### **Collegiate Vice President Mary Knaup (California State-Fullerton)**

Since 1985 Mary has continually served Gamma Phi Beta in various local, regional and international roles. "I look forward to providing our collegians a membership experience that is memorable, safe and prepares them for their life ahead."

### **Education Vice President Autumn Hansen (Idaho)**

With an extensive résumé of community involvement and volunteerism, Autumn has

worked as a collegiate leadership consultant and given more than six years to a variety of volunteer leadership positions for Gamma Phi Beta.

### **Financial Vice President Leigh Ann Price (Texas Tech)**

Serving on Council in this role since 2010, Leigh Ann has volunteered for the Sorority for 20 years. "Having made a lot of progress in fundamental operations and governance in the last two years, we are poised for unprecedented growth and opportunities in the next biennium."

### **Membership Vice President Nancy Ann Ostendorf Thompson (Northern Iowa)**

With a long résumé of community involvement and volunteerism, Nancy Ann has given more than 17 years of service to the Sorority. "Serving in this new role, working with more than 125 collegiate chapters, new expansion opportunities and public relations, is one more way to give back to a strong women's organization that has given me so much."

### **Panhellenic Affairs Vice President Sandra Biegelman Burba (Miami-Ohio)**

Serving for her second time on Council, Sandy has given more than 28 years to a variety of volunteer leadership positions for Gamma Phi Beta. "I look forward to representing Gamma Phi Beta in the interfraternal community as the National Panhellenic Delegate."



# A NEW APPROACH TO SUSTAINABILITY

Chiara Gustafson (Georgia), a junior at the University of Georgia, has a unique set of pet peeves. "Running tap water unnecessarily or keeping a light on when no one is in the room is like nails on a chalkboard for me," says Chiara, a Sustainability Ambassador intern for her University's Office of Sustainability. "Our environmental problems are not going away; we need to find a way to collaboratively respect our earth."

While walking to class, Chiara noticed numerous recycling bins available on campus, but realized sorority houses lacked the same option. Inspired, Chiara created the Sorority Green Cup Challenge, a friendly, environmentally-focused competition for her Panhellenic community. Chiara said her ultimate goal with the challenge was to raise awareness for recycling within the Greek community while showing that small changes can have a big impact.

"Each of the 12 participating sororities appointed 'Green Chairs.' They were responsible for conducting parts of the contest like recording water, energy and recycling information in their respective chapter houses and reporting those numbers to the Office of Sustainability," Chiara explains. The sorority that showed the most effort and greatest improvement in going green would receive custom designed t-shirts, a 'Green Queen' tiara and a day of discounts at a vintage store downtown.

In addition to recording energy numbers, the Green Chairs were also responsible for coming up with policies and ideas to reduce

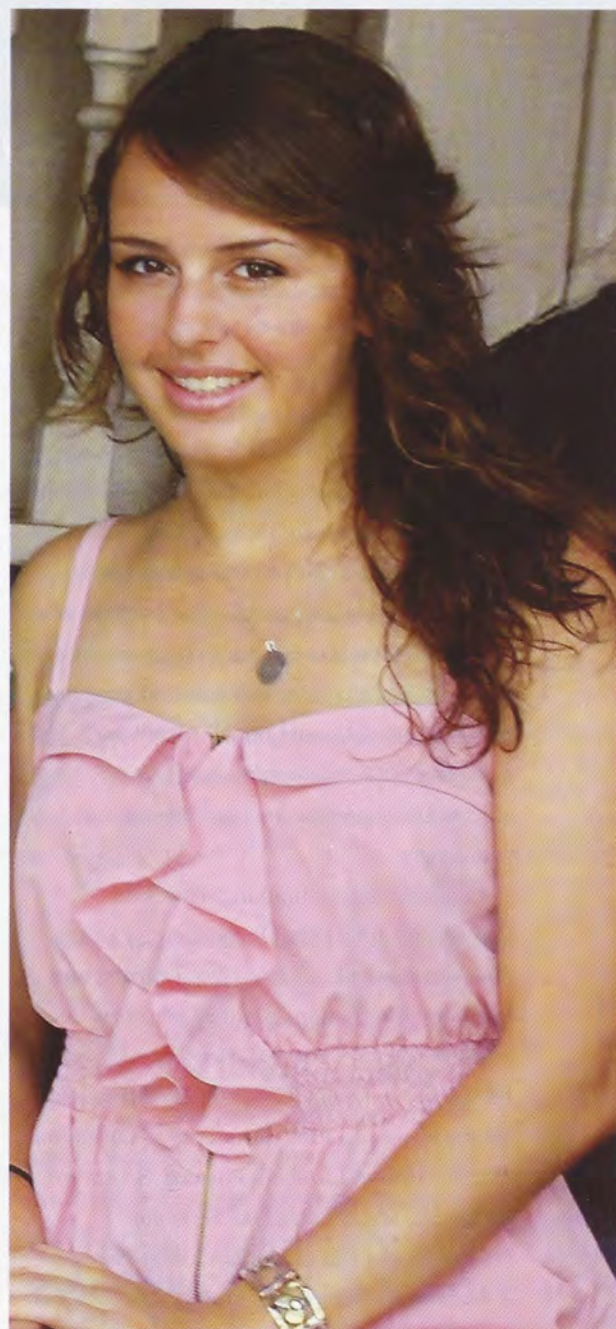
water and energy waste. "It was cool to see such an interest – a lot of sorority women were emailing the Office of Sustainability during the competition about their ideas. Sororities started making small steps, like breaking down cardboard boxes and recycling them, rather than throwing them in the dumpster," Chiara notes.

The Sorority Green Cup culminated with participation in the "Trashion Show" at the Athens Institute for Contemporary Art, fittingly held on Earth Day. Featuring models wearing outfits made entirely out of discarded materials, each of the 12 sororities participated along with local artists and elementary school students. A panel of community "celebrity judges" selected winners for a variety of awards including "Most Green" and "Most Creative."

"The Trashion Show helped people look at 'trash' in a new light because the participants reused discarded materials in creative and even wearable ways," Chiara says.

The University's first Sorority Green Cup was such a success that it will be held again next spring. Chiara will again serve as the behind-the-scenes brains for the challenge, coordinating the competition and working to gain even more exposure and participation.

"Practice makes perfect!" Chiara exclaims. "By remembering to do one small thing each day, we can all make a big impact on our earth."



*What's Chiara's simple tip for being more green? "Give up plastic water bottles!" Chiara says. "It's not healthier than tap water or a good value and produces more than one million tons of waste each year."*



# Crescent Corner *Holiday Shopping List!*



*Want the perfect gifts to give this holiday season? Shop [CrescentCorner.com](http://CrescentCorner.com), the one-stop shop for all of your holiday needs, and give the ones you adore a merry little something! Don't forget to pick up something extra special for the fabulous person you usually leave off your list – you!*

## *Holiday Shopping List:*

- ✓ *ΓΦΒ Car Decal for mom and dad to show their G-Phi pride!*
- ✓ *Adorable Sorority Ornament and Gamma Phi Beta Keychain for the best friends and sisters a girl could ask for!*
- ✓ *Pink Cupcake Stitch 1/4 Zip Sweatshirt to keep me warm and cozy this holiday season!*



**Check out [CrescentCorner.com](http://CrescentCorner.com) for even more great holiday gift ideas!**



# Get to Know ... *Omega Chapter*

*The Crescent* interviewed Omega Chapter President Kayla Toale (Iowa State) and learned about this shining chapter.

***The Crescent: What type of housing facility does the chapter occupy?***

**Kayla Toale:** More than 60 sisters live in our three-story Tudor-style house that was built in 1925. As a result of our growing chapter, there have been two additions: the first in 1963 and the second in 1992. Our home is just minutes from campus and the football stadium.

***What makes your campus unique?***

**KT:** Iowa State University is recognized as having a very strong Greek community, and all organizations put forth tremendous effort to keep our campus and community successful. We have a lot of friendly competitions during Homecoming, Varieties and Greek Week that are really fun and keep students involved.

***Describe your relationship with local alumnae.***

**KT:** One of the most outstanding things about our alumnae is their incredible commitment to helping our chapter succeed. We have an advisory board that consists of 15 members in addition to an amazing house corporation board. There is always at least one advisor at our house events to help support us, and local alumnae are always willing to help out anywhere, anytime!

***What philanthropic organizations does your chapter support?***

**KT:** Last year Omega started a new philanthropic event in honor of the



"Our chapter loves recruitment and welcoming new sisters to Gamma Phi Beta and our incredible Greek community!" Chapter President Kayla Toale says.

Sorority's Day of Service. We hosted an open house for local elementary students and Camp Fire kids, and members educated the children about the importance of serving their community through crafts, games and lessons – it was a huge success!

***What does being a lifetime member of Gamma Phi Beta mean to Omega?***

**KT:** A favorite chapter event is our annual Carnation Blitz. We go door-to-door visiting local alumnae in the area and give them a pink carnation. We talk and reminisce with them about Gamma Phi Beta and their personal stories of sisterhood. It really shows that Gamma Phi Beta is more than your four years in college.

## FAST FACTS!

**What is the current chapter size?**  
98

**What are some fun facts about the chapter?**

- The Omega Chapter house was the first Greek house built on "Sorority Circle" at the University.
- Omega Chapter alumnae include two past International Presidents, Karen Wander Klein and Diane Tjaden Thompson.

**How many NPC sororities are on campus?**

There are 13: ΑΓΔ, ΑΔΠ, ΑΟΠ, ΑΧΩ, ΓΦΒ, ΔΔΔ, ΔΖ, ΚΑΘ, ΚΔ, ΚΚΓ, ΠΒΦ, ΣΚ and ΧΩ.

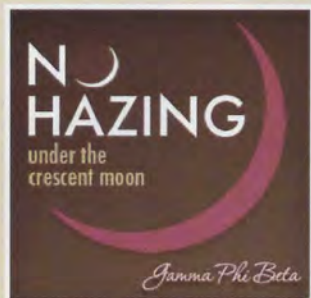
**Has your chapter received any Greek-related awards or honors in the last year?**

- At Convention, Omega won the Advisory Board Excellence Award, Elizabeth Ahlemeyer Quick Panhellenic Leadership Award, Scholarship Excellence Award and several honorable mentions.
- Our chapter GPA has been higher than the All-Sorority average for four consecutive years.
- Omega won third place overall for Homecoming 2011 (first place in 2010).



# HAZING Can't be Taken Lightly Anymore

By Sheridan Watson (Southern California) The following article was originally printed on April 18, 2012, in the "Daily Trojan."



Gamma Phi Beta is proud to share this member-written article that addresses the severity of hazing. As an organization that promotes respect, self-worth and dignity among our members, we applaud Sheridan for having the courage to write this article and agree wholeheartedly that we must take action if we know of, or have witnessed hazing. Call the Gamma Phi Beta-sponsored anti-hazing hotline to anonymously report suspected hazing incidents at 1.888.NOT.HAZE.

## A barrage of hazing horror stories

began with the death of George Desdunes, a Cornell University sophomore who was reportedly forced to drink so much alcohol that his blood alcohol content reached the level of .409.

Then came Robert Champion, a Florida A&M student who died after being violently hazed by his fellow band members.

These young men are just two of the countless college students who are bullied into submission — and sometimes even death — to gain the respect and trust of their peers.

Some organizations might call it bonding, but to the rest of the world, it's hazing.

*Rolling Stone* magazine recently ran an eight-page spread detailing the hazing activities of fraternities and sororities at Dartmouth University.

Andrew Lohse, a student and former fraternity member, decided to speak publicly about his experiences, incurring the wrath of many of his fraternity brothers.

Lohse discussed how he and his pledge brothers were forced to eat "vomlets" — you fill in the blank — and swim in kiddie pools filled with urine, sperm, vomit and feces, not to mention all-night drinking binges and activities involving kidnapping.

Lohse's story is not an isolated incident. It's playing out across the country. Too many of our nation's universities and colleges are guilty of some form of hazing.

When we think of hazing, the worst possibilities come to mind. In fact, a common misconception is that hazing only counts when it involves physical harm.

Hazing is better defined as forcing anyone to do anything that they are not comfortable doing in the name of fitting in with the group.

Many of us forget the emotional scars that uncomfortable activity can brand us with.

Less significant incidents, such as midnight workouts or naked runs, might seem harmless and funny.

Unfortunately, if we don't live by a zero-tolerance policy on hazing, then the more dangerous activities will continue unabated.

Whether it's in a frat during the bi-annual "Hell Week" or initiation into any other student organization, in order to be "in" you have to go through such rituals.

This vicious cycle will continue until colleges attempt to put an end to it.

As a member of the Greek community, I hope that one day such instances of hazing are rendered nonexistent.

To get to that point, we need to stop giving slaps on the wrists and enforce punishments on those who harm others.

The university should take a stronger hand in educating students going through recruitment, so that they can more easily distinguish between what's acceptable and what's inexcusable.

A brotherhood, sisterhood, band or club is no excuse for physical or emotional harm. True bonding is an act of support, friendship and love. Students should be able to have friends that don't abuse them as part of the "system."

George Desdunes and Robert Champion got lost in this same abusive system. Because so few people speak out about it, their parents had to plan their funerals before they got to see them graduate.

We must take action before a tragedy occurs, before a Trojan is a victim of a prank gone wrong.

*Sheridan Watson is a junior majoring in cinematic arts-critical studies.*

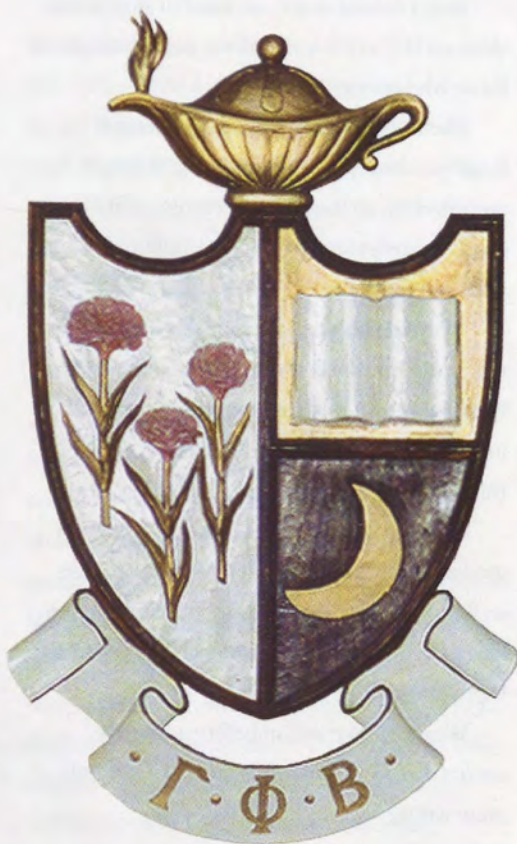


# inspiration board

## WORD UP

During the International Headquarters tour at Convention, everyone loved this Gamma Phi Beta-inspired word cloud. Looking to create a word cloud for your chapter? Contact [gammaphibeta@gammaphibeta.org](mailto:gammaphibeta@gammaphibeta.org) and we'll email you our word cloud template!

Gamma Phi Beta  
Sisterhood  
Service  
Leadership  
Community  
Loyalty  
Integrity  
Friendship  
Confidence  
Inspiration  
Crescent  
Patriotism  
Dedication  
Hardy  
Connect  
Celebrate  
Womanhood  
Sorority  
Values  
Love  
Learning  
Shine  
Labor  
Gratitude  
Impact  
Caravan  
Lands



## SYMBOL OF PRIDE

At Convention 1915, our beautiful crest was adopted. Gertrude Comfort Morrow (California-Berkeley) was the winner of a Sorority-wide design contest and her vision is a symbol of sisterhood we still use and hold dearly today.



## "I LOVE THE PINK CARNATION..."

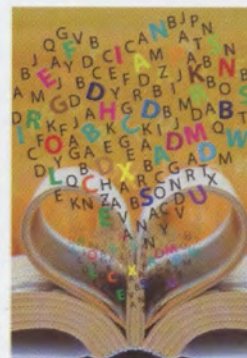
The carnation has been the Sorority's official flower for more than 120 years and was chosen because it is the longest lasting flower.





### NATIONAL AUTHORS DAY

Celebrate National Authors Day in November by purchasing a book written by a Gamma Phi Beta sister from the Sorority's Amazon aStore. From children's books to mystery and romance, there are hundreds of books available at [gammaphibeta.org/sorority/gamma-phi-beta-authors](http://gammaphibeta.org/sorority/gamma-phi-beta-authors). Support a sister and ΓΦΒ!



### WATCH IT!

The time is right for this stylish Gamma Phi Beta watch! This timeless treasure will keep you punctual, polished and seriously chic. Make this watch yours by visiting [higreek.com](http://higreek.com).

### GIVE A GIFT TO A SISTER (OR YOURSELF)!

It's never too early to start your holiday shopping for sisters! Crescent Corner has tons of adorable gift options – from this fun water bottle to Vera-inspired totes to cute and cozy and tees and jackets, we've cornered the market on the best Gamma Phi Beta gifts this season. Get your shop on at [CrescentCorner.com](http://CrescentCorner.com).

### FORM A SISTER STUDY GROUP

Study groups can motivate you when you're having trouble motivating yourself. What better group of motivators than your sisters?! Form a study group with sisters whom you share classes or majors – getting a group together allows you to divide and conquer, and explaining difficult concepts out loud will help you figure out what you understand and what you still need to review.





# The Suffragettes

## “ONE WOMAN, ONE VOTE”

began in 1848 in the Methodist chapel in Seneca Falls, New York, where Elizabeth Cady Stanton stirred up a meeting on women's rights with the radical demand for the vote. The campaign, also known as the women's suffrage movement, would be carried on for more than 70 years, in state legislatures, in Congress and in the streets, protesting with campaigns, rallies and marches accusing:

*“Uncle Sam set up his house,  
He welcomed every brother;  
But in the haste of his new life,  
He quite forgot his mother.”*

The struggle for women's suffrage was a long, arduous battle against ingrained assumptions and laws made by men, on behalf of men. Many brave and bold women, including Gamma Phi Betas, fought for a woman's right to vote and elect their government, the basic definition of democracy. We proudly introduce you to three members who stood up for what they believed was right, granting us liberties and opening countless doors for women.

## THE PROGRESSIVE

Always a leader, Alice Carpenter (Barnard, 1901) was the first initiate of Iota Chapter in 1901. As the head of the Woman's Department of the National Progressive Party, also known as the Bull Moose Party, Alice endorsed the platform that included espousing universal women's suffrage. Women's political participation

skyrocketed during this election, and Alice was one of 10 women to serve as an elected delegate to the 1912 Progressive Party Convention. After being elected by reformer Jane Addams and seconded by Theodore Roosevelt, Alice served on the Progressive Platform Resolutions Committee, advocating for a woman's right to vote.

In 1914, Alice and several other suffragists sold “suffrage sandwiches” on a New York City corner, with Alice speaking to any man, woman or child who would listen. The women's one-day sale thrived, and soon suffrage sandwiches were sold regularly in the city, with proceeds going to benefit the cause. In fact, at the 1917 polls Alice and other suffragists, standing the lawful distance of 100 feet away, distributed literature in addition to suffrage sandwiches, beer, coffee and cake on behalf of

their candidates. Their literature was addressed to “Mr. Voter,” telling him that no matter the party, “his candidate favored votes for women.”

On several occasions Alice was cited in the “New York Times” for her suffrage involvement and was known for being quite convincing. At a 1917 suffrage reception Alice hosted, several women made suffrage speeches, including long-time anti-suffrage leader Mrs. Simon Baruch. Alice was so compelling that even Mrs. Baruch had been converted to a “worker in the suffrage ranks.”

## THE DARING NOVELIST

Clara Helen Whitmore (Boston, 1887) was a charter member of Delta Chapter and an ardent suffragist. She was known for writing numerous short articles and stories for newspapers and magazines about the cause



Suffragist Alice Carpenter (Barnard, 1901) addresses a street corner crowd in support of the Progressive Party's candidate for president, Theodore Roosevelt.



and is best known for her book, "Woman's Work in English Fiction." The book details the achievements of women in fiction and flaunts the fact that women were the first novelists to write about topics like labor and capital, politics, humanitarianism and factory life. One reviewer said, "It is a book every woman should read because it will increase her respect for her own sex."

Knowing her writings were controversial to publish at the time, Clara included the following statement in the book's preface: "This book is written from a woman's viewpoint. It is my only hope that this book may in a small measure fill a want which a school-girl recently expressed to me: 'Our Club wanted to study about women, but we have searched the libraries and found nothing.'"

### THE ACTIVIST

Personal secretary and close friend of famous suffragist Jane Addams, Kathleen Jennison Lowrie (Goucher, 1913) worked in the Children's and Women's Bureau of the U.S. Department of Labor from 1918 to 1947 and was appointed by President Franklin Roosevelt as the first woman on the National Recovery Act Board. Many of the recommendations concerning working conditions, wages and job safety for women and children, made by the task forces on which she served, became part of Roosevelt's New Deal.

Before working with the Department of Labor, Kathleen worked with Jane Addams at the Hull House in Chicago. Originally created to help immigrants and the poor, the Hull House included a day nursery, gymnasium, community kitchen and boarding facility for working girls. Courses were also offered – from college-level classes in English and literature to skill-related courses like bookbinding. Many prominent social reformers and women's suffragists came to live at Hull House for a time, and Kathleen was there to help provide a home and education for them.

In 1980, the Michigan Senate adopted Resolution No. 453, recognizing Kathleen as "one of our nation's grandest citizens and most valiant equal rights activists." Her obituary read:

*"A Lady with a Lamp shall stand  
In the great history of the land,  
A noble type of good,  
Heroic womanhood."*



In the March 1915 issue of *The Crescent*, this photo of Alice Carpenter (Barnard, 1901) was printed, congratulating her for appearing on the national Woman's Who's Who list for her suffrage efforts.



## Alumnae Spotlight

# Carolyn Nelson

North Dakota State Senator Carolyn Callenbach Nelson (Ohio Wesleyan) received a call one evening more than 25 years ago that would forever change her life.

The call was from the late U.S. Senator Quentin Burdick, husband of her Gamma Phi Beta sister Jocelyn Birch Burdick (Northwestern), inquiring to see if she was interested in running in the next election for the state's House of Representatives.

"I was shocked, but I said yes. I always respected him, and Mrs. Burdick was never one to say no either – she was always there to serve her community in any capacity; she showed me that if something is really important to you, you can always make time for it," Carolyn says. "My district was split politically, and my party hadn't won an election in 10 years. Needless to say, I didn't think the odds were in my favor."

But, as destiny would have it, Carolyn won her first election by four votes, launching her political career. "People often think their vote doesn't make a difference – I'm proof that your voice does indeed count!" Carolyn says passionately.

From 1986-88, Carolyn served in the North Dakota House of Representatives, representing the 45th District. Serving the people of her congressional district, Carolyn worked to introduce bills and resolutions, offer amendments and serve on committees.

"Early in my career in the House I put in a somewhat controversial bill," Carolyn recalls. "It didn't pass and the next year I was not re-elected. Losing is fine, and that didn't mean I stopped caring. I quickly learned people don't forget about you either!"

Fast forward several years and the districts in the state were realigned. Though they only shifted by one block, Carolyn was now eligible to run for the 21st District. And she did. From 1992-94, Carolyn again served on the North Dakota House of Representatives.

In 1994, Carolyn shifted gears and ran for the North Dakota State Senate. She was elected and has been serving her district for the last 18 years. "I represent the most urban area of the state in Fargo; it's a very fun district to represent with an eclectic mix of people. I joke that because my district has so many viewpoints, I can never be wrong, so they just kept electing me," Carolyn teases.

Carolyn serves on two different Senate committees – the Judiciary Committee and Government and Veteran Affairs Committee. "With the Judiciary Committee I work with legislation dealing with things like speed limits, conditions in jails and child custody,"



Carolyn explains. "The Government and Veteran Affairs Committee works on legislation for issues like benefits for teachers and state employees, historical preservation and care for veterans."

In 2006, Carolyn was named the Senate Assistant Minority Leader, representing her party on the Senate floor until 2010. "I was searching the state history, and it turns out I was the first woman elected to this role," Carolyn notes. "When you've been in existence since 1889, that's a long time without a woman!"

Not up for re-election this year, Carolyn has no plans to slow down. She is currently serving as president of the National Federation of Music Clubs and has 14 darling grandchildren to spoil.



*Do you know a shining alumna making a positive impact? Nominate her to be spotlighted!*  
Email [TheCrescent@gammaphibeta.org](mailto:TheCrescent@gammaphibeta.org).



Get to Know ...

# Washington, D.C. Alumnae Chapter

Chartered more than 75 years ago, Washington, D.C. Alumnae Chapter is proud of its storied history and diverse group of sisters. Alumnae Chapter President Melissa Coughlin (Boston) shares more about our alumnae chapter in the District of Columbia.

## *The Crescent: What is unique about your chapter?*

**Melissa Coughlin:** D.C. is such a transient city, and we experience a large flux of Gamma Phi Beta alumnae in and out of the area. This motivates us to provide a robust social calendar to meet the interests of every area alumna, regardless of age. We're always looking to experience the culture and history of D.C. and held more than 25 events in 2011-12, including cultural dinner nights, museum/monument tours, a Cherry Blossom festival event and attending professional sports games.

## *Which Core Value best describes your chapter?*

**MC:** All of them! Our chapter has a rich history of Love, Labor, Learning and Loyalty to each other, the community and Gamma Phi Beta. Many members have, or currently serve, Gamma Phi Beta as regional coordinators or house corporation board members. Locally, our chapter goes to great lengths to support area collegiate chapters. We were an important part of the colonization efforts at Eta Epsilon Chapter (Virginia Tech) and Eta Gamma Chapter

(Delaware), and we support Epsilon Pi Chapter (George Mason) throughout the year with their spirit, recruitment and finals week.

## *Describe one of your signature events.*

**MC:** We don't have one particular signature event per se, but hold an annual holiday party each December where our executive board provides dinner and sisters participate in a gift exchange. This year we coupled the party with a drive to benefit Toys for Tots and a local church. We are also very excited to become an integral part of the Washington, D.C. Chapter of Girls on the Run! We'll be stuffing race packets in November and providing logistical support for the big 5K race in December.

## *How does your chapter celebrate Founders Day?*

**MC:** We typically hold two events to celebrate Founders Day. One event is a chapter dinner held at a local restaurant, while the other is a more formal celebration in conjunction with Epsilon Pi and sisters from Northern Virginia Alumnae Chapter. This past fall, more than 40 collegians and alumnae gathered to celebrate, representing more than 25 Greek-letter chapters. We enjoyed a wonderful luncheon and were inspired by the words of Rosemary Pezzuto, Chief Executive Officer of Camp Fire Patuxent Area Council.



Over the summer sisters volunteered at Camp Fire Patuxent Area Council, hosting the 'Gamma Phi Olympics' for more than 80 campers!

## *What does our mission mean to the chapter?*

**MC:** We support each other through life's highs and lows and are constantly looking for ways to improve ourselves, our chapter and Sorority. Through a variety of events aimed at cultural, scholastic, social and philanthropic development, we've built, and continue to build, rock-solid relationships. We're always looking to represent Gamma Phi Beta in the best light possible – something evidenced in the accomplishments of our individual members and chapter as a whole!

## FAST FACTS

**Membership size?** 52

**Charter date?** 1935

**Collegiate chapters supported?** Epsilon Pi (George Mason); Eta Epsilon (Virginia Tech); and Eta Gamma (Delaware)



*Recommend a chapter for our alumnae chapter spotlight! Email [TheCrescent@gammaphibeta.org](mailto:TheCrescent@gammaphibeta.org).*



# Four LEGACIES in Four Months

By Justine McDaniel (Puget Sound)



Caroline and her legacy Blaine.



Lee and her legacy Quinlan.



Beth and her legacy Addison.



Kathleen and her legacy Claire.

When Caroline Smith O'Neal found out she was expecting her first child, she and her three best friends, Lee Heitert Luetkemeyer, Beth Bryant Mande and Kathleen Gardenhire Copeland (all Oklahoma), were excited. When Lee discovered she was pregnant a couple of months later, they became even more ecstatic. Then Beth and Kathleen sent out emails – they were pregnant, too! As the gender Ultrasounds came rolling in, another discovery: they were all expecting girls.

The four have been friends since 1999 when they joined Gamma Phi Beta at the University of Oklahoma. Over the past 10 years they have kept in touch, supporting each other through the life changes that come with adulthood while allowing their friendships to grow. From finding jobs to getting married, the women have stayed close, and in 2010, they embarked on another new journey together. After sharing sisterhood for the last decade, they would now share motherhood, too.

Caroline's daughter Blaine came first in late July 2011. She was followed by Quinlan, Lee's daughter, in September. Beth gave birth

to Addison at the end of October, just a few days before Kathleen's daughter, Claire, arrived.

"The relationships with my Sorority sisters have changed," Beth says. "In college you're going out and having fun, but now it's kind of serious life stuff that's happening. The things that you are going through are different, but your sisters are still there."

The new mothers email and call each other frequently. They often turned to each other to exchange tips, advice and complaints about getting through pregnancy during the hottest Midwestern summer on record. "I

don't think we could have done it if we weren't all doing it at the same time. It made it less scary," Beth says.

"It's just so amazing to be able to see your friends and sisters go through these huge life changes and be there to celebrate with them," Beth says. "You went through special experiences with these women, and they know who you are."

The women admit that although their daughters have quite a while before they head off to college, the women are already thinking about the prospect of their legacies joining Gamma Phi Beta. "I'm excited," Beth says.



"I'll tell my daughter to follow her heart. You have to go to the chapter that's right for you. Go where you feel comfortable and amazing, where the women make you feel special...but it better be Gamma Phi!" she adds with a laugh.

The sisters love to visit their old chapter house, and Beth says her pride in Gamma Phi Beta has grown immensely since graduating. "You look back and appreciate those little things you didn't always appreciate while you were there. Even though we're all grown up and have new and exciting things in our lives, it was a really fun time. We all say we would give anything to go back to college for one day."

It has been a year since the legacies were born, and the women's friendship has only grown stronger. As their daughters get older, they will have the privilege of seeing the support and love that unites their mothers. And thanks to their mothers' friendship, the girls will grow up together, sisters in their own way from the very start.

Every member of Gamma Phi Beta has seen firsthand the amazing bonds that are established between sisters during college. Beth, Caroline, Kathleen and Lee's story is an extraordinary reminder that this love lasts a lifetime, spans generations and never stops growing.

**Q:** What is a  $\Gamma\Phi\text{B}$  legacy?

**A:** A legacy is a sister, daughter, granddaughter or great-granddaughter of a member of Gamma Phi Beta, including the "step" version of each of these relations.

**Q:** How can I recommend my legacy for membership in Gamma Phi Beta?

**A:** Complete a Reference Form at [GammaPhiBeta.org/WriteARec](http://GammaPhiBeta.org/WriteARec) and indicate her legacy relationship on the form.



**SB**  
SCHOOL  
BEADS

GAMMA PHI BETA

-STERLING SILVER BEADS AND JEWELRY-  
-BEADS FIT MOST PANDORA STYLE BRACELETS-  
-MADE IN THE USA-



TO SEE FULL LINE, PLEASE VISIT  
**SCHOOLBEADS.COM**  
PO BOX 91 CLAWSON, MI 48017 (248)548-4855







## Rachel Benke Roberts

(Oklahoma City) Collinsville, Oklahoma

Rachel is a dance instructor, wife, mom and Gamma Phi Beta. Between teaching ballet, tap, jazz and keeping up with her energetic 6-year-old legacy, she has a lot on her plate. But Rachel always manages to make time to give back to her Sorority each year by paying her international alumnae dues.

*“As an alumna, I feel it’s my responsibility to help our Sorority’s legacy continue. When I joined Gamma Phi Beta, I also made a commitment to fulfill the responsibilities of lifetime membership. By paying my international alumnae dues, I know I’m helping future members of our organization enjoy the same amazing experience I had.”*



### ARE YOU READY TO GIVE BACK?

There are three ways you can pay your \$25 international alumnae dues and Shine ON for Gamma Phi Beta!

1. Pay online at [GammaPhiBeta.org/AlumnaeDues](http://GammaPhiBeta.org/AlumnaeDues).
2. Pay through your local alumnae chapter.
3. Mail this form with a check to:  
Gamma Phi Beta Sorority, Inc.  
P.O. Box 731592  
Dallas, TX 75373-1592

*Yes!* I am proud to Shine ON for Gamma Phi Beta and foster a strong future for our organization!

☐ \$25 Check enclosed First Name, Maiden, Last Name \_\_\_\_\_

Address \_\_\_\_\_ City \_\_\_\_\_

State/Province \_\_\_\_\_ Postal Code \_\_\_\_\_ Country \_\_\_\_\_

Collegiate Chapter \_\_\_\_\_ School \_\_\_\_\_

Seven-digit Member Number (located on back of magazine) \_\_\_\_\_ Email \_\_\_\_\_

Alumnae Chapter (if applicable) \_\_\_\_\_ Phone \_\_\_\_\_

\*Dues and contributions made during the Sorority’s fiscal year (August 1, 2012 – July 31, 2013) are not tax-deductible. Please note new postal address.



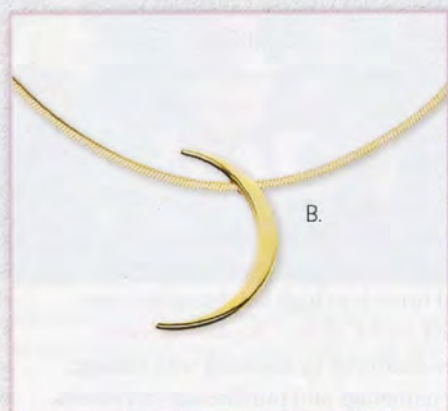
# GAMMA PHI BETA ACCESSORIES

Add to your holiday or birthday Wish List!

[order early for holiday delivery!]



Chapter President's Ring



(Chain sold separately.)

new watch!  
"Wynter Ice"



- A. Chapter President's Ring, #0453 SS.....\$122, 10K.....\$310
- B. Polished Crescent Necklace, 18", #1668 SS.....\$55, 10K (on a gold-filled chain).....\$150
- C. Oval Crest Signet Ring, #0345 SS.....\$91, 10K.....\$292
- D. Snake Chain, 18", #SNAKE SS.....\$19, GF.....\$29
- E. Crescent Disk Charm, #1045 SS.....\$26
- F. Wynter Ice Watch, #Wynteric.....\$40
- G. Wide Band Cuff Bracelet with Crescent, #SB497CST SS/GP.....\$150
- H. Wide Band Cuff Bracelet with Crest, #SB497 SS/GP.....\$150
- I. Stack Rings, #335GR stainless steel.....\$50 (Available in whole sizes 6 - 9.)



NEW!

**TO ORDER**

visit [www.HJGreek.com](http://www.HJGreek.com) or call 1.800.422.4348



Find us on Facebook: [www.facebook.com/hjgreek](http://www.facebook.com/hjgreek)

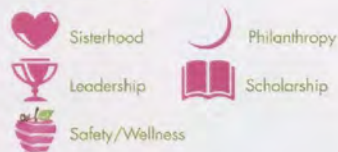
K - karat gold, SS - sterling silver, GF - gold-filled, GP - gold-plated





# SORORITY Life

## Symbol Key:



## Region 1

### DELAWARE

#### ♥ Eta Gamma Chapter (Delaware)

Members were excited to move in to a new chapter facility to start the school year! Sisters are excited to host sisterhood events at the facility and recently welcomed more than 300 guests for a dedication ceremony.

### MASSACHUSETTS

#### ♥ Delta Chapter (Boston)

After celebrating their 125th anniversary and initiating more than 40 sisters in the spring, sisters spent their summers together all over the world. Whether it was sightseeing in Rome, grabbing coffee before interning in New York City, eating dinner in Washington, D.C., or vacationing in Cape Cod, sisters made time to connect!

### NEW YORK

#### ♥ Alpha Chapter (Syracuse)

Six sisters traveled to Denver for Convention and left with lots of fresh, exciting ideas to share with the chapter, ranging from recruitment to Panhellenic involvement.

#### ↪ Rochester Alumnae Chapter

The chapter supported a local golf tournament to benefit the Hillside Family of Agencies and hosted a dinner for graduating seniors of Epsilon Tau Chapter (Rochester).

### ONTARIO

#### ♥ Greater Toronto Alumnae Chapter

Sisters have enjoyed a fun schedule of events, from the chapter's annual walk in High Park and brunch to high tea. Members also supported Alpha Alpha Chapter (Toronto) during recruitment by assisting with baking, creating nametags and purchasing carnations.

## Region 2

### FLORIDA

#### ♥ Naples Area Alumnae Chapter

With a steady increase in membership numbers, sisters filled an entire dining room at a local restaurant during their annual Summer Lunch Bunch and exchanged books for fall reading.

### NORTH CAROLINA

#### ♥ Epsilon Psi Chapter (North Carolina-Asheville)

Ending a great school year, sisters capped off the semester with fun sisterhood events like a spa night, Senior Celebration and formal at a historic post-Victorian stone manor!

### VIRGINIA

#### ♥ Epsilon Iota Chapter (Christopher Newport)

Many sisters continued their academic endeavors this summer as they studied abroad in various exciting locations like Spain and Italy.

#### ↪ Greater Norfolk Alumnae Chapter

Members of the chapter supported the local children's hospital by attending the Daughters Dine Out for the Kids Fundraiser, enjoying an evening of socializing and recounting fun times from collegiate days.

#### ♥ Zeta Beta Chapter (Virginia)

Temperatures peaking at 95 degrees didn't stop sisters from running the PurpleStride 5K Race in Washington, D.C., benefitting the Pancreatic Cancer Action Network.

## Region 3

### ALABAMA

#### ♥ Gamma Phi Chapter (Auburn)

Members prepared for one of their favorite times of year – recruitment – and are excited to welcome new sisters to the chapter. To welcome and get to know their new members, the chapter has plans for an adventure-filled sisterhood retreat to Six Flags Amusement Park.

#### ♥ Epsilon Lambda Chapter (Alabama)

Members received the Outstanding Chapter Award from the Order of Omega Greek Leadership Honor Society for their scholarship, diversity of membership and efforts to foster a positive image within their Greek community, on campus and in their local community.

Gamma Phi Beta Sorority by Regions







**Region 1** | Members of New York City Alumnae Chapter and Epsilon Tau Chapter (Rochester) had a great time connecting at their annual Central Park Picnic event. The alumnae chapter holds the event each summer and invites all recent graduates in the area to attend!



**Region 2** | This summer, sisters from Washington D.C. Alumnae Chapter, Eta Epsilon Chapter (Virginia Polytechnic), Eta Gamma Chapter (Delaware), Zeta Beta Chapter (Virginia) and Epsilon Pi Chapter (George Mason) hosted the "Gamma Phi Olympics" for children at Camp Fire Patuxent Area Council. From serving food to assisting with fun outdoor games, members volunteered their time to give more than 80 campers an awesome day to remember.

### Dear Gamma Phi Beta,

A significant number of children who come to Camp Fire are referred by local community outreach and homeless programs. Through the generosity of collegiate and alumnae chapters in Pennsylvania, Virginia, Washington, D.C., and the Gamma Phi Beta Foundation, Camp Fire receives supplemental funds through philanthropy grants, enabling many more children to attend our programs. Each child who attends camp also gets a one-year membership in Camp Fire and is able to stay connected largely because Gamma Phi Beta is there when they need them most.

Annually local chapters host a "Gamma Phi Beta Day," and this year the Olympic-themed event was expanded to include many more chapters. These women have – and continue – to provide support in so many ways. They've donated materials, volunteer with activities, invite us to their community and campus events and just stop by camp to say hi. It is a great partnership and we look forward to more events this year.

Sincerely,

Rosemary Pezzuto, Chief Executive Officer  
Camp Fire Patuxent Area Council



## GEORGIA

### ■ Delta Omicron Chapter (Southern Polytechnic)

Taking home every academic-related honor at the Greek Awards Banquet, the chapter proudly earned the highest all-Sorority and all-Greek GPA. Even more, a sister received the Greek Woman of the Year Award, making it the fifth consecutive year a chapter member won this prestigious honor.

## TEXAS

### ♣ Alpha Xi Chapter (Southern Methodist)

This spring, the chapter competed in the University's Sing Song competition. With a Texas-themed show, the chapter placed second overall and took home awards for best choreography and director, in addition to making the front page of the campus paper for their show-stopping performance.

### ♥ Dallas Alumnae Chapter

Members attended a seminar at The Container Store to learn tips for organizing and decorating and also enjoyed a high tea and a potluck event. Convention in Denver was a great opportunity for members to network and learn about our new philanthropic focus, Building Strong Girls.

### ♣ Zeta Chi Chapter (Texas Christian)

The chapter's entire executive board attended the Sorority's 75th Convention; a relatively young chapter, members plan to further "ELEVATE" the chapter, inspired by this year's Convention theme.

### ♣ North Houston Alumnae Chapter

Chapter members are celebrating the alumnae chapter's 30-year anniversary with a "\$30 for 30" program created to raise funds for young alumnae leadership development. Donors will be recognized during the chapter's Founders Day celebration in November.

## Region 4

### INDIANA

### ♥ Zeta Iota Chapter (Valparaiso)

Over the summer members kept busy with activities like medical mission trips to Peru, internships and traveling to Denver for Convention to meet sisters from across North America. The chapter's Convention attendees are eager to implement ideas they learned into chapter operations this fall.

### ♣ Zeta Kappa Chapter (Southern Indiana)

Between chapter and individual member awards, the chapter was honored with 10 awards at the Greek Awards Ceremony, including Chapter Advisor of the Year. The chapter also won the title of Greek Week champion after a week of sports, teamwork activities and philanthropic events.

## MICHIGAN

### ♥ Beta Delta Chapter (Michigan State)

Sisters went international this summer, with many members studying abroad together in locations like Australia, Spain and Ireland!

### ♣ Delta Omega Chapter (Oakland)

Members volunteered at Camp Ohivesa for one week this summer, leading campers in fun skill-building and outdoor activities ranging from zip lining to boating to games built around teamwork. Sisters bonded with the children and were happy to help enrich their experience!

### ♣ Eta Delta Chapter (Grand Valley State)

Members were proud to receive the esteemed McCormick Medallion Award at Convention for their outstanding participation in campus, community and philanthropic activities.

## OHIO

### ♣ Cincinnati Alumnae Chapter

Members of the chapter and sisters from Eta Zeta Chapter (Cincinnati) teamed up to cheer for Girls on the Run participants during their 5K race through downtown Cincinnati. The chapter is excited to continue working with our new philanthropic partner at the local level, helping build strong girls!

### ♥ Cleveland West Alumnae Chapter

Members are having a great time connecting with the sisters at Zeta Omicron Chapter (John Carroll) and Beta Gamma Chapter (Bowling Green State)! At their fall potluck, the chapter gave their collegiate sisters goodie bags of treats for recruitment and made a donation to help the chapters cover recruitment expenses.

### ♥ Zeta Omicron Chapter (John Carroll)

Members celebrated the chapter's 10-year anniversary with an Open House Luncheon with sisters from Cleveland West, Cleveland East and Kent Alumnae Chapters in

attendance. The chapter also set up a table with free candy giveaways in the University's gymnasium to include other students on campus in the celebration and promote a positive image of Gamma Phi Beta!

### ♥ Eta Zeta Chapter (Cincinnati)

Members of Gamma Phi Beta's newest chartered collegiate chapter were anxious to head back to school to continue to build their bonds of sisterhood and get even more involved with the Greek community.

## Region 5

### ILLINOIS

### ♥ Beta Eta Chapter (Bradley)

Receiving great PR, the chapter was spotlighted in the campus newspaper for their continued support of University sport teams!

### ♥ Chicago Alumnae Chapter

Members celebrated with a sister after her ordination as a minister.

### ♣ Delta Pi Chapter (Illinois State)

Members learned about the rare autoimmune disease Juvenile Myositis in support of a sister with the disease. The chapter plans to start supporting the Cure JM Foundation philanthropically this school year to raise funds for disease research.

## IOWA

### ♣ Omega Chapter (Iowa State)

The chapter was proud of several members selected to participate in the Hope 4 Africa mission event, aiding in the implementation of an electricity and music program in Kenya.

## MINNESOTA

### ♣ Kappa Chapter (Minnesota-Twin Cities)

To honor the life of a sister who passed from meningitis, the chapter hosted its ninth annual Kris 5K Run/Walk, with members of the Greek community, family and chapter alumnae participating. Nearly \$5,000 was raised to support the National Meningitis Association.

### ♣ Gamma Pi Chapter (Minnesota State-Mankato)

At the annual Greek Banquet, the chapter received awards for Chapter President of the Year, Sorority Woman of the Year, Panhellenic President of the Year and Website of the Year.





**Region 4** | Taking the world by storm, sisters from Alpha Nu Chapter (Wittenberg) traveled to Washington, D.C., North Carolina, France, Chile and Ireland for study abroad experiences last school year. From the Eiffel Tower to Irish castles, sisters enjoyed beautiful scenery while excelling academically!



**Region 4** | Sisters didn't let distance stop them from spending time together this summer! Members from Beta Phi Chapter (Indiana) drove from as far as Chicago to reunite for a get together in Indianapolis to attend a concert.



**Region 5** | Gamma Mu Chapter (Minnesota State-Moorhead) helped the local Sigma Chi Fraternity chapter have their most successful Derby Days philanthropy event to date! As the winners of the philanthropy competition, they received the opportunity to donate 15 percent of all proceeds raised to the charity of their choice; more than \$400 will benefit Girls on the Run!



### ♥ Minneapolis-St. Paul Alumnae Chapter

More than 60 members of the chapter had a fabulous evening cruising on beautiful Lake Minnetonka. The sisters enjoyed lots of laughs, reminiscing, games and raffles to raise funds for improvements to the Kappa Chapter (Minnesota-Twin Cities) house.

## Region 6

### ARKANSAS

#### ♥ Zeta Phi Chapter (Arkansas-Fort Smith)

During summer recruitment workshops, women of the chapter were inspired by the words of Gamma Phi Beta volunteers Stefanie Brickman (Oklahoma) and Alicia Slyter (Oklahoma) and are ready to use what they learned to make this recruitment their best yet!

### COLORADO

#### ♥ Theta Chapter (Denver)

Members were thrilled to meet new sisters at Convention and welcome them to the chapter's home city of Denver. The chapter is already looking forward to its next Convention experience in Seattle in 2014!

### KANSAS

#### ♥ Sigma Chapter (Kansas)

The chapter was elated to receive multiple awards at Convention! Chapter representatives enjoyed participating in business meetings, Convention workshops and the Pink Carnation Banquet.

### MISSOURI

#### ♥ Gamma Tau Chapter (St. Louis)

Several sisters attended Convention in Denver and connected with their entire regional team, making plans for recruitment and ongoing public relations efforts.

### OKLAHOMA

#### ♥ Beta Omicron Chapter (Oklahoma City)

The chapter cheered on their four sisters who competed in the Miss Oklahoma Pageant; two members were top 10 finalists!

#### ♥ Beta Psi Chapter (Oklahoma State)

Nearly 50 chapter alumnae from the 1980-85 pledge classes attended the chapter's fourth annual reunion, staying in the chapter house for a weekend and visiting their favorite Stillwater spots while renewing close

relationships from their time as collegians. Sisters in attendance also donated more than \$1,500 to the chapter's house corporation board to support current chapter house renovation projects.

## Region 7

### ARIZONA

#### ♥ Beta Omega Chapter (Northern Arizona)

At Convention, the chapter won the Most Improved Recruitment Award; members are excited to show off the special distinction during recruitment as they prepare to welcome new sisters!

### CALIFORNIA

#### ♥ Delta Delta Chapter (California State-Fullerton)

During one of the chapter's final meetings of the spring semester, sisters wrote positive affirmations about one another and themselves onto colorful sticky notes and placed them around the border of a large mirror in the chapter room.

#### ♥ Epsilon Nu Chapter (Chapman)

Over the summer, members strengthened their bonds of sisterhood with fun events to bring them together. The chapter's favorite event was meeting to watch the finale of "The Bachelorette" while making ΓΦΒ letter t-shirts.

#### ♥ Pasadena Alumnae Chapter

The newly-installed executive officers met over the summer to plan for the chapter's upcoming year, focusing on new programming ideas and bringing in new membership.

## Region 8

### BRITISH COLUMBIA

#### ♥ Alpha Lambda Chapter (British Columbia)

The chapter's executive board held their retreat in Whistler and had a fun-filled weekend of bonding and planning for the upcoming school year. One of the first events on the agenda for the semester is a recruitment-focused retreat at a local Girl Guides camp!

### CALIFORNIA

#### ♥ Eta Chapter (California-Berkeley)

Twenty-nine sisters from the chapter graduated, becoming alumnae of

Gamma Phi Beta. Their leadership will be missed, but the chapter is looking forward to welcoming a new class of sisters this fall as they prepare for another exciting recruitment week!

#### ♥ Diablo Valley Alumnae Chapter

Members were delighted to have a sister initiated as an alumna initiate at Convention! Chapter members enjoyed a recap of Convention highlights from their delegate during a summer event and are excited to move forward with new programming and philanthropy endeavors this fall.

### IDAHO

#### ♥ Xi Chapter (Idaho)

The chapter was proud to achieve top honors, earning the highest GPA for all campus sororities.

### OREGON

#### ♥ Nu Chapter (Oregon)

Traveling to a gorgeous camp on the Oregon Coast was the perfect setting for a sisterhood event where members enjoyed relay races, canoeing and paddle boating on the lake. After the sisterhood activities, members hit the beach together for a little rest and relaxation.

### WASHINGTON

#### ♥ Zeta Alpha Chapter (Eastern Washington)

More than 40 Zeta Alpha Chapter alumnae gathered for their second annual reunion in Woodinville. Plans for a 2013 reunion are already underway!

## Have you checked out ShineBeyond.org?

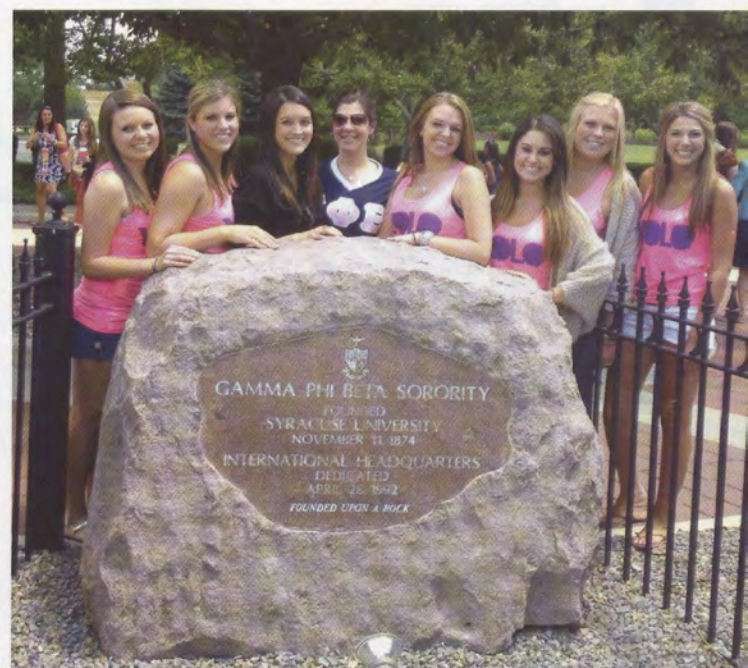
It's Gamma Phi Beta's new online resource for young alumnae! Find tips, articles and advice to help you transition from collegiate to alumna life.

shine  
BEYOND





**Region 7** | Gamma Eta Chapter (California State-Long Beach) was honored and humbled to receive six chapter awards at Convention! Sisters look forward to continuing their hard work to earn more awards in the future.



**Region 8** | Epsilon Kappa Chapter (California State-Chico) sent six executive board members and four advisors to Convention in Denver! Members had an amazing time interacting with hundreds of Gamma Phi Beta sisters and were thrilled to have a photo opportunity by International Headquarters' famous rock that boasts our open motto: Founded Upon a Rock.



**Region 7** | Three sisters from Zeta Theta Chapter (Pepperdine) spent two months studying and interning in London this summer and experienced historic sites and events together like Stonehenge and the Diamond Jubilee of Queen Elizabeth II.



**Region 8** | Taking a quick break from their Kickball Tournament, members of Gamma Epsilon Chapter (Puget Sound) soak up some rays in between games. More than eight teams competed (including several parents of chapter members!) in the philanthropic event, raising more than \$600 to donate to the University's annual Relay for Life event.



# SUPPORTERS OF THE *Heart*

*How do you forget a name like Tucky? It's not likely once you add the personality and generosity of one Tucky Wheeler Hobbs (Iowa). And after her incredibly big-hearted display at Convention, it's evident she has a special place in her heart for her sisters.*

Since her initiation at Rho Chapter (Iowa) in 1960, Tucky has served Gamma Phi Beta in many thoughtful capacities, receiving the Sorority's Merit, Service and Loyalty Awards for her continued loyalty, financial support and service to Gamma Phi Beta. A Foundation 1874 Society member, she previously served the Sorority alumnae department and was Kansas City Alumnae Chapter president for several years.

Tucky currently serves as a Foundation development committee member and volunteers in the Foundation Room each Convention. "Tucky is one of the most dedicated volunteers in the Foundation Room. She works hard and has fun at the same time," Sally Erikson Lewis (Bradley) says.

"I am involved with Gamma Phi Beta because the Sorority has given so much to me. I was a country girl from Iowa, and my chapter taught me how to speak in front of people and have social graces. My blood truly runs Gamma Phi pink," Tucky shares.

In addition to giving of her time as a volunteer, Tucky also established the Tucky Wheeler Hobbs Endowment in 2004, providing financial aid to members in need. Several years after establishing her endowment, Tucky formed a special relationship with one of the financial aid recipients, Callie Cox Bauer (Minnesota-

Twin Cities). After Tucky received Callie's thoughtful letter, thanking her for the opportunity to continue her education, Tucky was so touched she wrote back to Callie, and a lifelong friendship was born. In fact, they grew so close that Tucky attended Callie's medical school graduation and induction as an Air Force captain.

"Tucky is a constant source of encouragement and has been a blessing to me. I only hope in the future I'll be able to give someone what she has given to me – that extra nudge to strive for your dreams and the support to help you through it," Callie says.

This year's Convention introduced Tucky to a new group of admirers. At Convention, Foundation Executive Director Kitty L. deKieffer asked Tucky if she would pledge a \$25,000 gift to match Foundation donations made during a specific period of time at Convention. She eagerly agreed! During the Confirmed Conventioneer's Dinner, Kitty announced Tucky's generous gift and immediately received a well-deserved standing ovation, complete with lots of cheers and thankful Gamma Phi Betas. "My heart was beating so fast – I had such a feeling of pride," Tucky says.

"For Tucky to have donated this matching gift really speaks to her genuine love of her sisterhood," Kitty says. Members were so



energized and inspired by Tucky that they exceeded the match gift of \$25,000 by an additional \$10,000. Not surprisingly, Tucky was quick to increase her original pledge match to \$35,000.

"Tucky is an inspiring example of generosity, love and enthusiasm for Gamma Phi Beta," Foundation Chair Linda Daniel Johnson (Vanderbilt) says. "Tucky's gift secures the Gamma Phi Beta legacy for future generations and strengthens our sisterhood. Her lifelong example of support, involvement and loyalty inspires me to want to do more myself!"





A big thank you to the Foundation's dedicated Convention 2012 Foundation volunteers (from left to right): Phyllis Donaldson Choat (Nebraska-Lincoln), Melinda Risse Nutter (Kentucky), Christy Woltzen Ehrenreich (Missouri-Columbia), Sally Erikson Lewis (Bradley), Ann Mullen Bronsing (Indiana State), Genie Morgan Street (California-Los Angeles) and Tucky Wheeler Hobbs (Iowa).





## You spend hours using your phone.

We all love our smartphones, but they're only as smart as the decisions we make when using them. Remember to only use your phone when it is safe to do so. In 2009, over 5,400 people were killed in vehicle crashes related to distracted driving, while an additional 448,000 people were reported injured in such accidents (NHTSA, 2012). Make the smart choice and put the phone away while driving. Together, we can make our roads a safer place for everyone. For more safe driving tips, or to see how much your special **Gamma Phi Beta** discount could save you on auto insurance, visit [www.geico.com/greek/gammaphibeta](http://www.geico.com/greek/gammaphibeta) or call 1-800-368-2734. Don't forget, whenever you complete a new quote, GEICO gives back to Gamma Phi Beta.



**GEICO**<sup>®</sup>  
**geico.com**

AUTO • HOME • RENTERS • CONDO • BOAT





# Memorial Gifts

We acknowledge the following individuals and groups who contributed to the Gamma Phi Beta Foundation in memory of a loved one,\* as of July 31, 2012. Lists are printed as received from the Foundation.

## Geneva Shaw Thomas (San Diego State, 1950)

Marta Brown  
Lois Gubitosi  
Julia Hart-Lawson  
Suzanne Leinhaupel  
La Jolla Alumnae Chapter

## Angela Funai Lombardi (Boston, 1917)

Marta Brown

## Marissa Parks (Auburn, 2006)

Atlanta Alumnae Chapter

## Anderson, son of Lisa Harbison Brautigam

Julie Lumpkins

## Ellen Ann Hutchinson McKinstry (Washington, 1933)

Anne Adams Moldrem

## Michael Ramirez, father of Colleen Ramirez

La Jolla Alumnae Chapter

## John Lindauer, husband of Cathy and father of Christi Kilpatrick

Sharon Dunham  
Karen Kline  
Anne Layton

## Floyd Mayfield, father of Fran Mayfield Lapham

Barbara Boenzli  
Terri Briggs  
Sandra Burba  
Krista Davis  
Amanda Henriksen  
Laura Mayville  
New Chapter Team  
Kristen Slaughter  
Chandra Claassen Soule  
Joey Stiver  
Mary Vanier  
Shauna Wilson

## Nancy White Welton (Nebraska-Lincoln, 1947)

Gwen Rogers  
Christine Toole

## Charles H. Vogt, husband of Dorothy Stephens Vogt

Cleveland West Alumnae Chapter

## Tom Kline, husband of Karen Kline

Margery Wiltamuth

## Nancy Smith Correy (Iowa State, 1959)

Gwen Rogers

## Mary Schmitz Hoff (Minnesota, 1941)

Anne Moldrem

## Jane Stiedemann (Wisconsin-Madison, 1963)

Fraya Black  
Chicago Alumnae Chapter  
Sally Lewis  
Jennifer Moeller  
Elizabeth Ware

## Nancy Spencer King (Pennsylvania State, 1958)

Philadelphia West Suburban Alumnae Chapter

## Beverly Graf Meaney (Northwestern, 1980)

Philadelphia West Suburban Alumnae Chapter

## Barbara Morris Spahr (Pennsylvania State, 1948)

Philadelphia West Suburban Alumnae Chapter

## Barbara Anderson Hookom (Miami, 1958)

Jeannine Kallal

## Hugh McGonagle, husband of Jane Eddy McGonagle and father of Megan McGonagle Klein

Jenny Dieterle

## Carolyn Thomas Zerbel (Michigan, 1952)

Colleen Jersild

## Ruth Rolhfing Johnson (Illinois at Urbana-Champaign, 1940)

Catherine Spika

## Charles Harris, father of Madeleine Harris

Ann Bronsing

## Kenneth Nutter, husband of Melinda Nutter

Sandra Rettke Nauman

## Georgiana Post McClenaghan (Oregon State, 1944)

Sandra Rettke Nauman

## Annette Challis Carter (Goucher, 1936)

Virginia Beckett  
Mary Dahl  
Beverly Fudge  
Joan Green  
Marcia Judge  
Karen McCallister  
Cathy Nelson

Sue Simmons  
Barbara Small  
Susan Stoll  
Choux Wingert  
Mary Ann Zinn

## Tom Hoeker, husband of Betty Campbell Hoeker

Judy Millen

## Joyce Saunders (Oklahoma, 1926)

Sue Ann Tollett

## Ann Allen Briley (Kansas, 1947)

Sue Ann Tollett

## Ralph Capozzi, father of Lisa Capozzi Barthel-Rosa

Eleanor Clark  
Lorraine Henson  
Pamela Jimenez  
Kathy Steinle

## Serelda Gay Cody, mother of Kendal Cody Stegmann

Ann Ross

## Bob Reeds, grandfather of Suzanne Reeds Viesek

Ann Ross

## James Renton, husband of Nancy Renton

Eugene Alumnae Chapter

## Wilbur H. Baack, Kris Baack's father

Melinda Nutter

## Christina Delgado (California-Irvine, 1994)

Amber Alford  
Rosa Borrego  
Greater Orange County Alumnae Chapter

## Katie Lunn (Oklahoma City, 2002)

Linz Hall

## Betty Tegart (Southern California, 1966)

Lois Abbott  
Cinda Lucas

## My grandmother Sue Walter Chehey (Idaho, 1954) and great-grandmother Nelle Prescott Walter (Idaho, 1923)

Maegan Reilly

## Audrey Shafer, (Missouri-Columbia, 1938)

Alison and Dennis Bond

## Shirley Taleen Bibbings (Michigan State, 1944)

Ellen Barnhart  
Eleanor Francis  
Eleanor Lauer  
Martha Meade  
Mary Rietman  
Dorothy Stone  
Judith Willis  
Julia Wright

## Barbara Poe (Stanford, 1942)

Cynthia Icardo

## Jim Corliss, stepfather of Brittany Maloney

Barbara Boenzli

## Betty Mae Conner Jones (Oklahoma, 1942)

Kris Baack  
Barbara Boenzli  
Terri Briggs  
Sandy Burba  
Elizabeth Carroll  
Jennifer Chuang  
Julie Eichenberg  
Cathy Griffin  
Jennifer Herbert  
Shellie Hodges  
J.J. Kaelin  
Karen Kline  
Fran Lapham  
Suzanne Lee  
Laura Mayville  
Mia McCurdy  
Betty Quick  
Joanne Roman  
Joey Stiver  
Dena Suftko  
Chandra Soule  
René Matz Thompson  
Kelly Walker

## Patricia Vangellow Leidy (Wittenberg, 1970)

Margaret Leshinski

## Bruce Vernon, husband of Carollee Vernon

Gwen and Hugh Rogers

## Margaret Augsburg Ebersbach (Ohio Wesleyan, 1938)

Marjorie Lawson  
Dayton Alumnae Chapter

## Marie Risse, Melinda Nutter's mother

Kris Baack  
Fran Lapham

## Stephanie Johnson Arnold (Lake Erie, 2009)

Sandra Burba

\*For deceased members, *The Crescent* lists their first, maiden and last names in accordance with their school and year of initiation. Gifts received by October 31 will be acknowledged in the winter issue.



# In Celebration

Celebrate a special sister, loved one or event with an "In Celebration" gift to the Gamma Phi Beta Foundation. Thank you to the following donors, whose gifts were recorded as of July 31, 2012. To make a gift, visit [gammaphibeta.org/foundation-donations](http://gammaphibeta.org/foundation-donations) and select "In Celebration" from the drop-down menu in the designation field.

## In celebration of...

Delta Chapter's (Boston)  
125th anniversary.  
Marta Brown

To Epsilon Gamma Chapter (San Diego) for the astonishing fact that last semester 70 women earned a 3.5 GPA or better. They were joined by seven women who earned a 4.0.  
Marta Brown

In celebration of Alpha Nu Chapter (Wittenberg)! Hugs and snaps to the 2012 graduating seniors, my lovely as always Hakuna Matatas and to Bre Theiss Beach and Angela Trego Crist; I love and miss you all!  
Ashley Kopf

In recognition of Psi Chapter's (Oklahoma) 2012 graduating seniors, pledge class of 2008.  
Psi Chapter House  
Corporation Board

In celebration of Gloria Swanson Nelson's milestone birthday.  
Jeanne Beach  
Anne Layton  
Mary Jane Misthos

In celebration of Elizabeth Dickey's ordination as a Presbyterian minister.  
Fraya Lynn Black  
Ann Campbell  
Chicago Alumnae Chapter  
Sally Lewis  
Magnes Welsh

In celebration of Suzy Stasulis on her graduation from Virginia Tech.  
Kathleen Stasulis

In celebration of the birth of Katelyn Grace Cox to Jennifer Brickman Cox.  
Stefanie Brickman  
Kristin Brickman Hulin  
Jordan Brickman

In celebration of Whitney Brady for all her hard work with Delta Nu Chapter (Missouri State).  
Kristen Slaughter

In celebration of Suzanne Slinn-Higgins Lee and her family, celebrating Alexander's birthday and welcoming their new son Nathaniel Matthew Xia Lee.

Yael Acre  
Gigi De'Prey Eyre  
Cathy Griffin

In celebration of Ann Hipskind Campbell's 17 years of dedicated and loyal service as treasurer of Epsilon Chapter House Corporation Board and financial advisor to Epsilon Chapter (Northwestern). Pink carnations to you!

Epsilon Chapter House  
Corporation Board

In celebration of the 2010-12 Nominating Committee: Barbara Wessel, Karen Urette, Rosemary Milew, Kris Baaek, L'Cena Rice, Merry Cosgrove, Tori Bernardo and Emma Crockett. What a fantastic team — it was truly a pleasure working with all of you!

Julie Dunn Eichenberg

In celebration of Miranda Jones, Atlanta Alumnae Panhellenic Chapter Advisor of the Year, for her work with Kennesaw State. Congratulations, Miranda!

Julie Dunn Eichenberg

In celebration of Connie Pope, the new treasurer of Atlanta Alumnae Panhellenic. Thanks, Connie, for representing Atlanta Alumnae Chapter so well!

Julie Dunn Eichenberg

In celebration of Nancy Enright and Cindy Moore for putting together the Arizona spring reunion!

Melinda Bosquez

In celebration of Susan Grant Schneider and all her hard work on Convention 2012!

Talia Davis  
Stephanie Hearn  
Pamela Mayer  
Cheryl Moore

In celebration of Bridget Pitman's engagement — congratulations!  
Gigi De'Prey Eyre

In celebration of Landon Wade Wright, son of Jenn Wright.  
Barbara Boenzli

In celebration of my grandma Ila Jeanne Haige Hogan for always inspiring me to be a better version of myself.

Jill Hoakison

In celebration of the region 5 team. I loved the time we spent in Denver.

Jill Hoakison

In celebration of Nancy Ann Thompson, a great Council representative from Iowa. From an Iowan sister.

Tucky Hobbs

In celebration of Joyce Cookman for all her "recruiting" work during the house corporation board transition this spring.

Kelly Hane

In celebration of Beta Phi Chapter House Corporation Board and all the amazing work you are doing for the women in the chapter. You rock!

Kelly Hane

In celebration of Sally Lewis and her 47 years of membership in Chicago Alumnae Chapter and her Gamma Phi Beta love!

Jennifer Moeller

In celebration of Paula Dean and all her contributions to Gamma Phi Beta and the Gamma Phi Beta Foundation.

Jennifer Moeller

In celebration of Magnes Welsh for embodying Gamma Phi Beta love.

Jennifer Moeller

In celebration of Fraya Black and her years with Chicago Alumnae Chapter.

Jennifer Moeller

In celebration of the birth of Amy Dana's son Alexander Robert Dana!

Cathy Griffin  
Anne Layton

In celebration of Julie and Jackie Shultz. Thank you for being my rocks in Gamma Phi!

Jamie Pickel

In celebration of Cinda Lucas in appreciation for all you do for Delta Psi Chapter (California-Santa Barbara).  
Lois Abbott

In celebration of the 2010-12 International Council for inspiring the highest type of womanhood in an amazing biennium.  
Jennifer Chuang

In celebration of the birth of Alice Marie Brooks, born October 13, 2010. Congrats to Emily and Bill Brooks on their new little legacy.  
Mary Hoffmann

In celebration of the birth of Emma Anne Kostik, born May 14, 2012. Congrats to Angie and Greg Kostik on their new little legacy.  
Mary Hoffmann

In celebration of Shauna Revello Wilson.  
Amanda Schafer

In celebration of the Epsilon Eta Chapter (Bridgewater State).  
Shelby Bukhenik

In celebration of Miranda Jones on her election to the 2012-14 Nominating Committee.  
Kim Friesse

In celebration of my granddaughter Cali Anne Knutson's first birthday.  
Judy Gunkelman

In celebration of Jennifer Moeller on her promotion.  
Paula Dean  
Magnes Welsh

In celebration of Cheryl Moore.  
Magnes Welsh

In celebration of Courtney Ellis and Lisa Gray.  
Magnes Welsh

In celebration of Krista Ritacco on her 15 years of marriage to Paul Ritacco.  
Magnes Welsh



In celebration of Sally Lewis, Phyllis Choat, Genie Street, Amy Williams and the Gamma Phi Beta Foundation staff for all their work on the Foundation Room at Convention 2012.

Paula Dean  
Magnes Welsh

In celebration of Delta Upsilon Chapter's (Georgia) Scholastic Excellence Award at Convention 2012!

Michelle Rosenthal

In celebration of Suzanne Crutchfield.

Ashley Fling

In celebration of Barbara Wessel for being a great mentor! Thank you!

Stephanie Hearn

In celebration of the 2010-12 Greater Orange County Alumnae Chapter executive board for their great work during the last biennium.

Rosa Borrego

In celebration of Meredith Gardial.

Julie Gardial

In celebration of Elizabeth Evans for a wonderful job preparing for Convention.

Mallory Vachon  
Alpha Chapter (Syracuse)

In celebration of the marriage of Lissa J. Gunderson to Joshua Erwin. Congratulations, and wishing you both a lifetime of happiness.

Amber Alford

In celebration of outgoing Indianapolis Alumnae Panhellenic President Gail Gates-Zermeno.

Indianapolis Alumnae Panhellenic

In celebration of Archna Hazelbaker on the birth of her son Trenton.

Anne Layton

In celebration of Laurie Veldhuizen on the birth of her son Tate.

Anne Layton

In celebration of Suzanne Slinn-Higgins Lee on the arrival of her son Nathaniel.

Anne Layton

In celebration of Katherine Snow on the birth of her grandson Justin.

Anne Layton

In celebration of Marissa Sweazy on the birth of her son Austin.

Anne Layton

In celebration of Loraine Meech on her initiation.

Anne Layton

In celebration of the 2010-12 International Council.

Anne Layton  
René Matz Thompson

In celebration of the 2012-14 International Council – congratulations!

Anne Layton  
René Matz Thompson  
Mary Vanier

In celebration of Alyse Renee Fischer's graduation from the University of Tennessee at Knoxville on May 11, 2012.

Knoxville Alumnae Chapter

In celebration of the marriage of Caron Renee Cook to Ali Aghareza on May 19, 2012.

Knoxville Alumnae Chapter

In celebration of the marriage of Martha Marie Turndle to Edmund Robert Selby III on June 23, 2012.

Knoxville Alumnae Chapter

In celebration of Kathy Walek's twin legacies.

René Matz Thompson

In celebration of Leslie Wright's marriage to Phil Hannah.

René Matz Thompson

In celebration of Krista Davis being elected International President.

Mary Vanier

In celebration of Beta Upsilon Chapter (Kansas State).

Mary Vanier

In celebration of Gamma Phi Beta Foundation Trustees and staff—We're One: Joined by the Heart.

Mary Vanier

In celebration of Elyssa Marie Meade's birthday on July 26.

Nancy Meade

In celebration of Lucky Hobbs on her generous challenge gift for the Foundation.

Diane Arons  
Balboa Alumnae Chapter  
Rebecca Boyd-Obarski  
Phyllis Choat  
Jennifer Chuang  
Chandra Claassen Soule  
Paula Dean  
Christy Ehrenreich  
Jennifer Moeller  
Melinda Nutter  
Genie Street  
Magnes Welsh  
Amy Williams

In celebration of Cheryl Gunter and her outstanding 17 years of service as historian for Gamma Phi Beta.

Elizabeth Alburger  
Patricia Barks  
Faith Bevitz  
Margie Bianchetta  
Martha Borraccini  
Milly Butler  
Patricia Fox  
Doris Gorden  
Joann Huntington  
Constance Long  
Toni Moyer  
Mary O'Brien  
Carol Owens  
Susan Thomas  
Elizabeth Wanderer  
Mary Zahn

In celebration of Mary's Vanier's 12 years as chapter advisor to Beta Upsilon Chapter (Kansas State).

Kris Baack  
Betsy Barrett  
Ann Campbell  
Melissa Ford  
Jessica Gay  
Joann Goldstein  
Krista Harmsworth  
Annabel Jones  
Nancy Kruse

Anne Layton  
Jeree Marquess  
Sandra Messelt  
Letitia Petitjean  
Hillary Stevens  
Lauren Trussell  
Shaley Van Loenen  
Donna Vanier

In celebration of Elizabeth Quick's 20 years of International Council service.

Kris Baack  
Barbara Boenzli  
Jessica Brummel  
Sandra Burba  
Phyllis Choat  
Krista Davis  
Angie Dimit  
Julie Eichenberg  
Evansville Alumnae Chapter  
Jacki Falkenroth  
Kelly Hane  
Autumn Hansen  
Krista Harmsworth  
Jasmine Herbst  
Jessica Hermenitt-Faath  
Shellie Hodges  
Barbara Hurt-Simmons  
Maribeth Johnson-Flakes  
Annabel Jones  
J.J. Kaelin  
Terri Kennedy  
Karen Kline  
Anne Layton  
Sally Lewis  
Cathy Lindauer  
Lina Macedo  
Laura Mayville  
Elyssa Meade  
Gloria Nelson  
Carol Preston  
L'Cena Rice  
Joanne Roman  
Nicole Saunders  
Amanda Schafer  
Jocely Stiver  
Georgina Street  
Karen Urette  
Megan Wick  
Amy Williams

\*In Celebration notes are printed as received from the Foundation.



# In Memory

*We acknowledge the passing of the following members, and celebrate their part in our circle of sisterhood. This list reflects notifications received at International Headquarters between May 1, and July 31, 2012. First, maiden, last names and initiation year are listed for each deceased member.*

## **Beta - Michigan**

Elizabeth Dusseau, 1931

## **Gamma - Wisconsin-Madison**

Jane Stiedemann, 1963

## **Delta - Boston**

Marcia Rizzotto, 1969

## **Zeta - Goucher**

Annette Challis Carter, 1936

## **Eta - California-Berkeley**

Susan Munson Gilbert, 1947

## **Kappa - Minnesota-Twin Cities**

Marion Forestal Storm, 1939

Gail Skogmo Edwards, 1940

Mary Schmitz Hoff, 1941

## **Lambda - Washington**

Virginia Clough Calloway, 1936

## **Nu - Oregon**

Virginia Lynch Danielson, 1938

Virginia Swart Zafiratos, 1950

## **Xi - Idaho**

Jean Driscoll Dinsmore, 1937

Kathryn Stratton, 1943

## **Omicron - Illinois at**

## **Urbana-Champaign**

Ruth Rohlfing Johnson, 1940

## **Pi - Nebraska-Lincoln**

Nancy White Welton, 1947

## **Rho - Iowa**

Bette Jones McGee, 1942

## **Sigma - Kansas**

Elizabeth Newman Toms, 1941

Ann Allen Briley, 1947

## **Tau - Colorado State**

Elizabeth Malcouronne Bruner, 1936

## **Phi - Washington University**

Mary Lehman Hubbell, 1943

Carole Baldwin Turner, 1948

## **Chi - Oregon State**

Nancy Slusher Roeder, 1952

Paula Rucker Rucker, 1973

## **Psi - Oklahoma**

Betty Conner Jones, 1942

Jeane Malloy Fitzpatrick, 1942

Eleanor Erickson Brewster, 1947

Irene Braden Loosley, 1948

## **Alpha Delta - Missouri-Columbia**

Barbara Williams King, 1954

## **Alpha Epsilon Chapter - Arizona**

Shirley Arter Cavalier, 1947

## **Alpha Eta - Ohio Wesleyan**

Virginia Wilkinson Trauger, 1934

C. Augsburg Ebersbach, 1938

Eleanora Schoonmaker Lee, 1942

## **Alpha Iota - California-Los Angeles**

Stephana Roth Ryan, 1967

## **Alpha Mu - Rollins**

Annette Twitchell Whiting, 1934

## **Alpha Xi - Southern Methodist**

Marilyn Loomis Collier, 1945

## **Alpha Phi - Colorado College**

Winifred McBroom Stone, 1934

Elizabeth Van Valkenburgh

Lindeman, 1943

## **Alpha Psi - Lake Forest**

Lois Cummings Peacock, 1948

## **Beta Alpha - Southern California**

Rosemary Kraemer Raitt, 1939

## **Beta Beta - Maryland**

Mary Cross, 1977

## **Beta Gamma - Bowling Green State**

Karis Baker Woodrich, 1946

Donna Schlembach Zaimor, 1948

Arlene Daugherty Parker, 1954

## **Beta Delta - Michigan State**

Shirley Taleen Bibbings, 1944

Elizabeth Winston Turner, 1949

## **Beta Epsilon - Miami-Ohio**

Mary Moyse Bollinger, 1949

Barbara Anderson Hookom, 1958

## **Beta Theta - San Jose State**

Muriel Morrissey Van Den Berg, 1963

## **Beta Lambda - San Diego State**

Marilyn Rau Lawrence, 1950

Karen Lee-Skough Clabeaux, 1968

## **Beta Pi - Indiana State**

Emma Fenoglio Schlorch, 1953

## **Gamma Phi - Auburn**

Lesia MacKey, 1980

## **Delta Eta - California-Irvine**

Gerie Domingo, 1986

## **Delta Psi - California-Santa Barbara**

Johanna King Myers, 1990

## **Epsilon Epsilon - Union**

Ann Repp, 2000

## **Epsilon Chi - Marquette**

Joanna Tallorin, 1992



# How it Happened

*Founder Frances E. Haven Moss (Syracuse) wrote the following article about the Sorority's founding for The Crescent exactly one century ago. When this was written in 1912, Frances and the other Founders were celebrating Gamma Phi Beta's 38th anniversary.*

I found myself in Syracuse, New York, in September 1874 as my father was elected Chancellor of Syracuse University.

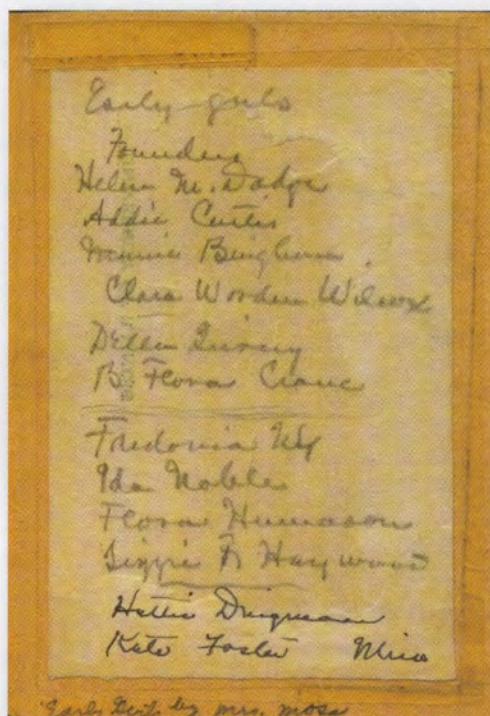
Having had two years in Northwestern University, a year of music in Brooklyn and not being over strong physically, my education was supposed to be complete. The recently opened department of Fine Arts proved a great temptation, however, and I was a happy girl indeed, when I found myself registered as a sophomore in the same.

The first social function I attended at Syracuse was a church oyster supper, and there I met my future husband who was assisting two young ladies in caring for one of the tables. These young ladies, I learned later, were members of a women's society and an invitation to join the same was soon extended to me. After due

deliberation, I thanked them for the honor but declined. Soon I discovered that there were other girls in just the same position. We drifted together and finding each other congenial, the question was broached – "Why shall we not found a society of our own!"

No sooner was the matter mentioned than we found all our friends not only eager, but ready to help. Three out of the four girls had brothers in the University and there were others who were not brothers but were just as deeply interested. Any one of them would have gladly drawn up a constitution for us with bylaws and initiation complete. But my father gave us our motto; Helen Dodge drew up the constitution, and her brother, who was studying for the ministry, added the Hebrew letters to our pin; he who became my husband wrote us the words for a song and helped design our pin; dear Professor Brown offered us the use of his parlor for our meetings and though we could not accept because there were women from another women's society rooming in the house, in recognition of his encouragement and long continued support we chose our colors, light and dark brown.

Before we secured our pins we had taken in our first initiates and you never saw a prouder set of girls than the first five who appeared with the generous badges, a monogram enclosed in a crescent carefully guarded by the letter "S." Truly we felt ourselves successfully launched upon what we hoped would be a grander scheme.



This is an original list of Gamma Phi Beta's first initiates, handwritten by Founder Frances E. Haven.





# Capture a Crescent

Have you captured a crescent? Send your crescent photos to [TheCrescent@gammaphibeta.org](mailto:TheCrescent@gammaphibeta.org) for a chance to be featured!



1. Italy: While traveling throughout Europe, Karen Currey (California State-Long Beach) visited the Leaning Tower of Pisa and captured a crescent!
2. London: During her semester studying abroad, Hannah Linde (Delaware) frequently walked down Crescent Lane to get around the city.
3. Missouri: During the Garden's Chinese Lantern Festival display at the Missouri Botanical Gardens in St. Louis, Ann McCarthy (Iowa State) and her biological and Gamma Phi Beta sister Rita McCarthy Swartz (Iowa State) spotted this bright and colorful crescent.

4. Yorkshire: It was hard for Christine Alexopoulos (Chapman) to miss this giant stone-made crescent at the Burton Agnes Hall, an Elizabethan manor house originally built in 1610!
5. North Carolina: Cousins and Gamma Phi Beta sisters Carolyn Haas Knehans (Arizona) and Marilyn Mousel Fitzgerald (Nebraska-Lincoln) spied this hanging crescent birdhouse during a rendezvous in The Outer Banks of North Carolina.