

# The Crescent

of Gamma Phi Beta

Winter 2011



Suicide,  
Sisterhood,  
Support

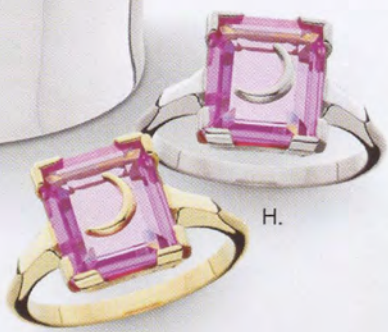




**GREAT GIFT IDEA**  
*for Mom!*

**ORDER EARLY**  
*for Spring!*

TO ORDER, VISIT  
**WWW.HJGREEK.COM**  
OR CALL **1.800.422.4348**



- A. Swirl Ring with rose sapphires, #1000RS  
10K, 10KW.....\$229 SS....\$119
- B. Swirl Ring with diamonds, #1000  
10K, 10KW.....\$277
- C. Pearl Toggle Necklace, #666008  
SS.....\$65
- D. Pulse Bracelet, 7.5", #BY244  
SS.....\$57
- E. Mother's Charm, #0301  
SS.....\$22
- F. Graduation Stole, #stole  
\$30
- G. Wide Cuff Bracelet with crest, #SB497  
SS/GP.....\$121
- H. Chapter President Ring, #0453  
10K, 10KW.....\$295, SS.....\$119

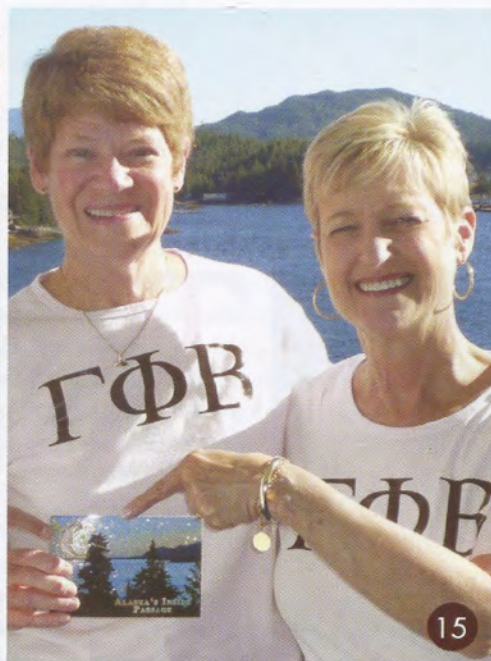


K-karat yellow gold, KW-karat white gold, SS-sterling silver, GP-gold-plated.

  
GAMMA PHI BETA







Winter The Crescent 2011 Volume 112 Number 1

- 4 International President's Letter**
- 5 Mailbox**
- 6 Sorority Executive Director**  
Introducing Laurie Imperiale Veldhuizen (Florida State)!
- 7 Be Safe, Be Well**  
New collegiate officer position promotes healthy student living.
- 8 In IIKE**  
Kay Fletcher Johnson (North Dakota State)
- 9 Sisterhood, Iowa State Style**
- 10 Our Footprint Grows**  
Three new chapters are taking flight!
- 12 Honoring our Alumnae**  
Take a peek at our outstanding alumnae chapters and award-winning volunteers!

- 14 Order of the Crescent Winners**  
How brightly did your chapter SHINE? Find out here!
- 15 Out and About**
- 16 Interfraternity**
- 17 Pacesetter**  
Kathy Fox (McGill)
- 18 ON THE COVER**  
**Suicide, Sisterhood, Support**  
Suicide leaves grieving survivors feeling confused, helpless and overwhelmed. How do Gamma Phi Betas handle the pain of an unexpected death in the sisterhood?
- 20 Collegians Say ...**  
Our Core Values are timeless and still impact collegians today.

- 21 Spotlight On**  
Hawaii Alumnae Chapter
- 22 Focus on Serving**  
Giving back to the community has always been a priority for Gamma Phi Beta. How are our chapters living up to the call?.
- 24 Sorority Life**
- 30 In Memory**
- 31 Foundation News**
- 32 Memorial Gifts**
- 33 In Celebration**
- 34 Foundation Feature**
- 35 Vintage ΓΦΒ**





GAMMA PHI BETA

**CONNECT.  
IMPACT.  
SHINE.**

### International Council

#### International President

Linda Lyons Malony

#### Alumnae Vice President

Mary L. Knaup

#### Collegiate Vice President

Annabel M. Jones

#### Education Vice President

Rebecca Boyd-Obarski

#### Financial Vice President

Leigh Ann Price

#### Membership Vice President

J.J. Stoll Kaelin

#### Panhellenic Affairs Vice President

Elizabeth Ahlemeyer Quick

#### Executive Director

Laurie Imperiale Veldhuizen

### Gamma Phi Beta Founders

Mary A. Bingham

E. Adeline Curtis

Helen M. Dodge

Frances E. Haven

### Sorority Mission Statement

Our mission is to foster a nurturing environment that provides women the opportunity to achieve their potential through lifelong commitment to intellectual growth, individual worth and service to humanity.

## Relevance and Gamma Phi Beta



**T**his biennium, International Council is doing its best to *make Gamma Phi Beta relevant*. That means taking a good look at our mission statement, ensuring true member engagement at all levels of the Sorority and offering programs that are unique to Gamma Phi Beta.

As I travel on behalf of the Sorority and meet so many of our members, I'm struck by the fact that "relevance" is, well, relative! Our collegiate chapters vary greatly from campus to campus: size, housing, culture, traditions, student profile. And our alumnae chapters are as different from group to group as women are from one to the next. Developing flexible programming to meet these variables is critical to our future success as a premier women's organization.

But I've also noticed that we seem to have several things in common, despite these many differences: a shared sense of values, a desire for strong friendships, a commitment to becoming the best we can be — in short, attaining that "highest type of womanhood" our Founders outlined 136 years ago.

So as we continue to define "relevance" and work diligently to achieve it, we also need to take a moment to savor where we are right now. Even in these tough economic times, the Sorority is growing at an amazing rate, and greater numbers of our alumnae are staying connected than ever before: clearly, our members find relevance in Gamma Phi Beta. Our impact through Camp Fire USA, Girl Guides of Canada, local camps and other organizations benefitted by Gamma Phi Beta is at an all-time high: clearly, our community partners and the constituents we jointly serve find relevance in Gamma Phi Beta. And Gamma Phi Betas locally, regionally and internationally receive high recognition for their contributions to the fraternal movement and to society at large — both within their professions and through service: clearly, Gamma Phi Beta remains relevant to those even beyond our circle.

Please join me in celebrating Gamma Phi Beta today — right now, wherever you are, whatever project you may be working on, whatever stage of life you may be enjoying. Gamma Phi Beta is on the GO! And our Sorority connections play an important, relevant role in our lives during our college years and well after.

In IIKE,

A handwritten signature in dark ink that reads "Linda Lyons Malony". The signature is fluid and cursive, with a large, stylized 'L' and 'M'.

Linda Lyons Malony  
International President





Joanne Shafer Meloro (Rutgers) and Yvette Schrock Vreeman (Kansas State) reconnected after 14 years thanks to Facebook.

### Small but Mighty

(Summer 2010) In addition to Beta Chi Chapter (Wichita State), there is another chapter house with only four live-in women. It is Delta Omega Chapter at Oakland University in Rochester, Michigan. Our Greek cottage is owned and maintained by the university. We have been there one year and are thrilled to have a place for storage, studying and, most of all, gathering and bonding. – Barbara Magnus Small (Michigan State), house corporation board president and financial advisory board member

### A Pound is a Pound

(Summer 2010) Being a life-long dieter and a recent 'loser' myself, I enjoyed reading the successful weight loss story about Tracy Johnson (Northwestern). However, the statement that "muscle weighs more than fat" is erroneous. A pound of fat weighs the same as a pound of muscle. A pound of anything weighs a pound but muscle takes up less space than fat. That's why athletes can weigh much more than they look. – Lori Mann (Boise State)

### Sisters, Sisters Everywhere

(Fall 2010) Thank you for featuring an article about me in *The Crescent*. I enjoyed talking to the writer and she captured my thoughts very well. As a result of the article, I have learned that the University of Michigan's executive director of university audits, Carol Faulk Senneff (Iowa), is a Gamma Phi. So an unexpected bonus of the article is finding a new sister in my own backyard! – Ruth Janssen Person (Gettysburg), 2010 Carnation Award winner and chancellor at University of Michigan-Flint

### Facebook and Friends

(Summer 2010) When I joined Facebook more than a year ago I thought I was "too old," but then I connected with so many old and dear friends. Strangely, your article about social networking arrived on the same day that Facebook brought me together with a Gamma Phi sister whom I had not seen since Convention 1996 in Kansas City, Missouri! We arranged to meet for dinner the next night and had a ball! How fun is that? Here's to Gamma Phi and Facebook! – Yvette Schrock Vreeman (Kansas State)

**Join our virtual communities and connect with Gamma Phi Beta and your sisters on our social media sites!**

**Facebook:** [www.facebook.com/GammaPhiBetaSorority](http://www.facebook.com/GammaPhiBetaSorority)

**Twitter:** @GPBcrescentmoon

**LinkedIn:** Search Gamma Phi Beta at [www.Linkedin.com](http://www.Linkedin.com)

**YouTube:** Channel name — Gamma Phi Beta Sorority

### Editor's Notes

#### Take The Crescent reader survey!

All fans of the magazine – parents, students, alumnae – are invited to give their responses to a few brief questions at [www.gammaphibeta.org](http://www.gammaphibeta.org). Read this issue and respond today!

#### In the Spring Issue

- Recruitment
- On the  $\Gamma\Phi\beta$  Bookshelf
- Appreciating our Advisors

#### Letters to the Editor



Gamma Phi Beta Sorority  
Attn: Editor  
12737 E. Euclid Drive  
Centennial, CO 80111  
[TheCrescent@gammaphibeta.org](mailto:TheCrescent@gammaphibeta.org)

The Crescent reserves the right to publish any letter addressed to the editor. Letters may be edited for space and clarity.

#### INTERNATIONAL HEADQUARTERS

12737 E. Euclid Drive, Centennial, CO 80111  
Phone: 303.799.1874 Fax: 303.799.1876  
Website: [www.gammaphibeta.org](http://www.gammaphibeta.org)  
E-mail: [TheCrescent@gammaphibeta.org](mailto:TheCrescent@gammaphibeta.org)

#### THE CRESCENT STAFF

Editor: Mimi Burch McMann  
(California State-Bakersfield)  
Staff Writer: Allie Winter  
Director of Marketing and Communications:  
Nina Dulacki (Colorado College)

©2011 Gamma Phi Beta Sorority  
*The Crescent* of Gamma Phi Beta (USPS 137620)  
is published quarterly by Gamma Phi Beta Sorority,  
12737 E. Euclid Drive, Centennial, CO 80111.

Periodicals postage paid at Englewood, CO, and at additional mailing offices. Non-member subscription price is \$6. Produced in the U.S.A.

POSTMASTER: Send address changes to:  
*The Crescent*, Gamma Phi Beta Sorority,  
12737 E. Euclid Drive, Centennial, CO 80111.





# Executive Director Joins Staff

**W**ith a confident smile, Laurie Imperiale Veldhuizen (Florida State) opened the front door at International Headquarters on November 1 and stepped into her new job as executive director of the Sorority.

She poured her first cup of coffee in the staff lounge and signed on to her Gamma Phi Beta e-mail account. As she treated staff to homemade breakfast goodies, she set the tone for mutual collaboration and teamwork that she hopes will characterize her management style.

"That Monday, I had a unique feeling — one that I had not experienced in my career before," Laurie says. "For the first time, I brought my personal and professional lives together to work for an organization I really care about."

A nationwide call for candidates began in May and led the search committee right to the backyard of Sorority headquarters; Laurie has lived in Denver since 2004 and commutes less than six miles to her new job. International Council members couldn't be more thrilled with the latest hire.

"Laurie is a sharp woman," International President Linda Malony (Southern California) says emphatically. "She went above and beyond to thoroughly impress the interview team."

An experienced manager in member-driven organizations, Laurie brings the requisite professional skills. She most recently worked at the Denver Botanic Gardens as director of membership and volunteer services, growing their membership base by 53 percent in just four years. Laurie also volunteers with the Junior League of Denver, a women's organization that promotes health and education for women and children.



*Laurie believes developing relationships among women is the key to strengthening our communities. More than 10 years after college, her best friends are still her Sorority sisters.*

Her goals as the executive director are to continue the long tradition of excellence at Gamma Phi Beta; provide resources and vision that empower staff to excel at their jobs; build positive relationships in the interfraternal community; and proactively support International Council.

"We have a very dynamic International Council," she says, "and by anticipating their staff support needs, we let them focus on policies, procedures and the future of the organization." Topping her to-do list is an organizational review to evaluate and improve internal processes.

Back in her college days, Laurie was a leader respected by both peers and superiors at Beta Mu Chapter (Florida State), according to Rosemary Stone Bunn (Florida State).

"In my role as the property manager on Beta Mu Chapter's house corporation board, I always wanted Laurie to participate in decision making," Rosemary remembers. "She's a very good listener and a team player. She

approaches everything in a positive way and looks for solutions to benefit the organization."

## Get to Know Laurie

- Favorite candy: Twix
- Family: Married to Chad since 2006, son Max born in 2009
- Dream vacation: The Maldives
- Always laughs at: Her girlfriends
- Guilty pleasure: Groupon.com (coupon website)
- Favorite college memory: Pranking two sisters by relocating their bedroom furniture and personal items to the chapter house's living room. They came home to find every item displayed downstairs, complete with beds turned down and mints on the pillows!



# Living Well

Protecting our members is a high priority for Gamma Phi Beta. With risk management issues on every campus, collegiate chapters are adding a new officer to their structure — the safety and wellness chairwoman.

**R**eporting directly to the chapter president, the safety and wellness chairwoman works closely with the education department and various officers to promote healthy lifestyle choices. Her areas of responsibility include:

- **Physical well-being** — promoting exercise, healthy eating and good sleeping habits; awareness of prescription medication use, alcohol use/abuse, overall health concerns, illness and disease
- **Mental health** — encouraging self-esteem and self-confidence; addressing addictions, depression and hormonal changes
- **Campus safety** — educating members on personal safety, diversity, date/partner violence and self-defense
- **Sisterhood issues** — upholding personal dignity; knowing when and how to intervene; demonstrating care and concern for one another

"I see this position as being very positive," comments Stephanie Miszewski, president of Delta Omega Chapter (Oakland). "The safety and wellness chairwoman will be someone our members can contact with questions or concerns as she will uphold our Core Values and promote the highest type of womanhood."

Christine Conrads, president of Delta Sigma Chapter (Florida Institute of Technology), agrees.



*Gamma Epsilon Chapter (Puget Sound) members spend an active day on the slopes.*

"We don't have many issues on our smaller campus, but it's a great way to prevent problems. I'm glad the Sorority recognized this need — whoever thought of the safety and wellness position is a genius!"

Cooperation between the Sorority's collegiate and education departments led to the creation of the new position when volunteer leaders identified tools and education we could provide to our members.

"Teaching our collegians to make responsible decisions allows them to reach their potential and gives them a strong foundation for a lifetime of better health," Chandra Claassen Soulé (Nebraska-Lincoln), sorority director-leadership development, explains. "The goal is to send them off into the world with more

confidence so they can have positive effects in their communities."

Collegiate Vice President Annabel Jones (Oklahoma) is proud the Sorority is offering "a cutting edge program" that addresses risk management issues from a positive and evaluative perspective.

"It encompasses the responsibilities of the risk management chairwoman and provides a much broader perspective to the safety and well-being of our members, chapters and Greek communities," Annabel says.

*Direct any questions about integrating this position into your chapter to Chandra at [gpb@cmrconstruction.com](mailto:gpb@cmrconstruction.com) or your regional coordinator. Be safe! Be well!*

Tell us how your new officer is making your chapter safer and healthier at [TheCrescent@gammaphibeta.org](mailto:TheCrescent@gammaphibeta.org)!



# A Tale of Sisterhood

## Dear Houston Alumnae Chapter,

My mother, Kay Johnson, is a Gamma Phi Beta from North Dakota State University (class of 1962) who now lives in Arizona. My father is currently in a Houston hospital recovering from surgery. Due to some challenges, he remains in intensive care for what looks like several weeks. My mother is staying at a hotel near the hospital and is holding up, but it would be wonderful if her Gamma Phi sisters could possibly lend some friendship and cheer. My mother is not the type of person to seek out help, but she could sure use a crescent moon. Thank you.

Sincerely,  
Steve Johnson  
San Tan Valley, AZ

## To the Amazing Gamma Phis in Houston:

A concerned and loving son of a Gamma Phi e-mailed me seeking a

little bit of Gamma Phi love for his mother, Kay. Sisterhood is a huge reason most of us joined Gamma Phi Beta in the first place, and it would be wonderful if you invited her over for lunch or dinner or offered to meet her. Maybe just give her a call and let her know that other Gamma Phis are thinking and praying for her.

In IIKE,  
Angela Pinina  
(Loyola-New Orleans)

## Dear Mimi,

I am really proud of Houston Alumnae Chapter; this is a heartwarming story that developed over the summer, during a time when we had no scheduled meetings. Local alumnae, without much organization, jumped into action for Kay. As her husband improved over seven long weeks in

Houston hospitals, she experienced a long-forgotten sisterhood in a most unexpected way. At her "farewell to Houston" luncheon, Kay touched us all with her emotion at reconnecting with Gamma Phi Beta and seeing again the true meaning of sisterhood that never ends. Kay lives in

Arizona but counts the members of Houston Alumnae Chapter as sisters! In IIKE,  
Linda Daniel Johnson  
(Vanderbilt)

**Kay experienced long-forgotten sisterhood in a most unexpected way.**

## Dear Sister Mimi,

Pink carnations to Houston Alumnae Chapter! Last May, our cardio-thoracic surgeon in Mesa, AZ, referred my husband to the Texas Heart Institute for major heart surgery. Our son contacted Houston Alumnae Chapter and let them know that "Mom" was alone, staying in a hotel. I would not have thought of reaching out in this way and am so glad Steve did — these sisters rescued me, and my phone didn't stop ringing. The day after they knew of my plight, a beautiful bouquet of pink carnations arrived at my hotel. Needless to say, I cried! They organized dinners, lunches, coffee, dessert and a museum visit and have become good friends. This experience gives me a renewed sense of sisterhood and makes me proud to be a Gamma Phi. I'm hoping to return for a chapter meeting in February. It has definitely given my interest in alumnae activities a boost.

In IIKE,  
Kay Fletcher Johnson  
(North Dakota State)



Kay is surrounded by loving sisters in Houston at her farewell luncheon, a spur of the moment affair where attendance exceeded that of many scheduled alumnae meetings! The guest of honor is seated on the couch, second from the left.





# And the Floods Came

By Emily Rahe Sutcliffe (Iowa State)

It doesn't take a house retreat or Greek Week victory to create bonds of sisterhood; it is often the everyday, ordinary events that strengthen a chapter. But tragedy that inflicts adversity upon a group has the ability to bring sisters together in the darkest of times. And that's what happened Tuesday, August 10, 2010, at Omega Chapter (Iowa State) when the meaning of sisterhood was changed forever — for the better.

While members watched “Jersey Shore,” made plans for Spirit Week and unpacked for the fall semester, adversity crept in. It came through the fireplaces, under windows and onto the floor in the form of rain drops. That night, a huge thunderstorm that caused as much as \$50 million in flood damage at Iowa State University hit the town of Ames hard.

The house's beautiful chapter room, located in the basement, was in danger. Without hesitation, collegians came running, some clad in pajamas, to save their beloved home — moving furniture to higher ground, unplugging electronics and running shop vacuums to keep the water under control.

As recruitment week loomed, a water ordinance was put into effect, resulting in a ban on showers and limited drinking water for a house full of women. Many were nervous the damaged house could negatively influence potential new

*In spite of their own hardships, a room full of arms shot up when the sisters were asked to deliver water to local residents. Gamma Phis were greeted gratefully with handshakes, blessings and even a spot on nationally televised news.*

members. Chapter alumnae sent flowers, brought food and laid new carpeting in the basement to inject positive energy into the house.

Doing what Gamma Phi Betas do best, the collegians turned what could have been an unfortunate situation around by promoting teamwork and problem-solving efforts during the calamity. They proudly told potential new members humorous stories of sisters shouting, “If Gamma Phi goes down, so do I!” or singing “It’s the Hard-Knock Life” from the musical “Annie.” The results were meaningful conversations and an authentic sense of sisterhood that potential members often seek.

Recruitment was more than successful, it was inspiring; 29 enthusiastic women were welcomed into the new member class last fall bringing the house total to 92 women, seven above Panhellenic Total. Just as importantly, Omega members connected with our open motto on a deeper level and understood even more why Gamma Phi Beta is “founded on a rock.”

*Emily is a former member of the Omega Chapter house corporation board. She and her husband Spencer just moved to the Minneapolis area (while she was seven months pregnant nonetheless!). She is a Pilates instructor who enjoys cooking healthy recipes and traveling.*

**Adversity  
can bring  
sisters together  
in the darkest  
of times.**

In 1927, Gamma Phi Beta was the first sorority to build a house on Iowa State University's “sorority circle.” They broke ground on March 16 and sisters moved in by the year's end. Subsequent additions have brought the live-in capacity to 52.



# Our Footprint Grows

**Chalk one up for Gamma Phi Beta — another WIN!**

**T**he recent announcement that the Sorority will establish a chapter at Virginia Polytechnic Institute and State University (Virginia Tech) is big news for Gamma Phi Beta. Coming from our tremendously successful expansion efforts in 2010, when three new chapters received charters, Gamma Phi Beta is definitely on the go and expanding our footprint!

The extension process requires a lot of work from many volunteer leaders, local alumnae and dedicated staff members; the journey from initial notification of the expansion opportunity to awarding a charter is lengthy but exciting!

## Prep for Success

According to Fran Mayfield Lapham (Kansas State), sorority director-collegiate extension, the process begins when a Panhellenic association determines its campus is ready for expansion and notifies the National Panhellenic Conference's member organizations.

"We make our decision to proceed based on various considerations including the prestige of the school, size of the campus, alumnae in the area and the housing situation," Fran says.

If a sorority is interested in the campus, it must submit a packet of information to the school. From these, a few sororities are chosen to visit campus and "pitch" their organizations to the school's expansion committee. Before

Gamma Phi Beta's team travels to a school, volunteers and staff conduct extensive research so our presentation is tailored to the community and campus. Local alumnae are invited to participate, demonstrating widespread support for the potential colony.

"Finding women who are willing to take on advisory positions is critical to a successful expansion effort," adds Mindy Sutton (Southern Methodist), sorority director-colonies.

Once in front of the expansion committee, much of the selection process comes down to the presentation so our extension team does its best to "knock the socks off" the committee by focusing on our Sorority's unique features and benefits.

"We're a values-based organization and the Greek community recognizes that," Mindy notes. "Our track record of establishing thriving chapters speaks for itself."

If invited to join a new campus, more work goes into preparation for a successful recruitment, Bid Day and chapter installation. Collegiate leadership consultants and volunteer leaders play a key role in getting the chapter off to a great start.

## Introducing Eta Delta Chapter!

Speaking of great starts, our newest chapter was installed December 4, 2010, at Grand Valley State University! Eta Delta Chapter counts 100 members, and sisters have

**"Our track record of establishing thriving chapters speaks for itself."**

— Mindy Sutton



*Our newest chapter, Eta Delta at Grand Valley State University, is already 100 members strong!*



Jamie Swecker (Delaware) was the first to receive the Eta Gamma Chapter president's badge, pinned on by International President Linda Malony.



bonded over philanthropy work on campus. They supported the "Love is Louder" campaign, that promotes suicide awareness and prevention, by distributing more than 1,600 flyers. But one event stood out, according to Elyse Gieschen (Valparaiso), the chapter's resident collegiate leadership consultant.

"The biggest highlight was their overnight sisterhood retreat," Elyse says. "We held it at a local gymnastics studio and played on trampolines, parachutes

and rings. It was the first chance they had to spend more than a couple of hours together. We just had a blast!"

Eta Delta Chapter joins seven other Panhellenic sororities on campus and has received a warm welcome from the Greek community. "It's unbelievable," Elyse reports. "The fraternities and sororities have been more encouraging than I have seen on other campuses."

Sisters will move into their chapter house next fall, until then, making like sisters will help them feel that they are one of the most

Delaware, Eta University their charter informational expressed interest l new members and knew about

in Gamma hugh Tuohy either way. People eally been a

thropic events, g a Crescent er is not housed hinder their meetings, social bers are also ment Sorority-

wide programming and have been busy encouraging local alumnae to get involved with the chapter.

"Gamma Phi Beta's making a big splash on campus," Cheryl continues. "They're doing phenomenally well."

### New in the Sunshine State

Gamma Phi Beta is also making an impression at Florida Southern College as new chapter Eta Beta builds a solid reputation on campus. The chapter joins five other National Panhellenic Conference sororities on campus and occupies a chapter room and suite of dorm rooms.

Chartered in April 2010, the chapter held its first formal recruitment last fall; their efforts were a success and members couldn't be more excited! "The chapter pledged 17 wonderful new members who are having a great semester," says Emily Davis Oliver (Southern Methodist), chapter advisor.

In keeping with Gamma Phi Beta's focus on volunteerism, the chapter served at the local Camp Fire USA's Halloween haunted house. "We've also been busy with a sisterhood retreat, intramurals and social events," adds Emily.

### Coming in 2011: Virginia Tech

- Location: Blacksburg, VA
- Student population: 23,558
- Fun fact: Virginia Tech has the fourth largest Greek system in the United States!
- National Panhellenic Conference sororities: 12
- Planned installation date: Spring 2011
- Closest alumnae group: Charlottesville
- Closest collegiate chapter: Zeta Beta Chapter (Virginia)

**Complete  
The Crescent  
survey today  
at**

**[www.gammaphibeta.org](http://www.gammaphibeta.org)**



Click on the survey prompt found in our home page News section.



# Our Footprint Grows

**Chalk one up for Gamma Phi Beta — another WIN!**

**T**he recent announcement that the Sorority will establish a chapter at Virginia Polytechnic Institute and State University (Virginia Tech) is big news for Gamma Phi Beta. Coming from our tremendously successful expansion efforts in 2010, when three new chapters received charters, Gamma Phi Beta is definitely on the go and expanding our footprint!

The extension process requires a lot of work from many volunteer leaders, local alumnae and dedicated staff members; the journey from initial notification of the expansion opportunity to awarding a charter is lengthy but exciting!

## Prep for Success

According to Fran Mayfield Lapham (Kansas State), sorority director-collegiate extension, the process begins when a Panhellenic association determines its campus is ready for expansion and notifies the National Panhellenic Conference's member organizations.

"We make our decision to proceed based on various considerations including the prestige of the school, size of the campus, alumnae in the area and the housing situation," Fran says.

If a sorority is interested in the campus, it must submit a packet of information to the school. From these, a few sororities are chosen to visit campus and "pitch" their organizations to the school's expansion committee. Before

Gamma Phi Beta's team travels to a school, volunteers and staff conduct extensive research so our presentation is tailored to the community and campus. Local alumnae are invited to participate, demonstrating widespread support for the potential colony.

"Finding women who are willing to take on advisory positions is critical to a successful expansion effort," adds Mindy Sutton (Southern Methodist), sorority director-colonies.

Once in front of the expansion committee, much of the selection process comes down to the presentation so our extension team does its best to "knock the socks off" the committee by focusing on our Sorority's unique features and benefits.

"We're a values-based organization and the Greek community recognizes that," Mindy notes. "Our track record of establishing thriving chapters speaks for itself."

If invited to join a new campus, more work goes into preparation for a successful recruitment, Bid Day and chapter installation. Collegiate leadership consultants and volunteer leaders play a key role in getting the chapter off to a great start.

## Introducing Eta Delta Chapter

Speaking of great news, the new Eta Delta Chapter was installed on December 4, 2010. The new chapter is currently recruiting new members.

**"Our track record of establishing thriving chapters speaks for itself."**

— Mindy Sutton



Our newest chapter, Eta Delta at Grand Valley State University, is already 100 members strong!

  
GAMMA PHI BETA

**CONNECT.  
IMPACT.  
SHINE.**



*Jamie Swecker (Delaware) was the first to receive the Eta Gamma Chapter president's badge, pinned on by International President Linda Malony.*



bonded over philanthropy work on campus. They supported the "Love is Louder" campaign, that promotes suicide awareness and prevention, by distributing more than 1,600 flyers. But one event stood out, according to Elyse Gieschen (Valparaiso), the chapter's resident collegiate leadership consultant.

"The biggest highlight was their overnight sisterhood retreat," Elyse says. "We held it at a local gymnastics studio and played on trampolines, parachutes

and rings. It was the first chance they had to spend more than a couple of hours together. We just had a blast!"

Eta Delta Chapter joins seven other Panhellenic sororities on campus and has received a warm welcome from the Greek community. "It's unbelievable," Elyse reports. "The fraternities and sororities have been more encouraging than I have seen on other campuses."

Sisters will move into their chapter house next fall, which will accommodate 40 members. Until then, making sure a group of 100 members really feel like sisters will be somewhat difficult, Elyse says. "Helping them feel that bond is the biggest challenge, but it is also one of the most rewarding parts."

### Breaking Ground in Delaware

In our first expansion to the small state of Delaware, Eta Gamma Chapter enjoyed a busy year on the University of Delaware campus. Installed last May, their charter membership totals 119! On a recent Greek informational night, an overwhelming number of women expressed interest in Gamma Phi Beta; in fact, many potential new members had already researched the Sorority online and knew about our philanthropy, goals, colors, etc.

"It's really great to see so much interest in Gamma Phi Beta," Chapter Advisor Cheryl Lonabaugh Tuohy (Rochester) says. "Being so new, it can go either way. People can be really intrigued or turned off. It's really been a positive experience for us!"

Members supported other Greek philanthropic events, held their first solo event and are planning a *Crescent Classic* for the spring. Although the chapter is not housed on campus, sisters aren't letting that fact hinder their presence. They get together frequently for meetings, social events and philanthropic activities. Members are also becoming more connected as they implement Sorority-

wide programming and have been busy encouraging local alumnae to get involved with the chapter.

"Gamma Phi Beta's making a big splash on campus," Cheryl continues. "They're doing phenomenally well."

### New in the Sunshine State

Gamma Phi Beta is also making an impression at Florida Southern College as new chapter Eta Beta builds a solid reputation on campus. The chapter joins five other National Panhellenic Conference sororities on campus and occupies a chapter room and suite of dorm rooms.

Chartered in April 2010, the chapter held its first formal recruitment last fall; their efforts were a success and members couldn't be more excited! "The chapter pledged 17 wonderful new members who are having a great semester," says Emily Davis Oliver (Southern Methodist), chapter advisor.

In keeping with Gamma Phi Beta's focus on volunteerism, the chapter served at the local Camp Fire USA's Halloween haunted house. "We've also been busy with a sisterhood retreat, intramurals and social events," adds Emily.

### Coming in 2011: Virginia Tech

- Location: Blacksburg, VA
- Student population: 23,558
- Fun fact: Virginia Tech has the fourth largest Greek system in the United States!
- National Panhellenic Conference sororities: 12
- Planned installation date: Spring 2011
- Closest alumnae group: Charlottesville
- Closest collegiate chapter: Zeta Beta Chapter (Virginia)



# Circle of Excellence 2010

**Congratulations to our alumnae chapters that achieved Circle of Excellence status!**



CIRCLE OF EXCELLENCE

This prestigious **Founders Circle** award is presented to chapters that attained either the Pearl or Diamond Circle of Excellence for the past five consecutive years. Three of the five years must have been Diamond status, although Diamond years need not have been consecutive.

Albuquerque, NM  
Arlington, TX  
Balboa Harbor, CA  
Chicago, IL  
Chicago Far West Suburban, IL  
Chicago Northwest Suburban, IL  
Evanston North Shore, IL  
Greater Fort Myers, FL  
Houston, TX  
Indianapolis, IN  
Naples, FL  
Nashville, TN  
North Houston, TX  
Oklahoma City, OK  
Pasadena, CA  
Philadelphia North, PA  
Princeton, PA  
South Bay, CA  
St. Louis, MO  
Tulsa, OK



CIRCLE OF EXCELLENCE

**Diamond Circle** chapters have met Circle of Excellence criteria plus five additional criteria

Albuquerque, NM  
Atlanta Southern Crescent, GA  
Arlington, TX  
Balboa Harbor, CA  
Chicago, IL  
Chicago Far West Suburban, IL  
Chicago Northwest Suburban, IL  
Columbia, SC  
Corvallis, OR  
Dayton, OH  
Denver, CO  
Detroit Metro, MI  
Diablo Valley, CA  
Evanston North Shore, IL  
Grand Rapids, MI  
Greater Fort Myers, FL  
Greater Kansas City, MO  
Greater Orange County, CA  
Hawaii, HI  
Houston, TX  
Indianapolis, IN  
Inland Empire, CA  
Jacksonville, FL  
Kent, OH  
Louisville, KY  
Milwaukee, WI  
Minneapolis-St. Paul, MN  
Naples, FL  
North Houston, TX  
Oklahoma City, OK  
Omaha, NE

Orlando-Winter Park, FL  
Pasadena, CA  
Philadelphia North, PA  
Philadelphia West, PA  
Phoenix, AZ  
Portland, OR  
Puget Sound, WA  
Princeton, NJ  
Rochester, NY  
San Diego, CA  
South Bay, CA  
St. Louis, MO  
State College, PA  
Tampa Bay, FL  
Tulsa, OK  
Washington D.C.



CIRCLE OF EXCELLENCE

**Pearl Circle** chapters have met Circle of Excellence criteria plus four additional criteria

Cedar Rapids, IA  
Fort Collins, CO  
Greater Fort Worth, TX  
Madison, WI  
Nashville, TN  
Peoria, IL  
Sacramento Valley, CA  
Syracuse, NY



CIRCLE OF EXCELLENCE

**Carnation Circle** chapters have met Circle of Excellence criteria plus three additional criteria

Birmingham, AL  
Eugene, OR  
Evansville, IN  
Manhattan, KS  
Marin County, CA  
Raleigh, NC



GAMMA PHI BETA

**Circle of Excellence** chapters have met Circle of Excellence criteria

Lincoln, NE  
Myrtle Beach, SC

The Circle of Excellence program has been revamped for 2011. For information on achieving one of our honorable circles, go to [www.gammaphibeta.org](http://www.gammaphibeta.org) and click the Alumnae & Volunteer Resources page, located under the Alumnae tab.



# Volunteers Shine!

**Gamma Phi Beta sincerely thanks our outstanding alumnae volunteers and is proud to announce our 2010 service award winners!**

## Service Roll

Acknowledges 15 or more years of alumnae volunteer service with a minimum of five years at the international level plus five years or more of financial support

Elise Berthon (Birmingham-Southern)  
Birmingham Alumnae Chapter

Barbara Chadwick (Vanderbilt)  
Nashville Alumnae Chapter

Krista Spanninger Davis  
(Bowling Green State)  
Columbus Crescent Circle (OH)

Kelly Brown Dunne (William & Mary)  
Northern VA Alumnae Chapter

Shellie King Hodges (Oregon)  
Sacramento Valley Alumnae Chapter

Cynthia Meisner Howes (Indiana State)  
Nashville Alumnae Chapter

Megan Byrne Krueger (Indiana)  
Chicago Alumnae Chapter

Denise Vollert-Parrotto  
(California State-Fullerton)  
New Jersey Metro Alumnae Chapter

Shelly Simmons Russell (Washington State)  
Puget Sound Alumnae Chapter

Nancy Ann Ostendorf Thompson  
(Northern Iowa)  
Ames Area Crescent Circle

## Loyalty Award

Honors a minimum of seven years of alumnae volunteer service at the international level plus seven or more years of financial support

Roberta "Bobbie" Schauer Balthazor  
(Northern Arizona)  
Phoenix Alumnae Chapter

Barbara Weiss Boenzli (Oregon State)  
Corvallis Alumnae Chapter

Jessica Jecmen Brummel (Oklahoma City)

Tracy Stack Johnson (Florida State)  
Charlottesville Crescent Circle

Tanya Jordan (Purdue)  
Greater Orange County Alumnae Chapter

Melanie Kelsey (Puget Sound)  
Puget Sound Alumnae Chapter

Fran Mayfield Lapham (Kansas State)  
Birmingham Alumnae Chapter

Melinda "Mindy" Sutton  
(Southern Methodist)  
Austin Alumnae Chapter

Mary Vanier (Kansas State)  
Manhattan Alumnae Chapter

## Merit Roll

Recognizes a minimum of 15 years of alumnae volunteer service at the local level plus five years or more of financial support

Robin Thomas Baskin (Vanderbilt)  
Nashville Alumnae Chapter

Katharine "Katy" O'Brien Batterman  
(Wisconsin-Madison)  
Madison Alumnae Chapter

Mary Beth Holzbach Carroll (Florida State)  
Nashville Alumnae Chapter

Rosemary G. Milew (California-Irvine)  
Chicago Alumnae Chapter

Becki Steers Metzger (Oregon State)  
Corvallis Alumnae Chapter

Nancy Weiss Ulman (Oregon State)  
Corvallis Alumnae Chapter

Lynn Towsley White (Colorado-Boulder)  
Washington D.C. Alumnae Chapter

Recommend an alumna member for one of our volunteer service awards!  
Go to [www.gammaphibeta.org](http://www.gammaphibeta.org) and click Member Forms on the home page.  
Download, print and postmark the recommendation form to International Headquarters by April 1.



# Order of the Crescent

**T**he results are in: 18 collegiate chapters achieved top ranking in the Order of the Crescent! The chapters listed below received recognition in all five areas of consideration: recruitment, risk management, member education, finance and scholarship.

Congratulations to our most outstanding chapters!

## 5 Crescents



**Region 1** **Alpha Tau** (McGill)  
**Delta Tau** (Colgate)  
**Zeta Mu** (St. John's)

**Region 2** **Alpha Chi** (William & Mary)

**Region 3** **Delta Omicron**  
(Southern Polytechnic State)

**Region 4** **Alpha Nu** (Wittenberg)  
**Zeta Iota** (Valparaiso)

**Region 5** **Kappa** (Minnesota-Twin Cities)  
**Omega** (Iowa State)  
**Gamma Gamma**  
(Wisconsin-Milwaukee)

**Region 6** **Psi** (Oklahoma)  
**Beta Upsilon** (Kansas State)  
**Epsilon Delta** (Creighton)  
**Zeta Delta**  
(Southeast Missouri State)

**Region 7** **Delta Delta**  
(California State-Fullerton)  
**Delta Theta**  
(California Polytechnic State)  
**Epsilon Nu** (Chapman)

**New chapter** **Eta Alpha** (Lake Erie)

The Order of the Crescent program is all new for 2011! Find out how you can earn a top spot: contact your regional coordinator or visit [www.gammaphibeta.org](http://www.gammaphibeta.org) and click on the Collegiate Resources page, located under the Collegians tab.

	4 Crescents	3 Crescents	2 Crescents	1 Crescent
Region 1	Alpha Upsilon Delta Kappa Epsilon Epsilon Epsilon Eta Epsilon Tau Epsilon Phi Zeta Epsilon	Gamma Beta Epsilon Alpha	Alpha Delta Alpha Alpha Zeta Pi	N/A
Region 2	Epsilon Sigma	Epsilon Iota Epsilon Pi Epsilon Psi Zeta Beta	Epsilon Theta	Zeta Zeta Zeta Sigma
Region 3	Gamma Zeta Delta Upsilon	Gamma Iota Gamma Phi Epsilon Zeta Epsilon Lambda Epsilon Mu Zeta Lambda Zeta Rho	Alpha Xi Beta Mu Delta Epsilon Delta Sigma	N/A
Region 4	Beta Delta Beta Epsilon Beta Phi Delta Iota Delta Omega Zeta Kappa Zeta Omicron	Zeta Nu	Beta Gamma Beta Pi Epsilon Beta	N/A
Region 5	Gamma Epsilon Gamma Psi	Beta Eta Gamma Mu Gamma Pi Gamma Rho	Omicron Rho Alpha Beta Delta Pi	Gamma Omega
Region 6	Pi Tau Beta Psi Gamma Tau	Theta Sigma Beta Rho Zeta Phi	Alpha Delta Beta Chi	Gamma Kappa
Region 7	Alpha Epsilon Beta Alpha Gamma Eta Epsilon Gamma	Alpha Iota Beta Kappa Beta Lambda Beta Omega Delta Eta Delta Lambda Delta Psi	Delta Phi	Zeta Theta
Region 8	Xi	Eta Nu Alpha Lambda Gamma Epsilon	Lambda Beta Sigma Delta Chi Epsilon Kappa Zeta Alpha Zeta Xi	Zeta Gamma
New Chapters	Zeta Tau Zeta Psi	Zeta Chi	Delta Nu Zeta Omega	Zeta Upsilon



# Milestones and More



**Cruisin' Sisters** Alpha Xi Chapter (Southern Methodist) alumnae Holly Hawkins Bowler, her big sister Christie Knudsen and pledge sister Carol Rodgers Currier were Gamma Phi Beta proud on an Alaskan cruise last September.

**Congratulations to our Greek-letter chapters celebrating milestone anniversaries this year!**

## 50 years

- Gamma Epsilon Chapter (Puget Sound), chartered April 29, 1961

## 25 years

- Epsilon Delta Chapter (Creighton), chartered February 22, 1986
- Epsilon Epsilon Chapter (Union), chartered May 3, 1986

# Regional Conferences Kick Off

**W**here is your chapter heading for leadership training this year? Regional Leadership Conferences are a highlight for many collegiate officers, who find the interaction with their peers, instruction by international volunteers and all-around enthusiasm inspiring! Don't miss out – book your registration today at [www.gammaphibeta.org](http://www.gammaphibeta.org) in the Events section! And be sure to send your new safety and wellness chairwoman; there will be specialized training offered just for her!



## Region 1

March 4-6, 2011  
Boston, MA  
Registration deadline:  
February 1

## Region 2

February 4-6, 2011  
Raleigh, NC  
Registration closed

## Region 3

March 4-6, 2011  
Atlanta, GA  
Registration deadline:  
February 1

## Region 4

January 28-30, 2011  
Indianapolis, IN  
Registration closed

## Region 5

February 11-13, 2011  
Oak Brook, IL  
Registration closed

## Region 6

February 4-6, 2011  
Kansas City, MO  
Registration closed

## Region 7

February 25-27, 2011  
Irvine, CA  
Registration deadline:  
January 25

## Region 8

February 25-27, 2011  
San Francisco, CA  
Registration deadline:  
January 25



# Gamma Phi Beta Goes to Washington

## Members lobby for tax code change

By Elizabeth "Betty" Ahlemeyer Quick (Indiana), International Panhellenic Affairs Vice President



**Collegiate safety is our number one concern.**

**A**pril 12 will be a big day for Greek organizations as alumni and collegians once again climb Capitol Hill to lobby Congress for the Collegiate Housing and Infrastructure Act (CHIA).

CHIA proposes an important change to the tax code that would make it possible for alumnae and other interested individuals to make tax-deductible donations to our Foundation in order to buy, build and upgrade the infrastructure of our chapter houses. This would greatly increase our ability to provide student housing that is modern, attractive, energy efficient and equipped with the latest fire and safety equipment.

Two Gamma Phi Beta collegians who are either Panhellenic presidents or student government officers will soon be selected from a large pool of applications to represent the Sorority. Last year, Samantha Kerley (Arizona State) was one of several Sorority members who lent persuasive argument to the cause. Her week began with two days of intensive learning and lobbying training where all student representatives became versed in 78 pages of information about CHIA.

"The Greek Capitol Hill visits helped me realize how important it is to stand up and support the issues that affect collegians like me," Samantha says. "It also helped me realize this is what I want to do with my future. I'm a political science major and would love to become a lobbyist one day."

Samantha and other interfraternal members completed 410 Congressional visits in support of CHIA and secured 204 of 218 sponsors needed in the House and 29 of 50 sponsors needed in the Senate. Gamma Phi Beta representatives Julie Pawelczyk (Illinois at Urbana-Champaign), sorority director-government relations, and Carmela Carr (Lander) provide year-round efforts at monthly Capital Fraternal Caucus meetings in Washington, D.C.

Collegiate safety is our number one concern. Won't you join the effort from the comfort of your home? Register your support at [www.fraternalcaucus.org](http://www.fraternalcaucus.org), and let's make 2011 the year CHIA is passed!

*Lobbying efforts are coordinated by the Capital Fraternal Caucus, a grassroots organization founded in 2002 by 69 fraternities of the North-American Inter-Fraternity Conference and the 26 sororities of the National Panhellenic Conference. The CFC was organized to advocate on behalf of legislation affecting Greek-member organizations and to educate policy makers about the positive role of inter-fraternal organizations.*

In 2010, Betty Quick and Panhellenic President Amanda Firman (Northern Iowa) represented Gamma Phi Beta on Capitol Hill to garner support for safer collegiate housing.



# Aviation Enthusiast

Canadian member takes her career to new heights

**K**athy Fox (McGill) is one Gamma Phi Beta who sets her sights high, very high.

"I have always wanted to fly, from the time I was a young child," Kathy says.

An aviation professional for more than 40 years, Kathy has worked as a sport parachutist, pilot, flight instructor, air traffic controller and executive. While at each position, she made leaps and bounds for women in the aviation field and for the industry itself. Last year, her many accomplishments were recognized with the *Elsie MacGill Northern Lights Award*, an honor created to spotlight Canadian women in the field of aviation or aerospace and named for the world's first female aircraft designer.

"Elsie MacGill was the first Canadian and perhaps the first woman in the world to get a degree in aeronautical engineering," Kathy explains. "She was definitely a pioneer in terms of a female working in a male-dominated environment. It's an honor to receive the award."

## A Life Lived Well

Elsie and Kathy are not so different. At age 20, Kathy was the first female president of the Canadian Sport Parachuting Association. She also worked tirelessly to get sport parachuting recognized as a legitimate sport. Once parachuting received the necessary funding for competing, Canada was able to participate in national competitions. Kathy led two teams to international events. Also, as a writer for a monthly magazine targeted at aviation pilots, Kathy educated readers on how to best use the air traffic control system.

When Canada privatized its air traffic control system, Kathy was promoted to vice president of operations at NAV CANADA headquarters in Ottawa, Ontario. NAV CANADA provides air traffic control, flight information, weather briefings, aeronautical information services, airport advisory services and electronic aids to navigation. As vice president of operations, Kathy played a key role in developing new systems and safety modifications.

## A Life Rewarded

Colleagues, friends, family and Sorority sisters honored Kathy's prestigious career at the awards gala in October.

"My big sister was there which was very special," Kathy says. "My longest-standing friends are from the Sorority."



Kathy (center) is surrounded by family, friends and sisters at a banquet held in her honor last October.

**Kathy's first love was flying airplanes, and she still works as a flight instructor in her retirement years.**

Winning this award brought together all of the phases of my career and all the important people I love."

Sylvie Thériault (McGill) attended the banquet to support Kathy and describes her friend as not only an aviation enthusiast, but as an overall impressive woman.

"Kathy is this petite woman with a firm handshake who is easy to talk to, friendly and generous," Sylvie says. "Aside from her many career accomplishments, Kathy is very involved in raising money for breast cancer research."

Kathy has since retired from her post at NAV CANADA but continues to work as a flight instructor. After all, flying was her first love. While a member of Alpha Tau Chapter at McGill University, Kathy spent her time sky diving until she could eventually afford to take flying lessons.

"I tell people I stopped jumping out of airplanes when I learned how to fly them," Kathy laughs. "I feel very privileged for the many opportunities I have enjoyed, across the many areas of aviation."

Previous honors for Kathy include a Fédération Aéronautique Internationale diploma for contributions in parachuting and a *Transport Canada Aviation Safety Award*. In 2004, she was inducted into the Québec Air and Space Hall of Fame.

"Winning this award brought together all of the phases of my career and all the important people I love." – Kathy Fox



# Suicide, Sisterhood,

**W**e all inevitably and unfortunately lose loved ones. But when someone takes his or her own life, grief hits in a different way.

Suicide is a real, gripping issue that cannot be ignored, and Gamma Phi Beta is no stranger to this tragedy. Most recently was Amanda Bebout (Texas Christian), whom we lost last year.

According to the American College Health Association (ACHA), suicide is the second leading cause of death for college students (behind accidental injury); the number one cause of suicide for those students is untreated depression. Experts at the ACHA estimate that 10,888 suicides occur at colleges every year.

## Offering Hope

To turn Amanda's tragedy into a beacon of hope and positivity, Zeta Chi Chapter (Texas Christian) worked with the university to bring Rachel's Challenge, a message of kindness, to the campus in memory of Amanda.

The Rachel's Challenge program honors Rachel Scott, a victim of the Columbine High School shooting in 1999, and is inspired by Rachel's own writings; the program promotes the positivity and culture change that Rachel herself had wanted. One person directly touched by her message was Amanda's close friend, Sarah Mansell (Texas Christian).

"The presentation hit so close to home," Sarah says. "The similarities between Rachel Scott and Amanda were absolutely unbelievable. I felt like I was listening to a presentation on Amanda's life. It was really moving."

Amanda's mother Sharon spoke during the presentation about her daughter's death, the heartache it caused and how much Amanda loved life.

"It was by far the most rewarding and inspiring activity that Gamma Phi Beta has ever done on our campus," Sarah believes. "Amanda's legacy will continue to live on, and I know she was so proud of our chapter."

## Offering Help

Gamma Mu Chapter (Minnesota State-Moorhead) suffered a similar tragedy in June 2010. Sisters banded together

to be there for a member whose father committed suicide. Alexandra Estenson (Minnesota State-Moorhead) was very proud of how her chapter came together for their grieving sister.

"We all knew just how important it was for her to know there's a whole house as a support system for anything that she may need," Alexandra explains. "His death brought up a topic that is so often hushed and allowed us to learn more about each other and become closer in our bonds as sisters and friends."

To remember their sister's dad, members participated in the *Out of the Darkness* walk in Fargo, ND, in September. The walk, organized by the American Foundation for Suicide Prevention, was coordinated by Alexandra, who lost a friend to suicide in high school. She has participated in the event for four years.

"I walk for my friend, and it is because of him that I'm not afraid to talk about suicide," she explains. "Suicide is an event full of questions, only leaving you with the question 'why?' The walk gives us the chance to stop asking questions and celebrate the lives those individuals lived."

## Know the Signs

As the American Foundation for Suicide Prevention and Rachel's Challenge fight back against suicide and depression, we can fight back too. According to ACHA, warning signs can include:

- Academic problems
- Depression
- Mood swings
- Withdrawal
- Feelings of hopelessness
- Increased substance use
- Increased risk taking
- An obsession with death

It's important that we are cognizant of those around us and make sure we offer help to our sisters during the dark times. Only with love and awareness can we stop the cycle of hurt.

If you are experiencing warning signs, or suspect a loved one  
may be in trouble, speak up!  
Call the National Suicide Prevention Lifeline at 1-800-273-TALK (8255)  
or visit [www.suicidepreventionlifeline.org](http://www.suicidepreventionlifeline.org).



# Support

## Not all suicide attempts end in tragedy.

For Yvonne Roehler (Minnesota State-Moorhead), a potentially deadly night turned into a memory of love and compassion from her sisters. Below, she shares her experience and how her sisters saved her life.

*"Remember Gamma Phi Beta, remember when you're away, remember the friends you've made here, and don't forget to come back someday. Remember the pink carnation, the crescent in the sky..."*

As a collegian, not once did I make it through that song without tears running down my face. Love would pour forth from my heart as I looked around the circle at my sisters, many of whom I felt closer to than my own flesh and blood sisters. At my darkest hour, though, I had somehow lost my song and I did not care.

The night I tumbled down an unfamiliar staircase, I landed with a hard thump on a beautiful newel post. Just an hour earlier, I had admired the post as I followed my newest *amour* up the stairs. But this second encounter with the newel post was not a moment of wonder and beauty, but one of darkness and despair.

As I regained my breath, I realized no one was there to lend me a hand or check my injuries. I was utterly alone, and alone I picked myself up and walked out the door without calling goodbye. What was the point, it was over. And with that silent goodbye, I drove, devoid of feeling, to the nearest 24-hour grocery store. I knew exactly where I was headed. I avoided making eye contact with anyone. I did not want human kindness to pull me back from the dark place where I had fallen.

I had messed up everything in my life. I was filled with hopelessness and despair and I couldn't see any choice but to end my life. I was an alcoholic in denial and alcohol fueled a deep depression that I tried to keep hidden behind a happy face. The false façade allowed me to exist on the outer perimeter for a short time. By the time I realized I was teetering at the very edge, I did not feel worthy enough to call out for help.

Mercifully for me, my Gamma Phi Beta sisters thought otherwise of my value. It was my pledge sister, Jackie Von Bank Hawkinson, and my little sister, Tiffani Herr Nelson, who rushed my limp body to the emergency room.

There is no possible way for me to express the overwhelming gratitude and love that I felt, and continue to feel, toward all my Gamma Mu sisters for their encouragement and support. They are the reason I survived to share my story today. My sisters were bright beacons that lit my path out of the darkness. Although my full recovery was a slow process, the friendship, encouragement and assistance of my sisters helped me find the strength to arise from the ashes, like the phoenix, to start anew and once again sing.

*Yvonne Felig Roehler*



## Sisterly Love

**Timeless. Relevant. Powerful. Our four Core Values — Love, Labor, Learning and Loyalty — continue to impact women today, shaping their priorities, decisions and goals in the pursuit of the highest type of womanhood.**

*By Kelley Hodges (Michigan State), winner of our collegiate essay contest*

I'll admit it—I cried every single day the first two weeks of my freshman year. I was sad. I was lonely. I was homesick and ready to pack up my bags and get the heck out of East Lansing forever.

When my older sister practically forced me into going through recruitment, I wasn't expecting much. I'd dress up, talk to some people, make my sister happy and be done with it. One thing was for sure, Greek life was *not* for me.

Getting a bid from Gamma Phi Beta was exciting, but I was still unsure. What was I getting myself into? What if I didn't like anyone? What if they all decided they didn't like me?

At my first new member meeting, I met one of my pledge sisters who was from my hometown — and then another who lived in the dorm across the street. And then I met my big sister who went out of her way to make sure I

was happy, feeling accepted and beginning to embrace the Gamma Phi experience.

Fast forward two years, and I cannot imagine my life without Gamma Phi Beta. Going Greek changed my college experience. I met my best friends, people who truly care about me, want the best for me and love me.

Love is one of our Core Values because it can extend to all aspects of your life, no matter how old you are. Love is sitting in the hallway at 2 a.m. eating Taco Bell and laughing at all the old composite pictures with your roommate. Love is going crazy at the library until your sister shows you a funny YouTube video to make you laugh. Love is knowing that if I ever get engaged, all my sisters will freak out and probably be happier for me than I am for myself. Love is knowing you can go to anyone who calls themselves a Gamma Phi and they will listen to you and care about you.

**Love is  
a Core Value  
because it is  
what cements  
us together.**



*Kelley (pictured second from the right) has found "genuine friendship, kindness and silliness" in Gamma Phi Beta.*

The love I found in Gamma Phi Beta—the genuine friendship, kindness, silliness—that's what kept me at Michigan State. I'm lucky enough to realize this love has made me a better friend, a better sister, a better daughter and a better person. Love is a Core Value because it is what cements us together. It has made me a better person because I found what it means to truly be a part of something, and I want everyone to feel the way I do about this wonderful organization. It has given me the opportunity to grow in ways that I could have never imagined. Finding this "sisterly" love made my college experience what it is. And believe me, my experience has been incredible.



# Aloha, Sisters

**W**hile most of us stateside are wearing coats, scarves and warm winter hats, the ladies of Hawaii Alumnae Chapter are clothed in their usual attire: aloha shirts and shorts. They are sipping on iced tea instead of hot chocolate and watching the waves crash instead of the snow fall. This month might bring frigid temperatures where you live, but in the Aloha State, it averages 75 degrees year round.

Chartered in 1938 — a good 20 years before Hawaii joined the union — this island alumnae chapter has 25 dues-paying members living on five of the six major islands, including one member on tiny Lana'i.

"Our alumnae chapter is comprised of many 50-year members — I call us the Golden Girls," says Chapter President Elizabeth "Betty" Bussey Demarke (San Diego State) good-naturedly. In fact, the entire executive board (except the Panhellenic representative) is at least 70 years old!

You don't have to be retired to join the fun in Hawaii, though. Several *kaikainas* (younger sisters) attending graduate school at Hawaii universities belong to the alumnae chapter and, with numerous military bases nearby, the chapter has seen plenty of servicewomen and military wives come and go.

When it comes to group activities, alumnae in Hawaii aren't at all different from their sisters in the continental U.S. On their island paradise, they enjoy

attending plays and musicals, visiting museums, socializing over potluck lunches and hosting guest speakers. They annually attend the spring Panhellenic luncheon where recent high school graduates are awarded scholarships for college. The ladies are also proud to have recently earned the Sorority's Diamond Circle of Excellence status, one of the highest levels of recognition for alumnae chapters.

Headquartered on the island of Oahu, the chapter's unique geographical situation is a constant challenge for members.



**Even in the dead of winter, Hawaii alumnae are enjoying the tropics.**



*At Founders Day 2010, members in Hawaii celebrated achieving the Sorority's Diamond Circle of Excellence status, one of the highest levels of recognition for alumnae chapters.*

With airfare between islands priced as high as \$70 one-way, residents outside Oahu occasionally opt to share sisterhood time over lunch at a local restaurant. Newsletters and online contact help the scattered but loyal membership stay connected.

"I've been here since '62, and it's strange to think we're the old ones now," laughs Marilyn Killebrew Picard (Bowling Green State), a retired high school math teacher and the chapter's treasurer for almost 20 years. "Joining the alumnae group was a wonderful opportunity to meet different people." In fact, Marilyn met her husband Anthony via Gamma Phi Beta connections on the island!

*For more information on Hawaii Alumnae Chapter, contact Betty at [demarkej001@hawaii.rr.com](mailto:demarkej001@hawaii.rr.com).*

## Like Mother, Like Daughter

One of Hawaii Alumnae Chapter's 10 founding sisters still lives on Oahu and celebrated her 75th year as a member in 2010. A Gamma Phi Beta legacy, Betty Boone Lowson (Stanford) was initiated in 1935. She inherits her love for the Sorority and her longevity gene from her mother, Gladys Senter Grove (California-Berkeley, 1914), who also lived to celebrate her 75th membership anniversary on Oahu in 1979. Perhaps Betty's daughter-in-law, Maui resident Laurie Smith Lowson (Wisconsin-Madison), will uphold the family tradition!

**"Our alumnae chapter is comprised of many 50-year members — I call us the Golden Girls." —Betty Bussey Demarke**



Zeta Delta Chapter  
(Southeast Missouri State)  
members display their  
commitment and enthusiasm  
for service on Philanthropy  
Night during recruitment.



# Servitude with Attitude

## Community involvement is central to Sorority membership

Every time we gear up to create *The Crescent*, we ask collegiate and alumnae chapters to send us examples of numerous ways members are giving back to their communities. Each time, the e-mails pour in, citing how chapters “walk the talk,” making philanthropy and service regular activities of chapter life. This commitment is one way of putting Gamma Phi Beta’s Core Values (and our members) to work!

By actively engaging in service, members are living the Gamma Phi Beta philanthropic mission: to provide experiences and resources that build spiritual, mental and social resiliency in girls.

“In giving back to the community, our members experience first-hand how they can make a real impact in the world around them,” Brenda Shea (California-Los Angeles), sorority director-philanthropy resources, says. “We want our members to become truly engaged with their communities, both during and after college.”

### Philanthropy

Philanthropy embodies donating to a cause. Using the *Crescent Classic* model, our Greek-letter chapters annually hold signature events to raise money and awareness for Sorority causes and other nonprofit organizations. Alumnae chapters also hold their own events or offer support to local collegiate chapters.

Organizing philanthropic events is especially important for new Gamma Phi Beta chapters and colonies. Brenda suggests newer chapters plan their *Crescent Classics* as soon as possible.

“When deciding the type of event to organize as its *Crescent Classic*, a chapter needs to look at the personality of their own campus community,” Brenda suggests. “What types of events are already being held? Which events are most successful? What is missing?”

### Service

Service is more hands-on and provides for one-on-one involvement. Gamma Phi Beta’s fifth annual *Day of Service* is scheduled for Thursday, March 17, and is a great opportunity to connect with young girls.

Honoring our international philanthropy, camping for girls, Gamma Phi Beta’s focus is on our collaborative relationship with Girl Guides of Canada and Camp Fire USA. “We have a wonderful opportunity to combine our philanthropy with our dedication to service when we help camps or other organizations that focus on building resiliency in girls,” Brenda explains. “When we participate in service activities, the entire concept of philanthropy comes alive!”

For additional tips, Brenda advises that members page through the *Philanthropy Manual* where they’ll find tips



and ideas for fundraising, philanthropy and service. Also listed is the history of Gamma Phi Beta's philanthropy, tips for successful fundraising and information regarding *Crescent Classics* and *Day of Service*. This manual is available at [www.gammaphibeta.org](http://www.gammaphibeta.org) under the Collegians tab on the collegiate resources page. Members can also network with other chapters for event ideas.

### Inspiring Ideas

When brainstorming ideas for a *Crescent Classic*, food is always an excellent place to start. Many chapters hold feeds, dinners and bakes of all types. Whether it's pancakes, spaghetti or wings, centering a philanthropy event around eating is always a good idea. Here are some examples and suggestions:

- Lambda Chapter (University of Washington) holds a study treats sale during finals week to raise funds for Camp Fire USA.
- Gamma Chapter (Wisconsin-Madison) hosted *Grilled Cheese with the G-Phi-Bs*. Sisters made about 1,000 grilled cheese sandwiches and raised more than \$4,800 for a local camp.
- Plan a meal or a feed featuring food from another country or culture such as Asian, Greek or Italian cuisine. It will be fun to research recipes and cook together. Plus, guests will enjoy trying something out of the ordinary!
- Coordinate your meal or food with an upcoming holiday. Chapters could throw an all-green food event in March for St. Patrick's Day or a Valentine's Day event with heart- or kiss-shaped cookies and candies.

If cooking doesn't sound appealing to your chapter, or if you want to get personally involved with the community, there are many options and chapters that offer inspiration:

- Delta Epsilon Chapter (Texas Wesleyan) participated in the 35th *Trinity Trot Run* in early October. The race benefits youth programs at a local YMCA.
- Epsilon Phi Chapter (Bentley) joined the *Making Strides against Breast Cancer Walk* in Boston.
- Lambda Chapter (University of Washington) has been busy supporting cystic fibrosis research. Members participated in both the *Cystic Fibrosis Stair Climb* and the *Great Strides National Walk*.
- Every fall, Pi Chapter (Nebraska-Lincoln) hosts its philanthropy event, *Do It Sober*, in honor of member Laura Cockson who was killed by a drunk driver in 1999.
- St. Louis Alumnae Chapter is heavily involved with Girls Inc., an organization that provides young girls with a structured place to learn, dance, read, cook and study. The chapter regularly volunteers with day-to-day activities.

- South Bay Alumnae Chapter assisted Camp Fire USA at its 100th anniversary celebration with registration and set up.

### Get Started!

Finding out how to help within your community is actually quite simple. To select a local charity that supports camping or young girls, explore and investigate. Call agencies and ask for information about local organizations. Find out what geographic area they cover and what types of volunteer opportunities they offer for groups. Discuss the special event and fundraising you have in mind as well as your chapter's goals in completing this project.

Remember, it is important to deal with credible and professional associations. Select charitable organizations with 501(c)(3) nonprofit status. The Better Business Bureau, Charity Navigator and Guidestar all have websites that offer a background check on charities.

"We have really stepped up our efforts in recent years to support our communities," Brenda says. "Philanthropy has become an integral part of chapter programming, both for collegians and alumnae."



Twice each month, members of Delta Omicron Chapter (Southern Polytechnic State) help with landscaping needs at a local cemetery.



# SORORITY LIFE



Check out Founders Day celebration photos on our official Facebook page, [www.facebook.com/GammaPhiBetaSorority](http://www.facebook.com/GammaPhiBetaSorority).

## REGION 1

### DELAWARE

♥ ♣ **Eta Gamma Chapter** (Delaware) recruited 10 fabulous new members and is excited to adopt little sisters! Members also participated in local philanthropy events and raised \$1,200 for pediatric cancer treatment.

### MASSACHUSETTS

♣ To raise money for breast cancer research, **Delta Chapter** (Boston) members joined forces with a local nonprofit to host their annual kickball tournament, *Kick For a Cure*. The chapter raised more than \$1,000.

♥ ♣ **Epsilon Phi Chapter** (Bentley) held many sisterhood events during the fall semester including a *Breakfast at Tiffany's*-themed event and *Movies and Manis*. Members also showed their commitment to the community by participating in the *Making Strides Against Breast Cancer* walk in Boston.

### NEW YORK

♥ ♣ **Epsilon Epsilon Chapter** (Union) saw a very successful fall semester. They welcomed 44 new members with a mermaid-themed dinner: *Freshest Catch*. The chapter also held a PACE dance event in September.



*Epsilon Eta Chapter (Bridgewater State) made care packages for young patients at a local hospital. They included art supplies and handwritten notes.*



*Alpha Chapter (Syracuse) members spell out C-U-S-E in front of their chapter house before a football game.*

♣ **Epsilon Tau Chapter** (Rochester) kicked off its year with philanthropy events including its first major fundraiser: *Crescent Classic Relay*. The race raised money for a nonprofit that assists families in need. Members also volunteered at a local cancer center, helping with the "Humor is the Best Medicine" production.

♥ ♣ **New York City Alumnae Chapter** said goodbye to summer with a happy hour get together on a boat docked along the Hudson River. Members also met at a charity wine-tasting and look forward to many upcoming philanthropy and social events.

♣ ♣ **Zeta Mu Chapter** (St. John's) members traveled from New York to Providence, Rhode Island, to participate in the *Ovarian Cancer Walk* to show support for a mother of two chapter alumnae members. The chapter also took part in the university's *Service Day* by cleaning a soup kitchen and volunteering with foster children. Zeta Mu was also named *Most Spirited* during *Greek Week*.

### PENNSYLVANIA

♥ **Gamma Beta Chapter** (Gettysburg) made its 34 new members feel welcome with an outing to a baseball game in Baltimore.

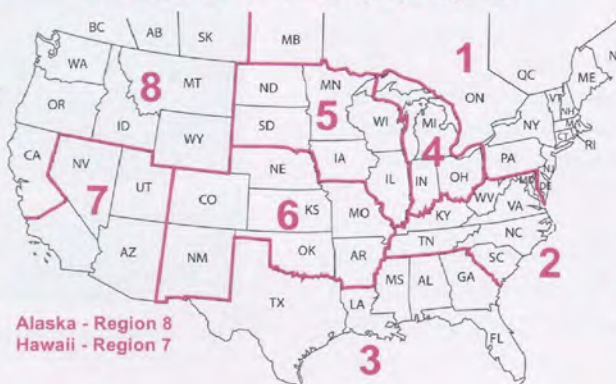
♣ Members of **Delta Kappa Chapter** (Lehigh) have been actively participating in campus events, including *Greek Week*. The chapter placed at the top of many events and was awarded third place overall!

♥ **Epsilon Alpha Chapter** (La Salle) welcomed nine new members during fall recruitment! Sisters are busy making their new additions feel welcome and are looking forward to the rest of the year.

### QUEBEC

♥ ♣ **Alpha Tau Chapter** (McGill) held a few theme nights during recruitment, including a Hawaiian party and a tea party. The chapter also plans to team up with Girl Guides of Canada to sell cookies on campus!

## Gamma Phi Beta Sorority by Regions



## Sorority Life!

Alumnae and collegiate news at a glance! Send your chapter's update to [TheCrescent@gammaphibeta.org](mailto:TheCrescent@gammaphibeta.org).

Welcome, Delaware, to region 1!

### Symbol Key:

- ♥ Sisterhood
- ♣ Philanthropy
- ♣ Leadership
- 📖 Scholarship



## REGION 2

### KENTUCKY

🔥 **Epsilon Sigma Chapter** (Morehead State) teamed with Pi Kappa Phi Fraternity to host a prom for several local nonprofit organizations, benefitting those with mental and physical disabilities.

### NORTH CAROLINA

🏆📖 **Epsilon Psi Chapter** (North Carolina-Asheville) is proud that members received a chapter average GPA of 3.248! During *Greek Week*, the chapter also received awards for *Highest GPA*, *Most Improved GPA*, *Most Spirited*, *Most Friendly* and *Most Community Service*.

### SOUTH CAROLINA

♥️ **Charleston Alumnae Chapter** met on a rooftop in historic Charleston to celebrate its first anniversary! Members are busy preparing for the year ahead.

♥️🔥🏆 **Epsilon Theta Chapter** (Clemson) has been busy! They participated in homecoming and their *Back to the Future*-themed float won! Aside from a successful recruitment, members held a tie-dye sisterhood event and began volunteering at the animal shelter.

♥️🔥 **Zeta Eta Chapter** (Lander) members enjoyed their sisterhood retreat and participated in the local *Juvenile Diabetes Walk* on Halloween.



Knoxville Alumnae Chapter extended sisterhood love by sending back-to-school goody baskets to collegiate members. Alumnae also helped local sisters affected by recent flooding in the Nashville area and raised money to send two Girl Scouts to camp!

### VIRGINIA

♥️🔥 **Alpha Chi Chapter's** (William & Mary) Bid Day theme, "Fly Gamma Phi, Always First Class," attracted 26 new members, propelling the chapter to Quota! Members also held their *Crescent Classic: Moonball* event, an annual volleyball tournament benefitting Camp Fire USA and Camp Fantastic.

♥️🔥 **Zeta Beta Chapter** (Virginia) participated in Theta Delta Chi Fraternity's philanthropy event, a run/walk to raise money for the March of Dimes.

**Take The Crescent  
reader survey at  
[www.gammaphibeta.org](http://www.gammaphibeta.org)  
in the News section!**

## REGION 3

### FLORIDA

🔥 **Delta Sigma Chapter** (Florida Institute of Technology) kicked off the semester with its annual week-long philanthropy, the *Yellow Ribbon Project*. Sisters collected money and donations to support the troops, then held a box-packing and letter-writing session.

♥️🏆 Newcomer **Eta Beta Chapter** (Florida Southern) recently held its first recruitment week; with the addition of 16 new sisters, the chapter has 51 members. Plus, the chapter's events are already breaking records — their *Gamma Phi-esta* had the highest turnout of any Greek event ever held on campus!

♥️ **Greater Miami Alumnae Chapter** held a membership meeting in Miami to catch up and discuss the upcoming year.

♥️ **Jacksonville Alumnae Chapter** had a "good old time" when they met at a local antique mall for a day of catching up. Members were also thrilled to help at Convention 2010; they welcomed two alumnae initiates while there!

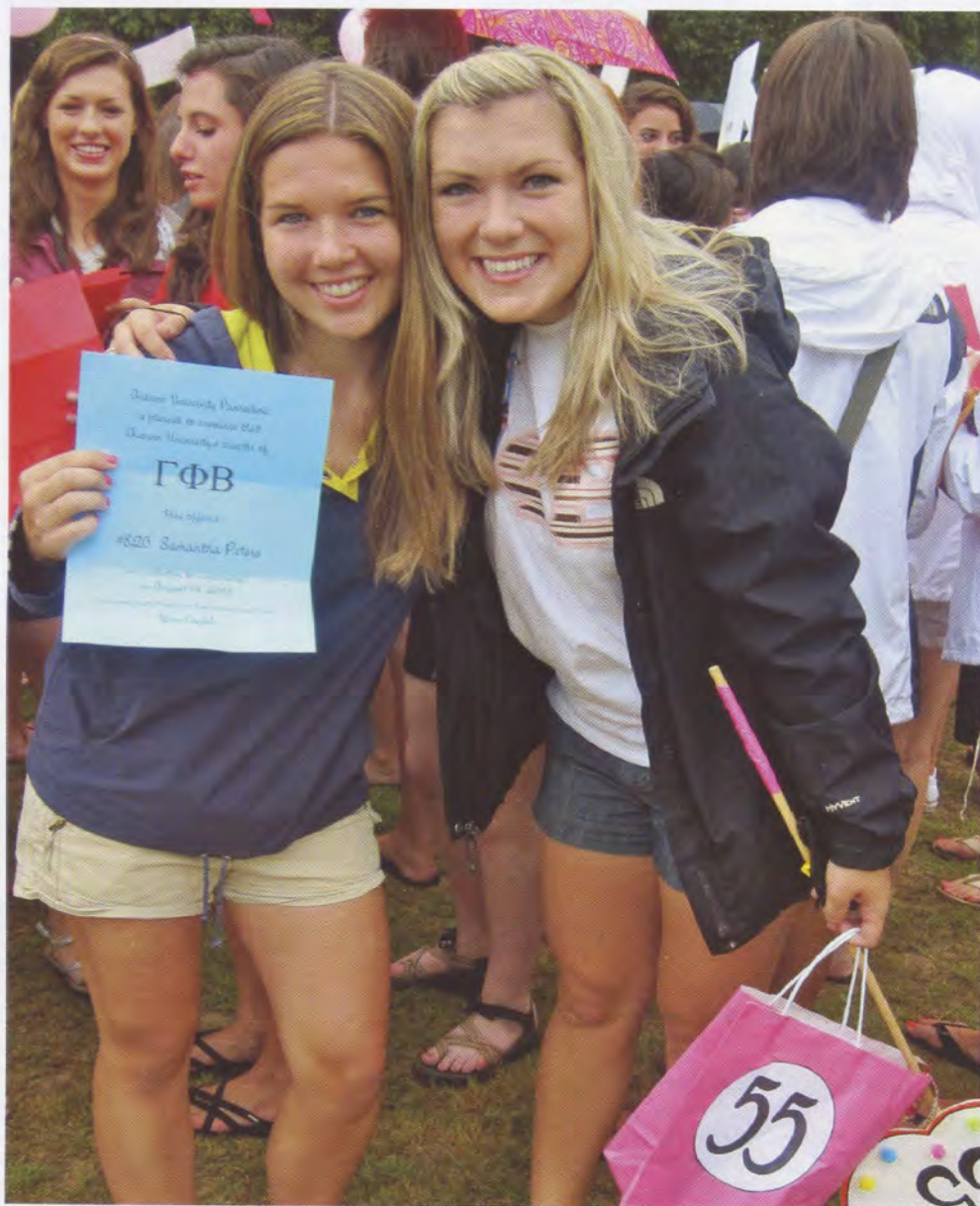
♥️🔥 **Tampa Bay Alumnae Chapter** held its kick-off meeting in September with the theme "Camp Gamma Phi Beta" to launch their support of Camp Fire USA. The chapter's 15 members also helped **Eta Beta Chapter** (Florida Southern) with its first recruitment.



## GEORGIA

♥ **Delta Omicron Chapter** (Southern Polytechnic State) included its new members in the tradition of painting a rock on campus to commemorate Bid Day. Members also bonded at a sisterhood retreat.

♥ With an "All You Need is Love" Beatles-themed Bid Day, **Delta Upsilon Chapter** (Georgia) attracted 65 new members who celebrated with a special dinner, dancing and a movie night featuring "Across the Universe."



Gamma Phi Chapter (Auburn) welcomed 69 new members during fall recruitment, the largest pledge class the chapter has seen since returning to the university in 1996! New members celebrated the momentous event on Bid Day.

♥ **Zeta Tau Chapter** (Emory) spent a day bonding and reigniting sisterhood at a lodge where members enjoyed good southern food and decorated Gamma Phi Beta beverage koozies.

## TEXAS

♥ **Alpha Xi Chapter** (Southern Methodist) alumnae members living in Washington, D.C., often get together to reconnect. Recently, they met for lunch and celebrated the upcoming nuptials of a sister.

♥ **Dallas Alumnae Chapter** members were treated to a fashion show organized by **Alpha Xi Chapter** (Southern Methodist). The show raised Super Sister funds to assist the collegiate chapter with deferred recruitment in January. Alumnae chapter members also held their popular wine and cheese tasting event.

♥ After finishing up recruitment, **Delta Epsilon Chapter** (Texas Wesleyan) members volunteered at the *Trinity Trot Run*, held at Texas Christian University. The chapter is also planning a camping event to promote Camp Fire USA.

♥ On philanthropy night, **Gamma Zeta Chapter** (Texas A&M-Commerce) performed a skit that introduced Camp Fire USA and later welcomed 16 new members.

♥ **Zeta Rho Chapter** (Texas A&M-College Station) is busy indeed! After holding their annual *Mother-Daughter Tea* in September, the chapter hosted a *Greeks Go Geek* crush party and *Crescent Classic: Wing Fling* to raise money for Camp Fire USA and Camp for All.

♥ **Zeta Chi Chapter's** (Texas Christian) 65 new members are already busy with philanthropy efforts like *Crescent Classic: Gamma Phi Boot Camp*. They were also excited when little and big sisters were revealed.

♥ **Zeta Psi Chapter** (Texas-San Antonio) celebrated the arrival of 31 new members during its fall retreat. Members also participated in Lambda Chi Alpha Fraternity's philanthropy event: *Watermelon Bash*.

## REGION 4

### INDIANA

♥ **Delta Iota Chapter** (Purdue) members are excited about renovating their chapter house! Members will see new paneling and paint on the house's exterior.

♥ Alumnae members of **Delta Iota Chapter** (Purdue) held a successful reunion where members reconnected and shared stories. Several also gathered at Purdue's homecoming football game in October.





Zeta Omicron Chapter (John Carroll) celebrated a successful spring 2010 semester. Members earned the highest sorority and Greek GPA on campus, along with the highest organization GPA on campus. They also welcomed 12 new members.

#### MICHIGAN

♥ **Beta Delta Chapter** (Michigan State) recently finished formal recruitment; Quota was 29, but the chapter welcomed a new member class of 38!

♥ After 51 years, a few **Beta Delta Chapter** (Michigan State) alumnae

♣ **Beta Epsilon Chapter** (Miami-Ohio) paired with other Greeks on campus for its *Preppy Sports* philanthropy event in September. A portion of the proceeds went to Camp Fire USA. Now, the chapter is preparing for *Crescent Classic: Cake Decorating Contest* in the spring.

**W**e value your feedback – please visit [www.gammaphibeta.org](http://www.gammaphibeta.org) today, click on the home page link in our *News* section and take a short survey about *The Crescent*.

**Your opinion matters!**

#### MINNESOTA

♣ **Gamma Mu Chapter** (Minnesota State-Moorhead) participated in the 48-hour *Rock-a-Thon*, raising money for the local Ronald McDonald House.

♥ **Gamma Pi Chapter** (Minnesota State-Mankato) saw a very successful fall recruitment; they exceeded Quota by welcoming 12 new members!

#### NORTH DAKOTA

♥ ♣ **Alpha Beta Chapter** (North Dakota) attracted 32 women during fall recruitment. Now they're preparing for their *Crescent Classic: Camp Week*, which raises funds for Camp Fire USA.

#### WISCONSIN

♥ ♣ **Gamma Gamma Chapter** (Wisconsin-Milwaukee) members got together to support breast cancer research by attending *Iron Cupcake Milwaukee*. Participants sampled 10 cupcakes, then voted for the best taste and display. All proceeds went to the Susan G. Komen Race for the Cure.

♥ **Gamma Rho Chapter** (Wisconsin-Oshkosh) was busy preparing and executing their recruitment plans resulting in 15 new members!

♥ **Gamma Omega Chapter** (Wisconsin-Platteville) is excited to announce that after fall recruitment, they more than doubled their chapter size growing from 13 members to 27!

#### REGION 6

##### ARKANSAS

♥ ♣ **Zeta Phi Chapter** (Arkansas-Fort Smith) helped *Paint the Park Pink* with other Greek organizations on campus. Members also organized a Flintstones-themed day for Girls Inc. before traveling to Branson for a weekend of sisterhood bonding.

##### COLORADO

♥ **Theta Chapter** (Denver) just finished a successful recruitment! They acquired 39 amazing women and are excited for the year ahead.



## GEORGIA

♥ **Delta Omicron Chapter** (Southern Polytechnic State) included its new members in the tradition of painting a rock on campus to commemorate Bid Day. Members also bonded at a sisterhood retreat.

♥ With an “All You Need is Love” Beatles-themed Bid Day, **Delta Upsilon Chapter** (Georgia) attracted 65 new members who celebrated with a special dinner, dancing and a movie night featuring “Across the Universe.”

♥ **Zeta Tau Chapter** (Emory) spent a day bonding and reigniting sisterhood at a lodge where members enjoyed good southern food and decorated Gamma Phi Beta beverage koozies.

## TEXAS

♥ **Alpha Xi Chapter** (Southern Methodist) alumnae members living in Washington, D.C., often get together to reconnect. Recently, they met for lunch and celebrated the upcoming nuptials of a sister.

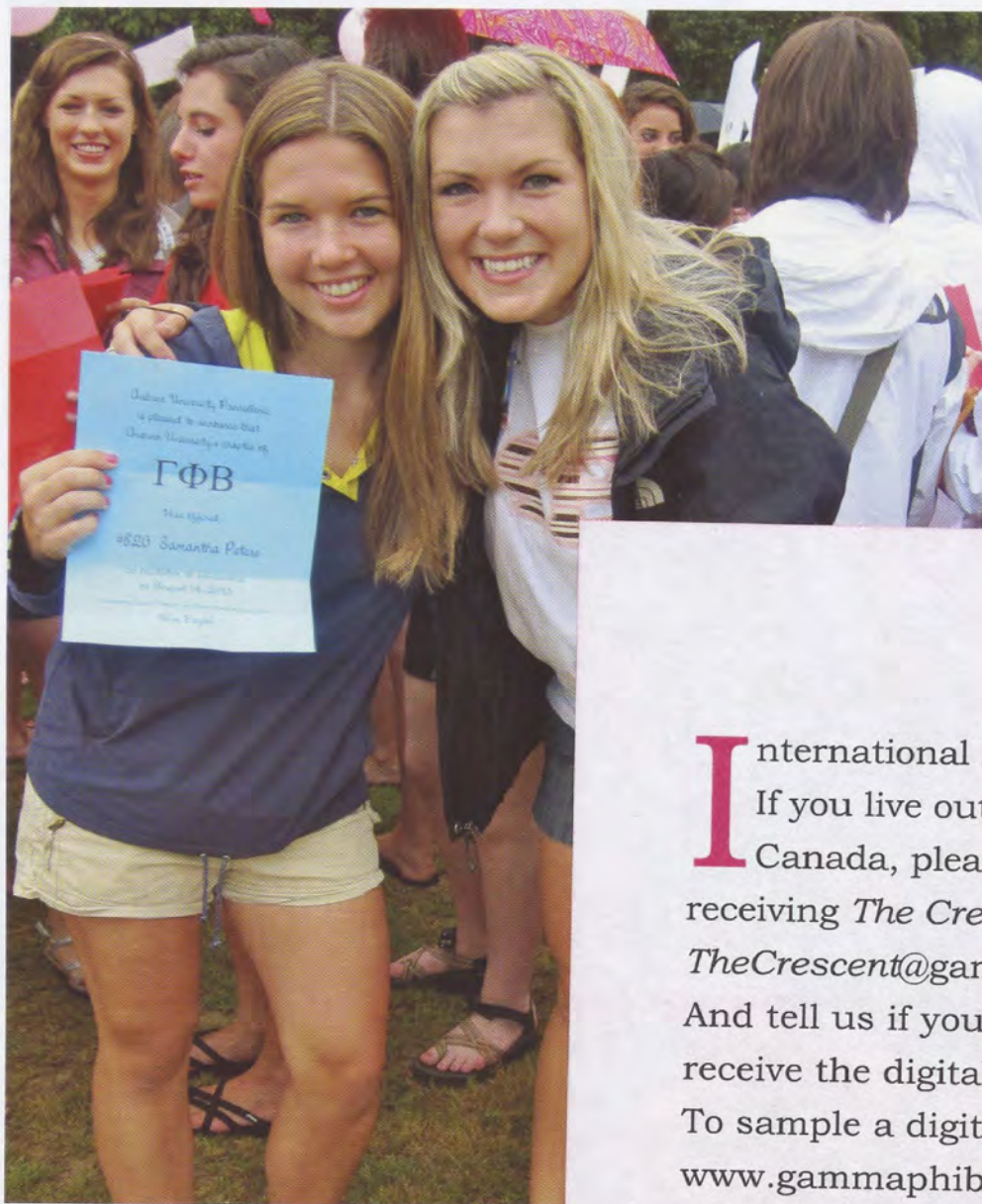
♥ ♠ **Dallas Alumnae Chapter** members were treated to a fashion show organized by **Alpha Xi Chapter** (Southern Methodist). The show raised Super Sister funds to assist the collegiate chapter with deferred recruitment in January. Alumnae chapter members also held their popular wine and cheese tasting event.

♥ ♠ After finishing up recruitment, **Delta Epsilon Chapter** (Texas Wesleyan) members volunteered at the *Trinity Trot Run*, held at Texas Christian University. The chapter is also planning a camping event to promote Camp Fire USA.

♥ ♠ On philanthropy night, **Gamma Zeta Chapter** (Texas A&M-Commerce) performed a skit that introduced Camp Fire USA and later welcomed 16 new members.

♥ ♠ **Zeta Rho Chapter** (Texas A&M-College Station) is busy indeed! After holding their annual *Mother-Daughter Tea* in September, the chapter hosted a *Greeks Go Geek* crush party and *Crescent Classic: Wing Fling* to raise money for Camp Fire USA and Camp for All.

♥ ♠ **Zeta Chi Chapter's** (Texas Christian) 65 new members are already busy with philanthropy



Gamma Phi Chapter (Auburn) welcomed 69 new members to the class the chapter has seen since returning to the university in a momentous event on Bid Day.

**I**nternational Residents:  
If you live outside the U.S. or Canada, please confirm you are receiving *The Crescent* by replying to [TheCrescent@gammaphibeta.org](mailto:TheCrescent@gammaphibeta.org). And tell us if you would prefer to receive the digital version (paperless). To sample a digital issue, visit [www.gammaphibeta.org](http://www.gammaphibeta.org), click on *About ΓΦΒ* and *Sorority Publications*.





Zeta Omicron Chapter (John Carroll) celebrated a successful spring 2010 semester. Members earned the highest sorority and Greek GPA on campus, along with the highest organization GPA on campus. They also welcomed 12 new members.

## MICHIGAN

♥ **Beta Delta Chapter** (Michigan State) recently finished formal recruitment; Quota was 29, but the chapter welcomed a new member class of 38!

♥ After 51 years, a few **Beta Delta Chapter** (Michigan State) alumnae members visited Cape Cod together for a small reunion. It was a trip filled with bonding, catching up and sisterhood!

♥ After the excitement of Convention and recruitment died down, **Delta Omega Chapter** (Oakland) spent time helping at local camps. Members also held an all-Greek barbecue to get to know their new sisters and other Greek members.

## OHIO

♥ **Alpha Nu Chapter** (Wittenberg) has been busy philanthropically! Members participated in *Ovarian Cancer Awareness Day*, the *Springfield Rocking Horse 5K* and the *Dayton Walk to Defeat ALS*. The chapter is also preparing for its *Crescent Classic: Moon Ball* event.

♥ A group of **Alpha Nu Chapter** (Wittenberg) alumnae members got their families together to celebrate the many legacies they've produced!

♥ **Beta Epsilon Chapter** (Miami-Ohio) paired with other Greeks on campus for its *Preppy Sports* philanthropy event in September. A portion of the proceeds went to Camp Fire USA. Now, the chapter is preparing for *Crescent Classic: Cake Decorating Contest* in the spring.

♥ **Eta Alpha Chapter** (Lake Erie) finished the previous school year in great academic standing. They achieved the highest Greek GPA on campus, a 3.45 average, helped by two sisters who reported 4.0 GPAs!

## REGION 5

### ILLINOIS

♥ **Chicago Northwest Suburban Alumnae Chapter** had 18 members attend its *Serve it with a Spoon* fundraiser meeting. Members also enjoyed a Panhellenic fashion show for scholarship, a carnation fundraiser and Founders Day.

### IOWA

♥ The women of **Omega Chapter** (Iowa State) pulled together in the midst of a flood to recruit 29 new members in the fall. (Read more about it on page 9.) Members held their *Crescent Classic* in October, raising money for Camp Fire USA.

## MINNESOTA

♥ **Gamma Mu Chapter** (Minnesota State-Moorhead) participated in the 48-hour *Rock-a-Thon*, raising money for the local Ronald McDonald House.

♥ **Gamma Pi Chapter** (Minnesota State-Mankato) saw a very successful fall recruitment; they exceeded Quota by welcoming 12 new members!

## NORTH DAKOTA

♥ **Alpha Beta Chapter** (North Dakota) attracted 32 women during fall recruitment. Now they're preparing for their *Crescent Classic: Camp Week*, which raises funds for Camp Fire USA.

## WISCONSIN

♥ **Gamma Gamma Chapter** (Wisconsin-Milwaukee) members got together to support breast cancer research by attending *Iron Cupcake Milwaukee*. Participants sampled 10 cupcakes, then voted for the best taste and display. All proceeds went to the Susan G. Komen Race for the Cure.

♥ **Gamma Rho Chapter** (Wisconsin-Oshkosh) was busy preparing and executing their recruitment plans resulting in 15 new members!

♥ **Gamma Omega Chapter** (Wisconsin-Platteville) is excited to announce that after fall recruitment, they more than doubled their chapter size growing from 13 members to 27!

## REGION 6

### ARKANSAS

♥ **Zeta Phi Chapter** (Arkansas-Fort Smith) helped *Paint the Park Pink* with other Greek organizations on campus. Members also organized a Flintstones-themed day for Girls Inc. before traveling to Branson for a weekend of sisterhood bonding.

### COLORADO

♥ **Theta Chapter** (Denver) just finished a successful recruitment! They acquired 39 amazing women and are excited for the year ahead.



♥ 🏠 **Tau Chapter** (Colorado State) ended the semester strong, ranking as the second highest overall house GPA on campus. They also welcomed 46 new members while volunteering and donating to a local philanthropy, Homeless Gear & Children in Need.

♥ **Beta Rho Chapter** (Colorado-Boulder) practiced recruitment efforts with **Tau Chapter** (Colorado State), resulting in 72 new members!

♥ **Fort Collins Alumnae Chapter** members met recently to make bookmarks as gifts for new members of **Tau Chapter** (Colorado State).

♥ 🏠 **Denver Alumnae Chapter** welcomed members and new members from **Theta Chapter** (Denver) at Founders Day. Sisters also helped package and mail pashmina scarves to donors following the Gamma Phi Beta Foundation's recent campaign to collect unrestricted gifts.

## KANSAS

♥ **Sigma Chapter** (Kansas) held its annual meeting, a holiday tea, in December.

🏠 **Beta Upsilon Chapter** (Kansas State) knocked philanthropy out of the park with their *Gamma Games*! The chapter, along with 17 fraternities on campus, held a three-day event with volleyball, relay races and flag football. Proceeds went to The Boys and Girls Club and Camp Fire USA.



Beta Eta Chapter (Bradley) has been busy with philanthropy projects, such as fundraisers for Habitat for Humanity and Camp Fire USA.

♥ 🏠 **Beta Chi Chapter** (Wichita State) teamed up with a local alumnae chapter to support the Susan G. Komen Race for the Cure cause by participating in the *Mid-Kansas Race for the Cure*. The chapter is also proud to announce its addition of 28 new members!

♥ **Greater Kansas City Alumnae Chapter** got together with recent college graduates for a tapas and wine happy hour. Members plan to show their school pride by wearing school colors and letters throughout the year!

## MISSOURI

♥ **Alpha Delta Chapter** (Missouri-Columbia) members are preparing to celebrate the chapter's 90th anniversary in May. For more information, contact Christy Ehrenreich at christyehren@gmail.com.

♥ 🏠 **Gamma Tau Chapter** (St. Louis) is busy preparing for its philanthropy week benefitting Girls Inc. The chapter also received first place in a *So You Think You Can Dance* competition and won 35 tickets to the show!

♥ **Delta Nu Chapter** (Missouri State) celebrated the arrival of 59 new members with a bounce house and delicious barbecue! They also held a sisterhood retreat at Camp Wakonda.

🏆 **St. Louis Alumnae Chapter** proudly accepted the *Alumnae Chapter Service Award*.

♥ 🏠 Members of **Zelta Delta Chapter** (Southeast Missouri State) banded together when they learned an alumna member was diagnosed with breast cancer. The chapter held a spaghetti dinner and raised more than \$2,000 for the member and breast cancer research!

## NEBRASKA

♥ **Lincoln Alumnae Chapter** members gathered for a night of "dirt dessert," a favorite from collegiate days at **Pi Chapter** (Nebraska-Lincoln).

♥ **Pi Chapter** (Nebraska-Lincoln) proudly welcomed 49 new members, 10 of whom are legacies! The chapter also joined its Panhellenic community in implementing the Release Figure Methodology system, designed to help with recruitment.

## OKLAHOMA

🏠 🏆 **Tulsa Alumnae Chapter** members helped out at a local event called *Wild Brew*. The chapter also nominated a member for the local alumnae Panhellenic's 2011 Woman of the Year award.

## REGION 7

### ARIZONA

♥ **Beta Kappa Chapter** (Arizona State) members celebrated the arrival of 41 new members by holding a sisterhood retreat at JumpStreet; there they worked on chapter goals and jumped on giant trampolines!

♥ 🏠 **Beta Omega Chapter** (Northern Arizona) members are getting to know 42 new members and preparing them for their biggest philanthropy event of the year, *Crescent Classic: Gamma Phi Golf*!

## CALIFORNIA

♥ **Alpha Iota Chapter** (California-Los Angeles) welcomed back members who were traveling the world during the summer. The chapter and its 48 new members are also preparing for many planned activities including *Dad's Day*, sisterhood movie nights and a retreat.

♥ **Bakersfield Alumnae Chapter** members have been seeing a lot of one another. After attending a member's wedding, the chapter helped **Delta Phi Chapter** (California State-Bakersfield) with their preference ceremony.



♥ 🏆 **Beta Lambda Chapter** (San Diego State) helped with a fundraiser at Camp Cahito. Members raised more than \$5,000 for Camp Fire USA and participated in a fashion show during the event.

♥ **Gamma Eta Chapter** (California State-Long Beach) members are enjoying their newly-renovated chapter house. Last year, sisters repainted the exterior and the driveway and updated the back apartment.

♥ 🏆 Along with welcoming 37 new members, **Delta Psi Chapter** (California-Santa Barbara) also won a slew of Greek Awards including *Most Outstanding President of the Year* and *Most Outstanding New Member Program*.

♥ **Delta Theta Chapter** (California Polytechnic State) is excited to welcome its 52 new members! Members are looking forward to the year ahead and numerous planned events.

♥ **Epsilon Gamma Chapter** (San Diego) members enjoyed their annual fall retreat making beaded bracelets with crescent charms and sending postcards to sisters studying abroad.

♥ 🏆 **Epsilon Nu Chapter** (Chapman) is excited to welcome 62 new members! On top of that, members held their *Crescent Classic: Airbands* event to support the Tom's Shoe campaign. For every pair of Tom's Shoes purchased, the organization gives a pair to a child in need. Because members purchased the shoes, 163 children received a pair for free!

♥ 🏆 **Long Beach Alumnae Chapter** assisted with recruitment events at **Gamma Eta Chapter** (California State-Long Beach) and **Delta Delta Chapter** (California State-Fullerton). Members also participated in the *Long Beach 10K Run*, a fundraiser for lupus.

♥ 🏆 **Orange County Alumnae Chapter** members held a meeting to celebrate their many accomplishments at Convention. They also held a successful yard sale and raised more than \$500 to support local collegiate chapters and Camp Fire USA!

♥ **Zeta Theta Chapter's** (Pepperdine) Tiffany & Co. recruitment theme helped bring in 22 new members; the chapter reached Quota and nearly doubled its size overall!



Five former Pasadena Alumnae Chapter presidents gathered to celebrate a recent honor. During Convention, the chapter received the Hall of Fame Award.

## NEVADA

♥ 🏆 **Las Vegas Alumnae Chapter** cooled off and said goodbye to summer with a pool party and barbecue. Members are proud to report they are charter members of the newly-reorganized Southern Nevada Alumnae Panhellenic.

## REGION 8

### BRITISH COLUMBIA

♥ **Alpha Lambda Chapter** (British Columbia) worked very hard at its philanthropy efforts to send 10 girls to summer camp. Members are excited for their *Crescent Classic: Powder Puff Football*; it raised more than \$1,000 last year!

### CALIFORNIA

♥ **Eta Chapter** (California-Berkeley) held its house retreat at a beach with a spectacular view of the Golden Gate Bridge. Sisters bonded, played games and got to know each other during a fun weekend!

♥ **Delta Chi Chapter** (California State-Sacramento) took its 40 new members to a sisterhood retreat in Santa Cruz. While there, many members went on a 5.5 mile hike on Angel Island where they bonded and broke a sweat.

See page 20 for our winning collegiate essay!

♥ 🏆 **Epsilon Omicron Chapter** (California-Santa Cruz) enjoyed a friendly recruitment, joining another sorority to don sassy, red Panhellenic shirts and entice more than 400 women to sign up for recruitment!

♥ **Zeta Gamma Chapter** (Sonoma State) members traveled to San Francisco for a day of bonding and shopping.

### IDAHO

♥ **Xi Chapter** (Idaho) held its own *Emmie Law Run*, in remembrance of a member who was killed participating in the official race in Moscow, Idaho.

### OREGON

♥ **Portland Alumnae Chapter** hosted a *Moonstruck Appetizer Potluck* in September. The event featured a scavenger hunt, and members brought school supplies for children in need.

### WASHINGTON

♥ Thanks to **Lambda Chapter** (University of Washington) alumnae, the chapter's 32 new members will enjoy a new formal living room, date room and hardwood floors!

♥ **Spokane Alumnae Chapter** assisted **Zeta Alpha Chapter** (Eastern Washington) during fall recruitment and connected with area alumnae by hosting a social.



# IN MEMORY

**This list reflects notifications received at International Headquarters from July 1 to September 30, 2010. First, maiden and last names and initiation year are listed for each deceased member.**

## Alpha | Syracuse

Rebecca Eaton Wedgwood, 1921  
Edith Burton Gill, 1926  
Margery Frost Farr, 1927  
Mary Hoyt Reynolds, 1927  
Esther Wynkoop Wood, 1929  
Barbara Stelman Zahm, 1930  
Lucy Torrance Farrington, 1933  
Alice Babcock Cooley, 1934  
Barbara Gere Ackley, 1936  
Cynthia Townsend Colway, 1944  
Pauline Johnson Perry, 1946  
Sylvia Wilcox Glenn, 1956

## Beta | Michigan

Gladys Lewis Eggeman, 1908  
Elizabeth Morrison Gardner, 1927  
Barbara Hewitt Kalif, 1927  
Eleanor Robson Carper, 1930  
Jane McCreedy Bannasch, 1932  
Jane Hyde Pinckney, 1939  
Leona Martin Smith, 1946  
Joanne Paton Strong, 1949

## Gamma | Wisconsin-Madison

Mary Lawton Lyons, 1933  
Charlotte Irgens Spohn, 1942  
Marie Hefferan Walling, 1945  
Mary Warsinske Rodencal, 1949  
Sara Hutchens McCormack, 1957  
Barbara Bolton Schmidt, 1963

## Epsilon | Northwestern

Evelyn Mulnix Swanson, 1945

## Eta | California-Berkeley

Carolyn Means Musto, 1964

## Theta | Denver

Louise Stegner Steinbruner, 1933  
Helen Ringer Hughes, 1937  
Dorothea MacDonald Wagers, 1944  
Judith Counts Price, 1962

## Kappa | Minnesota-Twin Cities

Margaret Kimpel Leddick, 1944

## Lambda | University of Washington

Barbara Philip Echernach, 1943  
Carol Goodrich Halleran, 1948  
Phyllis Steiner Frothingham, 1948  
Bette Badraun Gwathmey, 1948  
Ann Easter Campbell, 1956

## Nu | Oregon

Margaret Earl Pennington, 1937

## Xi | Idaho

Gloria Garfield Zinn, 1940  
Molly McMahon Painter, 1942

## Omicron | Illinois at

### Urbana-Champaign

Kathryn Sellers Howell, 1932  
Helen "June" Markert Harnish, 1938  
Suzanne Hasselquist Christiansen, 1947

## Pi | Nebraska-Lincoln

Marian Hamilton Sewell, 1948

## Rho | Iowa

Joyce Palmer Sitz, 1950

## Sigma | Kansas

Clarice Sloan Belden, 1932  
Emily Allen Witham, 1934  
Betty "Verlee" Reece Stone, 1943  
Carolyn Kanaga Kupersmith, 1973  
Kristen Graham, 2007

## Tau | Colorado State

Maxine Ossola Spencer, 1943

## Upsilon | Hollins

Mary Kelly Rutherford, 1921

## Chi | Oregon State

Betty Stott Cimicata, 1939  
Jacqueline Jaggar Ritter, 1945  
Mildred Darling DeGroot, 1949

## Psi | Oklahoma

Mary Turner Powell, 1923  
Mary "Betty" Krebs Payne, 1928  
Grace Pitchford Killingsworth, 1935  
Florine Cates Davis, 1943  
Jimye "Christine" Woodall  
Hilderbrand, 2005

## Omega | Iowa State

Mary MacDonald Dunlap, 1935

## Alpha Beta | North Dakota

Eileen Hammerel French, 1954

## Alpha Delta | Missouri-Columbia

Opal Hinshaw Fewell, 1933  
Patti Shrader Kennard, 1945  
Carolyn "Dixie" Dixon Willis, 1961

## Alpha Epsilon | Arizona

C. Elizabeth Moore Schneider, 1951  
Jane Brisack Andre, 1956  
Mary Tarnutzer, 1960

## Alpha Eta | Ohio Wesleyan

Julia Rickey Peebles, 1932

## Alpha Mu | Rollins

Patricia Barlowe Reamy, 1954

## Alpha Nu | Wittenberg

June Daniels Holland, 1948  
Joan Little Oviatt, 1949  
Cleva Koch Foerster, 1950  
Janet Jones Toedtman, 1951  
Debra Brennan-Nemetz, 1970

## Alpha Xi | Southern Methodist

Berna Brightwell Newcomb, 1930  
Mary Edwards Northup, 1931  
Ethel Morrow Johnson, 1931  
Pamela Pagenkopf Bacinich, 1982

## Alpha Omicron | North Dakota State

Freida "Josephine" Erickson Wheeler, 1938

## Alpha Pi | West Virginia

Belva Orell Greco, 1959  
Anna Girod Miller, 1960  
Sally Noel Huffman, 1961

## Alpha Phi | Colorado College

Elizabeth Adams Armstrong, 1937  
Lorraine Ellis Anderson, 1946  
Joan Batchelder, 1963

## Alpha Chi | William & Mary

Carol Warrington Leister, 1950

## Alpha Psi | Lake Forest

Geraldine Marquardt Stewart, 1939

## Alpha Omega | Western Ontario

Shirley Cull Thomson, 1950

## Beta Alpha | Southern California

Erica Crystal Patterson, 1985

## Beta Gamma | Bowling Green State

Marion Vongraeve Russo, 1959

## Beta Delta | Michigan State

Lois Weber Martinez, 1948  
Mary Ann Giddings Hood, 1949

## Beta Epsilon | Miami-OH

Elizabeth Clayton Garner, 1954

## Beta Theta | San Jose State

Juanita Kyle Brelle, 1948  
Marilyn Mitchell Hart, 1955  
Virginia "Ginny" Lindquist Tower, 1964

## Beta Iota | Idaho State

Mary Jones Jensen, 1949  
Karen Lavens James, 1963

## Beta Xi | Ohio State

Jean Sharp Smith, 1965

## Beta Omicron | Oklahoma City

Sherre Warren Ishmael, 1966

## Beta Pi | Indiana State

Geraldine "Deanne" Purchase Healy, 1967

## Gamma Zeta | Texas

A&M-Commerce  
Verda Anglin Hogue, 1963  
Sandra Dixon Jeter, 1965

## Gamma Pi | Minnesota

State-Mankato  
Dorothy Winzenburg Blatti, 1968

## Delta Nu | Missouri State

Jacqueline Cabbage, 1981



# Run, Rock 'n Roll

**I**n the early morning hours while sporting pink shirts, a personalized glittery drumstick baton, tightened running shoelaces and nervous laughter, four members gathered in Denver to race for a cause they believe in: Foundation grants-in-aid.

"We've trained, but the effect of running in a higher altitude is our great unknown," Terri Kennedy Briggs (Oregon State) of Texas commented prior to the big day.

Terri was part of a relay team that also included fellow Texas resident and Foundation Chairwoman Linda Daniel Johnson (Vanderbilt), Joanne Shaffer Meloro (Rutgers) of Pennsylvania and Krista Spanninger Davis (Bowling Green State) of Ohio. Each ran one leg of a marathon-length relay in the Rock 'n Roll Denver Marathon last October to log 26.2 miles for sisters in need.

The team's sponsors donated \$525 to help members in financial crisis stay in school. The Foundation grants-in-aid program annually awards emergency funds to student members who must use the grants for education-related expenses. For the past two years, requests for grants-in-aid have exceeded budgeted amounts. Additional donations made sure dozens of sisters could pursue their educational goals. Last year, donors contributed an extra \$18,000 to keep sisters in school.

Cathy Balzer Lorino (Texas Tech) is one of the team's supporters. "I found out about it from Linda's Facebook page, and I wanted to support grants-in-aid because I know there are a lot of wonderful members who need help paying college expenses."



*It's not too late to give toward the marathon runners' goal! Visit our website at [www.gammaphibeta.org/foundation-donations](http://www.gammaphibeta.org/foundation-donations), select "Financial Aid Fund" from the drop-down designation menu and add "Gamma Phi Girls Marathon Team" to the comment box.*

## 1874 Society Celebrates

**W**hat were you doing in 1991? Joining a new giving program through the Foundation called The 1874 Society?

For 28 Gamma Phi Betas, the answer is, "Yes!" As The 1874 Society celebrates its 20th year of generous unrestricted giving, it's the perfect time for you to become a member too!

Join this year by giving at least \$1,874 and get a special gift: a deliciously soft, delicately-colored pashmina scarf inspired by our favorite flower, the pink carnation. Our symbol, the crescent moon, is tastefully embroidered on one end. Those who upgrade their giving within the society or refer another member who joins will also receive this lovely appreciation gift.

**Join The  
1874 Society  
this year and  
receive a  
special gift!**

Additionally, anyone who joins, upgrades or refers a new society member in 2011 will be designated a "20th Anniversary Pacesetter" with recognition each year in the Foundation annual report.

Currently, there are 85 women in this esteemed giving society. Thank you to everyone who, through the years, has made it possible for the Gamma Phi Beta Foundation to provide leadership opportunities, camping experiences and financial aid to the future leaders of the world!

For the list of original 1874 Society members, or to make your 1874 Society gift, please visit our website at [www.gammaphibeta.org/foundation](http://www.gammaphibeta.org/foundation) or contact MaryLynn Rector, director of leadership gifts, at 303.799.1874 x303 or [mrector@gammaphibeta.org](mailto:mrector@gammaphibeta.org).



# MEMORIAL GIFTS

**The Gamma Phi Beta Foundation acknowledges the following individuals and groups who contributed to the Gamma Phi Beta Foundation in memory of a loved one (as of September 30, 2010). Deceased members' first, maiden and last names plus schools and initiation years are listed.**

Lorraine DeHaan Ruby  
(Iowa State, 1954)  
Luciann Smith Bell\*  
Connie Osborne

Jerelyn Claxton Corr  
(Oklahoma, 1955)  
Virginia Stanley

Ann Loomis,  
mother of Carol Loomis  
(Wittenberg)  
Shellie Hodges

Roberta Rogers McNeill  
(Oklahoma State, 1960)  
Elizabeth Worley

Barbara Ivy Ashby  
(Oklahoma State, 1960)  
Elizabeth Worley

Ruth Arlee Fish McLeod  
(Kansas, 1939)  
Jill Anderson

Sue Ann Haines Ott  
(Kansas, 1956)  
Donna Floyd

Patricia Reid MacCrea  
(Syracuse, 1952)  
Jackie Allee

Dillie Otto Tyus  
(Texas-Austin, 1954)  
Susan Studdard

Charlotte Irgens Spohn  
(Wisconsin-Madison, 1942)  
Joanne Bush

Cecelia Crowley,  
mother of Patricia Crowley  
(Northwestern) and  
Kathleen Crowley  
(Northwestern)  
Cathy Griffin  
Frances Griffin  
Shellie Hodges  
Linda Johnson

Emily Allen Witham  
(Kansas, 1934)  
Tucky Hobbs  
Carolyn Simpson  
Joyce Hultgren  
Sue Ann Fagerberg  
Joyce French  
Judy Millen  
Sammy Scott-Stark  
Kay Appleberry

Anna Girod Miller  
(West Virginia, 1960)  
Barbara Bucy

Belva Orell Greco  
(West Virginia, 1959)  
Barbara Bucy

Sally Noel Huffman  
(West Virginia, 1961)  
Barbara Bucy

Lillian Fisher Schnabel  
(Wittenberg, 1953)  
Kathryn Stepleton

Cleva Koch Foerster  
(Wittenberg, 1950)  
Kathryn Stepleton

Elizabeth Adams Armstrong  
(Colorado College, 1937)  
Catherine Spika

Evelyn "Evie" Bane  
(Illinois at Urbana-Champaign,  
1948)  
Margaret Myers

Elizabeth Zimmerman Schueller  
(William & Mary, 1939),  
mother of Susan Schueller Veatch  
(Wisconsin-Madison) and  
grandmother of Sara Veatch  
(Kansas)  
Beverly Gaabo

Jean Sharp Smith  
(Ohio State, 1965)  
Terri Thiede

Dr. James Coats, husband  
of Christine Kelley Coats  
(Auburn) and father of  
Kelley Coats Newell  
(Auburn)  
Montgomery Alumnae Chapter

Charlotte M. Orr, mother of  
Carolyn Orr (Nebraska-Lincoln)  
and Jacqueline Orr Johanson  
(Nebraska-Lincoln)  
Phyllis Choat

Judith Counts Price  
(Denver, 1962)  
Cleveland West Alumnae  
Chapter

John D'Ettorre, husband of  
Suzanne Deweese D'Ettorre  
(Ohio Wesleyan)  
Cleveland West Alumnae  
Chapter

Christine Woodall Hilderbrand  
(Oklahoma, 2005)  
University of Oklahoma Club  
of Tulsa

Linda Lee Jacobs  
(Nebraska-Lincoln, 1968)  
Debra Fischer

Virginia Lindquist Tower  
(San Jose State, 1964)  
Trudi Diffendaffer

Marion Simpler  
Lynn White

Dalton Reineking, father  
of Sarah Reineking Hsiao  
(Oklahoma)  
Karen Urette

Fern Payne, mother of Cheryl  
Payne Haskell (Wyoming) and  
grandmother of Monica Haskell  
(Denver)  
Mimi McMann

\*Intended for the fall 2010 issue.



The Gamma Phi Beta Foundation acknowledges the following donors who celebrated a special event or individual with a gift to the Gamma Phi Beta Foundation (as of September 30, 2010).

## IN CELEBRATION OF...

Jane Piper Gleason as  
Philanthropist of the Year

Kelly Edwards  
Becky Marsh

Mary Frost Frey as  
Philanthropist of the Year

Marilyn Buscher  
Carol Tull  
Marjorie Weaver  
Tamera Cantu  
Mary Alice French  
Janice Sundberg  
Valerie Sullivan  
Marilyn Lageschulte  
Judy Ingersoll

The birthday of Melba Jordan  
Elizabeth Worley

Pi Chapter's accomplishments  
and recognition at  
Convention 2010  
Mitzi Ritzman

Epsilon Delta Chapter's  
accomplishments and recognition  
at Convention 2010  
Mitzi Ritzman

Pi Chapter's scholastic  
achievement during spring  
2010. #1 on campus!  
Way to go!  
Mitzi Ritzman

Kris Baack for sharing her time  
and talents as Education Vice  
President from 2006-2010  
Mitzi Ritzman

Pi Chapter House  
Corporation Board  
Mitzi Ritzman

Amy Dana. Thank you for  
all you do!  
Mitzi Ritzman

The marriage of Julianne Snyder  
to Lonnie Wilson on August 14,  
2010  
Mitzi Ritzman

The marriage of Allison  
McCuddin to Bennett Poss on  
August 6, 2010  
Mitzi Ritzman

The graduation and  
accomplishments of Beth Renner  
from the University of Nebraska  
at Omaha  
Mitzi Ritzman

Lauren Auciello for all her hard  
work as Alpha Alpha's regional  
coordinator  
Elena Wagner  
Laura Kobsa

Karen Gamel Urette as 2010  
Convention Arrangements  
Chairwoman  
Tammy Prock  
Elizabeth Wisor  
Cele Eifert  
Cathy Simon  
Kathy Harn  
Kasey Brinkley  
Linda Arline  
Crystal White  
Sarah Hsiao  
Elizabeth Acomb  
Jane Todd  
Karen Ray  
Janice Martin  
Deborah Kreiger

Ruth Andrea Seeler, M.D., as the  
NICF Outstanding Volunteer of  
the Year for 2010

Mary Vanier  
L'Cena Rice  
Linda Johnson  
Marta Brown  
Cathy Griffin  
Christy Ehrenreich  
MaryLynn Rector

The birth of Lillian "Lily" Elise  
Malony on August 30, 2010,  
granddaughter of Linda Malony  
L'Cena Rice

My "Auntie" Betty Bussey  
Demarke and her dedication to  
Hawaii Alumnae Chapter  
Suzanne Lee

The wedding of former Dallas  
Alumnae Chapter President Holly  
Sumrow and Chris Dorward  
Dallas Alumnae Chapter

The birthday of Penny Witt  
Stamps and her leadership at the  
University of Michigan  
Sharon Brubaker

Bonnie Payne's successful surgery  
Margaret Myers  
Julie Wright  
Sue Schley  
Lynn White  
Tucky Hobbs  
L'Cena Rice  
Ruth Seeler, M.D.  
Joey Stiver  
Mary Ellen Burchfield  
Paula Dean  
Jeannine Kallal  
Kathy Williams  
MaryLynn Rector  
Christy Ehrenreich

The Oklahoma Sooner football  
team on their win over the Florida  
State University Seminoles —  
Boomer Sooner! With love to  
my sisters from Psi Chapter —  
Annabel Jones, Margaret Pape  
and Heidi Doty.  
Julie Eichenberg

My daughter, Devin Barnhart,  
who was initiated at UAfS  
Denise Tremaine

Delta Pi Chapter for another  
amazing recruitment!  
Jeannine Kallal

Nancy Dennis and Jennifer  
Grossman Leopard for all you do  
to support Alpha Upsilon Chapter  
State College Alumnae  
Chapter

Elizabeth Lathram  
Francine Hart

## Foundation Calendar Items

### 1.31.11

Make your In Celebration  
and In Memory gifts  
for publication in the  
spring issue

### 1.31.11

Apply for a scholarship  
or fellowship

### 3.15.11

Submit requests for  
camping supplemental  
funds



# Upholding History

**M**uch has happened between the day Gamma Phi Beta was established in 1874 and today. Culture, technology and life in general have evolved, and the Sorority has evolved as well.

Through the Gamma Phi Beta museum, the Foundation preserves Sorority history with the help of generous donors such as Jane Piper Gleason (Illinois at Urbana-Champaign) and Cheryl Gunter (Tennessee).

## A Mother's Inspiration

In establishing the Marion Kaeser Piper Endowment, Jane honors the woman who introduced her to Sorority life and who herself was a lover of history. "My mother [Marion] very much wanted to see that museum exist," Jane says. "She helped with museum efforts in the very beginning. I knew she would support it were she here."

Endowments such as Jane's are necessary for the museum's survival. The museum houses historic badges, antiques, memorabilia and other tangible pieces of the Sorority's history spanning more than 100 years. The upkeep is no easy task, as Sherry Ochoa-Rounkles (Denver), Gamma Phi Beta Foundation museum curator, can attest to firsthand.

"The new endowment supports the acquisition, preservation and display of museum objects, records and educational materials," Sherry says. "It will join the Helen Ward Pustmueller Museum Endowment in providing funds for a part-time curator as well as supplies, equipment and other expenses needed to maintain the museum and displays."

For Jane, it's important that a portion of her \$50,000 endowment be used to maintain a changing display, showcasing as many items associated with Gamma Phi Beta history as possible. Because of her mother and the giving nature of her family, this cause is near and dear to Jane's heart.

"It's too easy in this day and age for people to electronically eliminate so much of the past," she explains. "Future learns from the past; it shouldn't be erased."

## A Love for History

Keeping with preservation, Cheryl established a similar gift. The Cheryl D. Gunter Sorority History Endowment



Jane Piper Gleason  
(Illinois at Urbana-Champaign)



Cheryl Gunter  
(Tennessee)

**"My mother  
very much  
wanted to see  
that museum  
exist."**

— Jane Piper Gleason

was created to support and fund the preparation, publication and distribution of the Gamma Phi Beta Sorority history book. And Cheryl knows her facts; she's been the international historian for the Sorority since 1995. This endowment is a more permanent way for Cheryl to help maintain Gamma Phi Beta's history.

"I wanted the decisions about how to preserve the Sorority's history to be based on the educational mission of Gamma Phi Beta and not necessarily on financial considerations," Cheryl says.

Cheryl's \$25,000 endowment will focus on two areas: distribution of the actual history book and creation of educational pieces related to Gamma Phi Beta history.

"Our Founders were women of incredible character and wisdom. No matter what the present day circumstances are, we always find ourselves drawn back to their ideals, and I'd love to be part of perpetuating what they stood for," Cheryl explains.

To make a memorial gift, contact the Foundation at 303.799.1874 x307 or e-mail Ryan Severts at [rseverts@gammaphibeta.org](mailto:rseverts@gammaphibeta.org).



# Copper Photographic Plates, 1950s

**T**hose who put together print publications know how much work goes into collecting the graphic elements that bring the written word to life and entices readers to slow down and take a look. Today we receive the majority of our photos digitally and our graphic designer loads them into a computer program where she creates *The Crescent*. Uploading images doesn't take more than a few seconds.

But in the 1950s, technology was not nearly as advanced, and the process for adding photographs to a print piece required extra work, specifically through a technique called photogravure.

Photogravure is a photo-mechanical process developed in the 1830s by original pioneers of photography. They sought to make prints that would not fade by creating photographic images on etched metal plates. The plates could then be printed using a traditional printing press.\*

For Gamma Phi Beta, this process was used to add chapter house photos to the 1952 *Pledge Manual*. This booklet was required reading for every new member and helped her learn rules and regulations, meeting procedures, responsibilities, finances, songs and much more. In one lengthy section of the manual, each of the 68 active Greek-letter chapters has a dedicated page: the chapter name, location, founding date, history, names of other National Panhellenic Conference sororities on campus and, for several, chapter house photos are shown.

Forty-seven copper plates mounted to wood blocks have stood the test of time and are stored in our museum; even today the chapter houses are easily visible and identifiable from the etchings made more than 60 years ago.



*The 1952 revision of the Gamma Phi Beta Pledge Manual, using copper plate images, was supervised by Mary Jane Hipp Misthos (Colorado College).*

## The Multi-Step Photogravure Process

- 1 A continuous tone film positive is made from an original photographic negative.
- 2 A sheet of pigmented gelatin tissues is dipped into a solution for about three minutes.
- 3 After waiting a day, the film positive is placed on top of the gelatin tissue sheet. Then the object is exposed to ultraviolet light.
- 4 The exposed tissue is pressed onto a copper plate and covered with cool water. It is squeezed into place and the excess water is wiped clear.
- 5 Once adhered, hot water is used to remove the paper and to wash away the softer, unexposed gelatin. The remaining depth of hardened gelatin is relative to the exposure and forms a contoured resist on the copper plate. The resist is dried, and the edges and back of the copper are stopped out.
- 6 The plate is etched in a solution bath.
- 7 The plate is cleaned and ready for print.

\*Source: absoluteastronomy.com

## Excerpt from the 1952 Pledge Manual of Gamma Phi Beta

When you accept the invitation of Gamma Phi Beta to become a pledge member, you accept the responsibility of representing the Sorority in whatever circle you may find yourself. It becomes your duty to conduct yourself at all times to reflect credit and honor upon Gamma Phi Beta.



# CAPTURE A CRESCENT



1



2



3



8

Clockwise:

1. Florida: Marissa Hart and Kelsey Musselman (both of Northern Arizona) celebrated the start of summer at Walt Disney World's Hollywood Studios, where they captured a magical crescent.
2. Colorado: Biological sisters Kary Bussewitz Termain (Northern Iowa) and Kyle Bussewitz (Iowa) found a perfect crescent in Colorado Springs while on a family vacation.
3. New York: In the Big Apple, Pia Noguera (California-Irvine) was at the theatre and captured her crescent in the lobby.
4. Italy: Study abroad students Emily Jordan (Clemson) and Jessica Aguirre (California State-Fullerton) traveled through Rome last summer. They found out they were sisters during the trip, and were inseparable from that moment forward.
5. Greece: A map of crescent-shaped island Santorini was the perfect place for Desiree Montalvo and Annie Portwood (both of Chapman) to take a picture on a break from studying abroad last spring.
6. Maine: Kristen Vaccariello (Syracuse) was shopping in Ogunquit with her mom when the two spotted a crescent on a mobile.
7. Delaware: Alix Kraft (Syracuse) found her crescent in Bethany Beach.
8. Florida: During Convention 2010 in Orlando, Melinda Lewis (Idaho) captured a crescent in a shop at Downtown Disney.

Capture a crescent somewhere in the world?  
Send it to [TheCrescent@gammaphibeta.org](mailto:TheCrescent@gammaphibeta.org)! High-resolution photos preferred.



4



7



6



5