

The Crescent

of Gamma Phi Beta

Winter 2010

Have a Healthy 2010!

Crescent Classic

Order of the Crescent

Alumnae Initiates



CONNECT. IMPACT. SHINE.



MAKE A STATEMENT WITH GAMMA PHI BETA JEWELRY.
TO ORDER, VISIT WWW.HJGREEK.COM, OR CALL 1.800.422.4348



Exclusively manufactured for chapter presidents, this special ring is available with a delicate crescent securely mounted on a pink sapphire cushion stone.*



A. Crescent Festoon Necklace, 18", #2664
10K.....\$65, SS.....\$46

B. Snake Chain, 18", #snake
GF.....\$20, SS.....\$15

C. Traditional Lavalier, #L2647
10K.....\$41, SS.....\$24

D. Double Heart Necklace, 18", #SLW989
SS.....\$35

E. Engraved Heart Necklace, 16", #SP008
SS.....\$30

F. CZ Crescent Slide Necklace,
18", MP63502
10K.....\$253, SS.....\$30

G. Carnation Necklace, 18", #MP62361
SS.....\$35

H. Chapter President Ring, #0453
10K.....\$287, SS.....\$130

I. Aphrodite's Heart Ring, #RP2231
(Available in whole sizes 5 – 8 only.)
SS.....\$32

J. CZ Carnation Ring, #5758
(Available in whole sizes 5–9 only.)
SS.....\$35

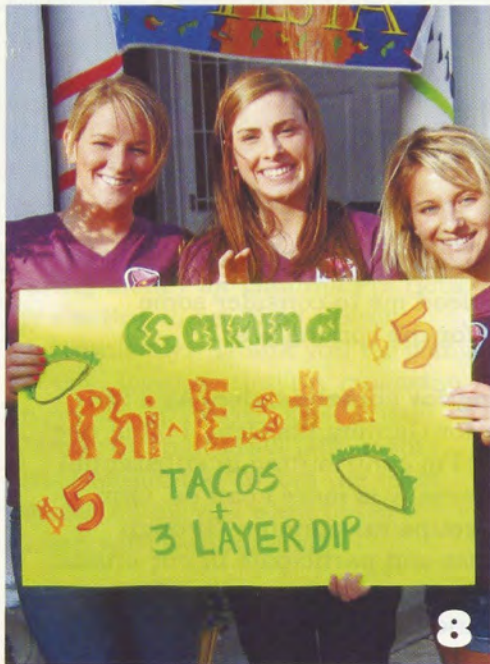
10K–10 karat gold, SS–sterling silver, GF–gold-filled, CZ–cubic zirconia
Prices subject to change.

*Colored stones are synthetic.



The Greek Division of

HERFF JONES®



8



14



22

WINTER The Crescent 2010 Volume 111 Number 1



ON THE COVER

Epsilon Nu Chapter (Chapman) members show Crescent Classic style at their "Survivor"-themed fundraising event.

FEATURES

7 Day of Service

Mark your calendar for March 18, then get inspired to make a difference in a child's life!

8 Crescent Classic

Raise philanthropy funds the fun way! Check out how our chapters are collecting thousands of dollars for camping organizations!

11 Welcoming Alumnae Initiates

Not sure how the Alumnae Initiate Program works? Learn more about how women who join the circle of sisterhood as alumnae members make a significant impact.

17 Focus on Your Health

Health and happiness go hand-in-hand; get the new year off to a great start by taking care of YOU!

IN EVERY ISSUE

4 International President's Letter

5 Mailbox

13 Pacesetter: Jennifer Meyer Schrage, J.D.

14 Out & About

16 Panhellenic Update

22 Spotlight On: Leiva Family

24 Sorority Life

30 In Memory

31 Foundation News

33 In Celebration

34 Memorial Gifts

35 Vintage ΓΦΒ

BONUS

6 Convention News

10 Order of the Crescent

12 On the ΓΦΒ Bookshelf





GAMMA PHI BETA

CONNECT.

IMPACT.

SHINE.

INTERNATIONAL COUNCIL

International President

Linda Lyons Malony

Alumnae Vice President

Mary L. Knaup

Collegiate Vice President

Annabel M. Jones

Education Vice President

Kris L. Baack

Financial Vice President

Amy M. Peterson

Membership Vice President

J.J. Stoll Kaelin

Panhellenic Affairs Vice President

Elizabeth Ahlemeyer Quick

Executive Director

Patricia M. Crowley

GAMMA PHI BETA FOUNDERS

Mary A. Bingham

E. Adeline Curtis

Helen M. Dodge

Frances E. Haven

SORORITY MISSION STATEMENT

Our mission is to foster a nurturing environment that provides women the opportunity to achieve their potential through life-long commitment to intellectual growth, individual worth and service to humanity.



The first of the year always brings a sense of renewal. Flipping to a new calendar year, hearing resolutions, delving into the next semester — all lead me to consider some personal goals for the coming year.

• **Do something for someone else.** As a full-time volunteer for Gamma Phi Beta, I often use the excuse that I'm contributing in substantial ways; but there really is more I can do. Our chapters and groups raise money through *Crescent Classics* and participate in our annual Day of Service to improve the quality of life

for people outside of Gamma Phi Beta, and I am inspired to do the same. (See pages 6, 8-9) And there are many deserving sisters who would benefit from our financial gifts. (See page 31)

• **Read a really good book.** A former English teacher, I sure love a good read! I've just joined a neighborhood book club — a great way to share good books and develop fun neighborhood relationships. Why not try a new book written by a Gamma Phi Beta? (See page 12)

• **Take control of my health.** Make and keep appointments for those annual exams; become better informed about taking care of the one body and mind I've been given — and help my daughter achieve this too. (See pages 17-23)

• **Gear up for Convention 2010.** As International President, I have a lot of work to do to prepare for our Convention in Orlando in June! But beyond the business involved, I'm getting excited about seeing sisters from across the continent and reaffirming all that we share in "The Happiest Place on Earth." Won't you join me? (See page 7)

• **Push toward excellence.** I am so encouraged to see the many ways our organization is embracing higher standards of achievement across the board. (See pages 10-16, 24-29 — well, really the entire issue!) Let's all reach for greater heights! Whether as an individual or as a group, your achievements reflect well on the Sorority.

Our members make a difference every day, all year long. And membership in Gamma Phi Beta makes a difference in my life — every day, all year long. May 2010 be a great year for us all: you help to insure that Gamma Phi Beta is on the GO!

In IIKE,

Linda Lyons Malony

Linda Lyons Malony
International President

Join the Green Team!

Our members are saving trees and saving money for Gamma Phi Beta by electing to get *The Crescent* electronically: "Thank you for going green! I loved getting my magazine in my e-mail inbox!" says Kristen Venzke Turpin, MSW (Minnesota State-Mankato). To join the team, tell the editor you want to Go Green with Gamma Phi!

Snuggly Legacy

My 6-year-old daughter Antoinette put on one of my Gamma Phi Beta sweatshirts to go to the store. She refused to take it off that night because it was so "snuggly." It was wonderful to see my little legacy embracing Gamma Phi letters the way I did as a new member. – Anna Rinaldi Discenzo (North Carolina-Asheville)

Working Girl

I recently interviewed for a marketing coordinator job in Arizona. Turns out that not only is the director of marketing a Northern Arizona University alumna, but a Beta Omega Chapter alumna. I got the job. Crazy how my life is always surrounded by intelligent and successful Gamma Phi Betas! – Lindsey Marie DellaDonna (Northern Arizona)

I wanted to send you a picture from my recent vacation. My mom, friend and I went 63 miles above the Arctic Circle to the small town of Wiseman, Alaska. We are wearing nets because there are so many mosquitoes. Hope you get a laugh from it like we did. – Kelly M. Cantrell (Kennesaw State) with Brittany Cochran and Wanda Cantrell

1950s Camper

I just wanted to thank you for making a difference in my life. As a young girl, I attended your camp for two years. I believe it was in 1958 and 1959. What wonderful memories! – Lynda Campbell Stone, Port Coquitlam, British Columbia, Canada

Like Mother, Like Daughter

In 1975, I was part of the extension team that brought three sororities to Lehigh University, of which Gamma Phi Beta was one! I was the first president of Delta Kappa Chapter (Lehigh) and have so many wonderful memories of my college days with the Sorority! We had no house or dorm space, and it was quite an achievement just to get sororities on campus! Thirty years after my graduation, my daughter, MaryHelen Werley Price, entered Lehigh. She is now serving as president of Delta Kappa Chapter. They have a beautiful house and a strong sisterhood of approximately 75 women! It has been great fun sharing our $\Gamma\Phi\beta$ stories. Some things have changed...and some things are just the same! – Ann Werley Price (Lehigh)



Editor's Notes

Contact me at
TheCrescent@gammaphibeta.org.



Call for Submissions

The Crescent is looking for members in their 20s, 40s, 60s, 80s and up. If you'd like to represent your generation in a future article, let us know!

In the Spring Issue

- Recruitment!
- New chapter installations
- Proposed bylaw changes

Letters to the Editor

Gamma Phi Beta Sorority
Attn: Editor
12737 E. Euclid Drive
Centennial, CO 80111



The Crescent reserves the right to publish any letter addressed to the editor. Letters may be edited for space and clarity.

INTERNATIONAL HEADQUARTERS

12737 E. Euclid Drive, Centennial, CO 80111
Phone: 303-799-1874 Fax: 303-799-1876
Internet: www.gammaphibeta.org
E-mail: TheCrescent@gammaphibeta.org

THE CRESCENT STAFF

Editor: Mimi Burch McMann
(California State-Bakersfield)
Staff Writer: Nicole Nelsestuen
Director of Marketing and Communications:
Nina Dulacki (Colorado College)
Business Manager: Patricia M. Crowley
(Northwestern)

MAGAZINE SUBMISSION DEADLINES

SPRING: January 1 FALL: July 1
SUMMER: April 1 WINTER: October 1

©2010 Gamma Phi Beta Sorority
The Crescent of Gamma Phi Beta (USPS 137620)
is published quarterly by Gamma Phi Beta Sorority,
12737 E. Euclid Drive, Centennial, CO 80111.

Periodicals postage paid at Englewood, CO and
at additional mailing offices. Non-member subscription
price is \$6. Produced in the U.S.A.

POSTMASTER: Send address changes to:
The Crescent, Gamma Phi Beta Sorority,
12737 E. Euclid Drive, Centennial, CO 80111.



MEMBER OF
NATIONAL
PANHellenic
CONFERENCE



FRATERNITY
COMMUNICATIONS
ASSOCIATION

CAPTURE THE MAGIC Convention 2010

Get Inspired!

Nancy Barry, a 25-year corporate veteran, Gen Y expert and author is a dynamic speaker, specializing in giving twentysomethings the information they need to get hired after college.



Based on her book, *When Reality Hits: What Employers Want Recent College Graduates to Know*, Nancy brings extensive business experience, contagious enthusiasm and real world stories. Members already in the workforce will get tips on hiring and training new graduates.

Catch Nancy's keynote address, only at Convention 2010 in Orlando!

Go Shopping!

Alumnae chapters and crescent circles will showcase fabulous Gamma Phi Beta merchandise at the Convention Alumnae Boutique, a must stop at Convention 2010!

Boutique sales include jewelry, handcrafted stationery, magnets, stemware charms and candles. Licensed vendors will also join in and offer even more options.

Remember to stop by the Hat Decor booth and load up on unique trimmings for your Confirmed Conventioneers' hat!



June 23-27, 2010

**The Hilton, located in the Walt Disney World® Resort
Orlando, FL**

Convention Hotel Rates

- \$149 single/double
- \$159 triple/quad
- 12.5% tax not included

CAPTURE THE
MAGIC
Gamma Phi Beta
ORLANDO 2010

Got a Pen?

Writing a letter can touch a child's life.

It's a universal truth: kids away at camp love to get letters from home.

During mail call, they eagerly anticipate hearing their names announced and going forward to accept special notes full of encouraging words: "I'm so proud of you!"; "I hope you're making lots of new friends!"; "I miss you!"

We can bring that same joy to children everywhere by joining with Camp Fire USA to put an encouraging letter into the hands of every kid on Absolutely Incredible Kid Day, Thursday, March 18.

To take part, write letters of love and support and mail them, leave them on pillows, put them in lunchboxes or even send e-mails to show kids how absolutely incredible they are. Don't stop with letters to the incredible children in your life; think about kids you don't

know, too, who could use an encouraging word.

Letters provide children with a tangible source of inspiration and guidance for years to come.

Other ways to honor the spirit of Absolutely Incredible Kid Day involve spending meaningful time with a child or a group of children. To get involved in your community, contact your local Camp Fire USA council or visit their Web site, www.campfireusa.org.



"The beauty of a girl cannot be mimicked, fabricated, or created by human means, it only occurs naturally."

— Pam Callaghan

**GAMMA PHI BETA
SORORITY'S
DAY OF SERVICE IS
MARCH 18.
PARTICIPATE IN
ABSOLUTELY INCREDIBLE
KID DAY OR ANOTHER
KID-FRIENDLY
ACTIVITY!**

Send us photos and a summary of how your members got involved with Absolutely Incredible Kid Day to TheCrescent@gammaphibeta.org.

Members of Epsilon Phi Chapter (Bentley) have a special relationship with a local Girl Scout Brownie troop. Last year, they helped the girls sell cookies on campus and wrote inspirational letters to the troop members, praising them for the work they do with the troop and encouraging them to dream big!

Seven Absolutely Incredible Ways to Celebrate Kids!

- 1 Spread the word.** Promote Absolutely Incredible Kid Day in your February and March publications, on bulletin boards and on your chapter Web site. E-mail letter-writing tips. Get other groups to join you!
- 2 "Adopt" a stranger.** Write and deliver letters to children in a shelter or hospital. Your encouragement will mean the world to a lonely child.
- 3 Make it fun!** Display an Absolutely Incredible Kid Day poster in your break room. Supply funky pens and stationery to encourage participation and stimulate creativity.
- 4 Take a time out.** During a chapter meeting, set aside 10 minutes for members to write a letter to a child.
- 5 Be sweet.** Write an absolutely incredible message in icing on cupcakes or cookies.
- 6 Chalk it up.** Create an outdoor message with sidewalk chalk.
- 7 Go big.** Invite the community to sign a giant letter for a local children's organization. Distribute stationery to participants so they can also write personalized letters to special children in their lives.

Classic Fundraising

Crescent Classic: a signature Gamma Phi Beta fundraising event held annually to raise money and awareness for Sorority philanthropies.

Which of the following events is a Crescent Classic?

- a. Mock Rock Lip Sync Contest
- b. G-Phi-Joe Obstacle Course Challenge
- c. Gamma Phi-esta Taco Feed
- d. All of the above, and many others!

You guessed "d," right?

On campuses and in communities across North America, Gamma Phi Betas are having fun, living out our commitment to service and raising money for charities through Crescent Classic events. The Crescent Classic planning guide, available at www.gammaphibeta.org, includes helpful tips and graphics that can be applied to a variety of events, ensuring a successful plan and effective promotion strategy.



Bowling Tournament

CRESCENT CLASSIC™

What's so great about the Crescent Classic planning guide?

- It allows Gamma Phi Beta to SHINE in a positive and professional light.
- It gives any major fundraiser a uniform name and look.
- It offers customizable options with professionally-designed graphics like the Bowling Tournament example shown.
- It covers all the elements of a well-planned event: timeline, budget, publicity, working with sponsors and participants, expanding efforts to the Greek community and beyond and follow-up.
- Funds are designated to support Camp Fire USA or Girl Guides of Canada, the Gamma Phi Beta Foundation and a local philanthropy of the chapter's choosing. Don't forget to apply to the Foundation for supplemental funds for camping donations by March 15!

Need more convincing?

Take a look at some chapters — large and small — that got a big boost from the Crescent Classic model:

- Epsilon Eta Chapter (Bridgewater State, 67 members) raised \$3,600 at *Crescent Classic: Rock-a-Thon*
- Epsilon Sigma Chapter (Morehead State, 44 members) collected \$1,000 at *Crescent Classic: Moonlight Soccer Tournament*
- Dallas Alumnae Chapter (139 members) earned \$5,000 at *Crescent Classic: Silent Auction*
- Beta Kappa Chapter (Arizona State, 91 members) raised \$5,000 at *Crescent Classic: Cookout for Camp Fire USA*

Get in on the fun way to fundraise! Start planning your chapter's Crescent Classic today; for guidelines and graphics, go to our Web site at www.gammaphibeta.org, then contact your regional coordinator-philanthropy for event approval using Form 95.



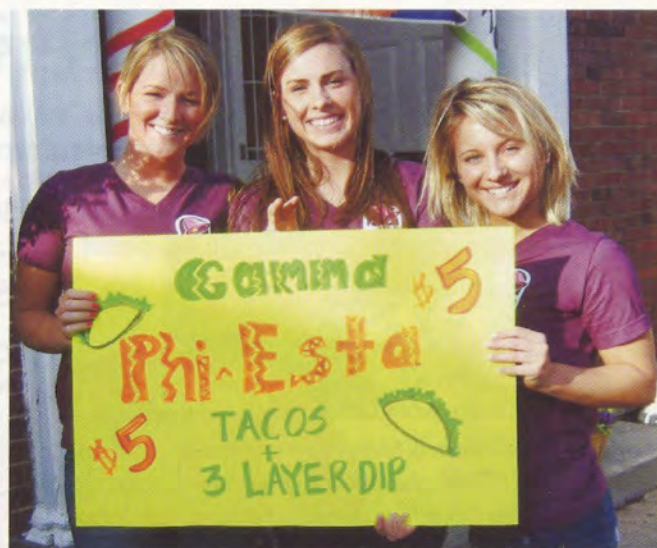
Have a Crescent Classic success story or photos? Send them to TheCrescent@gammaphibeta.org.

Epsilon Lambda Chapter (Alabama-Tuscaloosa) holds a softball tournament in the spring to support camping organizations.

Need more ideas? Rock Climbing Competition • Wing Fling (chicken wing cook out) • Golf • Flag Football • Volleyball • 3-on-3 Basketball • Kickball • Soccer • French Toast Feed • Cake Decorating Contest plus Bake Sale • Spagammi (spaghetti feed) • Book Sale • Video Game Tournament • Chili Cook-off • Bowling • Ultimate Frisbee • Miniature Golf



Beta Psi Chapter (Oklahoma State) added a volleyball tournament to its Crescent Classic: Pancake Palooza. The combined revenue was \$10,000!



Omicron Chapter (Illinois at Urbana-Champaign) members advertise for Crescent Classic: Gamma Phi-Esta. Follow their example and attract hungry college students to food-related events with low ticket prices.

Crescent Classics on Campus

Amazing!

It's clear that *Crescent Classic: Pancake Palooza* has developed a positive reputation and solid name recognition on the Oklahoma State University campus. Incredibly, Beta Psi Chapter raised \$10,000 for Camp Fire USA and a local philanthropy last year! Public Relations Vice President Christina Joines shares their recipe for success:

- **Every member sells at least seven tickets at \$5 each.** At the event, guests enjoy a stack of pancakes and assorted toppings. To maximize profits, get sponsors to fund or supply ingredients in exchange for publicity.
- **The chapter uses Crescent Classic publicity guidelines.** As an extra draw, the school's popular mascot, Pistol Pete, stops by to mingle with guests.
- **To earn more cash, a volleyball tournament is held the same weekend.** Team entry fees add to the overall revenue.

Unique!

Crescent Classic: Gamma Phi Frog Fry helped sisters at Alpha Xi Chapter

(Southern Methodist) combine school spirit with Crescent Classic style.

Members hosted a cookout before their school's football game against long-time rival Texas Christian University (TCU) last fall to raise money for Camp Fire USA. On the menu: fried frog legs, among other offerings. Strange fare, admittedly, unless you know TCU's mascot is the Horned Frog.

"We had 60 frog legs, all of which quickly disappeared, and students were asking for more!" Philanthropy Chair Rachel Singer



reports. "Since many freshmen came, the *Frog Fry* was also a great public relations event for our chapter."

Revenue came from ticket sales (\$5 each) plus the sale of "Fry the Frogs" T-shirts, which students were spotted wearing the day of the big game. The chapter also had sponsors, donations and discounted supplies to boost the bottom line. In this event's first year, Alpha Xi Chapter collected \$2,800!

"Fore" Fun!

Beta Omega Chapter (Northern Arizona) has "hit" upon a winning event they call *Crescent Classic: Gamma Phi Golf*. Team fees and community sponsorships generated more than \$10,000 last fall!

Members volunteer to caddy for the 60 teams that participate in the nine-hole tournament. For fun, they also have a team costume contest. "One team came as four characters from *Peter Pan*, another team was *Mario Kart*," says Amelia Venezia, public relations vice president. "They get really creative."

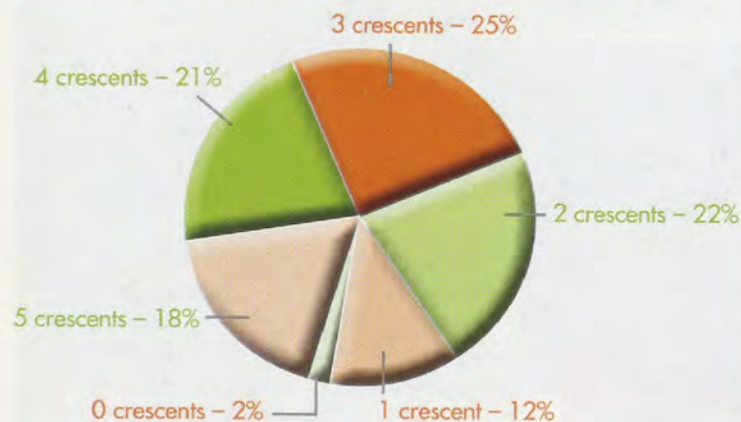
Order of the Crescent

The results are in! During the 2008-2009 academic year, 22 chapters achieved the highest level of **Order of the Crescent**,* demonstrating excellence in the areas of **recruitment, risk management, member education, finance and scholarship**. The crescent symbols represent the level of excellence merited by the listed chapters. Congratulations to our top chapters!



- Region 1** Alpha Upsilon (Penn State)
Delta Tau (Colgate)
Epsilon Eta (Bridgewater State)
- Region 2** Alpha Chi (William & Mary)
Epsilon Iota (Christopher Newport)
Epsilon Sigma (Morehead State)
- Region 3** Gamma Iota (Midwestern State)
- Region 4** Alpha Nu (Wittenberg)
Zeta Iota (Valparaiso)
Zeta Kappa (Southern Indiana)
Zeta Omicron (John Carroll)
- Region 5** Gamma Gamma (Wisconsin-Milwaukee)
Gamma Psi (Northern Iowa)
- Region 6** Pi (Nebraska-Lincoln)
Beta Omicron (Oklahoma City)
Beta Upsilon (Kansas State)
- Region 7** Alpha Epsilon (Arizona)
Beta Lambda (San Diego State)
Delta Delta (California State-Fullerton)
Epsilon Gamma (San Diego)
Epsilon Nu (Chapman)
- Region 8** Xi (Idaho)

Percentage of chapters achieving crescent levels



REGION 2
HAD THE OVERALL
BEST IMPROVEMENT:
CHAPTERS INCREASED
THEIR TOTAL NUMBER
OF CRESCENTS BY
24 PERCENT!
WOW!

Shine

Chapters are awarded one crescent for outstanding achievement in each area. How brightly did your chapter SHINE?



- Region 1: Epsilon Tau, Zeta Mu
Region 3: Zeta Tau, Zeta Psi
Region 4: Beta Delta, Beta Phi, Delta Iota, Delta Omega
Region 5: Gamma, Epsilon, Kappa, Omicron, Omega, Gamma Pi, Delta Pi, Epsilon Tau
Region 6: Sigma, Psi, Beta Psi, Gamma Tau, Zeta Delta
Region 7: Beta Alpha, Delta Theta, Delta Phi
Region 8: Gamma Epsilon
- Region 1: Alpha, Alpha Tau, Delta Kappa, Epsilon Epsilon, Epsilon Phi
Region 2: Epsilon Theta, Zeta Sigma
Region 3: Alpha Xi, Gamma Phi, Delta Omicron, Epsilon Zeta
Region 4: Beta Epsilon, Epsilon Beta, Zeta Nu
Region 5: Beta Eta
Region 6: Theta, Tau, Beta Rho, Beta Chi, Zeta Phi
Region 7: Beta Kappa, Gamma Eta, Delta Lambda, Delta Psi
Region 8: Lambda, Nu, Alpha Lambda, Delta Chi, Epsilon Omicron



- Region 1: Alpha Alpha, Gamma Beta, Zeta Epsilon
Region 2: Epsilon Psi, Zeta Beta, Zeta Eta
Region 3: Beta Mu, Delta Epsilon, Delta Upsilon, Zeta Lambda, Zeta Chi, Zeta Omega
Region 4: Beta Gamma
Region 5: Rho, Gamma Rho
Region 6: Alpha Delta, Gamma Kappa, Epsilon Delta
Region 7: Alpha Iota, Beta Omega, Delta Eta, Zeta Theta
Region 8: Eta, Beta Sigma, Zeta Alpha, Zeta Gamma, Zeta Xi



- Region 1: Delta, Zeta Pi
Region 2: Epsilon Pi, Zeta Zeta
Region 3: Gamma Zeta, Delta Sigma, Epsilon Lambda, Epsilon Mu, Zeta Upsilon
Region 4: Beta Pi
Region 5: Alpha Beta, Gamma Mu, Gamma Omega
Region 6: Delta Nu

* Every academic year, a collegiate chapter is awarded one crescent in each category if all requirements have been met as determined by the managing regional coordinator and regional director. Only chapters that receive the five-crescent rating for the biennium can be considered for the Mary A. Bingham Award as most outstanding collegiate chapter at Convention 2010.

From Strangers to Sisters

When it comes to Gamma Phi Beta, relationships can span generations and turn strangers into sisters.

Although separated in age by more than 40 years, Deborah Hitchcock Dufel (Kentucky) made a special connection with Jean Parcells Brock (Boston, 1931) and Marion Pratt Allen (William & Mary).

"These are two brilliant, wonderful women with sharp minds and huge hearts," Deb says. "Jean joined Gamma Phi Beta during the Depression and Marion joined during World War II. They have a whole different take on sisterhood and what it means to make a lifetime commitment. They are, to me, true Gamma Phis."

Inspired by the older women, Deb renewed her bond to the Sorority at a time when — she confesses — her loyalty had waned. "Jean and Marion reminded me of why Gamma Phi Beta is so great," she says. "Amazing women of all walks and generations are united by common values."

Thanks to her devoted sisters, Deb realized the strength of our Gamma Phi Beta bonds. It wasn't long before she would help a new sister, an alumna initiate, join the circle: Khristyne Keane (Boston) was 41 years old when she contacted Gamma Phi Beta about becoming a member.

Years before, at Stephen F. Austin State University in Texas, Khristyne dropped out of recruitment because of financial constraints. But the Gamma Phi Betas had made a strong impression; as she completed her degrees, started a family and worked, Khristyne never gave up on her dream of becoming a member.

Through International Headquarters, Khristyne became a potential alumna initiate, and connecting her with local alumnae was the next step. At their first meeting, Deb and Khristyne felt an immediate bond. With Deb by her side, Khristyne initiated into Delta Chapter and now shares what women like Jean and Marion have passed down through the years: the warmth of sisterhood.

Deeply affected by our ritual's meaning, Khristyne explains, "What I have inside makes me stand up straighter. I'm more aware of who I am, what I say and what I do."

"Joining Gamma Phi Beta is one of the best things I've ever done in my life."



Deb Dufel and Khristyne Keane at initiation in 2009.

THE GAMMA PHI BETAS HAD MADE A STRONG IMPRESSION ON KHRISTYNE, AND SHE NEVER GAVE UP ON HER DREAM OF BECOMING A MEMBER.

Circle of Sisterhood: Alumnae Initiates

The Alumnae Initiate Program welcomes qualified women directly into alumnae status. For both the Sorority and new members, it's a win-win situation: alumnae initiates enjoy new friendships and opportunities while making significant contributions to the Sorority.

Know a woman who would be a good candidate for membership? Go to our Web site, www.gammaphibeta.org, to download and print a **Potential Alumna Initiate Interest Form #30a** through the **ΓΦΒ** Forms link.

...

Past or current members of another Panhellenic sorority and current employees of Gamma Phi Beta house corporation boards are ineligible. Questions? Contact the alumnae coordinator at lmeech@gammaphibeta.org or 303.799.1874 ext. 309.

"ALUMNAE INITIATES ARE AN EXTRAORDINARILY IMPORTANT ASSET TO GAMMA PHI BETA. THEY HAVE SO MUCH TO OFFER IN TERMS OF SISTERHOOD, AND THEY REALLY EMBRACE OUR VALUES."

— Deb Hitchcock Dufel (Kentucky)

ON THE ΓΦΒ BOOKSHELF



The Pinwheel Girl Takes Flight: Every Woman's Journey through Seven Stages of Transformation

*Written and illustrated by Kendra Kett
(Illinois at Urbana-Champaign)*

Key Action Products, Inc., \$24.95

Once spinning endlessly on a stick, Pinwheel Girl wrests herself free by jumping off the stick and flying with the wind toward her dreams. Women experiencing life transitions will appreciate more than 100 affirmations that lead to profound personal transformation. The book's goal is to empower women to be true to themselves, live the life they love and want and pursue their dreams fearlessly. A great gift book for the special women in your life!



Cloris: My Autobiography

*By Cloris Leachman
(Northwestern)*

*Kensington Publishing Corporation,
\$24.00*

Actress Cloris Leachman's frank look at her life as one of America's most acclaimed and unpredictable entertainers includes details of her experiences on Broadway, in motion pictures and on television. She also gives insight into her personal life as a wife and mother. A must-read for fans!



Pigmentation 2010

*By Patricia Livinghouse
(Southern California)*

Willow Creek Press, \$13.99

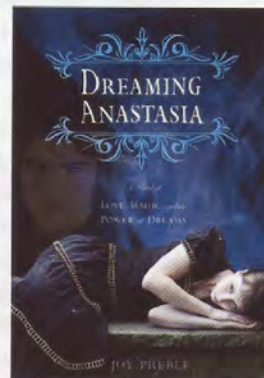
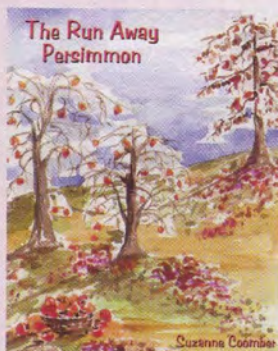
If you like pigs, you'll love this unique calendar. The images, inspired by famous artists, are a whimsical play on classic art using pigs as models. Think 'Starry Piglet' by Vincent Ham Gogh and 'Cubed Ham' by Pablo Piccasso. "At the request of my 87-year-old mom, I started painting pigs two years ago," Patricia explains. "Anything to make Mom happy!"

The Run Away Persimmon

*Written and illustrated by Suzanne
(Sprich) Coomber (San Jose State)*

Authorhouse, \$12.49

Children will be delighted with the story of Peter the Persimmon and his adventures at the farmer's market. After a young girl and her family put Peter in their shopping basket, he dreams of becoming a delicious cookie. But will a mishap at the market change his future? Find out in this playful harvest tale!



Dreaming Anastasia

By Joy (Brown) Preble (Northwestern)

Sourcebooks Publishing, \$9.99

A contemporary fantasy retelling of the disappearance of Anastasia Romanov, *Dreaming Anastasia* is told by three narrative voices: 16-year-old Anne, handsome and mysterious Ethan and Anastasia herself. Written with strong female characters, the novel is a fun read for young adults age 13 and up. For more about the author, visit www.joypreble.com.

Time Out

Member specializes in building peaceful campuses through effective conflict resolution.

The 2007 massacre at Virginia Tech proves the world needs more people like Jennifer Meyer Schrage, J.D. (Northern Arizona).

A recognized authority in campus conflict resolution, Jennifer has devoted her career to encouraging peaceful and just communities. Her expertise spans mediation, restorative justice, preventing disabilities discrimination, promoting diversity and building community.

"I always had a passion for education, law and concepts of justice," Jennifer says. "By combining all three, I found a unique career path that allows me to give back and add value to a campus."

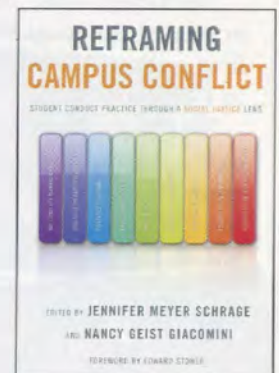
At the University of Michigan, she directs the Office of Student Conflict Resolution. Jennifer and her team offer conflict coaching, facilitated discussion, mediation,

help with restoration following a conflict and educational workshops that teach students to manage conflict in a constructive and proactive manner.

"Providing resources and a spectrum of reasonable resolutions often produces more meaningful, lasting, personal and inclusive outcomes," Jennifer explains.

**MY EXPERIENCE
WITH SORORITY
LIFE WAS EXTREMELY
POWERFUL AND HELPS
FACILITATE MY
WORK TODAY.**

— Jennifer Meyer Schrage



Jennifer owes her career success in part to her membership in Gamma Phi Beta and her work as a collegiate leadership consultant (1996-97). "My experience with sorority life was extremely powerful and helps facilitate my work today," she says. "I learned the importance of appropriately managing conflict; people grow and learn when conflict resolution is done right."

In 2009, Jennifer published *Reframing Campus Conflict: Student Conduct Practice through a Social Justice Lens*. The book examines existing campus conflict principles and offers a vision for empowering today's diverse student population to resolve issues on their own. Following her success as an author, Jennifer was invited to be a featured speaker at the 2009 Conference for the Association for Student Conduct Administration.

"Working in higher education is a privilege and honor," Jennifer says. "I hope my professional work honors the volunteers who made my experiences with Gamma Phi Beta possible."

Jennifer previously served as director of Student Judicial Services and adjunct faculty in business law at Eastern Michigan University. Prior to her career in higher education, she practiced as an attorney at the national headquarters for the United Auto Workers Legal Services Plan.



100 is AmaXIng

Xi Chapter to recognize 1910 installation.

On November 22, 1909, a telegram arrived at the University of Idaho for local sorority Alpha Delta Pi President Mary Meldrum. After reading the message to her sisters, Mary was reportedly overwhelmed and excused herself from the room. Even the house cook dissolved in tears.

The news: After 10 years of petitions, Gamma Phi Beta had accepted the local sorority's request to affiliate. It would become the first national sorority on the university's campus upon installation in February 1910.

This year, Mary and 13 other founding members will be honored at the 100th anniversary of Xi Chapter's installation. Festivities will commence with a reception at the Student Union Building Friday, March 5, and conclude following a continental breakfast Sunday, March 7. At Saturday evening's banquet (for members only), history will come alive as seven decades of sisters are expected to attend along with international and regional Sorority officers.

All Xi Chapter alumnae are encouraged to contact Erin Davis Jessup at gammaphi100@uidaho.edu or 208.596.1443 for more information.

Pink Carnations

Five chapters are celebrating milestone anniversaries in 2010. Congratulations to all!

100 years:	Xi Chapter (Idaho)
50 years:	Gamma Gamma Chapter (Wisconsin-Milwaukee)
10 years:	Zeta Mu Chapter (St. John's) Zeta Nu Chapter (Detroit-Mercy) Zeta Xi Chapter (College of Idaho)

International Travel In 2009, four Gamma Phi Betas from Delta Eta Chapter (California-Irvine) enjoyed studying in Cambridge, England, and sightseeing abroad. "We had the time of our lives and experienced a lot of new things, spreading our Gamma Phi Beta pride everywhere we went!" says Kelley Chan, pictured second from the left.



Alumnae Reunion Ten years after graduating, sisters from Gamma Chapter (Wisconsin-Madison) relived their college days by visiting campus and sleeping in the chapter house. "It was a wonderful weekend, and we decided not to wait 10 more years before we all meet up again!" writes Jenissa Rhodes Carlson.



Party Crashers

Alumnae of Delta Theta Chapter (California Polytechnic State) reunited for a wine-tasting excursion followed by an impromptu visit to the chapter house. "The collegians were preparing for recruitment, and we entertained them by singing 'The Rap' and a few pledge class songs," reports Jen Vogel Wells, pictured third from the right.

Celebrations

Two Gamma Phi Beta chapters celebrated 90 years of sisterhood with events in October 2009.

Psi Chapter has been a mainstay on the University of Oklahoma campus since 1918, an achievement marked by approximately 300 alumnae and collegians with weekend-long festivities. Members enjoyed house tours, historic scrapbooks and a banquet featuring personal recollections of vintage chapter life.

"As collegians, this is a really neat time for us to learn more about our chapter and to get to know our alumnae who helped shape the chapter into what it is today," Jackie Shultz, chapter president, says.

Alpha Alpha Chapter, our first international chapter, was chartered in 1919 at the University of Toronto. For the chapter's 90th anniversary, generations of Canadian sisters joined together to share fond memories. Years of scrapbooks and composites were on display along with beautiful historic treasures brought by Carolyn Pascoe. Special thanks go to the key organizers, Laura Kobsa and Elena Wagner, for hours of planning.



Congratulations on 90 years, Alpha Alpha Chapter!

Alumnae Extension

Kudos to our newest alumnae chapters! Notes of congratulations may be sent to the chapter presidents listed below.

Huntsville Alumnae Chapter (AL)

Installed September 24, 2009

President Morgan Scott
5003 Patriot Park Circle SE
Owens Cross Roads, AL 35763-9187
mrsorganscott@comcast.net

Charleston Alumnae Chapter (SC)

Installed August 30, 2009

President Jennifer Rone
1150 Hungryneck Blvd, Suite C317
Mount Pleasant, SC 29464
jenirone@yahoo.com



Oklahoma Beauties The 2009 Miss Oklahoma Pageant had four sisters from Psi Chapter (Oklahoma) competing: (l-r) Jennifer Hancock, Talia Berning, Brienne Vandiver and Danielle Delso. What a unique accomplishment!



Oklahoma Beauties, Part 2

Beta Psi Chapter (Oklahoma State) cuties Louise Monney Johnson, June Lewis Pentecost and Terri Pulliam Baker pose for a picture in 1979. Thirty years later, the three are treasurer, president and vice president of the Tulsa Alumnae Chapter!



South Carolina Sisters Members of Charleston Alumnae Chapter celebrated their installation August 30, 2009. The chapter is off to a good start with more than 30 sisters committed to a lifetime of sisterhood, community leadership and support for local collegiate chapters.

Be Skin Smart

By Laura J. Bailey (Georgia)

During my senior year of college, I was diagnosed with melanoma *in situ*. I never thought I would become a statistic at age 22, but here I am — a blonde haired, blue-eyed young woman who made some not-so-smart skin choices.

Tanning bed sessions. Laying out by the pool. Suntan lotion. What's wrong with getting a little color?

Well, a lot. When you're exposed to ultraviolet rays from the sun or a tanning bed, the resulting red or brown coloring is the skin's response to injury, according to the American Academy of Dermatology.

The Academy has joined with the National Panhellenic Conference to

educate indoor tanning bed users — 70 percent are female — about the dangers with their "Indoor Tanning is Out[®]" campaign. Getting brown via indoor tanning beds significantly increases the risk of melanoma, the deadliest type of skin cancer. Melanoma kills someone every hour; one million skin cancer cases are diagnosed each year.

I was lucky. A wonderful surgeon removed the cancer cells from my leg, leaving a three-inch scar as a reminder of my careless college days. For the rest of my life, I will see a dermatologist at least twice each year. The experience is also noted on my insurance records, affecting my rates for up to five years.

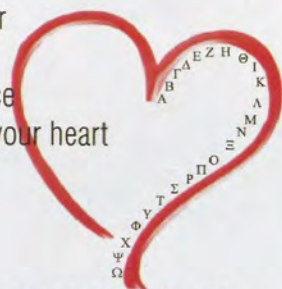
WHAT'S
WRONG WITH
GETTING A
LITTLE COLOR?
WELL, A LOT.



Are tanning beds safer than sun tanning? The fact is, any browning of your skin can lead to melanoma, the deadliest type of skin cancer.

For more information on how you can start an "Indoor Tanning is Out[®]" campaign on your campus, go to www.aad.org/public/sun/toolkit. And make sure to apply some sunscreen on your way out the door — yes, even in winter!

Keep your
fraternal
experience
close to your heart



International Badge Day
March 1, 2010

Join the movement to bring recognition to Greek women's organizations by wearing your crescent with pride on Monday, March 1

Panhellenic Presidents Shine for ΓΦΒ

Congratulations to members serving as Panhellenic president on their respective campuses this year!

Sammi Songle (St. John's)

Sarah Mach (Nebraska-Kearney)

Melissa Lee Murphy (Creighton)

Katie Nemeth (Wittenberg)

Julia Kokavec (Lake Erie)

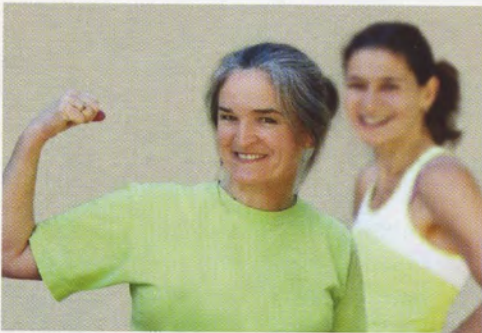


Sarah Mach (Nebraska-Kearney) says, "My main goal as Panhellenic president is to start the process of sorority expansion on my campus."



Have a Healthy 2010

A new calendar with its clean, blank days often prompts reflection.



IF YOU'VE
ALREADY BROKEN
YOUR 2010
RESOLUTIONS,
IT'S OK.
HAVE A
"DO-OVER."



What twists and turns will my life take this year? How will I spend my birthday? What trips will I take? Is a new job/relationship/challenge in store? How can I be happier in the days ahead?

Such musings inspire 74 percent of women to make those famous pledges known as New Year's resolutions, says a survey by dorthy.com.

You may not land a six-figure job or meet your soul mate in 2010, but everyone can resolve to make healthier choices this year. After all, a healthier you is a happier you. And that's a promise worth keeping. ➤





For Women Only

If knowledge is power, keep reading for the power to prevent cervical cancer.



“There are so many ways to start this blog and this is an entirely new thing for me. So, let’s start it like this: I have CANCER (aka “the plague”), that much is confirmed.”

— **Kindra Buchanan McLennan**
(Arizona, 1997), April 2008
kindramclennan.blogspot.com

Be Proactive

- **Ages 9-26:** Get vaccinated as appropriate
- **Age 21 and up:** Get Pap tests annually
- **Age 30 and up:** Get tested for high-risk HPV, if your doctor recommends it

Crazy Cells

Exclusively attacking the female body, cancer of the cervix killed 11 women in America every day last year, according to estimates from the American Cancer Society.

Although there are different kinds of cancer, they all have something in common: wildly growing cells. “Normal cells follow the rules,” explains Layne Kumetz, M.D. (California-Berkeley), who specializes in gynecology and obstetrics. “They respect their life span, divide and grow in an orderly fashion. Cancer cells are rebellious. They over-populate, crowding out normal cells, and they don’t die off. They also invade and conquer other tissue, spreading to areas of the body where they don’t belong.”

Cervical cancer occurs when cells on the surface of the cervix slowly change from normal to pre-cancer and then to cancer. “Most women will have absolutely no symptoms until the disease is advanced,” Dr. Kumetz says.

Risky Business

Women in their young adult years are the most likely to pick up the number one risk factor for cervical cancer: infection by the human papillomavirus (HPV). Ninety-nine percent of cervical cancer cases start with HPV, so prevention of cervical cancer begins with preventing HPV infection.

HPV is a very common sexually transmitted disease; Dr. Kumetz estimates 80 percent of American

women are exposed to it. Because the virus is spread through skin-to-skin contact, even condom use is not 100 percent effective. Dr. Kumetz recommends girls and women ages 9 to 26 get the HPV vaccine, which protects against the most cancer-causing HPV strains as well as 90 percent of strains that cause genital warts. Abstinence remains the surest way a woman can protect herself from infection.

Cigarette smoking, even socially, dramatically increases a woman’s chances of developing cervical cancer — smokers have twice the risk compared to nonsmokers. The chemicals in cigarettes settle in the cervical mucus, accelerating the advancement of pre-cancerous cells to cancer, according to Dr. Kumetz.



- **Schedule a PACE speaker:**
Contact Lori Stone through www.pnwchc.com.
- **Get more information about cervical cancer:**
www.cancer.gov/cancertopics/types/cervical.
- **Find out how Kindra inspired her chapter sister Jaclyn Malka Foutz (Arizona):**
www.humantribeproject.com.
The site enables friends and family to unite, show support and raise money for a loved one facing a health crisis.

JANUARY IS CERVICAL CANCER AWARENESS MONTH.

table is a lot less invasive than cervical cancer treatment." Plus, it could save your life. Lori strongly suggests annual screenings.

Cervix, Meet Pap Smear

More than 11,000 women are diagnosed with cervical cancer each year in the U.S., but the news is not necessarily a death sentence. If detected early, the disease can be treated.

Lori Stone (Sonoma State) started her cancer journey at age 34 after a routine Pap screening and subsequent tests found a seven-millimeter tumor growing on her cervix. Treatment involved

surgical removal of the growth and her pelvic lymph system.

Cancer-free since 2007, Lori is now an advocate for HPV awareness and cervical cancer screenings. She travels to Gamma Phi Beta collegiate chapters on the West Coast sharing her story, educating members about the risks and encouraging regular gynecological visits.

Pap tests "are not our favorite thing," Lori says, "but a few uncomfortable minutes on that

Kindra McLennan had a rare form of cervical cancer that was not caused by HPV. After enduring rounds of radiation, chemotherapy and a complete hysterectomy, Kindra learned the cancer cells had entered her bloodstream and affected other organs which were ultimately untreatable. Cancer claimed her as a victim January 2, 2009, at age 30, after she bravely fought for eight grueling months. In her memory, "love, hugs and good health."



Take Five

Let's agree that money, in fact, does not buy happiness.

There are thousands of wealthy people in the world who are miserable and as many without riches who are joyful and content. Thomas Jefferson, then, may have discovered the secret: "Happiness is not being pained in body or troubled in mind." Research agrees that people who describe themselves as healthy are also happier and more satisfied with their lives (and vice versa).

The Crescent asked wellness experts to give their best health tips in five areas. Take one tip in each category, apply it to your life this year and watch your health, happiness and satisfaction meter go up in 2010!

1 Eat to Live

- Keep a food journal. Many women are surprised by what they eat unconsciously; munching can add hundreds of calories a day. An extra 250 calories per day adds 1/2 a pound per week. Keeping a detailed food journal — even for a week — can be very eye-opening.

- Eat every 3-4 hours. A small meal or snack will keep your blood sugars level and eliminate the urge to overeat. Have a small serving of high-fiber carbohydrates (fruit, whole grains and vegetables) mixed with lean protein or a small amount of heart-healthy fats.

- Stay well-hydrated. Dehydration gives off the same "signals" as hunger so often people eat a snack when they are really just thirsty. Remember, caffeinated drinks actually leave you more dehydrated.

- Plan ahead. Pack meals, snacks and fluids to take with you on the go. Taking your lunch can save you hundreds of calories every week, and bringing healthy snacks is even more

important. Keep a stash of shelf-stable food (individually wrapped) in your desk and restock it once a week.

- Fresh fruits and veggies are best. Avoid too many packaged or processed foods.

- Treat yourself. You shouldn't expect to be perfect all the time. Plan for one splurge meal every week so you won't feel deprived of your favorite foods.

- Cut out sweetened beverages. If you drink one can of sweetened soda pop a day for a year, you'll add up to 12 pounds in empty calories. Replace it with water from the tap which adds fluoride to your diet.

Members of Houston-area alumnae chapters supported breast cancer research by participating in Race for the Cure.





- **Fruits and Vegetables** — www.fruitsandveggiesmorematters.org
- **Calorie Counter** — www.thedailyplate.com
- **Kick the Habit** — women.smokefree.gov
- **Women's Health** — www.cdc.gov/women/sitemap.htm

2 Get Moving

- Daily exercise should be fun! Pick a variety of activities that you enjoy and make it a social event by inviting your friends and family along.
- If you have not exercised for a very long time, remember to start slowly and build up over time. Set attainable short- and long-term goals.
- Don't work through your lunch — get up and go for a walk.
- Just 30 minutes of moderate activity per day will provide health benefits for a lifetime!

3 Check it Out

- Annual medical checkups can save money in the long run and improve your health and overall quality of life. Recommended exams include a Pap smear, mammogram, cholesterol and blood pressure screenings.
- Your dental health is important, too. Go every six months for a cleaning and to take care of any cavities before they become a real pain.
- Keep your vaccinations up to date.

4 Clear the Air

- Smoking is an unhealthy and expensive habit that is difficult to quit. The American Cancer Society suggests four keys to kicking the habit for good: 1) make the decision to quit 2) set a quit date and develop a quit plan 3) establish a plan for dealing with withdrawal and 4) develop a maintenance strategy.



- Ask family and friends to support your decision to quit. They will need to be patient and non-judgmental, especially if you become irritable or even irrational while your body adjusts to the absence of nicotine.
- Plan to reward yourself. After two weeks of smoke-free living, go out for a movie. After a month, go to a nice restaurant (and enjoy how much better the food tastes now!) and so on. For your one-year anniversary, invite loved ones to celebrate your healthier lifestyle!
- Keep a journal with you to write down your thoughts and feelings whenever you have a craving for a cigarette. Remind yourself why you are quitting.
- Drink plenty of water from a straw. It will help flush out the nicotine and satisfy the need to put something in your mouth.

5 Take a Load Off

- Take time to relax and recuperate after a long week.
- Keep a log for a week to determine what stressors recur in your life and how you can handle them in a healthier way.
- Get involved with a cause that's meaningful to you. Helping others takes the focus off our own problems and is rewarding in an intangible way.
- Have enjoyable hobbies and a network of friends to boost your mental well-being.
- Find something to laugh about every day. A healthy sense of humor helps you maintain a positive outlook through life's difficulties. It also relaxes the muscles, relieves stress, boosts the immune system and releases feel-good hormones. So go ahead and giggle!

Thanks to our wellness experts for these fantastic tips!

- Clinical Nutrition Coordinator Jill Oravitz Schuman, RD, CNSD, CSP, CDN (Penn State)
- Health Educator Traci Toone, MS CHES (Texas A&M-College Station)
- Wellness Coordinator Molly Yatso Butz (Wisconsin-Oshkosh)
- Barbara A. Montgomery, MD (McGill)
- Ruth Andrea Seeler, MD (Vermont)



SPOTLIGHT ON Olivia's Second Chance

"I knew the chemotherapy would make Olivia's hair fall out, but I was never ready for my baby to be bald," Laurie says. "Now I appreciate her beautiful big brown eyes."

Sitting stunned in a cramped Army doctor's office last year, Laurie Eichelberger Leiva (Loyola-New Orleans) and her husband heard the devastating news.

Their 2-year-old daughter Olivia had Sanfilippo syndrome, a rare genetic disorder affecting one in 70,000 people. But then, even more unbearable words: There is no cure or treatment. "The doctors offered virtually no support," Laurie says sadly. "We had no hope."

A Mother's Discovery

After the diagnosis Laurie began learning all she could about the disease. Sanfilippo syndrome occurs when the enzymes necessary for breaking down sugar chains in the body are missing or defective. Instead of disposing of the sugar chains, the body stores them. The resulting damage is progressive and patients experience deteriorating mental function, seizures, partial paralysis and ultimately, an early death. The average life expectancy is 10-14 years.

Yet amid all the grim facts, Laurie discovered a glimmer of hope. Doctors at Duke University Medical Center were using umbilical cord blood transplants as a treatment for Sanfilippo syndrome. With a successful transplant, Olivia's deterioration could be halted and

the infused stem cells could re-populate her body.

A Family's Hope

Umbilical cord blood is one of three sources for the blood-forming cells used in transplants (bone marrow and peripheral blood are the others). Collected from the umbilical cord following the birth of a child, the blood provides a potent and noncontroversial source of stem cells used to treat and cure more than 70 life-threatening illnesses.

According to Anne Dowdall Sarabia (Arizona) and Charis Schettino Ober (Arizona), founders of Save the Cord Foundation, cord blood has many distinct advantages for transplant use: It is easy to collect, store and access.

"Because it doesn't harm the baby or interfere with the birthing



process, cord blood banking is backed by groups ranging from the American Academy of Pediatrics to Congress to religious organizations," Charis explains.

A Child's Risks

For Olivia, the transplant was not without risk. Before the transplant, she would undergo chemotherapy to destroy her diseased blood cells. Her immune system would be

Cord blood is discarded as medical waste in 97 percent of U.S. births.



wiped out, making her extremely susceptible to disease. She would require isolation for at least a year.

Regardless of the dangers, doctors estimated the long-term survival rate for the procedure was more than 70 percent, a chance the Leivas were willing to take.

A Day to Remember

Within a year of Olivia's diagnosis, her family had made a cross-country move and her transplant day had arrived. With the healthy stem cells from another child circulating through her body, Olivia is recovering.

"We just need those cells to grow, grow, grow!" Laurie exclaims.

"It's been several months since the transplant, and doctors are extremely pleased with Olivia's progress. She is doing great, and her attitude is remarkable."

Laurie emphatically believes every parent should consider preserving her children's cord blood: "You have the ability to give someone like Olivia a second chance."



Send your well wishes to Olivia and the Leivas at TheCrescent@gammaphibeta.org.



Charis and Anne have never taken a salary from Save the Cord Foundation; all donations are used to promote awareness about the uses and benefits of cord blood.

Saving Cord Blood, Saving Lives

While touring a cord blood bank four years ago, Alpha Epsilon Chapter alumnae Charis Schettino Ober (Arizona) and Anne Dowdall Sarabia (Arizona) met two children whose stories changed their lives. Thanks to cord blood transplants, one child had been cured of leukemia and the other of sickle cell anemia.

Charis and Anne were sufficiently inspired. In 2007, they established a nonprofit organization called Save the Cord Foundation (savethecord.org) to educate pregnant women and the general public about the benefits of saving umbilical cord blood.

"We envision a world where cord blood is seen as a valuable, life-saving medical resource," Charis says. In fact, Save the Cord Foundation is working to mandate the collection of cord blood at hospitals in all 50 states.

Currently, in conjunction with an Arizona hospital, the foundation is initiating a pilot program to provide an on-site health professional who discusses cord blood saving options with expectant mothers. Charis and Anne hope to expand this program nationwide so that cord blood is available to cure sick people everywhere.



Pictured shortly after her diagnosis, Olivia is Mike's "daddy's girl" and a great big sister to baby Peter. The Leivas privately banked Peter's cord blood in case of future need.

SORORITY LIFE

REGION 1

MASSACHUSETTS

♥ ♣ To welcome recent graduates to alumnae life, **Boston Alumnae Chapter** hosted an atypical indoor picnic. Members also bring donations for the Women's Lunch Place to each meeting.

♥ ♣ After bonding at their sisterhood retreat, **Delta Chapter** (Boston) members held a campus-wide kickball tournament with proceeds benefitting the American Cancer Society.

♥ ♣ **Epsilon Eta Chapter** (Bridgewater State) members made tissue paper flowers at a sisterhood event, then surprised local nursing home residents with the bouquets.

♥ ♣ Recruitment workshops paid off for **Epsilon Phi Chapter** (Bentley) when an unprecedented 10 new members joined. The chapter raised nearly \$1,000 for local charities through various fundraising efforts.

NEW JERSEY

♣ **Delta Mu Chapter** (Rutgers) members laced up their sneakers for the *High Speed Chase for the Cure 3K*, benefitting the Cancer Institute of New Jersey.

NEW YORK

♥ ♣ **Alpha Chapter** (Syracuse) volunteered at the *Syracuse Breast Cancer Walk*, *Light the Night Walk* and the *D.A.R.E. Karate Championships*. The chapter also benefitted from a retreat where members participated in team-building exercises and valuable discussions.

♥ ♣ Playing laser tag was a great way for **Epsilon Tau Chapter's** (Rochester) eight new members to bond with initiated members. The chapter coupled athletics with philanthropy at its *Crescent Classic: Relay Races* and raised \$1,000 for camperships.

♥ **New York City Alumnae Chapter** members met for fun get-togethers at the Metro 53 in Midtown and also re-elected their executive board.

♣ The women of **Zeta Mu Chapter** (St. John's) played a fundamental role in their university's *Day of Service* by cleaning local elementary schools.

♥ **Rochester Alumnae Chapter** members had a grand time at their *La-Tea-Da Luncheon*.



Members of Delta Tau Chapter (Colgate) donned Superman costumes for a villains-and-heroes-themed sisterhood retreat to Madison County Children's Camp.

PENNSYLVANIA

♥ **Alpha Upsilon Chapter** (Penn State) was thrilled to welcome 21 new members on Bid Day.

♣ **Epsilon Alpha Chapter** (La Salle) raised autism awareness by taking part in the *Autism Speaks Walk*.

♣ With the help of Pittsburgh Steeler Hines Ward, **Zeta Epsilon Chapter** (Duquesne) was able to raise more than \$2,000 at its annual *Walk Miles for Kids' Smiles* event, benefitting the Children's Institute of Pittsburgh.

VERMONT

♥ **Green Mountain Crescent Circle** enjoyed an entertaining dinner cruise on Lake Champlain.

REGION 2

NORTH CAROLINA

♥ **Asheville Alumnae Chapter** hosted a picnic for area alumnae and collegians.

♥ ♣ The women of **Epsilon Psi Chapter** (North Carolina-Asheville) acted as city tour guides when several International Council members paid a quick visit. Members also volunteered to beautify campgrounds at a nearby camp.

SOUTH CAROLINA

♥ ♣ **Columbia Alumnae Chapter** hosted the second *Parents Weekend Pancake Breakfast* at the **Zeta Sigma Chapter** (South Carolina) house; proceeds from the event fund a dues scholarship for a student member.



Alaska-Region 8
Hawaii-Region 7

Sorority Life!

Alumnae and collegiate news at a glance! What's your region been up to? Send news to TheCrescent@gammaphibeta.org.

Symbol Key:

- ♥ Sisterhood
- ♣ Philanthropy
- 🏆 Leadership
- 📖 Scholarship

♥ Bid Day brought 54 exceptional new members to **Epsilon Theta Chapter** (Clemson); a sisterhood camping retreat was the perfect way for members to get to know their sisters.

♥ 🍷 **Zeta Eta Chapter** (Lander) welcomed 21 new members, the chapter's largest class in five years.

♥ More than 30 sisters gathered at the Center for Photography to install **Charleston Alumnae Chapter**, Gamma Phi Beta's 180th alumnae chapter.

VIRGINIA

♥ 🍷 **Epsilon Iota Chapter's** (Christopher Newport) *Crescent Classic: Moonball Tournament* raised monies for Camp Fire USA. Members also participated in the *Suicide Prevention Walk* at Mt. Trashmore Park.

♥ Members of **Epsilon Pi Chapter** (George Mason) volunteered their time and services at a children's clinic.

♥ 🍷 **Zeta Beta Chapter** (Virginia) and its eight new members celebrated 16 sweet years as a chapter with a birthday party, cake baking competition and commemorative slideshow. Members are also providing tutoring sessions for The Dreamers, a non-profit educational outreach program.



The women of Alpha Chi Chapter (William & Mary) got to know their 27 new members at a Mexican-themed pool party at a local alumna's house.

REGION 3

ALABAMA

♥ Members of **Birmingham Alumnae Chapter** learned money-management skills at a PACE program and got together for their annual *Fall Luncheon*.

FLORIDA

♥ 🍷 **Beta Mu Chapter** (Florida State) and its 63 new members enjoyed thrills at a theme park in Georgia. By focusing on academics, the chapter earned the Most Study Hours Award at the school's *Greek Awards Ceremony*.

♥ **Alumnae of Beta Mu Chapter** (Florida State) reconnected with the past when collegians gave a chapter house tour and provided breakfast.

♥ 🍷 Mickey Mouse greeted members of **Epsilon Zeta Chapter** (Jacksonville) at their sisterhood retreat to Disney World. The chapter also participated in *Buddy Walk*, an event that raises awareness for Down syndrome.

♥ 🍷 **Naples Area Alumnae Chapter** awarded its first collegiate scholarship and met monthly for *Lunch Bunch* dates.

♥ Members of **Tampa Bay Alumnae Chapter** met with several International Council members to catch up and reconnect over lunch.

GEORGIA

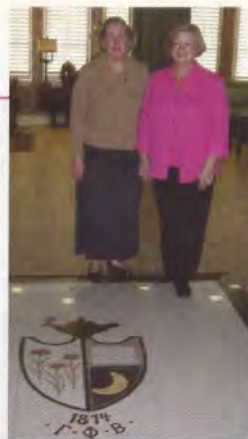
♥ To teach their new members about the Sorority's history, **Delta Omicron Chapter** (Southern Polytechnic State) performed skits with members acting as the Four Founders during their sisterhood retreat at the beach.

♥ 🍷 Burning the midnight oil, **Zeta Tau Chapter** (Emory) members attended the midnight premiere of "New Moon." The chapter also hosted a *Parents Brunch*.

♥ After an outstanding recruitment, **Zeta Omega Chapter** (Kennesaw State) welcomed 69 new members.

LOUISIANA

♥ Hamburgers, sweet treats and a dunking booth helped make **Epsilon Mu Chapter's** (Loyola-New Orleans) first *Crescent Classic: Cookout*, benefitting Camp Fire USA, a huge hit.



An inlaid stone crest is the focal point of Gamma Phi Chapter's (Auburn) new entrance. Pictured are Dorothy Cordell and Ann Neighbors.

Long Journey Home

By Dorothy Butler Cordell (Auburn), HCB President, Gamma Phi Chapter

It is the end of a long journey. I'm sitting in our new chapter room where the finishing touches have been put into place. As I wait for the chapter president to arrive, I think about what it took to get here.

Several years ago, Auburn University administrators notified Gamma Phi Chapter's house corporation board that all 17 campus sororities would be displaced from our dorm facilities and relocated to a new dorm complex yet to be constructed. Each chapter was allocated a chapter suite consisting of a large meeting room, kitchen, bath and office as well as bedrooms, additional baths, a lounge, study room and storage areas upstairs. This was exciting news!

Our house corporation board (HCB) got right to work on fundraising, design, a reunion, mailings and seemingly endless details. I cannot begin to describe all the support that came from the chapter, alumnae, parents and International Headquarters.

As Chapter President Kim Krietemeyer comes through the door, her expression makes it all worthwhile. If you are near Auburn, Alabama, please come visit our new home. We'll be proud to give you a tour!

Special thanks to Gamma Phi Chapter's house corporation board, especially Ann Griffin Neighbors (Auburn), HCB vice president, and her husband Murray. The untold hours we have spent working on this project together have been a joy! Questions? E-mail augpbalum@yahoo.com.



Delta Upsilon Chapter (Georgia) members created a Willy Wonka-themed Bid Day to welcome their 57 exceptional new women.

TEXAS

♥ **Dallas Alumnae Chapter** members got a preview of trendy seasonal looks at **Alpha Xi Chapter's** (Southern Methodist) *Fall Back Fashion Show*. Alumnae also took their children to the chapter house for Halloween festivities.

♥ 🏆 Exceeding quota, **Gamma Zeta Chapter** (Texas A&M-Commerce) was proud to have nine new members join the chapter.

♥ Decorating divas of **Houston Alumnae Chapter** picked up tips while touring Frogworks Interior Design Studio.

♥ **North Houston Alumnae Chapter** and **Houston Alumnae Chapter** combined forces to support the Susan G. Komen Foundation in *Race for the Cure*, raising more than \$1,000 for cancer research.

♥ 🏆 As formal recruitment came to a close, **Zeta Lambda Chapter** (Texas A&M-Corpus Christi) was thrilled to surpass quota and lead the campus in recruitment results.

♥ 🏆 Support from **Alpha Xi Chapter** (Southern Methodist) and area alumnae helped **Zeta Rho Chapter** (Texas A&M-College Station) achieve quota for the first time since its colonization in 2004. The environmentally-conscientious chapter also adopted a street and regularly participates in roadway clean-ups.

♥ 🏆 **Zeta Chi Chapter** (Texas Christian) and its 54 new members held a sisterhood event at a wax museum. More than 16 teams competed in the chapter's second *Crescent Classic: Kickball Tournament*, benefitting Camp Fire USA. Additionally, many members traveled to the University of Arkansas-Little Rock to help with extension efforts.

♥ 🏆 Surpassing quota with 24 brilliant women, **Zeta Psi Chapter** (Texas-San Antonio) had the best recruitment results on campus. The chapter planned its first *Movie on the Lawn* philanthropy event and its annual *Gamma Phi Premiere Date Night*.

REGION 4

MICHIGAN

♥ **Beta Delta Chapter** (Michigan State) members discovered the power of yoga during a PACE program and are now enrolled in yoga classes.

♥ Braving the wilderness, members of **Delta Omega Chapter** (Oakland) took their 20 new members on a camping sisterhood retreat.

♥ 🏆 Recruitment workshops and a visit from a collegiate leadership consultant helped **Zeta Nu Chapter** (Detroit-Mercy) achieve the University's top recruitment results, with 16 new members.

INDIANA

🏆 Implementing fresh recruitment ideas helped the women of **Beta Pi Chapter** (Indiana State) nearly double their chapter size and exceed campus quota.

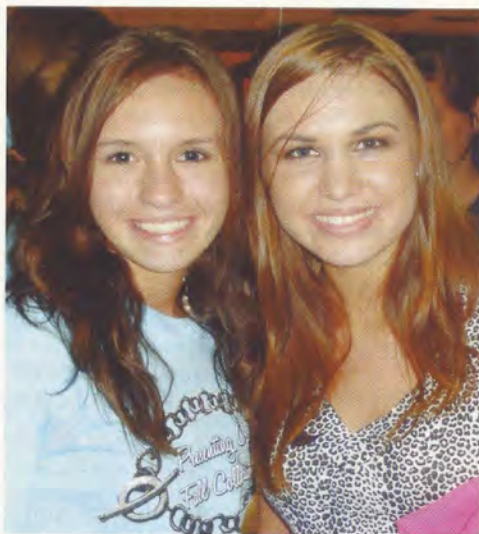
♥ 🏆 New members of **Zeta Iota Chapter** (Valparaiso) saw our commitment to camping during a chapter visit to Camp Tannadoonah, a Camp Fire USA camp in Michigan. The women also toured an orchard to pick fresh fruit.

OHIO

♥ 🏆 **Alpha Nu Chapter** (Wittenberg) hosted a cookout for other Greeks during *Greek Week* and raised awareness for Lou Gehrig's disease by participating in the *Amyotrophic Lateral Sclerosis Charity Walk*.



To honor a chapter sister's memory, alumnae of Alpha Beta Chapter (North Dakota) participated in the Dru Sjodin Purple Elephant Walk.



Gamma Gamma Chapter (Wisconsin-Milwaukee) members serenaded the chapter's 22 new members on Bid Day.

With new house renovations complete, **Beta Gamma Chapter** (Bowling Green) members showed off their school spirit at a University football game. Bid Day brought 11 outstanding women to the chapter.

Members of **Beta Epsilon Chapter** (Miami) enjoyed a challenging day of rafting with their fathers over *Dad's Weekend* and hosted their annual *Preppy Sports* philanthropy event to benefit camping for girls.

Bid Day brought 14 exceptional members to **Eta Alpha Chapter** (Lake Erie). To celebrate their success, members had a fun night out with dinner and roller skating. Preparations for the chapter's first *Crescent Classic: Glow-in-the-Dark Volleyball Tournament* are ongoing. Eta Alpha Chapter was installed on November 21, 2009.

REGION 5

ILLINOIS

Alumnae of **Beta Eta Chapter** (Bradley) had a great time reconnecting during their third annual *Girls Weekend*.

After hosting a Camp Fire USA fundraiser dinner, members of **Chicago Northwest Suburban Alumnae Chapter** strutted down the runway at the *Stylin' for Scholars Panhellenic Fashion Show and Raffle*.

With house renovations nearly complete, **Epsilon Chapter** (Northwestern) has been busy gearing up for winter recruitment.

IOWA

Cedar Rapids Alumnae Chapter's 46th Annual Garden Party Flower Sale raised \$1,200 for camperships. Members presented the check at Camp Hitaga, a Camp Fire USA camp, after touring the grounds.

Rho Chapter (Iowa) teamed with the Iowa City Police Department at its *Crescent Classic: Jail Bail*, to raise philanthropic funds and teach students about campus safety.

With a full house of new members, **Omega Chapter** (Iowa State) has been busy preparing for *Homecoming Week*. Members also volunteered at a campus blood drive and had a *Father-Daughter Cookout* before a University football game.

MINNESOTA

Bid Day brought 14 shining new members to **Gamma Pi Chapter** (Minnesota State-Mankato).

Gamma Mu Chapter (Minnesota State-Moorhead) and its 11 new members created a skit for *Homecoming Week*, participated in the parade and attended *Greek Formal* together.

NORTH DAKOTA

Alpha Beta Chapter (North Dakota) welcomed alumnae to the chapter house for *Homecoming* festivities. A sisterhood retreat to a nearby park included games, a talent show and goal setting.

WISCONSIN

Gamma Chapter (Wisconsin-Madison) members participated in the University's all-night *Dance Marathon*, raising funds to conquer pediatric cancer.

REGION 6

COLORADO

Members of **Colorado Springs Alumnae Chapter** celebrated *Founders Day* with a tea party, travelled to the Air Force Academy for a holiday concert and went skiing in the Rocky Mountains.



Members of Balboa Harbor Alumnae Chapter and Greater Orange County Alumnae Chapter met for an adventurous play date with their young children.

♥ Denver Alumnae Chapter

hosted their *Fall Kick-Off* at a local art gallery where International Council dropped in to visit. Members helped **Theta Chapter** (Denver) and **Beta Rho Chapter** (Colorado-Boulder) with recruitment, and then gathered for a pink-themed *Founders Day* celebration.

♥ **Theta Chapter** (Denver) members supported their university's first *Student Engagement Day*, providing tours of nearby volunteer sites to interested students.

♥ **Tau Chapter's** (Colorado State) western-themed Bid Day included a barbecue dinner and an inflatable obstacle course for its 33 new members. Members also enjoyed a day at the ballpark.

♥ Yee-haw! The women of **Beta Rho Chapter** (Colorado-Boulder) donned their finest western gear to line dance and ride mechanical bulls. Following fall recruitment, an amazing 78 women joined the chapter.

KANSAS

♥ **Beta Chi Chapter** (Wichita State) celebrated by hosting a *Faculty Dinner*. The chapter also proudly had 25 new members join.

MISSOURI

♥ **Alpha Delta Chapter's** (Missouri-Columbia) *Crescent Classic* Cup soccer tournament scored \$8,000 for Camp Fire USA and Hearts for Huntington. The chapter was thrilled to achieve the fourth highest GPA out of 41 Greek organizations on campus and welcomed 70 new members.

♥ Members of the newly re-installed **Delta Nu Chapter** (Missouri State) completed their first formal recruitment and boogied for 12 straight hours at *Dance Bear-a-Thon*, benefitting the Children's Miracle Network.

♥ **Greater Kansas City Alumnae Chapter** members picked up seasonal decorating tips and supported breast cancer survivors during Breast Cancer Awareness month.

♥ Chopsticks, tea and Asian-inspired dishes were enjoyed at **St. Louis Alumnae Chapter's** themed book club meeting.

♥ **Zeta Delta Chapter** (Southeast Missouri State) members explored the St. Louis City Museum with 25 exceptional new members and worked on a Battleship-themed float for Homecoming.

NEBRASKA

♥ Recruitment was a success for the women of **Pi Chapter** (Nebraska-Lincoln) in their newly renovated and modernized chapter house.

♥ **Epsilon Delta Chapter** (Creighton) celebrated *Family Weekend* with a silent auction and dinner to benefit Camp Fire USA, raising \$2,900.

OKLAHOMA

♥ To celebrate 90 years on campus, **Psi Chapter** (Oklahoma) and its 65 new members had a huge birthday bash.

♥ **Beta Omicron Chapter** (Oklahoma City) shared Homecoming, sisterhood events and the chapter's *Crescent Classic: Pancake Palooza* with 28 new members.

REGION 7

ARIZONA

♥ **Alpha Epsilon Chapter** (Arizona) and 72 new members sported 80s-inspired workout gear at a roller skating sisterhood retreat. They also hosted an all-you-can eat *Spagammi Dinner* for Camp Fire USA.

♥ Increased academic efforts helped **Beta Kappa Chapter** (Arizona State) exceed the all-women's GPA average on campus. The chapter and 55 amazing new women attended a Panhellenic-sponsored leadership conference, which focused on bettering the Greek community.

♥ **Beta Omega Chapter** (Northern Arizona) members got to know 30 new members during a day trip to Sedona and are making preparations for date dashes, initiation and their *Crescent Classic: Golf Tournament*.



More than 60 alumnae of Xi Chapter (Idaho) reunited for three days to golf, raft down the Salmon River and share stories of their pasts.

♥ Lending a hand to their collegiate sisters, members of **Phoenix Alumnae Chapter** helped **Beta Kappa Chapter** (Arizona State) with recruitment and later attended a Bid Day karaoke event to meet all 55 new members.

CALIFORNIA

♥ ♠ Members of **Bakersfield Alumnae Chapter** served dinner at a homeless shelter and helped **Delta Phi Chapter** (California State-Bakersfield) with recruitment.

♠ ♠ With 51 new members helping out, **Beta Alpha Chapter** (Southern California) raised more than \$3,600 for Camp Fire USA and Camp Troy at its first *Crescent Classic: Handball Tournament*. The chapter also achieved the second highest overall GPA for all Greek organizations.

♥ **Beta Lambda Chapter** (San Diego State) hosted *Family Weekend*, inviting all 49 new members and their families to learn about the Sorority and meet active members through fun events and activities.

♠ More than 250 people did the Fandango at **Gamma Eta Chapter's** (California State-Long Beach) *Gamma Phi-esta* philanthropy event which raised \$1,400 to support camping for girls.

♥ ♠ A sunset harbor cruise, fashion show and mother-daughter lookalike contest were part of **Epsilon Gamma Chapter's** (San Diego) *Mom's Weekend*. The chapter also took first place in the *Ballin' for Children Basketball Tournament*, raising monies for elementary schools.

♥ ♠ Members of **Epsilon Nu Chapter** (Chapman) enjoyed a sisterhood retreat at the beach. The chapter's "Survivor"-themed *Crescent Classic Challenge* brought in \$4,000 for Camp Fire USA.

♥ **Inland Empire Alumnae Chapter** hosted Bid Day festivities for new members of **Delta Lambda Chapter** (California-Riverside) and celebrated Founders Day royally at Benedict Castle.

♥ **Long Beach Alumnae Chapter** members tested their video game skills at Wii parties and helped **Gamma Eta Chapter** (California State-Long Beach) and **Delta Delta Chapter** (California State-Fullerton) with recruitment.



More than 20 teams competed in Beta Sigma Chapter's (Washington State) *Crescent Classic: Beach Volleyball Under the Crescent Moon Tournament* which raised funds for Camp Fire USA.

♥ **Pasadena Alumnae Chapter** members were thrilled to see new local alumnae at their *Fall Kick-Off Social*. They also joined local collegians for Gammie breakfasts, book club meetings and a *Founders Day Tea*.

♥ **Santa Barbara Alumnae Chapter** members and their families enjoyed a picnic potluck near the Pacific Ocean. Members also assisted **Delta Psi Chapter** (California-Santa Barbara) with recruitment.

♥ Members of **South Bay Alumnae Chapter** provided recruitment support for several collegiate chapters and enjoyed a joint Founders Day celebration with area collegians and alumnae.

REGION 8

BRITISH COLUMBIA

♥ A pre-recruitment retreat at an alumna's lake home helped **Alpha Lambda Chapter** (British Columbia) members to prepare for recruitment and bond. Following Bid Day, the women held sisterhood events like T-shirt making, relay races and Sorority cheer workshops.

CALIFORNIA

♥ **Eta Chapter** (California-Berkeley) kicked off the school year by hiking to a local landmark and welcoming 36 exceptional women to the chapter.

♥ **Sacramento Valley Alumnae Chapter** continues to grow by inviting area alumnae to *Meet and Greet Barbeques* and *Alumnae Formals*. Members have also connected with **Delta Chi Chapter** (California State-Sacramento) at sisterhood events.

IDAHO

♥ With their best recruitment to date, **Xi Chapter** (Idaho) welcomed 31 outstanding new members. Sisters are busy preparing for the chapter's centennial anniversary celebration in March.

OREGON

♥ **Corvallis Alumnae Chapter** hosted an alumnae tailgate party before a football game at Oregon State University.

WASHINGTON

♠ **Lambda Chapter** (University of Washington) and 32 outstanding new members joined in Sigma Chi Fraternity's Derby Days to raise funds for the Make A Wish Foundation. Thanks to their house corporation board, members are enjoying a remodeled chapter house.

IN MEMORY

This list reflects notifications received at International Headquarters from July 2, 2009, to September 30, 2009. First, maiden and last names and initiation year are listed for each deceased member.

Alpha | Syracuse
Lisa Crowley, 2007

Beta | Michigan
Gertrude Sawyer Howell, 1933
Joyce Oetjens Wambold, 1958

Gamma | Wisconsin-Madison
Shirley Budzien Matchette, 1948

Epsilon | Northwestern
Janet Fairbairn King, 1935
Cynthia Koerber Patterson, 1948
Jacqueline Furst Lapan, 1954

Eta | California-Berkeley
Jeanne Smith-Wild Arnold, 1933
Marcia Gray Doty, 1945

Theta | Denver
Blanche Taussig Cowperthwaite, 1927
Vera Vessey Andrews, 1939
Virginia Qualls Thomson, 1940
Calvina Morse Vaupel, 1941
Barbara Bidwell Winn, 1942
Maxine Davidson Booker, 1946

Kappa | Minnesota-Twin Cities
Mary McLearn Conde, 1944

Nu | Oregon
Marjorie Smith McCredie, 1934
Jeannette Jones, 1935
Ann Carson Steiver, 1950

Xi | Idaho
Jean Taylor DeRoeth, 1945

**Omicron | Illinois at
Urbana-Champaign**
Jeannette Jefferson Jansky, 1946

Pi | Nebraska-Lincoln
Martha Hamilton Dickey, 1949
Deloris Fulton Holbert, 1958

Sigma | Kansas
Elaine Falconer Wilson, 1945
Carol Nelson Frey, 1962

Tau | Colorado State
Amy Flower, 1988

Upsilon | Hollins
Carolyn Jones Saunders, 1924

Psi | Oklahoma
Hila Brown Johnson, 1919
Ida Hoover, 1919
Mary Carselowey Maulding, 1941
Susan Cummings Martin, 1957

Omega | Iowa State
Edna Carlson Gord, 1922
Patricia Anderson Hootman, 1943
Mary Daine Sharp, 1950
Mary "Marci" Merchant Lower, 1956

Alpha Beta | North Dakota
Louanna Lunseith White, 1942
Elsie Brown Wilkin, 1945

Alpha Gamma | Nevada-Reno
Doris Mack Duffey, 1950

Alpha Delta | Missouri-Columbia
Norma "Bunny" Welborn Corbin, 1946
Barbara Barse Henderson, 1946
Sally Brownfield Marshall, 1949

Alpha Epsilon | Arizona
Sara Lee Clayton, 1944

Alpha Zeta | Texas-Austin
Evelyn Willman-Welborn, 1951

Alpha Eta | Ohio Wesleyan
Eleanor Coddington Bennett, 1940

Alpha Iota | California-Los Angeles
Helen Weyman Loveland, 1940
Lois Link Blackburn, 1945

Alpha Nu | Wittenberg
Nancy Schmidt Furay, 1945

Alpha Omicron | North Dakota State
Rosemary Lee Finnegan, 1936

Alpha Rho | Birmingham-Southern
Juanita Bedingfield Lackner, 1946

Alpha Tau | McGill
Doreen Fairman Marks, 1949

Alpha Upsilon | Penn State
Wilma "Dee" Baldwin Crane, 1944
Claire Van Deusen Wilson, 1957

Alpha Chi | William & Mary
Ruth Proudman Biermann, 1933

Alpha Psi | Lake Forest
Mary Collins Huber, 1945

Beta Alpha | Southern California
Ann Christie Shaw, 1948

Beta Delta | Michigan State
Alicia "Maerose" Nelson Walton, 1947
Agnes Pulling DeHaven, 1947

Beta Epsilon | Miami-OH
Shirley Shrider Lloyd, 1947

Beta Iota | Idaho State
Karen Pickering Dejerf, 1953

Beta Kappa | Arizona State
Cecile "Cece" Cook, 1979

Beta Sigma | Washington State
Rosetta Roodhouse Erb, 1956

Gamma Xi | Tennessee-Knoxville
Marcia Parker, 1973

Delta Gamma | Nebraska-Omaha
Mickey Walmer Burrell, 1972

Remember your sisters with
a memorial gift to the
Gamma Phi Beta Foundation.

www.gammaphibeta.org

Go for the Gold

If there was an Olympic medal for generosity, you'd get the GOLD by giving \$1,000 (unrestricted) to the Foundation. As a Gold Leader, your gift will ensure Gamma Phi Beta's leadership, camping and financial aid programs continue to impact women and girls for a lifetime!

It's no secret the economy has affected the financial situations of our collegians; the Foundation is seeing unprecedented increases in applications for scholarships and fellowships. While many received funds from our generous donors last year, 80 deserving applicants were unfortunately turned away.

In 2010, we'd love to say "yes" to all our sisters in need. You can make that happen with your Gold Leader donation. Contact MaryLynn Rector, director of leadership gifts, at 303.799.1874 or mrector@gammaphibeta.org.



Help sisters reach their educational goals with a Gold Leader (\$1,000) donation to the Foundation! Monthly payment plans are available.

I am where I am today in large part because Gamma Phi Beta gave me opportunities, support, challenges and training. I invite all whose lives were enriched by Sorority experiences to join me in paying it forward!

- Karen Hedine (University of Washington), president/CEO of Micronics, Inc.

CONVENTION 2010 COUNTDOWN

Call for Auction Items

Convention 2010 will soon be here! The Foundation is again offering a silent auction and opportunity drawing to support our philanthropic efforts. Donations are needed! Contact dgstreet@aol.com or awilliams@aemrc.arizona.edu.

- Vacation home stays
- Jewelry
- Tickets to sports or theatre events
- Spa packages
- Gift cards to nationally known businesses (\$25 or more)
 - Travel vouchers
 - Electronics — laptops, iPods, digital cameras
 - Accessories — fashion purses (such as Coach), scarves, belts
 - Gamma Phi Beta goodies — Items from our licensed vendors are welcome! Go to the Merchandise link at www.gammaphibeta.org for a complete list.
 - Cash — Let the Foundation do the shopping!



By Invitation Only

It's not too late to get in on the fun of Convention — especially when the Foundation is hosting two special events for our donors! To find out how you can qualify to attend the Friends of the Foundation breakfast and The 1874 Society event, contact MaryLynn Rector (mrector@gammaphibeta.org or 303.799.1874).

And remember, our donors receive recognition ribbons for their Convention name tags with qualifying gifts to the Foundation! How many ribbons will you collect this year?

Convention Crescent Classic

Keep an eye out for more information about the second annual Convention *Crescent Classic*! Join sisters from across North America walking in Orlando for a great cause — camping for girls! Do you have family and friends who could sponsor you with a donation? Let them know their gifts will support Camp Fire USA, Girl Guides of Canada, a local camping organization in Florida and the Foundation. More information to follow!

Gorilla Hugs

Surrogate mom shows baby apes the ropes

At age 84, valued Foundation donor Dorothy “Dotty” Taylor Henderson (Penn State) was crawling around through piles of scattered straw as a baby gorilla watched her every move. It’s a typical day for Dotty, who is anything but typical. For the past 29 years, she has cared for and taught abandoned baby gorillas to be, well, baby gorillas.

Gorillas in her Midst

Dotty discovered a love for gorillas while doing primate observation work at the Columbus Zoo and Aquarium in 1980: “I held a baby, and he put his little arms around me and gave me a kiss. I was hooked instantly!”

As a surrogate gorilla mom in the primate nursery, Dotty responds to the physical and emotional demands of the infants. Unlike wild gorillas, who learn from their mothers, orphaned gorillas in captivity have no role models and will become afraid of their own kind without proper rehabilitation.

“We teach them to eat, crawl, interact and climb,” Dotty says. “When they are sick, we stay up through the night as you would with an infant, consoling and comforting them.”

Struggle for Survival

An endangered species, gorillas require vigilant conservation efforts. East African gorillas are constantly threatened by intense poaching, logging and the bushmeat trade. In fact, researchers believe gorillas may eventually only survive in captivity, making certified caretakers like Dotty essential.

In 1990, on a visit to Rwanda, Dotty discovered the Mountain Gorilla Veterinary Project (MGVP). Inspired by the group’s mission to ensure a healthy future for her beloved animals, Dotty and colleagues began fundraising. In one year they collected \$146,000: half was allocated to MGVP and the other half supports Rwandan orphanages.

In addition, Dotty recently became a Foundation Gold Leader and has been a Tau Epsilon Pi Society member since 2004, including the Foundation in her estate



*Dotty in 2004
with her
namesake
baby gorilla.*

plans. “I never felt like I belonged until I joined Gamma Phi Beta,” Dotty explains. “Through my membership in the Tau Epsilon Pi Society, I can make a difference even after I’m gone, giving women the opportunity to experience the same lasting friendship and support.”

Proud Mother

To date, Dotty has raised seven babies to become energetic and accepted members of the zoo’s gorilla family. She played an integral role in raising Jumoke, a world-famous female who is the first gorilla to successfully raise her own offspring after being raised in captivity.

“I will never forget visiting Jumoke after she gave birth to her first baby,” Dotty recalls. “She ran her hand down my cheek and caressed my face. A sign language interpreter explained that Jumoke was saying she loves me and thinks I am beautiful. It was incredible.”

What’s in a Name?

In 2004, the Columbus Zoo honored Dotty Henderson’s years of dedication by naming a baby Western lowland gorilla after her. Hand reared for six months, “Dotty Mashavu” playfully roughhouses with the other primates and loves playing chase with her keepers, according to www.columbuszoo.org. Mashavu means “chubby cheeks” in Swahili.



We acknowledge the following donors who celebrated a special event or individual with a gift to the Gamma Phi Beta Foundation (as of September 30, 2009).

IN CELEBRATION OF...

The birth of Savannah Sue Doty to Heidi (Green) and Chris Doty. With love and prayers from her CLC sisters (class of 1994-95)

Jennifer Kurumada Chuang
Julie Dunn Eichenberg
Abby Pierson
Tracy McDonald Swartley
Anne Fuchs Tremmel
Traci Steele Webb
Jennifer Putensen Zatechka

The birth of Jon Emory Edlow Hall on June 21, 2009, to Ivey (Johnson) and Travis Hall

Laura Webb

Those joining in celebration of our marriage. Thank you!

Autumn Hansen and
Nathan Hand

Mary Sharon Wells for a great job as the 2008-09 President of the Denver Alumnae Chapter

2008-09 Denver Alumnae Chapter Executive Board

Audrey Weldon Shafer's 90th Birthday!

Susan Fischer
Christy Ehrenreich

Shannon Bradley and ladiesseriously.com. Your posts are refreshing and such fun to read! Ciao bella!

Mitzi Ritzman

The new Executive Committee of the Gamma Phi Beta Foundation Board of Trustees

Paula Dean

Marjy Shupert and Cinda Lucas for their dedicated service as Trustees of the Gamma Phi Beta Foundation

Paula Dean

Ginny Myer as the new Development Committee Chair of the Gamma Phi Beta Foundation Board of Trustees

Paula Dean

Becky West's second year as a pancreatic cancer survivor. We love you!

Atlanta Southern Crescent Alumnae Chapter

The birthday of Jeanne Swanson Beach

Gloria Nelson

The 50th wedding anniversary of Jim and Meredith (McKiernan) Brown

Shirley Hoffman

Karen Kline's 70th birthday!

Christy Ehrenreich

Elise Alexander's 90th birthday and her dedication to Alpha Delta Chapter HCB

Christy Ehrenreich

Sally Lewis and fun at the reunion

Frances Griffin

The engagement of Beta Pi Chapter alumna Heather Foote Michaud and Eric Seber in Seattle

Suzanne Lee

Sally Lewis' milestone birthday and many years of devoted friendship

Mary Jane Misthos

Sally Lewis' 75th birthday!

Fraya Hirschberg
Grand Council 1988-1990
Joyce Hultgren
Jacki Falkenroth
Megan Krueger
Ann Campbell
Ann Bronsing

Dr. Ruth Seeler's speedy recovery

Fraya Hirschberg



THANK YOU, DONORS!

The individuals listed below contributed "restricted" gifts and pledges, which are designated by the donor to fund specific scholarships/fellowships, chapter gifts and various other needs (as of September 30, 2009).

Gifts totaling \$5,000 - \$9,999

Sara Clawson Colt (Kansas)
Sandra Rettke Nauman (Arizona)
Gretchen Youse Rein (Kansas)

Gifts totaling \$1,000 - \$4,999

Kris Baack, Ph.D. (Nebraska-Lincoln)
Sue Wright Brownlee (Kansas)
Rosemary Stone Bunn (Florida State)
Betty Hailey Crooker (Kansas)
Debi Dennis Duckworth (Kansas)
Susan Schlessman Duncan (Colorado College)
Sue Ann Wiltse Fagerberg (Kansas State)
Joyce Reusch French (Kansas)
Jackie Hilger Graves (Southern Methodist)
Ginny Harris Hammond (Colorado-Boulder)
Tucky Wheeler Hobbs (Iowa)
Susan Ulrich Loncar (Kansas)
L'Cena Brunskill Rice (Southern California)
Barbara Ossian Williamson (Kansas)

Corrections



From the Fall Issue:

- Mary Vanier attended Kansas State University.
- Paula Janis Dean and Magnes Welsh attended Memphis State University, now known as Memphis University.
- Cinda Lucas attended University of Southern California.

From the Annual Report:

- Karen Vander Kline attended Iowa State University.
- Audrey Shafer celebrated her 90th birthday with her two Gamma Phi Beta daughters, Alison Shafer Bond (Missouri-Columbia) and Pamela Shafer Burke (Missouri-Columbia).
- Barbara Parke Weaver (Epsilon) was incorrectly listed as Barbara Parke.

We apologize for these errors and omissions.

MEMORIAL GIFTS

We acknowledge the following individuals and groups who contributed to the Gamma Phi Beta Foundation in memory of a loved one (as of September 30, 2009). Deceased members' first, maiden and last names plus schools and initiation years are listed.

Father of Kris Brandt Riske
(Wyoming)

Frances Griffin

Mary Lou McLearn Conde
(Minnesota-Twin Cities, 1944)

Catherine Spika

Virginia Qualls Thomson
(Denver, 1940)

Shirley Walford

Margaret Windsor Rogers
(Arizona, 1948)

Elizabeth Gardner

Mary Frost

Virginia Burroughs, mother of
Barbara Burroughs Meadows
(Northwestern)

Donna Prior

Sandra Kirkbride

Margaret "Peggy" Glover
Mauter, Ph.D. (Miami-OH,
1955)

Lillian Sullivan

Kathy Bonie

Judy Copler

Ethel Jeanne Moreau Holst
(Northwestern, 1942)

Nancy Holst Leasia

Latane Jordan Graham
(Auburn, 1968), mother of
Judy Graham (Oklahoma)
and Sandra Graham Cude
(Memphis)

Magnes Welsh

Paula Dean

Gloria Nelson

Kay Bennett

Marjorie Donaldson, mother
of Phyllis Donaldson Choat
(Nebraska-Lincoln)

Magnes Welsh

Paula Dean

Frances Griffin

Karen Kline

Sally Lewis

Calvina Morse Vaupel
(Denver, 1941)

Susan and Jim Duncan

Betsy Lyle

Marjory Shupert

Georgiana Fales

Helen Pustmueller

Peggy Hutchinson

Nancy Kenry

Jean Marshall

Nancy Davis

Betty Doolin, mother of Janet
Doolin, J.D. (Denver)

Magnes Welsh

Paula Dean

Karen Kline

Mickey Walmer Burrell
(Nebraska-Omaha, 1972)
Omaha Alumnae Chapter

Albert Boczar, father of Irene
Boczar Stewart (Rutgers)

Delta Mu House Corporation
Board

John W. Nicoll, husband
of Veralie Brookins Nicoll
(Southern California)

Carol Blanchard

Ann Christie Shaw (Southern
California, 1948)

Christie Procknow

Virginia "Ginny" Lee Garr
Schneberger (Southern
California, 1948)

Christie Procknow

Wilma "Dee" Baldwin Crane
(Penn State, 1944)

Joan Brown

Becky Shipman

Gail Krenzer

Barbara and Bill Brown

Trudy Stratman

Robert Brown

Jane Hess

Susan Cummings Martin
(Oklahoma, 1957)

Margaret Roberts Evans

Norma "Bunny" Welborn
Corbin (Missouri-Columbia,
1946)

Tucky Hobbs

Judy Millen

Greater Kansas City Alumnae
Chapter

Sue Ann Fagerberg

Cindy Corbin Davidson

Joyce Oetjens Wambold
(Michigan, 1958)

Ellen Danich

Curt Johnson, son of
Sally Wood Johnson
(Birmingham-Southern)
Ann Hartje

Cynthia Koerber Patterson
(Northwestern, 1948)

Lorie Knickel

EPSILON CHAPTER

Convention Hat, 1950s

Where can you find hundreds of parading, conga-kicking Gamma Phi Betas with two, nine, 15, or even 30 carnations pinned to their hats? Only at Convention's most festive, fun and beloved event: the Confirmed Conventioneers Dinner.

Convention's Day to Play

In accordance with tradition, Convention attendees receive a hat, specially chosen to represent the local area, and proudly attach a faux pink carnation for each Convention attended. Many also take the opportunity to further embellish this accessory, with humorous and unique results.

Following dinner, the occasion is climaxed by a rowdy snake dance parade through the dining room led by veteran Conventioneers. Amidst thunderous applause and deafening Sorority chants and cheers, Gamma Phi Beta's sisterhood shines.



It's unclear exactly when the tradition of garnishing Convention hats began, however sources point to Convention 1974 in Kansas City, Mo. "During the parade, sisters who had attended more than five Conventions marched with paper carnations dripping from



their hats to symbolize their commitment," recalls 30-time Convention attendee Mary Jane Hipp Misthos (Colorado College).

Unique Convention Topper

Displayed in the museum at International Headquarters is a historical treasure, Eleanor Garm Hemminger's (Northwestern, 1931) Convention hat. Her hand-crafted topper was fashioned from a traditional

1950s millenary mold and is adorned with hundreds of starched cotton flowers and a brilliant felt bow. Ten precisely aligned pink carnations atop the crown symbolize Conventions Eleanor attended, effects we suspect she added once the carnation tradition began.

As Convention arrangements chairwoman (1958-64), Eleanor was often cited in *The Crescent*, encouraging members to attend the biennial gathering:

"Whether you're gung-ho Gamma Phi Beta at the college level, a busy beaver alumna, blending sorority work into a schedule of diapers, dishes, PTA and church activities, or the casual sister who thought Gamma Phi Beta was for the college crowd... CONVENTION IS FOR YOU!" (May 1960)

No matter the location or year, Convention has always had a charming way of recalling traditions of the past, inspiring endeavors of the present and assuring progress for the future.

Hats Off to Convention

A look at Convention hats throughout the years.



1978, Nashville



1990, Denver



1998, Newport Beach



2000, Houston



2002, Washington, DC



2008, Cincinnati

CAPTURE A CRESCENT



We love seeing crescents from all over the world! If you want your photo on this page, here's a hint: we prefer crescents that open to the left, like our logo. No outhouses, please!



1. United Kingdom: Amy E. Regan (Georgia) spotted a crescent while studying abroad.

2. Spain: Tourists Donna Schober and Linda Rondeau (both of Wisconsin-Oshkosh) found their crescent in Barcelona last summer.



3. Africa: Lacey Duffy (Oklahoma) and Susan Znidorka LaPierre (Wisconsin-Madison) found a crescent sign while on a hunting safari in Botswana. The two met through business and were delighted to realize they were sisters from different schools and different decades!

4. France: In Paris, Jennifer Toms (Colorado-Boulder) spotted a crescent depicted in a Pablo Picasso painting.

5. New York: Allison Romeu (Florida State) was on the lookout for crescents during her three-month internship at the Hearst Company.

6. Florida: Martha Freer Ratigan (Washington University) captured a crescent on her friend, Kimara Moon.

7. South Carolina: At MoonPie General Store in Charleston, sisters from Sigma Chapter (Kansas) smiled along with their large crescent.

8. Missouri: Legacy Sarah Mach and her mom Mary Buchanan Mach (both Nebraska-Kearney) found their iron crescent in Branson.

9. Ireland: On the Emerald Isle, Hannah Nichols (George Mason) found crescents everywhere. There were even streets named after crescents, like Crescent Court!

