

The Crescent

of Gamma Phi Beta

Summer 2010



Renovation!

Gamma Phi Gifts

100% owned and operated by
Gamma Phi Beta alumnae



☾ Lowest prices anywhere!
(find a better price, and we'll beat it!)



☾ All the products you love, plus products
you won't find anywhere else

☾ Sisterly customer service

☾ Discounts on bulk orders

EXCLUSIVE \$10 Gift Pack



Gamma Phi Beta

Come discover the Gamma Phi Gifts difference for yourself – and for your chapter. We offer fast shipping, innovative products, and an experience that you just won't find with any other Greek merchandise company. We care that you and your chapter are getting the best deal on the market, and we'll go the extra mile to prove it!



Just in time
for Fall!



www.GammaPhiGifts.com

1-877-800-1874



14



20



22

SUMMER *The Crescent* 2010 Volume 111 Number 3

FEATURES

6 E-Training Takes Off

Gamma Phi Beta leads the trend to offer online training to its volunteers.

7 At Home with Gamma Phi Beta

It takes more than a house to make a home, but we're pretty proud of our chapter houses.

14 Ready to Fly

Meet the new team of collegiate leadership consultants!

18 Talking About My Generation

Members at four different life stages share their perspectives on the world and sisterhood.

20 Friend Me

Get the most out of Facebook, the hottest way to connect, impact and shine!

IN EVERY ISSUE

4 International President's Letter

5 Mailbox

12 Spotlight On: Billhighway

16 Panhellenic News

17 Out and About

22 Pacesetter: Tracy Johnson

24 Sorority Life

30 In Memory

31 Foundation

33 In Celebration

34 Memorial Gifts

35 Vintage ΓΦΒ



**CONNECT.
IMPACT.
SHINE.**

International Council

International President

Linda Lyons Malony

Alumnae Vice President

Mary L. Knaup

Collegiate Vice President

Annabel M. Jones

Education Vice President

Kris L. Baack

Financial Vice President

Amy M. Peterson

Membership Vice President

J.J. Stoll Kaelin

Panhellenic Affairs Vice President

Elizabeth Ahlemeyer Quick

Interim Executive Director

Kendra Gates Bocher

Gamma Phi Beta Founders

Mary A. Bingham

E. Adeline Curtis

Helen M. Dodge

Frances E. Haven

Sorority Mission Statement

Our mission is to foster a nurturing environment that provides women the opportunity to achieve their potential through life-long commitment to intellectual growth, individual worth and service to humanity.

Reflections



It's exciting to reflect on this past biennium. Since Convention 2008, Gamma Phi Beta has really been on the GO, connecting more members to our sisterhood and providing meaningful, relevant membership experiences.

Even in this economic downturn, Gamma Phi Beta's membership has expanded to include four additional campuses and more than 2,000 collegiate members annually than at this same time just two years ago. This spring, we

installed our 170th and 171st charters, and we look forward to number 172 this fall. And more alumnae are connected to the Sorority than ever before: we have surpassed 170,000 initiated members!

This issue features articles on social media, online training and brand identity — not exactly regular topics even just a few years ago. And there's more ahead for Gamma Phi Beta: increased social networking, additional web-based training opportunities, the possibility of virtual alumnae groups and greater visibility in additional media outlets.

But as this fast-paced biennium winds down, I'm drawn to memories of the wonderful women I've met who connect to each other because Gamma Phi Beta stands for something constant.

As I pinned the sparkling president's badge on the dress of Jamie Swecker (Delaware) at Eta Gamma Chapter's installation in May, I saw in her young eyes the enthusiasm for the Sorority that someone may have spotted in my own at her age. Back then, I didn't text; I didn't have a cell phone — I wrote letters home to my parents and prepared my school papers on a typewriter. Even though our networks are swiftly expanding and technology defines generations, there are many constants we can all embrace regardless of our age or technological savvy: our Core Values, the lessons in our ritual, a belief in something greater than ourselves, developing the highest type of womanhood.

I have been so proud to represent you as International President. Meeting exceptional sisters who continue to exemplify the very best of our sisterhood — like Jamie — has truly been inspirational. Thank you for the privilege.

In IIKE,

Linda Lyons Malony

Linda Lyons Malony
International President

Cord Blood Counts

I just read the article about cord blood donation and Save the Cord Foundation (winter 2010). My mother was diagnosed with leukemia three years ago and is now completely healthy thanks to an anonymous cord blood donor. As a result, I donated the cord blood from my son's birth in 2007; every day I am hopeful that someone will get a new lease on life. – *Coleen Vance Raboin (Minnesota-Twin Cities)*

Impressed by Kansas

Last fall while in Kansas, I showed up at Beta Upsilon Chapter's (Kansas State) front door. Not only was the house beautiful, but so were those amazing girls. The 2009 public relations vice president gave me a tour while we compared different stories and talked about the similarities and differences of our houses. I love how Gamma Phi Beta has created this nationwide friendship and connection that we have for the rest of our lives. I also visited Beta Chi Chapter (Wichita State); they were home on break, but just a shout out to you, too! – *Brittany Alexieff (Washington State)*



Cancer Scare

Thank you so much for the "Be Skin Smart" editorial (winter 2010). I grew up in Phoenix and few of my childhood memories don't include a swimsuit and pool. As a collegian I

also imbibed in some very dangerous skin choices at a tanning salon. I was diagnosed with skin cancer twice before age 30 and two very ugly, permanent scars (one on my face) serve as a reminder to protect my skin and health. There's nothing like hearing, "You have cancer," and knowing you could have prevented it. We must be proactive in our health and take precautions: use a daily sun block and avoid tanning salons. The statistics are real, they are scary and they can happen to you. – *Brittany Conklin (Colorado-Boulder)*



Military Responses

I would like to thank your sisters (Epsilon Psi, North Carolina-Asheville) for sending the care package full of candy. Please send more letters and care packages so that we can have a piece of home with us and know that there are people besides our families still thinking of us. If you provide an address, we may send some pictures of the nicer side of Afghanistan. Thank you again. – *Steven Bailey, Specialist, 1st 178th Field Artillery Army National Guard*

I was quite pleased and surprised to see the articles about all those sisters who serve or served in the military (fall 2009)! I just retired as a colonel in the Army after 21 years of service. I was a chaplain and never managed to bump into any of my Sorority sisters. Perhaps we did meet and just didn't make the connection. – *Valerie Johnson St. John (Oklahoma)*

Editor's Notes



Convention News?

This issue was in production during Convention 2010, so look for all the news and business from Convention in the fall 2010 edition of *The Crescent*!

In the Fall Issue

- Award-winning chapters and members
- Sorority business
- New International Council

Letters to the Editor



Gamma Phi Beta Sorority
Attn: Editor
12737 E. Euclid Drive
Centennial, CO 80111
TheCrescent@gammaphibeta.org

The Crescent reserves the right to publish any letter addressed to the editor. Letters may be edited for space and clarity.

INTERNATIONAL HEADQUARTERS

12737 E. Euclid Drive, Centennial, CO 80111
Phone: 303-799-1874 Fax: 303-799-1876
Internet: www.gammaphibeta.org
E-mail: TheCrescent@gammaphibeta.org

THE CRESCENT STAFF

Editor: Mimi Burch McMann
(California State-Bakersfield)
Staff Writer: Nicole Nelsestuen
Director of Marketing and Communications:
Nina Dulacki (Colorado College)

MAGAZINE SUBMISSION DEADLINES

SPRING: January 1 FALL: July 1
SUMMER: April 1 WINTER: October 1

©2010 Gamma Phi Beta Sorority
The Crescent of Gamma Phi Beta (USPS 137620)
is published quarterly by Gamma Phi Beta Sorority,
12737 E. Euclid Drive, Centennial, CO 80111.

Periodicals postage paid at Englewood, CO, and at additional mailing offices. Nonmember subscription price is \$6. Produced in the U.S.A.

POSTMASTER: Send address changes to:
The Crescent, Gamma Phi Beta Sorority,
12737 E. Euclid Drive, Centennial, CO 80111.



MEMBER OF
NATIONAL
PANHELLENIC
CONFERENCE



FRATERNITY
COMMUNICATIONS
ASSOCIATION

Distance Learning Benefits Volunteers

By Krista Spanninger Davis (Bowling Green),
Sorority Director-Human Resources

It sounds like a nightmare: You start a new job for which you have not been properly trained. Others are expectantly looking to you for quality leadership, effective guidance and specialized information. Grossly unprepared for the task, a sweat breaks out over your entire body and panic sets in.

Conversely, this sounds like a dream: You sign on as a Gamma Phi Beta volunteer leader and instantly have access to a training program that prepares you to handle your responsibilities confidently and successfully. You can complete the training online at your own pace and in the comfort of your home.

Forget the nightmare. Enjoy the dream.

Clickable Success

Simply put, Gamma Phi Beta's online volunteer leader development program prepares volunteers for success. In addition to manuals, files, transition phone calls and e-mails, they receive access to interactive training via a computer with what is known as "distance learning" or "e-learning."

Distance learning has several advantages over in-person training:

- It allows volunteers to receive basic information "on demand" — in their homes, without giving up vacation or family time to travel to a conference.
- It provides consistent information to every learner.
- It gives Gamma Phi Beta the opportunity to use in-person events more effectively. Instead of covering basic information, conferences can be used to take training to a higher level.
- It is cost-effective in the face of rising travel and meeting management expenses. Distance learning can be delivered virtually anywhere.

"I have been a volunteer leader for many years and thought, frankly, there wasn't much the course could teach me," admits Anne Layton (McGill), regional coordinator. "Well, I was wrong! Not only did I learn a great deal, it was interesting and very accessible."

Personalized Attention

The program features 15 self-guided learning modules covering all aspects of volunteering. Information is presented through text, media-rich audio and video and



interactive Flash presentations. Message boards, chat rooms and internal e-mail features encourage members to interact online.

"Many alumnae who have been out of school for some time feel overwhelmed by the idea of working with collegians, fearing they no longer know anything about Gamma Phi Beta operations," Emily Lowry (William & Mary), regional coordinator, says.

"The online volunteer training course provides great information, regardless of whether you're hearing it for the first time or just need a refresher. It also allows volunteers to complete the training whenever they have time, which is a real benefit to Gamma Phi Beta's busy go-getters!"

About the Course

Launched in 2009, the volunteer leader development course was written and developed by Sorority volunteers in partnership with Axio Learning at Kansas State University. Axio Learning is a comprehensive, easy-to-use learning management system designed for higher education and adapted for Gamma Phi Beta with extensive help from Mary Vanier (Kansas State) and Dr. Elizabeth Unger (Kansas State). The volunteer component of the program follows the successful development of a training curriculum designed for chapter advisors and advisory boards.



For more information on volunteering or the online training program, contact Krista at volunteer@gammaphibeta.org.

Where Everybody Knows OUR Name

Bringing our brand *INSIDE* the house

Think back to when you were a new member (or pledge for us seasoned members!): you couldn't wait to be initiated into the Sorority and proudly show off our beautiful badge. Sporting those t-shirts or hooded sweatshirts with our Greek letters blazoned across the front took on new significance, and you wore them proudly as well.

With a little advance planning and budgeting, your chapter house can also be a fulsome reflection of Gamma Phi Beta by showcasing your Sorority pride throughout the home.

Greek letters, crests and the name "Gamma Phi Beta" have adorned the exterior of chapter homes since the beginning of campus Greek life. But when a potential new member walks through our front doors during recruitment, does she see our name and symbols incorporated on the inside as well?

We want her to remember Gamma Phi Beta and our pride in our sisterhood; one way to achieve that feat is through effective, memorable use of our brand. Below are a few unique and simple ways to incorporate our Sorority's identity into your chapter home's interior.

- Paint the walls pink and brown. Even if you don't use our exact colors (found at www.gammaphibeta.org), an interpretation will work well.
- Include the crest or logo on a large area rug or carpet tile. Carpet tiles can be installed in one room and then moved and re-installed to a new location if the room function changes.
- Check into custom printed glass films that look like etched glass. Designed with our logo, crest or other symbols, they can be applied to front doors, windows, glass table tops or even the outside of a shower door!
- Find wall sconces and pendant lights designed with Sorority motifs (especially crescents) to bring our brand into your interior lighting fixtures.
- Use today's digital print technology to create unique wall coverings that tell your chapter's history through a story; use a durable vinyl for the covering to make this piece last.
- Apply our crest to the back of a sofa or lounge chair in public spaces for sophisticated personalization.
- Artwork and photos display our identity effectively, especially in prominent areas of the home.



Beta Rho Chapter (Colorado-Boulder) uses beautiful stained glass to convey pride in Gamma Phi Beta.



The housing conference will be held in spring 2011. More information to come!

Holding Down the House



The home of Alpha Alpha Chapter (Toronto) is located in one of the city's most historic areas and was named a "heritage property" by the Toronto City Council in 1974.

For thousands of our members, Gamma Phi Beta chapter houses feel like home. If you've "lived in," you shared a room — and closet space — with your sisters, swapped clothes and fought over valuable shower time. But co-existing with other Sorority members teaches you a lot more than how to coordinate study and sleep schedules; it teaches you how to live, work and communicate with people from all walks of life.

Unlike members of other campus organizations, Gamma Phi Betas often live together in a house, lodge or distinct part of university dormitories. There, the chapter housing becomes the centerpiece for Sorority life, strengthening the bonds of sisterhood and providing a meeting place for collegiate and alumnae members.

Living in the house is a memorable benefit of membership, but it wouldn't be possible without our dedicated house corporation boards (HCBs). With more than 80 facilities to manage and maintain, our valuable HCB members volunteer their time to keep Gamma Phi Beta homes operating smoothly.



**Our website,
www.gammaphibeta.org,
now has an entire section
dedicated to housing!
Check it out!**

If Walls Could Talk

Take our oldest chapter house at the University of Toronto: it's more than 115 years old — imagine what it takes to keep those walls standing and functional for the 12 women who live there! A lot goes into researching, repairing and maintaining this residence, especially with the historic integrity of the home at stake.

"For all paint repairs, we have to use plaster instead of drywall — drywall wasn't even invented when the house was built," says HCB President Grace Lin (McGill). "When we replace trim, it has to be custom ordered to maintain the Victorian-style appearance."

Plus there's plenty of non-cosmetic maintenance. Until last year, the house was still relying on knot and tube (K&T) wiring, an early standardized method of electrical wiring commonly used from 1920 to the 1950s. The existing K&T system was inadequate for a household of women using laptops, curling irons and kitchen appliances on a daily basis. With the aid of the chapter's HCB and a little more than \$5,000, the home entered the 21st century and reduced its insurance costs.



Using the same technology employed by the U.S. government, Sigma Chapter (Kansas) has a new intruder deterrent, thanks to its HCB.

mounted to the exterior and trip wires with protective bars were added to all the windows.

"When all the safety measures were put in place, I felt like I could breathe again," reveals former house resident Ashley Siemers (Denver). "Our HCB even organized a meeting with campus police to make sure we felt safe living in the house."

After numerous campus break-ins, Sigma Chapter's (Kansas) HCB installed state-of-the-art fingerprint pattern-matching readers to both entrances of the home. Anyone trying to enter must pass identity verification.

"With this system we all feel extremely protected because our fingerprints can't be stolen, misplaced, forgotten or copied," says Administrative Vice President Kelsey Howarter (Kansas).

Whether a chapter has a house, dorm floor or suite, one thing is certain: living together solidifies your sisterhood. We are fortunate and privileged to have so many alumnae offering their time, knowledge and resources to meet our chapters' evolving housing needs. To all members of our house corporation boards, thank you for your dedication, service and hard work!

HCBs to the Rescue

Last year, an intruder broke into the Theta Chapter (Denver) house and stole various electronics and jewelry. The chapter's HCB took immediate action and within two weeks, an updated security system was installed featuring panic buttons and security cameras. Flood lights were

Interested in joining an HCB? Complete Volunteer Recruitment Form 47, found in the Member Forms area of www.gammaphibeta.org.

House Inspection

- Each chapter house is served by a volunteer board of alumnae, comprised of a president, vice president, treasurer and secretary.
- The Sorority has 48 owned houses, 21 dorms/floors, eight suites and 34 chapters which use university facilities for their meetings.
- There are 82 house corporation boards serving our collegians.
- One full-time housing staff member is employed at International Headquarters, Kay McFarlin Wilms (Colorado State), kwilms@gammaphibeta.org.
- Nu Chapter (Oregon), Omicron Chapter (Illinois at

Urbana-Champaign) and Pi Chapter (Nebraska-Lincoln) houses are listed in the National Register of Historic Places and have received official commendation for their historic value.

- Beta Phi Chapter (Indiana) has the most women living in-house with 99.
- Beta Chi Chapter (Wichita State) is our smallest house with four live-in women.
- Gamma Chapter (Wisconsin-Madison) purchased the first Gamma Phi Beta house in 1904.



Renovate!

Occupying a rented house in 1892, Alpha Chapter (Syracuse) members were the first to live together as sisters. They donated items to decorate the space, transforming the quaint little house into a home. As members shared the rewards of “living in,” other chapters began to follow their lead. Since then, Gamma Phi Beta homes have dramatically evolved, and we’ve got the renovation stories to prove it!

Home improvement projects on any level can be challenging, from coordinating building code requirements to adding modern conveniences. With the aid of their house corporation boards (HCBs), two chapters achieved success by planning ahead and braving the unpredictable world of reconstruction.

Pi Chapter

The Pi Chapter (Nebraska-Lincoln) house, built in 1927, has undergone major changes in the last two years. In 2002, the HCB collaborated with an architect to develop plans for a complete renovation. With projected costs exceeding \$1 million, the chapter started a capital campaign, “Building on Pi’s Tradition.”

The first step was gaining alumnae support through a two-year publicity program. Joan Wagoner Kopf (Nebraska-Lincoln), a member of Pi’s HCB for more than

25 years, headed up the campaign and was awed by the support. “Alumnae made our dream of a new house possible — more than 320 members contributed a total of more than \$680,000,” she says. “This money allowed us to turn what we still owed on our construction loan into a manageable mortgage.”

At the home’s re-dedication in 2009, plenty of excited alumnae, collegians, family and friends were on hand to celebrate the accomplishment. The in-house members, who had rented a vacant fraternity house for an entire semester, were especially eager to move back into their home.

“Our new house looks amazing and people are asking for tours all the time!” Chapter President Sarah Quandahl exclaims. “I’m really proud to call this place home.”

The renovations included:

- A third-floor addition to the west wing of the house, which increased the live-in capacity from 56 to 68
- New bathroom plumbing and the addition of a fourth bathroom
- All new central heating and air conditioning
- An expanded dining room and chapter room
- A new study room with built-in desks and a snack kitchen
- An additional fire escape stairwell and new fire sprinkler system

Gamma Mu Chapter

After 90 years, it was painfully obvious the Gamma Mu Chapter (Minnesota State-Moorhead) house kitchen was long overdue for a renovation. (Don't worry, appliances had been previously updated!)

"I joined the HCB 11 years ago and the kitchen was number one on my list to renovate," Judy Blake Gunkelman (North Dakota State) explains. "Then the clay pipes under our house burst and we had to delay the renovation to fix the plumbing."

Ten years later, Judy was still determined to modernize the space. After brainstorming with several sisters, the campaign "Sisters 2 the Rescue" was born.

"We created a website to explain the renovation goals and set it up to accept donations. We also solicited contributions from alumnae with hand-written notes through a one-time appeal," Vicki Smith-Williams (Minnesota State-Moorhead) says. The support was so generous that the HCB was able to pay off a remodeling debt from the 1990s and fund a large portion of the kitchen loan.

The entire renovation was completed last summer, just in time for the first day of school and recruitment. "I walked into the new

Our Foundation can help with the renovation process; see page 31!

kitchen and it was a 'wow' moment; I couldn't believe it looked that good," shares Administrative Vice President Laura Lien. "One alumna painted a crescent moon mural over the entrance that really made the room feel like home." Motivated to get the rest of the house into tip-top shape, Judy

recently had all the windows (originals from the 1920s) replaced, making the home more energy-efficient and increasing the overall value. "Sorority life is so important to young women today and living together teaches them patience, kindness and lifelong skills," Judy notes. "When my daughter lived in the house I saw her develop from someone who was very shy to a leader — I want to keep that opportunity alive by making the house a desirable place for our women to reside and make memories."



Built in 1927, Pi Chapter's (Nebraska-Lincoln) house received a 15,500 square foot renovation that was completed in September 2009 at a cost of \$2.6 million.

All facilities owned by the Sorority or by affiliated house corporations with live-in capabilities are required to be fitted with a fire sprinkler system by **December 2015**.

To learn more, reference the Housing section of www.gammaphibeta.org.

Make Your Voice Heard for Housing!

For several years, Gamma Phi Beta (along with many other Greek-letter organizations) has actively lobbied for support of the Collegiate Housing and Infrastructure Act (CHIA). We are rallying behind a proposed bill that would allow our alumnae to make tax-deductible donations that can be used to improve all aspects of chapter housing — replacing current laws that restrict how alumnae donations are invested.

Show your support and join the Capital Fraternal Caucus at www.fraternalcaucus.org. Or write a letter to your Congressional representatives, urging them to support this crucial initiative.

It's Automatic

Collegians, would you like to make billing and collecting dues, fees and fines easier? Would you like to cut down on the financial forms required by International Headquarters and get help with tax filings?

Through Gamma Phi Beta's online financial management tool, Billhighway (also known as Automatic Payment Highway or APH), you can keep your chapter's finances in order with less effort. Introduced in 2005, this easy-to-use program is now being enjoyed by more than two-thirds of our chapters.

"We use it for all our financial activity," says Lena Herzfeld (Rutgers), financial vice president at Delta Mu Chapter. "I definitely recommend APH because it makes my job easier and is more efficient. Instead of keeping track of multiple documents, everything is available online."

The enrollment deadline for fall 2010 has just passed, but it's not too soon to think about getting on board for 2011! Want to talk with other chapters using APH or start a mid-year enrollment? Contact Denise Vollert-Parrotto, sorority director-APH implementation (dvpnj@aol.com).

Gamma Phi Beta APH trainers are assigned to help throughout the financial management process. Chapters pay \$10 per member per semester for the service, and each chapter must vote to approve this expense.



The APH house corporation board pilot continues to progress. To join, contact Denise Vollert-Parrotto, sorority director – APH implementation at dvpnj@aol.com or 908-768-0908.

Why Your Chapter Needs APH

- Accessible 24 hours a day/seven days a week
- Easy online banking and real-time balances (no more bank statements to reconcile!)
- The chapter cannot overdraw its account
- 97 percent collection rate
- Electronic invoices for dues, fees, t-shirts, fines and more are sent to chapter members and their parents (optional)
- Chapter members maintain their APH accounts online and pay via electronic check, automatic payments from checking or savings accounts, mail or credit card*
- Officers and vendors get reimbursed quickly
- Dual signatories are instantly enabled
- No need to complete Form 15 (Collegiate Chapter Monthly Financial Statement)
- Electronic records generate reports
- Chapter records are kept online, facilitating a smooth officer transition
- Tax help is available from a certified public accounting firm

**APH payments via credit card are accepted at U.S. chapters only; 3 percent merchant card fee charged to chapter.*



A.



B.



(Chain sold separately)

D.



E.



G.



F.

ORDER EARLY
FOR **FOUNDERS DAY** NOVEMBER EVENTS!

NEW!
PEACE CHARM

H.



I.



- A. Snake Chain, 18", #snake
10K, 10KW.....\$98, SS.....\$15
- B. Traditional Lavalier, #L2647
10K, 10KW.....\$40, SS.....\$24
- C. Vintage Letter Charm, #0800
10K, 10KW.....\$85, SS.....\$35
- D. CZ Crescent Slide Necklace, 18",
#MP63502
10K, 10KW.....\$450, SS.....\$35
- E. 25-Year Pin, #0025
SS.....\$36
- F. 10-Year Pin, #0010P
SS.....\$25
- G. 10-Year Charm, #0010
SS.....\$25
- H. Peace Charm, #1454
10K.....\$160, SS.....\$30
- I. Black Onyx Ring with crescent,
#0555
10K, 10KW.....\$295, SS.....\$116
- J. Sincere Ring, #1022, SS.....\$35
(Whole sizes 5-8 only.)
- K. Mother's Pin, #0300
SS.....\$22
- L. Mother's Charm, #0301
SS.....\$22
- M. Carnation Earrings, #ME62212
SS.....\$35
- N. Carnation Ring, #5758
SS.....\$35
(Whole sizes 5-9 only.)
- O. Carnation Necklace, #MP62361
SS.....\$35
(Whole sizes 5-9 only.)
- P. Carnation Bracelet, #MB69072
SS.....\$65
- Q. Chapter President Ring, #0453
10K, 10KW.....\$287, SS.....\$135
- R. Birthday Cake Charm, #2824
10K, 10KW.....\$95, SS.....\$35

GREAT GIFT IDEA
FOR MOM ON PARENTS WEEKEND!

K.

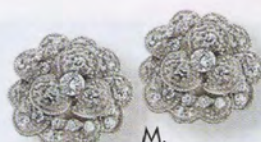


L.

J.



M.



N.



O.



P.



CHAPTER PRESIDENT RING

Q.

R.



CELEBRATE!
(Engraveable!)



TO ORDER, VISIT
WWW.HJGREEK.COM
OR CALL **1.800.422.4348**

Meet the New Consultants

The start of a new academic year means a new team of collegiate leadership consultants (CLCs) will hit the road soon!

Seven newly-graduated members will join three consultants returning from last year's team to visit and advise our collegiate chapters throughout 2010-11. They are trained, equipped and excited to be invaluable resources for all chapters. Consultants also work to establish chapters on new campuses, such as Grand Valley State University in Michigan (coming this fall).



Stephanie Hillman (Oklahoma State) of Afton, OK: I love meeting new people and building bonds that will last far beyond my stays at the collegiate chapters. Traveling is something I have always enjoyed, and being able to travel for Gamma Phi Beta is going to be exciting, life-changing and so rewarding. I can't wait to start this new chapter of my life as a Gamma Phi Beta!



Anna Sturdevant (Minnesota-Twin Cities) of Sioux Falls, SD: I love to make jewelry with my mom, talk to friends at Kappa Chapter (Minnesota-Twin Cities) and play with my puppy, Rudy. I have a passion for everything Gamma Phi Beta; I especially enjoy helping sisters understand themselves as individuals and leaders.



Jaime Miller (Iowa State) of Marshalltown, IA: I'm excited to begin working as a CLC and learn more about what it really means to be a Gamma Phi Beta. I am ready to step outside of the Midwest and discover what the rest of the country has to offer. Mostly, I can't wait to be inspired by the women I will meet, and I'm sure I will find plenty of women along the way who share my love for TV's "The Office," good food and sunshine.

Dear Gamma Phi Beta,

My chapter's collegiate leadership consultant (CLC) is on her way. How can we make the most of her visit?

Love in IIKE,
A chapter president

Good question! Taking the time to prepare for your CLC's visit will be the difference between a successful consultation and a so-so one. Returning consultants Jennie Geoffroy (California State-Fullerton), Elyse Gieschen (Valparaiso) and Dori Neff (Oklahoma City) share their top tips.



Jennie Geoffroy, Elyse Gieschen, Dori Neff

1. **Be open and honest.** Don't hesitate to express all your questions and concerns! We're there to work alongside you, give a fresh perspective and offer encouragement.
2. **Plan ahead.** We need to meet with individual officers as well as the whole chapter.
3. **Schedule meals and meetings separately.** Officer meetings are always more productive when they aren't conducted over a meal. We prefer to eat together after our meetings for more personal interaction.
4. **Have chapter documents ready.** We can make the most of our time when chapter documents (chapter roster, PR plan, scholarship plan and bylaws/standing rules) are on hand for our review.
5. **Don't forget down time.** Scheduling time for us to connect with loved ones is much appreciated.



Maegan Reilly (Idaho) of Meridian, ID: I couldn't have asked for a better experience as a collegian! I love taking photos, laughing and I am a huge college sports fan (Go Vandals!). Growing up in the Northwest, I'm a very outdoorsy person and enjoy exploring new places. I am beyond excited about the next school year's adventures and am looking forward to meeting my sisters from all over the United States and Canada!



Kristen Rouse (Denver) of Waynesville, MO: I love to spend time with my friends and family; these people are the most important part of my life. I also love cooking, yoga, photography, reading and spending time outdoors. I love exploring new places and enjoy the touristy or historic spots a city has to offer. I also like to experience those hidden gems: hole-in-the-wall restaurants, unique buildings or anything distinctive.



Shana Makos (Chapman) of Palm Springs, CA: I am a Southern California native who survived the 120-degree summers of Palm Springs. I am a minimalist at heart and will travel the world with nothing but what can fit in my backpack. I appreciate good grammar, a dry sense of humor and a good cup of tea. I am looking forward to this new adventure and meeting many amazing women on the road!



Anna Starks (Kansas) of Salina, KS: I can't even begin to describe how excited I am to be a CLC! Gamma Phi Beta has been my passion for the past four years, and I'm looking forward to another year filled with the four Ls [love, labor, learning, loyalty]. At KU (Go Jayhawks!), I studied exercise science and would like to become a physical therapist. I like to spend time with my friends and family, watch "The Office," listen to country music and do crossword puzzles.

6. **Stay in touch.** We can continue to help you throughout the year! We love follow-up calls and correspondence!
7. **Make us feel "at home."** It's always welcoming when a chapter pays special attention to the CLC's favorite things.
8. **Get to know us!** Your CLC is an international officer, but she is also your sister! We love to get to know you through casual meals, outings or sisterhood events.
9. **Allow time for sightseeing.** Show off your historical or favorite local spots — it could be a once-in-a-lifetime chance for us!
10. **Have fun!** A CLC visit should be the perfect mix of work, play and progress with a sister who has one goal — to see your chapter succeed!

Think you might want to be a collegiate leadership consultant after graduation? Contact Brandy Cunningham, CLC/field administrator, for more information (bcunningham@gammaphibeta.org)!

The collegiate leadership program is partially funded by donations to the Gamma Phi Beta Foundation. To donate, contact Bonnie Payne (bpayne@gammaphibeta.org).

Panhellenic Spirit Helps Raise Funds

By Beverly Gosnell (San Diego State)

Picture a large hall furnished with 30 tables brimming with décor of every style — a feast for the imagination. Now imagine

one special table embellished with Gamma Phi Beta mementos and those of seven other National Panhellenic Conference (NPC) members.



Every year, Cheryl Creech Gutierrez (California-Los Angeles) coordinates a fundraiser entitled, “Designs for Dining” at St. Francis Episcopal Church in Palos Verdes, California. This extravaganza raises college scholarship funds for promising but underprivileged students.

Debuting at the event last March, the “Dining with Panhellenic” table attracted much attention. Members of the church who are sorority alumnae enjoyed collaborating on a table design; showcasing one place setting for each sorority, and incorporating each organization’s flower, colors, embossed china and symbols.

The long, beautiful table showed lovely cooperation and represented impressive public relations for NPC. Congratulations to Cheryl for her ingenuity and Panhellenic spirit!

Shine Each Panhellenic place setting displayed a place card with facts about the sorority.



Panhellenic Presidents Shine

Congratulations to members serving the interfraternal community as Panhellenic president. We’re proud of you!

Collegiate

- Kaitlin McGaughey (Texas-San Antonio)
- Lillian Harwell (California-Santa Cruz)
- Jessica Trouten (Detroit-Mercy)
- Rebecca Gaulke (Eastern Washington)
- Angela Belding (St. Louis)
- Carly Ziegler/Megan Rossi (La Salle)
- Amanda Lee (Oklahoma City)
- Sierra East (Texas Wesleyan)
- Jami Morgan (Arkansas-Fort Smith)
- Rose Locatelli (Chapman)

Alumnae

- Nancy D’Angelo Kusmaul (Rochester), Rochester Alumnae Panhellenic
- Kathy Anderson Harn (Oklahoma), Daytona Beach Panhellenic
- Catherine “Cathy” Frost McMann (Michigan State), Central New Jersey Alumnae Panhellenic Association
- Marianne Keyes Gray (Bowling Green State), Columbus Alumnae Panhellenic
- Barbara Heyns May (California-Berkeley), Rossmoor Alumnae Panhellenic Association
- Lydia Vierson (Colorado-Boulder), Grand Rapids Area Alumnae Panhellenic

Alumnae Needed

Can you step up and serve as Gamma Phi Beta’s delegate on a local Panhellenic association? Our sorority director-Panhellenic resources, Sandy Biegelman Burba (Miami-OH), would love to get you on board, particularly in one of the following areas! Contact her at sandyburba@sbcglobal.net.

Alabama: Auburn/Opelika and Etowah County

Arkansas: Northwest Arkansas and Rogers

California: Glendale-Burbank, Los Angeles, South Bay (San Jose-San Francisco)

Kansas: Lawrence

Texas: Abilene, Amarillo, Boerne, Comal County, Houston County, Midland, Pampa City, San Angelo, Southern Dallas/Ellis Counties, Texas Hill Country, Waco

Are You “Out and About?”

Send your high resolution photos to TheCrescent@gammaphibeta.org and you may be featured in the magazine!



Four members of Alpha Chi Chapter (William & Mary) showed Gamma Phi Beta pride on spring break in Egypt. Pictured left to right: Stephanie Muse, Paula Lachowicz, Stephanie Apple, Laila Selim.



Sisters from Gamma Omega Chapter (Wisconsin-Platteville) got a visit from “Flat Stanley” as part of a little legacy’s first grade school project. The legacy had to mail Flat Stanley to a relative and she chose her big sister because she wanted Flat Stanley to experience sorority life! (Submitted by Kelsey Stahlbusch)



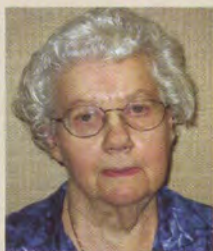
Naples Alumnae Chapter awarded Golden Crescent (50-year) pins to two members at the group’s March meeting. On the left, Karen Stepanek Swanson (Oregon) and on the right, Carmen Wise (Texas-Austin), are pictured with Ritual Chairwoman Sara Gallamore Moore (William & Mary). Congratulations, ladies!



Charter members of Gamma Beta Chapter (Gettysburg) celebrated 50 years of membership and upcoming 70th birthdays with a kayak excursion in Florida. Pictured left to right: Lura Coulton Trossello, Judy Curchin Vandever, Leslie Noyes Mass, Mary Algeo Hasiak.

Through the Years

Though we are all Gamma Phi Betas, each of us experiences life uniquely as our individual journeys are influenced by culture, world events and personal relationships. Four sisters from different generations give us a look at life from their perspectives. Enjoy!



Dorothy "Dottie" Newby McCaw (Southern Methodist), initiated in 1945

Who was the greatest leader in your lifetime?

Franklin Roosevelt: I didn't like him, but he was a good leader. He had the people behind him.

What world events have significantly influenced your life?

World War II: I met the man I married, Tom McCaw, at church in Houston, Texas. He was in the Navy and my father felt sorry for the kids [soldiers] who were all alone. He invited him to come to our house after dinner for popcorn. We took it from there. It just sort of happened. We married after he got out of the service.

What was your favorite childhood toy or game?

I was into music; I didn't care about anything else. I played the piano and cello starting at about age 5.



Carol Hamersen Garrard (William & Mary), initiated in 1966

King Juan Carlos II of Spain: He peacefully moved an authoritarian regime to a democracy. He systematically divested the monarchy of its power, and gave those powers to the Cortez, the Spanish Parliament.

The dropping of the atomic bomb: My father was a chief petty officer in the Navy during World War II and was scheduled to lead a team of flamethrowers to invade Japan, before the Japanese surrendered. He might not have made it back alive, in which case I wouldn't have been born in 1947.

My father built me a miniature cupboard, and I had a miniature stove with a light bulb in it. I could really cook using a miniature pie pan, cake pan and cookie sheet and tiny mixes. My dad was always thrilled when I "baked" him something, and I still love baking.



Elizabeth "Betsy" Goode (California State-Bakersfield), initiated in 1988

My mom, Sue Johnson Goode (Colorado College): She taught me that although not everyone is the same (race, religion, politics, financial status), in no way does it mean anyone should be treated differently. We should educate ourselves on their perspective and life experiences.

September 11, 2001: I was in downtown New York City when the planes hit. A few weeks later I was in Germany, talking around a table with people from seven countries about how 9/11 touched our lives. It taught me that we all have something in common: love for our families, their safety and their well-being. We aren't so different.

Candy Land – who doesn't love candy!??






Callie Davis (Lander), initiated in 2008

My mother and grandpa: Both have taught me to be who I am and stand up for what I believe in. They have been through a lot and I cannot think of better leaders than them.

The No Child Left Behind Act: It inspired me to become a teacher.



My favorite toy was my stuffed cat I received when I was 2. Her name was Miss Kitty.

<p>What did you do for fun as a teenager?</p> <p>I did the same thing the other teenagers did — went to dances and had dates, things like that. There were four of us who were inseparable, two cellists and another pianist. We had lots of fun playing music together.</p>	<p>What advice do you have for younger women?</p> <p>Live your life the way you want to live it.</p>	<p>What makes you proud of your Gamma Phi Beta membership?</p> <p>I like the women. I've been a Gamma Phi for 65 years, and I'm very proud of it.</p> 	<p>How can today's college members get the most out of their sorority experience?</p> <p>The college women today have a rough time and I'm glad I'm out. My advice is to be friends with each other.</p>
<p>Well, I was the bookish nerd, so I always liked reading and more reading.</p> 	<p>Follow your own path, not the one you think your Sorority sisters, or parents or society want you to. Have big dreams, and take risks without being reckless. You are unique — no one will ever be YOU again, so inhabit the world you create with joy and thanksgiving.</p>	<p>In the 1960s at William & Mary, Gamma Phi Beta was one of very few sororities that did not have a "white, Christian" clause [for membership], and we got lots of great girls who just happened to be Jewish. I applaud Gamma Phi Beta for this stand, which was unusual then.</p>	<p>Do all the charity events! Do the activities. Those will be great memories someday. Forget the drinking parties. Those will be very unhappy and embarrassing memories someday.</p>
<p>I played sports (soccer and softball). I was very competitive.</p>	<p>Don't forget your dreams. Too often women compromise on what we want and deserve because we think we need to live our lives for someone else.</p> 	<p>The sisters who I also call friends. I am fortunate to have sisters from my chapter, but I consider myself blessed to have made even more friends in the Sorority as an alumna.</p>	<p>Network and treat your sisters with respect, even if you don't agree with them. What you believe in today may change. Being part of the Sorority can teach you to be inclusive rather than exclusive; if you learn to be inclusive now, you will be far ahead of your career peers.</p>
<p>I played as many sports as possible.</p>	<p>Go after your dream because if you don't, you will never know what you are missing.</p>	<p>The responsibility that is entrusted to me. Every sorority has its ups and downs, but our chapter seems to hold together and back each other up, no matter what.</p>	<p>Trust your sisters and be yourself around them — then you will know you are home.</p>



Flash Back

When I was in college, there were about 10 of us [in the Sorority]. It was wartime and we didn't have a house — we met wherever someone would take us. I had a waffle iron, and whenever we entertained we made waffles and served grapefruit.

— **Dotty McCaw**

We had to wear dresses [to school during college]. Pants were only allowed if the Dean of Women measured sufficient snow with her ruler and then issued an edict allowing pants. (Would the young men have been driven mad at the outline of our thighs?) Getting a "ring by spring" was what the vast majority of us wanted.

— **Carol Garrard**

Fad-tastic Facebook

What can Facebook do for you?

By Megan McGonagle Klein (Florida State)

Since 2004, Facebook has helped people communicate with their friends, family and co-workers using “social networking” technology. Social networking refers to the grouping of individuals into online communities, similar to how a subdivision is part of a larger city. Facebook has more than 400 million users around the world who collectively spend eight billion minutes on the site every day. Users keep updated personal information and photos on their profile page, enabling them to instantly keep in touch with their community of “friends.”

With so much potential to connect, impact and shine through Facebook, how are Gamma Phi Betas using this powerful technology?

The Ultimate Event Planner

More than three million events are organized on Facebook each month and Gamma Phi Beta-related events are no exception. After members of Alpha Chapter's (Syracuse) 1987 pledge class reconnected using Facebook, Meg Sudlik (Syracuse) was inspired to organize a mini-reunion of chapter members and coordinated logistics using an event page on the site.

In all, 24 Alpha Chapter sisters gathered in New York City for a cocktail party and dinner, according to Meg. While most were from the Northeast, some traveled from Hawaii and Texas to enjoy an evening of laughter and shared memories.

“There was a lot of shrieking when we first saw each other,” Meg recalls. “It was as if 20 years hadn’t passed; we just picked up where we had left off. Without Facebook, this wouldn’t have happened.”



Fans and Friends

- More than 11,300 members are fans of the Sorority's official page. Search Gamma Phi Beta Official Page at www.facebook.com to find us and start connecting!
- The majority of our fans are between the ages 18-24 but two percent are age 55 and older. Facebook isn't just for college kids! It's free, so join today and find out how you can be part of the fun!
- Members living in more than 20 countries are represented, including Israel, Spain and Japan!



Coordinating a mini-reunion through Facebook.com helped sisters from Alpha Chapter (Syracuse) reconnect last October in New York City.

Beta Mu Chapter (Florida State) alumnae from the 1997 pledge class also used Facebook to organize a hugely successful, albeit unofficial, reunion last year at their alma mater. More than 40 Beta Mu alumnae met in Tallahassee, Florida, for a weekend of festivities.

"We used Facebook to coordinate reserving a block of hotel rooms, for arranging carpools from the airport and determining meeting times and locations — we even used it to color-coordinate our game day outfits!" Ginny Hyde Bissonnette (Florida State) says.

Private Detective, at Your Service

Sisters from Delta Delta Chapter (California State-Fullerton) are using Facebook to locate members who have lost contact with the Sorority, in preparation for the chapter's 40th anniversary celebration next year. "We created a chapter page on Facebook to disseminate information about the event," René Matz Thompson (California State-Fullerton) explains. "We use the page to track down members who do not have current information on file with International Headquarters."

René was also involved in finding lost members a decade ago for the chapter's 30th anniversary. "Facebook wasn't around then," she recalls. "We used traditional mail to find members, and it was slow and difficult work. Using Facebook is a lot easier than snail mail!"

When Jane Eddy McGonagle (Colorado College) attended her 40th college reunion, she was disappointed to meet up with only a handful of her chapter sisters. Although she initially dismissed Facebook as the latest fad, she created a personal profile page to find fellow members of her pledge class.

"At first I made a lot of mistakes trying to set up my page," Jane admits. "However once I understood how it worked — with some help from my daughter — I felt much more comfortable."



At a Florida State Seminoles football game, Megan McGonagle Klein (Florida State) and Meridyth Jenner Smith (Florida State) cheered on the home team as part of a Beta Mu Chapter reunion organized using Facebook.

Jane got out her chapter composite and started searching for pledge sisters, discovering many of them were users on the site. "I realized there is no age limit on Facebook," she says. In fact, according to Facebook, their fastest growing demographic is women older than age 35; Gamma Phi Beta's oldest user is 86-year-old Virginia "Ginger" Gose Febinger (Denver)!

Instant Information

"Facebook is a powerful tool for quickly streaming information to a large group of scattered individuals. It is something to be taken seriously," points out Kristen Record Heptinstall (Alabama), senior content producer for al.com and social media specialist.

"By creating an official Facebook page, Gamma Phi Beta has harnessed this power for the Sorority. Not only does it provide information to Gamma Phi Betas around the world, it also is a way for the Sorority to gather news from its members and encourage them to participate in a dialogue."

Kristina Abernathy (Florida State) admits, "Over the years I lost touch with my sisters. Facebook was the perfect tool to reconnect; we can open the Facebook pages of our sisters and discover what each is doing through pictures, videos and notes."

Amber King (Florida State) is a huge believer in the benefits of Facebook. "I am really in the everyday lives of my sisters. Reading of children's successes or people stuck in traffic is something I will never get in a Christmas card. It puts us in a relationship of now instead of the past. Our college days were great, but some of the hairstyles and outfits don't need to be revived," she laughs.

For information on Gamma Phi Beta's social networking sites (Facebook, LinkedIn, Twitter and mysisterlink) contact Nicole Nelsestuen at nnelsestuen@gammaphibeta.org.

Going Light

Through losing 40 pounds and being featured in a photo spread in *SHAPE* magazine, Pacesetter Tracy Johnson (Northwestern) has made strides. It all began when Tracy's pledge mom, Nikole Muzzy (Northwestern), saw a request from *SHAPE* magazine and suggested that Tracy apply for the feature. After submitting her information, Tracy was one of six women highlighted in the magazine.

In a three-question interview with *The Crescent*, Tracy shares more about her weight loss process.



About her weight loss success, Tracy recalls, "I could see and feel the changes in my body from strength training much more than just doing cardio, which helped me keep going, even through plateaus on the scale."

What was your weight-loss wakeup call?

The funny part was I didn't know how much weight I was gaining; I didn't own a scale. I was in a BCBG store trying on pants but they were too small; they didn't carry anything larger than size 14! That helped highlight to me that I did have an issue with my weight.

Right around that time, I went to dinner with a Gamma Phi sister, Alicia Drucker (Northwestern). As Alicia and I were picking out dishes to share, she informed me how she had been following Weight Watchers [weight loss program]. I was impressed with how the program gave her good information on making smart meal choices and that she wrote down what she was eating to hold herself accountable.

How did you stay motivated?

First, the best thing that helped me stay motivated was that it wasn't "all or nothing." I think some people approach weight loss with a super strict diet and an insane workout schedule, but that's just not sustainable. Second, I found doing strength training to be very motivating and took classes at my gym. With an instructor telling me what to do, I found it more approachable.

Moreover, I began to understand the whole concept that muscle weighs more than fat and realized it's not just what the scale says that matters.

What are three tips you would give to anyone trying to lose weight?

I tried to think of what I should be eating, like vegetables, instead of what I couldn't eat. Another thing that helped me not crave "bad" foods was to eat small meals five to six times a day. By doing that, I was never really hungry and I kept my metabolism going all the time. If I had both breakfast and a mid-morning snack, I would be satisfied with a salad at lunch instead of craving something more.

Lastly, tracking your food is very important. It also helps to "routinize" what you eat and make selections from a set of foods with good nutritional value. As I was losing weight, I basically ate very similar things for breakfast, lunch and snacks. I found that by controlling my calories early in the day, I didn't have to worry as much about going out to dinner.

Edited by Zeta Sigma Chapter's Kara Apel (South Carolina), editor-in-chief of the University of South Carolina's student newspaper, The Daily Gamecock.

Your Commitment to Gamma Phi Beta is Just as Important Now

as it was in College



Please support Gamma Phi Beta by paying your \$25.00 International Dues

By paying your international dues,
Gamma Phi Beta provides:

- Leadership and training programs for collegians and alumnae
 - Valuable communications – our website, *The Crescent*, *The Buzz*, Facebook, LinkedIn and mysisterlink.com
- Start-up costs for new collegiate chapters
- Database development to help find your sisters

Your Support Allows us to be a Leader in the Interfraternal World

It's easy to pay your international dues. Visit www.gammaphibeta.org
and click on "Alumnae" and "Pay Alumnae Dues."

Or send a check to Gamma Phi Beta, 12737 E. Euclid Drive, Centennial, CO 80111.



GAMMA PHI BETA

CONNECT. IMPACT. SHINE.



Sorority Life

REGION 1

MASSACHUSETTS

♥ ♠ Based on the 1990s MTV game show "Singled Out," **Delta Chapter** (Boston) hosted its annual *Mingled Out* event, raising \$1,500 for Camp Fire USA. The chapter also proudly initiated 46 members.

♥ ♠ **Epsilon Phi Chapter** (Bentley) spent a relaxing night at its *Movie and Manis* wellness event. Members are also showing off their Sorority pride by wearing letters to all university athletic events.

NEW YORK

♥ ♠ **Delta Tau Chapter** (Colgate) earned the Outstanding Chapter of the Year Award at the *Greek Awards Banquet*. Members enjoyed a fabulous formal and are preparing for *Crescent Classic: Soccer Tournament*.

♥ ♠ To help Haitian earthquake victims, **Epsilon Epsilon Chapter** (Union) baked and sold loaves of challah, traditional Jewish bread, raising more than \$300. Members also gather every Friday for *Afternoon Teatime* to promote sisterhood.

♥ ♠ **New York City Alumnae Chapter** volunteered at a local food pantry, toured the Fashion Institute of Technology Museum and enjoyed a movie night.

♥ ♠ **Zeta Mu Chapter** (St. John's) members were thrilled to meet Olympic gold medalist Misty May-Treanor at the university's *Women in Sports Dinner*. To support *Relay for Life* during Greek Week, members held bake sales and spearheaded public relations efforts.

PENNSYLVANIA

♥ ♠ Year-long fundraising efforts enabled **Alpha Upsilon Chapter** (Penn State) to raise more than \$119,000 for *THON*, the university's 46-hour IFC/Panhellenic Dance Marathon that raises awareness and funds for pediatric cancer.

♥ ♠ **Delta Kappa Chapter** (Lehigh) members received a cooking lesson and tips to reduce their carbon footprint while dining at The Farmhouse, a green restaurant. The chapter also hosted **Epsilon Alpha Chapter** (La Salle) for brunch and shared recruitment and sisterhood tips.



Members of Gamma Beta Chapter (Gettysburg) showed their support for Alex's Lemonade Stand, an organization that raises money to fight childhood cancer, by selling lemonade and baked goods on campus.

♥ ♠ **Zeta Epsilon Chapter** (Duquesne) took first place in *Greek Week* competitions and was awarded the President's Cup, the highest honor an interfraternal organization can receive. The chapter also teamed up with members of Alpha Gamma Delta and Alpha Phi sororities to host the first *Syracuse Triad Triathlon*.

♥ ♠ **Zeta Pi Chapter** (Penn State-Altoona) members satisfied their fashion cravings at a purse party and performed a dance routine in an interfraternal talent show fundraiser.

QUEBEC

♥ ♠ Members of **Alpha Tau Chapter** (McGill) regularly serve hot meals at a homeless shelter and recently enjoyed their annual formal, *Pink Crescent Ball*.

REGION 2

NORTH CAROLINA

♥ ♠ **Asheville Alumnae Chapter** members made lunch and cleaned a local women and children's shelter for *Day of Service*. The chapter also celebrated the second anniversary of its installation.



Sorority Life!

Alumnae and collegiate news at a glance! What's your region been up to? Send news to TheCrescent@gammaphibeta.org.

Symbol Key:

- ♥ Sisterhood
- ♠ Philanthropy
- 🏆 Leadership
- 📖 Scholarship

SOUTH CAROLINA

♥ 🏠 Members of **Epsilon Theta Chapter** (Clemson) danced for 13 hours straight at *Dance Marathon* to raise money for the Children's Miracle Network. Plus, the chapter's new member class ranked second for GPA among 11 campus sororities.

♣️ Aiming to help spread the word about Type 1 Diabetes, members of **Zeta Eta Chapter** (Lander) participated in the *Juvenile Diabetes Walk*.

♣️ **Zeta Zeta Chapter** (Coastal Carolina) teamed with another sorority to sell 'Hope for Haiti' bracelets. They raised more than \$700 and also co-hosted a silent walk in memory of the earthquake victims.

VIRGINIA

♣️ 🏠 **Alpha Chi Chapter** (William & Mary) participated in *Absolutely Incredible Kid Day* by writing 150 letters of love and encouragement to local children. The chapter also held a *Scholarship Brunch* to honor the school's staff.

♣️ Multiple university organizations supported **Epsilon Iota Chapter's** (Christopher Newport) *CNU's Best Dance Crew* competition to benefit Girls Inc. Additionally, a team of eight sisters ran the *Shamrock 8K* and collectively raised more \$3,300 to benefit the Leukemia & Lymphoma Society.

♥ **Epsilon Pi Chapter** (George Mason) members traveled to the University of Delaware to assist the Sorority's newest chapter, **Eta Gamma** (Delaware), with recruitment and Bid Day preparations. Members also enjoyed playing laser tag at a sisterhood retreat.

♥ ♣️ To close *Inspiration Week*, **Zeta Beta Chapter** (Virginia) participated in an amusing laughter-yoga retreat. Members also regularly tutor high school students from the I Have a Dream Foundation and hosted a fun-filled evening for the students to cap off the school year.

♥ Several members of **Richmond Alumnae Chapter** visited Lavender Farms for a garden tour, lunch and herb-themed cooking lesson.

REGION 3

FLORIDA

♥ 🏠 **Jacksonville Alumnae Chapter** co-hosted a Panhellenic Association meeting and celebrated the annual *Syracuse Triad Luncheon* with members of Alpha Phi and Alpha Gamma Delta sororities. Members also met for dinner and watched a play.

♣️ For the second consecutive year **Beta Mu Chapter** (Florida State) raised the most money for the university's *Dance Marathon* to benefit the Children's Miracle Network. Members took 20-hour shifts at the event, dancing and showing support for the cause.

♥ **Naples Area Alumnae Chapter** members explored the Botanical Gardens during their chapter meeting.

♥ ♣️ **Delta Sigma Chapter** (Florida Institute of Technology) members volunteered at the Humane Society by walking dogs and assisting with *Adoption Day*. The chapter also participated in *Campus Clean-Up* and capped off the semester with a sisterhood barbecue at the beach.



Community members enjoyed various carnival games, sweet treats and prizes at Epsilon Sigma Chapter's (Morehead State) Crescent Carnival, an event benefitting our international philanthropic mission — building resiliency in girls.

ALABAMA

♥ During a Panhellenic-sponsored weekend, **Epsilon Lambda Chapter** (Alabama-Tuscaloosa) welcomed more than 900 high school seniors to the chapter house for a cookout, tour, dessert party and informational sessions.

GEORGIA

♥ 🏆 **Delta Omicron Chapter** (Southern Polytechnic State) championed *Greek Week*, beating out every campus sorority. Members also coasted around the perimeter of the university in a cast-iron tub at the school's *Bathtub Races*.

♥ Members of **Delta Upsilon Chapter** (Georgia) danced for 24 consecutive hours at the university's *Dance Marathon*, a nationwide movement that benefits the Children's Miracle Network. The chapter raised more than \$24,000 for the cause through yearlong fundraising.

♥ **Zeta Tau Chapter** (Emory) welcomed its amazing new members with a fun night of karaoke and coffee shop-themed desserts and beverages.

TEXAS

♥ 🏆 **Alpha Xi Chapter** (Southern Methodist) kicked off the semester with a fun-filled overnight retreat at the Museum of Nature and Science. Chapter members received several awards at the university's *Sing Song* competition: Best Backdrop, Best Director, Best Choreography and Best Overall.

♥ **Dallas Alumnae Chapter** members invited visiting members of **Denver Alumnae Chapter** to dine with them at Snuffer's restaurant, a local favorite.

♥ To commemorate Earth Day, members of **Delta Epsilon Chapter** (Texas Wesleyan) donated decorated flowerpots and planters to their local Camp Fire USA. The chapter and its seven new members also participated in their university's *Hike for Haiti* to support earthquake victims.

♥ **Zeta Rho Chapter** (Texas A&M-College Station) earned a second place finish at *Stompfest*, an event that challenges Greek organizations to put on a mixed production of step dancing and skits to benefit the university's Panhellenic Council.

♥ 🏆 **Zeta Chi Chapter** (Texas Christian) members got acquainted with power tools when they helped build a home with FrogHouse, a partner of Habitat for Humanity. Spring recruitment brought 10 exceptional new members to the chapter.

REGION 4

INDIANA

♥ **Zeta Iota Chapter** (Valparaiso) welcomed 13 new members and held a *Carnation Blitz*, visiting local alumnae at their homes to share stories of sisterhood. The chapter also had fun with events like *Mom's Day* and a black-and-white-themed semi-formal.

♥ 🏆 **Zeta Kappa Chapter** (Southern Indiana) welcomed eight fabulous new members and hosted *Lip Sync*, raising \$1,400 to benefit a no-kill animal rescue organization.

♥ **Beta Phi Chapter** (Indiana) members bonded over arcade games and laser tag during a sisterhood retreat.

MICHIGAN

♥ More than 150 members of the community attended **Beta Delta Chapter's** (Michigan State) *Crescent Classic: Pancake Breakfast*, raising nearly \$1,000 from donations and ticket sales for Camp Fire USA.

♥ 🏆 **Delta Omega Chapter** (Oakland) provided Italian cuisine, a DJ and prizes at its *Crescent Classic: Spaghetti Dinner* for more than 170 attendees; the event raised \$6,000 to benefit our international philanthropy. Members also cheered on the Pistons at an NBA basketball game and were able to hang out on the court afterward.

♥ 🏆 **Detroit Metro Alumnae Chapter** launched its new website, www.detroitmetrogbp.org.

♥ **Epsilon Beta Chapter** (Alma) hosted a Tiffany & Co. jewelry-themed spring recruitment, playing off the idea of timelessness. Members also attended a Detroit Red Wings hockey game and took photos on the ice.

♥ For *Day of Service*, **Zeta Nu Chapter** (Detroit-Mercy) members spruced up the campus grounds. The chapter also earned a second place finish in *Greek Week* competitions.

OHIO

♥ **Beta Gamma Chapter** (Bowling Green) members were queens of the lane during a sisterhood retreat at the bowling alley.

♥ 🏆 A perfectly performed dance earned a top place finish for **Beta Epsilon Chapter** (Miami-OH) at an interfraternal philanthropy competition to benefit a local school for the deaf.

Zeta Omega Chapter (Kennesaw State) members made the Sorority's name known when they handed out 'Gamma Phi Beta loves you!' buttons to students and the school mascot during a basketball game.





Members of Gamma Iota Chapter (Midwestern State) zipped around the race track in go-karts at their sisterhood retreat.

♥ ♠ For *Day of Service*, **Zeta Omicron Chapter** (John Carroll) treated Girl Scout troops to a fun night of makeovers, movies and treats. The chapter also earned the highest all-female GPA on campus and played Sorority Jeopardy at its sisterhood retreat.

♥ 🏆 **Eta Alpha Chapter** (Lake Erie) hosted its second annual *Gammies*, an awards ceremony to recognize each member of the Greek community. The chapter was also proud to initiate three outstanding women and held various workshops to prepare for recruitment.

REGION 5

ILLINOIS

♠ 🏠 **Chicago Northwest Alumnae Chapter** hosted a *Panhellenic Scholarship Dinner* and helped organize a Bingo night at an organization that aids disabled adults.

♠ Among other activities, a capture-the-flag and inflatable jousting tournament were featured at **Omicron Chapter's** (Illinois at Urbana-Champaign) *Gamma Phi Beta Greek Games*, a week-long series of events that raised monies for Camp Fireside.

♥ ♠ To support Camp Fire USA, **Beta Eta Chapter** (Bradley) hosted a three-on-three basketball tournament, cookout and car wash. Members also enjoyed a spring formal at the Peoria Zoo where each member was set up on a blind date.

IOWA

♥ Members of **Rho Chapter** (Iowa) welcomed 11 amazing new sisters to the chapter with an ice skating sisterhood event.

♥ 🏆 The women of **Omega Chapter** (Iowa State) had a blast at their spring formal at a local golf course, attended several recruitment workshops and geared up for *Greek Week* competitions.

♠ **Gamma Psi Chapter** (Northern Iowa) members flipped pancakes for our international philanthropy at their *Crescent Classic: Pancake Breakfast* and raised nearly \$1,200.

MINNESOTA

♥ ♠ The women of **Kappa Chapter** (Minnesota-Twin Cities) celebrated *Random Acts of Kindness Week* by writing anonymous thank you notes to campus staff. Members celebrated Easter with an egg-dyeing sisterhood event with two sisters from nearby Gamma Phi Beta chapters.



Gamma Chapter (Wisconsin-Madison) members welcome their outstanding new members with open arms on Bid Day.



Rooting for their alma mater, Lincoln Alumnae Chapter members enjoyed attending a Huskers football game with the women of Pi Chapter (Nebraska-Lincoln).

🔥 **Gamma Pi Chapter** (Minnesota State-Mankato) hosted *Hungry for Hunger*, a 25-hour food fast to support an organization that feeds the community's needy, raising more than \$3,800 for the cause.

WISCONSIN

🔥 **Gamma Rho Chapter** (Wisconsin-Oshkosh) encouraged hospitalized children by writing and delivering letters of love for *Day of Service*. Numerous members also participated in or volunteered at the university-sponsored *Shamrock Shuffle*, a 5K run/walk to support local charities.

REGION 6

ARKANSAS

🔥 **Zeta Phi Chapter** (Arkansas-Fort Smith) held a fun philanthropy event benefitting Girls Inc. that was enjoyed by students and community members.

COLORADO

🔥 **Denver Alumnae Chapter** celebrated *Day of Service* by making crafts and sharing dinner with teens at Girls Inc. Members also enjoyed a spring luncheon and "Big I" (senior induction and officer installation) and dinner with **Theta Chapter** (Denver).

🔥 **Members of Theta Chapter** (Denver) attended the musical "Legally Blonde" and raised more than \$5,000 for our international philanthropy at their *Crescent Classic: Spaghami Dinner*. The chapter also earned the highest overall sorority GPA for the quarter with a 3.48.

🔥 **Tau Chapter** (Colorado State) and its 15 new members volunteered for Homeless Gear, an organization that collects and redistributes outdoor gear for the homeless. Members also enjoyed a yoga-themed sisterhood event.

🔥 For a sisterhood event, the women of **Beta Rho Chapter** (Colorado-Boulder) enjoyed an afternoon of tea in their finest spring dresses. Members celebrated *Moms Weekend* with brunch at the chapter house and a trip into Denver for a play.

KANSAS

🔥 The women of **Sigma Chapter** (Kansas) won the Audience Choice Award for their performance at *Rock Chalk Revue*, an annual variety show that benefits the United Way. The chapter also hosted alumnae and their children at its second *Easter Egg Hunt*.

🔥 **Members of Beta Upsilon Chapter** (Kansas State) volunteer regularly at the local Boys and Girls Club, helping kids with homework and playing games. They also hosted a *Moms Day*, complete with a silent auction, formal lunch, Bingo and shopping, with proceeds supporting the chapter's Moms Club.

🔥 **Beta Chi Chapter** (Wichita State) co-sponsored a Haiti benefit concert at the university, raising \$700 for the American Red Cross. Members were also excited to meet entertainer MC Hammer while participating in *Homecoming Week*.

MISSOURI

🔥 A talent show, barbecue, campout competition and raffle were all part of **Gamma Tau Chapter's** (St. Louis) *Philanthropy Week* where members raised more than \$3,300 for Girls Inc. The chapter also finished second in *Greek Week* competitions.

🔥 **Greater Kansas City Alumnae Chapter** was the sponsor of Kansas City Public Television's *Kids on Ice* that supports an organization providing low-income families with day care. The chapter raised nearly \$8,900 for the cause and more than 100 children were able to skate and read with Clifford the Big Red Dog at the event.

🔥 **Delta Nu Chapter** (Missouri State) recognized *Day of Service* with its 11 new members by spending the day at a local Boys and Girls Club. The chapter also participated in its second *Greek Week* and was the only organization to have full attendance at all events.

🔥 **Zeta Delta Chapter** (Southeast Missouri State) taught table manners to a local Girl Scout troop at an etiquette dinner.

NEBRASKA

🔥 Hungry students helped **Pi Chapter** (Nebraska-Lincoln) raise \$4,350 at *Crescent Classic: French Toast Feed* to benefit Camp Fire USA. Prior to the event, a Camp Fire USA representative encouraged the chapter about the importance of their philanthropic work.

🔥 **Gamma Kappa Chapter** (Nebraska-Kearney) members attended a benefit brunch to support a sister whose family home was destroyed in a fire. The chapter's freshman pledge class received an award for highest GPA at the school's *Scholarship Banquet*.

🔥 At the home of a local alumna, **Omaha Alumnae Chapter** honored the newest members of **Epsilon Delta Chapter** (Creighton) with a lasagna dinner, door prizes and a guest speaker from Camp Fire of the Midlands.

NEW MEXICO

♥ Monthly, **Albuquerque Alumnae Chapter** members celebrate Gamma Phridays with lunch at a local restaurant.

OKLAHOMA

♠ **Beta Omicron Chapter** (Oklahoma City) members flipped hundreds of pancakes at their *Crescent Classic: Pancake Palooza*, raising \$800 to support camping for girls.

♠ **Beta Psi Chapter** (Oklahoma State) helped organize *Performers on the Rise*, a benefit concert to support a pre-school for disabled children.

REGION 7

ARIZONA

♥ **Beta Kappa Chapter** (Arizona State) ventured to the Arizona Science Center for an overnight retreat with its three new members. The chapter is preparing for fall recruitment with regular workshops.

♥ ♠ **Beta Omega Chapter** (Northern Arizona) members participated in all other interfraternal philanthropy events on campus and brushed up on their recruitment skills with tips from a visiting collegiate leadership consultant.

CALIFORNIA

♥ ♠ Focusing on academics, 140 members of **Beta Alpha Chapter** (Southern California) earned a semester GPA of at least 3.0. Members also showed support for sisters personally impacted by cancer by raising nearly \$2,000 at their annual *Have a Heart Dinner* benefitting a lung cancer foundation.



Zeta Theta Chapter (Pepperdine) members painted colorful lifeguard towers for Portraits of Hope, an organization that helps community members create one-of-a-kind motivational art projects to enrich the lives of children and adults who are coping with serious illness.

♠ **Gamma Eta Chapter** (California State-Long Beach) hosted *Buca de Beta*, a spaghetti dinner, and *Crescent Classic: Basketball Tournament* to raise more than \$2,200 to support camping for girls. Members also volunteered their green thumbs at a local camp by sprucing up the grounds.

♥ ♠ **Delta Delta Chapter** (California State-Fullerton) members enjoyed a famous duos-themed *Date Dash* at the ESPN Zone and held their sisterhood retreat at an inflatable bounce stadium. The chapter also hosted a pizza party, spaghetti dinner and *Greek Feud Night* to raise monies for camping for girls.

♥ Bid Day brought 12 amazing new women to **Delta Theta Chapter** (California Polytechnic State).

♠ ♠ ♠ **Delta Psi Chapter** (California-Santa Barbara) hosted a *Professor Banquet* to honor university staff and held a PACE program about proper etiquette in the workplace. Members also supported nine members running the *San Diego Rock 'N' Roll Marathon* by raising \$22,500 for the Leukemia & Lymphoma Society.

♠ ♠ **Epsilon Nu Chapter** (Chapman) invited all interfraternal organizations on campus to friendly competitions at its annual *Crescent Classic Challenge*, raising \$5,000 for our international philanthropy. The chapter also won *Greek Week* and received Sorority of the Year and other notable awards at the university's *Greek Awards Ceremony*.

♥ **Pasadena Alumnae Chapter** members held their chapter meeting over a delicious Italian dinner and also enjoyed discussing their latest book club read.



For Day of Service, Eta Chapter (California-Berkeley) members traveled to a local Camp Fire USA and spent a fun day making crafts, cooking s'mores and playing with the kids.

HAWAII

♥ Members of **Hawaii Alumnae Chapter** attended a play, visited a local museum and learned about creative writing techniques from a guest speaker.

NEVADA

♥ At the Mandarin Oriental restaurant in Las Vegas, members of **Las Vegas Valley Alumnae Chapter** enjoyed tea and time to socialize.

REGION 8

CALIFORNIA

♠ To support troops overseas, **Epsilon Omicron Chapter** (California-Santa Cruz) wrote letters of thanks and inspiration.

WASHINGTON

♥ ♠ **Lambda Chapter** (University of Washington) donated more than \$500 to cystic fibrosis research, a result of the chapter's week-long *Study Treat Sale*. The chapter also took first place in an interfraternal philanthropy competition and hosted its annual *Father Daughter Dance*.

IN MEMORY

This list reflects notifications received at International Headquarters from January 1 to March 31, 2010. First, maiden and last names and initiation year are listed for each deceased member.

Alpha | Syracuse

Marilyn Smith Tennity, 1940

Beta | Michigan

Susan Ortmayer Chapman, 1941
Chloe Heitsch Sargent, 1943

Gamma | Wisconsin-Madison

Barbara Kaska Miller, 1958
Charlotte Whalen Vollbrecht, 1961

Epsilon | Northwestern

Martha Jennings Crocker, 1948

Zeta | Goucher

Virginia Wooden Crocker, 1941
Mary Sprague Saunders, 1948

Eta | California-Berkeley

Linda Fay Amling, 1968

Theta | Denver

Helen Auge McClinton, 1947
Helen Dowdy Johnson, 1948

Kappa | Minnesota-Twin Cities

Elizabeth "Betty" Johnson Lester, 1938
Jean Matson Perry, 1959

Lambda | University of Washington

Janet Powell Holmes, 1916
Helen Lord Lucas, 1924
Marcella Crabtree Dove, 1930
Kathleen Field Cornett, 1937

Mu | Stanford

Patricia Smith Milburn, 1938
Mary Cooke Jessop, 1944

Nu | Oregon

Sally Holloway Evans, 1930
Mildred Meaney Hamel, 1942

Xi | Idaho

Bernice Parish, 1927
Frances Dusaft Flohr, 1931
Dorothy Moss Ingersoll, 1937
Roberta Rodgers Braddock, 1942
Wilma Wittenberger Sites, 1943
Mary Burns Nowierski, 1948
Mary Burke Kever, 1953
Carol McGuffin Burroughs, 1955
Joan Walker Wheelock, 1961

Omicron | Illinois at Urbana-Champaign

Georgia Brownfield Campbell, 1914
Charla Hudler Wilson, 1915
Lillian Woerman Bull, 1915
Hazel Barackman, 1917
Elizabeth Blakeslee Vierhus, 1917
Edith Heizer Hawley, 1917
Mary Cooper Strange, 1918
Lettie Gay Carson, 1919
Mildred Eversole Monaghan, 1921
Vernalee Burpo Sharp, 1924
Virginia Smythe McCausland, 1924
Eleanor Otis Horn, 1925
Virginia Hanna McDougall, 1925
Mona Shimmek Ekman, 1927
Virginia Hall Dorman, 1929
Margaret Vaniman Bauer, 1937
Evelyn "Lyn" Allard Ellis, 1938
Mary "Evie" Bane, 1948

Pi | Nebraska-Lincoln

Georgiana Aultz Daly, 1937
Myra Hadan Christiansen, 1945
Doris Olson Hoyle, 1945
Barbara Wylie Teel, 1951
Linda Jacobs, 1968

Rho | Iowa

Donna Dybbro Snyder, 1931
Dorothy Whitmore, 1932
Dorothy Buescher Oertel, 1938
Frances Arthur Clough, 1945
Pauline Clausen Friend, 1949

Sigma | Kansas

Roberta "Bobbie" McCluggage Johnston, 1942
Andrea Ash Varney, 1959

Tau | Colorado State

Patricia O'Neill Colket, 1953
Judith Churchill Stevens, 1966

Phi | Washington University

Jane Boniface Clark, 1941
Emily Gallagher Baumgartner, 1943
Martha Franey Primm, 1943

Psi | Oklahoma

Yvonne Costley Green, 1940
Annabelle Escoc Cones, 1941
Mary Huckin McCormick, 1943
Vera Goodwin Goodwin, 1945
Novie "Lee" Bittman Beakey, 1958
Dorothy Bodine Miller, 1971

Omega | Iowa State

Gladys Lovrien Lasser, 1929
Maurine Hobkirk Hynds, 1934
Virginia Nye Brockett, 1935
Lorraine DeHaan Ruby, 1954

Alpha Alpha | Toronto

Barbara Greenleaf Misener, 1940
Elizabeth Nacson, 1997

Alpha Gamma | Nevada

Rachel McNeil Ebert, 1944
Shirley MacAulay Smith, 1948

Alpha Delta | Missouri-Columbia

Adele Hoffmann Lefever, 1962

Alpha Epsilon | Arizona

Geraldine Robinson Creighton, 1946

Alpha Zeta | Texas-Austin

Emily Woolard Ryan, 1953
Dillie Otto Tyus, 1954
Cynthia Higgins Hutcheson, 1967

Alpha Eta | Ohio Wesleyan

Betty Williams Duncan, 1931
Virginia Powers Walker, 1943

Alpha Theta | Vanderbilt

Nancy McDonald Reinke, 1952

Alpha Iota | California-Los Angeles

Dorothy Conlee Scowcroft, 1936
Marilyn Jackson Gravelle, 1942
Elizabeth "Bettie" Connolly Witchey, 1945

Alpha Kappa | Manitoba

Evelyn Dunfee McLean, 1946

Alpha Lambda | British Columbia

Kathleen Baird Manley, 1928
Elizabeth Evans Robertson, 1935

Alpha Mu | Rollins

Barbara Backus Pettit, 1965

Alpha Nu Chapter | Wittenberg

Jeannette "Jan" Bauer Ward, 1929
Lillian Fisher Schnabel, 1953
Linda Green Waters, 1958

Alpha Xi | Southern Methodist

Esta Saxon Kirkley, 1944

Alpha Omicron | North Dakota State

Dorothy Holes Catlin, 1931

Alpha Pi | West Virginia

Mary Sutton Hudson, 1930

Alpha Rho | Birmingham-Southern

Nellie Hardin Cleveland, 1945

Alpha Sigma | Randolph-Macon Women's

Mary Stigall Wright, 1932

Alpha Tau | McGill

Marion Johnson Curtis, 1949
Sheila Teller Watts, 1967
Linda Bluteau-Tarabelli, 1974

Alpha Upsilon | Penn State

Betty Alexander Warner, 1936
Ann Reese Cline, 1944

Alpha Phi | Colorado College

Dorothea "Dottie" Irion Edwards, 1943

Alpha Chi | William & Mary

Mildred Murray Torian, 1960

Alpha Psi | Lake Forest

Delores Kolan Nielsen, 1947

Alpha Omega | Western Ontario

Patricia Standing Southern, 1953
Marie Taylor Brown, 1953

Beta Alpha | Southern California

Elizabeth Bogue Patton, 1940
Barbara Lee Garner, 1940
Dorothy Nicholson Smith, 1941
Carol Gardner, 1942
Ruby Harbeson Barker, 1943
Marian Mortimer Swanson, 1944
Phyllis Tsharner Goldsberry, 1944
Sharon Williams Lynch, 1945
Mary Hodgkinson Davidson, 1949

Beta Beta | Maryland

Marianne Karlowa Ruppersberger, 1946
Carolyn Baumann Boor, 1950
Phyllis Allen Donnelly, 1964

Beta Gamma | Bowling Green

Helene Hollstein Guinther, 1955
Betty Stearns Fellers, 1959
Janet James Barnes, 1963
Patricia Cellio Hura, 1964

Beta Delta | Michigan State

Virginia Labbitt McGuire, 1944
Helen Arnold Burbage, 1958

Beta Epsilon | Miami-OH

Elizabeth Brooker Conrad, 1973

Beta Zeta | Kent State

Marilyn Green-Gandee, 1949
Barbara Jarus Kovacic, 1966

Beta Theta | San Jose State

Nancy Schieck Banfield, 1953
Carol Lentine, 1961

Beta Lambda | San Diego State

Jane Campbell Browne, 1950

Beta Omicron | Oklahoma City

Katie Lunn, 2002

Beta Pi | Indiana State

Janet Morgan, 1972

Beta Sigma | Washington State

Joan Thune Waananen, 1956
Susan Siegner Hoffman, 1959

Beta Upsilon | Kansas State

Judith Barnaby Howard, 1959

Beta Phi | Indiana

Diane Gruber Thompson, 1976

Beta Chi | Wichita State

Virginia Randle Loveland, 1958
Connie Basta McGill, 1973

Beta Psi | Oklahoma State

Virginia Norris Hess, 1958
Roberta Rogers McNeill, 1960

Gamma Alpha | Memphis

Shirley Nolen, 1961

Gamma Beta | Gettysburg

Nancy Kendall Snouffer, 1959

Gamma Eta | California State-Long Beach

Patricia Kendall Terry, 1965

Gamma Kappa | Nebraska-Kearney

Heather Harman Gideon, 1992

Gamma Omicron | Kentucky

Marion Mulligan Sackfield, 1968

Gamma Rho | Wisconsin-Oshkosh

Sandra Stern Buechel, 1974

Gamma Tau | St. Louis

Grayce McGuigan Schiller, 1982

Delta Eta | California-Irvine

Joanne "Rini" Mannino, 1981

Delta Xi | Bucknell

Linda Jamison Berry, 1979

Delta Omicron | Southern Polytechnic State

Rebecca Griffith West, 2001

Epsilon Delta | Creighton

Jennifer Steinmann, 2005

Epsilon Lambda | Alabama

Sarah Green Rivers, 1995

Epsilon Omega | Miami-FL

Diane Thompson Polles, 1996

Funds Help Finance Renovations

Renovating a home of any size can be a time-consuming, stressful and expensive endeavor. When the project is a Gamma Phi Beta Sorority house, updates can quickly amount to millions of dollars and the house corporation board (HCB) must carefully manage its resources to wisely invest in the home's future.

The Gamma Phi Beta Foundation can help.

Capital to finance a house's educational areas and educational equipment can be funded through the Foundation's area grants, according to Foundation Chairwoman Linda Daniel Johnson (Vanderbilt).

The area grants program allows donors to receive a tax benefit from their donations when giving a gift to the Gamma Phi Beta Foundation designated for the chapter's area grant fund. The process is best facilitated by a

fundraising firm, such as Pennington & Co., which solicits chapter alumnae for area grant funds and is proven to significantly increase renovation capital. Available funds are then distributed to the chapter HCB to finance renovation through the Foundation's grant-making process.

"We were scared to death of a capital campaign," admits Sigma Chapter HCB President Betty Hailey Crooker (Kansas). "After we finally hired a professional, it has been nothing but fun!"

Is there a milestone chapter anniversary on the horizon? Capitalize on the sentiment by considering whether a house renovation using area grants makes financial sense. For information, contact Bonnie Payne, executive director, Gamma Phi Beta Foundation, at 303.799.1874 or bpayne@gammaphibeta.org.



Beta Upsilon Chapter (Kansas State) renovated the house's library and basement using area grant funds.

Educational Areas

- Study rooms
- Libraries
- Computer rooms
- Drafting and educational work rooms
- Leadership training rooms
- Storage rooms for educational materials and equipment

Educational Equipment

- Computers
- Internet/wireless access
- Printers
- Laboratory and science equipment
- Audio and visual equipment
- Furniture: desks, conference tables, bookcases, etc.

A Fresh New Look!



GAMMA PHI BETA
FOUNDATION

Ta da! Convention 2010 was the perfect stage to debut the Foundation's new visual identity, and the critics agree: It's fabulous!

As the Foundation wraps up our 50-year anniversary celebration this month, we progress into our next era by establishing a stronger connection between the Foundation and the Sorority. Complementary brand identity elements benefit both organizations while continuing to embrace our "woman with heart" identity and the mission it represents.

Brand colors mimic the Sorority's use of hot pink, dark brown, light brown and light pink. In fact, the same graphic designer, Susan Foulk Reeves (Texas-Austin) of Prism Design, created both looks.

"We had a great design to begin with," explains Mary Vanier (Kansas State), public relations chairwoman. "This new look is an enhanced version that brings a modern, fresh interpretation to the design. Our ultimate goal was achieved, making the complete Gamma Phi Beta imagery more cohesive."

Give to Celebrate or to Remember

There are many reasons we celebrate with our sisters: special calendar dates, achievements, births and adoptions, weddings and more.

When you make an "In Celebration" donation to the Foundation, you've selected a thoughtful gift. It both honors a special person or occasion and advances opportunities for women in three ways — leadership education, camping for girls and financial aid. Your donation is acknowledged in *The Crescent* and with a card to the honoree. With so many occasions to celebrate, what will you give "in celebration of" today?

Likewise, a gift "In Memory" of a special person who has passed away

Impact Celebrate special occasions
with a gift to the Gamma Phi Beta Foundation!

honors his or her impact on your life, your chapter or your family. It's a wonderful way to say, "This person mattered to the world and especially to me."

Please send "In Celebration" and "In Memory" gifts by August 1 for publication in the fall issue of *The Crescent*.



How to Give

- Mail a check to:
Gamma Phi Beta Foundation
Attention Ryan Severts
12737 E. Euclid Drive
Centennial, CO 80111

- Donate securely online at
www.gammaphibeta.org.

Questions? Contact Ryan at
rseverts@gammaphibeta.org.

We acknowledge the following donors who celebrated a special event or individual with a gift to the Gamma Phi Beta Foundation (as of April 30, 2010).

IN CELEBRATION OF...

Allison Chandler's engagement to Brian Carter
Emma Chandler

Meghan Kollbocker and the entire Formal Recruitment team
Karla Stoebig

Cathy Frost McMann serving as Panhellenic President for Central New Jersey Alumnae Panhellenic Association
Cathy Griffin

Patty Moore receiving the 2010 Byliner Award for Business
Elizabeth Kerr

The birth of Cooper Joseph Willey, son of Jennifer Heidal Willey and Ben Willey
Melanie Roussos
Melissa Lutz
Barbara Boenzli

The initiation of my cousin, Betty Caya, at Beta Alpha Chapter
Linda Babcock

The birth of Grant Joseph Suftko, son of Dena Brayley Suftko
Barbara Boenzli
Amy Peterson

The birth of Emery Fruchtl, daughter of Christa Hamilton Fruchtl
Amy Peterson

The 2009-10 officers and chairwomen of the Fort Collins Alumnae Chapter
Sharon Green

The initiation of my daughter, Diana Henzler, into Beta Alpha Chapter on November 7, 2009. I'm thrilled to be your "m/ister" (mom/sister).
Elizabeth Emmert

The Atlanta Southern Crescent Alumnae Chapter
Adrianne Junius

The birth of Laeya Rivka, first daughter of Randi Traub Zaila, on January 18, 2010
Randi Zaila

Donna Arnold Smith
Stephanie Hearn

Stacey Agnew on her wedding!
Becky Wilson

The engagement of Mary Hawkins to Chris Sullins
Julie Eichenberg

Julie Eichenberg and MaryLynn Rector for all your time and effort – and you know why!
Rosemary Bunn

Carolyn Pascoe who has been elected president of the Toronto Watercolour Society
Anne Layton

Vera Goodwin
Sandra Davis

A great group of women in the alumnae department. Thanks, Mary, for all your hard work these past two years.
Shellie Hodges

The graduating sisters at Delta Epsilon Chapter: Cassie Burke, Melissa Green, Martha Juarez and Risa Lewis
Jane Todd

The graduating sisters at Epsilon Zeta Chapter: Danielle Aho, Kristen Conley, Julia Galletta, Lauren Martens and Jennifer Mendoza
Jane Todd

All of the support in Region 3: Heather Johnson, Adrianne Thompson, Heather Sheehan, Jennifer Costello, Jennifer Luker, Lauren Sullivan Dawson, Mo Kieffer, Sarah Loge, Amy Apostol and Whitney Bartle
Jane Todd

The birth of legacy Quinn Kathleen Stephens on March 23, 2010, to Kelley Beirne Stephens and Steve Stephens
Elizabeth Hernandez

The birth of legacy Rowan Elizabeth Armour on April 22, 2010, to Emily Hughes Armour and John Armour
Elizabeth Hernandez

The birth of legacy Lauren Olivia Willis to Lea Tanner Willis
Lauren Auciello

The birth of legacy Noelle Lucy Wick to Megan and Doug Wick
Shellie Hodges

Beta Mu Chapter for your Leadership Endowment support. Go Noles!
Rosemary Bunn

The marriage of Katie Koza and Mark Hanson. Congratulations, and I am so happy for the both of you!
Katie Glenn

Delta Eta Chapter being named "Most Spirited Sorority" by the ASB!
Gigi Eyre

Greater Orange County Alumnae Chapter being nominated for Orange County's Outstanding Philanthropy Group Award
Gigi Eyre

Gamma Epsilon Chapter winning Sigma Chi's Derby Days competition
Gigi Eyre

The birth of Emily Dugan, daughter of Corrine Ho Dugan. Congratulations!
Gigi Eyre

Norma Hasen
Naples Alumnae Chapter

Sara Moore
Naples Alumnae Chapter

Judy Ingersoll
Naples Alumnae Chapter

MAKING OR REVISING YOUR WILL?

Don't forget to include the Gamma Phi Beta Foundation! Contact Foundation Executive Director Bonnie Payne at bpayne@gammaphibeta.org or 303.799.1874 for more information on joining our Tau Epsilon Pi Society through thoughtful estate planning!

MEMORIAL GIFTS

We acknowledge the following individuals and groups who contributed to the Gamma Phi Beta Foundation in memory of a loved one (as of April 30, 2010). Deceased members' first, maiden and last names plus schools and initiation years are listed.

Sean Higgins,
father of Suzanne
Slinn-Higgins Lee (McGill)
Heather Beaton

Beatrice Tormey
(Wisconsin-Madison, 1946)
Madison Alumnae Chapter

Roberta Rogers McNeill
(Oklahoma State, 1960)
Sue Ann Tollett

Helen McCarthy,
mother of
Sheila McCarthy Hewitt
(California State-Long Beach)
Cathy Griffin

Jean Astrup Blanche
(Rollins, 1935)
Naples Alumnae Chapter

Emily Woolard Ryan
(Texas-Austin, 1953)
Houston Alumnae Chapter

Linda Neja,
mother of Dawn Neja Reese
(California State-Long Beach)
Linda Babcock
Judi McMahon
Balboa Harbor Alumnae
Chapter

Adele Hoffmann Lefever
(Missouri-Columbia, 1962)
Josephine Bates
Quad Cities Alumnae Chapter

Wilma Dee Baldwin Crane
(Penn State, 1944)
Ann Gregory

Dorothy Bodine Miller
(Oklahoma, 1971)
Marian McCarthy

Phyllis Allen Donnelly
(Maryland, 1964)
Mary Hartnett
Barbara Littlefield

Carol Snyder Hine
(West Virginia, 1962)
Betty Demarke
Zeta Beta House Corporation
Board

Ann Reese Cline
(Penn State, 1947)
Philadelphia North Alumnae
Chapter
Gwen McAdams
Joseph Beard
Marian Bickford
Elizabeth Boedecker
Ann Gregory
Dorothy Henderson
John Hopkins, III
Edward LaVoice
Joanne Peters

Richard H. Bauer,
husband of Shirley
Wolfarth Bauer
(Washington University)
Donna Prior

Jane Henry Michener
(Kansas, 1951)
Joan Cooke

Sue Haines Ott
(Kansas, 1956)
Virginia Farrar

Sydney Stoeppelwerth
(Kansas, 1959)
Virginia Farrar

Susan Wright Pierpont
(Kansas, 1946)
Sarepta Ostrum

Nancy Schieck Banfield
(San Jose State, 1953)
Marin County Alumnae
Chapter
Shirley Hoffman
Joan Mengarelli
Barbara LaMarca

Mary Castater Hickey
(Oregon State, 1942)
Carol Lauritzen

Mildred Murray Torian
(William & Mary, 1960)
Linda Hagen

Helene Hollstein Guinther
(Bowling Green, 1955)
Valarie Peistrup

Mary "Evie" Bane
(Illinois at Urbana-Champaign,
1948)
Ike Barnhart
Joan Braitsch
Eleanor Francis
Eleanor Lauer
Leona Turner
Julia Wright
Trude Lee
Mary Rietman
Cassi Tramm
Judy Willis

Mary Hodgkinson Davidson
(Southern California, 1949)
Marilyn English

Marilyn Smith Tenny
(Syracuse, 1940)
Palm Desert Crescent Circle
Barbara Wessel
Santa Barbara Alumnae
Chapter

Sheila Telfer Watts
(McGill, 1967)
Anne Layton

Rebecca Griffith West
(Southern Polytechnic State,
2001)
Atlanta Southern Crescent
Alumnae Chapter

Barbara Wylie Teel
(Nebraska-Lincoln, 1951)
Mary Beach

Helen Dowdy Johnson
(Denver, 1948)
Sarah Johnson

Colleen Brogan
(Indiana, 1998)
Sarah Johnson

Joseph Francis Gleason,
husband of Jane Piper Gleason
(Illinois at Urbana-Champaign)
Joanne Roman
Margery Miller

Margaret Windsor Rogers
(Arizona, 1948)
Nancy Cella

Joan Schmolze Quinlan
(Northwestern, 1949)
Joyce Dunn

Harriet Lishen Baldwin
(Missouri-Columbia, 1941)
Audrey Shafer
Tucky Hobbs

Latane Jordan Graham
(Auburn, 1968)
Debbie Wilson

Katie Lunn
(Oklahoma City, 2002)
Allison Barta
Laura Shofner
Sarah Smith
The Region 6 Team
Marisa Pels
Elizabeth San Miguel
Yukino West
Sheana Knighton
Brooke Lowe
Mary Jo Hope

Betty Gayle Sims Voorhees
(Kansas, 1934)
Tucky Hobbs

Patricia O'Neill Colket
(Colorado State, 1953)
Albuquerque Alumnae
Chapter

Anita Queen Statton
(Texas Tech, 1962)
Albuquerque Alumnae
Chapter

Carolyn Baumann Boor
(Maryland, 1950)
Philadelphia North Alumnae
Chapter

ETA CHAPTER

Chapter Founder's Badge, 1894

Eta Chapter founder Bessie Gaskill Waldron (California-Berkeley, 1894) was one of 12 women to pioneer our first expansion to California. Though she passed away many years ago, her unique badge has taken a journey that keeps Bessie's memory alive for the women of Eta Chapter.

History of an Heirloom

Once upon a time, the badge was inherited by Bessie's niece, Elizabeth, who was a member of Kappa Kappa Gamma women's fraternity. She originally gave it to her sister-in-law, Madeline Putnam Koser (California-Berkeley, 1923). When Madeline passed away, Elizabeth gifted the family heirloom to her stepson's wife, Nancy Brown Mathews (California-Berkeley). For 45 years, Nancy stored the badge with other treasures.

Now, with approval from International Headquarters, the badge is once again at home with Eta Chapter. As a perpetual scholarship chair's badge, the piece is on loan to junior Jessica Burton (California-Berkeley), the first collegiate member to wear Bessie's badge since the 1890s.

A Founder's Legacy

"While I must admit it's a little daunting to carry an Eta heirloom," Jessica shares, "it makes me feel a deeper connection to the chapter because I am reminded of the history of this organization. It's an absolutely beautiful pin, and I wear it with a lot of pride."

The badge is gold with a vintage texture on the Gamma and Beta Greek letters and 13 seed pearls on the Phi; a chapter guard and scholarship dangle have been added. The back is simply engraved "Bessie G. Waldron."

Special thanks to Barbara Heyns May (California-Berkeley) for her help with this article and her role in returning the badge to Eta Chapter.



• • •

**It's an absolutely beautiful pin,
and I wear it with a lot of pride.**

– Jessica Burton

The basic design of our badge has not changed since 1874, when our Founders consulted with Tiffany & Co. to produce the Greek letters Gamma, Phi and Beta over a crescent moon. However, prior to 1919, members were able to take the design to the jeweler of their choice for reproduction. Often, members would specify unusual accents and stones, resulting in one-of-a-kind badges.

CAPTURE A CRESCENT



We love seeing crescents from all over the world! If you want your photo on this page, here's a hint: we prefer crescents that open to the left, like our logo.

1. Belize: Spring breakers from Zeta Sigma Chapter (South Carolina) posed with their crescent while souvenir shopping.

2. Virginia: At the Meadowlark Botanical Garden, Michelle Barber (William & Mary) spotted a lawn ornament in the shape of a crescent!

3. Africa: Zeta Kappa Chapter President Jana Head (Southern Indiana) traveled a long way from home to capture a crescent and visit her brother who is serving with the Peace Corps in Ghana.

4. New Jersey: Eta Chapter (Berkeley) alumnae found a crescent sign in the small town of Hopewell.

5. Italy: Zeta Chi Chapter President Heather Heefner (Texas Christian) found her crescent in Cinque Terre.

6. Peru: At the Parque del Amor in Lima, Christina Steck (St. Louis) spotted a cut-out crescent with a view.

7. Guatemala: Vacationing near the Tikal Mayan Ruins, Vanessa Porter (Boston) found this super cute restaurant and crescent!

8. South Carolina: Abbey and Megan Hall (Bowling Green) found a crescent moon decoration in a local gift shop while on spring break in Myrtle Beach.

