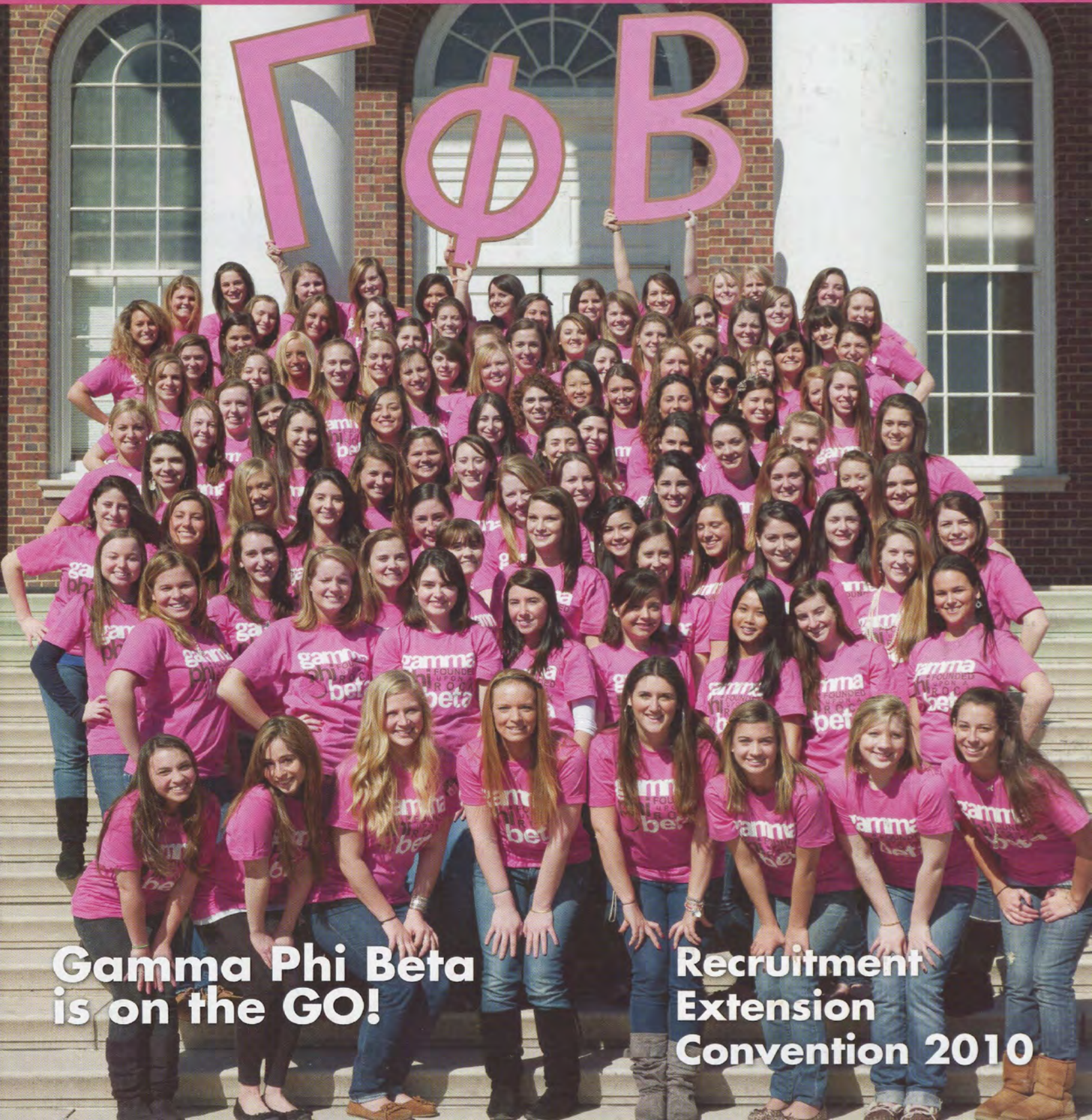


# The Crescent

of Gamma Phi Beta

Spring 2010



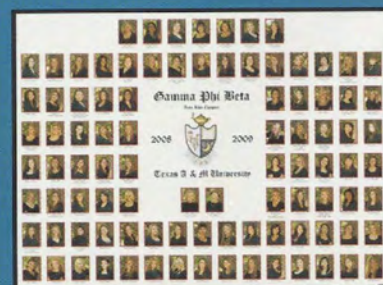
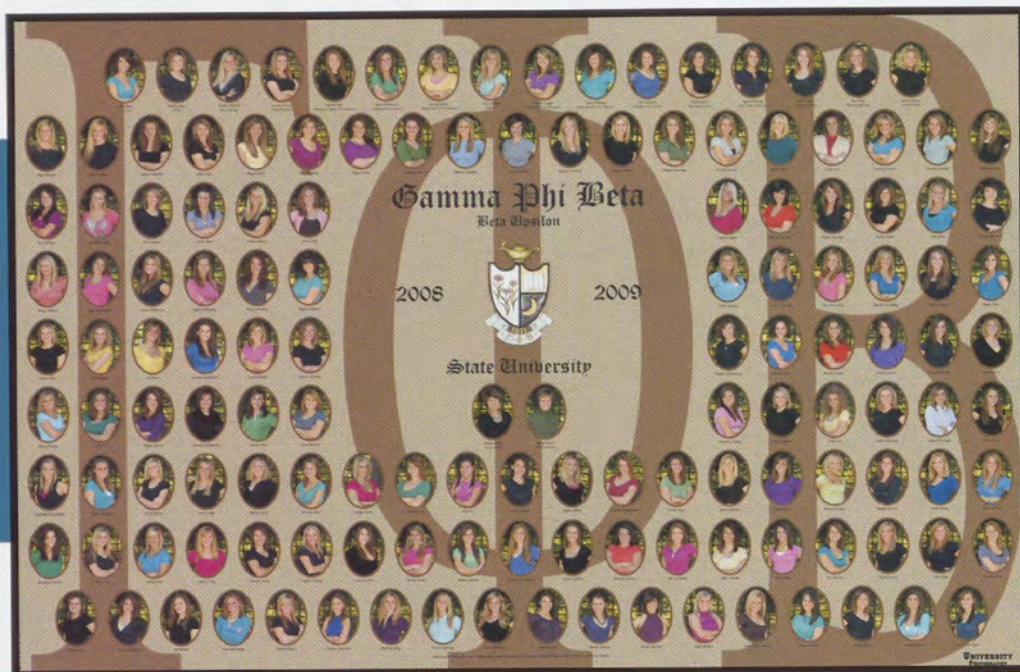
**Gamma Phi Beta  
is on the GO!**

**Recruitment  
Extension  
Convention 2010**





Not just another composite company,  
find out why!



**Truly NO Hidden Fees • Quick Photo Sessions  
Easy, Fast & Efficient • More Options**

Here at University Composites you, the customer, are our top priority. You will receive great customer service, old-style craftsmanship, and more options to create a quality product. We have a very high customer retention rate along with the lowest prices in the business. Call us today!



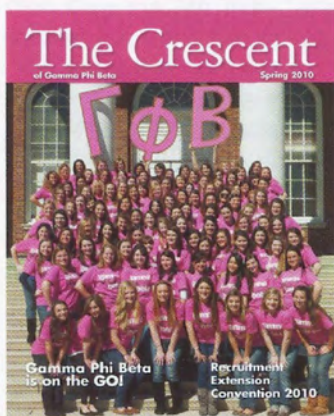
[www.universitycomposites.com](http://www.universitycomposites.com)  
800.819.7087







SPRING *The Crescent* 2010 Volume 111 Number 2



## ON THE COVER

New members of the University of Delaware colony shine for Gamma Phi Beta. See more on page 13.

## FEATURES

### 6 Recruitment

What's the secret to a great recruitment? There's only ONE thing you need.

### 12 We're Growing!

Our chapter roll expands with an installation in Ohio and extensions on the East Coast.

### 14 Convention Countdown

We'll be busy in Orlando come June! Take a look at all the goings-on in store for Convention 2010!

### 18 A Site to See

It's more than a face-lift, it's a whole new Web site!

## IN EVERY ISSUE

4 International President's Letter

5 Mailbox

20 Panhellenic Update

21 Out & About

22 Spotlight On: Crescent Catchers

23 Pacesetter: Kim Guevara

24 Sorority Life

30 In Memory

31 Foundation News

33 In Celebration

34 Memorial Gifts

35 Vintage ΓΦΒ







GAMMA PHI BETA

CONNECT.

IMPACT.

SHINE.



As we move into spring and approach Convention 2010, there sure is a lot to buzz about in Gamma Phi Beta! This issue, as well as the spring electronic edition of *Crescent Reflections*, has several articles informing you about upcoming initiatives, proposed changes and new directions for the Sorority.

• **A comprehensive survey** regarding our regional structure was conducted in December 2009, and data and comments are currently being analyzed. The electronic survey was circulated among volunteer leaders, chapter and house corporation board presidents, crescent circle chairwomen, alumnae chapter presidents and Sorority staff, and an astonishing 57 percent responded. International Council is considering several short- and long-term adjustments so our members and groups are better served.

- Nearly two years of work reviewing our current **alumnae group models** has been completed. Multiple task forces, surveys and focus groups have helped refine a new model, designed to attract more members to active alumnae membership and service. Bylaws amendments will be presented at Convention 2010 to reflect recommended changes that will allow our alumnae groups to function more easily and efficiently.
- Collegiate chapter presidents gathered from across North America at Gamma Phi Beta's third annual **The Academy**, held in Dallas in February. Sharing ideas, sharpening leadership skills and addressing common concerns among peers remains a great opportunity for our chapters to excel. Many thanks to the **Gamma Phi Beta Foundation** for continuing to support this outstanding leadership conference.
- **Gamma Phi Beta continues to grow!** New collegiate extension opportunities and improved recruitment results among our collegiate chapters indicate Gamma Phi Beta continues to be a relevant option for ever-busy collegiate women. Recruitment really happens 365 days per year – learn what our chapters are up to and how you can assist our Sorority's growth.
- **Convention 2010** is right around the corner! Gamma Phi Beta's second *Crescent Classic: Walk by the Light of the Crescent Moon* is gearing up, and exciting workshops and speakers will help all attendees truly "capture the magic!" Make your plans to join Gamma Phi Betas this June in Orlando for sisterhood, service, recognition of excellence and FUN — in short: *Connect. Impact. Shine!*

If you ever doubted that Gamma Phi Beta is truly ON THE GO, just read on!

In IIKE,

*Linda Lyons Malony*

Linda Lyons Malony  
International President

#### INTERNATIONAL COUNCIL

##### **International President**

Linda Lyons Malony

##### **Alumnae Vice President**

Mary L. Knaup

##### **Collegiate Vice President**

Annabel M. Jones

##### **Education Vice President**

Kris L. Baack

##### **Financial Vice President**

Amy M. Peterson

##### **Membership Vice President**

J.J. Stoll Kaelin

##### **Panhellenic Affairs Vice President**

Elizabeth Ahlemeyer Quick

##### **Interim Executive Director**

Kendra Gates Bocher

#### GAMMA PHI BETA FOUNDERS

Mary A. Bingham

E. Adeline Curtis

Helen M. Dodge

Frances E. Haven

#### SORORITY MISSION STATEMENT

Our mission is to foster a nurturing environment that provides women the opportunity to achieve their potential through life-long commitment to intellectual growth, individual worth and service to humanity.



## Book Lover

Cloris Leachman (Northwestern) was the honored guest of the Port Townsend Film Festival last September. She gave most graciously of herself, and I was able to have her sign my copy of her autobiography ("On the ΓΦΒ Bookshelf," winter 2010). Easily I'm able to plug her book as I enjoyed it thoroughly, especially the chapter about her childhood, with great pictures too. She's not only fun, but also very warm and friendly, and I was proud to be her sister. – Carol Hoyerman Brockett (Northwestern)

## Song's Author Recognized

As a college student in 1978, I happened upon a poem titled "For You Gamma Phi Beta," which was unsigned. I put the words to music and sang it at various functions. It was very popular, and our president entered it in a song contest at Convention. It won the original song category; the arrangement was returned to me, and I put it away.

I located the song recently and my name appears as the writer of the lyrics and music. This is incorrect. It should read: Lyrics by Iva Nicholson

Deobald, Music by Ann Molenaar Schram, Arrangement by Susan Soderstrom Dively (all Idaho).

I would like Iva to have some recognition for writing such beautiful words, so beautiful that I could not get them out of my head until they were put to music. – Ann Molenaar Schram (Idaho)

*Editor: Thanks for setting the record straight, Ann. Readers, the lyrics to "For You Gamma Phi Beta" are now posted at [www.gammaphibeta.org](http://www.gammaphibeta.org) under News & Events, The Crescent.*

## Online Options

I enjoyed viewing the winter issue online — great coverage on taking care of ourselves, great photos and layout. – Laurel Ziemann (Northwestern)

*Editor's Note: Did you know every issue of The Crescent is posted on our Web site, [www.gammaphibeta.org](http://www.gammaphibeta.org)? Make a switch to the online subscription at no charge and start saving trees, protecting the environment and cutting costs at ΓΦΒ! E-mail the editor ([mmcmann@gammaphibeta.org](mailto:mmcmann@gammaphibeta.org)) to join the Green Team today!*

## Editor's Notes

The Crescent needs a volunteer roving reporter or two to help cover Convention 2010 in Orlando. If you're attending and have an interest in giving your perspective, contact the editor! Collegians and alumnae are welcome to apply!



## In the Summer Issue

- Chapter Houses
- Generations of ΓΦΒ
- All About Facebook

## Letters to the Editor

Gamma Phi Beta Sorority  
Attn: Editor  
12737 E. Euclid Drive  
Centennial, CO 80111  
[TheCrescent@gammaphibeta.org](mailto:TheCrescent@gammaphibeta.org)



The Crescent reserves the right to publish any letter addressed to the editor. Letters may be edited for space and clarity.

## INTERNATIONAL HEADQUARTERS

12737 E. Euclid Drive, Centennial, CO 80111  
Phone: 303-799-1874 Fax: 303-799-1876  
Internet: [www.gammaphibeta.org](http://www.gammaphibeta.org)  
E-mail: [TheCrescent@gammaphibeta.org](mailto:TheCrescent@gammaphibeta.org)

## THE CRESCENT STAFF

Editor: Mimi Burch McMann  
(California State-Bakersfield)  
Staff Writer: Nicole Nelsetuen  
Director of Marketing and Communications:  
Nina Dulacki (Colorado College)

## MAGAZINE SUBMISSION DEADLINES

SPRING: January 1 FALL: July 1  
SUMMER: April 1 WINTER: October 1

©2010 Gamma Phi Beta Sorority  
The Crescent of Gamma Phi Beta (USPS 137620)  
is published quarterly by Gamma Phi Beta Sorority,  
12737 E. Euclid Drive, Centennial, CO 80111.

Periodicals postage paid at Englewood, CO and  
at additional mailing offices. Nonmember subscription  
price is \$6. Produced in the U.S.A.

POSTMASTER: Send address changes to:  
The Crescent, Gamma Phi Beta Sorority,  
12737 E. Euclid Drive, Centennial, CO 80111.



I work for The Honourable Jim Watson, Minister of Municipal Affairs & Housing for the Province of Ontario. Our office participated on a Habitat for Humanity build site and I decided to wear my Gamma Phi Beta letters while we supported this worthy cause. This group photo graced many of our ministry's internal publications, as well as a few external media spots. I also somehow stole the spotlight on the 6 o'clock news from him – this got a laugh as normally my job is keeping him front and centre at events. – Laura Kobsa (Toronto)



MEMBER OF  
NATIONAL  
PAN-HELLENIC  
CONFERENCE



FRATERNITY  
COMMUNICATIONS  
ASSOCIATION



# The Power of One

“We’re number one! We’re number one!”

This familiar phrase typically conjures images of teammates embracing and pointing in the air. They’re jumping for joy and alive with celebration. Those three little words communicate ultimate pride in accomplishment (“We did it — we won, we’ve achieved, we’ve done our best!”) like no other.

Is that what your chapter’s Bid Day looks like? Would you like it to be filled with joy and celebration?





## Turn up the heat

"We're number one." Isn't it interesting that we (plural) and one (singular) are used as one mantra — together? This is the strength and power of one. You!

Our Four Founders envisioned and expected our Sorority to grow, and that's exactly what we are doing: one personal effort at a time, working together. If each of us pledges to do just one thing with greater effort and commitment, imagine what we could achieve! Choose to "turn up the heat" by one degree and the results and benefits will grow exponentially.

## Get real results

Last fall, our Epsilon Lambda Chapter (Alabama) achieved a goal that at one time chapter members only dreamed of reaching. Sisters giving "one degree of effort," teamwork and ultimate pride in our Sorority resulted in this outstanding accomplishment.

So, what did they do and how did they do it?

At Epsilon Lambda, every member committed to doing at least one thing to help her chapter succeed throughout the year. For some, it was one more degree of effort during their spring philanthropy project or taking on one leadership position in another organization. Others added one more conversation workshop, preference practice or sisterhood activity into already-full schedules. Many attended one more campus function to increase Gamma Phi Beta's visibility. Individual efforts added up, one by one, as members did what it takes to build a sisterhood.

The result? They set a new chapter record by welcoming 98 new members on Bid Day!

## Take the challenge

What would your chapter achieve if every single member contributed just one more degree of effort to Gamma Phi Beta? The result would be a better chapter times 50, 100 or 200!

Maybe you'll be the one person who inspires a future leader to join our sisterhood: the president of your chapter, of International Gamma Phi Beta or even a future president of the United States of America. That's the power of one — you!



## Be the One

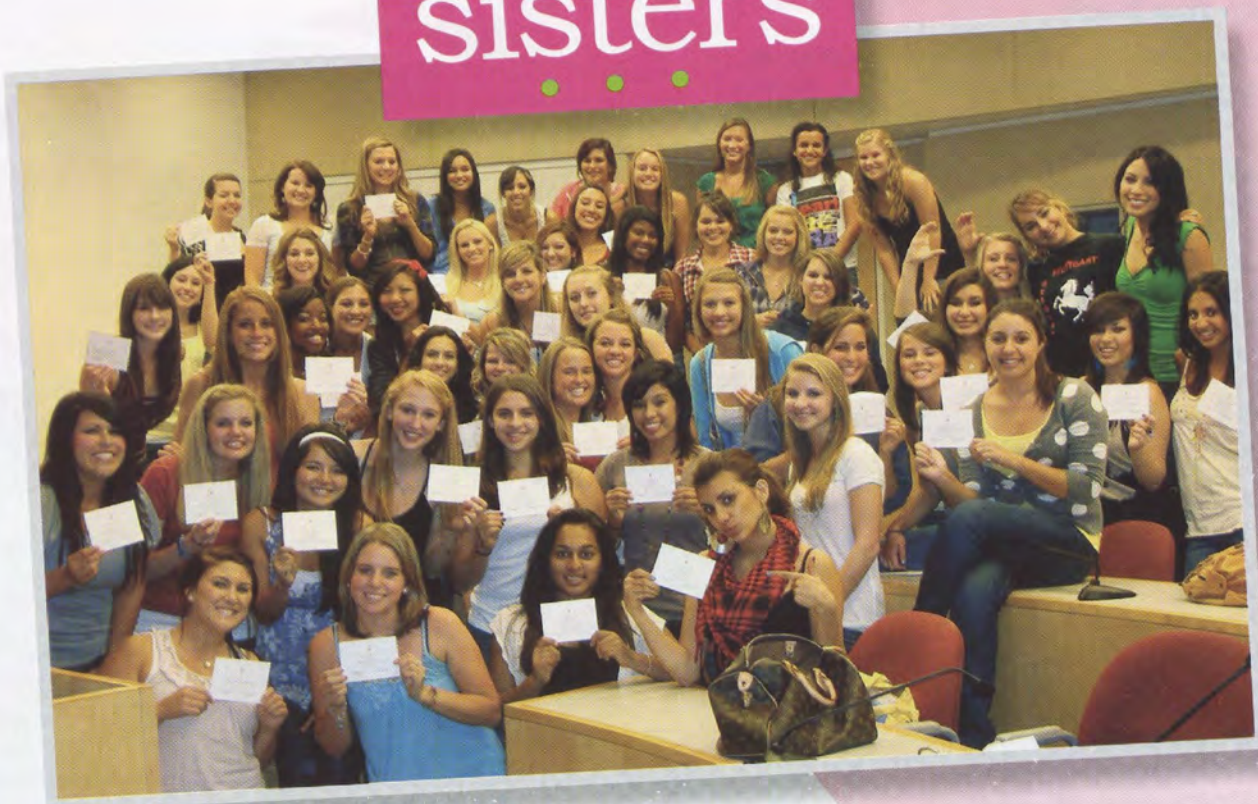
- Inspire ONE more potential new member to enroll in formal recruitment... then write her a recommendation to Gamma Phi Beta!
- Have every member of the chapter post ONE positive Facebook message or text a sister each week to strengthen retention and sisterhood.
- Plan ONE additional progressive conversation workshop or preference practice so all members are comfortable sealing the deal for Gamma Phi Beta.
- Write ONE more reference for a local high school senior hitting a campus this fall.
- Invite ONE more alumna to help during recruitment and model lifetime commitment for collegiate members.
- Organize ONE more image-building event this spring — wear pins and pearls or letters on campus, distribute water bottles at the recreation center, make treats and invite your neighbors over to study, attend one more Greek Week event together — be creative!
- Implement ONE more new skit, song or spirit week idea by consulting with your recruitment resources personnel!

Start designing a Recruitment Action Plan (RAP)  
that will get your chapter modeling recruitment year round.





## sisters



### *Member blogs about her Gamma Phi Beta love*

Being in a sorority has been the absolute BEST part of Chapman University so far. I know what you're thinking, "Amy as a sorority girl?" Yeah, I didn't believe it either. I came in thinking, "Nah — I don't think I'll be in one, that's just not me."

I decided to go through recruitment, just to see what it was like and meet some new girls. Boy, was I surprised! Sororities at Chapman are unlike any of the stereotypes you hear. The minute I stepped into the Gamma Phi room, and heard the girls singing their song about joining, I immediately lit up. These girls were SOOO much fun to be around, and were all so welcoming and genuine; I was totally in love with Gamma Phi. I went through recruitment praying they would invite me back, and they sure did.

I have never been so excited to open an envelope. It held my invitation to join the Sorority, and I was sooooo excited. Over the past few months, I've gained friendships and bonds beyond what I could have imagined. These girls are not just friends; they are sisters — and sisters they will always be. Going through Initiation made me even more excited to grow with amazing girls by my side for the next four years.

To help out my community AND have amazing friends? I'm so excited about it. And I'll be chapter historian next year, so I'm already getting involved! To wear my letters, knowing the secret meaning of them, is the best feeling, and I have so much pride for the Sorority that is impacting me in ways I couldn't have imagined. So call me a sorority girl if you want, but I'm absolutely in love with it and I'm proud to call myself a Gamma Phi.

P-R-I-D-E in the house of GPHIB!  
Love in IIKE,  
Ames (Amy Logan)





# Bid Day Celebration!

GO GAMMA PHI

**W**hat can be more exciting than being welcomed with songs, chants, cheers, lots of smiles and happy faces? It's fun! It's festive! It's the lasting memory you want your new members to capture when they open their Gamma Phi Beta bids.



New members at our Florida Southern College colony show their excitement on Bid Day 2010!

So go ahead and celebrate your recruitment success; you are one growing sisterhood! Keep this in mind as well: *Bid Day is the first day of your next recruitment.*

Think about it. Bid Day is the springboard into your next opportunity to grow and promote our Sorority. How?

When you keep "recruiting" new members, you inspire a pride and passion for Gamma Phi Beta — and that's contagious! Those new members will go out and confidently recruit others; the cycle continues as they share their ultimate pride and passion for Gamma Phi Beta.

Bid Days will come and go, but keeping the spirit of recruitment in everything you do all year will show others the rock-solid benefits of Gamma Phi Beta. And that's something to celebrate!



Kappa Chapter's (Minnesota-Twin Cities) new members celebrate their Bid Day success!



Theta Chapter's (Denver) fall Bid Day theme was, "Fly Gamma Phi — Always First Class."



Date \_\_\_\_\_ Potential New Member's Name \_\_\_\_\_  
First Nickname Middle Last



# GAMMA PHI BETA SORORITY REFERENCE FORM

(To be completed by Gamma Phi Beta members only.)

For \_\_\_\_\_ of Gamma Phi Beta at \_\_\_\_\_  
(Chapter) (College or University)

Entering as a ☐ Freshman ☐ Sophomore ☐ Junior ☐ Senior Age \_\_\_\_\_

High school attended \_\_\_\_\_ City/State \_\_\_\_\_

Scholastic average \_\_\_\_\_ Rank in class \_\_\_\_\_ Number in class \_\_\_\_\_

Previous college attended \_\_\_\_\_ City/State \_\_\_\_\_

Scholastic average \_\_\_\_\_ Number of terms completed \_\_\_\_\_ Major \_\_\_\_\_

Name of parent/guardian \_\_\_\_\_

Home address \_\_\_\_\_

Attach picture  
if available

## IS SHE A LEGACY?

(Indicate the  $\Gamma\Phi\beta$  relative) ☐ Sister ☐ Mother ☐ Grandmother ☐ Great grandmother  
☐ Step sister ☐ Step mother ☐ Step grandmother ☐ Step great grandmother

Relative's Name \_\_\_\_\_  
(Last) (First) (Maiden) (Chapter)

Other NPC sorority affiliations of relatives \_\_\_\_\_

Can this woman meet the financial obligations of the Sorority? ☐ Yes ☐ No

I endorse this woman for membership in Gamma Phi Beta Sorority. ☐ Yes ☐ No

Does the potential new member meet each of Gamma Phi Beta's four core values of membership? ☐ Yes ☐ No

(On a separate page, please comment on why she does or does not meet each of these values.)

**Love** (Individual Worth – good character, self-respect, enthusiasm, good integrity) ☐ Yes ☐ No

What character/personality traits does she demonstrate?

Does she have any hobbies or interests that she is passionate about?

**Labor** (Service to Humanity – community involvement, service, work, leadership in organizations) ☐ Yes ☐ No

**Learning** (Intellectual Growth – scholastic excellence, leadership, honors) ☐ Yes ☐ No

**Loyalty** (Lifetime Commitment – commit to bringing prestige to the Sorority) ☐ Yes ☐ No

Please provide any additional information that would help the collegiate chapter meet and recruit this woman.

Check as many as apply:

☐ I know this potential new member personally.

☐ I know her family personally.

☐ I do not know this woman personally, but I received this information from:

☐ Panhellenic members/master file

☐ Mutual friend

☐ High school faculty/staff member

☐ Other \_\_\_\_\_

☐ This information sent at the request of the collegiate chapter.

☐ This information sent voluntarily.

SUBMITTED BY:

(First) (Maiden) (Last) Husband's

(Street) (City) (State) (Zip)

( )

(Telephone) (Chapter of Initiation)

I am a/an (check one) ☐ Collegian ☐ Alumna

**Where to send reference forms: Reference forms go to the chapter's area reference chair (ARC) or directly to the chapter. Please call International Headquarters at 303-799-1874 with any questions.**



# Layers of Legacies

**M**ore than 25 years after Initiation, Jolene Ruff Dougherty (Colorado-Boulder) was once again dressed in a white gown. As she waited anxiously for her oldest daughter to join the ceremony, she worried about forgetting the words or that the experience would be different than she remembered.

But when the choir began to sing and the new members entered the room, all the precious memories came flooding back.

"I felt old," she laughs, "but it was like going back in time. Everything was just the same for Kelsey as it was for me. I really understood how our ritual has not changed in more than 100 years."

Jolene is also a legacy; she joined Gamma Phi Beta in 1981 as the younger sister of Kathryn Ruff Andonian (Colorado-Boulder). Last year, as her daughter Kelsey Dougherty (California-Los Angeles) made her way through recruitment week, Jolene and Kathryn fought to contain their excitement.

"I encouraged her to have an open mind and to choose the house that was best for her," Jolene remembers. "But she felt at home with Gamma Phi just like I did, and when she accepted their bid, I was thrilled. We called my sister in Pennsylvania to scream and yell together!"

Kelsey's first memory of Gamma Phi Beta was in fourth grade, when the family visited Jolene's alma mater in Boulder, Colorado.

"When I first saw the Gamma Phi house I was amazed," Kelsey says. "I couldn't believe my mom lived there. I didn't really understand the sorority concept, but I remember they welcomed her back unconditionally. She walked in like she was still a part of the house and it was a part of her. When I joined, it hit me that wherever Gamma Phi Beta is, you're home."

What legacy tradition will prosper at your chapter? Remember, collegians: legacies deserve a special measure of consideration. As a guideline:

- Take into account the history of Gamma Phi Beta pride and support these women can bring to your chapter.
- Reflect positively on how legacies exhibit our values of love, labor, learning and loyalty.
- Think about the deeper sense of commitment legacies offer to Gamma Phi Beta.



**Parker-Tenney Dynasty** Mary Mano Parker (Penn State) is the proud matriarch of six legacies! Clockwise from top: Elizabeth Ann Parker (West Virginia), Laura Parker Tenney (San Diego State), Priscilla Parker (San Diego State), Olivia Tenney (California Polytechnic-San Luis Obispo), Mary and Moriah Tenney (California Polytechnic-San Luis Obispo). Not pictured: Malinda Parker Ottinger (West Virginia)

The indescribable pride Jolene feels for her daughter and Kelsey's boundless enthusiasm has brought Gamma Phi Beta into focus for Jolene.

"Being in the house again, this time as a mom, is bringing back a lot of memories," she acknowledges. "The Gamma Phi Betas are so open and kind to everyone, I felt it as soon as I walked in the door. Kelsey and I love it so much that my husband wishes he could be a Gamma Phi!"

The big question now is: Will Kelsey carry on tradition and influence her younger sister Kenna to go Gamma Phi? The family certainly hopes so!

**Got a legacy story to share?**

**Send it to [TheCrescent@gammaphibeta.org](mailto:TheCrescent@gammaphibeta.org)!**

## Twofer

The Legacy Introduction Form and Reference Form are now combined — it's a two-for-one deal you can't pass up!



# Welcome, Eta Alpha Chapter!

By Megan Mahoney (Wisconsin-Milwaukee), collegiate leadership consultant

It's always exciting to install a new chapter, but when a chapter breaks new ground as the first National Panhellenic Conference sorority on campus, there is extra incentive to celebrate!

That was the type of exciting weekend enjoyed last November by the 41 founding members of Eta Alpha Chapter at Lake Erie College in Painesville, OH.

"What is so special about this chapter is the love and sisterhood each and every member has for one another," says International President Linda Lyons Malony (Southern California). "They really understand the sisterhood aspect, which is the basis of everything we are."

On Saturday, November 21, Morley Music Hall on campus was buzzing as the lovely ladies of Zeta Omicron Chapter (John Carroll) completed initiation preparations. International Director of Ritual Margaret West Pape (Oklahoma) coordinated the ceremony; Linda Malony, Collegiate Vice President Annabel Jones (Oklahoma) and several area alumnae were also present.

Later, as proud parents and friends looked on, the installation banquet commenced: the chapter's charter and president's badge were presented to Heather Greco and all guests enjoyed a fun video re-capping the colony's journey. The Region 4 team gifted the chapter with a pretty silver bell to use during many recruitment parties to come and area alumnae chapters gave a flag personalized with the Gamma Phi Beta crest and "Eta Alpha Chapter."

Nine alumnae initiates were also welcomed to the sisterhood that day. They are graduates of Lake Erie College who were former members of Delta Kappa Psi, a local sorority that became Gamma Phi Beta.

Congratulations, Eta Alpha Chapter!



**Eta Alpha Chapter (HA)**  
**Founded November 21, 2009**  
**Lake Erie College in Painesville, Ohio**



Charter members of Eta Alpha Chapter (Lake Erie) enjoyed a beautiful initiation and installation ceremony on Nov. 21, 2009.

## Events in the Life of Eta Alpha Chapter

### 2008

Spring: Gamma Phi Beta is invited to colonize at Lake Erie College

September: Extension recruitment efforts begin; Delta Kappa Psi local sorority members become Gamma Phi Beta new members

November: Colony members travel to Cleveland to celebrate their first Founders Day with Zeta Omicron Chapter (John Carroll)

### 2009

September: Colony members hold formal recruitment

October: Colony members organize their first Crescent Classic event – a glow-in-the-dark volleyball tournament

November: Colony members are initiated into our sisterhood and installed as Eta Alpha Chapter of Gamma Phi Beta Sorority, Lake Erie College's first National Panhellenic Conference sorority



# Mom, Blue Hens and Wrestling

## Why I love the University of Delaware

By Eileen Day O'Brien, Esq. (Syracuse)

I have a very special reason for being excited beyond words about colonizing at the University of Delaware (UD), home of the Fightin' Blue Hens.

My mother entered UD in 1927 majoring in English literature with plans to teach. When the stock market crashed in 1929, she dropped out to pursue more "practical" training in the administrative field. Along the way, my mother, Mary Moore Day (Maryland), became my sister as an alumna initiate.

Retired at age 65, Mother had time on her hands and unfinished business: her undergraduate degree. She re-enrolled at UD as an art history major and soon became a fixture on campus for her sharp wit:

- "I took Freshman Biology 1 when I was here before, but that doesn't mean I am prepared now to take Freshman Biology 2. You have to remember that in 1927, DNA had not been discovered."
- "Thank you for your concern, Professor, but if I am to study this rock face for your geology class, I must rappel down the face of this cliff with the rest of the students." And she did — even though she was nearly 70.
- "I still have one phys ed requirement? Well, sign me up for wrestling. I'll take you to the national championships. There isn't a boy alive who will lay a finger on me." The requirement was waived.
- "This nice young man in my class has invited me to his dorm room to see his etchings." And she told *me* never to fall for that line!

Humor aside, she was also well-known for her academics. Proficient in shorthand and drawing, Mother accurately transcribed lectures and sketched slideshow images — prompting other students to request her custom study guides.

In 1982, 55 years after her first class at UD, Mary Moore Day was invited on stage to receive her diploma and a standing ovation. In my mother's memory and for everything Gamma Phi Beta means to me, I pledge to support the colonization effort at UD and be active with the chapter. Good luck in Delaware!



Mary Moore Day in 1927 (right) when she first entered the University of Delaware and at graduation in 1982.

## Extension Update

### Florida Southern College (FSC)

- **Location:** Lakeland, FL
- **Student population:** 1,800 undergraduates
- **Fact:** FSC offers 50 academic majors and pre-professional programs.
- **National Panhellenic Council (NPC) sororities:** six
- **Planned installation:** April 2010

### University of Delaware (UD)

- **Location:** Newark, DE
- **Student population:** 16,000 undergraduates
- **Fact:** UD was founded as a small private academy in 1743.
- **NPC sororities:** nine
- **Planned installation:** May 2010

### Grand Valley State University (GVSU)

- **Location:** Allendale, MI
- **Student population:** 20,000 undergraduates
- **Fact:** GVSU will host Gamma Phi Beta's sixth chapter in Michigan.
- **NPC sororities:** seven
- **Planned installation:** Spring 2011

• • •



## And Jennie Makes Nine

With all this extension activity, Gamma Phi Beta has hired a new collegiate leadership consultant (CLC), Jennifer "Jennie" Geoffroy (California State-Fullerton). Jennie joins eight consultants working in the field who give guidance and tips for success to chapters. Welcome!





# CAPTURE THE MAGIC Convention 2010

## Convention Q&A

### Who should attend?

All collegians and alumnae are welcome to join the fun! Collegiate chapters are required to send one elected delegate, usually the president. It's best to send at least one alternate delegate too.

### How can I register?

Registration packets are available online at [www.gammaphibeta.org](http://www.gammaphibeta.org). Early registration deadline is May 3 (\$750); final deadline is May 31 (\$800).

### How do I get to the hotel from the airport?

Bus transportation to and from Orlando International Airport (MCO) will be provided. To reserve a seat, complete the Ground Transportation Reservation Form at [www.gammaphibeta.org](http://www.gammaphibeta.org) by June 1, 2010.

### What do I pack?

- Gamma Phi Beta badge
- Business attire (dress, suit, skirt and blouse or pantsuit)
- One semi-formal or formal dress for the Pink Carnation Banquet
- A light jacket or sweater, as room temperatures vary
- White or off-white daytime wear for Memorial Service and Initiation
- Casual clothes (shorts and T-shirt) for Play Day and the Crescent Classic walk/run event
- Bathing suit and exercise clothes for pool and workout facility

### How can I volunteer?

E-mail Jane Krabill Todd (Vanderbilt), volunteer coordinator, at [janektodd@comcast.net](mailto:janektodd@comcast.net). To volunteer your time in the Foundation room, contact Sally Lewis at [selewis535@aol.com](mailto:selewis535@aol.com).

### What is Play Day?

Play Day is scheduled the afternoon of Friday, June 26. Transportation and discount admission tickets will be available to: Disney World (\$70.75), Universal Orlando (\$60.50) and SeaWorld Orlando (\$71.50). There will also be special pre- and post-Convention ticket packages available.

**June 23-27, 2010**

The Hilton, located in the  
Walt Disney World® Resort  
Orlando, FL



CAPTURE THE  
MAGIC  
Gamma Phi Beta  
ORLANDO 2010



# Members Get Moving

**If you think of Convention as a lot of meetings that keep you trapped inside a hotel, think again.**

**F**or the second year, Convention attendees will get out and get moving to raise money for camping at *Crescent Classic: Walk by the Light of the Crescent Moon*. Following the Confirmed Conventioneers Dinner, members will head outside to a designated course to walk or run en masse.

"Hundreds of Gamma Phi Betas publicly supporting camping really makes a statement at Convention," says Leanne Orr (Chapman), sorority director-public relations. "We hope everyone coming to Orlando will register and join the fun."

New this year is a separate race for runners, who will tackle the route ahead of more laid-back participants. Both groups will enjoy an after-party to celebrate their achievements and fundraising success.



**HELP US  
RAISE  
\$20,000  
IN 2010!**



## Funds the Fun Way

In advance of the event, Crescent Classic athletes are asked to collect donations to support our commitment to camping for girls, Gamma Phi Beta's passion since 1929. Donors to *Crescent Classic: Walk by the Light of the Crescent Moon* will help fund four worthwhile programs.

- Camp Fire USA
- Girl Guides of Canada
- Gamma Phi Beta Foundation
- Camp Fire USA Sunshine Council in Orlando

With your help, we can meet our goal of raising \$20,000 in 2010! By contributing to positive camping experiences, we encourage spiritual, mental and social resiliency in girls — our international philanthropic mission.

## Wanna Help?

Even if you're not going to Convention, you can be part of *Crescent Classic: Walk by the Light of the Crescent Moon*!

- Sponsor a walker/runner! If asked to donate, say "yes!" Or, give a tax-deductible gift to the Foundation. Go to [www.gammaphibeta.org](http://www.gammaphibeta.org) and click Donate Now.
- Raise support! Stay home and be a "phantom walker!"

## Questions?

Contact Jill Gunjevic at 303.799.1874 or [jgunjevic@gammaphibeta.org](mailto:jgunjevic@gammaphibeta.org). For all the details on registration, go to [www.gammaphibeta.org](http://www.gammaphibeta.org).

**Fun-raising!** Run it or walk it, but don't miss the second Crescent Classic: Walk by the Light of the Crescent Moon at Convention 2010!



## CONVENTION

# Let the Business Begin!

By Linda Lyons Malony, International President

**Convention 2010:  
Fun! Sisterhood! Workshops! Networking!**

**W**e can expect all that and more this June in Orlando. But did you know the primary purpose for holding Sorority Convention is to conduct business? At Convention 2010, collegiate and alumnae delegates will affect the future direction and success of Gamma Phi Beta by electing officers, proposing resolutions and amending our bylaws.

### More about Bylaws

Simply put, bylaws are the rules that govern an organization. Gamma Phi Beta's bylaws may only be altered by the voting delegates at Convention, and every two years the opportunity to amend the Sorority's bylaws must be given proper consideration. Bylaw changes may seem complicated, but delegates have four months to consider what they mean, consult with their chapters, ask questions and prepare to vote.

Thanks to the research and recommendations of many members, several bylaws amendments in three categories will be presented.



1. With input from the Governance Task Force, Alumnae Chapter Success Task Force, survey-takers and various small groups, International Council proposes a new alumnae chapter model. Several aspects of the bylaws are affected. See related article below, "Change is in the Air," for specifics.

2. The Governance Task Force recommends additional means and methods to convene and conduct a meeting of the corporation between Conventions. This would be particularly important in an emergency.

3. Several proposed amendments affect the Sorority's magazine: permitting *The Crescent* to be distributed other than quarterly, allowing for printed or electronic distribution and acknowledging that the editor is now a full-time staff member rather than appointed.

Convention 2010 is packed with opportunities to share insights, develop stronger skill sets, build sisterhood and drive the business of the Sorority. Make your plans to **Capture the Magic** today!

## Change is in the Air

**I**f all goes well at Convention 2010, big changes are in store for Gamma Phi Beta alumnae groups.

Based on recommendations from task forces and volunteer leaders, alumnae chapters could become less structured, less expensive and more efficient if proposed bylaw changes are passed and implemented following a delegation vote in Orlando.

"Anything that can make involvement for alumnae simpler and more accessible, we want to consider," says Alumnae Vice President Mary Knaup (California State-Fullerton). Specifically, the suggestions involve:

- Making the crescent circle category obsolete. In the new model, any group with six or more members would be recognized as an

alumnae chapter and have the right to representation at Convention, including voting privileges.

- Reducing the paperwork, forms and fees required of alumnae groups. The number of required meetings would be reduced from four to two.

- Restructuring the leadership of alumnae chapters by changing the number of required officers, officer titles and responsibilities.

"Mainly the new structure forms a unified alumnae organization," explains Marissa Lewis Sweazy (Bradley), a task force member who helped develop the recommendations. "Instead of two categories, all alumnae would have the same status. Also, a more relaxed and welcoming chapter model accommodates the

added responsibilities juggled by alumnae like work and family."

In a separate change, not affected by the bylaw amendment vote, the Circle of Excellence program that rewards alumnae group achievement has been revamped, effective fall 2010. Currently, Circle of Excellence is deadline-driven and tracks the submission of required forms.

"Using forms requirements as an indicator of success is not reflective of what is happening within our alumnae groups," Mary explains.

"We will start seeing the definition of excellence based on our Core Values."

Details on the new and improved Circle of Excellence will be unveiled at Convention 2010. Stay tuned!



# Slate Finalized

After much study and deliberation, the 2008-2010 Nominating Committee confidently presents the following slate of officer candidates. To everyone who ran for office or submitted a Candidate Comment Form, *thank you!*

## International Council

- **International President**  
Linda Lyons Malony  
(Southern California)
- **Alumnae Vice President**  
Mary Knaup  
(California State-Fullerton)
- **Collegiate Vice President**  
Annabel Jones (Oklahoma)
- **Education Vice President**  
Rebecca Boyd-Obarski  
(Illinois)
- **Financial Vice President**  
Leigh Ann Price (Texas Tech)
- **Membership Vice President**  
J. J. Stoll Kaelin  
(Colorado-Boulder)
- **Panhellenic Affairs Vice President** Betty Ahlemeyer Quick (Indiana University)

## Nominating Committee

- Area A (Regions 1 and 2)**
  - Tracy Stack Johnson (Florida State)
  - Barbara Missert Wessel (Syracuse)
- Area B (Region 3)**
  - Jane Krabill Todd (Vanderbilt)
  - Karen Gamel Urette (Oklahoma)
- Area C (Regions 4 and 5)**
  - Nancy Chase Coolley (Iowa State)
  - Rosemary Milew (California-Irvine)
- Area D (Region 6)**
  - Kris Baack (Nebraska-Lincoln)
  - Christy Woltzen Ehrenreich (Missouri-Columbia)
- Area E (Region 7)**
  - Vicki Carlson Reid (Arizona)
  - L'Cena Brunskill Rice (Southern California)
- Area F (Region 8)**
  - Merry Greig Cosgrove (San Diego State)
  - Suzanne Higgins Lee (McGill)

**VOTE FOR  
2010-2012  
OFFICERS AT  
CONVENTION  
2010!**

## Recognizing outstanding service

Special thanks to members of the Nominating Committee for their diligence in evaluating and selecting 2010-2012 officer candidates.

- Chair: Phyllis Donaldson Choat (Nebraska-Lincoln)
- Area A: Elizabeth "Kiki" Sloan Phillips (Washington University)
- Area B: Julie Dunn Eichenberg (Florida State)
- Area C: Sally Erikson Lewis (Bradley)
- Area D: Ann Williams Ross (Oklahoma)
- Area E: Bonnie Lipow Jelinek (Northwestern)
- Area F: Heather Foote Seber (Indiana State)
- Collegiate Delegate: Nicole Ferrazzoli (Texas A&M-Commerce)
- Collegiate Delegate: Melissa Reyes (California Polytechnic State)

As a courtesy to the Convention body, candidates intending to be nominated from the floor\* should contact the Nominating Committee Chair Phyllis Choat (pdchoat@cox.net) by May 24 to submit a Candidate Information Form and three Candidate Comment Forms.

*\*Information on candidates nominated from the floor will be prepared for distribution to the delegates using the same template as the candidate information in the 2010 Report of the International Nominating Committee.*



Members of Bakersfield Alumnae Chapter enjoy breakfast alfresco. Alumnae chapters and crescent circles could see major structure changes if Convention 2010 delegates vote to approve several proposed bylaw changes.



# Oh, What a Site!

## Coming Soon . . .

**G**amma Phi Beta's new Web site is a breath of fresh air. Created to be the leading Web site of all National Panhellenic Conference (NPC) member groups, [www.gammaphibeta.org](http://www.gammaphibeta.org) is inviting, engaging and easy to navigate!

Our dramatically improved and upgraded site is the result of 18 months of research, analysis, design and programming. By incorporating current information with the latest technology and adding a plethora of Sorority photos, our new site will enhance your online Gamma Phi Beta experience and better meet your needs.

### Improved Login

First things, first. Instead of logging in using your member number, you now have a choice. Remembering your member number can be a challenge — so now either your member number or your e-mail address can be your login! If we don't have an e-mail address for you on file, you will initially log in with your member number and then be able to update to an e-mail address. Keep International Headquarters informed by updating your contact information in the Update my Profile section, found under the **Alumnae** and **Collegians** navigation tabs.

### Easy to Navigate

Forget about that old cumbersome navigation menu! "The navigation pathway is easy-to-follow, and visitors will feel comfortable using the site as a resource," says Sorority Director of Marketing and Communications, Nina Dulacki (Colorado College).

Eight primary navigation tabs are found at the top of each page of the site: **About** ΓΦΒ, **Join** ΓΦΒ, **Alumnae**, **Collegians**, **Parents**, **Service**, **Housing** and **Foundation**. In addition to the primary navigation tabs, find the latest Sorority news and event information on the homepage.



Add  
[www.gammaphibeta.org](http://www.gammaphibeta.org)  
to your bookmarked  
favorites!

### Fresh and Fabulous

Sprinkled throughout the site you'll find tons of updated Sorority information and lots of gorgeous Gamma Phi Beta photos. In fact, you can even enlarge select photos on the site to produce full-screen images. Several new pages have also been added including: direct access to licensed vendors, insights into sorority life, housing information and updates on our newest colonies and chapters, just to name a few.

### SEO Champions

Vital to the success of any Web site, search engine optimization (SEO) dictates how easy our site can be found by anyone searching for sororities or interfraternal organizations. Typically, the earlier (or higher) a site appears in the search results list, the more visitors it will receive. Our new site distributes optimized, keyword-rich content which means any woman interested in sorority life will find our site at or near the top of their online search! Go Gamma Phi!



## How Do I...

### Find a collegiate or alumnae chapter?

Select the state or province you want to connect with on our colorful map and the interactive Chapter Locator will find related information instantly! The Chapter Locator can be accessed from three areas — **Join** ΓΦΒ, **Alumnae** and **Collegians**.

### Find a specific report, manual, skit or other tool?

New to our site are resource areas found under the **Join** ΓΦΒ, **Alumnae**, **Collegians** and **Housing** navigations. Housed in each of these sections are information and resources that will assist your recruitment efforts, your House Corporation Board (HCB), bylaws establishment, reference information, efficiency reports, manuals and more.

### Find online forms?

On the homepage, click the icon of the woman sitting with a computer (labeled "Member Resources") to find any online form.

We're very excited about our fabulous new Web site and trust you'll find it to be a modern and engaging representation of the Sorority for members and non-members alike!



## Connect with Gamma Phi Beta!

Looking to reconnect with your sisters? The bottom of each page of our new Web site features direct access to our Facebook® page, Twitter® tweets, LinkedIn® group page and mysisterlink site.

Discover how easy it is to interact with sisters and Gamma Phi Beta through our social networking sites.



### Facebook ([www.Facebook.com](http://www.Facebook.com))

Facebook is a free global networking site that allows you to connect with people in your life. Our fan page lets members share the latest Sorority news, participate in discussions and discover all the great things our members are doing around the world. To become our fan, enter Gamma Phi Beta Official Page into the search engine; when the page appears, send a request to become a fan.



### Twitter ([www.Twitter.com](http://www.Twitter.com))

Want to know the latest and greatest Sorority news? Twitter is a micro-blogging site that allows users to send and read quick messages, known as "tweets." Our Twitter name is gpbccrescentmoon; enter our name in the search engine, sign up to follow us and receive up-to-the-minute Sorority news in short convenient snippets.



### LinkedIn ([www.Linkedin.com](http://www.Linkedin.com))

LinkedIn is a premier professional networking resource used for finding jobs, people and business opportunities. Our official LinkedIn group page helps members network and find professional and business resources. To connect with our group, enter Gamma Phi Beta into the LinkedIn search engine; when the page appears, send a request to join.



### mysisterlink ([www.mysisterlink.com](http://www.mysisterlink.com))

Created exclusively for Gamma Phi Beta members, mysisterlink is the Sorority's original online community. Members from across the globe can search for sisters, exchange ideas, find professional and networking opportunities and post announcements.



## Extension Q & A

**F**or more than 150 years, the sorority experience has been a rite of passage for college women, enriching the lives of female students well past graduation. Gamma Phi Beta is committed to growing our collegiate chapter roster through a process called extension, in cooperation with the National Panhellenic Conference (NPC).

### How does the extension process start?

- The school's Panhellenic association determines when its Panhellenic community is ready for expansion. The number of women interested in joining sororities, size of current chapters and housing are all factors in the decision.
- NPC notifies all 26 member organizations of the opportunity.
- Interested groups send a letter of interest and additional information to the school. At Gamma Phi Beta, this is known as the extension packet.

### How is a group selected?

- The packets are reviewed, and selected organizations are asked to make onsite presentations to the campus' extension committee. If invited, Gamma Phi Beta's extension team introduces our Sorority and answers any questions.
- The group that best meets the needs of the campus is invited to colonize.

### How does a colony get established?

- The colonizing organization generates awareness on the campus and recruits charter members, following guidelines of the college Panhellenic.
- Every Gamma Phi Beta colony is assigned a collegiate leadership consultant (CLC) who provides guidance in selecting leaders, recruiting additional members and establishing order and tradition.

### When does the colony become a chapter?

- Charter members of a Gamma Phi Beta chapter must complete new member training, elect officers and make plans to succeed on campus.
- A nearby collegiate chapter is invited to initiate the colony's new members. Local alumnae and international officers are also present.
- The same day, an installation reception is held where school administrators, family, friends and alumnae celebrate the new chapter.

More questions? Contact NPC Extension Committee Chair Julie Johnson at [jjohnsonkd@aol.com](mailto:jjohnsonkd@aol.com).



Gamma Phi Beta chapter founders, also known as charter members, have a permanent place in our history.



## Panhellenic Presidents Shine for ΓΦΒ

Congratulations to members serving as Panhellenic president on their respective campuses! We're proud of you!

- Katie Leinenkugel (Minnesota-Twin Cities)
- Mia McCurdy (Purdue)
- Paige White (Arizona)
- Katarina Gardner (Rochester)
- Amanda Firman (Northern Iowa)
- Cate Davis (Lander)
- Elizabeth "Liz" Paul (Union)

Also, alumnae Betty Bopp Fatzinger (Auburn) is president of Montgomery Alumnae Panhellenic Council in Alabama and Christine Boyett Barr (Texas State-San Marcos) is president of the Greater Katy Panhellenic Alumnae Association in Texas. Go Gamma Phi!



# The Academy

Outside of Convention, where can you find dozens of pink-and-brown clad women polishing their leadership skills, networking and chanting for Gamma Phi Beta with all their might?

There may be several correct answers to that question, but in this case, we're referring to The Academy, a leadership training camp for chapter presidents. Held last February in Dallas, The Academy brought together women from nearly every collegiate chapter to connect, impact and shine as Sorority leaders.

Attendees took away new ideas for developing an effective chapter, running efficient meetings, resolving conflict and leading more confidently. As usual, interacting with other chapter leaders is a highlight of this event; collegiate presidents often learn the same ups and downs are experienced by other chapters.

"I loved meeting so many Gamma Phis from around the country. It really reinforced the idea in me that a sorority is so much more than just my chapter on my campus, and

that this is the true reason we dedicate so much of our time to the organization," comments one collegian. Another chapter president agrees: "My favorite part of The Academy was getting a sense that we are all in this together as presidents."

Coinciding with The Academy, the Recruitment Summit was the perfect chance for Sorority recruitment experts to enjoy a packed weekend of specialized training. As they coach collegians to identify and secure wonderful new members, our recruitment consultants, advisors and coordinators are an important asset to our organization.

"It was especially meaningful and important for me as someone who is just beginning as a special recruitment consultant," says Elizabeth Smith Clark (Southern Methodist). "The Recruitment Summit gave me a lot of valuable information, as well as the intangible benefit of meeting other recruitment leaders. The advice, the mentorship and the experience, in general, was inspirational."

To help smaller chapters afford the registration and travel costs associated with The Academy, Foundation donors rose to the occasion – sending in more than \$21,000!

**THANK YOU!**

## Crescent Circle News

Congratulations to our newest alumnae group! International Council formally recognized Albany Crescent Circle (NY) in Region 1 on October 26, 2009. Send well wishes to: Chairwoman Meghan Chance Zito, 19 Candlewood Dr., Ballston Lake, NY 12019 (meghan.zito@gmail.com).



**Go Gamma Phi!** Chapter presidents swapped ideas and learned new techniques for leadership at The Academy in February.



# Preserving our History

**Crescent Catchers acquire misplaced badges**

Each year at Pinfest, members of the Fraternity Pin Collector Society gather to display their elaborate assortment of vintage Greek badges. Among the more than 5,000 pieces worth tens of thousands of dollars, rare Gamma Phi Beta badges dating to the 19th century are flaunted.

But fear not, there is a small but mighty crew dedicated to bringing these pieces home: an all-volunteer group of badge rescuers called the Crescent Catchers (formerly the Badge Task Force).

"Badges are a vital part of our history and ritual," founding member Melanie Kelsey (Puget Sound) says. "Non-members don't understand how they symbolize everything we believe and hold dear."

Since 2002, Crescent Catchers have used their own funds to "rescue" our badges from collectors, online markets, pawn shops and estate sales, to the tune of more than \$10,000. Once a badge is secured, the group first tries to locate the rightful owner before donating the piece to International Headquarters.

## An Unbelievable Reunion

Crescent Catchers are responsible for more than one happy ending to a lost or stolen badge story.

In the 1970s, Mary Lou Loufek Fazel's (Iowa State) badge was taken from her home. Police grimly told her the thieves would likely melt the jewelry for resale. But decades later, Mary Lou received an astonishing e-mail. Crescent Catcher Mary Hotter Reina (Northwestern) had spotted the long lost badge on ebay, an online auction site.

"I just about fell off my chair!" exclaims Mary Lou. "I couldn't believe I was getting a lost part of my heart back after all those years."

## A Unique Discovery

In another fairy tale ending, 23 Crescent Catchers rescued a piece of Gamma Phi Beta history from a collector. It set them back \$1,600, but their purchase was priceless.



**To ensure your badge doesn't end up in the hands of a collector, make your wishes known. In the event of your death, please have your Gamma Phi Beta badge returned to International Headquarters.**



*The Cuykendall badge is pictured at the bottom right, along with other unique vintage pieces on display at International Headquarters.*

The diamond-accented badge and attached guard belonged to Mary Safford Cuykendall (Syracuse, 1887), the 75th member of our founding chapter. No one knows the journey Mary's badge took throughout its 123-year life, but one thing is certain: this invaluable piece is safely home at International Headquarters where it is on prominent display in our museum.

One contributor to the Cuykendall rescue dedicated herself to the crusade after her father's home was burglarized.

"My dad said the only thing he truly missed was his Sigma Alpha Epsilon Fraternity badge," explains Christi Kinkle Fredricks (Southern California). "Working with the Crescent Catchers has shown me there's always hope! If only we could communicate to the outside world what our badges mean to us; I guess it's something only Greeks can truly appreciate."

*Want to be a badge rescuer? Search for the Crescent Catchers group at [www.mysisterlink.com](http://www.mysisterlink.com) or contact Melanie Kelsey, [makelsey@comcast.net](mailto:makelsey@comcast.net). For more badge stories and information, visit [www.gammaphibeta.org](http://www.gammaphibeta.org).*





## High-Tech Healthcare

**A**fter traveling worldwide bringing technology and training to developing countries, Pacesetter Kim Guevara (Oregon) has found her passion.

Kim is the corporate philanthropy officer for Medweb, a company that specializes in the business of telemedicine. Telemedicine uses technology to provide medical diagnosis and patient care in rural and remote areas, or to mobile or evacuated communities. Health services are accessed through the Internet using laptop computers and diagnostic medical devices.

In a three-question interview with *The Crescent*, Kim shares more about her work.

**Q: Many were touched by the disaster in Haiti. How did telemedicine help earthquake victims in this impoverished country?**

The medical professionals that arrived after the earthquake provided critical hands-on care. Unfortunately, these teams cannot remain in Haiti indefinitely, and many victims require follow-up evaluation and treatment. Telemedicine is ideally suited to this situation: physicians can monitor the progress of their patients remotely. Long-term, telemedicine can greatly enhance the medical system where physicians and specialists are lacking. It also offers a continuing education system for healthcare professionals and students.

**Q: You've traveled to many remote and indigent areas of the world. What country made the biggest impression on you?**

Each location brings tremendous rewards and unique challenges. No matter where I travel people want the same basic things: access to healthcare and education, the

opportunity to work and provide for their families and to give a better life to their children.

In Jalalabad, Afghanistan, we are building a Telemedicine Education & Learning Center in collaboration with the Rotary Club of San Diego. The locals work so hard and for no other reason than their love of the people and their desire to see a stable Afghanistan. Their energy, which stems from hope and love, is so palpable you can almost reach out and touch it.

**Q: What is rewarding about your job?**

When you can make a small difference in someone's life by providing a definitive answer and some measure of comfort while watching the power of technology, it is moving beyond words.

In Honduras I recently helped secure the country's first digital x-ray, teleradiology and telemedicine system for a new clinic. Our first case was a 26-year-old man with injuries to his arm from a motorcycle accident months before. He'd been to many doctors, but none provided a clear diagnosis. We used the new equipment to take x-rays and send the images to the U.S.; a report was back within minutes.

Sadly, the nerve damage was so severe that an amputation was recommended above the elbow. Had telemedicine services been available at the time of the accident, his arm may have been saved. As the news sank in and this man cried on his brother's shoulder, it strengthened our resolve to do more. There are millions more stories equally heart wrenching.

For more information, visit Kim's blog at [www.medwebcpo.blogspot.com](http://www.medwebcpo.blogspot.com).

The Red Cross campaign to donate \$10 by texting 'Haiti' to 90999 shows how a little can go a long way. Donations for earthquake relief total \$238 million and counting. In the words of Mother Teresa, "If you can't feed a hundred people, then feed just one." – **Kim Guevara**



# SORORITY LIFE

## REGION 1

### MASSACHUSETTS

♥ ♣ Throughout National Hazing Prevention Week, members of **Epsilon Eta Chapter** (Bridgewater State) distributed awareness ribbons to advocate hazing prevention. The chapter also recognized the school's professors and staff at its annual *Teachers Tea* and participated in a community clean-up event.

### NEW YORK

♥ Twenty-one **Alpha Chapter** (Syracuse) alumnae from the 1980s and 1990s celebrated 20 years of sisterhood with a reunion.

♥ ♣ **Delta Tau Chapter** (Colgate) members organized a book drive for local elementary schools and showed off their baking skills at a pie-making contest during a sisterhood event.

♣ **New York City Alumnae Chapter** members donated winter coats to a local charity and also volunteered at a holiday party for underprivileged children.

♥ **Rochester Alumnae Chapter** was proud to welcome six alumnae initiates to the sisterhood.

♣ **Zeta Mu Chapter's** (St. John's) first *Crescent Classic: Black Light Volleyball Tournament* raised monies for Camp Fire USA. The chapter also hosted a Winter Carnival for local elementary school students, complete with gifts, carolers and a fireworks show.

### ONTARIO

♣ **Alpha Alpha Chapter** (Toronto) members organized a canned food drive and raised \$720 for Girl Guides at their *Crescent Classic: Sugar Shack*, a carnival for the community.

♥ **Greater Toronto Area Crescent Circle** members helped **Alpha Alpha Chapter** (Toronto) with recruitment efforts by baking treats and lending support.

### PENNSYLVANIA

♥ **Alpha Upsilon Chapter** (Penn State) members had a ball at their winter formal held at Toftrees Gold Resort.



The women of Epsilon Tau Chapter (Rochester) put together gift bags of donated toys for Hillside Children's Center, an organization serving youth-in-need.

♥ ♣ **Zeta Pi Chapter** (Penn State-Altoona) hosted *Putting on the Hits*, an annual talent show fundraiser that resulted in a \$1,400 donation to Camp Fire USA. Members also tested their skating skills during a sisterhood event at the ice rink.

## REGION 2

### NORTH CAROLINA

♥ After welcoming two alumnae initiates, **Asheville Alumnae Chapter** members celebrated Founders Day with **Epsilon Psi Chapter** (North Carolina-Asheville). The chapter also hosted a progressive holiday dinner and ornament exchange.

♥ ♣ **Epsilon Psi Chapter** (North Carolina-Asheville) members are showing off their Sorority pride by attending all home sporting events while wearing letters. The chapter capped off the fall semester with a Paris-themed formal.

### SOUTH CAROLINA

♥ **Epsilon Theta Chapter** (Clemson) members bonded over a barbecue dinner, kickball games and s'mores at their sisterhood camping retreat in Georgia.

### VIRGINIA

♥ **Northern Virginia Alumnae Chapter** rang in the New Year with a Chinese gift exchange.

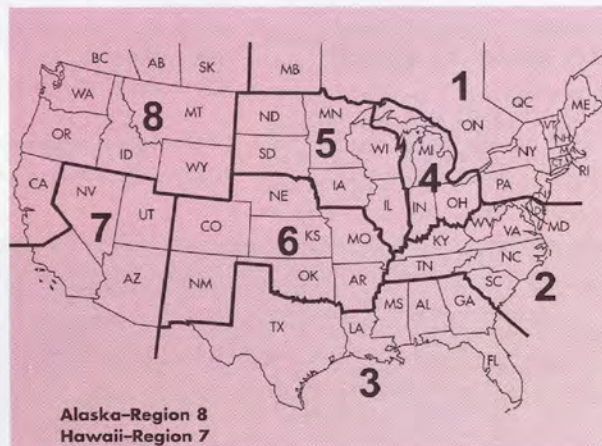
♥ **Richmond Alumnae Chapter** hosted several new recruitment workshops to help the women of **Zeta Beta Chapter** (Virginia) prepare for spring recruitment. Members enjoyed a Founders Day celebration at Feathernesters, a local brunch hot spot.

## REGION 3

### ALABAMA

♥ ♣ The women of **Epsilon Lambda Chapter** (Alabama-Tuscaloosa) traveled to Camp Fletcher for their sisterhood retreat and decorated several of the camp's pavilions.

♥ **Huntsville Alumnae Chapter** invited area alumnae to join the chapter's installation ceremony on September 24, 2009.



## Sorority Life!

Alumnae and collegiate news at a glance! What's your region been up to? Send news to [TheCrescent@gammaphibeta.org](mailto:TheCrescent@gammaphibeta.org).

### Symbol Key:

- ♥ Sisterhood
- ♣ Philanthropy
- ♣ Leadership
- ♣ Scholarship





Delta Omicron Chapter (Southern Polytechnic State) members proudly display their first place trophy after winning Goat Night, a Greek Council-sponsored event that brings the Interfraternal community together for fun and healthy competitions.

🌸 Teaming with the Montgomery National Panhellenic Council, members of **Montgomery Alumnae Chapter** sold poinsettias to raise monies for interfraternal scholarships.

#### FLORIDA

♥ Alumnae of **Beta Mu Chapter** (Florida State) had a great time reconnecting at their annual *Crescent Party*.

♥ 🌸 More than 25 women attended **Naples Alumnae Chapter's Pin and Pearls Founders Day** celebration where four members were honored with 50-year pins. The chapter also collected shoes to donate to Laces of Love, an organization helping disadvantaged children.



Epsilon Sigma Chapter (Morehead State) and local alumnae celebrated Founders Day in grand style with a delicious dinner and evening soiree.

🌸 To honor breast cancer survivors, **Jacksonville Alumnae Chapter** members participated in an awareness walk.

🌸 After forming Team Pink Carnations for the Cure, **Tampa Bay Alumnae Chapter** members joined the *Making Strides Walk*, raising cancer awareness. The chapter also collected items to donate to Mercy House, an organization providing resources for the homeless.

#### GEORGIA

♥ 🍷 **Delta Upsilon Chapter** (Georgia) members celebrated Founders Day in their newly renovated chapter room and regularly volunteer at a local women's shelter.

#### MISSOURI

♥ **Greater Kansas City Alumnae Chapter** members broadened their professional networks at a *Wine and Appetizer Networking Party*.

#### TEXAS

♥ 🍷 **Alpha Xi Chapter** (Southern Methodist) merited a first place finish in Homecoming competitions for the third time in four years. The chapter topped off the fall semester with *Jingle Bash*, a holiday party that featured horse-drawn carriage rides, photos with Santa and gingerbread house decorating.

🌸 📖 **Gamma Zeta Chapter** (Texas A&M-Commerce) collected more than \$500 for Camp Fire USA at its annual *Chili Cook-Off*. The chapter also earned the highest overall GPA for the entire Greek community.

♥ **Houston Alumnae Chapter** members created Valentine's Day cards and goodies for local collegiate chapters.

🌸 Live music and delicious food made **Zeta Rho Chapter's** (Texas A&M-College Station) second annual *Wing Fling* to benefit Camp Fire USA a success; the chapter raised \$10,730, enough money to send 40 children to camp!

♥ **Zeta Chi Chapter** (Texas Christian) celebrated Founders Day with local alumnae with a luncheon and afternoon tea. A girl's night at the chapter house included movies, games and late night chats.

**Snap to chapters reporting their Crescent Classic success in this issue: they raised \$35,094 for camping charities! Way to SHINE for Gamma Phi Beta!**



## REGION 4

### INDIANA

♣️ **Zeta Iota Chapter** (Valparaiso) traveled to Camp Tannadoonah in Michigan to spruce up the campgrounds and write letters of encouragement to future campers during their overnight stay.

♣️ Combining a volleyball and corn-hole tournament resulted in a flourishing *Crescent Classic* for **Zeta Kappa Chapter** (Southern Indiana); the women raised a chapter record-breaking \$1,700 to support our international philanthropy.

### MICHIGAN

♥️ ♣️ **Delta Omega Chapter** (Oakland) members pampered themselves at a spa day sisterhood retreat. Preparations for the chapter's *Crescent Classic: Spaghetti Dinner* are underway.

### OHIO

♣️ *Moon Ball*, **Alpha Nu Chapter's** (Wittenberg) glow-in-the-dark volleyball tournament raised \$900 for Camp Joy. Members also volunteer weekly at On the Rise, an after-school program for children.

♥️ ♣️ A sorority-wide *Crescent Classic: Powder Puff Football Tournament* hosted by **Zeta Omicron Chapter** (John Carroll) raised \$500 to support Camp Fire USA. Members also square danced the night away at their Western-themed formal.

♥️ **Eta Alpha Chapter** (Lake Erie) members are excited to connect, impact and shine after installing our 169th chapter; several International Council members were present for the installation ceremony and banquet.

## REGION 5

### ILLINOIS

♣️ **Chicago Alumnae Chapter** raised more than \$1,000 to send underprivileged children to camp at its holiday party.

♣️ **Chicago Far West Alumnae Chapter** members put together care packages for Operation Support Our Troops and collected toys to donate to Toys for Tots.

♣️ To raise funds for several nearby collegiate chapters, **Chicago Northwest Suburban Alumnae Chapter** sold Valentine's Day care packages. Members also enjoyed helping out with Bingo Night at a local senior center.

♣️ **Epsilon Chapter** (Northwestern) hosted a dinner to welcome the university's new president and also won Sigma Chi Fraternity's Derby Days, a philanthropy competition benefitting the Children's Miracle Network. Additionally, the chapter created a scholarship fund in honor of their longtime ritual advisor, Sally Erikson Lewis (Bradley).

♥️ The ladies of **Omicron Chapter** (Illinois at Urbana-Champaign) baked cookies, decorated stockings and created holiday cards to send to alumnae.

### IOWA

♥️ ♣️ **Rho Chapter** (Iowa) members enjoyed a gorgeous formal overlooking the Iowa River. The chapter also invited the entire Greek community to participate in a toy drive for Toys for Tots at its annual *Holiday Cozy Party*.

♥️ 🏆 Making the grade, 22 members of **Omega Chapter** (Iowa State) made the Dean's List. Members flipped hot cakes at their *Crescent Classic: Pancake Dinner*, raising \$1,600 for Camp Fire USA, and placed second overall in Homecoming competitions.

♥️ ♣️ **Gamma Psi Chapter** (Northern Iowa) members bonded during their stay at Camp Pine where they played outdoor games, set chapter goals and tidied the campgrounds.

### MINNESOTA

♣️ **Gamma Pi Chapter's** (Minnesota State-Mankato) first *Crescent Classic: French Toast Feed* satisfied the community's early morning hunger and collected \$1,100 for Camp Fire USA.

♥️ 🏆 **Minneapolis-St. Paul Alumnae Chapter** celebrated Founders Day with the women of **Kappa Chapter** (Minnesota-Twin Cities) and **Gamma Pi Chapter** (Minnesota State-Mankato) and facilitated the reinstatement of the Twin Cities Alumnae Panhellenic Council.

### WISCONSIN

♣️ 🏆 **Gamma Gamma Chapter** (Wisconsin-Milwaukee) was proud to have 18 new members join the chapter, making them the largest sorority on campus. The chapter also organized a community-wide blood drive, collecting enough blood to save more than 420 lives.



Beta Pi Chapter (Indiana State) members tested their golf skills at a black light putt-putt center during a sisterhood retreat.





At the sisterhood event, Style your Sole, Kappa Chapter (Minnesota-Twin Cities) members purchased and decorated a pair of shoes from Tom's Shoes, a socially responsible company that donates a pair of shoes to children in third world countries for every purchased pair.

♥ ♣ A raffle, grilled cheese sandwich sale and campus-wide kickball tournament helped **Gamma Rho Chapter** (Wisconsin-Oshkosh) raise \$2,000 for Camp Fire USA.

## REGION 6

### COLORADO

♥ ♣ **Denver Alumnae Chapter** welcomed three alumnae initiates, made Valentine's gifts for **Theta Chapter** (Denver) and held its annual meeting at International Headquarters. The women also continue to meet in smaller interest groups throughout the Denver area.

♥ **Ft. Collins Alumnae Chapter** members enjoyed festive games and prizes at a luncheon.

### MISSOURI

♥ Celebrating their first Founders Day since re-installation was a special event for the newly initiated women of **Delta Nu Chapter** (Missouri State); members spent the day learning about the chapter's history and traditions.

♥ ♣ In addition to raising more than \$1,200 to benefit Girls Inc., members of **St. Louis Alumnae Chapter** gathered books for the organization's library and are hard at work organizing and updating the collection. The chapter also hosted its 11th annual *Mother-Daughter Tea*.

♥ ♣ To celebrate 15 years on campus, **Zeta Delta Chapter** (Southeast Missouri State) hosted a brunch for alumnae. Members also regularly spend time with several local Girl Scout troops, providing fun activities and mentorship programs.

### NEBRASKA

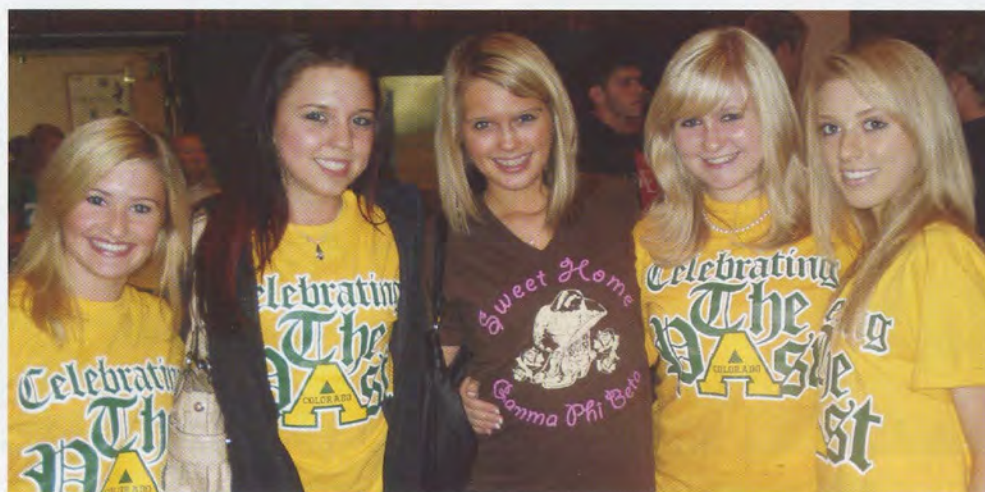
♥ ♣ **Gamma Kappa Chapter** (Nebraska-Kearney) held its *Crescent Classic: Bowling Tournament* and raised \$2,800 for Camp Fire USA and the chapter's local philanthropy, Moxie Angels.

♥ ♣ **Omaha Alumnae Chapter** celebrated Founders Day with the women of **Epsilon Delta Chapter** (Creighton) and held a silent auction to support the collegiate chapter's local philanthropy, Camp Fire of the Midlands.

### OKLAHOMA

♥ Commemorating 50 years as a chapter, alumnae of **Beta Psi Chapter** (Oklahoma State) reunited for a weekend of celebration and catching up.

♥ **Tulsa Alumnae Chapter** members exchanged goodies and recipes at their annual cookie exchange.



Tau Chapter (Colorado State) members participated in a Greek-wide carnival event during Homecoming week.





Delta Theta Chapter (California Polytechnic State) members flipped more than 600 pancakes at their Crescent Classic: GHOP, to raise monies to support our international philanthropy. Each little sister made their big sister a personalized apron to wear during the event.

## REGION 7

### ARIZONA

♥ **Alpha Epsilon Chapter** (Arizona) sisters have been showing love and loyalty to member Ali Adelmann, recovering from a serious car accident that resulted in a traumatic brain injury. Join them in following her progress online at [caringbridge.org/visit/alexandraadelmann](http://caringbridge.org/visit/alexandraadelmann).

♥ **Beta Kappa Chapter** (Arizona State) raised \$2,400 for Camp Fire USA at its *Crescent Classic*. The chapter was also recognized as having one of the highest overall sorority GPAs.

### CALIFORNIA

♥ **Alpha Iota Chapter** (California-Los Angeles) traveled to the **Beta Alpha Chapter** (Southern California) house to make blankets for ill children and celebrate Founders Day. Members also bonded at a sisterhood retreat to an amusement park.

♥ **Bakersfield Alumnae Chapter** members brought donations to their annual *Toys for Tots Dinner* and joined **Delta Phi Chapter** (California State-Bakersfield) to celebrate Founders Day and sisterhood at the Bell Tower Club.

♥ **Beta Lambda Chapter** (San Diego State) earned first place finishes in several Greek philanthropic competitions. Members also enjoyed a surprise bowling date dash in downtown San Diego.

♥ **Gamma Eta Chapter** (California State-Long Beach) members sailed along the Port of Long Beach at their formal and celebrated Founders Day with alumnae over brunch.

♥ **Delta Delta Chapter** (California State-Fullerton) was awarded the Dean's Cup for the fourth consecutive year and learned tumbling tricks at a sisterhood retreat to a gymnastics studio. A formal at the Newport Yacht Club was a night to remember for the chapter and its 54 new members.



Inland Empire Alumnae Chapter members hang out in the kitchen after providing dinner for the women of Delta Lambda Chapter (California-Riverside) on Bid Day.



♥ 🍷 **Delta Eta Chapter** (California-Irvine) was named 'Most Spirited Sorority' by the university's Associated Student Body and celebrated 35 years as a chapter at a formal dinner with alumnae.

♥ 🍷 For continually showing true commitment to bettering Camp Fire USA, **Greater Orange County Alumnae Chapter** members were nominated for Orange County's Outstanding Philanthropy Group Award.

♥ **Long Beach Alumnae Chapter** members enjoyed a delicious holiday dinner, casual mornings at a local coffee shop and an officer retreat to San Diego.

♥ To commemorate Founders Day, **Pasadena Alumnae Chapter** members met for high tea. The group also enjoyed book club gatherings, gammie breakfasts and monthly dinners.



Portland Alumnae Chapter hosted a brunch to celebrate Founders Day and recognized three 50-year members (pictured).

## REGION 8

### BRITISH COLUMBIA

♥ 🍷 **Alpha Lambda Chapter** (British Columbia) dedicated an entire week to philanthropic efforts by selling Girl Guide cookies, supplying craft activities for campers and hosting its first *Crescent Classic: Powder Puff Football Tournament*. Overall, the chapter raised more than \$1,500 to benefit Girl Guides of Canada.

### CALIFORNIA

♥ More than 350 attendees enjoyed singing, dancing and magic acts at **Eta Chapter's** (California-Berkeley) *Crescent Classic: Talent Show*, collecting \$2,000 to benefit our international philanthropy.

♥ Complete with music, food and prizes, **Epsilon Kappa Chapter's** (California State-Chico) first *Crescent Classic: Gamma Phi-esta* raised \$1,200 for Camp Fire USA.

♥ Strike! **Epsilon Omicron Chapter's** (California-Santa Cruz) *Crescent Classic: Disco Bowling Tournament* raked in \$800 for Camp Fire USA. The chapter also adopted six families-in-need over the holiday season, providing gifts and requested items.

♥ More than 50 women donned elegant attire at **Sacramento Valley Alumnae Chapter's Cocktail Party**. Members also enjoyed ice skating and meeting to play pub trivia.

### IDAHO

♥ **Xi Chapter** (Idaho) members bundled up for an ice skating sisterhood event at a local ice rink. Collegians celebrated their chapter's 100th anniversary with several hundred alumnae in March. Please see the Vintage ΓΦΒ article on page 35 for more information!

### OREGON

♥ More than 20 alumnae of **Chi Chapter** (Oregon State) gathered for a reunion at the McMenamins Kennedy School in Portland and hope to make this an annual event.

### WASHINGTON

♥ 🍷 The women of **Lambda Chapter** (University of Washington) climbed 56 flights of stairs while participating in the *Cystic Fibrosis Foundation Stair Climb*, an event benefitting the Foundation. The chapter also hosted its annual *Mother-Daughter Brunch* and *Alumnae Brunch*.

♥ 🍷 **Gamma Epsilon Chapter** (Puget Sound) members volunteered for Habitat for Humanity and won Sigma Chi Fraternity's Derby Days competition. Members also enjoyed hitting the slopes at a sisterhood retreat in the mountains.



## Say "Thanks!"

Give a pat on the back to those alumnae, campus administrators and community leaders who advise, guide and support your chapter!

April is National Advisor Appreciation Month according to National Panhellenic Conference!



# IN MEMORY

This list reflects notifications received at International Headquarters from October 1 to December 31, 2009. First, maiden and last names and initiation year are listed for each deceased member.

## Alpha | Syracuse

Dorothy Andrews Hennessy, 1934  
Dorothy Gridley Hughes, 1945  
Carol Campbell Seebold, 1952  
Patricia Reid MacCrea, 1952

## Gamma | Wisconsin-Madison

Jean Holmes Hansen, 1950  
Mary Gehl Kinas, 1958  
Susan Husting Stoddard, 1962  
Jane Rosenbaum Harvey, 1962

## Delta | Boston

Jean Parcells Brock, 1931

## Epsilon | Northwestern

Jacqueline Soutar Carney, 1934  
Lorraine "Lorry" Aberg  
Everhardus, 1935  
Marjorie Williams Mitchell, 1944  
Ruth Hannah Coyne, 1959

## Eta | California-Berkeley

Barbara Varnum Smith, 1943

## Theta | Denver

Nancy Coe Morton, 1948  
Tracy Crane Walker, 1977

## Kappa | Minnesota-Twin Cities

Marilyn Nordstrom Olson, 1954

## Nu | Oregon

Joy Bush Taggart, 1934

## Xi | Idaho

Fay Thomas Ostner, 1910  
Zoe Squires McGarry, 1958  
Jill Walker, 1986

## Pi | Nebraska-Lincoln

Mary McCracken Johnson,  
1940  
Beverly Sutton Ward, 1947

## Rho | Iowa

Diane Daine Cooper, 1955

## Phi | Washington

Judith Renje Seybt, 1953  
Carol Mallory Mastrapasqua,  
1964

## Chi | Oregon State

Evelyn South Bellerby, 1938  
Mary Castater Hickey, 1942

## Psi | Oklahoma

Ruth Munger, 1919  
Aimee Fry Freeman, 1920  
Mary Stafford Abbott, 1920  
Linnie Lookabaugh Costello,  
1920  
Lucille Blanchard Hillsman, 1921  
Virginia Cheshier Hart, 1921  
Pauline Smith Mosier, 1921  
Lorraine Eastwood Bradley,  
1921  
Lorena Craft Whitenton, 1922  
Frances Sandford Curnutt, 1922  
Elizabeth Massey Overlees,  
1924  
Lulu Clark Owens, 1925  
Lee Shives Martin, 1925  
Elizabeth Knisely Deahl, 1925  
Doris Pearson Wear, 1925  
Lucille Dean Bass, 1926  
Maxine Lillard Glenn, 1926  
Virginia Roberson McKenzie,  
1926  
Alva Walker Hooker, 1928  
Margaret Jett Maloney, 1930  
Lorna Coates Hankinson, 1934  
Margaret "Bobbie" Long Ford,  
1935  
Jean Rainey Eitner, 1952  
Donna Evans Beaver, 1956

Elizabeth Massey Overlees,  
1924

Lulu Clark Owens, 1925  
Lee Shives Martin, 1925  
Elizabeth Knisely Deahl, 1925  
Doris Pearson Wear, 1925  
Lucille Dean Bass, 1926  
Maxine Lillard Glenn, 1926  
Virginia Roberson McKenzie,  
1926

Alva Walker Hooker, 1928  
Margaret Jett Maloney, 1930  
Lorna Coates Hankinson, 1934  
Margaret "Bobbie" Long Ford,  
1935  
Jean Rainey Eitner, 1952  
Donna Evans Beaver, 1956

## Omega | Iowa State

Katherine Blackburn Caldwell,  
1939  
Nancy Lanham Titus, 1959

## Alpha Alpha | Toronto

Arden Patterson Boehm, 1979

## Alpha Beta | North Dakota

Marian Stjern Hahn, 1948

## Alpha Gamma | Nevada

Shirley Bell Rea, 1947

## Alpha Delta | Missouri-Columbia

Charlotte Garrison Stewart, 1948  
Joanne Lynes, 1962

## Alpha Zeta | Texas-Austin

Jane Kelly Capobianco, 1953

## Alpha Eta | Ohio Wesleyan

Marie Fouse Buckey, 1942

## Alpha Theta | Vanderbilt

Martha Hightower Campbell,  
1935  
Jane Sheaff Gilreath, 1938

## Alpha Mu | Rollins

Mary McCanna Rebik, 1963

## Alpha Nu | Wittenberg

Jeanette Bauer Ward, 1929  
Jean Matsumoto Baird, 1954

## Alpha Omicron | North Dakota State

Janet Olsen Moustakas, 1951

## Alpha Rho | Birmingham-Southern

Kathryn Winters Vernon, 1934  
Carolyn Barker Strain, 1940

## Alpha Upsilon | Penn State

Marilee "Pat" Kirsch Dufner, 1961

## Alpha Phi | Colorado College

Mary Hyatt Day, 1934  
Dorothy Mears Allen, 1940

## Alpha Psi | Lake Forest

Marjorie Davis Adams, 1939

## Beta Alpha | Southern California

Alice Jangaard Cuchna, 1952

## Beta Beta | Maryland

Jill Shimer Warrington, 1959  
Phyllis Allen Donnelly, 1964

## Beta Gamma | Bowling Green

Jeanne Gray Walker, 1948  
Gladys Frederking Phillips, 1953

## Beta Delta | Michigan State

Elaine Jennings Martin, 1947

## Beta Zeta | Kent State

Donna Gover Snoderly, 1947

## Beta Eta | Bradley

Kathleen "Kit" Sanderson  
Breckenridge, 1959  
Marcy Baker Walraven, 1978

## Beta Lambda | San Diego State

Joyce Haverkamp Clark, 1949

## Beta Mu | Florida State

Jeanette Miller, 1961  
Brenda Kile Walters, 1965

## Beta Rho | Colorado-Boulder

Dagnija Berzins Langberg, 1959

## Beta Phi | Indiana

Colleen Brogan, 1998

## Beta Chi | Wichita State

Joyce Walter Huston, 1959

## Beta Psi | Oklahoma State

Barbara Ivy Ashby, 1960

## Gamma Gamma | Wisconsin-Milwaukee

Kathleen Schnell Christiansen,  
1960

## Gamma Delta | Wyoming

Mary Smith McCormick, 1961

## Gamma Zeta | Texas A&M-Commerce

Diana Shearin Retzos, 1984

## Zeta Tau | Emory

Christine Shaffer, 2006

## Zeta Chi | Texas Christian

Amanda Bebout, 2008



**A MAGICAL  
EVENING FOR  
GENEROUS DONORS  
AT CONVENTION  
2010!**

## The Magic Number is 1874

**C**oming soon to Convention 2010 in Orlando: an unforgettable 1874 Society and major donor appreciation event!

On Friday, June 25, our most generous donors will meet for a magical evening at the Odyssey Pavilion in Walt Disney World's Epcot Center. The Odyssey is closed to the public, but Foundation donors will receive preferential treatment and an inside look at the intriguing features of this private venue.

To receive your invitation, renew your 1874 Society membership, join by making an unrestricted gift of at least \$1,874 or establish an endowment. Contact MaryLynn Rector at the Foundation for more information (303.799.1874 or [mrector@gammaphibeta.org](mailto:mrector@gammaphibeta.org)).

At the Odyssey, you'll be greeted by the smell of fine cuisine and the sight of extraordinary surroundings as we dine overlooking the Disney Lagoon. Enjoy delectable dishes, created by Disney's revered culinary team, during this culmination of our 50th anniversary celebration! We'll be treated to a dessert and captivating fireworks in the company of special sisters – renewing old friendships and making new ones. Don't miss out! Join the 1874 Society today!

*Did you know? A handful of elite women have been members of The 1874 Society since its launch in 1990: Georgie Post McClenaghan (Oregon State), Barbara Missert Wessel (Syracuse) and Susan Schlessman Duncan (Colorado College). Wow! Thanks, ladies!*

## 1874 Society Spotlight

From the moment she pledged Gamma Phi Beta in 1991, Florence "Jodie" Giordano Prestholdt (Rutgers) knew she had found her home away from home.

"I transferred from a small school and felt lost, like I was missing something," Jodie recalls. "When I went through recruitment, I made real connections with women just like me."

In 2005, Jodie recommitted herself to the sisterhood that provided her with such stability during her collegiate years. She joined the 1874 Society, our premier donor group established in 1990. Donors achieve 1874 Society membership by giving between \$1,874 and \$10,000 annually.

"I believe in the mission of our Sorority," Jodie says. "I want to give other women the same opportunity to follow their dreams."

*Jodie makes and sells flower garlands through Lady Jewel's Hair Garlands. Please contact her if your chapter needs any floral supplies for initiation; she'd be happy to help! ([ladyjewel34@yahoo.com](mailto:ladyjewel34@yahoo.com))*





## Legacy of a Lady

A respected politician, Rosemary Clinebell Thomson (Bradley, 1955) didn't have gimmicks, just a sincere desire to make a difference.

A former member of the Iowa House of Representatives (1995-2000), two-time author, alumnae chapter president and grandmother of three legacies, this remarkable lady was dedicated to giving of herself in service to others.

"She was a selfless leader who knew how to bring people together and achieve great things," says Iowa House Republican Leader, Kraig Paulsen.

Sadly, Rosemary passed away last year. To honor her leadership and altruistic spirit, her family established the Rosemary Clinebell Thomson Endowment through the Gamma Phi Beta Foundation. Their generous \$25,000 gift will provide much-needed financial aid to outstanding members at Beta Eta Chapter (Bradley).

"I know how important education and the Sorority were to Rosemary and by giving to the Foundation, Rosemary's legacy lives on," her husband Jim says. "Helping women achieve their goals is an incredible gift to give." An incredible gift in honor of an incredible woman.

"She was a true and constant friend to me and many other sisters," Sally Erikson Lewis (Bradley) says. "Her gracious acts will never be forgotten."

• • •

## Veteran Volunteer

Although Sally Erikson Lewis (Bradley) avoids the spotlight, this humble Foundation volunteer deserves plenty of recognition for her devoted service, particularly as Convention approaches.

A founding member of The 1874 Society, Sally has been a Sorority and Foundation volunteer since the 1970s. She's served as Convention Arrangements Chairwoman (1984), International Alumnae Vice President (1986-90) and Nominating Committee member (2008-10), just to name a few.

But Sally's true niche happens every two years when she combines her love for Convention with volunteering for the Foundation.

"I love working in the Foundation Room at Convention because I'm reunited with my sisters from across the



Sally Erikson Lewis (top) helped celebrate Rosemary Clinebell Thomson's Carnation Award at Convention 2002 in Washington, D.C.

country," Sally says. "Plus, we're doing wonderful things to support the Foundation and our membership."

With nearly 20 Conventions to her name, Sally has a lot of fond and interesting memories. "In 1984, I strolled out in front of hundreds of sisters wearing a brown pup tent to bring awareness to our philanthropy, camping for girls," Sally recalls. "I'll do just about anything, as long as it raises some good money!"

At age 75, one would think Sally has thoroughly fulfilled her lifetime commitment to the organization, but Sally has different plans. "When you slow down you get rusty. I'm still busy trying to pay Gamma Phi Beta back for all of the amazing friendships I've made over the years."

You'll find Sally hard at work at Convention 2010, so be sure to say "thanks" to our dedicated veteran volunteer.

*Interested in being a Foundation Convention 2010 volunteer?  
It's not too late! Contact Sally Lewis, Foundation Room chair, at  
SELewis535@aol.com to find out how you can get involved.*





We acknowledge the following donors who celebrated a special event or individual with a gift to the Gamma Phi Beta Foundation (as of January 25, 2010).

## IN CELEBRATION OF...

Epsilon Lambda Chapter House Corporation Board's purchase of their house on the Alabama campus and the chapter's amazing new member class. We're so proud of you!

Jacy Douglas  
Jennifer Meehan  
Carly Standridge  
Amanda Alexander  
Elizabeth Beemer  
Jennifer Luker

Sally Lewis' 75th birthday!  
Ruth Andrea Seeler, M.D.

Fran Darling's granddaughter,  
Emilia Jane Charlevoix  
Anne Layton

The birth of my grandson,  
Wesley Jack Terrill, on June 3,  
2009, to my daughter Melissa  
and her husband, Dan Terrill  
Kitty Sweeney

Mary Vanier for helping with  
creative video productions  
Linda Malony

Jane Edison  
Naples Alumnae Chapter

Merry Christmas, Jeanne!  
Gloria Nelson

The marriage of Heather Foote to  
Eric Seber  
Suzanne Lee  
Melanie Kelsey

The marriage of Stacey Agnew to  
James Cherrybon  
Rosemary Bunn

The AMAZING Regional  
Directors. You ladies ROCK!  
Megan Wick

Jen Willey and  
Cooper Joseph Willey  
Megan Wick

The 2009 Delta Tau Executive  
Board: Audrey, Marietta, Sarah,  
Julie, Jenna, Abby & Lindsay  
Andrea Jones

Allison Chandler's engagement to  
Brian Chandler  
Emma Chandler

The birth of Nick Byszewski,  
son of Elaine Moore Byszewski  
and grandson of Janice Vincent  
Moore  
L'Cena Rice

Kimberly Caldwell Katsuyama for  
her fabulous job as Beta Alpha  
Chapter HCB President  
L'Cena Rice

Nita Steck and Patsy Henderson  
for their NPC positions in  
St. Louis, and St. Louis NPC  
receiving the award  
Christy Ehrenreich

Merry Christmas, Gloria!  
Jeanne Beach

The birthday of Stephanie  
Horwitz  
Dawn Eagan

The birthday of Stephanie Kitchin  
Dawn Eagan

Dixie Bartell  
Linda Anderson

Barbara Honey Hofman's  
initiation into Delta Lambda  
Chapter as an alumna initiate  
Linda Honey  
Judi McMahon

The installation of Cathy Frost  
McMann as president of the  
Alumnae Panhellenic Association,  
Central New Jersey Chapter,  
of the National Panhellenic  
Conference  
Princeton Alumnae Chapter

Julie Dunn Eichenberg and her  
husband Bob on the birth of their  
son, Tyler Robert  
Natalie Muir

Kristina Purcell on the birth of her  
daughter Briana Rose Purcell  
Lindsay Smith

Erin, Sue, Jenny, Kate, Stacy  
and Michelle (Epsilon Alpha)  
for joining me for a Christmas  
brunch!  
Lindsay Smith

The 20th anniversary of the  
founding of Epsilon Omicron  
Chapter at U.C. Santa Cruz on  
February 10, 1990  
Trina Martynowicz  
Susan Loop

The birth of Corrine Ho Dugan's  
daughter, Emily  
Rene' Thompson

Opal Hinshaw Fewell's 100th  
birthday on January 12, 2010  
Susan Ann West

My daughter Annette Marie  
Graves, who graduated on  
December 11 with a master  
of arts degree in educational  
leadership from Golden Gate  
Baptist Theological Seminary in  
Mill Valley, CA  
Janice Graves

Susan Ann West  
Rita Hortenstine



## THANK YOU, DONORS!

The individuals listed below contributed "restricted" gifts, which are designated by the donor to fund specific scholarships/fellowships, chapter gifts and various other needs (as of January 25, 2010).

### Gifts totaling \$25,000 - 49,999

Paula Janis Dean (Memphis)  
James N. Thomson  
Mary Vanier (Kansas State)

### Gifts totaling \$10,000 - 24,999

Virginia Urban Merrill (Kansas)  
Carolyn Kunz Patterson (Kansas)

### Gifts totaling \$5,000 - \$9,999

Mary Ellen Porter Burchfield  
(Iowa State)  
Ann Hartley Bush (Kansas)  
Sara Clawson Colt (Kansas)  
Cathy Campbell Dunmire (Kansas)  
Lucile McVey Dunn (Kansas)  
Jane Piper Gleason (Illinois at  
Urbana-Champaign)  
Catheryn Hoehn  
Judy Mai Millen (Kansas State)  
Rhonda LaHue Mordy (Kansas)  
Jolene Lessard Stiver (North  
Dakota State)

### Gifts totaling \$1,000 - 4,999

Lisa Denton Barkett  
(Southern California)  
Ada Fuller Baumgartner (Kansas)  
Sue Ann Gilster Baxter (Idaho)  
Marilee Gilbert Benage (Kansas)

Andrea Woolard Borch  
(Northwestern)  
Sandy Biegelman Burba  
(Miami-OH)  
Connie Trentman Casper  
(Kansas State)  
Marcia Nelson Cassidy (Kansas)  
Sheri Sigman Coffin (Kansas)  
Marjorie Fischer Dozier (Kansas)  
Susan Schlessman Duncan  
(Colorado College)  
Joyce Lemon Dunn (Northwestern)  
Robert E. Dunn  
Jeanne Gorman (Kansas)  
Susan Grant-Schneider  
(Colorado State)  
Ginny Harris Hammond  
(Colorado-Boulder)  
Brenda Press Harden (Kansas)  
Susan Harper (Kansas)  
Larry Hickey  
Greta Gibson Huff (Kansas)  
Annabel Jones (Oklahoma)

Verona Dilbeck Lynam  
(Oklahoma City)  
Ashley Hock Meisinger (Kansas)  
Marilyn Moyer Mitchell (Kansas)  
Margaret Myers (Colorado College)  
Donna Hauser O'Neal (Kansas)  
Susan Moore Palmer (Kansas)  
Pat Kahrs Parr (Kansas State)  
Marynell Dyatt Reece (Kansas)  
Margaret Dickinson  
Schnackenberg (Kansas)  
Wendy Schwarz Schultz  
(Northwestern)  
Carol Walker Searcy (Kansas)  
Ruth Andrea Seeler, M.D. (Vermont)  
Audrey Weldon Shafer  
(Missouri-Columbia)  
Barbara Read Stapleton (Kansas)  
Diane Warner (Kansas)  
Magnes Welsh (Memphis)  
Kristen Merchant Whitaker (Kansas)  
Lynn Towsley White  
(Colorado-Boulder)



# MEMORIAL GIFTS



We acknowledge the following individuals and groups who contributed to the Gamma Phi Beta Foundation in memory of a loved one (as of January 25, 2010). Deceased members' first, maiden and last names plus schools and initiation years are listed.

Susan Cummings Martin  
(Oklahoma, 1957)  
Psi House Corporation Board

Alli Rose King, infant daughter of  
Eva Binyon King (Oklahoma)  
Psi House Corporation Board

Alice Jangaard Cuchna (Southern  
California, 1952)  
Nancy Smith

Stanley W. Abbott, husband  
of Lois Kirchner Abbott  
(San Jose State)  
Barbara LaMarca

Norma "Bunny" Welborn Corbin  
(Missouri-Columbia, 1946)  
Atlanta Southern Crescent  
Alumnae Chapter

Sydney Stoeppelwerth (Kansas,  
1959)  
Marilyn Mitchell  
Mary Beth Doughty

Jack C. Schnackenberg,  
husband of Margaret Dickinson  
Schnackenberg (Kansas) and  
father of Susan Schnackenberg  
(Illinois at Urbana-Champaign)  
Evanston North Shore Alumnae  
Chapter

The mother of De De Staskal Hicks  
(Colorado College)  
South Bay Alumnae Chapter  
Gigi Eyre

William J. Mitchell, husband of  
Renee Harman Mitchell (San Jose  
State)  
South Bay Alumnae Chapter

Ann Biro Rubendall (Wisconsin-  
Madison, 1955)  
Agnes Rothblatt

Marguerite Ridge Beckley  
(Colorado College, 1934)  
Nancy Groh

Calvina Morse Vaupel (Denver,  
1941)  
Marilyn Fitzgerald  
Maradith Wilkins  
Kitty Sweeney  
Denver Area Panhellenic

Lois Moon Garver (Kansas, 1930)  
Sandra Remsberg

Sean Higgins, father of Suzanne  
Slinn-Higgins Lee (McGill)  
Yael Acre  
Karen Belding  
Pamela Carkner  
Lynn Garipey  
Nabanita Giri  
Dominique Groulx  
Grace Lin

Ken Jones, father of Catherine  
Jones Showalter (Iowa State)  
Cathy Showalter

Patricia Reid MacCrea (Syracuse,  
1952)  
Gail Schongar  
Ann Leberman  
Phyllis Parlee  
Judy Ann Kaspar  
Jackie Sampsel

Lydia "Lana" Gerhardt  
(Penn State, 1954)  
Mary Browning

Latane Jordan Graham (Auburn,  
1968)  
Camille Favre

Gladys Frederking Phillips  
(Bowling Green, 1953)  
William E. Phillips

Dorothy Nowotny Boehm  
(Oregon State, 1940)  
Lorelei Moersch

Judith Churchill Stevens (Colorado  
State, 1966)  
Sandra Porter

Virginia Moe Feibusch (Oregon  
State, 1940)  
Therese Tanalski

Edna Carlson Gord (Iowa State,  
1922)  
Quad Cities Alumnae Chapter

Virginia Handeyside Gould  
(Michigan, 1936)  
Pamela Sanders

Jennifer Steinmann (Creighton,  
2005)  
Omaha Alumnae Chapter

Woodra Boyd Keene (Syracuse,  
1948)  
Jackie Sampsel

Dorothy Gridley Hughes  
(Syracuse, 1945)  
Jackie Sampsel

Michelle Kemble (Toronto, 1982)  
Greater Toronto Area Crescent  
Circle

Arden Patterson Boehm (Toronto,  
1979)  
Greater Toronto Area Crescent  
Circle

Kathryn Jeklin Scoggins (University  
of Washington, 1936)  
Jo Ann Gail Dickie

Mary Castater Hickey (Oregon  
State, 1942)  
Lynn Innerhofer

Donna Sprague Stagg  
(Wittenberg, 1975)  
Cheryl Petty

Mary "Susan" Pawlosky West  
(Wittenberg, 1976)  
Cheryl Petty

Mary Halcrow Moore (North  
Dakota, 1966)  
Robin Heine

Lisa Mueller (Kansas, 1984)  
Julie Scott

Ann Elizabeth Patzman Hart  
(Kansas, 1960)  
Marilyn Bernthal  
Elinor Bowman  
Karlene Ferguson  
Janet Freeman  
Susan Lake  
Linda McMullen  
Kay Mehrer  
Joyce Tobiasen Schwartz  
Gayle Stuber  
Ardath Taylor  
Kathleen Waller

Andrea Ash Varney (Kansas,  
1959)  
Marilyn Bernthal  
Elinor Bowman  
Karlene Ferguson  
Janet Freeman  
Susan Lake  
Linda McMullen  
Kay Mehrer  
Joyce Tobiasen Schwartz  
Gayle Stuber  
Ardath Taylor  
Kathleen Waller

Melinda Kirkman Wallach  
(Kansas, 1960)  
Marilyn Bernthal  
Elinor Bowman  
Karlene Ferguson  
Janet Freeman  
Susan Lake  
Linda McMullen  
Kay Mehrer  
Joyce Tobiasen Schwartz  
Gayle Stuber  
Ardath Taylor  
Kathleen Waller

Jacqueline Furst Lapan  
(Northwestern, 1954)  
Lois Kircher

Judith Renje Seybt (Washington  
University, 1953)  
Donna Prior  
Catherine Bowling  
Sandie Kirkbride  
Patricia Henderson

Sally Holloway Evans  
(Oregon, 1930)  
Mary Meyers

Dorothy Dickey Harn  
(Oregon, 1930)  
Mary Meyers

Carolyn Vaughn Newland  
(Oregon, 1942)  
Mary Meyers

Mildred "Mickie" Jakobs Fuller  
(St. Louis, 1969)  
Catherine Bowling

Patricia McKenna Dye  
(Michigan, 1946)  
Elizabeth Straith

Mary Gold Thomas (Oklahoma,  
1945)  
Mary Roney

Doris Walker Gayle (Texas-Austin,  
1943)  
Dorothy Dunkle

Wilma "Dee" Baldwin Crane  
(Penn State, 1944)  
Carolyn Orr

Phillip E. and Marjorie Sautter  
Donaldson, parents of Phyllis  
Donaldson Choat (Nebraska-  
Lincoln)  
Carolyn Orr

William Ryan, husband of Karrin  
Peterson Ryan (California-Irvine)  
Lotte Cosca

Marianne Karlowa Ruppberger  
(Maryland, 1946)  
Eleanor Reed

Linda Farmer Clark (Kansas,  
1957)  
Laura Rogers

Amanda Bebout (Texas Christian,  
2008)  
Sarah Mansell

Linda Neja, mother of Dawn  
Neja Reese (California State-Long  
Beach)  
L'Cena Rice  
Southern California Intercity  
Council

Patricia Kendall Terry (California  
State-Long Beach, 1965)  
Janet Whitcomb

Jeannette Jefferson Jansky (Illinois  
at Urbana-Champaign, 1946)  
Millicent Simonds Bates

Martha Earl Frey  
(Michigan, 1947)  
Kathryn Macpherson

George Thomas Kupper,  
husband of Karen Sather Kupper  
(North Dakota)  
Albuquerque Alumnae Chapter



## XI CHAPTER

## 100 Years of History

Last month, more than 500 Xi Chapter (Idaho) members viewed one-of-a-kind mementos from decades-gone-by as the chapter enthusiastically celebrated its 100th year in Moscow, Idaho.

Carefully collected artifacts dating to 1910 were on display, documenting the history of how a nine-year-old sewing circle known as Alpha Delta Pi became a Gamma Phi Beta chapter and the first national sorority at the University of Idaho, upon installation February 3, 1910.

At the centennial celebration, members viewed the only known copy of the installation banquet program, donated by Xi's first president, Mary Belle Meldrum Shields (Idaho, 1910). It is now a featured piece in the Gamma Phi Beta museum in Colorado.

In the last 100 years, thousands of women have followed in the footsteps of Mary and Xi's other 13 founders; one of the most notable is Carol Ryrie Brink (Idaho, 1914). Brink Hall, home to the University of Idaho English Department, is named in her honor as is the children's section of the Moscow Public Library.

An accomplished author, Carol penned 29 novels and three plays. A signed copy of her 1936 Newbery Award winning children's book, *Caddie Woodlawn*, is on display at International Headquarters: "To the Gamma Phi Beta Library at Central Office, from the author Carol Ryrie Brink, member of Xi Chapter of Gamma Phi Beta." This and many of her books are still in print.

Another alumna of local fame is Lucy Mix Day (Idaho, 1910), one of the original members of Alpha Delta Pi.

The Day family discovered silver in Idaho and their home, Day Mansion, is a local landmark. Lucy donated the property for Xi's first chapter house, built in 1916, and her vintage emerald badge, a new addition to the Sorority museum, was used as the chapter president's badge for many years. Although she and her sister Abby Mix Richardson (Idaho, 1910) had graduated at the time of Xi's founding, both were initiated as alumnae and are considered charter members. Lucy's daughter Bernice Day Maloney (Idaho, 1922) later joined as well.

For a detailed history of the founding of Xi Chapter and more on its anniversary celebration, see our Web site ([www.gammaphibeta.org](http://www.gammaphibeta.org)).



### 100 Years and Going Strong

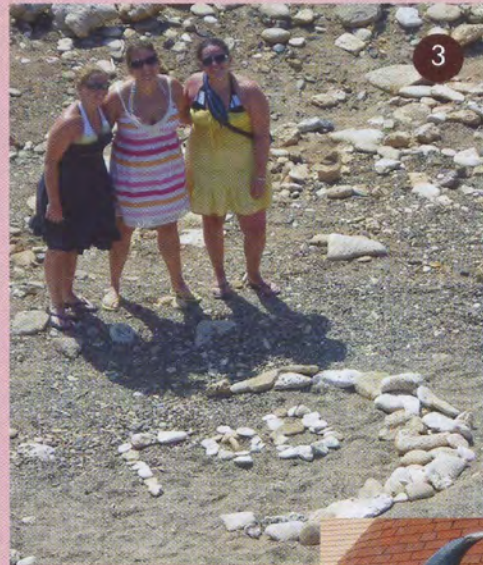
In a room full of 2,000 pink carnations, hundreds of Xi Chapter members talked, laughed and reveled in the celebration of a lifetime marking the 100th anniversary of their chapter.

Joining collegiate members were alumnae of all ages, including three members who initiated in 1937. With so many sisters gathered together, perfect weather and a variety of activities to suit all interests, the 100th anniversary bash was a resounding success according to Event Chair Erin Jessup (Idaho). Well done, Xi!

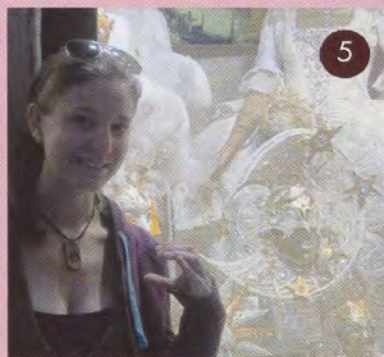




# CAPTURE A CRESCENT



We love seeing crescents from all over the world! If you want your photo on this page, here's a hint: we prefer crescents that open to the left, like our logo. No outhouses, please!



1. Spain: During a European vacation, Karen Wander Kline (Iowa State) captured a crescent in Barcelona.
2. Pennsylvania: Elizabeth Nguyen and Ashley Dobrovich (both of Florida Institute of Technology) found a crescent on a bus stop in Philadelphia while exploring the city.
3. Curaçao: If you can't find a crescent, make one. Heather Sommers, Jeannie Lott Kuyper and Amy Dickson (all of Florida Institute of Technology) vacationed together in Shete Boka National Park.
4. Turkey: Jennifer Lazear (Chapman) spotted a crescent on the Turkish flag.
5. Italy: Sharp-eyed Becca Hill (Syracuse) recognized a white crescent on this beautiful mask in Venice.
6. Taiwan: Carol Goshaw Blanchard (Southern California) was surprised to see a crescent on the ceiling of her hotel in Taipei.
7. Colorado: On vacation in Manitou Springs, Brooke Lowe (Oklahoma City) and Terri Cooper (Kansas State) found a crescent sculpture.
8. Kansas: Tina Myers Mullinix (Kansas) was joined by her three legacies Marie, Kaitlin and Aubree (all of Kansas) at a Renaissance Festival last year.
9. Oklahoma: Karen Stuart White and her legacy Chrissy White Hancock (both of Oklahoma) couldn't miss a super-sized crescent while shopping in Norman.