

The Crescent

of Gamma Phi Beta | Winter 2009



Gamma Phi Beta Goes Green
New Colonies/Photo Contest



GAMMA PHI BETA

CONNECT.

IMPACT.

SHINE.

INTERNATIONAL COUNCIL

International President

Linda Lyons Malony

Alumnae Vice President

Mary L. Knaup

Collegiate Vice President

Annabel M. Jones

Education Vice President

Kris L. Baack

Financial Vice President

Amy M. Peterson

Membership Vice President

J.J. Stoll Kaelin

Panhellenic Affairs Vice President

Elizabeth Ahlemeyer Quick

Executive Director

Patricia M. Crowley

GAMMA PHI BETA FOUNDERS

Mary A. Bingham

E. Adeline Curtis

Helen M. Dodge

Frances E. Haven

SORORITY MISSION STATEMENT

Our mission is to foster a nurturing environment that provides women the opportunity to achieve their potential through life-long commitment to intellectual growth, individual worth and service to humanity.



Dear Sisters,

As we begin another new year, resolutions abound.

When the 2008-10 International Council began our terms last August, we met to review the status of the Sorority and create a plan of action for the biennium (August 1, 2008-July 31, 2010). We asked ourselves some tough questions. How do we want to be able to describe Gamma Phi Beta? How will we hold ourselves accountable for progress, not just activity? With so much to do on a regular basis, what are our key priorities? How would we further the ideals of the Sorority?

It didn't take us long to identify the following three key priorities:

CONNECT: Increase member engagement through retention, member satisfaction and sisterhood.

IMPACT: Evaluate our structure to determine how we can improve support for our members, chapters, groups and volunteer leaders.

SHINE: Build pride in and through our programs, materials and everything Gamma Phi Beta.

International Council has already launched several initiatives to meet these three priorities. Special task forces are underway studying a broad spectrum of Gamma Phi Beta, from governance and educational programming to collegiate and alumnae excellence. We're reviewing our volunteer structure and ways to better train and appreciate our volunteers. A Sorority-wide marketing plan has been created, and we're working on a variety of processes to better serve our members and recruit new ones. And a new alumnae directory will soon hit your doorstep, linking you to other Gamma Phi Betas both around the world and in your own backyard.

New Year's resolutions aren't always easy to keep. Yet our resolve remains firm to fulfill our mission, make decisions that enhance our strategic imperatives and build momentum among all of our constituencies to deliver on our three key priorities for this biennium.

This issue of *The Crescent* outlines ways our members remain engaged within the Sorority and impact our world for the better. I hope you experience a sense of pride when browsing these pages, whether remembering lost sisters and times gone by or celebrating the Foundation's 50th anniversary and how the Sorority continues to grow.

Passion drives our commitment to be a premier women's organization. And one thing is certain: Gamma Phi Beta is on the GO!

Happy New Year!

Linda Lyons Malony

In IIKE,

Linda Lyons Malony

International President



Pam Gelman (Missouri State)

ON THE COVER

St. Louis Alumnae Chapter members designed an eco-friendly shopping tote as a chapter fundraiser. To place an order, visit www.stlgammaphibeta.org.

FEATURES

New colonies 4
Photo contest 9
Gamma Phi Beta Goes Green 16

IN EVERY ISSUE

Spotlight On: Kelly Evans 6
Pacesetters 12
Panhellenic Update 14
Out & About 15
Member News 19
Foundation News 24
Donors 26
In Memory 28
Vintage ΓΦΒ 30
Mailbox 31

BONUS COLUMNS

In ΠΚΕ 7
On the ΓΦΒ Bookshelf 8



Spotlight On . . . page 6

Clockwise from top: **Kelly Evans** (Southern Indiana) studied in Egypt to learn the Arabic language. **Delta Upsilon Chapter** (Georgia) welcomed 58 new members on Bid Night, including seven legacies! New members of **Eta Alpha Colony** (Lake Erie) cheer on the football team with their school mascot, Thunder. **Jill Kuebler** (Iowa State) and other Gamma Phis traveled to the Dominican Republic on a mission to provide health services. Members of **Alpha Nu Chapter** (Wittenberg) model their now-vintage blazers in 1966.



Member News . . . page 19



New colonies . . . page 4



Vintage ΓΦΒ . . . page 30



Pacesetters . . . page 12

INTERNATIONAL HEADQUARTERS

12737 E. Euclid Drive, Centennial, CO 80111
Phone: 303-799-1874 Fax: 303-799-1876
Internet: www.gammaphibeta.org
E-mail: TheCrescent@gammaphibeta.org

THE CRESCENT STAFF

Editor: Mimi McMann (California State-Bakersfield)
Staff Writer: Nicole Nelsestuen
Director of Marketing and Communications:
Nina Dulacki (Colorado College)
Business Manager: Patricia M. Crowley (Northwestern)



MEMBER OF
NATIONAL
PANHellenic
CONFERENCE

WINTER *The Crescent* 2009 Volume 110 | Number 1

MAGAZINE SUBMISSION DEADLINES

SPRING: January 1
SUMMER: April 1
FALL: July 1
WINTER: October 1

©2009 Gamma Phi Beta Sorority
The Crescent (USPS137620) is published quarterly by Gamma Phi Beta Sorority, 12737 E. Euclid Drive, Centennial, CO 80111. Periodicals postage paid at Englewood, CO and at additional mailing offices. Non-member subscription price is \$6. Produced in the U.S.A.

POSTMASTER: Send address changes to: *The Crescent*, Gamma Phi Beta Sorority, 12737 E. Euclid Drive, Centennial, CO 80111.

PREMIERING AT LAKE ERIE COLLEGE

Gamma Phi Beta colony is the first Panhellenic sorority on campus

With more than 150 years of history, Lake Erie College in Painesville, Ohio, is proud of its deep-rooted traditions and heritage. While abundant in student involvement and activity, one key aspect of collegiate life has been absent for more than 150 years—a Greek community with national roots.

Making History

Last year, Delta Kappa Psi, a local sorority at Lake Erie College, unanimously chose to affiliate with Gamma Phi Beta. The 24 members of Delta Kappa Psi were seeking a nationally recognized sorority with which to affiliate and selected Gamma Phi Beta because of the Sorority's high moral standards and long-standing traditions.

"We were excited to bring Gamma Phi Beta and all it has to offer to Lake Erie," explains Kelsey Beckstrom (Minnesota State), collegiate leadership consultant (CLC). "Most of the women we met had never met someone from the National Panhellenic community, so coming to this campus was both unique and challenging."

Before extending bids to the 24 ladies of Delta Kappa Psi, Kelsey and fellow CLC Lexi Fornoff (Missouri-Columbia) held a traditional fireside event under a historic gazebo located on campus. Gamma Phi Beta T-shirts and cookies were given to the women when they arrived.

"We wanted to instill sisterhood traditions of Gamma Phi Beta and show them how honored we were that they chose to pledge our Sorority," Kelsey says. After the CLCs explained what Gamma Phi Beta meant to them, each of the new members stood shoulder-to-shoulder and shared why they chose to affiliate with Gamma Phi Beta.



Sisters show off their "charter member" shirts on the Lake Erie campus.

Laying the Foundation

Several weeks earlier, Kelsey and Lexi launched a true grassroots campaign, creating a buzz about the first sorority on campus. They tailgated at football games, struck up conversations with interested women at lunch and hung countless posters around campus to promote Gamma Phi Beta.

EACH OF THE NEW MEMBERS
STOOD SHOULDER-TO-SHOULDER
AND SHARED WHY THEY
CHOSE TO AFFILIATE WITH
GAMMA PHI BETA.

"The response we received was incredible," Lexi notes. "Women were excited to learn about the Sorority."

Lake Erie College's first recruitment began with an informational meeting where potential new members learned about Gamma Phi Beta and the recruitment process. Later, they met

one-on-one with a member of the Gamma Phi Beta extension team, a group of several volunteers and CLCs who discussed Gamma Phi Beta with each potential new member. For the final night of recruitment, an invitation-only preference event was held. Members from Alpha Nu Chapter (Wittenberg) shared stories of sisterhood throughout the evening.

Start of a New Sisterhood

After a successful recruitment, 20 new members joined the 24 women of Delta Kappa Psi as the newest colony of Gamma Phi Beta. The women comprise a well-rounded and diverse group, including the president of the Student Government Association, resident advisors and the captain of the soccer team.

Eta Alpha Colony has plans for installation and initiation this spring as the 120th active collegiate chapter of Gamma Phi Beta. The women plan to not only embrace Gamma Phi Beta traditions of the past but to create their own as well.

BACK IN ACTION

Delta Nu Chapter will return to Missouri State campus

After a 14-year hiatus, Gamma Phi Beta has a new colony at Missouri State University (formerly Southwest Missouri State) in Springfield.

Delta Nu Chapter was originally installed in November 1977, but later closed because of low membership. Now Gamma Phi Beta is back on campus and ready for a fresh start.

Missouri State's Panhellenic Council opened for expansion last year, and a presentation team of Gamma Phi Beta alumnae and collegiate leadership consultants (CLCs) visited the campus to share how Gamma Phi Beta would "return home." After the Sorority was chosen to come on campus, CLC Sashaun Wood (Arizona State) moved to Springfield last fall and began preparations for recruitment.

"I was so proud to be the representative for Gamma Phi Beta," Sashaun states. "Everyone in the Greek community told me how excited they were to have a sorority of our caliber return to campus."

Dynamic Recruitment

Gamma Phi Beta participated in the first round of formal recruitment, introducing the Sorority to the potential new members. Following Panhellenic guidelines, Gamma Phi Beta withdrew from recruitment and held two weeks of public relations events. During that period, CLCs staffed information tables in the student centers to promote Gamma Phi Beta and garner interest.

"Several women actually dropped out of formal recruitment because they were so impressed with what Gamma Phi had to offer," Sashaun says. After three

days of successful recruitment activities, Gamma Phi Beta welcomed 100 amazing new members. Bid Day festivities were a celebration as the women began their exciting journey together as members of the new colony.

"It was inspiring to take women from different walks of life and unify them through Gamma Phi Beta," recalls CLC Allie Chester (Texas A&M-College Station).

Campus Involvement

New members wasted no time making Gamma Phi Beta's name known on campus. Homecoming commenced just one week after members received their bids, but they hit the ground running and participated in every Homecoming event.

❁ ❁ ❁
**AFTER THREE DAYS
OF SUCCESSFUL
RECRUITMENT ACTIVITIES,
GAMMA PHI BETA
WELCOMED 100 AMAZING
NEW MEMBERS.**
❁ ❁ ❁

"I have never encountered a group that was so eager to get involved right from the start and make their mark on the Greek community," Sashaun remarks, sharing that the colony took home their first Homecoming trophy after winning the "Pumpkin Bust" relay race competition.

After a full semester of Gamma Phi Beta education, Delta Nu Chapter will officially be re-installed in the spring. Although the journey has just begun, Gamma Phi Beta has "returned home" to Missouri State to once again connect, impact and shine!



Retreats help create bonds of sisterhood for colony members at Missouri State.

TO EGYPT AND BEYOND

World traveler discovers passion to help the underserved

By Kara Apel (South Carolina)

Recent graduate Kelly Evans (Southern Indiana) is unconventionally bilingual after eight weeks of studying the Arabic language in Egypt, thanks to a scholarship from the U.S. Department of State.

Students in the program attended linguistics classes Sunday through Thursday for five hours each day where they were taught to read and write Modern Standard Arabic and to speak Egyptian Arabic. They were also assigned a strenuous amount of homework each day. After two months of immersion study, Kelly is now able to read and write Arabic and can speak at a beginner's level.

The life-changing opportunity came after Kelly was one of only 22 applicants selected from a field of 2,000, all vying for the Critical Languages Scholarship to study the Middle Eastern language.

The Road to Egypt

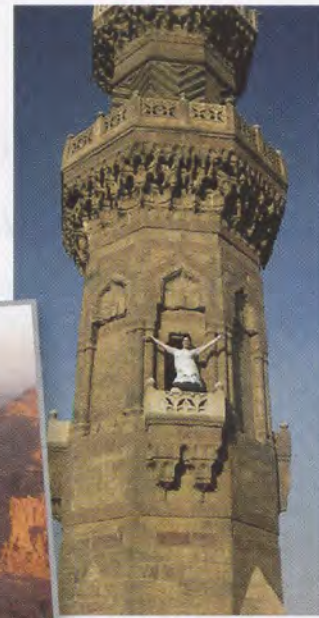
Kelly knew she wanted to study Arabic after serving as an international student orientation leader at the University of Southern Indiana. She picked up a couple of phrases and words from Middle Eastern students, piquing her interest. But after learning about the Critical Language Scholarship, Kelly was nearly discouraged from pursuing the funds.

"When I looked at the schools of students who had previously been accepted, all I saw was Harvard, Harvard, Harvard, so that made me nervous," Kelly says.

The application process was thorough and involved writing four essays, securing two letters of recommendation and demonstrating language-learning ability. In her essays, Kelly described an unforgettable trip to Haiti in 2007 that profoundly affected her future plans.



Kelly took time from intensive language study to tour Egypt's famous sites.



As a pharmacy student, Kelly volunteered in a Haitian medical clinic, giving her one of the most eye-opening experiences of her life: she met an infant whose umbilical cord had been cut with a razor because correct tools weren't available. The baby's stomach was exposed and the wound likely caused spinal damage. "He'll probably never walk even if he makes it past the age of 5," Kelly says sadly.

At that point, Kelly determined to change her career course from pharmaceuticals to international health care. "I realized I wouldn't be happy counting pills all day," says Kelly. "I want to do something to actually help people." Studying Arabic is a step toward her new career goals.

Time for Tourism

The Arabic course was very structured; however, its organizers still planned excursions for the students every weekend. One of Kelly's most memorable adventures was climbing historic Mount Sinai. Scaling the 2,285 meter mountain was physically challenging, taking seven hours to complete. The majority rode camels for a portion of the ascent.

"I got camel sick," laughs Kelly, "But after getting off the camels we had to walk up 750 steps." The amazing mountaintop sunrise was followed by the descent, which involved walking down 3,000 steps, itself a difficult feat.

Future Travels

Kelly graduated in December with degrees in biology and health services and minors in nutrition and public health. She hopes to earn her master's degree in medical science and work as a physician's assistant, using her Arabic language skills to help "unrepresented Arab-Muslims" with their health care needs.

This spring, Kelly will study Arabic in Jordan for a semester. She was able to visit the tiny country while in the Middle East and "fell in love with the language and culture." She also plans to reapply for the \$15,000 Critical Language Scholarship to take courses in the Arabic language at the intermediate level for summer 2009. The Department of State's Bureau of Educational and Cultural Affairs provides the scholarships in an effort to increase the number of Americans fluent in critical-need languages.

Kara Apel is a member of Zeta Sigma Chapter at the University of South Carolina where she majors in print journalism. She's never been to Egypt but thinks it would be amazing to travel there someday!

Dear Sisters,

If you're not a Gamma Phi Beta chapter advisor, imagine that you are. What's your worst nightmare? Discipline issues? Helicopter parents? Hazing? Drug and alcohol abuse? While these are all important concerns, I always knew that my worst nightmare would be the death of a member.

Returning home from Convention 2008 on June 29, I received a shocking message that Lauren Brue, a rising sophomore of Epsilon Lambda Chapter, had died in a small plane crash.

As I made and received more calls, I realized the awful truth of the situation. The devastating accident also killed Lauren's boyfriend, Matt Crump (a fellow University of Alabama student and member of Alpha Kappa Lambda Fraternity), and Matt's parents.

From that moment on, I had to push grief aside and deal with Lauren's death as a chapter advisor. Right away, volunteer leaders and International Headquarters came together to deal with the tragedy.

Because Lauren's funeral was held in Iowa, Chapter President Amber Murphy adapted the international memorial service to help members in Alabama with the grieving process. As a lasting



Epsilon Lambda Chapter sisters Anna Jones (right) and Lauren became fast friends at the University of Alabama.

memorial, Epsilon Lambda Chapter bought a brick in Lauren's name to be installed near the University of Alabama (UA) student union. A pink carnation painting was purchased and hung in the chapter house along with a plaque to honor Lauren, whose favorite color was pink.

Ironically, the night before Lauren died, I was sitting with three executive officers at the international memorial service at Convention. After reading the program, we noted those members who had died as collegians and asked each other, "What would we do if one of our girls died?"

"LEAN ON YOUR SISTERS FOR COMFORT, BECAUSE THE SISTERHOOD WE HAVE CAN HELP US DIVIDE THIS ACHE THAT WE ALL FEEL IN OUR HEARTS, AND WE CAN HELP EACH OTHER SHOULDER THIS BURDEN."

Chapter President Amber Murphy

And the next morning, it happened — our worst nightmare. Rest assured, if that worst nightmare ever happens to your chapter, Gamma Phi Betas from all corners of the world will help you, support you and ensure that your chapter comes out stronger. I'm grateful to International Council, my advisory board, UA Greek Affairs and Epsilon Lambda alumnae for their support during this difficult time in our chapter's history.

In IIKE,
Kristen Record (Alabama)



IN LOVING MEMORY OF LAUREN BRUE

September 15, 1988 – June 29, 2008

Lauren was my first good friend at Alabama. She made me want to be a better, happier person. When I think of Lauren, all I think of is good times, swaps, date parties and weekly episodes of "Lost." I would not trade any time I got to spend with her for anything.

—Anna Jones

Lauren was the kind of person who wanted to make sure everyone was happy. She was always laughing and had a positive attitude about everything she did. Lauren would include everyone, and would go out of her way to help out a sister. She helped me to remember to enjoy life and be kind to everyone.

—Larkie Tanksley, Lauren's Big Sister in Gamma Phi Beta

Contributed by Megan Corcoran (Alabama)



Tragically, sweethearts Lauren and Matt Crump died together on their way to a family vacation in June.

ON THE ΓΦΒ BOOKSHELF

Eureka! Understanding and Using the Power of Your Intuition

By Anne Salisbury, Ph.D. (Denver)
Morgan James Publishing
\$26.95

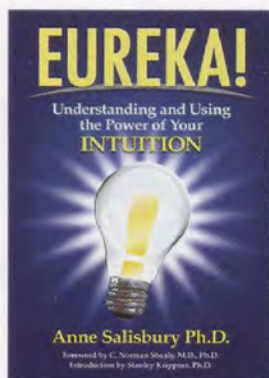
www.amazon.com

Author Anne Salisbury defines intuition as "knowing without the use of reason and without knowing how you know."

Her book explains the process of tapping into and developing intuitive abilities to bring more joy and meaning to life. It was written for those just learning about intuition, those who know about intuition but don't trust it, and those who actively use their intuition but need a system to hone that skill. Finally, the book was written with students in mind, including review questions at the end of each chapter to improve comprehension.

Anne has seen the power of intuition at work in all aspects of her own personal life. In one instance, she credits intuition for helping her avoid a multi-car pile-up on the freeway when she heeded the urge to leave unusually early for an appointment.

To book Anne as a speaker, contact her at info@GoIntuition.com.



Endowments 101

By Janet Doolin (Denver)
\$34.95

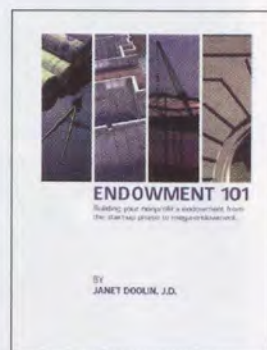
www.janetdoolin.com

Alumna initiate Janet Doolin has published her first book to educate nonprofit organizations on how to easily create a successful endowment. The book has a step-by-step approach that breaks down the process into four phases providing all the tools you need to plan, design and cultivate donor support.

"Every nonprofit organization faces an ongoing need for the financial resources to turn hopes and plans into reality," explains Janet. "This book helps nonprofits to be successful at fundraising."

With more than 22 years of experience working in nonprofit and foundation work, Janet specializes in endowment program development and campaigns. She has served on the National Board of Gift Planning Consultants and is published regularly in national publications such as *Planned Giving Today* and *Planned Giving Mentor*. Currently, she works as the director of major gifts and planning for the Gamma Phi Beta Foundation.

"I think of myself as an architect for endowment funds," Janet says. "I provide a practical plan and approach that works."



GIRL TALK

By Gigi Garner (Southern California)
Five Star Publications, Inc.
\$14.95

Celebrities and other extraordinary women share their secrets

It never fails: when women get together and talk, practical advice is shared, encouragement is offered and giggling frequently ensues. Such are the moments captured by author Gigi Garner in her book *Girl Talk*, a collection of tips from more than 100 women on topics including careers, beauty, health, kids and travel.

Need to remove make-up from your favorite shirt? Turn to Naomi Judd's tried-and-true trick. Headed to a potluck? Whip up Jamie Lee Curtis' famous Caesar salad and homemade croutons. Given up on finding a good self-tanning lotion? The author herself (daughter of actor James Garner) knows just the product for you, and it smells good, too.

Composed of stories, suggestions and sage advice from some of Hollywood's most recognizable stars and other worldly-wise women, the book is an easy read that promotes the power of women helping women.

"There seems to be an obligation within the sisterhood [of women] to relay our little treasures and pearls of wisdom!" Gigi enthusiastically explains. "If you know something wonderful, I want to know about it because I want to expand my horizons and improve the quality of life! Pass it on, sisters!"

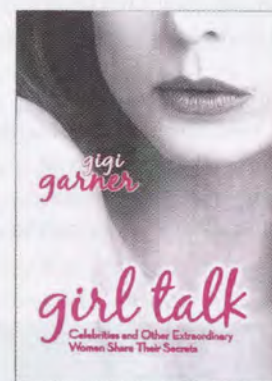




PHOTO CONTEST

Enter to win prizes and international recognition!

Are you a Gamma Phi Beta with a digital camera? Then you qualify to enter *The Crescent* photo contest! Fabulous prizes and bragging rights are at stake—plus, one grand prize photo will be featured on the cover of *The Crescent*! Read all about it, then get your camera out and start shooting!

Rules

- Subject matter must be related to Gamma Phi Beta.
- Contest is open to members of Gamma Phi Beta, amateur photographers only.
- Photos must be submitted electronically as an e-mail attachment to TheCrescent@gammaphibeta.org with "photo contest" in the subject line.
- Photographs and completed entry forms must be submitted electronically no later than 4:30 p.m. on Tuesday, March 31, 2009, to be considered eligible for the contest.
- Digital photos should be of the highest quality possible. Files should be in .jpg format no larger than 3 MB. **No print photos will be accepted.**
- Minimal manipulation of digital images with the intention of accurately rendering the subject is acceptable, such as small adjustments to brightness, contrast, color balance and/or sharpness. No other digital manipulation of an image is allowed.
- Enter a maximum of one photo per category.
- Photos submitted must be taken by the entrant. Only one name can be listed as the photographer on the entry form.

Categories

- Collegians and alumnae will be judged separately in the following categories:
- Portraits (any photo containing people)
 - Landscapes (no people depicted; buildings, still lifes, etc.)

Good to Know

- The entry form is available on our Web site (www.gammaphibeta.org) and must accompany each entry.
- Photographs may be color, black & white or sepia.
- Any submission which does not meet the above criteria will not be considered.
- By submitting the entry form, you confirm that you snapped the photograph and additionally, you grant permission to allow the photograph to be used by the Sorority in publicity-related materials including, but not limited to, *The Crescent*, *Crescent Reflections*, Gamma Phi Beta Web sites, extension, promotional and/or other materials.
- The top entries will be selected by a panel of Gamma Phi Betas who are professional photographers. Photos will be evaluated for clarity, composition, subject matter, emotional reaction and artistic value.
- If you have any questions regarding the contest, please e-mail TheCrescent@gammaphibeta.org.

Prizes

Winners will be announced in the summer 2009 issue of *The Crescent*. Prizes will be awarded to the first place winner in each category, with collegians and alumnae judged separately. In addition, one grand prize photo will be selected to appear on the cover of *The Crescent*, summer 2009 issue.

Contest Sponsors

Thanks to these generous licensed Gamma Phi Beta vendors, individuals and organizations, we have fabulous prize packages to award, valued at up to \$1,000. For more about our vendors, see page 29.

GreekMonograms.com, Bud Townsend
 GetSomeGreek.com, Gerad Ewing
 PurlStitchDesigns.com, Darla Schid
 GreekU.com, Lory Passov
 Heartstrings, available at greek101.com, Alicia Starbeck
 VineyardVines.com, Tim Sears
 MyCharmedLife.com, Patty & Chris
 MyChapterRoom.com, Penny Zamkov
 KotisDesign.com, Eric Hamlin
 Bev Key, Inc.
 Corporate Identity, Linda Ray (Southern Methodist)
 UniversityPhoto.com, Karen Guber
 Gamma Phi Beta Foundation
 Fraternity Row, Lewis Dawes
 DesignerGreek.com, Stefany Bernard
 GreekGear.com, Joseph Tantillo
 DonovanDesignsInc.com, Katie Vincent
 Gigi Garner (Southern California)
 Chapter Communications, Jeremy Turner
 Digital Pix & Composites, dpc.com, Erica/Camie
 FraternalComposite.com
 GreekBox.com, Doug Baker

Photographs and completed entry forms must be submitted electronically no later than **4:30 p.m. on Tuesday, March 31, 2009**, to be considered eligible for the contest. Send to TheCrescent@gammaphibeta.org with "photo contest" in the subject line.

SHOOT!

Photography tips give amateurs professional results

Does trying to turn your ho-hum photographs into eye-catching art seem like an impossible feat that should be left to the professionals? Don't give up hope just yet! You may be surprised to learn that by following a few simple yet effective tips, you can take fantastic photographs.

Keep Your Camera Handy

A moment only comes once! Great photo opportunities always seem to come when you least expect them. Try to keep your camera on hand so you are always prepared to capture the memory.

Take lots of shots when using a digital camera; you can always go back later and delete the ones you don't like.



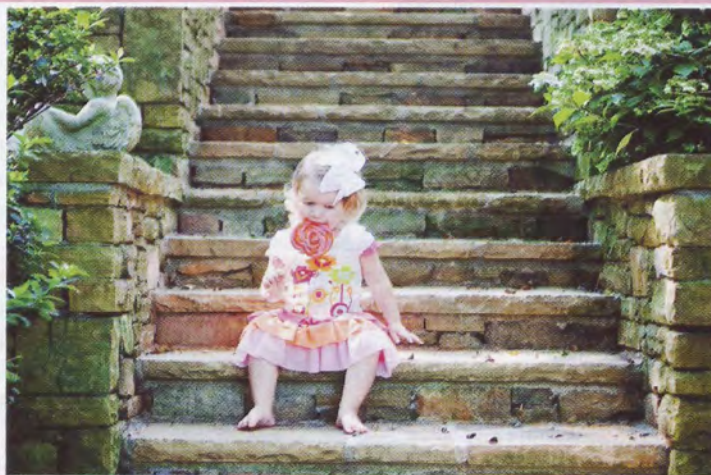
Getting close to your subject is a great way to eliminate background distractions and create powerful photos.

Capture the Closeness

A common mistake in photography is taking shots where your subject is too small in the frame. Filling the frame with your subject is much more dynamic and shows more detail. Simply move closer or use a longer focal length to give the effect of closeness.

Get Down Low

"If you are shooting pets, plants or children, you will have to move around and get low to get a shot with the most punch," explains professional photographer Danielle Hobbs (Georgia). Most subjects look better and more natural from their eye level—not yours.



Notice how the subject isn't looking directly into the camera? That's OK! The eye level angle creates and captures a personal feeling.

Imagine a Grid

Try following the rule of thirds as a composition guideline. This means that the frame can be divided into three horizontal sections and three vertical sections (imagine a tic-tac-toe grid). Where the horizontal and vertical lines intersect is the ideal location for the subject to be placed in the photograph. By using this technique you are actually giving more emphasis to your subject than if it was right smack in the middle of the photo!



The four points where the lines cross are the strongest focal points of your image. The human eye is naturally drawn to these spaces within a frame, not to the center of the frame.



A cluttered background can be distracting while a plain or solid-colored background will bring the focus to your subject.

Notice Your Background

Before taking a photograph, check the area behind your subject by taking a quick scan of your surroundings. Be on the lookout for trees or fence posts "sprouting" from your subject's head to avoid an awkward photo.



A rocking chair is unexpected in the middle of the desert, but notice how the meaningful prop adds interest.

Be a Director

Don't be a passive photographer. Get in the mix by taking an extra minute to rearrange your subjects, try a different viewpoint or add some props.

"Posing the subject plays a big part in conveying your message as the photographer," Danielle explains.

Check Your Lighting

When taking outdoor photos, try to position your subject with the sun behind you. With the sunlight to your back, enough sunlight reaches the subject to showcase a wide variety of color without washing out features.

Utilize your flash at night, in the shade or any time there are heavy shadows. If you are lacking sufficient lighting and want to avoid red eye, ask your subject to look to the side of your camera rather than straight on.

Know Your Camera

Take a few minutes to learn about the basic functions of your camera. Investing a little extra time perusing your manual could make the difference between a boring photograph and a breath-taking one!

Be Playful

Put people at the edge of a frame, shoot from different angles and explore creative possibilities. Experiment by merely rotating your camera anywhere between 15 and 75 degrees. Doing this will help you develop the habit of looking at the world from multiple perspectives, resulting in an artistic point of view you may not have even known you had!



Photography is all about the art of "seeing," looking at the same situation as everyone else, but seeing something different! Here the subject is framed unusually, making the photograph unique and memorable.

**SPECIAL THANKS TO ALUMNA DANIELLE HOBBS (GEORGIA)
FOR PROVIDING THESE LOVELY PHOTOGRAPHS.
TO SEE MORE OF HER WORK OR BOOK A SESSION,
CHECK OUT HER WEB SITE,
WWW.DANIELLEHOBBSPHOTOGRAPHY.COM.**

Keep Practicing

First century Roman author Publilius Syrus put it best: "Practice is the best of all instructors." Discover what you like, and improve your skills by learning through practice.

The Crescent photo guidelines

Getting a photo published in *The Crescent* is a memorable event for our members. Our Crescent correspondents work hard to submit appropriate material in the hopes of seeing their pictures printed in the magazine. We wish we could print them all, but only about a dozen photos are selected for the "Member News" section of each issue out of all the shots submitted by our 121 collegiate chapters, 134 alumnae chapters and 37 crescent circles.

Want to increase your photo's chances of being included? *The Crescent* staff offers some suggestions.

Show Some Action

Consider taking action shots at your next philanthropy event, sisterhood activity or social. Action (or candid) shots are a welcome change from groups of posed, smiling faces.

Digital photographs are preferred. You'll want to take high resolution (300 dpi) photos from a camera that is at least 3.2 mega pixels. Use the highest quality settings on the camera.

Give Some Credit

Include a caption for the photo identifying the chapter and explaining the event. Think who, what, where, when and why.

Delete the Duds

Photos we cannot consider for publication:

- Out-of-focus photos
- Poor quality (grainy, bad lighting, too far away, low resolution)
- Photos that reflect poorly on the individual, chapter or Sorority
- Photos showing cans, bottles, cups, glasses, etc.
- Outhouses. (Enough said.)
- Birthday celebrations, weddings or births (we do not have the space to be fair to all our members)

Send 'Em In

E-mail the photo and caption to TheCrescent@gammaphibeta.org.

Film prints will be accepted depending on quality. As with digital photos, include an appropriate identifying caption. Package photos carefully in an envelope and mail to *The Crescent* Editor, Gamma Phi Beta Sorority, 12737 E. Euclid Drive, Centennial, CO 80111.

PHYSICAL THERAPISTS

When three Gamma Phi Betas from Creighton University had the opportunity to volunteer their physical therapy skills in the Dominican Republic, they had no idea fate would put them in touch with two alumnae from two other states who were gearing up to do the same thing.

Jane Renner (Creighton), Michelle McLaughlin (Creighton) and Jill Alice Kuebler (Iowa State) volunteered for the hands-on training as students in the physical therapy program at Creighton. Each raised around \$2,000 for travel expenses and medical supplies.

Once in the country, during a night of talking with two mentor-instructors, the group realized they were all Gamma Phi Betas. Amanda Schultz (St. Louis) and Elizabeth Rusch-Richards (Creighton) had their own reasons for making the journey.

"It really refreshes me as a professional," says Elizabeth, "because it's all about service and respecting the people."

The women lived and worked together for four weeks in Santiago as part of the Institute for Latin American Concern, a non-profit health care and educational organization that promotes well-being and spiritual growth. They focused on using their skills at a hospital, children's hospital, orphanage and rural community where they provided services to patients ranging in age from six months to 96 years.



At a public hospital in the Dominican Republic, Jill Kuebler and Michelle McLaughlin work with a young patient.

Valuable experience

Volunteering was excellent on-the-job training for the three future health professionals, all of whom were hired by healthcare providers following graduation.

"I have more confidence now," says Jane. "I know that even with no modern tools, I can make a difference and improve someone's abilities."

Of all the Dominican people she treated, there's one Michelle will never forget.

"I met Mariel in the pediatric physical therapy unit," she explains. "She had a form of cerebral palsy and was paralyzed on her left side. One day while we were working with her, she took her first steps. It was amazing to be part of that and know I made a difference to someone."

Jane agrees. "The biggest thing for people to know is that no matter what your profession or skills, we all have something to give," she says. "Seek out opportunities to serve others. You won't be disappointed."

DID OUR PACESETTERS INSPIRE YOU?
LET US KNOW AT THECRESCENT@GAMMAPHIBETA.ORG.

FASHION JOURNALIST

Marylou Luther Imparato (Nebraska-Lincoln) answered her phone last summer, but she never expected the French ambassador to the United States to be calling.

Ambassador Pierre Vimont informed Marylou that France's Ministry of Culture had named her *Chevalier dans l'ordre des Arts et des Lettres*—Knight in the Order of Arts and Letters. She accepted the prestigious honor, a medal, in October during the Paris ready-to-wear fashion shows.

In the past five decades, Marylou has made a name for herself as one of the world's premier fashion and design journalists. Currently, she is the editor of the *International Fashion Syndicate* and writes "Clotheslines," a question-and-answer fashion column with more than 5 million readers worldwide. Additionally, her coverage of the London, Milan and Paris fashion shows are printed in countless newspapers throughout the United States.

With more than 50 years of experience under her fashionable belt, Marylou has no intention of slowing down.

"Fashion is a barometer of the times," Marylou explains. "I love writing about it for that reason and will continue to do so for as long as possible."

The Order of Arts and Letters was established in 1957 to reward distinguished artists in the fields of arts, culture and literature or those who have contributed to the influence of arts in France and throughout the world. Recent American recipients of this award include Robert Redford, Bob Dylan, George Clooney and Meryl Streep.

Très bien, Marylou!



BIRTH DEFECTS RESEARCHER

Ruth D. Merz (Wittenberg) is about to experience empty-nest syndrome. But in her case, Ruth's baby is not a child; rather, it's a program she helped create, nurture and raise from infancy to independence.



Ruth is set to retire from her position as the director of the Hawaii Birth Defects Program, a research and education organization she helped establish more than 20 years ago. The award-winning program monitors and evaluates all cases of birth defects in the Hawaiian Islands. There are approximately 1,000 newly-affected babies each year, covering over 1,150 different diagnoses.

"I have always been fascinated by the way we start out life as two half cells genetically and then evolve into such complex beings with all the right parts doing all the things they are supposed to do," says Ruth.

Her focus on birth defects came from wondering why, in some babies, something goes wrong with that development. She is especially interested in preventable complications, such as Fetal Alcohol Syndrome, and works to educate women about the dangers of alcohol use during pregnancy.

Like a lot of empty-nesters, Ruth has plans to keep busy and healthy. She is actively involved in Hawaii Alumnae Chapter and her church, sings with the Honolulu Symphony Chorus, takes Luk Tung Kwan and sword Tai Chi classes, and continues to work on several local committees for child health and safety.

"Ruth is very modest, so I will simply say that her work and dedication to the community have made a tremendous impact on the state of Hawaii," says Suzanne Lee (McGill). "We are all very proud of her."

Ruth holds a bachelor's degree in zoology and a master's in embryology. She has been recognized with several national and international awards for her work.

TECHNOLOGY CEO

If there was a photo in the dictionary under left-brain competencies, you'd see Georgia Griffiths (California State-Long Beach).

Georgia holds degrees in mathematics and computer science and is the chief executive officer of G2 Software Systems, a defense contracting business in San Diego she started 19 years ago. Recognizing her career accomplishments, the Alumni Association of California State University-Long Beach recently awarded her the 2008 Distinguished Alumna Award.

Georgia discovered her passion after taking a single college class; in her case it was a computer course. Georgia remembers marveling at the possibilities: "People will pay me for doing this?" She could hardly imagine a career where she could "play with puzzles" all day and make a living at it.

As a new graduate in 1973, Georgia worked for Hughes Aircraft and recounts the gender bias she experienced.

"Before equal opportunity laws, companies were very honest about the limitations for women," she says. "I was clearly told what I could and could not do."

She was motivated to "jump off the cliff" and start her own company where engineers were treated and paid fairly. She now employs 110 engineering professionals and strongly believes that the technology field has extraordinary career opportunities for today's women.



"It's never too late to pursue a career in science," says Georgia. "Technology offers a lot of advantages for working women, and the United States needs citizens to enter the technology field to be competitive in the world market."

For fun, Georgia recently earned her private pilot's license. She now uses her passion for flying as a volunteer with Angel Flight, a non-profit organization. At least once per month, she gives a free ride to patients needing transportation for any legitimate, charitable, medically-related need. Recently she piloted a group of deaf children from San Diego and San Francisco to camp in Yosemite, CA.

PACESETTERS, CONTINUED ON PAGE 29

HOUSTON ALUMNA SURPRISED BY PANHELLENIC SALUTE

By Cathy Balzer Lorino (Texas Tech)

Psi Chapter alumna M. Jane Swift Fair (Oklahoma) was recently honored by her many friends in Houston Alumnae Panhellenic (HAPA) for her years of dedicated attendance and service.

Jane was surprised by HAPA past president Sue Brenning (Kappa Kappa Gamma Sorority) who posed as a member of the "Houston Alumnae Hat Patrol." Like Sherlock Holmes, Sue wore a deerstalker and carried a large magnifying glass which she used to single out Jane, conspicuous in one of her signature hats. Sue presented the unsuspecting honoree with a gift and corsage accompanied by an enthusiastic standing ovation.

It's hard to convey how beloved Jane is. She is a remarkable woman who has led a remarkable life; she represents an extraordinary class of women who



Gamma Phi Beta alumna Jane Fair is a beloved member of Houston Alumnae Panhellenic.

survived the Great Depression and still attended college, served on the home front in World War II and went on to be community leaders.

Since moving to the Houston area in the 1970s, Jane has cheerfully and faithfully attended HAPA meetings, served as Gamma Phi Beta's delegate and hosted meetings. She also consistently

supports HAPA's philanthropic foundation, which last year gave \$41,000 in academic scholarships to local sorority women. Jane was specifically recognized for the many handwritten thank you notes she has produced on behalf of the organization.

Among her achievements, Jane is the past president of the Houston Alumnae Chapter of Gamma Phi Beta (1986-87) and the recipient of the Sorority's Merit Award and IIKE Award.

GREEKS GO GREEN

By Cele Hoffman Eifert (Southern California)

One prominent organization on college campuses nationwide is Greeks Going Green, Inc. (3G). This non-profit company is dedicated to mobilizing collegians and alumni to adopt sustainable living practices.

Check to see if your college has a 3G chapter, or learn how you can start one at www.greeksgoinggreen.com.

RecycleMania was started in 2001 as a friendly competition to promote waste reduction activities in campus communities. Get your campus Panhellenic involved at www.recyclemaniacs.org.



Zeta Tau Chapter members Erin Denio, Danielle Schwartz and Rachel Bergmann (Emory) participate in the campus recycling program.



Better late than never, Sarah Devlin (Kansas State) received the Lillian Thompson Award, announced at Convention 2008, at a Beta Upsilon Chapter event in October. The award recognizes a collegian who exemplifies Panhellenic ideals to the Greek system and community.

Before graduating with a bachelor's degree in biochemistry last year, Sarah served as vice president of Panhellenic Council and on the Student Alumni Board. She has been recognized for academic excellence by the Kansas State Alumni Association and inducted into the Phi Beta Kappa Society. Congratulations on your newest honor, Sarah!



Epsilon Zeta Chapter (Jacksonville) members Vivian Grifantini and her big sister Danielle Aho spent time exploring the Parthenon and other historic areas in Athens, Greece.

OUT AND ABOUT

CELEBRATING THESE CHAPTERS WITH MILESTONE ANNIVERSARIES IN 2009!

- 135th – Alpha, Syracuse University, 1874
- 50th – Gamma Beta, Gettysburg College, 1959
- 25th – Delta Omega, Oakland University, 1984
- Epsilon Beta, Alma College, 1984
- Epsilon Gamma, University of San Diego, 1984
- 10th – Zeta Lambda, Texas A&M-Corpus Christi, 1999

MY JOURNEY

BY DEBBIE HALL SUTTON (OKLAHOMA STATE)

*Back in 1969, before I was initiated
into Beta Psi Chapter at Oklahoma
State University, I was asked to write
what Gamma Phi Beta meant to me.*

I started on a journey
A little while ago,
Down the path of college,
Where to I did not know.

The path was rough and weeded.
The way was hard and dark,
And I began to wonder
Why ever I did start.

But when things look their darkest,
A crescent rose above.
It lit my pathway with its light,
Its light of hope and love.

And as I journeyed onward
The crescent as my guide,
I was no longer all alone
For friends were at my side.

And though the friends be many
As the years do come and go,
We are all safe and happy
'Neath our crescent's warming glow.

So now I've found a special love,
A true and guiding light,
And unto my dying day
We two shall not lose sight.

But, if that day is soon to come,
And buried I must be,
May a bed of pink carnations
Be the final place for me.



Collegians Josie Chai (Northwestern) and Sara Kahl (Pennsylvania State) met at the University of California-Los Angeles. After discovering they were both Gamma Phis, they posed for a picture with the UCLA mascot statue!



Eta Chapter (California-Berkeley) alumnae Caitlyn Whitwell and Carol Chen didn't know each other until they met arbitrarily at Huayna Picchu in the Peruvian Andes. What were the chances?

WELCOME TO OUR NEWEST ALUMNAE CHAPTER!

Montgomery Alumnae Chapter (AL) installed August 3, 2008.

Send congratulations to:
Emily Benton, President
Montgomery Alumnae Chapter
6731 Overview Dr
Montgomery, AL 36117-7651
ebbenton05@gmail.com

EVERYTHING GOES WITH

By Geneva Anderson Vallejo (Minnesota-Mankato)

Many people have “go green” on their New Year’s Resolutions list for 2009. We see and hear about “going green” every day, but what does it mean?

The movement refers to efforts that reduce human impact on Earth. It means being environmentally-conscious with energy use, waste disposal and consumption of goods and resources—efforts that have both immediate and long-term benefits.

The environment directly affects people’s ability to stay healthy. Improperly disposing of chemicals can taint our drinking water and food supply. Deforestation affects air quality; with fewer trees to clean the air of pollutants, more people struggle with breathing problems. By making sure that the world around us is thriving, we can lower medical bills and provide a better quality of life for future generations.

Green is Growing

While “going green” is not new, the awareness and popularity of green choices are more common than ever. Stores sell reusable shopping bags, compact fluorescent bulbs illuminate our buildings and hybrid cars zip along our roadways. Even television is getting into the act with the

Geneva’s Personal Faves

Hints for “going green” are available all over the Internet, in magazines and in your community. If you have green tips to share, join the “Go Green” group on www.mysisterlink.com. Here are a few of my favorite resources. —Geneva

TV

- “G Word” on Planet Green
- “Wa\$ted” on Planet Green

Publications

- *National Geographic Green Guide*
- *Body and Soul*
- *1001 Ways to Save the Earth*
by Joanna Yarrow

Web sites

- www.treehugger.com
- www.idealbite.com
- www.earthhour.org

launch of the first green network by the Discovery Channel (see www.planetgreen.discovery.com).

On Campus and in the Home

How can we “go green?” Our members are leading the way.

Becca Mason (California-Berkeley) is the sustainability chairwoman for Eta Chapter. She conducted water and energy audits with the local utility district, earning free low-flow and energy-efficient fixtures for the chapter house to save money and help the environment.

“Going green” also refers to wisely disposing of the resources we have already used, also known as trash. The Green Team at Alpha Epsilon Chapter (Arizona) placed a large recycle dumpster in the back parking lot and blue recycle bins in each of the day rooms. Recyclables are picked up weekly.

Alumna Marissa Scalia Sucusky (Rochester) is committed to the green effort in Atlanta. She set up a recycling system to produce less waste, switched to low-energy light bulbs, takes her own canvas bags to the store, uses bio-degradable cleaning products and carpools to work!

Marissa also maintains an organic urban garden where she grows her own vegetables, cutting back on the environmental impact of transporting fresh produce. Surplus vegetables are donated to a local food bank. The next green plan on Marissa’s list is composting. Composting is a process that converts organic household and yard waste into soil, returning needed nutrients to the garden and reducing the green waste going into landfills.



Zeta Tau Chapter President Amelia Mann and member Rachel Bergmann have fun with recycling at Emory University.

Making Resources Last

So “going green” is easy, but why is it important? There is a finite amount of natural resources on Earth, some of which are already depleted and many others that are disappearing at an alarming rate. Energy, water and other natural resources are wasted each time recyclable items are dumped into the landfill.

When recycling isn’t an option, “curb consumption.” Limiting new purchases in favor of trading, buying used goods or handcrafting items cuts back on the amount of products we use. Throw a “swap party” with neighbors and friends to trade everything from clothes to children’s toys to tools. Some resourceful people make gift wrap out of newspaper to cover their handmade presents and search for “treasures” at the neighborhood yard sale. In other words, find ways to use what is already available before heading to the store.



GREEN

Take a Step

What can you do? Spread the word, and challenge yourself to adopt a new "green" habit today. Here are more ideas to get you started.

Green

- Bring your own bags to the grocery store.
- Turn off the water while brushing your teeth.
- Turn off the lights when you leave a room.
- Combine trips when you run errands.

Greener

- Buy local produce at a farmer's market.
- Carpool, walk or ride a bike.
- Bring your lunch in reusable containers.
- Supply your own cup at the local coffee house (you might get a discount).

Greenest

- Make your gifts, give gifts of time or donate to a charity instead.
- Start a compost pile.
- Plant a vegetable or fruit garden.
- Organize a swap party (clothing, toys, tools, you name it!).

"Green of the Year" Award

- When it's time to trade in your vehicle, get a hybrid.
- Install solar panels in your home.
- Take an eco-vacation.
- Telecommute to work.

Geneva Vallejo is a member of Denver Alumnae Chapter and the collegiate coordinator at International Headquarters. She has been called a "tree-hugger" since middle school, a fact that makes her giggle.

SHOP GREEN!

www.greengreekgear.com

Green Greek Gear, a Gamma Phi Beta licensed vendor, uses eco-friendly manufacturing practices, toxic-free ink and 100% organic cotton in their clothing. Plus, they donate 1% from your purchase to environmental causes. Check our licensed vendor list for other green products at www.gammaphibeta.org.

SAVE A TREE!

Get your future issues of *The Crescent* online!

Send an e-mail stating your request to TheCrescent@gammaphibeta.org and you will receive an electronic link to the magazine as each issue is published. You'll get the issue in advance, save paper and reduce costs at International Headquarters! Everybody wins!



GREEKS MAKING THE WORLD GREENER

Compiled by Cele Hoffman Eifert (Southern California)

University of California-Los Angeles

"Green the Greeks" is an organization that is helping UCLA's more than 60 fraternities and sororities make their houses more sustainable. Efforts include installing fluorescent light bulbs and automated light timers, eliminating Styrofoam plates at house dinners, and a competition among houses to consume the least amount of energy.

University of Washington

The Greener Greeks project was created to educate students about energy and water efficiency and create ways to further seek change. Seattle Public Utilities and Seattle City Light are supporting the Greener Greeks project, and both have donated various energy efficient items to be installed in Greek houses.

University of Puget Sound

Gamma Epsilon Chapter is participating in the Live Green Challenge, a friendly eco-rivalry between Greek residences, theme houses and residence halls.

Bentley College

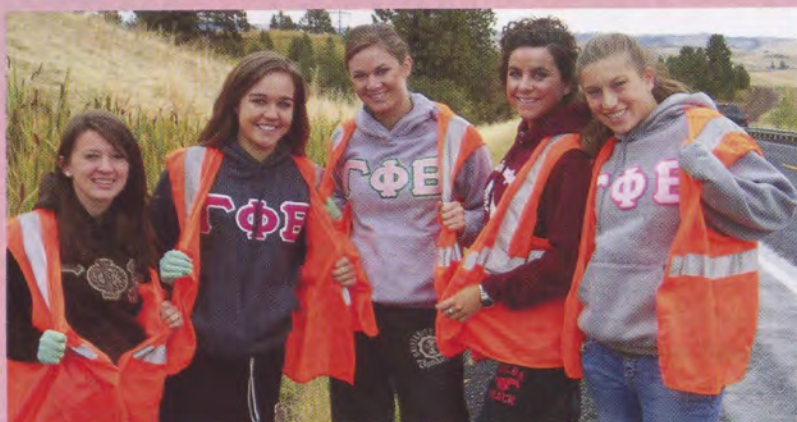
Epsilon Phi Chapter supports the campus Panhellenic effort to reduce paper waste, limiting recruitment fliers to 300 pieces per chapter. They also collect and donate sneakers to Nike's "Reuse-a-Shoe" which recycles them to make tracks and playgrounds for communities in need. Check it out at www.letmeplay.com/reuseashoe.



Collegiate Perspective

XI CHAPTER GIVES GREEN A GO

By Brenda Andrade (Idaho)



Xi Chapter (Idaho) members show their community leadership by cleaning up the highways.

Gamma Phi Beta strives to fulfill our values of love, labor, learning and loyalty. For Xi Chapter, keeping the environment healthy, clean and green is a way to live the values of our Sorority.

Recycle

While there is no penalty for not recycling in our chapter, the practice has become an embedded aspect of our sisterhood. We maintain an efficient system with a simple, accessible and convenient recycling center inside our home. We recycle glass bottles, aluminum cans, plastic containers, cardboard boxes, newspapers and magazines. In our dining room, the recycling bin for empty milk cartons is conveniently located right next to the sink, so that anybody can quickly rinse out the empty milk jugs and toss them in the bin.

Our recycling chairwoman visits the local recycling center once or twice a week, as needed. The center is open 24/7, making drop-off easy and convenient.

Reduce Water Use

One way our chapter decided to reduce the amount of water used is to limit the length of our showers. By keeping our showers short, we can dually respect our sisters and the environment.

Another way to save water is by running the washing machines on the quick cycle while doing laundry. We also reduce water use by turning the sink faucets on low for hand washing and making sure they are completely shut off to prevent water from dripping.

Reduce Energy Use

Winter nights on our sleeping porch are extremely cold, and some women in our house stay warm by using heating blankets. Our sleeping porch's electrical power is programmed to turn on each night at 10 p.m. and turn off at 9 a.m. which prevents excess power from being wasted.

Also, by encouraging each other to turn off unnecessary lights around the house, the women in our chapter quickly make a habit of saving energy.

Clean Up

Through Adopt-a-Highway, Xi Chapter cleans a strip of the Moscow, Idaho, highway twice a year. Brightly-colored garbage bags, safety vests and gloves are provided for each woman in our chapter to participate in this super-fun chapter activity.

Alumnae Perspective

GREEN LIVING IN "GREEN COUNTRY"

By Lindsay O'Donnell (Oklahoma)

We often hear the words "going green," but can you really make a difference in our Earth's plight? Oklahoma is often called "Green Country" and the ladies of Tulsa Alumnae Chapter have brainstormed a few ways to truly keep our country green. There's a good chance at least one of these tips can be incorporated into your daily life.



"Have you ever noticed how much water is wasted while you are waiting for the hot water to come out of the faucet? I now try to remember to put my plant watering can under the faucet to catch the cold water while waiting for the hot."

Carla Ewell Bock (Oklahoma State)

"We are using paper sacks at the grocery store and switched to energy-efficient light bulbs. We recycle newspapers, magazines and anything else we can."

Christine Hilderbrand (Oklahoma)

"I buy chlorine-free diapers for my baby, which means the chlorine does not run off into our ground water. I also switched to chlorine-free organic cleaners, including laundry soap and dish soaps."

Shannon Ragsdale Muret (Oklahoma State)

"I have started using 'green' cleaning products and I actually like them better. I use 'Green Works' from Clorox."

Piper Messimore (Oklahoma State)

"I am using vinegar, baking soda and other green cleaners. You wouldn't believe how great cleaning with vinegar is—it's better than other products and cheaper, too!"

Janna Bendure (Oklahoma State)



Green living doesn't have to end in Green Country. The women in Tulsa encourage all of our sisters to come together and share ways to make your community a little more environmentally friendly. Future generations of Gamma Phi Betas deserve the chance to swim in clean oceans, stare into clear skies at crescent moons and even see polar bears during their lifetimes.

REGION 1

MASSACHUSETTS

♥ Epsilon Phi Chapter (Bentley) was the only chapter on campus to have 100 percent acceptance on bids handed out during fall recruitment, welcoming five new and very excited members.

♥ After welcoming 12 outstanding new members, Epsilon Eta Chapter (Bridgewater State) got to know their new sisters at a T-shirt tie-dye event.

QUEBEC

♣ Breast cancer met another foe as alumnae and collegians from Alpha Tau Chapter (McGill) took part in the Canadian Breast Cancer Foundation's 5K Run for the Cure in October.

NEW JERSEY

♣ Bergen County Crescent Circle members handed out refreshments to walkers at the Spectrum for Living Walk. The walk raised money to provide services for adults with developmental disabilities.

NEW YORK

♣ Rockin' for a cause, Epsilon Tau Chapter (Rochester) co-sponsored the fundraiser ROC'ed-Around-the-Clock, raising \$300 for Camp Fire USA. Members rocked in rocking chairs all day while holding a raffle and small concert. The chapter also volunteered time over Homecoming weekend, making snow cones and running carnival games for students and families.



Spinning the "Gamma Web" was a fun way for new members of Zeta Pi Chapter (Pennsylvania State-Altoona) to learn about Gamma Phi Beta at their sisterhood retreat.

PENNSYLVANIA

♣ Zeta Epsilon Chapter (Duquesne) raised \$2,100 at the 11th Walk Miles for Kids Smiles philanthropy event to benefit the Pittsburgh Children's Institute.

♥ Whitewater rafting down the Lehigh River is how Delta Kappa Chapter (Lehigh) kicked off the beginning of the school year at a sisterhood retreat. After spending the day on the water, the chapter spent the night at a nearby resort watching movies and playing games like ritual Jeopardy.

♥ Celebrating 25 years as a chapter with alumnae was the perfect way for Epsilon Alpha Chapter (LaSalle) to show its 13 new members the lifelong benefits of becoming a Gamma Phi Beta!



Epsilon Iota Chapter (Christopher Newport) collected \$1,226 for Orphan Helpers during their philanthropy event, Moonball.

REGION 2

NORTH CAROLINA

♣ ♥ To show support for Helpmate, a local battered women's shelter, Asheville Alumnae Chapter hosted a raffle with Asheville's minor league baseball team. Collecting more than \$400 at the game, the raffle was a hit! Members also assisted Epsilon Psi Chapter collegians on their preference night.

VIRGINIA

♥ Alumnae from Zeta Beta Chapter (Virginia) met in Washington, D.C. to sightsee and reconnect.



Member News

See all the exciting things happening in your region at a glance!

Symbol Key:



Sisterhood



Leadership



Philanthropy



Scholarship



Mark your calendar!
International Badge Day
Monday, March 2, 2009

MEMBER NEWS

REGION 3 FLORIDA

♥ Hosting a tailgate-themed luncheon, Tampa Bay Alumnae Chapter celebrated the onset of the Tampa Bay Buccaneers football season together. The chapter also collected school supplies for their local philanthropy, Mercy House.

GEORGIA

♥ The sisters of Delta Upsilon Chapter (Georgia) had a lot to celebrate during the fall semester. The chapter had its 25-year anniversary and welcomed 58 new members on Bid Night, including seven legacies!

♥ Making its name known, Zeta Tau Chapter (Emory) is attending all Greek philanthropic events on campus and planning its own event, a campus-wide sports tournament. Additionally, the chapter was excited to add five new members after fall recruitment.

♥ With their best recruitment to date, Delta Omicron Chapter (Southern Technical Institute) doubled their chapter size with 16 new members and had the best recruitment results on campus. Traveling to the mountains of North Carolina, the sisters spent an adventurous weekend tubing down Deep Creek River and enjoying nature.

♥ All of the hard work and preparation paid off for Zeta Omega Chapter (Kennesaw State) when they welcomed 47 new members to their chapter after completing their first formal recruitment.

TEXAS

♥ Wichita Falls Alumnae Chapter helped Gamma Iota Chapter (Midwestern State) furnish their new house by collecting more than \$1,000 at a silent auction and reunion dinner. The fundraiser had a great turnout, with more than 50 alumnae members attending to show their support.

♥ Lending a hand to their collegiate sisters, San Antonio Alumnae Chapter helped the new Zeta Psi Chapter (Texas-San Antonio) organize their first fall recruitment. The chapter exceeded quota!

♥ Members of Gamma Zeta Chapter (Texas A&M-Commerce) volunteered their time at the Bois d'Arc Festival running a hamburger stand and game booths for children in order to raise money for the Commerce Lil' Angel program.

Food, fun and football were the themes of Zeta Rho Chapter's (Texas A&M-College Station) first ever Wing Fling. The chapter raised more than \$1,000 for Camp 4 All, a camp designed for mentally and physically handicapped children.



Epsilon Lambda Chapter (Tuscaloosa) fires up for recruitment by singing a chapter rally song.

♥ Completing their first fall recruitment with amazing success, Zeta Chi Chapter (Texas Christian) welcomed more than 50 new members. Since recruitment, the chapter has been hard at work; they designed a float for the Homecoming parade and planned a kickball game to benefit Camping for Girls, a local philanthropy.

REGION 4 INDIANA

♥ Zeta Iota Chapter (Valparaiso) participated in the National Day of Caring by planting trees, mulching gardens and resurfacing blacktop for Christian Haven, a community-based outreach center for children in need.

OHIO

♥ Gathering for their tenth reunion, alumnae from Beta Gamma Chapter spent the weekend visiting Bowling Green State University and connecting with collegians over a catered dinner at the chapter house.

♥ Alpha Nu Chapter (Wittenberg) surpassed quota for fall recruitment, welcoming eight new women. To celebrate their success, the chapter had a fun night out with their new members playing laser tag and video games. The chapter also traveled to Lake Erie College to help the new colony with its first recruitment.



Natalie Cochran (Detroit-Mercy) is full of Gamma Phi Beta pride as she stands by a rock that her chapter (Zeta Nu) painted during a sisterhood event. The rock is on campus and can be painted by anyone at any time!

♥ As formal recruitment came to a close, Zeta Omicron Chapter (John Carroll) was thrilled to welcome 12 new members. The chapter enjoyed sharing Founders Day with local alumnae and is looking forward to playing Powder Puff football again.

REGION 5 ILLINOIS

♥ Chicago Far West Suburban Alumnae Chapter kicked off the beginning of fall with an ice cream social and a "dressing for fall" shopping evening. The chapter also hosted Founders Day for all Chicago area members.

WISCONSIN

♥ More than 440 lives will be saved because of Gamma Gamma Chapter's (Wisconsin-Milwaukee) recent campus-wide blood drive. The blood drive was the largest that the Blood Center of Wisconsin has ever had!

REGION 6 COLORADO

♥ ♣ After spending Founders Day in Golden, Colorado, **Denver Alumnae Chapter** has been working hard to plan fundraisers to benefit the Denver Boys and Girls Club. Members are currently planning a luncheon where author Ginger Hall Underwood (Oklahoma City) will discuss her book, *A Travel Guide for High Maintenance Women*.

♥ Bid Day brought 72 exceptional new members to **Beta Rho Chapter** (Colorado-Boulder). The sisters and their new members spoiled themselves at a spa retreat where they spent an afternoon decorating cookies, making key chains, getting manicures and watching movies.

♥ Sisters of **Tau Chapter** (Colorado State) made preparations for Homecoming events with their 44 amazing new members. The chapter is looking forward to hosting their upcoming Spaghammi Dinner.

KANSAS

♥ Hosting a "Decades" party, **Greater Kansas City Alumnae Chapter** enjoyed a blast from the past when alumnae members got together based on their initiation years to reconnect and reminisce. The festivities continued when the chapter celebrated Founders Day at a local country club.



Members of Beta Eta Chapter (Bradley) anticipate the arrival of potential new members on their first day of recruitment.

MISSOURI

♣ Alpha Delta Chapter (Missouri-Columbia) started the school year on the right foot, collecting \$5,333 at their local philanthropy event benefiting Camp Fire USA and Hearts for Huntington.

♥ Columbia Alumnae Chapter members visited the Alpha Delta Chapter (Missouri-Columbia) house to host a PACE program. The program showcased different professions and gave tips for breaking into the professional world.

♥ ♣ Zeta Delta Chapter (Southeast Missouri State) has been making changes in their chapter house to go green. Recycling bottles and cans and purchasing eco-friendly bags are just a few steps they have taken to get into the green scene.

NEBRASKA

♣ Sisters of Pi Chapter (Nebraska-Lincoln) helped the Leukemia and Lymphoma Society organize their annual Light the Night fundraiser walk. After spending the day setting up for the event, chapter members continued to show their support by participating in the walk.

♥ Enjoying the great outdoors together, **Epsilon Delta Chapter** (Creighton) bonded at their recent sisterhood retreat. The sisters went on a hike and set chapter goals for the school year.

OKLAHOMA

♣ Beta Psi Chapter's (Oklahoma State) second Crescent Classic, Pancake Palooza, was a huge hit. The chapter raised an astounding \$10,000 for Camp Fire USA and the Rise School of Stillwater, an institution created to help mentally challenged children.



Anxiously awaiting their new members, Theta Chapter (Denver) made a pirate-themed banner to welcome their 42 new members on Bid Day.



Tulsa Alumnae Chapter members punched and kicked their way through a self-defense class where they learned valuable karate and boxing skills.

REGION 7 ARIZONA

♥ Dinner nights, book club meetings and Bunko nights were just a few of the many sisterhood activities **Phoenix Alumnae Chapter** enjoyed.

♥ With an incredible new remodel finally complete, **Beta Kappa Chapter** (Arizona State) is proud to show off their beautiful revamped space! The house corporation board and alumnae members worked alongside women from the chapter to give the living quarters a spectacular new look.

♥ ♣ Fore! Swinging their golf clubs to benefit Camp Fire USA, **Beta Omega Chapter** (Northern Arizona) members had a great time at their annual Crescent Classic golf tournament. Joining in on the fun, the chapter's 28 new members were excited to participate in their first philanthropy event.

CALIFORNIA

♥ 🌸 Members of South Bay Alumnae Chapter met for a night out in downtown San Pedro where they enjoyed dinner and toured local art galleries. The chapter also met to stuff backpacks with school supplies for underprivileged children in the Los Angeles area.

♥ Now a quarter-century old, Delta Psi Chapter (California State-Santa Barbara) spent Founders Day with alumnae to commemorate 25 remarkable years as a chapter.

♥ 🌸 Long Beach Alumnae Chapter relaxed in Glen Ivy for a decadent and indulgent spa day. The chapter also participated in the Children's Hospital of Orange County Walk and hosted an auction for Camp Fire USA.

♥ Gammie breakfasts and quarterly book club meetings have been on the agenda for Pasadena Alumnae Chapter recently. The sisters also held a wine and cheese tasting event where they caught up on news and discussed the chapter's upcoming calendar of events.

♥ Celebrating sisterhood in South America, several alumnae of Epsilon Gamma Chapter (San Diego) reunited for a week in the Dominican Republic. The women made matching embroidered beach bags to commemorate the trip.



Navigating down Level 3 rapids, members of Beta Sigma Chapter (Washington State) enjoyed a challenging, yet exciting day rafting down the Salmon River on a five-hour excursion.

♥ Starting a "movie night" has been the perfect way for Balboa Harbor Alumnae Chapter to spend quality time together. The chapter also enjoyed a night with their sisters and families when they attended an Anaheim Angels baseball game.

♥ 🌸 Greater Orange County Alumnae Chapter has been supporting Camp Fire USA through a variety of philanthropic work. The women passed out wristbands and information at the Festival of Children and created craft kits for the organization at a sisterhood event. Several sisters also participated in the Susan G. Komen Race for the Cure to help raise breast cancer awareness.

REGION 8 BRITISH COLUMBIA

♥ After returning from their recruitment retreat, Alpha Lambda Chapter (British Columbia) completed final preparations for recruitment and made plans for future community service projects.

CALIFORNIA

♥ Advisors from Eta Chapter (California-Berkeley) discussed preparations for the school year while spending the day at the ballpark together.

♥ Taking a leadership role on campus, Delta Chi Chapter (California State-Sacramento) invited all Greek organizations to attend an anti-hazing workshop they created. The chapter received extremely positive feedback and plans on making the workshop an annual event.

IDAHO

♥ For a second year, Boise Alumnae Chapter members collected school supplies for Washington Elementary School. The chapter also held their first Gammie Coins for Camping campaign at a summer picnic, collecting more than \$50 in spare change to benefit Camp Fire USA.



Members of Alpha Epsilon Chapter (Arizona) eagerly await their new members on Bid Day.



Sporting 70s-inspired gear, Alpha Iota Chapter (California-Los Angeles) spent a night skating at the roller rink.

**You're invited to join
The Crescent Magazine group on
www.mysisterlink.com!**



BEST SELLERS!

NEW!

NOW AVAILABLE!

Great gift ideas!
Fabulous finds!

A. Simulated Pearl Toggle Bracelet, 7.5",
with engraved tag, #636008T
SS.....\$53

B. Signature Necklace, #1008
SS.....\$50

C. Snake Chain, 18", #snake
10K, 10KW.....\$95 SS.....\$22
GF.....\$25

D. Crown Pearl Lavalier, #L2632
(Chain sold separately.)
10K, 10KW.....\$153

E. Aphrodite's Heart Ring, #RP2231
(Whole sizes 5 - 8.)
SS.....\$30

F. Jacqueline Ring, #1495
(Whole sizes 6 - 8.)
SS.....\$65

G. Crescent Festoon Necklace, 18", #2664
10K.....\$65 SS.....\$46

H. CZ Crescent Slide Necklace, 18",
#MP63502
10K, 10KW.....\$253 SS.....\$30

I. Diamond Crescent Slide Necklace, 18",
#MP63502D
10K, 10KW.....\$2170 SS.....\$1964

J. Interchangeable Badge Ring, #0440
(Badge sold separately.)
10K.....\$229 SS.....\$86

K. 10 Year Charm, #10
SS.....\$25

L. 10 Year Pin, #10P
SS.....\$25

M. Swirl Ring with rose sapphires,
#1000RS
10K, 10KW.....\$211 SS.....\$113

N. Pulse Bracelet, 7.5",
with engraved tag, #BY244
SS.....\$56

O. Tempo Bracelet,
7.5", with engraved
tag, #BD16PK
SS.....\$90

P. Modern
Bead
Bracelet,
7.5", with
engraved tag,
#BK1846
SS.....\$67

Q. Sparkle Heart Tag
Bracelet, 7.5", #9003RS
SS.....\$76

To order, visit
www.HJGreek.com
or call **1.800.422.4348**

The Greek Division of



HERFF JONES®

An employee owned company

CHANGES TO EXECUTIVE COMMITTEE

Gamma Phi Beta Foundation is shaking things up with a new chairwoman and new, dynamic additions to the Executive Committee!

Foundation Chair Linda Daniel Johnson (Vanderbilt)

Linda has transitioned into the role of Foundation Chairwoman, bringing the benefit of years of Sorority service to that position. A collegiate leadership consultant (CLC) after graduation, Linda appreciates the training she received and the relationships she formed with sisters from diverse backgrounds and campuses.

"As Foundation Chairwoman, I am looking forward to working as part of the team of Trustees and staff members. I am excited about the opportunity to serve as a facilitator—discovering and developing each Board and staff member's strengths," Linda says.

Mary Ellen Porter Burchfield (Iowa State)

Gamma Phi Beta became a lifeline for Mary Ellen during her college years, a challenging time for her and her family. Growing up as the oldest in a family of eight children, she always wanted a sister to share the load. Now she has 161,000!

"I haven't forgotten how my Sorority sisters were always there for me, and I'm grateful for the opportunity to share my resources and financial experience with my sisters," Mary Ellen explains. She is committed to protect the Foundation's assets during these uncertain economic times as chairwoman of the Finance and Investment Committee.

Barbara Hurt-Simmons (Nebraska-Kearney)

Barbara found her niche as a leader during college where she served as vice president of the student body, crediting the support of her Gamma Phi Beta sisters for her election. Like Linda Johnson, Barbara became a CLC following graduation and has found the training invaluable.

"As a student working two or three jobs to stay in school, I was thrilled to win a partial scholarship. In my position as the Foundation's Grant Committee chairwoman, I will be able to help my collegiate sisters reach their potential through financial aid. My passion is 'women helping women,'" Barbara says.



Foundation Executive Committee members met at International Headquarters in October 2008 to discuss future plans. Those with new roles on the committee are pictured. From left: Mary Ellen Burchfield, Linda Johnson, Barbara Hurt-Simmons and Linda Malony.

International President Linda Lyons Malony (Southern California)

Linda loves the friendships she has made in the Sorority and the ideals that guide Gamma Phi Beta. She credits the opportunities provided by the Sorority with shaping her into the person she is today.

"It's important to me that we continue to offer opportunities to all of our members that are relevant, educational and FUN!" she says. "As part of the Foundation Executive Committee, I hope to cement great working relationships among Foundation and Sorority volunteers and staff and to discover new ways we can provide outstanding leadership, philanthropic and educational opportunities for our members."

HAPPY 50TH ANNIVERSARY, FOUNDATION!

**WHAT
DO YOU
REMEMBER
FROM 1959?**



The bright turquoise
Ford Thunderbird
was everyone's
dream car.



"The Shaggy Dog"
starring Fred McMurray
was released.



Ben Hur
became a
box office
smash.



Barbie dolls made their debut.

TWO LEADERS ARE BETTER THAN ONE!

Delta Chi Chapter sisters Michelle Thompson and Joanna Buchowicz are better equipped to lead on the California State University-Sacramento campus, thanks to Foundation scholarships that allowed them to attend the LeaderShape Institute.

The LeaderShape Institute, a six-day program for campus leaders, is conducted each summer to help young people learn to "lead with integrity," according to Foundation Chairwoman Linda Daniel Johnson (Vanderbilt). Michelle and Joanna attended workshops where they learned to recognize and develop their natural leadership abilities. One thing they learned was that their styles are very different!

Using the DISC personal profile (Dominance, Influence, Steadiness and Conscientiousness), LeaderShape participants answer a personality survey to determine behavioral strengths. Facilitators use that information to guide participants to better communication and leadership skills. Joanna, Delta Chi Chapter's president, discovered that she is a natural-born leader who enjoys challenges. Michelle, financial vice president, leads by influencing others with enthusiastic optimism.

"The main thing I learned from LeaderShape was the importance of teamwork, summed up in the phrase, 'the value of one, the power of all,'" says Michelle, who found that it's okay to ask for help or let someone else take charge.

Taking charge is what Joanna does best. "I like to be busy, and I enjoy having responsibilities," she shares. While her leadership style is decisive and action-oriented, Joanna also discovered the power of teamwork. "By being vulnerable, I learned to trust others and to think outside the box" to resolve challenges, she says.



Michelle Thompson and Joanna Buchowicz (California State-Sacramento) used Foundation scholarships to join other campus leaders at the LeaderShape Institute.

Apply for a LeaderShape scholarship!

Visit our Web site, www.gammaphibeta.org and log in to the Members Only section.

Under Member Tools, go to Form Search and enter "LeaderShape" in the keywords box to access the application. The LeaderShape application must be postmarked by February 1, 2009.



Hawaii became the 50th state.



Frankie Avalon made girls swoon. His hit song "Venus" was #3 on the charts.



Rock 'n Roll was on fire! The jitterbug was the dance craze.



The Gamma Phi Beta Foundation was incorporated, furthering the cause of college education for women.

IN CELEBRATION

The Gamma Phi Beta Foundation acknowledges the following individuals and groups who contributed to the Foundation to celebrate a special event or individual. This list represents gifts received through October 10, 2008.

IN CELEBRATION OF...

Mary Knaup on being elected to serve on International Council. We are proud of you!

Greater Orange County Alumnae Chapter

Delta Delta Chapter being honored with the Most Improved House Corporation/Collegiate Relations award at Convention 2008.

Greater Orange County Alumnae Chapter

L'Cena Rice for her wonderful leadership as past Foundation Chair.

Paula Dean

The Foundation Trustees, committee members, volunteers and staff who helped out at Convention.

Paula Dean

The birthday of Jeanne Swanson Beach!

Gloria Nelson

An outstanding Convention ritual team: Margaret Pape-best wishes for her years ahead as Director of Ritual. Lisa Hesse-for her dedication and hard work as Convention ritual chair.

Kiki Phillips

Anne Layton, Melinda Nutter, Cheryl Gunter, and the "founders," L'Cena Rice, Joanne Roman, Barbara Hurt-Simmons, Terri Briggs for being enthusiastic members of the team.

Kiki Phillips

Mandy Stepowoy and her collegiate ritual team from Beta Epsilon Chapter and Alpha Nu Chapter.

Kiki Phillips

Lurene Frantz, Convention alumnae initiate coordinator, for her help, care of AIs and constant enthusiasm.

Kiki Phillips

Cinda Lucas, director, and all the members of the wonderful Convention choir.

Kiki Phillips

Joyce Smith and Ann Daily. Thank you very much for my baby shower! It was ah-mazing!!

Carrie Lutz

The birth of Nicholas Donald Joseph Seaman on April 29, 2008. Proud parents are Alpha Tau Chapter alumna Laurie Strano and husband Ben Seaman of Ottawa, Canada. A little brother for Alexandria!

**Dominique Groulx
Nabanita Giri
Cari Locke
Suzanne Lee**

The birthday of Cinda Lucas.

**Linda Johnson
Melinda Nutter**

Laura McMurray's care of Shelley Chandler.

Melinda Nutter

Legacy Samantha Nicole Helling born on December 26, 2007, to Sara Eisenmenger Helling and Mick Helling.

Mitzi Ritzman

Epsilon Delta Chapter's accomplishments and recognition at Convention 2008.

Mitzi Ritzman

Pi Chapter's accomplishments and recognition at Convention 2008.

Mitzi Ritzman

Joan Wagoner Kopf, Pi Chapter advisor.

Mitzi Ritzman

The election of Kris Baack as Education Vice President to International Council.

Mitzi Ritzman

The birth of Leo James Brummel on August 28, 2008, to Jessica Jecmen Brummel and Steve Brummel.

**Shellie Hodges
Sandy Burba
Kris Baack
Julie Eichenberg**

The birth of Ian Benjamin Willey on August 28, 2008, to Jennifer Heidal Willey and husband Ben Willey.

**Shellie Hodges
Suzanne Lee
Melissa Lutz
Melanie Roussos
Sandy Burba
Kris Baack**

The "retirement" of Krista Davis from International Council.

Shannon Bradley

The election of Annabel Jones as Collegiate Vice President to International Council.

Shannon Bradley

The 2006-2008 International Council, with thanks for your friendship and dedication and our many exciting accomplishments!

Linda Johnson

The 2008-2010 International Council, with excitement for all you will do to advance Gamma Phi Beta!

Linda Johnson

The Evanston North Shore Alumnae Chapter receiving the Hall of Fame Award. Congratulations, Sisters!

Beverly Gaabo

Laura Mayville for her time, energy and expertise to the Education Department.

Kris Baack

Rene' Matz Thompson for her work as Director of Philanthropy.

Kris Baack

Rene' Thompson for three years of service and friendship.

Laura Mayville

Karen Zupko Stuart.
Laurette Taylor

The births of our twin legacies, Lauren Ann and Anya Maria Wendl.

Norman and Christine Wendl, and big sister Grace

Cele Eifert for writing the NPC page in *The Crescent*.

Betty Quick

Margaret Pape and Karen Urette for their service on the NPC delegation.

Betty Quick

Linda Johnson, Nancy Truesdale and Krista Davis for their service to Gamma Phi Beta.

Betty Quick

The 50th wedding anniversary of Abe and Dinah Wolters Schuler.

Nathalie Hise

Emilia (Popescu) and Carlos Murphy on the birth of their son, Brennan Patrick.

Laura Webb

Elizabeth Zambrano Pace and husband Kirk on the birth of their beautiful daughter, Olive Rose, on October 5, 2008.

Laura Webb

The birth of Sharon Webb's legacy.

**Kelly Dunne
Melissa Ford
Hillary Stevens
Jennifer Herbert
Robin Baskin**

The Gamma Phi Beta Foundation acknowledges the following individuals and groups who contributed to the Foundation in memory of a loved one. This list represents gifts received through October 10, 2008.

Mike Skrill, friend of Mary Jo Sticht Lander (Kent State '60)

Paula Dean
Sally Lewis
Genie Street
Amy Williams

Charles E. Welsh, father of Magnes Welsh (Memphis State '68)

Paula Dean

Joan Pedersen Meagher (Southern California '93)

Corrine Dugan
Beverly Willd
Mary Anne Rindge
Katherine Orlin
Barbara Alberts
Jess and Donna Morton
L'Cena Rice
De De Hicks
Eloise Barnett
South Bay Alumnae Chapter

Carol Geniesse Shamburek (Wisconsin-Madison '47)

Margaret Watson

Pamela Stevens Harrison (Colorado-Boulder '57)

Linda Aden
Pamela Aden

Paul Gutzler, father of Christy Gutzler Shafer (Saint Louis '81)

Financial Advisory Board:
Alison Sansone, Joanne Roman, Victoria Vohs, Amy Peterson, Ann Campbell, Christine Ritger, Denise Vollert-Parrotto

Mother of Carolyn Seymour Locke (McGill '72)

Kathleen Fox
Dorothy Forsyth
Nabanita Giri
Marie Gravelle
Dominique Groulx
Annabelle Price
Sylvie Theriault

Betty Lou Gordon Towles (Idaho '41)

Doris Butler

Shelley Alford Chandler (Texas '70)

Melinda Nutter
Christy Ehrenreich
Sharon Vickers
Megan Krueger
Genie Street
Amy Williams
Sally Lewis
L'Cena Rice
Ruth Seeler, M.D.
Fraya Hirschberg

Angela Wallace Augur (Arizona '69)

Pamela Wilder

Frances Lee Davis Haag (Missouri-Columbia '38)

Audrey Shafer

Wilma Jean Knaup, mother of Mary Knaup (California State-Fullerton '81)

Laura Mayville
Robin Baskin
Megan Krueger
Shellie Hodges
L'Cena Rice
Linda Johnson
Cathy Griffin
Kris Baack
Education Department
Christine Ritger
Carleen Sullivan
Jennifer Chuang
Kathy Smith
Stephanie Carriere
Marianna Kolonelas
Leanne Orr
Pamela Mayer
Denise Vollert-Parrotto
Betty Quick

Geraldine Byrne, mother of Megan Byrne Krueger (Indiana '80)

Megan Krueger
Shellie Hodges
Suzanne Lee
Linda Johnson
Cathy Griffin
Frances Griffin
Kris Baack
Chicago Alumnae Chapter
Sally Lewis
Melinda Nutter
L'Cena Rice
Mary Knaup
Laura Mayville
Betty Quick

Rosemary Barbara Konopnick Scopol (Michigan State '70)

Beverly Gaabo
Mary Doering
Shannon Fineout
Mary Lou Terrien
Cindy Coffman
Susan Vecelli
Elaine Charney
Kathy Boerner
Gail Perkins
Mary Ellen Quasarano

Doris Handwerk Heinz (Pennsylvania State '44)

Joseph Beard
Marian Bickford
Elizabeth Boedecker
Ann Cline
Ann Gregory
Dorothy Henderson
Ruth Hollingsworth
John Hopkins, III
Dr. Edward LaVoice
Joanne Peters

Josephine Scally Phillips (California-Berkeley '32)

Melinda Daugherty

William Reece, husband of Marynell Dyatt Reece (Kansas '41)

Sigma House Corporation Board

Gloria Nelson Castor (Kansas '42)

Sigma House Corporation Board

Ken Brienzo, husband of Karen White Brienzo (Illinois '72)

Frances Griffin
Chicago Alumnae Chapter
Sally Lewis

Mother of Leigh Ann Kudloff (Denver '77)

Kris Baack
Education Department
Laura Mayville

Shirley Sacks DuTeil (Maryland '46)

Mary Jane Harvey

Nancy Hawkins, mother of Heidi Green Doty (Oklahoma '91)

Julie Eichenberg
Traci Webb
Jennifer Zatechka
Abby Pierson
Tracy Swartley
Anne Tremmel
Jennifer Chuang

Stanley W. Abbott, husband of Lois Kirchner Abbott (San Jose State '52)

L'Cena Rice
Morgan Justice-Black
Christine Wendl
Kristen Summers

O. Fred Koning, husband of Rachel McMurray Koning (Purdue '75)

Lafayette Area Alumnae Chapter

Helen G. Erdel, mother of Kathryn Erdel Heid (Indiana '66)

Lafayette Area Alumnae Chapter

Barbara Wanman Allen (Idaho '44)

Cathy Janis
Kathy Longstreet
Amanda Dumont

Arthur Meier, father of Gretchen Meier Oostenink (Iowa '57)

Judy Ann Kaspar
Syracuse Alumnae Chapter

Kolleen Baker Garcia (California-Los Angeles '86)

Cindy van Empel

Jamie Stuart

Laurette Taylor

Mary Alice Adams Betts (College of William & Mary '60)

Linda Hagen
Sandra Martin

Rissa Amen-Reif (Minnesota State-Mankato '05)

Minneapolis-Saint Paul Alumnae Chapter

IN MEMORY

This list reflects notifications received at International Headquarters from August 2 to October 15, 2008.

Alpha Chapter I Syracuse
Norma Chapin Honsinger, 1924

Constance Cassel Hughes, 1937
Marian Munger, 1937
Evelyn Horn Greulich, 1957

Gamma Chapter I Wisconsin-Madison

Ruth Piersen Cole, 1926
Carol Geniesse Shamburek, 1947

Delta Chapter I Boston

Catherine Weldon Dyer, 1928

Epsilon Chapter I Northwestern

Virginia Hunter Turner, 1935
Mary Erkert Altorfer, 1944
Mary Desmond Davis, 1950

Zeta Chapter I Goucher College

Margaret Harvey Gault, 1932

Eta Chapter I California-Berkeley

Patricia Marshall Smyth, 1949

Theta Chapter I Denver

Barbara Heath Harrison, 1951

Lambda Chapter I Washington

Evelyn Egan Carlson, 1953
Irene Peterson Rasanen, 1953
Cheryl Keeton Myklebust, 1968

Nu Chapter I Oregon

Betty Thomas Winslow, 1938

Xi Chapter I Idaho

Betty Gordon Towles, 1941
Barbara Wanman Allen, 1944

Omicron Chapter I Illinois

Patricia Oram Gillespie, 1937

Pi Chapter I Nebraska-Lincoln

Julia Greene Tyrrell, 1935
Gean Miller Lipson, 1938
Elizabeth Atkinson Bottemiller, 1939

Tau Chapter I Colorado State

Helen Galley Rogers, 1943

Phi Chapter I Washington

Edith Noel Bley, 1946
Peggy Duncan Douglass, 1953

Omega Chapter I Iowa State
Mildred McCulloch Greenleaf, 1935

Sandra Kilbane Griswold, 1963

Alpha Delta Chapter I Missouri-Columbia

Frances Davis Haag, 1938

Alpha Epsilon Chapter I Arizona

Sonia Harsch Stokoe, 1953
Joan Byron Bechtel, 1958

Alpha Zeta Chapter I Texas

Gene White Joyce, 1936
Shelley Alford Chandler, 1970

Alpha Eta Chapter I Ohio Wesleyan

Peggy Owen Pithau, 1951

Alpha Theta Chapter I Vanderbilt

Elizabeth Demoss Standley, 1941
Elaine Killebrew Evans, 1943

Alpha Nu Chapter I Wittenberg

Laura Parker Schofer, 1935

Alpha Xi Chapter I Southern Methodist

Mary Fisher Griffith, 1955

Alpha Pi Chapter I West Virginia

Verba Snodgrass Rowan, 1930

Alpha Tau Chapter I McGill

Dorothy Keay Stovel, 1936

Alpha Upsilon Chapter I Pennsylvania State

Jean Butz Rathmell, 1943
M. Jean Nelson Hopkins, 1944

Alpha Phi Chapter I Colorado College

Bobbie Olmstead Farr, 1938
Mary Todd McLaird, 1951
Marylyn Smith Good, 1953

Beta Alpha Chapter I Southern California

Joan Pedersen Meagher, 1993

Beta Beta Chapter I Maryland
Shirley Sacks DuTeil, 1946
Delores Sapp Claypoole, 1948

Beta Gamma Chapter I

Bowling Green State
Anita Frank Plazzo, 1946
Carol Pool Renna, 1947

Beta Delta Chapter I Michigan State

Dawn Wakefield George, 1980

Beta Epsilon Chapter I Miami

Mary Dean Gotautas, 1950

Beta Zeta Chapter I Kent State

Carole Jean Bigler Stump, 1961

Beta Eta Chapter I Bradley

Blythe O'Sullivan, 2000

Beta Mu Chapter I Florida State

Laure Cason, 1982

Beta Rho Chapter I Colorado-Boulder

Pamela Stevens Harrison, 1957

Beta Tau Chapter I Texas Tech

Martha Cates Johnston Beasley, 1964

Gamma Iota Chapter I

Midwestern State
Cynthia Prine Keller, 1966
Melissa Weeks Lucas, 1996

Gamma Chi Chapter I

Southwest Texas State

Donna Crabtree, 1970

Gamma Omega Chapter I

Wisconsin-Platteville

Teresa Kirkeeng Kincaid, 1977

Delta Mu Chapter I Rutgers

Kelly Spreng, 1992

RESTRICTED GIFTS

The Gamma Phi Beta Foundation acknowledges the following individuals who contributed **RESTRICTED** gifts and pledges totaling \$1,000 or more to the Foundation. These gifts are designated for specific scholarships/fellowships, chapter gifts and various others. This list represents gifts received from August 1, 2008 to October 10, 2008.

Gifts totaling \$15,000 - \$19,999

Virginia Urban Merrill - Kansas '44

Gifts totaling \$5,000 - \$9,999

Sue Ann Gilster Baxter - Idaho '66

Gifts totaling \$1,000 - \$4,999

Betty Hailey Crooker - Kansas '57
Jane Bacheller Habermann - Colorado State '62
Tucky Wheeler Hobbs - Iowa '60
Lori Amstein LaVezzi - Kansas State '86
L'Cena Brunskill Rice - Southern California '50
Keith Steiner
Mary Vanier - Kansas State '85



FULBRIGHT SCHOLAR

Ever have the feeling that you've switched to autopilot? Coasting through life with a comfortable routine in place, Meghan Geraghty (Bowling Green State) knew she needed a change.

During her senior year, Meghan was awarded a scholarship through the prestigious Fulbright Program. Soon she was one of 15 Americans traveling to Tai Po, Hong Kong, to teach English for the next 11 months.

"I was completely calm on the plane ride until green tea was the only beverage served," Meghan says. "Then it hit me. I knew I was in for an adventure."

While in Tai Po, Meghan taught English to various grades for 20 hours a week. She also helped establish the first model United Nations program for students interested in promoting world peace and learning about other cultures. "Students were so eager to learn," Meghan explains. "Education is a privilege in Tai Po, not a right."

Out of the classroom, Meghan experienced the local culture as much as possible. She visited the world's largest Buddha in Lantau Island, watched monks perform ritual ceremonies in the ancient Angkor Wat Temple in Cambodia and bartered for goods in Singapore.

"Living in Hong Kong was the change I needed," Meghan says. "I have become more confident in myself, and I no longer let fear of failure hold me back."

FILM DIRECTOR

Friendships among adolescent girls can be tricky. A topic search on Amazon.com yields book titles that shout *Girl Wars*, *Mean Chicks*, and the requisite girl-angst primer *Queen Bees and Wannabes*.

Debbie Heimowitz (California-Berkeley) tuned in to this aggressive world of girls to develop the idea for her master's thesis at Stanford University. After talking with middle school teachers, Debbie learned one of the most common problems with this age group was cyber-bullying, the use of technology such as cell phones, e-mail and the Internet to harass someone.

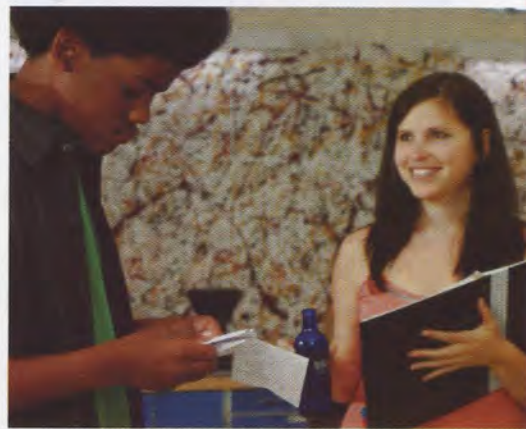
"I had never heard of cyber-bullying," admits Debbie, "but I knew girls could be mean to each other."

Debbie and a partner researched the issue then wrote, directed and produced a short movie called "Adina's Deck: The Case of the Cyber Bully." Its heroes are a group of tech-savvy middle school friends who help their peers solve mysteries.

The movie's release on her Web site, www.Adinadeck.com, was so popular that Debbie spent a year investigating new topics, fundraising and developing the business side of her small production company. Last fall, two sequels debuted.

For help with the series' production, Debbie turned to another Gamma Phi Beta, collegian Emily Bronstein (California-Berkeley). Emily worked as an intern on the set serving as props manager and script supervisor. For Debbie, working with someone she could instantly trust was refreshing in the entertainment business.

At this time, the movies are being used as educational tools by teachers in 37 states and six countries. Debbie continues to develop new episodes and looks forward to working with other Gamma Phi Betas in the future.



PROTECTING OUR LEGACY

A positive image doesn't always come without effort.

Did you know Gamma Phi Beta Sorority "owns" our name, Greek letters, crest, badge and other symbols? As an international organization, we're doing all we can to protect our registered trademarks, but we need your help.

Members are strongly encouraged to purchase Gamma Phi Beta merchandise exclusively from our licensed vendors to ensure brand integrity. We currently have more than 200 outstanding vendors offering a wide variety of products and services such as jewelry, apparel and stationery. For a complete list, visit our Web site at www.gammaphibeta.org and click on "Merchandise."

If you have questions about licensing or want more information on how to get your local vendor and campus bookstore licensed, please contact Vendors@GreekLicensing.com or call 607.753.6284.



Make sure to look for this seal, which signifies quality products and superior service.

REPORT THIS!

If you run across any vendor who is selling offensive products or services in conjunction with the name or symbols of Gamma Phi Beta, please e-mail Vendors@GreekLicensing.com. Our licensing company will follow up to ensure the offensive product or service is discontinued.

ALPHA NU CHAPTER

1960s WOOL BLAZER

Clothing styles in the 1960s were so varied that it's hard to put a label (no pun intended) on the era. It was a turbulent decade politically, socially and in fashion, but there was at least one Gamma Phi Beta chapter that adhered to a dress code.

Barbara Florey White (Wittenberg) recently donated a very special dark brown wool blazer to the Gamma Phi Beta museum. She wore it from 1963 to 1966 during her collegiate years with Alpha Nu Chapter.

"It was absolutely a source of pride to wear that blazer," says Barb. "Brown might not have been my favorite color but I loved that jacket, that's why I never got rid of it." The three well-worn brass buttons attest to the fact.

The jacket features our crest embroidered in brown, gold and kelly green on the breast pocket. At the time, it cost \$40-50 and was ordered from L.G. Balfour Company,

according to Barbara. The label inside reads "Robert Rollins Blazers" with an address in New York, NY.

Gamma Phi Betas weren't the only stylish collegians on the Springfield, OH, campus.

"All eight sororities had a different color wool blazer with their logos stitched on the pocket," remembers Ruth D. Merz (Wittenberg), also a member of Alpha Nu in the 1960s.

"We wore them all the time, with the same plain non-collared white blouses and white skirts. The eight fraternities had similar jackets in shades of black, charcoal, gray, brown, tan, navy, blue and forest green as I remember. They looked really good, and it helped unify the Greek system."

As an alternative to the white blouse and skirt, Gamma Phi Betas also had light brown dresses with our Greek letters embroidered vertically at the neck. When



Preparing for the "Sorority Sing" competition at Wittenberg University in 1965, Jean Woodruff, Gail Guthery and Ruth D. Merz don their requisite blazers.

worn with the buttoned jacket, the letters were visible in the "V" that was created.

The jackets were required attire during recruitment, formal meetings, Panhellenic functions and other Greek events such as the campus-wide singing competition, "Sorority Sings."

What fashion statements did you make during college? Let us know at TheCrescent@gammaphibeta.org.

Do you have a one-of-a-kind Sorority item from college days gone by? Historically-significant donations to the Gamma Phi Beta museum are tax-deductible; contact the curator today at sochoa@gammaphibeta.org or (303) 799-1874.



Alpha Nu Chapter looks sharp in their blazers at Wittenberg's Sorority Sing competition in the 1960s.

FASHION IN THE 60s

Early Years: Fashions reflected the elegance of former first lady Jacqueline Kennedy. Women wore pastel suits with short, boxy jackets and oversized buttons. The pillbox hat and stiletto-heeled shoes were popular. On college campuses, blazers were popular with men and women. The beehive hairstyle was in.

Middle Years: In 1964, the mini-skirt was introduced and fashion was changed forever in the western world. Hemlines kept rising, and by 1968 they had reached well-above mid-thigh. Stylish young women sported false eyelashes, pale lipstick and Twiggy's short 'do.

Late Years: The androgynous "hippie" look was in style by 1969. Both genders wore frayed bell-bottomed jeans, tie-dyed shirts, work shirts and headbands. Young women paired fringed buck-skin vests with colorful, gypsy-style skirts and accessorized with scarves and bangles. Their hair was worn very long and straight with a center part.

HARD WORKERS

In the fall, I was in charge of freshman move-in weekend at John Carroll University. Several of your young women helped out by moving freshmen into their respective rooms and serving as mentors to the first-year students. The ladies of Zeta Omicron Chapter are a great addition to our campus and should be commended for their hard work.

—Nick Toney, John Carroll University



FANS OF BAILEY

I was reading *The Crescent* about Bailey Hanks starring as Elle Woods ("Broadway Has a New Star," fall 2008). My mom and I saw her performance this summer and she was exceptional! —Ashley Weston (*Illinois State*)

I saw Bailey Hanks on Broadway and she was absolutely amazing! The show was really great! —Elizabeth Coder (Auburn)

I saw Bailey on Broadway in August and she was AMAZING! I was really impressed and she totally made the show. I met her afterwards at the stage door and she was really nice. I was wearing letters and when she saw them, she said, "Oh! Yay! Gamma Phi!" and she signed my playbill "GPhiB love." —*Ali Tobia (William & Mary)*

ORGAN RECIPIENT

I was very interested and happy to read your article with the important information about organ donation (summer 2008). Not many people think seriously about being an organ donor due to not being informed about the laws and procedure or not thinking it will ever happen to their family. I had a double lung transplant two years ago. I was not able to drive, but this surgery required me to go to the hospital every day for three months. The members of my St. Louis Alumnae Group gave me a ride when I needed it, and their sisterhood surrounded me even though I never had a sister growing up. —*Marian Frentzel (Washington University)*

CONVENTION 2010

I love the latest issue of *The Crescent*!! And I really like the picture of the adorable collegians you included in the Convention blurb. Thank you for being so creative.
—Karen Urette (Oklahoma), 2010 Convention chairwoman

IN THE SPRING ISSUE:

- Recruitment!
- Sisters in the Military
- Remembering Clara Worden



LETTERS TO THE EDITOR

Send your comments to TheCrescent@gammaphibeta.org,
attention Editor, or snail mail to:

Gamma Phi Beta Sorority
Attn: Editor
12737 E. Euclid Drive
Centennial, CO 80111

The Crescent reserves the right to publish any letter addressed to the editor. Letters may be edited for space and clarity.

COVER GIRLS

Just a note to tell you what a thrill it was to see the fall issue of *The Crescent* with Mary Jane Mithos and me on the cover! I've heard from sisters all across the country since then and it's been heartwarming to know that our bond of sisterhood has no age limit or geographic boundary! —Sally Lewis (Bradley)



You can't imagine how relieved I was to see the picture was a good one; I am thrilled and so honored that it was used. It is by far the best photo I have had taken for a long, long time. There are lots of things that have made it possible for me to have attended 30 Conventions and I have often said I hope it helps collegians see what lifetime commitment is all about. —*Mary Jane Misthos (Colorado College)*

The Crescent of Gamma Phi Beta Statement of Ownership: per the requirements of the United States Postal Service, this statement must appear in the magazine once every year.

[illegible][illegible]

CAPTURE A CRESCENT



1



2



3



4



5



6



7



9



10

1. Aruba: Junior Michaela Wiederspan (Nebraska-Lincoln) spotted a crescent out souvenir shopping.
2. Italy: Taylor Shainholtz, Lindsay Asmann and Betsy Beam (Kansas) captured this colorful crescent during their summer learning abroad.
3. Wisconsin: Krissy Venzke Turpin and Stephanie Drow, Gamma Pi alumnae from Minnesota-Mankato, found a carousel crescent in Madison.
4. Mexico: Chiara Benitez, Coleen Taylor, and Allison Swint (Florida Institute of Technology) show off souvenirs from Mexico.
5. Australia: Kelly O'Keefe (Boston) found this vintage moon seat in Melbourne.
6. California: Epsilon Nu alumnae Ashlee King Thomas and Ameer Kanady Scigliano (Chapman) found a crescent on a telephone booth during a winery tour.
7. New York: Three Nu Chapter (Oregon) alumnae found a crescent in Little Italy. From left to right are Daylena Schmidt, Kelsey Hubbard and Kristine Evans.
8. Rhode Island: Union College alumnae Jackie Siedlecki and Cara Murphy dined on crescent-shaped plates in Newport.
9. Caribbean: While dining on a cruise, Shelley Pulliam and Terri Pulliam Baker (Oklahoma State) found a crescent crouton in the lobster bisque!
10. California: Along the shore of Lake Tahoe, Danni Maginn Badger (Indiana University) spotted a cool crescent moon.