

The Foundation



Gamma Phi Beta

Summer 2009

Giving
From Our
Hearts For
50
Years!

Why we love camping
Cruise news
All about giving



Gamma Phi Beta Foundation Board of Trustees

Foundation Chair

Linda Daniel Johnson

Development Committee Chair

Paula Janis Dean

Finance and Investment Committee Chair

Mary Ellen Porter Burchfield

Grants Committee Chair

Barbara Hurt-Simmons

Governance Committee Chair

Karen Wander Kline

International Council Representative

Linda Lyons Malony

Public Relations and Marketing Committee Chair

Magnes Welsh

TRUSTEES

Virginia Harris Hammond

Cinda Lucas

Corinne Martinez

Ruth Janssen Person, Ph.D.

Elizabeth Ahlemeyer Quick

Marjory Mills Shupert

Ruth Seeler, M.D.

Jolene Lessard Stiver

Mary Vanier

Lynn Towsley White

Foundation Executive Director

Bonnie Brown Payne

Sorority Executive Director

Patricia Crowley

Foundation Vision Statement

The Gamma Phi Beta Foundation's vision is to be a premier philanthropic organization that:

- Supports world class leadership education for women of all ages.
- Inspires all members to embrace lifelong giving and service.
- Provides financial aid to every member in need.



Fifty years ago Dwight Eisenhower was President of the United States; Alaska and Hawaii became the 49th and 50th states; the Barbie doll debuted; the first NASA astronauts were selected; pantyhose were introduced; and the Gamma Phi Beta Foundation was born. Gamma Phi Beta was among the first National Panhellenic Conference sororities to establish a foundation for educational and charitable purposes.

Since our beginning in January 1959, the Gamma Phi Beta Foundation has distributed more than \$7.3 million: \$2.8 million in Leadership/Educational grants, \$2.25 million in financial aid to members and almost \$2.3 million to our philanthropy, camping for girls. Lives have been changed in many ways as a result. You can be justifiably proud of the impact your donations have made!

Where is the Foundation headed in the next 50 years? The Foundation Trustees recently adopted a strategic plan and we have a new, clear and simple mission statement: *to support the lifelong development of women.* This is our core purpose and the reason why we exist. It is easy to remember and easy to articulate.

We have a vision of what we want to become.

The Gamma Phi Beta Foundation's vision is to be a premier philanthropic organization that:

- *Supports world class leadership education for women of all ages.*
- *Inspires all members to embrace lifelong giving and service.*
- *Provides financial aid to every member in need.*

We've identified our core values. These are our guiding principles.

- *Advance the mission, vision and values of Gamma Phi Beta Sorority.*
- *Practice ethical and transparent stewardship of our resources.*
- *Honor our donors and volunteers.*
- *Advocate lifelong philanthropic engagement.*
- *Foster and support educational opportunities.*
- *Empower leaders.*
- *Treasure and promote lifelong connection to our sisterhood.*

And, we have strategic goals.

- *Expand and diversify our revenue base in order to support anticipated needs and growth.*
- *Create and deliver clear, consistent, compelling messaging that enables us to realize our vision.*
- *Support revenue goals, optimize volunteer and staff time and enhance communication with advanced technology.*

I don't know what the next 50 years will bring. But I do know that the Foundation's mission and vision are timeless. By achieving our goals and adhering to our guiding principles, we'll realize our vision and continue to support Gamma Phi Beta Sorority while changing lives through leadership education, philanthropy and financial aid for many years to come.

In IIKE,

Linda Daniel Johnson
Foundation Chair

A Secure Investment in the Future

The market's up. The market's down. While there's not a lot of security on Wall Street today, one thing is guaranteed: your donations to the Gamma Phi Beta Foundation are certain to pay dividends in developing tomorrow's leaders. Here's how investing in the Foundation makes an impact on young women and girls. (Totals reflect giving since 1959.)

Leadership Education

Total grants awarded:
\$2,800,000

The Sorority's collegiate leadership consultant (CLC) program is one way our donors ensure Gamma Phi Beta has a solid future. Each year, outstanding Gamma Phi Beta graduates are selected and trained to travel in support of our collegiate chapters. The guidance provided by these exceptional young women positively affects our chapters, equipping them to manage and develop programs on the campus level.

"Our CLC, Kelsey Beckstrom (Minnesota State-Moorhead), was very organized and prepared," says Holly York (Oregon), Nu Chapter membership vice president. "She provided photos and fliers that helped us visualize how we need to advertise for recruitment. She helped work out an action plan, restructured continuous open bidding, gave us inspiration and a guide of how to achieve our goals."

Dr. Ruth Seeler (Vermont) invites all sisters to join her in creating an endowment to support the CLC program. "The CLC program is one of the greatest educational tools for women's future success," Ruth believes.

Camping for Girls

Total grants for camperships and expenses:
\$2,275,000

The Foundation funds the Sorority's international philanthropy, camping for girls, by supporting Camp Fire USA, Girl Guides of Canada and local camps. See *Foundation pages 4-5* for more on camping.

"Camping gives girls the opportunity to connect with new friends in a safe environment; it makes a great impact on their self-esteem and ultimately they shine as they develop new skills at camp," says René Matz Thompson (California State-Fullerton), philanthropy subcommittee chair.

**DONATE
TOWARD
FOUNDATION
PROGRAMS AT
www.gammaphibeta.org**

Financial Aid

Total awarded: **\$2,251,527**

Rising tuition costs. Bleak economic conditions. Layoffs. Such trying factors have led to a spike in the number of deserving applicants requesting financial assistance from Foundation scholarships and fellowship endowments.

As both an undergraduate and postgraduate, Myesa Knox (Southern Methodist) received financial assistance from the Foundation. With plans to complete her doctorate this year, she is anxious to provide others with the same encouragement and support she has received through the Foundation.

"My Gamma Phi Beta membership gave me the confidence to set my goals higher intellectually," says Myesa. "I loved knowing that alumnae were supporting their collegiate sisters. It made an impact on my life!"

11 Major Events in Foundation History

1958

Convention delegates vote to create the Gamma Phi Beta Foundation as an exclusively educational and charitable not-for-profit corporation.

1959

In January, the Foundation is incorporated.

1960

The Foundation gives its first scholarship to a Gamma Phi Beta collegian.

1966

The Sorority's Philanthropy Board is incorporated into the Foundation.

Continued on next page.



Some of the first campers wait for the mail in 1925.

Committed to Camping

Support Grows

The Colorado camp generated great enthusiasm, and in 1929, Convention delegates adopted “camping for girls” as the Sorority’s philanthropy. In 1931, the project went international when sisters in Vancouver, British Columbia, established Camp Sechelt. Both locations were governed by the Philanthropy Board.

Members embraced the concept wholeheartedly, sending handmade quilts, aprons and dresses as well as financial support. College women devoted weeks each summer to mentor and counsel girls ages 8-12 in a nation gripped by the Great Depression.

Ask someone what comes to mind when she thinks of Colorado and you’ll hear, “Rocky Mountains, pine trees, clear blue lakes and freshwater streams.” But back in 1923, one young Denver girl innocently asked, “What does a mountain look like?” and became an inspiration for the Sorority’s international philanthropy — camping for girls.

First Camp Opens

To Greta Puckett Weston (Denver), the Gamma Phi Beta collegian who answered that question, it was unbelievable there were residents of Denver who had never been to the mountains, a 30-minute drive from the city. Greta shared the story, touching the hearts of other Theta Chapter members and inspiring the group to action in true Gamma Phi Beta fashion.

One sister offered use of her father’s cabins at Crystal Lake near Pine, Colorado. With that location secured, collegians and alumnae set to work soliciting funds for supplies and much-needed renovations to the cabins. They signed on to serve as counselors, plan meals and coordinate activities. Soon, the first campers were selected and Gamma Phi Beta Camp in Colorado was officially open.

“Hardly a child in the Denver Camp this year had a father . . . most of the mothers worked or were invalids. One little girl remarked, ‘I just can’t be gone two weeks for there’s no one to look after Tommy and Mary.’ Some children need this freedom from cares far too heavy for their frail shoulders; many are underweight and thin to the point of emaciation.”

Camp Chairwoman Kittie Lee Clarke (Denver), *The Crescent*, 1931

Camper Ivone Jones: One of three children. Father deserted family in June 1927. House very disorderly. Mother is illiterate but pleasant in manner. Home conditions poor and the change will do Ivone a great deal of good.

(Information furnished by Denver City Charities in 1929.)

11 Major Events in Foundation History *continued*



← 1974

The first Foundation logo is unveiled.

1982

Canada’s Camp Gamma Phi Beta at Sechelt is deeded to the Foundation.

1985

The Foundation Board of Trustees is led by elected trustees and an appointed chairwoman, rather than the Sorority’s Grand Council.

1991

The 1874 Society (annual gifts of at least \$1,874) and the Tau Epsilon Pi Society (planned giving donors) are founded.

Camping Today

Eventually, in 1966, responsibility for the camps was transferred to the Foundation when the Philanthropy Board was disbanded. Today, Gamma Phi Beta no longer owns, leases or operates summer camps. Instead, we hold fast to our convictions from 80 years ago by supporting Camp Fire USA, Girl Guides of Canada and local camps.

Foundation trustees established the Camping for Girls Philanthropy Endowment in 1991 and continue to make subsidizing camperships a priority.

Why? Because camping plays the same vital role in the lives of young girls today as it did in the past. Through Gamma Phi Beta, many at-risk girls can have a real mountain vacation and learn to swim, boat, hike and even ride horses. Developing new skills and enhancing their self-confidence at camp allows girls to dream of something better for their lives and builds spiritual, mental and social resiliency. Camping is a wholesome, nurturing experience for impressionable young girls. And, in our increasingly urban society, camping also provides a link to nature.

Like Greta Weston, we still believe a camping vacation benefits girls in ways that will be remembered for a lifetime, and for that reason, it's a cause we resolutely support.

To make a donation to camping, visit our Web site at www.gammaphibeta.org and click on 'Donate Now.' Choose "camping" from the drop down menu under 'Designation.' The Foundation also provides supplemental funding to enhance a chapter's financial gift to any local camp.



Six members had the honor of cutting the ribbon at the new International Headquarters in Centennial, CO: from left, Karen Wander Kline (Iowa State), Ardis McBroom Marek (Northwestern), Ann Mullen Bronsing (Indiana State), Jolene Lessard Stiver (North Dakota State), Randall Stevens (California State-Long Beach) and Marjory Mills Shupert (Colorado State).



Learning new skills at camp builds confidence in girls.

(Denver, c. 1970)

"I am writing to thank Gamma Phi Beta Sorority for giving my children a wonderful holiday. Since being at Sechelt with the girls of this organization, giving their time and their hearts to children, my girls now stand taller, and they have a bright new concept of life. They study, they keep neater, they go to Sunday school . . . At Sechelt, they knew this world was a good one to live in. They learned all this from you. So thank you, and bless you a million times over."

Mrs. H.M. Taylor, as reprinted in *The Crescent*, 1963

"Camp is ... the love of all races together under the love of one God; new friendships that will last a lifetime; shaking hands with the trees; refereeing a jacks tournament; drying homesick tears; experiencing mutual growth; involvement of self; becoming attached to eight very special kids and about 90 more – and listening to their joyous laughter."

Camping Chairwoman Sharon Reisig Green (Colorado State), *The Crescent*, 1975

1992

The new International Headquarters in Centennial, Colorado, is dedicated after a successful capital campaign raised more than \$850,000.

1997

A full-time executive director is hired at the Foundation.

2004

The Gamma Phi Beta Museum is established at International Headquarters.

Sun, Sand, Sea & Sisterhood

GIVING FROM
OUR HEARTS FOR

50 YEARS

What do you get when you put 37 Gamma Phi Betas on a cruise ship to the Caribbean? A seriously fun case of Connect. Impact. Shine.

When the vessel set sail last January, the women on board had high hopes for their vacation on the high seas, looking ahead to four days of sun, sand and sea. By the end, existing friendships had been strengthened and new ones formed; memories were made and much-needed funds were donated to the Gamma Phi Beta Foundation.

Floating Fundraiser

Women have always been multi-taskers, even on vacation. In between shopping, snorkeling and exploring, this generous group of sisters raised an amazing \$10,000 for grants-in-aid (emergency educational assistance) at a reception hosted by Foundation volunteer Tucky Wheeler Hobbs (Iowa).

They were clearly motivated by the story of two young members whose applications for grants were denied due to lack of funds. Foundation Grants Chair Barbara Hurt-Simmons (Nebraska-Kearney) went on to share that the need for funding is especially great this year. Quickly, the group took action: a "semi-silent" auction was held and the generosity of the women was soon evident.



In only four days, the Gamma Phi Beta Foundation's 50th Anniversary Celebrity Century Cruise accomplished a lot more than your typical vacation. Besides glowing tans and souvenirs, the tourists returned home with a renewed sense of pride in Gamma Phi Beta: our sisterhood, our causes, our Foundation.



Cruise by the Numbers

- 8 Foundation trustees joined the fun
- 5 members of International Council cruised
- 3 mother-daughter pairs participated
- 4 former trustees and 4 alumnae initiates frolicked on the 4 day cruise
- 1 heroic husband had a bon voyage
- \$10,000 donated for grants-in-aid
- \$100 designated from each member's cabin fee for the 50th anniversary fund
- 50 years of Foundation fundraising celebrated!

We acknowledge the following donors who celebrated a special event or individual with a gift to the Gamma Phi Beta Foundation (as of April 9, 2009).

IN CELEBRATION OF...

The birth of my granddaughter, legacy Cayden Joy Griffin
Frances Rea Griffin

The birth of legacy Katy Ann Hoffmeier, granddaughter of Joyce Cole Hultgren
Frances Rea Griffin

The birth of my new granddaughter, legacy Abigail Arabella Stanley on September 9, 2008, to proud parents Alan and Jennifer (Snoddy) Stanley and sister Alexandria
"Nana" Barbara Boerstler Snoddy

Audrey Weldon Shafer's 90th birthday!

Mary Kay McPhee and Bill Pfeiffer
Mr. and Mrs. Irving Rubin
Mary Nicely
Linda Wendlandt
Jolene Stiver
Frances Hover
Billie and Carolyn Houk
Donna Sanders
Jim and Marilyn Hedges
Joyce Hultgren
Alison Bond
Mary Jane Misthos
Ann Bronsing
Richard and Philancy Hedges
Gertrude Brown
Margaret McGregor
Stanley and Ardyce Pearson
Rebecca Bond
George and Linda Neill
Marilyn Mayberry
Geraldine Brischetto
Gloria Nelson
Pamela Shafer Burke
Helen Schumacher
Cornelia Spanier
Herbert Davis
Betty Werner
Eric and Lauren Wendlandt
Linda Daniel Johnson
Sally Erikson Lewis

Gaye Bricker's birthday!
Julie Dunn Eichenberg

Susan Rapanos O'Neill
Alpha Lambda Chapter

The marriage of Andi Jacobs and Wes Landes on July 11, 2009 — Congrats sister and roomie!
Kristy Rozsnyoi

Forty years of friendship with my big sister Fran Berrigan
Anne Layton

Valerie Blaes Sullivan
Naples Alumnae Chapter

The birth of twin legacies Lauren Ann and Anya Maria to Christine Eisel Wendt
Rene' Matz Thompson

Ann Ragsdale. Thanks for being a great agent and selling the Thompson house in Atlanta.
Rene' Matz Thompson

The 50th wedding anniversary of Penn Staters Milly and Charlie Butler-Congratulations!
Betty Lou and Don Wanderer

The officers and chairman of the Fort Collins Alumnae Chapter who have unselfishly given their time and talents to ensure a successful and fun year
Sharon Green

Epsilon Tau Chapter for a fabulous, successful recruitment of 23 women
Sue Bloch

Victoria Vignare for her outstanding leadership as president of Epsilon Tau Chapter at the University of Rochester
Sue Bloch

Alpha Eta class of 1961 at Ohio Wesleyan University — Hope to see you at our 45th reunion in May!
Sue Bloch

Tons of pink carnations to Alpha Delta Chapter for helping initiate the women at Delta Nu Chapter!
Dena Sufko

The women of Delta Nu Chapter on their March 7, 2009 installation! Everyone is very proud of you!
Dena Sufko

Delta Nu Chapter— Congratulations on your reinstallation!
Region 6 Team

Kristin Sancken's birthday and the newest addition to the family!
Rachel Christiansen

A huge thank you and many hugs to the extension team: Jessica Jecmen-Brummel, Annabel Jones, Linda Malony, Margaret Pape, Jamie Reitz, Joanne Roman, Ann Ross, Sash Wood and everyone else who made the reinstallation of Delta Nu Chapter a wonderful success!

Dena Sufko

Alpha Delta Chapter for all of your assistance in the reinstallation of Delta Nu Chapter — You all did a wonderful job!

Region 6 Team

Jaye Hughes Wells, on the publication of her first novel
Elizabeth Hernandez

The marriage of Dani Lively and Johnny Neal on April 25, 2009
Megan Wick

Stacy Boesen Purcell's birthday — I couldn't ask for a better gift than your friendship and want to help someone else find an amazing friend like I did through Gamma Phi Beta.
Dawn Eagan

The birth of Kaden Michael Seevers on February 20, 2009, to Alicia Adams Seevers, Chris, Kendall and Kiley
Elena Seward

Jane Fair
Susan Reeves



RESTRICTED GIFTS

The individuals listed below contributed **RESTRICTED** gifts and pledges, which are designated by the donor to fund specific scholarships/fellowships, chapter gifts and other needs (as of April 9, 2009).

\$25,000-49,999

Shirley Hutchason Boersma (Kansas '58)

\$10,000-24,999

Martha Steps Frank (Kansas State '59)
Nancy Hansen Jones (Kansas '74)

\$5,000-9,999

Mary Ellen Porter Burchfield (Iowa State '68)
Ruston Chandler
Carrie Handler
Rouchelle Chandler Hoke
Alberta Johnson McGrath (Kansas '53)
Rhonda Lahue Mordy (Kansas '79)

\$1,000-4,999

Sandy Biegelman Burba (Miami University '72)
Marcia Nelson Cassidy (Kansas '59)
Susan Schlessman Duncan (Colorado College '49)
Nancy Chuoque Enright (Texas '81)
Kelley Burmeister Gilmore (Kansas '98)
Susan Grant-Schneider (Colorado State '89)
Anne Doyle Grey (San Diego '84)
Ginny Harris Hammond (Colorado-Boulder '62)
Susan Landman Harwood (Kansas '74)
Barbara Mann Hill (Kansas '66)
Tucky Wheeler Hobbs (Iowa '60)
Cindy Emig Penzler (Kansas '78)
Ruth Andrea Seeler, M.D. (Vermont '56)
Marjory Mills Shupert (Colorado State '54)
Jolene Lessard Stiver (North Dakota State '69)
Magnes Welsh (Memphis State '68)
Kristen Merchant Whitaker (Kansas '95)

MEMORIAL GIFTS

The Gamma Phi Beta Foundation acknowledges the following individuals and groups who contributed to the Foundation in memory of a loved one (as of April 9, 2009).

Patricia Purcell Munro
(Nebraska-Lincoln '54)

Jody Stenehjelm
Betty Armagost
Betty Kempf
Jan Freese
Robyn Jackson
Jacque Haupt

Frances Black Green
(Northwestern '35)

Frances Griffin
Jacki Falkenroth
Chicago Alumnae Chapter
Catherine Spika
Sally Lewis
Natalie McKenzie

Beth Fraser Moore
(Michigan '45)

Robert Straith

Kimberly Hensley (Indiana '80)

Lafayette Area Alumnae
Chapter

Martha Johnson Markus
(Minnesota-Twin Cities '45)

Salem Crescent Circle

Geraldine Anderson Lucks
(Washington '49)

Anne Moldrem

Kindra Buchanon McLennan
(Arizona '97)

Alpha Epsilon Chapter
Alpha Epsilon House
Corporation Board

Charlotte Stone Fullgraf
(Ohio Wesleyan '43)

Charles M. Fullgraf

David Gilmore, husband
of Suzanne Smith Gilmore
(Oklahoma '55) and father
of Sarah Gilmore Cervi
(Oklahoma '80)

Ann Ross

Ruth Teason Bailey (Colorado
College '40)

Mary Jane Misthos

Rosemary Clinebell Thomson
(Bradley '55)

Cedar Rapids Alumnae
Chapter
Sally Lewis
Liz Ware
Barbara Maves
Lila Bolinger

Betty Jean Haka, mother of
Patricia Haka Carnahan

Vicki Helling

Martha Brigham Beamer
(Oregon State '37)

Hawaii Alumnae Chapter
Betty Demarke

Mickie Jakobs Fuller
(Saint Louis '69)

Donna Prior
Patsy Henderson
Joanne Roman
Ann Bronsing

Eleanor Soder Doolittle
(Syracuse '38)

Naples Alumnae Chapter

Gladys Lovrien Lasser
(Iowa State '29)

Naples Alumnae Chapter

Shelley Alford Chandler
(Texas '70)

Rene' Thompson
Joan Steinhoff

Joan Pedersen Meagher
(Southern California '93)

Rene' Thompson
Kay Marovich

Wilma Jean Knaup, mother
of Mary Knaup (California
State-Fullerton '81)

Rene' Thompson

Geraldine Byrne, mother
of Megan Byrne Krueger
(Indiana '80)

Rene' Thompson

Beverly King Freitas
(California-Berkeley '46)

Barbara May

Dorothy Tripp Glynn
(Oregon State '35)

Betty Demarke

Marjorie Johnston Peterson
(Northwestern '44)

Marilyn Goll

My daughter, Erica C. Goeckel

Dianne Weidner

Jeanne Kehoe Mercer
(Illinois '42)

Mary Welge

Evelyn Richter Baker
(Colorado College '32)
Greater Fort Myers Alumnae
Chapter

Margaret Amstutz, mother of
Gretchen Amstutz Mueller
(Miami '80)

Marita Mahan

Sheila Kivlin Reul
(Wisconsin-Madison '48)

Joanne Bush

Peggie Patterson Suttle
(Texas '40)

North Houston Alumnae
Chapter

Howard Hill, father
of Lee Ann Hill
(Midwestern State '99)

Camie Fielder
Randi Jones
Jessica Morris
Amber Reed
Ashley Thomas

George E. Stein, husband
of Suzanne Mast Stein
(Wittenberg '48)

Donna Prior

Mary Alice Adams Betts
(College of William &
Mary '60)

Camille Favre

Carol Butterworth Jacobson
(Washington '44)

Anne Moldrem

Anne Yeager Hansen
(Southern Methodist '58)

Gloria Nelson
Dallas Alumnae Chapter
Joy Adam

Betty Jane Werfelman McPhail
(Syracuse '38)

Judy Kaspar
Syracuse Alumnae Chapter

Beverly Daugherty Stockert
(California-Los Angeles '52)

South Bay Alumnae Chapter
L'Cena Rice
Corrine Dugan
Marjorie Kintas
Kay Marovich
Gigi Eyre
Anne Rindge

Mildred Newcomb Hill
(Iowa State '35)

Northwest Valley Arizona
Alumnae Group

Robert A. Ramseyer, father
of Sally Ramseyer Beck
(Kansas '74)

Stacia Griffith

Joan Gardner Daugherty
(Ohio State '51)

Susan Hibbitts-Carpenter

Constance Wall Claypool
(Ohio State '51)

Susan Hibbitts-Carpenter



The Crescent

The background of the cover is a dark night scene filled with various illuminated lanterns and lights. There are large, glowing yellow and blue crescent moon lanterns, several star-shaped lanterns in red, orange, and yellow, and a lantern with a human face. The scene is decorated with strings of small, warm-white lights and red, leaf-like ornaments. The overall atmosphere is festive and celebratory.

of Gamma Phi Beta

Summer 2009

Help Wanted:
Ten reasons
to volunteer

More winning photos inside!
Vintage powder compact
Meet entertainer Mary Beth Peil



GAMMA PHI BETA

CONNECT.

IMPACT.

SHINE.

A Lifetime in Gamma Phi Beta



When I pledged at age 18 at the University of Southern California, a “lifetime” seemed too big to comprehend. I was a wide-eyed freshman from Kansas — away in a big city at a prestigious university — and I didn’t know a soul. I was looking for friendship, a support system, a place to simply belong. By the time I’d attended my first class, I’d already pledged Gamma Phi Beta, met my future husband and attended the first football game of a national championship season. Living in the moment was just too rich to consider much beyond college!

Not long after graduation, I found myself in Michigan, beginning a 25-year stint (so far!) as a Gamma Phi Beta volunteer. I had no idea that serving as a chapter advisor would lead to such a love affair with our Sorority. Another move introduced me to more collegiate chapters and a vibrant alumnae group in Kansas City, Missouri. There, I met Audrey Weldon Shafer (Missouri), pictured above, a former Grand President with whom I’d eventually travel around the country installing several new collegiate chapters — and who recently celebrated her 90th birthday with sisters from all over. Truly a lifetime of Gamma Phi Beta!

As a member-driven organization, Gamma Phi Beta impacts both individual members and our communities. For the last 50 years, the Gamma Phi Beta Foundation has provided hundreds of thousands of dollars to further the education and leadership of our members, as well as ease difficult circumstances faced by sisters in need. Over the years, Gamma Phi Beta has played a key role in communities across the continent, touching countless lives through philanthropic giving, camping and mentoring activities that build girls into strong women — and supporting other non-profit organizations important to local groups. And, as a student, I thought Gamma Phi Beta was just for collegians!

This issue of *The Crescent* celebrates our Foundation’s 50th anniversary and invites you to consider volunteering for Gamma Phi Beta, an organization you pledged (however many years ago) for a lifetime. Consider how you might want to connect to your Sorority today beyond simply reading *The Crescent*. Send in your dues. Join (or start!) your local alumnae group. Celebrate with the Foundation and contribute \$50 in honor of its anniversary. Contact a sister and “remember when.” Write a reference for a potential new member. Volunteer.

What does “for a lifetime” mean to you?

In IIKE,

Linda Lyons Malony

Linda Lyons Malony
International President

INTERNATIONAL COUNCIL

International President

Linda Lyons Malony

Alumnae Vice President

Mary L. Knaup

Collegiate Vice President

Annabel M. Jones

Education Vice President

Kris L. Baack

Financial Vice President

Amy M. Peterson

Membership Vice President

J.J. Stoll Kaelin

Panhellenic Affairs Vice President

Elizabeth Ahlemeyer Quick

Executive Director

Patricia M. Crowley

GAMMA PHI BETA FOUNDERS

Mary A. Bingham

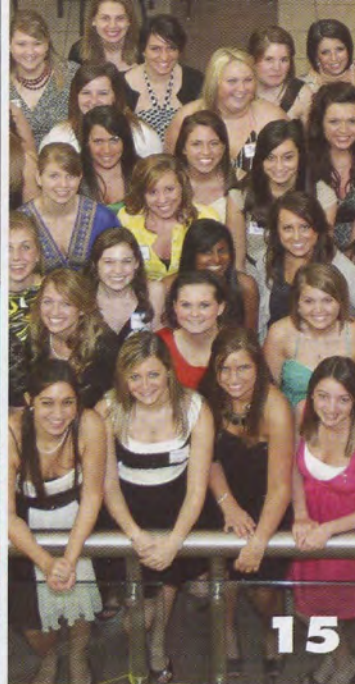
E. Adeline Curtis

Helen M. Dodge

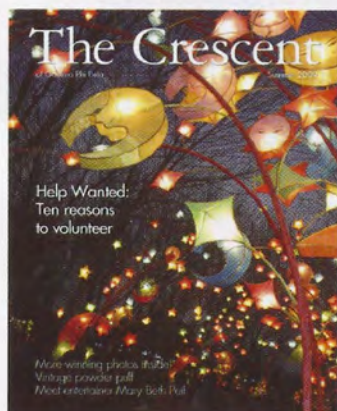
Frances E. Haven

SORORITY MISSION STATEMENT

Our mission is to foster a nurturing environment that provides women the opportunity to achieve their potential through life-long commitment to intellectual growth, individual worth and service to humanity.



SUMMER *The Crescent* 2009 Volume 110 Number 3



ON THE COVER

And the grand prize winner of *The Crescent* photography contest is . . . Stephanie Eberwine Bass (Miami) with her entry titled, "Chinese New Year." See page 11 for more winning shots!



FEATURES

6 We Value our Volunteers
Me? Volunteer for Gamma Phi Beta? Here are 10 reasons to make a difference in the lives of women as a volunteer leader.

8 New Team of Consultants
Eight freshly-graduated Gamma Phi Betas are trained and ready to take to the skies, supporting our collegiate chapters in North America. Meet the team of 2009-2010 collegiate leadership consultants!

18 Balance is the Key: Unlocking Healthy Relationships
Women are relational—we value and invest in meaningful interaction with others. Find out what four tips can improve any relationship, particularly the romantic kind.

IN EVERY ISSUE

- 12** Pacesetters: Global Humanitarians
- 14** Panhellenic Update
- 15** Out & About
- 16** Spotlight On: Mary Beth Peil
- 20** Sorority Life
- 26** In Memory
- 27** Vintage ΓΦΒ
- 28** Mailbox

FOUNDATION

You'll "flip" for this special 50th anniversary edition!

- 3** Foundation Priority Areas: Leadership, Camping, Financial Aid
- 4** Our Camping History
- 6** Cruise News
- 7** In Celebration
- 8** Memorial Gifts

Directors Shine with Experience

Gamma Phi Beta International Sorority can be described in many ways; legally, we are classified as a not-for-profit business. The professional management staff at International Headquarters (IH) directs a sizable annual operating budget and supervises 23 other employees. Read on to see how their unique qualifications perfectly suit them to running the business side of Gamma Phi Beta.

Patricia Crowley (Northwestern)

Executive Director, pcrowley@gammaphibeta.org

Of the directors, Patricia has earned the most degrees: a Bachelor of Science in mechanical engineering, a master's degree in pastoral studies and Juris Doctorate. She practiced law for 20 years while volunteering with the Sorority on local and international levels, including seven years as a province collegiate director.

Patricia stays active with her alma mater as a regional director and member of the alumni association board of directors. In almost five years as executive director, she finds the job exciting, invigorating and challenging, requiring all the skills she has developed in her life's experience.

Kendra Gates Bocher (California State-Long Beach)

Director of Member Services, kbocher@gammaphibeta.org

While Kendra was majoring in mathematics in college, her dad teased that she was really a double major — with Sorority as her second area of study! Ironically, Gamma Phi Beta did become her career after a brief stint in corporate banking.

As a new graduate, Kendra became a collegiate leadership consultant (CLC), and was later hired to coordinate the CLC program, beginning a 14-year tenure at IH. Instrumental in developing the staff model as IH grew; Kendra has served in numerous management positions and now manages services that enhance the alumnae, collegiate, education and membership departments.

Nina Dulacki (Colorado College)

Director of Marketing and Communications, ndulacki@gammaphibeta.org

In the last 20 years, Nina has managed strategic marketing and advertising efforts for regional and



At their home away from home, International Headquarters, Gamma Phi Beta's team of staff directors keep business running smoothly. L-R: Nina Dulacki, Janet Martinez, Christa Fruchtl, Patricia Crowley, Kendra Bocher.

national companies in numerous industries, including several Fortune 500 companies. She has also served on the boards of two non-profit organizations.

Beginning her communications career with the 1986 World Cycling Championships, Nina moved into corporate marketing before landing on the advertising agency side. Along the way, she also co-owned a successful marketing and advertising firm for seven years.

Christa Hamilton Fruchtl (Eastern Washington)

Event Manager, cfruchtl@gammaphibeta.org

Christa, a former CLC, has nine years experience in event planning. She previously worked at one of the country's largest real estate firms planning corporate functions involving hundreds of participants.

Utilizing her degrees in marketing and finance, Christa coordinates Convention, Regional Leadership Conferences, The Academy and other events. Her biggest challenge is adeptly organizing our biennial Convention where up to 800 Gamma Phi Betas meet for four days to learn, network and conduct Sorority business.

Janet Martinez

Controller, jmartinez@gammaphibeta.org

Educated in investment trading and financial/accounting management, Janet's responsibilities are all finance-related. She handles tax filing, investments (at the direction of International Council), budgeting, financial policies and procedures and payroll. Janet also oversees the annual audit and budget process.

Capture The Magic!

Convention 2010



Save The Date!

June 23 – 27, 2010

Hilton Orlando at Walt Disney World®

Join us at Convention 2010 for a week filled with sisterhood, opportunity and lots of fun! Our destination, the Hilton Orlando in Walt Disney World®, is packed with attractions and world-class adventures. Orlando 2010 promises to be a truly magical Convention.

Join Us As We Plan A Truly Memorable Event

Volunteers Needed — Please Contact:

Karen Urette

Convention Chair

murette@tampabay.rr.com

Jane Todd

Volunteer Coordinator

janekodd@comcast.net



Steering Committee:

Back Row, L-R: Rachael Harris Gaffin (Southern Indiana), Cathy Hendershot Simon (California-Riverside), Becky Perkins Gorman (Ohio State), Jane Krabill Todd (Vanderbilt), Karen Meyers Ray (Florida State), Kathy Harn (Oklahoma) and Linda Seefluth Arline (Wisconsin-Oshkosh).

Middle Row, L-R: Janice Vesper Martin (Texas), Karen Gamel Urette (Oklahoma), Deborah Koerner Kreiger (Bowling Green State).

Front Row, L-R: Tammy Weiss Prock (Pennsylvania State), Crystal White (Christopher Newport) and Julie Jones Arnold (Northern Arizona).

Not Pictured: Cele Hoffman Eifert (Southern California), Kasey Brinkley (Florida State)


CAPTURE THE
MAGIC
Gamma Phi Beta
ORLANDO 2010

Raise Your Hand!

Top Ten Reasons to be a $\Gamma\Phi\text{B}$ Volunteer

We each have 8,760 hours in a year, roughly 720 hours in a month and 24 hours in a day. How many can you spare to make a sister's day?

Numerous Gamma Phi Beta women across North America devote their time and energy to our Sorority. What keeps these selfless women motivated? Moreover, if you are not already involved, what can you gain from volunteering with Gamma Phi Beta?

10. It Keeps You Connected.

Once we've turned our tassels from left to right, our lives get busier and Gamma Phi Beta may no longer make it on the to-do list. Volunteering with the Sorority provides a simple yet effective way to keep in touch with friends, your community and most obviously, our sisterhood.

"I have volunteered with Gamma Phi Beta when I was single, as a working mom and now as a stay-at-home mom," Fran Mayfield Lapham (Kansas State) says. "Volunteering allows me to give back and remain close to an organization that has provided me with so much."

9. You Will be a Mentor.

The benefits our collegians receive from alumnae guidance and support are immeasurable and life-changing. Cinda Keating Lucas (Southern California) has dedicated her time as a chapter advisor for the past 20 years, providing leadership and stability to the women of Epsilon Gamma Chapter (San Diego).

"The energy, love and devotion she gives our chapter has been incredible since day one," says Carrie Widder (San Diego). "I could go on and on about how much we all value and look up to her!"

**SIGN
ME UP!**

**Want to volunteer, but not sure where or how?
To get started, fill out Volunteer Recruitment Form
#47 located on the Gamma Phi Beta Web site,
www.gammaphibeta.org under the Get Involved
section. A rewarding position is waiting for you!**



8. It Promotes Personal Growth.

Volunteering is not purely an altruistic act. Personal development, especially in such areas as self-fulfillment, self-confidence and self-esteem, often flourishes in the midst of volunteering experiences, according to www.nationalservice.gov. When you are confident and fulfilled, it is apparent to everyone you meet; it's good to be good!

7. Collegiate Chapters Need You.

Alumnae support is critical to the long-term success of any collegiate chapter, and those with consistent alumnae involvement tend to be our best. Gamma Phi Beta has more than 165,000 alumnae, yet many chapters have a tough time filling the seven alumnae advisory board positions and three house corporation board offices. In fact, only 37 percent of all advisory board positions are filled. Help your collegiate sisters shine by providing your support!

6. It's a Great Social Outlet.

Break out of your daily routine with the perfect excuse to get out of the house and meet new people.

"Hands down, the best part of volunteering in Gamma Phi Beta has been the friendships I've gained," says Jessica Jecmen Brummel (Oklahoma City). "I am constantly meeting new women and expanding my great network of sisters."

5. It's Beneficial to Your Health.

The Corporation for National and Community Service has found a significant connection between volunteering and good health. Their research shows that volunteers have greater longevity, higher functional ability, lower rates of depression and less incidence of heart disease. Who needs a personal trainer when giving your time generates such great results?!

4. Every Bit Helps.

Any time spent volunteering will create positive results, and whatever your schedule allows, Gamma Phi Beta has a place for you! You can start small by volunteering at a one-time event or even giving just a few hours a month. Recruitment and initiation are busy times for collegiate chapters, and both are great opportunities to get involved without a significant time commitment. Some members even "e-volunteer," serving all their volunteer hours electronically.

3. It Adds to Your Employability.

Volunteering can help sharpen your career knowledge, provide experience, build your professional network and hone your written and verbal communication skills. According to ResumePower.com, volunteer work shows an employer that you are willing to try new experiences and be involved in your community. It demonstrates a willingness to take initiative and make things happen. Talk about a résumé booster!

"Volunteering for Gamma Phi Beta while I was getting my Ph.D. really helped me learn how to 'teach' and interact with collegians, let alone the benefit of working with administrators at various universities," says Dani Lively Neal (Nebraska-Kearney). "It has tied in really well to my career goals and been really rewarding from a professional perspective, too!"

2. Gamma Phi Beta is a Lifetime Commitment.

Our Sorority has excelled for almost 135 years because of the dedication and loyalty of our members. Just because your memorable years as a collegian are over doesn't mean the rich and rewarding experiences have to end. Continue your journey with Gamma Phi Beta as an active alumna. The only way our story can continue is with you!

1. You Will Make a Difference!

Sociologist Margaret Mead put it best, "Never doubt that a small group of thoughtful, committed citizens can change the world; indeed, it's the only thing that ever has."

PLUS, Online Training is Available!

From the comfort and convenience of your home, you can complete our new, cutting-edge online volunteer training! Through self-guided modules, the volunteer leader development program teaches the principles, policies and practical information you'll need to be involved. You'll also be connected with other volunteers who can share advice and assistance. It's easy, and fun!



Collegiate chapters seek supportive alumnae volunteers to fill advisor positions in the United States and Canada. Qualifications include a loyalty to Gamma Phi Beta Sorority and a desire to work with college women.

Advisory boards have a diverse team of positions including, but not limited to:

Chapter Advisor – provide valuable assistance to chapter officers by offering Gamma Phi Beta knowledge and life experiences.

Financial Advisor – help maintain all chapter financial activity in compliance with Sorority policies.

Recruitment Advisor – assist members with building the future of their collegiate chapter and our sisterhood.

Education Advisor – preserve our commitment to ongoing education by giving members the necessary tools for PACE programs, Crescent Values sessions and sisterhood events.

New Member Advisor – offer direction for the chapter's programming, planning and implementation of the new member education program.

Public Relations Advisor – help members communicate a positive image of Gamma Phi Beta through relationships with our publics – using careful planning, approach and strategy in public relations plans.

Scholarship Advisor – challenge members to continue learning, exploring, and creating to achieve their chapter's scholastic standards.

Members of all ages, availability and experience are encouraged to learn more at www.gammaphibeta.org/involved.

COLLEGIATE LEADERSHIP CONSULTANTS

A New Team for a New Year

Fresh from summer training in Colorado, the 2009-10 team of collegiate leadership consultants (CLCs) is ready to hit the road, take to the skies and ride the rails across North America.

CLCs are recent Gamma Phi Beta graduates hired by the Sorority to provide practical guidance to our collegiate chapters. They bring hands-on experience and specialized knowledge of Sorority policies, practices and procedures, leadership, recruitment, retention, scholarship, public relations, standards — you name it, they can help.

Here's a little about each woman in advance of her visit to your campus!

Megan Mahoney **(Wisconsin-Milwaukee)**

Offices held: President, administrative vice president, new member educator

Education: Journalism and mass communication major

Advice: Get involved and befriend everyone.

Ideal day off: Sleeping in, breakfast on the deck with my mom, boating and jet-skiing on the lake, dinner with my family and then a good girls night out

Favorite candies: Red Swedish Fish and Reese's Peanut Butter Cups

Megan is: Adventurous, inquisitive, passionate

And lastly: I've traveled to 14 countries and have many more on my list of dream adventures!

Jessica Proffitt **(Christopher Newport)**

Office held: President

Education: Business administration major

Career Goal: Owning a trendy event planning company

Advice: Focus on your grades first; you are in college to be a student. But after your work is done, spend as much time with your sisters as

possible. They will be the friends you connect with forever.

Jessica is: Classy, accepting, driven

And lastly: I have lived in Virginia my whole life.

Michelina "Micki" Estuesta **(Oregon)**

Offices held: President, public relations vice president

Education: Mathematics major

Favorite $\Gamma\Phi\beta$ memory: Celebrating Nu Chapter's 100th anniversary

Advice: Take the opportunities you are given and remember you need humor to make it through life.

Most embarrassing moment: I was in my room getting ready for recruitment and leaned over to pick up a pen. I hit my head on my bed post and landed in the emergency room with a concussion.

Micki is: Intuitive, open-minded, motivated

And lastly: I cannot eat Skittles or M&Ms without color-coding them first.

Kelley Gallo (Clemson)

Offices held: President, administrative vice president

Education: Sociology major

Favorite $\Gamma\Phi\beta$ memory: Going white-water rafting for the first time with more than 100 of my new sisters

Advice: Find an internship, paid or unpaid, every summer. My internships convinced me to change my major twice and helped me realize that I want to work for non-profit organizations.

Kelley is: Honest, caring, reliable

And lastly: I have an adorable pet hedgehog named Carinal

Elyse Gieschen (Valparaiso)

Offices held: President, new member educator

Education: Civil engineering major

Career goal: Higher education, either advising or teaching
Advice: Set aside time to enjoy your friends and the opportunities you have as a college student.

DID YOU KNOW?

The collegiate leadership consultant program is partially funded by donations to the Gamma Phi Beta Foundation. Contact Bonnie Payne (bpayne@gammaphibeta.org) for more info.

Ideal day off: Touring a new city

Elyse is: Passionate, dedicated, optimistic

And lastly: I'm a HUGE Green Bay Packers fan!



*Pictured left to right are:
Megan Mahoney, Jessica Proffitt,
Micki Estueta, Kelley Gallo,
Elyse Gieschen, Hayley Madsen,
Sam Keltner, and Dori Neff.*

Hayley Madsen (California-Los Angeles)

Offices held: Membership vice president, Panhellenic affairs vice president

Education: Biology major

Career goal: Pharmaceutical sales

Coveted superhero power: Reading minds

Ideal day off: Sleeping late, shopping with my mom and seeing a movie with friends

Favorite drink: White chocolate latte

Hayley is: Loyal, caring, energetic

And lastly: I love cosmetics and own more than 50 shades of eye shadow.

Samantha "Sam" Keltner (Northern Iowa)

Offices held: President, administrative vice president

Education: History major

Career goal: Student affairs at a college or university

Favorite $\Gamma\Phi\beta$ moment: Seeing my biological sister become my Gamma Phi Beta sister

Coveted superhero power: The ability to freeze time to spend it with friends, still do laundry and run errands.

Sam is: Cheerful, outgoing, passionate

And lastly: I love office supplies! I could spend hours at Staples.

Dori Neff (Oklahoma City)

Offices held: President, Panhellenic president

Education: Acting major

Advice: Lead, love and encourage one another in such a way that anyone can see that

we are not only a sorority, but a sisterhood.

Coveted superhero power: To make people in braces feel cool. I would have really appreciated meeting that superhero in 7th grade.

Most embarrassing moment: At a store, I once mistook my reflection in a mirror for someone else and thought, "Wow, I have that same coat!" Before I realized it was me, I waved at myself.

Dori is: Full of life

And lastly: One of my favorite things to share is reading material. Know of a good book or script to carry as I travel? I'd love your recommendations!

If you are interested in applying to be a collegiate leadership consultant or would like to learn more about the CLC program, please contact Brandy Cunningham, CLC/Field Administrator at bcunningham@gammaphibeta.org.

Need to Know? Just Ask!

Marketing, public relations, Web site development, crisis communications, writing, publishing . . . these are all functions of your International Headquarters (IH) marketing and communications department.

For you, that means department director Nina Dulacki (Colorado College) and her team are available as a resource to volunteers and members "in the field," anyone working hands-on with Gamma Phi Beta collegiate or alumnae chapters. The professional communicators at IH help ensure our Sorority puts forth top-quality branded products on every level that position Gamma Phi Beta as a leader.

The marketing and communications department also maintains an archive of communications material produced for and by Gamma Phi Beta. If your chapter or crescent circle has something to contribute, mail the piece to Gamma Phi Beta, Marketing & Communications, 12737 E. Euclid Drive, Centennial, CO 80111.

Expertise is offered in the areas of brand identity, content, design, style guidelines, media relations and more. Get in touch with Nina today at ndulacki@gammaphibeta.org and see how the team at IH can serve you!

Nina Dulacki, Director of Marketing and Communications, ndulacki@gammaphibeta.org

Mimi McMann, Editor, mmcmann@gammaphibeta.org

Nicole Nelsestuen, Staff Writer, nelsestuen@gammaphibeta.org

ALUMNAE DUES \$25, SISTERHOOD PRICELESS

The bond of Gamma Phi Beta is not diminished
by time, circumstances or distance.

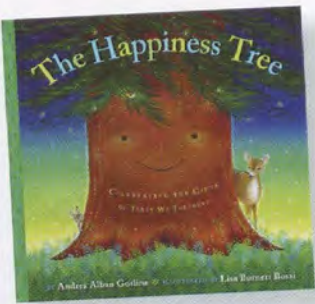


Stay connected to the Sorority by
paying your international alumnae dues:

Visit www.gammaphibeta.org — click 'Pay Alumnae Dues'

OR

Mail a check to: **Gamma Phi Beta International Headquarters**
Attention: Accounting Department
12737 E. Euclid Drive
Centennial, CO 80111



The Happiness Tree: Celebrating the Gifts of Trees We Treasure

by Andrea Alban Gosline
(California-Berkeley)

Feiwal and Friends, \$14.95

Printed on recycled paper, this children's book introduces young readers to the virtues of peace, courage, love, generosity and tolerance while inspiring an appreciation of nature. Endearing illustrations bring the lessons to life for children of all ages, who are encouraged to care for the trees in their communities.



Reflections of Erin: The Importance of Belonging, Relationships, and Learning with Each Other

by Barbara McKenzie
(Bowling Green State)

Art of Possibility Press, \$15.00

The case for inclusive learning for the disabled is beautifully presented through the story of Erin, an endearing young woman diagnosed with a developmental disability at birth. Stirring narratives, insightful reflections and photographs of Erin's journey testify to the powerful connections and relationships that transpire from an inclusive learning environment.

The Family of Sukey Lewis in the Plantation South

by Heather Palmer
(Colorado College)

\$25.00

A crumbling plantation journal and faded letters from 1793 to 1865 are the resources used to chronicle a Southern family facing nineteenth century hardships. Poignantly, their words also tell the larger story of the disappointments and triumphs of many who built our nation. Sales of the book support The C.S. Roberts House Museum in Sherman, Texas, a virtually unchanged 1896 period home that gives visitors a glimpse of life as their grandparents might have known. To order the book, contact The Sherman Preservation League, P.O. Box 159 Sherman, TX 75091-0159.

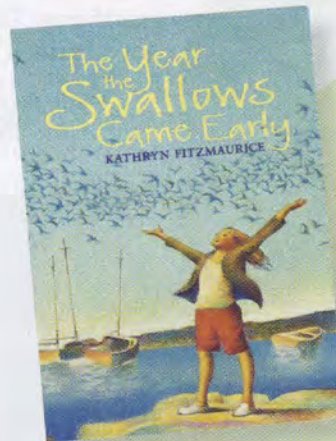


Cool Jewels: Beading Projects for Teens

by Naomi Fujimoto
(California-Berkeley)

Kalmbach, \$19.95

Delighting the fickle young adult market, "Cool Jewels" has earned exceptional reviews for its creativity, concise writing and step-by-step instructions for designing fun and trendy jewelry projects. Author Naomi Fujimoto is a senior editor at BeadStyle magazine and uses her know-how to present unique projects for beginners and experienced beaders.



The Year the Swallows Came Early

by Kathryn Fitzmaurice (Northern Arizona)

Bowen Press, \$16.99

Inspired by stacks of unpublished manuscripts inherited from her grandmother, author Kathryn Hughes Fitzmaurice tells the story of Eleanor "Groovy" Robinson, an 11-year-old girl faced with demoralizing hardships. As the world around her begins to crumble, Groovy learns about the importance of forgiveness and love as she discovers the complexity of the people in her life. This clever tale is a great read for young women, particularly ages 9 to 14.

Lessons in Volunteering

Graduates discover a love for “service to humanity” in foreign lands.

By Erin Dalpini (Valparaiso)

Carrie Carnevale (Boston)

Passion, determination and drive keep Carrie going on her toughest days as a Peace Corps volunteer in Catandica, Mozambique. Carrie teaches biology in Portuguese, a language she learned just prior to her assignment. “It is a challenge every day to understand students’ questions and respond to them,” admits Carrie. “Soon I’ll know more biology in Portuguese than in English.”

Now in her second year of service with the Peace Corps, Carrie has learned a few things about herself and other cultures. “I can live without many of the comforts I thought I needed,” she says. “People here find happiness from the simplest things.”

To those considering global service, Carrie suggests: “Volunteer as much as possible beforehand and see if you like it. There are days that are no fun, but if you can find something rewarding in each day it’s completely worthwhile . . . It’s the greatest adventure of my life thus far.”

Carrie’s Peace Corps assignment began in September 2007 and will end in November 2009.

Vanessa Porter (Boston)

Although Vanessa had always been involved in community service, it wasn’t until her friend Carrie Carnevale enlisted in the Peace Corps that she seriously considered applying for the program. “Carrie’s been such a source of inspiration for me,” says Vanessa.

The following year, Vanessa found herself at the base of the largest mountain in Honduras in the village of Catulaca. Her mission: to teach locals about ecological conservation, a significant issue in Honduras.

“A lot of developing countries have big problems with water contamination and health,” she says. “My program’s first objective is education; the second, biological bat research. I’m trying to teach people that bats are good for the environment.”

Vanessa’s Peace Corps assignment is perfectly suited to her skills: she holds a bachelor’s degree in biology, specializing in ecology and conservation. “The Peace Corps will fit you to a country and a project that you have the skills to develop,” she explains.

Reflecting on her experience, Vanessa admits, “Being able to make change and see change happen is so gratifying. They say, ‘It’s the toughest job you’ll ever love,’ and it’s definitely true.”

Vanessa’s assignment with the Peace Corps is from July 2008 to September 2010.

THE
CORPORATION FOR
NATIONAL AND COMMUNITY
SERVICE HOPES 75 MILLION
AMERICAN ADULTS VOLUNTEER
THEIR TIME IN SOME WAY BY
2010. SEE PAGES 6-7
FOR MORE ON HOW
GAMMA PHI BETA
NEEDS YOU!



Vanessa Porter used her college education to improve ecological conservation in Honduras.



Union College graduates Becky Broadwin (right) and her colleague Stephen Po-Chedley recently returned from combating malnutrition in Uganda.

Becky Broadwin (Union)

This past year, Becky worked in Ddegeya Village in southern Uganda as the recipient of her college's Minerva Fellowship—a program that allows recent graduates to engage in global service. Becky was one of two seniors selected in 2008 to develop programs for the village's health clinic.

After pinpointing the area's needs—education and nutrition—the team developed an early childhood education program and a community garden. Each day, Becky and her colleague taught preschool and helped maintain the garden to combat malnutrition. One result of their efforts is protein-rich peanut butter, homemade from the peanuts they grew.

The healthcare issues in Uganda have inspired Becky and given her direction for the future. "A medical mission came and I watched them save hundreds of lives doing very menial things," says Becky, who has recently decided to go back to school to obtain a degree in nursing. In the future, she hopes to return to Africa and heal those who are sick.

"I've grown up knowing that I want to serve others," says Becky. "I've been given so much—I have to give back every day."

Becky served in Uganda from August 2008 to April 2009. To learn more about the Minerva Fellowship, visit www.union.edu/StudentLife/Minervas/MinervaFellows.php.

Melissa Gant (St. John's)

Melissa, a photographer, went straight to work after graduation. On the job at Rachel Ray Magazine, she came across an article that sparked her interest to serve abroad. "I always wanted to go to Peru (and through Global Volunteers) I went for a week to Lima. It was the best week of my life," Melissa says.

Melissa served at the Puericultorio Perez Aranibar orphanage playing with the toddlers and bringing together siblings living in different areas of the facility to interact. "That was really special to me because I have two siblings who are my best friends," says Melissa.

Now considering a second service trip, Melissa enthusiastically supports global volunteerism. "It's good to change things up, take risks and try new things," she says.

Melissa traveled abroad during August 2008. To learn more about Global Volunteers, visit www.globalvolunteers.org.

Erin Dalpini is an alumna of Zeta Iota Chapter (Valparaiso) who now works in Chicago as an editorial assistant. A lover of travel and service, she hopes to someday participate in global service like the inspiring Gamma Phi Betas she learned about in writing this article.

What is the Peace Corps?

The Peace Corps traces its roots and mission to 1960, when President John F. Kennedy challenged students to serve their country in the cause of peace by living and working in developing countries. From that inspiration grew an agency of the United States government devoted to world peace and friendship.

Since that time, more than 195,000 volunteers have served two-year assignments in 139 host countries. Today, Peace Corps volunteers continue to help countless individuals who want to build a better life for themselves, their children and their communities (www.peacecorps.gov).

California Greeks Embrace Camping

By Blessing Waung (Southern California), USC Panhellenic President



Emily Smart (Southern California) helped Troy Camp kids "pass the can" at USC's homecoming football game, collecting \$30,000. The can campaign is a highlight for the campers, who go on the field before kick-off, and one way the entire campus supports the student-run camp.

Do you remember going away to camp as a kid? The excitement of packing your clothes in a duffel bag, hiking, making s'mores around the camp fire . . .

Now imagine a childhood devoid of cabins and camp songs, mess halls and skits, where kids never went to camp.

That sad scenario is exactly what led students at the University of Southern California (USC) to start Troy Camp more than 60 years ago. Since then, thousands of underprivileged Los Angeles schoolchildren have made their own camp memories. For our Beta Alpha Chapter, the cause coincides perfectly with our international philanthropy, camping for girls.

"For many kids, camp is the first time they even get to see the stars," says Brad Silnutzer, 2009 camp co-director. "We really couldn't send these kids without the support of Gamma Phi Beta."

This year, Beta Alpha Chapter members collected more than \$5,000 for Troy Camp at their "Crescent Classic: French Toast Feast" held on the chapter's lawn. The chapter also performed a skit with Beta Theta Pi Fraternity for USC's annual Songfest philanthropy event, which collectively raised \$20,000 for the camp. In May, Beta Alpha Chapter helped send more than 80 campers to Troy Camp.

"Working with children who come from very little has taught me a lot," says Troy Camp Counselor Emily Smart (Southern California). "All of our efforts for Troy Camp are to encourage children to dream big and go far in life."

Go Panhellenic

Alumnae, are you available to demonstrate inter-sorority cooperation and goodwill on your local Panhellenic association? The areas listed below need a Gamma Phi Beta representative — contact Sandy Burba, Sorority Director-Panhellenic Resources, at sandyburba@sbcglobal.net if interested!

Alabama: Etowah County and Walker County
Florida: Clearwater, Palm Beach County, Pensacola, St. Petersburg, Tampa
Louisiana: Acadiana, Baton Rouge, Lake Charles, Shreveport-Bossier
Massachusetts: Greater Boston
Mississippi: Hattiesburg and Jackson
North Carolina: Charlotte and Wilmington
New York: Greater Buffalo Area
Pennsylvania: Pittsburgh
Tennessee: Memphis Area
Virginia: Tidewater
West Virginia: North Central
Washington, D.C.

Panhellenic Presidents

Congratulations on your election!



Kolette Bohr
(Illinois State)



Katie Latta
(Boston)



Michelle Vatalaro
(Colgate)

Here We Grow!

Collegiate Installation

It's hard to describe the joyful feeling of re-opening a closed chapter, as alumnae of Delta Nu Chapter found out last March.

Ending a 15-year hiatus on the Missouri State University campus, Delta Nu is back after 87 enthusiastic new members were initiated by the ladies of Alpha Delta Chapter (Missouri-Columbia). Later, collegians celebrated at an installation reception with university administrators, International President Linda Malony (Southern California), Director of Ritual Margaret Pape (Oklahoma), parents, alumnae and friends of the chapter.

Well wishes may be sent to Delta Nu Chapter President Lindsay Farris, 1029 E. Elm Street, Springfield, MO, 65806-2610.



Charter members of the new Delta Nu Chapter were initiated March 7, 2009. The chapter was also re-installed that day.

Alumnae Extension

Kudos to our newest alumnae chapters! Notes of congratulations may be sent to the chapter presidents listed below.

Appleton Alumnae Chapter (Wisconsin)

Installed March 21, 2009

Amy Flanigan, President
Appleton Alumnae Chapter
1073 Stillmeadow Lane, #4
Menasha, WI 54952
acflanigan@gmail.com

Greater Miami Alumnae Chapter

Installed May 16, 2009

Meredith Aziz, President
Greater Miami Alumnae Chapter
606 NE 56th Street
Miami, FL 33137
artsymk@bellsouth.net

Myrtle Beach Alumnae Chapter (South Carolina)

Installed April 30, 2009

Laura Stanley, President
Myrtle Beach Alumnae Chapter
3524 Evergreen Way
Myrtle Beach, SC 29577
lauramstanley@aol.com

Northwest Arkansas Alumnae Chapter

Installed June 11, 2009

Tanya Prince, President
Northwest Arkansas Alumnae Chapter
5101 SW Blaire Mont Road
Bentonville, AR 72712
tanya@advantagetraavel.com

OUT AND ABOUT

Coming Soon to the University of Arkansas — Little Rock: Gamma Phi Beta!

Along with three other National Panhellenic Conference sororities, Gamma Phi Beta will begin a new Panhellenic community at University of Arkansas — Little Rock, in September 2009. Little Rock area alumnae are welcome to help out — we need you! Join us as we colonize Gamma Phi Beta's second collegiate chapter in Arkansas and work collaboratively with our Panhellenic sisters to realize a truly unique vision!

For more information, contact Deb Brubaker Randolph at Realdeb@aol.com.

Celebrating 90 Years of Sisterhood

Congratulations to two collegiate chapters — each celebrating its 90th anniversary this fall. We salute your success and longevity!

Psi Chapter (Oklahoma)

Psi Chapter will celebrate 90 years of "Sooner Sisterhood" October 23-24, 2009. Contact Chrissy Hancock at chrissy1ou@aol.com or (405) 447-6906 for more information.

Alpha Alpha Chapter (Toronto)

Alpha Alpha Chapter will commemorate its 90th anniversary at a gala dinner Saturday, October 24, 2009. Contact Laura at gtacrescent@gmail.com or (416) 427-6924 for information on helping and/or attending.

Nothing Ventured, Nothing Gained

Do fools rush in, or does the early bird get the worm? For Mary Beth Peil (Northwestern), jumping in feet first resulted in a diverse and successful career in the entertainment industry.

By Nicole Nelsestuen, Staff Writer



Mary Beth was last featured in *The Crescent* (March 1965) as a young woman at the start of her career.

It started in high school. On a whim, Mary Beth Peil volunteered to sing a solo, her first ever, in front of the entire student body. Terrified by her daughter's rash decision, Mary Beth's mother immediately signed her up for voice lessons.

"My vocal teacher saw that I had the goods," recalls Mary Beth. "She helped me pursue my talents on a larger scale."

While training as an opera singer at Northwestern University in the 1960s, Mary Beth was a proud Gamma Phi Beta, serving as Epsilon Chapter house president. "Joining Gamma Phi Beta brought a healthy balance to my life," says Mary Beth. "The friendships I formed have been gifts that keep giving."

Turning Aspirations into Reality

Recently graduated and high on ambition, Mary Beth took a risk and moved to New York City to pursue her music dreams. There, her vocal teacher arranged for an audition with the renowned Metropolitan Opera Studio.

After hitting her last high note, the judges were impressed and convinced the bold soprano to audition for the traveling Metropolitan Opera National Company. "I entered it without contemplating," remembers Mary Beth. "I wasn't afraid to make a leap."

As a member of the company, Mary Beth toured North America for the next year, commencing her 20-year career in opera.

Taking a New Stage

Impulsively, Mary Beth resolved to leave the world of opera and conquer another form of art: acting. "I realized that I was an actor who sings, not a singer who acts," Mary Beth reveals.

She began taking acting classes, leading to a role in the musical *Kiss Me Kate* where her performing talents were discovered. Next stop: Broadway.

In 1983, Mary Beth set her sights on the role of Anna in *The King and I*. "Auditioning for such a grand role with no Broadway experience was chancy," says Mary Beth. "I would have always regretted not auditioning, so I just went for it."

Mary Beth got the part. Her superb performance merited a Tony nomination for Best Featured Actress in a Musical; but even that honor wasn't enough to satiate the ever-evolving performer. After reading just two pages of a script for a television pilot, Mary Beth auditioned and landed the part of 'Grams' on the wildly popular series of the 1990s, *Dawson's Creek*.

Mary Beth continues to pursue roles while living in New York City. By advancing confidently in the direction of her dreams, she paved a path of unimaginable success in a highly competitive industry.

**"JOINING GAMMA PHI BETA BROUGHT A HEALTHY
BALANCE TO MY LIFE."** — Mary Beth Peil

A Picture is Worth . . .

Enjoy these creative photographs, the winning entries in *The Crescent* photo contest! Every member who participated had something wonderful to contribute; see more photos online at www.gammaphibeta.org.



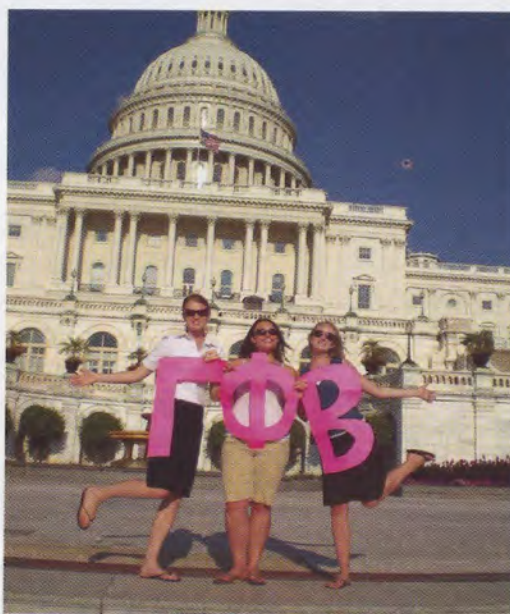
Alumna Mary Vanier (Kansas State) took her winning photo, "Can I Caddy for You?" at Beta Upsilon Chapter's golf philanthropy event benefiting Camp Fire USA and the local Boys & Girls Club. Pictured is Kelly Erwin (Kansas State) and Lauren Casper, a legacy whose mom is the chapter's house corporation board president.



At the Kappa Chapter house, "311 10th Ave SE" was taken by collegian Samantha Prudhon (Minnesota-Twin Cities). "I liked that the chair in the basement room denotes human presence," Samantha says.



It's clear from "Beta Mu House" at Florida State University that alumna Karen Meyers Ray (Florida State) feels pride for her chapter house.



"G-Phi-Bs in D.C." was submitted by collegian Ashley Buxton (California-Los Angeles). These Alpha Iota Chapter members (from left: Julianne Doelz, Jessica Lenart and Ashley Buxton) show Gamma Phi Beta pride in front of the U.S. Capitol.

About our Grand Prize Winner

Judges overwhelmingly selected "Chinese New Year" by alumna Stephanie Eberwine Bass (Miami) to showcase on this issue's cover, citing the unique perspective, emotional reaction and creative composition. "Awesome photo!" says contest judge Alanna Scully (Bridgewater State). "I wanted to know what was being celebrated and join in! Great job in a low-light situation as well! Nicely done."

Contest Judges

Special thanks to our judges, professional photographers Rachel Priddy Ohlschlager (California State-Fullerton), Alanna Scully and Danielle Stokes Hobbs (Georgia).

Contest Sponsors—Thank You!

Bev Key, Inc. • Chapter Communications, Jeremy Turner • Corporate Identity, Linda Ray (Southern Methodist) • DesignerGreek.com, Stefany Bernard • Digital Pix & Composites, dpc.com, Erica & Camie • DonovanDesignsInc.com, Katie Vincent • FraternalComposite.com • Fraternity Row, Lewis Dawes • Gamma Phi Beta Foundation • GetSomeGreek.com, Gerad Ewing • Gigi Garner (Southern California) • GreekBox.com, Doug Baker • GreekGear.com, Joseph Tantillo • GreekMonograms.com, Bud Townsend • GreekU.com, Lory Passov • Heartstrings, available at greek101.com, Alicia Storbeck • KotisDesign.com, Eric Hamlin • MyChapterRoom.com, Penny Zamkov • MyCharmedLife.com, Patty & Chris • PurlStitchDesigns.com, Darla Schid • University Photography, Karen Guber • VineyardVines.com, Tim Sears

BALANCE IS THE KEY:



Unlocking Happy Relationships

By Shelley Sommerfeldt, Psy.D. (Texas A&M-Commerce) and Mimi Burch McMann, Editor

And from our other “expert” sisters:

Sue Johnson Goode (Colorado College), married for 49 years: My all-time favorite advice is, “Do to others as you would have them do to you” — yes, the Golden Rule! If followed, we would all have better relationships.

Miriam Resnick Gomberg (Nevada-Reno), married for 13 years: Be true to yourself and your own identity.

Misha Campbell Mann (Michigan State), married for 13 years: It helps to have the same values and overall goals. It’s easy to share your thoughts when you know your partner is open to listening to you and working together.

Stacey Chomko Schalk (Colorado-Boulder), married for 12 years: Stop and remember that the world doesn’t revolve around you. Think about your partner’s feelings before you talk.

Jami Baize Sargent (Indiana State), married for eight years: Give lots of love and respect daily.

Most women desire healthy, mature relationships that bring joy and satisfaction to life. Maintaining a healthy relationship is challenging, but it’s also an exciting opportunity to work on intimacy and connecting with others. While two imperfect people can never have a perfect relationship, these keys can enhance your love life — or, with a little modification, improve friendships or family relations.

Be Yourself

Many have known a friend, family member or sorority sister who, the moment she begins a relationship, separated from people and activities she once enjoyed.

When Nelda Arredondo-Parker (Illinois State) met her future husband, she found it easy to immerse herself in his work-related activities, becoming his unofficial assistant who jumped at his beck and call. In the moment, “you don’t realize how much you’re giving up,” she says. “A little at a time, you lose contact with your friends until you don’t have any left.”

After several years, Nelda recognized her need for a separate identity, but the realization brought her marriage to a crisis point. “My husband had to adjust his expectations of my role in his life. I couldn’t continue to anticipate his needs 24/7.”

Cultivating your own interests, activities and friends is crucial to overall happiness and often results in a more satisfying relationship. The goal is to preserve each individual’s identity while investing time and effort together. After more than 20 years together, Nelda and her spouse have now achieved balance in this area.

He Says, She Says

We all have expectations, especially for our relationships. When our partners fail to have the magic ability to read our minds, we experience disappointment.

It's important for both partners to talk about their feelings and expectations — and just as important to listen. This is particularly true if your partner is less verbal than you, as Nancy Pasawicz Spada (Florida State) has discovered.

"Occasionally, my husband has some difficulty communicating," Nancy shares. "It takes him quite some time before he'll complain about something."

Elexa Dixon (Southern California) believes that women have wanted their men to communicate better since time began. The fact that the two sexes use words differently is something that women should just accept, she advises.

"I've found it's important to express myself as plainly as possible," says Elexa. "Being coy is a waste of time!"

Mutual communication inspires a sense of safety, promotes confidence and encourages the honest expression of feelings. It creates a better environment for love — and passion!

To Forgive is Divine

Of course, fights and arguments are inevitable. But if conflicts are not properly resolved, couples find themselves in a negative pattern of arguing: nagging, becoming emotionally detached, using sex as a bargaining tool.

In a hurry to ease tensions, we often "kiss and make up," proceeding as if the issue has been resolved. In fact, if forgiveness is not extended, old arguments can resurface; it's easy to get in this rut when we are unable to let go of hurtful events from the past.

One sister from California forgave what some would call a deal-breaker: her husband's infidelity.

His remorse, and the honest dialogue that followed, paved the way for her to release the pain of betrayal and move forward with her spouse.

"I realized that everyone is capable of making a big mistake like that," she says. "To rebuild trust after an affair, it takes a lot of stubborn commitment, work and grace."

Ideally, a conflict ends with true forgiveness, a difficult step that takes practice. It is much easier to hold grudges and resentments but

learning to genuinely forgive will lead to a more peaceful relationship.



Keep Courting

After a period of time, many couples experience a roadblock: They like the comfort and familiarity of a long-term relationship, but the routine bores them and they complain there isn't a spark. This is a sign that change is needed!

Brenda Callahan Brumfield (Indiana State) has been married for 18 years and admits she and her husband are working on keeping the passion alive at this stage in their relationship.

"We used to talk about politics, music, outdoor activities," Brenda says. "When you're busy getting the kids to their activities and getting dinner on the table, it's easy to forget there's this person you were nuts about."

Just like a summer romance that swept you off your feet, your long-term relationship can be passionate and exciting. Try mimicking your courtship with creative date nights; you'll both remember the exhilaration of young love. Don't underestimate the thrill of spontaneity and trying something new together. For the Brumfields, going to new concerts and taking overnight trips together have helped the couple refresh their mutual affection.

Relationships can be tough and challenging, but also joyful and exciting if you can maintain a balance in these four areas. Good luck in keeping *your* most important relationships healthy!

Shelley Sommerfeldt, Psy.D., is a licensed clinical psychologist practicing in Los Angeles. For more of Shelley's relationship tips, go to www.drssommerfeldt.com.



SORORITY LIFE

REGION 1

MASSACHUSETTS

♥ ♣ Cookies were swapped at **Boston Alumnae Chapter's** annual bakery exchange. Members also wrote notes of encouragement to children for Day of Service.

♥ 🏆 **Epsilon Eta Chapter** (Bridgewater State) is the largest Greek organization on campus after welcoming 23 women and surpassing quota. To celebrate their success, members went to dinner and played laser tag.

♥ ♣ Philanthropic spirits were high at **Epsilon Phi Chapter** (Bentley). The chapter sponsored a hypnotist performance with proceeds benefitting Camp Fire USA, wrote letters to soldiers overseas and helped local Girl Scouts with cookie sales.

NEW YORK

♥ 📖 **Delta Tau Chapter** (Colgate) had 90 members make the Dean's List and received the Highest Chapter GPA Award at the Greek Awards Banquet.

♥ 🏆 **Epsilon Tau Chapter** (Rochester) exceeded quota for recruitment and had a new member retreat at the Strong Museum of Play.



Traveling to Manhattan, members of Zeta Mu Chapter (St. John's) handed out bagged lunches, toiletries and clothing to those in need.

♥ Trivia nights, karaoke outings and picnics were sisterhood events **New York City Alumnae Chapter** members enjoyed.

♥ A great time was had by all at **Rochester Alumnae Chapter's** La-Tea-Da Luncheon.

PENNSYLVANIA

♥ Showing their competitive spirit, members of **Alpha Upsilon Chapter** (Pennsylvania State) took first place finishes in kickball and tug-of-war competitions and placed second overall for Greek Week.

♥ Traveling to New York City for a retreat, members of **Delta Kappa Chapter** (Lehigh) explored the city by shopping in Times Square, touring the Hershey Factory and seeing the musical "Chicago."

♣ Sisters of **Epsilon Alpha Chapter** (La Salle) wrote cheerful cards for senior citizens at a local nursing home.

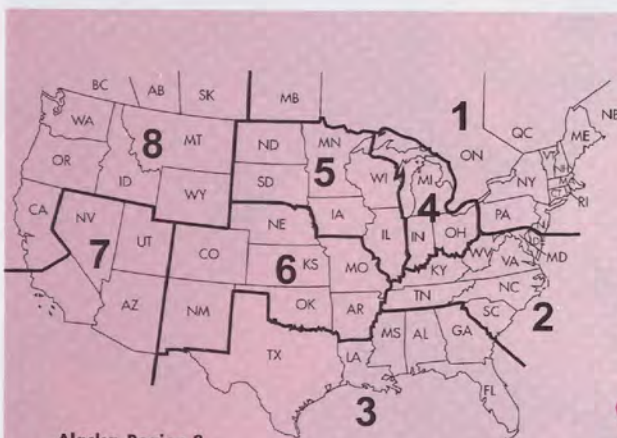
ONTARIO

♣ **Alpha Alpha Chapter** (Toronto) held its Crescent Classic: Pancake Breakfast and collected \$700 to support Girl Guides of Canada.

♥ 🏆 **Greater Toronto Alumnae Chapter** visited a diamond exhibit and hosted a scholarship luncheon for its collegiate sisters. Members are busy planning the 90th anniversary of **Alpha Alpha Chapter** (Toronto).

VERMONT

♣ **Green Mountain Crescent Circle** raised funds to send young girls to Camp Hochelaga with its annual white elephant auction.



Member News is now called SorORITY LIFE!

We've changed the name to better reflect the chapter and crescent circle information included here: sisterhood, philanthropy, leadership, scholarship. Read all about it!

Symbol Key:



Sisterhood



Philanthropy



Leadership



Scholarship

Alaska-Region 8
Hawaii-Region 7

REGION 2

NORTH CAROLINA

♥ The women of **Epsilon Psi Chapter** (North Carolina-Asheville) learned new recruitment songs, played games and set goals at their chapter retreat.

SOUTH CAROLINA

♥ ■ **Columbia Alumnae Chapter** presented a scholarship for dues at **Zeta Sigma Chapter's** (South Carolina) Senior Celebration.

♥ ♣ Sisters of **Epsilon Theta Chapter** (Clemson) tailgated and attended a baseball game with family over Parents Weekend and have been fundraising for Relay for Life.

TENNESSEE

♥ After attending "Menopause: The Musical," members of **Nashville Alumnae Chapter** enjoyed tea and lunch. Members have also been meeting weekly for walks.

VIRGINIA

♣ **Alpha Chi Chapter** (William and Mary) was recognized at the All-Greek Spirit Night as the sorority with the most school spirit.

♣ Recognizing Day of Service, **Epsilon Pi Chapter** (George Mason) and **Northern Virginia Alumnae Chapter** collected toys and books to donate to Children's Hospital.

♥ ♣ **Zeta Beta Chapter** (Virginia) learned self-defense moves at a sisterhood outing and participated in a stationary bike-a-thon to raise funds for children in Uganda.

REGION 3

ALABAMA

♣ ■ **Epsilon Lambda Chapter** (Alabama) had eight members inducted into The Order of Omega, a Greek honor society.

♥ ♣ **Montgomery Alumnae Chapter** has been active with pot luck dinners, painting and cooking classes. Alumnae also supported the Montgomery Panhellenic Council's scholarship fund by selling flowers.

FLORIDA

♥ ♣ **Jacksonville Alumnae Chapter** hosted the Syracuse Triad Luncheon for alumnae of the three sororities founded at Syracuse University.

♥ ♣ Monthly luncheons complete with a mélange of guest speakers helped **Naples Area Alumnae Chapter** complete a \$25,000 scholarship endowment for the Gamma Phi Beta Foundation. Sisters also enjoy meeting regularly to play bridge.

♥ **Tallahassee Alumnae Chapter** has been making preparations for **Beta Mu Chapter's** (Florida State) Senior Celebration.

♥ ♣ Camaraderie and cheesecake were the themes of **Tampa Bay Alumnae Chapter's** sisterhood dinner. Members also treated residents of Mercy House, the chapter's local philanthropy, to an ice cream social.

GEORGIA

♣ For the second year, **Delta Upsilon Chapter** (Georgia) took first place in skit and spirit contests during Greek Week. The chapter flourished during recruitment, achieving quota.

♣ **Zeta Omega Chapter** (Kennesaw State) had fellow Greeks take part in a dance showdown for its Crescent Classic.

Flooding Threatens Houses

April showers combined with excessive snowmelt and the Red River separating Minnesota and North Dakota rose dangerously, threatening to damage two Gamma Phi Beta chapter houses.

In Moorhead, Minnesota, Gamma Mu Chapter members prevented sewer back-up by plugging the basement drains of their 108-year-old home, and then labored to save their city. After classes were canceled, members "worked through the night at 'Sandbag Central,' keeping the sandbag operations going 24 hours a day," reports Chapter Advisor Kelly Pinke Hockett (Minnesota State-Moorhead).

Across the river in Grand Forks, North Dakota, members of Alpha Beta Chapter acted quickly to save their house, a 1923 landmark known as the Pink Castle.

"We are truly grateful to the Greek community at University of North Dakota," says Chapter Advisor Stephanie Weis (North Dakota). "Within hours of our call for help, people were waiting outside to fill sandbags."

LOUISIANA

♥ Touring New Orleans, members of **Epsilon Mu Chapter** (Loyola) visited the Tabasco Factory and the Acme Oyster House as sisterhood outings.

TEXAS

♥ **Dallas Alumnae Chapter** met for wine tasting and a cooking class. The chapter also hosted Gamma Phiasta, a Mexican-themed dinner, to recognize the seniors of **Alpha Xi Chapter** (Southern Methodist).



For the second consecutive year, Delta Iota Chapter (Purdue) took first place in Bowl-A-Rama, a Greek-sponsored philanthropy event supporting speech and hearing sciences.

♥ **Greater Fort Worth Alumnae Chapter** relished the Hats Off to Alumnae Brunch, hosted by **Zeta Chi Chapter** (Texas Christian). The alumnae chapter is looking forward to welcoming three new alumnae initiates.

♣ Members of **Gamma Iota Chapter** (Midwestern State) volunteered at a local grocery store for their Crescent Classic: Carts for Camp Fire, raising \$800.

♥ ♣ A fundraising Bunco night and weekend getaway to downtown Houston brought members of **North Houston Alumnae Chapter** together.

♥ ♣ Big Sisters were revealed at **Zeta Chi Chapter's** (Texas Christian) roller-skating sisterhood event. The chapter also took first place overall for Greek Week competitions for the second consecutive year.

♣ Recognizing academic achievement, **Zeta Rho Chapter** (Texas A&M-College Station) held its first scholarship banquet.

REGION 4

OHIO

♥ ♣ **Alpha Nu Chapter** (Wittenberg) holds the highest cumulative Greek GPA on campus and participated in Day of Service by cleaning-up a building that provides after-school programming. Members also enjoyed Bingo, crafting and games at sisterhood events.

♥ ♣ **Beta Epsilon Chapter's** (Miami) Crescent Classic supported Camp Fire USA with a cake decorating contest, raffle and bake sale. The chapter explored the Cincinnati Zoo at formal with its 48 new members and took home second place in Greek Week competitions.

♣ **Beta Gamma Chapter** (Bowling Green State) members participated in their university's Dance Marathon philanthropy event for Children's Miracle Network by dancing for 32 consecutive hours. Several members also biked 170 miles to raise funds.

♥ ♣ Recruitment workshops, officer retreats and sisterhood outings have helped the women at **Lake Erie College** build their colony. The ladies also held an Easter egg hunt for the community.

INDIANA

♥ ♣ Olé! More than 800 people attended **Beta Phi Chapter's** (Indiana) Crescent Classic: Gamma Phiasta, collecting \$4,000 for Camp Fire USA and the Boys and Girls Club. Risk management courses, bowling, roller-skating and self-defense classes have kept the chapter connected.

♥ ♣ **Zeta Iota Chapter** (Valparaiso) introduced 15 new members to the sisterhood by participating in Valpo's Got Talent, an event to benefit Camp Fire USA. Members also invited their moms up for a weekend of fun.

REGION 5

ILLINOIS

♥ ♣ **Beta Eta Chapter** (Bradley) invited all sorority members on campus to attend Swap-a-Sis, a workout class created to unite Greek women. Sisters had a blast at their celebrity couples-themed formal and have been volunteering regularly at St. Francis Hospital.

♥ ♣ Members of **Chicago Far West Suburban Alumnae Chapter** held a book sale to benefit Camp Fire USA and luxuriated in a decadent spa night together.

♥ ♣ After initiating 33 members, **Epsilon Chapter** (Northwestern) sold Hershey's candy to benefit the American Heart Association.

WISCONSIN

♣ The women of **Gamma Gamma Chapter** (Wisconsin-Milwaukee) invited Dr. Mary Ann Callais to speak to the entire Greek community about the importance of ritual at Greek Speaker Night.

🍷🍷 **Gamma Rho Chapter**

(Wisconsin-Oshkosh) has been involved with Big Brothers, Big Sisters raising more than \$1,000 for the organization and teaching our Core Values to teenage girls in the program.

♥️🍷 **Milwaukee Alumnae**

Chapter now has a complete alumnae advisory board to support the collegians of **Gamma Gamma Chapter** (Wisconsin-Milwaukee). Members also bonded over a fondue night and trip to the museum.

IOWA

🍷🍷 **Omega Chapter** (Iowa State) raised money for Iowa City's Children's Hospital by partaking in its university's Dance Marathon fundraiser. The chapter received an award for the most participation in the event and earned first place for its musical skit during Greek Week.

🍷 **Rho Chapter** (Iowa) boogied nonstop for 24 hours at a university-sponsored philanthropy event to support Iowa Children's Hospital.

🍷📖 **Gamma Psi Chapter** (Northern Iowa) earned the Chapter of the Year Award and the Highest Sorority GPA Award at the Greek Awards.

Save the Date!

2009 House Corporation
Board Conference
October 16-18, 2009
Kansas City, MO
All HCB members are invited!

REGION 6

ARKANSAS

🍷🍷 **Zeta Phi Chapter** (Arkansas-Fort Smith) held a Valentine's Day party for underprivileged girls at Girls Inc. and earned second place overall in Homecoming competitions.

COLORADO

♥️🍷 Sombrosos and tacos were abundant at **Tau Chapter's** (Colorado State) Gamma Phieta, where more than \$2,500 was collected for Camp Fire USA. Members also shared stories with local alumnae at an ice cream social.

🍷 **Theta Chapter** (Denver) raised enough money from its Spagammi Dinner to send a girl from the Make a Wish Foundation to Disney World with her family.

KANSAS

♥️🍷 **Manhattan Alumnae Chapter** hosted a three-on-three basketball tournament with proceeds benefitting Camp Fire USA and the Boys and Girls Club. Members also wrote letters to soldiers in Iraq and held a Senior Dinner for graduates of **Beta Upsilon Chapter** (Kansas State).

♥️ **Beta Chi Chapter** (Wichita State) hosted a dinner for alumnae to honor the chapter's founding members.

♥️ **Wichita Alumnae Chapter** has been making and mending ritual attire for nearby collegiate sisters.

MISSOURI

🍷 The women of **Delta Nu Chapter** (Missouri State) held a successful Crescent Classic, complete with golf tournament, barbecue and bake sale.

🍷🍷 **Gamma Tau Chapter** (St. Louis) cultivates relationships with young girls by volunteering every weekday at Girls Inc. The chapter also received an award from its university for its innovative alcohol-free programming.



Raising awareness for Will Starve for Food, a 25-hour food fast, Gamma Pi Chapter (Minnesota-Mankato) makes a paper chain to hang in the university's student union. Each link (6,000 total) represents a hungry individual in the Mankato area.

SORORITY LIFE



Theta Chapter (Denver) seniors celebrate their induction into alumnae status by performing "Flip Flop" for Denver Alumnae Chapter members.

♥ ♠ **Kansas City Alumnae** sponsored Kids on Ice, an event where children received a book and were able to ice skate with Clifford the Big Red Dog. Members also watched basketball games together at Sisters Night Out.

♠ ♣ **Zeta Delta Chapter's** (Southeast Missouri State) Crescent Classic included relay races, tug-of-war and a volleyball tournament, collecting \$770 for Camp Fire USA. The chapter also took first place in a kickball tournament during Greek Games.

NEBRASKA

♥ ♠ To welcome the 52 new members of **Epsilon Delta Chapter** (Creighton), members of **Omaha Alumnae Chapter** hosted a lasagna dinner, complete with a guest speaker from Camp Fire USA. Later, alumnae indulged in a catered dinner cooked by a renowned Australian chef.

♠ Helping to raise more than \$40,000 for St. Jude's Hospital, **Gamma Kappa Chapter** (Nebraska-Kearney) participated in Up 'Til Dawn, a campus-wide event.

NEW MEXICO

♥ Testing their Gamma Phi Beta knowledge, members of **Albuquerque Alumnae Chapter** played Ritual Jeopardy at their last meeting.

OKLAHOMA

♥ ♠ **Beta Omicron Chapter** (Oklahoma City) enjoyed a fun-filled sisterhood retreat with homemade goodies, games and a visit to the video arcade. Racing for a cure, the chapter had three teams compete in Relay for Life.

REGION 7

ARIZONA

♥ **Alpha Epsilon Chapter** (Arizona) members had fun playing volleyball, tie-dying shirts and playing water games.

CALIFORNIA

♠ **Beta Lambda Chapter** (San Diego State) scored at its Crescent Classic: Flag Football Tournament, raising \$4,200 to benefit Camp Cohito.

♠ Teaming up with Cold Stone Creamery, **Delta Phi Chapter** (California State-Bakersfield) scooped ice cream to raise money for the American Cancer Society.

♥ Celebrating 25 years as a chapter, **Epsilon Gamma Chapter** (San Diego) invited alumnae back to campus for a reunion.

♠ **Gamma Eta Chapter** (California State-Long Beach) collected \$700 at Tarts n' Hearts, a Valentine's Day fundraiser for Camp Fire USA.

♥ **San Diego Alumnae Chapter** members met at Coronado Island to catch up over coffee.

♠ With diligent fundraising efforts, **South Bay Alumnae Chapter** helped raise more than \$14,000 for collegiate scholarship funds at an auction held by South Bay Panhellenic.

♠ **Alpha Iota Chapter** (California-Los Angeles) members supported pediatric HIV/AIDS and held their Crescent Classic: G Phi Joe, an obstacle course fundraiser for Camp Fire USA.

♥ ♣ Members of **Epsilon Nu Chapter** (Chapman) bonded during a ropes course adventure. They also earned third place for their skit during Greek Week.

♥ Members of **Long Beach Alumnae Chapter** took a fitness class, met for coffee and went wine tasting.

HAWAII

♥ Sisters of **Hawaii Alumnae Chapter** explored the USS Missouri and toured an international shoebox sculpture exhibit during recent excursions.

NEVADA

♥ **Las Vegas Valley Alumnae Chapter** has been enjoying regular get-togethers at lunch and the movies.

REGION 8

CALIFORNIA

♥ Proving that sisterhood lasts beyond collegiate years, numerous alumnae came together for a brunch hosted by **Eta Chapter** (California-Berkeley).

♥ ♣ **Marin County Alumnae Chapter** donated books to the North Bay Children's Center and also met for a barbecue.

♥ Members of **Delta Chi Chapter** (California State-Sacramento) enjoyed ocean breezes at an overnight retreat to Irish Beach.

IDAHO

♥ Lending a hand, **Moscow Alumnae Chapter** helped **Xi Chapter** (Idaho) with its initiation and Senior Celebration.

♥ **Xi Chapter** (Idaho) excelled during Greek Week, winning the banner and skit competitions and earning first place overall.

OREGON

♣ Fulfilling the value of labor, **Corvallis Alumnae Chapter** collected food for a local food bank at its Hearts and Moons Luncheon.

♥ Crisp green salads were enjoyed at **Eugene Alumnae Chapter's** luncheon where plans for **Nu Chapter's** (Oregon) Senior Celebration were prepared.

WASHINGTON

♥ Making the trip to Priest Lake in Idaho, **Beta Sigma Chapter** (Washington State) bonded at its sisterhood retreat with games, a pizza party and a candle pass. Throughout the weekend, educational workshops were taught.

♣ **Lambda Chapter** (Washington) babysat children of alumnae and sold candy to raise money for the Cystic Fibrosis Foundation. The chapter also participated in the Foundation's walk-a-thon.

♥ ♣ Flipping pancakes for philanthropy, **Zeta Alpha Chapter** (Eastern Washington) raised \$500 for Camp Fire USA at its Crescent Classic: Pancake Feed. Members went snow tubing down the slopes of Mt. Spokane for a sisterhood event.

BRITISH COLUMBIA

♣ ♣ **Alpha Lambda Chapter** (British Columbia) was named Sorority of the Year by its Panhellenic Council. The chapter also worked to spruce up cabins at Camp Olave in time for summer campers.



Spokane Alumnae Chapter honored 75-year member Margaret Brodrecht Conklin (Idaho) for her lifelong commitment to Gamma Phi Beta.

IN MEMORY

This list reflects notifications received at International Headquarters from January 14 to April 15, 2009.

Alpha I Syracuse

Florence Obenhoff Rothschild, 1930
Dorothy Acheson Slotnick, 1936
Betty Werfelman McPhail, 1938
Phyllis Fraser Whitney, 1952

Beta I Michigan

Shirl Conway Larson, 1935
Virginia Handeyside Gould, 1936
Mary Anne McCusker Wilson, 1951

Gamma I Wisconsin-Madison

Peggy Rust Johnson, 1947
Sheila Kivlin Reul, 1948
Mildred Gardner, 1949

Delta I Boston

Marion Bailey Hilberry, 1942

Epsilon I Northwestern

Katharine Dickson Granquist, 1930
Marguerite Ray Carroll, 1934
Helen Labuy Shackelford, 1938
Katherine Crofts Storm, 1941
Marjorie Johnston Peterson, 1944

Eta I California-Berkeley

Betty Jones Kroeber, 1943
Beverly King Freitas, 1946

Theta I Denver

Marie Elizabeth Baker Brunjes, 1933
Margaret Walling Preston, 1933
Bette Boyd Thulin, 1944

Kappa I Minnesota-Twin Cities

Justine Deutsche Kelly, 1940
Martha Johnson Markus, 1945

Lambda I Washington

Kathryn Jeklin Scoggins, 1936
Jean Crenshaw Smart, 1936
Barbara Stewart O'Reilly, 1940
Carol Butterworth Jacobson, 1944
Geraldine Anderson Lucks, 1949

Mu I Stanford

Jo Glasson Smith, 1944

Nu I Oregon

Sara East Coit, 1959

Xi I Idaho

Margaret Brodrecht Conklin, 1933
Jean Spooner Bowers, 1936
Betty McBean Lawrence, 1939
Dorothy Follett Brown, 1941
Helen Dygert Pope, 1949

Pi I Nebraska-Lincoln

Mary Gerlach, 1932
Alice Hansen Marvel, 1953
Ruth Skogland Johnson, 1927

Sigma I Kansas

Dorothy Birt Sturgeon, 1931
Betty Learned Burns, 1942
Dorothy Miller Allen, 1943

Tau I Colorado State

Carolyn Wagner Wickersham, 1951

Phi I Washington-St. Louis

Josephine Kumbera Marschel, 1935

Chi I Oregon State

Martha Brigham Bearer, 1937

Psi I Oklahoma

Imogene Merrill Doss, 1925
Dorothy Guerriero Dunnett, 1934
Mary Gold Thomas, 1945
Leah Eastham, 1954

Omega I Iowa State

Caroline Woodruff Martens, 1930
Mildred Newcomb Hill, 1935
Patricia Halderman Gregory, 1946
Barbara Knapp Engram, 1948
Nancy Butler Pegram, 1950

Alpha Beta I North Dakota

Adeline Froiland Rossmiller, 1940
Nancy Peterson Heising, 1953

Alpha Gamma I Nevada-Reno

Muriel Bikker Heck, 1933
Ethel Kent McNeely, 1936

Alpha Delta I Missouri-Columbia

Sarah Snodgrass, 1969
Lauren Chapin, 1978

Alpha Epsilon I Arizona

Imogene Richey Russell, 1935
Jean Tillotson Anderson, 1937
Kindra Buchanan McLennan, 1997

Alpha Zeta I Texas

MaryAnn Campbell Ford, 1958

Alpha Theta I Vanderbilt

Louise McMurtry Payne, 1936
Frances Loring, 1941
Mary Enich Angelios, 1960

Alpha Iota I California-Los Angeles

Beverly Daugherty Stockert, 1952
Annette Hutton, 1980

Alpha Lambda I British Columbia

Frances Hillier Nelson, 1946

Alpha Nu I Wittenberg

Mary Wellinger Pittman, 1942

Alpha Xi I Southern Methodist

Mary Armstrong Brown, 1953
Anne Yeager Hansen, 1958

Alpha Omicron I North Dakota State

Caroline McKinnon Boyer, 1990

Alpha Pi I West Virginia

Mary Bishop Henry, 1930

Alpha Upsilon I Pennsylvania State

Clare Darby Scott, 1933

Alpha Phi I Colorado College

Evelyn Richter Baker, 1932
Ruth Teason Bailey, 1940
Marjorie Walker Spencer, 1947

Alpha Chi I William & Mary

Rachel Lyne Jorgensen, 1942

Alpha Psi I Lake Forest

Mary Yarnall Todd, 1945

Alpha Omega I Western Ontario

Jacqueline Gregory, 1940

Beta Beta I Maryland

Beatrice Lee Sibbald, 1950

Beta Gamma I Bowling Green State

Glennis Cole Syroid, 1944

Beta Delta I Michigan State

Sally Foster Lockhart, 1956

Beta Zeta I Kent State

Adelaine Metcalf Koyle, 1951

Beta Eta I Bradley

Rosemary Clinebell Thomson, 1955

Beta Theta I San Jose State

Janet Longden Greathead, 1948

Beta Iota I Idaho State

Shirley Davis Probasco, 1954

Beta Kappa I Arizona State

Carole Edwards Hosfield, 1962

Beta Mu I Florida State

Evelyn Carter Altaffer, 1951

Beta Xi I Ohio State

Cynthia Morgan O'Connell, 1953
Ritchie Baldwin Teach, 1954

Beta Pi I Indiana State

Mary Todd Rice, 1953

Beta Rho I Colorado-Boulder

Donna Hohmann Ewy, 1955
Diana Smith Carney, 1956
Catherine Cottrell Salerno, 1957

Beta Phi I Indiana

Nancy Tarnow Bartels, 1957

Gamma Epsilon I Puget Sound

Mary Miller McLarney, 1962

Gamma Iota I Midwestern State

Penelope Baldwin, 1963
Phyllis Haubert Laughon, 1963

Gamma Nu I Lamar

Virginia Studdard Roberson, 1967

Gamma Pi I Minnesota

State-Mankato
Dorothy Madigan Radichel, 1968

Gamma Tau I St. Louis

Mildred Jakobs Fuller, 1969

Delta Phi I California

State-Bakersfield
Erin Ruge, 2009

Epsilon Omega I Miami (FL)

Elise Beckendorf, 1993

TAU CHAPTER

Powder Compact, c. 1920s

If there's one thing that hasn't changed over our history, it's the way Gamma Phi Betas like to look their best.

That truism is evidenced by the vintage brass powder compact on display in our museum. The exterior is adorned with a raised crest; inside, a worn applicator and traces of a fair shade of powder remain to remind us of the compact's owner, Vera Dunton Hebert (Colorado State). Vera was initiated November 18, 1919, and later served as a province secretary and province alumnae director in the 1950s.



According to www.freebeautytips.org, women became bold about applying their make-up during the roaring '20s. Hollywood stars of the era made pale skin, blood red lips and overly-done eyes the must-have look for fashionable young women, known as flappers for their unconventional conduct and dress. Trend-setters no longer hid their rouge pots and powder puffs, as portable make-up containers like tube lipstick hit the market. Vera's pocket Gamma Phi Beta powder case was likely the ideal accessory to her boyish clothing and bobbed hair, popular styles at the time.

What were the popular looks in your day? Let us know at TheCrescent@gammaphibeta.org. If you have a unique piece of Gamma Phi Beta history, contact our museum curator at sochoa@gammaphibeta.org to discuss donating your item to our collection.



THIS VINTAGE PHOTO DEPICTS A TYPICAL YOUNG WOMAN'S FASHIONABLE STYLE IN THE 1920s: BOBBED HAIR, PALE COMPLEXION AND BOYISH CLOTHING.

A True Tearjerker

Thank you for your wonderful article on my daughter Jennifer and her mother Susan (Spring 2009). The incredible coincidence and resulting legacy at Gamma Phi Beta is remarkable. Your thoughtfully-written article will mean a tremendous amount to Susan's family, as it will to mine.
— Fred Honda



I was delighted to find *The Crescent* in my mailbox yesterday (Spring 2009). I began to flip through the pages and saw my old friend Sue Bradley. As I read the article, I broke out in tears. I want to let Jenny Honda know that even after 30 years, I remember her mother as a dynamic force and a loving and caring person.
— Chris Chesrown (Arizona State)

Letters to the Editor



Send your comments to TheCrescent@gammaphibeta.org, attention Editor, or snail mail to:

Gamma Phi Beta Sorority
Attn: Editor
12737 E. Euclid Drive
Centennial, CO 80111

The Crescent reserves the right to publish any letter addressed to the editor. Letters may be edited for space and clarity.

Alumnae Award

I was surprised when I read the article "Victorian Bud Vase, 1874" (Spring 2009). The Clara Worden Award is given to an alumnae chapter, not collegiate chapter, for the most outstanding improvement in all areas of chapter life.
— Sandy Biegelman Burba (Miami)

Editor: You're absolutely right, Sandy. At Convention 2008, Tulsa Alumnae Chapter received the Clara Worden Award.

Memory Jogger

The Spring 2009 issue brought back so many college memories. I feel lucky to have been a part of such a fun and beautiful group of girls and I miss those late nights, harried mornings, memorizing songs, Monday night meetings, candle passings, formals, lil' sisters, road trips, homework buddies and tons and tons of laughter. Twenty years later, my BFF (best friend forever) is my rush partner, Annie. My daughter will start college in a few years, and yes, she'll be a legacy but she'll have to get her own letters.
— Mary Palazzola Granger (California State-Fullerton)



Fresh and Green

On being "green" (Winter 2009), I almost never use clear plastic wrap for covering leftovers; I save large plastic lids from three-pound coffee cans. Grapefruit, pineapple and melon stored with the cut side down stay fresh for a least a week.
— Ruth Seeler, M.D. (Vermont)

EDITOR'S NOTES

Contact Mimi Burch McMann at TheCrescent@gammaphibeta.org.

Green Your 'Zine The Green Team is growing! There are now more than 200 sisters who have opted to discontinue their paper magazine in favor of reading *The Crescent* online. Will you join them?

Where is Capture a Crescent?

This being a special edition with two covers, the ever-popular Capture a Crescent feature is on hiatus. But, never fear, your crescent photos will be back in the fall issue at their customary spot on the back cover. Promise!

Magazine Advisor Needed

Members working professionally as journalists are invited to apply for a spot on *The Crescent* Advisory Board. Commitment involves thoroughly reviewing each issue to advise on content and design at a quarterly conference call. If interested, e-mail the editor.

Call for submissions *The Crescent* is looking for all members participating in the Winter 2010 Olympics! Coaches, athletes, trainers, organizers—we want your story! Contact the editor today!

In the next issue

- Founders Day
- Hazing Hurts
- Military Sisters

INTERNATIONAL HEADQUARTERS

12737 E. Euclid Drive, Centennial, CO 80111
Phone: 303-799-1874 Fax: 303-799-1876
Internet: www.gammaphibeta.org
E-mail: TheCrescent@gammaphibeta.org

THE CRESCENT STAFF

Editor: Mimi Burch McMann (California State-Bakersfield)
Staff Writer: Nicole Nelsestuen
Director of Marketing and Communications:
Nina Dulacki (Colorado College)
Business Manager: Patricia M. Crowley (Northwestern)

MAGAZINE SUBMISSION DEADLINES

SPRING: January 1 FALL: July 1
SUMMER: April 1 WINTER: October 1

©2009 Gamma Phi Beta Sorority
The Crescent (USPS137620) is published quarterly by Gamma Phi Beta Sorority, 12737 E. Euclid Drive, Centennial, CO 80111. Periodicals postage paid at Englewood, CO and at additional mailing offices. Non-member subscription price is \$6. Produced in the U.S.A.

POSTMASTER: Send address changes to: *The Crescent*, Gamma Phi Beta Sorority, 12737 E. Euclid Drive, Centennial, CO 80111.



FRATERNITY
COMMUNICATIONS
ASSOCIATION



MEMBER OF
NATIONAL
PAN-HELLENIC
CONFERENCE