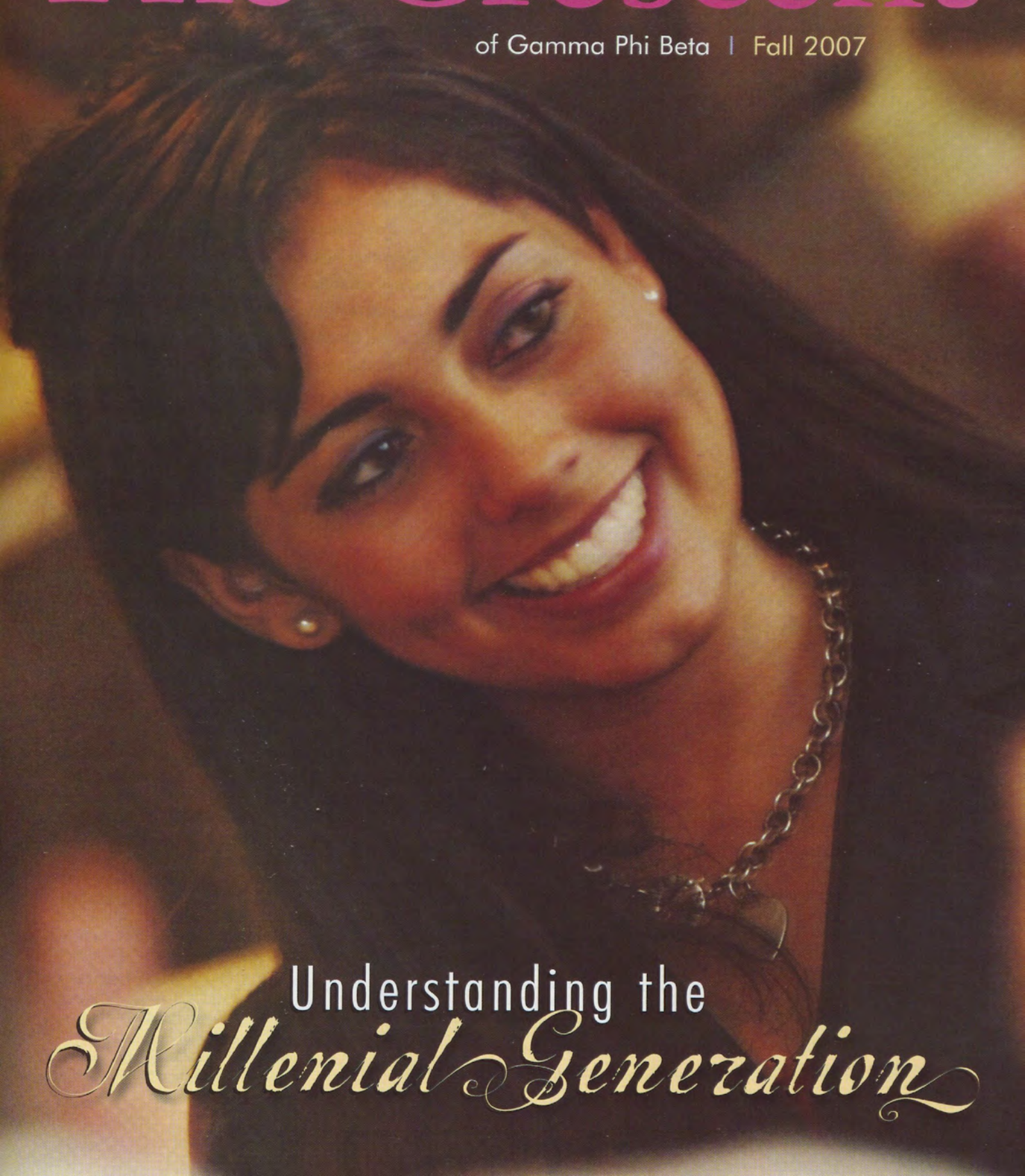


The Crescent

of Gamma Phi Beta | Fall 2007



Understanding the
Millennial Generation



GAMMA PHI BETA

Where will you be June 25–29, 2008?



Hundreds of Gamma Phi Betas will be in Cincinnati, Ohio to “Connect in The Queen City.”

If you have never experienced Gamma Phi Beta’s Convention, let me encourage you to make this your first. You’ll be glad you did! I remember my first Convention so clearly. It was in 1974, our Centennial Convention (and the largest one ever) in Kansas City. I learned a lot that week: how to motivate and lead others; that my chapter did a lot of things well and that we also had a lot we could improve—and I learned much that would help us improve. My eyes were opened to the fact that Gamma Phi Beta is a large, international organization.

INTERNATIONAL COUNCIL

International President

Linda Daniel Johnson

Alumnae Vice President

Nancy J. Truesdale

Collegiate Vice President

Krista Spanninger Davis

Financial Vice President

Amy M. Peterson

Education Vice President

Kris L. Baack

Membership Vice President

Linda Lyons Malony

Panhellenic Affairs Vice President

Elizabeth “Betty” Ahlemeyer Quick

Executive Director

Patricia M. Crowley

GAMMA PHI BETA FOUNDERS

E. Adeline Curtis

Frances E. Haven Moss

Helen M. Dodge Ferguson

Mary A. Bingham Willoughby

SORORITY MISSION STATEMENT

Our mission is to foster a nurturing environment that provides women the opportunity to achieve their potential through life-long commitment to intellectual growth, individual worth and service to humanity.

But the most important thing I learned at Convention is that Gamma Phi Beta is for life. I can still remember the alumnae I met that week.

I remember how interested they were in me and how meaningful their sorority experience continued to be for them.

Now, here it is, 34 years later and I’ll be attending my 14th Convention in Cincinnati. I can’t wait! I certainly hope you’ll join me in the Queen City, June 25–29, 2008. I can promise you a week of fun, laughter, singing and sisterhood, along with leadership experiences, ideas to revitalize your chapter or alumnae group, new friends, motivation and an infusion of Gamma Phi Beta pride.

Join us! Because it’s a great time to be a Gamma Phi Beta and to celebrate our sisterhood.

In IIKE,

Linda Johnson

International President

IP@gammaphibeta.org



ON THE COVER

GENERATION NEXT

The Millennials . . . who are they and how will they affect our world? Find out on page 8.

FEATURES

- Volunteer for Convention 2008 4
- Nominating Committee 6
- Order of the Crescent 14

IN EVERY ISSUE

- Spotlight On 7
- Foundation News 16
- Out & About 18
- Pacesetters 20
- Member News 22
- NPC Update 26
- In Celebration 27
- In Memoriam 28
- Memorial Gifts 29
- Capture a Crescent 30



Chapter News page 22

LEFT: Members from Zeta Xi Chapter (Albertson College) pose before their Vegas Night, a spring recruitment event.
BELOW: Sisters put their best foot forward in their Foundation flip flops.



Crescent Catchers page 30

ABOVE: Current Manhattanites and Alpha Chapter (Syracuse) alumnae Dhalya Baker (L) and Christina Campisi (R) surprised Kristen Kane (C), also a Syracuse alumna, on her 28th birthday with a crescent balloon.



Reunions page 18



Foundation News page 16

LEFT: Why do these Gamma Phi Betas have giant ornaments around their necks? Turn to page 18 to find out.

FALL The Crescent 2007 Volume 108 | Number 4

INTERNATIONAL HEADQUARTERS

12737 E. Euclid Drive, Centennial, CO 80111
Phone: 303-799-1874 Fax: 303-799-1876
Internet: www.gammaphibeta.org
E-mail: TheCrescent@gammaphibeta.org

CRESCENT STAFF

Editor: Megan McDermott
Staff Writer: Elizabeth Smith
Graphic Designer: Jody Toth
Business Manager: Patricia M. Crowley
Advisor: Kris Brandt Riske

MAGAZINE SUBMISSION DEADLINES

SPRING: January 1
SUMMER: April 1

FALL: July 1
WINTER: October 1



MEMBER OF
NATIONAL
PANHELLENIC
CONFERENCE

©2007 Gamma Phi Beta Sorority

The Crescent (USPS137620) is published quarterly by Gamma Phi Beta Sorority, 12737 E. Euclid Drive, Centennial, CO 80111.

Periodicals postage paid at Englewood, CO and at additional mailing offices. Non-member subscription price is \$6. Produced in the U.S.A. by Maury Boyd and Associates.

POSTMASTER: Send address changes to: The Crescent, Gamma Phi Beta Sorority, 12737 E. Euclid Drive, Centennial, CO 80111.

CONNECT
IN THE
Queen City
CINCINNATI 2008

Convention 2008

June 25–29, 2008

Hilton Cincinnati Netherland Plaza

We invite you to Connect in the Queen City, learn how to make an Impact and return home to Shine in your communities!





Schedule Highlights

Wednesday, June 25

Arrival
Play Day
Registration
Dinner and Welcome
Business Session

Thursday, June 26

Business Session
Workshops
Awards Dinner

Friday, June 27

Business Session
Workshops
Confirmed Conventers Dinner

Saturday, June 28

Business Session
NPC Luncheon
Ritual/Memorial Services
Reception
Pink Carnation Banquet

Sunday, June 29

Play Day
Departure

Nominating Committee

*Now is the time for you, as a member of Gamma Phi Beta,
to impact the future of the Sorority!*

At the 2008 Convention in Cincinnati, Ohio, elections will be held to fill the elected offices that comprise both the 2008-2010 International Council and the 2008-2010 Nominating Committee.

Convention delegates from alumnae and collegiate chapters will officially elect those officers; every individual member, however, has the opportunity to take part in the slate selection of these offices. Here's how:

Any Gamma Phi Beta member may submit a Candidate Prospect Form (Form #47e), obtainable in one of three ways: from International Headquarters, from the nominating chairwoman (contact information below), or from the Sorority's Web site. This form is used to suggest possible officer candidates to current nominating committee members.

Upon receiving a completed Candidate Prospect Form, the nominating committee chairwoman will inform the nominated member that she has been recommended for a position, and ask her to provide the required information and comments. Then, each member of the nominating committee studies the nominees, their information and any comments before they meet as a group in Denver, February 29 to March 2, 2008. At this meeting, the six alumnae and two collegians that form the nominating committee will discuss each nominee and decide on a slate to submit to the Convention body.

All elected International Council positions and six alumnae nominating committee members will be slated.

To be eligible for the nominating committee, a member must

- be in good standing,
- not be serving as an international officer of the Sorority,
- have attended International Convention in the past six years.

Candidate Prospect Forms are due by December 15, 2007, to:

Ann Bronsing
Nominating Committee Chairwoman
31 Chesterton Lane
Chesterfield, MO 63017

Don't let this chance pass you by—recommend sisters you think would make good leaders of the Sorority! It's easy, and it's essential to keep Gamma Phi Beta shining.

**Gamma Phi Beta Sorority
CANDIDATE PROSPECT FORM**

Must be received by the Nominating Committee Chairwoman by December 15, 2007.

Gamma Phi Beta Sorority prides itself on member-driven leadership. The selection of our Sorority leaders begins at the individual member level. The Nominating Committee invites your assistance in identifying potential candidates for International Council and Nominating Committee positions. The potential candidate you identify will be contacted by the Nominating Committee Chairwoman and offered the opportunity to self-nominate. Presentation of a name on this form is not a nomination or an endorsement.

You may identify potential candidates for any number of offices listed below.

International President:	Name	Address	e-mail
Alumnae Vice President:	Name	Address	e-mail
Collegiate Vice President:	Name	Address	e-mail
Education Vice President:	Name	Address	e-mail
Financial Vice President:	Name	Address	e-mail
Membership Vice President:	Name	Address	e-mail
Panhellenic Affairs VP:	Name	Address	e-mail
Nominating Committee:	Name	Address	e-mail
Nominating Committee:	Name	Address	e-mail
Submitted by:	Name	Address	e-mail
Date:	Name	Address	e-mail

ERIN CASWELL STONE

When she joined the Orange County (CA) Junior League eight years ago, Erin Caswell Stone (Northern Arizona) had no intention of ever being president of the group. But that's exactly what she'll be when she assumes the organization's lead role next summer.

As president, Erin aims to help keep the organization on its visionary path, staying connected with the community and identifying new needs. One of Erin's initial projects is to form a partnership with the Orangewood Children's Foundation Academy, a resident school for dependent foster youth in Orange County.



RACHEL SMITH ARIOLA



For her volunteer work with the Arthritis Foundation, Rachel Smith Ariola (UCLA) was recently selected as a Hawaii winner for the 2007 Jefferson Award. The Jefferson Award is part of a prestigious national recognition system that honors community and public service in America. Established in 1972 by Jacqueline Kennedy Onassis, Senator Robert Taft Jr. and Sam Beard through the

American Institute for Public Service, the Award is presented both locally and nationally.

Rachel began her work with the Arthritis Foundation in 2000 when her oldest son Ryan was diagnosed with juvenile rheumatoid arthritis and juvenile dermatomyositis (Ryan, now 14, is currently in remission). Rachel has served on the Arthritis Foundation's Board of Directors for six years and has chaired the Honolulu Arthritis Walk for five. Under her leadership, the Walk has more than doubled in size and in fundraising revenue. Currently, Rachel works for United Airlines and was recently accepted into the University of Hawaii's nursing program.

JENNIFER BLACKBURN DUNN

Former Gamma Phi Beta Congresswoman dies

"Jennifer was a person of high accomplishment, yet she retained such warmth and personal friendliness with everyone she met. It was a privilege to be at the 2003 Congressional Reception when she was honored for her Congressional Service. She was a special sister."

—Vicki Carlson Read (Arizona)

Jennifer Blackburn Dunn (Washington), a prominent figure in Washington state for more than two decades, died September 11, 2007, at the age of 66. Jennifer suffered a pulmonary embolism and collapsed in her Alexandria, Virginia, apartment and never regained consciousness.

Jennifer served six terms in the U.S. House and was the first woman to serve on the House Republican leadership team. Before serving in Congress, Jennifer became the first woman elected as chair of a state Republican Party. She retired from politics in 2005 and worked for a lobbying firm in Washington, D.C.

Jennifer was featured in the summer 2004 issue of *The Crescent* as a notable woman in politics. She received the Award of Distinction in 2003 from the North-American Interfraternity Conference.



Members of the South Bay Alumnae Chapter gather to celebrate the presentation of the Van Dine Family Americanism Award to De De Hicks. They are (from left): L'Cena Brunskill Rice (Southern California), Kay Johnson Marovich (Kansas State), De De Staskal Hicks (Colorado College), and Lynda Newman Petru (San Jose State).

DE DE HICKS

De De Staskal Hicks (Colorado College) was recently awarded the Van Dine Family Americanism Award at the 2007 Palos Verdes (CA) 4th of July celebration. The Van Dine Family Americanism Award is presented each year to "a Palos Verdes Peninsula resident who has contributed in a special way to the quality of life in America." De De, a 1992 Carnation Award recipient, is the President and CEO of The Volunteer Center, South Bay Harbor Long Beach; the center's mission is mobilize people and resources to deliver creative solutions to community problems. In this capacity, she has led the Center to many awards, including the prestigious 2006 George W. Romney Volunteer Center Excellence Award from the Points of Light Foundation, which is given to the top Volunteer Center nationwide.

Thanks to Tau Chapter (Colorado State) and Theta Chapter (Denver) for modeling for our cover and Millennial feature.
Photography by Photojenette.com.



Generation Next

THE MILLENIALS... WHO ARE THEY AND HOW WILL THEY AFFECT OUR WORLD?

By Elizabeth Smith (Southern Methodist), Staff Writer

"Kids these days..." It's a cliché that can be heard in classrooms, office buildings, and in homes at almost any point in history in every city in every country on every continent. In today's society, who are these "kids" and what impact will they ultimately have on not only our future, but also the future of the world?

This latest generation, born between 1981 and 1999, began slipping onto college campuses at the dawn of the new millennium. Labeled various things (the Internet Generation, the Echo Boomers, the Boomlet, Nexters, Generation Y, the Nintendo Generation, the Digital Generation and, in Canada, the Sunshine Generation), several thousand members of this generation responded to an ABC News online survey requesting suggestions about what they wanted their generation to be called. The clear winner? Millennials.

Millenials are the largest demographic bulge since the Baby Boomer generation. They could dominate the 21st century in much the same way as the World War II generation dominated the 20th century.

Essentially, Millenials are a refined version of Generation X, the generation born between 1965 and 1980 that has been generally characterized as apathetic and cynical. Neil Howe and William Strauss point out in their book *Millenials Rising: The Next Great Generation* that, while the highest rates in teenage history of suicide, homicide, alcoholism, drug abuse and pregnancy were hallmarks of Generation X, Millenials have apparently reversed this trend, with violent crime rates dropping 60% since 1994 and pregnancy and abortion rates for women under age 18 decreasing one-third since the mid-1990s. Additionally, Howe and Strauss write that Millenials seem to exhibit a return to "traditional" values, including growing interest in religion and voting rights, and a renewed confidence in government leaders.

However, it is the Millennials' ease with technology that perhaps distinguishes this generation from earlier ones. As Susan Aschoff points out in an article in the *St. Petersburg Times Floridian*, this newest generation may be the most media-saturated and media-savvy generation ever, as it is the first to be fully immersed in digital technology. In the *EDUCAUSE Review* article "Boomers, Gen Xers and Millennials—Understanding the New Students," Diana Oblinger points out that the prototypical Millennial was born in the years immediately following the introduction of the PC and virtually all Millennials were using computers by the time they were 16. Despite the assumption that such immersion in technology leads to "loner personalities," Millennials are far from being isolated; in fact, their communities are built in part thanks to their affinity for technology.

Culturally and economically, Millennials are the most egalitarian generation in American history; wealthier and more ethnically varied, Oblinger writes that one in five Millennials has at least one immigrant parent. Additionally, citing research from the Higher Education Research Institute, *The New York Times* reported in April 2005 that "top public and private universities... are drawing an increasing percentage of their students from higher income brackets." Forty percent of the 2003 college freshman class came from families earning more than \$100,000 a year, up from 32% in 1999.

"One in five Millennials has at least one immigrant parent"

Because of their relatively privileged upbringing, Millennials seek experiences tailored to individual tastes and needs, which contributes to them being stereotyped as "coddled." Many Millennials also have an ongoing close connection with their parents, who are often referred to as "helicopter" or "blackhawk" parents for their tendency to hover around their children. "You read a lot about millennial students and how heavily their parents are involved in their education—and they are," said Mary Desler, Associate Vice President for Student Affairs & Dean of Students at Northwestern University, as quoted in the summer 2006 edition of *Northwestern University Magazine*.

This parental involvement, which is most commonly illustrated by the apparent inordinate amounts of time and money spent on their kids, has had a positive effect, though: this generation is full of brilliant multitaskers.

GAMMA PHI BETA MILLENIAL SNAPSHOT

KATIE GUNDERSON

JUNIOR

PSI CHAPTER, UNIVERSITY OF OKLAHOMA



Photo courtesy of Cody Mulcahy from The Oklahoma Daily

A chemistry and geology major, Katie Gunderson is both a typical college student and an exceptional scholar. She's also the first OU student, and one of three students nationwide, to be named both a Udall Scholar and Goldwater Scholar. As a recipient of both scholarships, Gunderson will receive more than \$12,000 in scholarships for graduate work.

The Morris K. Udall Foundation was established by Congress to "award merit-based scholarships, fellowships and internships for studies related to the environment and Native American policy in the United States." The Barry M. Goldwater Scholarship and Excellence in Education Program awards scholarships "to students pursuing careers in science, math and engineering."

Katie is planning to pursue a Ph.D. and a research career in geochemistry, although she's already racked up a wide range of experience that made her a prime candidate for both scholarships. Gunderson's research has ranged from field to lab work and has encompassed many different subjects. Her research has taken her to the University of Notre Dame in 2005, where she researched the effect of nuclear waste on different types of rocks and minerals, and allowed her to travel to Tanzania last summer.

Gunderson is active on campus outside the lab, serving on the Campus Activities Council and actively involved with Psi Chapter. "She brings everything you would want in a sister," said Samantha Ludlum, Psi Chapter secretary and a sophomore at OU. "Katie is outgoing to everyone; her intelligence is also respected throughout the house."

GAMMA PHI BETA MILLENIAL SNAPSHOT

RANDAHL PALMER

JUNIOR

ZETA TAU CHAPTER, EMORY UNIVERSITY



Each year, Emory University presents a merit-based scholarship to a rising senior who has demonstrated "academic excellence, community involvement and leadership, moral qualities supporting the common good, and evidence that physical activity is part of their daily life." The Sonny Carter Scholarship, the description of

which reads like a dictionary definition of a Millennial student, covers all senior year tuition expenditures, a value of \$32,000. Zeta Tau Chapter member Randahl Palmer is the 2007-08 recipient.

"I knew I had the qualifications for it, but I was still kind of surprised because so many Emory students are qualified," Randi says.

A physics major, Randi has a passion for science, researching the proteins involved in Alzheimer's disease, working as a Supplemental Instruction leader for a physics class and serving on the executive board of the Emory Society of Physics Students. In addition to being a charter member of the Zeta Tau Chapter, Randi spent two years on the Emory varsity swimming and diving team. Although she has traded in competitive swimming for running and yoga, she is still connected to swimming as a coach at the Emory Community Swim Club. "I feel more balanced when I'm exercising or swimming daily."

(continued from page 9)

Millennials, having been hard-driving, heavily scheduled kids, have evolved into young adults who are considered team-oriented and over-achieving.

But it's also about being involved. An annual freshman survey conducted by UCLA found that 2/3 of college freshmen, the highest percentage in 25 years, believe it is "very important" or "essential" to help others in difficulty. A record eight in 10 college freshmen say they volunteered during their senior year in high school, with six in 10 saying they think they will volunteer during college. In her *Business Week* article "Millennials on a Mission," Julie Gordon proposes that the escalating numbers of college students who are performing community service on spring breaks and vacations is representative of this trend.

According to the Cone Millennial Cause Study, 63% of Millennials feel "personally responsible for making a difference in the world." Clearly, this generation is seeking relevance and community involvement. Why this shift toward civic engagement? William Strauss, co-author of *Millennials Rising: The Next Great Generation*, claims it's because Millennials fill the void being left by the generation they're replacing, the extremely civic-minded and socially responsible World War II-era GIs and Rosie the Riveters. "What we find in history is that the generations tend to replace the social role that all their life was powerfully associated with the generation that's now dying," says Strauss.

While Millennials face many of the same issues that generations past have faced, there is no questioning that they have been raised in a world of incredible advances and revolutions. From the availability of information to the progress of technology to society's increasing diversity, Millennials have been and will continue to be exposed to a variety of life experiences that ultimately will mold our society and shape the future for all of us.

GENERATIONS AT A GLANCE

Adapted from an article by Diana Oblinger in the higher education journal *EDUCAUSE Review*.

Traditionalists—born 1900–1945:

- Often referred to as the WWII generation
- Learned to live within means, having experienced two world wars and the Great Depression
- Faithful to institutions, hardworking, loyal and financially conservative

Baby Boomers—born 1946–1964:

- Boundless optimism led many to fight for change—they are responsible for many of the rights and opportunities now taken for granted

- Due to their large numbers, they faced competition from each other for jobs
- Sense of who they are is deeply connected to their career achievements—they invented the 60-hour work week, figuring that demonstrated hard work and loyalty to employers was one way to get ahead

Generation Xers—born 1965–1980:

- Sense of skepticism and distrust of institutions
- Technologically savvy, having ushered in the era of video games and personal computers during their formative years

- Resourceful and hardworking, but they believe that work isn't the most important thing in their lives

Millennials—born 1981–1999:

- Collaborators who favor teamwork, having functioned in groups in school, organized sports and extracurricular activities from a very young age
- Eager to learn and enjoy questioning things
- Confident with a high self-esteem, they reject the notion that they have to stay within the rigid confines of a job description



A Formula for Success

MANAGING MILLENIALS IN YOUR ORGANIZATION OR WORKPLACE

Just as each generation is defined by its life experiences, each generation also cultivates its own perspectives, values and work ethic. Whether members of your organization or members of your workplace, Millennials are infiltrating society at a breakneck pace, and they are doing so with higher expectations of what they will encounter than any other generation before them. Not meeting those expectations can spell doom. As Claire Raines notes in her book *Connecting Generations: The Sourcebook*, this generation is so well-connected that they can share what they've experienced with thousands of cohorts, and all with the click of a mouse.

In the workplace, Millennials tend to be rather demanding with regard to salary and job flexibility; impatient with what may be viewed as slow career progression, they are quick to move on if they find something better. In an article in *Entrepreneur Magazine*, Mark Henricks writes that employers and advisors can extract the most from Millennials by leveraging this generation's technical skills and providing plenty of chances to learn and develop skills and accomplish goals, all the while supplying ample feedback.

Raines also emphasizes the need to fully integrate Millennials into an organization or workplace. She indicates

GAMMA PHI BETA MILLENIAL SNAPSHOT

ELLEN STOLLE

JUNIOR

SIGMA CHAPTER, UNIVERSITY OF KANSAS



With a double major in biochemistry and genetics, one would think it would be hard for Ellen Stolle to be involved in anything other than piles of schoolwork. Nothing could be further from the truth. Much like her Millennial peers, Ellen's schedule is jam-packed with an enormous level of involvement, which she views as preparing herself for her ultimate career goal: becoming a surgeon.

"I know that being a surgeon will be demanding of my time, but as busy as I am it won't be too hard to adjust," Ellen says. "My diverse involvement will help me maintain other things outside of my time-consuming career."

Named Outstanding Woman Student in Leadership by the Emily Taylor Women's Resource Center at the University of Kansas this past spring, Ellen describes herself as a motivator who relies heavily on her planner. In addition to being a past chapter education vice president, Ellen is a cheerleader, president of the Student Alumni Association, a member of many honor societies, works in the Office of Admissions and Scholarships, and is involved in several other activities ranging from the Board of Class Officers to the Chemistry Club. Though finding time for everything can be challenging, Ellen says it's important to become involved on campus.

"Being involved opens your eyes to all kinds of people...from all kinds of different backgrounds."

that the key comes in understanding this generation's work ethic. According to Raines, the main components of a Millennial's work ethic include: confidence, hope (expectations include a workplace that is challenging, collaborative, creative, fun and financially rewarding), goals and achievements (many head off to work with personal goals on paper), civic-mindedness, and inclusiveness (they are used to being organized in teams and to making sure no one is left behind).

Bridging the Gap

RESPONSIBILITIES OF A MENTOR

By Peggy Costello (Penn State)

When working with Millennials, no matter the scenario, it is vital to remember four things: challenge them, sincerely ask for their opinions, find them a mentor and provide them with timely feedback. Whatever your role with regard to mentoring, try the following tips when acting as a mentor:

- Develop an open and honest relationship with your mentee.
- Champion the person being mentored to others, within and outside of the company.
- Serve as a positive role model.
- Maintain confidentiality.
- Work with your mentee to draft an overall professional development plan aimed at progression and success both at the workplace and in the profession.
- Monitor the work assignments.
- Meet with the person being mentored at least twice monthly to discuss work assignments, progress toward professional goals, problems or concerns, and any other issues that may arise.
- Identify any problem areas, and assist with remediation/intervention—do not let problems or issues go unaddressed.
- Introduce the person being mentored to contacts in the business and professional community.
- Participate in regularly scheduled training/feedback/discussion sessions for mentors.
- Agree to commit to mentoring the same person for at least a two-year period, although the mentoring relationship can be terminated if it is not working.

Margaret A. "Peggy" Costello is a Detroit-area lawyer with Dykema, one of the largest law firms in the Midwest. After graduating from Penn State University, where she was a member of the Alpha Upsilon Chapter, Peggy received master of arts degrees from both Southern Illinois University and the University of Michigan before matriculating to the Detroit College of Law where she obtained her doctorate, graduating Summa Cum Laude and first in her class. An experienced trial lawyer and licensed psychologist, Peggy has successfully advocated in U.S. courts, as well as presented cases before the U.S.-Iran Claims Tribunal, the Albanian Claims Commission, and the I.C.C. International Court of Arbitration.



A Generation on the Brink

MILLENNIALS AND DEPRESSION

For all the seemingly endless positive attributes the Millennial generation displays, its members are, by all accounts, simultaneously stressed-out. Consider the events Millennials have witnessed: the Oklahoma City bombing, Columbine, September 11, the space shuttle disaster, Hurricane Katrina and, the latest, Virginia Tech. While other generations have endured similar horrors during their youth, this latest generation is unique in that the tragedies they have experienced are often viewed through the lens of a harsh and inescapable 24/7 media environment.

According to an annual freshman survey conducted by UCLA in 2006, about one in three college freshmen indicate they feel "overwhelmed" a majority of the time. Wei-Jen Huang, a clinical psychologist in Northwestern University's Counseling and Psychological Services, sees a pattern emerging among today's college students. "They load themselves with classes, with extracurricular activities. They want to be leaders, therefore they get into different kinds of organizations, and that is how they realize themselves, and they don't get enough sleep. The result? I see apathy, fatigue and depression," said Huang in an article in the journal *Medical News Today*.

Consequently, many Millennials have begun to seek counseling. College campuses have seen not only an increase in the number of students diagnosed with mental health disorders, but also an increase in the number of those entering college who have had psychiatric treatment.

"A lot of the time, depression will be triggered or surface during the college years," said Deidre Dalsing of University of Wisconsin-Platteville Counseling Services in a recent article in the *University of Wisconsin-Platteville Exponent*. "College brings this added pressure of meeting new people, fitting in and being responsible for your own self care. It's an easy environment to become isolated in."

Although the incidence of depression among Millennials is not considered as commonplace as with Generation X members, the American Psychiatric Association (APA) still ranks suicide as the second cause of death among college-aged students. According to the APA, 25% of all young adults will experience at least one depressive episode before reaching the age of 24, and the American College Health Association estimates that 8.5% of all U.S. college students seriously considered committing suicide in 2006.

SUICIDE AND DEPRESSION FAQs

The following are commonly asked questions regarding suicide and depression. These questions, as well as additional information on how to help someone suffering from depression or contemplating suicide, can be found on the Suicide Awareness Voices of Education Web site, www.save.org.

What are depression and depressive illnesses?

Depression and depressive illnesses occur when chemicals in the brain become unbalanced or disrupted. A person with clinical depression does not think like a healthy person; the illness can prevent her from understanding the options available to help relieve her suffering.

Why do depressive illnesses sometimes lead to suicidal thoughts?

Depressive illnesses can distort thinking, so a person can't think clearly or rationally; the illness can cause thoughts of hopelessness and helplessness, which may lead to suicidal thoughts.

Can a suicidal person mask the depression?

Many people suffering from depression and even contemplating suicide can hide their feelings and appear to be happy, although sometimes a suicidal person will give clues as to how desperate she feels. Don't be afraid to ask direct questions about feelings of a person about whom you are concerned.

Why do people kill themselves?

The simple answer is: because they're very sick. Healthy people do not commit suicide. Most people who commit suicide suffer from a significant psychiatric illness at their time of death. Education and frank discussion are simple ways to help reduce the stigma that prevents a depressed person from seeking the help she needs.

Do people attempt suicide to prove something or to get sympathy?

A suicide attempt is a cry for help that should never be ignored—it is a warning that something is terribly wrong. Most

people who attempt or commit suicide don't really want to die, they just want their suffering to end.

Why do people attempt suicide when they appear to feel better?

Sometimes a severely depressed person contemplating suicide doesn't have enough energy to attempt suicide. As the depression lifts, she may regain some energy, but the feelings of hopelessness remain; and the increased energy levels may lead to acting on suicidal feelings.

If a person's mind is made up can suicide be prevented?

NEVER GIVE UP on someone contemplating suicide. For a person determined to commit suicide, the desire to live is overshadowed by seeming hopelessness and the decision to commit suicide is a desire to stop suffering. Intervening to help the person regain perspective and aggressively fighting the disease can help reverse the downward trend toward suicidal thoughts.

Order of the Crescent

2006–2007

Gamma Phi Beta is pleased to announce the Order of the Crescent for the 2006–07 academic year. The Order of the Crescent is a recognition program for collegiate chapters designed to help every Gamma Phi Beta chapter be the best it can be.

International Gamma Phi Beta believes every Gamma Phi Beta collegiate chapter can excel in one or more areas, and recognizes those chapters that have succeeded. All chapters achieving one or more crescents receive recognition annually in *The Crescent* and biennially at the Sorority's International Convention.

Structured to mirror Gamma Phi Beta's Criteria for Chapter Excellence, the program is an opportunity for chapters to share their successes. It also can be used as a goal setting tool. The Criteria for Chapter Excellence were developed to provide guidelines for collegiate chapters to determine the areas in which they are meeting expectations and those in which they can improve.

The Order of the Crescent recognizes chapters for excellence in the five areas of recruitment, risk management, member education, finance and efficiency, and scholarship. Chapters receive a crescent for each area in which they excel.



Order of the Crescent

Five crescents signifying excellence in all five areas

Epsilon, Northwestern University
Xi, University of Idaho
Omicron, University of Illinois
Pi, University of Nebraska-Lincoln
Sigma, University of Kansas
Alpha Nu, Wittenberg University
Alpha Chi, College of William & Mary
Beta Alpha, University of Southern California
Beta Lambda, San Diego State University
Beta Omicron, Oklahoma City University
Beta Upsilon, Kansas State University
Beta Phi, Indiana University
Gamma Gamma, University of Wisconsin-Milwaukee
Gamma Tau, St. Louis University
Delta Delta, California State University-Fullerton
Delta Tau, Colgate University
Delta Omega, Oakland University
Epsilon Delta, Creighton University
Epsilon Eta, Bridgewater State College
Zeta Delta, Southeast Missouri State University
Zeta Iota, Valparaiso University
Zeta Kappa, University of Southern Indiana
Zeta Mu, St. John's University
Zeta Omicron, John Carroll University
Zeta Phi, University of Arkansas-Fort Smith



Loyalty Level

Four crescents signifying excellence in four areas

Gamma, University of Wisconsin-Madison
Delta, Boston University
Psi, University of Oklahoma
Alpha Delta, University of Missouri-Columbia
Beta Epsilon, Miami University
Beta Psi, Oklahoma State University
Gamma Eta, California State University-Long Beach
Gamma Psi, University of Northern Iowa
Delta Eta, University of California-Irvine
Delta Iota, Purdue University
Delta Pi, Illinois State University
Delta Phi, California State University-Bakersfield
Delta Psi, University of California-Santa Barbara
Epsilon Gamma, University of San Diego
Epsilon Iota, Christopher Newport University
Epsilon Nu, Chapman University
Epsilon Omicron, University of California-Santa Cruz
Epsilon Sigma, Morehead State University
Epsilon Tau, University of Rochester
Zeta Rho, Texas A&M University-College Station



Learning Level

Three crescents signifying excellence in three areas

Alpha, Syracuse University
 Theta, University of Denver
 Lambda, University of Washington
 Alpha Alpha, University of Toronto
 Alpha Beta, University of North Dakota
 Alpha Iota, University of California-Los Angeles
 Alpha Lambda, University of British Columbia
 Alpha Xi, Southern Methodist University
 Alpha Tau, McGill University
 Alpha Upsilon, Pennsylvania State University
 Beta Eta, Bradley University
 Beta Omega, Northern Arizona University
 Gamma Beta, Gettysburg College
 Gamma Iota, Midwestern State University
 Gamma Kappa, University of Nebraska-Kearney
 Gamma Pi, Minnesota State University-Mankato
 Gamma Rho, University of Wisconsin-Oshkosh
 Gamma Phi, Auburn University
 Gamma Omega, University of Wisconsin-Platteville
 Delta Mu, Rutgers University
 Delta Omicron, Southern Polytechnic State University
 Delta Upsilon, University of Georgia
 Delta Chi, California State University-Sacramento
 Epsilon Beta, Alma College
 Epsilon Zeta, Jacksonville University
 Epsilon Psi, University of North Carolina-Asheville
 Zeta Theta, Pepperdine University
 Zeta Lambda, Texas A&M University-Corpus Christi
 Zeta Xi, Albertson College of Idaho
 Zeta Pi, Pennsylvania State University-Altoona



Epsilon Delta Chapter (Creighton) scores big with their Wing Fling philanthropy. The tailgating-themed event raised \$3,000 for Camp Fire USA.



Labor Level

Two crescents signifying excellence in two areas

Eta, University of California-Berkeley
 Kappa, University of Minnesota-Twin Cities
 Rho, University of Iowa
 Omega, Iowa State University
 Alpha Epsilon, University of Arizona
 Beta Delta, Michigan State University
 Beta Kappa, Arizona State University
 Beta Rho, University of Colorado-Boulder
 Beta Sigma, Washington State University
 Beta Chi, Wichita State University
 Gamma Epsilon, University of Puget Sound
 Gamma Mu, Minnesota State University-Moorhead
 Delta Epsilon, Texas Wesleyan University
 Delta Kappa, Lehigh University
 Delta Lambda, University of California-Riverside
 Epsilon Theta, Clemson University
 Epsilon Mu, Loyola University New Orleans
 Epsilon Pi, George Mason University
 Zeta Alpha, Eastern Washington University
 Zeta Beta, University of Virginia
 Zeta Eta, Lander University
 Zeta Nu, University of Detroit-Mercy
 Zeta Tau, Emory University



Love Level

One crescent signifying excellence in one area

Tau, Colorado State University
 Beta Gamma, Bowling Green State University
 Beta Pi, Indiana State University
 Gamma Zeta, Texas A&M University-Commerce
 Delta Theta, California Polytech State University
 Epsilon Alpha, La Salle University
 Epsilon Epsilon, Union College
 Epsilon Kappa, California State University-Chico
 Epsilon Lambda, University of Alabama
 Epsilon Phi, Bentley College
 Zeta Gamma, Sonoma State University
 Zeta Epsilon, Duquesne University
 Zeta Zeta, Coastal Carolina University
 Zeta Sigma, University of South Carolina
 Zeta Upsilon, University of Texas-Tyler

From Sister to Sister

In 2004, Cherie McElhinney Olsen (Iowa) passed away.

In 2007, Cherie helped Jenny Gangloff Scott (Iowa) with mission work in Africa.

A lifelong supporter of Gamma Phi Beta, Cherie was always willing to lend a hand. Through a fellowship endowment established in 2001, her love for Gamma Phi Beta carries on to sisters in need who decide to pursue their educational goals. Thanks to Cherie's foresight and generosity, Jenny Gangloff Scott is realizing her dream to serve disadvantaged women in Africa.



Cherie McElhinney Olsen (Iowa)

Dear Sisters,

Words cannot express my gratitude for the fellowship Gamma Phi Beta has blessed me with. I would like to share a little bit of my journey so you can see the tremendous impact it has made on my life.

Our founders wanted a safe place to enjoy fellowship with each other as they pursued their studies, a place to find themselves and discover their calling, so they could impact their families, communities, and the world around them. Their story resonated with me on such a personal level because I have spent the last two semesters in seminary at Mercer University in Atlanta seeking my calling and looking for a safe place to learn, grow, and prepare myself to make an impact on the world.

After weeks of prayer, I decided to finish my schooling in Nairobi, Kenya. In preparation my journey, I decided to step out of my corporate career and relinquish the salary that paid for my schooling. Not only were my upcoming semesters not funded, but any hope of saving money for subsequent semesters in Africa was looking bleak.

The day following my decision to step out of my job, and step forward in faith, I received a letter from the Foundation indicating I had been selected to receive a \$3,000 fellowship. I was elated! It not only comforted me to know that this next semester would be paid for, but it also served to reassure me that I had made the right decision for my future.

I am amazed at how our mission and objectives as a Sorority are still affecting my life today. My objective in the coming years is to complete my education so I can be of greater service, as I minister locally and to women in Africa who have not had the chance to discover their intrinsic value and worth. Whether abroad or next door, there are many opportunities to help women develop the highest level of womanhood.

Love, Labor, Learning, and Loyalty are woven through the tapestry of my life, and all bring beauty to a journey I couldn't have expected when I pledged Gamma Phi Beta almost two decades ago.

Thank you so much for your generosity. This gift is so much more than the money or a semester of school. It has helped me rediscover who I am, and, reassure me of the path that I am on, and it has given me a greater understanding of where the heartbeat to help and serve has come from.



Jenny Gangloff Scott (Iowa)

In IIKE,

Jenny Gangloff Scott (Iowa)



Tulsa sisters proudly display their Gamma Phi Beta flip flops.

Making a Splash

Sisters in Tulsa made a splash this summer with a Gamma Phi Beta Flip Flop Pool Party. Sporting their exclusive flip flops from the Foundation, they enjoyed sisterhood poolside.

"We all loved the flip flops," shared Annabel Jones (Oklahoma), Regional Director-Region 6, and Tulsa Alumnae Chapter President.

Join the Foundation at the online beach party at www.gammaphibeta/foundation/news. Together, on the beach—or by the pool—Gamma Phi Beta is making an impression!



Meet Our New Trustee

The Foundation is thrilled to welcome Corinne Martinez (California-Berkeley) to the Foundation Board of Trustees. Corinne brings strong business acumen to the 18-member board and extensive experience in Gamma Phi Beta. Corinne served on International Council as Member-at-Large from 2000-2002. She was also responsible for the development and delivery of phase I of the Membership Education Program (Crescent Values). In addition, Corinne was the technology lead on the Sorority's Strategic Plan Oversight Committee.

Professionally, Corinne manages a team of business strategy consultants at Microsoft Corporation. She is responsible for business operations, the cultivation of new business, and hiring and training for her region. After working for Microsoft for many years at corporate headquarters in Redmond, Washington, Corinne now resides in her hometown of Winters, California. The move allows her to provide sales, marketing, finance and business operations support to Berryessa Gap Vineyards.

Corinne also brings her marketing expertise to the Foundation as the marketing sub-committee chairwoman of the Public Relations and Marketing Committee. She serves on the Winters Healthcare Foundation Board of Directors, and is active in the Leukemia, Lymphoma Society.



Corinne Martinez
(California-Berkeley)

Out & About | Reunions

Alumnae members of Gamma Pi Chapter (Minnesota State-Mankato) recently camped out at the Beacon Shores Resort in Crosslake, Minnesota.



Alpha Beta Chapter (North Dakota) members from the graduating classes of 1967–1970 recently held a reunion at the chapter house. A number of the attendees had not been on campus for almost 40 years, and being back served to not only reunite the women with the university, but also with the chapter and with why they joined Gamma Phi Beta.



From left, Katherine Bennett, Nicola Hobeiche, Asley Mason and Laura Valuch Cestra, members of the 1996 new member class of Alpha Xi Chapter (Southern Methodist), celebrate their 30th birthdays in New Orleans.



In May, 17 members of the 1968 new member class of Lambda Chapter (Washington) met for a reunion luncheon at the home of Karen Bloomquist Duffy in Edgewood, Washington.



From left, Lynda Wynn Follenweider (Jacksonville) and Kelly Delaney (Jacksonville) take a break from the annual Jacksonville Alumnae Panhellenic Association meeting, hosted by Gamma Phi Beta.



Beta Upsilon Chapter (Kansas State) members from the 1970s returned to the chapter house to catch up on more than 30 years of sisterhood and to help celebrate the chapter's 50th anniversary.



Sisters for 25 years, Beta Omega Chapter (Northern Arizona) alumnae (from left) Anne Petrie, Lisa Garner Inglis, Beth Hoffman Day, Jane Kronstorfer Spicer and Kelly Young Nierengarten enjoy Oregon's wine country.



NU TO CELEBRATE 100th BIRTHDAY

By Ann Henderson Kershner (Oregon)

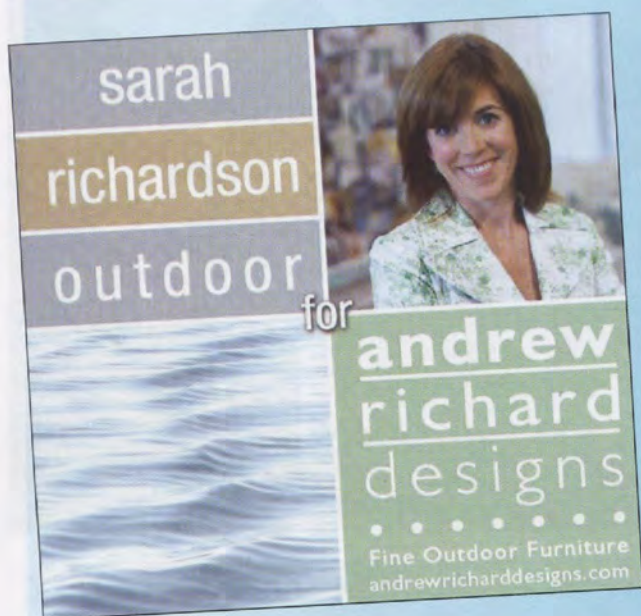
It was the thirteenth Gamma Phi Beta chapter located on 13th Street with 13 girls—this was Nu Chapter (Oregon) at the time of its installation in 1908. However, the members rapidly outgrew their home on 13th Street. Simon Benson, a Portland timber baron and father of two Gamma Phi Betas, purchased two lots along the banks of Eugene's historic millrace and architects John Hunzicker and Theodore Gerow completed the new house, now a Eugene landmark, in 1926. A 5,000 square foot addition was built in 1958 and the home was placed on the National Register of Historic Places in 1991.

On May 16, 2008, more than seven decades of Gamma Phi Betas will gather in Eugene for a weekend of sisterhood: reminiscing with old friends, revisiting their *alma mater*, and getting to know their current sisters. Activities will include a bus tour through Eugene's beautiful countryside and wine country, student-led campus tours, and a banquet that will conclude with The Hilyard Street Hoofers making their debut.

The hostess for this grand affair, the historic chapter house, has not been overlooked, thanks to the generosity of Nu alumnae. A recent fundraiser yielded more than \$30,000 for much-needed decorating and maintenance, ensuring the house will enter the next hundred years warmly welcoming future Gamma Phi Betas.

In early fall 2007, all Nu Chapter alumnae with current mailing addresses will receive a registration form to attend the 100th birthday celebration along with an informational brochure. All Nu alumnae are encouraged to attend this reunion, as it will most certainly be a weekend to remember!

For more information, please contact Ann Henderson Kershner at (541) 741-0271 or ann_kershner@hotmail.com.



Design Star

If Sarah Richardson (Western Ontario) looks familiar, it's probably because you've watched her on the widely successful T.V. show *Room Service* on HGTV (Home and Garden Television). Sarah hosted, co-created, and co-produced the show, which demonstrated how to recognize the potential of any space. In case you missed it, you can still catch *Room Service* on the Fine Living network.



Sarah's newest creative endeavor is her television show titled *design inc.* on HGTV Canada. The show takes you through the real elements of the interior design process—from the trials to the tribulations to the triumphs.

In addition to her work on television, Sarah is a leading interior designer and owner of her own design firm Sarah Richardson Design. In 2007, Sarah launched a line of outdoor furniture known as Sarah Richardson Outdoor for Andrew Richard Designs. For more information on *design inc.*, visit <http://www.designinc.ca/home/>. To view Sarah's outdoor furniture line, check out <http://www.sarabrichardsondesign.com/main.html>.

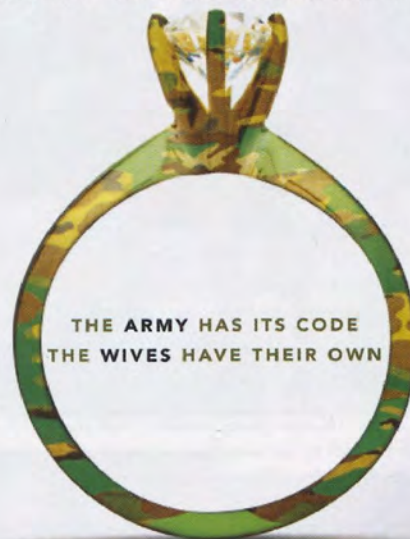
Army Wives Update

We first told you about Tanya Biank's (Penn State) book *Under the Sabers: The Unwritten Code of Army Wives* in the spring 2006 issue of *The Crescent*. Now we have even more exciting news to report! Lifetime Television Network, in collaboration with ABC Television Studio and Mark Gordon, the executive producer of *Grey's Anatomy*, has developed a new series titled *Army Wives* based on Tanya's book.

Army Wives is an ensemble drama featuring former *NYPD Blue* Emmy winner Kim Delaney and *JAG*'s Catherine Bell as officers' spouses dealing with problems at home and deployments overseas. Though the conflicts in Iraq and Afghanistan underlie the story lines, the series is more about the home front than the firefight.

Don't miss *Army Wives* on Lifetime, Sundays at 10 p.m. eastern/9 p.m. central.

A NEW LIFETIME ORIGINAL DRAMATIC SERIES



armywives

FROM "GREY'S ANATOMY" EXECUTIVE PRODUCER MARK GORDON



SUNDAYS 10PM/9C **Lifetime**

lifestimtv.com

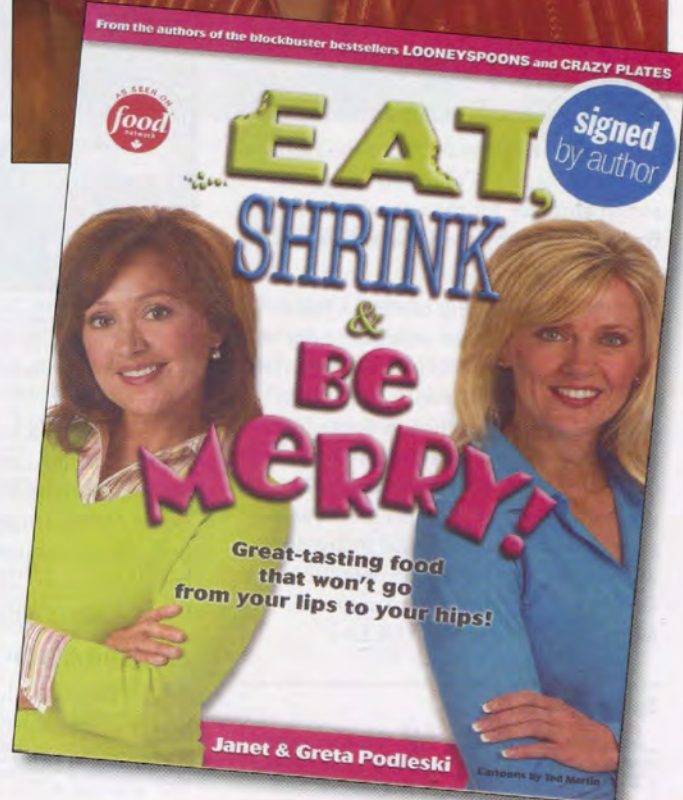
Cookbook Queen

Greta Podleski (Western Ontario) is the best-selling cookbook co-author of *Looneyspoons*, *Crazy Plates*, and *Eat, Shrink and Be Merry*. Publishing *Looneyspoons* didn't come easy for Greta and her co-author sister Janet. Both Greta and Janet quit their jobs and Greta moved into Janet's basement to create *Looneyspoons*. The sisters went 14 months without any income while writing the book, living off the proceeds from a yard sale, credit cards, and personal loans.

Eight publishers rejected their manuscript before they solicited the help of Dave Chilton, author of the two-million-copies-sold bestseller, *The Wealthy Barber* (a book about personal financial planning). After trying a piece of their low-fat cheesecake and listening to their marketing presentation, Chilton showed the book to his cookbook-loving mother, who declared it the best cookbook she had ever seen! He invested more than \$100,000 of his own money to help the women form their own publishing company, *Granet Publishing Inc.* The sisters' total cookbook sales to date are now a whopping 1.7 million copies.

The sisters and their inspirational self-publishing success story have been featured on dozens of national television outlets such as *The Today Show*, CNN, Canada A.M. and QVC, as well as on hundreds of radio shows, and in magazines and newspapers across North America. Greta co-hosts her own television show *Eat, Shrink & Be Merry* on the Food Network Canada. Greta has also created a line of frozen meal kits and pizzas under the Crazy Plates brand. Additionally, Greta and Janet are monthly columnists for Canada's number one magazine, *Reader's Digest*. And, as if they haven't been busy enough, the sisters have also recently launched a line of brightly colored, high-quality, FUNctional cooking tools and gadgets in Canada, and hope to expand the line in the U.S. this year.

For more information on Greta and her many accomplishments, visit www.eatsbrinkandbemerry.com.



Alumnae Anniversary Dates

100 Years 1907–2007

Denver Alumnae Chapter

75 Years 1932–2007

Colorado Springs Alumnae Chapter

50 Years 1957–2007

Duluth Alumnae Chapter

La Jolla Alumnae Chapter

Lima Crescent Circle

Philadelphia North Alumnae Chapter

Stillwater Alumnae Chapter

25 Years 1982–2007

Santa Barbara Alumnae Chapter

North Houston Alumnae Chapter

Deerbrook Crescent Circle



Fifty-year members of the Inland Empire Alumnae Chapter pose with seniors from California-Riverside at the annual Senior Brunch.

CALIFORNIA 🌸 🏆

The Greater Orange County Alumnae Chapter is providing goodie bags to 25 girls attending a Camp Fire USA overnight camp. Alumnae chapter members contributed items for the bags, as well as money to purchase the rest of the toiletries and gifts, and then met at the home of Kathy Meadows Smith (San Diego State) for a potluck and goodie bag assembly party.

🌸 Graduating seniors from the Delta Lambda Chapter (California-Riverside) joined alumnae for the annual Senior Brunch hosted by the Inland Empire Chapter.

🌸 The June meeting of the La Jolla Alumnae Chapter was an historic one as sisters gathered to celebrate the group's 50th anniversary. Those in attendance were thrilled to hear honored member and guest speaker Jean Couch Perry (Northwestern), who helped organize the original group and also served as the group's first president. Also in attendance were two other charter members, Geneva Shaw Thomas (San Diego State) and Mary "Jo" Funk Meyers (UCLA).

Symbol Key:

🌸 Sisterhood	🏆 Philanthropy
🏆 Leadership	📖 Scholarship



Pasadena Alumnae Chapter members are all smiles as they show off their Gamma Phi-inspired dessert, perfectly pink crescent moon cookies made by alumna Joanie Maines (California State-Long Beach), who catered the entire senior celebration event.

🌸 Spring was a season of celebration for the Pasadena Alumnae Chapter, beginning with the 90th birthday of beloved member Lucile McVey Dunn (Kansas) and concluding with a combined Senior Celebration for both Alpha Iota (UCLA) and Zeta Theta Chapter (Pepperdine) seniors.

COLORADO 🌸 🏆

The Denver Alumnae Chapter is busy making plans for the 100th anniversary of its founding this coming fall, with events that include a tea, an evening of gathering

with spouses, and the creation of a commemorative DVD. The Denver Chapter is especially proud of former Alumnae Chapter President Leigh Ann Kudloff (Denver), who is now serving as the Denver Area Panhellenic President.

HAWAII 🌸

Congratulations to Martha Hinds Crosby (Colorado State) and Betty Bovee Soli (Idaho) who received their 50-year pins at the Hawaii Alumnae Chapter's Founders Day Celebration.



LEFT: Betty Bovee Soli (Idaho), center, received her 50-year pin at the Hawaii Alumnae Chapter's 2006 Founders Day celebration; she is flanked on her left by Dottie Edinger Hill (San Jose State) and Alyce Davis Craft (Oregon). ABOVE: Also celebrating the Hawaii Alumnae Chapter's 2006 Founders Day are, from left, Martha Brigham Beamer (Oregon State), 50-year pin recipient Martha Hinds Crosby (Colorado State) and Alumnae Chapter President Marcy Hubbard Thomas (Stephen F. Austin).



From left, Mary "Jo" Funk Meyers (UCLA), Jean Couch Perry (Northwestern) and Geneva Shaw Thomas (San Diego State), all charter members of the La Jolla Alumnae Chapter, gather to celebrate the chapter's 50th anniversary.



The Portland Alumnae Chapter gathers to celebrate Founders Day at a brunch held at a local club.

MISSOURI 🌸🏆📖

The Greater Columbia Alumnae Chapter is excited to announce that member Dr. Debi Hanuscin (Florida State) was recognized as the 2007 Outstanding Faculty Advisor by the University of Missouri Greek life. Debi serves the Alpha Delta Chapter (Missouri-Columbia) by attending weekly chapter meetings and supporting the scholarship chair, with whom she has worked to develop a comprehensive scholarship plan and policy.

🌸 A busy fall is ahead for the Greater Kansas City Alumnae Chapter, who have scheduled a Founders Day celebration and a wardrobe shopping event, where alumnae chapter members will gather to "shop till they drop" at a local Chico's store.

NEW JERSEY 🦋

A spring garage sale held by the New Jersey Metro Alumnae Chapter raised \$300, which was used to sponsor a young girl's attendance at Camp Vacamas, a nonprofit organization enabling children from low income families in the New York Metro area to enjoy positive experiences.

NEW MEXICO 🌸

The Albuquerque Alumnae Chapter is proud to announce the revival of their Gamma Fridays, a no-host lunch held the first Friday of each month at different restaurants in the area. For more information, please contact Alumnae Chapter President Regina Williams Resley (Penn State) at rresley2002@earthlink.net.

VIRGINIA 🌸

Members of the Eastern Virginia Alumnae Chapter had a wonderful spring, hosting a touching Senior Celebration for both the Epsilon Iota (Christopher Newport) and Alpha Chi (William and Mary) Chapters, which included nearly 60 graduating seniors combined! Alumnae chapter members enjoyed additional bonding time by hosting a summer luau and attending a semi-professional baseball game.



From left Lindsay Nault, Heather Lykins, Amy Munoz and Jenn Jessee take a break to have their photo taken with a statue on the golf course where the Epsilon Nu Chapter (Chapman) held their new Crescent Classic philanthropy.

EPSILON NORTHWESTERN

The women of Epsilon Chapter are proud of their new members, who jumped right in to participate in Sigma Alpha Epsilon's Paddy Murphy philanthropy. This weeklong fundraiser, which included various contests, a 5K run and a dodgeball tournament, raised more than \$3,000 for The Children's Miracle Network.

XI IDAHO

With a house GPA of 3.49, Xi Chapter is proud to announce that it once again has the highest GPA of women's groups on campus. Additionally, the chapter was honored at the spring Greek Awards Banquet with numerous awards, including the Chapter Choice Award, for overall excellence. Xi Chapter would also like to congratulate members Shannon Hohl, who was voted Outstanding Junior, and Amy Huddleston, who was voted not only Outstanding Sophomore, but also Associated Students University of Idaho Vice President.



Natalie and Robin Hennergardt, both members of Sigma Chapter (Kansas), take part in a challenging game of whiffle ball while on the chapter's spring retreat.

SIGMA KANSAS

The weather was perfect for a pancake breakfast this past spring, as Sigma Chapter members served a lawn full of KU students, parents and community members to raise money for Camp Fire USA. The chapter is also proud to announce that five chapter members were initiated into the Mortar Board honor society, more than any other sorority on campus!







From left Lisa Ewing, Katiy Heath, Linden Fornoff and Alexa Fornoff, Alpha Delta Chapter (Missouri-Columbia) members, pose after being "tapped" into the membership of several prestigious honor societies, including Mortar Board, Omicron Delta Kappa and Q.E.B.H.



Members of Epsilon Chapter (Northwestern) take a break to show off their muscles while working up a sweat on the football field during Sigma Alpha Epsilon's Paddy Murphy philanthropy.

Symbol Key:

 Sisterhood
 Leadership

 Philanthropy
 Scholarship

PSI OKLAHOMA

Psi Chapter is dedicated to promoting pride and unity within the Panhellenic system at the University of Oklahoma and was honored to have former chapter president Jacqueline Weaver serve as head coordinator for the 2nd annual Queen for the Weekend event. Jacqueline and her assistant, current chapter education vice president Elyse Denny, organized this campus-wide event, the only one in the nation, in which two representatives from each of the campus' 12 sororities are welcomed onto campus.



Recently, six Gamma Phis from across North America met each other at the LeaderShape Institute. Leah Schrier, President of Alpha Chi Chapter (William & Mary), Michelle Freshcoln, Public Relations Vice President for Zeta Lambda Chapter (Texas A&M-Corpus Christi), Megan Mahoney, President of Gamma Gamma Chapter (Wisconsin-Milwaukee), Jenni Rozevink, President of Beta Gamma Chapter (Bowling Green), Mollie Baxter, Membership Vice President of Xi Chapter (Idaho), and Melissa Madaio, Corresponding Secretary for Delta Tau Chapter (Colgate) joined a group of 60 other college students, many of them also Greek, for a week full of leadership, learning and laughter. "It was a great week, and we all had so much fun getting to know our sisters from around the country," said Megan Mahoney.

ALPHA DELTA MISSOURI-COLUMBIA

This past spring, University of Missouri Greek Life hosted an honors night and the Alpha Delta Chapter was proud to bring home three awards: Outstanding Faculty Advisor Debi Hanuscin (Florida State), PHA Excellence in Scholarship Lisa Ewing and the Continuing Education Award.

GAMMA KAPPA NEBRASKA-KEARNEY

The ladies of the Gamma Kappa Chapter would like to congratulate chapter president Kristin Nielsen and financial vice president Jill Schwarting on their induction into UNK's chapter of Mortar Board and Jill's election as secretary of the organization.

DELTA MU RUTGERS

Delta Mu Chapter members relocated to a new house in June! While their previous home housed 16 sisters, their new abode doubles the number of sisters able to live in. With the help of a designer, the girls have set about turning their new house into a home!

EPSILON THETA CLEMSON

The women of Epsilon Theta Chapter were thrilled with their second place overall showing in Clemson's Greek Week, which concluded with the campus' Relay for Life, where the chapter was the only Greek organization in the top 10 highest fundraisers. The sisters concluded their spring semester by receiving the 2007 New Member Program Award from the Clemson chapter of Order of Omega and initiating nine new members!



Delta Lambda Chapter (California-Riverside) seniors (from left) Jen Ngyuen, Loren Lee, Tiler Webster, Kacie McCune and Teresa Martinez proudly display their graduation stoles, which were made for them by alumna Dianna Preston (California-Riverside).

EPSILON MU LOYOLA NEW ORLEANS

Epsilon Mu Chapter members are proud to announce the chapter received not only the Chapter of Distinction Award, but also the Outstanding Chapter of the Year award at the recent Loyola University Greek Awards. Additionally, the sisters would like to congratulate Rebecca Baggott on being named Outstanding Chapter President, Colleen McGrew on being presented with the Outstanding Chapter Achievement Award, and chapter advisor Sarah Roy (Loyola New Orleans) receiving the Chapter Advisor of the Year Award.

EPSILON NU CHAPMAN

This past spring, Epsilon Nu Chapter members unveiled a successful new philanthropy, the Crescent Classic golf tournament, which raised \$5,000 for Camp Fire USA. Contributing to the fundraising was a luncheon held following the conclusion of the tournament, where prizes were raffled off and a silent auction was held.

ZETA DELTA SOUTHEAST MISSOURI STATE

The women of Zeta Delta Chapter worked especially hard together to pull off a second place win in Southeast Missouri State's Greek Week, also taking the President's Award for the second year in a row.

COLLEGE HAZING HAS A NEW ENEMY

Hazing Hotline Sponsored by Gamma Phi Beta and 21 other Greek Organizations

As part of the ongoing attempt to end hazing on college campuses and particularly in fraternities and sororities, 22 international fraternities and sororities have joined together to establish a national Anti-Hazing Hotline. The toll-free number is 1-888-NOT-HAZE (1-888-668-4293). The line is available to callers who have information about hazing or victim(s) of hazing. Callers may remain anonymous or they can provide personal information so that their concerns can be responded to directly.

The Hotline connects to a dedicated voice mail box at the Cincinnati law firm of Manley Burke, the publisher of *Fraternal Law*. Manley Burke will monitor the Hotline on a daily basis and will forward copies of messages to the appropriate national organization, along with the hazing laws from the relevant jurisdictions.

"Gamma Phi Beta and NPC take hazing seriously. We are happy to support this hotline, in hopes it will further deter the Greek community and other campus organizations from participating in the demeaning act of hazing," said Betty Quick, NPC Chairman and Gamma Phi Beta Panhellenic Affairs Vice President. "We encourage our members to live the true sorority experience which supports positive member development."

The Hotline is a crucial new tool for Greek organizations to use in the fight against hazing. The 22 founding sponsors invite other fraternities and sororities to join as official sponsors of the National Anti-Hazing Hotline. For more information on joining the National Anti-Hazing Hotline, please contact Dan McCarthy at Manley Burke at (513) 721-5525.



Karen Gamel Urette (Oklahoma), Sorority Director-Panhellenic Resources, presents the Gamma Phi Beta Panhellenic Award to Melissa Sharp (left), Delta Delta Delta, and Austin Walker (right), Delta Gamma, officers of the winning College Panhellenic Council at Mississippi State University for their entry, *Got Greek*.

From left, Elizabeth Ablemeyer Quick (Indiana), NPC Chairman and Gamma Phi Beta Panhellenic Affairs Vice President, with Kristin Gast (Minnesota), Panhellenic President at the University of Minnesota.



2008 Regional Conference Schedule:

Mid-American Greek Council Association (MGCA)
February 21-24, 2008
www.mgca.org

Northeast Greek Leadership Association (NGLA)
February 21-24, 2008
www.ngla.org

Southeastern Panhellenic Association (SEPA)
March 27-30, 2008
www.sepconline.net

Western Regional Greek Association (WRGA)
April 3-6, 2008
www.wrgaonline.org

The Gamma Phi Beta Panhellenic Award, sponsored annually by the Sorority, honors successful college Panhellenic programs that promote a positive Greek image to faculty/administration, the campus and community. The award, a \$250 grant and certificate, is presented annually at regional Greek leadership conferences. For more information, visit www.gammaphibeta.org.

The Gamma Phi Beta Foundation acknowledges the following individuals who contributed to the Foundation to celebrate a special event. This list represents gifts received through July 31, 2007.

In Celebration of . . .

The 90th birthday of Margaret Jane Swift Fair.

Elaine Hamner

The 90th birthday of Lucile McVey Dunn.

*Jennifer Chuang
Olga Castellanos
Virginia Lasbley
Jerry Baird
Cynthia Warden
Bernadette Cole
Toby Chou*

The HCB Conference. Thanks to everyone who helped make it possible.

Ann Campbell

The installation of Leigh Ann Kudloff as the chairman of Denver Alumnae Panhellenic.

Marcy Shupert

The 90th birthday of Fran Green.

Frances Griffin

The 75th anniversary of Alpha Tau Chapter at McGill University and our wonderful sisterhood! A heartfelt thank you to all who traveled from near and far to "re-connect" with Gamma Phi Beta at our October 2006 reunion in Montreal, Canada.

Alpha Tau Chapter Alumnae and Collegians

The marriage of Jennifer Flowers to Eric Cheek in April 2007. Congratulations!

Delta Upsilon House Corporation Board

The marriage of Hannah Sherman to Paul Zey in June 2007. Congratulations!

Delta Upsilon House Corporation Board

The 50th wedding anniversary of Tom and Marjy Shupert.

Karen Kline

The birth of Isabella Grace Tamburrino on March 14, 2007, to Patrick and Amanda (Grebe) Tamburrino.

Vada Baird

The birth of Emma Elizabeth Hail on February 19, 2007, to Brian and Esther (Burns) Hail.

Vada Baird

Hallie Anderson's new home!

Julie Dunn Eichenberg

Natalie Black Muir accepting the role of regional coordinator for region 3. You'll be fantastic!

Julie Dunn Eichenberg

Laura Berg-most improved G.P.A. for spring 2006

San Diego Alumnae Chapter

Sarah McGinnis-most improved G.P.A. for fall 2007

San Diego Alumnae Chapter

All Beta Lambda Chapter graduating seniors: Tiana Britt, Emilie Cercley, Evonne Der, Elise Evatt, Megan Gannon, Taelor Gocke, Noelle Hamamura, Heather Higgins, Cori Hillman, Carly House, Kelsey Knight, Rachel Kuntz, Alex Loginoff, Maya Rowland, Chantel Ruiz, Melissa Sheffer, Lindsey Silverstein, Lindsey Steinman, Megan Stock, Rachel Tomlinson.

San Diego Alumnae Chapter

Gloria Swanson Nelson's 85th birthday.

Jeanne Swanson Beach

The birth of baby Teng on April 26, 2007, to Wang and Melissa (Masella) Teng.

L'Cena Rice

The birth of Audrey Elaine Dugan on January 21, 2007, to Travis and Corinne (Ho) Dugan.

L'Cena Rice

The birth of legacy Caroline Sarah Thompson on May 31, 2007, to Donald and Rene' (Matz) Thompson.

*L'Cena Rice
Laura Mayville
Shellie Hodges
Tanya Jordan
Valerie Lawlor
Balboa Harbor Alumnae Chapter
Sandy Burba
Linda Malony
Kris Baack
Cathy Griffin
Nancy Truesdale
Megan Krueger
Julie Dunn Eichenberg
Bonnie Payne*

Dr. Ruth Andrea Seeler receiving the University of Vermont Medical School's A. Bradley Soule Award for lifetime achievement.

*Foundation Trustees
Barbara Wessel*

Mollie Schneider and Ryan Halvorsen welcoming a baby girl named Ziya Bijou into the world!

Mollie Halvorsen

The birth of Zachary Dunn Eichenberg on June 8, 2007, to Bob and Julie (Dunn) Eichenberg.

*Laura Mayville
Rene' Thompson
Sandy Burba
Linda Malony
Kris Baack
Shellie Hodges
Auntie Debi (Debi Hanuscin)
Auntie Ro (Rosemary Bunn)
Nancy Truesdale*

The 50th wedding anniversary of Cheri (Lamont) and Ed Brumleau.

Rene' Thompson

The birth of John-Michael (Jack) Waller Apostol to Amy and Liam Apostol.

*Rene' Thompson
Sandy Burba
Linda Malony
Nancy Truesdale
Kris Baack*

The birth of Kai James Chisenga to Megan McDermott and Max Chisenga.

Rene' Thompson

The birth of Luke Robert Severts to Ryan and Lindsay Severts.

Rene' Thompson

The birth of new grandson Kyle Collins to Loraine Meech.

Rene' Thompson

The birth of Joshua Michael Null to Beth Null.

Sandy Burba

The region 1 team: Grace Lin, Beth Null, Theresa Nelson, Denise Vollert-Parrotto, Monica Bebie, Andrea Strike, Pat Mahan, Maribeth Johnson and Mary Jo Hope. Thank you for your friendship and for sharing your time and talents with all of our chapters in the Northeast.

Sandy Burba

Magnes Welsh for hosting my daughter in her home this summer.

Linda Malony

The April 2007 installation of Zeta Phi Chapter at the University of Arkansas-Fort Smith.

Linda Malony

The wedding of Jessica Jecmen to Steve Brummel.

*Linda Malony
Kris Baack*

The birth of a son to Alexandria Ferguson.

Linda Malony

The birth of James Elliot Beaton Masse to Heather Beaton and Martin Masse!

*Yael Acre
Karen Belding
Pamela Carikner
Dominique Groulx
Kelly Harps
Katy Herstein
Jean Slinn Higgins
Faizy Karan
Suzanne Lee
Grace Lin*

The 2006-2007 region 7 team: Linda Babcock, Bobbie Balthazor, Jennifer Chuang, Cara Muccino, Ellie Osborne, Leanne Orr, Gretchen Reiter and Kathy Smith. Thank you for your hard work, dedication and friendship. I will miss working with you all!

Mary Knap

Ginny and Oscar Campbell's 50th wedding anniversary.

Juan Virgo

De De Hicks for being honored with the Van Dine Family Americanism Award at the Palos Verdes Independence Day Celebration.

*Juan Virgo
L'Cena Rice
South Bay Alumnae Chapter*

The birth of legacy Vivian Marie Souan on May 17, 2007, to parents Leigh Marie (Matthews) and Ryan Souan and big sister Samantha.

Kelly Hane

Barbara Diehl for your devotion to our group. Best wishes in your new position, you will be greatly missed in Vermont!

Green Mountain Crescent Circle

The 50th anniversary of the La Jolla, CA Alumnae Chapter.

La Jolla Alumnae Chapter

Gwen Whitnell McAdams for her dedicated and loyal service on the Awards Committee.

Nancy Truesdale

Mike McGee, husband of Olga Castellanos, for his induction into the California Builder Industry Foundation's Hall of Fame.

Lucile Dunn

L'Cena Rice for who she is and all she does for Gamma Phi Beta.

Carol Blanchard

The birth of legacy Aliza Dawn Acre-Hosein, daughter of McGill University alumna Dr. Yael Acre and husband Christopher Hosein. A sister for Joshua and Russell!

*Karen Belding
Jean Slinn Higgins
Grace Lin
Margaret Higgins
Pamela Carikner
Heather Beaton
Dr. Gail Rose
Suzanne Lee*

The financial department volunteers for all the work you've done in the last year: Ann Campbell, Molly Noren, Leigh Ann Price, Chris Ritter, Christy Shafer and Genie Street.

Amy Peterson

The birth of legacy Ceinwin Grace Ahlgrin, Harriett Cogan's first grandchild.

Julie Dunn Eichenberg

The contributions of the members of the Financial Advisory Board: Patricia Crowley, Annabel Jones, Leigh Ann Price, Joanne Roman, Alison Sansone, Christy Shafer and Vickie Vohs.

Amy Peterson

The birthday of Jeanne Swanson Beach.

Gloria Swanson Nelson

In Memory

This list reflects notifications received at International Headquarters from April 14, 2007, to August 3, 2007.

Alpha I Syracuse

Miriam Johnson Carreker, 1934
Anne Pinck Easter, 1932
Helen Groner Mulvihill, 1939
Dale Munger Potter, 1969
Pauline Wright Seeley, 1961
Janet Stacey Simpson, 1936

Beta I Michigan

Helen Owston Corkin, 1936
Anne Woodard Ezal, 1953
Margaret Smith Hook, 1930
Margaret Ihling Nelson, 1940
Claire Wyatt Seabrook, 1948

Gamma I Wisconsin-Madison

Margaret Luecker Martin, 1942
Carol Schwingel Partleton, 1953
Barbara Fletcher Vail, 1941

Epsilon I Northwestern

Elizabeth Bechtel Barber, 1928
Patricia Cordiner Kiley, 1948
Cynthia Bronston Knowles, 1950
Marian Northcott Ponder, 1945
Virginia Murphy Sand, 1947
Laura Weber Stanley, 1961

Eta I California-Berkeley

Eleanor Holcombe Brochini, 1957
Marjorie Hoffman Joy, 1938
Helen Fietzsche Kane, 1952
Alice Martinelli Kett, 1944
Martha Locarnini Shine, 1936
Margaret Holbrecht Smith, 1945
Jean Solomon Spear, 1969

Theta I Denver

Jean Omohundro McLaughlin, 1935
Ione Law Page, 1933

Kappa I Minnesota-Twin Cities

Phyllis Tupa Daly, 1951
Jo Anne Hellie Dunncliff, 1948
Julia Field Dunsworth, 1937
Katherine Johnson Eustis, 1939
Frances Erickson Naugle, 1943
Julia Davis Warner, 1944

Lambda I Washington

Mary McNerthney Currier, 1939
Sally Sears Kerr, 1942
Rosemary McDonald Latimer, 1946
Cheryl Flinn Nance, 1974

Mu I Stanford

Dorothy Baker Mouat, 1933
Katherine Sanderson Zimmerman, 1943

Nu I Oregon

Ruth Hillman Carter, 1936

Xi I Idaho

Nancy McIntosh Berry, 1950
Katherine Pitcairn Kendall, 1912
Kay Mayer Moomaugh, 1959
Regina Limacher Roise, 1937

Omicron I Illinois

Elinor Davis Brogden, 1932
Sally Kirk Lundeen, 1948
Barbara Dodge Miller, 1930

Pi I Nebraska-Lincoln

Laura Arnup Alexander, 1928
Myrthalyne Cheney Bailey, 1926
Margaret Miller Billiard, 1925
Adelaide Burr Brandt, 1930
Helen Brennan, 1928
Maxine Yost Campbell, 1928
Louise Clarke, 1930
Irmabelle Waldo Correll, 1927
Betty Peterson Curtis, 1927
Dorothy Kent Dorothy, 1948
Elizabeth Raugh Duke, 1928
Rowena Depue Dunker, 1929
Adele Eisler, 1928

Doris Grewell Epke, 1938
Lucille Barlow Flitton, 1929
Elizabeth Kline Frisbie, 1928
Virginia Crooks Gallamare, 1926
Isabel Myers Graham, 1925
Helene Hall Hughes, 1926

Maxine Hunt, 1930
Winifred Harding Irving, 1928
Florence Joseph, 1926
Joan Landwerkamp Levine, 1947
Elizabeth Powell Marshall, 1925
Alva Viergutz McMahon, 1930
Nancy Kiely Moeller, 1953
Mary Ball Nommensen, 1926
Willie Norris, 1931
Helga Running Pennington, 1939
Ruth Klose Putney, 1930
Margaret Frahm Rogler, 1928
Marion Luikart Schmitz, 1928
Helena Skinner, 1929
Elizabeth Weir Slaughter, 1929
Evelyn Story, 1928
Mary Baxter Walsh, 1930
Marjorie Freeman Wells, 1928
Dian Moody Williams, 1961
Catherine Yeomans, 1929

Rho I Iowa

Scharlott Junge Lapham, 1942
Jean Pyles Ready, 1945
Anne Roberts Tidmarsh, 1956

Sigma I Kansas

Margaret Funk Aden, 1941
Marjorie Osborn Crawford, 1930
Ruth Wilson Nanninga, 1935
Betty Talbot Speed, 1942
Lucille Wagner, 1932

Tau I Colorado State

Hazel Cash Crabb, 1929
Roberta Kirschbaum, 1954
Rachel Fisher Morley, 1937
Ardi Youngster, 1965

Phi I Washington-St. Louis

June McGaghey Early, 1949
Sarah Coleman Jeffress, 1963
Florence Dooley Keegan, 1939
Kathryn Ruester McDowell, 1939
Rita Nickerson, 1943

Chi I Oregon State

Barbara Jensen Jones, 1958

Psi I Oklahoma

Shirley Woodruff Crawford, 1945
Marian Mowry Ford, 1945
Karla Cleek Harry, 1976
Elva Trueblood Hewert, 1929
Sara Redak Padden, 1942
Carolyn Reed, 1959
Susan Wilkerson, 1972

Omega I Iowa State

Mary Lyon Engelbrecht, 1937
Frances Flick, 1937
Jane Candor Walby, 1931
Martha Morgan Youngdale, 1930

Alpha Beta I North Dakota

Ione Grinager Brendsel, 1929
Virginia Richards Pearce, 1944
Austford Ryan, 1941
Jalna Holt Zimmerman, 1956

Alpha Epsilon I Arizona

Lora Clayton Byerly, 1944
Mary Hart Crookham, 1940
Bonnie Pierce Punttenney, 1937
Kathleen Sage, 1941

Alpha Zeta I Texas

Patsy Thompson Rauch, 1946
Bess Mayo Sprague, 1923

Alpha Eta I Ohio Wesleyan

Marjorie Edwards Dodson, 1951
Iva Harper Hendershott, 1955
Shirley Oviatt Kindell, 1943

Alpha Theta I Vanderbilt

Lavenia Tinnon Garvin, 1931
Lillian Powers, 1949

Alpha Iota I UCLA

Carol Jepson Schicketanz, 1950
Louise Soule Shaw, 1936
Mary Croft Sutherlen, 1933

Alpha Kappa I Manitoba State

Agnes Richardson Benedickson, 1940

Alpha Mu I Rollins

Virginia Smith Hayes, 1940
Marcia Lane Payne, 1931

Alpha Nu I Wittenberg

Patricia Scott Ballentine, 1960
Patricia Watkins Lay, 1936
Cynthia Smith Mulder, 1958

Alpha Xi I Southern Methodist

Mary Monroe Myers, 1946
Geraldine Swilley Sharp, 1947

Alpha Omicron I North Dakota State

Constance Beaudoin, 1970
Katherine Lindley Yeandle, 1930

Alpha Pi I West Virginia

Margaret Hassner Swann, 1934

Alpha Rho I Birmingham-Southern

Ora Lazenby Kniskern, 1930

Alpha Upsilon I Penn State

Barbara Bollinger Pearson, 1956

Alpha Phi I Colorado College

Sallie Richardson Haugh, 1955
Ruth Lindemann Savage, 1948

Alpha Chi I William & Mary

Jean Ferebee Reynolds, 1944

Alpha Omega I Western Ontario

Grace Crawforth, 1936

Beta Alpha I Southern California

Shirley Redican Bruce, 1952
Nan Glennon, 1942
Joan Schoolmaster, 1951
Jill Logan Wing, 1956

Beta Beta I Maryland

Maxine Moffett Jones, 1952
Mary Hicks Littleton, 1947
Joan Schaefer McDonald, 1950
Jean Novak, 1980

Beta Gamma I Bowling Green

Carol Knudsen Glader, 1951

Beta Delta I Michigan State

Nancy Porter Coletti, 1950
Margaret Barry Flett, 1947
Sarah Swink Moses, 1946
Gertrude Jackson Palmer, 1944

Beta Epsilon I Miami (Ohio)

Susan Kinderman Lovell, 1957

Beta Zeta I Kent State

Barbara Honsberger Rossi, 1953

Beta Theta I San Jose State

Bernita Coffeen Gross, 1949
Joan Ayers Kilgore, 1952
Margery Nelson Moore, 1949

Beta Kappa I Arizona State

Ruth Timberlake Dowell, 1949
Wava Iverson Kelly, 1953

Beta Lambda I San Diego State

Helen Dupaul Bedford, 1956

Beta Nu I Vermont

Carol Fischer, 1962
Patricia Stearns, 1951
Alayne Tomlinson Trombley, 1952

Beta Omicron I Oklahoma City

Elizabeth McGee Willis, 1953

Beta Pi I Indiana State

Harriet Hicks, 1952

Beta Rho I Colorado-Boulder

Deane Land Balan, 1955
Jane Jarema Vince, 1961

Beta Sigma I Washington State

Mary Olsen Ballantyne, 1962

Beta Tau I Texas Tech

Billie Stroehle Smith, 1957
Diana Blake Ready, 1959

Beta Psi I Oklahoma State

Phyllis Baker Thacker, 1969
Barbara Allen Wootan, 1959

Gamma Theta I Pacific

Joan Edwards Brown, 1964

Gamma Kappa I Nebraska-Kearney

Barbara Alderson Russell, 1963

Gamma Omega I Wisconsin-Platteville

Jill Uppena, 2006

Epsilon Rho I Stephen F. Austin

Mary Green, 1990

The Gamma Phi Beta Foundation acknowledges the following individuals who contributed to the Foundation in memory of a loved one. This list represents gifts received through July 31, 2007.

Janet Gibson Flory (Nebraska-Lincoln '42)
Denver Alumnae Chapter

Erica C. Goeckel, daughter of Dianne Weidner (Indiana '69)
Dianne Weidner

Virginia Geiger Hustad (Minnesota-Twin Cities '43)
Audrey Shafer
Mary Nicely

J. Tyler Forshee, stepbrother of Susan Lutz Lupo (Oakland '94)
Region 4 Team

Cynthia Bronston Knowles (Northwestern '50)
Judy Millen

Jill Uppena (Wisconsin-Platteville '06)
Madison Alumnae Chapter
Raymond and Deborah Durst

Dr. James Harris, father of Ann Harris Straw (Northwestern '62)
Ann Bronsing
Patricia Henderson
Margery Miller
Sandra Kirkbride

Roberta Kirschbaum (Colorado State '54)
Jo Anna Jeffers

Pamela Jorgensen Brown (Syracuse '66)
Jeanne O'Brien
Fay Privatera
Beatrice Miller
Patti Quagrello
Kathy Nilsen
Linda Fitzgerald
Laraine Frohlich
Ann Butler
Ann Taylor

Ruth Hillman Carter (Oregon '36)
Foundation Trustees
Judith Daugherty
Patricia Koza
Verona Lynam
Salem Crescent Circle
Franca Dyer
Rebecca Scrup
Kris Phillippay
Kathy Fletcher
Barbara Jones
Calline Burns
Lynda Cast
Marilyn Chandler
Eleanor Putnam

Kathleen Sage (Arizona '41)
Sandra Nauman

Barbara Allen Wootan (Oklahoma State '59)
Carole Higgins

Garth, husband of Marion Pfaender Downs (Minnesota-Twin Cities '32)
Dr. Ruth Andrea Seeler

Anne Woodard Ezal (Michigan '53)
Janet Poteete
Dorothy Drummond
Cynthia Icardo
Dolores Whitley
Marion Maas
Stacy Clarksean
Kathy Hanna

Margaret Tumlin McIntosh (San Diego State '49)
San Diego Alumnae Chapter

Dr. Deane Ebner, brother of Joyce Ebner Ross (San Diego State '49)
San Diego Alumnae Chapter

Eleanor Holcombe Brocchini (California-Berkeley '57)
Carol Clarke
Molly Brockmeyer

Rosemary McDonald Latimer (Washington '46)
William Latimer

Anne Pinck Easter (Syracuse '32)
Syracuse Alumnae Chapter
Judy Ann Kaspar

Carol Jepson Schicketanz (UCLA '50)
Glendale Alumnae Chapter
Joan Hawks

Florence Booth Trempe (Illinois '34)
Glendale Alumnae Chapter

Mary Cosgrove Liuzzi (Southern California '52)
Balboa Harbor Alumnae Chapter
Mary Ann Johnson
L'Cena Rice
Carol Blanchard
Mary Busche
Jackie Demos

Dorothy Carlson
Patricia Mangis

Ruth Vetter Phillips (Iowa '27), mother of Suzanne Phillips Hirsch (Iowa '53) and Martha Phillips Albright (Denver '71)
Quad Cities Alumnae Chapter

Father of Mary Ellen Porter Burchfield (Iowa State '68)
Foundation Trustees
Karen Kline
Bonnie Payne

Edward Janis, father of Paula Janis Dean (Memphis State '67)
Dale and Barbara Stewart
Megan Krueger
Sharon Vickers

Julia Markham Beckwith (Kansas '32), mother-in-law of Charlene Murphy Piper (Kansas State '59)
Judy Millen

Kitty Gardner Reeds (Oklahoma '40)
Ann Ross

Marjorie Triebold Appel (Pennsylvania State '45)
Joseph Beard
Marian Bickford
Elizabeth Boedecker
Ann Cline
Ann Gregory
Doris Heinz
Dorothy Henderson
Ruth Hollingsworth
Jean Hopkins
Dr. Edward LaVoice
Joanne Peters

Susan Kinderman Lovell (Miami '57)
Lewis C. Lovell

Margaret Black Rosbe (Northwestern '30)
Northwest Valley Arizona Alumnae Group

Aaron Kenneth Stern, son of Lois Brandt Stern (Southwestern Oklahoma State '78)
Stillwater Alumnae Chapter
Melba Spurrier

Martha Morgan Youngdale (Iowa State '30)
Katheryn Votaw

Nabi Mir, husband of Marion McLaughlan Mir (Pennsylvania State '68)
Philadelphia North Alumnae Chapter

Lewis Schneider, father of Leslye Schneider Woodard (Kansas State '85)
Mary Vanier
Fran Lapham
Jeree Marquess
Kristy Buyle
Heidi Cashman

Elmer L. Millage, husband of Jo Anne Clifford Millage (UCLA '49)
Joan Hawks

Carolyn Jane Reed (Oklahoma '59)
Judy Carter

Gertrude Jackson Palmer (Michigan State '44)
William Palmer

Mary Croft Sutherlen (UCLA '33)
Burns and Joan Nugent
Irene Donoghue
Paula Zintl
South Orange County Crescent Circle
Carol Blanchard

Gary Marlin Soli, husband of Betty Bovey Soli (Idaho '56)
Hawaii Alumnae Chapter

John G. Forsyth, husband of Paula Winterfeldt Hartley-Forsyth (Indiana '60)
Hawaii Alumnae Chapter

Marian Northcott Ponder (Northwestern '45)
Epsilon Chapter

Phyllis Baker Kriegel Thacker (Oklahoma State '69)
Melba Spurrier

Diana J. Richter
Jeanne Richter

Alvin "Al" Lee Shipley, husband of Susan Olson Shipley (Nebraska-Lincoln '53)
Kathleen Murphy

Jessica Owen Rothfuss (San Diego '90)
Jonelle Rothfuss

John and Barbara Hipp, brother and sister-in-law of Mary Jane Hipp Msthos (Colorado College '40)
Sally Lewis

Hazel Mason, mother of Adra Mason Cheek (Oklahoma City '68)
Laura Mayville
Shellie Hodges
Margaret Pape

Phil E. Donaldson, father of Phyllis Donaldson Choat (Nebraska-Lincoln '66)
Megan Krueger

Daniel Martinez, father of Corinne Martinez (California-Berkeley '83)
Megan Krueger

Joan Schoolmaster (Southern California '51)
L'Cena Rice
Mary Ann Johnson
Gretchen Reiter
Carol Blanchard
Mary Busche
Jackie Demos
Dorothy Throop

Sarah Swink Moses (Michigan State '46)
South Bay Alumnae Chapter
Barbara Alberts
Marilyn Amato
Rosalind De'Prey
Kaye Furlong
Eleanor Ginsberg
DeDe Hicks
Elizabeth Hill
Kimberly Katsuyama
Marjorie Marckx
Kay Marovich
Joan Meagher
Lynda Petru
L'Cena Rice
Beverly Stockert
Joan Virgo
Beverly Willd
Carol Blanchard

Julia Davis Warner (Minnesota-Twin Cities '44)
La Jolla Alumnae Chapter
Joan Erdall Warner

Lora Clayton Byerly (Arizona '44)
Dianne Hornbrook

Shirley Redican Bruce (Southern California '52) and her husband, William Bruce
Mary Ann Johnson
L'Cena Rice
Mary Busche
Jackie Demos

Gifts made in Celebration and Memorial gifts received by the following dates will be included in the corresponding issues of *The Crescent*:

January 1 Spring issue

April 1 Summer issue

July 1 Fall issue

October 1 Winter issue

Katrina Holland Dorneman (California State-Fullerton '75), mother of Tiana Dorneman (Southern California '05)
L'Cena Rice
Beta Alpha House Corporation Board
Beta Alpha Parents' Club
Beta Alpha Chapter

Theresa Hebert, mother of Charlotte Hennington (Southern California '06)
L'Cena Rice
Beta Alpha House Corporation Board
Beta Alpha Parents' Club
Beta Alpha Chapter

Miriam B. Cornell, grandmother of Nancy J. Truesdale (Georgia '85)
Suzanne Lee
Shellie Hodges
Cathy Griffin
Kris Baack
Amy Peterson

Scott Rutherford, son of Kimberly Sherrell Rutherford (Arizona State '78)
Foundation Trustees
International Council
Shellie Hodges
L'Cena Rice
Kris Baack
Darla Click Dakin
Bonnie Payne

Bonnie Pierce Puntenney (Arizona '37)
Agnes Cosgrove

Richard Willey, uncle of Shellie King Hodges (Oregon '78)
Suzanne Lee
Cathy Griffin
Nancy Truesdale

Alan Dean Donaghue, husband of Susan Eggleston Donaghue (Kansas '58)
Judy Millen
Sally Beck

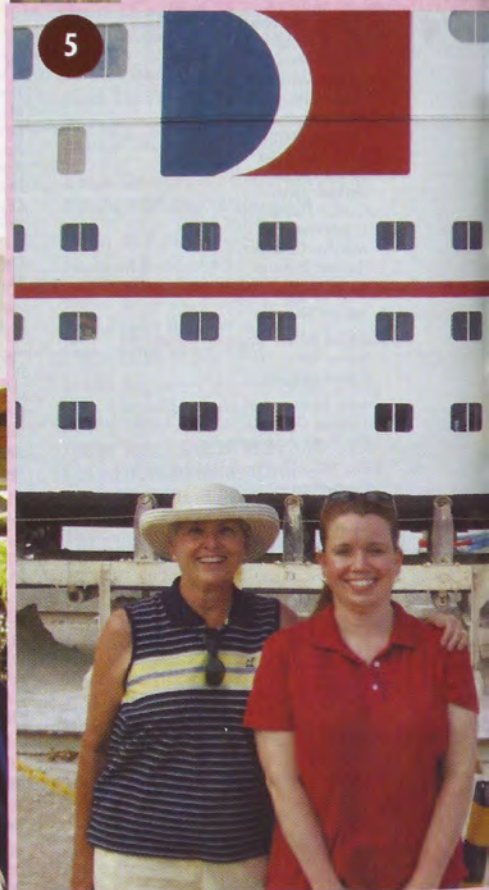
Charles E. Welsh, father of Magnes Welsh (Memphis State '68)
Foundation Trustees
International Council
Kris Baack
Karen Kline
Susan Turman
Bonnie Payne
Sandy Burba
Ann Bronsing
Sharon Vickers
Sally Lewis
Ruth Seeler, M.D.
Chicago Alumnae Chapter
Melinda Nutter
Phyllis Choat
Frances Griffin
Mary Jane Msthos
L'Cena Rice

Kay Rueter McDowell (Washington University '39)
Ruth Forsman

Judy Hubbard White (Kansas State '60)
Stasha White Case

Don Carlson, father of Lori Carlson Lundgren (San Diego State '73)
San Fernando Valley Alumnae Chapter

Capture a Crescent!



1. While exploring Geneva, Switzerland, Cindy Ka Amato (Wisconsin-Madison) couldn't stop thinking about her Gamma Phi Beta sisters when she spied this crescent flag hanging above the entrance to the Red Cross Museum.

2. Simone Epstein (California-Berkeley) happily poses with a crescent in Venice, Italy.

3. Taking a break from her studies, Lindsey May (Puget Sound) discovered a crescent moon in Manitou Springs, CO.

4. Joyce Harris Smith (Oklahoma City) is snapped with not only a crescent moon, but also a Gamma Beta T-shirt and a Zeta Rho Column Club charm she received for her contributions toward the Zeta Rho Chapter (Texas A&M-College Station) House Capital Campaign.

5. Mother and daughter Barbara Bright Hopton (Texas Tech) and Kelley Hopton Mansfield (California-Santa Barbara) took a crescent along with them on their family cruise to Grand Cayman and Calico, Mexico—it was on their ship, the MS Inspiration!

6. Beta Mu Chapter (Florida State) alumnae Amanda Nickhah (left) and Sarah Katie Calvert pause in front of the Lazy Moon, a pizza place in Orlando, while on their way to a job fair.

7. While on a trip to Washington D.C. to visit a friend injured in Iraq, Mareena Kohtala (Auburn) couldn't resist stopping by this sign to take a photo.



From right, Melanie Oncley (California State-Long Beach) and Brie Welch (California State-Long Beach) spot a crescent moon in the Las Vegas Wynn's tiled lobby.

Melissa Young (left) and Haley Hernandez, both members of Psi Chapter (Ithaca, NY), take a break from their journalism studies in Puerto Rico to point out a crescent moon. Nice T-shirt, Haley!

Minnesota State-Moorhead collegians Ashley VanErem (right) and Natasha (left) "check out" a crescent moon at the local video store.

For 25 years, Beta Omegas (Northern Arizona) gather at Cannon Beach, Oregon. From left, Kelly Young Nierengarten, Lisa Garner Inglis, Jane Warner Spicer, and Beth Hoffmann Day.



a. SL7125- Aphrodite's Heart Necklace, 18" SS \$42.00

b. SL8360D- Diamond Burst Necklace, 18" SS \$25.00

c. 2664- Crescent Festoon Necklace, 18" SS \$45.00 10K \$166.00

d. SNAKE- Snake Chain, 18" SS \$20.00

e. 3883CZ- Eternity Toggle Necklace with CZs, 18" SS \$48.00

f. B297-8- Athena Pave Bracelet with Engraved Tag, 7.5" SS \$161.00

l. 632156- Tri Color Pearl Bracelet with Mini Tag, 7.5" SS \$96.00

p. R8360D- Diamond Burst Ring, Whole sizes, 6-8 SS \$22.00

g. 806- Aphrodite's Heart Link Bracelet, 7.5" SS \$70.00

m. 6315- Mini Pearl Bracelet with Crescent, 7.5" SS \$31.00

q. 1022- Sincere Ring, Whole Sizes 6-8 SS \$35.00

h. 2216- Jeweled Mirror SP \$20.00

n. 903T- Coil Bracelet with Engraved Mini Tag, 7.5" SS \$68.00

r. 1000- Swirl Ring with Diamonds 10K-10KW \$243.00
1000C- Swirl Ring with CZs SS \$105.00

i. 2081- Jeweled Oval Box SP \$25.00

o. 1874- Heritage Ring, Whole Sizes 6-8 SS \$50.00

s. RP2231- Aphrodite's Heart Ring, Whole Sizes 6-8 SS \$30.00

j. 0025- 25 Year Member Pin SS \$35.00

k. MP63502-CZ Crescent Slide (chain sold separately) SS \$30.00



www.HJGreek.com 800.422.4348

*Products not shown to scale. Prices subject to change without notice. Colored stones are synthetic unless otherwise noted.

GAMMA PHI BETA