

The Crescent

of Gamma Phi Beta | Winter 2006



COMMODORE

**A BROADWAY ACTRESS • A WINNING COACH
A POWERFUL EXECUTIVE • A NEW YORK DESIGNER**

NOW PLAYING

THESE
WOMEN
ARE STARS

THESE
WOMEN
ARE STARS

The Sisterhood Connection: How strong is your link?

NPC Badge Day

March 6, 2006



Wear your badge
with pride

For Gamma Phi Betas, sisterhood is the tie that binds us one to another. In this issue of *The Crescent*, several accomplished Gamma Phi Betas are profiled; they are our sisters and we are proud to be linked together. Each credits their connection to Gamma Phi Beta for providing support, a sense of community, friendship, and an understanding of the importance of teamwork as the keys to their success.



What does your Gamma Phi Beta sisterhood connection bring you? For our collegiate chapter and alumnae affected by Hurricanes Katrina and Rita, the sisterhood connection meant a place to live, a helping hand, a listening ear, a meal, support and love. It meant working together to rebuild and reconnect. It meant sharing the burden and reaching out to others. Whether you made a monetary contribution, sent a message to a friend, supported a sister's school supply drive, opened your home to a sister or offered a prayer, your love and support were felt and our sisterhood links were strengthened.

Linda Walker (North Dakota) found comfort in our sisterhood this fall when she was initiated into her daughter, Dru Sjodin's, chapter, almost two years after Dru's abduction and death. During initiation Linda felt a special connection to her daughter. We hope by becoming part of a sisterhood that meant a great deal to her daughter it may soften the pain of Linda's loss.

Sometimes it is easier to give or offer sisterhood than it is to admit we need the support of our sisters. This fall I needed support and I received it *in abundance* when my mother died in September. Everywhere I turned in my grief and often when I least expected it, Gamma Phi Betas were present to remind me of their love and support. Pink carnations at the funeral, Gamma Phi Beta sisters (and one Gamma Phi Beta husband) driving an hour or more to attend visitation and the funeral, cards, notes and Foundation contributions from chapters, alumnae groups, pledge sisters, a roommate, volunteer leaders, Panhellenic friends, and many more. When I needed it most, you all responded and my sisterhood connection is strengthened. Thank you.

We are all connected by our sisterhood. Share the sisterhood stories that impact you.

Linda Daniel Johnson

Linda Johnson
International President
IP@gammaphibeta.org

INTERNATIONAL COUNCIL

International President Linda Daniel Johnson
Alumnae Vice President Sandra Biegelman Burba
Collegiate Vice President Krista Spanninger Davis
Financial Vice President Annabel M. Jones
Education Vice President Angela Jordan Dimit
Membership Vice President Linda Lyons Malony
NPC Delegate Elizabeth "Betty" Ahlemeyer Quick
Executive Director-Sorority Patricia M. Crowley

GAMMA PHI BETA FOUNDERS

E. Adeline Curtis
Frances E. Haven Moss
Helen M. Dodge Ferguson
Mary A. Bingham Willoughby

SORORITY MISSION STATEMENT

Our mission is to foster a nurturing environment that provides women the opportunity to achieve their potential through life-long commitment to intellectual growth, individual worth and service to humanity.

FEATURES

Now Playing: A Broadway
Actress, A Winning Coach,
A Powerful Executive,
A New York Designer 8
Convention 14, 15

JobBound 22

2005 Award Winners 30

IN EVERY ISSUE

President's Perspective 2

Spotlight On /In LIKE 6

Pacesetters 13

Alumnae News 16

Collegiate News 18

Leadership 21

Out & About 24

In Memory 25

Foundation News 26-27

In Celebration 28

Memorial Gifts 29

NPC Update 32



On the cover: The cover photo is courtesy of
The Commodore Theatre, 421 High Street,
Portsmouth, VA 23704.

The Winter *Crescent* 2006 Volume 106 | Number 1
INTERNATIONAL HEADQUARTERS
12737 E Euclid Drive, Centennial, CO 80111
Phone: 303.799.1874 Fax: 303.799.1876
E-mail: IH@gammaphibeta.org
Internet: www.gammaphibeta.org
E-mail: TbeCrescent@gammaphibeta.org

CRESCENT STAFF

Editor Megan McDermott

Print & Publications Coordinator Staci Frantz

Communications Assistant Abbie Weiss

Business Manager Patricia M. Crowley

Advisor Kris Brandt Riske

MAGAZINE SUBMISSION DEADLINE

Spring January 1

Summer April 1

Fall July 1

Winter October 1

© 2006 Gamma Phi Beta Sorority

The Crescent (USPS137620) is published quarterly by Gamma Phi Beta Sorority, 12737 E. Euclid Dr., Centennial, CO 80111. Periodicals postage paid at Englewood, Colorado and at additional mailing offices. Non-member subscription price is \$6. Produced in the U.S.A. by Maury Boyd and Associates.

Postmaster: Send address changes to: *The Crescent*, Gamma Phi Beta Sorority,
12737 E. Euclid Drive, Centennial, CO 80111.



| Crescent Advisory Board |

The Crescent staff would like to introduce and welcome our new Crescent Advisory Board. The board consists of five alumnae who will share their opinions and expertise to provide you with the best magazine possible.



Stefanie Brickman (Oklahoma) is the art director for the *Oklahoma Gazette* and *OKCBusiness*, a biweekly newspaper in Oklahoma City.



Myrna James Yoo (Kansas State) owns Blueline Publishing LLC. The company provides consulting and publishing outsourcing for independent publishers. Myrna has worked for *USA Weekend* and *Parenting* magazine.



Susan Foulk Reeves (Texas) is the founder of Prism Design, Inc, a design and marketing firm. Before starting her own company, Susan was art director for an advertising agency in her hometown of Houston, Texas.



Kris Brandt Riske (Wyoming) is former editor of *The Crescent* and current advisor. She is the publications director for the National Council for Geocosmic Research, the author of several books, and also writes for various astrology publications.



J.J. Kaelin (Colorado-Boulder) is the sorority director-public relations. In this role, she develops and manages the Sorority's public relations plan and advises the International President regarding public relations matters. She has worked in radio broadcasting for 15 years.

| Contributors |

As the sorority director-leadership development, Kris Baack works with sorority directors, regional directors and volunteers on leadership and leadership training. Read Kris's article on leadership on page 21.



Brad Karsh, president of JobBound, is an expert on breaking into the job market and author of "Confessions of a Recruiting Director" (Prentice Hall Press, April 2006). For Brad's expert advice, see page 22.

Terri Kennedy Briggs, (Oregon State), is the Nominating Committee Chairwoman. Terri was a CLC and served as Collegiate Vice President. For an update on the Nominating Committee, flip to page 14.



Heather Foote Michaud (Indiana State), the 2006 Convention Alumnae Boutique Chairwoman, also serves as sorority coordinator-alumnae extension. Heather lives in Aurora, CO. Read more about the 2006 Convention Alumnae Boutique on page 14.



Front row, left to right: Patricia Crowley, Staci Frantz, Alli Dunham, Susan Adams, Kate Steiner, Kendra Bocher. Middle row: Jill Kelley, Loraine Meech, Jane Kerr, Carol Sellers, Laurie Leiva, William Bishop. Back row: Amy Dana, Megan McDermott, Lillian Kelly, Abbie Weiss, Johnny Rice.

Directory

You can reach IH staff at the following extensions by calling 303.799.1874

Abbie Weiss - Communications Assistant	x314
Alli Dunham - Executive Assistant	x341
Amy Dana - Membership Data Coordinator	x332
Carol Sellers - Operations Coordinator	x319
Christa Fruchtl - Event Manager	x333
Christy Ehrenreich - Special Projects Assistant	x325
Jane Kerr - Receptionist	x300
Jill Kelley - Financial Assistant	x334
John Rice - Senior Technology Officer	x326
Kate Steiner - Special Projects Coordinator	x301
Kendra Bocher - Director of Member Services	x327
Laurie Leiva - Collegiate Coordinator	x343
Lillian Kelly - Director of Finance and Accounting	x324
Loraine Meech - Alumnae Coordinator	x309
Megan McDermott - Director of Communications	x322
Patricia Crowley - Executive Director	x335
Staci Frantz - Print and Publications Coordinator	x339
William Bishop - Technology Coordinator	x326

The Crescent wants to hear from you! Starting this spring we will be including a "Letters to the Editor" section. Do you have something to share about *The Crescent*, its articles or a topic of interest? Let us know!

Letters to *The Crescent* can be sent via mail (Editor, Gamma Phi Beta, 12737 E. Euclid Dr., Centennial, CO 80111), fax (303-799-1876) or e-mail (TheCrescent@gammaphibeta.org). Please include your full name, address and chapter of initiation with your submission.

United States Postal Service
Statement of Ownership, Management, and Circulation

1. Publication Title: *The Crescent of Gamma Phi Beta*
2. Issue Date: 11/15/12
3. Issue Frequency: 4 times a year
4. Number of Issues Published Annually: 4
5. Annual Subscription Price: \$1.00
6. Number of Copies (Net Press): 1000
7. Total Number of Copies (Gross Press): 1000
8. Total Number of Copies (Net Press): 1000
9. Total Number of Copies (Net Press): 1000
10. Total Number of Copies (Net Press): 1000
11. Total Number of Copies (Net Press): 1000
12. Total Number of Copies (Net Press): 1000
13. Total Number of Copies (Net Press): 1000
14. Total Number of Copies (Net Press): 1000
15. Total Number of Copies (Net Press): 1000
16. Total Number of Copies (Net Press): 1000
17. Total Number of Copies (Net Press): 1000
18. Total Number of Copies (Net Press): 1000
19. Total Number of Copies (Net Press): 1000
20. Total Number of Copies (Net Press): 1000
21. Total Number of Copies (Net Press): 1000
22. Total Number of Copies (Net Press): 1000
23. Total Number of Copies (Net Press): 1000
24. Total Number of Copies (Net Press): 1000
25. Total Number of Copies (Net Press): 1000
26. Total Number of Copies (Net Press): 1000
27. Total Number of Copies (Net Press): 1000
28. Total Number of Copies (Net Press): 1000
29. Total Number of Copies (Net Press): 1000
30. Total Number of Copies (Net Press): 1000
31. Total Number of Copies (Net Press): 1000
32. Total Number of Copies (Net Press): 1000
33. Total Number of Copies (Net Press): 1000
34. Total Number of Copies (Net Press): 1000
35. Total Number of Copies (Net Press): 1000
36. Total Number of Copies (Net Press): 1000
37. Total Number of Copies (Net Press): 1000
38. Total Number of Copies (Net Press): 1000
39. Total Number of Copies (Net Press): 1000
40. Total Number of Copies (Net Press): 1000
41. Total Number of Copies (Net Press): 1000
42. Total Number of Copies (Net Press): 1000
43. Total Number of Copies (Net Press): 1000
44. Total Number of Copies (Net Press): 1000
45. Total Number of Copies (Net Press): 1000
46. Total Number of Copies (Net Press): 1000
47. Total Number of Copies (Net Press): 1000
48. Total Number of Copies (Net Press): 1000
49. Total Number of Copies (Net Press): 1000
50. Total Number of Copies (Net Press): 1000
51. Total Number of Copies (Net Press): 1000
52. Total Number of Copies (Net Press): 1000
53. Total Number of Copies (Net Press): 1000
54. Total Number of Copies (Net Press): 1000
55. Total Number of Copies (Net Press): 1000
56. Total Number of Copies (Net Press): 1000
57. Total Number of Copies (Net Press): 1000
58. Total Number of Copies (Net Press): 1000
59. Total Number of Copies (Net Press): 1000
60. Total Number of Copies (Net Press): 1000
61. Total Number of Copies (Net Press): 1000
62. Total Number of Copies (Net Press): 1000
63. Total Number of Copies (Net Press): 1000
64. Total Number of Copies (Net Press): 1000
65. Total Number of Copies (Net Press): 1000
66. Total Number of Copies (Net Press): 1000
67. Total Number of Copies (Net Press): 1000
68. Total Number of Copies (Net Press): 1000
69. Total Number of Copies (Net Press): 1000
70. Total Number of Copies (Net Press): 1000
71. Total Number of Copies (Net Press): 1000
72. Total Number of Copies (Net Press): 1000
73. Total Number of Copies (Net Press): 1000
74. Total Number of Copies (Net Press): 1000
75. Total Number of Copies (Net Press): 1000
76. Total Number of Copies (Net Press): 1000
77. Total Number of Copies (Net Press): 1000
78. Total Number of Copies (Net Press): 1000
79. Total Number of Copies (Net Press): 1000
80. Total Number of Copies (Net Press): 1000
81. Total Number of Copies (Net Press): 1000
82. Total Number of Copies (Net Press): 1000
83. Total Number of Copies (Net Press): 1000
84. Total Number of Copies (Net Press): 1000
85. Total Number of Copies (Net Press): 1000
86. Total Number of Copies (Net Press): 1000
87. Total Number of Copies (Net Press): 1000
88. Total Number of Copies (Net Press): 1000
89. Total Number of Copies (Net Press): 1000
90. Total Number of Copies (Net Press): 1000
91. Total Number of Copies (Net Press): 1000
92. Total Number of Copies (Net Press): 1000
93. Total Number of Copies (Net Press): 1000
94. Total Number of Copies (Net Press): 1000
95. Total Number of Copies (Net Press): 1000
96. Total Number of Copies (Net Press): 1000
97. Total Number of Copies (Net Press): 1000
98. Total Number of Copies (Net Press): 1000
99. Total Number of Copies (Net Press): 1000
100. Total Number of Copies (Net Press): 1000

Above is *The Crescent* of Gamma Phi Beta Statement of Ownership. Per the requirements of the United States Postal Service, this statement must run in the magazine once a year.

Losing Everything In An Instant

A Katrina Survivor's Story

By Abbie Weiss, Communications Assistant

Brandi Boatner (Loyola-New Orleans) has weathered the storm. When Hurricane Katrina threatened her hometown of New Orleans, she packed an overnight bag and headed to Mississippi.

Unfortunately Katrina also hit Mississippi, and after the storm made landfall, Brandi's family evacuated once again, to Baton Rouge. She spent two weeks in Baton Rouge before returning home. Brandi's return was horrifying.

"We had no idea what we would find when we returned home. People starving, children crying, people dying," Brandi said.

Her family's home was ruined. The house was filled with six feet of water and the walls were covered in mold. They lost everything. Her mother's company relocated the family to Houston where they were forced to change hotels every two or three days. Just when things were starting to look up, Hurricane Rita grew to a category five storm. Predictions indicated that the storm was heading directly for Houston, so they evacuated once again and returned to Baton Rouge. They spent 23 hours on the road; with no food, no water and limited gas.

As a senior at Loyola-New Orleans, Brandi still had one semester to complete and was searching for a school. Because of her senior status, none of the area schools could accommodate her. After checking the Loyola Web site, Brandi learned about an opportunity for five students affected by Katrina to study in Germany, all expenses paid. She contacted the program, wrote an

essay and was accepted.

Brandi is currently studying at the University of Dortmund in Dortmund, Germany. She is not alone; fellow Gamma Phi Beta Marianne Dauphin (Loyola-New Orleans) also was selected for the program and the two live together. Brandi said, "Marianne has a wonderful



Loyola University senior Brandi Boatner (middle) stands with her little sisters, Allison Bent (left) and Erin Gervais

spirit and attitude and I turn to her for strength."

Brandi's story spread quickly through her new community, and although she doesn't speak German very well, she has become a celebrity appearing in the local media. Although Katrina turned Brandi's life upside down she doesn't regret the experience.

"The biggest lesson I've learned is to never take life for granted. We have no idea how fragile life is and how in one instant you could lose everything."

Gamma Phi supports teachers, students through supply drive

Editor's Note: Erin Aloan's plea for school supply donations for Hurricane Katrina victims was on the Gamma Phi Beta Web site. This is an update on her successful work and a thanks to Gamma Phi Betas across the country.

Erin Aloan (Union) spent two years working in southern Louisiana for Teach for America, the national corps of college graduates who commit two years to teach in low-income schools. When Katrina struck the region, Erin, who now lives in North Carolina, immediately responded to the needs of her friends and colleagues who remained in Baton Rouge and New Orleans. Erin felt that the best way to support students and teachers was through school supply drives. Coordinating with Gamma Phi Betas across the country, Erin's efforts delivered help at a crucial time. Erin thanks all of the collegiate chapters, alumnae chapters and individual members whose donations helped the Baton Rouge school district meet the needs of its students.

Gamma Phis offer homes to displaced sisters

Regional Coordinator Angelle Hoffman (Loyola- New Orleans) moved from Texas to Oklahoma and back to Louisiana in the weeks after the storm. Every step of the way she was welcomed by Gamma Phi Betas, many she had never met before. Sisters offered their time, their support and their homes to Angelle as she tried to piece her life back together. She says, "Although I felt displaced from my home, my New Orleans communities, and my job, I never felt displaced from Gamma Phi Beta."

Damage shocks New Orleans alumnae

Allison Bent (Loyola-New Orleans) is the president of the New Orleans Alumnae Chapter. When Hurricane Katrina hit, Allison and her family evacuated to Houston, Texas. When they returned home to Metairie, Louisiana, they were fortunate to find very little damage to their home. However, Allison was shocked to see the damage to the city and compared it to a war zone. Now months later, she says daily life is only beginning to return to normal.

In IIKE

As a current CLC and initiate of Epsilon Mu chapter at Loyola-New Orleans, I had been on the road for a little over a month when Hurricane Katrina hit. On September 27, I received a text message that read: We have to evacuate school. We will contact you as soon as we are safe.

From that sad day in September, I have been comforted by sisters across the country. The phone calls, e-mails, notes and hugs have helped me to stand strong. Regardless of whether these thoughts have come from collegians or alumnae, women I know or those I have yet to meet, they have reminded me of the real value of sisterhood.

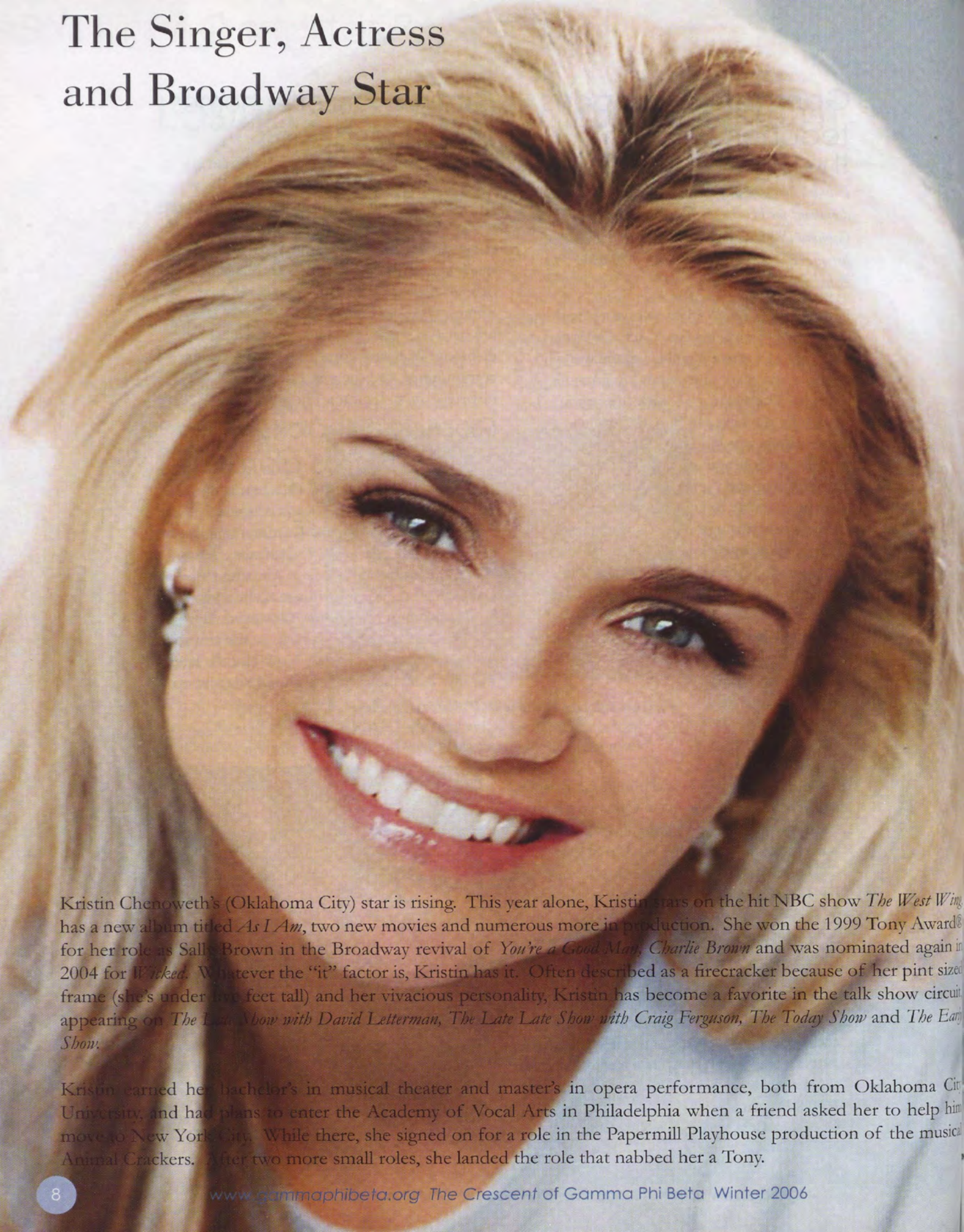
In IIKE,

Courtney Becker (Loyola-New Orleans)



Left to right: Hilary Hartje, Courtney Becker, Laura Burgmeyer, Britni Tyler (all Epsilon Mu) at Courtney's graduation.

The Singer, Actress and Broadway Star



Kristin Chenoweth's (Oklahoma City) star is rising. This year alone, Kristin stars on the hit NBC show *The West Wing*, has a new album titled *As I Am*, two new movies and numerous more in production. She won the 1999 Tony Award® for her role as Sally Brown in the Broadway revival of *You're a Good Man, Charlie Brown* and was nominated again in 2004 for *Wicked*. Whatever the "it" factor is, Kristin has it. Often described as a firecracker because of her pint sized frame (she's under five feet tall) and her vivacious personality, Kristin has become a favorite in the talk show circuit appearing on *The Late Show with David Letterman*, *The Late Late Show with Craig Ferguson*, *The Today Show* and *The Early Show*.

Kristin earned her bachelor's in musical theater and master's in opera performance, both from Oklahoma City University, and had plans to enter the Academy of Vocal Arts in Philadelphia when a friend asked her to help him move to New York City. While there, she signed on for a role in the Papermill Playhouse production of the musical *Animal Crackers*. After two more small roles, she landed the role that nabbed her a Tony.

Q & A

with Kristin Chenoweth

Who inspires you?

Actresses like Carol Burnett, Barbara Cook, Julie Andrews, Barbara Streisand and the singer Sandy Patty.

What role did Gamma Phi Beta play in your career and life?

Gamma Phi Beta gave me a strong sense of community and friendship.

What advice can you give our collegians about breaking into the business?

If you can see yourself doing anything else, go do it. If you can't, if in your heart you have no choice but to be an actress, then go for it.

If you met a freshman woman considering sorority life what would you tell her?

It will give her instant friends and a lot of fun. It will also provide her with mentors that will be helpful throughout her collegiate career.

What is the best part of your job?

Working with people I respect like Stockard Channing, John Spencer, Julie Andrews, Joel Gray...the list goes on. I'm lucky because I get to learn from them.

The worst?

My schedule is the worst because I do Broadway, film, T.V., recording and concert work. I pretty much have no social life. But that's OK, it's all worth it.

You've been working on so many movies, who is your favorite actor to work with?

That's a hard question. How do you decide between Jeff Daniels, Robin Williams, Nicole Kidman, Steve Martin and Annette Bening. You can't. They're all amazing in their own right.

You've made two CDs. Who are you listening to now?

I listen to India Arie, Alison Krauss, Faith Hill and Eva Cassidy.

What's next for you?

I'm doing a concert at Disney Hall in LA, February 26th.



(Top) Kristin took the stage in a solo, sold out concert at Carnegie Hall. (Bottom Left) With Nicole Kidman on the set of *Bewitched*. (Bottom Right) On stage in the hit Broadway production of *Wicked*.



On the Marquee

You can see Kristin in the following upcoming movies:

-*The Pink Panther* starring Steve Martin, Kevin Kline and Beyonce Knowles

-*Stranger Than Fiction* starring Emma Thompson, Will Ferrell and Maggie Gyllenhaal

-*Running With Scissors* starring Annette Bening and Gwyneth Paltrow

-*RV* with Robin Williams

-*Asphalt Beach*, an independent movie-musical

-*Rapunzel*, a Disney animated movie-musical

For more information on Kristin, visit: www.kristinchenoweth.com.

The Winning Coach

Therese Hession (Southern Methodist University) is up to par when it comes to coaching. Head coach of The Ohio State University's women's golf program since 1991, Therese has led the Buckeyes to seven Big Ten championships and nine consecutive NCAA championship appearances in 15 years.

Therese, a 1979 graduate, is a former LPGA tour professional. She competed in more than 250 LPGA tournaments in 11 years, and was among the top 150 in all-time LPGA career money-winners when she concluded her career in 1991. As a collegiate player, Therese led the Mustangs to a national championship in 1979, while earning All-American status. She graduated with honors, earning a bachelor's degree in business administration. For more on Therese, visit: www.ohiostatebuckeyes.collegesports.com

Q & A with Therese Hession

Who is your favorite golfer of all time?

Johnny Miller. When he was in his prime he nailed iron shots right at the pin and was awesome!

What goals do you have for your team?

To be nationally competitive, so we always set goals to win the Big Ten Championship, qualify for NCAA's and finish in the top 10 in the nation.

What's your favorite golf course?

Royal Saint George's in Toronto, Canada.

How did you become interested in golf?

I started playing by following my father around. He used to take me to the driving range and to the pro, Ed Knych, at Fort Benjamin Harrison in Indianapolis, IN. One day he came home with 2 sets of clubs and pulled them out of his truck. I was so excited – hooked for life!

How did Gamma Phi Beta influence your golf career?

I think it helped round out my collegiate experience. I remain friends to this day with many sorority sisters.



Therese instructs one of her players on the golf course.

What was it like being on the golf team and being a Gamma Phi Beta?

It was very tough at times as both required time. My chapter was very understanding of what I was trying to accomplish.

What was your favorite tournament on the LPGA?

Without a doubt, the U.S. Women's Open.

I'm sure you did lots of traveling on the tour. How many states did you travel to a year? Countries a year?

I was usually in about 25 states a year and usually 3 other countries. I am still using frequent traveler mile trips 14 years later!

Why would you recommend Gamma Phi Betas learn to play golf or have their children learn to play golf?

It is a sport you can play for a lifetime. It is also a great game to spend time together as a family. It also teaches you a lot about life!

Fast Fact

Another headliner at The Ohio State University – Dr. Karen Horney Holbrook (Wisconsin-Madison), University President.



The New York Fashion Designer



Q & A with Rebecca Romero

Where did the name Maverick come from?

The word maverick is defined as independent thinking; although, most people interpret it as rebellious.

What was the moment when you knew you had to be in fashion and out of Wall Street?

There wasn't a moment. I am passionate and committed to everything that I am part of; and the business of Wall Street and derivatives are as interesting and stimulating to me as they have ever been. But I have also always been artistically inclined and loved fashion; and it is the time in my life where I need to explore and to challenge the creative side of myself.

What are your top 5 fashion 'rules'?

- 1) Be confident in whatever you are wearing or don't wear it
- 2) Learn the hand of fabrics, so you know quality when you touch it
- 3) Know your own personal style and work to always enhance it; don't be afraid to take risks
- 4) Trend-setting is much more fun than trend following
- 5) Be proud of your body...it is a shrine

Where should a young professional woman shop to dress well with little cash?

The important thing to remember is that she gets what she pays for. If she is trying to build a wardrobe, which is what one should do, then she should spend her money on timeless but chic, cornerstone pieces (dresses, jackets, skirts), which don't need to be replaced for years.

What makes Maverick stand out from other lines?

The fabrication will always be outstanding and the look will always be simultaneously chic, sophisticated, modern and timeless.

Rebecca Romero (Denver) grew up with a passion for creativity and fashion. After a successful eight year career on Wall Street, Rebecca launched her own clothing line called Maverick, with the flagship boutique NoLita in New York City. Rebecca, a Colorado native, majored in finance and marketing and went on to receive her MBA. She then moved to New York and pursued a career in commodity derivatives trading.

Throughout her time in New York she never lost sight of her passions: travel and the arts. Maverick weaves Rebecca's love for global fashion and her Spanish descent into contemporary design for contemporary women. She draws from her extensive travels and her cosmopolitan New York City lifestyle to create a sophisticated, smart, strong and sexy collection. Rebecca uses only high-end designer fabrics from Italy, France and the U.S. and each piece is hand-finished. "I will always strive to put my absolute best work out there; I would be dissatisfied with anything less."

Rebecca's collection can be seen at www.mavericknyc.com.

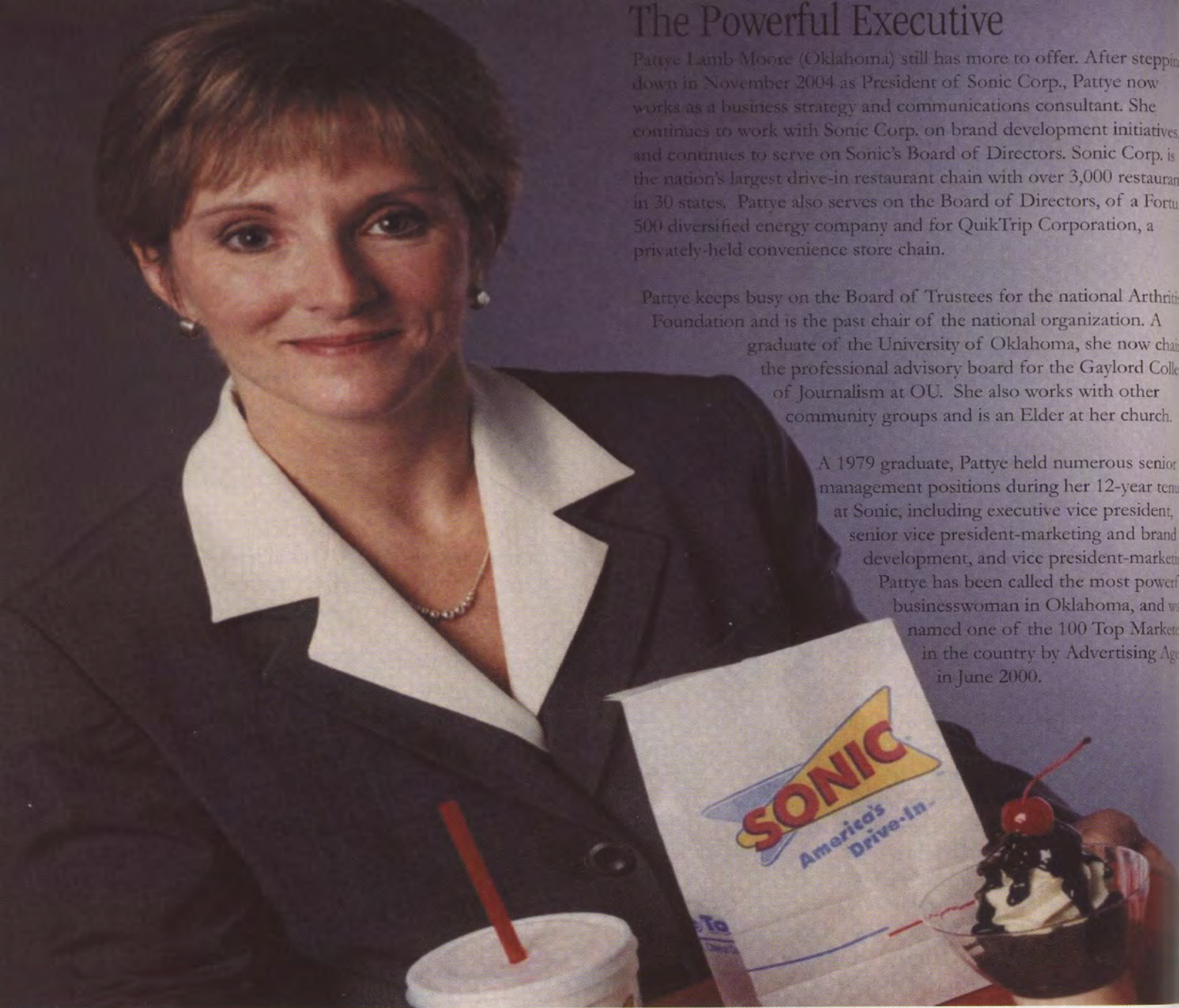


The Powerful Executive

Patty Lamb Moore (Oklahoma) still has more to offer. After stepping down in November 2004 as President of Sonic Corp., Patty now works as a business strategy and communications consultant. She continues to work with Sonic Corp. on brand development initiatives and continues to serve on Sonic's Board of Directors. Sonic Corp. is the nation's largest drive-in restaurant chain with over 3,000 restaurants in 30 states. Patty also serves on the Board of Directors, of a Fortune 500 diversified energy company and for QuikTrip Corporation, a privately-held convenience store chain.

Patty keeps busy on the Board of Trustees for the national Arthritis Foundation and is the past chair of the national organization. A graduate of the University of Oklahoma, she now chairs the professional advisory board for the Gaylord College of Journalism at OU. She also works with other community groups and is an Elder at her church.

A 1979 graduate, Patty held numerous senior management positions during her 12-year tenure at Sonic, including executive vice president, senior vice president-marketing and brand development, and vice president-marketing. Patty has been called the most powerful businesswoman in Oklahoma, and was named one of the 100 Top Marketers in the country by Advertising Age in June 2000.



Q & A with Patty Moore

What is your role with Sonic now and how long have you been consulting?

My last day at Sonic was Oct. 29 – a Friday. My first day as a consultant was Monday, Nov. 1st. My primary role is to help Sonic with brand re-imaging.

How has Gamma Phi Beta influenced your corporate decisions?

It helped me learn the importance of teamwork and of building relationships.

How has Gamma Phi Beta influenced you as a person?

As a Gamma Phi, we were taught the importance of honesty, integrity, character and friendships. I believe those traits are essential in leadership – whether you're leading in a corporate environment, as a parent or as a community volunteer.

What has been your favorite job? Why?

My favorite job is being a mom. I wouldn't trade that for anything in the world. Mark and I have the most wonderful daughters and helping them grow up is a delight. Beyond that, I can honestly say I have truly loved every job I've ever had. I believe that attitude is so important and determines everything.

How do you measure success?

A year ago, I might have talked about achievements of the company or my personal achievements. Today, I measure success by the number of hugs I get and receive each day. My 12-year-old answered the question this way, "By the number of hours each day you're not stressed out." Which is 24!

ATHENA Award winner

Ruth Janssen Person (Gettysburg), chancellor of Indiana University Kokomo, was awarded the ATHENA Award for her outstanding service to her community. The ATHENA Award program is operated by the non-profit ATHENA Foundation, based in Michigan. The foundation works with organizations to help open leadership opportunities for women. The award is named for Athena, the Greek goddess of reason and courage.



Ruth is involved in numerous community agencies, including the Kokomo/Howard County Public Library Board of Trustees, St. Joseph's Hospital Advisory Board, Kokomo/Howard County Chamber of Commerce Women's Business Council, and the Howard County Partners in Education.

Gamma Phi Beta earns fundraiser credential

Roberta "Robbe" Healey (Minnesota-Mankato) is one of 75 fundraisers in the world to have earned the Advanced Certified Fundraising Executive credential, the highest credential a professional fundraiser can attain. Robbe currently serves as development director for The Hickman, a Quaker assisted-living community in West Chester, PA. She is also principal of Farr Healey Consulting LLC.



"I was lucky to be mentored by outstanding development professionals, many of whom hold the same credentials," Robbe said.

Robbe is pursuing a Ph.D. in Philanthropy and Leadership Studies at Union Institute and University in Cincinnati.

Soaring to New Heights

Nicole Notz (Florida Institute of Technology) recently had the opportunity to participate in Florida's Zero-G Experience for Teachers. Notz was selected based on an essay she wrote describing how she would use the experience to benefit students and other teachers. The program, which is the first of its kind, enabled 15 Florida teachers to experience nearly 10 minutes of weightlessness while aboard a modified Boeing 727. While on board the teachers were expected to conduct experiments that they could then integrate into their curricula.

Agency names Gamma Phi Beta print director

Marketing professional Carrie Kleifgen (Alabama) was named director of print production for Yesawich, Pepperdine, Brown & Russell, a travel and leisure marketing agency. Kleifgen earned her undergraduate degree in English and worked as assistant production manager for Cooking Light magazine and advertising and print production manager for Southern Living. Kleifgen has won three gold Addy awards for exceptional advertising.



CD teaches children Spanish

Sharon Mitzner Mentkowski (Northwestern) launched a customized children's CD titled Especially For You to help children learn Spanish. Sharon, a former television reporter, produced and voiced the audio for the CD.

Raised in a bilingual home, Sharon also teaches a public speaking course in Buffalo, NY, where she lives with her husband Aaron, and their two sons, Robert and Jacob. Visit www.LanguageEspeciallyForYou.com.



Gamma Phi PRide

The Orange County Chapter of the Public Relations Society of America recently presented Keri Gee Barnett (California State- Long Beach) with The Distinguished Service Award for the individual PR person of the year. Barnett owns PRIDEA, a public relations/professional speaking agency.

Barnett's desire to help others inspired her to initiate programs such as Heart & SOLE, collecting tennis shoes for homeless shelters, and to co-chair California's first American Cancer Society Relay For Life. She volunteers her PR services to the Parkinson's and Movement Disorder Foundation and Humor Helping Humanity. In addition, she received a commendation from former first lady, Barbara Bush, for coordinating the successful TLC (The Literacy Celebration) PR campaign. Of all her success, Keri says, "I am so thankful for the freedom of speech and for the creative ability to use it to help my clients and so many worthy non-profits."



Shaping the Future of our Sorority

By Terri Kennedy Briggs, (Oregon State), Nominating Committee Chairwoman

The 2004-06 Nominating Committee thanks those who participated in the nominating process for the 2006-2008 biennium. Nomination Forms are due February 1, and the committee will meet February 17-19, 2006, at International Headquarters where they will prepare the slate for elections that will take place June 28th – July 2nd, 2006, at Convention in Phoenix, Arizona.

Areas for 2004-2006 nominating committee representation were based on the former province system. For the next biennium, areas have been changed to reflect the regional structure. International Council developed the new areas based on the distribution of alumnae members throughout the United States and Canada. For the 2006-2008 biennium, Area A, Region 1 and 2; Area B, Region 3; Area C, Region 4 and 5; Area D, Region 6; Area E, Region 7; Area F, Region 8.

The nominating process is vital to the future of our Sorority. Questions regarding the nominating process can be directed to Terri Briggs at 614.798.8626 or DBriggs@columbus.rr.com.

Members of the 2004-2006 nominating committee

Terri Kennedy Briggs (Oregon State), Chairwoman

Sue Bender Bloch (Ohio Wesleyan), Area 1

Jean Lewis Daily (Indiana State), Area 2

Megan Byrne Krueger (Indiana), Area 3

Karen Wander Kline (Iowa State), Area 4

Cheryl Broyles Moore (Colorado State), Area 5

Diane Soderstrom Goff (Idaho), Area 6

Jenny Yi (California-Riverside), Collegian

Megan Esch (Colgate), Collegian

Sentiments of Sisterhood

By Heather Foote Michaud (Indiana State), 2006 Convention Alumnae Boutique Chairwoman

The original designs and creativity of our alumnae were well showcased at the 2004 Convention Alumnae Boutique in Chicago, having built upon the successful revival of the boutique in 2002. As Gamma Phi Beta prepares for Convention 2006 in Phoenix, we invite all alumnae chapters and crescent circles to join in the fun by participating in the Convention Alumnae Boutique.

Thirteen groups participated in the Convention 2004 alumnae boutique and brought a wide array of boutique items, including $\Gamma\Phi\beta$ jewelry, ornaments, needlework, T-shirts, pins, cups and more. Participating alumnae groups staffed their own booths and the money they raised went back to their chapter. We hope to have even more groups participate this year.

For deadline information and guidelines, visit our Web site at www.gammaphibeta.org or contact Heather Michaud at 303.344.9495 or hkmichaud@yahoo.com.



Sandy Biegelman Burba (Miami-Ohio), Alumnae Vice President and Vonda Lynch Bryant (Christopher Newport), 2004 Convention Alumnae Boutique Chairwoman at the entrance to the 2004 boutique.

Meet at the Ultimate Sisterhood Event Convention 2006 in Phoenix, June 28-July 2

Sunsets

Spend your evenings at the Biltmore, relaxing with sisters around one of the resort's eight pools or celebrating the Awards Dinner and Pink Carnation Banquet. Come enjoy the beauty of Gamma Phi Beta.

Saguaros

The Arizona Biltmore Resort and Spa, the "Jewel of the Desert," sits at the foot of the Phoenix Mountain Preserve. Throughout your stay you will be surrounded constantly by the beauty of the southwest. The Biltmore's renowned European spa will provide you with the pampering you deserve.

Sisterhood

At Convention, Gamma Phi delegates will participate in the deliberation and decision-making of our Sorority, but everyone will participate in the fun! Sisters will have the opportunity to attend leadership workshops, and hear stimulating speakers.

Registration information will be available during February.

All alumnae chapters, collegiate chapters and crescent circles will receive registration packets in the mail in February.

To request a registration packet, contact International Headquarters at 303.799.1874, send an e-mail to Convention@gammaphibeta.org with your complete name and address or download a copy from the Gamma Phi Beta Web site at www.gammaphibeta.org.

Hotel Rates

\$109.00 per night plus 12.07% tax.

This rate is good seven days prior to the event and seven days after the event.

The Phoenix Alumnae Chapter invites you to check out its Web site! Visit www.arizonagammaphibeta.org to learn about Convention registration, sightseeing and transportation. Find suggestions for what to bring, what to wear and tips for the business sessions. Don't miss the site's monthly Convention poll!

To learn more about Phoenix, visit www.ci.phoenix.az.us.

Arizona

During recruitment, PHOENIX alumnae provided the Beta Kappas from Arizona State University with a taco dinner. Many Gamma Phi Beta alumnae participated in the Race for the Cure, celebrated Founders Day and are working on Convention 2006.

California

Andy Hanshaw, representative of the San Diego State University Alumni Center, met with SAN DIEGO alumnae to give a presentation on the Alumni Center Greek Challenge and the plans for building an alumni house at SDSU.

Colorado

The DENVER Alumnae Chapter's Laughter, Interests, News, Knowledge, Sisterhood (LINKS) programs are going strong with 26 interest groups. The group celebrated Founders Day, collecting donations for the homeless. Visit denveralumnae-gpb.org for more information.

The FORT COLLINS Alumnae Chapter celebrated Founders Day at the newly redecorated Tau Chapter House. The alumnae also assisted during recruitment.

Florida

School supplies were collected for the children of Mercy House, the TAMPA BAY Alumnae Chapter's local philanthropy.

Georgia

The ATLANTA Alumnae Chapter is helping with the colonization process at Emory University. The Atlanta alumnae held the 11th annual mother/daughter salad luncheon, with all donations going to Camp Fire USA. Chapter members sold Sally Foster wrapping paper to raise money for local scholarships.

Illinois

Many local alumnae of the CHICAGO FAR WEST SUBURBAN Alumnae Chapter gathered for the Susan G. Koman Race/Walk for Breast Cancer; see photo below.

The CHICAGO NORTHWEST

SUBURBAN Alumnae Chapter celebrated its 50th anniversary. At the alumnae Panhellenic's annual spring banquet, Nancy Hegel (Denver) won the Athena award, for sorority women who have demonstrated excellence and achievement in their professions.



Chicago Far West Suburban alumnae held their annual ice cream social to kick off the 2005-06 year.



Atlanta alumnae brave the waters of Georgia's Ocoee River. Pictured are: Darla Orth (Kansas State), Kim Byrd Subacz (Auburn), Maggie Lea (Kansas State), Wendy Hiddema (Detroit-Mercy), Libby Friedline (Purdue), Cristy Gleason (Georgia), and Bridget Cantrell (Southern Polytechnic State).

Indiana

Representatives from the BLOOMINGTON and INDIANAPOLIS alumnae groups joined the women of Indiana University to honor Betty Ahlemeyer Quick (Indiana). The Bloomington alumnae also supported the collegiate chapter during recruitment and shared the annual Founders Day celebration with the collegians.

Maryland

The GREATER BALTIMORE Alumnae Chapter held a monthly dinner and organized two yard sales, raising more than \$350 to benefit the chapter. In August they hosted a high tea for underprivileged girls from The Children's Home of Baltimore and volunteered at an event recognizing service men and women who have returned from Afghanistan. Their boutique sale with Gamma Phi Beta vendors donated 10 percent of the sales to Camp Fire USA.



Indianapolis Alumnae left to right, front row: Suzanne Gartland Demas (Indiana), Susie Webb Leeke (Indiana). Middle row: Susan Locking Richards (Michigan State), Terra Dossie Doyle (Colorado-Boulder), Melissa Johnston Rogers (Indiana). Back row: Monica Wagner Guthrie (Indiana) and Kris Kellum Jarosinski (Indiana).

Missouri

The GREATER KANSAS CITY Alumnae Chapter is proud to lend financial support to four collegiate chapters: University of Kansas, University of Missouri, Kansas State University and Wichita State University. Linda Malony (Beta Alpha), Membership Vice President, joined the chapter in celebrating Founders Day.

The ST. LOUIS Alumnae Chapter's book group met and the chapter held another successful mum sale. The group continued to support the St. Louis Panhellenic through ticket sales for the Meet Me in St. Louis Antique Road Show, featuring 50 nationally recognized antique dealers from across the nation.

New Mexico

For the past 25 years, the ALBUQUERQUE Alumnae Chapter has made jalapeno jelly as a fundraising project for Camp Fire USA scholarships and the Roadrunner Food Bank for the homeless. The chapter raises about \$900 annually from philanthropic events.

Ohio

The CLEVELAND EAST Alumnae Chapter celebrated its 50th anniversary. Four charter members attended: Virginia Pebley Morgan (Bowling Green), Amy Bowen Riski (Ohio Wesleyan), Jean Bigler Edwards (Kent State) and Ruth Mason Wuest (Kent State). Sandra Biegelman Burba (Miami-Ohio), Alumnae Vice President, and Gaye Grimsley Bricker (Ohio State), Regional Coordinator also attended. Over the past 50 years, the group has contributed to local women's shelters, children's homes and The Ronald McDonald House of Cleveland.

Texas

DALLAS alumnae kicked off the year with Fall Back into Gamma Phi hosted at the SMU Alpha Xi Chapter house.



Northern Virginia Alumnae made breast cancer awareness cards which remind a friend to get a mammogram.



Tampa Bay Alumnae enjoyed a Mexican fiesta brunch.

Kappa Minnesota | Twin Cities

The chapter hosted an event to raise money for Hurricane Katrina relief.

Xi | Idaho

This year, Gammie Frisbee Golf benefited Camp Fire USA. The chapter welcomed their fathers during Dad's Weekend.

Psi | Oklahoma

With the news of Hurricane Katrina, members partnered with Delta Chi Fraternity to raise more than \$7,000 for the Red Cross.

Alpha Beta | North Dakota

Members braved the weather for a 48-hour teeter-totter-a-thon, raising money for the American Diabetes Association.

Alpha Delta | Missouri-Columbia

The women volunteered for Tigers Taming Hunger and Tiger Tango, dancing with local nursing home residents.

Alpha Epsilon | Arizona

At Pi Kappa Phi's annual War of the Roses competition, Gamma Phi Beta raised more than \$2,000 and took first place.

Alpha Lambda | British Columbia

The chapter received the top leadership award from the UBC Panhellenic.

Beta Alpha | Southern California

Beta Alpha kicked off the year with bid night featuring a live band. The women raised their cumulative GPA to 3.36.



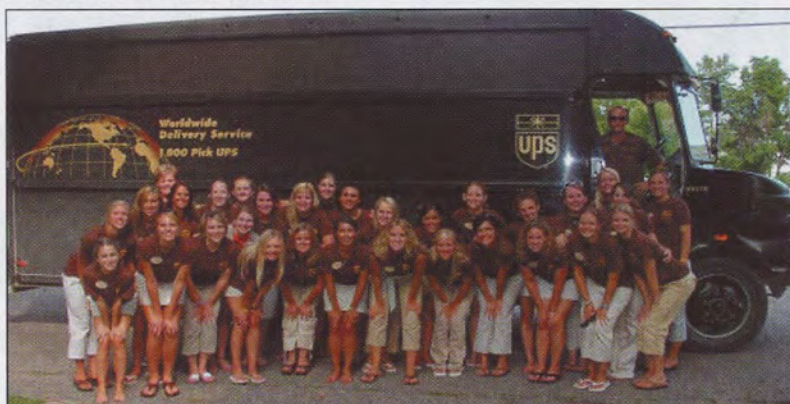
Omega | Iowa State

The chapter focused its recruitment on loyalty, labor, learning and love and welcomed 17 new members.



Alpha Chi | William and Mary

The chapter prepares for a skit during recruitment, at which they welcomed 22 new members.



Gamma Psi | Northern Iowa

"What can Brown do for you," as the saying goes. The chapter poses with the UPS man during recruitment.

Beta Omicron | Oklahoma City

The chapter founded Oklahoma's first ovarian cancer coalition chapter in honor of sister Brooke Haley.

Beta Phi | Indiana

Volunteer leaders Julie Dunn (Florida State) and Emily Deakyne Chestnut (Wittenberg) conducted a retreat for the chapter. Later, Betty Quick (Indiana), NPC Chairman, had dinner with the sisters.

Beta Psi | Oklahoma State

The Crescent Classic Volleyball Tournament involved campus groups and raised more than \$4,000 for Camp Fire USA and Hurricane Katrina Relief Fund.

Gamma Beta | Gettysburg

The chapter held its annual For the Love of Lori softball tournament, in memory of Lori Moll, former chapter president, who lost her battle with leukemia. Proceeds were donated to the National Leukemia & Bone Marrow Foundation.

Gamma Eta | California State-Long Beach

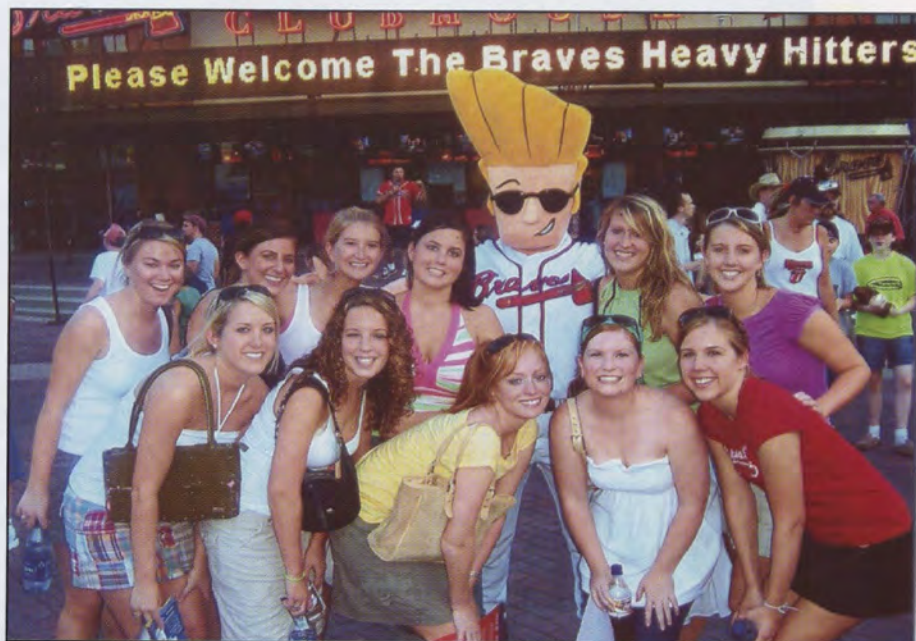
Money raised from the chapter's barbecue was donated to the American Red Cross disaster relief fund.

Delta Eta | California-Irvine

Delta Eta hosted its annual Creepy Crescent philanthropy and Silver Moon dance.

Delta Kappa | Lehigh

Sisters teamed with Delta Gamma, Alpha Tau Omega and Theta Xi to donate \$300 at a concert for the Hurricane Katrina Relief Fund.



Gamma Phi | Auburn

After a week of mingling with potential new members, stuffing Build-A-Bears and singing Gamma Phi Beta songs, sisters celebrated recruitment with 58 new members. Topping off the week, the chapter held a sisterhood event at an Atlanta Braves game.



Gamma Epsilon | Puget Sound

The sisters participated in Greek Week and Sigma Chi Derby Days, which raised money for Make-A-Wish Foundation.

Delta Upsilon | Georgia

At their chili cook-off, chapter members raised more than \$9,000 to benefit Children's Healthcare of Atlanta, Families for Freedom and the Clute-Barrow Nelson Life Foundation.

Epsilon Beta | Alma

Members participated in a barbecue and philanthropy project.

Epsilon Eta | Bridgewater State

The chapter assisted the campus with various relief efforts for victims of Hurricane Katrina.

Epsilon Iota | Christopher Newport

At their Moonball philanthropy, sisters played volleyball for 12 hours, and raised more than \$600 for Camp Fire USA.

Epsilon Nu | Chapman

Along with their chapter retreat, and semi-formal, the chapter hosted Airbands, which benefited Camp del Corazon.

Epsilon Psi | North Carolina-Asheville

The women held a car wash, raising more than \$600 for a battered women's shelter.

Zeta Delta | Southeast Missouri State

The Zeta Deltas returned this fall with the best grades on campus.

Zeta Zeta | Coastal Carolina

The sisters raised \$1,000 for Camp Fire USA during their annual golf tournament.

Zeta Eta | Lander

The chapter held a bake sale benefiting St. Jude Hospital, and a rock-a-thon for Katrina victims.

Zeta Mu | St. John's

With the help of CLC Liz Coder, the sisters were able to keep their energy up and welcome their new members!

Zeta Xi | Albertson

Last year, the chapter was named Greek organization of the year, and chapter members continue to dedicate themselves to philanthropy projects. Members recently donated money to Camp Fire USA.

Zeta Omicron | John Carroll

The chapter's new philanthropy is Individuals Dedicated to Educational Advocacy, which helps special needs children.



Tau | Colorado State

The chapter welcomed new members with leis on Bid Day.

Smith named chair of SMU Leaders program



Abigail Smith, a sophomore at Southern Methodist University in Dallas and a member of Gamma Phi Beta's Alpha Xi Chapter, has been named the Chairperson for the SMU Emerging Leaders program. Emerging Leaders is a leadership development program for a select group of First Year Students designed to teach students leadership skills and refine those they have already displayed. Students selected for this group meet weekly with local Dallas business leaders and other visiting dignitaries. Abbie was chosen as an Emerging Leader during her first year and now acts as the group's chairperson.

In addition, Abbie is a Resident Advisor (RA) and the assistant to the curator of the Meadows Museum. Abbie is majoring in French and International Studies at SMU.

Leading by developing relationships

By Kris L. Baack, Ph.D. (Nebraska-Lincoln), Sorority Director-Leadership Development

Leadership, like beauty, is hard to define, yet most of us know it when we see it.

I have the opportunity and pleasure to teach leadership at the University of Nebraska. Each day is a unique experience working with students who are high energy, intelligent and incredibly motivated. Meeting someone for the first time and asked, "What do you do?" I respond, "I teach leadership at the university." Almost inevitably the next question is, "So what do you teach?"

Can you teach leadership? According to J. Thomas Wren ("The Leader's Companion, Insights of Leadership Through the Ages", 1995), leadership is central to the human condition. As I often say to my students, "Leadership is a process, not an end product."

Growing up we acquire the societal norm that being a leader is good and being a follower is bad. But for every position of leadership we hold, we still have someone who oversees our work and for every committee we chair, we serve as a member on several others. Thus, while we seem to focus on leadership, followership is prevalent in our lives.

"Each day, we are leaders and followers; as active members of our society it is essential we become effective in both roles."

Effective followers manage themselves well; are committed to the organization and to a purpose, principle, or person outside themselves; build competence and focus their efforts for maximum impact, and are courageous, honest and credible (Robert E. Kelley, "Harvard Business Review"). Each day, we are leaders and followers; as active members of our society it is essential we become effective in both roles.

Leadership is all about relationships. Please contact me at kbaack1@unl.edu with questions or ways I can assist you in your leader-full endeavors.

GOOD Things You Did in College That Will Get You Fired in the Real World

By Brad Karsh, President of JobBound

The things you did in college will get you fired in the real world.

Top CEOs are resigning because of inappropriate e-mails, managers are fuming about personal cell phone use, and college women claim the headlines for wearing flip-flops to the White House.

In college, your professor probably didn't care if you walked in late. No one looked twice if you sported your favorite pink pajama pants around campus, or if you played solitaire on your computer during lecture. What was perfectly acceptable in college is inappropriate in the workplace. In the real world, no one will take you seriously if you're always ten minutes

late, if your iPod is plugged in at your desk, or if the *Sex in the City* ring tone resounds from your cell phone throughout the day.

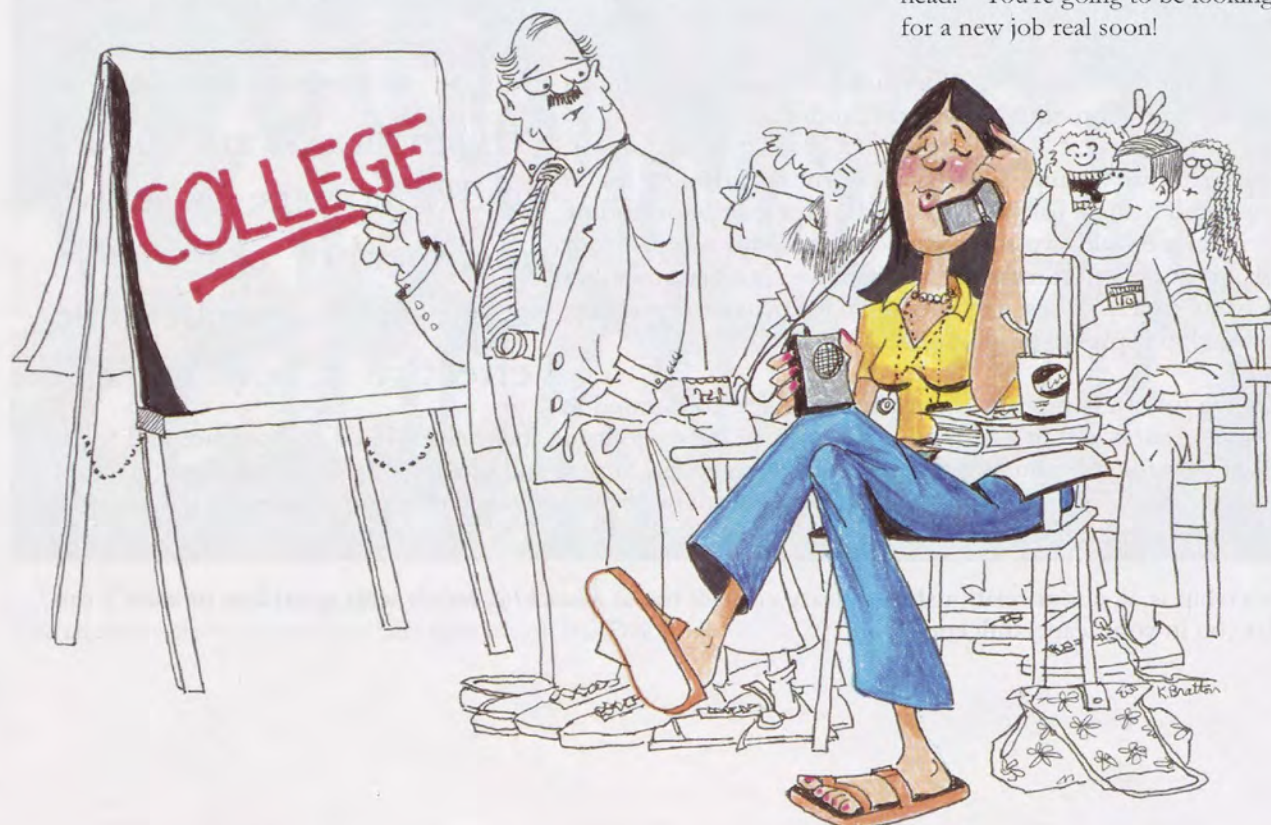
You may be thinking to yourself, "I would NEVER try to do these things in the office." And that's good news, because you absolutely shouldn't. For a smoother transition into your career, take note of the four following GOOD things you did in college that could get you fired in the real world.

1. Work Independently

In college, for the most part, you are expected to work independently. Can you imagine walking up to your professor and saying, "I wanted to write the best paper I could, so I

took ideas from several renowned scholars, my parents, and Web sites and copied all of their words into my paper?"

In the workplace, if your boss asks you to develop a new marketing plan for the company, you wouldn't base it solely on your own thoughts and ideas. If you said, "Boss, here is my marketing plan. I know the company launched a new marketing plan three years ago, but I didn't look at it. I know my coworker did a similar project, but I didn't ask her ONE question! I know there is a great amount of research and resources on marketing plans, but I didn't look at a single one! All of this information in the report comes straight from my head." You're going to be looking for a new job real soon!





In college you must work independently. In the working world it's about collaboration.

2. Do everyone else's work

In college, here's how most group projects work. Two people do all the work and the rest of the team takes credit. If you end up getting an A then it's no big deal.

In the real world, bosses are not impressed by an employee who does the work of the entire team. Bosses will think you have poor leadership and delegation skills, and they will think your duties are not getting the full attention they deserve. Plus many workers get offended when you tread on their turf. Yes, you want to pitch in and help others, but don't be a work hog.

3. Do exactly what you are told

In college, if you do exactly what you

are told and you do it well, you get an A.

In the real world, if you do exactly what you're told and you do it well, then you get a C. The fact is, you're expected to take the initiative and to go beyond what's expected. In college, you can't get higher than an A. In the workplace, there are always ways to improve.

4. Wait to be taught

In college, you sit in the classroom, and you wait for the professor to teach you. You've invested thousands of dollars for that professor's valuable information.

In the real world, you can't expect to sit around and wait for people to tell you exactly how to do everything. Bosses expect you to have questions, be resourceful and search for answers, and to take the initiative in learning your job duties

and responsibilities. Remember, they've invested thousands of dollars in YOU!

So there you have it. Some GOOD things you did in college that might get you fired in the real world. It's not easy to make the transition, but if you keep some of these tips in mind, it will be a whole lot easier. Good luck.

Prior to starting JobBound, Brad spent 15 years at Leo Burnett Advertising in Chicago. He left in 2002 as the VP/Director of Talent Acquisition, in charge of recruiting for the agency. While at Burnett, he critiqued more than 10,000 resumes and interviewed well over 1,000 college students.

Brad offers a variety of presentations and workshops on resume writing, interviewing, business etiquette, networking and professional development.

Brad lives in Chicago with his wife Lisa, a Gamma Phi Beta.



1. Iowa State University alumnae gathered recently at the chapter house in Ames to celebrate the 50th reunion of their class of 1951. Pictured left to right: Nancy Getz Adams, Catherine Schanche Sanders, May Kay Hogan, Janice Mellinger Linn, Ann Abraham Lehman, Marilyn Hagen Ause, Jewel Wendt Kintzinger Day, and Patricia Sandell Gustofson.

2. Five Alpha Mu sisters reunited in September. The 1968 Rollins graduates are Sherry Askren Walker, Lauri Reger Griffith, Sandy Voran Meslis, Susan Haddock and host Sandy Christian Deagman.

3. Cindy Walters Henderson (Washington) and Linda Fuhriman Scharnhorst (Idaho) celebrate at the wedding of their children, Jodi Henderson and Ryan Scharnhorst. Gamma Phi Beta alumnae from Lambda Chapter in Washington (left to right): Carol Lanham Koehler, Jane Lirhus Brand, Cindy Henderson. Alumnae from the University of Idaho, Xi Chapter, Linda Scharnhorst, Carol Colquhoun Cameron, Patsy Castino Enkema, and Debbie Henderson.

4. Two members of the San Diego Alumnae chapter, Barbara Davis McKewen (San Diego), left, and Donna Dwyer Stoner (San Diego), enjoy an impromptu get-together with Cele Hoffman Eifert (USC), center, of the Atlanta Southern Crescent Alumnae Chapter during the annual San Diego Alumnae Panhellenic Association Scholarship Luncheon.

5. Lake Forest alumnae Linda Nelson Graham, Pat Galitz Kramer, and Jane Ruhnke Jensen reunite in Arizona.

Alpha | Syracuse

1932 Mary Rowe Brown
1939 Janet MacKain Curtis

Epsilon | Northwestern

1948 Betsy Surrey Krier

Eta | California-Berkeley

1930 Marjorie Bielski Albinson
1954 Jinx Reynaud Fores
1931 Ardath Busby Swobe

Theta | Denver

1959 Judy Russell Davis
1936 Betty Richards Hutchison

Kappa | Minnesota-Twin Cities

1927 Milla Jacobsen Garretson
1946 Phyllis Barke Gilbert
1928 Virginia Wright Magnus
1955 Cecelia Robertson Marshall
1939 Suzanne Morris Peterson
1929 Virginia Little Stevens

Lambda | Washington

1932 Marjorie Hoag Emery
1945 Margaret Gillespie Gahagan

Mu | Stanford

1941 Rosamond Fuller Shelton

Nu | Oregon

1966 Kathleen Rogers Alden
1939 Mary Darling Jurgensen
1950 Mary Hansen Reed

Xi | Idaho

1938 Jerry Davidson Lillge
1927 Dorothy Simmons Hutting
1924 Pearl Pangborn Vanhorn

Omicron | Illinois

1929 Maxine Dry Trulock

Pi | Nebraska-Lincoln

1959 Patricia Barrett Anderson
1931 Lorne Welch

Sigma | Kansas

1928 Mary Donovan Jones
1952 Verna Knorp Parsons

Tau | Colorado State

1931 Doris Wagner Hannah
1947 Lucille Rutt Markley
1955 Bonnie MacAluso Pastor

Phi | Washington University

1940 Meta Mulconery Lieurance

Psi | Oklahoma

1941 Dorothy Shurtleff Frederick
1956 Patricia Morris Pemberton

Omega | Iowa State

1937 Marie Larson Anderson Tolley

Alpha Beta | North Dakota

1944 Geraldine Kaldor Vaaler
1936 ElaNor Weber

Alpha Epsilon | Arizona

1936 Mary Morgan Babcock
1949 Evelyn Neely Olson

Alpha Zeta | Texas

1934 Portia Garrett Waddell

Alpha Iota | UCLA

1934 Willow Kiefer Decker
1936 Eunice Devoin Easley
1948 Nancy Wilson Serr

Alpha Lambda | British Columbia

1937 Katherine Hewitt Smith
1938 Marion Sloan Van Order

Alpha Xi | SMU

1954 Elizabeth Philp Elle
1944 Mary Kathleen Redden Phillips

Alpha Omicron | North Dakota State

1939 Janice Follett Patman

Alpha Chi | William and Mary

1945 Mary Cappelman Killian
1950 Patricia Roland Mathews

Alpha Omega | Western Ontario

1938 Mary Tasker

Beta Alpha | USC

1938 Helen Hecht Shults

Beta Epsilon | Miami

1951 Rachel Roach Owens

Beta Zeta | Kent State

1947 Patricia Casto Ashton
1949 Audrey Sessions Sargent

Beta Theta | San Jose

1948 Patricia Temple Compton
1948 Virginia Jones

Beta Kappa | Arizona State

1954 Patricia Locker Ames

Beta Pi | Indiana State

1959 Mary Keegan Ward

Beta Sigma | Washington State

1955 Irene Martin Cunningham

Beta Tau | Texas Tech

1963 Ellen Dunias Roddy

Gamma Eta | California-Long Beach

1977 Marla Madnick Makler

Gamma Nu | Lamar University

1972 Deborah Havron Heather



Meet Our New Trustees...



Mary
Vanier



Mary Ellen
Porter Burchfield

The Foundation is proud to introduce our two new Trustees, Mary Ellen Porter Burchfield (Iowa State) and Mary Vanier (Kansas State). These sisters join the other 16 Trustees to provide expert guidance and generous support to the Foundation.

Mary Ellen is currently treasurer for the Naples Area Alumnae Chapter. She has previously served the Sorority as province financial director for provinces Va & b and treasurer for the Chicago Far West Suburban Alumnae Chapter. Professionally, she was a systems analyst and division accountant for the Northern Illinois Gas Company.

Mary Vanier is sorority director – advisor development and chapter advisor for Beta Upsilon chapter at Kansas State University. She currently is president of Grand Mere Development, Inc., a 1054-acre master planned golf course community in Manhattan, Kansas.

The Gift of Sisterhood

The Gamma Phi Beta Foundation invites you to share the Gift of Sisterhood at Convention 2006 in Phoenix. We will have many of our traditional activities, including the Opportunity Drawing and Crescent Grams. Plus, we'll introduce an exciting new regional fund raising competition. Come prepared to participate – you'll want to be a part of all the fun!

All fully-registered Convention attendees will participate in the Foundation Luncheon. Loyal Foundation donors will attend the Friends of

the Foundation breakfast. The 1874 Society members and major donors will enjoy a special luncheon with the Foundation Trustees at the Wrigley Mansion. More surprises are in the works.

Look for more information on Convention activities on our Web site, in our electronic newsletters, future issues of *The Crescent* and other Foundation publications.

Correction: The Aurora Area Crescent Circle should have been recognized as a donor to the Laurel Clark Endowment Fund in the 2004-05 Annual Report, but was not. We apologize for the error.



Trustees gathered at the NPC Biennial Session in Texas to see Betty Quick installed as NPC Chairman.

Estate planning benefits you and so many other young women

Whenever we promote planned giving and estate plans, we emphasize the benefits to you, including the tax benefits of having the Foundation in your plan. Today, most women need to build bequests and other planned-giving instruments into their financial preparation.

However, we seldom discuss the intrinsic value of including the Gamma Phi Beta Foundation in those plans – how your ultimate gift can truly make a difference in the lives of future generations of Gamma Phi Beta sisters and young girls.

Ellender Wills Dickson (California-Berkeley) provided for scholarships in her estate planning. She created a trust, which provided two scholarship funds after her death in 1983. The larger fund is for members of Eta chapter, at California-Berkeley and the Foundation annually awards several Eta Chapter scholarships and fellowships. This year alone, the value to collegians was \$25,000. Many Eta members have been able to complete their undergraduate work or attend graduate school because of Ellender's generosity and thoughtful planning.

The Foundation also awards Ellender Dickson scholarships each year. These awards, separate from the scholarships for Eta members, have also made a difference to many young women. One of the Ellender Dickson scholarship recipients for the 2005-2006 school year is Shari Kopf (Nebraska-Lincoln). Shari



reports, "I am majoring in political science with a minor in biology. I am currently the President of Pi chapter, a member of the Senior Chancellor's academic honorary (The Innocents Society), and a cheerleader on the University of Nebraska Spirit Squad. The activities I am involved with do not allow me much time to have a job, so this scholarship has been a true blessing, and a reward for my service to Gamma Phi Beta."

There are many more stories of how Gamma Phi Beta Foundation scholarships have made it possible for young women to stay in school or further their education in graduate schools. Scholarship endowments from planned gifts are the reason.

You also can designate your gift to help build leadership skills for collegians or resiliency in girls through a camping endowment. There is an option to fit every member's area of particular interest.

Some day your planned gift could make an important difference in the life of a young Gamma Phi Beta. Take action now to make this support possible. The Foundation invites you to consider a named endowment, or any other gift to the Foundation, in your estate plans. If you would like more information, please contact Bonnie Payne, Executive Director, at (303) 799-1874 ext. 305.

The Gamma Phi Beta Foundation acknowledges the following individuals who contributed RESTRICTED Gifts and Pledges totaling \$1,000.00 or more to the Foundation. These gifts are designated for specific scholarships/fellowships, chapter gifts and various others. This list represents gifts received from August 1, 2005 through October 31, 2005.

Gifts totaling \$1,000-\$4,999

Cathy Boudreaux Griffin
Louisiana State '69

Jayne Pettis Hilde
Minnesota-Twin Cities '81

Sylvia Finch Poppelbaum
Syracuse '58

Dorothy McElwain Will
Syracuse '42

Gifts totaling \$5,000-\$19,999

Patricia McDonald Chandler
Idaho '52

In Celebration

The Gamma Phi Beta Foundation acknowledges the following individuals who contributed to the Foundation to celebrate a special event. This list represents gifts received through October 31, 2005.

Births, Marriages, & Anniversaries

Best wishes to dedicated Gamma Phi Beta volunteer Rene' Matz and congratulations to Donald Thompson on their marriage May 28, 2004.

Carol Blanchard

In Celebration of the birth of my first grandchild, legacy McKenzie MaeLen Flowers on May 16, 2005.

Linda Flowers

In Celebration of the birth of Aramis Allen Lyons to Victor and Kelly Colman Lyons on June 10, 2005.

Balboa Harbor Alumnae Chapter

In Celebration of the birth of Mitchell Jamison Cosper to Scott and Amy Mitchell Cosper on June 14, 2005.

Balboa Harbor Alumnae Chapter

In Celebration of the birth of Grace Apollonia Wendl to Norman and Christine Eisel Wendl on August 4, 2005.

Balboa Harbor Alumnae Chapter

In Celebration of the birth of legacy Grace to Christine Eisel Wendl.

Rene' Thompson

In Celebration of the birth of legacy Jillian Elisabeth Trimble on June 29, 2005 to Lisa Kenagy Trimble and Shawn Trimble.

Mitzi Ritzman

In Celebration of the birth of Cameron James (CJ) Olson on September 2, 2005 to Lori Otto Olson and Seth Olson.

Mitzi Ritzman

In Celebration of the birth of Landon Curtis Cose on August 8, 2005 to Brooke Christenson Cose and Chad Cose.

Mitzi Ritzman

In Celebration of the birth of William Luke (Dec. 27, 2001) and Noah Charles (May 13, 2005) to Ted and Beth Snoddy. Congratulations to the new parents and grandparents.

Jack and Barbara Snoddy

In Celebration of the birth of Alexandria Anique (Aug. 22, 2005) to Alan and Jennifer Snoddy Stanley. Congratulations to the new parents and grandparents.

Jack and Barbara Snoddy

In Celebration of Maria Hall on the birth of her new baby, James Hall.

Delta Psi Chapter

In Celebration of the marriage of Michelle Yost to Nick Canellopoulos on August 13, 2005. **Balboa Harbor Alumnae Chapter**

In Celebration of the birth of Bonnie Payne's new grandson, Carrick Albin Stanley.

L'Cena Rice

In Celebration of Stacey Martin Boyer (Psi '92) on the birth of her second daughter, Emily Kate, born May 10, 2005. Stacey is the public relations director for the Mid-Del school district, and is married to college sweetheart Matt who works as a firefighter/paramedic for the Oklahoma City Fire Department. Stacey has another daughter, four year old Abigail Kristen.

Matt Boyer

In Celebration of the 50th Anniversary of Patricia Ann Gibbs and James R. Higginbottom.

Bergen County Alumnae Chapter

Congratulations

In Celebration of Pamela Peterson Abbott for the years of service to the Jacksonville Alumnae Chapter, Epsilon Zeta Chapter Advisory Board and Epsilon Zeta House Corporation Board as she moves on to enrich the lives of Chicago's Gamma Phis.

Vickie Whitcher

Joyce Penman

Brandy Hibbard

Lynda Follenweider

In Celebration of my daughter, Kristi Gage, and other 2005 graduating women of the Air Force Academy.

Marcey Gage

In Celebration of the installation of Elizabeth Ahlemeyer Quick as the Chairman of National Panhellenic Conference.

Foundation Trustees, International Council, Sharon Dunham, Kiki Phillips, Gladys Myles, Patricia Sheehan, Una Mae Naulty, Beverly Adams-Howard, Beverly Gosnell, Doris Gorden, Lee Hicks, Holly Bowler, Beca Barvin, Marty Pool, Sandy Wohlleber, Maradith Wilkins, Jocelyn Burdick, Rita Swartz, Syracuse Alumnae Chapter, Susan Lupo, Suzanne Williams, Marta Brown, Barbara Conklin, Alpha House Corporation Board, Jacki Falkenroth, Jeannine Kallal, Carole Frazier, Frances Griffin, Linda Kemper, Robyn Steele, Mary Nicely, Eileen Effinger, Vada Baird, Region 4, Julie Dunn, Gaye Bricker, Nancy Enright, Alison Sansone

Sisterhood

In appreciation of all the cards and gifts we received as we celebrated our installation.

Zeta Sigma Chapter

In Celebration of Elizabeth Giromini. Thank you for everything you did to help make sure our wedding was extra special this past summer. I am so lucky to call you sister and friend.

Kelly Nelson-Lane

In Celebration of Carrie Kleifgen on her move to Orlando, Florida in accepting her new position with YPB&R, a leading travel and leisure marketing agency. Congratulations, you've earned it. In IIKE,

Michelle Bennich

In Celebration of Melisa Dybbro for her wonderful contributions to the Green Mountain Crescent Circle.

Green Mountain Crescent Circle

In Celebration of the upcoming wedding of Julie Dunn! I'm so happy for you, and Bob is a real sweetie. What a perfect New Year's Eve. In IIKE love and hugs.

Rosemary Bunn

Congratulations to Ann Williams Ross on your retirement from AFROTC at OU.

Margaret Pape

Congratulations to Stefanie Brickman as new Region 6 coordinator, and your success at Psi as CA.

Margaret Pape

In Celebration of Southern California Intercity Council of Gamma Phi Beta's Founders Day 2004.

Fraternity Row

In Celebration of the legacy of our Four Founders and the Sisterhood of our Canadian Chapters.

Alumnae of Ottawa-Gatineau, Canada

In Celebration of Sue Schlessman Duncan's true philanthropic spirit. She's the best!

Stephanie Hearn

In Celebration of Cherie Lamont Brumleu's 50 years as a Gamma Phi Beta.

Rene' Matz Thompson

In Celebration of Mary Hemingway Crain on being a wonderful sister.

Rene' Matz Thompson

A huge thank you to Linda Hinshaw for her many years of selfless and tireless commitment to the ladies of Tau Chapter (Colorado State University) and the Fort Collins area alumnae.

Lynda Olin

The Gamma Phi Beta Foundation acknowledges the following individuals who contributed to the Foundation in memory of a loved one. This list represents gifts received through October 31, 2005.

Louis Shelton, husband of Peggy Compton Shelton
(Ohio Wesleyan '49)
Joanne Kernitz

James B. Violet, husband of Jane Rockel Violet
(Wittenberg '48)
Joanne Kernitz

Nancy Mays Rademaker
(California-Berkeley '44)
Anonymous Donor

Father of Taylor Estes
(Southern Methodist '03)
North Houston Alumnae Chapter

Father of Heather Ray
(Southern Methodist '02)
North Houston Alumnae Chapter

Capt. Edward J. Pawka, husband of Nancy Hall Pawka
(San Diego State '68)
Lyn Mesner

Dorothy Dickey Harn
(Oregon '30)
Eugene Alumnae Chapter

Patricia Barrett Anderson
(Nebraska-Lincoln '59)
Barbara Cobb, Bonnie Salomons, Nancy Mead, Jo Schleiger, Carol Strasheim

Julia Van Tiem Shonts
(Oakland '96)
Susan Lupu

Daniel Stockert, son of Beverly Daugherty Stockert
(California-Los Angeles '52)
Gigi Eyre, L'Cena Rice

Patricia Temple Compton
(San Jose State College '53)
Lois Abbott

John Richards, husband of Stephanie LaRoque Richards
(California-Irvine '74)
Balboa Harbor Alumnae Chapter

Mary Ransom MacLeith
(Southern California '46)
Balboa Harbor Alumnae Chapter
Dorothy Tubbesing

Raymond A. Gosnell, husband of Beverly Smith Gosnell and brother of Carolyn Gosnell Scott
(San Diego State '50)
Betty Kurkjian, Karen Kline, Helen Brazil, Parna Joyce, San Fernando Valley Alumnae Chapter, Lyn Mesner, L'Cena Rice, Rene' Thompson, Sally Lewis

Mary Darling Jurgensen
(Oregon '39)
Nancy Brenza, Beverly Gosnell

Isabel McLauchlan, mother of Marion McLauchlan Mir
(Pennsylvania State '68)
Gwendolyn McAdams

Virginia Jones
(San Jose State College '48)
Joyce Mather, Dolores Zeni

Ellen Dunias Roddy
(Texas Tech '63)
Dede Cauker, Jo Ann Durham, Dortha Erwin, Jacqueline Melcher, Irita Nicholas, Maria Nicholas, Carlotta Norman, Jimmie Reid, Sharon Renfro, Anna Stucker, Katheryn Votaw

Helen Hecht Shults
(Southern California '38)
Dede Cauker, Jo Ann Durham, Dortha Erwin, Jacqueline Melcher, Irita Nicholas, Maria Nicholas, Carlotta Norman, Jimmie Reid, Sharon Renfro, Anna Stucker, Katheryn Votaw

Frank Draeger, husband of Mary Diepenbrock Draeger
(California-Berkeley '45)
Peninsula Alumnae Chapter

Ann Mohr Daniel, mother of Linda Daniel Johnson (Vanderbilt '72) and Susan Daniel Schmeissing (Purdue '76)
International Council, Foundation Trustees, Christy Ehrenreich, Rene' Thompson, Joyce Hultgren, Dr. Ruth Seeler, Syracuse Alumnae Chapter, Ann Bronsing, Karen Urette, Region 4, Sally Lewis, Bonnie Payne, Jane Kerr, Carol Sellers, Joanne Roman, Kris Baack, Alpha HCB, Jacki Falkenroth, Vicki Read, Gloria Nelson, Jeannine Kallal, Verona Lynam, L'Cena Rice, Frances Griffin, Betty Quick, Margaret Pape, Darla Dakin, Houston Alumnae Chapter, Vada Baird, Sandy Burba, Diane Goff, Shellie Hodges, Marty Pool, Pi Chapter, Barbara Hurt-Simmons, Diane Thompson, Sharon Dunham, Krista Davis, Roberta Balthazor, Jennifer Chuang, Kathleen Smith, Gretchen Reiter, Linda Babcock, Mary Knaup

Mike Wales, father of Ashley Wales
(Indiana '03)
Beta Phi Chapter Advisory Board, Beta Phi HCB

Father of Jeannie Jackson
(Wisconsin-Milwaukee '00)
Beta Phi Chapter Advisory Board, Beta Phi HCB

Willow Kiefer Decker
(California-Los Angeles '34)
San Bernardino Alumnae Panhellenic

Jean Marty Nelson
(Minnesota-Twin Cities '54)
Rene' Thompson

K.C. Hansen, father of Autumn Hansen
(Idaho '01)
Foundation Trustees, L'Cena Rice, Darla Dakin, Sally Lewis

Mary Morgan Babcock
(Arizona '36)
Joseph and Colleen Babcock

Portia Garrett Waddell
(Texas '34)
Houston Alumnae Chapter, Margaret Weaver, Margaret Jane Fair

Sarah Channick
(Illinois new member)
Sally Lewis

Col. Edmond Lynam, husband of Verona Dilbeck Lynam
(Oklahoma City '52)
Vada Baird

Bonnie MacAluso Pastor
(Colorado State '55)
Sue Duncan, Heather Michaud, Betsy Lyle

Sabrina Smith Tuyay
(California-Santa Barbara '83)
Delta Psi Chapter

David Beane, nephew of Cathryne Melton
(Texas '37)
San Antonio Alumnae Chapter

Rita Hall Walker
(Psi '65)
Susan Ketch

Martha Evans Lund
(Idaho '39)
Mary Kennedy

Virginia Evans Miles
(Idaho '31)
Mary Kennedy

Mary Lou Hansen Reed
(Oregon '50)
Irene Kleen

Shirlee Peasley James
(Colorado State '38)
Judith Gunn

Romaine Lovelace Archer
(Oregon '56)
Deanna Hansen

2005 Awards

Merit Roll

Merit criteria: Members in good standing who have given devoted and distinguished service to the Sorority at the local level for a minimum of 15 years as an active alumna, as well as a minimum of five years of financial support.

Sandra Peck Carey
Gamma Eta Chapter
San Diego Alumnae Chapter

Phyllis Donaldson Choat
Pi Chapter
Omaha Alumnae Chapter

Harriett Bedwell Cogan
Beta Pi Chapter

Jane Verbridge Cook
Alpha Chapter
Rochester Alumnae Chapter

Kaye Harrison Furlong
Beta Alpha Chapter
South Bay Alumnae Chapter

Beverly Gaabo
Beta Delta Chapter
Evanston-North Shore
Alumnae Chapter

Dolores "De De" Staskal
Hicks
Alpha Phi Chapter
South Bay Alumnae Chapter

Barbara Hurt-Simmons
Gamma Kappa Chapter
Philadelphia West Suburban
Alumnae Chapter

Lisa Gaskill Johannsen
Tau Chapter
Denver Alumnae Chapter

Janet Reynolds Kendrick
Beta Zeta Chapter
Rochester Alumnae Chapter

Renee Heiser Lanthier
Delta Iota Chapter
Rochester Alumnae Chapter

Pat Horvath Mahan
Beta Epsilon Chapter
Rochester Alumnae Chapter

Beverly Ann Copeland Milburn
Beta Lambda Chapter
San Diego Alumnae Chapter

Gretchen Oostenink
Rho Chapter
Syracuse Alumnae Chapter

Lynda Newman Petru
Beta Theta Chapter
South Bay Alumnae Chapter

Fay Foster Privatera
Alpha Chapter
Rochester Alumnae Chapter

Stephanie LaRoque Richards
Delta Eta Chapter
Balboa Harbor Alumnae
Chapter

Pauline Johnson Sherry
Alpha Beta Chapter
Philadelphia North Suburban
Alumnae Chapter

Debby McFadden Simpson
Alpha Iota Chapter
Balboa Harbor Alumnae
Chapter

Janet Reynolds Snyder
Beta Chapter

Sharon Hachenberger Ward
Beta Upsilon Chapter
Dallas Alumnae Chapter

Kay McFarlin Wilms
Tau Chapter
Denver Alumnae Chapter

Loyalty Award

Loyalty criteria: Members in good standing who have given long, outstanding service on the international level for at least seven years, as well as a minimum of seven years of financial support.

Darla Click Dakin
Beta Kappa Chapter
Denver Alumnae Chapter

Julie Dunn
Beta Mu Chapter
Atlanta Alumnae Chapter

Susanne Eckert Newbauer
Delta Upsilon Chapter
Atlanta Alumnae Chapter

Vickie Zimmer
Gamma Delta Chapter
Corvallis Alumnae Chapter

Service Roll

Service criteria: Members in good standing who have given devoted and distinguished service to chapter and international Sorority for a minimum of 15 years total, with a minimum of five of those years being at the international level, as well as a minimum of five years of financial support.

Linda Babcock
Gamma Eta Chapter
South Bay Alumnae Chapter

Sue Schlessman Duncan
Alpha Phi Chapter
Denver Alumnae Chapter

Melinda Risse Nutter
Gamma Omicron Chapter
Dayton Ohio Alumnae Chapter

Jan Pickrel
Alpha Chi Chapter
Northern Virginia Alumnae
Chapter

Catherine (Kitty) Curtis Sweeney
Alpha Theta Chapter
Denver Alumnae Chapter

Leda Quiros-Weed
Delta Eta Chapter
Balboa Harbor Alumnae
Chapter

and Winners

Gamma Phi Beta 2005 Circle of Excellence

Circle of Excellence

All of the Circle of Excellence criteria.

Manhattan, KS

Carnation Circle

All of the Circle of Excellence criteria, plus three of the higher circle criteria.

Milwaukee, WI

New Orleans, LA

Toledo, OH

Pearl Circle

All of the Circle of Excellence criteria, plus four of the higher circle criteria.

Bakersfield, CA

Bergen County, NJ

Beverly-Westwood, CA

Cedar Rapids, IA

Charlotte, NC

Cincinnati, OH

Eastern Virginia, VA

Grand Rapids, MI

Long Beach, CA

Lubbock, TX

Philadelphia North, PA

Richmond, VA

Stillwater, OK

Diamond Circle

All of the Circle of Excellence criteria, plus five of the higher circle criteria.

Albuquerque, NM

Arlington, TX

Atlanta, GA

Atlanta Southern Crescent, GA

Balboa Harbor, CA

Birmingham, AL

Chicago, IL

Chicago-Far West Suburban, IL

Chicago NW Suburban, IL

Cleveland East, OH

Cleveland West, OH

Columbia, MO

Dallas, TX

Dayton, OH

Denver, CO

Detroit Metro, MI

Evanston North Shore, IL

Evansville, IN

Glendale, CA

Greater Baltimore, MD

Greater Fort Myers, FL

Greater Kansas City, MO

Greater Lansing Area, MI

Hawaii, HI

Indianapolis, IN

Inland Empire, CA

Kent, OH

La Jolla, CA

Naples, FL

Nashville, TN

New Jersey Metro, NJ

North Houston, TX

Northern Virginia, VA

Oklahoma City, OK

Omaha, NE

Pasadena, CA

Peoria, IL

Philadelphia West, PA

Portland, OR

Princeton, NJ

Puget Sound, WA

Quad Cities, IA

San Antonio, TX

San Diego, CA

San Fernando Valley, CA

South Bay, CA

St. Louis, MO

State College, PA

Syracuse, NY

Tallahassee, FL

Tampa Bay, FL

Tulsa, OK

Founders Circle

This prestigious award is presented to chapters attaining either the Pearl or Diamond Circle of Excellence for the past five consecutive years. Three of the five years must have been Diamond, although Diamond years need not have been consecutive.

Arlington, TX

Chicago, IL

Chicago NW Suburban, IL

Cincinnati, OH

Cleveland West, OH

Columbia, MO

Dallas, TX

Dayton, OH

Denver, CO

Evanston-North Shore, IL

Evansville, IN

Greater Fort Myers, FL

Greater Kansas City, MO

Kent, OH

Long Beach, CA

Nashville, TN

Oklahoma City, OK

Pasadena, CA

Philadelphia North, PA

Portland, OR

Quad Cities, IA

South Bay, CA

Syracuse, NY

Excellence Circle Criteria

• Payment of alumnae dues, postmarked by December 1.

• Payment of technology, publications and form fees, postmarked by December 1.

• Filing of Alumnae Chapter Officers List postmarked by May 15.

• Filing of Alumnae Chapter Presidents Report postmarked by May 15.

• Hold four or more alumnae chapter gatherings, events, or activities.

• Participate in the Gamma Phi Beta Connection Program by assisting a collegiate chapter.

To achieve a higher circle

Meet the Circle of Excellence Criteria as well as three or more of the following:

- Make a Founders Day gift to the Sorority.
- Contribute to the Foundation.
- Support Camp Fire USA or any local philanthropy.
- Send a representative to Convention.
- Publish/distribute a newsletter/letter informing members of chapter activities.
- Initiate an alumna initiate within the calendar year.
- Participate in an alumnae Panhellenic association.
- Participate in the alumnae department chapter challenge.
- Increase dues paying members by five percent from the previous year.
- Update chapter by-laws (credit given once a biennium).

History in the making

In October, Elizabeth Ahlemeyer Quick (Indiana) became the Chairman of the National Panhellenic Conference (NPC). Betty is only the third Gamma Phi Beta to become chairman.



1 Betty Quick takes the gavel from outgoing NPC Chairman Martha Brown, Delta Gamma. 2 Ohio State University President, Dr. Karen Horney Holbrook (Wisconsin-Madison), winner of NPC's 2005 Women in Higher Education Achievement Award, gave the keynote speech. 3 Gamma Phi Beta Grand/International Presidents gathered to celebrate Betty's installation. Left to right: Randall Stevens Allard, Vicki Carlson Read, Karen Wander Kline, Audrey Weldon Shafer, Joey Lessard Stiver, Linda Daniel Johnson, L'Cena Brunskill Rice, Ann Mullen Bronsing. 4 Gamma Phi Betas from all over came to see history in the making as Betty Quick became NPC chairman.

