

The Crescent

of Gamma Phi Beta | Summer 2006

THE NEW MOON



Connect. Impact. Shine.

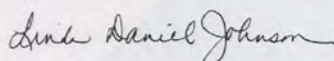
What do these three words mean to you? We believe they describe Gamma Phi Beta, who we are and what we're all about.

Gamma Phi Beta begins with connections. A potential new member connects with a Gamma Phi Beta friend, at a recruitment event, in class, or on campus; her new friend connects her with other Gamma Phi Beta friends and soon she's asked to join Gamma Phi Beta. These connections continue throughout her life. As an alumna moves to a new town, she contacts Gamma Phi Beta and connects with alumnae who live in her area. Gamma Phi Beta connections lead to new friends, new jobs, new chapters, and new opportunities.

Gamma Phi Beta impacts lives... each member's life, and those lives with whom we come in contact. Look at the impact Gamma Phi Beta had on ten women who are featured in this issue, the 2006-2007 collegiate leadership consultants. Look at the impact Elizabeth Pitcairn has made with her violin (p. 13). In this issue read about the impact our collegiate and alumnae chapters have on each other and their communities. Look for the impact we have in Washington D.C. with our Greek friends.

Gamma Phi Beta shines... our moon and our members, yesterday, today and tomorrow. Each of us reflects our light onto Gamma Phi Beta in all that we do and say. Is your light shining brightly? Does it reflect well on Gamma Phi Beta? Read about our 2006 philanthropist award winners to learn about two sisters who shine. Check out our two brand new Gamma Phi Beta chapters shining this spring. Tell us about other shining Gamma Phi Beta stars, info@gammaphibeta.org.

Gamma Phi Beta... Connect. Impact. Shine. Spread the word!



Linda Daniel Johnson
International President
IP@gammaphibeta.org



INTERNATIONAL COUNCIL

International President

Linda Daniel Johnson

Alumnae Vice President

Sandra Biegelman Burba

Collegiate Vice President

Krista Spanninger Davis

Financial Vice President

Annabel M. Jones

Education Vice President

Angela Jordan Dimit

Membership Vice President

Linda Lyons Malony

NPC Delegate

Elizabeth "Betty" Ahlemeyer Quick

Executive Director-Sorority

Patricia M. Crowley

GAMMA PHI BETA FOUNDERS

E. Adeline Curtis

Frances E. Haven Moss

Helen M. Dodge Ferguson

Mary A. Bingham Willoughby

The CRESCENT STAFF

Editor Megan McDermott

Print & Publications Coordinator Staci Frantz

Communications Assistant Abbie Weiss

Business Manager Patricia M. Crowley

Advisor Kris Brandt Riske

SORORITY MISSION STATEMENT

Our mission is to foster a nurturing environment that provides women the opportunity to achieve their potential through life-long commitment to intellectual growth, individual worth and service to humanity.

FEATURES

A "brand" new moon 4-5

Meet your new CLCs 7-9

JobBound 10-11

Chapter Installations 12

The Red Violin 13

IN EVERY ISSUE

President's Perspective 2

Leadership 6

Member News 14-19

Pacesetters 20-21

NPC Update 22

Spotlight On 25

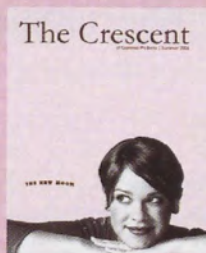
Out & About 26

In Memory 27

Foundation News 28-29

In Celebration 30

Memorial Gifts 31



On the cover: Gamma Phi Beta's new rebranding campaign was unveiled at Convention 2006! For more on the new logo and colors, turn to page 4-5.

The Crescent Mission Statement

The Crescent magazine is a Gamma Phi Beta publication to:

- » **Inspire** and nurture loyalty
- » **Inform** of trends and events impacting our members
- » **Celebrate** Sorority, Foundation and member achievements
- » **Promote** positive public relations for the Sorority

Summer *The Crescent* 2006 Volume 108 | Number 3
 INTERNATIONAL HEADQUARTERS
 12737 E Euclid Drive, Centennial, CO 80111
 Phone: 303-799-1874 Fax: 303-799-1876
 E-mail: IH@gammaphibeta.org
 Internet: www.gammaphibeta.org
 E-mail: TheCrescent@gammaphibeta.org

MAGAZINE SUBMISSION DEADLINES

Spring January 1
 Summer April 1
 Fall July 1
 Winter October 1



© 2006 Gamma Phi Beta Sorority

The Crescent (USPS137620) is published quarterly by Gamma Phi Beta Sorority, 12737 E. Euclid Dr., Centennial, CO 80111. Periodicals postage paid at Englewood, Colorado, and at additional mailing offices. Non-member subscription price is \$6. Produced in the U.S.A. by Maury Boyd and Associates.

Postmaster: Send address changes to: *The Crescent*, Gamma Phi Beta Sorority, 12737 E. Euclid Drive, Centennial, CO 80111.

A “brand” new moon.

As the moon goes through phases so do we. Gamma Phi Beta has entered a new phase of our communications. We have a new identity to hang our hat on. It's steeped in tradition with our crescent moon (waxing, of course). Our new brand will embrace again, shades of brown and pink colors.

See our new logo: a clean, timeless moon shines in the sky. Our new typestyle forms the earth's horizon below. We are grounded in the traditions of our past, celebrate the ever growing and changing crescent moon above.

Every brand can use a few good words. We have three: **Connect. Impact. Shine.**

Connecting with each other. Impacting lives. Shining forever.



GAMMA PHI BETA



One of the logo
color options



A brand is more than a logo, tagline, or a name.

Brand refers to the total experience and the mental picture people have of an organization. It's the "voice" we use. It's the summation of all the contacts a person has through the organization's communications, behavior, innovation, and trust.

Great brands have special qualities that distinguish them from their competitors and make it easy for people to recognize them.



Our new
tagline

These qualities or attributes are part of a strategy which is then carefully followed and the appearance to the outside world is one of consistency, and purposeful direction.

Most organizations are constantly reviewing and fine-tuning the way they manage their brand strategies. Cultural needs can create new expectations and cause change. This is why the careful management of visual identity is so important.

A carefully managed visual identity is an important way for our organization to make our strategies evident and memorable to everyone who comes in contact with us.

It's important to set ourselves apart with our brand.

How you can illuminate our brand.

We've got an incredible story to tell! What are you waiting for? We have our new branding in place complete with an exciting new logo using our beloved colors and our ever present symbol, the crescent moon. It is so special! It's us! But it means very little if we do not deliver on its promise. That's what will help set us apart. By placing value on our brand, and being stewards of it, we are keeping our promise to ourselves.

Growing larger under the waxing crescent moon.

Gamma Phi Beta hopes you will want to jump into the hearts of fellow members rekindling the joy and fun our memories provide, while displaying that to prospective members and the public. Embrace and understand our brand values and the promises it offers. Make your positive actions consistent. Our brand is YOU. Are you keeping Gamma Phi Beta a secret?

YOU are the Gamma Phi Beta story.

You have a rich and meaningful story to tell. A story about connecting with women from all walks of life, from all parts of the world and with one common objective:

To develop the highest type of womanhood through education, social life and service to country and humanity.

Be champions of our brand, values and promise, and let it shine!

BRAND NEW. BRAND VALUE.

WHAT'S NEW:

- ★ The crescent moon logo.
- ★ How we will use the shades of brown and pink.
- ★ The tagline: Connect. Impact. Shine.
- ★ Look for future "brand" applications.
- ★ Our Brand is YOU. Tell your story.

STILL OUR TRADITION AND VALUES:

- ★ Mission. Vision. Creed.
- ★ Symbols (crest, badge, pearl, pink carnation flower, greek letters)



New logo art.

Our new logo art will be available at www.gammaphibeta.org very soon. Until then, please contact Megan McDermott, Director of Communications, International Headquarters at 303-799-1874.

By J.J. Kaelin (Colorado),
Sorority Director - Public Relations

Susan Reeves (Texas), Prism Design, Inc.

Credibility: Walk the Talk

By Kris L. Baack, Ph.D., Sorority Director-Leadership

When it comes to leadership, trust and integrity are paramount. As Kouzes and Posner postulate in their book, "Credibility," leadership is about relationships.

Relationships are built on trust and trust comes from courage, time, experience, knowledge and self-disclosure.

Take a moment to think about people you trust. What is it that makes these people trustworthy?

In the early 1980s Kouzes and Posner were asking this same question: what qualities do people seek in someone they would willingly follow. After 13 years

of research, they had compiled a list of 20 characteristics; the four most common traits were honesty, forward-looking, inspiring, and competent. These four characteristic were

best summed up as credibility.

People you trust are credible. Think

about how credibility relates to public relations. Nine out of 10 individuals can name at least one corporation that has been in the media within the last few years who has lost credibility. Most of us would say these corporations, or their leaders, possess unethical, dishonest or untrustworthy

characteristics. As Gamma Phi Betas we must maintain credibility.

Each day we leave an impression on the people we meet. We should be asking ourselves if our actions represent our values. Leaders are credible. Gamma Phi Betas are credible. Live each day to prove it. Walk the talk of Gamma Phi Beta.

"As Gamma Phi Betas we must maintain credibility."

Six Disciplines of Credibility

1. Discover yourself
2. Appreciate constituents
3. Affirm shared values
4. Develop capacity
5. Serve a purpose
6. Sustain hope



Intelligent Leader Outgoing Strong
Dedicated Connected Creative

Gamma Phi Beta

Do any of these words describe you?

If so, continue reading and find out
how to become a Gamma Phi Beta
Collegiate Leadership Consultant.

Wondering what to do after college graduation? Looking to gain personal and professional skills?

Do you want to do something you believe in while traveling and making connections across the United States and Canada?

Collegiate leadership consultants (CLCs) are recent college graduates who travel to Gamma Phi Beta collegiate chapters across the United States and Canada (August through April) to ensure officer, member and chapter success. They provide leadership and training, guide chapters in self-assessment, facilitate workshops, and provide information, suggestions, and ideas. They also impart direction in recruitment preparations and processes.

A thorough training program is provided to prepare CLCs for the broad range of situations they encounter. The program is designed to ensure CLCs complete their tenure with the skills future employers seek.

Perhaps no other professional position can provide the unique blend of challenge and satisfaction that comes from the independence of being a CLC. Former CLCs have gone on to careers in the corporate world, higher education, not-for-profit organizations, politics, law, and more!

Whether you seek personal growth, professional skills and contacts or are excited about meeting sisters, being a CLC will open doors you never thought possible.

Applications are available in the Member Tools section of www.gammaphibeta.org and are due to International Headquarters by January 15. Additional questions about the program may be addressed to Kendra Bocher, kbocher@gammaphibeta.org.

CLCs are great resources for collegiate chapters

This year, 10 collegiate leadership consultants have been chosen to lead, educate and travel to our chapters across the United States and Canada.

"It is exciting to have yet another well-rounded, multi-talented, and exceptional CLC team for 2006-2007," Director of Member Services Kendra Bocher said. "This is wonderful for Gamma Phi Beta, and their wealth of experience and leadership will be shared with our collegiate chapters. These outstanding young women come from the ranks of our collegiate chapters and want to continue their Gamma Phi Beta involvement as young alumnae members."

The one-year position starts with training at the 2006 Convention, the CLCs also will meet chapter presidents and alumnae.



Lindsay Kalinowski
Hometown: Troy, MI
Beta Delta Chapter (Michigan State)
Major: Human Biology
Chapter Offices: President, Crescent Correspondant

"I'd like to offer myself as a resource to collegians, help with chapter needs and empower officers in their current positions. I want to be able to relate to members of the chapter as well as local alumnae."



Jamie Shultz
Hometown: Frisco, TX
Psi Chapter (Oklahoma)
Major: Human Resources Management
Chapter Offices: President, PRVP, Philanthropy Chair

"My mom taught me at a young age how special our Sorority is and I am so fortunate to have gained the experiences and more importantly, the friendships Gamma Phi has provided me with. I can't imagine life without it!"



Susie Knetter
Hometown: Piper, KS
Beta Upsilon Chapter (Kansas State)
Major: Agricultural Communications, Animal Science and Industry
Chapter Offices: President, MEVP Alumni Relations Coordinator

"I can see the influence of our Sorority in every aspect of my life, from my goals and ideals to my daily confidence and actions."



Mary Jo Hope
Hometown: Andover, KS
Beta Omicron Chapter (Oklahoma City)
Major: Entertainment Business
Chapter Offices: MVP, Panhellenic Delegate, House Manager

"My goals are personal and professional. I hope to grow and learn more about myself while sharing a new and unique perspective with chapters."



Pamela Mayer

Hometown: Basalt, CO
Theta Chapter (Denver)
Major: History, Political Science
Chapter Offices: Panhellenic President, Panhellenic VP of Finances, FVP, Assistant Treasurer

"I believe the most important aspect of my job as a CLC will be to bring a positive light to every chapter I visit. From the successful chapters to the struggling chapters and every chapter in between, I hope to bring an exciting, hopeful experience."



Katy Short

Hometown: Vancouver, BC
Alpha Lambda Chapter (British Columbia)
Major: Psychology
Chapter Offices: MVP, Member Education VP, PACE Chair

"My Gamma Phi Beta big sister was a CLC two years ago and she has really inspired me. The desire to give back to the organization motivated me to become a CLC."



Autumn Hansen

Hometown: Coeur D'Alene, ID
Xi Chapter (Idaho)
Major: Crime and Justice Studies, Psychology, Sociology
Chapter Offices: President, Scholarship Chair, Activities Chair, Panhellenic Delegate

"I was motivated to become a CLC after Convention 2002. I met so many amazing women whose chapters closed. It was heart wrenching to see the loss they felt. I made a commitment to prevent this from happening whenever possible."



Taylor Estes

Hometown: Sherman, TX
Alpha Xi Chapter (Southern Methodist)
Major: Political Science, Italian
Chapter Offices: President, MEVP, Ritual Chair

"Gamma Phi Beta is unconditional love and sisterhood at its finest. My goal as a CLC is to enable each chapter to maximize strengths and overcome weaknesses. I would like to leave every chapter with the bigger picture of Gamma Phi Beta in mind."



Amanda Crepps

Hometown: Aloha, OR
Nu Chapter (Oregon)
Major: Political Science, Sociology
Chapter Offices: AVP, Panhellenic VP of House Management

"I think chapters often feel like they are dealing with problems on their own, without any guidance. As a CLC, I hope to eliminate those feelings and give them a hand in becoming as strong as they can be."



Kerry Devine

Hometown: Henderson, KY
Beta Mu Chapter (Florida State)
Major: Secondary Math/Science Education
Chapter Offices: Panhellenic Delegate, Standards Committee

"I look forward to traveling as a CLC and creating new friendships. I would like to challenge sisters in Gamma Phi Beta to live out our ritual every day."

Tips for Getting the Raise You Deserve

By Brad Karsh, President of JobBound

Your parents and friends think you're priceless, but how much does your company think you're worth?

With the improving economy and job market, people have more options in 2006. Companies are offering bigger salaries and better packages to gain and maintain the best employees. It's the perfect time to ask your company for the raise you deserve.

Most companies won't throw more money at you "just because," so state your case if you think you deserve more money. Here are five tips to help you approach the situation with confidence.

1. Know What You're Worth

The first step is to get the facts and figures to justify your request for more pay. Do your homework; it makes it much easier to build a compelling case. Look at Web sites like www.monster.com and www.salary.com and research industry journals and professional associations to see what people in your position typically make. Speak with your colleagues and check recruitment ads in local newspapers and in the classifieds section. If a systems analyst in Chicago makes between \$45,000 and \$55,000, and you're only at \$40,000 - it's easier to make your case.

2. Prove You Deserve the Money

You need to walk into a meeting with your boss with documented reasons as to why you deserve a raise. Never try to make a case for a raise on the basis of need. Prove that you deserve the money based on your high performance and your contributions to your employer's goals. The best way to do this is to bring in your accomplishments AND what you plan to do to earn your new salary.

Remember one thing though; your salary is not the only expense that a company has for you. What you make is typically only about 50% of what you cost the company. Things like health costs, office space, and phone lines all add up to tremendous overhead. If you make \$50,000 a year, you probably cost your company \$100,000 a year! Prove that your value exceeds costs, and you'll be hard to refuse.

3. Talk to the Right Person at the Right Time

Your boss may not be who determines whether or not you get a raise. You want to do whatever you can to state your case directly to the decision maker. A good boss with a good heart can be more effective at getting to the decisionmaker, but if you don't get along with your boss, you may want to go above or around her.

Similarly, you want to talk about a raise at the right time. You want a private meeting, with no distractions or other business to talk about.

4. Be Direct, Concise, and Assertive

Too many people beat around the bush or sound too wishy-washy when it comes to asking for more money.

Bad: "Well, I know times are tough, and you probably have a lot of deserving people around here, so I was hoping, if it's possible, that I might be able to get a raise?"

Good: "Phil, as you know, I've been a valuable and critical member of our team. Over the past year alone, I've elevated the quality of our news program,



eliminated on-air glitches, and even filled in for two employees on maternity leave. I have not received a raise in two years, and based on salary surveys, I'm at the low end of the scale for my position. I think you would agree I deserve a raise."

As you can see, assertive speech presents a more powerful case.

5. Know your Company

If the goal is to get more money, requesting a raise isn't always the only or even best way to get it done. Since promotions usually come with more money, requesting a promotion may be even easier than requesting a raise.

Before having the "money talk," it's also important to evaluate your level of job satisfaction. Consider creative options and other benefits to improve your situation if your salary is non-negotiable. You may want to consider back-up career plans as well. Money isn't always the key to job happiness, so you need to identify the point at which you are willing to walk before you have the conversation with your boss.

Securing a good raise seems tricky, but if you put these five tips into practice, you can handle the negotiation with candor and confidence. For more job advice, check out www.jobbound.com.

Brad Karsh, President of JobBound, is a nationally recognized job search expert and author of "Confessions of a Recruiting Director: The Insider's Guide to Landing Your First Job" (Prentice Hall Press).

Brad has been featured on CNN's Paula Zahn Now, CNN Headline News, CNBC, and FoxNews Chicago and quoted in *The Wall Street Journal*, *Fortune* magazine, the *Chicago Tribune*, CNN.com, and many others.

Brad is available to speak to Gamma Phi Beta chapters and deliver presentations on resume writing, interviewing, networking, business etiquette and more.

Brad lives in Chicago and is married to Lisa, a Gamma Phi Beta.

For more information, contact Brad at bkarsh@jobbound.com, (800) 979-1121.

Gamma Phi Beta Welcomes Two New Chapters

By Jana Nobles (Oklahoma City), Sorority Director - Collegiate Extension



The Zeta Upsilon women take their first photo after installation as the 164th Chapter of Gamma Phi Beta.

Gamma Phi Beta installed its Zeta Tau Chapter

April 8, 2006, at Emory University in Atlanta Georgia. Caitlin Capozzi, (Syracuse), Sorority Coordinator - Collegiate Extension, led the celebration during which International President Linda Daniel Johnson (Vanderbilt) and Sorority Director - Ritual, Kiki Phillips (Washington - St. Louis) installed the chapter and initiated the members.

The Zeta Upsilon Chapter of Gamma Phi Beta was installed April 22, 2006, in Tyler, Texas. This chapter was installed along with two other sororities, Delta Gamma and Alpha Chi Omega, to establish a Greek system at the University of Texas at Tyler. The Zeta Upsilon members were initiated by Linda Johnson with the assistance of Kiki Phillips and the Alpha Xi Chapter of Gamma Phi Beta.



Zeta Upsilon Chapter President Meredith Allen holds the charter with International President, Linda Daniel Johnson.



Andrea Heflin, President of Zeta Tau Chapter, smiles with Linda Daniel Johnson.

Rising star with the red violin

Since her notable debut with the New York String Orchestra in 2000, violin virtuoso, Elizabeth Pitcairn (Southern California), has been earning a celebrated reputation as one of America's most important rising soloists.

Born in Bucks County, Pennsylvania, Elizabeth's path in music seemed to be etched in stone since the age of three when she set her sights on mastering the violin.

Elizabeth performed her first concerto with orchestra at age 14. In 1995, she won a major competition to solo with the Philadelphia Orchestra and has since played the masterpieces of the violin repertoire. Elizabeth's path led her to Los Angeles at age 17 when she was accepted at the University of Southern California and began studying with the preeminent Robert Lipsett.

Elizabeth champions John Corigliano's *Red Violin's Chaconne*, and was among the first few soloists to perform the dramatic work when she gave the Southern California premiere in 2000 with the California Philharmonic for an audience of 5,000.

In September 2005, Elizabeth made a triumphant European debut in the world premiere of *Hymns to the Night* by Sweden's leading composer, Tommie Haglund. The new violin concerto, which is dedicated to Elizabeth, was broadcast nationally via Swedish radio to rave reviews and will be recorded on Caprice Records.

She holds faculty positions at two of the world's top music schools, the USC Thornton School and the Colburn School of Performing Arts. Elizabeth's Web site, www.elizabethpitcairn.com, contains a calendar of her upcoming performances, press releases and an online store where you can purchase her CDs. This article was used with permission from her Web site.



Elizabeth has performed all over the world with her red violin. Above she signs CDs in Bucks County, Pennsylvania.

The Red Violin



Elizabeth Pitcairn performs in partnership with the legendary 1720 "Red" Mendelssohn Stradivarius that helped inspire the 1999 Academy Award winning film, "The Red Violin."

The historic violin was crafted in 1720 by Antonio Stradivari, who made his instruments in his small shop in Cremona, Italy. Not long after its creation, the instrument disappeared for more than 200 years.

The 1720 "Red" Stradivarius surfaced in 1930s Berlin. In 1945, it was purchased by a New York industrialist who kept the instrument in impeccable performance condition. In 1990, the instrument's fate would once again be triggered when the industrialist opted to put the Red Violin on the auction block anonymously at Christie's of London. While some of the world's most powerful sought to win the coveted instrument, it landed in the hands of 16-year-old violinist, Elizabeth Pitcairn.

California

The PASADENA Alumnae Chapter held its annual white elephant fund raiser in January. Items were auctioned to raise money for the chapter's philanthropies.

The annual cookie exchange was held by the SAN DIEGO Alumnae Chapter. Batches of cookies were contributed to the Beta Lambda Chapter. Alumnae also donated clothing to the YWCA's My Sister's Closet, a program for battered women in San Diego County.

BALBOA HARBOR Alumnae Chapter congratulates Delta Eta Chapter on the Greek awards they won this year. Delta Eta won the Chancellor's Cup, an award given to the best all around sorority. Delta Eta also won Best Collegiate/Alumnae Relations Award and Kelly

Colman Lyons (Pepperdine), Balboa Harbor member, won for Best Chapter Advisor.

In the spirit of Panhellenic sisterhood, the DIABLO VALLEY alumnae had their first joint event, A Night of Celtic Celebration, with the local Delta Delta Delta alumnae chapter. In April, the women had their first joint event with their Gamma Phi Beta sisters across the bay, the SAN FRANCISCO Alumnae Chapter. The two groups gathered at Eta Chapter at UC Berkeley to meet the collegians, welcome new members, participate in Senior Celebration and show what lifetime commitment to Gamma Phi Beta means.



The Bergen County Alumnae Chapter in New Jersey celebrated Founders Day with pink carnations.



Congratulations to Greater Norfolk Alumnae Chapter, installed April 30, 2006. Congratulations may be sent to: Melissa Heineman, Greater Norfolk Alumnae Chapter, 8723 Chesapeake Blvd, Norfolk, VA 23503, Heineman05@yahoo.com.



Pasadena alumnae work together to make gifts for one of the collegiate chapters they support.



Congratulations to Pittsburgh Alumnae Chapter, installed April 8, 2006. Congratulations may be sent to: Monica Bebie, Pittsburgh Alumnae Chapter, SMC 1069, 5032 Forbes, Pittsburgh, PA 15289, mbebie@andrew.cmu.edu.

Colorado

DENVER alumnae have been busy making their unique note cards to sell at Convention. The group shared ideas with other Greek women at the Denver Area Panhellenic Workshop. They attended the annual Denver Area Panhellenic awards luncheon where Darla Click Dakin (Arizona State) and Ginny Harris Hammond (Colorado) were nominees for alumnae awards. Visit www.DenverAlumnaeGPB.org if you are interested in Denver alumnae activities. Greeting cards may be purchased on the Web site as well.



Florida

The TAMPA BAY Alumnae Chapter celebrated Founders Day with a luncheon. Donations are being collected for the chapter's local philanthropy, Mercy House.

Madison area alumnae met for a luncheon. Pictured are (back row, left to right): Leslie Slatton Johnson (Texas), Katy O'Brien Batterman (Wisconsin-Madison), Hilary Wenzler DeBlois (Wisconsin-Madison) and (front row, left to right): Karla Stoebig (Minnesota-Twin Cities), Elizabeth Landes Knudten (Puget Sound), Justine Germaine Kessler (Wisconsin-Madison), Courtney Cantwell (Wisconsin-Madison).

Missouri

In April, GREATER KANSAS CITY alumnae and spouses spent the evening at the home of Gloria Delich (Kansas State) and Dick Anderson to view their 30-year collection of contemporary art and furniture.

New Mexico

ALBUQUERQUE Alumnae Chapter was proud to award five members 50-year pins at Founders Day. The meeting in February was the 348th meeting of the alumnae chapter, which was established in 1952.



San Diego alumnae decorated hats and held their annual cookie exchange.

Ohio

CINCINNATI alumnae met at the Beta Epsilon Chapter to celebrate the senior sisters' Rite of Passage ceremony.

Wisconsin

The MADISON AREA Alumnae Chapter published and distributed its spring edition of the Gamma News. The alumnae group held a Senior Luncheon for members of Gamma Chapter in April.



Tampa Bay alumnae celebrated Founders Day with a pink carnation luncheon.

ETA | CALIFORNIA - BERKELEY

The chapter's philanthropy, the Mr. Gamma Phi pageant, raised more than \$1,800 for Camp Fire USA.

KAPPA | MINNESOTA - TWIN CITIES

Sisters raised more than \$2,500 during their annual Kris 5K Memorial Run/Walk. The event is held in honor of Kristin Marx, a sister who passed away three years ago from meningitis.



XI | IDAHO

The University of Idaho celebrated 101 years of Greek life on campus. Gamma Phis donated blood and performed in a skit competition during Greek Week.

OMICRON | ILLINOIS

During fall semester, members raised more than \$2,000 for Camp Fire USA. In the spring, they hosted a designer jeans fundraiser, donating 10% of their profits.

PI | NEBRASKA - LINCOLN

From the Super Bowl Party and Date Dash to a new member sleepover, sisters kept very busy. They held a scholarship banquet and participated in the university's Greek Week.



Top: Beta Omicron (Oklahoma City) sisters headed to Norman, Oklahoma to enjoy a snowy day with members of Psi Chapter (Oklahoma).

Below left: Kappa (Minnesota Twin Cities) members endure the rain and chilly weather for their annual Kris 5K Memorial Run/Walk.

Below right: Psi Chapter (Oklahoma) President Jacqueline Weaver and Beta Omicron Chapter (Oklahoma City) President Calli Freyschlag meet at a joint chapter retreat.



SIGMA | KANSAS

The chapter organized a children's book drive and donated more than 500 books to the Boys and Girls Club of Lawrence and Kaw Valley Center, a foster care agency.

OMEGA | IOWA STATE

Every year ISU students create and stage 20-minute musical theater productions. This year, Gamma Phi Beta joined members of FarmHouse and Chi Omega. Junior Stacey Goodman won best female vocalist!

ALPHA BETA | NORTH DAKOTA

Members headed to Mayville, North Dakota for their semi-annual retreat.

ALPHA DELTA | MISSOURI - COLUMBIA

For spring break, members of the Alpha Delta Chapter headed to New Orleans to assist with Hurricane Katrina relief.

Beta Kappa's (Arizona State) spring 2006 new member class.



ALPHA IOTA | UCLA

The chapter raised its GPA and is now second on campus, surpassing the UCLA women's average and the sorority average. They participated in a dance marathon fundraiser benefiting the Elizabeth Glaser Pediatric AIDS Foundation.

ALPHA LAMBDA | BRITISH COLUMBIA

The chapter has been active in many fundraisers, including Rock-a-thon, raising more than \$3,000 for the British Columbia Cancer Foundation. The chapter also volunteered with Make Poverty History to raise community awareness about child poverty.

ALPHA UPSILON | PENNSYLVANIA STATE

Sisters paired with Kappa Alpha Order for the Penn State Dance Marathon. They raised more than \$117,000. Proceeds were donated to the Four Diamonds Fund which helps patients and families dealing with pediatric cancer.

BETA ALPHA | SOUTHERN CALIFORNIA

At its biannual scholarship dinner, the chapter recognized members for their academic successes. The chapter has six trustee scholars, seven presidential scholars and 40 women on the Dean's List.

BETA EPSILON | MIAMI

After making it to the semi-finals in Delta Upsilon and Alpha Omicron Pi's philanthropies, the chapter went on to seal third place in Delta Zeta's Puttin' on the Hits.

BETA ETA | BRADLEY

The Beta Eta Chapter spent an entire week raising money for Camp Fire USA. Led by junior Sarah Juerjens, the chapter sponsored a hockey game, sold pizzas and held a campout, all to benefit the Metro Chicago Council.

BETA LAMBDA | SAN DIEGO STATE

For their spring retreat, sisters headed to Mission Beach and competed in a tug-of-war, balloon toss and relay races.

BETA PHI | INDIANA

Sisters co-hosted a benefit concert with Beta Theta Pi, Sigma Chi and Kappa Alpha Theta featuring a local band. Proceeds were donated to the Boys and Girls Club and CASA.

GAMMA GAMMA | WISCONSIN - MILWAUKEE

This spring the chapter helped raise money for St. Jude's and the Children's Miracle Network.

DELTA ETA | CALIFORNIA - IRVINE

Megan Chancellor was honored at the Greek Awards as Best Junior. The chapter also received alumnae relations and sportsmanship awards and the chancellor's cup.

DELTA TAU | COLGATE

Members of Delta Tau Chapter prepared for Jump Rope for Heart, for the American Heart Association.

EPSILON DELTA | CREIGHTON

The chapter was rewarded with the highest GPA of all the Greek organizations on campus.

EPSILON EPSILON | UNION

Throw a Pie for Gamma Phi was a successful campus event. Students threw pies at members to raise money for the Kenny Center, COCOA House for underprivileged children and Camp Fire USA.

EPSILON IOTA | CHRISTOPHER NEWPORT

In February, sisters brought smiles to the residents of the Hidenwood Retirement Home. They gave manicures to the residents in preparation for the home's annual Valentine's Day dance.

ZETA DELTA | SOUTHEAST MISSOURI

The women held their annual Moonball event. They raised nearly \$1,000 for Girl Scouts of America.

ZETA EPSILON | DUQUESNE

The chapter's annual Cut-A-Thon philanthropy raised more than \$1,500 for The Leukemia Society. Volunteer beauticians donated their services for a discounted price.

ZETA ZETA | COASTAL CAROLINA

Betty Quick (Indiana), NPC Chairman, spoke to the sororities about International Badge Day and the purpose of sororities. During Think Pink Week the chapter raised money for breast cancer awareness.

The Beta Upsilon Chapter (Kansas State) started a new tradition this year, Pie Night. They had fun making several kinds of pies and enjoyed eating them.



ZETA ETA | LANDER

The chapter hosted an Easter egg hunt for the children of university faculty and staff.

ZETA LAMBDA | TEXAS A&M - CORPUS CHRISTI

Every year the university honors three students with an official ring during Homecoming. This year senior Stacey Icke was honored by Student Affairs.

ZETA OMICRON | JOHN CARROLL

Members shared initiation and tea with the Cleveland East, Cleveland West and Kent Alumnae Chapters.



Members of Delta Psi (California - Santa Barbara) enjoy a sisterhood hike to Inspiration Point at their retreat.

EPSILON MU | LOYOLA - NEW ORLEANS

After returning to the Crescent City for the start of spring semester, sisters faced many challenges. New Orleans was still devastated, advisors had relocated and recruitment was three weeks away. The chapter worked hard and welcomed an amazing group of new women.

Members have been involved with Habitat for Humanity, helping to restore the city. They planted flowers, and held school supply drives. They were eager to enjoy their return and hosted a formal and Gammabunga, a tropical dance in the French Quarter. The Epsilon Mu Chapter thanks sisters across the country for their support during this difficult year.



The Epsilon Mu Chapter (Loyola - New Orleans) members show their Gamma Phi Beta pride in Mardi Gras colors.



Samantha Johnson with Sir Elton John.

Alumna Receives Award from AirTran Airways

Samantha Johnson (Vanderbilt), Senior Marketing Manager at AirTran Airways, received the 2005 President's Award, the highest honor AirTran Airways offers a crew member, during the 8th Annual Excellence Awards Ceremony. A single crew member is selected each year to receive the President's Award.

Samantha has been instrumental in implementing numerous new and innovative marketing ideas for AirTran. Last year, she helped establish a partnership between singer Sir Elton John and AirTran Airways during the launch of XM Satellite Radio on AirTran's airplanes.

Samantha has been employed with AirTran Airways for five years and said she was very surprised to receive the President's Award. She credited the crew members in the marketing department for contributing to her success.



Julie Pierce (left) and Kristen Pirog.

Neighbors Author and Illustrate Army Book

Kristen Turner Pirog (Kansas State) and fellow Gamma Phi Beta alumna and Army spouse Julie Pierce (Illinois State) have written and illustrated their first book, "An Army ABC Book." Aspects of life in the U.S. Army are illustrated from A-Z through vibrant, child friendly watercolors. Anyone who has ever experienced Army life will appreciate this book.

A portion of the proceeds from the book will go to charities that support Army families, including Operation Remembrance, a non-profit organization Kristen and Julie formed that provides keepsake memory boxes to the families of fallen soldiers. For



An Operation Remembrance memory box.

more information on An Army ABC Book and Operation Remembrance, go to www.operationremembrance.org.

Kristen is a former middle school teacher who lives in Georgia with her husband John and their two daughters. Julie is an artist and former middle school art teacher who lives in Georgia with her husband Christian and their four children.



Kelli performs in *The Pajama Game* with costar Harry Connick, Jr.

Twice As Nice

Kelli O'Hara (Oklahoma City) was nominated for her second Tony Award in two years for her work as the Leading Actress in the Musical *The Pajama Game*, which costars Harry Connick, Jr. In 2005, she was nominated in the Featured Actress in a Musical category for her portrayal of Clara in the still-running Adam Guettel-Craig Lucas musical *The Light in the Piazza*.

Her history on Broadway includes roles in *Dracula*, *The Sweet Smell of Success*, *Follies* and *Jekyll & Hyde*. For more information on Kelli, visit www.kelliohara.com.

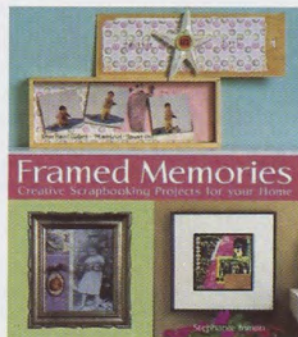
A Creative Career

With help from Boise graphic designer Stephanie Inman's (Oregon) new craft book "Framed Memories," a do-it-yourselfer can turn photos and mementos into meaningful framed works of art. Projects from Stephanie's book range from a Japanese inspired birth announcement to a homebuilt airplane memory piece to a leash rack for her dog Kip.

"Framed Memories" is a source book with more than 40 creative projects for your home. "It's about taking the celebration of your life and experience – and showcasing them in new ways," says Stephanie.

"My favorite part was using unusual objects in my own projects. I used barbecue skewers, curly willow branches, jewelry and lots of found materials."

Stephanie has been a graphic designer for 10 years and a lettering artist for over 20 years. She's designed logos for Harris Ranch and Jon Ball Photography. "Framed Memories" is published by Lark Books and retails for \$14.99.



Stephanie Inman with her miniature chair display, a collection she started two years ago.

NPC representatives travel to Washington, D.C. for Congressional visit, reception

By Cele Hoffman Eifert (Southern California) and Darla Click Dakin (Arizona State), Sorority Director – Panhellenic Resources

More than 200 North-American Interfraternity Conference (NIC) and National Panhellenic Conference (NPC) representatives and 80 student representatives traveled to Washington, D.C. in April for the annual congressional visits and reception.

Linda Daniel Johnson (Vanderbilt), International President, and Betty Ahlemeyer Quick (Indiana), NPC Chairman, represented Gamma Phi Beta with collegians Maggie Bowden (Virginia) and Autumn Hansen (Idaho).

Collegians attended two days of training before joining their NIC, NPC and National Pan-Hellenic Council (NPHC) team members for visits with members of Congress. The meetings are to generate new sponsors for H.R. 1548/S. 713. These bills will make a change in the tax code allowing tax-deductible donations to a 501(c)(3) non-profit organization to be used for improvements to the infrastructure of chapter houses. Such changes will increase the safety of our collegiate members.

Your letters and the visits are making a difference. Thirty-four representatives and two senators have become co-sponsors of the bill. There are now 131 co-sponsors in the House and 19 in the Senate.

The congressional visits and receptions are coordinated by the Capital Fraternal Caucus (CFC), a group of Greek men and women in the Washington, D.C. area with expertise in the public policy process. One hundred and one fraternities and sororities with 750,000 undergraduate members at 12,000 chapters belong to NIC, NPC and NPHC.



Autumn Hansen (Idaho) with International President Linda Johnson (Vanderbilt) in front of the Lincoln Memorial in Washington D.C.

Goals of the Capital Fraternal Caucus

- Educate policymakers about the positive impact of Greek life
- Preserve the existing rights of fraternities/sororities
- Advocate parity in government regulations and support collegiate quality of life issues
- Identify opportunities for Greeks and government to work to improve society
- Build permanent Greek presence in Washington, similar to the presence of other national trade organizations.

Check out the Web site at:
www.fraternalcaucus.org.

Gamma Phi Beta Sponsors Panhellenic Award

College Panhellenics developing and implementing programs which promote fraternity/sorority life on campus and in the local community are encouraged to apply for the annual Gamma Phi Beta Panhellenic Award. This award is presented at four regional Greek conferences. The 2006 winners are listed on page 23.



NPC Chairman, Betty Quick, center, presents the Southeastern Panhellenic Association Award to the members of the Mississippi State University Panhellenic Council.

Gamma Phi Beta recognizes College Panhellenics for outstanding programs

Mid-America Greek Council
Association (MGCA)

Eastern Illinois University - Halt Hazing:
National Hazing Prevention Week

Northeast Greek Leadership
Association (NGLA)

Duquesne University - Greek Week Film Project

Southeastern Panhellenic Association
(SEPA)

Mississippi State University - The House that
Greeks Built - Habitat for Humanity

Western Regional Greek Association
(WRGA)

Colorado State University - Women in
Leadership Dessert

Congratulations to these College Panhellenics for promoting the positive aspects of sorority/fraternity life on their campuses.

Kappa Delta receives first Betty Quick Scholarship

The first recipient of the Elizabeth Ahlemeyer Quick/Gamma Phi Beta Scholarship is Jennifer Hitt, a member of Kappa Delta Sorority at Mississippi State University. Many Gamma Phi Beta sisters pledged their support for the Gamma Phi Beta Foundation endowment enabling the Sorority to recognize Betty's service to Gamma Phi Beta and the National Panhellenic Conference through this scholarship, which will be awarded annually by the NPC Foundation.

"I was delighted to receive the Gamma Phi Beta scholarship at SEPC. Please express to your members my greatest thanks for supporting my academic endeavors. I am honored to receive a scholarship from such an outstanding organization," Jennifer wrote in recent e-mail. She will be a senior at Mississippi State in the fall, hoping to graduate

the following spring with a degree in Broadcast Meteorology. Upon graduation, she plans to work as a meteorologist or attend graduate school for a master's degree in



Jennifer Hitt

Student Affairs, with a goal to become a Greek Advisor.

Jennifer is an excellent embodiment of the criteria for the scholarship. In addition to her high scholastic achievement, she is

president of the MSU Panhellenic Council (and will continue in that position next fall), and has also served as the Panhellenic Assistant Recruitment Chair and the Panhellenic Judicial Board Chair. She is also an intern at a local television station, preparing herself for her broadcast career.

The Elizabeth Ahlemeyer Quick/Gamma Phi Beta Scholarship is one of six given by the National Panhellenic Conference Foundation to collegiate women who have excelled in their academic efforts and service to their local sorority chapters, campuses, and communities. The Gamma Phi Beta

Foundation and the many loyal sisters who have contributed to the Elizabeth Ahlemeyer Quick Endowment are pleased to make this scholarship possible for deserving young women like Jennifer Hitt.

Crescent Catchers Help Rescue Badge Stolen in the 1970s

by Cele Hoffman Eifert (Southern California), Crescent Catcher

Mary Lou Loufek Fazel (Iowa State) had never heard of Gamma Phi Beta's badge rescue group, the Crescent Catchers, until late last year. The California resident received an e-mail from Crescent Catcher Mary Hotter Reina (Northwestern): her badge was being auctioned on eBay.

Mary Lou said, "I about fell off the chair!" Her badge had been stolen more than 30 years ago!

Burglars broke into Mary Lou's home when she was on vacation and took the family silver and some irreplaceable pieces of jewelry, including her Gamma

Phi Beta badge and her husband's Phi Kappa Psi badge. Police told Mary Lou her jewelry would probably never be recovered because thieves usually melt it down.

With Mary's help, the jeweler agreed to stop the eBay auction after Mary Lou contacted him, selling her the badge for the high bid price. Not surprisingly, Mary Lou is now a Crescent Catcher herself and encourages other sisters to join.

To make a contribution, join the Crescent Catchers, or if your badge has been lost or stolen, please contact GPhiBBadges-owner@yahooogroups.com.

Start your program today!

By J.J. Kaelin (Colorado), Sorority Director - Public Relations

Public relations is 365 days a year of communicating,

sharing, telling and building awareness for our beloved Gamma Phi Beta! It's vital, it's necessary, and it's expected of our collegiate and alumnae chapters. We, Gamma Phi Betas, have incredible stories to tell! Krista Davis, our Collegiate Vice President, recently shared in a letter, "When you and I joined Gamma Phi Beta, we became part of something larger than ourselves."

Our Sisterhood connects us all over the world and our commitment to service positively impacts others in need. The special things we accomplish individually and as a group makes us shine! How are we telling our story to the public? And are we doing this everyday?

Think of it this way; you are planning a party or special event, but you don't send invitations. No one will know to come to your party, right? So send out your invitations, press releases, flyers... get your message out so others will respond.

This is how you get started...

1. Develop a "365" PR plan.
2. Stick to the plan.
3. Need a plan? Use ours, it's called PR in a Box

Develop a "365" PR plan. Why bother?

Because a "365" PR plan helps guide you to meet your chapter's goals and to succeed. You would not get into a car without an idea of where you are going, right? Your PR plan is your road map to success.

Top ten reasons to develop a customized "365" PR plan

1. Public relations is your primary communication tool.
2. What others think about us...so we are. Positive word of mouth can increase your credibility. The same stands for the unflattering "talk" that can filter around our campuses and communities.

3. It's easier to attract potential members and attract future Gamma Phi Betas.

4. It shows that you're in the game!

An effective PR plan can help place you where you want to be...participating...being top of mind.

5. Others see you as the best...worth their time.

6. PR is less expensive than advertising.

7. It's a great way to launch something new!

8. You'll put a "face" on Gamma Phi Beta. Your publics will read and believe what they see and hear about you. Help your publics make a connection.

9. You'll create enthusiastic buzz about Gamma Phi Beta.

10. It's expected. All great organizations do it.

Need a plan? Use ours. It's "PR in a Box"

This is the best part! A quick-start program has been developed just for you to use. It's called PR in a Box...a condensed version of the Gamma Phi Beta *PR Manual* for quick references to our PR plan template, style guides, ideas, press releases, terms, new logo usages and more!

The PR in a Box package was distributed to each collegiate and alumnae chapter delegate who attended Convention 2006 in Phoenix. If you need Gamma Phi Beta's PR in a Box, simply contact International Headquarters for more information.

Stick to the plan.

Follow your written plans and assign specific jobs. From your established goals, create the PR activity or event and assign members to be accountable to the assignments and the timelines. Follow through and evaluation are essential.

When you sit down with your alumnae or collegiate chapter's PR team, ask this important question:

"If we could only do one thing, what would it be?" Brainstorm and create some positive *buzz* for your chapter. Make it happen!

This is such an exciting time for Gamma Phi Beta! We've got the story. Gamma Phi Beta. Connect. Impact. Shine.



Out & About



Six Arizona (Alpha Epsilon) sisters reunited in New York City. The 1989 graduates are front row, left to right: Elizabeth Shanks Siroky, Audrey Vogelsburg Campbell, and Shelley Harris Jaramillo. Back row, left to right: Diana Christenson Kostas, Beth Bowers Carlos, and Laura Haugen Houck.



Four Beta Delta (Michigan State) sisters gathered for a reunion in Sangatuch, Missouri. From left, Karen Barger, Peggy O'Neil, Kim Demayer Meyers and Katalin Kutasi.



Frannie Dawson Woodruff, Arlene Erickson Simpson, Carol Reyle Van Sickle, Peppy Schmidt Theodore and Joyce Lemon Dunn celebrate their 50th reunion at Epsilon (Northwestern University).



Christine Carney Kidwell (Oregon) and Melanie Kelsey (Puget Sound) pose for a photo with the Gamma Phi Beta sign.



Fifty-year members were honored at a Founders Day celebration by the Puget Sound Alumnae Chapter.

Beta | Michigan

Marion Seitz Kolm 1928
Mary Potter Sharp 1934

Gamma | Wisconsin - Madison

Rosemary Brigham Kaska 1932
Nancy Willis Anderson 1948
Eleanor Manning Schalmo 1948
Mary Hempe Foege 1952
Dorothea Curtis Chickering 1898

Delta | Boston

Florice Tarment Madden 1942

Zeta | Goucher College

Laura Hill Wylie 1923
Frances Rudolph Summers 1931
Kathryn Wilson Born 1935

Eta | California - Berkeley

Patricia Carey Williams 1935
Priscilla Reed Dillingham 1935
Elisabeth Simonson Brower 1939
Joy Campagnoli Thompson 1965

Theta | Denver

Gail Prachett Roberts 1977

Kappa | Minnesota - Twin Cities

Dorothy Johnson Tuohy 1926
Jane Ford Crawford 1929
Helen Thompson Kay 1931
Alice Phelps Emery 1937
Marjorie Farnquist Warner 1944

Lambda | Washington

Margaret Lowrie Radoff 1931
Kathryn Graham Funk 1937
Marian Stam Kreeb 1946

Mu | Stanford

Marjorie Wakefield Hopper 1935

Nu | Oregon

Doris Hoefler Kulberg 1918

Xi | Idaho

Mary Angell Dusault 1922
Ruth Clements 1928
Pauline Frostenson Kramer 1954
Ann Foley Kennedy 1955

Omicron | Illinois

Helen Holmes Carpenter 1924
Katherine Simpson Emmons 1935
Jennifer Boreš Hill 1965

Pi | Nebraska - Lincoln

Margaret Walker West 1925
Cornelia Wieland Christensen 1935
Norma Clements Lehman 1946
Lou Shinn Smith 1954
Patricia Brown Bosking 1955

Rho | Iowa

Marian Kautz Parks 1943

Sigma | Kansas

Glenda Luehring Doyle 1945
Norma Whittaker Richter 1945

Tau | Colorado State

Frederica Gunyon Laird-Giedl 1930
Darline Durand Wilson 1943
Valerie Chappeller Sylvester 1957

Phi | Washington

Nancy Young Brown 1946
Helen Allen Jordan 1947

Chi | Oregon State

Dorothy Shaw Zellick 1941

Psi | Oklahoma

Mary Camp Tirey 1945
Eva Hill Legg 1946

Omega | Iowa State

Gertrude McArthur Young 1922
Virginia Stith Young 1945
Mary Ann Lindauer Callan 1946
Lillian Frey Schwitters 1976

Alpha Beta | North Dakota

Barbara Shafer Crowell 1937

Alpha Gamma | Nevada - Reno

Margaret Walts Ligon 1929
Frances Smith English 1935

Alpha Delta | Missouri - Columbia

Martha Lloyd Marshall 1928
Rita Dey Fields 1935
Marianne Metzger Pepoon 1949
Arlene Corbin Haley 1950
Brenda Bolte Graves 1955
Catherine Commerford Holmes 1957
Carolyn Young Smalley 1966

Alpha Epsilon | Arizona

Mary Jordan Smith 1935
Carolyn Black Hudak 1963

Alpha Zeta | Texas

Virginia Rutledge Stark 1925
Pauline Fertsch 1927
Mary Staley Bijak 1931
Lenora Thompson Ridings 1941
Marijo Phipps Gibson 1942
Marcia Kincaid Johnson 1954

Alpha Eta | Ohio Wesleyan

Virginia Neer Wing 1934
Joanne Frye Behrens 1955

Alpha Iota | UCLA

Lila Hanson Wallich 1924

Alpha Kappa | Manitoba

Kathleen Stewart Cupples 1942

Alpha Lambda | British Columbia

Joan Palmer Gordon 1947
Lynn LaFarge 1958

Alpha Nu | Wittenberg

Margaret Davis Baker 1944

Alpha Xi | Southern Methodist

Betsy Patterson Smith 1943
Lady Dallas 1944
Marcia Jones 1972

Alpha Pi | West Virginia

Virginia Boyer 1934

Alpha Rho | Birmingham-Southern

Lucille Griffin Poole 1930
Renetta Walton 1931
Elizabeth Robson Ensminger 1940
Martha Banks Speaks 1943
Mary Sellers Maddox 1944
Karen Klassen 1951
Joyce Custred Mitchell 1955

Alpha Upsilon | Pennsylvania State

Madeline Richardson Lane 1939
Dorothy Ellis Kehr 1940

Alpha Phi | Colorado College

Jane Sutton Nelson 1932

Alpha Chi | William and Mary

Joan Marsh Myers 1953

Alpha Psi | Lake Forest

Lois Brooke O'Kane 1934

Beta Gamma | Bowling Green

Barbara Lynch Staunton 1963

Beta Delta | Michigan State

Mary Nachtgall Natsch 1953

Beta Epsilon | Miami

Mary Whitman Potter 1956

Beta Zeta | Kent State

Marilyn Burton Rettie 1953

Beta Eta | Bradley

Carolyn Griffith 1965

Beta Iota | Idaho State

Anne Wells 1954

Beta Xi | Ohio State

Martha Everett Bowman 1957

Beta Rho | Colorado - Boulder

Sandra Wilken White 1960

Gamma Gamma | Wisconsin-Milwaukee

Berniece Sterling Evans 1960

Gamma Pi | Minnesota State-Mankato

Betty McElhenny Confer 1968

The year represents initiation date.

Alumnae receive top honors



Marion Downs



Ruth Seeler

These two women are outstanding pioneers in the medical field who just happen to be Gamma Phi Beta sisters. They are Dr. Ruth Seeler (Vermont) and Marion Downs (Minnesota- Twin Cities). They met last year in Denver and this winter, these two

active women (Marion at 92, Ruth at 71) spent a week skiing in Vail.

Both women have recently received special professional honors. Ruth walked into the University of Illinois Medical Center to find a new bronze plaque on the wall, announcing she had been chosen as one of the 2005 Castle Connolly's "America's Top Doctors."

Marion, a pioneer in pediatric audiology, was recently inducted into the Colorado Women's Hall of Fame. She initiated the practice of fitting hearing aids on infants. Her then-revolutionary idea increased functioning among hearing-impaired children. The Institute for Hearing and Deafness at the University of Colorado Health Sciences Center has been named for Marion.



Hawaii alumnae welcome Foundation Chair L'Cena Rice.

Gamma Phi Beta Gatherings

Football Unites

A football game created a great opportunity for a Gamma Phi Beta alumnae gathering! Foundation Chair L'Cena Rice (Southern California), a loyal Trojan fan, traveled to Oahu for the Southern California-Hawaii game and to meet Gamma Phi Betas living in Hawaii. Alumnae enjoyed hearing about the Foundation's work in leadership training, camping for girls and scholarships. Suzanne Lee (McGill) hosted the event, attended by this charming group!

Derby Days

Sisters in Chicago gathered to celebrate the Kentucky Derby and the Gamma Phi Beta Foundation. Magnes Welsh (Memphis) and Jennifer Moeller (Missouri-Columbia) hosted the gathering, where members learned more about the Foundation and, challenged by Paula Dean (Memphis), combined their resources to fund a leadership award for a collegian to attend The LeaderShape Institute® this summer. Sally Lewis (Bradley), Jen Moeller, and Tish Sheats (Lake Forest) were winners in the Derby Pool, donating their winnings to the Foundation.



Jennifer Moeller (Missouri-Columbia), Paula Dean (Memphis) and Sally Lewis (Bradley).

Exciting Announcement

The Foundation announced a new Collegiate Advisors Development Endowment campaign at the Foundation Luncheon at Convention. The endowment is in honor of the hundreds of dedicated sisters who have spent countless hours as advisors to our collegiate chapters. Earnings from the endowment will be used to train collegiate advisors, and provide on-going education and development workshops for advisors. The endowment and the campaign will be featured in the Foundation Annual Report in the fall 2006 issue of *The Crescent*.

2006 Philanthropist Awards

Jocelyn Birch Burdick & Joyce Canavan Stewart

For the first time, the Foundation Trustees honored two outstanding sisters with the Philanthropist Award at Convention. Joyce Canavan Stewart (Southern California) and Jocelyn Birch Burdick (Northwestern) initially met through a national organization in the 1960s when Joyce was living in California and Jocelyn in North Dakota. Both women are long-time members of The 1874 Society and both are recipients of Gamma Phi Beta's Carnation Award.

The Philanthropist Award is given at Convention to members whose outstanding philanthropic endeavors outside of Gamma Phi Beta have made a tremendous difference in the lives of others.

Jocelyn is best known for serving as U.S. Senator for North Dakota (D) after her husband, Quentin Northup Burdick, died in 1992. Always at the forefront of new ventures, she was a charter member of the Democratic Plus Organization, and Fargo League of Women Voters. After graduation from Northwestern in 1943, she served the Sorority as director of entertainment, led the initiative to start a new Gamma Phi Beta Chapter (Gamma Mu) at Minnesota State University-Moorhead and helped build a chapter house for Alpha Omicron Chapter (North Dakota State).

Joyce is a long-time resident of Tucson. With husband, Roger, Joyce loyally supports the USC Music Department and USC Band, as well as the USC Associates and USC Athletic Department. Joyce's interest in leadership development for Gamma Phi Beta has been consistent over many years, initially through generous support of the first leadership development endowment in the Foundation. She played a key role in establishing a scholarship endowment for members of Beta Alpha and is also supportive of the Laurel Blair Salton Clark, M.D. Memorial Leadership Endowment.

The Trustees selected these two members not only because they exemplify the highest ideals of philanthropy in their communities, but because they are excellent examples of how the Gamma Phi Beta connection enriches the lives of sister-friends.



Jocelyn Burdick



Joyce Stewart

The Gamma Phi Beta Foundation acknowledges the following individuals who contributed RESTRICTED Gifts and Pledges totaling \$1,000.00 or more to the Foundation. These gifts are designated for specific scholarships/fellowships, chapter gifts and various others. This list represents gifts received from February 1, 2006 through April 30, 2006.

Gifts totaling \$1,000-\$4,999

Sandra Biegleman Burba
Miami Univ. '72

Ocella Burns Covill
Syracuse '50

Susan Schlessman Duncan
Colorado College '49

Lynda Stevens Fairly
Southern California '62

Virginia Harris Hammond
Colorado-Boulder '62

Shirley Ann Hill
Missouri-Columbia '45

Verona Dilbeck Lynam
Oklahoma City '52

Darcy Aman Quinn
San Diego '87

Marynell Dyatt Reece
Kansas '41

Margaret Ryan-DeBonis
Syracuse '96

Joyce Canavan Stewart
Southern California '50

Lynn Towsley White
Colorado-Boulder '65

Gifts totaling \$20,000-\$49,999

Helen Ward Pustmueller
UCLA '32

Ruth Andrea Seeler, M.D.
Vermont '56

The Gamma Phi Beta Foundation acknowledges the following individuals who contributed to the Foundation to celebrate a special event. This list represents gifts received through April 30, 2006.

CONGRATULATIONS

In Celebration of the birth of Samantha Jane Souan. Proud parents are Ryan and Leigh Marie Souan. Congratulations, she is beautiful!

Kelly Hane

In Celebration of the University of Texas and their win over USC in the Rose Bowl Championship Game.

Linda Babcock

Julie Vowell-Ramirez

In Celebration of the Puget Sound Alumnae Chapter achieving the Diamond Circle of Excellence in 2005.

Gigi Eyre

In Celebration of the South Bay Alumnae Chapter achieving the Founders Circle of Excellence in 2005.

Gigi Eyre

In Celebration of Kaye Furlong receiving the Merit Roll Award.

Gigi Eyre

In Celebration of DeDe Hicks receiving the Merit Roll Award.

Gigi Eyre

In Celebration of Linda Babcock receiving the Service Roll Award.

Gigi Eyre

In Celebration of Leda Quiros-Weed receiving the Service Roll Award.

Gigi Eyre

In Celebration of the birth of Pendleton Peach Fenske, the first legacy born to Jennifer (Manske) and Jonathan Fenske.

Hallie Anderson

In Celebration of the first novel, "Toss the Bride," written by Jennifer Manske Fenske. You make me proud to call you a sister. Congratulations on all your blessings!

Hallie Anderson

In Celebration of L'Cena Rice, Torrance City Mother of the Year.

South Bay Alumnae Chapter

In Celebration of the marriage of Julie Dunn to Bob Eichenberg!

Harriett Cogan

Karen Kline

In Celebration of the birth of legacy Ella Caroline Epstein born November 8, 2005, to Dan and Michelle Dreesen Epstein.

Megan & Molly Dreesen

In Celebration of the birth of Hillary Barker Stevens' new legacy, Marcy Faythe, from all of her sisters in Region 2.

Vada Baird, Robin Baskin, Sandy Burba, Callie Cable, Carmela Carr, Lindsey Cooper, Tracy Johnson, Tracy Hood, Julie Simmons, Pamela Williams

In Celebration of the birth of legacy Kayleigh Skye Pare! Proud parents are Alpha Tau alumna Karen Belding and husband Denis Pare!

Dr. Yael Acre, Suzanne Lee, Pamela Carkner Kelly Harps, Lynn Gariepy, Heather Beaton

In Celebration of Dan Bumstead, our February meeting speaker.

Naples Alumnae Chapter

In Celebration of the February 18, 2006, birth of my grandson Gavin John Van Scoy to Kristin Schmidt Van Scoy and Greg Van Scoy.

Julie Millen

In Celebration of Dana Rogahn McDougal and the birth of her first child, Hayden Aaron, on November 9, 2005.

Madison Alumnae Chapter

In Honor of Hope Luken (Gettysburg College '04)

Cindy Yingling

In Appreciation of Lisa Kenagy Trimble, Pi Chapter Advisor.

Mitzi Ritzman

In Appreciation of Molly Popish, Epsilon Delta Chapter Advisor.

Mitzi Ritzman

In Celebration of the birth of legacy Reagan Emerson Winter on January 13, 2006, to Kelley Perkins Winter and Chad Winter.

Mitzi Ritzman

In Celebration of Betty Quick – Thanks for the introduction to TJ!

Julie Dunn, Kris Baack, Leigh Ann Price

In Celebration of the birth of Dorothy Higgs' daughter, Julia.

Leigh Ann Kudloff

Many thanks to the 2005-2006 Elected Executive Board of Denver Alumnae Chapter for collaborating to "Shoot for the Moon!" You have all contributed much to our sisterhood here in Denver. It has been such a pleasure to work together.

Leigh Ann Kudloff

In Celebration of Cheryl Haskell (FVP), Peggy Hutchinson (AVP), Roberta Coffee (Panhellenic), Ashriel Lutz (PRVP), Analisa Cleland (ACRVP), Kitty Sweeney (Programming VP) – the new Elected Executive Board of Denver Alumnae of Gamma Phi Beta for 2006-2007. Together we are going to make a difference in Denver in the coming year. I am looking forward to working with each of you. Thanks for your time and talents.

Leigh Ann Kudloff

Much appreciation to the following women of Denver Alumnae Chapter who work "behind the scenes" to make our chapter strong: Betsy Lyle, Dianne Hornbrook, Braelin Pantel, Carol Bilello, Lisa Shafer, Kris Geibel, Liz Martin, Dorothy Higgs, Corinna Grenfell, Christy Shafer, Janice Jacobovitz, Debra Baldwin, Becky Young, and last but not least, Heather Michaud. Thanks for all you do to support our chapter.

Leigh Ann Kudloff

In Celebration of Rosemary Bunn's marriage to John Laban. You deserve all the happiness in the world!

Julie Dunn Eichenberg

In Celebration of the 50th Wedding Anniversary of Clarice Braker and Richard J. Morrison.

Melba Spurrier

In appreciation of the outpouring of love and good wishes on the occasion of a milestone event in our lives.

With immeasurable gratitude,
Mary Jane and George Misthos

In Celebration of Georgie Foster for being our guest speaker.

Naples Alumnae Chapter

In Celebration of Delta Pi's winning an amazing number of awards during Greek Week!

Jeannine Kallal

In Celebration of Cinda Lucas receiving the Betty Gilmore Woods Award at the Western Regional Greek Conference.

Beta Alpha Chapter

The Gamma Phi Beta Foundation acknowledges the following individuals who contributed to the Foundation in memory of a loved one. This list represents gifts received through April 30, 2006.

Sarah Mefford Strathman (Illinois '52)
Susan Newsom

Marjorie Wakefield Hopper (Stanford '35)
Janice Graves

Elaine Harvey, mother of Susan Harvey Golden (Denver '63)
Patricia Mangis

Audrey "Jean" Barnes Click, mother of Darla Click Dakin (Arizona State '76)
Foundation Trustees, International Council, Karen Kline, Sally Lewis, Frances Griffin, Karen Urette, Sandy Burba, L'Cena Rice, Leigh Ann Kudloff

Norma Whittaker Richter (Kansas '45)
Albuquerque Alumnae Chapter

John and Kay Stevens, parents of Kay Stevens Arnold (Oklahoma '60) and Joanna Stevens Handel (Oklahoma '62)
Ann Ross

Marjorie Farnquist Warner (Minnesota-Twin Cities '44)
Marjorie Adams, Jean Erdall, Mary Pennington, Joan Warner

Alice Phelps Emery (Minnesota-Twin Cities '37)
Marjorie Adams, Julia Dunsworth
Jean Erdall, Mary Pennington, Joan Warner

Florence Leutwiler Jones (Washington University '34)
Louis & Norma Herrin, Cleveland Junior Naval Academy Staff, Drs. William & Mary Musick, Eleanor O'Connor, David & Jennifer Arndt, Allen & Sandy Segal

Allen Hicks, husband of DeDe Staskal Hicks (Colorado College '51)
Janet Whitcomb, Myrtice Adamson, Barbara Alberts, Linda Babcock, Rosalind De'Prey, Carol Fox, Cheryl Gutierrez, Rosemary Humphrey, Kay Marovich, Shelby McGirr, Joan Meagher, Una Mae Naulty, L'Cena Rice, Anne Rindge, Beverly Willd, Virginia Williams

Walter E. Knowles, III, husband of Cynthia Bronston Knowles (Northwestern '50)
Judy Millen

Paul Martin, father of Paula Martin Rutherford (Oklahoma '61)
Margaret Pape

Joe Robert Neeley, husband of Mary Simpson Neeley (Southern Methodist '30) and father of Sarah Neeley Metschan (Southern Methodist '65)
Deborah Wilson

Bruce A. Burchfield, husband of Mary Ellen Porter Burchfield (Iowa State '68)
Foundation Trustees, International Council, Sally Lewis, Frances Giffin, Karen Kline, Jeannine Kallal, Sandy Burba, Joanne Roman, Bonnie Payne, L'Cena Rice

Angus J. Ray, husband of Linda Christensen Ray (Southern Methodist '76) and father of Heather Ray (Southern Methodist '02)
Sally Lewis, Frances Griffin

June Mathews Jubelt (Illinois '39)
Janice Wissman

Christine Shelly (Vanderbilt '70)
Evelyn Thompson

Dorothy Martsolf Hutton (Pennsylvania State '36)
Robert Hutton

Mary Ransom MacLeith (Southern California '46)
Beta Alpha House Corporation Board

Joanne Frye Behrendsen (Ohio Wesleyan '55)
Emilie Kanitz

Eleanor Margaret Williams, mother of Ann Williams Ross (Oklahoma '62) and Susan Williams Shoemaker (Oklahoma '65)
Margaret Pape

Col. Edmond O. Lynam, husband of Verona Dilbeck Lynam (Oklahoma City '52)
Jacki Falkenroth

Nancy Young Brown, Ph.D. (Washington University '46)
Gladys Myles

Norma Clements Lehman (Nebraska-Lincoln '46)
Naples Alumnae Chapter

Karen Hearn Suman, sister of Stephanie Hearn (Kansas '82)
Susan Grant-Schneider, Leigh Ann Kudloff, Barbara Wessel

Virginia Rutledge Stark (Texas '25)
Mary Maley, Cathryn Melton

Muriel Wollman Walts (Goucher College '31)
Mary Schneider

Eva Hill Legg (Oklahoma '46)
Oklahoma City Alumnae Chapter

Charles J. McPhail, husband of Betty Werfelman McPhail (Syracuse '38)
Syracuse Alumnae Chapter

Mary Ann Lindauer Callan (Iowa State '46)
Cathy Lindauer

Bonnie MacAluso Pastor (Colorado State '55)
Leigh Ann Kudloff

Mother of Leanne Reiter Thompson (Colorado State '73)
Leigh Ann Kudloff

Mother of Dorothy McGregor Higgs (Denver '91)
Leigh Ann Kudloff

Daughter of Barbara Lowe Barr (Denver '52)
Leigh Ann Kudloff

Joy Campagnoli Thompson (California-Berkeley '65)
Kristine Abrams, Lynn Bijl, Contance Cox, Francesca Krauel, Jean Martin, Jacqueline McAniff, Mary McCosker, Susan Pate, Diane Ryason, Priscilla Schlegel, Barbara Schmidt, Cathlyn Shaw, Kathleen Smith, Karen Teel, Elisabeth Teel, Karen Tillis, Jeannine Turley, Sue Bay

William and Virginia Lees Carney (Oregon '40), parents of Christine Carney Kidwell (Oregon '73)
Eugene Alumnae Chapter

Martha Everett Bowman (Ohio State '57)
Raleigh Alumnae Chapter

Jayne O'Malin, husband of Yerdith White O'Malin (Oklahoma City '51)
Albuquerque Alumnae Chapter

Mother of Stephanie Stalberger Brigger (Iowa '79)
Rene' Thompson

Michael Joe McCann, husband of Karen Farmer McCann (Miami University '76)
Houston Alumnae Chapter

Rose Stone, mother of Rosemary Stone Bunn (Florida State '69)
Julie Dunn Eichenberg

Ronald B. Repka, husband of Jane Bock Repka (Denver '79)
Jane Bock Repka, Jim & Delores Clugh
Walter & Irma Maki, Mary & Joe Pohl, Charlene Cole, Arlie & Lill Meyer, Dick & Vivian Morawaski
Dr. David & Connie Morawaski, N. Portovarro

Jane Sutton Nelson (Colorado College '32)
Catherine Spika

Marian Kirchner, mother of Lois Kirchner Abbott (San Jose State College '52)
Foundation Trustees

Professor Narayan Giri, father of Nabanita Giri (McGill '87)
Suzanne Lee, Heather Beaton, Dominique Groulx

Marilyn Park Hawthorne (Bradley '56)
State College Alumnae Chapter, Elizabeth Phillips

Kathryn Warner Bane Moore (San Diego State '59)
Elizabeth Demarke

Fay Hazelwood Olson (Pennsylvania State '42)
Alice Walter, Mary Saby, Dorothy Farwell, Consuelo Myers, Ione Romeika

Ann Foley Kennedy (Idaho '55)
Sacramento Valley Alumnae Chapter

Capture a Crescent



Felice Pomierski Allen (Northwestern) knew she had found the right new Chicago home for her family when she spotted the crescent moon window in the front door!



Maura Ryan (Colorado State) captures a crescent!

If you spot a crescent, we want to see it! Grab your Gamma Phi Beta sisters, take a photo and send it in. We'll publish the most creative shots in upcoming issues.

Here's what we are looking for:

» Digital or film prints featuring Gamma Phi Beta members and a crescent moon symbol

» Digital images must be large and high resolution (300 dpi)

Remember, images will not be accepted if they show cans, bottles, cups or glasses.

Please send submissions to: TheCrescent@gammaphibeta.org
 The Crescent-Capture a Crescent
 12737 E. Euclid Drive
 Centennial, CO 80111

Change of Address Form

Please print changes and send to Gamma Phi Beta International Headquarters, 12737 East Euclid Drive, Centennial, CO 80111-6445 using the envelope in this issue. You can also change your address and pay your alumnae dues using the Gamma Phi Beta Web site, www.gammaphibeta.org

Initiated Name (First) (Middle) (Maiden)

Name (First) (Maiden) (Last)

New Address

(City) (State) (Zip)

Phone Number

E-mail

Chapter and Year of Initiation

To pay your Alumnae International Dues, please include a \$25 check (made payable to Gamma Phi Beta Sorority) or credit card information (use the envelope provided in this issue)