

THE Summer 2005

CRESCENT

of GAMMA PHI BETA



Piecing Together the New Regional Structure
Zeta Sigma Installation
The Future Is thefacebook
Our Badge On Display

FEATURES

14

THE FUTURE IS THEFACEBOOK

Learn about the technology that's changing the face of universities in America.

By Jojo Lam (California-Berkeley)

16

PIECING TOGETHER THE NEW REGIONAL STRUCTURE

If you have questions, we have answers.

By Patricia M. Crowley (Northwestern) | Executive Director-Sorority

20

2005 RLCs: LEADERSHIP & LEARNING

Peruse photos from three unforgettable weekends.

By Megan McDermott | Editor

22

OUR BADGE ON DISPLAY

Every badge has a story.

By Megan McDermott | Editor

28

ZETA SIGMA INSTALLATION

A new chapter is installed at the University of South Carolina.

By Jessica Jecmen (Oklahoma City)

CRESCENT CATCHER NEWS

Pat Metzger (California State-Long Beach), right, became a crescent catcher without even knowing it! While attending a Founders Day celebration in Pasadena, California she was approached by a woman curious about Gamma Phi Beta. Pat found out the woman's name was Mary, that her deceased sisters were Gamma Phi Betas and she had their badges!

Mary gave Pat the badges, and Pat promised they would get to International Headquarters. Mary's sisters, Bess Henehan Evans (Minnesota-Twin Cities) and Martina Henehan Travers (Minnesota-Twin Cities) were twins and their diamond-encrusted badges are from 1905 and 1906. What pieces of history! To read more about our historic badges, see page 22.



IN EVERY ISSUE

4

PRESIDENT'S PERSPECTIVE

By Linda Daniel Johnson (Vanderbilt) | International President

5

NPC UPDATE

By Patricia M. Crowley (Northwestern) | Executive Director-Sorority

6

SPOTLIGHT ON: LIFE ABROAD

Gamma Phi Betas leave their mark on the world.

8

OUT & ABOUT

Reunions, events and authors.

9

MEMBER NEWS

The latest news on our collegiate and alumnae chapters.

13

PACESETTERS

24

FOUNDATION NEWS

25

IN MEMORY

26

IN CELEBRATION

Recognizing a few of our special sisters.

27

MEMORIAL GIFTS

Remembering our sisters.

THE Summer 2005

CRESCENT

OF GAMMA PHI BETA

VOLUME 105 NUMBER 3

INTERNATIONAL HEADQUARTERS

12737 E. Euclid Drive, Centennial, CO 80111

Phone: 303.799.1874 Fax: 303.799.1876

E-mail: IH@gammaphibeta.org Internet: www.gammaphibeta.org

GAMMA PHI BETA FOUNDERS

E. Adeline Curtis Frances E. Haven Moss

Helen M. Dodge Ferguson Mary A. Bingham Willoughby

INTERNATIONAL COUNCIL

International President Linda Daniel Johnson

Alumnae Vice President Sandra Biegelman Burba

Collegiate Vice President Krista Spaninger Davis

Financial Vice President Annabel M. Jones

Education Vice President Angela Jordan Dimit

Membership Vice President Linda Lyons Malony

National Panhellenic Conference Delegate Elizabeth "Betty" Ahlemeyer Quick

Executive Director-Sorority Patricia M. Crowley

SORORITY MISSION STATEMENT

Our mission is to foster a nurturing environment that provides women the opportunity to achieve their potential through life-long commitment to intellectual growth, individual worth and service to humanity.

CRESCENT STAFF

Editor Megan McDermott

Print & Publications Coordinator Katherine Mulvihill

Communications Assistant Abbie Weiss

Business Manager Patricia M. Crowley

Advisor Kris Brandt Riske

MAGAZINE SUBMISSION DEADLINE

Spring Issue January 1

Summer Issue April 1

Fall Issue July 1

Winter Issue October 1

CONTACT US

Mail 12737 E. Euclid Dr., Centennial, CO 80111

E-mail TheCrescent@gammaphibeta.org

Call 303.799.1874

Fax 303.799.1876

Visit www.gammaphibeta.org

E-mail your old and new information to

address@gammaphibeta.org, call 303.799.1874, fax 303.799.1876 or mail to

Address Changes, Gamma Phi Beta Sorority, 12737 E. Euclid Drive, Centennial, CO 80111.

© 2005 Gamma Phi Beta Sorority

The Crescent (USPS 137620) is published quarterly.

Periodicals postage paid at Centennial, CO and at

additional mailing offices. Non-member subscription price is \$6.00.

Produced in the U.S.A. by Maury Boyd and Associates.

Postmaster: Send address changes to

The Crescent, Gamma Phi Beta Sorority, 12737 E. Euclid Drive, Centennial, CO 80111.

Member of the College Fraternity Editors Association



Member of the National Panhellenic Conference

GAMMA PHI BETA'S NEW REGIONAL STRUCTURE

...WHAT'S IN IT FOR YOU?



■ **ON JULY 1**, Gamma Phi Beta implemented a new volunteer operating structure designed to manage Sorority operations more effectively and to encourage broad-based collaboration between collegiate chapters, alumnae groups, house corporation boards, volunteers and headquarters staff. (See article on pages 16-19 of this issue.)

■ **COLLEGIATE CHAPTERS, ALUMNAE GROUPS AND HOUSE CORPORATION BOARDS** will have one volunteer regional coordinator trained to handle general issues in all department areas as their supervising volunteer. They will also experience the benefit of support from eight regional team members and a regional director trained in specialty areas and knowledgeable about their region's strengths and weaknesses. Each regional team will formulate a regional plan to address every chapter's opportunities and to further strengthen and promote Gamma Phi Beta within their region.

■ **SORORITY DIRECTORS AND SORORITY COORDINATORS** will monitor overall Sorority activities and programs, maintaining, creating and updating new sorority programs when necessary. They will also serve as resource specialists for regional teams needing additional support.

■ **INTERNATIONAL COUNCIL IS EXCITED** about the possibilities of this new structure. We believe the creation of regional teams and the attention placed on the overall health of each alumnae group, house corporation board and collegiate chapter will result in an increased level of support at the local level and improved results for Gamma Phi Beta.

■ **HOW CAN YOU HELP?** Get involved with your alumnae chapter or local collegiate chapter or become a volunteer leader at the international level. For more information, contact the Sorority Director-Volunteer Resources at volunteer@gammaphibeta.org. Every sister counts!

Linda Daniel Johnson
Linda Daniel Johnson
International President
IP@gammaphibeta.org

CALLING ALL GAMMA PHI BETAS TO CONTACT MEMBERS OF CONGRESS

by Patricia M. Crowley (Northwestern) | Executive Director-Sorority

Members from National Panhellenic Conference (NPC), North American Interfraternity Conference (NIC) and the National Pan Hellenic Conference (NPHC) visited Congress in Washington, D.C. on April 19, 2005. Their purpose was to encourage senators and representatives to co-sponsor and vote for pending legislation that could significantly improve the safety and living conditions in sorority/fraternity housing across the United States. The next step toward passage of this legislation is a grassroots campaign by all Gamma Phi Betas to let their senators and representatives know that this legislation is important to us.

The Collegiate Housing and Infrastructure Act of 2005 (H.R. 1548/S. 713) (the Act) seeks to amend the federal income tax code to allow fraternity and sorority 501(c)(3) foundations to use tax-deductible charitable contributions to make infrastructure improvements to chapter houses operated for the benefit of collegiate members. Currently, the tax code permits colleges and universities to use tax deductible

contributions for virtually any purpose to benefit students, including classroom, dormitory, meeting areas and laboratory infrastructure improvements. By contrast, tax-deductible contributions to fraternity and sorority foundations can only be used for educational purposes, limiting student housing improvements to such purposes as computers, computer labs, library additions and scholarships.

Passage of the Act will give Greek-letter organizations parity with colleges and universities. Like universities, fraternities and sororities would be able to fund the installation of life-safety equipment in chapter houses, such as fire sprinklers, with tax-deductible contributions.

On their visits with members of Congress, NPC, NIC and NPHC representatives emphasized how the American public will benefit from the passage of the Act.

- Fraternities and sororities are the largest not-for-profit landlords of college students besides colleges and universities, housing

250,000 students at no cost to schools or taxpayers.

- We own and manage more than \$3 billion in housing stock on U.S. college campuses; the replacement value of this housing is immeasurable.
- Many public and private universities rely on sororities and fraternities to house a significant percentage of the student population.
- Most colleges and universities cannot house the students that would be displaced if the Greek housing was closed.
- Public colleges and taxpayers save several billion dollars thanks to the residential capacity of Greek housing.

Gamma Phi Beta was represented ably during these congressional visits by NPC Delegate and NPC Secretary, Elizabeth Ahlemeyer Quick (Indiana); International President, Linda Daniel Johnson (Vanderbilt) and Foundation Executive Director, Bonnie Payne (Denver). Linda Johnson reported:

From left, Betty Ahlemeyer Quick (Indiana), Barbara Missert Wessel (Syracuse), Bonnie Brown Payne (Denver), Mary Jo Sticht Lander (Kent State), Ann Mullen Bronsing (Indiana State) and Paula Janis Dean (Memphis State) were all on hand for NPC's commemoration of the 75th anniversary of the Beekman Tower Panhellenic House in New York City.



"My day on the Hill was a new experience for me. It is clear that significant interest from constituents and political interests drives most congress members to support legislation. A grassroots campaign to support this legislation would significantly improve its chances of success. All we are seeking is equality with universities in our ability to raise funds for safe student housing."

Every American voter can help ensure passage of this important legislation by getting involved. All it takes is a fax, e-mail or phone call to your Members of Congress. As Gamma Phi Betas, we can provide for the health, education and safety of our current and future collegians by voicing our support of this legislation. Contact Betty Quick at EAQ007@aol.com for more information.

Spotlight On:

Life Abroad

Gamma Phi Betas are leaving their mark on the world. Today many of our sisters are living and working across the globe. These women, in countries from China to Mexico and Iraq to the Czech Republic, invite you to share their international experiences.



ELENA HANNAN

Although Elena Hannan (Colorado College) lives in Mexico, she would never classify herself as "living abroad." Elena was born and reared in northern Mexico by her American parents, giving her dual citizenship as well as a love and appreciation for both cultures and languages.

Elena is an independent consultant in communications and public relations. Her clients range from the current Mexican presidency (logistic support) to Mexico's tourism industry.

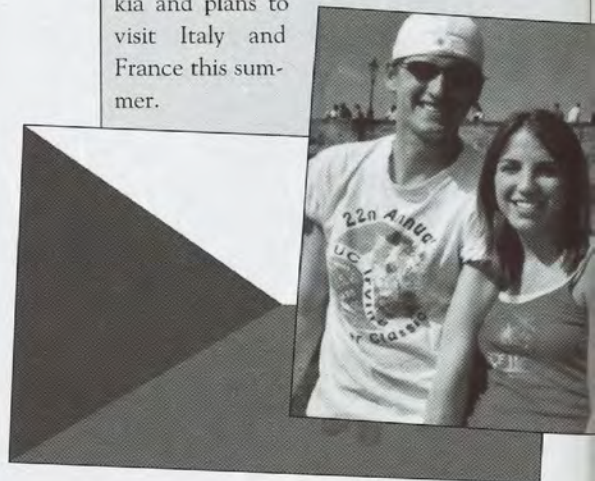
Today, Elena lives in Mexico City. Her two children, Louisa and Bruno, are in college. Elena is an American citizen, but in the words of a Mexican saying, "Once the dust of Mexico has settled on your heart, you will never leave!"

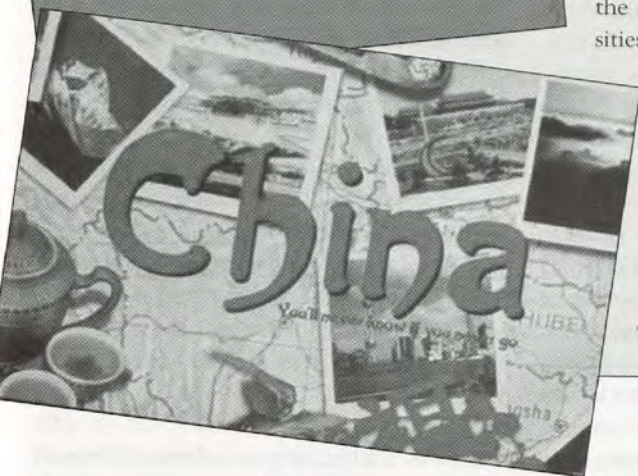


JILL TOBBEN

Jill Tobben (South-east Missouri State) has been living and teaching in Prague, Czech Republic for almost a year. Jill moved to Prague in November 2004 to be with her fiancé, Ján Vančo. Jill teaches English at two schools and also works

with private students. She notes, "My students are definitely learning English a lot faster than I am able to learn Czech!" Although she is busy with her students, Jill has visited Bratislava and Slovakia and plans to visit Italy and France this summer.





CAROL GOSHAW BLANCHARD

Carol Goshaw Blanchard (Southern California) has spent the past three years teaching in China. Carol first arrived in China to teach conversational English for The People's Construction Bank of China, whose mission was to prepare the top graduates of China's universities for Hong Kong's 1997 return to China and subsequent increased business demands.



In 2002, Carol was invited to join the faculty at SIAS International University, the only American-owned University in Central China, and the only undergraduate institution where students can receive an American diploma.

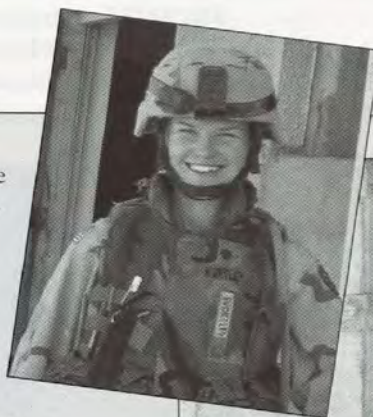
"It is the opportunity to see China awaken and to work with the future leaders of China that is most rewarding and satisfying," said Carol.

HEATHER WORTLEY

If you had asked Heather Wortley (Idaho) a few years ago where she'd be today, "in the middle east" would probably not have been her answer. Heather is a combat medic stationed in Northern Iraq.

As a combat medic, Heather serves as a member of an ambulance crew. She is responsible for the emergency evacuation of casualties and also works in the Troop Medical Clinic.

Heather's "battle buddies," as she calls them, keep her going. Like her days in Gamma Phi Beta, Heather says, "the people surrounding me here are what make this all an unforgettable life experience."

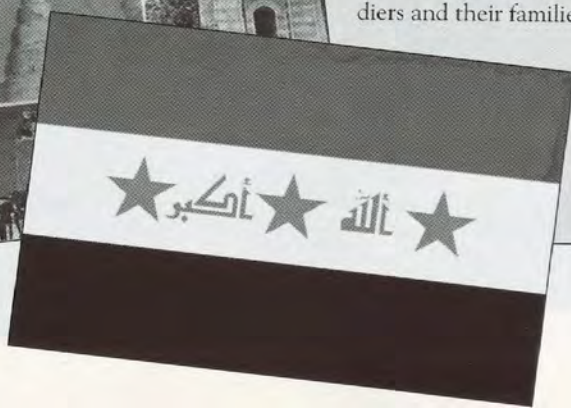
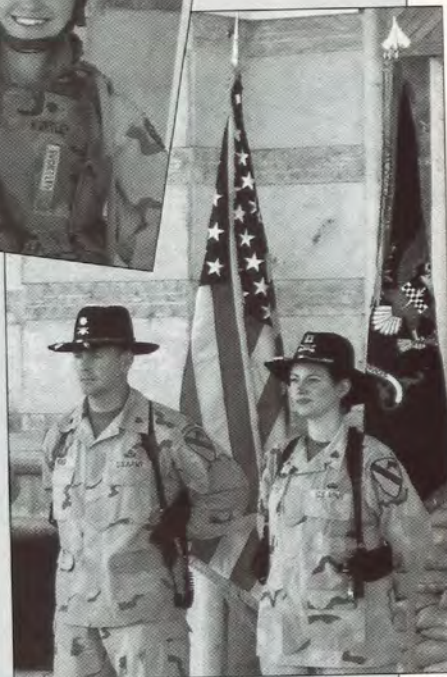


JEANNIE DEAKYNE

When CPT Jeannie Panton Deakyne (Arizona) was deployed to Iraq, she was armed with more than her military training. She was armed with the leadership skills she developed as a Gamma Phi Beta. Jeannie is currently the Commander of Charlie Detachment, 15th Personnel Services Battalion, 1st Cavalry Division. In April 2005, Jeannie was awarded the Bronze Star Medal at Fort Hood, Texas for her service during Operation Iraqi Freedom II.

As a personnel officer, Jeannie ensures that soldiers and their families receive the necessary service support to remain combat effective.

Jeannie wonders "who would have ever thought that my time spent as an assistant song chair, a standards officer, parliamentarian or panhellenic executive officer would have so positively contributed to deployed American troops?"



■ REUNION NEWS

PSI (Oklahoma) sisters Susan Hamby Andres, Elizabeth Perett Carmack, Claudia Matney King, and Paula Martin Rutherford had a mini-reunion in Washington, D.C. to celebrate their 60th birthdays. All were initiated in 1961. Paula was chapter president in 1963-64. Paula and Beth both live in Washington D.C., Susan lives in Montgomery, Alabama and Claudia lives in Tulsa, Oklahoma.

At an alumnae reunion at Texas Wesleyan University, Lindsey Jackson, Alicia Young, Mindy Matlock, Cecilia Bradley, Veronica Bradley and Margaret Borchert reunited. They are members of the DELTA EPSILON new member classes of 1998-2000.

BETA OMICRON (Oklahoma City) alumnae had a reunion in February 2005 at the home of Nancy Cullins Williams. Attendees were Elizabeth Cronin Puffenberger, Linda Andress Harris, Kathryn Jones Precure, Rita Whitaker Lee and Joyce Harris Smith, all collegians from 1954 to 1957.

Below: Psi alumnae reunite to celebrate their 60th birthdays. From left to right, Claudia, Paula, Susan and Beth.

Right: The photo submitted by Michelle Hood Rosenthal's (Georgia) in the Nikon Camer Pride and Joy Baby contest.

Far right: Think Yourself Thin, by Darcy Buehler Ph.D (Kansas State).

A group of Gamma Phi Betas from the GAMMA KAPPA Chapter (Nebraska-Kearney) were recently on campus again for a 10-year college reunion. The group toured the chapter house and said they've remained lifelong friends since they graduated.

■ EVENTS AND HAPPENINGS

Mary Hawkins (Southeast Missouri State) and Stacy Smith (Clemson) participated in the Atlanta two day Breast Cancer walk, held October 23-24, 2004.

Michelle Hood Rosenthal's (Georgia) son, Connor, was chosen as a finalist in the Nikon Camera Pride and Joy Baby contest. Michelle, her husband, Jeff, and baby Connor were flown to New York City and appeared on Good Morning America. While waiting in the green room, the trio was interviewed by Entertainment Tonight and

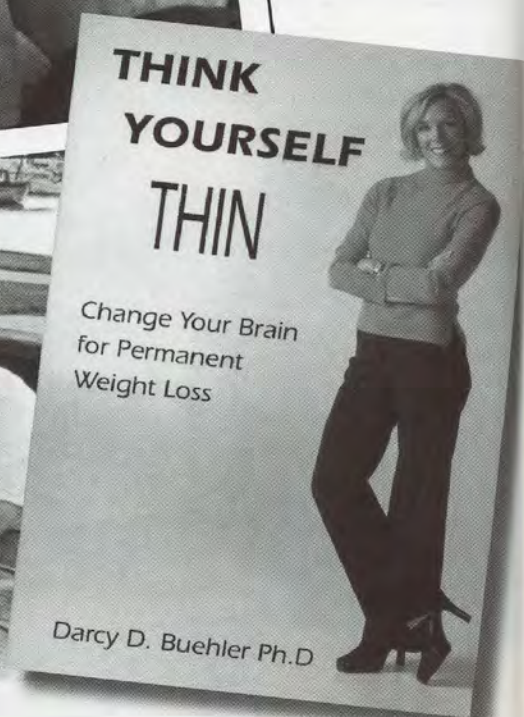
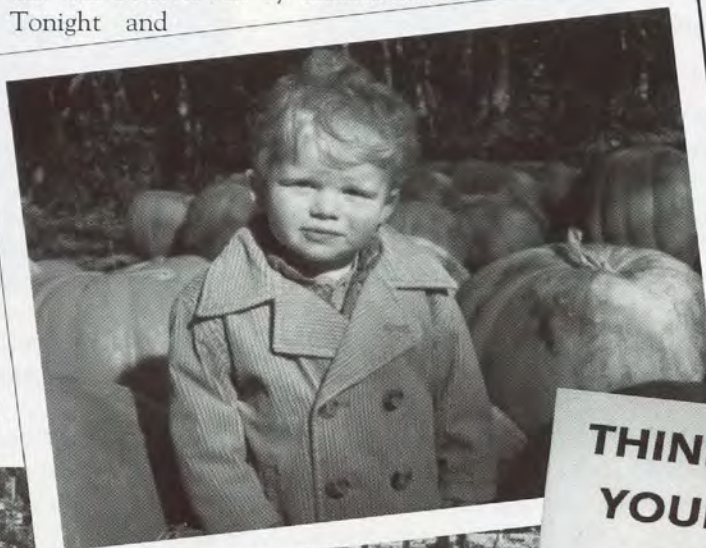
appeared on the show that night.

Although Connor didn't win the \$25,000 grand prize, Michelle said, "We are so proud that Connor made it to the finals out of thousands of entries. I can't wait to pull out the video 25 years from now at Connor's wedding rehearsal dinner. Thanks for your Gamma Phi Beta support!"

■ AUTHORS

Darcy Buehler Ph.D (Kansas State) has written a book entitled Think Yourself Thin: Change Your Brain For Permanent Weight Loss. The book is different from most weight loss books on the market, as it helps change the way you think about losing weight.

Darcy is a clinical psychologist currently doing private practice in Wichita, Kansas. Seven Simple Steps to Stop Smoking, her second book will be out sometime later this year. Think Yourself Thin is available at Barnes & Noble locations nationwide.



GAMMA PHI BETA COLLEGIATE AND ALUMNAE CHAPTERS ARE HAVING FUN, HELPING THEIR COMMUNITIES AND IMPACTING THE WORLD AROUND THEM.

■ ALPHA SYRACUSE

Alpha sisters welcomed 39 new members after spring recruitment, and proudly announce their chapter earned the second highest cumulative GPA on campus.

■ THETA DENVER

Theta Chapter is proud of Pamela Mayer, who was elected Panhellenic President. The women also won Chapter of the Year at the Greek Awards ceremony.

■ NU OREGON

The chapter's Pancake Breakfast, benefiting Camp Numanu, was one of the events in the Greek Sneak Peak for the University of Oregon.

■ XI IDAHO

Xi Chapter made the best grades on the University of Idaho campus, with an amazing 3.42 GPA. The women had a scholarship dinner with Phi Gamma Delta, the fraternity that earned the highest GPA, as a reward for their hard work and dedication.

■ SIGMA KANSAS

This year, Sigma Chapter was selected as one of five sororities at the University of Kansas to participate in the school's annual Rock Chalk Review variety show. Partnering with Phi Delta Theta, the directors, Samantha Horner, Ashley Dokken and Lindsay Phillips, developed the story and music for the production. The women wrote an original song, choreographed dances and designed costumes.

Emily Mueller, a Sigma sophomore, works as a legislative intern for Representative Terri Huntington (Kansas). Terri is serving her second term in the Kansas House of Representatives, representing Mission Hills, Kansas.

■ TAU COLORADO STATE

Tau Chapter at Colorado State University helped Sigma Pi Fraternity with clean-up day in February. Sigma Pi subsequently sold its house to a local church, which plans to turn it into a youth center.

■ PSI OKLAHOMA

Psi Chapter held its annual Chili Cook-Off for sororities, fraternities and other organizations. The judges for the Cook-Off were firefighters

Psi Chapter members celebrate sisterhood with International Council members Betty Ahlemeyer Quick (Indiana), NPC Delegate, and Linda Daniel Johnson (Vanderbilt), International President.



COLLEGIANS

from Norman Fire Station #7. With the theme, "Set your Taste Buds on Fire," \$8,000 was donated to the United Way of Norman.

In February, Psi Chapter hosted International President Linda Daniel Johnson (Vanderbilt) and National Panhellenic Delegate Elizabeth "Betty" Ahlemeyer Quick (Indiana) for Queen for a Weekend. The purpose was to treat the International Council members to a weekend of relaxation and fun with the members of Psi Chapter. Activities included a house tour, fireside chat and a viewing of the year's recruitment video.

■ ALPHA ALPHA TORONTO

The chapter held a pancake breakfast and clothing drive, and enjoyed sisterhood events such as volleyball and watching intramural hockey. The Alpha Alpha women worked incredibly hard this term to meet their academic potential, and rewarded themselves with a Spy Who Loved Me semi-formal and Carnation Ball.

Below top: Beta Eta member Mary Rafferty prepares for a pie to be thrown in her face.

Below bottom: Alpha Tau members sell bracelets for their philanthropy, "The Pink Project," to raise money for Breast Cancer Research.



■ ALPHA DELTA MISSOURI-COLUMBIA

Members of Alpha Delta Chapter teamed with the Missouri-Columbia campus to raise more than \$60,000 in their annual Rockin' Against Multiple Sclerosis. The event included guest speakers, a lip sync contest and community service events. Hannah Simons, an Alpha Delta sophomore, won the Service Award.

■ ALPHA LAMBDA BRITISH COLUMBIA

The University of British Columbia opened its first-ever Panhellenic House. Alpha Lambda Chapter is excited to have a chapter room again after eight years and, due to wonderful alumnae contributions, it is now fully furnished and looks stunning! The chapter hosted Founders Day in the chapter room and expressed its appreciation for the alumnae generosity and continual support.

Alpha Lambda members also kept busy with philanthropic events, including the annual Mr. Greek pageant, which raised money for Crescent Camping. The 36-hour Rock-A-Thon with Alpha Epsilon Pi raised money for the BC Cancer Foundation. One of Alpha Lambda's members underwent cancer treatment last summer, so this event was especially meaningful.

Members of Beta Epsilon squeeze in for a quick picture.



■ ALPHA TAU McGILL

The sisters of Alpha Tau participated in Run for the Cure and raised more than \$900 for the Canadian Breast Cancer Foundation by selling hand-made bracelets on campus.

■ BETA ALPHA SOUTHERN CALIFORNIA

Twenty Beta Alpha women attended the Regional Leadership Conference in Irvine, California, where they learned creative ways to promote Gamma Phi Beta sisterhood and met many other Gamma Phi Betas.

■ BETA EPSILON MIAMI

For the fourth consecutive year, Beta Epsilon new members took home a first place award at the local philanthropy dance competition, Putting On the Hits. Spring semester has been busy with events like Puddle Pull, Big/Little Week and formal.

■ BETA ETA BRADLEY

The spring semester brought Campus Carnival, an afternoon activity that Bradley University sponsors during Siblings Weekend. Organizations rent booths and set up games for kids to

COLLEGIANS

play. Beta Eta's game was, "Throw a Pie at a Gamma Phi," where children threw a whipped cream pie at the face of a Gamma Phi Beta. The chapter also volunteered at Loaves and Fish, a local soup kitchen in Peoria, Illinois.

■ BETA OMICRON OKLAHOMA CITY

The chapter started off the semester with an unforgettable chapter retreat. The mystery-themed retreat focused on setting chapter goals and getting to know each other better. The women also showed their support to members who participated in American Spirit Dance Company spring show.

■ BETA PI INDIANA STATE

The chapter held a basketball tournament to raise money for the families of two needy boys. Summer events included a family picnic and car wash to raise money for fall events.

■ BETA SIGMA WASHINGTON STATE

Beta Sigma Chapter hosted a private concert for up-and-coming artist, Dan Purser. The women also planned Mom's Weekend and

Two Beta Omicron sisters dress up as their favorite mystery character, Velma from Scooby Doo, for their mystery-themed chapter retreat.



participated in Greek Week.

■ BETA UPSILON KANSAS STATE

The chapter installed its new officers for the year, held its annual Triad Date party, and hosted an incredible PACE speaker who taught them self-defense. Three members participated during half time of a K-State women's basketball game, and won \$1,000 by winning a three-minute game against another sorority. The women also held their annual dodge ball tournament (Dodge 4-A Cause) and raised money for Camp Fire USA and The Boys and Girls Club of Manhattan, Kansas.

■ GAMMA ETA CALIFORNIA STATE-LONG BEACH

In February, Gamma Eta Chapter hosted its first annual Tarts and Hearts Ball for the Red Cross, where more than \$700 was raised for the Tsunami Relief Fund. March brought a chapter retreat with lunch at a local park. They finished the day by attending a Clippers basketball game at the Staples Center. The executive board attended the Regional Leadership Conference (RLC) in Irvine, California and thanks Linda Babcock, province collegiate director (California State-

Gamma Eta Chapter turns their backyard into a kids playday to celebrate Absolutely Incredible Kid Day®.



Long Beach), for making the RLC such a great experience for the chapter.

■ GAMMA IOTA MIDWESTERN STATE

Members of Gamma Iota Chapter at Midwestern State University enjoyed a fun-filled sisterhood retreat at Possum Kingdom Lake.

■ GAMMA TAU ST. LOUIS

The ladies of Gamma Tau Chapter at St. Louis University had a great spring semester. They co-chaired a benefit golf tournament with a campus fraternity for the Jack Orchard ALS Foundation.

■ GAMMA PHI AUBURN

The chapter celebrated Valentine's Day with style at a crush party with another sorority. Dressed in red and pink, the women danced the night away to their favorite '70s hits.

■ DELTA ETA CALIFORNIA-IRVINE

The ladies of Delta Eta finished the quarter with a flurry of activities. The chapter had several exchanges, an Italian-themed fraternity

COLLEGIANS



Epsilon Delta sisters anticipate the arrival of their new members on bid acceptance night.



Beta Chi members cheer on their basketball team at Wichita State.

dinner, a bonfire with Sigma Phi Epsilon and a un-birthday theme exchange with Phi Zeta Rho. They also held their Crescent Ball, earned best participation during Greek Week, hosted their annual Gammie Grand Prix and held a spring retreat.

■ DELTA IOTA PURDUE

Delta Iota Chapter started out 2005 with a variety of philanthropic activities. The chapter held a Three-on-Three with G-Phi-B Basketball Tournament in support of Camp Fire USA. They also participated in other sorority and fraternity philanthropies which benefited the Susan G. Komen Breast Cancer Foundation and the Alzheimer's Association and the Ronald and Nancy Reagan Research Institute. PACE and sisterhood workshops included a crash course on etiquette for formal dinners and interviews, Mary Kay facials, and making decorations for their rooms.

■ DELTA PI ILLINOIS STATE

The chapter won best costume in the March Madness philanthropy, a dance competition which raises money to support the Make-a-Wish Foundation. The chapter also raised more than \$800 during Camp Week.

■ DELTA PSI CALIFORNIA-SANTA BARBARA

Delta Psi had a fabulous time at the Regional Leadership Conference in Irvine, California, taking advantage of workshops and visiting with sisters from the western region. Andrea Holland offered the invocation Sunday morning, keeping in memory Robin Libitsky, a recently graduated sister who passed away from bone cancer. Sarah Mayer received honors for being the top-achieving woman social science major in the class of 2004.

■ DELTA OMEGA OAKLAND

Regular sisterhood events have been on the agenda at Delta Omega Chapter, including movie nights, bowling and country line dancing.

■ EPSILON BETA ALMA COLLEGE

Epsilon Beta's all-sorority retreat was a success; the women built a bonfire and played games. The sisters are currently working on raising money for RelayFor Life to benefit breast cancer research. Upcoming events include the Pink Carnation formal and Senior Celebration.

■ EPSILON DELTA CREIGHTON

The women of Epsilon Delta Chapter welcomed 40 new members after a successful recruitment,

and held their annual kickball tournament for Camp Fire USA.

■ EPSILON ETA BRIDGEWATER STATE COLLEGE

The chapter was presented with a team jersey by the Bridgewater State men's hockey team for its continuous support throughout the season.

■ EPSILON MU LOYOLA-NEW ORLEANS

The chapter recently celebrated its sweet sixteen years at Loyola University-New Orleans and launched a new Web site, www.geocities.com/gphibepsilonmu/home.

■ EPSILON NU CHAPMAN

Epsilon Nu Chapter held its second annual spring philanthropy event, Singled Out, and raised \$1,400 for Camp Fire USA. They also held their spring date party and a roller skating sisterhood.

■ EPSILON SIGMA MOREHEAD STATE

Epsilon Sigma Chapter kept its strong hold on intramurals, and was named champion for the third straight year. Their PACE programs continue to educate the chapter in dealing with difficult topics like stress management.

Continued on page 29...

■ BOOK SMART

Diane Paisley Capron (William & Mary) was recently named Library Media Specialist of the Year by The Virginia Educational Media Association. Diane has been working in education since the 1970s and in libraries since she was a teenager.

After receiving her bachelor's degree in elementary education from The College of William & Mary, she began teaching the second grade. With her library certification from Old Dominion University, she soon became a school librarian. Diane remembers, "When I started, there were no videos, and we had cards in pockets of books."

Today, Diane is director of library media services at Nansemond-Suffolk Academy in Suffolk, Virginia. She lives in Chesapeake, Virginia, with her husband, Richard. They have two sons, Ryan and Chad.

■ BRANDII FINDS SUCCESS IN THE BIG APPLE

Brandii Toby-Leon (California State-Fullerton) recently made the move from Orange County, California to New York City after being offered the position of publicity manager for Fox Television Stations, Inc.

Her new job entails generating positive publicity for WNYW-FOX 5 and WWOR-UPN 9 in the nation's #1 television market. Brandii says, "I finally feel like I have arrived. It is definitely a dream come true. The Big Apple offers so much. It is the best place to grow professionally and personally."

Brandii now lives in Jersey City, New Jersey with her husband, Rennie.

■ ALUMNA RECEIVES SERVICE AWARD

It's no surprise that Ann Rieber Plauzoles (UCLA) is such an active alumna of University of California-Los Angeles. Her great grandfather was the school's first dean of the College of Letters and Science and Rieber Hall was named in his honor.

Since her graduation Ann has gone above and beyond the role of active alumna, serving on eight scholarship committees and chairing the Community College Transfer Scholarship



Diane Paisley Capron
(William & Mary)

Committee for six years. She has been on 28 different alumni association committees, including five terms on the Board of Directors.

Ann is currently president of Gold Shield Alumnae and can now add recipient of the 2005 University Service Award to her list of accolades. She lives in Santa Monica, California with her husband of 35 years, Lucien.

■ GAMMA PHI BETA OF DISTINCTION

Patti Taylor Clapp's (Oklahoma) dedication to education and youth leadership has not wavered since her college graduation. A former English teacher, Patti is vice president for Education and Workforce Development for the Greater Dallas Chamber.

Patti spent years on the Texas Association of School Boards and was elected to the Board of Trustees for Richardson Independent School District five times. As a member of the Governor's Educational Excellence Committee, Patti helped to develop criteria for the first Educational Excellence Awards.

Patti worked intimately with the Tejas Girl Scout Council and was honored as a Woman of Distinction. Today, she is actively involved in Headstart of Greater Dallas, Texas Education Reform Caucus, and the U.S. Chamber

Brandii Toby-Leon (California State-Fullerton) with husband, Rennie.



Ann Rieber
Plauzoles (UCLA)



Patti Taylor Clapp (Oklahoma) with granddaughter, Elizabeth.

of Commerce Workforce and Education Committee. She also earned life memberships in both National PTA and Texas PTA.

As a colon cancer survivor, Patti became a founding member of the Colon Cancer Alliance in 1998. Patti currently lives in Dallas with her husband, Roger. They have three children; Julie, Doug and Catherine, and two grandchildren, Timothy and Elizabeth.

The Future Is

[thefacebook]

By Jojo Lam (California-Berkeley)
Collegiate Leadership Consultant 2004-2005

How it Works

The system is simple. You create your own account (you must have a confirmable .edu e-mail address), then you can look for other people whom you want to become friends, or they can look for you. Signing in brings you to a welcome page where you can access your profile. Profiles can contain as much or as little as you choose to submit and may include graduation year, major, hometown, interests, political views, etc.

My Privacy

Set privacy restrictions to reduce the number of people accessing your profile. Unless another user attends the same school or is a confirmed friend, profiles are unavailable. You can also block specific users completely.

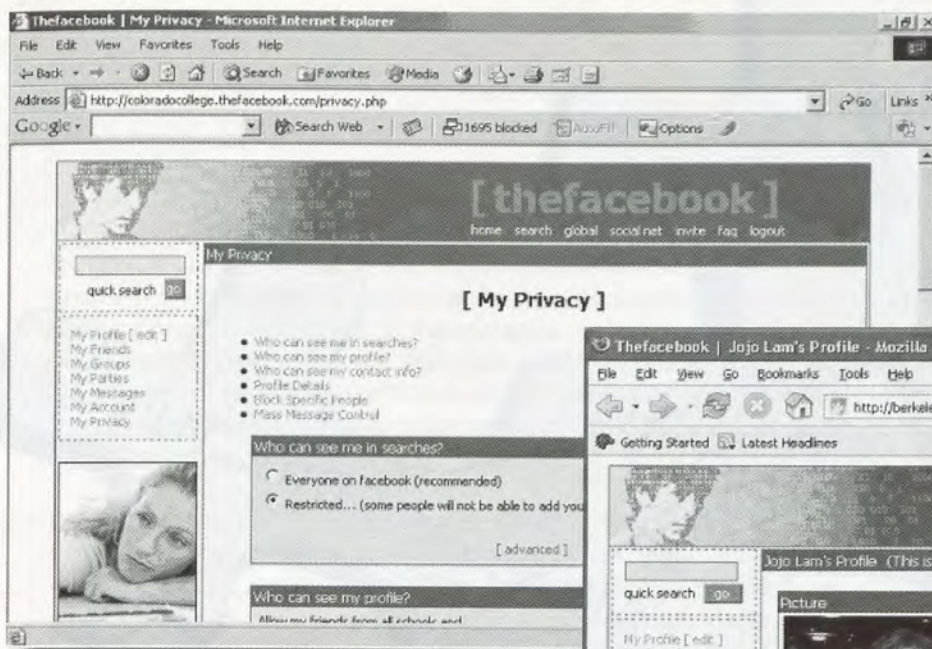
People-watching has never been easier. In the past, prime people-watching experiences required early arrival to claim coveted chairs, lawns and steps in high traffic areas on campus. Today, rolling out of bed into your computer chair is all it takes to log onto *thefacebook.com*, an online college community that connects over a million students across the nation and Canada. A resurrected version of the paper face books still used on college campuses, this electronic database of information and social networks takes making friends to a whole new level.

Since thefacebook first launched in February 2004, this brainchild of Harvard undergrad, Mark Zuckerberg, has expanded from a modest seven universities to 800. Zuckerberg told *Newsweek* that the idea for thefacebook was motivated by a social need at Harvard to be able to identify people in other residential houses. He said he wanted one online directory where all students could be listed.

Thefacebook community continues to grow and manifest itself in as many areas of the collegiate experience as members will allow. Many Gamma Phi Beta chapters have already hopped on this technological trend by authoring photo groups, savvy group descriptions, officer lists, recent discussions and organizations popular with Gamma Phi Beta. Ezela Salazar (Rochester) says, "thefacebook gives us an extra way to contact our peers through AOL Instant Messenger, helping us network with other Greek organizations and update our social and cultural calendars."

College Panhellenics are also getting wise to the uses of this new medium. Recognizing the prevalence of thefacebook use in Greek life, college Panhellenics list themselves as groups and use their sites to post announcements.

At the University of California-Berkeley, a local blogger (a person who keeps a Web log or publishes an online diary) publicly criticized his college Panhellenic and Interfraternity Council for writing a group description that he felt was elitist and exclusive. The Panhellenic



public relations officer responded by acknowledging the oversight and changed the group's description. Recognizing how our potential audiences use thefacebook to reach us is significant as this trend continues to affect thousands of incoming freshmen each year.

During my visit with Alpha Xi Chapter at Southern Methodist University, I met a member who used thefacebook after formal recruitment events to refresh her memory on potential new members. With each chapter visit, I picked up something new that our women are doing to prepare for recruitment and spread positive public relations all year.

Here are some ways a few of our chapters use thefacebook:

- To spread the word on informal recruitment events by purchasing ad space through thefacebook (click Announce, \$16/day). Recruitment event listings should follow the Panhellenic recruitment guidelines for advertising.
- Make up-to-date announcements on the Gamma Phi Beta group page.
- Include links from Gamma Phi Beta group pages to official chapter Web sites and online photo albums.
- Share chapter's diverse interests by listing personal extracurricular involvements in individual profiles.
- Raise awareness among members regarding internet safety concerns.

For many collegians, thefacebook is still a new friend and cool toy. But consider how we can use it both as individuals and as a group to best represent Gamma Phi Beta. Please consider that Gamma Phi Beta standards apply to any Gamma Phi Beta's thefacebook entry. Although thefacebook may be just another trend, its popularity and relevance prolongs its longevity.

Many collegians inquire about new ways to get people to informal events or to receive advice on creating campus presence, while others want to change their image—the ideas are waiting to be discovered. It might not be the way it's always been done, but that's what being ahead of the game is all about.

Safety & thefacebook

Whether you love it or hate it, thefacebook is still successful. It wasn't rare for me to wander campuses this year to hear undergrads proclaiming their unabashed addiction to thefacebook. However, thefacebook is not all fun and games; there are serious safety concerns involved. Past police cases involving thefacebook have included stalking and identity theft.

Follow these simple rules and you'll roam safely within thefacebook:

- Be wary of posting personal information such as your e-mail address and phone number.
- Use caution when posting your class schedule.
- Never meet face-to-face with someone you've met on thefacebook, unless you know the person or meet in a public place.
- Be careful what you post. If a message or photo doesn't belong in your campus newspaper, it probably doesn't belong on thefacebook or online.
- If someone is making you feel uncomfortable, block his or her e-mail address.
- Use the My Privacy feature to control who sees your personal information.



OUR MISSION is to foster a nurturing environment that provides women the opportunity to achieve their potential through life-long commitment to intellectual growth, individual worth and service to humanity.

The vision of Gamma Phi Beta is to be a premiere women's organization with a winning spirit through:

- seeking cultural, demographic and economic diversity,
- developing chapter, community and interfraternal leaders,
- providing programming that addresses issues relevant to women and society,
- strengthening of resources,
- focusing on being member-driven, and
- managing the organization through volunteerism.

Gamma Phi Beta's new volunteer leadership structure, based on our mission and vision, will create opportunities for project teams and cross-training essential to Gamma Phi Beta's success in the 21st century world.

Gamma Phi Beta has been evaluating the volunteer structure of our organization for many years. 1998 Convention delegates passed a resolution for a strategic plan and an information management plan. The 2000-2002 International Council defined a strategic plan goal to provide a new volunteer infrastructure that would maximize the time and talent of volunteers and staff.

A volunteer structure task force worked out the vision and details of the new structure, shared at the 2003 Leadership Development Institute (LDI). Further refinement of the proposed structure resulted from member feedback received up to and during Convention 2004.

Last September, International Council finalized regional structure alignments, appointments, timelines, roles, titles, communication plans and training plans. International Council appointed Fran Mayfield Lapham (Kansas State) to facilitate the implementation of the new structure. On October 19, 2004, International Council announced the management team of regional directors and sorority directors. Regional coordinators and sorority coordinators were announced on April 27, 2005. LDI 2005 was devoted to training volunteer leaders to implement this new structure, which will go into effect on July 1, 2005.

Information about the new regional volunteer structure is updated regularly on the Gamma Phi Beta Web site www.gammaphibeta.org.



SORORITY DIRECTORS will serve the needs of the regional teams in a given area of expertise, to provide support, training and developmental assistance to the regional teams on a planned basis and on an as-needed basis. They will assist with the development and assessment of resources such as manuals, programs, plans and training. Sorority directors report to an International Council member and supervise sorority coordinators and resource team members.

The general expectations of sorority directors include:

- Develop and supervise annual resource plans
- Coordinate activity of resource team members, if applicable
- Respond to communications from regional team members
- Evaluate resource team performance, if applicable
- Recommend and recruit sorority coordinators for International Council approval
- Oversee resource budget and approve expense reports of resource team members
- Prepare monthly reports for International Council
- Analyze sorority statistics and big picture trends; respond with relevant programming
- Create, develop, maintain and update program materials and resources

Sorority Director - Alumnae Resources SHELLIE KING HODGES (OREGON)
Sorority Director - Volunteer Recruitment SUZANNE SLINN-HIGGINS LEE (MCGILL)
Reporting to the Alumnae Vice President, Sandra Biegelman Burba (Miami-Ohio)

Sorority Director - Collegiate Resources SHAUNA REVELLO WILSON (WASHINGTON STATE)
Sorority Director - Advisor Training & Development MARY VANIER (KANSAS STATE)
Sorority Director - New Chapter Resources VADA MUSTON BAIRD (OKLAHOMA CITY)
Reporting to the Collegiate Vice President, Krista Spanninger Davis (Bowling Green)

Sorority Director - Financial Resources CHRISTINE GAUGLER RITGER (CALIFORNIA STATE-FULLERTON)
Sorority Director - Housing Resources LEIGH ANN PRICE (TEXAS TECH)
Reporting to the Financial Vice President, Annabel Jones (Oklahoma)

NPC 1st Alternate Delegate MARGARET WEST PAPE (OKLAHOMA)
NPC 2nd Alternate Delegate KAREN GAMEL UIRETTE (OKLAHOMA)
NPC 3rd Alternate Delegate DARLA CLICK DAKIN (ARIZONA STATE)
Reporting to the NPC Delegate, Elizabeth Ahlemeyer Quick (Indiana)

Sorority Director - Philanthropy RENE MATZ THOMPSON (CALIFORNIA STATE-FULLERTON)
Sorority Director - Education Resources LAURA MOONEY MAYVILLE (ST. LOUIS)
Sorority Director - Leadership Development KRIS BAACK (NEBRASKA-LINCOLN)
Reporting to the Education Vice President, Angie Jordan Dimit (Illinois)

Sorority Director - Alumnae Extension VONDA BRYANT (CHRISTOPHER NEWPORT)
Sorority Director - Recruitment Resources JESSICA JECMEN (OKLAHOMA CITY)
Sorority Director - Collegiate Extension JANA NOBLES MARTIN (OKLAHOMA CITY)
Reporting to the Membership Vice President, Linda Lyons Malony (Southern California)

Sorority Director - Public Relations J.J. STOLL KAEIN (COLORADO-BOULDER)
Reporting to the International President, Linda Daniel Johnson (Vanderbilt)

REGIONAL DIRECTORS will manage the operations of the Sorority's collegiate chapters, alumnae groups and house corporation boards. Regional directors will coordinate the support activities and assignments of regional team members and will ensure that the collegiate chapters, alumnae groups and house corporation boards within their region receive the support required to thrive and to comply with Gamma Phi Beta policies and procedures. Regional directors will meet annually with International Council for in-depth planning and reporting.

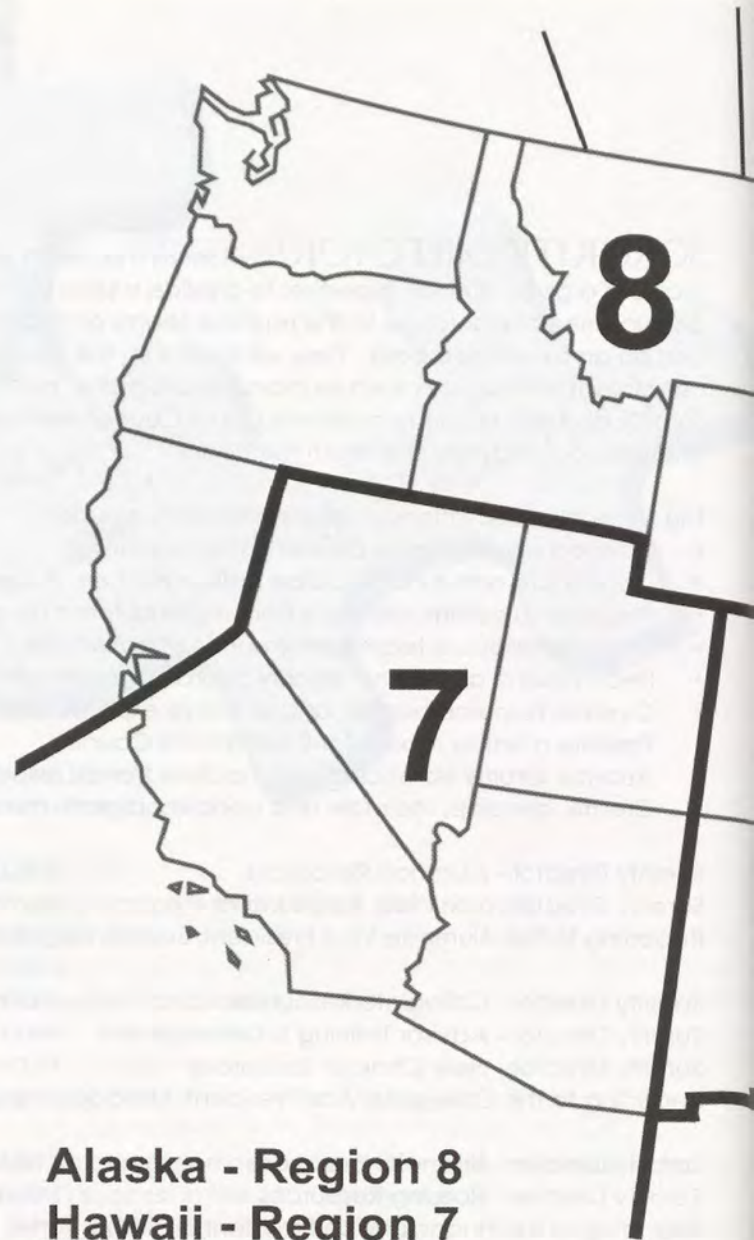
The general expectations of regional directors include:

- Develop and supervise annual regional operational plan
- Coordinate activity of regional team members and ensure appropriate communication with sorority directors and resource personnel
- Evaluate regional team performance
- Recommend and recruit regional coordinators for International Council approval
- Oversee regional budget and approve expense reports of regional coordinators
- Prepare monthly reports for International Council
- Analyze regional statistics and trends

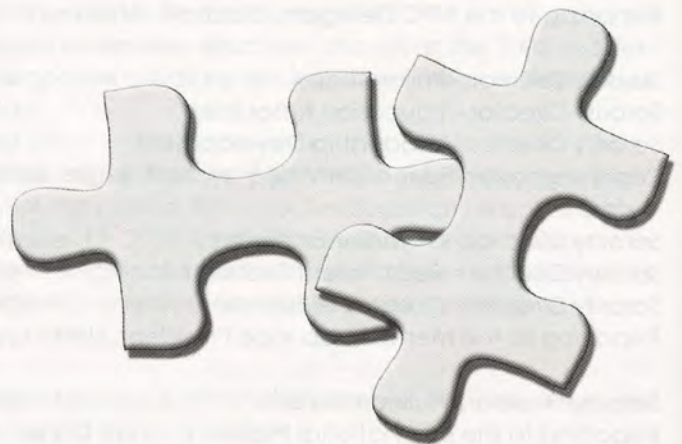
Each region will be staffed by a team of eight regional coordinators, who will report to the regional director. Each regional coordinator will serve as the team's specialist in one of the following areas: alumnae, collegiate, education, financial, Panhellenic, philanthropy, public relations and recruitment. A collegiate leadership consultant will work with each regional team.

Every regional coordinator, in addition to being the "specialist" on her regional team, will be the managing regional coordinator for a handful of collegiate chapters, house corporation boards, alumnae chapters and/or crescent circles. The managing regional coordinator will be the designated contact for a chapter or group; she will serve as the liaison between the group, the regional director and International Council.

Project teams will be assigned by the regional directors and sorority directors, as needed, for special projects. Project teams could involve, for example, collegiate specialists, alumnae specialists, recruitment specialists and financial specialists.



Alaska - Region 8
Hawaii - Region 7





The regional directors pose at their meeting with International Council in January.



- Regional Director - Region #1 | NANCY TRUESDALE (Georgia) | Reporting to Alumnae Vice President
- Regional Director - Region #2 | TRACY STACK JOHNSON (Florida State) | Reporting to Alumnae Vice President
- Regional Director - Region #3 | FRAN MAYFIELD LAPHAM (Kansas State) | Reporting to NPC Delegate
- Regional Director - Region #4 | JULIE DUNN (Florida State) | Reporting to Collegiate Vice President
- Regional Director - Region #5 | HARRIETT COGAN (Indiana State) | Reporting to Education Vice President
- Regional Director - Region #6 | ADRA MASON CHEEK (Oklahoma City) | Reporting to Financial Vice President
- Regional Director - Region #7 | MARY KNAUP (California State-Fullerton) | Reporting to Membership Vice President
- Regional Director - Region #8 | MEGAN SMILEY (Washington State) | Reporting to Collegiate Vice President

2005 RLCs: Leadership & Learning

By Megan McDermott | Editor

Leadership and learning are indispensable to each other.

— John F. Kennedy

Over the course of three weekends in February and March, Gamma Phi Beta collegiate women and chapter advisors from across the country met in six locations to participate in the Regional Leadership Conferences (RLCs). Motivated by the challenge, What's in Your Toolbox?, more than 800 women gathered to learn about Gamma Phi Beta and how to be effective leaders at the local and international levels.

"The best part of RLCs was meeting others in my region and learning new concepts."

Angie Jordan Dimit (Illinois), Education Vice President, invited attendees to take home their well-equipped toolbox and apply these skills as they build leadership in their chapters. "The challenges you face will come in lots of shapes and sizes. We want to provide you with a complete set of wrenches, sockets, saws, drills, screwdrivers and sanders (to smooth things out)!"

Programming

RLCs focused on bringing the entire executive board together to work as a team. Attendees polished their public relations plan, participated in a mock executive council hearing and even received specialized offi-

cer training. Other workshop topics included recruiting to total, NPC guidelines and conversation techniques.

Unique to Pullman

One major change this year was the move to host the Seattle RLC at the Beta Sigma chapter house in Pullman, Washington. The chapter hosted the 50-plus member event flawlessly, even employing the house cook to provide meals. The one-day chapter retreat-style RLC featured a tight agenda of programming tailored to individual needs.

The other five RLCs, held in Oklahoma City, Irvine, Charlotte, Indianapolis and Philadelphia, followed a more traditional three-day program.

Alumnae Support

Although alumnae workshops were not a part of the 2005 RLCs; the alumnae presence was still felt and appreciated. Alumnae chapters contributed goodie bags, donating everything from bottled water and snacks to baseball hats and beach bags. Alumnae were also on hand at the registration tables, greeting each attendee with a smile and cheerful hello!

Those Who Made It All Possible

Thanks to International Council, international officers, collegiate leadership consultants, alumnae volunteers, International Headquarters staff and all who made the 2005 Regional Leadership Conferences a leadership experience to remember!

Attending RLCs is motivating and refreshing.



“RLCs gave us an opportunity to bond and grow as an executive team.”

on display



Thanks to curators Helen Ward Pustmueler (UCLA) and Katherine Murphy Evans (Pacific), our historic badges have a home!

During 2004, the dedicated duo donated a wood and glass display cabinet to Gamma Phi Beta's International Headquarters in Centennial, Colorado. Helen and Katherine realized the need to display the unique and precious badges the Sorority has received over the years from husbands, friends and members.

The display case rests at International Headquarters in the warmly lighted central gallery under framed photos of Gamma Phi Beta's Grand Presidents from 1895 to 1915.

Two gifts received during 2004 make up the first exhibit:

1. A gold book from Phi Chapter (Washington-St. Louis) contains the signatures of all the members who wore the all-opal Spirit Badge.
2. Astronaut Laurel Blair Salton Clark's (Wisconsin-Madison) badge was donated to the Sorority by her husband, Dr. Jonathan Clark, at the 2004 Convention. Laurel, initiated in 1981, wore a gold badge encrusted with pearls and emeralds.





1.



6.



8.

Later, ten more badges were added, all from single letter chapters. These showed a wide variation in letters and badge size, types of gold and silver letters, pearls and stones. Katherine and Lisa Joanis Teman (Wisconsin-Milwaukee), Curator, arranged this display.

1. This diamond badge belonged to Mary Stafford Cuykendall (Syracuse), who was initiated in 1884. It was later purchased by 23 members from a private collection for \$1,600.
2. Diamonds also decorate this badge, which belonged to Laura Latimer Graham (Syracuse), initiated in 1900, a former Grand President. She later willed the badge to a friend who sent it to Ann Mullen Bronsing (Indiana State), also a former Grand President.
3. This is the 1898 badge of Mary Young Degrou (Michigan), donated by her daughter, Mrs. Fred Harlow.
4. This emerald badge was owned by Dorothea Flintermann Garber (Michigan), initiated in 1917.
5. Beautifully etched with flowers, this badge belonged to Ernestine Hall Walker (Michigan), upon her initiation in 1918.
6. A former Grand President, Florence Clifford Savage (Boston) received her beautiful turquoise badge upon initiation in 1894.
7. This badge was owned by Helen Dame (Boston), initiated in 1893.
8. This magnificent Grand Council badge was presented to Beatrice Hill Wittenberg (Stanford) at the conclusion of her term as Grand President from 1960 to 1964.
9. This diamond and emerald badge belonged to Carolyn Wolfe Dittus (Denver) in 1905.
10. This badge was owned by Helen Henderson (Nebraska-Lincoln), initiated in 1926.

Katherine maintains the more than 450 names in the historic badges database. The Sorority encourages members to remind their families that, after their deaths, their badges should be returned to the museum at International Headquarters, where they will serve as a memorial to the place of each member in the circle of sisterhood.



2.



3.



4.



5.



7.



9.



10.

■ ELIZABETH A. QUICK ENDOWMENT

Beginning October 22, Gamma Phi Beta will hold the chair of the National Panhellenic Conference. Elizabeth "Betty" Ahlemeyer Quick (Indiana), our NPC Delegate since 1992, will become NPC Chairman for a two-year term.

To honor Betty and this significant event for Gamma Phi Beta, the Elizabeth Ahlemeyer Quick NPC Scholarship Endowment will become part of the Gamma Phi Beta Foundation's endowment. Each year, the National Panhellenic Conference will receive the endowment proceeds to award a scholarship to a deserving Greek woman.

Thanks to a wonderful challenge gift from Gloria Swanson Nelson (Oklahoma), and the generosity of many Gamma Phi Betas, we have fully funded this \$50,000 endowment. Due to the outpouring of support for Betty, the Foundation now is creating a second scholarship endowment—the Elizabeth Ahlemeyer Quick Gamma Phi Beta Scholarship Endowment—that will provide support exclusively for a deserving Gamma Phi Beta collegian.

We welcome tax-deductible gifts to these endowments that recognize Betty's leadership efforts for all NPC groups. If you would like to make a contribution, please contact the Foundation office at 303.799.1874.

We appreciate the leadership of Foundation Trustee Karen Wander Kline (Iowa State) in this special campaign. First Alternate NPC Delegate Margaret West Pape (Oklahoma), Second Alternate NPC Delegate Karen Gamel Urette (Oklahoma), Past International President Vicki Carlson Read (Arizona) and Foundation Chair L'Cena Brunskill Rice (Southern California) have all been instrumental in this effort. Thank you all for your dedication and support!

■ HAPPENINGS IN THE DESERT AND THE DC AREA

Gamma Phi Betas gathered in the desert for Valentine's Day and in the D.C. area in April. Marilyn Smith Tennity (Syracuse) hosted a Valentine's Day party for 30 Gamma Phi Beta sisters in the Palm Springs/Indian Wells, California area. Bonnie Payne, Foundation Executive Director, spoke of the many exciting happenings within the Sorority and the Foundation. The California lunch was so successful that the sisters are considering forming a Crescent Circle "in the desert."

Lynn Towsley White (Colorado-Boulder) hosted a reception and supper in her McLean, Virginia, home for 70 members on April 20. These members were delighted to hear Linda Daniel Johnson (Vanderbilt), International President, speak about the state of the Sorority, and Elizabeth "Betty" Ahlemeyer Quick (Indiana), NPC Delegate, speak of her plans for the National Panhellenic Conference as Gamma Phi Beta becomes chairman in October. Having these two distinguished sisters in attendance added to the glow of a special Gamma Phi Beta gathering.

The Foundation plans to have events in other cities this year, one tentatively scheduled for late October in Houston (in conjunction with

the NPC meeting and installation). If you are interested in hosting a luncheon or reception in your area to create excitement about Gamma Phi Beta and the Foundation, please contact the Foundation office at 303.799.1874 for more information.



Betty Ahlemeyer Quick, NPC Delegate, left, and Linda Daniel Johnson, International President, right, join hostess Lynn Towsley White (University of Colorado-Boulder) at the Washington, D.C. Gamma Phi Beta Foundation gathering.



Gamma Phi Beta sisters enjoy a Valentine luncheon in Indian Wells, California.

Help Us Find New Members for the Foundation Board of Trustees!

We are now accepting nominations for service on the Board of Trustees. If you would like to nominate a sister (or yourself!), please send an e-mail to foundation@gammaphibeta.org to request a nomination form. If you have any questions, please call the Foundation office at 303.799.1874.

Alpha | Syracuse
1940 Jean Taylor Anderson
1943 Marian Gillett Herrod

Beta | Michigan
1940 Beth Cowing Moxam

Gamma | Wisconsin-Madison
1955 Anne Sullivan Meyer
1961 Alice Groth Pfeffer

Epsilon | Northwestern
1934 Patricia Schall Engelbrecht
1940 Jacquelyn Powers Evans
1935 Geraldine Fergus Eversz
1948 Betsy Surrey Krier
1948 Ann Sawle Robinson

Eta | California-Berkeley
1949 Martha MacKenzie
1942 Martha Singletary Mills
1944 Nancy Mays Rademaker

Theta | Denver
1971 Laura Winslow Kershaw

Kappa | Minnesota-Twin Cities
1935 Betty Vance Halvorson
1936 Elsa Bach Hutchinson
1949 Joanne Heinrich Nelson
1925 Jess Heinrich Regan
1936 Catharine O'Connor Terwilliger

Lambda | Washington
1935 Janet Sanders Benkwith
1925 Annabell Hall Brown
1952 Junice Ates Dodge
1944 Beverly Carson Gardner
1934 Virginia Kellogg Hill

Mu | Stanford
1930 June Reynolds Davidson
1934 Catherine Jennings Grabicki

Nu | Oregon
1980 Cynthia Mason O'Loughlin

Omicron | Illinois
1936 Geraldine Nickell Donald
1934 Anna MacGregor Gore
1949 Betty Chaney Meyer
1952 Sarah Mefford Strathman

Pi | Nebraska-Lincoln
1925 Margaret Walker West

Rho | Iowa
1954 Sondra Dibble McNall
1938 Constance Fenton Nevers

Sigma | Kansas
1938 LaRiene Nash Corlis
1957 Barbara Wilson Creighton
1930 Lois Moon Garver
1954 Joanne Ramaker Harrison
1946 Barbara Byrd McDonald
1944 Judy Vandeventer Pfadt

Tau | Colorado State
1985 Lisa Elmore
1950 Carol Fishack Goin
1940 Pauline Bice Hepting
1940 Edna Poyner

Upsilon | Hollins College
1924 Mary Thomson

Phi | Washington
1932 Lillian Herran Biggs
1925 Sibley Merton Schwenger

Chi | Oregon State
1932 Alice Quigley Barth
1958 Marilyn Swygard Beer
1945 Elizabeth Bowe Smythe
1939 Barbara Pfaender Watt

Psi | Oklahoma
1936 Wanda Hogue Bayless
1929 Mary Bruss Billingsley
1940 Marian Opel Bowman
1940 Yvonne Allen Litchfield
1954 Nancy Howard Maurer
1940 Josephine Law Norman
1954 Neva Chesnutt Perry

Omega | Iowa State
1943 Kathleen Hein Bellman
1942 Blythe Mitchell Cohoe
1932 Winifred McBeath Jones

Alpha Beta | North Dakota
1942 Joyce Fladland Fargo
1949 Dorothy Cox Logan
1952 Joan Reichert Norby

Alpha Gamma | Nevada-Reno
1939 Mickey Kelly Murray

Alpha Epsilon | Arizona
1942 Margaret Stradling Ballantyne
1954 Patricia Liggett Cross
1940 Virginia Robins Richmond
1938 Mildred Moss Vanorum

Alpha Zeta | Texas
1948 Maple Ramsey Cowan
1931 Mary Decherd Dolhof
1928 Gwendolyn Shepherd

Alpha Eta | Ohio Wesleyan
1925 Ruth Hyde Cookson
1954 Nancy Thomson Youngs

Alpha Iota | UCLA
1924 Hilda Klamroth Neill
1937 Marion Saltmarsh Ternstrom

Alpha Nu | Wittenberg
1941 Doris Runyon Foisey
1932 Katharine Trout Reichel

Alpha Xi | Southern Methodist
1934 Merle Rawlinson Nation
1930 Muriel Grogan Potter

Alpha Omicron | North Dakota State
1933 Clara Schrag Fawcett
1945 Joyce Gunvaldsen Hilden
1946 Gloria Aas Novaria

Alpha Pi | West Virginia
1931 Virginia Ahern Cline

Alpha Rho | Birmingham-Southern College
1951 Karen Klassen

Alpha Upsilon | Penn State
1935 Jean Keller Beeman
1943 Margaret Claridge Hurd
1933 A. Graham Radebach
1942 Jane Bollinger Stevenson

Alpha Chi | William & Mary
1950 Patricia Roland Mathews

Alpha Psi | Lake Forest College
1934 Elizabeth Swenkerud Amacker

Beta Alpha | Southern California
1959 Gwendolyn Olson Byrd
1946 Mariana Mueller Cox
1941 Rosemary Williams Seminoff

Beta Gamma | Bowling Green State
1943 Esther Burner Clark

Beta Epsilon | Miami University
1950 Shirley Conner McAuliffe

Beta Zeta | Kent State
1963 Helen Kloos Fitting
1952 Patsi Penningroth Gerrard

Beta Omicron | Oklahoma City
2001 Brooke Haley

Beta Psi | Oklahoma State
1969 Mary Gunn Hodnett

Delta Psi | California-Santa Barbara
1994 Robyn Libitsky

Delta Omega | Oakland
1996 Julia Van Tiem Shonts

Gamma Delta | Wyoming
1961 Nina Frazier Svoboda

Gamma Epsilon | Puget Sound
1989 Kathleen Murphy

Gamma Theta | Pacific
1964 Carol Carrington Wright

Gamma Kappa | Nebraska-Kearney
1964 Maurine Nelson Hofferber

Gamma Omicron | Kentucky
1968 Elizabeth Walker Strunk

Gamma Phi | Auburn University
1968 Julia Stuart Harper

This list represents names received and confirmed through May 16.

The Gamma Phi Beta Foundation acknowledges the following individuals who contributed to the Foundation to celebrate a special event. This list represents gifts received through April 30, 2005.

Congratulations to the newest alumnae initiate in Denver, Monica Haskell. Thanks for your help with our events and philanthropies this year, and thanks for speaking at Founders Day. Your efforts this year have been absolutely amazing. We are so excited to have you as our sister! Congratulations!

Denver Alumnae Chapter

Congratulations to Helen Cady Griffith (Wisconsin-Madison '24) who turned 100 on April 30, 2005. Her mother, Helen Baker Cady (Wisconsin-Madison 1892) was also a member of Gamma Phi Beta, as are her two daughters Katie Griffith Webster (Northwestern '53) and Margie Griffith Eskilson (Northwestern '56). Helen's granddaughter, Margie Webster Glendenning (Wisconsin-Madison '83) is also a Gamma Phi, as were Helen's two sisters.

Anne Krawczak

Congratulations to Alpha Tau alumna Gail Rose and husband Doug Goldsmith on the birth of their son Miles!

Grace Lin

Dr. Yael Acre

Alpha Tau Chapter

Suzanne Lee

In Celebration of the birth of my granddaughter, Starlyn Rose, on January 20, 2005. Finally a legacy!

Jacki Falkenroth

Congratulations to Julie Pulliam Samples on the birth of her legacy Emily Kathleen.

Natalie Muir

In Celebration of working with the five fabulous chapters of Province XVII-Alpha Iota, Beta Alpha, Gamma Eta, Delta Lambda and Zeta Theta.

Linda S. Babcock

Congratulations to Molly Leese Nece and her husband, Dan, on the birth of their first child, a son, Tyler, on February 6, 2005.

Philadelphia West Alumnae Chapter

In Celebration of the birth of Griffin Thomas Welch to my Epsilon Mu sister, Samantha Boza Welch.

Tina Sheesley

In Celebration of Harriett Cogan's 50th Birthday. You've never looked better!

Julie Dunn

In Celebration of the marriage of Ashriel Magee to Ryan Lutz.

Denver Alumnae Chapter

Congratulations to the Beta Lambda sisters at SDSU on their successful weekend devoted to cleaning up Camp Fire USA Camp Cahito on Saturday, March 19, followed by a flag football fund raising tournament on Sunday. They raised \$4,600 for Camp Fire USA. The event was planned by Jen Neale and assisted by Monica Lynn and Carly House. Great work, ladies!

San Diego Alumnae Chapter

Many, many thanks to the 2004-2005 Denver Alumnae Total Executive Board. What a wonderful, dedicated group of women. You are to be commended for your successes! I am proud to be your sister!

Leigh Ann Kudloff

In Celebration of the fabulous efforts of the 2004-2006 International Council as we make the new structure a reality!

The Regional and Sorority Directors

Pink Carnations to Fran Lapham for all of her hard work as the Implementation Leader. We couldn't have done it without you!

The Regional and Sorority Directors

In Celebration of the new regional and sorority directors.

Harriett Cogan

In Celebration of L'Cena Rice as the first recipient of USC Greek Awards and Order of Omega Sorority Advisor of the Year-2005.

Linda S. Babcock

In Celebration of Gamma Phi Beta's great fraternal work.

Alpha Phi Foundation

Congratulations to Julie Dunn for being named a Regional Director in the Sorority's new structure.

Natalie Muir

Congratulations to my daughter, Stacy Emily Levyn, a newly installed Gamma Phi Beta of the Beta Alpha Chapter at the University of Southern California. Karen Popovich Levyn is also the co-president of the Parents' Club of Gamma Phi Beta at USC. Stacy, enjoy your journey. Our sisterhood is a treasured bond. Love, Mom.

Karen Popovich Levyn

In Celebration of Cheryl Haskell, Kris Yokley, Peggy Hutchinson, Roberta Coffee, Ashriel Magee, Analisa Cleland, Shiloh Hernandez and Monica Haskell, the new elected Executive Board of Denver Alumnae of Gamma Phi Beta. I am looking forward to a terrific year working together to build our sisterhood here in Denver. Let's reach for the moon!

Leigh Ann Kudloff

In Celebration of Theresa Nelson. I appreciate all you've done in the province these last few years. Your patience and experience has made an enormous difference.

Laura Mayville

In Celebration of Mindy Sutton. Even through all the moves you did a great job holding the province together.

Laura Mayville

In Celebration of 20 years of Sisterhood—Phi class of Delta Delta.

René Matz Thompson

In Celebration of the new Volunteer Structure and all of the wonderful opportunities ahead. Here's to a fabulous LD!

The Regional and Sorority Directors

In Celebration of Tanya Jordan. I couldn't have done this without you these last three years.

Laura Mayville

In Celebration of Melissa Rhodes, Sara Cline, Laina Bush and Traci Letcher. Thank you for taking the chance this year. You've made a difference and I appreciate your work and dedication.

Laura Mayville

In Celebration of Faith Rhotigan. Three out of four is pretty amazing. Thanks for sticking it out and sticking with me.

Laura Mayville

In Celebration of Suzie Lehman. Thank you for everything you've done in the province. We've come a long way together and I appreciate your dedication.

Laura Mayville

In Celebration of the Development/PR/Marketing Joint Committee Meeting April 1-3, 2005.

René Matz Thompson

In Celebration of Alpha Iota Chapter's 75th anniversary on May 21, 2005 at the UCLA chapter house. Many thanks to all of the alumnae for their love and support of Alpha Iota and for generously donating to our capital campaign. Donations are still being accepted online at www.gammaphibetaalphaiota.org.

Cindy Tran

In Celebration of the birth of Cooper Benjamin Miloud to Meegan Marshall Miloud (Psi '94).

Melissa Marshall Lutz
Patricia Hall Marshall

The Gamma Phi Beta Foundation acknowledges the following individuals who contributed RESTRICTED Gifts and Pledges totaling \$1,000 or more to the Foundation. These gifts are designated for specific scholarships/fellowships, chapter gifts and various others. **This list represents gifts received from February 1, 2005 through April 30, 2005.**

Gifts totaling \$1,000-\$4,999

Phyllis Donaldson Choat (NE-Lincoln '66)
Allison Bryan Coffman (Kansas '83)
Ocella Burns Covill (Syracuse '50)
Patricia Crowley (Northwestern '74)
Virginia Harris Hammond (CO-Boulder '62)

Barbara Hurt-Simmons (NE-Kearney '79)
Linda Daniel Johnson (Vanderbilt '72)
Susan Davison Kaufman (Syracuse '90)
Karen Wander Kline (Iowa State '58)
Verona Dilbeck Lynam (Oklahoma City '52)
Jacqueline Kingsbury Manier (Syracuse '44)
Rebecca McKenzie (Southern Methodist '03)
Vicki Carlson Read (Arizona '62)
L'Cena Brunskill Rice (USC '50)
Ruth Andrea Seeler, MD (Vermont '56)
Audrey Weldon Shafer (Missouri-Columbia '38)
Susan Ann West (Missouri-Columbia '68)
Lynn Towsley White (CO-Boulder '65)

Jane Newcomb Whiting (USC '38)

Gifts totaling \$5,000-\$19,999

Sandy Biegelman Burba (Miami-OH '72)
Jody Carona Harris (Syracuse '77)
Tucky Wheeler Hobbs (Iowa '60)
Annabel Jones (Oklahoma '73)
Corinne Martinez (California-Berkeley '83)

Gifts totaling \$20,000-\$49,999

Paula Janis Dean (Memphis State '67)
Sue Schlessman Duncan (Colorado College '49)
Shirley Ann Hill (Missouri-Columbia '45)

MEMORIAL GIFTS

The Gamma Phi Beta Foundation acknowledges the following individuals who contributed to the Foundation in memory of a loved one. This list represents gifts received through April 30, 2005. The person being memorialized is in **bold**.

Floreine Dietrich Allen (Oklahoma '36)
Bartlesville Crescent Circle
Nick & Barbara Allen
Ann McCleskey
Nancy Worten
Charlene Vance
Charles & Frances Sego
Virginia Johnson
Mr. & Mrs. William E. Barr
Waneta Engleman
Mr. & Mrs. Thomas R. Shaw
Nancy Kilpatrick
Barbara Kragthorpe
Carolyn French
Harold & Alberta Boots
Becky Rhodes
Gale & Nancy Roush
Gary & Sheila Kilpatrick
The Dietrich Family
Richard & Ann Woodin
Mr. & Mrs. W. L. Phillips
University of Tulsa Softball Team
Margaret Fair & Virginia Perett
Wanda Culbertson
Sherry Allen Rucker
Bonnie Allen Williams
Patrice Allen Swanson
Marian Dietrich Browne

Wanda Hogue Bayless (Oklahoma '36)
Margaret Fair & Virginia Perett

Jean Keller Beeman (Penn State '35)
Philadelphia West Alumnae Chapter

Catherine M. Bonilla, daughter of Mary Graham Connelly (California-Los Angeles '48)
Hawaii Alumnae Chapter

Margaret Beckett Boynton (Michigan '32)
Charlotte Mason

Jennifer Brooks, cousin of Linda Babcock (California State-Long Beach '68)
Judi McMahon

Carolyn Beltramini Caldwell (Michigan '35)
Charlotte Mason

Clayton Callis, father of Joanne Callis Roman (Vanderbilt '70)
Foundation Trustees
Barbara Wessel
L'Cena Rice
Ann Bronsing
Verona Lynam
Karen Kline
Sandra Nauman
Leigh Ann Price
Dena Brayley
Judy Dyckman
Pat Mahan
Jean McDaniel
Chris Ritger
Genie Street
Jane Todd
Susan Nobles
Gretchen Reiter
Laura Mayville
Terri Briggs
Patsy Henderson

Chris Cherches, husband of Susan Mowm Cherches (North Dakota State '66)
Mary Hoffmann

Randy Cohn, father of Hilary Cohn Crumley (Southern College of Technology '93)
Natalie Muir

Barbara Termohlen Cooper (Ohio Wesleyan '46)
Mark and Patty Damisch

Patricia Liggett Cross (Arizona '54)
Sandra Nauman

June Reynolds Davidson (Stanford '30)
Santa Barbara Alumnae Chapter
Lois Abbott

Ann Doudna Davies (Nebraska-Lincoln '45)
Adele Streitwieser

Virginia Eiden (Idaho '65)
JoAn Walston

Jacquelyn Powers Evans (Northwestern '40)
Camille Evans Bennett

Sonny Ginsberg, father of Jan Ginsberg Baer (California-Irvine '87)
San Fernando Valley Alumnae Chapter

Judith Johnson Halbert (San Diego St. '54)
Charlotte Lester

Betty Vance Halvorson (Minnesota-Twin Cities '35)
Marjorie Vance Prouse

Joan Hawkins, mother of Mary Hawkins (Southeast Missouri State '94)
Natalie Muir

Jerry Hendricks, father of Aubrey Hendricks (Puget Sound '01)
Gamma Epsilon 2004 graduating class

Robert Hood, father of Michelle Hood Rosenthal (Georgia '90)
Natalie Muir

Wallace Dean Johnston, husband of Mary Minor Johnston (California-Berkeley '46), father of Constance Johnston (Oregon State '79)
Hawaii Alumnae Chapter

Stephen L. Kuepper, husband of Emerald Erickson Kuepper (William & Mary '69)
Cathy Griffin

Robyn Libitsky (California-Santa Barbara '94)
Delta Psi Chapter

Murray MacLeod, Jr., husband of Sally Patrick MacLeod (San Diego State '91)
Hawaii Alumnae Chapter

Jean Madson McNair (North Dakota State '65)
Mary Hoffmann

Anne Sullivan Meyer (Wisconsin-Madison '55)
Northwest Valley Arizona Alumnae Chapter

Kiyoshi Minami, husband of Nona Armstrong Minami (Boston '44)
Hawaii Alumnae Chapter

LaVerle Herman Morehouse (Nebraska-Lincoln '29)
Kathleen Murphy

Katherine Trout Reichel (Wittenberg '32)
Karl and Jeanne Braun

Carol Bertschi Smith (San Diego State '51)
Charlotte Lester
John T. Smith

Dr. W. S. Terry, father of Julia Terry Templeton (Southern Methodist '58)
Karen Kline

Helen Varga, mother of Veronica Vargo (Northwestern '74)
Patricia Crowley
Beverly Coscarelli

Father of Julie Vowell-Ramirez (Texas '81)
Donna Prior
Joanne Roman

Honora Warren Wimer (Denver '30)
Jean Oliver
Mary Myers
Patricia Hene
Virginia Gottfried
Barbara Hurt-Simmons
Lola Downs
Anne Cairini
Linda Bryson
Laverne Lantz

1874 Society Gifts

Unrestricted Gifts totaling over \$5,000

Sue Schlessman Duncan (Colorado College '49)
Marilyn Smith Tenny (Syracuse '40)

Unrestricted Gifts totaling \$2,500-\$4,999

Georgie Post McClenaghan (Oregon State '44)
Ruth Andrea Seeler, MD (Vermont '56)

Unrestricted Gifts totaling \$1,874-\$2,499

Sharon Carey Brubaker (Michigan '61)
Jocelyn Birch Burdick (Northwestern '42)
Karen Kendall (Vanderbilt '75)
Melinda Risse Nutter (Kentucky '66)
Margaret West Pape (Oklahoma '64)

Helen Ward Pustmueller (UCLA '32)

June Williams Smith (Idaho '44)

Lynn Towsley White (CO-Boulder '65)

Founders Society Gifts | Gold Leaders

Unrestricted Gifts totaling \$1,000-\$1,873

Linda Benning Beisswanger (UCLA '79)
Nancy McIntosh Berry (Idaho '50)
Rosemary Stone Bunn (Florida State '69)
Phyllis Nearing Cass (Colorado College '49)
Jill Wallace Castilla (Oklahoma State '91)
Phyllis Donaldson Choat (NE-Lincoln '66)
Peggy Campbell Clark (Texas Tech '60)
Ruth Ann Peer Edney (SMU '64)
Cathy Boudreaux Griffin (Louisiana State '69)

Joyce Cole Hultgren (Wichita State '59)

Deborah Jones (Colorado College '72)

Marjorie Maxwell Jones (MO-Columbia '38)

J.J. Stoll Kaelin (Colorado-Boulder '75)

Catherine Guthrie Lindauer (Iowa State '44)

Jo An Lawrence McDonald (Arizona '45)

Annette Kilgore O'Brien (Florida State '69)

Stephanie Sloggett O'Dell (San Diego State '68)

Ann Lajoie Pickler (Minnesota-Twin Cities '33)

Eleanor Rowley (Illinois '72)

Melba Quick Spurrier (Oklahoma State '79)

Kathleen Ryan Ursa (Washington '79)

Teresa Velk (Wisconsin-Milwaukee '77)

Janet Stone Wiggins (Rollins College '30)

Gifts received from 2/1/05 through 4/30/05.



Zeta Sigma Installation

By Jessica Jecmen (Oklahoma City)

On March 19, 2005, the newest chapter of Gamma Phi Beta Sorority, Zeta Sigma Chapter at the University of South Carolina, was installed. The initiation ceremony for our newest sisters was held on the university campus, followed by a banquet at the Holiday Inn USC in Columbia, South Carolina, to celebrate our 162nd collegiate chapter.

The Zeta Sigma colony was established in September 2004, following an extension recruitment. Lindsey Cooper (California-Santa Barbara), resident collegiate leadership consultant, educated the USC sisters about Gamma Phi Beta, our values and our Founders' ideals. Lindsey helped the chapter develop its identity and prepare for elections, recruitment and initiation. The colony was very active on campus and in the community and received second place for its participation in the campus domestic violence prevention week. Colony members also participated in the annual USC-Clemson Blood Drive, Dance Marathon and Relay for Life.

Members of Delta Upsilon Chapter at the University of Georgia initiated the 90 Zeta Sigma members on Saturday morning. Delta Upsilon members were hosted by the local Alpha Delta Pi Chapter. The initiation was led by Linda Daniel Johnson (Vanderbilt), International President, and Elizabeth "Kiki" Sloan Phillips (Washington), International Director of Ritual. Also initiated were three alumnae, all mothers of members. Rounding out the installation team were Vada Mustion Baird (Oklahoma City), New Chapter Director, Jessica Jecmen (Oklahoma City) and Chandra Claassen (Nebraska-Lincoln), Co-Extension Coordinators, and four collegiate leadership consultants, Caitlin Capozzi (Syracuse), Lindsey Cooper (California-Santa Barbara), Elisabeth Malin (Iowa State) and Whitney Passmore (Virginia).

Jessica Jecmen was mistress of ceremonies at the installation banquet, and Gena Runnion, Director of Greek Life at USC, spoke about the history of the USC campus and the Greek community's place in it. Deborah Koslin, chapter president, was presented with silver serving platters and a punch bowl from the province and local alumnae. Linda Johnson concluded with the presentation of the charter and president's pin, encrusted with diamonds and pearls. Linda spoke about extending our membership through new chapters and how important it is for the newly initiated members to continue to receive support from the guests in attendance. The banquet concluded with chapter pictures next to the hotel pool.

Notes of congratulations can be sent to the chapter in care of Sandra Bray, Chapter Advisor, University of South Carolina, 1215 Blossom Street, Columbia, South Carolina 29208.

Gamma Phi Beta has been invited to colonize at **Emory University** in fall 2005! Members of the Atlanta Alumnae Chapter and the Atlanta Southern Crescent Alumnae Chapter, along with volunteer leaders, gathered for a picture following a welcome reception hosted by the University. Gamma Phi Beta will be conducting an extension recruitment mid-September. If you would like to assist in this effort by volunteering time, resources or referring upper class unaffiliated women contact Jana Nobles (Oklahoma City), Director of Collegiate Extension, jnobles7@aol.com.



COLLEGIANS & ALUMNAE



Beta Omicron members squeeze in during their chapter retreat.

Alpha Chi members attend their annual Scholarship Brunch held in Williamsburg, Virginia.

Continued from page 12...

■ EPSILON TAU ROCHESTER

Epsilon Tau participated in an Easter Egg Hunt with the Hillside Children's Center.

■ ZETA ZETA COASTAL CAROLINA

Zeta Zeta members raised more than \$200 selling spaghetti dinners at their Rodz and Rolls fundraiser. The women also attended the annual Carolina Cup, and held a car wash to raise additional money for their own philanthropy.

■ ZETA MU ST. JOHN'S

Zeta Mu was featured in the university newspaper in celebration of women's history month for its participation in Girls Day Out, an event where elementary school girls visit the campus and spend a day with the chapter.

■ ZETA XI ALBERTSON COLLEGE

Jamie Summerfield competed at the Pi Kappa Delta National Speech and Debate Tournament with her duo interpretation partner, Leon Samuels, Sigma Chi Fraternity president. They performed a piece from the Broadway play

"Wit" and received a superior rating, making them national champions.

The sisters of Zeta Xi helped out at Albertson College's Scholarship Auction. The Mad Hatter Tea Party Scholarship Auction raised \$130,000 for the school's scholarship fund, which was \$30,000 more than the original goal. The sisters were pleased to help with this school-wide effort, and contributed to the evening as ushers, servers and models!

■ ZETA OMICRON JOHN CARROLL

In February, Zeta Omicron enjoyed its annual Crush Party, and later strengthened friendships at a sisterhood retreat. In addition, the sisters held Mom's Weekend in March, which turned out to be a fabulous time with games, food and friendship. The month of March brought a St. Patrick's Day party filled with plenty of green shamrocks and Irish appreciation.

■ ZETA RHO TEXAS A&M-COLLEGE STATION

The Zeta Rho Chapter at Texas A&M University has been working diligently with its local philanthropy, Camp For All, a camp for children with disabilities. Zeta Rho also participated in Big Event, a nationwide gathering where people come together to help

their community. Each group visited the house of someone in need. At the houses, the women painted, raked leaves and built gardens.

ALUMNAE ■ CALIFORNIA

SAN DIEGO alumnae continue to hold their monthly informal coffee nights at local coffee houses and members' homes. In February, the women met during a downpour at the home of Sandy Carey (California State-Long Beach) and enjoyed a presentation by jewelry designer Lauren Youngs (Northern Arizona).

■ COLORADO

DENVER alumnae kept busy this spring. The chapter hosted a successful spring salad luncheon at the Theta Chapter house and welcomed graduating Theta members to their traditional "Big I" celebration. At the Denver Area Panhellenic Luncheon, two members, Darla Click Dakin (Arizona State) and Ginny Harris Hammond (Colorado-Boulder), were recognized for their outstanding contributions to Gamma Phi Beta, the community and their careers. In addition, the LINKS book club meets monthly at local restaurants and the marathon bridge group is going strong. The NGA (New Garments Always) group keeps members crafting and the Saturday Morning

ALUMNAE

Breakfast Club visits sisters who are no longer able to get out.

■ FLORIDA

NAPLES AREA alumnae were honored to have former POW Wayne Smith join them at their 2005 Valentine celebration. Smith earned many honors for his service, including a Purple Heart. Each table of women was joined by someone who had served in the armed forces or the widow of a soldier, and at the end of the celebration the guests were given the table centerpieces.

■ GEORGIA

ATLANTA SOUTHERN CRESCENT alumnae attended the Southern Crescent Alumnae Panhellenic Association Founders Reception. Gamma Phi Betas started the

Below top: Naples alumnae Marjorie Holetton Weaver (Washington), left, and Lynne Clark Nordhoff (Wisconsin-Madison), right, with guest speaker Wayne Smith.

Below bottom: Joining St. Louis Alumnae Chapter President Ann Straw, (far right) is her mother (far left), daughter and granddaughter.

association and hosted the annual reception at Cele Eifert's (Southern California) home. This year the event was a dessert reception and included a presentation about the sale of sorority badges on E-bay.

■ ILLINOIS

CHICAGO NORTHWEST SUBURBAN alumnae had the opportunity to meet with local Camp Fire USA members and sponsors to learn more about the organization's local activities. The group also enjoyed a Girl's Night Out for tapas at the Tuscan Market. In May, they joined local collegians for a Chicago River Cruise, highlighting Chicago's architecture.

■ MISSOURI

The ST. LOUIS Alumnae Chapter started off 2005 with a Mother-Daughter Tea at the home of Chapter President Ann Straw (Northwestern). The annual event brought together a large group of local alumnae and collegians and a four generation family was even in attendance!

The chapter's meeting group visited the Contemporary Art Museum of St. Louis and the Pulitzer Foundation for the Arts. The book group met to discuss the *Time Traveler's Wife* by Audrey Niffenegger. The group also held a trivia night with ten rounds of questions that ranged from local history to comic strip characters!

■ TENNESSEE

The women of the NASHVILLE Alumnae Chapter recently celebrated their 75th anniversary with a garden party. In addition, they held their first yard sale to raise funds in support of a local Camp Fire USA camper. They've kept busy with multiple dinners and an evening of creative pottery painting.

■ TEXAS

Alumnae chapter charter member Cathryne G. Melton (Texas) was honored with a going-away tea by the SAN ANTONIO alumnae and fellow charter member, 100-year-old Virginia Rutledge Stark (Texas). Cathryne moved to live closer to family members in Lumberton,

Atlanta Southern Crescent Alumnae Chapter members attend their annual Alumnae Panhellenic Founder's Reception.



ALUMNAE

Texas. Virginia also had the honor of presenting Patricia Hardy Prestridge (Oklahoma) with a 50-year pin at the tea.

This spring, HOUSTON alumnae held a soup, salad and books luncheon, a Bunko night, officer installations and an evening of Pins and Pints, bowling with friends and spouses.

■ VIRGINIA

EASTERN VIRGINIA alumnae have held social dinners and business meetings to review their bylaws. They also wrote Incredible Kid Day letters to one sister's class of 2nd graders. The group has continued to support its philanthropy project, cleaning up their Adopt-a-Spot on the highway in front of Christopher Newport University.

During the first half of 2005, RICHMOND alumnae have been on the go. They enjoyed Art after Hours at the Virginia Museum and volunteered at the Monument Avenue 10K Race. The women also held their annual family and friends picnic and attended a Richmond Braves game.

IN IIKE: WHAT DOES GAMMA PHI BETA MEAN TO ME?

I've been an active Gamma Phi Beta collegian and alumna member for more than 30 years. Gamma Phi Beta has always been an important part of my life, however, in the last few weeks, I have discovered what Gamma Phi Beta "sisterhood" really means.

On November 1, 2004, I was diagnosed with a complex giant aneurysm on the right frontal lobe of my brain. On November 29 I had major surgery to repair the aneurysm. Two days later I had another surgical procedure and a week later I had a mild stroke. From virtually the minute my problem was diagnosed, I received phone calls, cards and e-mails from my sisters—offering well-wishes, prayers and general encouragement. Contact from Gamma Phi Beta members continued throughout my hospital stay, recovery period and still continues today.

The fact I was remembered and thought of by so many sisters (some of whom have been dear friends for years and some of whom I barely know or haven't seen in years) lifted my spirits and gave me the strength I needed to survive this ordeal.

Some sisters went beyond just staying in touch; they set up e-mail trees so my husband only had to call one or two people with an update on my condition instead of calling the whole group. Other Gamma Phi Beta sisters brought us food when I returned home from the hospital; and reminded me daily that I was loved and in their thoughts and prayers. I literally don't think I would be here today and writing this note if it hadn't been for the support and prayers I received from my sisters.

What does Gamma Phi Beta mean to me? It means my life!

With love in IIKE,
Judi Nesbitt McMahon
(California State-Long Beach)

Judy, right, with Jessica Jewell (Albertson College) enjoy the Pink Carnation Banquet at Convention 2004.

Camp Fire USA enthusiasts Nancy Sorrels Heggem (Denver) and Elizabeth Schaffer Giromini (Southern Methodist), top right, with local Camp Fire USA members.





One of eight swimming pools at the Arizona Biltmore Resort & Spa

Convention 2006 | Phoenix, Arizona | June 28 - July 2, 2006 | Arizona Biltmore Resort & Spa
www.arizonagammaphibeta.org | www.arizonabiltmore.com

100,000 square feet of meeting space
 738 guest rooms
 39 acres of resort and spa
 18-hole golf course
 8 swimming pools
 7 tennis courts
 6 on-site stores

700 or more Gamma Phi Betas = 1 fabulous Convention!

See you at the pool in Phoenix!

