



THE *Winter* 2004

CRESCENT

of GAMMA PHI BETA

Coping With Grief

FEATURES



PAGE 8



PAGE 10



PAGE 15



PAGE 20

WE WANT TO HEAR FROM YOU!

We welcome your feedback, comments and suggestions. Send them to: The Crescent Editor, Gamma Phi Beta Sorority, 12737 E. Euclid Drive, Centennial, CO 80111. You can also e-mail your comments to TheCrescent@gammaphibeta.org or fax them to 303.799.1876.

6

CAMP FIRE CONVENTION

Growth in Image, Resources and Participation
by Harriett Cogan (Indiana) | Philanthropy Chairwoman

7

2004 CONVENTION ALUMNAE BOUTIQUE

Learn more about the Boutique Guidelines for the 2004 Convention
by Vonda Bryant (Christopher Newport) | 2004 Alumnae Boutique Chairwoman

8

BUILDING ON TRADITION

Gamma Phi Beta Arrives at Texas A&M University
by Jana Nobles (Oklahoma) | Director of Collegiate Extension

16

LEADING TO SUCCESS

Nominating Committee Information
by Frances Griffin (Texas) | Nominating Committee Chairwoman

17

GAMMA PHI BETA PAINTS THE TOWN PINK

Canadian Sisters Gather for a Sisterhood Retreat
by Barbara Hurt-Simmons (Nebraska/Kearney) | Canadian Initiative Coordinator

18

CRESCENT VALUES PROGRAM

Building a Lifetime of Active Membership
by Brenda D. Rickert (Texas) | Consultant, Crescent Values Program

20

COPING WITH GRIEF

Endure, Conquer, Remember
by Megan McDermott | Associate Editor

22

GAMMA PHI BETA AWARD WINNERS

Recognizing our Chapters for their Hard Work and Dedication

24

LEADERSHAPE

Not your Typical Leadership Conference

by Fran Lapham (Kansas) | Director of Leadership Development and Kellie Chesire (Creighton)

IN EVERY ISSUE

4

PRESIDENT'S PERCEPTION

Keeping the Dream Alive

by Vicki Carlson Read (Arizona) | International President

5

SPOTLIGHT ON...

Ruth Andrea Seeler, M.D. (Vermont)

by Rebecca A. Beardslee (Denver) | Managing Editor

9

NPC UPDATE

NPC 58th Biennial Session

by Elizabeth "Betty" Ahlemeyer Quick (Indiana) | NPC Delegate

10

MEMBER NEWS

The latest news on our collegiate and alumnae chapters

25

PACESETTERS | IN IIKE

What some notable sisters are up to now

26

IN MEMORY | MEMORIAL GIFTS

Remembering our sisters

28

IN CELEBRATION

Recognizing a few of our special sisters

29

FOUNDATION NEWS

Convention Information

THE Winter 2004

CRESCENT

OF GAMMA PHI BETA

VOLUME 104 NUMBER 1

INTERNATIONAL HEADQUARTERS

12737 E. Euclid Drive, Centennial, CO 80111

Phone: 303.799.1874 | Fax: 303.799.1876

E-mail: IH@gammaphibeta.org | Internet: www.gammaphibeta.org

GAMMA PHI BETA FOUNDERS

E. Adeline Curtis Frances E. Haven Moss

Helen M. Dodge Ferguson Mary A. Bingham Willoughby

INTERNATIONAL COUNCIL

International President Vicki Carlson Read

Alumnae Vice President Sandra Biegelman Burba

Collegiate Vice President Linda Daniel Johnson

Financial Vice President Annabel Jones

Member-at-Large Krista Spanninger Davis

Membership Vice President Diane Soderstrom Goff

NPC Delegate Elizabeth "Betty" Ahlemeyer Quick

SORORITY MISSION STATEMENT

Our mission is to foster a nurturing environment that provides women the opportunity to achieve their potential through life-long commitment to intellectual growth, individual worth and service to humanity.

CRESCENT STAFF

Managing Editor Rebecca A. Beardslee

Associate Editor Megan McDermott

Graphic Designer Corie Walker

Business Manager Karen Blackman

Advisor Kris Brandt Riske

MAGAZINE SUBMISSION DEADLINE

Spring issue January 1

Summer issue April 1

Fall issue July 1

Winter issue October 1

CONTACT US

Mail 12737 E. Euclid Drive, Centennial, CO 80111

E-mail TheCrescent@gammaphibeta.org

Call 303.799.1874

Fax 303.799.1876

Visit www.gammaphibeta.org

Have you logged on lately?

ADDRESS CHANGES

E-mail your old and new information to address@gammaphibeta.org, call 303.799.1874, fax 303.799.1876, or mail to Address Changes, Gamma Phi Beta Sorority, 12737 E. Euclid Drive, Centennial, CO 80111.

© 2004 GAMMA PHI BETA SORORITY

The Crescent (USPS 137620) is published quarterly.

Periodicals postage paid at Centennial, CO and at additional mailing offices. Non-member subscription price is \$6.00.

Produced in the U.S.A. by Maury Boyd and Associates.

POSTMASTER: Send address changes to *The Crescent*, Gamma Phi Beta Sorority, 12737 E. Euclid Drive, Centennial, CO 80111.



KEEPING THE



International Council, volunteers and staff members remain sensitive to the need to monitor our costs in order to continue meeting today's increased level of expenditures.



DREAM ALIVE

■ **AS WRITTEN IN THE SORORITY'S** "Passage of Rite" ceremony, our "Gamma Phi Beta life is divided into three parts: pledgeship, collegiate membership and alumna membership. Pledgeship is the shortest. Upon initiation we accepted three responsibilities for life: the obligation of a lifetime financial commitment, the obligation of active lifetime involvement and the obligation to recommend women for membership." The lifetime financial commitment remains critical for each of us to fulfill. For without it, it would be difficult to maintain an effective level of programs and services. ■ **DUES REMAIN THE PRIMARY SOURCE** of Sorority income and generate the most reasonably stable flow of funds to support its operations. Dues are a means to provide our Sorority "environment" - the services, staff and programming that support the Sorority's mission. They are the source of funding to pay for the Sorority's staff and programs, which make direct services to members possible. ■ **DUES CONSTITUTE THE LARGEST PORTION** of our income. Other sources include our Foundation grants (which are limited to supporting our educational and philanthropic programs), investment income, the affinity program and various fees. ■ **AS GAMMA PHI BETA CONTINUES TO GROW** with a new chapter at Texas A&M/College Station, prepares for a colonization at the University of South Carolina in fall 2004, completes the new Crescent Values Program, completes phase one of the redesigned Web site, as well as financial software, and begins to implement the new volunteer structure program, we must be able to develop and sustain these programs and services. ■ **AS YOUR INTERNATIONAL PRESIDENT**, I have become intimately aware of the costs involved to: service the membership with a quarterly magazine; pay increased mailing costs; support 113 collegiate chapters, one collegiate colony, 153 alumnae chapters and 24 crescent circles; support an international officer system; update manuals and promotional information; provide leadership training for alumnae and collegiate officers; conduct extensions for new chapters on targeted campuses, along with new alumnae chapters; provide recruitment training; pay insurance costs; maintain the new Web site; pay for travel expenses for chapter visits - just to mention a few. ■ **INTERNATIONAL COUNCIL, VOLUNTEERS AND STAFF MEMBERS** remain sensitive to the need to monitor our costs in order to continue meeting today's increased level of expenditures. Along with this diligence, however, our Sorority still relies on dues to meet the program and service needs of our chapters and members. ■ **IN HER 1979 COUNCIL COMMUNIQUE MESSAGE**, Mary Jane Hipp Misthos (Director, Finance) reminded us, "Revenues for operating expenses of the sorority continue to come only from member fees and taxes (dues)." She ended by saying, "We can only provide services and programs to the extent that we are willing and able to pay for them." ■ **WE HAVE THE OPPORTUNITY** to foster that same environment each of us cherished through our college days; and most importantly help provide for the new generation of women who will lead Gamma Phi Beta through the 21st century. ■ **IT IS AS EASY AS** pulling out the envelope included in this issue, writing a \$25.00 check and mailing it to Gamma Phi Beta Sorority. I thank you for reaffirming your pledge to lifetime membership ... and keeping the dream alive.

Vicki C. Read

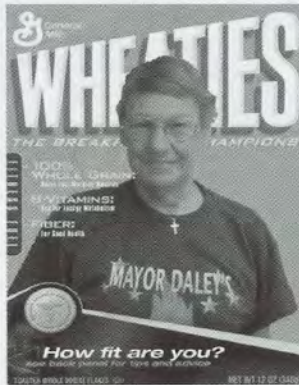
Vicki Carlson Read
International President

RUTH ANDREA SEELER, M.D.

■ **DISCIPLINE AND PATIENCE** have been important virtues for Ruth Andrea Seeler, M.D. (Vermont). She was featured in the summer 2003 issue of *The Crescent*, which highlighted her participation in triathlons. In this Spotlight, we are proud to announce that Ruth generously established one of the first of six named Collegiate Leadership Consultant Endowments in October 2003 with a cash gift and pledge of \$250,000.

AGE TO START FINANCIAL PLANNING

Ruth was able to start saving monthly after medical school and her residency, at about age 30. She started by putting aside \$50-100 a month. Although there were months when the investment was not possible, she missed only a few. Her stock continued to grow and she did not use it for other purposes. After her mortgage was paid off, she invested that same amount in stocks as well. Ruth recommends buying a stable stock, much like AT&T was about 35 years ago.



Ruth Seeler, M.D.

years ago when she "got her act together."

"I looked at myself and didn't want to live like this anymore," said Ruth. She spends much of her free time bicycling, swimming and skiing. Her discipline continues to pay off as she has been able to complete numerous races and has lost 30 pounds.

MOTIVATE OTHERS

Ruth hopes to motivate other women to "step up" and make financial donations to Gamma Phi Beta. Her generous gift will assist with annual fundraising and allow for other efforts by the Foundation. She hopes to leave a legacy of inspiration for Gamma Phi Beta. This gift will support many of the annual expenses for a CLC. Ruth was personally motivated by Barbara Missert Wessel (Syracuse) who is a former Foundation Chairwoman and a member of the 2004 Nominating Committee. Ruth and Barbara have worked together on the Sorority's philanthropic endeavors for many years.

Special thanks to Ruth Seeler, for her generous support of Gamma Phi Beta! ■

ADVICE FOR YOUNG INVESTORS

Determine a budget and plan for savings and stock purchases. Ruth recommends doing the dividend reinvestment plan that reinvests the dividends issued and rolls them back into fractional stock purchases. This allows for increased amounts to be invested because brokerage fees are decreased. It may not seem like much in the beginning, however the amount will add up. Being patient and watching the amount grow is important. Having the discipline to not use the money for other purposes is important as well.

PHYSICAL INVESTMENT

Ruth has also learned about the physical investment she could make in her body, and developed an interest in triathlons. She began her physical regime about 15

INVESTING 101

■ **Identify how much you can afford to lose.** Ask yourself how much you can afford to lose, both financially and temperamentally.

■ **Evaluate where to start.**

Consider starting with a diversified mutual fund. A mutual fund is a professionally managed investment that sells shares to investors and pools the capital it raises to purchase stocks, bonds, or money market securities. There are dozens of high quality, no-load funds that invest in larger company stocks. Avoid individual stocks as they increase both risk and potential for reward, which is not a prescription for a beginner.

■ **Understand the length of investments.**

Give the investment some time. Don't invest in equities with the intention of pulling the money out in weeks, months or less than five years.

Watch the ups and downs of the market and become comfortable with the volatility while at the same time increasing your knowledge in available investment choices and risks.

Over time, develop a diverse portfolio of mutual funds consistent with your goals, objectives, risk tolerance and tax situation.

■ **Educate yourself.**

To really learn, experience is required. Take some calculated risks and along the way you will undoubtedly make mistakes from which you can learn. The secret is to keep those mistakes small.

■ **Read up.**

Do some reading. "Investing for Dummies" by Eric Tyson is an excellent place to start. This book covers a wide range of alternatives and teaches you how to protect yourself. Two other recommended titles are by John C. Bogle: "Bogle on Mutual Funds: New Perspectives for the Intelligent Investor" and "Common Sense on Mutual Funds: New Imperatives for the Intelligent Investor."

Sources Paul Merriman and Gary Schatsky. Read more at the beginning Investment section on Yahoo! http://biz.yahoo.com/edu/ed_begin.html.

DIRECTORY OF SERVICES

IN-HOUSE SERVICES

Address or Name Change

Call: 303.799.1874, Fax: 303.799.1876
or e-mail: Address@gammaphibeta.org

SisterLink, Career & Networking Service

Call: 303.799.1874 or
e-mail: SisterLink@gammaphibeta.org

Supply Requests

e-mail: Orders@gammaphibeta.org

Volunteer Opportunities

e-mail: Volunteer@gammaphibeta.org

by Harriett Cogan (Indiana) | Philanthropy Chairwoman

The Camp Fire USA 2003 National Convention was held in Chicago, November 6-8, 2003. The objectives of the convention were to advance Camp Fire's three growth goals: image, resources and participation.

The opening session provided an assessment of the current environment and a report on Camp Fire USA's progress. Participants at the convention were challenged to commit themselves and their councils to grow. The featured speakers included, John L. McKnight (Asset Based Community Development Institute), Tracey Ballas (Inbiz4kids) and Bill Bentley (Points of Light Foundation).

Many workshops were held throughout the day, ranging from e-commerce to merchandising. Joanna Warren Smith, keynote speaker, opened the evening banquet with future plans for Camp Fire. Joanna is the President of Camp Consulting Services and a member of the American Camping Association. She is a presenter/consultant for the National Wildlife Federation and YMCA International and Camp Fire USA. Following the banquet, youth interacted in an activity aimed at recognizing their important role in Camp Fire's unified national system.

The Awards and Recognition Luncheon on Friday featured keynote speaker Debra Delgado, from the Annie E. Casey Foundation, a member of the Board of Directors for the Grantmakers for Children, Youth and Families. Camp Fire USA premier national awards included the Annie E. Casey Foundation Families Count: Family Strengthening Awards and the Youth of the Year Award. Other national awards presented included the Frederick E. Ruccius Professional Leadership Awards, the Staff Leadership Awards and the Wohelo Order.

Saturday morning allowed the attendees

to live the Camp Fire USA motto: "Give Service!" Participants were transported to Help the Hooved Animal Rescue and Protection Society (HARPS) to clear paths, revive the forest preserve and perform yard maintenance. The HARPS organization actively works to identify and rescue horses and other hooved animals from abusive environments. The youth attendees were able to observe the effects of inhumane treatment and also how HARPS can benefit from their service project.

Harriett Cogan, Gamma Phi Beta Philanthropy Chairwoman, served on a panel Saturday afternoon with other leaders from Camp Fire USA partner organizations, including United Methodist Church, National Conference on Community and Justice (NCCJ), Alpha Phi Omega service fraternity and Programs of Religious Activities with Youth (P.R.A.Y.). Each panelist described the background of his or her organization and how it has helped Camp Fire

speech. John encouraged the audience to have goals and stretch to reach them. Harriett shared a table with the Camp Fire USA council from Tulsa, Oklahoma. Youth at the table discussed the positive experience they had at HARPS that afternoon, and it's

positive impact. Several stories were shared about campers who benefited from the Sorority's contributions. Of particular interest, was a young girl who experienced social and emotional growth through her involvement with Camp Fire USA. Economic and social challenges could have

taken her down a much different path had she not been given the opportunity to be involved in Camp Fire USA.

Camp Fire USA offers a multitude of services to communities; it's not just about camping. The Council encourages both youth and family involvement. A community currently making a difference is Mt. Hood Council in Oregon. The Council has a very successful pregnancy prevention program that is designed to reach teens and preteens at risk. The program identifies the needs of the community and then responds.

Gamma Phi Beta collaborated with Camp Fire USA in June 2002, in efforts to continue a long-term philanthropy of camping for girls. The mission statement of Camp Fire USA best paralleled the sorority's philanthropy mission statement: "To provide experiences and resources that build spiritual, mental and social resiliency in girls." Together, these experiences help Camp Fire USA and Gamma Phi Beta achieve the mission of building caring, confident youth and future leaders. ■



Youth participants take a break in the shade during their weekend at Camp Fire.



Gamma Phi sisters spent time getting to know the campers and learning about their ceremony.

USA. Gamma Phi Beta contributions of more than \$28,000 during the 2002-2003 academic year were recognized by the group with applause. Participants were encouraged to overcome the barriers and begin forming relationships with their strategic partners. Harriett was able to speak with several of the Council representatives and discuss ways to engage local collegiate/alumnae chapters with local CFUSA councils.

The closing banquet on Saturday night featured speaker John Alston, Certified Speaking Professional, who delivered a lively

2004 Convention ALUMNAE BOUTIQUE

by Vonda Bryant (Christopher Newport) | 2004 Convention Alumnae Boutique Chairwoman

The Convention Alumnae Boutique made a successful revival at Convention 2002 in Washington D.C., once again making it possible for alumnae chapters and crescent circles from across the nation to come together and showcase their own Gamma Phi Beta merchandise. All alumnae chapters and crescent circles are invited to participate in the 2004 Convention Alumnae Boutique in Chicago.

Here are a few guidelines for the 2004 Convention Alumnae Boutique:

- Your chapter/circle must be present in order to sell your merchandise. There will be a central checkout requiring each participating chapter to have a volunteer work in the shift rotation at least once.
- Items may range from something made by your chapter, such as ΓΦΒ jewelry, ornaments, needlework, T-shirts, pins, cups, or other items you choose to have made locally to your specifications. (None of the items will be permitted to bear any Convention logo.)
- The selling cost is important when deciding what to sell.
- Duplication of items by chapters is not allowed. We encourage chapters to prepare unique products.
- Approval to sell merchandise at the Convention Alumnae Boutique is determined on a first-come first-serve basis and will be granted when all requirements are met.
- Each participating chapter or crescent circle will receive notification of approval and further Convention Alumnae Boutique guidelines by mail.
- A \$15.00 entry fee will be charged per group, to reserve your space at the Convention Alumnae Boutique. The deadline for your fee and entry form is February 4, 2004. Make checks payable to Gamma Phi Beta. Please indicate "Convention Alumnae Boutique" along with your chapter/crescent circle name, on the bottom of your check. A sample of your item(s) is also required for approval and must be received by March 4, 2004. Send all entry fees, forms, and samples to Gamma Phi Beta International



Members of the 2002 Convention Alumnae Boutique at the 2002 Convention in Washington D.C.

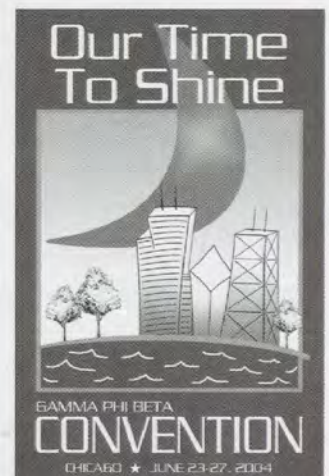
Headquarters to the attention of the Convention Alumnae Boutique.

■ Alumnae chapters and crescent circles are responsible for getting their merchandise to and from the Convention. You can either bring the items with you or arrange to have a contact in Chicago who will be responsible for your inventory until your arrival, or contact Megan McDermott, Communications Coordinator, to determine a shipping schedule to the hotel. Any items not sold at Convention must be taken home with you. Merchandise left behind will be retained by Gamma Phi Beta. Revenues from the sale of this remaining merchandise will benefit the programs and services of the Sorority.

For more information and additional boutique guidelines, visit our Web site at www.gammaphibeta.org or contact:

Vonda Bryant
2004 Convention Alumnae Boutique Chairman
2314 NW 10th Way
Battle Ground, WA 98604
360.687.7830
4HeelsNJC@comcast.net

Megan McDermott
International Headquarters
Communications Coordinator
303.799.1874 ext. 339
mmcdermott@gammaphibeta.org



Building on Tradition

GAMMA PHI BETA & TEXAS A&M UNIVERSITY

by Jana Nobles (Oklahoma City) | Director of Collegiate Extension

On Saturday, September 20, 2003, Gamma Phi Beta welcomed 96 new members into our Sorority and our newest colony. Bid Day for Zeta Rho colony at Texas A&M University was a Texas-style fiesta of food and fun as the new members had their first glimpse into what Gamma Phi sisterhood is all about. The festivities ended with a resounding "I am a G, I am a G-A..." by more than 100 new members and alumnae. As

tears of joy and exhaustion fell from the faces of many, the years of hard work toward creating this colony seemed to finally be a reality.

Texas A&M is a large land-grant, sea-grant, and space-grant university located in College Station, TX. Originally established in 1876 as an agriculture and mechanical school for men, A&M finally began admitting women in 1963. Not long after, sorority life began and has since become a fixture of student life. With over 900 student organizations to compete with, Panhellenic sororities must work hard to attract top quality women to their chapters. Thus, the College Panhellenic has chosen to extend to several sororities in the recent past making Gamma Phi Beta the 12th sorority on the A&M campus.

While extension recruitment took place over just one week in September, the Zeta Rho colony has been a long time in the making. Gamma Phi Beta presented to the College Panhellenic in the Fall of 2001, was invited to join the campus, and then waited a year to confirm that recruitment numbers were where they needed to be in order to ensure a successful Greek system. The extension team began public relations activities on campus in Spring 2003, to prepare for the actual extension recruitment. In April of 2003, the extension team, headed by Jana Nobles (Oklahoma City University) began heavy public relations at A&M and sponsored "The Dating Doctor" to speak on campus. Over the spring semester and summer the word about Gamma Phi Beta began to spread. When the extension team and collegiate leadership consultants arrived on campus in September, many students had already heard about a new sorority coming to A&M.

Gamma Phi Beta's formal recruitment officially began September 14 with an informational session for interested women. The lines for registration were overflowing with faces of women eager to learn more about sorority life. Led by the extension team and assisted by current collegiate members from Psi chapter at the University of Oklahoma and Alpha Xi chapter at Southern Methodist University, as well as alumnae from the surrounding areas, the event was deemed a success and more than 150 women



New members at Texas A&M smile brightly as they think about their future at Gamma Phi Beta.

signed up to meet individually with the extension team over the next few days to discuss Gamma Phi Beta more in depth.

On September 18, Gamma Phi Beta hosted a philanthropy recruitment event at the Memorial Student Center on campus. For the second time that week, the women of Psi chapter came to College Station to assist with recruitment. Time was spent getting to know the potential new members and decorating water bottles to be

donated to children who attend a local camp called Camp For All.

Gamma Phi Beta's preference event was by invitation only and took place at the College Station Hilton Hotel on Friday evening. The room was elegantly decorated in pink and white with a crescent moon and fountain at the front. Collegiate members from Psi and Beta Omicron (Oklahoma City) did a beautiful job performing the traditional preference ceremony for the room full of potential new members.

On Saturday morning, 96 women accepted their bids into membership and so began the Zeta Rho Colony at Texas A&M University.

The extension team was fortunate to have many alumnae from Brazos Valley and Houston to assist with the colonization. They attended every event beginning September 14 and culminating with Bid Day on September 20. They colony is excited to have such dedicated alumnae working with them and showing what lifetime commitment is.

Zeta Rho is competing as a team with Phi Gamma Delta Fraternity and Zeta Phi Beta Sorority for a chance at the Greek Week title. Additionally, the chapter co-sponsored a Halloween social entitled "The Skating" at a local roller skating rink and competed in the Delta Zeta "Run to the Chicken" philanthropy and many other campus events.

As the semester progresses, the new members of Zeta Rho have set their sights on a spring initiation and installation. They are working hard to complete all of the necessary criteria for membership in order to be installed as the 161st collegiate chapter of Gamma Phi Beta Sorority. ■

TEXAS A&M UNIVERSITY
GAMMA PHI BETA SORORITY



Building on Tradition

by Elizabeth "Betty" Ahlemeyer Quick (Indiana) | NPC Delegate

■ NPC 58th BIENNIAL SESSION

PROMOTING EXCELLENCE, PARTNERSHIPS AND PANHELLENIC SPIRIT
OCTOBER 10-11, 2003

The delegates and representatives of the twenty-six NPC groups convened at the Rancho Las Palmas Marriott Resort and Spa, Rancho Mirage, California, to meet for the 58th Biennial Session of the National Panhellenic Conference. Serving on the NPC Executive Committee were:

- Sally Grant, Alpha Phi - Chairman
- Martha Brown, Delta Gamma - Secretary
- Elizabeth Quick, Gamma Phi Beta - Treasurer
- Carol Warren, Pi Beta Phi - Alumnae Panhellenics Committee Chairman
- Laura Sweet, Sigma Sigma Sigma - College Panhellenics Committee Chairman

Registration was ably handled by Gamma Phi Beta alumnae in Southern California. Mary Knaup was the Volunteer Coordinator. She was assisted by L'Cena Rice, Gretchen Reiter, Una Mae Markle, Kathy Smith, Rene Matz and Carolyn Tobin of the Coachella Valley Alumnae Panhellenic.

Alpha Gamma Delta celebrated its 100th Anniversary by hosting the opening luncheon. Suzanne Carmack Spicer, President, led a vignette of the history of Alpha Gamma Delta.

Twenty resolutions were adopted. These will be sent to all Alumnae and College Panhellenics by NPC. Gamma Phi Beta Alumnae and Collegiate chapters will receive them in their January mailing from International Headquarters.

A panel of Senior Student Affairs Officers addressed the Conference; they were:

- Terry Hogan, Ph.D., Moderator, Dean of Students at Ohio University
- Dr. Donald B. Mills, Vice Chancellor for Student Affairs at Texas Christian University
- Barbara B. Hollmann, Ph.D., Ret. Vice President Student Affairs, University of Montana

- James E. Caswell, Ph.D., Vice President Student Affairs, Southern Methodist University



Gamma Phi Beta Delegation at the NPC Biennial Conference.

Highlights included:

- ◆ Sororities make a big difference on campuses.
- ◆ Cooperation and support between institutions and Greek organizations has increased greatly over the past five years.
- ◆ Volunteers are critical for the growth and development of fraternity and sorority chapter members.

◆ Communication is vital between the vice presidents and the organizations if the Greek communities are to be successful.

◆ Diversity of membership is important.

Dr. Edward Hammond, President of Fort Hayes State University and a member of the Franklin Square Group which developed "A Call for Values Congruence," addressed the Conference. A Call for Values Congruence is a document outlining a values philosophy for sorority/fraternity communities. He stated most university presidents see a value in sororities and fraternities when their values are reflected in their behavior.

The formal session concluded with the awards banquet and installation of the 2003-2005 Executive Committee.

Executive Committee members for 2003-2005 include:

- Martha Brown, Delta Gamma - Chairman
- Elizabeth Quick, Gamma Phi Beta - Secretary
- Julie Cain Burkhard, Alpha Chi Omega - Treasurer
- Linda Collier, Alpha Omicron Pi - Chairman of Alumnae Panhellenics Committee
- Patty Disque, Chi Omega - Chairman of College Panhellenics Committee

The 2004 NPC Meeting will be held October 7-9 in Dallas, Texas.

Thanks to Marilyn Fordham, Delta Gamma Alternate NPC Delegate for her summary of the meeting. Excerpts from her comments were used for this article.



Visit the Gamma Phi Beta Web site for information on the **Genesis Group**, a coalition of 41 International Fraternities and Sororities with the goal to change campus alcohol attitudes.

CELEBRATE INTERNATIONAL BADGE DAY 2004

The twenty-six member organizations of the National Panhellenic Conference (NPC) are celebrating International Badge Day, an annual event during which sorority women everywhere honor their Greek affiliations by wearing their badge or letters. The theme this year is, "Promoting Excellence, Partnership and Panhellenic Spirit." International Badge Day will be celebrated March 1, 2004.

Celebrating 101 years of excellence, partnership and Panhellenic spirit, the National Panhellenic Conference reflects with pride on the culmination of its centennial year in October 2002 and eagerly anticipates the future because of the continuing collaborative and dedicated efforts of its 26 groups. International Badge Day honors this spirit. The NPC believes that fraternity is a social experience based on the fundamental right of a free people to form voluntary associations. It is one of the enrichments of college life.

Fraternities exist because they:

- Provide a good democratic social experience.
- Give value beyond college years.
- Create, through their ideals, an ever-widening circle of service beyond the membership.
- Develop the individual's potential through leadership

opportunities and group effort.

- Fill the need of belonging.

The fact that NPC is a "Conference" is significant to the NPC philosophy because the organization is a conference, not a congress. It enacts no legislation except for the conduct of its own meetings. Other than the basic UNANIMOUS

AGREEMENTS which all groups have voted to observe, NPC confines itself to recommendations and advice, and acts as a court of final appeal in any College Panhellenic difficulty. One of its greatest services is providing Area Advisors for College Panhellenics and Alumnae Panhellenics. Members are represented on over 620 college and university campuses in the United States and Canada and in over 4678 alumnae associations, making up over 3.6 million sorority women in the world.

For more information about NPC's International Badge Day, contact the NPC Office at 317.872.3185 or visit the Web site at www.npcwomen.org.



GAMMA PHI BETA COLLEGIATE AND ALUMNAE CHAPTERS ARE HAVING FUN, HELPING THEIR COMMUNITIES AND IMPACTING THE WORLD AROUND THEM.



Nebraska/Lincoln new members proudly display their letters on Bid Day.

■ GAMMA WISCONSIN/MADISON

University of Wisconsin/Madison sisters started the year with the addition of 31 new members, and in October the chapter held its fall philanthropy, Kickin' It Club Style, with proceeds going to The Lion's Camp. Sisters enjoyed other fall activities including: Homecoming, Mom's Weekend and Fall Formal in Milwaukee. Members have also started practicing for Humorology, the university's all-Greek philanthropy.

■ DELTA BOSTON

Delta chapter received the Philanthropy of the Year award for its contributions to the Passion Plunge to benefit Special Olympics Massachusetts. Sixteen Gamma Phis, supported by their sisters, volunteered their time and spirit to raise more than \$3,000 by jumping into the winter waters of the Atlantic Ocean at Nantasket Beach.



Wisconsin/Madison new members pose in front of Lake Mendota.

■ EPSILON NORTHWESTERN

Epsilon sisters were excited to move into a newly renovated chapter house this fall. They welcomed incoming freshmen at Wildcat Welcome, where they helped move new students into dorms. Members enjoyed their first social event of the year, a midnight cruise on Lake Michigan, and are excited for formal recruitment in January.

■ KAPPA MINNESOTA

Kappa chapter at the University of Minnesota held its annual retreat last fall, which focused on sisterhood and gave members and new members a chance to get better acquainted. Other fall activities were date party and Homecoming.



San Diego sisters take a break before Greek Week skits.

■ XI IDAHO

The women of Xi chapter were thrilled to reach quota and welcome 26 new members after a successful fall recruitment. They also participated in Sigma Chi Derby Days and chapter philanthropy

activities, including volunteering at the Moscow Food Bank and the Humane Society, and mentoring at local elementary schools.

■ OMICRON ILLINOIS/URBANA-CHAMPAIGN

Omicron chapter had a successful recruitment with high return rates, and enjoyed a semester of fun, philanthropy and sisterhood. In addition to its annual golf tournament, the chapter started a community-wide project to educate high school and college women about body image. Formal, barn dance, exchanges and football block were other activities.

■ PI NEBRASKA/LINCOLN

Pi chapter members worked diligently to recruit and initiate 28 women. They raised about \$2,000 for Camp Fire by serving hamburgers,



Penn State sisters are proud to be Gamma Phis.

hotdogs and smores, and sponsored Dad's Day, which included a Husker football game and banquet. Members competed in Farmhouse Fraternity's Idol Party, and had fun at their own parties, Glory Days and Gansta' Party. Even with all this fun, they had the second highest GPA in the Greek system, which is higher than the all-university and all-women's GPAs.

■ RHO IOWA

Rho chapter members lost their sister, Amber Huber, to cancer, but know she will live in their hearts forever. The chapter welcomed 35 new members, and fall activities included sisterhood events, Homecoming festivities and numerous philanthropies.



Wittenberg seniors on Preference Night.

■ SIGMA KANSAS

Sigma chapter welcomed 49 new members, built a Homecoming float with the Sigma Chis and are working with Beta Theta Pi on Rock Chalk Revue, an annual benefit for the United Way.

■ PSI OKLAHOMA

Psi sisters welcomed 78 new members after fall recruitment. Their annual philanthropy,

C O L L E G I A N S

Gamma Phi Beta Chili Cook-Off, raised \$4,000 for a local charity, and sisters participated in the colonization at Texas A&M/College Station.



Iowa's newest members on Bid Day.

■ ALPHA LAMBDA BRITISH COLUMBIA

Alpha Lambda chapter conducted a successful fall recruitment, the end of which featured a groundbreaking ceremony for the school's Panhellenic House to be completed by August 2004.

■ ALPHA NU WITTENBURG

The sisters of Alpha Nu chapter started the year with the highest Greek GPA on campus, and welcomed 10 new members during informal recruitment. The chapter said goodbye to four members studying abroad this semester, but said hello to five sisters who have just returned. They prepared for Greek Week, Homecoming, their annual Teeter-Totter-A-Thon and semi-formal.

■ ALPHA XI SOUTHERN METHODIST

During the fall semester, Alpha Xi chapter welcomed 11 new

members in informal recruitment and enjoyed mixers, parties and fall formal. They also held their third annual Diamonds Are A Girl's Best Friend softball tournament in which 10 teams participated; the event raised more than \$2,500 for Camp Fire USA.

■ ALPHA CHI WILLIAM & MARY

Soon after fall recruitment, which added 26 new members to Alpha Chi chapter, the campus was evacuated due to the threat of Hurricane Isabel. Sisters traveled around the East Coast, spending time together and weathering out the hurricane. After returning to campus, they enjoyed their retreat and annual philanthropy, Moonball, which features glow-in-the-dark volleyball and benefits Camp Fantastic and Camp Fire USA.



Oklahoma City University sisters before Preference Night Party.

■ BETA ALPHA SOUTHERN CALIFORNIA

Beta Alpha collegians welcomed 54 new members with a live band, dancing and festivities. The sisters also danced at other fall events including the Crescent Ball and the annual Daddy/Daughter Dance. They held an annual ice cream social, scholarship dinner and sisterhood retreat.

■ BETA GAMMA BOWLING GREEN STATE

Beta Gamma chapter gained 21 new members, and in October held a buffet to celebrate the chapter's 60th anniversary. Alumnae were invited, and rooms in the house were decorated to represent

different decades. Members also held their annual Co-Ed Twister philanthropy, in which Greek and campus organizations participated.

■ BETA DELTA MICHIGAN STATE

Members of Beta Delta enjoyed recruitment activities, including Video Day, during which prospective members watched a short video to learn about each sorority. The chapter, including 28 new members, went to a local cider mill for Bid Day, where they took a hay ride and made their own caramel apples.

■ BETA LAMBDA SAN DIEGO STATE

During last spring's Greek Week, Beta Lambda sisters helped raise more than \$30,000 for the Elizabeth Glaser Pediatric AIDS Foundation. The

chapter placed first in all events throughout the week, which included spirit, sports and donations. Their own philanthropy fund raiser, Crescent Bowl, netted \$10,000 for camping. They wrapped up the year with Crescent Ball, and began the fall term by welcoming 34 new members and hosting Parent's Weekend, New Member Presents and a date dance.

■ BETA MU FLORIDA STATE

Florida State sisters lost one of their own, Jillian Allsup, in a tragic August car accident. In the wake of this event, they have reaffirmed the strength of their sisterhood and learned to be grateful for every day. Despite the loss, they continue to participate in many



Minnesota/Minneapolis Gamma Phis have a blast at their chapter retreat.

activities, including their annual Casino Night and Crush Party, Homecoming and semi-formal.

■ BETA OMICRON OKLAHOMA CITY

Fall was busy for the sisters of Beta Omicron, who gained 24 new members. The chapter also helped with the colonization at Texas A&M University/College Station, and ended the semester with Victory, their semi-formal. Chapter member Kelly Scott competed in the Miss America pageant as Miss Oklahoma and made the top ten.

■ BETA RHO COLORADO/BOULDER

Beta Rho collegians had a successful recruitment and



USC sisters welcome their new members on Bid Day.

enjoyed dinner at Buca di Beppo for their Bid Day celebration. Fall retreat was held in No Name, Colorado, where they camped and went whitewater rafting, and the chapter walked the Race for the Cure as a team and wore matching Gamma Phi T-shirts. In



Colorado/Boulder sisters show their spirit.



Purdue sisters canoe at their house retreat.

November, they held a new philanthropy event, Mr. G-Phi, with Sigma Pi to benefit the Yellow Ribbon Foundation.

■ BETA SIGMA WASHINGTON STATE

Beta Sigma chapter started the year with 34 new members and Crush Dance, and is proud to be one of the top five sororities for grades. Chapter President Kalin McNamara was recognized for her efforts in organizing a Greek Ambassadors program to promote the Greek community during summer orientation sessions on campus.

■ BETA UPSILON KANSAS STATE

Forty-six new members joined Beta Upsilon chapter on a Bid Day scavenger hunt and barbeque, and soon after, members put on their cowgirl best for their annual Barn Party. They held their new philanthropy, Pumpkin Chunkin, where KSU fraternities participated in a variety of activities from pumpkin bobbing and carving to seed spitting contests. The chapter



Colorado/Boulder sisters geared up to white water raft on their retreat.

was partnered with Delta Upsilon and Phi Delta Theta for Homecoming activities.

■ BETA PHI INDIANA

Beta Phi sisters geared up for a fun-filled week of Homecoming traditions, including Greek Week challenges, new member class rallies and pre-game tailgate parties with campus fraternities. Members participated as dancers, dancer buddies and committee chairwomen in the campus Dance Marathon, a 36-hour event that benefits Riley Children's Hospital in Indianapolis.

■ BETA OMEGA NORTHERN ARIZONA

This fall, Beta Omega held its 6th Annual Gamma Phi Beta Golf Tournament, which benefits a local MS group and Camp Fire USA, and hosted Diabetes Walk on campus. Other activities were Fall Ball, Homecoming and Family Weekend, which featured a brunch and football game.

■ GAMMA BETA GETTYSBURG COLLEGE

Gettysburg collegians welcomed 27 new members, and held their annual campus-wide softball tournament, For the Love of Lori. In October, the chapter participated in the American Cancer Society's walk for breast cancer.



Indiana University sisters clowning around at the 2002 University Dance Marathon.

■ GAMMA ZETA TEXAS A&M/COMMERCE

Gamma Zeta chapter celebrated sisterhood at its retreat by attending Group Dynamix, where they learned teambuilding skills, including working together to achieve a common goal, listening to one another and respecting the ideas of others. They played games, went on a ropes course and played on an inflatable jungle gym.

■ GAMMA IOTA MIDWESTERN STATE

Gamma Iota welcomed 19 new members, held the Crescent Ball, two mixers, a date party and Parent's Day, and did weekly mentoring for Partner's In Education.

■ GAMMA MU MOORHEAD STATE

Gamma Mu chapter's fall activities included recruitment, a philanthropy fund raiser for the Ronald McDonald House, a car wash fund raiser and a trust-building PACE. Members also enjoyed their time together at chapter retreat, Parent's Day and the annual Gamma Grammy Awards.

■ GAMMA PI MINNESOTA STATE/MANKATO

Gamma Pi chapter kicked off the school year by assisting incoming freshman on Move-In Day. In addition to a sisterhood retreat, they competed in the Echo Food Drive, a campus-wide event.

Sisters worked with Delta Chi on Homecoming, and were proud to see Emilie Clegg, chapter president, nominated for Homecoming queen.



Midwestern State sisters show their spirit and smiles on Bid Day.

■ GAMMA TAU ST. LOUIS UNIVERSITY

Gamma Tau chapter added 44 new members to the sisterhood, and joined Phi Delta Theta in

sponsoring an inventive philanthropy fund raiser: they sold pizza during the midnight hours and raised nearly \$1,000 for autism research. Later, they participated in the first St. Louis Autism Walk.

■ DELTA DELTA CALIFORNIA STATE/FULLERTON

California State/Fullerton sisters, including 44 new members, held their retreat at Arrowhead, and later in the fall, their annual philanthropy, Gammies N' Jammies.

■ DELTA ETA CALIFORNIA/IRVINE

Sisters at the University of California/Irvine had a great time on their retreat at Big Bear Mountain, where they caught up on each other's news, bonded and prepared for formal recruitment.

■ DELTA IOTA PURDUE

Delta Iota collegians participated



John Carroll sisters at their spring formal.

COLLEGIANS



Eastern Washington members at a pre-recruitment function.

in two fraternity philanthropies: Lambda Chi Watermelon Bust and Sigma Phi Epsilon Turtle Tug. Several chapter members participated in the Hunger Hike, a three-mile walk that benefitted local families in need. They enjoyed their chapter retreat at Turkey Run State Park, where they canoed and had a picnic lunch, and they learned a lot about self-defense and chapter safety at their first PACE event.

■ DELTA KAPPA LEHIGH

Delta Kappa chapter returned to a redecorated chapter room, entry way and sitting area. Members participated in several events to welcome freshmen women, including a bagel brunch, ice cream social and open house. They were involved in other activities, including soccer, lacrosse, field hockey, philanthropies and Panhellenic.

■ DELTA TAU COLGATE

Last spring, Delta Tau raised \$1,800 for Madison County Children's Camp, and this fall the camp director spoke at a PACE program. The chapter added 38 new members in fall recruitment.

■ DELTA UPSILON GEORGIA

Delta Upsilon held its chapter retreat at a cabin in the mountains of Gatlinburg, Tennessee, and organized its annual Chili Cook-Off, which benefits The Clute Barrow Nelson Life Foundation, Camp Fire USA and The Children's Miracle Network. The chapter also participated in other Greek philanthropy events, community activities

and campus events, as well as socials, date nights and Harvest Ball. Founders Day was celebrated with Atlanta alumnae.

■ DELTA PSI CALIFORNIA/SANTA BARBARA

Delta Psi celebrated its 20th anniversary with alumnae, and added 27 new members in fall recruitment. The chapter is proud of Becky Quiles, Order of Omega president, and Laura Mulligan, Panhellenic president.

■ EPSILON BETA ALMA COLLEGE

The year started early for Epsilon



Sisters at Southern Methodist had fun at their philanthropy.

Beta sisters with fun projects such as Housie Work Weekend and a reunion barbeque. They welcomed eight new members in informal recruitment, and held a new member retreat at the house. Members hosted a Parent's Dinner, and participated in the All-Sorority Retreat, an afternoon of group initiative and team bonding activities held at Camp Tamarack. The chapter ended the semester with the all-campus semi-formal, Tinsel Town Tavern.

■ EPSILON GAMMA SAN DIEGO

University of San Diego collegians held a retreat in sunny Palm Springs that was full of sisterly bonding and fun activities. Their philanthropy fund raiser, Gamma Phi City Wide Hold Up, benefitted Camp Fire USA.

■ EPSILON ETA BRIDGEWATER STATE

Bridgewater State sisters welcomed eight new members to their chapter during fall recruitment, and enjoyed volunteering for the Girl Scouts of America in Southeast Massachusetts.

■ EPSILON LAMBDA ALABAMA

Epsilon Lambda raised more than \$1,500 at its annual 48-hour Teeter-Totter-A-Thon to benefit the children of Camp Fletcher, where the chapter also held its retreat.

■ EPSILON MU LOYOLA

Epsilon Mu chapter kicked off the year with an innovative informal recruitment event - a progressive dinner with each

course served at a different location. They had fun at their annual events: Beach Retreat and Bingo Bash.

■ EPSILON OMICRON CALIFORNIA/SANTA CRUZ

Epsilon Omicron chapter had a successful fall recruitment, "Gamma Phi Beta Through the Decades," and welcomed 20 new



Eastern Washington members on their summer rafting trip in Montana.

members. A busy semester included an overnight sisterhood retreat camping on the beach, an AIDS walk philanthropy and Make a Difference Day, an all-Greek event.

■ EPSILON THETA CLEMSON

Following a successful recruitment, the sisters of Epsilon

Theta celebrated with a Bid Day party. The chapter worked together on a float for First Friday and marched in the annual parade to show their Gamma Phi Beta spirit. Members

had a great time at Destination Unknown Sisterhood Retreat, a



Pepperdine sisters serving chili at a fundraiser.

SUBMISSIONS

Please send your write-ups and photographs for the Member News section to: Editor, Gamma Phi Beta Sorority, 12737 E. Euclid Drive, Centennial, CO 80111 or TheCrescent@gammaphibeta.org.

COLLEGIANS



Gettysburg College seniors gather for some sisterly fun.

Halloween Mixer, My-Tie semi-formal and Moonshine, their annual date party. The chapter raised money for the Elizabeth Pediatric AIDS Foundation through its annual volleyball tournament, Moonball.

■ EPSILON SIGMA MOREHEAD STATE

The sisters of Epsilon Sigma designed some fall activities around the Gamma Phi motto, building love and loyalty. They welcomed a wonderful new member class, hosted a tailgating party for their parents, had fun at their date party and held a philanthropy event.

■ ZETA ALPHA EASTERN WASHINGTON

Zeta Alpha chapter welcomed new members during fall recruitment, and went on a rafting retreat in Montana. The chapter is actively involved with the local Camp Fire USA chapter, attending meetings and fund-raising events. Sisters also donate their time and cooking skills to Ronald McDonald House. They were recognized for their philanthropic efforts at the Panhellenic Scholarship Banquet, where they received the "Most Community Service" and "Most

Philanthropy" awards in addition to the coveted "Dean's Award," which recognizes the overall well-rounded sorority. The chapter celebrated its 10-year anniversary in November.

■ ZETA BETA VIRGINIA

The chapter held several new philanthropy events, and increased its activities with the I Have a Dream Foundation by taking children to a university soccer game, treating them to monthly birthday celebrations and providing tutoring services for fourth graders. Members enjoyed \$5 Prom, semi-formal and Father/Daughter weekend.

■ ZETA EPSILON DUQUESNE UNIVERSITY

After a successful recruitment, the sisters of Zeta Epsilon held their annual Walk Miles for Kid's Smiles Walk-A-Thon and raised more than \$2,000 for the Children's Institute of Pittsburgh. Members participated

in Greek Week and especially enjoyed the Greek Sing competition.

■ ZETA KAPPA SOUTHERN INDIANA

The women of Zeta Kappa welcomed 25 new members, doubling the size of the chapter. They enjoyed a chapter retreat, Date Party and Hayride.

■ ZETA LAMBDA TEXAS A&M/CORPUS CHRISTI

Zeta Lambda is proud to be the only chapter on campus that met recruitment quota, and to have received the first Panhellenic Philanthropy Award at Texas A&M University/Corpus Christi. Sisters also hosted an Alumna Brunch



Florida State sisters won \$6,000 for Camp Fire USA in the University's "Cheers for Charity" event.

where they met and shared stories with local alumnae.

■ ZETA NU DETROIT/MERCY

The women of Zeta Nu enjoyed sisterhood during Baskin Robbins Night, Make A Gamma Phi Pillow Night, Learn to Scrapbook Night and Letter Making Night. In addition to hosting Moonlight Masquerade, members worked at a local soup kitchen, arranged a campus-wide Hoedown for Camp Fire USA, and a bottle and can drive.

■ ZETA OMICRON JOHN CARROLL

Zeta Omicron began the school year with a successful informal recruitment, welcoming nine new members. They also sponsored the annual All-Sorority Powderpuff Football game and a carwash, and sold pizza at John Carroll's Octoberfest. Proceeds from all events were donated to Camp Cheerful, their local philanthropy.

United States Postal Service
Statement of Ownership, Management, and Circulation

1. Publication Title: The Crescent of Gamma Phi Beta
2. Issue Frequency: Quarterly
3. Issue Date for Circulation Data Below: 10/1/03
4. Annual Subscription Price: \$6.00
5. Annual Subscription Price: \$6.00
6. Complete Mailing Address of Known Office of Publication (Not printing office, city, county, state, and ZIP+4):
12737 E Euclid Dr. Centennial, CO 80111
7. Complete Mailing Address of Headquarters or General Business Office of Publisher (Not printing office):
12737 E Euclid Dr. Centennial, CO 80111
8. Full Names and Complete Mailing Addresses of Publisher, Editor, and Managing Editor:
Melinda Boyd & Associates, Inc.
4330 E 78th Street Suite 212, Indianapolis, IN 46250-2700
Angela White
12737 E Euclid Dr.
Centennial, CO 80111
Rebecca Beardslee
12737 E Euclid Dr.
Centennial, CO 80111
9. Full Name and Complete Mailing Address of Publisher:
Gamma Phi Beta Sorority, Inc.
12737 E Euclid Drive
Centennial, CO 80111
10. Full Name and Complete Mailing Address of Editor:
N/A
11. Full Name and Complete Mailing Address of Managing Editor:
N/A
12. Full Name and Complete Mailing Address of Business Manager:
N/A
13. Full Name and Complete Mailing Address of Circulation Manager:
N/A
14. Full Name and Complete Mailing Address of Advertising Manager:
N/A
15. Full Name and Complete Mailing Address of Distribution Manager:
N/A
16. Full Name and Complete Mailing Address of Subscription Manager:
N/A
17. Full Name and Complete Mailing Address of Fulfillment Manager:
N/A
18. Full Name and Complete Mailing Address of Fulfillment Manager:
N/A
19. Full Name and Complete Mailing Address of Fulfillment Manager:
N/A
20. Full Name and Complete Mailing Address of Fulfillment Manager:
N/A
21. Full Name and Complete Mailing Address of Fulfillment Manager:
N/A
22. Full Name and Complete Mailing Address of Fulfillment Manager:
N/A
23. Full Name and Complete Mailing Address of Fulfillment Manager:
N/A
24. Full Name and Complete Mailing Address of Fulfillment Manager:
N/A
25. Full Name and Complete Mailing Address of Fulfillment Manager:
N/A
26. Full Name and Complete Mailing Address of Fulfillment Manager:
N/A
27. Full Name and Complete Mailing Address of Fulfillment Manager:
N/A
28. Full Name and Complete Mailing Address of Fulfillment Manager:
N/A
29. Full Name and Complete Mailing Address of Fulfillment Manager:
N/A
30. Full Name and Complete Mailing Address of Fulfillment Manager:
N/A
31. Full Name and Complete Mailing Address of Fulfillment Manager:
N/A
32. Full Name and Complete Mailing Address of Fulfillment Manager:
N/A
33. Full Name and Complete Mailing Address of Fulfillment Manager:
N/A
34. Full Name and Complete Mailing Address of Fulfillment Manager:
N/A
35. Full Name and Complete Mailing Address of Fulfillment Manager:
N/A
36. Full Name and Complete Mailing Address of Fulfillment Manager:
N/A
37. Full Name and Complete Mailing Address of Fulfillment Manager:
N/A
38. Full Name and Complete Mailing Address of Fulfillment Manager:
N/A
39. Full Name and Complete Mailing Address of Fulfillment Manager:
N/A
40. Full Name and Complete Mailing Address of Fulfillment Manager:
N/A
41. Full Name and Complete Mailing Address of Fulfillment Manager:
N/A
42. Full Name and Complete Mailing Address of Fulfillment Manager:
N/A
43. Full Name and Complete Mailing Address of Fulfillment Manager:
N/A
44. Full Name and Complete Mailing Address of Fulfillment Manager:
N/A
45. Full Name and Complete Mailing Address of Fulfillment Manager:
N/A
46. Full Name and Complete Mailing Address of Fulfillment Manager:
N/A
47. Full Name and Complete Mailing Address of Fulfillment Manager:
N/A
48. Full Name and Complete Mailing Address of Fulfillment Manager:
N/A
49. Full Name and Complete Mailing Address of Fulfillment Manager:
N/A
50. Full Name and Complete Mailing Address of Fulfillment Manager:
N/A
51. Full Name and Complete Mailing Address of Fulfillment Manager:
N/A
52. Full Name and Complete Mailing Address of Fulfillment Manager:
N/A
53. Full Name and Complete Mailing Address of Fulfillment Manager:
N/A
54. Full Name and Complete Mailing Address of Fulfillment Manager:
N/A
55. Full Name and Complete Mailing Address of Fulfillment Manager:
N/A
56. Full Name and Complete Mailing Address of Fulfillment Manager:
N/A
57. Full Name and Complete Mailing Address of Fulfillment Manager:
N/A
58. Full Name and Complete Mailing Address of Fulfillment Manager:
N/A
59. Full Name and Complete Mailing Address of Fulfillment Manager:
N/A
60. Full Name and Complete Mailing Address of Fulfillment Manager:
N/A
61. Full Name and Complete Mailing Address of Fulfillment Manager:
N/A
62. Full Name and Complete Mailing Address of Fulfillment Manager:
N/A
63. Full Name and Complete Mailing Address of Fulfillment Manager:
N/A
64. Full Name and Complete Mailing Address of Fulfillment Manager:
N/A
65. Full Name and Complete Mailing Address of Fulfillment Manager:
N/A
66. Full Name and Complete Mailing Address of Fulfillment Manager:
N/A
67. Full Name and Complete Mailing Address of Fulfillment Manager:
N/A
68. Full Name and Complete Mailing Address of Fulfillment Manager:
N/A
69. Full Name and Complete Mailing Address of Fulfillment Manager:
N/A
70. Full Name and Complete Mailing Address of Fulfillment Manager:
N/A
71. Full Name and Complete Mailing Address of Fulfillment Manager:
N/A
72. Full Name and Complete Mailing Address of Fulfillment Manager:
N/A
73. Full Name and Complete Mailing Address of Fulfillment Manager:
N/A
74. Full Name and Complete Mailing Address of Fulfillment Manager:
N/A
75. Full Name and Complete Mailing Address of Fulfillment Manager:
N/A
76. Full Name and Complete Mailing Address of Fulfillment Manager:
N/A
77. Full Name and Complete Mailing Address of Fulfillment Manager:
N/A
78. Full Name and Complete Mailing Address of Fulfillment Manager:
N/A
79. Full Name and Complete Mailing Address of Fulfillment Manager:
N/A
80. Full Name and Complete Mailing Address of Fulfillment Manager:
N/A
81. Full Name and Complete Mailing Address of Fulfillment Manager:
N/A
82. Full Name and Complete Mailing Address of Fulfillment Manager:
N/A
83. Full Name and Complete Mailing Address of Fulfillment Manager:
N/A
84. Full Name and Complete Mailing Address of Fulfillment Manager:
N/A
85. Full Name and Complete Mailing Address of Fulfillment Manager:
N/A
86. Full Name and Complete Mailing Address of Fulfillment Manager:
N/A
87. Full Name and Complete Mailing Address of Fulfillment Manager:
N/A
88. Full Name and Complete Mailing Address of Fulfillment Manager:
N/A
89. Full Name and Complete Mailing Address of Fulfillment Manager:
N/A
90. Full Name and Complete Mailing Address of Fulfillment Manager:
N/A
91. Full Name and Complete Mailing Address of Fulfillment Manager:
N/A
92. Full Name and Complete Mailing Address of Fulfillment Manager:
N/A
93. Full Name and Complete Mailing Address of Fulfillment Manager:
N/A
94. Full Name and Complete Mailing Address of Fulfillment Manager:
N/A
95. Full Name and Complete Mailing Address of Fulfillment Manager:
N/A
96. Full Name and Complete Mailing Address of Fulfillment Manager:
N/A
97. Full Name and Complete Mailing Address of Fulfillment Manager:
N/A
98. Full Name and Complete Mailing Address of Fulfillment Manager:
N/A
99. Full Name and Complete Mailing Address of Fulfillment Manager:
N/A
100. Full Name and Complete Mailing Address of Fulfillment Manager:
N/A

1. Publication Title: The Crescent of Gamma Phi Beta
2. Issue Frequency: Quarterly
3. Issue Date for Circulation Data Below: 10/1/03
4. Annual Subscription Price: \$6.00
5. Annual Subscription Price: \$6.00
6. Complete Mailing Address of Known Office of Publication (Not printing office, city, county, state, and ZIP+4):
12737 E Euclid Dr. Centennial, CO 80111
7. Complete Mailing Address of Headquarters or General Business Office of Publisher (Not printing office):
12737 E Euclid Dr. Centennial, CO 80111
8. Full Names and Complete Mailing Addresses of Publisher, Editor, and Managing Editor:
Melinda Boyd & Associates, Inc.
4330 E 78th Street Suite 212, Indianapolis, IN 46250-2700
Angela White
12737 E Euclid Dr.
Centennial, CO 80111
Rebecca Beardslee
12737 E Euclid Dr.
Centennial, CO 80111
9. Full Name and Complete Mailing Address of Publisher:
Gamma Phi Beta Sorority, Inc.
12737 E Euclid Drive
Centennial, CO 80111
10. Full Name and Complete Mailing Address of Editor:
N/A
11. Full Name and Complete Mailing Address of Managing Editor:
N/A
12. Full Name and Complete Mailing Address of Business Manager:
N/A
13. Full Name and Complete Mailing Address of Circulation Manager:
N/A
14. Full Name and Complete Mailing Address of Advertising Manager:
N/A
15. Full Name and Complete Mailing Address of Distribution Manager:
N/A
16. Full Name and Complete Mailing Address of Subscription Manager:
N/A
17. Full Name and Complete Mailing Address of Fulfillment Manager:
N/A
18. Full Name and Complete Mailing Address of Fulfillment Manager:
N/A
19. Full Name and Complete Mailing Address of Fulfillment Manager:
N/A
20. Full Name and Complete Mailing Address of Fulfillment Manager:
N/A
21. Full Name and Complete Mailing Address of Fulfillment Manager:
N/A
22. Full Name and Complete Mailing Address of Fulfillment Manager:
N/A
23. Full Name and Complete Mailing Address of Fulfillment Manager:
N/A
24. Full Name and Complete Mailing Address of Fulfillment Manager:
N/A
25. Full Name and Complete Mailing Address of Fulfillment Manager:
N/A
26. Full Name and Complete Mailing Address of Fulfillment Manager:
N/A
27. Full Name and Complete Mailing Address of Fulfillment Manager:
N/A
28. Full Name and Complete Mailing Address of Fulfillment Manager:
N/A
29. Full Name and Complete Mailing Address of Fulfillment Manager:
N/A
30. Full Name and Complete Mailing Address of Fulfillment Manager:
N/A
31. Full Name and Complete Mailing Address of Fulfillment Manager:
N/A
32. Full Name and Complete Mailing Address of Fulfillment Manager:
N/A
33. Full Name and Complete Mailing Address of Fulfillment Manager:
N/A
34. Full Name and Complete Mailing Address of Fulfillment Manager:
N/A
35. Full Name and Complete Mailing Address of Fulfillment Manager:
N/A
36. Full Name and Complete Mailing Address of Fulfillment Manager:
N/A
37. Full Name and Complete Mailing Address of Fulfillment Manager:
N/A
38. Full Name and Complete Mailing Address of Fulfillment Manager:
N/A
39. Full Name and Complete Mailing Address of Fulfillment Manager:
N/A
40. Full Name and Complete Mailing Address of Fulfillment Manager:
N/A
41. Full Name and Complete Mailing Address of Fulfillment Manager:
N/A
42. Full Name and Complete Mailing Address of Fulfillment Manager:
N/A
43. Full Name and Complete Mailing Address of Fulfillment Manager:
N/A
44. Full Name and Complete Mailing Address of Fulfillment Manager:
N/A
45. Full Name and Complete Mailing Address of Fulfillment Manager:
N/A
46. Full Name and Complete Mailing Address of Fulfillment Manager:
N/A
47. Full Name and Complete Mailing Address of Fulfillment Manager:
N/A
48. Full Name and Complete Mailing Address of Fulfillment Manager:
N/A
49. Full Name and Complete Mailing Address of Fulfillment Manager:
N/A
50. Full Name and Complete Mailing Address of Fulfillment Manager:
N/A
51. Full Name and Complete Mailing Address of Fulfillment Manager:
N/A
52. Full Name and Complete Mailing Address of Fulfillment Manager:
N/A
53. Full Name and Complete Mailing Address of Fulfillment Manager:
N/A
54. Full Name and Complete Mailing Address of Fulfillment Manager:
N/A
55. Full Name and Complete Mailing Address of Fulfillment Manager:
N/A
56. Full Name and Complete Mailing Address of Fulfillment Manager:
N/A
57. Full Name and Complete Mailing Address of Fulfillment Manager:
N/A
58. Full Name and Complete Mailing Address of Fulfillment Manager:
N/A
59. Full Name and Complete Mailing Address of Fulfillment Manager:
N/A
60. Full Name and Complete Mailing Address of Fulfillment Manager:
N/A
61. Full Name and Complete Mailing Address of Fulfillment Manager:
N/A
62. Full Name and Complete Mailing Address of Fulfillment Manager:
N/A
63. Full Name and Complete Mailing Address of Fulfillment Manager:
N/A
64. Full Name and Complete Mailing Address of Fulfillment Manager:
N/A
65. Full Name and Complete Mailing Address of Fulfillment Manager:
N/A
66. Full Name and Complete Mailing Address of Fulfillment Manager:
N/A
67. Full Name and Complete Mailing Address of Fulfillment Manager:
N/A
68. Full Name and Complete Mailing Address of Fulfillment Manager:
N/A
69. Full Name and Complete Mailing Address of Fulfillment Manager:
N/A
70. Full Name and Complete Mailing Address of Fulfillment Manager:
N/A
71. Full Name and Complete Mailing Address of Fulfillment Manager:
N/A
72. Full Name and Complete Mailing Address of Fulfillment Manager:
N/A
73. Full Name and Complete Mailing Address of Fulfillment Manager:
N/A
74. Full Name and Complete Mailing Address of Fulfillment Manager:
N/A
75. Full Name and Complete Mailing Address of Fulfillment Manager:
N/A
76. Full Name and Complete Mailing Address of Fulfillment Manager:
N/A
77. Full Name and Complete Mailing Address of Fulfillment Manager:
N/A
78. Full Name and Complete Mailing Address of Fulfillment Manager:
N/A
79. Full Name and Complete Mailing Address of Fulfillment Manager:
N/A
80. Full Name and Complete Mailing Address of Fulfillment Manager:
N/A
81. Full Name and Complete Mailing Address of Fulfillment Manager:
N/A
82. Full Name and Complete Mailing Address of Fulfillment Manager:
N/A
83. Full Name and Complete Mailing Address of Fulfillment Manager:
N/A
84. Full Name and Complete Mailing Address of Fulfillment Manager:
N/A
85. Full Name and Complete Mailing Address of Fulfillment Manager:
N/A
86. Full Name and Complete Mailing Address of Fulfillment Manager:
N/A
87. Full Name and Complete Mailing Address of Fulfillment Manager:
N/A
88. Full Name and Complete Mailing Address of Fulfillment Manager:
N/A
89. Full Name and Complete Mailing Address of Fulfillment Manager:
N/A
90. Full Name and Complete Mailing Address of Fulfillment Manager:
N/A
91. Full Name and Complete Mailing Address of Fulfillment Manager:
N/A
92. Full Name and Complete Mailing Address of Fulfillment Manager:
N/A
93. Full Name and Complete Mailing Address of Fulfillment Manager:
N/A
94. Full Name and Complete Mailing Address of Fulfillment Manager:
N/A
95. Full Name and Complete Mailing Address of Fulfillment Manager:
N/A
96. Full Name and Complete Mailing Address of Fulfillment Manager:
N/A
97. Full Name and Complete Mailing Address of Fulfillment Manager:
N/A
98. Full Name and Complete Mailing Address of Fulfillment Manager:
N/A
99. Full Name and Complete Mailing Address of Fulfillment Manager:
N/A
100. Full Name and Complete Mailing Address of Fulfillment Manager:
N/A



Michigan State executive board members at Lake Michigan for their retreat.

This is The Crescent of Gamma Phi Beta Statement of Ownership. Per the requirements of the United States Postal Service, this statement must run in the magazine once a year.

A L U M N A E

■ CALIFORNIA

The BEVERLY-WESTWOOD Alumnae Chapter hosted a luncheon at the UCLA chapter house after a morning recruitment workshop to get acquainted with Alpha Iota collegians. They also celebrated Founders Day and gathered for their traditional Christmas party.



Beta Epsilon sisters from 1949 and 1950 gather at Miami's Alumnae Weekend in June.

Ten members of the GREATER ORANGE COUNTY Alumnae Chapter participated in a day of joy, pain and hope at the Race for the Cure in Newport Beach, California. They shared the bonds of sisterhood as they supported the fight against breast cancer.

The SACRAMENTO VALLEY Alumnae Chapter held a "Good Luck in Recruitment" party for Delta Chi chapter at CSU/Sacramento to wish them well during recruitment.

■ COLORADO

FORT COLLINS area alumnae welcomed 10 members of the 2002 Tau chapter graduating class into alumnae membership at their annual Taco Supper in



Columbia, SC alumnae at the Walk for Life breast cancer fundraiser.

April. Chapter members gathered for Girls Night Out at a local Chinese restaurant and held a root beer float party in September for new collegiate members.

■ FLORIDA

Over the summer, the TAMPA BAY Alumnae Chapter executive board met at a retreat to plan the year's events. Chapter members spent time together creating pottery at Clayground and enjoyed each other's company at the theatre and annual Ornament Exchange. Michelle Prell (Florida Institute of Technology) received a scholarship from the chapter at last May's Mother's Day Brunch.

■ MICHIGAN

DETROIT METRO alumnae started their fall with an informal dinner gathering. In October, chapter members each prepared a dish



Orange County and Balboa Harbor alumnae came together to Race for the Cure.

for Cook for the Cure, a potluck fund raiser for the Susan G. Komen Breast Cancer Foundation. They are in the process of making two handmade quilts to donate to the 2004 Gamma Phi Beta Convention.

■ MISSOURI

ST. LOUIS Alumnae Chapter members spent an afternoon at Hawken House, the first land-marked home in Missouri to receive a Historic Preservation Grant from the federal government. After the tour they



Sacramento Valley alumnae celebrate Parent/Alumnae Weekend with Delta Chi chapter of CSU/Sacramento.

enjoyed a presentation by an artist who combines women's handiwork with vintage photographs to tell women's stories. The chapter also participated in the annual Girls Inc. Golf Tournament, and had dessert with new members from Gamma Tau chapter.

■ NEW MEXICO

The ALBUQUERQUE Alumnae Chapter met for lunches to keep in touch over the summer. They also made jalapeño pepper jelly, their long-standing philanthropy fund raiser that benefits Camp Fire USA.



The 1994-95 CLC team reunited for a long weekend in Southern California.

■ OHIO

The CINCINNATI Alumnae Chapter started the year with its annual meeting at a local pottery painting venue. The chapter again met its annual goal to increase membership by 20%.

Winter activities include monthly dinners, a walk for the Greater Cincinnati Alzheimer's Association, Founders Day with the Dayton Alumnae chapter and a holiday gift exchange.

DAYTON alumnae attended Saturday Family Fun Day. The event, sponsored by the local Camp Fire USA chapter, is held at its locally-owned house, which is used for

scouting programs and serves as an after-school activity center for neighborhood children. The alumnae chapter received the Camp Fire chapter's "One Person Can Make A Difference"



Denver (Theta) alumnae gathered for a reunion in Steamboat Springs, CO.

award for sending one boy and one girl to summer camp.

■ TEXAS

HOUSTON Alumnae Chapter members participated in the Gamma Phi Beta's colonization at Texas A&M University/College Station. At their fall kick-off brunch in September, which had the

theme "Learning from the Past, Present and Future," the chapter's past presidents were honored and new officers introduced. In October, the chapter presented the Quillian Memorial Center with proceeds from recent fundraising events.



Philadelphia West Suburban alumnae at a Kentucky Derby party.

SUBMISSIONS

Please send your write-ups and photographs for the Member News section to: Editor, Gamma Phi Beta Sorority, 12737 E. Euclid Drive, Centennial, CO 80111 or TheCrescent@gammaphibeta.org.

Leading to Success

BE HEARD. THE 2004-2006 NOMINATING COMMITTEE TAKES SHAPE.

by Frances Griffin (Texas) | Nominating Committee Chairwoman

It is time for you, as a member to be heard. Your opinion is important and necessary for the growth of the Sorority. The bylaws of Gamma Phi Beta Sorority provide for elections to be held at each biennial Convention. Gamma Phi Beta's International Convention will be held in June 2004. At that convention, a slate of candidates for International Council and for the 2004-2006 Nominating Committee will be presented to the delegates for a vote. How the slate is prepared for Convention is a very precise process.

Any alumna member in good standing of Gamma Phi Beta may be considered for nomination for an office. It is recommended that the member have a current working knowledge of the Sorority, perhaps serving as an International Officer currently or in the recent past. Endorsements of a candidate may come from any member in good standing.

Terms of office for members of International Council are defined in the bylaws. Article VII states, "No elected International Council officer, with the exception of the National Panhellenic Conference Delegate, shall be eligible to serve more than two consecutive terms in the same office."

■ **Vicki Carlson Read**, International President, has served two consecutive terms and is not eligible for re-election as International President.

■ **Sandra Biegelman Burba**, Alumnae Vice President, has served one term in this office and is eligible for re-election as Alumnae Vice President.

■ **Linda Daniel Johnson**, Collegiate Vice President, has served one term in this office and is eligible for re-election as Collegiate Vice President.

■ **Annabel Jones**, Financial Vice President, has served one term in this office and is eligible for re-election as Financial Vice President.

■ **Krista Spanninger Davis**, Member-at-Large, has served one term in this office and is eligible for re-election as Member-at-Large.

■ **Diane Soderstrom Goff**, Membership Vice President, has served two consecutive terms in this office and is not eligible for re-election as Membership Vice President.

■ **Elizabeth Ahlemeyer Quick**, National Panhellenic Conference Delegate, has served

in this office since 1992. She is currently serving on the Executive Committee of the National Panhellenic Conference. The Bylaws provide for unlimited terms as National Panhellenic Conference Delegate, so she is eligible for re-election to this office.

Qualifications for serving as a member of the Nominating Committee are specified in the Rules and Procedures. Two alumnae from each of six geographic regions will be nominated for the 2004-2006 Nominating Committee. The regions are defined as:

| Area | Provinces |
|------|---------------|
| 1 | I, III, IV |
| 2 | II, VIII, XIV |
| 3 | V, VI XV |
| 4 | VII, IX, X |
| 5 | XI, XVI |
| 6 | XII, XIII |

The Nominating Committee has been asking for Candidate Information Forms and Candidate Endorsement Forms from the membership through *The Communiqué*, the Web site and the mail. Six alumnae and two collegiate members have the unique opportunity to serve on the Nominating Committee during a biennium.

Once a member is elected to the Nominating Committee, either as a delegate or as an alternate, or appointed as a collegiate member, she will encourage general participation by the membership in the procedures involved in the nominating process. A committee member may not fill out a Prospect Form, recruit a specific candidate, endorse a candidate, or be a candidate during that biennium.

The Nominating Committee meeting is structured to maintain the integrity of the members and the organization. The Nominating Committee does not sit in judgment of a sister or a personality. The Nominating Committee analyzes criteria and abilities of candidates. Steps that are taken during this process are as follows:

■ The Nominating Committee Chairwoman determines valid candidacies based on completion of the requirements (stated on the Candidate Information Form).

■ These requirements are receipt of a completed candidate information form, a

minimum of three endorsements and a vision statement by the stated deadline.

The Nominating Committee, in its meeting, will:

■ Review the Strategic Plan of the Sorority.

■ Establish criteria for evaluating International Council candidates and Nominating Committee candidates.

■ Analyze the strengths needed to build a strong International Council and Nominating Committee.

■ Use the established criteria to evaluate each candidate's individual strengths and abilities to contribute to the International Council or Nominating Committee teams.

■ Come to consensus on a slate after objectively evaluating the candidates.

■ Direct the Nominating Chairwoman to contact all slated candidates to determine who wishes to accept the nomination.

■ Direct the Nominating Chairwoman to contact all unslated candidates to determine who wishes to remain on the ballot as an unslated candidate.

■ Protect the privacy of candidates by holding all Nominating Committee discussions and correspondence confidential.

The Nominating Committee Chairwoman will disseminate all candidate information, in a consistent format, to the membership 60 days prior to Convention. Chapters should carefully review the material so that their delegates may cast an informed vote.

The Nominating Committee is a team of qualified members who have been elected by the delegates to serve in the selection process of the Sorority's leaders. They bring experience and knowledge to the process of carefully reviewing candidate and endorsement forms. A multi-level slate is prepared, giving consideration to any member wishing to submit her name for consideration. Beginning with listening to a member's recommendations and continuing throughout the steps as described, the nominating process is thorough, thoughtful and sisterly. The Nominating Committee waits to hear from you. ■

paints the town pink!

by Barbara Hurt-Simmons (Nebraska/Kearney) | Canadian Initiative Coordinator

Gamma Phi Betas from Eastern Canada, collegians and alumnae, gathered on a beautiful October weekend for sisterhood and leadership development. All the executive board members from Alpha Alpha chapter, Alpha Omega chapter and Alpha Tau chapter, 31 sisters in total, arrived Saturday at the Alpha Alpha chapter house in Toronto for 24 hours of Gamma Phi Beta education and a sleepover party. The retreat involved workshops on recruitment, standards, voting procedures, hazing, finances, new member programming, elections and much more. The Alpha Alpha women started the song session with their tradition of "CALL." Province officers, Tanya Jordan (Purdue), PCD; Krista Hanna (Northern Arizona), PMD; Pat (Horvath) Mahan (Miami), PFD; and Shauna Revello Wilson (Washington State), PCD led the collegiate leadership training.

Alumnae activities, while not as intense focused on sisterhood and the future of Gamma Phi Beta in

Crescent Circle to chapter status. What does this involve for Toronto alumnae? It means that an executive board needs to be formed, there must be at least 12 charter members, members must pay international dues, the executive board must submit reports and there must be a minimum of four meetings a year. Contact Barbara Hurt-Simmons with interest or questions.

Members of the Canadian Team will be in Montreal February 6-8, 2004 to meet with chapter members and area alumnae. Alumnae in Ottawa are also encouraged to meet with these officers in Montreal. For additional information on times and location, contact Pat Mahan at pmahpfd@rochester.rr.com.

The Eastern Canada collegiate chapters are in need of alumnae participation, guidance and advisors. Alumnae with questions on how they can make a difference should contact Tanya Jordan, PCD, at tjordangpb@hotmail.com.



Eastern Canada. Afternoon workshops, a dinner event at Saigon Sister restaurant and advisory and HCB training rounded out the weekend. Grace Lin and Kathy Manners provided the direction for these alumnae activities. Appointments were made for Alpha Omega's revitalized HCB, which is being led by Andrea Strike.

To maintain our Gamma Phi Beta presence and strength in Eastern Canada, home to more than 1,700 alumnae, we must rebuild our alumnae support. Toronto has the most concentrated number of members and one of the goals is to move the Toronto

This retreat event was funded by Gamma Phi Beta with supplemental funding from the participants and organized by the Canadian Initiative members. Thank you team! The Canadian Initiative began in the fall of 2001 for the purpose of rebuilding alumnae support in Eastern Canada and to identify and address issues unique to our Canadian chapters. Questions and comments about the Canadian Initiative can be directed to Barbara Hurt-Simmons, Canadian Initiative Coordinator at bhurtsimmons@comcast.net. ■

by Brenda D. Rickert (Texas) | Consultant, Crescent Values Program

The Program Team is pleased to announce that the first sessions of the Crescent Values Program are being implemented in the spring of 2004. These sessions, a part of the newly revised New Member Education Program, will be utilized by deferred recruitment chapters. Fall recruitment chapters will begin using them in fall 2004. The sessions will provide a comprehensive foundation of knowledge and understanding for our new members in building a lifetime of active membership in and commitment to Gamma Phi Beta.

There are 11 new member sessions of the Crescent Values Program that introduce new members to the Core Values, Creed, and Mission Statement through interactive learning strategies. Additionally, many sessions offer individual, reflective opportunities. Perhaps one of the most unique aspects of the Crescent Values Program is that the process has been a result of extensive cross-departmental collaboration. The content of the new member programs was developed with the input and guidance of alumnae volunteers in the collegiate, membership, NPC, financial, and alumnae departments. After the initial writing, we asked for feedback from our collegians to insure that the format was user-friendly and that the content met the needs of our new members. Because of this broad and thorough review process, we believe that the Crescent Values Program will be a vital and relevant tool for our chapter programming. Furthermore, we will utilize the new Gamma Phi Beta Web site technology to make all of these sessions easily accessible to our collegians. By doing so, we can update them annually and collegians can print them, confident that they are using the most current programming materials. An overview of the sessions follows.

INDIVIDUAL WORTH/LEADERSHIP/LOVE

Leadership 101: Introduction to Leadership

Participants will:

- Acquire information about campus/community service and professional organizations
- Interact with Gamma Phi Beta initiates and alumnae involved in various campus and community organizations
- Identify personal talents and/or interests to be utilized and enhanced through active participation
- Commit to continuing the search for appropriate organization(s) to join



University of Denver sisters participate in the Crescent Values Program.

Leadership 102: Introduction to Panhellenic

Participants will:

- Develop understanding of the National Panhellenic Conference (NPC)
- Become aware of Gamma Phi Beta's current and historical involvement with NPC
- Learn about the College Panhellenic Association on their campus
- Identify Panhellenic and Greek events that may appeal to their individual interests

SERVICE TO HUMANITY/SERVICE/LABOR

Service 101: Introduction to Service

Participants will:

- Learn about Gamma Phi Beta's legacy of service to humanity
- Interact with Gamma Phi members and alumnae involved with campus and community service projects
- Acquire information about upcoming and/or ongoing service projects (particularly any organized by the chapter and/or alumnae)

Service 102: Introduction to Gamma Phi Beta Philanthropy

This program hasn't been written yet, but will focus on our relationship with Camp Fire USA.

INTELLECTUAL GROWTH/LEARNING

Learning 101: Gamma Phi Beta Scholarship Expectations

Participants will:

- Discuss their personal interpretation of "intellectual growth" as presented in Gamma Phi Beta's Mission Statement
- Acquire understanding of Gamma Phi Beta's Expectations for Scholarship
- Learn about Gamma Phi Beta's Chapter Scholarship Program

Learning 102: Chapter Academic Resources

Participants will:

- Learn about Gamma Phi Beta's Chapter Study Hours Program
- Receive information about several principles of time management
- Plan their participation in the Chapter Study Hours Program

Learning 103: Campus Academic Resources

Participants will:

- Learn about organized, campus-sponsored study skills programs

and sessions

- Attend a study skills program/session during their new member education program
- Commit to a grade point average goal for each course they are taking

LIFETIME COMMITMENT/LOYALTY

Loyalty 100: Introduction to Expectations of Membership

Participants will:

- Discuss the legacy of Gamma Phi Beta's Founders
- Review the Gamma Phi Beta Mission Statement and Creed
- Reflect on and discuss the Four Core Values
- Commit to Gamma Phi Beta's ideals and Standards of Membership
- Become familiar with components of the New Member Education Program

Loyalty 101: The History of Gamma Phi Beta

History 101 is an ongoing program that spans the New Member Education Program. Participants will become familiar with Gamma Phi Beta's Founders, its origin, and the historical highlights and legacy of its long, proud history. Participants will use a variety of materials, activities, interactive exercises, and discussions to understand and appreciate the history of Gamma Phi Beta. They will become knowledgeable about the individual and collective aspects of Gamma Phi Beta membership.

Loyalty 102: Understanding Lifetime Commitment

Participants will:

- Become acquainted with alumnae
- Learn from the experiences of alumnae
- Develop understanding of the value of lifetime commitment

Loyalty 103: Understanding Founders Day

Participants will:

- Learn about Gamma Phi Beta's Founders
- Discuss the significance of Founders Day
- Participate (as appropriate) in the Founders Day celebration

Loyalty 104 A & B: Understanding Gamma Phi Beta Initiation

Gamma Phi Beta's initiation ritual is a sacred occasion. It is essential that new members fully participate in, understand, and appreciate the importance and relevance of each aspect of this ritual. This program will ensure that new members feel prepared and comfortable prior to participating in Initiation.



University of Denver sisters hard at work.

Part Two of this program consists of a post-initiation workshop that will ensure that members understand and appreciate the relevance and importance of Gamma Phi Beta's initiation ritual.

As chapters begin using these new member sessions, the Programming Team will move into the final stages of beta testing the Crescent Values Program sessions for our second and third year members. These will be highlighted in

future issues of *The Crescent* and will be available to chapters in the fall of 2004. Soon after we will complete beta testing of the sessions devoted to members in their senior year.

The Crescent Values Program includes sessions for our alumnae! The Programming Team has worked very closely with the alumnae department on this program development. In an effort to insure that we are providing programming that combines relevant and useful issues - as well as interesting, and enjoyable (FUN!) ideas, we have surveyed alumnae for suggestions and recommendations. This feedback is being summarized and reviewed; we look forward to providing Crescent Values Program Sessions for alumnae in mid-2004.

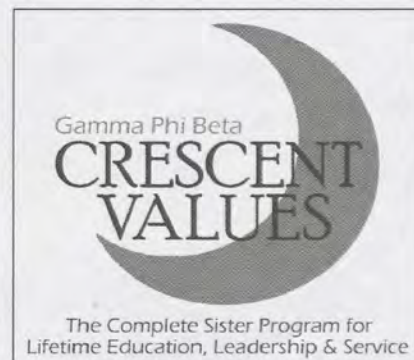
The Programming Team of the Member-at-Large Department is very proud to be able to work together to bring timely, relevant, and dynamic programming to our collegians and alumnae. It is our goal to keep our "continuing" educational materials updated on a regular basis and easily accessible. Further, we will consistently strive to create fresh, new learning opportunities for Gamma Phi Beta members in all stages of their membership. We welcome ideas from all sisters!

"We are committed to educating ourselves, to preparing as individuals to exert a strong influence for good ... (we) can perform a service by reaching for higher standards of human excellence, and with their various gifts make a better world for us all. This was the goal of our founders."

Mary Kay Dorman Kabler (1974)

Alumna, Sigma chapter

From *The Legacy of Gamma Phi Beta*





Coping with Grief

STRATEGIES IN HEALING

by Megan McDermott | Associate Editor

Losing someone you love is not simple or easy. It's not an afterthought in the morning or a quick cry at night. It's a lengthy journey, one which you may never really get over.

According to Elisabeth Kubler-Ross, M.D., a well-known expert on death and dying, "The most beautiful people we have known are those who have known defeat, known suffering, known struggle, known loss, and have found their way out of the depths. These persons have an appreciation, sensitivity and an understanding of life that fills them with compassions, gentleness, and a deep loving concern. Beautiful people do not just happen."

The most difficult moments you have in life shape your authentic self. All the pain, grief, suffering that comes with bereavement will eventually lead you to a place of acceptance. That's not to say that you will ever really get over your loss; all people grieve according to their own clock. Part of coming to terms with your grief is accepting the new space that exists and recognizing that it cannot be filled by someone or something else.

THE STAGES

People handle grief in five different stages:

1. **Denial** - In this stage it is difficult to come to terms with the loss. You may try to avoid the initial onset of grief.
2. **Pain** - In this stage you may recognize your loss but the pain involved is overwhelming.
3. **Bargaining** - Here you try to negotiate with yourself or with God: 'if I do this, will you take away the loss and pain?'
4. **Depression** - This may be where you have your darkest moments, but endurance and perseverance will lead you through to the fifth stage.
5. **Acceptance** - In this stage you are able to confront your feelings and finally accept them.

According to Elisabeth, "There is no joy without hardship. If not for death, would we appreciate life? If not for hate, would we know the ultimate goal is love? At these moments you can either hold on to negativity and look for blame, or you can choose to heal and keep on loving."

WHAT IS GRIEF?

Elisabeth is a psychiatrist and the author of the groundbreaking "On Death and Dying." She has earned a place as the best-loved and most-respected authority on the subject. Now in her seventies, she has spent most of her life working with the dying. She was born in Zurich, Switzerland, a triplet and graduated medical school at the University of Zurich in 1957. She came to the United States in 1958 after receiving a rotating internship at a community hospital in Long Island, New York. Her books have been translated into more than 25 languages. She is also the recipient of more than 20 honorary doctorates from such schools as the University of Notre Dame, Indiana and Loyola University in Illinois. Elisabeth says, "Grief is a natural process to death and dying. It is not pathological in nature, but rather, is a necessary response to helping heal from the overwhelming sense of loss when a loved one dies."

So, how do you cope with grief? The women at Gamma Phi Beta's Kappa chapter at

the University of Minnesota, Minneapolis know all too well. In late March, they lost Kristin "Kris" Marx, 20, within 72 hours after she was diagnosed with meningococcal meningitis. Kris served as recording secretary and co-chair of continuous open bidding. She lived in the chapter house. According to Ashley Jensen, Chapter President, Kris was the type of person who put her heart and full effort into everything she did. She earned exemplary grades and the chapter's weekly award for most studious member was almost always given to her.

"People are like stained-glass windows. They sparkle and shine when the sun is out, but when the darkness sets in, their true beauty is revealed only if there is a light from within." - Elisabeth Kubler-Ross

THE HUMAN EXPERIENCE

According to Elisabeth it is important to understand grief as part of the human experience. If you are grieving, some things you can do to help yourself include:

■ Attending support groups in your area

Many communities have secular and faith based support groups focused on spousal, parental, and child death.

■ Therapy with a psychologist or other qualified mental health professional

Therapy can be helpful in many ways, especially when combined with a support group.

■ Journaling

Writing is a catharsis for many!

...continued on page 30

REMEMBERING KRIS



Kris Marx (Minnesota)

The women say they've coped with Kris's death by remembering her in a variety of different ways: "We have really supported each other. We laugh, cry, and share our stories about Kris. When someone feels down we give her lots of hugs and shower her with love."

Chapter members made a scrapbook of memories that was presented to Kris's parents at her funeral. It contains a page designed by each member and is filled with pictures, poems, stories and letters to Kris. A copy of that scrapbook sits in the living room and serves as a constant reminder of Kris and what a wonderful person she was.

Kris's parents presented the chapter with a bench and plaque for the front yard, and her life is celebrated weekly in another way. The chapter renamed its weekly study bear award in her honor, and it's now known as the "Kris Bear."

The more than \$1,500 that was raised at the chapter's annual pancake breakfast was donated to Kris's family for funeral expenses.

Ashley Jensen said "Kris made such an



Kris (right) and her big sis Ashley Jensen at a football game.



Kiki Kazinkewicz, Kris Marx, Ashley Jensen and Caitlin Mahoney at the Nacho Feed Philanthropy 2002.

enormous impact on all our lives. She was a wonderful sister and a remarkable person. We keep her memory alive by striving to be the kind of person she was."

Recommended Readings

BOOKS

"On Death and Dying" - Elisabeth Kubler-Ross, M.D.

With simple interviews and conversations, Dr. Kubler-Ross gives you a better understanding of how imminent death affects the patient, the professionals who serve the patient, and the patient's family, bringing hope, solace, and peace of mind to all involved.

"The Five People you Meet in Heaven" - Mitch Albom

A novel that explores the unexpected connections of our lives, and the idea that heaven is more than a place; it's an answer.

"Chicken Soup for the Grieving Soul" - Jack Canfield and Mark Victor Hansen

This soothing bowl of stories is the perfect gift to bring comfort, strength and courage.

WEB SITES

www.elisabethkublerross.com

This is the ultimate resource for people experiencing loss.

www.livingwithloss.com

This site was established to provide grief resources to the many non-funded community support groups on a need basis at no cost through the help of donations.

www.griefnet.org

Grief.org is an Internet community of persons dealing with grief, death and major loss.

www.grieflossrecovery.com

This Web site offers articles, memoirs, and poems about grief and loss.

MERIT ROLL AWARD

Lois Kirchner Abbott (Beta Theta)
Santa Barbara Alumnae Chapter

Pamela Henderson Adams (Sigma)
Greater Kansas City Alumnae Chap.

Donabeth Kerner Downey (Beta Rho)
Pasadena Alumnae Chapter

Kay Wetzel Graham (Beta Alpha)
Santa Barbara Alumnae Chapter

Jane Bacheller Habermann (Tau)
Santa Barbara Alumnae Chapter

Elaine Martin Hamos (Beta Omega)
Cedar Rapids Alumnae Chapter

Karen Handley (Gamma Eta)
Long Beach Alumnae Chapter

Bonnie Lipow Jelinek (Epsilon)
Balboa Harbor Alumnae Chapter

Laura Monkhouse Lace (Alpha Zeta)
Fort Worth & Arlington Alum. Chaps.

Mary Jane Hipp Misthos (Alpha Phi)
Chicago Alumnae Chapter

Mary Lou Noel Pollak (Beta Zeta)
Cleveland West Alumnae Chapter

Alison Webster Sansone (Alpha Epsilon)
Balboa Harbor Alumnae Chapter

Leslie Davis Storr (Alpha Phi)
Santa Barbara Alumnae Chapter

Joyce Myers Sweeney (Alpha Delta)
Hawaii Alumnae Chapter

Susan Weston Viecegli (Beta Delta)
Chicago Northwest Suburban Alumnae Ch.

Gamma Phi
**AW
WIN**

LOYALTY AWARD

Rebecca Boyd Obarski (Omicron)
Chicago Far West Alumnae Chapter

Natalie Meyer McKenzie (Epsilon)
Chicago NW Suburban Alum. Chap.

Roxane Rockwell (Eta)
Diablo Valley Alumnae Chapter

Shelly Simmons Russell (Beta Sigma)
Puget Sound Alumnae Chapter

SERVICE ROLL AWARD

Mary Knaup (Delta Delta)
Greater Orange County Alum. Chap.

Linda Mathiassen Marzullo
(Gamma Eta)
Chicago NW Suburban Alum. Ch.

Christine Gaugler Ritger
(Delta Delta)
Greater Orange County Alum. Ch.

MERIT, LOYALTY & SERVICE AWARD CRITERIA

Merit: Member in good standing with minimum of 15 years of service to the Sorority at the local level and have given financial support to International Gamma Phi Beta within the last five years.

Loyalty: Member in good standing with minimum of seven years of service on the international level, as well as a minimum of seven years of financial support to the Sorority or Foundation.

Service: Minimum of five years at the international level and 15 years total of service at the local and international level. Also a minimum of five years of financial support to the Sorority or the Foundation.

TO ACHIEVE A HIGHER CIRCLE

You must meet the Circle of Excellence Criteria as well as three or more of the following:

- ❖ Make a Founders Day gift to the Sorority.
- ❖ Contribute to the Foundation.
- ❖ Support any local philanthropy - may be a camping program.
- ❖ Send a representative to a Regional Leadership Conference or Convention.
- ❖ Publish/distribute a newsletter/letter informing members of chapter activities.
- ❖ Initiate an alumna initiate within the calendar year.
- ❖ Participate in Alumnae Department Chapter Challenge.
- ❖ Participate in Alumnae Panhellenic.
- ❖ Increase dues paying members by 5% from the previous year.

ORD IERS

CIRCLE OF EXCELLENCE CRITERIA

- ❖ Payment of alumnae dues, postmarked by December 1.
- ❖ Payment of publications and technology fees, postmarked by December 1.
- ❖ Filing of Alumnae Chapter Officers List postmarked by May 1.
- ❖ Filing of Alumnae Chapter Presidents Report postmarked by June 1.
- ❖ Hold four or more alumnae chapter gatherings, events, or activities.
- ❖ Participate in the Gamma Phi Beta Connection Program by assisting a collegiate chapter.

CIRCLE OF EXCELLENCE

Seattle, WA

CARNATION CIRCLE

(All of the Circle of Excellence criteria,
plus three of the criteria above.)

NONE THIS YEAR

FOUNDERS CIRCLE

(This prestigious award is presented to chapters attaining either the Pearl or Diamond Circle of Excellence for the past five consecutive years. Three of the five years must have been Diamond, although Diamond years need not have been consecutive.)

Chicago, IL
Chicago NW Suburban, IL
Cleveland West, OH
Columbia, MO
Dallas, TX
Dayton, OH

Detroit Metro, MI
Greater Fort Myers, FL
Greater Kansas City, MO
Kent, OH
Long Beach, CA
Oklahoma City, OK

Pasadena, CA
Portland, OR
Quad Cities, IA
San Fernando Valley, CA
South Bay, CA
Tulsa, OK

DIAMOND CIRCLE

(All of the Circle of Excellence criteria,
plus five of the criteria listed to the left.)

Arlington, TX
Atlanta Southern Crescent, GA
Balboa Harbor, CA
Beverly Westwood, CA
Chicago, IL
Chicago Far West Suburban, IL
Chicago Northwest Suburban, IL
Cincinnati, OH
Cleveland West, OH
Columbia, MO
Dallas, TX
Dayton, OH
Denver, CO
Detroit Metro, MI
Diablo Valley, CA
Eastern Virginia, VA
Evanston North Shore, IL
Evansville, IN
Fort Collins, CO
Greater Fort Myers, FL
Greater Kansas City, MO
Hawaii, HI
Houston, TX
Jacksonville, FL

Kent, OH
Long Beach, CA
Louisville, KY
Naples, FL
Nashville, TN
North Houston, TX
Northern Virginia, VA
Oklahoma City, OK
Pasadena, CA
Peoria, IL
Philadelphia North, PA
Portland, OR
Puget Sound, WA
Quad Cities, IA
Reno, NV
Sacramento Valley, CA
San Fernando Valley, CA
South Bay, CA
St. Louis, MO
State College, PA
Syracuse, NY
Tallahassee, FL
Tulsa, OK
Wichita, KS

PEARL CIRCLE

(All of the Circle of Excellence criteria,
plus four of the criteria listed to the left.)

Cedar Rapids, IA
Manhattan, KS

LeaderShape

I . N . S . T . I . T . U . T . E .

by Fran Lapham (Kansas) | Director of Leadership Development and Kellie Chesire (Creighton)

In one week I discovered myself.

I put myself in an unfamiliar area with unfamiliar people for what I thought was going to be the longest week of my life. Actually it turned out that this week was one of the best weeks of my life. This amazing week was spent in Champaign, Illinois at a camp known as Leadershape.

I didn't know what to expect at first. I was sure it would be the typical leadership conference - a bunch of outspoken college kids forced to play ridiculous name games like the famous "My name's Kellie and I like kiwi." That, of course, would be followed by several boring lectures on how to develop personal skills and strategies for being the best leader you can be. Icebreaker after icebreaker and lecture after lecture. This is what I expected, but boy was I wrong!

Since the first moment I arrived there I had a feeling this was a different sort of camp. The place was beautiful, the students were personable, and the icebreakers were quite enjoyable. And that was just the first day! The whole week was filled with interactive exercises, discussions and most of all, eye-opening lessons. There was not one activity I walked away from without thinking, "Wow, I never thought of that before." We heard the words possibility, community, and goal quite a bit, but it was the manner in which we learned it that was so unique. They taught us how to be leaders and followers with activities like the ropes course. They also challenged us to work in teams and to be open to others' opinions and thoughts. Each day focused on different aspects of leadership, such as leading with integrity, building relationships, and bringing vision to reality. This ultimately caused us, who were initially complete strangers, to trust each other in order to accomplish a very difficult task. It is an experience I will never forget.

After six days of intense mental and physical challenges you cannot imagine the unbreakable bonds that were formed. It was as if I had known these people my whole life. Every single one of them was



Kellie (left) and her new family of friends gather for one last picture of the week.

a true leader with enough passion and charisma to make an impact in the world. I have never met a group of young adults who impressed and affected me as much as this group of people did. They were mature, intelligent students who had the qualities of being great leaders and devoted friends. We could engage in four-hour conversations, laugh until we cried, work together on a project, and then dance the night away.

After one week this phenomenal group taught me more about myself than anyone else in 20 years of living. They brought out sides of me that I never knew existed. I became aware of hidden talents and underlying passions that allowed me to find the real me.

In my mind, and in my heart, this camp accomplished all of its goals. It gave me a new sense of myself and my abilities as well as the motivation to change the world. This camp not only shaped me as a person but as a leader. Thank you Gamma Phi Beta for making this week possible! ■



After a busy but incredible week, Kellie (right) and friends take a short break.

Gamma Phi Beta LeaderShape Institute Scholarships

"What do vision, relationships, integrity and results have to do with...leadership? You'll find out at The LeaderShape Institute! It's an interactive, energizing and unique experience that builds leadership skills no other program can match. And since 1986, over 13,500 participants have graduated from the program across the country."

- Taken from The LeaderShape Institute Promotional Flyer

Gamma Phi Beta Sorority and the Gamma Phi Beta Foundation are proud to offer scholarships for The LeaderShape Institute at the Allerton Conference Center in Champaign, Illinois. To learn more about The LeaderShape Institute, please visit their website at www.leadershape.org.

Each scholarship is worth \$1,450 for tuition, room and board for one week.

How Do I Apply?

1. Applicants complete the Gamma Phi Beta Application Form and the Essay.
2. Applicants must get a reference from one of their chapter advisors or an international officer.
3. Mail the Application Form and Essay, Reference Form and your Official Transcript to International Headquarters.

Minimum Qualifications for Applicants:

- 3.0 or higher cumulative GPA (must submit official transcript)
- Sophomore or junior status in 2003-04 school year
- In good standing with collegiate chapter and International Gamma Phi Beta

For more information on this amazing opportunity, please visit the Gamma Phi Beta Web site at www.gammaphibeta.org or contact Fran Lapham, Director of Leadership Development, at flapham@hotmail.com.

■ GAMMA PHI BETA ALUMNA TO LEAD THE KANSAS CITY JUNIOR LEAGUE



Katharine Kwo Gerson (Arizona) was named president-elect of the Junior League of Kansas City, Missouri. She will lead one of the nation's oldest and largest Leagues, with roughly 1,500 members.

Katharine took office in May 2003 and will serve in this role through May 2004, when she will take office as the Junior League president until May 2005.

As president-elect, Katharine will prepare for her year as president by sitting in on committee meetings, attending all Board meetings, and heading a committee that is planning the Kansas City League's 90th anniversary celebration. Katharine has a long history of involvement with The League including the following positions: Community Development Team chair, Resource Allocation chair, Director of membership and director of planning. In these positions she made outstanding contributions to the organization by developing a membership retention program, and recreating and redesigning the strategic plan.

Katharine is also an active board member of several organizations including: William Jewell Fine Arts Second Generation, Community Blood Center, and the Children's Center for the Visually Impaired. Katharine earned her B.S. in Marketing from the University of Arizona and received her MBA from the University of Missouri-Kansas City. Previously, she worked for Hallmark Cards, Inc. in product management, marketing/merchandising strategy and retail communications. Currently, Katharine lives in Mission Hills, Kansas with her husband, Jim, and their two children, Jacob and Elizabeth.

■ GAMMA PHI BETA HONORED FOR ACADEMIC EXCELLENCE

Amy Innerbichler (California State/Fullerton) was asked to be a student speaker at her graduation ceremony in June 2003, where she wore a Gamma Phi Beta stole provided by her chapter. Amy graduated summa cum laude with a B.A. in liberal studies, maintaining a 4.0 GPA throughout college. She was also selected the most

outstanding student in the liberal studies program by the faculty. Amy is currently in the teacher credential program at California State University/Fullerton and student teaching.



■ KANSAS SENIOR NAMED TO ALL-AMERICAN SCHOLAR TEAM

Jennifer Bawanan (Kansas) was named, by the National Golf Coaches Association (NGCA), to the 2002-03 All-American Scholar Golf Team.



Becoming an All-American golfer has been a goal of hers that she has now reached for the second year in a row.

To become a member of

the NGCA All-American Scholar Team, athletes must maintain a minimum cumulative GPA of 3.50, or 3.40 for seniors, and compete in at least 66% of a regular season's competitions. Jennifer has a strong record with the University of Kansas' women's golf team. At the end of last season, she ranked second on the team with a stroke average of 79.96, and she ranked first on the university's best finish list after she won the Lady Aztec Invitational in 2003. She has competed in 33 events for KU, five of which were top-20 finishes. Three of those finishes were in the top-10.

PACESETTERS WANTED

Send a letter about yourself or a sister and a photo to: Editor, Gamma Phi Beta Sorority, 12737 E. Euclid Drive, Centennial, CO 80111.

IN LIKE

Billie Mae Willett Wintin (Indiana State '52) put together a memory book as a remembrance and thank you to Ginny and Red Harbison. The foreword reads:

"For your friendship, loyalty and hospitality for years and years and years and years and ... We love you!" - From the Gamma Phi Beta Reunion Gang July 27, 2003.

Here's their story:

Once upon a time, there were two friends. They knew each other because they lived in neighboring counties in Indiana and their moms taught together. Virginia Jarvis graduated from Russellville High School in 1951 and Julia Hazlett graduated from Greene Township High School in Parke County in 1951. Ginny and Judy were both going to Indiana State Teachers College, so they decided to become roommates. What was to become the Harbison Farm Reunion Group really started there and then when these "girls of the fifties" enrolled at Indiana State Teachers College in 1951.

After opting to stay out of sorority rush in the fall, Ginny and Judy pledged Gamma Phi Beta in the spring of 1952. Now they were sisters, with a whole set of new sisters as well.

In June 1954 Ginny married Red (Lowell) Harbison and they moved into a rented farm house in Montgomery County. That summer some of Ginny's former roommates who lived in the area got together one Sunday at Ginny and Red's farm. That was the beginning of the reunion. They did it the next year and the next, including their husbands, and by then it was tradition.

FRIENDS

Through it all, we have been friends, sisters and brothers. We have been there for each other. We've shared happiness and celebrations, sorrow and heartache. We mourn our losses. And we remain: FRIENDS.

In LIKE,

Billie Mae Willett Wintin (Indiana State University)

BETA University of Michigan
1936 Eleanor McCoy Klopp
1950 Janet Buckwalter Saxon

GAMMA University of Wisconsin/Madison
1928 Louise Marston Conklin
1934 Alice Holekamp King
1955 Ann Ageson Kimbrough
1956 Olga Lindfors Buenz

EPSILON Northwestern University
1924 Alice Dibble Ramsey
1928 Helen McClarnan Sanders

ZETA Goucher College
1934 Carol Horton Brookman
1949 Ruth Edelman Howell

ETA University of California/Berkeley
1930 Katherine Hugenin Holbrook
1932 Janice Barham Cramer
1939 Elizabeth Harrington

THETA University of Denver
1924 Marcella Henry Herbert
1943 Dorothy Burkhardt Schorr

KAPPA Univ. of Minnesota/Minneapolis
1954 Dorothy Polivka Van Puffelen

LAMBDA University of Washington
1936 Jean Morrison Grabenhorst
1936 June Morrison Sigler
1943 Betty Eddy May
1971 Maren Lantz Tall

MU Stanford University
1922 Edith Dobbelt Sawyer
1927 Helen Bullard Chappell

NU University of Oregon
1942 Majolaine Lebeck Bethell
1948 Barbara Schultz Richmond

OMICRON University of Illinois
1937 Janet Mosher Rasmeissen

PI University of Nebraska/Lincoln
1948 Virginia Hill LaMay

RHO University of Iowa
1921 Helen Kearney Walsh
1939 Ellamae Demorest Ratcliff
1943 Millicent Righter Popov
1950 Virginia Havercamp Siegel

SIGMA University of Kansas
1938 Lois Wilson Claffin
1949 Suzanne Vanslyke Wilson
1956 Barbara Fugate

PSI University of Oklahoma
1950 Wylodean Cornelison Saxon

OMEGA Iowa State University
1938 Maxine Wood Hagemann

ALPHA ALPHA University of Toronto
1928 Margaret Willoughby Maguire

ALPHA GAMMA University of Nevada/Reno
1934 Ruby Bliss Ruedy

ALPHA DELTA University of Missouri/Columbia
1928 Helen Gaudin Higday
1930 Martha Clay
1935 Marianna Blucher

ALPHA ETA Ohio Wesleyan University
1932 Ruth Burnap Cunningham

ALPHA IOTA University of California/Los Angeles
1926 Marjorie Davidson Houston
1931 Dorothea Montan Sorge
1950 Marjory Schaaf McGrath
1957 Marie Bell Waters

ALPHA LAMBDA University of British Columbia
1932 Myrtle Beatty Beattie
1974 Janet Inman Arbuckle

ALPHA NU Wittenberg University
1948 Margaret Harvey Snow

ALPHA XI Southern Methodist University
1940 Ann Clapp Scott
1959 Linda Allen Brown

ALPHA OMICRON North Dakota State University
1930 Dorothy Stoudt Arnold
1935 Gertrude Anderson Holm

ALPHA PI West Virginia University
1937 Stella Latortie Planck
1959 Martha Sandy Brown

ALPHA PHI Colorado College
1936 Marion Sherwood Steavenson

ALPHA CHI College of William and Mary
1943 Edith McChesney Ker

THANK YOU

The Sorority appreciates the return of a deceased member's badge, when possible, so that it may be preserved in the archives.

ALPHA OMEGA University of Western Ontario
1936 Marion MacLeod
1936 Mary Leitch Mickle
1940 Agnes Stothers Bradbury
1947 Mary Stewart Dudley
1948 Patricia Williams Jones

BETA ALPHA University of Southern California
1940 Harriet McCall Stifel

BETA DELTA Michigan State University
1951 Marie Mix Bell

BETA ZETA Kent State University
1948 Dana Danforth Little

BETA PSI Oklahoma State University
1965 Helen McCrummen Crow

BETA OMEGA Northern Arizona University
1961 Tavia Foster Wallace

GAMMA CHI Southwest Texas State University
1978 Kathy Ahlstrom



DONATIONS

Donations in memory of friends, sisters and loved ones may be sent to the Gamma Phi Beta Foundation at International Headquarters. If you would like a card sent to a family member or friend, please include that address. A member's name will only be listed in this section upon receipt of a confirmed death notice, such as an obituary or a notification from the deceased member's family.

The Gamma Phi Beta Foundation acknowledges the following individuals who contributed to the Foundation in memory of a loved one. This list represents gifts received through October 27, 2003. Memorial Gifts are listed alphabetically with the person being memorialized in **BOLDFACE** type. The name of the person making the gift appears below.

JILL ALLSUP (Florida State '02)
Atlanta Alumnae Chapter

JANET INMAN ARBUCKLE (British Columbia '74)
Ann Bronsing
Sally Erikson Lewis
International Council

LILA M. ARGUE (North Dakota '26)
Bloomington, Indiana Alumnae Chapter
Beta Phi Chapter

PHYLLIS "SHERRY" SWANTON BLACK (USC '50)
L'Cena Rice

MARIE BRADER (Boston '38)
Mr. & Mrs. David F. David

FRANK BUCHANAN (father of Crissy Buchanan Carlisle - Alabama '91)
Diane Goff

WILLIAM J. BUCHMUELLER (brother of Carol Buchmueller Stelmach - Missouri/Columbia '58)
Patricia Henderson

OLGA LINDFORS BUENZ (Wisconsin/Madison '56)
Sally Erikson Lewis

DENNY BUNN (husband of Rosemary Bunn - Florida State '69)
Camille Favre
Natalie Muir
Julie Dunn Cappello

MARGERY E. CAPPS (USC '54)
South Bay Alumnae Chapter
L'Cena Rice

HELEN B. CHAPPELL (Stanford '27)
Brit, Carol, Christine and Gladys Storey

LINDA FARMER CLARK (Kansas '57)
Donna Logan

SUBMISSION REQUIREMENTS

Sorority members and friends may make memorial gifts to the Foundation upon the death of a member or friend of Gamma Phi Beta. The Foundation notifies the family or alumnae chapter of the deceased about the gifts, and lists all memorial gifts in *The Crescent*. Gifts of any size are welcome; the average memorial gift is \$35. An alumna or her family may give to the Foundation to support a specific fund or program, or support unrestricted needs. Please contact the Gamma Phi Beta Foundation at 303.799.1874 for more information.

KATHRYN M. COEN (Kansas '28)
Dale and Deloris Chapman

HELEN BOYER GILL (Oregon State '26)
Barbara Boenzli

WILMA HENDERSON (Oklahoma State '59)
Phyllis Kriegel
Melba Spurrier

GERTRUDE ANDERSON HOLM (North Dakota State '35)
Philip Holm

WILLIAM LLOYD JONES (father of Annabel Jones - Oklahoma '73)
International Council

REVA JOYCE LAUGHLIN (Oklahoma State '61)
Phyllis Kriegel

GARNETTE AND LLOYD MCVEY
Lucile McVey Dunn

EDITH DOBBEL WURDEMAN SAWYER (Stanford '22)
Hawaii Alumnae Chapter

JANET BUCKWALTER SAXON (Michigan '50)
Shila Smith

J. REID SCOTT
Beverly Smith Gosnell

UNRESTRICTED GIFTS

Unrestricted gifts of \$125 or greater have been given in memory of the following members. In honor of these gifts, the Gamma Phi Beta Foundation will inscribe a brick in the Sisterhood Plaza.

EDITH SENNER DICKINSON (Kansas '31)
Margaret and Susan Schnackenberg

HELEN BOYER GILL (Oregon State '26)
Corvallis Alumnae Chapter

DENNY BUNN (husband of Rosemary Stone Bunn - Florida State, '69)
Kristen Heine Slaughter
Jill Zacker Ballew
Jennifer Manza Coughlin
Kristen Smick New
Laureen Zacker Ulloa

RITA HARMER KELLOGG STADDEN (Oregon State '38)
Thea Schreiber

TAVIA FOSTER WALLACE (Northern Arizona '61)
Patricia Blanchard

LEAVE A LEGACY

Remember the Gamma Phi Beta Foundation in your will or estate plans. For information on easy ways to support the organization you love, contact the Foundation office at 303.799.1874 or write us at 12737 E. Euclid Drive, Centennial, CO 80111. You can also get more information about planned giving options at www.gammaphibeta.org/foundation.

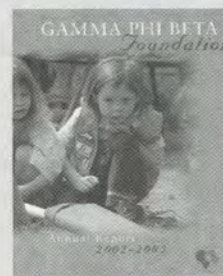
Gamma Phi Beta



Foundation

Building Tomorrow's Leaders

CORRECTIONS: Gamma Phi Beta Foundation Annual Report



We apologize for the following errors in the 2002-03 Annual Report and we thank the careful readers who spotted the mistakes:

- p. 11: Betty Luker Haverfield Scholarship Endowment (mistakenly identified as Betty Luke Haverfield)
- p. 14: Tau Epsilon Pi--single asterisks indicate a founding member; double asterisks indicate a deceased member (the footnote has a misplaced asterisk)
- p. 18: Chicago Alumnae Chapter was omitted from the list of alumnae groups contributing to the Foundation
- p. 23: Beta Epsilon (Miami of Ohio) mistakenly identified as Beta Upsilon
- p. 24: Fran Lapham was omitted from the list of Loyalty Fund donors from Beta Upsilon (Kansas State)

ALL CONTRIBUTIONS TO THE GAMMA PHI BETA FOUNDATION ARE TAX DEDUCTIBLE AS ALLOWED BY LAW.

THE GAMMA PHI BETA FOUNDATION ACKNOWLEDGES THE FOLLOWING INDIVIDUALS WHO CONTRIBUTED TO THE FOUNDATION TO CELEBRATE A SPECIAL EVENT. THIS LIST REPRESENTS GIFTS RECEIVED THROUGH NOVEMBER 11, 2003

In Celebration of the marriage of Peggy Hummer to Keith Meyer. **Corvallis Alumnae Chapter, Barbara Boenzli**

Congratulations to Lauren White Hollis, Alpha Xi, who successfully completed the Honolulu Marathon and is currently training for another one. **Bill Hollis**

In Celebration of all the wonderful sisters it has been my delight to work with in the Financial Department these last twelve years. **Barbara Boenzli**

In Celebration of the very kind and generous hospitality of Joan Braitsch. **Betty Kurkjian**

In Celebration of the marriage of Grace Lin to Bruce MacNeil. **Barbara Hurt-Simmons**

In Celebration of the 60th Wedding Anniversary of Harold and Eleanor Ricards. **Houston Alumnae Chapter**

Congratulations to Kristen Harmon Worden on her new position as Province Collegiate Director. **Long Beach Alumnae Chapter**

Many thanks to Gayle Avant, my sponsor, Sue Zwirz, President, and to the members of the Tallahassee Alumnae Chapter for welcoming me into Gamma Phi Beta. **Annette Green**

To the Houston Alumnae Group - Thanks to each of you for all of your support throughout the extension project at Texas A&M. Your continued support and excitement is greatly appreciated. **The Extension Team**

Congratulations to Nicole Watson Matney and her husband Marc on the birth of their daughter, Mia Isabel, on August 26, 2003. **Rachael Field**

In Celebration of the grandbabies of Bonnie Payne and Marijo Rymer. **L'Cena Rice**

In Celebration of Zeta Theta's New Member Class of Fall 2003. Welcome 21 New Sisters! **Linda S. Babcock**

In Celebration of Delta Psi's New Member Class of Fall 2003 and the 20th Anniversary of the Chapter. **Linda S. Babcock**

To Diane Goff, thanks so much for all of your leadership and support; you are the best! **Jana Nobles**

To Jamie Hampton - Thanks for jumping in on the Texas A&M extension. You are truly a star and I love having you on the extension team! I am grateful that I get to continue to work with you! Thanks for everything. **Jana Nobles**

To Chandra Classen - Thanks so much for all of your hard work on the Texas A&M extension; it truly could not have been done without you. Thank you even more for your friendship and support. I am very thankful to have Gamma Phi bring us together as friends. **Jana Nobles**

To Jessica Jecmen - Thanks for being such an amazing friend and extension team member. I truly appreciate your friendship and your constant support. **Jana Nobles**

To Whitney Lawson - Thanks for helping to make the Texas A&M extension so organized and beautiful. Most of all it was wonderful to get to work on this with such a great friend! Many thanks for your hard work and support! **Jana Nobles**

To the 2003-2004 CLC team - thanks to each of you for your support of the Texas A&M Extension. All of your hard work and efforts are greatly appreciated! Best of luck with the remainder of your travels. **Jana Nobles**

To Susan Nobles - Thanks for being such an amazing mom and support system! I love you and am very grateful we get to share our sorority experiences. **Jana Nobles**

In Celebration of Nicholas Carlisle, new son of Crissy Buchanan Carlisle. **Diane Goff**

HOW TO SUBMIT

Members and friends of Gamma Phi Beta are encouraged to inform the Foundation of special events or the accomplishments of others to be listed in the "In Celebration" section of *The Crescent*. We ask that these announcements be accompanied by a gift. Gifts of any size are welcome; the average "In Celebration" gift is \$25. The Foundation notifies the honorees of "In Celebration" gifts.

SISTERHOOD PLAZA (8.1.03 - 10.31.03)

■ IN RECOGNITION OF THE FOLLOWING IN CELEBRATION GIFTS OF \$125 OR MORE, THE GAMMA PHI BETA FOUNDATION WILL INSCRIBE A BRICK IN THE SISTERHOOD PLAZA.

Cleveland Alumnae Chapter - Anonymous Sister Zeta Omicron Chapter - Anonymous Sister

■ THE PARENTS OF THE FOLLOWING MEMBERS HAVE GIVEN GIFTS OF \$100 AND GREATER IN CELEBRATION OF THEIR DAUGHTERS.

Glenn & Rita for Meejin Annan-Brady - Boston University '00
Cindy Nelson for Danielle Santiago - California State University/Sacramento '01
Loudia for Deedra Allbritton - University of Colorado/Boulder '02
Diane for Heather Baumruk - California Polytech State University '02
Marvin & Kimiko for Vanessa Young - University of Washington '03

The Gamma Phi Beta Foundation received the following wonderful response after sending a 50-year pin to a member:

*Dear Sisters,
My thanks to the Gamma Phi Beta Foundation for this thoughtful recognition, which leads me to ask, where have all these years gone? Recently I visited Colorado Springs where I attended the International Convention in 1951, so more memories brought me smiles! May your leadership continue.*

*Sincerely in IIKE,
M. June Wright Arts
Western Ontario '51*

CONVENTION 2004 - FUN WITH THE GAMMA PHI BETA FOUNDATION

Every two years, more than 600 Gamma Phi Betas from all across North America come together at Convention - by far the largest regular gathering of sisters. At Convention, we conduct Sorority business, are inspired by motivating workshops, rediscover friends and make new ones. For the Gamma Phi Beta Foundation, Convention is our best opportunity to raise funds and make friends to support leadership development for collegians and alumnae, camping for girls, scholarships, fellowships and assistance for sisters-in-need.

Gifts to the Gamma Phi Beta Foundation support ongoing Sorority leadership education programs for collegiate and alumnae members. A gift to the Foundation gives all year, every year! Collegiate and alumnae delegates and guests should prepare now for some exciting "friend and fund-raising" in Chicago.

At Convention, you will have the opportunity to participate in:

■ **Province Race for the Moon** -- We invite every sister at Convention to make a personal tax-deductible gift of **\$10** or more to the Foundation. Your gift will help your Province be the first to reach the moon with 100% participation and/or contribute the highest average per-person gift. Chapters may want to help make sure that all of their Convention attendees are prepared to make an individual Convention gift.

We will honor your Convention gift of **\$100** or more with a special keepsake available only at Convention.

■ **Opportunity Drawings** -- For **\$5** or more, you will have the opportunity to win custom-designed baskets, unique Gamma Phi Beta-related items, and "sure-to-please" gift certificates.

If you would like to contribute an item for the Opportunity Drawing, please contact Phyllis Choot at pchoat@westside66.org or schoaa@gammaphibeta.org.

■ **"Crescent Grams"** -- For a **\$1** gift you can send special messages to sisters during Convention accompanied by popular embroidered heart stickers.

You will learn about other giving opportunities to meet the needs of every sister. There are still spaces available for bricks in the Sisterhood Plaza. For a gift of \$125 or more, you can honor a collegiate or alumnae chapter, a sister, or yourself. We will help you begin a tradition of giving through a Senior Carnation Appeal pledge and share with you the joys and benefits of becoming a member of a Foundation giving society.

Plan to visit the Foundation room (you won't miss it!) to pick up your recognition ribbons when you arrive as you begin three days of unforgettable experiences. You will share cherished traditions with sisters and have fun while providing gifts for the important work of your Foundation.

FOUNDATION EXECUTIVE COMMITTEE SUPPORTS GAMMA PHI BETA NPC DELEGATE, BETTY QUICK

The executive committee of the Foundation Board of Trustees met in Palm Desert October 12 in support of Betty Quick's installation as

NPC Secretary. There were three days of meetings and activities, culminating in the foundation executive committee meeting. A reception was held in honor of Ruth Andrea Seeler, M.D., Grants Chair, who funded the Ruth Andrea Seeler, M.D. Collegiate Leadership Consultant Endowment.

The Board of Trustees has recently made decisions resulting in monies being awarded to the following Sorority programs:

■ The CLC Program: \$62,839 for 2003-04.

■ The CLC Program: \$5,000 for the Spring of 2004 to fund one of the CLC's in the name of Ruth Andrea Seeler, M.D. for 2004-05.

Ruth's endowment will begin providing

funds of approximately \$8,800 in the Spring of '05 for the class of 2005-06.

■ **The LeaderShape Institute:** \$6,300 to cover the cost of tuition and transportation for five collegiate chapter leaders to attend a session of the institute in 2004. In support of this grant, three Trustees pledged \$1,000 each to send collegiate officers to The LeaderShape Institute for a total of \$9,300 for this grant! Thank you to Paula Dean, Verona Lynam, and Magnes Welsh.

■ **Camp Fire USA, National Headquarters:** \$10,000 for the fiscal year 2003-04 to fund support of local Camp Fire USA camping for girls nationwide.

The Foundation continues to be pleased to support the Sorority's programs. Your gifts make this possible. Thank you again!!



Trustees at Executive Committee Meeting in Palm Desert, October 12, 2003.

■ Eating well

Eat healthy foods and take supplements, as advised by a physician.

■ Exercise

Take walks or work out. Jogging, aerobics or a spring-cleaning week will do as well. Physical exertion is a great stress reliever and may afford you some time alone to gather your thoughts in the process.

■ Get enough rest

Give yourself plenty of time to rest. Grief drains your emotional battery and you will need to recharge more often. If you simply don't want to get out of bed in those early stages of grief, then don't!

■ Reading and learning about death-related grief responses

Knowledge helps people regain a sense of control over their experiences and environment and helps reduce feelings of vulnerability.

■ For some, seeking solace in the faith community

Seek the wisdom and comfort that churches, synagogues, temples, mosques, and other places of worship provide.

■ Seek comforting rituals

This include funerals and memorial services, planting gardens and trees, donating to a cause, and other comforting and culturally appropriate ritual

■ Allow emotions

Tears can be healing.

■ Avoid major changes in residence, jobs or marital status

Major changes can be too burdensome during grief. Wait for about one year after the death of a loved one before making any major changes. ■

The Legacy of Laurel Clark

"University of Wisconsin/Madison Gamma Phi Beta sisters mourn the loss of Laurel Blair Salton Clark, who died February 1, 2003 with the unanticipated collapse of NASA's space shuttle Columbia. Laurel was initiated at Gamma Chapter in February 1981. She not only enriched the Sorority through her enthusiasm, guidance, and involvement, but also served to enrich the world with her commitment, devotion, and loyalty. We remember, admire, and celebrate the legacy of Laurel Clark, and pray that her accomplishments will continue to thrive through the sisters of Gamma Chapter, as well as our sisterhood." - Bridget Callahan (Wisconsin/Madison)

OUT & ABOUT

■ ALUMNAE CHAPTER ACTIVITY

The following alumnae chapters or crescent circles are looking for your support to get started and become active again:

- Buffalo, NY Crescent Circle
- Broward County, FL Alumnae Chapter
- Savannah Area, GA Crescent Circle
- Whittier, CA Crescent Circle

Do you live nearby? Are you looking for opportunities to network and make new friends? Are you ready to get involved? If interested, contact Vonda Bryant at 360.687.7830 or 4HeelsNJC@comcast.net.

■ ABSOLUTELY INCREDIBLE KID DAY® MARCH 18, 2004

Each March, Gamma Phi Beta members participate in *Absolutely Incredible Kids Day*®, encouraging their sisters, people in their communities and on college campuses to write a letter of encouragement to an incredible girl.

WHAT'S SO INCREDIBLE?

Girls. They're absolutely incredible. We encourage all members to let girls know just

how valuable they are.

Write a letter of love and support to the girls in your life.

It takes a few minutes, and the positive impact can last a lifetime.

Does your chapter need help finding a group of girls that need letters? Contact your local Camp Fire USA council. They can give you a list of girls that would love to receive a special letter. For more information on how to make a girl's day truly incredible, visit the Camp Fire USA's *Absolutely Incredible Kid Day*® Web site at: http://www.campfireusa.org/a_i_kid_day/main-page.html



■ ARE YOU RELOCATING?

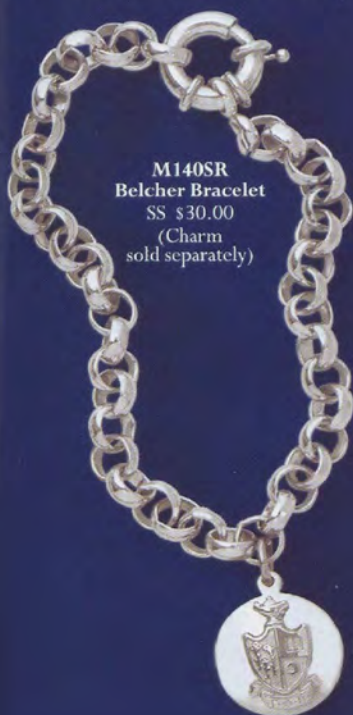
There are sisters in the SisterLink Network that would love to assist you in finding an apartment, locating the best neighborhoods & schools, and some have even offered their homes for a night's stay if you are in the area! Just log into www.gammaphibeta.org, then click on "SisterLink" in the menu box.

Do you have something to say? Do you have a passion for your career?

The Crescent is looking for experienced writers who would like to explore writing for the magazine. Write about your field or submit ideas for possible upcoming features. If you're not a writer, perhaps you have an amazing life story to tell.

We're waiting to hear from you! Share your experiences, share your passions and share your ideas. We know you have a story to share. Please send your submissions to: Megan McDermott, Associate Editor, *The Crescent*, 12737 East Euclid Drive, Centennial, CO 80111.

Start 2004 in Style with Gamma Phi Beta Jewels!



M140SR
Belcher Bracelet
SS \$30.00
(Charm
sold separately)



2030
Founders Ring
SS w/Sapphires
\$149.00



1000
Swirl Ring
SS w/CZ Stones
\$99.00
Also available with
3 Sapphires or 3 Rubies
for \$99.00



3440
Sisterhood Ring
SS w/10K Letters
\$85.00



L2647
Lavalier
w/18" Bead Chain
SS \$40.00
Lavalier only
\$20.00



2649
Crescent Necklace
w/18" Twisted Rope
Chain
SS \$45.00
Crescent Charm only
\$25.00

2606
Polished Charm
w/Crest
SS \$38.00



104
Full Crown Pearl
Badge, 10K*



9006
Crest Guard
10K \$41.00

President
Dangle
10K \$18.00

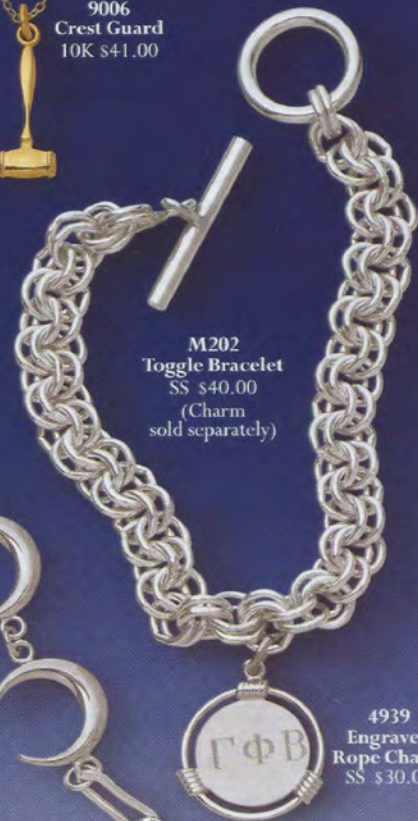


M304
Belcher Bracelet
SS \$55.00
(Charm
sold separately)



1940A
Founders Charm
SS \$25.00

4894
Crescent Bracelet
SS \$49.00



M202
Toggle Bracelet
SS \$40.00
(Charm
sold separately)



Badge Ring
SS \$85.00 10K \$145.25
(Badge sold separately)

*Other jewelry pieces available!
Click on www.mastersofdesign.com
to view a full selection of exclusive
Gamma Phi Beta jewelry.

*Order by Phone: **1.800.542.3728**

Friendly personal assistance Monday thru Friday,
8:00am to 5:00pm EDT.

Ask for your free collection brochure.

*PLEASE NOTE: All official badges must be ordered directly through IH.
We accept Visa, Mastercard & American Express, as well as personal and chapter checks.

Masters
OF DESIGN

P.O. Box 2719 Attleboro Falls, MA 02763-0896

www.mastersofdesign.com

Official Jeweler to GAMMA PHI BETA

This "interchangeable" badge ring allows you the versatility of wearing your badge as a ring! It's easy to order! We custom-fit your badge to the ring so that it fits the ring properly. Please send us your badge (be sure to send via UPS or postal insured), along with this ad and payment. Be sure to include ring size and please allow approximately 6-8 weeks for shipment to go forward.

Our Time to Shine



Gamma Phi Beta Convention

June 23-27, 2004 ★ Marriott's Lincolnshire Resort, Chicago

Our Time to Shine!

Convention 2004 will bring together Gamma Phi Beta members of all ages and backgrounds for an incredible celebration of our Sorority values.



Marriott's Lincolnshire Resort



AT CONVENTION, Gamma Phis will receive extraordinary leadership training. Sessions will focus on unlocking the unlimited potential within each member and striving to develop energetic and unified chapters where personal and group accountability is valued.

DELEGATES WILL PARTICIPATE in the deliberation and decision-making of our Sorority in the business sessions. All members will enjoy the fun and energy of the sisterhood that shines through the entire Convention.

MARRIOTT'S LINCOLNSHIRE RESORT is within tourism range of one of the greatest cities in the world, Chicago! Gamma Phis who come in early or stay after Convention will have a myriad of opportunities to sample the culture, explore the architecture and visit the Magnificent Mile of shopping on North Michigan Avenue. Sisters may also have the opportunity to make a trip to one of the icons of baseball, Wrigley Field.

WHATEVER YOUR INTEREST, Chicago has it, and your Chicagoland Gamma Phi Beta sisters are eager to share it with you!

See you in Chicago!

Chicago area Gamma Phis interested in learning more about Convention volunteer opportunities are encouraged to visit www.Chicagogammaphibeta.org.

Registration Information will be available February 1.

To request a registration packet, contact International Headquarters at 303.799.1874, send an e-mail to Convention@gammaphibeta.org with your complete name and address, or download a copy from the Gamma Phi Beta Web site at www.gammaphibeta.org.

All Alumnae Chapters, Collegiate Chapters and Crescent Circles will receive registration packets in February through the mail.

Registration Fees

EARLY REGISTRATION BY APRIL 26, 2004

Collegiate Chapter Delegates & Chapter Advisors

| | |
|----------------------------|-------------------|
| Registration Fee & Meals | \$560 |
| Good Standing Contribution | -\$100 |
| | \$460 |

Other Attendees

| | |
|--------------------------|-------|
| Registration Fee & Meals | \$560 |
|--------------------------|-------|

REGULAR REGISTRATION AFTER APRIL 26, 2004

Collegiate Chapter Delegates and Chapter Advisors

| | |
|----------------------------|-------------------|
| Registration Fee & Meals | \$610 |
| Good Standing Contribution | -\$100 |
| | \$510 |

Other Attendees

| | |
|--------------------------|-------|
| Registration Fee & Meals | \$610 |
|--------------------------|-------|

Hotel Rates

\$104 per night, plus 11% tax.
This rate is good two days prior to
Convention and two days after.