

THE *Summer* 2003

# CRESCENT

of GAMMA PHI BETA





## FEATURES



PAGE 8



PAGE 9



PAGE 18



PAGE 22

### WE WANT TO HEAR FROM YOU!

We welcome your feedback, comments and suggestions. Send them to: The Crescent Editor, Gamma Phi Beta Sorority, 12737 E. Euclid Drive, Centennial, CO 80111. You can also e-mail your comments to [TheCrescent@gammaphibeta.org](mailto:TheCrescent@gammaphibeta.org) or fax them to 303.799.1876.

6

### LOOKING FOR A JOB IS A FULL-TIME JOB!

Creative tips and ideas to help you shine in your job search

by Denise Hopkins (Idaho)

17

### PH: CONNECTING MEMBERS TO RESOURCES

Who are we and how can we help you?

by Rebecca Beardslee (Denver) | Director of Communications

18

### COMPLETE SISTER PROGRAM

Learn more about the new member education section

of Gamma Phi Beta's newest program

by Angie Dimit (Illinois) | New Member Program Coordinator

20

### ΓΦΒ & TEXAS A&M: BUILDING ON TRADITION

Find out more about Gamma Phi Beta's upcoming extension plans

by Angela White (Colorado State) | Communications Coordinator

21

### ZETA PI INSTALLATION

Meet the women of Gamma Phi Beta's newest chapter

by Kristy M. Keefe (Wisconsin/Oshkosh) | 2002-2003 Collegiate Leadership Consultant

22

### THE ADVENTURES OF A GAMMA PHI BETA

Gamma Phi Betas share their adventurist spirit

by Angela White (Colorado State) | Communications Coordinator

30

### A TRIBUTE TO CAMP SECHLT

Gamma Phi Beta's Camp Sechelt is now a special memory for the Sorority, but it leaves behind a lasting legacy.

by Lottie Nilsen | Outgoing Editor



IN EVERY ISSUE

4

**PRESIDENT'S PERCEPTION**

by Vicki Carlson Read (Arizona) | International President

5

**SPOTLIGHT ON...**

Overcoming Obstacles - Chiara Benitez

by Angela White (Colorado State) | Communications Coordinator

8

**NPC UPDATE**

Things you should know about the National Panhellenic Conference

by Elizabeth "Betty" Ahlemeyer Quick (Indiana) | NPC Delegate

9

**MEMBER NEWS**

The latest news on our collegiate and alumnae chapters

25

**PACESETTERS | IN LIKE**

What some notable sisters are up to now

26

**IN MEMORY | MEMORIAL GIFTS**

Remembering our sisters

28

**IN CELEBRATION**

Recognizing a few of our special sisters

29

**FOUNDATION NEWS**

Who we are and what we support

THE Summer 2003

**CRESCENT**

OF GAMMA PHI BETA

VOLUME 103 NUMBER 3

**INTERNATIONAL HEADQUARTERS**

12737 E. Euclid Drive, Centennial, CO 80111

Phone: 303.799.1874 | Fax: 303.799.1876

E-mail: ih@gammaphibeta.org | Internet: www.gammaphibeta.org

**GAMMA PHI BETA FOUNDERS**

E. Adeline Curtis Frances E. Haven Moss

Helen M. Dodge Ferguson Mary A. Bingham Willoughby

**INTERNATIONAL COUNCIL**

International President Vicki Carlson Read

Alumnae Vice President Sandra Biegelman Burba

Collegiate Vice President Linda Daniel Johnson

Financial Vice President Annabel Jones

Member-at-Large Krista Spaninger Davis

Membership Vice President Diane Soderstrom Goff

NPC Delegate Elizabeth "Betty" Ahlemeyer Quick

**SORORITY MISSION STATEMENT**

Our mission is to foster a nurturing environment that provides women the opportunity to achieve their potential through life-long commitment to intellectual growth, individual worth and service to humanity.

**CRESCENT STAFF**

Outgoing Editor Lottie Nilsen

Graphic Designer Carrie Curtiss

Communications Coordinator Angela White

Director of Communications Rebecca A. Beardslee

Business Manager Karen Blackman

Consultant Kris Brandt Riske

**MAGAZINE SUBMISSION DEADLINE**

Spring issue January 1

Summer issue April 1

Fall issue July 1

Winter issue October 1

**CONTACT US**

Mail 12737 E. Euclid Drive, Centennial, CO 80111

E-mail TheCrescent@gammaphibeta.org

Call 303.799.1874

Fax 303.799.1876

Visit www.gammaphibeta.org

**ADDRESS CHANGES**

E-mail your old and new information to address@gammaphibeta.org, call 303.799.1874, fax 303.799.1876, or mail to Address Changes, Gamma Phi Beta Sorority, 12737 E. Euclid Drive, Centennial, CO 80111.

**© 2003 GAMMA PHI BETA SORORITY**

The Crescent (USPS 137620) is published quarterly.

Periodicals postage paid at Centennial, CO and at additional mailing offices. Subscription price is \$6.00.

Produced in the U.S.A. by Maury Boyd and Associates.

POSTMASTER: Send address changes to The Crescent, Gamma Phi Beta Sorority, 12737 E. Euclid Drive, Centennial, CO 80111.





## OUR CAMPING



It has been our belief  
that in the camping  
experience, girls find  
the consistent  
environmental  
structure that  
contributes to  
a healthy  
development ...



## TRADITION CONTINUES

■ **THE BEAMS** of a crescent moon glistened on the surface of the lake as a symphony of laughter engulfed the evening around the bonfire. Friendships grew like the flames, to great heights, as the dreams and untold tales of little girls unfolded ... and the ants arrived, marching one by one to the tune of one more song around the campfire. ■ **IF YOU BELIEVE** the magic in your heart, you can visualize that very night at Camp Gamma Phi Beta or any camp throughout the world - even your own camping experience. Some memories are simply so precious; they will never be forgotten. ■ **AS AN EXPRESSION** of our philanthropy mission, Gamma Phi Beta has been providing successful camping experiences for girls with special needs in the United States and Canada for over 70 years. A 2000 task force concluded its study of our philanthropy and its future direction, and reaffirmed our commitment by clarifying our mission: "to provide experiences and resources that build spiritual, mental and social resiliency in girls." A primary means by which this mission is fulfilled is through camping, as well as a variety of other complementary philanthropic programs through our individual chapters. ■ **IT HAS BEEN OUR BELIEF** that in the camping experience, girls find the consistent environmental structure that contributes to a healthy development - experiences that invoke both good personal behavior, as well as those that build leadership characteristics essential for creating a positive impact on others. As one past camper and counselor stated: "Camp has been a growing experience. I have learned the value of life, what it means to have fun and how to work and live with others around me. Camp and the friends I made will always be close to my heart." - Tina Campbell, *The Crescent*, Summer 1982. ■ **TODAY, WE ARE CONTINUING** our great tradition of "camping for girls." Although, Gamma Phi Beta no longer owns and operates its own camps, we have created a means by which our legacy to camping can flourish and expand throughout the country, finally establishing our brand of supporting camping for girls. The 2002 Convention delegates voted to establish a collaboration with Camp Fire USA, a national non-profit youth organization with the mission "to build caring confident youth and future leaders." Their mission is fulfilled through various settings, including camps, throughout the United States. To learn more about Camp Fire USA, you may visit their Web site at [www.campfireusa.org](http://www.campfireusa.org). ■ **AS A SORORITY MEMBER**, your continued support is vital to the successful realization of our philanthropy mission. The vehicle to make this happen is our Gamma Phi Beta Foundation, which can distribute your gift to Camp Fire USA, or to any local camping program which your chapter may already support. ■ **EACH OF US CAN SHARE** the opportunity to enhance the philanthropic image of our Sorority and simultaneously make a difference in the lives of young girls who could someday be our sisters as well as leaders of our country. ■ **THANK YOU** for your commitment and support to this great tradition.

*Vicki C. Read*

Vicki Carlson Read  
International President



by Angela White (Colorado State) | Communications Coordinator

## OVERCOMING OBSTACLES

*"Go confidently in the direction of your dreams.  
Live the life you have imagined."*

- Henry David Thoreau

■ **IN 1991**, Chiara Benitez left her family in Puerto Rico and arrived at the Florida Institute of Technology. Her English was very poor. To improve her English, she joined the Delta Sigma chapter of Gamma Phi Beta and gained more than she ever imagined ... friends for life!

Surrounded by her English speaking classmates, Chiara felt, with her Puerto Rican accent, alienated by language barriers. Giving speeches to large groups or having conversations with people in English continued as a tremendous challenge for her.

The embracing bonds of Gamma Phi Beta first touched Chiara's life when she was asked to join the Delta Sigma women in a scavenger hunt. She had never heard of this before, but decided to try it anyway. In 1992, she became an initiated member of the Sorority. Her Gamma Phi Beta friends and sisters helped her

develop her second language, English. Learning English opened a world of adventure and special memories she would not have experienced otherwise.

Taking risks such as bungee jumping and skydiving are daring activities; however, Chiara embraces life and is not afraid to face challenges that stand in her way. Her first skydiving trip illustrates Chiara's approach to confronting her fears.

Uncertain of the outcome, she looked out of an airplane 13,500 feet above the ground and jumped in a pirouette, moving rapidly towards the earth. What seemed frightening before was now a beautiful adventure.

After operating her parachute for a successful jump, Chiara glided, observing the mouth of the river joining the ocean, as she steered her parachute to landing.

With undaunted determination and the constant support of her sisters, she has achieved her goals and experienced life to its fullest.

Along the way of accomplishing her goal of improving her conversational English, Chiara gained the positive aspects of lifelong friendships. She has overcome her fear of speaking in front of people. She graduated with her BS in space sciences and worked as a launch tracking analyst on Cape Canaveral Air Force Station. Currently, she works with two of her Gamma



Chiara Benitez (Florida Institute of Technology)

Phi Beta sisters as a systems engineer in RMA Trends and Analysis for the Spacelift Range System Contract.

Chiara is a charter member of the Space Coast Alumnae Chapter. She is an active

participant in a bi-monthly social group of Hispanic, Latin and Spanish women, all from different countries. She enjoys water sports, bicycling, dancing, watching movies, attending plays and traveling. Passionate to see the world, she collects a variety of art from her travels. She is from a family of chefs and is an avid connoisseur of food and wine. She will try anything unique to the palate.

Chiara believes: "La vida es corta y tienes que hacer/ver/aprender lo mas que se pueda - Life is short and you have to do, see and learn as much as you can." ■



Chiara and Coleen Taylor (Florida Institute of Technology) at their company Christmas party.



Chiara is an avid skydiver, pictured here with her instructor above the Florida east coast.

## DIRECTORY OF SERVICES

### IN-HOUSE SERVICES

Address or Name Change	Call: 303.799.1874, Fax: 303.799.1876 or e-mail: <a href="mailto:Address@gammaphibeta.org">Address@gammaphibeta.org</a>
SisterLink, Career & Networking Service	Call: 303.799.1874 or e-mail: <a href="mailto:SisterLink@gammaphibeta.org">SisterLink@gammaphibeta.org</a>
Supply Requests	e-mail: <a href="mailto:Orders@gammaphibeta.org">Orders@gammaphibeta.org</a>
Volunteer Opportunities	e-mail: <a href="mailto:Volunteer@gammaphibeta.org">Volunteer@gammaphibeta.org</a>



# LOOKING FOR A JOB

by Denise Hopkins (Idaho)

When I was laid off from my job on February 20, 2003, I thought, "How could I not find a job after two and a half years of technical recruiting, interviewing hundreds of people, and sifting through stacks of awful resumes?" I thought I was an expert in writing resumes and interviewing. I was wrong!

It quickly became apparent that my job search skills needed to be updated. I needed to find a way to stand out to employers when there were 1,100 former co-workers in Boise, ID seeking employment opportunities!

I will tell you how I did it ...

Whether you are right out of college or an established professional, there are techniques that can help you launch your job search, help maintain a positive attitude and assist you in landing a job!

## 1. Understand that finding a job IS your full time job.

- Establish a consistent daily schedule of job search activities, including visiting Internet sites, scanning newspapers for current industry news, attending free workshops and exercising.

- Commit to this schedule by waking up early and preparing yourself each day as if you were going to work.

- You will stand out among others with your professional look and aggressive schedule.

## 2. Take inventory of yourself.

- Identify "employable" accomplishments you have achieved on the job, in volunteer organizations or in school.

- Break these accomplishments into three components:

- 1) The goal, problem or situation that was at hand.
- 2) The actions you took to manage it.
- 3) The result of your actions.

- Incorporate these components in your resume as well as your interview responses.

## 10 METROPOLITAN AREAS WITH THE FASTEST JOB GROWTH

(Projected Growth through Year 2025)

1. Atlanta
2. Phoenix
3. Houston
4. Dallas
5. Washington D.C. & Los Angeles
6. San Diego
7. Seattle
8. Orange County
9. Tampa
10. Orlando

Source: U.S. Department of Labor, Bureau of Labor Statistics

## 3. Develop your 90-second commercial.

- If riding in an elevator with a recruiter, what aspects of your background would you highlight?

- Include unique information to make a stronger, lasting impression.

- Practice your commercial in front of a mirror so the words flow naturally.

- Your smooth delivery will set you apart from others when you use it at career fairs, seminars and other opportunities.

For example, "My name is Denise Hopkins. I'm seeking a position as an IT business analyst. I have six years experience in the field and I am known for my diplomacy, and my ability to meet deadlines and resolve problems. Outside of work I enjoy tap dancing and hiking. Do you know anyone looking for someone with my background?"

## 4. Order or print your own business cards.

- Distribute these cards at conferences, career fairs and the job service.

- Print them yourself or order online. For \$15, I received 250 business cards with a 2-color design.

- If you have no current job title, replace it with your degree(s) information or career choice (i.e. customer service specialist).

- You will appear more polished and prepared than other job seekers who are frantically searching for a pen and paper!

## 5. Massage your resumes. Yes, that is plural "resumes."

- Everyone who critiques your resume will have a different opinion. You won't be able to accommodate all the opinions, so choose your own style. Change it later if you don't receive responses.

HOWEVER ...

- Resumes need to be job-specific and catered to the open position.

- To find appropriate content and buzz words to include for particular job types, visit [www.acinet.org](http://www.acinet.org), and then click on "What it takes."



# SAFULLTIMEJOB

## WOMEN IN THE WORKFORCE

- By the year 2005, the national workforce will number 151 million. Women will make up 48% of the total work force.
- The careers in highest demand will be managerial, technical, and professional - all requiring a high level of education.

Source: U.S. Department of Labor, Bureau of Labor Statistics

## 6. Visit your local job service, a benefit usually offered by your state's department of labor to aid citizens in finding employment.

- To find your local job service, visit [www.jobservice.us/id-state.htm](http://www.jobservice.us/id-state.htm).
- Resume workshops, special re-training funds, interview workshops, professional contacts, job search advice, resume proofing, Internet access, fax machines, laser printers, computers, resume paper and matching envelopes ... all of this can be found at your local job service. Need I say more?

## 7. Network.

- Form a job search support group, and meet weekly to discuss techniques, job search progress, resume suggestions and interview techniques.
- Call and e-mail friends and family. Explain your job search plan and ask them for contacts that might provide you with career or job leads.

- Attend free events sponsored by your local chamber of commerce, job service, leads groups or small business centers. Distribute business cards and present your 90-second commercials at these events.

## 8. Determine what you want to negotiate BEFORE you interview.

- Determine the salary range for your field or position ([www.acinet.org](http://www.acinet.org) or the Department of Labor Web sites [www.jobservice.us/id-state.htm](http://www.jobservice.us/id-state.htm)).
- Determine the priorities for your next position, including money, flexible schedule, time off and work environment.

## BEST JOBS FOR THE 21ST CENTURY

The following fields are associated with healthy industries expected to continue growing at a faster than average rate through the year 2010.

### Healthcare

administration, nursing, physical health, dentistry, mental health

### Technology

biotechnology, engineering, information technology

### Business and Professional Services

financial services (banking, securities, accounting, insurance), human resources, law, communications, public relations, sales and marketing, food services

### Public Service

social services, education, state and local government

- If you are not offered what you want, what will you ask for instead?

- You can negotiate in this economy. My counter offer was accepted, and yours could be too if you ask. Even if they say no, you still have a job in hand.

Good luck with your job search endeavors. Visualize the outcome you want, recite a daily affirmation and pray for guidance, and it WILL happen for you!

.....  
*Denise Hopkins (Idaho) is an IT business analyst consultant. She received her MBA from Northwest Nazarene University, and has worked professionally in the human resources and informational technology industries. Denise is married and she enjoys concerts, tap dancing, traveling, and is a true crime and history documentary buff. She is an advisor for Zeta Xi chapter, and is a SisterLink contact. Of her involvement in SisterLink she said, "I love to offer free advice to anyone who asks!" ■*

**\$12/HR.**  
1st & 2nd shift. Some Fork lift adv. To lead. MH Ser. 303-650-0332

Warehouse Drivers/Warehouse

**WELDER/WAREHOUSE BACKUP DRIVER DOORS-FRAMES**

**1251 Work At Home**

Investment We Need Help Work From Home Int to Building PTFT Training From Home

PCP. lic. pros. Medic-aid cert. 303-741-1314



by Elizabeth "Betty" Ahlemeyer Quick (Indiana) | NPC Delegate

## ■ CONGRESSIONAL RECEPTION

On April 26, representatives of the National Panhellenic Conference (NPC), North-American Interfraternity Conference (NIC) and the National PanHellenic Council (NPHC) member groups met with members of Congress to:

- provide information about Greek life
- preserve the existing rights of fraternities and sororities
- advocate parity in governmental regulations and support collegiate safety issues
- re-establish a permanent sorority and fraternity presence in Washington
- promote passage of a bill, H.R. 1523

H.R. 1523 would amend the Internal Revenue Code of 1986 to allow fraternal educational foundations to make grants to chapters in the same way that a college or university

could make grants to students. If passed, the amendment would allow the Gamma Phi Beta Foundation to grant funds to house corporation boards for many purposes, including building improvements.

The day culminated with a reception at which awards were presented to several senators and representatives, including Representative Jennifer Dunn (Washington), who was honored for her congressional service.

Gamma Phi Beta was represented by International President Vicki Carlson Read (Arizona), and NPC Delegate Betty Ahlemeyer Quick (Indiana). Other Gamma Phi Betas in attendance were Krista Ritacco (Colorado),

Calli Daly (Idaho), Marianne Upton (Nebraska/Lincoln), Jennifer Swenson (Kansas), Molly Mueller (Kansas), Megan Mooney (Arizona) and Rebecca Rudman (California Polytechnic and California/Riverside).

## ■ POSITIVE GREEK ACTIVITIES RECOGNIZED

What is the Gamma Phi Beta Panhellenic Award? Established by Gamma Phi Beta in 1990, it recognizes College Panhellenics that develop and implement a program that positively enhances the Greek community on



Vicki Read, ΓΦΒ International President; Jennifer Dunn, U.S. Congresswoman, Washington 4th District; and Betty Quick, NPC Delegate.

recognized for its collaboration with other Greek coordinating councils on the Greek Week Community Service Activity for the Peoria, Illinois Park District.

**NGLA** - Duquesne University Panhellenic recognized for its work with the Interfraternity Council (IFC) sponsoring Greek Week Programs and Film Project that raised funds for the Pittsburgh Children's Homeless Fund.

**SEPC** - University of Mississippi Panhellenic cooperated with other Greek coordinating councils to present the Greek Show, a weekly phone in radio show broadcast for 30 minutes each week. Topics ranged from explanations about sorority and fraternity life to debunking diversity myths.

**SGLC** - Southern Methodist University

Panhellenic developed a comprehensive recruitment counselor initiative to educate potential new members and their families about SMU and Greek life, while assisting the potential new member's transition from high school to college.

**WRGLA** - University of Oregon Panhellenic recognized for cooperating with IFC to sponsor a Volunteer Fair. The purpose of the Volunteer Fair is to encourage all students - not only members of Greek organizations - to volunteer within the local community.

Each Panhellenic received a plaque and \$250.

Applications for the 2003-2004 award can be found on the Gamma Phi Beta Web site, [www.gammaphibeta.org](http://www.gammaphibeta.org), and in the awards packet sent by each Greek conference.



Gamma Phi Betas in attendance at the WRGLC.



University of Mississippi sisters won the ΓΦΒ Panhellenic Award at SEPC.



Gamma Phi Betas in attendance at the Congressional Reception.

campus and in the local community.

Where is it presented? The Gamma Phi Beta Panhellenic Award is presented at five Regional Greek/Panhellenic Conferences - Mid-America Greek Council Association (MGCA), Northeast Greek Leadership Association (NGLA), Southeastern Panhellenic Conference (SEPC), Southern Greek Leadership Conference (SGLC) and Western Regional Greek Leadership Association (WRGLA).

**The 2002-2003 Winners are:**

**MGCA** - Bradley University Panhellenic



Gamma Phi Betas in attendance at SEPC.





**GAMMA PHI BETA COLLEGIATE AND ALUMNAE CHAPTERS ARE HAVING FUN, HELPING THEIR COMMUNITIES AND IMPACTING THE WORLD AROUND THEM.**

## ■ ALPHA SYRACUSE

Alpha chapter nearly doubled in size after spring recruitment, which added 37 new members. Members celebrated Bid Day at the Tennity Ice Skating Pavilion, a campus rink that was built thanks to the generosity of Marilyn Smith Tennity (Syracuse) and her husband. The chapter participated in Sigma Alpha Mu's Studio 54 philanthropy event, which included a fashion show, karaoke and skit night, and they also sent Valentines to a local women's shelter.

## ■ BETA MICHIGAN

University of Michigan collegians held a retreat at one member's lake home. The event included lots of bonding, encouragement and praise, and was topped off with a karaoke sing-along.

## ■ EPSILON NORTHWESTERN

Recruitment at Northwestern featured sisterhood and a new Informals theme based on the

city of Chicago. Net result: 41 new members. On campus, the chapter is focusing on a public relations campaign.

## ■ ETA CALIFORNIA/BERKELEY

Eta Chapter is involved in a new philanthropy - Princess Projects of San Francisco. It benefits underprivileged high school girls unable to afford the cost of attending prom by providing donated dresses, makeup tips and makeovers. Eta also placed second in a fraternity's fundraiser for the Children's AIDS foundation; they sold daffodils.

## ■ THETA DENVER

The women of Theta chapter initiated 28 new members, and held philanthropic and social events during the winter and spring semesters. Many women enjoyed spending spring break



Northern Arizona sisters have lunch at the Regional Leadership Conference in Irvine.

together when they were snowed in at the chapter house, thanks to the four-feet of snow that hit Denver at the end of March. The chapter finished spring quarter with their annual See-Saw-A-Thon.

## ■ LAMBDA WASHINGTON

Lambda chapter celebrated its 100th birthday in 2003, and is the largest chapter on campus, with 117 members. The house has been



Gamma Phi Beta exec. board at the University of San Diego.



## COLLEGIANS



Bid Day 2003 at the University of San Diego.

remodeled with new carpeting, upholstery and a wireless Ethernet system. Chapter members established an in-house recycling program to decrease the use of non-biodegradable products, which they hope to expand to include the Greek system. They also bowled and ate pizza at a sisterhood event.

### ■ XI IDAHO

Upon their return from winter vacation, the women of Xi chapter were proud to learn they had the highest GPA, 3.26, of all of the women's living groups on campus. The chapter's goal is to earn a 3.36 GPA. Chapter members continue to volunteer at the local food bank

### ■ OMEGA IOWA STATE

During spring semester, the sisters at Iowa State hosted Mother's Weekend. The women were serenaded, and a brunch and silent auction were held, raising over \$1,300. The chapter held a March Madness basketball tournament to help benefit the Bliss Cancer Center and they participated in Greek Week activities including tournaments, volunteering and more. The chapter was honored for the highest sorority GPA at the academic recognition ceremony.

### ■ ALPHA ALPHA TORONTO

Sisters at the University of Toronto welcomed four new members, bringing chapter total to 29. Last spring they bonded at a new member retreat; raised more than \$500 with a candy sale and pancake breakfast for Camp Trillium, a local camp for children with cancer; held a food and clothing drive; and hosted the Carnation Ball and Senior Celebration.

### ■ ALPHA BETA NORTH DAKOTA

The women of the Alpha Beta chapter welcomed three new members last spring. They held a

spring retreat and a parent's dinner-dance formal, participated in Greek philanthropies and held their annual Mega Spegas dinner fundraiser for camping.



Sisters at Cal State/Fullerton

### ■ ALPHA NU WITTENBERG

The Wittenberg chapter welcomed 22 new sisters after formal rush in January, and hosted a spaghetti dinner philanthropy fundraiser.

### ■ ALPHA XI SOUTHERN METHODIST

Alpha Xi chapter welcomed 34 women on Bid Day, and celebrated by playing broomball in downtown



Members at Purdue at a sisterhood.

Dallas. The chapter held mixers, formals and other events last spring, and made plans for its fall softball tournament philanthropy.

### ■ ALPHA UPSILON PENN STATE

The Penn State chapter recruited 10 new members in January, the same month that Diana Filo began her term as Panhellenic

financial VP. In February, six Gamma Phi Betas danced and served as committee members and captains for Penn State's 31st 48-hour Dance Marathon, which raised \$3.6 million for the Four Diamonds Fund. The chapter joined forces with Phi Kappa Theta to sponsor a football tournament; 15 teams competed. Other spring semester activities included the Crush Party, Greek Week and the Crescent Moon Ball.

### ■ ALPHA CHI WILLIAM & MARY

Alpha Chi chapter officers attended Regional Leadership Conference in Atlanta, the chapter held a fiesta themed sisterhood retreat in March and ended the semester with a formal. The women joined other Greek organizations in supporting philanthropies and causes on campus, including Sexual Assault Awareness Week; Up Till Dawn, which benefits St. Jude's, and Love Your Body Week.

### ■ BETA ALPHA SOUTHERN CALIFORNIA

The sisters at the University of Southern California held their annual philanthropy, Gamma Games, in March, where they raised more than \$2,000 in donations to benefit the children of Troy Camp. Many sisters represented the chapter at the Regional Leadership Conference in Irvine, where they met sisters from California,



Gamma Phi Beta sisters at California/Irvine.

and care center, and the group hosted its annual pancake feed philanthropy fundraiser in April during Mom's Weekend.

### ■ TAU COLORADO STATE

Colorado State sisters initiated 12 new members last spring, held a



Sonoma State sisters enjoy a retreat at the aquarium in San Francisco.



Arizona and Colorado. They enjoyed the annual Mother-Daughter Tea at the Ritz Carlton in Pasadena, as well as a farewell luau for graduating seniors.

### ■ BETA GAMMA BOWLING GREEN

The Bowling Green chapter emphasized academics by implementing a study program that requires members with a GPA lower than 3.0 to devote hours to studying in the library. Sisters with higher GPAs proctor the program. The chapter also hosted Greeks Gone Crazy, a relay race to benefit its philanthropy.



Megan Johnson and Adriane Cline, co-chairs of the Beta Phi 10th annual 3-on-3 tournament at Indiana University.

awards at the annual Greek awards banquet. Other events included Mom's Weekend, formal and the Puddle Pull philanthropy fundraiser.

### ■ BETA OMICRON OKLAHOMA CITY

Beta Omicron Chapter held a western themed chapter retreat, complete with a bonfire, took third place in Homecoming float competition and were lip sync contest champs. Senior Week ended the year.

### ■ BETA SIGMA WASHINGTON STATE

Sisters at Washington State earned academic honors last year. The sophomore and junior classes were in the top three for grades among all campus Greek organizations and the chapter was above the all-Greek and all-campus GPAs. Chapter events included Dad's Weekend, Mom's Weekend, recruitment, philanthropies, Crescent Ball and a dance with Alpha Gamma Delta.

### ■ BETA PHI INDIANA

Hoosier sisters raised more than \$2,500 for Boys and Girls Club with their 10th annual G Phi B 3 on 3 basketball tournament. The women enjoyed karaoke and virtual sports for Dad's weekend, as well as the Little 500 cycling race in which four sisters participated.

### ■ BETA UPSILON KANSAS STATE

The Kansas State chapter finished first out of 11 sororities and third overall in fall semester grades. Four members will serve as recruitment counselors, and another was honored as Greek of the Month. In February, the chapter honored the mayor and fire marshal at a VIP dinner. Other



Oakland University sisters at their Crescent Ball.

activities included sibling weekend, Dodge-for-a-Cause, formal and Senior Celebration.

### ■ BETA CHI WICHITA STATE

Wichita State Gamma Phi Betas supported their local philanthropy with the Penguin 5K that raised \$800.

### ■ BETA PSI OKLAHOMA STATE

The Gamma Phi Beta songbirds at Oklahoma State enjoyed the annual Spring Sing on Mom's Day. The same day the women had a silent auction and did ceramic painting. Other spring events included a Miss Sorority Pledge Pageant, Greek Discovery Day and spring recruitment. A majority of the members earned a 3.0 or higher GPA last semester and were honored at a Smarty Party.

### ■ BETA OMEGA NORTHERN ARIZONA

Gamma Phi Betas at Northern Arizona University found great



University of Michigan sisters at their chapter retreat.

### ■ BETA DELTA MICHIGAN STATE

Sisters at Michigan State held a bachelor auction to raise money for Camp Fire USA, a spring new member retreat and formal, and participated in Greek Week.

### ■ BETA EPSILON MIAMI (OH)

The women of Miami University welcomed 53 new members last spring. For the second year in a row, they claimed the championship of the Puttin' on the Hits competition, and won the diversity initiatives and Greek relations

### ■ BETA KAPPA ARIZONA STATE

Arizona State collegians renewed their commitment to improving

their lives through service to community by supporting a sister whose family sponsors a charity event to help stop shaken baby syndrome. They also gathered the most canned goods

for a local food bank when they participated in a fraternity philanthropy, and were involved in a campus-wide fundraiser to benefit Phoenix Children's Hospital.



Kansas State sophomores spend spring break in Chicago.



Wichita State sisters at their Penguin 5K.



## C O L L E G I A N S



Sisters at Minnesota State/Mankato.

new ideas and bonded when they attended the Regional Leadership Conference in Irvine, California. Working with Kappa Alpha Order, the chapter raised enough money to host a nationally known date rape speaker, Katie Koestner, at an event that drew a huge crowd. Philanthropy events included the Relay for Life cancer walk and Snow Express.

### ■ GAMMA MU MINNESOTA STATE/MOORHEAD

Gamma Mu collegians helped the local police department with its Kids ID program, held a spaghetti dinner fundraiser and made party favors for the Ronald McDonald

house. They achieved the highest all-Greek GPA, and more than half the chapter made the Dean's List.



Jen Dulin, Kathryn Moresi and Kate Dickman at Missouri/Columbia at their formal, Roineo.

raised more than \$2,000 for the Children's House on campus, a 12-hour dance marathon for the Children's Miracle Network, formals, Special Olympics, family day and Greek Week.

### ■ GAMMA TAU ST. LOUIS UNIVERSITY

St. Louis collegians joined area alumnae in a new philanthropy project, Girls Inc, an organization that provides services for girls, such as help with homework and field trips.

Gamma Phi Betas also packed their social calendar with Tacky Prom, Crush Party, sisterhood bowling, yoga, Greek Week, formal and Parent's Weekend.

### ■ GAMMA PHI AUBURN

Gamma Phi chapter welcomed 24 members and held its annual philanthropy event, Auburn City Fest, a carnival to raise money for Camp Fire USA. The chapter also wrote letters of encouragement to US troops in the Middle East.

Other activities included an etiquette program and a Valentine's Day sisterhood party.

### ■ GAMMA PI MINNESOTA STATE/ MANKATO

Gamma Pi chapter welcomed 11 new sisters last spring, and chapter events included a spaghetti dinner that

### ■ DELTA DELTA CALIFORNIA STATE/FULLERTON

Sisters at California State/Fullerton helped beta test the Complete Sister Program, and supported philanthropic activities, including powder puff football and broomball tournaments to raise money for AIDS awareness and the Ronald McDonald House.

### ■ DELTA ETA CALIFORNIA/IRVINE

Winter quarter brought five new members to the chapter, and members volunteered for campus and Orange County philanthropic events, including serving food and



Minnesota State/Moorhead sisters at their Founders Day.

playing with kids at a local soup kitchen. Other events were the Crescent Ball, volleyball and basketball.

### ■ DELTA IOTA PURDUE

Last spring, Purdue sisters were first in intramurals and were honored for the most improved GPA, with a rise of .337. They held a spontaneous Night at the Oscars when they rented a stretch limo and saw "Chicago." The chapter also enjoyed sisterhood at an outdoor skating rink and participated in several fraternity philanthropies.

### ■ DELTA TAU COLGATE

Colgate Gamma Phis held their annual Tie Dance semi-formal and a 24-hour teeter-totter-a-thon to



Syracuse sisters celebrated before and after their school's victory at the NCAA Championship.

benefit the Madison County Children's Camp. The chapter is proud to have the top GPA among all sororities on campus.

### ■ DELTA UPSILON GEORGIA

University of Georgia sisters held a 3-on-3 basketball tournament to raise money for Camp Fire USA, the Children's Miracle Network and A Day to Remember, and participated in a campus Relay for Life and other Greek philanthropy events.

### ■ DELTA PSI CALIFORNIA/SANTA BARBARA

The Delta Psi chapter had a Parents Weekend, participated in Fiji soccer and Beta softball and had a blast at Crescent Ball and Isvt, which was held in Santa Barbara this year. They participated in *Absolutely Incredible Kid Day*® by setting up a table on campus and making cards to be sent to kids in hospitals.



Southeast Missouri State sisters eagerly await their new members.



Sisters at Michigan State held their Founders Day with local alumnae and sisters from Alma College.



### ■ DELTA OMEGA OAKLAND

Delta Omega Gamma Phi Betas sponsored their annual Throw a Pie at Gamma Phi to raise money for the Make A Wish Foundation and Relay for Life, a 24-hour walk-a-thon that benefits the American Cancer Society.

### ■ EPSILON BETA ALMA COLLEGE

Alma College sisters welcomed eight new members after Gamma Phiesta, their winter recruitment. During the spring semester they held a Polyester Prom party, a retreat, a 3-on-3 basketball tournament called Gammie Macker, Pink Carnation formal and Senior Celebration.

### ■ EPSILON GAMMA SAN DIEGO

Women at the University of San Diego welcomed 43 new members who enjoyed a retreat held in Palm Springs and Magic Mountain. Other chapter activities



Oklahoma City sisters gather for a chapter retreat.

included Mom's Weekend, Moonball philanthropy, Dad's Weekend and formal.

### ■ EPSILON ZETA JACKSONVILLE UNIVERSITY

Epsilon Zeta chapter welcomed 11 new sisters, enjoyed the Bella Luna formal and sponsored Gamma Games. Philanthropy events included building homes for HabiJax and writing letters for *Absolutely Incredible Kid Day*®.



Sisters at Oklahoma State have a blast at their semi-formal in February.

### ■ EPSILON MU LOYOLA

Loyola women held their first annual recruitment retreat in Gulf Shores, Alabama, followed by recruitment and 16 new members. The chapter works with a Girl Scout troop, for which they held a softball tournament fundraiser.

### ■ EPSILON NU CHAPMAN UNIVERSITY

Epsilon Nu Gamma Phi Betas were involved in philanthropy events, social gatherings and Greek Week competitions, for which they earned their third consecutive victory. They also hosted Gammafest, a country fair with face painting, carnival games and food that netted more than \$1,000 to benefit local children with heart disease. Social events included a four-way with three other Greek organizations and formal.



Syracuse sisters celebrated their school's NCAA Championship win.

### ■ EPSILON OMICRON CALIFORNIA/SANTA CRUZ

Epsilon Omicron wrapped up winter quarter with recruitment and eight new members, and a HipHop PACE. During spring quarter they participated in an AIDS walk, a beach clean-up, Special Olympics, Greek Week, The Day of Dialogue with other women's organizations and Senior Celebration.

### ■ ZETA BETA VIRGINIA

A rewarding recruitment period resulted in 25 new members for



Illinois State sisters at their 2003 semi-formal.

Zeta Beta chapter, which also held a Key to My Heart date function, a sisterhood retreat at a nearby summer camp and Mother-Daughter Weekend. They sponsored their Just for Kicks soccer tournament to raise funds for the I Have a Dream Foundation, which mentors elementary school children. Other activities were formal, Senior Celebration and the annual Foxfield Horse Races.

### ■ ZETA DELTA SOUTHEAST MISSOURI STATE

Southeast Missouri State sisters placed second in the Delta Chi Esta, a kickball tournament, and third in Pike Spike. They enjoyed a semi-formal and participated in Moonball, a philanthropy

event held under the moon and stars.

### ■ ZETA EPSILON DUQUESNE UNIVERSITY

Zeta Epsilon chapter initiated 17 women, raised more than \$650 for the Leukemia Society at their annual Cut-A-Thon and said goodbye to 15 graduating seniors.

### ■ ZETA NU DETROIT/MERCY

Zeta Nu Gamma Phi Betas sponsored Greek Penny War to benefit Camp Fire USA and walked for 24 hours in Relay for Life, a

fundraiser for the American Cancer Society. The chapter initiated nine new sisters, and three women attended Regional Leadership Conference.



Lander University sisters at their annual Christmas party.

### SUBMISSIONS

Please send your write-ups and photographs for the Member News section to: Editor, Gamma Phi Beta Sorority, 12737 E. Euclid Drive, Centennial, CO 80111 or [TheCrescent@gammaphibeta.org](mailto:TheCrescent@gammaphibeta.org).



## A L U M N A E

### ■ ALABAMA

Members of the BIRMINGHAM Alumnae Chapter attended the 44th Annual Meeting of Central Alabama Council of Camp Fire USA. The chapter held a yard sale in early June to benefit Camp Fire USA, Gamma Phi Beta and the Epsilon Lambda chapter.



Denver alumnae at their disco Murder Mystery dinner party in January.

### ■ ARIZONA

Members of the FLAGSTAFF Crescent Circle met for winter luncheon in Sedona. The members are graduates from Northern Arizona University's Beta Omega chapter.

### ■ CALIFORNIA

In December, LONG BEACH alumnae brought holiday cheer and homemade craft projects to children at a hospital cancer ward and after the holidays, they had a sisterhood night out. Throughout the year, the chapter sponsors a Secret Sisters mentoring program that matches alumnae with California State/Long Beach collegians according to career and college major.



Fort Collins area alumnae attend a Valentine luncheon at a nearby country club. With 12 members in attendance, they welcomed Crystal Day (Vanderbilt). As their philanthropy project they collected money and food items for the Food Bank of Larimer County.

Members of the WESTWOOD Alumnae Chapter celebrated the holidays at their Christmas Party. The chapter stays busy supporting the chapters at UCLA and Pepperdine University.

### ■ COLORADO

DENVER alumnae held their third annual Murder Mystery dinner party, traveling back to the age of disco to discover "who dun it." In February, the chapter had its annual business meeting, and April brought a spring salad luncheon. In May, they joined the Denver Alumnae Panhellenic



Alumnae from Wichita State gather at Zoobilee.

for its annual luncheon, and enjoyed a spaghetti dinner and Senior Celebration with University of Denver collegians.

### ■ FLORIDA

Ten members of the PINELLAS COUNTY Crescent Circle met on November 16 for a luncheon to celebrate Founders Day.



Members of the Atlanta and Atlanta Southern Crescent Alumnae Chapters share sisterhood at a joint Founders Day celebration. Julie Dunn Cappello (Florida State), third from left, received the Atlanta Alumnae Chapter Alumnae of the Year award.

### ■ GEORGIA

The ATLANTA Alumnae Chapter celebrated the holidays together with its annual ornament exchange. The chapter's new events, book club and movie club are a big hit, and they look forward to July and their ninth annual Collegiate

Mother/Daughter Salad Luncheon and new executive officer retreat.

### ■ ILLINOIS

Members of the CHICAGO FAR WEST SUBURBAN Alumnae Chapter celebrated Founders Day and the Convention 2004 Kickoff with International President Vicki Carlson Read (Arizona). The day's events, hosted by the 2004 Convention committee, included a raffle and silent auction, with all proceeds going to the 2004 Convention fund. Jeannine Sheldon Kallal (Miami-Ohio) received the Loyalty Award.



Six alumnae initiates sponsored by the Boise, Idaho Alumnae Chapter were initiated at Albertson College on November 9, 2002.

### ■ MICHIGAN

DETROIT METRO alumnae held a sisterhood event in March, and anticipate another successful alumnae mixer, which was well attended last year. Barbara Magnus Small (Michigan State) will again assist the chapter with a lunch bunch event in June, when members also will walk in a Race for the Cure.

### ■ MISSOURI

The ST. LOUIS Alumnae Chapter adopted Girls Inc. as its philanthropy. A national nonprofit youth organization, Girls Inc. is dedicated to inspiring girls from



Chicago Far West Suburban alumnae at their Founders Day Celebration and Convention 2004 Kickoff.

high-risk and under-served areas to be strong, smart and bold. Alumnae and St. Louis University collegians hosted a pizza and sundae party for St. Louis area Girls Inc. members.



## A L U M N A E

### ■ NEVADA

At its January meeting, LAS VEGAS VALLEY, Nevada alumnae listened to presentations about local sororities at University of Nevada/Las Vegas and the chapter's philanthropy, Nike House, a home for young women. The March meeting, held at the Antique Cafe and Tea Room, featured a high tea luncheon. The chapter also held a raffle which raised more than \$100 for Nike House.



Philadelphia West Suburban alumnae at their Founders Day celebration.

### ■ NEW MEXICO

The ALBUQUERQUE Alumnae Chapter is still going strong after 50 years! The chapter meets September through May, presenting a variety of programs, and actively supports the Alumnae Panhellenic by



Jeanne Rice Clark (Syracuse), center, reunited with Ann Sullivan Eickmeyer (Bowling Green) and Mary Daffron Cheap (William & Mary) in Rockland, Maine, where they attended "Lobster Maine-ia."



Portland alumnae at a sisterhood event.

participating in its fundraiser for local college students. The chapter makes and sells jalapeño pepper jelly each year, and donates the proceeds, more than \$1,000, to a local child care center for the homeless.

### ■ OREGON

PORTLAND Alumnae Chapter members focused on sisterhood and fun at the year's monthly meetings. They made goody bags for sisters attending the Portland Regional Leadership Conference and for University of Oregon collegians. The chapter also helped at the Oregon Food Bank, and got together for bowling.



Brazos Valley Crescent Circle alumnae



Las Vegas Valley Alumnae Chapter at their March tea.

### ■ PENNSYLVANIA

The PHILADELPHIA NORTH SUBURBAN Alumnae Chapter celebrated 35 years at their Founders Day Dinner on November 11, 2002. Four of the chapter's founding members

## C R E S C E N T P H O T O G R A P H Y C O N T E S T

*The Crescent* is sponsoring a collegiate and alumnae chapter photography contest! All chapters are eligible to enter, and winning entries in each of the five categories below will be featured in an upcoming issue of the magazine. The contest's purpose is to show chapter sisterhood through activities, events and smiling faces. Judging will be based on content, quality and originality. A chapter may enter as many photos as it wishes, but each photo must include a completed entry form. Make as many copies of this form as necessary. Please indicate chapter name on back of photo. Submissions will NOT be returned. Entries may be submitted electronically; however, they must be high resolution (300 dpi) with a caption AND entry form information included. Please put "Crescent Photography Contest" in the subject line. Deadline for submission is July 21, 2003.

Chapter Name: \_\_\_\_\_

Photographer's Name: \_\_\_\_\_

Phone number: \_\_\_\_\_ E-mail address: \_\_\_\_\_

Category (please choose only one):

☐ Sisterhood
 ☐ Recruitment Events
 ☐ Social/Sporting Events  
☐ Philanthropic Events
 ☐ Panhellenic Events

Brief description of photo, including identification of members (if five or fewer people):

\_\_\_\_\_

\_\_\_\_\_

\_\_\_\_\_

Mail photo and attached entry to: The Crescent Editor, Gamma Phi Beta Sorority, 12737 E. Euclid Drive, Centennial, CO 80111.  
E-mail entries to: [TheCrescent@gammaphibeta.org](mailto:TheCrescent@gammaphibeta.org).



## A L U M N A E



Houston alumnae at their Founders Day.

attended the dinner and several other founders sent letters of congratulations.

### ■ TEXAS

The HOUSTON Alumnae Chapter is busy preparing for next fall's Gamma Phi Beta colonization at Texas A&M University in College Station. Chapter members look forward to participating on many levels,

including events, public relations, housing, refreshments and Panhellenic. The March chapter meeting was dedicated to learning about collegiate extension. Alumnae chapter officer installation was held at the April meeting, and Susan Jack Banks (Texas Tech) was installed as Houston area alumnae Panhellenic president in May.



Cleveland West alumnae at a sisterhood gathering.

### ■ WASHINGTON

SEATTLE alumnae celebrated Lambda chapter's 100th anniversary at Seattle's Sunset Club on May 17. The Centennial Celebration was festive, with pink carnations and pink balloons. Eight decades of women were there to share their histories.



The Green Mountain Crescent Circle met in February for a white elephant auction fundraiser. Proceeds supplemented their treasury and allowed them to make a gift to the ΓΦΒ Foundation in memory of astronaut Laurel Blair Salton Clark (Wisconsin/Madison).



Members of the Clear Lake Area Crescent Circle.

## O U T & A B O U T

### ■ NEW PHILANTHROPY CHAIRWOMAN EXCITED TO GROW COLLABORATION



Gamma Phi Beta International Sorority has a new philanthropy chairwoman, Harriett Cogan (Indiana State). The appointment was made in early April and approved by the International Council. Harriett replaces Julie Wright.

Harriett is an alumna of the Beta Pi chapter at Indiana State University in Terra Haute, IN. She received her B.S. in education. Harriett also coaches girls and boys tennis at University High School, she is a member of the Project Management Institute, and an alumna of Leadership McClean county. Harriett has two daughters, Julian and Brooke. Her professional background includes 17 years with State Insurance Companies.

Other past responsibilities in Gamma Phi Beta include chapter advisor for Beta Pi, alumnae chapter president at Terra Haute. She also served on the house corporation boards for Delta Iota (Purdue) and as a chapter advisor for Delta Pi (Illinois State).

"I am excited for the opportunity to be the philanthropic chairwoman for our sorority. I look forward to working with our collegiate and alum-

nae chapters along with our new partners, Camp Fire USA. This experience will allow me to have a front row seat as every aspect of our new philanthropy strategy unfolds. While there are many details and challenges ahead, I continue to remember one of my favorite quotes:

"Vision without action is merely a dream. Action without vision is just passing time. Action with vision can change the world." - Anonymous  
I know our contributions and support will continue to make a difference in the lives of many children in communities across the country."

### ■ CONGRATULATIONS

■ Alpha Lambda Chapter (British Columbia) celebrates its 75th anniversary.

■ Lambda Chapter (Washington) celebrates its 100th anniversary.

■ Congratulations to the newly re-activated Princeton Alumnae Chapter, installed May 18, 2003 (originally chartered in 1974).

### ■ ZETA PI'S NEW ALUMNAE INITIATES

On March 30, Gamma Phi Beta welcomed 15 new members as alumnae initiates at the Sorority's newest chapter, Zeta Pi (Penn State/Altoona). Congratulations to Charity Long, Alissa Cruz, Sandra Donovan, Kim Gruber,

Jennifer Hartwick, Keri McGill, Shawna Matthews, Marisa Merlini, Heather Miller, Michelle Pryor, Julie Pryor, Angela Rinier, Lindsey Shaffer, Michele Stallone and Kristina Stinson.

### ■ 2004 CONVENTION ALUMNAE BOUTIQUE

The Convention Alumnae Boutique made a successful comeback at the 2002 Convention in Washington, DC, making it possible for alumnae chapters and crescent circles from across the nation to come together and showcase their unique Gamma Phi Beta merchandise. This opportunity will be available once again at Convention 2004 in Chicago!

If your chapter or crescent circle has a fun and unique idea for Gamma Phi Beta merchandise and would like to participate in the boutique, start producing your wares now. For more information please contact Vonda Bryant, 2004 Convention Alumnae Boutique chairwoman, at [HeelsNJC@attbi.com](mailto:HeelsNJC@attbi.com).

### ■ GAMMA PHI BETA LAUNCHES NEW WEB SITE

Gamma Phi Beta launched the new Web site ([www.gammaphibeta.org](http://www.gammaphibeta.org)) on June 21 at the 2003 Leadership Development Institute (LDI). Look for a full review in the Fall 2003 issue of *The Crescent*.



## Doing Business With Gamma Phi Beta

The International Headquarters of Gamma Phi Beta is located in Centennial (formerly known as Englewood) Colorado, a Denver suburb. The facility is a combination of office/conference room space, museum and sleeping quarters. The staff for both the Sorority and the Foundation occupies the office space; the museum, a repository for our treasured archival materials, is housed in another part of the building. International Council, Foundation Trustees, Collegiate Leadership Consultants and other departmental members who gather for meetings or training may stay in the sleeping quarters.

Gamma Phi Beta is a membership driven organization. International Council, the governing body, elected by Convention delegates, is chaired by the International President. International Headquarters, the business arm of the Sorority, is managed by the Executive Director and functions at the direction of the International Council. Collegiate and alumnae members contribute money, time and skills to fulfill the Sorority's mission.

The staff at International Headquarters performs a variety of tasks, some of which are to:

- collect information, and maintain records, forms and manuals
- provide technical support to the membership
- produce *The Crescent* and other publications
- ship supplies/mass mailings
- coordinate meetings - Convention, Regional Leadership Conferences and Leadership Development Institute
- support chapters and volunteers
- provide daily financial transactions

### Gamma Phi Beta International Headquarters

12737 East Euclid Drive, Centennial, CO 80111

Phone: 303.799.1874 Fax: 303.799.1876

[www.gammaphibeta.org](http://www.gammaphibeta.org)

# International Headquarters

*... connecting members to resources*

## Directory

You can reach IH staff at the following extensions by calling 303.799.1874.

### SORORITY

**Executive Director** x306  
Executive Assistant x325

**Director of Communications** x322  
Communications Coordinator x339  
Graphic Designer x314  
Event Coordinator x333

**Director of Operations** x326  
Receptionist x300  
Mailroom Operations Technician x319  
Membership Data Specialist x332

**Director of Finance** x324  
Senior Financial Analyst x301  
Financial Analyst x334

**Director of Member Services** x327  
Alumnae Assistant x309  
Collegiate Assistant x343

### FOUNDATION

**Executive Director** x305  
Director of Development x304  
Development Coordinator x338

**IH Fax:** 303.799.1876

**International Headquarters Staff (left to right):** Sherry Ochoa-Rounkles, Senior Financial Analyst; Toni Jones, Membership Data Specialist; Janell McPherson, Executive Assistant; Karen Blackman, Executive Director; John Josephson, Director of Finance; Angela White, Communications Coordinator; Corie Curtiss, Graphic Designer; Matt Grace, Mailroom Operations Technician; Kathy Miller, Financial Analyst; Loraine Meech, Alumnae Assistant; Christa Fruchtl, Event Coordinator; Brian Terry, Director of Operations; Brenda Rickert, Programming Coordinator; Rebecca Beardslee, Director of Communications; and Kendra Bocher, Director of Member Services.

Not pictured: Tina Williams, Collegiate Assistant





# COMPLETE SISTER PROGRAM

by Angie Dimit (Illinois) | New Member Program Coordinator

At Convention 2002 and RLC 2003, the Member-at-Large department unveiled a dynamic and progressive new programming plan that includes a revised New Member Education Program. Developed from extensive input from collegians and alumnae, this program is a result of Resolution #6 presented at Convention 2000. We are enthusiastically anticipating the implementation of this program in the fall of 2003 for chapters with deferred recruitment and in the spring of 2004 for chapters with fall recruitment. As a part of this expected implementation, we have piloted the program at three chapters, Lambda (University of Washington), Epsilon Beta (Alma College) and Epsilon Mu (Loyola University), so that we could solicit feedback from our collegians and alumnae. This feedback has been significant as we continue to fine-tune the program. We would like to extend our deepest gratitude to these chapters and alumnae!

## PURPOSE AND PHILOSOPHY

Recognizing that the new member period serves as an introduction to Gamma Phi Beta, the responsibilities of membership, and, in the case of freshmen, an introduction to college life, its purpose is to guide and assist new members in preparation for initiation and a lifetime commitment to Gamma Phi Beta. It is a priority to insure that the New Member Education Program implemented in each chapter fully adheres to all university/campus policies and guidelines for new member education programs. This modified program recognizes that *different, individual chapters have different, individual needs*. Consequently, this program has been developed to facilitate greater flexibility, increased consistency and clarity of



Sisters at Loyola University, one of the schools that pilot the new program.

program. Quite the opposite! We are encouraging chapters to blend the positive and unique aspects of their past new member programs with the new structured curriculum.

## PROGRAM IMPLEMENTATION

The New Member Educator Manual will provide a syllabus for the New Member Education Program and will include examples of successful activities and ideas submitted by individual chapters. Program templates for a six-week, ten-week, and twelve-week New Member Education Program are included. All chapters *must* have approval from their province collegiate director (PCD) for the length of their New Member Education Program. The recommended length of the Gamma Phi Beta New Member Education Program is 12 weeks. This 12-week program includes weekly meetings of 1.5 hours. It is important to understand that the program is designed to offer maximum flexibility while maintaining quality within the curriculum. For example, if a campus is on the quarter system, the chapter will most likely want to use the 10 week program template. Chapters may submit plans and request approval for shorter programs, especially when required by university policy or when the university calendar warrants adjustments. Gamma Phi Beta Sorority expects each chapter to fully comply with individual university and campus policies regarding the length of new member programming. Chapters may submit plans and request approval for longer programs. Programs must not exceed one semester.

**"I LIKED THE FACT THAT THE PROGRAM IS LONGER! MANY OF THE GIRLS COMMENTED ON HOW FUN THEIR I-WEEK WAS BECAUSE THEY KNEW THEIR CLASS BETTER AND COULD BOND EVEN MORE! I WAS INITIATED AFTER 7 WEEKS; I WOULD HAVE LOVED A FEW MORE TO GET TO KNOW MY CLASS. I FEEL THAT THE NEW MEMBERS REALLY BENEFITED FROM THE 10 WEEK PROGRAM."** Icy Gardiner (Washington), NM Educator

expectations for new members, as well as the entire chapter. Each chapter will have limited autonomy to customize its new member program in the manner in that best fits its chapter based upon size, university environment and policies. It is a priority of this program to provide chapters with specific topics, suggested activity ideas and detailed implementation plans so that consistency is achieved throughout chapters and from year-to-year within chapters. This does not mean that chapters are being asked to discontinue all they are doing for new members and use only what is included in the new

## PROGRAM REQUIREMENTS AND EXPECTATIONS

This program is based upon the Sorority's "no tolerance" position on hazing and, in fact, should serve to further insure a safe, supportive and hazing-free environment for our new members. The New Member Education Program consists of a core curriculum that includes content and topics to be consistent throughout every Gamma Phi Beta chapter. This provides a foundation for each individual from which she can build and develop her personal lifetime commitment to Gamma Phi Beta Sorority. This foundation is based upon the



# NEW MEMBER EDUCATION

**"I THINK THE NEW MEMBER EDUCATION PROGRAM PROVIDES A VERY THOROUGH PICTURE OF WHAT IT MEANS TO BE A GAMMA PHI BETA. MY FAVORITE COURSE WAS LEADERSHIP 101, BECAUSE IT GAVE THE NEW MEMBERS A CHANCE TO SEE HOW MANY OF US ARE INVOLVED IN DIFFERENT ORGANIZATIONS AT ALMA COLLEGE. THE NEW PROGRAM IS VERY USER FRIENDLY, EVEN FOR A SMALL CHAPTER LIKE EPSILON BETA. I LOOK FORWARD TO USING IT AGAIN THIS UPCOMING FALL. I'M SURE THE SECOND TIME AROUND WILL BE EVEN BETTER!"**

**Sandy Patrick (Alma), NM Educator**

Gamma Phi Beta Creed, Mission Statement, "The Legacy of Gamma Phi Beta" and the five Standards of Membership. Gamma Phi Beta membership begins with a successful, positive new member program that introduces new members to the history, traditions, privileges and responsibilities of membership and facilitates a full understanding of these through *collaborative learning strategies*. Responsibility for accomplishing that goal belongs to the entire chapter, not just the new member educator and her committee. The program will only be as strong as the commitment exhibited by the entire chapter. Strong leadership from the new member education committee and the member education department are essential. Alumnae leadership and support is available through the member education or new member advisor, province collegiate director/new chapter director and other alumnae and international officers.

The curriculum is considered to be integral to the objectives of the New Member Education Program, and as such, is a **required** component of every chapter program, REGARDLESS OF LENGTH. Each chapter must present its detailed implementation plan (template included in manual) for its New Member Education Program to its PCD for review and approval three months prior to implementation. This insures that each chapter has the resources and support necessary to offer a complete and "customized" new member education experience.

One very important focus of the new member period is to enable each new member to find her own place, her gifts and her contribution to the whole group, not just to her new member class. Through our

new member outreach efforts, it is our obligation to communicate the perpetual value of membership in Gamma Phi Beta. This is only the beginning! Continuous education opportunities within Gamma Phi Beta are being developed for second and third year collegians, seniors and alumnae.

Chapters are *strongly* encouraged to have some type of information regarding academic achievement (GPA) from the college or university for each new member prior to Initiation. However, this does not mean that a member may be withheld from Initiation for academic reasons. This recommendation is designed to insure that the chapter is on top of things with anyone who is having academic struggles. It enables the scholarship chairs to focus special efforts to make sure these new members are aware of chapter or campus programs that can help them and support them. It creates an opportunity for the chapter to commit personal attention, early-on, to support new members who may be facing academic challenges. It is designed to be a proactive approach rather than a reactive system once a new member has been put on probation.

The New Member Education Program implementation will include extensive training for province officers in the summer of 2003 and a conference call will be available in fall 2003 and spring 2004 to provide a point of contact and explanation for chapter advisors and new member advisors. A "list-serve" discussion board will be available on the ΓΦΒ Web site as well to provide open lines of communication for collegians and alumnae with the New Member Education Program coordinator, who will monitor these postings and contribute answers to questions. We hope that this Web based tool will also increase idea sharing among chapters. Additionally, we will be asking our new members to evaluate this program on an annual basis, and the New Member Education Program coordinator will compile an overall program evaluation for the purpose of keeping the program timely and relevant. We want to insure that we are meeting

the needs of our new members and that our efforts positively impact the understanding of the perpetual value of Gamma Phi Beta. ■



**Sisters at the University of Washington are participating in the pilot program.**

the needs of our new members and that our efforts positively impact the understanding of the perpetual value of Gamma Phi Beta. ■

**"I LIKED THE STRUCTURE AND IT WAS VERY HELPFUL. THE TEMPLATE WAS EASY TO INCORPORATE INTO OUR MASTER CALENDAR. THE 10 WEEK TEMPLATE WORKS WELL. IT'S NOT TOO LONG OR SHORT FOR OUR QUARTER SYSTEM."**

**Erin Ballard (Loyola), Outgoing NM Educator**



# Building on Tradition

## GAMMA PHI BETA & TEXAS A&M UNIVERSITY

by Angela White (Colorado State) | Communications Coordinator

"Extension is to international Gamma Phi Beta what (recruitment) is to each collegiate chapter .... Extension is the way we grow. It is ... the way we share the rich heritage each of us has been given .... Extension is vital for the survival of Gamma Phi Beta." -- Karen Wander Kline (Iowa State) 1985

This fall, Gamma Phi Beta will become the 12th National Panhellenic Conference (NPC) group at Texas A&M University (TAMU), College Station, TX.

Dedicated on October 4, 1876, TAMU was the first public institution of higher learning established in Texas. Today, student enrollment tops 45,000, and the school is one of the fastest growing universities in the nation, with women almost half the total enrollment. College Station is also home to the George Bush Presidential Library and Museum.

Gamma Phi Beta director of collegiate extension Jana Nobles (Oklahoma City), who will lead the extension team, said: "This is a very exciting time for the growth of Gamma Phi Beta especially in Texas! We are adding the great history of Gamma Phi Beta to that of a great institution and Greek community."

In April 2003, Gamma Phi Beta sponsored a TAMU campus presentation by David Coleman, known as "The Dating Doctor." He offered a humorous spin on "Making Relationships Matter" to more than 200 TAMU students, known as "Aggies." Gamma Phi Beta also co-sponsored a CARPOOL philanthropy to help create campus awareness of the Sorority.

A house corporation board (HCB) for the new chapter, which will be Gamma Phi Beta's 161st, was established last spring, with former Grand President and director of extension Karen Kline as president. The HCB has launched a fundraising campaign for a chapter house.

Gamma Phi Beta will kick off its colony recruitment in September. Collegians, alumnae and friends are encouraged to help

TEXAS A&M UNIVERSITY  
GAMMA PHI BETA SORORITY



Building on Tradition

by recommending unaffiliated women. Women who will be freshmen in fall 2003 cannot be contacted until September 1. To recommend a potential new member, contact Jana Nobles at [jnobles7@aol.com](mailto:jnobles7@aol.com). For more information, call 979.695.8820 or e-mail [TAMUGammaPhi@aol.com](mailto:TAMUGammaPhi@aol.com). ■

Jana Nobles (Oklahoma City) was appointed to the director of collegiate extension (DCE) for



Gamma Phi Beta and approved by International Council this May. Jana replaces former DCE, Ann Mitchell.

Jana graduated from Oklahoma City University in 1997 with a BA in advertising and public relations. She received her Masters of Science in integrated marketing communications from Northwestern University in 2001. Currently, she lives in Dallas and works for The Loomis Agency as an account executive.

Jana has been involved with collegiate extensions for nearly six years. She traveled as a collegiate leadership consultant (CLC) from 1997-1998. She participated in her first extension presentation as a CLC. Jana continued as a part of the extension team after her experience as a CLC and served as extension coordinator from August 2000 through April 2003. Other Gamma Phi Beta experience includes recruitment & standards advisor (Beta Omicron), financial advisor (Psi), chapter development recruitment consultant (Epsilon Lambda 1998-2000), chapter development coordinator (Epsilon Lambda 2000-2003) and she has assisted the Web site development team. Jana is also chapter advisor for the Alpha Xi chapter.

### TAMU Extension Recruitment Dates

(following Formal Panhellenic Recruitment)  
September 14 - Information Session  
September 15-17 - One-on-One meetings  
September 18 - Philanthropy Day  
September 19 - Preference Day  
September 20 - Bid Day

For more information, call 979.695.8820 or e-mail [TAMUGammaPhi@aol.com](mailto:TAMUGammaPhi@aol.com).

### TAMU Traditions

- The 12th Man - Students stand during football games to show support
- Reveille - An American Collie, Texas A&M's mascot also holds the Corps of Cadets' highest rank
- Muster - Aggies worldwide gather each April 21 to renew friendships and honor those who have died since the previous year's Muster
- Silver Taps - Silent campus memorial service on first Tuesday of each long-semester month for students who have died in previous month
- Yell Leaders - Elected by students to lead "yells" at sporting events
- The Big Event - Held each spring; the nation's largest student-run, one-day community service event



# zeta pi INSTALLATION

*Penn State Altoona*



by Kristy M. Keefe (Wisconsin/Oshkosh) | 2002-2003 Collegiate Leadership Consultant

Gamma Phi Beta's newest chapter, Zeta Pi, was installed March 29, 2003 at The Pennsylvania State University/Altoona, a school with about 4,000 students. It is Gamma Phi Beta's 160th collegiate chapter.

The inspirational event marked the culmination of 10 years of effort by Penn State/Altoona's local sorority Zeta Xi Epsilon to bring the first National Panhellenic Conference organization to campus. In the spring of 2002, 14 women from the local sorority, collegians, alumnae and international officers came together with energy and resources to glide through the process of forming a chapter.

In September 2002, resident collegiate leadership consultant Erika Drake (California State/Fullerton) continued this unification by assisting the colony members in their first Panhellenic formal recruitment, after which they welcomed 26 women, marking the largest fall recruitment class on campus.

Thrilled and filled with questions, the women began their new member education and learned what it means to be and represent Gamma Phi Beta. Members balanced their sorority involvement with student government, community service organizations, musical/vocal lessons and cheerleading activities to complement their academic experience.

As the semester progressed, the colony held its 11th annual Putting on the Hits lip sync competition, where they raised \$700 for Camp Fire USA. This event displayed the outgoing, enthusiastic and motivated women that I am proud to call my sisters.

Initiation of the charter class took place November 16, 2002. Inspiration and appreciation filled our newest members' hearts as these exemplary women developed a deeper understanding of the organization. Members of the Alpha Upsilon chapter from Penn State's main campus assisted with initiation.

The spring semester began with energized spirits and confident members as continuous open bidding began on campus. During

this time the colony invited 10 emerging leaders to share their exceptional sisterhood experience. Embarking on their first new member program, I was impressed by the mature educational environment the colony provided for its newest members. Charter members provided a supportive sisterhood as the colony met and overcame many challenges on its way to amazing successes.


Throughout the semester the colony diligently worked to meet the five criteria necessary for the installation of a Gamma Phi Beta chapter: They met and exceeded top recruitment numbers; worked with their new chapter director in developing chapter by-laws/standing rules and a merit point policy; maintained financial efficiency; followed and upheld Gamma Phi Beta policies; and developed excellent programming for colony members. During the spring, they also took part in the campus Big Bounce to raise money for the United Way and organized a Senior Prom to promote interaction between older adults and students. These women started an impressive legacy.

The colony's year of perseverance culminated at the installation banquet held at the Casino in Altoona. More than 200 people attended, including parents, friends and alumnae. Honored alumnae present were International President Vicki Carlson Read (Arizona); director of ritual Elizabeth "Kiki" Sloan Phillips (Washington University); new chapter director Nina Rodriguez-Bonnet (Rutgers); 2002-2003 collegiate leadership consultant Kristy M. Keefe (Wisconsin/Oshkosh); and Zeta Pi advisors.

The highlight of the evening was the presentation of the charter by Vicki Read to chapter President Nicole Fiorina and the members of Zeta Pi. The next morning the colony and alumnae initiated 10 new members and 15 alumnae initiates. Kiki presided over the ceremony and Vicki assisted in the education of the alumnae initiates who will provide support for the collegiate chapter. ■



# The Adventures of a Gamma Phi Beta

A full-page background image of a scuba diver underwater. The diver is wearing a black wetsuit, a yellow BCD, and a yellow mask. They are holding a yellow and black regulator. The water is blue and slightly murky, with some bubbles visible.

by Angela White (Colorado State) | Communications Coordinator

Adventurist sports and activities empower women with independence, individuality and confidence. Diving into the depths of the ocean, competing in triathlons and traveling to the ends of the earth, they are unafraid to pursue the extreme challenges of nature. But why do they engage in such intensity? What pushes them to mental and physical limits? Three Gamma Phi Beta alumnae share their stories to explain the why and the how.

Imagine diving into the depths of the ocean where the life below is calm and the water never rises above 45 degrees. Melanie Kelsey (Puget Sound) has been cold water scuba diving since the summer of 1998, primarily in the waters of Puget Sound.

Cold water diving requires a higher level of experience than diving in warm tropical waters. The more extreme conditions create reduced visibility, and colder temperatures necessitate additional exposure protection. Divers wear drysuits rather than the wetsuits commonly used in warmer water. In

addition, most avid divers use a mix of Nitrox (compressed air with a higher concentration of oxygen), rather than the standard air used for warm water diving, to allow them to dive more safely and, in some instances, for longer periods of time.

Melanie was amazed by the variety of life found underwater during her basic open water training, and has continued to pursue cold sea adventures. Several of her trips have included naval wrecks, ships that have sunk within the past few years to create artificial reefs. Melanie described the first such dive in Nanaimo, British Columbia: "You descend down a line and the stern of the ship comes into view as you let go of the rope and just drift right on down to the deck of a massive ship covered with all kinds of marine life. Or you can dive in the shallow water and swim with enormous seals that have no problem coming nose to nose with you to check you out, just as you check them out." Many divers believe the cold waters off Washington and British Columbia have some of the world's best diving.





Melanie Kelsey (blonde wearing black drysuit) at a boat dive in Nanaimo, BC in November 2002.

counting fish on various dives for Reef Environmental Education Foundation (REEF) which is an active organization of divers committed to the preservation of the marine environment. This fall she will travel with the organization to the Turks and Caicos islands for a week of warm water diving, fish identification seminars and fish counting.

Melanie is a budget analyst for the city of Bellevue, Washington. She is scholarship advisor for Gamma Epsilon chapter at the University of Puget Sound, serves as treasurer of the Gamma Epsilon house corporation board and is chair of the international Gamma Phi Beta badge task force. Melanie is also the Area 6 representative to the 2004 Convention nominating committee, and a former president of the Puget Sound Alumnae Chapter.

Ruth Seeler, M.D. (Vermont) began the summer of 2003 with the River's Edge Women's Triathlon (biking, swimming, running) in Chicago on June 21, competing with about 2,500 women in one of the 10 largest triathlons in the world. She has no plans to stop anytime soon. Ruth said, "It's sort of fun to be huffing and puffing and have young women say, 'I hope I can do it [triathlons] when I'm your age.'"

For more than 10 years, Ruth has been competing in triathlons in Illinois, Florida and Wisconsin. She has two shelves of trophies and several medals awarded her for finishing in the top of her age group, typically besting 10 to 15 percent of all women. Ruth competed in running races in Chicago years before her first triathlon, but it occurred to her that although she finished strong against her competition, she did not particularly enjoy running. She heard about triathlons and was determined to try one. So in 1991, she competed in her first triathlon where she swam for half a mile, biked for 12 to 14 miles and finished the race with a 3.1 mile run.



Beverly standing under Tibetan prayer flags from Oza Rongphu Monastery near the Tibetan Base Camp (16,900 ft.) for Mt. Everest in July 2002.

Melanie also enjoys diving in tropical water, and has visited Cozumel, Mexico; Curacao (between Aruba and Bonaire); and Catalina, California. In the Caribbean, the pristine water is about 80 degrees and, at 100 feet underwater it's possible to see the surface waves ripple.

Currently, Melanie volunteers as a fish surveyor,

She alternates swimming, working on weight machines and running during the week, and usually bikes 30 to 75 miles on the weekend. Her motivation to continue to race in triathlons comes from her pure enjoyment of the event and the health benefits gained from training and participating in races. "I may be the oldest, but I am nowhere near the slowest," said Ruth.

For as long as she can remember, Beverly Elliott-Ingram (San Diego State) has loved the outdoors. She has traveled the world on a plethora of adventures, climbed a number of mountains and traveled



Beverly Elliott-Ingram standing at Cap Nico de Conderes (17,500 ft.), where she camped for two nights in December 2001.

great distances to see solar eclipses. "Travel and mountain climbing make me feel more attuned to the world around me and give me a richer life to share with others," said Beverly.

Beverly's climbing treks are by far richer than can be imagined and include Mt. Whitney, Mt. Fuji, the Swiss Alps, Mt. Kenya, two excursions to the summit of Mt. Kilimanjaro and another to Mt. Aconcagua, where she reached 17,500 feet. She has also been to 17,500 feet on the north face of Mt. Everest. Beverly is returning to the Himalayas this summer for trekking in the Ladakh area of northwest India.

In 1997, Beverly saw her first solar eclipse in Mongolia. About her adventures, New York Times writer Barry Estabrook wrote in a May 18, 2003 article: "Suddenly the horizon turned pink, and Ms. Elliott-Ingram gazed skyward to see the silhouette of the moon biting a small crescent out of the sun. She was speechless." Since seeing her first eclipse, Beverly has arranged her travel plans around total solar eclipses. She has traveled to Turkey and Zambia, and she anticipates her next eclipse viewing in Antarctica this November.

When Beverly is not scaling the heights of the world, she enjoys photography, weaving, gardening and reading historical fiction and non-fiction books. She is a sixth grade ancient history teacher in the San Diego area. ■



Beverly on the peak of Mt. Kilimanjaro, Tanzania (19,340 ft.) in July 2001.



Ruth Seeler, MD (Vermont, 1956) crosses the finish line at the Triumph Classic 50+ triathlon.

PICTURE AT LEFT: Melanie Kelsey in Curacao in February 2001.





\* Redesign 2003 \*

Have you visited the Gamma Phi Beta Web site lately?



## ■ GAMMA PHI BETA ON BROADWAY

This spring, Jordan Ballard (Oklahoma City) toured with the cast of Broadway's "Tick...Tick...Boom!" as the understudy for the main character, Susan, and as the assistant stage manager. After serving in these roles, Jordan will receive the Actor's Equity card, which is the equivalent of becoming a member of the Screen Actor's Guild. The card allows her the opportunity to audition for shows on Broadway as soon as this fall. Jordan's acting credits include: Ariel in the national tour of "Footloose," Maureen in the national tour of "Rent" and a dancing role in Liza Minelli's limited run one-woman show.

## ■ LENDING A HELPING HAND

Vanessa Bird (St. Louis University) and Amanda Schultz (St. Louis University) volunteered their time, effort and knowledge in Saint Louis de Nord, Haiti for two weeks during winter break. Besides preparing food for and playing with malnourished children, they did medical work, such as assisting in childbirth and eye surgeries and holding medical clinics for residents. Vanessa is an occupational therapy graduate and Amanda is a physical therapy major. The two women applied their therapy knowledge toward helping physically and mentally handicapped children to help improve their lives. Both women plan to return to Haiti in the near future for a longer stay.



Vanessa Bird and Amanda Schultz playing with children in Saint Louis de Nord, Haiti.

## ■ AT THE HEAD OF THE CLASS

Captain Jeannie Pantan Deakyne (Arizona) was named the Honor Graduate of the US Army's Adjutant General Captains Career

Course at Fort Jackson, South Carolina. Jeannie also received the Major General Winfield Scott Award for obtaining the highest overall class standing in leadership, academics and physical fitness. This June, she will be assigned to the 1st Calvary Division at Fort Hood after completing her advanced officer training.

## ■ 2003 LEADERSHAPE RECIPIENT

Kellie Chesire (Creighton University) is the recipient of the 2003 Gamma Phi Beta LeaderShape Institute Scholarship. LeaderShape is a unique six-day program that builds lifelong leadership concepts and abilities to participants from colleges,

universities and corporations. After attending the program this summer, Kellie will return to Creighton University as a junior, where she has maintained a 3.808 GPA. She has served her chapter as historian, public relations vice president and as assistant Panhellenic delegate.

## PACESETTERS WANTED

Send a letter about yourself or a sister and a photo to: Editor, Gamma Phi Beta Sorority, 12737 E. Euclid Drive, Centennial, CO 80111.

## I N I I K E

### Dear Gamma Phi Beta Sisters,

I'm sure that many of you and your families have set your resolutions and goals for 2003. The goals I have set this year make it one of the most challenging, exciting and life-affirming years of my life. Let me tell you why: On June 21, 2003, I ran 26.2 miles at the Mayor's Midnight Sun Marathon in Alaska.

I made the personal commitment to train and prepare myself, despite the temperamental New Jersey weather, to complete this event. I also made a commitment to help The Leukemia and Lymphoma Society in its fight to cure all forms of leukemia, lymphoma, Hodgkin's disease and myeloma. I took advantage of my good health and energy to raise more than \$5,000 to help cure the number one disease killer of children and leading fatal cancers of young people under the age of 35.

By now, I know you are thinking, why did I take on the spiritual battle and physical challenge of such an athletic feat? How did I commit to running 40 to 60 miles a week in preparation for the Alaska Marathon? While I trained, I thought about Lori Moll (Gettysburg College) and Angela Ezekiel (Gettysburg College). Both women had their whole lives in front of them when they learned of their illnesses. At the age of 23, Lori was diagnosed with leukemia and was taken by the disease. Lori graduated from Gettysburg College, and was president of my chapter. Her character and courage inspired my run for leukemia and lymphoma research, so that other victims can be assured of a brighter future. Angela was diagnosed with Hodgkin's lymphoma in December 2000, and is now in her third year of remission. Her strength in the face of this battle fueled my passion to achieve my goal. Her story confirms our belief in research as the primary vehicle to a cure for these diseases. We see statistics everyday -- every nine minutes, one person dies of Leukemia and two are diagnosed with a blood-related cancer. These statistics have touched my life. Lori, Angela and others like them are my source of motivation and inspiration. Indeed, training for this marathon became a CELEBRATION OF LIFE!!!

In IIKE,  
Debie Dalrymple (Gettysburg College)



Debra with her niece, Christina Dalrymple



**ALPHA** Syracuse University  
1935 Mary McChesney Shaw

**GAMMA** University of Wisconsin/Madison  
1934 Jean O'Connor Kelley  
1942 Nordis Mortensen Roberts

**EPSILON** Northwestern University  
1933 Eugenia Blount Wallace  
1934 Janice Maher Winterbottom  
1939 Virginia Wells Craig

**ETA** University of California/Berkeley  
1927 Frances Johnson Swain  
1932 Dixie Weber Angelman  
1934 Mary Cleary Smith  
1935 Ruth Jones Foster

**THETA** University of Denver  
1938 June Johnston Irwin  
1963 Joan Clasmann Heumsch  
1964 Susan Helminiak Dunham

**KAPPA** University of Minnesota/Minneapolis  
2002 Kristin "Kris" Marx

**LAMBDA** University of Washington  
1929 Betsy Lee Bush  
1942 Elizabeth Siemens Keeney

**NU** University of Oregon  
1940 Anne Halderman McGowan

**XI** University of Idaho  
1921 Helen Patterson Brandt

**OMICRON** University of Illinois  
1921 Thelma Marion Campbell  
1940 Ronda Mann Hemphill

**PI** University of Nebraska/Lincoln  
1926 Dorothy Pugh Smithberger  
1943 Carroll Anderson

**RHO** University of Iowa  
1931 Roena Pyle Sawyer  
1931 Alice Rist O'Rourke  
1948 Lois Martin Klein  
1958 Carol Maxant Phillip

## DONATIONS

Donations in memory of friends, sisters and loved ones may be sent to the Gamma Phi Beta Foundation at International Headquarters. If you would like a card sent to a family member or friend, please include that address. A member's name will only be listed in this section upon receipt of a confirmed death notice, such as an obituary or a notification from the deceased member's family.

**SIGMA** University of Kansas  
1927 Dorothy Stone Haren  
1931 Edith Senner Dickinson  
1934 Anabel Walter Joyce  
1947 Bernice Brady Harvey  
1964 Julie Fisher Boulware

**PHI** Washington University  
1928 Mary Beresford Vahle  
1930 Margaret Kamp Driemeier

**CHI** Oregon State University  
1962 Bonnie Woolsey Spickerman

**PSI** University of Oklahoma  
1954 Cornelia Caldwell Martin

**OMEGA** Iowa State University  
1927 Doris Erwin Hawkins

**ALPHA BETA** University of North Dakota  
1937 Clarice Bjorneby Wilford  
1943 Joann Palmer Rich

**ALPHA DELTA** Univ. of Missouri/Columbia  
1941 Marybelle Lawing Sapp  
1941 Pauline Shannon Bangert  
1947 Suzanne Sames  
1949 Shirley Ferril  
1949 Jacqueline French Watt  
1950 Marilyn Homan Kenton  
1979 Donna Kullman

**ALPHA EPSILON** University of Arizona  
1928 Mary Baldwin Monier  
1928 Evelyn Smith Henderson  
1965 Susan Finley Campbell

**ALPHA ZETA** University of Texas  
1947 Joyce Yarbrough Driscoll

**ALPHA ETA** Ohio Wesleyan University  
1928 Mary Ames Brant  
1931 Mary Frye Rains  
1932 Jo Welch Myers  
1935 Charlotte Loeffler Reynolds  
1937 Martha Steinorth LeClair

**ALPHA THETA** Vanderbilt University  
1929 Julia Gibson Demarest  
1941 Norma Mousson Shaw

**ALPHA IOTA** Univ. of California/Los Angeles  
1941 Marilyn Jaccard Canfield

**ALPHA LAMBDA** Univ. of British Columbia  
1928 Florence McLeod Auld

**ALPHA NU** Wittenberg University  
1938 Nancy Tulloss Keck

**ALPHA XI** Southern Methodist University  
1938 Margaret Huston O'Neill  
1952 Sylvia Wink Forster

## THANK YOU

The Sorority appreciates the return of a deceased member's badge, when possible, so that it may be preserved in the archives.

**ALPHA OMICRON** North Dakota State Univ.  
1945 Gloria Ludemann Duis

**ALPHA RHO** Birmingham Southern College  
1935 Caroline Gignilliat Sparks  
1940 Joanna Thorpe Bernhard

**ALPHA SIGMA** Randolph Macon Woman's College  
1939 Barbara Woolman Preston

**ALPHA UPSILON** Pennsylvania State Univ.  
1944 Florence Ratchford La Voice

**ALPHA PHI** Colorado College  
1944 Shirley Woltzen Cameron  
1955 Suzanne Althouse Loden

**BETA ALPHA** Univ. of Southern California  
1946 Jean Fraser Carden  
1950 Phyllis Swanton Black

**BETA GAMMA** Bowling Green State Univ.  
1951 Flora Ufferman Norris

**BETA EPSILON** Miami University (OH)  
1947 Velma Blackard Maxwell

**BETA TAU** Texas Tech University  
1958 Lola Meek Cone  
1968 Florence Phillips

**BETA PHI** Indiana University  
1960 Barbara Klein Thomas  
1962 Arvilla Erdmann Slukarshi

**GAMMA ZETA** Texas A&M University/Commerce  
1973 Carol Gann Lee

**GAMMA RHO** University of Wisconsin/Oshkosh  
1971 Sara McLaren Zick

**ZETA BETA** University of Virginia  
1999 Caroline Moss

## CORRECTION

The name of Carolyn Stimmel Hutchinson (Colorado State) was mistakenly added to the Spring 2003 In Memoriam list. We apologize for any confusion and are happy to share that Carolyn is alive and well!



## FYI...

Memorial Gifts are listed alphabetically with the person being honored in **BOLDFACE** type. The person making the honor gift appears underneath.

**PAULINE SHANNON BANGERT** (Missouri/Columbia '41)  
Geraldine Epp Smith

**SARA WYMAN BARNUM** (Kansas '56)  
Sue Ann Haines Ott

**LAUREL BLAIR SALTON CLARK** (Wisconsin/Madison '81)  
Glendale Alumnae Chapter  
Green Mountain Crescent Circle  
Rosemary S. Bunn  
Houston Alumnae Chapter  
Epsilon House Corporation Board  
Diablo Valley Alumnae Chapter

**LINDA FARMER CLARK** (Kansas '57)  
Ann Fendorf  
Betty Crooker  
Sigma House Corporation Board  
Sue Ann Haines Ott

**LOLA MEEK CONE** (Texas Tech '58)  
Lubbock Alumnae Chapter

**WILLIAM C. CORDELL** (husband of Dorothy (Quincy) Butler Cordell - Auburn '71)  
Vada Baird

**BETTYE QUANDT CROMWELL** (California/Los Angeles '37)  
Sally Howard

**FATHER OF DOROTHY KENT DORTHY** (Nebraska/Lincoln '48)  
Dorothy Kent Dorthy

**VERNA MONTGOMERY ESSLINGER** (Oklahoma City '57)  
Phyllis Krieger  
Melba Quick Spurrier

**SARAH DEAN FARLEY** (Rollins College '35)  
Eugene Farley

**NANCY MEREDITH HOWARD** (Bradley '48)  
Jill Murrell

**EVELYN DAVIS JOY** (Iowa State '33)  
Cathy Lindauer

**ANABEL WALTER JOYCE** (Kansas '34)  
Catherine Spika

**SHARON AINSWORTH LANCASTER** (Northwestern '51)  
Reno Alumnae Chapter  
South Peninsula Alumnae Chapter

**FLORENCE RATCHFORD La VOICE** (Penn State '44)  
Marjorie Triebold Appel, Joseph Beard (husband of Briggite Uhlig Beard), Marian Doty Bickford, Elizabeth Hutchinson Boedecker, Ann Reese Cline, Ann Berkimer Gregory, Doris Handwerk Heinz, Dorothy Taylor Henderson, Jean Nelson Hopkins, Susan Haas Moomau, Joanne Peoples Peters

**MARY CAWARD LINDSAY** (California/Los Angeles '39)  
Helen Douglas Brazil

**SUZANNE ALTHOUSE LODDEN** (Colorado College '55)  
Mary Grace Rogers Wulschleger

**ARDIS MAREK** (Northwestern '34)  
Betty Booth Trempe  
Virginia Wells  
Karen Appel  
L'Cena Brunskill Rice

**DONNA MARSH** (Southern California '53)  
Virginia Howells Campbell  
Shirley and Rocky Flanagan  
Jackie Demos  
Veralie Brookins Nicol  
Esther Weld  
Rilla Griffin  
Carol Blanchard and Family  
Gretchen Reiter  
Cheri (Charlene) Lamont  
L'Cena Brunskill Rice  
Mary Ann Johnson

**CORNELIA "JILL" MARTIN** (Oklahoma '54)  
Georgetown Crescent Circle

**KATHERINE BROKAW McCORMICK** (Missouri/Columbia '30)  
Hawaii Alumnae Chapter

## UNRESTRICTED GIFTS

Unrestricted gifts of \$125 or greater have been given in memory of the following members. In honor of these gifts, the Gamma Phi Beta Foundation will inscribe a brick in the Sisterhood Plaza.

**MARGARET STEINKAMP ALLEN** (Iowa State '64)  
Rochester Alumnae Chapter

**BETTY McINTYRE** (Northern Arizona '90)  
Houston Alumnae Chapter

**MARY LILA HOOTEN MELVIN** (Oklahoma City '51)  
Verona Lynam

**MARY BALDWIN MONIER** (Arizona '28)  
Jan Mickelson  
Caroline Teaford

**GARY O'NEAL** (husband of Donna Hauser O'Neal - Kansas '67, father of Amy O'Neal Gurley - Kansas '92, brother-in-law of Susan Hauser Ashley - Kansas '70)  
Tucky Hobbs  
Millen, Colebank and Scott Families

**FLORENCE PHILLIPS** (Texas Tech '68)  
Lubbock Alumnae Chapter

**DONNA ZEGGIS POWELL** (San Diego State '49)  
Charlotte Lester

**ANN MITCHELL PRICE** (Vanderbilt '46)  
Andrew Price

**"MOM" HELEN PRICE** (Florida State/Beta Mu House Director)  
Rosemary Bunn  
Gayle C. Avant

**ADA REID** (mother of Nancy Ann Reid - Michigan '69)  
Jo Ann York

**MARYBELLE LAWING SAPP** (Missouri/Columbia '41)  
Columbia, MO Alumnae Chapter

**NORMA LYNCH SPEEGLE** (Southwest Oklahoma State '73)  
Oklahoma City Alumnae Chapter  
Adra Cheek  
Barbara Snoddy

**JILL HORNER SOUTHERN** (Nebraska/Kearney '74)  
Kearney Area Alumnae Chapter

**NANCY AND BABY STOCKERT** (daughter-in-law and grandbaby of Beverly Dougherty Stockert - California/Los Angeles '52)  
L'Cena Brunskill Rice

**PAT BIGGAR TATRO** (California/Berkeley '42)  
Bakersfield Alumnae Chapter  
Barbara Poe

**JANE ATWATER TINKLEPAUGH** (Kansas '38)  
James Mac Tinklepaugh

**NANCY CORPENING TODD** (Denver '53)  
Carolyn (Peggy) Stimmel Hutchinson

**MARGIE SMITH WATTERS** (Oklahoma City '54)  
Barbara Snoddy

**BERNICE (BUNNY) LYONS WILSON** (Nebraska/Lincoln '27)  
Jo Ann Berry Schleiger, Mary Cummins Lein, Donna Eilers Hansen, Bonnie Eilers Salomons, Joan Hansen Perry, Carol McCown Strasheim, Nancy Osborn Wagey, Nancy Weir Mead, Sue Ann Fagerberg

## SUBMISSION REQUIREMENTS

Sorority members and friends may make memorial gifts to the Foundation upon the death of a member or friend of Gamma Phi Beta. The Foundation notifies the family or alumnae chapter of the deceased about the gifts, and lists all memorial gifts in *The Crescent*. Gifts of any size are welcome; the average memorial gift is \$35. An alumna or her family may give to the Foundation to support a specific fund or program, or support unrestricted needs. Please contact the Gamma Phi Beta Foundation at 303.799.1874 for more information.



## ■ CONGRATULATIONS

In celebration of Terrie Huntington's election to public office. **Melba Spurrier**

Congratulations to Carrie Kleifgen, advertising & print production manager at Southern Living Magazine, who was recently awarded this year's prestigious Monadock Paper Award of Excellence for Design. Carrie was one of 15 national finalists to receive this award. **Southern Living Magazine**

In celebration of the Chicago NW Suburban Alumnae winning the Outstanding Alumnae Chapter Service Award at Convention. Thanks for your hard work! **'02-'03 Exec Board**

In celebration of the one-year anniversary of Bob and Kelly Carraway Smith. **Rosemary Bunn**

In honor of the graduating seniors of Zeta Omicron at John Carroll University.  
**Cleveland West Alumnae Chapter**

Congratulations to Joan Meagher (Southern California) receiving the Clara Worden Award at the Southern California Intercity Alumnae Council Founders Day Celebration. **L'Cena Brunskill Rice**

In celebration of Jennifer Schoen's engagement.  
**Diablo Valley Alumnae Chapter**

Congratulations to Krista Odom Yost, Alpha Nu, who received her Masters in Science in education and allied profession from the University of Dayton. **Lois Babson**

## ■ BIRTHS & BIRTHDAYS

In celebration of the birth of legacy Gwyneth Maxine, born October 23, 2002 to Bernadette and Steven Cole. **Ciran Hadian**

In celebration of the birth of legacy Aleece Christine Chandler born December 19 2002, to Brian and Jill (Thingelstad) Chandler (Minnesota State/Moorhead) of Grand Forks, ND. **Jill Chandler**

## ■ SISTERHOOD

In celebration of Barbie Chadwick's service as Collegiate Vice President. **Vicki Read, Sandy Burba, Annabel Jones, Krista Davis, Diane Goff and Betty Quick**

In celebration of Indy RLC, Chicago alums, and Kristi Heine Slaughter. Just Thanks!  
**Rosemary Bunn**

In celebration of Linda Johnson's appointment as Collegiate Vice President. **Vicki Read, Sandy Burba, Annabel Jones, Krista Davis, Diane Goff and Betty Quick**

In celebration of Wendy Blair Chudner (California/Irvine) and Janelle Wilson (Washington University) for all their help and support over the last four years. The torch has been passed. **Melanie Kelsey**

In honor of Selina Cicogna (Gettysburg College, 1999). **Jeanne Eisele**

In celebration of Debi Hanuscin's support, smiles, and caring. You're wonderful, kiddo!  
**Rosemary Bunn**

In celebration of Camile Favre. Thanks for keeping me "normal" and laughing. A big hug to you, Vivi and Dominique. **Rosemary Bunn**

In celebration of Katie Perkins, our chapter advisor. We appreciate everything you have done for us. You are doing a great job. Keep up the great work!! We love you! **Epsilon Eta Chapter**

## HOW TO SUBMIT

Members and friends of Gamma Phi Beta are encouraged to inform the Foundation of special events or the accomplishments of others to be listed in the "In Celebration" section of *The Crescent*. We ask that these announcements be accompanied by a gift. Gifts of any size are welcome; the average "In Celebration" gift is \$25. The Foundation notifies the honorees of "In Celebration" gifts.

## FOUNDATION GIFTS

### ■ THE PARENTS OF THE FOLLOWING MEMBERS HAVE GIVEN GIFTS OF \$100 AND GREATER IN CELEBRATION OF THEIR DAUGHTERS:

Laura Aboud (Wichita State)  
Kristi Allan (Arizona)  
Kathryn Anderson (Michigan St.)  
Kathryn Austin (Creighton)  
Kelsey Austin (Washington State)  
Natalie Bogdanoff (Oregon)  
Lindsay Bossuk (CA/Santa Barbara)  
Ashley Butler (Iowa State)  
Lurena Cain (CA/Santa Barbara)  
Caitlin Capozzi (Syracuse)  
Kristen Care (CA/Santa Barbara)  
McKenzie Carpenter (Washington)  
Morgan Cepparo (Cal State/Long Beach)  
Marisa Cicchino (Rutgers)  
Emiley Claytor (Wittenberg)  
Christine Collins (St. Louis)  
Rachelle Cooper (Sonoma State)  
Lindsay Damico (Indiana)  
Tracee Davis (Cal State/Fullerton)  
Elizabeth DeBaun (Iowa)  
Jane Doiron (Oklahoma)  
Leah Dunklau (Nebraska/Lincoln)  
Jacqueline Estes (Colorado)  
Katharine Falahee (Northwestern)  
Rebecca Fenn (Florida State)  
Anna Filipek (Oakland)  
Courtney Filmer (Southern CA)  
Juanita Fion (Sonoma State)

Caterina Franco (CA/Santa Barbara)  
Elizabeth Gately (Northwestern)  
Mary Giles (Auburn)  
Jennifer Golisch (Arizona)  
Megan Gonzalez (Denver)  
Caitlyn Graham (Arizona)  
Julianne Guariglia (Lehigh)  
Laura Hamby (Nevada/Reno)  
Elizabeth Harpine (George Mason)  
Kimberly Harvey (Arizona)  
Christian Helm (Oklahoma State)  
Elizabeth Holland (WI/Madison)  
Jennifer Idelson (Arizona)  
Kyley Jolna (Colorado)  
Jadyn Jones (Northern Arizona)  
Amy Jordan (Florida State)  
Melissa Kahn (Virginia)  
Mia Kantonen (Washington)  
Bethany Karas (William & Mary)  
Amber Koski-Sanborn (Arizona State)  
Ashley Lamb (Washington)  
Miren Lejardi (Idaho)  
Tracy Line (Southern CA)  
Sabrina Mashburn (Southern CA)  
Lauren Monroe (Washington St.)  
Teresa Morris (Southern CA)  
Katie Nahmias (Gettysburg)  
Meredith Neems (Southern CA)

Emily Pasquier (Miami, OH)  
Adriana Pawelee (WI/Milwaukee)  
Shelley Pick (Denver)  
Alexandra Puhon (George Mason)  
Sonia Reece (Arizona State)  
Morgan Remmers (Washington)  
Nancy Rhodes (Oregon)  
Lisa Riccardino (Bradley)  
Rachel Ringgenberg (Iowa State)  
Victoria Royer (Clemson)  
Taylor Schiffres (Arizona)  
Elise Schiller (Oklahoma State)  
Amanda Schoppe (OK City)  
Katherine Searing (Chapman)  
Charlotte Show (Florida State)  
Rupi Sodhi (St. Louis)  
Kristin Spivey (CA/Los Angeles)  
Laura Stanley (Virginia)  
Deborah Swenton (Syracuse)  
Melissa Sykes (Cal St./Fullerton)  
Meg Thalimer (Alabama)  
Jenna Tong (CA/Los Angeles)  
Corinne Vargas (Illinois)  
Amanda Walter (Arizona)  
Nikki Weddle (Oakland)  
Whitney Wheeler (Colorado)  
Laura Wilkinson (Chapman)  
Jennifer Williamson (Pepperdine)  
Theresa Wojnarowski (Bradley)  
Nicole Zbikowski (Kansas)



## YOUR GAMMA PHI BETA FOUNDATION ... WHO WE ARE AND WHAT WE SUPPORT



Carol Forsberg Tull (Wisconsin/Madison), Judy Benthaus Ingersoll (Bradley), Edie Jones Batton (Lake Forest College/Bowling Green) and Mary Alice French (Wisconsin/Madison).

### VISION

To establish philanthropy as an integral part of Gamma Phi Beta membership.

### MISSION

As the funding partner to Gamma Phi Beta Sorority, the Gamma Phi Beta Foundation provides resources for financial aid to members, the Sorority's leadership programs and international philanthropy.

## BUILDING TOMORROW'S LEADERS ALL GIFTS TO YOUR FOUNDATION ARE TAX DEDUCTIBLE

### Funding

The Foundation receives funding from a variety of sources including:

- Gifts from individual members, parents and friends of the Sorority
- Gifts from collegiate and alumnae chapters, corporations and other foundations
- Bequests, planned gifts, endowments and capital gifts designated by donors for specific purposes
- Investment income

### USE OF FUNDS

Foundation funds provide support for the Sorority's leadership programs and philanthropy, including:

#### ■ Leadership Development

- ◆ Educational programs such as Convention workshops
- ◆ Leadership Development Institute
- ◆ Personal And Chapter Enrichment (PACE) for training in the local chapters
- ◆ Chapter Advisor Management Program that provides better training and resources for chapter advisors
- ◆ Regional Leadership Conferences during off-Convention years
- ◆ Collegiate Leadership Consultants

#### ■ International Philanthropy - Camping for Girls

- ◆ Camp Fire USA, the Sorority's philanthropy
- ◆ Camperships to supplement chapter-provided funds for local camps

#### ■ Financial Aid

- ◆ Scholarships for undergraduate work
- ◆ Fellowships for graduate work
- ◆ Grants-in-aid for emergency financial crises for collegians
- ◆ Grants to support alumnae with special needs



Outgoing Naples alumnae president Peggy Mauter (Miami, OH) with incoming president Lynne Nordhoff (Wisconsin/Madison).



Eleanore Cornish Wood (Toronto), Sara Gallamore Moore (William & Mary), Norma Orlando Hasen (Ohio State), Phyllis Blake Palmer (Boston Univ.) and Dr. Megan Wynne-Jones McKee (Toronto).



Bridget Murray Fairbrother (Loyola), Joan Carlson Wilson (Minnesota/Minneapolis), Lorie Wilkening Kley (Colorado College), Lynn Baker Mueller (Lake Forest College) and Mary Frost Frey (Minnesota/Minneapolis).

**ANNUAL DEADLINES**  
**Financial Aid Submissions**  
**January 31**  
**Supplemental Funds**  
**April 15**

*\*All pictures on this page are from Foundation Executive Director Bonnie Payne's visit to the Naples Alumnae Chapter.*

The Foundation operates on a fiscal year ending July 31. The Foundation recognizes donor gifts for the fiscal year and profiles major donors in the fall issue of *The Crescent*. The  $\Gamma\Phi\beta$  Foundation is a charitable, not-for-profit 501(c)(3) organization incorporated in the state of Illinois.



# A Tribute to Camp Sechelt

## Now a Treasured Memory for Gamma Phi Beta

by Lottie Nilsen | Outgoing Editor

More than a half century ago Gamma Phi Beta added a tradition to its camping legacy with the purchase of Camp Gamma Phi Beta at Sechelt in British Columbia. Today, that legacy lives on in the memories of former counselors, staff members, devoted volunteers and the campers whose hearts were touched by Gamma Phi Beta.

Although a difficult one, the decision was made last spring to close Camp Sechelt, as it was known, and sell the property because of the increasing challenge in finding qualified volunteers and staff.

While the camp may be gone, its legacy continues. Like a rock thrown into still water, the ripple effects of the special times shared by campers, staff, counselors and other volunteers live on.

The idea to start a Gamma Phi Beta camp for girls in Canada was first explored at the 1930 Convention because the Sorority wanted to establish a second summer camp (the first was near Denver) to serve underprivileged girls. Delegate Dosh Shorney Stafford (British Columbia) announced that the Vancouver chapter "would love to run a camp!"

Within two years a camp was established in an old rented house at Boundary Bay on the Washington State side of the U.S.-Canadian border. Twenty campers, five counselors, a cook and a "camp mother" made for very crowded conditions. This was the first of several different versions of the camp that existed before it found its permanent home at Sechelt.

According to a story in the Winter 1983 issue of *The Crescent*, in 1949, Dosh and Eric Stafford noticed a piece of property for sale at Sechelt, British Columbia. The price was low, as specified in the will of the deceased owner, Archbishop de Pencier, who also stipulated that the land be sold to a charitable organization.

Former camp director Beatrice Wilch MacLeod (British Columbia) described the camp as, "on the waterfront, with a long stretch of pebbly beach. Some days there would be huge breakers pounding against the shore, while at other times the water was still as a mill pond. There are some gorgeous fir and cedar trees, and lovely red-barked arbutus on our property."

Gamma Phi Beta jumped at the chance to acquire this property and, in 1950, the

first session was held at Sechelt with 20 campers, three counselors and one camp director. There was an old farmhouse, a few small cabins and a boathouse. Water was carted in buckets from across the highway, and counselors drove a Model T to the Sechelt wharf to pick up ice packed in sawdust that had been delivered by the Union Steamship Company.

In the following years the camp gained some modern conveniences: a larger dorm was built, allowing there to be 36 campers at each session; huge old refrigerators were brought in, eliminating the need for the ice to be hauled; and the camp added running water when a public main was piped past the property.

Every summer Camp Sechelt hosted about 100 girls ranging in age from 9 to 12. There were usually three sessions, each running almost two weeks. Camp attendance required a recommendation from a school nurse, teacher or counselors, after which the potential campers were interviewed by members of the camp board.

The girls came from a variety of homes. Beatrice MacLeod wrote in *The Crescent*: "Some were from homes that would be quite satisfactory if the incomes weren't so low. Some were from definitely sordid backgrounds. Many were girls from broken homes or big families living in very cramped quarters. All of the children had been chosen by the Vancouver school nurses because of a definite need in that child for the experiences camp could give them. Such things as companionship on an equal footing with other girls of the same age, and understanding and affection, security and the sense of being welcome; good food, fresh air, sunshine and rest."

Before each session, the Sechelt staff would prepare the camp and participate in training sessions, including wildlife identification. During their stay, campers and staff were likely to see eagles, seals, sea lions, crows, hawks, falcons, deer and an occasional bear across the highway.

According to longtime Vancouver camp board member Janet Inman Arbuckle (British Columbia), the girls would travel more than four hours from Vancouver to get to camp. When they arrived, many of the girls had caked on make-up, bad attitudes, bad posture and pimples, and some had lice. Most carried a paper bag that included all they needed



Saying goodbye to Camp Sechelt are Heather Dickson Elliott (McGill), Audrey Buchanan Hetherington (British Columbia), Susan Moore Erb (Manitoba), George Watt (caretaker), Margaret Evans Hodgson (British Columbia), Debbie Berto (British Columbia), Lucy Watt (George's wife), Anne McEvoy (British Columbia), Doreen Brown Ramage (British Columbia) and Sarah Shorney (Toronto). The group spans pledge years from 1937 to 1995.



from home: a bathing suit, jacket and one pair of jeans. Once they got to camp, everything from the clothes they wore to the bedding they slept on was provided for them.

In the almost two weeks that followed, a transformation would occur. Days at camp were filled with time on the beach and informal learning, singing, play acting, row boating (a canoe came later), games, sports and arts and crafts. Many of the girls shed their worries and were allowed to be children. Every day included rest and play, as well as lessons about how to live with and trust other people, how to take care of themselves, and each girl was shown that she was a valuable person.

"One of my favorite memories was watching them learn to enjoy life," Janet said.

From the time they arrived, the campers had the opportunity to earn "cabin points" by displaying good attitudes, cleaning and doing chores. At the end of each session, there would be "Olympic" games, where each cabin would do something different, and a "Gamma Phi Fair," where the campers could use their cabin points to purchase t-shirts, barrettes and other personal items. There was also a Christmas in July (or August), with a full turkey dinner and presents the girls made for each other. The caretaker, who was often the subject of many practical jokes, acted as Santa Claus.

When they re-boarded the bus at the end of each session, the same 36 girls left smiling between their tears, with suntans, clear faces and a new respect for kindness, sharing and trust.

Every year, after camp was long over, the campers were invited to a Valentine's Day party in Vancouver. Gamma Phi Beta alumnae would rent a hall, show slides and serve ice cream. Collegiate members from the area hosted games for the girls to play and everyone had a good time. It was also when the Beth Robertson Award was announced. Named after Beth Evans Robertson (British Columbia), one of the camp's founders, the award was given to one girl who would represent Gamma Phi Beta at another camp.

As the years went by, Camp Sechelt and Gamma Phi Beta saw some of the campers return to play other roles. Some worked in the kitchen, several became alumnae initiates and at least one went on to join the Vancouver Camp Board.

It wasn't just the campers who grew, learned and gained valuable lessons from Camp Sechelt. Many of the women who served as counselors later became international officers and alumnae chapter officers. Serving

as a camp counselor gave many members a profound appreciation for Gamma Phi Beta.

"All of us are loyal Gamma Phi Betas, but our loyalty was greatly enhanced by the counseling experience," wrote Martha MacKenzie (California/Berkeley) in a 1951 issue of *The Crescent*. "When you realize that your sisters will come from near and far to do good for others, it makes you all but burst your buttons that you belong to such a wonderful group."

However, counselors and summer staff weren't the only ones who contributed to and gained from their work at Camp Sechelt. Through the years, hundreds of women devoted countless hours to ensure that

little girls in need would have a summer experience they would never forget. There were women who volunteered in every aspect, from logistics to gathering clothing, bedding, supplies and food. Members volunteered weekends and vacations to build and maintain the camp.

There were also many women, including Beth Robertson, Dosh Stafford, Mary Dolmage Inman (British Columbia), Katherine Hewitt Smith (British Columbia), Margaret Evans Hodgson (British Columbia) and Margot Burgess (British Columbia), without whose efforts the camp might not have existed or lasted.

"It became part of who they are," said Carol Pedlar (British Columbia), current president of the Vancouver camp board. "It rocked their souls a little bit."

In recent years, it had become more and more difficult to find the volunteers and staff needed to run the camp. "It was a very, very sad day when we had to make the decision to close it," Carol said.

According to Susan "Sue" Moore Erb (British Columbia), the sale of the camp closed on May 2, 2003. The proceeds were split between the Gamma Phi Beta Foundation and the Vancouver Camp Fund. The interest earned by the camp fund's portion will provide annual camperships to about six children with cancer, or up to 15 children with other special needs.

Camp Sechelt was an integral part of Gamma Phi Beta for many years. It instilled in many members the importance of providing a loving, caring atmosphere for little girls. Its gifts to Gamma Phi Beta are innumerable, but include the desire of one of the oldest women's organizations in North America to maintain a relationship with camping. This will be played out for years to come in Gamma Phi Beta's collaboration with Camp Fire USA, as well as the many different local and specialized camps supported by collegiate and alumnae chapters. ■

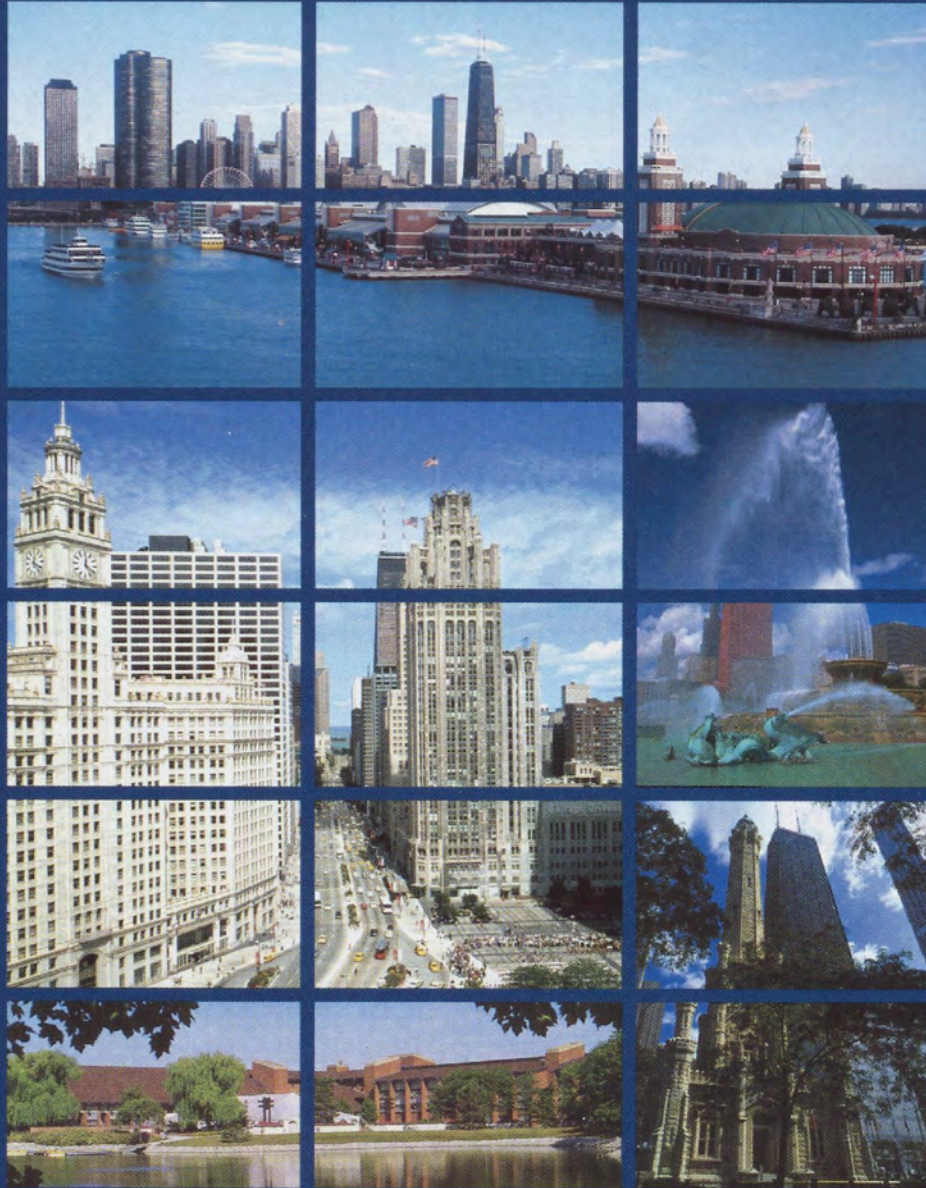
Like a rock  
thrown into still water,  
the ripple effects of the  
special times shared by  
campers, staff, counselors  
and other volunteers  
live on.



Heather Dickson Elliott, George Watt, Margaret Evans Hodgson, Anne McEvoy and Susan Moore Erb.



Our Time To Shine



GAMMA PHI BETA

# CONVENTION

2004

Chicago ✧ June 23-27, 2004  
Marriott's Lincolnshire Resort  
[www.chicagogammaphibeta.org](http://www.chicagogammaphibeta.org)