

THE

# CRESCENT

OF GAMMA PHI BETA

WINTER 2000



*Shaping Our Future*



# THE CRESCENT

OF GAMMA PHI BETA

## CRESCENT STAFF

<b>EDITOR</b>	Deborah Hidde Borak International Headquarters dborak@gammaphibeta.org
<b>ASSISTANT EDITOR</b>	Carrie Plachko International Headquarters cplachko@gammaphibeta.org
<b>ALUMNAE/ COLLEGIATE NEWS EDITOR</b>	Kristyn Wiggins Golberg 2314 Stone Creek Ln. West Chanhassen, MN 55317 Kgolberg@aol.com
<b>NEWS EDITOR/ FEATURE EDITOR</b>	Darla Click Dakin 7148 South Andes Circle Aurora, CO 80016 DarlaD@ix.netcom.com
<b>GRAPHIC ARTIST</b>	Jody Toth
<b>BUSINESS MANAGER</b>	Alison Webster Maguire
<b>INTERNATIONAL HEADQUARTERS</b>	12737 E. Euclid Drive Englewood, CO 80111 Phone: 303-799-1874 Fax: 303-799-1876 IH@gammaphibeta.org

## FOUNDERS



Helen M. Dodge Ferguson  
Frances E. Haven Moss  
E. Adeline Curtis  
Mary A. Bingham  
Willoughby

## COUNCIL

<b>INTERNATIONAL PRESIDENT</b>	L'Cena Brunskill Rice
<b>ALUMNAE VICE PRESIDENT</b>	Linda Hallenbeck Pelegrino
<b>COLLEGIATE VICE PRESIDENT</b>	Terri Kennedy Briggs
<b>FINANCIAL VICE PRESIDENT</b>	Joanne Callis Roman
<b>MEMBER-AT-LARGE</b>	Lisa Lepley Hiles
<b>MEMBERSHIP VICE PRESIDENT</b>	Vicki Carlson Read
<b>NPC DELEGATE</b>	Betty Ahlemeyer Quick
<b>IH EXECUTIVE DIRECTOR</b>	Alison Webster Maguire

Gamma Phi Beta (USPS 157-620). *The Crescent* is published quarterly in Fall, Winter, Spring and Summer by Gamma Phi Beta Sorority, Inc., 12737 E. Euclid Drive, Englewood, CO 80111-6445. Subscription price is \$6.00. Produced in the U.S.A. by Maury Boyd and Associates. Periodicals postage at Englewood, CO and additional mailing offices.

Copyright 1999, Gamma Phi Beta Sorority.

**Postmaster:** Send address changes to *The Crescent*, Gamma Phi Beta Sorority, 12737 E. Euclid Drive, Englewood, CO 80111-6445. Printed in the U.S.A.

**Subscribers:** Send changes of address, notices of marriages and deaths to Gamma Phi Beta Sorority, 12737 E. Euclid Drive, Englewood, CO 80111-6445. Phone: 303-799-1874. Fax: 303-799-1876.



Member of the College Fraternity Editors Association

## Letter from the Editor

As I sort through the stack of Reader Surveys received from the summer issue, one overwhelming theme is apparent—members vary widely in what they want to read in *The Crescent*. As Editor of *The Crescent*, it is my responsibility to provide accurate and worthwhile information, while ensuring the integrity of our publication. Several guidelines have been developed to achieve these goals. Here are a few of our policies regarding inclusion of information in *The Crescent*.

**Letters To The Editor:** You are invited to share your thoughts and comments concerning the magazine and its content on the Letters to the Editor page. In order for your letter to be published it must be signed with full name, address and chapter.

**Member News:** All collegiate and alumnae chapters are encouraged to send a brief update of chapter activities for each issue of the magazine. All chapter updates submitted by *The Crescent* deadline will be included in the next issue. All names included in the magazine are verified with our member database. Individuals listed in *The Crescent* must be initiated members. Due to space limitations and interest to the general audience, wedding and birth announcements are not included in the Member News but are encouraged for the In Celebration announcements through the Gamma Phi Beta Foundation.

**In Memoriam:** Due to space limitations, it is the policy of *The Crescent* to not print obituaries in the magazine, with one exception, upon the death of a former International President. The one section in *The Crescent* devoted to those who have passed away, is our In Memoriam section. Initiation chapter follows each member's name. When submitting death notices to International Headquarters, please include a funeral notice or newspaper obituary to verify the information. Names will not be listed unless they have been verified.

**Photographs:** We accept black & white and color photographs only. We cannot accept Polaroid, faxed or color copies of photographs due to the fact that they don't reproduce well in the magazine. Only photos of the highest quality are included in the magazine. If you would like your photo returned, please include a self-addressed, stamped envelope with your photo, otherwise they become the property of Gamma Phi Beta and are subject to use in all Gamma Phi Beta publications, including the website.

*The Crescent* is your publication! We welcome letters, feedback, articles, and photos from all members to help shape future issues. Reader Survey results will be published in the spring issue. Have a great 2000!

—Deborah Borak, Editor

## DIRECTORY OF SERVICES

<b>Address/Name Change</b>	Call (303) 799-1874 or E-mail <a href="mailto:Address@gammaphibeta.org">Address@gammaphibeta.org</a>
<b>Crescent Classics</b>	Call 1-800-453-5344, Fax 1-714-441-1029, or E-mail: <a href="mailto:rightcontn@aol.com">rightcontn@aol.com</a>
<b>Crescent Waves, Music &amp; Magazine Program</b>	Call 1-800-368-1385 or E-mail <a href="mailto:CrescentWaves@gammaphibeta.org">CrescentWaves@gammaphibeta.org</a>
<b>Gamma Phi Beta Credit Card through First Tennessee Bank</b>	Call 1-800-234-2840 or visit <a href="http://www.ftbaffinity.com">www.ftbaffinity.com</a>
<b>National Collegiate Calling Card</b>	Call 1-800-628-8234 or visit <a href="http://www.nationalcollegiate.com">www.nationalcollegiate.com</a>
<b>SisterLink, Career &amp; Networking Service</b>	Call (303) 799-1874 or E-mail <a href="mailto:SisterLink@gammaphibeta.org">SisterLink@gammaphibeta.org</a>
<b>Volunteer Opportunities</b>	E-mail <a href="mailto:Volunteer@gammaphibeta.org">Volunteer@gammaphibeta.org</a>



# CONTENTS

Volume 100, No. 1

## 4 Ideas on Issues: Traditions for the New Millennium

By Linda Hallenbeck Pelegrino

## 5 Member News

## 9 Gamma Phi Beta Plans for the Future

A look at the Strategic Planning Process

## 12 Gamma Phi Beta's Website—What a Site to See

## 19 NPC Update

## 21 Presidents DO Wear Lipstick

A focus on Deborah Floyd—NPC Foundation Award Winner

## 30 Closeout on 125th Anniversary Merchandise!

### Gamma Phi Beta ended the Century with...

- 10,048 living collegiate members
- 75,863 living alumnae members
- 111 Collegiate chapters
- 136 Alumnae chapters
- 34 Crescent Circles
- 2 Colonies
- 7 elected members of International Council
- 9 Foundation Trustees
- 10 members on the Foundation Board of Regents
- 18 IH staff members
- 6 Collegiate Leadership Consultants
- Over 150 International Officers
- 68 International Conventions behind us

## Bits & Pieces

### Chapter Anniversaries

Congratulations to these Greek-letter chapters celebrating special anniversaries in 2000!

#### 10 Year

*Epsilon Omicron* - February 1990 - University of California - Santa Cruz  
*Epsilon Pi* - April 1990 - George Mason University  
*Pullman Washington Alumnae Chapter*, WA - January 1, 1950

#### 25 Year

*Delta Theta* - January 1975 - California Polytechnic State University  
*Delta Iota* - April 1975 - Purdue University

#### 50 Year

*Beta Mu* - April 1950 - Florida State University  
*Lake County Alumnae Chapter*, IL - January 1, 1950

### Congratulations, Foundation!

The Foundation won the following awards at THE Foundation Seminar held in September in Indianapolis.

#### Best Donor Newsletter

*"From the Heart"*

#### Best Non-Direct Mail Package

*Parent Calling*

#### Best Student Development Effort

Foundation Consultant Program

### Greek-Letter Chapter Installation

Congratulations to Gamma Phi Beta's newest chapter, Beta Rho at the University of Colorado, in Boulder, Colorado! The chapter was reinstalled on October 2, 1999. Congratulations can be sent to the chapter at 935 16th Street, Boulder, CO 80302.

### Alumnae Growth

We are proud to announce the installation of the Puget Sound Alumnae chapter on Saturday, November 6 at the Gamma Epsilon chapter house. Diane Goff, Director of Collegiate Recruitment, was the installing International Officer and Vickie Zimmer, PAD, also attended. Congratulations may be sent to chapter president, Melanie Kelsey, at 7631 218th St. SW #17, Edmonds, WA 98026.

### The Crescent Deadlines

Summer ..... April 1  
Fall ..... July 1  
Winter ..... October 1  
Spring ..... January 1





Linda Hallenbeck Pelegrino

# Traditions for the New Millennium

By Linda Hallenbeck Pelegrino, Alumnae Vice President

I recently watched the popular television program, *The Antique Road Show* and reflected on what we have in our lives today that will be of value to others 100 years from now. What will we cherish and save to pass onto the next generation?

I reflected on things each of us might have tucked away and saved, some favorite pictures from a special occasion, significant event or celebration. Items from experiences shared with family and friends. The more I thought about it the more I realized that it is not the items which I saved that are of value, but what they represent. Many of them were from special experiences I had shared with my Gamma Phi Beta friends. Each object was tied to a significant event, held a wonderful memory, and was also tied to a Gamma Phi Beta tradition. But "traditions are more than just nice things we do together now and then. Traditions are the product of millions of human trials and errors too. The ones that last and are repeated do so because they are both joyful and useful." **Building strong sisterhood through friendship and mutual support is ΓΦΒ's most important and lasting tradition.**

As we begin the new millennium, I wonder what are we creating today in Gamma Phi Beta that will become tomorrow's traditions? What do we cherish today that will be passed on? What traditions are important enough to be carried over into the new millennium and beyond?

In 1999, the International Council was preparing for the future with a strategic planning process. As part of this process, we asked parents, collegiate members and alumnae both active and inactive, what were the most important elements of their ΓΦΒ experience.

The number one and most important reason women gave for joining a sorority was friendship. Women want to be

connected, or in the case of our alumnae, become reconnected. Women want to stay in touch with the lifelong friends they made as a collegian. They want to meet and network with other women. Remaining connected changes as we pass through the decades of our lives. **The kind of connections change, but the need to stay connected remains the same.**

We graduate from college and stay connected to our sisters for primarily social reasons. We help each other struggle through the beginnings of our new careers. We help each other get married, with new families and with the responsibilities of being a parent. We might get help with financial investments, writing a resume, or establishing new connections in a new city. As we get older, our need to be connected includes meeting new sisters and friends as well, as an opportunity to give back to the community and to the sorority.

Our recent strategic planning survey results indicated that the second most important reason women join a sorority is for leadership and personal growth opportunities. So no matter what school, what era, what size the chapters, the opportunities for friendship, leadership and personal growth have been, and remain, important to our members.

Friendship, leadership and personal growth are values expressed as traditions in Gamma Phi Beta and are supported by financial resources, volunteers and sister to sister connections. They are demonstrated in many ways. They are part of a chapter retreat, officer training, a CLC visit and a memorable inspiration week to name just a few. They are expressed through a Sisterlink mentor, a Foundation scholarship or emergency grant for a sister in need. These are gifts and traditions of our sisterhood, which we want to share with future ΓΦΒ's.

**When you left college and packed up your party favors and textbooks did you pack up your connection to Gamma Phi Beta?** Perhaps the most important thing you can do now is to stay connected or get reconnected to Gamma Phi Beta. Our strategic planning focus groups and surveys revealed that alumnae continue to support ΓΦΒ because they want an opportunity to give back and insure that younger women have the same opportunity for friendship and personal growth that they had when they were a collegian. Consider enriching your life by acting on these Gamma Phi Beta traditions.

- Find and reconnect with a chapter sister
- Attend a Founders Day celebration
- Serve as a mentor or advisor
- Foster young professionals, create an internship in your workplace
- Volunteer your expertise or work on a short term project for ΓΦΒ
- Pay your \$20 International Alumnae Dues.
- Donate to the Foundation
- Get reconnected by visiting our website at [www.gammaphibeta.org](http://www.gammaphibeta.org)

The challenge of the new millennium is not just about creating something new, but looking at what we have created in the past that is important today, and if cared for properly will be passed on to the next generation of Gamma Phi Betas. Our very best traditions are our stated core values as expressed in our mission: "to foster a nurturing environment that provides women the opportunity to achieve their potential through life-long commitment to intellectual growth, individual worth and service to humanity." Like the special items from the past that we save and cherish today, these traditional values are our most important traditions. Traditions are our connection to the past and are our bridge to the future. ●



# CRESCENT WAVES

## Gamma Phi Beta's Magazine and Music Program

Gamma Phi Beta prides itself on the exceptional leadership programs available to its members, including the Regional Leadership Conference (RLC) program. RLCs provide opportunity for leadership development through officer training, idea sharing, workshops, focus groups and more. This program is possible due to the success of Crescent Waves.

Crescent Waves, Gamma Phi Beta's Music and Magazine Program, has been in place for many years, and chapters have always been expected to participate. The program has undergone some positive changes this year. Several chapters suggested adding an option to the program so that they could contribute to RLCs without buying/selling magazines and music items. This change was proposed to International Council in June, approved, and put into effect for the 1999-2000 school year. In addition, the number of magazines and music items each member is expected to sell has been reduced from two to one.

Most women have at least one magazine subscription or buy one CD throughout the course of a year. Crescent Waves allows members to renew subscriptions and purchase these items at a reduced cost, while contributing to RLCs.

Participation in the Crescent Waves program is one of the criteria for Overall Chapter Excellence for collegiate chapters. Alumnae chapters also participate in Crescent Waves. Placing an order of \$200 or more with Crescent Waves is one of the criteria for the Alumnae chapter Circle of Excellence at one of the higher levels.



It is important for each Gamma Phi Beta chapter to make a commitment to leadership training and Crescent Waves is one small way to do that.

### Collegiate Chapter Update

All Collegiate chapters should have received a shipment of catalogs from QSP and an information packet from IH. Remember to send in your chapter's option choice, Crescent Waves Chairwoman's name and chapter information to Carrie Plachko at: (303) 799-1874 ext. 326, [cplachko@gammaphibeta.org](mailto:cplachko@gammaphibeta.org).

### Alumnae Chapter Update

Please contact Mandy Paul with your Alumnae chapter/Crescent Circle Chairwoman information at (303) 799-1874 ext. 309, [mpaul@gammaphibeta.org](mailto:mpaul@gammaphibeta.org). You can also contact Mandy if you have any questions or need any additional catalogs.

*This year Gamma Phi Beta will spend more than \$4,000 to receive address corrections from the US Postal Service*

Help us save money by notifying International Headquarters (IH) of name or address changes. You may call, write or E-mail Gamma Phi Beta International Headquarters, 12737 E. Euclid Drive, Englewood, CO 80111. Phone: (303) 799-1874, Fax: (303) 799-1876, E-mail: [address@gammaphibeta.org](mailto:address@gammaphibeta.org)

### Please include the following information

Initiated Name: First: \_\_\_\_\_ Middle: \_\_\_\_\_ Last: \_\_\_\_\_

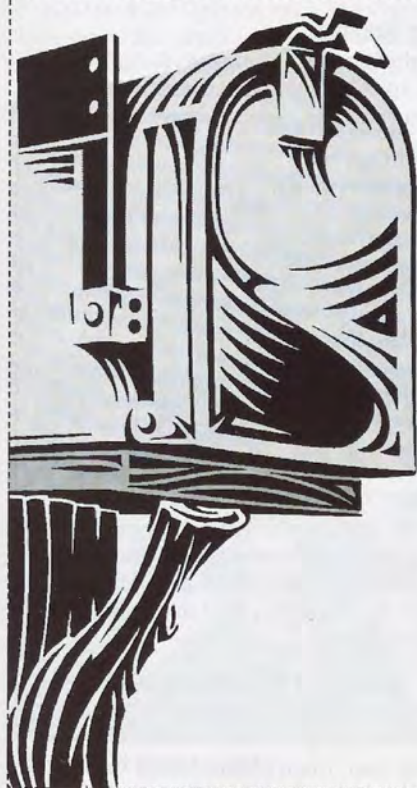
Current Name: First: \_\_\_\_\_ Maiden: \_\_\_\_\_ Last: \_\_\_\_\_

New Address: Street: \_\_\_\_\_

City: \_\_\_\_\_ State: \_\_\_\_\_ Zip: \_\_\_\_\_

Phone Number: \_\_\_\_\_ E-mail Address: \_\_\_\_\_

Chapter and Year of Initiation: \_\_\_\_\_





### COLLEGIANS

#### Alpha chapter - Syracuse University

Sisters at Syracuse University assisted with a groundbreaking ceremony for a new ice skating rink on

campus. Syracuse alumnae Marilyn Tennity and her husband William donated the \$3.9 million needed to build the rink.

#### Epsilon chapter - Northwestern University

House renovations were a pleasant surprise to the sisters at Northwestern University as they returned to the house this fall. The chapter is gearing up for recruitment in January as well as focusing their efforts on their annual philanthropy "Gamma Phi Great Outdoors."

#### Eta chapter - University of California - Berkeley

These sisters celebrated their 105th anniversary and the presentation of three new member classes with family, friends and alumnae. The event included a barbecue and a football game.

#### Kappa chapter - University of Minnesota

Sisters at the University of Minnesota took 2nd place overall in their Greek Week this past spring. The chapter also raised \$1600 by hosting a pancake breakfast. All proceeds benefited a young girl in need of a heart transplant.

#### Xi chapter - University of Idaho

The sisters at the University of Idaho proudly report that they earned first in grades out of 25 other Greek living groups on campus. Fifteen of their members earned a 4.0. The chapter is planning for their Gammie Golf Philanthropy in September. Proceeds from this event will benefit a local children's camp.

#### Pi chapter - University of Nebraska - Lincoln

The sisters at the University of Nebraska, Lincoln welcomed 40 new members to their chapter this fall. Other activities for this chapter include a new member program, softball, and Inspiration Week.



Alpha sisters at Syracuse University at an ice-rink opening.



Sisters at the University of Michigan hosted their alumnae at the chapter house.

#### Sigma chapter - University of Kansas

Sigma Brunch will be held during the chapter's 85th Anniversary celebration on March 31 and April 1, 2000. The celebration will be held at the Lawrence Holidome and the Sigma chapter house.

#### Omega chapter - Iowa State University

Twenty-two new members joined the chapter at Iowa State following fall recruitment. After a very successful Dad's Weekend, the sisters are now looking forward to taking part in the many Homecoming activities.

#### Alpha Delta chapter - University of Missouri - Columbia

Sisters at the University of Missouri, Columbia welcomed 60 new members to their chapter this fall. They now have a total of 183 members. The chapter enjoyed Homecoming activities and are now looking forward to their annual hayride and a semi-formal event.

#### Alpha Epsilon chapter - University of Arizona

The sisters at the University of Arizona enjoyed their weather this fall at an all-house retreat. Swimming, barbecuing and bonding were just a few of the activities. The sisters enjoyed a date dash and received many awards at their Greek award ceremony.

#### Alpha Chi chapter - College of William and Mary

Sisters at the College of William and Mary welcomed 30 new members to their chapter. The sisters went into high gear as they held their main philanthropy event,



Sisters from Gettysburg College helped to keep the streets clean.



## Member News



Alpha Delta sisters welcomed new members following fall recruitment.



Beta Kappa sisters on Preference night.

Moon Week, which benefits Camp Gamma Phi Beta. Founders Day celebrations will be especially noteworthy as this year is the tenth anniversary of the recolonization at the College.

### **Beta Alpha chapter - University of Southern California**

Fifty-one new members joined the chapter at the University of Southern California this fall. The chapter has been busy with Bid Day celebrations, their Gamma Grand Prix philanthropy, Alumnae Day and a Crescent Ball.

The Beta Alpha annual meeting will be held on Monday, February 7, 2000 at the chapter house. Dinner will be at 5:00 p.m. with the meeting to start at 6:00 p.m.

### **Beta Beta chapter - University of Maryland**

Sisters at the University of Maryland welcomed 11 new members. The chapter enjoyed a Back to the Beach Barbecue, an ice cream social and their annual Gamma Phi Beta Crabfeast.

The sisters donated their time to making Halloween masks for sick children and they also took part in the annual AIDS Walk held in Washington, DC.

### **Beta Kappa chapter - Arizona State University**

Thirty-two new members joined the sisterhood after a successful fall recruitment. The sisters celebrated with a Crescent Ball, which also celebrated their 50th anniversary on the Arizona State University campus.

### **Beta Mu chapter - Florida State University**

The sisters at Florida State University welcomed 47 new members this fall. Homecoming, the chapter's annual casino night philanthropy, a formal, Parent's Weekend and many other social events will keep these sisters busy.

### **Beta Sigma chapter - Washington State University**

The sisters at Washington State University are gearing up for their Gammie Golf philanthropy. The chapter is also donating hours to making diaries for underprivileged girls. The sisters have developed a new independent study hours program. Last semester they raised their grade point average to a 3.1 and they look forward to an even higher GPA next semester.



University of Arizona seniors



Florida State University was proud to welcome 47 new members.



### COLLEGIANS

(continued)

#### Beta Upsilon chapter - Kansas State University

52 new members joined the sisters at Kansas State. This is the second largest class on campus. The chapter took part

in the annual Spiketacular philanthropy which raised money for young girls' camps. The sisters are now looking forward to Homecoming.

#### Beta Psi chapter - Oklahoma State University

Sisters from Oklahoma State University welcomed 53 new members this August. The sisters are now busy with Homecoming events and are looking forward to their upcoming volleyball tournament philanthropy which raises money for Camp Gamma Phi Beta at Sechelt.

#### Gamma Phi chapter - Auburn University

The sisters at Auburn University are very excited about their 54 new members. Bid Day activities included rolling Toomer's Corner, (an Auburn tradition after a big win), and midnight roller skating.

#### Gamma Pi chapter - University of Minnesota, Mankato

Fourteen new members joined the chapter at the University of Minnesota, Mankato. The chapter celebrated with a overnight retreat. The sisters carved pumpkins both with elementary children and with some elderly citizens in their community. After two carving events, these sisters are pros!

#### Gamma Psi chapter - University of Northern Iowa

The sisters at the University of Northern Iowa welcomed 22 new members to their chapter. The sisters spent their weekend retreat reflecting on their accomplishments and determining their future goals as a chapter. The chapter maintained their position as having the highest GPA in the Greek system for the spring semester and look forward to keeping that spot this fall. On a philanthropic note, the sisters are planning to take part in a walk for diabetes, a walk for breast cancer, a campus-wide blood drive and a Big Brother/Big Sister Bowl-a-Thon.



Thirty-two new members joined the chapter at California State University, Long Beach this fall.

#### Delta Delta chapter - California State University - Fullerton

These sisters started the school year with a new look—new roof, new windows and new paint. They also welcomed 34 new girls during fall recruitment.

#### Delta Psi chapter - University of California - Santa Barbara

Sisters at the University of California, Santa Barbara were also pleased to return to a renovated chapter house. The chapter was busy with recruitment and is already active in many activities this fall.



Sisters from University of Minnesota, Mankato during Preference.

#### Epsilon Delta chapter - Creighton University

Sisters at Creighton University held their third annual golf tournament to benefit Catholic Charities in September. Over \$2,000 was raised and nearly 60 alumnae and businessmen and women took part in the event. Dinner was provided at a local country club and was followed by a prize ceremony.

#### Epsilon Theta chapter - Clemson University

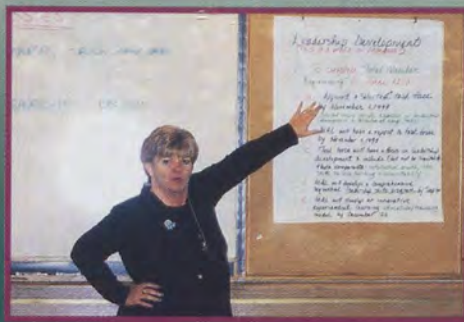
Sisters at Clemson University welcomed 49 new members this fall. The chapter immediately forged into Homecoming activities and worked long hours on their float with a "Back To The Future"



New members at Epsilon Pi.

(Continued on page 14)





# Gamma Phi Beta Plans For the Future

Strategic planning is an ongoing process that involves asking several questions. Who and what are we? What are we doing and why? What do we want to be and do in the future and why? And finally, how do we get there?

In 1994, the Future Visions committee of Gamma Phi Beta began the process by establishing our mission, goals and objectives. Since then, each International Council has worked to support the goals identified by that committee. In the meantime, websites, e-mail and the Internet have changed our focus and the way we conduct our business.

Mission and vision statements were no longer enough to satisfy the needs of our members. Thus, at the 1998 Convention, the delegates passed Resolution #5, a mandate for a strategic plan and the implementation of an information management plan by December 31, 1998. We completed the preliminary strategic plan in December and distributed it in February 1999 to all International Officers, former Council members, collegiate and alumnae chapters, and to all attendees of the Regional Leadership Conferences held in seven cities across the United States.

We hired a consulting firm to guide us as we crystallized our strategic focus and identified the Sorority's priorities. We surveyed International

Officers, alumnae, collegians and parents and held focus groups for collegiate presidents and International Officers. We selected a diverse group of members to serve on the Strategic Planning Committee. The committee members were: Kris

Baack, Vada Baird, Deborah Borak, Barbie Chadwick, Darla Dakin, Stephanie Hearn, Lisa Hintze, Verona Lynam, Alison Maguire, Ann Mitchell, Linda Pelegrino, Betty Quick, Vicki Read, L'Cena Rice, Joanne Roman and Carleen Sullivan.

The committee met in September 1999 and the result was the design of a plan that reflects the needs of our members and a plan that will continue to evolve, moving the Sorority forward in the next millennium. This strategic model defines our six most critical issues: image; leadership development; technology; membership; structure; and financial support to achieve the first five objectives.

We have utilized the energy, expertise and teamwork of our members to set the priorities for the strategic plan. The dedication of our members is outstanding; the willingness and effectiveness of our International Officers is exemplary and the commitment of our staff is extraordinary. We need to continue working together through this strategic plan to achieve the mission of Gamma Phi Beta.

You will be reading more about the Strategic Plan, and the specific steps involved in reaching our goals in future issues of *The Crescent*, on our website and at our upcoming Convention in Houston. ●

## Critical Issues Identified for Gamma Phi Beta International Sorority

### IMAGE

Position Gamma Phi Beta to be viewed by internal and external audiences as one of the premiere women's organizations in North America.

### LEADERSHIP DEVELOPMENT

Empower women to achieve their potential through the process of leadership development.

### TECHNOLOGY

Establish and maintain a system for effective communications and data management by utilizing current technology.

### MEMBERSHIP

Strengthen and broaden collegiate and alumnae membership through focused efforts of extension, recruitment and retention.

### STRUCTURE

Provide an infrastructure that meets the needs of our constituencies while maximizing the time and talent of volunteers and staff.

### FINANCES

Strengthen our financial position to provide optimum support for programs and member services.





# Dream Big. Shape Destiny

Texas is a place of wide open spaces...wide open minds and wide open possibilities. And **Houston** is the place where those possibilities happen. ■ So what better opportunity to join Gamma Phi Beta Houston 2000 and set your sights to **dream**

big and shape destiny? ■ Inspire yourself at the fast-paced motivational workshops, sessions and seminars. Reacquaint with old friends. Get back in the spirit of the 'hood. **Sisterhood**, that is. Shop 'til you drop at the internationally famous Galleria. **Indulge** your tastebuds with every food category imaginable. Pamper yourself at the hotel gym or pool or on nearby hiking and jogging trails. Just focus on your dreams and they are destined to happen—Houston 2000.



#### HOUSTON 2000 CONVENTION STEERING COMMITTEE:

(L to R) Front Row: Teresa Gibson, Lisa Short. Middle Row: Linda Kemper, Cathy Lorino, Laura Bova, Linda Johnson (chairwoman), Susan Banks, Julia Dunbar. Back Row: Karen Kline, Monica Birtwistle, Shila Smith, Lisa Spieldenner, Grayle James, Karen McCann, Linda Wooten, Peggy Clark, Terri Nieser. Not Pictured: Stephanie Goldfield, Laura Stokes, Susan Reeves



**Barbara Glanz**  
*Keynote Speaker*



**Dr. Deborah Floyd**  
*NPC Luncheon Speaker*



**Connie Cox**  
*Foundation Financial Planning Speaker*





**Houston** is one of the nation's most cosmopolitan cities with incredible museums, **fabulous** shopping and the most **delicious** restaurants you could imagine. Just the

type of city to inspire you to dream big and shape destiny. Convention 2000 will be a

# CONVENTION 2000



celebration of women and will lay the groundwork for our sisterhood's next millennium.

The Convention hotel site is just footsteps away from the world famous Galleria complete with every **fantasy** your credit card could **desire**. And if you plan to stay over the Fourth of July holiday, we've got just the **escape** for you! Mark your calendars now.



**JUNE 28 — JULY 2**  
**DON'T MISS IT!**

## CONVENTION 2000

### HIGHLIGHTS

#### TUESDAY, JUNE 27

- International Officer Dinner

#### WEDNESDAY, JUNE 28

- Attendees Arrive
- International Officer and Advisor Training
- Dinner and Welcome
- Opening Business Session

#### THURSDAY, JUNE 29

- Business Sessions
- Foundation Lunch
- Awards Dinner

#### FRIDAY, JUNE 30

- Philanthropy Breakfast
- Workshops
- Foundation Financial Planning Lunch
- Confirmed Conventioneers Dinner

#### SATURDAY, JULY 1

- Business Session
- NPC Luncheon
- Memorial and Initiation Services
- Receiving Line
- Pink Carnation Banquet

#### SUNDAY, JULY 2

- Play Day—Optional
- Departure

#### REGISTRATION INFORMATION AVAILABLE FEBRUARY 1ST

To request a registration packet, please contact International Headquarters at 303-799-1874 or send e-mail to [Convention@gammaphibeta.org](mailto:Convention@gammaphibeta.org) with your complete name and address.

All alumnae and collegiate chapters will receive registration packets in the mail in February.



# Gamma Phi Beta Website

**Gamma Phi Beta International Sorority**

*Our mission is to foster a nurturing environment that provides women the opportunity to achieve their potential through life-long commitment to intellectual growth, individual worth and service to humanity.*

**HOW DO I?...**

- GAMMA PHI BETA UP CLOSE
- FOUNDATION
- EVENT CENTER
- MEMBER SERVICES
- MY G-PHI-B

**MY G-PHI-B**

Member #:

password:

**Submit** [Forget password?](#) ☐ [save password?](#)

**COLLEGIATE CHAPTERS**

**HOW DO I?...**

- GAMMA PHI BETA UP CLOSE
- FOUNDATION
- EVENT CENTER
- MY G-PHI-B
- HOME

**GREEK RESOURCES**

- ALUMNAE CHAPTERS
- COLLEGIATE CHAPTERS
- GPB PROGRAMS & SERVICES
- MERCHANDISE

Click on any state to search for chapters and colonies in your area or click [here](#) to view all chapters.

**Click on the button of your choice to open up a new screen.**

**After registering, enter your member # (found on your Crescent label above your name) and password to enter "My G-Phi-B" directly.**



# What A Site To See

If you haven't visited the Gamma Phi Beta website ([www.gammaphibeta.org](http://www.gammaphibeta.org)) in a while, you'll be surprised at how many new features have been added. In order to serve our members better, several items were added, including the much awaited My G-PHI-B private area. Check out the new site for yourself and see what we have added. Look for more updates as the site continues to grow to serve the needs of our members and potential members.

## Gamma Phi Beta Site Menus

### How Do I?...

#### How Do I?

This section is divided into areas of interest and provides answers to your most frequently asked questions.

### GAMMA PHI BETA UP CLOSE

#### Gamma Phi Beta Up Close

Get an in-depth look at

Gamma Phi Beta by learning more about International Council, International Headquarters (IH), membership, prominent Gamma Phis and our Sorority history.

### FOUNDATION

#### Foundation

As the funding partner to Gamma Phi Beta

Sorority, visit this area to learn more about how the Foundation provides resources for financial aid to members and provides support for leadership programs and our international philanthropy as well as how it is structured.

### EVENT CENTER

#### Event Center

Get up-to-date information on what

is happening with Gamma Phi Beta by clicking on this section. The Event Center will keep you informed about Convention, Leadership training and What's Hot! Also, take a look at our Chapter Spotlight column or find out about exciting volunteer opportunities in your area.

### MEMBER SERVICES

#### Member Services

In this area you will find information on all Gamma Phi Beta chapters, programs, products and services. We offer a wide range of programs and services to members including our own merchandise section. Support Gamma Phi Beta!

### MY G-PHI-B

#### My - G - PHI - B

Wish you could locate your little sister from college or find an alumna that you met at Convention? Now you can. We have worked hard to bring you this exciting service while striving to keep your personal information protected. My G-PHI-B, Gamma Phi Beta's private area, is password-protected to ensure that non-members cannot enter. However, it is important to remember that despite all security measures, no private side is foolproof. Please use common sense when posting items you do not want others to see and never share your password with anyone!

## My G-Phi-B Menus

#### My Chapter

Do you have news or events to share with sisters from your chapter of initiation? In the My Chapter section, you can post and read chapter updates. There is also an interactive calendar listing chapter events and important dates. Adding events is easy. Just click on the add/delete link to take you to that page, fill in the details of the event and click add. You can also modify or delete events as needed.

#### Member Search

Customized searches allow Gamma Phi Betas to search for sisters they may have lost contact with or sisters located near them. Users have complete control over the personal information they wish to publish in this area.

#### Address Book

Set up your own personal address book. This feature allows you to list information on selected sisters for your convenience. You can update your address book to include business contacts and friends in Gamma Phi Beta.

#### Bulletin Board

The bulletin board area is a unique idea-sharing and discussion forum established for Gamma Phi Betas. Topics will be updated continuously to allow members to address current and relevant member issues. Please respect your sisters by using appropriate conduct when posting messages to this area.

#### Edit Personal Info

Once in the secure area, you are encouraged to update your individual profile which allows you the opportunity to add such items as your e-mail address, work information, hobbies or your own personal home page. Be sure to take advantage of the unique option included in the secure area is that it allows you to choose the amount of privacy you want. You can choose to show all of your profile information or only a portion. After you have set up your profile and determined your password, you can enter My G-PHI-B through the bottom right-hand corner of the site. Just memorize your member number and password and you're in!

#### Resources

If you'd like access to a Gamma Phi Beta form directly from your computer, visit the Resources section! Some of the most commonly requested forms are available in PDF format for you to print out, complete, and send in.

#### Do you know your member number?

To enter the private My G-PHI-B area of the Gamma Phi Beta web site you need to know your member number. Registration with My G-PHI-B is simple. You will be asked to enter your member number, also called constituent code that appears on your mailing label. This number can be found above your name on your copy of *The Crescent* magazine mailing label. Forgot your member number or don't have a copy of *The Crescent* handy? No problem! Just use the Alternative Registration Form. This form will require you to supply several fields of information about yourself so we can verify your presence in our database. You can then register normally. ●



### COLLEGIANS

continued

movie theme. The float placed third in the competition.

#### Epsilon Nu chapter - Chapman University

Sisters from Chapman University ended their spring semester on a high after raising \$1400 for Camp Gamma Phi Beta. The sisters were awarded the title of Greek Week Champions and Sorority of the Year. Twenty-two new members joined the chapter this fall and the sisters are getting ready for their fall philanthropy, Boot Camp.

#### Epsilon Pi chapter - George Mason University

George Mason University sisters added 22 new members through fall recruitment. All sisters and new members attended a chapter retreat to set chapter goals and get to know each other better. They also participated in the national AIDS walk in Washington, D.C.

#### Zeta Beta chapter - University of Virginia

The Zeta Beta chapter wants to recognize Elizabeth Eckstein, the chapter's Standards Chairwoman, on being named the President of Omicron Delta Kappa Honor Fraternity and Sami Greenstein on being recognized for her outstanding contributions to the Greek System on the Inter-Sorority Council Executive Board.

#### Zeta Theta chapter - Pepperdine University

The sisters at Pepperdine University added 16 new members following fall recruitment. The chapter celebrated Bid Day by playing broomball in Burbank. The chapter also took first place with Sigma Phi Epsilon at the annual Malibu chili cook-off.

Sisters from Creighton University spread some cheer in the Dominican Republic.



Sisters at Oklahoma City University welcomed 22 new members to their chapter.

### ALUMNAE

#### California

**South Bay** alumnae opened another year with a new slate of officers headed by Beverly Stockert. The first meeting included decorating Halloween t-shirts for seriously ill children who must spend the holidays in the hospital.

On Founders Day, the chapter announced the purchase of a brick in honor of L'Cena Rice to be placed in the Sisterhood Plaza at International Headquarters. Four members received the Golden Crescent recognizing them for 50 years of membership.

**Balboa Harbor, Long Beach** and **Greater Orange County** alumnae joined forces for a day of walking and fun during the Susan G. Komen Race for the Cure. The alumnae enjoyed each other's company and raising money for breast cancer research.

**Diablo Valley** alumnae are very proud of fellow member Roxane Bomersine who recently received the Merit Roll Award. This award was given to her for her 15 years of



Zeta Beta sisters at the University of Virginia were thrilled to move into a new house.



Eight sisters who graduated in 1966 from Colorado College reunited this summer in Oregon.



## Member News

service to the Sorority. The chapter was pleased to have Bobbie Johnston, Sigma, '46 writer/producer as their featured lecturer at a recent meeting.

Congratulations to Leslie Anderson on being profiled in the summer 1999 issue of *Marshall, The Magazine of the Marshall School of Business* at the University of Southern California. Leslie is a Senior VP of Marketing Administration for Paramount Pictures.

### Colorado

Sisters graduating in 1966 from **Colorado College** have contributed yearly letters to a group newsletter for the past 33 years. Eight members got together this past August in Oregon to reminisce in person.

**Denver** alumnae joined the sisters from the University of Denver for a dinner and mock recruitment event that helped the sisters during recruitment later in the week.



### Hawaii

**Hawaiian** alumnae were pleased to be awarded a "Community Benefactor Appreciation Award" by the Girl Scout Council of Hawaii for their long time support of camping scholarships for girls in need.

Writer/producer Roberta Johnson (Sigma '46) lectured at the recent Diablo Valley alumnae event.



Beta Chapter Class of 1949 celebrated their 50th anniversary on Lake Michigan this summer.

### Kansas

A mentoring and job opportunity program was the focus at a recent **Greater Kansas City** alumnae meeting. Six alumnae shared their personal experiences with the group. The group has also begun adding e-mail addresses to their directory to better encourage communication with their younger members.

**Wichita** alumnae found themselves stripping wallpaper and doing other glamorous chores in an effort to update the chapter house at Wichita State. The group also celebrated with the seniors at an English High Tea at a local restaurant. The seniors were then presented with a gold pin box. Special recognition to Janet Heft Wright on being named the new Wichita River



Wichita Alumnae President Sandy Riedl Stump (left) and sister Anne Mohr Corrison were honored as part of the next generation of business leaders in Wichita.

Festival Director.

Anne Mohr

Corrison and Sandy Riedl Stump also receive a spotlight as they were chosen among 40 people under the age of 40 that represent the next generation of business leaders in the Wichita area.

### Michigan

The class of 1949 from the **University of Michigan** celebrated their 50th anniversary this summer at a lodge on Lake Michigan. Members came from Ohio, Illinois, Iowa, Kentucky, Maryland, Florida and Michigan. It was a wonderful event that allowed sisters to reminisce. Some had not seen each other since graduation!

Alumnae from the **Michigan** area were invited by the sisters at the University of Michigan for a luncheon and afternoon of storytelling, house tours and looking through old photos. The event was one that was enjoyed by sisters of all ages.



Balboa Harbor, Long Beach and Greater Orange County alumnae joined together for the "Race for the Cure" in California.



### ALUMNAE

(continued)

#### Missouri

**St. Louis** alumnae kicked off this fall with their annual fall party. This festive event allows the alumnae to discuss events and activities for the upcoming year. The alumnae will again join the sisters at St. Louis University to continue to serve the community by picking up trash with the Adopt-a-Street program.

#### Ohio

Alumnae from the classes of 1945 through 1951 from **Bowling Green State University** joined together for a reunion this past June. The sisters have been meeting for a reunion since 1979 every two to three years. Sisters come for this event from as far away as Florida and Arizona.

**Dayton** alumnae again showed their support this past June for the Dayton Art Institute. The annual Art Ball is the chapter's premier philanthropic and social event. This year's theme was "Masquerade."

#### Texas

**Fort Worth** alumnae finished their spring with a Senior Celebration Tea at a local restaurant. This fall the alumnae were active in supporting the Texas Wesleyan University sisters during recruitment. Luncheons and other events are planned throughout the year.

Special recognition goes to Patricia Ewert for being selected as the recipient for the Excellence in Teaching Award for Adjunct Faculty at Southern Methodist University. Ms. Ewert is a 1961 graduate from **Southern Methodist University** where she currently teaches math.

#### Virginia

What are the odds that two alumnae from the **University of Virginia** would run into one another in front of a casino in Monte Carlo? It happened. Just ask Heather Pusich and Sami Greenstein who will tell you it was great to see a familiar face.

#### Wisconsin

Twelve members from the **University of Wisconsin, Platteville** met for a luncheon reunion in Madison this past July. Most of the alumnae were from the class of '71 and hadn't seen each other in over 28 years. The group plans to meet again in two years.



Greater Kansas City alumnae shared their job networking and mentoring experiences at a recent meeting.



Alumnae from Northwestern University celebrated their 50th reunion this fall.



University of Wisconsin, Platteville alumnae at their luncheon reunion.



Dayton alumnae showed their support at the annual Dayton Art Institute Ball.



### You are the leaders of Gamma Phi Beta's future.

By Jennie Curtis, Int'l. Nominating Chairwoman

Winter reminds us of the importance of letting go all that might be keeping us from reaching our potential. Letting go has many side effects which are beneficial to a leader. For instance, letting go creates space within us. Letting go also allows for new insights to penetrate into the I, who we've become, and these insights, in turn shape us for what is to come. It is in this place of 'not knowing' what is to come that we are most open to radical ideas of how we might shape our future and how we might come to terms with what "is" to be our future.

Those of you who are able to discern the meaning of the above metaphor are in demand. You are the individuals who have much to offer the rest of us in terms of wisdom, insight and leadership. You are the leaders of Gamma Phi Beta's future.

Gamma Phi Beta's future starts today. Nominations for International Council positions and the 2002 Nominating Committee are due February 1, 2000. The Nominating Committee is eager to digest the applications of those who have responded to the call to step forward and serve our sisterhood in one of these critical roles. If this is you, please fill out the appropriate forms today, available through International Headquarters, and get it in by February 1, 2000.

Step forward today and offer your best to help shape Gamma Phi Beta into the highest type of womanhood to which each and every one of us has been called.



## Staying Connected . . . The Alumnae Difference

When you joined the Sorority you became a sister for life. This includes your life after college! As an alumna you have the opportunity to stay connected and support Gamma Phi Beta by:

- Paying your International Alumnae Dues of ONLY \$20 a year
- Serving as a career mentor through the SisterLink program
- Volunteering for special projects or as an International Officer
- Assisting collegiate chapters
- Joining your local Alumnae chapter

### Did you know?

- You are welcome at any Alumnae chapter in the country
- You can belong to more than one Alumnae chapter, including the chapter that supports your collegiate chapter.
- Alumnae chapter programming focuses on sisterhood, philanthropy, social, personal and career development.
- Alumnae chapter activities are not mandatory. However, your involvement as an alumna ensures the Gamma Phi Beta message is shared and perpetuated to future alumnae.
- There are over 76,000 alumnae globally.

### Why Doesn't My Alumnae Chapter Contact Me?

Almost all active alumnae chapters distribute newsletters at least once a year. This newsletter includes activities, important dates and volunteer opportunities in your area. This is your chance to respond and get reconnected to your local alumnae group. Many of our chapters have hundreds of alumnae residing in their areas and cannot afford to continually mail to those who never respond. If you are interested in getting reconnected or volunteering to help Gamma Phi Beta, contact your local alumnae chapter. To volunteer or locate your nearest local alumnae chapter, visit our website at [www.gammaphibeta.org](http://www.gammaphibeta.org), e-mail [volunteer@gammaphibeta.org](mailto:volunteer@gammaphibeta.org) or call IH at (303) 799-1874.

### Gamma Phi Beta Planners

Gamma Phi Beta started a pilot program this year with Premier School Agendas, a division of Franklin Covey, to produce a Gamma Phi Beta planner. The planner contains Gamma Phi Beta historical information, due dates, addresses, phone numbers and other important resources. It also includes a world map, daily, weekly and monthly calendars and a directory for personal e-mail addresses. To order a planner, for only \$8.00, including shipping, call or e-mail Linda Ryan at IH at (303) 799-1874, [lryan@gammaphibeta.org](mailto:lryan@gammaphibeta.org).

### Sisterhood Stories

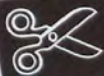
Do you have a story to tell about how Gamma Phi Beta sisterhood changed your life? Maybe you have a special friend who helped you through a difficult time, or

you reconnected with long-lost sisters after many years. We want to hear your stories! Send articles and pictures to The Crescent Editor, 12737 E. Euclid Drive, Englewood, CO 80111-6445. If you want your photos returned you must include a self-addressed stamped envelope.

### Internship Opportunities

Gamma Phi Beta Headquarters is always looking for volunteers to help at IH in Englewood, Colorado with various activities including filing and data entry. Currently we are also offering a Marketing/Public Relations internship for college students looking to gain valuable experience. If interested, please contact IH by phone at (303) 799-1874, fax at (303) 799-1876 or e-mail Deborah Borak at [dborak@gammaphibeta.org](mailto:dborak@gammaphibeta.org).





## Campus Clips

✂ University of Oregon's ten sororities became the first in the country to sign the student-driven "Select 2000" pledge, a voluntary pledge to keep their houses substance and alcohol-free. By signing the pledge, the sororities promise to no longer co-host events that include alcohol. Greek leaders and university officials hope this will prompt other students to rethink their drinking habits.

✂ Results from research using Breathalyzer tests to measure drinking levels at the University of North Carolina indicate that students do not drink excessively, contradictory to results from other studies using questionnaires. The 1997 study, from the University's Highway Safety Research Center, reports that 66% of students had no detectable trace of alcohol in their blood on traditional "party nights" and 86% had no detectable trace on other nights.

✂ Congress amended federal confidentiality laws last year to give universities the option of telling parents when students under 21 violate campus codes on drugs or alcohol. Some schools, including Indiana University and Penn State, have already put notification policies in place, but most colleges and universities across the country are still debating whether to take advantage of the change.

✂ A Texas appeals court ruled that a provision of the 1986 anti-hazing law requiring students to report hazing activities violates students' constitutional protection against self-incrimination. However, anyone who witnesses a hazing incident, but does not engage in it, is still required by law to report it.

✂ The cost of attending college increased less than 5% this year, the smallest rise in four years. According to Trends in College Pricing 1999, tuition cost at public universities rose 3.4% and tuition cost at private universities rose 4.6%.

✂ A record number of Americans are attending college, but an increasing number of them are also dropping out. One reason for this trend is that many employers, especially those in technical fields, have altered their hiring practices to place more emphasis on skills and experience rather than educational attainment. However, workers with diplomas still outnumber those without.

✂ According to the 1999 Student Monitor survey of undergraduate college students:

- 30% of undergraduates think volunteering is "in"
- 57% of students use the web at least once a day, with an average of six hours online each week
- 59% think body piercing is "in"
- 75% of college students think the Internet is "in"
- 77% say drinking beer is "in"

✂ Alumni offices at college and universities are using new technologies to form relationships with college graduates. Career networking, e-mail discussion groups, on-line courses and searchable alumni directories are some of the technological features gaining popularity.

## Crescent Clips

13. Publication Title		14. Issue Date for Circulation Data Below	
Extent and Nature of Circulation		Average No. Copies Each Issue During Preceding 12 Months	No. Copies of Single Issue Published Nearest to Filing Date
a. Total Number of Copies (Net press run)		85,543	84,241
b. Paid and/or Requested Circulation			
(1) Paid in Advance	22,590	23,522	
(2) Paid in Advance (Outside of U.S.)	N/A	N/A	
(3) Paid in Advance (Outside of U.S.)	N/A	N/A	
(4) Other Classes Mailed Through the USPS	N/A	N/A	
c. Total Paid and/or Requested Circulation (Sum of 13b(1)-(4))		22,590	23,522
d. Free Distribution by Mail (Outside of U.S.)		N/A	N/A
(1) Outside of U.S. as Mailed on Form 3541	N/A	N/A	
(2) In-Country as Mailed on Form 3541	N/A	N/A	
(3) Other Classes Mailed Through the USPS	N/A	N/A	
e. Free Distribution Outside the Mail (Carriers or other means)		250	250
f. Total Free Distribution (Sum of 13d(1)-(3) and 13e)		250	250
g. Total Distribution (Sum of 13c and 13f)		22,840	23,772
h. Copies not Distributed		2,403	1,469
i. Total (Sum of g and h)		85,543	84,241
j. Total Paid and/or Requested Circulation (Sum of 13b(1)-(4))		22,590	23,522
k. Total Paid and/or Requested Circulation (Sum of 13b(1)-(4))		22,590	23,522
l. Total Paid and/or Requested Circulation (Sum of 13b(1)-(4))		22,590	23,522
m. Total Paid and/or Requested Circulation (Sum of 13b(1)-(4))		22,590	23,522
n. Total Paid and/or Requested Circulation (Sum of 13b(1)-(4))		22,590	23,522
o. Total Paid and/or Requested Circulation (Sum of 13b(1)-(4))		22,590	23,522
p. Total Paid and/or Requested Circulation (Sum of 13b(1)-(4))		22,590	23,522
q. Total Paid and/or Requested Circulation (Sum of 13b(1)-(4))		22,590	23,522
r. Total Paid and/or Requested Circulation (Sum of 13b(1)-(4))		22,590	23,522
s. Total Paid and/or Requested Circulation (Sum of 13b(1)-(4))		22,590	23,522
t. Total Paid and/or Requested Circulation (Sum of 13b(1)-(4))		22,590	23,522
u. Total Paid and/or Requested Circulation (Sum of 13b(1)-(4))		22,590	23,522
v. Total Paid and/or Requested Circulation (Sum of 13b(1)-(4))		22,590	23,522
w. Total Paid and/or Requested Circulation (Sum of 13b(1)-(4))		22,590	23,522
x. Total Paid and/or Requested Circulation (Sum of 13b(1)-(4))		22,590	23,522
y. Total Paid and/or Requested Circulation (Sum of 13b(1)-(4))		22,590	23,522
z. Total Paid and/or Requested Circulation (Sum of 13b(1)-(4))		22,590	23,522
aa. Total Paid and/or Requested Circulation (Sum of 13b(1)-(4))		22,590	23,522
ab. Total Paid and/or Requested Circulation (Sum of 13b(1)-(4))		22,590	23,522
ac. Total Paid and/or Requested Circulation (Sum of 13b(1)-(4))		22,590	23,522
ad. Total Paid and/or Requested Circulation (Sum of 13b(1)-(4))		22,590	23,522
ae. Total Paid and/or Requested Circulation (Sum of 13b(1)-(4))		22,590	23,522
af. Total Paid and/or Requested Circulation (Sum of 13b(1)-(4))		22,590	23,522
ag. Total Paid and/or Requested Circulation (Sum of 13b(1)-(4))		22,590	23,522
ah. Total Paid and/or Requested Circulation (Sum of 13b(1)-(4))		22,590	23,522
ai. Total Paid and/or Requested Circulation (Sum of 13b(1)-(4))		22,590	23,522
aj. Total Paid and/or Requested Circulation (Sum of 13b(1)-(4))		22,590	23,522
ak. Total Paid and/or Requested Circulation (Sum of 13b(1)-(4))		22,590	23,522
al. Total Paid and/or Requested Circulation (Sum of 13b(1)-(4))		22,590	23,522
am. Total Paid and/or Requested Circulation (Sum of 13b(1)-(4))		22,590	23,522
an. Total Paid and/or Requested Circulation (Sum of 13b(1)-(4))		22,590	23,522
ao. Total Paid and/or Requested Circulation (Sum of 13b(1)-(4))		22,590	23,522
ap. Total Paid and/or Requested Circulation (Sum of 13b(1)-(4))		22,590	23,522
aq. Total Paid and/or Requested Circulation (Sum of 13b(1)-(4))		22,590	23,522
ar. Total Paid and/or Requested Circulation (Sum of 13b(1)-(4))		22,590	23,522
as. Total Paid and/or Requested Circulation (Sum of 13b(1)-(4))		22,590	23,522
at. Total Paid and/or Requested Circulation (Sum of 13b(1)-(4))		22,590	23,522
au. Total Paid and/or Requested Circulation (Sum of 13b(1)-(4))		22,590	23,522
av. Total Paid and/or Requested Circulation (Sum of 13b(1)-(4))		22,590	23,522
aw. Total Paid and/or Requested Circulation (Sum of 13b(1)-(4))		22,590	23,522
ax. Total Paid and/or Requested Circulation (Sum of 13b(1)-(4))		22,590	23,522
ay. Total Paid and/or Requested Circulation (Sum of 13b(1)-(4))		22,590	23,522
az. Total Paid and/or Requested Circulation (Sum of 13b(1)-(4))		22,590	23,522
ba. Total Paid and/or Requested Circulation (Sum of 13b(1)-(4))		22,590	23,522
bb. Total Paid and/or Requested Circulation (Sum of 13b(1)-(4))		22,590	23,522
bc. Total Paid and/or Requested Circulation (Sum of 13b(1)-(4))		22,590	23,522
bd. Total Paid and/or Requested Circulation (Sum of 13b(1)-(4))		22,590	23,522
be. Total Paid and/or Requested Circulation (Sum of 13b(1)-(4))		22,590	23,522
bf. Total Paid and/or Requested Circulation (Sum of 13b(1)-(4))		22,590	23,522
bg. Total Paid and/or Requested Circulation (Sum of 13b(1)-(4))		22,590	23,522
bh. Total Paid and/or Requested Circulation (Sum of 13b(1)-(4))		22,590	23,522
bi. Total Paid and/or Requested Circulation (Sum of 13b(1)-(4))		22,590	23,522
bj. Total Paid and/or Requested Circulation (Sum of 13b(1)-(4))		22,590	23,522
bk. Total Paid and/or Requested Circulation (Sum of 13b(1)-(4))		22,590	23,522
bl. Total Paid and/or Requested Circulation (Sum of 13b(1)-(4))		22,590	23,522
bm. Total Paid and/or Requested Circulation (Sum of 13b(1)-(4))		22,590	23,522
bn. Total Paid and/or Requested Circulation (Sum of 13b(1)-(4))		22,590	23,522
bo. Total Paid and/or Requested Circulation (Sum of 13b(1)-(4))		22,590	23,522
bp. Total Paid and/or Requested Circulation (Sum of 13b(1)-(4))		22,590	23,522
bq. Total Paid and/or Requested Circulation (Sum of 13b(1)-(4))		22,590	23,522
br. Total Paid and/or Requested Circulation (Sum of 13b(1)-(4))		22,590	23,522
bs. Total Paid and/or Requested Circulation (Sum of 13b(1)-(4))		22,590	23,522
bt. Total Paid and/or Requested Circulation (Sum of 13b(1)-(4))		22,590	23,522
bu. Total Paid and/or Requested Circulation (Sum of 13b(1)-(4))		22,590	23,522
bv. Total Paid and/or Requested Circulation (Sum of 13b(1)-(4))		22,590	23,522
bw. Total Paid and/or Requested Circulation (Sum of 13b(1)-(4))		22,590	23,522
bx. Total Paid and/or Requested Circulation (Sum of 13b(1)-(4))		22,590	23,522
by. Total Paid and/or Requested Circulation (Sum of 13b(1)-(4))		22,590	23,522
bz. Total Paid and/or Requested Circulation (Sum of 13b(1)-(4))		22,590	23,522
ca. Total Paid and/or Requested Circulation (Sum of 13b(1)-(4))		22,590	23,522
cb. Total Paid and/or Requested Circulation (Sum of 13b(1)-(4))		22,590	23,522
cc. Total Paid and/or Requested Circulation (Sum of 13b(1)-(4))		22,590	23,522
cd. Total Paid and/or Requested Circulation (Sum of 13b(1)-(4))		22,590	23,522
ce. Total Paid and/or Requested Circulation (Sum of 13b(1)-(4))		22,590	23,522
cf. Total Paid and/or Requested Circulation (Sum of 13b(1)-(4))		22,590	23,522
cg. Total Paid and/or Requested Circulation (Sum of 13b(1)-(4))		22,590	23,522
ch. Total Paid and/or Requested Circulation (Sum of 13b(1)-(4))		22,590	23,522
ci. Total Paid and/or Requested Circulation (Sum of 13b(1)-(4))		22,590	23,522
cj. Total Paid and/or Requested Circulation (Sum of 13b(1)-(4))		22,590	23,522
ck. Total Paid and/or Requested Circulation (Sum of 13b(1)-(4))		22,590	23,522
cl. Total Paid and/or Requested Circulation (Sum of 13b(1)-(4))		22,590	23,522
cm. Total Paid and/or Requested Circulation (Sum of 13b(1)-(4))		22,590	23,522
cn. Total Paid and/or Requested Circulation (Sum of 13b(1)-(4))		22,590	23,522
co. Total Paid and/or Requested Circulation (Sum of 13b(1)-(4))		22,590	23,522
cp. Total Paid and/or Requested Circulation (Sum of 13b(1)-(4))		22,590	23,522
cq. Total Paid and/or Requested Circulation (Sum of 13b(1)-(4))		22,590	23,522
cr. Total Paid and/or Requested Circulation (Sum of 13b(1)-(4))		22,590	23,522
cs. Total Paid and/or Requested Circulation (Sum of 13b(1)-(4))		22,590	23,522
ct. Total Paid and/or Requested Circulation (Sum of 13b(1)-(4))		22,590	23,522
cu. Total Paid and/or Requested Circulation (Sum of 13b(1)-(4))		22,590	23,522
cv. Total Paid and/or Requested Circulation (Sum of 13b(1)-(4))		22,590	23,522
cw. Total Paid and/or Requested Circulation (Sum of 13b(1)-(4))		22,590	23,522
cx. Total Paid and/or Requested Circulation (Sum of 13b(1)-(4))		22,590	23,522
cy. Total Paid and/or Requested Circulation (Sum of 13b(1)-(4))		22,590	23,522
cz. Total Paid and/or Requested Circulation (Sum of 13b(1)-(4))		22,590	23,522
da. Total Paid and/or Requested Circulation (Sum of 13b(1)-(4))		22,590	23,522
db. Total Paid and/or Requested Circulation (Sum of 13b(1)-(4))		22,590	23,522
dc. Total Paid and/or Requested Circulation (Sum of 13b(1)-(4))		22,590	23,522
dd. Total Paid and/or Requested Circulation (Sum of 13b(1)-(4))		22,590	23,522
de. Total Paid and/or Requested Circulation (Sum of 13b(1)-(4))		22,590	23,522
df. Total Paid and/or Requested Circulation (Sum of 13b(1)-(4))		22,590	23,522
dg. Total Paid and/or Requested Circulation (Sum of 13b(1)-(4))		22,590	23,522
dh. Total Paid and/or Requested Circulation (Sum of 13b(1)-(4))		22,590	23,522
di. Total Paid and/or Requested Circulation (Sum of 13b(1)-(4))		22,590	23,522
dj. Total Paid and/or Requested Circulation (Sum of 13b(1)-(4))		22,590	23,522
dk. Total Paid and/or Requested Circulation (Sum of 13b(1)-(4))		22,590	23,522
dl. Total Paid and/or Requested Circulation (Sum of 13b(1)-(4))		22,590	23,522
dm. Total Paid and/or Requested Circulation (Sum of 13b(1)-(4))		22,590	23,522
dn. Total Paid and/or Requested Circulation (Sum of 13b(1)-(4))		22,590	23,522
do. Total Paid and/or Requested Circulation (Sum of 13b(1)-(4))		22,590	23,522
dp. Total Paid and/or Requested Circulation (Sum of 13b(1)-(4))		22,590	23,522
dq. Total Paid and/or Requested Circulation (Sum of 13b(1)-(4))		22,590	23,522
dr. Total Paid and/or Requested Circulation (Sum of 13b(1)-(4))		22,590	23,522
ds. Total Paid and/or Requested Circulation (Sum of 13b(1)-(4))		22,590	23,522
dt. Total Paid and/or Requested Circulation (Sum of 13b(1)-(4))		22,590	23,522
du. Total Paid and/or Requested Circulation (Sum of 13b(1)-(4))		22,590	23,522
dv. Total Paid and/or Requested Circulation (Sum of 13b(1)-(4))		22,590	23,522
dw. Total Paid and/or Requested Circulation (Sum of 13b(1)-(4))		22,590	23,522
dx. Total Paid and/or Requested Circulation (Sum of 13b(1)-(4))		22,590	23,522
dy. Total Paid and/or Requested Circulation (Sum of 13b(1)-(4))		22,590	23,522
dz. Total Paid and/or Requested Circulation (Sum of 13b(1)-(4))		22,590	23,522
ea. Total Paid and/or Requested Circulation (Sum of 13b(1)-(4))		22,590	23,522
eb. Total Paid and/or Requested Circulation (Sum of 13b(1)-(4))		22,590	23,522
ec. Total Paid and/or Requested Circulation (Sum of 13b(1)-(4))		22,590	23,522
ed. Total Paid and/or Requested Circulation (Sum of 13b(1)-(4))		22,590	23,522
ee. Total Paid and/or Requested Circulation (Sum of 13b(1)-(4))		22,590	23,522
ef. Total Paid and/or Requested Circulation (Sum of 13b(1)-(4))		22,590	23,522
eg. Total Paid and/or Requested Circulation (Sum of 13b(1)-(4))		22,590	23,522
eh. Total Paid and/or Requested Circulation (Sum of 13b(1)-(4))		22,590	23,522
ei. Total Paid and/or Requested Circulation (Sum of 13b(1)-(4))		22,590	23,522
ej. Total Paid and/or Requested Circulation (Sum of 13b(1)-(4))		22,590	23,522
ek. Total Paid and/or Requested Circulation (Sum of 13b(1)-(4))		22,590	23,522
el. Total Paid and/or Requested Circulation (Sum of 13b(1)-(4))		22,590	23,522
em. Total Paid and/or Requested Circulation (Sum of 13b(1)-(4))		22,590	23,522
en. Total Paid and/or Requested Circulation (Sum of 13b(1)-(4))		22,590	23,522
eo. Total Paid and/or Requested Circulation (Sum of 13b(1)-(4))		22,590	23,522
ep. Total Paid and/or Requested Circulation (Sum of 13b(1)-(4))		22,590	23,522
eq. Total Paid and/or Requested Circulation (Sum of 13b(1)-(4))		22,590	23,522
er. Total Paid and/or Requested Circulation (Sum of 13b(1)-(4))		22,590	23,522
es. Total Paid and/or Requested Circulation (Sum of 13b(1)-(4))		22,590	23,522
et. Total Paid and/or Requested Circulation (Sum of 13b(1)-(4))		22,590	23,522
eu. Total Paid and/or Requested Circulation (Sum of 13b(1)-(4))		22,590	23,522
ev. Total Paid and/or Requested Circulation (Sum of 13b(1)-(4))		22,590	23,522
ew. Total Paid and/or Requested Circulation (Sum of 13b(1)-(4))		22,590	23,522
ex. Total Paid and/or Requested Circulation (Sum of 13b(1)-(4))		22,590	23,522
ey. Total Paid and/or Requested Circulation (Sum of 13b(1)-(4))		22,590	23,522
ez. Total Paid and/or Requested Circulation (Sum of 13b(1)-(4))		22,590	23,522
fa. Total Paid and/or Requested Circulation (Sum of 13b(1)-(4))		22,590	23,522
fb. Total Paid and/or Requested Circulation (Sum of 13b(1)-(4))		22,590	23,522
fc. Total Paid and/or Requested Circulation (Sum of 13b(1)-(4))		22,590	23,522
fd. Total Paid and/or Requested Circulation (Sum of 13b(1)-(4))		22,590	23,522
fe. Total Paid and/or Requested Circulation (Sum of 13b(1)-(4))		22,590	23,522
ff. Total Paid and/or Requested Circulation (Sum of 13b(1)-(4))		22,590	23,522
fg. Total Paid and/or Requested Circulation (Sum of 13b(1)-(4))		22,590	23,522
fh. Total Paid and/or Requested Circulation (Sum of 13b(1)-(4))		22,590	23,522
fi. Total Paid and/or Requested Circulation (Sum of 13b(1)-(4))		22,590	23,522
fj. Total Paid and/or Requested Circulation (Sum of 13b(1)-(4))		22,590	23,522
fk. Total Paid and/or Requested Circulation (Sum of 13b(1)-(4))		22,590	23,522
fl. Total Paid and/or Requested Circulation (Sum of 13b(1)-(4))		22,590	23,522
fm. Total Paid and/or Requested Circulation (Sum of 13b(1)-(4))		22,590	23,522
fn. Total Paid and/or Requested Circulation (Sum of 13b(1)-(4))		22,590	23,522
fo. Total Paid and/or Requested Circulation (Sum of 13b(1)-(4))		22,590	23,522
fp. Total Paid and/or Requested Circulation (Sum of 13b(1)-(4))		22,590	23,522
fq. Total Paid and/or Requested Circulation (Sum of 13b(1)-(4))		22,590	23,522
fr. Total Paid and/or Requested Circulation (Sum of 13b(1)-(4))		22,590	23,522
fs. Total Paid and/or Requested Circulation (Sum of 13b(1)-(4))		22,590	23,522
ft. Total Paid and/or Requested Circulation (Sum of 13b(1)-(4))		22,590	23,522
fu. Total Paid and/or Requested Circulation (Sum of 13b(1)-(4))		22,590	23,522
fv. Total Paid and/or Requested Circulation (Sum of 13b(1)-(4))		22,590	23,522
fw. Total			



## NPC National Badge Day Slate for March 6, 2000

*"Place it over your heart with pride"*



March 2000 will mark the fourth annual National Panhellenic Badge Day, an effort that encourages sorority women to celebrate their Greek affiliations by wearing their badge or letters. The public awareness campaign, entitled "Place it over your

heart with pride," is slated for March 6th. "National Badge Day gives sorority women of all ages and in all locations a way to show their Greek pride," said Lissa Bradford, Chairman of the National Panhellenic Conference.

In an article featured in The Phoenix of Alpha Sigma Alpha, "A Simple Solution—Wear Your Membership Badge Today," writer Nora Ten Broeck explained, "By putting on my membership badge, I was able to tell at least 100 people about Alpha Sigma Alpha and Greek life. All I did was give people the opportunity to ask about it."

"We have lots of great news to share," said Bradford, "During the last year over \$2 million was given in scholarships and donations to charitable organizations, alumnae involvement is up and membership numbers continue to climb—we have a lot to be proud of."

"A badge is a great conversation starter," Bradford contended, "It provides the chance to share what Greek membership is... a lifetime opportunity for friendship, leadership, learning and service." The National Panhellenic Conference will send out promotional materials to Alumnae and College Panhellenics in late 1999. For more information about NPC's National Badge Day, contact the NPC Central Office at (317) 872-3185 or visit their website at [www.greeklife.org/npc](http://www.greeklife.org/npc).

## 1999 Report on research Results

### University of Missouri Center Conducted National Research for NPC/NIC

The findings reported here result from more than a year of research by the Center for Advanced Social Research at the University of Missouri-Columbia with nearly 2,000 undergraduates at public universities and private colleges nationally.

As with earlier Research Initiative studies, center Director Dr. Esther Thorson led the project and conducted the analysis that produced these findings.

Funding for the Research Initiative has been provided by member groups from the National Panhellenic Conference and the National Interfraternity Conference. Together, the NPC and the NIC represent 93 national and international men's and women's fraternities or sororities with 700,000 undergraduate members in chapters on 800 campuses in the United States and Canada.



University of Missouri-Columbia.

### RESEARCH FINDING 1

*Alcohol-free Housing, Education Reduce Alcohol Use*

Alcohol-free housing and education for undergraduate members of men's and women's fraternities on the risks of alcohol use, according to a new study by the Center for Advanced Social Research at the

### RESEARCH FINDING 2

*Responsible Attitudes Go Hand in Hand with Fewer Alcohol Problems*

In men's and women's fraternities that actively encourage responsible approaches to alcohol, members report fewer alcohol-related problems.

### RESEARCH FINDING 3

*Alcohol-Educated Fraternity Leaders Use Less Alcohol, Less Often*

Research showed elected leaders of alcohol-sensitive chapters drink less and less often than other fraternity members. Among all fraternity members, officers of alcohol-sensitive women's fraternities reported the lowest use of alcohol in the past year.

### RESEARCH FINDING 4

*28% of Male Greeks, 60% of Females In Alcohol-free Housing*

Twenty-eight percent of male fraternity members said their residences were alcohol-free versus 31% of the independent men. A larger proportion of female fraternity members (60%) than of independents (42%) had alcohol-free residences. National Panhellenic Conference (NPC) groups, with their longstanding policy of alcohol-free residences, provide housing for many fraternity women.

### RESEARCH FINDING 5

*"Alcohol-Sensitivity," Academic Satisfaction Go Hand in Hand*

Members of "alcohol-sensitive" chapters are more satisfied with their academic experiences, and more positive about the role their chapters play in encouraging studying, than are members of chapters that do not provide alcohol education or an alcohol-free environment.

### RESEARCH FINDING 6

*Independents Report Less Alcohol Use Than Do Males & Female Greeks*

Even in alcohol-sensitive chapters, the research found, drinking is heavier and more common than among independent students. Alcohol education is making a difference, but it has not yet reduced drinking and drinking-related problems to levels experienced by those who are not members of a men's or women's fraternity.



## In Celebration

### CONGRATS

The 50th Wedding anniversary of Alice (Proffrock) and Jim Reedy.

In honor of Helga Okolischan Taylor, Phi '83 from Ruth Pettenger Emerson.

In celebration of Dixie Klingaman recognition in the Syracuse University Magazine for her handbell talent from Barbara Wessel.

In celebration of Stephanie Hearn's co-chairmanship of the Greek Foundation Seminar and Kristin Burrows assistance in its success from Barbara Wessel.

In celebration of Marilyn and Bill Tennity's gift of a student ice rink at Syracuse University from Barbara Wessel.

Congratulations to Susan Grant Schneider on her August wedding to Morey Schneider from Linda Pelegrino.

### BIRTH AND BIRTHDAYS

Karen Kline's birthday from Audrey Shafer.

Elizabeth Dean Wanderer's 70th Birthday from Larry and Donna Moore.

The birth of Colin Vawter to Tanya Swartz-Vawter from Julie Lynn Jackson-Barrett.

The birth of a baby girl to Stacey White Janczak from Laura Taylor McMurray.

The birth of Bryan Patrick, on August 17, 1999, to Lynn Burman Ritchey and Robert Ritchey from Ann Burman Bradstreet.

Happy Birthday to Chrissy White Hancock, February 16, 2000 from Jim and Karen White.

The birth of legacy Marianna Elisabeth Hiles to Andy and Lisa Lepley Hiles from L'Cena Brunskill Rice, Linda Hallenbeck Pelegrino, Terri Kennedy Briggs, Joanne Callis Roman, Vicki Carlson Read, Elizabeth "Betty" Ahlemeyer Quick, and Alison Webster Maguire.

The birth of triple legacy Caroline Rice to Capt. Lawrence and Jananne Throop Rice (BA '80). Proud Gamma Phi Beta grandmothers are Dorothy Sutherland Throop (BA '51) and L'Cena Brunskill Rice (BA '50) from L'Cena Brunskill Rice, Linda Hallenbeck Pelegrino, Terri Kennedy Briggs, Joanne Callis Roman, Lisa Lepley Hiles, Vicki Carlson Read, Elizabeth "Betty" Ahlemeyer Quick, and Alison Webster Maguire.

In honor of the following gifts, the Gamma Phi Beta Foundation will inscribe a brick in the Sisterhood Plaza.

Unrestricted gifts of \$125 and greater have been given in honor of the following:

Andrea Boulais' 50th Birthday from Susan West

### SISTERHOOD

Judy Graham from Barbara Hoffman

Priscilla Likely Northrup from Eleanor Mischuck

Mildred Martin from Mary Kay Martin-Heldman

Rebecca Zerbel Powell from Carolyn Thomas Powell

Karen Kline's birthday from Phyllis Choat, Leona Drouet, Frances Griffin, Joyce Hultgren, Sally Lewis, Mary Jane Mithos, Joey Stiver and Janet Wright

"In honor of and gratitude for my friendships with Linda Gelner Bauman and Robin Beahan Zell" from Cari Walquist.

The parents of the following members have given gifts of \$125 and greater in celebration of their daughters:

Sara Bellitt (University of San Diego)

Renee Kingsbury (Iowa State)

Stacy Smith (Clemson)

Andrea Shiffler (Rutgers)

Hillary Firlick (Alma College)

In Celebration gifts received by the following dates will be included in the corresponding issues of *The Crescent*:

January 1 .....	Spring issue
April 1 .....	Summer issue
July 1 .....	Fall
October 1 .....	Winter issue

### Submitting In Celebration Announcements

Celebrate your sisters by sending a tax-deductible donation to the Gamma Phi Beta Foundation at 12737 E. Euclid Drive, Englewood, CO 80111-6445. Include a description of what you are celebrating and who you are celebrating. Also, provide your name, address and phone number and it will appear on this page in a future issue.



# Presidents DO Wear Lipstick

*The National Panhellenic Conference (NPC) Foundation announced Dr. Deborah L. Floyd as the first winner of the Women in Higher Education Achievement Award. A 1978-79 recipient of a Gamma Phi Beta Foundation Fellowship, she earned a doctorate in education at Virginia Tech and has distinguished herself as a visionary in higher education administration. Deborah served a large region of Central Appalachia in Kentucky as President and Chief Executive Officer of Prestonsburg Community College. Infusing faculty, staff and students with her energy and drive, she additionally serves as a consultant and speaker at various institutions, has published more than 25 articles and books locally and nationally, and is active in state and federal legislative affairs.*

*"I would advise a young woman graduating with a Bachelor's degree," says Deborah, "to embrace the fact that her graduation is merely one step toward a journey of career development that will likely include additional higher education. To be effective, all of us must focus on learning new skills, knowledge and understanding everyday of our lives. I would also encourage [her] to carefully think about what kind of difference she would want to make in her life. All too often young graduates think mainly of earning money. While financial stability is an important part of our development, a young woman who is truly "educated" will want to strive to give back to those who helped her achieve her accomplishments."*

*In recognition of the significant difference Deborah has made in higher education through her scholarship and leadership, this award was presented to her at the biennial meeting of the NPC in October. The following was taken from her luncheon address and acceptance speech.*



**Y**our theme of "Focus on Excellence" is timely and appropriate as we approach this new millennium. I am deeply honored and moved to receive this award, which I enthusiastically accept on behalf of all women in higher education.

Preparing for this speech has been fun and reflective. Pouring through college annuals, scrapbooks and reading my diary has been an eye opening experience. How did we do all we did in college?

Until I read my diary I had almost forgotten about our many Greek activities!

What puzzled me the most as I poured through my diary was—where in the world did I find the time for all those dates? I had several dates every week and sometimes every night! Where did all these guys come from? Yes, times have changed. Today, as a single middle-aged woman, I wonder now, where did all those men go?

Almost 30 years ago, when I was an undergraduate, about 60 percent of all college students were male, a statistic that helps explain one reason why we seemed to always have dates! Today, these statis-



tics are reversed, 40 percent of all college students are male and more women than ever are earning professional degrees in law, medicine, and education.

When I graduated with a master's degree in 1975 and assumed my first administrative position in a community college, only 11 women nationally were presidents of community college. Today, 280 women lead community

colleges as presidents, more than 100 others held such posts and have since retired.

In the past thirty years women have gained in the business world. Today there are more women executives, more women owned and operated businesses and more women going to college than in the history of our country.

Though the women's movement does not make headlines today as it did in the 1970's, certain issues are still alive. As we turn the century, clearly battles are being waged over inequality of pay scales, promotions, hiring practices, domestic issues such as childcare, and subtle inequities with the political reality of our working world.

Many of us have experiences of being "the only one"—the one female in an office, the "only one" supporting issues affecting women, the "only one" around us juggling priorities of our families and our work. Being the "only one" can be a lonely place. As we look back, it is clear that we have come a long way. But, we still have a long way to go. I was reminded of





how far we have to go to be accepted as college leaders during my first year as a college president.

Eight years ago, our college hosted a class of first graders for a "College Student for a Day" event. First graders actually engaged in mock college classes with real college professors and experienced their "first day" of college.

By noon, it was time for graduation and as many presidents do, I hosted a graduation luncheon complete with McDonald's happy meals.

I made my way around the room, individually welcoming the students and introducing myself. As I approached the last table I could clearly see we had a live wire on our hands. At the end of the table sat a red-haired young boy, his feet swinging and not touching the floor, and from his body language it was clear that he was clearly energized as the head of the table! Slowly I went around to each child.

"Welcome. I'm Dr. Floyd, the President of the College. What is your name?"

"My name is Mary Sue," replied the blonde sitting next to the redheaded boy.

"Is this your first day at college," I asked "Yes, ma'am," she said.

I thanked her for coming and invited her to come back anytime, especially when she is older and graduates from high school. Finally, the last first grader—the red headed kid at the end of the table. As I did with all the children, I extended my hand to shake his hand and welcome him to the college.

"Hello. Welcome to the College. What is your name?", I asked. After he squirmed in his chair he replied, "Thelmer."

"Well, Thelmer, I am Dr. Floyd and I am the President of the College."

Without hesitation Thelmer burst out "You're not the president!"

"Thelmer, what gives you the idea that I am not the president?"

"'Cause Presidents don't wear lipstick!"

It took every inch of control and discipline I had not to laugh and just in that moment, Mary Sue, began hitting on Thelmer. As Mary Sue hit Thelmer on the shoulder she exclaimed, "She is the president, she is the president. I seen her on the TV."



Pictured L to R: L'Cena Brunskill Rice, Deborah Floyd and Betty Ahlemeyer Quick.

*"Envy is a deadly poison.  
But, it is no match for  
steadfastness and purpose  
and you have both."*

—United States Senator Bill Bradley

I then asked Thelmer to explain, "Where did you get the idea that presidents don't wear lipstick?"

"My daddy said so," he smirked.

Well, there you have it! Like father, like son. Thelmer's daddy transferred his biases onto his son. While little Thelmer boldly exclaimed his learned bias that "president's don't wear lipstick." Aren't we encouraged that young Mary Sue assertively exclaimed, with the help of the TV, that presidents can, and do, wear lipstick! Thanks to young girls like Mary Sue, there is hope, much hope. Doctors, lawyers, college presidents, all can, and do, wear lipstick.

Yet achievement doesn't come without sacrifice—long hours, frustrations, and substituting play time for more and more work time. Then there are all the additional demands placed on you by others.

Haven't you noticed who is called upon most frequently

for leadership roles in organizations, clubs and committees? The busiest person.

I believe there are four key steps to achievement: **plan purposely, prepare prayerfully, proceed positively, and pursue persistently.**

But even if each step is followed, someone or something will become an obstacle. And it is the true achiever—the true leader—who is able to overcome obstacles, even overcome failure.

Several years after meeting Thelmer and Mary Sue, I was totally immersed in my presidency. One day a towering man, about seven feet tall, walked into my office. He was leading a "puddle jumping" campaign trip on behalf of his party's candidates and had delivered a brief speech to students during a rally. To this huge man who towered over me, I boldly asked, "From a historical perspective, do you know where you are?" "No, tell me," he replied. "Sir, you are in the region where Lyndon Johnson declared the war on poverty. This is the county in Appalachia where food stamps were piloted. Do you want to see what has happened over the past thirty years?"

Are you curious about why a single woman would come here to 'make a difference'? He grinned as he looked down on my five foot three inch frame and replied, "Yes, of course, I want to see. But, what has made the difference and why are you here?" he asked sincerely.

"Education, sir, has made the difference. I am here to make a difference, to contribute. This college is a jewel and offers hope for many. The college has been an opportunity for thousands to get an education and crawl out of poverty. But, since you are leaving now you won't be able to see this. What a shame." "I'll be back. I promise. I'll be back," he replied. I never expected to see him again.

To my surprise and true to his word, he did come back. Within a month or so of our introduction, this tall Washington politician asked for information about my research on the region and the goals for the college.





After reading what I sent, he called and asked for more information, particularly about the health conditions of the people and the plans for the college to make a difference. And, he offered guidance and advice regarding the college vision and my efforts to lead the college. He listened, asked questions, and paid attention. He did come back to this Appalachian region.

Unlike Thelmer and his dad, this man genuinely understood that some presidents can wear lipstick. He demonstrated his beliefs with consistent actions that were supportive. Throughout our many coaching sessions in person and on the telephone, I realized, through him, that college presidents are like politicians. As academic politicians we face the glare of the media, scrutiny by newspapers and television, and demeaning comments about our appearance, personality, style, clothes, and family.

As "the only one," the only Kentucky female community college president for years, I often felt like I was "the only one" leading the charge for health and technology changes in this Appalachian region. As success became a part of this agenda, so did political ugly attacks. And during my darkest hours, this sensitive man often called, wrote notes, and listened to me personally as I vented and confided in him my hopes, dreams and frustrations. Like a big brother and a father combined.

I recall, that during a particularly ugly time of political struggles he wrote me a letter of encouragement. At the bottom of the letter he pinned a note (which he often does) and his handwritten note read, "Envy is a deadly poison. But, it is no match for steadfastness and purpose and you have both." Who was this tall politician? United States Senator Bill Bradley.

Before he retired from the Senate he wrote his memoirs, and he told me that he was writing about "female politicians," including me. I had never thought of myself as a politician, but framing my work in this context often soothed the pain of the arrows of distracters who sometimes worked to discredit the ambitious college vision and me. He encouraged me to read about successes and failures. I learned that the movie *Star Wars* was rejected by every movie studio in Hollywood before 20th Century Fox produced it. And, I learned from the founder of Honda Motor Company, that "Success is 99 percent failure."

Most of all, I learned to persist, persist, persist, and persist since failure is a natural part of getting to the top.

In July when I retired from the presidency for a sabbatical to study and consult, a senior faculty member remarked that "Dr. Floyd, you have made a difference. And, you have weathered the storms that bring with making a difference with grace and dignity." Grace and dignity. Where did we first learn about grace and dignity? Thanks to the Greek system and Gamma Phi Beta, the values of winning and losing with grace and dignity were instilled in me and in us as sisters. We learned to be disciplined and live and work together as a team. We had a special bond of support, of values, and it was comforting that we did not feel as though we were "the only one."

*"Doctors, lawyers, college presidents, all can, and do, wear lipstick."*

The fraternal Greek system lives today in all of us as we lean on each other and help others through challenges. To Dr. Anne Mulder, a Delta Delta Delta sister and retired college president, I owe much gratitude for coaching me as a president and loving me for winning and for losing. Most of all, she is a perfect example of a sister who lives her life with dignity and grace. To LaWynn Rogers, my Gamma Phi Beta sister, I honor our sisterhood and friendship that has spanned almost thirty years. And, to State Representative Ruth Ann Palumbo, another Gamma Phi Beta who serves as only 1 of 12 women in the 100 member Kentucky House of Representatives, I applaud your leadership and support of women and I cherish our friendship.

To Marta Tellado, Bill and Ernestine Bradley, Glenda DeLeon, Ditty Tackett, Mazola Salmons, John Williams, Walburga Scott, Nancy and Jim Johnson, Gordon Mattingly, Janet Schriver, Tom Preston, Jan Friedel, Bob Sullins, Charles Atwell, Gretchen Naff, Ben Carr, Charles Wethington, Paul VanBooven, Elisabeth Zinser, Judee Hale, John and Bonnie Triplett, men and women, Independents and Greeks, I

thank you for listening, for caring and for your support of women in higher education.

And, to L' Cena Rice my Gamma Phi Beta sister who nominated me for this award, thank you for your confidence — sight unseen! L'Cena and I did not meet each other until yesterday. But, instantly I felt a bond of admiration for her and all she has accomplished as the International President of Gamma Phi Beta.

Of course, to the National Panhellenic Conference Foundation, Inc. and President Jean Scott and the Board of Directors, I offer my most sincere thanks personally and my congratulations to you for your visionary leadership in establishing this award to honor women in higher education. With your continued support of women in higher education, I am convinced that you will reinforce our determination to make a difference and improve the lives of others.

Today, let me return your honor by honoring each of you as women leaders with the National Panhellenic Conference. I applaud you for your leadership and encourage you to continue to support the fine ideals of this incredibly fine organization.

Please know that I am grateful for the thousand-dollar check provided by the Sigma Sigma Sigma Foundation.

This year Gamma Phi Betas are celebrating 125 years of sisterhood. Twenty-five years ago, the Gamma Phi Beta Foundation helped me fund my doctoral education. I am delighted to have this opportunity to give back to the sisters who helped me. With this award check and a personal supplement, I am donating \$1874 to the Gamma Phi Beta Foundation in celebration of our 1874 founding. I hope my gift will help another sister succeed and perhaps, in the future, one of these sisters will stand before you as a recipient of the Woman in Higher Education Achievement Award.

In celebration of all women in higher education, and the men and women who have supported them, I humbly accept this award. Thank you. ●

*In July, Deborah stepped aside as President and Chief Executive Officer of the Prestonsburg Community College of the University of Kentucky (UK) to take a sabbatical that allowed her to study and consult. Upon completion of her sabbatical, including study at Harvard University, Deborah started a new assignment in her University. Effective November 16 she is Executive Assistant to the Chancellor for Special Projects at the University of Kentucky.*





# AWARD

## 1999 LOYALTY AWARD WINNERS

Diane Goff, Xi  
Stephanie Hearn, Sigma  
Tucky Hobbs, Rho  
Linda Johnson, Alpha Theta  
Georgina McClenaghan, Chi  
Audrey Shafer, Alpha Delta

## 1999 SERVICE AWARD WINNERS

Adra Cheek, Beta Omega  
Sharon Dunham, Pi  
Susan Rose, Alpha Iota  
Marjy Shupert, Tau

## 1999 MERIT AWARD WINNERS

Ellen Barnhart, Alpha Sigma  
Donna Bogdanovich, Gamma Eta  
Louise Breese, Alpha Eta  
Sandra Burba, Beta Epsilon  
Truly Callaway, Theta  
Barbie Chadwick, Alpha Theta  
Karen Cooper, Beta Gamma  
Lynn Dantuono, Beta Gamma  
Julie Fay, Pi  
Julie Green, Alpha Epsilon  
Jane Hanna, Tau 1954  
Rita Holman, Beta Alpha  
Helen Kaiser, Phi  
Norma Kotteman, Beta Eta  
Lori Lundgren, Beta Lambda  
Linda Mayer, Beta Gamma 1960  
Ruth Merz, Alpha Nu 1964  
Emily Nash, Alpha Gamma 1965  
Marjorie Neff, Beta Eta 1952

Linda Nolin, Beta Psi 1969  
Patricia Purdy, Tau  
Elisebeth Robbins, Alpha Eta  
Joan Roeder, Beta Eta  
Jean Schuldt, Gamma  
Diane Schulte, Omicron  
Linda Severin, Omega  
Shila Smith, Beta  
Melba Spurrier, Beta Psi  
Julie Tilley, Beta Chi 1981

## CIRCLES OF EXCELLENCE

*To Achieve a Circle of Excellence a chapter must have met six criteria:*

- Payment of alumnae dues, postmarked by December 1.
- Payment of forms fees, postmarked by December 1.
- Filing of Alumnae Chapter Officers List postmarked by April 1.

## Gamma Phi Beta Official Jewelry

Proudly providing beautiful badges,  
fine jewelry and gifts of pride to  
Gamma Phi Beta Sorority members.

For a full color brochure, please call

**877.473.3570** or visit

**[www.preferredgreek.com](http://www.preferredgreek.com)**

*Preferred*  
GREEK JEWELRY  
CHICAGO, ILLINOIS



- Filing of Alumnae Chapter Presidents Report postmarked by June 1.
- Hold four or more Alumnae chapter gatherings, events, or activities.
- Provide assistance to a Collegiate chapter.

#### **CIRCLE OF EXCELLENCE WINNERS:**

Cedar Rapids  
Champaign-Urbana  
Duluth  
Eastern Virginia  
Evansville  
Marin County  
Moscow  
Nashville  
Peoria  
Phoenix  
Reno  
San Francisco  
Wichita

**ADDITIONAL CRITERIA:** *In order to achieve a higher circle chapters must meet the Circle of Excellence criteria as well as three or more of the following:*

- Make a Founders Day gift to the Sorority.
- Contribute to the Foundation.
- Support any local philanthropy.
- Send a representative to a Regional Leadership Conference or Convention.
- Publish/distribute a newsletter/letter informing members of chapter activities.
- Invite an alumna initiate within the calendar year.
- Place \$200 or more in magazine orders with Crescent Waves.
- Participate in Alumnae Panhellenic.

#### **DIAMOND CIRCLE OF EXCELLENCE WINNERS:**

*All of the Circle of Excellence criteria plus 5 of the additional criteria.*

Ames  
Atlanta  
Balboa Harbor  
Chicago NW Suburban

Cleveland West  
Dallas  
Dayton  
Denver  
Detroit Metro  
Diablo Valley  
Greater Fort Myers  
Greater Fort Worth  
Greater Kansas City  
Greater Orange County  
Houston  
La Jolla  
Long Beach  
Louisville  
Northern Virginia  
Oklahoma City  
Omaha  
Philadelphia North  
Philadelphia West  
Portland  
Rochester  
St. Louis  
San Diego  
San Fernando Valley  
South Bay  
Tallahassee  
Tampa Bay  
Tulsa

#### **PEARL CIRCLE OF EXCELLENCE WINNERS:**

*All of the Circle of Excellence plus 4 of the additional criteria.*

Bakersfield  
Boise  
Charlotte  
Chicago  
Chicago Far-West  
Columbia  
Columbus  
Corvallis  
Eugene  
Evanston  
Fort Collins  
Hawaii  
Indianapolis  
Jacksonville  
Kearney  
Kent  
Lake County  
North Houston  
Norman

Pasadena  
Quad Cities  
State College  
Stillwater

#### **CARNATION CIRCLE OF EXCELLENCE WINNERS:**

*All of the Circle of Excellence criteria plus 3 of the additional criteria.*

Arlington  
Birmingham  
Bloomington  
Boulder  
Cincinnati  
New Jersey Metro  
Richmond  
Tucson  
Washington D.C.

#### **FOUNDERS CIRCLE OF EXCELLENCE WINNERS:**

*This prestigious award is presented to Alumnae chapters attaining either the Pearl or Diamond Circle of Excellence for the past five consecutive years.*

Bakersfield  
Balboa Harbor  
Chicago  
Chicago Far West  
Chicago NW Suburban  
Cleveland West  
Dayton  
Diablo Valley  
Evanston North Shore  
Fort Collins  
Greater Fort Myers  
Greater Kansas City  
Houston  
Jacksonville  
La Jolla  
Long Beach  
Northern Virginia  
Oklahoma City  
Omaha  
Philadelphia North  
Philadelphia West  
Portland  
Rochester  
St. Louis  
San Diego

# WINNERS





## In Memory

### IN MEMORIAM

#### Beta chapter

Diana Platt Frenkel

#### Gamma chapter

Margaret Dodge Mees

#### Epsilon chapter

Marsha Perkins Austin  
Dorothy Iverson Cowan  
Margaret Black Foreman

#### Eta chapter

Annette Vollmann Ruhstaller

#### Theta chapter

Gwendolyn Mudgett Parmelee  
Virginia Preuss MacLeod  
Janet Leist Horn  
Shirley Pitman Bryan

#### Kappa chapter

Virginia Gleason Thomson  
Barbara Hagerman Lilly

#### Lambda chapter

Dorothy Hellenthal Mowery  
Naida Marshall Sanders

#### Nu chapter

Lillian Lee Luders Ebersole  
Eleanor Sheeley McGlaughlin

#### Xi chapter

Lois Reynolds Congdon  
Margaret King Gigray

#### Omicron chapter

Audley Nichols Swartz  
Mildred Smith Frese  
D. Stanhope Pearce  
Rhea Woody Peterson  
Dorothy Potter Benjamin

#### Pi chapter

Mary Louise Hossack Asher  
Virginia Buckingham Rice  
Dorothy Trenholm Mitchell

#### Rho chapter

Frances Bailey Van de Venne  
Susan McAllister

#### Sigma chapter

Elizabeth Post Kimple  
Mignon Morton Bowen  
Jeanne Wilkins Wienecke  
Leona Stillwagon Douglass  
Gene Baade Warneke

#### Tau chapter

Mary Kingsley Aldrich  
Irene McDonald

#### Phi chapter

Miriam Grafe Schokmiller

#### Omega chapter

Elizabeth Johnson Neal

#### Alpha Delta chapter

Blanche Baker  
Dolores Pritchett Oldendorph  
Esther Jordanson Griswold

#### Alpha Zeta chapter

Joanne Wallace Smith  
Cynthia Shoptaw Leeper

#### Alpha Eta chapter

Lucille Shawk Beears

#### Alpha Xi chapter

Cleon Poole Gilmore

#### Alpha Omicron chapter

Dorothy Evanson Rorvig  
Ruth Gunvaldsen Herderich

#### Alpha Tau chapter

Lois Newmark Jipp

#### Alpha Upsilon chapter

Ruth Thomas Blackwood

#### Alpha Phi chapter

Amy Emiko Sasaki Furukido

#### Alpha Omega chapter

Ora Margaret Warren Onorato  
Dorothy Stepler Stepler

#### Beta Gamma Chapter

Marilyn Gebhart DeTray

#### Beta Nu chapter

Donna Godfrey Boylan

#### Beta Chi chapter

Marilyn Fletcher Verdier

#### Gamma Gamma chapter

Janet Schacht Krauss

#### Gamma Theta chapter

Sharon Hull Cherry

### MEMORIAL GIFTS

Memorial Gifts are listed alphabetically with the person being honored in boldface type. The person making the honor gift appears in italics underneath.

#### **Marsha Perkins Austin** (Epsilon '61)

*Joann Kuersh Huntington  
Sandra Peterson Kirkbride  
Beth Schober*

#### **Blanche Baker** (Alpha Delta '21)

*Hawaii Alumnae Chapter*

#### **Brigitte Uhlig Beard** (Alpha Upsilon '44)

*Carolyn Aull  
Marjorie Appel  
Elizabeth Boedecker  
Marian Bickford  
Ann Cline  
Ann Gregory  
Dorrie Heinz  
Dotty Taylor  
Flo LaVoice  
Sue Moomau  
Jean Hopkins  
Jo Peters  
Ruth Hollingsworth*

#### **Dorothy Potter Benjamin** (Omicron '48)

*Carol Saalwaechter Fredrickson  
Elizabeth and Craig Saalwaechter  
Harold and Jeanne (Potter) Bowman*



## In Memory

**Jeanne Verne Blahnik** (Alpha Omicron '35)  
*Sharlyn Wax Munns*

**Mignon Morton Bowen** (Sigma '42)  
*Margaret Dahlquist Eddy*

**Sharon Hull Cherry** (Gamma Theta '63)  
*Ruth Hull-Sandine*

**Frederick A. Cline, Jr.** (Husband of Ann Reese - Alpha Upsilon '44)  
*The Round Robin Sisters of Alpha Upsilon of Penn State, Class of 1947*

**Jeanne Ranger Downs** (Omicron '34)  
*Peg Blaylock*  
*Sun Cities Alumnae*

**Eleanor Evenson Ericson** (Kappa '30)  
*Sune Ericson*  
*Marge and Jim Gray*  
*Jean Horstick*  
*Susanne Hotte*  
*Adrienne Rogovin*  
*Frances Sauer*  
*Katherine Teitgen*  
*Virginia Miller Tenge*  
*Jean Thorp*  
*Marjorie Gray Vogel*  
*Margaret Watson*  
*Virginia Wells*  
*Betty L. Wisland*  
*Patricia E. Yeiser*

**Peggy Black Foreman** (Epsilon '41)  
*Jocelyn Birch Burdick*

**Frank Foulk** (Father of Susan Foulk Reeves - Alpha Zeta '76)  
*Jane Swift Fair*

**Amy Sasaki Furukido** (Alpha Phi '56)  
*Hawaii Alumnae Chapter*  
*Mary Rogers Wullschleger*

**Margaret King Gigray** (Xi '37)  
*Jerry Lillge*

**Jean Robinson Gore** (Omicron '34)  
*James and Gladys Myles*

**Richard Hansen** (Father of Emily Sue Hansen - Beta Psi '58)  
*Sue Ann Allen Tollett*

**Anne Hayes** (Alpha Eta '32)  
*Mary Ellen Ficocella*

**Ruth Gunvaldsen Herderich** (Alpha Omicron '39)  
*Irene Gunvaldsen Diederich*

**Mary Margaret Holthouse** (Chi '33)  
*Marguerite Gillchrest Bromley*

**Carl Hustad** (Husband of Virginia Geiger Hustad - Kappa '43)  
*Audrey Shafer*  
*Jack and Caral Heffernan*

**Jeanne Lupton Leisy** (Chi '47)  
*Mary Ryan Johnson*

**Barbara Barott Lentz** (Alpha Gamma '50)  
*Sue Dorsey Durrett*  
*Greater Kansas City Alumnae Chapter*

**Mavoureen Martin** (Mother of Alyce Anne Chism - Beta Tau '60 and Gloria - Psi '62)  
*Joyce Ullom*

**June Mahon Meader** (Mu '33)  
*Kathy LaVenture*  
*Rilla Griffin*

**Dorothy Hellenthal Mowery** (Lambda '44)  
*Anne A. Moldrem*

**Delores "Dee" Meyer-Watson** (Mother of Karen Meyer Brayden - Tau '76)  
*Patti Blanchard*

**Dorothy Jane Trenholm Mitchell** (Pi '36)  
*John and Betty Hart Taylor*

**Dorothy Evanson Rorvig** (Alpha Omicron '36)  
*Jocelyn Burdick*

**Miriam Grafe Schokmiller** (Phi '44)  
*Gloria Krimmel*

**Sylvanus Smith** (Husband of Cynthia (Thaye) Musgrave Smith - Chi '29)  
*Eugene Alumnae Chapter*

**Pauline Sawyer Umland** (Delta '22)  
*Helen Brazil*

---

Unrestricted gifts of \$125 and greater have been given in memory of the following. In honor of these gifts, the Gamma Phi Beta Foundation will inscribe a brick in the Sisterhood Plaza.

**Jeanne Verne Blahnik** (Alpha Omicron '35)  
*Sharlyn Wax Munns*

**Judith Ridlen Brophy** (Beta Tau '61)  
*Peggy Campbell Clark*

**Karen Johnson Doke** (Nu '90)  
*Christina Carey*

**Gavin Ward Glanz** (Son of Barbara Bauerle Glanz - Sigma '62)  
*Charles and Barbara Glanz*

**Alice Hibbert Goodwin** (Omicron '37)  
*Phyllis Goodwin Merrill*

**Laverne Haley** (Beta Tau '57)  
*Peggy Campbell Clark*

**Mavoureen Martin** (Mother of Alyce Anne Chism - Beta Tau '60 and Gloria - Psi '62)  
*Peggy Campbell Clark*

**Dina (Virginia) Buckingham Rice** (Pi '44)  
*Marion Campen Mahone*

**Myrtle Sharp** (Mother of Mary Ann Fletcher - Beta Tau '56 and Kay Sharp Renkel - Beta Tau '58)  
*Peggy Campbell Clark*

---

Memorial gifts received by the following dates will be included in the corresponding issues of *The Crescent*:

January 1 . . . . . Spring issue  
April 1 . . . . . Summer issue  
July 1 . . . . . Fall issue  
October 1 . . . . . Winter issue



Donations in memory of friends, sisters and loved ones may be sent to the Gamma Phi Beta Foundation at International Headquarters. If you would like a card sent to a family member or friend, please include that address.

The Sorority appreciates the return of a deceased member's badge, when possible, so that it might be preserved in our archives.



## Historical Purposes and Significance of Ritual

By: Elizabeth Phillips, Director of Ritual and Margaret Mauter, Editor, Ritual Manual

Ritual has been used universally by virtually all people since the beginning of time. From recordings found on the walls of early cave dwellers to the present day worldwide TV observances of special occasions, evidence abounds that ritual services have been and continue to be used to celebrate and commemorate special events.

Ritual is defined as a prescribed ceremony or service used to signify the importance, joy or solemnity of an occasion. Some ritual ceremonies are very public, even stately, as in a coronation or swearing in of public officials. Some may limit participation to members only, as in many fraternal and religious organizations. Other rituals may be shared with invited guests to celebrate a special event, such as a wedding or graduation. Still others are very private or personal affairs. For example, many families celebrate holidays with long-held family rituals and traditions, and couples often celebrate anniversaries with personal, sentimental rituals. Some rituals may be quite frivolous, their origin or purpose virtually unknown to the participants, but practiced nonetheless. For example, wearing green on St. Patrick's Day is an annual ritual enjoyed by many people regardless of their religious or ethnic heritage.

A ritual service generally utilizes a formal set of rites including specific acts, symbols and words that are meaningful to the group. Ritual should not be uncomfortable or perceived as dark, mysterious or foreboding. Participants are more likely to look forward to ritual if they understand the purpose—to celebrate, to commemorate, to give thanks, to honor, to affirm common goals or to make a commitment. There is nothing secretive about these purposes. Ritual should be anticipated as a vibrant and enlightening experience.

While there may be similarities in the rituals of like-organizations, for instance, music is universally used in many rituals, it is the use of specific words or symbols having meaning only to the group that makes its ritual unique. These "secret" rites are intended to enhance and solidify a common bond among members of the group. Some of these rites may be based on the very first rituals used by the founding members of a group, giving those who follow an opportunity to honor the founders and to reaffirm the group's original ideals and objectives.

Adherence to the prescribed rituals of any organization ensures continuity and perpetuation of the historic ties that bind all present members to those who preceded them. While over time, ritual services may be altered in keeping with the times, or new rituals may be added to celebrate other special occasions, it



is the basic ritual, passed down from generation to generation that links the past to the present and beyond.

The use of ritual is an important part of Gamma Phi Beta, not only as a tribute to our Four Founders for their vision and gifts, but as a unique and meaningful way to perpetuate the Sorority. Entrusted to the Greek-letter chapters only is the sacred ritual of initiation. The true understanding of the ideals of Gamma Phi Beta is instilled at initiation, and the quality of a candidate's initiation often determines her loyalty, devotion and commitment to these ideals throughout her life. The growth of Gamma Phi Beta depends upon the commitment of its members in furthering the aim and ideals of the Sorority; therefore, initiation should be one of the most unforgettable experiences of her Gamma Phi Beta life. The chapter should guard and protect the sanctity of the initiation ritual and forever cherish the sacred obligation entrusted to it.

There is no place in our ritual now, nor has there ever been, for hazing activities of any kind. Participation in our time-honored rituals allows every member to affirm—and reaffirm—her commitment to Gamma Phi Beta. It is important that our rituals remain constant and true for all time.

It is with mixed emotion that I announce the resignation of Stephanie Hearn as Executive Director of the Gamma Phi Beta Foundation effective December 31, 1999.

In the past seven years the Foundation has grown significantly under Stephanie's capable leadership and we shall miss her professional skills and loyal dedication. However, the Foundation Trustees and I recognize that it is time for Stephanie to move forward in her career and we are fully supportive of her decision. The development of leadership talent is intrinsic to our mission. We see in Stephanie an example of the highest kind of womanhood and trust that her years with the Foundation have contributed to her professional growth.

Please join me in wishing Stephanie great success and happiness as she undertakes new challenges.

Barbara M. Wessel  
Chairwoman, Board of Trustees



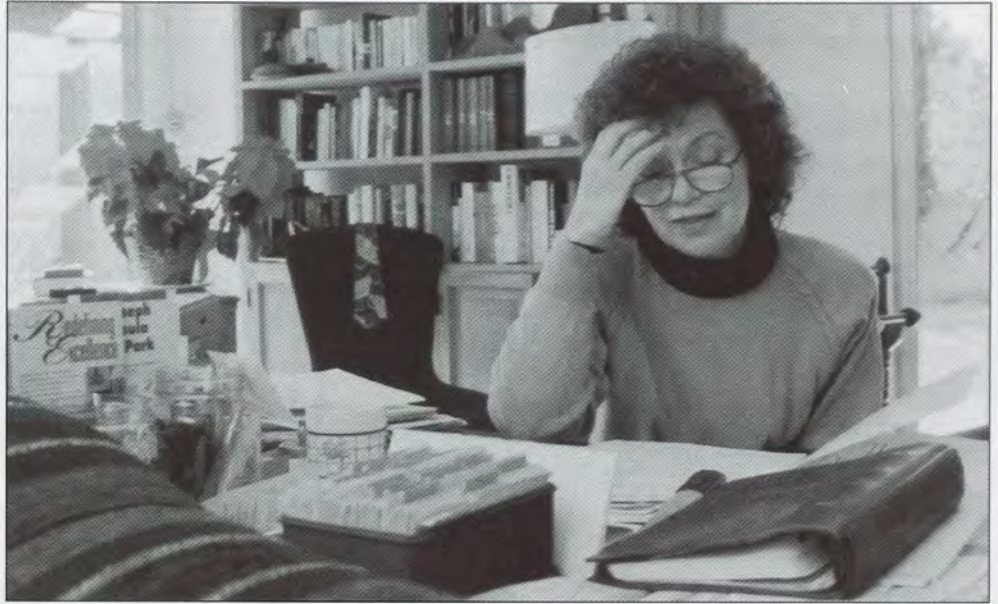
Stephanie Hearn



## Political Pioneer

As new chief justice of the New Mexico Supreme Court, **Pamela Burgy Minzner** (Beta Epsilon '62) is also the first female chief justice in the state's history. Once aspiring to be a secretary, Pamela earned an internship with the Ohio Civil Rights Commission while attending Miami University in Oxford, Ohio. "When I saw those lawyers working, I knew I wanted to study law," she said. "It was a way I saw that I could help people."

Graduating cum laude from Miami, she went on to Harvard at a time when a career in law wasn't particularly open to women—1965—and was one of only 22 women in her class of more than 500. Before her appointment to the Supreme Court, Pamela taught law at the University of New Mexico Law School and served as a judge with the state Court of Appeals. She and husband Dick, also a lawyer, have two sons and live in Albuquerque.



Pamela Burgy Minsner

## Promoting Women's Health

After 25 years of providing health services to thousands of women, Barbara Maves (Beta Eta '57) is retiring. Barbara

has served as director of Planned Parenthood in East Central Indiana for a quarter century, providing health advice, products and adoption services to mostly low-income females under the age of 24. She helped the agency expand to cover 19

counties, serving more than 14,000 clients last year alone. Barbara also serves the community through her work with Muncie-Delaware County Chamber of Commerce, the Human Service Coalition and Republicans for Choice.

## Promote and Support Gamma Phi Beta!

Gamma Phi Beta Sorority will receive up to \$150 per box when you order your bank checks with the 125th anniversary logo.

Optional custom lettering:

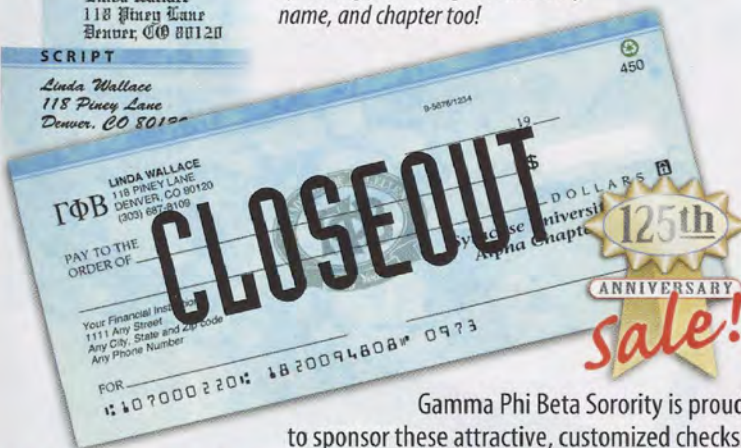
125th anniversary logo on a sky blue marbelized check. Add Greek letters only \$1.00. Increase your contribution by adding your college or university name, and chapter too!

### OLD ENGLISH

Linda Wallace  
118 Piney Lane  
Denver, CO 80120  
Denver, CO 80120

### SCRIPT

Linda Wallace  
118 Piney Lane  
Denver, CO 80120



Gamma Phi Beta Sorority is proud to sponsor these attractive, customized checks.

**Order now! Check Partners, inc. 1-800-923-2435 (CHEK)**

Your check is printed on recycled paper with 40% pre-consumer and 20% post-consumer waste. We print only with biodegradable inks. Each order includes 1-part deposit slips, check register, and recycled checkbook.

## ORDER FORM

Name \_\_\_\_\_ 9B9100  
Daytime phone ( ) \_\_\_\_\_

Starting number for check supply \_\_\_\_\_

If not specified, starting number will be 301

Enclose with your order:

- ✓ Voided check from your checking account.
- ✓ Deposit slip from same account.
- ✓ Payment check payable to Check Partners, Inc.
- ✓ Complete order form for Gamma Phi Beta.



200 single checks per box # of boxes \_\_\_\_\_ x ~~\$15.00~~ **\$11.95** = \$ \_\_\_\_\_

150 duplicate checks per box # of boxes \_\_\_\_\_ x ~~\$15.75~~ **\$12.95** = \$ \_\_\_\_\_

Optional: Greek letters # of boxes \_\_\_\_\_ x \$1.00 = \$ \_\_\_\_\_

☐ Old English ☐ Script # of boxes \_\_\_\_\_ x \$2.00 = \$ \_\_\_\_\_

Indicate college, university, or chapter for text above signature line.

Limited to 2 lines with 26 characters including spaces \$2.00 per box = \$ \_\_\_\_\_

\_\_\_\_\_

Sub-total: (Add the column above) = \$ \_\_\_\_\_

Tax: 3.8% sales tax for Colorado residents = \$ \_\_\_\_\_

Shipping & handling:

Bulk mail - allow 4 weeks from receipt of order. \$1.50 = \$ \_\_\_\_\_

Priority mail - for every 2 boxes add: \$3.10 = \$ \_\_\_\_\_

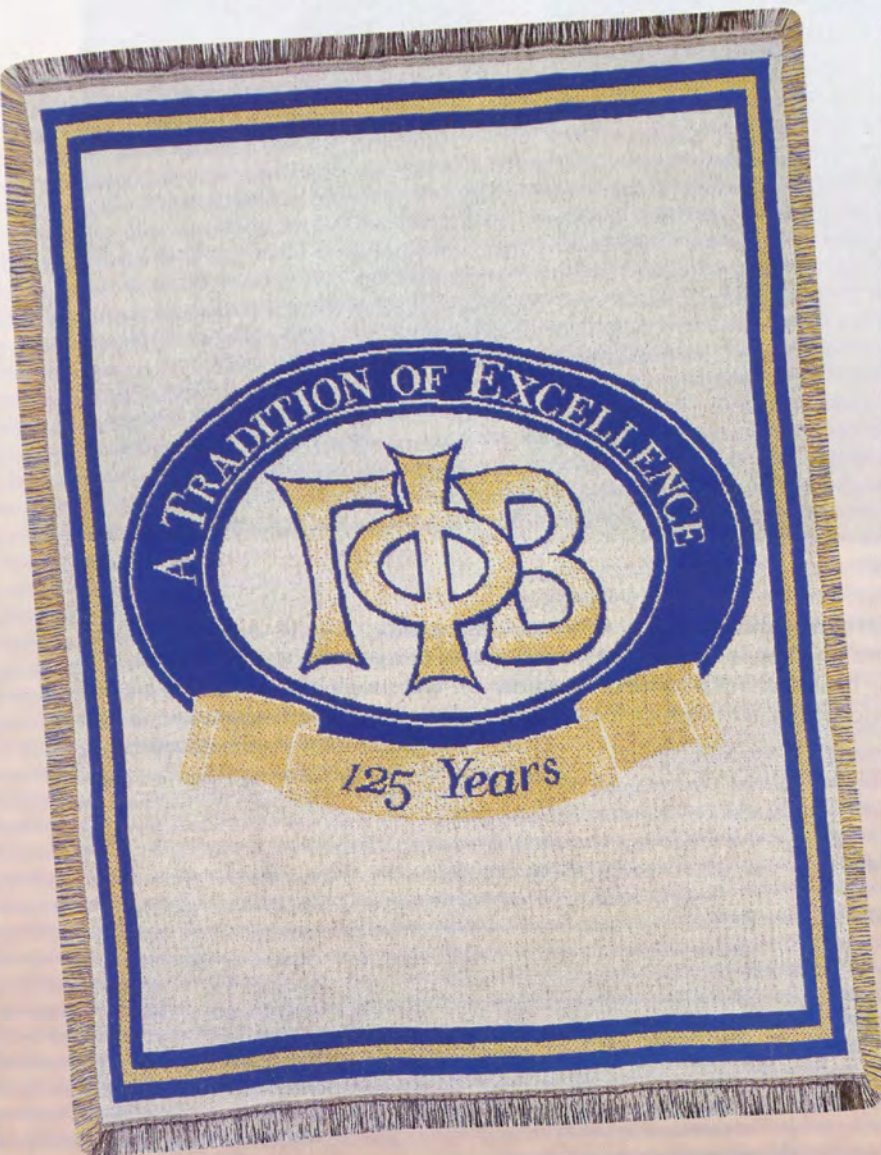
Total order: (Add sub-total, tax, shipping & handling) = \$ \_\_\_\_\_

Mail all items to: Check Partners, Inc., PO Box 621416, Littleton, CO 80162-1416



# Crescent Classics

Close-out on all 125th merchandise—Quantities Limited



## 125 YEAR AFGHAN

Celebrate our Sorority's 125th year with a custom woven afghan. This beautiful throw proudly displays Gamma Phi Beta's official 125-year logo. Offered for a limited time, be sure to celebrate our 125 years with this memento. (Machine washable, 46" x 67") 99CC1 ~~\$45.00~~... \$35.00

## OFFICIAL 125th COLLECTIBLES

- A. Oval magnet 99CC4 ..... \$1.95
- B. Enamel pin, button back 99CC5 ..... \$3.95
- C. Ivory folded notes, solid gold logo (10 CT.) 99CC6 ..... \$5.75
- D. White folded notes, color logo (10 CT.) 99CC7 ..... \$5.75

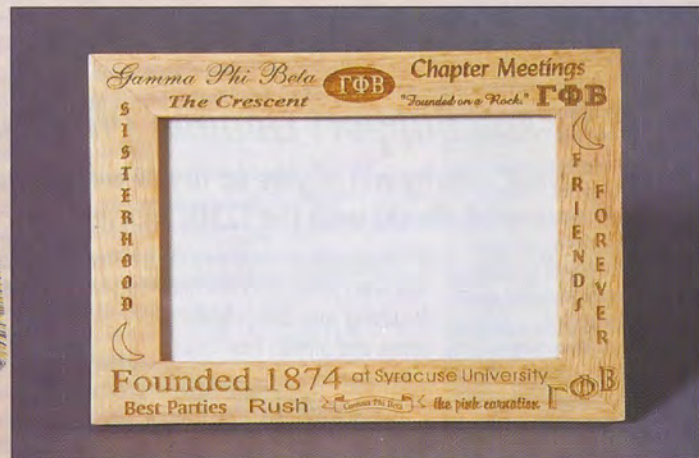


## KEEPSAKE BOX

Engraved sterling silver box, 2" x 3", inside lined with red velvet  
99CC2 ..... \$15.95

## REMEMBER WHEN . . .

Wooden collage frame laser engraved with all your Gamma Phi Beta cherished memories. 4" x 6"  
99CC3 ..... \$31.95

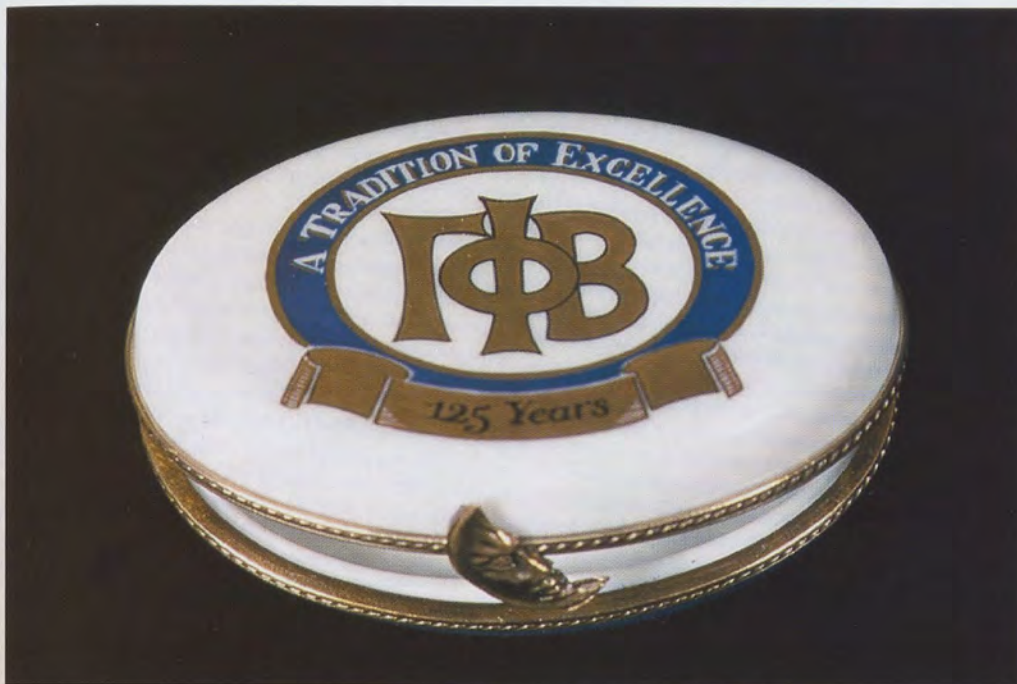


**1-800-453-5344**



Support your Sorority! A portion of the proceeds from you purchase is used to support Gamma Phi Beta programs. For the CRESCENT CLASSICS catalog call:

**1-800-453-5344**



### 125 YEAR LIMOGES

Gamma Phi Beta and Crescent Classics commissioned this porcelain box to commemorate the 125th anniversary of our founding. Designed by a family of master craftsmen and artists in the town of Limoges in the South of France, these boxes are exquisite heirlooms. The oval shape measures 2-1/2 inches x 3/4 inch. The hinge is hand fitted with a crescent clasp. Inside is inscribed "1874-1999" in honor of our 125-year celebration. Order early, the Limoges will only be available for a limited time and are a special order item.

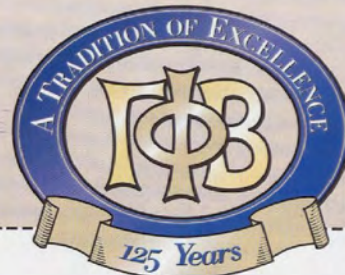
**99CCLimoges** ..... \$135.00



### OFFICIAL 125 YEAR T-SHIRT

- A. Short sleeve  
**99CCTS1** ..... \$12.95  
 B. Long sleeve  
**99CCTS2** ..... \$14.95

(T-shirts are 100% pre-shrunk cotton—available M, LG, XLG)



### CRESCENT CLASSICS ORDER FORM

Item	Size	Quantity	Price	Total

#### Method of payment:

☐ Check (payable to Crescent Classics)

☐ Money Order    ☐ Visa    ☐ MasterCard

Card No \_\_\_\_\_ Exp. Date \_\_\_\_\_

Signature \_\_\_\_\_ Phone \_\_\_\_\_

#### Ship to:

Name \_\_\_\_\_

Address \_\_\_\_\_

#### Send to:

CRESCENT CLASSICS 1115 S. Placentia Ave.,

Fullerton, CA 92831 **1-800-453-5344**

Fax: 714-441-1029 E-mail: rightcontn@aol.com

For a complete catalog call 1-800-453-5344

#### Shipping and Handling

0-\$5.00	\$3.50
\$5.01-\$25.00	\$4.75
\$25.01-\$50.00	\$5.50
\$50.01-\$75.00	\$6.75
\$75.01-\$100.00	\$7.75
\$101.00-\$150.00	\$8.75
\$150.01-\$225.00	\$9.75

UPS next day and  
second day air available

Subtotal \_\_\_\_\_

Shipping and Handling \_\_\_\_\_

California residents  
add 7.75% sales tax \_\_\_\_\_

Canada orders add \$10 \_\_\_\_\_

Total \_\_\_\_\_



# The Sisterhood 125 Celebration...

*Building a path to the future*



## The Sisterhood 125th Celebration

How You Can Be a Partner in Building a Path to the Future for Gamma Phi Beta? For a gift to the Foundation of \$125 or more, the Foundation will inscribe a brick in the Sisterhood Plaza:

1. In honor of a sister
2. To remember a loved one
3. To celebrate your daughter's initiation
4. To celebrate your daughter's graduation
5. To create a lasting tribute to a closed chapter
6. To honor your alumnae chapter
7. To thank your mentor
8. As a birthday gift for your house director
9. As a thank you to your advisor
10. As a celebration of an award or achievement
11. To commemorate initiation
12. To commemorate graduation
13. To celebrate your chapter's achievements
14. To celebrate your legacy
15. To congratulate your HCB
16. To celebrate your chapter's special anniversary
17. To honor your big sister
18. To celebrate sisterhood
19. To celebrate a birthday
20. To celebrate a new chapter

Space is limited, so do not delay! Send your gift in the attached envelope today!

**G**amma Phi Beta celebrates its 125th anniversary in 1999. To mark this occasion and to raise funds to benefit the Sorority's leadership, scholarship and philanthropic programs, the Foundation announces the Sisterhood 125 Celebration... our celebration of lifelong connection begins now and concludes at Convention in Houston in July of 2000.

The Foundation invites all Gamma Phis to celebrate their lifelong connection with a gift recognizing our rich heritage based on the development of the highest type of womanhood.

***Brick by brick, sister by sister, Gamma Phi Beta is building a solid future.***

To commemorate our anniversary and ensure that the opportunity for Gamma Phi membership is available to the woman of the next century, the Gamma Phi Beta Foundation will construct a Sisterhood Plaza at International Headquarters in Englewood, Colorado. Unrestricted gifts of \$125 and more will entitle members and friends to an engraved brick in the plaza.

For unrestricted gifts of \$500 and more, the Foundation will provide a Keepsake Brick in the Plaza. Keepsake Bricks for significant donations of \$2500 or more will be placed in the Plaza's Crescent Moon.

The Sisterhood 125 Celebration represents the open circle of our sisterhood—from our four Founders at Syracuse to the members yet to come. All Sisterhood 125 Celebration gifts will help ensure the future of Gamma Phi Beta through leadership programs, educational opportunities and philanthropic endeavors.

Contact the Gamma Phi Beta Foundation, 12737 E. Euclid Dr., Englewood, CO 80111, 303-799-1874 or visit our website at [www.gammaphibeta.org](http://www.gammaphibeta.org).