

THE

CRESCENT

OF GAMMA PHI BETA

SUMMER 2000



*Gamma Phis Strengthen their
Support of Alcohol-Free*

THE CRESCENT

OF GAMMA PHI BETA

CRESCENT STAFF

EDITOR Deborah Hidde Borak
International Headquarters
dborak@gammaphibeta.org

ASSISTANT EDITOR Carrie Plachko
International Headquarters
cplachko@gammaphibeta.org

**ALUMNAE/
COLLEGIATE
NEWS EDITOR** Kristyn Wiggin Golberg
2314 Stone Creek Ln. West
Chanhassen, MN 55317
Kgolberg@aol.com

**NEWS EDITOR/
FEATURE EDITOR** Darla Click Dakin
7148 South Andes Circle
Aurora, CO 80016
DarlaD@ix.netcom.com

GRAPHIC ARTIST Jody Toth
**BUSINESS
MANAGER** Alison Webster Maguire
International Headquarters

**INTERNATIONAL
HEADQUARTERS** 12737 E. Euclid Drive
Englewood, CO 80111
Phone: 303-799-1874
Fax: 303-799-1876
IH@gammaphibeta.org

FOUNDERS



Helen M. Dodge Ferguson
Frances E. Haven Moss
E. Adeline Curtis
Mary A. Bingham
Willoughby

COUNCIL

**INTERNATIONAL
PRESIDENT** L'Cena Brunskill Rice
**ALUMNAE
VICE PRESIDENT** Linda Hallenbeck Pelegrino
**COLLEGIATE
VICE PRESIDENT** Terri Kennedy Briggs
**FINANCIAL
VICE PRESIDENT** Joanne Callis Roman
MEMBER-AT-LARGE Lisa Lepley Hiles
**MEMBERSHIP
VICE PRESIDENT** Vicki Carlson Read
NPC DELEGATE Betty Ahlemeyer Quick
**IH EXECUTIVE
DIRECTOR** Alison Webster Maguire

Gamma Phi Beta (USPS 137-620). *The Crescent* is published quarterly in Fall, Winter, Spring and Summer by Gamma Phi Beta Sorority, Inc., 12737 E. Euclid Drive, Englewood, CO 80111-6445. Subscription price is \$6.00. Produced in the U.S.A. by Maury Boyd and Associates. Periodicals postage at Englewood, CO and additional mailing offices.

Copyright 2000, Gamma Phi Beta Sorority.

Postmaster: Send address changes to *The Crescent*, Gamma Phi Beta Sorority, 12737 E. Euclid Drive, Englewood, CO 80111-6445. Printed in the U.S.A.

Subscribers: Send changes of address, notices of marriages and deaths to Gamma Phi Beta Sorority, 12737 E. Euclid Drive, Englewood, CO 80111-6445. Phone: 303-799-1874. Fax: 303-799-1876.



Member of the College Fraternity Editors Association

Letters to the Editor

Address Change Requested

First of all, congrats on a beautiful new web design. I love it. I have been able to find the e-mail addresses of some of my former college sisters & I truly appreciate that!

Also, I was wondering how I can enter a name and address change in your system. I filled out the information in My G Phi B, but I am not sure if that information goes to the people who send out *The Crescent* or not. As of now, the magazine is being sent to my mother's house and it takes awhile for me to get it. I am also now a bit more financially secure, so I can start to pay my dues again and make up for lost time! Hopefully you will be able to pass that along to whoever needs it! Once again, my compliments to the designer of the website. It looks very nice!

Love in IIKE,
Angela Mullen Seffernick
Beta Pi '93

We appreciate your compliments on the web site. International Headquarters is pleased with the new site and has received several positive comments. International Council continues to budget funds towards the advancement of the site to better serve our members. We welcome all comments and feedback.

You can change your address anytime, day or night, using a variety of methods. From the web site, go to the "How Do I?" section and click on address@gammaphibeta.org. You can also update your address, and any other personal information, through the My G-PHI-B section. Go to the My G-PHI-B link on the home page of the site. Instructions for entering this private area are available there. Once a month, Gamma Phi Beta International Headquarters (IH), receives an update from our web hosting company. We export the update into our database and the IH database is updated. This allows all of our members with Internet access the opportunity to change their personal information without having to contact IH. Keep in mind that the update is only done once a month, therefore, your information will not be changed until the update has occurred. You can also e-mail your address change to address@gammaphibeta.org or update your information by phone at 303-799-1874 or by fax at 303-799-1876.



DIRECTORY OF SERVICES

Address or Name Change	Call (303) 799-1874 or E-mail Address@gammaphibeta.org Fax: (303) 799-1876
Crescent Classics	Call 1-800-453-5344, Fax 1-714-441-1029, or E-mail: rightcontn@aol.com
First Tennessee Bank Gamma Phi Beta Credit Card	Call 1-800-234-2840 or visit www.ftbaffinity.com
Gamma Phi Personal Planners	Call (303) 799-1874, ext. 319
National Collegiate Calling Card	Call 1-800-628-8234 or visit www.nationalcollegiate.com .
SisterLink, Career & Networking Service	Call (303) 799-1874 or E-mail SisterLink@gammaphibeta.org
Volunteer Opportunities	E-mail Volunteer@gammaphibeta.org

CONTENTS

Volume 100, No. 3

4 Ideas on Issue: Creating Our Future

By Lisa Lepley Hiles, Member-at-Large

5 Member News

15 Do You Know Your Province?

Locate your chapter's Province on the map

21 Feature

Strengthening the Support of Alcohol-Free

25 National Panhellenic Conference (NPC)

NPEC and the Panhellenic Award Winners

Moon Phases and Their Names

Upon receiving my spring 2000 issue of *The Crescent*, I read the "Crescent Clip" that states: "When showing Gamma Phi Beta's symbol of the Crescent Moon, it should always show the open area facing left." I find it rather hypocritical to print this information in a publication that violates this statement. If it was important to publish this kind of information, then it should be equally as important for the publishing body to promote it.

In IIKE,
Christina A. Steck

The Crescent staff appreciates your comments. Including this information about the crescent moon was not meant to be hypocritical, it was meant to inform and promote the information as a rule of thumb.

In the past, a few members have asked which way our symbol should face and based on the phases of the moon, waxing versus waning, the preferred way for the moon to face is left. However, because crescent moons are not exclusive to Gamma Phi Beta Sorority, many times you will find them on a variety of items including clothing, greeting cards and frames, just to name a few, where the crescent moon faces left or right. Many products show crescent moons in a variety of shapes and sizes and all face different directions—in other words, there is no standard for the way a crescent moon faces.

We are working with our vendors to provide items with the moon facing in the "preferred" direction. However, there will always be those cases when the crescent moon will face right based on the design it is used in and the company it was manufactured by.



Bits & Pieces

My G-PHI-B

Have you visited the private area of the Gamma Phi Beta web site? My G-PHI-B is an area of the site that was created to allow members to access information from three important areas—Bulletin Boards, Chapter Events and Personal Information, just by entering your member number, found on the mailing label of each issue of *The Crescent*.

Bulletin Boards

In this area, members can post a message or send a reply related to the current topics of interest. Members can see what others wrote and how they responded to questions. This area has been very successful in providing answers to many recruitment questions.

Chapter Events

Wouldn't it be great to be able to contact any member of your initiating chapter to let them know about a future reunion or other event? You can! With a complete drop down calendar and text box for inserting information, you can announce any sort of news, meetings, reunions and other events by using the Events area.

Personal Information

The Gamma Phi Beta International Headquarters database is now available on line. Locate sisters you have lost track of or use this area to update your personal information so that you continue to receive your issue of *The Crescent*, even if you have moved. And the best part is, you control your level of privacy. Choose to show your name, address, phone number, e-mail address or any combination of the three. It's easy!

Gamma Phi Partners with Amazon.com



Whether you are looking for a book, video, software, or gift idea, *Amazon.com* can help. Gamma Phi Beta has joined *Amazon.com*'s Affiliate Program. This program allows members to browse the *Amazon.com* website and purchase items. Proceeds from each item purchased will help support your Sorority. Remember, you must access *Amazon.com* through the Gamma Phi Beta website at www.gammaphibeta.org for your items to support Gamma Phi Beta.

To locate the merchandise area of the website, go to the home page and click on the Member Services button on the menu to the left of the page.

Creating our Future

By Lisa Lepley Hiles, Member-At-Large



Gamma Phi Beta is entering the 21st century with a commitment to serve our membership. To best meet this goal, we must remain true to our core values while embracing new approaches to connecting with sisters. Continuing to do the things we have done in the past is not enough. We must address today's issues, focusing on the parts of our members' lives that Gamma Phi Beta is uniquely positioned to address.

Alumnae Ranks Are Growing And Growing

As baby boomers continue to age over the next decades, coupled with improvements in life expectancy, America will see the largest group of seniors ever to inhabit the planet. Unlike today's stereotypes of "senior citizens," demographers and sociologists predict that this group will be active, energetic and looking to participate in meaningful activities. Many of our most active volunteers already are "seniors" in age, but young at heart with much to give.

Gamma Phi Beta membership will mirror this trend. Our alumnae group will increase in average age while continuing to grow in size. During this time, our collegiate membership will remain relatively constant. We should be in front of this trend, developing themes and programs that appeal to our growing alumnae base.

Getting Wired to the e-World

The rapid march to an e-world is revolutionizing our lives. Experts believe the impact will be on par with the industrial revolution, and all organizations will either be part of the e-revolution or get lost in the shuffle.

As part of the e-revolution, the traditional office seems to be going by the wayside. Telecommuting was an idea born in the 1980s. With improving technology, almost everyone will be able (and possibly encouraged) to work

without ever coming to the "office." Some companies today have already eliminated the traditional "office," offering employees a work-space for the day as they show up in the morning.

Gamma Phi Beta members will be seeking new ways of making and keeping friends and business contacts. We can address this "social gap" created by the new economy by providing a web-enabled source for sisters to interact. In the web-enabled world, location, time and space become irrelevant. Our site on the internet could become a 7/24 cyber-meeting place for sisters around the world.

The Gamma Phi Beta Experience-Our Promise to Sisters

Successful organizations know who they are and make promises to those they connect with. These promises capture the essence of the organization, and clearly articulate what the experience with the organization will be like. For example: UPS tells customers they will "deliver at the speed of business." This promise tells customers what to expect, and sets the bar for performance. If UPS does not deliver (quickly, accurately), customers feel the promise by UPS has been broken and will take their business elsewhere.

Other companies make a promise to their employees. Southwest Airlines was rated the best place to work in America in 1998. Southwest tells their employees that "freedom begins with me." This promise clearly communicates to employees that Southwest will be a place that will help them find the freedom to have successful lives (e.g. saving money for retirement, educational assistance, etc.).

These are more than marketing slogans. These promises tell everyone what to expect, and create a simple, easy-to-relate-to image of the experience. Once the promise is made to stakeholders (customers, employees, etc.), successful organizations align all their programs to

deliver on the promise.

Gamma Phi Beta should clarify its promise to collegians and alumnae. Our goal should be that if asked, every Gamma Phi Beta should be able to state the two or three sentences that clearly articulate what being a Gamma Phi Beta is all about.

This goal is not a mission statement. Our mission statement tells us what we are trying to accomplish as an organization. It does not tell our members what being a Gamma Phi Beta is about, or what each sister can expect from her involvement. We should develop our promise to members, capturing our uniqueness, rich history and unlimited future. Once developed, let's build our programs and communications around consistently delivering on this promise.

Looking Ahead

Let me close by sharing my view that we have a great organization today, well positioned for future success. The issues discussed above, as well as many others, are already under consideration by International Council. This article is my synopsis of what I believe to be the most important trends that will impact Gamma Phi Beta.

Each of the trends discussed in this article will result in significant change to Gamma Phi Beta and how we impact the lives of our members. That said, our four founders looked to the future and saw something that did not exist, but they had the vision and courage to build it. Today, it is our turn to look ahead into the unknown and rebuild Gamma Phi Beta, keeping our core values while reshaping the way we connect with our members. The hard work is ahead, but I know the tremendous women of Gamma Phi Beta are up to the challenge. ●

Member News

COLLEGIANS

If your chapter is not listed, it means that no information was submitted by the deadline.

Beta, University Of Michigan

University of Michigan sisters had the privilege of initiating University of Detroit Mercy's new chapter. L'Cena Brunskill Rice joined many local alumnae in the festivities which included a post-initiation banquet. These women also enjoyed taking part in Greek Week and have been raising money for a local children's hospital. The upcoming jump-a-thon has them getting in shape to raise money for YMCA camps.

Gamma, University of Wisconsin, Madison

The sisters welcomed 41 new members to their chapter this fall. Philanthropy "Kickin' It Club Style for Kids," a campus-wide dance competition, has kept the chapter busy. All proceeds benefit Camp Sechelt.

Eta, University of California, Berkeley

Two self-defense instructors were welcomed at a recent PACE meeting. Practical information as well as basic self-defense instructions will hopefully enable these sisters to better protect themselves. Thirteen new members joined last spring.

Theta, University of Denver

These women held their annual See-Saw philanthropy. This involves 24 hours of see-sawing to raise money for a local camp. Several members of this chapter serve on boards and councils of university organizations and three sisters were recently elected as executive members to the Panhellenic council.

Kappa, University of Minnesota

Sisters from the University of Minnesota have been busy planning for their pancake breakfast raising money for Camp



Sisters from Oklahoma State University participated in Varsity Revue.

Sechelt along with other local charities. They are looking forward to their annual sweetheart competition and Spring Jam 2000.

Xi, University of Idaho

Congratulations to these sisters for earning first in grades of all other Greeks on campus. Their grade point average was 3.31! The chapter volunteered at the Care center and at the Food Bank and spread some cheer by singing carols for the residents of a retirement community. The sisters were again pleased with the success of their third annual spaghetti feed which benefited a local camp.

Pi, University of Nebraska, Lincoln

It's been a busy semester for Pi chapter after running carnival games at a local elementary school and reading to children at a recreation center. Their spring formal was a big success and the chapter had a mouth-watering French Toast Feed fundraiser to raise money for a safe ride home program.

Omega, Iowa State

Congratulations to the Iowa State sisters who were awarded with the highest grade point average among sororities on campus. Their annual pancake breakfast to benefit a shelter for battered women was again a success. A student-run festival, March Madness and a spring philanthropy will keep these sisters hopping this spring.

Alpha Lambda, University of British Columbia

For the third consecutive year a Alpha Lambda was chosen as the Sigma Chi sweetheart. The chapter also installed new officers and has enjoyed taking part in a basketball outing and a swimming philanthropy.

Alpha Xi, Southern Methodist University

After another successful spring recruitment, the newest members celebrated bid day with a night of karaoke and bowling.



Gamma Phis take part in the 150th Homecoming festivities in Madison.

Member News



USC Gamma Phis inducted into the National Society of Collegiate Scholars.

COLLEGIANS

(continued)

Alpha Upsilon, Penn State

The sisters at Penn State, along with the Sigma Phi fraternity, raised \$54,000 for their part in the all-university dance marathon.

Four sisters danced for 48 hours without one complaint! This annual fundraiser benefits children with cancer.

Beta Alpha, University of Southern California

Congratulations to Rina-Ann Hunter, Nadia Al-Amir, Bellamie Blackstone, Andrea Campbell and Amanda Vickers on their induction to The National Society of Collegiate Scholars.



Jenny Fudge smiles for the camera with her mother, Michigan State University and Beta Delta Chapter alumnae, Beverly Bowlus Fudge. Jenny was proud to have her mother present at her initiation.

Parent's Weekend and the Crescent Ball were again big successes for the chapter, now 140 women strong after an addition of 39 new members.

Beta Delta, Michigan State

After a very successful spring recruitment, the 12 newest members at Michigan State have jumped right in and are active on numerous committees and organizations.

Beta Kappa, Arizona State University

Also joined by 12 new members following spring recruitment, Arizona State University sisters got the newest members involved right away in a philanthropy walk and the Greek Leadership Conference. Beta Kappa's have been busy planning an all-house retreat, a "barn dance," a date function and big sister revealing. Everyone is excited for Initiation and for making Senior Week a success for graduating sisters.



New members at Southern Methodist University celebrate Bid Day.

Beta Lambda, San Diego State University

With the most Panhellenic delegates out of nine other sororities, San Diego State University sisters are well represented on campus. The sisters are looking forward to Greek Week where they hope to maintain their 1st place overall position from last year's festivities. Twenty women will graduate this spring and the sisters are preparing for a very memorable Senior Week.

Beta Upsilon, Kansas State

Sisters at Kansas State joined forces with the Phi Gamma Delta fraternity at a local dodge ball philanthropy. Everyone had a ball and proceeds benefited a Boys and Girls Club. Mothers and daughters enjoyed brunch during Mother's Day weekend, plus a silent auction and a formal dinner. Auction proceeds will help with upcoming recruitment activities.

Beta Psi, Oklahoma State

Varsity Revue, an all-campus production, has kept many Oklahoma State sisters busy dancing and singing. Fifteen sisters took part modeling at a local bridal show. Others were found reading to children at a local elementary school; some visited the elderly at a retirement community.



Sisters from San Diego State University have spirit!

Member News



Sisters at Northern Arizona University welcomed 14 new members this spring.

Beta Omega, Northern Arizona University

Outstanding community service by the sisters at Northern Arizona University was recognized—service that totaled 1,855 hours during the fall semester! The chapter welcomed 14 new members during spring recruitment and has been busy taking part in the American Heart Walk and Special Olympics events.

Gamma Zeta, Texas A&M, Commerce

As part of a Greek fundraising effort for Muscular Dystrophy, the chapter put their lip-syncing talents to good use. The chapter held an all-house retreat and had a wonderful time playing, relaxing and planning for their upcoming activities.

Gamma Pi, Minnesota State University, Mankato

Gamma Pi welcomed four new women following spring recruitment. Volunteering at Sam's Club, they read to children while the parents shopped. In April the sisters had a formal and a family fun day.

Delta Delta, California State University, Fullerton

Kicking off the year with a chapter retreat, these sisters found time to relax and enjoy each other's company. The chapter is



Sisters at the University of Georgia pose after 24 hours of dancing.

busy getting ready for the annual Greek Week; all proceeds will benefit a local camp for underprivileged children.

Delta Eta, University of California, Irvine

At their winter retreat, these sisters set goals for the spring quarter. They played teambuilding games and enjoyed getting better acquainted with their newest members. A formal, Greek and community philanthropies and a chili cook-off have kept these sisters running this spring.

Delta Iota, Purdue University

Purdue University sisters started off their semester in an unusual way—dressed in crazy clothing and skating at a local roller rink for some fun. The sisters had a great time and started the spring with zeal!

Delta Kappa, Lehigh University

Twenty-seven new members joined the chapter following spring recruitment! The chapter is now working to get to know all these wonderful new women and to make sure they feel welcomed into their sisterhood.

Delta Lambda, University of California, Riverside

Congratulations to Kirsten Nyberg on being named as Panhellenic President. The chapter enjoyed taking part in a MS walk in Los Angeles to raise money for that cause.

Delta Pi, Illinois State University

The sisters from Illinois State University came home with a trophy following the March Madness fundraising event. After hours of dancing and singing rehearsals, the sisters really did "shine" and were recognized for their hard work.



Purdue University sisters had a great time rollerskating!

COLLEGIANS

(continued)

Delta Upsilon, University of Georgia

Following winter recruitment with 11 new members, these women joined in a campus-wide dance marathon to raise money for the

Children's Miracle Network.

Epsilon Delta, Creighton University

Congratulations to these sisters who maintained their highest grade point average position this past semester compared to all other sororities on campus with a 3.47! They had a quota busting spring, proudly announcing the initiation of 42 new members.

Epsilon Epsilon, Union College

These sisters have been busy tutoring elementary students in preparation of the New York State mandated tests in language and math skills. The program was implemented in the fall and has been incredibly successful. The sisters enjoy interacting in the community and watching all their hours of work help others.

Epsilon Zeta, Jacksonville University

Chapter member, Marliss Ladson, received the crown of Miss Jacksonville 2000 in February. Marliss sang a beautiful gospel version of "He's Got the Whole World (in His Hands)." Her platform is the importance of teaching the arts to the socioeconomically disadvantaged. Marliss' next stop is the Miss Florida pageant in Orlando during June.

Epsilon Theta, Clemson University

Kicking off their spring with a scholarship banquet, sisters from honored those who had excelled and improved academically during the past semester. They held their second annual fundraiser, 'Late Night with Gamma Phi Beta,' to raise money for camperships. The sisters also continue to work with children in a local middle school, helping students with their homework in an after-school program.



Alpha Nus at Wittenberg University volunteer at a soup kitchen.



Sisters from Creighton University welcome 42 members after a successful Spring recruitment.



The newest members at Loyola University celebrate with a night on the town.

Epsilon Kappa, California State University, Chico

At a recent retreat Epsilon Kappa sisters enjoyed a weekend of relaxation and sisterhood in Lake Shasta, California.

Epsilon Lambda, University of Alabama

Sisters at the University of Alabama toured the local camp that they help support this past March. Campers received shower buckets that the women had made during fall recruitment.

Epsilon Mu, Loyola University

Congratulations to the Epsilon Mu chapter who doubled in size this year and is now only two away from being a "full house!"

Epsilon Omicron, University of California, Santa Cruz

Sisters from the UC Santa Cruz enjoyed a day with a Boys and Girls Club, spending the afternoon carving pumpkins. The sisters had a social with a fraternity and welcomed new members after spring recruitment.

Epsilon Pi, George Mason University

At a Saturday morning retreat, these sisters set goals for the spring along with their seven new members following spring recruitment. Sharing a leisurely breakfast together was part of the morning's enjoyment.

Epsilon Tau, University of Rochester

The sisters at the University of Rochester welcomed seven new women this spring as well as some new "digs" as they transferred from their current residence floor to a larger area.

Member News



The women of Zeta Theta at Senior Celebration with the San Fernando Valley alumnae.

ALUMNAE

If your chapter is not listed, it means that no information was submitted by the deadline.

Alabama

Over 40 alumnae from the classes of 1968–1974 attended a reunion at Auburn University this past Founders Day. It was a wonderful opportunity for these sisters to get together and plans are underway for another reunion within the next five years.

California

South Bay alumnae enjoyed a traditional luncheon tea to celebrate the New Year and St. Valentine's Day. President Beverly Stockert announced plans for the upcoming spring season and for the Syracuse Triad meeting. The alumnae are also looking forward with great anticipation to the reopening of the Alpha Iota Chapter at the University of California, Los Angeles.

San Fernando Valley alumnae began their new year with a "recovery" luncheon to unwind from the holiday season.



Boulder alumnae pose at the newly renovated Beta Rho house.



Alumnae from Auburn University graduating from 1968 to 1974 reunited at the University this past Founders Day.

The group met in February to brainstorm about their upcoming fundraisers and decisions for slating of officers for this year. Other activities included a guest speaker who discussed practical ways to financially plan for college educations and hosting the Gamma Phi seniors from Pepperdine University at a potluck dinner.

The **Los Angeles Alumnae Panhellenic Association** enjoyed their Scholarship 2000 luncheon this spring. \$1000 scholarships are awarded annually to sorority women from the University of California, Los Angeles, University of Southern California and Loyola Marimount University. Additionally the Greek organizations with the highest grade point averages are awarded with engraved silver trays.

Colorado

Boulder alumnae enjoyed an ice-cream social with members at the University of Colorado before their annual meeting this past winter. Several fun activities have been planned for the spring including taking part in the Boulder MS walk.

After a lively ornament exchange with International Headquarters staff, **Denver alumnae** helped decorate the tree and the interior office of the headquarters building. The year 2000 began with a networking dinner with collegiate sisters at the University of Denver.



Dr. Claire Lock Asam was recently named the Executive Director of Queen Lili'uokalani Children's Centers.

At an ice-cream social **Fort Collins alumnae** welcomed the new members at Colorado State University. The next month found the groups together again to celebrate Founders Day. The alumnae are proud of their 1999 Pearl Circle of Excellence Award and hope to achieve this honor again this year.

Georgia

The **Atlanta alumnae** more than doubled in size in three years. The alumnae kicked off the New Year by taking part in a "passport dinner club." The club visits a variety of restaurants and learns of

(continued on page 13)

ΓΦΒ Sisterhood Grows

*Zeta Mu chapter installed at
St. John's University-Queens, New York*



L'Cena Brunskill Rice welcomed the newly installed sisters of the Zeta Mu Chapter at St. John's University. Above, L'Cena Brunskill Rice presents the chapter's charter to the chapter president.



By: Susan Carrara and Emily Deakyne

January 22, 2000. The long awaited day had finally arrived. All 22 women made their way to the Wyndham Garden Hotel. There they greeted L'Cena Brunskill Rice, International President, Elizabeth "Kiki" Phillips, Director of Ritual and the other alumnae that traveled to New York for the initiation. The Zeta Mu chapter of Gamma Phi Beta was installed. The women had worked so hard for their charter and they believe it to be a wonderful accomplishment.

Through their tears and smiles, the women began to view each other in a different way. They had become Gamma Phi's. The Delta Mu chapter, from Rutgers University had accompanied them on that special day. Not only was the Zeta Mu Chapter extremely appreciative of their kindness but they also enjoyed the opportunity of meeting some more of their sisters.

In the evening, a banquet was held in their honor. It was there in which they received their charter. Both friends and family were invited to share in this exciting and special occasion. The president of the Panhellenic Council was there to offer congratulations and support from the Greek Community at St. John's University.

St. John's is one of the largest Catholic Universities and is located in Queens, New York. It was founded in 1870 by the Vincentian Community. Over 18,300 undergraduate and graduate students are enrolled in the University. It has a long tradition of Greek life. The Zeta Mu chapter of Gamma Phi Beta is both honored and proud to be the fourth national sorority on campus.

It was the strong determination and dedication that built the foundation of the Zeta Mu Chapter. And with the help of their advisors, they learned how to function as part of International Gamma Phi Beta. They greatly appreciate the wonderful support that they received from Emily Deakyne (CLC), Meagan Hardwick (NCRC), Noreen McElroy (NCD), and Jean Morrow (PFD). Special thanks goes to their new advisors, Tina Sheesly, Karen Lyski and Lea Sampietro.

The Zeta Mu women completed their first formal recruitment as Gamma Phi Beta and are proud of how successful it was. Their great spirits and organization really paid off. They look forward to many more prosperous years at St. John's.

ΓΦΒ's Newest Chapter

Sisters welcome the Zeta Nu chapter at the University of Detroit Mercy-Detroit, Michigan



L'Cena Brunskill Rice welcomes the newly installed sisters of the Zeta Nu Chapter at the University of Detroit Mercy.

By: Marjy Shupert and Livy Colvin

Our unending Greek-letter chapter circle has grown and now includes Zeta Nu (ZN). Since September 1, 1997, the University of Detroit Mercy (UDM), has had a local group called Gamma Phi. UDM is a small catholic university with approximately 6,500 students. The original members searched for a national or international sorority to affiliate with, that embraced their same ideals. We could connect this small group in Detroit to sisters around the world who were similarly striving for the highest type of womanhood. There are currently three NIC fraternities and one local sorority, Sigma Sigma Sigma chapter. This necessitates a new Panhellenic on the campus because we are the second NPC group. The chapter is looking forward to building a strong Greek community with the Panhellenic framework.

February 12, 2000 was the historic day for Zeta Nu chapter because their long time goals were finally accomplished. Many were in attendance including Cherie Olsen, past Foundation Chairwoman and past Financial Vice President, Trina Fox, President of the Metropolitan Detroit Alumnae

chapter, as well as past International Officers and other interested alumnae. It was standing room only for the ceremony, which was beautifully preformed by the Beta women at the Beta Chapter house. Twenty-two new members were initiated—this included three Alumnae Initiates. How wonderful to have a chapter over 100 years old, install the very newest chapter. All in all it was extremely impressive. The Installation Banquet was the same evening with seventy-five people in attendance including the new initiates, parents, local alumnae, Beta chapter officers, UDM fraternity leaders and International Officers.

The Zeta Nu chapter received some very useful installation gifts. Patty Kragh, PAD IV handled and presented the province gift of a large Gamma Phi Beta banner with the crest. Beta chapter President, Ann Bell presented the chapter with a silver scrapbook to record their weekend and the Detroit Alumnae donated large plastic containers to help them organize their new ritual equipment.

We wish the Zeta Nu chapter all the best in their pursuit to grow in the bonds of Gamma Phi Beta. It is a continual growth process and will enhance their lives forever.



Time well spent

It's no secret that any volunteer role takes one of our most valuable assets—time. Advising is no different but the hours spent working with young women in the Sorority are guaranteed to be satisfying. Alumnae often see their own personal and professional leadership skills growing as they volunteer as chapter advisors. Being available and accessible for consultation is key to building a strong relationship with the collegiate chapter. How much time

does it take? Today's women are Internet savvy and many advisors have found e-mail to be a time-effective means of communicating with the chapter on administrative issues and problem solving. However, nothing beats quality "one-on-one" time and the chapter members also enjoy and benefit from an advisor's presence at Sorority chapter meetings and major events. Time commitments for various advising positions vary and there is a position available to meet your schedule as a valuable volunteer. For a few hours a week—you can make a difference that lasts a lifetime. Just ask one of our collegiate members from Zeta Gamma Chapter "Our chapter advisor became a personal friend, one, who in my personal life and in working with the chapter, provided constant support, encouraged us and was someone we could rely on." Ellie Osborne, Zeta Gamma member.

How do I become involved?

To share your time and talents as a volunteer collegiate chapter advisor, check out the How Do I? area of the Gamma Phi Beta website at www.gammaphibeta.org where you can review current volunteer opportunities and send e-mail to volunteer@gammaphibeta.org or you can call International Headquarters at 303-799-1874. ●

Inspiring Excellence

By: Nancy Ann Thompson, Advisor Training & Development Coordinator

One of the most rewarding experiences you'll ever have! Ask anyone who has ever served as a volunteer advisor to a collegiate chapter and this is their instant, enthusiastic response. Advising a collegiate chapter of Gamma Phi Beta is not only inspiring and motivating, but also challenging and meaningful. What could be more satisfying and important than helping young women develop their skills and strengths and shaping the future of the sorority at the same time?

"As I travel across North America visiting collegiate chapters, I find that strong chapters have strong advisors. With an increasing number of fractured families, higher academic expectations and the need to encourage young women to take leadership roles, now more than ever, our women need positive role models to be successful in their life choices. Knowledgeable advisors provide these needed role models," said L'Cena Brunskill Rice, International President.

What is an advisor?

Advisors motivate collegiate chapters to achieve excellence. Their role is to guide not decide, to share not to supervise, to understand and uphold all sorority policies and principles, and to serve as posi-

tive role models. Advisors are often the primary connection collegiate members make with the principle of lifetime commitment. "I have helped the chapter tackle challenges one by one to make things better in the long run. I've helped them to realize their own potential and to not be afraid to strive to be better. I am a resource and a sounding board. I hope that I have been an inspiration to others to stay involved as alumnae by volunteering their time," said Beth Fisher, University of Georgia Chapter Advisor.

Are you qualified? Yes!

Advisors come from all walks and stages of life. The primary requisite for the job of advising is dedication. Experience in the working world, age, education, geography, and volunteer experience vary greatly among the advisors assisting collegiate chapters across the U.S. and Canada. Advisors are trained and supported by international and province officers through workshops, conventions and personal contact. Ideally, chapters have teams of advisors working in several areas including chapter development, finance, recruitment, new member education, standards and public relations. This means the need for Gamma Phi Beta advisors is great and positions are available everywhere.

Member News

(continued from page 9)

ALUMNAE

(continued)

different cultures and cuisines. The group had a very successful fundraiser in March that raised over \$700.

Hawaii

The **Hawaii alumnae** are proud to announce the appointment of fellow member Dr. Claire Lock Asam as the new Executive Director of Queen Lili'uokalani Children's Centers. These six centers work with orphaned and destitute children mainly of Hawaiian ancestry. Tutoring, leadership training and cultural classes are the main areas of assistance of these centers.

Idaho

The **Pocatello alumnae** held their 50th Anniversary Celebration and were pleased to have four of the original charter members in attendance. This event coincided with Idaho State's Homecoming celebration and the alumnae welcomed the opportunity to take part in the Homecoming parade. Other activities included a football game, reunion dinner and brunch.

Illinois

Congratulations to Missy Wagner, Ways and Means Chairperson of the **Northwest Suburban Panhellenic Alumnae** organization for the 1999-2000 year. Due to her leadership the alumnae raised nearly \$4000 to support scholarships for high school seniors planning to enroll in colleges where sororities are present.

Indiana

Founders Day for the **Evansville alumnae** and the sisters at the University of Southern Indiana was especially monumental this past year. Michelle Hickey, president of the Zeta Kappa chapter was awarded with a Coat-of-Arms necklace from Sarah Lou Morse, the first president of the Evansville alumnae. The necklace had been first given to Sarah by her pledge mother at the University of Illinois in 1941.



Missy Wagner (right), the Ways and Means Chairperson of the Northwest Suburban Panhellenic Alumnae organization poses with Sue Viece.



Pocatello alumnae celebrate 50 years at Idaho State University.



University of Oregon classes from 1958-1959 pose onboard a cruise ship for a recent reunion.

Kansas

Several **alumnae from Kansas State University** gathered to celebrate the arrival of a future Gamma Phi! This baby shower was attended by sisters graduating in the late '70s to early '80s and was a great chance for the group to reconnect.

Missouri

Fifteen **St. Louis alumnae** enjoyed sightseeing and shopping on the Riverwalk in San Antonio during the annual Travelin' Sisters excursion in April. The spring luncheon meetings included a presentation about a polar bear safari and another about the Butterfly House in St. Louis. The annual officer installation meeting in May will coincide with a potluck dinner so the alumnae will definitely mix business and pleasure.

Nebraska

Past International Council Alumnae Vice President, Sharon Witt Dunham, was selected as the Omaha Panhellenic Association Woman of the Year for 2000.

Member News



ABOVE: Alumnae from Hawaii celebrate Founders Day.

New Mexico

The **Albuquerque alumnae** enjoyed a December get-together to include spouses. This was a wonderful opportunity for many members who can't attend daytime meetings to join in the festivities. In January the chapter put on a skit called "Little Girls with The Grandma Faces." This skit was an overwhelming success.

New York

New York City alumnae gathered in early December for an ornament exchange party. Members brought and traded Christmas ornaments, shared dinner and rounded up more than 100 toiletry items for a women's shelter. In January the group celebrated with the Zeta Mu chapter at St. John's University as they received their charter.

Ohio

Dayton alumnae enjoyed an evening of crafts with their children at a local pottery cafe. Other events included a speaker discussing organ donations, a line-dancing workshop and a dinner out making this a very busy year for the alumnae so far!

Columbus alumnae kicked off the New Year by helping others as well as themselves. The group discussed how to develop a career network and how to use professional contacts most effectively. Alumnae donated business suits and work to Dress for Success, an organization that prepare and dress women for job interviews. Their efforts were greatly appreciated and will surely help some less-privileged women in Central Ohio enter the work force with more confidence.



Virginia Rutledge Stark, University of Texas, 1925, joins Meghan Chance, Rutgers 1997, at the recent San Antonio Founders Day celebrations.

International President, L'Cena Rice visited the Epsilon Mu Chapter for their officer transitions. Pictured L to R: Kathy Novak, former Advisor, L'Cena, Pat Crowley, PCD, and Angelle Hoffman, Advisor.



RIGHT: Honored by her Denver sisters with the Service Award, Marjory Mills Shupert, retired Executive Director, celebrated Founders Day with the Fort Collins alumnae chapter.

Oregon

Sisters graduating in 1958 and 1959 from the **University of Oregon** reunited on the high seas after many years! This four-day cruise was filled with lots of excitement and reconnecting.

Texas

The **Dallas alumnae** celebrated the start of summer with their annual high tea and officer installation at a local restaurant. This past spring the alumnae were active in supporting the Southern Methodist University sisters during recruitment. A wine tasting party, senior celebration and other special events kept this chapter active this spring.

San Antonio alumnae celebrated 125 years of sisterhood in style. This Founders Day celebration included 40 pink balloon, streamers and a reading from each sister that highlighted our Sorority's history.

Washington

Congratulations to Geri Lucks, Peggy Bal, Lois Combs, Helen Best, Missy Malm, Patty Burris, Janice Hartley, Dee Knight and Gerry Myers who were each presented their 50-year pins at Founders Day celebrations at the University of Washington.

PROVINCE LISTING

The following is the 2000 Province Listing. You may pull out this section of the magazine to keep.

Province I

Ia

Delta, Boston University
Epsilon Eta, Bridgewater State College
Epsilon Phi, Bentley College
Western Connecticut Alumnae chapter

Ib

Alpha, Syracuse University
Delta Tau, Colgate University
Epsilon Epsilon, Union College
Epsilon Tau, University of Rochester
Zeta Mu, St. John's University
New York City Alumnae chapter
Rochester Alumnae chapter
Syracuse Alumnae chapter
Buffalo Crescent Circle

Ic

Alpha Alpha, University of Toronto
Alpha Tau, McGill University
Alpha Omega, University of Western Ontario
London Alumnae chapter
Ottawa Area Crescent Circle

Province II

Ila

Delta Kappa, Lehigh University
Delta Mu, Rutgers State University
Epsilon Alpha, La Salle University
Bergen County Alumnae chapter
New Brunswick Alumnae chapter
Harrisburg Alumnae chapter
New Jersey Alumnae chapter
Philadelphia North Alumnae chapter
Philadelphia West Alumnae chapter
South Jersey Alumnae chapter

Ilb

Alpha Upsilon, Pennsylvania State University
Gamma Beta, Gettysburg College
Zeta Epsilon, Duquesne University
Pittsburgh Alumnae chapter
State College Alumnae chapter
Mid-Maryland Crescent Circle

Province III

Alpha Nu, Wittenberg University
Beta Gamma, Bowling Green State University
Beta Epsilon, Miami University
Cincinnati Alumnae chapter
Cleveland Alumnae chapter
Cleveland East Alumnae chapter
Cleveland West Alumnae chapter
Columbus Alumnae chapter
Dayton Alumnae chapter
Kent Alumnae chapter
Springfield Alumnae chapter
Toledo Alumnae chapter
Canton-Massillon Crescent Circle
Greater Akron Crescent Circle
Lima Crescent Circle

Province IV

Iva

Beta, University of Michigan
Beta Delta, Michigan State University
Delta Omega, Oakland University
Epsilon Beta, Alma College
Zeta Nu, University of Detroit-Mercy
Ann Arbor Alumnae chapter

Detroit Metro Alumnae chapter
Greater Lansing Area Alumnae chapter
Jackson Alumnae chapter

Ivb

Beta Pi, Indiana State University
Beta Phi, Indiana University
Delta Iota, Purdue University
Zeta Kappa, University of Southern Indiana
Zeta Iota, Valparaiso University
Bloomington Alumnae chapter
Evansville Alumnae chapter
Indianapolis Alumnae chapter
Lafayette Alumnae chapter
Northwest Indiana Alumnae chapter
Muncie Area Crescent Circle
Terre Haute Crescent Circle

Province V

Ia

Gamma, University of Wisconsin-Madison
Gamma Gamma, University of Wisconsin-Milwaukee
Gamma Rho, University of Wisconsin-Oshkosh
Gamma Omega, University of Wisconsin-Platteville
Madison Alumnae chapter
Milwaukee Alumnae chapter
Platteville Alumnae chapter

Ib

Epsilon, Northwestern University
Omicron, University of Illinois
Beta Eta, Bradley University
Delta Pi, Illinois State University
Champaign-Urbana Alumnae chapter
Chicago Alumnae chapter
Chicago Far West Suburban Alumnae chapter
Chicago Northwest Suburban Alumnae chapter
Evanston North Shore Alumnae chapter
Lake County Alumnae chapter
Peoria Alumnae chapter
Aurora Crescent Circle
Deerbrook Crescent Circle

Province VI

Kappa, University of Minnesota-Minneapolis
Alpha Beta, University of North Dakota
Gamma Mu, Moorhead State University
Gamma Pi, Mankato State University
Duluth Alumnae chapter
 Fargo-Moorhead Alumnae chapter
Grand Forks Alumnae chapter
Minneapolis-St. Paul Alumnae chapter

Province VII

Alpha Xi, Southern Methodist University
Beta Tau, Texas Tech University
Gamma Zeta, Texas A&M-Commerce
Gamma Iota, Midwestern State University
Delta Epsilon, Texas Wesleyan University
Zeta Lambda, Texas A&M-Corpus Christi
Arlington Alumnae chapter
Austin Alumnae chapter
Corpus Christi Alumnae chapter
Dallas Alumnae chapter
Greater Fort Worth Alumnae chapter
Houston Alumnae chapter
Lubbock Alumnae chapter
Northeast Texas Alumnae chapter
North Houston Alumnae chapter
San Antonio Alumnae chapter
Denton Crescent Circle
Nacogdoches Crescent Circle

Province VIII

Vlla

Epsilon Theta, Clemson University
Zeta Zeta, Coastal Carolina University
Zeta Eta, Lander University

Vllb

Gamma Phi, Auburn University
Delta Omicron, Southern Polytechnic State University
Delta Upsilon, University of Georgia
Epsilon Lambda, University of Alabama
Birmingham Alumnae chapter
Tuscaloosa Alumnae chapter
Montgomery Alumnae chapter
Atlanta Alumnae chapter
Atlanta Southern Crescent Alumnae chapter
Savannah Area Alumnae chapter

Vllc

Beta Mu, Florida State University
Delta Sigma, Florida Institute of Technology
Epsilon Zeta, Jacksonville University
Epsilon Mu, Loyola University
Broward County Alumnae chapter
Greater Fort Myers Alumnae chapter
Greater Pensacola Alumnae chapter
Jacksonville Alumnae chapter
Miami Alumnae chapter
Orlando-Winter Park Alumnae chapter
Sarasota-Manatee Alumnae chapter
Tallahassee Alumnae chapter
Tampa Bay Alumnae chapter
Space Coast Alumnae chapter
Brevard County Crescent Circle
Daytona Beach Area Crescent Circle
Gainesville Crescent Circle
Naples Crescent Circle
Pinellas County Crescent Circle
Treasure Coast Crescent Circle

Province IX

Psi, University of Oklahoma
Beta Omicron, Oklahoma City University
Beta Psi, Oklahoma State University
Muskogee Alumnae chapter
Norman Alumnae chapter
Oklahoma City Alumnae chapter
Stillwater Alumnae chapter
Tulsa Alumnae chapter
Bartlesville Crescent Circle
Oklahoma City Metro Crescent Circle

Province X

Xa

Alpha Delta, University of Missouri-Columbia
Gamma Tau, St. Louis University
Zeta Delta, Southeast Missouri State University
Columbia Alumnae chapter
Greater Kansas City Alumnae chapter
St. Louis Alumnae chapter
Southeast Missouri Crescent Circle

Xb

Sigma, University of Kansas
Beta Upsilon, Kansas State University
Beta Chi, Wichita State University
Lawrence Alumnae chapter
Manhattan Alumnae chapter
Topeka Alumnae chapter
Wichita Alumnae chapter
Hutchinson Crescent Circle
Kansas City, Kansas Crescent Circle

PROVINCE LISTING (continued)

Province XI

XIa

Theta, University of Denver
Tau, Colorado State University
Beta Rho, University of Colorado-Boulder
Boulder Alumnae chapter
Denver Alumnae chapter
Fort Collins Alumnae chapter

XIb

Alpha Epsilon, University of Arizona
Beta Kappa, Arizona State University
Beta Omega, Northern Arizona University
Albuquerque Alumnae chapter
Phoenix Alumnae chapter
Tucson Alumnae chapter
Flagstaff Crescent Circle
Salt Lake City Crescent Circle

Province XII

XIIa

Xi, University of Idaho
Beta Sigma, Washington State University
Zeta Alpha, Eastern Washington University
Zeta Xi, Albertson College of Idaho
Boise Alumnae chapter
Moscow Alumnae chapter
Pocatello Alumnae chapter
Pullman Washington Alumnae chapter
Spokane Alumnae chapter

XIIb

Lambda, University of Washington
Nu, University of Oregon
Chi, Oregon State University
Alpha Lambda, University of British Columbia
Gamma Epsilon, University of Puget Sound
Corvallis Alumnae chapter
Eugene Alumnae chapter
Portland Alumnae chapter
Puget Sound Alumnae chapter
Salem Alumnae chapter
Seattle Alumnae chapter
Vancouver Alumnae chapter

Province XIII

XIIIa

Alpha Gamma, University of Nevada-Reno
Delta Chi, California State University-Sacramento
Epsilon Kappa, California State University-Chico
Zeta Gamma, Sonoma State University
Reno Alumnae chapter
Sacramento's Capital City Crescent Circle

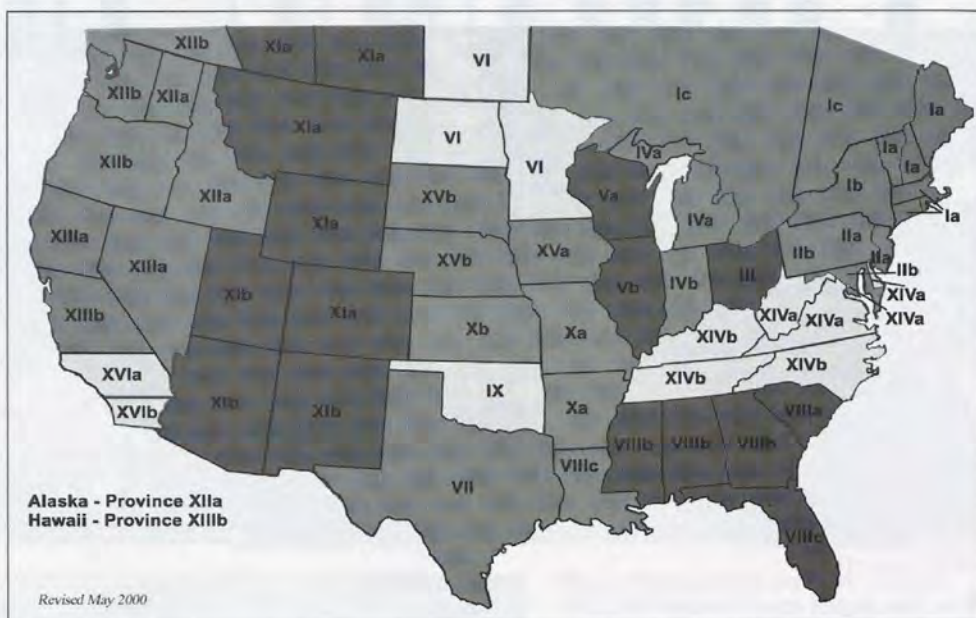
XIIIb

Eta, University of California-Berkeley
Delta Theta, California Polytechnic State University
Delta Phi, California State University-Bakersfield
Epsilon Omicron, University of California-Santa Cruz
Bakersfield Alumnae chapter
Diablo Valley Alumnae chapter
Hawaii Alumnae chapter
Marin County Alumnae chapter
Peninsula Alumnae chapter
San Francisco Alumnae chapter
South Peninsula Alumnae chapter
Fresno Crescent Circle
San Luis Obispo Crescent Circle

Province XIV

XIVa

Alpha Chi, College of William & Mary
Epsilon Iota, Christopher Newport University
Epsilon Pi, George Mason University
Zeta Beta, University of Virginia
Charlottesville Alumnae chapter
Eastern Virginia Alumnae chapter
Northern Virginia Alumnae chapter
Richmond Alumnae chapter
Washington, D.C. Alumnae chapter



XIVb

Epsilon Sigma, Morehead State University
Epsilon Psi, University of North Carolina-Asheville
Charlotte Alumnae chapter
Louisville Alumnae chapter
Nashville Alumnae chapter
Piedmont-Triad Alumnae chapter
Raleigh Alumnae chapter

Province XV

XVa

Rho, University of Iowa
Omega, Iowa State University
Gamma Psi, University of Northern Iowa
Ames Alumnae chapter
Cedar Rapids Alumnae chapter
Des Moines Alumnae chapter
Quad Cities Alumnae chapter
Iowa City Crescent Circle

XVb

Pi, University of Nebraska-Lincoln
Gamma Kappa, University of Nebraska-Kearney
Epsilon Delta, Creighton University
Kearney Alumnae chapter
Lincoln Alumnae chapter
Omaha Alumnae chapter

Province XVI

XVIa

Alpha Iota, University of California-Los Angeles
Beta Alpha, University of Southern California
Gamma Eta, California State University-Long Beach
Delta Lambda, University of California-Riverside
Delta Psi, University of California-Santa Barbara
Zeta Theta, Pepperdine University
Beverly-Westwood Alumnae chapter
Glendale Alumnae chapter
Long Beach Alumnae chapter
Pasadena Alumnae chapter
San Fernando Valley Alumnae chapter
Santa Barbara Alumnae chapter
South Bay Alumnae chapter
Whittier Crescent Circle

XVIb

Beta Lambda, San Diego State University
Delta Delta, California State University-Fullerton
Delta Eta, University of California-Irvine
Epsilon Gamma, University of San Diego
Epsilon Nu, Chapman University

Balboa Harbor Alumnae chapter
Greater Orange County Alumnae chapter
Inland Empire Alumnae chapter
La Jolla Alumnae chapter
San Diego Alumnae chapter
South Orange County Crescent Circle

Closed Chapters

Zeta, Goucher College
Iota, Barnard College
Mu, Stanford University
Upsilon, Hollins College
Phi, Washington University
Alpha Zeta, University of Texas
Alpha Eta, Ohio Wesleyan University
Alpha Theta, Vanderbilt University
Alpha Kappa, University of Manitoba
Alpha Mu, Rollins College
Alpha Omicron, North Dakota State University
Alpha Pi, West Virginia University
Alpha Rho, Birmingham Southern College
Alpha Sigma, Randolph Macon Woman's College
Alpha Phi, Colorado College
Alpha Psi, Lake Forest College
Beta Beta, University of Maryland
Beta Zeta, Kent State University
Beta Theta, San Jose State University
Beta Iota, Idaho State University
Beta Nu, University of Vermont
Beta Xi, Ohio State University
Gamma Alpha, Memphis State University
Gamma Delta, University of Wyoming
Gamma Theta, University of the Pacific
Gamma Lambda, Louisiana State University
Gamma Nu, Lamar University
Gamma Xi, University of Tennessee
Gamma Omicron, University of Kentucky
Gamma Sigma, Western Michigan University
Gamma Upsilon, Drake University
Gamma Chi, Southwest Texas State University
Delta Alpha, University of Wisconsin-River Falls
Delta Beta, Boise State University
Delta Gamma, University of Nebraska-Omaha
Delta Zeta, Southwest Oklahoma State University
Delta Nu, Southwest Missouri State University
Delta Xi, Bucknell University
Delta Rho, Dickinson College
Epsilon Xi, Rhodes College
Epsilon Rho, Stephen F. Austin University
Epsilon Upsilon, University of South Dakota
Epsilon Chi, Marquette University
Epsilon Omega, University of Miami (Florida)

SURPRISES, SISTERHOOD, SHARING & CARING

When visiting her son in Pennsylvania, Peggy Larson Hirschberg, Pi (Nebraska) thought it would be nice to get acquainted with some Gamma Phi's living there. Upon arriving in State College, Peggy referred to the list provided by International Headquarters of sisters who graduated about the same time as she had and made a call to Beverly Hickey.

Beverly's husband William answered the phone. Peggy introduced herself and told him her wishes for getting to know Pennsylvania sisters. He was very accommodating and said he'd have Bev call when she got home from doing some community volunteer service. Two days later five wonderful sisters showed up to meet a sister (stranger) from Wisconsin.

"We weren't strangers very long," writes Peggy. I was overwhelmed with the voluntary turnout and graciousness. All made me feel very welcome."

"Thanks to Bev for doing all of the calling and thanks to those sisters who took the time to share. Now when I visit my son and his family in Pennsylvania, I will know I have Gamma Phi's to again have lunch with and who knows what else?"

Reflections on our Elected Leadership Process

"We cannot hope to influence any situation without respect for the complex network of people who contribute to our organizations." Margaret J. Wheatley

Convention 2000 has come and gone. The dust has settled and the newly elected International Council is beginning the challenging and important work of leading us forward. No matter who has been ultimately elected to take on the leadership of our sisterhood, each of us must be willing to step up and serve those



Beverly Corman Hickey (Alpha Upsilon), Peggy Larsen Hirschberg (Pi), Mary Duncan Hawthorne (Alpha Upsilon), Elizabeth "Kiki" Sloan Phillips (Phi), Eleanor Jays Lindstrom (Gamma) and Lurene Jochem Frantz (Alpha Upsilon).

who give so much of their time, talents and treasure to benefit our Sorority.

We each have an opportunity and a responsibility to support those who have been elected. We each must remind ourselves of our commitment to the sisterhood as first undertaken during our collegiate years. Then as now, it is incumbent on us to remember that we have taken an oath to a bond of sisterhood that is to transcend our differences and build upon our common commitment to love, labor, learning and loyalty.

Consider what action you are personally willing to take in the 2000-2002 biennium to tangibly show your commitment to the life long precepts of Gamma Phi Beta. Determine how you will let our elected leadership know that you care, that you are counting on them to lead from a place of integrity and deep respect and that you are a committed sister. Step forward and honor those who serve, both those elected and those appointed, step forward to honor yourself and your commitment to your sisters.

Jennie K. Curtis
Outgoing International Nominating Committee Chair

Welcome Puget Sound Alumnae Chapter

The Puget Sound Alumnae chapter was formed November 6, 1999. Welcome to all of the members of this new Alumnae chapter. We look forward to reading more about this group in the Member News section in future issues of *The Crescent*.





Robin Leahy

"Phonics for Squirrels" wins a Clio

At only 24 years of age, Robin Leahy, Pi (Nebraska) was awarded a Clio—the Oscars of advertising. As head writer on the Bozell Worldwide team, Robin wrote a commercial for MidAmerican Energy. Her "Phonics for Squirrels" spot was one of only sixteen ads recognized during the Clio Awards in New York City; nearly 950 radio ads were entered.

Robin is behind many of Omaha's most striking billboards including First National Bank's 'Ever-Changing, Never-Changing' Campaign. A 1997 graduate of the University of Nebraska-Lincoln, she has always enjoyed writing, although nothing along the advertising line until college. When she applied for her internship at Bozell, Robin believes that the potential she showed, her willingness to work hard, and her 'passion' got her hired.

Women of Consequence

The book, *Women of Consequence: The Colorado Women's Hall of Fame*, tells the stories of fifty-nine women from Colorado's past and present. Written by Jeanne Mills Varnell, Theta (Denver), it evolved when Jeanne began putting together a biography of her late mother, a renowned forensic pathologist, who was inducted into the Hall in 1996. A veteran writer and reporter, Jeanne was encouraged to profile each member of the Hall of Fame, ultimately interviewing 22 of the 24 living hall members.



Jennifer Stark Fry, with supporters Annie Chao, her student, and Charles Fry, her husband.

Presented in chronological order, the first woman of consequence is "Aunt" Clara Brown, a former slave who joined the 1859 rush to the Rockies. Margaret "Molly" Tobin Brown and Mamie Doud Eisenhower, who considered Denver her home, are profiled; some of the more recent inductees include Marilyn Van Derbur, Pat Schroeder, and fellow Theta, Jean Jolliffe Yancey, a Denver entrepreneur who was named National Business Woman of the Year.

Jeanne's mother, Dr. Frances McConnell-Mills, was Denver's first taxologist, practicing medicine in Colorado for fifty years. She gave testimony in scores of trials, many of which were high-profile murder cases. Quoting her in a recent newspaper interview as saying, 'It's a crime to waste a beautiful education,' Jeanne has created the perfect tribute to her mother in this book of remarkable women.

Teacher Wins Special Recognition

When Annie Chao was chosen to receive the Presidential Scholars Award, she in turn selected Jennifer Stark Fry, Beta Psi (Oklahoma State) as the teacher most influential to her. An International Baccalaureate English teacher in Wichita, Jennifer was recognized during the United States Presidential Scholars Teacher Recognition Week in Washington D.C.

"Working with such remarkable students is incredibly rewarding," Jennifer shared. "I can't even dream of doing anything else in life!" She also won the Presidential Scholars Distinguished Teacher Award when teaching in Phoenix in 1996. Jennifer strongly urges energetic young women who are committed to making a difference in the world to embrace the field of education!

Adult Volunteer of the Year

The American Red Cross awarded Betty Roessler Griffin, Pi (Nebraska) as the Adult Volunteer of the Year. For the past twenty years, Betty has provided health and safety training to the community in her career as a lifeguard, swimming and water safety instructor. She is in charge of aquatics instruction at the Tuckahoe Swim Club in Fairfax County, Virginia and in one year alone, has taught over 200 young people how to swim and become lifeguards.



Betty Roessler Griffin

Pacesetters

For the past three years she has facilitated the implementation of new water safety programs and recently accepted an assignment as a member of the Training Cadre to train others in the positions of Professional Rescuer, First Aid, CPR and Instructor Trainer. Betty helped develop the marketing approach for the Sport Safety Training program, for which she is a strong advocate in the community recreation departments. She also participates in the HIV/AIDS Instructor program.

Crescent Moon Sighting

This cow jumping over the crescent moon caught the eye of Jeannine Sheldon Kallal, Beta Epsilon (Miami/Ohio) during an outdoor art exhibit. It seemed to say, "Chicago is a Gamma Phi kind of town," said Jeannine, who reports that the exhibit was comprised of over 300 decorated fiberglass cows scattered all over the city. This cow, and crescent moon, were in front of the Wrigley Building on Chicago's beautiful Magnificent Mile, north Michigan Avenue, and were later auctioned off to support various charitable organizations.

Honored by peers

The Nebraska State Home Builders Association honored Connie Hays Strohmeyer, Pi (Nebraska) for her outstanding leadership and service in the home building industry. Owner of her own business, CS Kitchen and Bath Studio, Connie has spearheaded education in and about the building industry, coordinating the annual Student Model Homes and Interior Design contest. She presents educational seminars and is involved in the Building/Remodeling 101 for Women program, an educational course for nontraditional workers who want to get into the home-building industry.

Serving on the Home Builders Association Board of Directors, Connie has been active with the association for nearly ten years. She is a Home and Garden Show exhibitor and participates in the annual Tours of Remodeled Homes.



The crescent is seen in Chicago!



This year Gamma Phi Beta will spend more than \$4,000 to receive address corrections from the US Postal Service

Help us save money by notifying International Headquarters (IH) of name or address changes. You may call, write or E-mail Gamma Phi Beta International Headquarters, 12737 E. Euclid Drive, Englewood, CO 80111. Phone: (303)799-1874, Fax: (303)799-1876, E-mail: address@gammaphibeta.org

Please include the following information

Initiated Name: First: _____ Middle: _____ Last: _____

Current Name: First: _____ Maiden: _____ Last: _____

New Address: Street: _____

City: _____ State: _____ Zip: _____

Phone Number: _____ E-mail Address: _____

Chapter and Year of Initiation: _____

In Celebration

CONGRATS

To Alison Maguire, "congratulations on your engagement" from L'Cena Rice, Linda Pelegrino, Terri Briggs, Joanne Roman, Lisa Hiles, Vicki Read and Betty Quick.

To Kristin Burrows, "thanks and congratulations on your new adventure" from L'Cena Rice, Linda Pelegrino, Terri Briggs, Joanne Roman, Lisa Hiles, Vicki Read, Betty Quick and Alison Maguire.

To Linda Ryan, "thanks for all you have done for Gamma Phi Beta" from L'Cena Rice, Linda Pelegrino, Terri Briggs, Joanne Roman, Lisa Hiles, Vicki Read, Betty Quick and Alison Maguire.

BIRTH AND BIRTHDAYS

The birth of Ashley Taylor Nauman to David and Louise from Grandmother Sandra Rettke Nauman.

The birth of Connor James to Gina Bleile Hartigan from Fran Mayfield Lapham.

The birth of legacy Kelsey Rose Sullivan to Steve and Carleen Rose Sullivan from Shellie King Hodges, Darci Rose Hinthorn and Joanne Roman.

The birth of legacy Hope Margaret to Meg (Tau) and Brian Dawson on January 18, 2000 from Daytona Beach Area Crescent Circle.

The birth of Anna Carolyn Suppes on January 21, 2000 to Jill and David Suppes from Kimberly Koeplin.

The birth of Molly Louis Montgomery (12-20-99) to Bruce and Nancy Donovan Montgomery (Beta Gamma) from the Tampa Bay Alumnae Chapter.

The birth of Gregory Matthew Hample II (2-16-00) to Greg and Lori Donnell Hample (Delta Sigma) from the Tampa Bay Alumnae Chapter.

SISTERHOOD

In honor of Carol van Empel's birthday from her daughter Cyndi.

In honor of Honora Wimer's 90th birthday from the Atlanta Alumnae Chapter.

"To the Alumnae Department, a big thank you for all you have contributed and accomplished and for your support. Special thanks to Sandy, Barbara and Susan! A great team. I have loved working with all of you" from Linda Pelegrino.

"In honor of Beverly Gosnell, Beta Lambda '50, Past President of Beverly-Westwood Alumnae, Past Province Director, recipient of the Merit Award and Los Angeles Panhellenic's Woman of the Year award, for representing Gamma Phi Beta so ably as 1999-2000 President of Los Angeles Panhellenic, from Jo Jane Marshall, Psi '50, Beverly-Westwood Alumnae Chapter."



In honor of the following gifts, the Gamma Phi Beta Foundation will inscribe a brick in the Sisterhood Plaza.

Unrestricted gifts of \$125 and greater have been given in honor of the following:

Lucille Morgan Terry's birthday from her daughter Julia Templeton.

The parents of the following members have given gifts of \$125 and greater in celebration of their daughters:

Ashley Day (San Diego)
Monica Freriks (Indiana)
Melissa Merkel (Clemson)
Kristie Esterly (Wittenberg)
Rachel Gentry (Auburn)
Jaylee Levine (Iowa)
Amanda Lilly (Wittenberg)
Helen Mathews (Kansas)
Sarah Salomon (Northwestern)
Paige Schaffter (Virginia)
Amy Schwartzbauer (Denver)
Jenny Sepate (Bowling Green)
Carolyn Smith (St. Louis)
Mikaela Smith (St. Louis)
Amanda Vickers (Southern California)
Jennifer Wirrick (Southern California)
Jamie Wensel (Indiana)

In Celebration gifts received by the following dates will be included in the corresponding issues of *The Crescent*: January 1, Spring issue; April 1, Summer issue; July 1, Fall issue; October 1, Winter issue.

Celebrate your sisters by sending a tax-deductible donation to the Gamma Phi Beta Foundation at 12737 E. Euclid Drive, Englewood, CO 80111-6445. Include a description of what you are celebrating and who you are celebrating with your name, address and phone number. Your announcement will appear in a future issue.

Strengthening the Support of Alcohol-Free



Why is Gamma Phi Beta International supporting the concept of co-sponsoring only alcohol-free events in men's fraternity facilities?

The leadership of Gamma Phi Beta, its International Council and Officers have consistently shown their concern for the health and safety of our members. Gamma Phi Beta has adopted policies and position statements on a number of issues that affect women's health, including having alcohol-free philanthropic events. Gamma Phi Beta has encouraged participation in various women's health initiatives through PACE and NPC sponsored programs, such as the Eating Disorder Screening Program. Research done by Henry Wechsler and others has shown that alcohol use and abuse during the college years can have a significant impact on the students. When women were sexually harassed, assaulted or hazed it seemed the use of alcohol was often involved.

The other 25 sororities that are members of the National Panhellenic Conference are showing equal concern for their members. All have a resolution or letter that addresses their stance regarding alcohol-free social events in men's fraternity facilities.

It is important that sororities and fraternities contribute to the educational mission of the college or universities where there are collegiate chapters. Research done in 1999 by the Center for Advanced Social Research at the University of Missouri shows that alcohol-free housing and education for undergraduate members is helping reduce the amount and frequency of alcohol use.

Continued . . .



What is Gamma Phi Beta doing to support the concept of co-sponsoring only alcohol-free events in men's fraternity facilities?

The following information was sent earlier this year as a letter to all alumnae and collegiate chapter presidents, Panhellenic delegates and chapter advisors, Greek advisors, Deans of Students and Vice Presidents of Student Affairs at colleges and universities where there are Gamma Phi Beta chapters.

Gamma Phi Beta's International Council adopted the attached resolution in March 1999. It is one of our policies. The intent is that Gamma Phi Beta chapters will co-sponsor only alcohol-free events in fraternity facilities. The elected officers and staff of Gamma Phi Beta Sorority are concerned about the health and safety of our members. This resolution is one way that Gamma Phi Beta's International Council is addressing these concerns.

What is Gamma Phi Beta's definition of co-sponsored events?

If the event has joint planning, funding, registration, liability, supervision, advertising, etc. then it is considered co-sponsored. If any of these components is absent, the event is still considered co-sponsored.

1. At our 1996 Convention, a workshop was presented that gave collegians the opportunity to discuss alcohol-free events and provided suggestions for ways to plan those events.



2. In 1998 several actions were taken to further the idea of alcohol-free social events. At our International Convention which is attended by at least one delegate from each collegiate chapter:

- L'Cena Rice, International President, used her address to the Convention attendees to stress the concerns about underage drinking and alcohol abuse. The video "Get Real" which focuses on alcohol abuse was introduced.
- Terri Briggs, Collegiate Vice President, facilitated a round table discussion about the Alcohol-Free movement and co-sponsoring only alcohol-free events in fraternity facilities.
- Elizabeth Quick and other members of the NPC Delegation facilitated a similar discussion during another workshop.
- A Risk Management workshop attended by all chapter presidents also addressed this issue.
- Information about the Alcohol-Free movement and suggestions for alcohol-free social events were sent to each chapter's Panhellenic Delegate in the 1998 Fall Officers Packet.

about the Alcohol-free movement has been conveyed to our chapters in several ways:

3. In 1999, the information distribution included:

- The Alcohol-Free movement was discussed at seven Regional Leadership Conferences held in February.
- The resolution was adopted and a letter with a copy of the resolution was sent to each collegiate and alumnae chapter as well as each Greek advisor on campuses where Gamma Phi Beta has a chapter.
- At the Leadership Development Institute held for volunteers and staff, Robert Deloian, past National President of Phi Delta Theta spoke. His remarks and those of L'Cena Rice, International President, were sent to each collegiate and alumnae chapter president. The letter also had ideas for implementing the resolution by working through the College Panhellenic.
- Information about the Alcohol-Free movement was sent in the Fall 1999 Officers Packet.
- The Collegiate Leadership Consultants and International Officers working with the chapters were educated about the issue.
- Terri Briggs, Collegiate Vice President wrote an article about the Alcohol-Free movement and our resolution for Gamma Phi Beta's magazine, *The Crescent*.
- Information was in the November issue of the Communiqué, an internal publication sent to each collegiate and alumnae chapter.

4. As August 2000 nears, the information flow continues.

- The January and March issues of the Communiqué has information about Alcohol-Free social events in fraternity facilities and encouraged collegiate chapter members to work with others on their campus to make the necessary change.
- Information was included in the Winter Issue and Spring Issue of *The Crescent*.
- By April 15, all collegiate chapter presidents will be contacted directly by their Province Collegiate Director to answer questions and provide additional clarification on the issue.
- Each chapter president is receiving additional information about our resolution, a copy of this letter and a copy of the NPC booklet, *The Alcohol-Free Facility Resolution*.
- Gamma Phi Beta International Officers are continuing to work with International Officers of other NPC member groups to generate positive support for the implementation of the policy on various college campuses.
- A workshop will be held at the June 2000 Convention to continue the implementation ideas. The workshop discussions will focus on the questions and information gathered by the Province Officers through personal contacts with chapter presidents.
- The NPC booklet, *The Alcohol-Free Facility Initiative*, will be given to each delegate at Convention and will be sent to each alumnae chapter.
- The 2000–2001 Collegiate Leadership Consultants will be ready to answer questions, facilitate chapter discussions and help the chapter find ways to promote change on the campus.

We are working with each chapter regarding the implementation of this policy. Gamma Phi Beta is committed to having our chapters co-sponsor only alcohol-free events in fraternity facilities.

If you need clarification regarding our policy please contact Gamma Phi Beta's National Panhellenic Conference Delegate, Elizabeth Quick at 256-882-6646 or EAQ007@aol.com.





NPC/NIC Research Initiative

University of Missouri Center Conducted National Research

The findings reported here result from more than a year of research by the Center for Advanced Social Research at the University of Missouri-Columbia with nearly 2,000 undergraduates at public universities and private colleges nationally. This ran in *The Crescent* (Winter 2000) on page 19, but is so significant to International Council's decision on supporting Alcohol-Free housing, that we feel it bears repeating.

RESEARCH FINDING 1

Alcohol-free Housing, Education Reduce Alcohol Use

Alcohol-free housing and education for undergraduate members of men's and women's fraternities on the risks of alcohol use, according to a new study by the Center for Advanced Social Research at the University of Missouri-Columbia.

RESEARCH FINDING 2

Responsible Attitudes Go Hand in Hand with Fewer Alcohol Problems

In men's and women's fraternities that actively encourage responsible approaches to alcohol, members report fewer alcohol-related problems.

RESEARCH FINDING 3

Alcohol-Educated Fraternity Leaders Use Less Alcohol, Less Often

Research showed elected leaders of alcohol-sensitive chapters drink less and less often than other fraternity members. Among all fraternity members, officers of alcohol-sensitive women's fraternities reported the lowest use of alcohol in the past year.

RESEARCH FINDING 4

28% of Male Greeks, 60% of Females in Alcohol-free Housing

Twenty-eight percent of male fraternity members said their residences were alcohol-free versus 31% of the independent men. A larger proportion of female fraternity members (60%) than of independents (42%) had alcohol-free residences. National Panhellenic Conference (NPC) groups, with their longstanding policy of alcohol-free residences, provide housing for many fraternity women.

RESEARCH FINDING 5

'Alcohol-Sensitivity,' Academic Satisfaction Go Hand in Hand

Members of "alcohol-sensitive" chapters are more satisfied with their academic experiences, and more positive about the role their chapters play in encouraging studying, than are members of chapters that do not provide alcohol education or an alcohol-free environment.

RESEARCH FINDING 6

Independents Report Less Alcohol Use Than Do Males & Female Greeks

Even in alcohol-sensitive chapters, the research found, drinking is heavier and more common than among independent students. Alcohol education is making a difference, but it has not yet reduced drinking and drinking-related problems to levels experienced by those who are not members of a men's or women's fraternity.

Gamma Phi Beta Panhellenic Award Winners

The Gamma Phi Beta Panhellenic Award is designed to recognize a Panhellenic that develops and implements a program that enhances the image of the Greek community on campus and in the local community. The program can be implemented by Panhellenic or a Panhellenic can collaborate with other groups. A plaque and a monetary award of \$250.00 is presented to a Panhellenic at the four regional Panhellenic/Greek conferences. The winners for 2000 are:



North East Panhellenic Conference (NEPC)

Bucknell University Panhellenic Association, Lewisburg, Pennsylvania for the "One Million Penny Project."

Mid American Greek Council Association (MGCA)

St. Mary's University Panhellenic Association, San Antonio, Texas, for their "Women in the Workplace" Seminar.

South East Panhellenic Conference (SEPC)

Birmingham-Southern College Panhellenic Association, Birmingham, Alabama, for "Halloween on the Hill".

Western Regional Greek Conference (WRGC)

New Mexico State University Panhellenic Association for a number of programs including "ANGLE" Greek Ambassador program, "Ask Pete" web page and a Self Defense Workshop.

NPEC Award Winners

Each October at the National Panhellenic Editor's Conference (NPEC) held in conjunction with NPC, several editors volunteer to be judges, as well as presenters for the NPEC Awards. This award is given to the winning college or university Panhellenic at their respective conference, based on Recruitment booklets and newspaper/newsletters they submitted for judging. This year's winners were:

MGCA

Recruitment Booklet - Ohio University

Newspaper/Newsletter - Indiana University

Judged by Katie Jolley, Mariellen Saseen, Debbie Shotwell

Presented by Katie Jolley

NEPC

Recruitment booklet - University of Maryland

Judged by Kimberly Benner, Deborah Borak, Mariellen Saseen

Presented by Patti Simmons

SEPC

Recruitment Booklet - University of Alabama

Newspaper/Newsletter - University of Tennessee

Judged by Deborah Borak, Libby Cannon and Ann Schrauth

Presented by Jean Sutton (NPC liaison)

WRGC

Recruitment Booklet - University of California at Irvine

Newspaper/Newsletter - New Mexico State University

Judged by Christine Barnicki, Liz Rinck and Debbie Shotwell

Presented by Christine Barnicki



Gamma Phis at the MGCA Conference in Chicago this February.

IN MEMORIAM

Alpha, Syracuse University

Grace Eddy Graff
Dorothy Davis
Janet Wibur Stasch
Jane Andrews
Jane Maxon Bromsted

Eleanor Barlow Evans
Nancy Bruce Leader

Beta, University of Michigan

Virginia Glaize Nash

Gamma, University of Wisconsin-Madison

Clara Ruester Johnston
Judith Baechle Kuehlmann
Margaret O'Neill Romagnoli
Mary Tuteur Sherman
Lucille Campbell Hoff

Delta, Boston University

Mary Trout
Gertrude Ells Gaudet
Pauline Sawyer Umland

Epsilon, Northwestern University

Janet Widau Harris
Joanne Pedder Bell
Alice McCune Ogden
Virginia Dawson
Mennet Mott Jacob

Zeta, Goucher College

Mary Woolverton Kirbysmith
Elizabeth Fehl Ely
Corrie Hill Tankersley

Eta, University of California-Berkeley

Margaret Homer Coultas

Theta, University of Denver

Jean Ponsonby Wilson
Dorothy Dawson MacIntosh
Margaret Oesterle Alison
Margaret Briggs Stifel
Helen Dollaghan Vogel

Kappa, University of Minnesota-Minneapolis

Virginia Miller Tenge
Marion McVoy Thompson
Nancy Nelson Coppock

Lambda, University of Washington

Jean Wilkinson Reynolds
Dorothy Dehn Lantz
Dorothy Shaw Toland

Mu, Stanford University

Babette Bailey Doyle
Mildred West Walker
Dorris Martin Hammond

Nu, University of Oregon

Marjorie Halderman
Susan Olinger Bye

Xi, University of Idaho

Ethel Chrisman Jacomini
Betty Mazna Cullen
Hazel Dean Spencer

Omicron, University of Illinois

Florence Roy White
Betty Hoelscher Christianson
Phyllis Conley Woodhouse

Pi, University of Nebraska-Lincoln

Marie Walker Leonard
Mary Babst

Rho, University of Iowa

Genevieve Smith Hoge
Mildred Thatcher Hetzel
Helen Bein Van Houten

Sigma, University of Kansas

Eugena Donahue Russell
Jane Henry Michener
Arlette Ward Orear
Helen Opie Conner

Tau, Colorado State University

Jessie Reece Bohne
Frances Lacey Jenkins

Phi, Washington University

Dorothy Moore Reed
Rosemary Ramsey Powell
Marilyn Breidecker Dye
Helen Cross Richardson
Genevieve Davis Younker
Jeanne Henske Wilkins
Roselle Mishow Rokaw
Marilyn Swain Paige

Chi, Oregon State University

Jean Taber Coleman
Kathryn Stoddard Hunt
Janet Ormandy Marshall

Psi, University of Oklahoma

Rhetta Patton Culver
Dorothy Henry Phillips
Harrell Miles Littlejohn

Omega, Iowa State University

Helen Schultz Fisher
Adele Hammond
Janice Wiegman Stelzer
Virginia Brayer Howell
Barbara Apple Keffer
Beverly Beaty Johnson
Norma Bauer Carney

Alpha Beta, University of North Dakota

Lillian Lundquist Harris
C. LeNore Ulvedal Caldis
Maxine Fridley Hair

Alpha Gamma, University of Nevada-Reno

Lucie King Humphrey
Barbara Horton Mighels
Margaret Walker Reynolds

Alpha Delta, University of Missouri-Columbia

Adeline McBurney Lodge
Loreen Mohler Dorsey
Margaret Comstock Corbyn
Sheila Singleton Stimson
Bonnie Hedley Rhein
Jennifer Freemann

Alpha Epsilon, University of Arizona

Agnes Carpenter Maule
Katherine Huffman Woods
Mary Huntington Bethancourt

Alpha Zeta, University of Texas

Elizabeth Henderson Putman
Elsa Erler Groeneveld
Naomi Slimp Ellisor
Diane Wolslegel Strother
Nettie Turner Griffin

Alpha Eta, Ohio Wesleyan University

Jean Galloway Sawyer
Harriet McCandless
Martha Borden Campbell
Phyllis Webber McWilliams
Adelaide Davis
Wilma Freudemann Miller

Alpha Theta, Vanderbilt University

Pollyanna Calhoun Roddy
Mary Sharp Riley
Caroline Benz Neal

Donations in memory of friends, sisters and loved ones may be sent to the Gamma Phi Beta Foundation at International Headquarters. If you would like a card sent to a family member or friend, please include that address.

In Memory

IN MEMORIAM

(continued)

Alpha Iota, University of California-Los Angeles
Linnea Nelson Alexander

Alpha Lambda, University of British Columbia
Sandra Van Zonneveld Richmond

Alpha Mu, Rollins College
Frances Montgomery

Katherine Brothers Scales

Alpha Xi, Southern Methodist University
Helen Russell McFarlane
Dorothea Lent Pasqua
Lucille Jordan Turner
Inez Gibson DeWolfe

Alpha Omicron, North Dakota State University
Elizabeth McDonald Herold
Judith Selvig Hulbert
Sharon Cooke Haggart

Alpha Pi, West Virginia University
Helen Pyles

Alpha Rho, Birmingham Southern College
Lynelle Armstrong Whan
Helen Ward Barnes
Ellyn Etchinson Deyampert

Alpha Tau, McGill University
Grace Dougherty Bartram-Daggitt
Ann Griffith Nixon

Alpha Upsilon, Pennsylvania State University
Martha Barr Case

Alpha Phi, Colorado College
Mary Johnson Pahls

Alpha Chi, College of William and Mary
Elizabeth Burger Jackson

Alpha Psi, Lake Forest College
Barbara Feldt Myers
Dorothy Westbay Bradley

Beta Alpha, University of Southern California
Hester Chalmers Van Dissen
Margaret Gillilan Suiter

Beta Delta, Michigan State University
Susan Hartwick Bailey

Beta Epsilon, Miami University (Ohio)
Barbara Hoffarth Dittmer
Mary Noland

Beta Zeta, Kent State University
Karen Ritchie Sauer

Beta Eta, Bradley University
Lois Gibson Evans

Beta Theta, San Jose State University
Gwendolyn Donaldson Carothers
Bettejoan Scott Jensen

Beta Lambda, San Diego State University
Lulu Taylor Lizon
Love Stickney Warren
June Riechers Skalecky
Jane Crowningshield Whilldin
Gladys Hitt Kent

Beta Nu, University of Vermont
Sarah Carter Willey

Beta Omicron, Oklahoma City University
L. Martha Parks Woltz
Thelma Saxon Baker

Beta Phi, Indiana University
Gretchen Wagner Winston

Beta Psi, Oklahoma State University
Frances Council Fristoe
Gladys Hughes Heath

Beta Omega, University of Wisconsin-Platteville
Elsie Austin Jakle

Gamma Beta, Gettysburg College
Lori Moll

Gamma Lambda, Louisiana State University
Pamela Samaha

Gamma Xi, University of Tennessee
Emmaretta Early Hough

Gamma Psi, University of Northern Iowa
Jacquelyn Staebell Stendel

Delta Upsilon, University of Georgia
Adele Howe

Epsilon Delta, Creighton University
Michele Sundell

MEMORIAL GIFTS

Memorial Gifts are listed alphabetically
with the person being honored in boldface type.
The person making the honor gift appears in
italics underneath.

Marsha Perkins Austin - Epsilon '61
Elizabeth "Betsy" Morr Conrad
Diane Beauge Glynn
Barbara Meadows
Carol Carbone Terry

Mary Louise Babst - Pi '41
Margaret Dietz

Susan Hartwick Bailey - Beta Delta '52
Dianne Howerton

Brigitte Uhlig Beard - Alpha Upsilon '44
Marian Ponder

Dorothy Limber Bittle - Alpha Upsilon '45
Wyllian King Yockey

Ruth Thomas Blackwood - Alpha Upsilon '41
Ione Romeika

Doris Padrick Blunt - Mu '50
Mary Reed

Anne Frederiksen Bradfield - Nu '37
Charles Akre

Susan Olinger Bye - Nu '59
Salem, Oregon Alumnae Chapter

Janet Hale Callander - Alpha Zeta '34
Cecelia Bouma
Marion Hastings
Edith Ker
Louisa Riggs
Catherine Sweeney
Ralphine Staring
Helen Holbrook Tunstall

Patricia DeWalt Cardinali - Alpha Gamma '49
Robyn Forsyth Steele
Norma Bauer Carney - Omega '42
Virginia Carter Moll

Rhetta Patton Short Culver - Psi '35
Jane Swift Fair

Margaret "Peg" Homer Coultas - Eta '34
Frances Moss Hendricks

Josephine L. Demarke (Mother-in-law of Betty Bussey Demarke - Beta Lambda '58)
Hawaii Alumnae Chapter

In Memory

MEMORIAL GIFTS

(continued)

Loreen Mohler Dorsey - Alpha Delta '28

*Beverly Sue Wright Brownlee
Tucky Hobbs
Emily Witham*

Babette Bailey Doyle - Mu '25

Helen Bullard Chappell

Margre Henningson Durham - Omega '39

*Elizabeth Wilcox Bowker
Omaha Alumnae Group*

Mr. M. W. "Bud" Eddleman (Husband of Thalia Welborn Eddleman - Psi '51 and Father of Laura Anne Eddleman - Psi '93)

Psi Chapter House Corporation Board

Katherine Lathrop Ehrlich - Beta '41

Phoebe Power Wyland

Thomas Evett (Father of Katherine Evett - Alpha Delta '95)

Dana Early

Michael Thomas Farley (Son of Nancy Abbott Farley - Gamma Iota '77 and grandson of JoAnne Anderson Abbot - Alpha Omicron '55)

Albuquerque Alumnae Chapter

Tacy Campbell Fisher - Sigma '34

*Susan Schlessman Duncan
Catherine G. Lindauer
Calvina Morse Vaupel*

Georgia Flynn Fletcher - Phi '32

Peggy Clark

Frank Foulk (Father of Susan Foulk Reeves - Alpha Zeta '76)

Houston Alumnae Chapter

Dr. Lillian Davis French - Gamma Kappa '32

Patricia Perrin Mangis

Frances Council Fristoe - Beta Psi '59

Phyllis Krieger

Shirley Hansen Hagstrum - Chi '42

Lorelei Moersch

Samuel W. Glynn (Husband of Dorothy Tripp Glynn - Chi '35)

Hawaii Alumnae Chapter

Helen Marlow Grable (Mother of Ann Grable Wilson - Psi '62)

Ann Ross

Nancy Vincent Haight - Alpha '55

*Judy Ann Kaspar
Jeanne Cramer O'Brien
Syracuse Alumnae*

Janet Widau Harris - Epsilon '51

Sun Cities Alumnae Chapter

Mary Jean Lauvetz Hart - Pi '40

Edward Hart

Ruth Eisenhart Heid - Delta Iota '75

*Frances McLallen Meeks
Lafayette Area Alumnae Chapter*

Jean Hansen Hendrix - Alpha Epsilon '42

Thomas Hendrix

Ruth Gunvaldsen Herderich - Alpha Omicron '39

Jocelyn Burdick

Virginia Brayer Howell - Omega '31

Virginia Schutter Voss

Carl Hustad (Husband of Virginia Geiger Hustad - Kappa '43)

Mary Nicely

Mennet Mott Jacob - Epsilon '38

Houston Alumnae Chapter

David Johnson (Husband of Edna Sue Herzog Johnson - Alpha Chi '50)

Gloria Nelson

Virginia Hansen Johnson (Mother of Carolyn Hansen Dorn - Gamma Delta '62)

Carolyn Hansen Dorn

Greta Astrom Koerber - Epsilon '29 (Mother of Cynthia Koerber Patterson - Epsilon '48)

Cynthia Patterson

Cynthia Shoptaw Leeper - Alpha Zeta '61

*Laura Monkhouse Lace
Carolyn Blumhof Lombard*

Barbara Barrot Lentz - Alpha Gamma '50

Robyn Forsyth Steele

Marie Walker Leonard - Pi '24

Doris Nelson

Mavoureen Alyce Reeds Martin (Mother of Gloria Martin Fuller - Psi '63)

Ann Ross

Louise Thompson Martineau - Gamma '25

Pete Martineau

Sara Jane "Sally" Earl McCune - Beta Psi '66

*Barbara Beeman
Carol Martin Burnett
Eowana Peters Jordan
Linda Hise Lane*

Thomas Bureau McDonald (Son of Eileen Bureau McDonald - Beta Theta '56)

Albuquerque Alumnae Chapter

Nellie Rushing Melton - Beta Omicron '51

*Paula Clover
Clarice Morrison
Oklahoma City Alumnae Chapter*

Alice Mills (Mother of Marjory Mills Shupert - Tau '54)

<i>"Love from IC"</i>	<i>Sandra Rettke Nauman</i>
<i>Terri Briggs</i>	<i>Linda Pelegrino</i>
<i>Kendra Bocher</i>	<i>Betty Quick</i>
<i>Frances Griffin</i>	<i>Vicki Read</i>
<i>Lisa Hiles</i>	<i>L'Cena Rice</i>
<i>Karen Kline</i>	<i>Joanne Roman</i>
<i>Sally Lewis</i>	<i>Barbara Wessel</i>
<i>Alison Maguire</i>	

Eugene Monning (Husband of Mary Jane Brown Monning - Phi '40)

Donna Davis Prior

Jeffrey R. Munroe (Husband of Tami Hanson Munroe - Gamma '85)

Jeannine Kallal

Grandpa Noedel

Patricia Henderson

Ervin J. Nutter (Father-in-law of Melinda Risse Nutter - Gamma Omicron '66)

Dayton Ohio Alumnae Chapter

Sandra Orrelana - Epsilon Mu '89

Houston Alumnae Chapter

Nadine Cullison Page - Rho '21

*Jo Page
Marcia Page Cooley*

Mary Jo Green Patrick - Tau '53

*Patricia O'Neill Colket
Nancy Davis
Sandra Robey*

Joan Jacobus Pellissier - Eta '48

Barbara Heyns May

Maria Williams Pistol - Tau '82

Caren Cundy Keller

Virginia (Dina) Buckingham Rice - Pi '44

*Margaret Dietz
Nancy Welton*

Dorothy Brown Roy - Alpha Delta '44

Naples Crescent Circle

Betty Kelly Ruud - Rho '38 (Mother of Maryann Ruud LeZotte - Rho '62)

*Maryann Ruud LeZotte
Quad City Alumnae Chapter*

(continued)

In Memory

Mavis Kirby Ruud - Alpha Omicron '50

Beverley Edwards

Leroy Sides (Husband of Carol Chapman Sides - Pi '41)

Sara Clayton

Michael Sides (Son of Carol Chapman Sides - Pi '41)

Sara Clayton

June Riechers Skalecky - Beta Lambda '49

San Diego Alumnae Chapter

Jean Summers Smith - Epsilon '29

Evanston North Shore Alumnae Chapter

Arthur R. Sullivan (Husband of Marilyn Cooke Sullivan - Psi '41)

Gloria Nelson

Mary Lundeen Thorngren - Rho '41

Quad City Alumnae Chapter

Ann Owen Tipps (Mother-in-law of Carolyn Brummitt Tipps - Beta Phi '60)

Dayton Ohio Alumnae Chapter

Dorothy Shaw Toland - Lambda '44

Anne Moldrem

Lucille Jordan Turner - Alpha Xi '91

*Sandra Cude
Judy Graham
Latane Graham
Gloria Nelson*

Frances Bailey Van de Venne - Rho '57

Houston Alumnae Chapter

Grace Hopkins Williams - Alpha Chi '38

Helen Holbrook Tunstall

Jeanne Henske St. Denis Wilkins - Phi '44

*Aline Carver
Gloria Krimmel
Beverly McLeod Vandervoot*

Elsie Frampton Wilson - Pi '28 (Mother of Judith Wilson Stallsmith - Psi '64)

Judith C. Stallsmith

Helen Rose Dodd Winter - Gamma '15

Martha Lee DeLanoy

Martha Parks Woltz - Beta Omicron '59

Helen Rossney

Phyllis Conley Woodhouse - Omicron '43

Karyl Fraley Dean

Katherine Huffman Woods - Alpha Epsilon '33

Pauline Bayless

Nedra Culler Yohe - Alpha Delta '25

Elise Pritchett Alexander

Genevieve Davis Younker - Phi '37

*Jane Conzelman
Ruth Forsman
Rosalind Fullgraf
Florence Keegan*

The Brother of Rebecca Stevenson-Shields - Delta Mu '87 and son of

Alice McSparron Stevenson - Epsilon Alpha '92

Philadelphia North Suburban Alumnae Chapter

Unrestricted gifts of \$125 and greater have been given in memory of the following. In honor of these gifts, the Gamma Phi Beta Foundation will inscribe a brick in the Sisterhood Plaza.

Elizabeth Fee Arnold - Tau '23

*Kathy Ervin
Carol Gassen
Susan Judkins*

Joanne Pedder Bell - Epsilon '54

Lois Kircher

Pamela Donnell Games - Delta Nu '77

*Diane Altwater
Connie Atkisson
Mary Shank Cain
Lisa Bergman Carder
Candy Sivils Dahmer
Joyce Burnside Danner
Denise Marts Eschenbrenner
Vicki Benitz Helling*

*Susan Hiland
Jean Hawkins Hilgedick
Darcy Yeager Humphreys
Chris Imhof Kitsch
Debbie Tines Krumme
Ann Meyer Ripp
Cassie Sivils Simpson
Susie Rupe Suyden*

Mary Jean Lauvetz Hart - Pi '40

Philadelphia North Suburban Alumnae Chapter

Eleanor Garm Hemminger - Epsilon '31

*Ann Mullen Bronsing
Margaret Godbold Briscoe
Christine Grossheider Carter
Marcia Lazarz Etzkorn
Karen Greening
Patsy McGahey Henderson
Gordon Herzog
Helen Griffiths Kaiser
Martha Scott Kenton
Sandra Peterson Kirkbride
Sally Lewis
Betty Ittel Marting*

*Mary Jane Brown Monning
Gladys Myles
Bruce Newman
Donna Davis Prior
Joanne Callis Roman
Kathryn Kraus Schwarting
Geraldine Epp Smith
Anita Waninger Steck
Carol Buchmueller Stelmach
Ann Harris Straw
Jeanne Koch Swallow
Nancy White Welton*

Wilma Grund Hoener - Alpha Delta '35

*Alan Hoener
Alpha Delta House Corporation
Mary Jane Brown Monning*

*Gladys Myles
Donna Davis Prior
Mollie Peebles Wyatt*

Betty C. Jacobs

*Gale Amond
Barrye Hatcher
Marilee Jacobs*

Minda McComb Laerdal - Alpha Delta '58

*Sharon Bower
Sue Durrett
Judith Engberg
Nancy Litzinger
Joyce Pharriss
Janet Schoedinger*

*Lana Slack
Sonia Smith
Carol Stelmach
Rose Stubbs
Kathleen Whitaker*

Lori Moll - Gamma Beta '94

Gamma Beta Chapter

Nadine C. Page - Rho '21 (Mother of Marcia Page Cooley - Alpha Chi '53)

*Marcia Page Cooley
David and Jo Page*

Cynthia Miller Simon - Delta Nu '80

*Diane Altwater
Connie Atkisson
Mary Shank Cain
Lisa Bergman Carder
Candy Sivils Dahmer
Joyce Burnside Danner
Denise Marts Eschenbrenner
Susan Hiland*

*Jean Hawkins Hilgedick
Vicki Benitz Helling
Darcy Yeager Humphreys
Chris Imhof Kitsch
Debbie Tines Krumme
Ann Meyer Ripp
Cassie Sivils Simpson
Susie Rupe Suyden*

Diana Lee Titlow Whisman - Alpha Gamma '68

Jacki Falkenroth

Julie Young - Xi '91

*Kimberly Albers
Cheri Bloom
Kati Haeder
Marilyn Pagano Harvey
Stacie Wilmoth Kvanvig*

*Kate Marrone-Thompson
Jennifer Osborn Moffit
Suann Praest
Angela Clark Schmitten
Heather Mitchell Smith*

Elizabeth Carter Zavalydriga - Alpha Delta '58

*Sharon Bower
Judith Engberg
Nancy Litzinger
Joyce Pharriss
Janet Schoedinger*

*Lana Slack
Sonia Smith
Carol Stelmach
Rose Stubbs
Kathleen Whitaker*

CRESCENT CLASSICS MERCHANDISE



TEES

100% Cotton T Shirts -
Available in M, L, XL

A. White T, Floral Panel
White T, Blue & Lt. Blue,
99CCTS8\$14.95

Not shown:

White T, Purple & Pink
.....99CCTS15

Creme T, Brown & Mode
.....99CCTS16

B. Navy T, Small Crescent,
99CCTS9\$14.95

C. White T, Large
Crescent, 99CCTS10
.....\$14.95

(Call for bulk pricing)

PIN JEWELRY BOXES

A. Bone China - Hand-painted
carnations, 99CC23 \$15.95

B. Round Silver Crest Box,
99CC24 \$18.95

C. Square Pewter Box,
99CC25 \$18.95

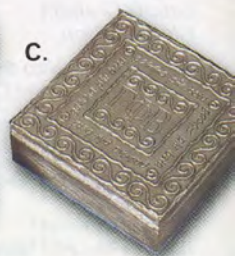
Silver Crescent Box (not shown) ..
99CC62 \$14.95



A.



B.



C.

CALL 1-800-453-5344 FOR A COMPLETE CATALOG!

CANDLES AND CRESENTS

- A. Crescent Votive (Candle not included), 99CC13.....\$9.95
- B. Pewter Crescent Candle Holder (one holder,
4 candles), 99CC14\$8.95
- C. Crescent Decorative Bottle (2 3/4" Ht), 99CC15\$12.50
- D. Beaded Candle Votive , 99CC16\$12.95

FRAMES

- A. Silver Crest Frame 3x5 , 99CC17 \$21.95
- B. Acrylic Frame 4x6 - Lil Girl, 99CC18 \$5.95
- C. Pewter Frame 4x6, 99CC19 \$14.95
- D. Acrylic Frame 4x6, 99CC20 \$5.95
- E. Frame 4x6 - a frame and a poem in one,
made of Recycled crinkle paper, 99CC21 \$14.95
- F. Pin - Friendship pin and poem card, 99CC22... \$5.95



B.

A.

C.

D.



A.

B.

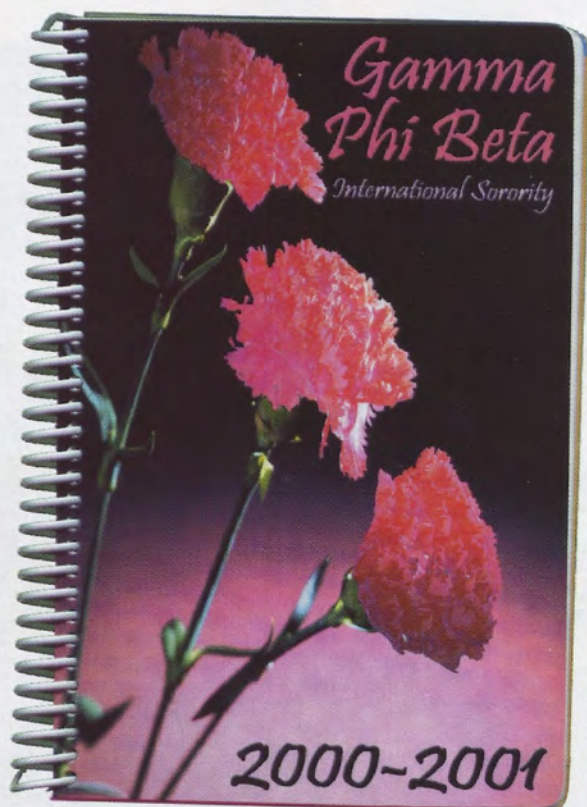
C.

D.

E.

F.

Gamma Phi Personal Planner



This 16-month planner is a must-have for any Gamma Phi Beta!

In addition to monthly, weekly and yearly
calendars, it features 24 pages of customized
Gamma Phi Beta information, including:

- ♦ Sorority history & highlights
- ♦ Due dates & reminders
- ♦ Contact names & numbers
- ♦ Province map
- ♦ Collegiate chapter listing
- ♦ An overview of Sorority policies & procedures
- ♦ Programs & services
- ... and more!

Order your Gamma Phi Personal Planner today!

GAMMA PHI PERSONAL PLANNER ORDER FORM - PLEASE PRINT

Name: _____

Street Address: _____

City: _____ State: _____ Zip: _____

Phone: (_____) _____ E-mail Address: _____

Number of Planners Requested: _____ x \$9.00 each U.S. funds = \$ _____ Total Due

Please enclose a check made payable to Gamma Phi Beta in U.S. funds for the total amount due

Send payment and order form to:

Gamma Phi Beta Sorority International Headquarters, 12737 East Euclid Drive, Englewood, CO 80111