

# THE CRESCENT

OF GAMMA PHI BETA

FALL 1999



125 YEARS OF GAMMA PHI BETA



Love, Labor, Learning, Loyalty

## EDITORS

**EDITOR** Deborah Hidde Borak  
12737 E. Euclid Drive  
Englewood, CO 80111-6445  
dborak@gammaphibeta.org

**ALUMNAE/  
COLLEGIATE  
NEWS EDITOR** Kristyn Wigin Golberg  
2314 Stone Creek Ln. West  
Chanhassen, MN 55317  
kgolberg@aol.com

**FEATURE  
EDITOR** Darla Click Dakin  
7148 South Andes Circle  
Aurora, CO 80016  
Darlad@ix.netcom.com

**GRAPHIC ARTIST** Jody Toth  
**BUSINESS  
MANAGER** Alison Webster Maguire  
International Headquarters

## FOUNDERS



Helen M. Dodge Ferguson  
Frances E. Haven Moss  
E. Adeline Curtis  
Mary A. Bingham  
Willoughby

## COUNCIL

**INTERNATIONAL  
PRESIDENT** L'Cena Brunskill Rice  
**NATIONAL  
PANHELLENIC  
CONFERENCE  
DELEGATE** Betty Ahlemeyer Quick  
**FINANCIAL  
VICE PRESIDENT** Joanne Callis Roman  
**COLLEGIATE  
VICE PRESIDENT** Terri Kennedy Briggs  
**ALUMNAE  
VICE PRESIDENT** Linda Hallenbeck Pelegirino  
**MEMBERSHIP  
VICE PRESIDENT** Vicki Carlson Read  
**EXECUTIVE  
DIRECTOR** Alison Webster Maguire  
**MEMBER-AT-LARGE** Lisa Lepley Hiles

Gamma Phi Beta (USPS 137-620). *The Crescent* is published quarterly in Fall, Winter, Spring and Summer by Gamma Phi Beta Sorority, Inc., 12737 E. Euclid Drive, Englewood, CO 80111-6445. Subscription price is \$6.00. Produced in the U.S.A. by Maury Boyd and Associates. Periodicals postage at Englewood, CO and additional mailing offices.

Copyright 1999, Gamma Phi Beta Sorority.

**Postmaster:** Send address changes to *The Crescent*, Gamma Phi Beta Sorority, 12737 E. Euclid Drive, Englewood, CO 80111-6445. Printed in the U.S.A.

**Subscribers:** Send changes of address, notices of marriages and deaths to Gamma Phi Beta Sorority, 12737 E. Euclid Drive, Englewood, CO 80111-6445. Phone: 303-799-1874. Fax: 303-799-1876.



Member of the College Fraternity Editors Association

## Letter to the Editor

Dear Sisters,

In my position as a rural County Commissioner, I have many occasions to search for grants. Because of this, I am taking a grant writing course. Today, we discussed Foundations. It reminded me of the wonderful gift our Foundation gave to Camp Leo, a local summer camp for children with Diabetes, supported by Lions International. I just want to thank the Foundation again for the gift, the information given to me and other sisters at the Kansas City Convention, and for the continued good work you do.

Recently, three Beta Sigma classes from Washington State University had a reunion to reminisce about our time at WSU during the 60's. When we went around the group and told about what we are doing now, many of them mentioned volunteer work. Later I told about my working with the Sorority for a time as a PFD for our Province. I also asked how many worked with girls who would be going to any kind of camp and told about my experience with the Foundation. Hopefully, you will be inundated with requests from this group. Somehow we need to keep getting the word out about the opportunities the Foundation offers. I'll keep doing all I can. I'm very proud to belong to Gamma Phi and have such wonderful sisters!

In IIKE

Mary Jo Cady

p.s. Reunions are terrific! Everyone should try it.

## Letter From the Editor

As we come to the close of celebrating Gamma Phi Beta International Sorority's Quasiquicentennial anniversary (125 years), we also end *The Crescent* magazine creed series with loyalty. During the past 125 years we have all been loyal in one way or another to keeping Gamma Phi Beta strong. We have given back to our Sorority through both chapter and International dues, by recommending women for membership, by volunteering, by providing professional experience. From four members in one chapter, we have grown to more than 120,000 members in over 250 collegiate and alumnae chapters worldwide. We all remain loyal to the ideals of Gamma Phi Beta Sorority, the level of interaction depends on the individual. Just remember you can become involved as much or as little as you want. Through love, dedicated labor, continuous learning and loyalty to the high ideals the founders envisioned, Gamma Phi Beta International Sorority has proven to the world that it is founded upon a rock and will continue to stay strong and grow over the next 125 years.

## On The Cover

- An older Frances E. Haven.
- Collegians socialize during the mid 1900s.
- Alpha Chapter house, circa 1959.
- A young Mary A. Bingham.
- Syracuse University faculty in 1875. L to R: Prof. C.W. Bennett, Frank Smalley, Prof. J.R. French, Chancellor E.O. Haven, Prof. George F. Comfort, Prof. J.H. Durston and Prof. J.J. Brown.
- The 36th Biennial Convention in Kansas City, Missouri, 1929.



# CONTENTS

Volume 99, No. 4

## 4 Ideas On Issues: 125 Years on Gamma Phi Beta

*By L'Cena Brunskill Rice, International President*

## 5 Crescent Classics Merchandise

Support Your Sorority!

## 6 Profile of a Volunteer

It's not what it used to be.

## 11 Member News

See what interesting things your chapter is doing.

## 15 Stop

Paying dues and giving to the Foundation just got easier.

## 22 Peanuts and Olives: A Gamma Phi Beta Feast

The final article in our history series.

## 30 Convention 2000

Join your sisters in Houston, Texas, June 28–July 2.

## WANTED!

*Women of extraordinary capacity*

*Women who have mastered the art of eco-centered leadership*

*Women specializing in servant leadership*

The time has come to begin shaping the leadership team for Gamma Phi Beta 2000. In March of 2000, the nominating committee will convene to develop the slate of nominees for International Council and the 2002 Nominating Committee.

Take a journey into the heart of your Gamma Phi Beta experience and listen deeply to discover if you are being called to step forward and join the team of extraordinary women who will lead us into the new millennium. As a Gamma Phi you have taken a vow to live your life in service to others. Serving as an international officer or as a member of the nominating committee calls on the very best within any one of us. Take the time today to discern if the time has come for you to step forward and offer your very best for your sisterhood.

Candidate nomination forms were sent in fall packets and are available through International Headquarters and by contacting Jennie Curtis, the Nominating Committee Chairwoman at 20 Lake Place, Walnut Creek, CA 94598-4820, (925)934-1374. All nominations are due by February 1, 2000.

## Bits & Pieces

### The Crescent Deadlines

Summer ..... April 1  
Fall ..... July 1  
Winter ..... October 1  
Spring ..... January 1

### Upcoming Issues of The Crescent

*The Crescent* is planning to feature Gamma Phi Beta's involved in: politics, music, and professional/recreational sports. If you are involved in any of these activities or know a sister who is, please submit information and articles to Darla Dakin, Feature Editor, or to Deborah Borak, Editor. Address and e-mail information can be found on page two.

### We Want to Hear from You!

*The Crescent* was established a century ago to improve communication between members and keep everyone informed on Gamma Phi Beta issues. With this in mind, we'd like you to send us information, articles and pictures for inclusion in the magazine.

Please send us news about current Gamma Phi Beta issues concerning members and alumnae as well as pan-hellenic information. Feel free send pictures to go along with the article or to use in upcoming issues. We are always looking for great photos of events and activities. *The Crescent* is your magazine, and as always we welcome ideas, comments and suggestions. Your input will help us serve you best and keep the magazine up to date.

Send information and pictures to International Headquarters, 12737 E. Euclid Drive, Englewood, CO, 80111-6445 or fax to: (303) 799-1876. If you'd like your photo returned, you must include a self-addressed stamped envelope.

### Gamma Phi Beta Web Site

Our current website is going through a redesign process behind the scenes. The new look will be unveiled within the next few weeks. New features are being added to assist members. Check out our website at [www.gammaphibeta.org](http://www.gammaphibeta.org)



L'Cena Brunskill Rice

## 125 Years of Gamma Phi Beta Loyalty

By L'Cena Brunskill Rice, International President

**Love, Labor, Learning and Loyalty—**Our Gamma Phi Beta Creed. Loyalty is the fourth and last element in our Creed series celebrating Gamma Phi Beta's first 125 years. What does Loyalty mean? Webster's Dictionary reads, "Loyalty is a quality, state, or instance of being loyal; faithfulness or faithful adherence to a person, government, cause, duty, etc." In our Creed Loyalty means, "Adherence to all true and noble things." In our Ritual we pledge our loyalty to the ideals and purposes of Gamma Phi Beta. We all signed a Loyalty Pledge when we became members. As we reflect on our history of loyalty, it would be helpful to review this pledge, at an Initiation ceremony or at an Alumnae chapter meeting.

Our Loyalty to Gamma Phi Beta does not end with our graduation. The bond of sisterhood remains forever, as alumnae stand with collegians ever ready to volunteer their time, talents and treasures throughout their lives. As members we know it is our obligation to recommend perspective women for membership, to meet the financial obligations of our Sorority and to remain actively involved.

As fall arrives, so does recruitment (formerly "rush"), and in spite of what you may have heard the number of women interested in joining sororities is increasing. Research tells us that these "likely joiners" are looking for friends, first and foremost; therefore, completing recommendation forms is beneficial to both the potential members and the chapters.

Meeting our financial obligations is easy to do and vital to the growth of our Sorority. Please demonstrate your loyalty to the future of Gamma Phi Beta Sorority and its Foundation. A dues/donation envelope can be found in every issue of *The Crescent*.

Staying active in Gamma Phi Beta changes depending on where we are in our life experiences. Any contributions you can make to your Alumnae, Collegiate or International groups builds upon the foundation that we are all privileged to experience. In 1994, Gamma Phi Beta's Future Visions Committee met to establish our mission, goals and objectives. Since then, each council has worked to respond to the issues identified.

The 1998 convention body passed Resolution #5, which mandated a Strategic Plan and the implementation of an Information Management Plan by December 31, 1998. We can all thank Lisa Hiles and her husband, Andy, for taking the time to draft the preliminary plan, which you received if you attended an RLC.

Council had our own ideas about what direction to go, but we wanted to find out what our members wanted first. Consequently, we hired the consulting firm of Loring, Sternberg and Associates in Indianapolis to question our members. They sent out surveys and held focus groups with randomly selected alumnae, collegians, parents and International Officers. The response was extraordinary. As a result, a Strategic Planning Committee has been formed to narrow our focus based on these survey results. The committee members are: Kris Baack, Vada Baird, Deborah Borak, Barbie Chadwick, Darla Dakin, Stephanie Hearn, Lisa Hintze, Verona Lynam, Alison Maguire,

Ann Mitchell, Linda Pelegrino, Betty Quick, Vicki Read, L'Cena Rice, Joanne Roman and Carleen Sullivan. The plan they develop will continue to evolve, moving the Sorority forward into the next millennium.

We found that Gamma Phi Beta's strength is in our heritage. The loyalty and dedication of our members is outstanding, the willingness and effectiveness of our International Officers is exemplary, and the commitment of our staff is extraordinary. We need to continue working together toward excellence in our Sorority.

Your involvement will help Gamma Phi Beta crystallize our strategic focus and move forward. What we need to accomplish is a tremendous challenge. We can only do this if we carefully identify our priorities and work together to improve the quality of life of each Gamma Phi.

Loyalty to our Gamma Phi Beta family is our most cherished possession—the research proved that to be true. Friends are absolutely central to our mission, programs and everything we do. We need more alumnae who are willing to go out and serve our chapters, universities and communities. Strong chapters have strong advisors, and Gamma Phi Beta needs more strong advisors. We all have strong emotional ties to Gamma Phi Beta. We need to use our energy, expertise and teamwork to set the priorities for the strategic plan to make sure that Gamma Phi Beta is the best that it can be.

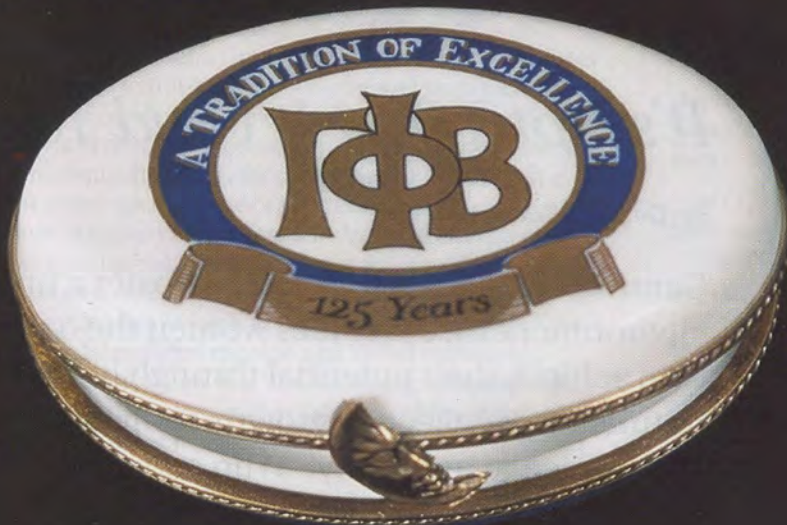
With our Strategic Plan as the guidepost for the future, our next 125 years will be as productive as those we have already enjoyed. Love, Labor, Learning and Loyalty—Gamma Phi Beta means so much to us! ●

Support your Sorority! A portion of the proceeds from you purchase is used to support Gamma Phi Beta programs. For the CRESCENT CLASSICS catalog call:

**1-800-453-5344**

**New Item**

Available limited time only



**125 YEAR LIMOGES**

Gamma Phi Beta and Crescent Classics commissioned this porcelain box to commemorate the 125th anniversary of our founding. Designed by a family of master craftsmen and artists in the town of Limoges in the South of France, these boxes are exquisite heirlooms. The oval shape measures 2-1/2 inches x 3/4 inch. The hinge is hand fitted with a crescent clasp. Inside is inscribed "1874-1999" in honor of our 125-year celebration. Order early, the Limoges will only be available for a limited time and are a special order item.

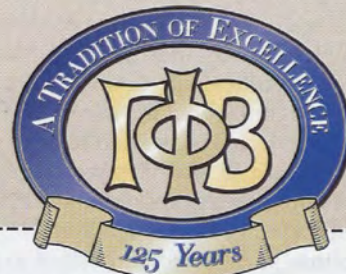
99CCLimoges..... \$135.00



**OFFICIAL  
125 YEAR T-SHIRT**

- A. Short sleeve  
99CCTS1 .....\$12.95
- B. Long sleeve  
99CCTS2 .....\$14.95

(T-shirts are 100% pre-shrunk cotton—available M, LG, XLG)



**CRESCENT CLASSICS ORDER FORM**

Item	Size	Quantity	Price	Total

**Method of payment:**

☐ Check (payable to Crescent Classics)

☐ Money Order    ☐ Visa    ☐ MasterCard

Card No \_\_\_\_\_ Exp. Date \_\_\_\_\_

Signature \_\_\_\_\_ Phone \_\_\_\_\_

**Ship to:**

Name \_\_\_\_\_

Address \_\_\_\_\_

**Send to:**

CRESCENT CLASSICS 1115 S. Placentia Ave.,  
Fullerton, CA 92831    **1-800-453-5344**

Fax: 714-441-1029    E-mail: rightcontn@aol.com

**For a complete catalog call 1-800-453-5344**

**Shipping and Handling**

0-\$5.00 .....	\$3.50
\$5.01-\$25.00.....	\$4.75
\$25.01-\$50.00.....	\$5.50
\$50.01-\$75.00.....	\$6.75
\$75.01-\$100.00.....	\$7.75
\$101.00-\$150.00.....	\$8.75
\$150.01-\$225.00.....	\$9.75

UPS next day and  
second day air available

Subtotal \_\_\_\_\_

Shipping and Handling \_\_\_\_\_

California residents  
add 7.75% sales tax \_\_\_\_\_

Canada orders add \$10 \_\_\_\_\_

Total \_\_\_\_\_



Barbara Hurt-Simmons, Director of Volunteer Recruitment

# Profile of a Volunteer

## *It's Not What It Used To Be*

By: Deborah Borak

Gamma Phi Beta's mission is to "foster a nurturing environment that provides women the opportunity to achieve their potential through lifelong commitment to intellectual growth, individual worth and service to humanity". Who carries out this mission? Our volunteers, of course!

**W**hat is your perception of a volunteer? Do you think a volunteer is a person that has no career or is retired? Think again. The profile of a volunteer has changed significantly through the years. Membership in organizations fosters the spirit of volunteerism among adults. The more linked a person is to an organization, the more likely that person is going to be a volunteer. By asking someone to volunteer, you are reaching out to them and involving them in the organization or community. People who are asked to volunteer do so at a much higher rate than if they were not asked.

Volunteering is very important to non-profit organizations. In 1994, volunteer time provided 36 percent of total employment to the independent sector but represented only 9 percent of total employment in government and a negligible percentage in business. On average, volunteers provide 56 percent in civic, social and fraternal organizations.

In 1994, 48 percent of American adults volunteered at an average rate of 4 hours per week. One very positive trend is the increased rates of volunteering among retirees. Giving and volunteering surveys have consistently shown that behavioral habits are very important predictors of not only present, but also future volunteering and contributing patterns. These behavioral characteristics include membership and regular attendance at religious institutions and membership in community, voluntary and professional associations. Participation also increases by level of education. Having been a member of a youth group and having had a volunteer experience when young have a major influence on the level of volunteering of an individual as an adult. However, one of the most important factors is that members of organization are more likely to be asked to give and volunteer than non-members, this increases their likelihood to contribute or volunteer.

Senior citizens make up an increasing proportion of the population of this country. Currently, seniors comprise approximately 21 percent of the residents of the United States. This number is only going to increase over the next twenty to thirty years as the almost 79 million members of the "Baby-Boomer" generation mature. With retirement coming earlier to many in this group, senior citizens today are active, involved, and interested in helping whether it be through charitable contributions or volunteer time. Seniors of every age, ethnic and racial group volunteer to some level. Over 46 percent of persons ages 55 to 74 reported performing some type of volunteer work in the past year.

### **Trends in Voluntary Service**

While volunteering among adults has declined since 1990, it is still higher than it was in 1980. Data from a series of polls and studies are showing that volunteering among young people has increased, and parental participation in schools is increasing. There has been little decline in church membership or other group membership organizations for over two decades and participation in social services activities is increasing. Three quarters of Americans still report annual household contributions. While the future presents challenges about government, continued services and maintaining the quality of life in this country, there are signs that the levels of participation and voluntary association and service will increase.

Percentage of population volunteering	48.8%
Total number of volunteers (millions)	93.0
Average weekly hours per volunteer	4.2

*Sources: Independent Sector report and Giving and Volunteering in the United States, 1996)*

## Encouraging Volunteerism In Gamma Phi Beta

While one member may enjoy serving on a committee, another may prefer to organize a one-time event, and another may wish to offer ongoing assistance to collegians. Some may enjoy an international project; others may prefer to stay involved locally or share their professional knowledge and expertise by using the Internet to mentor and advise collegiate members.

Volunteers are impacting the success of our Sorority with various levels of involvement. Gamma Phi volunteers range from stay-at-home moms to full-time career-oriented women with a family to take care of. More and more members are discovering the challenges and rewards of volunteerism. They've learned that it's not time that qualifies them for participation, but rather, a commitment to the values of the organization.

Involvement in Gamma Phi offers a wide spectrum of opportunities, involving unique skills and talents from our diverse membership. Although a non-profit, our Sorority utilizes strategic planning, budgeting, planning and human resources skills. Like for-profits, we've formulated mission and vision statements. Yet sharing a common vision in a "not for money" atmosphere makes participation less competitive than that of the corporate world. Volunteers truly enjoy opportunities to contribute and to learn from one another.

Just as working together in a collegiate chapter enhances our personal growth in college, volunteerism brings opportunities that challenge that growth and rewards us with the knowledge that we are making a difference. Far from participating alone, volunteerism connects us to others, allowing us to experience the best that Gamma Phi has to offer. From the smallest volunteer position to a board position, our volunteers share a vital role in keeping our organization on course, and in ensuring our success for future generations.

## Creating Links For Volunteer Opportunities Within Gamma Phi Beta

Increasing outreach and matching members with volunteer opportunities that fit their capabilities is extremely important. Matching volunteers to the exciting opportunities that exist in our organization is an important process. Just as businesses need expertise in a variety of areas, Gamma Phi Beta continually seeks talent among its members to fill a variety of needs. To facilitate this matching of members to opportunities, the Sorority utilizes an internal recruiting procedure called Volunteer Recruitment and maintains a database of interested members who have completed Form #47 (See page 9). As a position becomes available, we tap into our database of volunteers and begin matching the needs of the position to the interests and talents of our members. Please use the form to add yourself to the database or recruit other Gamma Phi Betas.

Now more than ever, our membership is asking for smaller and less time-consuming volunteer opportunities. Our leadership is constantly reviewing our position responsibilities and working on the necessary flexibility to meet our members needs. Members who want to "make a difference" and learn how to offer their volunteer services can now contact us at [volunteer@gammaphi-beta.org](mailto:volunteer@gammaphi-beta.org) or visit our web site at [www.gammaphibeta.org](http://www.gammaphibeta.org). Other volunteers are here to assist you in finding that opportunity so that your may give back to those that gave so much to you while helping to fulfill our Sorority's mission.

## Myths About Volunteering

**MYTH:** I can't work full-time and volunteer too.

**FACT:** Volunteers throughout the world have learned to manage a full-time job and contribute in volunteer activities. This can be accomplished by deciding how much time you want to contribute then finding a position that will meet your needs.

**MYTH:** I can't make a difference unless I spend at least 10 hours a week volunteering.

**FACT:** Volunteering can range from an hour a week, to several days a month. Within Gamma Phi Beta alone, there are several volunteer positions that average as little as two hours a week, and they make a big difference.

**MYTH:** I can't volunteer for Gamma Phi Beta because I have been away from the organization for years.

**FACT:** It is never too late to get involved. Gamma Phi Beta is the right organization to volunteer for several reasons. 1. As more professionals get involved in Gamma Phi Beta, the more professionally the organization is run. 2. We're not trying to offer hundreds of services, just those that our members need the most - and we meet those needs well. 3. We seek individuals with expertise and match positions we don't just fill the slot with a name. 4. We respect our volunteers' time and are creating more and more jobs that accommodate the working woman. 5. We offer volunteer positions that challenge, stimulate and reward the volunteer. 6. We realize your family and work commitments change every year. You are always welcome to volunteer, take some time off and come back anytime.

**MYTH:** I don't feel that volunteering provides any benefits.

**FACT:** By volunteering you can realize the following benefits:

1. Volunteering can bring to light new talents that can foster career growth
2. Networking opportunities become available and you can make friends or develop career contacts.
3. You can learn new skills.
4. You can expand your horizons. If you don't get the opportunity to travel, your volunteer position may allow you to visit other cities.

## Volunteer Resources

If you are interested in volunteering your time and talents, here are a few places to begin your search.

### Gamma Phi Beta Sorority

303-799-1874

[www.gammaphibeta.org](http://www.gammaphibeta.org)

### International Volunteer Day

[www.unv.org](http://www.unv.org)

### International Year of Volunteers in 2001

[www.iyv2001.org](http://www.iyv2001.org)

### Make A Difference Day

800-416-3824

[www.makeadifferenceday.com](http://www.makeadifferenceday.com)

### Martin Luther King Jr. Day of Service

202-606-5000

[www.nationalservice.org](http://www.nationalservice.org)

### National Philanthropy Day

Sponsored by-National Society for Fund Raising Executives  
800-666-3863

### National Volunteer Week

202-729-8000

[www.pointsoflight.org](http://www.pointsoflight.org)

### Random Acts of Kindness Week

510-845-2471

[www.actsofkindness.org](http://www.actsofkindness.org)

## Linda Johnson

**POSITION:** Convention 2000 Chairwoman

**TIME COMMITMENT:** Varies: Five hours per month to 20 hours per week

**WHY DO YOU VOLUNTEER FOR ΓΦΒ?** The experience that "hooked" me was my year as a CLC. I learned so much about ΓΦΒ and myself that I felt like I had both something to offer to the sorority in experience and much to repay. I feel my own experience parallels what we say in our mission statement—ΓΦΒ is very much a nurturing environment for me and always has been.

## Jessica Jecmen

**POSITION:** New Chapter Recruitment Consultant

**TIME COMMITMENT:** Varies from project to project

**WHY DO YOU VOLUNTEER FOR ΓΦΒ?** I love to spend time with other ΓΦΒs. I think I have a lot of knowledge to share and that each time I work with a chapter, I seem to learn more from them. I have met great women through volunteering and it gives me great satisfaction.

## Sandy Burba

**POSITION:** Director of Alumnae Operations

**TIME COMMITMENT:** Average 15 hours a week

**WHY DO YOU VOLUNTEER FOR ΓΦΒ?** I have been volunteering for Gamma Phi for over 18 years. The reasons for volunteering have changed during those years. At first, it was to do something for myself away from my young children. Now, I volunteer to help make a difference in the Greek community and to stay active in a fast paced business atmosphere.

## Diane Goff

**POSITION:** Director of Collegiate Recruitment

**TIME COMMITMENT:** Average 20 hours per week

**WHAT DO YOU LIKE BEST ABOUT VOLUNTEERING FOR ΓΦΒ?** Keeping in touch with all of the wonderful women who care about GPB's past, present, and future. I'm lucky because I get to work with IOs, collegians, and alumnae. It is fun to see that all GPBs still have that contagious enthusiasm to make us grow and be strong!



## Barbara Boenzli

**POSITION:** Director of Financial Operations.

**TIME COMMITMENT:** Average 25 hours per week.

**WHAT DO YOU LIKE BEST ABOUT VOLUNTEERING FOR ΓΦΒ?** The women I work with have been the best part! We all share a common background and common goals. As a volunteer, I have come to understand the sorority in a way I never did as a collegian. I hope that we can find a way to keep all sisters involved as volunteers, so they too can see the wonder of our organization!

## Suzanne Slinn-Higgins

**POSITION:** Province Financial Director

**TIME COMMITMENT:** Average three hours per week

**WHY DO YOU VOLUNTEER FOR ΓΦΒ?** I had a great experience as a collegian and want to give something back to

make the experiences for today's collegians even better. I also enjoy working to improve processes in each chapter and make it easier for every member to manage finances. Also, teamwork with other volunteers is great fun!

## Barbie Chadwick

**POSITION:** Director of Collegiate Chapter Development and Chapter Development Coordinator

**TIME COMMITMENT:** 20-30 hours per week

**WHAT DO YOU LIKE BEST ABOUT VOLUNTEERING FOR ΓΦΒ?** Working with the collegians to effect positive change and growth. I especially enjoy teaching them to develop goals and plans to meet their goals. When I visit a chapter that responds positively to the feedback that I give them, it is so rewarding. It's wonderful to see women become self-confident and positive.

## Jennie Curtis

**POSITION:** Int'l Nominating Committee Chairwoman

**TIME COMMITMENT:** Average one hour per week

**WHAT DO YOU LIKE BEST ABOUT VOLUNTEERING FOR ΓΦΒ?** The wonderful people I meet who are connected to the sisterhood and who often share many of the same values. Giving back is the rent we pay for the opportunity to be connected

## Lynn Etkins

**POSITION:** Province Alumnae Director

**TIME COMMITMENT:** Average 10 hours a week

**WHY DO YOU VOLUNTEER FOR ΓΦΒ?** I have a very strong commitment to Gamma Phi because of my college years and I want to give back.

## Lynn Jacobs

**POSITION:** New Chapter Dir. and Recruitment Advisor

**TIME COMMITMENT:** One to four hours per week

**WHY DO YOU VOLUNTEER FOR ΓΦΒ?** I enjoy working with young women, because they are eager to learn and improve themselves in preparation for a career. It's every woman's responsibility to mentor young women; working with collegians allows me to do this.



## Cheryl Speer

**POSITION:** Scholarship Program Coordinator

**TIME COMMITMENT:** One hour a week

**WHY DO YOU VOLUNTEER FOR ΓΦΒ?** I believe in what we stand for. Giving of my time and talents is extremely rewarding. There is nothing better than being able to make a difference

in someone's life, and striving to make ΓΦΒ the best it can be. I would not be who or where I am today if not for GPB. I wish all our sisters shared the love and dedication that all our volunteers do. If each alumna did nothing more than pay her dues, there would be no end to what we could accomplish. We've heard it all before, but it really is true - the more you put into it, the more you get out of it. I don't have many opportunities at work to manage people or be a true leader. ΓΦΒ offers me that, which I hope someday my employer will value.



# Gamma Phi Beta Sorority Volunteer Recruitment Form

(Please Print)

_____	D.B.
_____	P.C.
_____	I.O.

Date: \_\_\_\_\_

Name: \_\_\_\_\_  
(Last) (Maiden) (First) (M.I.) (Spouse's First Name)

Address: \_\_\_\_\_

City/State: \_\_\_\_\_ Zip Code: \_\_\_\_\_ e-mail: \_\_\_\_\_

Home Phone: (\_\_\_\_) \_\_\_\_\_ Work Phone: (\_\_\_\_) \_\_\_\_\_ Fax: (\_\_\_\_) \_\_\_\_\_

College/University Attended: \_\_\_\_\_ Initiation Year: \_\_\_\_\_

Major: \_\_\_\_\_ Degrees: \_\_\_\_\_ Area: \_\_\_\_\_

***I would be interested in the following Gamma Phi Beta volunteer opportunities:***

(Please check areas of interest where you could help)

**Working with and Assisting Collegiate Chapters:**

- |                                   |                                    |                                      |                                      |
|-----------------------------------|------------------------------------|--------------------------------------|--------------------------------------|
| <input type="checkbox"/> Advisor: | <input type="checkbox"/> Chapter   | <input type="checkbox"/> Standards   | <input type="checkbox"/> Recruitment |
|                                   | <input type="checkbox"/> Financial | <input type="checkbox"/> Scholarship | <input type="checkbox"/> New Member  |
|                                   | <input type="checkbox"/> Ritual    |                                      |                                      |

- |                                      |   |
|--------------------------------------|---|
| <input type="checkbox"/> Membership: | <input type="checkbox"/> Alumnae Reference Chairwoman |
|                                      | <input type="checkbox"/> Extension                    |

- |  |   |
|--|---|
| <input type="checkbox"/> House Corporation Board | <input type="checkbox"/> New Chapter Assistance |
|--|---|

**Working with and Assisting Alumnae:**

- |   |  |
|---|--|
| <input type="checkbox"/> Alumnae Panhellenic (represent $\Gamma\Phi\beta$ )               | <input type="checkbox"/> Philanthropy/fundraising      |
| <input type="checkbox"/> Serve as an Alumnae chapter officer                              | <input type="checkbox"/> PR/newsletters/graphic design |
| <input type="checkbox"/> Provide speaker, location and ideas for alumnae chapter meetings |  |

**Serving both Alumnae and Collegiate Members:**

- |                                      |                                      |  |
|--------------------------------------|--------------------------------------|--|
| <input type="checkbox"/> Foundation  | <input type="checkbox"/> Camping     | <input type="checkbox"/> Scholarship               |
| <input type="checkbox"/> Training    | <input type="checkbox"/> Technology  | <input type="checkbox"/> Leadership Development    |
| <input type="checkbox"/> Programming | <input type="checkbox"/> Fundraising | <input type="checkbox"/> SisterLink Career Network |

I am currently registered with the SisterLink Career Network: ☐ Yes ☐ No

I am interested in a short-term project: Area? \_\_\_\_\_

I am interested in an International or Province Officer position: \_\_\_\_\_

Please See Other Side

Collegiate Chapter Affiliation: \_\_\_\_\_

Alumnae Chapter Affiliation(s): \_\_\_\_\_

Offices Held at Collegiate Level: \_\_\_\_\_

Offices Held at Alumnae Level: \_\_\_\_\_

Chapter Advisory/House Corporation Board Position Held: \_\_\_\_\_

International Positions Held: \_\_\_\_\_

Other Volunteer/Community Involvement: \_\_\_\_\_

\_\_\_\_\_

\_\_\_\_\_

Professional Occupation: \_\_\_\_\_

Other Professional Experience and Skills: \_\_\_\_\_

\_\_\_\_\_

\_\_\_\_\_

Optional: List members of Gamma Phi Beta familiar with your activities (name and phone):

\_\_\_\_\_

\_\_\_\_\_

Optional: Please include special interests, why you're interested in leading  $\Gamma\Phi\text{B}$ , a resume, etc.:

\_\_\_\_\_

\_\_\_\_\_

\_\_\_\_\_

\_\_\_\_\_

We would like to send this form to other  $\Gamma\Phi\text{B}$ 's. Please share their name and address with us:

\_\_\_\_\_

**Return form to:**

Susanne Eckert Newbauer

Attn:  $\Gamma\Phi\text{B}$  Volunteers

4364 Revere Circle

Marietta, Georgia 30062

Fax: 770-998-9763

### COLLEGIATE

#### Epsilon chapter - Northwestern University

Community service continues at Northwestern as sisters helped repair houses through a local community service program and sponsored a booth at Special Olympics this spring. They also took part in the annual

Maysing skit show and played a variety of intramural sports.

The chapter is proud of the many awards that they received at the Greek Excellence program. The sisters received outstanding programming in the areas of scholarship, public relations, membership enrichment, and new member education. A 3.4 GPA puts this chapter at the #1 slot of all sororities on campus.

#### Theta chapter - University of Denver

These sisters went through a lot of "ups and downs" at their annual See-Saw-A-Thon in May. They donated the money they raised to a local YMCA children's camp. This chapter won numerous awards during Greek Week, including the highest average GPA of all the Greek houses on campus.

#### Xi chapter - University of Idaho

At the University of Idaho, Gamma Phi Beta's could be seen for miles and miles—literally. The chapter adopted a portion of the highway and is responsible for cleaning that stretch twice each year. The annual Mom's Weekend was a huge success and the semester came to a close with a spring dance.

#### Tau chapter - Colorado State University

The strength of their sisterhood pulled sisters from Colorado State University through a challenging semester. The spring Yard Sale philanthropy was a hit, and all the proceeds went to a Columbine High School relief fund. For the second year in a row, a member was named Panhellenic Woman of the Year.

#### Psi chapter - University of Oklahoma

Children are laughing and playing in a safe, happy environment thanks to the Psi chapter at the University of Oklahoma! After only five days of construction, the new Kidspace Park opened to the public in Norman, OK. The Psi sisters arrived on a cold rainy Saturday morning to shovel dirt, hammer boards and serve their university community. They definitely demonstrated the highest type of womanhood that morning while they worked to create the dreams of elementary children.



Sisters at the University of North Dakota worked together for their upcoming recruitment.



Rho chapter (University of Iowa) is "Doing it for Kids!" Even after the long hours of dancing, members were wide awake and smiling with Gamma Phi Beta's sponsored children at the University of Iowa's annual Dance Marathon, which raised \$354,000!

#### Omega chapter - Iowa State University

Sisters at Iowa State had an award-winning semester. The chapter received the Scholarship Award at the National Leadership Conference and took home six awards from the VESPERS ceremony, including the highest award given, the President's Award for Fraternal Excellence. The sisters had a great time taking part in the University's Greek Week. Many mothers came to celebrate Mom's Weekend, which helped to raise money for the Parent's Club.

#### Alpha Beta chapter - University of North Dakota

Lynn Jacobs, Chapter Advisor for the University of North Dakota Chapter, along with Tucky Hobbs, the Director of Alumnae Chapter Development, spent a weekend in April helping both Alpha Beta sisters and alumnae. Events included a meeting with alumnae to stir up enthusiasm and a recruitment practice to help the chapter with their upcoming recruitment.

#### Alpha Epsilon chapter - University of Arizona

The members of Alpha Epsilon chapter had a great year. The second annual Jaime Golightly Volleyball Tournament was a success,



Jami Bisetti of the Delta Kappa chapter stopped by Gamma Phi Beta Int'l Headquarters in Englewood, Colo. with her grandparents Irene and Cliff Robinson. Gamma Phi Beta holds a special place in Cliff's heart, since he was part of the construction team that built IH in 1992.

### COLLEGIATE

(continued)

drawing participants from across the campus to join the fun. The women hope to continue raising money in her name for years to come. Their all-house retreat was "far-out." The sisters dressed up in 80's garb and rented a roller-skating rink for the afternoon.

#### Alpha Nu chapter - Wittenberg University

The Wittenberg University chapter took quota during winter recruitment, welcoming 21 new members. During recruitment, the sisters along with many guests decorated camping supplies such as toothbrushes, soap, toothpaste and dental floss, then put them in decorated bags and sent them to Camp Sechelt. Marcie McClintic won the "Best New Member" award and the entire new member class won the "Most Outstanding New Member Class" award at the Greek Awards in April.

#### Beta Alpha chapter - University of Southern California

Beta Alpha definitely had a semester to be proud of. They were honored with five awards at the Greek Awards reception. Beta Alpha's Jan Moore received the John R. Hubbard Award for Outstanding Alumnae Support. As a chapter, Beta Alpha was rewarded with the President's Award for Overall Excellence, the Panhellenic Spirit Award and the Alumnae Programming Award. They also received a Certificate of Excellence for Academic Achievement, reserved for chapters that received a 3.0 GPA or higher throughout 1998.

#### Beta Beta chapter - University of Maryland

An energetic new member class added to the fun of Beta Beta's semester. The chapter participated in a very informative sexual harassment workshop, a philanthropy event for the homeless, and co-sponsored a Safe Spring Break activity with the University of Maryland Health Center. They also had a blast at the end-of-the-semester date event in Washington D.C.

#### Beta Delta chapter - Michigan State University

Committed to Gamma Phi Beta's mission, sisters from Michigan State continued their community involvement and sisterhood this semester. In addition to working with the Greek system for Special Olympics during Greek Week, they also volunteered for a nationwide event to benefit Alzheimer Disease. The sisters collected donations and passed out information on this disease in their

L to R: Sara Dorman, Michelle Kingstrom and Angela Christie from Michigan State University volunteered with other sisters on Alzheimer's Tag Day.



Alpha Xi Seniors from Southern Methodist University celebrated their graduation.

community. The chapter found that not only did they make a profit—over \$400 for the cause—they worked together and experienced some real sisterhood spirit.

#### Beta Kappa chapter - Arizona State University

At the Arizona State University Greek Awards, Beta Kappa was given awards for Most Outstanding Chapter, Most Outstanding President, Best Community Service Participation, Best Fundraising Organization and Best Philanthropy. It was a sweep! Congratulations to the four women selected to be Rho Chi's for fall recruitment.

#### Beta Omicron chapter - Oklahoma City University

The first triumph of Beta Omicron was being chosen to lead ritual in the charter initiation of the Zeta Lambda chapter in Corpus Christi, Texas. As a great ending to the semester, they took first place in Oklahoma City University's Spring Sing 1999. Activities such as the Spring Sing bond the sisters and make them realize what the Gamma Phi Beta sisterhood is all about.

#### Gamma Beta chapter - Gettysburg College

Gamma Beta sisters held their first annual Shamrock Volleyball Tournament in conjunction with the Delta Gamma sorority, raising money for Camp Sechelt and the American Cancer Society. Early in the school year, Lori Moll (Gamma Beta '97) passed away after a long battle with leukemia. Her sisters will forever remember her. In the spring, the most anticipated event was Greek Week. After many years of coming so close to the top, a win by the seniors in mud-volleyball clinched the title of Greek Week 1999 Champions. What a way to end the millennium!

#### Gamma Tau chapter - St. Louis University

This spring the women of Gamma Tau were extremely focused on philanthropy, volunteering for Habitat for Humanity, American Red Cross, Special Olympics and more! During Parent's Weekend, they held a silent auction and went to the Lemp Mansion for a Murder Mystery Dinner. It was a great weekend and all the women and their parents had a wonderful time. For their spring retreat, the entire chapter went to "The Face and Body Day Spa." It was an excellent opportunity to enrich their sisterhood while learning health and beauty tips.

## Member News



L to R: Joselyn Blackburn, Ashley Dietzman (front), Colleen Hillis and Emily Lane cheered on their Gamma Phi sisters from Auburn University in Greek Sing competition.

### Gamma Phi chapter - Auburn University

Congratulations to the sisters at Auburn University for winning the Spirit Award during Greek Sing! Their efforts were displayed not only on stage but also by selling the most tickets, painting signs and cheering on their sisters.

### Gamma Psi chapter - University of Northern Iowa

Twenty-three seniors were honored by their sisters at the University of Northern Iowa during Senior Celebration Week. The chapter also began a new philanthropy this spring by co-hosting a pancake breakfast with a local church. All proceeds benefit the Boys and Girls Club. Greek Week proved a big success for the sisters. They volunteered many hours of their time and raised over \$1,000 for a child diagnosed with cancer. Other highlights included Inspiration Week, a spring retreat and Parent's Day. A record-breaking eight engagements were announced during this past year, so the sisters have their candle-lighting ceremony down to a tee!

### Delta Delta Chapter - California State University-Fullerton

A new philanthropy event, a one-on-one fraternity basketball tournament, kept these sisters busy this spring. They had a great time at their spring formal, and enjoyed the sight of their men in tuxedos. This summer the Delta Delta house had improvements done, including new windows and a roof. They are looking forward to the improvements and to fall new member recruitment.

### Delta Mu chapter - Rutgers State University

The Delta Mu chapter ended their spring semester by welcoming 21 new members. The sisters were proud to receive several awards at the 1999 Greek Awards Ceremony. The recognition includes Chapter Excellence, three Awards of Distinction and the Outstanding New Member Award. Other highlights of the semester include a Family Day, a Senior Celebration and a beautiful Crescent Ball aboard the boat "Spirit of New York."

### Delta Tau chapter - Colgate University

The teeter-totter-a-thon was revived this spring at the Delta Tau chapter. For 24 hours the women teeter-tottered on their front lawn to raise money for a local children's camp, the Madison County Children's Camp. Each summer, children from one of the most financially struggling counties in New York are provided a wonderful experience at this camp.



Sisters from Delta Mu chapter at Rutgers State University enjoyed the 1999 Crescent Ball aboard the Spirit of New York.

### Delta Psi chapter - University of California-Santa Barbara

Spring '99 was a busy season for Delta Psi, with welcoming six fabulous new women and events such as Family Weekend, Senior Week and their annual Crescent Ball. The sisters also held their annual fundraiser, "Vegas Vacation," raffling off great prizes including a grand prize trip to Las Vegas! At University of California-Santa Barbara's annual Greek Awards banquet, Delta Psi's own Robin Luke was honored with Greek Woman of the Year. The chapter was also very proud to receive the Athletic Achievement award.

### Epsilon Eta chapter - Bridgewater State College

Sisters at Bridgewater State College welcomed their new members. The chapter was proud to be honored with the award for Greek Organization of the Year at their recent Greek Awards ceremony. The sisters also raised money working at Foxboro Stadium in Cape Cod and at a rock-a-thon event.



### Zeta Beta chapter - University of Virginia

The Zeta Beta chapter moved this summer in order to accommodate a growing chapter. This fall, the new house will have its first group of tenants. The new location is closer to the main campus, and the chapter is very excited about the move.

Women from St. Louis University visited the Magic Kingdom for Spring Break.

## Member News

### ALUMNAE

#### California

Jennifer Banks from the **Beverly-Westwood Alumnae chapter** took part in the first of four walks to fund breast cancer awareness.

Jennifer was among 2,400 walkers who walked 60 miles over a three-day period from Santa

Barbara to Malibu. The three remaining walks will take place in Atlanta, Chicago and New York.

#### Colorado

**Fort Collins area alumnae** held an ice cream social at the Tau chapter house for new members at Colorado State University, and had a dessert party and induction into alumnae membership for Tau graduates. The highlight of the spring was the Fort Collins Panhellenic Brunch, hosted by Gamma Phi Beta. The chapter presented 50 year members Betty Ann Gillett Husted (Tau '39), Sharon Page Anderson (Theta '47), and Virginia Gose Febinger (Theta '42), with corsages upon their arrival. The brunch honored the outstanding women of Colorado State's sororities, including Gamma Phi Beta's candidate, Melissa Baker.



Ellen Reed Burns, Alpha Iota '36, (left), took time from her 60th wedding anniversary celebration to attend Beverly Smith Gosnell's installation as president of the Beverly/Westwood Alumnae chapter.

#### Florida

The **Greater Pensacola Alumnae chapter** was officially re-chartered on November 11, 1998 and has become an active part of the community. The alumnae answered telephones for WSKE in the PBS fundraiser. This summer the chapter celebrated the first anniversary of the formation of the group with a beach picnic for friends and family. The Special Olympics Aquatic Games will be the next philanthropic endeavor for these ladies. Wish them luck!

Ten members of the **Tampa Bay Alumnae chapter** presented their collegiate scholarship to Michelle Phelps from Florida State University at their annual brunch this May. A great time was had by all at beautiful bayside.



The Greater Pensacola Alumnae chapter officially rechartered last fall.



The Tampa Bay Area Alumnae chapter enjoyed their annual champagne brunch.

#### Illinois

The **Chicago Alumnae chapter**, the first alumnae chapter chartered in 1892, meets monthly for dinner in members' homes or local restaurants, or for events around Chicago. Their annual Christmas party, hosted by Foundation trustee Ruth A. Seeler since 1977, has raised thousands of dollars through the years for the Foundation's camping program.

#### Kansas

The 85th Anniversary of the founding of the Sigma Chapter will be held in Lawrence, Kansas from March 31-April 1, 2000. The event will be headquartered at the Holidome in Lawrence and information will be sent to all Sigma members in January.

#### Louisiana

On May 8, 1999, collegians from Epsilon Mu at Loyola University and alumnae from the **New Orleans Alumnae chapter** attended the installation luncheon for the 1999-2000 officers of the Greater New Orleans Alumnae Panhellenic (GNOAP). The featured speaker was Elizabeth Ahlemeyer "Betty" Quick, Gamma Phi Beta's NPC Delegate, who discussed recent NPC initiatives and trends. Patricia M. Crowley, New Orleans alumnae chapter member and PCD VIIIc, was installed as 1999-2000 President of GNOAP.



L to R: Suzanne Collins, Angelle Hoffman, Faye Morris hale, Patricia Crowley, Margarita Perez, Tina Freeman and Betty Quick at the Greater New Orleans Alumnae Panhellenic installation luncheon.



## **What are International Alumnae Dues and How Important Are They?**

International dues are a \$20.00 fee that all alumnae are asked to pay annually. You may pay through a local Alumnae chapter, which may add additional local dues to cover the cost of mailing their local newsletter, honoring sisters and supporting local collegiate chapters. You may also pay International dues directly to the sorority by using the envelope in *The Crescent*.

# ALUMNAE ANNUAL DUES

## *Most commonly asked questions*

The following are answers to the most commonly asked questions regarding active alumnae participation and support of Gamma Phi Beta.

### ***I thought I was a lifetime member and paid my lifetime membership fee?***

You are a Lifetime Member of Gamma Phi Beta and you did pay an initiation fee as part of that lifetime membership. Unfortunately, when that fee was established there was no way of predicting rising postage and paper costs and increasing life expectancies. Alumnae now account for over 90% of our membership. During the 40's, 50's 60's and 70's our members paid from \$25 to \$100 to be initiated. These fees have long since been "used up" in terms of providing financial support to Gamma Phi Beta. Each year our alumnae membership grows, as does the cost of mailing *The Crescent* to over 85,000 members.

### ***Isn't \$20.00 annual dues relatively low compared to other national and professional membership organizations?***

Yes, it is very low. Junior League, Rotary and hundreds of other membership organizations charge annual fees five to ten times higher than our \$20 annual dues. As a direct result they are also able to provide their members with more services. International Headquarters has just 16 paid staff to serve over 85,000 members. With 10 percent more alumnae paying dues, we could expand our technology capabilities which will:

- \* Provide increased services to members
- \* Provide capabilities to help members find sisters through the members only addition to the website
- \* Provide chapters and volunteers the opportunity to file reports to IH electronically

### ***Don't alumnae already financially support Gamma Phi Beta through the Foundation?***

Yes, some alumnae do donate to the foundation. While the contributions make a significant contribution to the philanthropic goals of scholarship, leadership development and camping, the IRS highly regulates how the money can be spent. The total amount of funds raised is modest compared to our overall needs. Sorority dues pay for things such as:

- \* New Greek-letter and Alumnae chapter colonizations and installations, and revitalizations of existing chapters
- \* Sisterlink—a global career and mentoring network for collegians and alumnae
- \* *The Crescent* magazine production and distribution
- \* Special assistance for chapters facing challenges

### ***How does Gamma Phi Beta determine how the money collected is spent?***

International Council has the responsibility of managing the organizations financial resources. Over 100 International Officers volunteer in departments which develop programs, goals and budgets. These activities are reviewed and evaluated annually to determine the next annual budget. In addition, this year as part of our strategic planning, members were asked through focus groups and questionnaires to help determine the future of the organization. As a result priorities have been established for items such as:

- \* Expansion of the Gamma Phi Beta Web page
- \* Improved and expanded use of technology for communicating with chapters

### ***Why is paying my dues necessary?***

Another important aspect of the fiduciary responsibility of International Council is to balance the budget. Without additional International Dues, we cannot meet the needs requested by the members. This is important not only for the growth of our sorority, but to keep pace with the requests and demands for updated member services

### ***How do I pay my dues?***

You may pay your dues through a local Alumnae chapter or directly to International Gamma Phi Beta using the envelope provided in *The Crescent*. International alumnae dues are for the fiscal year of August 1, 1999 to July 31, 2000.

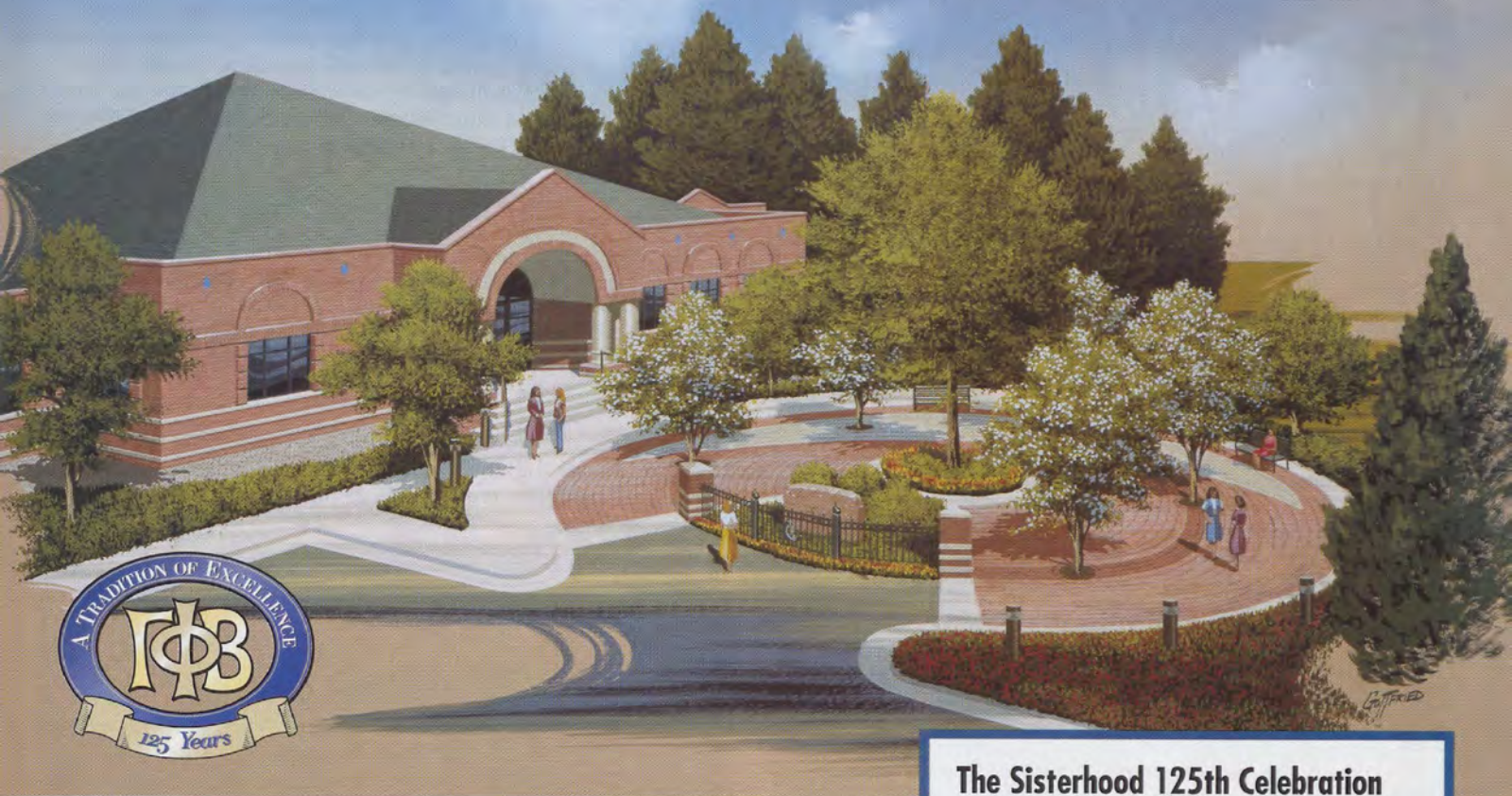
### ***How can I stay connected to Gamma Phi Beta and maintain my lifelong commitment?***

Our loyalty pledge says "I pledge to accept three lifetime obligations to my sorority: to recommend women for membership, to remain actively involved and to always to meet my financial obligation." An important part of your financial obligation is paying your International alumnae dues annually. Remaining actively involved as an alumna does not require the same commitment for everyone. Here are some other things you can do to stay connected to Gamma Phi Beta:

- \* Join your local Alumnae chapter or start one in your area
- \* Visit the Gamma Phi Beta website at [www.gammaphibeta.org](http://www.gammaphibeta.org) to learn what's happening in your sorority
- \* Complete the Volunteer Recruitment form on page 15 or send an e-mail to [volunteer@gammaphibeta.org](mailto:volunteer@gammaphibeta.org) to find out what positions are available and how you can help.

# The Sisterhood 125 Celebration...

*Building a path to the future*



**G**amma Phi Beta celebrates its 125th anniversary in 1999. To mark this occasion and to raise funds to benefit the Sorority's leadership, scholarship and philanthropic programs, the Foundation announces the Sisterhood 125 Celebration... our celebration of lifelong connection begins now and concludes at Convention in Houston in July of 2000.

The Foundation invites all Gamma Phis to celebrate their lifelong connection with a gift recognizing our rich heritage based on the development of the highest type of womanhood.

***Brick by brick, sister by sister, Gamma Phi Beta is building a solid future.***

To commemorate our anniversary and ensure that the opportunity for Gamma Phi membership is available to the woman of the next century, the Gamma Phi Beta Foundation will construct a Sisterhood Plaza at International Headquarters in Englewood, Colorado. Unrestricted gifts of \$125 and more will entitle members and friends to an engraved brick in the plaza.

For unrestricted gifts of \$500 and more, the Foundation will provide a Keepsake Brick in the Plaza. Keepsake Bricks for significant donations of \$2500 or more will be placed in the Plaza's Crescent Moon.

The Sisterhood 125 Celebration represents the open circle of our sisterhood—from our four Founders at Syracuse to the members yet to come. All Sisterhood 125 Celebration gifts will help ensure the future of Gamma Phi Beta through leadership programs, educational opportunities and philanthropic endeavors.

Contact the Gamma Phi Beta Foundation, 12737 E. Euclid Dr., Englewood, CO 80111, 303-799-1874 or visit our website at [www.gammaphibeta.org](http://www.gammaphibeta.org).

## The Sisterhood 125th Celebration

How You Can Be a Partner in Building a Path to the Future for Gamma Phi Beta? For a gift to the Foundation of \$125 or more, the Foundation will inscribe a brick in the Sisterhood Plaza:

1. In honor of a sister
2. To remember a loved one
3. To celebrate your daughter's initiation
4. To celebrate your daughter's graduation
5. To create a lasting tribute to a closed chapter
6. To honor your alumnae chapter
7. To thank your mentor
8. As a birthday gift for your house director
9. As a thank you to your advisor
10. As a celebration of an award or achievement
11. To commemorate initiation
12. To commemorate graduation
13. To celebrate your chapter's achievements
14. To celebrate your legacy
15. To congratulate your HCB
16. To celebrate your chapter's special anniversary
17. To honor your big sister
18. To celebrate sisterhood
19. To celebrate a birthday
20. To celebrate a new chapter

Space is limited, so do not delay! Send your gift in the attached envelope today!

## Member News

### Missouri

The **St. Louis Alumnae chapter** had a busy spring quarter. Members and their men jived to the big band sound of the Blue Knights at the historic Casa Loma Ballroom, celebrating the almost-end-of-winter. Proceeds from ticket sales went to local philanthropies. In April, St. Louis's Travelin' sisters took their annual spring trip to New Harmony and French Lick, IN, to visit many important and often overlooked historical sites. Their spring concluded with the annual potluck dinner and new officer installation.

### New York

**Alumnae from Syracuse University** proudly announce the recent initiation of Mrs. Ruth Beach this past March. Mrs. Beach served as house-mother for the chapter for 22 years. She often sacrificed her own time and resources to help the chapter. After many years of dedication, she was named an official member of the Sorority.



Carolyn Tipps and Kathy Gilbo volunteered with other Dayton Alumnae chapter members as hostesses at the Dayton Philharmonic Design Home.

### Ohio

The **Dayton Alumnae chapter** worked as volunteer hostesses at a design home to raise funds for their chapter during the upcoming year. The chapter was proud to learn that Tina ReKate, a Gamma Phi Beta senior at Wright State University, was named the recipient of the Dayton Panhellenic Alumnae Association Scholarship Award. This award is presented annually to fraternity women in the area. Selection is based on academic excellence and community service.

### Oklahoma

The Oklahoma City National Memorial Trust and Foundation selected Kari Ferguson, Psi '82, as Executive Director. She will be responsible for the day-to-day operations of this \$24.1 million

memorial in honor of everyone impacted by the Oklahoma City bombing. Kari was the unanimous choice for this position because of her work with the foundation since the bombing. According to Robert M. Johnson, chairman of the Oklahoma City National Memorial Trust, "Her sensitivity to the issues, combined with her communication and business skills make Kari the right person to lead the Memorial forward."

### Pennsylvania

The members of the **Philadelphia North Alumnae chapter** hosted their annual dinner for seniors and new members at La Salle University. The graduating seniors were honored as they make their journey into alumnae status, and the new members got a "taste" of the sisterhood and how it continues long after graduation.

### Texas

**Austin alumnae** are ALIVE and KICKIN'! After their "Spring Fling" in March, the alumnae found themselves together again with their family and friends at a barbecue night in June.



Philadelphia North Alumnae chapter hosted their annual senior and new member dinner



The Atlanta Alumnae chapter donated money to purchase a brick for Sisterhood Plaza at International Headquarters.



The Austin alumnae chapter enjoyed their 1999 Spring Fling this March

## Member News

The **Dallas Alumnae chapter** recently honored the Alpha Xi (Southern Methodist University) graduating seniors with a ceremony and reception at the home of Sandra Dingler. On to new careers and graduate schools, the new alumnae were presented with silver business card cases.

### REUNIONS

The '80, '81 and '82 new member classes from the Xi chapter at University of Idaho met for a weekend in the chapter house in Moscow June 18-20th. Many were impressed by the renovations, and were amazed at how everyone went back in time 20 years by just stepping into the house. It was an awesome weekend and they hope to do it again in five years.



The '80-'82 Xi chapter new member classes reunited this summer.



Joining together for high tea, the Dallas Alumnae chapter honored their officers of the past year at a special ceremony.



San Antonio Alumnae chapter's Charter Day luncheon at the Argyle brought together three University of Texas alumnae for the first time in 60 years. L to R: Cathryne Melton, Dr. Nell White Sander, and Elouise Wagner Pennycuik.



The Northeast Texas Alumnae chapter was recently chartered. Front L to R: Becky Lewis, Kristy Harris, Jennifer Thompson, Tara Schneider, Jill Kilmer. Back, L to R: Robyn Grigdon, Becky Nephey, Carolyn Pitts, Kristin Tolle, Sheri Barton, Kristi Maeckel, Kristi Martin-Williams.



Elizabeth K. Ware (Beta '55) stood by her exhibit, which she completed for graduation with a Master of Art in Liberal Studies from DePaul University. The exhibit was on display for three months at the Richardson Library of DePaul, and then moved to the Fourth Presbyterian Church on Michigan Avenue in Chicago.

# Collegiate Leaders

## Women of balance, experience, sympathy, charm

**T**he life of Collegiate Leadership Consultants, at one time known as the visiting delegate, is one involving interaction with diverse chapters with varying needs, daily decision making, superb listening skills, weekly airline travel, one weekend monthly available for free time, the ability to problem solve... in other words, the experience of a lifetime.

For the chapter, the visit by a CLC was best described in the History of Gamma Phi Beta printed in 1921. "The visiting delegate bestows upon each chapter three potent gifts; and these three gifts are national spirit, national efficiency and national endeavor. National spirit means a vital interest in the achievements of each chapter and a high resolve to be a strong part of a stronger whole; national efficiency realizes how dependent upon perfected details and careful local organization an effective central government must be; national endeavor constantly keeps in mind the best things, the truest ideals, and the most far-reaching influence for Gamma Phi Beta."

This year, seven loyal young women will bring these three gifts to chapters across the United States and Canada and have this experience of a lifetime. If you are interested in becoming a CLC for the 2000-2001 academic year, contact IH at 303-799-1874 or by e-mail at [IH@gammaphi-beta.org](mailto:IH@gammaphi-beta.org) to obtain an application

### Gretchen Buescher

*Gamma Epsilon chapter - University of Puget Sound*

**MAJOR:** Business and Public Administration

**CHAPTER OFFICE HELD:** Panhellenic Delegate

**CAMPUS INVOLVEMENT:** Panhellenic Vice President of Internal Relations, intramurals, Omicron Delta Epsilon

**LIKES:** Mountain Dew, gummies, baseball and bowling

**DISLIKES:** Mushrooms and pigeons

**IN 5 YEARS I WILL BE...** A financial analyst able to go to all the major league ball parks for at least one game.

**MOTTO YOU LIVE BY:** "Twenty years from now you will be more disappointed with the things that you didn't do than by the ones that you did do. So throw off the bow lines. Sail away from the safe harbor. Catch the trade winds in your sails. Explore. Dream. Discover." -Mark Twain

**WHAT DO YOU MOST LOOK FORWARD TO AS A CLC?** Meeting more fabulous Gamma Phis.

### Olivia "Livy" Colvin

*Nu chapter - University of Oregon*

**MAJOR:** Business Administration

**CHAPTER OFFICES HELD:** Membership Education Vice President, Public Relations Vice President

**CAMPUS INVOLVEMENT:** Panhellenic community service, Freshmen Interest Group Leader, Alpha Lambda Delta/Phi Eta Sigma

**LIKES:** Fruit, bagels and orange juice

**DISLIKES:** Mayonnaise

**IN 5 YEARS I WILL BE...** Using my CLC experiences in a marketing position on the west coast.

**MOTTO YOU LIVE BY:** "Treat all those you meet with kindness because you never know what sort of day she's had."

**WHAT DO YOU MOST LOOK FORWARD TO AS A CLC?** Seeing so much of the country from the Gamma Phi Beta perspective.

### Emily Deakyne

*Alpha Nu chapter - Wittenberg University*

**MAJOR:** Chemistry (Minors in Education and Physics)

**CHAPTER OFFICES:** Panhellenic Delegate, PACE Chairwoman, Historian

**CAMPUS INVOLVEMENT:** Panhellenic Secretary, Residence Hall Association, Theatre Costume Department, Rugby

**LIKES:** Traveling, theatre, Earl Grey tea, crunchy Reese's peanut butter cups and sushi (not necessarily together)

**DISLIKES:** Red meat and unthoughtful people

**IN 5 YEARS I WILL BE...** Done with my Peace Corps stint and working for a chemical company in a new city.

# p Consultants



Gretchen Buescher



Livy Colvin



Emily Deakyne



Ashriel Magee



Liz Smith



Patti Spelman



Cory Tice

**MOTTO YOU LIVE BY:** "Live today fully and you create a lifetime of meaningful memories."

**WHAT DO YOU MOST LOOK FORWARD TO AS A CLC?** Everything! Especially travelling to new places.

## Ashriel Magee

*Psi chapter - University of Oklahoma*

**MAJOR:** Public Relations

**CHAPTER OFFICES:** Collegiate-Alumnae Relations, Public Relations Vice President

**CAMPUS INVOLVEMENT:** '99 Dance Marathon Chair, Oklahoma Blood Institution Leadership Panel, Art of Networking Executive

**LIKES:** Carefree pink bubblegum, fruit, red licorice, granola bars and working out

**DISLIKES:** Black olives, Coke, french fries and mayonnaise

**IN 5 YEARS I WILL BE . . .** Traveling around the world for my amazing international public relations job! Maybe married—you never know.

**MOTTO YOU LIVE BY:** "Remember your yesterdays, dream your tomorrows, but live your todays."

**WHAT DO YOU MOST LOOK FORWARD TO AS A CLC?** Meeting Gamma Phi Beta's all over the country, visiting new cities and the many smiling faces!

## Elizabeth "Liz" Smith

*Alpha Xi chapter - Southern Methodist University*

**MAJOR:** English (Minors in History, Medieval Studies & Women's Studies)

**CHAPTER OFFICES:** Public Relations Vice President, Recruitment Assistant, Homecoming Chair

**CAMPUS INVOLVEMENT:** Panhellenic Coordinator of Member Development, Executive Vice President of the SMU Student Foundation, Features Editor & Editorial Board Member of The Daily Campus, Order of Omega, Mustang Link

**LIKES:** Diet Coke, pixie sticks and a good sense of humor

**DISLIKES:** Slow drivers, red apples and wasted time

**IN 5 YEARS I WILL BE . . .** Working at a job that I love (which has yet to be revealed to me, but there's still hope.)

**MOTTO YOU LIVE BY:** "You will never go wrong if you remember two things. First, all the potential of the universe is inside of you; second, it is within every other human being as well." -unknown

**WHAT DO YOU MOST LOOK FORWARD TO AS A CLC?** I look forward to meeting everyone, gaining friends, exploring the country and doing what I can to help each chapter and each chapter member achieve their full potential.

## Patricia "Patti" Spelman

*Epsilon Kappa chapter - California State University, Chico*

**MAJOR:** Exercise Physiology (Minor in Human Resources)

**CHAPTER OFFICES:** Scholarship Chairwoman, Standards Board member

**CAMPUS INVOLVEMENT:** Order of Omega President, Campus Wellness Center Coordinator

**LIKES:** Sushi, exercising, reading, fruit and salads

**DISLIKES:** Chocolate and peanut butter together

**IN 5 YEARS I WILL BE . . .** Happy and successful, hopefully starting a business of my own.

**MOTTO YOU LIVE BY:** "The only thing constant in life is change." - Unknown

**WHAT DO YOU MOST LOOK FORWARD TO AS A CLC?** Getting to know all the personalities of the chapters and meeting new people.

## Cory Tice

*Beta Gamma chapter - Bowling Green State University*

**MAJOR:** Interpersonal Communications / English

**CHAPTER OFFICES:** President, Membership Vice President, Collegiate-Alumnae Relations Chairwoman

**CAMPUS INVOLVEMENT:** Gamma Sigma Alpha, Order of Omega, Children's Miracle Network Dance Marathon

**LIKES:** Bananas, Diet Coke and sports

**DISLIKES:** Tomatoes, pickles and being on crutches

**IN 5 YEARS I WILL BE . . .** Who knows? I don't even know what I'll be doing next year!

**MOTTO YOU LIVE BY:** "Be good, be smart, be careful." -from my mom

**WHAT DO YOU MOST LOOK FORWARD TO AS A CLC?** Expanding my awareness of the unique qualities of all of our different chapters.



## HISTORY

# Peanuts and Olives A Gamma Phi Beta Feast

By Cheryl Gunter, International Historian

As have been the members of all the National Panhellenic Conference and National Pan-Hellenic Conference sororities and women's fraternities, the members of Gamma Phi Beta have been committed to standards of excellence across our charitable, educational, and social endeavors. While we have treasured our shared ideals, we have also cherished those histories, rituals, and traditions that have contributed to the distinctive portraits we have painted of each of our sisterhoods across the decades since these were founded.

We have commemorated our personal milestones in our observances of our traditions. We have remembered our commencements with our special donations to our chapter houses—our china tea cups, our silver punch cups, and our other selections. As we have been married, we have passed our candles, decorated (and even run around) dinner tables, and shared our five-pound boxes of candies. We have welcomed the babies of our members with double brown ribbons and, when those babies have later become members themselves, with the pins or memorabilia of loved ones. And, as we have died, our sisters have remembered us in memorial services. In addition to these, of course, we have celebrated Gamma Phi Beta milestones, such as Inspiration Week, Initiation, and Founders Week, and some chapters have created their own distinctive traditions, such as the Annual Play of

Theta chapter and the Muffin Worry of Sigma chapter. However, of all the traditions, the one most distinctive to Gamma Phi Beta has been that of "Peanuts and Olives."

### The Tradition

Most members have summarized the "Peanuts and Olives" tradition as service of these two foods at our assorted social events. The descriptions of social occasions contained across several chapters in the 1910s and the 1920s, however, have alluded to an actual protocol for a "Peanuts and Olives" occasion: a. purchase a sack of peanuts in the shell and olives, b. clear a room in the chapter house, suite or dorm, c. spread newspapers over the entire floor, d. have members sit on the floor to shell the peanuts, e. pass around bowls of olives to complement the peanuts, and f. have fun but, remember to remove the shells! Whether the theme or the treat associated with a Gamma Phi Beta event, these foods have been favorites. The descriptions of chapter events across the decades have contained repeated descriptions of how traditional peanuts and olives complemented the event menu. A considerable amount of folklore has evolved about the events that surrounded the start of this practice. As the initiated members have shared the traditions of the sisterhood, most of the uninitiated members have become familiar with at least one of the three explanations for this tra-

dition—all of which have centered around a supposed social event scheduled at Alpha chapter.

**Folklore #1** featured a meal that consisted of a colorful spread, with the best linen, china, and silver in the table decor. The members of Alpha chapter set out the delicious creations, then went out to escort their friends or potential new members to the house or, based on the version, run errands, visit friends, attend church services, or perform charitable acts. In their absence, some members of one of the local fraternities came into, or heaven forbid, broke into the house and ate the spread, with the exception of the peanuts and olives. The members found these sole remnants of the food theft upon their return to their house, but with true Gamma Phi Beta decorum served these two items with considerable class.

**Folklore #2** involved some friends of the members who called on them at the chapter house. When the unofficial hostess checked the cupboards, she found them bare, but for some peanuts and olives. While one version placed the blame on the chaperone, whose duties included routine visits to the store, other versions accused an uninitiated member, who shirked her kitchen chores, an initiated member, who did the same, and even a collection of members who, raided the kitchen earlier. No matter what or whom the source of the trouble, the intuitive hostess sense of this well-bred member told her to make the best of the situation, so with politeness, she offered these items on china with silver servers.

**Folklore #3** features an informal recruitment event, in which some members invited their friends to interact with them with hopes of an invitation to membership. One of the Freshmen, Sophomores, Juniors, or Seniors, based on the version was to oversee the refreshments for the event. She became preoccupied with academics, theatre, sports, or male students she did not remember to shop. A few minutes before the arrival of the potential members, she realized her omission! At that point, she either rushed to the cupboards, to find them bare except for peanuts and olives, or to the store, where

she could, without a loan from a sister, afford no more than these two items. In either case, as she served them to members and non-members alike, she acted as if peanuts and olives were the intended delicacies all the time.

## The Truth

These three stories have been the bases for the vast assortment of versions of the "Peanuts and Olives" tradition that have circulated across Greek-Letter and Alumnae chapters across the decades. The perpetuation of such stories has been so commonplace in some areas, that the stories have become accepted as canon. For instance, in his book entitled *Fraternities and Sororities at Iowa State* (1949), Walter James Miller described the "favorite tradition" of our own Omega chapter as one that started when "some members of one of the local fraternities broke into the house and stole all the food." Whether he heard this from members or non-members, the source was adamant that this was the "true" fact.

While these versions of the tale have indeed been colorful, none, has been the actual truth. As with numerous traditions, the actual events were rather anti-climac-

tic when compared with the folklore. An overview of the events that surrounded the introduction of peanuts and olives as staples at Gamma Phi Beta events was included in an article entitled, "A Brief Record of the Beginnings from Alpha," included in the June, 1908, edition of *The Crescent*. While the author remained unnamed, she cited as her source for this material none other than our beloved founder, Addie Curtis, and our first initiate, Clara Worden. Who could be more reliable? Based on their recollections, the actual events from which our tradition arose were as follows: "The banquets of the early days were very different from the 20th century function. They were simpler, though none the less enjoyable, except possibly to the freshmen who did the serving. The young women who lived in town furnished sandwiches, salads, cakes, and other dainties; the other members paid for coffee, ice cream, and whatever else was necessary. One entertainment of a less formal nature has also survived — the peanut and olive spread. Eva Seymour, '85, invited Alpha to what she termed a 'chocolate-taire.' It is easy to imagine that chocolate in many forms was served. A few weeks later another member entertained the chapter

informally. One of the features of the refreshments was peanuts and olives. This function the guests dubbed a 'peanut-taire.' The combination captivated the fancy or the appetite of these women that they adopted the peanut and olive spread as one of the features of their informal gatherings."

So reads the account of the start of the "Peanuts and Olives" tradition as an informal parody of a more formal occasion. However, the fact that we have such an historical account does not necessitate our immediate disposal of all the folklore associated with this tradition. In fact, the folklore around the tradition is as central to Gamma Phi Beta history as the tradition itself. That Greek-letter chapters and Alumnae chapters alike have passed their own special renditions of the tradition to decades of new members has added to the sense of sisterhood. Provided that members add the disclaimer that folklore is folklore and facts are facts, the "Peanuts and Olives" tradition can continue on for the next 125 years of Gamma Phi Beta, as it has in this musical creation from Bessie Cowles (Alpha, '95), to the tune of "Patience" by Gilbert and Sullivan, our own "Peanut and Olive Song."

*Give me the place so dear, Where I can  
find good cheer,  
Where peanuts delectable, Always  
respectable, Comfort me all the year.  
With peanuts I am done, If olives there are  
none,  
For they're so superior, Never inferior,  
Add very much to the fun.  
Then come my sisters true, And crack  
your peanuts do;  
For in Gamma Phi Beta, From Alpha to  
Eta, We eat Peanuts and Olives, too.  
Now when you think you're blue, That no  
one cares for you,  
Just come to our table, And there you'll be  
able to find Peanuts and Olives, too.  
When college days are passed, And joys  
are fleeting fast,  
I'll ever remember, From June to Septem-  
ber, That Peanuts and Olives last.  
Then come my sisters true, And crack  
your peanuts do;  
For in Gamma Phi Beta, From Alpha to  
Eta, We eat Peanuts and Olives, too.* ●





I want to express deep gratitude for the recent \$200 Gamma Phi Beta Foundation campship donation to the Swift Water Girl Scout Council. The total gift will be \$400, as I am providing a matching amount.

On June 5, I visited Camp Chenoa in Antrim, NH, and made a presentation to the camp director, Missy Long. The gifts have been designated for overnight campships. Camp Chenoa is beautifully situated and has exceptional facilities. Gamma Phi Beta should be proud to be a part of this endeavor. I know I am.

I am also very proud of Gamma Phi Beta for responding so generously to my request. I feel we are really making a difference in the lives of young girls.

Sincerely in IIKA,  
Evelyn Schmitt  
Alpha Chi '45

### Running For A Cause

Raising funds for leukemia, Evelyn Richardson Hare (Alpha Zeta) of Dallas, recently participated in the Kona Marathon in Hawaii. Meeting Leukemia Society runners while vacationing in Hawaii, Evelyn began to think seriously about participating in a marathon herself and with husband, Ken, became an official member of the Leukemia Team in Training. On her wrist, she wears three plastic bracelets bearing the name of a leukemia patient. "...so we can have some one-on-one contact and camaraderie with them and know that we're doing something for a person, not just a society" says Evelyn. One of the plastic bracelets represents a friend that died in 1979 at the age of six. Now that same kind of leukemia has an 80 percent remission rate, whereas in '79 it was 20 percent remission."

### Model Unveiled In Arizona

As a memorial to her father and a thank you to the many patrons who tried to save it, Gayle Homes Christiansen (Beta Kappa - Arizona State), commissioned a detailed architectural scale model of the Cine Capri Theater, the famous Phoenix landmark. The model was officially unveiled at the Arizona Historical Society Museum, benefiting two valley charities.



The contractor who built the theater was the late W.E. "Bill" Homes, Jr. "Of all his many contributions to the city of Phoenix, the Cine Capri was one of his personal favorites," said Gayle. During his long and difficult battle with cancer, the community rallied to preserve the tradition. He died just weeks before its demolition.

The model benefits the John C. Lincoln Health Foundation Cancer Fund, which assists cancer patients and their families coping with the day-to-day stress of this illness. Housed as part of their permanent collection, the model also benefits the Arizona Historical Society, whose mission includes preservation of local history.

### Andrea Alban Gosline, Spiritual Mothering

For mothers-to-be and mothers everywhere, there is a beautiful guidebook and inspirational companion celebrating motherhood through the centuries and throughout the world.

Andrea Alban Gosline (Eta '78) co-created *Mother's Nature: Timeless Wisdom for the Journey into Motherhood* with Lisa Burnett Bossi and Ame Mahler Beanland. Andrea conceived and created this book while pregnant with her second child.



In her introduction, Andrea writes, "I was moved to compile a book celebrating motherhood because I knew I was not alone in my quest for heightened spiritual awareness as a woman, more peace and knowingness as a parent. I began to collect the reflections of diverse women. . . and was amazed by the discovery of a common thread and spiritual link among the voices... these women expressed the same message in union: creating life is sacred and mothering is a journey of discovery."

Andrea is a poet and editor and is the creative director of Amble Dance Books and Fineline Design. She lives in San Francisco, California, with her family.

### Educational Pioneer

Veteran college English teacher Ellen Shull, Beta Eta '56, has been improving education in Texas for 24 years. As a pioneer of new teaching methods and activities, Ellen



has initiated many student activities, has blended disciplines to enrich a student's classroom experience, and was one of the very first to create courses using multimedia and the World Wide Web.

Her passion for teaching has been recognized by many. She was named College/University English Teacher of the Year by the Texas Council Teachers of English in 1998, and was Palo Alto

## Pacesetters

College's nominee for the prestigious 1999 Piper Professor. She was also awarded a Teaching Excellence Award for Innovation and Creativity in 1994.

Ellen first became interested in teaching when her fourth grade teacher encouraged her to tutor a classmate. From that experience she learned that cooperation and celebrating success go a long way to educational progress, and one-on-one teaching works amazingly well.

Noted author Naomi Shilab Nye said of Shull, "In so many schools I have visited for the past 24 years, Ellen Shull's name comes up as a beacon, an example, a crucial landmark for someone else's life. She is one of those teachers who makes a difference to so many people."

Ellen and husband, John, are parents of four children and grandparents of five.

### Performing Artist

Stephanie Stoyanoff, Phi '63, delights audiences worldwide with her performances as a pianist and as an actress.

As a duo-pianist, Stephanie performed the world premiere of Ellen Taaffe Zwilich's "Images for Two Pianos and Orchestra" with the National Symphony Orchestra for the inaugural concert of the National Museum of Women in the Arts. In addition to symphony appearances and concerts throughout the United States and Europe, she performs in the critically acclaimed recording "Music by American Women Composers."

As an actress, Stephanie has appeared in regional repertory theater, has toured for the Missouri and National Council on the Arts, and was recently featured in the NBC network television show "HOMICIDE: Life on the Street."



Stephanie is a private piano teacher in Washington, D.C. and is President of the National Society of Arts and Letters. In addition, she is a licensed real estate agent in Washington, D.C., Maryland and Virginia, and is a member of the Washington Committee of the Friends of the National Arboretum.

### A Creative Way of Life

Marla Marx McCabe, Pi '52, has been helping individuals improve their self-esteem and creativity with her books on creative thinking and learning. Her books, *Opening the Corners to Creativity and Self-Esteem*, *Homestyle Creativity*, and *The Creative Spiral*, focus on enhancing creative thinking and learning. She aims to cultivate a more peaceful, creative world where creativity takes on a positive force for the betterment of individuals and ultimately society as a whole. In addition to writing, Marla established one of the first Birkenstock specialty stores in the United States in 1975. She enjoys water-skiing and Tai Chi, as well as caring for her husband and two sons.

### Fancy Footwork

If you ever wanted to learn to perform a flying camel or a double lutz with your in-line skates, Jo Ann Schneider Farris can show you how.

Jo Ann Schneider Farris, Alpha Phi '74, began ice-skating in 1964. She won a silver medal in the United States National Figure Skating Championship in 1975, and became a United States Figure Skating Association Gold medallist in 1976.

Since the original Rollerblades were introduced in the 1980s, Jo Ann has been recreating her ice-skating knowledge for in-line skates. She describes these techniques in her book, *How to Jump and Spin on In-Line Skates*.

Jo Ann teaches both ice and in-line skating in Colorado Springs, Colorado, where she lives with her husband and three children.



### Pacesetters Wanted

Are you a Pacesetter or know someone who is? Gamma Phi Beta sisters all over the world are doing research, writing books, starting their own businesses, being elected to political offices, inventing new products—they are being Pacesetters. We want to feature you in our quarterly Pacesetter section. Send a letter and a photo about yourself or a sister to: Editor, Gamma Phi Beta Sorority, 12737 E. Euclid Drive, Englewood, CO 80111.

### Commendable Service

At the U.S. Environmental Protection Agency's (EPA's) Office of Water Annual Awards Ceremony Jan M. Pickrel (Alpha Xi) was awarded the Bronze Medal for Commendable Service. The certificate and plaque recognize her contribution of "outstanding leadership and training of Regions, States, municipalities, and industry personnel involved in the implementation of the National Pretreatment Program." Via this training program, Jan has taught regulations, how to write permits and how to conduct inspections to control industrial wastewater, as well as records and data management to over 700 people in seven states.

Jan joined the U.S. EPA two years ago after working for more than a twelve years for the Commonwealth of Virginia Department of Environmental Quality.

Jan is also the Province Alumnae Director for Province XIV and a member of the Northern Virginia Alumnae Chapter.

# Something of Value



What is "SOMETHING OF VALUE"? Is it our Ritual? Is it our badge? Is it the experiences we have had and continue to have as members of a Greek letter organization?

These are all something of value, however, the SOMETHING OF VALUE that is being discussed among National Panhellenic Conference member groups is a values based risk management seminar for sorority women developed by the National Panhellenic Conference. PACE (Personal and Chapter Enrichment) programming addresses issues from a chapter or personal perspective. However, many of the health and safety topics that PACE programs highlight are more than chapter issues, they are campus issues.

SOMETHING OF VALUE (SOV) gives sorority women the opportunity to identify the risky behaviors and norms that could have an effect on their health and safety. They analyze these issues, develop a strategy to address them and make a commitment to work together to make positive change. The open, supportive environment created by the facilitators encourages discussion among the participants. They gain an understanding of the physical, emotional and legal effects of risky behaviors and learn how to confront the behaviors that are contrary to the values espoused by NPC member groups. Chapter leaders understand that the issues are more than chapter issues, they are Greek issues and can be managed more effectively when addressed by an action plan that is supported by all groups.

The College Panhellenic must vote to participate in the program. The program is held in a campus facility on a Saturday when all chapters are available to participate. Each chapter sends a number specified number of representatives. Each national organization sends a representative that works with the chapter and also serves as a small group facilitator.

Nine Gamma Phi Beta chapters participated in SOV in 1998-99. Those chapters and the Gamma Phi Beta representatives were: Bradley University - Betty Quick; Colgate University - Sue Bloch; University of California-Berkeley - Kimberly Hauxhurst; University of Idaho - Suzanne Williams, University of Maryland-College Park - Tracy Johnson; University of Nebraska-Lincoln - Susan O'Hanlon; University of Oklahoma - Margaret Pape; and Washington State University - Suzanne Williams.

Six Gamma Phi Beta chapters are scheduled to participate in SOV in the fall of 1999. They are: California State University - Fullerton, Miami of Ohio, Michigan State University, Purdue University, University of Colorado-Boulder, and University of Missouri-Columbia.

The program is funded partially by the Panhellenics that request the program and by grants from Kappa Kappa Gamma, Alpha Gamma Delta and the National Panhellenic Conference Foundation's Something of Value Endowment established by Alpha Omicron Pi and Kappa Delta.

Participants are asked what they will do as a result of this program. The following quotes are from the NPC SOV brochure.

*"involve my chapter in Panhellenic issues and education."*

*"be more responsible for myself and my sisters."*

*"think about my actions and if they are in line with my sorority's values."*

*"confront others versus turning my head when I think they are jeopardizing themselves and our chapter."*



Maureen Syring, NPC Alumnae Panhellenics Committee Chair, visited Dayton, Ohio, on May 3rd to install Melinda Nutter as President of the Dayton Alumnae Panhellenic. Members of the Dayton Ohio Alumnae chapter attended Melinda's installation. Shown L to R: Marita Kirkpatrick Mahen, Melina Risse Nutter, Maureen Syring, Lisa Rupell Hesse, Donna DeFabritus, Kathy Benyo Gilbo.

## In Memory

### IN MEMORIAM

Annette Stauffer Hocker, *Alpha chapter*  
 Jean Summers Smith, *Epsilon chapter*  
 Carolyn Whiting Murman, *Eta chapter*  
 June Mahon Meader, *Mu chapter*  
 Marjorie Biswell Watson, *Nu chapter*  
 Dorothy Whitenack Mcquire, *Xi chapter*

Jeanne Ranger Downs, *Omicron chapter*  
 Christine Oberheide Thompson, *Omicron chapter*  
 Bettie Reed Olson, *Rho chapter*  
 Betty Kelly Ruud, *Rho chapter*  
 Helen Halderman Markham, *Chi chapter*  
 Annabel Altman Skeggs, *Alpha Alpha chapter*  
 Betty Hagen Grovogel, *Alpha Beta chapter*  
 Katherine Montgomery Hancock, *Alpha Theta chapter*  
 Madge Hutchinson Poole, *Alpha Sigma chapter*  
 Mishelle Thompson Lehman, *Alpha Chi chapter*  
 Susan Gilkey, *Alpha Chi chapter*  
 Evelyn Holbrook Logan, *Beta Theta chapter*

### MEMORIALS

**Ruthanna Borden Amy** (Delta Iota '79)  
 by Greater Lafayette Alumnae Chapter

**Virginia (Ginny) Atwill** (Alpha Omicron '42)  
 by Twin Cities Alumnae Bridge Group

**Vera Baack** (Mother of Kris Baack - Pi '72)

by Barbara Lien Bader  
 by Patsy O'Connor Rohrig  
 by Nancy Beecher Kleeb  
 by Jennifer Fix Reck

**Betty Meyer Bartholomew** (Beta '37)  
 by Arthur P. Bartholomew, Jr.

**Brigitte Uhlig Beard** (Alpha Upsilon '44)  
 by Elizabeth Hutchinson Boedecker  
 by Marian Doty Bickford

**Dorothy Limber Bittle** (Alpha Upsilon '45)  
 by Lois Limber Kok

**Doris Padrick Blunt** (Nu '50)  
 by Roz Fraser Wyche  
 by Irene McLeod Kleen

**Mary Wheat Bowers** (Rho '29)  
 by Vivienne Bowers Barker

**Kerry Spooner Dean** (Epsilon '86)  
 by Ann Hipskind Campbell

**Ruth Dilbeck** (Mother of Verona Dilbeck Lynam - Beta Omicron '52)  
 by Lisa Lepley Hiles

**Janet Hawes Foley** (Sigma '43)  
 by Ada Lee Fuller Baumgartner  
 by Gloria Nelson Castor  
 by Lois Wilson Claflin  
 by Janet Marvin Cree  
 by Marjorie Siegrist Ebling  
 by Beth Weir Jones  
 by Norma J. Falconer Keck  
 by Harriette Smith McVay  
 by Betty J. Boddington Reese  
 by Evogene Wallace Sales  
 by Jane Atwater Tinklepaugh

**Mary Lou Shinkle Foxworthy** (Sigma '43)  
 by Greater Fort Myers Alumnae Chapter

**Jane Katherine Grimsley** (Beta Psi '83)  
 by Phyllis Krieger  
 by Melba Quick Spurrier  
 by Stillwater Alumnae Chapter

**Luella Ham** (Mother of Veronica Ham Sibley - Alpha Iota '48)  
 by Beverly Smith Gosnell  
 by Parna Lazelle Joyce

**Mary Holthouse**  
 by Kay Conrad Robinson  
 by Vickie Zimmer

**Patricia Thomas Pinney Kelley** (Psi '47)  
 by Marie Whitehead Turvey

**Maydee Logeman Lehman** (Omicron '26)  
 by Beverly-Westwood Alumnae Chapter

**Jeanne Lupton Leisy** (Chi '47)  
 by Keri Gee Barnett  
 by Donna Murray Bogdanovich  
 by Roxanne Brogan  
 by Candice Ciampa  
 by Long Beach Alumnae Chapter  
 by Dawn Neja Reese  
 by Elizabeth Johnson Reidy  
 by Christine Rowe

**Barbara Barott Lentz** (Alpha Gamma '50)  
 by Audrey Weldon Shafer  
 by Tucky Hobbs

**Gerry Brittingham Angell-Marx** (Tau '49)  
 by Brownie McGraw  
 by Viola McBee (Retired Delta Iota House Director)  
 by Greater Lafayette Alumnae Chapter

**Ruth Arlee Fish McLeod** - Sigma '39 (Mother of Jill McLeod-Cooksey - Sigma '82)  
 by Jill McLeod-Cooksey



Donations in memory of friends, sisters and loved ones may be sent to the Gamma Phi Beta Foundation at International Headquarters. If you would like a card sent to a family member or friend, please include that address.

The Sorority appreciates the return of a deceased member's badge, when possible, so that it might be preserved in our archives.

## In Memory

### MEMORIALS

(continued)

#### **June Mahon Meader** (Mu '33)

*by Mary Jane Birdsall  
by Alyce Anawalt  
by Robyn Steele  
by L'Cena Brunskill Rice  
by Esther Pearson Weld  
by Shirley Davidson Flanagan*

*by Sandra Winslow Steiner  
by Beta Alpha House Corporation Board  
by Joan Warren Sullivan  
by Mary Ann Johnson  
by Barbara Barnhouse Johnson  
by Joyce Canavan Stewart  
by Gretchen Haller Reiter  
by Jacqueline Demos  
by Joan Jahnke Virgo  
by Shirley Egland Spalla  
by Joan Jani  
by Carol Goshaw Blanchard*

#### **Virginia Appel Nelson** (Pi '38)

*by Ada Lee Fuller Baumgartner  
by Gloria Nelson Castor  
by Lois Wilson Claflin  
by Janet Marvin Cree  
by Marjorie Siegrist Ebling  
by Beth Weir Jones  
by Norma J. Falconer Keck  
by Harriette Smith McVay  
by Betty J. Boddington Reese  
by Jane Atwater Tinklepaugh*

#### **Jean Schadel O'Brien** (Rho '29)

*by Sun Cities Alumnae Chapter*

#### **Bettie Jayne Reed Olson** (Rho '37)

*by Sun Cities Alumnae Chapter*

#### **Margaret "Peggy" Catherine Andrews Petrie** - Alpha Epsilon '45

(mother of Anne Petrie - Beta Omega '82)  
*by Anne Gillmore Low  
by Chris Gillmore Martin*

#### **Jean Ricketts Lyle** (Beta Gamma '44)

*by Toledo Alumnae Chapter*

#### **Grace Kaye Newbecker Polizzi** (Alpha Iota '47)

*by Joan Thorpe Lord*

#### **Helen Strickland Roberts** (Epsilon '27)

*by Bergen County Area Alumnae Chapter*

#### **Louise Berger Rost** - Phi '30 (mother of Jeanne Rost Schacker - Phi '58)

*by Jeanne Rost Schacker*

#### **Jacqueline Wood Schaefer** (Phi '35)

*by Elaine Foerster Maxeiner  
by Gladys Hecker Myles*

#### **Helen Spittler Seltz** (Kappa '32)

*by Seltz Family*

#### **Paula Stoli Stenberg** (Delta Alpha '69)

*by Audrey Shafer*

#### **Shirley Shumway Stephenson** (Kappa '41)

*by Houston Alumnae Chapter*

#### **Clement Thapy** (Grandfather of Carrie Plachko - Beta Delta '95)

*by Gamma Phi Beta International Headquarters*

#### **Helen Wilkins Thompson**

(Sigma '41)  
*by Ada Lee Fuller Baumgartner  
by Gloria Nelson Castor  
by Lois Wilson Claflin  
by Janet Marvin Cree  
by Marjorie Siegrist Ebling  
by Beth Weir Jones  
by Norma J. Falconer Keck  
by Harriette Smith McVay  
by Betty J. Boddington Reese  
by Jane Atwater Tinklepaugh*

#### **John Timmons** (Husband of Dorothy Langdon Timmons - Alpha Delta '37)

*by Dorothy Langdon Timmons  
by Virginia Forsythe Vint*

#### **Patricia Williamson** (Omicron '45)

*by Geraldine Epp Smith*

*Unrestricted gifts of \$125 and greater have been given in memory of the following. In honor of these gifts, the Gamma Phi Beta Foundation will inscribe a brick in the Sisterhood Plaza.*

#### **Eileen Driscoll Cooper** (Lambda '37)

*by Betsy Campbell Stone*

#### **John G. Cooper**

*by Betty Jinkins Cooper*

#### **Lila Smith Elam** (Xi '20)

*by Barbara Wanman Allen  
by Isabel Jones Brassey  
by Patricia Oxley Collinsby  
by Joyce McMahon Delana  
by Shelley Smith Eichmann  
by Jo Ella Hamilton Kleffner  
by Carolyn Craddock McEntee  
by Josephine Lecona Miller  
by Mary Burns Nowierski  
by June Williams Smith*

#### **Elvera Woolner Fitzgerald** (Epsilon '22)

*by Lynn Baker Mueller*

#### **Jeanette Scott Ingram** (Beta '69)

*by Nancy Reid*

#### **Mary Fraser Preston** (Epsilon '49)

*by Nancy Probst Crandall*

#### **Lucile Begrow Thomas** (Beta '51)

*by Elizabeth V. Miller*

#### **Clara Tarling Marsalek Tremayne** (Phi '32)

*by Julia Marsalek Dawson  
by Mary Marsalek McGill  
by Sarah Marsalek Brooke*

Memorial gifts received by the following dates will be included in the corresponding issues of *The Crescent*:

January 1 . . . . . Spring issue  
April 1 . . . . . Summer issue  
July 1 . . . . . Fall issue  
October 1 . . . . . Winter issue

## In Celebration

### CONGRATS

The marriage of Neda Burtman to Kypp Wetmore from her sisters, at Epsilon Tau.

Sue Schlessman Duncan for having the Arvada, CO YMCA named in her honor from Stephanie Hearn.

Bev Smith Gosnell for becoming the new president of the Los Angeles Panhellenic from Stephanie Hearn and Linda Pelegrino.

The engagement of Heather Gail Huffman (Lander University) to John Bolt from Jennifer Dobbins.

Eric King for winning the Outstanding Alumnus award for the College of Business Administration at Cal Poly Pomona from Sheila King.

The engagement of Letia Parker to Curtis Cruson from Debby Maxey Samaras.

The marriage of Jennifer Dawn Wetherford (Lander University) to Al Henson from Jennifer Dobbins.

The marriage of Patricia Wernecke Marlin to Robert M. Juranitch on May 21, 1999 from Virginia Forsyth Vint.

### BIRTH AND BIRTHDAYS

Ruth Roselle Wallace's 88th birthday from The La Jolla Alumnae chapter.

Susan Ann West's 50th birthday from Connie Bell and Stan and Ann Marie Walton Kroenke.

The birth of twins, Jason Christopher and Jacob Gianni, to John and Jennifer Salzetti Zeis from Tiffany Haeberlein.

### SISTERHOOD

The "Alumnae Department, especially Barb, Marita, Sandy, Patty and Lisa Hiles and Alison Maguire, for helping me through LDI. Don't fly with a new crown! In IIKE, Dawn A. Menegos-Randolph."

Four wonderful years that Kay Gardner Appleberry served as Vice-President and President of Greater Kansas City Alumnae Chapter from Tucky Wheeler Hobbs.

In honor of Lurene Jochem Frantz for her "leadership of and commitment to our chapter" from the State College Alumnae Chapter.

"Thank you and good-bye to Laura Henson for all you have done for the Alumnae Department" from Linda Pelegrino.

"To Dawn Menegos Randolph for being a GREAT PAD! Thanks for the guidance to me and the Atlanta Alumnae Chapter" from Natalie Black.

To Nancy Hall Parker for 31 years of dedicated service to Gamma Phi Beta from the La Jolla Alumnae Chapter.

*In honor of the following gifts, the Gamma Phi Beta Foundation will inscribe a brick in the Sisterhood Plaza: Unrestricted gifts of \$125 and greater have been given in honor of the following:*

1998 Convention from the 1998 Convention Committee  
Pam Aden, Val and Megan Lindsay from Jeanne Schroll Aden  
Alpha Phi Chapter from Donna Drucker  
Margaret Ann Montonna Emmons from Mary Lou Montanna Williams  
Epsilon Gamma seniors from La Jolla Alumnae Chapter  
Latane Jordan Graham from Judy E. Graham  
Heather C. Ioset from Holly Haberstroh Ioset  
Una Mae Naulty from L'Cena Brunskill Rice  
Linda Pelegrino, 1998 Convention Chairman, from the 1998 Convention Committee  
Province XVI from the 1998 Convention Committee  
The marriage of Genifer Ring to Thomas Michel  
Southern California Intercity Association from the 1998 Convention Committee  
Virginia Grottke Styracula from Lynn Baker Mueller  
Gwen Grottke Tegart from Lynn Baker Mueller  
Edith Whitehead Walker from Kathy Waker Pratt  
Susan Ann West from Melvin and Barbara Ann West  
Karen and Bob Woolard from Andrea Woolard Borch  
Carolyn Thomas Zerbel from Rebecca Powell

*The parents of the following members have given gifts of \$125 and greater in celebration of their daughters:*

Noelle Andris (Syracuse)  
Michele Aust (Creighton)  
Nicole Bialek (University of Georgia)  
Karen Bodigheimer (Clemson)  
Selina Cicogna (Gettysburg)  
Dollie Davis (Southern Methodist)  
Tiffany Levin (Santa Cruz)  
Tia Martarella (Georgia)  
Rebecca Mutschall (Berkeley)  
Cheyenne Phelps (Alma College)  
Tiffany Saucerman (Eastern Washington)  
Rhannon Vaughn (University of Georgia)

### Submitting an In Celebration Announcement

Celebrate your sisters by sending a tax-deductible donation to the Gamma Phi Beta Foundation at 12737 E. Euclid Drive, Englewood, CO 80111-6445. Include a description of what you are celebrating and who you are celebrating. Also, provide your name, address and phone number and it will appear on this page in a future issue.



# Dream Big. Shape Destiny.

Texas is a place of wide open spaces...wide open minds and wide open

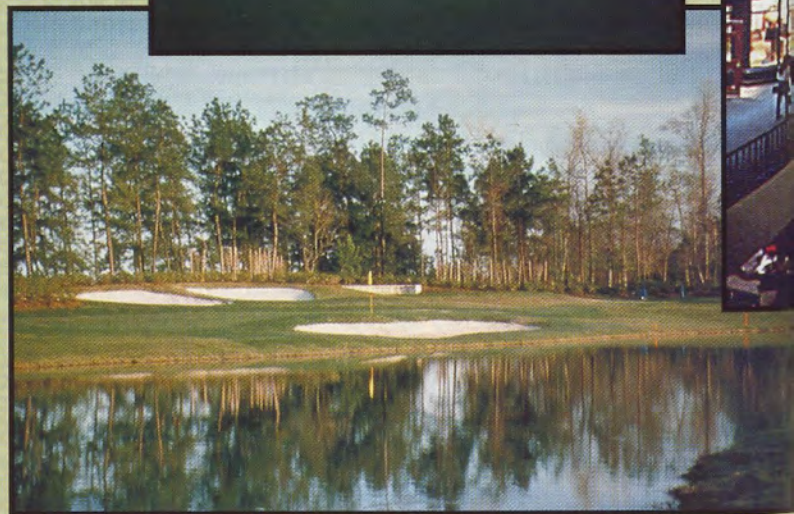
possibilities. And **Houston** is the place where those possibilities happen. ■ So what better opportunity to join Gamma Phi Beta Houston 2000 and set your sights to **dream**

big and shape destiny? ■ Inspire yourself at the fast-paced motivational workshops, sessions and seminars. Reacquaint with old friends. Get back in the spirit of the 'hood. **Sisterhood**, that is. Shop 'til you drop at the internationally famous Galleria. **Indulge** your tastebuds with every food category imaginable. Pamper yourself at the hotel gym or pool or on nearby hiking and jogging trails. Just focus on your dreams and they are destined to happen—Houston 2000.



**HOUSTON 2000 CONVENTION STEERING COMMITTEE:**

(L to R) Front Row: Teresa Gibson, Lisa Short. Middle Row: Linda Kemper, Cathy Lorino, Laura Bovo, Linda Johnson (chairwoman), Susan Banks, Julia Dunbar. Back Row: Karen Kline, Monica Birtwistle, Shila Smith, Lisa Spieldenner, Grayle James, Karen McCann, Linda Wooten, Peggy Clark, Terri Nieser. Not Pictured: Stephanie Goldfield, Laura Stokes, Susan Reeves



1. Stimulate your senses: Take a walk to "the most photographed spot in Houston"—the famous Transco Waterwall and adjoining park. 2. Get back to nature with a visit to Memorial Park and Golf Course (just a 5 minute drive from the hotel). Memorial Golf Course is known as the "best municipal golf course in the nation." This newly renovated 600-acre course has a lighted driving range, putting and chipping greens and clubhouse. The surrounding park has one of the most popular jogging and exercise tracks in Houston plus an 18 court tennis center and pool. Adjoining the park is a 155 acre urban wildlife sanctuary with hiking trails.

# CONVENTION 2000

## HIGHLIGHTS

### TUESDAY, JUNE 27

- International Officers and Advisors Arrive

### WEDNESDAY, JUNE 28

- Attendees Arrive
- Dinner and Welcome

### THURSDAY, JUNE 29

- Breakfast—Continental
- Business Sessions
- Foundation Lunch
- Awards Dinner

### FRIDAY, JUNE 30

- Camper Breakfast
- Workshops
- Confirmed Conventioneers Dinner

### SATURDAY, JULY 1

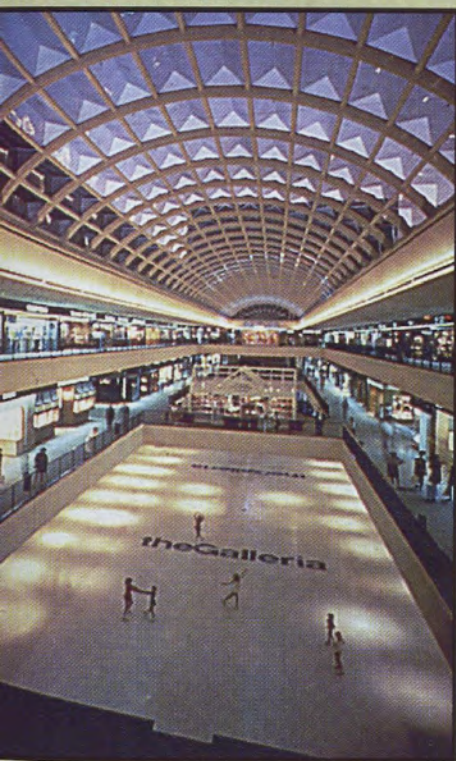
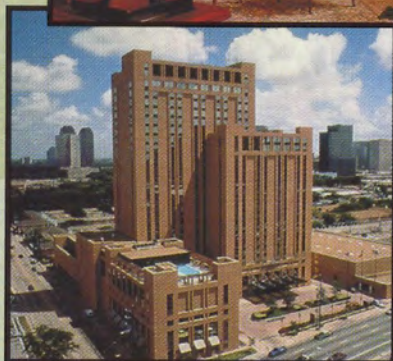
- Business Session
- NPC Luncheon
- Memorial and Initiation Services
- Reception
- Pink Carnation Banquet

### SUNDAY, JULY 2

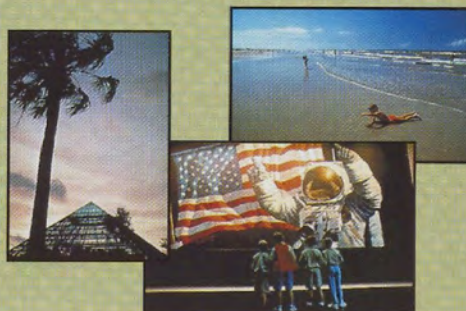
- Play Day—Optional
- Departure

JUNE 28 — JULY 2

DON'T MISS IT!



**Stay Over** *an extra day and escape to one of many Houston vacation spots such as...Moody Gardens, NASA & Space Center Houston or Galveston Island.*



3. Indulge yourself: Shop the hundreds of stores just a few steps away. 4. Your destination: Convention headquarters J.W. Marriott Hotel and Conference Center in the heart of Houston's cosmopolitan Galleria area. 5. Your room is an just elevator ride from the luxurious lobby! We're holding a spot for you. 6. Treat your body and mind with a pool or gym break.

# Gamma Phi Beta's Quasiquicentennial

## Celebrating 125 Years of Excellence

1999

1992

1984

1965

1958

1936

1929

1915

1900

1882

1874

In a society where women were discouraged from entering college due to their "insufficient brainpower" and "delicate health," four women from Syracuse University came together to form a society they named Gamma Phi Beta. Now 125 years later we celebrate the vision and dedication of those women and all that have come since then, who have built Gamma Phi Beta into one of the largest and most well-respected sororities in the world.

At its quasiquicentennial, Gamma Phi Beta stands strong and proud. Gamma Phi Beta withstood the harsh attacks on Greek organizations during the early parts of the century, two World Wars, the economic hardship of the Depression, the anti-Greek movement of the '60s, and the Greek renaissance of the '70s and '80s. From four members in one chapter, Gamma Phi Beta has grown to include more than 120,000 members and 250 collegiate and alumnae chapters worldwide. Through love, dedicated labor, continuous learning, and loyalty to the high ideals the Founders envisioned, Gamma Phi Beta has proven to the world that it is founded upon a rock.

Gamma Phi Beta faces unique challenges and opportunities on the brink of a new millennium. The recently developed Strategic Planning Committee is working on developing a plan to move the Sorority into the 21st century. With dedication to the ideals and purposes on which our Founders established the sorority, Gamma Phi Beta is ready to move brilliantly into the new millennium.

"We must advance along the road where the new generation is leading us, or we must travel alone—and backwards." -Anonymous