



THE CRESCENT

OF GAMMA PHI BETA

Winter 1992-93



*By Diane Tjaden Thompson,
International President*

Buzzwords abound to express current situations and trends. One of those words now circulating is "accountable." It seems that many people have just discovered that we are supposed to be accountable for our actions. This, of course, is an old philosophy, but whether we have always realized its validity or whether we are just now learning the virtue of being accountable, we should all realize its importance in our own lives and in the world of Gamma Phi Beta and the Greek community.

As Gamma Phi Beta collegiate members or alumnae we are accountable to our Sorority. As Gamma Phi Betas it is our responsibility to see that our organization is successful and is able to move into the 21st Century with a strong foundation and an ever-mindful eye to the future.

We must understand current trends and provide programs to deal with them. We must understand the needs of our members and provide programs to accommodate those needs. And who will see that this is done? Who will work to see that Gamma Phi Beta succeeds? Gamma Phi Betas will. Gamma Phi Betas are accountable to other Gamma Phis and to our Sorority to see that we continue to be the positive organization that we are today.

Gamma Phi Betas are also held accountable to see that Greek systems are allowed to continue on our campuses and that they flourish. Current trends, such as declining enrollments and anti-Greek feelings of

COMMENTARY

some faculties and administrations have made the 90s a challenging time for Greeks. We have the opportunity to face these challenges and evaluate them and ourselves in order to determine how to deal with changes in a positive way and become more viable.

Self-evaluation of our Greek systems also provides sororities and fraternities with the opportunity to grow and become stronger. We are accountable—or we let others down. If we, as Greeks, do not stand united by showing the support of others, we cannot survive.

International Council understands its accountability to our Sorority members. Each Council member has defined her own goals and concerns for her department and for the Sorority. To give you an idea of how each International Council member has determined her own role, I will briefly explain some of their personal priorities for this biennium. I must add that each Council member's responsibilities far extend the few priorities I mention here, but perhaps you can gain some knowledge of what each Council member's role involves by the following:

Alumnae Vice President— Camille A. Cestone

1. Strengthen and develop services and alumnae/collegiate relations.
2. Continue to develop the rush recommendations network.
3. Actively encourage alumnae group revitalization and extension. Increase and improve our alumnae opportunities for sisterhood.
4. Develop recent graduate/young alumnae membership interest.

Collegiate Vice President— Linda Daniel Johnson

1. Study collegiate environment for the next 2 to 4 years in such areas as declining enrollment and non-traditional students.

2. Maintain and strengthen collegiate chapters by supervising and motivating.

3. Concentrate on rush programs, leadership training, self-esteem and pride.

Financial Vice President— Susan Genskow Mayer

1. Locally, ensure that houses are full and find financial advisors for every chapter.

2. Develop International Officer structure within the Financial Department so that all chapters and members are represented capably.

3. Execute financial planning—budget and balance sheet; long and short term.

4. Continue risk management development.

MEMBER-at-LARGE— Cinda Keating Lucas

1. Evaluate the first year of chapter programming and develop the second year.

2. Develop programming for collegiate department.

3. Work with Vice Presidents to fulfill their department needs.

4. Develop Leadership Training agendas for International Officers and for Convention and Leadership Training School.

National Panhellenic Conference (NPC) Delegate—

Betty Ahlemeyer Quick

1. Provide each member of the NPC delegation with collegiate chapters for guidance and support in the area of Panhellenic.

2. Support and promote Gamma Phi Beta alumnae Panhellenic involvement.

3. Provide NPC education for all Gamma Phis, including International Officers and collegiate and alumnae chapter members.

Executive Director— Marjory Mills Shupert

1. Refine International Headquarters.

2. Integrate into the staff and help define the new roles of Foundation Director and Foundation Administrative Assistant.

3. Continue to develop the Gamma Phi Beta archives.

4. Increase staff proficiency at International Headquarters.

International President— Diane Tjaden Thompson

1. Support all International Council members in their individual departments.

2. Coordinate International Council.

3. Listen.

4. Promote Gamma Phi Beta to members, to other Greeks and to the non-Greek community.

5. Support Gamma Phi Beta programs.

International Council—

1. Encourage communications within Gamma Phi Beta.

2. Identify and encourage potential leaders as International Officers.

3. Remind our members of their constant opportunities to support Gamma Phi Beta.

4. Be ever-mindful and accountable to the members who elected us.

These priorities are right on target with today's trends and with our responsibilities to Gamma Phi Beta's role in the Greek community. International Council members are committed to making our sorority be the best that it can be as we prepare for the 21st Century. We look forward to serving Gamma Phi Beta during the 1992-94 biennium.

I challenge all of our members, collegiate and alumnae, to remind themselves of their accountability to Gamma Phi Beta. It may be a word that is currently popular but it is a concept that we all learned as pledges. We ARE Gamma Phi Betas and it is with pride that we find our own way to be accountable to ensure our Sorority's future.

CONTENTS

DEADLINES

Winter September 1
Spring December 1
Summer March 1
Fall June 1

EDITORS

Editor

Stephanie Hearn
12737 E. Euclid Drive
Englewood, CO 80111-6445

Alumnae/Collegiate News Editor

Phyllis Donaldson Choat
2116 S. 113th Avenue
Omaha, NE 68144

Business Manager

Marjory Mills Shupert
International Headquarters

FEATURES

Convention Highlights 4
More than 700 Gamma Phi Betas met in St. Louis last July for the 65th International Convention.

Epsilon Chi Chapter Installed at Marquette University 10
The Gamma Phi Beta Charter was presented to the Epsilon Chi Chapter April 11, 1992.

1992 Circle of Excellence Awards 18
Gamma Phi Beta congratulates the alumnae chapters that have received awards of excellence for 1992.

Foundation Awards Scholarships 24
The Gamma Phi Beta Foundation proudly announces their scholarship and fellowship recipients for the 1992-93 academic year.

Breast Cancer Knows No Boundaries 27
Laura Gray Allen (Bowling Green) tells of her personal struggle with breast cancer.

DEPARTMENTS

Alumnae News 12
Collegiate News 14
Profiles 16
In Memoriam 20
Memorial Gifts 22
Crescent Classics 29
Etcetera 31

THE CRESCENT OF GAMMA PHI BETA Winter 1992-93

Gamma Phi Beta USPS
137-620

THE CRESCENT is published quarterly in Fall, Winter, Spring and Summer by the Gamma Phi Beta Sorority, Inc., 12737 E. Euclid Drive, Englewood, CO 80111-6445. Subscription price-\$6.00. Produced in the U.S.A. by Maury Boyd & Associates. Second class postage paid at Englewood, CO and additional mailing offices. Copyright 1993, Gamma Phi Beta Sorority.

Postmaster: Please send notice of undeliverable copies on Form 3579 to Gamma Phi Beta Sorority, 12737 E. Euclid Drive, Englewood, CO 80111-6445.

Subscribers: Send changes of address, notices of marriages and deaths to Gamma Phi Beta Sorority, 12737 E. Euclid Drive, Englewood, CO 80111-6445.

COVER

Gamma Phi Beta's 65th International Convention was held in St. Louis July 21-25, 1992.



Four months before her wedding, Laura Gray Allen discovered she had breast cancer.

See page 27.



Awards

Hall of Fame for overall excellence

Northern Virginia

Outstanding Alumnae Chapter Service

Chicago NW Suburban, Illinois

Denver, Colorado

Stillwater, Oklahoma

Clara Worden Award for membership increase

Pasadena, California—1989-90

Jacksonville, Florida—1990-91

Chicago Award for sisterhood

Evansville, Indiana

Community Service

Kansas City, Missouri—large chapter

North Houston, Texas—small chapter

Special Girl

Dallas, Texas

South Jersey—

honorable mention

Newsletter Award

St. Louis, Missouri

Scrapbook Award

St. Louis, Missouri

Pollack Award

St. Louis, Missouri

Collegiate

Mary A. Bingham Award for overall excellence

Omega, Iowa State University

E. Adeline Curtis Award for sisterhood

Gamma Kappa, University of Nebraska-Kearney

McCormick Medallion Award for activities

Psi, University of Oklahoma; and Alpha Epsilon, University of Arizona (for chapters on campuses with more than 12,000 students)

Theta, University of Denver; and Xi, University of Idaho (for chapters on campuses with less than 12,000 students)

Helen M. Dodge Award for outstanding advisor

Gretchen Oostenink (Iowa), chapter advisor to Delta Tau, Colgate University

Outstanding Advisory Board

Delta Psi, University of California-Santa Barbara

Collegiate/Alumnae Relations

Epsilon Tau, University of Rochester, and Rochester, New York

CONVENTION

Convention *The Highlights*

Bill Clinton and the Atlanta Braves weren't the only VIPs in St. Louis last July. The Gateway to the West also hosted more than 700 Gamma Phi Betas attending the 65th International Convention July 21-25.

From 6:30 a.m. aerobics and information-packed workshops to delicious meals and



inspirational award ceremonies, the 1992 Convention was a time for Gamma Phis to share their spirit and pride.

And, of course, many attendees said their favorite part of Convention was reuniting with old friends and making new Gamma Phi Beta friends across the country. And with the exciting schedule of events there was plenty of time for that . . .

The Convention was off to a roaring start with a Province dinner featuring St. Louis fare—pizza, ravioli, custard and hoagies complete with St. Louis Cardinal red decorations.

The informal dinner was followed by creative poster-making and a write-a-thon where collegians wrote to more than 700 alumnae reminding them about annual

giving to the Gamma Phi Beta Foundation. This effort brought in more than \$3,000 in donations for the Foundation.

The business session on Wednesday began with the presentation of chapter flags and the introduction of new chapters, followed by a message from the presiding International President, Jolene Lessard Stiver (N. Dakota St.).

Joey shared the vision of Gamma Phi Beta, the conceptual issues, the esoteric elements that make Gamma Phi Beta an organization that is moving back to the future. She explained that we need to explore and discuss our vision so that the issues of tomorrow are addressed as thoroughly and specifically as the issues and challenges of today.

"Why do we have this vision?" Joey asked the Convention body. "Why don't we just focus on today and our own chapters instead of international Gamma Phi Beta? Because we are LEADERS and leaders have VISION."

In addition to Joey's motivational address, Gamma Phis were treated to many others during the week. At the Public Relations luncheon Maureen Sweeney Syring, a member of Delta Gamma sorority, spoke on "Greek Image . . . Do We Really Care?" She sent a powerful message to all Greeks that people will not always believe what you say, but they will believe what you do.

"Greeks are in it together," Syring said. "What other Greek organizations do affects Gamma Phi Beta."

Dr. Richard P. Keeling, Di-

rector of the Department of Student Health at the University of Virginia, spoke on "Self Esteem, Health and Decision Making" at the Panhellenic/Legacy Luncheon.

Keeling used slides of advertisements to illustrate how contemporary ideas are influenced by the media. He stressed having enough confidence in yourself to make the right choices. Do what you know is right—not just what everybody else is doing, he emphasized.

But the week involved much more than sitting and listening. With the usual Gamma Phi flare, the Confirmed Conventioneers dinner, held on the "Belle of St. Louis" on the Mississippi River was a festive evening of singing, parading, laughing and, again, meeting and getting to know more Gamma Phi Betas.

Before meals and between workshops and business sessions Convention attendees had the opportunity to enjoy the Boutique, now a tradition at Gamma Phi Beta Conventions. The lovely display of Crescent Classics merchandise and other special Gamma Phi items made by collegiate and alumnae chapters was conveniently set up right in the hotel.

The week culminated with the elegant Pink Carnation Banquet that featured a video of the International Headquarters groundbreaking and dedication. As sisters left the ballroom that evening with a music box specially made for the St. Louis Convention, everyone was sure to "Remember Gamma Phi Beta."



The Vision

Joey outlined the vision of Gamma Phi Beta as the following:

- To develop the highest type of womanhood.
- To provide members with all we can to enhance their lives and the lives of those they touch.
- To have the financial stability to increase the prestige of Gamma Phi Beta.
- To be what we say we are in our ritual.
- To provide leadership opportunities for our members for a lifetime.
- To be a major force in the Greek world.
- To be responsive to today and the trends of the future as we cherish the past.
- To have a structure that gives our members opportunities for involvement in their busy lives.
- To make a statement to our members, to administrators, to the community and to the world about the power and wonderment of women and of Gamma Phi Beta.
- To supplement formal education with practical experiences to be used tomorrow.
- To live the ritual in our daily lives.
- To provide the opportunity of membership to women of all ages, cultures, races and backgrounds.
- To have the financial stability to establish more Gamma Phi Beta alumnae groups and collegiate chapters so that more women may experience the gift of Gamma Phi Beta.
- To promote excellence in all that we do, to have pride in all that we do and to have the belief that we can and will achieve both.
- To be campus and community leaders.
- To demonstrate sisterhood in every thought and deed and to respect each other.
- To be tolerant of our humanness.
- To accept the responsibility for Gamma Phi Beta's future by expecting excellence.
- To strive for team effort on every level.
- To know that what we do we do for the good of Gamma Phi Beta.



The Foundation banquet climaxed with the raffle drawing for the "Pot of Gold," the value of which kept rising during the evening as more and more raffle tickets were purchased. Karen Scarlett (Gettysburg) was the lucky winner of \$9,110.

The Gamma Phi Beta Foundation thanks the following alumnae and friends for their donations to the 1992 Foundation Convention Raffle. Due to the outstanding items donated and the support of those attending the Convention, the Foundation raised more than \$23,000 at the Foundation dinner.

Ames Alumnae Chapter
Audio-Visual Wholesalers
Alison Shafer Bond (Missouri)
Marta Lombardi Brown (Boston)
Brown Bag, Inc.
Checkbook Expressions
Chess Data Communication
Peripheral Specialists
Chiquita Brands International
'92 Convention Committee
Paula Janis Dean (Memphis St.)
DJR Enterprises
Denver Tech Instant Print
Development Dynamics Group
Educational Resources Funding
Barbara A. Endres (N. Dakota)

Gamma Phi Beta International
Headquarters
Judy E. Graham (Oklahoma)
Bonnie Klund Hana (Missouri)
Joyce E. Hatch (Rutgers St.)
J.C. Penney
J.O. Pollack Company
Sally Erikson Lewis (Bradley)
Rene E. Matz (Cal. St.-Fullerton)
Miller & McCullom Accountants
PACE Warehouse
Riverside Alumnae Chapter
Kari Nelson Skahill (San Diego St.)
Angela Patrone Wright (San Diego St.)

Rocky Rococo Pizza
Marlynn Lee Rumm (Lamar)
St. Louis Alumnae Chapter
Singer Marketing
South Bay Alumnae Chapter
Carol Buchmueller Stelmach (Missouri)
Stillwater Alumnae Chapter
Jeanne Koch Swallow (Washington)
Mary Agnes Welsh (Memphis St.)
West Photo/Pakor Company, Inc.
Jerra Bachman White (Kansas St.)

Awards

Continued from page 4

Most Improved Collegiate/Alumnae Relations

Gamma Tau, St. Louis University, and St. Louis, Missouri

Delta Chi, California State University-Sacramento, and Sacramento, California—honorable mention

Newsletter to Alumnae

Delta Upsilon, University of Georgia

Efficiency Award

Sigma, University of Kansas Nu, University of Oregon—honorable mention

PACE Programming

Beta Gamma, Bowling Green State University
Epsilon, Northwestern University—honorable mention

Lillian Thompson Award for Panhellenic

Michelle Griffing (Arizona)

Panhellenic Leadership

Beta Sigma, Washington State University
Epsilon Theta, Clemson University—honorable mention

Panhellenic Spirit

Delta Delta, California State University-Fullerton

Community Service

Epsilon Gamma, University of San Diego

Alpha Beta, University of North Dakota

Omicron, University of Illinois—honorable mention

Epsilon Nu, Chapman College—honorable mention



Pollack Award for philanthropy

Alpha Omega, University of Western Ontario

Special Girl Award for camping

Delta Chi, California State University-Sacramento



Awards

Continued from page 5

Excellence in Pledge Programming

Epsilon, Northwestern University

Outstanding Local Pledge Manual

Tau, Colorado State University

Alpha Upsilon, Pennsylvania State University

Beta Rho, University of Colorado—honorable mention

Most Improved Public Relations

Alpha Gamma, University of Nevada



Staci Baldwin and Kai Wha Chen accept the Most Improved Rush Award for their chapter at the University of California-Irvine.

Outstanding Administration Faculty Relations Award

Gamma Beta, Gettysburg College

Most Improved Rush

Delta Eta, University of California-Irvine

Delta Lambda, University of California-Riverside—honorable mention

Chancellor E.O. Haven Award for highest chapter GPA

Epsilon, Northwestern University

Most Improved Scholarship

Alpha Xi, Southern Methodist University

Scholastic Excellence

Delta Tau, Colgate University

Delta Mu, Rutgers State University

Alpha Nu, Wittenberg University

Beta Epsilon, Miami University

The Awards

Hall of Fame Award

Northern Virginia Alumnae Chapter received the prestigious Hall of Fame Award for demonstrating 10 years of excellence in service, participation, philanthropy, efficiency and collegiate/alumnae relations.

The Northern Virginia Chapter has supported Gamma Phi Beta's camps as well as local camping as part of its community service for many years. They fill Christmas stockings for a local training center in addition to donating money to provide local scholarships, a new piano, swimming pool, nature trails and a special bus.

Northern Virginia has been represented at Convention for more than 16 years. In addition to international support, they lend support for three collegiate chapters by providing advisors, house corporation boards, initiation robes and even pots and pans!



Linda Mathiasen (Chicago NW Suburban), Paula Choplin Shryock (Stillwater, Oklahoma) and Kitty Curtis Sweeney (Denver) accept Outstanding Alumnae Chapter Service Awards for their respective alumnae chapters.

Helen M. Dodge Award

Gretchen Meier Oostenink (Iowa), chapter advisor, received the Helen M. Dodge Award for providing outstanding guidance and support to Delta Tau Chapter at Colgate University.

From the time the Delta Tau Chapter was colonized, Gretchen was there. She provided that special link between Gamma Phi Beta Sorority and the local sorority turned colony. She helped start the House Corporation Board functioning and has been instrumental in the upkeep and quality of living in the chapter house.

Gretchen attends all executive board and chapter business meetings. Not only is she present at chapter functions but she also represents Gamma Phi Beta at campus alumnae advisory meetings.

An invaluable asset to our Sorority, Gretchen saw Colgate through two tumultuous years on campus and had the perseverance to wade through reports, position statements, rumors and innuendos that surfaced while the Greek system's worth was being challenged by the faculty and administration.

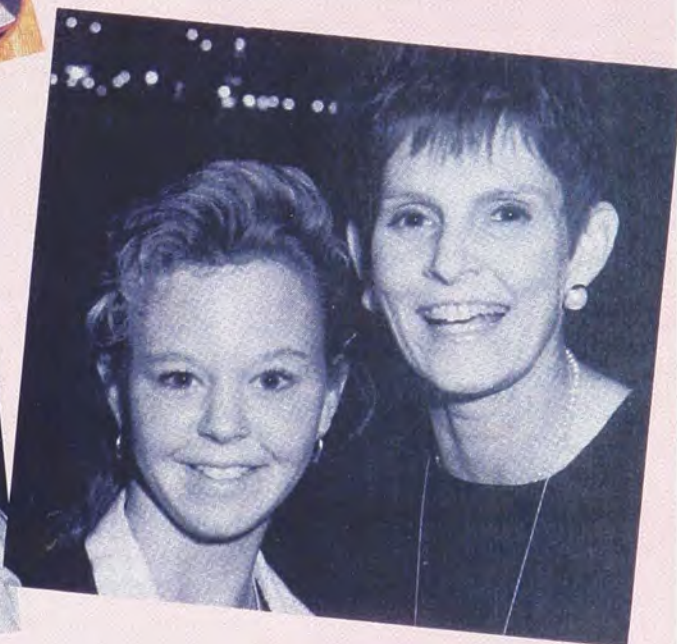


Terri McMurray Nieser, president of the Houston Alumnae Chapter, accepts the 1992 PACE award for her chapter.





Alison Shafer Bond (Missouri) was chairman of the Convention committee.



Awards

Continued from page 6

Gamma, University of Wisconsin—Madison
Beta Omicron, Oklahoma City University
Theta, University of Denver
Alpha Phi, Colorado College
Lambda, University of Washington
Eta, University of California—Berkeley
Alpha Theta, Vanderbilt University
Pi, University of Nebraska—Lincoln
Gamma Kappa, University of Nebraska—Kearney
Alpha Iota, University of California—Los Angeles
Delta Psi, University of California—Santa Barbara
Epsilon, Northwestern University
Omicron, University of Illinois
Epsilon Epsilon, Union College

Scrapbook Award

Delta Psi, University of California—Santa Barbara

Most Consistent Reporting to THE CRESCENT

Delta Delta, California State University—Fullerton
Greater Kansas City, Missouri

Editor's Award for outstanding contributions

Christy Matthews and Michelle Van Sant (UC—Santa Barbara)

Financial

House Corp. Board/ Collegiate Relations

Gamma Eta, California State University—Long Beach
Psi, University of Oklahoma

Most Improved Collegiate Relations

Beta Beta, University of Maryland

HCB Efficiency

Psi, University of Oklahoma

E. Adeline Curtis Award

Gamma Kappa Chapter at the University of Nebraska—Kearney was honored to receive the E. Adeline Curtis Award for sisterhood, friendship, cordiality, concern and consideration for others.

Gamma Kappa members believe that their strong sisterhood is the foundation of their chapter. From the beginning of pledgship, sisters conform to high standards of behavior, friendship and caring. Sisters are recognized for outstanding achievements.

Visitors to this chapter are quick to see the strength of mutual respect and friendship exhibited by its members.

Mary A. Bingham Award

Iowa State University's Omega Chapter of Gamma Phi Beta was the proud recipient of this biennium's Mary A. Bingham Award for consistently demonstrating overall chapter excellence in the areas of rush, chapter programming, scholarship, leadership, efficiency, ritual, Panhellenic participation and community and philanthropic activities.

Omega's scholarship efforts have been recognized by Iowa State University with an award for Outstanding Scholarship programs. The chapter actually pays for half of the tutoring costs for its members.

Much of the chapter's philanthropic endeavors have involved local children's charities. They have received awards from the university for Outstanding External Relations, as well as awards for Fraternal Excellence and Outstanding Chapter President.



The Elections



Seated: Diane Tjaden Thompson. Standing, left to right: Camille A. Cestone, Susan Genskow Mayer, Betty Ahlemeyer Quick, Linda Daniel Johnson, Marjory Mills Shupert, Cinda Keating Lucas.

International Council

International President—Diane Tjaden Thompson
(Iowa St.)

Alumnae Vice President—Camille Antoinette Cestone
(Bowling Green)

Collegiate Vice President—Linda Daniel Johnson
(Vanderbilt)

Financial Vice President—Susan Genskow Mayer
(Minnesota)

Member-at-Large—Cinda Keating Lucas (USC)

The National Panhellenic Conference Delegate is now also an International Council position and Elizabeth Ahlemeyer Quick (Indiana) has been appointed for this biennium.

Marjory Mills Shupert (Colorado St.), Executive Director, is also a continuing appointed member of International Council.

Endowment-Loan Board

Judy E. Graham (Oklahoma)
Sandra Rettke Nauman (Arizona)
L'Cena Brunskill Rice (USC)
Barbara Missert Wessel (Syracuse)

Also serving on the E-L Board by virtue of their International Council positions are Susan Genskow Mayer, Diane Tjaden Thompson and Marjory Mills Shupert.

Nominating Committee

Area I (Provinces I, III, IV)
Delegate: Gretchen Meier Oostenink (Iowa)
Alternate: Fran Berrigan (McGill)

Area II (Provinces II, VIII, XIV)

Delegate: Leona Davis Drouet (S. Methodist)
Alternate: Lynn Towsley White (Colorado)

Area III: (Provinces V, VI, XV)
Delegate: Mary Agnes (Magnes) Welsh (Memphis St.)
Alternate: Frances Rea Griffin (Texas)

Area IV (Provinces VII, IX, X)
Delegate: Karen Wander Kline (Iowa St.)
Alternate: Judy Hubbard White (Kansas St.)

Area V (Provinces XI and XVI)
Delegate: Linda Hallenbeck Pelegrino (Calif. St.—Long Beach)
Alternate: Lois Kirchner Abbott (San Jose St.)

Area VI: (Provinces XII and XIII)
Delegate: Merry Greig Wong (San Diego St.)
Alternate: Sharon Reisig Green (Colorado St.)



The Bylaws

Bylaw Amendments

- A pledge shall be eligible for initiation, provided she has met the academic requirements for good standing determined by the college or university administration.
- Alumnae Initiates may be initiated after receiving **Sorority** education . . . [changed from "pledge education"].
- The officers of the Greek-letter chapter shall include: president, administrative vice president, financial vice president, member education vice president, membership vice president, public relations vice president, Panhellenic delegate, recording secretary, corresponding secretary, activities chairman, collegiate-alumnae relations chairman, THE CRESCENT correspondent, historian, house manager, PACE chairman, parliamentary-censor, philanthropy chairman, pledge chairman, ritual chairman, scholarship chairman, social chairman and standards chairman. Other officers may include alternate Panhellenic delegate, assistant financial vice president, magazine chairman, SisterLink chairman and song chairman.
- All alumnae chapters and crescent circles may assist Greek-letter chapters.
- Any affiliated house corporation or trust shall be managed and directed by a house corporation board composed of alumnae directors or trustees and, as

long as the related local Greek-letter chapter is active, at least two representatives of the local Greek-letter chapter as voting ex-officio members of such board.

- If the charter of the related Greek-letter chapter is surrendered or revoked, the affiliated house corporation or trust shall, if requested by the International Council to do so, promptly elect or appoint as additional directors or trustees of the house corporation or trust, with full voting rights, those alumnae members of the Sorority designated by the International Council. An allowance was made for house corporations to retain titles to property should tax implications make it burdensome for the Sorority to assume.
- All International Officers' appointments shall be made by the International Council by August 1 in the off-Convention year with the following exceptions: Parliamentary, Convention Coordinator and THE CRESCENT Editor.
- Province bylaws and dues are no longer required.
- The National Panhellenic Delegate will again be a voting member of International Council.
- Collegiate annual international dues will be increased to \$60 per year beginning fall of 1992 (paid in two equal installments during the year) and \$70 beginning fall of 1993 (also paid in two equal installments during the year).
- House corporation boards will pay an annual publications and forms fee of \$25.
- Insignia for the Honor Roll, the Carnation Award and the 75-year Award have been established.
- Bylaw amendments will be provided to all chapters four months before Convention.
- International Council members are not eligible for the Loyalty Award while in office.
- Serious consideration will be given to selecting at least one collegian, preferably a Gamma Phi Beta, as a main Convention speaker.
- The International Council will study the membership policies regarding graduate, fifth year and sixth year students.
- A position will be established to oversee and advise Canadian chapters on issues specifically related to Canada.
- The International Council shall study alumnae participation in developing a financial solution, including increasing the alumna international dues by \$10; and direct the bylaws committee to develop an amendment, if appropriate, for consideration at the 1994 Convention.
- The International Council will study the seating of crescent circles and alumnae chapters with less than 12 members, as

delegates to International Convention, and direct the bylaws committee to develop an amendment, if appropriate, for consideration at the 1994 Convention.

- An objective forum shall be created at Convention for presenting bylaw amendments.
- An Ad Hoc committee will be appointed by International Council to study the nominating procedures.

Be it resolved that . . .

- Serious consideration will be given to selecting at least one collegian, preferably a Gamma Phi Beta, as a main Convention speaker.
- The International Council will study the membership policies regarding graduate, fifth year and sixth year students.
- A position will be established to oversee and advise Canadian chapters on issues specifically related to Canada.
- The International Council shall study alumnae participation in developing a financial solution, including increasing the alumna international dues by \$10; and direct the bylaws committee to develop an amendment, if appropriate, for consideration at the 1994 Convention.
- The International Council will study the seating of crescent circles and alumnae chapters with less than 12 members, as



EXTENSION

Leslie Boyer lead the songs at the Initiation Banquet and Leigh Wedell, President of the Marquette Gamma Phi Chapter, was selected as the "Most Outstanding Pledge" by her sisters.



The Milwaukee Alumnae chapter hosted a senior induction ceremony.



Epsilon Chi Installation at Marquette University



Newly initiated members of the Epsilon Chi Chapter celebrated at their Installation Banquet April 11, 1992.

By Margo Wimer
(Georgia)

On April 11, 1992 Gamma Phi Beta welcomed its newest chapter, Epsilon Chi, into the bonds of sisterhood. Only three months earlier the Gamma Phi Extension team had traveled to Marquette University in Milwaukee, Wisconsin to make their presentation to a local sorority, Zeta Epsilon Xi. The women selected Gamma Phi Beta within 30 minutes and the team began working on rush right away.

The next two weeks were a whirlwind of teaching the new pledges how to recruit new members through rush parties.

Once pledging was finished, the young women spent hours dedicating themselves to learning the philosophies and traditions on which their new Sorority was founded. The pledges participated in many campus, Greek and Sorority events throughout the semester. The chapter was honored during Greek Olympics week for having the second highest sorority grade point average during their last semester as Zeta Eps and were extremely spirited during the Greek Olympics weekend. The women were also very interested in Gamma Phi's philanthropic activities and had a "Founded-Upon-a-Rock-a-Thon" to raise money for Camp Sechelt.

After all the social, philanthropic and educational events wound down, the women were ready to begin Inspiration Week. The group met every night to prepare for initiation and installation.

The new chapter also received support from the Milwaukee Alumnae Chapter. Local alumnae helped with installation, rush and even conducted a senior induction ceremony.

The women of Gamma Gamma Chapter at the University of Wisconsin-Milwaukee had the honor of performing the beautifully orchestrated initiation ceremony. Representing International Gamma Phi Beta at the Installation Banquet were Frances Rea Griffin (Texas), Financial Vice President; Camille A. Cestone (Bowling Green), Alumnae Vice President; Audrey Weldon Shafer (Missouri), International Ritual Chairman; Chris Amos (Bowling Green) and Margo Wimer (Georgia), Collegiate Leadership Consultants.

Charter initiates of Epsilon Chi Chapter are: Lynn Amore, Monica Bergschultz, Sally Best, Lesley Boyer, Amy Casper, Colleen Dupies, Pam Fryjoff, Susan Hull, Lorelee Itrich, Tina Jesse, Sherry Knutson, Jennifer Lay, Lara Leaf, Catie Lukas, Brenda Miller, Hilary Mills, Jennie Murphy, Marie O'Halloran, Edie Olinger, Michelle Organ, Debbie Paris, Caryn Proesel, Nikki Rasmussen, Linda Sears, Jenna Schoenwetter, Leona Swieton, Beth Toth, Leigh Wedell and Sung Un Yi. Kim Devlin and Chris Lukas were initiated as alumnae.



You are cordially invited

to attend the

Installation Banquet

Epsilon Chi Chapter of Gamma Phi Beta

Marquette University

Milwaukee, Wisconsin

April 11, 1992

Milwaukee Athletic Club

Milano Room

758 N. Broadway

Milwaukee, Wisconsin

7:30 p.m.

ALUMNAE NEWS

Arizona State's house board receives high marks for its work on the chapter's newly furnished sorority floor. Alumnae also supported the chapter during rush. In appreciation, the chapter held several events with their alumnae during the semester.

The **St. Louis Alumnae Chapter** was delighted to host the hundreds of sisters who chose to "Meet Us in St. Louis" at the 65th International Convention in July.

Fall activities included visiting Camp Wyman and celebrating Gamma Tau's 25th birthday at Founder's Day.

Denver alumnae have accepted the challenge to attract 650 area sisters to participate in at least one event in the next two years. Activities will include a new lecture series and a prom (just for fun).

Audrey Farrar Scheller and Betty Brock Davis brought together 39 **Beta Alpha** alumnae from the years 1941 to 1949 at a luncheon at the Long Beach Yacht Club. Sisters came from as far away as Kansas and Washington, and others from Arizona and Northern California.

Just two years ago, the **Naples Area Crescent Circle** started with 20 members. Now 42 of the 79 sisters in the area are dues-paying members! At their April picnic luncheon, they made 38 ditty bags for Camp Sechelt. With an average attendance of 25, they report great involvement. Gamma Phis spending the winter in the area are invited to contact Barbara Nicholson Conklin, chairman.

Even Hurricane Andrew couldn't stop **South Florida Alumnae** from helping to colonize at the University of Miami. With a new chapter to assist, Miami alumnae are searching for new members in the area. If you're interested, please contact Nancy Anderson at (305)235-4552.

San Diego Alumnae Chapter members found themselves literally buried in copper during their first Penny Roll held after the September Potluck Salad and Muffin luncheon. Members rolled 4,050 pennies that will be placed in the chapter's camper-ship fund.

The **San Diego** alumnae welcomed Beta Lambda members back to school with an old-fashioned ice cream social.



Syracuse sisters reunite to share tears, fears and joys of the 37 years that have passed since they were together last.

Reunion—the tie that binds

By *Sonia Dalrymple*
(Syracuse)

Last June, nine members of Alpha Chapter had the unique opportunity to renew old friendships. Some of us had not seen each other for 37 years!

We met at Jean Jackson Budden's home on the shore of Walloon Lake in northern Michigan. In those amazing five days together, we became girls once more. We watched videos from

our college years and saw our young selves come alive before our eyes.

What struck us most, amid the myriad of surprises and reminiscences, was that we had not changed as far as the love, the tie that bound us as Gamma Phis. That closeness was still there, immediately apparent, the never-ending circle. It was a tremendous comfort in such a complicated world!



USC sisters that graduated between 1941 and 1949 gathered for a reunion.



A mother and daughter team, Nancy Schieck Banfield and Jeannette Banfield, from Marin County decorate pillowcases for Camp Sechelt.

Philadelphia West Suburban, Philadelphia North Suburban and Princeton Area Alumnae Chapters sent a gift to the Gamma Phi Beta Foundation Leadership Development Endowment in honor of the new chapter.

Atlanta alumnae enjoyed outings to the zoo, a baseball game and the theater. They also heard an update on the '96 Olympics and a speaker on nutrition. The year ended with a luau at the home of Barbara Hurt-Simmons (Nebraska-Kearney).

Bloomington, Indiana alumnae have undertaken a fundraising project to replace worn furniture, wallpaper and draperies at the Beta Phi Chapter house. Donna Arnold Smith (Kansas) is chairing the fund drive.

The initiation dates of the members of the **Ft. Myers Alumnae Chapter** span 75 years. Louise Franciscus (Goucher College—1916) is an active participant among the 14 Golden Crescent members. The chapter recently added two 25-year members and is looking forward to welcoming four recent graduates.

The **Tucson Alumnae Chapter** welcomed its first alumnae initiates, Sue Lauer and Susan Rosenberg. Sue is the mother of Alpha Epsilon's past president and Susan had been a Gamma Phi Beta pledge 15 years ago.

Following a dinner at the home of Jamie Wells Behrendt (UC-Berkeley), the **Marin County** alumnae tested their creativity by using fabric paints to decorate pillowcases for Camp Sechelt. They also had a couples' barbecue over the summer.

Southwest Texas State alumnae who graduated during the 1980s met for a luncheon and raised more than \$1,000 for the Gamma Phi Beta Foundation to celebrate the pending reorganization of their chapter.



Southwest Texas State alumnae met for lunch.



After nine months of hard work by Province II Alumnae Director, Doris Bird Gorden (Bowling Green), and area alumnae the **New Brunswick, New Jersey Alumnae Chapter**

Fantastic table decorations, health and happiness through laughter, crime prevention and Gamma Phi trivia were some of the innovative programs enjoyed by **Houston**, the 1992 PACE Alumnae Award winner.



Sue Lauer and Susan Rosenberg (center) experience the joys of being alumnae initiates in Tucson.

The 1947 pledge class from **Sigma Chapter** at the University of Kansas held its third annual reunion in Omaha at the home of Georgianne "Danny" Dutton Colladay. Danny's husband, Martin, a retired three-star General and former Chief of Staff at Offutt Air Force Base, gained entrance for the Gamma Phis to visit StratCom.

Gamma Phi songs, lots of pink carnations and balloons and a special cake helped make the 35th anniversary luncheon of the **Duluth Alumnae Chapter** a festive occasion. Province Alumnae Director Melanie Joe Mogg (Mankato) presented the Golden Crescent award to Carol Cecil Oleson (Michigan).

The **Albuquerque Alumnae Chapter's** Birthday Club helps support a day care center for the children of homeless parents who are looking for a job or taking job training. The Birthday Club sends each member a card on her birthday and asks for a donation to help the center. The chapter holds a "shower" once a year and members bring diapers, juice, paper goods and laundry detergent for the day care center.

Sixteen **Texas** alumnae who graduated between 1937 and 1943 met for a mini-reunion in Arlington. They came from across the state and many had not seen each other for 50 years!

COLLEGIATE NEWS



A "LUVNPKE" license plate captures the attention of Iowa State sisters.

Gamma Phis at **Nebraska-Lincoln** teamed with a fraternity to win second place in the annual Best Non-Alcoholic Party Contest. As winners, they received money to host a non-alcoholic party next year.

Alpha Epsilon collegians continued a five-year winning streak by winning Best Overall Entertainment Booth and Best Facade during Arizona's "Springfling," a large student-run carnival. Together with Sigma Phi Epsilon they spent countless days writing and rehearsing a 50-minute skit filled with singing, dancing and comedy. The university audience loved the show as did nursing home residents and handicapped children.

Chico State sisters organized an "MTV-Remote Control" game for the third annual Fun without Alcohol Fair. Winning the all-day scavenger hunt to benefit the Salvation Army and the bed race helped the chapter take third place in Greek Week.

For the fourth year in a row, **University of North Dakota** collegians won Greek Week. Highlights included winning the philanthropy car wash and the banner contest. They invited more than 250 area alumnae to their first alumnae barbecue that took place on the last day of Senior Celebration Week. The annual Balloon Sale, bake sale, two retreats, and a fundraiser that brought in more than \$1,000 for Gamma Phi Beta's Camp Sechelt rounded out their schedule.

Gamma Phi sisters at **Kansas State** celebrated their 35th anniversary with a day full of fun and activities. Alumnae enjoyed a tour of the chapter house and a slide show featuring sisters past and present. The evening included dinner and a dance.

Oregon State's all-chapter retreat included an afternoon of games in a park, pizza, a light-hearted awards ceremony, and all-night movies.

Rutgers alumnae and collegians held their annual Delta Beta Psi picnic to celebrate when the local sorority pledged Gamma Phi Beta. Alumnae enjoyed meeting the new pledges and sharing stories about being the first national sorority on campus.

University of Oregon sisters welcomed their new house-mother, Anne Baldwin, from Montana.

Bradley collegians thank Puget Sound for the idea of the Founded Upon a Rock, Rock-a-Thon. They borrowed rocking chairs and rocked the night away on their front porch. They earned \$1,400 for cerebral palsy by collecting pledges for time spent rocking. In return for a job well done, the chapter received a plaque from the United Cerebral Palsy Foundation. The chapter has a special interest in Cerebral Palsy because one sister's brother has the disease and he is a special friend to the Bradley chapter.

Bowling Green won "Most Spirited" and "Best Group Act-Female" during Greek Week. They hosted a luncheon for their parents and honored the seniors with a fireside and a cookout. They began participating in "Adopt a Highway," an environmentally focused community service project. The chapter was excited to receive new letters and a sign for their house.

Mother's Weekend, Senior Appreciation Week, the initiation dance and the "turtle derby" kept **Idaho** collegians' calendars full. As community service, they helped clean up a highway and a creek.



Leigh Ann Martello and Kathy Durand hold Chico State's Homecoming Spirit Award.

Coeur d'Alene Lake in Idaho was the scene of **Washington State's** spring formal cruise. The chapter had so much fun that they returned to the lake for their all-house retreat. Paddleboats, food and games made the sunny day one to be remembered. Firesides and a formal dinner were the highlights of the Senior Week.

Syracuse sisters have been swinging their partners at a nearby nursing home. As part of a wheelchair square dancing program, the Alpha Chapter members help the residents do-si-do and promenade in their wheelchairs as a caller recites the calls. The event is popular because of the interaction on and off the floor between the Gamma Phis and the residents. When it's time to leave, almost everyone is clapping their hands or tapping their toes.

Boston sisters returned to their childhood at their "All I Ever Needed to Know I Learned in Kindergarten" retreat. They held department meetings during "Homeroom" and talked about "What they wanted to do when they grow up," otherwise known as goal setting. After "Snack Time" they practiced Greek games during "Recess" and ended the day with "Show and Tell."

UC-Irvine's philanthropy and spirit awards helped them win third overall in the Greek Songfest. Being named the Outstanding Greek Organization was their biggest accomplishment. They were also recognized for community service and for helping to raise \$250,000 for a pediatric AIDS Foundation.

UC-Los Angeles collegians combined philanthropy and sisterhood when they spent an enjoyable afternoon cleaning up the environment at Will Rogers State Beach.

Seniors at **San Diego** kept busy by hosting a barbecue for the pledges and by modeling the latest styles during their Mother's Day Luncheon. Chapter activities included the Pearl Ball, Big-Little Sister Week, a date party and perfecting their new "Little Mermaid" rush skit.

A "Mourner's Dinner" during Dead Week motivated **Florida State** sisters to study hard for exams. The chapter's top scholars and faculty advisor were guests for dinner at the university president's home.

Elaborate props and decorations and live plants greeted rushees at the chapter's new Luau Day. A beach retreat helped pledges and initiated members get acquainted. The chapter printed its first newsletter to help increase communications between the chapter and alumnae.

Wichita State sisters prepared a home-cooked meal for the Wichita State Shocker Baseball team and bowled for Big Brothers/Big Sisters.

Missouri collegians helped with games, handed out balloons, served food and were buddies to the participants in the Mid-Missouri Special Olympics. Moonball Volleyball, a sand volleyball tournament raised more than \$11,000 for the local diabetes chapter, including sending diabetic children to camp.

Last spring, **Union College** professors enjoyed sundaes and a tour of the chapter's new house. They also showed off the house to the seniors' families during their first house party for seniors. They also sponsored a "Cut-a-Thon" that paid for camperships for children with cerebral palsy.

By placing in seven categories, **Maryland Gamma Phis**

won Greek Week. The chapter was especially proud of the accomplishment, as it was the first time a team of smaller chapters took top honors.

North Dakota collegians are grateful to their house corporation board and alumnae for their newly remodeled chapter house. The chapter adjusted well to having rush week after the start of classes.

Wittenberg sisters sold chances for their "Guess the Number of Jelly Beans in the Jar" contest. For fun they tucked the seniors in and read them bedtime stories. In a more serious vein, the seniors described what Gamma Phi Beta meant to them during a fireside.

Philanthropy was a strong focus for **Reno**. Projects included a blanket drive, working in a soup kitchen and providing Thanksgiving dinners. They also donated 76 stuffed animals to Camp Sechelt. Their efforts were rewarded with the campus' Outstanding Philanthropy Award.

Great pledges made "work week" at Santee State Park very worthwhile for **Clemson** collegians. An all-chapter retreat followed pledging and the entire chapter pitched in to build a float for the first football game's festivities.

A lip synch contest motivated **Bowling Green** sisters for rush. Balloons, streamers and confetti transformed the chapter house into New Orleans for their Mardi Gras party. Then it was life jackets, towels, fishing nets and shells to set the mood for their "Under the Sea with G Phi B" party. The chapter appreciated the rush treats provided by the Cleveland East alumnae.

Outstanding scholarship, intramural participation, Greek and community work helped **Idaho** win the Chapter Excellence Award. They had the second highest GPA among sororities and their seniors had the highest GPAs among all senior women.

Washington State sisters journeyed to a lake in nearby Idaho for their Spring Formal Cruise and an all-chapter retreat. Achievement Status was the reward for lots of study during Spring semester. Their "Wizard of Oz" and "Gilligan's Island" skits impressed rushees. The chapter welcomed their new pledges with a poolside retreat.

Epsilon Chapter placed first out of 12 sororities at Northwestern to win the President's Award for Greek Excellence at the annual Greek Leadership Conference.



Oregon sisters prepare props for rush.

PROFILES

On September 12, 1992, North Dakota Governor George Sinner appointed **Jocelyn Birch Burdick** (Northwestern) to fill the U.S. Senate seat held by her late husband, Senator Quentin Northrop Burdick (D-North Dakota). Jocelyn took the oath of office on September 16, 1992, pledging to complete her husband's unfinished business in the United States Senate.

Jocelyn comes to politics naturally. Her grandmother, Matilda Joslyn Gage, was a leading suffragette and feminist theologian who worked closely with Susan B. Anthony and Elizabeth Cady Stanton.

While raising a family, Jocelyn was involved with many civic organizations in Fargo. She was a charter member of the Junior League and the League of Women Voters when it reorganized in the 1940s. She has been active in P.E.O., a philanthropic education organization; Red Cross; Camp Fire Girls; and history and drama sections of the Fine Arts Club. She was Women's Chairman of the United Fund, now United Way. Along with having held state and local offices for Gamma Phi Beta, she is also a founding member of the Gamma Phi Beta Foundation's 1874 Society.



Susan Thomas (Wittenberg) is not your stereotypical private eye and her company isn't either. The northern Virginia resident is president of Infomax, a company that specializes in private investigations and information services by using vast national and international databases to find information.

Her company can do everything from finding out if a used car has ever been in an accident or locating a college friend to determining if a potential business deal in Paris is legitimate.



Patricia Roach Kratky, M.P.H., (North Dakota St.)

Registered Dietitian **Patricia Roach Kratky, M.P.H.**, (North Dakota St.) received the Medallion Award at the Minnesota Dietetics Association Annual Meeting in recognition of her distinguished service to her profession and the community. Patti is employed at the Clay County WIC program and as a

consultant with Consumer Fare. The Moorhead, Minnesota resident is a media representative for the state dietetic association and frequently appears on local television. She is a member of the Fargo-Moorhead Gamma Phi Beta Alumnae Chapter.

An isolated village in Peru's Manu Biosphere Reserve was the destination of **Ginger Kathrens** (Bowling Green) and her production company. President of Taurus Productions of Colorado Springs, Ginger made three trips to the rainforest to produce, direct and film "Spirits of the Rainforest," a two-hour feature documentary for the Discovery Channel.

Brenda Ball (Oklahoma) received a Master of Science in counseling from the University of Houston-Clear Lake. The psychotherapist specializes in women's issues, eating and body image, and survivors of abuse. She is implementing a program in the Houston area that she developed to help survivors heal from their trauma.

Julia A. Vowell (Texas) opened her own public relations agency, Vowell Communications in St. Louis County, Missouri. She specializes in general public relations counseling, marketing communications, desktop publishing, crisis communications, media training, special events and promotions.

After 42 years at Penn State, **Helen Andrews Guthrie** (Penn St.), one of the nation's leading nutrition researchers, retired. She held the Helen A. Guthrie Chair in Nutrition, the only university chair to carry the name of an active faculty member.

In addition to being president of two national nutrition groups, she was an advisor and consultant to the U.S. Department of Agriculture, National Health Institute, Johnson & Johnson and Kraft General Foods.

Deborah Bailey McFall (Iowa) of Denver is president of the American Dental Hygienists' Association. To reach her professional goal of providing oral health care to those who presently have minimal or no access



Ginger Kathrens (Bowling Green), President of Taurus Productions. Photo: Linda Crawfis.

to it, she developed a geriatric outreach project for residents of Denver nursing care facilities. Deb is a clinical instructor at the University of Colorado School of Dentistry, Department of Dental Hygiene.

Luckily for **Betsy Brown Lowrey** (Memphis St.) the computer class that she was enrolled in was cancelled. Little did she know at the time, but the photography class that she chose as a convenient substitution would be the beginning of a new love affair and career.

The mother of four grown children especially enjoys photographing children and architecture. Her work has been exhibited at the Art Barn Gallery in Rock Creek Park in Washington, D.C. The exhibit was sponsored in part by "New Visions Photography," an organization Betsy founded last year to showcase the work of "new" visual artists.



Clemson sisters Elissa Irvin, Heidi Huber, Gretchen Mindnich, Carissa Audi and Mary Jo Grey strengthened their spirit of sisterhood during a five-week summer tour of Europe. In addition to learning about Europe, they learned about each other.

1992 Circle of Excellence Awards

The criteria for Circle of Excellence Awards are determined each year by International Council.

Diamond Circle of Excellence

Greater Orange County, California
Kearney, Nebraska
Oklahoma City, Oklahoma
Stillwater, Oklahoma
Philadelphia North Suburban,
Pennsylvania
Northern Virginia, Virginia
Milwaukee, Wisconsin

Pearl Circle of Excellence

Beverly-Westwood, California
LaJolla, California
Long Beach, California
Monterey County, California
Riverside, California
San Diego, California
South Bay, California
Denver, Colorado
Tampa Bay, Florida
Chicago, Illinois
Chicago Northwest Suburban,
Illinois
Evanston-North Shore, Illinois
Glen Ellyn, Illinois
Lake County, Illinois
Quad Cities, Illinois
Rochester, Michigan
Columbia, Missouri
Greater Kansas City, Missouri
St. Louis, Missouri
Omaha, Nebraska
Bergen County Area, New Jersey
Princeton Area, New Jersey
New York, New York
Dayton, Ohio
Philadelphia West Suburban,
Pennsylvania
State College, Pennsylvania
Houston, Texas
North Houston, Texas

Carnation Circle of Excellence

Bakersfield, California
Diablo Valley, California
Glendale, California
Palo Alto, California
Pasadena, California
San Fernando Valley, California
San Francisco, California
Colorado Springs, Colorado
Greater Ft. Myers, Florida



Stillwater, Oklahoma



Rochester, Michigan

Tallahassee, Florida
Ames, Iowa
Des Moines, Iowa
Manhattan, Kansas
Boston South, Massachusetts
Albuquerque, New Mexico
Buffalo, New York
Rochester, New York
Syracuse, New York
Cleveland West, Ohio
Cleveland East, Ohio
Cincinnati, Ohio
Memphis, Tennessee
Dallas, Texas
San Antonio, Texas
Washington D.C.

Circle of Excellence

Marin County, California
Peninsula, California
Balboa Harbor, California
Santa Barbara, California
Jacksonville, Florida
Bloomington, Indiana
Evansville, Indiana
Terre Haute, Indiana
Cedar Rapids, Iowa
Lawrence, Kansas
Topeka, Kansas
Wichita, Kansas
Louisville, Kentucky
Duluth, Minnesota
Cleveland, Ohio
Columbus, Ohio
Tulsa, Oklahoma
Corvallis, Oregon
Arlington, Texas
Ft. Worth, Texas
Fox Valley, Wisconsin
Madison, Wisconsin



Milwaukee, Wisconsin

IN MEMORIAM

EPSILON

Nellie Weston Ullrick*
Inez Stockdale Dyer
Jane Dibble Fraser*

ZETA

Frances Coventry

ETA

Alice Van Every Dougherty
Mildred Long Ehrhardt

THETA

Ann Elstun Hoover
Ruth Reid Koch
Jessie Huffsmith Schrepferman

KAPPA

Helen Rhode Binish
Joanne Lansing MacGregor
Edith Kierland Lowry

LAMBDA

Muriel Hesse Simpson

MU

Marjorie E.B. Grant
Blanche Barnett Ketcham

XI

Julie Ann Young

OMICRON

Jo Markee Myer
Barbara Angus Sprinkel
Bertha (Biff) Enger Molden*

PI

Anna Brodegaard Hamsa
Janet Winter Jakeman*

RHO

Bernice Purcell Peterson
Mary Kerwin Bruggeman
Phyllis Hedges Sangster

SIGMA

Mary Tudor Hanna
Judy Hodge Robinson
Willette Hainer Martin
Margaret Kirchhoff MacLaren
Florence Harkrader Hastings

UPSILON

Mary Wells Knight Ashworth

PHI

Marguerite Vierheller Mueller
Sylvia Kleinschmidt Denckhoff
Fischer
Harriet Schulz McMillan*
Florence Schuermann
Blumenkamp

CHI

Barbara Pittock Johnsrud
Jane Stidd Fisher

PSI

Anita Berg Blackwood
Jewell Daugherty Vinson

Marjorie Hoover Newman
(National Director of Finance—
1950)

Barbara Ann Hodge Reid

OMEGA

Stella Edwards Brevoort
Beulah Swihart Streeter
Alice Larson Allen
Marjorie Boyt Fletcher
Lucille Draper Ahern

ALPHA BETA

Marian Gray
Huldah Ellestad Shafer

ALPHA GAMMA

Beatrice Ott Hoge

ALPHA DELTA

Charline Holloway Campbell
Marie Tiemann Smith
Georgia Donaldson McIntyre

ALPHA EPSILON

Lois Gates Mickle
Inez Petty Jaap
Marjorie Monighan Hatcher
Helen Leland Jones
Dolores Nichols Edelbrock

ALPHA ZETA

Lorena Baker
Marguerite Wiseman Wolf
Jeanne Robbins Ward

ALPHA ETA

Vilma Denes Corraz

ALPHA THETA

Susan Schmidt Huss

ALPHA IOTA

Doris Jones Turrill
Catherine Stokes Fifita
Micheline Rae Nosce

ALPHA NU

Elisabeth F. Harner
Ruth Bartlett Lewis
Helen Swab Sneath
Mary Weimer Anderson

ALPHA XI

Beth McCallon Wheeler**
Josephine Quinker Howe*

ALPHA OMICRON

Lois Presler McDonald
Barbara Jean (B.J.) Iverson
Cilfone

ALPHA PI

Irene Frame Fleming

ALPHA CHI

Patricia Ann Bruington Rudeseal

ALPHA PSI

Barbara Harris Swanson
Bette Ekstrom Hodgdon

BETA THETA

Julia Ann Bennett Pasley

BETA IOTA

Ruth Ann Barrett Hitler

BETA LAMBDA

Nadine Smith Thacher

BETA NU

Margaret Knandel Bauer

BETA OMICRON

Bernice Anderson Fritz

BETA RHO

Suzanne Crew Frumess

BETA TAU

Alawin Jordan Royce

BETA PHI

Marilyn McEachern Hall Dillon
Ann Schwinghammer Lazarus

BETA CHI

Hazel Watson Dosien

BETA PSI

Judy Short Whitlock

GAMMA EPSILON

Ginger Welt Eatock

GAMMA PI

Karen Pudil Nelson

GAMMA TAU

Judy Lynn Smith

GAMMA PHI

Fernanda Sautel Berthon

DELTA THETA

Ruth Ann Gilstrap

*Merit Roll

**Service Roll

Proof of death must be submitted to International Headquarters before a member's name will be listed in the "IN MEMORIAM" column. A newspaper obituary is preferred, but consideration will be given to a letter from a family member or executor of estate.

The Sorority appreciates the return of a deceased member's badge, when possible, so that it might be preserved and bring joy to others as a special chapter badge.

ALPHA

Patricia Charleson Gedale

BETA

Hilda Bowen Griffith
Andrea Jeanne Farinacci

GAMMA

Barbara Nash Gibson
Aileen Hall Tredwell

DELTA

Doris Hopewell Harrop
Christine Baker Hunter
Irene Miller Thomson

Saying "Good-bye" to Julie Ann Young, Xi Chapter

By Stacie Wilmoth (Idaho)

The word, "forever" has a new meaning for those who knew and loved Julie Ann Young. We used to think of married forever, in school forever, and I slept forever. On July 30, 1992, our pledge class at the University of Idaho was faced with gone forever.

Never again will our ears be filled with her laughter nor will our eyes ever see her beautiful red hair and beaming smile, but what we have in our hearts and minds will last a lifetime.

Julie could brighten anyone's day with her sincere happiness. She was a rare person that had a friend in everyone. Unselfishly she made everyone feel that he or she was her favorite.

Not an unkind word could be said about this delightful person. She was and still is beautiful inside and out. She lifted our spirits and helped us enjoy each day. She was a huge part of making Xi chapter an outstanding Gamma Phi Beta chapter.

She was an exemplary member and a great public relations person, having friends in every house on campus. As house manager she put the house in tip-top shape. As her pledge class vice president, she organized dances and serenades and created excitement about participating.

The effect that Julie had on this chapter and its members was realized with the announcement of her death. The pain of our loss brought us closer than we ever thought possible. We learned to never take our friends for granted. I would never have been able to cope with losing Julie without the support of Gamma Phi Beta. We have cried together and laughed together in grieving for Julie.

Julie will be immortalized through our memories. Her voice still lives in our hearts. Her face is posted in pictures on our closets and shelves and her thoughts are in letters that we have kept. She is forever gone in body, but forever loved in soul.



Julie Ann Young (Idaho) died at age 20 July 30, 1992, while fighting a fire for the forest service.

Lost Tape

McAdoo Bruington, father of the late Patricia Bruington Rudeseal, is anxiously trying to locate a copy of a syndicated television documentary titled, "The Time of Their Lives," that Patricia appeared in representing the College of William & Mary. If you have any information that could help Mr. Bruington locate the tape, please contact him at 1711 Bellevue Avenue, Apt. P-14, Richmond, VA 23227, (804)266-2661.

International Headquarters Request Form

Please send me information about:

- | | |
|---|---|
| <input type="checkbox"/> Closest alumnae chapter | <input type="checkbox"/> TranSIster Program |
| <input type="checkbox"/> Sister Link Program | <input type="checkbox"/> Crescent Catcher Program |
| <input type="checkbox"/> Convention | <input type="checkbox"/> Mothers Clubs |
| <input type="checkbox"/> Alumnae Initiate Program | <input type="checkbox"/> Gamma Phi Beta Visa Card |
| <input type="checkbox"/> Other _____ | |

Please send me these forms:

- | |
|--|
| <input type="checkbox"/> Recommendation |
| <input type="checkbox"/> Legacy Introduction |
| <input type="checkbox"/> Other _____ |

☐ Enclosed is a check for \$15 annual membership dues. Alumnae dues are not tax deductible.

Name _____
(first) (maiden) (last)

Address _____
(street)

(city) (state) (zip)

()

(phone)

Collegiate Chapter _____

Mail to: Gamma Phi Beta Sorority, 12737 E. Euclid Drive, Englewood, CO 80111-6445; 303-799-1874 303-799-1876 (FAX)

MEMORIAL GIFTS

In Memory Of:

Ruth Buckman Armstrong
Fernanda Sautel Berthon
Gail Jansen Birdsong
Jean Pipal Bliss
Sara Callis (mother of Joanne Callis Roman)
Charline Holloway Campbell
Don Carlson (father of Vicki Carlson Read)
Barbara Iverson Cilfone

Given Collier

Alta Patricia Denton
Catherine Stokes Fifta
Marjorie Boyt Fletcher
Adelaide Weeks Francis
Suzanne Crew Frumess
R. Gordon A. Galbraith

Given By:

Dorothy Andrews Dawley
Elise Berthon
Kathy Creswell Johnson
Sheila Gallagher Sullivan
Catherine Gardner Bowling

Audrey Weldon Shafer
Kris Brandt Riske

Catherine Balzer Lorino
South Texas Crescent Circle
Dorothy Butler Welsh
Julie M. Welsh

Peggy Campbell Clark

Mary Ellen Porter Burchfield

Melanie Smyth

Monterey County Alumnae Chapter

Audrey Weldon Shafer

Houston Alumnae Chapter

Marxine Wrigley Galbraith

In Memory Of:

Lynn Jorgenson Jacobs' father
Janet Winter Jakeman
Mary Atkinson Joustra
Blonch Barnett Ketcham
Alice Kidder Lewis
Joanne Lansing MacGregor

Georgiana Post McClenaghan's son
Harriet Schultz McMillan

Martha Payne Mendenhall

Jean Kneip Merriken

Bertha Molden (mother of Margery Molden Wiltamuth)

Richard Mullen (father of Ann Mullen Bronsing)

Karen Pudil Nelson

Mary Louise Nelson (mother of Jane Stiedemann)

Dorothy Olson (mother of Anne Olson McCoy)

Harry B. Seybt (husband of Judith Renje Seybt)

Barbara Angus Sprinkel

Aileen Hall Tredwell

Nellie Weston Ullrick

Alice Peck VonDalsun

Beth McCallon Wheeler

Eleanor Haggett Willey

Julie Ann Young

Given By:

Marilyn Bachnik Callahan
Kathleen Boettner Murphy
Alice Reed Beckmeyer
Philip W. Ketcham
Elizabeth Martin Reed
Minneapolis/St. Paul Alumnae Chapter

Virginia Winn Atwill
Beverly Woods Edwards
Nancy L. Evans

Shirley Mark Ferguson
Caral Jacobs Heffernan
Ginny Geiger Hustad

Jean Johnson

Jane Mann Lamb

Carol Burns Laybourn

Roxy Klein Molzahn

Joyce Carlson Peterson

Ki Peterson

Janice Hedine Sundberg

Joanne Callis Roman

Ann Mullen Bronsing

Mr. & Mrs. Vernon W. Piper

Jennie K. Curtis

James Merriken

Wilma Dee Baldwin Crane

Theora Kurt Schonberg

Mary Agnes Welsh

Catherine Gardner Bowling

Kenneth Nelson

Beth M. Rowney

Kay Gardner Appleberry

Catherine Gardner Bowling

Marilynn and Jim Irwin

Russ and Anne Ruetz

Edna Carlson Gord

Susanne Oehler Keller

Edith Dobbelt Sawyer

Marilyn Bachnik Callahan

Linda Wheeler Cooke

Frances Kirk Cranfill

Dallas Alumnae Chapter

Judy E. Graham

Latane Jordan Graham

Sue Herzog Johnson

Audrey Weldon Shafer

Claudia Lovett Taylor

Virginia Forsyth Vint

Clarice Sloan Belden

International Council

Support the Gamma Phi Beta Foundation

Make Your Travel Arrangements with



TRAVEL CARE INCORPORATED

The Agency with a Heart

1-800-875-3344

We are a full service travel agency

303-798-6700

handling Cruises, Tours, Airline Reservations



All travel booked through Travel Care will benefit the GPB Foundation.

Call Travel Care Today!!

Mention that you're a ΓΦΒ!

We Care About You!

Donations in memory of friends, sisters and loved ones may be sent to the Gamma Phi Beta Foundation, 12737 E. Euclid Drive, Englewood, CO 80111-6445. If you would like a card in recognition of your memorial gift, please include a family member's name and address.

DIRECTORY

Founders

Helen M. Dodge Ferguson
Frances E. Haven Moss
E. Adeline Curtis Curtis
Mary A. Bingham Willoughby

International Council

International President: Diane Tjaden
Thompson, P.O. Box 246, Eldora, IA 50627
Alumnae Vice President: Camille A. Cestone,
1120 N. LaSalle #11G, Chicago, IL 60610
Collegiate Vice President: Linda Daniel Johnson,
12110 Rhett, Houston, TX 77024
Financial Vice President: Susan Genskow
Mayer, 7112 Witchinghour Ct., Citrus
Heights, CA 95621
Member-at-Large: Cinda Keating Lucas, 4565
Vista de la Tierra, Del Mar, CA 92014
National Panhellenic Conference Delegate:
Elizabeth Ahlemeyer Quick, 2513 Garth Rd.
SE, Huntsville, AL 35801
Executive Director: Marjory Mills Shupert, 12737
E. Euclid Drive, Englewood, CO 80111-6445

Director of Extension: Linda Lyons Malony,
4230 W. 104th Terr., Overland Park, KS
66207

Alumnae Department

Alumnae Vice President: Camille A. Cestone
Membership: Jacki Ennis Falkenroth, 89
Tumbleweed Ct., San Ramon, CA 94583
Alumnae Initiates and Mothers/Parents
Clubs: Paula Choplin Shryock, 623 Ute
Dr., Stillwater, OK 74075
Alumnae Extension: Clarice Braker
Morrison, 4604 NW 32nd St., Oklahoma
City, OK 73122
Recommendations: Liz Crosby Martin,
10706 E. Powers Dr., Englewood, CO
80111
Operations: Sharon Witt Dunham, 6411 S.
75th Ave. Cir., Ralston, NE 68127
Province Alumnae Directors:
I: Joyce E. Hatch, 31 Cabot St.,
Providence, RI 02906
II: Doris Bird Gorden, 22 Andrews Rd.,
Malvern, PA 19355
III: Sandra Biegelman Burba, 34458
Claythorne Dr., Solon, OH 44139
IV: Barbara Magnus Small, 1932 Shipman,
Birmingham, MI 48009
V: Christi Lindauer Kilpatrick, 1001
Lochlyn Ridge Rd., Wales, WI 53183
VI: Melanie Joe Mogg, 3523 E. 4th St.,
Duluth, MN 55804
VII: Regina Peck Watkins, 8124 Camelot
Rd., Ft. Worth, TX 76134
VIII: Nancy Donovan Montgomery, 3104
Waverly Ave., Tampa, FL 33629
IX: Melba Quick Spurrier, 815 Hillcrest,
Stillwater, OK 74075
X: Harriet Wheeler Hobbs, 5205 W. 84th
St., Prairie Village, KS 66207
XI: Jennifer Wiseman Oseth, 125 Clubridge
Pl., Colorado Springs, CO 80906
XII: Vivian Dietrich Werner, NW 207
Sunrise, Pullman, WA 99163
XIII: Verona Dilbeck Lynam, 672 Duffin Dr.,
Ridgemont Country Club, Hollister, CA
95023
XIV: Elizabeth Roessler Griffin, 2837 Brook
Dr., Falls Church, VA 22042
XV: Beth Happe Bruner, 604 Division,
Guthrie Center, IA 50115
XVI: Barbara Davis McKewen, 4416 Mt.
Herbert Ave., San Diego, CA 92117
Programs: Patricia Pivonka Wagar, 9675
Martinique, Concord, OH 44060
Alumnae Collegiate Relations: Sally
Dickinson Andrews, 1044 Soudown Rd.,
Springfield, OH 45503
Philanthropy Chairman: Beth Singleton
Kilchenman, 1898 Carlton Dr., Kent, OH
44240
Alumnae PACE:
Crossroads: Sally Erikson Lewis, 535 N.
Michigan #907, Chicago, IL 60611

SisterLink: Cindy Shirley Schultz, 1990 Selby,
St. Paul, MN 55104
TransISter

Collegiate Department

Collegiate Vice President: Linda Daniel Johnson
Advisors: Melissa Martyr Wagner, 223-B
Halsey St., Princeton, NJ 08540
New Chapter Directors:
A: Joanne Shaffer Meloro, 520 Woodbridge
Cir., Harleysville, PA 19438
B: Julie Stevenson, 6302 Boston, Des
Moines, IA 50322
C: Carol Caruso, PO Box 26509, Tempe,
AZ 85285
Operations:
West—Terri Kennedy Briggs, 24201 SE
38th Pl., Issaquah, WA 98027
East—Colette Cooley Hays, 507 Monroe
Ave., Glencoe, IL 60022
Province Collegiate Directors:
I: Eileen Mary Effinger, 300 East 74th St.,
Apt. 22E, New York, NY 10021
II: Linda Thomson McMahon, 35 Ratcliffe
Rd., Wayne, NJ 07470
III: Anne Louise Layton, 88 Gothic Ave.,
Toronto, Ontario, Canada M6P 2V9
IV: Wendy Elizabeth Halsted, 3658
Pheasant Run, Bloomfield Hills, MI
48302
Va: Lyn Ann Hildenbrand, 926 N. Cass St.,
#27, Milwaukee, WI 53202
Vb: Rebecca Boyd-Obarski, 836
Bellingrath Ct., Naperville, IL 60540
VI: Elizabeth Holcomb Norton, 1117
Marquette Ave. #1211, Minneapolis, MN
55403
VII: Kim Anderson Loeffelholz, 310
Williams Rd., Lorena, TX 76655
VIII: Dianna Johnson, 15210 Pond Woods
Dr. West, Tampa, FL 33618
IX: Margaret West Pape, 1523 Wilshire,
Norman, OK 73069
X: Becky Pond Kearns, 418 Oak Glen Dr.,
Ballwin, MO 63021
XI: Jeannette Stoll Kaelin, 19690 Top O' The
Moor West, Monument, CO 80132
XII: Angela Schaben Johnson, 832 NW
64th St., Seattle, WA 98107-2216
XIII: Diane Soderstrom Goff, 18148 NW
Dustin Ln., Beaverton, OR 97006
XIV: Suzan Zetterman Culver, 35 Gurnsey
Dr., Newark, DE 19713
XV: Nancy A. Ostendorf, 2310 Mortenson
Parkway, #15, Ames, IA 50010
XVI: Angela Patrone Wright, 14713
Amigos Rd., Chino Hills, CA 91701
XVII: Kathy Schwarzbach Stewart, 2035
PanTops Dr., Charlottesville, VA 22901
Collegiate Leadership Consultants: Stephanie
Duncan, Noreen Gopez, Susan Grant,
Theresa Hanlon, Lisa Hintze, Leah
Hubbard, Andrea Nevotti

International Collegiate Board:

Area A (Provinces I, II): Susan Gerrish, Box
703 Gettysburg College, Gettysburg, PA
17325
Area B (Provinces VIII, XIV): Shelly Carey,
FIT Box 5157, Melbourne, FL 32901
Area C (Provinces III, IV): Barbara
Goodrich, 628 Woodlawn Ave.,
Springfield, OH 45504
Area D (Provinces V, VI): Deana Duin, 210
Spruce St. #C3, Vermillion, SD 57069
Area E (Provinces VII, IX, XI-Colorado):
Kim Freeman, 4203 NE Stallings Dr.
#703, Nacogdoches, TX 75962
Area F (Provinces X, XV): Stacy
Pflugaupt, 318 Pearson Ave., Ames, IA
50010
Area G (Provinces XII, XIII): Tish MacRae,
NE 600 Campus, Pullman, WA 99163
Area H (Provinces XI-Arizona, XVI):
Shannon McIntee, 616 Hilgard Ave., Los
Angeles, CA 90024

THE CRESCENT

Editor: Stephanie Hearn, 12737 E. Euclid Dr.,
Englewood, CO 80111-6445
Alumnae/Collegiate News Editor: Phyllis
Donaldson Choat, 2116 S. 113th Ave.,
Omaha, NE 68144
Business Manager: Marjory Mills Shupert,
International Headquarters

Financial Department

Financial Vice President: Susan Genskow Mayer
Housing: Virginia Heck Gottfredson, 1401
San Felipe Ct., Boulder City, NV 89005
Operations: Kathleen Sage, 2624 E.
Blackidge, Tucson, AZ 85716
Province Financial Directors:
I: Patricia Horvath Mahan, 8 Breezewood
Ct., Fairport, NY 14450
II: Elizabeth Dean Wanderer, 1033
Tilghman Ct., Wayne, PA 19087
III: Melinda Risse Nutter, 2750 Nantucket
Rd., Beavercreek, OH 45385
IV: Janet Reynolds Snyder, 5550 Miller
Rd., Ann Arbor, MI 48103
V: Mary Ellen Porter Burchfield, 320 E.
Chicago Ave., Naperville, IL 60540
VI: Mary Ruth Holloway Manthey, 4975
Forestview Ln., Plymouth, MN 55442
VII: Janette Jones Strickland, 7309 Park
Highland Pl., Dallas, TX 75248
VIII: Sandra Rettke Nauman, 136 Great
Oaks Ln., Roswell, GA 30075
IX: Ann Williams Ross, 717 36th Ave. NW,
Norman, OK 73072
X: Joanne Callis Roman, 7215 Shaftsbury
Ave., University City, MO 63130
XI: Terry Carpenter Shamley, 12445 N.
51st Dr., Glendale, AZ 85304
XII: Cecelia Jones Lafavour, 1505 177th
Ave., Bellevue, WA 98008
XIII: Barbara Weiss Boenzi, 35221
Riverside Dr. SW, Albany, OR 97321
XIV: Georgiana Post McClenaghan, 6212
Brownlee Rd., Nashville, TN 37205
XV: Karen Hohenstein Nelsen, 8222
Castelar St., Omaha, NE 68124
XVII: Cheryl Anne Speer, 771 Racquet
Club Rd. #501, Diamond Bar, CA 91765
XVIII: Anne Heise Lara, 24646 Via
Vallarta, Yorba Linda, CA 92686
Tax Matters: Ann Cibula Zultner, 12
Wallingford Dr., Princeton, NJ 08540

Historian: Debby Warren-Manning, MP 0.71
Mabee Mines Rd., Washougal, WA 98671

National Panhellenic Conference

NPC Delegate: Elizabeth Ahlemeyer Quick, 2513
Garth Rd., SE, Huntsville, AL 35801
1st Alternate Delegate: Karen Gamel Urette,
532 Riviera Dr., Tampa, FL 33606
2nd Alternate Delegate: Anne Louise Layton,
88 Gothic Ave., Toronto, Ontario, Canada
M6P 2V9
3rd Alternate Delegate: Catherine Gulhrie
Lindauer, 5051 S. Beeler, Englewood, CO
80111

Member-at-Large Department

Member-at-Large: Cinda Keating Lucas
Pledge: Lynn Jorgenson Jacobs, 401 S. 1st
St. #506, Minneapolis, MN 55401
Rush: Vicki Carlson Read, 7389 N. Camino
sin Vacas, Tucson, AZ 85718
Scholarship: Fran Mayfield, 425 Timberlea
Dr. #200, Rochester Hills, MI 48309

Parliamentarian: Jennie K. Curtis, 461 Cherry
Valley Rd., Princeton, NJ 08540

Awards Committee Chairman: Ellen Matthews
Duncan, 8305 Glenwood, Oklahoma City, OK
73114-1111

International Bylaws Chairman: Carol
Chapman Sides, 2550 S. Fairfax Place,
Denver, CO 80222

1994 Convention Arrangements Chairman

Alana Markley Bott, 15234 Pond Woods Drive
East, Tampa, FL 33618

1994 Convention Coordinator: Sally Erikson
Lewis, 535 N. Michigan Ave., #907, Chicago,
IL 60611

Rituals: Audrey Weldon Shaler, 6808 Rockhill
Rd., Kansas City, MO 64131

Song: Jeannette Stoll Kaelin, 19690 Top O' The
Moor W., Monument, CO 80132

Endowment-Loan Board

Sandra Rettke Nauman, Chairman, 136 Great
Oaks Ln., Roswell, GA 30075

Directors:
Judy E. Graham, 6325 Ravendale, Dallas, TX
75214

L'Cena Brunsell Rice, 124 Via Monte D'Oro,
Redondo Beach, CA 90277

Barbara Missert Wessel, 4842 Hyde Rd.,
Manlius, NY 13104

Diane Tjaden Thompson
Susan Genskow Mayer
Marjory Mills Shupert

Gamma Phi Beta Foundation

Trustees:
Chairman: Ann Mullen Bronsing, 31 Chesterton
Ln., Chesterfield, MO 63017

Camp Committee Chairman: Barbara J. Junker,
2227 Haywood Ave., W. Vancouver, BC,
Canada V7V 1X6

Development Chairman: Barbara Missert Wessel,
4842 Hyde Rd., Manlius, NY 13104

Financial Aid Committee Chairman: Joan Herzog
Braitsch, 6005 Copely Ln., McLean, VA
22101

Finance and Investment Committee Chairman:
Frances Rea Griffin, 830 Warwick Rd.,
Deerfield, IL 60015

Public Relations Committee Chairman: Alison
Shaler Bond, 1142 Corington Ct.,
Manchester, MO 63011

International Council Representative: Diane
Tjaden Thompson

Secretary-Treasurer: Marjory Mills Shupert

Gamma Phi Beta Sorority

Founded November 11, 1874
Syracuse University

International Headquarters
12737 E. Euclid Drive
Englewood, CO 80111-6445
(303) 799-1874
FAX (303) 799-1876

1992-93 Scholarship and Fellowship Recipients



Blackwell



Boren



Criticos



Huey



Johnson



Maddox



Mosely



Phillips



Procter



Trunkey



Wright



Rasa

Laura Frances Cottingham Scholarship

Angelique R. Blackwell (Colorado College) a sophomore with a 3.9 grade point average, is majoring in architectural engineering. She is the chapter parliamentarian and assistant rush chairman.

Louise B. Tillotson/Alpha Epsilon Scholarship

Christine K. Boren (Arizona) is public relations chairman and a research assistant for a psychology study. She is a senior majoring in psychology.

Vera Virginia Hill Thayer Dick Scholarship

Pamela Gail Criticos (Miami) is the pledge chairman and a volunteer at Oxford Crisis and Referral Center. She is a senior majoring in psychology.

Dallas Alumnae/Alpha Xi Scholarship

Jennifer L. Huey (S. Methodist) is the chapter president and a member of the Southern Methodist University Honor Council. She is a senior majoring in sociology and political science.

Orra Spencer Reid Scholarship

Gwendolen A. Johnson (Miami) is the recording secretary and a member of Pi Sigma Epsilon, a marketing fraternity for students. She is a senior majoring in marketing.

Eta Scholarship

Norene Marie Lew (UC-Berkeley) a senior with a 3.71 grade point average, is majoring in political economy of industrial societies. She is a tutor at The Student Learning Center and a member of Order of Omega, Prytanean Women's Honor Society and Honor Students' Society.

Jane Benton French/Sigma Scholarship

Jennifer Rae Maddox (Kansas) is chapter vice president and a member of the Kansas University Student Senate. She is a junior majoring in mathematics.

Irma Latzer Gamble Scholarship

Elizabeth Moseley (Oklahoma City) a senior with a 4.0 grade point average, is majoring in accounting. She is the chapter's sunshine chairman and a Resident Assistant for Walker Hall dormitory.

Ruth B. Fox Scholarship

Marcy Phillips (Oklahoma) a junior with a 4.0 grade point average, is majoring in women's studies and pre-law. She is the alumnae relations chairman, panhellenic environmental chair and a panhellenic rush counselor.

Ellender Dickson Scholarships

Heather Diane Procter (Nevada-Reno) is the membership education vice president, treasurer and a member of Delta Sigma Pi. She is a senior majoring in management.

Julie L. Trunkey (Washington St.) a senior with a 4.0 grade point average, is majoring in elementary education. She is the chapter treasurer and is actively involved in philanthropies and community work.

Chaly Josephine Wright (Georgia) a senior with a 3.9 grade point average, is majoring in environmental management and public policy. She is chapter scholarship chairman, on the Dean's List and a 1992 National Truman Scholar finalist.

Ardis McBroom Marek Scholarship

Tanya Lavette Rasa (Rhodes) is the chapter scholarship chairman and a member of the International House. She is a senior majoring in international studies.

Ladyfood Scholarship

Jennifer Lynn Tompkins (Nebraska-Kearney) a sophomore with a 3.91 grade point average, is undecided in her area of study. She is the external public relations chairman and is in-



Tompkins



Voight



Voth



Buchanan

involved in intramural sports.

Betty Luker Haverfield Scholarship

Heidi Lynn Voigt (N. Dakota St.) is the chapter president and public relations chairman and a member of The American Institute of Architects. She is a senior majoring in architecture.

Kathryn & John F.

Winchester Scholarship

Anna Marie Voth (Colorado St.) a senior with a 4.0 grade point average, is majoring in psychology and nutrition. She is the chapter scholarship chairman, a member of the standards committee, on the Dean's List and a volunteer for the Campus Crisis Hotline.

Ellender Dickson Book Awards

Crissy J. Buchanan (Alabama) a junior with a 3.7 grade point average, is majoring in accounting. She is chapter vice president and is on the Coordinating Council for Student Organizations.

Jennifer Mary Kelly (St. Louis) is the member education vice president and on the varsity softball team. She is a senior

1992-93 Scholarship and Fellowship Recipients



Kovar



Ross



Fitzgerald



Anderson

majoring in communication disorders.

Rachel Kovar (N. Dakota) a senior with a 3.82 grade point average, is majoring in marketing and management. She is the Sisterlink chairman and a member of the marketing club and Phi Eta Sigma honor society.

Susanna Ross (Illinois) a senior with a 4.85/5.00 grade point average, is majoring in health and safety studies/community health. She was the chapter's rush chairman, a rush counselor and is involved with the student alumni association.

Deborah Lynn Fitzgerald (Creighton) is a first-year optometry student who graduated with a bachelor's degree in biology. She would like to specialize in ocular pathology and pediatric vision therapy. Deborah served her chapter as public relations chairman and is a member of Alpha Phi Omega service fraternity.

Fellowships

Founders Fellowships

Cynthia Marie Anderson (Ore-

gon St.) earned an undergraduate degree in elementary education, a graduate degree in college student personnel and is studying for a degree in educational leadership at N. Arizona. Her ultimate professional goal is to be employed as a Dean of Students at a mid-sized, public or private college or university. She has served Gamma Phi Beta as a collegiate consultant, is Beta Omega chapter's standards advisor and serves on the university's Commission on the Status of Women.

Nicoel Lee Berringer (Kansas St.) earned an undergraduate degree in life science and is studying for an M.D. in pediatrics. She is especially interested in rehabilitative medicine. She served her chapter as the standards chairman and currently volunteers for the Kansas Children's Service League, as well as conducting a therapy program for a severely brain-damaged boy.

Mary Beth Holzbach (Florida St.) is a first-year student working for her masters in college student personnel. She graduated with a bachelor's degree in communication and served her chapter as president and standards chairman. She has also served Gamma Phi Beta as a collegiate leadership consultant and an international rush consultant. Mary hopes to pursue a career in higher education administration.

Janice Marie Shade (Boston) ultimately wants to be the chief executive officer of a Fortune 500 company. She has earned a bachelor's degree in finance and is studying for a masters in public and private administration concentrating on organizational behavior and corporate strategy. Janice served her chapter as membership chairman and historian and has served international Gamma Phi

Beta as a collegiate consultant and international rush consultant.

Audrey Weldon Shafer Fellowship

Marla Burnham Maharg (Oregon) upon completion of her master's degree in speech pathology, wants to work in either a school or hospital setting specializing with pediatric clients. She has an undergraduate degree in communication disorders with a minor in special education and served her chapter as philanthropy chairman, panhellenic delegate and alumnae relations chairman.

Fern Holcomb Heath Fellowship

Melissa Kirsten Hove (N. Iowa) is a first-year dental student who hopes to be in the top 5% of her class and ultimately plans to become an orthodontist. She has an undergraduate degree in management and has served her chapter as public relations chairman, panhellenic delegate and rituals chairman. Melissa is also a member of Omicron Delta Kappa-Leadership Honorary.

Beta Centennial Fellowship

Heidi Linelle Lampi (Michigan) earned an undergraduate degree in German and political science and is studying for an international management degree concentrating on German, cultural studies and world business in finance and marketing. She hopes to be a business leader who can manage a diversified work force. Heidi served her chapter as the activities chairman and currently volunteers for the Adopt-a-Highway Cleanup Program.

Lindsey Barbee Fellowship

Amy Arlt Larkin (Mankato St.) ultimately wants to help children with disabilities and other conditions overcome educational obstacles. She has earned



Berringer



Holzbach



Maharg



Hove



Lampi



Ninchak



Aponte



Kwak



Mangalindan



Su

a bachelor's degree in psychology and is studying for a Ph.D. in school psychology. Amy served her chapter as president, membership chairman and scholarship chairman and is currently a state recommendations chairman.

Continued on page 26



IN CELEBRATION

Gifts have been given to the Foundation in celebration of:

Elizabeth Fee Arnold's and Beatrice Hill Wittenberg's dedication to Gamma Phi Beta from Robyn Forsyth Steele.

Brenda Ball's graduation with an MS in counseling from Judy E. Graham.

Barbara Hairfield Battles' and Kathy Cole Hurley's hard work and devotion to the renovation of the Alpha Xi Chapter house from Debra Verner Merlino.

Gina Bleile Hartigan's and Kendra Gates Bocher's marriages from Joanne Callis Roman.

Alison Shafer Bond's wonderful job chairing the '92 Convention from the '92 Convention Steering Committee.

Becky Bond's pledging Gamma Phi Beta from Ann Mullen Bronsing.

Cheryl Broyles' engagement from Ann Mullen Bronsing, Mother & Daddy Broyles and Barbara Missert Wessel.

Cheryl Broyles' 25th birthday from Mother & Daddy Broyles.

Cheryl Broyles and the Foundation PR Committee's help at Convention from Mary Agnes Welsh.

Becki Spees DeMarco's help with the Foundation at Convention from Mary Agnes Welsh.

Cele Hoffman Eifert's new son, Carl William from Bette Bartow Newberger.

International Headquarters Staff's help with labels and the computer from the Denver Alumnae.

Linda Daniel Johnson's being elected to serve as Collegiate Vice President from the Houston Alumnae.

New Brunswick Area Alumnae's installation from Philadelphia N. Sub. Alumnae, Philadelphia W. Sub. Alumnae, Pittsburgh Alumnae and Princeton Alumnae.

Jana Tasca Rill's becoming my new cousin-in-law from Gail T. Workman.

Julie M. Silvester's new life and adventure from Theresa Hanlon.

Jolene Lessard Stiver's job well done from Virginia Forsyth Vint.

Kathryn Allen Woodward's birthday from Kathryn Moore Coen, Betty Hailey Crooker, Sue Dorsey Durrett, Marjorie Siegrist Ebling, Lois Moon Garver, Emily Margaret Allen Witham.

Janet Heft Wright's new position as Director of Development at the Wichita Children's Home from Barbara Missert Wessel.

Leon Davis Drouet's successful sale of the Gamma Lambda house from the Endowment-Loan Board.

The new Foundation Trustees (Alison Shafer Bond, Joan Herzig Braitsch and Frances Rea Griffin) from Mary Agnes Welsh.

The new International Council from Marilyn Bachnik Collohan.

Do you have a special friend or sister to honor? Send an In Celebration gift to the Foundation and the Foundation will send your honoree a special card. Be sure to include your name, the honoree's name and the celebration, and send it to Gamma Phi Beta Foundation, 12737 E. Euclid Drive, Englewood, CO 80111-6445.

1992 Scholarships and Fellowships

Continued from page 25

Elizabeth Fee Arnold/ Beatrice Hill Wittenberg Fellowship

Anne Emily Ninchak (UC-Irvine) earned bachelor's degrees in biological sciences and social ecology with an emphasis on human behavior and psychology and is currently studying for an M.D. She hopes to specialize in the field of her choice, possibly pediatrics or dermatology and is also interested in teaching. Anne served her chapter as president and public relations chairman and is currently a tutor for the tutorial assistance program.

Eta Fellowships

Jennifer Ellen Aponte (UC-Berkeley) earned a bachelor's degree in integrative biology and is completing a degree in medicine at the Harvard Medical School. Becoming a physician has been a life long ambition of Jennifer's. She served her chapter as the assistant pledge director, has been a research assistant for the Joslin Diabetes Center and is currently a member of the American Medical Association.

Lily Christine Chang (UC-Berkeley) earned a bachelor's degree in neurobiology and is pursuing an M.D. as a primary care physician. Her interests also lie in improving health care to include more of an emphasis on preventative care, accessibility to services, and universal health insurance. She served her chapter as rush assistant and is currently a peer advisor and coordinator for Medical Cluster.

Christine Hae-Kyung Kwak (UC-Berkeley) is a first-year international business and management student who graduated with a bachelor's degree in ar-

chitecture. She hopes to become a project architect and an eventual managing principal of an architecture firm. Christine served her chapter as social chairman and currently volunteers for the Santa Monica Museum of Art, the Korean-American Center and the Santa Monica Arts for Children Workshop.

Dana Marlo Lewenthal (UC-Berkeley) earned a bachelor's degree in dramatic art and is pursuing a master's degree in fine arts at Yale. She would like to work as a professional actress in the theater and hopes to further her research of comedienettes in musical theater in the twentieth century. She served her chapter as activities chairman and was a student intern for Berkeley's Programs for Study Abroad.

Mylene Soria Mangalindan (UC-Berkeley) hopes to work in an editorial capacity on the news or opinion-editorial sections of a newspaper. She has earned an undergraduate degree in history and is studying for a masters in journalism concentrating on legal and political issues. She served her chapter as THE CRESCENT correspondent and assistant treasurer and is presently a staff writer for *The Daily Californian*.

Jenny L. Su (UC-Berkeley) earned a bachelor's degree in cell biology and is studying to be a doctor of optometry concentrating on genetic influence on vision. She hopes to become a part of a group practice where support and shared responsibilities would be evident. Jenny served her chapter as scholarship chairman and was a part of the Honor Student's Society and Prytanean.

The Gamma Phi Beta Foundation announces its new Board of Regents: front row, left to right—Doris Bird Gorden (Bowling Green), Sue Schlessman Duncan (Colorado College), L'Cene Brunskill Rice (USC), Marion Kaeser Piper (Illinois). Back row, left to right—Nicki Nicol (Southern Methodist), Elizabeth Thornton (Boston), Jennie Curtis (Northern Arizona) and Lynn Towsley White (Colorado). Not pictured: Mary Agnes Welsh (Memphis State). These women will serve two- to four-year terms as advisors to the Foundation's Board of Trustees. The Regents will meet with trustees at Convention to review Foundation goals, long-range plans, special projects and activities.



Breast Cancer Knows No Boundaries

By Laura Gray Allen
(Bowling Green)

It was a cold February night as I nestled under the covers in my bed, propping a pillow against my headboard. I was ready to indulge in yet another bridal magazine. My wedding day was in exactly four months, and even though the planning was completed, I still enjoyed pouring through these magazines.

As I leaned back, my arm brushed over my chest, and I felt a lump in my left breast. I felt again with my fingertips. Sure enough, there was a definite lump in the lower area of my breast. Not to fear, I thought. My younger sister had a benign cyst removed a year and a half ago, and my mother often had small, benign cysts that appeared and then disappeared. I had known that this time would come for me sooner or later. Fortunately, none of the breast cancer risk factors pertained to me—age, family history or personal history.

At the urging of my mother, I called my gynecologist the following morning and made an appointment for that afternoon. My doctor examined me and believed the lump to be a benign cyst, as I had expected. Nevertheless, she suggested contacting a surgeon, as she thought it best to have it removed. I contacted a surgeon and upon his examination, received the same diagnosis—a benign cyst. He also felt that it should be removed.

I was not thrilled about the prospect of surgery, but it would be one-day surgery, and I would be conscious. I would also need to take a couple days off work. I loved my career as a teacher, but a couple days off sounded inviting. The surgery was scheduled for the following week.

My parents accompanied me to the hospital. I convinced my fiancé and my sister not to take a personal leave day to be with me. This was a simple 15-minute procedure. I would be home resting by the time they came home from work.

The surgery went quickly. I was wheeled to the recovery room where I began resting. Shortly after, my surgeon walked into the room, came toward me, and took my hand. The words from his mouth will ring in my ears for eternity: "Laura, I have some bad news. You have cancer."

Cancer? No, doctor, you must be wrong. I'm only 26 years old! Women don't get this when they are in their 20s! And I'm getting married



in four months. Am I going to die before the wedding? These thoughts flooded my mind as his voice drifted from my ears.

The next week was frantic with visits to surgeons, oncologists, chemotherapists and radiologists. I was presented with several treatment options. It was difficult to decide which treatment would be most effective in fighting the cancer. I was trying to avoid a mastectomy (complete removal of the breast), and instead opt for a lumpectomy (partial removal of the breast).

But then I received another jolt: Pathology reports confirmed that cancer had spread into my lymphatic system. The only option I had now was a modified radical mastectomy followed by aggressive chemotherapy. The treatment began immediately.

The mastectomy was mentally stressful. The six months of chemotherapy were physically grueling. In the middle of my course of treatment, my wedding day went as planned. For that brief day, I was so happy! My mind completely blocked out what I was in the midst of going through. Fighting cancer was a tremendous ordeal, but I learned a great deal about myself and now approach life in a brand new way.

It has been almost three years since this experience. I am still in remission and I have had no signs of recurrence and continue to receive excellent health reports. With the support of my husband, family, friends, and most importantly, God, I battled cancer . . . and won!

Without a doubt, the diagnosis of breast cancer was the most harrowing experience of my life. I was not the slightest bit prepared. I never imagined that a woman in her 20s could become a breast cancer victim. I failed to do simple preventive steps that could have detected breast cancer much sooner.

It is vital that women of all ages be highly educated regarding early detection of breast cancer. Breast cancer is not a

**It is vital
that women of
all ages be highly
educated regarding
early detection
of breast cancer.**

disease that chooses any particular race, age or even gender (breast cancer has been found in males). No one is immune to this treacherous disease. Therefore, breast cancer must not be considered lightly by anyone. The best prevention is early detection.

Statistics regarding breast cancer are alarming. The American Cancer Society reports that one in nine women will be diagnosed with breast cancer. They estimate there will be more than 180,000 new cases of breast cancer in 1992. The National Cancer Institute reports that about 20 percent of all breast lumps are cancerous. However, if detected early and treated promptly, the prognosis is good. Most of the women diagnosed with early stages of breast cancer will be rid of it for the remainder of their lives.

The steps suggested by the National Cancer Institute to detect early stage breast cancer are: monthly breast self-examinations (BSEs), yearly breast exams, and routine mammograms. These simple steps can save lives.

BSEs should be done once a month to become familiar with the normal feel and appearance of your breasts. The familiarity will allow you to notice any

changes from month to month. If you menstruate, BSE should be done two to three days after your period ends. If you have reached menopause, choose a day to remind yourself to do BSE each month. If you are unfamiliar with the proper BSE technique, consult your doctor.

Breast exams should be conducted on a yearly basis by a physician. Should a woman notice any changes in her breasts, a physician should be seen promptly. Although 80 percent of breast lumps are benign, only a doctor can make that diagnosis.

Mammography can detect breast cancer up to two years before it can be felt. Mammograms also show changes in the breast that may suggest cancer. The National Cancer Institute, American Cancer Society and the American Medical Association suggest a beginning mammogram at age 40 with fol-

low-ups every one to two years until age 50. Annual mammograms should occur after age 50. However, due to the increase of breast cancer in women in their 20s and 30s, the recommended age for a beginning mammogram and frequency may be lowered—especially when there is a strong family history of breast cancer.

Being diagnosed with a life-threatening disease is a wretched experience. But, breast cancer, detected early, can be cured. In addition to healthy eating and daily exercise, BSEs, annual exams and mammograms can go a long way in saving lives. Women in their 40s and 50s are not the only ones diagnosed with breast cancer; women in their 20s are diagnosed too. If you have not yet begun these simple life-saving steps, it would be wise to begin them now—they may save your life.



National High Risk Registry Helps Breast Cancer Research

Strang Cancer Prevention Center, a nonprofit medical facility that conducts research for the prevention and early detection of cancer, has formed a National High Risk Registry for women with a significant family history of breast cancer. "Significant" is defined as having a mother and maternal grandmother who developed breast cancer or having two first-degree relatives with the disease, or having one first-degree relative with bilateral breast cancer that developed before menopause.

In return for aiding research, the Registry offers those who sign up an individual risk assessment, specific recommendations for mammogram schedules, a computer-generated family tree and other recommendations and reminders.

For more information, or to join, call the National High Risk Registry at (800) 521-9356.



CRESCENT CLASSICS

- A-1 Grey 100% cotton t-shirt with block letters. M,L,XL. \$13.50
- A-2 Floral tote bag. \$25.00
- A-3 Navy jersey knit shorts with block letters. S,M,L,XL. \$25.50
- A-4 Navy jersey knit pants with block letters. S,M,L,XL. \$34.00
- A-5 Grey crew sweatshirt with block letters. M,L,XL. \$27.50
- A-6 Grey 100% cotton t-shirt with navy arch. L,XL. \$15.00
- A-7 Canvas tote bag. \$16.00
- A-8 High cotton Lee sweatshirt with ribbed side panel and navy arch. L,XL. \$34.00
- A-9 Waterproof nylon windbreaker with sewn-on letters, red, navy or kelly. M,L,XL. \$30.00
- A-10 High cotton navy Russell Athletic sweatshirt with floral sewn-on letters. L,XL. \$38.00
- A-11 High cotton forest green Russell Athletic sweatshirt with paisley sewn-on letters. L,XL. \$38.00
- B-1 100% cotton t-shirt with sewn on letters in primary colors, red, kelly, royal. L,XL. \$12.00
- B-2 Baseball caps with embroidered Greek letters, white cap with stitching: red, kelly, royal; royal cap with yellow stitching. \$8.50
- B-3 Baseball caps with balloon embroidered design, white, green, bright pink. \$8.50
- B-4 Gamma Phi Beta balloons, red, blue, green, yellow. \$0.20 each or \$25.00 per gross.
- B-5 White curling ribbon, 500 yards. \$7.00
- B-6 Balloon clips, plastic snap clip. \$25.00/1,000
- C-1 White crew sock with Greek letters. \$3.50
- C-2 Pink turn down sock. \$5.00
- C-3 White crew sock with "Gamma Phi". \$3.50
- C-4 White turn down sock with pink band. \$3.50



Collegiate Leadership Consultants





- D-1 Ceramic mug with dancing crescent moons. \$7.00
D-2 30 oz. tumbler. \$2.00
D-3 Koozie. \$2.25
D-4 Plastic bucket. \$5.00
E-1 5x7 Lucite frame. \$6.00
E-2 5x7 cardboard fun frame. \$2.50
E-3 5x7 ceramic frame. \$15.00
E-4 5x5 Lucite frame. \$6.00
F-1 Enameled and brass two-way key ring. \$4.75
F-2 "Gamma Phi Beta" pen. \$1.50
F-3 Pencil with "Gamma Phi Beta". \$0.50
F-4 Pencil with Greek letters. \$0.50
F-5 Music box and photo holder, tune: "Remember". \$13.00
F-6 "Gamma Phi Beta" watch with leather band. \$45.00
G-1 Cross stitch pillow kit, 12x12. \$10.00
G-2 Heart frame cross stitch kit, 6x6. \$6.00
G-3 Romance frame cross stitch kit, 4x5. \$7.00
H-1 International Headquarters notecards, 8 per set. \$4.00
H-2 "Things To Do" notepad. \$4.00
H-3 Stationery set, 12 sheets/10 envelopes. \$5.00
H-4 "Gamma Phi" notepad. \$4.50
H-5 "Gamma Phi" notecards/envelopes, 8 per set. \$3.50
H-6 Notepad with pink bow and Greek letters. \$4.00
H-7 Post-it notes. \$2.50
H-8 Notepad with crescent moon. \$4.00
H-9 Bumper sticker with crescent moons. \$1.00
H-10 Bumper sticker with "Gamma Phi". \$1.00
H-11 "Only the Best" stickup. \$0.50
H-12 Die-cut notes and two pencil set. \$8.00
I-1 Sports bottle. \$3.50
I-2 Balloon nametags with peel-off back. \$0.20 each or 25 for \$4.50
I-3 Balloon pencil. \$0.50
I-4 Balloon napkins. 50 for \$5.00
I-5 Balloon button. \$0.50

- J-1 Balloons, plain or with Greek letters, pink, white, silver. \$0.20 each or \$25.00/gross
J-2 Nametags with pink logo and peel-off back. \$0.20 each or 25 for \$4.50
J-3 Tiny cards with Greek letters, 2"x4", 25 per set. \$5.00
J-4 Pink napkins with logo in gold. 50 for \$9.50
J-5 Gold stickers with crest. \$0.50
J-6 Button. \$1.00
J-7 White stickers. \$0.50
J-8 Ribbon with Greek letters, 10 yard roll. \$4.50

ORDER FORM

Name: _____ Date: _____

Mailing Address: _____

City: _____ State/Province: _____ Zip: _____

Phone: () _____ Alumnae: _____ Collegian: _____ Other: _____

ITEM #	DESCRIPTION / COLOR	SIZE	QUANTITY	PRICE	TOTAL

Shipping and Handling:
Under \$25.00: \$3.00
\$25.01 - \$50.00: \$4.00
\$50.01 - \$75.00: \$5.00
Over \$75.01: \$6.00

Subtotal:

CO residents add 3.8% sales tax:

Shipping and handling:

Canadians add 10% currency exchange:

Total Enclosed:

All prices in U.S. dollars.

Minimum credit card order is \$15.00.

All 3-4 weeks for delivery.

Method of payment:

Check or money order: _____ VISA: _____ MasterCard: _____ Card Number: _____

Expiration Date: _____ Signature: _____

Send order form and payment to: CRESCENT CLASSICS, Gamma Phi Beta International Headquarters, 12737 East Euclid Drive, Englewood, CO 80111-6445. (Make checks payable to Crescent Classics.)

Alumnae Initiates

Gamma Phi Beta welcomes these recent alumnae initiates to the Sorority: Lisa Gay LeGrand (East Texas St.), Alice McSparron Stevenson (LaSalle), Susan Marie Benjamin Lauer and Susan LaMantia Rosenberg (Arizona), Kimberly Devlin and Christine Lukas (Marquette), Barbara Baumann Svetlik (Stephen F. Austin), Kathy Ratkiewicz Filippini and LaDonna Pierson Zipprich (Bradley), Penelope Tasch Merritt (Christopher Newport), Teresa Pond Cagen, Karen Tinsley Lemmon (St. Louis) and Carol A. Baron Wiseman (Minnesota).

New Crescent Circle

Welcome to two new Crescent Circles: Mid Cities (Texas) and Southeast Missouri!

CLC Application Deadline Approaching

Two huge suitcases, wheels, and a little black bag are the tools of Gamma Phi Beta Collegiate Leadership Consultants. These women are recent graduates of Gamma Phi chapters across the continent who are traveling for the Sorority to improve communication and act as consultants between international Gamma Phi Beta and local chapters.

The CLC program provides opportunities for personal growth, travel, friendships and a lifetime of memories. If you would like more information or to apply, contact your president, an international officer or International Headquarters, 12737 E. Euclid Dr., Englewood, CO 80111-6445, (303)799-1874.

New Alumnae Chapter

Congratulations to the Boston South Alumnae Chapter of Gamma Phi Beta and welcome to the ever-growing number of alumnae groups across the United States and Canada. Gamma Phi Beta is proud to have you as part of our team.

Books

Prepare a month's worth of meals in a day? Sounds impossible! Not according to Mary Beth Chubb Lagerborg (Colorado College and Kansas State), co-author of *Once-a-Month Cooking*. The book includes sample menus, grocery lists and recipes. The book explains how with a little planning and a full day in the kitchen, anyone can prepare and freeze enough entrees to last a month.



Mary Beth Chubb Lagerborg (Colorado College and Kansas State), co-author of a unique cookbook, *Once-a-Month Cooking*.

Gamma Phi Beta



Foundation

Cheryl Speer (CSU-Fullerton), Province XVIa Financial Director—*Alumnae Chapter*: Greater Orange County, California. *Career*: Administrative Assistant for James River, a paper manufacturer.

Beth Singleton Kilchenman (Bowling Green), Philanthropy Chairman—*Alumnae Chapter*: Cleveland. *Career*: Associate Director of Donor Services for the Greater Cleveland Chapter of the Red Cross.

Tucky Wheeler Hobbs (Iowa), Province X Alumnae Director—*Alumnae Chapter*: Greater Kansas City. *Activities/Interests*: Board of Directors, Minute Circle Friendly House (inner-city recreation center); Board of Directors, City Golf League; swimming, yard work and church activities.



Tucky Wheeler Hobbs (Iowa), New Province X Alumnae Director.

Rebecca Boyd-Obarski (Illinois), Province Vb Collegiate Director—*Alumnae Chapter*: GlenEllyn Area. *Career/Activities*: Attorney, stay-at-home mother.

OFFICERS

Correction:

Phyllis Armstrong Johnson, a founding member of the Tau Epsilon Pi Society, was initiated into the Omicron chapter at the University of Illinois—not Nebraska-Kearney.

Gloria Swanson Nelson (Oklahoma) is a founding member of the Tau Epsilon Pi Society.

Edna Hanlon, a member of the International Headquarters' staff was incorrectly listed as Edna Hinton in the Fall issue.

For applications to be part of the Gamma Phi Beta Foundation's Camp Sechelt staff this summer, check January mailings to collegiate and alumnae chapters or call Linda Ryan at International Headquarters, (303) 799-1874.

Pin - On Gamma Phi Beta Badge Jewelry From



J.O. POLLACK Co.



Wear your badge as either pin, ring or pendant. Pinning it on the ring mounting or pendant is as easy as pinning it to your clothing. Removal is just as simple.

Description	10K Yellow Gold Mounting		Sterling Silver Mounting		10K White Gold Mounting		Total
	Quantity	Price	Quantity	Price	Quantity	Price	
BP/G Badge Pendant (Pendant only)		95.00		45.00		110.00	
BR/01G Badge Ring (Ring Only) Size _____		140.00		70.00		155.00	
Merchandise Total							
8.75% State Tax (IL & MO Only)							
Postage & Handling (6% of Total 3.25 Min.)							
Total							

Name _____

Address _____

City _____ State _____ Zip _____

()
Phone (AC) _____

Allow 4 to 6 weeks for delivery

J. O. Pollack Jewelry Catalog Available on Request.

Make Checks Payable to: Gamma Phi Beta NB Jewelry
Direct Orders to: Gamma Phi Beta International Headquarters
Dept. N. B. J.
7395 E. Orchard Road Suite 200
Englewood, Colorado 80111 - 2509

ΓΦΒ

CHANGE OF ADDRESS OR NAME REPLY

Clip form, place in stamped envelope and mail to Gamma Phi Beta Sorority, 12737 E. Euclid Drive, Englewood, CO 80111-6445; 303-799-1876 (FAX)

Maiden Name _____ Chapter _____

New name if different from label

Title _____ Last _____ First _____ Middle _____

Entire new address

Street _____

City _____ State _____ Zip _____

Members are responsible for all address changes. Allow 4 weeks.

☐ Check here if change of address is for other than addressee.

PLEASE DO NOT
REMOVE OLD LABEL