

THE CRESCENT

OF GAMMA PHI BETA

Summer 1988



The Fashion
Scene

Breast
Cancer

1988
Convention

COMMENTARY

By Joey Stiver, Collegiate Vice President



PR! Public Relations! How often we hear and say those words in relation to Gamma Phi Beta!

What does the concept mean? How does it affect Gamma Phi Beta, you and your chapter? Why is it so important?

Public relations can be defined as the programs and action plans designed and implemented to enhance the perception of an organization with its identified markets. That's a mighty big definition for two little letters thrown around so freely by each of us! In simpler terms, public relations is what we are, what we do, what we stand for and how we act.

Public relations is the means by which Gamma Phi Beta promotes its image, pride and purpose both internally and externally. With a properly designed and implemented PR program, individual chapters promote those things of which we as Gamma Phi Betas are proud. It is often said that real success comes from knowing you're good, wearing it well and sharing it with others.

Beyond definitions, an organization such as Gamma Phi Beta is its members. And, in turn, YOU are Gamma Phi Beta. Therefore, Gamma Phi Beta public relations begins with one person . . . YOU. Each of us, whether pledge, initiated collegian or alumna, forms the total Gamma Phi Beta image as well as the image of a sorority woman.

Each day, in action and conversa-

tion, what we do and say reflects on all of us. Good public relations begins with your chapter and extends to other Greeks, non-Greeks, the faculty and administration, campus organizations, prospective members, alumnae members, other Gamma Phi Beta collegiate chapters, international officers, your community, your parents and the world at large.

Despite the current popularity of Greeks, Gamma Phi Beta and all other sororities and fraternities face serious challenges. The extra expense of collegiate membership can be difficult. Time is at a premium for collegians and the alumnae who support them. Relationship statements and the discussion of banning all sororities and fraternities on certain campuses require us to successfully justify our existence to college administrators. Negative publicity sometimes attached to the Greek system must be far outweighed by the positive. If Gamma Phi Beta is to continue to attract new members, we must demonstrate—through action—the quality and high ideals the Sorority represents.

Developing a public relations program is really quite easy if you focus on your target audiences. Ask yourself some questions: How do you get along among yourselves? Do you know and like each other? How can you promote good PR internally to address these issues?

Do you know your alumnae? Do you tell them how much they are appreciated? What can your chapter do to promote relations with alumnae? Do you follow international Gamma Phi Beta policies? How does your chapter fit into the International organization? How does the campus population view Gamma Phi Beta? Has anyone ever heard of you? What can your chapter do to promote Gamma Phi Beta on campus? What does the community think of Gamma Phi Beta? Are you a good neighbor? What do other Greeks say about Gamma Phi Beta? Are you supportive of your fellow Greeks? Do your parents know about Gamma Phi Beta? Do they know why it is important to you? How can your chapter interact with parents? Answers to these questions will form the basis for your positive public relations program.

The theme of the 1988 Gamma Phi Beta International Convention is Gamma Phi Pride—Catch It! Public relations is key to promoting that theme on campus, in the community and in your chapter. There is no better way to demonstrate pride in an organization that promotes the philosophy of being the best we can be as individuals, as chapters and as an international organization than through the development of a positive public relations program. What those around you think of Gamma Phi Beta is up to YOU.

CONTENTS

DEADLINES

Winter September 1
Spring December 1
Summer March 1
Fall June 1

EDITORS

Editor-in-Chief

Kris Brandt Riske
2405 W. Gregg Drive
Chandler, AZ 85224

Alumnae Editor

Margy Molden Wiltamuth
1700 Kiva Road
Silver Spring, MD 20904

Collegiate Editor

Lin Schafer Sanford
1858 E. Krista Way
Tempe, AZ 85284

Feature Editor

Natalie Meyer McKenzie
531 S. Burton Place
Arlington Heights, IL 60005

Business Manager

Marjory Mills Shupert
Central Office

FEATURES

The Fashion Scene 4
Gamma Phi Beta collegians model their favorite attire for different occasions.

Breast Cancer 9
When detected early, the cure rate of this disease approaches 100 percent.

Convention 12
The 1988 Convention Committee invites all Gamma Phi Betas to Palm Desert, Calif.

Chapter Installations 14
Members of the reorganized Alpha Theta and Alpha Upsilon Chapters show their Gamma Phi Pride.

DEPARTMENTS

Alumnae News 16

Collegiate News 17

In Memoriam 19

Profiles 20

ARC Listing 24

Directory 29

Foundation 30

THE CRESCENT OF GAMMA PHI BETA Summer 1988

Gamma Phi Beta USPS
137-620

THE CRESCENT is published quarterly in Fall, Winter, Spring and Summer by the Gamma Phi Beta Sorority, Inc., 7395 E. Orchard Rd., Ste. 200, Englewood, CO 80111-2509. Subscription price—\$1.50. Produced in the U.S.A. by Maury Boyd & Associates. Second class postage paid at Englewood, CO and additional mailing offices. Copyright 1988, Gamma Phi Beta Sorority.

Postmaster: Please send notice of undeliverable copies on Form 3579 to Gamma Phi Beta, 7395 E. Orchard Rd., Ste. 200, Englewood, CO 80111.

Subscribers: Send changes of address, notices of marriages and deaths to Gamma Phi Beta, 7395 E. Orchard Rd., Ste. 200, Englewood, CO 80111.



Cover

Niki Steinberg (USC) models a preference party dress.



9



12

The look is unmistakably elegant when Gamma Phi Betas wear formal attire.

Left: Diane Gustafson and Rhonda Blecher (Denver).

Middle: Kathy Jennings (USC).

Right: Colleen Kenney (Nebraska), Kim Dodd (N. Iowa) and Laura Faust (Creighton).

Formals





the Fashion Scene on campus



Are you fashion conscious? Image wise? Are you the best you can be every time you step out the door?

Studies have shown first impressions are lasting ones. These instantaneous evaluations are based on appearance more than any other factor.

But appearance goes beyond natural beauty and a perfect figure. It more clearly might be described as a "total look" appropriate for the individual or occasion—always with attention to detail.

Just as a Gamma Phi Beta letter shirt would be inappropriate for a rush preference party, a curly hair style is more complimentary with certain face shapes. Makeup, jewelry, accessories, polished shoes and pressed clothing add the finishing touches for a total look.

Pride in appearance is basic to every chapter's public relations program because every member is Gamma Phi Beta. A first and lasting impression of you is a first and lasting impression of Gamma Phi Beta.

Catch that Gamma Phi Pride—for yourself and your Sorority!

USC photos by Cynthia Lum
Denver photos by Larry Laszlo
Northwestern photos by Karen Rodgers
Province XV photos by Jerry Rempp

Preference

Basic black is the fashion statement for preference parties during rush. Top: Laura Faust (Creighton). Left: Kathy Ruffalo (Northwestern). Right: Laura Montarone and Chris Boni (Denver).



Dresses enhance
the business
atmosphere of
Gamma Phi Beta
chapter
meetings. Left:
Haley Hefkin
and Margo
Rovegno (USC).
Middle: Wendy
Schwarz and
Diane Seaburg
(Northwestern).
Right: Julie
Stevenson (Iowa
St.) and Lisa
Morgan (Iowa).

Meetings





What Gamma
Phi Beta's
wardrobe would
be complete
without letters?
Left: (front) Niki
Steinberg,
Margo Rovegno,
(back) Joanna
Massey, Melissa
Michaelson and
Kathy Jennings
(USC). Middle:
Laura
Montarone,
Chris Boni and
Rhonda Blecher
(Denver). Right:
Laura Butler,
Wendy Schwarz
and Kathy
Ruffalo
(Northwestern).

Letters



For classes and
campus
activities,
Gamma Phi
Betas choose
comfortable,
casual
sportswear.

Left: Chris Boni,
Diane Gustafson
and Laura
Montarone
(Denver).

Middle: Kathy
Jennings (USC).

Right: Kim Dodd
(N. Iowa).

Casual



FEATURE

Breast Cancer

By Margery Wiltamuth,
Alumnae Editor

Breast Cancer. Two words that strike terror in the hearts of women. And no wonder. Breast cancer will strike 135,000 American women this year, and ultimately be diagnosed in about one out of every 10 women.

Look around you at your next chapter meeting—alumnae or collegiate. If there are 40 present, four of you will have breast cancer at some time in your lives. But that doesn't mean four of you will DIE of breast cancer. You can't make sure you won't be one of the four, but you can make certain that if you are, your cancer will be detected early when the cure rate approaches 100 percent.

Early detection can be accomplished in two ways:

- Practicing monthly breast self-examination.
- Following the American Cancer Society recommendations for regular examination through mammography (low dose breast x-ray).

Women have demonstrated a willingness to give up smoking—or better yet never start—to reduce the risk of lung cancer. We're eating more fiber and less fat. But when it comes to breast cancer, many are repulsed by the thought of breast self-examination and fear a mammogram would be painful and result in excess exposure to radiation.

Why do we continue to hide our heads in the sand? Most of us see a gynecologist regularly for a pap test even though the incidence of pelvic and uterine cancer is significantly lower than that of breast cancer and recent research has shown pap tests to be less reliable than breast screening techniques.

What is it we fear? That we'll find something? We all have read of the breast cancers of Nancy Reagan, Happy Rockefeller, Betty Ford, Jill Ireland and Ann Jillian. **THEY'RE ALL ALIVE!**

Most breast cancers are first discovered by women themselves. The earlier a lump is detected the better, so it behooves us all to become acquainted with the normal feel of our breasts through breast self-examination. It's a simple three step procedure recommended by the American Cancer Society:

In the shower: Examine your breasts during bath or shower; hands glide easier over wet skin. Fingers flat, move gently over every part of each breast. Use right hand to examine left breast, left hand for right breast. Check for any lump, hard knot or thickening.

Before a mirror: Inspect your breasts with arms at your sides. Next, raise your arms high overhead. Look for any changes in contour of each breast, a swelling, dimpling of skin or changes in the nipple.

Then, rest palms on hips and press down firmly to flex your chest muscles. Left and right breasts will not exactly match—few women's breasts do.

Regular inspection shows what is normal for you and will give you confidence in your examination.

Lying down: To examine your right breast, put a pillow or folded towel under your right shoulder. Place right hand behind your head—this distributes breast tissue more evenly on the chest. With left hand, fingers flat, press gently in small circular motions around an imaginary clock face. Begin at outermost top of your right breast for 12 o'clock, then move to one o'clock, and so on around the circle back to 12. A ridge of firm tissue in the lower curve of the breast is normal. Then move in an inch, toward the nipple, keep circling to examine *every part of your breast*, including nipple. This requires at least three more circles. Now slowly repeat procedure on your left breast with a pillow under your left shoulder and left hand behind head. Notice how your breast structure feels.

Finally, squeeze the nipple of each breast gently between thumb and index finger. Any discharge, clear or bloody, should be reported to your doctor immediately.

Extra tips:

Soapy fingers seem to "feel" better.

Pick a specific date to check your breasts each month. A week after your monthly menstrual cycle is a good time, when breasts are usually not tender or swollen. After menopause, choose the first of the month so you'll remember.



About the author

Alumnae Editor Margery Molder Wiltamuth (Iowa St.) learned all she could about breast cancer after a personal bout with the disease more than four years ago. She found a lump which was determined by biopsy to be malignant. A modified radical mastectomy was followed by six months of adjuvant chemotherapy and seven weeks of daily radiation. She considers herself a survivor, though an ever watchful one, and now makes it her mission to encourage others to practice breast self-examination and schedule mammograms as recommended by the American Cancer Society.

For nine years the Wiltamuths (including husband Dick and sons Mark, 21 and Scott, 18) have sponsored a private golf and tennis tournament. Since Marge's cancer they've turned it into a benefit for the American Cancer Society, adding a Casino Night the last two years. To date they've raised more than \$8,000.

FEATURE



Breast cancer will . . .
ultimately be diagnosed
in about one out of every
10 women.

Breast self-examination can be learned in several ways. Check with your doctor, local hospital or breast center for scheduled sessions to learn the procedure and practice with dummy breasts that have lumps which can be felt. A new program called Mammacare for learning the technique through home video cassette with the aid of tissue-like models is available in some communities. Call 1-800-626-2273 for more information on this program. It is available only through physicians, hospitals and breast centers.

Seventy percent of all breast lumps are found by the woman herself. The vast majority of these lumps (nine out of 10) are BENIGN—non-cancerous. So don't panic if you find one. Just get to your doctor.

Many women have normally lumpy breasts from fibrous cystic disease and for them self-examination is more difficult. Also, the major problem with malignant (cancerous) tumors discovered through self-examination is they may not have been detected early enough to permit minimal treatment and almost certain cure. That's why a mammogram is so necessary.

MAMMOGRAPHY CAN DETECT A TUMOR BEFORE YOU OR YOUR DOCTOR CAN FEEL IT.

Just this morning I checked on a Gamma Phi Beta friend who had had a tumor biopsied yesterday. It was visible on her mammogram but neither she nor her doctor were able to feel the lesion even when the mammogram showed exactly where it was. The lump was malignant. It was caught early enough that no further treatment is needed. Without mammography, it would still be growing, perhaps spreading.

These guidelines are recommended by the American Cancer Society for mammography:

Women 35-39—See your doctor for a baseline mammogram.

Women 40-49—Have a mammogram every one to two years, even if no symptoms are present.

Women 50 and over—See your doctor for a mammogram every year.

Because of the results of the Breast Cancer Detection Demonstration Project sponsored by the National Cancer Institute (NCI) and the American Cancer Society, it is likely the recommendation for yearly examinations through mammography will be lowered to age 40. Dr. Charles R. Smart, chief of NCI's Detection Branch, estimates that if doctors across the country would recommend regular mammograms for their female patients over 40, the national death rate from breast cancer might be cut by 46 percent. The study, begun in 1970, involved 280,000 women.

Why aren't all women getting regular mammograms? There are many reasons, all of them baseless.

Pain. It is not painful unless you are unusually sensitive. If you are, mention it to the technician and he/she can be particularly gentle. It is essentially a picture-taking procedure. The breast is compressed, so the equipment may feel cold, and a careless technician could unintentionally pinch. Just say "Ouch!"

Cost. Mammograms are still relatively expensive—up to \$100—and often are not covered by health insurance unless prescribed by a physician. Medicare does not cover breast screening mammography, but two bills are pending in Congress (in the Senate sponsored by Barbara Milulski of Maryland, and in the House by Mary Rose Oakar of Ohio) which would provide Medicare coverage. Occasionally the

American Cancer Society offers reduced cost mammograms in some communities for a specified period of time. Call them if cost is a concern.

Excess radiation. Unfounded. Be sure you are being examined with the latest equipment. When the test was first developed, it delivered significant radiation doses, generating concern over regular testing throughout a woman's lifetime. But in recent years technology has significantly reduced the radiation doses involved and the very low dosage (1 RAD or less per breast) is now considered perfectly safe. Many doctors who simply don't have time to keep up with the latest developments in every phase of medicine are still leery of prescribing regular mammograms. If your doctor recommends against mammography, get a second opinion.

Breast cancer is not limited to older women. All of us, regardless of age, must learn all we can about this disease, practice monthly self-examination and when we reach the recommended ages, schedule regular mammograms.

One thing is certain: **ALL LUMPS MUST BE CHECKED WITHOUT EXCEPTION.** Failure to act can cost you your life.

Even if you find a large tumor which has spread, there are many effective treatments—surgery, drugs, radiation.

Sources for additional information:

NCI Cancer Hotline—1-800-4-CANCER. For doctors and patients to assist in finding appropriate tests and therapies, including experimental ones.

For brochures with the latest information on breast cancer, write Woman's Breast Cancer Advisory Committee, Box 224, Kensington, MD 20895.

Alternatives by Rose Kushner.

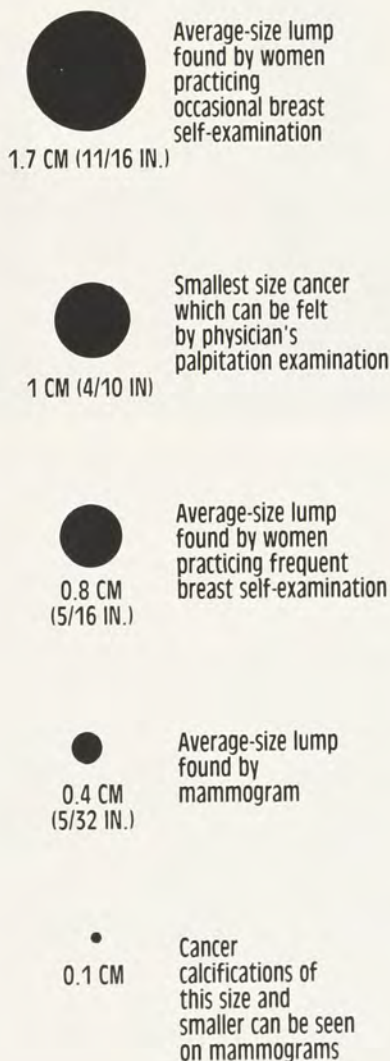
Rose Kushner, herself a breast cancer patient, campaigned for procedural changes in the treatment of breast cancer. Thanks to her efforts, women may consider the options after biopsy rather than the previous procedure of immediate mastectomy. She has served on the

National Cancer Advisory Board and, though a lay person, is recognized as a leading expert on breast cancer.

Choices by Marion Morra and Eve Potts.

Local chapter of the American Cancer Society.

Breast cancer sizes found by various detection methods:



Most breast cancers are first discovered by women themselves.

CONVENTION

Gamma Phi Beta Pride . . . **CATCH IT!**



Gamma Phi Betas will travel to Palm Desert in July for the Sorority Convention, where Southern California sisters will be the hostesses. The Convention Committee is coordinating all the fun—Play Day, beach party, Foundation dinner and more—which will focus around Marriott's Desert Springs Resort, site of the 63rd Gamma Phi Beta International Convention.



Catch the chance to meet Gamma Phi Betas from all across the continent! Catch rays of sunshine by day . . . glittering skies by night! Catch up on special friendships! Catch the stimulating



workshops and inspirational ceremonies!

Get caught up in all the fun at Gamma Phi Beta's 63rd International Convention, July 26-30, 1988, Marriott's Desert Springs Resort, Palm Desert, Calif.

You will experience California hospitality at the Marriott with its 23 acres of private lakes. A canopied boat will transport you to and from your room, or anywhere else you travel within the Marriott.

California Gamma Phi Betas will host a beach party and barbecue one evening on the Marriott's 12,000 square foot sandy beach. Get ready for bingo, volleyball, paddleball, frisbee and yes, even a game of pass the California orange! You can pose for a picture with a California celebrity, take a surfing lesson and learn the California rai-sin dance. You could even be hon-

ored as Ms. Casual Californian, so all you out-of-state Californians slip on those shades and whatever else you think casual Californians wear. Californians, you'll be the judges!

"Do I hear 30, 30! Going once, going twice, sold to that Gamma Phi Beta!" That's what you'll hear on Foundation night as a fun Foundation auction and raffle fundraiser takes place. (Rumor has it you may even get the chance to bid on a real treat—a night out with a California celebrity!)

Choices! That's what you'll have to make on Play Day. There's an event for everyone. Which will it be? Catching the aerial tramway? Catching the air conditioned bus to go shopping on the famous El Paseo and gazing at celebrity homes? Catching the waves at the Oasis Waterpark? Catching some extra pampering at the hotel spa? Catch-



ing some sleep by the hotel pool? Catching a round of golf or a game of tennis? The decision is yours!

Does all this fun catch your attention? So will the Gamma Phi Beta Boutique, which will be located at the Marriott and stocked with all kinds of Gamma Phi Beta paraphernalia.

Gamma Phi Pride—Catch It! Make plans now to catch either a plane, bus, train or car to the 1988 Convention. For more information contact Gamma Phi Beta Sorority, 7395 E. Orchard Road, Suite 200, Englewood, CO 80111. Every member of Gamma Phi Beta is welcome!

What to Wear

Meetings, luncheons, dinners—dress, suit or skirt and blouse

Initiation and memorial service—white dress or skirt and blouse

Play Day, beach party—casual

Pink Carnation Banquet—short or long formal

Note: Palm Desert will be HOT and the hotel COOL.



Back On Campus

Vanderbilt University
Pennsylvania State
University



A reception honored new initiates of Alpha Theta Chapter, Vanderbilt University, Nashville, Tenn.



Members of Alpha Upsilon Chapter, Pennsylvania State University, State College, Pa. invited Extension Supervisor Arlene Inbody (Calif.-Irvine) to a brief rest after the initiation luncheon.

Alpha Theta

The chapter lodge at Vanderbilt University was the site of the January 23, 1988 initiation of members of the reorganized Alpha Theta Chapter. Delta Upsilon Chapter, University of Georgia conducted the ceremonies which had been preceded by Inspiration Week.

More than 90 members and guests attended a reception that evening at the historic Union Station Hotel in Nashville. Mistress of ceremonies was International Public Relations Chairman Cyndy Meisner Howes (Indiana St.). Vanderbilt University Assistant Dean of Residential and Judicial Affairs Sandy Stahl welcomed the group to campus. A plaque recognizing the newly initiated members was presented by National Panhellenic Conference Delegate Karen Gamel Urette (Oklahoma), who represented Grand Council.

Among the guests were Sandy Carver Remsberg (Kansas) and Jill Remsberg (Kansas), mother and sister of initiate Jennifer Remsberg. They also attended the afternoon initiation ceremonies.

Gifts received by Alpha Theta Chapter included a silver tray from Province XIV and the president's ring, which was used by the chapter prior to reorganization. Kim Webb was named Outstanding Pledge.

Last fall, the new pledges participated in Homecoming, Atheanian



Guests at the Alpha Theta reception are Extension Supervisor Shelley Arnold (Boise St.), International Public Relations Chairman Cyndy Meisner Howes (Indiana St.) and Province XIV Collegiate Director Debbie Dykes Misiag (Calif. St.-Fullerton).

Sing and Founders Day, and won first place in Sigma Chi Derby Days. Parties with fraternities, retreats and Parents Weekend were other activities.

New initiates are Andrea Albert, Lauren Bastone, Cindy Byrns, Tonya Carey, Charlotte Cheng, Tracey Cochran, Kristin Corgan, Corey Delk, Lisa Fellen, Sarah Finley, Angie Gaw, Sara Huffine, Kathy Knapp, Francesca Lynd, Kim Martin, Nancy Maurin, Christy Monaco, Tracy Newton, Jennifer Remsberg, Francesca San Diego, Karen Salzman, Danae Spackey, Lauren Szabo, Michelle Veach, Kim Webb, Amy White, Katherine White and Kim White.

Alpha Upsilon

Members of the reorganized Alpha Upsilon Chapter were initiated January 22, 1988 at Gamma Beta Chapter, Gettysburg College, Gettysburg, Pa. It was the culmination of colonization activities begun the previous fall.

In addition to pledge class projects and meetings, the new group quickly became involved in Greek life on the Pennsylvania State University campus. In October they captured first place in spirit and third place overall in Sigma Chi Derby Days. Halloween was cele-

CAMPUS *Continued on page 18*

ALUMNAE NEWS

Gamma Phi Betas always enjoy getting together with dear friends from college days and that's what five **Boston University** alumnae did after not seeing each other for 50 years. "We've been corresponding and some have seen others, but we weren't all together until now," said Kathryn Cummings Towle.

Five years ago six Omega Chapter alumnae returned to **Iowa State** for their 50th reunion. Last year, four returned for their 55th reunion. The young 1932 graduates are Jane Candor Walby, Kathryn Misbach Spies, Martha Merle Morgan Youngdale and Jeanne Fitzgerald MacDuff.

Columbia, Mo. alumnae and Alpha Delta collegians enjoyed a Founders Day luncheon at the University of Missouri chapter house. Lillian Stapel Blakemore (Missouri) received her 50-year pin.

Donna Moore (E. Texas St.) was named Alumna of the Year at the **Dallas** Founders Day celebration. The event was held at Royal Oaks Country Club.

The **Portland, Ore.** Alumnae Chapter celebrated its 75th anniversary and Founders Day with a luncheon at the Portland Golf Club. Joining alumnae were collegians from Oregon State and the University of Oregon. Diane Soderstrom Goff (Idaho) presented 50-year certificates and pink carnations, and



A reunion weekend brought together members of the Alpha Lambda (British Columbia) 1944 pledge class. They are (front) Dorothy Williams Dawson, Verda MacGillivray Young, Vivian Golos Tretheway, Sylvea Dyson Inman, Dorothy Ann Andrews Huyck, (middle) Ann Symonds Russell, Valerie Manning Taggart, Mary Dolmage Inman, Dale Coughlin Blair, Joy Donegani McCusker, Nona Lambert, Shirley Leach Vernon, (back) Dorothy Moore Chutter, Joan Pratt Scrim, Edlin d'Easum de Rosenroll and Dorothy McLeod Forsyth.

Hope Bitting Szabo (William and Mary) entertained the group with reflections on campus life in the 1930s.

Nashville, Tenn. alumnae kicked off the year with the annual potluck salad supper. October featured a fall fashion update by Sharjo's and the annual Vanderbilt Homecoming party.

Mary Mooney Regan Green, Elizabeth Carr Nichols, Jane Davis Nicholson and Margaret Hope Jones Neathamer (all Vanderbilt) received 50-year pins on Founders Day at the Stouffer Nashville Hotel. Alumnae were delighted to be joined by pledges of the reorganized Vanderbilt chapter.



Kansas State alumnae celebrating their 10 year reunion are (front) Meg Wilson Johnson, Terry Chambliss Beers, Nancy Hammel Kuehler, Suzi Ullom Meitzner, Teresa Everett Wilpin, Karen Wedel, (middle) Lynn Barrett Wilson, Nancy Dallman Jordan and (back) Deb Braun Gettler.



Charlotte Frank Randall (Oregon St.), Maryon Greenough (Oregon St.), Hope Bitting Szabo (William and Mary), Dorothy Dunham Cornwell (Oregon St.) and Charlotte Latourette Miller (Oregon St.) were awarded 50-year pins in Portland, Ore. on Founders Day.



Boston University alumnae enjoyed a reunion luncheon in Maine. They are Dorothy Boyce Lightner, Kathryn Cummings Towle, Margaret Durkee Benton, Wilma Nichols and Betsey Hosmer Cutliffe.

COLLEGIATE NEWS



Balloons and streamers add a festive touch to a University of Nebraska rush party where Janelle Westerbuhr and Jill Barreman are ready to greet their guests.

Rho Chapter at the University of Iowa held its annual volleyball-a-thon philanthropy fundraiser along with Phi Kappa Psi. Last fall they helped the Lambda Chi Alphas with a teeter-totter-a-thon. Fraternity exchange themes for the year have included King of the Jungle and The 19th Hole.

A group of underprivileged children delighted in Nu Chapter's (Oregon) presentation of a Dr. Seuss story. It earned them first place in the Derby Days Skit Contest.

Greeks for Peace is a new organization at the University of Michigan founded by Gamma Phi Beta Carol Spencer. The group focuses on international philanthropic and social issues. With more than 200 members, Greeks for Peace would like to expand to other campuses.

In November, Northwestern collegians welcomed parents visiting for the weekend. Pledges raised more than \$350 for Camp Sechelt, and a nursing home was decorated for Thanksgiving and Christmas.



Nu Chapter (Oregon) members and pledges celebrate the chapter's quota-plus pledge class.



University of Oklahoma members rehearse their Christmas in August rush party skit.

For the third consecutive semester, Iowa State Gamma Phi Betas are number one in Panhellenic

scholarship. They also captured first place for their Varieties skit, performed with Phi Delta Theta.

Psi Chapter (Oklahoma) organized a clothing drive, collecting items from every sorority on campus for donation to Goodwill Industries. First place awards were earned for two banners.



Laura Irvine and Shan Blakemore (Cal. St.-Sacramento) look through the Gamma Phi Beta History.

ETCETERA

Cornelius Memorials

Mr. and Mrs. Walter Cornelius have established a scholarship and donated a baby grand piano to Beta Delta Chapter, Michigan State University in memory of their daughter Lisa.

Miss Cornelius was a unit sales manager for Proctor and Gamble at the time of her death on June 30, 1987. She graduated from Michigan State University in 1987 with a degree in communications, and was chapter membership chairman and Panhellenic president. Named the Outstanding Greek woman, she also was Theta Chi Dream Girl. Her



Lisa Cornelius

many high school activities included service as president of the senior class, and she set numerous records in gymnastics, track and swimming.

The Lisa Ann Cornelius Memorial Scholarship will be awarded annually by the Michigan State University College of Communications. Members of Beta Delta Chapter will be given first consideration for the scholarship.

Extension News

Gamma Phi Beta colonized at Clemson University, Clemson, S.C. in January and at California State University-Chico, Chico, Calif. in April.

A third colony is located at Christopher Newport College, Newport News, Va. Members of local sorority Pi Kappa Sigma were pledged in February.

Gamma Phi Beta also has accepted an invitation to colonize at George Mason University, Fairfax, Va. in the spring of 1990.

Alumnae Panhellenic Groups

If you've been thinking it would be fun to get together with other sorority alumnae in your area, new friendships can begin by organizing an alumnae panhellenic group. For help in getting started, contact the NPC Advisor for Prospective Alumnae Panhellenics Jan Covington, 1112 Walnut Dr., Morgan City, LA 70380.

CAMPUS *Continued from page 15*
brated at a social with Delta Tau Delta.

Greek Sing was a big event in November, with the Gamma Phi Beta pledges performing "George M." They also participated in a Jr. Panhellenic all-sorority fundraiser.

Inspiration Week with the traditional days of Love, Labor, Learning and Loyalty preceded the Friday evening initiation. Saturday was a day of celebration at the initiation luncheon held at the Nittany Lion Inn. Alumnae Vice President Sally Erikson Lewis (Bradley) welcomed the new initiates on behalf of Grand Council and presented a plaque engraved with their names.

The memorable January initiation provided added enthusiasm for February rush parties in the chapter suite on campus. Twenty-two pledges were welcomed with pink carnations and a serenade at the Beta Theta Pi house.

First initiates of the reorganized Alpha Upsilon Chapter are Julia Britton, Kira Bukowski, Emily Caldwell, Maureen Fuller, Linda Galati, Christine Hoyne, Tricia Jester, Rene Karstetter, Mary Keegan, Emily Kohler, Cheryl Malizia, Michelle Mitinger, Kelly Osborne, Kristyn Post, Tammy Rhoads, Dorothy Rosener, Stacy Ruch, Kellie Ryan, Gina Scornavacchi, Lisa Seprish, Julie Shields, Kathy Stambaugh, Jen-

nifer Stauffer, Lori Surma, Jennifer Tebera, Suzie Troyanoski, Carol Viglione, Mimi Joy Weaver, Tammy Weiss, Allison Widmann and Christine Zinzer.

Dorothy Rosener received the State College Alumnae Panhellenic Outstanding Pledge Award.



Alpha Upsilon members share the joy of initiation.



Alumnae Vice President Sally Erikson Lewis (Bradley) welcomes Alpha Upsilon initiates to Gamma Phi Beta.

IN MEMORIAM

ALPHA

Esther Stacey Posthill Clement
Marianne Hollister Teach
Marian Beecher Scott

BETA

Sally Larson Melberg

GAMMA

Adelaide Krumrey Saemann
Barbara Waldo Brown

EPSILON

Rowena Gamber Brown
Marian Drew Waitley
Dorothy Rioch Cunningham*
Mildred Clark Masters

ETA

Elizabeth Buffington Rabbitt

THETA

Reita Schnackenberg Graham
Lillian Peters Beatty
Marie Miller Hostetter*
Marjorie Moore Deberard Berger

KAPPA

Jean Giere Fransen
Susan Cochrane Campbell
Barbara Harris Parker

LAMBDA

Kathryn Barnhisel Altsheler
Katherine Schulz Bruce

NU

Marygould Parsons Mays
Elizabeth O'Conner Nelson Henderson
Marion Henderson Bergerson*
Beatrice Locke Hogan ***/**

Beatrice Hogan

Beatrice Locke Hogan, who served as National Panhellenic Conference Delegate (1953-58) and National Panhellenic Conference Chairman (1955-57), died February 10, 1988 in Washington, D.C.

Initiated at Nu Chapter, University of Oregon on October 23, 1912, she also served the Sorority as Alumnae Vice President (1936-38) and was the first Province VI Director. Mrs. Hogan was named to the Honor Roll in 1952 "for originating and furthering Founders Day gatherings on an international basis."

She was a member of the P.E.O. Sisterhood and had served the Disabled American Veterans Auxiliary as national commander (1945-46).

XI

Ellen Louise Holbrook
Florence Richardson Goff

OMICRON

Jessie B. Mueller
Lola Carroll Baum
June Martin Storms
Gertrude Day
Irene Styan Van Alstyne
Esther Hibbs Barnes
Helen Eva Bliss
Frances Abbott Culver

PI

Alice Connell Horacek

RHO

Lillian Mildred Miller Forbes

SIGMA

Miriam Lamar Mott*
Vera Virginia Hill Thayer Dick**
Kay Warring Allen

TAU

Martha Augustine Dill

PHI

Katherine Stephens Morrison
Doris Talbot Hetlage

PSI

Myrtle Brazil Skillern
Dorothy Way Lamphere
Drewsilla Beams Hickman

OMEGA

Elizabeth Lukermann Kroeger
Mildred Cessna Stoddard
Gloria Strongin Sheldon
Anne Mundt Gillmore

ALPHA ZETA

Glynn Mitchell Johnston
Ruth Hilliard Knoll

ALPHA ETA

Ruth Gammell Rulketter
Pauline Pfeiffer Ruopp

ALPHA THETA

Anne Young Pierce
Anna Hudson Wiggins

ALPHA IOTA

Berenice Smith Galbraith
Isabel Barrows Jackson

ALPHA LAMBDA

Leila Lewis Maxwell

ALPHA MU

Helen Morrow Briley
Elizabeth Mackenzie-Reid Roy

ALPHA NU

Doris Haughton Young

ALPHA XI

Jean Collins Glaze
Ruby Dudley Collins

ALPHA OMICRON

Margaret Donovan Herland**
Sara O'Connor
Catherine O'Connor

ALPHA PI

Virginia Reed Boutwell

ALPHA UPSILON

Geanne Marcy "Meg" Bolton

BETA GAMMA

Janet Tabler Hackworth

BETA THETA

Mona Belle Hench Cortez

BETA RHO

Judith Elaine Hovde-Jensen

GAMMA ZETA

Martha Lee McDowell

* Merit Roll

** Service Roll

*** Honor Roll

Donations in memory of friends may be sent to: Gamma Phi Beta Foundation, 7395 E. Orchard Rd., Ste. 200, Englewood, CO 80111.

Proof of death must be submitted to Central Office before a member's name will be listed in the In Memoriam column. A newspaper obituary is preferred, but consideration will be given to a letter from a family member or executor of estate.

The family of a deceased member is encouraged to return the member's Gamma Phi Beta badge to Central Office.

PROFILES

Meredith Leitschuck Naviaux (Nebraska) received an honorary degree in pedagogy from Doane College in Nebraska. She is considered a master teacher for her exemplary performance as a teacher of the behaviorally impaired, and was honored for dedication in teaching teachers and students.

A Ralston Public Schools teacher for 21 years, Meredith is an off-campus instructor for Peru State College and the University of Nebraska at Lincoln, and serves as a consultant in management of children's behaviors. She was named Teacher of the Year by the Nebraska Council for Children with Behavioral Disorders.

Shanon Glenn Fitzpatrick (Oregon), a Placentia, Calif. fourth grade teacher, was honored by the Los Angeles Music Center with a BRAVO Award. It recognizes outstanding educators for their dedication in keeping the arts alive and well in the Los Angeles public schools. The award was presented at the Dorothy Chandler Pavilion, home of the Academy Awards.

Take a college of human development with a curriculum requiring a shift in focus to meet the needs of today's students and add a Gamma Phi Beta who stirs in a lot of excitement.

The product is an almost 30 percent increase in enrollment (up to 1,000) and a revised curriculum, which has yielded employment for every recent graduate not in graduate school.

That's what happened when Syracuse University asked **Jane Brush Lillestol** (N. Dakota St.) to take over as dean of the College of Human Development. "Today the college has a new direction, new vigor and the unmistakable aura of success," according to an article in



Jane Brush Lillestol (N. Dakota St.)

man Development. "Today the college has a new direction, new vigor and the unmistakable aura of success," according to an article in

Syracuse University Magazine.

She began by talking with national leaders in the fields where her students would be employed, asking them to examine Syracuse's curriculum with an eye to making it reflect the needs of professionals in the 1980s. The school eliminated some programs, most notably home economics education and clothing studies.

This fall a new food systems management program was added, reflecting a need for men and women to manage restaurants, hotels and other institutions, one of the fastest growing career fields in the country. One of the most popular majors is retailing, formerly taught as clothing and textiles.

"Everything we teach today derives from the original three areas the school emphasized—food, clothing and shelter," Jane said. "But now we prepare women and an increasing number of men for the careers of the modern world."

What started as a home job to earn money for a tennis court turned into big business for **Colleen Quigley King** (Calif. St.-Long Beach). King Hi-Tech, a packaging and assembly company, had its inception in 1979 when Colleen earned \$2,000 assembling electronic components on her kitchen table. By 1981, 12 people were assembling 60,000 boards a month in her garage workshop and sales were \$17,000.

"We really took pride in not having rejects even though customers told us everyone had rejects," she said. For her attention to detail, she was awarded a plaque for zero defects by Apple Computer for seven months of perfect work, a record that continued after she won the award.

The personal computer industry boomed in 1983 and so did Colleen's business. In one year, sales jumped from \$76,000 to \$321,000. Soon there were 450 employees working in offices and plants in two states.

Colleen sold King Hi-Tech last



Colleen Quigley King (Calif. St.-Long Beach)

year and is looking for new companies to purchase, writing a book and speaking at conventions and seminars.

Mary Collins (S. Methodist) is a Dallas talent agent who says "discoveries" usually happen only in the movies. Her best advice to those trying to be the one in 10,000 who makes it is to take classes and then find an agent who requires little or no experience. She also warns against agents who charge for signing actors or require a lot of expensive photos.

Mary was casting director and broadcast director for one agency for three years and director of broadcast for two others before launching her own company in 1984. One of Dallas' most successful agencies, it grossed a million dollars in 1986.

Cindy Hunter Welch (Auburn) has been promoted to publicity manager of American Cast Iron Pipe Company, Birmingham, Ala. As publicity manager, she implements advertising programs for the company's four sales divisions, develops product catalogs, coordinates trade show exhibits and serves as editor of *Pipe Progress*.

Cindy is a 1973 graduate of Auburn with a degree in retail merchandising. She is a member of the Acipco Chapter of the National



Attending the BRAVO Awards ceremony are Shanon Glenn Fitzpatrick (Oregon) and her children Kelly, Jamie and Casey.

Management Association, Birmingham Advertising Club and Birmingham Press Club.



Cindy Hunter Welch (Auburn)

Two Kappa Chapter members received awards last spring at the University of Minnesota. Panhellenic recognized **Diana Edwards** for outstanding leadership and service to the Greek system and university with its Clara Bierman Award. **Karen Jacobson Reese** received the Lilly Achievement Award, given to the College of Pharmacy graduating student who exemplifies scholastic and professional achievement, leadership ability and ethical conduct.

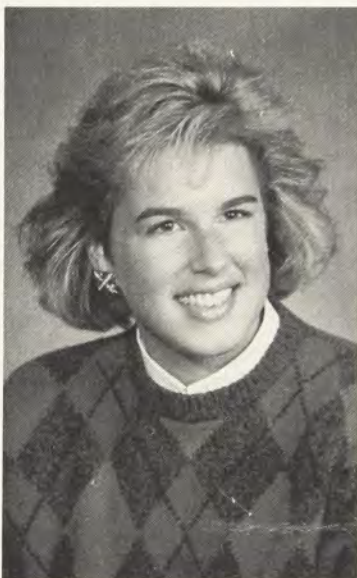
Jane Bock (Denver) graduated last August from the American Graduate School of International Management in Phoenix. She earned a master's degree in international management. As an undergraduate at the University of Denver, she was on the Dean's List, listed in *Who's Who* and named an outstanding Young Woman of America.

Virginia Massey Bowden (Texas) has been named director of the Dolph B. Briscoe Library at the University of Texas Health Science Center in San Antonio. She has been on the library staff since 1970 in various positions, including asso-

ciate director. Virginia holds a B.A. from the University of Texas at Austin and a master's degree in library science from the University of Kentucky. She is active in professional library organizations and is on the board of the San Antonio Library Foundation.

The Briscoe Library is the largest medical library in Texas in size and fifth largest in the nation in size and budget. It is ranked among the most advanced medical libraries in the world in computer capacity. All the library's holdings are on a computerized card catalog, and with the use of a modem, a library user can dial Brisco Library for computerized information.

Florence Gratiot (Illinois) received the Hattie L. Shumway Award at Strong Memorial Hospital in Rochester, N.Y. The award rec-



Diana Edwards (Minnesota)

ognizes volunteers who have demonstrated extraordinary loyalty to the hospital and who are effective role models for other volunteers.

A faithful volunteer for 20 years, Florence began her career when she retired from the Rochester Public Library after 40 years. When she began, children called her by name. Later, they called her "mom" and now it's "grandma." She reads to them, helps them fingerprint, frost cupcakes, and



Florence Gratiot (Illinois) is a dedicated hospital volunteer.



Karen Jacobson Reese (Minnesota)

make potholders and stuffed animals.

Lynn Jorgenson (N. Dakota) was one of 123 students who last July attended The LeaderShape Institute, a six-day intensive leadership development course for college men and women.

Held at the University of Illinois

Conference Center, The LeaderShape Institute is sponsored by the Alpha Tau Omega Fraternity Foundation. The non-traditional curriculum, described by one faculty member as "the equivalent of a Harvard M.B.A.-level 'crash' course for *Fortune* 500 executives," deals with self-awareness, self-assessment, interpersonal communication, group dynamics, decision making, ethics and power in a democracy, and social responsibility

Dr. Janet Susan Butel (Kansas St.) has been appointed the first Joseph L. Melnick Professor of Virology at the Baylor University College of Medicine.

A member of the Baylor faculty since 1968, her teaching responsibilities have included graduate courses in general virology, viral genetics and viral oncology. Janet's research has focused on tumor viruses, and she has served as a scientific reviewer for many virology and cancer research scientific journals.

BOOKS

Joan Myers Coles (Louisiana St.) is the co-author with Elizabeth Post (Emily's granddaughter-in-law) of *Emily Post Talks with Teens about Manners and Etiquette*, a book that is appropriate for college students as well as younger teens.

"Etiquette is any special code of behavior or courtesy," according to the authors. It is knowing what to do when, thereby making one feel comfortable and able to enjoy

ant.

—Think before speaking.

"Etiquette is basically unselfishness, kindness and consideration toward others. It gives you guidelines on how to act in almost every situation involving contact with other people," Joan said. "I realized, too, in writing the chapter on table manners what an influence my dining experiences at the Gamma Phi Beta house had on my feelings about 'etiquette at the table.'"



Joan Myers Coles (Louisiana St.)

any social situation, free from worry about what is proper. The authors point out that "being kind and courteous can make one more popular."

Some tips:

—First impression is truly important, including an attractive appearance (you don't have to be the prettiest, but be neat and clean and wear well cared for clothes).

—Be cheerful and considerate of others.

—When introducing people, give them something to talk about. Ask questions that don't have yes or no answers.

—Conversational habits to correct: whining, repeating words, using too much slang, y' know, swear words, grunting for yes/no.

—Keep your tone of voice pleas-

Joan Delmonico Ohanneson (Boston), theologian and lecturer at the Jesuit School of Theology, Berkeley, Calif., allows hundreds of young Roman Catholics to speak for themselves regarding the delicate issues of the body/spirit relationship in *And They Felt No Shame; Christians Reclaim Their Sexuality*.

A Roman Catholic, Joan claims the church is turning off young people by its negative attitude toward male/female sexual relations. She contends God made humans male and female according to His divine purpose, and that in the male/female relationship resides one of the most fundamental premises for spiritual growth.

The *San Francisco Examiner* said of the book: "It is magnificent in its orthodoxy, its passion and its deep love of a church which is strangling itself, ironically, in an ancient heresy which rejects the body, just as the early heretics, some of them, denied that Jesus Christ had a human nature at all."

Recipes for Remembrance, co-authored by **Cinda Goold Redman** (USC), is a walk down memory lane with the Lawrence Welk Show. The charming cookbook is lavishly illustrated with photographs of all 54 contributors and their families and includes favorite memories from the Musical Family.

Reading the book Cinda said "is a wonderful way to sit back and reminisce about what being part of the family meant to each and catch



Michael and Cinda Goold Redman (USC)

up on what some favorite former members have been doing since they left."

A concert pianist who has performed with her husband Michael in concerts and on television in the United States and abroad, Cinda plays in civic concerts with the Libre-Temps Trio, a Southern California professional chamber group.

How did a musician come to write a cookbook? The idea grew from a luncheon that "Champagne Lady" Norma Zimmer gave for women from the show and wives of performers. This included Cinda, whose husband was a third of the Gail, Ron and Michael Trio, the first mixed trio in the Musical Family. When she wrote her thank you note, Cinda asked for the chicken salad recipe Norma served and was struck by the idea: "There must be a lot of people who would love to sample Norma's wonderful meal."

Cinda credits the book's success to the fact that it is the first book about the performers themselves, not just Welk. He is not ignored, however, as his recipe for Chicken N' Dumplings is included with this remembrance from Peggy Lennon Cathcart. "He is a person of diverse personalities, charming, fascinating . . . great sense of humor, practical joker . . . who knew how to gather the right people around him with a basic idea of what it meant to be part of the Musical Family."

Gamma Phi Beta Authors

If you have written a book, you are invited to send a copy to Central Office for placement in the Gamma Phi Beta Headquarters Library.

Please autograph the book and send to Gamma Phi Beta Sorority, 7395 E. Orchard Road, Suite 200, Englewood, CO 80111.

RECOMMENDATIONS CHAIRMEN

ALABAMA

State Membership Chairman
Cindy Welch
1714 14th Terrace South
Birmingham, AL 35205

ALASKA

State Membership Chairman
Mrs. David Rooker
1419 Marten
Anchorage, AK 99504

ARIZONA

State Membership Chairman
Jean C. Nufeld
14638 N. 36th Place
Phoenix, AZ 85032
Northern Arizona Univ., Flagstaff
(Beta Omega)
Pam Lasher
2565 N. Peakview
Flagstaff, AZ 86001
Univ. of Arizona, Tucson
(Alpha Epsilon)
Bonnie K. Harris
6910 Soyaluna Place
Tucson, AZ 85715

ARKANSAS

State Membership Chairman
Sandra Smith DeCoursey
#7 Scarlett Maple Court
Little Rock, AR 72212

CALIFORNIA

State Membership Chairman
Mrs. Lawrence L. Anderson
18680 Reamer Road
Castro Valley, CA 94546
California State Polytechnic, San Luis Obispo
(Delta Theta)
Kathryn Jean Stiles Cook
1130 Azalea Court
Nipomo, CA 93444
California State College, Bakersfield
(Delta Phi)
Mrs. Carl Bryan, Jr.
3524 Purdue Drive
Bakersfield, CA 93306
California State Univ., Chico
Merry Craig Wong
18 Island Drive
San Rafael, CA 94901
California State Univ., Fullerton
(Delta Delta)
Robin L. Roberts
c/o Gamma Phi Beta Sorority
600 Chapman Avenue
Fullerton, CA 92631
California State Univ., Sacramento
(Delta Chi)
Mrs. James Karver
341 Sandburg Drive
Sacramento, CA 95819
Long Beach State, Long Beach
(Gamma Eta)
Loretta Trutanich
3718 E. Fountain Street #108
Long Beach, CA 90804
San Diego State Univ., San Diego
(Beta Lambda)
Deborah Flint
1688 Guy Street
San Diego, CA 92103
Stanford Univ., Palo Alto
(Mu)
Susan Posnick

135 Vista del Monte
Los Gatos, CA 95032
Univ. of California, Berkeley
(Eta)
Merry Craig Wong
18 Island Drive
San Rafael, CA 94901

Univ. of California, Irvine
(Delta Eta)
Mrs. Robert Leary (Patricia)
2003 Baltra Place
Costa Mesa, CA 92626
Univ. of California, Los Angeles
(Alpha Iota)
Cindy Van Empel
616 Hilgard Avenue
Los Angeles, CA 90024
Univ. of California, Riverside
(Delta Lambda)
Mrs. Doris H. Nelson
2923 Arlington Avenue
Riverside, CA 92506

Univ. of California, Santa Barbara
(Delta Psi)
Mrs. Joan Tuma
6466 Camino Viviente
Goleta, CA 93117

Univ. of San Diego, San Diego
(Epsilon Gamma)
Jeanne Aden
2413 Corona Court
La Jolla, CA 92037

Univ. of Southern California, Los Angeles
(Beta Alpha)
Mrs. Jan Moore
2526 Allenjay Place
Glendale, CA 91208

COLORADO

State Membership Chairman
Mrs. Douglas Doane (Jan)
820 Detroit Street
Denver, CO 80206
Univ. of Colorado, Boulder
(Beta Rho)
Liz Martin
10706 E. Powers Drive
Englewood, CO 80111
Colorado College, Colorado Springs
(Alpha Phi)
Beth Phillips
c/o Gamma Phi Beta Sorority
1152 N. Cascade Avenue
Colorado Springs, CO 80903
Colorado State Univ., Fort Collins
(Tau)
Debra Simpson Gentry
4501 Boardwalk #E8
Fort Collins, CO 80525
Univ. of Denver, Denver
(Theta)
Mary Phifer
739 Front Range Road
Littleton, CO 80120

CONNECTICUT

State Membership Chairman
Carmella Chance
106 Beechwood Drive
Madison, CT 06443

DELAWARE

State Membership Chairman
Carol Adams
15 Garrison Circle
Smyrna, DE 19977

FLORIDA

State Membership Chairman
Mrs. Robert E. Lee
PO Box 396
Haines City, FL 33844
Florida Inst. Tech., Melbourne
(Delta Sigma)
Sue Carol Kneller Robson
171 SE Harbor Point Drive
Stuart, FL 34996
Florida State Univ., Tallahassee
(Beta Mu)
Cindy White
3778 Suffolk Drive
Tallahassee, FL 32308
Jacksonville Univ., Jacksonville
(Epsilon Zeta)
Brandy Hibbard
2 Pablo Road, PO Box 635
Ponte Vedra Beach, FL 32082

ILLINOIS

State Membership Chairman
Sherilea Brown
442 N. Stark Drive
Palatine, IL 60067
Bradley Univ., Peoria
(Beta Eta)
Joan Miller
112 W. Coventry Lane
Peoria, IL 61614
Illinois State Univ., Normal
(Delta Pi)
Mrs. Carole Barger
1202 Elmwood Road
Bloomington, IL 61701
Northwestern Univ., Evanston
(Epsilon)
Mrs. David Massey (Carol)
310 Richmond Road
Kenilworth, IL 60043

Do you know potential pledges? Sponsor them!

- Complete the Gamma Phi Beta Sponsor Form on pages 25 and 26.
- Locate the Area Recommendations Chairman for the appropriate college or university. They are listed on pages 23, 24 and 27.
- Mail the completed Sponsor Form to the Area Recommendations Chairman. Note: On many campuses, rush week is in August; mail early so the chapter has ample time to review the information before rush begins.

GEORGIA

State Membership Chairman
Mrs. Fred White
2032 Kramer Way
Marietta, GA 30062
Southern Tech. Inst., Marietta
(Delta Omicron)
Mrs. Fred White
2032 Kramer Way
Marietta, GA 30062
Univ. of Georgia, Athens
(Delta Upsilon)
Mrs. Fred White
2032 Kramer Way
Marietta, GA 30062

HAWAII

State Membership Chairman
Mrs. Joseph Demarke (Betty)
99-1044 Lalawai Drive
Aiea, HI 96701

IDAHO

State Membership Chairman
Patty Taylor
2040 Crystal Way
Boise, ID 83706
Boise State Univ., Boise
(Delta Beta)
Jackie Vogel
10187 W. Shiloh Drive
Boise, ID 83704
Univ. of Idaho, Moscow
(Xi)
Jo Kleffner
1011 Virginia Avenue
Moscow, ID 83843

Univ. of Illinois, Urbana
(Omicron)
Joey Frush Lord
The Maples, RR #1, Box 269
Urbana, IL 61801

INDIANA

State Membership Chairman
Joie H. Bertram
3905 Hemlock Drive
Valparaiso, IN 46383
Indiana State Univ., Terre Haute
(Beta Pi)
Joie H. Bertram
3905 Hemlock Drive
Valparaiso, IN 46383
Indiana Univ., Bloomington
(Beta Phi)
Janet Hoomes
3811 Morningside Drive #44
Bloomington, IN 47401
Purdue Univ., W. Lafayette
(Delta Iota)
Shirley West
824 Essex Street
W. Lafayette, IN 47906

IOWA

State Membership Chairman
Mrs. John Bireline (Susan)
610 W. Boston
Indianola, IA 50125
Iowa State Univ., Ames
(Omega)
Mrs. Robert Binkley (Barb)
Meadow Glen Road
Ames, IA 50010
Univ. of Iowa, Iowa City
(Rho)

RECOMMENDATIONS CHAIRMEN

Mrs. N. Perkins
1932 Graslton
Iowa City, IA 52240
Univ. of Northern Iowa, Cedar Falls
(Gamma Psi)
Jeannie Lindgren
824 Orchard Drive
Cedar Falls, IA 50613

KANSAS

State Membership Chairman
Mrs. William J. VonRuden (Shirley)
5 Downing Road
Hutchinson, KS 67502
Kansas State Univ., Manhattan
(Beta Upsilon)
Bobi Hoover
1522 Westwind Drive
Manhattan, KS 66502
Univ. of Kansas, Lawrence
(Sigma)
Mrs. William Coil (Suzanne)
2737 Alabama
Lawrence, KS 66046
Univ. of Wichita, Wichita
(Beta Chi)
Diana J. Tangeman
6902 Winterberry Circle
Wichita, KS 67226

KENTUCKY

State Membership Chairman
Mrs. Edward Jungbert
356 Kenwood Hill Road
Louisville, KY 40214

LOUISIANA

State Membership Chairman
Kathleen Novak
3725 Lang Street
New Orleans, LA 70114

MAINE

State Membership Chairman
Mrs. S. T. Vreeland
11 E. Main Street
Yarmouth, ME 04096

MARYLAND

State Membership Chairman
Mrs. Mary Anne Youngwood
8205 Jeb Stuart Road
Rockville, MD 20854
Univ. of Maryland, College Park
(Beta Beta)
Mrs. Mary Anne Youngwood
8205 Jeb Stuart Road
Rockville, MD 20854

MASSACHUSETTS

State Membership Chairman
Linda Thomson
6 Ashmont Avenue
Newton, MA 02158
Boston Univ., Boston
(Delta)
Linda Thomson
6 Ashmont Avenue
Newton, MA 02158
Bridgewater State College,
Bridgewater
(Epsilon Eta)
Linda Thomson
6 Ashmont Avenue
Newton, MA 02158

MICHIGAN

State Membership Chairman
Julie A. Lavrack
1447 S. Nichols Road
Swartz Creek, MI 48473
Alma College, Alma
(Epsilon Beta)
Mona Cline
4405 Moorland Drive
Midland, MI 48640
Michigan State Univ., East Lansing
(Beta Delta)

Renee Breslin
945 Pebblebrook Lane
East Lansing, MI 48823
Oakland University, Rochester
(Delta Omega)
Karen Sandlin
504 Farmdale
Ferndale, MI 48220

Univ. of Michigan, Ann Arbor
(Beta)
Nancy Joslin
43363 Citation
Novi, MI 48050

MINNESOTA

State Membership Chairman
Mrs. Ben Morgan (Bernie)
5220 Lee Way
Minnetonka, MN 55345
Mankato State Univ., Mankato
(Gamma Pi)
Ms. Peggy Wild
607 1/2 Lakeview Avenue
N. Mankato, MN 56001
Moorhead State Univ., Moorhead
(Gamma Mu)
Mrs. Mark Vanyo
2127 S. 18th Street
Moorhead, MN 56560
Univ. of Minnesota, Minneapolis
(Kappa)
Mrs. John D. Heffernan
5105 Windsor Avenue
Edina, MN 55436

MISSISSIPPI

State Membership Chairman
Mrs. Steven Schoenley
Route 6, Box 322
Oxford, MS 38655

MISSOURI

State Membership Chairman
Mrs. Robert Appleberry
15383 E. 45th Street
Independence, MO 64055
St. Louis Univ., St. Louis
(Gamma Tau)
Diane Altwater
4340 Frieda
St. Louis, MO 63116
SW Missouri State Univ.,
Springfield
(Delta Nu)
Elizabeth L. Horn
1215 S. Florence
Springfield, MO 65807
Univ. of Missouri, Columbia
(Alpha Delta)
Mrs. R. J. Martin
200 E. Burnam Road
Columbia, MO 65203
Washington Univ., St. Louis
(Phi)
Diane Altwater
4340 Frieda
St. Louis, MO 63116

MONTANA

State Membership Chairman
Mrs. Robert Mann
105 Dena Drive
Plentywood, MT 59254

NEBRASKA

State Membership Chairman
Mrs. Donald J. Schonberg (Teek)
12205 Leavenworth
Omaha, NE 68154
Kearney State College, Kearney
(Gamma Kappa)
Tracey Shada
1420 4th Avenue
Kearney, NE 68847
Univ. of Nebraska, Lincoln
(Pi)
Kim Osborne Salistean
3005 Summit Boulevard
Lincoln, NE 68502

Creighton Univ., Omaha
(Epsilon Delta)
Mrs. Donald J. Schonberg (Teek)
12205 Leavenworth
Omaha, NE 68154

NEVADA

State Membership Chairman
Mrs. Gordon Hafenrichter
3644 Forestcrest
Las Vegas, NV 89121
Univ. of Nevada, Reno
(Alpha Gamma)
Mrs. Shawn McCoy
2301 La Hacienda
Sparks, NV 89431

NEW HAMPSHIRE

State Membership Chairman
Mrs. James Lilly
Wilson Road
Canterbury, NH 03224

NEW JERSEY

State Membership Chairman
Cathy Frost
1402 Aspen Drive
Plainsborough, NJ 08536
Rutgers Univ., New Brunswick
(Delta Mu)
Marci Winter
2502 Trafalgar Square
Hillsborough, NJ 08876

NEW MEXICO

State Membership Chairman
Margaret A. Farrell
4909 Larchmont NE
Albuquerque, NM 87111

NEW YORK

State Membership Chairman
Mrs. Elizabeth Martens
RD 1, Box 376B
Salt Point, NY 12578

1019 Hannifin Street North
Bismark, ND 58501
North Dakota State Univ., Fargo
(Alpha Omicron)
Mrs. Conrad Leifur
1019 Hannifin Street North
Bismark, ND 58501
Univ. of North Dakota, Grand
Forks
(Alpha Beta)
Mrs. Conrad Leifur
1019 Hannifin Street North
Bismark, ND 58501

OHIO

State Membership Chairman
Mrs. Mark Kochert (Kim)
8171 Saddle Run
Powell, OH 43065
Bowling Green State Univ., Bowling
Green
(Beta Gamma)
Mrs. Shirley Mitchell
1000 Farmington
Maumee, OH 43537
Miami Univ., Oxford
(Beta Epsilon)
Marcia Born
1816 Forester Drive
Cincinnati, OH 45240
Wittenberg Univ., Springfield
(Alpha Nu)
Mrs. George Raup (Betty)
534 Northwood Drive
Springfield, OH 45504

OKLAHOMA

State Membership Chairman
Miss Margaret Newton
619 E. Okmulgee
Muskogee, OK 74401
Oklahoma City Univ., Oklahoma
City
(Beta Omicron)
Susan Kaefer Almen
4613 N. Virginia
Oklahoma City, OK 73118

Potential Pledges

- Relatives
- Neighbors
- Daughters of friends, co-workers, fellow volunteers or members of clubs and organizations to which you belong
- Friends of your daughter or son
- Students in your class
- Employees in your office

Colgate Univ., Hamilton
(Delta Tau)
Mrs. Elizabeth Martens
RD 1, Box 376B
Salt Point, NY 12578

Syracuse Univ., Syracuse
(Alpha)
Karen Brogan
4794 Lime Hill Drive
Syracuse, NY 13215
Union College, Schenectady
(Epsilon Epsilon)
Mrs. Elizabeth Martens
RD 1, Box 376B
Salt Point, NY 12578

NORTH CAROLINA

State Membership Chairman
Mrs. Laurence Schreiber
1100 Chester Road
Winston-Salem, NC 27104

NORTH DAKOTA

State Membership Chairman
Mrs. Conrad Leifur

Oklahoma State Univ., Stillwater
(Beta Psi)
Jane Grimsley
128 N. Main
Stillwater, OK 74075
SW Oklahoma State College,
Weatherford
(Delta Zeta)
Martha Thornbrough
333 S. 14th
Clinton, OK 73601
Univ. of Oklahoma, Norman
(Psi)
Beverly Milton Endicott
1512 NW 43rd Street
Oklahoma City, OK 73118

OREGON

State Membership Chairman
Mrs. Carole Gilbert Frazier
722 NW Albemarle Terrace
Portland, OR 97210
Oregon State Univ., Corvallis
(Chi)

NAME OF RUSHEE

Last

First

Middle

Nickname

Gamma Phi Beta Sorority

Attach picture (optional)



SPONSOR FORM

(To be used by members of Gamma Phi Beta only.)

INSTRUCTIONS: Please type or print. Complete only those items for which you have reliable information. Send this form to your local Alumnae Recommendations Committee Chairman. If no such chairman exists, send to the collegiate chapter's Alumnae Recommendations Committee Chairman. These addresses can be found in THE CRESCENT (summer issue).

FOR _____ OF GAMMA PHI BETA AT _____
Chapter College or University

ENTERING AS FR. _____ SOPH _____ JR. _____ SR. _____ AGE _____

HIGH SCHOOL ATTENDED: _____ CITY and STATE _____

PREVIOUS COLLEGE ATTENDED: _____ CITY and STATE _____

Reason for Transfer: _____

NAME OF PARENTS/GUARDIAN _____

HOME ADDRESS _____
Street City State Zip

GAMMA PHI BETA RELATIVES: Give name and chapter

Mother _____ Sister _____

Grandmother _____ Other _____

OTHER SORORITY/FRATERNITY INFLUENCES _____

INFORMATION ABOUT THE FAMILY THAT MIGHT BE HELPFUL _____

PLEASE CHECK AND/OR COMPLETE ALL APPLICABLE STATEMENTS:

This information is submitted on personal acquaintance with rushee. _____

Number of years I have known this rushee _____

This information is submitted on personal acquaintance with rushee's family _____

Number of years I have known the family _____

Although I do not know this rushee personally, this information has been obtained from:
parents _____, friends _____, or other reliable sources _____.

VOLUNTARY SPONSOR FORM _____ SUBMITTED BY:

REQUESTED SPONSOR FORM _____
First Maiden Last Husband's

FACTUAL INFORMATION ONLY _____
Street City State Zip

CANNOT SPONSOR _____
Telephone Chapter of initiation
Alumna Collegian

GAMMA PHI BETA'S FIVE (5) STANDARDS OF MEMBERSHIP: Please check and comment

1. **GOOD CHARACTER:**

_____ Honesty _____
 _____ Politeness _____
 _____ High Ideals _____
 _____ Respected by her peers/others _____

2. **SCHOLASTIC ABILITY:** High School College Honors

Size of graduating class _____
 Rank in class (Upper 1/4, 1/2) _____
 GPA (A=) _____
 SAT/ACT Score (if known) _____
 Is she seriously pursuing a degree? _____

3. **ABILITY TO ASSUME FINANCIAL RESPONSIBILITY:**

Will Gamma Phi Beta finances be a hardship? _____
 Is she on a scholarship, loan, working part-time? _____
 Is she putting herself through school? _____

4. **CONTRIBUTION TO PRESTIGE OF GAMMA PHI BETA:**

_____ Dependable/responsible _____
 _____ Has leadership qualities _____
 _____ Respects other's opinions/ideas _____
 Activities, Interests, Special Talents and Work Experience _____

5. **ATTRACTIVE PERSONALITY:**

_____ Congenial _____
 _____ Sense of humor _____
 _____ Outgoing, enthusiastic _____
 _____ Reserved, shy _____
 _____ Poised _____
 _____ Interested in people _____
 _____ Group oriented _____
 _____ Pride in appearance _____

PLEASE WRITE YOUR PERSONAL EVALUATION OF THE RUSHEE:

To the best of my knowledge, the preceding information is correct and complete.

Signature _____

Date _____

OPTIONAL: I hereby sponsor this rushee for lifetime membership in GAMMA PHI BETA.

Signature _____

Date _____

FOR CHAPTER USE ONLY

SPONSOR FORM received _____

Date _____

Signature of Alumnae Recommendations Committee Chairman _____

SPONSOR FORM acknowledged _____

Date _____

Signature of Alumna Rush Adviser _____

If rushee is pledged to Gamma Phi Beta, the Alumna Rush Advisor shall within ten (10) days, send this SPONSOR FORM to Gamma Phi Beta Central Office to be kept on file.

RECOMMENDATIONS CHAIRMEN

Peggy Hummer
2434 Green Circle
Corvallis, OR 97330
Univ. of Oregon, Eugene
(Nu)
Trudi Diffendaffer
2920 Tulip
Eugene, OR 97401

PENNSYLVANIA
State Membership Chairman
Mrs. Charles S. Butler, II
2290 Hillside Lane
Aston, PA 19014
Gettysburg College, Gettysburg
(Gamma Beta)
Mrs. William Spahr (Bobby)
521 Wayne Avenue
Springfield, PA 19064
La Salle College, Philadelphia
(Epsilon Alpha)
Mrs. Frederick Cline (Ann)
409 Cheltona Avenue
Jenkintown, PA 19046

SOUTH DAKOTA
State Membership Chairman
Mrs. Harold J. Mandl
RR #2, Box 104
Colton, SD 57018

TENNESSEE
State Membership Chairman
Judith A. Shaw
6705 Cate Road
Knoxville, TN 37931
Vanderbilt Univ., Nashville
(Alpha Theta)
Cyndy Howes
1617 Ashgrove Court
Franklin, TN 37064

TEXAS
State Membership Chairman
Mrs. William L. Jones
2413 Crestview Circle
Irving, TX 75062
East Texas State Univ., Commerce

11819 Laneview
Houston, TX 77070
Texas Wesleyan College, Fort
Worth
(Delta Epsilon)
Sue Morton
6141 Walla
Forth Worth, TX 76133
Univ., of Texas, Austin
(Alpha Zeta)
Karen Kline
11819 Laneview
Houston, TX 77070

UTAH
State Membership Chairman
Barb Levy
2197 S 2200 E
Salt Lake City, UT 84109

VERMONT
State Membership Chairman
Carol Fischer

Marnee Pierson Iseman
2005 Boyer Avenue East
Seattle, WA 98112
Washington State Univ., Pullman
(Beta Sigma)
Gwen Oldenburg
Route 2, Box 134
Pullman, WA 99163

WEST VIRGINIA
State Membership Chairman
Mrs. Mary Booker
1924 Parkwood Road
Charleston, WV 25314

WISCONSIN
State Membership Chairman
Mrs. Jerilyn Faltz
305 W. Main Street
Mt. Horeb, WI 53572
Univ. of Wisconsin, Madison
(Gamma)
Ellen Sperling
505 Isle Royal
Madison, WI 53705
Univ. of Wisconsin, Milwaukee
(Gamma Gamma)
Sharon Zurawski
1711 W. Glen Oaks Lane
Mequon, WI 53092
Univ. of Wisconsin, Oshkosh
(Gamma Rho)
Debra Hogue
412 W. 15th Avenue
Oshkosh, WI 54901
Wisconsin State Univ., Platteville
(Gamma Omega)
Rhona Zlabek-Harker
608 N. Grove Street
Chippewa Falls, WI 54729

WYOMING
State Membership Chairman
Linda Koldenhoven
2672 Jefferson
Laramie, WY 82070

CANADA
Univ. of British Columbia,
Vancouver
(Alpha Lambda)
c/o Rush Advisor
University of British Columbia
970 Wildwood Lane
W. Vancouver, BC V7S 2H8
McGill Univ., Montreal
(Alpha Tau)
c/o Rush Advisor
McGill University
3641 Aylmer Street
Montreal, Quebec H2X 2C3
Univ. of Toronto, Toronto
(Alpha Alpha)
c/o Rush Advisor
University of Toronto
26 Madison Avenue
Toronto, Ontario M5R 2S1
Univ. of Western Ontario, London
(Alpha Omega)
c/o Rush Advisor
University of Western Ontario
639 Talbot Street
London, Ontario N6A 2T6



Wichita State Gamma Phi Betas welcome their new pledges.

Lehigh Univ., Bethlehem
(Delta Kappa)
Mrs. Sarah Pappas
34 W. Fairview Street
Bethlehem, PA 18018
Pennsylvania State Univ.,
University Park
(Alpha Upsilon)
Mrs. Laura Hackett
678 Devonshire Drive
State College, PA 16803

RHODE ISLAND
State Membership Chairman
Mrs. John Andrews
60 Reynolds
North Kingstown, RI 02852

SOUTH CAROLINA
State Membership Chairman
Tracy Stohrer
1450 Diamond Boulevard
Mt. Pleasant, SC 29464
Clemson Univ., Clemson
Barbara Hurt-Simmons
11065 Pinehigh Drive
Alpharetta, GA 30201

(Gamma Zeta)
Judy Sandidge
6501 Kiowa Court
Plano, TX 75023
Lamar Univ., Beaumont
(Gamma Nu)
Kay Kirtland
4415 Willow Bend Drive
Beaumont, TX 77707
Midwestern Univ., Wichita Falls
(Gamma Iota)
Leslee Phillips
1003 Lanelle
Iowa Park, TX 76367
Southern Methodist Univ., Dallas
(Alpha Xi)
Mrs. Randy Montgomery (Vickie)
9393 Skillman #1723
Dallas, TX 75243

SW Texas State Univ., San Marcos
(Gamma Chi)
Mrs. Roger Smith (Janene)
326 Fair Lane
New Braunfels, TX 78130
Texas Tech, Lubbock
(Beta Tau)
Karen Kline

PO Box 552
Bradford, VT 05033

VIRGINIA
State Membership Chairman
Denise B. Anderson
2118 Greenwich Street
Falls Church, VA 22043
Christopher Newport College,
Newport News
Karen Kline
11819 Laneview
Houston, TX 77070

WASHINGTON
State Membership Chairman
Mrs. Charles F. McNeal (Patricia)
954 S. Locust Lane
Tacoma, WA 98465
Univ. of Puget Sound, Tacoma
(Gamma Epsilon)
Della Haley Young
17334 160th Place SE
Renton, WA 98058
Univ. of Washington, Seattle
(Lambda)

Rings

1. SR/366-G Signet
 2. SR/135-G Signet
 3. SR/531-G Signet
 4. SR/731-G Pierced Mini-Monogram
 5. BR/01-G Pin-On Badge Ring*
- *Badges not included. Fits all existing badges.

	GOLD KASE	10K GOLD	10K WHITE GOLD	STERLING SILVER
1. SR/366-G	\$ 29.00	\$104.50	-	\$ 31.00
2. SR/135-G	-	115.50	-	35.25
3. SR/531-G	-	121.00	-	37.50
4. SR/731-G	-	60.00	-	30.00
5. BR/01-G	-	125.00	\$135.00	65.00

Pins

23. MG/11-G Monogram
24. CR/25-G Crest
25. MP/G Mother's Pin
26. CB/G Crescent Collar Button
27. CG/G Crest Guard-Enameled
28. SP/02-V-G Vert. Monogram Stick Pin
29. SP/Crescent-G Crescent Stick Pin
- SP/1896-G 1896 Monogram Stick Pin (Not illustrated)
30. SP/Crest-G Crest Stick Pin

	GOLD KASE	GOLD FILLED	10K GOLD	STERLING SILVER
23. MG/11-G	-	\$ 6.75	\$20.00	-
24. CR/25-G	-	6.75	20.00	-
25. MP/G	-	5.60	-	-
26. CB/G	-	6.75	-	-
27. CG/G	-	-	20.00	-
28. SP/02-V-G	\$ 9.00	-	23.25	12.25
29. SP/Crescent-G	12.00	-	23.00	11.00
- SP/1896-G	12.00	-	23.00	11.00
30. SP/Crest-G	15.00	19.75	24.00	17.50

Symbol Lavalier Charms

17. SL/40-G Crescent
18. SL/58-G 1896 Monogram
19. SL/37-G Crescent-Enamel
20. FCP/100-G Founder's Crest (Not illustrated)
21. PC/12-G Paddle Charm
22. SC/G Script Charm
- SB/62-G Crescent Bracelet (Not illustrated)

	GOLD PLATE	GOLD KASE	GOLD FILLED	10K GOLD	STERLING SILVER
17. SL/40-G	-	\$10.00	-	\$28.00	\$ 9.00
18. SL/58-G	-	10.00	-	21.00	9.00
19. SL/37-G	-	10.00	-	38.00	9.00
20. FCP/100-G	\$ 8.50	-	-	85.00	-
21. PC/12-G	-	-	-	38.50	18.75
22. SC/G	-	15.00	-	27.00	21.00
- SB/62-G	-	-	\$38.50	-	32.00

Lavalier Charms

	GOLD KASE	GOLD FILLED	10K GOLD	10K WHITE GOLD	STERLING SILVER
6. ML/02-V-G Vertical Monogram	\$ 7.00	-	\$21.25	-	\$10.25
7. ML/02-S-G Staggered Monogram	7.00	-	21.25	-	10.25
8. ML/12-G Heart Monogram	10.00	-	23.50	-	11.50
9. ML/09-G Circle Monogram	10.00	-	23.50	-	11.50
10. ML/14-M-G Sculptured Lavalier	-	-	26.75	-	12.50

	GOLD KASE	GOLD FILLED	10K GOLD	10K WHITE GOLD	STERLING SILVER
11. ML/11-S-G Staggered Monogram with Cultured Pearl	\$15.00	-	\$30.00	-	\$19.00
12. ML/33-D-G 3-D Extra Heavy	18.00	-	33.50	-	18.00
13. ML/15-G Mini Monogram	-	-	13.00	-	7.00
14. CC/07-G Crest Lavalier	-	-	23.50	-	13.50
15. C/01-G 18" Chain	-	\$ 3.00	-	-	3.00
16. BP/G Pin-On Badge Pendant*	-	-	85.00	\$95.00	40.00

*Badges not included. Fits all existing badges. Pendants come with 26" endless chain. Optional 18" Gold Filled or Sterling Silver neckchains (C/01-G) available. See above.

Order Form For ΓΦΒ

Name _____
 Address _____
 City/State _____
 Ring size _____
 Greek name and letters for chapter _____

QTY.	ITEM NO.	SIZE/ DESCRIPTION	PRICE EACH	TOTAL

- ☐ Check Enclosed
☐ Money Order

Price (Total of Above)	\$
Sales Tax 8% Chicago Shipments 7% Other Illinois Cities	\$
Postage Handling & Insurance (min. \$1.00) 6% of Total	\$
TOTAL	\$

Add a 15% surcharge to all jewelry prices.

Make checks payable to Gamma Phi Beta Jewelry, and mail orders to
 Gamma Phi Beta Sorority, Dept. NB, 7395 E. Orchard Rd., Ste. 200,
 Englewood, CO 80111-2509.

Directory Verification Underway

Many alumnae have already received telephone calls from the Harris Publishing Company, publishers of our official Alumnae Directory. The purpose of the telephone contact is to verify information alumnae provided on directory questionnaires and current information held on alumnae records.

At the same time, telephone representatives of the publishing company are inviting alumnae to purchase personal copies of the directory.

The directory is tentatively scheduled for release in November or December, 1988. If you are interested in ordering a copy and have not heard from the publisher

by August 8, 1988, you may contact the publisher direct at this address:

Liz Galen
 Customer Service Supervisor
 Bernard C. Harris Publishing
 Company, Inc.
 3 Barker Avenue
 White Plains, NY 10601
 914-946-7500

DIRECTORY

Founders

Helen M. Dodge Ferguson
Frances E. Haven Moss
E. Adeline Curtis
Mary A. Bingham Willoughby

The Grand Council

International President: Randall Stevens Guerra
(Mrs. R.), 7055 S. Andes Cir., Aurora, CO 80016
Alumnae Vice President: Sally Erikson Lewis
(Ms. S.), 535 N. Michigan Ave. #907,
Chicago, IL 60611
Collegiate Vice President: Jolene Lessard Stiver
(Mrs. K. H.), 15944 Ashville Ln., Granger, IN 46530
Financial Vice President: Joyce Cole Hultgren
(Mrs. M. K.), 450 N. Armour, Wichita, KS 67206
NPC Delegate: Karen Gamel Urette (Mrs. M.),
2109 S. Hesperides St., Tampa, FL 33629
Executive Director (Corp. Sec.): Marjory Mills
Shupert (Mrs. T.), 7395 E. Orchard Rd.,
#200, Englewood, CO 80111

Directors

Extension: Karen Wander Kline (Mrs. T. L.),
11819 Laneview, Houston, TX 77070
Services: Phyllis Donaldson Choat (Mrs. N.),
2116 S. 113th Ave., Omaha, NE 68144

Alumnae Department

Alumnae Vice President: Sally Erikson Lewis
(Ms. S.)
Bylaws: Doris Bird Gorden (Mrs. W.), 22
Andrews Rd., Malvern, PA 19355
Alumnae Initiates: Marsha McCollum
Schumacher (Mrs. T. L.), 8010 Hidden
Trail Ln., Spring, TX 77379
Province Alumnae Directors:
I: Anne Louise Layton (Miss A.), 88 Gothic
Ave., Toronto, Ontario, Canada M6P 2V9
II: Carolyn Vick Anderson (Mrs. C.), 1625
Connor Dr., Library, PA 15129
III: Patricia Pivonka Wagar (Mrs. P.), 9675
Martinique, Concord, OH 44060
IV: Barbara Magnus Small (Mrs. B.), 1400
Pembroke St., Bloomfield Hills, MI 48013
V: Sandra Reimer Siok (Mrs. K.), 1605 E.
Fleming Dr. S., Arlington Heights, IL 60004
VI: Cindy Shirley Schultz (Mrs. R.), 1990
Selby Ave., St. Paul, MN 55104
VII: Donna Snyder Scarborough, 7817
Kenosha Ave., Lubbock, TX 79423
VIII: Anne Sturgis Phillips Hartje (Mrs. R.),
4579 Corrientes Cir. S., Jacksonville, FL 32217
IX: Clarice Braker Morrison (Mrs. R. J.),
4604 NW 32nd St., Oklahoma City, OK 73122
X: Virginia Knight Crowley (Mrs. W.), 8141
Pershing Ave., St. Louis, MO 63105
XI: Eileen Bureau McDonald (Mrs. C.), 4309
Royene NE, Albuquerque, NM 87110
XII: Capt. Renee M. Gralewicz, 8609 Onyx
Dr., Tacoma, WA 98498
XIIIa: Jacki Ennis Falkenroth (Mrs. C. F.), 89
Tumbleweed Ct., San Ramon, CA 94583
XIIIb: Linda Brooks Drevno (Mrs. M. A.), 395
Euclid Ave. #106, San Francisco, CA 94118
XIV: Elizabeth Roessler Griffin (Mrs. J. M.),
2837 Brook Dr., Falls Church, VA 22042
XV: Sharon Witt Dunham (Mrs. T.), 6411 S.
75th Ave. Cir., Ralston, NE 68127
XVIa: Susan Jacobsen Rose (Mrs. J.), 390
Peralta Ave., Long Beach, CA 90803
XVIb: Barbara Davis McKewen (Mrs. R. W.),
4416 Mt. Herbert Ave., San Diego, CA 92117

Awards: Peggy Larson Stromer, RR #2, Cty. M
1172W, Melton, WI 53563

Bylaws (International) A. Patricia Denton (Ms.
P.), 747 Willis, Glen Ellyn, IL 60137

Collegiate Department

Collegiate Vice President: Jolene Lessard Stiver
(Mrs. K. H.)
Bylaws: Sue Herzog Johnson (Mrs. D. R.),
5538 McCommas, Dallas, TX 75206
Operations: Frances Rea Griffin (Mrs. D. T.),
830 Warwick Rd., Deerfield, IL 60015
Pledges: Debbie Dykes Misiag (Mrs. J.),
6912 Stratford Dr., Sykesville, MD 21784
Policies: Connie Lynne Brandon (Ms. C.),
1219 Saxon Dr., Nashville, TN 37215
Rush: Linda Lyons Malony, 8304 High Dr.,
Leawood, KS 66206
Coordinator of State Membership Chairmen:
Katherine Daman Garrett (Mrs. W.),
2523 Vista Ave., Olympia, WA 98501
Scholarship: Joanne Callis Roman (Mrs. J.),
7215 Shaftsbury Ave., University City, MO 63130
Province Collegiate Directors:
I: Becky Taube-Beeler (Mrs. D.), 330 E. 43rd
St. #502, New York, NY 10017
II: Barbara Myhre Koch, 7 Madison Dr.,
Ogdensburg, NJ 07439
III: Beth Singleton Kilchenman (Ms. B.), 1898
Carlton Dr., Kent, OH 44240
IV: Audrey Johnson Nelson (Mrs. A.), 16998
Hampton Dr., Granger, IN 46530
V: Camille Cestone, 1120 N. LaSalle #11G,
Chicago, IL 60610
VI: Mary Adams Bennett (Mrs. R.), 3901
Monterey Ave. S., St. Louis Park, MN 55416
VII: Sharilyn Carney Griffin (Ms. S.), 200
Village Dr. #601, Longview, TX 75605
VIII: Sandra Rettke Nauman (Mrs. S.), 136
Great Oaks Ln., Roswell, GA 30075
IX: Ellen Matthews Duncan (Mrs. J.), 902
Meadow Ridge, Clinton, OK 73601
X: Kathryn Bowen Titus, 4403 E. Red Bridge,
Kansas City, MO 64137
XI: Carol Caruso, P.O. Box 26509, Tempe, AZ 85282
XII: Mary Michele Pond (Ms. M.), 509 S. 7th,
Pocatello, ID 83201
XIII: JoAnne Wallace Plutt (Mrs. J.), 990
Village Oaks Dr., Martinez, CA 94553
XIV: Debbie Dykes Misiag (Mrs. J.), 6912
Stratford Dr., Sykesville, MD 21784
XV: Diane Tjaden Thompson (Ms. D.), PO Box
246, Eldora, IA 50627
XVIa: Ellen Penne (Ms. E.), 233 S. Barrington
#313, Brentwood, CA 90049
XVIb: Cheryl Anne Speer, 1591 W. Lorella
Ave., La Habra, CA 90631
New Chapter Director: Marilyn Bachnik
Callahan (Mrs. L.), 2437 Fairway Dr.,
Richardson, TX 75080
Collegiate Consultants: Shelley Arnold, Cyndy
Hill, Arlene Inbody, Denise Kamp, Cathy
Kennedy, Susan Pinkard, Carleen Rose,
Kristin Stephany

Convention Coordinator: Karen Wander Kline
(Mrs. T. L.), 11819 Laneview, Houston, TX 77070
Convention Chairman: Judith Abbott McMahon
(Ms. J.), 2127 Petaluma, Long Beach, CA 90815

The Crescent

Editor: Kris Brandt Riske (Mrs. P.), 2405 W.
Gregg Dr., Chandler, AZ 85224
Alumnae Editor: Margy Molden Wiltamuth
(Mrs. R. E.), 1700 Kiva Rd., Silver Spring,
MD 20904

Gamma Phi Beta Sorority

Founded November 11, 1874;
Syracuse University

Central Office
7395 E. Orchard Rd., Suite 200
Englewood, CO 80111
(303) 771-3031

Collegiate Editor: Lin Schafer Sanford (Mrs.
A.), 1858 E. Krista Way, Tempe, AZ 85284
Feature Editor: Natalie Meyer McKenzie (Mrs.
G.), 531 S. Burton Pl., Arlington Heights,
IL 60005
Business Manager: Marjory Mills Shupert
(Mrs. T.), Central Office

Financial Department

Financial Vice President: Joyce Cole Hultgren
(Mrs. M. K.)
Area Financial Advisors:
Cathy Boudreaux Griffin (Mrs. W.), 340
Plainsboro Rd., Plainsboro, NJ 08536
Kathleen Sage (Ms. K.), 2624 E.
Blackledge, Tucson, AZ 85716
Janette Jones Strickland (Mrs. W.), 7309
Park Highlands Pl., Dallas, TX 75248
Sherry Crow Adams (Mrs. S.), 910 Smoky
Hill Rd., Lincoln, NE 68520
Barbara Novotny Deagle (Mrs. B.), 3189
Heatherside Dr., Dublin, OH 43017
Virginia Heck Gottfredson (Mrs. J.), 1401
San Felipe Ct., Boulder City, NV 89005
House Corporation—Bylaws: Donna Arnold
Smith (Mrs. V.), 6998 S. Ketcham Rd.,
Bloomington, IN 47401
Tax Matters: Julia Lynn Wright (Mrs. G.), RR
#3 Box 166, Girard, KS 66743

Historian: Beverly Smith Gosnell, 3609 Serra
Rd., Malibu, CA 90265

National Panhellenic Conference

National Panhellenic Conference Delegate: Karen
Gamel Urette (Mrs. M.)
1st Alternate Delegate: Gloria Swanson Nelson
(Mrs. I. P.), 3521 Royal Ln., Dallas, TX 75229
2nd Alternate Delegate: Betty Ahlemeyer Quick
(Mrs. J.), 6009 Foxland Dr., Brentwood,
TN 37027
3rd Alternate Delegate: Catherine Guthrie
Lindauer (Mrs. J.), 5051 S. Beeler,
Englewood, CO 80111

Nominating Committee Chairman: Beverly
Adams, 3539 S. Hillcrest, Denver, CO 80237

Parliamentarian: Jennie K. Curtis (Ms. J.), 6222
Revere, Dallas, TX 75214

Public Relations: Cyndy Meisner Howes (Mrs.
R.), 1617 Ashgrove Ct., Franklin, TN 37064

Gamma Phi Beta Foundation

Trustees:
Chairman: Ann Mullen Bronsing (Mrs. R. O.),
31 Chesterton Ln., Chesterfield, MO 63017
Camp Committee Chairman: Judy Graham
(Miss J.), 6325 Ravendale, Dallas, TX 75214
Financial Aid Committee Chairman: Sally
Ramseyer Beck (Mrs. C.), 20205 W. 121st
Ln., Olathe, KS 66061
Finance and Investment Committee Chairman:
Barbara Endres (Miss B.), 1950-D S.
Helena St., Aurora, CO 80013
Fund Raising Committee Chairman: Catherine
Guthrie Lindauer (Mrs. J.), 5051 S. Beeler
St., Englewood, CO 80111
Grand Council Representative: Randall
Stevens Guerra (Mrs. R.)
Public Relations Committee Chairman: Mary
Agnes Welsh (Ms. M.), 625 Huntington
Commons Unit 312, Mt. Prospect, IL 60056
Secretary-Treasurer: Marjory Mills Shupert
(Mrs. T.)

Research: Mary Jane Hipp Misthos (Mrs. G.
E.), 242 Glendale Rd., Glenview, IL 60025

Rituals: Audrey Weldon Shafer (Mrs. C., Jr.),
6808 Rockhill Rd., Kansas City, MO 64131

Services

Director: Phyllis Donaldson Choat (Mrs. N.)
Alumnae Collegiate Relations: Barbara Hurt-
Simmons (Mrs. J.), 11065 Pinehigh Dr.,
Alpharetta, GA 30201
Crossroads: Regina Duggan Moritz (Mrs. R.),
25311 Outlook Dr., Carmel, CA 93923
Leadership Training Coordinator: Camille
Cestone (Ms. C.), 1120 N. LaSalle #11G,
Chicago, IL 60610
Mothers Club: Georgiana Post McClenaghan
(Mrs. R. S.), 6212 Brownlee Rd.,
Nashville, TN 37205
PACE Committee Chairman: Marjory Letner
Jones (Mrs. B. E.), 1116 Stonewall
Jackson Ct., Nashville, TN 37220
Alumnae PACE: Rita Harkins Dickinson
(Mrs. R.), 2002 E. Rancho, Phoenix, AZ 85016
Collegiate PACE: Diane Soderstrom Goff
(Mrs. R.), 4200 SW 96th, Beaverton, OR 97005
Philanthropy Coordinator: Linda Hallenbeck
Pellegrino (Mrs. D.), 2706 Midvale Ave.,
Los Angeles, CA 90064
SisterLink: Vicki Asprooth Roy (Mrs. J.),
213 W. Fremont, Arlington Heights, IL 60004
TranSiSter: Barbara Missert Sassaman,
4842 Hyde Rd., Manlius, NY 13104

Song: Jeannette Stoll Kaelin (Mrs. W.), 19690
Top O' The Moor W., Monument, CO 80132

Endowment-Loan Board

Directors:
Margaret Godbold Briscoe (Mrs. C. B., Jr.),
4523 Haverleigh Terr., St. Louis, MO 63128
Emerald L. Erickson (Ms. E.), 136 Glendale Dr.,
Ewing, NJ 08618
Leona Davis Drouet (Mrs. R. G.), 10482 E.
Grandeur Dr., Baton Rouge, LA 70815
Rebecca Syverson Young (Mrs. G.), 5956 S.
Colorow Dr., Morrison, CO 80465
Randall Stevens Guerra (Ms. R.)
Joyce Cole Hultgren (Mrs. M. K.)
Marjory Mills Shupert (Mrs. T.)

FOUNDATION

Sound Familiar?

By Lindy MacDonald
(Memphis St.)

Bills! That's all I ever get in the mail these days. Look at this American Express bill—oh, gee! What in the world is this? Gamma Phi Beta Foundation? Why in the world do they want money from me? There's not even a collegiate chapter in Memphis anymore. Why should I even think about giving?

Our chapter really struggled. We put everything we had into that chapter. Our efforts certainly brought us closer together than any other group on campus, and we really had some great times together.

I remember our Hawaiian dance. I matched everybody who didn't have a date with men I knew in the marching band, and had scheduled a luau in our sorority suite that evening to help everyone break the

ice before the dance. Only one problem; the Panhellenic house-mother forgot about us and left town for the weekend.

We realized we were locked out of our luau only 30 minutes before it was to start. With the help of sympathetic neighbors in the dorm, we used the entire wing of our floor to have the luau. I checked almost 35 men into my dorm room, and my reputation was never the same. My match-making efforts got me the award of Best Member that year.

My roommate of three years, Patty Brown Sanders, and I became true sisters for life. She was a last minute replacement and, at the time, I couldn't believe I was "stuck" with Miss Goodie Two Shoes, pledge class president. We laughed and cried together and had

few differences.

One night before exams I chose to visit the party scene rather than study. Mother hen Patty let me know her feelings regarding my poor study habits. In retaliation, I put our phone number "up in lights" using her Lite-brite set (she was an elementary education student teacher), plugged it in, put it in our front window, pulled the curtains and left. Needless to say, she didn't accomplish much studying either! The phone rang all night until she discovered her billboard.

We were both friends with the Pi Kappa Phis, both in the Miss Memphis State Pageant, the only two members who *never* knew about the pledges' kidnaps, and always caught with curlers in our hair and Oxy 10 on our faces. She had one steady beau, Larry, and I was never

ΓΦΒ Foundation Donor Form

Name _____	Collegiate Chapter _____
(first) (maiden) (last)	
Address _____	
Donation in memory of _____	
(name)	
Donation in celebration of _____	
(name and event/achievement)	
Send card to _____	
(name)	

(Address)	
Donation Amount \$ _____	



*A gift has been made to
the Gamma Phi Beta Foundation
in memory of*

by _____



*A gift has been made to
the Gamma Phi Beta Foundation
in celebration of*

by _____

Special friends and sisters

Gifts to the Gamma Phi Beta Foundation are an expression of love for sisters and friends. They may be given in memory of a loved one or in celebration of a special occasion.

Anniversaries, births, graduations, promotions and other achievements are occasions worthy of a celebration between friends and sisters. Now Gamma Phi Betas may recognize these events by donating to the Foundation. A special card will be sent to the honoree.

Gifts given in memory of loved ones also will be acknowledged with a special card sent by the Foundation.

Foundation celebrates chapter installations

In celebration of the installation of each new or reorganized Gamma Phi Beta collegiate chapter, a \$1,000 Foundation grant will be awarded to a local camp. The designated camp will be chosen by the sponsoring alumnae group.

"The Foundation Trustees want to honor these collegiate chapters and alumnae groups," said Foundation Chairman Ann Mullen Bronsing (Indiana St.). "This will help them make an immediate impact on

their communities, and encourage new sisters to establish a tradition of philanthropic giving."

The first grant was presented to Hemlock Girl Scout Council in honor of the reorganized Alpha Upsilon Chapter, Pennsylvania State University, State College, Pa. Nashville, Tenn. alumnae selected American Cancer Society Camp Horizon to receive a grant at the installation of the reorganized Alpha Theta Chapter, Vanderbilt University.

satisfied, always being counseled by Patty on affairs of the heart. She married Larry and I've yet to settle down.

We still share these tears and laughter. Patty and I attribute most of our success to one alumna who kept us going, Boots Cullins Best (Memphis St.). She was always there and I'll never forget her.

I love Patty, Boots, my Gamma Alpha sisters and all those endless memories. They are priceless and all possible through Gamma Phi Beta. I guess that's reason enough to support the Foundation.

Keep the memories coming.

GAMMA PHI PRIDE—CATCH IT!

CATCH the momentum and share the **PRIDE** as the Capital Endowment Campaign surpasses the \$200,000 mark in its goal of raising \$850,000.

CATCH that **GAMMA PHI PRIDE!**

Help make the dream of owning our international headquarters a reality. Help endow permanently the educational programs of Gamma Phi Beta. When you are asked to give, do your generous best.

SUPPORT the **CAPITAL ENDOWMENT CAMPAIGN!**

CHANGE OF ADDRESS OR NAME REPLY

Members are responsible for all address changes. Allow 4 weeks.

Maiden Name _____ Chapter _____

New name if different from label

Title

Last

First

Middle

Entire new address

Street _____

City _____ State _____ Zip _____

☐ Check here if change of address is for other than addressee.

PLEASE DO NOT REMOVE OLD LABEL

Clip form, place in stamped envelope and mail to Gamma Phi Beta Sorority, 7395 E. Orchard Rd., STE. 200, Englewood, CO 80111-2509