

The Crescent

Spring 1985



*Gamma
Phi
Beta*

1984 Service Roll

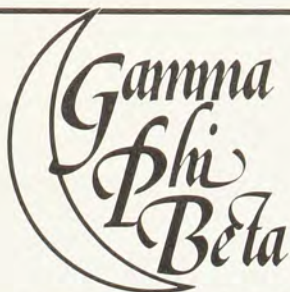
**In recognition of alumnae who have given
long, devoted and constructive service
to chapter and international Sorority**

Mary Alice Adams Betts (William and Mary)—Orlando, Florida
Margaret Godbold Briscoe (S. Methodist)—St. Louis, Missouri
Sally Erikson Lewis (Bradley)—Chicago, Illinois
Gloria Swanson Nelson (Oklahoma)—Dallas, Texas
Peggy Larson Stromer (Nebraska)—Janesville, Wisconsin

1984 Merit Roll

**In recognition of alumnae who have given
long, devoted and distinguished service
to the Sorority at the local level**

Jean Rheubotham Arnett (Texas)—Lubbock, Texas
Kathryn Reynolds Bennett (Texas Tech)—Dallas, Texas
Jo Anne Bettenhausen (Nebraska)—Lincoln, Nebraska
Gail Nelson Bush (Northwestern)—St. Louis, Missouri
Claudean Tarrazas Cone (Texas Tech)—Dallas, Texas
Elizabeth Bussey Demarke (San Diego St.)—Honolulu, Hawaii
Virginia Gustafson Drew (Northwestern)—Long Beach, California
Lois Andren Evans (N. Dakota St.)—Lake County, Illinois
Jackueline Ennis Falkenroth (Nevada)—Omaha, Nebraska
George Ann Flaten (Wisconsin)—Madison, Wisconsin
Janet Bradenburg Fox (Wisconsin)—Madison, Wisconsin
Edith Doughty Hindley (Stanford)—Long Beach, California
Gayle Marye Hurst (Texas Tech)—Dallas, Texas
Marcia Kincaid Johnson (Texas)—Lubbock, Texas
Martha Ann Cates Johnston (Texas Tech)—Lubbock, Texas
Margaret Becker Klipstein (Wisconsin)—Madison, Wisconsin
Carol Leitschuck Lacey (Nebraska)—Lincoln, Nebraska
Jeanne Lupton Leisy (Oregon St.)—Long Beach, California
Barbara Barott Lentz (Nevada)—Kansas City, Missouri
Betty Gillett Martell (Colorado College)—Ft. Collins, Colorado
Laura Taylor McMurray (Lamar)—Beaumont, Texas
Dorothy Galloway Morton (Oklahoma St.)—Stillwater, Oklahoma
Patricia O'Connell Mullins (St. Louis)—Dallas, Texas
Deanna Geertsen Parker (Idaho)—South Orange County, California
Karen Coutler Rawlings (Missouri)—Columbia, Missouri
Martha Roberts Reid (Bowling Green)—Jackson, Michigan
Virginia Lee Hazen Ris (Iowa)—South Orange County, California
Gertrude Fetzer Skelly (Penn St.)—Philadelphia North Suburban, Pennsylvania
Betty Bovey Soli (Idaho)—Honolulu, Hawaii
Sue Ellen Wall (Nebraska)—Lincoln, Nebraska



Spring 1985

Opinion

Gamma Phi Beta's chapter at the University of San Diego was installed in grand style in October. The charter members are charming, gracious young women who have begun a tradition of excellence for their chapter.

Grand President Ann Bronsing told chapter members that Gamma Phi Beta offers the opportunity to "develop leadership, responsibility and democracy in action." These assets, already much in evidence, are sure to guide the chapter throughout its future.

As the Epsilon Gammas enjoyed the limelight as Gamma Phi Beta's baby chapter, two more were on the horizon. A colonization rush was held in February to establish a Gamma Phi Beta colony at Creighton University in Omaha. Also in February, local sorority Gamma Phi Alpha was pledged at the University of Wisconsin-Oshkosh to reestablish Gamma Rho Chapter.

Editor

Deadlines

Winter September 1
Spring December 1
Summer March 1
Fall June 1

Editors

Editor-in-Chief

Kris Brandt Riske
2405 W. Gregg Drive
Chandler, AZ 85224

Alumnae Editor

Margy Molden Wiltamuth
1700 Kiva Road
Silver Spring, MD 20904

Collegiate Editor:

Cindy Welch
8-D Rue Maison
Birmingham, AL 35209

Feature Editor

Natalie Meyer McKenzie
531 S. Burton Place
Arlington Heights, IL 60005

Business Manager:

Marjory Mills Shupert
Central Office

CONTENTS

Success!

4

Desire and teamwork brought one chapter from near extinction to #1.

Epsilon Gamma Chapter 7

Gamma Phi Beta's 123rd chapter is installed at the University of San Diego.

TranSISters

10

A Kansas TranSISters visited her counterpart in Scotland.

Team Building

24

Commitment and spirit can be encouraged through team building.

DEPARTMENTS

TranSISters	12	Collegians	27
Alumnae	20	Good Buys	30
In Memoriam	23	Magazine Agency	31
Directory	26	An Opportunity	32

ON THE COVER

Director of Extension Karen Kline presents the Sorority gift to Carol Schumacher, president of Epsilon Gamma. (University of San Diego installation photos by Joel Friedman)

Gamma Phi Beta *SPS 137-620

THE Crescent is published quarterly in Fall, Winter, Spring and Summer by the Gamma Phi Beta Sorority, Inc., 7395 E. Orchard Rd., Ste. 200, Englewood, CO 80111-2292. Printed in the U.S.A. by Maury Boyd & Associates. Second class postage paid at Englewood, CO and additional mailing offices.

Postmaster: Please send notice of undeliverable copies on Form 3579 to Gamma Phi Beta, 7395 E. Orchard Rd., Ste. 200, Englewood, CO 80111.

Subscribers: send changes of address, notices of marriages and deaths to Gamma Phi Beta, 7395 E. Orchard Rd., Ste. 200, Englewood, CO 80111.

SUCCESS!

**Desire and teamwork brought
one chapter from near extinction to**

#1

March 19, 1985 is Gamma Gamma Chapter's 25th anniversary. I have been a Gamma Phi Beta since September, 1980 and I know about my chapter as far back as December, 1979 when my big sister Jeri Miller was pledged. Before that I have no idea what my chapter was like. No one in the chapter does. So, our quest for our 25th anniversary is to find out about Gamma Gamma Chapter during its first 20 years.

That a chapter wouldn't know all of its history may seem strange, especially for a relatively short period of time like 25 years, but our chapter came within a hair's breadth of extinction. Here's the story . . .

In September, 1979 Karen Joost Henry, a Gamma Gamma alumna, planned to say hello to the Gamma Phi Betas when she was strolling through the University of Wisconsin-Milwaukee Student Union and saw the Panhellenic fall rush booths. To her surprise and dismay, no Gamma Phi Betas were there. She was told Theresa Velk was the last member on campus, and she had few notebooks and paraphernalia. For the most part, the history of the chapter was already lost. Then Linda Barbian, a transfer student from Gamma Chapter at the University of Wisconsin, met Karen and the three Gamma Phi Betas began to rush and rebuild.

After rush, five new members, never really pledges, existed. They held office and conducted business (except ritual) as a chapter, rewrote missing bylaws and rushed. Within the next year, 10 more were added

to the chapter roll.

I pledged in September, 1980, was initiated in January, and was elected to an executive board position in March. My pledgeship was not much easier than those in the class preceding mine. We were studying for our pledge final and training to become officers. We worked hard at increasing our numbers and getting Gamma Phi Beta known on campus.

In the next two years (1980-82) we did philanthropies—tons of them. We rarely said no to anyone who asked us for help. We raised money, ran events and did whatever was needed, as long as those asking us sent a letter to the Dean of Students saying how wonderful the Gamma Phi Betas were at UWM. The Dean soon knew—so well that he and others approached us to run campus projects.

We held an auction for the Leukemia Society at the Dean's request. We helped celebrate the University's and Union's 25th and 10th anniversaries, respectively. Asked by its sponsors, we took part in UWM's first Homecoming in 10 years. (In 1984, we were one of the sponsors!) Gamma Phi Betas were beginning to be known by the administration. If members wore their letters, they were often stopped and praised for the chapter's work, and at the 1982 Convention, Gamma Phi Beta awarded us the Community Service Award.

During the past two years our efforts have continued and Gamma Phi Beta is now a prominent student

organization at UWM. In 1983, Chancellor Horton approached Greek organizations to help improve the image of the school, suggesting we form an all-Greek council to act as a sounding board. With Gamma Phi Beta as one of the four founding organizations, the United Greek Letters Organization (UGLO) was formed. A year later the student government asked us to hold a dance marathon to raise money for the Emergency Student Loan Fund. The Assistant Chancellor asked member Lyn Hildenbrand to speak before the Wisconsin Senate Joint Finance Committee on behalf of the UW system to request more funds, which were ultimately received.

UWM's mascot, Victory Panther, was a Gamma Phi Beta in 1983, a Greek in this position being ideal to encourage more Greeks to come to games and increase school spirit. On September 25, 1984 at the Fall Convocation, Gamma Phi Beta was honored with the Student Service Award for services done for the University.

Our members not only work hard at Gamma Phi Beta, jobs and extracurricular activities, but also maintain a high scholastic record. Many have been on the Dean's List, and since 1980 Gamma Phi Betas have won either one or two of the three scholarships given annually by the Milwaukee Area Alumnae Panhellenic. In addition, the chapter has also been honored for scholarship achievement by Gamma Phi Beta.

I know the past had to be great, but we feel like we have amnesia. We need our past, the hazy stories of which are more like local myths, vague and incomplete. We want our alumnae to fascinate us with stories of fraternities, houses and Homecomings (once numerous at UWM).

Although small (32 members and the largest on campus) and located on a commuter campus with an average student age of 25, we have accomplished much in the past four and one-half years. We want to be part of 20 years of memories. Any alumnae who can help with letters, pictures or other memories are asked to call or write Joyce Freeman, University of Wisconsin-Milwaukee, Union Box 43, Milwaukee, WI 43211; 414-964-8622.

Gamma Gamma would like to thank:

Karen Joost Henry, who is always there;

Becky Bauer, who never butted in, but always steered us in the right direction;

Linda Barbian, who started us out again and gave us her Gamma Phi Beta expertise;

Theresa Velk, who stayed with Gamma Phi Beta that last year and refused to let Gamma Gamma die;

Peggy Larson Stromer, Province Alumnae Director, who gave us her inspiration and love; and

Sally Erikson Lewis, who as Province Collegiate Director, gave us words of understanding, wisdom and love that kept many of us going and reaching toward the crescent moon.



The Gamma Phi Beta float, complete with Victory Panther, was the only Greek float in the Homecoming parade.



(Top row) Susie Zietlow, Leslie Patrick, Joyce Freeman, Lyn Hildenbrand, (bottom row) Terri McGrath, Victory Panther and Lisa Rosetto cheer the UWM soccer team at Homecoming.

Why extend?

Ed. Note: "Up Up and Away with G Phi B" was the theme of the extension brunch at the 1984 Chicago Convention. The following remarks were made at the event by Director of Extension Karen Wander Kline (Iowa St.).

Up Up and Away with G Phi B! I'm very proud to report that Gamma Phi Beta has reached new heights this biennium with the colonization of nine colonies and installation of six chapters. And, another milestone was passed when we moved from the Delta Chapters to the Epsilons with the installation of Epsilon Alpha at La Salle College in Philadelphia.

Before introducing our new chapters, I want to address several concerns you have expressed about extension. Probably the question asked most often is, "Why extend?" Would all the members of Alpha Chapter, Collegians and alumnae, please stand? Were it not for extension, the rest of us would not be here today. Had we not gone past Omega, 51,000 sisters would never have been Gamma Phi Betas.

To paraphrase Valerie Lawlor, former Alpha Phi Vice President of Extension, extension is to international Gamma Phi Beta what rush is to each collegiate chapter. If a collegiate chapter would suddenly stop rushing, in time it would die. The same is true for international Gamma Phi Beta. Extension is the way we grow. It is the way we increase our membership, the way we broaden our geographic base, the way we share the rich heritage each of us has been given, and it is one way we increase our income. Extension is vital for the survival of Gamma Phi Beta.

Another of your concerns is that there has been an excessive amount of emphasis placed on extension this biennium. Actually there has been no more emphasis, just more opportunities. The climate for extension is ripe! According to the January, 1984 "Interfraternity Research and Advisory Council Bulletin," during the past year, 185 sorority chapters have been colonized on 57 campuses.

If we want to be competitive, it is imperative that we research every extension possibility, that we be aggressive in pursuing campuses where we would like to have a chapter, and that we accept every opportunity to colonize as long as our criteria for colonization are met.

You are also concerned that our existing chapters may suffer because of extension. The Extension and Collegiate Departments are two completely separate

departments. Each has its own budget and each operates independently of the other. Yes, the consultant staff is shared, but the number of Collegiate Consultants hired annually is determined by the needs of our existing chapters and our extension goals.

It is important to remember that international Gamma Phi Beta cannot make or break a chapter. It can only support. Each chapter has control of its own destiny. If the will and desire are there and the conditions right to succeed, in time success will come. International Gamma Phi Beta will be there to support every step of the way, whether or not we are extending at the time.

When I came on Council in 1974 as Collegiate Vice President, my goal was to have each chapter visited by a Collegiate Consultant at least once before the next Convention. During the 1983-84 school year alone, every chapter had at least one visit, most had two, and many had three or more—some for extended periods of time.

In 1974 the consultant staff consisted of three; in 1983, it consisted of seven. In 1974 the training amounted to reviewing the *President's Book* and various manuals. Over the years the training our Collegiate Consultants receive has been expanded to include goal setting, group interaction and dynamics, interpersonal relationships, time management and departmental training by each member of Grand Council. Our support system has indeed grown in the past 10 years. We do have the personnel and capabilities to support our existing chapters as well as an aggressive extension program.

The last concern I would like to address is the number of new chapters in California. Because Gamma Phi Beta is highly respected in California, colonizing is easy. Collegians come to us wanting to be part of a Gamma Phi Beta colony. Our alumnae are super supportive, often initiating interest in a collegiate chapter. And, since we have not had to turn down an opportunity to colonize elsewhere because of a California colonization, Grand Council's answer is, "Why not?"

Today, sorority extension is highly competitive. Each sorority has developed very professional, sophisticated presentations. Our competitors have experienced, knowledgeable women directing their efforts. The competition is stiff. As long as the extension climate is ripe, Gamma Phi Beta must remain a leader in extension with an aggressive extension program.

So, let's continue Up Up and Away with G Phi B!

A new bloom for Gamma Phi Beta

Epsilon Gamma is "another pink carnation in the bouquet of Gamma Phi Beta," said Susan Jacobsen Rose (UCLA), Province XVI Alumnae Director and installation banquet mistress of ceremonies.

And what a bloom it is! From the colonization rush held the previous spring to the October 27, 1984 installation, Gamma Phi Beta's new chapter at the University of San Diego has excelled in every endeavor.

The colony quickly moved to the forefront on campus by co-sponsoring an alcohol awareness week and an all school luau. Philanthropically, colony members participated in Senior Citizen Outreach weekend and a blood drive. They also visited retirement home residents, bringing Halloween treats. Social activities included parties with Sigma Pi, Sigma Alpha Epsilon,

Phi Delta Theta and Phi Kappa Theta, and their own Charter Ball.

A study buddie system and required study hours encouraged scholastic excellence. Incentives included special treats for "As" earned on tests and papers. A special PACE activity is Wonderful Wednesday, held on the last Wednesday of each month. Events were a house warming reception, a barbeque for the football team and making Christmas ornaments. Ice cream sandwiches and popcorn were sold to raise funds.

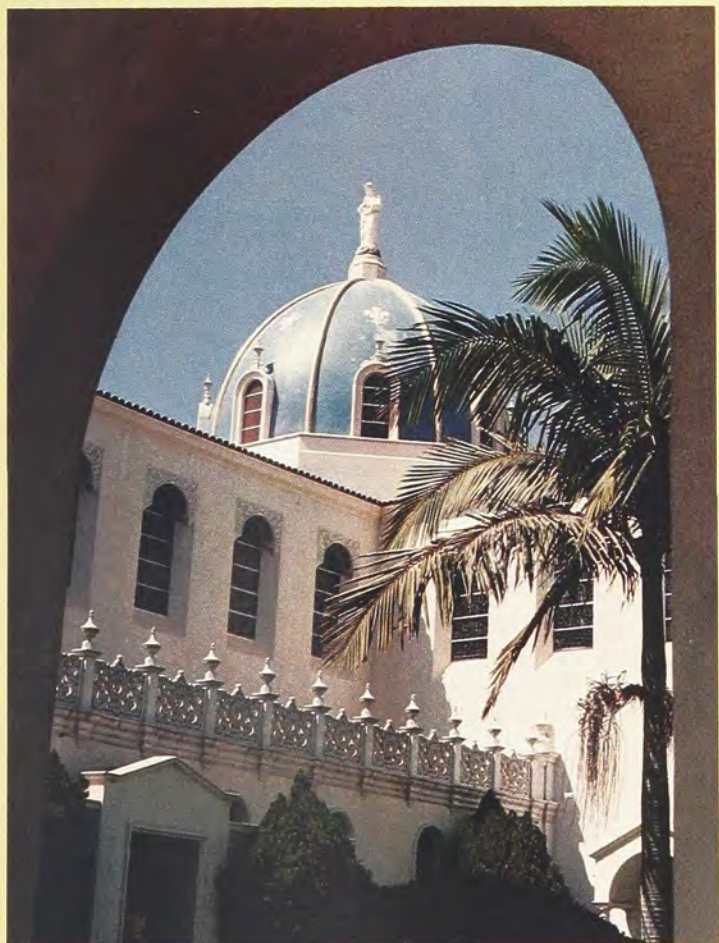
Having learned, labored, and developed love and loyalty for each other and Gamma Phi Beta, the colony members were ready for Inspiration Week and the long awaited installation weekend. Visiting international officers were greeted at a reception held on campus Friday evening, after which they joined local alumnae and chapter advisors for dinner.

Amid the stained glass and gold of the University of San Diego Founders Chapel, 44 Epsilon Gamma charter members and one alumna initiate became members of Gamma Phi Beta. The installation initiation was the second for Emma Wootton Hall, who was active in the establishment of Chi Chapter at Oregon State in 1918. Mrs. Hall, a 1914 initiate of Nu Chapter at the University of Oregon, was accompanied by her daughter, Nancy Hall Pawka (San Diego St.).

The Warners added another Gamma Phi Beta to the family as Judy Davis Warner (Minnesota) pinned her badge on daughter and alumna initiate Betsy Warner Verkade. Betsy's sisters, Julie Warner Walker (San Diego St.), Marcia Warner Nelson (San Diego St.) and Barbara Warner Collins (Puget Sound) are Gamma Phi Betas. Initiation was equally special for two other legacies. Rosalind Kickox Innis (Colorado), a resident of Hawaii, sent her badge for daughter Betsy, and Marilyn Kratzer Osborne (Colorado) pinned her daughter Anne.

Awards, gifts and the coveted chapter charter awaited the Epsilon Gammas at the Sheraton Harbor Island West, site of the installation banquet. Surrounded by pink table linen and carpeting in shades of pink and brown, light from the glass candlelit centerpieces reflected in the eyes of excited Gamma Phi Betas and guests.

Extension Supervisor Julie Shafer radiated enthusiasm and love as she read comments expressed by two charter members: "Gamma Phi Beta means a love that



Many of the buildings on the University of San Diego campus have landscaped courtyards.

Feature



Epsilon Gamma Chapter was installed on October 27, 1984 at the University of San Diego. Betsy Innis (lower right) wears the lei sent to her by her Gamma Phi Beta mother.

I found with my sisters;" "Seeing our alumnae so involved with us lets me know Gamma Phi Beta is a lifetime commitment." After introducing Epsilon Gamma initiates and 27 pledges, Julie announced the colony awards which had been selected and voted on by the members.

The Pearl Award for overall excellence was presented to Paula Dobin, rush chairman; the Spirit Award to Vicki Minardi; the Cindy Lucas (Epsilon Gamma rush advisor) Most Inspirational Award to Tami Durham and Paula Dobin; and the Julie Shafer Leadership Award to Carol Schumacher, president.

Gifts presented to Epsilon Gamma were a crystal vase from Delta Lambda Chapter at California-Riverside, a silver pitcher and two trays from Province XVI, a Gamma Phi Beta banner from the La Jolla Alumnae Chapter (Epsilon Gamma sponsor) and a silver punch bowl from the Sorority.

The Epsilon Gamma president's badge was given by Elizabeth Steed DePrez (Oregon). It had belonged to her mother, Eleanor Leonard Steed, a 1901 Delta Chapter initiate, and was accompanied by a biography and photograph of the late Mrs. Steed.

Finally, after months of anticipation, Grand President Ann Mullen Bronsing (Indiana St.) presented the Epsilon Gamma charter to Carol Schumacher, telling chapter members, "with it goes my confidence and my love."

Gamma Phi Beta joins Alpha Delta Pi and Zeta Tau Alpha on the beautiful University of San Diego campus. Founded in 1952 as San Diego College for Women by the Society of Sacred Heart St. Madeleine, it merged with the San Diego College of Man in 1972.

The University of San Diego has undergraduate and graduate programs, and is located on a 170 acre mesa overlooking Mission Bay.

Chapter advisors are Sue Kimball Skala (California), scholarship; Linda Hanks, (Puget Sound), chapter; Penny Dumm Wilkes (USC), PACE; Cinda Keating-Gregg Lucas (USC), rush; Marry Leppert Hargraves (San Diego St.), financial; Teddi Tindall Curran (USC), social; and Julie Warner Walker, pledge.

International officers attending the installation were Grand President Ann Bronsing, Director of Extension Karen Wander Kline (Iowa St.), Ritual Chairman Audrey Weldon Shafer (Missouri), Province XVI Alumnae Director Susan Rose, Province XVIb Collegiate Director Cheri Lamont Brumleau (USC), Extension Supervisor Julie Shafer (Oklahoma St.), CRESCENT Editor Kris Brandt Riske (Wyoming) and Alumnae Field Representative Leslie Clanton Stubenvoll (Puget Sound).

Charter members are Laurie Allari, Julie Barbaro, Susan Barker, Andrea Basso, Liz Bernatz, Sheryl Bonner, Kathy Brysacz, Carol Byrne, Michelle Costello, Paula Dobin, Julianne Douglas, Anne Doyle, Tammi Durham, Marla Feiner, Patty Fitzgerald, Beth Flanagan, Melinda Fletcher, Holly Flint, Neave Foley, Michelle Gananian, Lisa Gill, Teresa Goodwin, Debbie Gribbons, Marena Hanrahan, Kerry Higgins, Denise Ingwersen, Betsy Innis, Diane Katz, Holly Kirkland, Nancy MacConnie, Janine Mason, Nancy McIntyre, Vicki Minardi, Lori Newman, Anne Osborne, Susan Reese, Karen Rivera, Carol Schumacher, Dorys Sosa, Martha Tabor, Sharon Trebowski, Beth Williams, Caren Wimer and Catherine Wisz.



Marilyn Kratzer Osborne, husband Jerry and daughter Anne celebrate Epsilon Gamma's installation.



Epsilon Gamma Chapter advisors are Sue Skala, Penny Wilkes, Cinda Lucas, Mary Hargraves, Teddi Curran, Julie Walker and Field Representative Leslie Stubenvoll.



A ruby marks the location of Epsilon Gamma Chapter on the gold California charm and necklace given to Julie Shafer.



Pam Aden (Colorado) and her mother, La Jolla Alumnae Chapter President Jeanne Schroll Aden (Colorado), attend the installation banquet.

TranSISterS span the ocean

Standing in a foreign train station—not knowing where to go or where anything is can be a frightening experience. But, knowing a Gamma Phi Beta TranSISter will soon be arriving is delightful.

We met first by correspondence when I wrote requesting train schedules and information. She responded with brochures and directions on how to get almost everywhere in Scotland. More letters sailed back and forth between Kansas and Scotland. The end result was the meeting of TranSISterS Ceil Robertson Marshall (Minnesota) and Jane Morris Penny (Maryland).

Neither my husband Sam nor I had ever had a passport. We wanted to tour Scotland, England and Wales in November and December. The planning began by gathering maps, booklets and information, and bit by bit the trip began to take shape. I had written to a long time pen pal in Edinburgh and received a reply with information about hotels near her. But, Sam and I wanted to take trains and the packet of schedules from Jane with explicit directions for each station made our timing and routes simple.

I called her from Edinburgh, and later in the week we arrived in Aberdeen on the train. Outside the station, we hoped Jane and husband Joe would recognize "the tall man with a gray beard and the skinny woman with braces on her teeth." Soon a man in a red car waved to us and at the same time a woman came from behind saying, "You must be Sam and Ceil. I'm Jane Penny."

At that we were on our way for a tour of Aberdeen and the coastline northward, stopping for lunch along the way.

The Pennys are in the cattle business and we learned why cattle from the Aberdeen area is so prized for its quality. Scottish cattle are kept in barns during the winter unlike the ranch cattle of Kansas.

Over dinner there were many questions asked and Jane and Joe answered them all. Jane explained some of the difficulties an American woman has in buying cooking utensils and groceries. Joe told us what the Scots wear under their kilts, but of course I'm sworn to

secrecy.

Jane toured me through their beautiful old farmhouse which has been completely redone with the exception of the wonderful 1939 bathtub. You've never had a real bath until you've dunked in one of those huge tubs with a round bottom. She also explained some of the redecorating had not been finished because of the problem in buying lampshades. It is difficult to find ones without elaborate, flowery decorations or tassels around the bottom.

Originally from Maryland, Jane said there is only one time during the year when she is really homesick—Thanksgiving. No one in Scotland understands the feelings of that holiday and even the American school in Aberdeen is open. She has cooked many turkeys complete with all the trimmings but finds herself in tears anyway. You can imagine how much Joe looks forward to November each year.

By 3:30 pm it was dark in northern Scotland. The days are short because its latitude is about the same as Hudson's Bay. The grass was green and we were lucky with mild temperatures unlike the severe cold and snow in Kansas.

After a good night's sleep and hearty Scottish breakfast, we packed up and headed back to Aberdeen. There we had lunch at an old castle and browsed around a craft fair. Then time came to say goodbye.

I cried!

As the train pulled out of the station, I knew how valuable our TranSISterS really are. This was Jane's first experience in helping a sister and I, in Topeka, have had two sisters from Pennsylvania come through to stay with us.

Of course Jane wasn't the only Gamma Phi Beta who helped us. Elspeth Mackay Mitchell (McGill) sent us train schedules and advice about getting from London to South Wales. Her knowledge helped tremendously to ease our venture.

Next time you travel, take the list of TranSISterS along. You never know when you might need a friend. In case of an emergency it's nice to know there are sisters all over the world ready and willing to help.



The Penny home of stone and stucco has a view of green meadows even in December. Green-houses are commonly found in Scottish homes.



Sam Marshall and Joe Penny found their Gamma Phi Beta wives as similar as their own interests.



The back of the Penny home was built in the early 1900s. Joe and Jane redecorated the entire inside.

TranSISter became a byword when Ceil Marshall and Dr. Laura Sunn (Wash.-St. Louis) were discussing Ceil's trip.

Laura, a psychiatric resident, was planning a move to Milwaukee and was puzzled about finding a suitable condominium. Ceil suggested she contact Milwaukee TranSISter Elise Bossart Bell (Wisconsin). Elise directed Laura to Nancy Bell (Wisconsin), a real estate broker.

Not only did Laura find a wonderful condominium overlooking Lake Michigan, but acquired it at a reasonable price thanks to Nancy.

Laura also is convinced that the TranSISter Service is super and as she said, "It certainly does work and is a terrific help."



Ceil Marshall and Jane Penny visit in the living room, which in Scotland is called the lounge.

UNITED STATES

ALABAMA

Birmingham
Mrs. Sue Parnell
(Sue Sullivan—Auburn)
1829 Canton Road
Birmingham, AL 35216
Phone: 205-822-2424

Dothan
Mrs. Lynn Jones
(Anne Munde—Auburn)
406 Kentworth Drive
Dothan, AL 36301
Phone: 205-794-4852

Huntsville
Miss Lisa Carol Cleveland (Auburn)
204 Vincent Road
Huntsville, AL 35802
Phone: 205-881-0708; 837-7200

Mobile
Mrs. Bonney H. Irwin
(Bonney Harrison—Vanderbilt)
30 Buerger Road
Mobile, AL 36608
Phone: 205-342-7724

Montgomery
Mrs. Julia Pilkerton
(Julia Marshall Murdock—Auburn)
3429 Cross Creek Drive
Montgomery, AL 36116
Phone: 205-284-2849

ALASKA

Anchorage
Mrs. Jeff Hassler
(Betty Bretten—Puget Sound)
2131 McKenzie Drive
Anchorage, AK 99503
Phone: 907-248-6617

Trapper Creek (McKinley Natl. Park)
(B&B)
Sondra Stucker Porter (Colorado St.)
Box 152, Mile 4, Petersville Road
Trapper Creek, AK 99688
Phone: 907-733-2388

ARIZONA

Casa Grande
Mrs. Clinton F. Merrill
(Virginia King—Washington)
809 Shadow Ridge Drive
Casa Grande, AZ 85222
Phone: 602-836-5642

Flagstaff
Mrs. John C. Rooker, Jr.
(Sharon Super—N. Arizona)
3520 N. Monte Vista
Flagstaff, AZ 86001
Phone: 602-774-0769

Mesa, Williams Air Force Base
Mrs. Jim Carpenter
(Barbara Gollihar)
1243 N. Matlock Street
Mesa, AZ 85203
Phone: 602-890-2330

Phoenix—Glendale
Mrs. Charla Jo Lee (Arizona St.)
5323 W. Alice
Glendale, AZ 85302
Phone: 602-931-2398

Phoenix—Paradise Valley (2)
Mrs. Jack Burnett
(Dorothy Hoadley—William and Mary)
5429 E. Caron
Paradise Valley, AZ 85253
Phone: 602-948-3164

Mrs. Ron Evans
(Lynne Ingraham—Arizona)
6600 E. Hummingbird
Paradise Valley, AZ 85253
Phone: 602-951-1229

Phoenix—Scottsdale
Mrs. C. P. Blackwood
(Ruth Blackwood)
6927 E. Redfield
Scottsdale, AZ 85254

Tucson
Mrs. Vicki Read
(Vicki Carlson—Arizona)
5825 Camino Hombro de Oro
Tucson, AZ 85718
Phone: 602-299-4381; 299-5246

ARKANSAS

Mountain Home
Marge Kindt Johoshe (Bowling Green)
705 Fulton Street
Mountain Home, AR 72653
Phone: 501-425-8287; 425-6969

CALIFORNIA

NORTHERN CALIFORNIA

Northern California TransSister Coordinator:
Mrs. Lillian L. Meyers (B&B)
(Lillian Dimiduke—Oregon St.)
4712 Xavier Court
Sacramento, CA 95841
Phone: 916-487-5046; 446-1111;
481-2550 messages

Burlingame
Sue Becker
(UCLA)
3000 Arguello Drive
Burlingame, CA 94010
Phone: 415-697-7619

Carmel—Monterey County (2)
Mrs. Glenn R. Bernhardt
(Mary Lou Klinker—Washington)
79 High Meadow Road
Carmel, CA 93923
Phone: 408-624-0435

Mary Alice Porch
25470 Rio Vista Drive
Carmel, CA 93922
Phone: 408-624-2744

Clovis—Fresno
Mrs. Eric Sikora
(Diane Hiller—Cal. Poly)
1152 1st Street
Clovis, CA 93612
Phone: 209-298-8617

Colfax
Mrs. Richard Hodge (B&B)
(Barbara Butenschon—California)
960 New Valley Road
Colfax, CA 95713
Phone: 916-637-5174

Fairfax
Mrs. John Hauserman
(Margaret Ayotte—California)
68 Gregory Drive
Fairfax, CA 94930
Phone: 415-457-8486

Fresno
Mrs. Jerry De Young
(Paula Banadelle—USC)
2280 West Robinwood Lane
Fresno, CA 92711
Phone: 209-435-7666; 224-7405

Los Altos Hills
Mrs. Linda Colehower
(Linda Neff—Wittenberg)
26060 Kriste Lane
Los Altos Hills, CA 94022
Phone: 415-948-2562

Marin County—San Rafael, Sausalito,
Mill Valley, San Anselmo
Mrs. Samuel A. Fletcher
(Barbara Harshbuerger—Washington)
170 McNear Drive
San Rafael, CA 94901
Phone: 415-453-1887

Modesto
Mrs. William Reinheimer
(Ila Jean Stiver—Wittenberg)
424 Buena Vista
Modesto, CA 95351
Phone: 209-529-3952

Palo Alto
Mrs. William Snitjer
(Kate Clemons—Stanford)
2317 South Court
Palo Alto, CA 94301
Phone: 415-327-7739

Paradise
Harriet Rowe Ahlswede (UCLA)
5546 Newland Road
Paradise, CA 95969

Placerville
Mrs. Robert M. Riley, Jr.
(June Oakwood—Syracuse)
2700 Westwood Drive
Placerville, CA 95667

Sacramento
Mrs. Willard Schwabe
(Jane Rothe—California)
3125 Moreland Court
Sacramento, CA 95825
Phone: 916-482-4271

San Francisco—East Bay (2)
Mrs. John Fazal
(Mary Lou Loufek—Iowa St.)
66 Loma Vista Drive
Orinda, CA 94563
Phone: 415-254-7341

Sandy Gaylord (Bradley)
1052 Choctaw Court
Walnut Creek, CA 94598
Phone: 415-945-1789

San Francisco—South Bay
Mrs. Suzie Mann
(Suzie Zingler—San Jose St.)
2448 Rockridge Way
Santa Clara, CA 95051
Phone: 408-247-1556; 415-328-7040 office

San Jose
Mrs. Karen Howell
(Karen Bluth—San Jose St.)
5283 Rooster Drive
San Jose, CA 95136
Phone: 408-629-2606

San Mateo County
Mrs. Eugene Umland
(Pauline Sawyer—Boston)
416 Villa Terrace #1
San Mateo, CA 94401
Phone: 415-343-3300; 342-9204

San Ramon, Fremont, Dublin,
Danville
Mrs. Peter Horner
(Kerry O'Brien—San Jose St.)
2790 Ascot Drive
San Ramon, CA 94583
Phone: 415-829-1808

Santa Cruz
Mrs. Corinne Wipke
(Corinne Fisher—Missouri)
100 Segre Place
Santa Cruz, CA 95060
Phone: 408-427-0321

Soda Springs
Mrs. Jinx Fores (B&B)
(Jinx Reynaud—California)
P.O. Box 155

Soda Springs, CA 95728
Phone: 916-426-3279

Sonoma County—Santa Rosa
Mrs. Sydney Peter Murman (B&B)
(Carolyn Whiting—California)
5710 Fawn Drive
Santa Rosa, CA 95405
Phone: 707-539-9337

SOUTHERN CALIFORNIA

Southern California TransSister Coordinator:
La Jolla—San Diego
Mrs. Michael B. Wilkes
(Penny Dumm—USC)
P.O. Box 2201
La Jolla, CA 92038
Phone: 619-459-8897

Bakersfield
Mrs. Ridgely Dorsey
(Sylvia Cramb—Washington)
4505 La Mirada
Bakersfield, CA 93309
Phone: 805-322-0317

Balboa Harbor
Mrs. Arthur Patch
(Sharlie Doughty—Iowa St.)
525 Vista Flora
Newport Beach, CA 92660
Phone: 714-644-5075

Beverly Hills—Westwood
Mrs. John Hamilton
(Patricia Blazer—Texas)
518 Stone Canyon
Los Angeles, CA 90024
Phone: 213-476-6796

Blyth
Mrs. Randy Witham
(Debra Cribbens—Cal. Poly)
420 S. 5th Street
Blyth, CA 92225
Phone: 714-922-3803

Glendale
Mrs. Marta L. Brown (B&B)
(Marta Lombardi—Boston)
850 Cumberland Road
Glendale, CA 91202
Phone: 818-246-8950; 259-2796

La Crescenta
Miss Suzanne Anderson (Oregon)
3734 Beechglenn Drive
La Crescenta, CA 91214
Phone: 714-593-1726

Lancaster
Jill K. Dobbins
(Jill Haft—Wichita St.)
44327 W. Cedar
Lancaster, CA 93534
Phone: 805-948-4374

Long Beach
Mrs. Rick Johnson
(Mary Ann Ryan—USC)
6541 Montova St.
Long Beach, CA 90815
Phone: 213-598-1509

Los Angeles
Mrs. Ella-Mae Manwaring
(Ella-Mae Reidy—UCLA)
235 S. Rossmore Ave.
Los Angeles, CA 90054
Phone: 213-935-5063

Orange County
Mrs. Timothy Falisky
(Barbara Rosbe—Michigan)
2942 E. Lake Hill Drive
Orange, CA 92667
Phone: 714-637-4505

Orange County—North (2)
Mrs. Kenneth Montgomery
(Christine Loveberg—San Diego St.)
10226 Overhill Dr.
Santa Ana, CA 92705
Phone: 714-544-0494

Mrs. Jeffery Kraft
(Janis Park—Cal. St.—Fullerton)
20321 Trails End Road
Walnut, CA 91789
Phone: 714-594-1367

Orange County—South: Laguna
Niguel, Saddleback, Capistrano
Valley
Mrs. Wil Chong (B&B)
(Pat Norton—San Diego St.)

26791 Lariot Circle
San Juan Capistrano, CA 92675
Phone: 714-496-0120

Palos Verdes—South Bay
Mrs. Donald Moses
(Sally Swink—Michigan St.)
5618 Scotwood Drive
Rancho Palos Verdes, CA 90274
Phone: 213-377-3373

Pasadena (2)
Mrs. Ruth Turpin
(Ruth Bless—California)
1828 Windsor Road
San Marino, CA 91108
Phone: 213-283-5550

Pat M. Trujillo
(Pat Metzger—Cal. St.—Long Beach)
1415 Beech Street
South Pasadena, CA 91030
Phone: 818-799-8787

Pomona Valley
Mrs. Robert V. Phillips
(E. Louise Morris—Bowling Green)
2687 San Angelo Drive
Claremont, CA 91711
Phone: 714-624-5761

Riverside
Mrs. Gerald Bradshaw
(Audrey Cannon—Washington)
1631 Coteau
Riverside, CA 92504
Phone: 714-780-7254

San Bernadino
Mrs. George Zachary
(Harriet Forden—USC)
4350 Quail Canyon Road
San Bernadino, CA 92404

San Diego—La Mesa
Nena M. Doyle
(Nena Byard—Cal. St.—Long Beach)
8508 Fresno Ave.
La Mesa, CA 92041
Phone: 714-464-2174

San Diego
Mrs. Mary Hargraves
(Mary Leppert—San Diego St.)
9216 Brier Road
San Diego, CA 92041
Phone: 619-697-3199

San Fernando Valley
Mrs. Don Mesner
(Marilyn Perkins—Oregon)
22287 Coss Avenue
Woodland Hills, CA 91364
Phone: 213-340-6239

Santa Barbara
Barbara L. LaMarca (B&B)
(Barbara Lanning—San Jose St.)
Goleta, CA 93117
Phone: 805-968-5196; 964-7717

Ventura
Cheryl Willene Gordon (USC)
3101 Peninsula Road #316
Channel Isle Harbor, GA 93030
Phone: 805-984-7059

Yorba Linda
Peggy M. Oles (B&B)
(Peggy McClenghan—Cal. St.—Fullerton)
6449 Olive Branch Lane
Yorba Linda, CA 92686
Phone: 714-970-6114; 898-1411
ext. 295

COLORADO
Aspen
Mrs. Richard Fallin
(Pat Finley—Oklahoma)
Box 2711
Aspen, CO 81611
Phone: 303-925-4075

Boulder
Mrs. James Friend
(Pauline Clausen—Iowa)
5444 White Place
Boulder, CO 80303
Phone: 303-443-6791

Colorado Springs
Mrs. Wayne Cooper
(Elly Welter—N. Dakota St.)
3014 Drakestone Drive
Colorado Springs, CO 80909
Phone: 303-632-5106

Denver
Mrs. Earl T. Pinney (B&B)
(Patricia Thomas—Oklahoma)
6915 S. Garfield Way
Littleton, CO 80122
Phone: 303-773-3364

Ft. Collins
Mrs. Donald Blanchard
(Patricia Ball—N. Arizona)
2719 Silver Creek Drive
Ft. Collins, CO 80525
Phone: 303-223-8489

Grand Junction
Mrs. Anita B. Fenn
(Anita Brown—Denver)
2700 G Road, 7-D
Grand Junction, CO 81501
Phone: 303-243-1087

Montrose
Mrs. Ben Sprouse
(Janet Smith—Colorado College)
345 S. San Juan
Montrose, CO 81401
Phone: 303-249-2087; 249-3786

Monument
Ms. Judy Bilyeu (San Diego St.)
18735 Sierra Vista Road
Monument, CO 80132

Pueblo
Dagmar Herden Haney (Indiana St.)
(B&B)
1810 Elizabeth
Pueblo, CO 81003
Phone: 303-543-3161

CONNECTICUT

Darien
Mary Leachman Castle
(Northwestern)
320 Noroton Avenue
Darien, CT 06820
Phone: 203-655-8448; 655-1423

Fairfield County (3)
Mrs. Kenneth Anderson
(Susan Huggard—Michigan)
146 Applegate Road
Fairfield, CT 06430

Mrs. Roland Carreker
(Miriam Johnson—Syracuse)
12 Elmwood Lane
Westport, CT 06880
Phone: 203-227-9135

Mrs. William H. Armstrong
(Joan Kester—Stanford)
43 Pecksland Road
Greenwich, CT 06830
Phone: 203-661-7118

Madison
Mrs. B. Victor Chance, Jr.
(Carmella Bentley—Auburn)
106 Beechwoods Drive
Madison, CT 06443

Ridgefield
Mrs. Robert Dieterich (B&B)
(Patricia Smith—Iowa)
40 Mead Ridge Road
Ridgefield, CT 06877
Phone: 203-438-0528

South Windsor
Miss Nancy L. Pierce (Dickinson)
(B&B)
152 Lawrence Road
South Windsor, CT 06094
Phone: 203-644-3523

DELAWARE

Delmar-Eastern Shore
Mrs. Greg Hammer
(Karen Garrelts—Kansas St.)
RD 4, Box 285J
County Road 330
Dover, DE 19901
Phone: 302-678-1485

Wilmington
Mrs. John Hughes
(Catherine Combacker—Minnesota)
1302 Copely Drive
Welshire
Wilmington, DE 19803
Phone: 302-762-1925

DISTRICT OF COLUMBIA

Washington, D.C.

Mrs. Maria Wolf
(Maria Henderson—Maryland)
17228 Sandy Knoll Drive
Olney, MD 20832
Phone: 301-774-0405

FLORIDA

Anna Maria Island
Mrs. J. Howard Pope (B&B)
(Margaret McBryer—McGill)
201 Chilson Avenue, Box 1083
Anna Maria Island, FL 33501
Phone: 813-778-5135

Charlotte County—Punta Gorda
Mrs. D. H. Campbell
(Ginny Hill—Bowling Green)
P.O. Box 187
Punta Gorda, FL 33950

Clearwater
Miss Barbara M. Hodas
55 Rogers Street, #506
Clearwater, FL 33516
Phone: 813-461-9409

Dania
Miss Ann Overton (Tennessee)
600 NE 2nd St., #311
Dania, FL 33004
Phone: 305-923-2569

Ft. Lauderdale
Mrs. Vicki R. Peel
(Vicki Rosenwald—Florida St.)
2000 Coral Gardens Drive
Wilton Manors, FL 33306
Phone: 305-564-0065

Ft. Meyers (2)
Mrs. James E. Hefty
(Patricia Salter—Ohio Wesleyan)
338 SE 32nd Terrace
Cape Coral, FL 33904
Phone: 813-772-2351

Mrs. Gregory Ezell
(Nan Schmucker—Wittenberg)
3917 Hidden Acres Circle NW
North Ft. Meyers, FL 33903

Homestead
Mrs. William S. Marsh
(Libby Martin—Auburn)
25201 S.W. 189th Avenue
Homestead, FL 33031

Jacksonville
Mrs. Henry Molden
(Bertha Enger—Illinois)
10531 Bigtree Circle E.
Jacksonville, FL 32217
Phone: 904-268-1945

Lake Park
Mrs. James R. Hibbard (B&B)
(Jeanne Friedberg—Ohio St.)
507 Silver Beach Road
Lake Park, FL 33403
Phone: 305-848-0906

Melbourne
Mrs. Elaine C. Simpson (B&B)
(Elaine Campbell—Iowa)
207 Southgate Boulevard
Melbourne, FL 32901
Phone: 305-724-0884

Miami
Mrs. Donald B. Boyd
(Karen Criswell—Florida St.)
7384 Big Cypress Drive
Miami Lakes, FL 33014
Phone: 305-556-6447

Orlando—Winter Park (2)
Mrs. Sara Kirby
(Sara Stutz—Bowling Green)
2575 State Road 436, #2507
Winter Park, FL 32792
Phone: 305-677-5473

Mrs. Jimmy Wilson (B&B)
(Rhoda Wentsch—Oklahoma St.)
7224 Abbey Lane
Winter Park, FL 32792
Phone: 305-677-8353

Tallahassee
Mrs. Kay Vernon
(Kay Winters—Birmingham Southern)
2750 Blair Stone Court
Tallahassee, FL 32301
Phone: 904-878-6392

Tampa
Mrs. Helen Moxtey

(Helen Meyer—Washington)
2103 Curt Circle
Tampa, FL 33629
Phone: 813-870-0645

Zellwood
Mrs. Terry A. Clark
(Jean Middlebrook—Missouri)
3421 Banberry Circle
Zellwood, FL 32798
Phone: 305-886-0779

GEORGIA

Atlanta (5)
Mrs. Julieta Burda
(Julieta Arias—California)
663 Garden Walk Drive
Stone Mountain, GA 30083
Phone: 404-498-0457

Mrs. John B. F. Dillon
(Agnes Helander—Iowa)
4124 Brockett Creek Court
Tucker, GA 30084
Phone: 404-493-7250; 939-8447

Mrs. Charles T. Tarr
(Elena Daugherty—Georgia)
1853B Skyland Terrace NE
Atlanta, GA 30319
Phone: 404-256-0516; 321-6448

Mrs. Robert D. Murray
(Beth Dowling—Kansas St.)
785 Oakhaven Drive
Roswell, GA 30075
Phone: 404-992-3809

Miss Lou Ann Koval (Michigan)
720 Argonne Avenue NE
Atlanta, GA 30308
Phone: 404-876-5281; 658-5102

Augusta
Mrs. Frank S. Adams (B&B)
(Fay Graves—Nevada, Iowa St.)
707 Milledge Road
Augusta, GA 30904
Phone: 404-733-9582

Columbus—Ft. Benning
Donna Downen (Tennessee)
207 Hamilton Station
Columbus, GA 31909
Phone: 404-327-2189

LaGrange
Mrs. Louise E. Geer
(Louise Evans—Wisconsin)
1205 Vernon Road
LaGrange, GA 30240
Phone: 404-882-1848

HAWAII

Hawaii TransISter Coordinator:
Island Of Kauai
Ms. Ruth D. Merz (Wittenberg)
1123 Lohoe Street
Kailua, HI 96734
Phone: 808-261-8820; 521-9571

Island of Hawaii
Mrs. James W. Ednie
(Marilyn Olsen—Oregon St.)
256 Kaulani Street
Hilo, HI 96720
Phone: 808-935-3672; 935-6653

Island of Maui
Mrs. Charles B. Sutherland
(Connie Byington—Arizona)
P.O. Box 446
Lahaina, HI 96761
Phone: 808-661-0768; 661-4592

Islands of Molokai & Lania
Mrs. Joseph Demarke
(Betty Bussey—San Diego St.)
99-1044 Lalawai Drive
Aiea, HI 96701
Phone: 808-488-4617; 842-8617

Island of Oahu
Mrs. Joyce C. Finley
(Joyce Christie—Oregon)
7 Slade Drive
Honolulu, HI 96822
Phone: 808-947-4780; 944-5819

IDAHO

Boise
Isabel J. Brassey (B&B)
(Isabel Jones—UCLA)
3200 Treasure Drive
Boise, ID 83703
Phone: 208-342-0242

Cascade
 Patricia Bennett (Idaho)(B&B)
 P.O. Box 763
 Cascade, ID 83611
 Phone: 208-382-4631; 382-4202

Donnelly
 Mrs. Stan Kompst
 (Ginny Freeman—San Jose St.)
 Star Route
 Donnelly, ID 93615
 Phone: 208-382-4682

Gooding
 Mrs. James Hollifield (B&B)
 (Lisa Naffiger—N. Arizona)
 Route 2, Box 152 A-2
 Gooding, ID 83330
 Phone: 208-934-8226

Mackay
 Mrs. Robert S. Logan (B&B)
 (Jan Lythgoe—Boise St.)
 Rt. 1, Box 26D
 Mackay, ID 83251

Moscow
 Mrs. Charles Kiblen
 (Mary Thompson—Idaho)
 108 E. 2nd Street, #1
 Moscow, ID 83843
 Phone: 208-882-4285

Rupert
 Peggy Shufeldt (Idaho St.)
 1205 F Street
 Rupert, ID 83350
 Phone: 208-436-0469

ILLINOIS

Aurora
 Mrs. Martin Cassell
 (Janet Thompson—Illinois)
 601 Redwood Drive
 Aurora, IL 60506
 Phone: 312-892-7482

Bloomington-Normal
 Mrs. Mary LaRue Houska
 (Mary Weilmeir—Bradley)
 813 Smith Drive
 Normal, IL 61761
 Phone: 309-452-6493

Champaign-Urbana
 Mrs. Steven Miller
 (Karen Kanady—Illinois)
 2708 Perkins Road
 Urbana, IL 61801
 Phone: 217-384-0612

Chicago (2)
 Sally Erikson Lewis (Bradley)
 535 N. Michigan Avenue, #907
 Chicago, IL 60611
 Phone: 312-644-4116

Ruth Andrea Seeler, M.D. (Vermont)
 (B&B)
 2431 N. Orchard
 Chicago, IL 60614
 Phone: 312-472-3432; 633-6526

Chicago and Northwest Suburban
 Laurel P. Batka
 1325 Baldwin Court, 2D
 Palatine, IL 60067
 Phone: 312-934-5819; 272-2300

Chicago Northwest Suburban
 (Palatine, Arlington Heights,
 Barrington)
 Mrs. Page Engelke (B&B)
 (Deanna Scott—Iowa St.)
 42 E. Garden Avenue
 Palatine, IL 60067
 Phone: 312-359-2684

Chicago South Suburban (Park
 Forest, Chicago Heights, Olympia
 Fields)
 Mrs. Karen Grafe
 (Karen Nilson—Iowa St.)
 308 Sheridan
 Park Forest, IL 60466
 Phone: 312-481-7104

Danville
 Mrs. Harvey H. Acton
 (Jean Campbell—Vanderbilt, Iowa)
 7 North Shore Terrace
 Danville, IL 61832
 Phone: 217-446-1232

Decatur
 Mrs. Mariana Williams

(Mariana Whitmore—Iowa St., Illinois)
 3167 Lake Bluff
 Decatur, IL 62521
 Phone: 217-424-7270

Evanston—North Shore
 Mrs. Charles V. Haliday
 (Polly Grove—Randolph Macon,
 Northwestern)
 910 Romona Road
 Wilmette, IL 60091
 Phone: 312-251-5961; 446-7100

Glen Ellyn
 Mrs. A. J. Pearson
 (Betty Kass—Wisconsin)
 22 W. 106 Sheffield Court
 Glen Ellyn, IL 60137
 Phone: 312-469-1944

Joliet
 Mrs. Howard F. Weber (B&B)
 (Beverly, Kallman)
 411 Rollingwood Lane
 Joliet, IL 60435

Kankakee
 Mrs. Phillip Gadbois
 (Nancy Taylor—Bradley)
 391 S. Chicago Avenue
 Kankakee, IL 60901
 Phone: 815-937-1411

Lake County
 Ms. Daria Brown (Northwestern)
 801 W. Everett
 Lake Forest, IL 60045
 Phone: 312-295-5354

Moline (B&B)
 Mrs. Stanley R. Ullrick
 (Nellie Weston—Northwestern)
 2936—16th Avenue, Forest Hill
 Court
 Moline, IL 61265
 Phone: 309-762-6434

Oak Park
 Bev Coscarelli
 226 Pleasant
 Oak Park, IL 60302
 Phone: 312-386-6244; 443-3800

Peoria
 Mrs. J. G. Long
 (Joanne Garrott—Bradley)
 7025 N. Patton Lane
 Peoria, IL 61614
 Phone: 309-691-6623

Quincy
 Mrs. Felicia Kay Buttchen
 (Felicia Touchette—Wisc.—
 Platteville)
 1254 Kentucky
 Quincy, IL 62301
 Phone: 217-224-5572

Rockford
 Mrs. Donald L. Ivacic
 (Peggy Phelps—Illinois)
 1723 Larkspur Drive
 Rockford, IL 61107
 Phone: 815-226-5458

Southern Illinois—Carbondale
 Mrs. E. Hollis Merritt
 (Judy Gibson—Colorado College)
 623 Wedgewood Lane
 Carbondale, IL 62901
 Phone: 618-549-8382

Sterling
 Mrs. Laurence Johnson
 (Sharon Huebener—Illinois)
 R.R. #1
 Sterling, IL 61081
 Phone: 815-626-5798

Western Springs
 Mrs. Michael Bachmann (B&B)
 (Sharon Nothdurft—Bradley)
 4146 Lawn Avenue
 Western Springs, IL 60558
 Phone: 312-246-1238

INDIANA
 Anderson (B&B)
 Mrs. Don Gwinup
 (Penny Blank—Purdue)
 3635 Oakwood Drive
 Anderson, IN 46011
 Phone: 317-649-6221

Calumet Area (3)
 Mrs. Walter Alexander

(Maggie McDonald—Indiana)
 1305 Forest Park Drive
 Valparaiso, IN 46383
 Phone: 219-462-8723

Mrs. Robert Biefeldt
 (Barbara Arneson—N. Dakota St.)
 6329 Moraine Avenue
 Hammond, IN 46324
 Phone: 219-932-1132

Mrs. Donald Gertz
 (Joyce Marzotto—Indiana)
 522 S. East Street
 Crown Point, IN 46307
 Phone: 219-663-7041

Elkhart
 Barbara Ladzick Pearce (W.
 Michigan)
 26324 Cottage Avenue
 Elkhart, IN 46514
 Phone: 219-264-3212

Evansville
 Mrs. Janet Mackay
 (Janet Berman—Indiana)
 508 Wilson Square
 Evansville, IN 47715
 Phone: 812-477-5749

Hanover
 Mrs. Paul C. MacMillan
 (Barbara Pinkerton—Oregon)
 Box 375
 Hanover, IN 47243
 Phone: 812-866-3339

Indianapolis (2)
 Mrs. Vaino Ajango
 (Nancy Paras—Indiana)
 1632 Lancaster Court
 Indianapolis, IN 46260
 Phone: 317-846-4948

Mrs. William Hasen
 (Norma Orlando—Ohio St.)
 12026 Eden Glen
 Carmel, IN 46032
 Phone: 317-846-2374

Lafayette
 Mrs. George Heid
 (Kathy Erdel—Indiana)
 1528 Northwestern Avenue
 West Lafayette, IN 47906
 Phone: 317-463-6263

Terre Haute
 Mrs. Donald Lowder
 (Judith Ryan—Indiana St.)
 7668 N. 39th Street
 Terre Haute, IN 47805
 Phone: 812-466-9526

IOWA

Ames
 Mrs. Robert Shearer
 (Betty Little—Iowa St.)
 2126 Greeley
 Ames, IA 50010
 Phone: 515-292-9489

Ankeny
 Patricia J. Brown
 (Patricia Allbee—Iowa)
 513 SW Westlawn Drive
 Ankeny, IA 50021

Cedar Rapids
 Mrs. James T. Miller (B&B)
 (Elaine Martin—N. Arizona)
 2019 Sundland Drive SE
 Cedar Rapids, IA 52403
 Phone: 319-362-6882

Des Moines
 Dena Coplerud (Nebraska)
 1901 34th Street
 Des Moines, IA 50310
 Phone: 515-279-1928

Iowa City
 Mrs. George J. Gisin
 (Kathleen Kostelnik—SW Texas St.)
 309 Oberlin
 Iowa City, IA 52240

Newton
 Mrs. C. Porter Hamilton (B&B)
 (Danielle Davis—Iowa)
 703 S. 6th Avenue West
 Newton, IA 50208

Sioux City
 Mrs. Howard M. Logan

(Ila Hagie—Iowa St.)
 309 Jackson Street
 Moville, IA 51039
 Phone: 712-873-3104

KANSAS

Hutchinson
 Mrs. Richard Piper
 (Barbara Johnson—Kansas)
 3105 Cornell Drive
 Hutchinson, KS 67501
 Phone: 316-662-6104; 662-1266

Kansas City
 Mrs. Alden Brownlee
 (Sue Wright—Kansas)
 5620 Pembroke Lane
 Shawnee Mission, KS 66208
 Phone: 913-362-8893

Lawrence
 Mrs. Richard Friede
 (Victoria Neimann—Wisc.—
 Milwaukee)
 3403 Trail Road
 Lawrence, KS 66044
 Phone: 913-842-7875

Manhattan
 Mrs. Ronald Salberg
 (Juli Wrightman—Kansas St.)
 1905 Kenmar Drive
 Manhattan, KS 66502
 Phone: 913-537-7145

Topeka
 Mrs. Samuel H. Marshall, Jr.
 (Ceil Robertson—Minnesota)
 1921 Westwood Drive
 Topeka, KS 66604
 Phone: 913-235-1447; 234-5000

Wichita
 Mrs. Susie Eastman
 (Susie McKay—Wichita St.)
 3622 Elmwood Drive
 Wichita, KS 67218
 Phone: 316-681-3578

KENTUCKY

Lexington
 Mrs. John A. Palumbo, II (B&B)
 (Ruth Ann Baker—Kentucky)
 10 Deepwood
 Lexington, KY 40505
 Phone: 606-299-2597

Louisville
 Mrs. George Stacy
 (Terry Taylor—Penn St.)
 6910 Foxcroft Road
 Prospect, KY 40059
 Phone: 502-228-8678

LOUISIANA

Baton Rouge
 Mrs. James Brunson
 (Sally Fleming—Washington)
 826 W. Lakeview Drive
 Baton Rouge, LA 70810
 Phone: 504-766-3284

Harvey
 Mrs. Robert Price
 (Shirley Hedrick—Tennessee)
 2148 Colombo Drive
 Harvey, LA 70058
 Phone: 504-362-7494

Lafayette
 Cynthia Gray
 (Cynthia Parks—Oklahoma St.)
 218 St. James Drive
 Lafayette, LA 70506
 Phone: 318-988-0089

Greater New Orleans (2)
 Mrs. Kathy Ritter
 (Kathy Kenny—Louisiana St.)
 5116 Rebecca Blvd.
 Kenner, LA 70062
 Phone: 504-456-1891

Judith Z. Gordon
 (Judi Zatarain—Louisiana St.)
 5004 Cleveland Place
 Metairie, LA 70003
 Phone: 504-888-8532; 838-1919

MAINE
 Bucks Harbor
 Mrs. Russell K. Griffith

TranSIsterng to Convention

Gamma Phi Beta certainly is more than a sorority. It's an opportunity to expand your horizons both locally and abroad. Last summer I had the wonderful experience to learn about the TranSIster Service firsthand.

My sister and I drove from Long Beach, Cal. to Chicago, Ill. and stayed with TranSIsters along the way. We visited Gamma Phi Betas in Flagstaff, Ariz.; Albuquerque, N.M.; Amarillo, Tex.; and Broken Bow, Okla.



Ann Leighton welcomes Roxanne to Flagstaff, Ariz.

Ann Stone Leighton (N. Arizona) was our gracious hostess in Flagstaff. Ann is a junior high school history teacher and an expert guide of Arizona. She gave us information about the Grand Canyon (her husband is a river guide during the summer) and about an alternate route through an Indian reservation, which was a welcome

change of scenery.

Our next stop was in beautiful Albuquerque with the Campbells. Judy Hansard Campbell (Midwestern St.) took us on a tour of Albuquerque, home of the world's largest tramway. It also hosts the famous balloon fiesta. The Camp-

bells were extremely pleased with our gift of a basket filled with Knott's Berry Farm goodies as on a recent visit to southern California they arrived just as Knott's was closing.

Winifred Higginbotham Dunaway (Texas) made arrangements for us with the Davis family of Amarillo. Barbara Forrest Callander Davis (Vanderbilt), husband Dick, and children Richard and Cari, kept us entertained. They told us about the town's Cadillac Ranch at which 15 Cadillacs from the 1950s are buried, all with their tails sticking out at the angle of the pyramids.

Darrell and Ruth Ann Olson Kana (N. Dakota) welcomed us in Oklahoma. We enjoyed a refreshing swim at their club. Later they took us on a tour of Broken Arrow and also to Tulsa to catch a glimpse of the opulent Oral Roberts University.

My cross country trek was a marvelous prelude to the 1984 Gamma Phi Beta Convention in Chicago. I met so many super Gamma Phi Betas and their families and will always remember this terrific experience. Maybe someday I, too, shall become a TranSIster.—Roxanne Brogan (Cal. St.—Long Beach)



Roxanne toured Tulsa with the Kanas.

(Mary Ann Lee—Ohio Wesleyan)
Route 92
Bucks Harbor, ME 04618
Phone: 207-255-3914

MARYLAND

Cockeysville
Mrs. David R. Leffard, II
(Janet Daly—Auburn)
2-1 Lake Ridge Place
Cockeysville, MD 21030
Phone: 301-628-6582

Delmar Eastern Shore
Mrs. J. D. Martone
(Evelyn Cann—Syracuse)
Chesmar, RD#1
Chestertown, MD 21620
Phone: 301-778-0012

Olney—see District of Columbia

MASSACHUSETTS

Andover
Roberta V. Shupe
(Roberta Vincent—Colorado)
76 Salem Street
Andover, MA 01810
Phone: 617-475-7374; 475-1242

Boston (2)
Gail M. Workman (Illinois)
28 Fleet Street, #7
Boston, MA 02113
Julie M. Hansen (Illinois)
28 Fleet Street, #7
Boston, MA 02113

Sandwich
Mrs. Paul T. McManaway (B&B)
(Sandy Bergstrom—Boston)
3 Bourne Road, Box 926
Sandwich, MA 02563
Phone: 617-888-2917

MICHIGAN

Alma
Rose Peck (B&B)
(Rose Woodrow—Alma)
609 Richmond

Alma, MI 48801
Phone: 517-463-3713; 463-7148

Ann Arbor
Mrs. Jack Dye
(Mary Breidecker—Missouri, Wash.-
St. Louis)
2619 Manchester Road
Ann Arbor, MI 48104
Phone: 313-971-5716

Detroit
Mrs. Gary R. Fort
(Ann Yingling—Vanderbilt)
34698 Valley Forge
Farmington Hills, MI 48018
Phone: 313-553-9144

Grand Rapids
Mrs. William Hineine
(Carolyn Moulton—Miami)
2550 Maplewood SE
Grand Rapids, MI 49506
Phone: 616-949-9335

Jackson
Mrs. William L. Reid
(Martha Roberts—Bowling Green)
932 Thomas Drive
Jackson, MI 49203
Phone: 517-784-3550

Mt. Pleasant
Mrs. Jerry R. Quick
(Betty Ahlemeyer—Indiana)
1212 Tomah Drive
Mt. Pleasant, MI 48858
Phone: 517-773-2757

Southwest Michigan
(Hartford, St. Joseph)
Mrs. John Dukeshere (B&B)
(Kay Harris—Michigan St.)
Rt. 2
Hartford, MI 49057
Phone: 616-621-3773

Traverse City
Mrs. A. E. Moenkhaus
(Ruth Siefertman—Illinois)
1738 E. Front Street
Traverse City, MI 49684

Phone: 616-947-5074

Troy
Mrs. William Green
(Joan Gray—Michigan St.)
2932 Lanegan
Troy, MI 48064
Phone: 313-644-3798

MINNESOTA

Duluth
Mrs. Charles Semrad
(Susan Getchell—Minnesota)
2726 Branch Street
Duluth, MN 55812
Phone: 218-724-7586

Minneapolis-St. Paul
Mrs. David Pung (B&B)
(Marlys Niceson—N. Dakota)
6020 Manchester Drive
Golden Valley, MN 55422
Phone: 612-545-6807

Rushford
Judith Ellickson (B&B)
(Judith Gallagher—Wisc.—Platteville)
500 W. Stevens
Rushford, MN 55971

MISSISSIPPI

Jackson (2)
Mrs. Dennis R. Howell
(Roberta Gibson—Bowling Green)
101 Terrapin Drive
Brandon, MS 39042
Phone: 601-825-8903

Mrs. Dean M. Miller
(Gloria Horn—Kansas)
231 Ashcot Circle
Jackson, MS 39211
Phone: 601-362-3593

MISSOURI

Columbia
Mrs. William R. Sappington
(Sharlyn Spragg—Missouri)
2268 Concordia Drive

Columbia, MO 65201
Phone: 314-445-7862; 874-4489

Rolla
Mrs. Kent Sanborn
(Diane Hawley—Kansas)
RFD 1
Rolla, MO 65401
Phone: 314-341-3046

St. Joseph
Mrs. James K. Akard
(Betty Ashmore—Missouri)
1821 Crest
St. Joseph, MO 64506
Phone: 816-233-3302; 232-8441

St. Louis (3)
North
Miss Debra Domino (Vanderbilt)
11970 Del Reo Court
St. Louis, MO 63138
Phone: 314-355-8747

Nita Waninger (Wash.—St. Louis)
5338 Chapelford Lane
St. Louis, MO 63119
Phone: 314-962-0916

Central West End
Miss Nancy Donovan (Bowling
Green)
7570 Byron, #2W
St. Louis, MO 63105
Phone: 314-727-9170

Springfield (2)
Miss Carla J. Carter (SW Missouri
St.)
1717 S. Luster, #102
Springfield, MO 65804
Mrs. John Lilledahl, Jr.
(Charlotte Widmer—Wisconsin)
P.O. Box 4687 G.S.
Springfield, MO 65804

MONTANA

Billings
Mrs. R. D. Blythe
(Kaye Kyner—Iowa St.)
4640 Rimrock Road

Billings, MT 59102
Phone: 406-656-5640

NEBRASKA

Hastings—Grand Island
Mrs. Warren Whitted, Jr. (B&B)
(Nancy O'Conner—Nebraska)
610 N. Shore Drive
Hastings, NE 68901
Phone: 402-462-4363

Kearney
Mrs. Brad Bigelow
(Karen Johnson—Kearney St.)
3300—19th Avenue
Kearney, NE 68847
Phone: 308-237-5634

Lincoln
Mrs. Lynn Wingrove
(Lynn Grosscup—Nebraska)
3125 S. 29th
Lincoln, NE 68502
Phone: 402-423-2688

Omaha (2)
Mrs. Jerry Mosser
(Gloria Pfundheller—Idaho St.)
508 Jinings Drive
Bellevue, NE 68005
Phone: 402-292-5497

Mrs. John O. Pistillo, Jr. (B&B)
(Judi Dimke—Wichita St.)
4858 S. 157th Street
Omaha, NE 68135
Phone: 402-895-1498

Scottsbluff
Mrs. Roger Dawdy (B&B)
(Marcia Baker—Colorado St.)
1913 Avenue P
Scottsbluff, NE 69361

NEVADA

Carson City
Eleanor Kolbe
(Eleanor Thomson—Michigan St.)
407 N. Walsh Street
Carson City, NV 89701
Phone: 702-882-6736

Reno
Mrs. Valerie Mastellato
(Valerie Brown—Nevada)
865 Glenvista Drive
Sparks, NV 89431
Phone: 702-359-7428

NEW HAMPSHIRE

Center Strafford
Sandra K. Schwab (B&B)
(Sandra Nelson—Wisc.-Platteville)
P.O. Box 48
Pleasant Valley Road
Center Strafford, NH 03815

Deerfield
Mrs. Burton Bush
(Judy Johnson—Oregon St.)
Mt. Delight Road
RFD#1, Box 202AA
Deerfield, NH 03037
Phone: 603-463-7683

Gilsum
Mrs. Michael Moran
(Sara Bradley—Vermont)
P.O. Box 156
Gilsum, NH 03448
Phone: 603-357-3883

Pelham
Mrs. Stephen St. Jean
(Carol Stott—Colorado College)
7 Kennedy Drive
Pelham, NH 03076
Phone: 603-893-5583

NEW JERSEY

Bergen County (2)
Mrs. Bruce Storms
(Ann Tuthill—Syracuse)
371 Linwood Avenue
Ridgewood, NJ 07450
Phone: 201-652-8693

Mrs. Emory Heaps
(Jean Blizzard—Maryland)
378 Holly Drive
Wyckoff, NJ 07481
Phone: 201-891-1624

Mrs. R. K. Stafford
(Rosemary Morel—Gettysburg)
9 Parkside Avenue
Freehold, NJ 07728
Phone: 201-431-5305
Miss Betsy Podsiadlo (Gettysburg)
Apt. 20-10
Quail Ridge Drive
Plainsboro, NJ 08536
Phone: 609-799-4940

Little Silver (Monmouth County)
Mrs. Sylvia H. Burton
(Sylvia Simpson—Arizona)
54 Rustic Terrace
Little Silver, NJ 07739
Phone: 201-747-2267; 741-4500

Middletown (2)
Mrs. Joanne C. Rossnagel
(Joanne Scholes—Wash.—St. Louis)
630 Harmony Road
Middletown, NJ 07748
Phone: 201-787-5295

Mrs. A. Thorsten Karlsson
(Ann Adams—California)
94 Townsend Drive
Middletown, NJ 07748
Phone: 201-671-3213; 946-3200

Moorestown
Mrs. Mancer J. Cyr
(Sara Terwilliger—Wisconsin)
543 Eaglebrook Drive
Moorestown, NJ 08057
Phone: 609-234-6129

Newark
Mrs. Charles Nicholas
(Ginny Linneman—Penn St.)
Keats Road
Pottersville, NJ 07979
Phone: 201-439-2358
Trenton—see Morrisville, PA

Westfield
Mrs. Monroe D. Macpherson (B&B)
(Kay Lynch—Michigan)
141 Jefferson Avenue
Westfield, NJ 07090
Phone: 201-232-3636

NEW MEXICO

Albuquerque (2)
Mrs. Stuart R. Campbell
(Judy Hansard—Midwestern)
3703 Cheraz Road, NE
Albuquerque, NM 87111
Phone: 505-298-8296

Mrs. Bill Laney
(Joan Hogan—McGill)
8901 Camino Cometa NE
Albuquerque, MN 87111
Phone: 505-821-5268

Las Cruces
Donna M. O'Conner
(Donna McConahay—Colorado St.)
Rt. 3, 4835 S. Senita
Las Cruces, NM 88001
Phone: 505-522-1616

Los Alamos
Martha Lee DeLancy
(Martha Lee Dougherty—Wyoming)
1010 Myrtle
Los Alamos, NM 87544
Phone: 505-662-9283

Roswell
Mrs. George Mitchell
(Carolyn Schmidt—Texas Tech)
2509 Coronado
Roswell, NM 88201

Santa Fe
Emily Sue Hansen (Oklahoma St.)
213 E. Berger
Santa Fe, NM 87501
Phone: 505-982-8975

NEW YORK

Batavia
Miss Sandra A. Kracht (B&B)
(Wisc.-River Falls)
47½ S. Main
Batavia, NY 14020
Phone: 716-343-8851; 343-3040
Buffalo
Mrs. Robert Simpson
(Elizabeth Dunnington—California)

8970 Roll Road
Clarence, NY 14031
Phone: 716-741-3452

Cazenovia-Hamilton
Deborah Dufel
(Deborah Hitchcock—Kentucky)
3900 Nine Mile Road
RD#3
Cazenovia, NY 13035
Phone: 315-655-2159

Endwell-Binghamton
Mrs. James W. Titus
(Beverly Curless—Arizona)
3636 Wildwood Drive
Endwell, NY 13760
Phone: 607-785-0960

New York City (2)
Miss Julee A. Bertsch (Bowling
Green)
171 W. 23rd Street
New York, NY 10011
Phone: 212-620-0135; 285-6242

Nancy Neumann (Miami)
333 E. 75th Street
New York, NY 10021
Phone: 212-988-5738

Oceanside
Beth Stewart (N. Arizona)
2603 Fortesque Avenue
Oceanside, NY 11572
Phone: 516-678-6150

Olean
Mrs. Robert L. Rossi (B&B)
(Janice Clark—Gettysburg)
701 Grandview Avenue
Olean, NY 14760
Phone: 716-372-7248

Oneida
Mrs. James Colway (B&B)
(Cynthia Townsend—Syracuse)
101 The Vineyard
Oneida, NY 13421
Phone: 315-363-4854

Plattsburgh
Adrianne C. Newton
(Adrianne Faye Carpenter—
Syracuse)
26 Algonquin Drive
Cumberland Head
Plattsburgh, NY 12901
Phone: 518-563-4210

Poughkeepsie (B&B)
Lizabeth C. Martens
(Lizabeth Cambridge—Syracuse)
29 Oriole Drive
Poughkeepsie, NY 12601
Phone: 914-462-6901; 454-1440

Rochester
Mrs. John Nicastro
(Terry Carbone—Boston)
35 Briggsboro Lane
Fairport, NY 14450
Phone: 716-223-1402

Rye
Mrs. Kathleen Gatewood
(Kathleen Gallagher—Purdue)
One Apawamis Avenue
Rye, NY 10580
Phone: 914-967-4049; 335-5266

Syracuse
Mrs. David Hess
(Bea Muller—Syracuse)
767 Village Boulevard S.
Baldwinsville, NY 13027
Phone: 315-638-4341

NORTH CAROLINA

Asheville
Mrs. Francis W. Young (B&B)
(Virginia Clough—Bradley)
G-6 Pebble Creek Drive
Asheville, NC 28804
Phone: 704-254-1528

Chapel Hill
Mrs. John Steinbaugh
(Kathy Sperling—Colorado St.)
61 Stoneledge
Fearrington Post—Box 61
Pittsboro, NC 27312
Raleigh
Mrs. Thomas L. Law

(Gay Barnes—William and Mary)
304 Edgemont Drive
Raleigh, NC 27612
Phone: 919-787-8662

Winston-Salem
Mrs. Robert Chafee
(Shirley Noell—William and Mary)
4740 Old Winston Road
Kernersville, NC 27284

NORTH DAKOTA

Fargo-Moorhead (2)
Mrs. Quentin Burdick
(Jocelyn Birch—Northwestern)
1110 9th Street S.
Fargo, ND 58102
Phone: 701-235-8457

Mrs. Ellend J. Palmer, Jr.
(Grace Bergen—N. Dakota St.)
316 Eddy Court
Fargo, ND 58102
Phone: 701-237-5014

Minot (2)
Mrs. William H. Blore
(JoAnn Nelson—N. Dakota)
315 9th Avenue SE
Minot, ND 58701
Phone: 701-838-4565

Miss Kathleen Korgel
1600 10th Street SW
Minot, ND 58701
Phone: 701-839-5780

OHIO

Greater Akron
Mrs. Frank Conner (B&B)
(Ann Denison—Bowling Green)
2049 27th Street
Cuyahoga Falls, OH 44223
Phone: 216-929-3466

Blue Ash (Cincinnati Area)
Mrs. Carroll P. Blackwood
(Ruth Thomas—Penn St.)
90 Carpenter Ridge
Blue Ash, OH 45241
Phone: 513-791-0211

Canton-Massillon
Mrs. Donald Seibert
(Connie Shutt—Kent St.)
606 E. Maple Street
North Canton, OH 44720
Phone: 216-499-7058

Chagrin Falls
Mrs. Roger J. Smith (B&B)
(Alice Demming—Miami)
8758 Holly Springs Trail
Chagrin Falls, OH 44022
Phone: 216-543-4688; 543-4670

Cincinnati
Shirley Rights Teigen (Denver)
6648 Michael Drive
Cincinnati, OH 45243
Phone: 513-793-0970

Cleveland (East)
Mrs. David Martinson
(Judith Broughan—Miami)
2153 Garden Drive
Wickliffe, OH 44092
Phone: 216-585-4323

Aurora (Cleveland East)
Marianne S. Paul (Wisconsin)
29D Aurora Road (Rt. 43 and 82)
Aurora, OH 44202
Phone: 216-562-9065; 562-9136

Columbus
Mrs. Steve Koehler
(Cindy Stockman—Auburn)
2273 Sawbury Boulevard
Columbus, OH 43085
Phone: 614-764-2667

Dayton
Mrs. Richard Korn
(Virginia Havens—Colorado College)
1505 Harvard Boulevard
Dayton, OH 45406
Phone: 513-277-4746

Findlay
Pamela Binder (Bowling Green)
(B&B)
443 Westchester Drive
Findlay, OH 45840
Huron

Mrs. Carl W. Winans (B&B)
(Phyllis Brobst—Bowling Green)
1005 Dockway Drive
Huron, OH 44839
Phone: 419-433-2758

Lima
Mrs. James W. Wilt
(Nancy Gedge—Ohio Wesleyan)
200 S. Westwood Drive
Lima, OH 45805
Phone: 419-222-8536

Middletown-Oxford
Mrs. Joseph E. Newlin
(Tina Rogers—Wittenberg)
4401 Nelson Road
Middletown, OH 45042
Phone: 513-424-1120

Napoleon
Mrs. Marc Pardo
(Sandra Davies—Bowling Green)
Route 2, 16-129
Napoleon, OH 43545

Springfield
Mrs. M. J. Pavelka
(Joyce Yerty—Wittenberg)
1371 Tenner Place
Springfield, OH 45502
Phone: 513-322-2014

Toledo
Mrs. Joseph Pilot
(Sharon McManners—Michigan St.)
3950 Grandview Court
Toledo, OH 43614
Phone: 419-385-6774

Warren
Diana J. Potts (Bowling Green)
414 Warren Avenue
Niles, OH 44446
Phone: 216-652-1998

Youngstown
Mrs. Gene Pusateri
(Pamela Oyer—Bowling Green)
162 Shorehaven Drive
Youngstown, OH 44512
Phone: 216-758-0396

OKLAHOMA

Bartlesville
Mrs. Patrick H. Roark
(Louise Kane—Kansas)
946 SE Briarwood
Bartlesville, OK 74006
Phone: 918-333-6297

Clinton-Weatherford
Mrs. Cheryl Lockstone
(Cheryl Lehman—SW Oklahoma St.)
101 NW Main, #19
Weatherford, OK 73096
Phone: 405-772-8167

Muskogee
Mrs. M. O. Lewis
(Helen Denman—Penn St.)
5 Leathers Lane
Muskogee, OK 74401
Phone: 918-682-7165

Norman
Mrs. Edwin L. Moore
(Jane Slater—Randolph-Macon)
1518 Ann Arbor
Norman, OK 73069
Phone: 405-329-0052

Oklahoma City
Mrs. Jim Collins
(Rebecca McCough—S. Methodist)
2334 NW 58th
Oklahoma City, OK 73112
Phone: 405-848-8288

Stillwater
Mrs. Scarlett Hall
(Scarlett Irwin—Oklahoma St.)
3723 W. Vista Lane
Stillwater, OK 74074
Phone: 405-624-9776

Tulsa
Mrs. Darrell Kana
(Ruth Ann Olson—N. Dakota)
8318 Shadowood Lane
Broken Arrow, OK 74012
Phone: 918-455-1520

Vinita
Mrs. Jerry Ruork (B&B)
(Gail Hutts—Oklahoma)

235 S. Miller
Vinita, OK 74301
Phone: 918-256-2219

OREGON

Ashland
Lois (Trudy) Astrid Maddox (B&B)
(Astrid Adams—Oregon)
186 Church Street
Ashland, OR 97520
Phone: 503-482-0059

Eugene
Mrs. James Renton
(Nancy Buell—Oregon)
2263 Ridgeway Drive
Eugene, OR 97401
Phone: 503-345-8115

Portland
Mrs. Barbara Briggs
(Barbara Thomas—California)
9830 SW Hawthorne Lane
Portland, OR 97225
Phone: 503-292-1023

Portland (East)—Troutdale
Mrs. William R. Johnston
(Elizabeth Weinzi—Oregon)
28040 SE Stark Street
Troutdale, OR 97060
Phone: 503-665-7001; 287-6122

Salem
Mrs. Leona Farrell
(Leona Waterhouse—Washington)
3445 Cherokee Drive S.
Salem, OR 97302
Phone: 503-588-1224

Tigard
Mrs. James Emard (B&B)
(Elisabeth Douglas—Oregon St.)
14500 SW Hall Boulevard, #28
Tigard, OR 97223
Phone: 639-2767

PENNSYLVANIA

Cooksburg
Mrs. Robert Wheat (B&B)
(Mary Craft—Penn St.)
Box 106 (River Road)
Cooksburg, PA 16217
Phone: 814-744-8162

Harrisburg
Miss Veronica Varga (Northwestern)
294 Beacon Drive
Harrisburg, PA 17112
Phone: 717-545-9130

Lehigh Valley
Mrs. William R. Elleston
(Marilyn Rennacker—Syracuse)
227 W. Lafayette Street
Easton, PA 18042
Phone: 215-258-9546

Morrisville-Bucks County
Geraldyn M. Prosswimmer, M.D.
(Geraldyn Marotta—Lehigh)
740 Crown Street
Morrisville, PA 19067
Phone: 215-295-9333

Philadelphia North Suburban
Mrs. Robert H. Meisinger
(Marcia Young—Ohio St.)
125 Glenwood Drive
Washington Crossing, PA 18977
Phone: 215-493-0473

Philadelphia West Suburban (2)
Mrs. Harry Zahn
(Mary Newell—Wisconsin)
308 Oak Hill Lane
Newtown Square, PA 19073
Phone: 215-356-4775

Carla Zambelli (Ohio Wesleyan)
309 Rose Lane
Haverford, PA 19041
Phone: 215-649-1580; 649-6499

Pittsburgh—North Hills
Mrs. James L. Hartley
(Margaret Calvin—Bowling Green)
2925 Albine Drive
Glenshaw, PA 15116
Phone: 412-487-1496

Pittsburgh—South Hills
Mrs. Herbert Amick
(Marilyn Kerr—Kent St.)
1740 Taper Drive

Upper St. Clair, PA 15241
Phone: 412-221-5662

Pittsburgh—East Suburban
Mrs. Phillip Wyche
(Rosamond Fraser—Oregon)
424 Woodland Hills Drive
Pittsburgh, PA 15235
Phone: 412-241-3518

Pottstown
Barbara C. Kott
(Barbara Carpenter—Penn St.)
R.D. 2, Mill Road
Schwenksville, PA 19473
Phone: 215-287-8540

State College
Mrs. Jean Hawthorne
(Jean Duncan—Penn St.)
13 N. Barkway Lane
State College, PA 16801
Phone: 814-237-6807

Unionville
Eileen N. Beck
(Eileen Nolan—Kent St.)
Box 387, Rosedale Road
Kennett Square, PA 19348
Phone: 215-388-1405; 444-3668

RHODE ISLAND

Pawtucket
Valerie A. Bruzzie (Syracuse)
22 Walnut Street
Pawtucket, RI 02860

Providence
Kay A. Cassill
(Kay Adams—Iowa)
22 Boylston Avenue
Providence, RI 02906
Phone: 401-751-4949

Southern Rhode Island
Mrs. Gilbert Kingsley
(Christine Franzen—Colorado St.)
243 Balsam Road
Wakefield, RI 02879

SOUTH CAROLINA

Charleston
Mrs. Ronald Templeton (B&B)
(Julia Terry—S. Methodist)
97 Norview Drive
Charleston, SC 29407
Phone: 803-571-1501

Fripp Island
Mrs. Clarence Fry (B&B)
(Shirley Markey—Maryland)
626 Dolphin Drive
Fripp Island, SC 29920
Phone: 803-838-2066

Hilton Head Island
Mrs. Robert Kriwanek (B&B)
(Penny Coyne—Wisconsin,
Syracuse)
42 Club Course Drive, Sea Pines
Hilton Head Island, SC 29928
Phone: 803-671-4232

Spartanburg (B&B)
Mrs. Paul S. Lofton, Jr.
(Mary Beth Mireur—SW Texas St.)
404 E. Park Drive
Spartanburg, SC 29302
Phone: 803-583-0553

SOUTH DAKOTA

Pine Ridge
Sue Hocking (Bowling Green) (B&B)
P.H.S. Hospital
Pine Ridge, SD 57770
Phone: 605-867-5512; 867-5131

Rapid City (2)
Mrs. Wiley Hughes
(Joan Myhren—Nebraska)
3422 Carmen Court
Rapid City, SD 57701
Phone: 605-341-3353

Ms. Jane Gibson (S. Methodist)
6521 Jennifer Street
Rapid City, SD 57701
Phone: 605-342-0901; 342-0280

Sioux Falls
Mrs. Hal Mandl
(Marianna Revell—Vanderbilt)
Route #2, Box 104
Colton, SD 57018

Phone: 605-446-3515

TENNESSEE

Knoxville
Sherry Robertson (Tennessee) (B&B)
7213 Arlie Road, Halls Crossroads
Knoxville, TN 37918
Phone: 615-922-2808

Memphis
Miss Karen Bitner (Memphis St.)
4783 Kitty Drive
Memphis, TN 38128
Phone: 901-372-1953

Murfreesboro
Mrs. Karen Wagner Hudson (Indiana)
Rt. 8, Summit Court
Murfreesboro, TN 37130
Phone: 615-895-0645

Nashville
Elise Clark Anderson
(Ohio Wesleyan) (B&B)
2203 Old Hickory Blvd.
Nashville, TN 37215
Phone: 615-373-8950

TEXAS

Texas TransISter Coordinator:
Corpus Christi
Mrs. Charles D. Adams, Jr. (B&B)
(Patricia Mapes—Texas)
6110 Boca Raton Drive
Corpus Christi, TX 78413
Phone: 512-853-8055

Abilene
Miss Valery Cooper (SW Texas St.)
2500 Nonesuch Road, #4-G
Abilene, TX 79605

Amarillo
Mrs. Winifred H. Dunaway (B&B)
(Winifred Higginbotham—Texas)
1506-A W. 11th Street
Amarillo, TX 79101
Phone: 806-373-7546

Arlington
Mrs. William Lace
(Laura Markhouse—Texas)
3405 Somerset
Arlington, TX 76013
Phone: 817-461-0154

Austin
Mrs. James M. Michael
(Jane Pfeiffer—Texas)
3307 Whiteway Drive
Austin, TX 78757
Phone: 512-451-4177

Beaumont
Mrs. Hal Laine
(Shirley Johnson—Lamar)
6845 Marshall Place
Beaumont, TX 77706
Phone: 713-866-5555

Corpus Christi
Mrs. Craig Fields
(Jean)
3613 Glenway
Corpus Christi, TX 78413
Phone: 512-854-5233

Dallas (3)
Mrs. Daniel A. Groves
(Sharon McFarland—S. Methodist)
730 Snowden Drive
Richardson, TX 75080
Phone: 214-234-2842

Dallas—Richardson (B&B)
M. Gene Joyce (B&B)
(Gene White—Texas)
910 Glen Cove
Richardson, TX 75080
Phone: 214-235-1724

Miss Charlene F. Boyd
(S. Methodist)
7604 Fair Oaks, #2086
Dallas, TX 75231
Phone: 214-341-6638

Ft. Worth
Mrs. Terry Faulk
(Debra McClelland—SW Texas St.)
5229 Mallory
Ft. Worth, TX 76117
Phone: 817-838-7035

Houston (2)
Brenda S. Ball (Oklahoma)

10601 S. Drive, Condo #83
Houston, TX 77099
Carolyn Kimberley Young (Iowa St.)
11806 Moorecreek
Houston, TX 77070
Phone: 713-376-6124
Hurst-Euleess, Bedford
Mrs. Gordon Doggett
(Sabra Hester—Texas Wesleyan)
3136 Spring Lake
Bedford, TX 76021
Phone: 817-281-6937
Lubbock
Mrs. Felicia Gordon
(Felicia Holder—Texas Tech)
4117 62nd Drive
Lubbock, TX 79413
Phone: 806-797-7388

Odessa
Mrs. Page Greene (B&B)
(Barbara Hurley—Texas)
1455 Pagewood
Odessa, TX 79761
Phone: 915-362-3018
San Antonio
Mrs. Robert A. Hein
(Nancy Tiekens—Texas)
413 Ridgemont Avenue
San Antonio, TX 78209
Phone: 512-824-9229
The Woodlands
Mrs. Bruce A. Letterer (B&B)
(Jeri Lynn Franey—N. Iowa)
48 Fallshire Drive
The Woodlands, TX 77381
Phone: 713-363-2895; 447-3153

Victoria
Mrs. James Dunaway
(Nanette Pepper—Lamar)
103 Rosewood
Victoria, TX 77901
Phone: 512-578-1697
Wichita Falls
Mrs. Robert Jorgensen
(Anne Ginther—Michigan St.)
4603 El Capitan
Wichita Falls, TX 76310
Phone: 817-692-7340

UTAH

Salt Lake City (2)
Mrs. James L. Levy (B&B)
(Barbara Trites—Nebraska)
2197 S. 2200 E.
Salt Lake City, UT 84109
Phone: 801-487-2895
Mrs. Lowell E. Alt, Jr.
(Dottie Hinkle—W. Virginia)
1315 E. 3730 S.
Salt Lake City, UT 84106

VERMONT

Bennington
Sharon M. Swetz (Colgate)
Southwestern Vermont Medical
Center
100 Hospital Drive East
Bennington, VT 05201
Phone: 802-442-6361, ext. 342
Burlington (B&B)
Marian D. Bickford
(Marian Doty—Penn St., Goucher)
24 Valleyview Drive
Essex Jct., VT 05452
Phone: 802-878-4158
Richmond
Mrs. Perley Adams
(Carol Marvin—Vermont)
Box 155
Richmond, VT 05477

VIRGINIA

Alexandria (Washington, D.C. Area)
(2)
Mrs. James W. Heegeman
(Margo Twiss—Wisconsin)
906 Place 1
5500 Holmes Run Parkway
Alexandria, VA 22304
Phone: 703-832-2677
Miss Stephanie Clipper (Indiana)

3110 Mt. Vernon Avenue, #705
Alexandria, VA 22305
Phone: 703-836-5739
Charlottesville
Mrs. Frances L. Fulton
(Emily Koczansky—Penn St.)
2317 Wakefield Road
Charlottesville, VA 22901
Chesapeake
Mrs. Robert Swaine
(Mary Martin—Bradley)
2832 Meadowwood Drive E.
Chesapeake, VA 23321
Phone: 804-484-8494; 441-6444

Lynchburg
Mrs. Andrew J. Whitehead (B&B)
(Catherine Golwey—William and
Mary)
14 Grimes Drive
Madison Heights, VA 24572
Phone: 804-384-0918
Norfolk
Mrs. Angelo Heaton
(Byrd Smith—William and Mary)
8277 Baywood Court
Norfolk, VA 23518
Phone: 804-583-3415
Richmond (3)
Miss Alice Burlinson (William and
Mary)
4700 Fox Rest Drive, #923
Richmond, VA 23228
Phone: 804-264-7933; 786-1836

Jo M. Garey
(Jo McLelland—Maryland)
2411 King's Lynn Road
Midlothian, VA 23113
Phone: 804-272-7548; 800-446-
1601

Billye Jean Patton
(Billye Jean Buckley—Oklahoma)
6631 Welch Drive
Chesterfield, VA 23832
Phone: 804-276-0481

Springfield—Northern Virginia
Judith R. Stocks
(Judith Ruff—William and Mary)
8126 Viola Street
Springfield, VA 22152
Phone: 703-569-4765

Virginia Beach
Mrs. James A. Pridmore
(Cynthia)
4129 N. Witchduck Road
Virginia Beach, VA 23462

WASHINGTON

Olympia
Mrs. Michael P. Haines
(Gail Beekman—Washington)
4145 Lorna Court, SE
Olympia, WA 98503
Phone: 206-491-1658
Pullman
Mrs. Norman Shoup
(Betty Featherstone—Washington
St.)
NE 1040 B Street
Pullman, WA 99163
Phone: 509-332-1382
Richland, Pasco, Kennewick
Mrs. Joseph Myhra
(Cheryl Stoner—Iowa St.)
457 Carner Court W.
Richland, WA 99352
Phone: 509-627-5647; 735-8750
Ritzville
Mrs. M. P. Sackmann (B&B)
(Nancy Lee Franke—Washington)
309 W. 10th
Ritzville, WA 99169

Seattle
Julie Woodall (Boise St.) (B&B)
3605 NE 155 H-2
Seattle, WA 98155
Phone: 206-367-1635
Spokane
Mrs. Pam Hemingway
(Pam Alasker—Idaho)
P.O. Box 203
Greenacres, WA 99016

Phone: 509-924-6348

Tacoma
Mrs. Austin Burch
(Alice Babst—Nebraska)
7010 Topaz Drive SW
Tacoma, WA 98498
Phone: 208-582-0964
Yakima
Mrs. David E. Miller
(Carol Cross—Puget Sound)
819 S. 35th Avenue
Yakima, WA 98902
Phone: 509-453-8586

WEST VIRGINIA

Culloden
Mrs. Barbara Ball (B&B)
(Barbara Gum—W. Virginia)
1010 Kilgore
P.O. Box 78, 1010 Kilgore
Culloden, WV 25510
Phone: 304-743-3054
Morgantown
Mrs. Neoma Crynock
(Neoma Saul—W. Virginia)
449 Grand Street
Morgantown, WV 26505
Phone: 304-296-6513

WISCONSIN

Appleton
Mrs. Herbert T. Hardt
(Virginia Gayle Clarke—Indiana St.)
800 W. Winnebago Street
Appleton, WI 54911
Phone: 414-731-9547
Beaver Dam
Miss Joan Schneider (Wisc.-
Oshkosh)
1236 Circle Drive E.
Beaver Dam, WI 53916
Columbus
Mrs. John F. Roche (B&B)
(Mary Froeschle—N. Dakota St.)
Rt. 2
Columbus, WI 53925
Phone: 414-623-2778

LaCrosse
Miss Maureen Sigler (Mankato St.)
(B&B)
811 Vilas Road, #2
Onalaska, WI 54650
Phone: 608-783-0416; 785-8547

Lake Geneva
Elizabeth Click Stinebrink (Colorado
St.) (B&B)
1014 Tolman
Lake Geneva, WI 53147

Madison (3)
Patricia Neilson Moen (Wisconsin)
Box 515
420 12th Avenue
New Glarus, WI 53574
Phone: 608-527-2450

Mrs. James Spohn (B&B)
(Charlotte Irgens—Wisconsin)
4133 Council Crest
Madison, WI 53711
Phone: 608-233-6504

Lindley Crouch Karstens (Illinois)
(B&B)
4821 Tocora Lane
Madison, WI 53711

Milton—Janesville
Peggy Stromer (B&B)
(Peggy Larson—Nebraska)
Rt. #2, West City M
Milton, WI 55563
Phone: 608-868-2334

Greater Milwaukee Area (2)
Mrs. Donald L. Bell
(Elise Bossart—Wisconsin)
6755 N. Lake Drive
Milwaukee, WI 53217
Phone: 414-352-8094

Mrs. Douglas Brown
(Cathy Martin—Iowa St.)
5019 N. Sheffield
Whitefish Bay, WI 53217
Phone: 414-964-7937
Oshkosh (B&B)

Mrs. Rosalind M. McEnroe
(Rosalind Kratochwill—Wisc.-
Platteville)

158 E. Ripple Road
Oshkosh, WI 54901
Phone: 414-235-3408

Platteville
Pam Schlesner (Wisc.-Platteville)
948 S. Harrison Street
Lancaster, WI 53813
Phone: 608-723-2527
Ripon, Berlin, Green Lake
Mrs. Clyde Boismenue
(Roberta Stuart—Northwestern)
695 Sandstone Road
Ripon, WI 54971
Phone: 414-748-5367

River Falls (2)
Mrs. Robert Baker
(Kathy Gorzalski—Wisc.-River Falls)
601 College
Prescott, WI 54021

Becky Wagner Ruka (Wisc.-River
Falls)
549 S. Wasson Lane
River Falls, WI 54022
Phone: 715-425-9142

Shiocton
Mrs. Ronald Conradt
(Marilyn Bruce—Wisc.-Oshkosh)
Box 32
Shiocton, WI 54170
Phone: 414-986-3698
Wausau
Mrs. Alton G. Swanson
(Barbara Harris—Lake Forest)
1015 Eighth Street
Wausau, WI 54401
Phone: 715-845-6716

WYOMING

Cheyenne
Mrs. Lorraine Grigsby
(Lorraine Forister—Wyoming)
R.R. #1, Box 802
Cheyenne, WY 82001
Phone: 307-638-6082
Douglas, Cooper, Glenrock
Mrs. Shirley Baker
(Shirley Burks—Wyoming)
Box 128
Douglas, WY 82633 or
2402 N. Clover Road
Cooper, WY 82601
Phone: 307-265-8007

Lander
Princess Humphrey Killebrew (N.
Arizona)
P.O. Box 51
Lander, WY 82520
Phone: 307-332-3044
Laramie
Mrs. E. J. Hendon
(Carol Fronk—Wyoming)
RFD 2, Box 87A
Laramie, WY 82070
Phone: 307-745-3217

CANADA

ALBERTA

Calgary (3)
Mrs. John T. Ryan
(Mona Thomson—Toronto)
3819-6 Street SW
Calgary, Alberta T2S 2M9, Canada
Phone: 403-243-0688
Mrs. Robert F. Lawson
(Alexandra Moncrieff—Michigan)
2015 Ungava Road, NW
Calgary, Alberta T2N 4B3, Canada
Phone: 403-282-8708
Anne Savage
(Anne Kettenbach—Idaho)
920 87th Avenue SW
Calgary, Alberta T2V 0W1, Canada
Phone: 403-255-5468; 255-3667

BRITISH COLUMBIA

Vancouver (3)
Debbie Phippen (UBC)
#3 1465 W. 14th Avenue
Vancouver, BC V6H 1R4, Canada

Phone: 604-733-9841

Miss Barbara Bockhold (UBC)
306-984 W. 7th Avenue
Vancouver, B.C. V5Z 1C3, Canada
Phone: 604-732-7190

Mrs. Earle H. Bell (B&B)
(Jean Plack—Northwestern)
4203 Staulo Crescent
Vancouver, B.C. V6N 3S1, Canada

Victoria
Mrs. H. James Portelance (B&B)
(Letitia Clarke—Washington)
999 Loch Glen Place
Victoria, BC V9B 4N9, Canada
Phone: 604-478-1350

Whistler
Mrs. William McCance (B&B)
(Susie Becker—Oklahoma)
Box 411
Whistler, BC V0N 1B0, Canada
Phone: 604-932-3302

NOVA SCOTIA

Cape Breton
Mrs. Robert Milks
(Barbara Anne Leisinger—Syracuse)
RR #1, Little Marrows
Campbell Road
Victoria County
Cape Breton, Nova Scotia B0E 1T0,
Canada
Phone: 902-756-2536

ONTARIO

Guelph
Mrs. JoLynn Folusewyc (B&B)
(JoLynn Edgington—Kent St.)
2 Augustine Court
Guelph, Ontario N1G 2Y8, Canada
Phone: 519-821-3267

Ottawa
Mrs. Graeme Barber (B&B)
(Sally Whitby—Toronto)
504 Highland Avenue
Ottawa, Ontario K2A 2J7, Canada
Phone: 613-722-1407

Tillsonburg
Mrs. Don Watkins
(Sharon Mickle—Toronto)
280 Broadway
Tillsonburg, Ontario N4G 3R7,
Canada
Phone: 519-842-9161

Windsor
Mrs. Americo Dean, Jr. (B&B)
(Barbara Galbraith—Michigan St.)
RR #1, 606 Old Tecumseth Road
Belle River, Ontario N0R 1A0,
Canada
Phone: 519-735-9786

QUEBEC

Montreal
Mrs. Wendy H. Bohn
(Wendy Hand—McGill)
645 45th Avenue
Lachine, Quebec H8T 2M4, Canada
Phone: 514-634-4391

WORLDWIDE

AFRICA

Equatorial Guinea
Mrs. Susan B. Niblock
(Susan Butler—William and Mary)
c/o American Embassy
Malabo, Equatorial Guinea
Africa

AUSTRALIA

Barbara Whilldin (Mankato St.)
21 Caledonia Circle
Goode Beach
Albany, W.A. 6330 Australia

CHINA

Barbara A. Tsang
(Barbara Anderson—Wisconsin)
48 Headland Drive
Discovery Bay, Lantau
Hong Kong or
G.P.O. Box 10242

Hong Kong
Phone: 5-9876240; 5-272868

ECUADOR

Quito
Miss Reanate Klocker (Florida St.)
P.O. Box 11-271 CCNU
Quito, Ecuador
South America

ENGLAND

Lake District
Mrs. Ira Fishman (B&B)
(Allene Osborn—UCLA)
"Rosemount," Lake Road
Windermere, Cumbria, England LA23
2EQ
Phone: (STD 09662) Windermere
3739
Slad, Stroud
Mrs. Elspeth MacKay Mitchell (B&B)
(Elspeth MacKay—McGill)
The Old Vicarage
Slad, Stroud
Glos. GL6 7QD England
Phone: Painswick (0452) 813887
Northampton
Ms. Jane Hampton
(Jane Dengel—Wittenberg)
Cross Farm
Walgrave, Northants
England
Phone: Northampton (STD 0604)
781277

FIJI

Janice J. Smith
(Janice Jacksa—Wyoming)
#6 Niranjana Place
Namadi Heights, Tamavua
Suva, Fiji Islands or
2030 17th Avenue
San Francisco, CA 94116-1244

FRANCE

Chambery
Mrs. Patricia Anderson-Gerfaud
(B&B)
(Patricia Anderson—Illinois)
16, Avenue du Stade
Barberaz
73000 Chambery
France
Phone: (79) 85-27-93

GERMANY

Frankfurt
Judith Markeson (Cal. St.-Fullerton)
Box 5539
APO, NY 09057 or
Feld Str #30 6082 Morfelden
Frankfurt, Federal Republic of
Germany
Phone: 06105-21447

Giessen
Lt. Renee M. Gralewicz (Wisc.-
Milwaukee) (B&B)
C Battery, 2nd BN, 2nd ADA
APO, NY 09169

Heidelberg
Miss Reagan E. Heese (Idaho) (B&B)
HQ USAREUR-7A
ODCS RM Box 46
APO New York 09403 or
239 Hauptstrasse
6900 Heidelberg, Germany
Phone: 06221-15679; 8115 or
6668 Heidelberg Military
Karlsruhe
Capt. Mary Pat Klee (Wisc.-
Platteville)
USMCA-Karlsruhe (OEC)
APO, NY 09164

Messerich
Elizabeth Schneider (B&B)
32 Bahnhofstrasse
Messerich, West Germany
Phone: 06568-473

GREECE

Island of Crete
Lynda Smith
Box 41

APO, NY 09291 or
Iraklion, Village of Gournea

GUAM

Deborah Williams Furlow
1215B Mango Drive
APO, SF 96334

INDONESIA

Dr. Winifred L. W. Djajenqwasito
IKIP Negeri, Jalan Semarang
Malang, Jatim, Indonesia or
Jalan Citanduil
Malang, Jatim, Indonesia
Husband's office phone: 0341-
51334

IRELAND

Frances I. Johnson
(Frances Ide-Goucher)
Ballinalacken Cottage
Lisdoonvarna, Co. Clare, Ireland
Phone: Lisdoonvarna 150
Northern Ireland
Karyn Murphy (Auburn)
9A Murdock Lane
Six Road Ends
Bangor, Co. Down
Northern, Ireland
Phone: 58209

JAPAN

Mrs. Marty Bowman (B&B)
8-11 Minami Azabu 3 Chome
Minato Ku, Tokyo 106 Japan
Phone: 445-8671

MEXICO

Ajijic
Mrs. M. L. Doyle
(Ruth Curtis—Illinois)
Apartado 180
Ajijic, Jalisco
Mexico
Phone: (376) 5-29-74
Guaymas, Sonora
Mrs. Henry Schafer
(Shirley Jackson—Iowa St.)
A.P. 484 Colonia Lomas de Miramar
Guaymas, Sonora Mexico 85400
Phone: 622-2-35-90

Mexico D.F.
Mrs. Elena E. Hannan de Renero
(Elena Hannon—Colorado College)
(Colorado College)
Apartado, Postal 5-225
Mexico, D.F., Mexico 06500
Phone: 905-812-0271; 511-1896

NETHERLANDS

Ter Aar
Susan D. Van Erk
(Susan Davis—Puget Sound)
Kievitspad 37
2461 BK Ter Aar, Netherlands
Phone: 01722-3198

NEW ZEALAND

Auckland
Mrs. O. J. Gilbo
(Kathy Benyo—Kent St.)
16 Cornelian Crescent
Bucklands Beach
Auckland, New Zealand
Phone: 535-8662
Invercargill
Mrs. A. C. MacPherson
(Ada Russell—Wyoming)
Springhills #6 RD
Invercargill, New Zealand

PANAMA

Miss Laura Gross (2nd Lt.)
(Michigan)
PSC Box 3
APO, Miami 34004
Phone: 011-507-85-4028

PHILIPPINES

San Miguel, Subic Bay, Clarke AFB
Mrs. H. C. Schilling, Jr. (B&B)
(Theresa Chuka—Arizona St.)
P.O. Box 790. NCSP

FPO San Francisco, CA 96656
Phone: 886-3831

PUERTO RICO

Miss Gisela M. Lopez (William and
Mary)
3 Verona Street
Rio Piedres
Puerto Rico 00924
Phone: 809-761-7001

SCOTLAND

Aberdeen
Mrs. Joseph Penny (B&B)
(Jane Morris—Maryland)
Baloss Farm, Mintlaw Station
Aberdeenshire AB4 8BT, Scotland
Phone: (07712) 2493

SOUTH KOREA

Osan Air Base
Capt. Cecilia H. Byers
(Cecilia Hoffman—USC)
Headquarters 5th Tactical Air
Control Group/Intelligence
APO, San Francisco, CA 96570

SPAIN

Madrid
Denise Davis (Nebraska)
Monte Verde, 2
Madrid, Spain

WEST INDIES

Aruba
Judith G. Riese
(Judith Gaudin—UBC)
c/o Marine Supply Services
Box 379
Aruba, Netherlands Antilles
Nevis
Mrs. Joseph Roby
(Bette Adams—Washington)
Winter address:
Box 512
Nevis, West Indies
Phone: 809-465-5205
Summer address:
1566 Lake Road
Webster, NY 14580

Legacy Committee

In accordance with
the 1984 Convention
Resolutions, Grand
Council has appointed
an ad hoc committee
to study Gamma Phi
Beta's policy, proce-
dures and member ed-
ucation in regard to
legacies.

Committee Chair-
man Donna Snyder
Scarborough (Texas
Tech), 8102 Kenosha,
Lubbock, TX 79423
welcomes suggestions
from all Gamma Phi
Betas. Other commit-
tee members are Cindy
Anderson (Oregon St.),
Flagstaff, and Teek
Kurt Schonberg (Iowa
St.), Omaha.

ΓΦΒ welcomes new chapters

Gamma Phi Beta isn't growing just in the collegiate area. The Sorority is adding lots of new alumnae groups too. In fact, according to Alumnae Vice President Phyllis Donaldson Choat (Nebraska), more groups were organized in 1983-84 than at any period in the Sorority's history. And more are still being added. "With this record of extension, more alumnae than ever before have the opportunity to enjoy the sisterhood, service and personal fulfillment that alumnae group participation offers," said Phyllis.

The newest groups include Charlotte, N.C.; Denton, Tex.; East Texas area; Hartford County, Conn.; Napa-Sonoma Valley, Cal.; Triad, N.C.; and Mid-Michigan.

Earlier, chapters or crescent circles were organized in Alaska; Athens, Ga.; Deerbrook, Ill.; Diablo Valley, Cal.; Fresno, Cal. (reactivated); Marin County, Cal.; New York City

(reactivated); Piedmont, S.C.; Rochester, Mich.; Santa Fe, N.M.; Sioux Empire, S.D.; and Stockton, Cal. Santa Barbara, Cal. grew from crescent circle to alumnae chapter.

Some of the new chapters were started because new collegiate chapters were looming on the horizon; others were offshoots of established groups grown too large and spread out; still others were formed through detective work, lots of telephoning and pure hard work by one individual or a group.

Typical is the formation of the Hartford County, Conn. chapter. Hartford County has a number of small communities, as well as Hartford and its suburbs. There have been a smattering of Gamma Phi Betas in several locations, but not until the fall of 1983 had anyone done anything about organizing them.

Nancy Lynn Pierce (Dickinson) of New Windsor, Conn. requested a list of members in the area from Central Office, and sent out invitations for a coffee to test the waters and see if the interest was there. It was, and plans were made to meet again and be installed as an alumnae chapter in June, 1984. As it turned out, that date wasn't possible and the chapter was installed October 28. Province Alumnae Director Anne Layton (McGill) arrived from Montreal, Canada to conduct the ceremony, and they were off and running and ready to meet again for Founders Day. Thirteen members were present for the installation at the Ramada Inn.

The new chapter members held a short business meeting and decided to charge dues of \$35 per year. That amount covers the individual international alumnae tax of \$12, with the remaining \$23 to pay for local mailings, refreshments, etc. They decided to make their official meeting day the first Monday of every other month. Ideas were discussed for meetings: dried and silk flower arrangements, tips on credit laws

and money management, food and drink sampling by a beverage company in the area, a cake decorating workshop, color consulting and a craft workshop. The group was invited by Nancy Fox Judd (Iowa St.) to tour the New Britain Museum of American Art in December.

Province XIIIb, under the enthusiastic guidance of Province Alumnae Director Linda Brooks (California), welcomed two new alumnae chapters last March. The Marin County chapter started off with 40 members under president Merry Greig Wong (San Diego St.). The Stockton alumnae chapter has Carol Conant Friend (San Diego St.) as its first president to guide the chapter through a full and ambitious schedule including an organizational breakfast, a cheese party, a family picnic and a flower arranging event. They also helped the California State-Sacramento chapter with rush.

Another new chapter is Santa Fe. Sue Hansen (Oklahoma St.) is its first president. Four of the charter members are from one family: Helen Dodd Winter (Wisconsin), her two daughters Pat Winter Mendius (UCLA) and Dr. Helen Winter Rusalem (UCLA), and her sister Edith Dodd Culver (Wisconsin).

Cyndy Meisner Howes (Indiana St.), International Alumnae Extension Chairman, prepared a handbook to guide Province Alumnae Directors in their extension activities. To become an alumnae chapter, 12 dues paying members who meet officially four times each year are needed. A crescent circle can be formed with fewer members.

Believe it or not, there are still some areas without chapters. If you live in one, write Central Office for a list of members in your area. Get them together and go for it! Central Office and your Province Alumnae Director will be happy to help. Or contact Cyndy Howes, 2005 Moran Rd., Franklin, TN 37064.



Province IV Alumnae Director Jolene Lessard Stiver (N. Dakota St.) presents the Rochester, Mich. Alumnae Chapter charter to Sharon Fanelli Collins, alumnae chapter president.

Alumnae in **Lubbock** held two special functions. First was a spaghetti supper with the theme, Keep Rushing Our Collegians. After dinner they were entertained with a walk down memory lane as Winnifred Garland Gifford (Illinois) related tales of rush with one of the Founders. At the end of the evening a "thought candle" was passed. As each one held the candle she expressed a thought on sisterhood, what it means to be a Gamma Phi Beta, and friendship. Later in the month alumnae and seniors got together for a brunch and each senior told of her future plans.

Most activities in **Corvallis** centered around Chi Chapter at Oregon State. In the fall they feted Chi pledges and their most popular event of the year was a lasagne supper for Chi seniors. To raise money, they put items on consignment at a thrift shop, where 75 percent of the sale price is returned to the group.

State College, Penn. alumnae ended their year with a covered dish supper honoring Province Alumnae Director Julie Flinchbaugh. Highlights of the year included learning about counted cross stitch, a historical talk on Ben Franklin, donating to the county "Fun Fund" for foster children, and entertaining the Penn State chapter for Founders Day and a scholarship brunch. A clever skit linking Gamma Phi Beta history and American history was presented by the collegiate chapter at Founders Day.

Omicron House Corporation Board and **Champaign-Urbana, Ill.** alumnae had a busy year, adding a new addition for the housemother and redecorating the chapter house. "We are very proud and appreciative of all our corporation board has done for the house," wrote Lisa Felice and Kim Starwalt. "They have spent many hours working to better the house and we are very thankful for a job well done."

San Francisco had something novel, a summer lunchbox swap. Members were invited to pack a yummy lunch in an inviting container.



Attending the Santa Fe, N.M. Alumnae Chapter installation are Sue Hansen (Oklahoma St.), Santa Fe president; Eleanor Pickett Caughren (Illinois), Albuquerque president; and Annette Stauffer Hocker (Syracuse), Santa Fe secretary.



Lubbock alumnae welcome Texas Tech seniors to the chapter at the senior brunch.

Long Beach alumnae ended their year with an installation banquet at a Mexican restaurant where annual alumnae awards were presented. Janet Parker Whitcomb (Cal. St.-Long Beach) received the Hall of Fame Award for professional and community work based on her achievements. The Love and Loyalty Award was presented to Jeannine Custer Allison (Cal. St.-Long Beach) for her work with Gamma Eta Chapter and for supervising extensive remodeling of the chapter house. The Pink Carnation Award was presented to Sue Howlett Tonsich (Cal. St.-Long Beach) as alumna of the year. At the same meeting, Meg Crawshaw (Cal.-Riverside) told of her Peace Corps adventures, which included working in a leper colony in Korea and a stint in Africa.



Morgantown, W.V. alumnae attend a chapter planning session.

Borrowing an idea from the parades at Convention, **Lincoln** featured a pink carnation parade in the fall. Alumnae gathered pink carnations and wore them in a variety of ways to compete for prizes given for the most flowers and the most creative way of wearing them.

Omaha's Garden Party for spina bifida raised \$770 last spring. The chapter began its fall program with a surprise dinner prepared by the executive board and a special Founders Day to celebrate its 65th year.

Evansville, Indiana's fall get together featured a make your own sundae bar before listening to Convention highlights. Maybe the make your own sundae break was a highlight of Convention for the Evansville representatives!

South Orange County, Cal. alumnae are going nuts again. That is, they're selling nuts for their fundraiser. Do you suppose they'll be able to surpass their \$2,295.13 net return last year? Through those nut sales they were able to provide four camperships to the local Girl Scout Council, two to Gamma Phi Beta Camp Sechelt and a sizeable donation to a local women's shelter.

Phoenix alumnae found a fun and painless way to raise money for Camp Sechelt. They held a luncheon in a lively restaurant where the waiters and waitresses performed. Their year was kicked off by a potluck dinner with the Arizona State collegians.

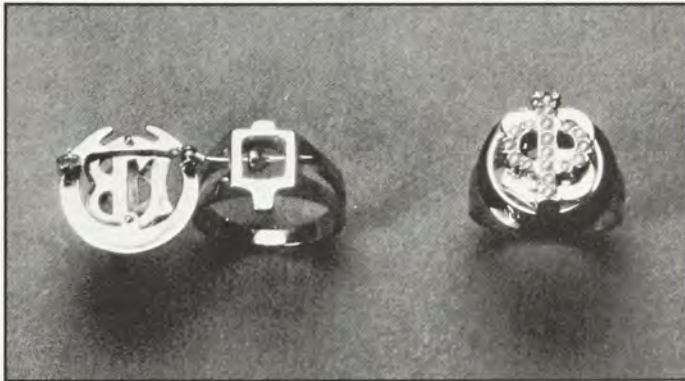
The Tampa Bay, Fla. Alumnae Chapter matched funds with the Gamma Phi Beta Foundation to send four "special girls" to Girl Scout Camp. The campers were chosen from The Children's Home, a non-profit organization providing residential care for abandoned, neglected and abused children. It offers the camping program to children between the ages of five and 18 and requests contributions from local supporters to fund the camping experience. The chapter has committed itself to this project on a continuing basis.



Sally Erikson Lewis (Bradley) was named to the Service Roll on Founders Day in Chicago.

NEW!—Removable Pin-On Ring and Pendant

Pinning your badge into our ring or pendant is as easy as pinning it onto your blouse.



Sterling Silver
\$44.00

10K Yellow Gold
\$106.00

10K White Gold
\$117.00



Sterling Silver
\$22.00

10K Yellow Gold
\$66.00

10K White Gold
\$77.00

AUTHORIZED JEWELER

- Jewelry ServiCenters On All Campuses
- Free Catalog Available From Pollack
- Badges Ordered Through Executive Office

MAJOR CREDIT CARDS ACCEPTED
ABOVE PRICES DO NOT INCLUDE BADGE
PRICES SUBJECT TO CHANGE

J.O. POLLACK co.

1700 W. IRVING PARK RD.
CHICAGO, ILLINOIS 60613

800-621-1904
312-477-2100 (IL)

In Memoriam

BETA

Evelyn Walsh McCoy

EPSILON

Lois Taylor Rieger
Patti Ryan Curtis
Jeanne Moss Collins
Margaret Shoemaker
Lenehan

ZETA

Grace Atkinson

ETA

Elizabeth Helmer Clark
Margaret Griffith*
Florence Hofer Bynon

THETA

Helen Whitford Meyers

KAPPA

Ruth M. Hall
Mary MacPhail Moss

LAMBDA

Mary Hart Beach
Katherine Peterson Knapp

MU

Joan Marion Lucas
Rachael Beard Thomson

NU

Dorothy Dunbar Dysart

XI

Patricia Miller Domke
Charlotte Jones Drews
Spokane Smith Hutchison
Jessie Coram Jordan
Kate Skillern MacNamara
Marion Tripler Miller

OMICRON

Jane Mosher Graf
Betty Grantham Kuyper
Jamie Chester McEntyre
Marian L. Treat

PI

Maryellen Robison Hinnichs
Viola Jones Templeton

RHO

Aldura Haynes Hagerman
Florence Dennison Quigley

SIGMA

Lois Sharpless Beuthien*
Florence Ingham
Vandeutekom

TAU

Clara Moore Schrepferman

UPSILON

Margaret Vance Cole

PHI

Constance Roach Pheley*

CHI

Barbara Fleming Eldredge
Katherine Howells Lindsey
Carolyn Cramer Steward

PSI

Clara Morton Alge
Eleanor Thompson Ivester
Maxine Williams Mackie
Mary Walpole Willis

OMEGA

Erma Soloman Grinke
Darline Nelson Ludwig
Ernestine C. Quinn
Shirley Smith Sethna

ALPHA ALPHA

Helen Glaister Dobson
Margaret Conie Livingston

ALPHA BETA

Sydnee Rakowski
Charbonneau
Edith Southam Roberts

ALPHA GAMMA

Edith Martensen Machabee

ALPHA DELTA

Mary Welles Patterson

ALPHA EPSILON

Josephine McDonald Failor
Dorothy Walker Neelly

ALPHA ZETA

Lynn Woodward O'Hagan
Rene-Mary Hecht Unger

ALPHA THETA

Ann Mathis Doyle

ALPHA IOTA

Margaret Harper

ALPHA MU

Carolyn Barrett Brosious

ALPHA XI

Carly Burns West

ALPHA PI

Ruby Dyer Carter

BETA BETA

Doris Crewe Dollar
Dorothy I. Cumings

BETA CHI

Margaret Berges Allen

GAMMA DELTA

Edna Carlisle Hitchcock

GAMMA ZETA

June Danner Janosko
* MERIT ROLL

On target with team building

Betty Kurkjian, Alumnae PACE Chairman, is a professional consultant and trainer specializing in time management, communications and learning skills. Amanda Harries, Province XI Alumnae Director, also owns her own training service, offering workshops especially for non-profit organizations.

How can we motivate more members to get involved? How can we help new members feel welcome? How can we come up with new ideas? How can we become better acquainted with each other? How can meetings be both fun and productive?

Both alumnae and collegians search for answers to these and other questions when discussing group size, commitment and spirit, the three qualities essential to chapter growth and development. So, how can members encourage these qualities in their own chapters?

Through a conscious effort to develop a team feeling within the group and to learn about members' talents, members become better acquainted and feel more a part of the group. Team building exercises also increase group and individual confidence and promote mutual commitment and understanding, so important to chapter development.

The exercises require only a little time and a willing chapter officer with enthusiasm and a positive attitude to set the tone for success. And, members must be willing to listen to each other to gain the full benefit of team building.

Five team building exercises are included in this article. They can be tailored to the needs and interests of a specific group. The first three exercises will facilitate communications among group members and help them become better acquainted.

1. Complete The Sentence. Ask each group member to complete one or more sentences and share her answers. With a large group it may be more manage-

able to break into smaller groups of five to seven. Suggested incomplete sentences which can be posted on a flip chart or chalkboard, or handed out are:

My fondest memory of Gamma Phi Beta is . . .

I usually try to make people think I am . . .

I love working with people who are . . .

I wish I could . . .

2. Purse-onally Sharing. Ask each member of the group to select three items from her purse that would reveal something important or interesting about herself. Give each member about two minutes to share the reasons she chose those items. Once again, if the group is large, break into groups of five to seven.

3. The Positive Minute. Within a group of five to seven members, ask each person to spend a minute expressing positive things about herself—things she is good at, challenges she has overcome, and tasks she has accomplished. During the one positive minute per member, the other members of the group listen supportively without commenting.

The next two exercises will tap the group's creative potential and can be used to generate new ideas and/or solve problems. To be effective, the chapter officer must separate the creative process from the evaluation process. In other words, generate all the ideas first without evaluating any of them. Then begin to evaluate all the ideas.

1. One Idea At A Time. First, define the specific question or challenge the group is to address (for example, "How can we increase attendance at our Founders Day banquet?") Then ask each person to make a list of ideas—silly or practical, creative or common—all possible ideas. About three to five minutes are sufficient to complete this step.

When each person finishes her list, move sequentially through the group asking each member to share one idea at a time. Record the ideas on a flip chart or blackboard so that all members can see the list, and continue until everyone's ideas have been recorded. Positive or negative comments should be reserved until all ideas have been listed.

When the list is complete, begin the evaluation phase by asking members to tactfully eliminate unfeasible ideas.

2. Sixty-six Method. Once again, define the question or challenge specifically (for example, "How can we improve alumnae/collegiate relations?"). Then divide participants into groups of six and appoint a recorder from each group. Give each group five minutes to generate ideas plus one minute to briefly evaluate and/or eliminate items from the list. Ask the recorders to meet and compile a complete list, eliminating any duplications. The final list is then presented to the group for evaluation and a decision.

In using these techniques, be creative, open minded and positive. Maintain a supportive atmosphere so that all members will feel their ideas and comments are important and valued. Most of all, enjoy!



Searching for a job or an employee?

Gamma Phi Beta's SisterLink Career Network may have what you're looking for. A new service will provide an information bank to enable members who know of job openings to share them with members who are job hunting.

International SisterLink Chairman Teri Lederer will act as liaison for the service and will keep job openings on file for three months. Members are encouraged to contact Teri about available positions, either permanent or for the summer. She also will list internships. Those looking for positions can contact Teri to learn what is available.

The service is strictly informational. By listing an opening, there is no promise of a job or an interview. It is an opportunity to pass along an opportunity to a sister. The note one sister drops in the mail may well mean a job for another.

Members looking for jobs also should remember to contact the SisterLink chairman of the alumnae chapter nearest to them. Many collegiate and alumnae chapters have already selected chairmen to start SisterLink programs locally.

As SisterLink grows, input from Gamma Phi Betas in the human resources and college student personnel fields will be vital to its effectiveness. Members in these areas of expertise who would be interested in acting as resources for ideas, suggestions and programming are encouraged to contact Teri Lederer.

To list a job opening, volunteer, offer suggestions or receive answers to questions, contact Teri Lederer, 424 W. Oakdale, #412, Chicago, IL 60657.

Gamma Phi Beta Sorority Directory

Founded November 11, 1874

Founders

Helen M. Dodge Ferguson
Frances E. Haven Moss
E. Adeline Curtis
Mary A. Bingham Willoughby

The Grand Council

Grand President: Mrs. R. O. Bronsing (Ann Mullen) 31 Chester-
ton Ln. Chesterfield, MO. 63017
Alumnae Vice President: Mrs. N. W. Choat (Phyllis Donaldson)
9716 Erskine St., Omaha, NE 68134
Collegiate Vice President: Mrs. F. Guerra (Randall Stevens)
7055 S. Andes Cir., Aurora, CO 80016
Director of Finance: Mrs. R. G. Drouet (Leona Davis) 10482 E.
Grandeur Dr., Baton Rouge, LA 70815
NPC Delegate: Mrs. G. Wright (Janet Heft) 5102 E. English,
Wichita, KS 67218
Executive Secretary-Treasurer: Mrs. T. Shupert (Marjory Mills),
7395 E. Orchard Rd., Ste. 200, Englewood, CO 80111

Directors

Extension: Mrs. T. L. Kline (Karen Wander) 3648 S. 91st St.,
Omaha, NE 68124
Services: Mrs. Sally E. Lewis (Sally Erikson) 535 N. Michigan
Ave. #907, Chicago, IL. 60611

Alumnae Department

Alumnae Vice President: Mrs. N. W. Choat (Phyllis Donaldson)
Alumnae Bylaws: Mrs. W. Gordon (Doris Bird) 22 Andrews
Rd., Malvern, PA 19355
Alumnae Extension: Mrs. R. L. Howes (Cynthia Meisner)
2005 Moran Rd., Franklin, TN 37064
Alumnae Initiates:
Province Alumnae Directors:
I: Miss Anne Louise Layton, 4626 Patricia Ave., Montreal,
Quebec, Canada H4B1Z1
II: Mrs. R. Flinchbaugh (Julia Hill) 32 Overlook Dr., Ivyland,
PA. 18974
III: Mrs. J. W. Tschantz (Mary Ann Messer) 1236 Hidden
Oaks Dr., Dayton, OH 45459
IV: Mrs. K. H. Stiver (Jolene Lessard) 54295 Old Bedford Tr.,
Mishawaka, IN. 46545
V: Mrs. Peggy Stromer (Peggy Larson) RR#2, Cty M 1172W,
Milton, WI 53563
VI: Mrs. R. Schultz (Cindy Shirley) 1990 Selby Ave., St. Paul,
MN 55104
VII: Mrs. J. Griffith (Mary Helen Fisher) 11803 Brookwood
Rd., Austin, TX 78750
VIII: Mrs. R. Smith (Mary Lou Jordan) Pebble Creek Village,
9220 Cypress Wood Cir., Lutz, FL. 33549
IX: Mrs. R. J. Morrison (Clarice Braker) 4604 N.W. 32nd St.,
Oklahoma City, OK. 73122
X: Mrs. W. S. Huff (Alice VanHorne) 274 N. Raney, Sikeston,
MO. 63801
XI: Mrs. J. Harries (Amanda McCoy) 53 Thornwood Acres,
Scottsdale, AZ. 85251
XII: Mrs. P. Arbuckle (Janet Inman) 1934 W. 15th Ave., Van-
couver, BC, Canada V6J 2L3
XIIIa: Mrs. R. Sandstrom (Judy Lively) 8420 Brentwood St.,
Portland, OR. 97225
XIIIb: Mrs. Linda Brooks, 2033 Mohawk Dr., Pleasant Hill, CA.
94523
XIV: Mrs. S. Hamblin (Lyn Towsley) 2718-32nd St., N.W.,
Washington, D.C. 20008
XV: Mrs. H. D. Allee (Jackie Reid) 2711 Olympia Dr., Bettend-
dorf, IA 52722
XVI: Mrs. J. Rose (Susan Badgley Jacobsen) 390 Peralta
Ave., Long Beach, CA. 90803

Awards: Mrs. L. Steinbruner (Louise Stegner) 4570 E. Yale
Ave. #807, Denver, CO 80222

Bylaws (International/Collegiate): Mrs. D. R. Johnson (Sue
Herzog) 5538 McCommas, Dallas, TX 75206

Collegiate Department

Collegiate Vice President: Mrs. F. Guerra (Randall Stevens)
Operations: Mrs. W. Whitcomb (Janet Parker), 326 Roycroft,
Long Beach, CA 90814
Graduate Counselors: Carol Brown
Mothers' Club: Mrs. J. Griffin (Elizabeth Roessler) 2837

Central Office
7395 E. Orchard Rd., Suite 200
Englewood, CO 80111
(303) 771-3031

Brook Dr., Falls Church, VA 22042
Pledges: Mrs. D. Bond (Alison Shafer) 1142 Corrington Court,
Manchester, MO. 63011
Rush: Miss Kristie Lynn Baack, 6100 Vine St., #H49, Lin-
coln, NE. 68510
Coordinator of State Membership Chairmen: Mrs. W. Gar-
rett (Kathy Daman) 2523 Vista Ave., Olympia, WA
98501
Scholarship: Mrs. L. W. Bush (Gail Nelson) 14385 Stableton
Ct., Chesterfield, MO 63107

Province Collegiate Directors
I: Mrs. C. Locke (Carolyn Seymour) 27 Broadview, Pointe
Claire, Quebec, Canada H9R 3Z1
II: Mrs. R. Egleston (Gwen Whitnell) 328 Glen Way, Elkins
Park, PA 19117
III: Lisa Gravette 2923C Knoll Ridge Dr., Dayton, OH 45449
IV: Ms. Susan L. Smith, 820 S. Center St., #4, Terre Haute,
IN. 47803
V: Ms. Wanda Siegfried, 6208 Imperial Dr., Peoria, IL 61614
VI: Miss Maureen Sigler, 811 Vilas Rd. #4, Onalaska, WI.
54650
VII: Mrs. L. Callahan (Marilyn Bachnik) 2437 Fairway Dr.,
Richardson, TX. 75080
VIII: Mrs. M. Urette (Karen Gamel) 2109 Hesperides, Tempa,
FL 33629
IX: Mrs. J. C. Buckingham (Sharon Fisher) 1019 Woodcrest,
Stillwater, OK. 74074
X: Mrs. J. Roman (Joanne Callis) 7215 Shaftsbury Ave., Uni-
versity City, MO. 63130
XI: Mrs. R. Wolper (Pam Porter) 3653 E. Costilla, Littleton,
CO. 80122
XII: Miss Ann Molenar, 1108 S.W. 10th Ave., Ontario, OR
97914
XIII: Mrs. J. E. Ferrini (Jean Murphy) P.O. Box 562, Williams,
CA. 95987
XIV: Mrs. J. Misiag (Debbie Dykes) 903 Bardswell Rd.,
Cantonville, MD. 21228
XV: Miss Carol Cartmill, 950 Rutland Dr., #324, Lincoln, NE.
68512
XVIa: Ms. Judith D. Abbott (Judith Nesbitt) 2127 Petaluma,
Long Beach, CA. 90815
XVIb: Mrs. D. Giesea (Patricia Lazos) 13882 Mauve Dr., San-
ta Anna, CA 92705
Collegiate Consultants: Brooke Bailey, Cindy Brune, Kathryn
Ann Harrell, Angela Schaben, Diane Soderstrom, Brenda
Stainfield, Susan Zettermann

Convention Coordinator: Mrs. T. L. Kline (Karen Wander)
Convention chairman: Mrs. R. T. Mullins (Pat O'Connell) 1104
Yale Cr., Plano, TX 75075

The Crescent

Editor: Mrs. P. Riske (Kris Brandt) 2405 W. Gregg Dr., Chandler,
AZ 85224
Alumnae Editor: Mrs. R. E. Wiltman (Margy Molden) 1700
Kiva Rd., Silver Spring, MD 20904
Collegiate Editor: Mrs. G. Welch (Cindy Hunter) 8-D Rue Mai-
son, Birmingham, AL 35209
Feature Editor: Mrs. G. McKenzie (Natalie Meyer) 531 S. Bur-
ton Pl., Arlington Heights, IL 60005
Business Manager: Marjory Mills Shupert, Central Office

Financial Department

Director of Finance: Mrs. R. G. Drouet (Leona Davis)
Area Financial Advisors
Mrs. W. Griffin (Cathy Boudreaux) 340 Plainsboro Rd.,
Plainsboro, NJ 08536
Mrs. M. Hultgren (Joyce Cole) 450 N. Armour, Wichita, KS
67206
Miss Janet G. Pierce, 743 Hampton Ridge Dr., Akron OH
44313
Mrs. W. E. Pierson (Louisa Brown) 4229 N.E. 33rd, Seat-
tle, WA. 98105
Miss Becky Taube, Route 4, Box 135, Pound Ridge, NY
10576

House Corporation Board-Bylaws: Ms. Emerald L. Erickson,

Syracuse University

136 Glendale Dr., Trenton, NJ 08618
Policies: Mrs. D. Griffin (Frances Rea) 830 Warwick Rd.,
Deerfield, IL. 60015

Leadership Training Coordinator: Dr. Debbie L. Floyd, Scott
Community College, Belmont Rd., Bettendorf, IA 52722

National Panhellenic Conference

National Panhellenic Conference Delegate: Mrs. G. Wright (Janet
Heft)
1st Alternate Delegate: Mrs. R. O. Bronsing (Ann Mullen)
2nd Alternate Delegate: Mrs. I. P. Nelson (Gloria Swanson)
3521 Royal Lane, Dallas, TX 75229
3rd Alternate Delegate: Mrs. J. Quick (Betty Ahlemeyer),
1212 Tomah, Mt. Pleasant, MI 48858

Nominating Committee Chairman: Mrs. J. Lindauer (Cathy Guth-
rie) 5051 S. Beeler, Englewood, Co. 80111

Parliamentarian: Miss Linda Rae Baker, 5550 N.W. 44th St.
B203, Lauderhill, FL. 33319

Public Relations: Mrs. Leslie Collins (Leslie Dauble) 4043 Braid-
ed Stream Way #3B, Indianapolis, IN 46260
Alumnae PR: Julie Funke (Julie Wheeler) 8018 Castlake,
Indianapolis, IN 46256
Historian: Mrs. F. H. Mason (Charlotte Hamilton), 5050 Lake
Shore Drive, Brown's Lake, Jackson, MI 49203

Research: Mrs. W. Laney (Joan Hogan) 8901 Camino Cometa
N.E., Albuquerque, N.M. 87111

Rituals: Mrs. C. Shafer, Jr. (Audrey Weldon) 6808 Rockhill Rd.,
Kansas City, MO 64131

Services

Director: Mrs. Sally E. Lewis (Sally Erikson)
Alumnae Collegiate Relations: Ms. Barbara J. Hurt, 1401
Woodlands Dr., Smyrna, GA. 30080
PACE Committee Chairman: Ms. Camille Cestone, 1120 N.
LaSalle, #12M, Chicago, IL 60610
Alumnae PACE: Mrs. H. J. Kurkjian (Betty Ragenovich)
1220 Catalina Ave., Seal Beach, AC. 90740
Collegiate PACE: Miss Nancy Donovan, 7570 Byron, #2W,
Clayton, MO 63105
Sisterlink: Ms. Teri Lederer, 424 W. Oakdale, Apt. #412,
Chicago, IL. 60657
Translister: Mrs. J. C. Sassaman (Barbara Missert) 4842
Hyde Rd., Manlius, N.Y. 13104
Ways and Means/Philanthropy: Mrs. A. O. Durrett (Sue Dor-
sey) 443 W. 57th Terr., Kansas City, MO 64113

Song: Mrs. W. Kaelin (Jeannette Stoll) 3012 Del Prado,
Almagordo, N.M. 88310

Endowment-Loan Board

Chairman: Mrs. C. B. Briscoe, Jr. (Margaret Godbold) 4523
Haverleigh Terr., St. Louis, MO 63128
Directors:

Mrs. Lee Gatewood (Kathleen Gallagher) One Apawamis Ave-
nue, Rye, N.Y. 10580
Ms. Katherine Joan Vorisek, 502 S. Occidental Blvd. #20,
Los Angeles, CA 90057
Mrs. Julia Wright (Julia Lynn), 412 So. Osage, Girard, KS
66743
Mrs. R. G. Drouet (Leona Davis)
Mrs. R. O. Bronsing (Ann Mullen)
Mrs. T. Shupert (Marjory Mills)

Gamma Phi Beta Foundation

Board of Directors:
President: Mrs. Jennie K. Curtis, 5500 Chatham Hill, Dallas,
TX 75220
Camp Committee Chairman: Miss Judy Graham, 6325
Ravendale, Dallas, TX 75214
Financial Aid Committee Chairman: Mrs. D. Ilgen (Barbara
Geiser) 1975 Cimarron, Okemos, MI. 48864
Finance and Investment Committee Chairman: Mrs. G. E.
Misthos (Mary Jane Hipp), 242 Glendale Rd., Glenview, IL
60025
Fund Raising Chairman: Mrs. J. Lindauer (Cathy Guthrie)
Grand Council Representative: Mrs. N. Choat (Phyllis Donald-
son)
Secretary-Treasurer: Mrs. T. Shupert (Marjory Mills)

Collegians

Eta Chapter members at the **University of California** discussed nutrition, diets and stress at a PACE program presented by a representative from the University Health Center. An activity night gave members the opportunity to tell about their extra-curricular activities, and another evening the University Men's Octet entertained them with songs from the 1950s and 1960s.

A new idea to improve Eta Chapter scholarship is the 200 Hour Club. To qualify for membership, members must study a minimum of 20 hours per week. At the end of the semester, members who have studied 200 hours or more are given certificates. Hours are charted weekly and prizes awarded at the 100 hour mark.

Gamma Phi Betas at the **University of Illinois** host several special dinners throughout the year. They honor house corporation board members, professors, special friends and the chapter house staff. The chapter's annual barndance with Alpha Gamma Delta and Alpha Phi begins with a serenade a few days before the event. Together, members of all three chapters serenade as they deliver invitations to the dance. Other serenades are on Valentine's Day, Easter and Halloween.

The Veiled Prophet Fair was the site of a fundraiser for **St. Louis University** Gamma Phi Betas. After reserving a booth, obtaining a vendor's license, passing health inspections and transporting 3,000 pounds of supplies, the Gamma Taus were ready to sell 3,000 piping hot funnel cakes for a profit of \$2,000. The Fair, held on the riverfront in downtown St. Louis, was attended by 4.5 million people.

Gamma Phi Betas and their mothers modeled in a fashion show after a Sunday brunch at **California State-Sacramento**. Mothers, along with alumnae, were treated to another brunch at the chapter's summer rush retreat where they previewed rush skits.

Wichita State collegians and Wichita alumnae celebrated Found-



Mary Benedict and Julie Ehrhart set up a propane tank to cook funnel cakes in St. Louis.



Pledges Joyce Mineer and Desiree Holdnak are greeted by Judy Hanawalt and Julie Peterson on bid day at the University of California.

ers Day in an atmosphere of the past at the Empire House restaurant in the old Cowtown Museum. Featured speaker National Panhellenic Conference Delegate Janet Heft Wright (Wichita St.) spoke about the great heritage and bright future of Gamma phi Beta. Pat Wilkinson Smith (Wichita St.) and Susie McKay Eastman (Wichita St.) received Outstanding Alumna Awards and

Michelle Flick was recognized as the Outstanding Senior.

Alumnae and collegians met at the **Southwest Texas State University** Club to celebrate Founders Day. The ritual was led by Karen McGrew and a catered luncheon was served. Sylvia Winston Cutler (Texas), Gamma Chi alumna advisor, introduced the alumnae, and the pledge class was presented.

Collegians



Rene Recker helps children carve a pumpkin at the University of Oregon.



Rho Chapter pledges share their excitement after the pledging ceremony at the University of Iowa.



Stacy Weigle and Lynn Gorgen are California State-Fullerton Gamma Phi Betas.



Denver Gamma Phi Betas and Kappa Sigmas sponsored a 24 hour see-saw-a-thon for a local charity.



Northwestern pledges followed campus tradition when they gave the campus rock a new coat of paint.



Bowling Green Gamma Phi Betas show their spirit at the Beta Theta Pi "Beta 500."



Mary Pat Simmons welcomes children to the Kansas State chapter's Halloween party.



Nadine Shetler, Liza Chapman, Paulette Hamby and Brooke Heathcotte don their ears to sell bunnygrams to Indiana Greeks.



Gamma Phi Betas celebrate Delta Theta Chapter's first 10 years at San Luis Obispo.



Suzie Vanek, Laurie Levy and Brooke Tafoya are Gamma Phi Betas at Colorado State. They helped serve spaghetti at the chapter's fundraiser.



Excited Rutgers pledges have just learned the names of their big sisters.



Mankato State sisters joined campus Greeks in sponsoring a computer date service for a campus dance.

Good Buys

Coasters and Nametags

Atlanta alumnae are offering two items for sale. Practical 4"x4" needlepoint coasters with cork backing have the Gamma Phi Beta logo in double brown and the carnation in pink. They are \$5 per set of four. Nametags for meetings, Founders Day and rush are 3"x2". They are white with a pink carnation and pink lettering, have a peel off backing and sell for \$8 per 100. Order from Honora Wimer, 444 Burlington Rd. NE, Atlanta, GA 30307.



ΓΦΒ Stamp

Imagine having or giving a replica of an antique Gamma Phi Beta stamp! Syracuse alumnae are offering reproductions of a stamp belonging to an Alpha alumna. Use the stamp for correspondence, name tags, place cards or rush favors. They also have available

Corporations Meet

Beta Chapter, April 20, 1985, 11:00 am, 1520 S. University, Ann Arbor, Mich.

Eta Chapter, April 11, 1985, 7:30 pm, 2732 Channing Way, Berkeley, Cal.

Beta Theta Chapter, April 25, 1985, 7:30 pm, 538 S. 8th St., San Jose, Cal.

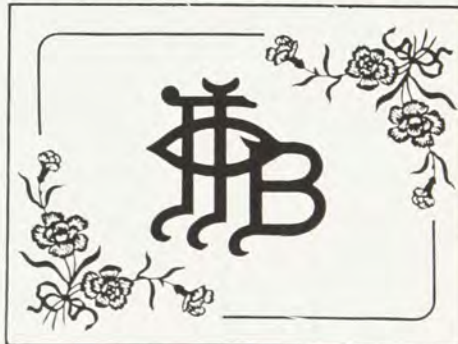
Delta Nu Chapter, April 21, 1985, 2:00 pm, 920 E. Elm, Springfield, Mo.

brown ink stamp pads specially made to be used with the stamps. The stamps are \$3 each and the pads are \$4. For orders of \$10 or less add \$1 postage to the U.S. and Canada, \$2 to foreign countries. For orders over \$10, add \$2 for U.S. and Canada order, \$3 for foreign. Send orders to Linda Fitzgerald, 7835 Karakul Ln., Fayetteville, NY 13066.



Suncatchers

St. Louis alumnae continue to offer their suncatchers. Three versions are available, each at \$6 plus \$1 postage and handling. One version announces "Sisters Are Special—ΓΦΒ." The second features a crescent moon and the words "Remember Gamma Phi Beta." Both are made of hand poured glass collared in lead and both are bordered with painted pink carnations and delicate leaves. The third item, designed to grace your desk or table, is a piece of 3"x4" frosted glass banded in copper complete with its own clear plastic stand. In the center is the 1896 monogram in brown, bordered in the corners with pink carnations, ribbons and green leaves.



Order from Carol Johnson, 1892 Schoettler Valley Dr., Chesterfield, MO 63017.

Ladyfood

Ladyfood continues to generate capital for the Gamma Phi Beta Foundation. A comprehensive collection of the yummiest recipes from Gamma Phi Betas all over the country, *Ladyfood* makes a perfect gift for any occasion. For each copy sold, \$1 goes to your local treasury and \$2 to the Foundation. It sells for \$8.95 per copy and is available through Barb Tallman, 406 High Brook, Richardson, TX 75080. Include \$1.05 for postage and handling. Texas residents must add 45¢ sales tax. For chapter sales, write Barb or contact your Province Alumnae or Collegiate Director so special arrangements can be made.

Foundation Logo Kit

A needlework kit featuring the Gamma Phi Beta Foundation logo is available from the Philadelphia North Suburban Alumnae Chapter. Everything needed to complete a 5"x6" wall hanging is included—scrim with logo pattern, persian yarn, needle, directions, felt backing and corded hanger. The kit sells for \$7.50 plus 10% postage and handling and may be ordered from Mary Jean Hart, 6 Brookside Rd., Philadelphia, PA 19118. One dollar of the purchase price will be donated to the Gamma Phi Beta Foundation.

Charters Returned

With deep regret, Grand Council has accepted the charters of Alpha Eta Chapter, Ohio Wesleyan; Beta Theta Chapter, San Jose State; and Delta Alpha Chapter, Wisconsin-River Falls. It is the hope of Grand Council that future conditions will warrant Gamma Phi Beta returning to these campuses.



ΓΦΒ Magazine Agency

Magazine orders benefit all ΓΦΒ members through help in funding:

- Collegiate Consultant Visits
- International Rush Consultants
- New Alumnae Chapters
- New Crescent Circles
- New Collegiate Chapters
- Leadership Training Programs

Take Pride, make a Commitment to ΓΦΒ . . . more than a Sorority . . . an Opportunity!

Code and Publication

032	Atlantic Monthly (10 issues)	\$9.95
043	Basketball Digest (8 issues)	7.95
047	Better Homes & Gardens (12 issues)	10.00
075	Car and Driver (12 issues)	11.99
127	Cuisine (12 issues)	12.97
176	Family Food Garden (6 issues)	6.95
177	Family Handyman (10 issues)	9.95
191	Field and Stream (12 issues)	9.95
207	Football Digest (10 issues)	8.95
210	Fortune (16 issues)	23.95
215	Games (1 year)	15.97
221	Golf Digest (12 issues)	8.98
222	Golf Magazine (12 issues)	8.97
232	Harper's Magazine (12 issues)	12.00
233	Health (8 issues)	7.97
251	Horse and Rider (12 issues)	9.97
258	House and Garden (12 issues)	18.00

Code and Publication

294	Ladies Home Journal (1 year)	14.98
307	McCall's (1 year)	9.95
324	Modern Photography (12 issues)	6.99
333	Motor Trend (12 issues)	8.97
345	Needlecraft for Today (6 issues)	14.00
348	Newsweek (23 issues)	17.25
370	Omni (12 issues)	18.00
371	1001 Home Ideas (8 issues)	10.97
383	Parents (12 issues)	11.95
411	Prevention (12 issues)	12.97
417	Psychology Today (12 issues)	12.97
423	Redbook (12 issues)	9.97
434	Runner (12 issues)	12.97
450	Self (12 issues)	11.97
454	Ski Magazine (8 issues)	7.97
463	Soccer Digest (6 issues)	5.95
478	Sports Illustrated (22 issues)	21.29

Code and Publication

478	Sports Illustrated (50 issues)	48.50
493	Teen (12 issues)	11.95
504	Time (23 issues)	21.97
504	Time (52 issues)	50.00
516	True Story (12 issues)	8.97
518	TV Guide (44 issues)	19.80
518	TV Guide (52 issues)	23.40
524	US Magazine (17 issues)	11.97
524	US Magazine (26 issues)	17.95
523	US News & World Report (22 issues)	17.00
550	Women's Sports and Fitness (12 issues)	8.95
556	World Tennis (1 year)	5.97

For more information contact: Julie Bean, Gamma Phi Beta Central Office, 7395 E. Orchard Road, Suite 200, Englewood, CO 80111.

Please allow 10 to 12 weeks for delivery. For service adjustment thereafter, call toll free: 800-523-1758.

Send To _____

Street _____

City _____

State _____ Zip _____ Date _____

Alumnae Chapter _____ if applicable

Prices good through March 31, 1985. Use separate sheet of paper for additional orders. Make checks payable to Gamma Phi Beta Magazine Agency.

Code No.	Magazine Selection	Dollar Amount Paid		Term	Check One	
					New	Ren
Total Amount Due		\$				

Send orders to: Julie Bean, Gamma Phi Beta Central Office, 7395 E. Orchard Road, Suite 200, Englewood, CO 80111.

An Opportunity

Epsilon Reunion

Nine Epsilon Chapter (Northwestern) alumnae had an unusual 50th birthday party as they gathered to mark their mutual milestone in Harbor Springs, Mich. The idea came from gatherings over the years in Evanston, Ill. when the Michigan gals would joke: "We'll have to entertain you . . . maybe for our 50th (ugh!) birthdays."

And entertain they did, as Nan Adams Conlin opened her "cottage" near Traverse City on the northern tip of Michigan. Joyce Lemon Dunn describes the area as the setting for "vintage 1890 'cottages' built in the days when the train crept into northern Michigan and actually stopped behind each home to discharge the help several weeks before families arrived for the summer."

Joyce recalls that things haven't changed much over the years. Still lots of giggles, stories and reminiscences between the women. Their husbands were very much a part of the celebration. "Even though they are a diverse group of men, they get along quite well and have learned to accept our gatherings," Joyce said.



Gamma Phi Betas and husbands attending the reunion are (row 1) Dick Good, Joyce Lemon Dunn, Sheila McGinnis Spung, Diane Fawcett Korling, Bob Dunn, Don Wallace, (row 2) Jean Leren Halstead, Barb Cline Day, Jane Young Wallace, Adele Droste Good, Fran Dawson Woodruff, Bob Woodruff, (row 3) Nan Adams Conlin, Al Spung, (standing) Ted Halstead, Bill Conlin and John Day.

CHANGE OF ADDRESS OR NAME REPLY

Members are responsible for all address changes. Allow 4 weeks.

Maiden Name _____ Chapter _____

My profession or training is in _____

New name if different from label

Title	Last	First	Middle
-------	------	-------	--------

Entire new address

Street _____

City _____ State _____ Zip _____

PLEASE DO NOT REMOVE OLD LABEL

☐ Check here if change of address is for other than addressee.

Clip form, place in stamped envelope and mail to Gamma Phi Beta Sorority, 7395 E. Orchard Rd., Ste. 200, Englewood, CO 80111-2292.