

The Crescent

Spring 1980



1980 A Mile High



Crescent Assignments

For Fall Issue:

Collegiate honors and photos
Scholarship program articles
Colossal Collegian Articles
Alumnae Career Corner articles
Alumnae Pacesetter articles
Deadline: June 1, 1980

Crescent Correspondents:

Please read the *Crescent* assignment page in the *Crescent Communique*, which you can obtain from your president.

Editors

Editor-in-Chief

Kris Brandt Riske
1222 E. Cordova
Casa Grande, AZ 85222

Alumnae Editor

Mary Ellen Wisniewski Hern
246 7th Ave., #5
Brooklyn, N.Y. 11212

Collegiate Editor:

Carol Asel
4612 Amesbury #288
Dallas, TX 75206

Feature Editor:

Margy Molden Wiltamuth
1700 Kiva Road
Silver Spring, MD 20904

Business Manager

Jonette Crowley
Central Office

The Crescent

Spring 1980

Contents

Convention:

Continuing Education Units 4

Founders Day 9

Greek Pendulum Swings 15

TranSISter Listing 16

Lunar Lights 23

It's A Working World 24

Good Buys 29

Gamma Phi Beta

ON THE COVER: Jean Scheidt Brian (Bradley) and Marie Friedemann (Denver) view Denver's skyline from the Civic Center Mall. Colorado collegiate chapter presidents are Missy Meis (Colorado St.), Faye Bernstein (Colorado), Karen Boge (Denver) and Ann Bunett (Colorado College).

Gamma Phi Beta USPS 137-620

The Crescent is published quarterly in Fall, Winter, Spring and Summer by the Gamma Phi Beta Sorority, Inc. 7503 Marin Drive, Englewood, CO 80111. Printed in the U.S.A. by Compolith Graphics and Maury Boyd & Associates. Second class postage paid at Englewood, CO and additional mailing offices.

Postmaster: Please send notice of undeliverable copies on Form 3579 to Gamma Phi Beta, 7503 Marin Drive, Englewood, CO 80111.

Subscribers: Send changes of address, notices of marriages and deaths to Gamma Phi Beta, Central Office, 7503 Marin Drive, Englewood, CO 80111.

Council Communique

There are two parts to expansion—the “how” and the “why.” Part one is the mechanics, the nuts-and-bolts of procedures and technicalities, and part two is the philosophy of expansion. I am a firm believer that the latter is the more important of the two, for without the second part there is no need for the first.

Let us briefly explore part one, the mechanics of expansion. Our initial contacts, our leads, come from many sources—alumnae and collegians, inquiries from local sororities seeking national affiliation, college administrations seeking to begin or expand their Greek system, National Panhellenic Conference contacts.

Preliminary investigations often begin with an official letter of interest to the school, followed by further correspondence and exchange of information and material, possibly visitation by local alumnae and nearby province directors. If conditions seem to be mutually advantageous and desirable, arrangements are made for an official visit and presentation of Gamma Phi Beta to the administration, Panhellenic, or local group desiring affiliation. The Director of Expansion conducts this official presentation and investigation, and may be accompanied by the expansion supervisor, regional collegiate consultant, local alumnae and collegians, or province directors. Many factors are considered when appraising a campus for possible colonization: the academic reputation of the institution, the stability of the institution in the face of impending declining enrollments, the attitude of the administration toward Greeks, the overall strength and statistics of the existing Greek system, chapter housing requirements, and local alumnae support.

When all criteria have been met, and a colony has been pledged, the

12-15 week training period begins. The culmination of these many weeks of frenzied activity is our traditional inspiration week, concluded with a beautiful and moving installation weekend—initiation and installation by a nearby collegiate chapter, a model chapter meeting, a joyful installation banquet brimming with pink carnations, crescent moons, and an occasional tear-filled eye. A new chapter has been added to the roll of Gamma Phi Beta.

Why do we expand? In one word: Survival. Growth is the natural life cycle of all things—if we don't grow, we die.

Expansion is to the Sorority what rush is to the chapter. Expansion and rush are two sides of the same coin—the growth of our Sorority. It is easy to capsule the process involved with a single word, “selling.” But perhaps the true concept of the process is “selling ourselves.” As values continue to shift and priorities are realigned, it becomes apparent that the only real motivation is self-motivation. Just as rushees *want* to join a collegiate chapter, local sorority groups and college administrations must *want* a chapter of Gamma Phi Beta on their campus.

Women at every age level today are better educated and better informed than ever before; consequently, they are less willing to accept the old status quo. It is important that we as Gamma Phi Betas be aware of our Sorority's growth and progress and current pro-

Are you eagerly awaiting the opportunity for Gamma Phi Beta to colonize at a college or university near you? Please write Leonite about potential areas of expansion.

Mrs. J. D. Moore
2807 S. Peoria
Tulsa, OK 74114



Leonite Selzer Moore
(SMU)
Director of Expansion

grams for today's woman. If we are to sell the many opportunities that membership in our sisterhood offers. These opportunities are not learned through our printed materials, flyers, leaflets, and brochures with nearly the impact and intensity that comes through association and contact with enthusiastic members, alumnae and collegians alike: “If I can make you feel about Gamma Phi Beta the way that I feel about Gamma Phi Beta, you're going to join if there's any way in the world you can!”

It has been said that the hopeful person ventures into the future certain that change, growth, and happiness are real possibilities. Gamma Phi Betas are hopeful persons! We are sisters in one of the finest women's organizations in the world. Let us share our opportunities by living with a sense of expectation, and doing what each of us can to build, support, and maintain Gamma Phi Beta to her fullest potential. Gamma Phi Beta IS more than a sorority: Gamma Phi Beta is OPPORTUNITY on the GROW!

The Credit Goes to Volunteers

Do you ever wish you had something tangible for the opportunities Gamma Phi Beta has given you?

Continuing Education Units were implemented to establish a system to measure individual participation in noncredit, professional continuing education.

How do you measure the value of your leadership training and volunteer experience in Gamma Phi Beta? How do you explain to your employer the value he or she will receive by granting you time off to attend Gamma Phi Beta leadership training?

Receive credit for it.

Gamma Phi Beta will offer the opportunity to members to receive Continuing Education Units through the University of Denver at the Denver Convention.

Continuing education is the trend, and so, about 10 years ago, Continuing Education Units (CEUs) were implemented to establish a system to measure individual participation in noncredit, professional continuing education. Continuing Education Units provide a means of transferring

How do you measure the value of your leadership training and volunteer experience in Gamma Phi Beta?

this information to an organization, employer, person or institution. It is a nationally accepted permanent records standard that is compiled, updated and transferred upon request.



Debbie Jones
(Colorado College)
Coordinator of
Leadership Training

... will provide Gamma Phis with a wealth of material on time management, building a positive self-image and keys to motivating yourself and others.

Coordinator of Leadership Training Debbie Jones (Colorado College) and two speakers from the University of Denver will present seminars for which CEU credit will be awarded.

Debbie's experience in leadership training will provide Gamma Phis with a wealth of material on time management, building a positive self-image and keys to motivating yourself and others. She'll also teach you how to develop more of your chapter's potential and how to eliminate problems, recognize challengers and concentrate on solutions.

A Graduate Counselor at Gamma Omicron Chapter, Debbie will complete her M.B.A. in May. She has conducted numerous leadership training sessions for Gamma Phi Beta at Area Leadership Conferences and at Collegiate Consultant and Graduate Counselor conferences. Recently, she was the keynote speaker for a sorority president's roundtable meeting at the University of Kentucky and at the State Greek Leadership Conference at Eastern Kentucky University.

... you will benefit by being the best that you can be ... and get credit for it.

Randy Kunkel, author of *The Burnout Syndrome*, is a nationally known speaker and trainer in organization, humanistic leadership and personal growth. He will speak on "Breakthrough on Conducting Meetings: Increasing Productivity by a Factor of Four." A founder and executive director of a management advisory firm he holds a Ph.D. from the University of Denver. As a staff consultant for the U.S. Air Force and the University of California, he advised on organization behavior and staff development.

"Organize for Action: Lead from Purpose," will be presented by Elaine Long, executive director of EML Group. She is a management consultant in organization analysis, and planning and development of human resources.

Gamma Phi Beta will benefit from your increased leadership abilities. Your present or future employer will benefit from your organization, leadership and ability to conduct effective meetings. Most of all, you will benefit by being the best that you can be ... and get credit for it.

The Denver Convention.
An Opportunity.



Gamma Phis gather around the Flying W Ranch corral to await the daily horseshoeing demonstration. They are (1st row, l to r) Kits Chairman Sandy Bonicamp Duncan (Wichita), Panhellenic Reception Chairman Marilyn Mousel Fitzgerald (Nebraska) and (2nd row) Banquets Chairman Pat Thomas Pinney (Oklahoma) and Ann Mitchell Kasper (Bradley).



Dramatic Colorado mountains in the Rocky Mountain National Park.

1980—A Mile High

For those who have never attended a Gamma Phi Beta International Convention, let Denver be your first. The Rockies are a magnificent backdrop for the clear, comfortable Denver summer.

To a first-timer, it is difficult to imagine the spirit, warmth and enthusiasm generated at this get-together of bright, energetic, dedicated Gamma Phis from all over the United States and Canada. A lot of learning is involved as we join with sisters in working to make Gamma Phi and ourselves the best that we can be.

If you have attended a Gamma Phi Beta Convention in the past, you know the excitement, fun and love that combine to make Convention a long treasured experience. Make your plans now to add a Colorado pink carnation to your Convention hat.

Convention workshops will provide you and your chapter the tools and guidance needed to achieve your fullest potential. Personal and chapter development will be emphasized throughout workshops conducted by Ruth Donlon Lowell, Collegiate Vice President, Ann Mullen Bronsing, Alumnae Vice President, and Mary Jane Hipp Misthos, Director of Finance.

Some workshops planned for alumnae are those on fund raising, auxiliary groups and our TransISTER program.

Former Counselors

If you are a former Gamma Phi Beta Camp Counselor who will be attending Convention, please write Sharon Green, 1090 Vail View Dr., #3, Vail, CO 81657.

The advisors' workshops provide the opportunity to learn more about Panhellenic, rush and officer training. Public relations and how to change, improve and maintain a super image are only a few of the "how-tos" you'll learn.

An opportunity to sing songs and share ideas will be a fun and beneficial workshop for collegians. You'll acquire new rush skills and the knowledge to excel in scholarship. Alumnae/collegiate relations and new ideas for your philanthropic activities are two more workshops being planned for Convention.

Whether alumnae or collegian, Convention is an opportunity to renew friendships, to learn and to experience the meaning of Gamma Phi Beta.

On June 12, just before Convention

officially begins, join in a three hour guided tour of historic Denver. Highlights include a trip through the home of "Unsinkable Molly Brown" and the Landmark Castle of Baron Walter von Richthofen. Dress is casual and the cost is \$12.00 per person. Tours of Gamma Phi Beta's new Central Office are also being arranged for this day.

For a taste of the true flavor of the Rocky Mountains, plan to take an exciting eight hour post-Convention bus tour of Rocky Mountain National Park. The cost is \$35.00 per person, including lunch. This tour covers approximately 165 miles over the foothills route from Denver through Rollinsville, Nederland and Ward. There will be time for shopping in Estes Park before returning to Denver via the Big Thompson Canyon and some of the most spectacular scenery in the world. Be sure to dress casually and bring a warm jacket.

You'll be able to wear your casual clothes—jeans if you like—on our Saturday trip to the Flying W Ranch. Afternoon dresses, skirts and suits are appropriate for most of the other Convention functions. The Awards Banquet and the Pink Canation Banquet are formal.

Remember to look for Gamma Phi collegians in checkered western shirts, denim skirts, white cowboy hats and their "Mile High With Gamma Phi" buttons when you arrive at Stapleton airport. They'll be able to direct you to the Marriott limousine or other transportation.

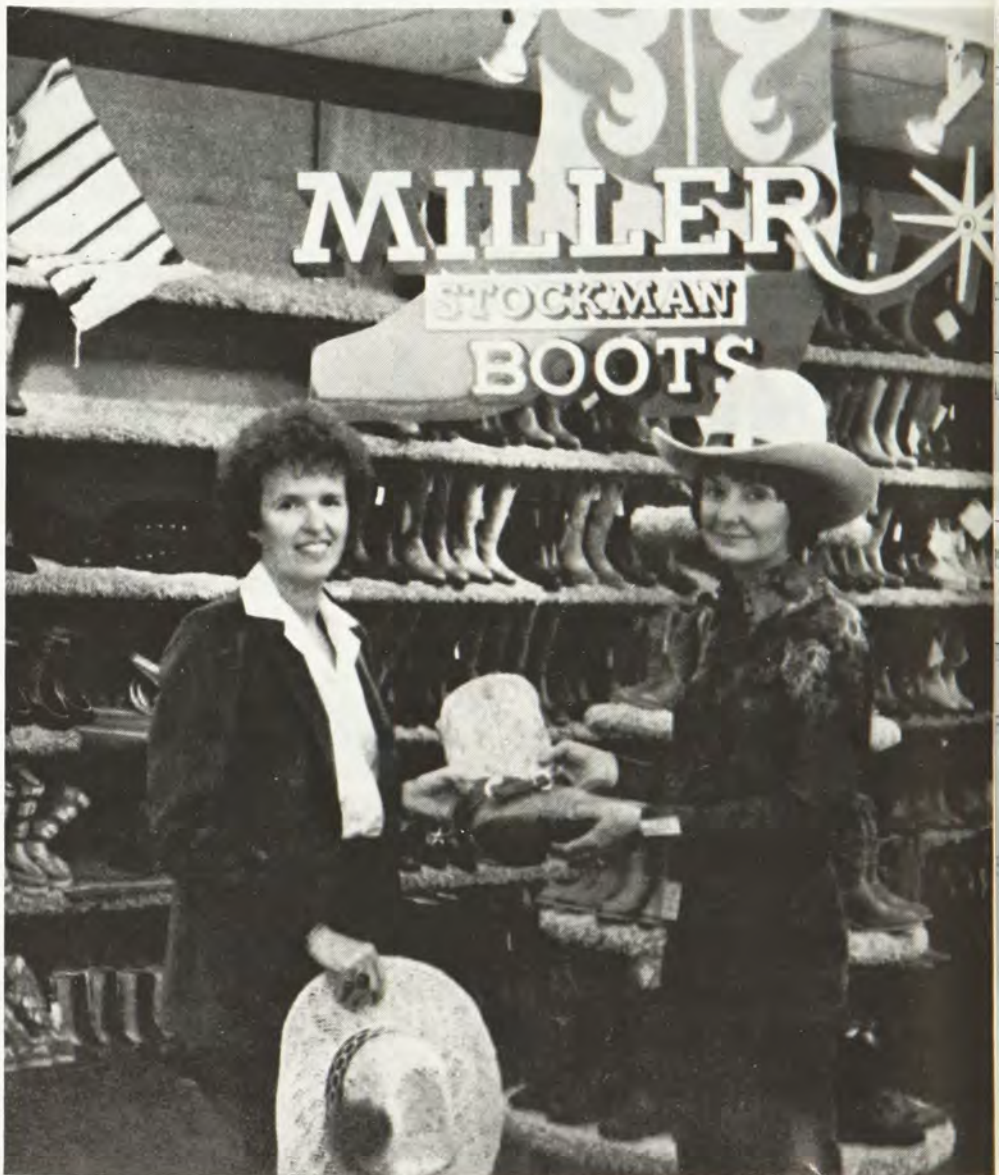
Advisor Funds Are Needed

An all-day alumnae advisors workshop is on the agenda for Convention. It's a super opportunity for advisors to get together and share ideas and experiences.

All Gamma Phi Betas and alumnae chapters who do not sponsor collegiate chapters are invited to participate by contributing funds to help support this project. Donations, which may be designated for a specific region or province, may be sent to Central Office. Please be sure to note on your check that it is for the advisors fund.



(l to r) Recording Secretary Elizabeth Mullare Messenger (Denver) and Treasurer Ann Horner, Hall (Denver) discuss Convention plans with convention Chairman Cathy Guthrie Lindauer (Iowa St.)



Style show Chairmen Maradith Ensor Wilkins (Colorado St.) and Barbara Lowe Barr (Denver) preview hats and boots for the Western style show sponsored by Miller Stockman.

CONVENTION REGISTRATION

HOTEL & TRANSPORTATION FORM

GAMMA PHI BETA INTERNATIONAL CONVENTION

MARRIOTT HOTEL—DENVER, COLORADO

JUNE 12—17, 1980

By May 1, 1980 please return to Gamma Phi Beta Sorority, Inc., 7503 Marin Drive, Englewood, Colorado 80111. (A \$10.00 late fee will be charged for registration forms received after May 1.) Please plan to arrive by 5 p.m. on Thursday, June 12. Scheduled activities end after Monday night, June 16.

A check for the applicable fees and expenses must accompany this form. The registration fee is non-refundable after June 1, 1980; meals are non-refundable after June 11, 1980. Make checks payable to: Gamma Phi Beta Sorority.

NAME: _____
last first maiden husband's

NAME PREFERRED ON NAMETAG: _____

HOME ADDRESS: _____

COLLEGIATE CHAPTER: _____ ALUMNAE CHAPTER: _____

I am a 50 year member: ☐ , Number of Conventions attended including 1980: _____

Gamma Phi Beta relative(s) attending this Convention: _____

COLLEGIAN: Delegate ☐ Alternate ☐ Visitor ☐

ALUMNA: Delegate ☐ Alternate ☐ Visitor ☐ International Officer ☐

Alumna Advisor ☐ (Arrive by 6 p.m. Wednesday, 6/11, for workshop.)

COLLEGATE DELEGATES: registration fee \$ 50.00

ALL OTHER FULL-TIME PARTICIPANTS: registration fee \$ 50.00
 meals (luncheons and dinners only) \$101.50
TOTAL \$151.50

PART-TIME PARTICIPANTS: registration fee (no fee for Saturday, 6/14) \$10.00 per day
 Convention kit (optional) \$ 5.00

Thursday 6/12:	Get Acquainted Dinner (\$10.50)	<input type="checkbox"/>	Sunday 6/15:	Brunch (\$8.00)	<input type="checkbox"/>
Friday 6/13:	Panhellenic Luncheon (\$8.00)	<input type="checkbox"/>		Foundation Dinner (\$10.00)	<input type="checkbox"/>
	Awards Banquet (\$12.50)	<input type="checkbox"/>	Monday 6/16:	Western Style Show & Lunch (\$8.50)	<input type="checkbox"/>
Saturday 6/14:	Flying "W" Ranch Trip and Lunch (\$15.00)	<input type="checkbox"/>		Pink Carnation Banquet (\$19.00) (includes favor)	<input type="checkbox"/>
	Confirmed Conventioneers Dinner (\$10.00)	<input type="checkbox"/>			

TOTAL remitted for meals \$ _____
 TOTAL registration \$ _____
 Convention kit (optional) \$ _____
TOTAL \$ _____

COLLEGIATE DELEGATES

Hotel and flight reservations and roommate assignments will be made by Central Office. (Do not fill out hotel reservations portion of this form.) You will be notified of all arrangements. Those wishing to drive will be reimbursed for mileage not to exceed round trip coach air fare.

I plan to drive ☐

I am a non-smoker ☐

Date arriving: _____ from _____ / _____
airport city

Date departing: _____

ALL OTHER FULL-TIME AND PART-TIME PARTICIPANTS

Travel Please make your own travel arrangements, or contact the Convention travel agent: Driscoll Travel Inc., 1108 15th Street, Denver, CO 80202; (303) 573-1062.

Hotel Please make hotel reservations using the bottom of this form.

MARRIOTT HOTEL RESERVATIONS

Will arrive _____ (Check-in is 4 p.m.)
time day date

Will depart _____ (Check-out is 11 a.m.)
time day date

Accommodations desired (prices are per person per day and payable at check-out time.)

Single \$45.00 ☐

Double or Twin \$25.00 ☐

Please assign me a roommate ☐

Triple (2 double beds) \$18.00 ☐

Quad (2 double beds) \$14.00 ☐

Non-smoker preferred ☐

Roommate preference: List names of desired roommates (please mail forms together). If arrival and departure dates differ, you are responsible for the single room rate.

1. _____
2. _____
3. _____

THERE WILL BE NO ROOM CHANGES ONCE RESERVATIONS ARE CONFIRMED.

TOURS

I plan to take the pre-Convention Denver tour, June 12, 1 to 4 p.m. ☐ \$12.00

I plan to take the post-Convention Estes Park tour, June 17, all day ☐ \$35.00 (includes lunch)

TOTAL . . . \$ _____

A check for the tours must accompany this form.
Money will not be refunded after May 12. Prices are subject to change.



Kathleen Cutting Wagner (Michigan) couldn't make it to Beta Chapter's Founders Day celebration, so chapter members took her award to her. Teresa Bertoncin (Michigan) looks at the lovely paperweight presented to Kathleen.

Honored for . . .

Three-fourths Century in $\Gamma\Phi B$

Seventeen Gamma Phi Betas were honored on Founders Day 1979 in recognition of 75 or more years membership each. The Sorority presented each member a Morgantown, W. Virginia glass paperweight accompanied by a letter from Grand President Karen Wander Kline (Iowa St.).

Nina Ostrander Butts (Syracuse) wrote Karen, "It is indeed an honor to know that I am remembered after all these 'more than 75 years' and that I am a 'very special sister!'" Zoe Riley Dyer (California) wrote, "A crystal paperweight with Gamma Phi insignia. How lovely and how unexpected! It all awakens happy memories of friendship and college days."

The paperweights are collectors items and feature the Sorority crest in shades of pink. The ladies, their chapters and initiation years are listed below.

Edith Hedges Craves
Alpha—1902
Laura Mathews Cole
Alpha—1902
Nina Ostrander Butts
Alpha—1902
Florence Daisy Stott Sullivan
Gamma—1902
Ruth Clarke Staples
Delta—1899
Jane Smart Allen
Zeta—1901

Cornelia Webb
Zeta—1901
Nell Watts Clark
Zeta, Lambda—1902
Alice Benson Allen
Eta—1902
Adele Goble Collman
Epsilon—1903
Jean Snyder
Alpha—1904
Zoe Riley Dyer
Eta—1904
Effie May Behm Reinert
Theta—1904
Ellen Ogorman Duffy
Iowa—1904
Kathleen Cutting Wagner
Beta—1904

Founders Day 1979

On Founders Day, Gamma Phi Betas pledged their faith and loyalty to our Sorority. Chapters celebrated with the traditional ceremony and other activities.

A Founders Day celebration marked two special anniversaries in Dallas. Fifty years ago, Alpha Xi Chapter at Southern Methodist University and the Dallas Alumnae Chapter were chartered.

The weekend celebration was coordinated by Virginia Forsythe Vint (Missouri) and Lynn Baxter Maguire (SMU). More than 200 Alpha Xi and Dallas alumnae shared memories at a Saturday afternoon reception at which the first Dallas Gamma Phi Beta scholarship was presented to Val West (SMU).

Grand President Karen Wander Kline (Iowa St.) presented a slide show at the Sunday Founders Day luncheon. Four Alpha Xi charter members received Golden Crescent

Awards. They are Mary Haynes Gilliland, Ruby Dudley Collins, Katherine Peurifoy Elwood and Margaret Cate Weaver. Another charter member, Lula Mae Carter, was unable to attend.

St. Louis alumnae and Gamma Tau and Phi collegians gathered for a luncheon. A local television personality spoke to the 125 members about the value of Greek life to the individual. Thirteen Golden Crescent Awards were presented.

Stillwater alumnae joined Beta Psi collegians at the chapter house. Members of eight chapters were present at the celebration which featured an address given by Director of Expansion Leonite Selzer Moore (SMU).

Greta Weston and Betsy Matthews received Golden Crescent Awards at the Denver celebration. The Gamma Phi Beta crest etched in glass was presented for a new bookcase to be placed in Central Office.



Teek Kurt Schonberg (Iowa St.) presents the Irene Hollenback Pigaga Memorial to Janice Pigaga (Nebraska).

Alpha Omicron and Gamma Mu Chapters held their annual joint Founders Day celebration. Both chapters entertained after the banquet and an outstanding member of each chapter was honored.

Alpha Alpha Chapter and Toronto alumnae gathered for dinner to celebrate Founders Day and the 60th anniversary of Alpha Alpha Chapter. A variety show featuring a slide presentation and musical selections from each decade encouraged reminiscing. Twelve Golden Crescent Awards were presented.

Alpha Chapter and the Syracuse alumnae celebrated with dinner and a crescent shaped cake. The Golden Crescent Award was presented to Nan Paltz (Syracuse).

Epsilon Chapter hosted a dessert for area alumnae. Collegians presented a rush skit and pledges were introduced.

Pi collegians entertained alumnae



San Francisco alumnae who attended Founders Day are (1st row, l to r) Pearl Pangborn VanHorn (Idaho), Carolyn Helbith Williams (Denver), Carla Krantz Trott (Oregon), Sylvia Manjarrez Walker (Bradley), C. J. Oferman McCall (Minnesota); and (2nd row) Connie Spanier (Oregon St.), Charlotte Preble Jones (Oregon), Sally Thomas Bruhot (Iowa St.), Margaret Moore Sawyer (Oregon St.), Beverly Smith, and Nancy Sugg (Vanderbilt).



Alpha Xi Chapter housemother Ann McCubbin visits with Grand President Karen Wander Kline (Iowa St.) and Virginia Forsythe Vint (Missouri) at Founders Day in Dallas.



St. Louis Alumnae Chapter President Helen Holstein and Alumnae Vice President Ann Mullen Bronsing with Gamma Tau Chapter.

in Lincoln. A silent auction and delicious dessert provided by alumnae were highlights of the evening.

Twenty-seven Monterey County alumnae gathered for lunch at the home of Marjorie Wilke Petit (Illinois). Frances Martin Coswell (Iowa St.), Barbara Douglas Gammons (UCLA) and Ruth Clark Norman (Stanford) received Golden Crescent Awards.

San Francisco alumnae celebrated in an historic Victorian home. After a catered buffet, Golden Crescent Awards were presented to Pearl Panghorn VanHorn (Idaho) and Helen Prendiville.

Beta Sigma and Xi Chapters united at the Xi Chapter house to celebrate Founders Day. Conversation, cake and ice cream marked the birthday party for Gamma Phi Beta's 105th year, Beta Sigma's 25th year and Xi's 70th year.

A potluck dinner and reminiscing about old friends and old times is how Bartlesville alumnae celebrated. The 15 members present found exchanging stories from college days to be fun and interesting.

Beta Gamma Chapter and Toledo alumnae had a memorable Founders Day dinner. Seventy-eight members participated and collegians entertained with a slide show and skit. Collegians and alumnae taught each other Gamma Phi songs.

Delta Pi Colony's 24 pledges began their Founders Day with the pledging of six women. Bloomington-Normal alumnae then gave a kitchen shower for the colony. Each pledge opened a



Delta Pi Colony pledges (l to r) Missy Burnhardt and Cathy Sullivan with one of the items the chapter received at its kitchen shower.

package and all joined in singing Gamma Phi Beta songs.

Omaha alumnae celebrated Founders Day with a birthday party including dinner, cake and party favors. The celebration of the chapter's 60th year featured speeches by President Peg Walker Thiesen (Nebraska-Omaha), Bertha Molden (Illinois), Grand President Karen Wander Kline (Iowa St.) and Nancy O'Connor Whitted (Nebraska).

Local alumnae joined Omicron collegians at the chapter house for dessert. Awards were presented to outstanding collegians and Kathy Schroeder received the Outstanding Alumna Award.

Singing and a slide show were highlights of Delta Delta's celebra-



Epsilon Chapter President Meredith Bleick serves refreshments to Charlene Greener and Polly Haliday.



Omicron Chapter charter members (l to r) Nellie Hartsock and Grace Sayre attending the Founders Day celebration in Urbana.



Washington, D.C. Alumnae Chapter President Nancy Jones Claunts (Texas Tech) (left) visits with Golden Crescent Award recipient Sylvia Anderson Kallio (Texas).

tion. Orange County alumnae attended the dinner at which Alaire Hinkel (Cal. St.-Fullerton) received the Frances E. Haven Award.

Portland alumnae enjoyed a luncheon and fashion show. Five of the 70 members in attendance received Golden Crescent Awards. Cynthia Johnson Phillips (Colorado St.) introduced PAD XIII Eleanor Baker Merz (Washington), who spoke to the group.

Beta Tau collegians and Lubbock alumnae watched a fashion show of styles from 1870 to the present. Peggy

Henderson received the Pink Carnation Service Award and Diana Brown was named the outstanding member.

At the Minneapolis-St. Paul celebration, Kappa Chapter presented outstanding alumnae awards to Rene Ziegler Gezell, Nancy Alva Firth and Mary Jane Lampert Bellinger. A slide show and pledge skit were two of the day's highlights.

Beta Alpha and Alpha Iota Chapters enjoyed a dinner celebration with area alumnae. Sheila Duffy (USC) received the E. Adeline Curtis Award.

Northern Virginia and Washington, D.C. alumnae met at the Beta Beta Chapter house for lunch. Golden Crescent Award recipient Sylvia Anderson Kallio (Texas) delighted the group with tales of her life on the Riviera.

A Show of fashions from 1874 to 1979 was presented by Delta Xi Chapter. PAD II Mary Ann Morgan Youngwood joined collegians and alumnae in the festivities.

Alpha Thetas watched a slide show about historic Nashville sights. Collegiate awards were presented at the brunch and Julie Gibson Demarest, Ellen Couch Coone and Mary James Montgomery received Golden Crescent Awards.

Beta Lambdas and La Jolla alumnae celebrated Founders Day at a luncheon. Eloise Thompson Shuttleworth (Wittenberg) received the Golden Crescent Award. Speaker for the day was Bea Barker Evenson (Oregon).

Founders Day at Gamma Chapter was an elegant dinner. Louise Marston (Wisconsin), a newspaper society page editor, entertained collegians and alumnae with stories of her career. The Barbara Maroney Award was presented to Wilma Smith in recognition of her service to Gamma Chapter.

Grand Rapids alumnae celebrated Founders Day with dinner and ceremonies. Detroit and Birmingham-Bloomfield alumnae enjoyed dinner together. Cleveland West alumnae gathered at the home of Carol Judson Cass and welcomed two new members to the chapter.

At the Columbus celebration, Golden Crescent Awards were presented to Elizabeth Allison, Jane Fraser, Katherine Hardy and Betty Roberts. Boston alumnae held a pot-



Monterey County alumnae who have received the Golden Crescent Award are (l to r) Ruth Fitch Peirson (Minnesota), Marie Daley Hildebrand (Iowa), Frances Martin Caswell (Iowa St.), Wilna Graves Dufour (California), Dorothy Meyer Neill (Stanford), Erica Berne Hurff (California), Marjorie Boyt Fletcher (Iowa St.), Virginia Stearns Fredricks (Wisconsin) and Ruth Clark Norman (Stanford).



Pi Chapter pledges sing a song at Founders Day.

luck dinner and mini auction. Delta Theta Chapter invited area alumnae to a Founders Day Thanksgiving dinner at its new house.

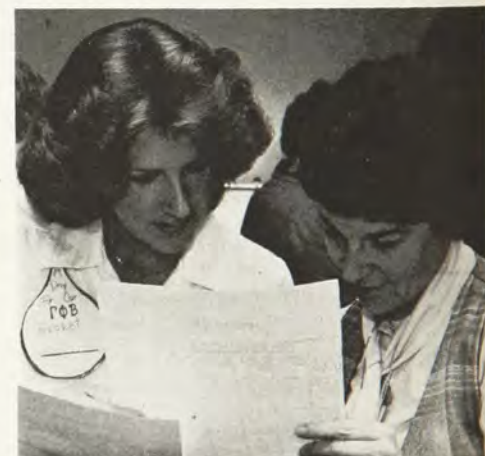
Miami alumnae enjoyed an afternoon tea, sharing memories in Gamma Phi Beta. At the celebration of the Chicago Northwest Suburban Alumnae Chapter, the Sterling Girl Award was presented to Barbara Mangus Small (Michigan St.) and Dorothy Wilger Hayes received the Golden Crescent Award.

Dinner at the home of Mary Diepenbrock Draeger was enjoyed by 31 members of the Peninsula Alumnae Chapter. Gamma Phis in the Salt Lake City area met for dinner to celebrate Founders Day. Ames alumnae joined Omega collegians at the chapter house. The Four Founders Awards and alumnae scholastic awards were presented to collegians.

Balboa Harbor alumnae and Delta Eta Chapter celebrated Founders Day



Toledo Gamma Phi's ready to celebrate Founders Day are (l to r) Sue Freund (Bowling Green), Linda Ellis Dachenhaus (Bowling Green), Beta Gamma President Nancy Donovan and Caroline Crouch Wood (Miami).



A Pi Chapter collegian and an alumna play Gamma Phi Beta Bingo at Founders Day to learn more about each other.

together, enjoying a dinner prepared by alumnae. San Antonio alumnae gathered for a brunch. In Colorado Springs, alumnae and collegians celebrated together. The Lucy Lennox Award was presented to Tami Hand and Ann Burnett.



Golden Crescent award recipients in Portland are Mildred Morrison French (Oregon St.), Louise McKinney (Idaho), Julia Smith Patterson (Oregon St.), May Belle Allen Prag (Oregon), Mina Grosscup Van-Vactor (Oregon), Helen Wilcox (Oregon) and Joy Ingals Wright (Oregon).

Welcome to My Morning

(Sung to Farewell Andromeda)
Words by Chris Murray
(Cal. St.-Fullerton)

Welcome to our morning,
Welcome to our day
You're the ones responsible,
you made it just this way
You told us of your Sorority,
and all that it would mean
We made our choices perfectly,
we wouldn't change a thing.
Gamma Phi la la la la la
Gamma Phi la la la la la
Welcome to our happiness,
you know it makes us smile
And it pleases us to have you
here for just a little while
While we open up some spaces,
and try to make some friends
Gamma Phi is forever,
it will never really end.
Gamma Phi la la la la la
Gamma Phi la la la la la
Welcome to our evening,
the closing of the day
We could try a million times
never find a better way
To tell you that we love you,
and the song that we have played
Is to thank you for allowing us
in the lovely day you've made.
Gamma Phi la la la la la
Gamma Phi la la la la la
Gamma Phi la la la la la
Gamma Phi la la la la la
Gamma Phi —————

1979 Merit Roll

Nominated by their alumnae chapters for long, devoted and distinguished service to the Sorority on the local level, 37 Gamma Phi Betas were added to the Merit Roll. Grand Council also voted to add two names to the Sorority's Service Roll.

Beverly Cumming Adams (Colorado St.), Executive Director of the Gamma Phi Beta Foundation, and Geraldine Epp Smith, former *Crescent* Editor, were honored for long, devoted and constructive service to both chapter and International Sorority.

Their certificates were presented at Founders Day ceremonies held across the country. They are listed with their collegiate and alumnae chapters.

Dorothy Tiemann Adam
Denver-Bloomington
Barbara Wedge Alberts
Arizona St.-South Bay
Jacqueline Reid Allee
Michigan-Quad Cities
Elizabeth Neer Allison
Ohio Wesleyan-Columbus
Lila Argue
N. Dakota-Bloomington
Gayle Christensen Avant
Florida St.-Tallahassee
Myra Garrett Baker
SMU-Bloomington
Dixie Deupree Bartell
Oklahoma-Houston
Phyllis Way Boardman
Illinois-South Bay
Margaret Godbold Briscoe
SMU-St. Louis
Verna Montgomery Esslinger
Oklahoma City-Stillwater
Marilyn Jensen Fleckenstein
Iowa St.-Cedar Rapids
Helen Fling
Missouri-Greater Kansas City
Beatrice Geiger
Colorado St.-Bloomington
Sharon Reisig Green
Colorado St.-Denver
Joyce Harris Grove
Nevada-Bloomington
Mary Lou Orr Hattery
Iowa St.-Cedar Rapids

June Daniels Holland
Wittenberg-Springfield
Nancy Lee Hukill
Iowa St.-Cedar Rapids
Joyce Cole Hultgren
Wichita-Wichita
Patricia Marble Jones
Ohio St.-Columbus
Martha Scott Kenton
Missouri-St. Louis
Susan Richter Krombach
Missouri-St. Louis
Barbara Baldwin Lewis
Wm. and Mary, Northwestern-Columbus
Barbara Schmitt Manning
Texas-Houston
Lettie Gushall McDonald
Arizona St.-Phoenix
Adelaide Milligan
Wittenberg-Springfield
Flori Sloniger Page
Oregon-Balboa Harbor
Nancy Cullins Ratzlaff
Oklahoma City-Oklahoma City
Marilyn Mott Richards
SMU-Dallas
Ruth Allderige Smithers
Michigan-Quad Cities
Nancy Cole Spencer
Iowa St.-Houston
Grace Spivey
Oklahoma St.-Stillwater
Mary Hunt Sterling
Oklahoma St.-Oklahoma City
Evelyn VonHerrman
Northwestern-Bloomington
Gretchen Wagner Winston
Indiana-Bloomington
Sally Swink Moses
Michigan St.-South Bay

Service Roll

Beverly Cummings Adams
Colorado St.-Denver
Geraldine Epp Smith
Missouri-St. Louis

YES YOU CAN!

By Phyllis Donaldson Choat
and Linda Daniel Johnson
Chapter Development Chairman

Today's woman faces complex decisions regarding the time she is able to give for volunteer service. Collegians combine class loads with work loads. Alumnae juggle multiple responsibilities as career women, wives, mothers, and students.

Combined with these time constraints is the fact that recently the value of volunteerism is being questioned by women and society. Today's emphasis is on gainful employment. Many argue volunteerism is helping to keep women economically dependent by involving them in unpaid service.

Yet volunteer service and philanthropic interests are integral elements of Gamma Phi Beta. It is recognized that the ability to give fully on one's time and talent is an important step in the personal growth process. Service fosters generativity, the ability to give without expecting thanks and the feeling of self-worth.

Gamma Phi Beta recognizes the many competing options and demands on members' time and is working to keep the demands of volunteer service in perspective. Even if a woman has little time for volunteer service, her efforts, when combined with those of her sisters, will have an impact on her country, community and Sorority.

Gamma Phi Beta offers many opportunities to aid communities with local philanthropic endeavors and opportunities to enrich the lives of special children through our camping program. Collegiate members volunteer their summers to work at Camp Sechelt; alumnae and collegiate chapters raise money to sponsor local children attending local camps; others assist by collecting camp clothes or making ditty bags. Chapters raise money for local charities

and give their time for other charitable activities.

Gamma Phi Beta Sorority is run almost entirely by dedicated women who volunteer their vast managerial and organizational talents. These women bring with them to their positions as Grand Council members, Foundation directors, PADs, PCDs, other international officers, alumnae advisors, House Corporation Board members and local chapter officers, the skills, experience and loyalty that mark them as professionals in the true sense of the word.

Like many things today, volunteerism is changing; fewer individuals are free to be involved on a full-time basis. Yet the need for volunteers continually grows. Perhaps the answer lies in lessening the demand and time requirements and encouraging everyone to give just a small amount of time to volunteerism. Better to have volunteer forces of many, each doing a small amount, than only a few giving all of their time.

Although there are no salaries and "thank you" isn't heard enough, there are rewards for service. Organizational and managerial skills developed through volunteer work are assets recognized by employers. Working with other Gamma Phi Betas on worthwhile projects gives us the opportunity to know and appreciate each other and to take pride in ourselves and our Sorority. But the greatest reward is the warm feeling that comes from giving without being asked or paid. "Love isn't love until you give it away."

Yes, service does belong in today's woman's life; professionalism and volunteerism can accommodate and enhance each other through the varied opportunities for service that membership in Gamma Phi Beta offers. By giving of ourselves, our sisterhood grows, and we, as individuals grow along with it.

Greek Pendulum Swings

By Margy Molden Wiltamuth
Feature Editor

The Greek system has more than survived that dark period in the sixties when being Greek was decidedly "out" on most college campuses. In fact, this period seems to have strengthened the system, leading groups to greater achievements.

In the sixties, Greek organizations were in full retreat on many campuses. One of the campuses hardest hit was the University of California, Berkeley. There, the number of fraternities dropped from 48 to 24, sororities from 22 to 11. (Gamma Phi Beta remained.) The number has since climbed back to 33 fraternities and 13 sororities.

Campuses across the nation were rocked by student unrest, and the demonstrating, idealistic anti-Establishment students focused on the Greeks, who they viewed as privileged dilettantes, banded together to practice discrimination and meaningless frivolities.

Gone now are the accusations and disdain. More and more students, in search of a more traditional college life, are seeking membership in fraternities and sororities. Greeks have rededicated themselves to their common goals of scholarship and leadership. They have expanded community service efforts, returned their members to campus leadership positions, promoted scholarship and given today's more traditional students a sense of belonging.

Latest National Panhellenic Conference figures show sorority membership up 88.4 percent since 1961. An all-time high of 2,365 collegiate chapters exist, up 117 from 1977. Gamma Phi Beta added three strong chapters during this period and three colonies are awaiting installation.

Presently, Greeks are enjoying an "age of Acceptance," according to an article in the Interfraternity Research and Advisory Bulletin. At a recent Interfraternity Research and Advisory Council (IRAC) meeting, member organizations reported "generally calm campuses and healthy Greek letter



Members of Delta Delta Chapter at California St.-Fullerton are happy to be Greek. The photograph first appeared with an article on Greek resurgence in the Los Angeles Times.

situations," even calling it the best year ever.

Gamma Phi Beta's Director of Expansion Leonite Selzer Moore (SMU) reported she can see a "general overall increase in Greeks across the board; there is definitely a resurgence of interest in fraternity-sorority life, coast to coast. This new interest is expected to remain with us into the eighties, for as a more conservative air pervades the American college scene, the more traditional life and associations gain in importance."

"Sororities, particularly Gamma Phi Beta, are reaching out to collegiate women," said Collegiate Vice President Ruth Donlon Lowell (Cal. St.-Long Beach). "We hold onto the traditions, but move forward to show our relevance in today's world. Sororities have career planning nights, and are challenging women to become involved in philanthropic affairs, and to make the most of their unique personalities."

Almost one-third of America's college bound teenagers said they hope Greek life is a part of their higher education, according to a Gallup youth survey. College social organizations are more appealing to teens from smaller cities.

What influence has the movie "Animal House" and its TV series coun-

terpart, along with other picturizations of Greek life had? "Anyone who has ever been a Greek or ever will be a Greek must see "Animal House," said Dr. Drury Bagwell, director of students at the University of Maryland. "It is having a definite influence on campus life today," he said. Thousands showed up for a "toga party" on the University of Minnesota campus shortly after the film's release and toga parties became the rage across the nation.

While increasing general public awareness of the Greek system, these television and movie glimpses of Greek life give a false picture of what it's really like to be Greek. Will today's television viewers come to college expecting to spend four years drinking and carousing in a "frat?"

"In many ways, we face more of a challenge now than in the sixties or early seventies," said Dr. Robert Etheridge, vice president of student affairs at Miami University. Campus representatives reported to IRAC that the greatest challenges were seen as alcohol abuse, declining enrollments, fewer full-time undergraduate students, hazing and vandalism.

Meanwhile, more students are going through rush, and more are pledging, and average chapter size is increasing.

Sisters Found in the Forest

Gamma Phi Beta boasts at least three TranSisters in unique positions to help their sisters. They are wives of park rangers in widely scattered county, state and national parks and forests.

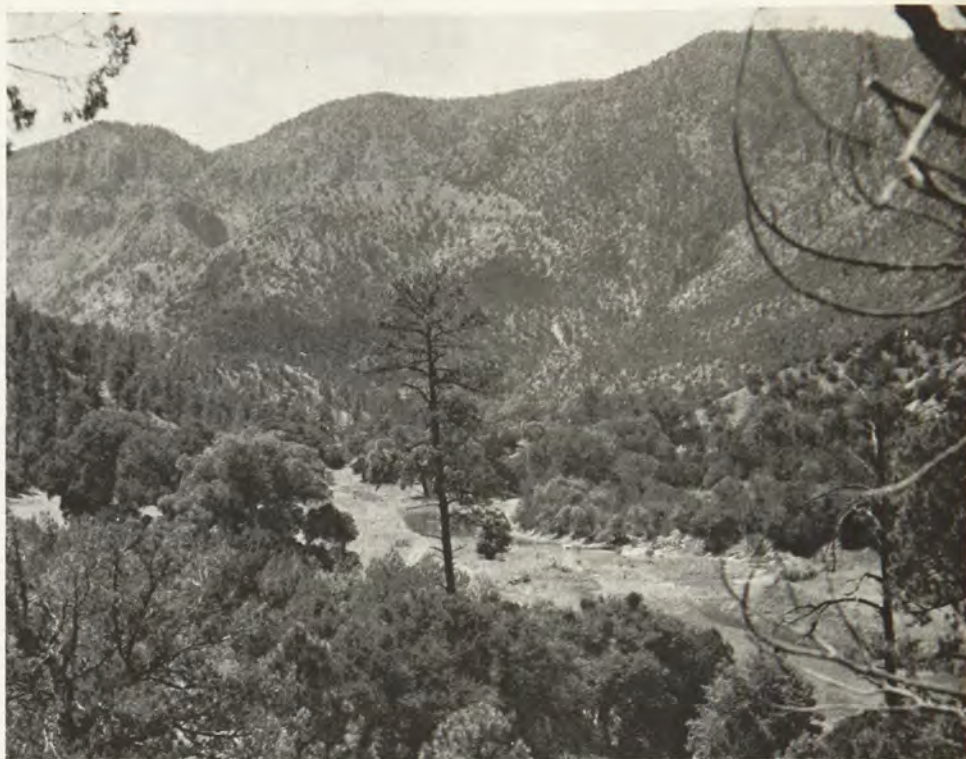
Sondra Stucker Porter (Colorado St.) is in Alaska, Judy Loken McCutchen (N. Arizona) is in New Mexico and Vivian Dietrich Werner (Lamar) is in Washington. If your family is planning a trip to any of these areas, perhaps they can offer a bit of Gamma Phi-style assistance.

Though they all live simply and close to nature, Sondra Porter lives the most primitively. For six years, she and husband David have lived without electricity and running water; they cook and heat with wood. "We live in a beautiful log cabin we have built ourselves that has a spectacular view of the Alaska Range," reported Sondra.

Her husband is an Alaska state ranger with responsibility for parks, campgrounds and waysides for a large area that includes Bonny, Long and Finger Lakes, Matanuska Glacier and King Mountain. "We are located very close to new additions to McKinley National Park and a possible entrance to a proposed state and National visitor's center," she said. She warns prospective campers there are no electric hookups or pump stations for recreational vehicles in Alaska state parks. Water is available by hand pump.

Sondra is the entire English department at the local high school, which last year boasted a senior class of 17.

Judy and Gus McCutchen live in Apache National Forest near Luna, New Mexico. "We live in a tiny mountain community which has one store with an old wood stove, around which people congregate," reported Judy. She's learned quilting from local ranchers' wives, many of whom still live "like pioneers."



TranSister Judy McCutchen (N. Arizona) lives near this site in the Gila National Forest.

Although they have a modern home, "we do experience the rural annoyances of occasional power outages and sporadic telephone service."

"Our life revolves around the forest and the forest users and often demands that we be rescuers, diplomats and teachers. We once had 21 unexpected overnight guests. The campers were isolated from their trailers by rising flood waters, so we spread blankets and sleeping bags on the floor, put together what food they had salvaged with what we had, and had an enjoyable time waiting out the storm," Judy said.

If you are traveling through the Gila or Apache National Forests and need help or information "please drop me a note or give me a call—if the phone works," she said.

Vivian, their children and her county ranger husband live in Kamiak Butte County Park, 13 miles North of Pullman, Washington. Vivian waxed lyrical on the

unadulterated joys of living with nature. "In the summer we sometimes get a knock on our door from someone needing assistance," or from information seekers, or people simply wanting to pay their camp fees. Few people stop at their house in winter months, except friends. "It is at this time we feel the mountain is ours. We feel rich beyond description," said Vivian.

"Although our living quarters are too small to offer lodging, we can offer beautiful campsites to any sisters who wish to stop over for the night, or even several days. I would be more than happy to acquaint them with the area and help in any way I can," offered Vivian.

That goes for all our other TranSisters, too. They're there just waiting for you to call for information and assistance. Use them!

Herewith is the 1980 list of TranSisters throughout the United States and Canada—and even some abroad.



ALABAMA

Auburn
Mrs. Jeffrey L. Moore
(Kathy Roberts—Auburn)
103 Poplar Street, Apt. 15
Auburn, AL 36830
Birmingham
Mrs. Will M. Gregory
(Robbie Tate—Birmingham)
4210 Sharpsburg Drive
Birmingham, AL 35213
Phone: 205-879-7082
Montgomery
Mrs. Al Davis
(Carol Sicard—Auburn)
501 Glade Park Loop
Montgomery, AL 36109
Phone: 205-272-0333

ALASKA

Anchorage (2)
Mrs. Jeff Hassler
(Betty Bretten—Puget Sound)
2119 McKenzie Drive
Anchorage, AK 99503
Mrs. Susan Cessna
(Susan Fountain—Indiana St.)
4300 Arctic Blvd., # 56
Anchorage, AK 99503
Phone: 907-277-2150
Trapper Creek (McKinley Natl.
Park)
Sondra Stucker Porter (Colorado
St.)
Box 152 (Mile 3, Petersville Road)
Trapper Creek, AK 99688
Phone: 907-733-2388

ARIZONA

Casa Grande
Mrs. Phil Riske
(Kris Brandt—Wyoming)
1222 E. Cordova Avenue
Casa Grande, AZ 85222
Phone: 602-836-1106
Flagstaff
Mrs. John C. Rooper, Jr.
(Sharon Super—N. Arizona)
3224 N. Grandview
Flagstaff, AZ 86001
Phone: 602-774-0769
Phoenix (B&B)
Mrs. Fred W. Ames
(Pat Locker—Arizona St.)
6050 N. Calle Mio
Phoenix, AZ 85014
Phone: 602-264-0009; 602-263-
8882
Scottsdale—Phoenix (B&B)
Pat Halvorsen Haden (Wisconsin)
8362 Via de Risa
Scottsdale, AZ 85258
Phone: 602-991-4523; 602-952-
0120
Tucson (B&B)
Mrs. Jeffrey Haskell
(Pamela Hardy—N. Arizona)
5705 E. Ft. Lowell Road
Tucson, AZ 85712
Phone: 602-885-1984

ARKANSAS

Little Rock
Mrs. Michael Drake
(Jinnie Koch—Missouri)
7104 Sequoyah Lane
North Little Rock, AR 72116
Phone: 501-835-5037
Mountain Home
Marge Kindt Johoske (Bowling
Green)
705 Fulton Street
Mountain Home, AR 72653
Phone: 501-425-8287; 501-425-
6969

CALIFORNIA

Southern Alameda County
Mrs. Lawrence Anderson
(Virginia Hastings—Ohio
Wesleyan)
18680 Reamer Road
Castro Valley, CA 94546
Phone: 415-538-7697

Bakersfield
Mrs. Lynn Reade
(Genie Palmer—USC)
6425 Mt. Shasta
Bakersfield, CA 93309
Phone: 805-833-9801
Balboa Harbor
Mrs. Arthur C. Patch
(Sharlie Daughty—Iowa St.)
525 Vista Flora
Newport Beach, CA 92660
Phone: 714-644-5075
Berkeley
Miss Nancy E. Lubamersky
(California)
1059 El Centro Avenue, # 4
Oakland, CA 94602
Phone: 415-530-8075; 415-642-
2098
Beverly Hills-Westwood
Mrs. Victor Sutherlen
(Mary Frances Croft—UCLA)
10961 Rose Avenue, # 6
Los Angeles, CA 90034
Phone: 213-559-9489
Carmel (Monterey County) (2)
Mrs. Glen R. Bernhardt
(Mary Lou Klinker—Washington)
79 High Meadow Road
Carmel, CA 93921
Phone: 408-624-0435
Mary Alice Hinman Porch (San
Jose St.)
26338 Carmel Rancho Blvd.
Carmel, CA 93923
Phone: 408-624-2744
Central Coast (Grover City, Santa
Maria, San Luis Obispo,
Passarobles)
Mrs. Joan Forrest
(Joan Wassenar—Oregon St.)
867 North 3rd
Grover City, CA 93433
Fresno (2)
Mrs. Kathleen Grub
(Kathleen Hammerburg—Cal. St.—
San Jose)
6561 N. Angus
Fresno, CA 93710
Phone: 209-439-8716
Mrs. Paula DeYoung
(Paula Bonadelle—USC)
448 N. Phillip Avenue
Fresno, CA 93727
Phone: 209-251-2657; 209-224-
7405
La Jolla-San Diego
Mrs. Michael B. Wilkes
(Penny Dumm—USC)
P.O. Box 2201
La Jolla, CA 92038
Phone: 714-459-4021; 714-459-
8897
Lompoc
Nena Byard Doyle (Cal. St.—Long
Beach)
950 W. Chestnut
Lompoc, CA 93436
Long Beach
Mrs. Rick Johnson
(Mary Ann Ryan—USC)
6541 Montova Street
Long Beach, CA 90815
Phone: 213-598-1509

Los Angeles (2)
Mrs. Patrick Wickhem
(Sue Cartwright—USC)
111 Drake Road
Arcadia, CA 91006
Phone: 213-445-5231
Nina Bradley (B&B) (California)
1416 Brand Avenue, Apt. B
Glendale, CA 91202
Marin County (San Rafael, Mill
Valley, Sausalito, San Anselmo)
Mrs. Samuel A. Fletcher
(Barbara Harshbuerger—
Washington)
170 McNear Drive
San Rafael, CA 94901
Phone: 415-453-1887
Modesto
Mrs. William Reinheimer
(Ila Jean Stiver—Wittenberg)
424 Buena Vista
Modesto, CA 95351
Phone: 209-529-3952
Orange
Mrs. Timothy Falisky
(Barbara Rosbe—Michigan)
2942 E. Lake Hill Drive
Orange, CA 92667
Phone: 714-637-4504
Palo Alto
Mrs. William Snitjer
(Kate Clemons—Stanford)
2317 South Court
Palo Alto, CA 94301
Phone: 415-327-7739
Pasadena (2)
Mrs. Ruth Turpin
(Ruth Bless—California)
1828 Windsor Road
San Marino, CA 91108
Phone: 213-283-5550
Patricia Metzger Trujillo (Cal. St.—
Long Beach)
528 N. Campbell
Alhambra, CA 91801
Phone: 213-282-7368
Placerville
Mrs. Robert M. Riley, Jr.
(June Oakland—Syracuse)
2700 Westwood Drive
Placerville, CA 95667
Pomona Valley (Covina,
Claremont)
Mrs. Robert V. Phillips
(E. Louise Morris—Bowling Green)
2657 San Angelo Drive
Claremont, CA 91711
Riverside
Mrs. Dwayne Mickelson
(Jan Anthony—Iowa)
2805 Miquel
Riverside, CA 92506
Phone: 714-683-6941
Sacramento Valley
Mrs. Ellis Hirst
(Linda Borges—Vermont)
825 Robin Lane
Sacramento, CA 95825
Phone: 916-489-4990; 916-445-
5139
San Bernadino
Mrs. George Zachary
(Harriet Forden—USC)

4350 Quail Canyon Road
San Bernadino, CA 92404
San Fernando Valley
Mrs. Ronald Rindge
(Sue Slocumb—UCLA)
5253 Ambridge
Agoura, CA 91301
Phone: 213-889-9966
San Francisco
Miss Lynne Ponzini (Texas Tech)
1427 Balboa
San Francisco, CA 94118
Phone: 415-387-9575
San Francisco East Bay (Contra
Costa County) (2)
Mrs. John Fazel
(Mary Lou Loufek—Iowa St.)
66 Loma Vista Drive
Orinda, CA 94563
Phone: 415-254-7341
Mrs. Richard Fores
(Jinx Reynaud—California)
1901 Piper Ridge Court
Walnut Creek, CA 94596
Phone: 415-939-9846; 415-933-
0200
San Jose, Los Gatos, Santa Clara
Mrs. Suzie Mann
(Suzie Zingeler—Cal. St.—San Jose)
2448 Rockridge Way
Santa Clara, CA 95050
Phone: 408-247-1556; 408-996-
9670
San Mateo County
Mrs. Eugene Umland
(Pauline Sawyer—Boston)
416 Villa Terrace, # 1
San Mateo, CA 94401
Phone: 415-343-3300; 415-342-
9204
Santa Maria
Mrs. Dan Holmes
(Beverly Brownfield—Bowling
Green)
327 Highland Drive
Santa Maria, CA 93454
Phone: 805-937-6583
South Bay
Mrs. Donald C. Kraatz
(Pat Grimwood—UCLA)
2448 Via Anacapa
Palos Verdes Estates, CA 90274
Phone: 213-541-1743
South Orange County (El Toro,
Lake Forest, Mission Viejo, Laguna
Niguel) (2)
Bernette Hamel
(Denny Haden—Nebraska)
24701 Raymond Way, # 56
El Toro, CA 92630
Phone: 714-770-1217; 714-830-
6060
Mrs. Wil Chong
(Pat Norton—Cal. St.—San Diego)
26791 Lariat Circle
San Juan Capistrano, CA 92675
Phone: 714-496-0120
South Peninsula (Sunnyvale, San
Jose, Los Altos, Mt. View,
Cupertino) (B&B)
Mrs. Jeffrey C. Harp
(Janet Scott—Texas)
1544 Marlborough Avenue
Los Altos, CA 94022
Phone: 415-968-5497
Whittier
Mrs. Merwin Carty
(Mary Burton—Iowa St.)
6202 S. Alta
Whittier, CA 90601
Phone: 213-693-6815

COLORADO

Boulder
Mrs. James Friend
(Pauline Clausen—Iowa)
5444 White Place
Boulder, CO 80303
Phone: 303-443-6791
Colorado Springs
Mrs. Wayne Cooper
(Elly Welter—N. Dakota St.)
3014 Drakestone Drive

Colorado Springs, CO 80909
Phone: 303-632-5106

Denver (3) (B&B)
Mrs. Earl T. Pinney
(Pat Thomas—Oklahoma)
6915 S. Garfield Way
Littleton, CO 80122
Phone: 303-771-6689

Mrs. L. M. Petersen, Jr.
(Marcella Harris—Denver)
11057 W. 31st Avenue
Lakewood, CO 80215
Phone: 303-238-5004; 303-232-4212

Joyce Stout Smith (Colorado St.)
7120 W. 8th Pl.
Lakewood, CO 80215
Phone: 303-233-4571

Ft. Collins
Mrs. William C. Risheill
(Diane Simpson—Colorado St.)
1301 Broadview Place
Ft. Collins, CO 80521
Phone: 303-493-6475

Grand Junction
Anita Brown Fenn (Denver)
720 Golfmore Drive
Grand Junction, CO 81501
Phone: 303-243-1087

Montrose
Mrs. Ben Sprouse
(Janet Smith—Colorado College)
345 S. San Juan
Montrose, CO 81401

CONNECTICUT

Darien (2)
Mary Leachman Castle
(Northwestern)
320 Noroton Avenue
Darien, CT 06820
Phone: 203-655-8448; 203-655-1423

Mrs. Elwyn Loosley
(Elwyn Bridgens—Missouri)
One Ledge Road
Darien, CT 06820
Phone: 203-655-8985

Fairfield County (2)
Mrs. Roland Carreker
(Miriam Johnson—Syracuse)
12 Elmwood Lane
Westport, CT 06880
Phone: 203-227-9135

Mrs. William H. Armstrong
(Joan Kester—Stanford)
43 Pecksland Road
Greenwich, CT 06830
Phone: 203-661-7118

Madison
Mrs. B. Victor Chance, Jr.
(Carmella Bentley—Auburn)
599 Horse Pond Road
Madison, Ct 06443

Ridgefield
Mrs. Robert Dieterich
(Patricia Smith—Iowa)
40 Mead Ridge Road
Ridgefield, CT 06877

DELAWARE

Delmar Eastern Shore
Mrs. Greg Hammer
(Karen Garrelts—Kansas)
605 S. Crawford Avenue
Dover, DE 19901
Phone: 302-678-1485

Wilmington (B&B)
Mrs. John Hughes
(Catherine Combacker—Minnesota)
1302 Copley Drive
Wilmington, DE 19803
Phone: 302-762-1925

DISTRICT OF COLUMBIA

Washington Area (B&B)
Mrs. Joan Linder
(Joan Dufel—Drake)
19501 Tiber Court
Gaithersburg, MD 20760
Phone: 301-869-5047

FLORIDA

Anna Maria Island (B&B)
Mrs. J. Howard Pope
(Margaret McBryer—McGill)
201 Chilson Avenue, Box 1083
Anna Maria Island, FL 33501
Phone: 813-778-5135

Charlotte County—Punta Gorda
Mrs. D. H. Campbell
(Ginny Hill—Bowling Green)
P. O. Box 187
Punta Gorda, FL 33950

Ft. Lauderdale
Mrs. William Seymour
(Pat Parkinson—Ohio Wesleyan)
1390 S.W. 56th Avenue
Ft. Lauderdale, FL 33314
Phone: 305-587-3567

Homestead
Mrs. William S. Marsh
(Libby Martin—Auburn)
25201 S.W. 189th Avenue
Homestead, FL 33031

Jacksonville
Mrs. Michael Miller
(Molly Molden—Kansas)
9424 Pickwick Drive
Jacksonville, FL 32217
Phone: 904-733-6482

Miami
Miss Karen Criswell (Florida St.)
9022 N.E. 8th Avenue, 1-L
Miami Shores, FL 33138
Phone: 305-751-6559

N. Ft. Myers
Mrs. Gregory Ezell
(Nan Schmucker—Wittenberg)
3917 Hiden Acres Circle N.W.
N. Ft. Myers, FL 33903

Orlando-Winter Park (2) (B&B)
Mrs. Herbert C. Towle
(Kay Cummings—Wm. and Mary)
206 Ranch Road
Maitland, FL 32751
Phone: 305-671-0265

Mrs. James S. Conklin
(Lynn Summers—Maryland)
5015 St. Germain Avenue
Orlando, FL 32809
Phone: 305-855-1531

West Palm Beach Area
Mrs. James R. Hibbard
(Jeanne Friedberg—Ohio St.)
507 Silver Beach Road
Lake Park, FL 33403
Phone: 305-848-0906

Mrs. Joseph Henderson
(Shirley Johnson—Maryland)
1930 Indian Road
Lake Clarke Shores, FL 33406
Phone: 305-965-1416; 305-964-2030

Sarasota
Mary Pry Oettli (Missouri)
527 S. Osprey Avenue
Sarasota, FL 33577

St. Petersburg Area
Mrs. Scott Tyler
(Andrea Crane—Iowa St., Arizona St.)
10026 Yacht Club Drive S.
Treasure Island, FL 33706
Phone: 813-360-0900

Tallahassee
Mrs. Kay Vernon
(Kay Winters—Birmingham)
2750 Blair Stone Court
Tallahassee, FL 32301
Phone: 904-878-6392

Tampa (B&B)
Sandra Jaques (Florida St.)
3006 Estrella # 3
Tampa, FL 33609
Phone: 813-251-4272

GEORGIA

Atlanta (3)
Mrs. Rudolph Burda (B&B)
(Julietta Arias—California)
663 Garden Walk Drive
Stone Mountain, GA 30083
Phone: 404-498-0457

Julia Dyer Heaman (Michigan St.)
(B&B)
2121 Seaman Way
Chamblee, GA 30341
Phone: 404-457-1687

Mrs. John B. F. Dillon
(Agnes Helander—Idaho)
2726 Parkview Drive, N.E.
Atlanta, GA 30345
Phone: 404-325-9006; 404-939-8447

Columbus-Ft. Benning
Donna Downen (Tennessee)
950 Peachtree Drive, # 47
Columbus, GA 31906
Phone: 404-327-2189

LaGrange
Mrs. Louise Geer
(Louise Evans—Wisconsin)
1205 Vernon Road
LaGrange, GA 30240
Phone: 404-882-1848

Macon
Ann Marie Overton (Tennessee)
3441 Bloomfield Drive, Apt. A-2
Macon, GA 31206
Phone: 912-788-9173

HAWAII

Kauai
Mrs. F. M. Warden
(Wynne Martin—Rollins)
349-A Lawai Road
Koloa, Kauai, HI 96756

Mauai
Mrs. Charles B. Sutherland
(Connie Byington—Arizona)
P.O. Box 446
Lahaina, Maui, HI 96761
Phone: 808-661-0768

Oahu
Mrs. Joseph Demarke
(Betty Bussey—Cal. St.—San Diego)
99-1044 Lalawai Drive
Aiea, Oahu, HI 96701
Phone: 808-488-4617

IDAHO

Boise (B&B)
Isabel Jones Brassey (UCLA)
3200 Treasure Drive
Boise, ID 83703
Phone: 208-342-0242

Gooding (B&B)
Mrs. James Hollifield
(Lisa Naffiger—N. Arizona)
Route 2, Box 208
Gooding, ID 83330
Phone: 208-934-8226

Moscow
Mrs. Charles Kiblen
(Mary Thompson—Idaho)
210 N. Garfield
Moscow, ID 83843
Phone: 208-882-4285

Pocatello (2)
Mrs. Bill Watkins
(Valorie Wilson—Idaho St.)
240 Fairmont
Pocatello, ID 83201
Phone: 208-232-6263

Pam Brennan Maguire (Idaho, Idaho St.) (B&B)
527 Filmore
Pocatello, ID 83201
Phone: 208-233-8975; 208-237-0800

ILLINOIS

Aurora (B&B)
Janet E. Thompson Cassell
(Mrs. Martin L.—Illinois)
601 Redwood Drive
Aurora, IL 60506
Phone: 312-892-7482

Belleville
Mrs. Sherry Adams
(Sherry Geil—St. Louis)
336 Powder Mill Road
Belleville, IL 62223
Phone: 618-235-4100; 618-389-0123

Champaign-Urbana (B&B—over 65)

Mrs. Cloyd M. Smith
(June Carnes—Wisconsin)
508 W. Florida Avenue
Urbana, IL 61801
Phone: 217-367-0858

Chicago (2)
Sally Erikson Lewis (Bradley)
535 N. Michigan Avenue, # 704
Chicago, IL 60611
Phone: 312-644-4116

Ruth Andrea Seeler, M.D.
(Vermont) (B&B)
2431 N. Orchard
Chicago, IL 60614
Phone: 312-472-3432; 312-633-6526

Chicago Northwest Suburban (B&B) (Palatine, Arlington Heights, Barrington)
Mrs. Page Engelke
(Deanna Scott—Iowa St.)
42 E. Garden Avenue
Palatine, IL 60067
Phone: 312-359-2684

Chicago South Suburban (Park Forest, Chicago Heights, Olympia Fields)
Mrs. Karen Grafe
(Karen Nilson—Indiana St.)
308 Sheridan
Park Forest, IL 60466
Phone: 312-481-7104

Chicago West Suburban (Hinsdale, Oak Park, Downers Grove, Western Springs, Clarendon Hills)
Mrs. Gerald Asp
(Barbara Lasser—Iowa St.)
409 Warren Terrace
Hinsdale, IL 60521
Phone: 312-323-9407

Chicago West Suburban (Glen Ellyn, Wheaton, Naperville)
Mrs. Sandy Gaylord
(Sandy Hauser—Bradley)
1112 Honest Pleasure Drive
Naperville, IL 60540
Phone: 312-961-9641; 312-469-7000

Danville
Mrs. Harvey H. Acton
(Jean Campbell—McGill)
7 North Shore Terrace
Danville, IL 61832
Phone: 217-446-1232

Decatur
Mrs. Mariana Williams
(Mariana Whitmore—Iowa St., Illinois)
3167 Lake Bluff
Decatur, IL 62521
Phone: 217-424-7270

Evanston—North Shore
Mrs. Charles V. Haliday
(Polly Grove—Randolph Macon, Northwestern)
910 Romona Road
Wilmette, IL 60091
Phone: 312-251-5961; 312-256-3000

Glen Ellyn
Mrs. A. J. Pearson
(Betty Kass—Wisconsin)
22 W. 106 Sheffield Court
Glen Ellyn, IL 60137
Phone: 312-469-1944

Kankakee
Mrs. Phillip Gadbois
(Nancy Taylor—Bradley)
391 S. Chicago Avenue
Kankakee, IL 60901
Phone: 815-937-1411

Lake County (Lake Forest, Libertyville)
Mrs. Herbert J. Robine
1470 Greenbrier
Libertyville, IL 60048
Phone: 312-362-7667

Moline (B&B)
Mrs. Stanley R. Ullrick
(Nellie Weston—Northwestern)
2936—16th Avenue, Forest Hill Court
Moline, IL 61265
Phone: 309-762-6434

Normal
Mrs. William C. Gale
(Bev McDowall—Bradley)
112 Riss Drive
Normal, IL 61761
Phone: 309-452-6009

Rockford
Mrs. Donald L. Ivacic
(Peggy Phelps—Illinois)
1723 Larkspur Drive
Rockford, IL 61107
Phone: 815-226-5458

Southern Illinois (Carbondale)
Mrs. E. Hollis Merritt
(Judy Gibson—Colorado College)
1507 Taylor Drive
Carbondale, IL 62901
Phone: 618-549-8382

Sterling
Mrs. Laurence Johnson
(Sharon Huebener—Illinois)
R.R. #1
Sterling, IL 61081
Phone: 815-626-5798

INDIANA
Bloomington
Miss Evelyn vonHermann
(Northwestern)
201 S. Meadowbrook
Bloomington, IN 47401
Phone: 812-336-6912

Calumet Area (3)
Mrs. Walter Alexander
(Maggie McDonald—Indiana)
1305 Forest Park Drive
Valparaiso, IN 46383
Phone: 219-462-8723

Mrs. Robert Bielfeldt
(Barbara Arneson—N. Dakota St.)
6329 Moraine Avenue
Hammond, IN 46324
Phone: 219-932-1132

Mrs. Donald Gertz
(Joyce Marzotto—Indiana)
522 S. East Street
Crown Point, IN 46307
Phone: 219-663-7041

Elkhart
Barbara Ladzick Pearce (W.
Michigan)
26324 Cottage Avenue
Elkhart, IN 46514
Phone: 219-264-3212

Evansville
Mrs. William Montrastelle
(Marilyn Harvey—Oklahoma City)
1760 Dianne
Evansville, IN 47715

Ft. Wayne
Gayni Kessler Spalla (Michigan)
4114 Knightway Drive
Ft. Wayne, IN 46815
Phone: 219-485-2438; 219-423-7802

Greencastle
Mrs. L. Duane Bassett
(Nancy Phillips—Indiana St.)
408 Linwood Drive
Greencastle, IN 46135
Phone: 317-653-3842

Indianapolis (2)
Mrs. Vaino Ajango
(Nancy Paras—Indiana)
1632 Lancaster Court
Indianapolis, IN 46260
Phone: 317-846-4948

Mrs. William Hasen
(Norma Orlando—Ohio St.)
12026 Eden Glen
Carmel, IN 46032
Phone: 317-846-2374

Lafayette Area (B&B)
Anita Broderick Tompkins
(Mrs. Glen—Purdue)
610 S. 19th Street
Lafayette, IN 47906
Phone: 317-447-7474

Terre Haute
Mrs. Donald Lowder
(Judith Ryan—Indiana St.)
7668 N. 39th Street
Terre Haute, IN 47805
Phone: 812-466-9526

IOWA
Ames
Mrs. Helen Facto
(Helen Knudson—Iowa St.)
3416 Woodland Avenue
Ames, IA 50010
Phone: 515-292-1808

Ankeny
Patricia Allbee Brown (Iowa)
410 NW Cindy Lane
Ankeny, IA 50021
Phone: 515-964-4499; 515-964-3888

Cedar Rapids (B&B)
Mrs. James T. Miller
(Elaine Martin—N. Arizona)
3590 Cottage Grove S.E.
Cedar Rapids, IA 52403
Phone: 319-362-6882

Clinton (B&B)
Anne Wirtz (Miami)
Bluff Apts. # 15, 850—1st Avenue
Clinton, IA 52732
Phone: 319-243-7995

Des Moines
Mrs. Charles Safris
(Kathy Carstens—Nebraska)
4300—74th Street
Des Moines, IA 50322
Phone: 515-276-2996

Iowa City
Julie Dickinson (Iowa)
307-4th Avenue, # 5
Coralville, IA 52241
Phone: 319-345-7337

Newton (B&B)
Mrs. C. Porter Hamilton
(Danielle Davis—Iowa)
703 S. 6th Avenue W.
Newton, IA 50208

Quad Cities
Mrs. Jon A. Flower
(Arnetta Tedford—Iowa)
2408 Avalon Drive
Bettendorf, IA 52722
Phone: 319-355-6994

Waterloo-Cedar Falls
Mrs. William Heiple
(Karen Mikelson—Iowa)
203 Cedar Crest
Cedar Falls, IA 50613
Phone: 515-266-7852

KANSAS
Greater Kansas City
Mrs. Ronald Ott
(Sue Haines—Kansas)
7520 Aberdeen Road
Prairie Village, KS 66208
Phone: 913-649-3572

Hutchinson
Mrs. Richard Piper
(Barbara Johnson—Kansas)
3105 Cornell Drive
Hutchinson, KS 67501
Phone: 316-662-6104; 316-662-1266

Lawrence
Mrs. Richard Friede
(Victoria Neimann—Wisconsin—
Milwaukee)
3403 Trail Road
Lawrence, KS 66044
Phone: 913-842-7875

Manhattan
Mrs. William Green
(Shirley Tucker—Colorado St.)
1923 Indiana Lane
Manhattan, KS 66502
Phone: 913-539-4568

Topeka
Mrs. Samuel H. Marshall, Jr.
(Ceil Robertson—Minnesota)
1921 Westwood Drive
Topeka, KS 66604
Phone: 913-235-1447; 913-234-5000

Wichita
Mrs. George R. Tiller
(Jeanne Guenther—Denver)
16066 Citation Road
Wichita, KS 67230
Phone: 316-733-2847

KENTUCKY
Lexington (B&B)
Mrs. John A. Palumbo, II
(Ruth Ann Baker—Kentucky)
10 Deepwood
Lexington, KY 40505
Phone: 606-299-2597

Louisville (2) (B&B)
Mrs. J. Hart Speiden
(Mary Lou Freeman—Ohio
Wesleyan)
565 Upland Road
Louisville, KY 40206
Phone: 502-895-5584; 502-893-5281

Mrs. George Stacy
(Terry Taylor—Penn St.)
6910 Foxcroft Road
Prospect, KY 40059
Phone: 502-228-8678

LOUISIANA
Baton Rouge
Mrs. James Brunson
(Sally Fleming—Washington)
826 W. Lakeview Drive
Baton Rouge, LA 70810
Phone: 504-766-3284

DeRidder—Fort Polk Army Base
Mrs. Elwin Thornburgh
(Carol Edgington—Florida St.)
14 Chinquapin Drive
DeRidder, LA 70634
Phone: 318-463-7819

Greater New Orleans
Kathy Ritter
(Kathy Kenney Ritter—Louisiana
St.)
5232 Trenton Street
Metairie, LA 70002
Phone: 504-455-1519

MAINE
Bucks Harbor (Half-way between
Bar Harbor and Calais)
Mrs. Russell K. Griffith
(Mary Ann Lee—Ohio Wesleyan)
Route 92
Bucks Harbor, ME 04618
Phone: 207-255-3914

Portland Area
Susan Henry Bastek
(Mrs. John A.—Louisiana St.)
24 Bayberry Lane
Scarborough, ME 04074
Phone: 207-883-6091

MARYLAND
Baltimore
Linda Pohl (Gettysburg)
907 Wellington Road
Baltimore, MD 21212
Phone: 301-377-2787

Delmar Eastern Shore
Mrs. J. D. Martone
(Evelyn Cann—Syracuse)
Chesmar, RD # 1
Chestertown, MD 21620
Phone: 301-778-0012

MASSACHUSETTS
Acton (Boston Area) (B&B)
Mrs. Michael Havener
(Peggy Russell—Lehigh)
9 Elm Street, Apt. 8
Acton, MA 01720
Phone: 617-263-2954

Andover
Roberta Vincent Shupe (Colorado)
76 Salem Street
Andover, MA 01810
Phone: 617-475-7374; 617-475-1242

Boston West Suburban
Mrs. Herbert Allen
(Betty Bellatty—Boston)
103 Brookside Avenue
Belmont, MA 02178
Phone: 617-484-8367

Worcester (Boyleston, West
Boyleston) (B&B)
Mrs. Robert D. Murray
(Beth Ann Dowling—Kansas St.)

36 Applewood Road
West Boyleston, MA 01583
Phone: 617-835-6449

MICHIGAN
Ann Arbor (2)
Mrs. Jack Dye
(Mary Breidecker—Missouri,
Wash.-St. Louis)
2619 Manchester Road
Ann Arbor, MI 48104
Phone: 313-971-5716

Mrs. James L. Blaylock
(Peg Merriam—Illinois)
1500 Glen Leven Road
Ann Arbor, MI 48103
Phone: 313-663-8608

Battle Creek
Mrs. Steven Levenburg
(Nancy Johnson—Miami)
120 Rambling Road, Apt. 36-C
Battle Creek, MI 49015
Phone: 616-964-8277

Birmingham
Jane Feters Peters
(Mrs. Thomas—Michigan St.)
3286 Witherbee
Troy, MI 48084
Phone: 313-649-5893

Grand Rapids
Mrs. William R. Hinehline
(Carolyn Moulton—Miami)
2550 Maplewood SE
Grand Rapids, MI 49506
Phone: 616-949-9335

Jackson
Mrs. William L. Reid
(Martha Roberts—Bowling Green)
932 Thomas Drive
Jackson, MI 49203
Phone: 517-784-3550

Kalamazoo
Mrs. Laurence Oberhill
(Donna Jason—Northwestern)
10165 Point O Woods Drive
Portage, MI 49081
Phone: 616-323-2274

Traverse City
Mrs. A. E. Moenkhaus
(Ruth Siefertman—Illinois)
1738 E. Front Street
Traverse City, MI 49684
Phone: 616-947-5074

MINNESOTA
Duluth
Mrs. Charles Semrad
(Susan Getchell—Minnesota)
2726 Branch Street
Duluth, MN 55812
Phone: 218-724-7586

Minneapolis-St. Paul (2) (B&B)
Mrs. David Greven
(Barbara Person—Minnesota)
13009 Hialeah Path
Apple Valley, MN 55124
Phone: 612-454-7495

Judith Peterka Cipolla (Ohio
Wesleyan)
7021 Comanche Court
Edina, MN 55435
Phone: 612-944-3738; 612-888-4176

MISSISSIPPI
Jackson (2)
Mrs. Dennis R. Howell
(Roberta Gibson—Bowling Green)
101 Terrapin Drive
Brandon, MS 39042
Phone: 601-825-8903

Mrs. Dean M. Miller
(Gloria Horn—Kansas)
231 Ashcot Circle
Jackson, MS 39211
Phone: 601-362-3593

MISSOURI
Columbia
Mrs. Joy Fuderburk
(Joy Richard—Oklahoma)
2809 Overhill Road
Columbia, MO 65201
Phone: 314-455-4755

Greater Kansas City
Mrs. Ronald Ott
(Sue Haines—Kansas)
7520 Aberdeen Road
Prairie Village, KS 66208
Phone: 913-649-3572

Rolla
Mrs. Kent Sanborn
(Diane Hawley—Kansas)
RFD 1
Rolla, MO 65401
Phone: 314-341-3046

St. Louis
Mrs. Conway B. Briscoe
(Margaret Godbold-SMU)
319 Bellerive Blvd.
St. Louis, MO 63111
Phone: 314-832-6365
Springfield
Charlotte Widmer Lilliedahl
(Mrs. John, Jr.—Wisconsin)
1324 Raintree Place
Springfield, MO 65804
Phone: 417-881-1676

MONTANA

Billings
Mrs. R. D. Blythe
(Kaye Kyner—Iowa St.)
4640 Rimrock Road
Billings, MT 59102
Phone: 406-656-5640

NEBRASKA

Kearney
Mrs. Brad Bigelow
(Karen Johnson—Kearney)
330—19th Avenue
Kearney, NE 68847
Phone: 308-237-5634
Lincoln
Mrs. John Guthrey
(Diane Messineo—Nebraska)
7711 Myrtle
Lincoln, NE 68516
Phone: 402-489-1411
Omaha (2) (B&B)
Mrs. James Doll
(Nancy Dellere—Nebraska—
Omaha)
16084 Oak Street
Omaha, NE 68130
Phone: 402-393-3724
Mrs. Roderick Thiesen
(Peg Walker—Nebraska-Omaha)
5220 Mason
Omaha, NE 68106
Phone: 402-551-0416
Scottsbluff (B&B)
Mrs. Roger Dawdy
(Marcia Baker—Colorado St.)
1913 Avenue P
Scottsbluff, NE 69361

NEVADA

Reno Area
Linda Ward (Nevada)
5051 N. Virginia, # 6
Reno, NV 89506
Phone: 702-786-4862

NEW HAMPSHIRE

Exeter
Mrs. Edward Franq
(Cathy Coatney—Maryland)
42 Linden Street
Exeter, NH 03833
Phone: 603-772-3632
Keene
Mrs. Michael Moran
(Sara Bradley—Vermont)
74 Pinehurst Avenue
Keene, NH 03431
Nashua
Mrs. Frank K. Clark
(Barbara Ash—Texas)
10 Shelburne Road
Nashua, NH 03060
Phone: 603-882-4632
Southwest and Central New
Hampshire (2)
Mrs. Burton Bush
(Judy Johnson—Oregon St.)
Mt. Delight Road, RFD # 1, Box
202AA

Deerfield, NH 03037
Phone: 603-463-7683
Sandra Nelson Schwab
(Wisconsin—Platteville) (B&B)
Pleasant Valley Road
Center Strafford, NH 03825

NEW JERSEY

Bergen County (2)
Mrs. Emory Heaps
(Jane Blizzard—Maryland)
378 Holly Drive
Wyckoff, NJ 07481
Phone: 201-891-1624
Mrs. Henry Diercxsens
(Ann McEwen—Wisconsin)
217 Fairmount Road
Ridgewood, NJ 07450
Phone: 201-652-6010
Central Jersey
Mrs. R. K. Stafford
(Rosemary Morel—Gettysburg)
9 Parkside Avenue
Freehold, NJ 07728
Phone: 201-431-5305
Essex County—Bergen County
Sharon Reed Barrows (Vermont)
27 Park Place
Bloomfield, NJ 07003
Phone: 201-429-7382
Summit Area (2) (B&B)
Mrs. Marjorie Rognlie
(Marjorie Letnes—N. Dakota)
70 Post Road
Bernardsville, NJ 07924
Phone: 201-377-1389
Mrs. Charles Nicholas
(Ginny Linneman—Penn. St.)
Keats Road
Pottersville, NJ 07979
Phone: 201-439-2358
Little Silver (Monmouth County)
Mrs. Sylvia H. Burton
(Sylvia Simpson—Arizona)
54 Rustic Terrace
Little Silver, NJ 07739
Phone: 201-747-2267; 201-741-
4500
Middletown
Mrs. Joanne C. Rosnagel
(Joanne Scholes—Wash.-St.
Louis)
630 Harmony Road
Middletown, NJ 07748
Phone: 201-787-5295
Westfield (B&B)
Mrs. Monroe D. Macpherson
(Kay Lynch—Michigan)
141 Jefferson Avenue
Westfield, NJ 07090
Phone: 201-232-3636

NEW MEXICO

Albuquerque
Mrs. Stuart R. Campbell
(Judy Hansard—Midwestern)
10612 Cielita Linda NE
Albuquerque, NM 87111
Phone: 505-298-0571
Las Cruces
Donna McConahay O'Connor
(Colorado St.)
Rt. 3, 4835 Senita
Las Cruces, NM 88001
Phone: 505-522-1616
Los Alamos
Martha Lee Dougherty DeLanoy
(Wyoming)
1010 Myrtle
Los Alamos, NM 87544
Phone: 505-662-9283; 505-667-
7661
Luna (Gila Ntl. Forest)
Judy Loken McCutcheon (N.
Arizona)
Box 74
Luna, NM 87824
Phone: 505-547-2623

NEW YORK

Buffalo (Erie County)
Mrs. Robert Simpson
(Elizabeth Dunnington—California)
8970 Roll Road

Clarence, NY 14031
Phone: 716-741-3452
New York City
Ms. Linda Zuffa-Ashard (Indiana
St.)
336 E. 86th Street, PHB
New York, NY 10028
Rochester
Mrs. John Nicastro
(Terri Carbone—Boston)
27 Gentian Way
Fairport, NY 14450
Phone: 716-223-1402
Sea Cliff
Judith Snyder Clark (Syracuse)
69-15th Avenue
Sea Cliff, NY 11579
Syracuse
Mrs. John Sassaman
(Barbara Missert—Syracuse)
4842 Hyde Road
Manlius, NY 13104
Westchester County (B&B)
Miss Kathleen Kincaid (Indiana)
1 Hillside Avenue
Pelham, NY 10803
Phone: 914-738-5159; 914-696-
3649

NORTH CAROLINA

Charlotte
Mrs. John Talkington
(Mary Clausing—Oklahoma)
47 Newriver Trace, River Hills
Plantation
Clover, SC 29710
Phone: 803-831-7422
Durham-Chapel Hill
Mrs. Ken L. Wilson
(Margie Reynolds—Kent St.)
5408 Beaumont Drive
Durham, NC 27707
Phone: 919-489-8852
Raleigh
Mrs. Thomas L. Law
(Gay Barnes—Wm. and Mary)
3404 Edgemont Drive
Raleigh, NC 27612
Phone: 919-787-8662

NORTH DAKOTA

Fargo-Moorhead (3)
Mrs. Quentin Burdick
(Jocelyn Birch—Northwestern)
1110—9th Street So.
Fargo, ND 58102
Phone: 701-235-8457
Mrs. Ellend J. Palmer, Jr.
(Grace Bergan—N. Dakota St.)
316 Eddy Court
Fargo, ND 58102
Phone: 701-237-5014
Dr. Georgianna Burt
(Georgie Metzinger—N. Dakota St.)
1201—14th Avenue N.
Fargo, ND 58102
Phone: 701-232-3017; 701-232-
3261
Grand Forks-East Grand Forks,
MN (2)
Mrs. Debra Hoffman
(Debra Fisk—N. Dakota)
3514—11th Avenue N., Apt. 13
Grand Forks, ND 58201
Phone: 701-775-3330
Mrs. Mary Weaver
(Mary Davenport—N. Dakota)
219 Lincoln Drive
Grand Forks, ND 58201
Phone: 701-775-3264
Minot
Mrs. William H. Blore
(JoAnn Nelson—N. Dakota)
315—9th Avenue S.E.
Minot, ND 58701
Phone: 701-838-4565

OHIO

Greater Akron (B&B)
Mrs. Frank Conner
(Ann Denison—Bowling Green)
2049—27th Street
Cuyahoga Falls, OH 44223
Phone: 216-929-3466

Canton-Massillon
Mrs. Donald Seibert
(Connie Shult—Kent St.)
606 E. Maple Street
North Canton, OH 44720
Phone: 216-499-7058
Cincinnati (2)
Mrs. Richard Gorman
(Becky Perkins—Oklahoma St.)
3751 Hyde Park Avenue
Cincinnati, OH 45209
Phone: 513-731-8588
Camile A. Cestone (Bowling
Green) (B&B)
6403 Clough Pike, Apt. 3
Cincinnati, OH 45244
Phone: 513-231-3396
Cleveland East (2)
Mrs. David Martinson
(Judith Broughan—Miami)
2153 Garden Drive
Wickliffe, OH 44092
Phone: 216-585-4323
Marianne Sprague Paul
(Wisconsin)
289 S. Chillicothe Road
Aurora, OH 44202
Phone: 216-562-9065; 216-562-
9136

Cleveland West (B&B)
Mrs. Roger Cherryholmes
(Marcia Fitzpatrick—Ohio St.)
2455 Boxberry Lane
Broadview Heights, OH 44147
Phone: 216-237-4416
Columbus
Maryanne Jones (Ohio Wesleyan)
3978 Karl Road, Apt. 31
Columbus, OH 43224
Phone: 614-267-7925
Dayton (B&B) (2)
Mrs. Richard L. Kaiser
(Evie Limmer—Texas)
4350 Delco Dell Road
Dayton, OH 45429
Phone: 513-299-1282
Mrs. Douglas Bauer
(Judy Henderson—Bowling Green)
2920 Vale Drive
Kettering, OH 45420
Phone: 513-293-2421
Middletown
Mrs. Joseph E. Newlin
(Tina Rogers—Wittenberg)
4401 Nelson Road
Middletown, OH 45042
Phone: 513-424-1120
Norwalk
Mrs. John Andrews
(Sally Dickinson—Bowling Green)
184 Whittlesay Avenue
Norwalk, OH 44857
Phone: 419-668-6669

Springfield
Mrs. M. J. Pavelka
(Joyce Yerty—Wittenberg)
1371 Tenner Place
Springfield, OH 45502
Phone: 513-322-2014
Toledo (B&B)
Mrs. John Strader
(Evelyn Alexander—Wisconsin)
4618 Weldwood
Sylvania, OH 43560
Phone: 419-882-3773
Youngstown
Mrs. Gene Pusateri
(Pamela Oyer—Bowling Green)
162 Shorehaven Dr.
Youngstown, OH 44512
Phone: 216-758-0396

OKLAHOMA

Bartlesville
Mrs. Patrick H. Roark
(Louise Kane—Kansas)
946 S.E. Briarwood
Bartlesville, OK 74003
Phone: 918-333-6297
Broken Arrow
Mrs. Darrell Kana
(Ruth Olson—N. Dakota)
8313 Shadowood Avenue

- Broken Arrow, OK 74012
Phone: 918-251-9209
- Clinton-Weatherford (B&B)
Mrs. J. L. Thornbrough (Martha Roach)
333 S. 14th
Clinton, OK 73601
Phone: 405-323-0823
- Muskogee
Mrs. M. O. Lewis
(Helen Denman—Penn St.)
5 Leathers Lane
Muskogee, OK 74401
Phone: 918-682-7165
- Norman
Mrs. Edwin L. Moore
(Betse Slater—Randolph-Macon, Oklahoma)
1518 Ann Arbor
Norman, OK 73069
Phone: 405-329-0052
- Oklahoma City (B&B over 65)
Mrs. Larry Nowlin
(Linda Tysor—Oklahoma St.)
3040 NW 65th
Oklahoma City, OK 73112
Phone: 405-843-1014
- Tulsa
Lynda Kay Mathews VanFossen
(Oklahoma St.)
10904 E. 26th Street
Tulsa, OK 74136
Phone: 918-622-2887
- Stillwater
Betty Gunn Hodnett
(Mrs. Ernest—Oklahoma St.)
1020 W. Will Rogers Drive
Stillwater, OK 74074
Phone: 405-372-0220
- OREGON**
Corvallis (B&B)
Mrs. Whitney Ball
(Jane Pendleton—British Columbia-Oregon St.)
2495 S.W. Whiteside Drive
Corvallis, OR 97330
Phone: 503-757-7404
- Eugene
Mrs. James Renton
(Nancy Buell—Oregon)
3235 Chambers
Eugene, OR 97405
Phone: 503-345-8115
- Portland
Katherine Kauffman Kocourek
(Wyoming)
245 W. Exeter
Gladstone, OR 97027
Phone: 503-657-5395
- PENNSYLVANIA**
Cooksburg (Cooks' Forest)
Mrs. Robert Wheat
(Mary Craft—Penn St.)
2075 Springhill Road
Cooksburg, PA 16217
- Lancaster Area
Tippy Strawn Sheraw (Penn St.)
46 Peach Lane
Lancaster, PA 17601
- Lehigh Valley
Mrs. William R. Elleston
(Marilyn Rennacker—Syracuse)
227 W. Lafayette Street
Easton, PA 18042
Phone: 215-258-9546
- Lewisburg
Joanne Risley Artz (Vermont)
220 N. 2nd Street
Lewisburg, PA 17837
Phone: 717-524-7460; 717-524-3056
- Lititz (Lancaster County) (B&B)
Mrs. G. Marlin Spaid
(Lillian Brighton—Penn St.)
625 S. Spruce Street
Lititz, PA 17543
Phone: 717-626-2446
- Philadelphia West Suburban
Mrs. F.A. Cline, Jr.
(Ann Reese—Penn St.)
409 Cheltona Avenue
Jenkintown, PA 19046
Phone: 215-886-9796
- Philadelphia West Suburban
Mrs. Harry Zahn
(Mary Newell—Wisconsin)
308 Oak Hill Lane
Newtown Square, PA 19073
Phone: 215-356-4775
- Pittsburgh—North Hills
Mrs. Millicent Paisley
(Millicent Beaver—Penn St.)
150 Richmond Circle
Pittsburgh, PA 15237
Phone: 412-366-5584
- Pittsburgh—South Hills
Mrs. Herbert Amick
(Marilyn Kerr—Kent St.)
1740 Taper Drive
Upper St. Clair, PA 15241
Phone: 412-221-5662
- Pittsburgh—East Suburban
Mrs. Philip Wyche, Jr.
(Rosamond Fraser—Oregon)
424 Woodland Hills Drive
Pittsburgh, PA 15235
Phone: 412-241-3518
- Pottstown-Schwenksville
Barbara Carpenter Kott (Penn St.)
R.D. 2, Mill Road
Schwenksville, PA 19473
Phone: 215-287-8540
- State College
Mrs. J. G. Hawthorne
(Jean Duncan—Penn St.)
1311 Backway Drive
State College, PA 16801
Phone: 814-237-6807
- Northeastern Pennsylvania
Judith Ruff Stocks (Wm. and Mary)
RD 6, Box 143, Shadow Brook Drive
Tunkhannock, PA 18657
Phone: 717-836-2095
- Unionville-Kennett Square
Eileen Nolan Beck (Kent St.)
R.D. #1
Unionville, PA 19375
- RHODE ISLAND**
Kingston
Jan Montgomery (Syracuse)
223 Annaquatucket Road
North Kingston, RI 02852
Phone: 401-295-0790; 401-792-2288
- Providence
Kay Adams Cassill (Iowa)
22 Boylston Avenue
Providence, RI 02906
Phone: 401-751-4949
- SOUTH CAROLINA**
Charleston (B&B)
Mrs. Ronald Templeton
(Julia Terry—SMU)
97 Norview Drive
Charleston, SC 29407
Phone: 803-571-1501
- Columbia
Mrs. L. Kennedy Boggs
(Maureen McGraw—Michigan St.)
4341 Shorebrook Road
Columbia, SC 29206
Phone: 803-782-8682
- Greenville (B&B)
Mrs. J. Ellison Raines
(Joyce Ellison—Auburn)
196 Chapman Road
Greenville, SC 29605
Phone: 803-271-1194; 803-233-1633
- Spartanburg (B&B)
Mrs. Paul S. Lofton, Jr.
(Mary Beth Mireur—SW Texas St.)
404 E. Park Drive
Spartanburg, SC 29302
Phone: 803-583-0553
- SOUTH DAKOTA**
Rapid City (2)
Mrs. Wiley Hughes
(Joan Myhren—Nebraska)
R.R. 4, Box 1124 A
Rapid City, SD 57701
Phone: 605-341-3353
- Ms. Jane Gibson
(Jane Fiske—SMU)
- 407 Nordbye Lane
Rapid City, SD 57701
Phone: 605-342-0901; 605-342-0280
- Sioux Falls
Mrs. Hal Mandl
(Marianna Revell—Vanderbilt)
Route # 2, Box 104
Colton, SD 57018
Phone: 605-446-3515
- TENNESSEE**
Jacksboro
Mrs. Jimmy Wilson
(Rhoda Wentsch—Oklahoma St.)
509 Shallow Creek, Meyers Street
Jacksboro, TN 37757
Phone: 615-562-7269; 615-562-0932
- Knoxville (B&B)
Sherry Robertson (Tennessee)
7213 Arlie Road, Halls Crossroads
Knoxville, TN 37918
Phone: 615-922-2808
- Memphis
Pam Gallagher (Memphis St.)
4291 Paula
Memphis, TN 38116
Phone: 901-398-2733
- Nashville (2) B&B
Mrs. Timothy Jacobson
(Katherine Barrett—Colorado College)
3933 Brighton Road
Nashville, TN 37205
Phone: 615-298-1195
- Elise Clark Anderson (Ohio Wesleyan)
2203 Old Hickory Blvd.
Nashville, TN 37215
Phone: 615-383-7358
- TEXAS**
Amarillo (B&B)
Mrs. Winifred H. Dunaway
(Winifred Higginbotham—Texas)
1506A W. 11th Street
Amarillo, TX 79101
Phone: 806-373-7546
- Arlington
Mrs. William Lace
(Laura Markhouse—Texas)
3405 Somerset
Arlington, TX 76013
Phone: 817-461-0154
- Austin
Mrs. James M. Michael
(Jane Pfeiffer—Texas)
3307 Whiteway Drive
Austin, TX 78757
Phone: 512-451-4177
- Beaumont
Mrs. Hal Laine
(Shirley Johnson—Lamar)
6845 Marshall Place
Beaumont, TX 77706
Phone: 713-866-5555
- Corpus Christi (B&B)
Mrs. Charles D. Adams, Jr.
(Patricia Mapes—Texas)
6110 Boca Raton Drive
Corpus Christi, TX 78413
Phone: 512-853-8055
- Dallas (B&B)
Mrs. Don Baldwin
(Harriet Lishen—Missouri)
2712 Russwood
Plano, TX 75075
Phone: 214-867-0573
- Dallas Richardson (B&B)
Gene White Joyce (Texas)
910 Glen Cove
Richardson, TX 75080
Phone: 214-235-1724
- Ft. Worth
Mrs. Harry T. Stucker
(Anna Muhlenbruch—Kansas)
3817 Arroyo Road
Ft. Worth, TX 76109
Phone: 817-923-5305
- Houston (3)
Mrs. Gerald Hise
(Nathalie Irwin—Illinois)
- 14907 Broadgreen
Houston, TX 77079
Phone: 713-497-6748
- Brenda S. Ball (Oklahoma)
9221 Pagewood, Apt. 199
Houston, TX 77063
Phone: 713-782-3727
- Mrs. John Blinn
(Caroline Sawtelle—Rollins)
5405 Longmont
Houston, TX 77056
Phone: 713-965-0812; 713-960-1520
- Hurst-Eules, Bedford Area
Mrs. Gordon Doggett
(Sabra Hester—Texas Wesleyan)
3136 Spring Lake
Bedford, TX 76021
Phone: 817-281-6937
- Lubbock
Mrs. Dick Pollard
(Susan Fletcher—Colorado)
6609 Norfolk
Lubbock, TX 79413
Phone: 806-799-7761
- Midland
Mrs. H. LaDoyce Lambert
(Gloria Hicks—Arizona)
1404 Murray
Midland, TX 79701
Phone: 512-684-7714
- Odessa (B&B)
Mrs. Page Greene
(Barbara Hurley—Texas)
1455 Pagewood
Odessa, TX 79761
Phone: 915-362-3018
- San Antonio
Mrs. Robert A. Hein
(Nancy Tieken—Texas)
413 Ridgmont Avenue
San Antonio, TX 78209
Phone: 512-824-9229
- Wichita Falls
Anne Ginther Jorgensen
(Mrs. Robert—Michigan St.)
4603 El Capitan
Wichita Falls, TX 76310
Phone: 817-692-7340
- UTAH**
Salt Lake City (B&B)
Mrs. James Levy
(Barb Trites—Nebraska)
2197 South 2200 East
Salt Lake City, UT 84109
Phone: 801-487-2895
- VERMONT**
Burlington (B&B)
Marian Doty Bickford (Penn St., Goucher)
24 Valleyview Drive
Essex Jct., VT 05452
Phone: 802-878-4158
- VIRGINIA**
Charlottesville
Mrs. D. Pierce
(Karen Stephan—Wm. and Mary)
103 B Stewart Circle
Charlottesville, VA 22901
- Norfolk
Mrs. Angelo Terry Heaton
(Byrd Smith—Wm. & Mary)
8277 Baywood Court
Norfolk, VA 23518
- Northern Virginia (Alexandria)
Mrs. James W. Heegeman
(Margo Twiss—Wisconsin)
906 Place 1, 5500 Holmes Run Pkwy.
Alexandria, VA 22304
Phone: 703-823-2677
- Richmond
Mrs. William E. Trout, Jr.
(Harriet McCurley—Goucher)
35 Towana Road
Richmond, VA 23226
Phone: 804-288-1334
- WASHINGTON**
Pullman
Mrs. Norman Shoup
(Betty Featherstone—Washington St.)

N.E. 1040 B Street
Pullman, WA 99163
Phone: 509-332-1382
Seattle (B&B)
Mrs. James C. Cairns
(Billie Larson—Washington St.)
107 E. Lake Sammamish Road N.
Redmond, WA 98052
Phone: 206-885-4447

Spokane
Robin Peters Sorensen (Idaho)
3714 E. 32nd Avenue
Spokane, WA 99203
Phone: 509-534-7782

Tacoma
Mrs. Austin Burch
(Alice Babst—Nebraska)
7010 Topaz Drive SW
Tacoma, WA 98498
Phone: 208-582-0964

Vancouver
Mrs. P. Brooks Madison
(Johanne Kuntz—Cal. St.-San Diego)
1210 NE 126th Street
Vancouver, WA 98665
Phone: 206-573-2587

Kamiah Butte County Park
Mrs. Michael Werner
(Vivian Dietrich—Lamar)
Rt. 1, Box 190
Palouse, WA 99161

WEST VIRGINIA

Morgantown
Mrs. Neoma Crynock
(Neoma Saul—W. Virginia)
449 Grand Street
Morgantown, WV 26505
Phone: 304-296-6513

WISCONSIN

Appleton (2)
Mrs. Richard Martinek
(Clara Hoffer—Northwestern)
1444 W. Prospect
Appleton, WI 54911
Phone: 414-734-4450

Mrs. Paul Williamson
(Marcia Zimmerman—Michigan)
1611 West Lorain Court
Appleton, WI 54911
Phone: 414-733-3003

Beaver Dam
Miss Joan Schneider (Wis.-Oshkosh)
1236 Circle Drive E
Beaver Dam, WI 53916

Columbus (B&B)
Mrs. John F. Roche
(Mary Froeschle—N. Dakota St.)
Rt. 2
Columbus, WI 53925
Phone: 414-623-2778

Madison
Mrs. James Spahn (B&B)
(Charlotte Irgens—Wisconsin)
4133 Council Crest
Madison, WI 53711
Phone: 608-233-6033
Greater Milwaukee Area (2)
Elise Bossart Bell

(Mrs. Donald L.—Wisconsin)
6755 N. Lake Drive
Milwaukee, WI 53217
Phone: 414-352-8094

Mrs. Douglas Brown
(Cathy Martin—Iowa St.)
4305 N. Marlborough Blvd.
Shorewood, WI 53211
Phone: 414-964-7937

Platteville
Mrs. Jerry Klessig
(Donna Neary—Wis.-Platteville)
Golf View Road, R. #3
Platteville, WI 53818
Phone: 608-348-4276

Ripon, Berlin, Green Lake
Mrs. Clyde Boismenue
(Roberta Stuart—Northwestern)
695 Sandstone Road
Ripon, WI 54971
Phone: 414-748-5367

Shiocton
Mrs. Ronald Conradt
(Marilyn Bruce—Wis.-Oskosh)
Box 32
Shiocton, WI 54170
Phone: 414-986-3698

Wausau
Mrs. Alton G. Swanson
(Barbara Harris—Lake Forest)
1015 Eighth Street
Wausau, WI 54401

WYOMING

Cheyenne
Mrs. Lorraine Grigsby
(Lorraine Forister—Wyoming)
R.R. #1, Box 802
Cheyenne, WY 82001
Phone: 307-638-6082

Douglas, Cooper, Glenrock
Mrs. Shirley Baker
(Shirley Burks—Wyoming)
Box 128
Douglas, WY 82633 or
2402 N. Clover Road
Cooper, WY 82601
Phone: 307-265-8007

Lander
Princess Humphrey Killebrew (N. Arizona)
P. O. Box 51
Lander, WY 82520
Phone: 307-332-3044
Laramie
Mrs. E. J. Hendon
(Carol Fronk—Wyoming)
RFD 2, Box 87A
Laramie, WY 82070
Phone: 307-745-3217

CANADA

ALBERTA
Calgary
Mrs. John T. Ryan
(Mona Thomson—Toronto)
3819-6 Street S.W.
Calgary, Alberta T2S 2M9, Canada
Phone: 403-243-0688

BRITISH COLUMBIA

Vancouver (B&B)
Debbie Phippen (British Columbia)
950 E. 33rd Avenue
Vancouver, BC, V5V 3A6, Canada
Phone: 604-325-0773

ONTARIO

Guelph (B&B)
JoLynn Edgington Folusewych
(Kent St.)
2 Augustine Court
Guelph, Ontario N1G 2Y8, Canada
Phone: 519-821-3267

Ottawa (B&B)
Mrs. Graeme Barber
(Sally Whitby—Toronto)
504 Highland Avenue
Ottawa, Ontario K2A 2J7, Canada
Phone: 613-722-1407

Thunder Bay (B&B)
Margaret Werte Craig (W. Ontario)
211 Hinton Avenue
Thunder Bay, Ontario P7A 7E5,
Canada

Windsor (B&B)
Mrs. Americo Dean, Jr.
(Barbara Galbraith—Michigan St.)
RR #1, 606 Old Tecumseth Road
Belle River, Ontario N0R 1A0,
Canada
Phone: 519-735-9786

QUEBEC

Montreal
Wendy Hand Bohn (McGill)
645—45th Avenue
Lachine, Quebec H8T 2M4,
Canada
Phone: 514-634-4391

AUSTRALIA

Como, Western Australia
Barbara Whilldin (Mankato St.)
57B Robert Street
Como, Western Australia, Australia
6152

CANAL ZONE

Balboa (B&B)
Mrs. Marvin Ward
(Jackie White—Vanderbilt)
Box 192
Balboa Heights, Canal Zone

ENGLAND

Lake District (B&B)
Mrs. Ira Fishman
(Allene Osborn—UCLA)
"Rosemount," Lake Road
Windermere, Cumbria, England
LA23 2EQ
Phone: (STD 09662) (Windermere
3739)

GERMANY

Heidelberg, Frankfurt
Christine Frances Podd (Indiana)
Dependent Schools, Box 146
APO, New York, NY 09021

MEXICO

Mexico City
Miss Elena E. Hannan (Colorado
College)

Apartado, Postal 5-225
Mexico 5, D.F., Mexico
Phone: 905-568-1253; 905-511-1896

NEW ZEALAND

Invercargill
Mrs. A.C. MacPherson
(Ada Russell—Wyoming)
Springhills, #6 RD
Invercargill, New Zealand

NORTHERN BAVARIA

Bad Kissingen
Elizabeth Goeller Buehler (Penn St.)
c/o 2nd LT Talph C. Buehler
"C" Battery, 2/41st FA
APO, New York, NY 09330
Phone: 09708-1482

NORWAY

Oslo
Mrs. O.J. Gilbo
(Kathy Benyo—Kent St.)
Halden Terrasse, 16B
1330 Oslo Lufthavn, Norway
Phone: 53-86-91

REPUBLIC OF SINGAPORE

Mrs. Peter Norton
(Mary Kelly—California)
c/o Amoco Far East Exp. Co.
Box 3744
Singapore, Republic of Singapore

REPUBLIC OF CHINA

Taipei, Taiwan (2)
Barbara Anderson (Wisconsin)
#3, Alley 5, Lane 10, Street 4
Tienmou, Taipei, Taiwan
Phone: 871-9790

Mrs. Peter M. Iverson
(Nancy Armstrong Wolcott—Wisconsin)
J-2, U.S.T.D.C.
Box 24, APO
San Francisco, CA 96263 or
207A-B.O.T., AREAF
Yang Ming Shan, Taipei, Taiwan
Phone: 861-6049

REPUBLIC OF THE PHILIPPINES

San Miguel, Subic Bay, Clark AF
(B&B)
Mrs. H.C. Schilling, Jr.
(Theresa Chuka—Arizona St.)
P.O. Box 790, NCSP
FPO San Francisco, CA 96656
Phone: 886-3831

SAUDI ARABIA

Dhahran
Patricia Ames London
(Mrs. E. W.—Kansas)
Box 1157
APO New York, NY 09616

WEST INDIES

Curacao
Mrs. Judith Ann Riese
(Judith Gaudin—British Columbia)
Patrick Plantation, District #3
Curacao, Netherlands West Indies



House Corporations to Meet

Delta Kappa Chapter, 7:00 p.m.,
April 28, 1980, chapter house, Lehigh
University, Bethlehem, Penn.

Delta Eta Chapter, 11:00 a.m., June
18, 1980, Glendale Federal Savings
Community Room, 100 Newport
Center Dr., Newport Beach, Cal. If
unable to attend please contact Bob-

bie Allen, 5092 Harcum, Irvine, CA
92715.

Beta Chapter, 11:00 a.m., April 16,
1980, chapter house, 1520 S. Univer-
sity, Ann Arbor, Mich.

Delta Mu Chapter, 8:00 p.m., April
14, 1980, chapter house, 6 Union St.,
New Brunswick, N.J.

Lunar Lights

At Purdue, CONNIE BROWN is cheerleading captain and CHERYL MOLLINGSWORTH is a senior board member of Purdue's Grand Prix. She's in charge of Grand Prix Girls. NANCY BUSH was invited to join the national leadership honorary, Omicron Delta Kappa.

JESSIE GREENE is an announcer for the USC radio station. DEBBIE JOHNSON is a member of the USC Black Smithsonian Club and CATHY BECKTEL is a flag girl. PAM BOREN dances for the USC dance team, Knottsberry Farm and Disneyland. HEIDI KLEINMAUS was named Most Outstanding Pledge of 1979 for all sororities at USC. JULIE JOHNSON was elected to Order of Omega, an honorary Greek society, and JAN THROOP was a finalist for the Ambassador of Disneyland. DEBBIE JOHNSON is one of two students at USC chosen to serve an internship on the Norman Topping Governing Board. GLORIA SWANSON NELSON (Oklahoma), Gamma Phi Beta's NPC Delegate, is the new chairman of the NPC Housing Committee.

PEARL GOODWIN, JUANITA JOHNSON and DOROTHY SANDBERG are new alumnae initiates of Alpha Zeta and Austin Alumnae Chapters. They did a service project for Camp Sechelt as part of their pledge education. CHERYL BANKS is a member of the Texas Relays Committee at the University of Texas.

BARTLESVILLE ALUMNAE held their annual Paper Patch to benefit camping. Invited patrons purchase stationery, note cards, recipe cards, gifts and Christmas cards.

DIANE DUFFER (Oklahoma St.) played the second lead in "The Lion That Wouldn't." She was the lion's trainer.

At the University of Nevada, ANNE WILLY was chosen Miss Indian Nevada and HEIDI ULHORN is Miss Teenage Nevada.

LYNN SPRINGER (Washing-



Merry Ann Ottosen Leftwich (Goucher) enjoys the replica microscope presented to her in recognition of her 25th anniversary as an histologic technician and associate member of the American Society of Clinical Pathology. She directs the activities of a private lab in La Jolla.

ton-St. Louis) is the national president for the Decorative Arts Society. She is curator of decorative arts at the St. Louis Art Museum and one of the founders of the society.

LEIGH BAILEY, NANCY TYNER, JEANNETTE GRAND and MICKI MASTERS were chosen to serve on the Memphis State University Ambassador Board. The board works with university officials on a number of programs and issues.

JEAN CUSHING is Greek Week chairman at Southern Technical Institute. She serves the Student Government Association as entertainment chairman.

WENDY MOTLONG (Texas Tech) has held local and area offices in Angel Flight. She received the Vice-Commandant's Award at ROTC summer camp.

DEBBIE COX (Idaho St.) was first runner-up to Miss Idaho and attended a first runner-up pageant.



Bartlesville alumnae check last minute details for their annual Paper Patch.



Cheryl Dooley (Oklahoma) is Miss Dance Oklahoma.

At the University of Iowa, TERESA VILMAIN was selected co-chairman of the Muscular Dystrophy Dance-a-Thon. She's also a student government senator, representing the Greeks.

WICHITA STATE Gamma Phi received four first place trophies and one second place trophy for their production in the Hip-podrome Show.

Career Corner

It's A Working World

By Evogene Wallace Sales
(Iowa St.)

Today's members spend their days doing more than caring for their families, doing volunteer work, and participating in Gamma Phi Beta activities. They do all this plus going back to school and starting new careers—or returning to those started earlier in their lives. How do these Kansas Citians manage it all?

Pat McDermott Forman (Kansas St.), mother of five sons ranging from junior high to college age, recently joined the work force. A business administration major in college, she has just associated with a large real estate company in the area.

Some of her days are frantic and extend well into the evening. Reconciling her erratic schedule with that of her salesman husband is a challenge all its own. She finds her

work always exciting and sometimes awesome as she becomes involved in its complexities.

Another newcomer to the working world is Joy Hillerns Hesler (Kansas). Finding herself spending more and more of her time at home waiting for breaks in the busy schedules of her children aged 10 and 12, Joy decided she'd enjoy outside stimulation. She chose to work in a travel agency, planning trips for clients.

Although she considers her job to be part-time, she finds it necessary to be in touch with her office at some time on most days. Her hours are flexible and her home a reassuring five minutes away, should she be needed. Joy has already had a bonus in her new career: the discovery that her children have become more self-sufficient in the brief time she has been a working mother.

Betty Campbell Hocker (Missouri) is director of the Headstart Program of the Shawnee Mission School District. When she decided to return to school for her master's degree in social work in 1966, she was required to attend school on a full-time basis. Her children were in the first and third grades. She remembers that time as a pressured and cramped space during which the family "ate out a lot." Until her children were in high school, she worked part-time.

Her concerns in her present job include teachers, finding children who need and qualify for the program, consultations with parents and proper health care as needed. There is constant worry over funds and she donates her time in the summer. She also serves as treasurer of the annual Gamma Phi Antique and Arts Show.

Ten years ago, Caroline Stark Records (Northwestern) sent the



Judy Wilkins Schumann (Iowa St.) is ready to hang a painting amid some of the prints and graphics which are the backbone of the growing business she and her husband have built.



Caroline Stark Records (Northwestern) adds the finishing touches to a painting in her store front studio workshop.

youngest of her three children to junior high and returned to painting. Her B.S. degree and an M.A. earned at the Kansas City Art Institute had prepared her to pursue her profession. For the past seven years, she has shared a studio with two other artists. Her paintings hang in elegant business suites and in private collections. One of her canvasses won a prize in a recent art exhibition.

Another Gamma Phi in the art business is Judy Wilkins Schumann (Iowa St.), President of the Kansas City Alumnae Chapter. When her husband decided to embark on a new career, Judy

helped him start Royce Galleries, Ltd.

The galleries began by specializing in graphics, prints and posters. They now supply art dealers and other galleries, handle contract sales to hospitals and offices and do custom framing.

Judy, who does all the buying and a great deal of the contract sales work, would find it difficult to return to her former lifestyle. While working for Hallmark, she acquired, according to her husband, an instinct for what will sell.

Charlene Holloway Campbell (Missouri) worked for many years

in public relations. When she married Gould Campbell, they found his job as a manufacturers' representative kept them apart, so Charlene took on an accessory line and traveled with him.

Prior to his death, Gould was involved in the furnishing of new homes. Charlene became involved too, and is selection coordinator. She advises home buyers in choosing decorative options and even small details such as the location of phone jacks.

The gratitude of her clients, which some express with embraces and a few tears, makes her job deeply satisfying.

In Memoriam

ALPHA

Mary Ellen Trezise Palmer
Ethel Rixon Sibus

BETA

Evelyn Roehm May
Dorothy Peet Stewart

GAMMA

Lorine Pollack Bingman
Eleanor Fisher O'Brien
Lina Duffy Story
Majory Biggar Wilson

ZETA

Lillian Kifer Mann

ETA

Alice Benson Allen
Carol Craft Buckland
Genevieve Atkinson Reed

THETA

Mary Belle Alkire Baker
Shirley Ammerman Harrod
Doris Moser Hermann
Mary Austin Neumann
Genevieve Young Overman
Elizabeth Morgan Reeves

KAPPA

Rose Mary Kenny Bailey
Florence Wright Brooks

LAMBDA

Mary Reitze Stokes

MU

Doris Barrett
Jane Smith Fields
Margaret Brown McConnell

NU

Lelaine West Gardinier
Sophie Catlin Spears

XI

Mary Ramstedt Jessup
Gwyneth Mackinlay Kindrick

PI

Burdette Carpenter Corley

RHO

Elizabeth Jacobson Rogers

SIGMA

Pattye Wadley Boand
Maxine Van Pelt McElhinny
Lila Martin Quinn
Mary Haskins Schumacher

TAU

Hazel Nevius Rubidge

PHI

Margaret Frances Johnson
Josephine Christmann Kraeger
Cecile Mitchell Lincoln
Edith Sylvester Magarrell
Lucile S. Riedel

CHI

Marguerite Arens Bechtol
Laverne Stewart Olsen

OMEGA

Miriam Buettell Ecklund

ALPHA BETA

Dorothy Colton Zeh

ALPHA GAMMA

Anna Brown Dolliver
Grace Mahoney

ALPHA DELTA

Barbara McFarland Peter

ALPHA EPSILON

Genevieve Gardner Roberson

ALPHA ZETA

Mattie Belle Crook
Dolena Bollinger Goodwin
Velma Irwin Guggolz
Bennie Bryan Hendrix
Annie Campbell Hill

ALPHA ETA

Grace M. Godard

ALPHA THETA

Elizabeth Sue Kroupa
Bonnie Howard Lord

ALPHA KAPPA

Helen Magill Cowan

ALPHA NU

Lenore Wamsher Hofmann

ALPHA XI

Estaleen Wood Mitchell

ALPHA OMICRON

Walterine Barry Gustafson

ALPHA OMEGA

Margaret Hollister Hull

BETA THETA

Virginia Hastings Ritchie

BETA MU

Peggy Mauldin Flynn

BETA PI

Grace Newland Cross

GAMMA ETA

Jean Smith Talcott

Gamma Phi Beta Sorority is urging its members to make memorial gifts to the Gamma Phi Beta Foundation in memory of a lost "sister" or other loved one. Contributions, which are U.S.A. tax deductible, will be used to support the Sorority's philanthropies-camping for special children and financial aid to women students. The latter takes the form of scholarships, fellowships and grants-in-aid.

Members of the remembered one's family will be notified of your gift with a special card mailed from Central Office. Contributions should be made payable to the Gamma Phi Beta Foundation, 7503 Marin Drive, Englewood, CO 80111, and designated as a memorial to (John Doe) on the face of the check.

Help deserving young women while remembering someone you loved.

*Beverly Cummings Adams
Executive Vice President
Gamma Phi Beta Foundation*

College Collage

An annual event for the Washington State Gamma Phis is the summer function. Sun and fun seekers gathered at Newman Lake, Ida. to mix business and pleasure. The first day was spent catching up on summer activities, swimming and sunning. Then they worked on rush and discovered the relaxed atmosphere encouraged great ideas.

Delta Nu Chapter received 40 place settings of dishes from alumnae at a picnic for alumnae and their families. After the picnic they held an open house, sang and watched a slide show. At the annual senior brunch, Delta Nu presented Chapter Advisor Carol Turner the outstanding alumnae award.

At Michigan State, Beta Delta pledges organized a Chapter Development program. Two rape counselors spoke to the chapter about the myths, dangers and frequency of rape on campus.

A fund raising project they did was to make up a directory listing Beta Delta alumnae and their addresses. When alumnae receive the directory, they send a donation to the chapter to be used for house improvements.

In Nashville, Alpha Theta held its fifth annual Country Fair. Area craftsmen sold their wares, alumnae sponsored a raffle and the pledge class sold hot dogs and baked items. Proceeds of the fair were donated to several children's charities.

Beta Chi Chapter at Wichita State held its first Leukemia Rock-a-thon. Gamma Phis stationed at a local shopping center raised several hundred dollars. They also helped with the Leukemia Radio-a-thon and collected donations for muscular dystrophy.

Delta Etas at California-Irvine held a cookie exchange with Delta gamma. Everyone brought her favorite cookies and the recipe on an index card. Another night, they held a pizza exchange with Delta Delta Delta. A great way to get to know other Greeks.



The Gamma Phi Beta football team and their coaches are ready to play a game in the Gamma Phi Beta sponsored Greek Sports Week. Proceeds of the University of Illinois event were donated to Camp Sechelt.



Sleepy executive officers are ready to have some members of Beta Rho Chapter treat them to a surprise 5:45 a.m. breakfast.



Alpha Gammas entertain their fathers at Dad's Day in Reno. They played baseball, participated in relay races and enjoyed a banquet.

Missing Persons Bureau

If you know the addresses of any of these "lost" members, please notify Gamma Phi Beta Central Office, 7503 Marin Drive, Englewood, CO 80111.

SYRACUSE (Alpha)

Elaine Baxter Bailey '36
Charlotte M. Arbogast '45
Dorothy Morgan Anderson '65
Sherry Abel '68

MICHIGAN (Beta)

Doris Harrington Ancker '24
Patricia Hugg Allan '38
Carol Jeanne Andersen '64
Leslie Jeanne Aderhold '70
Roberta Anderson '70

WISCONSIN (Gamma)

Mary Louise Allen '10
Ruth Alice Allen '09
Ruth Dvorak Bandelin '47
Jean Day Alexander '52
Jacqueline Haglund Anderson '58
Margaret Arrowsmith '68
Margaret E. Antonius '71
Johanna Steggart Andrews '72

BOSTON (Delta)

Jessie Louise Adams 1893
Helen Edson Archer 1898
Marguerite Hill Alden '15
Dorothy Pearson Annas '23
Fannie Ashley '25
Hazel Anthony '28
Scotia Ballard '32
Mary Davenport Baird '40
Nona Armstrong '47
Joan Atwater '47
Ruth Goodwin Adki '63

NORTHWESTERN (Epsilon)

Helen Ballack '23
Evelyn Black Anderson '28
Kathryn Risher Alice '34
Edith Darling Anderson '61
Suzanne Sparks Avola '65

GOUCHER (Zeta)

Helen Temple Allan '33
Gertrude McKeon Armstrong '52

CALIFORNIA (Eta)

Maude Rex Allen 1900
Lorraine Andrews '12
Elizabeth Rost Arpin '14
Ellen Power Baird '20
Dorothea Epley Ahrens '22
Margaret Huetter Azcona '53
Phyllis Francis Albritton '62
Virginia Ann Bailey '63
Karen Rae Aulwurm '70
Teresa Marie Adams '74

DENVER (Theta)

Rowena Schafer Ballinger '17
Consuelo Harmon Ballinger '20
Ruth Anderson Appell '21
Frances Mauro Aberle '26
Priscilla Baine Austin '37
Marilyn Taylor Bancroft '45
Joan Alverson '48
Carolyn Alkire '58
Claraine V. Ackerman '60
Marilyn E. Baird '67
Kathleen Adams '68
Marta Alder '78

MINNESOTA (Kappa)

Ruth Duesler Aurness '21
Virginia Yers Avery '23
Leora Merry Arneson '26
Maxine M. Baker '34
Ruth Pickhardt Adams '43
Marjorie K. Anderson '44
Dorothy Shiely Anderson '49
Jean Anderson Bainbridge '54
Lora Hoffmeyer Albrecht '56
Joan Pastor Abrahamson '60
Bonnie Kay Anderson '64
Karen Pilgrim Annoni '66
Laurel Maher Anderson '68

WASHINGTON (Lambda)

Bernice Kennedy Ahrens '24
Peggy Calvert Abrams '35
Wilma Hoover Allen '40
Gwendolyn Albert Arnstein '43
Bernice Allison '44
Ann Reitze Ashworth '46
Carol Jefferson Badovinus '66
Joan Teresa Ballard '75

STANFORD (Mu)

Ruth Gelbert Baker '06
Caroline Squire Abbey '14
Evelyn Carey Allen '21
Alice Whiffen Armour '26
Adrienne Hawkins Allen '34
Judith Pope Anderson '43

OREGON (Nu)

Helen McKinney Arnspiger '08
Mildred Thomas Arney '16
Lillian Brock Allen '21
Dorothy Coffin Bancroft '29
Mildred Lawrence Anderson '36
Frances Johnston Abbott '38
Barbara Jones Balfour '46
Joanne Adams '51
Patricia Bailey '52
Susan E. Austin '67
Sheryl Renee Atkins '72

IDAHO (Xi)

Ethel Babcock '19
Mary A. Ball '23
Kathryn Campbell Baker '23
Lorraine Odell Allgaier '55
Shirley Byrne Anderson '56
Nancy Campbell Anderson '60
Karen Jensen Alldredge '69
Joanne Elizabeth Angell '69
Kris Bacharach '72
Sandra Jean Ashmon '77

ILLINOIS (Omicron)

Anne Reisner Allgyer '21
Christine Hyland Armstrong '22
Katherine Schmidt Aiken '25
Virginia Woolen Armitage '40
Elizabeth B. Augustine '43
Elizabeth Taylor Aguerreverre '45
Dorothy Price Andrew '48
Eileen Frieberg Allemen '56
Renee Goier Babka '69

NEBRASKA (Pi)

Betty Atkinson '40
Mary Elizabeth Anderson '44
Elaine Holden Anderson '55
Joan Beerline Albers '65

IOWA (Rho)

Ruth Campbell Allen '18
Maude Williams Alway '21
Grace Alworth '22
Virginia Ayers Anderson '25
Lavaughn L. Arrant '28
Ruth Howes Ardruser '30
Emogene Chapman Atwater '30
Winona Prettyman Ashton '34
Marsha Coats Ablard '59
Blanca Lippisch Bailey '64

KANSAS (Sigma)

Marian Hargett Allen '21
Helen Aiken Adams '26
Charlaine Armstrong '34
Roberta Cook Anschultz '39
Helen Nickell Attwood '53
Lorene Hunt Baldwin '57
Sandra S. Aldrich '61
Alla Darling Aldrich '63
Joan McGregor Ashley '64
Judith Louise Ballard '65
Christine Conway Alexander '69
Jane Lukeman Ankrom '69
Peggy Anderson Adams '49
Joann Bacca '49
Patricia Alden '52
Sarah Burns Allen '54
Celia Jo Agee '61

WASHINGTON -ST. LOUIS (Phi)

Bernadine Merton Abbott '26
Nellie Houghton Baer '26
Mary Elizabeth Krimmel '48
Anne Battenberg Anderson '49
Hansinia Aldin '51
Anita Maass Ahorn '59
Lynn Sandra Arrowsmith '66

OREGON STATE (Chi)

Mary Lewis Aikens '21
Dorothy Walker Allen '24
Mildred Imlah Angle '24
Renee Mattingly Ashlock '38

Genevieve Cockerline Baird '42
Rosemary Kenney Babb '45
Ellen Holcomb Anderson '46
Deanna Croft Alexander '72

OKLAHOMA (Psi)

Elizabeth Driver Anderson '23
Louise Laux Anderson '34
Jane Abbott '41
Jimmie Ralls Baker '48
Joyce Calkins Bales '52
Linda Lee Alexander '55
Karen Marlene Bader '60
Sandra Wing Anthony '61
Opal Ford Austin '61
Judy Keys Almquist '64
Sarah Long Balenti '64
Patricia Tormey Adam '70
Pamela Kay Anno '74

IOWA STATE (Omega)

Winifred Connor Allen '28

TORONTO (Alpha Alpha)

Sara Kele Baiden '22
Dorothy Jenkins Abbott '33
Edith Dowler Appleford '34
Audrey Tedman Austin '37
Lindsay Savage Anderson '47
Wendy Ann Eitken '67
Janet Kathleen Allan '72

NORTH DAKOTA (Alpha Beta)

Lucile Allen Anderson '22
Bernice L. Anderson '36
Rita Nelson Alm III '54
Carol Afseth '60
Gail Waldon Afseth '61
Carolyn A. Ashland '62
Connie Jean Balsukot '68

NEVADA (Alpha Gamma)

Jeanne Swanholm Armes '46
Lucy Michele Arrington '64
Robbin White Armstrong '75

MISSOURI (Alpha Delta)

Muriel Danielson Allen '25
Virginia McCue Akers '29
Jane Ellen Abbott '44
Betty Kelly Ames '45
Marian Roehrs Adams '55
Elinor Louise Alger '59
Barbara Lee Allen '63
Cynthia Eagan Almon '66
Leslie Carroll Andrews '70
Cynthia Sapp Amend '73

ARIZONA (Alpha Epsilon)

Ethel Pope Anderson '22
Marjorie Pierce Avery '45
Helen Heath Baker '50
Doris Gridley Anderson '55
Frances Clark Babineaux '58
Alice Harris Alcus III '63
Linda Ruth Bachus '72

TEXAS (Alpha Zeta)

Katherine Lawrence Adams '28
Josephine McCutcheon Allen '43
Dorothy Dorrian Apple '46
Genelle Alexander '47
Betty Marie Allred '48
Carolyn Sue Baggett '74

OHIO WESLEYAN (Alpha Eta)

Catherine Pamela Baker '65
Frances Coddling Baker '40
Alice Tobin Anderson '47
Dolores Wucjak Ballin '49
Elinor Elsie Aderton '58
Susan Elizabeth Aitken '59
Christine Pamela Baker '65
Anne Patterson Alexian '66

VANDERBILT (Alpha Theta)

Evelyn Lynch Adams '49
Katherine Fryer Alexander '50
Cynthia Armstrong '54
Gale Castleberry Amond '61
Corinne Bee Anderson '63
Mary Jo Lafuze Bacdecker '64
Betty Farrar Baird '66
Elizabeth Urban Alexander '69
Sara Anatlas Anderson '69
Mary Jane Avriett '72

UCLA (Alpha Iota)

Floris Alexander '26

Linnea Nelson Alexander '26
Virginia Svarz Ackerman '31
Marie Young Anshutz '37
Barbara Diane Baggerly '57
Mary Rasmussen Abbott '60
Susan Caldwell Alsop '69
Lois Thompson Anderson '69

MANITOBA (Alpha Kappa)

Janet Agnew '25
Mildred Brooking Atkinson '25
Evelyn Reyecraft Alexander '30
Shirley Atkins '41
Leslie Florence Adamson '43
Donna Baker '51
Miriam Baker '51
Jill Alexander '52
Barbara Tod Armstrong '59
Marilyn Stephenson Anderson '60
B. Gail Harbottle Ayotte '62
Janey Dunlot Allan '69
Linda Mae Aldridge '72
Linda Gail Arnett '72

BRITISH COLUMBIA (Alpha Lambda)

Muriel Aylard '23
Maude Allen '26
Mildred Campbell Attridge '26
Marjorie Hill Armstrong '37
Elizabeth Darnbrough Ball '39
Jean Sinclair Arber '46
Diane Bancroft '51
Betty Wiltse Akesson '53
Rhona Coldicut Agereau '61
Gail Anderson '61
Diane Roth Armstrong '64

ROLLINS (Alpha Mu)

Catherine Adams '29
Alice Kretsinger Ayers '32
Hillary Andrews '35
Frances Eloise Arnold '39
Jane Balch '43
Constance Clifton Ball '46
Carolyn Hughes Bailey '51
Edna Baldwin '51
Ardath Norcross Aucoin '52
Harriet Atlass '55
Beverly Stein Anderson '58

WITTENBERG (Alpha Nu)

Betty Andresen Anderson '46
Patricia Lee Arnett '69
Mary Elizabeth Baker '69

SOUTHERN METHODIST (Alpha Xi)

Laura Catherine Alford '71

NORTH DAKOTA STATE (Alpha Omicron)

Sharon Rindahl Albrecht '64
Mary Becker Allamaras '74
Jacquelyn Nielsen Bakken '61
Judith Maxine Anderson '68

WEST VIRGINIA (Alpha Pi)

Mary Kettle Allison '60
Betty Lou Ashley '63
Mary Krasevec Anderson '72

RANDOLPH-MACON (Alpha Sigma)

Marien Abshire '39
Dorothy Voris Aldrich '40
Patricia Kane Arey '42
Hope Haggett Adolph '47

MC GILL (Alpha Tau)

Elaine Miner '45
Elizabeth Atkinson '49
Shirley Conrad Baird '52
Linda Carol Angeline '62
Suzanne Yvonne Aboud '70

PENNSYLVANIA STATE (Alpha Upsilon)

Betty Bailey '41
Margaret Wasson Ault '48

COLORADO COLLEGE (Alpha Phi)

Phyllis Thompson Anderson '36
Phyllis Abdullah '38
Mary Braham Andrus '49
Kathryn Anderson Andrew '56
Joanne Murray Anthony '58
Dorothy B. Bailey '67
Sharon Anders '70
Roberta Allen '60

WILLIAM & MARY (Alpha Chi)

Frances Hawley Aron '50

Good Buys

License Frames

"It's Great To Be A Gamma Phi Beta." That's the slogan proclaimed in dark brown on a light brown license plate frame. Offered by Long Beach alumnae, they feature a pink carnation and Greek letters in lower corners. Priced at \$6.50 a pair or \$3.50 each plus \$1.00 postage and handling, they may be ordered from Mrs. Georgia Merchant, 3372 Rossmoor Way, Los Alamitos, CA 90720.

Pendants

Memphis alumnae offer attractive ceramic pendants designed with a crescent and pink carnation antiqued in brown and mode. The design is also available in porcelain—pendants and pins—of white with a pink carnation and the Sorority letters in gold. Each item sells for \$2.50, but orders are limited to lots of ten. Send your check to Mrs. Arthur Best, 60 Eastland Dr., Memphis, TN 38111.

Baby Bibs

White terry cloth baby bibs are still a favorite for Gamma Phi babies. Each, printed in brown, shows a happy, chubby baby perched on a crescent moon. Boston Alumnae embroider the tiny pink carnation the baby holds. Two styles available: "My Mommy is a Gamma Phi" or "My Grandma is a Gamma Phi." The cost is \$3.50, postage paid. Order from Mrs. W. F. Burt, Longmeadow Rd., Lincoln, MA 01773.

Coasters

Jackson alumnae offer two varieties of coasters—one, measuring 3"x4" (\$8). Both kits include painted canvas, yarn and directions. Make checks payable to Jackson Alumnae of Gamma Phi Beta and send to Mrs. Richard Fabian, 754 Beverly Park Pl., Jackson MI 49203.



Ladyfood

Ladyfood: A Collection of Recipes Enjoyed by Ladies and Gentlemen, is a hard cover, illustrated volume containing more than 700 recipes from Gamma Phi Betas. Compiled by the Dallas alumnae, the book includes chapters on appetizers and beverages, salads and dressings, main dishes, vegetables and desserts and pastries.

Proceeds from the project will be divided between the Foundation and a scholarship fund marking Gamma Phi Beta's 50th anniversary on the Southern Methodist campus. To order, send \$8.95 plus \$1.05 postage and handling to Mrs. Herman Graham, 2716 Rosedale, Dallas TX 75225.

Motto Decals

Delta Mu is selling decals depicting our open motto, "Founded upon a Rock," topped with a pink carnation and the words "Gamma Phi Beta." Measuring about 4x5 inches, the decals are available for 50¢ each. Orders should be sent to Susan Toole, 6 Union St., New Brunswick, N.J. 08903.

T-shirts

Foundation T-shirts are red and feature the Foundation logo in white. Children's sizes 6-8 and 10-12 are \$4; adults' S, M, L, XL are \$5. Add \$1 postage and handling for each shirt and send check to Mrs. William S. Hammond, 6751 E. Center Ave., Denver, CO 80222. Proceeds support the Sorority's philanthropies.

Crest Transfer

An item from Oklahoma City alumnae is a Gamma Phi Beta crest transfer to be used on denim shirts, T-shirts or other items made of a blend fabric. Price is \$1.50, postage paid. Send orders payable to Mrs. Richard M. Jennings to 6721 Willowridge Dr., Oklahoma City, OK 73112.

Cookie Stamps

Carnations and crescent moons mark cookie stamps presented by the Corvallis Alumnae Chapter. Created of clay, the stamps come with shiny ceramic handles in assorted colors. They're available in lots of 12 for \$25. A recipe folder is included with each stamp for individual giving. Send orders to Mrs. Gary Pastega, 4435 S. W. Gold View Ave., Corvallis, OR 97330.

Nostalgia

A series of Mary Kay Dorman Kabler's (Kansas) readable articles on nostalgia, which once ran in the *Crescent* and have since been published in booklet form, are still being offered for sale by the Denver alumnae. In her articles, Mary Kay traces 100 years of Gamma Phi Beta and United States history. This limited edition, bound in a soft pink cover, is available for \$2.65, postage paid, from Mrs. Patricia T. Pinney, 6915 S. Garfield Way, Littleton, Co. 80122.

Gamma Phi Beta Sorority Directory

Founded November 11, 1874
Syracuse University

FOUNDERS

Helen M. Dodge Ferguson
Frances E. Haven Moss
E. Adeline Curtis
Mary A. Bingham Willoughby

THE GRAND COUNCIL

Grand President: Mrs. T. L. Kline (Karen Wander), 3648 S. 91st St., Omaha, NE 68124
Alumnae Vice President: Mrs. R. O. Bronsing (Patricia Ann Mullen), 31 Chesterton Lane, Chesterfield, MO 63017
Collegiate Vice President: Mrs. B. Lowell (Ruth Donlon), 1800 Hackett Ave., Long Beach, CA 90815
Director of Finance: Mrs. G. E. Misthos (Mary Jane Hipp), 242 Glendale Rd., Glenview, IL 60025
Director of Expansion: Mrs. J. D. Moore (Leonite Selzer), 2807 S. Peoria, Tulsa, OK 74114
NPC Delegate: Mrs. I. P. Nelson Jr. (Gloria Swanson), 3521 Royal Lane, Dallas, TX 75229
Executive Secretary-Treasurer: Ms. Jonette Crowley, 7503 Marin Drive, Englewood, CO 80111

CENTRAL OFFICE STAFF—7503 Marin Drive, Englewood, CO 80111

Executive Secy.-Treas. Ms. Jonette Crowley
Administrative Assistant: Mrs. R. Ruth
Alumnae Co-ordinator: Mrs. T. C. Shupert
Collegiate Co-ordinator: Ms. Carol Stott
Bookkeeper: Mr. Robert C. Eckley
Receptionist: Ms. T. Walsh
Collegiate Consultants: Karma Burford, Marcia Major, Cindy Partain, Marni Shoner
Expansion Supervisor: Karen L. Hedine
Coordinator of Leadership Training: Deborah Kay Jones

THE CRESCENT

Editor: Mrs. Phil Riske (Kristin Anne Brandt), 1222 E. Cordova, Casa Grande, AZ 85222
Business Manager: Ms. Jonette Crowley, 7503 Marin Dr., Englewood, CO 80111

THE CRESCENT COMMUNIQUE

Editor: Mrs. G. McKenzie (Natalie Meyer), 531 S. Burton, Arlington Heights, IL 60005

NATIONAL PANHELLENIC CONFERENCE

NPC Delegate: Mrs. I. P. Nelson, Jr. (Gloria Swanson)
1st Alternate Delegate: Mrs. D. H. Lundin (Marjorie Speidel), 5135 N.E. Latimer Pl., Seattle, WA 98105
2nd Alternate Delegate: Mrs. Carl Hustad (Virginia Geiger), 5304 Ayshire Blvd., Minneapolis, MN 55436
3rd Alternate Delegate: Mrs. T. L. Kline (Karen Wander)

INTERNATIONAL OFFICERS

Asst. to Alumnae Vice President—Bylaws: Mrs. Robert E. Mapes (Beverly Gerhardt), 2904 Pine Ridge, Oklahoma City, OK 73120
Asst. to Alumnae Vice President—Alumnae Initiates: Mrs. D. J. Matuszak (Mary Helen Eaton), 4011 E. Prospector Dr., Salt Lake City, UT 84121
TransiSter Service: Mrs. D. J. Schonberg (Theora Kurt), 12205 Leavenworth, Omaha, NE 68154
Asst. to Collegiate Vice President—Bylaws: Mrs. G. V. Kallal (Jeannine Alice Sheldon), 1296 Casa Solana Dr., Wheaton, IL 60187
Asst. to Collegiate Vice President—Rush: Mrs. B. A. Bell (Sheila Cornish), East 12722 Guthrie, Spokane, WA 99216
Asst. to Collegiate Vice President—Pledge: Mrs. P. G. Sendroy (Catherine Curtis), 12 Cherry Vale Dr., Englewood, CO 80110
Asst. to Director of Finance—Policies: Mrs. T. A. Lothian (Carol Ann Vichek), P.O. Box 863, Williams Bay, WI 53191
Asst. to Director of Finance—House Corp. Bylaws: Ms. Emerald L. Erickson, 149 Farnsworth Ave., #3B, Borden-town, NJ 08505
Historian: Mrs. Frank Mason (Charlotte Hamilton), 5050 Lake Shore Drive, Brown's Lake, Jackson, MI 49203

AREA FINANCIAL ADVISERS

Mrs. C. B. Jennings (Patricia Strickler), 4724 44th N.E. Seattle, WA 98105
Mrs. E. G. Hart (Mary Jean Lauvetz), 6 Brookside Rd., Philadelphia, PA 19118
Mrs. R. G. Drouet (Leona Davis), 10482 E. Grandeur Dr., Baton Rouge, LA 70815
Mrs. G. Baldwin (Julia Irene Lynn), 503 Hobson Dr., Pittsburg, KS 66762

ENDOWMENT-LOAN BOARD

Directors:
Mrs. W. Nichols (Diane Dross), Chairman, 17475 Arbor Drive, South Bend, IN 46635
Miss Patricia Denton, 747 Willis, Glen Ellyn, IL 60137
Mrs. T. C. O'Neill (Judith Ruhl), 815 E. Edgemont, Phoenix, AZ 85006
Mrs. P. K. Graves (Jacquelyn Hilger), 515 Kenton, Aurora, CO 80010
Mrs. G. E. Misthos (Mary Jane Hipp) Dir. of Finance
Mrs. T. L. Kline (Karen Wander), Grand President
Ms. Jonette Crowley, Treasurer
Address all communications to Central Office

INTERNATIONAL CHAIRMEN

Awards: Mrs. A. T. Phillips (Elizabeth Sloan), 1118 Westerly Pkwy., State College, PA 16801
Bylaws—International: Mrs. F. L. McDonald (Ernestine Dobler), 9714 State Line Rd., Shawnee Mission, KS 66206
Convention: Mrs. J. W. Lindauer, (Catherine M. Guthrie), 5051 S. Beeler St., Englewood, CO 80110
Chapter Development: Co-chairmen:
Collegians—Mrs. Linda Johnson (Linda Daniel), 2636 Steel St., Houston, TX 77098
Alumnae—Mrs. Norman Choat (Phyllis Donaldson), 9716 Erskine St., Omaha, NE 68134
Programs—Ms. Louise Oxenreiter, 415 Sherwood #306, Sausalito, CA 94965
Coordinator of State Membership Chairmen: Miss Elise Berthon, 3141 Warrington Rd., Mtn. Brook, Birmingham, AL 35223
Magazines: Mrs. C. W. Kenney (Dorothy Stark), Maplewood Gardens, 129 Croyden Ln., Syracuse, NY 13224
Mothers' Club: Mrs. L. M. Brown (Marta Lombardi), 850 Cumberland, Glendale, CA 91202
Nominating: Mrs. John B. Hunt (Mary Boots), 8538 E. Sandaldale Dr., Scottsdale, AZ 85253
Parliamentarian: Miss Jennie K. Curtis, P.O. Box 896, Leadville, CO 80461
Philanthropy Programs: Miss Judy Elaine Graham, 2716 Rosedale, Dallas, TX 75205
Public Relations: Mrs. Sally E. Lewis (Sally Erikson), 535 Michigan Ave., Apt. 704, Chicago, IL 60611
Research: Mrs. C. Shafer, Jr. (Audrey Weldon), 6808 Rockhill Rd., Kansas City, MO 64131
Ritual: Mrs. Dirk Kempthorne (Patricia Merrill), 11219 Gunsmoke St., Boise, ID 83704
Scholarship: Ms. Colleen Sweeney, 7503 Marin Dr., Englewood, CO 80111
Song: Mrs. Marian Hulseley (Marian Corley), 1020 Live Oak, Norman, OK 73069

GAMMA PHI BETA FOUNDATION

President: Mrs. T. L. Kline (Karen Wander), 3648 S. 91st St., Omaha, NE 68124
Exec. Vice President: Mrs. E. B. Adams (Beverly Cummings), 14 Sentinel Rock Terrace, Larkspur, CO 80118
Vice President: Mrs. G. E. Misthos (Mary Jane Hipp), 242 Glendale Rd., Glenview, IL 60025
Secretary-Treasurer: Ms. Jonette Crowley
Directors:
Mrs. R. O. Bronsing (Patricia Ann Mullen)
Mrs. B. Lowell (Ruth Donlon)
Mrs. J. D. Moore (Leonite Selzer)
Mrs. I. P. Nelson, Jr. (Gloria Swanson)

Foundation Standing Committees:

Camping Program Chairman: Mrs. D. H. Green (Sharon Reisig), 1090 Vail View Dr., #3, Vail, CO 81657
Finance and Investment Chairman:
Financial Aid Chairman: Mrs. P. R. Conway (Carribell Waters), 9021 Fairview Rd., Silver Spring, MD 20910

PROVINCE ALUMNAE DIRECTORS

I: Mrs. Donald M. Matheson (Dorothy Roberts), 7 Pocahontas St., Winchester, MA 01890
II: Mrs. Mary Ann Youngwood (Mary Ann Morgan), 8205 Je Stuart Rd., Rockville, MD 20854
III: Mrs. Camille Cestone, 6403 Clough Pike, #3, Cincinnati, OH 45244
IV: Mrs. R. L. Howes (Cynthia Denise Meisner), 5896 Valler Lane, SE, Grand Rapids, MI 49508
V: Mrs. Marvin E. Stromer (Peggy Larson), RR2, Milton, V. 53563
VI: Ms. Patricia Davies Newcombe, 15803 Holdridge Rd., Wayzata, MN 55391
VII: Mrs. D. R. Johnson (Sue Herzog), 5538 McComma Dallas, TX 75206
VIII: Mrs. G. Oliver (Jean Brooks), 4030 Summit Dr., N. Marietta, GA 30062
IX: Mrs. F. W. Volker, Jr. (Ann McCune), 1700 W. 25th Odessa, TX 79763
X: Mrs. A. O. Durrett (Sue Dorsey), 443 W. 57th Terr., Kansas City, MO 64113
XI: Mrs. William Laney (Joan Hogan), 13425 Cedarbrook N.E., Albuquerque, NM 87111
XII: Mrs. Sam G. Arana (Connie Rutt), 10654 Onondaga Place, Boise, ID 83709
XIII: Mrs. James A. Merz (Eleanor Baker), 14356 N. Siskiyou Ct., Portland, OR 97230
XIV: Mrs. Jack M. Burnett (Dorothy Hoadley), 5429 E. Carly St., Paradise Valley, AZ 85253
XV: Mrs. E. R. Fritsch (Mary Lou Dahl), 1423 Curtiss Ave., Ames, IA 50010
XVI: Mrs. Dale R. Leisy (Jeanne Lupton), 3171 Oak Knoll D Los Alamitos, CA 90720

PROVINCE COLLEGIATE DIRECTORS

I: Miss Anne Louise Layton, Apt. 319 3787 Cote Des Neiges, Montreal, QU H3H1V9
II: Mrs. R. C. Freisheim (Deborah Foulsham), 2052 Moreland Rd., Abington, PA 19001
III: Mrs. Robert Winterhalter (Diana Gay), 4336 Braunto Rd., Columbus, OH 43220
IV: Mrs. Jerry R. Quick (Elizabeth Ahlmeyer), 1212 Tom Dr., Mt. Pleasant, MI 48858
V: Mrs. Mike Hartley (Judy Ivester), 1915 Maple Ave., #30 Evanston, IL 60201
VI: Mrs. M. Savageau (Vicki Smith), 1013 11th Ave., N Fargo, ND 58102
VII: Mrs. Kim McMurray (Laura Taylor), 880 Peyton D. Beaumont, TX 77706
VIII: Mrs. L. W. Betts (Mary Alice Adams), 2448 Whitehall Cir., Winter Park, FL 32789
IX: Mrs. D. B. Scarborough (Donna Snyder), 7817 Kenosh Lubbock, TX 79423
X: Mrs. Gregory Wright (Janet Heft), 5102 E. English Wichita, KS 67218
XI: Mrs. Randall Guerra (Randy Stevens), 9796 E. Maplewood Circle, Englewood, CO 80110
XII: Mrs. Larry Halvorson (Kathryn Huffman), 732 S. Lynn Moscow, ID 83843
XIII: Mrs. Gary Todd (Martha Hall), 733 Old Country Rd. Belmont, CA 94002
XIV: Mrs. Clarke R. Duncan (Shirley Gronds), 2531 N. Santa Lucia Ave., Tucson, AZ 85715
XV: Mrs. Dennis Petersen (Jane Dunlap), 923 D Oak Cres Iowa City, IA 52240
XVI: Mrs. Fred Rothfuss (Jonelle Hanna), 529 Tumbleweed Road, Anaheim, CA 92807

Couples and Cradles

Nancy Webster (UCLA) to Richard Bennewate, October 14, 1979.

Holly Hill (Northwestern) to Craig Barnhart, August 18, 1979.

Carol Nordskog (Iowa St.) to Michael Fischer, June 2, 1979.

Shirley Stanley (Vanderbilt) to Don Stevens, September 29, 1979.

Shari Greggs (Oklahoma St.) to Adrian Edwards, August 10, 1979.

J'Ceal Hodges (Oklahoma St.) to Greg Spencer, July 21, 1979.

Gene Ann Duffy (Syracuse) to Paul T. Siller, December 30, 1979.

A boy to Brian and Nancy Coe Smithson (Idaho), June 29, 1979.

A boy to Richard and Brenda Thomas Harris (Vanderbilt), August 29, 1979.

A boy to Jim and Sharon Smith Steeg (Miami), September 19, 1979.

A girl to Tom and Virginia Reinhold Tillman (N. Arizona), May 12, 1979.

Nancy Blue (Auburn) to M. Leslie Cole, November 17, 1979.

A boy to Floyd and Martha McDonald Hendrix (Auburn), October 30, 1979.

A girl to John and Candy Walsh Carrigan (Florida St.), October 19, 1979.

Janet Martinelli (California) to Jeff Shaw, September 1, 1979.

Denise Dempster (Cal. St.-Fullerton) to Mark Cattern, June 22, 1979.

Nancy Barberie (Illinois) to Jeffery Tarte, August 5, 1979.

A girl to Tom and Jeanne Perry Wilkin-son (Illinois), June 29, 1979.

A boy to John and Barbara Miller Adams (Kearney), October 9, 1979.

Tina Ellston (SMU) to Dave Holland, August 4, 1979.

Anne Carter (SMU) to Michael Huran, August 11, 1979.

Liz Unvert (SMU) to Michael Menard, August 4, 1979.

Kiki Schreiner (SMU) to Kenny King, December 2, 1978.

Betsy Billips (SMU) to Buzz Zeller, Sep-tember 7, 1979.

Patricia Blevins (W. Virginia) to Gary Clark, September 29, 1979.

Susan Kuykendall (W. Virginia) to Robert Edmunds, October 14, 1978.

A boy to Joseph and Pat Knight Villani (W. Virginia), March 15, 1979.

Sharon Brown (Syracuse) to Craig Sullivan, September 15, 1979.

Audrey Hagen (Syracuse) to John Hum-mel, August 18, 1979.

Sue Sleasman (Syracuse) to Mark Re-nucki, June 10, 1979.

Gail Chernen (British Columbia) to Tony Westman, April 29, 1978.

Kathy Knezevic (British Columbia) to Toby Sutcliffe, June 3, 1978.

Marilyn Clarke (British Columbia) to Derek Lunden, October 6, 1979.

Virginia Davis (Washington St.) to James Leibold, July 21, 1979.

Janet Kafer (Washington St.) to Chris Camp, August 4, 1979.

Debbie Gates (Washington St.) to Ralph Prouty, September 28, 1979.

Debbie Fitzthum (Washington St.) to Ken Kilpatrick, October 27, 1979.

Judi Johnson (Washington St.) to Mike Clark, September 1, 1979.

Kelly Rudy (Washington St.) to Dean Dennis, July 29, 1979.

A boy to Ross and Janice Mitchell Kelly (Wyoming), November 6, 1979.

A boy to Ron and Carol Lewis Pernicka (Northwestern), August 10, 1979.

Gayle Lamendola (Texas) to Ralph Edwards, July 6, 1979.

Christine Egan (Kansas St.) to John Johnston, September 8, 1979.

Tina Neusitz (Colorado St.) to Robert Meyers, November 24, 1979.

Joan Weresh (Iowa) to Curt Broek, June 16, 1979.

Terri Thomas (Iowa) to Marty Trepp, August 11, 1979.

Laura Moore (Iowa) to Mark Cook, August 25, 1979.

Theresa Connolly (Iowa) to Michael Braune, September 14, 1979.



For the Woman with Pride In Herself and $\Gamma\Phi\beta$

There's a certain extra feeling of pride every Gamma Phi Beta ex-periences when she displays the symbols of her friendship in fine jewelry. When you want to remember that special friend or relative, think of fraternity jewelry by Pollack.

Write for our free catalog of fine jewelry and accessories for Gam-ma Phi Beta and other collegiate fraternities.

RINGS		Sterling Silver	10K Yellow Gold
1-SR/135G	Signet (rectangular)	\$22.50	\$41.00
2-SR/366G	Signet (oval) <i>Pictured on model</i>	19.00	35.00
3-SR/531G	Recessed Letters	26.00	45.00
BRACELET			
4-B/60G	Crescent-Sterling Silver	\$24.00	
	Gold Filled	29.00	
OTHER INSIGNIA			
RECOGNITION PINS			
5-CR/25G	Crest-Gold Filled	\$ 5.00	
6-MG/11G	Monogram-Gold Filled	5.00	
7-MB/FG	Crescent-Black Enamel-Gold Filled	5.00	
8-MOTHER	MOTHER'S PIN-Pink Carnation-Gold Filled	5.10	
9-PI/G	PLEDGE PIN-Brown Enamel with Yellow		
	Crescent-Gold Filled	2.00	
-PS/58G	1896 Monogram Pin (<i>not illustrated</i>)		
	10K Yellow Gold	17.50	
	Sterling Silver	11.50	
	STICK PINS (<i>not illustrated</i>)		
-SP/11G	Crest-10K Yellow Gold	16.00	
-SP/40G	Gold Crescent-10K Yellow Gold	22.50	
SP-58G	1896 Monogram-10K Yellow Gold	22.50	

PRICES SUBJECT TO CHANGE WITHOUT NOTICE. Please add 4% for postage, handling and insurance (minimum \$1.00) to all orders for above merchandise; add \$2.00 service charge on orders less than \$10.00. Surcharge of 40% on all jewelry items except badges and 80% on 10K rings.

J. O. POLLACK co.

1700 WEST IRVING PARK ROAD • CHICAGO, ILLINOIS 60613

An Opportunity

By Joy Messenger
(W. Virginia)

G irls—who always lend a hand
A ctive—Someone who always cares
M ember—of the best sorority there is
M otto—"Founded upon a rock."
A ttitude—the best in the world
P ledge—what I am right now
H appy—because I am one of you
I nspiration—not just this week, but always
B rown—light and dark, our colors
E xciting—never a dull moment
T radition—we've kept a good thing going
A lways—a Gamma Phi Beta sister

Gamma Phi Parents: While your daughter is in college, her magazine is sent to her home address. We hope you enjoy it. If she is no longer in college and is not living at home, please send her new address to Gamma Phi Beta Central Office on the form below.

CHANGE OF ADDRESS OR NAME REPLY

Members are responsible for all address changes. Allow 4 weeks.

Maiden Name _____ Chapter _____

My profession or training is in _____

New name if different from label

Title	Last	First	Middle
-------	------	-------	--------

Entire new address

Street _____

City _____ State _____ Zip _____

PLEASE DO NOT REMOVE OLD LABEL

☐ Check here if change of address is for other than addressee.

Clip form, place in stamped envelope and mail to Gamma Phi Beta Sorority, 7503 Marin Drive, Englewood, CO 80111