

The Crescent

Fall 1980



A Mile High...



1.



2.



3.



4.

1. Collegiate consultants present a workshop skit.
2. Debbie Jones, Coordinator of Leadership Training, presents a workshop on time management.
3. Colleen Sweeney, International Scholarship Chairman, leads the confirmed conventioners parade.
4. Riding the train at the Flying W ranch on play day.

Crescent Assignments

FOR SPRING ISSUE:

Founders Day Highlights
Alumnae Career Corner
Articles
Alumnae Pacesetter Articles
Colossal Collegian Articles
College Collage Articles
Feature Articles

Deadline: December 1, 1980

CRESCENT

CORRESPONDENTS:

Please read the *Crescent* assignment page in the *Crescent Communicative*, which you can obtain from your president.

Editors

Editor-in-Chief

Kris Brandt Riske
1222 E. Cordova
Casa Grande, AZ 85222

Alumnae Editor

Margy Molden Wiltamuth
1700 Kiva Road
Silver Spring, MD 20904

Collegiate Editor:

Carol Asel
4612 Amesbury #288
Dallas, TX 75206

Feature Editor

Georgia Buell Adams
6417 N.E. 190 Street
Seattle, WA 98155

Business Manager:

Randy Stevens Guerra
Central Office

Contents

1980—A Mile High	4
Coverage of the 1980 Denver Convention featuring award winners, Central Office, Grand Council and business sessions.	
Delta Pi Eyes Not Set on 'Normalcy'	14
Delta Pi Chapter is installed at Illinois State University.	
Everything's Coming Up Delta Rho-ses	16
Delta Rho Chapter is installed at Dickinson College.	
Scholarships and Fellowships Awarded	18
The Gamma Phi Beta Foundation awarded scholarships and fellowships to 24 women.	
Dear Diary . . .	41
How does Grand President Karen Kline divide her time between Gamma Phi Beta, her home and family?	
There's No Pause in Work for Gamma Phi	42
These graduate counselors, collegiate consultants and Gamma Phi's expansion supervisor will work with collegians during the school year.	

Departments

Directory	21	Good Buys	44
Honors	29	Sisters Speak	45
Pacesetters	38	Missing Person Bureau	46
In Memoriam	40	Couples and Cradles	47

ON THE COVER—Indianapolis Alumnae delegate Mary Fitzgerald (Purdue) poses with the Rockies as a background at the Flying W Ranch during the 1980 Convention.

Gamma Phi Beta USPS 137-620

The **Crescent** is published quarterly in Fall, Winter, Spring and Summer by the Gamma Phi Beta Sorority, Inc., 7503 Marin Drive, Englewood, CO 80111. Printed in the U.S.A. by Compolith Graphics and Maury Boyd & Associates. Second class postage paid at Englewood, CO and additional mailing offices.

Postmaster: Please send notice of undeliverable copies on Form 3579 to Gamma Phi Beta, 7503 Marin Drive, Englewood, CO 80111.

Subscribers: Send changes of address, notices of marriages and deaths to Gamma Phi Beta, Central Office, 7503 Marin Drive, Englewood, CO 80111.

award winners



1.



2.



5.



6.



3.



4.



7.



8.

Award winners are listed by chapter, award won and member accepting the award.

1. Wittenberg—Efficiency Award, Scholastic Award—Janet Leedale.
2. Bowling Green—Collegiate Crescent Award—Lisa Gravette.
3. Wisconsin—E. Adeline Curtis—Judy Lenhardt.
4. Colorado College—Chancellor E. O. Haven Award—Ollie Landahl.
5. Editor's Award—Phyllis Donaldson Choat.
6. Ohio Wesleyan, Columbus—Collegiate-Alumnae Relations Award—Lynn Pederson.
7. California Polytechnic, San Luis Obispo—Collegiate-Alumnae Relations Award—Barbara Forde.
8. Wisconsin-Platteville—Scholastic Award—Ann Grunder.
9. Lincoln—Alumnae Crescent Award—Cay Lacey.



9.

award winners



10.



11.



12.



13.



14.



15.



16.



17.



18.

- 10. Washington-St. Louis—Scholastic Award—Mary Caola.
- 11. British Columbia—Scholastic Award—Karen Calderwood.
- 12. St. Louis University—Scholastic Award—Kathy Jo Miller.
- 13. Nebraska—Scholastic Award—Sue Brown.
- 14. Kearney—Scholastic Award—Jayne Brummer.
- 15. Southwest Missouri State, Springfield—Collegiate-Alumnae Relations—Lisa Stidham.
- 16. Arizona State, Phoenix—Collegiate-Alumnae Relations—Mariann Costello.
- 17. McGill—Outstanding Canadian Chapter—Anne Turner.
- 18. California State-Fullerton—Mary A. Bingham Award—Marty Michaud.



a new Central Office



1.



2.



3.

A sense of the past . . . a sense of elegance . . . a symbol of the Sorority's growth, excellence and future for thousands of women . . . this is Gamma Phi Beta's new Central Office in Englewood, Colo.

Conventioners touring the facility located in a modern glass enclosed building first saw the Gamma Phi Beta seal mounted on the office door. Then, with the opening of that door, they entered the spacious, functional office, decorated throughout in light and dark brown. Plants thrive in the pleasant atmosphere, enhanced by large windows in one wall.

The office also has a large meeting room, kitchen, storage area and workroom. Three individual offices are used by the Executive Secretary-Treasurer, the accountant and the Gamma Phi Beta Foundation.

1. The reception room features four comfortable velveteen upholstered chairs amid Gamma Phi Beta mementoes. The lighted

bookcase displays bound copies of every issue of THE CRESCENT and books by well known Gamma Phi Beta authors. Sorority treasures in silver and an historic badge display are also a part of the setting.

2. This glass etching, mounted in the bookcase, was presented to Gamma Phi Beta by the Denver Alumnae Chapter.

3. Grand Council members Leonite Selzer Moore, Gloria Swanson Nelson, Karen Wander Kline and Ann Mullen Bronsing pose in front of the display which features the coat-of-arms and portraits of the Founders.

4. Marge Shupert (Colorado St.) is alumnae coordinator. Since graduating with a degree in home economics, Marge has been active in the Denver Alumnae Chapter. She was president of the Colorado Camp Board. In her spare time she enjoys needlework, sewing, camping and reading. She and her husband have three children.

5. Central Office accountant Harriet

Thompson earned her degree at Barnes College. During the 30 years her husband was a career officer in the Air Force, the family lived all over the world. The Thompsons and their three children survived the 1964 Alaska earthquake, but their dishes didn't. Harriet enjoys politics, sewing, skiing, reading and cycling.

6. Becky Mackey attended Purdue University and is collegiate coordinator. She has been an assistant to the athletic and placement director at St. Joseph's College and sold real estate in Virginia. Becky and her husband have a 2-year-old daughter. They enjoy skiing, golf and family activities.

7. An Iowa native, Sharon Mallory, special projects coordinator, attended Iowa State University. She has lived in Denver 11 years and is the mother of two children. Spare time activities include cooking, sewing, needlepoint, cycling, reading and roller skating.

8. Sharley Wallace greets visitors at the re-



4.



5.



6.



7.



8.



9.

ception desk. Born and reared in Texas, she holds a degree in elementary education from SW Texas State University. She is working for her master's degree in reading at Metropolitan State College. Sharley skis, camps, plays tennis, cycles and reads in her spare time.

9. Randy Stevens Guerra (Cal. St.-Long Beach) was recently named Acting Executive-Secretary Treasurer. She has been a province collegiate director, Theta Chapter advisor and vice president of the Denver Alumnae Chapter. Before moving to Denver three years ago, Randy gained experience working with a volunteer board of directors by directing a program for migrant farm workers in California. Randy believes Central Office has unlimited potential to be responsive to the membership's needs. "That is the reason we have a Central Office," she said. She and her anaesthesiologist/psychiatrist husband have two sons.

1980 - 1982



Delegates elected a new Grand Council at Convention. They are Director of Finance Mary Jane Hipp Misthos, Director of Expansion Mary Alice Adams Betts, Retiring Director of Expansion Leonite Selzer Moore, Alumnae Vice President Ann Mullen Bronsing, National Panhellenic Conference Delegate Gloria Swanson Nelson, Grand President Karen Wander Kline and Collegiate Vice President Ruth Donlon Lowell.

Grand Council...

The 1980-82 Grand Council of Gamma Phi Beta was elected at the 59th International Convention.

Re-elected as Grand President was Karen Wander Kline (Iowa St.). She was elected to the office in 1978 after serving almost four years as Collegiate Vice President. She also has served the Sorority as province collegiate director, alumna advisor and assistant field representative.

Mrs. Kline served as vice president, recording secretary and alumnae recommendations chairman of the Omaha Alumnae Chapter. She was a member of the Junior League of Omaha and has been president and recording secretary of her PEO chapter.

In 1980, Mrs. Kline was named the Omaha Alumnae Panhellenic Woman of the Year and in 1976, she was listed in "Outstanding Young Women of America."

Mrs. Kline's husband, Tom, is employed by Northern Natural Gas Company. They have a daughter, Kim, 17.

Ann Mullen Bronsing (Indiana St.) assumes a second two-year term as Alumnae Vice President. Her Gamma Phi Beta activities include service as secretary of the Lafayette Alumnae Chapter, alumna advisor to Omicron Chapter, president of the Evansville Alumnae Chapter, secretary of the St. Louis Alumnae Chapter, international chairman of Clipping Service and province alumnae director.

Mrs. Bronsing is a library volunteer at her daughter's junior high school and has been a Girl Scout leader, editor of a New Neighbor League newsletter and a Girl Scout neighborhood press representative. Mrs. Bronsing resides in Chesterfield, MO, with her husband, Rex, who is a man-

ufacturer's representative and daughter Holly, 13.

Ruth Donlon Lowell (Cal. St.-Long Beach) was re-elected Collegiate Vice President. She has served Gamma Eta Chapter in three advisory capacities: rush, pledge and alumna. A member of the Long Beach Alumnae Chapter, Mrs. Lowell was president and a delegate to the Long Beach Alumnae Panhellenic. She was efficiency advisor to Delta Delta Chapter and, before her election as Collegiate Vice President, was a province collegiate director.

A love of cruises is evidenced by Mrs. Lowell's career in outside sales for a travel agency. She is active in many youth baseball organizations.

Mrs. Lowell's husband, Bruce, is a police officer. Their son, Ed, is 13.

Mary Jane Hipp Misthos (Colorado College) is now serving her second term as Director of Finance. Her experience in Gamma Phi Beta includes four years as a traveling secretary. She was the Sorority's Secretary-Treasurer for five years and served 13 years on the Endowment Loan Board, holding the offices of treasurer and chairman.

From 1972 to 1976, Mrs. Misthos was the executive vice president of the Gamma Phi Beta Foundation. She was named to the Service Roll and Honor Roll.

A member of the Chicago Northwest Suburban Alumnae Chapter, Mrs. Misthos resides in Glenview, Ill. She served as a trustee of her church and has been involved in volunteer service at Children's Memorial Hospital in Chicago for more than 24 years. She is also a member of the Woman's Board of the hospital. Her husband, George, is president of an electronic design and assembly work firm.

The new face on the 1980-82 Grand

Council belongs to Mary Alice Adams Betts (William and Mary) who was elected Director of Expansion, succeeding Leonite Selzer Moore (SMU). Mrs. Betts is a former province collegiate director and a member of the Orlando-Winter Park Alumnae Chapter. She has held many offices in her alumnae chapter, including those of president, alumnae recommendations chairman and secretary.

Mrs. Betts has been active in Girl Scout activities and is leader of a Cadette troupe. She is also a member of the Operating Unit for Program Services to Girls.

A resident of Winter Park, Fla., Mrs. Betts and her husband, Lee, have two children: Kathy, 13, and Keith, 12. Lee is associated with Liberty Mutual Insurance Company.

A familiar face to all Gamma Phi Betas is Gloria Swanson Nelson (Oklahoma), re-elected National Panhellenic Conference Delegate. She served as Director of Finance from 1974 to 1978.

Mrs. Nelson is the office manager of her late husband's accounting firm. She has been active in the Dallas Alumnae Chapter, having served in many offices and as treasurer of the Alpha Xi House Corporation Board.

A member of the CPA Wives of Dallas and the Northwest Bible Church, Mrs. Nelson assisted in the formation of the Texas Panhellenic and became its president. Her Panhellenic interest continues with her position on Grand Council.

Gamma Phi Beta . . . more than a Sorority, an opportunity! Our new 1980-82 Grand Council will continue to provide more opportunities for growth and learning for all Gamma Phi Betas.

business conducted...

In a changing world, those who have built something over many years must greet the dawn as a friendly challenge in order to remain prosperous in the future. But the words of Grand President Karen Wander Kline (Iowa St.), as she opened the 59th International Convention this June in Denver, were more specific.

"In order for Gamma Phi Beta to maintain its position of prominence in the Greek world, it must address four concerns facing the college community . . .," she said at the opening business session. Those concerns are declining enrollments, hazing, vandalism and alcohol abuse. She called for flexibility.

"Today the Greek system is enjoying a period of prosperity. Whether this prosperity continues will depend on how willing we are to change our thinking and, in some cases, to change the way we've always done things," she said.

"I challenge each of you to be innovative, to be flexible, to lead the way . . ."

Mrs. Kline said the number of women going through rush may decline as college enrollments decline. She asked if Panhellenic and collegiate chapters were "doing everything possible to pledge every interested rushee."

"Will your chapter survive the eighties?" she asked. Mrs. Kline said survival depends on action to meet full Panhellenic annual quotas.

She said both National Panhellenic Conference and National Interfraternity Conference have resolved to eliminate all hazing practices.

"If your chapter has nothing better to offer its pledges and members than activities which produce any degree of mental or physical discomfort, embarrassment, harassment, or ridicule, then your chapter's charter is in jeopardy," she warned.

She said vandalism or fraternity/sorority raids is on the increase and costing individual chapters thousands of dollars each year.

"Take a stand, refuse to participate, and let it be known that Gamma Phi Beta will do whatever is necessary to put an end to this foolish form of vandalism," she said.

Mrs. Kline said alcohol abuse is "relatively common" among college students, and more and more universities are developing programs to combat the problem. She said most college students who drink do not suffer from alcoholism, but added, "Let it never be said that Gamma Phi Beta contributed to a sister's alcoholism (or to) . . . a sister's death."

Other highlights of the Grand President's message included the Sorority's attention to resolutions adopted at the 1978 Convention in Nashville:

- An alumnae endorsement program to provide collegiate chapters with maximum information on all potential pledges has been developed.

- The understanding and effective use of the *Crescent Communique* continues to improve.

- The 1978 Convention evaluation responses rated an 8.27 on a scale of 10.

During the biennium Mrs. Kline reported that a blanket liability insurance program to protect the assets of International Gamma Phi Beta, including local chapters and house corporations was adopted. Each chapter must participate in order to protect the welfare of the entire Sorority and its members.

Gamma Phi Beta has met the challenge of upgrading and relocating Central Office, she said. Denver was selected because of its labor market, reasonable cost of living, favorable climate and good mail and telephone service.

Mrs. Kline praised leadership training programs and said, "Gamma Phi Beta has, without question, the best trained in-the-field personnel of any member group of National Panhellenic Conference."

Gamma Phi Beta is " . . . the first and only sorority or fraternity to offer

continuing education units for its training." Credit is awarded through the University of Denver.

On the financial scene, income from alumnae taxes paid directly to Central Office increased more than 21 percent over the previous year, she said.

"This past biennium has truly been one of growth for Gamma Phi Beta," Mrs. Kline said. "In addition to our four new collegiate chapters, the alumnae department boasts five new crescent circles."

" . . . Grand Council is very proud to report that not one collegiate chapter has been lost during this biennium."

"It is indeed satisfying to report that . . . Gamma Phi Beta continues to progress in achieving its goal of developing the highest type of womanhood," Mrs. Kline said.

The second business session began with the report of Ernestine Dobler McDonald, International Bylaws Chairman. She presented the proposed bylaws amendments, all of which were passed.

Mary Boots Hunt, International Nominating Committee Chairman, presented slates for the 1980-82 biennium for Grand Council, the 1980-82 Nominating Committee and the Endowment Loan Board.

Elected to the Endowment Loan Board were Diane Dross Nichols (Indiana), Patricia Denton (Oklahoma City), Eileen Effinger (Vanderbilt) and Kitty Jo Vorisek (Illinois).

Six members will serve on the International Nominating Committee for the 1982 Convention. The second name listed for each area is the alternate. Eastern: Elaine Dennison Pinholster (Maryland) and Eileen Lindeman Lentz (Washington-St. Louis). East Central: Kathy Cavanaugh Holland (Indiana) and Boots Cullins Best (Memphis St.). North Central: Nancy O'Connor Witted (Nebraska) and Jane Lambert Bellinger (Minnesota). West Central: Marian Corley Hulsey (Oklahoma



Proudly displaying their baby cups presented by (l) Expansion Supervisor Karen Hedine (Washington) and (r) Director of Expansion Leonite Selzer Moore (Southern Methodist) are (l to r) Nancy Deitrick (Illinois St.), Diane Klawans (Dickinson), Shirley Parker (S. Tech) and Ann Isban (Bucknell). The cups were given to the four collegiate chapters installed in the 1978-80 biennium.

City) and Peachy London Smith (Missouri). South Central: Bev Smith Gosnell (San Diego St.) and Jenny Martin Stroup (N. Arizona). Western: Madeleine Phaxton Ball (Colorado College and Arizona) and Jean Anderson Allard (Washington).

Goals for the Sorority for the 1980-82 biennium which the delegates passed in the form of resolutions are:

- That each chapter make a firm commitment that their inspiration week and pledge practices be free from hazing.
- That Gamma Phi Beta strongly condemn vandalism and encourage legal action to be taken when necessary.
- That collegiate chapters be encouraged to promote alcohol and drug awareness education in their chapter development programs and urge Panhellenic to conduct similar programs.
- That Grand Council consider re-

aligning the Provinces due to the Sorority's growth in the past biennium and the increased cost of transportation.

- That Grand Council continue to offer the opportunity of obtaining continuing education units at future conventions.

- That Grand Council study certain specific areas of the bylaws with consultation from the parliamentarian.

Mrs. Kline presented the Carnation Award to Ruth Patterson Maddox (SMU). An illuminating engineer for Dallas Power and Light for 28 years, Ruth has received local, regional and national recognition and 12 awards for her original solutions to lighting problems.

In 1955 she was elected the first woman alumna member of Sigma Tau, honorary engineering fraternity.

Ruth has served Gamma Phi Beta as president of the Alpha Xi House

Corporation Board and the Dallas Alumnae Chapter. Named to the Merit Roll in 1971, she was also international housing chairman.

"I just can't thank you enough. I love you all dearly."

These were the words of acceptance from Audrey Weldon Shafer (Missouri) when the delegates approved a motion to elect her to the Honor Roll. Her outstanding contributions to Gamma Phi Beta for more than 20 years at the international level as province alumnae director, international Mother's Club chairman, Alumnae Vice President, Grand President, 1st alternate delegate to National Panhellenic Conference and research chairman make her truly deserving of the Honor Roll.

The names of 92 members were added to the Merit Roll during the biennium. Beverly Cummings Adams (Colorado St.) and Jane Lambert Bellinger (Minnesota) were named to the Service Roll.

...at the 1980 Convention



Alison Shafer Bond (Missouri) with her mother Audrey Weldon Shafer (Missouri), who was elected to the Honor Roll.

Conventioneers rushed to the Rockies on June 12 to renew old friendships, make new friends among sisters and benefit from and experience the opportunities offered in Gamma Phi Beta.

Gloria Swanson Nelson, National Panhellenic Conference Delegate, presided over the Panhellenic luncheon.

"Getting to know the Panhellenic representatives to your College or Alumnae Panhellenic is the first step in learning that while we are different, we are the same," she said. "You come to trust each other and work together for the common goal of service to the women of today."

Members and Panhellenic guests at the luncheon welcomed Dr. Sherry Manning, Colorado Women's College president, who spoke about women's roles in society today.

She said the women's movement and the "What's in it for me?" attitude occurred simultaneously, leading to an unsharing, ungiving attitude among women.

"Know your value and give it to someone else," said Dr. Manning. "Listen to others. If you don't think that person is a bore, you're not listening hard enough. Give yourself to people by listening. Think about giving them joy."

Gamma Phi Beta camp counselors presented a mini camp skit at the Foundation dinner. Camp scenes on stage interspersed with narration and slides of campers created a heart

warming tribute to Gamma Phi Beta's international philanthropy.

Beverly Cummings Adams, Gamma Phi Beta Foundation Executive Vice President, presided over the evening's events. She introduced Sharon Reisig Green, Camping Program Chairman, who reported that of the 128 children sent to camps other than the Gamma Phi Beta Children's Camp, one-half attended special need camps.

"Camping helps the upcoming generation," Sharon said.

To complete the evening, Director of Finance Mary Jane Hipp Misthos presented the Community Service Award to the Albuquerque Alumnae



Ruth Patterson Maddox (Southern Methodist) was presented the Carnation Award.

Chapter and Gamma Eta Chapter at Cal. St.-Long Beach. Another philanthropy award, the Special Girl Award, was presented to the Wichita Alumnae Chapter and Delta Delta Chapter at Cal. St.-Fullerton. Their prize—delivered to them on stage—a canoe for the Gamma Phi Beta Children's Camp given in the names of all four chapters.

Workshops and learning and discussions were constant reminders of the opportunities in leadership training available to Gamma Phi Betas.

And, for the first time, conventioneers received credit for that leadership training. Continuing education units were awarded to members who participated in training sessions conducted by recognized ex-

perts in the field and Coordinator of Leadership Training Debbie Jones (Colorado College).

The sessions helped prepare Gamma Phi Betas to conduct successful meetings, to manage time efficiently and to develop leadership skills. Other workshops were conducted on camping, chapter development, house corporation board organization and management, bylaws and parliamentary procedure.

Love and loyalty were in the hearts of the more than 600 Gamma Phi Betas at the Pink Carnation Banquet. Amid candlelight and mirrors they laughed along with the evening's speaker, Denver alumna Jean Jolliffe Yancey. President of her own business counselling service, Jean spoke of women and friendship in the form of many humorous anecdotes. She said the two universal supports are humor and friendship.

"Humor is to observe and be amused by all the foibles of the human race and friendship gives us constancy and consistency," Jean said.

With a sensational conclusion, a slide show to music showing all the activities of the 1980 Denver Convention, Gamma Phi Betas joined in the Mystic Circle to remember . . . and go forward to the opportunities of the next biennium . . . and Phoenix Fiesta 1982.



Central Jersey—Clara Worden Award for greatest percentage increase in membership for 1978-79—Emerald Erickson, Cathy Griffin.

1. Illinois—Scholastic Award, McCormick Medallion—Rebecca Gibson



2. Evansville, Ind.—Alumnae Chapter Development Award—Cyndy Howes.



3. Phoenix—Clara Worden Award for greatest increase in number of member for 1979-80—Lucia Causey.



4. Omaha—Outstanding Non-Sponsoring Alumnae Chapter—Peggy Thiesen.



5. South Orange County—Clara Worden Award for greatest increase in number of members for 1978-79—Bette Murray.



6. Bradley—McCormick Medallion, Collegiate Chapter Development Award—Kay Morrissey.

7. Chicago Northwest Suburban—Alumnae Chapter Development Award—Frances Griffin.

8. Northern Virginia—Outstanding Non-Sponsoring Alumnae Chapter—Karen Staha.

9. Indiana—Collegiate Chapter Development Award—Madeleine Yulevicius.

10. California-Irvine—Scholastic Award, Collegiate Chapter Development Award—Janet Deyo.

Convention winners not pictured:

Denver—Outstanding Sponsoring Alumnae Chapter.

Dallas—Outstanding Sponsoring Alumnae Chapter.

California State-Fullerton—All Around Panhellenic Excellence.

Southwest Missouri State—Increased Panhellenic Participation.

Song Awards: Serious—Vanderbilt; Original—Wittenberg; Humorous—Oklahoma State.

Scrapbooks: Alumnae—Greater Kansas City, 1st, Northern Virginia, 2nd; Collegiate (smaller)—Idaho

State, 1st, Southwest Missouri State, 2nd; Collegiate (larger)—California State-Long Beach, 1st, Southern Methodist, 2nd.

Alumnae Newsletters: Greater Kansas City, 1st, South Orange County, 2nd.

Public Relations: California State-Fullerton, 1st, Missouri, 2nd.

Magazine Sales: Largest dollar production—Greater Kansas City, Purdue; largest dollar increase—St. Louis, Arizona; largest dollar per capita—Philadelphia West Suburban, Purdue.

award winners...



Delta Pi President Nancy Deitrich is happy to receive the Province V gift from Province Collegiate Director Judy Ivester Harley and Province Alumnae Director Peggy Larson Stromer.

Delta Pi Eyes Not

**By Leonite Selzer Moore
Director of Expansion**

On April 19, 1980, Gamma Phi Beta installed its 112th chapter, Delta Pi, at Illinois State University, in Normal, Ill. This was perhaps the first time in Gamma Phi Beta history that a chapter installation has been attended by four Grand Council members: Grand President Karen Wander Kline (Iowa St.), Alumnae Vice President Ann Mullen Bronsing (Indiana St.), Director of Finance Mary Jane Hipp Misthos (Colorado College), and Director of Expansion Leonite Selzer Moore (Southern Methodist).

From meager beginnings in late May, 1979, this group of hard-working young women grew from a low point of nine to the 32 charter initi-

ates who achieved their dream 11 months later, "with a little help from their friends." Many loyal, dedicated, caring Gamma Phi Betas contributed to the success of Delta Pi. Local alumnae rallied with unfailing love and support for the new chapter. Special thanks goes to Alumna Field Representative and Chapter Advisor Sue Haven Quane (Indiana); Alumnae President and Delta Pi house decorator Jackie Furst Lapan (Northwestern); House Corporation Board President Bev McDowall Gale (Bradley); Financial Advisor Frances Stufflebom Dotson (Nebraska); and Rush Advisor Rose Marie Ranney Bliss (Illinois).

Installation weekend activities began Friday evening with a get-ac-

quainted gathering of alumnae and visiting international officers at the home of Jackie Lapan. Officers had earlier visited the Delta Pi house to meet the collegians, and be onhand for the sharing of many congratulatory gifts and messages from Gamma Phi Betas everywhere, and the ISU Greek community.

Saturday morning found the Grand Council officers conducting interviews with the prospective initiates at the home of alumna Marilyn Schueler Townley (Illinois), followed by the Saturday afternoon initiation of 32 collegians and four alumnae initiates by Beta Eta Chapter, Bradley University.

The charter initiates are Kris Zeile, Missey Bernhardt, Chris Sutton,



With pink carnations in hand, these Delta Pi charter members are thrilled to be Gamma Phi Betas at last.

Set on 'Normalcy'

Michele Hinkle, Gayle Norem, Nancy Wold, Patti Pickett, Kim Vollertsen, Nancy Ownby, Debbie Goodus, Nancy Deitrick, Laurie White, Linda Wellman, Sara Morris, Nancy Hedlin, Debi Andersen, LeAnn Lehr, Liz Klein, Lynn Nelson, Sheryl Haab, Lupe Carrillo, Linda Meyer, Suzanne Sutor, Lisa Birkett, Janice Dupin, Lori Travis, Paige Hudleson, Sue Ohlhausen, Susie Chambers, Nancy Blume, Yvonne Jacobsen, Mona Kalter. Alumnae initiates are Alice Watts, Brenda Hodges, Roxanne Casselman, and Shellise Smith.

The Saturday evening installation banquet was held on campus, in the ISU Union, with 165 in attendance. Not only did the customary Gamma Phi Betas, spouses, parents, and cam-

pus guests enjoy the festivities, but collegians from Omicron Chapter, at Illinois, and alumnae from Chicago and elsewhere shared the joyful evening as well.

Alumnae President Jackie Lapan was toastmistress for the evening. Campus welcome was extended by Teresa Paschal, the Illinois State University Program Advisor for Student Activities. Province Directors Judy Ivester Hartley (Florida State) and Peggy Larson Stromer (Nebraska) presented the Province V gift, a lovely silver tea service. Mrs. Moore presented the Grand Council gift, a silver punch bowl set. Introduction of the new initiates was made by Collegiate Consultant Marcia Major (Texas), and Outstanding Pledge and other

special recognitions were made by Expansion Supervisor Karen L. Hedine (Washington), followed by the presentation of the chapter's historic badge by Jackie Lapan and Sue Quane. A special note of welcome and encouragement from Financial Advisor Fran Dotson was read; the note contained a generous check to the chapter to begin Delta Pi's scholarship fund.

Grand President Mrs. Kline welcomed the newest chapter to the Gamma Phi Beta roll, and shared some of her own fond memories and reminiscences of Gamma Phi Beta. Mrs. Kline presented the Delta Pi Chapter charter to Delta Pi President Nancy Deitrick, drawing the memorable evening to a close.

Everything's Coming

By Karen Hedine
Expansion Supervisor

Gamma Phi Beta has blossomed once again. May 17, 1980, marked the installation of our 113th chapter, Delta Rho, at Dickinson College in Carlisle, Pa. Members of a long-established local sorority at Dickinson petitioned Gamma Phi Beta in early Spring 1980. After a whirlwind, jam-packed pledge training and colonization period, 56 women became charter initiates and members of the third national sorority on the Dickinson campus.

Women from Delta Xi Chapter from nearby Bucknell performed the

initiation ceremony, with Grand President Karen Wander Kline (Iowa St.) presenting the badges to the initiates. Delta Xi shared more than their time away from studies to make this a memorable occasion. Throughout the colonization period Delta Xi's graduate counselor Missy Farmer (William and Mary) aided in the pledge training and first rush for the colony.

The initiation was followed by the Installation Banquet at Mt. Holly Inn. Parents, guests and Gamma Phis all joined in the festivities. Members of Toronto's Alpha Alpha Chapter also highlighted the day's activities, not only by their attendance from such a great distance, but by providing

musical entertainment at the initiation and at the close of the banquet. It is rumored that the Alpha Alpha travel diary will be among the many interesting gifts featured in an upcoming CRESCENT.

The Installation Banquet was hosted by toastmistress and Alumna Field Representative Bette Byrd Filip (Oklahoma). Among the many honored guests were Associate Dean for Special Programs Mary Watson Carson, who welcomed the new chapter to Dickinson. Area Financial Advisor Mary Jean Lauvetz Hart (Nebraska) brought with her two very special gifts.

The first was her aunt, Sylvia Prokes, a charter member at Nebraska, whose presence at Dickinson was an inspiration for Gamma Phi Betas young and old alike. The second gift was a beautiful hooked rug designed with the Gamma Phi Beta coat-of-arms and created by the Philadelphia West Suburban Alumnae Chapter.

The Province II gifts were simply overwhelming. Through contributions from the many alumnae in Province II, Province Collegiate Director Deborah Foulsham Freisheim (Penn St.) and Province Alumnae Director Mary Ann Morgan Youngwood (Penn St.) presented the new chapter with a lovely silver tea service, silver punch bowl and cups, and a silver peanut dish.

Mary Ann also presented the traditional historic badge to Chapter President Diane Klawans. This badge belonged to Lilta Bane, a charter member at the University of Illinois, who later became the Dean of Home Economics at Illinois and an editor for *Ladies Home Journal*.

Director of Expansion Leonite Selzer Moore (Southern Methodist) was on hand to welcome this, the sixth chapter installed during her term of office. New initiates gave her a loving farewell with a rousing rendition of "Oklahoma!" In turn, Mrs. Moore presented the Grand Council gift of a silver chafing dish, engraved with the chapter name and installa-



Bette Byrd Filip tries out her new director's chair. With her are (1st row) Debbie Uchitel, Marta Rubin, (2nd row) Marilyn McIntire, Julie Forney and Lori Wallower.

Up Delta Rho-ses

tion date. Mrs. Moore also recognized the time and dedication to this colonization given by Bette Filip, Missy Farmer, Collegiate Consultant Marni Shonerd (N. Arizona) and Expansion Supervisor Karen Hedine (Washington).

Marni left the chapter with a mobile of stars and a crescent moon, the chapter symbols. Karen left "her babies" with the traditional silver baby rattle. The new initiates showed their admiration and love for Bette Filip with a personalized director's chair. And, concluding the array of gifts was presentation of a chapter banner made by Pledges Too, so called because they were rushed by Pledges Won (who first "won" our hearts).

The moment all had been awaiting finally arrived, when Mrs. Kline presented the Delta Rho charter to President Diane Klawans. Delta Rho is off to a beautiful start; a rose by any other name is Gamma Phi Beta's own Delta Rho.



Displaying the banner constructed by Pledges Too and presented to Pledges Won are Cindy Troeger, Diane Klawans and Robin Glanz.



The new members of Delta Rho Chapter take a break from studying to relax at a scenic spot on the Dickinson campus.



Gamma Phi Beta Found

Scholarships and Fellowships Awarded

The Gamma Phi Beta Foundation awarded scholarships and fellowships to 24 deserving women for the 1980-81 school year. A representative selection of their thank you letters appears in the Sisters Speak column in this issue.

Lindsey Barbee Fellowship

JOANNA BROWN (Arizona). As the principal investigator of a neurobiology research project at Barrow Neurological Institute, Joanna will complete a medical degree in three years. She will have knowledge of the influential role chemicals exert in both normal and pathologic behavior and moods of women. She served Alpha Epsilon as social chairman, founded and served as chairman of the university tutoring program and was an officer of Mortar Board. Joanna graduated with honors and distinction.

Founders Fellowships

GERALYN MAROTTA (Lehigh). While on campus GERALYN served Delta Kappa as vice president and house manager and was on the Dean's List. She worked as a volunteer at Muhlenberg Medical Center and was a Girl Scout leader. She is pursuing a medical degree at New York Medical College.

DIANE NORTON (SMU). A master's degree in international affairs and policy analysis will prepare Diane for Diplomatic service in the U.S. Information Agency or Foreign Service. In 1978, she received the Truman Scholarship for Kansas. She has organized, directed and accompanied a high school church choir and served Alpha Xi as philanthropy chairman and ritual chairman.

LAURA McCAULEY REICH (Denver). Laura is in her second year of medical studies with the perspective of a wife and mother. She plans to practice in a specialty that will utilize her rapport with



Joanna Brown
(Arizona)

children and concern for the family unit. Laura was active in chapter and campus organizations and was honored as Distinguished Senior Woman.

ANITA SOKOLSKY (USC). While working as an undergraduate law clerk, Anita was able to participate in and observe many aspects of the law profession. She is pursuing her law degree after graduating Phi Beta Kappa.

Fern Holcomb Heath Fellowship

JAN JONES (Oklahoma). Jan is interested in medical administration and hopes some day to be a medical school dean. In her third year of medical school, she plans to specialize in internal medicine. She graduated magna cum laude from Southwestern Oklahoma State where she was dean's delegate to Student Leaders of America.

Audrey Weldon Shafer Fellowship

LINDA SNELLING (Oregon). While an undergraduate, Linda was chapter president and active on campus. She has financed her schooling through scholarships and part-time work since her junior year. A medical student, her goal is to practice pediatric cardiology.

Foundation Fellowships

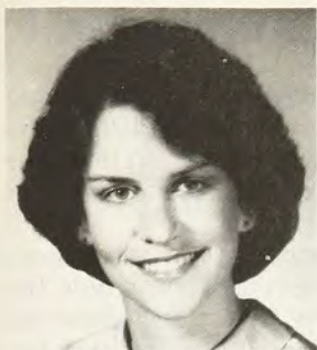
OLGA CASTELLANOS (Cal. St.-Fullerton). In her second and final year of an MBA program at UCLA, Olga looks forward to a career in international marketing. She graduated with honors and a double major in communications and Spanish. She was chapter development chairman for Delta Delta, was active on campus, worked part-time to help pay college expenses and studied one year in Madrid.

SUZANNE EAGLE (William and Mary). As an undergraduate in education and psychology, Suzanne was rush chairman for Alpha Chi, in the marching and concert bands and a member of many honoraries including Phi Beta Kappa. She arranged her own internship with the local school board to work with children with communication disorders, thus leading to graduate study in speech pathology.

JOANNE DISCH (Wisconsin). Joanne will enter a doctoral program in nursing at the University of Michigan where she will study the economics of health care, particularly as it relates to nursing care. She is a professional nurse who has served in numerous capacities in hospitals and medical centers. She has presented workshops and has had her articles published in professional journals.

JUDY IVESTER HARTLEY (Florida St.). Graduating Phi Beta Kappa, Judy served Beta Mu as pledge director and was a province collegiate director. She began a joint MBA/JD program this fall, hoping to work in the area of labor aid and labor relations after graduation.

LINDA MANCINI (McGill). Linda's commitment to community service in Montreal made her an effective philanthropy chairman for Alpha Tau. She has worked in camps for underprivileged children, taught trainable mentally handicapped children



Judy Ivester Hartley
(Florida St.)



Olga Castellanos
(Cal. St.-Fullerton)



GERALYN Marotta
(Lehigh)



Joanne Disch
(Wisconsin)



Linda Mancini
(McGill)



Suzanne Eagle
(William and Mary)



Linda Snelling
(Oregon)



Jan Jones
(Oklahoma)



Nancy Sparks
(Oklahoma)



Diane Norton
(Southern Methodist)



Anita Sokolsky
(USC)



Laura Reich
(Denver)

and applied for and received a grant to set up, staff and direct a day care center in a low income neighborhood. She is in a graduate program in speech pathology at the University of Vermont.

NANCY SPARKS (Oklahoma). After completing her JD, Nancy hopes to combine her journalism experience with law to enter private practice as an attorney specializing in civil matters, probate and contracts. She has been on the Dean's Honor Roll throughout college and served in many journalism related and Psi Chapter activities.

Elizabeth Fee Arnold-Beatrice Hill Wittenberg Scholarship

KATHLEEN LEIGH (Syracuse). Kathleen is a senior and has maintained an "A" average throughout college. She is a member of Eta Pi Upsilon and the Syracuse Honors Program. She has been membership chairman and ritual chairman for Alpha Chapter.

Ardis McBroom Marek Scholarship

SUE JACKSON (Ohio Wesleyan). Sue is majoring in history and English literature and was editor of the student handbook, "In the Know." She was corresponding secretary for her chapter and tutors foreign students in the English language program.

Irma Latzer Gamble Scholarship

KELLI CARTER (Purdue). Kelli has served as standards chairman at Delta Iota. She is a senior in elementary education and is active with the Student Association Advocate Department and the University Senate Campus Appeals Board.

LAURIE CHAPMAN (Nevada). Laurie was scholarship chairman and vice president of Alpha Gamma. For practical experience in her field of study, she has been working as a volunteer physical therapy aide.

Kathryn and John F. Winchester Scholarship

KAREN McQUEEN (Arizona). In her junior year with a double

major in marketing and finance, Karen works part-time, has been chapter treasurer and is active on campus. She works in student government and is a member of Spurs.

Ruth B. Fox Scholarship

LESLIE PRECHTL (Bucknell). Leslie has served Delta Xi as philanthropy chairman and social chairman. She has been a member of the varsity track team and is a volunteer in a school for the mentally retarded.

KERRY ROBINSON (UCLA). She has served as pledge director and philanthropy chairman and maintains an "A—" average. Kerry has done volunteer work in two convalescent homes and is on the Dean's List and a member of several honoraries.

Betty Luker Haverfield Scholarship

KATHRYN MAJOR (SW Texas St.). A second semester senior, Kathryn has been active in honoraries and is employed as a grader for the English department.

JULIE WOODALL (Boise St.). Julie has held almost every chapter office including pledge director, social chairman, corresponding secretary, alumnae relations chairman and president. Her "A—" average keeps her on the Dean's List.

Foundation Scholarships

ELIZABETH ROTH (Purdue). This senior's volunteer activities include field work at a local hospital. Liz was pledge director for a class of 44 pledges.

KAREN USELDINGER (Moorhead St.). A senior, Karen works part-time and has been pledge director, philanthropy chairman, Panhellenic delegate and treasurer.

JOHN F. WINCHESTER

John F. Winchester, who along with his wife established the Kathryn and John F. Winchester Scholarship, died April 1, 1980 in Phoenix.

Mr. Winchester was instrumental in converting what is now the Exxon Corp. from horse-drawn to motorized tank wagons and became manager of transportation.

The Winchesters established the permanent scholarship fund 14 years ago. Awarded annually by the Gamma Phi Beta Foundation, preference is given to members of Arizona or Colorado chapters. Contributions to the fund in memory of Mr. Winchester will be accepted by the Gamma Phi Beta Foundation, 7503 Marin Drive, Englewood, CO 80111.

Mrs. Winchester, a member of Theta Chapter, died last year.

Scholarships and Fellowships Available

GRADUATE FELLOWSHIPS

Lindsey Barbee Fellowship

Granted annually for graduate study in the field of law, business, engineering (including architecture), social work or health science professions.

Founders Fellowships

Four are offered for graduate study in the field of the applicant's choice.

Fern Holcolm Health Fellowship

For graduate study in the field of the applicant's choice.

Audrey Weldon Shafer Fellowship

For graduate study in the field of the applicant's choice.

Fellowship applicants are considered on the basis of character, academic record, promise of achievement and financial need, and must be accepted in a graduate program before fellowship is granted.

UNDERGRADUATE SCHOLARSHIPS

Elizabeth Fee Arnold-Beatrice Hill Wittenberg Scholarship

Primarily for study during the senior year of college and, secondarily, for graduate work.

Ruth B. Fox Scholarship

For study during the junior or senior year of college.

Irma Latzer Gamble Scholarship

For study during the junior or senior year of college.

Betty Luker Haverfield Scholarship

For study in the field of the applicant's choice.

Ardis McBroom Marek Scholarship

For study during the sophomore, junior or senior year, with preference given to applicants in the field of creative writing or journalism.

Kathryn and John F. Winchester Scholarship

For study primarily during the junior or senior year, with preference given to members of Arizona or Colorado chapters.

Scholarship applicants are considered on the basis of academic

record, contribution to Gamma Phi Beta and financial need.

POLLACK AWARD

Awarded to the collegian most dedicated in her efforts for the Gamma Phi Beta Foundation—\$1,000.

FINANCIAL ASSISTANCE

Grants-in-aid

Available to members of Gamma Phi Beta who face unforeseen financial need that might force withdrawal from college. Applications may be made at any time on behalf of a member by another member, chapter advisor or an officer of an affiliated House Corporation Board.

ATTENTION: ALL APPLICANTS: Forms and additional information may be obtained by writing the Gamma Phi Beta Foundation, 7503 Marin Drive, Englewood, CO 80111. Completed applications, including transcripts and letters, must be filed not later than March 1, 1981.



1980-81 Directory

This eight page insert is your Gamma Phi Beta Directory for the upcoming year. It includes a listing of all international, province and local officers. It also contains a list of Gamma Phi Beta collegiate and alumnae chapters, a province roster, the list of officers' duties and *Crescent* deadlines.

Please lift the staples in the center of this section, remove the pages and insert them in your permanent officer's notebook for ready reference throughout the year.

Gamma Phi Beta Sorority Directory

Founded November 11, 1874
Syracuse University

FOUNDERS

Helen M. Dodge Ferguson
Frances E. Haven Moss
E. Adeline Curtis
Mary A. Bingham Willoughby

THE GRAND COUNCIL

Grand President: Mrs. T. L. Kline (Karen Wander), 3648 S. 91st St., Omaha, NE 68124
Alumnae Vice President: Mrs. R. O. Bronsing (Ann Mullen), 31 Chesterton Lane, Chesterfield, MO 63017
Collegiate Vice President: Mrs. B. Lowell (Ruth Donlon), 1800 Hackett Ave., Long Beach, CA 90815
Director of Finance: Mrs. G. E. Misthos (Mary Jane Hipp), 242 Glendale Rd., Glenview, IL 60025
Director of Expansion: Mrs. L. W. Betts (Mary Alice Adams), 2448 Whitehall Circle, Winter Park, FL 32792
NPC Delegate: Mrs. I. P. Nelson Jr. (Gloria Swanson), 3521 Royal Lane, Dallas, TX 75229
Acting Executive Secretary-Treasurer: Mrs. F. Guerra (Randall Stevens), 7503 Marin Dr., Englewood, CO 80111

CENTRAL OFFICE—7503 Marin Drive, Englewood, CO 80111

FIELD PERSONNEL

Collegiate Consultants: Cynthia Anderson, Colette Cooley, Donna Cochran, Deborah Dykes, Marni Shoner
Expansion Supervisor: Rebecca Boyd

THE CRESCENT

Editor: Mrs. P. Riske (Kris Brandt), 1222 E. Cordova Ave., Casa Grande, AZ 85222
Alumnae Editor: Mrs. R. E. Wiltamuth (Margy Molden), 1700 Kiva Rd., Silver Spring, MD 20904
Collegiate Editor: Ms. Carol Asel, 4612 Amesbury #288, Dallas, TX 75206
Feature Editor: Mrs. E. Adams (Georgia Buell), 6417 N.E. 190 Street, Seattle, WA 98155
Business Manager: Mrs. F. Guerra (Randall Stevens)

NATIONAL PANHELLENIC CONFERENCE

NPC Delegate: Mrs. I. P. Nelson, Jr. (Gloria Swanson)
1st Alternate Delegate: Mrs. D. H. Lundin (Marjorie Speidel), 5811 Oberlin Ave. N.E., Seattle, WA 98105
2nd Alternate Delegate: Mrs. C. Hustad (Virginia Geiger), 5304 Ayshire Blvd., Minneapolis, MN 55436
3rd Alternate Delegate: Mrs. T. L. Kline (Karen Wander)

INTERNATIONAL OFFICERS AND COMMITTEE CHAIRMEN

Alumnae Expansion (Asst. to AVP): Mrs. R. L. Howes (Cynthia Meisner), 2005 Moran Rd., Franklin, TN 37064
Alumnae Initiates (Asst. to AVP): Mrs. D. J. Matuszak (Mary Helen Eaton), 4011 E. Prospector Dr., Salt Lake City, UT 84121
Awards: Mrs. B. Manthey (Mary Ruth Holloway), 1200 W. Taylor St., Apt. 342, Sherman, TX 75090
Bylaws: International and Province: Mrs. F. L. McDonald (Ernestine Dobler), 9714 State Line Rd., Shawnee Mission, KS 66206
Alumnae (Asst. to AVP): Mrs. R. E. Mapes (Beverly Gerhardt), 2904 Pine Ridge, Oklahoma City, OK 73120
Collegiate (Asst. to CVP): Mrs. G. V. Kallal (Jeannine Sheldon), 1296 Casa Solana Dr., Wheaton, IL 60187
House Corporation (Asst. to DOF): Ms. Emerald L. Erickson, 149 Farnsworth Ave., #3B, Bordentown, NJ 08505
Chapter Development:
Alumnae: Mrs. N. W. Choat (Phyllis Donaldson), 9716 Erskine St., Omaha, NE 68134
Collegiate: Mrs. M. Meaux (Marcia Major), 5811 Creek-bend, Houston, TX 77096
Programs: Ms. Louise Oxenreiter, 415 Sherwood #306, Sausalito, CA 94965
Convention: Mrs. M. A. Michele (Mignon Phipps), 2214 E. San Juan, Phoenix, AZ 85016
Convention Coordinator: Mrs. J. D. Moore (Leonite Selzer), 2807 S. Peoria, Tulsa, OK 74114

Coordinator of Leadership Training: Ms. Judy Ditchey, 5225 Candlewick Ct., Riverside, CA 92506
Coordinator of State Membership Chairmen: Ms. Elise Berthon, 3141 Warrington Rd., Mountain Brook, Birmingham, AL 35223
Historian: Mrs. F. H. Mason (Charlotte Hamilton), 5050 Lake Shore Drive, Brown's Lake, Jackson, MI 49203
Magazines: Mrs. C. W. Kenney (Dorothy Stark), Maplewood Gardens, 129 Croyden Lane, Apt. E, Syracuse, NY 13224
Mothers' Club: Mrs. Joseph Griffin (Elizabeth Roessler), 2837 Brook Dr., Falls Church, VA 22042
Nominating: Mrs. C. B. Briscoe, Jr. (Margaret Godbold), 319 Bellerive Blvd., St. Louis, MO 63111
Parliamentarian: Ms. Jennie K. Curtis, P.O. Box 896, Leadville, CO 80461
Philanthropy Programs: Ms. Judy Elaine Graham, 2716 Rosedale, Dallas, TX 75205
Pledges (Asst. to CVP): Ms. Linda Brooks, 44 Gardenside Dr. #10, San Francisco, CA 94131
Policies (Asst. to DOF): Mrs. T. A. Lothian (Carol Ann Vichek), P.O. Box 863, Williams Bay, WI 53191
Public Relations: Ms. Camille Cestone, 1340 N. Dearborn, Apt. 11F, Chicago, IL 60610
Research: Mrs. C. Shafer, Jr. (Audrey Weldon), 6808 Rockhill Rd., Kansas City, MO 64131
Rush (Asst. to CVP): Ms. Karen Kendall, 1829 Augusta #19, Houston, TX 77057
Ritual: Mrs. D. Kempthorne (Patricia Merrill), 11219 Gunsmoke St., Boise, ID 83704; Ms. Cindy Partain, 1225 Bonnie View Ave., Lakewood, OH 44107
Scholarship: Ms. Colleen Sweeney, 4680-A S. 36th St., Arlington, VA 22206
Song: Mrs. W. Kaelin (Jeannette Stoll), 4301 Revere Rd., Enid, OK 73701
Transister Service: Mrs. D. J. Schonberg (Theora Kurt), 12205 Leavenworth, Omaha, NE 68154

AREA FINANCIAL ADVISORS

Mrs. C. B. Jennings (Patricia Strickler), 4724 44th N.E. Seattle, WA 98105
Mrs. E. G. Hart (Mary Jean Lauvetz), 6 Brookside Rd., Philadelphia, PA 19118
Mrs. R. G. Drouet (Leona Davis), 10482 E. Grandeur Dr., Baton Rouge, LA 70815
Mrs. G. Baldwin (Julia Irene Lynn), 503 Hobson Dr., Pittsburg, KS 66762

PROVINCE ALUMNAE DIRECTORS

I: Mrs. D. M. Matheson (Dorothy Roberts), 7 Pocahontas St., Winchester, MA 01890
II: Mrs. G. Youngwood (Mary Ann Morgan), 8205 Jeb Stuart Rd., Rockville, MD 20854
III: Mrs. J. W. Tschantz (Mary Ann Messer), 284 Blackstone Dr., Centerville, OH 45459
IV:
V: Mrs. M. E. Stromer (Peggy Larson), R.R. 2, Cty. M, Milton, WI 53563
VI: Mrs. Patricia D. Newcombe (Patricia Davies), 15803 Holdridge Rd., Wayzata, MN 55391
VII: Mrs. D. R. Johnson (Sue Herzog), 5538 McCommas, Dallas, TX 75206
VIII: Mrs. G. Oliver (Jean Brooks), 4030 Summit Dr., N.E., Marietta, GA 30067
IX: Mrs. F. W. Volker, Jr. (Ann McCune), 1700 W. 25th, Odessa, TX 79763
X: Mrs. A. O. Durrett (Sue Dorsey), 443 W. 57th Terrace, Kansas City, MO 64113
XI: Mrs. W. Laney (Joan Hogan), 13425 Cedarbrooke N.E., Albuquerque, NM 87111
XII: Mrs. S. G. Arana (Connie Rutt), 10654 Onondaga Place, Boise, ID 83709
XIII: Mrs. J. A. Merz (Eleanor Baker), 14356 NE Siskiyou Ct., Portland, OR 97230
XIV: Mrs. J. M. Burnett (Dorothy Hoadley), 5429 E. Caron St., Paradise Valley, AZ 85253
XV: Mrs. J. Wheeler (Mary Lou Dahl Fritsch), 507 N. 17th St. Place, Marshalltown, IA 50158
XVI: Mrs. D. R. Leisy (Jeanne Lupton), 3171 Oak Knoll Dr., Los Alamitos, CA 90720

PROVINCE COLLEGIATE DIRECTORS

I: Ms. Anne Louise Layton, Apt. 319-3787 Cote Des Neiges, Montreal, Quebec, Canada H3H 1V9
II: Mrs. R. C. Freisheim (Deborah Foulsham), 2052 Moreland Rd., Abington, PA 19001
III: Mrs. R. Winterhalter (Diana Gay), 4336 Braunton Rd., Columbus, OH 43220
IV: Mrs. J. R. Quick (Elizabeth Ahlmeyer), 1212 Tomah Dr., Mt. Pleasant, MI 48858
V: Mrs. Sally E. Lewis (Sally Erickson), 535 Michigan Ave., Apt. #704, Chicago, IL 60611
VI: Mrs. M. Savageau (Vicki Smith), 1013 11th Ave., N., Fargo, ND 58102
VII: Mrs. K. McMurray (Laura Taylor), 880 Peyton Dr., Beaumont, TX 77706
VIII: Mrs. G. D. Schaeffer (Lorraine Dey), 280 John Knox Rd., Apt. #261, Tallahassee, FL 32303
IX: Mrs. C. W. Scarborough (Donna Snyder), 7817 Kenosha, Lubbock, TX 79423
X: Mrs. G. Wright (Janet Heft), 5102 E. English, Wichita, KS 67218
XI: Mrs. F. Guerra (Randall Stevens), 9796 E. Maplewood Circle, Englewood, CO 80110
XII: Mrs. L. Halvorson (Kathryn Huffman), 732 S. Lynn, Moscow, ID 83843
XIII: Mrs. G. Todd (Martha Hall), 733 Old Country Rd. #D, Belmont, CA 94002
XIV: Mrs. C. R. Duncan (Shirley Gronds), 2531 N. Santa Lucia Ave., Tucson, AZ 85715
XV: Ms. Nancy Parker, 326 N. Linn, Iowa City, IA 52240
XVI: Mrs. F. Rothfuss (Jonelle Hanna), 529 Tumbleweed Rd., Anaheim, CA 92807

ENDOWMENT-LOAN BOARD

Directors:
Mrs. W. Nichols (Diane Dross), Chairman, 17475 Arbor Dr., South Bend, IN 46635
Ms. Patricia Denton, 747 Willis, Glen Ellyn, IL 60137
Ms. Eileen Effinger, 145 W. 58th St., Apt. 7K, New York, NY 10019
Ms. Katherine Joan Vorisek, 502 S. Occidental Blvd. #20, Los Angeles, CA 90057
Mrs. G. E. Misthos (Mary Jane Hipp)
Mrs. T. L. Kline (Karen Wander)
Mrs. F. Guerra (Randall Stevens)

GAMMA PHI BETA FOUNDATION

President: Mrs. T. L. Kline (Karen Wander)
Executive Vice President: Mrs. E. B. Adams (Beverly Cummings), 14 Sentinel Rock Terrace, Larkspur, CO 80118
Vice President: Mrs. G. E. Misthos (Mary Jane Hipp)
Secretary-Treasurer: Mrs. F. Guerra (Randall Stevens)
Directors:
Mrs. R. O. Bronsing (Ann Mullen)
Mrs. B. Lowell (Ruth Donlon)
Mrs. L. W. Betts (Mary Alice Adams)
Mrs. I. P. Nelson, Jr. (Gloria Swanson)
Foundation Standing Committees:
Camping Program Chairman: Mrs. D. H. Green (Sharon Reising), 1090 Vail View Dr., #3, Vail, CO 81657
Financial Aid Chairman: Mrs. D. Ilgen (Barbara Geiser), 1521 Woodland Ave., West Lafayette, IN 47906

GREEK-LETTER PRESIDENTS

Please include "Gamma Phi Beta Sorority" in all addresses.
ALPHA (Syracuse U.) November 11, 1874 (I) Joyce Tudryn, 803 Walnut Ave., Syracuse, NY 13210
BETA (U. of Michigan) June 7, 1882 (IV) Kathy Passfield, 1520 S. University, Ann Arbor, MI 48104
GAMMA (U. of Wisconsin) November 14, 1885 (V) Judy Lenhardt, 270 Langdon St., Madison, WI 53703
*DELTA (Boston U.) 1887-1970
EPSILON (Northwestern U.) Oct. 13, 1888 (V) Karen Seibert, 640 Emerson St., Evanston, IL 60201
*ZETA (Goucher College) 1893-1950
ETA (U. of California) April 29, 1894 (XIII) Karen Johnson, 2732 Channing Way, Berkeley, CA 94704
KAPPA (U. of Minnesota) May 23, 1902 (VI) Jodi Williams, 311 10th Av., S.E., Minneapolis, MN 55414

THETA (U. of Denver) December 28, 1897 (XI) Carla Gordon, 2233 S. Josephine, Denver, CO 80210

*IOTA (Barnard College) 1901-1915

LAMBDA (U. of Washington) May 17, 1903 (XII) Kathy Albin, 4529 17th Av., N.E., Seattle, WA 98105

*MU (Stanford U.) 1905-1944

NU (U. of Oregon) December 18, 1908 (XIII) Shellie King, 1021 Hilyard, Eugene, OR 97401

XI (U. of Idaho) February 3, 1910 (XII) Teri Willey, 709 Elm St., Moscow, ID 83843

OMICRON (U. of Illinois) May 24, 1913 (V) Rebecca Gibson, 1110 W. Nevada, Urbana, IL 61801

PI (U. of Nebraska) June 22, 1914 (XV) Sue Brown, 415 N. 16th St., Lincoln, NE 68508

RHO (U. of Iowa) June 15, 1915 (XV) Maryan Maxwell, 328 N. Clinton, Iowa City, IA 52240

SIGMA (U. of Kansas) October 9, 1915 (X) Judy Shepherd, 1339 W. Campus Rd., Lawrence, KS 66044

TAU (Colorado State U.) Oct. 16, 1915 (XI) Brenda Irvin, 733 S. Shields, Ft. Collins, CO 80521

*UPSILON (Hollins College) 1916-1929

PHI (Washington U.) February 23, 1917 (X) Mary Caola, Women's Bldg., Washington U., St. Louis, MO 63130

CHI (Oregon State U.) April 26, 1918 (XIII) Kathy Shacklett, 645 N.W. 23rd St., Corvallis, OR 97330

PSI (U. of Oklahoma) September 13, 1918 (IX) Cheryl Vaught, 1105 S. College, Norman, OK 73069

OMEGA (Iowa State U.) December 21, 1918 (XV) Lisa Milligan, 318 Pearson Ames, IA 50010

ALPHA ALPHA (U. of Toronto) Oct. 30, 1919 (I) Elizabeth Woodliffe, 26 Madison Ave., Toronto, Ont., Canada M5R 2S1

ALPHA BETA (U. of North Dakota) June 16, 1920 (VI) Cherie Peterson, 3300 University Ave., Grand Forks, ND 58201

ALPHA GAMMA (U. of Nevada) May 14, 1921 (XIII) Tammy Abernathy, 401 University Terr., Reno, NV 89503

ALPHA DELTA (U. of Missouri) May 20, 1921 (X) Jill Mabie, 808 Richmond, Columbia, MO 65201

ALPHA EPSILON (U. of Arizona) April 29, 1922 (XIV) Ann Lutich, 1535 E. First St., Tucson, AZ 85719

ALPHA ZETA (U. of Texas) May 20, 1922 (VII) Linda Griffith, 2222 Pearl St., Austin, TX 78705

ALPHA ETA (Ohio Wesleyan U.) November 10, 1923 (III) Lynn Pederson, 24 Winbeth Ln., Delaware, OH 43015

ALPHA THETA (Vanderbilt U.) June 25, 1924 (VIII) Kathy Teachout, 2411 Kensington Pl., Nashville, TN 37212

ALPHA IOTA (U. of California-Los Angeles) June 26, 1924 (XVI) Cathy Sernett, 616 Hilgard Ave., Los Angeles, CA 90024

*ALPHA KAPPA (U. of Manitoba) 1925-1975

ALPHA LAMBDA (U. of British Columbia) April 28, 1928 (XII) Karin Calderwood, 3675 S.W. Marine Dr., Vancouver B.C., Canada V6N3Z3

*ALPHA MU (Rollins College) 1928-1971

ALPHA NU (Wittenberg U.) June 8, 1929 (III) Janet Leedale, 628 Woodlawn Ave., Springfield, OH 45504

ALPHA XI (Southern Methodist U.) September 21, 1929 (VII) Pam Pitchford, 3030 Daniels, Dallas, TX 75205

ALPHA OMICRON (North Dakota State U.) February 1, 1930 (VI) Connie Bender, 1616 12th Ave. N., Fargo, ND 58102

ALPHA PI (West Virginia U.) April 19, 1930 (II) Joan Patriarca, 591 Spruce Street, Morgantown, WV 26505

*ALPHA RHO (Birmingham-Southern College) 1930-1957

*ALPHA SIGMA (Randolph-Macon Women's College) 1930-1951

ALPHA TAU (McGill U.) September 26, 1931 (I) Anne Turner, 475 Prince Arthur St. W., Montreal, Quebec, Canada H2X 1T4

ALPHA UPSILON (Penn State U.) May 21, 1932 (II) Lisa Viola, S-108 Haller Hall, Penn State U., University Park, PA 16802

ALPHA PHI (Colorado College) Oct. 15, 1932 (XI) Ollie Landahl, 1110 Wood Ave., Colorado Springs, CO 80903

ALPHA CHI (College of William and Mary) January 14, 1933 (II) Nancy Nowicki, GPB House, Richmond Rd., Williamsburg, VA 23185

*ALPHA PSI (Lake Forest College) 1934-1961

ALPHA OMEGA (U. of Western Ontario) October 24, 1936 (I) Colleen Carroll, 639 Talbot St., London, Ont., Canada N6A 2T6

BETA ALPHA (U. of Southern California) September 24, 1938 (XVI) Linda Malley, 737 W. 28th St., Los Angeles, CA 90007

BETA GAMMA (Bowling Green State U.) October 23, 1943 (III) Lisa Gravette, Cottage #3, Sorority Row, BGSU, Bowling Green, OH 43403

BETA BETA (U. of Maryland) October 23, 1940 (II) Kim Mortenson, 9 Fraternity Row, College Park, MD 20740

BETA DELTA (Michigan State U.) June 3, 1944 (IV) Julie Diehl, 342 N. Harrison Rd., East Lansing, MI 48823

BETA EPSILON (Miami U.) April 12, 1947 (III) Helen Stake, 106 MacCracken Hall, Miami U., Oxford, OH 45056

*BETA ZETA (Kent State U.) 1947-1972

BETA ETA (Bradley U.) April 3, 1948 (V) Katherine Morrissey, 1414 W. Fredonia Ave., Peoria, IL 61606

BETA THETA (San Jose State U.) April 24, 1948 (XIII) Sue Lane, 385 E. San Fernando St., San Jose, CA 95112

BETA IOTA (Idaho State U.) October 22, 1949 (XII) Sally Alston, 716 Turner House, ISU, Pocatello, ID 83201

BETA KAPPA (Arizona State U.) December 3, 1949 (XIV) Cathleen May, Palo Verde Main, Box #98, ASU, Tempe, AZ 85281

BETA LAMBDA (San Diego State U.) October 15, 1949 (XIV) Terri Mather, 6123 Montezuma Rd., San Diego, CA 92115

BETA MU (Florida State U.) April 29, 1950 (VIII) Sue Ann Smith, 633 W. Jefferson Street, Tallahassee, FL 32304

*BETA NU (U. of Vermont) 1950-1974

*BETA XI (Ohio State U.) 1951-1967

BETA OMICRON (Oklahoma City U.) November 3, 1951 (IX) Paula Templar, Box 36A, 2501 N. Blackwelder, Oklahoma City, OK 73106

BETA PI (Indiana State U.) September 13, 1952 (IV) Kathy Callahan, 231 Lincoln Quad, Terre Haute, IN 47809

BETA RHO (U. of Colorado) March 13, 1954 (XI) Patricia Davis, 935 16th St., Boulder, CO 80302

BETA SIGMA (Washington State U.) March 5, 1955 (XII) Barbara Dahl, NE 600 Campus St., Pullman, WA 99163

BETA TAU (Texas Tech. U.) March 10, 1956 (IX) Karen Mann, Box 4334, Texas Tech. U. Sta. Lubbock, TX 79409

BETA UPSILON (Kansas State U.) March 23, 1957 (X) Deb Steiner, 1807 Todd Rd., Manhattan, KS 66502

BETA PHI (Indiana U.-Bloomington) November 16, 1957 (IV) Madeline Yucevicius, 1305 N. Jordan, Bloomington, IN 47406

BETA CHI (Wichita State U.) February 1, 1958 (X) Diane Converse, 3912 E. 21st., #20 Omega Court, Wichita, KS 67208

BETA PSI (Oklahoma State U.) February 3, 1958 (IX) Sherri Lynn Troub, 1405 W. Third St., Stillwater, OK 74074

BETA OMEGA (Northern Arizona U.) February 15, 1958 (XIV) Elizabeth Hughes, CU 7654, NAU, Flagstaff, AZ 86001

GAMMA ALPHA (Memphis State U.) March 15, 1958 (VIII) Micki Masters, Box 80154, MSU, Memphis, TN 38152

GAMMA BETA (Gettysburg College) February 21, 1959 (II) Jane Nase, PO Box 2175, Gettysburg College, Gettysburg, PA 17325

GAMMA GAMMA (U. of Wisconsin-Milwaukee) March 19, 1960 (V) Linda Barbican, Union Box 43, U. of WI-Mil., Milwaukee, WI 53211

*GAMMA DELTA (U. of Wyoming) 1961-1973

GAMMA EPSILON (U. of Puget Sound) April 29, 1961 (XII) Melinda Goss, 1310 N. Union, Tacoma, WA 98406

GAMMA ZETA (East Texas State U.) March 3, 1962 (VII) Gina Hignett, Box A, East Texas Station, Commerce, TX 75428

GAMMA ETA (California State U.-Long Beach) March 10, 1962 (XVI) Elise Murdock, 2929 E. Broadway, Long Beach, CA 90803

*GAMMA THETA (U. of the Pacific) 1963-1972

GAMMA IOTA (Midwestern State U.) March 16, 1963 (IX) Kathy Allen, Box 142, Midwestern State U., Wichita Falls, TX 76308

GAMMA KAPPA (Kearney State College) May 11, 1963 (XV) Jayne Brummer, 615 W. 26th St., Kearney, NE 68847

*GAMMA LAMBDA (Louisiana State U.) 1964-1977

GAMMA MU (Moorhead State U.) April 25, 1964 (VI) Patricia Konkler, 515 S. 10th St., Moorhead, MN 56560

GAMMA NU (Lamar U.) February 20, 1965 (VII) Kim Shuffield, Box 10734, Lamar U. Station, Beaumont, TX 77710

*GAMMA XI (U. of Tennessee) 1965-1977

GAMMA OMICRON (U. of Kentucky) January 22, 1966 (III) Monica Huffines, 508 Columbia Ave., Lexington, KY 40508

GAMMA PI (Mankato State U.) February 5, 1966 (VI) Heidi Hansen, 406 Warren St., Mankato, MN 56001

*GAMMA RHO (U. of Wisconsin-Oshkosh) 1966-1976

*GAMMA SIGMA (Western Michigan U.) 1968-1975

GAMMA TAU (St. Louis U.) November 11, 1967 (X) Kathy Jo Miller, 20 N. Grand Blvd., St. Louis, MO 63108

GAMMA CHI (Southwest Texas State U.) February 3, 1968 (VII) Kathy Sue Major, Student Center, SWTSU, San Marcos, TX 78666

GAMMA UPSILON (Drake U.) February 17, 1968 (XV) Mary Neel, 1218 34th St., Des Moines, IA 50311

GAMMA PHI (Auburn U.) May 4, 1968 (VIII) Susan Stansell, Teague Hall, (Dorm 4), Auburn U., Auburn, AL 36830

GAMMA PSI (U. of Northern Iowa) November 23, 1968 (XV) Terri Peterson, c/o Joan Redalen, AA, 3715 Clearview Dr., Cedar Falls, IA 50613

GAMMA OMEGA (U. of Wisconsin-Platteville) March 29, 1969 (V) Ann Grunder, 160 Bradford, Platteville, WI 53818

DELTA ALPHA (U. of Wisconsin-River Falls) May 3, 1969 (VI) Diana Lehnen, 204 Hagestad Student Center, River Falls, WI 54022

DELTA BETA (Boise State U.) February 21, 1970 (XII) Julie Woodall, 1918 Potter Dr., Boise, ID 83706

*DELTA GAMMA (U. of Nebraska-Omaha) 1970-1976

DELTA DELTA (California State U.-Fullerton) April 3, 1971 (XVI) Marteil Michaud, 508 Cornell Ave., Fullerton, CA 92631

DELTA EPSILON (Texas Wesleyan College) April 28, 1973 (VII) Anne Dobesh, 3101 Rosedale, Fort Worth, TX 76103

DELTA ZETA (Southwestern Oklahoma State U.) May 5, 1973 (IX) Toni Newberry, Box 761, SWOSU, Weatherford, OK 73096

DELTA ETA (U. of California-Irvine) January 19, 1974 (XVII) Janet Deyo, 118 Garnet, Balboa Island, CA 92662

DELTA THETA (California Polytechnic State U.-San Luis Obispo) January 18, 1975 (XVI) Barbara Forde, 1326 Higuera St., San Luis Obispo, CA 93401

DELTA IOTA (Purdue U.) April 19, 1975 (IV) Kathy Speckhard, 810 David Ross Rd., West Lafayette, IN 47906

DELTA KAPPA (Lehigh U.) January 31, 1976 (II) Sandra Buschmann, Box F-43, Lehigh U., Bethlehem, PA 18015

DELTA LAMBDA (U. of California Riverside) January 24, 1976 (XVI) Lori Montigel, 3637 Canyon Crest Dr., #V408, Riverside, CA 92507

DELTA MU (Rutgers, State U. of New Jersey) April 23, 1977 (I) Mary Franzwa, 10 Bartlett St., New Brunswick, NJ 08901

DELTA NU (Southwest Missouri State U.) November 12, 1977 (X) Lisa Stidham, 722 E. Elm St., Springfield, MO 65806

DELTA XI (Bucknell U.) December 2, 1978 (II) Anne Isban, Box C-2889, Bucknell U., Lewisburg, PA 17837

DELTA OMICRON (Southern Technical Institute) January 26, 1980 (VII) Elaine Parker, Student Center, STI, Marietta, GA 30060

DELTA PI (Illinois State U.—Normal) April 19, 1980 (V) Nancy Dietrick, 412 Normal Ave., Normal, IL 61761

DELTA RHO (Dickinson College) May 17, 1980 (II) Diane Klawans, Box 1075, Dickinson College, Carlisle, PA 17013

*Chapter Deactivated

ALUMNAE CHAPTER PRESIDENTS

ALABAMA (VIII)

Auburn, 1963 Mrs. E. O. Jones, Jr. 744 Sherwood Dr., Auburn, AL 36830

Birmingham, 1931 Mrs. Weiker Kline, 5722 Belmont Pl., Birmingham, AL 35210

Montgomery, 1973 Ms. Delena C. Pickens, 3848 Governors Dr. #F-247, Montgomery, AL 36111

ARIZONA (XIV)

Flagstaff, 1957 Mrs. Jeff Lawrence, 317 W. Navajo, Flagstaff, AZ 86001

Phoenix, 1939 Mrs. William E. Causey, 3522 S. Juniper, Tempe, AZ 85282

Tucson, 1937 Mrs. Angela Augur, 6050 Piedra Seca, Tucson, AZ 85718

CALIFORNIA (XIII, XIV, and XVII)

Bakersfield, 1953 (XVII): Mrs. R. Mack Phillips, 2004 Glendon Ct., Bakersfield, CA 93309

Balboa Harbor, 1964 (XVI): Mrs. Gloria Venerdi, #6 Sharpsburg, Irvine, CA 92714

Berkeley, 1902 (XIII): Miss Jeanne Banfield, 780 Oak Grove F-1, Concord, CA 94518

Beverly Hills-Westwood, 1955 (XVI): Miss Tricia Honsaker, 5460 White Oak Ave., #G205, Encino, CA 91316

Fresno, Reactivated 1979 (XIII): Mrs. James S. Maines, 6617 N. Laureen Ave., Fresno, CA 93710

Glendale, 1939 (XVI): Mrs. Elmer Millage, 2319 Caracas, LaCrescenta, CA 91214

La Jolla, 1957 (XIV): Mrs. Fred Spiess, 9450 LaJolla Shores Dr., La Jolla, CA 92037

Long Beach, 1939 (XVI): Mrs. J. M. Johnson, 6511 El Jardin St., Long Beach, CA 90815

"Dancing With



1. Campfire Girls and Girl Scouts accept checks totaling \$5,000 from the Denver Alumnae Chapter.

2. Province XI collegians present a skit.

3. Molly Brown, dressed in a different outfit every day, welcomes conventioners to Denver.

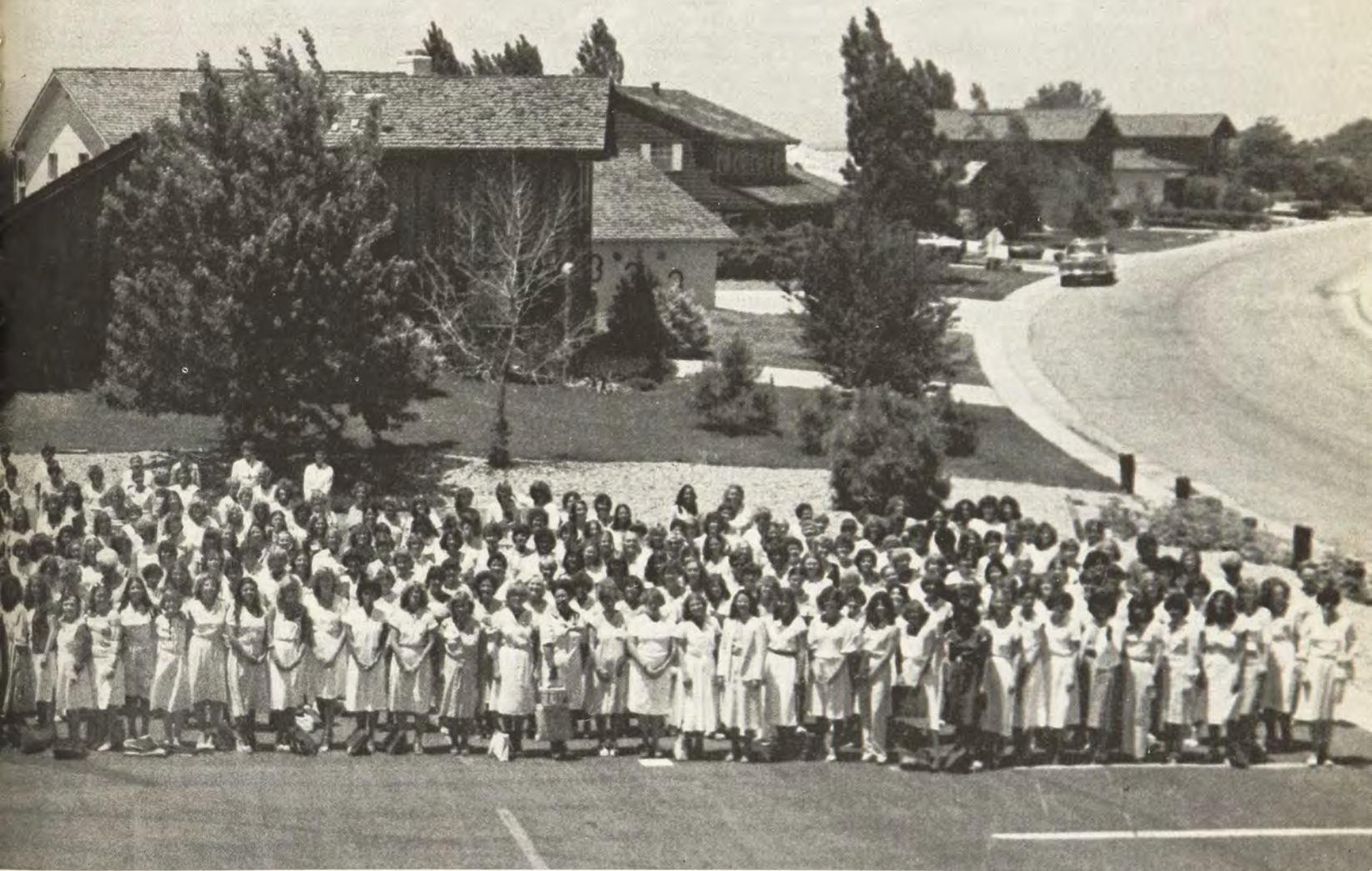
4. Collegians singing songs at the confirmed conventioners dinner.

5. Dorothy Harrison illustrates amusing stories with her seemingly never ending collection of hats from different decades.



The Mountains"

John Denver Song, 1980



Los Angeles, 1913 (XVI): Mrs. Peggy Stevenson, 1383 Van Dyke Rd., San Marino, CA 91108
 Modesto, 1955 (XIII): Mrs. Dorothy Kem, 410 Bowen Ave., Modesto, CA 95350
 Monterey County, 1951 (XIII): Mrs. Roger Gammons, Box 3833, Carmel, CA 93921
 Orange County, 1954 (XVI): Mrs. Jim J. Roberts, 1436 S. Citrus Ave., Fullerton, CA 92633
 Palo Alto, 1939 (XIII): Mrs. Harrison O'Neil, 3066 Price Ct., Palo Alto, CA 94303
 Pasadena, 1939 (XVI): Mrs. Joan R. Wood, 1445 Arroyo View Dr., Pasadena, CA 91103
 Peninsula, 1948 (XIII): Mrs. Kirkendall Carlton, 305 Middle Rd., Belmont, CA 94002
 Pomona Valley, 1956 (XVI): Mrs. Dwaine C. Glass, 4804 N. Fairvalley, Covina, CA 91722
 Riverside, reactivated 1978 (XVI): Mrs. Gerald Bashaw, 1631 Coteau, Riverside, CA 92504
 Sacramento Valley, 1937 (XIII): Mrs. Jane Schwabe, 3125 Moreland Ct., Sacramento, CA 95825
 San Diego, 1939 (XIV): Mrs. Charlotte Fairbairn, 8625 Verlane Dr., San Diego, CA 92119
 San Fernando Valley, 1953 (XVI): Mrs. Dale Bergerson, 8350 Capps, Northridge, CA 91324
 San Francisco, 1902 (XIII): Mrs. Felix Brunot, 1129 Douglass St., San Francisco, CA 94131
 San Jose, 1948 (XIII): Mrs. Gaye Carles, 120 Porter Ln., San Jose, CA 95127
 South Bay, 1956 (XVI): Mrs. Nancy Borland, 7214 Rue Godbout, Rancho Palos Verdes, CA 90274
 South Orange County, 1976 (XVI): Mrs. Kenneth H. Eldred, 22972 Cecelia, Mission Viejo, CA 92691
 South Peninsula, 1964 (XIII): Mrs. Linda Colehower, 26060 Kriste Ln., Los Altos Hills, CA 94022

COLORADO (XI)

Boulder, 1953: Mrs. Paul Linton, 1120 Clayton, Denver, CO 80206
 Colorado Springs, 1932: Mrs. Rob Woods, 3196 Montebello Dr. W., Colorado Spgs, CO 80918
 Denver, 1907: Mrs. Rebecca Young, 5956 S. Colorow Dr., Morrison, CO 80465
 Fort Collins, 1945: Mrs. John Nicol, 1200 Teakwood Dr., Ft. Collins, CO 80521

CONNECTICUT (I)

Fairfield County, 1958: Mrs. Suzanne Sposato, 15 Woodstone Rd., Ridgefield, CT 06877

DISTRICT OF COLUMBIA (II)

Washington, DC, 1935: Mrs. Frank P. Claunts, 15301 Montford Rd., Silver Spring, MD 20904

FLORIDA (VIII)

Ft. Lauderdale, 1956: Mrs. Edward King, 2964 N.W. 69th Ct., Ft. Lauderdale, FL 33309
 Jacksonville, 1953: Mrs. Michael J. Miller, 9424 Pickwick Dr., Jacksonville, FL 32217
 Miami, 1948: Miss Karen Criswell, 9022 N.E. 8th Ave., #1L, Miami Shores, FL 33138
 Orlando-Winter Park, 1935: Mrs. Samuel Hines, 2000 King Arthur Cir., Maitland, FL 32751
 Tallahassee, 1954: Mrs. Juliet T. Stacklyn, 2016 Wahalaw Nene, Tallahassee, FL 32301

GEORGIA (VIII)

Atlanta, 1940: Mrs. Gail Sherer, 1805 Roswell Rd. #28-B, Marietta, GA 30062

HAWAII (XIII)

Hawaii, 1938: Mrs. Gary Soli, 47-153 Iuii St., Kaneoh, HI 96744

IDAHO (XII)

Boise, 1928: Mrs. Marcia Donnelly, 1970 Fairmeadow Dr., Boise, ID 83704
 Moscow, 1941: Mrs. Janice McDonald, 204 N. Adams #4, Moscow, ID 83843
 Pocatello, 1955: Mrs. Rose Gallegos, 240 S. 8th, Pocatello, ID 83201

ILLINOIS (V)

Aurora, 1963: Mrs. Pat Kassel, 5 S. 100 Pebblewood Ln., #C-3, Naperville, IL 60540
 Bloomington-Normal, 1973: Mrs. Jackie Lapan, 101 S. Vale, Bloomington, IL 61701
 Champaign-Urbana, 1929: Mrs. Leo G. Perucca, 1 Monterey, Champaign, IL 61820

Chicago, reactivated 1978: Mrs. Sally E. Lewis, 535 N. Michigan, #907, Chicago, IL 60611
 Chicago Northwest Suburban, 1955: Mrs. Larry Heasty, 831 N. Chestnut, Arlington Heights, IL 60004
 Evanston-North Shore, 1949: Mrs. John Carlson, 9529 Harding, Evanston, IL 60203
 Glen Ellyn Area, 1967: Mrs. Robert Meisinger, 35161 Cypress Dr., Glen Ellyn, IL 60137
 Lake County, 1950: Mrs. David Stiles Jr., 637 Crane Blvd., Libertyville, IL 60048
 Peoria Area, 1947: Miss Wanda Siegfried, 6208 N. Imperial Dr., Peoria, IL 61614
 Quad Cities, 1938: Mrs. Scott Turnipseed, 2483 31st St. Ct., Moline, IL 61265

INDIANA (IV)

Bloomington, 1956: Mrs. Dorothy Adam, 2225 S. High St., Bloomington, IN 47401
 Calumet Area, 1959: Mrs. Janice Wright, 952 W. 72nd Ave., Merrillville, IN 46410
 Evansville, 1956: Mrs. Laura Feldkamp, 644 Chateau Drive, Evansville, IN 47715
 Indianapolis, 1942: Mrs. Mac J. Martin, 4915 Kessler Blvd. E. Dr., Indianapolis, IN 46220
 Lafayette Area, 1963: Mrs. Shirley Mueller West, 824 Essex, W. Lafayette, IN 47906
 Terre Haute, 1952: Mrs. Michael Cogan, 3802 Parkview Dr., Terre Haute, IN 47803

IOWA (XV)

Ames, 1940: Mrs. Jerry Jones, 2042 Cessna, Ames, IA 50010
 Cedar Rapids, 1948: Mrs. Gary Anhalt, 1933 4th Ave. S.E., Cedar Rapids, IA 52403
 Des Moines, 1919: Mrs. Janelle Lamb, 1205 4th St. S.W., Altoona, IA 50009
 Iowa City, 1931: Miss Wendy Claggett, 207-1/2 6th St., Apt. 3, Coralville, IA 52241
 Quad Cities, 1938: Mrs. Scott Turnipseed, 2483 31st St. Ct., Moline, IL 61265
 Waterloo-Cedar Falls, 1941: Mrs. Lloyd Elliott, 2408 W. 6th, Waterloo, IA 50702

KANSAS (X)

Lawrence, 1941: Mrs. Janet Kernes, 1620 W. 20th Terr., Lawrence, KS 66044
 Manhattan, 1956: Mrs. Gary Boomer, 212 Pine, Manhattan, KS 66502
 Topeka, 1955: Mrs. Samuel H. Marshall, Jr., 1921 Westwood Dr., Topeka, KS 66604
 Wichita, 1925: Mrs. Anne Nelson, 320 N. Ridgewood, Wichita, KS 67208

KENTUCKY (III)

Lexington, 1965: Mrs. John Palumbo, 10 Deepwood Dr., Lexington, KY 40505
 Louisville, reactivated 1970: Mrs. Nicki Swiderski, 2807 Springbud Ct., Louisville, KY 40220

MASSACHUSETTS (I)

Boston-West Suburban, 1963: Mrs. James E. Wood, 11 Grassland St., Lexington, MA 02173

MICHIGAN (IV)

Ann Arbor, 1936: Mrs. Janice Hanson Fisher, 1126 Ferdon, Ann Arbor, MI 48104
 Birmingham, 1948: Mrs. Neil DeKoker, 2800 Baltane Rd., W. Bloomfield, MI 48033
 Detroit, 1913: Mrs. J. Robert MacMillan, 37 Kerby Rd., Grosse Pointe Farms, MI 48236
 Grand Rapids, 1950: Mrs. Patricia Rodgers, 9514 Cherry Valley Ave. SE, Caledonia, MI 49316
 Jackson, 1953: Mrs. Lee T. Lincoln, 512 McBride St., Jackson, MI 49203
 Greater Lansing, 1948: Mrs. Janice Proudfoot, 1121-D Palmer Lane, East Lansing, MI 48823

MINNESOTA (VI)

Duluth, 1957: Mrs. Brad Johnson, 431 9th Ave., Two Harbors, MN 55616
 Mankato, 1965: Ms. Donna Boyer, 8031 12th Ave. S., #1, Bloomington, MN 55420
 Minneapolis-St. Paul, 1904: Mrs. Fenwick Atwill, 1600 Oak Ave., Arden Hills, MN 55112

MISSOURI (X)

Columbia, 1941: Mrs. Jolene Schulz, 1021 Hulen Dr., Columbia, MO 65201

Greater Kansas City, 1923: Mrs. Robert J. Schumann, 9743 Sagamore Rd., Leawood, KS 66206
 St. Louis, 1919: Mrs. Ead E. Fuller, 10680 Tioga Ct., St. Louis, MO 63128
 Springfield, 1917: Mrs. Miles Sweeney, 1015 S. Delaware, Springfield, MO 65804

NEBRASKA (XV)

Kearney, 1962: Mrs. Connie Jo Fulcher, 4211 Avenue F, Kearney, NE 68847
 Lincoln, 1938: Mrs. Gary E. Lacey, 3708 J St., Lincoln, NE 68510
 Omaha, 1919: Mrs. Roderick Thiesen, 5220 Mason St., Omaha, NE 68106

NEVADA (XIII)

Reno, 1921: Mrs. Henry Blagen, 1005 Brentwood, Reno, NV 89502

NEW JERSEY (II)

Bergen County, 1965: Mrs. Henry Diercxsens, 217 Fairmont Rd., Ridgewood, NJ 07450
 Central Jersey, 1974: Ms. Kathy Clarke, 113 Elmore Ave., Trenton, NJ 08619
 Summit Area, 1965: Mrs. Margaret Riley, 420 Rion Rd. D5, Chatham, NJ 07928

NEW MEXICO (XI)

Albuquerque, 1952: Mrs. Calvin Higgins, 6429 Esther, N.E., Albuquerque, NM 87109

NEW YORK (II)

Buffalo, 1940: Mrs. Herbert Preve, 5305 Willow Lake Ct., Clarence, NY 14031
 New York City, reactivated 1977: Mrs. John M. Dunkle, 36 Ismay St., Staten Island, NY 10314
 Rochester, 1945: Mrs. Terry Nicastro, 27 Gentian Way, Fairport, NY 14450
 Syracuse, 1892: Mrs. Gerald Reidenbaugh, 130 Buckingham Ave., Syracuse, NY 13210
 Westchester County, 1938: Miss Kathy Kincaid, One Hillside Ave., Pelham, NY 10803

NORTH CAROLINA (VIII)

Raleigh, 1967: Mrs. Allen Clapp, 3206 Queens Rd., Raleigh, NC 27612

NORTH DAKOTA (VI)

Fargo-Moorhead, 1929: Mrs. Kay Halverson, 3307 Evergreen Rd., Fargo, ND 58102
 Grand Forks, 1946: Mrs. Ann Clark, Box 8, Forest River, ND 58233

OHIO (III)

Cincinnati, 1941: Mrs. Beverly J. Nichols, 16 Hamman Dr., Amelia, OH 45102
 Cleveland, 1916: Mrs. Marjorie Smith, 2584 Guilford Rd., Cleveland Hgts., OH 44118
 Cleveland East, 1955: Mrs. Carol Matthews, 426 Acacia Dr., Willowick, OH 44094
 Cleveland West, 1961: Mrs. George Durham, 111 Ellen Dr., Berea, OH 44017
 Columbus, 1929: Mrs. Ronald Ernst, 1099 Kirk Ave., Worthington, OH 43085
 Dayton, 1941: Mrs. Mary Ann Tschantz, 284 Blackstone Dr., Centerville, OH 45459
 Lima, 1957: Mrs. Jocelyn Errington Kirk, 2934 W. Lakewood, Lima, OH 45805
 Springfield, 1929: Mrs. George Raup, 260 Brighton Rd., Springfield, OH 45504
 Toledo, 1945: Mrs. Terry Dachenhaus, 1655 Archwood Ln., Toledo, OH 43614

OKLAHOMA (IX)

Bartlesville, 1952: Mrs. Ruth E. Bowles, 4609 Barlow Pl., Bartlesville, OK 74003
 Muskogee, 1957: Mrs. Glen Bergdorf, 2610 Turner, Muskogee, OK 74401
 Norman, 1930: Mrs. Michal W. Gray, 2730 Chautauqua #131, Norman, OK 73069
 Oklahoma City, 1921: Mrs. Jim Collins, 1509 Brighton, Oklahoma City, OK 73120
 Stillwater, 1957: Miss Virginia Lippert, 3101 N. Lincoln, Stillwater, OK 74074
 Tulsa, 1929: Mrs. Frank Jackson, 2600 W. Broadway, Broken Arrow, OK 74012
 Weatherford, 1973: Mrs. Kay Gilliland, 1010 Camelot Dr., Weatherford, OK 73096

OREGON (XIII)

Corvallis, 1947: Ms. Kay Conrad, 2220 N.W. 29th, Corvallis, OR 97330
 Eugene, 1940: Mrs. Charles B. Chackel, 255 Coachman Dr., Eugene, OR 97405
 Portland, 1913: Mrs. Trudi Diffendaffer, 4705 N.W. 191st, Portland, OR 97229
 Salem, 1944: Mrs. Margaret D. Simms, 1100 Chemeketa #407, Salem, OR 97301

PENNSYLVANIA (II)

Lehigh Valley, 1975: Mrs. Robert M. Yanega, 1633 Mine Lane Rd., Easton, PA 18042
 Philadelphia North, 1957: Mrs. Robert Eckert, 199 Greyhorse Rd., Willow Grove, PA 19090
 Philadelphia West, 1935: Mrs. David Girard, 416 Hickory Ln., Berwyn, PA 19312
 Pittsburgh, 1940: Mrs. Terry Gruneberg, 825 Foxland Dr., Pittsburgh, PA 15243
 State College, 1941: Mrs. Trend Gilberg, 1197 Smith Field St., State College, PA 16801

TENNESSEE (VIII)

Memphis, 1952: Ms. Pam Gallagher, 4291 Paula, Memphis, TN 38116
 Nashville, 1929: Ms. Barbara Chadwick, 203 Mason Ave. #5, Nashville, TN 37203

TEXAS (VII, IX and XI)

Amarillo, 1955 (IX): Mrs. Leta Barry, 6619 Roxton, Amarillo, TX 79109
 Arlington, 1965 (VII): Mrs. Tom Ryden, 1006 Wembley Rd., Arlington, TX 76014
 Austin, 1947 (VII): Mrs. Mike Nickless, 3207 Bonnie Rd., Austin, TX 78703
 Beaumont, 1956 (VII): Mrs. Thomas R. Foster, 845 Fenway Park, Beaumont, TX 77706
 Corpus Christi, 1956 (VII): Mrs. R. W. Coffin, 4401 Marie St., Corpus Christi, TX 78411
 Dallas, 1930 (VII): Mrs. William L. Jones, 2413 Crestview Cir., Irving, TX 75062
 Fort Worth, 1946 (VII): Mrs. Teresa Bertel, 4416 Buckeye, Ft. Worth, TX 76137
 Houston, 1941 (VII): Mrs. Paul F. Steinhoff, Jr., 10015 Green Tree, Houston, TX 77042
 Lubbock, 1951 (IX): Mrs. J. W. Wagner, 4705 59th St., Lubbock, TX 79414
 Midland, 1951 (IX): Mrs. Ernest Angelo, Jr., 3106 Stanolind, Midland, TX 79701
 Odessa, 1965 (IX): Mrs. Larry D. Gorrell, 1407 Rosewood, Odessa, TX 79761
 San Antonio, 1946 (VII): Miss Leslie Crain Hill, 12854 Judson Rd., San Antonio, TX 78233
 Wichita Falls, 1961 (IX): Mrs. Cindy Mobley, #4 St. Stephens Ct., Wichita Falls, TX 76310

UTAH (XI)

Salt Lake City, 1958: Mrs. Carolyn Ershler, 3115 S. 2900 E., Salt Lake City, UT 84109

VERMONT (I)

Burlington, 1952: Mrs. Amelia B. Tower, Mill Pond Rd., Colchester, VT 05446

VIRGINIA (III)

Northern Virginia, 1956: Mrs. Joseph M. Griffin, 2837 Brook Dr., Falls Church, VA 22042

WASHINGTON (XII)

Pullman, 1955: Mrs. Elvin Ericson, S.W. 1145 Wadleigh Dr., Pullman, WA 99163
 Seattle, 1915: Mrs. Howard E. Stansbury, 6952 96th S.E., Mercer Island, WA 98040
 Spokane, 1918: Ms. Pamela R. Alsaker, P.O. Box 14948, Spokane, WA 99214
 Tacoma, 1947: Mrs. Kathleen Anderson, 65 East Rd. N., Tacoma, WA 98406

WEST VIRGINIA (III)

Morgantown, 1959: Mrs. Pam Yagle, 933 Vandalia Rd., Morgantown, WV 26505

WISCONSIN (IV and VI)

Madison, 1913 (V): Mrs. Hugh Dega, Rt. #2, Brooklyn, WI 53521
 Milwaukee, 1902 (V): Mrs. Sharon Zurawski, 1711 W. Glen Oaks, Mequon, WI 53092
 Platteville, 1969 (VI): Ms. Dawn S. Swiggum, 8554 Klevenville-Riley Rd., Mt. Horeb, WI 53572

Gamma Phi Beta Chapters

By Province

PROVINCE I

Alpha (A)
 Alpha Alpha (AA)
 Alpha Tau (AT)
 Alpha Omega (AO)
 Delta Mu (DM)

PROVINCE II

Alpha Pi (AP)
 Alpha Upsilon (AY)
 Alpha Chi (AX)
 Beta Beta (BB)
 Gamma Beta (GB)
 Delta Kappa (DK)
 Delta Xi (DX)
 Delta Rho (DR)

PROVINCE III

Alpha Eta (AH)
 Alpha Nu (AN)
 Beta Gamma (BG)
 Beta Epsilon (BE)
 Gamma Omicron (GO)

PROVINCE IV

Beta (B)
 Beta Delta (BD)
 Beta Pi (BP)
 Beta Phi (BF)
 Delta Iota (DI)

PROVINCE V

Gamma (G)
 Epsilon (E)
 Omicron (O)
 Beta Eta (BH)
 Gamma Gamma (GG)
 Gamma Omega (GO)
 Delta Pi (DP)

PROVINCE VI

Kappa (K)
 Alpha Beta (AB)
 Alpha Omicron (AO)
 Gamma Mu (GM)
 Gamma Pi (GP)
 Delta Alpha (DA)

PROVINCE VII

Alpha Zeta (AZ)
 Alpha Xi (AX)
 Gamma Zeta (GZ)
 Gamma Nu (GN)
 Gamma Chi (GX)
 Delta Epsilon (DE)

PROVINCE VIII

Alpha Theta (AT)
 Beta Mu (BM)
 Gamma Alpha (GA)
 Gamma Phi (GF)
 Delta Omicron (DO)

PROVINCE IX

Psi (P)
 Beta Omicron (BO)
 Beta Tau (BT)
 Beta Psi (BP)
 Gamma Iota (GI)
 Delta Zeta (DZ)

PROVINCE X

Sigma (S)
 Phi (F)
 Alpha Delta (AD)
 Beta Upsilon (BY)
 Beta Chi (BX)
 Gamma Tau (GT)
 Delta Nu (DN)

PROVINCE XI

Theta (T)
 Tau (T)
 Alpha Phi (AP)
 Beta Rho (BR)

PROVINCE XII

Lambda (L)
 Xi (X)
 Alpha Lambda (AL)
 Beta Iota (BI)
 Beta Sigma (BS)
 Gamma Epsilon (GE)
 Delta Beta (DB)

PROVINCE XIII

Eta (H)
 Nu (N)
 Chi (X)
 Alpha Gamma (AG)
 Beta Theta (BT)

PROVINCE XIV

Alpha Epsilon (AE)
 Beta Kappa (BK)
 Beta Lambda (BL)
 Beta Omega (BO)

PROVINCE XV

Pi (P)
 Rho (P)
 Omega (O)
 Gamma Kappa (GK)
 Gamma Upsilon (GY)
 Gamma Psi (GP)

PROVINCE XVI

Alpha Iota (AI)
 Beta Alpha (BA)
 Gamma Eta (GH)
 Delta Delta (DD)
 Delta Eta (DH)
 Delta Theta (DT)
 Delta Lambda (DL)

River Falls, 1969 (VI): Mrs. Becky Ruka, 549 S. Wasson Ln., River Falls, WI 54022

BRITISH COLUMBIA (XII)

Vancouver, 1928: Ms. Abigail Brown, 895 King George's Way, W. Vancouver, B.C., Canada V7S 1S6

ONTARIO (I)

London, 1937: Ms. Yolanta Zawadzinski, 516 Colborne St., London, Ont., Canada N6B 2T5
 Toronto, 1919: Ms. Elizabeth Kerr, 305 Fairways, 1400 Dixie Rd., Mississauga, Ont., Canada L5E 3E1

QUEBEC (I)

Montreal, 1938: Ms. Marie Claude Reney, 5535 de Terrebbonne, Montreal, Quebec, Canada H3H 1V9

CRESCENT CIRCLE CHAIRMEN:

Huntsville, AL—Mrs. Stanley McIntyre, 10001 Hickory Hill, Huntsville, AL 35803
 Desert, AZ—Mrs. William Stanfield, 338 Paseo de Paula, Casa Grande, AZ 85222
 Leisure World-Laguna Hills, CA—Mrs. Harvey Miller, 363 O Algarrobo, Laguna Hills, CA 92653
 San Luis Obispo, CA—Mrs. Eric Sikora, 577 Couper Dr. #6, San Luis Obispo, CA 93401
 Santa Barbara, CA—Ms. Florence Andrews, 330 Old Mill Rd. #137, Santa Barbara, CA 93110
 Ventura, CA—Mrs. Lloyd Aspinwall, 2424 Poli St., Ventura, CA 93003
 Whittier, CA—Mrs. James Seminoff, 5514 S. Mesagrove Ave., Whittier, CA 90601
 No. Delaware, DE—Mrs. R. G. Downing, 2413 Heather Rd. W., Wilmington, DE 19803
 Ft. Myers, FL—Mrs. C. Thomas Dollar, Rt. 12, 134 Canaan Dr., Ft. Myers, FL 33901
 Palm Beach, FL—Mrs. James Hibbard, 507 Silver Beach Rd., Lake Park, FL 33403
 Pensacola, FL—Mrs. John T. Burke, 4213 Futura, Pensacola, FL 32504
 Pinellas County, FL—Mrs. Herbert Hirsch, 10284 Imperial Pt. Dr. E., Largo, FL 33540
 Greater Sarasota, FL—Mrs. W. P. Ricamore, 2300 S. Wellesley Dr., Bradenton, FL 33507
 Tampa Bay, FL—Mrs. Robert F. Smith, 9220 Cypress Wood Cr., Pebble Creek Village, Lutz, FL 33549
 Southern Illinois—Mrs. Joan Withers, 204 S. Lark Ln., Carbondale, IL 62901
 Kankakee, IL—Mrs. Charlotte Vollbrecht, 17230 Vollbrecht

Rd., South Holland, IL 60473
 Hutchinson, KS—Mrs. William VonRuden, 5 Downing Rd., Hutchinson, KS 67501
 Kansas City, KS—Mrs. William R. Allen, 8008 State Ave., Kansas City, KS 66112
 Baltimore, MD—Mrs. Jeanne Cosby, 481 Fair Oaks Dr., Severna Park, MD 21146
 Delmar E. Shore, MD—Mrs. Emslie Gault, Rt. 1, Box 162, Queenstown, MD 21658
 Kalamazoo, MI—Mrs. James R. Stewart, 1257 Timber Oaks Ct., Plainwell, MI 49080
 Rolla, MO—Mrs. Jill Heitzman, 507-E. 7th, Rolla, MO 65401
 Jackson, MS—Mrs. Alex E. Ralston, 46 Summit Ridge Dr., Brandon, MS 39042
 Las Vegas, NV—Mrs. Richard Crites, 4249 Rimcrest, Las Vegas, NV 89121
 Minot, ND—Mrs. Reginald Morelli, 1512 Third Ave., S.W., Minot, ND 58701
 Greater Akron, OH—Mrs. Frank Conner, 2049 27th St., Cuyahoga Falls, OH 44223
 Canton-Massillon, OH—Mrs. William R. Beckley, 2911 22nd N.W., Canton, OH 44708
 Middletown, OH—Mrs. David Shaffer, 6998 Middletown-Hamilton, Middletown, OH 45042
 Oxford, OH—Mrs. Joseph Newlin, 4401 Nelson Rd., Middletown, OH 45042
 Sandusky, OH—Mrs. Ralph Bache, P.O. Box 145, Huron, OH 44839
 Charleston, SC—Mrs. Glenn Fleming, 671 Pawley Rd., Mt. Pleasant, SC 29464
 Clemson, SC—
 El Paso, TX—Mrs. Shirley Prager, 5224 Sterling Place, El Paso, TX 79932
 Port Arthur-Groves, TX—Mrs. Ernest Drake, 1947 Woodrow Dr., Port Arthur, TX 77640
 San Angelo, TX—Mrs. Christie Knudsen Schuch, 3613 Wilde Wood, San Angelo, TX 76901
 Hampton Roads, VA—Mrs. Gordon MacCleary, 11 Luanita Ln., Newport News, VA 23606
 LaCrosse, WI—Mrs. Robert A. Farnam, 127 S. 26th St., LaCrosse, WI 54601
 WI Fox Valley—Mrs. Ronald Conradt, Rt. 2, Box 125, Shioc-ton, WI 54170
 Cheyenne, WY—Mrs. Lorraine Grigsby, R.R. #1, Box 802, Cheyenne, WY 82001
 Laramie, WY—Miss Billie Ruth Edwards, P.O. Box 665, Laramie, WY 82070

Calendar of Officers' Duties

Abbreviations:

CO—Central Office; **PCD**—Province Collegiate Director; **AA**—Alumna Advisor **PAD**—Province Alumnae Director; **ACVP**—Assistant to Collegiate Vice President **Int'l**—International **ARC**—Alumnae Recommendations Committee

GREEK-LETTER CHAPTERS

See Greek-letter 200 section of the President's Book for additional details.

PRESIDENT:

Prior to election, send PCD proposed slate of officers for approval.

Immediately after beginning of school year send PCD Alcohol & Visitation Policies Forms 51 and 52.

ACTIVITIES CHAIRMEN:

By April 1 of Convention years, send CO McCormick Award material.

CHAPTER DEVELOPMENT:

At beginning and end of term of office, send int'l chapter development chairman-collegians initial and final report sent PCD.

CORRESPONDING SECRETARY:

Immediately after pledging, send PCD copy of letter to parents of pledges.

By September 1, send Grand President business for consideration at fall Grand Council meeting and during Convention year include business for consideration at Convention.

By March 1, send Grand President business for consideration at spring Grand Council meeting.

By March 1, send CO, PCD and TransiSter chairman a list of members graduating from college and those not returning to college.

By April 1, send CO College and Rush Calendar on Form 10. Promptly send all marriage notifications to CO.

HISTORIAN:

Before close of term of office, send PCD and int'l historian annual historical record.

HOUSE MANAGER:

By November 1, send PCD & AA current house rules.

MEMBERSHIP CHAIRMAN:

Immediately after formal rush, send CO Rush Report on Form 4.

Immediately after each formal and informal rush, send PCD a report evaluating rush.

PANHELLENIC DELEGATE:

Whenever changes occur, send CO, NPC Delegate and PCD any changes in office of campus Panhellenic adviser or college or university President.

At the beginning of your term, send NPC Delegate and PCD copies of current Panhellenic handbook, constitution, bylaws and rush rules.

Send NPC Delegate all reports (initial and final,) sent PCD.

PARLIAMENTARIAN-CENSOR:

By November 1 send ACVP-Bylaws revised chapter bylaws for approval.

PHILANTHROPY CHAIRMAN:

At beginning and end of term of office, send int'l chairman of philanthropy programs initial and final report sent PCD.

PLEDGE DIRECTOR:

At end of each school term, send CO Pledge Statistical Report on Form 11.

Three weeks prior to initiation, send PCD program for inspiration week for approval.

Before retiring from office, send to CO revisions or suggestions for improving Pledge Manual.

PUBLIC RELATIONS CHAIRMAN:

By March 1, send CO Public Relations Report Form 1.

RECORDING SECRETARY:

By November 1, send PCD corrected computer printout sent to president in September.

Immediately after each election and/or appointment, send CO Chapter Officer List on Form 12.

Following retreats, send PCD summary of officers' and chapter's retreats.

By June 1, send PCD names and summer addresses of chapter members.

RITUAL CHAIRMAN:

After each event requiring ritual, except formal chapter meetings, send PCD a report.

SCHOLARSHIP CHAIRMAN:

Immediately after official release of grades each school term, send CO Scholarship Report on Form 3.

At beginning and end of term of office, send int'l scholarship chairman initial and final report sent PCD.

TREASURER:

Promptly after each pledging, send CO white copies of Pledge Registration Form 9. Send checks for first installment of membership fees and Remittance Form 13. Send PCD orange copies of Pledge Registration Form 9.

Immediately after each initiation for members pledged after 8-1-78, send CO list of initiates and badge orders on Form 14 and signed Loyalty Pledge on Form 2. Also, send check for second installment of membership fees and badge payment.

By 10th of each month, send CO and alumna financial advisor Statement of Receipts and Disbursements on Form 15.

By October 1, send CO and alumna financial advisor chapter budget on Form 46.

By December 1, send corrected (computer print-out) Collegiate Dues Report to CO with check for international dues for members pledged prior to 8-1-78.

By December 1, send CO province dues.

By December 1, send CO Founders Day Contribution, Form 39.

VICE PRESIDENT:

At beginning of term of office, collect and send PCD and AA initial reports from all officers.

According to the PCD's schedule of report due dates, collect and send PCD periodic reports from chapter officers.

At end of term of office, collect and send PCD and AA final reports from all officers.

By October 1, send Chapter Statistics Form 62 to Central Office.

ALUMNAE CHAPTERS:

By September 1, send CRESCENT editor your alumnae chapter letter.

By September 1, send Grand President business for consideration at fall Grand Council meeting.

By October 1, of Convention year send CO Carnation Award Recommendations, Form 60.

By December 1, send Central Office check for int'l taxes and province dues with computer list. After December 1 send tax and dues payments with CO Form 17—"Report of International Taxes Paid to Alumnae Chapters."

By December 1, send CO Founders Day Contribution, Form 39.

By February 1, send to CO recommendations for int'l offices on Recommendation for International Office Form 47.

By February 1, of the off Convention year, send CO names of any members your chapter wishes to suggest for province alumnae and collegiate directors. Include candidate's qualifications on Recommendation for International Office Form 47.

By February 1, send name and address of ARC chairman to CO for listing in THE CRESCENT.

By February 1, send Grand President business for consideration at spring Grand Council meeting.

By April 1, send roster of chapter officers on Form 25 to CO. Notify CO of any changes of officers between elections. Installation of officers may occur at a later date.

By May 1, send CO Honor Roll Recommendations Form 57; Merit Roll Recommendations Form 59; and Service Roll Recommendations Form 58.

By May 1, send prior year's chapter history (written either by chapter historian or retiring president) to int'l historian.

By June 1, send name of magazine chairman to: int'l magazine chairman and notify her if chapter's magazine sales profit is to be contributed to the Gamma Phi Beta Gift Fund or returned to the chapter.

By June 1, send one copy of alumnae chapter president's report, CO Form 27 (see page A-215a) to CO. Send membership list or directory to Alumnae Vice President and province alumnae director.

At any time, send list of deceased members to CO. Include married name, maiden name. Greek-letter chapter, address, and date of death, if known. Enclose newspaper announcement, if possible.

At any time, send change in name and/or address of TransiSter to the int'l TransiSter Service chairman.

HOUSE CORPORATIONS:

President: Immediately after election send roster of House Corporation Board officers to CO.

Treasurer: By November 1, send House Corporation Board Financial Report Form 33, and a copy of IRS Form 990 to CO.

By November 1, send House Corporation Information Sheet, Form 8, to CO.

By November 1, send Greek-letter Chapter Annual Financial Report, Form 16, to CO.

CRESCENT DEADLINES FOR 1980

For Spring issue: December 1 (Founders Day highlights)

For Fall issue: June 1 (Honors—individual and chapter)

For Summer issue: March 1 (Greek Letter Chapter letters)

For Winter issue: September 1 (Alumnae Chapter letters)

Special assignments for each issue will be outlined in the COMMUNIQUE sent tri-annually to the Chapter Presidents and in each issue of The Crescent.

Honors

Arizona

Chapter Honors—Greek Week, 2nd place; Spring Fling, 1st place; *Patty Amado*—Batgirls, Speaker's Board; *Kolleen Archibald*—Batgirls; *Sharon Bard*—Alpha Zeta, Block and Bridle, 4-H Club Secretary, Ruth Cowdon Scholarship, Mortar Board; *Teri Benton*—Cheerleader; *Kim Carr*—Angel Flight, Panhellenic Scholarship, Dean's List, Hostesses, Mortar Board; *Susie Dresser*—Hostesses; *Sue Engelman*—Hostesses Vice President, Arizona Ambassadors; *Lucie Fiske*—Angel Flight; *Sandy Frey*—Homecoming Queen, Pom Pon Squad, Chimes, Speaker's Board, Pre-Veterinary Honorary, Alpha Zeta, Pre-Veterinary Scholarship, Order of Omega, Blue Key, Beta Sigma Sigma; *Kathleen Ginett*—Hostesses, Angel Flight, Tracey Moyer Scholarship; *Carol Gray*—Hostesses, Symposium; *Colleen Hastings*—Arizona Ambassadors, Hostesses, Dean's List; *Lynn Hayes*—Angel Flight, Arizona Ambassadors; *Perri Hayes*—Symposium, Beta Sigma Sigma; *Sharron Hite*—Speaker's Board; *Stacy Hornung*—Alpha Zeta, Dean's List; *Sara Hunter*—Angel Flight, Blue Key, Beta Sigma Sigma President; *Lisa Hyman*—Psi Chi, President's Club, Dean's List, Who's Who; *Nanci Jackson*—Delta Sigma Pi; *Karen Johnston*—Dean's List, Spurs; *Kathy Kvochak*—Batgirls; *Misi Kittleman*—Angel Flight; *Kathy Kirchner*—Newman Center Choir; *Caroline Lindsay*—Arizona Ambassadors; *Shelley Lloyd*—Arizona Ambassadors; *Ann Lutich*—Hostesses, Chimes, Dean's List, Mortar Board; *Peggy McNeely*—Hostesses, Cheerleader, National Cheerleader All-American Squad; *Karen McQueen*—Hostesses, Chimes; *Melinda Mehrtens*—Symposium, Beta Sigma Sigma; *Janet Mills*—Camp Wildcat, Angel Flight, Delta Psi Kappa; *Madge Mitchell*—Symposium; *Janie Nancarrow*—Symposium; *Dee Niethammer*—Symposium Vice President, Hostesses; *Laura Nowland*—Diving Team; *Erin Oates*—Sigma Delta Chi Secretary-Treasurer, Hostesses, Angel Flight, Arizona Ambassadors, Kappa Delta Pi, Greek Week Executive Committee, Order of Omega, Blue Key Secretary; *Ariane Poulin*—Hostesses, Beta Sigma Sigma President; *Becky Richter*—Hostesses, Symposium; *Karin Richter*—President's List; *Julie Rogge-man*—Batgirls; *Laura Segal*—Dean's List; *Kathy Silvers*—Arizona Ambassadors, Dean's List; *Betty Skaggs*—Tacey C. Moyer Scholarship, Chimes, Hostesses, Arizona Ambassadors, Omicron Nu, Dean's List; *Holly Steinmann*—Delta Sigma Pi, Hostesses; *Lee Spilsbury*—Batgirls, Beta Sigma Sigma; *Donna Tietjen*—Arizona Ambassadors; *Lori Urias*—Delta Sigma Pi, Speaker's Board, Arizona Ambassadors; *Marguerite Valenzuela*—Hostesses, Beta Sigma Sigma; *Mary Kay Von Flue*—Hostesses, Symposium; *Debbie Wick*—Penny Melnick Scholarship, Susan Leonard Scholarship, Phi Kappa Phi, Beta Gamma Sigma, Delta Sigma Pi, Hostesses, Who's Who; *Julie Winslow*—Queen of Hearts, Symposium, Beta Sigma Sigma.



Assistant Pledge Director Debbie Roberts (center) with U. of Illinois pledges who raised \$100 for Camp Sechelt by having a car wash.

Arizona State

Chapter—Greek Sing, 3rd place; Panhellenic Scholarship, 2nd place; Intramurals, 2nd place; *Debbie Baldwin*—Dean's List; *Sue Bradley*—Television Advisory Board; *Carmen Carr*—Alpha Lambda Delta, Dean's List, Greek Sing Chairman; *Mariann Costello*—Honors Convocation, Swim Team Timer, Greek Week Committee; *Sue Crawford*—Dean's List; *Kathy Doubek*—Twirler; *Donna Dresser*—Arizona Home Economics Association, Arkesis, American Home Economics Association; *Laurie Harwood*—Greek Steering Committee Secretary, Panhellenic Secretary; *Judy Krebbiel*—Dean's List, Mortar Board; *Sandy Martinez*—Southwest Honorary Archery Team, National Championship Archery Team; *Helen Mawhinney*—Dean's List, Mortar Board, Campus Affairs Vice President; *Baba May*—Cheerleader, Business Administration Scholarship, Arkesis; *Kathy Peterson*—Philanthropic Woman of the Year; *Robin Reid*—Concert Choir, Lyric Opera; *Paula Schaub*—Delta Sigma Pi.

Boise State

Chapter—Greek Week Song Festival, 1st place; *Tina Gustaveson*—Judiciary Committee; *Judy Hogan*—Capital Singers; *Lori Mann*—Dorm President; *April McCormick*—Dean's List; *Judy Rhine*—Dean's List;

Nancy Thornfeldt—Dean's List; *Mary Beth VanDecar*—Dean's List; *Julie Woodall*—Dean's List, Alpha Kappa Psi, Beta Sigma Lambda Eta, National Student Exchange Coordinator.

Bucknell

Cornelia Pechmann—Phi Beta Kappa; *Suzanne Gross*—Phi Beta Kappa; *Rita Sweet*—Phi Beta Kappa; *Mary Fox*—Tau Beta Pi.

Bowling Green

Chapter—Panhellenic Outstanding Chapter Award; Panhellenic Scholarship, 1st place; Delta Tau Delta Superstars, 1st place; Delta Gamma Anchor Splash, 3rd place; *Nancy Donovan*—Golden Torch, Omicron Delta Kappa, Who's Who, Anteans; *Kim Downs*—Phi Eta Sigma, Kappa Delta Pi, Omicron Delta Kappa; *Sue Edmunds*—Kappa Delta Pi, Omicron Delta Kappa; *Sue Freund*—Phi Upsilon Omicron; *Barb Gantz*—Alpha Lambda Delta, Phi Eta Sigma, Beta Alpha Psi, Beta Gamma Sigma, Omicron Delta Kappa, Golden Torch; *Linda Gravette*—Phi Upsilon Omicron; *Jan Lawrence*—Alpha Lambda Delta; *Barb Minke*—Phi Upsilon Omicron; *Jackie Oster*—Alpha Lambda Delta, Omicron Delta Kappa, Anteans, Golden Torch, Who's Who; *Suzy Oster*—Phi Eta Sigma, Beta Gamma Sigma; *Sue Powell*—

Honors

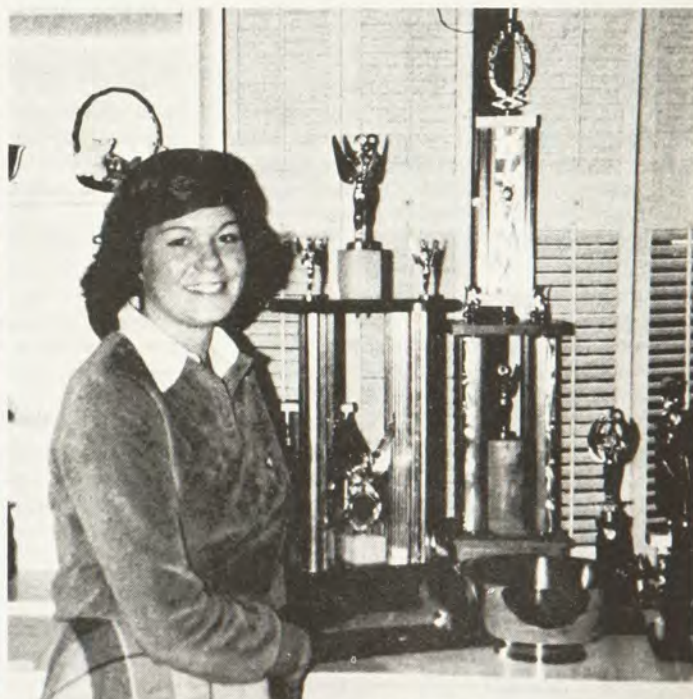
Alpha Lambda Delta, Phi Eta Sigma; *Patty Robinson*—Phi Upsilon Omicron; *Heidi Spring*—Phi Eta Sigma.

California

Chapter—Lambda Chi Alpha Daffodil Contest, 2nd place; Pacific Gas and Electric Energy Saving Award, 2nd place; *Andrea Alban*—Daffodil Festival Princess; *Kim Aikawa*—Pre-Medical Society, Summer Ministries Program, Hospital Volunteer, John Fisher Concert Co-chairman, Co-op Council; *Karen Aumock*—Panila Vice President, Pom Pon Squad, Alumni Scholar; *Catherine Auslen*—Chamber Choir, Honor Society, Lair of the Bear; *Bettina Baig*—Elections Council Chairman, San Francisco Symphony Forum Chairman; *Nancy Bedrow*—Alumni Scholar, Western Interpreters Association; *Kristen Bernard*—Alumni Scholarship, Panile; *Maureen Boro*—Honor Society; *Brenda Blardony*—Honor Society, Cal State Scholarship; *Linda Brooks*—Order of the Golden Bear, Cal in the Capitol, Oski Dolls, Chancellor's Committee, Honor Escort, Washington, D.C. Bipartisan Intern Committee, Panhellenic Scholarship, Campus Tour Guide, U.S. Congress Intern; *Jennifer Buttner*—Beta Alpha Psi, Phi Chi Theta, Honor Society, Oski Dolls; *Elizabeth Clayton*—CALSO Counselor, Campus Tour Guide, Yearbook Editor; *Rachell Chong*—Honor Society, KALX newscaster, Alumni Scholar; *Jeana Colabianchi*—Pharmacology Laboratory Volunteer, Hospital Volunteer, Pharmacy Research Project Team; *Carol Colwell*—Dorm

President, CALSO Counselor, Rally Committee Director, Honor Society, American Institute of Chemical Engineers, Mortar Board; *Seona Connolly*—Alumni Scholar, Girl Scout Advisor; *Lisa Ann Dimock*—Panhellenic Publicity Chairman; *Drew Daine*—Volleyball Team; *Alison Dubbin*—American Institute of Chemical Engineers, American Chemical Society; *Rebecca Elia*—Mortar Board; *Tracey Enneking*—Band; *Karen Erickson*—Oski Dolls, Suicide Prevention volunteer, Order of the Golden Bear, Yearbook Assistant Editor; *Stacey Ernst*—Cupertino Federated Womens Club Scholarship; *Amy Eskin*—Honor Society, Cal State Scholarship; *Marlo Fife*—Prytanean, Honor Society, Student Consulting Group, Honor Escort, Campus Tour Guide, Oski Dolls, Panhellenic Judicial Committee chairman, Model United Nations Secretariat, Order of the Golden Bear; *Janet Fink*—Elementary School Tutor; *Molly Flynn*—Rugby Team; *Carolina Froid*—Student Consulting Group; *Michele Furlan*—Rugby team, Oski Dolls, Campus Tour Guide; *Ann Furtado*—Honor Society, Cal State Scholarship; *Beth Galvin*—Campus Health Volunteer; *Susan Garell*—Cal State Scholarship; *Sharon Gerkin*—Alumni Scholarship, Job's Daughters Scholarship, Mid-farm homeowners Association Scholarship; *Sheila Gillespie*—Oski Dolls, Waterpolo Team, Pre-Med Society; *Gail Godsey*—Alumni Scholarship, American Institute of Chemical Engineers, Oski Dolls; *Jeannie Graham*—KTVU News Intern; *Aileen Harrington*—Cal Women's Crew; *Kathy Harrell*—Order of the Golden Bear, Bilingual Tutor; *Cathy*

Haymes—Alumni Scholar, Honor Society, Omicron Delta Epsilon, Louis B. Honig Fellow, Phi Chi Theta, Phi Beta Kappa; *Judy Higgins*—Band; *Julia Hill*—Band; *Cathy Innes*—Oski Dolls, Society of Women Engineers, American Institute of Industrial Engineers, Panile; *Jennifer Joe*—Alumni Scholar, Oski Dolls; *Shari Koenig*—Undergraduate Business Association; *Karen Johnson*—Rally Committee; *Laurie Keyson*—Freshman Advisor, City Recreation Leader; *Kathy Lucas*—Pom Pon Squad, Lambda Chi Alpha Princess; *Sarah Mack*—County Administrative Intern; *Katlyn Mahley*—Medicus Club, Holland Scholarship, Hospital Volunteer; *Michele Manatt*—Advisors Committee, High School Teaching Assistant, Cal and the Capitol, U.S. Congress Intern; *Kirsten McKay*—Sigma Chi Princess, KALX news announcer, Rally Committee, Honor Society, Elections Council, Bilingual Tutor, Panile; *Kim McKay*—Undergraduate Architectural Association; *Carolyn Murry*—Cal Camp, World Affairs Council of Northern California; *Antonia Nicosia*—Halian Club, Junior Womens Literary Art Scholarship, Red Cross Volunteer; *Helen Otto*—Alumni Scholar, Lambda Chi Alpha Daffodil Festival Princess; *Dale Polowski*—Choreographer for "Applause," Newspaper Associated Press Editor, Diving Team; *Lori Phillips*—American Institute of Industrial Engineers, Society of Women Engineers; *Angela Penny*—KALX Staff, Newspaper Staff; *Lisa Pieroni*—Business Association; *Elaine Peters*—Judicial Committee; *Michelle Puccio*—Alumni Scholar, Vicent Davi Scholarship; *Peggy Robinson*—Cal



Colleen Mooney (Wisconsin) and Ken Lawrence clutch their Homecoming Queen and King trophies at the University of Wisconsin.

Nancy Donovan (Bowling Green) proudly displays the chapter's trophies for the highest grade point averages on campus.

Women's Crew; Susan Robinson—Model United Nations Administrative Assistant, Mortar Board, Order of the Golden Bear; Susan Petoletti—Mass Communications Association; Lisa Smoley—Alumni Scholar, Prytanean, Panile, Oski Dolls; Landa Siu—Alumni Scholarship, Cal State Scholarship; Kristin Steinmetz—Pet Clinic Volunteer, Hospital Volunteer, Entertainment Board, Theater Policy Board; Claire Wibroe—Kaleidoscope; Wendy Williams—Honor Society; Emily Wu—Honor Society; Annette Zavala—Cal State Scholarship.

California-Irvine

Chapter—Panhellenic Scholarship, 1st place; Donna Bullock—Cheerleader; Nora Doyle—Dean's List; Joanne Fantozzi—Dean's List; Jayne Frisman—Dean's List, KUCI Radio, Academic Advisor, Summer Orientation Advisor; Cynthia Genit—Sweetheart of Sigma Chi; Karen Glick—Dean's List, Summer Orientation Advisor; Lorrie Gray—Dean's List; Melanie Gross—Dean's List, Dorm President; Caroline Haas—Dean's List; Ann Holland—Dean's List; Rajka Kinach—Dean's List, Summer Orientation Advisor; Cindy Lopez—Women's Program Board, Orientation Week Coordinator, Student Senate; Carol Maher—Academic Advisor; Alison McClure—Dean's List; Julie Miesen—Academic Advisor, Community Concern Coordinator; Lisa Perenchio—Dean's List; Karen Rees—Women's Resources Board, Summer Orientation Advisor; Robin Riley—Summer Orientation Advisor; Barbara Sellers—Dean's List; Ann Slocum—Summer Orientation Advisor; Kathy Stangl—Student Body Vice President, Dean's List; Jenny Taylor—Student Senate; Marjorie Taylor—Dean's List; Tracy Thatcher—Dean's List, Cheerleader; Lani Toman—Dean's List; Becky Tucker—Dean's List; Bernadette VanHook—Dean's List; Cheryl Webb—Dean's List; Ellie Wurster—Dean's List.

Colorado College

Chapter—Panhellenic Food Drive, 1st place; Tami Hand—Barnes Scholarship, Panhellenic Award, Dean's List; Marne Jensen—Dean's List, Romance Language Award; Marina Marra—Accounting Honorary; Kay Newell—Blue Key; Heather Palmer—Fine Arts Center Intern, Student Advisory Board; Becky Sisk—Class President; Ann Viseur—Dean's List, Alpha Lambda Delta.

Florida State

Chapter—Pi Kappa Alpha Banner Contest, 1st place; Intramural Volleyball, 2nd place; Intramural Golf, 2nd place; Greek Week, 2nd place; Panhellenic Scholarship Award; Dance-a-thon Fundraising, 2nd place; Garnett Avant—Glee Club; Barbara Boyd—University Singers, American Choral Directors Association, Madrigal Dinner Entertainer, Carousel Entertainer, Dean's List, Florida National Association of Teachers of Singing



Alpha Omicron won first place with this Homecoming float at North Dakota State.

contest, 1st place; Debbie Boyd—Choral Union, Alpha Lambda Delta, Dean's List; Cathy Boline—Greek Week Committee, Rho Lambda; Linnell Burton—Alpha Lambda Delta, Dean's List; Cathy Carlile—Dean's List; Kris Dye—Big Brother Coordinator; Diane Ellis—Flag Corps; Sharon Ewart—American Choral Directors Association, University Singers, Madrigal Dinner Entertainer; Tammy Ford—Phi Eta Sigma, Rho Lambda, Dean's List, Panhellenic Housing Committee Chairman, Dean's List, Garnet and Gold Key; Sharon Hartnett—Rho Lambda, Dean's List; Jan Holmes—Student Advisory Committee, National Student Speech and Hearing Association; Ila Klion—Greek Council Newspaper; Bambi Lockman—Who's Who, National Advisory Committee of Educators, Visual Disability Education Organization President; Debbie Miller—Tarpon Club Treasurer; Kathy Monahan—Marshall Hamilton Scholarship; Mary Monahan—Big Brother Coordinator; Paula Morrow—Fashion Incorporated; Kim Rowan—Phi Eta Sigma, Dean's List; Stephanie Sharpe—American Society of Interior Designers; Betsy Svarthout—Dean's List; Jodie Turbyfill—Alpha Phi Sigma; Rhonwyn Whitehead—Phi Eta Sigma Treasurer, Dean's List.

Gettysburg

Jeannie Beta—Pi Lambda Sigma, Dean's List; Mary Ellen Bickel—Pi Lambda Sigma; Stephanie Burt—Panhellenic President; Laura Castrogivanni—Sophomore Class Treasurer; Ann Fisher—Yearbook Editor; Emily Gordy—Pi Lambda Sigma, Dean's List; Ann Halan—Martha Ellen Sachs Award, Dean's List; Cindy Homm—Dean's List; Ann Jacobson—Psi Chi; Susan King—Chapel Choir, Urban Outreach Intern; Karen Kroggel—Missouri Cherry Blossom Princess; Gayl Kunttu—Student Senate Secretary, Junior Class Secretary; Karen MacDonald—Dean's List; Louise Maisailo—Beta



San Diego State Gamma Phis gather in front of their house to present a rush song.

Beta Beta Secretary; Luanne Muscaro—Residence Hall Coordinator; Jane Nase—Pi Lambda Sigma; Nora Niner—Phi Sigma Iota, French Cultural Counselor's Award; Betsy Podsiadlo—Psi Chi, Dean's List; Nancy Rhoads—Phi Beta Kappa, Phi Alpha Theta President, Eta Sigma Phi Secretary, Dean's List, American Marketing Association; Brenda Salvaggio—Residence Hall Coordinator, Pi Lambda Sigma, Newspaper Features Editor; Lindy Stone—Psi Chi; Carol Svartson—Psi Chi; Colleen Terhune—Psi Chi, Dean's List; Rhonda Thomas—Symphonic Band Vice President; Heidi Tuma—Women's Intramural Commissioner; Jaci Wagner—Newspaper Business Manager.

Idaho

Julie Cahill—American Farmer Award; Suzanne Groff—Who's Who; Amy Pollard—Violet Ball Queen; Sue Soderstrom—Who's Who, Student Senate; Cathy Tesnohledik—Student Senate, Farmhouse Queen; Teresa Tesnohledik—Student Senate, American Farmer Award; Sandy Walker—Order of Omega; Teri Willey—Order of Omega, Who's Who, Greek Woman of the Year.

Illinois

Becky Boyd—Panhellenic Affairs Board, Top 100 Senior Award; Lydia Benjamin—Illinette, Women's Glee Club; Kristin Bouton—Phi Kappa Phi; Karen Brakefield—Concert Choir; Sandy Brown—Gamma Sigma Delta; Lisa Buchanan—Tennis Team; Martha Campbell—Star Course; Kathy Cook—Dean's List; Jane Driessen—Dean's List; Maria Hanratty—Dean's List; Leslie Holliday—Atius-Sachem Sing Chairman; Debbie Hyde—Dean's List; Sharon Jacobs—Alpha Lambda Delta; Colette Jacobucci—Kappa Delta Pi; Cathy Jewell—Dean's List; Sandy Kalantzis—Dean's List; Debbie Lauritsen—Phi Upsilon Omicron; Karen Leiser—Beta Alpha Psi, Dean's List; Julie

Honors



Ann Pohlman (Kansas)—Student Senate



Julie Winslow (Arizona)—Queen of Hearts



Alexandra Slawek (McGill)—Sigma Chi Sweetheart



Margaret Girgis (Miami)—Miss Miami



Nancy Craig (San Diego St.)—Outstanding Senior



Joanne Rowen—Sigma Chi Sweetheart



Susan Clarke (USC)—Phi Beta Kappa



Tammy Perkins (Drake)—Student Body Vice President

Loving—Star Course, Band; Mary Lutz—Flag Core Captain; Kathy Porter—Dean's List; Debbie Roberts—Illini Greek newspaper Illio; Barb Rodseth—Beta Alpha Psi; Carol Rudolph—Phi Kappa Phi, Dean's List; Stephanie Schomer—Illini Pride; Diane Stanislawski—Bronze Tablet, Dean's List; Terry Sudges—Dean's List; Paula Temple—Concert Choir; Kim Urbain—Phi Kappa Phi, Dean's List; Sue Verseman—Dean's List; Jill Wood—Illinette; Gail Workman—Flag Core, Ombudsman.

Illinois State

Debie Anderson—Honors Voice Recitals; Susie Chambers—Miss Centercourt; Michele Hinkle—Softball team; Linda Wellman—Dean's List; Kris Zeile—Resource Student.

Indiana State

Chapter—Panhellenic Outstanding Pledge Program Award, Tandemonia Race, 1st place; Barbara Allen—Order of Omega, Blue Beret, Alumni Council; Brenda Callahan—Campus Carnival Steering Committee, Tirey Memorial Union Board; Kathy Callahan—Order of Omega, Campus Revue, Panhellenic Scholarship, Dean's List, Alumni Council; Missy Ferderber—Dean's List; Nancee Ferry—Campus Revue; Natalie Ford—Sparkettes, Tandemonia Steering Committee, Pi Kappa Alpha Calendar Girl; Cindy Hennessy—Swim team; Linda Jahn—University hostess; Mary Beth Klause—Sparkettes, Campus Revue; Terri Miller—Sigma Mu treasurer; Terry Palumbo—Campus Revue; Tina Palumbo—Alpha Project leader; Paula Pike—Campus Revue; Dorothy

Pund—Campus Revue; Sally Robertson—Sparkette, Imperial Guard, Campus Revue; Karen Snelling—Campus Revue, Pi Kappa Alpha Calendar Girl; Gloria Surgin—Who's Who, Blue Beret, Parmarista; Julie Stout—Campus Revue, Sparkettes; Helen Tarpey—Homecoming Queen; Mary Jane Vieck—Union Board Vice President, Blue Beret, Alpha Project Leader, Alumni Council, Hospitality Corps; Cris Walpole—Dean's List; Joan Wheeler—Homecoming Float Chairman; Jane Williams—Sparkettes Captain, Campus Revue Director, Parmarista, Order of Omega President, Omicron Delta Epsilon, Lambda Alpha Epsilon, Blue Beret, Sycamore Showcase, Phi Kappa Phi, Phi Beta Kappa, Alpha Lambda Delta Scholarship Award, Dean's List; Karen Wolfe—Hospitality Corps.

Iowa

Chapter—Panhellenic Scholarship, 3rd place; Terri Asby—Dean's List, Phi Eta Sigma; Staci Bell—Dean's List, Phi Eta Sigma; Janet Chisholm—Dean's List, Honors Convocation; Sharon Eck—Dean's List; Karen Funk—Cheerleader; Jami Gasperi—Dean's List, National Dean's List, Phi Eta Sigma; Beth Gaulke—Dean's List, Phi Eta Sigma, Honors Convocation; Marci Goodrich—Twirler; Mary Guhin—Dean's List, Honors Convocation; Susan Hawes—Alumni Association, Greek Week Follies Chairman; Nancy Hogenson—Campus Crusade; Anne Johnson—Honors Convocation; Joanne Kersten—Honors Convocation; Marti Klauke—Dean's List; Kris Knittel—University Choir; Sue Larson—Honors Convocation; Sarah Leachman—Synchronized Swim

Team Vice President, Greek Week Committee Chairman; Kim Louscher—Honors Convocation; Maryan Maxwell—Dean's List, Phi Eta Sigma, Honors Convocation; Laura Maxwell—Dean's List, Phi Eta Sigma, Honors Convocation; Laura Murphy—Student Senate, Homecoming Committee Chairman, director; Jan Muzzarelli—Dean's List; Shelley Parsons—Dean's List, Pom Pon Squad, Honors Convocation; Chris Pellet—Synchronized swim team; Tyra Price—Dance Company; Laura Rausch—Mat Girls; Jane Reed—Campus Crusade; Laura Reese—Dean's List, Phi Eta Sigma, Honors Convocation; Stephanie Stalberger—Phi Kappa Sigma Calendar Girl, Mortar Board; Jane Stewart—Panhellenic President, Alumni Association, Hawkeye Arena Recreation Campaign; Cindy Sweem—Dean's List, Helen Reich Scholarship, Irene Hollerbach Pigaga Scholarship, Honors Convocation; Christine Taylor—TV Production Manager and News/Sports Director; Jayne Tometich—State of Iowa Scholar, Dean's List; Lisa Toedt—Dean's List; Kim Toedt—Phi Upsilon Omicron Treasurer; Tamara VanGinkle—Honors Convocation, Teresa Vilmain—Greek Senator, Women's Resource and Action Center Advisory Board, Homecoming Special Events Director; Lisa Winston—Salvation Army Fashion Board; Monica Wolf—Pom Pon Squad Captain, Hawkeye Arena Recreation Campaign; Deb Yount—Poison Prevention Chairman, Kappa Epsilon national research grant, Greek Week Committee Chairman.

Kansas

Chapter—Beta Theta Pi Softball Tourna-



Debbie Wick (Arizona)—Who's Who, Phi Kappa Phi



Tammy Sedin (USC)—Phi Beta Kappa



Cindy Newman (Southern Methodist)—Rotunda Beauty



Sandy Frey (Arizona)—Homecoming Queen



Diane Stanislawski (Illinois)—Bronze Tablet



Sharon Holm (San Diego St.)—Crescent Girl



Bari Golub (Wash.-St. Louis)—Dean's List



Kimeron Haas (San Diego St.)—Homecoming Queen



Serina Raab—Sigma Chi Sweetheart



Karen Useldinger (Moorhead St.)—Sigma Tau Gamma Sweetheart



Susan Clinton (Southern Methodist)—Who's Who, Panhellenic President



Kim Carr (Arizona)—Dean's List, Mortar Board

ment, 1st place; Phi Psi 500, 1st place; Intramural Basketball, 3rd place; *Diane Anderson*—Honor Roll; *Julie Aull*—Honor Roll, Field Hockey Team; *Janis Biehler*—Student Union Activities PR Chairman; *Brenda Bleske*—Basketball Team; *Ann Covalt*—Student Senate; *Megan Curtis*—Campus Radio Special Programs Coordinator; *Cindy Emig*—Honor Roll, Lambda Chi Sigma, Biology Research Assistant; *Vicki Englund*—Campus Radio Sportscaster; *Natalie Evanson*—Honor roll; *Allison Goodnow*—Concert Chorale, Panhellenic Secretary/Treasurer; *Debra Greenspan*—Fellowship of Christian Athletes High School Sponsor; *LeeAnn Hahn*—Honor Roll; *Wendy Hildyard*—Dance Company; *Sheryl Luebbert*—Phi Beta Kappa, Honor Roll, Youth Program Coordinator; *Sally Maag*—Honor Roll, Beta Gamma Delta, Phi Kappa Phi; *Julie Miller*—Honor Roll; *Toni Mogel*—Honor Roll; *Janice Moore*—Waterski Team President, Student Senate; *Susan Moore*—

Helen Rhoda Hoopes Award; *Sue McGinty*—Honor Roll, Student Senate; *Corey Nason*—Watkins Berger Scholar, Owl Society, Tennis Team, Fellowship of Christian Athletes Leader; *Debbie Oliver*—Rockchalk, Campus Radio Newscaster; *Susan Owens*—Honor Roll; *Anne Pholman*—Student Senate, Architecture Student Council; *Brenda Press*—Student Senate; *Jane Robinson*—Delta Tau Delta Sweetheart; *Joy Schul*—Honor Roll, Phi Kappa Phi, Pauline Hildinger Award; *Elizabeth Smith*—School Mascot; *Jenny Stubblefield*—Mortar Board, Honor Roll; *Michelle Taylor*—Student Senate; *Julie Weisman*—Fellowship of Christian Athletes; *Michelle Whitson*—Miss Kansas, Miss America 2nd Runner-up, Honor Roll.

Kearney

Carla Bauman—Rho Lambda, Homecoming

Princess; *Jayne Brummer*—Track Team; *Judy Carlson*—Rho Lambda, Kay Christensen Award, Spirit Squad; *LuAnn Christensen*—Sigma Tau Gamma; *Dee Goodrich*—Sigma Tau Gamma; *Becky Hawks*—Delta Omicron, Choraleers; *Sandy Hiddleston*—Rho Lambda; *Barb Hurt*—Student Senate; *Kathi Krane*—Diving Team; *Judy Mickelson*—Softball Team; *Andra Purkalitis*—Tennis and Volleyball Teams; *Kathy Ray*—Rho Lambda President; *Diane Ronni*—Student Senate; *Julie Schenzel*—Rho Lambda, Spirit Squad, Zeta Phi president; *Kris Schultz*—Sigma Phi Epsilon Sweetheart; *Danette Shearer*—Spirit Squad; *Susie Underhill*—Crescent Ball Queen.

Moorhead State

Chapter—Songfest, 2nd place; *Linda DeSautel*—Phi Sigma Epsilon Sweetheart; *Karen Useldinger*—Sigma Tau Gamma Sweetheart.

Honors

Nebraska

Sue Brown—Newspaper Intern, Kappa Tau Alpha; *Amy Colwell*—Alpha Lambda Delta; *Kim Cuda*—Broadcasting Honorary; *Cindy Drevo*—Kappa Tau Alpha, Broadcasting Honorary; *Jean Gittler*—Mortar Board, Innocents Society, Psi Chi; *Suzie Hruza*—Phi Beta Kappa; *Sarah Meade*—Mortar Board; *Colleen McBride*—Student Senate; *Tami Osborne*—Mortar Board; *Janice Pigaga*—Gerald Bremer Scholarship, Phi Upsilon Omicron; *Criss Porter*—Student Senate; *Susan Roddy*—Nebraska Home Economics; *Trudy Saunders*—Kappa Tau Alpha, Broadcasting Honorary; *Mary Schanbacher*—Student Senate; *Valerie Schroeder*—Alpha Lambda Delta; *Angie Smith*—Student Senate; *Lori VonMinden*—Mortar Board, Student Senate; *Renee Wessels*—Mortar Board, Innocents Society, Student Body President; *Robin Younger*—Mortar Board, Phi Upsilon Omicron.

N. Dakota State

Chapter—Homecoming Float, 1st place; *Theta Chi Trike Races*, 2nd place; *Connie Bender*—Student Senate, Campus Attractions President, Associations of College Unions International Regional Chairman, Psi Chi Vice President, Who's Who, Rho Lambda, Freshman Orientation Leader; *Becky Crum*—Alpha Lambda Delta; *Teresa Hagen*—Rho Lambda; *Jan MacDonald*—Glee Club; *Barb McKeever*—Alpha Lambda Delta; *Kim Madsen*—Rho Lambda, Yearbook Editor, Glee Club, Phi Upsilon Omicron; *B. J. Peltier*—Track Team, Cheerleader; *Barb Stine*—Rho Lambda, Freshman Orientation Leader; *Lori Wiest*—Concert Choir, Alpha Lambda Delta.

Northwestern

Chapter—Sigma Chi Derby Days, 1st place; *Jennifer Achuck*—Phi Eta Sigma; *Laura Carlson*—Newspaper Assistant Editor; *Claudia Friederici*—Phi Eta Sigma, Alpha Lambda Delta, Kappa Alpha Pi, NU Garde Secretary; *Marta Gonzalez*—Latin American Student Organization Vice President; *Debbie Hill*—Society of Women Engineers Vice President, American Society of Civil Engineers Secretary Outstanding Civil Engineering Senior, Tau Beta Pi; *Joy Kniffin*—Wildcat Council Tour Chairman, Phi Eta Sigma, Alpha Lambda Delta, Kappa Alpha Pi; *Annie Lin*—Midwest Karate Tournaments, 1st place; *Nancy Lutz*—Phi Eta Sigma, Alpha Lambda Delta, Kappa Alpha Pi, NU Friends Regional Chairman; *Lynn Matteson*—Alpha Lambda Delta; *Lilly Moon*—Alpha Lambda Delta; *Cheryl Richmond*—Alpha Lambda Delta; *Carole Shure*—Studio 22 Board, Dean's Advisory Council; *Sujata Somani*—Phi Beta Kappa, Summer Bell Award, National Institute of Health Fellowship; *Renee Sowa*—ROTC Queen; *Andrea Taylor*—Alpha Lambda Delta; *Sherry Weinstein*—1980 Dance Marathon Chairman *Kathy West*—Synchronized Swim



Kansas Gamma Phi proudly display their first place trophy for intramural softball.

Team Treasurer, NU Friends Coordinator; *Kathryn Worden*—Alpha Lambda Delta.

Oklahoma

Debbie Adkins—Opera Performer; *Natalie Almen*—Beta Gamma Sigma, Dean's List; *Debbie Arbasak*—Zoological Society, Student Nurses Association, Dean's List; *Tammy Bailey*—Batgirls; *Janet Bittner*—President's Leadership Class; *Kari Black*—Aardvark Activities, Dad's Day; *Diane Bort*—Dean's Honor Roll; *Mary Bradfield*—University Sing Usher; *Susan Brown*—Dean's Honor Roll; *Jennifer Burns*—Dean's Honor Roll, Phi Eta Sigma; *Roxanna Coker*—Scandals Continuity, Allied Health Club, Greek Week Tour Guide; *Carrie Crumpler*—Phi Eta Sigma, Beta Gamma Sigma; *Caryn Cundith*—Alpha Lambda Delta; *Valerie Dix*—Sigma Chi Sweetheart; *Cheryl Dooley*—Miss Dance Oklahoma, Miss Warr Acers Talent Competition Winner; *Michelle Ethridge*—Reserved Officers Association Award, Air Force ROTC Scholarship; *Lisa Fager*—Midwestern Consumer Education Conference, Omicron Nu Secretary, Dean's Honor Roll, Oklahoma Home Economics Association Conference; *Teresa Fager*—Public Relations Student Society, Alcohol Awareness Committee, Campus Chest Publicity Committee; *Kerry Fennell*—Presi-

dent's Leadership Class; *Kathy Harris*—Newspaper Editorial Staff; *Amy Hertzbach*—Dean's Honor Roll; *Jill Johnson*—American Society of Personnel Administration; *Debbie Kerr*—Newspaper Editorial Page Coordinator, Copychief and News-editor, Public Relations Society of America Treasurer; *Andrea Kidd*—Greek Week Executive, Tour Guide Chairman, Mom's Day Publicity Chairman, Gamma Gamma; *Jenny Landers*—Dad's Day assistant treasurer, Traffic Court judge, Greek Week Tour Guide, Mom's Day Treasurer; *Pam Landers*—Top Ten Green Women, Dad's Day Executive, Big 8 Panhellenic Conference Delegate, Gamma Gamma, Dean's Honor Roll; *Leni Lundh*—Campus Activities Council, Pre-Medical Club; *Vickie McClain*—Retail Advertising Intern, Creative Ad Campaign Winner; *Diana McDoniel*—Internship Committee, Beta Gamma Sigma, Dean's Honor Roll, National Dean's Honor Roll; *Carmen Messer*—Phi Beta Lambda, Sooner Scandals Assistant Program Chairman; *Cheryl Miller*—Student Entertainers, Concert Choir, Mu Phi Epsilon, Piano Scholarship; *Beverly Milton*—Yearbook Section Editor; *Kelly Parks*—President's Leadership Class; *Polly Payne*—Pre-Medical Club; *Sloan Peltier*—Houston Chronicle Intern; *Janet Privett*—Dean's Honor Roll, Phi Eta Sigma, President's Leadership Class; *Denise Rey-*

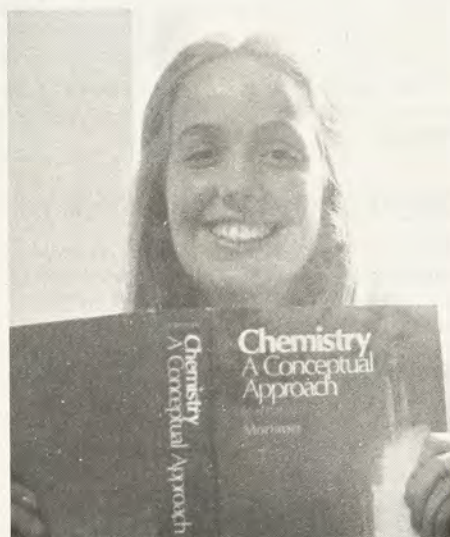
nolds—Journalism Scholarship; *Beverly Roff*—TV Intern; *Sue Saylor*—Student Business Association; *Tracy Schultz*—Student Activities Club; *Debbie Shaw*—Pom Pon Squad, Miss Venus; *Donna Shriver*—Sooner Scandals, Allied Health Club; *Nancy Sparks*—Dean's Honor Roll, Kappa Tau Alpha, Women in Communications, Inc.; *Traci Spring*—President's Council Newsletter Committee; *Susan Stout*—Greek Week Picnic Chairman; *Tara Templin*—Public Relations Club; *Jill Thacker*—Recruiting Banquet Hostess; *Gwen Thompson*—University Sing Publicity Committee; *Tracie Tutt*—Greek Week Executive; *Cheryl Vaught*—University Sing Arrangements Chairman, Yearbook Staff, Public Relations Student Society of America, Newspaper Staff, Sooner Scandals Publicity Chairman; *Laurie Vaught*—President's Leadership Class, Model United Nations, Campus Activities Council, Panhellenic Special Events, High School Recruiter; *Valerie Wages*—Student Activities Club; *Carla Warner*—Indian Council, Cherokee Scholarship; *Karolyn Wolf*—Greek Week Tour Guide, Alpha Epsilon Rho, Oklahoma Film Society, TV Public Affairs Producer; *Crystal Woodard*—Advark Week Publicity Committee.

Oklahoma State

Chapter—Jog-a-thon, 1st place, 2nd place; Homecoming Spirit, 1st place, Homecoming Float, 3rd place, Intramural Bowling, 1st place; *Pat Adams*—Women's Leadership Seminar, Alpha Lambda Delta, Dean's Honor Roll; *Jean Allen*—Society of Women Engineers; *Laura Archer*—Women's Leadership Seminar, Phi Beta Lambda, Redskin staff, Toastmasters; *Jane Armstrong*—Alpha Lambda Delta; *Vicki Babcock*—Big-Little Scholarship; *Jan Bacon*—Kappa Phi; *Janet Balkenbush*—Pershing Rifles, Lambda Tau, Dean's Honor Roll, Studio 54 dance contest winner; *Sheri Ballard*—Bowling Team, Alpha Lambda Delta, Phi Beta Lambda, Dean's Honor Roll; *Pam Beard*—Dean's Honor Roll; *Janna Block*—Alpha Lambda Delta, Alpha Phi Omega, President's Honor Roll; *Kristi Boyer*—Business Student Council, Phi Beta Lambda, Alpha Lambda Delta, Grace M. Demotte Award; *Terri Brunoldi*—Greek Week Steering Committee; *Marrene Burton*—Army Blades, Orange and Black Quill, Alpha Lambda Delta, Kappa Delta Pi; *Debbie Campbell*—Student Education Association, Education Honorary; *Ann Crossley*—Alpha Lambda Delta; *Peggy Day*—Women's Leadership Seminar, Toastmasters; *Nancy Dew*—Alpha Lambda Delta, Dean's Honor Roll; *Pat Dodd*—Homecoming Committee; *Diana Duffer*—Theater, Circle K; *Justine Eidt*—Patchin Panel, President's Council, Women's Leadership Seminar, Mom's Weekend Committee, Women's Programming Committee, Dean's Honor Roll; *Jana Farris*—Orchestra, Varsity Review, Alpha Phi Omega, Phi Beta Lambda; *Carol Fitzgerald*—All Star Greek Basketball; *Cindy Green*—Rough Riders; *Stephanie Grimes*—Alpha Lambda Delta, Dean's Honor Roll; *Kelly*



Homecoming Queen Helen Tarpey (Indiana St.) and Bob Hope entertain during weekend festivities.



Jenny Stubblefield (Kansas) is a member of Mortar Board.

Groen—Dean's Honor Roll; *Patricia Hebard*—Alpha Lambda Delta, Dean's Honor Roll; *Cindy Hess*—Redskin Assistant Editor, Scholastic Standard Council, Dean's Honor Roll, Rush Book Editor; *Mary Bea Jackson*—Dean's Honor Roll, Alpha Lambda Delta; *Jan Kuntz*—Dean's Honor Roll; *June Lewis*—Diamond Dolls, Fashion Board, American Society of Interior Designers, Alpha Lambda Delta, Omicron Nu Orange and Black Quill, President's Honor Roll; *Linda Loper*—Waterski Team, Dean's Honor Roll; *Teri Love*—Army Blades; *Karen Lucius*—Big Brothers, Big Sisters Board of Directors, Beta Upsilon Sigma; *Kem Maher*—Alpha Lambda Delta, President's Honor Roll; *Kerri McQueen*—American Society of Interior Designers; *Julie Mitchell*—Women's Leadership Seminar, Dean's Honor Roll; *Vicki Parker*—Business Student Council, Mu Kappa Tau; *Cindy Phillips*—4-H; *Laura Radke*—Phi Upsilon Omicron,



At Purdue Connie Brown is cheerleading squad captain and Kathy Speckhard is a member of the pep squad.



The queens at Southwest Texas State are Susan Ericksen, 1980 Watermelon Queen, Beth Fiddelke, 1979 Watermelon Queen, JoAnn Williams Fiddelke (Kent St.) and Timi Tims, one of the top five finalists in the pageant.

Honors



Joanna Newbury (Auburn) accepts the second place plaque for the College Panhellenic with the most outstanding public relations program.



Becky Boyd (Illinois) accepts the trophy for the College Panhellenic with the most outstanding public relations program.

Omicron Nu, President's Honor Roll; *Jean Ann Robertson*—Beta Upsilon Sigma, Alpha Lambda Delta, Dean's Honor Roll; *Anne Russo*—Alpha Delta, President's Honor Roll; *Torie Schmidt*—Waterski Team; *Kelly Scholz*—Cheerleader; *Jody Seay*—Alpha Phi Omega, Dean's Honor Roll; *Julie Shafer*—Ambassadors, Dean's Honor Roll; *Becky Simon*—Community Relations Committee, Dean's Honor Roll, Student Advisory Committee; *Sandra Stilwell*—Army Blades; *Janine Teague*—Theater Guild; *Cindy Terrell*—Toastmasters, President's Honor Roll; *Nancy Thompson*—Tau Beta Sigma, Alpha Kappa Psi, Band, Dean's Honor Roll; *Susan Treat*—Dean's Honor Roll; *Sherri Troub*—Angel Flight, Phi Beta Lambda, Rhomate, Greek President's Council, Beta Upsilon Sigma, Kappa Delta Pi, Orange and Black Quill, Alpha Lambda Delta; *Susan Wade*—Dean's Honor Roll; *Carol Wallace*—Dean's Honor Roll; *Cyndy Waugh*—Big-Little Scholarship, Pledge Scholarship; *Anne Weir*—Mortar Board, Beta Gamma Sigma, Angel Flight, Omicron Delta Kappa, Orange and Black Quill, Alpha Lambda Delta, Outstanding Leadership Award, Phi Kappa Phi, Scholastic Achievement Award; *Donese Whitaker*—Bowling Team, Dean's Honor Roll, Beta Gamma Sigma, Beta Alpha Psi; *Diane Wittrock*—Phi Upsilon Omicron, Greek Week Steering Committee.

Rutgers

Joann Ammann—Dean's List; *Debra Lynn Gargano*—Dean's List; *Sharon Simandl*—Dean's List, Omicron Delta Epsilon; *Cathy VanSickle*—Dean's List.

St. Louis

Kathy Baily—Dean's List; *Laura Bergmann*—Biology Honorary, Dean's List; *Linda Geil*—Swim Team, State Record in Backstroke; *Linda Lehr*—Dean's List; *Patti Popadopoulos*—Dean's List, Biology Honorary; *Anne Stolwyk*—Swim Team, State Record in Breaststroke; *Kim Vye*—Dean's List.

San Diego State

Lisa Cerneka—Twirler; *Bobbie Christen*—Dean's List; *Sharon Dauk*—Dean's List; *Wendy Garner*—Dean's List; *Alison Gray*—Dean's List; *Bobbie Kay Hartley*—Dean's List; *Mari Jenefsky*—Dean's List; *Debbie Wilson*—Dean's List.

San Jose State

Chapter—Panhellenic Scholarship, 2nd place; *Karen Bluth*—Student Body Vice President, Campus Rape Prevention Chairman, Katherine Boolege Award; *Marianne Crocker*—Pi Kappa Alpha Calendar Girl; *Lisa Eubank*—Sigma Chi Princess; *Lisa Sperling*—Presidential Athletic Scholarship.

Southern California

Lisa Barkdull—Dean's List; *Betsi Bell*—Dean's List; *Susan Clarke*—Phi Beta Kappa; *Debbie Danson*—Dean's List, Alpha Mu Gamma; *Debbie Darr*—Sigma Delta Chi,

Dean's List; *Shari Davis*—Dean's List; *Betsy Dimaria*—Dean's List; *Kristine Goode*—Dean's List; *Sheryl Haugen*—Dean's List, Intersorority Scholarship; *Christine Hennig*—Phi Alpha Theta; *Jennifer Johnson*—Alpha Mu Gamma, Dean's List; *Julie Johnson*—Order of Omega; *Susan Kirren*—Dean's List; *Debi Koski*—Dean's List; *Margaurite LaShell*—Dean's List; *Linda Lyons*—Dean's List; *Carol Mahdesian*—Alpha Lambda Delta, Panhellenic Book Award; *Linda Malley*—Dean's List; *Susan McDonald*—Dean's List; *Nancy Ormiston*—Dean's List; *Signe Ovale*—Dean's List; *Tammy Sedin*—Dean's List, Phi Beta Kappa, Alpha Mu Gamma; *Valorie Seyfert*—Dean's List; *Suzanne Shaw*—Dean's List.

Southern Methodist

Alice Ahern—Radio Production Manager; *Lori Bowles*—Delta Sigma Pi; *Charl Boyd*—Student Programming Council Secretary; *Vicki Chivetta*—Judiciary Committee; *Susan Clinton*—Blue Key, Who's Who, Order of Omega, Kirkos, Panhellenic President; *Lisa Cloud*—Public Relations Student Society of America Secretary/Treasurer; *Mary Culligan*—Kappa Mu Epsilon; *Jane Dougherty*—Order of Omega, Lazenby Scholarship; *Karen Gardner*—Alpha Lambda Delta treasurer, Chaplain's Council; *Katie Keglin*—Dean's List; *Judy Horning*—Basketball and Football Team Trainer; *Andrea Johnson*—Saddle Award; *Diane*

Lorant—Harris Society of Biologists Treasurer; Missie McGeorge—Golf Team; Karen Meyer—Dallas Civic Orchestra, Chamber Orchestra; Cindy Newman—Rotunda Beauty; Diane Norton—Harry S. Truman Scholar; Pam Pitchford—Business School Scholarship; Shannon Rench—Dance Marathon 5th place; Lori Sauereisen—Student Foundation; Jerri Sines—Mu Phi Epsilon Scholarship, Christian Science Organization President; Nancy Warren—Political Science Department Student Assembly Chairman; Jackie West—Chapel Choir; Val West—Who's Who, Mortar Board, Staff Club and Student Foundation Scholar, Omicron Delta Epsilon.

SW Missouri State

JoAnne Carlen—Greek Woman of the Year, Wall Street Journal Award; Rose Anne Gilbert—Campus Union Board; Susan Hiland—Campus Union Board, Ozarks Queen; Brenda Huszar—Campus Union Board; Lisa Morganthaler—Student Government Association; Lisa Stidham—Student Government Association, Campus Union Board, Honeybears; Susan Sweazy—Sigma Tau Gamma White Rose Queen; Claudia Webster—Campus Union Board.

SW Texas State

Lynda Allen—Dean's List; JoAnn Bass—Dean's List; Carolyn Berry—Dean's List; Kim Britt—Superior Dean's List; Joanne Chaltry—Dean's List; Terri Cooper—Dean's List; Sheila Dixon—Superior Dean's List; Tanya Hale—Dean's List; Cindy Johnson—Dean's List; Ann Jones—Superior Dean's List; Charlotte Liberda—Superior Dean's List; Debbie Mahan—Dean's List; Kathy Major—Superior Dean's List; Cheryl Phillips—Dean's List; Leslie Smith—Superior Dean's List; Sharon Snyder—Dean's List.

Syracuse

Joan Amon—Dean's List, Omicron Nu; Emily Boy—Dean's List; Clare Briggs—Student Association Representative; Sally Brown—Panhellenic Scholarship Chairman; Valerie Bruzzi—Dean's List; Kathy Czado—Huntington Family Center Group Leader; Lori Davis—Omicron Nu; Anita Emerson—Class Marshall; Eliz Hartenstein—Dean's List; Kathy Leigh—Dean's List, Eta Pi Upsilon, Panhellenic Scholarship; Nancie Scheirer—Dean's List; Mariann Smith—Alpha Pi Mu President; Stacy Spivak—Dean's List; Claudia Stern—Dean's List, University Orchestra Concert Master; Elna Thompson—Phi Beta Kappa; Joyce Tudryn—William O. Dapping Scholarship, Yearbook Assistant Editor; Terrie Tuoti—Dean's list; Barbara Wells—Alpha Epsilon Delta; Sue Wante—Dean's List; Cindy Watjen—Dean's List; Maryann Wojcieszak—Society of American Foresters.

Vanderbilt

Chapter—Sigma Chi Derby Day, 4th place; Intramural Sports Sportsmanship Award; Sue Ellen Abney—Dean's List; Sheree Carroll—Omicron Delta Epsilon, Eta Sigma Phi President, Gamma Beta Phi; Mary Fox—Alpha Lambda Delta, Phi Eta Sigma, Gamma Beta Phi; Anne Gilman—Women's Athletic Board Vice President; Beth Hetzler—Omicron Delta Kappa, Phi Beta Kappa, Mortar Board, Theater, French Government Prize; Eileen Kovalich—Theater; Jane Johnston—Kappa Delta Epsilon; Teresa Lefebvre—Fencing Team Captain; Ann Lindegard—Sigma Theta Tau; Peggy Linn—Tau Beta Pi, Dean's Award; Alice Lumpkin—Alpha Lambda Delta, Phi Eta Sigma, Cheerleader; Angela McClendon—Fellowship of Christian Athletes Vice President; Susan Mericle—American Field Service President; Sue Nesbit—Institute of Electronic and Electrical Engineers president; Sally Parks—IMPACT Executive Committee; Nancy Schaffer—Nursing Council, Honor Council; Beth Slate—Vucept Board; Cindy Stubbs—Panhellenic President; Judi Tobey—Alpha Lambda Delta, Phi Eta Sigma, Gamma Beta Phi; Amy Westall—Alpha Lambda Delta, Phi Eta Sigma, Cheerleader; Jill Willen—United Jewish Appeal Chairman.

Washington State

Ranel Anderson—Omicron Nu; Mary Basta—Orchisis Secretary/Treasurer; Betty Bement—Gymnastics Team; Ann Bialek—Orchisis; Janice Bjornstad—Dietetic Association; Lisa Bliss—Sigma Iota Vice President; Susan Duckworth—Rho Nu; Sharon Foster—University Singers; Jane Goodman—Panhellenic President, Order of Omega; Kelly Hinkson—Student Assembly; Ruth Holland—Alpha Lambda Delta, Phi Eta Sigma, Phi Alpha Theta, High School Tennis Coach; Laurie Horne—PEO President; Julie Humphreys—Homecoming Co-chairman; Judy Jacobs—Greek Week Committee; Julie Jacobson—President's Honor Roll, Mortar Board; Tina Kosteletzky—Delta Tau Delta Sally Sunshine; Susan MacWhirter—Sigma Chi Sweetheart; Patti Madsen—American Home Economics Association secretary, Greek Week Committee; Stacie Marlatt—Soccer Team; Sue McLean—Phi Eta Sigma, President's Honor Roll; Heather Nakamura—Cheerleader; Karen Nisbet—Sigma Iota; Bonnie Parker—Coug Gals; Cindy Peterson—Rho Nu, Crimson Company; Sharon Radach—President's Honor Roll; Sally Silver—President's Honor Roll; Karen Uddenberg—Rho Nu; Shannon Ueda—Kaiser Scholarship; Lynn Wiggins—American Society of Interior Designers; Debbie Wooten—Intramural Council.

W. Virginia

Ellen Bumoskey—Dean's List, Tennis Team; Ann Havay—Rho Lambda, Alpha Pi Schol-

arship, Advancement Society of Personnel Administrators; Flora Holland—Westmoreland Sprague Scholarship, American Institute of Chemical Engineers; Angie Huffman—Dean's List; Sue Jaster—Band, Wind Ensemble First Chair; Kathy Johnston—Fine Arts Committee, Student Art Guild; Felicia Koch—Dean's List; Tina Loucas—Student American Pharmaceutical Association; Nancy McNary—Advance Society of Personnel Administrators; Joy Messenger—Future Social Workers of America, National Council of Social Workers; Cathy Patriarca—Dean's List, Rho Lambda, Alpha Epsilon Delta; Joan Patriarca—Dean's List, Alpha Epsilon Delta; Debbie Raines—Dean's List, Phi Kappa Phi, Student Foundation; Rita Rohrbough—Dean's List, Student Nurses Association; Marcy Rosser—Dean's List, Rho Lambda, Phi Kappa Phi, Council for Exceptional Children; Linda Sargent—Alpha Phi Omega; Melinda Sargent—Dean's List, Band; Judy Simmons—Band; Teresa Westfall—Student Art Guild.

Wittenberg

Debra Agnello—Student Teaching Award, Softball Team; Katy Avery—Alpha Lambda Delta, Kappa Delta Epsilon, Henry Shellar Scholarship; Lori Balliett—Alpha Lambda Delta, Kappa Delta Epsilon, Dean's List; Judy Barnes—Alpha Lambda Delta, Tau Pi Phi, Marketing Club Vice President; Jenna Bergren—University Choir; Sally Boogher—Dean's List Psi Chi; Rebecca Bourret—Bach Chorale; Patricia Carlin—Alpha Lambda Delta, Dean's List; Sally Davis—Gamma Theta Upsilon; Jay Egerton—Dean's List; Kris Eldard—Dean's List, Kappa Delta Epsilon; Pam Evans—Hall Council President, Pick and Pen, Ivy Ring, Basketball Team; Mary Ann George—Tau Pi Phi, Lacrosse Team Co-captain; Kathy Hannegan—Dean's List, Kappa Delta Epsilon; Jill Hutto—Swim Team; Kristin Johnston—Alpha Lambda Delta, Dean's List, Student Government Association; Susan Joslin—Alpha Lambda Delta, Tau Pi Phi, Dean's List; Nancy Kirlin—Alpha Lambda Delta, University Choir; Sandy Klotz—Sociology Scholarship; Diane Kovach—Alpha Lambda Delta; Janet Leedale—Psi Chi, Swim Team Co-captain; Sherrill Lowe—Alpha Lambda Delta; Melissa Merrill—Alpha Lambda Delta, Dean's List; Lisa Momose—Dean's List; Pam Montgomery—Alpha Lambda Delta, Pi Sigma Alpha; Sandy Noreen—Alpha Lambda Delta, Dean's List; Linda Peterson—Beta Beta Beta, Alpha Lambda Delta, Union Board; Janet Pierce—Dean's List; Brenda Rice—Dean's List, Beta Beta Beta; Sandy Schaefer—Alpha Lambda Delta; Nancy Schwarz—Dean's List; Sharon Smith—Dean's List; Sheryl Switzer—Kappa Delta Epsilon, Union Board; Sandy VanAuker—Alpha Lambda Delta, Tau Pi Phi, Omicron Delta Kappa, Dean's List, Alma Mater; Becky Wright—Alpha Lambda Delta, Tau Pi Phi; Nancy Zatkalik—Dean's List, Psi Chi.

World Peace Is First with Rep. Meyner

The crescent moon must be shining down on Washington, D.C., these days.

And, by the light of that moon, Helen Stevenson Meyner (Colorado College) stands out as one of Gamma Phi Beta's brightest stars as well as one of the country's most effective congresswomen.

Elected to the U.S. House of Representatives as a Democrat in 1974, Helen represents New Jersey's 13th Congressional District. A champion of hometown causes as well as the more general goals of world peace and human rights, she has already managed to make an indelible mark on Washington.

During her first term, she emerged as chief spokesman in a battle with the Defense Department to keep New Jersey's Picatinny Arsenal, a facility vital to the district's economy. Not only was she successful, but she also persuaded the department to locate its new Army Armament Research and Development Command at the site as well.

During her five years on Capitol Hill, she has made significant strides in other areas too. As a member of the House Committee on International Relations and the Select Committee on Aging, she has sponsored legislation for better food assistance programs for the poor, pushed for reform in the Social Security System and backed the end of mandatory retirement practices.

Because of her work on those committees, Rep. Meyner passed up an opportunity to serve on the powerful Ways and Means Committee, which deals with Social Security, health, medicaid and for-



Congresswoman Helen Stevenson Meyner (Colorado College) represents New Jersey's 13th Congressional District.

eign aid. She explained later that "there's a danger of stretching yourself too thin," and that she didn't want to be known as "a jack of all trades and master of none."

Surrounded by politics most of her life, Helen is the daughter of a former ambassador to Tanzania and the Phillipines, cousin to the late Adlai Stevenson and wife of former New Jersey Gov. Robert Meyner. She came into her own in 1972 when tapped by the 13th District Democrats to replace a candidate who had dropped out of the Congressional race. Although she lost that election, she led the Democratic ticket and was swept into office two years later.

A native New Yorker, she attended Colorado College where she served Alpha Phi Chapter as pledge trainer and her campus as Panhellenic president.

Following a tour of duty for the American Red Cross during the

Korean War, she worked at the United Nations and then as a travel advisor for TWA Airlines. It was while working on cousin Adlai Stevenson's presidential campaign that she met her future husband and, following his tenure as governor, she embarked on a career as a newspaper columnist and television talk show hostess. She was writing a biography of Katherine Mansfield, she says, when asked to run for her current seat.

As one of just a handful of U.S. Congresswomen, Rep. Meyner feels that her strongest commitment is to the goal of world peace.

"It is the most important issue we face," she says. "We can have the best education in the world, the highest employment, the most splendid housing and mass transportation, but if we don't have peace, it doesn't amount to anything."

Portland Mayor Political Vet

By Cynthia Johnson Phillips
(Colorado St.)

As President of the City Council, Connie Averill McCready (Oregon) became mayor of Portland when Neil Goldschmidt left the position to become President Carter's Secretary of Transportation. But, that wasn't the start of her political career.

She was elected to the state legislature in 1966 and served two terms. This necessitated staying in Salem, the capitol, during sessions—an existence she likens to being in prison, away from home, family and friends. So, she was excited to accept an appointment to fill an interim vacancy on the Portland City Council in March, 1970. In May of the same year she was elected to the position and has kept it ever since.

Connie was instrumental in de-



Mayor Connie Averill McCready (Oregon) in her office in Portland.

veloping the Swan Island Task Force and was the first woman City Fire Commissioner.

She would like to see much more progress for the city but lives by the motto, "Forward momentum

at a measured pace." When talking about her dreams for the city she says she hopes to develop a comprehensive plan for the improved use of the Willamette River and make cable television and an emergency telephone number realities.

Connie believes her experiences in Gamma Phi Beta and life in the chapter house were invaluable experience for her political career.

"You have to work with others, to give and to take and cooperation is absolutely essential."

Her love of Portland, its heritage and future are a way of life to Connie. Her grandfather arrived in Oregon on one of the first wagon trains to reach the Oregon territory. Her grandmother was born to another family of pioneers who arrived at the same time. Connie and her husband, Albert, have three children.

Sister Bridges the Ocean

It seems that one of Marcia Lane Payne's (Rollins) biggest missions in life has been to make friends—not just for herself, but for all her fellow Rochester, N.Y. residents as well.

As a director and life member of the Association for Teenage Diplomats (ATAD) and director of Rochester's International Sister Cities projects, she has been responsible for giving a multitude of high school students the opportunity for an international education.

In the mid 1960s, she was instrumental in organizing Rochester's first sister city program with Rennes, France, and incorporating Rochester and Rennes students into ATAD. She later went on to set up similar programs with other cities.

Her oldest son, Duncan, can be credited with igniting Marcia's first spark of interest in international affairs by volunteering his

family to house a teenage diplomat in 1956.

Since then it's been full speed ahead for Marcia and her husband, Charles "Red" Payne, who has joined her in everything from French lessons to countless trips abroad, all in the name of promoting world friendships.

In return for her endeavors, she has been honored by the Institut Franco-American in Rennes with a specially made gold medal, and has shared in the International Sister Cities award for the best overall program for cities of 250,000. The teenage diplomat program, to which she has devoted more than 23 years, also recently honored her with a lifetime membership on their board of directors.

Marcia has still always managed to find time for Gamma Phi Beta. A charter member of Rochester's 34-year-old alumnae chapter, she has served as alumnae director for Province I.



Marcia Payne accepts the Sister Cities Award from Frederick Brittan.

She strongly advocates the continuation of exchange programs, pointing out that the U.S. benefits not only by sending our own students abroad, but by bringing an international variety of young people here to study.

In Memoriam

ALPHA

Deirdre Mace Gowing
Helen Laidlaw Smith
Eleanor Puder Sykes

BETA

Jean Oakes Campbell
Martha Currie Sanford

GAMMA

Elizabeth Bartlett Nordby

EPSILON

Dorothy Brewster Leeming

ETA

Dorothy Hannah Cutler
Penelope Murdoch Simonson
Imogene Mason Walker
Betty Cook Wells

THETA

Ruth Burgard
Dorothy Bell Joyce

KAPPA

Helen Drennen Bros
Susan Kay Johnson
Dorothy Dixon Murphy

LAMBDA

Elizabeth MacElroy Allison
Edith Donovan Denney
Francel Hill Tomlinson

MU

Harriet Irene Baldwin
Doris Barrett

NU

Dorothy Collier
Pauline Porteous MacKenzie
Lyle Steiwer Walls

XI

Wilna Best Hutchins
Betty Horton Taylor

PI

Joyce Adair Nicholls

RHO

Emogene Chapman Atwater
Mildred Blanxius Lindsey

SIGMA

Ruth Van Riper Dickinson
Clara Helen Kent

LaVerne Bronaugh Stover
Dorothea Dean Young

PHI

Kathleen Reardon Davis
Ruth Waldbauer Mueller

CHI

Ruth Middlekauff Tyson

PSI

Norma Jo Dougherty Brett
Jeanne Hill Chuculate

ALPHA BETA

Marguerite Lysing Hughes
Karen Moe Wilson

ALPHA EPSILON

Jane Kieckhefer Carroll
Dorothy Attaway Maddock

ALPHA ZETA

Renotta Patterson Faubion
Evalyn Limmer Kaiser
Holly Susan Lanier King, D.D.S.

ALPHA IOTA

Lucretia Stephens Hegewald

ALPHA MU

Virginia Hughes

ALPHA NU

Rhea Yeazell Zost

ALPHA PI

Virginia Heckert Thompson

ALPHA PHI

Reba Raney McDonough
Isabel Wylie

ALPHA PSI

Marion Irene Sunderlage

BETA LAMBDA

Helen Tattersall Vurgason

BETA PSI

Elizabeth Morgan Fitzgerald
Nina Hayes Laughlin

BETA OMEGA

Karen Diane Cooper

GAMMA OMEGA

Frances Burg Keyes

Penelope Murdoch Simonson (California) died July 8, 1980 in California. Her Gamma Phi Beta career included service as Grand President, Director of Finance and Alumnae Vice President.

She also served as international historian and wrote the 1962 edition of "The History of Gamma Phi Beta." Mrs. Simonson originated and implemented the Loyalty Pledge and promoted and edited the first Gamma Phi Beta handbook.

Initiated in 1909, she was named to the Honor Roll at the 1954 Mackinac Island Convention.

Survivors include a son, Tom, and a Gamma Phi Beta daughter, Elizabeth Simonson Brower.

LaVerne Bronaugh Stover (Kansas), who served Gamma Phi Beta both locally and internationally, died April 15, 1980.

Mrs. Stover was Vice President and Alumnae Secretary from 1929 to 1934. She was one of the founders of the Kansas City Alumnae Chapter and served as president for two years.

Named to the Service Roll in 1953, Mrs. Stover was 1929 Kansas City Convention Chairman and an advisor to Sigma Chapter.

Gifts to the Gamma Phi Beta Foundation "in honor of" or "in memory of" a sorority sister, friend, or loved one have added immeasurably to the philanthropic endeavors of Gamma Phi Beta. Your gift will help to support camping for the "special" girl and financial aid to women students in the form of scholarships, fellowships and grants-in-aid.

Contributions should be made payable to the Gamma Phi Beta Foundation, 7503 Marin Dr., Englewood, CO 80111 and designated as a memorial to (Jane Doe) on the face of the check. Donations to the Foundation are tax deductible.

Beverly Cummings Adams
Executive Vice President
Gamma Phi Beta Foundation

Dear Diary . . .

By Margy Molden Wiltamuth
Feature Editor

The job is glamorous, involves lots of travel, public speaking, long distance calls and leadership of over 73,643 educated women scattered all over the world. It includes overseeing a foundation, a central office, a magazine, a newsletter, a public relations program, recruitment and decision making. In short, it's a demanding management position.

If it were listed in the classifieds, salary would be quoted as "psychic" instead of the thousands of dollars it's probably worth. The position is Grand President of Gamma Phi Beta, a job which grows and changes with the times.

Karen Wander Kline (Iowa St.), our current Grand President, took over the job inauspiciously following the death of Betty Luker Haverfield (Missouri) in 1978. Without benefit of ongoing guidance from her predecessor, she began to prepare in earnest for the Nashville Convention, where she was elected to the office.

Curious to see how much time the job takes, how she works in other activities and still finds time for her family, we asked her to keep a diary for a "normal" week. She chose the week before she was to leave for the

If it were listed in the classifieds, salary would be quoted as "psychic" . . .

National Panhellenic Conference's biennial meeting last fall. A few weeks later she would be off to visit Central Office in Denver.

Her log reveals many long distance calls to and from Grand Council members (mostly in the evening when rates are lower). She wrote a special Founders Day message for international distribution, and a memo



Karen Wander Kline
(Iowa St.)
Grand President

to Grand Council. Much of her time is devoted to answering letters and dealing with correspondence. She also reads other sorority and fraternity magazines and chapter reports.

She thoroughly cleaned her house (in two installments), repeatedly tried to call a church list (no one was ever home) and baked a cake for a children's hospital bazaar. She shopped for a dress to take on her trip and finding none, sewed one herself.

Husband Tom, who plans and implements a variety of special marketing projects for Northern Natural Gas, enjoyed a few precious moments as they watched the World Series and some football games on television (as his wife did some Gamma Phi related reading and fielded telephone calls) and he took her out to dinner the night before her departure.

Active daughter Kim, 17, had some long chats with mom, got her drill team uniform pressed and received a lot of telephone calls answered by mom, who also reported waiting up

for her several nights. Even Fritz, the family poodle, got a piece of her time for a trip to the veterinarian for shots.

When she's traveling, father and daughter follow a menu and schedule she has carefully planned for them.

. . . it appears at least half her time is spent on Gamma Phi Beta

. . .

They've given up a lot of mom and wife for Gamma Phi trips, but she says they have weathered it well and patiently, and have probably grown closer during her absences. A special Gamma Phi phone in a room she uses as her office is unanswered when she's away.

She often finds herself leaving for airports early in the morning so she can be home longer with her family. She's had her share of cancelled flights and is adept at rescheduling when airlines go on strike or weather causes delays.

From her diary, it appears at least half her time is spent on Gamma Phi Beta, not counting the extra hours she must spend thinking about it and mulling over important decisions.

After writing her diary she re-

They've given up a lot of mom and wife for Gamma Phi Beta trips . . .

marked, "It all sounds dull and routine—it really isn't." That's because she brings a great enthusiasm to her job.

Rather shy as an undergraduate, Grand President Karen Kline is a walking example of how Gamma Phi Beta has provided the opportunities for tremendous personal growth. She's the embodiment of all that is Gamma Phi Beta.

There's No Pause in

Graduating magna cum laude with a degree in psychology, Colette Cooley (Bradley) plans a career in personnel management after her year as a collegiate consultant. She was Panhellenic rush chairman, a responsibility which included supervising staff, budgets, promotion and the entire rush program for all campus sororities.

To enable her to earn more than 75 percent of her college expenses, Colette worked as a teacher's assistant and as a research assistant for a trucking firm. Two scholarships also helped meet expenses.

A charter member of Order of Omega, Colette was also a member of Phi Kappa Phi, Alpha Lambda Delta and Chimes. She served Gamma Phi Beta as membership chairman and was delegate to the 1978 Convention. Other campus activities included participation in intramural sports, Student Advisory Board, All-Greek Officer Workshop Steering Committee and as a hospital volunteer. Her awards include Dean's List, Greek Woman of the Month and selection to

present a research paper at the American Psychological Association convention.

Donna Cochran (Missouri) served her chapter as ritual chairman and was Panhellenic president.

"Each person is an individual and has something to offer," she said. "I always try to see the best in everyone and plan to give as much as I can to all the chapters I visit."

A Homecoming Queen finalist, Donna was a member of the Relationship Development Task Force, two senior honoraries and the Alumni Association Student Board. Donna was Greek Week chairman and student government elections coordinator.

Donna holds a degree in journalism with emphasis in advertising and plans to continue her education after her year of travel. An avid sports participant, Donna enjoys skiing, golf, sailing and riding.

Debbie Dykes (Cal. St.-Fullerton) was an active participant in Panhellenic. She was on the Greek Housing Steering Committee and Greek Week

Committee. This Panhellenic president was delegate to the Western Regional Panhellenic Conference and planned and conducted an Area 5 mini-conference.

Debbie entered the university with honors and was a member of Phi Alpha Theta. She plans to supplement her degree in history with a multiple subject credential for elementary school teaching.

Born in Okinawa, her interests include travel and meeting people, visiting historical sights, needlework and antiques. Debbie also enjoys baseball, football and riding. Her mother, Carolyn Collier Mooney, is a member of Alpha Eta Chapter.

Cindy Anderson (Oregon St.) served her chapter as activities chairman, philanthropy chairman and president. She was alternate delegate to the 1978 Convention.

A Panhellenic rush and delegate coordinator, she was a university hostess and member of Campus Lights Committee, Phi Eta Sigma, Kappa Delta Pi, Order of Omega, Phi Kappa Phi and Mortar Board. With a degree in education, she plans to either pursue a teaching career or study for a master's degree in student services administration.

Cindy's grandparents, Frank and Mabel Candee, many years ago chaperoned dances for the then new Gamma Phi Beta chapter at Washington State.

Returning for her second year as a collegiate consultant, Marni Shoner (N. Arizona) said "I'm proud to be a Gamma Phi Beta and want to become the best woman I can be."

A 1978 cum laude graduate in home economics and business, she was a member of Phi Kappa Phi and the Association of Women Students. Marni was scholarship chairman, vice president and corresponding secretary of her chapter.

Marni's hobbies include traveling, reading, sewing and visiting historical areas. She has worked at Disneyland and as a PBX operator for Marriott.

Becky Boyd, Expansion Supervisor

Becky Boyd (Illinois) was president of her College Panhellenic, and chairman of the Midwest Panhellenic Convention. She was also a member of Panhellenic Campus Affairs and Publications Committees.

A member of Illini Forensic Association, McKinley Health Board and Illini Pride, Becky was chosen chairman of Illini Guides. She was Omicron Chapter social chairman and rush skit chairman and was named outstanding pledge.

Becky was named to Who's Who and the Senior 100 Club. Her interests include reading and running.

As expansion supervisor, Becky will oversee the activities of new colonies during the colonization period. During periods of inactivity in the expansion department, she will visit collegiate chapters.



Becky Boyd
(Illinois)

Work for Gamma Phi



Collegiate Consultants for the 1980-81 school year are Donna Cochran (Missouri), Marni Shonerd (N. Arizona), Colette Cooley (Bradley), Cindy Anderson (Oregon St.) and Debbie Dykes (Cal. St.-Fullerton).



Past and present graduate counselors at the Denver Convention are (1st row, l to r) Kathy Steward (Cal. St.-Fullerton), to Penn State; Kathy Livesay (Maryland), continuing at SW Missouri State; Judy Ditchey (Cal.-Riverside), current coordinator of leadership training; Jocelyn Phillips (Drake), to Michigan State; Missy Farmer (William and Mary), continuing at Bucknell; Maureen Sigler (Mankato St.); (2nd row, l to r) Karma Burford (Iowa), to Texas; Jackie Oster (Bowling Green), to San Jose State; Debbie Jones (Colorado College); Sue Genskow (Minnesota); Becky Taube (Texas Tech), continuing at Purdue; Karen Hedine (Washington); and Colleen Sweeney (Washington St.).

Good Buys

Historical Film

"Yesterday for Today" is a fast moving, lighthearted motion picture about the history of Gamma Phi Beta Sorority. The colorful, 16mm film tells the story of the ever changing ideas and yet constant spirit of Gamma Phi Beta. It is interspersed with amusing quotations from our Founders and narrated by sisters. "Yesterday for Today" can be used for rush, pledge education, general entertainment, alumnae chapter meetings and chapter development. A percentage of the income from rentals and sales will be donated to the Gamma Phi Beta Foundation.

The film rents for \$18.50 and purchase price is \$135.00. Please order the film two to three weeks ahead and include the date of showing. Checks should be made payable to Summus Films and sent to Joyce Brooke, Summus Films, 333 Margarita Dr., San Rafael, CA

94901. You will receive written confirmation of the date of showing.

Ladyfood

It's a beautiful hard cover cookbook full of the best recipes from all over the United States and Canada. Order your copy now and several extra for gifts. It is perfect for showers, weddings, birthdays and hostess gifts.

Ladyfood is of international interest as proceeds from its sale will be shared by the Dallas Alumnae Chapter and the Gamma Phi Beta Foundation to support Gamma Phi Beta's international philanthropy, camping, and scholarships and fellowships.

Ladyfood includes chapters on appetizers and beverages, salads and dressings, main dishes, vegetables and desserts and pastries. The more than 700 recipes are those of Gamma Phi Betas.

Ladyfood may be ordered from

Pat Mullins, 1104 Yale Circle, Plano, TX 75075. The price is \$8.95 plus \$1.05 postage and handling. Texas residents please add 45¢ sales tax.

Suncatchers

Brighten your window with a suncatcher, featuring a pink carnation, crescent moon or Gammy bug. This handpainted glass disk is available for \$5.00 from the Kalamazoo Crescent Circle.

A fun project for big and little sisters or great gifts for graduating seniors are 3" x 3" needlepoint pincushions. Colors are light and dark brown with a pink carnation intertwined in Gamma Phi Beta letters. All instructions and materials, except filler, are included. The kit is \$5.

For either suncatcher or needlepoint, make checks payable to Gamma Phi Beta and mail to Mrs. Allan Reiff, 6344 Hampton, Portage, MI 49081.

Use this handy order blank to order magazines for yourself or someone dear. It's a gift which gives year round enjoyment. And you'll be helping Gamma Phi Beta. Profits benefit the Sorority gift fund and the giver's local chapter treasury.

TO: Gamma Phi Beta Magazine Agency, Mrs. C. W. Kenney,
129 Croyden Lane, Syracuse, NY 13224

FROM: Name _____ Chapter Credit _____

Address _____

Zip Code _____

MAGAZINE	PRICE	HOW LONG TO SEND	NEW OR RENEWAL	SEND TO

Sisters Speak

Dear Editor:

I cannot tell you how happy I was to be selected as a Founders Fellow. It makes all the hard work seem worthwhile and I hope to help a Gamma Phi someday in pursuing her goals.

My best thank yous to the Gamma Phi Beta Foundation.

*In ΠΚΕ,
Anita Sokolsky*

Dear Editor:

Financial assistance is always welcome and appreciated, but it becomes especially so when it has been bestowed by a group with whom one feels a special closeness. I certainly intend to make the most of this award by studying to my fullest potential.

Thank you for this honor.

*In ΠΚΕ,
Joanne Disch*

Dear Sisters:

I would like to take this opportunity to express my sincere appreciation to the Gamma Phi Beta Foundation and other sisters who made it possible for me to receive financial aid for my studies at law school.

I am proud of Gamma Phi and even prouder to represent the Sorority as a fellowship recipient.

Thanks, too, to all the sisters at Psi Chapter who encouraged me to apply for the fellowship and those who helped me get the application together. You all have been so supportive of my law school endeavor and you'll never know how much that encouragement helped me.

I plan to continue supporting Gamma Phi Beta throughout law school and I hope that I can become just as generous, loyal and dedicated as those members who made my scholarship possible.

Thank you so much.

*Love in ΠΚΕ,
Nancy Sparks*

Dear Sisters:

The phone lines in Topeka are really buzzing tonight. "Can you believe what Gamma Phi has done for us?"

As a result of Province Alumnae Director Sue Dorsey Durrett's advice (she has been so supportive and helpful), we asked for and received help from the Gamma Phi Beta Foundation to send a handicapped girl to the YWCA Dibble Dabble program this summer. This means so much to Candy Deay, our Camping Chairman, and the rest of us.

We're planning a garage sale in the fall and hopefully we'll be able to help another girl next year.

Thanks to Sue and Gamma Phi.

*We're yours in ΠΚΕ,
Ceil Marshall*

Dear Editor:

In the winter CRESCENT, there was an article with a picture of my mother's badge. The article mentioned that "little is known about Hattie." A friend sent me the clipping and inquired if that wasn't my mother about whom the article referred.

Mother did graduate from Wellesley in 1907. She married Horace G. Lozier of Oak Park, Ill. and they resided in Glen Ellyn, Ill. most of their married life. They had three children and were both very involved in civic life and were devoted parents. The last two years of mother's life she lived with me here in St. Louis, my father having passed on a few years before that time. She was a lovely, gentle person, beloved by all.

Perhaps of interest is the fact that she was born and raised in Monroe, Wis. Her grandfather, Arabut Ludlow, was one of the early settlers there and his house is now called the Mansion and is included in the historical tours of Wisconsin.

*Sincerely,
Gertrude Lozier Miller*

Dear Editor:

The Delta Xi Chapter of Gamma Phi Beta at Bucknell University would like to extend its congratulations to the new sisters of the Delta Rho Chapter at Dickinson College. Delta Xi was delighted

to be chosen as the chapter to install the chapter at Dickinson.

We greatly enjoyed participating in the initiation ceremony and joining the new sisters at their banquet. In addition, we were very glad to meet our sisters from other chapters of Gamma Phi Beta, sisters from both the United States and Canada.

The sisters of the Delta Xi Chapter would like to thank the members of Delta Rho for their hospitality. We would also like to extend our best wishes to all the officers and initiates. We hope that they will find as much friendship, love and inspiration as we have always found in the Gamma Phi Beta Sorority.

*In ΠΚΕ,
Delta Xi Chapter*

Dear Sisters:

Gamma Phi

Is an important part of my life.

The friends I've made

The sisterhood I will never trade.

It has come to promote

All the wonderful growth

That has made me into the
person I am.

With fellowship and opportunity

Like the Crescent moon, that

shines so bright overhead every
night

Is the spirit that fills our hearts

and love that we will never let
part.

Gamma Phi Beta, the mode and
brown,

Will always be there

When we need it around!

*In ΠΚΕ,
Diana Lehnen
Wisc.-River Falls*

Corporation to Meet

The Beta Kappa House Corporation will hold its annual meeting October 15, 1980, at the Gamma Phi Beta chapter room in Tempe, Arizona for the purpose of simplifying and updating through amendment the Articles of Incorporation and the By-laws.

Missing Persons Bureau

If you know the addresses of any of these "lost" members, please notify Gamma Phi Beta Central Office, 7503 Marin Drive, Englewood, CO 80111.

GOUCHER COLLEGE (Zeta)

Fay Myers Bedford '08
Martha Jane McGhee Beh '37
Nancy Willa Beisler '41
Barbara Ann Berg '50
Elizabeth Wise Besley '28
Irene Rose Blank '08
Katherine Shaw Blassingame '23
Florence Schumacher Boots '14
Joan Marti Brainard '49
Minnie Brewer (& Gamma) '24
Helen Elizabeth Brown '02

UNIVERSITY OF CALIFORNIA (Eta)

Coralee Hollywood Barber '53
Elizabeth Hindry Barker '59
Nancy Larson Benisch '50
Dorothy Westrup Berry '13
Kathleen Hosford Blake '46
Dorothy Deardorf Boal '18
Gladys Senter Boone '14
Alice Bradley Boswell '16
Mary Elizabeth Rothganger Brenner '52
Susan Smith Briggs '61
Marion Kennedy Brink '27
Betty Jo Ellis Brink '41
JoAnn Turner Brinkman '55
Diane White Brower '70
Barbara Coltrin Brown '59
Virginia Lynn Brown '59
Nancy Saefer Buckley '56
Mary Kathleen Buljan '69
Maria Andersen Burkett '74
May Joan Buwalda '47
Virginia Byrne '20

UNIVERSITY OF DENVER (Theta)

Ruth Ann Barber '63
Joyce Barry '58
Marlyn Ewers Barton '41
Patricia Ana Beck '55
Nanci James Becker '53
Helen Sydnor Benwell '31
Natalie Bigelow '57
Mary Don Coldren Blight '38
Jean Larson Bloom '42
Barbara Ann Bluhm '66
Joanne Croft Boatwright '49
Leah Joy Bobeck '54
Caroline Ann Boening '48
Nina Borden '45
Dorothy Henry Borgeson '36
Inda Browne Davis Botts '12
Pamela Leilani Bowen '72
Juanita Gudgel Breisch '20
Vicky Cullen Briscoe (& Pi) '60
Ethel Rankin Broatch '10
Barbara Brittingham Brooks '49
Shirley Pittman Bryan '45
Emmy Lou Bulkley '35
Ethel Young Bullen '14
Rita Jo Burleson '77
Mary Butchtel '17

BARNARD COLLEGE (Iota)

Anne Carol Barnard '04
Anna Paddock Barton '12
Florence E. Beach '02
Ethel Richardson Beach '09
Florence Beers '02
Varian White Blumberg '10
Dorothy Dean Boorman '12
Alice G. Brown '10
Jean May Bruce '03

UNIVERSITY OF MINNESOTA (Kappa)

Florence Warnock Barbour '18
Kathryn Woolsey Bawlf '30
Mary Lou Skipton Barr '37
Marylee Meighan Baston '42
Virginia Frost Baston '42
Dorothy Bell '10
Marilyn Kline Bell (& Alpha Phi) '52
Dana Bolstad Benjamin '63
Francie Hubbard Bennett '54
Helen Turnham Bennett '39
Josephine Bozoier '40
Margaret Bjerke '55
Ellen Paine Blandin '02
Janet Leach Blodgett '50
Mary Rafferty Bloom '65
Frances Flint Boelter '38

Karen Bonhus '58
Elizabeth Ladd Borgwardt '43
Marian Holbrook Botelho '43
Verna Herman Boyle '13
Joyce Kliever Bramblett '64
Gertrude Moore Brandt '11
Muriel Gunderson Brattvet '20
Janet Eklund Gredesen '47
Anne Phillips Bremicker '41
Gwendolyn Morris Brigham '23
Jane Britzius '47
Janet Gilquist Brodahl '48
Margaret Menzel Bronson '10
Karen Lee Peterson Broughton '61
Elaine Cipra Broughton '47
Esther Martin Brown '27
Louise Youngs Brown '35
Janet Youngdahl Bultrud '47
Mary I. Burger '39
Nan Brown Burke '12
Emma Lou Graham Burlingame '23
Sara Sherman Byers '23
Mary Jo Hoffert Byson '56

UNIVERSITY OF WASHINGTON (Lambda)

Marguerite Finch Bates '26
Mary Helen Birchfield Blair '40
Beverly Kay Bogen '68
Violet Sheppard Bonner '16
Patricia Ward Borrow '38
Ina Lamont Bowen '10
Mary Elizabeth Weisman Brewer '30
Clare Marie Harris Brown '33
Bess Kaufman Brown '04

STANFORD UNIVERSITY (Mu)

Marion Bocks Beall '15
Elsa Jean Barber '22
Lucy Gillespie Bardin '29
Eljah Barricklow '20
Dorothy Swain Begein '22
Jane Ellen Raapke Bell '70
Mabel Crow Bennett '05
Jessica Bird '05
Carolyn Losse Blair '33
Ethel Lloyd Bosworth '05
Mary F. Bridge '44
Constance McCleave Brownridge '29

UNIVERSITY OF OREGON (Nu)

Doris Dezendorg Banks '19
Marian Johnson Bauer '34
Susan P. Bates '60
Flora Dunham Bean '10
Kerry Louise Beaulieu '70
Jessie Bennett '48
Jill Jacqua Bergeson '66
Nancy Herman Bibb '59
Margaret Kirk Bielenberg '68
Virginia George Binns '34
Shirley Blanchard '38
Janet Bronson Bloom '50
Marilyn Weber Blue '59
Jill Freeman Bockley '59
Lucille George Breaky '26
Susan Lynn Brennan '61
Mary Brennan '54
Joan Eichhorn Bresee '57
Marian Briggs '25
Sandra Kay Brink '63
Lucie Brooks '31
Joanne Wedel Brun '62
Dorris Burgess '51
Kathleen Burgess '51
Jane Burkett '37
Jean Burt '39

UNIVERSITY OF IDAHO (Xi)

Betty Jean Ingraham Banks '46
Hazel Dean Barr '51
Lorraine Selby Barton '15
Marguerite Finch Bates '26
Jessamine Batterton '24
Nella Jane Bartleson Beck '46
Katherine Colwell Belko '39
Gladys Dittmore Bey '15
Maxine Billings '21
Helen Wood Bitner '23
Mary Jean Winterholer Black '51
Frances Baird Borresen '36
Nancy Eleanor Bowden '48
Jean Spooner Bower '36

Meredythe Bowler '42
Gladys Hansen Bozarth '56
Dawn Gibson Brandt '28
Judith Ann Patterborg Brassey '59
Janet Salyer Briggs '58
Lyvonne Gallup Brooks '58
Jean Beveridge Brown '43
Cindy Long Brown '43
Mary Jean Burke '53
Kathryn Burger Burningham '58
Angelina B. Burns '16
Nancy Ann Burns '55
Shirley Greenway Burns '46
Janice Willms Byrd '55

UNIVERSITY OF ILLINOIS (Omicron)

Mary Jo Scovill Beamer '34
Hazel B. Barackman '17
Esther Hibbs Barnes '26
Luella Moline Barnett '19
Valerie Loar Barrett '60
Helen Duncan Barron '29
Patricia Caldwell Battell (& Alpha Xi) '41
Joann Bernreuter '48
Virginia Brunkow Biska '47
Carolyn June Beaty '60
Jeanette Mies Bixler '37
Julianne Eastland Boardman '61
Sara Edgell Bonkowski '57
Martha Waldrup Bortner '31
Anne Bradley '68
Lola Carol Branit '23
Patricia Starke Brannick '44
Jeannine Burnier Brix '51
Catherine Dumford Clark Brown '19
Lillian Woerman Bull '15
Bernice Lohmeyer Burdett '28
Judith Litsinger Burgett '57
Frankie Holton Burke '13
Harriette Dadant Bush '14
Eleanor Haser Buswell '26

UNIVERSITY OF NEBRASKA (Pi)

Kay Lynn Sparck Barber '61
Olinda Kay Bates '68
Janice Marler Bauer '60
Roseann Fowles Becher '66
Lucile Coates Beck '15
Virginia Konsel Begley '43
Diana Lee Berger '72
Rozella Widows Blacker '47
Patricia Brown Bosking '55
Genevieve Boslaugh '30
Marcia Weichel Boyes '59
Katharine Gylden Bradley '68
Nell Morrissey Brannon '15
Deann Stenglein Bratka '61
Helen Brennan '28
Ruth Brown Broz '14
Martha Johnson Burckhalter (& Psi) '35
Barbara McKinley Busch '47

UNIVERSITY OF IOWA (Rho)

Virginia Barker '29
Gladys Loyer Barrett '16
Barbara Hope Bacon Baumgartner '52
Rose Marie Beck '32
Muriel Wareham Beebe '18
Evalene Babcock Beebe '17
Clara Louise Wallace Behrens '29
Florence Bell '16
Nan Henderson Bell '71
Etta Loewenstein Bender '15
Clara Hamilton Bergendahl '21
Elizabeth Hutchinson Biehl '28
Mildred Nelson Billenborg '27
Helene Blattner '17
Alice Vanlaw Blue '26
Frances Wyland Bone '16
Linda Parker Borden '55
Clara Larson Boyce '23
Kathryn Brabec '23
Mary Magaret Bracewell '39
Elizabeth Bragdon '49
Bonnie Kutter Brandenburg '55
Florence Gaughan Bray '47
Marjorie Herndon Britton '26
Marilynn Henningsen Brown '45
Susan McAllister Brown '64
Elizabeth Forrester Browning '23
Dorohty Janan Brunsvold '61

Ann Wolf Brunsvold '59
Marcia Moore Buchele '57
Marguerite Lloyd Burt '27

UNIVERSITY OF KANSAS (Sigma)

Cynthia Lee Cole Bean '66
Georgiana Holland Bell '19
Linda Hughes Bell '67
Victoria Elaine Benson '61
Susan Wolvertton Beverly '59
E. True Binford '57
Isabel Bolin Bixler '55
Lucile Carder Borchardt '31
Carla Ann Crites Bowen '68
Donna L. Bowman '58
Vickie Anderson Bradley '67
Verna Perkins Brady '25
Barbara Feldmann Brass '68
Judith Braudis '59
Emma Jane Staton Brooks '44
Barbara Ann Brown '73
Edna Brown '22
Twila Eaton Brown '64
Julia Fulkerson Brown '24
Marjorie Woodson Brownlee '55
Alice Brunner '28
Frances Shaw Buchanan '36
Gayle Blankenship Bullock '52
Betty Learned Burns '42
Julie Darling Byars '70

COLORADO STATE UNIVERSITY (Tau)

Constance Cramer Banks '35
Kathryn Ann Barkett '68
Shirley Mae Bassett Barnhart '54
Carolyn Jane Barnhill '63
Josephine Bartholomew '32
Patricia Maurine Bear '49
Ruth McCracken Beard '30
Edith Belcher '39
Katherine Thebus Betts '49
Neva Jeanne Bloom '40
Lillian Blunt '28
Lois Nixon Boblett '35
Janice Bradenburg '57
Katherine Bradshaw '20
Joyce Ann Brandenburg '66
Jane Bacheller Brillhart '62
Rita Jo Brockman '75
Carol Joy Bronn '63
Gretchen Brown '57
Mildred Long Brown '21
Avis Whittier Brown '27
Gertrude Torrey Brown '19
Margaret Kulp Brown '46
Virginia Brown '28
Verniece Ewart Brown '25
Mary Ann Giroux Bruce '64
Lillian Million Burke '19
Doris Burnett '30
Eleanor Rhodes Burnett '25
Alice Pott Busch '38

HOLLIS COLLEGE (Upsilon)

Willie Carter Witt Blake '20
Grace Bloodworth '16
Kathleen Barron Brennan '22

WASHINGTON UNIVERSITY (Phi)

Madge Bartlett '19
Ruth Bates '24
Phoebe Winholt Batty '68
June Nagel Bentliff (& Alpha Zeta) '28
Marjorie Fallert Blankenship '49
Marie Brennan Bond '43
Martha Willemijn Branson '54
Erdwine Holekamp Brookes '34
Margaret Freudenstein Brown '25
Jola Georgian Burt '59

OREGON STATE UNIVERSITY (Chi)

Linda Paulson Barkus '67
Judy Voorhies Barton '55
Florence Earl Barton '44
Glendora McDowell Bates '27
Phyllis Gould Baugh '38
Barbara Beck '40
Joan Claire Bennington '58
Sandra Lewis Bergam '62
Patricia Blanchard '66
Elise Osburn Blisset '28
Dorothy Nowotny Boehm '40
Marge Maher Bonny '45

Couples and Cradles

Twin boys to Michael and Grace Townsend Systrach (Arizona), December 17, 1979.

Twin girls to Con and Beth Widholm Campbell (Illinois), October 2, 1979.

A girl to Jim and Linda Fure Murray (Wisc.-Platteville), October 25, 1979.

A boy to Charles and Claudia Matney Brown (Oklahoma), January 30, 1980.

A boy to Rick and Carolyn Carter Holland (Auburn), December 7, 1979.

A girl to Donald and Meri Goyette Rid (Vermont), April 1, 1979.

A boy to Gregory and Ka Anderson Guyman (Washington), October 7, 1979.

A girl to Joe and Flo Haymond Haynes (Kansas St.), May 18, 1979.

A boy to Ken and Sandra Reimer Siole (Bradley), December 18, 1979.

A boy to John and Terrie Dangler Sobeski (Bradley), January 12, 1980.

Jill Nowak (Wisc.-Milwaukee) to Richard Bellford, July 26, 1980.

A girl to Joe and Debbie Doster Terrell (Auburn), March 11, 1980.

Connie Shaw (Auburn) to Sal Granata, March 8, 1980.

Joanne Rearer (Auburn) to James Robbins, February 16, 1980.

Carol Bellinger (Kearney) to Carl Dietz, August 25, 1979.

Tricia Belcher (Kearney) to Rick Sinkbeil, June 10, 1979.

Susie Neutzman (Kearney) to Kevin Nansel, December 17, 1979.

Sue Gammell (Kearney) to Rick Newton, May 26, 1979.

Julie Cover (Kearney) to Bill Windhorst, July 22, 1979.

A boy to Bob and Noel Shaw Keller (Wash.-St. Louis), December 2, 1979.

Kathleen Cann (Indiana St.) to Randall Rudeen, April 12, 1980.

Barbara Duke (Indiana) to Homer O. Sams, April 18, 1980.

Kelly Carstensen (Iowa) to John Gavin, May 23, 1980.

Deb Fideler (Iowa) to Phil Williams, May 24, 1980.

Susan Strasberg (Iowa) to Jeff Ploeger, May 31, 1980.

Lori Weih (Iowa) to Jim Swift, June 14, 1980.

Julie Dickinson (Iowa) to Larry Gansen, July 26, 1980.

Mary McNamee (Iowa) to John Carstensen, August 23, 1980.

Donna Ahlers (Rutgers) to Bruce Turner, June 23, 1980.

A boy to Harry and Barbara Marsh Saunders (W. Virginia), April 6, 1980.

A daughter to Steven and Alice Arslanian Mehlenbacher (Michigan), June 12, 1979.

A boy to Earl and Jeanette Baluk Print (Kent St.), March 31, 1980.

A girl to Philip and Charlotte Cox D'Angelo (Ohio St.), May 19, 1980.

Sheila Stiles (Bradley) to Roberto Joyce, January 12, 1980.

Ann Drill (Vanderbilt) to Michael Bernstein, June 8, 1980.

Janette Weatherbie (Vanderbilt) to Steve Lippert, June 14, 1980.

Michelle Gachet (Vanderbilt) to Andrew O'Neil, February 16, 1980.

Donna Sitts (Wisc.-Platteville) to Thomas Sharp, June 14, 1980.

Kathy Broer (Iowa) to Kent Frank, June 14, 1980.

Ginger Lee Butler (Texas Tech.) to Russell Clayton, December 28, 1979.

Lynne Davis (Wisconsin) to Michael Belcher, November 24, 1979.

Janet Gamble (Bowling Green) to Robert Ruffing, May 16, 1980.

Cheryl Geschke (Bowling Green) to David Smercina, May 3, 1980.

Elizabeth Hunt (Midwestern) to Tom Henderson, June 14, 1980.

Kathleen Kirkpatrick (Purdue) to Michael Ingram, June 7, 1980.

Peg Lawlor (William and Mary) to Mark Hutchinson, March 7, 1980.

Susan Lange (Cal.-Riverside) to Charles Reilly, April 19, 1980.

Sally Gay McGary (Texas Wesleyan) to Tony Amendola, June 14, 1980.

Carol Meyer (Colorado St.) to David Kratky, September 2, 1979.

Nancy Nelson (Wisc.-Platteville) to John Quirk, August 9, 1980.



LAVALIERS

(Gold Filled Chain with Gold Colored Charms; Sterling Silver Chain with Sterling Silver Charm)

		Gold Filled	10K	Sterling Silver
1-3LL/02VG	Vertical Monogram	\$16.00	\$	\$22.00
2-2/LL40G	Crescent	—	—	35.00
3-3/LL/12G	Heart with Monogram	—	—	24.00
4-CC/07G	Crest	—	—	24.00
5-3LL/14MG	Sculptured	—	—	27.00
6-3LL/13DG	Three Dimension	—	—	33.00
7-3LL/025G	Staggered Monogram	16.00	—	22.00
8-3LL/09G	Circle Monogram	—	—	24.00
9-2LL/37G	Crescent Enameled	—	—	45.00
10-2LL/58G	1896 Monogram	—	—	35.00

OTHER INSIGNIA

11-CR/25G	RECOGNITION PINS:			
12-MG/11G	Crest-Gold Filled	6.00	—	—
13-	Monogram	6.00	—	—
14-MOTHER	Black Enameled Crescent	—	—	—
15-PI/G	Collar Button	6.00	—	—
	MOTHER's PIN-Pink	—	—	—
	Carnation-Gold Filled	5.10	—	—
	PLEDGE PIN-Brown Enamel	—	—	—
	with-Yellow Crescent-Gold Plate \$2.00	—	—	—

-PS/58G

16-SP/11G

17-SP/40G

18-SP/58G

1896 Monogram Pin

STICK PINS

Crest

Gold Crescent

1896 Monogram

RINGS

19-SR/135G	Signet (rectangular)	—	105.00	32.00
20-SR/366G	Signet (oval)	—	95.00	28.00
21-SR/531G	Recessed Letters	—	110.00	34.00

BRACELET

22-B/60G	Crescent	35.00	—	29.00
----------	----------	-------	---	-------

CHAPTER GUARDS

(Not illustrated)

1-Letter 2-Letter

CG-06G	Plain			
	Gold Plate	\$11.00	\$12.00	
	10K	18.00	25.00	
CG/07G	Close Set Pearl			
	10K	28.00	41.00	
CG/08G	Crown Set Pearl			
	10K	38.00	53.00	
CG/09G	Engraved (Chased)			
	Gold Plate	13.00	15.00	
	10K	20.00	28.00	

PRICES SUBJECT TO CHANGE WITHOUT NOTICE. Please add 4% for postage, handling and insurance (minimum \$1.00) to all orders for above merchandise, add \$2.00 service charge on orders less than \$10.00.

J. O. FOLACK co.

1700 WEST IRVING PARK ROAD • CHICAGO, ILLINOIS 60613

An Opportunity

The opportunities for developing the highest type of womanhood through Gamma Phi Beta are limited only by our imagination and financial support.

Our continuing education training, TransISter Service and alumnae and colle-

giate expansion are just a few of the activities in which we can take pride. In order to provide even more creative services to our members and to take full advantage of the opportunities of the eighties, the Opportunity Fund has been created.

It provides you the opportunity to give extra financial support to Gamma Phi Beta.

It helps Gamma Phi Beta provide more opportunities for you.

In addition to your alumnae tax, please add a little extra for the Opportunity Fund. This contribution to the Opportunity Fund will give Gamma Phi Beta more opportunities to grow and help sisters everywhere.



ppportunity Fund

Gamma Phi Parents: While your daughter is in college, her magazine is sent to her home address. We hope you enjoy it. If she is no longer in college and is not living at home, please send her new address to Gamma Phi Beta Central Office on the form below.

CHANGE OF ADDRESS OR NAME REPLY

Members are responsible for all address changes. Allow 4 weeks.

Clip form, place in stamped envelope and mail to Gamma Phi Beta Sorority, 7503 Marin Drive, Englewood, CO 80111

Maiden Name _____ Chapter _____

Present Occupation _____

New name if different from label

Title

Last

First

Middle

Address if different from mailing label

Street _____

City _____ State _____ Zip _____

PLEASE DO NOT REMOVE OLD LABEL

☐ Check here if change of address is for other than addressee.