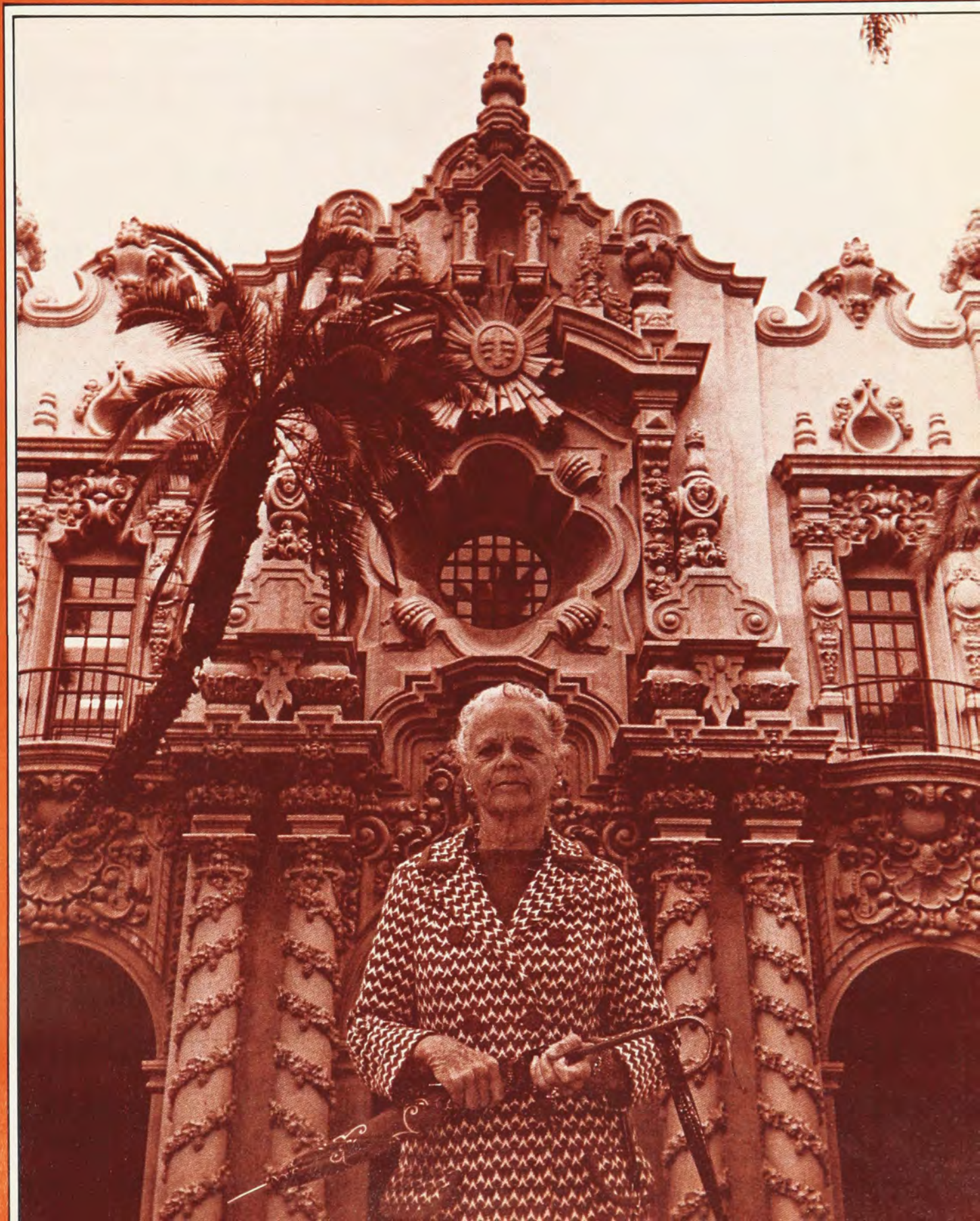


The Crescent

Fall 1979

Gamma Phi Beta



Crescent Assignments

For Spring Issue:

Founders Day highlights
Alumnae Career Corner articles
Alumnae Pacesetter articles
Colossal Collegian articles
College Collage articles
Feature articles

Deadline: December 1, 1979

Crescent Correspondents:
Please read the *Crescent* assignment page in the *Crescent Communique*, which you can obtain from your president.

Editors

Editor-in-Chief

Kris Brandt Riske
1222 E. Cordova
Casa Grande, AZ 85222

Alumnae Editor

Judy Haverfield Beaupre
94 Thistledown Drive
Rochester, NY 14617

Collegiate Editor:

Carol Asel
4612 Amesbury #288
Dallas, TX 75206

Feature Editor:

Margy Molden Wiltamuth
1700 Kiva Road
Silver Spring, MD 20904

Business Manager

Jonette Crowley
Central Office

Gamma Phi Beta's international headquarters has moved to beautiful, new offices in Englewood, Colorado, a suburb of Denver. All correspondence should be directed to Gamma Phi Beta, Inc., International Headquarters, 7503 Marin Drive, Englewood, CO 80111. Watch for more details in future issues of *The Crescent*.

The Crescent

Fall 1979

Gamma Phi Beta

Contents

Welcome Delta Pi

Alumnae Opportunities Enriching

Lighting up PR

Scholarships and Fellowships Awarded

Yes, You Can

Coping with College Costs

Collegiate Honors

Career Corner

Sisters Speak

ON THE COVER: Beatrice Barker Evenson (Oregon) in front of the Casa del Prado building, Balboa Park, San Diego. Story on page 37.

Gamma Phi Beta USPS 137-620

The Crescent is published quarterly in Fall, Winter, Spring and Summer by the Gamma Phi Beta Sorority, Inc. 7503 Marin Drive, Englewood, CO 80111. Printed in the U.S.A. by Compolith Graphics and Maury Boyd & Associates. Second class postage paid at Englewood, CO and additional mailing offices.

Postmaster: Please send notice of undeliverable copies on Form 3579 to Gamma Phi Beta, Inc., International Headquarters, 7503 Marin Drive, Englewood, CO 80111.

Subscribers: Send changes of address, notices of marriages and deaths to Gamma Phi Beta, Inc., International Headquarters, 7503 Marin Drive, Englewood, CO 80111.

Dream House Now a Reality



Located in the "Acres," Delta Iota's 18,000 square foot chapter house at Purdue University houses the chapter's 80 members.

It was a hole in the ground in April and a house in September for the 80 members of Delta Iota at Purdue.

Alumnae spent a hectic summer bringing a new chapter house to realization after four years of frustration. Through the efforts of many, including international Gamma Phi Beta, one of the few new sorority houses in the country in recent years emerged from a dream to a reality.

The rolling hillside property is situated in the "Acres," a beautiful setting for this contemporary structure.

The 18,000 square foot house was designed and constructed using advanced building methods. The steel structure offers more square footage per woman than any other housing unit on campus. It is basically maintenance free with an outside steel skin coated with a 20 year acrylic film and a roof system of aluminized steel panels. Additional insulation has proven its value by cutting normal heating costs by approximately one-third.

The hand carved front door immediately suggests the interior is also exciting. Rattan, chintz and natural woven textures are used extensively throughout the house, repeating an elegant but contemporary decor. The peach and blue color scheme is highlighted by the most unusual dining



Members and guests attending the reception in honor of the new Gamma Phi Beta house at Purdue University.

room. A wisteria mural, hanging plants and dimmed glowing chandelier lighting create a beautiful mood for dining.

The study rooms are designed to be basically maintenance free. Each window is covered by a levelor. Brightly colored "Merri-mikko" fabric is in the second and third floor living quarters, which the women say reflect the spirit of their house.

The house was designed by Drogo G. Panich and constructed by McCarthy Davis Company. Alumnae building chairmen were Jean Ballantyne Ransom (Northwestern) and Shirley Mueller West (Washington). The decorating committee included Kathryn McCarthy Davis (Purdue), Francis Horner Bloom (Illinois) and Fran McLallen Meeks (Washington).

Welcome Delta Pi

Here comes number 112! Gamma Phi Beta's chapter roll grows bigger and better with each passing day.

Delta Pi Colony was official at Illinois State University on May 15, 1979, when 14 members of Phi Kappa Delta local were pledged to Gamma Phi Beta. Along with Director of Finance Mary Jane Hipp Misthos (Colorado College), 14 local alumnae participated in the ceremony under the guidance of Expansion Supervisor Karen L Hedine (Washington). The supporting alumnae provided refreshments after the pledging service at an informal get acquainted party.

Delta Pi joins eight National Panhellenic Conference groups on the ISU campus: Alpha Delta Pi, Alpha Gamma Delta, Chi Omega, Delta Delta Delta, Delta Zeta, Kappa Delta, Pi Beta Phi and Zeta Tau Alpha.

Illinois State University, founded in 1857, is the oldest and one of the largest public universities in Illinois. The University, with 28 departments in five colleges, offers career preparation fields at the bachelor's, master's and doctoral levels. The more than 19,000 students at ISU come from throughout Illinois, most other states and from many foreign countries. A faculty of 1,200 and a modern campus enhance the learning experience.

Illinois State University is located near the geographic and transportation center of the state, in Normal. The Normal-Bloomington cities have a combined population of 75,000 and are located 140 miles from Chicago and 160 miles from St. Louis.

Welcome to Delta Pi! Gamma Phi Beta is proud to join the Greek roster at ISU. Rush information and messages of welcome may be sent to our Gamma Phi Beta alumna field representative, Sue Haven Quane (Indiana), 1107 W. College, Normal, IL 61761.

Leonite Selzer Moore (SMU)
Director of Expansion



New Pledges of Delta Pi Colony with Expansion Supervisor Karen Hedine (Washington St.) are (1st row) Roxanne Castlemen, Kris Zeile, (2nd row) Linda Zimmerman, Patty Pickett, Beth Landstrom, Shellise Smith, Patti Dillon, Chris Sutton, (3rd row) Karen Hedine, Nancy Wold, Theresa Miller, Gayle Norem, Missy Bernhart and Michelle Hinkle.



Linda Zimmerman, pledge class treasurer; Karen Hedine (Washington St.), expansion supervisor; and Sue Haven Quane (Indiana St.), alumna field representative.



Gamma Phi Beta chapter's pledges are only a few of the happy, smiling women who could enrich your life as an alumna pledge advisor. They are displaying caricatures of themselves drawn by their big sisters.

Alumnae Opportunities Enriching

By Mary Ellen Wisniewski Hern
(Syracuse)

How can you help Gamma Phi Beta? After graduation, many sisters lose touch, yet the Sorority is sustained by those in contact with other Gamma Phis. They keep involved so other young women can be enriched by the Greek system and Gamma Phi Beta. In the next several issues, *The Crescent* will examine volunteer positions in the sisterhood, hoping to interest other alumnae in getting involved again with our Sorority.

Pledge days are special ones. Each new pledge has much to learn—sisters to get to know, fellow pledges to meet, a sisterhood to explore. Two people can best help her—her chapter pledge director and the alumnae pledge advisor.

The opportunity to serve as pledge advisor comes highly recommended. Why not volunteer? "The opportunity to work with the girls is great. The rewards of friendship are end-

less," said Joanne Callis Roman (Vanderbilt), pledge advisor to Alpha Chapter. "I enjoy watching people grow and mature, both in Gamma Phi and their own personal lives."

Pledge advisors work closely with the pledge director, setting up a schedule of weekly pledge meetings and special projects. She helps integrate the pledges into the chapter, and is the pledge's first alumna contact. She gives the pledges the perspective of Gamma Phi Beta beyond the individual chapter—lasting beyond college. She is there for support, for advice, "for smoothing out the rough spots," said Joanne Roman.

"The goal (is to have) a united pledge class, to help them feel a part of the whole Sorority, to teach them a respect for what the Sorority stands for and its traditions, and to assist them in making mature decisions," said Kathleen Prins Anderson (Puget Sound).

Cathy Juelfs Knutsen (Kearney)

particularly enjoys being a pledge advisor because "you get to know the women the first year they become Gamma Phis and it's interesting to watch them develop through the years." It also brings back "a lot of good memories of your own pledge period."

Sonja Murray (Cal. Poly) describes the "love, support and strength" she receives from working with the chapter. "It keeps me on my toes!" Pledge advisors spend about two to three hours per week with their charges, usually in meetings or on a special project.

The job has its special challenges, too, said Cathy Knutsen, like keeping up a pledge's interest when she is having problems. "You have to let her know she is needed in Gamma Phi."

"I feel alumnae support helps keep a chapter strong," said Kathy Anderson. "I would tell anyone interested in pledge advising that it is rewarding, worthwhile and enjoyable!"



By Sally Erickson Lewis
Public Relations Chairman

What does a *good* public relations chairman do?

She is the person who is alert to good public relations opportunities—in the chapter, on campus, in Panhellenic, with the faculty and administration, with alumnae, with parents, in the community.

The collegiate public relations chairman suggests ways to develop good PR within the chapter: firesides, goal-setting meetings, an exercise class, special study help, an attractive and informative bulletin board or a special "Brag Board" to honor member's accomplishments, a secret buddy for a week or term, gracious living evenings, recognition of seniors' contributions to the chapter, frequent reminders regarding telephone etiquette, courtesy to guests and staff.

On the campus, a good PR chairman will find ways to encourage members to participate and lead in student government, athletics, clubs and organizations. Of special PR importance is Gamma Phi Beta participation (and sponsorship) in campus fund raising events. Even ushering at a school concert is a good PR tool for Gamma Phi Betas. Participation is one of the ways we tell others about Gamma Phi Beta.

To our Panhellenic sisters, the collegiate PR chairman can spread good public relations by remembering

sororities and fraternities on their "birthdays" or founding days. Remember them with cards at different holidays, too. Holiday caroling (even at Halloween with their own Greek letters carved in the pumpkins) is another way to cement Greek friendships. Rush and rush workshops are other facets of public relations and the good PR chairman can help remind members about this.

A "Good Friends" or "Fratty Friends" night is an effective public relations tool as it introduces Gamma Phi Beta (and the Greek way of life) to Greek and non-Greek friends. This could be done once a month, once a term or even once during the school year and could be a dinner, dessert or special program. The same idea of entertaining is good for favorite professors or members of the administration.

Gamma Phi Beta alumnae represent another public and the PR chairman can find ways to keep these relations good. Perhaps a free babysitting service is needed to help young alumnae with children or the collegiate chapter can host a Christmas party or Easter egg hunt for the children. Another approach would be to have an alumnae "adopt" a new pledge and have lunch or go shopping with her once a month. Publishing a chapter newsletter for alumnae to keep them posted on chapter activities, accomplishments, honors and plans is another PR tool. Collegiate members can help with alumnae fund raising events.

The collegiate public relations chairman will be aware of local organizations which need volunteers. Annual food or clothing drives for the needy in the community will help put Gamma Phi Beta in the public eye as will singing visits to the children's ward of the local hospital or a nursing home for the aged. Chapter members can also be involved in the community by serving as Brownie or Girl Scout leaders or with the Big Sisters organization.

Parents of new pledges should be welcomed by the chapter and would appreciate a newsletter with information about Gamma Phi Beta, the chapter, a "translation" of local campus idioms, a listing of campus organizations and other information to help them feel a part of their daughter's college life. Parents can be invited to special weekends at the house and campus.

The good collegiate public relations chairman will also send out publicity for the chapter. She'll notify the local media of important news about Gamma Phi Beta, whether it be a fund raising effort, a visit by an international officer, chapter elections or a special party. She will also send pledging and initiation announcements to hometown papers.

All in all, the *good* collegiate public relations chairman is aware of all the publics Gamma Phi Beta has and is innovative in motivating her chapter to present its best face to all its publics all the time. It is an important job and best of all, it's fun.

Area Leadership Conferences Feature Growth Topics

"Springin' Forth as a Human Becoming" was the theme of the Area Leadership Conference at the University of Iowa. Sixty-nine Gamma Phis from Iowa and Nebraska attended.

Workshops were held on conducting effective meetings, leadership, hashing, resolving personal and chapter conflicts and finance. Personal growth and growth within Gamma Phi Beta were emphasized throughout the conference.

The conference was a valuable learning experience and an opportunity for Iowa and Nebraska Gamma Phis to get to know one another.

Alpha Chi Chapter hosted the Province II Area Leadership Conference in Williamsburg. Joining Alpha Chi were sisters and pledges from Maryland, Pennsylvania and W. Virginia. International representatives in attendance were Grand President Karen Wander Kline (Iowa St.), Coor-

director of Leadership Training Debbie Jones (Colorado) and Assistant to the Director of Finance—Bylaws Emerald Erikson (Wm. and Mary).

Saturday morning Karen Kline presented a slide show and spoke about the Gamma Phi Beta Foundation. Debbie Jones presented a leadership training program in which she stressed the importance of a positive self-image.

After lunch, delegates split up into collegian, alumnae and alumnae advisor groups. The different sessions covered areas ranging from pledge education to alumnae/collegiate relations. A banquet that evening featured a delicious dinner, rounds of singing and awards presentations.

Visitors toured William and Mary and historic Williamsburg after Sunday brunch. The conference was a great success and beneficial to all who attended.



Nancy Parker organized the Area Leadership Conference at the University of Iowa.



J. J. Stoll (Colorado), collegiate consultant, conducting a workshop at the Area Leadership Conference at the University of Iowa.



Attending the Area Leadership Conference in Pullman were (seated) Nora Swanson Nelson, NPC representative; Pat Jennins, area financial advisor; Carolyn McEntee, PCD XII; Madeline Ball, PAD XII; (standing) Carol Stott, collegiate consultant; Vivian Werner; Helen Swane; Marge Lundin; and Debbie Pitcher, Sigma chapter president.



Gamma Phis from Iowa and Nebraska participated in a workshop at the Area Leadership Conference at the University of Iowa.



Scholarships and Fellowships Awarded

The Gamma Phi Beta Foundation has awarded 22 scholarships and fellowships for the 1979-80 school year.

Lindsey Barbee Fellowship

JESSICA HOOVER (California). A joint degree from Yale in law and a PhD in developmental economics is Jessica's goal to enable her to combine an understanding of the American legal system and international relations. An honor student, she spent a year at Leeds University in England in the Education Abroad Program. Her collegiate activities included pledge class president, historian and service on the judiciary committee for Eta Chapter.

Founders Fellowships

JULIE ANN JOHNSON (Iowa). A BS in zoology, employment as a

nurse's aid and service as a volunteer hematology lab assistant have prepared Julie to enter medical school. She was photography chairman and house manager for Rho Chapter and Panhellenic rush counselor.

MARCIA KEMP MOLISE (Vanderbilt). After graduating magna cum laude, Marcia taught high school, directed marketing for an audio-visual materials company, was a newspaper reporter and earned an MA degree. Her activities include the Nursing Mothers' Council, Al-Anon family groups and directing church youth groups. She is the mother of two children, 3 and 6, and begins a JD degree program at Stanford Law School this fall.

PEGGY A. NORTON (Oregon). Presently in her second year of medical school, Peggy plans to spe-

cialize in obstetrics and gynecology while using her fluent Spanish. She served Nu Chapter as pledge president, rituals chairman and president.

LAURA ANN SUNN (Washington-St. Louis). A third year medical student at the University of Missouri, Laura plans to practice medicine to aid health care delivery to the underprivileged. Her dual undergraduate major was biology and Chinese. Laura was a member of the AMSA delegation to the People's Republic of China in 1978.

Fern Holcolm Heath Fellowship

NANCY HINTERBERG MALONEY (Minnesota). After completing an MD degree and residency, Nancy plans to enter family practice in a rural Wisconsin community. She is in her second year at the University of Wisconsin Medical School. She worked as a counselor for handicapped children and as a registered physical therapist before beginning medical school.

Audrey Weldon Shafer Fellowship

LINDA FOREMAN (SMU). Linda begins study this fall toward a JD degree with a specialization in international law. She has worked during the summer as a student investigator or a public defender. Her collegiate honors include Phi Beta Kappa (as a junior), Alpha Lambda Delta and the Gamma Phi Beta "A" Award.

Hazel McClure Luedeman Fellowship

SUE VANDERSLICE PATRICK (LSU). In her final year of study toward a PhD in psychology, Sue has worked as a marriage and family counselor, with mentally and physically handicapped children and with abused spouses. She was

Continued on p. 10

Volunteers Needed for Summer Camp Sechelt

The Vancouver camp board is recruiting counselors for summer 1980. Consider spending eight weeks of your summer experiencing the beauty of the Canadian coast with seven Gamma Phi Betas from across the country and more than 100 special girls from Vancouver.

Gamma Phi Beta Camp Sechelt is a natural outdoor laboratory for learning which provides a wholesome playground for fun and enjoyment. Serving Gamma Phi Beta as a camp counselor is an enriching, rewarding and demanding experience.

Camping gives girls an exciting outdoor experience in the finest possible setting for character development. Girls experience a sense of responsibility and pride in

finding out all that they can do for themselves.

Please consider this opportunity to share your summer with young girls in need of your services. Qualifications: genuine liking for youth, love of the outdoors and the ability to work with others.

Gamma Phi Beta Camp Sechelt needs you. Sign up now and reap the benefits of a camping summer with Gamma Phi Beta. Transportation and room and board are provided. Camp director and waterfront counselor positions are also available with a small salary. For further information and an application write: Mrs. W. B. Gayle, 1351 Chartwell Drive, West Vancouver, B.C. V7S 2R4 CAMP DATES: June 24-August 14, 1980 (approximately).



Jessica Hoover
(California)



Patricia A. Koulogeorge
(Northwestern)



Marcia Kemp Molise
(Vanderbilt)



Nancy Hinterberg Maloney
(Minnesota)



Peggy Norton
(Oregon)



Susan Kulp
(Kansas)



Julie Johnson
(Iowa)



Debbie Macktinger Lauter
(California)

Scholarships and Fellowships Available

GRADUATE FELLOWSHIPS

Lindsey Barbee Fellowship

Granted annually for graduate study in the field of law, business, engineering (including architecture), social work or health science professions.

Founders Fellowships

Four are offered for graduate study in the field of the applicant's choice.

Fern Holcolm Heath Fellowship

For graduate study in the field of the applicant's choice.

Audrey Weldon Shafer Fellowship

For graduate study in the field of the applicant's choice.

Fellowship applicants are considered on the basis of character, academic record, promise of achievement and financial need, and must be accepted in a graduate program before fellowship is

granted. Completed applications, including transcripts and letters, must be filed not later than March 15, 1980.

UNDERGRADUATE SCHOLARSHIPS

Elizabeth Fee Arnold-Beatrice Hill

Wittenberg Scholarship

Primarily for study during the senior year of college and, secondarily, for graduate work.

Ruth B. Fox Scholarship

For study during the junior or senior year of college.

Irma Latzer Gamble Scholarship

For study during the junior or senior year of college

Ardis McBroom Marek Scholarship

For study during the sophomore, junior or senior year, with preference given to applicants in the field of creative writing or journalism.

Kathryn and John F. Winchester Scholarship

For study primarily during the junior or senior year, with preference given to members of Arizona or Colorado chapters.

FINANCIAL ASSISTANCE

Grants-in-aid

Available to members of Gamma Phi Beta who face unforeseen financial need that might force withdrawal from college. Applications may be made at any time on behalf of a member by another member, chapter advisor or an officer of an affiliated House Corporation Board.

ATTENTION: ALL APPLICANTS: Forms and additional information may be obtained by writing the Gamma Phi Beta Foundation, 7503 Marin Drive, Englewood, CO 80111.

Continued from p. 8

a Gamma Phi Beta Colorado camp counselor. Her professional goal is to be an advocate for women and minority groups.

Foundation Fellowships

LISA FUTCH (California-Irvine). At Columbia University, Lisa is studying the effects of malnutrition on the intellectual and behavioral development of children. Her goal is to attend medical school and practice family medicine in a Spanish speaking community. Her campus activities included Panhellenic and Greek Council and she was a research assistant in psychobiology.

PATRICIA A. KOULOGEORGE (Northwestern). Patricia is pursuing an MBA degree with a double major in marketing and finance. She received the Outstanding Senior Award, Panhellenic-IFC Outstanding Achievement Award and Outstanding Service Award. Northwestern's first leadership honorary was founded by her. Patricia has worked as a data analyst and marketing research assistant.

SUSAN B. KULP (Kansas). A JD degree will enable Susan to become involved in corporate law. She plans to spend her summers as a legal clerk. Susan served Sigma Chapter as pledge advisor and has been treasurer of Panhellenic and of her university senior class. She

holds a BS in journalism.

DEBBIE MACKTINGER LAUTER (California). Debbie enters her first year of law school seeking a JD degree as a route to a career in politics. She has worked as a legislative assistant, a volunteer in state politics and as a caseworker and intern for U.S. senators. She was founder and coordinator for the first all university weekend of activities to raise money for disabled students on campus, president of Panhellenic and active in Mortar Board and chapter activities.

SANDRA DUDEK VANDERLIN (Gettysburg). This year Sandra will complete a DVM degree at the University of Pennsylvania. After several years practice of medicine of the companion animal, she plans postgraduate work in laboratory animal medicine and/or pathology. She has worked as an extern, laboratory technician and research assistant and holds an MS in pathology.

Undergraduate Scholarships

Joint winners of the Elizabeth Fee Arnold-Beatrice Hill Wittenberg Scholarship are Heidi Gay Galit (Texas) and Katherine Hubbard Newell (Colorado College). Heidi has earned a 4.0 average while serving Alpha Zeta Chapter in many offices, including scholarship chairman. Katherine has

maintained a 3.7 average while holding several major chapter offices and is currently serving as president.

Suzanne Elizabeth Cogan (Oregon) has been awarded the Ardis McBroom Marek Scholarship. Suzanne has maintained a 4.0 average and is enrolled in the Honors College. She spent the past academic year at the University of Massachusetts, participating in the National Exchange Program.

Kathleen Marie Hodge (Indiana) is the recipient of the Irma Latzer Gamble Scholarship and Betty Skaggs (Arizona) has been awarded the Kathryn and John F. Winchester Scholarship. Betty is house manager of Alpha Epsilon Chapter, participates in intramural sports and is a member of several honoraries.

Sharing the Ruth B. Fox Scholarship are Karen Rae Boge (Denver) and Elizabeth Ann West (Iowa St.). Karen is president of Theta Chapter and Elizabeth is rush chairman for Omega Chapter.

Foundation Scholarship recipients are DeeAnn Bauer (Indiana) and Ann Kathleen Burnett (Colorado College). DeeAnn, recording secretary for Beta Phi Chapter, was a lead singer in the Indiana University sing. Ann is a member of the Colorado College debate team and the Colorado Springs Community Orchestra.

LADYFOOD . . . LADYFOOD

A cookbook by Gamma Phi Betas to benefit scholarships & philanthropies.

Now available for immediate delivery, **Ladyfood, A Cooking Collection Enjoyed by Ladies & Gentlemen, Too**, is the perfect Christmas gift. Enclose on separate sheet, names & addresses where gift copies should be sent. Books will be **gift wrapped** and a card with your name enclosed.

☐ Please reserve _____ copies at \$8.95 plus \$1.05 for postage, add 45 cents for tax if Texas resident.

☐ Enclosed is my check to **Ladyfood** for \$_____.

Name _____

Address _____

City, State, Zip _____

MAIL TO: PAT MULLINS, 1104 Yale Circle, Plano, Texas 75075

Meet Your New Collegiate Consultants

Graduating cum laude last December with a degree in home economics and business, Marni Shonerd (N. Arizona) was a member of Phi Kappa Phi, Cardinal Key and Associated Women Students. She served as vice president and corresponding secretary for Gamma Phi Beta.

Marni worked summers at Disneyland as a clerk in Adventureland and was a PBX operator for a hotel in California.

Born and reared in the West, Marni enjoys nature and the outdoors. She also spends her spare time sewing, cooking, reading and swimming.

Marcia Major (Texas) received a degree in marketing with a minor in clothing and textiles. While in college, she was on the Dean's List, a member of Phi Beta Chi and active in Cordettes and Panhellenic. Voted the Outstanding Sorority Woman, she was vice president of Alpha Zeta.

Her special interests include sewing, reading and traveling. Marcia enjoys attending concerts and music festivals and was a member of the Crescent Singers.

Karma Burford (Iowa) received a degree in social work in 1978. The last year she has been pursuing an MA in curriculum and instruction while serving Gamma Phi as a graduate counselor at the University of Texas.

A member of Mortar Board and Kappa Delta Pi, she volunteered many hours for muscular dystrophy including serving as co-director of a dance marathon. She was active in Panhellenic and Greek Development Conferences and received the Greek Woman of the Year Award and the Distinguished Service Recognition Award.

An athlete, also, Karma was a diver for the women's swim team for three

years and manager of the men's and women's teams her senior year. While living at Alpha Zeta, she was a member of the Crescent Singers.

Cindy Partain (Bowling Green) enjoys meeting and working with people. She would like to teach Spanish or math and did her student teaching in Bogota, Columbia. As a student aide, she worked with elementary students through the Alternatives in Education Project.

She received several awards and scholarships and was a member of Phi Kappa Phi, Kappa Delta Pi, Alpha Lambda Delta and Who's Who. Cindy was active in Women's Chorus, Panhellenic, Union Activities Organization, Orientation Board and served Beta Gamma as president and treasurer.

Her hobbies are sewing, handicrafts, poetry, photography and traveling. She has visited every state except Hawaii.



Marni Shonerd
(N. Arizona)



Marcia Major
(Texas)



Cindy Partain
(Bowling Green)



Karma Burford
(Iowa)



Graduate counselors for 1979-1980 are (l to r) Colleen Sweeney (Washington St.), continuing at Arizona St.; Missy Farmer (Wm. and Mary), to Bucknell; Leslie Koepke (Kansas St.), continuing at Florida St.; Karen Hedine (Washington), continuing at Indiana; Kathy Livesay (Maryland), to Southwest Missouri St.; Sue Genokon (Minnesota), to Drake; Maureen Sigler (Mankato), continuing at N. Dakota St.; and Debbie Jones (Colorado College), continuing at Kentucky. Other graduate counselors not pictured are Nora Barringer (Cal. St.-Fullerton), to Cal.-Riverside; Judy Ditchey (Cal.-Riverside), continuing at Cal. St.-Long Beach; Jan Smith (Washington), continuing at Memphis St.; Carol Stott (Colorado College), to Cal. St.-San Jose; and Becky Taube (Texas Tech), to Purdue.

Use this handy order blank to order magazines for yourself or someone dear. It's a gift which gives year round enjoyment. And you'll be helping Gamma Phi Beta. Profits benefit the Sorority gift fund and the giver's local chapter treasury.

TO: Gamma Phi Beta Magazine Agency, Mrs. C. W. Kenney,
129 Croyden Lane, Syracuse, NY 13224

FROM: Name _____ Chapter Credit _____

Address _____

Zip Code _____

MAGAZINE	PRICE	HOW LONG TO SEND	NEW OR RENEWAL	SEND TO

Coping with College Costs

By Margy Molden Wiltamuth
Feature Editor

With college costs escalating at an alarming rate, how are today's collegians and their families coping with this major financial burden?

Here's a glimpse at a few Gamma Phi Betas and how they are combining part time jobs, summer jobs, scholarships and loans to meet the expense of a college education and still afford the cost of sorority membership.

Teresa Sullivan (Cal. St.-Fullerton) makes it all look simple, said Crescent Correspondent Diana Slaven. A psychology major, Teresa works 30 hours per week to meet the costs of tuition, books, food, Gamma Phi, insurance and miscellaneous expenses. Her parents help with her house rent. Teresa is recording secretary for Delta Delta and plans to attend graduate school.

Janice Montavon's (Bradley) parents help by paying one semester's tuition each year. Janice pays the rest of her tuition, room and board and all other expenses. She combines money from an academic scholarship, a student loan and part-time jobs.

Janice pledged Gamma Phi Beta her freshman year, but had to depledge due to finances. After a summer of three jobs at an average of 60 hours per week, she earned enough money to repledge her sophomore year. She has since served as philanthropy chairman and is presently social chairman. She will graduate in December after seven semesters and

maintains a 3.55 grade point average. Janice belongs to two academic honoraries and is a Greek representative to Bradley's student senate. The chapter gives her a scholarship for chapter dues.

Kathy Livesay (Maryland) contributes toward her college expenses by spending her summers as a ranch hand training horses, bucking bales of hay, building fences, tending a thousand head of cattle and even raising raccoons. Kathy said college wouldn't mean as much to her if she didn't help pay for it. She was Beta Beta president and treasurer and a counselor at Gamma Phi's Colorado camp. She begins study this fall at Southwest Missouri State where she is a Gamma Phi graduate counselor.

Betty Cullinane (Maryland) works summers as the only female tour guide for a white water rafting outfitter in Harper's Ferry, W. Virginia. "I was feeling guilty having my mother pay for everything," said Betty. Helping pay expenses makes her "feel good." She uses her summer earnings to pay for books and sorority dues. Betty has been recording secretary and rituals chairman.

"At Texas Tech, financial burdens have been handled in various ways. Parents are the major form of financial support for most, but in many cases the girls are making substantial contributions, or even going it alone," said Crescent Correspondent Suzan Beaty. A common arrangement seems to be parents paying tuition and room and board and the girls working part time to pay for Gamma



Janice Montavon
(Bradley)

Phi, gas and general expenses.

Linda Fruge (Texas Tech), a family relations major, pays her tuition with a Basic Educational Opportunity Grant. She works as a student assistant in the business office of the medical school. With her earnings she pays rent, food and Gamma Phi expenses. Linda is also on the lodge clean up committee, which lowers her dues. She finds time to serve as vice president and participate in other campus activities.

Sandi Brow (Texas Tech) has a scholarship from the home economics department and has worked as a dietary hostess at the Health Sciences Center and as a student assistant in the home economics department. She lives at home but serves on the lodge clean up committee to lower her dues. Sandi is rush chairman.

Jill Netz (Colorado) polled her chapter to learn how members are coping with college costs. Results show 80 per cent are contributing to the cost of their educations. Forty per cent work, 60 per cent have loans, 15 per cent have scholarships and five per cent are receiving financial aid. Some of the girls have grandparents who help them pay for school.

Collegians are urged to consult college loan and scholarship offices. There are always loans and scholarships which go unused—there for the asking for the right woman. Alumnae can help with tips on where to find part time employment. It isn't easy. Pink carnations to all of you who cope so well.

YES YOU CAN!

By Phyllis Donaldson Choat
and Linda Daniel Johnson
Chapter Development Chairmen

As a collegian, you may feel you know all you will ever need to know about ritual. As an alumna, you may have forgotten some ritual but can "get by" at Founders Day. Or perhaps you feel ritual has no place in your life if you do not belong to an alumnae chapter.

The ritual of our Gamma Phi Beta sisterhood is special. It both unites and separates. Over the years it has united tens of thousands of women in more than 100 collegiate chapters and twice as many alumnae chapters. At the same time, it distinguishes Gamma Phi Beta from all other educational, social or philanthropic organizations.

Ritual is our foundation, our reason for being. Like any good foundation it is firm and has withstood the test of time. It has remained unchanged and is just as valid for today's members as it was for our Founders.

Our ritual is a system of values and a means of self-evaluation. If the message of the ritual were to be summarized, it would show each member she should strive to be the best person she can be. The idea of growth is defined clearly in both words and symbols. Appreciating the ritual and its meaning are basic to understanding the purpose of chapter development. Growth is the essence of both.

Chapter development provides an environment for members to achieve their full potential only when all aspects of the Sorority including ritual, are developed. An understanding of pledging, initiation and meeting services fulfills potential.

At least once each year, formal meeting ritual and the reasons for using it should be reviewed. Before each initiation, hold a practice session to refresh memories about the meaning and relevance of ritual to the chapter and each individual's life. New initiates benefit from an explanation of the initiation ceremony soon after they have experienced it.

Collegians and alumnae can share enjoyable experiences based on ritual.

For Loyalty Day, collegians could invite alumnae to relate their memories and experiences as collegians. Participation in initiation is just as meaningful for alumnae as it is for collegians. With the aid of song sheets, alumnae and collegians can enjoy a song fest incorporated into a joint Founders Day celebration.

Formal ritual in an alumnae chapter may be more limited but is just as meaningful. Prior to Founders Day or the annual formal meeting, review the pledge and the opening and closing exercises and practice "Fidelity." Consider celebrating Founders Day at a locally historic place or having a style show of vintage clothing as a reminder of our heritage.

Sisterhood is of paramount importance to our ritual. As few as six Gamma Phis can start a Crescent Circle, or an individual could be a TransSister to welcome Gamma Phis who visit or move to her community. Or just keep in touch; a special Gamma Phi friend would appreciate a call or letter or friends from collegiate days could have a newsletter or round-robin.

Organize a pledge class reunion or a "generation" reunion to include several classes. An alumna can share her sisterhood by reading *The Crescent*. Payment of international taxes assures more young women the opportunity to know and enjoy the sisterhood of a strong and growing Sorority.

Ritual is truly the tie which binds—individual to individual, chapter to chapter, generation to generation. It is our link with the past, our model for the present and our inspiration for the future. It is the strong, steady foundation which offers chapters and individuals the opportunity to grow and change.

Mind Expander

Answer to last issue's mind expander: There are six "Fs" in the sentence.

How One Chapter Develops Itself

By Jana Kahle
(N. Arizona)

From Syracuse to Riverside, Gamma Phi Beta's chapter development program is broadening interests through many varied and unique methods.

By providing a wide selection of activities and educational material, chapter development is designed to enrich the academic, philanthropic and cultural concerns of all Gamma Phi Betas.

"Everyone looks forward to these meetings for it enables us to get closer to each other while doing something constructive for the community and chapter," said Kim Jacobs, chapter development chairman at N. Arizona. "The reason our chapter development program is successful is the variety of programs which are just plain fun."

Holidays, for example, always create an excellent theme. Halloween offers a traditional pumpkin carving contest. Easter features an egg hunt. "Come as the Place You Are Going" is a favorite party to have right before spring break, featuring fresh fruit hors d'oeuvres.

One way to a Gamma Phi's heart is through her stomach so food has great potential as a chapter development program. Each group cooks a dinner for which members draw numbers from a hat. Later, a dessert ice cream social is held in the chapter room and the different menus are compared. Picnics to scenic areas are always a treat.

Community service is of great importance. Philanthropic interests can be promoted by embroidering "Gamma Phi Beta" on brown socks for Camp Sechelt or singing Christmas carols in the childrens ward of the local hospital. This is also a great opportunity to spring a surprise fund raising project on the chapter. Keep the program a secret until the meeting begins and then announce a candy bar selling contest is on the night's agenda.

Council Communique

Inflation, recession, energy crisis, government taxation—all too familiar concerns to everyone right now. The Greek world is certainly no exception. So how is Gamma Phi Beta faring? Very well, we believe.

Two new colonies are preparing for installation; more chapters than ever before, 13 will have the guidance of graduate counselors this year; ways are being found to provide chapter housing in spite of high costs and interest rates; and Central Office is moving to a new facility for increased service and efficiency.

Gamma Phi Beta is fortunate to have had able, far sighted leaders in the past who recognized the need for a strong financial base. These women established our endowment fund, the loan fund, and when tax free giving became important, our Foundation. As assets of Greek organizations came more and more under government scrutiny, we sought and listened to competent legal and tax advisers. Twice in a single decade federal tax reform acts have prompted revision in the structure of our funds and fees. Today our income can be used to the best possible advantage.

Historically, Gamma Phi Beta chapters and house corporations have enjoyed privileges of self determination within the framework of an international organization. This is important to the development of individual responsibility and leadership that we recognize as a primary source of chapter success. When situations arise that affect the well being of the entire sorority, Grand Council must act responsibly, making decisions in the best interest of all. This was the case with the national liability insurance program that went into effect during the past year. In routine matters, we will continue to provide as much resource material and advisory personnel as possible to assist chapters



Mary Jane Hipp Misthos
(Colorado College)

and house boards in reaching their maximum potential. The factors that contribute to financial stability at all levels of the sorority are the same as those that identify chapter success—full pledge quotas, 100% initiation rate, maximum house occupancy, and the understanding and acceptance of personal and chapter responsibilities.

Revenues for operating expenses of the sorority continue to come only from member fees and taxes. Investment income may be used for certain programs, those that qualify under federal tax statutes. It behooves us all, Grand Council, chapter officers and members, alike, to examine our values, set our priorities, develop creative and innovative ways to use modern technology and the quantity of skills among our members, and increase our departmental and personal efficiency. We can only provide services and programs to the extent that we are willing and able to pay for them.

It may mean modifying some of our traditional procedures and practices. But we will be experiencing new challenges while we preserve the legacy of sisters past and insure the opportunities for sisters yet to come.

In Memoriam

ALPHA

Stephanie Clark Meleney
Carmel Macdowell Streeter

BETA

Catherine McInerney Alt

GAMMA

Marguerite Nuzum Grubb
Louise Steensland Payton
Jean Abel Schmidt

DELTA

Flora Smith Maygar

EPSILON

Grace Sprague Cameron
Beverly Albright Hayes
Mary Jane Fellows Phelps
Virginia Delatour Schelter
Jean Bartelme Thompson
Beulah Truitt Vantuyle

ZETA

Elizabeth Chesley Schultheis

ETA

Susan Jane Green

THETA

Elaine Krabacher Creegan

LAMBDA

Helen Byles Anderson

MU

Edna Earle Kellam

NU

Marguerite Sheehy

XI

Edna Price Holcomb
Virginia Dermott Murphy

OMICRON

Charlotte Gellert Mueller
Sara Davison Stutz

PI

Irene Hollenback Pigaga

RHO

Helen Rink Sutliff

SIGMA

Pauline Christian Agnew
Mary Eleanor Haskins
Schumacher

TAU

Elise Young Carlson
Margaret Jamieson Hougland

UPSILON

Emily Carter Saunders Smith

PHI

Frances Barbour

PSI

Marian Foster Teneyck
Marion Wann Warweg
Helen Lohman Worley

OMEGA

Karen Paulsen Henery

ALPHA GAMMA

Virginia Cross Rizzo

ALPHA DELTA

Louise Barthold
Catherine Barrons Day
Elizabeth Carter Zavalydrlica

ALPHA ZETA

Elizabeth Barrickman Ash
Rebecca McCrary Bullock

ALPHA ETA

Norma Nelson Olrich
Janet Zimmerman Shilling

ALPHA THETA

Sarah Lee Fox Wright

ALPHA LAMBDA

Carol Hill Cross

ALPHA UPSILON

Mary Louise Astie Frey

ALPHA PSI

Barbara Stakel Clancy
Lee Smith Sutherland Tyron

BETA ALPHA

Mary Carson Griff
Virginia Anderson Jacobs

BETA THETA

Julie Anna Bihn Lovett

BETA OMEGA

Mary Josephine King Smith

GAMMA MU

Gayle Arlene Kruschke Walter

DELTA ZETA

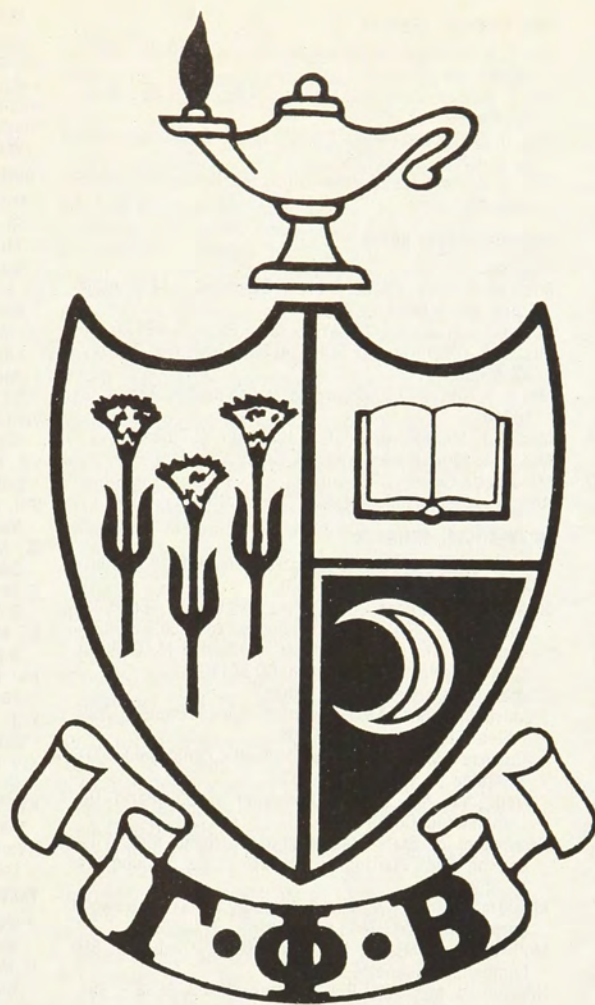
Cynthia Jean Toal

Gamma Phi Beta Sorority is urging its members to make memorial gifts to the Gamma Phi Beta Foundation in memory of a lost "sister" or other loved one. Contributions, which are U.S.A. tax deductible, will be used to support the Sorority's philanthropies—camping for special children and financial aid to women students. The latter takes the form of scholarships, fellowships and grants-in-aid.

Members of the remembered one's family will be notified of your gift with a special card mailed from Central Office. Contributions should be made payable to the Gamma Phi Beta Foundation, 7503 Marin Drive, Englewood, CO 80111, and designated as a memorial to (John Doe) on the face of the check.

Help deserving young women while remembering someone you loved.

*Beverly Cummings Adams
Executive Vice President
Gamma Phi Beta Foundation*



1979-80 Directory

This eight page insert is your Gamma Phi Beta Directory for the upcoming year. It includes a listing of all international, province and local officers. It also contains a list of Gamma Phi Beta collegiate and alumnae chapters, a province roster, the list of officers' duties and *Crescent* deadlines. Please lift the staples in the center of this section, remove the pages and insert them in your permanent officer's notebook for ready reference throughout the year.

FOUNDERS

Helen M. Dodge Ferguson
Frances E. Haven Moss
E. Adeline Curtis
Mary A. Bingham Willoughby

THE GRAND COUNCIL

Grand President: Mrs. T. L. Kline (Karen Wander), 3648 S. 91st St., Omaha, NE 68124
Alumnae Vice President: Mrs. R. O. Bronsing (Patricia Ann Mullen), 31 Chesterton Lane, Chesterfield, MO 63017
Collegiate Vice President: Mrs. B. Lowell (Ruth Donlon), 1800 Hackett Ave., Long Beach, CA 90815
Director of Finance: Mrs. G. E. Mithos (Mary Jane Hipp), 242 Glendale Rd., Glenview, IL 60025
Director of Expansion: Mrs. J. D. Moore (Leonite Selzer), 2807 S. Peoria, Tulsa, OK 74114
NPC Delegate: Mrs. I. P. Nelson Jr. (Gloria Swanson), 3521 Royal Lane, Dallas, TX 75229
Executive Secretary-Treasurer: Ms. Jonette Crowley, 7503 Marin Drive, Englewood, CO 80111

CENTRAL OFFICE STAFF—7503 Marin Drive, Englewood, CO 80111

Executive Secy.-Treas.: Ms. Jonette Crowley
Administrative Assistant: Mrs. R. Ruth
Alumnae Co-ordinator: Mrs. T. C. Shupert
Collegiate Co-ordinator: Ms. Carol Stott
Bookkeeper: Mr. Robert C. Eckley
Collegiate Consultants: Karma Burford, Marcia Major, Cindy Partain, Marni Shoner
Expansion Supervisor: Karen L. Hedine
Coordinator of Leadership Training: Deborah Kay Jones

THE CRESCENT

Editor: Mrs. Phil Riske (Kristin Anne Brandt), 1222 E. Cordova, Casa Grande, AZ 85222
Business Manager: Ms. Jonette Crowley, 7503 Marin Dr., Englewood, CO 80111

THE CRESCENT COMMUNIQUE

Editor: Mrs. G. McKenzie (Natalie Meyer), 531 S. Burton, Arlington Heights, IL 60005

NATIONAL PANHELLENIC CONFERENCE

NPC Delegate: Mrs. I. P. Nelson, Jr. (Gloria Swanson)
1st Alternate Delegate: Mrs. D. H. Lundin (Marjorie Speidel), 5135 N.E. Latimer Pl., Seattle, WA 98105
2nd Alternate Delegate: Mrs. Carl Hustad (Virginia Geiger), 5304 Ayshire Blvd., Minneapolis, MN 55436
3rd Alternate Delegate: Mrs. T. L. Kline (Karen Wander)

INTERNATIONAL OFFICERS

Asst. to Alumnae Vice President—Bylaws: Mrs. Robert E. Mapes (Beverly Gerhardt), 2904 Pine Ridge, Oklahoma City, OK 73120
Asst. to Alumnae Vice President—Alumnae Initiates: Mrs. D. J. Matuszak (Mary Helen Eaton), 4011 E. Prospector Dr., Salt Lake City, UT 84121
TranslSister Service: Mrs. D. J. Schonberg (Theora Kurt), 12205 Leavenworth, Omaha, NE 68154
Asst. to Collegiate Vice President—Bylaws: Mrs. G. V. Kallal (Jeannine Alice Sheldon), ON 211 Winfield Rd., Winfield, IL 60190
Asst. to Collegiate Vice President—Rush: Mrs. B. A. Bell (Sheila Cornish), East 12722 Guthrie, Spokane, WA 99216
Asst. to Collegiate Vice President—Pledge: Mrs. P. G. Sendroy (Catherine Curtis), 12 Cherry Vale Dr., Englewood, CO 80110
Asst. to Director of Finance—Policies: Mrs. T. A. Lothian (Carol Ann Vlchek), P.O. Box 863, Williams Bay, WI 53191
Asst. to Director of Finance—House Corp. Bylaws: Ms. Emerald L. Erickson, 149 Farnsworth Ave., #3B, Bordentown, NJ 08505
Historian: Mrs. Frank Mason (Charlotte Hamilton), 5050 Lake Shore Drive, Brown's Lake, Jackson, MI 49203

AREA FINANCIAL ADVISERS

Mrs. C. B. Jennings (Patricia Strickler), 4724 44th N.E. Seattle, WA 98105
Mrs. E. G. Hart (Mary Jean Lauvetz), 6 Brookside Rd., Philadelphia, PA 19118
Mrs. R. G. Drouet (Leona Davis), 10482 E. Grandeur Dr., Baton Rouge, LA 70815
Mrs. G. Baldwin (Julia Irene Lynn), 503 Hobson Dr., Pittsburg, KS 66762

ENDOWMENT-LOAN BOARD

Directors:
Mrs. W. Nichols (Diane Dross), Chairman, 17475 Arbor Drive, South Bend, IN 46635
Miss Patricia Denton, 747 Willis, Glen Ellyn, IL 60137
Mrs. T. C. O'Neill (Judith Ruhl), 815 E. Edgemont, Phoenix, AZ 85006
Mrs. P. K. Graves (Jacquelyn Hilger), 515 Kenton, Aurora, CO 80010
Mrs. G. E. Mithos (Mary Jane Hipp) Dir. of Finance
Mrs. T. L. Kline (Karen Wander), Grand President
Ms. Jonette Crowley, Treasurer
Address all communications to Central Office

INTERNATIONAL CHAIRMEN

Awards: Mrs. A. T. Phillips (Elizabeth Sloan), 1118 Westerly Pkwy., State College, PA 16801
Bylaws—International: Mrs. F. L. McDonald (Ernestine Dobler), 9714 State Line Rd., Shawnee Mission, KS 66206
Convention: Mrs. J. W. Lindauer, (Catherine M. Guthrie), 5051 S. Beeler St., Englewood, CO 80110
Chapter Development: Co-chairmen:
Collegians—Mrs. Linda Johnson (Linda Daniel), 2636 Steel St., Houston, TX 77098
Alumnae—Mrs. Norman Choat (Phyllis Donaldson), 9716 Erskine St., Omaha, NE 68134
Programs—Ms. Louise Oxenreiter, 7503 Marin Dr., Englewood, CO 80111
Coordinator of State Membership Chairmen: Miss Elise Berthon, 3141 Warrington Rd., Mtn. Brook, Birmingham, AL 35223
Magazines: Mrs. C. W. Kenney (Dorothy Stark), Maplewood Gardens, 129 Croyden Ln., Syracuse, NY 13224
Mothers' Club: Mrs. L. M. Brown (Marta Lombardi), 850 Cumberland, Glendale, CA 91202
Nominating: Mrs. John B. Hunt (Mary Boots), 8538 E. Sandalwood Dr., Scottsdale, AZ 85253
Parliamentarian: Miss Jennie K. Curtis, 20 Lake Pl., Walnut Creek, CA 94598
Philanthropy Programs: Miss Judy Elaine Graham, 2716 Rosedale, Dallas, TX 75205
Public Relations: Mrs. Sally E. Lewis (Sally Erikson), 535 Michigan Ave., Apt. 704, Chicago, IL 60611
Research: Mrs. C. Shafer, Jr. (Audrey Weldon), 6808 Rockhill Rd., Kansas City, MO 64131
Ritual: Mrs. Dirk Kempthorne (Patricia Merrill), 11219 Gunsmoke St., Boise, ID 83704
Scholarship: Ms. Colleen Sweeney, 7503 Marin Dr., Englewood, CO 80111
Song: Mrs. Marian Hulsey (Marian Corley), 1020 Live Oak, Norman, OK 73069

GAMMA PHI BETA FOUNDATION

President: Mrs. T. L. Kline (Karen Wander), 3648 S. 91st St., Omaha, NE 68124
Exec. Vice President: Mrs. E. B. Adams (Beverly Cummings), 14 Sentinel Rock Terrace, Larkspur, CO 80118
Vice President: Mrs. G. E. Mithos (Mary Jane Hipp), 242 Glendale Rd., Glenview, IL 60025
Secretary-Treasurer: Ms. Jonette Crowley
Directors:
Mrs. R. O. Bronsing (Patricia Ann Mullen)
Mrs. B. Lowell (Ruth Donlon)
Mrs. J. D. Moore (Leonite Selzer)

Mrs. I. P. Nelson, Jr. (Gloria Swanson)
Foundation Standing Committees:
Camping Program Chairman: Mrs. D. H. Green (Sharon Reisig), 1090 Vail View Dr., #3, Vail, CO 81657
Finance and Investment Chairman:
Financial Aid Chairman: Mrs. P. R. Conway (Carrielle Waters), 9021 Fairview Rd., Silver Spring, MD 20910

PROVINCE ALUMNAE DIRECTORS

I. Mrs. Donald M. Matheson (Dorothy Roberts), 7 Pocahontas St., Winchester, MA 01890
II. Mrs. Mary Ann Youngwood (Mary Ann Morgan), 8205 Jeb Stuart Rd., Rockville, MD 20854
III. Ms. Camille Cestone, 6403 Clough Pike, #3, Cincinnati, OH 45244
IV. Mrs. R. L. Howes (Cynthia Denise Meisner), 5896 Valley Lane, SE, Grand Rapids, MI 49508
V. Mrs. Marvin E. Stromer (Peggy Larson), RR2, Milton, WI 53563
VI. Ms. Patricia Davies Newcombe, 15803 Holdridge Rd., Wayzata, MN 55391
VII. Mrs. D. R. Johnson (Sue Herzog), 5538 McCommas, Dallas, TX 75206
VIII. Mrs. G. Oliver (Jean Brooks), 4030 Summitt Dr., N.E., Marietta, GA 30062
IX. Mrs. F. W. Volker, Jr. (Ann McCune), 1700 W. 25th, Odessa, TX 79763
X. Mrs. A. O. Durrett (Sue Dorsey), 443 W. 57th Terr., Kansas City, MO 64113
XI. Mrs. William Laney (Joan Hogan), 13425 Cedarbrooke N.E., Albuquerque, NM 87111
XII. Mrs. Sam G. Arana (Connie Rutt), 10654 Onondaga Place, Boise, ID 83709
XIII. Mrs. James A. Merz (Eleanor Baker), 14356 NE Siskiyou Ct., Portland, OR 97230
XIV. Mrs. Jack M. Burnett (Dorothy Hoadley), 5429 E. Caron St., Paradise Valley, AZ 85253
XV. Mrs. E. R. Fritsch (Mary Lou Dahl), 1423 Curtiss Ave., Ames, IA 50010
XVI. Mrs. Dale R. Leisy (Jeanne Lupton), 3171 Oak Knoll Dr., Los Alamitos, CA 90720

PROVINCE COLLEGIATE DIRECTORS

I. Miss Anne Louise Layton, Apt. 319 3787 Cote Des Neiges, Montreal, QU H3H1V9
II. Mrs. R. C. Freisheim (Deborah Foulsham), 2052 Moreland Rd., Abington, PA 19001
III. Mrs. Robert Winterhalter (Diana Gay), 4336 Braunton Rd., Columbus, OH 43220
IV. Mrs. Jerry R. Quick (Elizabeth Ahlmeyer), 1212 Tomak Dr., Mt. Pleasant, MI 48858
V. Mrs. Mike Hartley (Judy Ivester), 1915 Maple Ave., #303, Evanston, IL 60201
VI. Mrs. M. Sauvageau (Vicki Smith), 1013 11th Ave., N., Fargo, ND 58102
VII. Mrs. Kim McMurray (Laura Taylor), 880 Peyton Dr., Beaumont, TX 77706
VIII. Mrs. L. W. Betts (Mary Alice Adams), 2448 Whitehall Cir., Winter Park, FL 32789
IX. Mrs. D. B. Scarborough (Donna Snyder), 7817 Kenosha, Lubbock, TX 79423
X. Mrs. Gregory Wright (Janet Heft), 5102 E. English, Wichita, KS 67218
XI. Mrs. Randall Guerra (Randy Stevens), 9796 E. Maplewood Circle, Englewood, CO 80110
XII. Mrs. Larry Halvorson (Kathryn Huffman), 732 S. Lynn, Moscow, ID 83843
XIII. Mrs. Gary Todd (Martha Hall), 733 Old Country Rd. #D, Belmont, CA 94002
XIV. Mrs. Clarke R. Duncan (Shirley Gronds), 2531 N. Santa Lucia Ave., Tucson, AZ 85715
XV. Mrs. Dennis Petersen (Jane Dunlap), 923 D Oak Crest, Iowa City, IA 52240
XVI. Mrs. Fred Rothfuss (Jonelle Hanna), 529 Tumbleweed Road, Anaheim, CA 92807



Corporation Boards to Meet

Theta chapter, 7:00 p.m., October 8, 1979, chapter house, 2233 S. Josephine, Denver, Colo.

Beta Kappa chapter, 7:30 p.m., October 17, 1979, in the home of Mrs. Ralph McDonald, 2109 E. Montebello, Phoenix, Ariz.

Delta Delta chapter, 7:30 p.m., October 10, 1979, chapter house, 508 N. Cornell, Fullerton, Cal. Send proxy votes to Mrs. Ruth Ann Gray, 5251 S. Ohio, Yorba Linda, CA 92686 if unable to attend.

GREEK-LETTER PRESIDENTS:

ALPHA (Syracuse U.) November 11, 1874 (I) Claudia Stern, 803 Walnut Av., Syracuse, NY 13210
 BETA (U. of Michigan) June 7, 1882 (IV) Karen Ruohonen, 1520 S. University, Ann Arbor, MI 48104
 GAMMA (U. of Wisconsin) November 14, 1885 (V) Ann Carpenter, 270 Langdon St., Madison, WI 53703
 *DELTA (Boston U.) 1887-1970
 EPSILON (Northwestern U.) Oct. 13, 1888 (V) Meredith Bleick, 640 Emerson St., Evanston, IL 60201
 *ZETA (Goucher College) 1893-1950
 ETA (U. of California) April 29, 1894 (XIII) Jennifer Buttmer, 2732 Channing Way, Berkeley, CA 94704
 THETA (U. of Denver) December 28, 1897 (XI) Karen Boge, 2233 S. Josephine, Denver, CO 80210
 *IOTA (Barnard College) 1901-1915
 KAPPA (U. of Minnesota) May 23, 1902 (VI) Kathie Eldredge, 311 10th Av., S.E., Minneapolis, MN 55414
 LAMBDA (U. of Washington) May 17, 1903 (XII) Colleen Baird, 4529 17th Av., N.E., Seattle, WA 98105
 *MU (Stanford U.) 1905-1944
 NU (Oregon) December 18, 1908 (XIII) Lori Thelin, 1021 Hilyard, Eugene, OR 97401
 XI (U. of Idaho) February 3, 1910 (XII) Resa Galdos, 709 Elm St., Moscow, ID 83843
 OMICRON (U. of Illinois) May 24, 1913 (V) Theresa Rue-melle, 1110 W. Nevada, Urbana, IL 61801
 PI (U. of Nebraska) June 22, 1914 (XV) Suzie Hruza, 415 N. 16th St., Lincoln, NE 68508
 RHO (U. of Iowa) June 15, 1915 (XV) Cindy Fideler, 328 N. Clinton, Iowa City, IA 52240
 SIGMA (U. of Kansas) October 9, 1915 (X) Susan Owens, 1339 W. Campus Rd., Lawrence, KS 66044
 TAU (Colorado State U.) Oct. 16, 1915 (XI) Missy Meis, 733 S. Shields, Ft. Collins, CO 80521
 *UPSILON (Hollins College) 1916-1929
 PHI (Washington U.) February 23, 1917 (X) Kaye Haldiman, GPB, Women's Bldg., Washington U., St. Louis, MO 63130
 CHI (Oregon State U.) April 26, 1918 (XIII) Cynthia Anderson, 645 N.W. 23rd St., Corvallis, OR 97330
 PSI (U. of Oklahoma) September 13, 1918 (IX) Tracie Tutt, 1105 S. College, Norman, OK 73069
 OMEGA (Iowa State U.) December 21, 1918 (XV) Cynthia Donohue, 318 Pearson Ames, IA 50010
 ALPHA ALPHA (U. of Toronto) Oct. 30, 1919 (I) Anne Marie Turnbull, 26 Madison Avenue, Toronto, Ontario, Canada M5R 2S1
 ALPHA BETA (U. of North Dakota) June 16, 1920 (VI) Sally Wold, 3300 University Ave., Grand Forks, ND 58201
 ALPHA GAMMA (U. of Nevada) May 14, 1921 (XIII) Susan Ball, 401 University Terr., Reno, NV 89503
 ALPHA DELTA (U. of Missouri) May 20, 1921 (X) Diane Whitehead, 808 Richmond, Columbia, MO 65201
 ALPHA EPSILON (U. of Arizona) April 29, 1922 (XIV) Lisa Hyman, 1535 E. First St., Tucson, AZ 85719
 ALPHA ZETA (U. of Texas) May 20, 1922 (VII) Judy Focht, 2222 Pearl St., Austin, TX 78705
 ALPHA ETA (Ohio Wesleyan U.) November 10, 1923 (III) Mary DeGroff, 24 Winbeth Lane, Delaware, OH 43015
 ALPHA THETA (Vanderbilt U.) June 25, 1924 (VIII) Susan Nesbit, 2411 Kensington Place, Nashville, TN 37212
 ALPHA IOTA (U. of California at Los Angeles) June 26, 1924 (XVI) Marlee Means, 616 Hilgard Avenue, Los Angeles, CA 90024
 ALPHA KAPPA (U. of Manitoba) 1925-1975
 ALPHA LAMBDA (U. of British Columbia) April 28, 1928 (XII) Carol Pedlar, 3308 W. 37th Ave., Vancouver B.C., Canada V6N2V6
 ALPHA MU (Rollins College) 1928-1971
 ALPHA NU (Wittenberg U.) June 8, 1929 (III) Maria Cashy, 628 Woodlawn Avenue, Springfield, OH 45504
 ALPHA XI (Southern Methodist U.) September 21, 1929 (VII) Jane Dougherty, 3030 Daniels, Dallas, TX 75205
 ALPHA OMICRON (North Dakota State U.) February 1, 1930 (VI) Susan Buchl, 1616 12th Avenue North, Fargo, ND 58102
 ALPHA PI (West Virginia U.) April 19, 1930 (II) Susan Jaster, 591 Spruce Street, Morgantown, WV 26505
 ALPHA RHO (Birmingham-Southern College) 1930-1957
 ALPHA SIGMA (Randolph-Macon Women's College) 1930-1951
 ALPHA TAU (McGill U.) September 26, 1931 (I) Lynn Swisher, 475 Prince Arthur St. W., Montreal, Quebec, Canada H2X 1T4
 ALPHA UPSILON (Penn State U.) May 21, 1932 (II) Joan Pegg, GPB, S-108 Haller Hall, Penn State U., University Park, PA 16802
 ALPHA PHI (Colorado College) Oct. 15, 1932 (XI) Kay Newell, 1110 Wood Avenue, Colorado Springs, CO 80903
 ALPHA CHI (College of William and Mary) January 14, 1933 (II) Susan Butler, GPB House, Richmond Rd.,

Williamsburg, VA 23185
 *ALPHA PSI (Lake Forest College) 1934-1961
 ALPHA OMEGA (U. of Western Ontario) October 24, 1936 (I) Janet Fair, 639 Talbot St., London, Ontario, Canada N6A 2T6
 BETA ALPHA (U. of Southern California) September 24, 1938 (XVI) Julie Johnson, 737 W. 28th Street, Los Angeles, CA 90007
 BETA BETA (U. of Maryland) October 23, 1940 (II) Susan Sibbald, 9 Fraternity Row, College Park, MD 20740
 BETA GAMMA (Bowling Green State U.) October 23, 1943 (III) Nancy Donovan, Cottage #3 Sorority Row, BGSU, Bowling Green, OH 43403
 BETA DELTA (Michigan State U.) June 3, 1944 (IV) Sarah Bristor, 342 N. Harrison Road, East Lansing, MI 48823
 BETA EPSILON (Miami U.) April 12, 1947 (III) Jill Garnette, GPB, MacCracken Hall, Miami U., Oxford, OH 45056
 *BETA ZETA (Kent State U.) 1947-1972
 BETA ETA (Bradley U.) April 3, 1948 (V) Wendy Whitaker, 1414 W. Fredonia Avenue, Peoria, IL 61606
 BETA THETA (San Jose State U.) April 24, 1948 (XIII) Karen Bluth, 385 E. San Fernando St., San Jose, CA 95112
 BETA IOTA (Idaho State U.) October 22, 1949 (XII) Kelli Downend, 716 Turner House, ISU, Pocatello, ID 83201
 BETA KAPPA (Arizona State U.) December 3, 1949 (XIV) Helen Mawhinney, Palo Verde Main, Box #98, ASU, Tempe, AZ 85281
 BETA LAMBDA (San Diego State U.) October 15, 1949 (XIV) Wendy Garner, 6123 Montezuma Road, San Diego, CA 92115
 BETA MU (Florida State U.) April 29, 1950 (VIII) Betsy Swarthout, 633 W. Jefferson Street, Tallahassee, FL 32304
 *BETA NU (U. of Vermont) 1950-1974
 *BETA XI (Ohio State U.) 1951-1967
 BETA OMICRON (Oklahoma City U.) November 3, 1951 (IX) Marianne Evans, Box 36A, 2501 N. Blackwelder, Oklahoma City, OK 73106
 BETA PI (Indiana State U.) September 13, 1952 (IV) Barbara Allen, 231 Lincoln Quad, Terre Haute, IN 47809
 BETA RHO (U. of Colorado) March 13, 1954 (XI) Faye Bernstein, 935 16th Street, Boulder, CO 80302
 BETA SIGMA (Washington State U.) March 5, 1955 (XII) Debby Pitcher, NE 600 Campus, Pullman, WA 99163
 BETA TAU (Texas Tech. U.) March 10, 1956 (IX) Diana Brown, Box 4334, Texas Tech. U. Sta. Lubbock, TX 79409
 BETA UPSILON (Kansas State U.) March 23, 1957 (X) Patty Ellis, 1807 Todd Road, Manhattan, KS 66502
 BETA PHI (Indiana U.-Bloomington) November 16, 1957 (IV) Leslie Dauble, 1305 N. Jordan, Bloomington, IN 47406
 BETA CHI (Wichita State U.) February 1, 1958 (X) Monica Hart, 3912 E. 21st., #20 Omega Court, Wichita, KS 67208
 BETA PSI (Oklahoma State U.) February 3, 1958 (IX) Cindy Terrell, 1405 W. Third Street, Stillwater, OK 74074
 BETA OMEGA (Northern Arizona U.) February 15, 1958 (XIV) Jeanette Jackson, GPB, CU 7654, NAU, Flagstaff, AZ 86001
 GAMMA ALPHA (Memphis State U.) March 15, 1958 (VIII) Mary Jo Ringhofer, GPB, Box 80154, MSU, Memphis, TN 38152
 GAMMA BETA (Gettysburg College) February 21, 1959 (II) Luanne Muscaro, GPB, PO Box 2175, Gettysburg College, Gettysburg, PA 17325
 GAMMA GAMMA (U. of Wisconsin-Milwaukee) March 19, 1960 (V) Terri Remsik, GPB, Union Box 43, U. of Wis.-Milw., Milwaukee, WI 53211
 *GAMMA DELTA (U. of Wyoming) 1961-1973
 GAMMA EPSILON (U. of Puget Sound) April 29, 1961 (XII) Carol Headdan, 1310 N. Union, Tacoma, WA 98406
 GAMMA ZETA (East Texas State U.) March 3, 1962 (VII) Judy Sandridge, Box A, ETSU, Commerce, TX 75428
 GAMMA ETA (California State U.-Long Beach) March 10, 1962 (XVI) Janis Long, 2929 E. Broadway, Long Beach, CA 90803
 *GAMMA THETA (U. of the Pacific) 1963-1972
 GAMMA IOTA (Midwestern State U.) March 16, 1963 (IX) Barbara Lowrie, Box 142, Midwestern State U., Wichita Falls, TX 76308
 GAMMA KAPPA (Kearney State College) May 11, 1963 (XV) Jan Riggert, 615 West 26th Street, Kearney, NE 68847
 *GAMMA LAMBDA (Louisiana State U.) 1964-1977
 GAMMA MU (Moorhead State U.) April 25, 1964 (VI) Gina Matter, 515 South Tenth St., Moorhead, MN 56560
 GAMMA NU (Lamar U.) February 20, 1965 (VII) Angie Romano, P.O. Box 10734, L. U. Station, Beaumont, TX 77710
 *GAMMA XI (U. of Tennessee) 1965-1977
 GAMMA OMICRON (U. of Kentucky) January 22, 1966 (III) Marianne Potter, 508 Columbia Avenue, Lexington, KY 40508
 GAMMA PI (Mankato State U.) February 5, 1966 (VI) Diane

Hemmingson, 406 Warren Street, Mankato, MN 56001
 *GAMMA RHO (U. of Wis.-Oshkosh) 1966-1976
 *GAMMA SIGMA (Western Michigan U.) 1968-1975
 GAMMA TAU (St. Louis U.) November 11, 1967 (X) Sharon Zgiet, GPB, 20 N. Grand, St. Louis, MO 63108
 GAMMA UPSILON (Drake U.) February 17, 1968 (XV) Jane Meyer, 1218 34th Street, Des Moines, IA 50311
 GAMMA PHI (Auburn U.) May 4, 1968 (VIII) Debbie Harris, Dorm 4, Auburn Univ., Auburn, AL 36830
 GAMMA CHI (Southwest Texas State U.) February 3, 1968 (VII) Carol Bryant, GPB, Student Center, SWTSU, San Marcos, TX 78666
 GAMMA PSI (U. of Northern Iowa) November 23, 1968 (XV) Susie Berge, 174 Summit Drive, Cedar Falls, IA 50613
 GAMMA OMEGA (U. of Wisconsin-Platteville) March 29, 1969 (V) Ellen Bartling, 160 Bradford, Platteville, WI 53818
 DELTA ALPHA (U. of Wisconsin-River Falls) May 3, 1969 (VI) Theresa Beran, 204 Hagestad Student Center, River Falls, WI 54022
 DELTA BETA (Boise State U.) February 21, 1970 (XII) Gaea Walker, 1918 Potter Drive, Boise, ID 83706
 *DELTA GAMMA (U. of Nebraska-Omaha) 1970-1976
 DELTA DELTA (California State U.-Fullerton) April 3, 1971 (XVI) Alair Hinkle, 508 Cornell Avenue, Fullerton, CA 92631
 DELTA EPSILON (Texas Wesleyan College) April 28, 1973 (VII) Kayla Hayes, 3101 Rosedale, Fort Worth, TX 76103
 DELTA ZETA (Southwestern Oklahoma State U.) May 5, 1973 (IX) Lynn Eby, P.O. Box 761, Weatherford, OK 73096
 DELTA ETA (U. of California-Irvine) January 19, 1974 (XVI) Ann Kelly, 118 Garnet, Balboa Island, CA 92662
 DELTA THETA (California Polytechnic State U.-San Luis Obispo) January 18, 1975 (XVI) Patrice Kershaw, 1326 Heguera St., San Luis Obispo, CA 93401
 DELTA IOTA (Purdue U.) April 19, 1975 (IV) Dawn Dunfee, GPB, 810 David Ross Rd., West Lafayette, IN 47906
 DELTA KAPPA (Lehigh U.) January 31, 1976 (II) Yvonne Green, Box F-43, Lehigh U., Bethlehem, PA 18015
 DELTA LAMBDA (U. of California at Riverside) January 24, 1976 (XVI) Dawn Chappell, 3637 Canyon Crest Dr., #V408, Riverside, CA 92507
 DELTA MU (Rutgers-State U. of New Jersey) April 23, 1977 (I) Regina Chaplin, 6 Union Street, New Brunswick, NJ 08903
 DELTA NU (Southwest Missouri State U.) November 12, 1977 (X) Liz Saum, 722 East Elm, Springfield, MO 65802
 DELTA XI (Bucknell U.) December 2, 1978 (II) Cornelia Pechmann, Box C-2889, Bucknell Univ., Lewisburg, PA 17837
 DELTA OMICRON COLONY (Southern Technical Institute) (VIII) Carol Moore, Gamma Phi Beta, Student Center, STI, Marietta, GA 30060
 DELTA PI COLONY (Illinois State U.) (V) Kristina Zeile, 412 Normal Ave., Normal, IL 61761
 *Chapter Deactivated

ALUMNAE CHAPTER PRESIDENTS

ALABAMA (VIII)

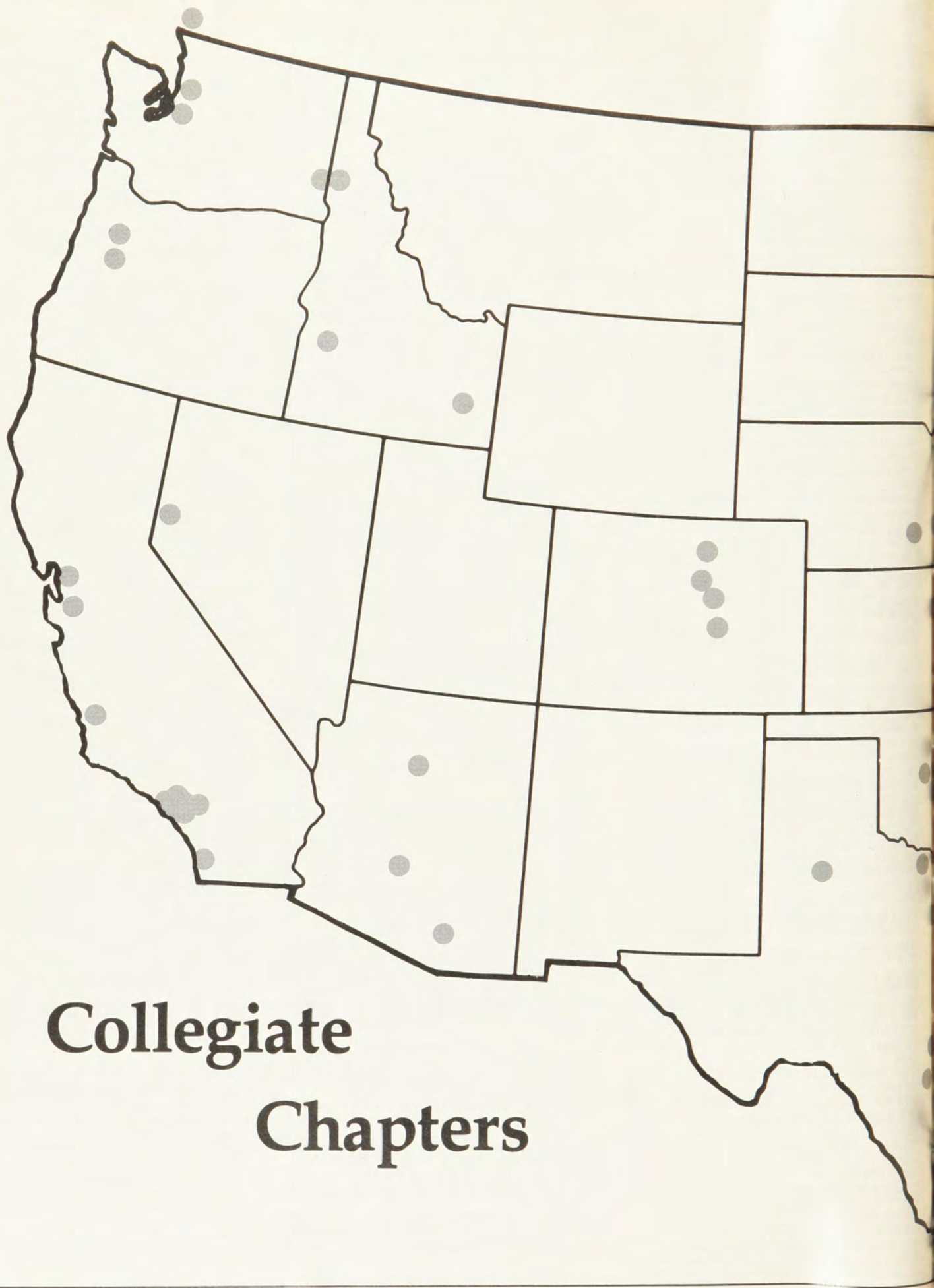
Auburn, 1963: Mrs. E. O. Jones, Jr. 744 Sherwood Dr., Auburn, AL 36830
 Birmingham, 1931: Ida Jean Wilburn, 2205 Kenbridge Circle, Birmingham, AL 35226
 Montgomery, 1973: Ms. Delena C. Pickens, 3848 Governors Dr. #F-247, Montgomery, AL 36111

ARIZONA (XIV)

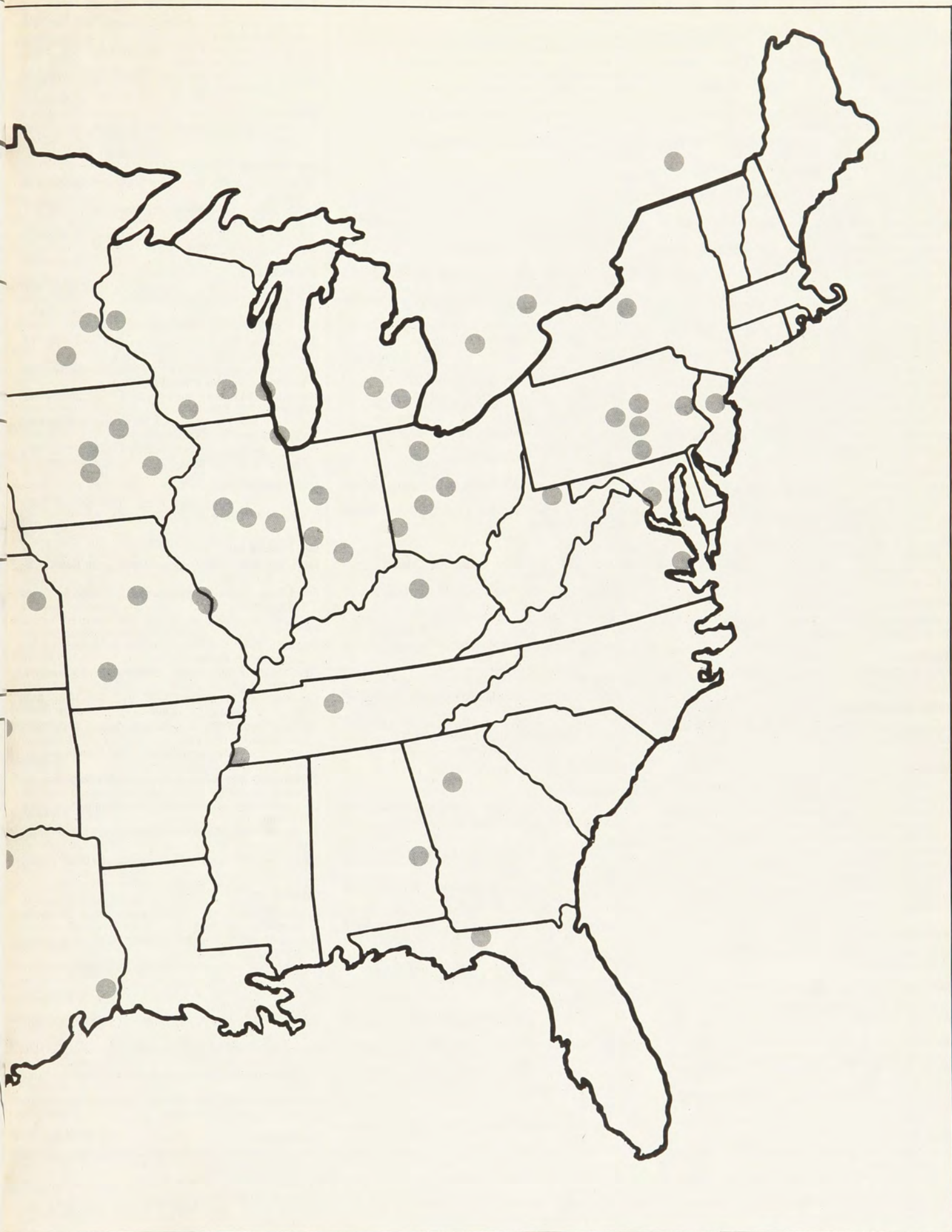
Flagstaff, 1957: Mrs. Tavia Wallace, 3206 N. Alta Vista, Flagstaff, AZ 86001
 Phoenix, 1939: Mrs. William E. Causey, 3522 S. Juniper, Tempe, AZ 85282
 Tucson, 1937: Mrs. Ronald Huxtable, 2619 E. 22nd., Tucson, AZ 85713

CALIFORNIA (XIII, XIV, and XVI)

Bakersfield, 1953 (XVI): Mrs. R. Mack Phillips, 2004 Glendon Court, Bakersfield, CA 93309
 Balboa Harbor, 1964 (XVI): Mrs. Dennis Giesea, 13882 Mauve Dr., Santa Ana, CA 92705
 Berkeley, 1902 (XIII): Miss Jeanne Banfield, 780 Oak Grove F-1, Concord, CA 94518
 Beverly Hills-Westwood, 1955 (XVI): Mrs. Lawrence Drumm, 296 Bronwood Ave., Los Angeles, CA 90049
 Fresno, Reactivated 1979 (XIII) Mrs. James S. Maines, 6617 N. Laureen Ave., Fresno, CA 93710
 Glendale, 1939 (XVI): Mrs. Vincent Bell, 5512 Pinecone, LaCrescenta, CA 91214
 La Jolla, 1957 (XIV): Mrs. Paul Thomas, 894 Candlelight Place, La Jolla, CA 92037



Collegiate Chapters



Long Beach, 1939 (XVI): Mrs. J. M. Johnson, 6511 El Jardin, Long Beach, CA 90815
Los Angeles, 1913 (XVI): Mrs. Susan Wickhem, 1116 Drake Rd., Arcadia, CA 91006

Modesto, 1955 (XIII): Mrs. Dorothy Kem, 410 Bowen Avenue, Modesto, CA 95350

Monterey County, 1951 (XIII): Mrs. Allen C. Miller, 4265 Tolando Trail, Carmel, CA 93921

Orange County, 1954 (XVI): Mrs. Ruth Ann Gray, 5251 S. Ohio, Yorba Linda, CA 92686

Palo Alto, 1939 (XIII): Mrs. Harrison O'Neil, 3066 Price Court, Palo Alto, CA 94303

Pasadena, 1939 (XVI): Mrs. Lila Garner, 601 Garden Lane, Pasadena, CA 91105

Peninsula, 1948 (XIII): Mrs. Kirkendall Carlton, 305 Middle Road, Belmont, CA 94002

Pomona Valley, 1956 (XIV): Mrs. Dwaine Glass, 4804 N. Fairvalley, Covina, CA 91722

Riverside, reactivated 1978 (XVI): Mrs. Dwane Mickelson, 2805 Miguel, Riverside, CA 92506

Sacramento Valley, 1937 (XIII): Mrs. Ellis Hirst, 825 Robin Lane, Sacramento, CA 95825

San Fernando Valley, 1953 (XVI): Mrs. Dale Bergerson, 8350 Capps, Northridge, CA 91325

San Francisco, 1902 (XIII): Mrs. Felix Brunot, 1129 Douglass St., San Francisco, CA 94131

San Jose, 1948 (XIII): Mrs. Dorothy Howes, 1761 Lorenzen Dr., San Jose, CA 95124

South Bay, 1956 (XVI): Mrs. Charles D. Buell, 5716 Scotwood Dr., Palos Verdes, CA 90274

South Orange County, 1976 (XVI): Mrs. Lawrence McCalley, 26765 San Gonzalo, Mission Viejo, CA 92691

South Peninsula, 1964 (XIII): Mrs. Claire Johnson, 1515 Cormorant Ct., Sunnyvale, CA 94087

COLORADO (XI)

Boulder, 1953: Miss Nancy Burton, 1608 Budd Ct., Longmont, CO 80501

Colorado Springs, 1932: Mrs. Rob Woods, 3196 Montebello Dr. W., Colorado Spgs, CO 80918

Denver, 1907: Mrs. Harry Vaupel, 9450 W. 11th Avenue, Lakewood, CO 80215

Fort Collins, 1945: Mrs. John Nicol, 1200 Teakwood Dr., Ft. Collins, CO 80521

CONNECTICUT (II)

Fairfield County, 1958: Mrs. Robert J. Furnas, 234 Skyview Drive, Stamford, CT 06902

DELAWARE (II)

Delaware, 1964: Mrs. R. G. Downing, 2413 Heather Road, West, Wilmington, DE 19803

DISTRICT OF COLUMBIA (III)

Washington, DC, 1935: Mrs. Frank Claunts, 15301 Montford Rd., Silver Spring, MD 20904

FLORIDA (VIII)

Ft. Lauderdale, 1956: Mrs. Edward King, 2964 N.W. 69th Court, Ft. Lauderdale, FL 33309

Jacksonville, 1953: Mrs. Michael J. Miller, 9424 Pickwick, Jacksonville, FL 32217

Miami, 1948: Miss Karen Criswell, 9022 NE 8 Ave., #1L, Miami, FL 33138

Orlando-Winter Park, 1935: Mrs. Samuel Hines, 2000 King Arthur Circle, Maitland, FL 32751

Tallahassee, 1954: Mrs. Julian Alford Jr., 4033 Delvin Drive, Tallahassee, FL 32308

GEORGIA (VIII)

Atlanta, 1940: Mrs. David Thompson, 4166 Mill Stone Ct., Norcross, GA 30071

HAWAII (XIII)

Hawaii, 1938: Mrs. John D'Araujo, 46-374 Kumoo Loop, Kaneohe, HI 96744

IDAHO (XII)

Boise, 1928: Mrs. Linda Pierce, 1501 Allen, Boise, ID 83705

Moscow, 1941: Mrs. Philip S. Defenbach, 480 Boyde Ave., Moscow, ID 83843

Pocatello, 1955: Mrs. Gail Siemen, 1789 Syringa, Pocatello, ID 83201

ILLINOIS (V)

Aurora, 1963: Mrs. Robert Bilstrom, 335 S. Westlawn, Aurora, IL 60506

Champaign-Urbana, 1929: Mrs. Leo G. Perucca, 1 Monterey, Champaign, IL 61820

Chicago, reactivated 1978: Mrs. Sally E. Lewis, 535 N. Michigan, #704, Chicago, IL 60611

Chicago Northwest Suburban, 1955: Mrs. David Griffin, 717 Pintail Ct., Deerfield, IL 60015

Evanston-North Shore, 1949: Mrs. John W. C. Carlson, 9529 Harding, Evanston, IL 60203

Glen Ellyn Area, 1967: Mrs. Robert Meisinger, 3 S. 161 Cypress Dr., Glen Ellyn, IL 60137

Lake County, 1950: Mrs. David Stiles Jr., 637 Crane Blvd., Libertyville, IL 60048

Peoria Area, 1947: Miss Wanda Siegfried, 6021 N. Imperial Dr. #242, Peoria, IL 61614

Quad Cities, 1938: Mrs. Jon Flower, 2408 Avalon Dr., Bettendorf, IA 52722

INDIANA (IV)

Bloomington, 1956: Mrs. Dorothy Adam, 2225 S. High St., Bloomington, IN 47401

Calumet Area, 1959: Mrs. Janice Wright, 952 W. 72nd Ave., Merrillville, IN 46410

Evansville, 1956: Mrs. Laura Feldkamp, 644 Chateau Drive, Evansville, IN 47715

Indianapolis, 1942: Mrs. Nancy MacMartin, 4915 Kessler Blvd. E. Dr., Indianapolis, IN 46220

Lafayette Area, 1963: Mrs. George Heid, 1528 Northwestern, W. Lafayette, IN 47906

Terre Haute, 1952: Mrs. Donald R. Lowder, 2420 N. 8th St., Terre Haute, IN 47804

IOWA (XV)

Ames, 1940: Mrs. John Timmons, 832 Brookridge, Ames, IA 50010

Cedar Rapids, 1948: Mrs. Gary Anhalt, 1933 4th Ave. SE, Cedar Rapids, IA 52403

Des Moines, 1919: Mrs. Stephen Morain, 3807 Crestmoor Pl., Des Moines, IA 50310

Iowa City, 1931: Miss Wendy Claggett, 207-1/2 65th St., Coralville, IA 52241

Quad Cities, 1938: Mrs. Jon Flower, 2408 Avalon Drive, Bettendorf, IA 52722

Waterloo-Cedar Falls, 1941: Mrs. Lloyd Elliott, 2408 W. 6th, Waterloo, IA 50702

KANSAS (X)

Lawrence, 1941: Mrs. Bruce Kernes, 500 Colorado Apt. C, Lawrence, KS 66044

Manhattan, 1956: Mrs. Don Combs, 217 Carlisle Terrace, Manhattan, KS 66502

Topeka, 1955: Mrs. Samuel Marshall, Jr., 1921 Westwood Dr., Topeka, KS 66614

Wichita, 1925: Mrs. Clark Nelson, 320 N. Ridgwood, Wichita, KS 67203

KENTUCKY (III)

Lexington, 1965: Miss Sharon Blandford, 336 Eagle Creek Dr., Lexington, KY 40502

Louisville, reactivated 1970: Mrs. Madge Adams, 1361 Tyler Park Dr., Louisville, KY 40204

LOUISIANA (VII)

MASSACHUSETTS (II)

Boston-West Suburban, 1963: Mrs. James E. Wood, 11 Grassland St., Lexington, Mass. 02173

MICHIGAN (IV)

Birmingham, 1948: Mrs. Neil DeKoker, 2800 Baltane Rd., West Bloomfield, MI 48033

Detroit, 1913: Mrs. James McGlaughlin, 7300 Deep Run, Apt. 1623, Birmingham, MI 48010

Grand Rapids, 1950: Grand Rapids Pres., Mrs. Wayne Rodgers, 9516 Cherry Valley Av. SE, Caledonia, MI 49316

Jackson, 1953: Mrs. Lee T. Lincoln, 512 McBride St., Jackson, MI 49203

Greater Lansing, 1948: Mrs. Janice Proudfoot, 1121-D Palmer Lane, East Lansing, MI 48823

MINNESOTA (VI)

Duluth, 1957: Mrs. Charles Semrad, 2726 Branch St., Duluth, MN 55812

Mankato, 1965: Ms. Donna Boyer, 8031 12th Ave. S., Apt. #1, Bloomington, MN 55420

Minneapolis-St. Paul, 1904: Mrs. Fenwick Atwill, 1600 Oak Avenue, Arden Hills, MN 55112

MISSOURI (X)

Columbia, 1941: Mrs. Carla Qualy, 504 W. Broadway, Columbia, MO 65201

Greater Kansas City, 1923: Mrs. Robert J. Schumann, 9743 Sagamore, Leawood, KS 66206

St. Louis, 1919: Mrs. Alvin W. Holstein, 9 Cricket Lane, St. Louis, MO 63144

Springfield, 1917: Springfield Pres., Mrs. Miles Sweeney, 1015 S. Delaware, Springfield, MO 65804

NEBRASKA (XVI)

Kearney, 1962: Mrs. Steven L. Fisher, 3405 5th Ave., Kearney, NE 68847

Lincoln, 1938: Lincoln Pres., Mrs. Gary E. Lacey, 3708 J Street, Lincoln, NE 68510

Omaha, 1919: Mrs. Roderick Thiesen, 5220 Mason St., Omaha, NE 68132

NEVADA (XIII)

Reno, 1921: Miss Linda Ward, 5051 N. Virginia #6, Reno, NV 89506

NEW JERSEY (II)

Bergen County, 1965: Mrs. Daniel Chase, 744 Albemarle St., Wyckoff, NJ 07481

Central Jersey, 1974: Miss Kathy Clarke, 113 Elmore Ave., Trenton, NJ 08619

Summit Area, 1965: Mrs. Mary Carol Merola, 11 Blackburn Rd., Summit, NJ 07901

NEW MEXICO (XI)

Albuquerque, 1952: Mrs. Calvin Higgins, 6429 Esther, N.E., Albuquerque, NM 87109

NEW YORK (II)

Buffalo, 1940: Mrs. Nevin Jamieson, 223 Ruskin Rd., Egbertsville, NY 14226

New York City, reactivated 1977: Miss Nancy Neumann, 333 E. 75th St., New York, NY 10021

Rochester, 1945: Mrs. Janet Kendrick, 126 Johnson Rd., Rochester, NY 14614

Syracuse, 1892: Mrs. William E. Fitzgerald, 202 Churchill Lane, Fayetteville, NY 13066

Westchester County, 1938: Westchester County Pres., Mrs. Edward M. Carney, Barney Park, Irvington, NY 10533

NORTH CAROLINA (VIII)

Raleigh, 1967: Mrs. Allen Clapp, 3206 Queens Road, Raleigh, NC 27612

NORTH DAKOTA (VI)

Fargo-Moorhead, 1929: Mrs. Jean Melicher, 56 17th Ave. N., Fargo, ND 58102

Grand Forks, 1946: Mrs. Ann Clark, 503-23 Ave. So., Grand Forks, ND 58201

OHIO (III)

Cincinnati, 1941: Mrs. Beverly Nichols, 3452 Stettinius Av., Cincinnati, OH 45208

Cleveland, 1916: Mrs. Robert Jeffreys, 1227 Quilliams Rd., Cleveland Hgts., OH 44121

Cleveland East Suburban, 1955: Mrs. Earl Print, 6448 Meldon Dr., Mentor, OH 44060

Cleveland West, 1961: Mrs. Douglas Cooper, 1126 Forest Rd., Lakewood, OH 44107

Columbus, 1929: Mrs. James Adams, 7988 Peter Hoover Rd., New Albany, OH 43054

Dayton, 1941: Mrs. James W. Tschantz, 284 Blackstone Dr., Dayton, OH 45459

Lima, 1957: Mrs. Jeffrey O. Hardy, 3654 Huntleigh Dr., Lima, OH 45806

Springfield, 1929: Mrs. Karl F. Schofer, 1971 Oak Knoll Dr., Springfield, OH 45504

Toledo, 1945: Mrs. Henry Wood, 716 Randall Drive, Oregon, OH 43616

OKLAHOMA (IX)

Bartlesville, 1952: Mrs. Alan S. Bowles, 4509 Barlow Pl., Bartlesville, OK 74003

Muskogee, 1957: Mrs. Mike Rafter, 2220 Michael Rd., Muskogee, OK 74401

Norman, 1930: Mrs. Michal Gray, 2730 Chautauqua #131, Norman, OK 73069

Oklahoma City, 1921: Mrs. Jack Snoddy, 7233 N.W. 31st, Bethany, OK 73008

Stillwater, 1957: Mrs. R. Ray Heath, 2005 W. 10th St., Stillwater, OK 74074

Tulsa, 1929: Tulsa Co-Pres, Mrs. Nancy Vanauken, 12119 E. 24 St. Tulsa, OK 74129

Tulsa Co-Pres., Miss Diana Hearn, 113 A E. 31st Pl., Tulsa, OK 74105

Weatherford, 1973: Mrs. Wyndell Clark, Rt. #1, Hidden Oaks, Weatherford, OK 73096

OREGON (XIII)

Corvallis, 1947: Mrs. Don Kennedy, 4050 SW Fairhaven Dr., Corvallis, OR 97330

Eugene, 1940: Mrs. Charles Chackel, 255 Coachman Dr., Eugene, OR 97405

Portland, 1913: Mrs. Mark Kocourek, 245 W. Exeter, Gladstone, Or. 97027

Salem, 1944: Mrs. John Welborn, 3555 Fir Tree Dr. S., Salem, OR 97302

PENNSYLVANIA (III)

Lehigh Valley, 1975: Mrs. Robert M. Yanega, 1633 Mine Lane Rd., Easton, PA 18042
Philadelphia North Suburban, 1957: Mrs. Robert Eckert, 199 Greyhorse Rd., Willow Grove, PA 19090
Philadelphia West Suburban, 1935: Mrs. Charles Butler, 2290 Hillside Lane, Aston, PA 19014
Pittsburgh, 1940: Mrs. Jerry C. Stewart, 613 Macbeth Dr., Pittsburgh, PA 15235
State College, 1941: Mrs. Trend Gilberg, 1197 Smithfield St., State College, PA 16801

TENNESSEE (VIII)

Memphis, 1952: Mrs. David Williams, 3587 Edgefield Dr., Memphis, TN 38128
Nashville, 1929: Miss Lynne Ayers, 1406-B 18th Ave. South, Nashville, TN 37212

TEXAS (VII, IX and XI)

Amarillo, 1955 (IX): Mrs. Stanley T. Gunn, 2312 Atkinson, Amarillo, TX 79109
Arlington, 1965 (VII): Mrs. Tom Ryden, 1006 Wembley Rd., Arlington, TX 76014
Austin, 1947 (VII): Austin Pres., Mrs. Melinda Nickless, 3207 Bonnie Road, Austin, TX 78703
Beaumont, 1956 (VII): Mrs. Hal Laine, 6845 Marshall Place, Beaumont, TX 77706
Corpus Christi, 1956 (VII): Mrs. Rex Stever, 44 Camden Pl., Corpus Christi, TX 78412
Dallas, 1930 (VII): Mrs. Frances Cranfill, 7760 Willow Wind Ct. #227, Dallas, TX 75230
Fort Worth, 1946 (VII): Mrs. Jay S. Garrett, 7044 Valhalla, Ft. Worth, TX 76116
Houston, 1941 (VII): Mrs. L. D. Thomas, 6219 Burgoyne, Houston, TX 77057
Lubbock, 1951 (IX): Mrs. J. W. Wagner, 4705 59th St., Lubbock, TX 79414
Midland, 1951 (IX): Mrs. LaDoyce Lambert, 1404 Murray, Midland, TX 79701
Odessa, 1965 (IX): Mrs. Page Greene, 1455 Pagewood, Odessa, TX 79761
San Antonio, 1946 (VII): Mrs. F. J. Cutler, 415 Wiltshire, San Antonio, TX 78209
Wichita Falls, 1961 (IX): Mrs. Robert Jorgensen, 4603 El Capitan, Wichita Falls, TX 76310

UTAH (XI)

Salt Lake City, 1958: Mrs. Philip Ershler, 3115 S 2900E, Salt Lake City, UT 84109

VERMONT (II)

Burlington, 1952: Mrs. Amelia B. Tower, Mill Pond Rd., Colchester, VT 05446

VIRGINIA (II)

Northern Virginia, 1956: Mrs. Joseph M. Griffin, 2837 Brook Dr., Falls Church, VA 22042

WASHINGTON (XII)

Pullman, 1955: Mrs. Harry McAllister, NE 1640 Lower Dr., Pullman, WA 99163
Seattle, 1915: Mrs. Howard E. Stansbury, 6952 16th SE, Mercer Island, WA 98040
Spokane, 1918: Miss Theresa Niemeier, Box 14948, S. 2809 Skipworth, Spokane, WA 99214
Tacoma, 1947: Mrs. John Broten, 3416 Glendale Dr. W, Tacoma, WA 98466

WEST VIRGINIA (III)

Morgantown, 1959: Mrs. Jean Ann Butt, 427 Richwood Ave., Morgantown, WV 26505

WISCONSIN (V and VI)

Madison, 1913 (V): Mrs. Hugh Dega, Rte. #2, Brooklyn, WI 53521
Milwaukee, 1902 (V): Mrs. James R. Clark, 9719 N. Dalewood Lane, Mequon, WI 53092
Platteville, 1969 (V): Mrs. Jerilyn Faltz, 652 Jefferson St., Platteville, WI 53818
River Falls, 1969 (VI): Mrs. Lowell Flade, R.T. 1, Beldenville, WI 54003

BRITISH COLUMBIA (XII)

Vancouver, 1928: Miss Liz Chapman, 5357 Angus Dr., Vancouver, BC V6M3N3, Canada

ONTARIO (II)

London, 1937: Miss Mary Winn Daykin, 348 Berkshire Dr., London, Ont., N6J3S1, Canada

Gamma Phi Beta Chapters By Province

PROVINCE I

Alpha (A)
Alpha Alpha (A A)
Alpha Tau (A T)
Alpha Omega (A Ω)
Delta Mu (Δ M)

PROVINCE II

Alpha Pi (A Π)
Alpha Upsilon (A Y)
Alpha Chi (A X)
Beta Beta (B B)
Gamma Beta (Γ B)
Delta Kappa (Δ K)
Delta Xi (Δ Ξ)

PROVINCE III

Alpha Eta (A H)
Alpha Nu (A N)
Beta Gamma (B Γ)
Beta Epsilon (B E)
Gamma Omicron (Γ O)

PROVINCE IV

Beta (B)
Beta Delta (B Δ)
Beta Pi (B Π)
Beta Phi (B Φ)
Delta Iota (Δ I)

PROVINCE V

Gamma (Γ)
Epsilon (E)
Omicron (O)
Beta Eta (B H)
Gamma Gamma (Γ Γ)
Gamma Omega (Γ Ω)
Delta Pi Colony

PROVINCE VI

Kappa (K)

Alpha Beta (A B)
Alpha Omicron (A O)
Gamma Mu (Γ M)
Gamma Pi (Γ Π)
Delta Alpha (Δ A)

PROVINCE VII

Alpha Zeta (A Z)
Alpha Xi (A Ξ)
Gamma Zeta (Γ Z)
Gamma Nu (Γ N)
Gamma Chi (Γ X)
Delta Epsilon (Δ E)

PROVINCE VIII

Alpha Theta (A Θ)
Beta Mu (B M)
Gamma Alpha (Γ A)
Gamma Phi (Γ Φ)
Delta Omicron Colony

PROVINCE IX

Psi (Ψ)
Beta Omicron (B O)
Beta Tau (B T)
Beta Psi (B Ψ)
Gamma Iota (Γ I)
Delta Zeta (Δ Z)

PROVINCE X

Sigma (Σ)
Phi (Φ)
Alpha Delta (A Δ)
Beta Upsilon (B Y)
Beta Chi (B X)
Gamma Tau (Γ T)
Delta Nu (Δ N)

PROVINCE XI

Theta (Θ)
Tau (T)

Alpha Phi (A Φ)
Beta Rho (B Ρ)

PROVINCE XII

Lambda (Λ)
Xi (Ξ)
Alpha Lambda (A Λ)
Beta Iota (B I)
Beta Sigma (B Σ)
Gamma Epsilon (Γ E)
Delta Beta (Δ B)

PROVINCE XIII

Eta (H)
Nu (N)
Chi (X)
Alpha Gamma (A Γ)
Beta Theta (B Θ)

PROVINCE XIV

Alpha Epsilon (A E)
Beta Kappa (B K)
Beta Lambda (B Λ)
Beta Omega (B Ω)

PROVINCE XV

Pi (Π)
Rho (Ρ)
Omega (Ω)
Gamma Kappa (Γ K)
Gamma Upsilon (Γ Y)
Gamma Psi (Γ Ψ)

PROVINCE XVI

Alpha Iota (A I)
Beta Alpha (B A)
Gamma Eta (Γ H)
Delta Delta (Δ Δ)
Delta Eta (Δ H)
Delta Theta (Δ Θ)
Delta Lambda (Δ Λ)

Toronto, 1919: Mrs. Paul Romanchuk, 49 Baybrook Crescent, Scarborough, Ont. Can M1H2R7

QUEBEC (II)

Montreal, 1938: Miss Anne Layton, #319, 3787 Cote Des Neiges, Montreal, Quebec H3H 1V9

CRESCENT CIRCLE CHAIRMEN:

Huntsville, AL—Mrs. Stanley McIntyre, 10001 Hickory Hill, Huntsville, AL 35803
Leisure World-Laguna Hills, CA—Mrs. Harvey Miller, 5363 O Algarrobo, Laguna Hills, CA 92653
San Luis Obispo, CA—Mrs. Roland Maddalena, 2301 Parkland Terrace, San Luis Obispo, CA 93401
Santa Barbara, CA—Mrs. Robert G. Swift, 1481 Crestline Dr., Santa Barbara, CA 93105
Whittier, CA—Mrs. James Seminoff, 5514 South Mesagrove Ave., Whittier, CA 90601
Ft. Myers, FL—Mrs. C. Thomas Dollar, Rt. 12, 134 Canaan Dr., Ft. Myers, FL 33901
Palm Beach, FL—Mrs. Jo Carrin, 1142 Hillcrest Blvd., West Palm Beach, FL 33405
Pensacola, FL—Mrs. John T. Burke, 4213 Futura, Pensacola, FL 32504
Pinellas County Crescent Circle—Mrs. Herbert Hirsch, 10284 Imperial Pt. Dr. E, Largo, FL 33540
Greater Sarasota, FL—Mrs. W. P. Ricamore, 2300 S. Wellesley Dr., Bradenton, FL 33507
Tampa Bay, FL: New: 1979—Mrs. John H. Minter, 4173 North Meadow Circle, Tampa, FL 33624
Kankakee, IL—Mrs. Charlotte Vollbrecht, 17230 Vollbrecht Rd., South Holland, IL 60473
Southern Illinois—Mrs. Robert Graves, 808 Belle Ave., Pinckneyville, IL 62274
Hutchinson, KS—Mrs. William VonRuden, 5 Downing Rd., Hutchinson, KS 67501
Kansas City, KS—Mrs. Charles Brenneisen, Jr., 1215 N. 19th St., Kansas City, KS 66102

Baltimore, MD—Mrs. Jeanne Cosby, 481 Fair Oaks Dr., Severna Park, MD 21146
Delmar Eastern Shore, MD—Mrs. Emslie Gault, Rt. 1, Box 162, Queenstown, MD 21658
Kalamazoo, MI—Mrs. James R. Stewart, 1257 Timber Oaks Ct., Plainwell, MI 49080
Rolla, MO—Mrs. Jill Heitzman, 507-E. 7th, Rolla, MO 65401
Jackson, MS—Mrs. Alex E. Ralston, 46 Summit Ridge Dr., Brandon, MS 39042
Las Vegas, NV—Mrs. Richard Crites, 4249 Rimcrest, Las Vegas, NV 89121
Minot, ND—Mrs. Reginald Morelli, 1512 Third Ave., S.W., Minot, ND 58701
Canton-Massillon, OH—Mrs. William R. Beckley, 2911 22nd N.W., Canton, OH 44708
Hamilton, OH—Mrs. Frank Vido, Jr., 1720 Sunset Ave., Hamilton, OH 45013
Middletown, OH—Mrs. David Shaffer, 6998 Middletown-Hamilton, Middletown, OH 45042
Oxford, OH—Mrs. Christopher Rodbro, 6130 Vereker Dr., Oxford, OH 45056
Sandusky, OH—Mrs. Ralph Bache, P.O. Box 145, Huron, OH 44839
Charleston, SC—Mrs. Glenn Fleming, 671 Pawley Rd., Mt. Pleasant, SC 29464
Clemson, SC—Mrs. Robert Nowack, 208 Riggs Dr., Box 1101, Clemson, SC 29631
El Paso, TX—Mrs. Shirley Prager, 5224 Sterling Place, El Paso, TX 79932
Port Arthur-Groves, TX—Mrs. Ernest Drake, 1947 Woodrow Dr., Port Arthur, TX 77640
Hampton Roads, VA—Mrs. Gordon MacCleary, 11 Luanita Lane, Newport News, VA 23606
LaCrosse, WI—Mrs. Robert A. Farnam, 127 South 26th St., LaCrosse, WI 54601
WI Fox Valley—Mrs. Ronald Conradt, Rt. 2, Box 125, Shioc-ton, WI 54170
Cheyenne, WY—Mrs. John Bunch, 1605 Crook Ave., Cheyenne, WY 82001
Laramie, WY—Miss Billie Ruth Edwards, P.O. Box 665, Laramie, WY 82070

Calendar of Officers' Duties

Abbreviations:

CO—Central Office; PCD—Province Collegiate Director; AA—Alumna Advisor PAD—Province Alumnae Director; ACVP—Assistant to Collegiate Vice President Int'l—International ARC—Alumnae Recommendations Committee

GREEK-LETTER CHAPTERS

See Greek-letter 200 section of the President's Book for additional details.

PRESIDENT:

Prior to election, send PCD proposed slate of officers for approval.
Immediately after beginning of school year send PCD Alcohol & Visitation Policies Forms 51 and 52.

ACTIVITIES CHAIRMEN:

By April 1 of Convention years, send CO McCormick Award material.

CHAPTER DEVELOPMENT:

At beginning and end of term of office, send int'l chapter development chairman-collegians initial and final report sent PCD.

CORRESPONDING SECRETARY:

Immediately after pledging, send PCD copy of letter to parents of pledges.
By September 1, send Grand President business for consideration at fall Grand Council meeting and during Convention year include business for consideration at Convention.
By March 1, send Grand President business for consideration at spring Grand Council meeting.
By March 1, send CO, PCD and TransiSter chairman a list of members graduating from college and those not returning to college.
By April 1, send CO College and Rush Calendar on Form 10. Promptly send all marriage notifications to CO.

HISTORIAN:

Before close of term of office, send PCD and int'l historian annual historical record.

HOUSE MANAGER:

By November 1, send PCD & AA current house rules.

MEMBERSHIP CHAIRMAN:

Immediately after formal rush, send CO Rush Report on Form 4.
Immediately after each formal and informal rush, send PCD a report evaluating rush.

PANHELLENIC DELEGATE:

Whenever changes occur, send CO, NPC Delegate and PCD any changes in office of campus Panhellenic adviser or college or university President.
At the beginning of your term, send NPC Delegate and PCD copies of current Panhellenic handbook, constitution, bylaws and rush rules.
Send NPC Delegate all reports (initial and final,) sent PCD.

PARLIAMENTARIAN-CENSOR:

By November 1 send ACVP-Bylaws revised chapter bylaws for approval.

PHILANTHROPY CHAIRMAN:

At beginning and end of term of office, send int'l chairman of philanthropy programs initial and final report sent PCD.

PLEDGE DIRECTOR:

At end of each school term, send CO Pledge Statistical Report on Form 11.
Three weeks prior to initiation, send PCD program for inspiration week for approval.
Before retiring from office, send to CO revisions or suggestions for improving Pledge Manual.

PUBLIC RELATIONS CHAIRMAN:

By March 1, send CO Public Relations Report Form 1.

RECORDING SECRETARY:

By November 1, send PCD corrected computer printout sent to president in September.
Immediately after each election and/or appointment, send CO Chapter Officer List on Form 12.
Following retreats, send PCD summary of officers' and chapter's retreats.
By June 1, send PCD names and summer addresses of chapter members.

RITUAL CHAIRMAN:

After each event requiring ritual, except formal chapter meetings, send PCD a report.

SCHOLARSHIP CHAIRMAN:

Immediately after official release of grades each school term, send CO Scholarship Report on Form 3.
At beginning and end of term of office, send int'l scholarship chairman initial and final report sent PCD.

TREASURER:

Promptly after each pledging, send CO white copies of Pledge Registration Form 9. Send checks for first installment of membership fees and Remittance Form 13. Send PCD orange copies of Pledge Registration Form 9.
Immediately after each initiation for members pledged after 8-1-78, send CO list of initiates and badge orders on Form 14 and signed Loyalty Pledge on Form 2. Also, send check for second installment of membership fees and badge payment.
By 10th of each month, send CO and alumna financial adviser Statement of Receipts and Disbursements on Form 15.
By October 1, send CO and alumna financial adviser chapter budget on Form 46.
By December 1, send corrected (computer print-out) Collegiate Dues Report to CO with check for international dues for members pledged prior to 8-1-78.
By December 1, send CO province dues.
By December 1, send CO Founders Day Contribution, Form 39.

VICE PRESIDENT:

At beginning of term of office, collect and send PCD and AA initial reports from all officers.
According to the PCD's schedule of report due dates, collect and send PCD periodic reports from chapter officers.
At end of term of office, collect and send PCD and AA final reports from all officers.
By October 1, send Chapter Statistics Form 62 to Central Office.

ALUMNAE CHAPTERS:

By September 1, send Grand President business for consideration at fall Grand Council meeting.
By October 1, send CO Carnation Award Recommendations, Form 60.
By December 1, send Central Office check for int'l taxes and province dues with computer list. After December 1 send tax and dues payments with CO form 17—"Report of International Taxes Paid to Alumnae Chapters."
By December 1, send CO Founders Day Contribution, Form 39.
By February 1, send to CO recommendations for int'l offices on Alumnae Personnel Data Form 47.
By February 1, of the off Convention year, send CO names of any members your chapter wishes to suggest for province alumnae and collegiate directors. Include candidate's qualifications on Alumnae Personnel Data form 47.
By February 1, send name and address of ARC chairman to CO for listing in THE CRESCENT.
By February 1, send Grand President business for consideration at spring Grand Council meeting.
By April 1, send roster of chapter officers on form 25 to CO. Send name of magazine chairman to int'l magazine chairman. Notify CO of any changes of officers between elections. Installation of officers may occur at a later date.
By May 1, send CO Honor Roll Recommendations Form 57; Merit Roll Recommendations Form 59; and Service Roll Recommendations Form 58.
By May 1, send prior year's chapter history (written either by chapter historian or retiring president) to int'l historian.
By June 1, notify int'l magazine chairman if chapter's magazine sales profit is to be contributed to the Gamma Phi Beta Gift Fund or returned to the chapter.
By June 1, send one copy of alumnae chapter president's report, C.O. form 27 (see page A-215a) to CO. Send membership list or directory to Alumnae Vice President and province alumnae director.
At any time, send list of deceased members to CO. Include married name, maiden name, Greek-letter chapter, address, and date of death, if known. Enclose newspaper announcement, if possible.
At any time, send change in name and/or address of TransiSter to the int'l TransiSter Service chairman.

HOUSE CORPORATIONS:

President: Immediately after election send roster of House Corporation Board officers to CO.
Treasurer: By November 1, send House Corporation Board Financial Report Form 33, and a copy of IRS Form 990 to CO.
By November 1, send House Corporation Information Sheet, Form 8, to CO.
By November 1, send Greek-letter Chapter Annual Financial Report, Form 16, to CO.

CRESCENT DEADLINES FOR 1980

For Spring issue: December 1 (Founders Day highlights)

For Fall issue: June 1 (Honors—individual and chapter)

For Summer issue: March 1 (Greek Letter Chapter letters)

For Winter issue: September 1 (Alumnae Chapter letters)

Special assignments for each issue will be outlined in the COMMUNIQUE sent tri-annually to the Chapter Presidents and in each issue of The Crescent.

Honors

Arizona State

Chapter—Province XIV Philanthropy Award, Province XIV Most Improved Scholarship Award, first place Greek Games, second place Greek Sing, first place Phi Psi 500, first place Sigma Alpha Epsilon Talent Contest

Lillian Cereghino—Punt, pass and kick winner, one-on-one basketball champion

Chris Chesrown—Bobby Ball Academy acting award and scholarship

Cece Cook—Dean's List, Alpha Lambda Delta

Kathy Doubek—twirler

Janet Evans—Mortar Board, Devils Advocates, science honorary, Founders Day award

Laurie Harwood—Panhellenic publicity chairman, Homecoming committee publicity chairman

Therese Hintze—Mat Maid for wrestling, Newman Center secretary

Sandy Martinez—archery team, Southwest Honorary Archery Team, nominated for All-American Team

Helen Mawhinney—Young Republicans executive secretary, American Federation of Republican women intern

Baba May—basketball cheerleader

Robin Reid—concert choir, lyric opera

Bowling Green

Jackie Oster—Panhellenic first vice-president

Bucknell

Chapter—Sigma Chi Derby Weekend spirit award

Nancy Duran—Alpha Lambda Delta

Kathy Febock—Alpha Lambda Delta

Audrey Fessler—Alpha Lambda Delta

Karen Hamerski—Alpha Lambda Delta

Donna Mealey—Alpha Lambda Delta

Annie Peters—Alpha Lambda Delta

Janet Sammoc—Alpha Lambda Delta

California

Chapter—Second place Big Game Week decorations, runner-up Lambda Chi Alpha Daffodil Contest, Pacific Gas and Electric Energy Saving Award, most spirited pledge class, Province XIII Scholarship Award

Kimberly Aikawa—Summer Ministries missionary, League of Women Voters, hospital volunteer, Pre-Med Society, Intersivity Christian Fellowship

Andrea Alban—Daffodil Festival first Princess

Sharon Anderson—Dean's consulting group

Karen Aumock—Panile vice president, pom pon girl, Alumni Scholar

Bettina Baig—Elections office manager, intern for Senator John Dunlop

Nancy Berdrow—Alumni Scholar, nature center instructor, Western Interpreter's Association



Alpha Pi chapter placed first in three games in Sigma Chi Derby Days at W. Virginia University.

Kristen Bernard—Honor Society, Edward Frank Kraft Scholarship, Sierra Club, Greenpeace

Brenda Blardony—Honor Society, Cal State scholarship

Linda Brooks—Oski Doll, Political Science Association, Cal-in-the-Capital intern, intern for Senator S. I. Hayakawa, Bipartisan Internship Program, university tour guide

Jenny Buttmer—Honor Society, Phi Chi Theta, Oski Doll, campus health worker, Undergrad Business Association

Rachelle Chong—Alumni Scholar, Honor Society, KALX radio newscaster, Political Science Association

Elizabeth Clayton—CalSO counselor, university tour guide, Education Abroad alternate, Women's Waterpolo Club, yearbook editor

Carol Colwell—Rally Committee director, American Institute of Chemical Engineers, CalSO counselor, American Chemical Society, Honor Society, Cal Ski Club

Seona Connolly—Alumni Scholar, Girl Scout advisor

Drew Daine—volleyball team

Lisa Dimock—Environmental Design Review Committee

Alison Dubbin—American Chemical Society, Dorm Council

Rebecca Elia—Honor student

Amy Eskin—Honor Society, Humanities Association, Cal State scholarship

Karen Ann Erickson—yearbook staff

Sue Fife—Panhellenic vice president, Oski Doll, Mathematics Students Association, Model United Nations Secretariate

Molly Flynn—Rugby team, dorm president

Caroline Froid—English Association, magazine staff

Michele Furlan—Rugby team, Oski Doll

Beth Galvin—campus health worker

Sue Garell—Most inspirational member to pledges

Sheila Gillespie—Pre-Med Society, Cal Ski Club, waterpolo team

Gail Godsey—Alumni Scholar, Oski Doll, American Institute of Chemical Engineers, Society of Women Engineers, IBM engineering intern

Martha Grasty—Dorm Council

Kathy Harrell—Honor Society, Political Science Association

Aileen Harrington—Cal Women's Crew

Catherine Anne Haymes—Phi Chi Theta, Honor Society, Omicron Delta Pi, Economics Association, Alumni Scholar, CalPrig, HUD community services intern

Julie Hill—Society of Women Engineers

Jessica Hoover—Phi Beta Kappa, Deutsch Award, Monroe Award, James H. Juhl Award, Kraft Award, Education Abroad, Cal Women's Crew

Cathy Innes—Oski Dolls, Society of Women Engineers, American Institute of Industrial Engineers, Panile

Katie Inderkum—Oski dolls, Panile, Prytanian, intern for Senator Alan Cranston,

Honors

Cal-in-the-Capitol intern
 Karen Johnson—Intramural football, softball
 Tricia Jump—Chancellor Advisory Committee, CalSO counselor, Prytanean, Beta Alpha Psi, Honor Society, Regent's Scholar, Charter Day and Chancellor's Reception honor escort
 Susan Kimball—Oski Doll, Young Life leader, Camp Fire leader, Architectural Heritage of San Francisco intern
 Nancy Knudsen—Charter Day and Chancellors Reception honor escort, Business Association, Campus Crusade for Christ
 Teresa Long—Mortar Board, Prytanean, Phi Beta Kappa, Honor Society, Dean's Honor Roll, school for the deaf volunteer, Girl Scout and Brownie leader, Animal Behavior Lab research assistant, Housing Board chairman, Chancellor's Advisory Committee, rugby team
 Sarah Mack—Freshman Threshold vice president
 Janet Martinelle—Intramural football, basketball, tennis
 Kirsten McKay—KALX radio newscaster
 Mara Murdoch—Bloss Memorial Scholarship
 Helen Otto—Alumni Scholar newsletter staff, dorm social chairman
 Gina Owen—Dean's List, Alumni Foundation Scholarship
 Karen Pelham—Alumni Scholar, NCAA Honor Roll, badminton team
 Dale Polowski—Choreographer for "Applause," *Daily Californian* Associated Press editor, diving team
 Kim Rhine—San Francisco Suicide Prevention volunteer
 Peggy Robinson—Cal Women's Crew
 Susan Robinson—Residence hall coordinator, Tolman Hall research assistant, Model United Nations administrative assistant

Cal.St.-Polytech

Chapter—First place Greek Week Olympiad, third place Greek Week song festival
 Kathy Andriano—Academic Council, Distinguished Teachers Committee, Soil Science Club secretary, Pre-Law Club
 Christie Black—most outstanding pledge
 Buffie Bromfield—Women's Council, Panhellenic representative
 Catherine Greiff—Dean's List
 Kathy Homan—Dean's Honor List, scholarship award
 Lori Horenstein—Phi Upsilon Omicron, Cardinal Key
 Carol Ineman—Phi Upsilon Omicron vice president
 Cam Messersmith—Dean's List
 Julie Moser—Dean's List
 Terisa Nerelli—Dean's List
 Cindy Regan—Interior Design club vice president
 Colleen Sage—Week of Welcome counselor
 Susan Stallings—Pacific Egg and Poultry Association and California Farm Bureau scholarships
 Lucy Thoms—Pi Gamma Mu, Industrial Relations Research Association Fairness

Board representative, most inspirational member
 Cathy Zeffoff—Week of Welcome counselor
 Lynda Zigrang—Newman Club president, most inspirational member to pledges

Colorado

Shannon Boland—Assistant to Vice Chancellor of Academic Affairs, student body vice president, Phi Beta Kappa
 Marilee Gibson—Mortar Board
 Vicki Imig—Dean's List, flag corps captain, Panhellenic scholarship
 Dale Johnson—Mortar Board
 Stacy Lenner—Chi Epsilon
 Selma Lewdowitz—Girl Scout leader
 Dutch Michels—Dean's List
 Jill Netz—Public Relations Student Society of America secretary
 Christina Paup—Ski team
 Polly Powell—Working press newspaper editor
 Kristi Raube—Brownie leader
 June Roth—Student Alumni Association vice president
 Alicia Steinhagen—Brownie leader
 Andrea Stock—Panhellenic rush coordinator
 Mary Tary—Girl Scout leader

Denver

Chapter—Panhellenic Scholarship Award, highest pledge class grade point average, second place intramural broomball, third place Homecoming float
 Julie Anderson—Talarian
 Nancy Bock—Who's Who
 Karen Boge—Talarian, Geneva Glen Camp staff
 Wendy Edson—Talarian
 Teresa Feder—Spurs, Alpha Lambda Delta
 Carla Gordon—National Dean's List, Undergraduate Alumni Association president
 Janny Jones—Alpha Lambda Delta secretary, Spurs
 LeighAnn Kudloff—Talarian president
 Ann Meyering—Derby Days event champion
 Bridget Perll—Sigma Chi Sweetheart
 Nixie Raymond—Psychology honors program
 Michelle Reeh—Alpha Lambda Delta
 Barb Straight—Alpha Lambda Delta
 Teena Vanzdant—Pi Gamma Mu
 Gretchen Whemhoff—Forensics team, Geneva Glen staff
 LeeAnn Williams—Homecoming Queen, Talarian

Drake

Chapter—First place Drake Relays street painting, President's Award for float construction, second place in scholarship for all sororities, third place Sweetheart Sing
 Linda Allen—President's List, Gwen Riggs Award, Delta Kappa Pi
 Patty Butner—Dean's List
 Lynda Chick—Sigma Delta Chi
 Gayle Field—Dean's List
 Barb Finch—SAPhA
 Mary Gauthier—Dean's List, journalism newspaper editor

Ginger Hull—Dean's List
 Sara Justice—President's List, Beta Alpha Psi
 Jule Lutz—Gamma Gamma
 Cathy McGowan—Dean's List
 Linda McLaughlin—Outstanding student in accounting
 Jane Meyer—President's List, Mortar Board vice president, Omicron Delta Kappa, Beta Alpha Psi
 Jocelyn Phillips—Gamma Gamma, Panhellenic president, Omicron Delta Kappa, rush counselor
 Carolyn Raffel—Dean's List
 Karen Scully—Dean's List
 Nancy Slagle—Dean's List
 Kim Swearingen—SAPhA

E.Texas State

Chapter—Province VII Activity Award, first place Pi Kappa Alpha Fireman's Ball Week, first place Kappa Delta Sing Song, second place Sigma Chi Derby Week
 Barbara Anderson—Golden Leos, Who's Who
 Lanette Armstrong—Who's Who, Homecoming Court, campus beauty, campus junior favorite
 Lee Ayer—Most outstanding pledge, Phi Eta Sigma, Alpha Lambda Delta, Dean's List
 Lisa Baker—Dean's List
 Carolyn Coppick—Texas State Education Association, most outstanding member
 June Danner—Dean's List
 Donna Duncan—Cheerleader, Dean's List, Golden Leos
 Karen Fulbright—Dean's List, Who's Who, Cap and Gown
 Karla Griffin—Texas Association for Mental Deficiencies, Student Council for Exceptional Children
 Gina Hignett—President's Honor Roll, campus beauty, Panhellenic president, Golden Leos
 Patti Honeycutt—Golden Leos
 Karen Jernigan—President's List, Who's Who
 Pam Jernigan—Who's Who
 Donna Moore—Sigma Chi Derby Doll, Greek Goddess, campus beauty semifinalist, Sigma Chi Sweetheart Court
 Harriett Moore—Campus beauty semifinalist
 Sherry Morris—President's Honor Roll, Phi Eta Sigma, Alpha Lambda Delta, Slater Scholarship
 Becca Murdock—Feature twirler
 Kita Richardson—Head twirler
 Judy Sandidge—Dean's List, Pi Omega Pi vice president, Baron's vice president, Golden Leos
 Pam Simpson—Who's Who
 Barbara Stevenson—Feature twirler
 Sherry Tucker—Who's Who

Florida State

Lee Cobb—Panhellenic rush chairman, Lambda Iota Tau secretary, Garnet and Gold Key, Rho Lambda
 Terrie Frison—Garnet and Gold Key vice president



Pam Martin (Oklahoma)—Outstanding Senior in College of Education

Judi Ivester—Advisory Council of English Students, Phi Kappa Phi, member of the year

Illinois

Chapter—Second place Sigma Chi Derby Days

Becky Boyd—Panhellenic president
Jill Campbell—Sigma Pi Sweetheart
Helen Corbett—College of Commerce Top Ten Senior

Kathy Fourt—Phi Beta Kappa
Linda Gainey—Phi Kappa Phi
Kathy Olson—Outstanding senior
Missy Panko—Phi Kappa Phi
Diane Stanislawski—Phi Kappa Phi
Gina Trimarco—Outstanding senior
Jill Wood—Alpha Delta Phi Sweetheart, Illinettes
Lisa Zack—Shorter Board

Indiana State

Chapter—Third place Campus Carnival, first place Homecoming float, first runner-up Campus Revue

Karen Adkins—Pom pon girl
Barbara Allen—Panhellenic vice president, Blue Berets, Student Alumni Council, Campus Revue, Order of Omega
Karen Barr—Campus Revue
Brenda Callahan—Campus Carnival Steering Committee
Kathy Callahan—Rush counselor, Homecoming Parade Steering Committee
Nancy Edwards—Dean's List, Pamarista
Mary Pat Frederick—Outstanding senior finalist, home economics honorary president, Who's Who
Natalie Ford—Pom pon girl, Dean's List
Missy Ferderber—Rush counselor
Teresa Hamilton—Sigma Phi Epsilon Sweetheart, talent show first runner up, Miss ISU
Cindy Hennessey—Swim team
Robin Kemp—Pamarista, Sigma Pi Sweetheart, education scholarship, Dean's List



Sherri Driscoll (Idaho)—Delta Sigma Phi Dream Girl and Ferris Deal (Idaho)—Pi Kappa Alpha Dream Girl, Rodeo Queen

Teri Miller—Sigma Mu treasurer
Tima Palumbo—Freshman orientation leader
Donna Pierce—Student government
Dawn Price—Tennis team
Jane Rushing—Rush counselor
Sally Robertson—Pom pon girl
Susan Smith—Who's Who
Gloria Spurgin—Rush counselor, Pamarista, Blue Berets, Sigma Mu, Dean's List
Helen Tarpey—500 Queen Court
Janie Vieck—Freshman orientation leader, student government
Denise Waltz—Campus Revue, pom pon girl
Cathy Warren—Dean's List, Student Alumni Council
Joan Wheeler—Rush counselor
Jane Williams—Who's Who, Pamarista, Blue Berets, outstanding member, Order of Omega, Student Alumni Council, pom pon girl, Tandemonia Steering Committee, Campus Revue, Dean's List

Iowa

Chapter—Third highest grade point average for all sororities, first place Phi Kappa Sigma coed Calendar Sales Contest
Staci Burke—Rush counselor
Rebecca Broer—Omicron Delta Kappa, first place Delta Gamma Anchor Splash Legs Contest
Kathy Drath—Mortar Board
Cindy Fideler—Delta hygiene junior class president
Karen Fund—Phi Kappa Sigma Calendar Girl, cheerleader
Lesley Gabbert—Women's Resource and Action Center Advisory Board
Mary Ann Goodrich—Dean's List, twirler
Sue Hawes—Pom pon girl
Julie Johnson—Dean's List, Helen Reich Scholarship
Jerri Kleuver—Dean's List
Sarah Leachman—Seal's Club vice president



Dana Powers and Susie Reynolds (Bradley)—Cheerleaders

Laura Moore—Sigma Theta Tau, Dean's List, certificate of outstanding achievement in nursing, pom pon girl, rush counselor
Shelley Parsons—Dean's List, pom pon girl
Laura Reese—Dean's List, Phi Eta Sigma
Lori Rieck—Track team
Stephanie Stalberger—Phi Kappa Sigma Calendar Girl
Jane Stewart—Panhellenic president, tuition scholarship
Kathy Stoker—Dean's List
Cindy Sweem—Dean's List
Cathy Taylor—Dean's List, John C. Clendinin Scholarship, Beta Gamma sigma, honors certificate of achievement
Christine Taylor—Student Union Program Board
Kimberly Tvedt—Rush counselor, Phi Upsilon Omicron treasurer
Teresa Vilmain—Senator, Women's Resource and Action Center Advisory Board
Susan Wicks—Rush counselor
Monica Wolf—Pom pon captain, Greek Hawkeye co-editor

Kearney State

Chapter—Second place muscular dystrophy dance marathon, Panhellenic outstanding scholarship award, Province XV Award of Excellence
Jayne Brummer—Track team
Lynn Somenza—Colonels Coeds
Kristen Short—Spurs, freshman orientation, Dean's List
Julie Smith—Spurs
Bobbie Wiley—Sagens, track team
Janice Williams—Sagens, PEO
Anne Willie—Social Services and Corrections representative, American Indian Organization historian, Health Planning Committee, Upward Bound Big Sister, Sagens, crisis line counselor
Toni Witt—Spurs, Sagens, Sigma Delta Chi

Honors



Sharie Brunner (Missouri)—Greek Week Queen



Teresa Hamilton (Indiana St.)—Miss ISU



Anna Wagner (Idaho)—Rodeo Queen



Heidi Galit (Texas)—Mortar Board



Diana Naylor (Texas)—Society of Women Engineers



Stephanie Steinhäufel (Missouri)—Freshman honorary



Terri Frison (Florida St.)—Garnet and Gold Key vice president



Sheri Reichert (Bradley)—Pike Hike Queen



Sue MacWhirter (Washington St.)—Sigma Chi Sweetheart



Renee Cook (Idaho)—Rodeo Queen



Lisa Gustafson (Idaho)—Rodeo Queen



Mary Pat Fredrick (Indiana St.)—Who's Who



Jackie Collins (Idaho)—Rodeo Queen



Polly Lynn Payne (Oklahoma)—Engineering Queen finalist



Amy Spicer (Texas)—Round-Up Queen finalist



Susan Molenaar (Idaho)—Rodeo Queen

Judy Carlson—Spirit Squad, Rho Lambda
 Nancy Hemje—Rho Lambda
 Barb Hurt—Senator
 Kathi Krane—Diving team, first place in conference and rated in top ten nationally
 Judy Mickelson—Softball team
 Sue Miller—Senator
 Kathy Ray—Accounting scholarship
 Jan Riggert—Orientation staff, Rho Lambda, accounting scholarship
 Danette Shearer—Spirit Squad
 Julie Schenzel—Spirit Squad, Rho Lambda, Panhellenic rush chairman
 Pam Smith—Rho Lambda
 Susan Underhill—Orientation staff, Panhellenic president
 Sandy Watson—Sigma Phi Epsilon Olympics Queen

Kentucky

Elizabeth Ann Chenault—Phi Beta Kappa
 Susan Dennen—Phi Beta Kappa

Lehigh

Denise Dally—Dean's List
 Barb Davis—Dean's List
 Meg Ehrich—Dean's List
 Elizabeth Grasso—Dean's List
 Geri Marotta—Dean's List

McGill

Chapter—Province I Best Chapter
 Marie Gravelle—Betty Luker Haverfield Scholarship
 Lianne Potter—Rhodes Scholar
 Serina Raab—Sigma Chi Sweetheart

Memphis State

Chapter—Province VIII Community Service Award, Province VIII Best Rush Song, second place Sorority Intramurals, second place Phi Kappa Psi 500, second place Sigma Chi Derby Day, first place junior Panhellenic philanthropy drive, second place softball, first place bowling
 Leigh Bailey—Intramurals Allstar in volleyball, basketball and softball
 Cindy Biltz—Dean's List, Angel Flight, 3.0 Club, 3.5 Club, County Republican Convention representative, Inter-Greek Programming Board, Tennessee Inter-Collegiate State Legislature delegate, Student Honors Association, Rho Lambda
 Karen Bitner—Sigma Chi Derby Doll second runner-up
 Patty Brown—Pi Kappa Phi Sweetheart, Angel Flight, 3.0 Club, Rho Lambda, Student National Education Association, Who's Who
 Lori Cuthbertson—Alpha Lambda Delta, senator, Angel Flight
 Mary Clark—Intramurals Allstar in basketball, marching band, concert band, wind ensemble, pep band
 Kathy Floyd—Sigma Delta Chi, Phi Sigma Kappa Sweetheart
 Becky Ford—Rifle Corps, Sigma Chi Sweetheart, Angel Flight
 Kim Foutch—Intramural Allstar in softball
 Karen Gandee—Intramural Allstar in softball and volleyball

Jeannette Grand—Alpha Lambda Delta, Angel Flight
 Marian Goode—Concert band, marching band, pep band, Sigma Alpha Iota, first place racquetball singles, doubles and badminton doubles
 Janet Holt—Flag Corps, Rifle Corps, Student Council for Exceptional Children, feature twirler, 3.0 Club, Pi Kappa Phi Sweetheart, Intramural Allstar in softball
 Dana Hooks—Tennessee Inter-Collegiate State Legislature representative
 Micki Masters—Alpha Lambda Delta
 Melinda MacDonald—University orchestra, marching band, wind ensemble, concert band, pep band, Angel Flight, Sigma Alpha Iota, 3.0 Club, Public Relations Student Society of America, Metro Conference student representative, Ambassador Board, Sigma Delta Chi, IFC-Panhellenic AllSing co-chairman
 Laura May—Student Action Council
 Lisa Moore—3.0 Club, 4.0 Club, Kappa Delta Pi, Dean's List
 Diane Pugh—Orchestra, cello ensemble
 Sara Rogers—Concert choir, Chorus of Opera Memphis
 Lisa Rhoads—Alpha Lambda Delta vice president, Student Council for Exceptional Children, 3.0 Club, 3.5 Club, Student National Education Council, Dean's List, Mortar Board, Golden Key
 Mary Jo Ringhofer—Sigma Alpha Iota, Sigma Alpha Iota scholarship, Fine Arts Board, University Chorale, assistant director of "Cosi fan Tutti"
 Nancy Tyner—Tiger Twenty Club, Ambassador Club vice president, Panhellenic intramural director, Intramural Allstar in volleyball, basketball, softball, bowling, first place badminton doubles and racquetball doubles, second place badminton singles, third place table tennis doubles and handball singles, second place handball doubles, Outstanding Panhellenic Athlete of the Year, first runner-up Women's Superstar Competition, University Programs, Student Action Council, Intramural Manager of the Year, Rho Lambda

Michigan State

Chapter—Efficiency and most improved grade point average awards, third place in Greek Sing
 Lisa Cornelius—Greek Woman of the Year, Senior Class Council
 Barbara Hodas—Department of Communications Service Award, Homecoming Court, Mortar Board, Omicron Delta Kappa
 Rae Anne Mayer—Mortar Board, Alpha Zeta, Omicron Delta Kappa
 Diane Zdunczyk—Mortar Board, Phi Kappa Phi, Omicron Delta Kappa, Beta Gamma Sigma, Panhellenic Executive Council

Missouri

Jan Bien—AWS
 Edith Biesser—Tiger Mascot alternate
 Jill Brown—Who's Who, Pi Lambda Theta, Kappa Delta Pi
 Donna Cochran—Panhellenic president,

Alumni Association Student Board, Phi Sigma Iota, Relationship Development Task Force, Spanish Club
 Lynn Fallon—Ombudsman, rush guide, AWS
 Cindy Gates—University of Missouri Council Teachers of English
 Sally Harris—AWS
 Elaine Koelher—Cheerleader
 Debbie Kuhlman—Phi Upsilon
 Suzy LaTourette—Dean's List
 Julie Lechman—Mo-maids
 Kim Lovelace—Barnwarming Queen
 Jill Mabie—Phi Eta Sigma, Kappa Sigma Alpha, Curators Scholarship
 Karen Marple—Savitar finalist
 Sharie McLafferty—Phi Kappa Theta
 Michelle McPike—Occupational Therapy Association
 Leesa Medley—Phi Beta Lambda
 Belinda Mertz—American Society of Interior Designers
 Pat Perry—Phi Eta Sigma, University Scholar
 Laurie Rhein—Dean's List, Rollins Scholarship, Pi Lambda Theta
 Nell Roberts—KCOU radio producer
 Sue Ruhlman—Phi Chi Theta
 Susan Sherwood—Mo-maids
 Cathy Southerland—Phi Kappa Theta Sweetheart, Phi Psi Calendar Girl
 Pat Sweeney—Greek Week Steering Committee
 Diane Whitehead—Tiger Kitten, Psi Chi vice president, Diamond Darling
 Cindy Yarwood—Pi Alpha Alpha, university choir
 Lynn Zimmerman—Diamond Darling

Nevada

Tammy Abernathy—AWS
 Susan Ball—Spurs, Sagens, Omicron Delta Epsilon, Pi Sigma Kappa, intern for Assemblyman Coulter, intern for Senator Laxalt
 Leah Bengochea—Colonels Coeds, Alpha Phi Omega
 Laurie Chapman—Alpha Phi Omega
 Shawn Davis—Outstanding pledge
 Kimberly Durbin—Spurs, Sagens, student accounting society
 Tamara S. Durbin—Spurs president, Outstanding Spur of the Year, Spurs regional director, Sagens, Mackay Misses, Student National Education Association
 Elaine Guenaga—Rainbow
 Heidi Hand—Alpha Phi Omega
 Shannah McAleer—Sagens, Alpha Phi Omega president, Panhellenic president, Colonels Coeds, Dean Selection Committee, Greek Hearing Board
 Lynette Martinelli—Sagens, Mackay Misses, Alpha Phi Omega president, Spurs, Colonels Coeds president, Student National Education Association
 Kim Menely—Band, National Ski Patrol, Pi Delta Pi, Italian Club
 Tami Morgan—Colonels Coeds, Alpha Phi Omega, Amigos
 Kathryn Porter—Spurs treasurer, Dean's List
 Karen Rizzo—Sagens, Colonels Coeds, AWS

Honors

N. Arizona

Becky Denison—Phi Eta Sigma, Freshman Scholars
 Becky Hughes—Spurs president
 Jeanette Jackson—Sigma Alpha Eta
 Jana Kahle—Academic scholarship
 Susi Massell—Panhellenic executive officer, Sigma Nu Court of Honor
 Becky Meyer—Mortar Board
 Christie Nicolos—Kappa Delta Pi
 Leslie Northrup—Zip Club president
 Judy Seifert—Arcons, Panhellenic executive officer
 Marni Shonerd—Phi Kappa Phi, Junior Scholar
 Dorrie Stewart—Sophomore Scholar
 Shellie Swetish—Homecoming Queen

Northwestern

Chapter—Second place May Jamboree, third place Chi Omega Coed Volleyball Tournament
 Julie Calahan—Basketball team
 Karin Deam—Phi Eta Sigma
 Barb DiGulio—Alpha Lambda Delta, Phi Eta Sigma president, Putnam Math Competition
 Kathy Dirkes—Bio-Medical Engineering Society secretary, dorm secretary
 Winnie Freedman—Homecoming Queen
 Claudia Friederici—Badminton doubles champ
 Debbie Hill—Tau Beta Pi
 Val Ito—Dean's List
 Sandy Jankiewicz—Tau Beta Pi
 Anita Lotz—James Scholarship, Associate Alumnae Scholarship
 Jackie Meuse—Third place punt, pass and kick competition
 Mary Pelton—Basketball team
 Shames Shariatpanahi—NROTC Queen, Women's intramural ping pong champ
 Carole Shure—Intramural badminton singles and doubles champ
 Sujata Somani—Phi Eta Sigma vice president
 Sherry Weinstein—Muscular dystrophy dance marathon co-chairman
 Judy Zunamon—First chair oboe Symphonic Band
 Vicky Voss—Basketball team

Oklahoma

Chapter—First place Sigma Chi Derby day, first place Mom's Day decorations
 Debbie Adkins—Most active pledge, Benton Voice Scholarship, Oklahoma City Lyric Theater performer
 Natalie Almen—Big Sis-Little Sis Scholarship Award, Sooner Scandals, Dean's List
 Debbie Arbasak—Dean's List
 Jean Barnes—Dad's Day Executive Committee, Dean's List
 Susie Becker—Gamma Phi camp counselor, Sooner Scandals
 Kathy Binkley—Dean's List, accounting club, finance club
 Diane Bort—Sooner Scandals, Dean's List
 Lee Brock—Sooner Scandals act director, cast member of "Equus," member of Dollar Stock Theater Company, Dean's List

Jane Brooks—Sooner Scandals
 Alyssa Burns—Dean's List
 Karla Cleek—Sooner Scandals, Dean's List
 Chris Coddington—Phi Eta Sigma, Dean's List, Zoology Society, Pre-Med Professionals Club, Lottenville Prize finalist
 Roxanna Coker—Pledge Scholarship Award, Dean's List
 Loree Cline—Kappa Delta Pi, Dean's List, Big Sis-Little Sis Scholarship Award, Sooner Scandals
 Carrie Crumpler—Campus Chest, Phi Eta Sigma, Achievement Award Scholarship, Dean's List
 Caryn Cundith—Sooner Scandals, Rush Council
 Andrea Dickson—Scene design master for Sooner Scandals act
 Valerie Dix—Sooner Scandals
 Debbie Dixon—Sooner Scandals, Dean's List
 Cheryl Dooley—Miss Dance Oklahoma, Sooner Scandals
 Michelle Ethridge—Dean's List
 Lisa Fager—Omicron Nu, Dean's List, Student Dietetic Association vice president, Alice B. Sowers Scholarship
 Teresa Fager—Sooner Scandals Publicity Committee
 Jan Foster—Intramural football and softball
 Christy Fox—Dormitory Dad's Day Committee
 Cindy Fox—Sooner Scandals
 Ann Frere—Kappa Delta Pi, Dean's List
 Kathy Harris—House Dad's Day Chairman
 Jennifer Howard—Sooner Scandals, Dean's List
 Donna Jameson—Intramural softball
 Jill Johnson—Student Entertainers, University Sing tickets chairman, Sooner Scandals
 Janet Jones—Election Board vice chairman, Sooner Scandals, Dean's List
 Kimberly Jones—Cheerleader
 Debbie Kerr—Sigma Delta Chi, *Oklahoma Daily* staff
 Andrea Kidd—Panhellenic rush advisor, yearbook section editor
 Patty Koenig—Sooner Scandals
 Karen Knight—Phi Eta Sigma, Alpha Lambda Delta, Dean's List, tour guide
 Pattye Lamb—Mortar Board, Tassels, Alpha Sigma Phi Talisman Rose Queen, Dean's List
 Jenny Landers—Tour guide, Best All Around Pledge
 Pam Landers—Gamma Gamma, Letsiezer Selection Committee, campus traffic court judge, Panhellenic secretary, Dean's List
 Rozalind Leisinger—Dean's List
 Lisa Maher—Dean's List
 Pam Martin—Who's Who, Letsiezer Honor Roll, Dean's List, outstanding senior in the Collegiate of Education, Panhellenic outstanding scholar, Big Woman on Campus, Top Ten Greek Women, Outstanding Names and Faces in America
 Vickie McClain—Panhellenic rush advisor, Party Pic representative
 Diana McDaniel—Dean's List, National Dean's List, accounting club

Kathy McGinnis—Fellowship of Christian Athletes
 Cheryl Miller—Sooner Scandals, concert choir
 Beverly Milton—Sooner Scandals, Rush Council, OIPA convention lecturer
 Mitsi Moore—Panhellenic activities chairman, Sooner Scandals mistress of ceremonies, Student Entertainers director, University Sing director
 Jenny Partridge—campus traffic court judge
 Polly Payne—Dean's List, Engineering Queen finalist, Student Entertainers
 Kelly Pflieger—Sooner Scandals, pledge scrapbook award
 Gail Privett—Outstanding Greek Woman, Sooner Standout, Big Woman on Campus, University Sing mistress of ceremonies, Panhellenic president, Sigma Delta Chi
 Sue Saylor—Alpha Lambda Delta, Dad's Day Ticket Committee, Greek Week Executive Committee, Greek Sunday chairman, Mom's Day Ticket Committee, Dean's List
 Connie Shaver—Sooner Scandals skits chairman, Mom's Day chairman
 Debby Shaw—Pom pon girl, Sooner Scandals
 Nancy Sparks—Panhellenic scholarship, Eaton Journalism Scholarship, Sigma Delta Chi, Dean's List
 Susan Stone—Panhellenic social chairman, chairman for OU President Banowsky's reception
 Jill Thacker—Greek Week Executive Committee, Dorothy Truex Panhellenic Scholarship, Dean's List
 Gwen Thompson—Accounting club, Dean's List
 Tracie Tutt—Campus traffic court judge
 Any Upthegrove—Mom's Day executive staff, Panhellenic rush advisor
 Cheryl Vaught—Greek Awards Selection Committee, tour guide, Scandals Tickets Committee, Dean's List
 Laurie Vaught—President's Leadership Class, Model United Nations, Campus Elections chairman, Dean's List

Oklahoma State

Chapter—Province IX Most Improved chapter Award, First place Greek Week, first place muscular dystrophy dance marathon, fourth place Sigma Chi Derby Day, fourth place Spring Sing, third place Delta Chi Charity Bicycle Race, second place softball, second place bowling, second place Campus Chest
 Pattye Abel—Dean's Honor Roll, Regent's Distinguished Scholarship, Alpha Lambda Delta vice president, Angel Flight, Campus Chest Steering Committee
 Pat Adams—Dean's and President's Honor Rolls, Alpha Lambda Delta, Freshman Scholarship, Pledge Scholarship
 Monica Amis—Dean's Honor Roll, Kappa Delta Pi, Omicron Delta Kappa, Tau Beta Sigma, Ambassadors, marching band, Homecoming Steering Committee, music department scholarship, Rotary Founda-



Becky Boyd (Illinois)—Panhellenic president



Shellie Swetish (N. Arizona)—Homecoming Queen



Donna Cochran (Missouri)—Mortar Board



Kim Lovelace (Missouri)—Barnwarming Queen



Deborah Atkins (Washington St.)—Tau Kappa Epsilon Waterfollies Queen



Frank Perugini and Teresa Kirkeeng (Wisc.-Platteville)—Homecoming couple first runner-up



Cheri Cohen (Missouri)—Pi Lambda Theta, Kappa Delta Pi



Patty Warchol (Bradley)—Homecoming Queen

tion Scholarship, Gamma Gamma, Chi Delphia
 Vicki Babcock—Big-Little Scholarship Award, B. G. John Scholarship, Greek All-Star Basketball Team
 Janet Balkenbush—Med Tech Society, Army ROTC scholarship
 Cheryl Bays—Dean's Honor Roll, Kappa Delta Pi
 Laura Bentley—Education Student Council, Kappa Delta Pi, Dean's Honor Roll
 Leasa Bodkin—Pledge Scholarship, Dean's Honor Roll, Diamond Dolls alternate
 Tracy Brown—Chi Delphia
 Marrene Burton—Alpha Lambda Delta, Army Blades, Dean's Honor Roll, Orange and Black Quill, education honorary
 Karin Clark—Alpha Lambda Delta, Dean's Honor Roll
 Vicki Cline—Dean's Honor Roll, Angel Flight finance officer, Miss Haliburton finalist, Delta Sigma Pi Rose Queen, tour guide
 Mindy Copley—President's and Dean's Honor Rolls
 Nancy Dew—Candace Loving Scholarship
 Pat Dodd—Army Blades, Dean's Honor Roll
 Jeni Ellis—Dean's Honor Roll
 Jan Farris—Dean's Honor Roll, university scholarship, Med Tech Society, first place Greek badminton
 Sue Faulconer—Dean's Honor Roll, Good Time Girls
 Conner Fergus—Dean's Honor Roll, Miss Campus chest finalist, Fashion Board
 Carol Fitzgerald—Greek All-Star Team
 Cindy Green—University scholarship
 Stephanie Grimes—Dean's Honor Roll, Alpha Lambda Delta, Diamond Dolls alternate

Tracie Hamilton—Dean's Honor Roll, Good Time Girls, Student Union Activities Board
 Patricia Hebard—Dean's Honor Roll
 Pam Hendershott—Dean's Honor Roll, Homecoming Steering Committee, Spring Sing Steering Committee, Outstanding Big Sister Award, Alpha Phi Omega pledge advisor
 Cindy Hess—Yearbook editor
 J'Ceal Hodges—Orange and Black Quill, Army Blades, Dean's Honor Roll, Business Student Council
 Ellen Hunt—Dean's Honor Roll, Pleiades treasurer
 Mary Bea Jackson—Dean's Honor Roll, Big-Little Scholarship, Alpha Lambda Delta
 Kelly James—Dean's and President's Honor Rolls, first place intramural track, Who's Who, Education Student Council treasurer, Angel Flight, Top Ten in Education, Kappa Delta Pi, Omicron Delta Kappa
 Becky Kelsey—Alpha Lambda Delta, Dean's Honor Roll
 Sharlyn Kennon—Dean's Honor Roll
 Sharon Kohler—Dean's Honor Roll
 Jan Kuntz—Army Blades, Dean's Honor Roll
 Lori Kuntz—Beta Alpha Psi, Army Blades treasurer, Dean's Honor Roll, Lew Wentz Scholarship
 Leasa Lang—Dean's Honor Roll
 Kellie Leach—Dean's Honor Roll, All-Star Bowling Team
 Teresa Lee—President's Council, Homecoming Parade Committee, Campus Chest co-chairman, Dean's Honor Roll, dance marathon committee, Spring Sing co-director

June Lewis—Fashion Board, Diamond Dolls, Dean's Honor Roll, Orange and Black Quill, Omicron Nu
 Lisa Lewis—Miss Elk City, Dean's Honor Roll, Alpha Lambda Delta
 Teresa Long—Dean's Honor Roll
 Diane Long—Dean's Honor Roll
 Teri Love—Alpha Lambda Delta, Army Blades, Dean's Honor Roll
 Vicki Loyd—Dean's Honor Roll
 Lisa Maeder—Angel Flight, Alpha Lambda Delta, President's and Dean's Honor Rolls, sophomore scholarship, Orange and Black Quill
 Kem Maher—Dean's Honor Roll, Alpha Lambda Delta
 Kerri McQueen—Dean's Honor Roll
 Cheryl Melton—Band Queen, Orange and Black Quill, Dean's Honor Roll, Spring Sing Steering Committee, Campus Chest Steering Committee, Fall Rush Book Committee, sophomore scholarship, Alpha Phi Omega rush chairman
 Martha Menzel—Dean's Honor Roll, Business Student Council
 Sue Messler—Dean's Honor Roll, Elliot Girls of Oxford
 Shannon Nicoli—Acacia Calendar Girl
 Vicki Parker—Dean's Honor Roll, Spring Sing Steering Committee
 Vicki Parks—Good Time Girls
 Laurie Penn—Dean's Honor Roll
 Terri Pulliam—Dean's Honor Roll
 Laura Radke—G. R. Fox Honorary, Alpha Lambda Delta, Dean's Honor Roll, home economics scholarship
 Patti Riechers—Candace Loving Scholarship
 Jean Ann Robertson—Alpha Lambda Delta, Dean's Honor Roll

Honors



Sue Konrad, director of student activities presents the Greek of the Year Award to Diana Eros (S. Tech) and Lee Thomas.



Crystal Block (Wisc.-Platteville)—Sno-Din co-chairman

Kathy Roush—Dean's Honor Roll
 Julie Scholz—Dean's Honor Roll, Army Blades, dance marathon committee
 Jody Seay—Dean's Honor Roll
 Julie Shafer—President's Council, Ambassadors, Dean's Honor Roll
 Penny Shafer—Hanging Chief Scholarship
 Angela Shinn—Education Student Council, Dean's Honor Roll
 Ginger Shumaker—Dean's Honor Roll
 Becky Simon—Greek Week Steering Committee, Panhellenic secretary, Women's Leadership Seminar
 Dierdre Smitherman—Dean's Honor Roll
 Cindy Stark—Dean's Honor Roll
 Jenny Stark—Dean's Honor Roll, Sigma Tau Delta
 Suzanne Sumpter—Dean's Honor Roll, music scholarship, Sigma Alpha Iota scholarship, Sigma Alpha Iota secretary
 Janine Teague—Dean's Honor Roll
 Stacy Terrell—Dean's Honor Roll, Angel Flight
 Nancy Thompson—Tau Beta Sigma, Dean's Honor Roll, concert and marching bands
 Sherri Troub—Dean's Honor Roll, Angel Flight, Campus Chest Committee, Women's Leadership Seminar, Alpha Lambda Delta, Orange and Black Quill
 Erin Wade—Good Time Girls, Dean's Honor Roll
 Susan Wade—Dean's Honor Roll
 Vicki Weaver—Engineering Student Council, Engineering Queen



Jill Wood (Illinois)—Alpha Delta Phi Sweetheart and Jill Campbell (Illinois)—Sigma Pi Sweetheart



Susan Dennen and Elizabeth Chenault (Kentucky)—Phi Beta Kappa

cil, Engineering Queen
 Ann Weir—Alpha Lambda Delta president, outstanding pledge, pledge scholarship, Phi Kappa Alpha scholarship, Spring Sing Steering Committee, Angel Flight, Women's Leadership Seminar, Dean's and President's Honor Rolls
 Terri Weir—Orange and Black Quill, Dean's and President's Honor Roll, Big-Little Scholarship Award, Sun Company Scholarship
 Donese Whitaker—Alpha Lambda Delta, Dean's and President's Honor Rolls, Beta Alpha Psi
 Diane Wittrock—Miss OSU finalist, Dean's Honor Roll
 Melanie Wood—Chi Delphia

Puget Sound

Muff Eising—Winterim in London Study Group
 Karen Elzey—Basketball team
 Tesa Erstad—Ski team, outstanding pledge
 Evelyn Farmin—Kappa Sigma Stardust Queen
 Amy Ford—Japan Study Group
 Laurie Funkhouser—Trustees Scholarship
 Valerie Gigandet—Diving team, qualifier for national diving meet
 Barb Headden—Outstanding senior
 Marcy Jacobson—Trustee Scholarship
 Liza Jorgenson—Miss Pierce County runner-up, Big Sis-Little Sis Scholarship
 Sherrill Kelso—Trustees Scholarship, Alpha Psi Omega, Rotary Club scholarship
 Evelyne Lloyd—Sigma Chi Court, Trustees Scholarship, Honors Program

Pat McNallan—Trustees Scholarship, Big Sis-Little Sis Scholarship
 Jeanne Panchot—Kappa Sigma Stardust Queen
 Debbie Paul—Sigma Chi Court
 Jaj Peterson—Pacific Rim Study Group
 Nancy Pittenger—Trustees Scholarship, pledge scholarship
 Patty Quedado—Spurs
 Caroline Sias—London Study Group, Language House Program
 Jeannine Sieler—Publicity Office and Information Booth manager
 Lori Sprinkle—Sailing Club

Texas

Chapter—Second Place Sigma Chi Derby Day, third place Round-Up Parade
 Susan Bell—Dorm advisor, Dean's List
 Julie Benson—Dean's List, Alpha Lambda Delta
 Kathleen Benz—Dean's List
 Tricia Berry—Posse
 Linda Buchanan—Alpha Lambda Delta
 Dianne Bullock—Dorm advisor
 Susan Clark—Alpha Lambda Delta, Spook officer
 Leslie Crane—Angel Flight pledge advisor
 Kathy Creviston—Spooks
 Chris Dahl—Sigma Delta Chi, UT News and Information Services intern
 Ellen Dalehite—Natural Sciences Club
 Julie Davis—Phi Chi Theta
 Amy Dempsey—Posse, Alpha Epsilon Delta, Beta Beta Beta, Orange Jackets
 Laurie Dolce—Cactus staff
 Suzanne Fazende—Phi Beta Chi
 Judy Focht—Kappa Pi, Student Art Show
 Heidi Galit—Mortar Board, Psi Chi, Dean's List
 Vickie Gaudin—Social Behavioral Council, University Fine Arts Committee, Kappa Delta Pi
 Mary Gerke—Alpha Lambda Delta
 Shirley Golden—Cordettes
 Stephanie Goldfield—Texas State Teachers Association
 JoAnne Griffith—University Republicans
 Linda Griffith—Angel Flight, Posse
 Marci Harrell—Student Activities Committee, Sigma Phi Chi
 Lynne Hersho—Posse
 Dianne Holden—Sigma Delta Chi
 Brenda Hruzek—Dorm advisor
 Lou Hyatt—Society of Women Engineers
 Kim Jackson—Dean's List, Pre-Law Association, Psi Chi
 Lisa Kubosh—Phi Chi Theta
 Marcie Major—Panhellenic Outstanding Sorority Woman, Phi Beta Chi, Community Business Advisory Service
 Laura Manning—Daily Texan intern, Daily Texan staff, Advertising Club
 Kelli McAninch—Round-Up chairman
 Laura McCarty—Dorm advisor
 Audrey McNamara—Tau Beta Sigma
 Shelly McTee—Posse
 Diana Naylor—Alpha Lambda Delta, Society of Women Engineers, Alpha Chi Epsilon, Tau Beta Phi, Orange Jackets, Omicron Chi Epsilon, American Institute of Chemical Engineers

Cindy Parham—Sigma Delta Chi
 Hilary Palmer—Phi Beta Chi
 Carolyn Russell—Dorm advisor, Spooks
 Tammy Smith—Posse
 Wendi Smith—Phi Beta Chi
 Amy Spicer—Alpha Lambda Delta, dorm
 advisor, Round-Up Queen finalist
 Gretchen Steig—Student Landman's Asso-
 ciation
 Suzanne Stovall—Alpha Lambda Delta
 Susan Stubblefield—Dorm Floor Council
 Kim Tolar—Angel Flight, Alpha Lambda
 Delta
 Dawna Williams—Alpha Lambda Delta,
 Dean's List
 Kandy VanDyke—Advertising Club, Wom-
 en in Communications

Texas Tech

Chapter—Second place Homecoming float,
 second place Phi Delta Theta Stampede,
 group with highest percentage of partici-
 pation in a blood drive
 Jana Allison—Rho Lambda, Social Welfare
 Club, Interchange volunteer, Big Sister
 Helen Angelo—Phi Gamma Nu, College
 Life
 Shery Armstrong—Dorm Legislature
 Suzan Beaty—Alpha Lambda Delta, Delta
 Phi Alpha
 Karen Blakely—Fashion Board, Sailing
 Club
 Missy Bolt—American Society of Interior
 Designers, Raider Recruiters, Rho
 Lambda
 Julie Bomberger—Gymnastics Club
 Becky Brizzolara—Dorm government,
 Fashion Board
 Sandra Brow—Student Dietetic Associa-
 tion, Phi Upsilon Omicron, Margaret W.
 Weeks Scholarship
 Diana Brown—Omicron Delta Kappa,
 Junior Council, Beta Alpha Psi, Rho
 Lambda, Tech Accounting Society, Mor-
 tar Board
 Karen Brown—Fashion Board, Raider Re-
 cruiter, Phi Eta Sigma, Alpha Lambda
 Delta
 Nancy Burrow—Fashion Board, Student
 Foundation
 Julie Busbee—Arts and Sciences Council,
 Angel Flight
 Cathy Campbell—Home Economics Coun-
 cil, Phi Upsilon Omicron
 Lydia Campbell—Alpha Lambda Delta,
 Who's Who
 Lisa Carlton—Dorm Legislature, Fashion
 Board, Texas State Guard
 Janie Carter—Junior Council, Phi Upsilon
 Omicron, Housing and Interior Design,
 National Dean's List
 Debby Catlett—Beta Alpha Psi, Tech Ac-
 counting Society, Beta Gamma Sigma,
 Advisory and Protest Board, Phi Kappa
 Phi
 Kathy Cook—100 Mile Club, Arnold Air
 Society, Silver Wings Society
 Chris Cornelius—Silver Wing Society
 Angela Eppler—Society of Women Engi-
 neers
 Jill Erwin—Dorm Legislature
 Pam Fenley—Fashion Board, Phi Upsilon
 Omicron

Deanna Finck—Association of Childhood
 Education, Collegiate 4-H
 Renee Flournoy—Dorm Legislature
 Laura Folmar—Fashion Board, Dorm Resi-
 dence Standards Board
 Lindy Fruge—Fashion Board, Phi Upsilon
 Omicron
 Tina Griffith—Fashion Board, Freshman
 Council
 Yolie Hagerty—American Home Econom-
 ics Association
 Debbie Hall—Recreation Leisure Society,
 Park and Recreation Club, Texas Recrea-
 tion and Parks Society
 Elizabeth Hicks—Phi Gamma Nu
 Copie Hotman—Recreation and Leisure
 Society, Phi Epsilon Kappa
 Vickie Hudspeth—Phi Gamma Nu
 Victoria Igou—Fashion Board
 Becky Johnson—Sigma Tau Delta, National
 Teachers of English, Student Life Project
 Assistant
 Brenda Johnson—American Home Eco-
 nomics Association
 Heidi Kressin—Dorm Legislature
 Laura LaPlante—Beta Gamma Sigma, Al-
 pha Lambda Delta, Phi Kappa Phi, Na-
 tional Dean's List
 Karen Mann—Pre-Med Society, Junior
 Council
 Donna Martin—American Home Econom-
 ics Association
 Karen Matson—Phi Gamma Nu, Rho
 Lambda
 Becky McAlpine—Fashion Board, Phi
 Upsilon Omicron
 Terri McMurry—Alpha Lambda Delta
 Wendy Motlong—Alpha Lambda Delta,
 Omicron Delta Kappa, Angel Flight,
 Silver Wings, Sabre Drill Team, Junior
 Council, Rho Lambda, Mortar Board,
 Stephen F. Douglas Award
 Linda Myers—Sigma Delta Chi, Women in
 Communication
 Elizabeth Nivens—Rainbow Girls, Eastern
 Star, church choir
 Tammy Owen—Dorm treasurer, Pre-Law
 Society
 Shari Posey—Tau Beta Sigma, American
 Home Economics Association, marching
 band
 Mary Quade—Honors Program represen-
 tative
 Cindy Reed—Alpha Epsilon Rho, Kappa
 Tau Alpha
 Lisa Renfrow—Volunteer reader for blind
 Peggy Renfrow—Alpha Lambda Delta, Pre-
 Pharmacy Club, Who's Who, Phi Kappa
 Phi
 Nancy Scheuerman—Society of Women
 Engineers
 Cindy Scott—Education Student Council
 Suzy Speck—Pre-Pharmacy Club
 Carolanne Stephens—Tri-Hi-Y advisor,
 Classroom Teachers of Lubbock Schol-
 arship
 Ronda Stewart—University Singers, Na-
 tional Dean's List
 Suzanne Swift—Campus Crusade for
 Christ
 Becky Taube—Mortar Board, Tau Beta Pi, Eta
 Kappa Nu, Society of Women Engineers,
 marching band, Tau Beta Sigma, Rho
 Lambda, Alpha Lambda Delta, Phi Kap-

pa Phi, Who's Who
 Tammy Tucker—American Home Econom-
 ics Association
 Louann Walton—American Home Eco-
 nomics Association
 Janice Wickstrom—Dorm Legislature,
 dorm president
 Diana Wilson—American Society of
 Microbiologists

Texas Wesleyan

Carol Abel—Phi Beta Lambda, Gamma Sig-
 ma Sigma alumnae secretary, Who's
 Who, Dean's List
 Beth Biddinger—Dean's List, Phi Beta
 Lambda
 Susan Brockett—Sigma Tau Delta secretary,
 Quadrangle president, Student Govern-
 ment Association, Who's Who
 Peggy Bryan—Most outstanding pledge
 Lisa Cagigal—Lambda Chi Alpha Crescent
 president, Phi Beta Lambda reporter,
 College Appeals Board
 Anne Dobesh—Phi Beta Lambda
 Kayla Hayes—Dean's List
 Paula Jean—Phi Beta Lambda
 Mary Johnson—Financial Aid Committee
 Cindy Lee—Most improved grade point av-
 erage scholarship
 Donna Linton—Choros and dancer in "Call
 Me Madam"
 Sally McGary—Dean's List, Student Na-
 tional Education Association, Alpha Chi
 treasurer, Quadrangle vice president,
 Student Organizations Board vice chair-
 man, Honors Colloquim, Miss TWC run-
 ner-up
 Cindy Merk—Pi Kappa Alpha Dream Girl,
 Student Government Association
 Leslie Norris—Phi Beta Lambda, chorus
 and dancer in "Call Me Madam"
 Karen Raines—Recruiting Committee,
 most outstanding pledge
 Laurie Shoop—Senior Gift Committee,
 Golden Shears, Student Government As-
 sociation secretary, Student Organiza-
 tions Board secretary, Homecoming
 Queen runner-up, Dean's List, Chapter
 Scholarship Award, Lambda Chi Alpha
 Sweetheart
 Sonia Torres—Cheerleader, Student Affairs
 Committee secretary, Homecoming
 Queen, Lambda Chi Alpha Sweetheart
 Phyliss White—Dean's List
 Joy Whitt—Yearbook co-editor, Publica-
 tions Committee secretary, Dorm Coun-
 cil, O. O. McIntyre Press Club
 Andrea Wood—Dean's List
 Denisa York—Dean's List

UCLA

Melane Ali—first place Cal. St.-Long Beach
 Nursing School admissions tests
 Nancy Archibald—Alpha Lambda Delta
 Roberta Burnett—yearbook photographer
 Kathy Cudahy—UCLA Prison Coalition
 tutor
 Laura Dean—Elementary school teaching
 assistant
 Dalila DeLeon—Regents Scholar
 Louise Dixon—Panhellenic scholarship,
 Student Alumni Association

Honors

Carol Hesse—Panhellenic secretary, *Daily Bruin* business sales manager
 Katie Jackson—*Daily Bruin* advertising staff, National Student Lobby intern
 Carrie McLaughlin—UCLA Medical Center volunteer
 Mary Anne Ostrom—*Daily Bruin* assistant sports editor, Panhellenic rush counselor
 Vikki Perez—Special education volunteer
 Kerry Robinson—Special education volunteer
 Jennifer Sanders—Regents Scholar
 Cathy Sernett—Special education volunteer
 Cris Shroeder—Organization of American States intern
 Michelle Simon—Student Legislative Council Election Board, Alumni Scholarship Club

Vanderbilt

Chapter—Province VII Magazine Award, Province VIII Most Improved Scholarship Award
 Sheree Lynne Carroll—Eta Sigma Phi
 Sue Ellen Abney—Phi Eta Sigma, Alpha Lambda Delta, Lotus Eaters
 Cindy Hendrix—Phi Eta Sigma, Alpha Lambda Delta
 Marye Pellettieri—Phi Eta Sigma
 Karen Smith—Phi Eta Sigma, Alpha Lambda Delta
 Beth Hetzler—Omicron Delta Kappa
 Martha McClaugherty—Mortar Board, Phi Beta Kappa
 Peggy Linn—Tau Beta Phi
 Debbie Sanderson—Navy Queen, Blue Angels

Washington State

Chapter—First place Sigma Alpha Epsilon Olympics, tied for first place Lambda Chi Alpha Watermelon Bust, first place intramural soccer, second place intramural football
 Ranel Anderson—President's Honor Roll, Omicron Nu
 Debra Atkins—Tau Kappa Epsilon Waterfollies Queen
 Mary Basta—Orchosis secretary treasurer
 Betty Bement—Gymnastics team
 Tina Biss—Outstanding senior, Omicron Nu, Mortar Board, President's Honor Roll, Crescent Girl
 Lisa Bliss—Sigma Iota vice president
 Stacy Boswell—Phi Eta Sigma
 Tanya Cavallini—Pi Kappa Alpha Dream Girl finalist
 Erin Cowan—Greek Week Committee, President's Honor Roll
 Barb Dahl—President's Honor Roll
 Laura Doman—Phi Kappa Tau Princess finalist
 Debbie Gates—Marketing Club treasurer, Crescent Girl
 Jane Goodman—Panhellenic secretary, Western Region Panhellenic Conference vice president, National Order of Omega
 Patrice Hardy—President's Honor Roll
 JoAnn Harrington—Accounting Club
 Kelly Hinkson—President's Honor Roll
 Ruth Holland—Phi Eta Sigma, Alpha Lambda Delta, President's Honor Roll, Spurs

Jeanna Holtz—Crescent girl
 Sherrill Lambruschini—Farmers Daughter finalist
 Judy Jacobs—Greek Week Committee
 Amy Jacobson—Greek Week Committee co-chairman, Spurs, Member of the Year, Crescent Girl, Panhellenic Public Relations Committee
 Julie Jacobson—President's Honor Roll, Mortar Board
 Sue MacWhirter—Sigma Chi Sweetheart
 Patti Madsen—Greek Week Committee
 Sue McClean—Phi Eta Sigma
 Heather Nakamura—Crimson Rally Squad, cheerleader
 Bonnie Parker—Coug Gal, Lambda Chi Crescent Girl finalist
 Cindy Petersen—Pledge of the Year, Rho Nu
 Barb Phipps—President's Honor Roll
 Ginny Scalzo—Homecoming Committee, Panhellenic Philanthropy Committee chairman
 Leslie Walker—Pullman girls track assistant coach
 Debbie Wooten—Pullman girls track assistant coach, Coug Gal

West Virginia

Chapter—Province II Scholarship Award
 Ellen Bumoskey—Tennis team
 Joyce Diacopoulos—Dean's List, founder of Hellanic Club
 Judi Dunmire—Dean's List, Student Nurses Association, School of Nursing student body president
 Sharon Hartley—Dean's List, Pi Sigma Alpha
 Ann Havay—Dean's List
 Flora Holland—Dean's List, Mountaineer Week Committee
 Sue Jaster—Rank leader marching band, soloist wind ensemble, oboe recital
 Kathy Johnston—Fine Arts Committee
 Felicia Koch—Dean's List
 Nancy McNary—Dean's List
 Joy Messenger—In Touch and Concern
 Nancy Mutz—Yearbook staff, marching band
 Cathy Patriarca—Dean's List, Litoonawa
 Joan Patriarca—Dean's List, Litoonawa
 Rina Patriarca—Dean's List, Mu Tau
 Debbie Raines—Dean's List, Mu Tau president
 March Rosser, Dean's List, Panhellenic secretary, Kappa Delta Pi
 Ilene Shapiro—Dean's List
 Annie Spinner—National Student Speech and Hearing Association
 Belinda Ward—Dean's List, American Marketing Association, Theta Chi Sweetheart
 Teresa Westfall—Dean's List

William and Mary

Chapter—McCormack Medallion, first place Spirit Sign competition, third place Homecoming float competition, first place Sigma Chi Derby Day, first place WRA Intramurals
 Tracy Leinbach—Virginia Women's State Golf Champion

Wisc.-Platteville

Chapter—Second place Homecoming competition
 Teresa Kirkeeng—College of Engineering Geode Gem
 Crystal Block—Co-chairman of Sno-Din

Wittenberg

Chapter—Province III Scholarship Award, first place Homecoming float competition, first place intramural volleyball
 Debra Agnello—Dean's List
 Deb Ament—Dean's List
 Nicki Baker—Jr. Panhellenic president
 Lori Balliett—Alpha Lambda Delta, Dean's List
 Jenna Bergren—Choir, symphonic band
 Sally Boogher—Dean's List, Residence Hall Council vice president, Union Board
 Laura Cashy—Dean's List
 Maria Cashy—Dean's List
 Robin DeRolf—Alpha Lambda Delta, Dean's List
 Jay Egerton—Spanish Club president
 Alicia Einsel—Dean's List
 Kris Eldard—Dean's List
 Sue Figley—Dean's List, Kappa Delta Epsilon, Student Advisory Board, Panhellenic scholarship, Student Advisory board scholarship, Alpha Lambda Delta
 Mary Ann George—Dean's List
 Kathy Hannegan—Dean's List
 Sue Henry—Dean's List
 Beth Hessinger—Choir
 Sue Joslin—Alpha Lambda Delta, Dean's List, Tau Pi Phi, Accounting Association programming chairman
 Nancy Kirlin—Alpha Lambda Delta, Dean's List, choir
 Barbara Lauterbach—Dean's List
 Janet Leedale—Dean's List, swim team co-captain
 Sherrill Lowe—Alpha Lambda Delta, Dean's List
 Sandi Mason—Dean's List, Residence Hall Council treasurer
 Holly Mathess—Dean's List
 Judy Metzger—Dean's List
 Pam Montgomery—Alpha Lambda Delta, Dean's List
 Lorna Naegle—Dean's List
 Sharon Oldknow—Dean's List, Residence Hall Council president
 Joanne Owen—Dean's List, Kappa Delta Epsilon, Alpha Lambda Delta
 Linda Petersen—Dean's List, Union Board
 Janet Pierce—Dean's List, Accounting Association president and organizer
 Lisa Pilati—Alpha Lambda Delta, Dean's List
 Nancy Schwarz—Dean's List
 Kathy Shaver—Dean's List
 Kathryn Smith—Dean's List
 Sharon Smith—Dean's List, Greek Council
 Sheryl Switzer—Dean's List, Union Board
 Sandy Van Auker—Alpha Lambda Delta, Omicron Delta Kappa, Dean's List, Tau Pi Phi, Panhellenic Council rush director
 Phyllis Vickery—Bach Chorale, American Institute of Biological Studies
 Jill Withers—Gamma Tau Epsilon
 Becky Wright—Dean's List, Alpha Lambda Delta tutoring chairman

Career Corner

Sister from Georgia Is on Pollution Watch

It all reads a little bit like a fairy tale.

But, unlike the ladies created by the Brothers Grimm, this heroine didn't rely on a fairy godmother or a magic wand to transform her from a Georgia housewife into one of the top ranking women in the Carter administration.

It was, instead, her own determination and perseverance that can be credited with that magical metamorphosis.

The lady in our story is Barbara Davis Blum (Florida State) and the glittering castle at the end of her rainbow is the U.S. Environmental Protection Agency, where she fills the job of Deputy Administrator.

A presidential appointee, Barbara has held her Washington post for just over two years now, a breath taking leap from the place she was just eight years ago—an Atlanta mother of four with no experience in the areas of conservation or government.

The igniting spark for her heated battle against pollution can be traced back to one heart-tugging comment made years ago by one of her then-small children.

"Mommy," he said, "I don't think I have to think too much about the future because with the air being as bad as it is, and the problems we have with water, I may not grow up."

That innocent statement, coupled with the discovery that a natural wooded area and river behind her home were about to be defiled by a sewer line, spurred her into action—action that led through a number of grassroots conservation groups, a good deal of environmental lobbying and, finally, the passage of Georgia's first land use

planning bill, which placed strict zoning regulations on the area in question.

In the course of her crusade, Barbara attracted the attention and support of Georgia Gov. Jimmy Carter. She later worked on his presidential campaign, and, just two months after his inauguration, followed him to Washington to continue her battle against pollution.

As Deputy Administrator for EPA, she shares authority for the agency's duties in air and water pollution control and heads up work in the areas of urban environmental policy, internal management and regulatory reform.

Barbara is adamant about the fact that she would like to see more women assume active roles in government, and she has already done a good deal of work toward that end. She was one of the leaders of President Carter's transition team seeking candidates for positions in the new administration, and she believes that the turning point for women seeking policy-making jobs is just around the corner.

"By the beginning of the 21st century, the controversy over the role of women will have ended," she says. "The Equal Rights Amendment will have passed, there will be as many women as men in policy positions in government and private industry, and women will have their own networks."

During the Ford-Carter transition period, Barbara was instrumental in the implementation of a Washington Women's Network, a sophisticated grapevine that gathers resumes and compiles a



Barbara Davis Blum
(Florida St.)

women's talent bank so "nobody can say there aren't any women to recommend."

The recipient of a handful of awards for her efforts in both conservation and the women's movement, Barbara was most recently honored with the Federally Employed Women's Distinguished Service Award for "dedication and achievements in promoting women for roles of leadership in government."

Said a FEW spokesman in presenting the award: "As Deputy Administrator of EPA, Barbara Blum gives feminism a visibility unmatched in the federal family."

As visible and influential as she might be during her weeks in the nation's capital, though, Barbara is still, after all, that same Georgia housewife she was eight years ago.

And so, every Friday afternoon, after clearing away the last of paperwork, she returns to Atlanta for the weekend, to her husband and four children, and to the happily every after that every fairy tale needs.

Judy Haverfield Beaupre

Sisters Speak

Dear Sisters,

I am now a walking advocate of our TranSISter program. I was moving out to Denver for two months time and before doing so, I contacted TranSISter Pat Pinney. You would have thought I was a long lost friend. Without ever previously knowing me, she invited me to stay at her home with her husband, Earl and daughter, Gay. Pat offered assistance in every area of my possible relocation to Denver: real estate Gamma Phis, job opportunities from friends, use of her spare family car, taking me to and from the airport, tips on the city, involvement in the activities of an extremely strong alumnae chapter, ski trips and room in her house until I settled in the Theta Chapter house. Pat also set up my stay there with the house corporation president.

I am truly indebted to the Pinneys, and now know the maximum benefit TranSISter brings to any Gamma Phi. If an opening occurs in the company I am interested in in Denver and I return to the city, nothing could keep me from getting involved in the Denver alumnae chapter.

Another "feather in the hat" goes out to the collegians at the University of Denver. I was able to live with the sisters for more than a month while I interviewed various businesses in the city. I was treated like a true sister, involved in all of their activities and kept up to date

on campus and sorority news. I was also given total respect for the time they knew I had to spend on business matters, even if it meant sharing a newspaper or making coffee on some of those 6 a.m. mornings.

I enjoyed myself immensely, got my work done and Gamma Phi couldn't ask for a more terrific bunch of women.

Learning now of ΠKE,
Elaine M. Enick (Purdue)

Dear Sisters,

The day after I gave birth to my first child I asked her pediatrician to tell me how to be a mother. I was serious. Believe me, your pledge director has felt similar serious trepidation, especially if her predecessor was an officer who did not keep notes, who proved unimaginative, or with whom she disagreed on approach. Guiding any aspect of another human being's life, be it as a mother or pledge director, requires energy, commitment and self-understanding.

Take a good look at your chapter's pledge director. She is the manager of your chapter's future. To a pledge, the pledge director is the first bond to the Sorority. She facilitates understanding of the opportunities of Gamma Phi Beta and creates an atmosphere of acceptance and warmth. A pledge director with eager, participating pledges will create strong, active

members who then become contributing alumnae. However, all of that management with its inherent significance for the future can be an awesome responsibility.

Establishing that initial bond with warmth—the pledge director to the pledge—necessitates openness: a willingness to share and disclose. It takes vast amounts of energy to remain honest when it might be easier to shut down lines of communication and become the tyrant. Your chapter's pledge director will be expending a great deal of emotional as well as physical energy the first weeks with the new pledges. She may not actively seek your opinion of her as an officer, but she would doubtless enjoy knowing if you see her doing things well. Tell her! Perhaps in the course of her self-development, the pledge director may ask for your criticism. Tell her that, too—gently! None of us can become the best of what we are without feedback.

Just as giving birth does not automatically supply a woman with parenting skills, being elected pledge director does not automatically ensure "people" or leadership skills. Your pledge director needs to understand herself in order to perceive and meet the needs of the pledges. She needs your help in doing that.

Kitty Curtis Sendroy
(Vanderbilt and Ohio St.)
ACVP-Pledges

Happy Birthday

Alpha—Syracuse
105 years
Xi—Idaho
70 years
Rho—Iowa
65 years
Alpha Alpha—Toronto
60 years
Alpha Beta—N. Dakota
60 years
Alpha Xi—SMU
50 years

Alpha Omicron—N. Dakota St.
50 years
Alpha Pi—W. Virginia
50 years
Beta Iota—Idaho St.
30 years
Beta Kappa—Arizona St.
30 years
Beta Lambda—San Diego St.
30 years
Beta Mu—Florida St.
30 years

Beta Sigma—Washington St.
25 years
Gamma Gamma—Wisc.-Milwaukee
20 years
Gamma Nu—Lamar
15 years
Delta Beta—Boise St.
10 years
Delta Theta—Cal. St. Poly
5 years
Delta Iota—Purdue
5 years

Pacesetters

San Diego Credits Sister for Restoration

It's never too late to start on a worthwhile project.

That's the philosophy of one of the West's most dynamic civic leaders, petite Beatrice Barker Evenson (Oregon), native of Oregon and adopted daughter of California.

San Diego, which calls itself "California's Finest City," gives much credit for its title to Bea, who has been instrumental in the city's beautification and the preservation of its Spanish-American heritage. Her remarkable civic achievements, all of which she accomplished in her late sixties, include creating a waterfront park and restoring the original beauty of the vast Balboa Park.

The two projects have involved city and federal governments, millions of dollars, a successful bond issue and the enlistment of cultural and civic groups. Now in her seventies, Bea has seen both tasks successfully accomplished and has turned her attention to further preserving San Diego's deep-rooted Latin heritage.

In 1965 she dove headlong into San Diego civic affairs by persuading the local Port Authority to develop a park on the only open stretch of land remaining on the city's scenic waterfront.

Christened "Spanish Landing," in honor of its heritage, the family park was dedicated in 1968. For this and other achievements, Bea was given the first Cabrillo Award of Excellence for "distinguished spirit of leadership on the land."

With the waterfront beautification and maintenance assured, Bea turned to the more ambitious proj-

ect of preserving the deteriorating Spanish-Colonial architecture of the Balboa Park buildings, originally built for the 1915-16 Panama Pacific Exposition celebrating the opening of the Panama Canal.

To do so, she founded the Committee of 100 for the Preservation of Spanish Colonial Architecture in Balboa Park. The Committee of 100 now has 1300 members.

The project's first phase, which involved rebuilding the largest and most elaborate building of the 1915 Exposition, is said to be the largest restoration project of its kind in the country.

*Eileen Dwyer Jackson
(Arizona)*



Photo by Antony DiGesù

**Beatrice Barker Evenson
(Oregon)**

Eugene's Woman of the Year

Kay Kirkey Warner (Oregon St.) is described by her peers as a lady who "serves her community with a constancy of dedication and responsibility and a wealth of personal magnetism."

And that just about sums up the reasons the Lane County Council or Organizations must have had for recently naming her Woman of

the Year in Eugene, Ore.

Kay's activities run the gamut from Campfire Girls to Gamma Phi Beta, where she serves on the corporation board and as rush advisor to Nu Chapter at the University of Oregon.

Her Campfire activities have included eight years as a leader (yes, ladies, that's eight years of once-a-week meetings, plus weekend activities, plus field trips), several terms on its board of directors and one recent five-week stint (and we think she had this one coming) as advisor for a Campfire sponsored trip to Europe.

Her energies also have been directed toward the Eugene Junior Women's Club (which she founded and served as its first president), the American Association of University Women, various church and school activities and a multitude of charitable organizations.

Judy Haverfield Beaupre



**Kay Warner
(Oregon St.)**

Good Buys

Paperweight

Remember a special sister with this paperweight, handcrafted especially for the Morgantown, W. Virginia alumnae by the Gentile Glass Company. This unique gift features a pink Gamma Phi Beta crest on a white angel hair background. It's a perfect present for new initiates, big and little sisters, chapter officers, province visitors or even just for you.

To receive yours, mail your name, address and zip code plus a personal check or money order for \$11.75 per paperweight to Mrs. Richard E. Walters, 1062 Koontz Ave., Morgantown, WV 26505. This amount will cover the paperweight, gift box, gift card and shipping.

To have the gift sent directly to someone else, include the recipient's name and address, as well as a message for the card. Please allow three weeks for delivery.



Crest Kits

The perfect Christmas gift for your favorite needlework enthusiast is one of these hand painted needlepoint kits, featuring either a pink carnation or the Gamma Phi Beta crest. The crest kit comes in three sizes: 5 x 7" (\$5.00), 16 x 18" (\$10.00) and 19 x 26" (\$20.00). The

carnation design is available in an 18" square pillow size for \$10.00. To order, send check (payable to Gamma Phi Beta) to Mrs. Susan Zaepfel, 486 Morning Canyon Rd., Corona Del Mar, CA 92625. California residents add 6% sales tax. Allow 3 to 4 weeks for delivery. Proceeds benefit the Arnold-Wittemberg Scholarship Fund.

Denver T-shirts

In the spirit of the upcoming Denver Convention, Alpha Phi Chapter is selling short-sleeved t-shirts bearing the motto "A Mile High with Gamma Phi." Available in red, black, dark blue and light blue with white lettering, the shirts sell for \$5 including postage. To order, send size (S, M or L), color and check to Linda Curtis, 1110 Wood Ave., Colorado Springs, CO 80903. Minimum order: five shirts.

Postcards

Brown and mode postcards, symbolically printed with a crescent moon and carnation come plain for use in writing personal messages, or in meeting form for chapter reminders. Offered by the Fort Lauderdale Alumnae, both styles are available in packages of 100 for \$5.00 per pack, postage paid. Make checks payable to Fort Lauderdale Alumnae and mail to Mrs. James R. Hyatt, 5778 N.E. 17th Ave., Fort Lauderdale, FL 33334.

Pincushions

A fun project for big and little sisters or a great gift for graduating seniors are 3" x 3" needlepoint pincushions offered by the Kalamazoo Crescent Circle. Colors are mode and brown with a pink carnation intertwined in Gamma Phi Beta letters. All instructions

and materials, except filler, are included. Make checks for \$4.00 payable to Gamma Phi Beta and mail to P.O. Box 532, Portage, MI 49081.

Ornaments

Decorate your tree, and your friends' too, with needlepoint Christmas ornaments created by the Milwaukee Alumnae. They're available in six designs—candle, stocking, candy cane, bell, crescent moon and Gamma Phi Beta initials. Each kit contains hand drawn canvass, wood ring, felt back, yarn and directions. The designs are \$2.50 with yarn, \$2.00 without. Add 50 cents for postage and handling. Specify design and send order to June Ladish, 5944 S. 37th St., Greenfield, WI 53221. Make checks payable to Milwaukee Alumnae, Gamma Phi Beta.

Ladyfood

Ladyfood: A Collection of Recipes Enjoyed by Ladies and Gentlemen, is a hard cover, illustrated volume containing more than 700 recipes from Gamma Phi Betas. Compiled by the Dallas Alumnae, the book includes chapters on appetizers and beverages, salads and dressings, main dishes, vegetables and desserts and pastries.

Proceeds from the project will be divided between the Foundation and a scholarship fund marking Gamma Phi Beta's 50th anniversary on the Southern Methodist campus. To order, send \$8.95 plus \$1.05 postage and handling to Mrs. Herman Graham, 2716 Rosedale, Dallas TX 75225.

Survey Available

Those who participated in the survey, "Satisfaction with Gamma Phi Beta Sorority as perceived by Alumnae," conducted by Jennie Curtis in conjunction with her Master's thesis may obtain an abstract of the results by writing Central Office.

Couples and Cradles

Evelyn Ryals (Oklahoma) to Joseph Schroeder, March 10, 1979.

Gwynne Smith (Arizona) to James Fijan, June 16, 1979.

Sandy Creek (Puget Sound) to Greg Baker, April 7, 1979.

Nancy Hays (Illinois) to Robert Brackmann, March 17, 1979.

Debbie Olshefski (Texas Wesleyan) to Eddie Gambill, June 16, 1979.

Marguerite Slocumb (Northwestern) to Michael Seymour, March 31, 1979.

Karen Whitney (Kansas) to Grant Evans, April 21, 1979.

Melinda Starkey (Kansas) to Christopher Maturo, May 26, 1979.

Marty Hodge (Kansas) to Steven Winkelman, May 26, 1979.

Bobbie Briley (Kansas) to Stephen Gish, May 19, 1979.

Michele Harris (Maryland) to Bill Terry, May 5, 1979.

Gail Davis (Maryland) to David Bourdon, May 12, 1979.

Reva Horowitz (Maryland) to Warren Eisen, June 10, 1979.

Mindie Stern (Syracuse) to Steven Zisser, June 3, 1979.

Sherri Robinson (California-Riverside) to Stephen Russ, August 9, 1978.

Mary Ellen Wisniewski (Syracuse) to Damon W. Hern, May 12, 1979.

A girl to John and Chris Steig Richards (Washington) November 23, 1978.

A girl to Pat and Karen Bloomquist Duffy (Washington), April 11, 1979.

A boy to Clay and Sharon Snyder Valsted (San Diego St.) April 25, 1979.

A boy to Charles and Ginny Place Myer (Vanderbilt), April 12, 1979.

A boy to Gary and Linda Mistler Dunkle (Miami), October 15, 1978.

A girl to Bob and Diane Rickelman Kohler (Kentucky), November 16, 1978.

A girl to David and Becky Anderson Levi (Boise St.), January 18, 1979.

A boy to Alvin and Carol Beranich Reitz (Bradley), January 27, 1979.

A girl to Art and Nancy Antichevich Click (Southwest Texas St.), February 21, 1979.

A girl to Jack and Liz Mironas Hinds (Colorado), May 14, 1979.

A girl to Dirk and Pat Merrill Kempthorne (Idaho), March 10, 1979.

Twin girls to Danny and June Willis Thomas (Arizona St.), May 14, 1979.

A girl to Gary and Celia Smith Morgan (E. Texas St.), December 23, 1978.

A boy to Hilton and Liz Crosby Martin (Colorado), February 16, 1979.

A girl to Steve and Candy Marsden Baune (N. Dakota St.), April 25, 1979.

A boy to William and Maxine Turner Wallis (Texas Wesleyan), February 9, 1979.



For the Woman with Pride In Herself and ΓΦΒ

There's a certain extra feeling of pride every Gamma Phi Beta experiences when she displays the symbols of her friendship in fine jewelry. When you want to remember that special friend or relative, think of fraternity jewelry by Pollack.

Write for our free catalog of fine jewelry and accessories for Gamma Phi Beta and other collegiate fraternities.

LAVALIERS		Charm	10K	10K	Sterling Silver
		Chain	Gold Filled	10K	Sterling Silver
1-3LL/02VG	Vertical Monogram		\$10.75	\$20.75	\$ 8.00
2-2/LL40G	Crescent		14.50	24.50	9.50
3-3/LL/12G	Heart with Monogram		12.00	22.00	9.50
4-CC/07G	Crest		16.50	-	10.00
5-3LL/14MG	Sculptured		13.75	23.75	10.50
6-3LL/13DG	Three Dimension (Gold Plated Charm/ Gold Filled chain \$13.00)		16.00	26.00	13.00
7-3LL/025G	Staggered Monogram		10.75	20.75	8.00
8-3LL/09G	Circle Monogram		12.00	22.00	9.00
9-2LL/37G	Crescent Enameled		19.00	29.00	14.00
10-2LL/58G	1896 Monogram		14.50	24.50	9.50
OTHER INSIGNIA (Not Illustrated)					
RECOGNITION PINS:					
CR/25G	Crest-Gold Filled			\$ 4.00	
MG/11G	Monogram-Gold Filled			4.00	
MB/FG	Crescent-Black Enamel-Gold Filled			4.00	
MOTHER	MOTHER'S PIN-Pink Carnation- Gold Filled			4.25	
PI/G	PLEDGE PIN-Brown Enamel with Yellow Crescent-Gold Filled			2.00	

PRICES SUBJECT TO CHANGE WITHOUT NOTICE. Please add 2% for postage, handling and insurance (minimum 50¢) to all orders for above merchandise; add \$1.00 service charge on orders less than \$10.00.

J. O. POLLACK co.

1700 WEST IRVING PARK ROAD • CHICAGO, ILLINOIS 60613



An Opportunity



Attending the fund raising luncheon were (l to r) Sheila Otteson, Girl Scout campership chairman, Elizabeth Williams, luncheon chairman and Aileen Tredwell, philanthropy chairman.

San Francisco Peninsula alumnae chapter took the opportunity to support Gamma Phi Beta's international philanthropy, camping, when they held a fund raising luncheon attended by more than 90 guests.

Funds were presented to the San Francisco Council of Girl Scouts to send two special girls to camp for one week. Gamma Phi Beta Camp Sechelt received a check for \$250.

The luncheon was held in the community room at Bay View Federal Savings and Loan corporate headquarters. Bay View Federal provided the luncheon free of charge.

Gamma Phi Parents: While your daughter is in college, her magazine is sent to her home address. We hope you enjoy it. If she no longer is in college and is not living at home, please send her new address to Gamma Phi Beta Central Office on the form below.

CHANGE OF ADDRESS OR NAME REPLY

Members are responsible for all address changes. Allow 4 weeks.

Maiden Name _____ Chapter _____

My profession or training is in _____

New name if different from label

_____ Title Last First Middle

Entire new address

Street _____

City _____ State _____ Zip _____

PLEASE DO NOT REMOVE OLD LABEL

☐ Check here if change of address is for other than addressee.

Clip form, place in stamped envelope and mail to Gamma Phi Beta Sorority, Inc., International Headquarters, 7503 Marin Drive, Englewood, CO 80111