

The Crescent



Gamma Phi Beta
Spring 1978
"White Gloves"

ON THE COVER

Social Butterflies . . .

wearing "white gloves" are passé among Sorority women. But party manners are not. We'll try to make a point in this issue while also throwing out confetti for a chapter installation, several birthday parties and, of course, Founders Day.

—The Staff

Cover design by Chris Drees
(Washington-St. Louis).

Editor-in-Chief

Geraldine Epp Smith
300 Mansion House,
Apt. 1501
St. Louis, MO 63102

Alumnae Editor

Kristin Brandt Riske
3433 S.E. 20th
Des Moines, IA 50320

Collegiate Editor

Mary Agnes Welsh
1931 Prairie Square,
Apt. 227
Schaumburg, IL 60195

Business Manager

Mary M. Moxley
Central Office

THE CRESCENT

Volume 78, Number 1
Spring, 1978

THE CRESCENT is published quarterly in Fall, Winter, Spring and Summer by the Gamma Phi Beta Sorority, 630 Green Bay Road, Kenilworth, IL 60043. Printed in the U.S.A. by the Dixon Publishing Co., Dixon, IL. Second class postage paid at Kenilworth, IL, and additional mailing offices.

POSTMASTER: Please send notice of undeliverable copies on Form 3579 to Gamma Phi Beta, Box 310, Kenilworth, IL 60043.

SUBSCRIBERS: Send changes of address, notices of marriages and deaths to Gamma Phi Beta Central Office, Box 310, Kenilworth, IL 60043.

WHITE GLOVES ARE OUT OF FASHION . . .

Stick Pins* Are "In"! But . . .



WHETHER WEARING jeans or party frocks, "white gloves" (good manners) are a necessary accessory. They're an expression of yourself at your best all the time.

Your editor submits that it's time to put the "White Gloves" on again!

And what does she mean by "white gloves?" Simply put: good manners, thank you very much.

Boiled white with Rinso-blue, good manners are but a show of concern and an awareness of other people. They're also an expression of one's own self at one's best all the time.

Back in the Sixties, people put a derogatory "white glove" tag on sorority women. It implied snobbishness . . . aloofness . . . a lack of concern in an era of protests about the war in Vietnam. It was a radical, left-wing criticism, in great measure unwarranted.

Today, the popularity of Greeks is soaring. Outsiders credit changes within the system—the elimination of discriminatory membership clauses and "Hell Week," for two examples. But others feel that many overlook the broader impact of continuing values and standards.

True, rigid rules of manners are gone; more casual ones have surfaced. But, speaking with something close to glee, a manners teacher, par excellence, reports: "Fingerbowls are returning to fraternity houses."

Exaggerated as this bulletin might be, young members of sororities—and fraternities—are expecting something "extra" from their fraternal memberships—something over and beyond friendship, room and board. They want established social values—not social excesses.

The learning of social values and the practice of proper social conduct among the membership and with others should be a prime teaching goal of every Gamma Phi Beta chapter. Such a program should recognize that good manners put one at ease and make life easier. They take you where money can't.

Be A "Good" Sorority

Speaking at the National Panhellenic Conference's Diamond Jubilee banquet last October in Tulsa, Beta Theta Pi's Peter P. Greiner, president of the National Interfraternity Conference, drew a distinction between a **great** sorority and a **good** sorority.

"Greatness can be measured in age, numbers, in tradition and lore, in a long line of distinguished members, in organizational and financial attainment, scholarship achievement and leadership.

"A good sorority is a teacher—a teacher which gives its members a code of great and good living."

"Your challenge," Mr. Greiner said, "is to make and keep your sorority a **good** sorority. As the present and future leaders of the American college sorority system, you have an unsurpassed opportunity to strengthen and enrich the character and lives of thousands of young people so they can better serve themselves, their communities and their fellow human beings."

Statistics Indicate Good Health

Like the stock market, statistics are indicators of the health of the Greek system. For the fourth consecutive year, sorority membership is on the upward move—drawing close to its all-time high. Over 100,228 women were attracted to Greek chapters between 1975-77—a 9.5% gain over the previous biennium.

But sororities can't be complacent for numerous reasons, including;

- 1) there is a rising criticism of drinking habits,

though this applies to all college students as a group. Delegates to the National Panhellenic Conference took a strong stand against alcoholic abuse and also reaffirmed its stand against the serving of liquor during rush. Some national organizations have launched alcoholic awareness programs.

2) too many women are dropping out of rush despite the record-breaking number of pledges. Sororities, including Gamma Phi Beta, must increase memberships to insure themselves against future charges of snobbishness. Above all, rushees bearing the endorsement of Sorority alumnae should receive "white glove" treatment—every consideration. The life-long interest of alumnae is vital to the strength of any chapter and Gamma Phi Beta.

At this point in time, it seems appropriate for all Sorority members to challenge these problems and bring to the attention of the current generation a feature of sophistication for which sororities are uniquely equipped to realize.

Comments Dr. Robert F. Etheridge, Miami University's vice president—student affairs, "In so much of the disorder of society, in galleries at sporting events and other facets of our everyday lives, one of the great American traditions is lacking.

"There is no reason that this characteristic cannot be grasped again, much as the brass ring is caught on the merry-go-round and with the same excitement. Why not try a return to 'civility,' the 'behavior proper to the intercourse of civilized people?'"

"What better vehicle to carry the return than the most close-knit of all student organizations—fraternities and sororities? At a time when we have a seeking and questioning generation, why not encourage this as an appropriate element of their life style that has enduring value?"

Apparently this editor is not alone in saying: Put on "White Gloves."

*Stick Pins

America's young fashionables are stuck on stick pins. Their demand for these exciting costume accents caught retailers off-guard at the holiday season. But Gamma Phi Beta was ahead of the fashion game. The pins were ready but, *The Crescent* wasn't told in time for the Winter issue.

Now that we know, we'll share the happy news. Three versions of a 10K yellow gold stick pin are available . . . Crest (SP/11G), 1896 Monogram (SP/58G) and the Crescent Moon (SP/40G). Each cost \$12.00, plus 50¢ for postage and handling.

Once again, add 50¢ for postage and handling. Send orders to J. O. Pollack and Co., 1700 W. Irving Park Rd., Chicago, IL 60613.

She Made Her Last Deadline!

Grand President Betty Luker Haverfield (Missouri) died February 17, 1978. Before reentering the hospital in January, she wrote "A Call to Nashville" (p. 12).

As a 10-year editor of the *Crescent*, Mrs. Haverfield

would have wanted the presses to run on schedule for the spring issue. We stopped them only long enough to make this brief, sad announcement. The Sorority's tribute to Mrs. Haverfield will appear in the summer issue.

White Glove Occasions



What could be more of a "white glove" occasion than a birthday party!

Across the U.S. and Canada, thousands upon thousands of invitations were mailed requesting participation in Gamma Phi Beta's 103rd anniversary fetes. Members from **Alpha** through **Delta Nu** responded favorably to R.S.V.P.

Delta Nu's celebration coincided with its installation, as reported elsewhere. And everyone agreed a charter was a special birthday gift indeed. Having received theirs only a few months earlier, **Delta Mus** at Rutgers observed their first Founders Day with a special dinner at the Townhouse Inn, Woodbridge, N.J.

Comments *Crescent* Correspondent **Linda Rolle**, "The sisters made the most of the evening. Eager for the opportunity to get out of their daily blue jean attire, they presented a stunning picture . . . a 'touch of class' to the reverent occasion."

Back at Alpha, where IT all began, Syracuse University members celebrated Founders Day with an enthusiasm of which "our four founders would have been proud," writes **Lauren Leventhal**. **Doris Erskine '17** was the elder alumna present, **Serine Arnold, '77**, the youngest.

For most Greek and alumnae chapters this Founders Day remained within quiet, traditional bounds. A gathering for brunch or lunch, tea or punch bowl, pitch-in supper or dinner . . . a time for joyful reunions solemnly sealed by the traditional Mystic Circle.

For three chapters, this Founders Day was a double celebration:

Kappa's "Diamond Jubilee"

With **Marge Anderson Adams** (Minnesota), Minneapolis-St. Paul Alumnae president, and **Cindy Michel**, Kappa president, in the lead, 140 members sang "Happy Birthday" to Gamma Phi Beta and Kappa Chapter. It was the latter's 75th anniversary. Announcement that a 17-year mortgage on the Kappa house annex had been paid off added to the jubilant mood of the occasion reports **Cathy Sutmar**, correspondent.

"Outsiders" made sure it was a festive occasion. **Barbara Schmidt Weldon** (Auburn) arranged the event with **Joan Elliot Neaton** (Moorehead) and **Maureen Siegler** (Auburn) assisting.

Six 50-year members were special guests of honor with other tributes going to **Jan Grout Schuett** (Wisconsin), named "outstanding alumna," and **Elizabeth Kincaid** (Minnesota), "outstanding collegiate."

The alumnae chapter's highly successful SportsMania will be repeated, according to **Maryls Nickeson Pung** (North Dakota), correspondent. **Pat Ransier Lindren** (Minnesota) announced plans for a February event; **Dr. Vivian Barfield**, women's athletic director and Kappa special initiate, outlined the progress in the Minnesota Women's Athletic Department and spoke of the students who had received scholarships from the alumnae fundraiser last year. (See *Summer Crescent*, 1977.)

Albuquerque's "Silver Jubilee"

Counting their own blessings at a 25th anniversary luncheon, **Albuquerque Alumnae** donated \$700.00 to its local philanthropy—the Albuquerque Hearing and Speech Center. Eleven charter members, wearing pink carnations, were among 34 in attendance.

They included: Marie Anderson Axline and Rowena Bass Cole (Missouri), Eleanor Pickett Caughren (Illinois), Mary Brindley Ferguson (Iowa State), Ruth Phillips Franklin (Rollins), Louise Naylor Jory (Denver), Pat Stangebye Kailer (North Dakota-Missouri), Mercedes Wheelon Murray (Colorado), Norma Whittaker Richter (Kansas), Ruth Moore Thelander (Denver) and Dorothy Ashton Vaught (Lake Forest).

The group's "Gamma Phi of the Year" award was given to **Rowena Bass Cole** (Missouri), according to **Gail LaBeau Ewing** (Arizona). In addition to Merit Roll honorees, **Frances Gilkison Wisser** (Colorado State) was honored with a Golden Crescent.

Gamma Tau's 10th Birthday

In St. Louis, St. Louis University's **Gamma Tau** made doubly sure it didn't "hog" the spotlight. It began a week-long celebration with its own reception at the Colony Inn—complete with a pink carnation decorated cake—concluded its observance by participating in the traditional St. Louis Alumnae's Founders Day luncheon at a local country club.

There Gamma Taus were thrilled to see their alumna advisor, **Christie Grossheider Carter** (Washington-St. Louis) receive the St. Louis Chapter's newly established award for the "alumna who exemplifies love, labor, learning and loyalty." An antique silver tray, originally a wedding gift from the Washington U. chapter to Elizabeth Wood Mize, now serves as a revolving token.

According to **Eleanor Garm Hemminger** (Northwestern), correspondent, three received Merit certificates (and five, all from Washington-St. Louis, Golden Crescent): **Maud Beattie Berger**, **Martha Severson Camp**, **Elizabeth Schall Hood**, **Dorothy Mohrig Ploesser** and **Martha Quentin Spinner**.

Elsewhere, Across The Continent . . .

It was champagne punch and birthday cake for **Cleveland West Alumnae** . . . French crepes and fellowship for **Fort Meyers Crescent Circle** celebrants . . . peanuts and olives for **Sigmaws** and **Lawrence Alumnae**. Fashion was dished up with luncheon in **Rochester, N.Y.**, and, on the other side of the country, **Portland Alumnae** raffled off their table centerpieces.

As in Albuquerque, several chapters combined their parties with philanthropic actions. **Buffalo Alumnae** turned in dolls they had dressed for distribution by the Salvation Army and, in California, **Sacramento Valley Alumnae** saw a premiere performance of a puppet show. This will be shown at area primary schools for the benefit of the Dental Auxiliary. **Memphis Alumnae** and **Gamma Alphas** made individual contributions to the sorority camp fund.

Birthday parties aren't complete without prizes. And so it was in **Ames** where **Omega's Jill Lockwood** was awarded \$25 off her building fee for being the pledge

with the highest grade point. **Renea Butcher** merited an award for pledge with the highest grade point mixed with activities. **Denna Stone** won the senior scholarship award, **Diane Bruin** a pin for the greatest grade point improvement between freshman and junior years.

In **Toronto**, **Alpha Alpha** recognized **Susan Abbey** for scholarship, **Ruth Gardner** for activities. And in **Reno**, alumnae presented scholarships to **Nevada's** four: **Cheryl Porter**, most outstanding Gamma Phi Beta on campus; **Karen Traynor**, outstanding chapter member; **Sharon Gronberg**, highest grade point average; and **Gina Humphreys**, highest pledge grade point average. At **Sigma**, **Janet Gorman** received the Helen Rhoda Hoopes award at K.U.

Wichita Alumnae paid special tribute to **Nancy Elliott Martin**, outstanding alumna, for her efforts in behalf of the **Beta Chi** lodge, soon to be completed. Announcement of a \$20,000 loan from the Sorority to furnish it brought applause from Founders Day celebrants.

Elsewhere **Greater Kansas City Alumnae** named **Virginia Tanzey Jordan** (Stanford) "Woman of the Year"; **Dallas Alumnae** designated **Sandra Graham Cude** (SMU) as "Alpha Xi's Alumna of the Year"; and **Boston West Suburban Alumnae** gifted **Dorothy Roberts Matheson** (Boston) with a crested silver spoon in recognition of a job well done as president from 1975-77.

And so we light a candle for growth . . . in our 104th year.

2/3 of Kappa's 75 Years=Six 50-Year Members



VIRGINIA BALLINGER COX received her Crescent Award from Minneapolis-St. Paul Alumnae president, **Marge Anderson Adams** (Minnesota). So did:



2.



3.



4.



2. Esther Martin Kuehl

3. Margaret Watson Heinrich

4. Patty Bergh Stephenson

5. Julia Hazard Buffington

6. Margaret Pinger Rogers



5.



6.



Birthdays . . .

IN ALBUQUERQUE: Charter members attending the group's 25th birthday party included (from left, front row): Rowena Bass Cole (Missouri), Pat Stangebye Kailer (N. Dakota); and Louise Naylor Jory (Denver). Back, from left: Marie Anderson Axline (Missouri), Norma Whittaker Richter (Kansas) and Eleanor Pickett Caughren (Illinois).



NANCY O'CONNER WHITTED, president, and Nancy Dellere Doll (both Nebraska).



KIMONO-CLAD hostesses, back row from left: Merilee Mattson Lundquist (Minnesota), chairman; Kim Doll and Peg Walker Thiesen (Nebraska) and Mary Neal Whinery (Iowa State). Nancy Doll and Mary Pitterman Barnhart (Nebraska).



KAREN WANDER KLINE (Iowa State), International Collegiate Vice President.



KOMBAN-WA!

Hello, Gamma Phis, how are you?

This warm Japanese greeting welcomed Omaha Alumnae to its unique Founders Day celebration. The House of Genji, built after a Japanese family country home, added a special feeling of "family tradition" to our annual gathering.

As the Teppan Yaki (Japanese barbeque) was prepared before our eyes, no one dared blink for fear of missing the flaming sake, the rhythmical tapping of salt and pepper shakers, or the flick of shrimp onto each plate.

Our "Evening in the Far East" saw the continuation of our tradition to name one to "The Hall of Fame." This year's selectee was Norma Gamert Hinchcliff (Nebraska).

In Japanese style, Sayonara!—*Barb Scharck*



A THREE-TIERED CAKE, tipped with pink icing carnations, was the focal point of Gamma Tau Chapter's 10th anniversary party. A reception at the Colony Inn November 13 opened a week-long observance of St. Louis University's chapter birthday, Gamma Phi Beta's 103rd. Seen here Michelle Huelskoetter, Gamma Tau president, and Christie Grossheider Carter (Washington-St. Louis), chapter alumna advisor.



IN SPOKANE: At its 1976 Founders Day, Spokane honored six 50-year members; no photographer showed up. In 1977, it had no honorees but it did have three photographers. So they caught up with five of last year's six (from left): Ellen Healy and Marjorie Bloom Jones (both Idaho); Grace Humphrey Emory (Stanford-Colorado State); Jeannette Clarke Tibbits (Washington) and Dorothy Hall Pierson (Idaho). Missing this year: Estelle Pickrell Whittimore (Idaho).



IN ODESSA, TEX: Helen Wisdom Redman (Arizona) received a nosegay plus a Golden Crescent from alumnae president Diana Hillman Marshall (Washington).



IN LONG BEACH: Marty Hill (California State-Long Beach) received the Mary A. Bingham award for loyalty and pride from Ruth Donlon Lowell, PCD XVI. South Bay Alumnae (left) also joined in the celebration.

Birthdays . . .



SKITS AND SINGING are delightful ingredients of many Founders Day gatherings. Here members of Omega Chapter perform their Tradition Day rush skit. White gloves date the founders who return to Omega to make sure that traditions and standards are being maintained.



IN DENVER: One hundred and three turned out for Gamma Phi's 103rd at the Paradise Valley Country Club. Three received Crescent awards (from left): Justine Sarkisian Rodriquez (Denver), Francis Payne O'Brien (Kansas) and Ruth Schunk Shelton (Iowa).



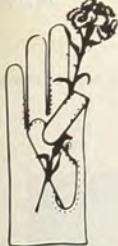
IN LINCOLN: Alice Clute Weaver (center) and her daughter, Barbara Weaver Mitchell (right) enjoyed the Nebraska celebration with Jo Berry Schleiger.



IN KANSAS CITY: Betty Haily Crooker (Kansas) received the "Gamma Phi of Today" award from alumnae president, Peggy Cook Evans (Missouri). Given only twice before by the Greater Kansas City Alumnae, the award recognizes civic as well as sorority achievements. Betty recently retired as president of both the Kansas City Young Matrons and the Kansas City Panhellenic. She served as alumnae president for two years, one term coinciding with the Sorority's national convention.



KANSAS CITY'S FLOOD didn't deter the Founders Day social committee. When the original site was inundated, it located another at the 11th hour. From left: Beverly Stanfrod and Jarene Anderson Stanford (both Missouri), Katie Moore Coen (Kansas), Sharon Edwards Drake (Missouri) and Ann Charlton Lester (Kansas State).



An Award Received . . .

In The Vanguard of Service



Carribelle Waters Conway



Joanne Sallee Kernitz



Ernestine Dobler McDonald

For long, devoted and constructive service to both chapter and International Sorority, Grand Council voted to add the names of three to Gamma Phi Beta's Service Roll. The 1977 honorees are:

Carribelle Waters Conway (Goucher—Washington, D.C. Alumnae).

Currently chairman of the Foundation's Financial Aid Committee, Carribelle has served on the International Scholarship Committee and was Maryland State Membership Chairman for many, many years. Her 22-years of service also include terms as her alumnae chapter's president, Panhellenic delegate and philanthropy chairman. She is vice-president of Beta Beta Chapter's HCB and a past alumna advisor. She was named to the Merit Roll in 1970.

Joanne Sallee Kernitz (Wittenberg—Philadelphia North Suburban Alumnae).

A charter member and first president of Philadelphia North, Joanne moved on to the international scene 10

years ago when she was appointed a PAD. A past Pennsylvania State Membership Chairman, she's a former Alumnae Editor of *The Crescent*. She currently serves as chairman of the Awards Committee and is immediate past assistant to the Alumnae Vice President for Special Initiates. She was elected to the Merit Roll in 1971.

Ernestine Dobler McDonald (Northwestern—Greater Kansas City Alumnae).

Nearing completion of her fourth term as Chairman of the International ByLaws Committee, Ernestine has played a major role in the complete revision of ByLaws and Standing Rules. Previously a member of the Little Rock Alumnae, she moved to the Greater Kansas City area 17 years ago and since has held nearly every chapter office from president on down. She was first chairman of that group's renowned Antique and Arts Show. In 1973, she was named its "Woman of the Year." Her years of dedicated service number more than forty.

1977 Merit Roll



IN DENVER: Joan Casey Welch (left) and Joy Jordan Craven (both Denver).
IN ALBUQUERQUE: Trudy Magee Grenko (Oklahoma) and Marie Anderson Axline (Missouri).



Thirty-one alumnae were added to the Gamma Phi Beta Merit Roll in 1977. Nominated by their respective alumnae chapters for long, devoted and distinguished service to the Sorority on the local level, they were approved by Grand Council. Their Certificates of Merit were presented at Founders Day ceremonies held across the country.

Janis Raines Abernathy

Florida State—Birmingham (Ala.) Alumnae

Elise Hadley Alexander

Vanderbilt—Columbia (Mo.) Alumnae

Marie Anderson Axline

Missouri—Albuquerque Alumnae

Mary Alkire Baker

Denver—Beverly Hills-Westwood Alumnae

Joy Nordon Craven

Denver—Denver Alumnae

Janice Hoyer Doane

Nebraska—Denver Alumnae

Martha Harden Eubanks

Texas—Stillwater Alumnae

Lois Moon Garver

Kansas—Greater Kansas City Alumnae

Gertrude Magee Grenko

Oklahoma—Albuquerque Alumnae

Jean Kerth Hawks

Wisconsin—Pittsburgh Alumnae

Patsy McGahey Henderson

Washington—St. Louis-St. Louis Alumnae

Wilma Kinst Henderson

Oklahoma State—Stillwater Alumnae

Dorothy Carvey Hetherington

Southern Methodist—Fort Worth Alumnae

Phyllis Armstrong Johnson

Illinois—Quad Cities Alumnae

Maryanne Jones

Ohio Wesleyan—Columbus Alumnae

Rebecca Keene

North Dakota State—Rochester (N.Y.) Alumnae

Virginia Keene

North Dakota State—Rochester (N.Y.) Alumnae

Jane Little Laue

Minnesota—River Falls Alumnae

Maydee Logeman Lehman

Illinois—Beverly Hills-Westwood Alumnae

Sally Erikson Lewis

Bradley—Chicago-Windy City Alumnae

Joanne Wyrens Martig

Nebraska—Omaha Alumnae

Mary Woodworth Pfeifer

Illinois—State College Alumnae

Nelli Robertson Poling

North Dakota—River Falls Alumnae

Shirley Oswald Putnam

Wittenberg—Columbus Alumnae

Linda Lobb Roe

Bowling Green—Cleveland West Alumnae

Gwen Lankford Rogers

Iowa State—St. Louis Alumnae

Roberta Reid Moore Sorensen

Washington—Seattle Alumnae

Catherine Colman Spika

Iowa State—Milwaukee Alumnae

Carol Buchmueller Stelmach

Missouri—St. Louis Alumnae

Joan Casey Welch

Denver—Denver Alumnae

Cynthia Lonsbrough Wilcox

Nebraska—Omaha Alumnae



. . . A Chapter Installation

“Nu”-est Member of our Family

Springfield, MO, provided Gamma Phi Beta with the biggest “Nus” of its 103rd birthday celebration. When the candles were lit and the presents unwrapped, the Sorority had its 90th chapter—**Delta Nu** at Southwest Missouri State.

Among those initiated at this beautiful birthday party were six of seven founders of the local sorority from which Delta Nu grew: **Patty Barenkamp, Layne Stober Brendell, Sharon Cole, Jan Martin, Carol Smith** and **Sally Winters**.

Wrote **Laura Jackson, Alpha Delta** correspondent, “we received one of Gamma Phi Beta’s highest honors when we were asked to be the initiating chapter for Delta Nu. **Lisa Knipsheild**, retiring president, performed most of the ceremony while **Grand President Betty Luker Haverfield** (Missouri) pinned each charter member.”

Installation services were held the afternoon of November 12 with Mrs. Haverfield and **Karen Hedine** (Washington), Collegiate Consultant, officiating. Other major participants in the event included **Marion Corley Hulsey** and **Pat Merrill Kempthorne**, International Ritual Co-chairman; International Director of Expansion **Leonite Seltzer Moore**; **Ann Mullen Bronsing** and

Diana Hawley Sanborn, Province Alumnae and Collegiate directors respectively.

That evening a Pink Carnation banquet was held at the Riverside Inn. It was attended by SMSU Greeks, deans, Delta Nu parents and local Sorority alumna. **Karen Kreider Sweeney** (Kansas), field representative, served as toastmistress.

Speaking to the assemblage, Mrs. Haverfield said: “You know how much this means to me.” Making the trip despite poor health, she remarked, “I wanted to come in the worst way—and I did—on Ozark Airlines.” (Ozark is a bad joke for Missouri travelers.)

No birthday party—or chapter installation—is complete without gifts. And Delta Nu hit the jackpot . . . a gold dinner bell no less. **Grand Council** sent an engraved silver punch bowl and ladle, **Province X** a table clock, the **Springfield Alumnae** a beautiful banner. **Mary Margaret Lamberson** sent an historic badge for which past Grand President **Audrey Weldon Shafer** provided a chapter guard and gavel.

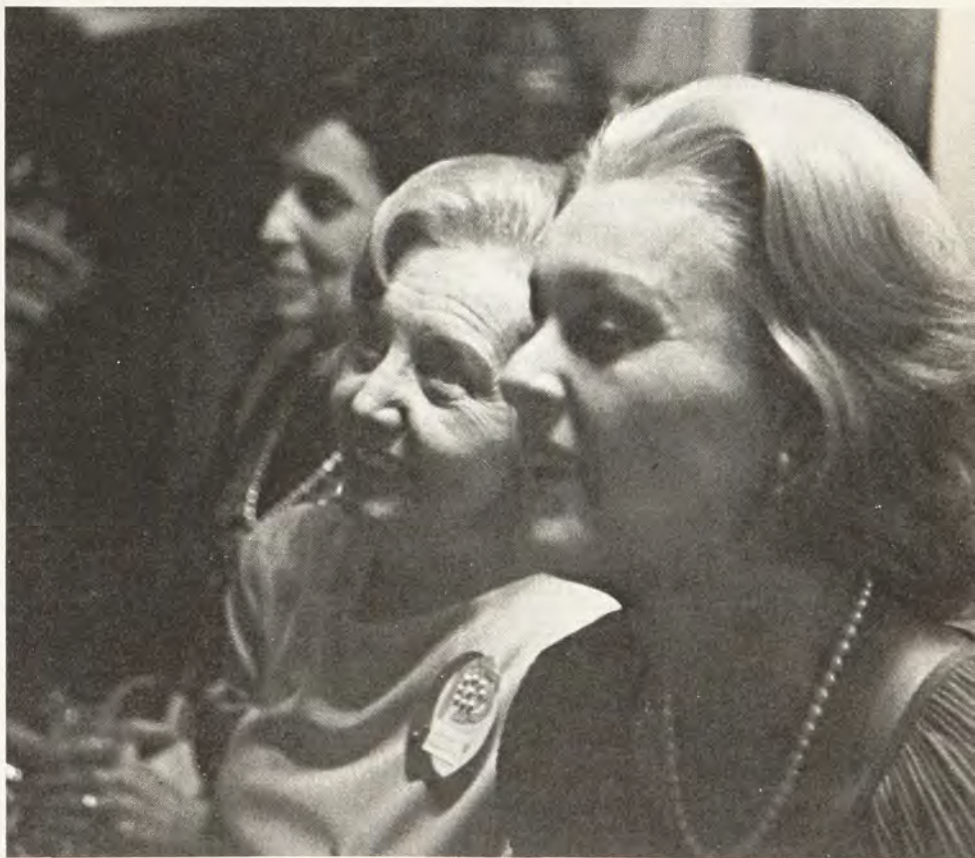
But perhaps the sweetest gift of all was a plaque from the chapter’s Big Brothers. It thoughtfully was inscribed: “We watched your dreams come true.”



DELTA NU PRESIDENT, Karen Davidson, accepted the Sorority’s 90th charter from **Karen Hedine**.



GRETA GIBSON HUFF (Kansas) received Delta Nu’s first “outstanding alumna” award.



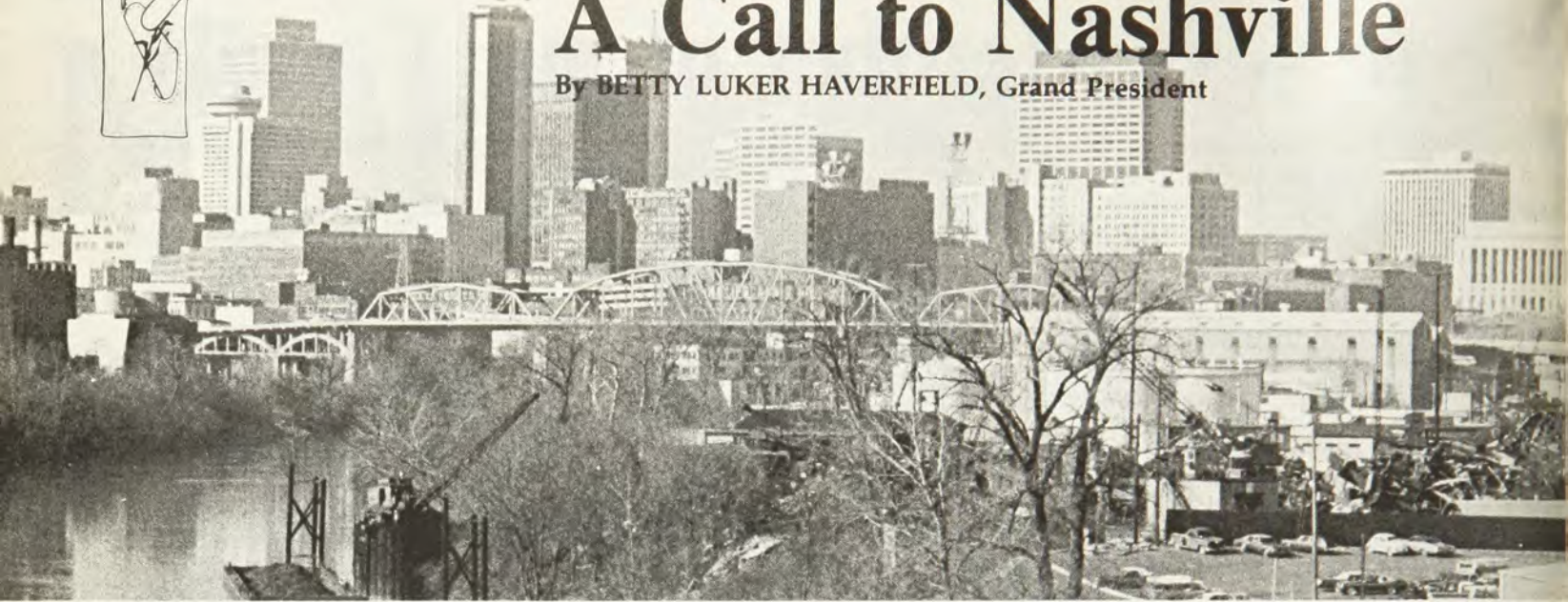
HAPPINESS IS A NEW CHAPTER—Delta Nu—as evidenced by the faces of Grand President **Betty Luker Haverfield** (Missouri) and Director of Expansion **Leonite Selzer Moore** (Southern Methodist).—Photo by **Martha Potts** (Mizzou).



. . . An International Convention

A Call to Nashville

By BETTY LUKER HAVERFIELD, Grand President



OLE NASHVILLE, on the historic Cumberland River, is growing up—as Eliza McClenaghan's skyline photo proves. Hyatt Regency is the third major building from the left.

To Love, Labor, Learning and Loyalty, add a joyous score of Nashville and Sorority music and voila! Convention '78: Sing Out Gamma Phi.

Love

What is more precious to all of us than the love we give and receive from our 60,000 sisters around the world? Within the regal luxury of the Hyatt-Regency Hotel in Nashville, we'll once again renew old friendships and make some fantastic new ones.

If this will be your first Convention, you will be delighted with the calibre and intelligence of the women there. You will find them committed, witty and able to talk on many subjects other than Sorority. And, you will have fun with them at after-hour get-togethers.

It will be all fun and games when we journey to Opryland June 25 for five hours of amusement park hilarity. There will be no formal dinner served that night so bring enough pocket money to buy a hamburger and shake—or whatever you crave—at one of Opryland's many small restaurants. Non-delegates also will enjoy the several tours planned to historic Nashville sights. You will find your love for your sisters and Gamma Phi Beta will thrive on the lovely southern hospitality showered upon you by our Nashville Alumnae and Vanderbilt collegians.

Labor

You will work, too. Special workshops will be led by Karen Kline, Collegiate Vice President; Kiki Phillips, Alumnae Vice President; Gloria Nelson, Director of Finance; and Marjorie Lundin, National Panhellenic Delegate. These have been planned to help answer those questions most frequently asked. You will learn how other chapters have solved their problems; you will learn the challenges that lie ahead and how we can be

prepared to meet them. Bring your ideas and your questions and we will talk them over together.

Learning

There will be marvelous learning experiences for everyone. Bill Meyer, a behavioral psychologist, will be on hand to conduct leadership training. His sessions will not be lectures, but audience participation programs, where you will originate ideas prompted by a few probing questions. Together we will set our short and long-range goals and decide on the best methods to improve attitudes, encourage motivation and accentuate self-esteem and self-confidence within the chapter and the individual.

We will probe various ways of learning to understand ourselves, where we want to go and how to get there. We will come away with a good working knowledge of how to reach our individual and chapter potentials. So bring your thinking caps with you and be prepared to participate.

Loyalty

By your very presence at Convention, you will demonstrate your loyalty. Nashville is located in the center of the country so you will find transportation charges less than were it on either coast. The hotel will give special rates. Your enthusiasm will explode as we sing out at every meal, an old tradition that has been sadly neglected at recent conventions. In Music City, U.S.A., this is a natural. Even the tote bag you receive upon registration will "Sing Out Gamma Phi" with its guitar and pink carnation motif.

It's not too early to make your plans. So, put June 22-26 on your calendar and I'll see you there. Y'all come, y'heah?

By your Convention vote, recognize . . .

Value Received—and More!

By GLORIA SWANSON NELSON, Director of Finance

Have you ever tried to put a price tag on your Gamma Phi Beta membership? If you haven't, stop and add up the benefits you enjoy. As a collegian, whether you live in a sorority house, commute to class and live at home, or as an alumna, there are obvious pluses you enjoy: caring and helpful sisters, encouragement in accomplishing your scholastic and personal goals, campus and community involvement, and the secure feeling of belonging.

There are extras you may not think of immediately but thoughtful reflection will call to mind a lifelong source of friendship wherever you may live, through our unique TranSISter service and available alumnae chapter activities, as well as the pleasures derived from *The Crescent*.

Another major part of membership is the guidance offered by Province officers, Collegiate Consultants, Grand Council members and many other international officers and committee chairmen who constantly seek ways to enrich your Sorority experience. The tie that binds all efforts is Central Office, the only salaried part of our operation.

Because of changing times and the need to insure our ability to continue the best possible leadership and services, the 1976 Convention's Resolutions Committee charged Grand Council to study the fees and dues structure of Gamma Phi Beta. In compliance, an Ad Hoc Committee was appointed: Ruby McMurtry Foster (Vanderbilt), chairman; Leona Davis Drouet and Margaret Godbold Briscoe (both Southern Methodist).

Based on its findings, the Ad Hoc Committee recommended that the International annual collegiate dues of \$25 be discontinued, and the pledge fee of \$20 and the initiation fee of \$40, plus the cost of a badge, should be realigned as a membership fee of \$135, plus the cost of a badge, to be paid in two installments. The first installment of \$45 should be due and payable to the chapter treasurer at the time of pledging, and the second of \$90, plus the cost of a badge, before initiation.

At the present, fees are as follows:

Pledge fee (time of pledging)	\$ 20
Initiation fee (prior to ceremony)	40 + Badge
Annual dues (3 years at \$25 per)	75
Total	\$135 + Badge

This change would not increase the total cost of membership, but it would insure that each member would

pay the same amount for her membership—something which is not now true since members who drop out of school, or transfer to campuses where there is no Gamma Phi Beta chapter, do not pay their collegiate annual dues while their sisters who remain behind have to pay for them. That hardly seems fair. Therefore, the Committee recommends this change. Of course, provision will be made to cover initiates pledged prior to August 1, 1978 so that they will make payments as agreed at the time of pledging, if this recommendation is adopted. This would in no way affect local house bills or chapter dues.

We are all aware of spiraling costs caused by inflation. Added to these is the ever increasing need to offer greater services and supervision to all of the chapters to meet common goals.

If you attain your full life expectancy of 77 years, you will enjoy your Gamma Phi Beta membership for well over 50 years at a cost of less than \$2.50 per year. In today's economy, it is difficult to see even one movie for that price. Yet with that same amount, we maintain Central Office, records on every Gamma Phi Beta, while also carrying on leadership and scholarship programs, conventions, Collegiate Consultants and other means of chapter assistance. Without the untold hours of volunteer service, it would not be possible to provide these membership services.

Pledge and initiation fees have not increased substantially in many years. Yet costs have—also services to our chapters. We sincerely believe the suggested changes will provide sufficient funds for several years ahead. At the same time, they will create a more equitable situation whereby the cost of membership is the same for all Gamma Phi Betas. **Where else can you find greater and more lasting value than the one you receive from your Sorority?**

Let Your Voice Be Heard in Nashville

Convention delegates will be required to vote on many resolutions at Convention—only one of which is outlined here.

Make sure your chapter studies each proposal before instructing you how to cast your ballot. That's democracy at its best!

Sights and Sounds of Nashville, Music City, U.S.A.



"From stately historical mansions to bold new skyscrapers,
From a multi-million dollar recording industry to rolling horse
farms,

From the symphony to the Grand Ole Opry,
From Campus to Capitol Hill,
From hot dogs to Chateaubriand,
Nashville is a study of exciting contrasts.
A progressive, vital city
Totally involved in the present,
With a colorful past
and a great future.
WELCOME!

Sightseeing tours are being arranged for the families of busy delegates . . . and non delegates. Others may wish to add a day to their Nashville visit to enjoy the special sights of this famous city. Opryland is on every conventioneer's schedule. But not to be missed is The Hermitage, the home of Andrew Jackson. Cedar line the circular drive leading up to the mansion with its white pillars, wide verandas and spacious front hall. The tour will be offered on Monday for a nominal fee which goes to the Ladies Hermitage Association.

A walking tour of Downtown Nashville—-a river boat ride on Belle Carol, a unique triple-deck sternwheeler . . . are among other choices we'll offer visitors.

Y'all come!

—Barbara Hanson Cleveland (Vanderbilt)

Photos by Eliza McClenaghan,
daughter of Georgia Post McClenaghan
(Oregon State)



ALL ABOARD FOR NASHVILLE! Echoing the Grand President's call to convention: Anne Robinson Dale and Anne Seton Shockley (both Vanderbilt).



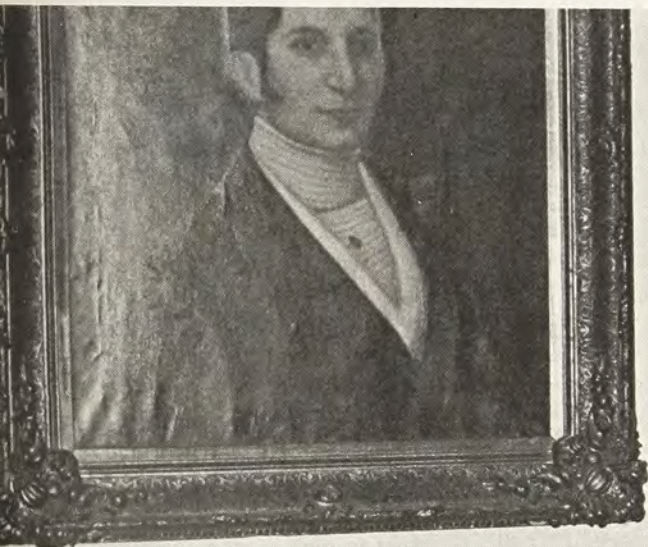
FORT NASHBOROUGH, site of the first settlement which was to become Nashville, is on the historic walking tour scheduled. Advance visitors are Lucille Corkran Nabors, Convention Chairman; Marie Fitzgerald Burr (both Nashville Alumnae-Vanderbilt) and Clee Lee Picklesimer (Vanderbilt-Houston Alumnae), Convention Registrar.



(Above) **CHECKING DETAILS** for the fun outing to Opryland: Barbara Hanson Cleveland, Publicity Chairman; Kathleen Swan (Both Vanderbilt); and Georgiana Post McClenaghan (Oregon State), past Nashville Alumnae president.

(Left) **VISITING THE GROUNDS** of Belle Meade Mansion, Queen of Southern plantations, is Diane Easterling Briley (Vanderbilt). The well, smoke house (in background) and horse barns are all intact.

(Below) **VANDERBILT COLLEGIANS** Connie Brandon (second from left) and Lynn Ayers are seen at The Hermitage. Their mothers, Mrs. Sara Brandon (left) and Mrs. Joyce Ayers of Clarksville, TE, are assisting with tour arrangements.



Overture to the Convention Program



Thursday, June 22

- 10:00 a.m. Registration opens
- 4:00 p.m. Alumnae/Greek-letter information meetings
- 6:00 p.m. "Consider Yourself at Home"
Christmas in June dinner
- 8:00 p.m. Panel on camping program

Friday, June 23

- 7:30 a.m. Parliamentary Procedure Class
- 9:00 a.m. First business meeting
- 12:00 "Tie a Yellow Ribbon 'Round the Old Oak Tree" luncheon
- 1:30 p.m. Joint Alumnae/Greek-letter leadership training session
- 7:00 p.m. "When You Wish Upon A Star" Awards dinner
- 9:30 p.m. Province parties

Saturday, June 24

- 7:30 a.m. Parliamentary Procedure class
- 9:00 a.m. Joint Alumnae/Greek-letter leadership training session
- 11:30 a.m. "Welcome to Our World" Panhellenic luncheon
- 2:00 p.m. Greek-letter leadership training session
House Corporation Board workshop
Alumnae workshop
- 6:30 p.m. "Hee Haw"—Confirmed Conventioneers' dinner
- 9:00 p.m. Alumnae leadership training
Greek-letter workshop
Advisers workshop

Sunday, June 25

- 9:30 a.m. Invocation
Memorial Service
Exemplification of the ritual
- 11:30 a.m. "Waiting for the Robert E. Lee" luncheon
- 1:00 p.m. Joint Alumnae/Greek-letter leadership training
- 4:00 p.m. Visit to Opryland

Monday, June 26

- 7:30 a.m. Parliamentary Procedure class
- 9:00 a.m. Second business meeting
Alumnae visitor workshop
Greek-letter visitor workshop
- 12:00 "When the Saints Go Marching In" luncheon
- 1:30 p.m. Third business meeting
Tours for non-delegate members and guests
- 7:00 p.m. "May the Circle Go Unbroken"—Pink Carnation banquet
Reception immediately following

MAKE CONVENTION REGISTRATIONS NOW! Deadline: May 22

All applications for Convention reservations must be made through Central Office, Box 310, Kenilworth, IL 60043. Official delegates will be notified of travel arrangements, room assignments and other pertinent details.

Non-delegates, too, must reserve space through C.O. And, it's advised, it is much easier to cancel than it is to process a reservation at the last minute.

A variety of rooms are available under a variety of plans to allow for family visitors. The length of your visit also may be extended or shortened with no difficulty. The Convention Registrar will see to that.

Basically, here are the charges under a Modified American Plan (lunch and dinner, Thursday through Monday):

Collegians	3 per room, \$32.00 per person per day
Double	35.00 per person per day
Single	44.50 per person per day

All Gamma Phi Betas are responsible for the registration fee of \$35.00. However, allowances are made for daily visitors. For one day: \$10 plus \$5 for the Convention kit. Registration for workshops and two meals—no kit—\$25.00



Travelers' Advice

Nashville Weather:

Mean temperature is 80.2 F. Highs in the 90's, lows in the 70's. Humidity level is high in comparison with the rest of the nation . . . 80% is not uncommon.

Air conditioners function very well—in fact, sometimes too well. Brrrrr! So pack wraps for indoor comfort.

Transportation:

Limo service available directly from the airport to the Hyatt Regency. Also taxis.

M.T.A. (Metro Transit Authority) will prove useful for side trips to the Parthenon, Fort Nashborough and other downtown sights.

Parking is available at both the Hyatt Regency and the nearby Municipal Garage.



TRANSISTER SERVICE

1978 Directory of TranSISterS

"More expert advice for traveling Gamma Phi Betas" . . . that was the goal of **Theora (Teek) Kurt Schonberg** (Iowa State) when she assumed the chairmanship of TranSISter Services last year. That she's succeeding is apparent with the growing International flavor to the directory listing. Members in such far-away places as Norway, Singapore and New Zealand have volunteered to give their sisters words of advice when visiting their countries of residence.

Those desiring to "See America First" can find assistance in 46 out of the 50 states. Only Alaska, Maine, Rhode Island and South Dakota are missing from the 1978 directory. "Hopefully," says Teek, "TranSISterS in these states will be found soon."

Here, then, is the record-breaking number (261) of TranSISterS. Those marked B&B offer free-of-charge overnight accommodations (bed and breakfast). Test one of these generous women . . . particularly if you are moving into their area and could use help in locating in the right neighborhood, or finding services. Teek promises you'll find another reason why it's great to be a Gamma Phi Beta.

ALABAMA

Birmingham
Mrs. Will M. Gregory (Robbye)
4210 Sharpsburg Drive
Birmingham, AL 35213
Phone: 205-879-7082

ALASKA (none)

ARIZONA

Flagstaff
Mrs. John C. Rooker, Jr. (Sharon)
3224 N. Grandview
Flagstaff, AZ 86001
Phone: 602-774-0769
Phoenix (B&B)
Mrs. Fred W. Ames (Pat)
6050 N. Calle Mio
Phoenix, AZ 85014
Phone: 602-264-0009; 602-263-8882

Tucson (B&B)
Mrs. Jeffrey Haskell (Pamela)
5705 E. Ft. Lowell Road
Tucson, AZ 85712
Phone: 602-885-1984

ARKANSAS

Little Rock
Mrs. Michael Drake (Jinnie)
7104 Sequoyah Lane
North Little Rock, AR 72116
Phone: 501-835-5037

CALIFORNIA

Alameda County (Southern)
Mrs. Lawrence Anderson (Virginia)
18680 Reamer Road
Castro Valley, CA 94546
Phone: 415-538-7697

Bakersfield
Mrs. Lynn Reade (Genie)
6425 Mt. Shasta
Bakersfield, CA 93309
Phone: 805-833-9801
Balboa Harbor
Mrs. Arthur C. Patch (Sharlie)
525 Vista Flora
Newport Beach, CA 92660
Phone: 714-644-5075
Beverly Hills-Westwood
Mrs. Victor Sutherland (Mary Frances)
1069 Rose Avenue #6
Los Angeles, CA 90034
Phone: 213-559-9489
Carmel (Monterey County)
Mrs. Glenn R. Bernhardt (Mary Lou)
79 High Meadow Road
Carmel, CA 93921
Phone: 408-624-0435
Central Coast (Grover City, Santa Maria, San Luis Obispo)
Mrs. Joan Forrest
867 North 3rd
Grover City, CA 93433
Fresno
Mrs. William L. Haskell (Nancy)
933 E. Sierra Madre
Fresno, CA 93704
Phone: 209-227-0114
La Jolla
Mrs. Michael B. Wilkes (Penny)
P.O. Box 2201
La Jolla, CA 92038
Phone: 714-459-4021

Long Beach
Mrs. Rick Johnson (Mary Ann)
6541 Montova Street
Long Beach, CA 90815
Phone: 213-598-1509
Los Angeles (2)
Mrs. Robert Benton (Carol)
2014 N. Serrano Avenue
Los Angeles, CA 90028
Phone: 213-461-8186
Nina Bradley (B&B)
1416 Brand Avenue, Apt. B
Glendale, CA 91202
Modesto
Mrs. William Reinheimer (Ila Jean)
424 Buena Vista
Modesto, CA 95351
Phone: 209-529-3952
Orange
Mrs. Timothy Falisky (Barbara)
2942 E. Lake Hill Drive
Orange, CA 92667
Phone: 714-637-4504
Palo Alto
Mrs. William C. Snitjer (Kate)
2317 South Court
Palo Alto, CA 94301
Phone: 415-327-7739
Pasadena
Mrs. Miles J. Turpin (Ruth)
1828 Windsor Road
San Marino, CA 91108
Phone: 213-283-5550
Placerville
Mrs. Robert M. Riley, Jr. (June)
1214 Westwood Drive
Placerville, CA 95667

Riverside
Mrs. Dwane Mickelson (Jan)
2805 Miguel
Riverside, CA 92506
Phone: 714-683-6941
Sacramento Valley (2)
Mrs. Ellis Hirst (Linda)
825 Robin Lane
Sacramento, CA 95825
Phone: 916-489-4990; 916-445-5139
Mrs. Dottie McCann
10293 Los Palos Drive
Rancho Cordova, CA 95670
Phone: 916-363-2040
San Diego
Mrs. Chad Brucker (Judy)
6361 Lake Shore Drive
San Diego, CA 92119
Phone: 714-460-5273
San Fernando Valley
Mrs. Ronald Rindge (Sue)
5253 Ambridge
Agoura, CA 91301
Phone: 213-889-9966
San Francisco
Miss Lynne Ponzini
1427 Balboa
San Francisco, CA 94118
Phone: 415-387-9575
San Mateo County
Mrs. Eugene Umland (Pauline)
416 Villa Terrace #1
San Mateo, CA 94401
Phone: 415-343-3300; 415-341-8231

Santa Maria
 Mrs. Dan Holmes (Beverly)
 327 Highland Drive
 Santa Maria, CA 93454
 Phone: 805-937-6583

South Bay, Palos Verdes Pen. Los Angeles Area (2)
 Mrs. William R. Muller, Jr. (Sally)
 24 Narcissa Drive
 Rancho Palos Verdes, CA 90274
 Phone: 213-541-7326

Mrs. Donald C. Kraatz (Pat)
 2448 Via Anacapa
 Palos Verdes Estates, CA 90274
 Phone: 213-541-1743

South Orange County (El Toro; Mission Viejo; Laguna Niguel)
 Mrs. Keith Olsen (Mary Ann)
 24161 Adonis
 Mission Viejo, CA 92675
 Phone: 714-830-1630

South Peninsula (Sunnyvale, San Jose, Los Altos, Mt. View, Cupertino, Saratoga) (B&B)
 Mrs. Jeffrey C. Harp (Janet)
 1544 Marlborough Avenue
 Los Altos, CA 94022
 Phone: 415-968-5497

Whittier
 Mrs. Merwin Carty (Mary)
 6202 S. Alta
 Whittier, CA 90601
 Phone: 213-693-6815

COLORADO

Boulder
 Mrs. James Friend (Pauline)
 2710 Regis Drive
 Boulder, CO 80303
 Phone: 303-494-9650

Colorado Springs
 Mrs. Wayne P. Cooper (Elly)
 3014 Drakestone Drive
 Colorado Springs, CO 80904
 Phone: 303-632-5106

Denver (B&B)
 Mrs. Earl T. Pinney (Patricia)
 6915 S. Garfield Way
 Littleton, CO 80122
 Phone: 303-771-6689

Ft. Collins
 Mrs. Wendell Bevan (Anne)
 421 South Howe, Apt. 605
 Ft. Collins, CO 80521
 Phone: 303-482-2905

Grand Junction
 Mrs. Anita B. Fenn
 720 Golfmore Drive
 Grand Junction, CO 81501
 Phone: 303-243-1087

CONNECTICUT

Fairfield County (2)
 Mrs. Roland Carreker (Miriam)
 12 Elmwood Lane
 Westport, CT 06880
 Phone: 203-227-9135

Mrs. William H. Armstrong (Joan)
 43 Pecksland Road
 Greenwich, CT 06830
 Phone: 203-661-7118

Madison
 Mrs. B. Victor Chance, Jr.
 (Carmella)
 599 Horse Pond Road
 Madison, CT 06443

Stratford (B&B)
 Susan H. Parker
 1115 Whippoorwill Lane
 Stratford, CT 06499
 Phone: 203-378-7973

Tolland, Storrs, Hartford (B&B)
 Mrs. Michael Moran (Sara)
 Cider Mill Road
 Tolland, CT 06084
 Phone: 203-875-7793; 203-872-9163

DELAWARE

Wilmington (B&B)
 Mrs. John Hughes (Cackey)
 1302 Copley Drive
 Wilmington, DE 19803
 Phone: 302-762-1925

FLORIDA

Anna Maria Island
 Mrs. J. Howard Pope (Margaret)
 201 Chilson Avenue, Box 1083
 Anna Maria Island, FL 33501
 Phone: 813-778-5135

Homestead
 Mrs. William S. Marsh (Libby)
 25201 S.W. 189th Avenue
 Homestead, FL 33031

Ft. Lauderdale
 Mrs. William Seymour (Pat)
 1390 S.W. 56th Avenue
 Ft. Lauderdale, FL 33314
 Phone: 305-587-3567

Jacksonville
 Mrs. Michael Miller (Molly)
 9424 Pickwick Drive
 Jacksonville, FL 32217
 Phone: 904-733-6482

Lake Park (B&B)
 Mrs. James R. Hibbard (Jeanne)
 507 Silver Beach Road
 Lake Park, FL 33403
 Phone: 305-848-0906

Karen Criswell
 9022 N.E. 8 Avenue #1L
 Miami Shores, FL 33138

N. Fort Myers
 Mrs. Gregory Ezell (Nan)
 509 Pine Island Road
 N. Ft. Myers, FL 33903
 Phone: 813-995-0989

Orlando-Winter Park (4)
 Mrs. Herbert C. Towle (Kay) B&B
 206 Ranch Road
 Maitland, FL 32751
 Phone: 305-671-0265

Mrs. James T. Conklin (Lynn) B&B
 5015 St. Germain Avenue
 Orlando, FL 32809
 Phone: 305-855-1531; 305-647-8118

Mrs. Harold Walsh (Caroline)
 Sleepy Hill Farm
 Maitland, FL 32751
 Phone: 305-862-1744

Mrs. John Pipkorn (Janet)
 114 Spring Valley Loop
 Altamonte Springs, FL 32701
 Phone: 305-862-7404

Pensacola
 Mrs. John T. Burke (Pam)
 4213 Futura Drive
 Pensacola, FL 32504
 Phone: 904-477-9566

Tallahassee
 Mrs. Kay Vernon
 744 Duparc Circle
 Tallahassee, FL 32303
 Phone: 904-385-4776

GEORGIA

Atlanta (2)
 Mrs. Don Heaman (Julia)
 2929 Panthersville Road R-28
 Decatur, GA 30034

Mrs. John B. F. Dillon (Agnes)
 2726 Parkview Drive N.E.
 Atlanta, GA 30345

Columbus-Ft. Benning (2)
 Donna Downen
 950 Peachtree Drive #47
 Columbus, GA 31906
 Phone: 404-327-2189

Ann Overton
 3305 Gail Drive
 Columbus, GA 31907
 Phone: 404-568-3914

Statesboro
 Joanne R. Artz
 240 South Mulberry Street, Apt. 20
 Statesboro, GA 30458
 Phone: 912-764-4790

HAWAII

Lahaina, Maui
 Mrs. Charles B. Sutherland
 (Connie)
 P.O. Box 446
 Lahaina, Maui, HI 96761
 Phone: 808-661-0768



She Answered the Telephone

A call went out for someone to design a Transister logo.

Answering: **Pattie Neilson Moen** (Wisconsin).

That was back in 1972. Since then she's also redrawn the tableau illustrations for the Sorority's Initiation Booklet and designed the cover and fly leaf for *The History of Gamma Phi Beta* as revised in 1976 by **Charlotte Hamilton Mason** (Michigan). Long active in the Madison Alumnae and the Gamma House Corporation Board, Pattie received the Merit Award in 1974.

In 1976, Pattie celebrated her 50th birthday by opening "The Hole in the Woods Art Gallery" in New Glarus. Art work exhibited and sold is primarily that of local artists and her own watercolors. Now she's adding the work of "outside" artists—including a beautiful Batik by **Nedra Schneider**, a Gamma Phi Beta from Minneapolis.

Pattie is seen here with her two Gamma Chapter daughters: **Pamela** (left) is the Madison Alumnae delegate to Panhellenic and an interior designer for Blied, Inc. **Priscilla**, who's now attending Minnesota, is working for her B.S. in dental hygiene. She's a Gamma Phi Beta scholarship winner.

Oahu
 Mrs. Joseph Demarke (Betty)
 99-1044 Lalawai Drive
 Aiea, HI 96701
 Phone: 808-488-4617

IDAHO

Boise (B&B)
 Mrs. Jerry L. Moore (Donna)
 11184 Peconic Drive
 Boise, ID 83705

Gooding
 Mrs. James Hollifield (Lisa)
 Route 2, Box 208
 Gooding, ID 83330

Moscow
 Mrs. Charles Kiblen (Mary)
 210 N. Garfield
 Moscow, ID 83843
 Phone: 208-882-4285

Pocatello
 Mrs. Bill Watkins (Valorie)
 240 Fairmont
 Pocatello, ID 83201
 Phone: 208-232-6263

ILLINOIS

Aurora (B&B)
 Janet E. Cassell (Mrs. Martin L.)
 601 Redwood Drive
 Aurora, IL 60506
 Phone: 312-892-7482

Chicago (2)
 Mrs. Jeanne Jacob Haesemeyer
 1660 N. LaSalle, #3507
 Chicago, IL 60614
 Phone: 312-649-1860; 312-467-1611

Sally E. Lewis
 535 North Michigan Avenue, #704
 Chicago, IL 60611

Chicago Northwest Suburban
Palatine, Arlington Hgts,
Barrington)
Mrs. Robert Hyson (Sue)
635 S. Walnut
Arlington Heights, IL 60005
Phone: 312-392-9693

Chicago South Suburban, Park
Forest, Chicago Hgts, Olympia
Fields)
Mrs. Karen Grafe
308 Sheridan
Park Forest, IL 60466
Phone: 312-481-7104

Chicago West Suburban (Claredon
Hills, Hinsdale, Downers Grove,
Oak Park, Western Springs)
Mrs. Gerald H. Asp (Barbara)
409 Warren Terrace
Hinsdale, IL 60521
Phone: 312-323-9407

Chicago West Suburban
(Naperville, Glen Ellyn, Wheaton)
Mrs. Sandy Gaylord
25W231 Oldham Avenue
Naperville, IL 60540
Phone: 312-355-3496; 312-469-
7000

Champaign-Urbana (B&B) over 65
Mrs. Cloyd M. Smith (June)
508 West Florida Avenue
Urbana, IL 61801
Phone: 217-367-0858

Danville (B&B)
Mrs. Harvey H. Acton (Jean)
7 North Shore Terrace
Danville, IL 61832
Phone: 217-446-1232

Glen Ellyn
Mrs. A. J. Pearson (Betty)
22 West 106 Sheffield Court
Glen Ellyn, IL 60137
Phone: 312-469-1944

Kankakee County
Mrs. Philip J. Gadbois (Nancy)
11 Strasma Drive
Kankakee, IL 60901
Phone: 815-937-1411

Moline
Mrs. Stanley Ulrick (Nellie)
2936 Forrest Hills Ct. at 16th
Avenue
Moline, IL 61265
Phone: 309-762-6434

Normal (B&B)
Mrs. William C. Gale (Bev)
112 Riss Drive
Normal, IL 61761
Phone: 309-452-6009

Peoria
Mrs. James Schauble (Carol)
2315 W. Winnebago
Peoria, IL 61614
Phone: 309-691-5799

Rockford
Mrs. Donald Ivacic (Peggy)
1723 Larkspur Drive
Rockford, IL 61107
Phone: 815-226-5458

Sterling
Mrs. Laurence Johnson (Sharon)
RR #1
Sterling, IL 61081
Phone: 814-626-5798

INDIANA
Bloomington
Miss Evelyn VonHermann
201 S. Meadowbrook
Bloomington, IN 47401
Phone: 812-336-5729

Calumet Area (3)
Mrs. Walter Alexander (Maggie)
1305 Forest Park Drive
Valparaiso, IN 46383
Phone: 219-462-8723

Mrs. Robert Bielfeldt (Barbara)
6329 Moraine Avenue
Hammond, IN 46324
Phone: 219-932-1132

Mrs. Donald Gertz (Joyce)
622 S. East Street
Crown Point, IN 46307
Phone: 219-663-7041

Evansville
Mrs. Alan Staggs (Linda)
3605 Herndon
Evansville, IN 47711
Phone: 812-476-0989

Greencastle
Mrs. L. Duane Bassett (Nancy)
408 Linwood Drive
Greencastle, IN 46135
Phone: 317-653-3842

Indianapolis (2)
Mrs. Vaino Ajango (Nancy)
1632 Lancaster Court
Indianapolis, IN 46260
Phone: 317-846-4948

Mrs. William Hasen (Norma)
12026 Eden Glen
Carmel, IN 46032

Lafayette Area (B&B)
Anita Tompkins (Mrs. Glen)
610 S. 19th Street Lafayette, IN
47906
Phone: 317-447-7474

Terre Haute
Mrs. Ronald Howes (Cynthia)
1916 South 29th Street
Terre Haute, IN 47803
Phone: 812-235-2694

IOWA

Ames
Mrs. Helen K. Facto
3416 Woodland Avenue
Ames, IA 50010
Phone: 515-292-1808

Cedar Rapids
Mrs. Douglas Rotman (Nancy)
2117 Washington Avenue SE
Cedar Rapids, IA 52403
Phone: 319-364-0868

Des Moines
Susan Holderness
8109 Airline
Des Moines, IA 50322
Phone: 515-276-4757

Iowa City
Mrs. Dennis Petersen (Jane)
932 D Oakcrest
Iowa City, IA 52240
Phone: 319-354-1931; 319-353-
6961

Quad Cities
Mrs. Jon A. Flower (Annetta)
2408 Avalon Drive
Bettendorf, IA 52722
Phone: 319-355-6994

Waterloo-Cedar Falls
Mrs. William Heiple (Karen)
203 Cedar Crest
Cedar Falls, IA 50613
Phone: 515-266-7852

KANSAS

Greater Kansas City
Mrs. Leo O'Brien (Peggy Jo)
433 West Red Bridge Road
Kansas City, MO 64114
Phone: 816-942-1667

Hutchinson
Mrs. Richard Piper (Barbara)
3105 Cornell Drive
Hutchinson, KS 67501
Phone: 316-662-6104; 316-662-
1266

Lawrence
Mrs. James Callahan (Dorothy)
1430 Louisiana, Apt. 1
Lawrence, KS 66044
Phone: 913-843-9155

Manhattan, Jct. City, Ft. Riley
Jule Boomer
2136 Lawrence
Manhattan, KS 66502
Phone: 913-539-5350

Topeka
Mrs. Samuel H. Marshall, Jr. (Ceil)
1921 Westwood Drive
Topeka, KS 66604
Phone: 913-235-1447; 913-234-
5000

Wichita
Mrs. George R. Tiller (Jeanne)
7407 Norfolk Drive

Wichita, KS 67206
Wichita, KS 67206
Phone: 316-685-2062

KENTUCKY

Greater Louisville Area (B&B)
Mrs. Stanley A. Gorski (Juliet)
7008 Foxcroft Place
Hunting Creek
Prospect, KY 40059
Phone: 502-228-8546

LOUISIANA

Baton Rouge
Mrs. James Brunson (Sally)
826 W. Lakeview Drive
Baton Rouge, LA 70810
Phone: 504-766-3284

Shreveport-Bossier City
Mrs. Patrick Hardin (Genie)
121 Bruce Street
Shreveport, LA 71105
Phone: 318-868-2960

Greater New Orleans
Mrs. Dan Bond (Leah)
4417 Senac Drive
Metairie, LA 70003
Phone: 504-885-0381

MAINE (none)

MARYLAND

Baltimore
Mrs. Richard Suehla (Betty)
2108 Lippizan Court
Fallston, MD 21047
Phone: 301-877-7303

MASSACHUSETTS

Andover
Roberta V. Shupe
76 Salem Street
Andover, MA 01810
Phone: 617-475-7374; 617-475-
1242

Boston
Mrs. Herbert M. Allen (Betty)
103 Brookside Avenue
Belmont, MA 02178
Phone: 617-484-8367

West Boylston
Mrs. Robert D. Murray (Beth Ann)
36 Applewood Road
West Boylston, MA 01583
Phone: 617-835-6449

MICHIGAN

Ann Arbor (2)
Mrs. Jack Dye (Mary)
2619 Manchester Road
Ann Arbor, MI 48104
Phone: 313-971-5716

Mrs. James L. Blaylock (Peg)
1500 Glen Leven Road
Ann Arbor, MI 48103
Phone: 313-663-8608

Birmingham
Mrs. Frederick Gould (Virginia)
1775 Tiverton Road
Bloomfield Hills, MI 48013
Phone: 313-642-8091

Grand Rapids (2)
Mrs. R. Hine (Carolyn)
2550 Maplewood S.E.
Grand Rapids, MI 49506
Phone: 616-949-9335

Mrs. Willard Schroeder (Barbara)
2618 Reeds Lake Blvd., S.E.
Grand Rapids, MI 49506
Phone: 616-949-1576

Jackson
Mrs. William L. Ried (Martha)
932 Thomas Drive
Jackson, MI 49203
Phone: 616-784-3550

MINNESOTA

Duluth
Mrs. Charles Semrad (Susan)
2726 Branch Street
Duluth, MN 55812
Phone: 218-724-7586

Minneapolis-St. Paul (B&B)
Mrs. David R. Greven (Barbara)
123 Chapparral Drive
Apple Valley, MN 55124
Phone: 612-454-7495

MISSISSIPPI

Jackson
Mrs. Dean M. Miller (Gloria)
231 Ashcot Circle
Jackson, MS 39211
Phone: 601-362-3593

Jackson-Brandon
Mrs. Dennis R. Howell (Roberta)
101 Terrapin Drive
Brandon, MS 39042
Phone: 601-825-8903

MISSOURI

Columbia
Mrs. David Rawlings (Karen)
4106 N. Wappel Drive
Columbia, MO 65201
Phone: 314-445-2041

Greater Kansas City
Mrs. Leo O'Brien (Peggy Jo)
433 West Red Bridge Road
Kansas City, MO 64116
Phone: 816-942-1667

Rolla
Mrs. Kent Sanborn (Diane)
RFD 1
Rolla, MO 65401
Phone: 314-341-3046

St. Louis
Mrs. Christine McDonald
624 Haverford Road
St. Louis, MO 63124
Phone: 314-965-8476

Springfield
Mrs. John Lilliedahl, Jr. (Charlotte)
1324 Raintree Place
Springfield, MO 65804
Phone: 417-881-1676

MONTANA

Billings
Mrs. R. D. Blythe (Kaye)
4640 Rimrock Road
Billings, MT 59102
Phone: 406-656-5640

NEBRASKA

Kearney
Mrs. Brad Bigelow (Karen)
3300 19th Avenue
Kearney, NE 68847
Phone: 308-237-5634

Lincoln
Mrs. Steven Flanders (Judy)
2717 Anderson Drive
Lincoln, NE 68506
Phone: 402-488-1390

Omaha (2) B&B
Mrs. Terry Lammert (Donna)
12215 Orchard Street
Omaha, NE 68137
Phone: 402-895-0987

Mrs. Roderick Thiesen (Peg)
5220 Mason
Omaha, NE 68106
Phone: 402-551-0416

NEVADA (none)

NEW HAMPSHIRE

Exeter
Mrs. Edward Franq (Cathy)
42 Linden Street
Exeter, NH 03833
Phone: 603-772-3632

Manchester
Mrs. Edward Allman (Betty Jane)
385 Crestview Circle
Manchester, NH 03104

Nashua
Mrs. Frank K. Clark (Barbara)
10 Shelburne Road
Nashua, NH 03060
Phone: 603-882-4632

Raymond
Mrs. Burton Bush (Judy)
RFD #1, Mount Delight Road
Deerfield, NH 03037
Phone: 603-463-7683

NEW JERSEY

Bergen County (2) B&B
Mrs. Miles Jenney (Joan)
6 Longridge Road
Montvale, NJ 07654
Phone: 201-391-5209

Mrs. Paul Elvidge (Mary Ellen)
449 Wastena Terrace
Ridgewood, NJ 07450
Phone: 201-445-3293

Middletown
Mrs. Joanne C. Rossnagel
630 Harmony Road
Middletown, NJ 07748
Phone: 201-787-5295

Princeton Area
Ms. Sheila Hewitt
6 Benford Drive
Princeton Junction, NJ 08550
Phone: 609-799-2255

Summit Area (3) B&B
Mrs. Jean Crane
120 Early Street
Morristown, NJ 07960
Phone: 201-538-3784

Mrs. David Rugogulie (Marjorie)
162 Old Short Hills Road
Short Hills, NJ 07078
Phone: 201-379-5354

Mrs. Charles Nicholas (Ginny)
Keats Road
Pottersville, NJ 07979
Phone: 201-439-2358

Westfield (B&B)
Mrs. Monroe D. Macpherson (Kay)
141 Jefferson Avenue
Westfield, NJ 07090
Phone: 201-232-3636

NEW MEXICO

Albuquerque
Mrs. Stuart R. Campbell (Judy)
2114 Hendola NE
Albuquerque, NM 87110
Phone: 505-298-8296
Los Alamos
Martha Lee DeLanoy
1010 Myrtle
Los Alamos, NM 87544
Phone: 505-662-9283; 505-667-7661

NEW YORK

Buffalo-Erie County
Mrs. Robert Simpson (Betsy)
8970 Roll Road
Clarence, NY 14221
Phone: 716-741-3452
New York City (3)
Ms. Linda Zuffa-Ashard
336 E. 86th Street PHB
New York, New York 10028
Miss Linda Speer
1574 Third Avenue, Apt. 2F
New York, New York 10028
Phone: 212-289-8719; 213-750-3398

Mrs. Peter F. Leeds (Dianne)
200 East End Avenue
New York, New York 10028
Phone: 212-560-6589; 212-427-8963

Rochester
Mrs. John Nicastro (Terry)
27 Gentian Way
Fairport, NY 14450
Phone: 716-223-1402

Sea Cliff
Judith Ann Snyder
345 Carpenter Avenue
Sea Cliff, NY 11579

Syracuse
Mrs. L. Randolph Streeter (J. Carmel)
155 Seeley Road
Syracuse, NY 13205
Phone: 315-469-0047
Westchester County
Miss Kathleen Kincaid
9 Hillside Avenue
Pelham, NY 10803
Phone: 914-732-0028

NORTH CAROLINA

Charlotte
Mrs. John Talkington (Mary)
47 Newriver Trace
River Hills Plantation
Clover, SC 29710
Phone: 803-831-7422

Raleigh (2)
Mrs. George Jones (Marjorie)
1316 Westfield Avenue
Raleigh, NC 27605
Phone: 919-878-5915
Mrs. Thomas L. Law (Gay)
3404 Edgemont Drive
Raleigh, NC 27612
Phone: 919-787-8662

NORTH DAKOTA

Fargo-Moorhead (3)
Mrs. Ellend J. Palmer (Grace)
316 Eddy Court
Fargo, ND 58102
Phone: 701-237-5014
Dr. Georgianna Burt (Georgie)
1201 14th Avenue North
Fargo, ND 58102
Phone: 701-232-3017; 701-232-3261

Mrs. Quentin Burdick (Jocelyn)
1110 9th Street South
Fargo, ND 58102
Phone: 701-235-8457

Minot
Mrs. William H. Blore (JoAnn)
315 9th Avenue SE
Minot, ND 58701
Phone: 701-838-4565

OHIO

Greater Akron (B&B)
Mrs. Frank Conner (Ann)
2049 27th Street
Cuyahoga Falls, OH 44223
Phone: 216-929-3466
Canton-Massillon
Mrs. Donald Seibert (Connie)
606 E. Maple Street
North Canton, OH 44720
Phone: 216-499-7058

Cleveland East
Mrs. David Martinson (Judith)
2153 Garden Drive
Wickliffe, OH 44092
Phone: 216-585-4323

Cleveland West (B&B)
Mrs. Roger Cherryholmes (Marcia)
2455 Boxberry Lane
Broadview Heights, OH 44147
Phone: 216-237-4416

Columbus
Maryanne Jones
3978 Karl Road, Apt. 31
Columbus, OH 43220
Phone: 614-451-0223

Dayton (B&B)
Mrs. Richard L. Kaiser (Evie)
4350 Delco Dell Road
Dayton, OH 45429
Phone: 513-299-9730

Granville-Newark (B&B)
Mrs. John T. Hood (Pat)
135 Granview Road
Granville, OH 43023
Phone: 614-587-3107

Middletown
Mrs. Joseph E. Newlin (Tina)
4401 Nelson Road
Middletown, OH 45042
Phone: 513-424-1120

Oxford (B&B)
Camille Cestone
5273 College Corner Road, Apt. 19
Oxford, OH 45056
Phone: 513-523-5021

Toledo (B&B)
Mrs. Michael Mitchell (Donna)
1694 Archwood Lane
Toledo, OH 43614
Phone: 419-385-8027

OKLAHOMA

Ada
Mrs. Gary E. Jergensen (Barbara)
500 Rollow Road
Ada, OK 74820
Bartlesville
Mrs. Patrick H. Roark (Louise)
946 S.E. Briarwood
Bartlesville, OK 74003
Phone: 918-333-6297

Housemothers in Demand

In response to the increasing demand for housemothers, particularly by fraternities, a second National House Directors Seminar has been set for June 18-22. Once again, the University of Missouri—Columbia will be the site, with participants housed at the Ramada Inn.

Co-sponsored by the Center for Student Life and the University Extension Division, the seminar will cover nutrition and meal planning, security, sanitation, fire safety, first aid, and planning for special house events. The basic necessities of organizing and supervising a staff also will be stressed.

For additional information contact:

Conference & Short Courses
351 Hearnese Building
University of Missouri—Columbia
Columbia, MO 65201
Phone: (314) 882-4087

Special Note: A change in Sorority rules now permits members to serve Gamma Phi Beta chapters as housemothers. If you're interested, contact Audrey Weldon Shafer (Missouri)—Mrs. Charles Shafer, Jr., 6808 Rockhill Rd., Kansas City, MO 64131.

Broken Arrow
Mrs. Darrell Kana (Ruth)
8313 Shadowood Avenue
Broken Arrow, OK 74012
Phone: 918-251-9209

Clinton-Weatherford Area
Mrs. J. L. Thornbrough (Martha)
333 South 14th
Clinton, OK 73601
Phone: 405-323-0823

Muskogee
Mrs. M. O. Lewis (Helen)
5 Leathers Lane
Muskogee, OK 74401
Phone: 918-682-7165

Norman
Mrs. Edwin L. Moore (Betse)
1518 Ann Arbor
Norman, OK 73069
Phone: 405-329-0052

Oklahoma City (B&B over 65)
Mrs. Harry Anderson (Carol)
4704 N. W. 77th
Oklahoma City, OK 73132
Phone: 405-721-6848

Tulsa
Mrs. Dean VanTrease (Vesta)
5738 E. 62nd Place
Tulsa, OK 74136
Phone: 918-622-9571

Stillwater
Mrs. Ernest Hodnett (Betty)
1020 Will Rogers Drive
Stillwater, OK 74074
Phone: 405-372-0220

OREGON

Coos Bay (B&B)
Mrs. Ben Sprouse (Janet)
557 S. 9th
Coos Bay, OR 97420
Phone: 502-269-0598

Corvallis (B&B)
Mrs. Whitney Ball (Jane)
2495 S. W. Whiteside Drive
Corvallis, OR 97330
Phone: 503-757-7404

Eugene
Miss Christine May Carney
1637 Ferry, #3

Eugene, OR 94701
Phone: 503-345-7973

Portland
Mrs. Stephen Fairley (Carolyn)
14608 N.E. Hancock
Portland, OR 97230
Phone: 503-252-2225

PENNSYLVANIA

Cooksburg (Cook's Forest)
Mrs. Robert Wheat (Mary)
2075 Springhill Road
Cooksburg, PA 16217

Lancaster Area
Tippy Sheraw
46 Peach Lane
Lancaster, PA 17601

Lehigh Valley
Mrs. William R. Elleston (Marilyn)
227 W. Lafayette Street
Easton, PA 18042
Phone: 215-258-9546

Lititz
Mrs. G. Marline Spaid (Lillian)
625 S. Spruce Street
Lititz, PA 17543
Phone: 717-626-2446

Philadelphia-North Suburban
Mrs. F. A. Cline, Jr. (Ann)
409 Cheltona Avenue
Jenkintown, PA 19046
Phone: 215-886-9796

Philadelphia-West Suburban
Mrs. Harry Zahn (Mary)
308 Oak Hills Lane
Newtown Square, PA 19073

Pittsburgh
Mrs. Daniel McCown (Sherrill)
2365 Englewood Drive
Pittsburgh, PA 15241
Phone: 412-831-9040

State College
Mrs. J. G. Hawthorne (Jean)
309 Toftrees Avenue #342
State College, PA 16801
Phone: 814-237-6807

RHODE ISLAND (none)

SOUTH CAROLINA

Charleston (B&B)
 Mrs. Ronald Templeton (Julia)
 97 Norview Drive
 Charleston, SC 29407
 Phone: 803-571-1501

Columbia
 Mrs. L. Kennedy Boggs (Maureen)
 4532 Sandy Ridge Road
 Columbia, SC 29206
 Phone: 803-782-8682

Greenville (B&B)
 Mrs. J. Ellison Raines (Joyce)
 196 Chapman Road
 Greenville, SC 29605
 Phone: 803-271-1194; 803-233-1633

Greenwood County (B&B)
 Mrs. Paul S. Lofton, Jr. (Mary Beth)
 Rt. 1, Box 4
 Ninety Six, SC 29666
 Phone: 803-543-4319

SOUTH DAKOTA (none)**TENNESSEE**

Memphis
 Mrs. George Gray (Pat)
 1810 Harbert Avenue
 Memphis, TN 38104
 Phone: 615-398-4094

Knoxville (B&B)
 Sherry Robertson
 7213 Arlie Road
 Halls Crossroads
 Knoxville, TN 37918
 Phone: 615-922-2808

Nashville (B&B)
 Mrs. Edmond J. Miller (Vallie)
 118 Taggart Avenue
 Nashville, TN 37205
 Phone: 615-352-6109

TEXAS

Amarillo (B&B)
 Mrs. Winifred H. Dunaway
 1506-A West 11th Street
 Amarillo, TX 79101
 Phone: 806-373-7546

Arlington
 Mrs. William Lace (Laura)
 3405 Somerset
 Arlington, TX 76013
 Phone: 817-461-0154

Austin
 Mrs. James M. Michael (Jane)
 3307 Whiteway Drive
 Austin, TX 78757
 Phone: 512-451-4177

Beaumont
 Mrs. Hal Laine (Shirley)
 935 Monterrey
 Beaumont, TX 77706
 Phone: 713-866-5897

Corpus Christi (B&B)
 Mrs. Charles D. Adams, Jr. (Patricia)
 6110 Boca Raton Drive
 Corpus Christi, TX 78413
 Phone: 512-853-8055

Dallas
 Mrs. Frank J. Vogel (Christina)
 9914 Larchbrook
 Dallas, TX 75238
 Phone: 214-348-5936

Dallas-Richardson (B&B)
 Gene Joyce
 910 Glen Cove
 Richardson, TX 75080
 Phone: 214-235-1724

Fort Worth
 Mrs. Ronald J. Belota (Linda)
 8537-2 LaPlaza Drive
 Ft. Worth, TX 76108
 Phone: 817-246-4834

Houston
 Mrs. Willis P. Crenshaw (Carol)
 7703 Beech Cove Lane
 Houston, TX 77072
 Phone: 713-498-1458

Hurst, Euless, Bedford Area
 Mrs. Gordon Doggett (Sabra)
 3136 Spring Lake
 Bedford, TX 76021
 Phone: 817-281-6937

Lubbock
 Jan Cummings
 4512 16th Street
 Lubbock, TX 79416
 Phone: 806-799-6928

Midland
 Mrs. H. LaDoyce Lambert (Gloria)
 1404 Murray
 Midland, TX 79701
 Phone: 512-684-7714

San Antonio
 Mrs. Robert A. Hein (Nancy)
 413 Ridgemont Avenue
 San Antonio, TX 78209
 Phone: 512-824-9229

UTAH

Bountiful
 Mrs. Byron Lemmon (Patty)
 1873 South 775 East
 Bountiful, UT 84010
 Phone: 801-295-4653

Salt Lake City (B&B)
 Mrs. James L. Levy (Barb)
 2197 South 2200 East
 Salt Lake City, UT 84109
 Phone: 801-487-2895

VERMONT

Burlington (B&B)
 Marian Bickford
 24 Valleyview Drive
 Essex Jct., VT 05452
 Phone: 802-878-4158

VIRGINIA

Alexandria (DC Area)
 Mrs. James W. Heegeman (Margo)
 906 Place I
 5500 Holmes Run Pkwy
 Alexandria, VA 22304

Norfolk
 Mrs. Angelo Terry Heaton (Byrd)
 8277 Baywood Court
 Norfolk, VA 23518

Richmond
 Mrs. William E. Trout, Jr. (Harriet)
 35 Towana Road
 Richmond, VA 23226
 Phone: 804-288-1334

Washington DC Area (B&B)
 Mrs. Linda Peters
 1500 Atwood Road
 Silver Springs, MD 20906
 Phone: 301-460-1637

Woodstock (B&B)
 Mrs. Tom Cunniff (Nancy)
 219 North Church Street
 Woodstock, VA 22664
 Phone: 703-459-4940

WASHINGTON

Pullman
 Mrs. Norman Shoup (Betty)
 N.E. 1040 B Street
 Pullman, WA 99163
 Phone: 509-332-1382

Seattle
 Mrs. Charles H. Kester (Helen)
 15810 S.E. 42nd Place
 Bellevue, WA 98006
 Phone: 206-641-0325

Spokane
 Mrs. Frank Emerson (Shirley)
 1509 Toni Rae Drive W.
 Spokane, WA 99218
 Phone: 509-466-2054

Tacoma
 Mrs. Austin Burch (Alice)
 7010 Topaz Drive S.W.
 Tacoma, WA 98498
 Phone: 208-582-0964

Kamiah Butte State Park
 Mrs. Michael Werner (Vivian)
 Rt. 1, Box 190
 Palouse, WA 99161

WEST VIRGINIA

Morgantown
 Mrs. C. N. Posenecker (Margaret)
 Cheat Road, Rt. #6, Box 51
 Morgantown, WV 26505
 Phone: 304-296-4855

WISCONSIN

Appleton (2)
 Mrs. Richard Martinek (Clara)
 1444 W. Prospect
 Appleton, WI 54911
 Phone: 414-734-4450

Mrs. Paul Williamson (Marcia)
 1611 West Lorain Court
 Appleton, WI 54911
 Phone: 414-733-3003

Beaver Dam, Fond du Lac, Green Bay
 Miss Joan Schneider
 1236 Circle Drive E.
 Beaver Dam, WI 53916

Columbus (B&B)
 Mrs. John F. Roche (Mary)
 Rt. 2
 Columbus, WI 53925
 Phone: 414-623-2778

Coleman (Marinette, Oconto) B&B
 Sue Tatge
 Box 89
 Coleman, WI 54112
 Phone: 414-897-3812

Madison (2)
 Patti Moen (Mrs. Donald N.)
 420 12th Avenue, Box 515
 New Glarus, WI 53574
 Phone: 608-527-2450

Mrs. James Spahn (Charlotte) B&B
 4133 Council Crest
 Madison, WI 53711
 Phone: 608-233-6033

Greater Milwaukee Area (2)
 Mrs. Donald L. Bell (Elise B.)
 6755 N. Lake Drive
 Milwaukee, WI 53217

Mrs. Cathy Brown
 4305 N. Marlborough
 Shorewood, WI 53211
 Phone: 414-964-7937

Neenah-Menasha
 Mrs. Robert Kay (Helen)
 147 North Park
 Neenah, WI 54956
 Phone: 414-725-2827

Oshkosh
 Mrs. Hewitt Toland (Elizabeth)
 850 Jackson
 Oshkosh, WI 54901
 Phone: 414-231-4494

Platteville
 Mrs. Jerry Klessig (Donna)
 Golf View Road, R. #3
 Platteville, WI 53818
 Phone: 608-348-4276

Ripon, Berlin, Green Lake
 Mrs. Clyde Boismenue (Roberta)
 695 Sandstone Road
 Ripon, WI 54971
 Phone: 414-748-5367

Shiocton
 Mrs. Ronald Conradt (Marilyn)
 Box 32
 Shiocton, WI 54170
 Phone: 414-986-3698

Wausau
 Mrs. Alton G. Swanson (Barbara)
 1015 Eighth Street
 Wausau, WI 54401

WYOMING

Cheyenne
 Mrs. Lorraine Grigsby
 2774 Olive Drive
 Cheyenne, WY 82001
 Phone: 307-638-6082

Douglas
 Mrs. Shirley Worl
 Box 128
 Douglas, WY 82633
 Phone: 307-358-3415

Lander
 Princess Killebrew
 Rt. 62-C, Box 100
 Lander, WY 82520
 Phone: 307-332-3044

Laramie
 Mrs. E. J. Hendon (Carol)
 2316 Rainbow
 Laramie, WY 83070
 Phone: 307-745-3217

CANADA

Montreal, Quebec
 Mrs. Carol Bird
 3470 Ridgewood Avenue, Apt. 4
 Montreal, H3V1C2
 Quebec, Canada
 Phone: 514-738-6113

West Vancouver, British Columbia (B&B)
 Mrs. William V. Inman (Mary)
 1408 31st Street
 West Vancouver, V7V4P5
 British Columbia, Canada
 Phone: 604-922-4866

Ottawa, Ontario
 Mrs. Graeme Barber (Sally)
 529 Brierwood Avenue
 Ottawa, K2A2H4
 Ontario, Canada

Windsor, Ontario (B&B)
 Mrs. Americo Dean, Jr. (Barbara)
 RR #1, 606 Old Tecumseth Road
 Belle River, NORIAO
 Ontario, Canada
 Phone: 519-735-9786

CANAL ZONE

Balboa
 Mrs. Rudolph Burda (Julietta)
 PO Box 68
 Balboa, Canal Zone

GERMANY

Heidelberg, Frankfurt
 Christine Frances Podd
 Dependent Schools, Box 146
 APO, New York, New York 09221

GUAM

Mrs. Paul A. Moore (Deborah)
 117 2nd Street NAS
 FPO, San Francisco, CA 96637

LUXEMBOURG

Mrs. Robert L. Roth (Jackie)
 69 rue Dange-St. Romain
 Mamer
 Grand Duchy of Luxembourg
 Phone: 31 03 38

MEXICO

Mexico City
 Miss Elena E. Hannan
 Apartado Postal 5-225
 Mexico City, Mexico 5, D.F.
 Phone: 511-18-96

NORWAY

Oslo
 Mrs. O. J. Gilbo (Kathy)
 Halden Terrasse 16/B
 1300 Lufthausen
 Norway
 Phone: 53-86-91

NEW ZEALAND

Invercargill
 Mrs. A. C. MacPherson (Ada)
 Springhills, #6, RD
 Invercargill, New Zealand

JAPAN

Tokyo
 Mrs. Howard Austin (Janet)
 39-34, I Chome
 Tama-Machi-Fuchu-Shi
 Tokyo, Japan 183

REPUBLIC OF SINGAPORE

Mrs. Peter Norton (Mary)
 c/o Amoco Far East Exp. Co.
 Box 3744
 Singapore, Republic of Singapore

WEST INDIES

Curacao
 Mrs. Judith Ann Riese
 Patrick Plantation
 District #3
 Curacao, Netherlands West Indies

Special Scholarships

Rotary Fellowship to . . .



Anita Ransdell, a senior at Southern Methodist University. Having been awarded the 1978-79 Rotary Foundation Graduate Fellowship, Anita will enjoy an all-expense academic year at Johannes Gutenberg Universitat in Mainz, West Germany, with two months of summer study at the Goethe Institute of Freiburg in Breisgau.

As a student and ambassador of good will from the U.S. Rotary, Anita will be hosted by a German Rotary District counselor and, insofar as her study schedule will permit, she will travel and speak to German Rotary clubs.

Holder of a 3.95 degree average, Anita will receive her B.S. in Mathematics and a B.A. in German next May. An SMU National Alumni Honor Scholar, she is president of both Kappa Mu Epsilon, National Mathematics Honor Society, and Delta Phi Alpha, National German Society. She was recipient of the 1977 SMU Modern Language Award in German. She also is co-chairman of SMU's Women's Varsity Swim Team and on the board of the Dallas Goethe Center.

Weatherford Alumnae Pay Tribute to Handicapped Member

Several years after her graduation from Southwestern State, Delta Zeta charter member **Kathy Olds** suffered a

tragic accident while demonstrating a double flip on a trampoline at a gymnastic tournament. In falling off the trampoline, she broke her neck and was paralyzed from the waist down.

After many months of therapy, Kathy is teaching again—on a part time basis—and from her wheelchair. In tribute to her courage and love of teaching, the Weatherford (OK) Alumnae established the Kathy Olds Foundation Scholarship last year. Kathy herself presented the first award to a girl who is majoring in Physical Education during the 1977 Southwestern Duke Awards.

While on Southwestern's campus, Kathy was named Miss Southwestern, Homecoming Queen and Delta Zeta's Girl of the Year. She began teaching physical education in the Oklahoma City school system upon her graduation.

Westchester

Panhellenic Scholarship Available

The Westchester Panhellenic Scholarship is available each year to a sorority woman in her junior year. She must reside in Westchester County (N.Y.) to be eligible. Too, her sorority must be affiliated with the Westchester Panhellenic.

The scholarship in the amount of \$500 is paid directly to the winner's school. It goes toward her tuition. **Mari Schaefer** of White Plains was the first winner of this Panhellenic Scholarship. This Gamma Phi Beta attended Syracuse.

Applications are immediately available from Mrs. Richard Chalson, 284 Law Road, Briarcliff Manor, N.Y. 10510.

House Corporation Board Notices Posted



BETA BETA CHAPTER, April 2, 1978, at the Chapter House, #9 Fraternity Row, College Park, MD, 2 p.m. If unable to attend, send proxy to: Ann Crowley, 14109 Castle Blvd. #204, Silver Spring, MD 20904. News of alumnae also welcomed.

ALPHA THETA, April 6, 1978, at the Vanderbilt University Chapter House, 2411 Kensington Circle, Nashville, TN. Dinner at 6 p.m.

PHI CHAPTER, April 17, 1978, at the Washington University (St. Louis) Chapter Suite, 8:30 p.m.

BETA CHAPTER, April 19, 1978, at the University of Michigan Chapter House, Ann Arbor, MI. A noon luncheon will be followed by the business session.

BETA RHO, May 1, 1978, at the University of Colorado Chapter House, Boulder, CO. Meeting set for 7 p.m.



ANN McCUNE VOLKER
(Oklahoma)—PAD IX

Having lived in five cities in less than four years, Ann hopes Odessa, TX, will be "it" for a long time. As a collegiate in Norman, she was chapter treasurer and served on the Student Traffic Court. As an alumna, she was chairman of Oklahoma City's junior evening group, ARC chairman and active in the Candy Cane Lane fund-raising project. In Pittsburgh, Anne was Panhellenic Delegate. Back in Norman, she served Psi's HCB. She is currently active in the Odessa Alumnae.

In Odessa, too, she's a member of AAUW, Panhellenic and secretary of the Newcomers Bowling League. She's also creating a merchandise catalogue for City Pipe and Supply Corporation, the firm for which her husband, Rick, is an accountant.



MARY ALICE ADAMS BETTS
(William and Mary)—PCD VIII

Mary Alice's goal, in assuming her new post, is to "strengthen our Southern chapters and make Gamma Phi Beta

GRAND COUNCIL APPOINTEES TO PROVINCES

as well known to the South as Southern hospitality."

After graduating with a BA in Psychology, Mary Alice married Lee, working as a secretary while he attended law school at Chapel Hill. After his graduation, they moved on to Free Port, Grand Bahama Island, Fairfax County, VA, and, finally, to Winter Park, FL. There Lee is associated with Liberty Mutual Life Insurance.

As the mother of Kathy, 11, and Keith, almost 10, Mary Alice is very involved in PTA and "always a room mother." She's also a co-leader of a Girl Scout Troop.

A three-year president of the Orlando-Winter Park Alumnae, she's also been vice-president, secretary and ARC chairman.



PHYLLIS ARMSTRONG JOHNSON
(Illinois)—PAD XV

Though Phyllis lives in Moline, IL, she has an old tie with Nebraska. There she received her Master of Arts degree and served Pi as an adviser. She'll renew acquaintances in Nebraska, while also traveling Iowa.

A teacher of math and histo-

ry, Phyllis joined the WAVES during World War II and served first as a disbursing officer—then as paymaster at the Brooklyn Naval Hospital. Married to a Beta, Ken, they are the parents of two sons. Now that they have grown up to be a naval officer (Jeffrey) and a lawyer (Bruce), Phyllis has returned to teaching in Moline. She's also active in her church and P.E.O.

She's a past president and treasurer (several times) of the Quad City Alumnae and recently completed two years as secretary of Panhellenic.



DIANE HAWLEY SANDBORN
(Kansas)—PCD X

"President" is the one word that aptly applies to Diane. She was president of the Sigma Pledge Class, the Manhattan Alumnae, the Kansas City Junior Alumnae, the Rolla (MO) Crescent Circle and the Rolla-Phelps County Panhellenic. She also designed the Boston Alumnae's baby bibs and was decoration chairman for the first Kansas City antique and hobby show.

In her community, Diane is a director of the Missouri Association of Realtors and the Planned Parenthood Association of the Ozarks, treasurer of the Rolla Board of Realtors and an officer in P.E.O. Husband Kent is president of the Hardwood Charcoal Co. of Steelville. Son Dirk, 20, is a junior in mechanical engineering at Missouri U. and Blake, a high school senior. Daughter Dana is a high school freshman.

—Sally Erikson Lewis (Bradley)
Public Relations Chairman

COLLEGE TOWN

"First annual Spring housecleaning day at **Alpha Phi** a big success" telegraphs **Karen Rector**, Colorado State correspondent. "After a day's work and much laughter, tired sisters congratulated themselves on a great job. We hope to make cleaning day a weekly event."

One Sister Takes on 35

Each sister takes a turn in cooking when **Alpha Chis** at William and Mary gather for an informal dinner and fun three nights a week. "The cook also has the tedious job of cleaning up," reports **Sue Butler**. "That's the job deplored by all."

Paying a mere \$1.85 per, the 35 sisters come straight from grueling afternoon labs or hockey practice—in all forms of dress. And they scrape their plates clean—fast—asking for seconds. After dessert (the favorite "mud pies" are a scrumptious mixture of crushed oreos and ice cream), the bus boys ask the question: "how many coffees, how many tea?" Soon the house is quiet again. It's study time.

On the Subject of Food

Delta Etas at the University of California-Irvine have

launched a pledge program called "Take a Sister to Lunch." Each member writes her name on a slip of paper; pledges draw from a bag. According to **Susan Sui**, correspondent, "lunch doesn't have to be elaborate . . . simply a picnic in Campus Park or a coke and hamburger. Since we don't have a house, it's one way for members to get to know one another better."

The "Run to Dallas"

Oklahoma **Psis** joined in Delta Upsilon's "Run to Dallas" fund-raiser for the American Diabetes Association. The 200-mile run increased the usual excitement of the Oklahoma-Texas football clash. Gamma Phi Betas manned detection centers along the route from Norman to Dallas to help people become aware of the disease and its symptoms.

She Went to the Orange Bowl

Elizabeth Johnson Racine, 1977 University of Wisconsin-Madison Homecoming Queen, was one of 50 state homecoming queens reigning at the Miami Orange Bowl football game. A senior in international relations and French, **Gamma's** Elizabeth rode on a float and car-



GREEKS HELP UNITED WAY in what has become a tradition at the University of Idaho. Here Gamma Phi's LeAnn Blanksma receives her solicitation packet from the president of the Moscow United Way.

SPRING HOUSECLEANING is fun, say Colorado State's Nancy Levil, Chris Bowers, Anne Burnett and Karen Rector.



GAMMY-GRAMS

ried the state flag at the game itself.

At Houston Women's Conference

Teresa Vilmain (Iowa) was a state delegate-at-large to the National Women's Conference in November. As one of the youngest women involved at both state and national levels, Teresa said it was her responsibility to represent "everyone's daughter" at the meeting. "It was so neat to see women in action," reports Teresa. And she ought to know. She even brushed up against Betty Ford in an elevator.

Iowa State's Colossal Collegian

Deb Holbrook, correspondent, nominates **Denna Stone**, currently serving as president of Mortar Board. Standing in the top 2% of university scholars, Denna is a member of Gamma Gamma Greek honorary and on the Dean's List. Currently serving **Omega Chapter** as rush chairman, she's also active in campus varieties and the Iowa State Model United Nations.

More Rho Short-Takes

Super correspondent **Kim Steffen** (Iowa) suggests the

P in Phi of Gamma Phi Beta could well stand for philanthropy. **Susie Wicks**, sophomore theatre student, walked nearly 12 miles in four hours to raise \$127 to fight cerebral palsy. She placed third in amount of pledges. "The only thing that hurt when it was over," Susie said, "was my toenail. I'd do it all over again."

Rho's Karma Burford is one of three directors for the 1978 Muscular Dystrophy Dance Marathon. A former member of the University's diving team, she's undertaken an "Athletes Against Dystrophy" campaign. She's determined the April event will beat last year's marathon in which she herself danced (\$29,900).

As a chapter, Rho presents programs for residents of the Iowa City Care Center. About 25 members entertain regularly with songs—serve refreshments—then stay to visit for a while.

Why don't you send a Gammy-Gram to:

Collegiate Editor Magnes Welsh, 1931 Prairie Square, Apt. 227, Schaumburg, IL 60195



(Above) SEEN WITH IOWA GOVERNOR Robert Ray, Iowa's Teresa Vilmain represented her state at the Houston Women's Conference.



(Left) DENNA STONE is Iowa State's candidate for Colossal Collegian. She's president of Mortar Board.



RHO's Karma Burford is deeply involved in Iowa's 1978 Muscular Dystrophy Dance Marathon.



SUSIE WICKS (Iowa) walked almost 12 miles in Zeta Tau Alpha's Walkathon for cerebral palsy.

KALEIDOSCOPE



AFTER FOUR DAYS of intensive work, members of the Sorority's delegation to the National Panhellenic Conference donned their party best for the 75th anniversary banquet. Top to bottom: Virginia Geiger Hustad, second alternate delegate; Gloria Swanson Nelson, Director of Finance, representing the Grand President; Mary M. Moxley, executive secretary; Audrey Weldon Shafer, first alternate; and Marjorie Speidel Lundin, NPC Delegate.

"White Glove" Occasion in Tulsa

A 75th anniversary is traditionally a diamond jubilee and that's what the National Panhellenic Conference observed when it held its bi-annual convention at Tulsa's Camelot Inn October 16-19.

But before the closing gala, addressed by Beta Theta Pi's Peter Greiner, president of the National Intrafraternity Conference, there was work to be done . . . problems to be discussed. Primary areas of concern involved alcohol abuse, hazing and the upgrading of pledge programs.

A showing of "Fraternity Row," arranged by J. O. Pollack & Co., underscored NPC's concern about hazing. While re-affirming its position that all such activities be erased, the conference went further: it would encourage all fraternities to formulate and enforce regulations forbidding such activities.

Delegates also resolved that pledge programs be directed toward "the appreciation of the fraternity and the understanding of the opportunities for self-improvement that are offered the individual."

Plans were made for a cooperative effort with the National Panhellenic Editors Conference to establish a positive national publicity program aimed toward national awareness of philanthropic and scholarship programs.

Unexpected Encounters

"It's a small world" where Gamma Phi Betas are concerned. It's a well documented fact you can meet sisters in very unexpected places. Example last year two newly commissioned Air Force officers found each other at Lackland Air Force Base, San Antonio. A Greek-letter T-shirt proclaimed the affiliation.

Shown here are Second Lieutenants **Lesia Crow** (Drake '76), left, and **Cele Hoffman** (Southern California '76).



Letter to the Editor, THE STANFORD OBSERVER

Your article on the return of sororities to the campus was of great interest to many Gamma Phi Betas—we have kept several groups active in the Bay Area

Friendships are much more lasting in sorority groups. I would feel no relationship to Stanford had I not belonged to a sorority (and I had many friends in Roble).

Living in Palo Alto with responsibilities at home, I would have gone to classes, then home. Belonging to a house, I participated in many activities and "made" Cap and Gown.

I vote for sororities!

—Hester Proctor '21
Melo, Park, CA

Editor's Note: At press time, the Board of Trustees had not voted on whether or not to lift its 1944 ban on sororities at Stanford University.

A cross-country report of alumnae activities.



A GLEEFUL TRIO checks out a \$16,000 Baldwin Concert Grand Piano at the Muskogee Fine Arts Auditorium. Taking her rightful place on the bench, Helen Berg Kline (Oklahoma), first contributor to the seven-year project.

Copyright October, 1977, The Oklahoma Publishing Co. Photo Courtesy—The Muskogee Daily Phoenix and Times Democrat.

And Her Heart Is Filled With the Sound of Music

On October 15, a dream came true for **Helen Berg Kline** (Oklahoma). This was the dedication of a new Baldwin Concert Grand Piano for the Muskogee Fine Arts Auditorium. David Bar-Illan, pianist, was performing artist for the concert that opened the Community Concert Association's 1977-78 season. (Helen is one of its founders.)

Making the first contribution, Helen started the drive for a new piano seven years ago. Since then, 158 individuals, clubs and organizations have made donations to the fund ranging from \$5 to \$1000.

Holder of a Phi Beta Kappa key, Helen became a member of Sigma Alpha Iota, musical fraternity, during her college days, too. A 60-year Sorority member, she was named to Gamma Phi Beta's Service Roll in 1966. She served as International Scholarship Chairman from 1959-1970. She's also remembered by many as tour leader for five Gamma Phi Beta trips to Europe—even around the world.

"Citizen" of the Day

Loretta Murray (California-Long Beach) was named San Juan Capistrano "Citizen of the Day" in August. The 25-year-old woman is an administrative aide to that city. She aspires to be assistant city manager in a large city, but meanwhile enjoys her current position.

"There are very few women in local government and it's an area more women should get into," says Loretta. "It's wide open." She got interested in politics when her brother ran for Congress.

Winner of a Young Ambassador to Europe contest in 1971, Loretta spent over a month in seven European countries. "It was a great opportunity to see what other cultures are like."

Another trophy won—a fellowship from the International City Management Conference. She attended the international conference in Toronto.

A resident of Los Alamitos, she's president of the Catholic Alumni Club of Orange County, and treasurer of the American Society of Public Administrators, Orange County.



Many University of Wisconsin Gamma Phi Betas will remember a girl named **Kathy** whom they "adopted" when she was nine years old and in an orphanage in Taiwan. Today she's a high school graduate and seen here (on crutches) with one of her classmates.

Kathy keeps in close touch with Barbara Anderson Johnson (Wisconsin), who lives in Taiwan. Barbara, a Merchandise Coordinator for May Department Stores International, speaks Chinese, a definite asset in her challenging new job. Her Chinese studies were furthered when she was awarded the Lindsay Barbee Fellowship in 1970.

THE SORORITY EXCHANGE

PROJECT PAPER PATCH . . . a fund raising idea from Bartlesville, OK



A HUGE WATERING CAN on the front lawn proclaimed the home of Kay Monier Schneider (Northwestern) the site of Bartlesville Alumnae's third biennial "Paper Patch." From left: Ruthie Stevenson Bowles (Oklahoma State), project chairman; Ann Harrison Woodin (Oklahoma State), treasurer; Betty Boefer Keller (Missouri); Louise Kane Roark (Kansas), and Kay Schneider.

From party plates to kitchen shelf paper, gift wraps to scratch pads, all manner of unique paper products and stationery are among items offered for sale when the Bartlesville Alumnae stage "The Paper Patch." Because the project involves a lot of preparatory work, especially in advance contact with stationery houses, this fundraiser is staged on a biennial basis, according to **Diana Hood Farris**, *Crescent Correspondent*.

The by-invitation-only event traditionally is held at the home of a chapter member. And the place is "advertised" by the display of a large watering can. Made of wood and hand-painted with Greek letters and the project name, the can stands conspicuously on the front yard of the benefit's hostess.

Alumnae, dressed in long patchwork skirts, serve punch from old-fashioned crocks along with homemade cookies. Guests browse through the rooms at their leisure, buying items available for immediate sale and ordering from samples. Staged in September, there's time for holiday deliveries.

Seventy-seven's effort was under the co-chairmanship of **Ruthie Stevenson Bowles** and **Melody Bennett Johnson** (both Oklahoma State). As in the past, the project provides campships for needy girls at area Scout camps as well as money in support of Sorority camps.

According to Diana, "Our philanthropic endeavor has helped us in the community, and most alumnae are eager to give their time to make the event successful."

PSI'S MEMBERSHIP DIRECTORY . . . successful program to improve Greek-Alumnae relations

As part of its continuing interest in maintaining good alumnae relations, **Psi Chapter** (Oklahoma) decided to publish a 1977 Membership Directory. The enthusiasm and support from alumnae was "so rewarding," writes **Gail Privett**, *Crescent Correspondent*. "We heard from alumnae located all over the United States."

Elizabeth Burford Gunn '31, living in Shreveport, LA, responded, "You've done a great job—am glad to learn where old timers are located—so scattered." From **Sonya Smiley McKinzie '55** of Tulsa, "Loved the directory and catching up on where everyone from my years in the house are living now." And **Irene Braden Loosley '51** of Dallas wrote, "Great job doing this directory."

Psi's directory listed all living initiates, including the member's maiden name, married (if applicable), class year, home address, occupation and business address (if applicable). A section which proved popular was a listing of members according to geographical location.

The financial support received from the program also was gratifying, reports Gail. "It exceeded costs by over \$600—money that surely will be put to good use by Psi Chapter."

An added plus was the finding of 30 "lost" members. This was accomplished by sending a list of "lost" with

the announcement mailing . . . asking members for information as to the whereabouts of these sisters. The chapter also sent a committee to the University of Oklahoma Alumni office to further trace these women. All new addresses were added to the chapter files and copies sent to Central Office.

"The results of our directory program," reports Gail, "was a strengthening of chapter and Sorority bonds. Receiving the directory rekindled alumnae enthusiasm and the successful completion of our project fostered feelings of unity among undergraduates and alumnae alike."

TAKERS OF ORDERS at The Paper Patch included, seated from left, **Kathy Dunn Zervas** (Oklahoma) and **Betty Keller**. Standing, (from left) **Melody Bennett Johnson**, co-chairman, and **Ann Woodin** (both Oklahoma State).



Good Buys from Gamma Phis

Memphis Offers Pendants

A new item in the "Good Buy" column is an attractive ceramic pendant designed with a Crescent and pink carnation antiqued in brown and mode. Offered by the **Memphis Alumnae**, the design also is available in porcelain—pendants and pins—of white with a pink carnation and the Sorority letters in gold. Each item sells for \$2.50, but orders are limited to lots of ten. Specify your choice—pin or pendant. Send your check to Mrs. Arthur Best, 60 Eastland Dr., Memphis, TN 38111.

Continuing popular items (over and above the Fall CRESCENT) include:

Needlepoint Coasters

Jackson Alumnae offer two varieties of coasters—one, measuring 3" X 3", feature carnations (\$6.00), the other the Gamma Phi Beta monogram, 4" X 4", (\$8.00).

Both kits include painted canvas, yarn and directions. Make checks payable to Jackson Alumnae of Gamma Phi Beta and send to Mrs. Richard Fabian, 754 Beverly Park Place, Jackson, MI 49203.

Crescent Bumper Stickers

"Gamma Phi Beta Hung the Moon." That's the clever slogan proclaimed on bumper stickers printed in kelly green, gold and white. **Beta Tau** is the chapter spreading the word. They're a must for every Gamma Phi at only 75¢, postage paid. Order from Gamma Phi Beta, Box 4334, Texas Tech University Station, Lubbock, TX 79409.

CRESCENT Cookbook

The 4th edition of *The Crescent Cookbook* is available from the **Tucson Alumnae**. Now expanded to 142 pages, the beautiful spiral-bound book offers many additions to its

Mexican, hors d'oeuvres and beverage sections. Add it to your own cookbook collection or give it as a gift. Priced at \$5.25, postage paid, the book may be ordered from the Tucson Alumnae Chapter, c/o Pat Decker, 5530 N. Entrada Ultima, Tucson, AZ 85718.

Crest Transfer

A new item from **Oklahoma City Alumnae** is a Gamma Phi Beta crest transfer to be used on denim shirts, T-shirts or other items made of a blend fabric. Price is \$1.50, postage paid. Send orders payable to Mrs. Richard M. Jennings, 6721 Willowridge Dr., Oklahoma City, OK 73122.

Got a Bright Idea?

Be sure to clear an item for "Good Buys" before preceding with an investment of your chapter money. Write **Karen Brandt Riske**, 3433 S.E. 20th St., Des Moines, IA 50320.

ADVERTISING AGE ** AIR CONDITIONING & HEATING ** AMERICAN FAMILY PHYSICIAN
DENTAL ** CONNOISSEUR ** DATA PROCESSING ** FINANCIAL ** LAW ** WEAVING

BOTH BUY...AND SELL... MAGAZINES

to make money for your chapter and the International Gamma Phi Beta Gift Fund.
SOLVE a gift-giving problem and BUY a subscription for someone else.

SELL magazines to your husband for his office or reception room . . . your local beauty shop . . . your dentist. Remember we handle RENEWALS and special coupon offers as well as new orders.

Publishers now require ten to twelve weeks to process orders. Consult your area chairman for rates. Don't forget to ZIP CODE. If there isn't a chairman available, write Mrs. C. W. Kenney, 129 Croyden Lane, Apt. E, Syracuse, N.Y. 13224.

P.S. This layout frankly stolen from the Greater Kansas City "Red Rocker."

AMERICAN HERITAGE ** CHRISTIAN SCIENCE MONITOR ** BROADCASTING
WOMEN'S WEAR ** MEN'S WEAR ** SPANISH ** FRENCH ** GUNS

ARCHITECTURAL ** ANTIQUES ** BACTERIOLOGY ** CATHOLIC DIGEST
PSYCHOLOGY ** STEREO ** STOCK MARKET ** NEW YORK TIMES

RESTAURANTS ** OPTICAL ** PACKAGING ** PLASTICS ** HANDYMAN ** SPORTING NEWS
CROSS WORD PUZZLES ** WALL STREET JOURNAL ** SPINNING WHEEL ** GLAMOUR ***

Gamma Phi Beta Sorority Directory

Founded November 11, 1874
Syracuse University

FOUNDERS

Helen M. Dodge Ferguson
Frances E. Haven Moss
E. Adeline Curtis
Mary A. Bingham Willoughby

THE GRAND COUNCIL

Grand President: Mrs. R. W. Haverfield (Betty Luker), 507 Medavista Dr., Columbia, MO 65201
Alumnae Vice President: Mrs. A. T. Phillips (Elizabeth Sloan), 1118 Westerly Pkwy., State College, PA 16801
Collegiate Vice President: Mrs. T. L. Kline (Karen Wander), 3648 S. 91st St., Omaha, NE 68124
Director of Finance: Mrs. I. P. Nelson, Jr. (Gloria Swanson), 3521 Royal Lane, Dallas, TX 75229
Director of Expansion: Mrs. J. D. Moore (Leonite Selzer), 2807 S. Peoria, Tulsa, OK 74114
NPC Delegate: Mrs. D. H. Lundin (Marjorie Speidel), 5135 N.E. Latimer Pl., Seattle, WA 98105
Executive Secretary-Treasurer: Miss Mary M. Moxley, 630 Green Bay Rd., Kenilworth, IL 60043

CENTRAL OFFICE STAFF—Box 310, 630 Green Bay Rd., Kenilworth, IL 60043

Executive Secy.-Treas.: Miss Mary M. Moxley
Financial Consultant: Miss Eleanor J. Sieg
Secy. to Exec. Secy.-Treas.: Mrs. Gwynette Grier Pittenger
Membership Records: Mrs. Anna Kantz
Alumnae Chapter Records: Mrs. June Cooke
Greek-letter Chapter Records: Mrs. Anne Simpson
Bookkeeper: Mrs. Mary Cristiano
Supplies & Office Services: Mrs. Judith Hagan
Collegiate Consultants: Karen Hedine, Deborah Kay Jones, Leslie Koepke, Colleen Ann Sweeney

THE CRESCENT

Editor: Mrs. A. W. Smith (Geraldine Epp), 300 Mansion House, Apt. 1501, St. Louis, MO 63102
Business Manager: Miss Mary M. Moxley, 630 Green Bay Rd., Kenilworth, IL 60043

THE CRESCENT COMMUNIQUE

Editor: Mrs. G. McKenzie (Natalie Meyer), 531 S. Burton, Arlington Heights, IL 60005

NATIONAL PANHELLENIC CONFERENCE

NPC Delegate: Mrs. D. H. Lundin (Marjorie Speidel)
1st Alternate Delegate: Mrs. C. Shafer, Jr. (Audrey Weldon), 6808 Rockhill Rd., Kansas City, MO 64131
2nd Alternate Delegate: Mrs. Carl Hustad (Virginia Geiger), 5304 Ayshire Blvd., Minneapolis, MN 55436
3rd Alternate Delegate: Mrs. R. W. Haverfield (Betty Luker)

INTERNATIONAL OFFICERS

Asst. to Alumnae Vice President—Bylaws: Mrs. B. J. Steele (Robyn Forsyth), 264 E. Benbow, Covina, CA 91722
Asst. to Alumnae Vice President—Alumnae Initiates: Mrs. J. Pinholster (Elaine Dennison), 14840 Cranoke St., Centreville, VA 22020
Translster Service: Mrs. D. J. Schonberg (Theora Kurt), 12205 Leavenworth, Omaha, NE 68106
Asst. to Collegiate Vice President—Bylaws: Mrs. J. B. Carter (Norma Collyer), 810 East B., Moscow, ID 83843
Asst. to Collegiate Vice President—Consultants: Mrs. R. Fallin (Pat Finley), Box 2711, Aspen, CO 81611
Asst. to Collegiate Vice President—Rush: Mrs. B. A. Bell (Sheila Cornish), East 12722 Guthrie, Spokane, WA 99216
Asst. to Director of Finance—Policies: Mrs. I. L. Bowman (Martha Everett), 22 High Rock Rd., Stamford, CT 06903
Asst. to Director of Finance—House Corp. Bylaws: Historian—Mrs. Frank Mason (Charlotte Hamilton), 5050 Lake Shore Dr., Brown's Lake, Jackson, MI 49203

AREA FINANCIAL ADVISERS

Mrs. C. B. Jennings (Patricia Strickler), 4724 44th N.E. Seattle, WA 98105
Mrs. J. V. Faletti (Peggy Wooden), 15690 Rica Vista Way, San Jose, CA 95127
Mrs. E. G. Hart (Mary Jean Lauvett), 6 Brookside Rd., Philadelphia, PA 19118
Mrs. R. G. Drouet (Leona Davis), 10482 E. Grandeur Dr., Baton Rouge, LA 70815

ENDOWMENT-LOAN BOARD

Directors:
Mrs. W. Nichols (Diane Dross), Chairman, 17475 Arbor Drive, South Bend, IN 46635
Miss Patricia Denton, 747 Willis, Glen Ellyn, IL 60137
Mrs. T. C. O'Neill (Judith Ruhl), 815 E. Edgemont, Phoenix, AZ 85006
Mrs. P. K. Graves (Jacquelyn Hilger), 515 Kenton, Aurora, CO 80010
Mrs. I. P. Nelson, Jr. (Gloria Swanson), Dir. of Finance.
Mrs. R. W. Haverfield (Betty Luker), Grand President
Miss Mary M. Moxley, Treasurer
Address all communications to Central Office

INTERNATIONAL CHAIRMEN

Awards: Mrs. C. A. Kernitz (Joanne Sallee), 319 Mill Rd., Oregon, PA 19075
Bylaws: Mrs. F. L. McDonald (Ernestine Dobler), 9714 State Line Rd., Shawnee Mission, KS 66206
Convention: Mrs. T. R. Nabors (Lucille Corkran), 823 Evansdale Dr., Nashville, TN 37220
Chapter Development:
Co-chairmen:
Collegians—Miss Linda Daniel, 2636 Steel St., Houston, TX 77098
Alumnae—Mrs. Norman Choat (Phyllis Donaldson), 9716 Erskine St., Omaha, NE 68134
Coordinator of State Membership Chairmen: Miss Elise Berthon, 3141 Warrington Rd., Mtn. Brook, Birmingham, AL 35223
Housing:
Magazines: Mrs. C. W. Kenney (Dorothy Stark), Maplewood Gardens, 129 Croyden Ln., Syracuse, NY 13224
Mothers' Club: Mrs. A. W. Douglass (Virginia Gray), 3204 W. Concord Way #475, Mercer Island, WA 98040
Music: Mrs. S. W. Miller (Claribel Haydock), 17005-191 Ave., NE, Woodinville, WA 98072
Nominating: Mrs. E. G. Monnig, Jr. (Mary Jane Brown), 3 Laymount, St. Louis, MO 63117
Parliamentarian: Miss Jennie K. Curtis, 20 Lake Pl., Walnut Creek, CA 94598
Philanthropy Programs: Miss Judy Elaine Graham, 2716 Rosedale, Dallas, TX 75205
Public Relations: Mrs. Sally E. Lewis (Sally Erikson), 535 Michigan Ave., Apt. 704, Chicago, IL 60611
Research: Mrs. E. L. Vint (Virginia Forsythe), 9319 Vinewood, Dallas, TX 75228
Ritual: Mrs. Dirk Kempthorn (Patricia Merrill), 2217 N. 22nd, Boise, ID 83702
Scholarship: Mrs. M. Stromer (Peggy Larson), R.R. #2, Milton, WI 53563

GAMMA PHI BETA FOUNDATION

President: Mrs. R. W. Haverfield (Betty Luker), 507 Medavista Dr., Columbia, MO 65201
Exec. Vice President: Mrs. E. B. Adams (Beverly Cummings), 14 Sentinel Rock Terrace, Larkspur, CO 80118
Vice President: Mrs. I. P. Nelson (Gloria Swanson), 3521 Royal Ln., Dallas, TX 75229
Secretary-Treasurer: Miss Mary M. Moxley
Directors:
Mrs. A. T. Phillips (Elizabeth Sloan)
Mrs. T. L. Kline (Karen Wander)
Mrs. J. D. Moore (Leonite Selzer)
Mrs. D. H. Lundin (Marjorie Speidel)
Foundation Standing Committees
Camping Program:
Chairman: Mrs. D. H. Green (Sharon Reisig), 2405 S. Kearney St., Denver, CO 80222
Committee Members:
Patricia Deal, 23 Colonial Dr., Arlington, MA 02174
Mrs. P. J. McTavish (Jean Fisher), 4015 E. Mercer Way, Mercer Island, WA 98040
Mrs. J. E. Wilson (Carol Lehrer), 3014 Brenner Pl., Colorado Springs, CO 80917
Finance and Investment:
Chairman: Miss Eleanor J. Sieg, 630 Green Bay Rd., Kenilworth, IL 60043
Committee Members:
Mrs. R. W. Haverfield
Mrs. I. P. Nelson
Mrs. G. Misthos
Mrs. E. B. Adams
Miss Mary M. Moxley

Financial Aid:

Chairman: Mrs. P. R. Conway (Carrielle Waters), 9021 Fairview Rd., Silver Spring, MD 20910
Committee Members:
Mrs. R. Erb (Rosetta Roodhouse), 1705 Klondike Rd., West Lafayette, IN 47905
Mrs. D. A. Jackson (Elizabeth Burger), Burmont, Rt. 6, Box 300, Farmville, VA 23901
Mrs. M. Paisley (Millicent Beaver), 150 Richmond Circle, Pittsburgh, PA 15237
Mrs. M. Stromer (Peggy Larson), R.R. #2, Milton, WI 53563
Mrs. J. White (Florence Roy), 24728 Ridge Rd., Damascus, MD 20750

PROVINCE ALUMNAE DIRECTORS

I: Mrs. Eileen Lentz (Eileen Lindemann), 22 Meadowbrook Rd., Short Hills, NJ 07078
II: Mrs. F. Thomas Sporck (Victoria VanLoenen), 900 Hickory St., Morgantown, WV 26505
III: Mrs. Charles Rauch (Patricia Thompson), 3885 W. 213th St., Fairview Park, OH 44126
IV: Mrs. R. F. Witt (Patricia Ann Sullivan), 3221 Fairington Dr., Bloomington, IN 47401
V: Mrs. R. M. Green (Frances Black), 139 N. Ashland Ave., Palatine, IL 60067
VI: Mrs. James B. Newcombe (Patricia Davies), 15803 Holdridge Rd., Wayzata, MN 55391
VII: Mrs. Anne Yeager, 3924 Glenwick Ln., Dallas, TX 75205
VIII: Mrs. G. Oliver (Jean Brooks), 4030 Summitt Dr., N.E., Marietta, GA 30062
IX: Mrs. F. W. Volker, Jr. (Ann McCune), 1700 W. 25th, Odessa, TX 79763
X: Mrs. R. O. Bronsing (Patricia Ann Mullen), 2 Treewood Ct., Ballwin, MO 63011
XI: Mrs. William Laney (Joan Hogan), 13425 Cedarbrooke N.E., Albuquerque, NM 87111
XII: Mrs. W. H. Ball (Madeleine Thaxton), 9101 SE 57th St., Mercer Island, WA 98040
XIII: Mrs. R. H. Allard (Jean Anderson), 314 Norwegian Ave., Modesto, CA 95350
XIV: Mrs. Earle E. Rayner (Virginia Maddox), P.O. Box 1461, Litchfield, AZ 85340
XV: Mrs. Kenneth Johnson (Phyllis Armstrong), 1036 25th Ave., Ct., Moline, IL 61265
XVI: Mrs. D. Moses (Sarah Swink), 5618 Scotwood Dr., Palos Verdes Pen., CA 90274

PROVINCE COLLEGIATE DIRECTORS

I: Mrs. J. A. Hewitt (Sheila McCarthy), 6 Benford Dr., Princeton Junction, NJ 08550
II: Mrs. C. Freisheim (Deborah Foulsham), 2052 Moreland Rd., Abington, PA 19001
III: Mrs. Robert Winterhalter (Diana Gay), 4336 Brauntown Rd., Columbus, OH 43220
IV: Mrs. J. Holland (Kathleen Cavanaugh), 1109 E. First St., Bloomington, IN 47401
V: Mrs. G. V. Kallal (Jeannine Sheldon), 0N211 Winfield Rd., Winfield, IL 60190
VI: Mrs. David Durenberger (Gilda-Beth Baran), 4887 E. Lake Harriet Blvd., Minneapolis, MN 55409
VII: Mrs. Jerry Bawcom (Vicki Kean), 6504 Banbury Dr., Ft. Worth, TX 76119
VIII: Mrs. L. W. Betts (Mary Alice Adams), 2448 Whitehall Cir., Winter Park, FL 32789
IX: Mrs. Marian Hulsey (Marian Corley), 1020 Live Oak, Norman, OK 73069
X: Mrs. M. Kent Sanborn (Diane Hawley), R. #1, Rolla, MO 65401
XI: Mrs. P. G. Sendroy (Catherine Curtis), 12 Cherry Vale Dr., Englewood, CO 80110
XII: Mrs. L. T. McEntee (Carolyn Craddock), 1801 Edgcliff Ter., Boise, ID 83702
XIII: Mrs. R. McMichael (Gail Haren), 2110 Rockwood Dr., Sacramento, CA 95825
XIV: Mrs. Clarke R. Duncan (Shirley Gronds), 2531 N. Santa Lucia Ave., Tucson, AZ 85715
XV: Mrs. T. Fulcher (Connie Shivers), 4211 Ave. F, Kearney, NE 68847
XVI: Mrs. B. Lowell (Ruth Donlon), 1800 Hackett Ave., Long Beach, CA 90815

IN MEMORIAM

ALPHA
Annamary Sawhill Flagg
Jeanne Fiero Reynolds

BETA
Margaret Langenderfer
Hodgman

GAMMA
Bernice Millen Ayers
Linda Franz Nelson
Phyllis Hammond Schuette

DELTA
Esther W. Bates

EPSILON
Mary Lee Reay Manchester
Alice Cady Pickering
Harriet J. Sluss
Dorothy Stearns Wittwer

ZETA
Margaret Sloan

ETA
Mary Eleanor Bierer Albritton
Elizabeth Smith Fletter

THETA
Gertrude Keller
Patsy Corrine Clark Rogers

KAPPA
Jean Cochrane Hiller

LAMBDA
Janet Riggs Clark
Barbara Rothermel Fillmore
Helen Logan Hart
Janice Parker Holman
Nancy Ingham Kelley
Gertrude Ireland Mott
Myrtle Hurst Patterson
Hasseltine Chessher Robinson

NU
Jane Bishop Reville
Norma Stoddard Scott

XI
Margaret Stolle Baker

OMICRON
Audry Miller Bodner

SIGMA
Catherine Madorie Cooper

PSI
Raydell Clay Algeo

OMEGA
Ruth Pohlman McKee

ALPHA BETA
Jeanne R. Guloien

ALPHA GAMMA
Elizabeth Barndt Crouse

ALPHA DELTA
Margaret Graham Randall

ALPHA EPSILON
Ruth McDowell Thurman

ALPHA IOTA
Mildred Painter Killough

ALPHA KAPPA
Marianne Wingate Taggart

ALPHA RHO
Dorothy Summers Powers

ALPHA UPSILON
Elizabeth Cook Robinson

ALPHA CHI
Marcia Smith Peterson

ALPHA OMEGA
Frances Buchanan Bye

BETA BETA
Carol E. Lake

BETA ZETA
Elaine Lovasy Myhre

BETA MU
Maxine Schannep Putnam

BETA TAU
Mary Ann Dickey

BETA OMEGA
Bernice Pence Taft

DELTA ALPHA
Janice Burnstad Pekarske



PIN-ON BADGE RING

You may now wear your badge either as a pin or on a ring. You pin it on the ring mounting or remove it as easily as pinning it on your blouse. DO NOT SEND US YOUR BADGE. One ring fits all styles of badges. Send your check and ring size only.

Sterling Silver Ring Mounting—\$28.00
10K Yellow Gold Ring Mounting—\$44.00
10K White Gold Ring Mounting—\$56.00

AUTHORIZED JEWELER

Please specify order #BR/3-6.

- Jewelry ServiCenters On All Campuses
- Free Catalog Available from Pollack
- Badges Ordered Through Executive Office

J. O. POLLACK co.
1700 WEST IRVING PARK ROAD • CHICAGO, ILLINOIS 60613

Issue Highlights

2) **WHITE GLOVES ARE OUT OF FASHION** . . . Stick Pins Are "In." But it's time to wear "white gloves" again. "Wear" good manners.

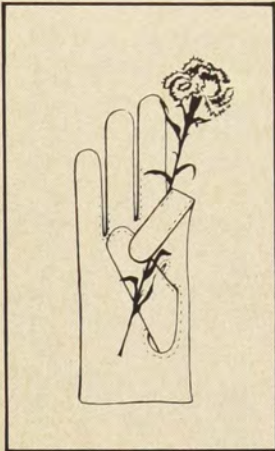
4) **"WHITE GLOVE" OCCASIONS** . . . birthday parties. 9/ Service Roll. 10/ Merit Roll. 11/Delta Nu installation.

12) **A CALL TO NASHVILLE** from the International Grand President. 13/ Vote for Valued Received.

17) **TransSister DIRECTORY FOR 1978.**

24) **GAMMY-GRAMS** . . . lively messages received from campus chapters.

Other features: 22/ Special Scholarships and HCB Notices. 23/ Grand Council Appointees. 26/ Kaleidoscope focuses on alumnae. 28/ Sorority Exchange of Ideas. 29/ Good Buys—Magazine order form. 30/ Sorority Directory. 31/ In Memoriam.



2 / "White Gloves"



14 / Nashville "Hee Haw"



11 / Delta Nu Installation

☐ Check here if change of address is for other than addressee

CHANGE OF ADDRESS OR NAME REPLY

Members are responsible for all address changes. Allow 4 weeks.

Maiden Name _____ Chapter _____

My profession or training is in _____

New name if different from label

Title

Last

First

Middle

Entire new address

Street _____

City _____ State _____ Zip _____

PLEASE DO NOT REMOVE OLD LABEL

Clip form, place in stamped envelope and mail to Gamma Phi Beta Sorority, Box 310, Kenilworth, IL 60043.