

The Crescent

Gamma Phi Beta
Fall 1978



"How proudly
we wave"



On the cover:

Pledge Your Allegiance

to Gamma Phi Beta with a fond salute to these symbolic flags bearing emblems of our Sorority and its Foundation. Re-affirm your fidelity by being a dues-paying participant in Sorority programs this fall—both Greek Letter and Alumnae.—The Staff

Cover design:

Chris Drees (Washington-St. Louis)

Editor-in-Chief

Geraldine Epp Smith
300 Mansion House,
Apt. 1501
St. Louis, MO 63102

Alumnae Editor

Kristin Brandt Riske
2308 15th Street
Alamogordo, NM 88310

Collegiate Editor

Mary Agnes Welsh
1931 Prairie Square,
Apt. 227
Schaumburg, IL 60195

Business Manager

Mary M. Moxley
Central Office

THE CRESCENT

Volume 78 Number 3
Fall, 1978

THE CRESCENT is published quarterly in Fall, Winter, Spring and Summer by the Gamma Phi Beta Sorority, 630 Green Bay Road, Kenilworth, IL 60043. Printed in the U.S.A. by the Dixon Publishing Co., Dixon, IL. Second class postage paid at Kenilworth, IL, and additional mailing offices.

POSTMASTER: Please send notice of undeliverable copies on Form 3579 to Gamma Phi Beta, Box 310, Kenilworth, IL 60043.

SUBSCRIBERS: Send changes of address, notices of marriages and deaths to Gamma Phi Beta Central Office, Box 310, Kenilworth, IL 60043.

58th Conclave Opens On Highest of Notes!

Hitting a clear high C—that “C” for Confidence—**Grand President Karen Wander Kline** (Iowa State) opened the first general assembly of Nashville’s “Sing Out Gamma Phi” convention.

“For this biennium,” she pointed out, “Gamma Phi Beta adopted the slogan ‘Going Great to ’78.’ Today I can report we are great in ’78!”

This remark served as the prelude to what was a unique Grand President’s message—a slide presentation. Through this medium, Mrs. Kline answered some very basic questions: “What is Gamma Phi Beta? Why does it exist? How is it organized?” It continued with plans for the future—how they will be implemented and evaluated. In the process, she struck these strong chords:

- Gamma Phi Beta is a sisterhood of women whose purpose is to develop the highest type of womanhood—through individual growth and development. In order for Gamma Phi Beta to be the best that it can be, we must encourage each member to become the very best she can be. Gamma Phi Betas are not merely human beings, they are human becomings.

- Education is not just something we acquire during college days; it continues for a life time. Through alumnae chapter activities and programs, Gamma Phi Beta continues to provide opportunities through life to stimulate intellectual growth.

- Service is our opportunity to share with our community and country a portion of what we have received. Through our many and varied philanthropies, Gamma Phi Betas have given to others. In the 1976-77 year, Greek Letter and Alumnae chapters gave more than \$85,000 and countless hours to various endeavors.

- The Gamma Phi Beta Foundation also has given generously: \$28,000 in scholarships, fellowships and grants-in-aid; 520 disadvantaged girls enjoyed rich camping experiences at Denver and Vancouver. Local Green-Letter and Alumnae chapters sponsored campships for 25 additional children.

- During the last biennium, a regional collegiate consultant program was adopted—one woman assigned exclusively to each of four geographic regions.

- Gamma Phi Beta has had two building projects in the last two years. **Beta Chi Chapter** at Wichita State moved into a new lodge and ground was broken for **Delta Iota’s** new home at Purdue. It is scheduled for completion in fall.

- The Sorority began a program of professional leadership training in 1970. It continues with this convention. Chapter development is its goal. Chapter development can be used to resolve challenges, recruit new members and improve collegiate/alumnae relations. Following our Seattle Convention, the International Chapter Development Committee was changed to include a chairman for alumnae and one for collegians. Now a third has been added—to research and develop complete programs on specific topics for use by both collegiate and alumnae chapters.

- Recruitment of new members is essential. To a

“GAMMA PHI BETA IS GREAT IN ’78”



YOUR NEW GRAND COUNCIL FOR 1978-80 (from left): Grand President Karen Wander Kline (Iowa State), Director of Finance Mary Jane Hipp Misthos (Colorado College), Alumnae Vice President Ann Mullen Bronsing (Indiana State), Director of Expansion Leonite Selzer Moore (Southern Methodist), NPC Delegate Gloria Swanson Nelson (Oklahoma), Collegiate Vice President Ruth Donlon Lowell (California State-Long Beach), and Executive Secretary-Treasurer Mary M. Moxley (Northwestern).

collegiate chapter that means rush. To an alumnae group, it means attracting Gamma Phi Betas who are not involved and potential alumnae initiates. Recruitment is a year-round public relations program for the Sorority to grow. During the biennium, the **Alumnae Vice President Elizabeth Sloan Phillips** (Washington-St. Louis) compiled *A Membership Recruitment and Retention Manual* and a revision of training materials for alumnae

initiates has just been completed.

- Pledge development may be the most significant activity of the Sorority. The education each pledge receives affects the future growth of the chapter. Pledges are our lifeblood.

- Feedback from within Gamma Phi Beta comes from alumnae support and involvement. Long after college days are over, there is an endless wealth of asso-

"Man on Second"

In sorority house lingo, the cry "man on second" serves as a warning that a male guest or worker is ascending the stairs. In Nashville, that visitor to the second floor was Bill Meyer, behavioral psychologist from Bellevue, WA. He conducted five intensive leadership sessions during the convention.

Bill explained four questions each chapter must ask itself: Where are we now? What is our goal? Why do we need this? How do we achieve it?

Wanting to achieve the goal, **believing** it can be achieved and **expecting** that it will be are the three necessary steps for goal realization, Bill said. He added that expecting a goal to be realized is the key to both personal and chapter success.

He also pointed out that without stress in our lives there will not be any growth. The key is to develop positive stress and to eliminate negatives.



Other Election Results

Nashville delegates re-elected all members of the Endowment Loan Board: **Patricia Denton** (Oklahoma City), **Jacquelyn Hilger Graves** (Southern Methodist), **Diane Dross Nichols** (Indiana), and **Judy Ruhl O'Neill** (Indiana).

They also elected six members from different areas of the country to serve on the International Nominating Committee for the 1980 Convention. Second name listing for each area represent the alternates.

Eastern Section: **Sheila Gallagher Sullivan** (Penn State) and **Dorothy Roberts Matheson** (Boston).

East Central Section: **Janis Raines Abernathy** (Florida State) and **Julia Terry Templeton** (Southern Methodist).

North Central Section: **Jacqueline Reid Allee** (Michigan) and **Margaret Kimpel Leddick** (Minnesota).

West Central Section: **Margaret Godbold Briscoe** (Southern Methodist) and **Maxine Leverett Trager** (Southern Methodist).

South Central Section: **Mary Babbitt Bilby** (Arizona) and **Janne Calloway Hayés** (California State-San Diego).

Western Section: **Diane Kay Conrad** (Idaho) and **Elna Magnusson Dimock** (Idaho).

ciations and experiences to be enjoyed. Panhellenics provide feedback from the Greek community. Through a climate of cooperation, understanding and harmony, alumnae and college Panhellenics aid in strengthening member groups.

- Public relations is doing something worthwhile and telling others about it. Good public relations begins with each Gamma Phi Beta. From individuals, it extends to families, universities, communities, other Greeks, prospective members—the world at large.

"Where do we want to be in '80?" asked Mrs. Kline. "You will tell us through the resolutions adopted here at this convention."

"What is Gamma Phi Beta?" she concluded. "It's more than a sorority, it's an opportunity for each and everyone of us."

Second Business Session

Reports of the Nominating and Resolutions Committees were a feature of this assembly. But the news came in the discussion and passage of changes in the by-laws. All were passed including a controversial but unavoidable one to restructure the collection of membership fees. To avoid conflict with IRS and to protect Sorority tax exemptions, delegates voted a change.

Earnest Dobler McDonald (Northwestern), By-Laws Chairman, played an important role at this session. Similarly did the Nominating Committee Chairman, **Mary Jane Brown Monnig** (Washington-St. Louis), and the Research Chairman, **Virginia Forsythe Vint** (Missouri).

Third and Final Business Session

Per the Nominating Committee's slate, Mrs. Kline and **Ruth Donlon Lowell** (California State-Long Beach) were reaffirmed as Grand President and Collegiate Vice President. **Leonite Seltzer Moore** (Southern Methodist) was reelected Director of Expansion and **Gloria Swanson Nelson** (Oklahoma) was switched from Director of Finance to National Panhellenic Delegate. New to Grand Council are **Ann Mullen Bronsing** (Indiana), Alumnae Vice President; and **Mary Jane Hipp Mithos** (Colorado College), Director of Finance.

Delegates to the 58th convention charged Grand Council with these goals for the next biennium:

That in the interest of more effective organization and communication, 1) written communication between Central office and collegiate chapters be improved; 2) that each chapter make full use of the *Crescent Communique*; and 3) a map showing the location of all Sorority chapters be prepared each biennium.

That in the interest of increased cooperation between alumnae and collegians, 1) all shall cooperate in implementation of new dues and fees plan; 2) use and value of endorsements be reexamined by alumnae and collegians with special emphasis on collegiate needs; alumnae chapters should increase their participation in collegiate activities and development.

That in the interest of growth through self evaluation, 1) a Conventioneers Committee be appointed to evaluate the 1978 and future conventions; 2) evaluation of future convention sites be made by Grand Council; 3) the order of convention program be reviewed by Grand Council; and 4) an Ad Hoc Committee be appointed to review international award criteria and report to Grand Council.

That in the interest of further growth, expansion efforts in the Southern and Northeastern regions be supported.

That it affirm the incomplete resolutions from the 57th convention regarding 1) updating yet outstanding manuals; and 2) continuing the Ad Hoc Committee to study the relocation of Central Office.

The final session ended on three very happy notes:

- The Carnation Award was presented to **Helen Jane Rehlke Wamboldt** (Northwestern-Minnesota), former radio and band singer and now a leader in Dallas civic and community affairs.

- **Elizabeth Wheeler Olson** (Michigan) a former Grand President, was named to the Sorority's Honor Roll for many outstanding acts of service to the Sorority. (More on these convention VIP's in the next issue of *The Crescent*.)

- **Randi Guerra**, vice president of the Denver Alumnae, extended an invitation to the 59th International Convention to be held in Denver, CO, in June, 1980.

With the reading of the Mentor's Report from **Delta Delta Chapter** (California-State-Fullerton) and the closing scriptures, Mrs. Kline declared the assembly adjourned.

NASHVILLE:

A UNIQUE GATHERING

"Who would have thought more than 500 would come here in the summertime!" remarked one amazed member of the Nashville Convention Committee. An unexpectedly large number of Gamma Phi Betas registered at nearby motels—then showed up unannounced for the weekend activities.

So many unexpected "lady callers" was only the first of happenings that made the Nashville conference unique. Here are more examples:

- It was the first dedicated to the memory of an individual—**Betty Luker Haverfield** (Missouri). She was the only Grand President to die in office. Members of her family were special convention guests. They came primarily for the traditional Memorial Service at which Mrs. Haverfield was singled out for a special eulogy.

- It was a convention that saw the leader of another sorority—Betty Mullins Jones, Alpha Phi Panhellenic Delegate—as guest speaker for the traditional Panhellenic luncheon. So what made this unique? Mrs. Jones left her own sorority convention in Florida to fly to Nashville. Afteward, she flew right back.

- It saw the revival of two convention traditions after a long absence from the scene: the singing of the blessing at every meal and an afternoon designated for play. In the latter case, conventioners had their choice between a performance of Grand Ole Opry or a visit to Andrew Jackson's home, The Hermitage. It was one of the few times conventioners braved the near 100 degree temperatures. Otherwise, most were content to stay within the air-conditioned Hyatt Regency.

"Consider Yourself At Home"

There were several surprises in store when the Nashville Alumnae welcomed conventioners to the Sing Out's opening banquet. Though decreed "informal," guests were none the less startled when officers and project chairmen of the Gamma Phi Beta Foundation took their places on stage wearing T-shirts. But these were special shirts indeed . . . red with the Foundation logo in white. (They were featured at the Convention Boutique and are now for sale by mail.)

Thunderous applause greeted these officers and other head table guests. These included Convention Chairman **Lucille Corkran Nabors** (Vanderbilt) and Nashville Alumnae President **Bonnie Hager Daume** (also Vanderbilt). In inviting conventioners to consider themselves at home, they explained the beautiful silk iris used as table centerpieces: the iris is the Tennessee state flower.

Beverly Cummings Adams (Colorado State), Foundation executive vice-president, presided over the evening's program dedicated to the organization's camping and scholastic activities. And subsequent announcements made news:

- a scholarship honoring **Ruth B. Fox** (Northwestern) has been endowed by the Evanston Alumnae. The first recipient will be named for the 1979-80 school year.

- a one-time \$1,000 scholarship was awarded in Mrs. Haverfield's memory.

- the Foundation paid special tribute to the **Denver Camp Board** for 53 years of loyal service. It also was revealed that the Colorado camp site has been closed. New directions for the Foundation's camp program will be announced shortly.

Judy Graham (Oklahoma), International Philanthropy Chairman, presented awards to the following chapters for their philanthropic efforts: Alumnae—Omaha, Denver, North Virginia, Vancouver and Houston; Collegiate—Indiana, Colorado State, Oklahoma, California State—Fullerton, and Kansas.

On the Hit Parade

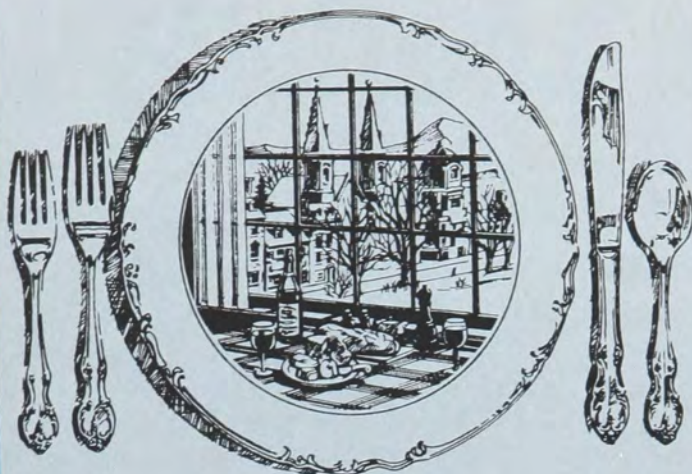
Use of song titles was not confined to mealtimes such as "Tie A Yellow Ribon" for Friday's program on Sorority expansion. They prevailed for workshops. Appropriately, leadership conferences were entitled "Won't You Come Back, Bill Meyer?"; "We Want You"—alumnae recruitment; "Home on the Range" for an HCB session; "Write Me A Letter" for membership recommendations; and "Drink To Me Only With Thine Eyes" for alcohol and visitation. Many more musical tie-ins were made with Gamma Phi Beta programs.

"Welcome To Our World"

Addressing Gamma Phi Betas and their Nashville Panhellenic guests, Alpha Phi's Mrs. Jones said, "Healthy competition and mutual respect can do much for the Greek system. When we are separated from the flame of competition and the warmth of unity, we will die."

She likened the strength of Panhellenic to an individual's personal health. And, she stressed, "Every obstacle to rushing forms a clot in the Greek bloodstream. Any rules that prevent girls from pledging cut our lifeline."

"Everyone needs something—something to do, to love, to hope for," Mrs. Jones concluded. "We should



The Sorority Blessing

The singing of *The Blessing* at all meals was re-established at the Nashville Convention. It is a lovely tradition; its revival was welcome.

To refresh the memories of those who have forgotten and to inform those who never knew, here's the historical background on our blessing.

The music was composed by Louis Bourgeois, a Frenchman who lived 1500-1561. It was included in the Genevan Psalter of 1551. It is the melody of the Doxology sung in Protestant and Catholic churches, "Praise God from whom all blessings flow."

An Englishman, Sir Henry W. Baker, used the same melody for a hymn which appears in the hymnals of all faiths. The title is "O God of Love."

Dr. Charles M. Moss, professor of classics at Syracuse University and husband of Sorority founder, Frances E. Haven, wrote the words for the blessing as we Gamma Phi Betas know it.

What does all this sum up to? The blessing is very old, universal and ecumenical—something of which we can all be very proud.

—Margaret Miller Browne (Oregon State)

hope we can offer a place to every girl who wants to be part of the Greek system."

"The Saints Go Marching On"

Workshop after workshop . . . appointment after appointment with the convention photographer for official Province delegation pictures . . . an up-beat fashion show . . . Honors night . . . the "Hee Haw" party . . . Grand Ole Opry . . . and so the convention built up to a stirring crescendo: the Pink Carnation banquet.

No surprises here. It was beautifully traditional in every respect—just as everyone wished. Collegiate Consultant Jeannette Stoll sang "In the Heart of a Pink Carnation" . . . Carnation Award recipient **Helen Wamboldt** held the audience spellbound with her message "May the Circle be Unbroken" . . . new officers received their appropriate badges . . . and, finally, the Mystic Circle. The count-off numbered 513.

"Memories, memories" . . . those of Nashville will long live in the hearts of 1978 conventioners.

Now the theme must change . . . "Climb Every Mountain" . . . to Denver in 1980!



"HOLD MY CAMERA while I have my picture taken." A frequent occurrence.



THE CONVENTION OFFICE was a beehive of activity throughout the week. Here Convention Chairman Lucille Corkran Nabors (Nashville) confers with committee workers on the next scheduled event. At right, she meets with Catherine Guthrie Lindauer (Iowa State), chairman of the Denver Convention in 1980.



BEHIND THE SCENES AT NASHVILLE



PRESIDENT Karen Wander Kline and other Foundation officers proudly wore T-shirts with their heart-inspired logo to the opening banquet.

ALPHA PHI'S Betty Mullins Jones left her Florida convention to address our Convention's Panhellenic luncheon.



RETIRING NPC DELEGATE Marjorie Speidel Lundin (Washington) served as toastmistress for the Panhellenic Luncheon and presented Panhellenic Awards to chapter representatives (from left): Marti Moore for Oregon State; Katherine Livesay for Maryland, an honorable mention; and Cindy Lee Partain for Bowling Green.



DISPLAYS and the Convention Boutique attracted many convention delegates during non-business hours.

Wishes Granted - And Earned



HONORS BANQUET TOASTMISTRESS—Allison London Smith (Missouri), a member of the Sorority's Awards Committee.

In keeping with the Convention's musical theme, the Honors Banquet was appropriately entitled "When You Wish Upon A Star." But it took much more than wishing to make the dream of an award come true. It took hard work. All awards were truly earned. **Allison London Smith** (Missouri) proved the perfect banquet toastmistress. Aware of the mounting excitement in the ballroom, Allison waved extraneous remarks and kept the award presentations on a fast-paced course. She was rewarded by squeals of delight and tears of joy throughout the evening. In a unique convention first, representatives of the award-winning chapters were presented with gold stars for each member in attendance. These were attached to name tags and provoked many post-event conversations. Other delegates were able to learn, first hand, what it takes to be a winner.



Left: **CLARA WORDEN AWARDS** for increased alumnae chapter membership during the last biennium went to Platteville, WI, Jerilyn Flatz (Wisconsin) accepting; Minneapolis-St. Paul, Marjorie Anderson Adams (Minnesota); and Vancouver, Susan Rapanos (British Columbia). The award is named for the Sorority's first pledge.



MEMBERS OF COLORADO'S BETA RHO happily accepted Grand Council's Award for Gracious Living. From left: Jeannette Stoll, Kathleen Schrader and Stacie Lehner.



CHAPTER DEVELOPMENT AWARDS to (from left) Beta Psi (Oklahoma State), Monica Amis accepting; Alpha Upsilon (Penn State), Lynn Dailey; Lambda (Washington), Kathy O'Connor; and Delta Delta (California State), Cheryl Markel.



CANADA'S OUTSTANDING CHAPTER during the last biennium—Alpha Alpha at the University of Toronto. Accepting, Kathy Dorey.



GRAND COUNCIL AWARDS for outstanding alumnae chapters in two categories: Non-Sponsors (from left)—Omaha, Nancy O'Connor Whitted (Nebraska), and Hawaii, Jean Anderson Allard (Washington), Province III Alumnae Director, accepting. Sponsoring chapters: Oklahoma City, Tanya Williams Deen (Texas); St. Louis, Dorothy Allen Drees (Washington-St. Louis).



CRESCENT AWARDS for consistency in reporting and best features went to (from left) Rho-Iowa, Kathy Draths accepting; Omega-Iowa State, Deb Holbrook; Lincoln Alumnae, Lynn Mortensen; St. Louis Alumnae, Dorothy Allen Drees.



THE SORORITY'S COVETED Mary A. Bingham Award for overall chapter excellence went to Nebraska, Kimberly Osborne proudly accepted.



MCCORMICK MEDALLIONS for individual and chapter participation in campus and community activities were awarded in two categories, according to campus size. Below 12,000 enrollment (from left): William and Mary, Margaret Littlejohn accepting; Southern Methodist, Mary Alice Collins. Over 12,000: Oklahoma, Pam Martin and Iowa State, Del Holbrook.

Wishes...



FOR THE SECOND TIME in a row, Vanderbilt's Alpha Theta Chapter received the Efficiency Award. Happily accepting, Karen Keyes.



PHILADELPHIA NORTH SUBURBAN became the third alumnae chapter to move into the Sorority's "Hall of Fame." Obviously elated by the honor was the chapter delegate (left) Julie Hill Flinchburg (Penn State) and Deborah Foulsham Freisheim (Penn State), PCD for Province II.

ADDITIONAL EVENING STARS

(not pictured)

ALUMNAE AWARDS FOR CHAPTER DEVELOPMENT: Lincoln, Lynn Field Mortensen (Nebraska) accepting, and Oklahoma City, Tanya Williams Deen (Texas).

COLLEGIATE-ALUMNAE RELATIONS based on communications, rapport and cooperation went to four Greek Letter chapters and sponsoring alumnae groups: **XI (Idaho)—Moscow Alumnae**, Diane Frisch and Gayle Carter Stockton accepting; **Beta Epsilon (Miami)—Oxford Crescent Circle**, Marcia Davis and Pat Hopkins Gordon accepting; **Gamma Phi (Auburn)—Birmingham Alumnae**, Julie Muckelrath and Elise Berthon representatives; and **Delta Theta (California State Polytechnic)—San Luis Obispo Crescent Circle**, Lucy Thoms and Patrice Kershaw accepting.

Perfect Scholar on "A" List

Denise Rainwater (Texas Tech) is appropriately called "the perfect scholar." Having maintained a 4.0 for her entire college career (1973-77), she heads a list of 64 Gamma Phi Betas named to the prestigious "A" List for the 1976-77 school year. Like the others, Denise has received a crested charm in tribute to her scholastic achievement.

Members of this "A" List are:

Province II

William and Mary (Alpha Chi)—Marianne Sorensen*, Doris Scheffel

Province III

Miami (Beta Epsilon)—Victoria Arceci
Kentucky (Gamma Omicron)—Jane Connell, Elizabeth Chenault*

Province IV

Purdue (Delta Iota)—Carol Ann Conner, Mary Elizabeth Craig

Province V

Northwestern (Epsilon)—Francie Carver, Lisa Hendricksen, Karen Trenkler

Illinois (Omicron)—Amy Forsythe

Province VII

Texas (Alpha Zeta)—Laura Moore
Southern Methodist (Alpha Xi)—Kathy Fickenscher, Suzanne Fiederlein, Lori Griffith, Diane Norton, Anita Ransdell, Marianne Seiler, Linda Foreman

Province VIII

Auburn (Gamma Phi)—Vicky Busby

Province IX

Oklahoma (Psi)—Jane Winston, Jeretta Wilson

Oklahoma City (Beta Omicron)—Becky Seip, Sharon Shaw*

Texas Tech (Beta Tau)—Debbie Robertson, Denise Rainwater***

Province X

Kansas (Sigma)—Gretchen Schmidt
Missouri (Alpha Delta)—Jill Brown, Maria Krause

Kansas State (Beta Upsilon)—Crista Clark, Cindy Corbin

Wichita (Beta Chi)—Melodie Parcel*, Anne Milner

St. Louis (Gamma Tau)—Joan Soden, Judy Wehlig

Province XI

Colorado (Beta Rho)—Laura Marie Brown

* Those so designated were on the 1975-76 "A" List.



SEVEN CHAPTERS WERE RECOGNIZED FOR SCHOLASTIC EXCELLENCE during the last biennium (3.0 GPA or better). Accepting for their chapters (from left): Jane Driessen, Omicron-Illinois; Sandy Smith, Sigma-Kansas; Susan Rapanos, Alpha Lambda-British Columbia; Lynda Slaughter, Alpha Omega-Western Ontario; Mary Alice Collins, Alpha Xi-Southern Methodist; Charla Jones, Beta Omicron-Oklahoma City; and Pam Fitzke, Gamma Kappa-Kearney State.

In the SCHOLASTIC SPOTLIGHT

Right: **GAMMA PHI BETA'S HIGHEST SCHOLASTIC HONOR**, the Chancellor E. O. Haven Award, went to Nebraska and St. Louis University. They tied with a 3.24 GPA. Accepting were Kim Osborne for Pi Chapter, Nebraska, and Nora McLaughlin for Gamma Tau, St. Louis University.



Colorado College (Alpha Phi)—Coqui Murry, Melonie Dickinson, Linda Hare, Patti Freudenburg, Lori Randa, Taffy Bond, Jennie Bails, Julie Reddan, Sally Owens, Lisa Radetsky, Marne Jensen, Ann Burnett

Province XIV

Arizona (Alpha Epsilon)—Debbie Wick
Northern Arizona (Beta Omega)—Linda Jacobson

Province XV

Nebraska (Pi)—Merilee Carlson*, Diane Korinek*, Kim Chase, Sandy Huber, Marian Lucas

Iowa (Rho)—Julia Johnson*, Cathryn Taylor*

Kearney State (Gamma Kappa)—Gayle Lee, Pam Robinson

Drake (Gamma Upsilon)—Patricia Pellitier, Margaret Teague, Ann Zoucha

Province XVI

California State-Fullerton (Delta Delta)—Claire Hinkel, Cheryl Markel

If names are missing from this list, it could be because your chapter scholarship chairman failed to send in the scholarship report. "Please check," says Peggy Larson Stromer, International Scholarship Chairman.



Straw Hats & Howdy

Music, music, music! Hand-slapping, foot-stamping music! It was "Hee Haw" Saturday Night In Nashville—a great prelude to Sunday's Opryland visit.

In accordance with tradition, nearly 600 guests tucked from one to 18 pink carnations (one for each convention attended) in a hat indicative of the host area—in this case a "Minnie Pearl" white straw complete with pink satin streamers and a \$1.95 price tag. Many first-timers, limited to one flower, made up for it with country freckles.

From extemporaneous musical offerings by the "stage struck" to the presentation of awards, the evening ran its hilarious course—climaxed by a snake dance through the dining room. Participants were limited to those with five or more pink carnations in their hats. It was convention's true fun time!



SPECIAL GUESTS at the Hee Haw and several other convention events included members of the family of the late Betty Luker Haverfield. Shown here are her husband, Bob, and daughter Judy Haverfield Beaupre (Missouri), who also represented the Rochester, N.Y. Alumnae. Son David also was there.



Upper left: **MINNIE PEARL, TAKE HEED!** Marian Corley Hulsey (Oklahoma) did a fantastic job as toastmistress for the Hee Haw party. She also led the parade of Confirmed Conventioneers and presented magazine sale awards—several of which were picked up by Peggy Cook Evans, Greater Kansas City Alumnae.

Left: **SALLY ERIKSON LEWIS** (Bradley), International Public Relations Chairman, handed out awards galore—for scrapbooks, newsletters and public relations.

HEE HAW NIGHT AWARDS

Song Awards:

Humorous—Peggy Lewis (Lehigh)
 Serious—Antoinette Lebel
 (California-Irvine)
 Original—Ann Marie Molenaar (Idaho)

Scrapbooks:

Alumnae—Greater Kansas City, first;
 St. Louis, second.
 Collegiate (smaller)—Memphis State,
 first, Oklahoma City.
 Collegiate (larger)—Illinois, first,
 Texas Tech.

Alumnae Newsletters:

St. Louis, first; Colorado Springs,
 second.

Public Relations:

Drake, first; Washington State,
 second.

Magazine Sales:

1975-76—Largest dollar production
 (alumnae)—Greater Kansas City
 and St. Louis; (collegiate) Purdue
 and Nebraska. Largest dollar
 increase (alumnae)—Wichita and
 Greater Kansas City; (collegiate)
 Nebraska and Oklahoma State.
 Largest dollar per capita
 (alumnae)—Beverly-Westwood and
 Rochester, N.Y.; (collegiate)—
 Purdue and California State-Long
 Beach.

1976-78—Largest dollar production
 (alumnae)—Greater Kansas City
 and Dallas; (collegiate)—Purdue
 and Oklahoma State. Largest
 dollar increase (alumnae)—
 Greater Kansas City and Tulsa;
 (collegiate)—Purdue and Indiana.
 Largest dollar per capita
 (alumnae)—Philadelphia West
 Suburban and Rochester;
 (collegiate)—Purdue and
 Oklahoma City.



WHAT THEY LACKED in carnations, they made up for with freckles—first time conventioners Dana Hooks and Linda Roberts (Memphis State).



Left: **WITH 18 PINK CARNATIONS** on her bonnet, Gwen Bolden Riggs of Des Moines was the most confirmed of Confirmed Conventioners.

Center: **HEE HAW** was a camerawoman's delight. Note here, another camera caught West Ontario's loveliest.

Right: **ST. LOUIS DELEGATES** showed civic pride by adding replicas of their famed "Gateway to the West" arch to the top of their hats. Representative: Janis Smith (Washington-St. Louis).

CHRISTMAS IS COMING . . . And Magazines Certainly Fit Everyone's Budget!



Not only will gift subscriptions save you money, they will . . .

- 1) **save time.** Shop at home . . . cover many on your list in a matter of minutes.
- 2) **save trouble and more money . . .** traffic and parking problems, gasoline and garage fees.
- 3) **provide a gift** that gives year-round enjoyment.
- 4) **help Gamma Phi Beta.** Profits benefit both the Sorority gift fund and the giver's local chapter treasury.

Christmas rates are in effect from September 1 through December 31, 1978. **THE DONOR'S NAME AND ADDRESS MUST BE GIVEN ON ALL ORDERS.** Publishers now require 10-12 weeks to process orders. So **ORDER NOW** and remember to ZIP CODE. Consult your area chairman for rates, or write the International Magazine Chairman, Mrs. C. W. Kenney, 129 Croyden Lane, Apt. E, Syracuse, N.Y. 13224.

Grand Council Appointees

A new Editor for *The Crescent* is among the first appointees of the new Grand Council elected at Nashville. Also on the list, a PAD, a chapter development chairman; four Collegiate Consultants—those very special young women who serve as the Sorority's Ambassadors on Campus; and finally, ten Graduate Counselors who will serve Greek chapters while continuing their advanced education. Here are the details:

CRESCENT EDITOR



Kris Brandt Riske (Wyoming)

Kris Brandt Riske (Wyoming), former *Crescent* Alumnae Editor, has been named Editor-in-Chief to succeed **Geraldine Epp Smith** (Missouri). Jerrie, who served in the post four years, resigned due to the pressures of her other full-time job.

Kris holds a B.A. in Broadcasting and a M.A. in Journalism. Her past journalistic experience includes the posts of advertising manager for Kagin's, Des Moines; public relations writer for the State of Wyoming's Department of Environmental Quality, Cheyenne; and layout editor of the University of Wyoming's *Branding Iron*.

She's a member of the Society of Professional Journalists (Sigma Delta Chi); Phi Delta Epsilon, journalism honorary; and the American Association of University Women.

Husband, Phil, also is in the field. A former TV anchorman in Des Moines, he's now affiliated with a radio station in Alamogordo, NM, where the couple make their home.



GRAND COUNCIL HAS SELECTED TEN GRADUATE COUNSELORS

to provide live-in support for Greek Letter chapters while personally pursuing their studies for master degrees. They are, from left, front row: **Leslie Koepke** (Kansas State) to Florida State's Beta Mu, **Donna Szuba** (William and Mary) to Maryland's Beta Beta, **Lisa Chee** (California State-Irvine) to UCLA's Alpha Iota, and **Karen Hedine** (Washington) to Indiana's Beta Phi. Back row, from left: **Karma Burford** (Iowa) to Texas' Alpha Zeta, **Colleen Sweeney** (Washington State) to Arizona State's Beta Kappa, **Maureen Sigler** (Mankato) to North Dakota State's Alpha Omicron, **Elizabeth Maize** (West Virginia) to William and Mary's Alpha Chi, **Debbie Jones** (Colorado College) to Kentucky's Gamma Omicron, and **Annemarie Polak** (California State-Irvine) to Gamma Eta at California State-Long Beach.

Right: **JONETTE CROWLEY** (Colorado), a University of Missouri graduate counselor for the past two years, has been named International Chapter Development Programs Chairman. She graduated this year from Missouri with a master's degree in business administration.—Photo by Laura Jackson (Missouri)





Pat Davies Newcombe
(Washington- St. Louis)

PROVINCE ALUMNAE DIRECTOR

Patricia Davies Newcombe (Washington-St. Louis) has a long and dedicated allegiance to Gamma Phi Beta which began as rush chairman and president of Phi Chapter, then immediately grew as corresponding secretary, vice president and president of the St. Louis Alumnae.

Now residing in Minneapolis, Pat has served Kappa Chapter as rituals advisor and held many offices in the Minneapolis-St. Paul Alumnae. These have included president and Panhellenic delegate. Named to the Sorority's Merit Roll in 1975, she also was social chairman for the Minneapolis Convention.

Pat and her husband, Jim, are the parents of five children and so, understandably, Pat has been active in youth programs. She is a past PTA president and was a Girl Scout leader for nine years. She's also been on the board of the Greater Minneapolis Girl Scout Council and received their Thanks Badge, the highest adult honor.

For the past four years, Pat has worked in Special Service classes for learning-disabled first and second grade students in her local school district. She is currently attending Metropolitan State University and serving an internship in the Development Department of the Metropolitan Medical Center in Minneapolis.

NEW COLLEGIATE CONSULTANTS

Anita B. Peterson (North Dakota) has a natural flair for the dramatics. It was evidenced in her scholastic work (Radio-TV and journalism) as well as in her college extracurricular activities. For one, she was the hostess of an "Old Time" polka and waltz program aired at 6 a.m. each day on KFJM (Grand Forks affiliate of National Public Radio). For another, she was a second-place winner in both the University and Red River Valley talent shows with her characterization of Lily Tomlin's little girl, Edith Anne.

A member of Mortar Board and Who's Who in American College and University Students, Anita was active in the Greater Grand Forks Community Theatre and placed first at the 1976 North Dakota State Collegiate Speech Tournament in serious dramatic interpretation and dramatic duo. She served Gamma Phi Beta as parliamentarian and chapter development chairman.

Jeannette Stoll (Colorado) is another communications expert, having majored in Radio and TV broadcasting. Gifted with musical abilities, she was a member of Colorado University's Concert Band and Choir. A soloist for church services, weddings and Gamma Phi Beta functions, Jeannette also sang with Beta Rho's group, "The Moonlighters," and served the honorary as vice president and recording secretary. She also was a member of Tau Beta Sigma, band honorary.

In a more energetic bent, Jeannette was a University flag girl for three years and played intramural softball and volleyball.

Carol J. Stott (Colorado College) served Alpha Phi Chapter as social and then chapter development chairman. She cites the Sorority as one of the "special interests" of her life.

Graduating last February with a degree in business administration

and a 3.28 GPA, Carol is a social advocate for youth. She voluntarily worked with a mentally disturbed child for a year, spending three to five hours a week with her. She'll have the patience required of a collegiate consultant.

Kim Wolfe (Iowa State) has a sensitive interest in both the fine and applied arts. Her major was advertising design. While on campus, she devoted much of her time and effort to Panhellenic and campus activities while also serving Omega as Crescent Correspondent, Rituals Chairman and Panhellenic representative.

More recently, she spent six weeks assisting with Alpha Phi Sorority's new colony at Iowa State. Living with this chapter, discussing chapter policies, functions, rush procedures and participating in the remodeling of its house, an old Mormon Church, gave her a taste of what the job of a collegiate consultant would be like.



Anita B. Peterson (North Dakota)

Jeannette Stoll (Colorado)

Carol J. Stott (Colorado College)

Kim Wolfe (Iowa State)

"IN LIEU OF FLOWERS"



IRIS—Tennessee's flower.

Gamma Phi Beta Sorority is urging its members to make memorial gifts to the Foundation in memory of a lost "sister" or other loved one. Contributions, which are

U.S.A. tax deductible, will be used to support the Sorority's philanthropies—camping for underprivileged children and financial aid to women students. The latter takes the form of scholarships, followships and grants-in-aid.

Members of the remembered one's family will be notified of your gift with a special card mailed from Central Office. Contributions should be made payable to the Gamma Phi Beta Foundation, 630 Green Bay Rd., Kenilworth, IL 60043, and designated as a memorial to (Jane Doe) on the face of the check.

While meeting in the Iris State (Tennessee), the Foundation's Board of Directors initiated a drive to raise \$10,000 so that a permanent **Betty Luker Haverfield Scholarship Fund** may be established in lasting tribute to this Grand President's memory. **Audrey Weldon Shafer** and **Virginia Forsythe Vint** (both Missouri) were named co-chairmen.

Simultaneously, **Grand President Karen Wander Kline** (Iowa State) announced that as a special tribute to Mrs. Haverfield, the Foundation has granted a one-time \$1,000 scholarship—the largest to be awarded this year. The recipient is **Marie Gravelle** (McGill). Currently serving as president of Alpha Tau Chapter, Marie is enrolled in a Bachelor of Science program with honors in mathematics. With a 3.6 GPA, she is a two-time recipient of the McConnell Engineering and Science Scholar—one of McGill's most prestigious awards.

Help deserving young women like this—while remembering someone you loved.

—**Beverly Cummings Adams**,
Executive Vice President,
Gamma Phi Beta Foundation.

In Memoriam

ALPHA

Louise White Barr
Gladys R. Timmerman

BETA

Maleta Moore Wernicke

GAMMA

Daisy Dean Cutshall
Mary Boorse Kieckhefer
Evelyn E. McElphatrick
Marie Leavens Youngman

DELTA

Beatrice Chambers

EPSILON

Margaret Elizabeth Ross
Gage
Doris Wise Wheeler

ETA

Sue Marx Capron
Jean McDougall Dudman
Ida Hale Johnson

THETA

Katharine Culbertson Cook
Martha Truscott Wright

KAPPA

Ellen Lorena Krider

LAMBDA

Elizabeth Pratt Atkinson
Amy Pike Becker
Virginia Wester Howe
Laura Beecher Scott
Laurien Winn Wilcox

NU

Carolyn Alice Albers
Daria Sangster Hughes
Edith Herrin Watt

XI

Patricia Daubner Snyder

PI

Charlene Cooper Siebert

SIGMA

Babara Jean Norrie Bland
Maud Ellsworth
Louise Allen Neff
Sue Schmid Riederer
Rhea McBride Stryker
Elizabeth West Whitney

TAU

Elsie Jamieson Chandler

UPSILON

Eleanor Brooks Deaton

CHI

Lois Thurston Jenkins

PSI

Blanche Cooley Lee

ALPHA GAMMA

Anne Elizabeth Brown
Dolliver

ALPHA DELTA

Ruth Henrich Hindman
Julia Hadley McKecknie

ALPHA EPSILON

Fay Heron Shoemaker

ALPHA ZETA

Marguerite Ater Cooper

ALPHA IOTA

Lou Ann Buffum Nuffer

ALPHA MU

Ruth Phillips Franklin

ALPHA NU

Ruth Wigton Capewell

ALPHA OMICRON

Eleanor Reed Dahl
Frances Loomis Lawrence

BETA THETA

Margaret Mary Kenefick

BETA OMICRON

Caryl Taylor Crabtree
Dorah Engel Grow

DIRECTORY

1978-1979



GAMMA PHI BETA ALERT!

This eight-page insert on tinted paper constitutes your Sorority directory for the upcoming year. It includes a listing of all international, province and local officers. It also contains a list of Gamma Phi Beta collegiate and alumnae chapters, a Province roster, the list of officers' duties, TranSISter services, CRESCENT deadlines and other important announcements.

Please lift the staples in the center of this section, remove the pages and insert them in permanent officers' notebooks for ready reference throughout the year.

Gamma Phi Beta Sorority Directory

Founded November 11, 1874
Syracuse University

FOUNDERS

Helen M. Dodge Ferguson
Frances E. Haven Moss
E. Adeline Curtis
Mary A. Bingham Willoughby

THE GRAND COUNCIL

Grand President: Mrs. T. L. Kline (Karen Wander) 3648 S. 91st St., Omaha, NE 68124
Alumnae Vice President: Mrs. R. O. Bronsing (Patricia Ann Mullen), 2 Treewood Ct., Ballwin, MO 63011
Collegiate Vice President: Mrs. B. Lowell (Ruth Donlon), 1800 Hackett Ave., Long Beach, CA 90815
Director of Finance: Mrs. G. E. Misthos (Mary Jane Hipp), 242 Glendale Rd., Glenview, IL 60025
Director of Expansion: Mrs. J. D. Moore (Leonite Selzer), 2807 S. Peoria, Tulsa, OK 74114
NPC Delegate: Mrs. I. P. Nelson Jr. (Gloria Swanson), 3521 Royal Lane, Dallas, TX 75229
Executive Secretary-Treasurer: Miss Mary M. Moxley, 630 Green Bay Rd., Kenilworth, IL 60043

CENTRAL OFFICE STAFF—Box 310, 630 Green Bay Rd., Kenilworth, IL 60043

Executive Secy.-Treas.: Miss Mary M. Moxley
Financial Consultant: Miss Eleanor J. Sieg
Secy. to Exec. Secy.-Treas.: Mrs. Theresa Howard
Membership Records: Mrs. Anna Kantz
Alumnae Chapter Records: Miss Mary O'Connor
Greek-letter Chapter Records: Mrs. Anne Simpson
Bookkeeper: Mrs. Mary Cristiano
Supplies & Office Services: Mrs. Judith Hagan
Collegiate Consultants: Anita Beth Peterson, Jeannette Jill Stoll, Carol Jean Stott, Kimberly Darl Wolfe
Expansion Supervisor: Karen L. Hedine
Coordinator of Leadership Training: Deborah Kay Jones

THE CRESCENT

Editor: Mrs. Phil Riske (Kristin Anne Brandt), 2308 15th St., Alamogordo, NM 88310
Business Manager: Miss Mary M. Moxley, 630 Green Bay Rd., Kenilworth, IL 60043

THE CRESCENT COMMUNIQUE

Editor: Mrs. G. McKenzie (Natalie Meyer), 531 S. Burton, Arlington Heights, IL 60005

NATIONAL PANHELLENIC CONFERENCE

NPC Delegate: Mrs. I. P. Nelson, Jr. (Gloria Swanson)
1st Alternate Delegate: Mrs. D. H. Lundin (Marjorie Speidel), 5135 N.E. Latimer Pl., Seattle, WA 98105
2nd Alternate Delegate: Mrs. Carl Hustad (Virginia Geiger), 5304 Ayshire Blvd., Minneapolis, MN 55436
3rd Alternate Delegate: Mrs. T. L. Kline (Karen Wander)

INTERNATIONAL OFFICERS

Asst. to Alumnae Vice President—Bylaws: Mrs. R. Hoffman (Kay Reid), 202 N. Broadview, Wichita, KS 67208
Asst. to Alumnae Vice President—Alumnae Initiates: Mrs. D. J. Matuszak (Mary Helen Eaton), 12908 W. 84th St., Lenexa, KS 66215
TransiSter Service: Mrs. D. J. Schonberg (Theora Kurt), 12205 Leavenworth, Omaha, NE 68106
Asst. to Collegiate Vice President—Bylaws: Mrs. G. V. Kallal (Jeannine Alice Sheldon), ON 211 Winfield Rd., Winfield, IL 60190
Asst. to Collegiate Vice President—Rush: Mrs. B. A. Bell (Sheila Cornish), East 12722 Guthrie, Spokane, WA 99216
Asst. to Director of Finance—Policies: Mrs. T. A. Lothian (Carol Ann Vlchek), P.O. Box 863, Williams Bay, WI 53191
Asst. to Director of Finance—House Corp. Bylaws: Ms. Emerald L. Erickson, 149 Farnsworth Ave., #3B, Bordentown, NJ 08505
Historian: Mrs. Frank Mason (Charlotte Hamilton), 5050 Lake Shore Drive, Brown's Lake, Jackson, MI 49203

AREA FINANCIAL ADVISERS

Mrs. C. B. Jennings (Patricia Strickler), 4724 44th N.E. Seattle, WA 98105
Mrs. E. G. Hart (Mary Jean Lauvetz), 6 Brookside Rd., Philadelphia, PA 19118
Mrs. R. G. Drouet (Leona Davis), 10482 E. Grandeur Dr., Baton Rouge, LA 70815
Mrs. G. Baldwin (Julia Irene Lynn), 503 Hobson Dr., Pittsburgh, KS 66762

ENDOWMENT-LOAN BOARD

Directors:
Mrs. W. Nichols (Diane Dross), Chairman, 17475 Arbor Drive, South Bend, IN 46635
Miss Patricia Denton, 747 Willis, Glen Ellyn, IL 60137
Mrs. T. C. O'Neill (Judith Ruhl), 815 E. Edgemont, Phoenix, AZ 85006
Mrs. P. K. Graves (Jacquelyn Hilger), 515 Kenton, Aurora, CO 80010
Mrs. G. E. Misthos (Mary Jane Hipp) Dir. of Finance
Mrs. T. L. Kline (Karen Wander), Grand President
Miss Mary M. Moxley, Treasurer
Address all communications to Central Office

INTERNATIONAL CHAIRMEN

Awards: Mrs. A. T. Phillips (Elizabeth Sloan), 1118 Westerly Pkwy., State College, PA 16801
Bylaws—International: Mrs. F. L. McDonald (Ernestine Dobler), 9714 State Line Rd., Shawnee Mission, KS 66206
Convention: Mrs. J. W. Lindauer, (Catherine M. Guthrie), 5051 S. Beeler St., Englewood, CO 80110
Chapter Development: Co-chairmen:
Collegians—Miss Linda Daniel, 2636 Steel St., Houston, TX 77098
Alumnae—Mrs. Norman Choat (Phyllis Donaldson), 9716 Erskine St., Omaha, NE 68134
Programs—Miss Jonette Crowley, 1645 E. Noble Pl., Littleton, CO 80121
Coordinator of State Membership Chairmen: Miss Elise Berthon, 3141 Warrington Rd., Mtn. Brook, Birmingham, AL 35223
Magazines: Mrs. C. W. Kenney (Dorothy Stark), Maplewood Gardens, 129 Croyden Ln., Syracuse, NY 13224
Mothers' Club: Mrs. L. M. Brown (Marta Lombardi), 850 Cumberland, Glendale, CA 91202
Nominating: Mrs. John B. Hunt (Mary Boots), 8538 E. Sandalwood Dr., Scottsdale, AZ 85253
Parliamentarian: Miss Jennie K. Curtis, 20 Lake Pl., Walnut Creek, CA 94598
Philanthropy Programs: Miss Judy Elaine Graham, 2716 Rosedale, Dallas, TX 75205
Public Relations: Mrs. Sally E. Lewis (Sally Erikson), 535 Michigan Ave., Apt. 704, Chicago, IL 60611
Research: Mrs. C. Shafer, Jr. (Audrey Weldon), 6808 Rockhill Rd., Kansas City, MO 64131
Ritual: Mrs. Dirk Kempthorne (Patricia Merrill), 11219 Gunsmoke St., Boise, ID 83704
Scholarship: Mrs. M. Stromer (Peggy Larson), R.R. #2, Milton, WI 53563

GAMMA PHI BETA FOUNDATION

President: Mrs. T. L. Kline (Karen Wander), 3648 S. 91st St., Omaha, NE 68124
Exec. Vice President: Mrs. E. B. Adams (Beverly Cummings), 14 Sentinel Rock Terrace, Larkspur, CO 80118
Vice President: Mrs. G. E. Misthos (Mary Jane Hipp), 242 Glendale Rd., Glenview, IL 60025
Secretary-Treasurer: Miss Mary M. Moxley
Directors:
Mrs. R. O. Bronsing (Patricia Ann Mullen)
Mrs. B. Lowell (Ruth Donlon)
Mrs. J. D. Moore (Leonite Selzer)
Mrs. I. P. Nelson, Jr. (Gloria Swanson)

Foundation Standing Committees:

Camping Program Chairman: Mrs. D. H. Green (Sharon Reisig), 2405 S. Kearney St., Denver, CO 80222
Finance and Investment Chairman: Miss Eleanor J. Sieg, 630 Green Bay Rd., Kenilworth, IL 60043
Financial Aid Chairman: Mrs. P. R. Conway (Caribelle Waters), 9021 Fairview Rd., Silver Spring, MD 20910

PROVINCE ALUMNAE DIRECTORS

I: Mrs. Eileen Lentz (Eileen Lindemann), 22 Meadowbrook Rd., Short Hills, NJ 07078
II: Mrs. Mary Ann Youngwood (Mary Ann Morgan), 8205 Jeb Stuart Rd., Rockville, MD 20854
III: Ms. Camille Cestone, 6403 Clough Pike, #3, Cincinnati, OH 45244
IV: Mrs. R.T. Howes (Cynthia Denise Meisner), 5896 Valley Lane, SE, Grand Rapids, MI 49508
V: Mrs. R. M. Green (Frances Black), 139 N. Ashland Ave., Palatine, IL 60067
VI: Mrs. James B. Newcombe (Patricia Davies), 15803 Holdridge Rd., Wayzata, MN 55391
VII: Mrs. D. R. Johnson (Susan Herzog), 5538 McCommas, Dallas, TX 75206
VIII: Mrs. G. Oliver (Jean Brooks), 4030 Summitt Dr., N.E., Marietta, GA 30062
IX: Mrs. F. W. Volker, Jr. (Ann McCune), 1700 W. 25th, Odessa, TX 79763
X: Mrs. A. O. Durrett (Sue Mohler), 443 W. 57th Terr., Kansas City, MO 64113
XI: Mrs. William Laney (Joan Hogan), 13425 Cedarbrooke N.E., Albuquerque, NM 87111
XII: Mrs. W. H. Ball (Madeleine Thaxton), 9101 SE 57th St., Mercer Island, WA 98040
XIII: Mrs. R. H. Allard (Jean Anderson), 314 Norwegian Ave., Modesto, CA 95350
XIV: Mrs. Earle E. Rayner (Virginia Maddox), P.O. Box 1461, Litchfield, AZ 85340
XV: Mrs. E. R. Fritsch (Mary Lou Dahl), 1423 Curtiss Ave., Ames, IA 50010
XVI: Mrs. D. Moses (Sarah Swink), 5618 Scotwood Dr., Palos Verdes Pen., CA 90274

PROVINCE COLLEGIATE DIRECTORS

I: Mrs. J. A. Hewitt (Sheila McCarthy), 6 Benford Dr., Princeton Junction, NJ 08550
II: Mrs. R. C. Freisheim (Deborah Foulsham), 2052 Moreland Rd., Abington, PA 19001
III: Mrs. Robert Winterhalter (Diana Gay), 4336 Braunton Rd., Columbus, OH 43220
IV: Mrs. J. Holland (Kathleen Cavanaugh), 1109 E. First St., Bloomington, IN 47401
V: Mrs. C. F. Falkenroth (Jacki Ennis), 1175 Hassell, Hoffman Estates, IL 60195
VI: Mrs. M. Savageau (Vicki Smith), 1013 11th Ave., N., Fargo, ND 58102
VII: Mrs. Jerry Bawcom (Vicky Keene), 900 N. Bowen Rd., Arlington, TX 76012
VIII: Mrs. L. W. Betts (Mary Alice Adams), 2448 Whitehall Cir., Winter Park, FL 32789
IX: Mrs. Marian Hulseley (Marian Corley), 1020 Live Oak, Norman, OK 73069
X: Mrs. M. Kent Sanborn (Diane Hawley), R. #1, Rolla, MO 65401
XI: Mrs. P. G. Sendroy (Catherine Curtis), 12 Cherry Vale Dr., Englewood, CO 80110
XII: Mrs. L. T. McEntee (Carolyn Craddock), 1801 Edgecliff Ter., Boise, ID 83702
XIII: Mrs. R. McMichael (Gail Haren), 2110 Rockwood Dr., Sacramento, CA 95825
XIV: Mrs. Clarke R. Duncan (Shirley Gronds), 2531 N. Santa Lucia Ave., Tucson, AZ 85715
XV: Mrs. J. A. Bireline (Susan Himstreet), 414 N. Fulton, Newell, IA 50568
XVI: Mrs. Fred Rothfuss (Jonelle Hanna), 529 Tumbleweed Road, Anaheim, CA 92807

ALUMNAE CHAPTER PRESIDENTS ALABAMA (VIII)

Auburn, 1963: Mrs. Pete Cutler, 1103 McKinley Ave., Auburn, AL 36830
Birmingham, 1931: Miss Janet Walker, 186 Powderhorn Ave., Apt. 233, Birmingham, AL 35209
Montgomery, 1973: Mrs. Richard Keeshan, 712-B Ski Lodge, Montgomery, AL 36106

ARIZONA (XIV)

Flagstaff, 1957: Mrs. Tavia Wallace, 3206 N. Alta Vista, Flagstaff, AZ 86001
Phoenix, 1939: Mrs. Charles Weston, 18811 N. 12th Ave., Phoenix, AZ 85027
Tucson, 1937: Mrs. Robert Carmack, 6350 Camino Primeria Alta, Tucson, AZ 85718

CALIFORNIA (XIII, XIV, and XVI)

Bakersfield, 1953 (XVI): Mrs. R. Mack Phillips, 2004 Glendon Court, Bakersfield, CA 93309
Balboa Harbor, 1964 (XVI): Mrs. James B. Linderman, 1935 Commodore Rd., Newport Beach, CA 92660
Berkeley, 1902 (XIII): Miss Nancy Lubamersky, 1059 El Centro Ave., Oakland, CA 94602
Beverly Hills-Westwood, 1955 (XVI): Mrs. Lawrence Drumm, 296 Bronwood Ave., Los Angeles, CA 90049
Glendale, 1939 (XVI): Mrs. Vincent Bell, 5512 Pinecone, LaCrescenta, CA 91214
La Jolla, 1957 (XIV): Mrs. Charles Merz, 5290 Soledad Rancho Ct., San Diego, CA 92109
Long Beach, 1939 (XVI): Mrs. Steve Varney, 3391 Rowena Dr., Los Alamitos, CA 90720
Los Angeles, 1913 (XVI): Mrs. Connie Burns, 30343 Jasmine Valley Dr., Canyon Country, CA 91351
Modesto, 1955 (XIII): Mrs. Robert Allard, 314 Norwegian Ave., Modesto, CA 95350
Monterey County, 1951 (XIII): Mrs. Allen C. Miller, 4265 Tolando Trail, Carmel, CA 93921
Orange County, 1954 (XVI): Mrs. Patrick Witte, 12691 Hinton Lane, Santa Ana, CA 92705
Palo Alto, 1939 (XIII): Mrs. Harrison O'Neil, 3066 Price Court, Palo Alto, CA 94303
Pasadena, 1939 (XVI): Mrs. Lila Garner, 601 Garden Lane, Pasadena, CA 91105
Peninsula, 1948 (XIII): Mrs. William VanBokkelen, 195 W. Poplar, San Mateo, CA 94402
Pomona Valley, 1956 (XIV): Mrs. Dwaine Glass, 4804 Fairvalley, Covina, CA 91722
Riverside, reactivated 1978 (XVI): Mrs. Dwane Mickelson, 2805 Miguel, Riverside, CA 92506
Sacramento Valley, 1937 (XIII): Mrs. Ellis Hirst, 825 Robin Lane, Sacramento, CA 95825
San Diego, 1939 (XIV): Mrs. Sandra Carey 7805 Whelan Dr., San Diego, CA 92119
San Fernando Valley, 1953 (XVI): Mrs. Kermit Huck, 400 N. Brighton, Burbank, CA 91506
San Francisco, 1902 (XIII): Ms. Cornelia A. Spanier, 2483 44th Avenue, San Francisco, CA 94116
San Jose, 1948 (XIII): Mrs. Dorothy Howes, 1761 Lorenzen Dr., San Jose, CA 95124
South Bay, 1956 (XVI): Mrs. Stanley B. Boardman, 29929 Knoll View Dr., Rancho Palos Verdes, CA 90274
South Orange County, 1976 (XVI): Mrs. Lyle Gingrich, 33392 Cockleshell, Laguna Niguel, CA 92677
South Peninsula, 1964 (XIII): Mrs. Jack Funk, 10679 Nathanson Ave., Cupertino, CA 95014

COLORADO (XI)

Boulder, 1953: Miss Nancy Burton, 1608 Budd Ct., Longmont, CO 80501
Colorado Springs, 1932: Mrs. T. W. Thompson, 920 Ellston, Colorado Springs, CO 80907
Denver, 1907: Mrs. Robert Duncan, 1678 E. Geddes Circle No., Littleton, CO 80122
Fort Collins, 1945: Mrs. John Nicol, 1200 Teakwood Dr., Ft. Collins, CO 80521

CONNECTICUT (II)

Fairfield County, 1958: Mrs. Carter Beach, 103 Old Easton Turnpike, Weston, CT 06883

DELAWARE (II)

Delaware, 1964: Mrs. R. G. Downing, 2413 Heather Road, West, Wilmington, DE 19803

DISTRICT OF COLUMBIA (II)

Washington, DC, 1935: Mrs. Julius White, 24728 Ridge Rd., Damascus, MD 20750

Florida (VIII)

Clearwater Area, 1957: Mrs. Herbert Hirsch, 10284 Imperial Pt. Dr. E., Largo, FL 33540

Ft. Lauderdale, 1956: Mrs. Edward King, 2964 N.W. 69th Court, Ft. Lauderdale, FL 33309
Jacksonville, 1953: Mrs. Michael J. Miller, 9424 Pickwick Dr., Jacksonville, FL 32217
Miami, 1948: Miss Karen Criswell, 9022 NE 8 Ave., #1L, Miami, FL 33138
Orlando-Winter Park, 1935: Mrs. Walter E. Dzurus, Jr., 202 Hickory Ln., Rt. 2, Maitland, FL 32751
Tallahassee, 1954: Mrs. George Avant, 2407 Delgado Dr., Tallahassee, FL 32304

GEORGIA (VIII)

Atlanta, 1940: Mrs. Alton Webb, 4475 DeBracy Pl., Tucker, GA 30084

HAWAII (XIII)

Hawaii, 1938: Mrs. John D'Araujo, 46-374 Kumoo Loop, Kaneohe, HI 96744

IDAHO (XII)

Boise, 1928: Mrs. Linda Pierce, 1501 Allen, Boise, ID 83705
Moscow, 1941: Mrs. Chris Dixon, NE 920 Alpha, Pullman, WA 99163
Pocatello, 1955: Mrs. Nannette Siemen, 1789 Syringa, Pocatello, ID 83201

ILLINOIS (VI)

Aurora, 1963: Mrs. Martin Cassell, 601 Redwood Dr., Aurora, IL 60506
Champaign-Urbana, 1929: Mrs. Daniel Ponder, R.R. #1, Tuscola, IL 61953
Chicago, reactivated 1978: Mrs. Sally E. Lewis, 535 N. Michigan, #704, Chicago, IL 60611
Chicago Northwest Suburban, 1955: Mrs. Arthur Small, 607 Burno Dr., Palatine, IL 60067
Evanston-North Shore, 1949: Mrs. Charles V. Haliday, 910 Romona Rd., Wilmette, IL 60091
Glen Ellyn Area, 1967: Mrs. Thomas H. Solomon, 1406 Jane Ave., Naperville, IL 60540
Lake County, 1950: Miss Daria Brown, 801 W. Everett Rd., Lake Forest, IL 60045
Peoria Area, 1947: Ms Sheila Stiles, 4010 War Memorial Dr., Peoria, IL 61614
Quad Cities, 1938: Mrs. Jon W. Nelson, 1470 Terrace Park Dr., Bettendorf, IA 52722

INDIANA (IV)

Bloomington, 1956: Mrs. Louis Grove, Jr., 632 Skyline Dr., Bloomington, IN 47401
Calumet Area, 1959: Mrs. Janice Wright, 952 W. 72nd Ave., Merrillville, IN 46410
Evansville, 1956: Mrs. Fletcher Ellis, 550 So. Ruston, Evansville, IN 47714
Indianapolis, 1942: Mrs. Robert Wildman, 7002 Warwick Rd., Indianapolis, IN 46220
Lafayette Area, 1963: Mrs. George Heid, 1528 Northwestern, W. Lafayette, IN 47906
Terre Haute, 1952: Mrs. Donald R. Lowder, 2420 N. 8th St., Terre Haute, IN 47804

IOWA (XV)

Ames, 1940: Mrs. John Timmons, 832 Brookridge, Ames, IA 50010
Cedar Rapids, 1948: Mrs. Richard Klopp, 353 Garden Dr., SE, Cedar Rapids, IA 52403
Des Moines, 1919: Mrs. Danny Christensen, 1021 66th St., Des Moines, IA 50311
Iowa City, 1931: Miss Julie Dickinson, 3217 Friendship, Iowa City, IA 52240
Quad Cities, 1938: Mrs. Jon W. Nelson, 1470 Terrace Park Dr., Bettendorf, IA 52722
Waterloo-Cedar Falls, 1941: Mrs. Lloyd Elliott, 2408 W. 6th, Waterloo, IA 50702

KANSAS (X)

Lawrence, 1941: Mrs. Richard E. Friede, 3403 Trail Rd., Lawrence, KS 66044
Manhattan, 1956: Mrs. Shirley Green, 1923 Indiana Ln., Manhattan, KS 66502
Topeka, 1955: Mrs. Samuel Marshall, Jr., 1921 Westwood Dr., Topeka, KS 66614
Wichita, 1925: Mrs. Gerald W. Carr, 131 Brendonwood Dr., Wichita, KS 67206

KENTUCKY (III)

Lexington, 1965: Miss Diana Starns, 1814 Versailles Rd., Lexington, KY 40504
Louisville, reactivated 1970: Mrs. Cathy Stephenson, 526 Primrose Way, Louisville, KY 40206

LOUISIANA (VII)

Baton Rouge, 1963: Mrs. Donald Tooley, 10928 Ansley, Baton Rouge, LA 70816

Help Gamma Phi Beta Save Precious Dollars

Postal rates, as everyone knows, have gone up again on the mailing of publications. So this special plea:

Send all reports and notices to the proper party. Check this directory for the proper persons, their addresses. Especially remember that—

- all changes of address should be sent to Central Office. Use the handy Change of Address form to be found on the back cover of every issue of THE CRESCENT.

- notices of member deaths should be directed to Central Office and accompanied by a newspaper clipping or obituary. Central Office will notify THE CRESCENT.

- CRESCENT correspondents should send material to the editor specified. For example, Greek Letter honors should go to the Collegiate Editor; Alumnae Chapter letters to the Alumnae Editor. When not directed properly, such materials have to be re-addressed . . . a waste of postage, envelopes and time.

All Gamma Phi Beta departments work on a tight budget. Your help is needed to keep costs in line.

MASSACHUSETTS (I)

Boston-West Suburban, 1963: Mrs. Daniel P. LaGatta, 15 Laurel Hill Lane, Winchester, MA 01890

MICHIGAN (IV)

Birmingham, 1948: Mrs. Neil DeKoker, 4273 Bieber Dr., Sterling Heights, MI 48077
Detroit, 1913: Mrs. James McGlaughlin, 7300 Deep Run, Apt. 1623, Birmingham, MI 48010
Jackson, 1953: Mrs. Frank Mason, 5050 Lakeshore Dr., Brown's Lake, Jackson, MI 49203
Greater Lansing, 1948: Mrs. James Ralston, 9255 Price Rd., Laingsburg, MI 48848

MINNESOTA (VI)

Duluth, 1957: Mrs. Charles Semrad, 2726 Branch St., Duluth, MN 55812
Mankato, 1965: Ms Donna Boyer, 8031 12th Ave. S., Apt. #1, Bloomington, MN 55420
Minneapolis-St. Paul, 1904: Mrs. John W. Adams, III, 4055 Sibley Ave., Wayzata, MN 55391

MISSOURI (X)

Columbia, 1941: Mrs. Carla Qualy, 504 W. Broadway, Columbia, MO 65201
Greater Kansas City, 1923: Mrs. Homer C. Evans, 3001 West 105th St., Leawood, KS 66206
St. Louis, 1919: Mrs. William F. Drees, 430 Linum Lane, St. Louis, MO 63119
Springfield, 1917: Mrs. John Lilliedahl, Jr., 1324 Raintree Place, Springfield, MO 65804

NEBRASKA (XV)

Kearney, 1962: Mrs. Ronald Johnson, 313 W. 26th, Kearney, NE 68847
Lincoln, 1938: Mrs. Paul J. Bruno, 1001 Cobblestone Dr., Lincoln, NE 68510
Omaha, 1919: Mrs. Warren R. Whitted, Jr., 5929 S. 149 St., Omaha, NE 68137

NEVADA (XIII)

Reno, 1921: Miss Michelle Murray, 1215 Sullivan, #4B, Sparks, NV 89431

House Corporation Board Meetings



ALPHA ZETA: Saturday, September 30, at the chapter house, Austin, TX. The 1 p.m. covered dish luncheon will be followed by the annual meeting and election of officers.

BETA MU: Tuesday, November 7, 7 p.m. at 633 West Jefferson St., Tallahassee, FL. Election of new members to Board of Directions.

GAMMA TAU: Wednesday, October 11, 7 p.m., at Chapter Suite, Lewis Hall, Lindell at Spring, St. Louis, MO. Election of officers.

DELTA BETA: Tuesday, November 21, 7:30 p.m., at the home of Mrs. William (Beverly Burke) Hon, 1104 Warm Springs Ave., Boise, ID.

Take advantage of THE CRESCENT's money-saving service by posting notices of your annual House Corporation Board meetings in the pages of this magazine. It will save you the printing and postage costs of a formal announcement.

NEW JERSEY (I)

Bergen County, 1965: Mrs. Daniel Chase, 744 Albemarle St., Wyckoff, NJ 07481
Central Jersey, 1974: Miss Kathy Clarke, 113 Elmore Ave., Trenton, NJ 08619
Summit Area, 1965: Mrs. Mary Carol Merola, 11 Blackburn Rd., Summit, NJ 07901

NEW MEXICO (XI)

Albuquerque, 1952: Mrs. Edward L. Jory, 1531 Wellesley, NE, Albuquerque, NM 87106

NEW YORK (I)

Buffalo, 1940: Mrs. Nevin Jamieson, 223 Ruskin Rd., Egbertsville, NY 14226
New York City, reactivated 1977: Miss Nancy Neumann, 333 E. 75th St., New York, NY 10021
Rochester, 1945: Mrs. David Privitera, 2 Mary Dr., Macedon, NY 14502
Syracuse, 1892: Mrs. William E. Fitzgerald, 202 Churchill Lane, Fayetteville, NY 13066
Westchester County, 1938:

NORTH CAROLINA (VIII)

Raleigh, 1967: Mrs. David Waters, 5300 Sweetbriar Dr., Raleigh, NC 27609

NORTH DAKOTA (VI)

Fargo-Moorhead, 1929: Mrs. David Sunderland, 2819 Hickory St., Fargo, ND 58102
Grand Forks, 1946: Mrs. Ann Clark, 503-23 Ave. So., Grand Forks, ND 58201

OHIO (III)

Greater Akron, 1956: Miss Martha Scott, 886 Hereford Dr., Akron, OH 44303
Cincinnati, 1941: Mrs. Richard Gorman, 3751 Hyde Park Ave., Cincinnati, OH 45209
Cleveland, 1916: Mrs. Virginia Mulligan, 4771 Dalebridge, #D 11, Warrensville Heights, OH 44128
Cleveland East Suburban, 1955: Mrs. Earl Print, 6448 Meldon Dr., Mentor, OH 44060
Cleveland West, 1961: Mrs. Douglas Cooper, 1126 Forest Rd., Lakewood, OH 44107
Columbus, 1929: Mrs. James Adams, 7988 Peter Hoover Rd., New Albany, OH 43054
Dayton, 1941: Mrs. Joe W. Hardacre, 6156 Cantata Ct., Dayton, OH 45449
Lima, 1957: Mrs. Jeffrey O. Hardy, 3654 Huntleigh Dr., Lima, OH 45806
Springfield, 1929: Miss Rosemary Sundberg, 2422 Shawnee Blvd. N, Springfield, OH 45504
Toledo, 1945: Mrs. Robert Sautter, 6343 Oakland Ct., Sylvania, OH 43560

OKLAHOMA (IX)

Bartlesville, 1952: Mrs. Patrick Roark, 946 S.E. Briarwood, Bartlesville, OK 74003
Muskogee, 1957: Mrs. Mike Rafter, 2220 Michael Rd., Muskogee, OK 74401
Norman, 1930: Mrs. Michal Gray, 504 Sooner Dr., Apt. A, Norman, OK 73069
Oklahoma City, 1921: Mrs. Dudley H. Deen, 5905 N. Barnes, Oklahoma City, OK 73112
Stillwater, 1957: Mrs. R. Ray Heath, 2005 W. 10th St., Stillwater, OK 74074
Tulsa, 1929: Mrs. Jay L. Shields, 1226 E. 26 St., Tulsa, OK 74114
Weatherford, 1973: Mrs. Wyndell Clark, Rt. #1, Hidden Oaks, Weatherford, OK 73096

OREGON (XIII)

Corvallis, 1947: Mrs. Joe B. McHenry, 206 NW 5th, Corvallis, OR 97330
Eugene, 1940: Mrs. Charles Chackel, 255 Coachman Dr., Eugene, OR 97405
Portland, 1913: Mrs. Mark Kocourek, 4339 SE 35th Ave., Portland, OR 97202
Salem, 1944: Mrs. John Welborn, 3555 Fir Tree Dr. S., Salem, OR 97302

PENNSYLVANIA (II)

Lehigh Valley, 1975: Mrs. Robert M. Yanega, 1633 Mine Lane Rd., Easton, PA 18042
Philadelphia North Suburban, 1957: Mrs. Robert Flinchbaugh, 32 Overlook Dr., Ivyland, PA 18974
Philadelphia West Suburban, 1935: Mrs. Charles Butler, 2290 Hillside Lane, Aston, PA 19014
Pittsburgh, 1940: Mrs. Jerry C. Stewart, 613 Macbeth Dr., Pittsburgh, PA 15235
State College, 1941: Mrs. Richard Nelson, 733 North McKee St., State College, PA 16801

TENNESSEE (VIII)

Memphis, 1952: Mrs. Diane Leopold, 4971 Melanie, Memphis, TN 38118
Nashville, 1929: Mrs. Oscar Daume, 515 Fairfax, Nashville, TN 37212

TEXAS (VII, IX and XI)

Amarillo, 1955 (IX): Mrs. Stanley T. Gunn, 2312 Atkinson, Amarillo, TX 79109
Arlington, 1965 (VII): Mrs. Robert Fortenbaugh, 2810 Whispering Trail, Arlington, TX 76013
Austin, 1947 (VII):
Beaumont, 1956 (VII): Mrs. Frank Daleo, 2368 McFaddin St., Beaumont, TX 77702
Corpus Christi, 1956 (VII): Mrs. Rex Stever, 44 Camden Pl., Corpus Christi, TX 78412
Dallas, 1930 (VII): Mrs. Darek A. Bennett, 6741 Leameadow, Dallas, TX 75248
Fort Worth, 1946 (VII): Mrs. Jay S. Garrett, 7044 Valhalla, Ft. Worth, TX 76116
Houston, 1941 (VII): Mrs. Gerald Hise, 14907 Broadgreen, Houston, TX 77079
Lubbock, 1951 (IX): Mrs. Joe Johnston, 6314 Nashville, Lubbock, TX 79413
Midland, 1951 (IX): Mrs. Aggie Anguish, 1705 Lexington, Midland, TX 79701
Odessa, 1965 (IX): Mrs. Page Greene, 1455 Pagewood, Odessa, TX 79761
San Antonio, 1946 (VII): Mrs. F. J. Cutler, 415 Wiltshire, San Antonio, TX 78209
Wichita Falls, 1961 (IX): Mrs. Robert Jorgensen, 4603 El Capitan, Wichita Falls, TX 76310

UTAH (XI)

Salt Lake City, 1958: Mrs. Kathleen Cann, 177 East 1700 South, Salt Lake City, UT 84115

VERMONT (I)

Burlington, 1952: Mrs. Amelia B. Tower, Mill Pond Rd., Colchester, VT 05446

VIRGINIA (II)

Northern Virginia, 1956: Mrs. Joseph M. Griffin, 2837 Brook Dr., Falls Church, VA 22042

WASHINGTON (XII)

Pullman, 1955: Mrs. Harry McAllister, NE 1640 Lower Dr., Pullman, WA 99163

Seattle, 1915: Mrs. James S. Yates, 13111 Shorewood Dr. S.W., Seattle, WA 98146
Spokane, 1918: Miss Theresa Niemeier, Box 14948, S. 2809 Skipworth, Spokane, WA 99214
Tacoma, 1947: Mrs. F. W. Selden, 4124 128th St. East, Tacoma, WA 98446

WEST VIRGINIA (II)

Morgantown, 1959: Mrs. Jean Ann Butt, 427 Richwood Ave., Morgantown, WV 26505

WISCONSIN (V and VI)

Madison, 1913 (V): Mrs. Pamela Tye, 2905 Post Rd., Madison, WI 53713
Milwaukee, 1902 (V): Mrs. James R. Clark, 9719 N. Dalewood Lane, Mequon, WI 53092
Platteville, 1969 (V): Mrs. Jerilyn Faltz, 652 Jefferson St., Platteville, WI 53818
River Falls, 1969 (VI): Mrs. Gary Romberg, R.R. 1, Hudson, WI 54016

BRITISH COLUMBIA (XII)

Vancouver, 1928: Miss Liz Chapman, 5357 Angus Dr., Vancouver, BC V6M3N3, Canada

ONTARIO (I)

London, 1937: Miss Mary Winn Daykin, 348 Berkshire Dr., London, Ont., N6J3S1, Canada
Toronto, 1919: Miss Avril Dempster, 425 Avenue Rd., Apt. 305, Toronto, Ont., Canada

QUEBEC (II)

Montreal, 1938: Miss Anne Layton, #319, 3787 Cote Des Neiges, Montreal, Quebec H3H 1V9

CRESCENT CIRCLE CHAIRMEN:

Huntsville, AL—Mrs. Stanley McIntyre, 10001 Hickory Hill, Huntsville, AL 35803
Leisure World-Laguna Hills, CA—Mrs. Harvey Miller, 5363 O Algarrobo, Laguna Hills, CA 92653
San Luis Obispo, CA—Mrs. Roland Maddalena, 2301 Parkland Terrace, San Luis Obispo, CA 93401
Santa Barbara, CA—Mrs. Robert G. Swift, 1481 Crestline Dr., Santa Barbara, CA 93105
Whittier, CA—Mrs. James Seminoff, 5514 South Mesagrove Ave., Whittier, CA 90601
Ft. Myers, FL—Mrs. C. Thomas Dollar, Rt. 12, 134 Canaan Dr., Ft. Myers, FL 33901
Palm Beach, FL—Mrs. Jo Carrin, 1142 Hillcrest Blvd., West Palm Beach, FL 33405
Pensacola, FL—Mrs. John T. Burke, 4213 Futura, Pensacola, FL 32504
Greater Sarasota, FL—Mrs. W. P. Ricamore, 2300 S. Wellesley Dr., Bradenton, FL 33507
St. Petersburg, FL—Mrs. Paul Schofer, 115 21st Ave., Indian Rocks Beach, FL 33535
Chicagoland, IL—Mrs. Dale Jelinek, 1235 Elmwood, Evanston, IL 60202
Kankakee, IL—Mrs. Charlotte Vollbrecht, 17230 Vollbrecht Rd., South Holland, IL 60473
Southern Illinois—Mrs. Robert Graves, 808 Belle Ave., Pinckneyville, IL 62274
Hutchinson, KS—Mrs. William VonRuden, 5 Downing Rd., Hutchinson, KS 67501

Kansas City, KS—Mrs. Charles Brenneisen, Jr., 1215 N. 19th St., Kansas City, KS 66102
 Baltimore, MD—Mrs. Jeanne Cosby, 481 Fair Oaks Dr., Severna Park, MD 21146
 Delmar Eastern Shore, MD—Mrs. Emslie Gault, Rt. 1, Box 162, Queenstown, MD 21658
 Kalamazoo, MI—Mrs. James R. Stewart, 1257 Timber Oaks Ct., Plainwell, MI 49080
 Rolla, MO—Mrs. Margaret Travis, Williamsburg Apts., Rolla, MO 65401
 Jackson, MS—Mrs. Alex E. Ralston, 46 Summit Ridge Dr., Brandon, MS 39042
 Las Vegas, NV—Mrs. Richard Crites, 4249 Rimcrest, Las Vegas, NV 89121
 Minot, ND—Mrs. Reginald Morelli, 1512 Third Ave., S.W., Minot, ND 58701
 Canton-Massillon, OH—Mrs. William R. Beckley, 2911 22nd N.W., Canton, OH 44708
 Hamilton, OH—Mrs. Frank Vido, Jr., 1720 Sunset Ave., Hamilton, OH 45013
 Middletown, OH—Mrs. David Shaffer, 6998 Middletown-Hamilton, Middletown, OH 45042
 Oxford, OH—Mrs. Christopher Rodbro, 6130 Vereker Dr., Oxford, OH 45056
 Sandusky, OH—Mrs. Ralph Bache, P.O. Box 145, Huron, OH 44839
 Charleston, SC—Mrs. Glenn Fleming, 671 Pawley Rd., Mt. Pleasant, SC 29464
 Clemson, SC—Mrs. Robert Nowack, 208 Riggs Dr., Box 1101, Clemson, SC 29631
 El Paso, TX—Mrs. Shirley Prager, 5224 Sterling Place, El Paso, TX 79932
 Port Arthur-Groves, TX—Mrs. Ernest Drake, 1947 Woodrow Dr., Port Arthur, TX 77640
 Hampton Roads, VA—Mrs. Gordon MacCleary, 11 Luanita Lane, Newport News, VA 23606
 LaCrosse, WI—Mrs. Robert A. Farnam, 127 South 26th St., LaCrosse, WI 54601
 WI Fox Valley—Mrs. Ronald Conradt, Rt. 2, Box 125, Shioc-ton, WI 54170
 Cheyenne, WY—Mrs. John Bunch, 1605 Crook Ave., Cheyenne, WY 82001
 Laramie, WY—Miss Billie Ruth Edwards, P.O. Box 665, Laramie, WY 82070
 Winnipeg, Manitoba—Mrs. Norman Nicols, 247 Niagara St., Winnipeg, Man., Canada R3N 0V1

GREEK-LETTER PRESIDENTS:

ALPHA (Syracuse) November 11, 1874 (I) Page Dunkel, 803 Walnut Av., Syracuse, NY 13210
 BETA (Michigan) June 7, 1882 (IV) Diane Bartus, 1520 S. University, Ann Arbor, MI 48104
 GAMMA (Wisconsin) November 14, 1885 (V) Jane Hagemann, 270 Langdon St., Madison, WI 53703
 *DELTA (Boston University) 1887-1970
 EPSILON (Northwestern) Oct. 13, 1888 (V) Gail Dykstra, 640 Emerson St., Evanston, IL 60201
 *ZETA (Goucher College) 1893-1950
 ETA (California) April 29, 1894 (XIII) Ellen Wynne, 2732 Channing Way, Berkeley, CA 94704
 THETA (Denver) December 28, 1897 (XI) Sandy Yarmoski, 2233 S. Josephine, Denver, CO 80210
 *IOTA (Barnard College) 1901-1915
 KAPPA (Minnesota) May 23, 1902 (VI) Bonnie Momsen, 311 10th Av., S.E., Minneapolis, MN 55414
 LAMBDA (Washington) May 17, 1903 (XII) Kathy O'Connor, 4529 17th Av., N.E., Seattle, WA 98105
 *MU (Stanford University) 1905-1944
 NU (Oregon) December 18, 1908 (XIII) Mary Beth Bergquist, 1021 Hilyard, Eugene, OR 97401
 XI (Idaho) February 3, 1910 (XII) Diane Frisch, 709 Elm St., Moscow, ID 83843
 OMICRON (Illinois) May 24, 1913 (V) Vicki Perabeau, 1110 W. Nevada, Urbana, IL 61801
 PI (Nebraska) June 22, 1914 (XV) Kim Osborne, 415 N. 16th St., Lincoln, NE 68508
 RHO (Iowa) June 15, 1915 (XV) Kathy Draths, 328 N. Clinton, Iowa City, IA 52240
 SIGMA (Kansas) October 9, 1915 (X) Sandy Smith, 1339 W. Campus Rd., Lawrence, KS 66044
 TAU (Colorado State) Oct. 16, 1915 (XI) Chris Aden, 733 S. Shields, Ft. Collins, CO 80521
 *UPSILON (Hollins College) 1916-1929
 PHI (Washington) February 23, 1917 (X) Danna Davis, GPB, Women's Bldg., Washington Univ., St. Louis, MO 63130
 CHI (Oregon State) April 26, 1918 (XIII) Martha Moore, 645 N.W. 23rd St., Corvallis, OR 97330.

*Chapter Deactivated

PSI (Oklahoma) September 13, 1918 (IX) Pam Martin, 1105 S. College, Norman, OK 73069
 OMEGA (Iowa State) December 21, 1918 (XV) Debra Ann Holbrook, 318 Pearson Ames, IA 50010
 ALPHA ALPHA (Toronto) Oct. 30, 1919 (I) Karen Dorey, 26 Madison Avenue Toronto, Ontario, Canada M5R 2S1
 ALPHA BETA (North Dakota) June 16, 1920 (VI) Janna Ross, 3300 University Ave., Grand Forks, ND 58201
 ALPHA GAMMA (Nevada) May 14, 1921 (XIII) Valerie Brown, 401 University Terr., Reno, NV 89503
 ALPHA DELTA (Missouri) May 20, 1921 (X) Sally Vanderpearl, 808 Richmond, Columbia, MO 65201
 ALPHA EPSILON (Arizona) April 29, 1922 (XIV) Debborah Cohen, 1535 E. First St., Tucson, AZ 85719
 ALPHA ZETA (Texas) May 20, 1922 (VII) Diana Naylor, 2222 Pearl St., Austin, TX 78705
 ALPHA ETA (Ohio Wesleyan) November 10, 1923 (III) Deb Kavanaugh, 24 Winbeth Lane, Delaware, OH 43015
 ALPHA THETA (Vanderbilt) June 25, 1924 (VIII) Karen Keyes, 2411 Kensington Place, Nashville, TN 37212
 ALPHA IOTA (California-Los Angeles) June 26, 1924 (XVI) Patricia Honsaker, 616 Hilgard Avenue, Los Angeles, CA 90024
 *ALPHA KAPPA (Manitoba) 1925-1975
 ALPHA LAMBDA (British Columbia) April 28, 1928 (XII) Sue Rapanos, 605 Barnham Rd., W. Vancouver, B.C., Canada, V7S 1T6
 *ALPHA MU (Rollins College) 1928-1971
 ALPHA NU (Wittenberg) June 8, 1929 (III) Kathy Hannegan, 628 Woodlawn Avenue, Springfield, OH 45504
 ALPHA XI (Southern Methodist) September 21, 1929 (VII) Mary Alice Collins, 3030 Daniels, Dallas, TX 75205
 ALPHA OMICRON (North Dakota State) February 1, 1930 (VI) Suzette Peltier, 1616 12th Avenue North, Fargo, ND 58102
 ALPHA PI (West Virginia) April 19, 1930 (II) Judith Dunmire, 591 Spruce Street, Morgantown, WV 26505
 *ALPHA RHO (Birmingham-Southern College) 1930-1957
 *ALPHA SIGMA (Randolph-Macon Women's College) 1930-1951
 ALPHA TAU (McGill) September 26, 1931 (I) Marie Gravelle, 475 Prince Arthur St. W., Montreal, Quebec, Canada H2X 1T4
 ALPHA UPSILON (Penn State) May 21, 1932 (II) Lynn Dailey, GPB, S-108 Haller Hall, Pennsylvania State Univ., University Park, PA 16802
 ALPHA PHI (Colorado College) Oct. 15, 1932 (XI) Julie Reddan, 1110 Wood Avenue, Colorado Springs, CO 80903
 ALPHA CHI (College of William and Mary) January 14, 1933 (II) Margaret Littlejohn, GPB House, Richmond Rd., Williamsburg, VA 23185
 *ALPHA PSI (Lake Forest College) 1934-1961
 ALPHA OMEGA (Western Ontario) October 24, 1936 (I) Lynda Slaughter, 639 Talbot St., London, Ontario, Canada N6A 2T6
 BETA ALPHA (Southern California) September 24, 1938 (XVI) Ronnie Rodgers, 737 W. 28th Street, Los Angeles, CA 90007
 BETA BETA (Maryland) October 23, 1940 (II) Katherine Livesay, 9 Fraternity Row, College Park, MD 20740
 BETA GAMMA (Bowling Green State) October 23, 1943 (III) Cindy Partain, Cottage #3 Sorority Row, BGSU, Bowling Green, OH 43403
 BETA DELTA (Michigan State) June 3, 1944 (IV) Jeanne Peyton, 342 N. Harrison Road, East Lansing, MI 48823
 BETA EPSILON (Miami) April 12, 1947 (III) Marcia Davis, GPB, MacCracken Hall, Miami University, Oxford, OH 45056
 *BETA ZETA (Kent State) 1947-1972
 BETA ETA (Bradley) April 3, 1948 (V) Lori Hughett, 1414 W. Fredonia Avenue, Peoria, IL 61606
 BETA THETA (California State-San Jose) April 24, 1948 (XIII) Kerry Smurr, 385 E. San Fernando St., San Jose, CA 95112
 BETA IOTA (Idaho State) October 22, 1949 (XII) Kris Smith, 716 Turner House, ISU, Pocatello, ID 83201
 BETA KAPPA (Arizona State) December 3, 1949 (XIV) Kim Hutchinson, Palo Verde Main, Box #98, ASU, Tempe, AZ 85281
 BETA LAMBDA (California State-San Diego) October 15, 1949 (XIV) Kari Nelson, 6123 Montezuma Road, San Diego, CA 92115
 BETA MU (Florida State) April 29, 1950 (VIII) Terrie Frison, 633 W. Jefferson Street, Tallahassee, FL 32304
 *BETA NU (Vermont) 1950-1974
 *BETA XI (Ohio State) 1951-1967
 BETA OMICRON (Oklahoma City) November 3, 1951 (IX) Charla Jones, Box 36, 2501 N. Blackwelder, Oklahoma City, OK 73106
 BETA PI (Indiana State) September 13, 1952 (IV) Lisa Schoknecht, 231 Lincoln Quad, Terre Haute, IN 47809

BETA RHO (Colorado) March 13, 1954 (XI) Kathleen Schrader, 935 16th Street, Boulder, CO 80302
 BETA SIGMA (Washington State) March 5, 1955 (XII) Tina Biss, NE 600 Campus, Pullman, WA 99163
 BETA TAU (Texas Tech.) March 10, 1956 (IX) Sally Holmes, Box 4334, Texas Tech. Sta. Lubbock, TX 79409
 BETA UPSILON (Kansas State) March 23, 1957 (X) Janelle Chinn, 1807 Todd Road, Manhattan, KS 66502
 BETA PHI (Indiana) November 16, 1957 (IV) Brenda Gettelfinger, 1305 N. Jordan, Bloomington, IN 47401
 BETA CHI (Wichita) February 1, 1958 (X) Diana Pottebaum, 3912 E. 21st., #50 Omega Court, Wichita, KS 67208
 BETA PSI (Oklahoma State) February 3, 1958 (IX) Monica Amis, 1405 W. Third Street, Stillwater, OK 74074
 BETA OMEGA (Northern Arizona) February 15, 1958 (XIV) Judy Seifert, GPB, CU 7654, NAU, Flagstaff, AZ 86001
 GAMMA ALPHA (Memphis State) March 15, 1958 (VIII) Patty Brown, GPB, Box 80154, MSU, Memphis, TN 38152
 GAMMA BETA (Gettysburg College) February 21, 1959 (II) Barbara Myhre, GPB, PO Box 2175, Gettysburg College, Gettysburg, PA 17325
 GAMMA GAMMA (Wisconsin-Milwaukee) March 19, 1960 (V) Judene Sennott, GPB, Union Box 43, U of Wis-Milw., Milwaukee, WI 53211
 *GAMMA DELTA (Wyoming) 1961-1973
 GAMMA EPSILON (Puget Sound) April 29, 1961 (XII) Janet Keebler, 1310 N. Union, Tacoma, WA 98406
 GAMMA ZETA (East Texas State) March 3, 1962 (VII) Pam Simpson, Box A, ETSU, Commerce, TX 75428
 GAMMA ETA (California State-Long Beach) March 10, 1962 (XVII) April Daylida, 2929 E. Broadway, Long Beach, CA 90803
 *GAMMA THETA (University of the Pacific) 1963-1972
 GAMMA IOTA (Midwestern) March 16, 1963 (IX) Kim Klawiter, Box 142, Midwestern Univ., Wichita Falls, TX 76308
 GAMMA KAPPA (Kearney State College) May 11, 1963 (XV) Pam Fitzke, 615 West 26th Street, Kearney, NE 68847
 *GAMMA LAMBDA (Louisiana State) 1964-1977
 GAMMA MU (Moorhead State College) April 25, 1964 (VI) Amy Peterson, 515 South Tenth St., Moorhead, MN 56560
 GAMMA NU (Lamar) February 20, 1965 (VII) Janie Dodd, P.O. Box 10734, L. U. Station, Beaumont, TX 77710
 *GAMMA XI (Tennessee) 1965-1977
 GAMMA OMICRON (Kentucky) January 22, 1966 (III) Daisy King, 508 Columbia Avenue, Lexington, KY 40508
 GAMMA PI (Mankato State) February 5, 1966 (VI) Rebecca Workman, 137 Lincoln Street, Mankato, MN 56001
 *GAMMA RHO (Univ. of Wis.-Oshkosh) 1966-1976
 *GAMMA SIGMA (Western Michigan) 1968-1975
 GAMMA TAU (St. Louis) November 11, 1967 (X) Nora McLaughlin, GPB, 20 N. Grand, St. Louis, MO 63108
 GAMMA UPSILON (Drake) February 17, 1968 (XV) Jule Lutz, 1218 34th Street, Des Moines, IA 50311
 GAMMA PHI (Auburn) May 4, 1968 (VIII) Julie Muckelrath, Dorm 4, Auburn Univ., Auburn, AL 36830
 GAMMA CHI (Southwest Texas State) February 3, 1968 (VII) Susan Hill, GPB, Student Union Bldg., SWTSU, San Marcos, TX 78666
 GAMMA PSI (Northern Iowa) November 23, 1968 (XV) Jeri Franey, 174 Summit Drive, Cedar Falls, IA 50613
 GAMMA OMEGA (Wisconsin-Platteville) March 29, 1969 (V) Cherie Ziemer, 160 Bradford, Platteville, WI 53818
 DELTA ALPHA (Wisconsin-River Falls) May 3, 1969 (VI) Kathy Wilson, 204 Hagestad Student Center, River Falls, WI 54022
 DELTA BETA (Boise State) February 21, 1970 (XII) Patti Crepps, 1918 Potter Drive Boise, ID 83706
 *DELTA GAMMA (Nebraska-Omaha) 1970-1976
 DELTA DELTA (California State-Fullerton) April 3, 1971 (XVI) Cheryl Markel, 508 Cornell Avenue, Fullerton, CA 92631
 DELTA EPSILON (Texas Wesleyan College) April 28, 1973 (VII) Sally McGary, 3101 Rosedale, Fort Worth, TX 76103
 DELTA ZETA (Southwestern State) May 5, 1973 (IX) Trenna Newberry, P.O. Box 761, Weatherford, OK 73096
 DELTA ETA (California-Irvine) January 19, 1974 (XVI) Janice Hillier, 118 Garnet, Balboa Island, CA 92662
 DELTA THETA (California State Polytechnic) January 18, 1975 (XVI) Lucy Thoms, 1034 Mill Street, San Luis Obispo, CA 93401
 DELTA IOTA (Purdue) April 19, 1975 (IV) Carolyn Schnirring, GPB, Tower Acres, Purdue Univ., West Lafayette, IN 47907
 DELTA KAPPA (Lehigh) January 31, 1976 (II) Amelia Wenhold, Box F-43, Lehigh University, Bethlehem, PA 18015
 DELTA LAMBDA (California-Riverside) January 24, 1976 (XVI) Pat Cordova, P.O. Box 55008, Riverside, CA 92507
 DELTA MU (Rutgers) April 23, 1977 (I) Susan Toole, 6 Union Street, New Brunswick, NJ 08903
 DELTA NU (Southwest Missouri State) November 12, 1977 (X) Pam Rose, 722 East Elm, Springfield, MO 65802

CALENDAR OF OFFICERS' DUTIES

Abbreviations:

CO—Central Officer; PCD—Province Collegiate Director;
AA—Alumna Advisor PAD—Province Alumnae Director;
ACVP—Assistant to Collegiate Vice President Int'l—International

GREEK-LETTER CHAPTERS

See Greek-letter 200 section of the President's Book for additional details.

PRESIDENT:

Prior to election, send PCD proposed slate of officers for approval.

By November 1, send PCD Alcohol & Visitation Policies Forms 51 and 52.

ACTIVITIES CHAIRMEN:

By April 1 of Convention years, send CO McCormick Award material.

CHAPTER DEVELOPMENT:

At beginning and end of term of office, send int'l chapter development chairman initial and final report sent PCD.

CORRESPONDING SECRETARY:

Immediately after pledging, send PCD copy of letter to parents of pledges.

By October 1, send Grand President business for consideration at fall Grand Council meeting and during Convention year include business for consideration of Convention.

By March 1, send Grand President business for consideration at spring Grand Council meeting.

By March 15, send CO, PCD and Transister chairman a list of members graduating from college and those not returning to college.

By May 1, send CO College and Rush Calendar on Form 10.

By June 1, notify int'l magazine chairman about distribution of magazine sale's profit.

Promptly send all marriage notifications to CO.

HISTORIAN:

Before close of term of office, send PCD and int'l historian annual historical record.

HOUSE MANAGER:

By November 1, send PCD & AA current house rules.

MEMBERSHIP CHAIRMAN:

Immediately after formal rush, send CO Rush Report on Form #4.

Immediately after each formal and informal rush, send PCD a report evaluating rush.

PANHellenic DELEGATE:

Whenever they occur, send CO, NPC Delegate and PCD any changes in office of Campus Panhellenic adviser or college or university President.

At the beginning of your term, send NPC Delegate and PCD copies of current Panhellenic handbook, constitution, bylaws and rush rules.

Whenever they occur, send NPC Delegate and PCD policy changes or trends which affect sororities on campus. Send NPC Delegate all reports (initial, final, and periodic) sent PCD.

PARLIAMENTARIAN-CENSOR:

Within six months after Convention, send ACVP-Bylaws revised chapter bylaws for approval.

PHILANTHROPY CHAIRMAN:

At beginning and end of term of office, send int'l chairman of philanthropy programs initial and final report sent PCD.

PLEDGE DIRECTOR:

At end of each term, send CO Pledge Statistical Report on Form 11.

Three weeks prior to initiation, send PCD program for inspiration week for approval.

Before retiring from office, send to CO revisions or suggestions for improving Pledge Manual.

PUBLIC RELATIONS CHAIRMAN:

By March 1, send CO Public Relations Report Form 1 for distribution. This annual report form will be sent with the January Crescent Communique.

RECORDING SECRETARY:

Immediately after opening of school, send PCD corrected computer printout sent to president in September.

Immediately after each election and/or appointment, send CO Chapter Officer List on Form 12.

Following events, send PCD summary of officers' and chapter's retreats.

By June 1, send PCD names and summer addresses of chapter members.

RITUAL CHAIRMAN:

After each event requiring ritual except formal chapter meetings, send PCD a report.

SCHOLARSHIP CHAIRMAN:

Immediately after official release of grades each term, send CO Scholarship Report on Form 3.

At beginning and end of term of office, send int'l scholarship chairman initial and final report sent PCD.

TREASURER:

Promptly after each pledging, send CO white copies of Pledge Registration Form 9, check for pledge installment of membership fees and Remittance Form 13. Send PCD orange copies of Pledge Registration Form 9.

Immediately after each initiation for members pledged prior to 8-1-78, send CO list of initiates and badge orders on Form 14, signed Loyalty Pledge on Form 2 and check for initiation fees and badge orders.

Immediately after each initiation for members pledged after 8-1-78, send CO list of initiates and badge orders on Form 14, signed Loyalty Pledge on Form 2 and check for initiation installment of membership fees and badge payment.

By 10th of each month, send CO and alumna financial adviser Statement of Receipts and Expense on Form 15. Within 4½ months after the close of the fiscal year (July 31), send CO Chapter Financial Examination on Form 16 with copy of Internal Revenue Form 990.

By November 1, send CO and alumna financial adviser chapter budget on Form 46.

By December 1, send corrected Collegiate Dues Report to CO with check for international dues for members pledged prior to 8-1-78.

By December 1, send CO province dues.

VICE PRESIDENT:

At beginning of term of office, collect and send PCD and AA initial reports from all officers.

According to the PCD's schedule of report due dates, collect and send PCD periodic reports from the following officers: president, vice president, activities, chapter development, house manager, Panhellenic, pledge director, scholarship and social.

At end of term of office, collect and send PCD and AA final reports from all officers.

ALUMNAE CHAPTERS:

By October 1, send Grand President business for consideration at fall Grand Council meeting.

By December 1, send Central Office check for international taxes and province dues with computer list. After December 1 send tax and dues payments with CO form #17—"Report of International Taxes Paid to Alumnae Chapters."

By February 1, of the year in which Convention is held, send international chairman of the nominating committee the names of any members your chapter wishes to suggest for an international office. Include candidate's qualifications on Alumnae Personnel Data form.

By February 1, of the off Convention year, send Central Office names of any members your chapter wishes to suggest for province alumnae and collegiate directors. Include candidate's qualifications on Alumnae Personnel Data form.

By February 20, send name and address of ARC chairman to Central Office for listing in THE CRESCENT.

By February 15, send Grand President business for consideration at spring Grand Council meeting.

Immediately after election and by March 15, send roster of chapter officers on C.O. form #25 to Central Office. Send name of magazine chairman to international magazine chairman. Notify Central Office of any changes of officers between elections. Installation of officers may occur at a later date.

By May 1, send prior year's chapter history (written either by chapter historian or retiring president) to international historian.

By June 1, notify international magazine chairman if chapter's magazine sales profit is to be contributed to the Gamma Phi Beta Gift Fund or returned to the chapter.

By June 15, send one copy of alumnae chapter president's report, C.O. form #27 (see page A-215a) to Central Office. Send membership list or directory to Alumnae Vice President, province alumnae director.

At any time, send list of deceased members to Central Office. Include married name, maiden name, Greek-letter chapter, address, and date of death, if known. Enclose newspaper announcement.

At any time, send change in name and/or address of Transister to the international Transister Service chairman for listing in THE CRESCENT and in the Crescent Communique.

By June 15, send to CO recommendations for Service and Merit Rolls.

HOUSE CORPORATIONS:

Treasurer: When Financial Examination is completed, send copy to CO with a copy of IRS Form 990, if such return is required by law.

President: Immediately after election send roster of House Corporation Board officers to CO.

CRESCENT DEADLINES 1979

For Spring issue: December 1 (Founders Day highlights)

For Fall issue: June 1 (Honors—individual and chapter)

For Summer issue: March 1 (Greek Letter Chapter letters)

For Winter issue: September 1 (Alumnae Chapter letters)

Special assignments for each issue will be outlined in the COMMUNIQUE sent tri-annually to Chapter Presidents and in each issue of The Crescent.

Historical Film Great for Founders Day Program

If members in your area have not yet seen Gamma Phi Beta's historical film, "From Yesterday for Today," act today. There's still time to schedule it for Founders Day gatherings.

This educational yet entertaining film, prepared especially for the Sorority's Centennial celebration, remains a timeless piece for rush, pledge education, chapter development, Panhellenic meetings and many other occasions.

It is a fast moving, lighthearted overview of Gamma Phi Beta's first 100 years with a narration that is interspersed with amusing and philosophical quotes from the four founders.

Here are some pertinent details:

Time: 12 minutes, 16 mm, color, sound print

Producer: Joyce Brooke (Michigan State)

Price: \$165 for purchase; \$20.00 rental

Mail orders to

Summus Films

333 Margareita Drive

San Rafael, CA 94901

Order the film 3 to 4 weeks ahead of planned showing. Indicate alternate dates if possible. Rental rate applies to per day showing. No telephone orders. Authorized purchasing signature is required on all sales and rental requests. Summus Films will forward a written confirmation of the show date.

Handle film with care. There's a minimum charge of \$5.00 for damage to rental prints. On a happier note: the more the film is used, the greater the funds dedicated to the Gamma Phi Beta Foundation.

GAMMA PHI BETA CHAPTERS By Province

PROVINCE I

Alpha (A)
Alpha Alpha (AA)
Alpha Tau (AT)
Alpha Omega (AO)
Delta Mu (DM)

PROVINCE II

Alpha Pi (AP)
Alpha Upsilon (AY)
Alpha Chi (AX)
Beta Beta (BB)
Gamma Beta (GB)
Delta Kappa (DK)

PROVINCE III

Alpha Eta (AH)
Alpha Nu (AN)
Beta Gamma (BG)
Beta Epsilon (BE)
Gamma Omicron (GO)

PROVINCE IV

Beta (B)
Beta Delta (BD)
Beta Pi (BP)
Beta Phi (BF)
Delta Iota (DI)

PROVINCE V

Gamma (G)
Epsilon (E)
Omicron (O)
Beta Eta (BH)
Gamma Gamma (GG)
Gamma Omega (GO)

PROVINCE VI

Kappa (K)
Alpha Beta (AB)
Alpha Omicron (AO)

Gamma Mu (GM)
Gamma Pi (GP)
Delta Alpha (DA)

PROVINCE VII

Alpha Zeta (AZ)
Alpha Xi (AX)
Gamma Zeta (GZ)
Gamma Nu (GN)
Gamma Chi (GX)
Delta Epsilon (DE)

PROVINCE VIII

Alpha Theta (AT)
Beta Mu (BM)
Gamma Alpha (GA)
Gamma Phi (GF)

PROVINCE IX

Psi (P)
Beta Omicron (BO)
Beta Tau (BT)
Beta Psi (BP)
Gamma Iota (GI)
Delta Zeta (DZ)

PROVINCE X

Sigma (S)
Phi (F)
Alpha Delta (AD)
Beta Upsilon (BY)
Beta Chi (BX)
Gamma Tau (GT)
Delta Nu (DN)

PROVINCE XI

Theta (T)
Tau (T)
Alpha Phi (AP)
Beta Rho (BR)

PROVINCE XII

Lambda (L)
Xi (X)
Alpha Lambda (AL)
Beta Iota (BI)
Beta Sigma (BS)
Gamma Epsilon (GE)
Delta Beta (DB)

PROVINCE XIII

Eta (H)
Nu (N)
Chi (X)
Alpha Gamma (AG)
Beta Theta (BT)

PROVINCE XIV

Alpha Epsilon (AE)
Beta Kappa (BK)
Beta Lambda (BL)
Beta Omega (BO)

PROVINCE XV

Pi (P)
Rho (R)
Omega (O)
Gamma Kappa (GK)
Gamma Upsilon (GY)
Gamma Psi (GP)

PROVINCE XVI

Alpha Iota (AI)
Beta Alpha (BA)
Gamma Eta (GH)
Delta Delta (DD)
Delta Eta (DH)
Delta Theta (DT)
Delta Lambda (DL)



TRANSISTER
SERVICE

TRANSISTER NOW IN ALL 50 STATES

An elated chairman, Theora (Teek) Kurt Schonbert (Iowa State), reports that for the first time in the history of Transister Services, all 50 states are represented. Among the 32 new participants added to the 1978 Directory since spring are members from Alaska, Maine, Rhode Island and South Dakota. Also breaking a record is the new total on Transisters—293.

Here, then, is the directory update. Remember, those marked B&B offer free-of-charge overnight accommodations (bed and breakfast).

ALABAMA
Auburn
Mrs. Jeffrey L. Moore (Kathy)
103 Poplar Street, Apt. 15
Auburn, AL 36830

ALASKA
Anchorage
Mrs. Jeff Hassler (Betty)

2119 McKenzie Drive
Anchorage, AK 99503

Ketchikan
Mrs. Dana C. Payne (Margo)
P.O. Box 5185 or 19 Evergreen Terrace
Ketchikan, AK 99901
Phone: 907-225-4968

CALIFORNIA
Berkeley
Nancy E. Lubamersky
1059 El Centro Avenue, #4,
Oakland, CA 94602
Phone: 415-530-8075; 415-642-2098
Los Angeles (from Benton)
Mrs. Sharon Commins
3214 Colonial Avenue

Los Angeles, CA 90066
Phone: 213-390-2644

Marin County (San Rafael, Sausalito,
San Anselmo, Mill Valley, Inverness)
Mrs. Samuel A. Fletcher (Barbara)
170 McNear Drive
San Rafael, CA 94901
Phone: 415-453-1887

San Bernadino
Mrs. George Zachary (Harriet)
4350 Quail Canyon Road

San Bernadino, CA 92404
San Jose (Los Gatos, Santa Clara)
Mrs. Suzie Mann
2448 Rorbindge Way
Santa Clara, CA 95050
Phone: 408-247-1556; 408-996-9670

South Orange County (El Toro, Mission Viejo, Laguna Niguel) (from Olsen)
Mrs. M. Lee Goode (Sue)
33049 Elisa Drive
Dana Point, CA 92629
Phone: 714-837-9739

COLORADO

Ft. Collins (from Bevan)
Mrs. William C. Risheill (Diane)
1301 Broadview Place
Ft. Collins, CO 80521
Phone: 303-493-6475

FLORIDA

St. Petersburg Area
Mrs. Scott Tyler (Andrea)
10026 Yacht Club Drive S.
Treasure Island, FL 33706
Phone: 813-360-0900

HAWAII

Kauai
Mrs. F. M. Warden (Wynee)
349-A Lawai Road
Koloa, Kauai, HI 96756

ILLINOIS

Decatur
Mrs. Mariana Williams
3167 Lake Bluff
Decatur, IL 62521
Phone: 217-424-7270

Lake County (Lake Forest, Libertyville)
Daria Brown
801 W. Everett
Lake Forest, IL 60045
Phone: 312-295-5354

Southern Illinois (Carbondale)
Mrs. E. Hollis Merritt (Judy)
1507 Taylor Drive
Carbondale, IL 62901
Phone: 618-549-8382

IOWA

Clinton (B&B)
Anne Wirtz
Bluff Apts. #15
850-1st Ave
Clinton, IA 52732
Phone: 319-243-7995
Des Moines (from Holderness)
Mrs. Charles Safris (Kathy)
4300-74th Street
Des Moines, IA 50322
Phone: 515-276-2996

KANSAS AND MISSOURI

Greater Kansas City Area (from O'Brien)
Mrs. Gary R. O'Neal (Donna)
7604 Caenen Lake Drive
Lenexa, KS 66216
Phone: 913-268-6256

MAINE

Bucks Harbor (half-way between Bar Harbor and Calais)
Mrs. Russell K. Griffith (Mary Ann)
Route 92
Bucks Harbor, ME 04618
Phone: 207-255-3914

Portland Area
Susan Henry Bastek (Mrs. John A.)
24 Bayberry Lane
Scarborough, ME 04074
Phone: 207-883-6091

MARYLAND

Baltimore (from Suehla)
Linda Pohl
907 Wellington
Baltimore, MD 21212
Phone: 301-377-2787

MASSACHUSETTS

Acton (Boston Area) B&B
Mrs. Michael Havener (Peggy)
9 Elm Street, Apt. 8
Acton, MA 01720
Phone: 617-263-2954

MICHIGAN

Birmingham (from Gould)
Jane Peters (Mrs. Thomas)
3286 Witherbee
Troy, MI 48084
Phone: 313-649-5893

Battle Creek
Mrs. Steven Levenburg (Nancy)
Apt. 36-C, 120 Rambling Road
Battle Creek, MI 49015
Phone: 616-946-8277

MISSOURI

St. Louis (from McDonald)
Mrs. Conway B. Briscoe (Margaret)
319 Bellerive Blvd.
St. Louis, MO 63111
Phone: 314-832-6365

NEBRASKA

Lincoln (from Flanders)
Mrs. John Guthrey (Diane)
7711 Myrtle
Lincoln, NE 68516
Phone: 402-489-1411

Scottsbluff B&B
Mrs. Roger Dawdy (Marcia)
1913 Avenue "P"
Scottsbluff, NE 69361

NEW JERSEY

Central Jersey (2) (from Hewitt)
Mrs. R. K. Stafford (Rosemary)
9 Parkside Avenue
Freehold, NJ 07728
Phone: 201-431-5305

Cathy Griffin
P. O. Box 331
Dayton, NJ 08810
Phone: 201-329-2556

Essex County-Bergen County
Sharon Reed Barrows
5 Park Street, #23
Bloomfield, NJ 07003
Phone: 201-429-7382

NEW MEXICO

Alamagordo
Mrs. Phil Riske (Kris)
2308-15th Street
Alamagordo, NM 88310
Phone: 505-437-2957

NEVEDA

Reno Area
Linda Ward
200 Bisset Court, Apt. 3
Reno, NV 89503
Phone: 702-786-4862

NORTH DAKOTA

Grand Forks, East Grand Forks, MN (2)
Mrs. Debra Hoffman
3514-11th Avenue, N. Apt. 13
Grand Forks, ND 58201
Phone: 701-775-3330

Mrs. Mary Weaver
219 Lincoln Drive
Grand Forks, ND 58201
Phone: 701-775-3264

OHIO

Cincinnati
Mrs. Richard Gorman (Becky)
3751 Hyde Park Avenue
Cincinnati, OH 45209
Phone: 513-731-8588

Toledo (B&B) (from Mitchell)
Mrs. Roger Rummel (Margie)
5644 Palntation Drive
Toledo, OH 43623
Phone: 419-474-9223

OKLAHOMA

Tulsa (from VanTrease)
Lynda Kay Van Fossen
10904 E. 26th Street
Tulsa, OK 74136
Phone: 918-622-2887

OREGON

Eugene (2)
Mrs. James Renton (Nancy)
3235 Chambers
Eugene, OR 97405
Phone: 503-345-8115

Portland (from Fairley)
Mrs. Phillip Frazier (Carole)
8895 S.E. Bohmann Pkwy.
Portland, OR 97223
Phone: 503-244-6864

RHODE ISLAND

Kingston
Jan Montgomery
223 Annaquatucket Road
North Kingston, RI 02852
401-295-0790; 401-792-2288

Providence
Kay Cassill
22 Boyleston Avenue
Providence, RI 02906
Phone: 401-751-4949

SOUTH DAKOTA

Rapid City
Mrs. Wiley Hughes (Joan)
R.R. 4, Box 1124 A
Rapid City, SD 57701
Phone: 605-341-3353

TENNESSEE

Nashville (2) B&B (from Miller)
Mrs. Timothy Jacobsen (Katherine)
3933 Brighton Road
Nashville, TN 37205
Phone: 615-289-1195

Elise Anderson
2203 Old Hickory Blvd.
Nashville, TN 37215
Phone: 615-383-7358

TEXAS

Dallas (from Vogel) B&B
Mrs. Robert T. Mullins, Jr. (Patricia)
1104 Yale Circle
Plano, TX 75075
Phone: 214-596-9044

Ft. Worth (from Belota)
Mrs. Harry T. Stucker (Anna)
3817 Arroyo Road
Ft. Worth, TX 76109
Phone: 817-923-5305

Houston (from Crenshaw)
Mrs. Ralph Huthmacher (Rietta)
2212 Tangle
Houston, TX 77005
Phone: 713-523-4775

Lubbock (from Cummings)
Mrs. Dick Pollard (Susan)
6609 Norfolk
Lubbock, TX 79413
Phone: 806-799-7761

Wichita Falls
Anne Jorgensen (Mrs. Robert)
4603 El Capitan
Wichita Falls, TX 76310
Phone: 817-692-7340

VIRGINIA

Charlottesville
Karen E. Stephan
235 Colonnade Drive, Apt. 35
Charlottesville, VA 22901

Washington DC Area (B&B) from Peters
Mary Anne Youngwood
8205 Jeb Stuart Road
Rockville, MD 20854
301-762-8763

CANADA

Calgary, Alberta
Mrs. John T. Ryan (Mona)
3819-6 Street S.W.
Calgary, Alberta T2S 2M9, Canada
Phone: 403-243-0688

Montreal, Quebec (from Bird)
Mrs. Colleen Feeney
137 Westminister Avenue N.
Montreal, Quebec, Canada
Phone: 514-482-2142

Vancouver, British Columbia (B&B) (from Inman)
Debbie Phippen
#3, 1250 W. Broadway
Vancouver, BC V6H 1G6, Canada
Phone: 604-736-2119

AUSTRALIA

Barbara Whilldin
27 Hotham Street
Bayswater
Perth, Western Australia
Australia 6053

REPUBLIC OF CHINA

Taipei Taiwan (2)
Barbara Anderson
#3, Alley 5
Lane 10, Street 4
Tienmou, Taipei, Taiwan
Phone: 871-9790

Mrs. Peter M. Iverson (Nancy)
J-2, U.S.T.D.C.
Box 24, A.P.O.
San Francisco, CA 96263
or
207A—B.O.T. AREA
Yang Ming Shan, Taipei, Taiwan
Phone: 861-6049

SAUDI ARABIA

Dhahran
Patricia Ames London (Mrs. E.W.)
Box 1157
A.P.O.
New York, NY 09616

DELETIONS

MISSISSIPPI
Gulfport Area (Schilling)

NEW JERSEY

Summit Area (Crane)

WISCONSIN

Coleman (Tatge)

HONORS

From straight-A students and Dean's List enrollees to campus and Panhellenic leaders, Gamma Phi Betas in the United States and Canada had another banner year for achieving honors. Besides the multitude of individual recognitions, our chapters pooled their energies and talents to earn a wide variety of campus and sorority province awards.

On subsequent pages, you will see how many collegians continue to excel in leadership and learning—a Gamma Phi Beta tradition and goal since our founding. They deserve our admiration and congratulations.—**Mary Agnes Welsh**, Collegiate Editor

AUBURN— Patti Dykes reporting

Chapter Honors:

First place in softball, second place in tennis doubles, first and second places in shuffleboard, first place in Sigma Phi Epsilon Kidnap and first place in Lambda Chi Watermelon Bust.

Individual Honors:

Nancy Blie—American Marketing Association Award, Phi Kappa Phi Honor Society, School of Business honor student.
Kay Mundee—Phi Kappa Phi Honor Society, School of Business honor student, Beta Alpha Psi (accounting), Gamma Beta Sigma (business).

Beth Baker—Dean's List, Pi Delta Phi (French).

Stephanie Jennings, Cathy Jones and Cindy Jones—Dean's List.
Chavawn Woodall—Dean's List, Alpha Epsilon Rho (broadcasting).

Nancy Baker—Lambda Sigma Freshmen Honorary, Pi Mu Epsilon (math), Dean's List.

Carol Cleveland—Phi Mu Epsilon.

Terri Russell—Alpha Lambda Delta, Lambda sigma.

Sally Call and Lisa Page—Alpha Lambda Delta.

Kathy McCarthy—Lambda Tau.

Linda Meaher—secretary of Alpha Phi Omega (service fraternity).

Sherry Meeks—vice president, Alpha Phi Omega.

Susan Stansill—treasurer, Alpha Phi Omega.

JoAnna Newberry—vice president of Panhellenic.

BOWLING GREEN— Kyle Wilson reporting

Individual Honors:

Pam Bansbach, Shirley Barton, Cathy Cox, Terry Dunlap, Darlene Fogt, Kim Palermo, Kathy Vivian and Barb Gantz—Alpha Lambda Delta.

Sandy Davies—Alpha Lambda Delta president, Kappa Delta Pi, Who's Who, Omicron Delta Kappa, Sidney Frohman Scholarship, President's Recognition Award.

Cynthia Dennis, Susan Freund, and Jane Marquardt—Phi Upsilon Omicron.

Cheryl Geschke—Sigma Delta Chi, Omicron Delta Kappa.

Deborah Guelpa—Beta Beta Beta.

Kelley Jones—Phi Upsilon Omicron, Alpha Lambda Delta.

Helen McDonald—Alpha Lambda Delta, Beta Beta Beta, Baird Yocum Award.

Nancy Roda—Omega Phi Alpha, Alpha Lambda Delta.

Cindy Partain—Beta Gamma president, Phi Eta Sigma, Anteans, Kappa Mu Epsilon, Kappa Delta Pi.

Barb Gantz—Phi Eta Sigma, Alpha Lambda Delta, Bowling Green Trustee Scholarship.

Julee Bertsch—Phi Eta Sigma.

Char Poltarec—Delta Psi Kappa, Omicron Delta Kappa, Kappa Delta Pi.

Kyle Wilson—Soroptimist Scholarship, Omicron Delta Kappa.
Cynthia Mangum—Golden Torch, Anteans, Outstanding Senior, Senior Challenge Board.

Kathy Selby—Delta Psi Kappa.

Meg Cox—Alpha Lambda Omega.

Lee Wallington—Captain of swim team, Delta Psi Kappa, Mortar Board, Omicron Delta Kappa.

CALIFORNIA at Berkeley— Linda Brooks reporting

Chapter Honors:

Pacific Gas and Electric Energy Savings Contest, second place;
Big Game Week decorations, first place; runner-up in Lambda Chi Alpha Daffadil Contest; Championship Football, Basketball and Softball Teams.

Individual Honors:

Andrea Alban—First Princess for Lambda Chi Alpha Daffadil Contest.

Laurie Andres—Oski Doll, A.M.A., IBM Intern.

Karen Aumock—Honor Student, Alumni Scholar.

Katie Barron—Oski Doll, Kaleidoscope Singing Group, accepted by University of Colorado, Denver-Medical Center.

Nancy Bedrow—Honor Student, Alumni Scholar.

Brenda Blandoney—Honor Student Society.

Kathy Boyd—Alumni Scholar, Jazz Dance instructor.

Linda Brooks—Oski Doll, Campus Tour Guide.

Jenny Buttmer—Oski Doll, Honor Student Society.

Carol Colwell—Dorm president, Honor Student, SAACS, CAL Ski Club.

Diane Danielson—Dorm secretary.

Rebecca Elia—Honor Student.

Sue Fife—Oski Doll, Senatorial Aide, Sailing Club, Model United Nations Secretary.

Paula Franco—Oski Doll, Honor Student, accepted for Medical School in St. Louis.

Michelle Furlan, Gail Godsey—Oski Dolls.

Jackie Guibert—President—Oski Dolls, Panicle, Prytaneean.

Barbara Gurley—CAL Pom-Pon, Bank of America Intern.

Kris Hammar—Oski Doll, Honor Student, Alumni Scholar, Prytaneean.

Kathy Harrell—Honor Student.

Kathi Hoertling—CAL Tennis Team, Forestry Club.

Margie Hoff—Alumni Scholar, UBA.

Cathy Innes—Oski Doll, president—Panicle.

Tricia Jump—Honor Student, UBA, Chancellor's Advisory Committee.

Kathy Keane—Honor Student, Exchange Student to France.

Nancy Knudsen—CAL Pom-Pon, UBA, Honor Student.

Teresa Long—Honor Student, Mortar Board, Most Outstanding Senior.

Gwendy Longyear—Panicle, president—Newman Organization.

Bernie Maloney—UBA.

Sheri McBride—CAL Pom-Pon, Ballet instructor.

Debbie Macktinger—Ida W. & Robert Gordon Sproul Award, Most Outstanding Junior Woman on Campus, Penelope Murdock Simonson Award, Alice J. Jewitt & Hugh S. Jewitt Scholarship, Mildred Jordan Sharp Touch & Shield Honorarium, Wells Fargo Scholarship, CAL-and-the-Capital, Big Game Princess, Sweetheart of Sigma Chi, Mortar Board, Prytaneean, Oski Doll, Panicle, Panhellenic president, Founder-Chairman of first annual CAL-FAIRE, Co-president—Greek Council, Commencement Luncheon speaker.

Janiele Maffei—Kaleidoscope Singing Group.

Anne Menard—Oski Doll, Alumni Scholar.

Lori Nelson—Honor Student, Genevieve McEnermy Academic Scholarship, Oski Doll.

Patty O'Lague—Oski Doll, co-ordinator—Undergraduate Biophysics Association.

Gina Owen—Alumni Scholar.

Karen Pelham—Alumni Scholar, Honor Student, U.C. Inter-collegiate Badminton Team.

Susan Richardson—Honor Student.

Peggy Robinson—Alumni Scholar.

Sue Robinson—Model United Nations, Letters and Science Student Consulting Group to Dean Park.

Betsy Rosenthal—A.S.U.C. Senator, Israel Action Committee, Honor Student, Model United Nations, Mortar Board, Academic Senate Committee.

Beverly Skirvin—Chancellor's Advisory Committee, A.S.U.C. Judicial Board.

Lisa Smoley—Honor Student, Oski Doll.

Kristin Steinmetz—Pre-Veterinarian Club.

Dana Styles—CAL Pom-Pon.

Sue Trebino, Carol Willoughby, Ellen Wyne—Oski Dolls.

Mary Wynne, Andrea Zavala—Alumni Scholars.

Chosen to Visit Red China



Laura Ann Sunn (Washington-St. Louis) has some exciting stories to share with her Gamma Phi sisters in Missouri this fall. She's recently returned from a 17-day trip to mainland China. She was the only freshman medical student chosen to participate in a 25-member American Medical Student Association delegation to the People's Republic of China in August.

The purpose of the trip was to see first-hand the dramatic ways the Chinese have improved their health standards in the last 25 years. Of particular interest were the use of paraprofessionals ("Barefoot Doctors") and alternate methods of treatment such as acupuncture.

With her selection for this unique honor, Laura also was named as AMSA representative for her class at the University of Missouri Medical School. Another recognition: a Dean's fellowship to do research in pharmacology.

St. Louis and Kansas City Alumnae chapters were among those who raised money to finance Laura's unique adventure. They will see her slides and hear about her experiences at fall programs.—Dolores Hannibal Person (Washington-St. Louis). St. Louis *Crescent* Correspondent

CALIFORNIA STATE AT FULLERTON— Erin Kelly reporting

Chapter Honors:
Panhellenic Spirit Award.

Individual Honors:
Violette Balma, Leisa Beck, Robin Bergholtz, Mimi Borovinsky, Alaire Hinkel, Eloise Hock, Amy Jin, Erin Kelly, Cheryl Markel, Leslie Thomas, Connie Whitson—Dean's List.

Eloise Hock—Social Science Honor Society, Economics Honor Society and "Who's Who in Political Science."
Kathy Steward—recipient \$250 scholarship from Los Angeles Alumnae Chapter of Gamma Phi Beta.

CALIFORNIA STATE POLYTECHNIC— Gayle Todd reporting

Chapter Honors:
First place Olympiad, second place overall Greek Week, third place overall Panhellenic intramural sports.

Individual Honors:
Karen Ambler—Delta Theta's "most inspirational active," voted by actives.
Charlotte Brekke—Poly Royal Queen.
Bev Brintnall—Scholarship Award, Dean's List.
Rosie Buzzelli—Phi Upsilon Omicron, Scholarship award Fall '77, Winter '78.
Kathy Homan—Treasurer—Sierra Madre Residence Hall.
Lori Horenstein—Phi Upsilon Omicron, cardinal key honor society.
Carol Ineman—Cal Poly Tennis Team, Dean's List.
Kasa Kjellman—Scholarship award Winner '78, Dean's List.
Sandy Montgomery—Scholarship award Fall '77.
Julie Moser—Outstanding Pledge.
Leigh Moylan—"Most inspirational active," voted by pledges.
Janet Muller—Cardinal Key Honor Society.
Terisa Nerelli—Dean's List.
Jan Rice—Service Award.

CALIFORNIA STATE—SAN JOSE— Diane McCroskey reporting

Chapter Honors:
Second highest G.P.A. of any sorority for spring.

Individual Honors:
Karen Bluth—Lower division Student Council representative, Panhellenic secretary.
Diane McCroskey—History associate of Rho Alpha Theta.
Gayle Paride—Panhellenic president, Varsity Girls' Hockey Team.
Denise Pereira—Dean's List.
Mary Stancavage—Alpha Lambda Delta.

COLORADO COLLEGE— Gail D. Harlor reporting

Chapter Honors:
Raised most money for 1978 Colorado Springs Muscular Dystrophy Dance Marathon.

Individual Honors:
Marina Marra—"Honors at Entrance".
Kay Newell—president, Alpha Lambda Delta; delegate to Colorado College Honor Council; resident advisor.
Nancy Groth—delegate, Colorado College Campus Association.
Heather Palmer—associate editor, The Catalyst (newspaper).
Linda Curtis—photograph for The Nugget (yearbook).
Karen Jacobson—president, campus Jewish organization.
Tami Hand—resident advisor.
Ann Burnett and Regina Walter—first place negative division and first place overall in Missouri Valley Debate Tournament.

COLORADO STATE— Carrie Haas reporting

Chapter Honors:
First place, Panhellenic Swim Meet; Third, Panhellenic Volleyball; "Outstanding Junior Greek Girl" for second year in row.

Individual Honors:
Chris Aden—Dean's List for School of Business, Tau Chapter president.
Kathy Arthur—Hesperia (Junior Scholastic Honorary).
Tricia Brenner—vice president, Panhellenic Council.
Colleen Callahan—CSU's Golden Rams (athletic hostesses).
Pam Coats—Silver Spurs.
Linda Carlson—freshman representative, Business College Council.
Diann Dunlevy—CSU Girls Swim Team.
Lark Lawrence—Dean's List for College of Arts, Humanities and Social Studies; First All University Coed Volleyball.
Sandy Ludwick—CSU Wind Ensemble's principal oboe, University Orchestra, Fort Collins Symphony, Marching Band, American Society of Mechanical Engineers, Tau Beta Pi (highest engineering honorary), vice-president of Pi Tau Sigma (mechanical engineering honorary), treasurer of Mortar Board, Outstanding Junior Greek Girl, Dean's Award as Outstanding Junior in Engineering, Outstanding Junior in Mechanical Engineering, Creative and Performing Arts Award.
Kristi Prager—Dean's List for College of Arts, Humanities and Social Sciences.

Robin Scudder—vice president for Association of Distributive Educators.
Carol Winslow—Mortar Board, Tau Iota Omega (Senior Scholastic Honorary).

DENVER— Ann Meyering reporting

Chapter Honors:
Highest Sorority GPA, Highest Pledge GPA, All-Sorority Softball champions.

Individual Honors:
Karen Boge—Spurs, Freshmen Camp staff.
Rita Burleson—All-Greek Planning Council.
Diane Essex—Outstanding Junior 1978.
Diane Johnson—Women's Order of Alpha, 4.0 Club.
Heidi Johnson—Denver's Outstanding Freshman Woman.
Leigh Ann Kudloff—Spurs president, Talarians, University Scholar, Women's Order of Alpha.
Janet Lewis—Women's Order of Alpha.
Linda Reese—Mortar Board, Women's Order of Alpha, Psychology Departmental honors, 1978 Outstanding Senior.
Gretchen Wehmhoff—Student Advisory Committee representative, Freshmen Camp staff, Campus radio DJ.
Lee Ann Williams—"Clarion" associate feature editor, Alpha Lambda Delta, Highest Highest Sorority Pledge GPA.

EAST TEXAS STATE COMMERCE— Jane Smith reporting

Chapter Honors:
First, Sigma Phi Epsilon Down South house decorations; second place, Kappa Sigma Sing Song; "Best Booth for Homecoming"; hosted "Strike Out for Cancer" bowling tourney.

Individual Honors:
Pam Simpson—Homecoming Court, Greek Goddess, Pike Calendar Girl, E. T. Hostess, Gamma Zeta president.
Karen Jernigan—President's Honor Roll, Dean's List, Alpha Chi, president of National French Honor Society.
Sherry Tucker—Miss Greenville, E. T. Beauty, Pike Calendar Girl, Dean's List, Intramural Swim Team, Alpha Lambda secretary.
Kathy Shelton—Alpha Chi, Dean's List, Phi Theta Kappa secretary.
Karen Fullbright—Cap & Gown, Dean's List, Student Dietetic Association president.
Cindy Fsy—Kappa Alpha Rose, Dean's List, Pi Sigma Epsilon, retired Gamma Zeta president.
Lannette Armstrong—Head Cheerleader, Dean's List.
Lisa Greb—Dean's List, Panhellenic secretary, Kappa Alpha Old South Court.
Karla Griffin—Student Council for Exceptional Children.
Sherry Dew—Dean's List.
Kita Richardson—Head twirler.
Judy Sandige—Lion's Club scholarship award.
June Danner—Pi Kappa Alpha Rose.
Donna Duncan—Cheerleader, Dean's List.
Sharon Barrow—E. T. Beauty, Barons.
Pam Jernigan—Dean's List.
Lisa Pitts—E. T. Twirler.
Barbara Griffin—Barons, first place, Sigma Chi Ice Bucket contest.

INDIANA— Anne Henley reporting

Chapter Honors:
First place Campus Blood Drive, first in Cross Country, Beta Theta Pi Blind Fund, United Way.

Individual Honors:
Karen Claxton—Indiana Student Foundation.
Suzy Heald—Indiana Student Foundation, Carnahan-Pfingston Memorial Scholarship.
Anne Henley—Alpha Epsilon Delta (pre-medical honorary), Hoosier Scholar, Indiana Student Foundation, Dean's List.
Kathy Hinkley and Kris Howard—Indiana Student Foundation.
Patti Jennings—Sigma Chi Sweetheart.
Lisa Johnson—Indiana Student Foundation.
Maureen Koloch—Indiana Student Foundation.
Elisa Moran—I.U. Outstanding Greek Woman, Blue Key Honorary, Panhellenic Rush counselor, Indiana Student Foundation, Telefund chairman.
Katy Pickell—Tau Beta Sigma (band), Marching 100 baton twirler.
Sally Stevenson—All-Sorority Athlete of the Year, All-Campus Athlete of the Year, Student Recreational Sports Association, Co-Rec championship basketball team.
Carol Streepey—Indiana Student Foundation, Dean's List, President's Straight A Recognition.
Cindy Strong—Indiana Student Foundation, 1978 All-Star Trike Team.
Susan Strupp—Primary Elections precinct chairman, summer internship with Congressman.
Connie Vodde—1978 All-Star Trike Team.
Mary Jo Wood—Varsity Golf Team.



BARBARA GRADER, Texas Relays Princess.



KATHY WUTHRICH, "Powder-Puff" Queen of Tau Kappa Epsilon's "Powder-Puff Olympics" at Midwestern State.



CHARLOTTE BREKKE, Queen of Poly Royal at California Polytechnic State. Sharing her excitement are Delta Thetas Gretta Wilson and Lynda Zigrang.



GAMMA IOTAS dominated the Homecoming Court at Midwestern State. From left: Duchess Beth Allen, Duchess Nancy Duggan, Queen Beth Perry and Princess Brenda Nichols.

ROYAL SISTERS



RHO'S ROYALTY, from left: Terry Connally, attendant to Military Ball Queen, and Marcia Goodrich, attendant to Iowa's Dolphin Queen.



LIS JOHNSON, Homecoming Queen at Wisconsin-Madison.

Chris Widner—Pompon Corps.
Chris Wilson—Redsteppers.

IOWA— Melinda McNully reporting

Chapter Honors:
First place, Pi Kappa Sigma Calendar sales for Muscular Dystrophy; third place Miller Beer Can contest.

Individual Honors
Karma Burford—Greek Woman of the Year, co-director of

Muscular Dystrophy Dance Marathon, historian and editor for Mortar Board, Task Force for Managing Sorority Growth, Men and Women's Diving Manager.
Wendy Daebelliehr—Pom Pon squad.
Karen Dahlberg—Iowa Ski Team.
Kathy Draths—Mortar Board, Student Senate Committee, Omega Chapter scholarship.
Gayle Foss—Dean's List.
Karen Funk—Cheerleader, representative for Phi Kappa Sigma Calendar.
Lesley Gabbert—Iowa Regents Foreign Exchange Program, Phi Eta Sigma.

Marcia Goodrich—Duet Twirler in Hawkeye Band.
Mary Ann Goodrich—Duet Twirler in Hawkeye Band, Dean's List.
Sue Hawes—Pom Pon squad.
Ann Holeman—Wind ensemble, chairman of Blood Drive for Gamma Phi Beta.
Julie Johnson—Helen M. Richt Scholarship, Dean's List.
Jerri Kluever—Dean's List.
Sarah Leachman—Seals Club, Synchronized Swimming Team, Synchronized Swim National Meet—figure and duet.
Mindy McNeilly—Council on Exceptional Children, Dean's List.

ACHIEVERS



AMY STILL (Texas Wesleyan)—Outstanding Student in Department of History, Alpha Chi Honor Society, Sigma Tau Delta (English), Best Active Award Spring '78.



JENNIE YAMAGUCHI AND LINDA FELGAR (California-Irvine)—charter members of Alpha Epsilon Delta, pre-medical honorary. Both also are on the Dean's List.



ELISA MORAN (Indiana)—Outstanding Greek Woman of the Year.



SALLY STEVENSON (Indiana)—"All Sorority" and "All Campus" Athlete of the Year.



DIANA NAYLOR (Texas)—Omicron Chi Epsilon, Orange Jackets, Tau Beta Pi.



LISA ANNE CHEE (California-Irvine)—1978 Panhellenic Woman of the Year, Dean's List, Panhellenic Scholarship recipient.



SHERRY FEAUTO (Midwestern State)—Outstanding Student in German Studies.

Pat Many—Old Gold Singers.
Laurie Moore—Pom Pon Squad.
Jill Muggie—Iowa Women's Track Team, National Qualifier.
Shelly Parsons—Pom Pon Squad.
Missy Schwark—Beta Gamma Sigma, Dean's List.
Kim Steffen—John L. Murray Journalism Scholarship, Public Relations Student Society of America, University of Iowa News Service intern.
Jane Stewart—Executive Panhellenic Council.
Kathy Stoker—Phi Eta Sigma (freshman honorary).
Susan Strasburg—Public Relations Student Society of America.
Cindy Sweem—Phi Eta Sigma, Dean's List.
Cathy Taylor—Beta Gamma Sigma, Dean's List.
Laura Unger—Junior American Dental Hygienists Association of America.
Teresa Vilmain—Greek Pledge conference, executive member of Iowa's International Women's Year, Coordinative Committee, delegation to National Women's Conference in Houston.
Gayle Wiedenfeld—vice president of Junior American Dental

Hygienists Association, Preventive Dentistry Club, chairman of Table Clinics for Dental Health Week.
Susan Wicks—Cerebral Palsy Walk-a-thon prize winner.
Joan Weresh—Scuba Club, Phi Kappa Sigma Calendar representative.
Monica Wolf—Pom Pon squad captain, Homecoming Council, King and Queen Chairman, Muscular Dystrophy Dance Marathon Awareness Chairman.
Scholastic Citation List for Honors Convocation: Becky Broer, Daintry Price, Shelly Parsons, Lesley Gabbert, Kathy Stoker, Cindy Sweem, Cathy Sagrille, Kathy Draths, Mindy McNeilly, Julie Johnson, Mary Ann Goodrich, Cathy Taylor, Jerri Kluever, Karm Burford, Missy Schwark, Susan Strasburg and Laurie Moore.

IOWA STATE— Ann Hawthorne reporting

Cindy Donahue—Alpha Lambda Delta.
Julie Fenton—Phi Eta Sigma, Mortar Board.

Steph Gaarde—Kappa Delta Pi, Top 2% of college.
Jill Lockwood—Phi Eta Sigma.
Amy Peterson—Phi Kappa Phi, Top 2% of college.
Janie Sampson—Kappa Delta Pi.
Julie Samuleson—Top 2% of college.
Deanna Stone—Alpha Lambda Delta, Top 2% of college.
Alumnae Award for Outstanding Senior.

KENTUCKY— Debbie Morgan reporting

Individual Honors:
Carol Brandon—Sigma Delta Chi (Society of Professional Journalists).
Elizabeth Chenault—Pi Delta Phi (French), Kappa Delta Pi (education), Mortar Board treasurer, Links (junior women's honorary), Lances (junior men's honorary).
Jane Gayle Connell—Mortar Board, Senior Women's Honorary, Kappa Delta Pi (education), Links, Phi Eta Sigma, Societus Pro Legibus (pre-law honorary).

Lu Ann Holmes—Dean's List, campus editor of *Kentuckian* yearbook, Mortar Board secretary, Phi Upsilon Omicron (home economics), American Society of Interior Designers—trip coordinator, Greek activities Steering Committee.

MC GILL— Katrina Osborne reporting

Individual Honors:

Marie Gravelle—McConnell Scholarship.
Suzanne King—president, McGill Women's Rugby.
Pamela McGovern—secretary-treasurer of Political Science Students' Association, chairman of Ad Hoc Group on Quebec's Future.
Leanne Potter—Alexander MacKenzie Scholarship, Pan-Hellenic Ball Organizer.
Marie-Claude Reney—co-chairman of McGill Winter Carnival.
Joanne Rowen—Sweetheart of Sigma Chi.
Alexander K. Slawek—chairman of McGill Orientation.
Lynn Swisher—treasurer, Savog Society.

MICHIGAN STATE— Catherine Frost reporting

Chapter Honors:

Panhellenic Spirit Award for outstanding participation in Greek affairs.

Individual Honors:

Karen Barger—Editor of Greek newspaper, *The Oracle*.
Julie Dumas—Vice president, Panhellenic Executive Council.
Kathy Kutasi—Greek Week coordinator.
Rae Mayer—Mortar Board, Alpha Zeta.
Diane Zdunczyk—Mortar Board, Phi Kappa Phi.

MIDWESTERN STATE— Sherry Feauto reporting

Chapter Honors:

Greek Week trophy for athletic events, overall first-place in Tau Kappa Epsilon's Powder-Puff Olympics.

Individual Honors:

Carol Donnell—Fall Festival Favorite.
Cheryl Burgess—Alpha Lambda Delta.
Beth Coombs—Fall Festival Beauty.
Kathy Wuthrich—Powder-Puff Queen.
Darla Murphy—Montague County Farm Bureau Queen, chosen cheerleader for 1978-79.
Sherry Feauto—Alpha Lambda Delta, "Outstanding Student in German Studies," elected senator to Student Government for 1978-79, University Honor Roll.
Denise Trammell—Fall Festival Beauty, Kappa Alpha Rose.
Brenda Nichols—Alpha Lambda Delta, Homecoming Princess, MSU Cheerleader.
Nita Fleming—MSU Honor Roll.
Brenda Lister—Alpha Lambda Delta, MSU Honor Roll.
Kenda Riley—Alpha Lambda Delta, Honors Program.

DeeDee Duggan—Fall Festival Beauty.
Nancy Duggan—Homecoming Duchess.
Beth Perry—Fall Festival Beauty and Favorite, Homecoming Queen.
Amy Clayton—Fall Festival Beauty, MSU Cheerleader.
Michelle Stoughton—Alpha Lambda Delta.
Beth Allen—Fall Festival Favorite, Homecoming Duchess.
Kim Klawiter—Kappa Sigma Sweetheart.
Terri Taylor—Phi Sigma Kappa Moonlight Girl.

MINNESOTA— Julie Hautman reporting

Individual Honors:

Jeanne Abendroth and Sue Genskow—Rho Lambda.
Kathi Eldredge—J. W. Award (most contributions to Gamma Phi Beta).
Heidi Gesell—Kappa Chapter Humitarian Award.
Cindy Michel—Outstanding Senior.
Joan Vanderpool—Outstanding Pledge.

NEBRASKA— Sue Brown reporting

Individual Honors:

Kelley Bowen—vice president of Panhellenic, vice president Pi Chapter.
Kim Cuda—summer orientation host.
Kim Davis—Campus Red Cross, Teacher's Advisory Board.
Cindy Drevo—vice president of Nebraska Union Program Council, Notable Sophomore Women.
Shelley Hanson—Phi Chi Theta.
Carrie Krenk—Teacher's Advisory Board, Student Education Association.
Rocky Kruse—Mortar Board, Teacher's Advisory Board.
Gina Lauber—Phi Chi Theta.
Teri Mauch—Nebraska East Union Program Council.
Sarah Mead—Orchisis (dance).
Sharon O'Brien—Phi Eta Sigma.
Kim Osborne—Mortar Board, Pi president.
Wendy Patten—Student Alumni Board.
Sue Roberts—UNL flag team.
Trudy Saunders—Student Senator.
Diane Tanking—Phi Chi Theta.
Mary O'Commer—Student Senator.
Tami Osborne—Notable Freshmen Woman.
Joyce Pollock—UNL flag team.
Sally Riha—UNL flag team.
Lorie Shane—UNL Rodeo Queen.
Kiru Von Minden—Notable Freshmen Women.
Sue Gast—Scarlet and Cream Singers.

NORTH DAKOTA— Laurie Hanson reporting

Individual Honors:

Jeanne Dipple—pledge with highest grade point.

Karen Nedberg—junior with highest grade point.
Pam Powers, Jana Ross, Nancy Yolden—Mortar Board.

OREGON STATE— Denise Sullivan reporting

Individual Honors

Carol Deeming—University Crew Team, president of Talons (sophomore honorary).
Cindy Anderson—Memorial Union Hospitality Committee.
Graal Diman—Honor Roll, secretary of Beta Alpha Psi (business).
Lisa Douglas—Beaver Belles secretary, Beta Alpha Psi, Chi Delphia, Delta Chi Calendar Girl of the Year.
Audrey Gerding—Beaver Belles, Chi Delphia, Food Tech Club.
Kristy Howell—Withycomb Club, Agricultural Economics Club, Agricultural Executive Council—secretary, Encore usher, Pendleton Round-Up Court Princess.
Michelle Mayfield—Junior Class president, Omicron Nu (campus honorary), Canterbury Board of Directors, Honor Roll, University Honors Program, Order of Omega (greek honorary).
Sue Meredith—Talons, Management Club.
Lynn Rice—Scabbard & Blade, NROTC Physical Fitness Team, National Rifle Team Competition in Ohio, OSU Flying Club, OSU and NROTC rifle teams.
Lisa Richardson—Chi Delphia.
Jan Siemsen—Whithycomb Club, Pre-Vet Society.
Denise Sullivan—*Bexell Times* staff (business school paper), *Barometer* staff (University paper).
Heather Wood—Home Economics Honors Program, SHEA.

PENN STATE— Pamela Hill reporting

Chapter Honors:

First place trophies for enthusiasm and over-all competition, Sigma Chi Derby Days.

RUTGERS— Desiree Herald reporting

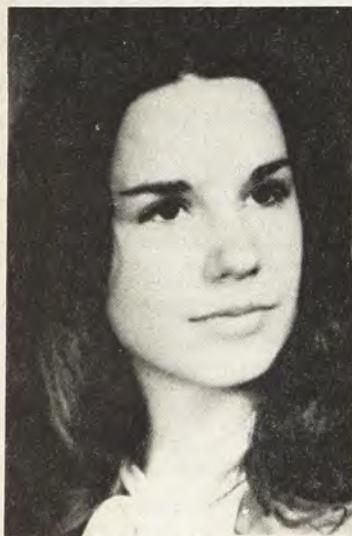
Campus Honors:

Third in fraternity/sorority division of Rutgers Cancer Marathon.

Individual Honors:

Donna Ahlers—Varsity Letter in Gymnastics.
Joann Ammann, Jill Rupert—New Jersey State Scholarships.
Valerie Bellino, Cindy Lanza, Anita Reich, Sue Solewin, Diane Todd, Susan Toole—Dean's List.
Bonnie Berger—Dean's List, TAsip at U. of Florida.
Ann Caruso—Dean's List, Panhellenic president, organizer of Panhellenic Council.
Debbie Cohen—Dean's List, highest cum. in Delta Nu.
Donna Koyen—Dean's List, Kappa Delta Pi, Omicron Nu.
Janis Kreiss—Abroad-Exchange Student to England.
Mary Marko—Varsity Letter for Cheerleading, chairman of

PHI BETA KAPPAS PLUS . . .



E. CLAIRE COLLIER (West Virginia).



ELLEN SCHEIBOL (Texas). Plus Phi Kappa Phi and Dean's List.



ANNEMARIE POLAK (California-Irvine). Plus Dean's List. Triple major: received BA's in Psychology, Sociology and Philosophy in June '78.



WENDY WOLDT (USC). Plus Mortar Board and Phi Kappa Phi.

Rutgers Judiciary Committee, R.F.C. Scholarship, Political Science Association.

Nadine Muraviev—Ski Team, Russian Club.

Marge Niedzwicz—Commuter Council representative.

Sharon Simadl—Dean's List, field hockey.

Debbie Tantum—Dean's List, New Jersey State Scholarship.

Kathy Wilson—chairman of R.F.C. Board of Control.

SAN DIEGO STATE— Kimeron Haas reporting

Chapter Honors:

First place Spirit Trophy, first place in games and second place in overall week-long competition—Sigma Chi Derby Days.

Individual Honors:

Cynthia Montgomery—Mortar Board.

Kim Spalione—Sigma Chi Sweetheart.

Fourteen Beta Lambdas—Dean's List.

SOUTHWEST TEXAS STATE— Mollie Ritz reporting

Chapter Honors:

Best Costumes—All Campus Review; second in showmanship, Chilympiad (annual Chili Cookoff contest).

Individual Honors:

Gay Baker—University Choral.

Kim Britt—Order of Omega (Greek Honor Society).

Marty Canipe, Beth Fiddelke, Becky Ramey, Sharon Smith—Strutters (drill team).

Cheryl Fitzgerald—Off-Campus Senator.

Suzy Hill—Sigma Delta Pi (Spanish), Order of Omega, Alpha Chi (University Honor Society).

Pam Johnson—Kappa Delta Pi (education).

Kathy Major—University Chorus, Alpha Lambda Delta, Strutters.

Carol Moorman—SWT Singers.

Pam Riggs—Miss Chilympiad, Associate Justice of Student Court.

Mollie Ritz—Alpha Chi.

Lou Ann Thompson—Phi Alpha Theta (history).

SYRACUSE— Janet Pennington reporting

Chapter Honors:

M. Eunice Hilton Panhellenic Award for Standards, second place—Inter-Sorority Spirit Award competition.

Individual Honors:

Patty Bergin—accepted for master's work at Northwestern.

Rosemary Brisbois—Dean's List, Chairman of Syracuse University Social Work Organization, VISTA volunteer.

Pierina Consol—Syracuse University scholarship, School of Nursing scholarship.

Liz Cambridge—president Alpha Chapter 1977-78.

Nancy Grady—class marshall for student affairs, cum laude graduate.

Cheryl Roth—Dean's List, B.S. magna cum laude, Alpha Scholarship Award.

Mary Ann Smith—first woman president of Alpha Pi Mu (industrial engineering honorary, treasurer of Tau Beta Pi (engineering honorary), Society of Women Engineers, American Institute of Industrial Engineers, baton twirler for Syracuse Marching Band and dancer for basketball pep crew, the Sour Citrus Society).

Joan Walentuk—editor of Alumnae Nursing Magazine.

Mary Ellen Wisniewski—Dean's List, Syracuse Panhellenic Hilton scholarship, Foreign Study scholarship, Sigma Delta Chi (journalism).

Ricky Zegelstein—Dean's List.

TEXAS— Laura Winslow reporting

Chapter Honors:

First place trophy for float in Round-Up Parade for Muscular Dystrophy, second place—Kappa Kappa Gamma—Delta Kappa Epsilon Blood Drive.

Individual Honors:

Judith Anglin—Dean's List.

Barbara Atteridge—Kappa Delta Pi.

Susan Bell—Phi Beta Chi, Angel Flight.

Julie Benson—Dean's List, Alpha Lambda Delta.

Barb Biegger—Posse (honorary spirit organization).

D'ann Bullock—Karl & Helen McGinnis Scholarship, Longhorn Band.

Laura Chuoke—Swim Team, Dean's List.

Susan Clark, Patty Conley—Spooks (spirit honorary).

Cyndi Craig—Special Interests Editor of *Cactus*.

Leslie Crain—Angel Flight pledge trainer.

Kathy Creviston—Spooks, Angel Flight.

Chris Dahl—Sigma Delta Chi, News and Information Services Internship.

Amy Dempsey—Posse, Dean's List.

Mary Dilger—UT Fashion Group vice president and secretary-treasurer.

Judy Focht—Dean's List, Angel Flight.

Vicki Gaudin—Spooks.

Barbara Grader—Texas Relay's Princess, Texas Women's Affairs committee.

Ann Grappe—Kappa Epsilon, Longhorn Phi Theta Kappa.

Linda Griffith—Alpha Lambda Delta, Phi Beta Kinsolving.

Dean's List, Posse, Angel Flight.

Patti Hubbard—Bevo's Babes (Swim Team Pep-Squad).

Kim Jackson—Psi Chi, Dean's List, U.T. Law Association.

Mary Kaufman—Sigma Alpha Iota, Delegate to Music Education National Conference.

Andrea Lambert—Kappa Epsilon.

Margie Leatherwood—Phi Beta Chi.

Glynda Moore—Panhellenic Scholarship, Kappa Delta Pi, College Scholarship—Honors Day.

Audrey McNamera—Tau Beta Sigma.

Diana Naylor—Alpha Chi Sigma, Tau Beta Phi, Orange Jackets (service honorary), Omicron Chi Epsilon, American Institute of Chemical Engineers.

Nina Peterson—Jester Dorm Residents—president.

Marcy Roman—Kappa Epsilon—recording secretary, Longhorn Pharmacy Association.

Carolyn Russell—Spooks, Cordettes.

Ellen Scheibal—Phi Beta Kappa, Phi Beta Phi, Dean's List.

Tammy Smith—Posse, Angel Flight, Alpha Lambda Delta.

Barbara Stieg—Posse.

Jean Wilkinson—Seton Medical Center Internship, Carolyn Hackson Show Internship, KUT Internship, Sigma Delta Chi.

Terri Wilson—French Honor Award, Phi Beta Chi.

TEXAS WESLEYAN— Beth Biddinger reporting

Chapter Honors:

Overall Trophy, Greek Week Festivities.

Individual Honors:

Carol Abel—Dean's List, Phi Beta Lambda, Gamma Sigma Sigma.

Beth Biddinger—Dean's List, Vivien and Law Sone Scholarship, Gamma Omicron.

Susan Brockett—Sigma Tau Delta, Augie Mae Howell Scholarship.

Theresa Brown—Editor of annual, Press Club president, Society of Collegiate Journalists.

Karen Bunker—Freshman Leadership Class, Wesleyan Singers, Gary Windsor Memorial Scholarship, Scripps Howard Scholarship, yearbook staff.

Margaret Burciaga—Beta Pledge Fall '77.

Teresa Byrom—Quadrangle president, Best Delta Epsilon Active, Phi Beta Lambda treasurer, Who's Who in American Colleges and Universities, wearer of the Golden Shears, Homecoming Princess, Smile Girl runner-up, Miss Future Business Executive—third place, Dean's List, Lambda Chi Alpha Sweetheart, Student Government Association Board of Appeals, member of winning intramural bowling team.

Teresa Hernandez—Dean's List.

Paula Jean—Dean's List, Junior Panhellenic delegate.

Cindy Lee—Best Active Spring '78.

Sally McGary—Dean's List.

Leslie Norris—Pledge Class president.

Laurie Shoop—Dean's List, Anne Waggoner Scholarship.

Amy Still—Alpha Chi vice president, Delta Epsilon chapter president, Quadrangle secretary, Dorm Council treasurer, Who's Who, Outstanding Student in Department of History, DAR Scholarship and Dean's List.

Sonia Torres—Cheerleader, Senior Panhellenic delegate, Student Advisory Board for Student Government Association.

Joy Whitt—Dean's List.

WICHITA STATE— Beth Harlenske reporting

Chapter Honors:

Most Outstanding Sorority Award (second year in a row), first in Best Special Effects and second in Best Overall Production for Hippodrome (annual day of skits), and first place, Best Added Attraction in '77 Homecoming Parade.

Individual Honors:

Becky Bachrodt—Shockettes (9-member cheerleading squad), Dean's Honor Roll.

Missi Bachrodt—Shockettes.

Monica Boughton—WSU Acapella Choir.

Linda Chindberg—Women in Communications scholarship, Order of Omega (charter member), Dean's Honor Roll, newscaster for KMWU—WSU radio station.

Diane Converse—Flagg!—WSU Marching Band, Sigma Alpha Iota, Brevard Music Camp scholarship, Dean's Honor Roll.

Cindy Cushing—cheerleader, WSU Varsity Women's Gymnastics team.

Erin Cyphert—Kansas State Horse Association, many horsemanip awards including "Horse of the Year" award for Kansas.

Julie Dalrymple and Dedee Becker—Dean's Honor Roll freshmen.

Debbie Draut—Who's Who Among American Colleges and Universities, Kappa Delta Pi (education), Dean's Honor Roll for fourth year, Order of Omega (charter member), president of CircleOK Kiawanas, director of WSU Hearing Screening Project.

Amy Garrett—WSU Acapella Choir and member, "Ballinger's Backstage," professional song and dance company.

Cindy Griffing—Shockettes, Young Life Leader.

Beth Harlenske—Mortar Board, Who's Who, Senior Honor Five (WSU's highest honor), Alpha Kappa Delta (Sociology), Most Outstanding Sorority Woman, Dean's List for four years, Leadership Recognition Banquet, and Homecoming Queen finalist.

Monica Hart—Dean's Honor List, Panhellenic Council.

Susie Hitchcock—Alpha Kappa Delta, Volunteer Juvenile Court Probation Officer, Dean's Honor Roll, recipient of research grant for Administration of Justice project.

Carol Kissling—Dean's Honor Roll.

Janet Lansdown—Dean's Honor Roll, Psi Chi (psychology), Volunteer, Juvenile Court of Sedgwick County.

Linda Miller—Dean's Honor Roll, Rodeo Queen award and other equestrian awards.

Anne Mohr—junior advisor to Alpha Lambda Delta, Dean's Honor Roll.

Pam Oxenreider—University Theatre productions, WSU Summer Theatre Stock, Chamber Singers.

Melodie Parcel—Phi Kappa Phi, Sigma Phi Alpha (Dental Hygiene honorary), Arnold-Whittenberg Scholarship, Dean's Honor Roll for four years, "A" Award from Gamma Phi Beta.

Diana Pottebaum—Helen M. Guard award for Outstanding Junior in Beta Chi Chapter.

Jenni Ray and Jana Reeder—Dean's Honor Roll.

Debbie Schell—Batgirl (spirit squad for WSU baseball team).

Becky Schneider—Brevard Music Camp scholarship, WSU Music scholarship.

Lyn Sonntag—Dean's Honor Roll.

Sandra Stoddard—Dean's Honor Roll, historian for Alpha Lambda Delta.

Kathy Wilde—Women's Varsity Tennis team.

WISCONSIN—PLATTEVILLE— Janni Pickel reporting

Chapter Honors:

Inter-Greek Community Council's Highest Grand Point Average Award.

Individual Honors:

Marie Stuelke—Co-chairman of Inter-Greek Community Council, Homecoming '78 delegate, honor student.

Donna Vollmer—Dean's List, Gamma Omega Chapter scholarship award.

WITTENBERG— Judith Galo reporting

Chapter Honors:

First, Homecoming Float/Display Competition '77 (fifth time in five years).

Individual Honors:

Gwen Anwyl—Dean's List, Sociology Student Faculty Committee.

Judy Barnes—Tau Pi Phi, Hall Council president, Alpha Lambda Delta.

Carolyn Bonner—Tau Pi Phi, American Marketing Association.

Barbara de Penaloza—Homecoming Queen runner-up, Dean's List.

Robin DeRolf—Alpha Lambda Delta, East Asian Club secretary, Dean's List.

Sue Figley—Panhellenic Council program chairman, Wittenberg University Choir, Dean's List.

Judy Galo—Alpha Lambda Delta, Student Advisory Board—Education Department, Dean's List.

Cheryl Gatchel—Dean's List, Tau Pi Phi secretary-treasurer.

Laurie Heffner—Wittenberg Choir, Union Board, Dean's List.

Beth Hessinger—Wittenberg University Choir.

Ann Hutchinson—Dean's List, Wittenberg University Choir.

Sue Joslin—Dean's List, Hall Council treasurer, Tau Pi Phi.

Karol Kinard—Bach Chorale.

Nancy Kirlin—Dean's List, Wittenberg University Choir.

Bar Lauterbach—Dean's List, Hall Council secretary.

Pam Montgomery—Dean's List, Alpha Lambda Delta.

Joanne Owen—Dean's List, Kappa Delta Epsilon, Panhellenic Council president, Greek Council vice president.

Dixie Snively—Tau Pi Phi, Wittenberg University Honor Society, Dean's List.

Sandy Van Auken—Wittenberg University Choir, Dean's List, Alpha Lambda Delta.

Jill Withers—Greek Council representative, Geography Honorary.

Becky Wright—Alpha Lambda Delta, Dean's List.

Maria Cashy, Judy Croll, Patsy Davis, Amy Durra, Alicia Einsel, Kris Eldard, Mary Ann George, Susan Henry, Sandy Klotz, Marcia Kohl, Judy Metzger, Lorna Naegele, Lisa Pilati, Deb Redinger, Kathy Shaver, Kay Trenner, Theresa Warnecke and Barb Wertis—Dean's List.

FRATERNITY SWEETHEARTS, YES . . .



SIGMA CHI SWEETHEART—Patti Jennings (Indiana).



LAMBDA CHI ALPHA SWEETHEART—Teresa Byrom (Texas Wesleyan). Also Delta Epsilon and Honors Graduate.



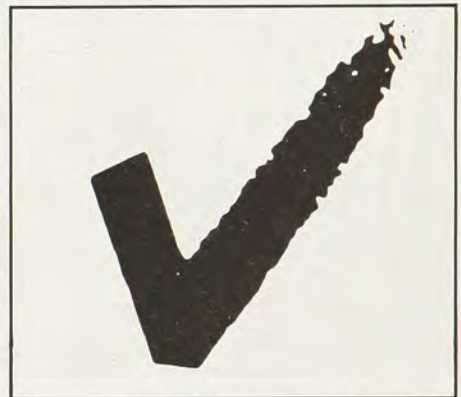
KAPPA SIGMA SWEETHEART—Kim Klawiter (Midwestern).



PHI SIGMA KAPPA MOONLIGHT GIRL—Terri Taylor (Midwestern).



KAPPA ALPHA ROSE—Denise Trammell (Midwestern).



LITTLE SISTERS, NO!

In these strenuous times, young women must jealously guard against commitments which might not be spent to their advantage. Increased leadership opportunities for women on campus—and in the business world after graduation—behave collegiates to be more selective in their association choices.

This points up a potential conflict which affects many Greek women and prospective sorority members. It is the time required to serve as a member of little sister organizations of national and local fraternities. Both the National Panhellenic Conference and the National Interfraternity Conference oppose the establishment of such groups.

Gamma Phi Beta's Grand Council has now gone on record as opposing its member's participation in such groups. They're concerned that doing housekeeping and other chores for fraternities will prevent their women from participating in either Sorority or other leadership groups.

Marjorie Speidel Lundin, (Washington) retiring National Panhellenic Delegate, outlines four primary disadvantages to belonging to a little sister organization:

- 1) It can take so much time that the member hasn't enough left to participate in

her own Sorority's activities.

- 2) On some campuses, rushing for little sister groups occurs at the same time as sorority rushing which means that the rushee has to choose between them.
- 3) Some little sister chapters charge dues and the women often cannot afford both a sorority and a fraternity auxiliary membership.
- 4) Women are treated as secondary citizens, in some cases, being expected to do laundry, housecleaning, etc. as part of their duties.

While selection for a little sister chapter represents a certain popularity achievement, we believe today's young woman should seriously consider whether or not she is wasting chances to develop her special abilities while in a collegiate setting. We think our members' time is far too valuable to take on housekeeping and hostess chores in return for the right to wear another piece of Greek jewelry.

Each woman must decide for herself. However, Gamma Phi Beta strongly feels that each member can more wisely spend her time and talents in other ways.

—Mary Agnes Welsh

GAMMY-GRAMS

from Campustowns, U.S.A.



NASHVILLE, TN

ALPHA THETA'S RUSH SKIT, "CHORUS LINE" BROUGHT DOWN THE HOUSE AT CONVENTION HEE HAW PARTY. IT WAS "THE HIT" OF RUSH AT VANDERBILT LAST FALL. GREAT COSTUMES . . . WONDERFUL SONG PARODIES . . . FANTASTIC CHOREOGRAPHY. IF YOU HAVE THE TALENT, WE WILL SHARE THE IDEA.—KAREN KEYES



AUSTIN, TX

ALPHA ZETAS TAKE FIRST PLACE IN FLOAT COMPETITION FOR ANNUAL ROUND-UP PARADE.—LAURA WINSLOW



WEST LAFAYETTE, IN

DELTA IOTAS "DUG IN" APRIL 16. GROUND BREAKING CEREMONIES FOR NEW \$502,000 CHAPTER HOUSE AT PURDUE FOUND GRAND PRESIDENT KAREN WANDER KLINE (IOWA STATE) SWINGING A SPADE ALONG WITH HCB PRESIDENT JEAN BALLANTYNE RANSOM (NORTHWESTERN).

FIRST NEW SORORITY HOUSE ON CAMPUS IN 13 YEARS. COMPLETION EXPECTED FOR FALL TERM. WILL HOUSE 80 COLLEGIATES, DORMITORY STYLE.

GAMMA PHI BETA HAS DUG IN FOR LONG STAY AT PURDUE.—MONICA REJZER NOVAKOVIC, (WISCONSIN-RIVER FALLS)





COLUMBIA, MO

ALPHA DELTAS WIN OVERALL TROPHY AT SIGMA CHI DERBY DAY GAMES AGAIN. FIVE OUT OF LAST SIX YEARS. SEEN IN HEARTY TUG-OF-WAR STRUGGLE ARE (FROM LEFT) CATHY SOUTHERLAND, PAM RUTLEDGE, JULIE LECHMAN, ANA RODRIQUEZ AND CATHY RYAN—LAURA JACKSON



FLAGSTAFF, AZ

BETA OMEGA AT NORTHERN ARIZONA ANNOUNCES SCHOLARSHIP HONORING MARY BABBITT BILBY (ARIZONA). TRIBUTE ACCELERATED BY MARY'S MOVE TO PHOENIX. THIS FORMER INTERNATIONAL DIRECTOR OF EXPANSION INSTRUMENTAL IN ESTABLISHMENT OF BETA OMEGA. FIRST RECIPIENT LESLIE NORTHUP. WE'LL MISS MARY.—JUDY SEIFERT

SPRINGFIELD, OH

AIRPLANES GET EVEN DIRTIER THAN CARS. SO WITTENBERG'S ALPHA NUS SPONSORED UNIQUE AND PROFITABLE PLANE WASH. FORTY MEMBERS SPENT TWO SATURDAYS WASHING FOUR TWIN-ENGINE PLANES (\$25 EACH) AND THREE SINGLE-ENGINE PLANES (\$20). MUNICIPAL AIRPORT SUPPLIED CLEANING INGREDIENTS.

RENEE BUNGER, PHILANTHROPY CHAIRMAN, REPORTED \$160 RAISED—\$135 TO SORORITY FOUNDATION, \$25 TO MEMORIAL FUND FOR LAMBDA CHI ALPHA KILLED THIS YEAR IN HIGHWAY ACCIDENT.

WHAT NEXT? MAYBE WE'LL WASH "HOT AIR BALLOONS."—JUDIETH E. GALO

PEORIA, IL

BETA ETAS AT BRADLEY ON WINNING STREAK. FIRST PLACE RAISING MONEY FOR PEORIA CHARITIES AT CAMPUS CARNIVAL. FIRST, SIGMA CHI DERBY DAY. FIRST, MILLER BEER CAN DRIVE BOTH FALL AND SPRING SEMESTERS—\$500 PRIZE EACH.—TERRI LONG

IOWA CITY, IA

GAMMA PHI BETA'S RHOS AND DELTA TAU DELTAS KEPT BALL IN THE AIR BECAUSE WE CARE DURING 30-HOUR VOLLEYBALL-ATHON FOR HANDICAPPED STUDENTS AT IOWA. RAISED \$2,400. EVEN UNIVERSITY PRESIDENT WILLARD BOYD STOPPED BY TO WRITE A PERSONAL CHECK.—MELINDA MC NEILLY

MANHATTAN, KS

AMERICAN CANCER SOCIETY SALUTES BETA UPSILON. NOT ONE OF 75 GIRLS IN GAMMA PHI BETA HOUSE SMOKES. FIRST TIME IN HISTORY OF KANSAS STATE THAT A SORORITY MADE UP OF NON-SMOKERS. NO WAY MANDATORY. EACH GIRL, OF INDIVIDUAL CHOICE, MADE DECISION. HAPPY PARENTS OF ONE MEMBER, MR. AND MRS. JOHN SPARKS OF HOLDEN, MO, MADE CONTRIBUTION TO SOCIETY IN TRIBUTE TO ITS WORK FOR THE "POSITIVE GOOD FOR THE FUTURE OF OUR CHILDREN."—MARY GRUBB HICKS, GREATER KANSAS CITY ALUMNAE

GAMMA PHI BETA

More Than a Sorority— an Opportunity

Where do your talents, interests and needs lie? What would you like to do for and with Gamma Phi Betas?

Name _____

Address _____

Collegiate Chapter _____ Year initiated _____

Alumnae Groups _____

Alumnae Offices and Chairmanships held _____

College Major _____ Degree(s) _____

Business experience _____

Volunteer experience _____

Area of collegiate work that would interest you:

- | | |
|---|--|
| <input type="checkbox"/> Province Collegiate Director | <input type="checkbox"/> Chapter Advisory committee |
| <input type="checkbox"/> House Corporation Board | <input type="checkbox"/> Collegiate expansion in your area |

Areas of alumnae chapter work that would interest you:

- | | |
|---|--|
| <input type="checkbox"/> Province Alumnae Director | <input type="checkbox"/> State Membership chairman |
| <input type="checkbox"/> Alumnae Panhellenic | <input type="checkbox"/> Alumnae Chapter officer |
| <input type="checkbox"/> Expansion of alumnae chapter or crescent circle in your area | |

Other areas of Gamma Phi Beta that interest you:

- | | |
|-------------------------------------|--|
| <input type="checkbox"/> TranSiSter | <input type="checkbox"/> International officer (specify) _____ |
|-------------------------------------|--|

Special talents, training or experience:

- | | |
|---|---|
| <input type="checkbox"/> Public Relations | <input type="checkbox"/> Arts/graphics |
| <input type="checkbox"/> Journalism | <input type="checkbox"/> Law |
| <input type="checkbox"/> Finance | <input type="checkbox"/> Leadership/management skills |
| <input type="checkbox"/> Speaker for collegiate or alumnae chapters | |

Are you available for an ongoing experience? _____ A single occasion? _____

Are you able to travel? _____

It would be great to have you with us! The opportunity to grow with Gamma Phi Beta does not end when you leave college. Join us—help yourself. Send this form to:

Gamma Phi Beta Central Office, Box 310, Kenilworth, IL 60043

HAWAII CALLS!

ON THE LINE: Betty Bussey Demarke (San Diego State), Hawaii Alumnae president, and Ruth Bartlett (Boston), corresponding secretary. And here's their news:



Christine Schmoll Ching

Gamma Phi Beta Heads Hawaii Panhellenic

Christine Schmoll Ching (Oklahoma State), former Hawaii Alumnae president, has been elected president of Hawaii Panhellenic. She's its former rush vice president and scholarship vice-president. A substitute high school teacher and volunteer elementary school librarian, she and her architect husband, Timmy, have two children.



Carol Snyder Hine and Jean Elson Woods

Two Members Star in Mardi Gras

Carol Ann Snyder Hine (West Virginia) and Jean Elson Woods (Kansas) were featured in the highly successful musical production, "Color Me Mardi Gras," which ran last February at Pearl Harbor.

Mardi Gras is the major fund-raiser of the Awa Lau Washine ("Women of Pearl Harbor"), an organization of Navy, Marine and Coast Guard officers' wives. In 1977, Mardi Gras donated over \$13,000 to various military and Hawaiian charities.



Docent Sharla White speaking to Hawaii alumnae.

Captain Cook Bicentennial Celebrated

Guided by Sharla White (Oregon), a docent of the Bishop Museum of Honolulu, 20 members of Hawaii Alumnae and their guests were privileged to view the special exhibition of "artificial curiosities" collected by Captain James Cook. First arriving in the Islands January 18, 1778, Cook named them the Sandwich Islands in honor of his patron, the Earl of Sandwich.

The chief, believing him to be a god, welcomed Cook by taking off his royal cloak and putting it on the captain's shoulders. The captain was less kindly treated on his second voyage in 1779, when he was killed by the natives.

Anthropologist Adrienne Kaeppler devoted more than four years to locating and collecting the nearly 2,000 artifacts that were displayed between January and August. Gamma Phi Beta's viewing was the occasion of the February meeting of the Hawaii Alumnae Chapter.

"Ladyfood" To Benefit Foundation; Other Good Buys From Gamma Phis

Dallas Alumnae want to make YOU famous. They'd like your favorite recipes for inclusion in their upcoming cookbook, *Ladyfood: A Collection of Recipes Enjoyed by Ladies and Gentlemen*. (Use form in this issue and submit for kitchen testing by October 30.)

Proceeds from the project will benefit the Sorority's philanthropies and scholarships. Funds will be divided between the Foundation and a scholarship fund to mark 50 years of Gamma Phi Beta on the Southern Methodist campus.

The cookbook will be a hard cover, illustrated volume containing 700 or more recipes from Gamma Phi Betas. It will include appetizers and beverages, salads and dressings, main dishes, vegetables and all manner of desserts and pastries. Entertaining ideas also are welcome.

Ladyfood will sell for \$6.95 plus \$1.05 for postage and handling. Gift certificates are available for this Christmas with book delivery promised for spring. **Pat O'Connell Mullins** (St. Louis) is in charge of packaging and mailing. Order checks should be made out to Ladyfood and mailed to 2716 Rosedale, Dallas, TX 75225.

Sandra Graham Cude (Memphis State) and **Sara Hess McElhaney** (Iowa State) are co-chairmen of the book committee. Sara is specifically responsible for selections and all recipes should be submitted to her at 7518 Meadow Oaks Dr., Dallas, TX 75230.

Heading this gigantic project is **Irene Braden Loosley** (Oklahoma) assisted by **Dorothy Chase Jones** (SMU) and **Betty Mae Conner Jones** (Oklahoma). Serving as liaison between Gamma Phi Beta and Taylor Publishing Company is **Nan Mulvaney** (Texas). *The Crescent* will



DALLAS ALUMNAE unveiled its "Ladyfood" cookbook project at Nashville. Soliciting an advance order from Irene Fleming Frame (West Virginia) were, from left, Lucy Crimmins Eichorn and Jane Dick Ladewig (Southern Methodist).

update *Ladyfood's* story in a later issue. Meanwhile, send recipes and orders for Christmas gift certificates.

Other Boutique Items

Foundation T-Shirts

First offered at Nashville, these T-shirts are red and feature the Foundation logo in white. Children's sizes 6-8 and 10-12 are \$4.00; adults' S, M, L, XL are \$5.00. Add \$1.00 postage and handling for each shirt and send check to Mrs. William S. Hammond, 6751 E. Center Ave., Denver, CO 80222. Proceeds support the Sorority's philanthropies.

Sorority "Campaign" Buttons

Great "campaign" buttons for rush or on-campus wear are offered by **Gamma Mu** Chapter. They are white with green letters spelling out "Gamma Phi Is A Natural High." Order from Amy Peterson, GPB, 515 S. 10th St., Moorehead, MN 56560. Make checks payable to Gamma Phi Beta. The 65¢ cost includes postage.

Needlepoint Name Tags

Reusable needlepoint name tags at 50¢ each are another great item for rush. Handmade by the **Delta Iotas**, they're brown with a gold border and crescent in the right corner. Make checks payable to Gamma Phi Beta and send to 810 David Ross Rd., W. Lafayette, IN 47906.

More Books for Cooks

There's always room for still more cookbooks on the kitchen shelf. A

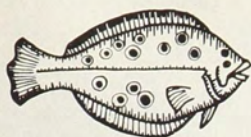
series of three entitled *Gamma Goodies* includes one on hors d'oeuvres, one on desserts and one on casseroles. Individual books are priced at \$2.00; the series sells for \$5.00. It's a timely offer for planning holiday menus, or for gift giving. Make checks payable to the **Columbus Alumnae Chapter** and mail to Jane McMaster, 271 Brixton Rd., Columbus, OH 43221.

Christmas Ornaments

Decorate your tree and your friends', too, with needlepoint Christmas ornaments created by **Milwaukee Alumnae**. They're available in six designs—candle, stocking, candy cane, bell, crescent moon and Gamma Phi Beta initials. Each kit contains hand drawn canvas, wood ring, felt back, yarn and directions. The designs are \$2.50 with yarn, \$2.00 without. Add 50¢ for postage and handling. Specify design and send order to June Ladish, 5944 S. 37th St., Greenfield, WI 53221. Make checks payable to Milwaukee Alumnae, Gamma Phi Beta.

Symbolic Cookie Stamps

Carnations and crescent moons mark cookie stamps presented by the **Corvallis Alumnae Chapter**. Created of clay, the stamps come with shiny ceramic handles in assorted colors. They're available in lots of 12 for \$25. A recipe folder is included with each stamp for individual giving. Send orders to Mrs. Gary Pastega, 4435 S.W. Gold View Ave., Corvallis, OR 97330.



LADYFOOD ... LADYFOOD

*A Cooking Collection
Enjoyed by Ladies and Gentlemen Too*

A Cookbook by Gamma Phi Betas
to benefit scholarships and philanthropies



IT'S NATIONAL . . . We're now collecting recipes from Gamma Phi Betas all across the nation for our exciting, new NATIONAL GAMMA PHI BETA COOKBOOK. Every chapter will be included and we need your recipe immediately.

YOUR RECIPE WILL BE FAMOUS . . . We want to use your favorite, time-tested recipe in this book sold nationwide. So please fill out this form and return it to us immediately.

RESERVE YOUR COPIES TODAY . . . Be sure to reserve your copies now. Just complete the order form below.

RECIPE FORM

NAME AS IT SHOULD APPEAR IN BOOK	
YOUR COLLEGE NAME	
GREEK-LETTER CHAPTER	ALUMNAE CHAPTER
ADDRESS	
CITY, STATE, ZIP CODE	
AREA CODE/TELEPHONE NUMBER	

☐ Yes, Please reserve _____ copies @ \$6.95 plus \$1.05 for postage and insurance.

☐ Enclosed is my check to ΓΦΒ Cookbook for \$ _____.

Please send this recipe form to the following person or people who will also be interested in this project.

NAME
ADDRESS
CITY, STATE, ZIP CODE

RECIPE NAME:

INGREDIENTS:

DIRECTIONS:

MAIL ΓΦΒ COOKBOOK
TO: Sara McElhaney
7518 Meadow Oaks Drive
Dallas, Texas 75230

KALEIDOSCOPE

A cross-country view of alumnae happenings.



RE-ELECTED MAYOR

JANA GILPIN HAEHL (Ohio Wesleyan) has been re-elected to the Town Council of Corte Madera, CA, and chosen as Mayor by her fellow councilmen for the second time.



SALLY ERIKSON LEWIS (Bradley), Chicago Alumnae president, reads a congratulatory note while Executive Secretary-Treasurer Mary Moxley, PAD Frances Black Green and hostess Elizabeth K. Ware listen.



KIMONO-CLAD Stacy Peterson Beaudine (Arizona) and her friend Danny met with past Sorority Grand Presidents Elizabeth Fee Arnold and Beatrice Hill Wittenberg following the Oriental Overture Benefit luncheon last spring. The party, held at Little Tokyo and featuring Japanese entertainment, was sponsored by the Southern California Intercity Council. Proceeds benefited the Arnold-Wittenberg Scholarship Fund.

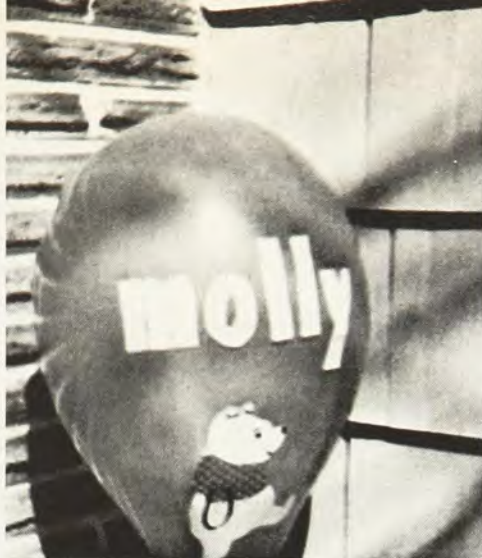
CHICAGO ALUMNAE REACTIVATED

Gamma Phi Beta's newest alumnae chapter is also her oldest! When the Chicago Windy City Crescent Circle was installed as the Chicago Alumnae Chapter on May 18, 1978, our oldest alumnae chapter, associated in 1891, was once again on the roster after a three-year hiatus!

Fourteen charter members, representing 11 chapters, were present to see **Frances Black Green** (Northwestern), PAD V, give the charter to chapter president, **Sally Erikson Lewis** (Bradley). **Mary Moxley** (Northwestern), Executive Secretary-Treasurer, represented Grand Council and presented a gavel as a gift from the Central Office staff. Council nominee for Director of Finance, **Mary Jane Hipp Misthos** (Colorado College) also attended.

Hostess **Elizabeth K. Ware** (Michigan) designed and ordered a special dessert for the occasion: a cake iced in double brown and decorated with a replica of our pin and pink carnations.

In the past, the Chicago group has given career seminars for the Northwestern chapter collegians and supports the Gamma Phi Beta camping program and the National Hemophilia Foundation.



"BALLOON-GRAMS" LIGHT UP FACES

Greater Kansas City Alumnae **Pat Sizemore Pearce** and **Mary Grubb Hicks** (both Kansas) have adopted a unique money-making idea from Pat's pledge sister, **Marcia Bovos Dietchman**, who in turn got the idea from a florist in Dallas where she lives. It's called "Balloon-Games."

The Dallas florist delivered floral arrangements in baskets to which 5" balloons, bearing various congratulatory messages, were attached. Marcia decided she could offer the same service for less—then passed

along the idea to her Kansas City friends. It's a great chapter money-raising idea—or one that can be adopted by individuals wanting to earn pin-money.

Here's how the business goes, in Mary's words:

"Balloon-Grams offers customized designed, helium filled balloons in different sizes (11", 20", 36" and 48"). Size permitting, we print any message and deliver the balloon in the Kansas City area for a set fee.

"A specialty is 11" balloons for

children's birthday parties. Decorated with the guest's name and an appropriate decoration, they serve as place markers, favors and decorations. Other popular items are get well messages for hospital patients and congratulations for new babies. We delight in delivering balloons that are a surprise. As was a 48" anniversary message to a husband in his office. Recently we prepared balloons for the children's ward of a local hospital. They were donated for a party through the Channel 19 (educational channel) Auction.

"Part of our desire to create this business was to make some pin money. We've found, however, that the cash flow is little more than enough to buy additional balloons. The real reward is to see people's faces light up when they see their custom-made balloon. It brings smiles to those from six to sixty. Balloons are decorated with letters and figures made from wrapping paper. We put whatever the customer wants on our product."—Kay Rider McCully (Kansas)



For the Woman with Pride In Herself and ΓΦΒ

There's a certain extra feeling of pride every Gamma Phi Beta experiences when she displays the symbols of her friendship in fine jewelry. When you want to remember that special friend or relative, think of fraternity jewelry by Pollack.

Write for our free catalog of fine jewelry and accessories for Gamma Phi Beta and other collegiate fraternities.

RINGS

1-SR/135G	Signet (rectangular)		
2-SR/366G	Signet (oval) <i>Pictured on model</i>		
3-SR/531G	Recessed Letters		

Sterling Silver	10K Yellow Gold
\$18.75	\$33.50
16.00	29.50
21.50	37.00

BRACELET

4-B/60G	Crescent-Sterling Silver	\$20.00
	Gold Filled	24.00

OTHER INSIGNIA

5-CR/25G	RECOGNITION PINS:	
6-MG/11G	Crest-Gold Filled	\$ 4.00
7-MB/FG	Monogram-Gold Filled	4.00
8-MOTHER	Crescent-Black Enamel-Gold Filled	4.00
	MOTHER'S PIN-Pink Carnation-Gold Filled	4.25
9-PI/G	PLEDGE PIN-Brown Enamel with Yellow Crescent-Gold Filled	2.00
-PS/58G	1896 Monogram Pin (not illustrated)	
	10K Yellow Gold	\$14.50
	Sterling Silver	\$ 9.50
-SP/11G	STICK PINS (not illustrated)	
-SP/40G	Crest-10K Yellow Gold	\$12.00
SP-58G	Gold Crescent-10K Yellow Gold	12.00
	1896 Monogram-10K Yellow Gold	12.00

PRICES SUBJECT TO CHANGE WITHOUT NOTICE. Please add 2% for postage, handling and insurance (minimum 50¢) to all orders for above merchandise; add \$1.00 service charge on orders less than \$10.00.

J. O. POLLACK co.

1700 WEST IRVING PARK ROAD • CHICAGO, ILLINOIS 60613

Issue Highlights



2/We Are Great In '78

2) WE ARE GREAT IN '78! Grand President gives exuberant message on the State of the Sorority. 5/A Unique Gathering.

8) WISHES GRANTED . . . AND EARNED! Meet stars of Convention's Honoring evening.

12) STRAW HATS AND HOWDY! Carnations added to Minnie Pearl bonnets by Confirmed Conventioneers. 13/ Magazine order form.

25) HONORS! Annual review of individual and chapter achievements.

Other features: 14/ Grand Council appointees. 16/ In Memoriam. 17/ Annual Directory of International and Chapter offices. 32/ Gammy-Grams. 34/ Alumnae membership form. 35/ Hawaii Calls. 36/ Good Buys. 37/ "Ladyfood" 38/ Kaleidoscope.



25/Honors



36/Good Buys

☐ Check here if change of address is for other than addressee.

CHANGE OF ADDRESS OR NAME REPLY

Members are responsible for all address changes. Allow 4 weeks.

Maiden Name _____ Chapter _____

My profession or training is in _____

New name if different from label

Title

Last

First

Middle

Entire new address

Street _____

City _____ State _____ Zip _____

PLEASE DO NOT REMOVE OLD LABEL

Clip form, place in stamped envelope and mail to Gamma Phi Beta Sorority, Box 310, Kenilworth, IL 60043.