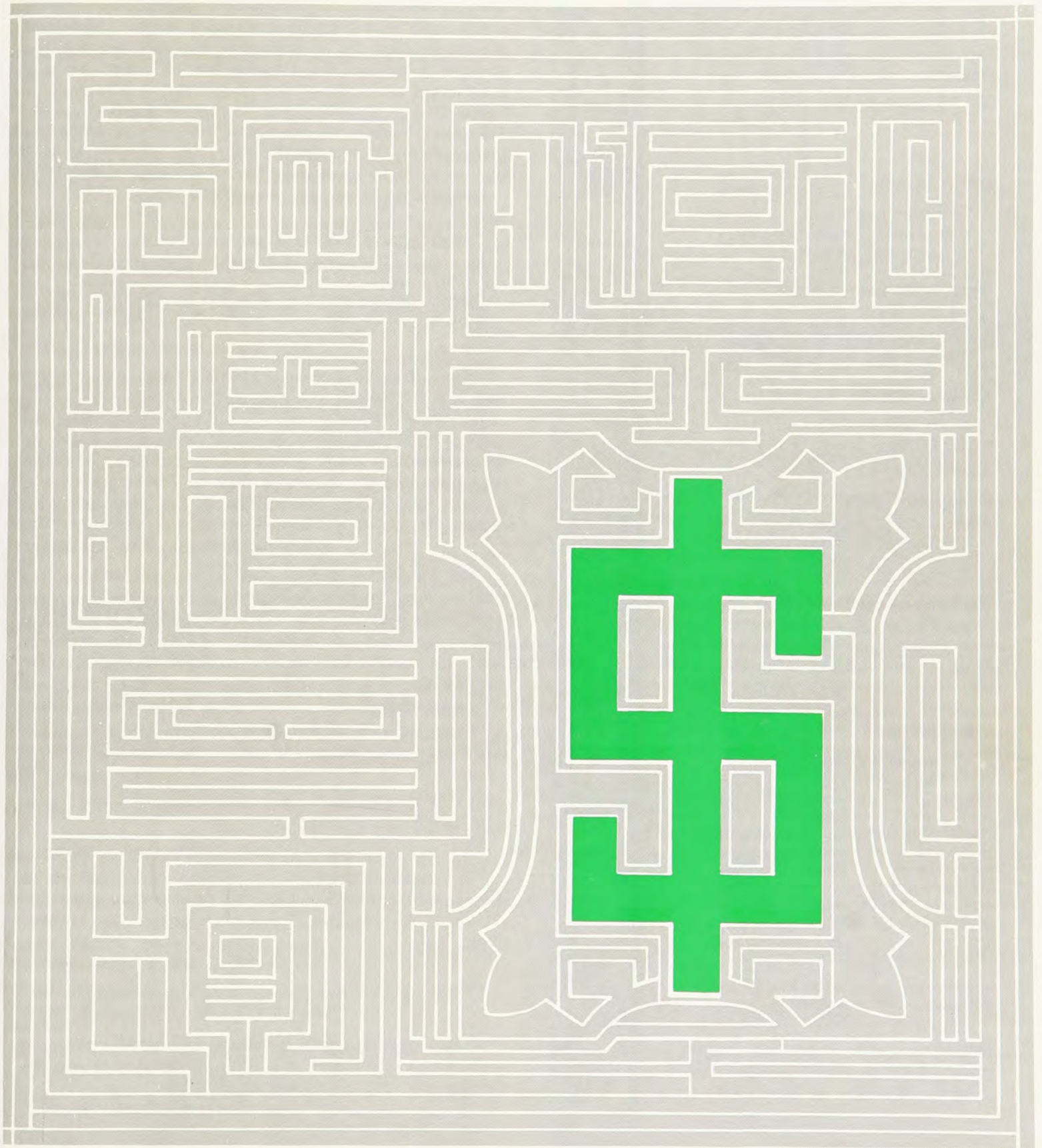


The Crescent

Gamma Phi Beta



The Money Maze
September 1975

SPEAK NOW, OR FOREVER . . .

hold your "peace" regarding an annual May CRESCENT in tabloid form. The format was conceived in response to demands for re-instatement of Chapter Letters. Obviously some were pleased—others alienated. Grand Council would like to hear more before it meets in mid-November. Write the Editor tomorrow, if not today!

—The Staff

Editor-in-Chief

Geraldine Epp Smith
300 Mansion House, Apt. 1501
St. Louis, MO 63102

Feature Editor

Donna Logan
827D Southwest Blvd.
Jefferson City, MO 65201

Alumnæ Editor

Kristin Brandt Riske
2159 Evans Court, #204
Falls Church, VA 22043

Collegiate Editor

Mary Agnes Welsh
3365 Steve Rd., #6
Memphis, TN 38111

Business Manager

Mary M. Moxley
Central Office

THE CRESCENT

Volume 75, Number 3
September, 1975

THE CRESCENT is published quarterly in March, May, September and December by the Gamma Phi Beta Sorority, 630 Green Bay Road, Kenilworth, IL 60043. Printed by George Banta Company, Inc., Menasha, WI 54952. Second class postage paid at Kenilworth, IL, and additional mailing offices. Printed in the U.S.A.

POSTMASTER: Please send notice of undeliverable copies on Form 3579 to Gamma Phi Beta, Box 310, Kenilworth, IL 60043.

SUBSCRIBERS: Send all questions and changes of address in regard to the Directory of International Officers, chapter list, membership chairman, chapter presidents' lists and In Memoriam to Central Office, Box 310, Kenilworth, IL 60043.

OUR MEMBERS ARE TALKING ABOUT . . .

. . . THE CRESCENT

Notifying the Sorority of a new address after two years in Vanga, Republique du Zaire, Sally Anne Whitby (Toronto) wrote:

"I cannot tell you how it felt to receive *The Crescent* in this isolated Mission station. Nostalgic . . . slightly homesick . . . very proud . . . thankful for so many happy memories . . . ambitious in my plans to keep in touch . . . delighted about expansion . . . impressed by the very fact that *The Crescent* found me here. I always left the latest issue in a conspicuous place hoping someday a fellow missionary or Peace Corps volunteer would say those cherished words: Are YOU a Gamma Phi, too? One Peace Corps fellow did break into the Sorority chant, and a missionary friend said she was an Alpha Chi Omega, but never a Gamma Phi."

Sally looks forward to finding many in Ottawa.

. . . THE CONTROVERSIAL MAY TABLOID

As already indicated, feelings ran strong. Here are excerpts from letters which express varying viewpoints:

"Please count me out! Don't send me anymore of these. After 42 years, I've had it."

—E. M. Green (Syracuse)

"Many of the Tulsa Alumnæ liked the chatty, casual newsmanship of the periodical. It is assumed this type of journal costs considerably less and expense is a major consideration. My own personal observation, however, is concerned with its non-permanence. Many articles needed for future reference (TransISter and membership) will not survive the test of time. My own copy already has two major tears from normal (?) handling."

—Leonite Selzer Moore, Tulsa Alumnæ

"We thought the tabloid worth a try, but don't think it is what we want. Perhaps we could just have a newsletter issue—or would it be possible to use the fine print in a regular issue. If we must cut, we'd rather see one less issue and retain the quality. This was the consensus of our Inter-City meeting with nine alumnæ chapters represented."

—Robyne Steele, Covina, CA

"I liked the tabloid—found it very easy to read. It caught one's attention very well."

—Dixie Bartell, Houston Alumnæ

"I was so enthused about seeing chapter letters again that I didn't give it an 'editorial' eye."

—Sally Erickson Lewis (Bradley)

"Our members found the tabloid was not as readable as the magazine format and not as easily stored for future reference. If economy is all that important, then this is better than nothing."

—Shirley Tice, Ames Alumnæ

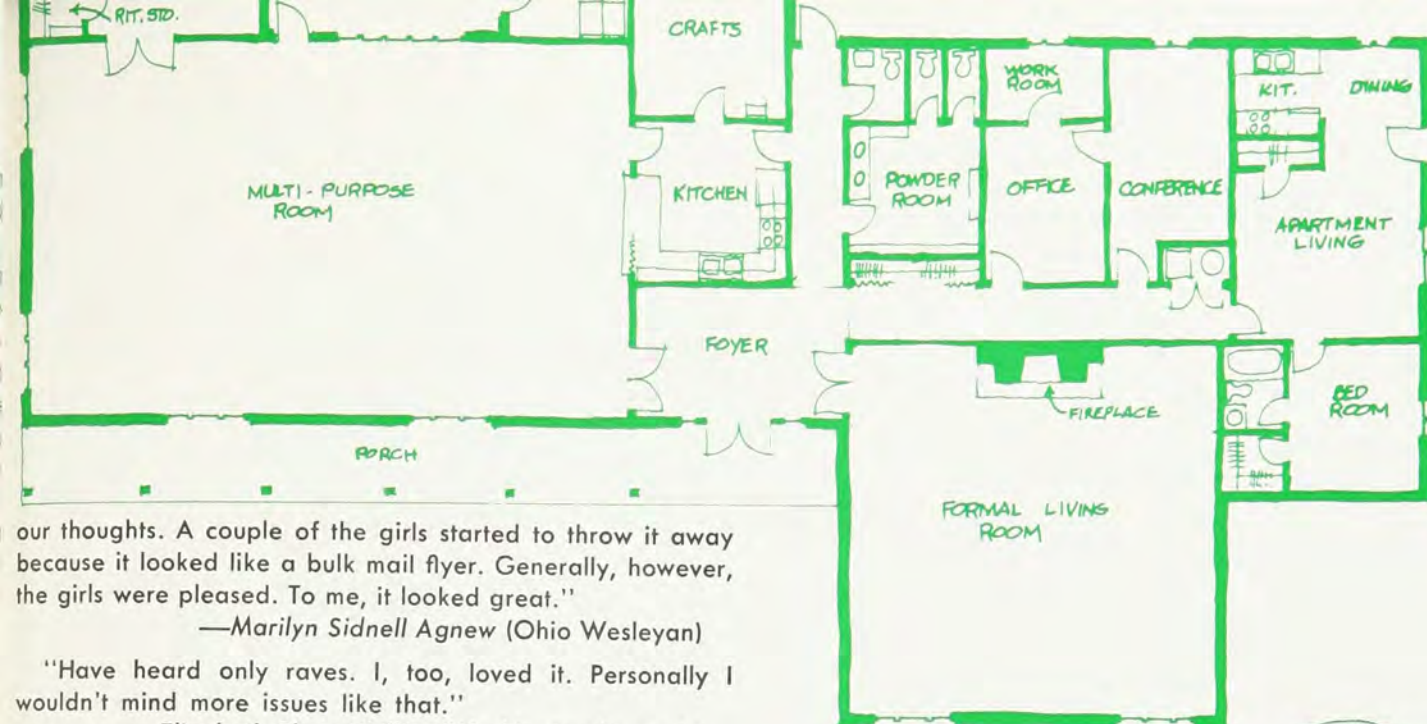
"What a SUPER issue. I really like the newspaper format."

—Julia Templeton, Charleston, SC

"I have always looked forward to our friendly magazine and this issue was quite a letdown. Perhaps mine was the only one received in such ragged condition."

—Isabel Bunan Scoon (Rollins)

"The Boston West Suburban Alumnæ asked me to write



Lodge Facilities for
Gamma Phi Beta Sorority at Texas Tech. View from Greek Circle.

our thoughts. A couple of the girls started to throw it away because it looked like a bulk mail flyer. Generally, however, the girls were pleased. To me, it looked great."

—Marilyn Sidnell Agnew (Ohio Wesleyan)

"Have heard only raves. I, too, loved it. Personally I wouldn't mind more issues like that."

—Elizabeth Sloan Phillips (Washington-St. Louis)

"I have always enjoyed it (Crescent) so, but this new format is very unattractive. Is there any way the old publication can be restored?"

—Paula Hayes (Missouri)

"I very much enjoyed the tabloid. It was very readable and must cost a good deal less to publish than the magazine."

—Fitty Fisher Harrison (Ohio Wesleyan)

"LOVED the tabloid. Imagine you've heard it both ways though—I know some prefer the 'permanence' of a magazine. I'd like to see the tabloid at least once a year, and wouldn't be against a complete changeover if it would save lots of money."

—Lynn Thompson (Memphis State)

WOULDN'T YOU LIKE TO ADD YOUR TWO CENTS WORTH?

... CRIME ON CAMPUS

Bike thefts, drug arrests and rape incidents—these are subjects for concern on the part of school administrators today. As more and more became alert to the seriousness of the situation, crime preventive measure are being introduced.

At the University of Illinois, for example, the administration offered an indoor tennis court for bike storage with guaranteed protection from theft over holiday periods. The service is continuing. (It certainly beats toting bikes to one's room, or parking them in the sorority house lounge.)

Under a program called WhistleSTOP, many college women are carrying whistles when on campus walks, the street, a parking lot or entering a garage. If one senses personal danger or sees a suspicious happening, the whistle should be blown as a distress signal. WhistleSTOP has many advocates at St. Louis, Washington, Missouri and Kansas universities.

Gamma Phi Beta Casey Eike, assistant Dean of Women, KU, has prepared a slide presentation entitled "Women Take Warning." It includes general safety precautions, especially those needed by women. Ruthi Baird (Kansas) also reports the campus has a Rape Victim Support Service.

... BETA TAU'S NEW LODGE

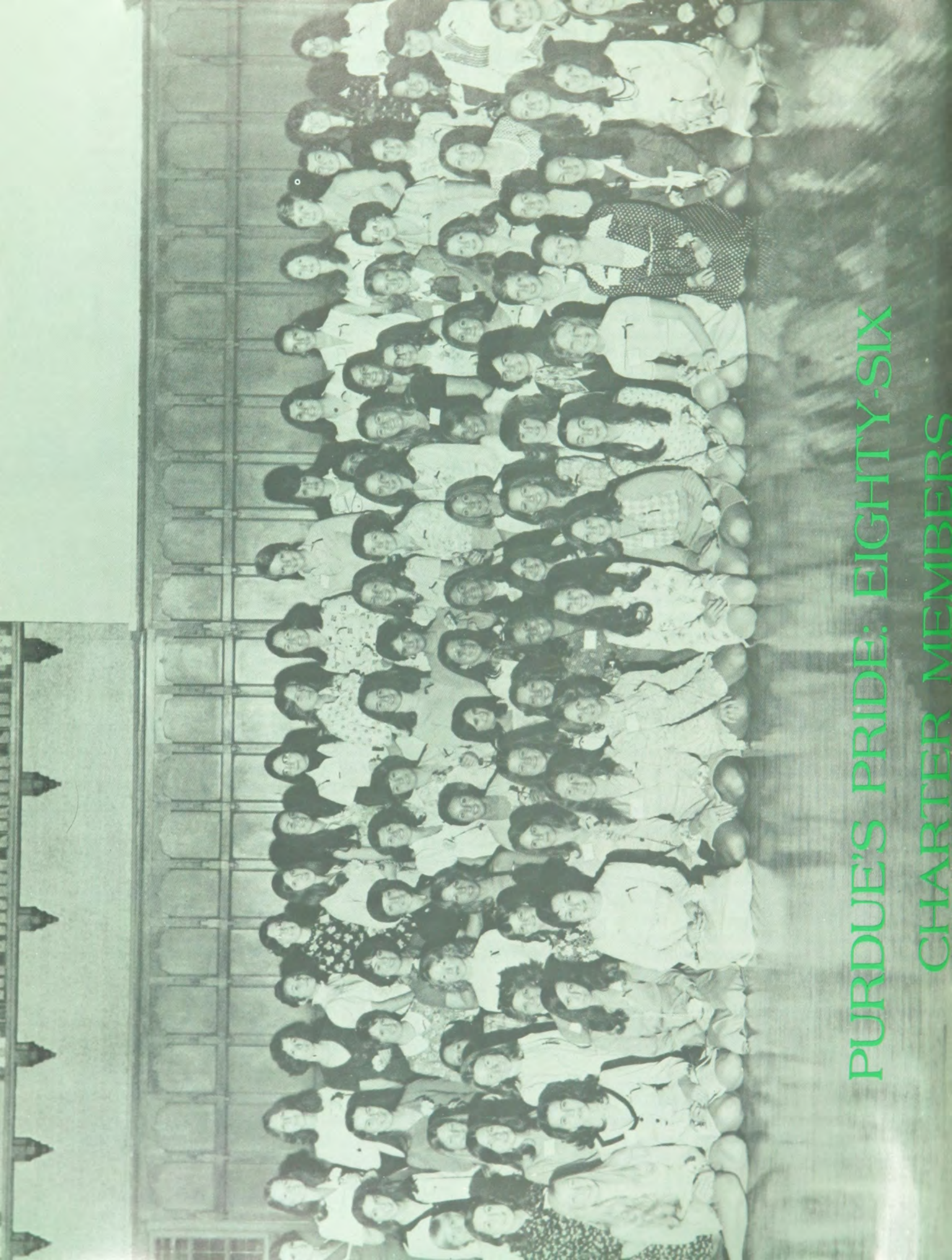
Construction on a \$110,000 lodge on Greek Circle is moving along at a rapid pace as Beta Tau Chapter plans for its dedication and a November 1 open house as part of Texas Tech's homecoming activities. The 5,436 square-foot building has a Southwestern architectural decor.

Ground breaking ceremonies were held April 19 in Lubbock, according to Rebecca Young Clinton, Crescent correspondent. Glora Martin Fuller (Oklahoma), chairman of the Building Fund and acting president of Beta Tau Corporation Board, dug the traditional first shovel of dirt. Others participating in the ceremonies included Molly Hopkins, chapter president; Claudene Terrazas Cone (Texas Tech), Lubbock Alumnae president; Ruth E. Ford (MC & C Meridian), corporation treasurer; Martha Cates Johnston (Texas Tech), corporation vice president; Jo Beth Barnes Robertson (Texas Tech), alumnae vice president; and Mary Jo Forrest English (SMU), former Province Collegiate Director.

... NORTHERN IOWA'S "COLLEGE BOWL"

Who knows more about the Sorority's history—the Greeks or the pledges? That's the question posed by Terri Hammer, Gamma Psi correspondent. Her chapter found out by staging a college bowl match. It suggests a novel idea for a Founder's Day program—Greeks vs. pledges, or Greeks vs. alumnae, or just sisters vs. sisters.

Pick names from a hat to make team selections fair—five for each. Then ask dates about founders, dates, ideals, motto, colors. (See September, 1974 Crescent Crossword or pledge manual for ideas.) Give points as in a spelling bee. Team with the most wins. Award small prizes if budget permits.



PURDUE'S PRIDE: EIGHTY-SIX
CHARTER MEMBERS

Delta Iota Installation Highlights



JOANNE VOLAKAKIS, president of the Delta Iota Pledge Class, accepted the charter from Grand President Betty Luker Haverfield.



SALLY BRENNEMAN, one of 86 collegiate initiates, received congratulations from Rosetta Roodhouse Erb, chapter advisor; Barbara Geiser Ilgen, Lafayette Alumnæ president; and Jean Ballantyne Ransom, field representative.

TWO TO GROW ON!

Grand Council has revealed colonization plans for two additional chapters of Gamma Phi Beta:

Lehigh University, Bethlehem, PA in September
University of California-Riverside in October.

A lifetime of experiences in Gamma Phi Beta began for 86 charter members when Delta Iota was installed April 9 at Purdue University, Lafayette, IN. It was the Sorority's second new chapter into our second century. On January 18, Delta Theta was added to the Chapter Roll at California State Polytechnic University—the ninth California collegiate chapter.

In accordance with an old Purdue tradition of rain on the day of any important event, ominous tornado watch sirens greeted "biggies" arriving for the installation weekend activities. So reported Carol Conner, Purdue's charter CRESCENT Correspondent. "But we still had a great time entertaining our guests with skits and music." These included three past Grand Presidents: Ruth Bartels Fox (Northwestern), Charlotte Robertson White (Washington-St. Louis), and Ardis McBroom Marek (Northwestern).

Initiation ceremonies for the Sorority's record-breaking pledge class were held Saturday afternoon at University Church. At the same time 21 special initiates were activated. The installing chapter was Beta Pi (Indiana State). Betty Luker Haverfield (Missouri), Grand President, and Marian Corley Hulsey, International Ritual Chairman, conducted the ceremony. Immediately following, members of Beta Phi (Indiana) held a model chapter meeting.

Highlight of the weekend was the Installation Banquet Saturday night at Holiday Inn. At that time Mrs. Haverfield presented the Delta Iota charter to Joanne Volakakis, chapter president. Rosetta Roodhouse Erb (Washington-St. Louis), chapter alumnæ advisor and pledge director for Special Initiates—Lafayette Area Alumnæ, also announced individual awards.

ILLUSTRIOUS GUEST LIST

In Lafayette to participate in the festivities were these International and Province officers: Elizabeth Sloan Phillips (Washington-St. Louis), Alumnæ Vice President; Karen Wander Kline (Iowa State), Collegiate Vice President; Elna Magnusson Dimock (Idaho), Director of Expansion; Karen Nilson Grafe (Indiana), PCD; and Charlotte Hamilton Mason (Michigan), PAD.

There, too, to enjoy "the fruits of their labor" were Linda Pearson (Indiana State), collegiate consultant; and Jean Ballantyne Ransom (Northwestern), field representative. Barbara Geiser Ilgen (Illinois), president Lafayette Alumnæ, was the toastmistress. More than 300 attended the history-making event.

The Panhellenic reception accorded Gamma Phi Beta as the 15th sorority on Purdue's campus has been tremendous, Carol further reported. "Our spring meetings were highlighted by serenades from various fraternities, and our social calendar has been filling up with sorority-fraternity invitations that stretch well into next year."

"We can barely wait to begin living together in fall," she added. Second and third floors of Graduate House West have been assigned Gamma Phi Beta until such time as the chapter buys or builds its own house.

Many chapters raise money by selling articles through THE CRESCENT's Good Buys column. Herewith a listing of both new and continuing items. Perhaps one or more will solve a gift giving problem for you.

Founders in Needlepoint

The striking cover of the March '75 CRESCENT, depicting the Sorority's four founders, has been reproduced in a needlepoint kit from the St. Louis Alumnae. The complete kit, 13 X 15" finished size, in brown, black and white, with handpainted canvas and Persian yarns is priced at \$25.00, postage paid. The canvas only is available for \$10. This would make an ideal gift for an outstanding alumna on Founders Day, or to a chapter. Each canvas can be custom designed to include a name or chapter. Color or size modifications can be made.

The Founders also are available in sets of four individual portraits, each 10 X 12", for \$25, postage paid (4 canvases only). Order from Mrs. D. W. Bond, 12 Bayberry, Florissant, MO 63033.

Crewel Kit—Crest Motif

Oklahoma City Alumnae offer a crewel kit featuring the Gamma Phi Beta crest. Kit includes stamped linen, quality wool yarn and complete instructions. There also is backing in case you wish to make it up into a pillow. Cost \$7.00, including postage. Mail checks payable to Gamma Phi Beta to: Mrs. Richard M. Jennings, 6721 Willowridge Dr., Oklahoma City, OK 73122.

Embroidered Coat-of-Arms

Here's another ideal gift for an outstanding alumna or close Sorority friend. Swiftsure Heraldic Arms of Seattle, WA, embroiders the Gamma Phi Beta coat-of-arms for \$18.74. For \$2.00 extra, a name can be embroidered in Old English lettering. Price includes the gold oval frame for this handsome 5 X 7" wall hanging (rectangular if a personal name is included). From each sale, \$5.00 will be donated to the Gamma Phi Beta Foundation. Mail orders to Central Office, Box 186, Kenilworth, IL 60043.

GOOD BUYS FROM GAMMA PHIS

Delightful Greeting Cards

What's the occasion? Pasadena Alumnae can help you express yourself with one of these original greeting cards. There's a white card illustrated with a pink perambulator with pink carnation wheels, that reads: "Congratulations on your little legacy." Other designs are for birthdays, anniversaries, showers, graduations and more. Price: 30 cents per card in assortments of 6 or 12. Order from: Mrs. Robert Kenney, 2385 Adair, San Marino, CA 91008.

Bibs for Gamma Phi Babies

The demand for these heavy white terry cloth baby bibs goes on. Each, printed in brown, shows a happy, chubby baby perched on a crescent moon. Boston Alumnae embroider the tiny pink carnation the baby holds. Two styles available: "My Mommy is a Gamma Phi" or "My Grandma is a Gamma Phi." Price \$2.00, postage paid. Order from Mrs. W. F. Burt, Longmeadow Rd., Lincoln, MA 01773.

Eye-Stopping Post Cards

Brown and mode post cards, symbolically printed with a crescent moon and carnation emblem, come plain for use in writing personal messages, or in meeting notice form to remind members of the date, place, etc. Offered by the Fort Lauderdale Alumnae, both styles are available in packets of 100, \$4.00 per pack, postage paid. Order from: Mrs. James R. Hyatt, 5778 N.E. 17th Ave., Fort Lauderdale, FL 33308.

Attractive Playing Cards

Cards with a Sorority theme and a brown-and-mode color scheme are available from the Calumet Area Alumnae. Gift boxed, they sell for \$3.75 per double deck; \$3.25 in lots of 10, postage paid. Order from Mrs. Robert Bielfeldt, 6329 Moraine, Hammond, IN 46324.

Gamma Phi T-Shirts

Be proud of your sisterhood. Wear a distinctive T-shirt of brown cotton (100%) with the large words Gamma Phi Beta written across the front in pink. You won't be missed! In small, medium and large, each shirt is \$4.00, postage paid. Order from Delta Alpha, Gamma Phi Beta, Hagestad Student Center, River Falls, WI 54022.

Stainless Steel Knives

Tallahassee Alumnae continue their stainless steel knives with hollow ground blades and polished aluminum handles. Among the many available sizes are: paring knife, \$1.00; single steak knife, \$1.25, or a boxed set of six, \$7.50; butcher knife with 6" blade, \$2.00; slicer with 8" blade, \$2.25; carving set, \$4.50; and knife sharpener of German steel, \$1.00. Postage is \$1.00 for each order. Mail checks or requests for complete list of offerings to Mrs. Cyril V. Smith, 1836 Westminster Dr., Tallahassee, FL 32304.

"Nostalgia" in Book Form

Mary Kay Dorman Kabler's "Nostalgia" articles, which ran in THE CRESCENT as a prelude to our Centennial, have been published in booklet form by the Denver alumnae. This limited edition, bound in a soft pink cover, is available for \$2.25, postage included. Order from: Mrs. Earl T. Pinney, 6915 South Garfield Way, Littleton, Colo. 80122.

Get In On the Act

If your chapter is selling articles, for whatever money-making purpose, THE CRESCENT will be happy to give you advertising space. Just send all pertinent information to the Editor. However, all articles offered for sale must be approved by Grand Council of Gamma Phi Beta.

The Money Maze

Alumnæ Exchange on Fund Raising:

To settle on a money-making project for an alumnæ chapter is like choosing which path to walk upon entering an English maze garden. What leads to success for one can deadend for another, and vice versa.

There are so many things to consider before making a decision. But don't overlook these basics:

- 1) How many of your members are willing to get actively involved in working?
- 2) How much interest and enthusiasm will the project generate among non-working members and the public? After all—someone has to do the buying at auctions or art sales, the attending of fashion or magic shows.
- 3) Is the idea unique in your community—or does another organization already have the inside track on a Decorator's Showcase or a Christmas tree sales lot.
- 4) What or who will the project benefit? Charities have broader appeal than chapter treasuries. The latter benefit best when the project satisfies a basic, continuing need for members—magazine, stationery or Christmas card sales, for example.
- 5) Does the project have publicity value for the chapter?
- 6) Does the profit potential outweigh the investment in money, time and energy it will require?

The answers to these and many other questions are essential to reaching a decision. But here, as part of *The Crescent's* continuing Idea Exchange, are fund-raisers that have proved successful for Gamma Phi Betas. See if any might suit your chapter.

—The Editor

A Refreshing Idea

A unique Stay-At-Home Tea proved a rewarding money-maker for the **Philadelphia North Suburban Alumnæ**. It required so little effort, too. Personal invitations were mailed along with a tea bag to members in the area. The invitations read:

A busy life we all do lead
Yet like to help a friend in need
This little tea bag is the clue
To what we sincerely hope you'll do.
You don't have to come—it's money you send
No cookies to bake, no silver to lend
No need to dress up, no hair-dresser's dryer
Just sip of your tea and sit by the fire.
And when your cup's empty and you've enjoyed all the
thrill
Perhaps you'll remember the girls with a gift.

The "girls" in this case were the Gamma Beta members at Gettysburg. Almost \$400.00 was realized and is being used to redecorate the Sorority suite—rugs, draperies, etc. The poem, of course, can be revised to fit an individual situation. Any questions? Direct them to: **Mary Jean Hart**, 6 Brookside Rd., Philadelphia, PA 19118.

The Saleable Holidays

As in retailing, there's money to be made out of Christmas. Ask the **Birmingham MI Alumnæ** and they'll tell you

so. They sold enough holly to buy two wallabies (miniature kangaroos) for the Detroit Zoo last year. For additional information, write **Carmella G. Murry**, 2824 Traf-ford Rd., Royal Oak, MI 48073.

Visits from Santa Claus proved a rewarding new venture for the **Wichita Alumnæ Chapter** last Christmas season. Members' husbands, dressed up as Santa, made calls to private homes—with a charge made for visits, of course. Each child was able to sit on Santa's lap and talk to him—then given a candy gift.

Organized and coordinated by **Sue Billings Steele** (Wichita State), the project realized about \$200.00. But with the Santa suits now paid for, the chapter anticipates much better results this December. Proceeds benefit Camp Wonderful for mentally handicapped children. Contact: **Kay Reid Hoffman** (Oklahoma City), 202 N. Broadview, Wichita, KA 67208.

The Christmas Idea House has become a pre-Thanks-giving tradition for the **Flagstaff Alumnæ**. Each year a lovely home is obtained—then fabulously decorated. Most of the items shown are for sale, as are the two or more individual Christmas items or ideas donated by each alumna member.

Each alumna also is asked to furnish ten dozen cookies and these are served from a refreshment table. (Extras are wrapped and sold, as is a recipe book on favorite cookies.) The house is shown from 1 to 4 P.M. on the Saturday and Sunday prior to Thanksgiving. Admission is \$1.00. For



ALL SOLD OUT! Stocks were depleted in the Children's Shopping Room at the end of Oklahoma City's Candy Cane Lane.



SHOWING OFF best selling items at the 1974 Tulsa Talent Auction and Bazaar (from left): Anne Powell McCarty, Amanda Brant Lawrence and Lynda Kay Matthews VanFossen (all Oklahoma State). These included a puff quilted Christmas tree skirt, stuffed turtle, rag doll and NOEL wall hanging.



ART AND ANTIQUE SHOWS are proving lucrative for numerous chapters. At the Northern Virginia Alumnae's Soiree D'Art (from left): Nancy Yount Reberger (Idaho), Betty Roessler Griffin (Nebraska), Audrey Powers, guest, and Phyllis DeHaven Jones (SMU).



OMAHA ALUMNAE'S "Garden Party" chairman, Jani Gogela (right, Nebraska) and her assistant, Donna Lammert (North Iowa) tell a \$800 success story. The May event benefited camps.

Right: KATHY WHITE and Mary Ann Jones fill out "charge" cards at the Columbus "Checks for Children" Auction. Guests pay one lump sum at evening's end.



CROSS CHECKING their order sheets for the Cedar Rapids Alumnae plant sale were Elaine Martin Miller (Michigan-Iowa State), Joanne Just Smith (Iowa State) and Sharon Barry Elderkin (Iowa).



Money Maze (cont.)

further details, write **Bernetta Grape**, 1202 Navajo Dr., Flagstaff, AZ 86001.

What's In—What's Out at Bazaars

Kitchen aprons are out, hostess aprons are in. So report behind-the-scene experts on the Tulsa Talent Auction and Bazaar. Now busily at work preparing for their 11th annual talent event, the **Tulsa Alumnæ** say they try to keep abreast of what the "in thing" is each year. For example, bread dough art has already made the rounds there and calico materials will die with the Bi-Centennial next year. (They will have some macrame this year.) Easiest items to move are those with holiday appeal—as gifts or decorations.

Workshops are conducted throughout the summer months so that members can work together on their talent and bazaar items. Big-ticket merchandise goes on the auction block; items under \$5.00 go into the bazaar. Puppet theaters constructed from donated plywood will be featured in the 1975 auction. One appropriately decorated for boys will have cowboy and Indian hand puppets. For details, write: **Leonite Selzer Moore**, 2807 S. Peoria, Tulsa, OK 74114.

Children Help Children

When the children turn out for **Oklahoma City Alumnæ's** annual Candy Cane Lane, they are helping other children. All proceeds from this popular event go to children's Convalescent Hospital. Consequently, the Will Rogers Garden Center Exhibition Hall is turned over to the sorority for three days at no charge. Over \$1,300 was raised at last year's event chaired by **Laura Ford Deaver** (Oklahoma State).

In support of the project, many pre-schools bring their youngsters in buses, terming the event a field trip. Most are brought by mothers driving car-pools for Scout troops, etc. And they turn out in droves—paying 50¢ admission. Each child leaves with a hand-painted ornament and a self-made Christmas card, for sure—and most with family gift purchases.

Santa's Helpers man the Children's Shopping Room. Here, out of mother's view, a child can make gift selections. There is a tremendous assortment of items (key chains, wooden herb plaques, pot-holders) priced at \$1.00 or less.

Other festive features of this gala event: each child walks through a lane of wooden candy canes to get to Santa's Throne; there's a Frosty Puppet Theatre to keep youngsters occupied while waiting their turn to visit Santa; decorated Christmas trees are scattered throughout the hall and music fills the air. A plant sale and bazaar keep mothers patiently waiting. For more pertinent details, contact: **Janice Lee Romerman**, 3509 N.W. 44th, Oklahoma City, OK 73112.

Three Unique Ideas

San Antonio Alumnæ raise money by waiting tables at The Gazebo of Los Patios. (Los Patios is a group of fancy shops which began with a landscaping company situated on a cypress lined creek.) The Gazebo is open for lun-

cheon and tea. One group (say a bar or medical auxiliary or a sorority) agrees to furnish waitresses for a week. Volunteers get the wages and tips for their respective organizational treasuries. According to **Zula Williams Vizard**, "it's all rather fun because few women work more than one day and people are forgiving of errors." She points out that proprietors of restaurants or tearooms in other communities might be willing to try this. It has publicity value . . . plus it brings in the friends of waitresses for lunch. Zula can be reached at 11824 Persuasion Dr., San Antonio, TX 78216.

Topeka Alumnæ ardently support the Topeka Panhellenic Council's annual Stitch-a-rama Plus. The idea was conceived in 1971 by **Pug Mandl** (Vanderbilt) while Panhellenic president. Originally set-up as a sewing fair and contest, it has been expanded to include crafts. National companies send representatives to demonstrate innovations in sewing and fashions. It could be an ambitious program for a larger alumnæ chapter. For details, write: **Ceil Robertson Priest**, 2903 West 20th, Topeka, KA 66604. Send self-addressed, stamped envelope.

Tucson Alumnæ stage a benefit magic show. It's a day of merriment and mirth for the Arizona University Hospital Pediatrics Art Project. In addition to amazing magicians, the event features such film classics as the Little Rascals, Laurel and Hardy and The Three Stooges. Write: **Mrs. Michael Harris**, 6910 Soyuluna Pl., Tucson, AZ 85715.

Plant Sales Popular

Unless someone else in the area has beat you to it, a sorority sponsored plant sale seems a good way to grow money for a philanthropic project. Many alumnæ chapters so report.

When **Omaha Alumnæ** began its annual "Garden Party" in the early 60's, a boutique and food sale were included. Now, according to **Sharon Dunham**, "we've trimmed it down to a plant sale only. That's where we make the money."

To be successful, the sponsor must have good nursery stock and a cooperative nurseryman. Another important ingredient for success is a good variety of plants. Omaha offers perennials and annuals, some vegetable plants (especially tomatoes) and any special requests such as for rosebushes or hanging baskets. Six weeks prior to the event, a newsletter is sent to all alumnæ with order sheets. Nearly all orders are made before the party because the nursery will not take back unsold plants. (Extra plants always are ordered for the Garden Party itself, but there is no magic formula for this.) On the day of the sale, alumnæ arrive early to box the orders and set them aside for pick-up. Filling them usually requires 3-4 hours of steady work.

Like Omaha, the **Cedar Rapids Alumnæ** sell plants in support of camping programs. According to **Joanne Just Smith** (Iowa State), Cedar Rapids offered 36 kinds of flowers and vegetables at its 11th annual Garden Party, raising \$450. For additional tips, write Sharon, 6411 S. 75 Ave. Circle, Omaha, NE 68127.

New Money-Makers in Kansas City

Over the years, CRESCENT readers have read of the suc-

Money Maze (cont.)

cess of the **Greater Kansas City Antiques and Art Show**. An update on this 15th annual event seems appropriate since two innovations were introduced last fall.

According to **Sue Ann Wiltse Fagerberg** (Kansas State), the **Kansas City, KA Alumnae** now sponsor a cheese and cider booth. Last year it brought in a \$245.00 profit. The **Evening Group, Greater KC**, has an herb and spice booth. In addition to 18 spices, it sells cinnamon sugar shakers, nutmeg graters and "spice ropes." The latter, a real hit, consist of a double rope of jute with five small calico bags tied on at 3-inch intervals. Each bag contains a different spice which can be used for cooking, or simply use the rope as a fragrant kitchen decoration. A free booklet about spices, including recipes, was given free with each \$2.00 purchase. Over \$300 was raised, and the group expects to do better—having learned how to cut some expenses.

The Antique and Art Show raised \$10,000 last year. Expenses of \$6,500 are projected for this fall's show. It's not a project for all alumnae groups but interested parties may write: **Mrs. Fred Rowland**, 9315 Pawnee Lane, Leawood, KA 66206. Get cheese details from **Mrs. David Schmidt**, 9001 W. 104th, Overland Park, KA 66212; spice information from **Mrs. Richard Fagerberg**, 6741 Granada Rd., Prairie Village, KA 66208.

Other Lucrative Art Shows

Equally as well known as the KC show are those sponsored by the **Denver and Houston Alumnae**. Launched in 1966, the Denver show originally featured 90 artists; this year's Art Mart had 200 Colorado artists displaying their talents in oils, watercolors, pottery, jewelry, macrame and other crafts. The event averages \$8,000 in support of the Sorority's camping program.

Houston's Gamma Phi Gallery has drawn profits ranging from \$3,000 to \$6,000 in its distinguished history. The major difference, it's pointed out, is location. If too much money is spent on rent, it is almost impossible to overcome. **Mrs. James L. Richman** has developed a fantastic 7-page outline regarding this project—make-up of committees, duties of each member, show details and warnings against pitfalls. If your group is really serious about tackling such a major project, write **THE CRESCENT Editor** for a copy of Ada Lou's report.

To benefit the local Multiple Sclerosis Society and send a child to camp, **Austin Alumnae** sponsor a three day antique show and sale with cut glass, silver, china, jewelry, heirloom dolls, European furniture and porcelain. In addition there's a Gamma Phi Gingham Gallery with plants, cornhusk dolls, used books, stationery and handmade items. For more information, write **Mrs. Donald B. Arthur**, 1903-B Blue Crest, Austin, TX 78704.

More than 30 well known local artists were represented in the **Northern Virginia Alumnae** fifth annual Une Soiree D'Art last May. Before the bidding began, guests enjoyed cocktails while studying the paintings. A local radio personality was the auctioneer for this near \$2,000 money-maker. Another benefit for camps and the mentally retarded, **Nancy Yount Reberger** can answer questions: 4739 Exeter St., Annandale, VA 22003.

Going, Going, Gone!

"Who will give me five? Five! Who will give me six?"

And that's how it going-going-goes when the **Columbus, Ohio, Alumnae** chapter sponsors its annual "Checks for Children" Auction.

In three years over \$4,000 has been raised with \$3,100 going into a fund for repairing the hearing aids of indigent children at the Alexander Graham Bell School.

Originally, the alumnae sponsored a card party to raise repair funds. But this didn't do the trick. Only \$150 resulted. Then, in 1971, Barbara McNutt Cape (Bowling Green State '65) and Ruth Brown Maxwell (Ohio State '56) co-chaired the first auction. Under the guidance of Mary Ann Dorsey Krauss (Missouri '59), the first food committee served hors d'oeuvres and punch—all one could eat or drink for 25¢ per person. Receipts totaled \$1250 but expenses cut back the Bell gift to \$700.

Now there's been a crackdown on expenses. Coffee and tea have been substituted for the punch and 50¢ is charged for food. This consists of a wide variety of eye-tempting desserts made by the alumnae. A cookbook, detailing the recipes for these desserts, sells for \$1.50. This year's chairmen were **Ann Upson Femia** (Bowling Green '65) and **Judy Timmerman Rydell** (Rollins '66).

Items for the auction are donated by Columbus businessmen and chapter members. They include small appliances, paintings, toys, handicrafts, floral decorations, handmade clothing—even cases of dog food.

For further information, write **Mrs. Robert E. Cape**, 5098 Seldom Seen Rd., Powell, OH 43065.

The Tried and True Do Pay

Tailgate sales remain popular with many chapters. According to **Marjorie Hetzler**, members of the **Dayton Alumnae** clean unwanted items out of their closets and attics while adding between \$150-\$250 annually to their treasury. **St. Louis Alumnae** agree . . . \$254.15 raised May 17.

Bake sales and raffles, too, prove themselves favored traditionals. **Atlanta Alumnae** held a bake sale in a shopping mall—cleared \$60.00. **Central Orange County Alumnae** gathered to cross-stitch a quilt—then raffled it for the benefit of California-Fullerton's building fund. For quilt project information, write **Mrs. Robert Salerno**, 4128 Church Haven Way, Anaheim, CA 92806.

"Escape To The Marriott" proved an easy money-maker for **St. Louis**. Valued at \$59.95 (two days, one night, meals and facilities), the weekend was donated by a Gamma Phi Beta husband. Sales (nearly \$100 for the drawing at press time) are clear profit.

Other chapters sell used paperbacks, Holland bulbs, unshelled nuts and specialty items such as those offered in **THE CRESCENT** "Good Buys" column. (See this issue.) Christmas cards also are popular in many communities, including **Fairfield County**. Members in its various towns take the albums for a week—hold coffees for neighbors and friends so they can study samples. For guidelines on such an effort, write **Mrs. Glenn C. Woodrich**, 33 High Acre Rd., Weston, CT 06880.

One last word of advice: don't forget the Gamma Phi Beta Magazine Agency. (See form this issue.) It's an easy way to make the green for the Sorority. D D D

HONORS

By Mary Agnes Welsh

Each chapter of Gamma Phi Beta has more than its quota of members who have distinguished not only themselves but the Sorority through their recognition by academic, leadership and community service organizations. Still more have been acclaimed for individual talents. Herewith, a salute to but a partial listing of our Greeks of Distinction.

EPSILON—Northwestern University

Allison Baer—Panhellenic vice president.
Donna Comstock—University Christian Ministry Undergrad Fellowship.
Pat Crowley—Wildcat Council, American Society of Mechanical Engineers.
Paula Dowdy—*Northwestern Engineer* staffer, NU Garde, Women in Engineering, Tech Dean's List.
Catherine Goodnetter—Education SAB, Norris Center Programming Council.
Holly Hill—Chairman Big Sis program, Wildcat Council, SAC, Epsilon president.
Susan Hondo—Tri-Beta (biology), NU Garde.
Connie Kemmerer—Zeta Phi Eta (speech).
Betty Maksymczak—Wildcat Council, Tech Undergraduate Council, ASG Rep.
Robin Rierson—Wildcat Council, Zeta Phi Eta.
Janice Slupski—NU Garde.
Susan Socolowski—co-chairman Waa-Mu.
Margot Wain—NU Garde, Theater 65.
Cheryl Walczak, Waa-Mu Showbook chairman, Biology Student Rep to Faculty Committee.

KAPPA—University of Minnesota

Chapter Honor: 1975 Campus Carnival—third place overall (traditional shows).
Barbara Olson—Mortar Board.
Jane Rizzi and Lisa Skriveth—Gopher Cheerleading Squad.
Jean White—M Varsity Letter in tennis.

NU—University of Oregon

Kris Kelly and Melinda Pruett—Kwama sophomore women's honorary.
Katie Keith—Mortar Board, Diamond Pin Award for 4.0 GPA with most course hours (winter term).
Meg Henningson—Panhellenic vice president.

OMICRON—University of Illinois

Debra Allen—Chairman Panhellenic Committee on Career Development.
Bev Allgaier—James Scholar, Dean's List, Alpha Lambda Delta.

Susan Allwood—Dean's List.
Carol Anderson—Phi Upsilon Omicron.
Linda Bangasser—Atius women's honorary, Torch, Sigma Alpha Iota (music).
Carol Becker—Alpha Lambda Delta.
Lisa Budris—Illinois Concert Band, Marching Illini.
Jan Burke—Alpha Lambda Delta.
Andrea Cooney—Dean's List, James Scholar.
Mary Deuster—Alpha Lambda Delta, Student American Institute of Architects.
Ann Dickey—Alpha Lambda Delta, James Scholar.
Clare Downey—Shorter Board, Alpha Lambda Delta and Atius women's honoraries, Zeta Phi Beta (communications), 1974 Homecoming Court.
Missy Fanning—ATEP Educational Program.
Jan Furlong—Woman's spokesman for Alpha Kappa Psi (business).
Diane Gmitro—Dean's List.
Leslie Haubold—Atius-Sachem Mother's Day Sing chairman.
Eileen Henry—University Flag Corp, Alpha Lambda Delta, Atius.
Janice Hina—Phi Kappa Phi.
Louise Lane—Torch, Women's Glee Club secretary, Mu Phi Epsilon.
Janet Peters—Home Economics Education Seminar secretary-treasurer.
Terry Tobias—Dean's List, James Scholar.
Claudia Trimarco—Atius, Torch.
Kitty Jo Vorisek—Panhellenic Speaker's Bureau.
Carol Wanberg—Torch, Mortar Board, chairman Panhellenic Pledge Committee.

RHO—University of Iowa

Deb Drew—Panhellenic president, Finkbine Student Leadership.
Cindy Guzewich—Phi Beta Kappa, Pi Lambda Theta (education).
Holly Heidenreich—Sigma Theta Tau (nursing), Dean's list four years.
Susan Strasburg—People Unlimited, cheerleader.

SIGMA—University of Kansas

Martha Jane Mueller—Phi Beta Kappa, Pauline Hildinger Award, highest GPA award for entire college career (3.77), Outstanding Senior.
Belinda Borders—Mortar Board.
Anne Cox—Erikson Scholarship, Mortar Board.
Cyndi Woody—Student Senator, chairman Summer Student Senate Communications Committee, Study & Travel Abroad—Fall '75.
Andy Groves—"Beyond High School" Director Commission on Status of Women.
Debbie Kruegel—Student Senator.
Jo Ann Partin—Study Abroad—Bordeaux, France 1975-76.
Mary Lou Reese—Student Body vice president.
Aimee Sanders—Watkins-Berger Scholarship.
Missy Mason—Sophomore Class secretary.
Carol Jackson—KU PomPon Girl.
Cathy McDonald—OWENS.

TAU—Colorado State University

Chapter Honor: Philanthropic Award in Province XI.
Tricia Brenner—Colorado State University hostess, SPURS.
Rita Brockman—University hostess.
Kitch Foster—World Campus Afloat.
Anne Hale—Alpha Lambda Delta.
Toni Oakes—Hesperia.
Lori Rapp—Student Center board.
Leanne Reiter—KME Math honorary.
Susie Tucker—Mortar Board, Beta Epsilon.

PSI—University of Oklahoma

Chapter Honors: First place, Muscular Dystrophy Dance Marathon; Best Choreography, "Sooner Scandals."
Jan Eskew—Top Ten Greek, Sooner Standout.
Lisa Farrell—Phi Beta Kappa, the Carl Albert Award for Outstanding Graduate, School of Arts and Science.
Annabel Jones—Dorothy Truex Scholarship, Mortar Board.
Lorraine Merhib—Phi Beta Kappa.



Leslie Anne Laycock
Western Michigan
Summa cum laude



Sarah Rowland
Iowa State
Mortar Board



Winona Aguzin
Louisiana State
Queen of Zeus, Mardi Gras



Carol Pioli
West Virginia
Mortar Board



Marlys Hushak
Iowa State
Phi Upsilon Omicron

Honors (cont.)

OMEGA—Iowa State University

Marlys Hushak—Phi Upsilon Omicron, Student Alumnae Association.
Sarah Rowland—Veishea Central Committee, Mortar Board.
Sue Breckenfelder—Greek Week Central Committee, Mortar Board, Gamma Gamma (Greek honorary), Lampos.
Kris Kimberly—Diamond Darling Captain.
Susan Hayes—Science & Humanities Council, Varieties Central Committee.
Liz Goetz—Food and Nutrition Club president.
Linda Legvold—S.P.A.N.
Laurel Studet and Joy Wiegman—Student Union board.
Terry Donohue—Cyclone Aide.
Pam Collins and Kathy Buchanan—Cyclone recruiters.
Barb Feikema and Deb Huston—PomPon Girls.
Gina Swaim and Rose Langford—Cheerleaders.
Susan Wood—Student Alumnae Association.
Jean Beatty—Panhellenic president, Outstanding Sophomore Award.
Shelley Hunter—Orchesis.
Marla Shaw—Butterick Fashion Council.
Kim Wolfe—Junior Panhellenic president.

ALPHA DELTA—University of Missouri

Ellen Anghius—Engineering Queen, Phi Chi Theta (business).
Sherri Burris—Derby Day Queen.
Caety Clay—Missouri Repertory Theater.
Jan Drury—Phi Lambda Theta (education).

Chris Koumas—UMC Butterick Board, runner-up Phi Psi 500 Queen.
Cindy Marr—Sweetheart of Sigma Alpha Epsilon.
Sue Mosby—Student Association Senator, Panhellenic Public Relations chairman.
Pam Naylor—Phi Chi Theta.
Ellen Nelson—Fanfare for Fifty, Panhellenic secretary.
Maria Schalk—Kappa Alpha Phi.
Debbie Schwartz—Pi Lambda Theta.
Maureen Stolar—UMC Fashion Board.
Shelley Vaughn—Miss Missouri Top Ten in Most Outstanding Women.

ALPHA EPSILON—University of Arizona

Celia Denny—Phi Kappa Phi.
Ann DeVarannes—Miss Tucson.
Marian Feffer—Vice president University Student Body.
Laurie Hunter—Beta Gamma Sigma (business), Phi Kappa Phi.
Laurie Lounsbury—Outstanding Senior.
Martha Wallace—Phi Kappa Phi, Mortar Board, *Who's Who in American Colleges and Universities*, Angel Flight.

ALPHA ZETA—University of Texas

Marsha Wheller—College Scholar, Mortar Board.
Cathy Rossi—Angel Flight—Ideal Angel, Outstanding Angel, Angel Flight comptroller.
Karrie Capello—Cactus Goodfellow, University Senate, Texas Union Ideas and Issues Committee, Alpha Zeta president.
Markeeta McNatt—Public Relations Student Society of America, College Scholar, Phi Kappa Phi, Kappa Tau Alpha.
Debbie Randerson—General and Comparative Studies Council, Executive Council Texas Relays Committee.
Jo Beth Montgomery—Cordettes, Phi Beta Kinsolving Honor Society.
Jean Loggie—Cordettes.
Sharon Allen—Phi Beta Kinsolving Honor Society.

Barbara Reichert—Phi Kappa Phi, Kappa Delta Pi.
Renee Mauzy—Phi Beta Kinsolving Honor Society, Alpha Lambda Delta.
Ellen Scheibal—Phi Beta Kinsolving Honor Society.
Barbara Klipple—Alpha Lambda Delta, Humanities Council.
Betty Nelson—Phi Beta Chi secretary.

ALPHA THETA—Vanderbilt University

Chapter Honors: Highest G.P.A. on campus, A.P.O. Blood Drive award, Athletic Award, second place Athenian Sing.
Ginny Place—Alpha Lambda Delta, Sigma Theta Tau vice president.
Sherry Kritzer—Spanish Honor Society.
Linda Daniel—Vucept.
Luann Daugherty—Vucept, Town Women's Association, American Society of Civil Engineers vice president.
Clee Lee—Vucept.
Julie Madsen—Alpha Lambda Delta secretary.
Margie Letner—Panhellenic treasurer; Nursing Big Sister, Vucept.
Paula Allphin—Vucept.
Sherrie Rackley—Alpha Lambda Delta treasurer, honors program Psychology.
Vickie Millsip—Tennessee Ornithological Society, Junior Class Cabinet.
Ann Womer—Phi Beta Kappa, Lotus Eaters, Athenians, Mortar Board.
Linda Harris—Interhall corresponding secretary, vice president Undergraduate History Association.
Pam Masters—Student Health Coalition, Sophomore Dorm president.
Connie Brandon—Secretary Town Women's Or-



Sue Breckenfelder
Iowa State
Mortar Board

Susan Boesvert
Memphis State
Mortar Board

Gail Fisher
Memphis State
Mortar Board

Debbie Mathes
Memphis State
Mortar Board



Clare Downey
Illinois U.
Shorter Board, Atius

Mary Callan
Wisconsin-Oshkosh
Delta Chi Sweetheart

Carolyn Heidel
Wisconsin-Oshkosh
Greek Woman of the Year

Wendy Krueger
Wisconsin-Oshkosh
cum laude

ganization, Appellate Review Board, SERV Award School of Engineering.
Eileen Effinger—Mortar Board.
Margaret Stennes—Phi Beta Kappa.
Nickie Thompson—Mortar Board, Nursing Council president.
Chris Devanny—Alpha Lambda Delta, vice president Nursing Council, Athenians, president Senior Nursing Class, Special University Affairs Board, Honor Council, Mortar Board.
Dinah Grashot—Alpha Lambda Delta, Lotus Eaters, Athenians, junior elected to Phi Beta Kappa.
Joan Scheele—Alpha Lambda Theta, president Senior Nursing Class.
Sheree Peglow—Alpha Lambda Delta.
Anne Phillips—Sophomore Class secretary, Lotus Eaters, Athenians, Vucept.
Susan Riggs—Tennis team, Panhellenic Council.
Annette Swank—Alpha Lambda Delta, Tau Beta Pi, Engineering Council representative, Computer Society, Electrical Engineering Professional Society.
Cathy Csaky—Junior Class Cabinet.
Cathy Ives—Alpha Lambda Delta, Lotus Eaters, Athenians, Vucept.
Amye Reece—Nashville Model United Nations, Vanderbilt International Affairs Association.
Barb Tate—Delta Phi Alpha, Lotus Eaters, Athenians, APO Scholarship, Mortar Board, Interim Student Association president.
Jac Stroud—Vulcept.
Becky Olive—USAB Cabinet, American Society of Civil Engineers.
Karen Weaver—Vulceptor.
Debbie Lamar—Phi Beta Kappa, Lotus Eaters, Vucept, Sophomore Class Cabinet.
Kathy Ruark—Alpha Lambda Delta, Vucept.
Susan Ball—Lotus Eaters, Faculty Fellows.

Carol Loud—VU Flag Corps, Vucept, Naval ROTC drill team.
Mary Willms, Nettie Harding, Pam Auble and Dawn Dudgeon—Alpha Lambda Delta.
Cindy Fisher—Vucept.
Cathy Nikoden—Alpha Lambda Delta, Lotus Eaters, Hustler.

ALPHA NU—Wittenberg University
Chapter Honors: First place 1974 Homecoming float.
Sue McGilvray—Campus Gold vice president.
Amy Campbell—Hockey Team captain.
Sandy Catlin—Panhellenic vice president.

ALPHA XI—Southern Methodist University
Charlotte Coke—Alpha Lambda Delta Best Sophomore Award.
Betsy Curran—Phi Chi Theta (business).
Dawn Day—Advisory Board to Vice President, Student Senate Affairs.
Cheri Dunn—Phi Chi Theta.
Karen Fickenschier—Beta Gamma Sigma.
Kathy Fickenschier—Alpha Lambda Delta.
Debbie Henrich—Kappa Delta Pi secretary.
Claire Howard—Beta Gamma Sigma, Phi Chi Theta.
Elizabeth Maurer—"Daily Campus" feature editor, English Department Distinction Program, Hency C. Becker Scholarship for Outstanding Journalist, SMU.
Janet Miller—Two wrapping paper designs selected by Neiman Marcus.
Kay Siefken—Alpha Lambda Delta.
Linda Speckmann—Kirkos, Mortar Board, *Who's Who*, Institute of Technology Council, Student Senate, Panhellenic treasurer.
Carol Turner—Kappa Delta Pi.

ALPHA OMICRON—North Dakota State
Chapter Honors: First place in Sigma Chi Derby Days.
Kris Aas—Student Government, Student Finance Commission, Faculty Senate Committee, Appointments Committee chairman.
Sue Anderson—Cheerleader.
Robin Askew—Orchesis, feature baton twirler Gold Star Marching Band.
Colleen Bogan—Panhellenic secretary, Orchesis, Special Olympics.
Barb Burgum—Alpha Lambda Delta, Phi Kappa Phi, Phi Upsilon Omicron Libra (president).
LuAnne Dynes—Orchesis, Special Olympics.
Barb Helmeke—Orchesis, PomPon, Greek Week chairman, tennis team, Spring Blast chairman.
Mary Fran Jester—Alpha Lambda Delta.
Wendy Loucks—Alpha Lambda Delta (president), Mortar Board, Phi Kappa Phi, Phi Kappa Delta (secretary), Student Senate, Kappa Delta (secretary), Outstanding Student in Humanities, *Who's Who*, Senior Panhellenic president, Model United Nations speaker.
Mary McDaniel—Sigma Alpha Eta.
Bonnie Porter—Gold Star Marching and Concert Band, Alpha Lambda Delta, Libra.
Karen Steidl—College Republican secretary, news editor *Spectrum Reporter*, Board of Student Publications chairman, Alpha Omicron president.
Cathi Stine—Junior representative to Home Economics Student Council, head of Tri-College Cooperative, Special Olympics.
Cyde Stoelling—Orchesis.
Deb Viestenz—Sweetheart of Sigma Phi Delta.

ALPHA UPSILON—Penn State University
Eileen Bach—Gamma Sigma Sigma, Biological Science Society.

Honors (cont.)

Linda Egan—Gamma Phi Epsilon (pre-med).
Joan Hoffman—Block and Bridle Club secretary, Penn State Choir.
Mary Ellen O'Neill—Vice president Panhellenic.
Patti Reilly—Association of Childhood Educators International.
Kathie Spahr—Penn State Choir, Phi Kappa Tau Little Sister (president).
Denise Suhey—Penn State Choir, Volunteer Service Center, American Society of Social Workers.
Cindy Wagoner—Omicron Nu (Human Development honorary).

ALPHA PHI—Colorado College

Melanie Dickenson—Dean's List, Delta Epsilon, Alpha Lambda Delta.
Candy Hand—Dean's List, Varsity swim team, Alpha Lambda Delta, W.E.S. Scholarship.
Kathy Donovan—Dean's List, Cap and Gown (Mortar Board), Phi Beta Kappa, Colorado College Math Award.
Connie Coht—Dean's List, Cap and Gown president, Women's Caucus for Art, Phi Beta Kappa, Colorado College Women's Commission.
Linda Ribnik—W.E.S. Scholarship, Summer Marine Scholarship of Robert Stabler Fund.
Debbie Jones—Intramural Advisory Board, Dean's List, Cap and Gown.
Betty Coulson, Robin Chapman, Patty Pflug, and Lori Ranada—Dean's List.
Lynn Luikart and Susan Presti—Delta Epsilon.
Susan Knock—Cap and Gown, Circle K Club secretary-treasurer.
Amy Riechman—Lucy May Lennox Award.
Linda Bradley—Varsity swim team captain.
JoAnn Schneider—2nd place 1975 National Silver Dance Championships, 1st place 1975 Pacific Coast Silver Dance Championships in figure skating.
Kacey Cox—co-editor Baptist Student Union paper, W.E.S. Scholarship.

ALPHA CHI—William and Mary

Chapter Honors: Second place Homecoming Float, second place, Women's Recreation Association.
Lynn Allison—Mortar Board.
Jean Blackwell—ODK, Mortar Board, ODE (economics honorary), Alpha Chi president.
Julie Claypool—Outstanding Senior.
Cathy Collins—Omicron Delta Kappa, Mortar Board.
Liz Dry—Tidewater team for varsity hockey, Intramural Award for 1000 points.
Louise Hicks—Mortar Board, Phi Sigma honorary.
Susan Hildebrand—Phi Sigma.
Nancy Johnston—Phi Beta Kappa.
Karen Kennedy—Outstanding Senior, *Who's Who*.
Nancy King—*Who's Who in Collegiate America*.
Caroline Kramer—Federal Junior Fellowship Program for 1974-78.
Peggy Lawlor—*Who's Who*, swimming nationals.
Peggy Moler—President Advisor for 1975-76, "Colonial Echo" editor.
Carol Patrylick—College's representative to Student Conference on U.S. Affairs.
Catherine Peppiatt—Mortar Board.
Katherine Richter—AIAW National Swimming records for 50-yard free-style, 100 yard and 1000 yard IM.
Mary Anne Sorensen—Alpha Lambda Delta.
Holly Thompson—Exeter Program for junior year abroad.
Judy Wascher—Kappa Delta Pi, Mortar Board.
Cissy Wilson—Alpha Lambda Delta.

BETA ALPHA—USC

Chapter Honors: Most improved Grade Point Average (first place out of 12 sororities), Best Costumes Award, Songfest '75. First place, house decorations for Troy Week.
Marilyn Abbott—Shell and Oar.
Lyn Alessi—Dean's List.
Kim Cerqui—Panhellenic president, Phi Kappa Tau Carnation Queen.
Kerry Clark—Delta Sigma Phi Queen, Sigma Tau Alpha, Shell and Oar, crew team.
Patti Crum—Alpha Epsilon Delta (pre-med).
Terry Davenport—Shell and Oar, Dental Hygiene Honor Fraternity, Psychology Honor Fraternity.
Phyllis Dembowsky—Helenes.
Kim Dorsey—Phi Chi Theta (business), Hunter Reserve Champion.
Julie Fosgate—Dean's list, Alpha Lambda Delta, Shell and Oar, Phrateres treasurer, Alpha Epsilon Rho (broadcasting).
Joanna Kimura—Dean's List, Shell and Oar, Helenes, Phrateres.
Cele Hoffman—Air Force ROTC—outstanding commander, distinguished cadet, honor flight commander; Arnold Air Society, Angel Flight, Trojan Marching Band (flag girl).
Kris Kinkela—Phi Delta Theta Azure Queen, Phi Chi Theta.
Carolyn Kolts—Magna Cum Laude, past chapter president, Outstanding Student Teacher Award, H.A.W.E.
Delphine Lee—Dean's Advisory Board Business School, Phi Chi Theta president.
Leslie Lewis—Dean's list, Beta Alpha president.
Pati Loyd—Helenes.
Cindy Martin—Dean's List, Phrateres, Shell and Oar, crew team.
Meredith Massey—Shell and Oar.
Ginny McLeith—Dean's list, Phi Kappa Tau Outstanding Little Sister.
Kathy McNair—Theta Xi Queen.
Kathy Ritscher—Dean's List, Phi Chi Theta, Chapman World Campus Afloat (fall '74).
Jan Ryan—Engineering Princess, Shell and Oar.
Patti Sloper—Alpha Lambda Delta, Shell and Oar.
Wendy Woldt—Alpha Lambda Delta, Dean's List, Educational Project tutor.

BETA BETA—University of Maryland

Lauren Peterson—Outstanding Senior, Diamond Honorary, Panhellenic Council Service Award, International Horse Show hostess, Equestrian Club.

BETA GAMMA—Bowling Green State Univ.

Chapter Honors: Dean's Award for highest sorority scholarship.
Debbie Lockwood—Phi Kappa Phi, Alpha Lambda Delta, Pi Kappa Phi, Kappa Delta Pi, Mortar Board, *Who's Who Among American Colleges*, Wisely Scholarship.
Debbie Elgin—Alpha Lambda Delta, Phi Upsilon Omicron, Golden Torch, Outstanding Junior in Home Economics, Dolly MacArthur Award.
Sharon Flory—Kappa Mu Epsilon, Kappa Delta Pi, Alpha Lambda Delta, Phi Kappa Phi, *Who's Who*, President's Scholarship.
Ann Clark—Delta Phi Alpha, Alpha Lambda Delta, Phi Alpha Theta, Mortar Board, Beta Gamma president.
Marilyn Fries—Kappa Mu Epsilon.
Jane Genuit—Kappa Delta Pi.
Jane Corbin—Phi Upsilon Omicron.
Beth Brubaker—Beta Beta Beta, Alpha Lambda Delta.
Beverly Park—*Who's Who*, Golden Torch, Dolly MacArthur Award, Outstanding Senior.
Char Steris—Beta Beta Beta.
Joan Ditch, Lori Childs, Jane Nejedlik, Katie Durham, Margaret Bongey, Paul Baier, Shelly Brewster and Colleen Dichard—all Alpha Lambda Delta.

Kathy Baker—Delta Psi Kappa, Baird-Yocum Award.
Jo Ellen Locher—Alpha Lambda Delta, Sigma Tau Delta.
Diana Tepping—Alpha Lambda Delta, Beta Beta Beta.
Sue Matoney—Delta Psi Kappa.
Ruth Knott—Phi Upsilon Omicron.
Deb Koerner—Tau Beta Sigma, Alpha Lambda Omega, Music Scholarship grants.

BETA EPSILON—Miami University

Sandy Aukerman—SEA
Cindy Beaty—Choraliers, Angel Flight.
Sandy Biegleman—SHEA
Liz Brooker—Alpha Lambda Delta.
Melissa Byers—Student Senate, Recensio.
Kate Carrington—SCEC, SEA
Debbie Cooper—Mariners, Kappa Delta Pi, Alpha Lambda Delta.
Sally Denlinger—Combus, Beta Alpha Psi.
MaryAnne Dial—Miami Shakerettes
Paula Donovan—Combus.
Jan Duccilli—ALETHENOI
Debbie Everett—Tau Beta Sigma, University Band.
Robin Groner—Concert Board, Angel Flight.
Bridget Harding—Greek Week chairman.
Nancy Johnson—*Who's Who*, Outstanding Young Woman of the Year (Kalamazoo), Outstanding Marketing Major nominee, Alumni Merit Scholar, Republican Powdered Metals Scholarship, Phi Kappa Phi, Combus.
Karen Larson—Saddleers.
Karen Meng—CWENS, Botany Society.
Sandy Miller—Angel Flight, Mortar Board.
Laura Moore—SEA, CWENS.
Vickie Nahman—Alpha Lambda Delta.
Sue Nelson—Kappa Delta Pi.
Lynn Olinger—Phi Upsilon.
Sandy Owings—Angel Flight.
Debbie Roush—Kappa Delta Pi.
Karen Zateslo—Majorette, Angel Flight.

BETA THETA—San Jose State

Chapter Honors: Grand winner Muscular Dystrophy Drive, third place Sigma Chi Derby Day.
Lynn Rambaldi—Dean's Scholar.
Kathy Dinshaw—Dean's Scholar, Alpha Lambda Delta.
Susan Merson—Masland Duran Cover Girl Program.
Joella White—Pi Kappa Alpha Princess.

BETA PI—Indiana State

Marsha Thompson—Panhellenic president.
Dianne Snyder—Kappa Delta Pi, Pi Lambda Theta, *Who's Who*.
Karen Parco—Pi Lambda Theta.
Suzy Walters, Joie Harris and Peggy Vieck—*Who's Who*.

BETA KAPPA—Arizona State University

Chapter Honors: First place, Trivia Bowl; third place both Greek Sing and Greek Games.
Kathy Keele—Greek Week Steering Committee secretary; Arkesis.
Marcia Joy Prouse—Natani, Sigma Delta Chi, *Student Bulletin* editor, ASASU Student Relations Board chairman.
Kathy Richardson—Natani (junior women's honorary).

BETA RHO—University of Colorado

Chapter Honors: First place Homecoming float.
Cathy Altman—Dean's List
Karen Bankhead—Society of Women Engineers, Boulder Area Alumni Scholarship.
Janie Bronstein—Dean's List.
Linda Bronstein—Pom-Pom Girl.
Rita Cammack—Masonic Scholarship from Colorado Masons.

Sheryl Clagett—Dean's List.
 Jonette Crowley—Rho Lambda, Phi Beta Kappa
 Scholarship Recognition Award, Gamma Phi
 Beta Award for academic achievement, Presi-
 dent's Honor Roll.
 Suzanne Dico—Dean's List, Rho Lambda.
 Pam Downes—Dean's List.
 Terri Gartenberg—Rho Lambda.
 Lisa Kindem—Rho Lambda, Panhellenic presi-
 dent.
 Annie Millie—Rho Lambda.
 Lynn Patterson—Dean's List.
 Randi Popiel—Rho Lambda president, Dean's
 List, President's List.
 Debbie Raiter—Dean's List.
 Barb Rutland and Penny Sacks—Rho Lambda.
 J. J. Stoll—Tau Beta Sigma, Concert Band.
 Patti Tucker—Rho Lambda.
 Jackie Wright—Rho Lambda, Women's Sports
 Board president.

BETA TAU—Texas Tech

Chapter Honors: Sweepstakes Award, Home-
 coming float.
 Debbie Sullivan—Junior Council, Angel Flight.
 Barbara Aigner—President's hostess.
 Debbie Robertson—Junior Council, Lubbock
 Panhellenic Scholarship.
 Patty Lamberti—Phi Gamma Delta Olympic
 Queen.
 Linda Bowman—Dean's List, Beta Tau president.
 Debbie Nelson, Denise Rainwater, Janet Rut-
 man and Cindy Smith—Alpha Lambda Delta.
 Jeannie Thompson, Tina Willmann, Dixie
 Lloyd—Rho Lambda.
 Rhonda Stanley—Cordettes.
 Telitha Willman—Rho Lambda, Dean's Honor
 Roll, American Home Economics Associa-
 tion, Panhellenic president.

BETA UPSILON—Kansas State University

Nikki Anspaugh—Home Economics Council,
 Perceptics winner at Miss Kansas pageant,
 Dean's Honor Roll.
 Carol Beatty—Phi Upsilon Omicron, Omicron
 Nu, Dean's Honor Roll.
 Meg Beatty—Sigma Delta Chi.
 Janet Deines—Light Brigade, Marching Band.
 Jane Dembski—Marching Band, Engin-dears,
 Drum Major K-State Marching Band.
 Judy Currie—Concert Choir, Miss Congeniality
 at Manhattan K-State Pageant.
 Susie Edgerley—Women in Communications,
 Sigma Delta Chi, public relations director
 Student Governing Association, Dean's Hon-
 or Roll.
 Marilyn Farnsworth—Sigma Chi Sweetheart.
 Julia Gamba—Mortar Board, Dean's Honor
 Roll.
 Becky Gardner—A.H.E.A.
 Carrie Henderson—Engin-dears, Diamond Dar-
 lings.
 Colleen Kill—Dean's Honor Roll.
 Linda Knecht—Delta Tau Delta Sweetheart.
 Leslie Koepke—Mortar Board president.
 Kay Patrick—Chimes.
 Mary Ann Robben—Mortar Board, Engin-dear
 secretary, Light Brigade, Education Council,
 Kappa Delta Pi.
 Luci Ronning—Mortar Board, 1975 Engineering
 St. Patricia, Engineering Steel Ring, Tau Beta
 Pi vice president, Phi Tau Sigma secretary,
 Engin-dears, American Society of Mechanical
 Engineers, Engineering Honors program.
 Jan Saunders—Student Senator, Student At-
 torney's Board of Governors, Dean's Honor
 Roll.
 Su Townsend—Dean's Honor Roll.
 Nanci Yeager—Beta Upsilon president, Dean's
 Honor Roll.
 Deanna Paulsen—Phi Upsilon Omicron, 1974
 Homecoming Couple, Chimes, Kansas and
 International Flying Farmer Queen, Dean's
 Honor Roll.

BETA PSI—Oklahoma State

Cathie Reynolds—Varsity Review.
 Marsha Debord—1975 Bridal Fair coordinator.
 Leslie Penny—Army Blade.
 Kathy Roberts and Cheryl Wyatt—Education
 Student Council.

BETA OMEGA—Northern Arizona

Jana Turner, Debbie MacDonald, Leslie O'Con-
 ner and Marni Shoner—Dean's List.

GAMMA ALPHA—Memphis State University

Susan Boesvert—Dean's List, Alpha Lambda
 Delta, Chi Beta Phi, Mortar Board, Inter-
 sorority 3.0 Club, Omicron Delta Kappa,
 Angel Flight and *Who's Who in American
 Colleges*.
 Claire Boyle—Angel Flight.
 Joyce Clark—Panhellenic vice president, Stu-
 dent Government Association.
 Annette Cole—AWS president.
 Derita Coleman—Kappa Omicron Phi, Ameri-
 can Home Economics Association, Ten Best
 Dressed Coeds on Campus, Memphis South-
 men cheerleader, Duchess to the 1974 Mem-
 phis Cotton Carnival Queen, *Who's Who*.
 Diana Dykes—Dean's List, Mortar Board, Inter-
 sorority 3.0 Club, University March Band.
 Gail Fisher—Dean's List, Mortar Board, Inter-
 sorority 3.0 Club, Omicron Delta Kappa,
 Angel Flight, *Who's Who*.
 Lauri Hood—Dean's List, Mortar Board, Kappa
 Omicron Phi, Omicron Delta Kappa, Inter-
 sorority 3.0 Club, MSU Fashion Board,
 American Home Economics Association, Am-
 bassador's Board, MSU Town Council, Home-
 coming Court, *Who's Who*.
 Teresa Hughes—Alpha Lambda Delta, Inter-
 sorority 3.0 Club.
 Betty Gay Luton—Intersorority 3.0 Club, Phi
 Sigma Alpha.
 Linda McBee—Angel Flight, Intersorority 3.0
 Club, Panhellenic president.
 Debbie Mathes—Dean's List, Mortar Board,
 Alpha Lambda Delta, Intersorority 3.0 Club,
 Angel Flight, Kappa Delta Pi, Kappa Omi-
 cron Phi, Phi Kappa Phi, Omicron Delta
 Kappa, Department of Distributive Educa-
 tion Outstanding Senior, Department of
 Home Economics Holiday Inn Home Eco-
 nomics Award, *Who's Who*, Dean's Award.
 Michelle Ramsey—Alpha Lambda Delta, Inter-
 sorority 3.0 Club, Angel Flight.
 Angie Smith—Alpha Lambda Delta, Intersoror-
 ity 3.0 Club.
 Margaret Sullivan—Dean's List, Mortar Board,
 Intersorority 3.0 Club.
 Anne Solley—Dean's List, Sigma Delta Chi, Pi
 Delta Epsilon.
 Ann Stephens—Dean's List, Alpha Lambda
 Delta, Intersorority 3.0 Club.
 Kathy Theil—Dean's List, Alpha Lambda Delta,
 Intersorority 3.0 Club, University Marching
 Band, Lubrani music scholarship.

GAMMA LAMBDA—Louisiana State

Jean Anzelmo—Alpha Lambda Delta.
 Winoa Aguzin—1975 Queen of Zeus, Alpha
 Beta Alpha (library science).
 Karen Cormier—Alpha Lambda Delta, Angel
 Flight, Kappa Delta Epsilon (education).
 Pam Endsley—American Home Economics As-
 sociation, Pi Sigma Epsilon (marketing).
 Ramona Gates—Phi Upsilon Omicron (home
 economics), vice president LSU American
 Home Economics Association.
 Suzanne Gatipon—Alpha Beta Alpha.
 Virginia Law—Kappa Delta Epsilon.
 Foster Neal—Kappa Delta Epsilon, Starlight,
 Concert and Tiger bands.
 Pam Pennington—Sigma Alpha Iota (music).
 Yvonne Serio—1974 Panhellenic president.
 Linda Williamson—Sigma Alpha Iota, Tiger
 and Starlight bands.

GAMMA XI—University of Tennessee

Chapter Honors: Province VIII Most Improved
 Scholarship during biennium.
 Angie Byrd, Dianne Chase and Rose Cowden
 —Dean's List.
 Susan Cooler—Mortar Board, Liberal Arts Ad-
 visory Council, Dean's List.
 Mary Demarest—Mortar Board senior citation,
 Dean's List.
 Cheryl Gunter and Joyce Jackson—Dean's List.
 Lori Hamlet—Dean's List, Phi Kappa Phi,
 Alpha Lambda Delta, Kappa Delta Pi.
 Anneliese Lillard—Mortar Board, Alpha Lamb-
 da Delta, Dean's List.
 Vicki Marcus—Mortar Board, Alpha Lambda
 Delta, Dean's List.
 Ann Overton—Sigma Delta Chi.
 Nancy Powers—UT Nursing School honor roll.
 Sherry Robertson—Alpha Lambda Delta,
 Dean's List.
 Debbie Stansberry—Alpha Lambda Delta,
 editor of American Society of Civil Engi-
 neers, Society of Women Engineers, Dean's
 List.
 DeAnne Underwood—Pi Lambda Theta, Dean's
 List.

GAMMA RHO—Wisconsin State-Oshkosh

Mary Callan—Delta Chi Sweetheart
 Carolyn Heidel—Kappa Delta Pi (education),
 Panhellenic Council Dean's List, Oshkosh
 Student Assembly, *Who's Who*, University
 Wind Ensemble, Chi Delphia president,
 Greek Woman of the Year.
 Wendy Krueger—Dean's List, Honor Roll,
Who's Who, Kappa Delta Pi, graduated cum
 laude.

GAMMA SIGMA—Western Michigan

Leslie Anne Laycock—Summa Cum Laude
 (3.9 for 4 years), Mortar Board, Kappa
 Delta Pi, *Who's Who*, selected as one of
 five Outstanding Senior Women on campus.

GAMMA UPSILON—Drake University

Chapter Honors: First place float in Drake Re-
 lays parade.
 Mary Kay Collins—Mortar Board, Gamma
 Gamma, *Who's Who*, Kappa Delta Pi.
 Susan Watt—Lambda Kappa Sigma, SA Ph A,
 Dean's List.
 Sherry Leder—Beta Beta Beta.
 Sandy Batley—Dean's List, Beta Beta Beta.
 Suzanne Zein-Elding, Toni McCrary and Nanci
 Peiffer—Dean's List.
 Peggy Vial—Kappa Delta Pi secretary, Mortar
 Board, Intervarsity Christian Fellowship
 president, Dean's List.
 Debbie Graffis—Mortar Board vice president,
 President's List.
 Jane Mabb—President's List.
 Sarah White—Beta Beta Beta, Dean's List.
 Janet Kohlman—President's List, Kappa Delta
 Pi vice president, Mortar Board.
 Julie Bird—Second place Iowa Collegiate
 Poetry Contest.

GAMMA PHI—Auburn University

Chapter Honors: First place Sigma Chi Derby,
 first place Step Sing, second place Burn the
 Bulldog Float.
 Jo Ellen Allen—Alpha Phi Lambda, Phi Chi
 Theta (business), Big Sister-Little Sister
 scholarship award.
 Beth Anderson—Phi Chi Theta.
 Beth Baker—Marching Band, Concert Band.
 Debbie Bentley—Dean's List, president Alpha
 Phi Omega Little Sisters.
 Liz Bishop—American Society of Interior De-
 signers.
 Nancy Blue—Alpha Lambda Delta, Big Sister-
 Little Sister scholarship, Junior Panhellenic
 secretary, Dean's List, CWENS.

Honors (cont.)



GAMMA RHO boasts three out of 12 members of the Titanette Pom Pom Squad, Wisconsin-Oshkosh (top from left) Jeanne Kleman and Elizabeth Schuett; (bottom) Terry Rosenberg.



ALPHA CHAPTER, claims four clarinet players in the Syracuse Marching Band (from left): Kay Gunnersen, Mari Schaefer, Nancy Pettersen and Karlie Conneman.

Barb Tate, Vanderbilt University, Student Association President.



Betty Bopp—Alpha Phi Lambda Sweetheart, Sigma Delta Pi (Spanish).
 Beverly Brown—chairman Step Sing, SPEC.
 Kathy Burns—Phi Mu Alpha, Delta Omicron.
 Marietta Caldwell—Pre-Law Society.
 Lynn Challoner—Gamma Phi president, Mortar Board, *Who's Who*, Sigma Chi Little Sister president, Phi Kappa Phi, Kappa Delta Pi.
 Susan Challoner—Council for Exceptional Children, director Sigma Chi Derby, Associated Women Student, Dean's List, Mortar Board.
 Lynn Cox—Campus Crusade, Alpha Lambda Delta, Dean's List, Lambda Alpha Epsilon (law enforcement).
 Janet Daly—Phi Kappa Psi Girl, Press Club.
 Cathy Ellis—WIA representative, Dean's List.
 Susan Freeman—Phi Chi Theta.
 Lee Ann Fullerton—CWENS, SIMUN '75 Model United Nations delegate, Pi Delta Phi (French).
 Alice Harper—Super pledge.
 Lynn Hensel—Phi Kappa Psi.
 Pam Kennedy—Omega Tau Sigma Sweetheart.
 Jodi Leach—"Plainsman" copy editor, Alpha Lambda Delta.
 Lyn Lufkin—CWENS, Model United Nations.
 Cindy Mace—Sigma Tau Delta.
 Becca Mazell—Kappa Delta Pi (education).
 Anne Mundee—Dean's List, treasurer Auburn Speech and Hearing Association, WIA.
 Kay Mundee—Alpha Lambda Delta, WIA, Most Outstanding Pledge.
 Lisa McLean—Alpha Lambda Delta, Pi Delta Phi, Mortar Board, editor of Women Students newsletter, Dean's List, Marion Walker-Spidle Award for highest Greek scholarship, top award for French Literature.
 Rosemary Sullivan—Alpha Eta Rho.
 Carol Zimlich—Greek Forum chairman, Dean's List.

DELTA BETA—Boise State College

Toni Portmann—Miss Idaho Credit Union—in 1975 Tournament of Roses Parade.
 Denise Steneck—Esquire Girl of the Year.
 Buffy Williams—Tau Kappa Epsilon Girl of the Year.

DELTA DELTA—California-Fullerton

Kathy Steward—*Who's Who in America*.

DELTA EPSILON—California-Irvine

Chapter Honors: Highest GPA for Province XVI chapter.
 Julie Craig—4.0 GPA, Dean's List.
 Cheryl Spreen—4.0 GPA, Dean's List.
 Ann Bowes, Linda Felgar, Kathy Johnson, Vivian Loumeau, Patty Vogt and Lee Nelson—all Dean's List.

DELTA THETA—California Polytechnic

Constance Anderson—Phi Kappa Phi
 Tara Andrews—Alpha Psi Omega (drama).
 Teresa Jean Farris—Panhellenic delegate.
 Ruth Gilstrap—Outstanding pledge.
 Karen Klapman—Phi Epsilon Omicron.
 Ellen Penne—Poly Twirlers.
 Margaret Ruggles—Phi Kappa Phi.

DELTA IOTA—Purdue University

Barb Brelsford—Most Outstanding Sophomore Home Economics.
 Sally Brenneman—Omicron Nu (home economics), Kappa Delta Pi, Phi Kappa Phi.
 Betty Carleton—Most Outstanding Sophomore School of Recreation, field hockey team.
 Beth Craig—Earhart Hall unit president, Tomahawk (service honorary), Taco-Tilters, Alpha Lambda Delta.
 Ann Ferris—President Dorm Frosh Council, Tau Beta Sigma, Marching Band.
 Mary Fitzgerald—Grand Prix girl, Purdue Pep Girl, Skull and Crescent, Tau Beta Sigma.



ALPHA PI's MALINDA PARKER representing West Virginia in the national swimming and diving championships at Tempe, AZ, despite a broken hand.

Cindy Fox—FACE Junior Board.

Sheri French—Society of Women Engineers.
 Kathy Gallagher—Purdue Pilots, Fife and Drum Corps.

Holly Hanes—Vice president Green Guard (upperclass women's honorary).

Gerianne Hap—Alpha Lambda Delta.
 Debbie Hughes—Alpha Lambda Delta.
 Nancy LaMantia—Pep girls captain.

Lisa Lechowicz—Alpha Lambda Delta, Beta Gamma Sigma.

Denise McAhren—Alpha Lambda Delta.
 Vicki Ness—president Delta Chi Little Sisters.
 Mary Beth Renberg—Alpha Lambda Delta, Student Union Board, Skull and Crescent.
 Robin Royster—Alpha Lambda Delta.
 Sandy Sandelben—Purdettes.

Linda Sense—Alpha Lambda Delta.
 Cindy Shackleton—0075 Steering Committee.
 Viveca Soderland—Air Force ROTC, Angel Flight.

Sandy Speckhard—Purdettes, Alpha Lambda Delta.

Beth Tubergen—Grand Prix girl.

Joanne Volakakis—Mortar Board president, Alpha Lambda Delta president, Student Union Board vice president, Tomahawk and Gold Peppers, Phi Beta Kappa, Phi Kappa Phi, Omicron Delta Kappa.

Kim West—ASID.

Wendy Whitlow—Green Guard.

Wendy Williams—Industrial Management Council, all-campus senator, Camera Club president.

Carolyn Woodward—President Alpha Gamma Sisters (service organization), Alpha Phi Omega.



DIRECTORY

1975-1976

GAMMA PHI BETA ALERT!

This eight-page insert on green paper constitutes your Sorority directory for the upcoming year. It includes a listing of all international, province and local officers. It also contains a list of Gamma Phi Beta collegiate and alumnae chapters, a Province roster, the list of officers' duties, TranSISter services, CRESCENT deadlines and several *important announcements* of far-reaching consequences.

Please lift the staples in the center of this section, remove the pages and insert them in permanent officers' notebook for ready reference throughout the year.

Gamma Phi Beta

Sorority

Directory

Founded November 11, 1874

Syracuse University

FOUNDERS

Helen M. Dodge Ferguson
Frances E. Haven Moss
E. Adeline Curtis
Mary A. Bingham Willoughby

THE GRAND COUNCIL

Grand President: Mrs. R. W. Haverfield (Betty Luker), 507 Medavista Dr., Columbia, MO 65201

Alumnæ Vice President: Mrs. A. T. Phillips (Elizabeth Sloan), 1118 Westerly Pkwy., State College, PA 16801

Collegiate Vice President: Mrs. T. L. Kline (Karen Wander), 3648 S. 91st St., Omaha, NE 68124

Director of Finance: Mrs. I. P. Nelson, Jr. (Gloria Swanson), 3521 Royal Lane, Dallas, TX 75229

Director of Expansion: Mrs. G. O. Dimock (Elna Magnusson), 1195 Third St., Clovis, CA 93612

NPC Delegate: Mrs. D. H. Lundin (Marjorie Speidel), 5135 N.E. Latimer Pl., Seattle, WA 98105

Executive Secretary-Treasurer: Miss Mary M. Moxley, 630 Green Bay Rd., Kenilworth, IL 60043

CENTRAL OFFICE STAFF—Box 310, 630 Green Bay Rd., Kenilworth, IL 60043

Executive Secy.-Treas.: Miss Mary M. Moxley
Financial Consultant: Miss Eleanor J. Sieg
Secy. to Exec. Secy.-Treas.: Mrs. Vina Peterson
Membership Records: Mrs. Anna Kantz
Alumnæ Chapter Records: Mrs. June Cooke
Greek-letter Chapter Records: Mrs. Anne Simpson

Bookkeeper: Mrs. Mary Cristiano
Supplies & Office Services: Mrs. Judith Hagan
Publications: Miss Lynn Thompson, 2771 Treasure Island W., Memphis, TN 38118
Collegiate Consultants: Linda Daniel; Pat Merrill; Joanne Volakakis

THE CRESCENT

Editor: Mrs. A. W. Smith (Geraldine Epp), 300 Mansion House, Apt. 1501, St. Louis, MO 63102

Business Manager: Miss Mary M. Moxley, 630 Green Bay Rd., Kenilworth, IL 60043

NATIONAL PANHELLENIC CONFERENCE

NPC Delegate: Mrs. D. H. Lundin (Marjorie Speidel)

1st Alternate Delegate: Mrs. C. Shafer, Jr. (Audrey Weldon), 6808 Rockhill Rd., Kansas City, MO 64131

2nd Alternate Delegate: Mrs. R. M. Bilby (Mary Babbitt), 700 Bertrand St., Flagstaff, AZ 86001

3rd Alternate Delegate: Mrs. R. W. Haverfield (Betty Luker)

INTERNATIONAL OFFICERS

Archivist: Mrs. J. C. Trussell (Mary Glendon), 1055 S. Beverly Pl., Lake Forest, IL 60045

Asst. to Alumnæ Vice President—Membership

& Bylaws: Mrs. E. L. Vint (Virginia Forsythe), 9319 Vinewood, Dallas, TX 75228

Special Initiates: Mrs. C. A. Kernitz (Joanne Sallee), 319 Mill Rr., Orelan, PA 19075

Translster Service: Mrs. J. Pinholster (Elaine Dennison), 14840 Cranoke St., Centreville, VA 22020

Asst. to Collegiate Vice President—Bylaws: Mrs. W. W. Lace (Laura Monkhouse), 3405 Somerset Dr., Arlington, TX 76013

Asst. to Collegiate Vice President—Rush & Membership: Mrs. J. W. Henry (Diane Housel), 3322 S. 1112th, Omaha, NE 68144

Asst. to Director of Finance—House Corp. Bylaws: Mrs. J. Possehl (Karen Lundin), 8710 E. Kenyon, Denver, CO 80237

Historian: Mrs. Frank Mason (Charlotte Hamilton), 5050 Lake Shore Dr., Jackson, MI 49203

AREA FINANCIAL ADVISERS

Mrs. W. C. Bellinger (Mary Jane Lambert), 1842 Wellesley, St. Paul, MN 55105

Mrs. C. B. Jennings (Patricia Strickler), 4724 44th N.E. Seattle, WA 98105

Mrs. J. V. Faletti (Peggy Wooden), 15690 Rica Vista Way, San Jose, CA 95127

Mrs. E. G. Hart (Mary Jean Lauvetz), 6 Brookside Rd., Philadelphia, PA 19118

ENDOWMENT-LOAN BOARD

Directors:

Mrs. W. Nichols (Diane Dross), Chairman, 2020 Continental Dr., Apt. 210, Tallahassee, FL 32304

Miss Patricia Denton, 1700 N. North Park Ave., Chicago, IL 60614

Mrs. W. J. Wilds (Ruth Finke), 3355 Navajo Pl., Dallas, TX 75224

Mrs. P. K. Graves (Jacquelyn Hilger), 515 Kenton, Aurora, CO 80010

Mrs. I. P. Nelson, Jr. (Gloria Swanson), Dir. of Finance

Mrs. R. W. Haverfield (Betty Luker), Grand President

Miss Mary M. Moxley, Treasurer
Address all communications to Central Office

INTERNATIONAL CHAIRMEN

Awards: Mrs. T. H. Maguire (Margaret Lamping), 245 Unquowa Rd., #78, Fairfield, CT 06430

Bylaws: Mrs. F. L. McDonald (Ernestine Dobler), 9714 State Line Rd., Shawnee Mission, KS 66206

Convention: Mrs. R. D. Sorensen (Roberta Moore), 4263 N.E. 73rd, Seattle, WA 98115

Chapter Development: Chairman—Mrs. D. G. Murray (Betty Grimm), 1644 Gaywood Dr., Altadena, CA 91001

Pledges: Mrs. R. Hoffman (Mary Walstad), 2525 Viking Cir., Fargo, ND 58102

Collegians: Mrs. E. K. Jenkins (Mary Lou Perry), 1857 N. Ridge Rd., Wichita, KS 67212

Alumnæ: Mrs. A. W. Douglass (Virginia Gray), 3204 W. Concord Way, #475 Mercer Island, WA 98040

Coordinator of State Membership Chairmen: Miss Elise Berthon, 3141 Warrington Rd., Mtn. Brook, Birmingham, AL 35223

Housing: Mrs. R. F. Searls (Linnea Brown), 473 W. 2nd, Hoisington, KS 67544

Magazines: Mrs. C. W. Kenney (Dorothy Stark), Maplewood Gardens, 129 Croyden Ln., Syracuse, NY 13224

Mothers' Club: Mrs. K. H. Cribbins (Jeanne Murphy), 1664 Newcastle Dr., Los Altos, CA 94022

Nominating: Mrs. C. E. Sheldon (Barbara Westover), 3512 Country Club Dr., N.W., Olympia, WA 98502

Philanthropy Programs: Mrs. J. Heaton (Janet Milligan), 601 Ivanhoe Lane, Key Royale, Holmes Beach, FL 33510

Public Relations: Mrs. D. S. Lewis (Sally Erickson), 1516 North State Parkway, Chicago, IL 60610

Research: Mrs. F. Hiscock (Barbara Burns), 1802 Parkside Dr. E., Seattle, WA 98112

Ritual: Mrs. G. H. Hulsey (Marian Corley), 1020 Live Oak, Norman, OK 73069

Scholarship: Mrs. M. Stromer (Peggy Larson), R.R. #1, Milton, WI 53563

GAMMA PHI BETA FOUNDATION

President: Mrs. R. W. Haverfield (Betty Luker), 507 Medavista Dr., Columbia, MO 65201

Exec. Vice President: Mrs. G. Misthos (Mary Jane Hipp), 242 Glendale Rd., Glenview, IL 60025

Vice President: Mrs. I. P. Nelson (Gloria Swanson), 3521 Royal Ln., Dallas, TX 95229

Secretary-Treasurer: Miss Mary M. Moxley

Directors: Mrs. A. T. Phillips (Elizabeth Sloan)
Mrs. T. L. Kline (Karen Wander)

Mrs. G. O. Dimock (Elna Magnusson)
Mrs. D. H. Lundin (Marjorie Speidel)

Foundation Standing Committee

Camping Program: Chairman: Mrs. E. B. Adams (Beverly Cummings), c/o Lakeview Golf & Country Club, Rt. #1, Soap Lake, WA 98851

Committee Members: Mrs. E. Brower (Elizabeth Simonson), c/o Girl Scouts of the USA, 830 Third Ave., New York, NY 10022

Mrs. D. H. Green (Sharon Reisig), 2405 S. Kearney St., Denver, CO 80222

Mrs. J. Heaton (Janet Milligan), 601 Ivanhoe Ln., Key Royale, Holmes Beach, FL 33510

Financial Aid: Chairman: Mrs. P. R. Conway (Carribelle Waters), 9021 Fairview Rd., Silver Spring, MD 20910

Committee Members: Mrs. R. E. Erb (Rosetta Roodhouse), 1705 Klondike Rd., West Lafayette, IN 47906

Miss Susan K. Hagen, 631-A Cutler Lane, Charlottesville, VA 22901

Mrs. D. A. Jackson (Elizabeth Burger), Bur-

mont, Rt. 6, Box 300, Farmville, VA 23901
Mrs. M. Stromer (Peggy Larson), R.R. #1,
Milton, WI 53563

PROVINCE ALUMNÆ DIRECTORS

I: Mrs. S. Lentz (Eileen Lindemann), 39
Nottingham Rd., Short Hills, NJ 07078
II: Mrs. R. Sullivan (Sheila Gallagher), 8
Hastings Cir., Rockville, MD 20850
III: Mrs. J. E. Newlin (Lillian Rogers), 4401
Nelson Rd., Middleton, OH 45042
IV: Mrs. W. M. Howe (Laura Lee), 1915 E.
81st, Indianapolis, IN 46240
V: Mrs. R. M. Green (Frances Black), Box
336, 139 N. Ashland Ave., Palatine, IL
60067
VI: Mrs. M. K. Leddick (Margaret Kimpel),
12805 Welcome Ln., Burnsville, MN 55337
VII: Mrs. J. T. Crowe (Martha Rugg), 14019
Pebblebrook, Houston, TX 77024
VIII: Mrs. F. Abernathy (Janis Raines), 1309
Parliament Ln., Birmingham, AL 35216
IX: Mrs. W. N. Beach (Jeanne Swanson), 3209
Apperson Dr., Midland, TX 79701
X: Mrs. R. O. Bronsing (Patricia Ann Mullen),
2 Treewood Ct., Ballwin, MO 63011
XI: Mrs. R. Fallin (Pat Finley), Box 2711,
Aspen, CO 81611
XII: Mrs. W. H. Ball (Madeleine Thaxton),
9101 S.E. 57th St., Mercer Island, WA 98040
XIII: Mrs. R. H. Allard (Jean Anderson), 314
Norwegian Ave., Modesto, CA 95350
XIV: Mrs. M. A. Michele (Mignon Phipps),
2214 E. San Juan, Phoenix, AZ 85016
XV: Mrs. W. W. Hinchliff (Norma Gamerl),
21150 Shiloh Cir., Elkhorn, NE 68022
XVI: Mrs. D. Moses (Sarah Swink), 5618
Scotwood Dr., Palos Verdes Pen, CA 90274

PROVINCE COLLEGIATE DIRECTORS

I: Mrs. J. A. Hewitt (Sheila McCarthy), 6
Benford Dr., Princeton Junction, NJ 08550
II: Mrs. R. C. Freisheim (Deborah Foulsham),
2052 Moreland Rd., Abington, PA 19001
III: Mrs. R. McKinney (Marian Rithmiller),
1044 Elm, Perrysburg, OH 43551
IV: Mrs. James Holland (Kathy Cavanaugh),
1021 S. Manor Rd., Bloomington, IN 47401
V: Mrs. G. V. Kallal (Jeannine Sheldon),
ON211 Winfield Rd., Winfield, IL 60190
VI: Mrs. David Durenberger (Penny Barron),
4887 E. Lake Harriet Blvd., Minneapolis,
MN 55409
VII: Mrs. G. Bristol (Valarie Scott), 3612
Ripple Creek, Austin, TX 78746
VIII: Mrs. R. K. Templeton (Julia Terry), 97
Norview Dr., Charleston, SC 29407
IX: Mrs. L. D. Trager (Helen Leverett), 6734
S. 67th Ave., Tulsa, OK 74133
X: Mrs. B. M. Smith (Allison London), 1201
Country Club Ln. West Plaines, MO 65775
XI: Mrs. P. G. Sendroy (Catherine Curtis), 12
Cherry Vale Dr., Englewood, CO 80110
XII: Mrs. L. T. McEntee (Carolyn Craddock),
1801 Edgecliff Ter., Boise, ID 83702
XIII: Mrs. R. McMichael (Gail Haren), 2110
Rockwood Dr., Sacramento, CA 95825
XIV: Mrs. John Hayes (Janne Calloway),
6662 Oakfridge Rd., San Diego, CA 92120
XV: Mrs. T. Fulcher (Connie Shivers), 4211
Ave. F, Kearney, NE 68847
XVI: Mrs. F. Y. Parker (Deanna Geertsens),
25225 Cinnamon Rd., El Toro, CA 92630

ALABAMA (VIII)

Auburn, 1963: Mrs. Kenneth Harwell, 919 Bibb
Ave., Auburn, AL 36830
Birmingham, 1931: Mrs. William R. Lysinger,
1225 Lincocya Dr., Birmingham, AL 35216
Huntsville, 1964: Miss Betty Ford, Rt. 2, Box
124, Huntsville, AL 35811
Montgomery, 1973: Mrs. A. E. Davis, 501
Glade Park Loop, Montgomery, AL 36109

ARIZONA (XIV)

Flagstaff, 1957: Mrs. James David, 1919 N.
Lynn Dr., Flagstaff, AZ 86001
Phoenix, 1939: Mrs. William F. Stroup, 6722 E.
Onyx, Scottsdale, AZ 85253
Tucson, 1937: Mrs. Michael E. Harris, 6910
Soyaluna Place, Tucson, AZ 85715

CALIFORNIA (XIII, XIV, and XVI)

Bakersfield, 1953 (XVI): Mrs. C. P. Maas, Jr.,
108 Gabriel Dr., Bakersfield, CA 93309

Balboa Harbor, 1964 (XVI): Mrs. J. D. Mac-
Leith, 16771 Montclair Lane, Huntington
Beach, CA 92647

Berkeley, 1902 (XIII): Mrs. Francis H.
Frederick, 2715 Stuart St., Berkeley, CA
94705

Beverly Hills-Westwood, 1955 (XVI):
Fresno, 1949-1960. Reactivated 1966 (XIII):
Glendale, 1939 (XVI):

Kings-Tulare, 1966 (XIII):
La Jolla, 1957 (XIV): Miss Ann Vurgason,
521 Arenas St., La Jolla, CA 92037

Long Beach, 1939 (XVI): Mrs. Lewis N. Hind-
ley, 4420 Clubhouse Dr., Lakewood, CA
90712

Los Angeles, 1913 (XVI): Mrs. Gerald Arnold,
837 S. Windsor Blvd., Los Angeles, CA
90005

Modesto, 1955 (XIII): Mrs. Charles Chituras,
1036 Stanton Way, Modesto, CA 95355

Monterey County, 1951 (XIII): Mrs. John L.
Strong, 1168 Rampart Rd., Pebble Beach,
CA 93953

Orange County, 1954 (XVI): Mrs. George E.
Watts, 13591 Prospect Ave., Santa Ana,
CA 92705

Palo Alto, 1939 (XIII): Mrs. Dexter E. Glunz,
22079 McClellan Rd., Cupertino, CA 95014

Pasadena, 1939 (XVI):
Peninsula, 1948 (XIII): Mrs. Eugene Umland,
416 Villa Terrace, San Matro, CA 94401

Pomona Valley, 1956 (XVI):
Sacramento Valley, 1937 (XIII): Mrs. J. R.
Halsted, 5002 Keane Dr., Carmichael, CA
95608

San Diego, 1939 (XIV):
San Fernando Valley, 1953 (XVI): Mrs.
Donald Mesner, 7932 Royer Ave., Canoga
Park, CA 91304

San Francisco, 1902 (XIII):
San Jose, 1948 (XIII): Mrs. James Brown, 4089
El Coral Ct., San Jose, CA 95118

South Bay, 1956 (XVI): Mrs. Gregory Marten,
2614 Loftyview Dr., Torrance, CA 90505

South Peninsula, 1964 (XIII):
Southern Alameda County, 1958 (XIII): Mrs.
G. Douglas Goodale, 5641 Shadow Ridge
Rd., Castro Valley, CA 94546

COLORADO (XI)

Boulder, 1953: Mrs. H. Lee Sturgeon, 7034
Indian Peaks Trail, Boulder, CO 80301

Colorado Springs, 1932: Mrs. J. Lloyd Pflug,
1215 N. Chelton Rd., Colorado Springs,
CO 80909

Denver, 1907: Mrs. John Lindauer, 5051 S.
Beeler, Englewood, CO 80110

Fort Collins, 1945:
CONNECTICUT (I)

Fairfield County, 1958: Mrs. Jack K. Lemley,
One Pine St., Westport, CT 06880

DELAWARE (II)

Delaware, 1964:
DISTRICT OF COLUMBIA (II)

Washington, DC, 1935: Mrs. Richard G.
Harris, 10812 Fox Hunt Lane, Potomac,
MD 20854

FLORIDA (VIII)

Ft. Lauderdale, 1956: Mrs. J. H. Chafey, 1218
E. Lake Dr., Ft. Lauderdale, FL 33316

Jacksonville, 1953: Mrs. Jimmy Laughren,
2709 Parental Home Rd., Jacksonville, FL
32216

Miami, 1948:
Orlando-Winter Park, 1935: Mrs. Lee W.
Betts, 2448 Whitehall Circle, Winter Park,
FL 32789

St. Petersburg Area, 1957: Mrs. David Skinner,
1178 42nd Ave. NE St. Petersburg, FL
33703

Tallahassee, 1954:
GEORGIA (VIII)

Atlanta, 1940: Mrs. John H. Robinson, Jr.,
2550 Hargrove Rd., Apt. E-306, Smyrna,
GA 30080

HAWAII (XIII)

Hawaii, 1938: Mrs. Timmy L. Ching, 405
Keolu Dr., Kailua, Hawaii 96734

IDAHO (XII)

Boise, 1928: Mrs. Irene Baalson, 9320
Bienapfl Dr., Boise, ID 83705

Moscow, 1941: Mrs. Beverly Masteller, 628
Deakin, Moscow, ID 83843

Pocatello, 1955: Mrs. Sam Arana, 135 Park-
view Dr., Pocatello, ID 83201

ILLINOIS (V)

Aurora, 1963: Mrs. Howard Austin, 7 Sher-
wood Dr., Windcrest, Oswego, IL 60543

Bloomington-Normal Area, 1973: Mrs. Reed
Shaffer, Box 86, Arrowsmith, IL 61722

Champaign-Urbana, 1929: Mrs. Larry A.
Morningstar, 14 Hagan, Urbana, IL 61801

Chicago-Northwest Suburban, 1955: Mrs.
Robert Hyson, 635 S. Walnut, Arlington
Heights, IL 60005

Evanston-North Shore, 1949: Mrs. Charles
Haliday, 910 Romona Rd., Wilmette, IL
60091

Glen Ellyn Area, 1967:
Kankakee, 1970: Mrs. Joseph Yurgine, 203 Julie
Dr., Kankakee, IL 60901

Lake County, 1950:
Peoria Area, 1947:

INDIANA (IV)

Bloomington, 1956: Mrs. Mike Farrington,
1211 Freemont, Bloomington, IN 47401

Calumet Area, 1959:
Evansville, 1956: Mrs. Ronald Overton, 1125
E. Blackford, Evansville, IN 47714

Indianapolis, 1942: Mrs. Wayne W. Pearce, 22
Janean Dr., Brownsburg, IN 46112

Lafayette Area, 1963: Mrs. Dan Ilgen, 1521
Woodland Ave., West Lafayette, IN 47906

Terre Haute, 1952: Mrs. Ned B. Herriott, 206
Arcadia Dr., Terre Haute, IN 47803

IOWA (XV)

Ames, 1940: Mrs. Jeannette Sicks, 720 Kellogg,
Ames, IA 50010

Cedar Rapids, 1948: Mrs. Terry Benfer, 3905
Terrace Hill Dr. NE, Cedar Rapids, IA
52402

Des Moines, 1919: Mrs. Karl L. Schilling, 3615
S.W. 13th, Des Moines, IA 50315

Iowa City, 1931:
Quad Cities, 1938: Mrs. H. D. Allee, Jr., 2711
Olympia Dr., Bettendorf, IA 52722

Waterloo-Cedar Falls, 1941: Mrs. Kathryn
Thorpe 300 Maryland Ave., Waterloo, IA
50701

KANSAS (X)

Hutchinson, 1958: Mrs. William Von Ruden, 5
Downing Rd., Hutchinson, KS 67501

Kansas City, 1950: Mrs. Charles Brenneisen,
Jr., 1215 N. 19th St., Kansas City, KS
66102

Lawrence, 1941: Mrs. John Immel, 960 Jana
Dr., Lawrence, KS 66044

Manhattan, 1956: Mrs. Mac Stevenson, 112 So.
Dartmouth Dr., Manhattan, KS 66502

Topeka, 1955: Mrs. H. J. Mandl, R 7, Topeka,
KS 66614

Wichita, 1925: Mrs. Ralph Hoffman, 202 N.
Broadview, Wichita, KS 67208

KENTUCKY (III)

Lexington, 1965:
Louisville, Reactivated 1970: Mrs. George P.
Stacy, 6901 Foxcroft Rd., Prospect, KY
40059

LOUISIANA (VII)

Baton Rouge, 1963: Mrs. Russell Lefaux, 6045
Chandler Dr., Baton Rouge, LA 70808

Grand Rapids, 1950: Mrs. Edmund T. Shea, 2544 Maplewood SE, Grand Rapids, MI 49506

Jackson, 1950: Mrs. Frank H. Mason, 5050 Lakeshore Dr., Jackson, MI 49203

Greater Lansing, 1948: Mrs. Michael Hoyles, 1578 Sylvan Glenn Rd., Okemos, MI 48864

MINNESOTA (VI)

Duluth, 1957:

Mankato, 1965:

Minneapolis-St. Paul, 1904: Mrs. John E. Schuett, 1205 Tamarack, Long Lake, MN 55356

MISSOURI (X)

Columbia, 1941: Miss Gayle Starwalt, 1803 Stanford, Columbia, MO 65201

Greater Kansas City, 1923: Mrs. A. Overton Durett, Jr., 443 W. 57th Ter., Kansas City, MO 64113

St. Louis, 1919: Mrs. Frank S. Greening, 5209 Woodglow Dr., St. Louis, MO 63129

Springfield, 1917: Mrs. Leo E. Huff, 2125 Shady Glen Dr., Springfield, MO 65804

NEBRASKA (XV)

Kearney, 1962: Mrs. James Petersen, 3610 Ave. L, Kearney, NE 68847

Lincoln, 1938: Mrs. Gailyn Larsen, 2909 Cedar Ave., Lincoln, NE 68502

Omaha, 1919: Mrs. Roger Dawdy, 10318 Weir, Omaha, NE 68127

NEVADA (XIII and XIV)

Las Vegas, 1967 (XIV):

Reno, 1921 (XIII): Mrs. Roscoe Murray, Jr., 4 Miller Way, Carson City, NV 89701

NEW JERSEY (I)

Bergen County, 1965: Mrs. James Molly, 237 Sollas Ct., Ridgewood, N.J. 07450

Princeton Area, 1974:

Summit Area, 1965: Mrs. Charles Nicholas, Keats Rd., Pottersville, NJ 07979

NEW MEXICO (XI)

Albuquerque, 1952: Mrs. Richard Rice, 8504 Prestina Pl. N.E., Albuquerque, NM 87111

NEW YORK (I)

Buffalo, 1940: Mrs. Bruce Artz, 99 Darwin Dr., Snyder, NY 14226

Rochester, 1945: Mrs. Francis Mahan, 10 Crossfield Rd., Fairport, NY 14450

Syracuse, 1892: Mrs. Betty Lou Elleman, 205 Ardsley Dr., Syracuse, NY 13214

Westchester County, 1938:

NORTH CAROLINA (VIII)

Raleigh, 1967: Mrs. Charles Gustafson, 3102 Devonshire Dr., Raleigh, NC 27607

NORTH DAKOTA (VI)

Fargo-Moorhead, 1929: Mrs. Norman Mark, 1607 8 St. S., Fargo, ND 58102

Grand Forks, 1946: Mrs. Ann Clark, 503-23rd Ave. So., Grand Forks, ND 58201

OHIO (III)

Greater Akron, 1956:

Canton-Massillon, 1951: Mrs. William Beckley, 2911 22nd N.W., Canton, OH 44708

Cincinnati, 1941: Mrs. Edward Denny, 3418 Sunbury Lane, Cincinnati, OH 45239

Cleveland, 1916: Mrs. Jeffrey Oliver, 4305 Neville Rd., S. Euclid, OH 44121

Cleveland East Suburban, 1955: Mrs. W. Sterling Coleman, 7636 Markell Rd., Kirtland, OH 44094

Cleveland West, 1961: Mrs. Donald Joenke, 22614 Detroit Rd., Rocky River, OH 44116

Columbus, 1929: Mrs. Robert E. Jones, 4301 Cameron Rd., Columbus, OH 43220

Dayton, 1941: Mrs. Richard L. Kaiser, 4350 Delco Dell Rd., Dayton, OH 45429

Lima, 1957: Mrs. Ronald Thiesing, 2433 Merit, Lima, OH 45805

Springfield, 1929:

Toledo, 1945: Mrs. Dan Searles, 4336 Dorr St., Box 7273, Toledo, OH 43615

OKLAHOMA (IX)

Bartlesville, 1952: Mrs. James L. Keller, R.R. 1, Box 348-1, Bartlesville, OK 74003

Muskogee, 1957: Mrs. A. Camp Bonds, Jr., Rt. 3, Box 349AA, Muskogee, OK 74401

Norman, 1930: Miss Barbie Baker, 725 E. Main, Norman, OK 73069

Oklahoma City, 1921: Mrs. James C. Denny, Jr., 2909 Rossmore Place, Oklahoma City, OK 73120

Stillwater, 1957: Mrs. Robert Cross, 1020 E. Virginia, #32, Stillwater, OK 74074

Tulsa, 1929: Mrs. J. Dovel Moore, 2807 S. Peoria, Tulsa, OK 74114

Weatherford, 1973:

OREGON (XIII)

Corvallis, 1947: Mrs. Hugh Black, 3320 NW Norwood Dr., Corvallis, OR 97330

Eugene, 1940: Mrs. Cecil Kribs, 4460 Altura, Eugene, OR 97404

Portland, 1913: Mrs. David Pahl, 8165 S.W. 71st Ave., Portland, OR 97223

Salem, 1944: Miss Margaret D. Simms, 1100 Chemeketa N.E., Salem, OR 97301

PENNSYLVANIA (II)

Gettysburg, 1959:

Philadelphia-North Suburban, 1957: Mrs. James Ziegler, 408 Cheltona Ave., Jenkintown, PA 19046

Philadelphia-West Suburban, 1935: Mrs. Harry A. Zahn, 3505 Lewis Rd., Newtown Square, PA 19073

Pittsburgh, 1940: Mrs. James Hartley, 2925 Albine Dr., Glenshaw, PA 15116

State College, 1941:

TENNESSEE (VIII)

Knoxville Area, 1961: Miss Louise Josephson, 6019 Grace Lane, Apt. K, Knoxville, TN 37919

Memphis, 1952: Mrs. Gerald W. Lindsay, 3340 Scottsdale Cove, Memphis, TN 38118

Nashville, 1929: Mrs. Robert McClenaghan, 6212 Brownlee Rd., Nashville, TN 37205

TEXAS (VII, IX and XI)

Amarillo, 1955 (IX): Mrs. Lewis E. Coley, 3502 Bremond, Amarillo, TX 79109

Arlington, 1965 (VII): Mrs. Gordon Doggett, 3136 Spring Lake Dr., Bedford, TX 76021

Austin, 1947 (VII): Mrs. Donald B. Arthur, 1903-B Blue Crest Dr., Austin, TX 78704

Baytown, 1970 (VII):

Beaumont, 1956 (VII): Mrs. Ruston P. Chandler, 470 Georgetown, Beaumont, TX 77707

Commerce, 1962 (VII):

Corpus Christi, 1956 (VII): Mrs. Bob Allen, 9609 Paula, Corpus Christi, TX 78410

Dallas, 1930 (VII): Mrs. John A. Maguire, 4912 Abbott, Dallas, TX 75205

El Paso, 1965 (XI): Mrs. George Ponsford, 915 E. College Ave., El Paso, TX 79902

Fort Worth, 1946 (VII): Mrs. William E. Durham, 4300 Plantation Dr., Fort Worth, TX 76116

Galveston Bay Area, 1971 (VII):

Houston, 1941 (VII): Mrs. L. Ed Berry, 10910 Olympia, Houston, TX 77042

Lubbock, 1951 (IX): Mrs. Steve Cone, Route 2, Box 363, Lubbock, TX 79415

Midland, 1951 (IX): Mrs. W. E. Murrah, 2504 Dartmouth, Midland, TX 79701

Odessa, 1965 (IX):

Richardson, 1963 (VII):

San Antonio, 1946 (VII): Mrs. Joe C. Edwards, 305 Sagecrest, San Antonio, TX 78232

Texarkana, 1966 (IX):

Wichita Falls, 1961 (IX):

UTAH (XI)

Salt Lake City, 1958: Mrs. Robert Cann, 390 East Woodlake Dr., #91, SLC, UT 84107

VERMONT (I)

Burlington, 1952:

VIRGINIA (II)

Norfolk, 1969:

Northern Virginia, 1956: Mrs. J. Philip Reberger, 4739 Exeter St., Annandale, VA 22003

WASHINGTON (XII)

Pullman, 1955: Mrs. Melvin D. Strickler, R. 2, Box 550, Pullman, WA 99163

Seattle, 1915: Mrs. John K. Woodruff, Jr., 4233 NE 74th, Seattle, WA 98115

Spokane, 1918: Mrs. Richard Malone, N. 1117 Evergreen Rd., Spokane, WA 99216

Tacoma, 1947: Mrs. Henry Campbell, 8601 43rd St. W., Tacoma, WA 98466

WEST VIRGINIA (II)

Morgantown, 1959: Mrs. F. T. Sporck, 900 Hickory St., Morgantown, WV 26505

WISCONSIN (V and VI)

Fox Valley, 1962 (V):

Madison, 1913 (V): Mrs. Vance Nelson, 6013 Raymond Rd., Madison, WI 53711

Milwaukee, 1902 (V): Mrs. Rick D. Bauman, 832 E. Sylvan Ave., Whitefish Bay, WI 53217

Platteville, 1969 (V): Mrs. Jerry Klessig, Golf View Rd., Platteville, WI 53818

River Falls, 1969 (VI): Mrs. Jack Agnew, RR #1, Hwy. 29E, River Falls, WI 54022

WYOMING (XI)

Laramie, 1960: Miss Susan M. Tanner, 168 N. 9th, #8, Laramie, WY 82070

BRITISH COLUMBIA (XII)

Vancouver, 1928:

ONTARIO (I)

Toronto, 1919:

CRESCENT CIRCLE CHAIRMEN

CA Central Coast—Mrs. Donald L. Talley, 844 Virginia Dr., Arroyo Grande, CA 93420

Gamma Phi Beta Historical Film Remains Available

Title: "From Yesterday for Today"

Title: 12 minutes, 16 mm, color, sound print

Producer: Joyce Brooke (Michigan State)

Price: \$165 sale; \$20.00 rental

Mail Orders to

SUMMUS FILMS

333 Margareita Drive

San Rafael, CA 94901

This educational, yet entertaining film, prepared especially for the Gamma Phi Beta Centennial celebration, remains a timeless piece ideal for rush, pledge education, chapter development, Panhellenic meetings, Founders Day and many occasions. It is a fast moving, lighthearted overview of Gamma Phi Beta's first 100 years with a narration that is interspersed with amusing and philosophical quotes from the Four Founders.

If you haven't used it—seen it to date—do so soon.

Order the film well in advance (3 to 4 weeks of planned showing). Indicate alternate dates, if possible. Rental rate applies to per day showing. No telephone orders. Authorized purchasing signature is required on all sales and rental requests. Summus Films will forward a written confirmation of the show date.

Handle film with care: There's a minimum charge of \$5.00 for damage to rental prints. On a happier note: the more the film is used, the greater the funds dedicated to the Gamma Phi Beta Foundation.

Davis, CA—Mrs. J. A. Willett, 25 College Park, Davis, CA 95616
 Leisure World-Laguna Hills, CA—Mrs. Robert Colflesh, 5171 Belmez, Laguna Hills, CA 92653
 Riverside, CA—Mrs. Dwane Mickelson, 2805 Miguel, Riverside, CA 92506
 Santa Barbara, CA—Mrs. Robert G. Swift, 1481 Crestline Dr., Santa Barbara, CA 93105
 Ventura County, CA—Mrs. Malcolm Thorsen, 1821 Bernadette, Oxnard, CA 93030
 Whittier, CA—Mrs. James Seminoff, 5514 South Mesagrove Ave., Whittier, CA 90601
 Ft. Myers, FL—Mrs. C. Thomas Dollar, Rt. 12, 134 Canaan Dr., Ft. Myers, FL 33901
 Pensacola, FL—Mrs. John T. Burke, 4213 Futura, Pensacola, FL 32504
 Coeur d'Alene, ID—Mrs. M. W. Drake, Rt. 3, Box 658J1, Coeur d'Alene, ID 83814
 Magic Valley, ID—Mrs. Judy Felton, 603 8th Ave. N., Buhl, ID 83316
 Columbus, IN—Mrs. James Buck, 4485 River Rd., Columbus, IN 47201
 Rolla, MO—Mrs. Kent Sanborn, Route 1, Rolla, MO 65401
 Minot, ND—Mrs. Reginald Morelli, 1512 3rd Ave. S.W., Minot, ND 58701
 Hamilton, OH—Mrs. Frank Vido, Jr., 55 Greenway Pl., Hamilton, OH 45013
 Middletown, OH—Mrs. David Shaffer, 6998 Middletown-Hamilton, Middletown, OH 45042
 Oxford, OH—Mrs. Christopher M. Rodbro, 6130 Vereker Dr., Oxford, OH 45056
 Sandusky, OH—Mrs. Walter Kuhlman, 99 Corwin St., Norwalk, OH 44857
 Clemson, SC—Mrs. Robert Nowack, 208 Riggs Dr., Box 1101, Clemson, SC 29631
 Port Arthur-Groves, TX—Mrs. Ernest Drake, 1947 Woodrow Dr., Port Arthur, TX 77640
 Charlottesville, VA—Miss Susan Hagen, 631A Cutler Lane, Charlottesville, VA 22901
 Hampton Roads, VA—Mrs. Gordon MacCleary, 11 Luanita Lane, Newport News, VA 23606
 Richmond, VA—Mrs. C. E. Clark, Jr., 4817 Rodney Rd., Richmond, VA 23230
 Everett, WA—Mrs. Lyle Ostlund, 1732 Rucker, Everett, WA 98201
 La Crosse, WI—Mrs. Robert A. Farnam, 127 Losey Blvd. N., La Crosse, WI 54601

Attention: Registered Parliamentarians

Gamma Phi Beta requires a registered parliamentarian to serve at its biennial convention in Seattle June 20-24, 1976.

Full expenses will be paid for five exciting days in the Pacific Northwest.

Send resume covering qualifications and past experience to: Mrs. Robert W. Haverfield, 507 Medavista Drive, Columbia, MO 65201.

It is with sincere regret that Grand Council of Gamma Phi Beta has accepted the charters of Alpha Kappa and Gamma Sigma chapters. These charters were returned voluntarily to the Sorority when conditions on the campuses of the University of Manitoba and Western Michigan University proved unfavorable to the maintenance of adequate membership.

—Betty Luker Haverfield, Grand President

Winnipeg, Manitoba—Mrs. Laurie Nicol, 287 Cambridge St., Winnipeg, Man., Canada R3M 3E7

GREEK-LETTER PRESIDENTS

ALPHA (Syracuse) November 11, 1874 (I)
 Catherine Fritts, 803 Walnut Ave., Syracuse, NY 13210
BETA (Michigan) June 7, 1882 (IV)
 Michele Wencel, 1520 S. University, Ann Arbor, MI 48104
GAMMA (Wisconsin) November 14, 1885 (V)
 Jenny Nelson, 270 Langdon St., Madison, WI 53703
***DELTA**—Boston University—1887-1970
EPSILON (Northwestern) October 13, 1888 (V)
 Holly Hill, 640 Emerson St., Evanston, IL 60201
***ZETA**—Goucher College—1893-1950
ETA (California) April 29, 1894 (XIII)
 Jean Garrard, 2732 Channing Way, Berkeley, CA 94704
THETA (Denver) December 28, 1897 (XI)
 Nicole Gambrell, 2233 S. Josephine St., Denver, CO 80210
***IOTA**—Barnard College—1901-1915
KAPPA (Minnesota) May 23, 1902 (VI)
 Sue Steger, 311 10th Ave. S.E., Minneapolis, MN 55414
LAMBDA (Washington) May 17, 1903 (XII)
 Karen Hedine, 4529 17th N.E., Seattle, WA 98105
***MU**—Stanford University—1905-1944
NU (Oregon) December 18, 1908 (XIII)
 Jill Floyd, 1021 Hilyard St., Eugene, OR 97401
XI (Idaho) February 3, 1910 (XII)
 Tracey Barker, 709 Elm St., Moscow, ID 83843
OMICRON (Illinois) May 24, 1913 (V)
 Nancy Houkem, 1110 W. Nevada, Urbana, IL 61801
PI (Nebraska) June 22, 1914 (XV)
 Cheryl Holthaus, 415 N. 16th St., Lincoln, NE 68508
RHO (Iowa) June 15, 1915 (XV)
 Laurel Marsden, 328 N. Clinton, Iowa City, IA 52240
SIGMA (Kansas) October 9, 1915 (X)
 Belinda Borders, 1339 W. Campus Rd., Lawrence, KS 66044
TAU (CSU) October 16, 1915 (XI)
 733 S. Shields, Ft. Collins, CO 80521
***UPSILON**—Hollins College—1916-1929
PHI (Washington-St. Louis) February 23, 1917 (X)
 Susan Thorne, GPB, Women's Bldg., Washington University, St. Louis, MO 63130
CHI (Oregon State) April 26, 1918 (XIII)
 Nancy Weiss, 645 W. 23rd St., Corvallis, OR 97330
PSI (Oklahoma) September 13, 1918 (IX)
 Jane Cundith, 1105 S. College, Norman, OK 73069
OMEGA (Iowa State) December 21, 1918 (XV)
 Sue Breckenfelder, 318 Pearson, Ames, IA 50010
ALPHA ALPHA (Toronto) October 30, 1919 (I)
 26 Madison Ave., Toronto, Quebec, Canada M5R 2S1
ALPHA BETA (North Dakota) June 16, 1920 (VI)
 3300 University Ave., Grand Forks, ND 58201
ALPHA GAMMA (Nevada) May 14, 1921 (XIII)
 Kathleen Sullivan, 401 University Ter., Reno, NV 89502
ALPHA DELTA (Missouri) May 20, 1921 (X)
 Catherine Voris, 808 Richmond Ave., Columbia, MO 65201
ALPHA EPSILON (Arizona) April 29, 1922 (XIV)
 Diana Davies, 1535 E. First St., Tucson, AZ 85719
ALPHA ZETA (Texas) May 20, 1922 (VII)
 Terry Gallagher, 2222 Pearl St., Austin, TX 78705
ALPHA ETA (Ohio Wesleyan) November 10, 1923 (III)

Rebecca Gamble, 24 Winbeth Lane, Delaware, OH 45015
ALPHA THETA (Vanderbilt) June 25, 1924 (VIII)
 Kathy Ruark, 2411 Kensington Pl., Nashville, TN 37312
ALPHA IOTA (UCLA) June 26, 1924 (XVI)
 Lauchlin Briggs, 616 Hilgard Ave., Los Angeles, CA 90024
***ALPHA KAPPA**—Manitoba—1925-1975
ALPHA LAMBDA (British Columbia) April 28, 1928 (XII)
 Liz Chapman, GPB Room, Panhellenic House, U. of British Columbia, Vancouver 8, B.C. Canada
***ALPHA MU**—Rollins College—1928-1971
ALPHA NU (Wittenburg) June 8, 1929 (III)
 Martha Powell, 628 Woodlawn Ave., Springfield, OH 45504
ALPHA XI (SMU) September 21, 1929 (VII)
 Claire Howard, 3030 Daniels, Dallas, TX 75275
ALPHA OMICRON (North Dakota State) February 1, 1930 (VI)
 Karen Steidle, 1616 12th Ave., N., Fargo, ND 58102
ALPHA PI (West Virginia) April 19, 1930 (II)
 Joyce Falbo, 617 Spruce St., Morgantown, WV 26505
***ALPHA RHO**—Birmingham-Southern College—1930-1957
***ALPHA SIGMA**—Randolph-Macon Woman's College—1930-1951
ALPHA TAU (McGill) September 26, 1931 (I)
 Susan Bardswick, 475 Prince Arthur West, Montreal, Quebec, Canada
ALPHA UPSILON (Penn State) May 21, 1932 (II)
 Mary Ann Raynack, GPB, S-108 Haller Hall, Pennsylvania State University, University Park, PA 16802
ALPHA PHI (Colorado College) October 15, 1932 (XI)
 Deborah Jones, 1110 Wood Ave., Colorado Springs, CO 80903
ALPHA CHI (William and Mary) January 14, 1933 (II)
 Jean Stuart, GPB, Richmond Road, Williamsburg, VA 23185
***ALPHA PSI**—Lake Forest College—1934-1961
ALPHA OMEGA (Western Ontario) October 24, 1936 (I)
 Lynne Perry, 639 Talbot, London, Ontario, Canada
BETA ALPHA (USC) September 24, 1938 (XVI)
 Leslie Carol Lewis, 737 W. 28th St., Los Angeles, CA 90007
BETA BETA (Maryland) October 23, 1940 (II)
 Barbara Pignatore, #9 Fraternity Row, College Park, MD 20740
BETA GAMMA (Bowling Green) October 23, 1943 (III)
 Ann Clark, GPB, Cottage #3, Sorority Row, Bowling Green, OH 43403
BETA DELTA (Michigan State) June 3, 1944 (IV)
 Janet Smith, 342 N. Harrison Rd., East Lansing, MI 48823
BETA EPSILON (Miami-Ohio) April 12, 1947 (III)
 Laura Moore, GPB, MacCracken Hall, Miami University, Oxford, OH 45056
***BETA ZETA**—Kent State University—1947-1972
BETA ETA (Bradley) April 3, 1948 (V)
 Valerie Marie Green, 1414 W. Fredonia Ave., Peoria, IL 61606
BETA THETA (San Jose) April 24, 1948 (XIII)
 Stephanie L. Szukalski, 43 S. 14th St., San Jose, CA 95112
BETA IOTA (Idaho State) October 22, 1949 (XII)
 Michele Pond, GPB, 716 Turner House, Idaho State Univ., Pocatello, ID 83201
BETA KAPPA (Arizona State) December 3, 1949 (XIV)
 Mary Starman, Palo Verde Main, Box 111, Arizona State Univ., Tempe, AZ 85281

BETA LAMBDA (San Diego) October 15, 1949 (XIV)
Linda McPherson, 6123 Montezuma Rd., San Diego, CA 92115

BETA MU (Florida State) April 29, 1950 (VIII)
Marion O'Hare, 633 W. Jefferson St., Tallahassee, FL 32304

***BETA NU**—University of Vermont—1950-1974

***BETA XI**—Ohio State University—1951-1967

BETA OMICRON (Oklahoma City) November 3, 1951 (IX)
Becky Rickey, Box 36, OCU, 2501 N. Blackwelder, Oklahoma City, OK 73106

BETA PI (Indiana State) September 13, 1952 (IV)
GPB, Pickert Hall, ISU, Terre Haute, IN 47809

BETA RHO (Colorado) March 13, 1954 (XI)
Janet Weimer, 935 16th St., Boulder, CO 80302

BETA SIGMA (Washington State) March 5, 1955 (XII)
Frances Radewan, NE 600 Campus St., Pullman, WA 99163

BETA TAU (Texas Tech) March 10, 1956 (IX)
Molly Hopkins, GPB, Box 4334, Texas Tech, Lubbock, TX 49409

BETA UPSILON (Kansas State) March 23, 1957 (X)
Nancy Yeager, 1807 Todd Rd., Manhattan, KS 66502

BETA PHI (Indiana) November 16, 1957 (IV)
1305 N. Jordan, Bloomington, IN 47401

BETA CHI (Wichita) February 1, 1958 (X)
Jane Hite, 3616 Clough Place, Wichita, KS 67208

BETA PSI (Oklahoma State) February 3, 1958 (IX)
Patti Stubbs, 1405 W. Third St., Stillwater, OK 74074

BETA OMEGA (Northern Arizona) February 15, 1958 (XIV)
Marilyn Farris, GPB, Box 7654, Northern Arizona University, Flagstaff, AZ 86001

GAMMA ALPHA (Memphis State) March 15, 1958 (VIII)
Donna Lacy, GPB, Box 80154, Panhellenic Bldg., Memphis State University, Memphis, TN 38152

GAMMA BETA (Gettysburg) February 21, 1959 (II)
Claudia Auer, GPB, Box 922, Gettysburg College, Gettysburg, PA 17325

GAMMA GAMMA (Wisconsin-Milwaukee) March 19, 1960 (V)
Judy Landry, GPB, Union Box 43, University of Wisconsin-Milwaukee, Milwaukee, WI 53201

***GAMMA DELTA**—University of Wyoming—1961-1973

GAMMA EPSILON (Puget Sound) April 29, 1961 (XII)
Judy Radebaugh, 1310 N. Union, Tacoma, WA 98406

GAMMA ZETA (East Texas State) March 3, 1962 (VII)
Linda Watson, Box A, East Texas Station, Commerce, TX 75428

GAMMA ETA (CSU-Long Beach) March 10, 1962 (XVI)

2929 E. Broadway, Long Beach, CA 90803

***GAMMA THETA**—University of the Pacific—1963-1972

GAMMA IOTA (Midwestern) March 16, 1963 (IX)
Patricia Proctor, Box 142, Midwestern U., Wichita Falls, TX 76308

GAMMA KAPPA (Kearney) May 11, 1963 (XV)
615 W. 26th, Kearney, NE 68847

GAMMA LAMBDA (LSU) March 14, 1964 (VII)
Eve Airhart, P.O. Box 18190-A, University Sta., Baton Rouge, LA 70808

GAMMA MU (Moorhead) April 25, 1964 (VI)
515 So. 10th St., Moorhead, MN 56560

GAMMA NU (Lamar State) February 20, 1965 (VII)
GPB, Box 10635, Lamar U. Sta., Beaumont, TX 77710

GAMMA XI (Tennessee) May 15, 1965 (VIII)
Ann Overton, 1531 Cumberland Ave., Knoxville, TN 37916

GAMMA OMICRON (Kentucky) January 22, 1966 (III)
Hilary Flanagan, 508 Columbia Ave., Lexington, KY 40508

GAMMA PI (Mankato) February 5, 1966 (VI)
Karen Hobbs, 137 Lincoln St., Mankato, MN 56001

GAMMA RHO (Wisconsin-Oshkosh) May 14, 1966 (V)
Victoria Wand, 1237 Titan Ct., Oshkosh, WI 54901

***GAMMA SIGMA**—Western Michigan University—1968-1975

GAMMA TAU (St. Louis) November 11, 1967 (X)
Judy Handrick, GPB, 20 N. Grand, St. Louis, MO 63108

GAMMA UPSILON (Drake) February 17, 1968 (XV)
Sarah White, 1218 34th Street, Des Moines, IA 50311

GAMMA PHI (Auburn) May 4, 1968 (VIII)
Susan Challoner, GPB, Ella Lupton Hall, Dorm 8, Auburn University, Auburn, AL 36830

GAMMA CHI (Southwest Texas) February 3, 1968 (VII)
Jean Thaxton, GPB, Student Union Bldg., Southwest Texas State University, San Marcos, TX 78666

GAMMA PSI (Northern Iowa) November 23, 1968 (XV)
Christine T. Mineart, GPB, 647 Lawther Hall, University of Northern Iowa, Cedar Falls, IA 50613

GAMMA OMEGA (Wisconsin State-Platteville) March 29, 1969 (V)
Judy Gallagher, 160 S. Bradford St., Platteville, WI 53818

DELTA ALPHA (Wisconsin State-River Falls) May 3, 1969 (VI)
Gayle Dimond, 204 Hagestad, Student Union, River Falls, WI 54022

DELTA BETA (Boise State) February 21, 1970 (XII)
1918 Potter Dr., Boise, ID 83706

DELTA GAMMA (Nebraska-Omaha) March 7, 1970 (XV)
Margaret Dineen, GPB, Box 688, University of Nebraska-Omaha, Omaha, NE 68101

DELTA DELTA (California-Fullerton) April 3, 1971 (XVI)
Beverly Johnson, 1321 Victoria, Fullerton, CA 92631

DELTA EPSILON (Texas Wesleyan) April 28, 1973 (VII)
Janet Clark, Administration Bldg., Box 77, Texas Wesleyan College, Ft. Worth, TX 76105

DELTA ZETA (Southwestern) May 5, 1973 (IX)
Marsha Caldwell, GPB, Box 761, Southwestern State College, Weatherford, OK 73096

DELTA ETA (California-Irvine) January 19, 1974 (XVI)
Linda Roberts, 2292 Rumble Dr., El Toro, CA 92630

DELTA THETA (California State Polytechnic) January 18, 1975 (XVI)
Cheryl Dara Gerard, GPB, 1279 Bond St., Apt. A, San Luis Obispo, CA 93401

DELTA IOTA (Purdue) April 19, 1975 (IV)
Bonnie Lee MacNeal, GPB, Graduate House West, Purdue Univ., West Lafayette, IN 47906

* Deactivated

Advantage: New Englanders

All Gamma Phi Betas who call New England home have been declared eligible for the Mary Jane Wellington Award.

Established through a bequest by Mary Jane Wellington, a founder of Delta Chapter (Boston), the scholarship originally was given to a Delta Greek member. With Delta's de-activation, it went to a member of Beta Nu (Vermont), now also de-activated.

As of 1976, the award will be made to any New Englander who is a member of a Gamma Phi Beta Greek chapter in the United States or Canada. Preference will be given a sophomore or junior, and the decision will be based on the highest scholastic standing.

Candidates should submit their names to Mrs. Frances MacKay, Spofford Road, Auburn, New Hampshire, 03032, by March 1, 1976. Mrs. MacKay, scholarship chairman, Boston West Suburban Alumnae, reports the award will be made in Spring, 1976.

NOTICE TO ALL HOUSE CORPORATION BOARDS:

A Money Saving Service From *The Crescent*

Chapters which can provide *The Crescent* Editor with pertinent data as to annual corporation meetings can save themselves the printing and postage costs of a formal announcement.

Required:

Date, time, and place.

Deadline:

December 1 for publication in March issue.

CALENDAR OF OFFICERS' DUTIES

Abbreviations:

CO—Central Office; PCD—Province Collegiate Director; AA—Alumna Advisor; PAD—Province Alumnae Director; ACVP—Assistant to Collegiate Vice President; Int'l—International

GREEK-LETTER CHAPTERS

PRESIDENT:

Prior to election, send PCD proposed slate of officers for approval.

ACTIVITIES CHAIRMAN:

By April 1 of convention years, send CO McCormick Award material.

CORRESPONDING SECRETARY:

Immediately after pledging, send PCD copy of letter to parents of pledges. By October 1, send Grand President business for consideration at fall Council meeting and during biennial year include business for consideration of convention.

By March 1, send Grand President business for consideration at spring Council meeting.

By March 15, send CO, PCD & PAD a list of members graduating from college and those not returning to college.

By June 1, send CO College and Rush Calendar on Form #G1-224b.

By June 1, notify Int'l Magazine Chairman about distribution of magazine sale's profit.

HISTORIAN:

Before close of term of office, send PCD & Int'l Historian annual historical record.

HOUSE PRESIDENT:

By November 1, send ACVP, PCD & AA current house rules.

MEMBERSHIP CHAIRMAN:

Immediately after formal rush, send CO Rush Report on Form #4.

Immediately after rush, send PCD a report evaluating rush.

By March 1, order supplies from CO for next year's rush.

PANHELLENIC DELEGATE:

In September, send CO and PCD any changes in office of Dean of Women, Dean of Students, Panhellenic Dean or college or university President.

By end of October, send Int'l Membership Chairman & PCD copies of current Panhellenic Handbook, Constitution, Bylaws and rush rules.

Whenever they occur, send Int'l NPC Delegate and PCD policy changes or trends which affect sororities on campus.

PARLIAMENTARIAN-CENSOR:

Within six months after International Convention, send ACVP, PCD and AA revised chapter bylaws.

PHILANTHROPY CHAIRMAN:

Send to Int'l Chairman of Chapter Philanthropy Programs a report on any projects in support of our Gamma Phi Beta camps.

At beginning and end of term of office, send Int'l Chairman of Chapter Philanthropy Programs initial and final report sent PCD.

PLEDGE DIRECTOR:

At end of each semester or quarter, send CO & PCD Pledge Statistical Report on Form #G1-257a.

Three weeks prior to initiation, send PCD program for Inspiration Week and copy of pledge final.

Prior to initiation send PCD pledge final examination grades.

Before retiring from office, send to CO revisions or suggestions for improving Guide for Pledges.

PUBLIC RELATIONS CHAIRMAN:

By October 1, December 15, February 15, and May 15 send Int'l Public Relations Chairman and PCD resume of chapter and individual honors.

RECORDING SECRETARY:

Immediately after opening of school, send PCD Chapter Roll on computer list.

As soon as available, send CO Chapter Officer List on Form #G1-265g.

Immediately send CO and PCD any changes in appointments or officers. Following events, send PCD summary of Officers' and Chapter's Retreats. By June 1, send PCD names and summer addresses of chapter members.

RITUAL CHAIRMAN:

After each event requiring ritual, send PCD a report.

SCHOLARSHIP CHAIRMAN:

Within one month after official release of grades, send Int'l Scholarship Chairman & PCD Scholarship Report on Form #G1-274a.

At beginning and end of term of office, send Int'l Scholarship Chairman initial and final report sent PCD.

SONG CHAIRMAN:

By April 1 of convention years, send Song Committee original songs.

CHAPTER DEVELOPMENT:

At beginning and end of term of office, send Int'l Chapter Development Chairman initial and final report sent PCD.

TREASURER:

Promptly after each pledging, send CO white copies of Pledge Registration Form #G1-291b, check for pledge fees, and Remittance Form #G1-291c.

Send PCD orange copies of Pledge Registration Form #G1-291b.

Immediately after each initiation, send CO list of initiates on Form #G1-291d, signed Loyalty Pledge on Form #G1-206a and check for initiation fees.

By 10th of each month, send CO (white copy), PCD (green copy), and Alumnae Financial Adviser (pink copy) Statement of Income and Expense on Form #G1-291f.

By November 1, send CO chapter audit on Form #G1-291g with copy of Internal Revenue Form 990.

By November 1, send CO, PCD, and Alumna Financial Adviser chapter budget on Form #G1-291h.

By December 1, send CO check for Int'l dues, with computer list.

By January 1, send PAD province dues.

VICE PRESIDENT:

In September and after election of officers, collect and send PCD and AA initial report from all officers.

At beginning of each month, collect and send PCD reports from the following officers: President, Vice President, Activities, Alumnae Relations, Corresponding Secretary, House President, Panhellenic, Pledge Director, Scholarship, Social, and Chapter Programs.

At end of term of office, collect and send PCD and AA final report from all officers.

ALUMNAE CHAPTERS

By October 1, send Grand President business for consideration at fall Council meeting.

By December 1, send CO check for Int'l dues with computer list. After Dec. 1, send dues payments with revised Form #A 225a.

By January 1, send Province dues to PAD.

By February 1 of the year in which convention is held, send Int'l chairman of the nominating committee the names of any members chapters wish to suggest for an Int'l office. Include each candidate's qualifications.

By February 1, send name and address of membership chairman to CO for listing in May CRESCENT.

By March 1, send Grand President business for consideration at spring Council meeting.

Immediately after election, send roster of chapter officers on Form #A-222b to CO. Send name of magazine chairman to Int'l magazine chairman.

(Notify CO of any change of officers between elections.)

By May 1, send prior year's chapter history (written by retiring president) to Int'l historian.

By May 15, send list of members deceased since previous May 15 to CO. Include married and maiden names, Greek-letter chapter, address and date of death, if known, and newspaper announcement if available.

By June 1, notify Int'l magazine chairman if chapter's magazine sales profit is to be contributed to the Gamma Phi Beta Gift Fund or returned to the chapter.

By June 15, send one copy of alumnae chapter president's report (A-215a) to CO. Send membership list or directory to the Alumnae Vice President and the PAD.

By June 15, send one copy of alumnae chapter president's report (A-215a) to CO. Send membership list or directory to the Alumnae Vice President and the PAD.

HOUSE CORPORATIONS:

Treasurer: By November 1 annual audit due CO.

President: Immediately after election send roster of House Corporation Board officers to CO.

CRESCENT DEADLINES

For March issue: December 1

For May issue: February 1

For September issue: June 1

For December issue: September 1

Special assignments for each issue will be outlined in the COMMUNIQUE sent tri-annually to Chapter Presidents. These should be passed along to CRESCENT Correspondents.

GAMMA PHI BETA CHAPTER LIST

By Provinces

PROVINCE I

Alpha (A)
Alpha Alpha (A A)
Alpha Tau (A T)
Alpha Omega (A Ω)

PROVINCE II

Alpha Pi (A Π)
Alpha Upsilon (A Τ)
Alpha Chi (A Χ)
Beta Beta (B Β)
Gamma Beta (Γ Β)

PROVINCE III

Alpha Eta (A Η)
Alpha Nu (A Ν)
Beta Gamma (B Γ)
Beta Epsilon (B Ε)
Gamma Omicron (Γ Ο)

PROVINCE IV

Beta (Β)
Beta Delta (B Δ)
Beta Pi (B Π)
Beta Phi (B Φ)
Delta Iota (Δ Ι)

PROVINCE V

Gamma (Γ)
Epsilon (Ε)
Omicron (Ο)
Beta Eta (B Η)
Gamma Gamma (Γ Γ)
Gamma Rho (Γ Ρ)
Gamma Omega (Γ Ω)

PROVINCE VI

Kappa (Κ)
Alpha Beta (Α Β)
Alpha Omicron (Α Ο)
Gamma Mu (Γ Μ)
Gamma Pi (Γ Π)
Delta Alpha (Δ Α)

PROVINCE VII

Alpha Zeta (Α Ζ)
Alpha Xi (Α Ξ)
Gamma Zeta (Γ Ζ)
Gamma Lambda (Γ Λ)
Gamma Nu (Γ Ν)
Gamma Chi (Γ Χ)
Delta Epsilon (Δ Ε)

PROVINCE VIII

Alpha Theta (Α Θ)
Beta Mu (B Μ)
Gamma Alpha (Γ Α)
Gamma Xi (Γ Ξ)
Gamma Phi (Γ Φ)

PROVINCE IX

Psi (Ψ)
Beta Omicron (B Ο)
Beta Tau (B Τ)
Beta Psi (B Ψ)
Gamma Iota (Γ Ι)
Delta Zeta (Δ Ζ)

PROVINCE X

Sigma (Σ)
Phi (Φ)
Alpha Delta (Α Δ)
Beta Upsilon (B Τ)
Beta Chi (B Χ)
Gamma Tau (Γ Τ)

PROVINCE XI

Theta (Θ)
Tau (Τ)
Alpha Phi (Α Φ)
Beta Rho (B Ρ)

PROVINCE XII

Lambda (Λ)
Xi (Ξ)
Alpha Lambda (Α Λ)
Beta Iota (B Ι)
Beta Sigma (B Σ)
Gamma Epsilon (Γ Ε)
Delta Beta (Δ Β)

PROVINCE XIII

Eta (Η)
Nu (Ν)
Chi (Χ)
Alpha Gamma (Α Γ)
Beta Theta (B Θ)

PROVINCE XIV

Alpha Epsilon (Α Ε)
Beta Kappa (B Κ)
Beta Lambda (B Λ)
Beta Omega (B Ω)

PROVINCE XV

Pi (Π)
Rho (Ρ)
Omega (Ω)
Gamma Kappa (Γ Κ)
Gamma Upsilon (Γ Τ)
Gamma Psi (Γ Ψ)
Delta Gamma (Δ Γ)

PROVINCE XVI

Alpha Iota (Α Ι)
Beta Alpha (B Α)
Gamma Eta (Γ Η)
Delta Delta (Δ Δ)
Delta Eta (Δ Η)
Delta Theta (Δ Θ)

SERVICE IS OUR SPECIALTY

Have you used our TransISter service yet?

If you haven't and you are moving or planning to travel, read on. Chances are there is a Gamma Phi Beta at destination's end who can help you solve a problem or give you a much welcome piece of advice. For example, find an apartment or house, locate a baby sitter or recommend a doctor, dentist or lawyer.

The names of 168 Gamma Phi Beta TransISters were listed in the May, 1975 issue of THE CRESCENT. To this listing we now add seven:

ALABAMA

Birmingham
Mrs. Will M. Gregory (Robbye)
4210 Sharpsburg Drive
Birmingham, AL 35213
Phone: 205-879-7082

CALIFORNIA

Palo Alto
Mrs. William Snitjer (Catherine)
2317 South Court
Palo Alto, CA 94301
Phone: 415-327-7739

FLORIDA

Orlando-Winter Park (3)
Mrs. John Pipkorn
114 Spring Valley Loop
Altamonte Springs, FL
Phone: 305-862-7404

Mrs. Herbert C. Towle (Kay)
206 Ranch Road
Maitland, FL 32751
Phone: 305-671-0265

Mrs. Harold Walsh
Sleepy Hill Farm
Maitland, FL 32751
Phone: 305-862-1744

MONTANA

Billings
Mrs. R. D. Blythe (Kaye)
4640 Rimrock Road
Billings, MT 59102
Phone: 406-656-5640

NORTH CAROLINA

Greensboro
Mrs. Richard T. Aloia
627 Vandalia Road
Greensboro, NC 27406

Also, make these changes to the May TransISter listing;

CALIFORNIA

LaJolla
Change zip from 92037 to 92038
Add phone: 714-459-8897

ILLINOIS

Northwest Suburban
Mrs. Robert Green (Fran)
(chg from Reitz)
139 N. Ashland, Box 336
Palestine, IL 60067
Phone: 312-358-1057

NEBRASKA

Lincoln
Mrs. Steven Flanders (chg from Powell)
2717 Anderson Drive
Lincoln, NE 68506
Phone: 402-488-1390

NORTH CAROLINA

Raleigh
Mrs. Thomas G. Law (chg. from Perrin)
3404 Edgemont Drive
Raleigh, NC 27607
Phone: 919-787-8662

OKLAHOMA

Oklahoma City
Mrs. James W. Tyser (chg. from Denny)
1508 Dublin Road
Oklahoma City, OK 73120
Phone: 405-751-5475

B&B PROGRAM

Remove Ladysmith, WI

HOUSE EXCHANGE AND B&B PROGRAMS

Two additional facets of TransISter Service are available to Gamma Phi Betas. One of these—the House Exchange—is accelerating in interest, reports Elaine Dennison Pinholster, director of TransISter services. Under this program two members and their families can exchange homes in two divergent locales to mutual benefit.

B&B ("Bed and Breakfast") is designed especially for members over 65. Fourteen TransISters open their homes for traveling members seeking a homey, free-of-charge overnight accommodation.

If you have misplaced your May CRESCENT and desire TransISter information, write Mrs. James W. Pinholster, 14840 Cranoke St., Centreville, VA 22020.



SEATTLE '76

"From Sea to Shining Sea"

At the Helm:

ROBERTA MOORE SORENSEN
1976 Convention Chairman

Born and raised in Seattle, Roberta Moore Sorensen is no stranger to the sea. She will feel comfortable navigating the rough waters every convention chairman must sail. Perhaps she'll have a few words of expert advice from her Navy Reserve husband, Roger. And certainly she will be backed up by a mighty crew as members of the Seattle Alumnæ muster for duty.

Roberta's convention chart is being mapped out of experience . . . she's attended Gamma Phi Beta conclaves at French Lick, Ind., and Kansas City. A two-year past president of the Seattle Alumnæ and a four-year member of the Lambda Corporation Board, she also has attended four Province Conferences.

Long active in community as well as Sorority affairs, she is on the ASLD (Alumnus Summa Laude Dignatus) Committee of the University of Washington. She's a past president of the Washington Alumnæ Club, a trustee in charge of all Music, Arts and Crafts of the Women's University Club, and currently a trustee, too, of the Alumni Association.

Now, turn the page and meet some of Roberta's "helping hands" on deck for the Seattle Convention June 20-24. They want to introduce you to some of the highspots of the "Queen City of the Pacific Northwest."



A CONVENTION CHAIRMAN can always use another hand or set of hands as this gilt bronze Kwan-Yin of the Ming Dynasty seems to say. Roberta Moore Sorensen, visiting the Seattle Art Museum, agrees. Meet some of her helping hands in this and subsequent issues. But first meet Roberta.

ON DECK: To Welcome You . . . To Show Off SEATTLE

All the parliamentary pomp and the capricious circumstance of any International Gamma Phi Beta convention will be in evidence when delegates and non-delegates gather next June at the Olympic Hotel, Seattle, WA. But there will be more—oceanic culinary delights, a sense of Gold Rush history, a taste of the Orient—all this and so very much more.

Many Gamma Phi Betas already are working hard to make Seattle a memorable moment in your lifetime—Gamma Phi Beta's history. So mark your 1976 vacation calendar NOW—June 20-24—and add a few extra days to further enjoy the exciting Northwest in Bicentennial Year.

IT'S GRACEFUL ARCHES of the Pacific Science Center. Louisa Brown Pierson (Washington), registration-reservations chairman.

Right: IT'S MONORAIL TERMINAL, legacy 1962 Seattle World's Fair. From left: Madelein Thaxton Ball (Colorado State), PAD XII and kit chairman; Donna Moore Miller (Washington), convention secretary; Dodie Shiel Capeloto (Washington), registration.



IT'S JAPANESE TEA GARDEN at University of Washington's Arboretum. From left: Marilyn Peterson Bradshaw, boutique treasurer; Susie Dewar Locknane, Lambda alumnae adviser; Pat Jukes Woodruff, Seattle alumnae president (all Washington).

Photos by:

Sally Ford York

(Washington)

Right: IT'S PIKE PLACE MARKET, a very special place for super-fresh produce and gourmet delights. From left: Ann Donovan Brown, registration-reservations; Joan White Bergesen, kits co-chairman, both Washington.





ABOVE: IT'S OLD PIONEER SQUARE AREA with exciting browsing places. From left: Pat Morrison Moriarty (Washington), boutique chairman; Louise Haydock Miller (San Jose State), music chairman; Geri Anderson Lucks (Washington), tours.

IT'S SEATTLE ART MUSEUM renowned for its Asiatic art. From left: Eleanor Baker Merz, arrangements and properties; Barbara Smith Story, art design; Mary Kay Morrissey Fitzgerald, arrangements and properties (all Washington).

VOLUNTEERS IN GAMMA PHI BETA

It takes the dedicated and talented services of many to keep Gamma Phi Beta International functioning smoothly. Among those who recently have accepted key posts are these seven women:

ASSISTANT TO COLLEGIATE VICE PRESIDENT (BYLAWS)

Laura Monkhouse Lace (Texas) will work with collegiate chapters to revise and update their bylaws. She resides in Arlington, TX, where her husband, Bill, is associate director of News and Information, University of Texas. Two children, Billy in kindergarten, and four-year-old legacy, Leslie, complete the Lace family.

Having received her BA in 1965, Laura completed her master's degree in Library Science this past May at North Texas State University. She plans to pursue a career in librarianship.

A past president of the Fort Worth Alumnae, she was a field representative for Delta Epsilon's colonization at Texas Wesleyan. In 1974, Laura was named Outstanding Alumna by Fort Worth. She's affiliated with Arlington Alumnae.



Laura Monkhouse Lace

PUBLIC RELATIONS CHAIRMAN

Sally Erikson Lewis (Bradley) is already at work making plans for the Seattle Convention publicity. She hopes to make public relations great for Gamma Phi Beta and Panhellenic as well.



Sally Erikson Lewis

Her task will be easier because of her widespread connections. Formerly an executive secretary for Foote, Cone & Belding Communications, Inc., she was vice president of the Chicago Alumnae from 1965 to 1970. Then, having met and married her husband, Don, they moved on—living in New York City, Rye, N.Y., and New Canaan, Conn. While in the East, she served as president of the Fairfield County (Conn.) Alumnae.

Early this year, the Lewises returned to Chicago where Don is a senior vice president and director of Playboy Enterprises, Inc. Bridge, traveling and reading occupy Sally's spare time as well as occasional visits from four stepchildren ranging in age from ten to twenty.

CRESCENT ALUMNAE EDITOR

Kristin Brandt Riske (Wyoming) brings unprecedented enthusiasm and zeal to her job. She's "anxious to do work for Gamma Phi Beta—the more the better!" Holder of a master's degree in journalism, she is especially interested in photography and graphics.

A former member of the State of Wyoming's public relations department, Kris currently works part-time as an advertising merchandiser. She



Kristin Brandt Riske

and her husband, Philip, are living in Falls Church, VA. He is press secretary to U.S. Senator Gale McGee, Washington, D.C.

PROVINCE ALUMNAE DIRECTOR

Eileen Lindemann Lentz (Washington-St. Louis) hopes to organize alumnae chapters in London and Montreal while administering alumnae activities in Province I. She'd also like to see colonization of a New Jersey campus chapter in the future.

A graduate in dress design, Eileen has designed sportswear and children's apparel. Currently she is selling designer fabrics from her home in Short Hills, N.J., and gives sewing lessons when time permits.



Eileen Lindemann Lentz

She's a former president of both the New York City and Summit Area Alumnae chapters.

Tennis, skiing, sailing and ballet dancing are among Eileen's interests. Cooking is her favorite . . . for groups from six to 150! She and her husband, Steve, are parents of three: Dean, 7; Christian, 5; and Kathy, 3 years.



Jeanne Swanson Beach

PROVINCE ALUMNAE DIRECTOR

Jeanne Swanson Beach (SMU) is Province IX's new alumnae director. Originally pledged by Psi chapter at Oklahoma, she became a special initiate of Alpha Xi in 1964. Since then she has been active in Midland, TX Alumnae affairs, including the presidency. Her sister is Gloria Nelson, Director of Finance.

Jeanne is a member of the Women's Auxiliary, Midland Memorial Hospital. Being the mother of six (23 to 11), she is active in PTA. Other interests include the National Association of Parliamentarians, the Midland Symphony Guild and the Texas Society for the Prevention of Blindness.

Husband, Bill, is an independent oil operator.

PROVINCE COLLEGIATE DIRECTOR

Deborah Foulsham Frelsheim (Penn State) has been kept busy by the Philadelphia-North Suburban Alumnae since her graduation a decade ago—as president and Panhellenic delegate among many other posts. Now she will expand her activities to all of Province II.

Husband Ray is a senior pharmaceutical chemist for Smith Kline

OUR AMBASSADORS ON CAMPUS

Collegiate Consultants:

Three bright-eyed young college graduates already are traveling the jet streams as Gamma Phi Beta's campus ambassadors at large—Collegiate Consultants. They will show up where needed, lending their special talents for specific reasons. Grand Council is most confident they will serve the Sorority well.



Deborah Foulsham Freisheim

Corp., Philadelphia. There's also legacy Kirsten, four, and baby Christopher.

A former member of Penn State's Women's Chorus, Mediation Chapel Choir and Mixed Chorus, Debbie continues her musical interest by singing in her church choir.



Linda A. Daniels

Linda A. Daniels (Vanderbilt) is a former president of Alpha Theta chapter. A resident of Columbus, IN, she's a whiz at math and could probably manage a few hours of special tutoring if the need is such in a chapter she visits. She served not only as a tutor for Vanderbilt's Math Department, but a teaching assistant as well. She was elected to Mortar Board. A sports enthusiast (golf, water skiing and tennis), she also was a Vanderbilt Swim Team Timer for four years.

Commenting on her new assignment, Linda said: "My chapter has given me so much in the way of friendships, opportunities and development that I want to share this with others."

Patricia Jean Merrill (Idaho) recently completed her B.S. in Business Management, with emphasis on fashion design. She looks forward to a career in retail merchandising. Sales work in a fashion boutique helped finance her college education.

During her four years on the Moscow campus, Pat chalked up a remarkable record: Mortar Board, ASUI Programs Board, Panhellenic president and Xi Chapter president.

She also was Greek Pledge of the Year in 1971 and Greek Woman of the Year in 1974 among other accomplishments.

Looking forward to this coming year, Pat remarked: "The love I have for Gamma Phi Beta and my belief that the Greek System is a good one will carry me through the challenges I will face."



Patricia Jean Merrill

Joanne Volakakis (Purdue) stands as the first president of the Sorority's newest chapter, Delta Iota. She graduated in June with a double major in chemistry and biology and her scholastic honors included Phi Beta Kappa.

During her four years on campus, Joan served as president of Mortar Board, Junior Vice-President of the Student Union Board, and Executive Board Director of Personnel. She also was president of Alpha Lambda Delta, the freshman women's honorary. She's a devotee of the piano and Greek dancing. After her year as a collegiate consultant, Joan plans to work for a Masters in Business Administration.

Wrote Joanne: "While attending Area Leadership Conference at Michigan last February, I had an



Joanne Volakakis

opportunity to compare some of our stronger houses with weaker ones. Many of the girls in the latter are great—have a lot of potential. They just don't know how to use it. As a consultant, I hope to help them develop their skills."

GRADUATE COUNSELORS:

Six Gamma Phi Beta counselors will provide live-in support for Greek chapters while they continue to work for their masters degrees. It should prove a mutually beneficial experience for all involved.

New to the International scene are:

Marilyn Fairley (Kearney State) who graduated with honors last spring with a major in French and a Business Administration minor. She was the first KSC graduate to receive a Certificate in Translation and Oral Interpretation. She will continue her French while serving at Alpha Delta (Missouri).

Marilyn has many great credits on her campus record, including the presidency of Panhellenic. At the Senior Day Convocation, she spoke to one thousand high school seniors about sororities, and was later initiated into Rho Lambda.



Maxine Leverett Trager

PROVINCE COLLEGIATE DIRECTOR

Maxine Leverett Trager (SMU) brings a lot of Gamma Phi Beta experience to her job as PCD for Province IX. She's long been active in the Tulsa Alumnae, having held almost every office in the chapter. She received its "Outstanding Alumna Award."

A native of Dallas with a BA in Education and English, Maxine taught in the Dallas schools before moving to Tulsa 13 years ago. The mother of three (two daughters and a son), she has been a PTA officer and a Camp Fire Girl leader.



Marilyn Fairley

She was selected as Outstanding Greek Woman of the Year 1974-75.

In applying for the consultant post, Marilyn said: "Gamma Phi Beta is something I believe in so completely and treasure so dearly, that nothing would honor me more than the opportunity to share this feeling with others."



Donna Jane McGuire

Donna Jane McGuire (Kentucky) will take her organizational skills to Gamma Lambda (Louisiana State). She looks forward to "being back in the thick of things. As a second semester senior I missed the planning aspects of chapter life." Simultaneously, she will continue her studies in Family Life,

having majored in Human Development and Family Relations.

Donna served Gamma Omicron as philanthropy chairman, social chairman, house manager and president. On campus and in the community she was involved with the Bluegrass Association for Children Under Six, Mortar Board, Links, and the Human Development Association. Her honoraries were Phi Upsilon Omicron and Alpha Lambda Delta. She is in *Who's Who in American Colleges and Universities*.

Jan Montgomery (Syracuse) continues as a graduate counselor for Gamma Xi (Tennessee) while working on her Masters in Education. Two of last year's collegiate consultants also have been named graduate counselors: **Mary Kathryn Anstett** (North Dakota State) for Alpha Zeta (Texas) and **Linda Marie Pearson** (Indiana State) for Delta Iota (Purdue).

Katherine S. Nordeen (Drake) will continue her graduate studies in kinesiology while supporting Gamma Phi Beta activities at Alpha Upsilon (Penn State). Now holding a BS in Education, her ultimate



Katherine S. Nordeen

goal is a doctorate in biomechanics.

A native of Wisconsin, Katherine has been a graduate student at Penn State for the past year. Her graduate project is an exposition of the kinematics of the lower leg during cycling.

IN MEMORIAM

ALPHA

Genevieve Joy Beatty
Priscilla Viets Fleckenstein

BETA

Sarah Eschbach Anderson
Mary Anne Joslyn Gordon
Margaret Hoyt Ihling

GAMMA

Alice Ringling Coerper

EPSILON

Irene Dimock
Vera Becker Kraft
E. Gladys Moore Saurer
Gertrude M. Smith
Jessie Robinson Thornton
Jessie Mae Yawter
Margaret McBroom Young

ZETA

Jean Thoburn

ETA

Barbara Thrall Chester
Edna Gearhart
Ora Muir Thelen

IOTA

Edna Stitt Robinson

KAPPA

Judith Gilquist Arney

LAMBDA

Winifred Clancy Dagg
Irmengarde Patten Dickinson
Helen Frater Lewis

Gertrude Young Manny
Edna Byrd Nelson
Katherine Kerr Scott
Helen Sully
Louise Richardson Watts
Marion Barton Wood

NU

Elizabeth Setters Dadson
Constance Cavell Dolph
Ruth Duniway Kerby
Esther Davis Scriven

XI

Carol Ann Zapp Garro
Vivian Dickamore Geddes
Edwina Yearian Nichols
Helen Grimm Watson

PI

Rowena DePue Dunker
Lorma Hawkins Gillaspie
Leona Pelz Osterlund

RHO

Sally K. Johnson
Gloria Kersbergen

SIGMA

Carolyn Knoepfel Petersen
Caroline Greer Woodard

TAU

Clarlyn Cleese Cummer

CHI

Betty Bostock Bauer

ALPHA DELTA

Brooks Ann Cole
Bronwyn Lois Evans Fitzgerald

ALPHA ZETA

Euretta Davis Falconer
Mary Steussy Gray

ALPHA ETA

Alma Mary Bernhardt Haderer
Georgia Harman Maier

ALPHA THETA

Sarah Thweatt Crichlow
Ellen DeChicchis

ALPHA IOTA

Elizabeth Rhodes Query

ALPHA XI

Betty McCulloch Jumper

ALPHA PI

Ruth Tucker Dawson

ALPHA CHI

Margaret Kelly Martin

ALPHA PSI

Bernice M. Best
Shirley Cochrane Ruggles

BETA ALPHA

Virginia Lynn Boyle Potter

BETA GAMMA

June Wasserman Bishop
Lenna Conklin Golttscholk

BETA OMICRON

Winnifred Reneau

BETA SIGMA

Margaret Suzanne Marsh Ross

RUTH TUCKER DAWSON MEMORIAL AWARD

A Ruth Dawson Memorial Fund has been established at Beta Alpha Chapter (USC) in tribute to its key adviser, Ruth Tucker Dawson (West Virginia). A former Province Alumnæ Director, Ruth died June 3 in La Canada, CA. The yearly award will be made to the junior who best exemplifies her Gamma Phi Beta principles.

A former treasurer and rush counselor representing the Sorority on the USC Panhellenic Council, Ruth was a past president of Beta Alpha's sponsoring Pasadena Alumnæ Chapter. Her name appears on Gamma Phi Beta's International Service Roll, an honor she received following her chairmanship of Southern California Intercity Council's Greek Theater Benefit. Ruth also was named its "Woman of the Year" in 1972.

Contributions to the Ruth Dawson Memorial Fund may be made to Beta Alpha of Gamma Phi Beta, c/o Corporation Board President, Mrs. Rockne A. Flanagan (Shirley Davison, USC), 712 Bison Ave., Newport Beach, CA 92660. An acknowledgment will be forwarded to the family.

'Lost' Member Found . . . At 'The Romagnolis Table'

She is **Margaret O'Neill Romagnoli** (Wisconsin '43), one half of the pair on "The Romagnolis Table," a top cooking program being aired nationally on Public Broadcasting channels. Produced at WGBH-Boston, the same station where Julia Child ruled the kitchen for so many years, Margaret and her Roman-born husband, Franco, use some of Julia's basic equipment in teaching viewers all over the country how to prepare classic Italian cuisine.

But to go back and to catch up with Margaret: Shortly after the war, she went to Rome as a Marshall Plan information officer. There she met and married Franco . . . and got fired for doing so.

"It probably wouldn't happen now," says Margaret. "But back then, when an American woman working for the U.S. government married a national of another country, it meant immediate dismissal. This was true, of course, only for women, not men."

Since then, the Wisconsin-born daughter of a professor and a Gamma Phi Beta (Edith Winslow O'Neill—Wisconsin) and the Roman architect's son have raised their four children—and Franco has pursued his career in cinematography.

In the middle Fifties, Franco set up the WGBH-Boston film department, remaining as head of photography until 1960. In the ensuing years, the Romagnoli family lived in both Boston and Rome as Franco coped with the excitement and exigencies of free-lance work. (Recently he was filming a National Geographic special in the Nevada mountains.)

Throughout her youth, Margaret enjoyed eating, but cooking was really of no concern to her. Then, in Rome, she became fascinated with haute-cuisine Italian cooking. It was this interest in fine Italian cooking that drew Franco to her.

"But he could hardly wait to introduce me to something he considered just as good, maybe even better," Margaret recalls. "It was Franco's Mama's cooking. Some of my happiest moments were spent in her kitchen."

"After we married, Franco and I moved into a lovely apartment and I had a cook-housekeeper, Rina. She was tre-



STARS OF A NEW Public Broadcasting Company TV cooking series are Margaret O'Neill Romagnoli (Wisconsin) and her Roman-born husband, Franco. Margaret responded to the "Lost Gamma Phi" article in the CRESCENT.

mendously important to me in a number of ways. For one thing, she helped me with, and corrected my Italian, so that I soon became fluent. And even though there's no doubt that Franco's mother was a fine cook, it was Rina who taught me most of what I know about Italian food."

Franco credits his culinary abilities to his "taste memory"—the ability to recreate the exact taste of a dish or a sauce he may have eaten years before. "When I would come home from a job, and think about a certain dish I had eaten the last time I was in, say Bologna, my mouth would begin to water. And I would begin to try to duplicate it."

In April, Franco and Margaret had a book published by Atlantic-Little, Brown and Company. The title? "The Romagnolis' Table," of course. And it became the Cookbook Guild selection for June. (Their recipes also were featured in a beautiful color feature in May's *McCall's*.)

Both the book and the television series are the culmination of 21 years of cooking together and Franco says that in their Watertown, Mass., home, the kitchen, as in Rome, is still the heart of the home.

Like good Italian cuisine? Check your local TV guide for details. The program has been renewed.

And the Pace Quickens

"There are more Gamma Phi Beta Pace-setters than CRESCENT space permits us to keep up with," reports **Donna Logan**, Feature Editor. But, herewith, a first valiant try:



Patricia McIllece Carmen

FIRST WOMAN—BOARD OF MEDICAL EXAMINERS

Patricia McIllece Carmen, M.D. (Nebraska) is the first woman to serve on the Wisconsin Board of Medical Examiners. First appointed by Gov. Patrick Lucey in 1973, she recently was re-appointed for four years.

Graduating with her M.D. degree in 1949, "Dr. Pat" served her internship at the University of Illinois Research and Educational Hospital and her residency at New England Hospital for Children.

Having chosen the field of pediatrics, she continued her residency at University of Wisconsin Hospitals in Madison. During that period, she met and married David G. Carmen, head of his own advertising agency. So Madison became home for Pat and, eventually, the four Carmen children.

She began private practice in pediatrics and stayed with it until her second child was born in 1954. But closing the office door didn't end her work as a doctor. She immediately became Director of the Bureau for Handicapped children, working half-time while her children were small.

In 1965, Pat began a four year residency in psychiatry at University Hospitals—then joined a group of psychiatrists, Mental Health Associates. She specializes in children and adolescents. Currently serving as secretary of the State Psychiatric Association, she has served on the Governor's Committee, Children and Youth.

Pat has "a mad passion" for cooking, an interest she shares with her husband. "Dining with the Carmens," reports **Patricia Neilson Moen** (Wisconsin), "is an esthetic experience. It is always a joint endeavor in the cooking, decorating and serving."

HONORED BY STATE ASSEMBLY

Recently retired as a full-time volunteer with the San Fernando Valley Legal Aid Association, **Kate Frost Sheridan** (UCLA) has donated more than 20,000 hours of legal counsel in the past nine years. A resolution from the California State Assembly says in part: "Mrs. Sheridan exemplifies the spirit of dedication and selflessness. Through her efforts over 4,000 valley citizens urgently in need of help have had their faith in our system of justice restored when they received her competent, free legal assistance."



Kate Frost Sheridan

For this her name is recorded in the Congressional Record.

A 50-year member of Gamma Phi Beta, Kate received her AB degree from UCLA—her law degree from USC.

In 1927, she was one of six members who worked for and signed incorporation papers for Alpha Iota Chapter. She has a Sorority daughter, Anne Grey Sheridan Epinette (UCLA).

THE LADY IS A JUDGE

Joyce Orms Mangum (Arizona) is the first woman judge in Coconino County, Flagstaff, AZ, sworn into office January 3, 1975, as judge of the county's Superior Court.

But Joyce says being a woman has no effect on the outcome of the cases she tries. She told a reporter for the *Arizona Daily Sun*, "I think of myself first as a judge, then as a woman judge."

Judge Mangum was graduated with honors in business administration—then went on to law school. She won her law degree and was married to Richard K. Mangum in 1961. Joyce began practicing law in 1965 and joined her husband and father-in-law, both practicing attorneys, in the Flagstaff firm of Mangum, Wall and Stoops. She ran for election and won the judgeship in 1974, trading her attorney's briefcase for judicial robes.

Joyce was named Arizona's outstanding young woman in 1973, and was listed in *Who's Who of American Women* in both 1972 and 1973. A civic leader, her honors have included being vice president of community affairs and board member of



Joyce Orms Mangum

the Flagstaff Chamber of Commerce; chairman of the city council's citizens' advisory and municipal plan committees; chairman of the Northern Arizona Health Development Council; and a member of the University's Law School Board of Visitors.

She's held most offices of the Beta Omega Alumnae group in Flagstaff. She is president of the corporation board.

The Mangum children are Karen, Mark and Ramona, ages 13, 12 and 5.



Marion P. Downs

WORLD AUTHORITY ON HEARING

Marion Pfaener Downs (Minnesota) ranks as a world authority on hearing in children.

The remarkable Minnesota native is an assistant professor of otolaryngology in the audiology division at the University of Colorado School of Medicine. She collaborated recently with a colleague at the university's Denver Medical Center to author the first complete textbook in child audiology.

Marion joined Colorado's medical faculty in 1959 and has pioneered in developing methods for early identification of hearing loss in infants, and in the development of a High Risk Register for Deafness, now the accepted procedure for identifying hearing loss at birth.

She was initiated into Kappa chapter in 1932 and made both Mortar Board and Phi Beta Kappa in her junior year.

Married to geologist George R. Downs, Ph.D., in 1934, they moved to Montana where he was engaged in oil exploration in the Rocky Mountains until his recent retirement. They have

three children: Jody, George, Jr., and Sara, and 10 grandchildren. "I'm afraid to look again and see if there are any more!" Marion laughs. She still "skiis madly" and plays trophy-winning tennis.

This outstanding Gamma Phi Beta was decorated by the South Vietnamese government in 1970 for teaching in the University of Saigon Medical School.

HONORED BY LOUISIANA DAR

Helen Nelson Mobley (Oregon) has been honored for outstanding accomplishments in teaching American history and civics by the Louisiana Daughters of the American Revolution. At their 64th annual state conference, DARs presented Helen the permanent Samuel Nye Blass Memorial Trophy and a traveling trophy for Helen's school, Old River Academy near Baton Rouge.

Helen and her husband, Laurie S. Mobley, who pioneered the Louisiana Farm Bureau movement, own the plantation, "Belvue," at Lettsworth, La. They converted the plantation from cotton to cattle, and have been active for years in the fields of agriculture and citizenship.

As chairman of the Louisiana Farm Bureau Women's Committee, Helen started the Freedom Bookshelf in school libraries and began an annual essay contest on American heritage for juniors and seniors. She also initiated the annual Farm Bureau Youth Conference.

The Mobleys jointly received the Master Farmer Award in 1962 and the Federation's first distinguished service award in 1969. Helen also was the recipient of the Freedom Foundation's George Washington Honor Medal and the Louisiana Farm Bureau's Freedom Award stressing Christian heritage.

Helen Nelson Mobley



Joan Krueger Wadlow

REPORTER TURNED TEACHER

Joan Krueger Wadlow (Nebraska) rated a full page feature in the January, 1975 issue of *Nebraska Alumnus Magazine*. She is assistant dean of the University of Nebraska-Lincoln College of Arts and Sciences, and associate professor in the political science department.

Joan earned her undergraduate degree in journalism from Nebraska in 1953, and a master of arts from the Fletcher School of Law and Diplomacy in Medford, MA, in 1956. Then she won a Rotary Fellowship and studied in Geneva, Switzerland. She received her Ph.D. from her alma mater in 1963 and joined its faculty. She became vice chairman of the political science department in 1970 and assistant dean in 1972.

A former reporter for the *Lincoln Star*, Joan started teaching by accident.

"I'd been working in the University's public relations department," she says. "But at this particular time the political science department was shorthanded so I began teaching an introductory course. After the first few days in the classroom, I was hooked. I really enjoy teaching."

Joan served Pi Chapter as rush advisor from 1959-66. A major accomplishment was her development of a mathematical rating and point system to permit a more complete, fair and quicker rating of rushees. In 1967, Pi Chapter voted Joan into their Hall of Fame for her service and dedication to Gamma Phi Beta.

Joan is married to Richard R. Wadlow, a Lincoln funeral director. They have two daughters, Dawn and Kit.

The Challenge of Growth

By VIRGINIA GRAY DOUGLASS

Chairman, Alumnae Division, Chapter Growth

Every woman must prepare for a "second life" between the ages of 40-80. Especially is this true of Gamma Phi Betas. Our records indicate that more than 50% of our sorority alumnae are over 50 years of age, and a greater number of women in the 45-65 years of age group will be added with each passing year.

The following suggestions are aimed toward helping our members to fill in that large blank section in the chart:

FIRST, FIND YOUR INTERESTS

1. For best results, start establishing these while still in Section 4 of your life.

2. Look back to what college courses or activities interested you most.

3. Survey your area for opportunities in these fields.

- a) If there are none, could you start one or two—i.e. study course in opera, symphony, learning Braille to write for the blind, adult conditioning classes, etc.

4. Search for women in different types of work. In one city there are women as head of a jam factory, head of a million dollar charter boat service, head of a food company, etc.

- a) Interview them for opportunities in their field, if you are interested.

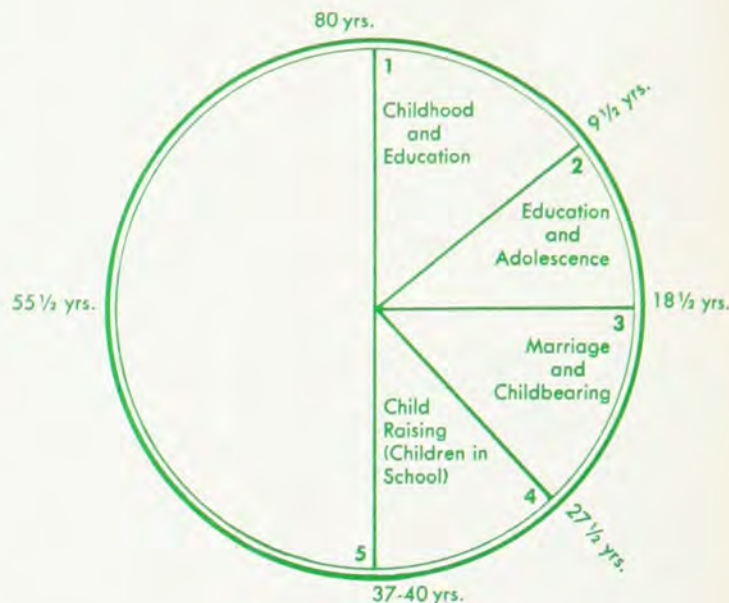
5. Study different life styles to see where you fit in.

6. Organize a workshop, with guest speakers, which is designed to help women find what they really want, and what skills they need to accomplish it.

IF YOUR COLLEGE INTERESTS ARE STILL PARAMOUNT, BRING THEM UP TO DATE

1. Check out continuing education programs at a nearby college.

- a) Most colleges offer a no-tuition opportunity to "senior citizens."
- b) This would be an opportunity to fill in the gap of college when we had to pass up fascinating courses for required ones.



A WOMAN'S LIFE

CHART EXPLANATION:

1. The above chart of a woman's life appeared in the *Star News* of Pasadena last year.

2. By the beginning of Section 5, many women who have not pursued a career in Section 3 or 4 are alone—either widowed, divorced, or "alone" because children are grown and gone.

3. Each person must prepare for a "second life" in the 40-80 year bracket.

- c) Offer to volunteer in the Continuing Education office, as it might lead to regular employment, if you so desire it.

2. Go back to school in your own field.

INQUIRE AS TO A CONFERENCE ON CAREER OPPORTUNITIES

1. Is counseling offered?

2. Some women feel threatened by the woman's movement and the idea they should leave their homes.

- a) Assess your life—what do you really want?

b) Women must realize the power they have over their own lives. You may not want to leave your home atmosphere.

c) Sometimes it is hard to be one's self. It is more comfortable being what we are told we should be; i.e. mother only, housewife only, good housekeeper only, etc.

d) So, decide what you want—and do something about it.

PURSUE THE "OFF-BEAT" CLASSES AT COLLEGE OR CLUB

1. Audit, Investments, Back Packing, Astronomy, Skiing, Real Estate, Cooking, Geology, Aviation, Safety, Travel. All these classes are offered at one California college.

2. Another section of classes offers Practical Ceramics, Know Your Auto, Furniture Refinishing, Landscaping, Knitting, Conversational French Weaving, Painting, etc.

CLOSING THE GENERATION GAP

a) This is a federally funded program to encourage multigenerational living and learning.

- a) They may audit any course on the campus, free of charge, or enroll in a regular credited course at reduced rates.

b) Day care centers are available for young marrieds who are enrolled in the program.

c) One 80-year-old woman says it is a tremendous experience, and all are on a first name basis.

If no occupations appeal to you, volunteering may be an answer.

2. It has been said that volunteering is the rent we pay for our room on earth.

4. See if Section 4 of the chart might provide a lead.

a) If you have developed no special interests in

5. Call the Chamber of Commerce to see where the greatest needs lie.

a) If your ferns are failing, or your broccoli is buggy, get a really good gardner to open a clinic. Most shopping centers would be glad to house such a clinic, which would be a boon to amateur gardners. If puzzled, write to your Department of Agriculture for suggestions.

7. Many employers now recognize the validity of volunteer work and are giving it the same sort of consideration they give paid employees in the areas of experience and references.

8. Gamma Phi Beta always has need of volunteers.

9. If you are a career woman, you can share your skills by counseling Gamma Phi Beta pledges on their careers.

These ideas are offered to the 49'ers—all those Gamma Phi Beta alumnae from 40-90, in the hope they will help you prepare for your "second life." Go get the gold in "them thar hills" 49'ers!

your local magazine chairman, or to be a one-woman committee in your own community.

and magazine subscriptions make great stocking stuffers or small, personalized gifts for neighbors and friends.

sell yourself and others on the idea of magazine subscriptions for holiday giving. Place the orders with the Gamma Phi Beta Magazine Agency and benefit the Sorority's Gift Fund and your chapter's treasury.

Publishers require eight to twelve weeks to process orders. So place your orders early. Be sure to include name, address and zip code of gift recipients—also the donor's name and address. Consult your area magazine chairman for rates or write Mrs. E. W. Kenney. Make checks payable to the Gamma Phi Beta Magazine Agency.

Mrs. C. W. Kenney, 129 Croyden Lane, Apt. E., Syracuse, New York 13224

(Address)

Zip Code

--	--	--	--	--

KALEIDOSCOPE

A panoramic report of Alumnæ happenings—both individual and collective—
as compiled by the Alumnæ Editor, Kristin Brandt Riske.

Once in Twenty-Two Years

Growing 50 Swedish Ivy centerpieces, freezing and transporting 125 pounds of ice, and even leading cheers were among tasks performed with special Gamma Phi Beta talent as the Greater Kansas City Alumnæ hosted the area's annual Panhellenic Open Meeting and luncheon. With the innovative leadership of the Sorority's delegate, Joyce Reusch French (Kansas), the country club luncheon-fashion show scene was replaced, refreshingly, by a more relevant "Indoor Panhellenic Picnic."

With a budget of absolutely nothing, talented Joyce was able to serve lunch to two hundred, give away sixty doorprizes and provide entertainment by a vocal group from a local nightspot. Sue Ann Haines Ott (Kansas) served as Joyce's

never tiring assistant. They chose as theme for the day, "Growing with Panhellenic," with the goal of sharing ideas to help each group grow stronger.

A morning of lively discussion groups covering 11 different areas (membership building, money-making and rush recommendations) gave each individual her opportunity to start "growing with Panhellenic!" Joan Lewis McCoy (Ohio State) and Betty Hailey Crooker (Kansas) served as moderators for two workshops. Betty, convention year president of the Kansas City Alumnæ, will be Panhellenic president next year.

A box lunch replaced the usual country club fare and Gamma Phi Betas donned workshirts with calico flowers as they acted as good-will ambassadors. The mood for a picnic was set with red bandanna tableservice and accented with 50



LATEST PRESIDENTS of University of Washington's Alumnæ Club—Patricia Jukes Woodruff (left) and Roberta Moore Sorensen—react with elation to word that the group received the Alumni Association's 1975 Distinguished Service Award. The band of dedicated women graduates in the Seattle area devote their time and effort to promoting the University's interests. Board members also include Marolyn Ebling Jorgensen, Anne Morrow McKinley, Ann Hilen Wright, Joan Lein Burkland and Barbara Neville Lentz. Pat Woodruff received the Seattle Alumnæ's 1974 Crescent Award for outstanding community service.



A FANTASTIC INDOOR PICNIC was staged for the Greater Kansas City Panhellenic when Gamma Phi Betas took their once-in-22 years turn as hostesses. Assuring the event's success were (standing from left): Sue Ann Haines Ott, Lois Moon Garver and Betty Hailey Crooker (all Kansas); past Grand President Audrey Weldon Shafer (Missouri), and Joyce Reusch French (Kansas). Kneeling (from left) are the "Go Grow Greek" pepsters: Sharon Livengood Ihde and Judy Hubbard White (both Kansas State), and Ruth Olson Allison (Kansas).

live plants (grown by members) wrapped in bandannas as centerpieces.

Former collegiate cheerleaders, Judy Hubbard White and Sharon Livengood Ihde (Kansas State) and Ruth Olson Allison (Kansas) led appropriate cheers to stimulate the Panhellenic spirit.

In addition to Betty Crooker, two other Gamma Phi Betas were honored at the luncheon. Lois Moon Garver (Kansas) was one of 12 past presidents of the KC Panhellenic recognized. Past Grand President, Audrey Weldon Shafer (Missouri), the Sorority's first alternate to NPC, was saluted as the Missouri Area Advisor for NPC. Audrey supervises eight campuses in the state.

According to Sue Ann Wiltse Fagerberg (Kansas State), CRESCENT correspondent, the goal for the workshop luncheon was "enrichment, encouragement, excitement and enlightenment." This goal was attained.

Navy Salutes The Admiral's Lady

Behind every good Judge Advocate General of the U.S. Navy is a good woman—in this case Ralphine Moore Staring (Idaho). A noted attorney herself, Ralphine was a recipient of Gamma Phi Beta's Carnation Award last year.

While serving as the Navy's chief legal counsel, Adm. Staring said of "his" lawyer: she was "a pivotal factor in my life and career." Now the Admiral's Lady is continuing special humanistic projects she began with the Navy. These are children and the law.

Ralphine works extensively with the juvenile court, representing neglected and battered children. The groundwork for this was laid while observing juvenile courts, talking with court officials and frequenting correctional institutions in Japan, Greece, the Philippines and other foreign jurisdictions where her husband was assigned.

Presently she is involved in Friends of the Court, a program utilizing the talents of Washington, D.C. area law school students. Here she advises prospective attorneys and even goes to court with them as they learn first hand the practice of law. She also continues her own law practice.



SEVEN MEMBERS of the Lubbock Alumnae charter petition were honored at Beta Tau's silver anniversary tea. Standing (from left): Martha Nicholson Robinson (Washington U.), Mary Jo Forrest English (SMU), Jeanne Hall Brewer (SMU), Winnifred Garland Gifford (Illinois) and Patricia Miles Rivers (Colorado College). Seated are Elizabeth Cornish Crandall (Northwestern) and Johnnye Gilkerson Langford (Texas).

Beta Tau Silver Tea

The Lubbock Alumnae honored the 13 members of its charter petition with a silver anniversary tea March 15 in the home of Bonnie Jones Aycock (Texas). The chapter was formally chartered on

November 10, 1951, following two years of preparatory work by alumnae in the area.

Seven of the honorees were present and accounted for, according to Rebecca Young Clinton (Texas Tech), correspondent. Unable to attend were Marjorie Fallert Blankenship (Washington), Mary Earnshaw Brown (Michigan), Sannie Callan (Denver), Georgea Flynn Fletcher (Washington), Patricia Banks Skinner (Denver) and Shirley Tacke Hunt.



NAVY WIVES don't always get their due. Not so in the case of Ralphine Moore Staring (Idaho), wife of Rear Admiral Merlin H. Staring (center), when the latter retired this year as Judge Advocate General of the Navy. Ralphine received a Navy Certificate of Appreciation from J. William Mendenhoff II, Secretary of the Navy.



VERMONT UNIVERSITY's Speech Clinic has been renamed the Eleanor M. Luse Center for Communication Disorders. Now a professor emeritus in Speech Pathology, this Northwestern initiate started the Vermont clinic more than 20 years ago. Significantly recognized by the American Cancer Society for her rehabilitation of 400 laryngectomees, Eleanor also received the Sorority's Carnation Award last year.

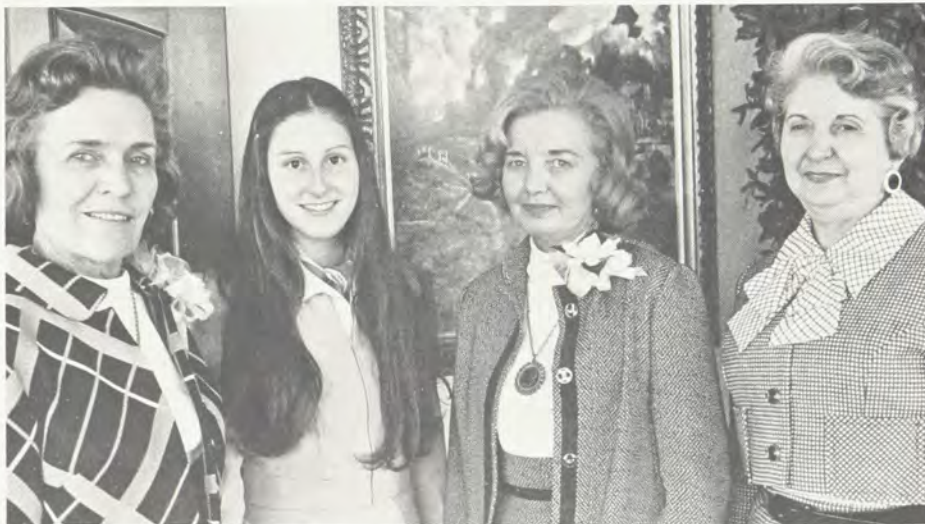
Typical Area Leadership Conferences

Across the nation, as segmented by the Sorority's 16 provinces, Area Leadership Conferences were held between February and April. Expounding such themes as **Cedar Falls'** "We've Only Just Begun," the conferees featured workshops on such topics as pledge programs, rush and philanthropies.

A typical conference was one staged by the Champaign-Urbana Alumnae and Omicron in the shadows of the University of Illinois campus. Province V delegates included those from Illinois and Wisconsin universities as well as bistate alumnae chapters.



PREPARING FOR CONFERENCE and its Pink Carnation luncheon (from left): Carol Ann Garland (Iowa), Margie Keck Wikoff and Betty Jane Roe Farrington (both Illinois).



CONFERENCE "BIGGIES" (from left): Ardis McBroom Marek (Northwestern), former Grand President; Claudia Trimarco, Omicron's Panhellenic delegate; Betty Luker Haverfield (Missouri), International Grand President; and Betty Woller Morningstar (Illinois), Champaign-Urbana Alumnae president.



Mrs. Helen Lasher

Tribute to A Housemother

"Just by her presence, she makes us act like ladies."

These words, spoken by a pretty blonde senior of Gamma Chapter (Wisconsin-Madison), summarize the sincere feelings of the entire chapter for their beloved housemother, Mrs. Helen Lasher, who retired in June.

There are housemothers and housemothers. Some are so-so, many are adequate, and a few are outstanding. Helen was one of the latter. (Says Louise Marston, reporter, "I have known every single Gamma housemother since 1929 and I can tell you from first hand knowledge that she was tops.")

A physically beautiful woman with lovely gray hair, sparkling green eyes and a tall, statuesque figure, she ruled over the Gamma Chapter house for 15 years with quiet dignity and wonderful good humor.

Widowed in her fifties, Mrs. Lasher was urged to take the job by close friends who were convinced she would be "absolutely perfect" for the position. And that she was.

"I loved it," she says. "The Gamma girls were simply wonderful. Never once was I treated with insolence or rudeness. The Sixties were difficult for all housemothers across the nation, but Gamma Chapter came through with flying colors and a minimum of problems. The Seventies have been pure joy. I know I am going to miss the girls terribly."

Mrs. Lasher, who has four married children and 14 grandchildren, has taken a spacious apartment at 20 Heritage Circle in Madison. She hopes to see the Gamma girls often—"a few at a time."

NEW ON THE ΓΦΒ BOOKSHELF

What Will People Say?

RUTH ALEXANDER



WHAT WILL PEOPLE SAY?—A

tender love story pinpointing the cruel and irrational emphasis society puts on age in marriage is the latest literary offering of Ruth Wilbur Alexander (Northwestern). Here, the author says, "is where discrimination with a capital D rears its ugly head! Yet, the subject until now has remained taboo."

This tightly-written novel (Vantage Press, Inc. \$4.95) represents the first break from the double standard for those of differing ages—wrong way-round—who love, marry and find happiness in each other. It possesses the reader at once.

Ruth, who's papers have been accepted in the prestigious *Library of Congress* and *Who's Who in the World*, has been a regular columnist for the Hearst Corp. and *Readers Digest* for a quarter century.

Holder of honorary degrees from Temple and Colorado universities, she also has received Northwestern Alumni's highest honor. She graduated summa cum laude having entered the university while three-months pregnant. She finished four years in two while caring for her infant child. Stories on this achievement ran in the newspapers of 31 countries.



Ruth Alexander



Florence H. Hollister

OZZIE—Florence Hartman Hollister (Oregon) has been hearing from Gamma Phi Betas all over the country following publication of her little book about a young king snake and his life in Virginia's swamps (Vantage Press, \$4.95).

To quote from just a few letters:

"Ozzie is a darned good tale. And I love your salutation—'with love and hisses.'"—Ruth Hopkins Strode (Oregon).

"Hunters, children and nature lovers will all enjoy 'Ozzie' and catch the magic of the great Swamp."—Helen Tunstall (William & Mary).

"Altho I loathe snakes, I find Ozzie delightful and quite human."—Eileen Tompskins Hall (Oregon).

"You must have spent many hours of research on all that scientific material. I entertained my AAUW book section last Monday and all were most interested."—Salome Riley Ott (Nevada).

"Many people hate snakes but your deftness in dealing with them took away all revulsion. You have spun a very sympathetic story for children and adults both."—Ruth Folwell Studley (Iowa-Washington).



Eleanor B. Steadman

NURSERY SCHOOL DAZE

A Guide For Mothers
And Preschool Aides



Eleanor Steadman

NURSERY SCHOOL DAZE—A Guide for Mothers and Preschool Aides (Vantage Press, Inc., \$3.95) by Eleanor B. Steadman (Minnesota) is an illustrated, short (51-page) primer which should be helpful to anyone involved in educating pre-school children.

Teacher aides, parents and the teachers themselves would benefit from this little book based on Eleanor's experience as a teacher and director in cooperative nursery schools.

The cooperative nursery school, in which mothers spend an average of one day each week helping, offers special advantages to both mother and child, says the author. The experience provides a continuity between home and school involving the entire family.

Eleanor mentions the Montessori training in her chapter on "Which Preschool?" and also touches on Head Start and day care community service programs. But, because she knows the cooperative nursery school situation best, she favors this type for the "stimulating environment" it can provide.

Mrs. Steadman and her husband, Dr. Thomas R. Steadman, reside in Columbus, OH. They have two grown children.

IN THIS ISSUE

Cover

Money making is like walking a path in an English maze garden. What leads to success for one group, deadends for another. Chris Drees (Washington-St. Louis) interprets the Money Maze with a symbolic design.



Purdue / 4



Money Maze / 7



Seattle / 25



Pacesetters / 31

- 2 Members Are Talking About . . . the May tabloid, crime on campus, Beta Tau's new lodge, and other things.
- 4 Purdue's Pride: Eighty-six initiates sign Delta Iota's charter.
- 6 Good Buys from Gamma Phis. Unusual items offered by Sorority chapters.
- 7 The Money Maze. An alumnae exchange of successful money-making ideas.
- 11 Honors. Annual round-up of chapter and individual honors among the Greeks.
- 17 Sorority Directory. A comprehensive listing of international, province and local officers, plus special announcements.
- 25 At The Helm: Introducing Seattle women now busily engaged in plans for Gamma Phi Beta's 1976 convention—"From Sea To Shining Sea."
- 28 Volunteers in Gamma Phi Beta. Seven accept responsible posts.
- 29 Our Ambassadors on Campus . . . collegiate consultants and graduate counselors.
- 30 In Memoriam
- 31 Pacesetters. Alumnae members who "lead the pack" in their respective fields.
- 34 The Challenge of Growth— directed to women over 35-40 years.
- 36 Kaleidoscope. A panoramic view of recent alumnae happenings—both individual and collective.
- 38 Tribute to A Housemother. Gamma Chapter will miss Mrs. Helen Lasher.
- 39 New on the GPB Bookshelf. A review of recent books by Sorority authors.