

The **CRESCENT**
OF GAMMA PHI BETA

DECEMBER • 1946



Schedule of Officers' Duties

Greek-Letter Chapters

PRESIDENT:

By February 15 of odd years, send Central Office acknowledgement of bound *CRESCENTS*. Use postal card in volume.

CORRESPONDING SECRETARY:

By August 1, send 6 rushing calendars to Central Office and 1 each to Province Director and Traveling Secretary.

By September 15, send 6 college calendars to Central Office and 1 each to Province Director and Traveling Secretary.

By October 1, send Grand President business for consideration at fall council meeting, include business for consideration of convention in fall preceding convention.

Immediately after pledging (immediately after opening of college if pledging is deferred), send lists of chapter members and pledges (new and holdovers) to Central Office and Province Director.

By February 15, send lists of chapter members and pledges (new and holdovers) to Central Office and Province Director.

Not later than March 25, mail name and home address of new rushing chairman to Central Office.

Immediately after appointment is made, send name and address of *CRESCENT* Correspondent to Editor-in-chief.

As soon after April 1 as information is available, send 6 lists of all new chapter officers to Central Office and 1 list each to Province Director and Traveling Secretary.

By May 1, send Grand President business for consideration at spring council meeting.

By May 15, in convention year, send to Central Office list of chapter members (undergraduates and alumnæ) who have passed away since preceding convention.

By July 1, send list of graduates (include members who have dropped out of college) with home addresses to Central Office and Province Director.

Due Central Office by December 1: first installment of international dues and \$6.50 for bound *CRESCENTS* and subscriptions to *Banta's Greek Exchange* and *Fraternity Month*.

Due Central Office by March 1: second installment of international dues.

Fiscal year begins August 1, ends July 31. All dues paid between those dates cover the period between and cannot apply to the next fiscal year no matter how late they are paid.

SCHOLARSHIP CHAIRMAN:

Comparative rating of NPC sororities on campus for preceding year due Mrs. Ord immediately after reported, if possible by Nov. 1.

PLEDGE TRAINER:

Immediately after pledging, order pledge manuals (50¢ each) and song books (\$1.00 each) from Central Office. Enclose check.

By May 15, send report for new edition of Pledge Manual to Central Office.

CRESCENT CORRESPONDENT:

Pledge lists, glossies, chapter letters for December issue due Mrs. Bradford Oct. 1.

Chapter letters, glossies, features for May issue due Mrs. Bradford March 1.

List of members elected to honoraries during past year, glossies and features due Mrs. Bradford at close of school year.

RUSHING CHAIRMAN:

Rushing reports due Province Director immediately after each formal rushing season of the year.

Order supplies (recommendation blanks, file cards, acknowledgment cards) early each spring for following fall, from Central Office.

PUBLICITY CHAIRMAN:

Publicity copy, with glossies, due Mrs. Thomas by first of each month.

HISTORIAN:

Chapter history for preceding year due Central Office July 1.

Alumnae Chapters

CORRESPONDING SECRETARY:

By October 1, send Grand President business for consideration at fall Council meeting.

By January 1 of a province conference year, send nominations for Province Director to Grand President.

As soon as all chapter offices have been filled, send 6 lists of chapter officers to Central Office and 1 list to Province Director. If complete list is not available by April 1, send name and address of member who will be responsible for rushing recommendations during the summer. Send name and address of *CRESCENT* Correspondent to Mrs. Pinkerton and Mrs. Marek.

By May 15 of a convention year, send list of members who have died since preceding convention to Central Office. Include married and maiden name and Greek-letter chapter.

TREASURER:

International dues and camp taxes cover the sorority fiscal year—August 1 through July 31. Both become due August 1 but may be paid at any time during the fiscal year, but chapter is considered delinquent if dues and camp taxes of its members are not paid by January 1.

Chapter audit sent to Mrs. Howe on same date House Board sends audit. **DO NOT SEND TO CENTRAL OFFICE.**

CRESCENT subscriptions, to begin with following issue, must be sent to Central Office according to schedule below.

CRESCENT CORRESPONDENT

Alumnae chapter letters for September issue and marriages, births, deaths, feature stories and glossies due Mrs. Marek July 15.

Alumnae chapter letters for February issue, and marriages, births, deaths and features and glossies due Mrs. Marek Dec. 15.

Feature articles, newspaper clippings, pictures about alumnae may be sent to Mrs. Marek between deadlines.

HOUSE BOARD TREASURER

First semester audit due Mrs. Howe before March 15.

Second semester audit due Mrs. Howe before September 15.

SCHEDULE FOR CRESCENT SUBSCRIPTIONS

Greek-letter chapter and Alumnae chapter Treasurers:

CRESCENT subscriptions (included in final initiation fee for recent initiates) must be received by mailing list deadlines (shown below), if they are to begin with the next issue: August 15—September *CRESCENT*; November 1—December *CRESCENT*; January 15—February *CRESCENT*; April 1—May *CRESCENT*.

Subscriptions cannot be dated back since only enough copies are printed to accommodate mailing list at time of publication.

The Crescent of Gamma Phi Beta

Volume XLVI, Number 4

Contents for December, 1946

The Cover

Front of Main Hall on the campus of Randolph-Macon Woman's College, Lynchburg, Virginia, where Alpha Sigma chapter of Gamma Phi Beta was chartered September 13, 1930.

THE CRESCENT is published September 15, December 1, February 15, and May 1, by the George Banta Publishing Company, official printers of the fraternity, at 450 Ahnaip Street, Menasha, Wisconsin. Subscription price \$1.50 a year payable in advance, 40¢ a single copy.

Send change of address and correspondence of a business nature to Gamma Phi Beta, 450 Ahnaip Street, Menasha, Wisconsin, or Suite 2230, Civic Opera Bldg., 20 N. Wacker Dr., Chicago, Ill. Mailing lists close August 15, November 1, January 15 and April 1.

Correspondence of an editorial nature is to be addressed to the editor Mrs. Roy Pinkerton, Box 341, Route 1, Ventura, California. Items for publication should be addressed to the editor to arrive not later than July 15, October 10, December 15 and March 1.

Member of Fraternity Magazines Associated. All matters pertaining to national advertising should be directed to Fraternity Magazines Associated, 1618 Orrington Avenue, Evanston, Illinois.

Entered as second-class matter at Menasha, Wisconsin, under the act of March 3, 1879. Acceptance for mailing at special rate of postage provided for in the act of February 28, 1925.

Editorial Staff:

AIRDRIE KINCAID PINKERTON, Editor-in-Chief, 341, Route 1, Ventura, Calif.

ALICE THOMSEN BRADFORD, Associate Editor, 1224 Spruce St., Denver 7, Colo.

LOLA CARROL BRANIT, Associate Editor, L12 Lake Lotawana, Lees Summit, Mo.

ARDIS MCBROOM MAREK, Waldron Rd., Kankakee, Ill.

EVELYN GOODING, Acting Secretary-Treasurer, Suite 2230, Civic Opera Bldg., 20 N. Wacker Dr., Chicago 6, Ill.

MEETS WIVES OF HANGED GERMANS	3
WE HATE TO SEE THEM GO!	4
WAR WIDOW SERVES WITH RED CROSS	5
ODD-EVEN TRADITION SPURS SPIRIT	6
THE OUTSTANDING CAREER OF VIRGINIA S. MORRIS	7
HIGH BRITISH HONOR GIVEN WAVE	8
ALPHA ETA'S SHINING DAYS, BY HECK!	9
SENIORS' FAREWELL	10
PAT WINTER IS A. KENT FINALIST	11
WHAT GAMMA PHI BETA MEANS TO ME	12
PRINTERS INK HER MIDDLE NAME	13
BULLETIN BOARD	14
MRS. GEORGE METCALFE SIMONSON, GRAND PRESIDENT	15
GRAND COUNCIL, 1946-1948	16
GRAND COUNCIL APPOINTMENTS	18
ON CAMPUS WITH OUR CHAPTERS	21
STATE AND PROVINCE RUSHING CHAIRMEN	27
MAGAZINE SUBSCRIPTIONS	28
GAMMA PHI BETA DIRECTORY	31
SCHEDULE OF OFFICERS' DUTIES	Inside front cover



JOAN DOUGAN, Gamma '47, was one of the five contestants chosen from the entire student body of the University of Wisconsin Campus as an Artist of the Future.

Meets Wives of Hanged Germans

Hope Chamberlin (Oregon State '38) who has been in Europe for the past two years is now attached to the Office of Military Government for Bavaria and edits, in Munich, the official military government newspaper, *The Bavarian*. She attended the Malmedy trials in Dachau and the war criminal trials in Nuremberg. The following, from *The Bavarian*, tells of her interviews with the wives of the Nuremberg prisoners.



Hope Chamberlin

WIVES of the notorious nazi war criminals who, through their love and devotion, allegedly helped their husbands convert Hitler's wild dreams of conquest into battle plans, spend most of their time today in quiet solitude, ostracized by all but their immediate families. That is, the older ones. The younger fraus are less lonely.

To await the verdict from Nuremberg (it's been over a year now since any have seen their husbands), the majority have chosen the exclusive and beautiful Bavarian Lake Region.

In tiny secluded Hechenberg, reached only by a narrow, winding, hilly gravel road off the main route to Bad Tölz, Mrs. Walter Funk, whose husband served as Reich Minister of Economics and as Secretary of State in the Nazi Propaganda Ministry from 1933 on, lives, sleeps and eats in a small room on the second floor of a Gasthaus. She admits being "quite alone" and is ever thankful for the companionship of "Tobin," the black Scotch terrier which was a birthday gift from her husband.

Tears came to her eyes and she glanced at the tapestry-framed picture of Herr Funk prominently displayed on a side table when asked what hopes she had of her husband's acquittal. "I know we'll be together again," she said, almost in a whisper. "We must. Our 25 years of married life were perfect."

It has been 16 months since titian-haired Mrs. Funk left her Berlin mansion to take occupancy in their summer home in Gergherhof, a few kilometers from where she now lives. At the end of the war, she vacated this to take up residence in her present blue wall-papered quarters, for which, with meals, she pays five marks a day. Her large pearl and two-diamond engagement rings are quite a contrast to the clean but shabby print dress and old-fashioned shoes she wears. "These are all the clothes I possess," she said. "It takes almost all of the 200 marks a month I'm allowed to exist."

Exquisitely-tailored suits, bearing the labels of exclusive Maximilianstrasse dress shops hang in the hallway of the attractive Bavarian chalet overlooking blue Tegernsee where young Mrs. Wilhelm Keitel and her brood of five children are comfortably passing the days. Sharing the 10-room house, built atop a hill, are Mrs. Burkner, Mrs. Keitel's sister-in-law and her three children, and Eva von Blomberg, Mrs. Keitel's step mother and widow of Field Marshal Werner von Blomberg.

Well tanned and wearing brief two-piece bathing suits, the adult trio had recently come from bathing with male friends when interviewed. "We are badly off," Frau Keitel insisted. "Now I have only one nurse for the children." At that only the next-to-the-youngest, a 2½-year-old, made his appearance. Blond and well dressed, he displayed manners of a gentleman. The other youngsters are 7, 5, 3 and 1 year, respectively.

Beautifully furnished, the house contains silver services, old

valuable paintings, and expensively-upholstered furnishings.

The name on the doorbell at the Frank residence in Neuhausen on the Pegnitz, reads Dr. Frank. Slim, dark-haired Mrs. Frank, however, answered the ring. Allotted two rooms in the back of a large, though attractive, Bavarian country house, she lives here with four of her five children. Sigrid, the eldest, is married. Mrs. Frank's mother and a sister live several kilometers away, and she manages to spend some time with them.

"My greatest problem outside of getting enough to eat," she said hesitatingly, "is attempting to locate a school that will accept Norman, my 18-year-old son. We have no friends now and the high school here is antagonistic towards him. He's a bright boy, and I had such high hopes. . . ." With this, she broke down. Between sobs, she continued, "If only I were alone, without the responsibility of the children—then I'd put my things in a knapsack and go far away from everyone."

Her husband writes often, she said, adding that she believes the trial is being conducted very fairly. "He was such a good Catholic," she went on. "I know he'll come back to us."

The Franks' former summer home is located on the river in Neuhausen and, in pointing it out, she sighed, "Everything has been ruined. It used to be so wonderful. Now I even have to get my own wool."

The young, attractive wife of Baldur von Schirach, organizer and chief of the Hitler Jugend (Reich Youth) and one-time gauleiter of Vienna, now occupies a small house at Jachenau, along the famed Walchensee. Her quarters, though not too cramped, are a far cry from the former spacious, heavily-guarded, hill top house above Kochelsee, now inhabited by troops. Frau von Schirach has had to forsake her oriental rugs, gobelin tapestries, Rembrandt paintings and Dresden china for the less expensive, more plentiful type of household furnishings. However, she boasts about the fact that she made friends with the Americans and was able to take certain prized possessions from her "beloved" home.

"No, I don't listen to the news. It's depressing," she stated. "My time, when I'm not with the children (the Schirach's have four) is spent with "Friends." Main "gripe" of Mrs. von Schirach is that she has to do her own housework.

Another lake-shore resident is Mrs. Wilhelm Frick, wife of Germany's former Reich Protector in Bohemia and Moravia. She lives in small quarters along Starnberg lake, "down the road" from the famed Frick summer house, now an Army VIP house. D D D

We Hate To See Them Go!

ALPHA THETA held its annual senior banquet at the BelleMeade Country Club last spring, and we certainly hated to see our seniors leave Vanderbilt University.

Our new president, Kathryn Quarles, presided at the speaker's table, with Dr. Doris Phelps, Director of Province III, Mrs. G. F. Coles, president of the Nashville alumnae group, Mrs. Frank Shapard, our house mother, and Katy Moore, graduating president. Dr. Phelps spoke to us, giving us a brief report on the achievements of Alpha Theta during the past four years that our seniors have been at Vanderbilt. Outstanding among the things that she reminded us of was the fact that, in those four years, members of Alpha Theta have held five out of the six major offices on campus, in addition to numerous minor ones.

Sis Mershon received the award given annually to the senior who has been most valuable to Alpha Theta. Sis served as vice-president this year, and as pledge trainer the year before. She has been president of S.C.A. and News Editor of the *Hustler*,

Vanderbilt newspaper.

Kathryn also made the traditional presentations of the ring to the most outstanding freshman, which went to Ann Mitchell, and the plaque to the freshman with the highest average, to Suzanne Shepherd. We certainly will miss our seniors. Among them are three Phi Beta Kappas, the Lady of the Bracelet (highest honor a woman can attain at Vanderbilt), former presidents of: Lotus Eaters, Athenians, W.S.G.A. Tri-Arts, S.C.A., Sigma Delta Pi, Women's Panhellenic Council, Women's Honor Council, Women's Athletic Association Board, and Newman Club, as well as Editor of the *Commodore*, two members of Mortar Board, a cheerleader, and Editor of Chi Delta Pi. All these honors distributed among twelve girls really isn't bad, we think!

The senior banquet was a grand send off to a grand group of girls. We want to see our new alumnae around a lot. We certainly do hate to see them go! D D D

—SUZANNE SHEPHERD

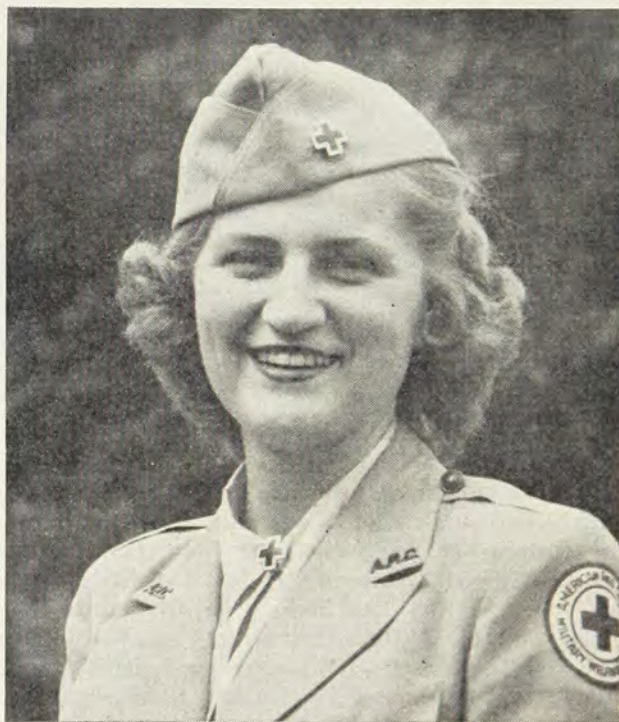
Sails Again With Red Cross

NADINE BOHLANDER (Oregon) was a member of the largest contingent of American Red Cross workers to go overseas since VJ Day when she left October 9 to serve members of the American armed forces in occupied zones of Europe and the Far East, Verne Simmons, Pacific Area manager of the Red Cross, announced.

Of the 179 now being briefed at ports of embarkation, 120 are bound for the European theater while 59 are scheduled to go later this month to Japan and other points in the Far Eastern Theatre of Operations. In its continuing service to American troops scattered throughout the world, the American Red Cross now has 3500 workers overseas. This year it has allocated \$25,900,000 for overseas recreational programs in leave areas, camps and hospitals, and for its field offices which handle welfare and communications work.

Nadine Bohlander first served with the American Red Cross in the Middle Eastern Theatre of Operations, arriving in North Africa in May, 1944. After two years of service she returned to the United States. A member of Gamma Phi Beta sorority, she attended the University of Washington and the University of Oregon. The majority of Red Cross representatives sailing this month from New York and Seattle are experienced workers who have been called back after completing other overseas assignments or have been engaged in Red Cross work in this country. They include recreation directors, hand craft instructors, hospital aides, on-post field workers, and secretarial assistants.

Most of the representatives are assigned to areas where American troop concentrations are greatest but smaller groups and individual workers will join outlying staffs which serve units in all isolated sections of both theaters. D D D



Mary Jane Drake, Omega '44, was one of the most outstanding and popular women on the Iowa State Campus. A member of Mortar Board she proved herself capable in all she undertook. She is now with the American Red Cross in Italy doing recreation work and loving every minute of it. Her colorful letters are filled with stories of busy days, good times, always working toward the goal of making the life of tired men and women in the service more enjoyable. We are proud to say that Mary Jane is a member of Gamma Phi Beta.

—Charlotte Stone, Iowa State '47

War Widow Serves With Red Cross

VIRGINIA MATTHEWS has come home.

A war widow who felt that she "wanted to have an active part in the war," the Dallas girl joined the American Red Cross as a recreational worker with the armed forces in April, 1945, "to find something."

In the lonely stretches of the South Pacific and in the hospital wards filled with wounded and dying men she found herself. What is more, she found her place in the scheme of things. And that place, she admits is good.

Back in Dallas and about to leave the Red Cross, she feels that her place still is beside servicemen. That is the conclusion she has reached, both in the Pacific and since she has been home. She left Kwajalein, jumping-off place for the Operations Crossroads on June 6 and arrived in San Antonio just in time to hear the radio broadcast of the first atom-bomb test at Bikini.

In Dallas she is visiting her husband's parents, Mr. and Mrs. E. A. Matthews of Pleasant Grove.

When Lt. Ernest A. Matthews was killed as the Marines stormed the beaches on lonely Tarawa on November 20, 1944, it was almost as though the world had ended for Mrs. Matthews. But the girl who had held a war plant job thought it over and decided she wanted to have a more active place in the war. There was nothing melodramatic about it. She joined the Red Cross as her husband, who had left with a grin and the remark that he wanted to watch a buddy take boot training, had joined the Marines.

Soon after she joined in April, she was sent to Honolulu to an Army and later a fleet hospital, where she came into contact with the wounded pouring back from Iwo Jima and Okinawa. Later she saw the survivors of Jap prison camps, wrote letters and did the Christmas shopping for a man who was still alive after suffering burns over 85% of his body.

Mrs. Matthews had hoped to go to the South Pacific but individual preferences have no place among Red Cross workers and she had to wait and hope. Too, she felt that she was not yet ready for that.

"You see," she said, "I had to learn first of all whether I was emotionally stable." It was in the hospital that she found this emotional stability. She was ready for a new kind of duty when the call came.

Last January she was sent to Kwajalein, later to be the jumping-off place for the A-bomb test. There she served as hostess in the Red Cross recreation club for members of the armed forces. With Operation Crossroads activity getting under way, her club became one of the key Red Cross clubs of the world, serving 1,200 persons daily.

Shortly after she reached Kwajalein she received news of the death of her mother, Mrs. J. J. Vorhees of San Antonio.

The opportunity to visit her husband's grave on Tarawa came through the personal efforts of the Air Transport Command officials and the commodore of the NATS who made the arrangements as a courtesy to her.

"I want to make it plain that the Red Cross had nothing to do with getting me to Tarawa," said Mrs. Matthews. "I don't want the wives and mothers of other men who were killed to think that they couldn't visit their graves while the Red Cross sent me to visit my husband's. I was just lucky."

Virginia Matthews saw the pier on which her combat correspondent husband fell as he advanced with the Second Regiment of the Second Marine Division, of which he was assistant public relations officer.

And after visiting the island there is one thing about which



Photo by "The Dallas Times Herald"

Virginia Vorhees Matthews

EDITOR'S NOTE:

Virginia Vorhees Matthews (Washington U at St. Louis '30) is well known to Gamma Phi Betas in Dallas where she and her late husband Ernest Matthews opened their apartment near Southern Methodist University to members of Alpha Xi chapter when the group was having difficulty in finding a meeting place.

she is very definite. She does not want her husband's body returned to the United States for burial. "I don't think anyone would want her husband's body brought back who has worked with servicemen or seen a battlefield," she said. "Of course I can't tell another wife or mother she should not want a body brought back. We are so conditioned that we have to have something factual to accept things. When we have only a telegram from the War or Navy Department that isn't very much."

In working with the servicemen and in visiting Tarawa, she learned more about her husband and all servicemen. "Ernest didn't die as my husband," she said simply. "He died as something bigger than that and I have learned something bigger than that." There were tears in her eyes and her chin was quivering as she went on "I saw the pier where he was killed and the beach where the Marines had to wade for 600 yards through a withering machine-gun fire, and I know how they must have felt. Any man would have been afraid. But it was something bigger than themselves or their fear that made them willing to go forward, even willing to die. They had to live—and die—for something bigger than themselves or even their

(Continued on page 8)

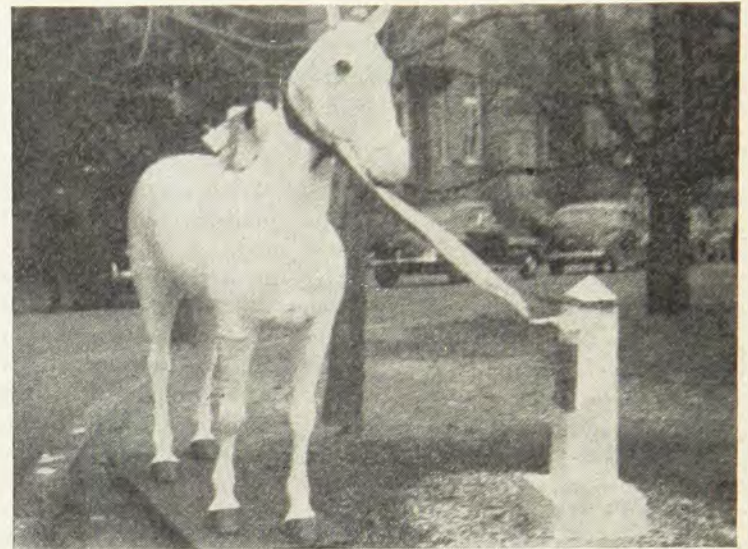
Odd-Even Tradition Spurs Spirit

By Jane Keifer '47 and
Nancy Eileen Wait '48

Randolph-Macon Woman's College

ONE of the outstanding features of Randolph-Macon college life is Odd and Even rivalry. Students graduating in odd years are Odds, and students graduating in even years are Evens. The symbol of the Evens is the Even Hitching Post and their mascots are Bones, a little white dog, and Buttons, a large white horse. Buttons originally belonged to William Waugh Smith, the first president of Randolph-Macon, but now is symbolized in Even lore. Bones was originally a little white dog who brought luck to the Evens in all their games. One day Bones disappeared, and from that time on he was incorporated into Even tradition. Every year on Even day, which is March 14, Bones and Buttons are brought out, freshly painted, and tied to the Hitching Post to guard it during Even celebrations. Not being content with mere inanimate symbols the Odds hold in esteem their Odd Tree, the Ragged Robin, and the carnation. As their colors they honor the red, grey, blue, and as their beloved mascots they respect the witch and the devil.

Through songs and cheers and once a year on special days set aside for the respective rivals, Odd and Even lore are glorified. For each day the campus is changed overnight into a vertible wonderland. A year ago on Even Day all Evens were in Paradise for one glorious day and all Odds were in Paradise Lost. In the Main Hall dining room was a judgment throne. All Evens were allowed to go to Wiggam, the Even heaven, while the Odds were made to go to a symbolic hell. At noon the Evens were taken for a ride on the fire-engine—another Even



Even hitching post, showing Buttons, with Bones on his back on Even Day at Randolph-Macon, Lynchburg, Virginia.

Day tradition. Around suppertime all the Evens came to the banquet hall to a banquet for just the Evens. At night all of the Evens gathered around the Hitching Post and watched the spirits of Bones and Buttons return as always before. Odd Day is celebrated on April 13 in similar manner. Last year Odd Day celebrated the Oddling Sisters' Circus. Main Hall became the Big Top where fruit juice and cookies were sold and many strange animals were held captive such as Cheetah, the treasurer of the college. The Even hall was designated as the Freak

(Continued on page 8)

Named Dean Of Women

DR. LEOLA NEAL, a member of the alumnae chapter of Alpha Omega of Gamma Phi Beta, of the University of Western Ontario, has been appointed dean of women to succeed Dr. Dorothy Turville. Dr. Neal, who is assistant professor of Psychology, was appointed by the board of governors of the university and assumed the deanship at the beginning of the Fall semester.

She was graduated from the University of Western Ontario in 1933 and is well-known to women students and graduates; she will continue in the Department of Philosophy and Psychology on a part-time basis. Dr. Neal received her Ph.D. from the University of Toronto. During her study there, she served as don (junior adviser to women), in a residence of Victoria College. Thus she brings to the position of dean considerable experience in counselling.

From 1935, when she received her M.A. degree from "Western" until 1941, Dr. Neal was on the Faculty of her Alma Mater. In 1941, she was awarded the John Northway Fellowship in Psychology at the University of Toronto. She returned to the University of Western Ontario staff in 1942. She also did post-graduate study at the University of Calif.

Leola, as she is known to all of her Gamma Phi sisters, has always been an enthusiastic member of the alumnae chapter in London. She brings to her new position, charm, poise and a youthful viewpoint, qualities so necessary to one acting in her capacity; these attributes naturally combine to make the appointment a popular one. Alpha Omega and London alumnae of Gamma Phi Beta are proud of this outstanding sorority sister.

—HELEN BENSON ASELSTYNE



Dean Neal

The Outstanding Career Of Virginia Sankey Morris

By Elaine Foerster Maxeiner

St. Louis Alumnae

USO Head Receptionist Dies While on Vacation"—that was the headline that shocked the city of St. Louis in mid-August. The career of Virginia Sankey Morris had been abruptly terminated at the age of 39, and the community was aware of the loss in civic leadership it had suffered. Her job had been a tremendous one, involving the entertaining of nearly 5,000,000 servicemen at the center. In addition, as volunteer placement secretary, she had supervised the 10,000 young women who had served as hostesses there.

Mrs. Morris was an initiate of Phi chapter at Washington University, and Gamma Phi Beta had been proud of her all through the war. In her important position she had devoted long hours to her work, her duties covering everything from seeing that transient G.I.'s had uniforms pressed and beds for the night, to arranging for 12,000 dozen cookies for the weekly Saturday and Sunday night dances attended by an average of 10,000 servicemen each night.

On September 4, 1942 the St. Louis *Post-Dispatch* had run a feature article on this outstanding woman to bring her activities to light in the community. Virginia's comments herein quoted characterize the tremendous interest, initiative, and personality that were hers. "I think I like the job so well, because I like people and am naturally gregarious. . . ." "We've had all sorts of personal problems, too. We don't encourage the boys to weep on our shoulders. We try to keep their lives so full of pleasure that they forget their homesickness. We don't discuss the war. We try not to think about it . . ."

"On occasions such as the 4th of July, the USO Center became an impromptu hotel. As many as 400 servicemen have slept here for lack of other accommodations." "At these times," said the writer, "Mrs. Morris disregards such routine as sleeping and eating and stays on duty night and day."

One week Virginia put in 83 hours, working 58 hours and volunteering the rest. She commented, "With the irregular eating and sleeping hours I have to love my job. If I didn't, I'd be dead. It's an awful lot of work, but it's a lot of fun too. . . ."

This tremendous giving of self in her USO work had not come as a surprise to Gamma Phis who had known her before her rise to civic fame. They had watched her in previous years undertaking other responsibilities not from a sense of duty or for personal glory, but because she loved life and the opportunities for enjoying it to the fullest. She was never too busy or preoccupied to avoid additional responsibility. And she was never too tired to enjoy the simple things along with the adventurous.

Her affiliation with Gamma Phi Beta came when, as Virginia Sankey, she entered Washington University in September 1924 where Phi chapter was proud to pledge and initiate her. Her preparatory record at Mary Institute from which she had been graduated was a fine one, evidencing an active interest in the dramatic and glee clubs. On the campus of Washington University, she was an outstanding sorority and college woman. She was a member of Ken Mair, women's debating society and held several offices in the League of Women's Voters. She was on the Circulation staff of *Dirge*, the University's humorous publica-



Virginia Sankey Morris

tion, and after having served as an assistant on *Hatchet*, the school's year book, she became its first woman Business Manager in her junior year. Also in that year she was chosen *Hatchet* Queen, probably the most coveted social honor of the year.

She was awarded sophomore honors and represented the League of Women Voters on the Women's Council, participated in the Varsity Debate in her junior year and was a member of the YWCA and Little Theater.

Shortly after graduation she married Charles M. Morris, Jr. also of Washington University and a member of Theta Xi fraternity. In March 1931, a daughter, Dorothy Jane, was born.

Virginia assisted at Wilson's Kindergarten, where her daughter was a pupil, for two years. In 1937 she became a member of the faculty of Mary Institute where she taught until 1941. At that time she became head receptionist at the USO Center which she served until her passing. She was stricken suddenly and died of a cerebral hemorrhage while vacationing in Brainard, Minnesota. In addition to her husband and daughter, she is survived by her mother, Mrs. Anna McClain Sankey, and an uncle, Harry R. McClain.

When on August 14, 1946 Virginia Sankey Morris passed on from her well organized and busy life, she had done more for and with people in her 39 years than many of us can accomplish in a full four score and ten.

High British Honor Given Wave

Lt. Margaret Purves, USNR (Kansas '38), the only American girl made a member of The Most Excellent Order of the British Empire was decorated by the Earl of Halifax, British Ambassador, in Washington, D.C. February 12, 1946. In The Engineering branch of the navy, she supervised the purchase of aviation instruments for lend-lease.

A WICHITA, KANSAS, doctor's daughter who as a WAVES officer helped fight the "battle of Washington," has received a military decoration at the hands of the Earl of Halifax, British ambassador.

Lieut. Margaret Purves, daughter of Dr. and Mrs. G. K. Purves, thus became the only American girl given honorary membership in the military division of the Most Excellent Order of the British Empire.

For nearly two years, Lieutenant Purves (Kansas '38) served in the engineering branch of the navy bureau of aeronautics at the Washington headquarters. Specifically, she was in the instruments branch and computed purchase estimates.

On the side, she also did a job for his majesty's government. British requisitions for aviation instruments under lend-lease came under her general supervision.

Miss Purves had little personal contact with the British. Most of the business was handled by telephone. Her assistance in the procurement and shipment of the all-important instruments undoubtedly played a real part in the success of the British air forces.

"But I was really just a cog in the big machine, and I didn't know British leaders had been aware of my work," Miss Purves said. "So I was surprised to receive the gold-crested invitation a few weeks ago in Wichita. I had been discharged from the WAVES and was at home."

Miss Purves returned to Washington for the presentation. She donned her navy uniform, "the only junior grade in the bunch," she said, and appeared at the departmental auditorium for the ceremony. More than 100 American officers from various branches of the service were honored by the British at the same time. As the lone girl in this distinguished gathering, Lieutenant Purves was singled out by the photographers for a picture with the British ambassador.

It would seem rather difficult for a stenographer who had majored in English to handle a technical job involving pur-



Lt. Margaret Purves, USNR

chases running into millions of dollars. Miss Purves did the job, however, and she did not creditably.

"A lot of people were put into war jobs they didn't know anything about at first," is her explanation. "I guess I just picked up knowledge on the spot, and we were furnished technical data by the various offices."

Miss Purves gave some thought to getting into the aviation industry upon her discharge, but finally decided to return to Wichita and take another office job similar to those she had held before joining the WAVES.

Miss Purves is an attractive brunette of medium size. She attended the University of Wichita and was graduated from the University of Kansas in 1938. She belonged to the Gamma Phi Beta sorority at K.U. She then went to a business school at Wichita, after which she had office jobs. In August, 1943, she was commissioned an ensign in the WAVES and took a training course at Northampton before receiving her Washington assignment.

Miss Purves has two brothers still in the service. Major William Purves of the medical corps now has a fellowship at the Winter General hospital in Topeka, and G. K. Purves, Jr., is with army intelligence at Hawaii.

(Continued from page 5)

families. That's why they went forward. That's not calloused. It's just objective."

After visiting her own husband's grave and the battle field Mrs. Matthews returned to Kwajalein and her work. The rest of her life likely will be devoted to work, preferably with servicemen, in hospitals.

Virginia Matthews lost her husband on a lonely island in the Pacific.

But in the Pacific she found herself and her place in the scheme of life and death and service. D D D

—From a recent article by Frank Langston in
The Dallas Times Herald

(Continued from page 6)

Show. Traditionally, the Odd upperclassmen march into chapel under the carnation arch, made by the underclassmen Odds. After lunch the sister Odd classes gather together for the planting of the Ragged Robin in front of the dorm which always houses the Odds. They also, like the Evens, hold a seclusively Odd banquet in the evening. The celebrated day is ended at 10:15 with the lantern parade.

Traditionally, each fall the Hatchet Party is held at which all the Seniors and Juniors gather to "bury the hatchet." A peace pact is made and the rivals become lasting friends. And so it goes year after year as the tradition is imbedded more deeply into the hearts of all true Maconites. D D D

Alpha Eta's Shining Days, By Heck!

By Marilyn Heck
Ohio Wesleyan '48

WHO HAS the mop? Who has the soap? Where is the dust cloth? Everyone pitches in to help during fall housecleaning. With all the members of the chapter at work, it takes no time at all to complete the dreaded task.

In a sorority there are more than enough to help, but it is always said that too many cooks spoil the broth. I would not say that, however. There is nothing I like better than playing the role of doormat, and have my dear sisters trample all over me.

I also enjoy being pulled and pushed across the kitchen floor, having been mistaken for the one and only precious mop. I don't mind it so much when they duck my head in the bucket, but when they start twisting my neck to squeeze out the water—that is too much.

In the morning hours, not very much is accomplished because one by one all of the girls "just have to take a few minutes to drag on a fag." The girls also anticipate the lunch hour and so we all turn to clockwatchers until the noon hour arrives. Ah! How we love lunchtime. We gorge ourselves with everything that is on the menu of the nearby restaurant. Of course, after lunch we must rest awhile before pitching back into housecleaning.

Finally we trudge back to the house ready to work once more. The afternoon is very profitable indeed, and most of the work is accomplished. The windows look so bright and clean, almost as if there is no glass at all. Imagine that! There is no glass! Oh, those strong armed window washers. The carpets are immaculate. They are a beautiful sight to see, that is, if you



overlook the holes that have been rubbed through by the carpet cleaners. We girls are so talented!

By five or six o'clock, the house begins to take shape (some of the girls are silhouetted against the fast greying sky as the Phi Beta cleaning casualties, but they still smile). We all are so proud of our work. We gaze with pleasure on our masterpiece as Da Vinci no doubt gazed on his work. How proud our mothers would be!

Ah, but now, the night shades are falling, and the figures of the girls are silhouetted against the fast greying sky as they trudge back to the dorm. What a poetic sight they make! What a peaceful atmosphere! Contentment reigns high, as the girls enter the dorm ready to write to their men about their domestic qualities. Such is the life of a Gamma Phi house cleaner.

College Wardrobes Revert To Feminine

THAT the return of the male to the American university campus has chased the perennial sloppiness of the female wardrobe to the backwoods was discovered by two University of Arizona girls after the July opening of the College Roundup in Marshall Field's Chicago store. Sally Lee, president of Alpha Epsilon Chapter and Kay Pfeiffer, Kappa Alpha Theta, were among 24 co-eds from nearly as many colleges including: Mills, Carlton in Minnesota, Lindenwood, Mo., the University of Colorado, Wellesley, the University of Michigan, Purdue, Iowa, Northwestern, Smith, Sarah Lawrence and the University of Illinois, in addition to Arizona, on the college board for the organization.

The Roundup itself included a large corral fence, shocking pink beer barrels as seats, round tables and a juke box and piano to give the impression of cosmopolitan campuses as featured

parts of the setting. The girls on the college board were attired in gray skirts, plaid shirts and wide belts as uniforms.

A training course before the opening of the Roundup taught the girls to make out sales checks and to become familiar with the different sections of the store. Their duties included answering questions and selling to college girls as well as modeling in a daily style show. Arizona was represented on August 8 with Sally and Kay in charge and Sally as commentator. The All-star luncheon with members of the Los Angeles Rams and the All-star professional football teams was attended by 12 of the girls. Incidentally, there were 700 men present. The girls were also featured in style shows in Evanston, and a general show at Marshall Field with 2000 people attending.

» » »
—ALICE GIBBS, Arizona '48

Seniors' Farewell

ONE of the happiest, yet paradoxically, the saddest meetings of Alpha Eta at Ohio Wesleyan comes each June as the "Senior Dinner" meeting. Always it is a gathering that provides good food and good fellowship, but since it is the graduating seniors' last meeting, a touch of sadness must be added.

This year's meeting, however, seemed to be more successful than preceding ones—there was a little more happiness and a few more tears.

After being served a delicious supper that put all in just the right, satisfied mood, the seniors presented a three act play depicting a Gamma Phi Beta rush party as it would have been given in 1890. Where they got all the outlandish costumes and clever ideas, we'll never know, but a very enjoyable and laughing time was had by all, intermingled with nostalgic tears when we listened to the farewell song that was sung by each departing senior.

Afterwards there was an exchange of gifts that faintly resembled Christmas. The chapter received a beautiful and much welcomed set of dishes from the seniors, and the chapter presented each senior with a leather billfold plus an engraved cigarette lighter to Virginia Powers, retiring president.

At the close of the meeting Helen Camp Idoine, '46, read the thoughts that she had written to represent the thoughts of all the senior girls who were leaving, and the words would tell equally well the feelings of girls who would leave in the future.

She read . . . "The time has been too short, farewell is crowding our hello. We are twelve Gamma Phis reluctant to bid good-by, but proud that it is to this chapter, this housemother,

and this organization that we do so.

"The past years have been studded with jewels that we will long cherish as our memories of Alpha Eta. Joys and tears have been blended in this house on 24 North Franklin to give to us a sisterhood no farewell, no separation can mar or put into oblivion. We carry with us a love and reverence for Gamma Phi Beta for higher than any external we dedicate to it.

"Four years have been filled to overflowing for us; our pledge-ship when we knew we were about to enter into something far greater and finer than any one person, but even then we had to wait, to work, and to give that we might know its full meaning for we had found that the greatest and best could become known to us only when we so gave ourselves.

"Initiation brought with it a score of things invaluable to us as we now recall them. Friends, girls to whom we can never voice all we hold for them, women of whom we have known the essentials through long hours of work, play, confidences; women who have heard our gayest laughter, and seen it followed by our tears.

"We've known the security of a love given us by Mommy Roberts. Self-reliant as we claim to be, each of us remembers countless times when her solace and understanding saw through that time which loomed too big for us.

"To all of you, Mommy, officers, sisters, we offer up our prayer of thank you for the associations and memories we carry away from you. The smile of pride and tears of regret mingle as we say, 'God bless you.'"

)))

—ANNA MARIE FISCHER, '48

Lucy Is Our Torch!

EVER since Beta Beta Chapter was founded, in 1940 at the University of Maryland we have had one person who has been a constant source for help, and who, through her tireless effort, is admired by the alumnae and actives of Beta Beta. Her name is Lucy (everybody calls her "Luc") and she is our Gamma Phi Beta cook. One can just as well imagine the sorority without her as to imagine the Statue of Liberty without her torch.

We can all recall with a grin the day of an initiation banquet, when, thinking of saving Luc a little time and effort, we bought "store cakes" to have with dessert. She was so indignant that she huffed up with an indignant "now you-all know bettah than that!" She then scraped all the "store icing" off every one of the cakes, and made some of her own (which she applied in generous helpings). When she had finished she asked, "now, don't that look bettah?" We agreed, and still agree that there is no one like Lucy!

Long a hit with the men on campus, she can cook a dish that will "make your eyes stand right out of your head." Especially well known are her hot apple pie with whipped cream, or creamed caramel cake so good that it's positively out of this world.

Every Sunday night, Lucy, although she is free to go if she pleases, stays at the house and fixes "a little snack for supper," which includes milk, sandwiches (of about four varieties), salad, and cookies, and there is always enough to feed a panzer division.

Once, without help, she cooked a luscious initiation banquet (complete with turkey and trimmings) for over forty people all by herself, and even made special cakes which all had pink crescent icing.



Lucy

Her wise and timely philosophy of life has been the envy of us all. Loyal and true to all of the girls, there is not one of us who would not say that Lucy has won a place in our hearts that no one else could ever hope to take.

By BARBARA SHERMAN, Maryland '46



Pat Winter Is A. Kent Finalist

PATRICIA DODD WINTER (UCLA '45) placed second and won the \$1,500 prize in the women's division of the Atwater Kent singing auditions late in September. She was one of eight finalists, survivors of an original entry list of more than 1,400 singers in non-professional competition for women between the ages of 18 and 28. She sang over ABC coast to coast broadcast with John Charles Thomas as master of ceremonies. The judges were Nelson Eddy, Jeanette McDonald, Lauritz Melchior and Helen Traubel. Pat was introduced as a member of Phi Beta Kappa from the University of California at Los Angeles, where she was also a member of Mortar Board and the only woman student speaker at commencement there a year ago. She has appeared in concert in Los Angeles and this past spring won the Young Artists contest at Royce Hall, on the UCLA campus, with a cash prize of \$100.

Pat's mother Helen Dodd Winter, is a graduate of the University of Wisconsin where she was a Gamma Phi Beta as was her aunt, Edith Dodd Culver, of Detroit. Her younger sister, Helen Joan Winter has just been pledged Gamma Phi Beta at the University of California at Los Angeles. D D D



Up In The Air Over Rushing

"RUSH BY AIR" took on a double meaning this fall as Theta chapter of Denver University added an unusual twist to conventional rushing practices by taking a group of rushees for a flight over Denver in a Continental Airlines plane. Traditionally bewildered by the frenzied rush campaigns of the various sororities, this group of prospective pledges found themselves literally up in the air as they prepared with active members to take-off at Stapleton airport.

What ΓΦΒ Means To Me

THE first thing that comes into my mind when I think of Gamma Phi Beta is the fellowship and friendliness offered by my sorority sisters.

Delving deeper into the advantages of my sorority, I look at its effect on my future life. Since every person must depend on society for sustenance and happiness, it follows that each person should prepare to the best of his ability to fit himself into society. One way a girl can prepare for living with others is by knowing the social conventions. Through the activities of a sorority, she has a chance to practice these conventionalities and gains the ability to cope with any situation successfully and with ease. She can round out her college life by complementing the academic requirements with social activities. She is helped to grow into the ideal adult woman who reflects friendliness, charm, graciousness, and good breeding.

Being a part of a sorority protects each girl because of the comradeship and loyalty of her sisters. It stimulates her interest in college life. Because of competition, each girl strives to better herself so that the sorority and the college as a whole is improved.

Gamma Phi Beta offers all the advantages of college life in the best possible way. It gives each member the desire and inspiration to prove worthy its ideals and traditions and of the loyalty and friendships of her campus. D D D

—By LOLA SUE JOHNSTON, *Birmingham Southern '48*



Rozanne Rupp

Rozanne Rupp, one of the busiest girls around Epsilon's chapter house on the Northwestern campus, is chapter president, member of Alpha Lambda Delta, Zeta Phi Eta, and active in numerous other campus activities. She was her chapter's delegate to the Bretton Woods convention last summer. She is a member of Mortar Board and was a member of the May Queen's court.



Clariel J. Weikart

Clariel J. Weikart, Navy Empress at Northwestern's Navy Ball holds the navy sword presented to her when she reigned over the big campus affair. This is the second time that a member of Epsilon chapter has won this honor. The sword now hangs in a place of honor over the fireplace in the chapter house.

Mortar Board Delegates

FOUR Gamma Phi Beta members from four campuses attended the Mortar Board convention held last June at Estes Park, Colorado. From left to right: Elaine Sebastian, University of Illinois; Mary Smith, Iowa State College, Ames Iowa; Jeanne Allen, University of Minnesota; and Janise Warren, Denver University. D D D



Printers Ink Her Middle Name

IT is difficult for Corrine Neal Cook to keep her feet on the ground these days. As editor and publisher of the *Texas Mesquiter*, a weekly Dallas County newspaper, she never lacks activity. She is a member of the Texas Press Association, the National Editorial Association, and has served on the editorial board of the Press Association and the East Texas Chamber of Commerce Magazine.

Wherever interesting people meet you will find Corinne. She attended President Roosevelt's first press conference in Washington following his fourth term victory and represented the Texas Press Association at the United Nations Conferences in San Francisco for two and one-half months last year. Mrs. Cook has just returned from "flying down to Rio," which she says is all like a dream and Dallas alumnae chapter is looking forward to an interesting account of her trip. Just before going to Rio she went to New York to cover the United Nations Security Council.

Printers ink doesn't take all her time as she has quite a knack for making draperies or re-doing a chair, as well as making the best hot water corn-bread in Texas. And in the last two years Mrs. Cook has added another to her list of accomplishments—a student pilots license.

A native Texan, she attended Texas State Teachers College, the University of Texas, Stephan F. Austin State Teachers College, and Southern Methodist University. It was while attending Texas University that she became a charter member of Alpha Zeta chapter. She was manager of the Gamma Phi Beta house, vice-president of the chapter, secretary of the Pre-Law Associa-

tion, and the Texas Bible Chair. Corinne took courses in law, journalism, public speaking, and received her B.A. degree majoring in government.

We know that Corinne Cook in her seven league boots will have many happy landings and notebooks overflowing.

—KATHRYN L. DAVIS, *Dallas Alumnae Chapter*



Mrs. Cook

Lindsey Barbee Award Revived

THE Gamma Phi Beta Lindsey Barbee Fellowship in social work, awarded every two years through the American Association of University Women except during the war years, has been revived and is open to any qualifying woman, preparing for the profession of social work.

Gamma Phi Beta has made the committee on Fellowship Awards of the American Association of University Women the committee of award of the Lindsey Barbee Fellowship in Social Work, of the value of \$1,000. Applications for the fellowship, to be awarded for the academic year 1947-48, are due on January 1, 1947.

Women applying for the fellowship must be graduates of colleges of recognized rank, and should have done advanced work in preparation for the profession of social work. The Committee's usual policy in awarding fellowships—to candidates who have completed two years of residence work for the Ph.D. degree or who have already received the degree—will be followed in

awarding the Gamma Phi Beta Lindsey Barbee Fellowship. However, the Committee in looking for the best candidate for the fellowship will make the award to the most promising candidate regardless of the status of her graduate work.

It is understood that the Fellow will devote herself entirely to preparation for the profession of social work in a graduate school of recognized standing. A personal conference between the candidate and a member of the committee, or one of the members of the American Association of University Women appointed to interview candidates, will be arranged wherever it is possible.

Correspondence concerning directions for applying for the fellowship, the conditions of acceptance, etc., should be addressed to: Secretary, Committee on Fellowship Awards, American Association of University Women, 1634 I Street, N.W., Washington 6, D.C.

» » »

Bulletin Board—

New Committee Heads

GRAND COUNCIL, meeting in Chicago in November, named five new International chairmen to standing committees, retained Mrs. James Studley as Magazine chairman, Mrs. Robert C. Johnstone, Camps, and added four new committees and chairmen. Miss Evelyn Gooding who has been acting chairman of the Education committee was confirmed to that post; Miss Anne Duffy of Milwaukee heads Ritual; Mrs. Lester A. White, Chicago, heads Recommendations; Mrs. A. C. Daugherty of Dupon, Illinois, becomes chairman of Rushing; and Mrs. C. W. Kotsrean, St. Louis, Missouri, chairman of the 1948 Convention, to be held in St. Louis, Missouri.

New departments include Mrs. Marius Lindloff of Fayetteville, Arkansas, chairman of the Song committee, to revise the song book; Miss Jocelyn Birch, Fargo, North Dakota, heads the Entertainment committee to handle party plans for rushing and all other chapter hospitality throughout the country. Mrs. Levi Willcutt, Wellesley, Massachusetts, is chairman of Standards committee, Mrs. E. O. C. Ord, Berkeley, California, Scholarship, and Mrs. George Thomas, Scarsdale, New York, Publicity.

Important!

THE office of Traveling Secretary for Gamma Phi Beta, a salaried position, is now vacant. Members interested in applying are asked to write to Mrs. G. M. Simonson, Grand Presi-

dent, 20 Lorita Avenue, Piedmont 11, California. Please give name in full, address, age, college or university attended, business experience, type of work done. A photograph should accompany application.

Attention, Chapter Officers

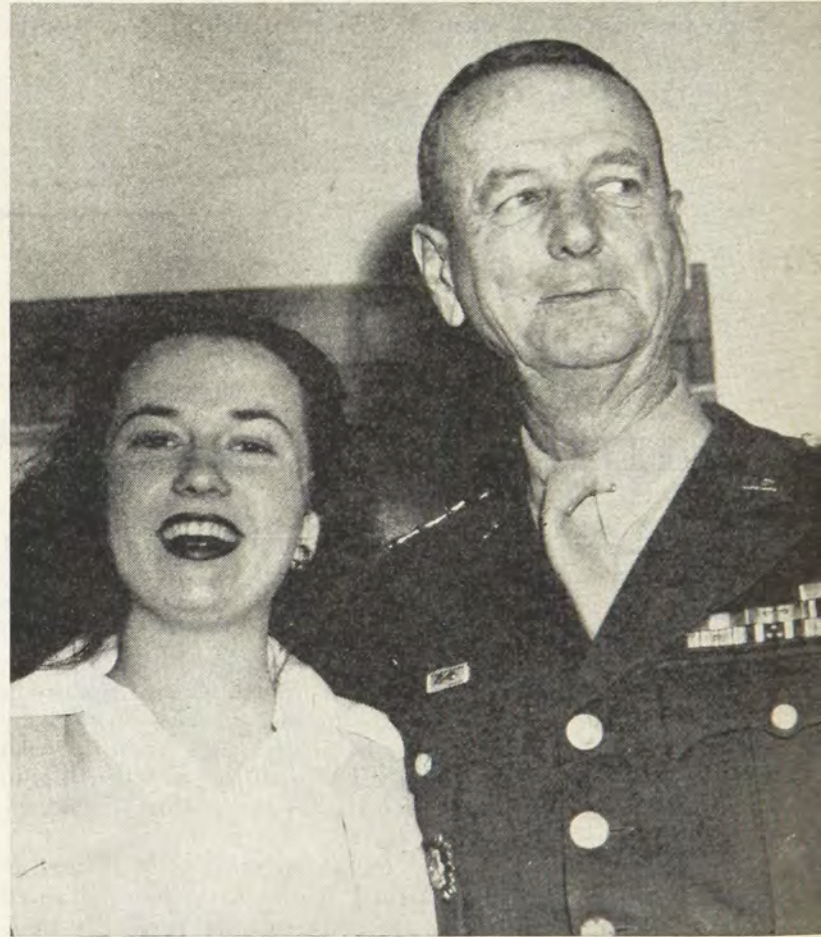
TO FACILITATE the work and reports of Greek letter and alumnae chapter officers, they are urged to check the Calendar on the inside of the front cover of this issue of THE CRESCENT for new chairmen of committees to whom reports are due. Officers are asked also to verify names and addresses of International Officers in the Gamma Phi Beta Directory at the back of this issue before sending communications.

Advertising

WITH this issue, THE CRESCENT begins a rejuvenated program of paid advertising. Manufacturers, firms, making and handling products recognized nationally are eager to place their goods before the eyes of approximately 200,000 sorority women readers and to this end will use the pages of our magazines. The appeal is primarily to the college-trained woman whether she be home-maker or career girl. Every inch of space sold to an advertiser is earned income for Gamma Phi Beta and THE CRESCENT.



Clariel Jane Weikert (Northwestern), crowned Queen of the Navy Ball at the annual affair in Chicago. She was presented with a sword as well as a crown.



Winnie York, Alpha Zeta chapter, University of Texas, shown with Gen. Jonathan Wainwright, famed hero of Bataan and Corregidor, who visited at her ranch home.

Mrs. George Metcalfe Simonson

International Grand President



Mrs. G. M. Simonson

THOSE of us who have known our International Grand President-elect since her freshman year are expecting a harmonious and successful year for Gamma Phi Beta.

Penelope Murdoch Simonson was born in Los Angeles, going to its High School and then coming north, fortunately for Eta, to enroll in the School of Architecture at the University of California. Her first experience at convention was as Eta's delegate to Boston, while she was chapter president.

Following her graduation she taught large classes of boys in engineering and architectural drawing at one of the large Los Angeles High Schools. This was followed by six months in Europe with Margaret Hodgen, also of Eta. The girls lived at the American Art Students Club in Paris while Pen studied water color sketching. En route to Russia, in 1914 they were stopped in Berlin by the declaration of war, and returned to this country after a very exciting trip in the steerage.

She married a classmate, George Metcalfe Simonson and moved to Sacramento where her two children were born. Tom, after four years in the army is now completing his work for a Ph.D.

in chemistry at the University of California. Elisabeth was president of Eta in 1942 and now has a daughter of her own. While in Sacramento Pen found time to organize the alumnae chapter and served as president before the family moved to Piedmont.

Pen was president of the Berkeley alumnae chapter and was president of the Hall corporation when Eta had to build and finance its present home. She continued her career in Gamma Phi Beta by being elected vice president at the 1938 International Convention at Delmonte and Chairman of Finance in 1940 at Washington, D.C. Both offices required visits to many chapters, an experience most valuable to a Grand President.

She has been active in community affairs and has done personnel work for one of the Community Chest agencies as well as serving on agency boards.

We are sure that our new president was wisely chosen since by her record she has proven, on the basis of long activity and experience, her ability and loyalty. We wish her all success.

—RACHEL VROOMAN COLBY
California '95, Berkeley Alumnae

Grand Council, 1946-1948

Mrs. Richard Marvin
Vice President,
Alumnae Secretary

MARGIE MARR was a Denver girl through grade school, high school and Denver University. Then things began to happen, and since then she's been back to her beloved Rocky Mountains only on occasional vacations.

In 1927 she went to Europe for a year. When she returned her high school sweetheart, Richard Marvin, met her on the dock in New York and they were married at the famous Little Church Around the Corner. Since then she's lived in New York, Pelham, Montreal, Toronto, Scarsdale, Chicago, Wilmette, and then back to New York again—with side trips to Hollywood and San Francisco. Now her home is New Rochelle, N.Y.

All in all, she's moved around a lot, which is strictly in keeping with her personality. You wouldn't expect Margie Marvin to be any place but where there's lots of excitement. While in Chicago she was president of the North Side alumnae group and later rushing chairman of the North Shore alumnae group. Since she returned to New York she has served first as treasurer and later as president of the Westchester alumnae chapter. And, of course, we all know how hard Margie worked at the Bretton Woods convention as Director of Province I, official hostess for the convention and sergeant at arms.

Now that she's vice-president we can be sure that with her energy and her background of service Margie Marvin will be apt to pop up anywhere, doing anything she thinks will be of benefit to Gamma Phi Beta.



Mrs. Richard Marvin

Right now, in the lull before her Fall activities begin, Margie is busy reducing her activities in other organizations so she will have more time to devote to Gamma Phi. (Last year, for example, for a local Club she ran a Fashion Show and Bridge which netted \$10,000. Someone else will have to do it this year—Margie's working for her sorority.)

And how do her husband and her family feel about her activities? Her husband, a radio writer and producer, is proud of her. Her two sons, both in high school, are proud of her. Even the faithful old family dog shows appreciation with an extra wag of his tail. They all know that Margie is happiest when she is busiest, and that her heart as well as her energies are in her work for Gamma Phi Beta. D D D



Mrs. Roger Howe

Mrs. Roger Howe
Director Of Finance

WITH a firm grip on the strings of Gamma Phi Beta's purse, Mrs. Roger Howe (Marion Bebb) steps confidently into her new position as International Chairman of Finance.

Marion's wide experience in banking, investment procedures and general finance has given her great scope and fine judgment in financial matters.

We who know Marion personally, can think of no better choice for finance chairman, a position of great responsibility. Those who know her through her excellent and untiring service on the Endowment-Crescent board since 1929, know that her

position on the Grand Council is richly deserved and that her work will be executed with exacting thoroughness and wisdom.

Marion was graduated from the University of Illinois in 1923 and received her S.B. degree from Simmons College in Boston in 1925. The Harris Trust and Savings Bank in Chicago, where she served in a responsible position in the Investment department for 18 years, lost a highly valued employee when Marion left in 1944 to marry Roger Howe. Knowing Marion's capabilities, we were not too surprised to find she had served 811 hours as a Red Cross Nurses' Aide in the past two years.

Having served as treasurer of Omicron chapter while in college, Marion really built herself a reputation, for she has been treasurer of every organization with which she has been affiliated ever since. To my mind comes a picture of Marion's kitchen window sill with a long line of sugar bowls, labeled with each club's name. But, on thinking it over, Marion is definitely not a run-of-the-mill sugar bowl type.

When the balance sheets balance and financial books are closed for the day, you'll find Marion and Roger playing golf at the local course, or flying around the blue skies, with Roger in the pilot's seat.

After a vacation in Maine, following convention, Marion now settles down to her new position. D D D

—By ARDIS MCBROOM MAREK, *Northwestern* '37



Mrs. William Owen

Mrs. William Owen Panhellenic Delegate Chairman Of Expansion

IF ANYBODY writes anything about me and makes it sound exciting, or even interesting, she's got to be good. I'm just not the kind of person you write articles about. Thrilling things don't happen to me—I just plug."

Can anyone who went to Convention at Bretton Woods guess who is talking about herself? None other than the popular chairman of Convention, Mrs. William Owen (Ursula Smith, Syracuse '21). This is the way she "plugs." Some of us call it interesting too.

Class of '21, Liberal Arts, Syracuse—we talked of a "war-torn world" in those days too. But for all the grim realities Ursula Smith took no business training, just an "impractical" culture course—maybe she would teach. She did, for a few months and hated it. So, on her way to arrange for business training, she met a friend who "knew just the job for her" at the New York Telephone Co. in Collections. Instead of business school she went to work that day and stayed nine years. She became cashier, then supervisor of compilation of the directory, organizing the work and training the workers.

On April 11, 1931 Bill Owen took charge and Ursula joined the ranks of housewives. On February 29, 1932 small Ursula was born and until 1937 her mother put all of her talents to work on the job of home and motherhood. The day Convention opened, small Ursula—grown into an attractive, tall blonde of fourteen—played a piano solo at junior high commencement in Syracuse, New York.

In 1937 business claimed Ursula again. In one of the major industries of Syracuse, Crouse-Hindes Co., Ursula went to work on methods and procedures in various departments. When the cafeteria needed a manager she ran the cafeteria. When the "Supply" department, needed a new head Ursula was the super-

visor—interviewing and training personnel, and supplying the best worker to the most suitable job.

When War Bond savings plans went into the factory they bogged down for a while, and deliveries were two months behind when Ursula was asked to take charge there. Her system enabled the men to get their bonds the very day the final payment was made.

Can anyone doubt why convention plans went well and smoothly in the face of serious, apparently almost insurmountable, difficulties; or why Ursula was elected as Panhellenic Delegate? D D D

Mrs. Kenneth Dubach Director Of Provinces

ANNA LOIS VOIGTS DUBACH (University of Kansas and Kansas City alumnae) in her new role as Chairman of Provinces on Grand Council is a familiar name to most Gamma Phi Betas. Her work as International Rushing Chairman has brought her in close contact with both the active and alumnae chapters, and has been applauded most heartily because of the efficient nation-wide organization of state rushing chairmen and key workers which she established.

Although Anna Lois has been busy with her rushing she has found time for a number of other activities and has not dropped out of the Kansas City limelight. Recently she was a judge at the Woman's City Club Exhibit in which she had the honor of awarding a Blue Ribbon to a jar of preserves made by Mrs. Harry S. Truman. In addition to working on the local Forget-me-not Drive of the Veterans of Foreign Wars, she was chairman of a civic organization convention for 300 which was held in Kansas City several weeks ago.

In spite of all the hours she spends on organization work, she

maintains a most charming home filled with exquisite antiques and well chosen accessories. Last but not least her two lovely daughters belie the fact that she has ever had a single outside interest. D D D



Mrs. Kenneth Dubach

new Gamma Phi Betas at B.U. in March 1919—Judy Moss among them.

Judy played basketball well enough to make one of the teams, and tennis badly enough to be the despair of all her friends. Horseback riding was her favorite sport. She was recording secretary of Gamma Phi Beta in her sophomore year, and of the college Y.W.C.A. that same year. She was Editor-in-chief of the *Beacon* (monthly literary magazine) her junior year.

In June 1921 she married into the faculty wives club. Since that time three daughters have made life interesting for the Harlows. Manuscript preparation, proof-reading, and editorial assistance on six books of her husband's have kept Judy well occupied in the "spare" time of a housewife.

In 1929 the Harlows moved to Syracuse and later Judy affiliated with the Syracuse alumnae chapter, where she has represented Delta chapter at many Founders' Day services. She has spoken at two initiation banquets and been toastmistress at one. She was alumnae scholarship chairman one year, vice-president one year, president last year and was re-elected for the current year, but resigned to accept the directorship. She presented the Founders at the opening banquet, and was official delegate for Syracuse alumnae chapter at the Bretton Woods convention.

In addition to Gamma Phi Beta activities she is a member of Portfolio Club of Syracuse, and served on the Board of the Syracuse Y.W.C.A. for six years after having been on various Y.W. committees. In the war emergency she did volunteer work as Post Personnel Officer in the local civilian defense organization; and as general helper in two of the city hospitals, in addition to sewing for one hospital at home, and making surgical dressings at the hospital. One stretch of duty included running the hospital elevator three afternoons a week for six months, when it was impossible to keep the elevators running with the regular help available at that time.

With one daughter married, one in her second year at Yale Medical School, and the youngest away at boarding school, Judy is looking forward with keen anticipation, to meeting her new family of Gamma Phi Beta daughters in Province I. D D D

Grand Council Appointments

Mrs. Ralph V. Harlow
Director, Province I

MRS. RALPH V. HARLOW (Judith Moss Harlow), Director of Province I, went from Athens, Georgia in 1918 to Boston University, College of Liberal Arts. That year college opened just in time to be closed for four weeks by the 'flu epidemic, then re-opened in time to close to celebrate the signing of the Armistice. Sometimes now, members of the class of 1922 wonder just how much they actually attended classes at all that hectic first semester.

Somehow things got shaken down and finally assumed a semblance of quiet college routine. Even in the post-armistice hub-bub sororities rushed, pledged, and initiated. There were nine



Mrs. Ralph V. Harlow

Mrs. Forrest Witmeyer

Secretary-Treasurer, Province I

THE new Secretary-Treasurer of Province I is Annette Hastings Witmeyer, Alpha '28. A graduate of the School of Speech of Syracuse University, she was a member of Zeta Phi Eta and Boar's Head dramatic society, and active in undergraduate activities, playing the lead in several Boar's Head productions. After three years of studying and working in New York, she returned to Syracuse as a founder and co-director of the Children's Theatre of Syracuse University and played during the summers with the University Summer School Players. During this time she was treasurer of the alumnae chapter and alumnae advisor to the active chapter.

Following her marriage to Forrest Witmeyer, also a Syracuse graduate, she lived in Cleveland for a time, and was a member of the alumnae chapter there. Since returning to Syracuse in 1935, she has been active in the alumnae chapter, having been CRESCENT correspondent, president of the chapter and served for a time on the board of trustees as chairman of the house committee, until the most recent addition to the family caused her to resign. University affairs have claimed her interest too, as she was president of the Syracuse University alumnae club for a term. Three children, Carol age 11, Jean age 7 and John one year old are her most important and "time-taking" activity these days, but there always seems to be some time for Gamma Phi Beta:



Mrs. Paul Johnson

Mrs. Paul Johnson

Director, Province VIII

PROVINCE VIII is happy to have as its new director lovely Frances Ide Johnson, Zeta '34. Frances is a native of the province. She learned her three R's at Friends School in Baltimore, Maryland and then attended Goucher College where she joined Gamma Phi Beta. From that point in her life our director has been constantly dashing from place to place leaving an amazing trail of accomplishments behind her.

Not content with one degree, Frances received her Masters Degree at Columbia University in 1935, and the next year found her on the staff of the University of Maryland teaching English. Students found it difficult to realize that this beautiful young woman was actually an instructor and every male on campus prayed that he would be in one of Miss Ide's sections. Those who were so fortunate smile as they remember her lectures on the American ballad which Frances made fascinating with her recitations of such gems as "Frankie and Johnnie."

Somehow this busy lady attended Cornell, Catholic University in Washington, and the University of Minnesota and accumulated enough graduate credits to have completed a doctorate lacking only her dissertation. Knowing Frances, we feel sure that she will some day write this off at record pace, but at present she has many other things to keep her busy.

While at Maryland, Frances devoted much time and energy to organizing Beta Beta chapter to which she was not only alumnae advisor and member of the house board, but "fairy godmother" as well.

She has been an active member of the Washington alumnae chapter and has served as its president. In 1940 she was a com-

mittee chairman for the Gamma Phi Beta convention, held in Washington, D.C.

In 1943, Frances married Paul Johnson, economist with the Department of Agriculture. Strange as it seems, they met through another director of Province VIII, Helen Sands, who asked Frances to accept a blind date to chaperone a USO dance sponsored by Gamma Phi Beta. This blind date materialized into a very fascinating man, and no man could help but be charmed with Frances, SO. . . .

The Johnson's have a young son, Bill, who competes with his mother to see which has the greater amount of energy. Shortly before Bill arrived, Paul went in the army and the Johnson's moved about the country until he left for England where he was attached to the British Army with military government. While he was overseas, Frances taught English at the Soviet Purchasing Commission, practiced the piano and caught up on her reading—completing an average of two books a night.

Since Paul's return in May of 1946 Frances has moved twice (she now resides at 2 Shenandoah Rd., Tauxemont, Alexandria, Virginia), acquired a dog, and become province director. Her friends enjoy her tales of packing for inspection trips which require three or four trunks to take along life's little necessities.

All who know her know that Province VIII has acquired a prize package in Frances Ide Johnson! D D D

Mrs. Jack Curtis

Secretary-Treasurer, Prov. VIII

ANITA BERTRAN CURTIS, Vanderbilt '35, modestly says that there is nothing interesting about herself, but her wide circle of friends knows better. This new secretary-treasurer of Province VIII is one of those remarkable people who always livens a party with her sparkling personality.

If you ask 'Nita what she has done, she will tell you, "Oh,

nothing at all," but when she left Alpha Theta in December of 1933 to marry Jack Curtis and moved to Missouri, she was active in the St. Louis alumnae chapter and attended Washington University. The next year the Curtises moved to New Haven where Jack had a National Research Fellowship at Yale and 'Nita was his laboratory assistant. They then moved to Washington, D.C., where Jack is with the Food and Drug Administration. 'Nita in the process of doing nothing, has had two darling children, Katie and Johnny, been vice-president, secretary and treasurer of the Washington alumnae, been a committee chairman for the 1940 convention, worked with Frances Ide Johnson in organizing Beta Beta, been treasurer of the Beta Beta house board, and built a home at 4608 Brookview Drive, Washington 16, D.C. From 1942 to 1945 the Curtises were in the army and moved to Colorado and Utah where 'Nita worked with various alumnae chapters. We are amazed at what 'Nita calls nothing.

If you ask her if she has a hobby, 'Nita says, "Oh, no!", but she sews and crochets not only beautifully but with great speed. And if you ask her if she has a pet, she will tell you about her little black kitten that she is "not very excited about," but the tone of her voice indicates a wee bit of attachment.

Yes, Province VIII is lucky, with two loyal Gamma Phi Betas as director and secretary-treasurer, two delightful women who are close friends and have had a wealth of experience working together. D D D



Mrs. Jack Curtis



Mary Lou Schneider, queen of the Interfraternity ball at the University of Wisconsin, was the second Gamma chapter member to gain that honor. Margaret Becker ruled in 1944.

Dr. and Mrs. Larry Larson (Vinetta Schmidt, Iowa '38) are making their home in Ventura Calif. where Dr. Larson has opened dental practise following naval duty in the Pacific. Mrs. Larson is a member of the Santa Barbara-Ventura alumnae chapter and active in Panhellenic circles.



**ENJOY
THIS TREAT**

**WHEN YOU GO OUT TO EAT
... AT BETTER HOTELS AND
RESTAURANTS EVERYWHERE.**

**SHERMAN
EXQUISITE
COFFEE**



SEXTON QUALITY FOODS

On Campus With Our Chapters

Alpha Syracuse University

Patty Erskine, chapter president, was elected president of the Red Cross, and was also the one senior chosen for this fall's cheering squad. Cindy Townsend, chairman of the campus Gray Ladies, was elected secretary of the Red Cross. Peggy Cunningham, who was one of six elected out of the sophomore class to Junior Clerk in Women's Student Government. Isabel Grover is corresponding secretary of City Women's Club, Ann Godfrey vice president of the sophomore class, and Maude Harnden, Charlotte Muschlitz, Ellie Langworthy and Jean Hart are junior guides for Women's Student Government. Janet Barlow was elected assistant business manager of the *Onondagan*, Syracuse's yearbook, and Charlotte Muschlitz and Maude Harnden were appointed to the business staff of the "On."

Along the scholastic line, Ellie Langworthy had the highest average of the sophomores in the school of Home Economics, and Ginny Gaylord won the \$40.00 art award given to a junior in the Fine Arts college for the best work that year. Cindy Townsend was initiated into Boars Head, the dramatics honorary. Several Alphas made the Dean's List.

We were privileged to have as dinner guests here at the chapter house Dean Hilton, Dean of Women, Miss Sibley, head of the Physical Education department and a Gamma Phi alumna, and Dean Noble, Dean of Chapel.

Many Gamma Phis headed, or served on, committees for Spring weekend, a weekend which the entire campus really "gave their all" for. Alpha plunged in head first, emerging in the finals of the step-singing contest, which were broadcast over one of Syracuse's larger stations.

And then there was our Spring formal; a gala, never-to-be-forgotten affair which we gave with the Phi Gams on the Roof Garden of the Onondagan Hotel.

JEAN HART

Engagements:

Dorothy Louise Gridley, '48, to Walter Hughes (Brown University).

Nancy Lou Failing, Ex '48, to Donald Likes.

Shirley Titus, '48, to Charles Driscoll, Phi Kappa Psi (Syracuse).

Marriages:

Betty Lou Milliken to Warren H. Brodie.

D. Virginia Gaylord to William Y. Perez.

Marian Gillett to Walter Herrod (Carnegie Tech., '39).

Meredith Hughes, '46, to Stuart Eagan, Beta Theta Pi (Syracuse '48).

Zayde Kinback, '46, to Russell McLean, Pi Kappa Alpha (Carnegie Tech.).

Jackee Kingsbury, '46, to J. Richard Manier, Chi Phi (R.P.I.).

Jean Rennacker, '46, to Robert Cowin, Ensign, U.S.N.R.

Shirley Soder, '46, to Harold Sandwick, Jr., Alpha Chi Rho (Cornell).

Beta University of Michigan

Beta chapter initiated nineteen girls last May. The new initiates are: Barbara Bartley, Carolyn Chandler, Carla Cobb, Phyllis Collins, Shirley Farnsworth, Esther Ann Gummeson, Francis Kline, Louise Lawrence, Kathryn Lynch, Leona Martin, Jo Ann Miles, Patricia McKenna, Jacqueline Reid, Mary Margaret Robinson, Rosemarie Schoetz, Donna Schneider, Gwen Sperlich, Ruth Spore, and Jean Le VanLeeuwen.

Chapter social events began this fall with a tea in honor of our new housemother, Mrs. Margaret A. Baldwin, to which all sorority housemothers and house presidents on campus were invited. They continued with open houses held after the Indiana, Army, Northwestern, and Illinois football games. Beta entertained ten West Point cadets at the open house after the army game. The Illinois game was played during Michigan's Homecoming weekend and many alumnae were present at the open house and buffet supper which followed. Beta also entertained many actives from Epsilon chapter at the open house following the Northwestern game.

Beta chapter has a good sports program under way this year under the direction of its sports manager, Collee Ide. A volleyball team has been organized and the basketball team has begun to practice for the coming season. Beta has also formed a football team, as have many other sororities on campus.

Beta's members are playing a large part in campus activities this year. Margaret Gage, our vice-president, is doing a fine job as president of Michigan's Panhellenic Association. Barbara Everett, our president, is president of the Women's Glee Club. Florence Kingsbury is editor for the second time of the Michigan yearbook, the *Michigan Ensign*. Gwen Sperlich is serving on the Women's Athletic Association board as Bowling chairman. Jean Le VanLeeuwen was appointed programs chairman for the Panhellenic Ball. Both Jacqueline Reid and Gwen Sperlich are members of the central committee of the Soph Cabaret, the Sophomore class project.

BARBARA BARTLEY

Gamma University of Wisconsin

Rushing season at Gamma chapter was climaxed by the pledging on September 30 of eighteen girls: Jean Christiansen, Wisconsin Rapids, Wis.; Carol Geniesse, Milwaukee, Wis.; Jean Helmes, Oshkosh, Wis.; Mary Kalveladze, Milwaukee, Wis.; Charlotte Kloo, Milwaukee, Wis.; Virginia Law, Madison, Wis.; Martha Ludden, Viroqua, Wis.; Helen Meanwell, Madison, Wis.; Nancy Nelson, Neenah, Wis.; Ellen Polzin, Oshkosh, Wis.; Cameron Ritchie, Madison, Wis.; Margaret Rust, Milwaukee, Wis.; Audrey Schmid, Appleton, Wis.; Audrey Smith, Maywood, Ill.; Arlyss Spencer, Milwaukee, Wis.; Mary Ellen Splitgerber, Plymouth, Wis.; Judith Tormey, Madison, Wis.; Eugenia Tuhtar, Janesville, Wis.

Judy Tormey and Nancy Nelson are Gamma Phi sisters; Mary Kalveladze is a Gamma Phi cousin. Mary Ellen Splitberger is the grandniece of Mary C. Brittingham who was a charter member of the Gamma chapter.

Gamma Phi is now listening to radio station WHA's "School of the Air." A series of plays called "Adventures in Our Town" is a featured program starring Gamma's Marie Hefferan and Ruth Casey as Jimmy O'Reilly and his mother respectively.

Phoebe Flentye who graduated from our rushing style show is now attending Pat Steven's modeling school in Chicago. Phoebe is being trained to do photographic modeling and to work in television productions.

Another Gamma girl, Pat McKee, transferred this fall to the University of California, Los Angeles, where she will study dress designing. Pat writes us that she has moved into Alpha Iota's beautiful chapter house.

SUSAN HAAS

Engagement:

Janet Mary Melichar to Charles Andrew Pribyl, Chicago, Ill.

Marriages:

Mary Carvel Noer to Dirk van Dar Brick, Phi Kappa Psi (University of Michigan), on November 9 in Milwaukee, Wis.

Virginia Steuart to Harry Marten, Jr., in Washington, D.C. on October 11. Her bridesmaids included Betty Jane Park DeGarmo, Mary Lou Silverman Roozon, Grace Bishop Schneider, all Gamma Phis.

Margaret Casey to Dr. Philip G. Robson on August 10 in Oshkosh, Wis.

Janet Edith Benn to Robert Henry Rifleman on August 31 in Stevens Point, Wis.

Margaret Severns (pledge) to James Moore Salisbury on March 16.

Carol Jane Stiefel (pledge) to Richard Leslie Swift on June 14 in Pittsburgh, Pa.

Births:

A son, Ralph Arlington 3, to Mary (Billie) Stagg Kresge on August 31.

A daughter, Kin, to Margaret Becker Klipstein on August 7.

A daughter, Susan McCarthy, to Elna Mary Clausen Hadley of Highland Park, Ill., on August 7.

Delta Boston University

On January 30 the active members of Delta were pleasantly surprised by a novel party given in their honor by the pledges. Bette Foster served as host. Games and group singing followed the spaghetti dinner.

Delta initiated in February Ruth Williams, Donna Grunden, Helen Bailey, Elizabeth Clapp, Bette Foster, Virginia Berry, Charlotte Thompson, Joanne Kelley, Joan Sullivan, Ruth Witalis. Speakers at the Initiation Banquet held at the Boston University Women's Building at 146 Commonwealth Avenue were Hope Whiting, '45, representing the alumnae chapter at Boston, Clara Williams for the seniors, Mary McGowan for the juniors, Ruth Osterberg the sophomores, and Ruth Williams the freshmen.

Taking advantage of the festive spirit prevailing, Delta sponsored an informal dance called "Spring Fever" on March 9 with the purpose of raising money for convention. In addition to providing a wonderful evening to over forty-five couples, "Spring Fever" was a financial success.

Eta University of California

The Gamma Phi house was the setting for an alumnae fashion tea. The alumnae and the members modeled the newest spring fashions as the guests enjoyed their refreshments.

The pledges entertained us with a Circus Dinner before their initiation in April.

A mother-daughter tea was held for the benefit of the out-of-town mothers, in order to give them an opportunity to become acquainted with the girls. Not to leave our fathers out of the fun, we invited them to a buffet supper.

Claire Kester served on the Senior Class Council, and Marsha Gray contributed to the *Daily Californian*. Nancy Brown modeled in the *Pelican* fashion shows. Nancy Jory was sent East as a representative of the Y.W.C.A. Our House President, Patty Eggleston, was associate editor of the *Blue and Gold*, the California year-book, and last term, Patty was elected to the Senior Women's Honor Society, Mortar Board, and to Phi Beta Kappa.

In April, we celebrated Eta chapter's fifty-second birthday with a cake and presents from the alumnae.

At the senior breakfast we bid farewell to thirteen of our seniors. Following our tradition, strawberries were served for breakfast, and each graduate was given a gift to remember us by.

NANCY BROWN

Engagements:

Mary Lloyd and Philip Voorheis, Phi Delta Theta.

Shirley Higgins and John Black, Delta Kappa Epsilon of University of California.

Jean Searle and David Richardson, Sigma Chi.

Marriages:

Ruth Washburn to Kenneth Volker.

Barbara Marr to Charles Merz.

Irene Jansen to Peter Marinovich.

Carol Kiessig to Richard Parker Lyon.

Janice Slater to Charles Keith Parker.

Dorothy Munson to Lindley Davis Bynum, Jr.

Births:

To Mr. and Mrs. Walt Lewis (Jessica James) a son, Walt, Jr.

To Mr. and Mrs. Anderson (Dorothy Marr) a son.

Theta

Denver University

March 26 Helen Dolaghan and Jane Bresnahan received the double brown ribbons and Elaine O'Brien was elected president of Alpha Sigma Chi. Helen Hopkins started the horseback riding club on campus and was elected president.

A tea honoring Miss Rilling, a Gamma Phi Beta who was a teacher on campus, was held April 26 since this was her last year at the university.

Dolores Hamilton was pledged to the national romance language fraternity, Phi Sigma Iota, and Janice Warner was tapped for Mortar Board president. Marion Schwalb was crowned May Queen at the same time, and Mary Sue Flanagan was chosen as senior attendant to the Queen.

In May, initiation for Diane Schoezel, Seerie Russell, and Kay Cook was held.

April 30 Barbara Beatty was given the double brown ribbons.

Pat Pfrimmer, Elaine O'Brien, Maxine Davidson, Nina Borden, Peggy Jane White, Laurita McLain, and Dorothy Kindig were pledged to Mentors.

Our pledges are: Beverly Ainsworth, Janet Amilon, Helen Auge, Joan Casey, Shirley Coffman, Betty Curtis, Charlene Davis, Barbara Dickerson, Shirley Dickerson, Donna Duer, Velda Grunwald, Maryjane Halter, Marjorie Hansen, Victoria Hansen, Jean Hardy, Marcella Harris, Virginia Hoots, Beverly Hopely, Betty Jacobs, Donna Jeffords, Janice Johnson, Edna Mary Jones, Charlene Jordan, Helen Maul, Madeline Morison, Sharon Page, Shirley Stacy, and Sandra Steele. A dinner was held at the chapter house on September 24 honoring these new pledges.

We all gathered at the house for a football dinner on September 27 before the first game of the year played at Denver.

DOROTHY KINDIG

Engagements:

Hope Hanscom to Ernie Apel (University of Denver) on April 9.

Elaine Sandburg to Bill Burnside on April 23.

Ann Brasfield to Warren Beier on July 22 (Kappa Sigma, Colorado School of Mines).

Marriages:

Louise Jordens to Jack McFadden (Sigma Alpha Epsilon) on May 1 at Denver.

Audrey McCully to Lawrence Snell on August 3 at Denver.

Betty Boyd to Herman Frederick Thulin, Jr. (Alpha Kappa Psi, University of Denver) on August 28 at Denver.

Betty Burgess to William Weideman (Sigma

Chi, University of Colorado) on July 28 at Denver.

Dorothy Roy to William E. Ulery on June 7 at Denver.

Audrey Jung to Crawford M. Scott, Jr. (Sigma Alpha Epsilon, University of Denver) on August 9 at Denver.

Laurene Stokes to Don Orange (Sigma Phi Epsilon, University of Denver) on May 15 at Denver.

Vivian Weaver to Roy Sauders on July 3 at Denver.

Marilee Hanning to Robert Smith (Beta Theta Pi, University of Colorado) on January 16 at Longbeach.

Shirley Pitman to Robert Bryan (Sigma Alpha Epsilon, University of Denver) on February 17 at Denver.

Lambda

University of Washington

Lambda chapter presents 26 pledges: Beverly Clarke, Lois Cochran, Mary Lou Cleave, Joan Vilas, Phyllis Bianco, Janet Bothwell, Barbara Clarke, Mary Jane Ebling, Jo Anne Gunn, Alice Jean Higgins, Alice Howe, Solveig Ivarsson, Mary Ann Jacobson, Margaret Joy, Janet Karshner, Virginia King, Lois Lydgate, Dorothy MacKenzie, Sally Mallory, Patricia Proctor, Betsy Putnam, Glee Reap, Dorothy Shiel, Norma Jean Simila, Joan Walker, and Patricia Walker.

The arrival of our Province Director, Mrs. Stevens, is being awaited by all of us. We will enjoy seeing her again as it has been a whole year since her last visit.

Besides all the excitement of the term, Lambda is very proud of its newly decorated chapter house. The rooms have all been redone and we are very pleased with the appearance of our home.

JOYCE STAUBER

Engagements:

Nancy Lucks, '46, to Kenneth D. Moores.

Mary McKeivitt, '47, to Joseph Beeler.

Beverly Nelson, '48, to William McCormick.

Barbara Thompson, '47, to Maurice Saffel.

Marriages:

Patricia Shiel, '46, to Richard Harrison.

Caron Williams, '48, to James Charlton.

Judy Williams, '48, to Harold Zimmerman.

Birth:

To Mr. and Mrs. Harold Willits (Betty Anderson), a son.

Nu

University of Oregon

We are proud to announce the initiation on April 13, 1946, of Eleanor Toll, Dee Moore, Zoe Ann Anderson, Mary Lou Anderson and Martha Cleveland.

Jocelyn Fancher, chapter president, was also elected president of the senior class. Diane Mead and Mary Hibbitt were tapped for Kwana, sophomore women's honorary. For outstanding accomplishments in their respective fields, Dorothy Kienholz was pledged to Theta Sigma Phi, journalism honorary, and Mary Margaret Dundore was initiated into Mu Phi Epsilon, music honorary. We are especially proud of Betty Bennett Cramer who was awarded a Phi Beta Kappa key. Diane Mead was appointed to the Oregon rally squad.

Highlight of spring term was our house dance which was given by the freshmen. The decorations, done to the theme of "In the Middle of May," turned the house from springtime enchantment to a fantasy of flowers. We also entertained with a traditional fireside and continued with the re-established Wednesday night desserts with the fraternities.

In the late spring we elected our house officers: Jocelyn Fancher, president; Joan Preble, vice-president; Marilyn Rowling, secretary; Joan Sears, treasurer; and Betty J. McKenzie, corresponding secretary.

Two of our members, Jocelyn Fancher and Marilyn Rowling, were delegates from this chapter to the national convention at Bretton Woods.

New pledges are: Dione Doree, Beverly Hills, Calif.; Harriet Howes, and Janet Easterday, Portland, Ore.; Doris McMann, Riverside, Calif.; Jacqueline Washhorst, Sacramento, Calif.; Patricia Starling, Eugene, Ore.; Joan Hoppe, Medford, Ore.; Harriet Houston and Jane Carson, both of Salem, Ore.

MARY HIBBITT

Engagements:

Becky Burkes, '48, to William Fiack, Sigma Alpha Epsilon.

Jeanne Dodson, '49, to William Weber, Phi Kappa Sigma at Oregon State.

JoAnn Knight, '48, to Charles Nickelson, Phi Delta Theta.

Marriages:

On August 24, 1946, at Los Angeles, Calif., Roberta Bowman, '47, to Mr. Paul Bocci (University of Oregon, Alpha Tau Omega).

On September 24, 1946, at Silverton, Ore., Patricia Maulding, '48, to Robert Oder (Willamette University).

On September 7, 1946, at Burlingame, Calif., Sharlee Heimann, '47, to Elliott Wilson (University of Oregon, Sigma Nu).

On September 7, 1946, at Eugene, Ore., Dorothy Carlson, '46, to Richard W. Bunting (University of Oregon, '46).

On June 23, 1946, at Eugene, Ore., Barbara Erb, '46, to John Craig (University of Oregon).

On May 17, 1946, at Palo Alto, Calif., Doreen Radford, '48, to Joseph Marty (Sigma Alpha Epsilon).

On July 10, 1946, at Tacoma, Wash., Bibbits Strong, '46, to Wayne Brown (Sigma Alpha Epsilon).

On August 20, 1946, at Long Beach, Calif., Jean Killingsworth, '47 (Transfer from Alpha Iota Chapter) to Gerard Rastello (University of Oregon, Beta Theta Pi).

On June 23, 1946, at Portland, Ore., Betty Lou Butler, '46, to Daniel B. Scott (lieutenant, United States Army).

Pi

University of Nebraska

We pledged Ann Lomax, Broken Bow; Beth Polhemus, Holdrege; Barbara Rowland, Farnam; and Beverly Sievers, Lincoln, in late spring.

Marion Campen, Omaha; Norma Clements, Elmwood; Marilyn Diestel, Fremont; and Marilyn Duffack, Omaha were repledged.

Pi chapter's 27 pledges are: Alice Babst, Lincoln; Phyllis Cadwallader, Lincoln; Lois Cooper, Omaha; Connie Crosbie, Lincoln; Catherine Ham, Lincoln; Diana Hayes, Omaha; Barbara Hunter, Omaha; Mercedes James, Tabor, Iowa; Barbara Johnson, Omaha; Jane Jones, Ft. Riley, Kan.; Mary Kuppinger, Omaha; Mildred Landers, Sundance, Wyo.; Joan Landwehrkamp, Omaha; Trudy Lucas, Winner, S.D.; Katherine Lutton, Ashland; Anne Marshall, Windom, Minn.; Kaye Moore, Lincoln; Phyllis McFarland, Omaha; Barbara McKinley, St. Paul; Luana Nelson, Central City; Dora Lee Niedenthal, Russell, Kan.; Georgianna Rediger, Tekamah; Joyce Salsbury, Kansas City, Mo.; Beverly Sutton, Omaha; Rosa Lee Weatherfield, Cambridge; Carolyn Westervelt, Lincoln; Janice Wolford, Shelton.

We are happy to have Mrs. Mattie S. Quick with us as housemother.

New officers are: Virginia Buckingham, president; Beverly Sorensen, vice president; Doris Ol-

son, recording secretary; Margaret Stoddard, corresponding secretary; Mavis McMurray, house manager; Adele Green, treasurer; Phyllis Warren, rushing chairman; Grace Smith, Omaha rushing chairman.

JANE YOUNG

Tau

Colorado State College

At the climax of rush week, we were able to claim ten new pledges for our first pledge class: Mary Lee Mathews, Marilyn Morrison, Jane Bennett, Helene Wallace, Dixie Tidswell, Marilyn Sloan, Betty Champion, Dorothy Tremaine, Jean Butler, and Sue Kiely.

Gamma Phi Beta won the cup for the best performance of the evening at Campus Capers in April.

On May 17, Gamma Phi again took the honors at the annual Hesperia Sing. Our selection for this song fest was a group of Negro spirituals. The girls, dressed in all white formals, sang "Short'nin' Bread," "I Got A Shoes," and "Nobody Knows de Trouble I've Seen." After the "sing," Iris Parker was crowned "Miss Betty Coed" at the annual dance sponsored by the sophomore class.

The "Pink Carnation," annual dinner dance given by Tau chapter was held May 23, at the Armstrong Hotel.

On May 25, Oletta Locke captured the crown and reigned as queen of the College Day Celebration, which included a parade, a rodeo in the afternoon, climaxed by an informal dance in the evening.

We are proud to add five girls to the Tau chapter pledge class: Marguerite Pointon, Las Animas; Peggy Anderson, Grover; Virginia Sandstead, Willard; Shirley Swartz, Englewood; and Joye Smith, Littleton.

Five new members were also added to active chapter in a spring initiation. They are Rosemary Lichty, Sue Laird, Roberta Archer, Pat Angell, and Mary Ellen Carter Cosper.

Iris Parker holds the office of vice-president in Woman's Athletic Association. In the A.W.S. Virginia Mercer is vice-president, Dorothy Ammons junior representative, and Mary Lou Hutchinson sophomore representative.

Tapped for Spur, sophomore honorary organization, were Mary Lou Hutchinson, Charlene Leedy, Oletta Lock, Kathryn Marsaglia, Mary Minor, Joye Smith, and Shirley Swartz. Those girls tapped for the junior honorary society, Hesperia, are Dorothy Ammons, Verna Mae Leirich, and Iris Parker.

Gamma Phis recognized for scholastic achievements were Dale Green, Dorothy Ann Lough, Mary Mickey, and Joye Smith. Dale Green was elected to Pi Delta Epsilon, national journalistic fraternity; Doreen Sprague and Dorothy Ann Lough to Omicron Nu, national honorary sorority for home economics majors. Dorothy Ann and Doreen were again recognized in honor day assembly as "Pace Makers" on the Colorado A. & M. campus.

MARY MINOR

Chi

Oregon State College

After a hectic week of rushing, which included seven days of planning parties and decorating for them, Chi chapter is happy to announce the pledging of eighteen girls Sunday, October 6. Our new pledges are: Dorothy McCabe, Patricia Moore, Lorraine Boardman, Marjorie Peterson, Marcia French, and Anna Marie Van Hoomissen of Portland; Carolyn Davis, Catherine Moran, Patsy Nickens, Peggy Paxson, and Peggy Sears, of Salem; Marion Patton, Milton; Marjorie Clark, Klamath Falls; Carolyn Cramer, Hubbard; Alice Searles, Newberg; Mollie Berry, Ventura, Calif.; Jeanne Lupton, San Diego, Calif., and Erma Troutman, Meridian, Idaho.

Classes started October 4 (in the middle of rushing) with almost 7000 students crowding classrooms from basements to quonset huts. And those wonderful days of football are here again!

With our minds on activities, we began the school year with Ramona Warnke as editor of the *Beaver*; Betty Southwick as sophomore class secretary, Margaret Kern as a member of Talons, sophomore service honorary, and Jean Taber as president of Theta Sigma Phi.

GEORGIANA POST

Engagements:

Louise Ferguson, '47, to William Cooper, Sigma Phi Epsilon.

Elizabeth Bowe, '48, to Robert Smythe, '48.

Frances Ormandy, '47, to William Coffield, '47, Sigma Pi.

Jean Taber, '47, to Stanton Coleman, '49.

Helen Uthaug, '46, to Dick Miller, '48, Phi Delta Theta.

Marriages:

Barbara Fleming to Donald Eldredge, Sigma Nu, June 16, in the chapter house.

Louise Ferguson to William Cooper, June 23, in Coos Bay, Ore.

Helen Sallee to Emil Stuz, June 30, in Nyssa, Ore.

Frances Ormandy to William Coffield, September 1, in Portland.

Psi

University of Oklahoma

The biggest hits of our rush parties were Lila and Annabel Escoe, who returned in July from one and a half years overseas with the U.S.O. troupes. A large amount of our success was due to the Escoe sisters and our alumnae, of which fifty were present at our various parties. But not to be ignored was our minstrel show and Can Can chorus which won huge applause from each rushee. Our most impressive party however was sixth, at which Annabel Escoe told the story of the song "My Mind's in a Whirl" and then sang it.

Our twenty-four pledges are: Norma Lois Adams, Woodward; Mary Ansell, Elk City; Barbara Brewer, Ardmore; Billie Jean Buckley, Holdenville; Wilburta Cartwright, McAlester; Alice Da-

vis, Pauls Valley; Eleanor Erickson, Ponca City; Emma Laura Hulsey, Chickasha; Nancy Johnson, Muskogee; Lou Ann Lancaster, Seminole; Marilyn Meyer, Edmund; Patricia Thomas, Okmulgee; Jane Trotter, Buffalo; Marie Whitehead, Tonkawa; Nell J. Worley, Sayre; Doris Dresser, Tulsa; and Rosamary Brown, Pat Clymer, Carolyn Cobb, Jo Ann Dodson, Jackie Fulton, Betty Alice Sneed, Mary Sue Walpole, and Kathryn Werme all from Oklahoma City.

We introduced our new house mother, Mrs. Edna Koerner, to the fraternities, sororities and campus notables at a tea Sunday, October 6. Another event of the month was a dessert for the alumnae of Oklahoma City and Norman in appreciation of the help given during rush.

Our dads, at our invitation, were our guests for dinner and the Kansas State football game on Oklahoma's Dad's Day, October 19. Our social functions for the next two months included a faculty dessert, Founders Day, and a friends' dessert. Also during October we had our dates and friends in for a Sunday night dessert to hear a gypsy band from Oklahoma City.

New initiates are Betty Nell Cheadle, Charlotte Davis, Dorothy Faye Beagel, Marilyn Massey, Maurine Flanagan, Willma Jean Ford, and Jody Langly.

PATTY IVESTER

Engagements:

Charlotte Davis to Ben A. Jackson.

Rosamary Brown to Max Lawrence, Sigma Nu.

Ava Jeanne Hollingsworth to Ted Prater, Phi Psi.

Virginia Ann Davis to Charles Threkhele.

Mitzi Morris to Jim Marsh, Sigma Nu.

Janelle Liebolt to William H. Epperson.

Billie Jean Smith to Bill Fadigan, Phi Kappa Sigma.

Charlsie McLaughlin to Peter Cawthorn, Phi Delta Theta.

Betty Nell Cheadle to Richard Ward Hillyer III, Phi Kappa Sigma.

Marriages:

Bebe Cullen (Oklahoma '48) to J. Sam Sorrells (Annapolis '43) in Carlsbad, N.M., August 29, 1946.

Colleen Cravens (Oklahoma '49) to Jack L. Jones (Oklahoma '48) in Seminole August 30, 1946.

Keep in Touch with Gamma Phi Beta

Song Book	\$1.00	<input type="checkbox"/>
Life International Alumnae Dues	\$5.00	<input type="checkbox"/>
Annual Dues	\$1.00	<input type="checkbox"/>
Annual Camp Tax	\$1.00	<input type="checkbox"/>
The CRESCENT—Annual Subscription	\$1.50	<input type="checkbox"/>

Alumnae Life Subscriptions

Ages		Ages	
25-35	\$20.00 Cash	45-55	\$10.00 Cash
35-45	15.00 Cash	55-	5.00 Cash

Mailing lists close August 15, November 1, January 15 and April 1, and subscriptions (new or renewals) cannot be dated back.

Make all checks payable to "Gamma Phi Beta" and mail them to Central Office of Gamma Phi Beta, Suite 2230, Civic Opera Bldg., 20 N. Wacker Dr., Chicago 6, Illinois

Your name
 Address
 Chapter

Helen Lance (Oklahoma '45) to Ray Yancey in Phoenix, Ariz., in December, 1945.

Neota Williams (Oklahoma '48) to Eldon Hatfield (Oklahoma '47) in Oklahoma City, August 18.

Florine Cates (Oklahoma '46) to Bill Slivka (Oklahoma '46), Phi Gamma Delta, in Floyd, Tex., July 30.

Marian Hayden Cheadle (Oklahoma) to Robert Jacob Dunham (Oklahoma) in Oklahoma City, August 18.

Bobby Hodge (Oklahoma '45) to Creighton Reed (Oklahoma) in Oklahoma City, June 1946.

Betty Ford (Oklahoma '46) to Frank M. Hoadley March 27 in Kentucky.

Willena Busby to Karl Camp, Beta Theta Pi, in McAlester, June 1946.

Doris Maddoux (Oklahoma '48) to John M. Herrin, Jr., in Seminole, October 11, 1946.

Janet Werner (Oklahoma '42) to Vernie E. Harris (Oklahoma) in Elk City, Oklahoma, October 13, 1946.

Mary Elizabeth Camp (Oklahoma '47) to Lucius Christopher Tirey, Jr. (Oklahoma '49), Phi Kappa Sigma, October 11, 1946, in Norman.

Birth:

To Mr. Alfred Lurie (Harvard '43) and Mrs. Alfred Lurie (Rosemary Andrews, Oklahoma '43) a daughter, Carol Ann, August 23, 1946, in Oklahoma City.

Omega Iowa State College

Two of our chapter, Mary Smith, '47, president, and Justine Brintnall, '47, and Pat Stow Jackson, '46, with her mother also an Omega chapter alumna attended convention and brought back some marvelous ideas for our formal rush week.

Pledges are: Joyce Anderson, Ames, Iowa; Mildred Brettnall, Ames, Iowa; Shirley Day, Ottawa, Iowa; Illa-jean Hagie, Osceola, Iowa; Sue Hamlin, St. Louis, Mo.; Marilyn Hofer, Sioux City, Iowa; Betty Hoffman, Sioux City, Iowa; Virginia Hukill, Ames, Iowa; Marian Johnston, Mason City, Iowa; Dortha Kuschman, Moline, Ill.; Norma Marriott, Des Moines, Iowa; Margaret McKee, Carlisle, Iowa; Virginia Northrop, Des Moines, Iowa; Faith Oleson, Dows, Iowa; Lucianne Smith, Davenport, Iowa.

New initiates are: Hazelmay Harlan, Minot, N.D.; Barbara Hoerner, Omaha, Neb.; Virginia Lomison, Waterloo, Iowa; Margaret McCulloch, Eagle Grove, Iowa; Marilyn Shaw, Fort Dodge, Iowa; Janet Tiedeman, Burlington, Iowa.

ARLENE JOHNSON

Engagement:

Pat Halderman, '47, to Richard Asmussen, D.U. at Nebraska University.

Marriages:

Be Joy Strange X '48, to Robert James, Sigma Phi Epsilon, at Sioux City, Iowa, July 13, 1946.

Ruth McDonald, X'47, to Robert Lamoureux, at Ames, Iowa, March 20, 1946.

Mary Burgi, '45, to William Moorehouse, April 6, 1946, at Minneapolis, Minn.

Shirley Snyder, '45, to Lee Honeyman, April 6, 1946, at Des Moines, Iowa.

Joyce Wilson, '45, to Donald Sceli, June 28, 1946, at Des Moines.

Virginia Ware King, '46, to Ross Fife, Jr., Phi Delta Theta at Pennsylvania State College, and Betty Jenkins, X'48, to John Cooper, Sigma Alpha Epsilon at Iowa State College, July 27, 1946, at Chicago.

Norma Bauer, '45, to Dene Carney, August 11, 1946.

Pat Stow, '46, to Galen Jackson, Sigma Phi Epsilon at Iowa State College, August 7, 1946.

Mary Jane Drake, '45, to James Mugg Jr.

Helen Gowen, X'47, to Reid Cameron, Jr., and

at Fort Dodge, Iowa, Ellowene Garlock, X'47, to Bruce Lefler, August 17, 1946.

Jane Porter, X'49, to Robert Edison, Sigma Alpha Epsilon, August 18, 1946, at Fort Dodge.

Doris Koch, '45, to Robert Jones, Theta Xi, at Iowa State College, August 30, 1946.

Betsy Little, '45, to Richard Harris at Des Moines, Iowa, and Jean Webb, X '47, to Gene Phelps, Sigma Phi Epsilon, at Waterloo, Iowa, September 14, 1946.

Birth:

To Mr. and Mrs. Ronald Dirks (Margaret Mewherter) on August 27, 1946, a son, Douglas John.

Alpha Alpha University of Toronto

Following the initiation of sixteen new Gamma Phi's, we held our initiation banquet and dance at the Toronto Hunt Club. It was a very festive and happy occasion. Our new members are Frances Arthurs, Nancy Charles, Enid Ferrier, Pat Hall, Mary Hepburn, Gwen Miller, Marilyn Jones, Kay Morley, Mary Ruth Patterson, Johann Rawson, Ellen Smeaton, Shirley Smith, Anne Spence, Jean Webster, Sidney Woodhouse, and Shirley Young.

The festivities and gaiety of the season did not end, however, with the initiation party. The house party at Fern Cottage afforded much pleasure and much-needed relaxation after examinations.

Individually our members have been playing important parts here on the Toronto campus. Joy Sanderson was re-elected president of the Players Guild, having done a wonderful job last year. Marian Wadsworth is president of basketball this year, as well as being the representative for her faculty on the Women's Undergraduate Association of University College.

Sue Gray has crowned not only herself but her chapter with great glory when she was presented with the Golden Key this year, the highest award of the Students Administrative Council.

We are always sorry when the time arrives for our graduating class to say au revoir, but nevertheless we are very proud of the girls, who this year were Helen Sheppard, Louise MacDonald, Janet Hughes, Phyllis Agnew, Susann Gray, Barbara Hall, Pat Pougnet, Margaret Morris, and Margaret Currie. Dr. Currie was the only graduate in the Faculty of Dentistry this year.

We are proud, too, of Marcia Lamont, who is the first girl in the University of Toronto to reach the fourth and final year in Civil Engineering—and with honors, too.

As yet our first meeting has not been held, but we have heard already from our sisters of the success of the convention. How disappointed those of us were who were unable to attend. Those who represented Alpha Alpha chapter were Phyllis Agnew, president, Eleanor Cornish, Pat Hunt, Louise MacDonald, Aileen Scott, and Helen Sheppard.

JO-ANNE COPELAND

Marriages:

On June 22, 1946, at Leamington, Ontario, Margaret Morris (Toronto '46) to Allen Cameron.

On July 12, 1946, at Toronto, Phyllis Agnew (Toronto '46) to John Russell Baldwin.

Alpha Beta University of North Dakota

We pledged twelve girls, filling our quota: Barbara Herberg, Virginia Smith and Vivian Ulvedahl of Grand Forks; Jean George, Jean Leeb and Patricia Owens of Fargo, N.D.; Corinne Glander, Wahpeton, N.D.; Carol Hoesley, Crystal, N.D.; Sonia Halvorsen, Northwood, N.D.; Betty June Middlemas, Bismarck, N.D.; Madge Nickeson, Clyde, N.D.; and Joyce Rosenberg, Langdon, N.D.

Six girls came up from Alpha Omicron chapter at North Dakota State and stayed at the house during rushing. They were a great help and we had many talk fests comparing notes. Those who came are Jocelyn Birch, state rushing chairman; Edith Gelder, president; Joyce Gunvaldson, Donna Evanson, Jean Wallerius and Gloria Aas.

A formal tea was given during October to honor our new pledges and our new housemother, Mrs. J. R. Carley of Grand Forks.

During the summer Alpha Beta held a reunion picnic attended by many out-of-town girls as well as the Grand Forks members.

Mrs. Elaine Vig, winner of the CBS Cinderella month in New York is a past president of Alpha Beta. Upon her return from her trip the chapter honored her with a luncheon at which she told of her experiences during her "dream month."

Connie Johnson is the new president of campus Panhellenic. Connie is also social chairman of Phi Upsilon Omicron and is active in YWCA.

Phyllis Indridson Nedrud, Helen Philis, and Elsie Ann Brown are playing in the current production of the Dakota Playmakers, "Incognito." Helen is vice president of the organization and Elsie Ann is secretary.

Joann Plamer was graduated June 9. She recently was elected to *Who's Who in American Universities and Colleges*, and has served on the Women's League Board. She is retiring rush chairman of the chapter. Another senior, Marcella Hanson, came to UND two years ago from Mayville State Teachers' College. She was awarded a band key, given to members who enroll in band each semester while in residence; and the past year has served as member of the Lutheran Students Association council.

The mother's club entertained these girls and five who will be graduated next mid-year at the traditional brunch, presenting them with teaspoons of their individual patterns. Mrs. Christ Stjern is the mothers president succeeding Mrs. W. J. Brown.

Officers of the active chapter elected in May are: Evelyn Peterson, president; Ruth McEnroe, vice-president; Jeanette Pietron, secretary; Mary Haggen, treasurer; Mickey Thompson, corresponding secretary; Helen Hoesley, house manager; Barbara Smith, rush chairman; Jo Hoesley, pledge trainer; Elsie Ann Brown, publicity chairman and CRESCENT correspondent; MariFran Smith, song chairman; Joyce Sorenson, historian; Marlys Kruchten, literary exercises; Ruth McEnroe and Mary Jeanne Kelsven, social chairman and assistant; and Connie Johnson, Panhellenic representative.

Musically minded girls are Evelyn Peterson and Gerry Kaldor, members of Sigma Alpha Iota; and MariFran Smith, president of the Women's Glee Club.

The chapter is especially proud of Joyce Sorenson who maintained a 3. or straight A average during her pledgehip and has had her name engraved on the Mortar Board Plaque which hangs in the Dean of Women's office. This honor goes to the first semester freshman woman maintaining the highest scholastic average.

Joyce is also a member of Playmakers and YWCA Junior Cabinet. Also elected to Junior Cabinet are Jeanette Pietron and Marlys Kruchten.

Chapter journalists are June Stjern who is a columnist for the *Dakota Student*, campus newspaper; Helen Philis, feature writer for the *Student* and staff writer for the *Dacotah*, campus yearbook; and Elsie Ann Brown, desk editor of the *Student* and picture editor of the *Dacotah*. She is also secretary of Dakota Playmakers.

Connie Johnson is president of Panhellenic and a member of Phi Upsilon Omicron, home economics honorary.

Alpha Beta won five campus queens this year: Delores Delzer, Sweetheart of Sigma Chi; Marlys Kruchten, Sweetheart of Theta Chi; Bev Hen-

ricks, Inter-fraternity May Queen; Helen Philis, Alpha Tau Omega Supper Club girl; and Buzzie Smith, Phi Delta Theta Supper Club girl.

ELSIE ANN BROWN

Alpha Gamma University of Nevada

We pledged 26 girls: Julie Baker, Winnemucca, Nev.; Irene Beck, Newcastle, Calif.; Shirley Bell, Las Vegas, Nev.; Alice Casazza, Reno; Joyce Cliff, Carson City; Olive Dobyns, Yerington; Patricia Fee, Ft. Bidwell, Calif.; Patricia Furchner, Reno; Catherine Ghilieri, Reno; Lea Glaser, Elko; Joyce Harris, Cedarville, Calif.; Patti Jones, McGill; Marjory Kean, Carson City; Elinore McCray, Reno; Joyce McElwain, Reno; Rita Mortara, Reno; Jean Nash, Las Vegas; Suzanne Pierson, Sacramento, Calif.; Gloria Pincolini, Reno; Ida Bess Sanderson, Elko; Mary Lou Sewell, Reno; Dorothy Snook, Auburn, Calif.; Arlene Sorenson, Reno; Nancy Sullivan, Lovelock; Alice Teske, Reno; Donna Wittwer, Reno.

Carol Keith, Ruth Cook, and Barbara Marker were initiated on October 4.

In honor of our new pledges and new initiates, we had a formal dinner at the Columbo.

Shortly before the school year ended last year, our new house mother arrived. Mrs. Reinken is a lovely person and makes everyone feel at home.

JANETH ROWLEY

Engagements:

Brownlie Wylie, '45, to Antonio F. Montero, Jr. Jeanne Walker, '49, to Jack Owen, Sigma Rho Delta.

Esther Golick, '47, to Elmer Vacchina, Sigma Alpha Epsilon.

Betty Holmes, '49, to Jerry Sullivan.

Marriages:

Charlotte Risard, '49, to Roy Mitchell, Sigma Alpha Epsilon, August 21.

Barbara Mandich, '48, to Vaughn Marker, September 2.

Louise Wogan, '49, to William Doyle, September 1.

Mary Wright, '46, to Elroy Meckley, Sigma Alpha Epsilon, September 1.

Jackie Thompson, '45, to William Elder, August 25.

Betty Lou Kirley, '46, to Myron Curtis, June 2.

Norma Ruth Smith, '47, to William B. Gregory.

Birth:

To Mr. and Mrs. William Geertsema (Maud Patterson) a girl Vickie Jean, September 2, 1945.

Deaths:

Margaret Rawson Garavanta and Shirley Layman Virgil.

Alpha Epsilon University of Arizona

Pat Powers represented the chapter at convention, and returned with glowing accounts about our other sisters. Alice, her twin sister, remained in Tucson to attend summer session in order to prepare herself to be a better educator of the children of the paisanos when Sheepskin Day marks itself on her special calendar of events. Polly Pinkerton returned from the beauty of California to pick up a few extra units toward the same event. Dale Knox, homeward bound from her Conover modelling job in New York, is enrolling again to finish her educational career. Mary Bogle is an airline stewardess. Edith White, first woman president of the student body on the Arizona campus, was married to Joe Hales and Janet Ruggles was married to Bob Shaw, Alpha Tau Omega from Ohio State.

Rayma Babbitt, '46, is at Harvard Medical College.

Mrs. V. D. Daugherty, our new housemother, has proved herself a guiding star with a heart and time schedule large enough to accommodate the most trivial of college griefs as well as the tragic ones.

Eleanor Rice and Kitty Lyon, 1945, are in San Francisco.

ALICE GIBBS

Alpha Theta Vanderbilt University

We are proud of our nineteen new pledges: Nancy Ross, Mary Louise Cathcart, Katherine

Fryer, Barbara Jewell, Martha McIntyre, Mary Ann Murray, Betty Sue Tassey, Mary Alice Williams, Beverly Willis, from Nashville; Nancy Bing from Madison, Tenn.; Aurelia Bond, Brownsville, Tenn.; Harriet Kaveny and Betty Brown Renn, of Gallatin, Tenn.; Joanne Talbott, Knoxville, Tenn.; Marilyn Wallace, Mount Pleasant, Tenn.; Aline Brown, Coral Gables, Fla.; Frances Porter, Oklahoma City, Okla.; and Mary Ann Crenshaw, of Montgomery, Ala.

After pledging we held our traditional pledge supper, then football and classes began with all our pledges attending the first gym dance.

Carolyn Neathery is the Student Union Representative to Women Student Government Association, and a council member of the Student Christian Association.

Ruth Wiggs is a member of Sigma Delta Pi, Sara Robertson of Tri-Arts, and Harriet Kaveny is a cheerleader.

The news sheet, *Happenings at 2417 Kensington Place*, was edited by Ruth Wiggs; it told of Alpha Theta's Katherine Dale, who was elected Lady of the Bracelet last year. This is the highest honor a woman can attain at Vanderbilt.

Margie Richardson is one of the few girls accepted for Vanderbilt Medical school. She was admitted to it this year, after three years of pre-medical work.

Officers for this year are: Katherine Quarles, president; Betty Jean Willis, vice president; Dotty Farrar, recording secretary; Audrey Phelan, corresponding secretary; Gladys Dowdy, treasurer; Peggy Malone, pledge trainer; and Carolyn Neathery and Sara Robertson, co-rush chairmen.

SUZANNE SHEPHERD

Marriages:

Hannah Charlton to Lt. Wallace Gourley Hynds, Jr., December 11, 1945.

Elaine Killebrew to Thomas Golladay Evans, in Anniston, Ala., December 26, 1945.

Timothy Frances Eatherly to Joseph Vendrix Dail, in Lebanon, Tenn., June 27, 1946.

Ruth Walton Ferris to Lt. (jg) Barry Bowers, United States Naval Reserve, in Norris, Tenn., March 15, 1946.

Saralie Fox to Kenneth Fernard Wright, June 19, 1946.

Frances Van Sant to John Raeburn Green II, in Fulton, Mo., February 9, 1946.

Have You Changed Your Name or Address?

Many Gamma Phis change their Addresses and fail to notify the Central Office therefore do not receive their CRESCENTS because the Postal Department does not forward magazines.

If you have recently moved or changed your name

Tear Out and Send to Gamma Phi Beta Central Office, 20 N. Wacker Dr., Chicago 6, Illinois

Mailing lists close Aug. 15, Nov. 1, Jan. 15 and April 1.

My { Maiden Name
Married Name

My Active Chapter My Alumna Chapter

My Old Address

My New Address
No. Street City Zone No. State

Chapter Office I Hold

Members in service and service wives: If you can supply a permanent address, you will be more certain of receiving your CRESCENT.

Elizabeth Cherry Strayhorn to Joseph Leonard Walsh, at Wightman Chapel, April 2, 1946.

Carol Woelflin to Roy Archie Douglass, Jr., United States Army, December 22, 1945.

Peggy Smith to Nicholas James Kartinos, in Bloomington, Ind., January 31, 1946.

Florence Jean Clark to Lt. Crofton Elwyn Thorp, Jr., United States Naval Reserve, in Manchester, N.H., May 26, 1945.

Marian Elwell Allen to Paul Leroy Beale, in Los Angeles, Calif., August 4, 1946.

Jean Russell to Brooks Breckenridge Eslick, in Paris, Tenn., July 7, 1946.

Births:

To Mr. and Mrs. Duncan Currey, Jr. (Martha Thatch), Mary Thatch, born at Protestant Hospital, February 15, 1946.

To Mr. and Mrs. David D. Bush (Corinne Pritchard), David Wynne, born at Vanderbilt Hospital, May, 1946.

To Mr. and Mrs. Robert A. Green (Mary Regan), Mary Ann, born at St. Thomas Hospital, July 4, 1946.

To Mr. and Mrs. Sims Crownover (Ruth Horn), Alice, born in Nashville, August 11, 1945.

To Mr. and Mrs. Neil H. Wright, Jr. (Margaret Johnson), Neil H. III, born in Nashville, September 27, 1945.

To Mr. and Mrs. B. Wade Foster (Ruby McMurtry), Catherine Elaine, born August 1, 1945.

To Mr. and Mrs. N. R. Spencer, a daughter, born September 28, 1945.

To Mr. and Mrs. Allen Mather (Rose Spaeth), Marilyn Rose, born in Hanover, N.H., February 11, 1946.

To Dr. and Mrs. J. T. Gilbert (Jane Kroekel), a son, born May 8, 1946.

Alpha Eta Ohio Wesleyan

Three weeks of open houses, teas, parties, and lots of fun ended in a successful rushing season for Alpha Eta at Ohio Wesleyan.

Special thanks go to our president, Alyce Walker, to Janie Bracy, and her committee for their work on decorations; Barbara Kaye and her committee on refreshments; Cynthia Baker and her helpers on entertainment; and to Jinx Box, chairman of our parties.

As a result of it all, "all" including our circus party, complete with a "barker" and animal show, and our beautiful formal party, when our rushers were taken to the "Land of the Crescent Moon" we pledged 20 girls who we're very proud to have as future members of Gamma Phi Beta.

Our new pledges are: Dorothy Clay, Buffalo, N.Y.; Patricia Craig, Cincinnati, Ohio; Roxanna Dunton, Delaware, Ohio; Jeanne Hohn, Hartford, Conn.; Phyllis Horne, Marion, Ohio; Mary Ikerman, Ravenna, Ohio; Marilyn Peek, Rockville Center, N.Y.; Phyllis Pickrell, Urbana, Ohio; Geneva Puterbaugh, Tipp City, Ohio; Dorothy Riddle, Pittsburgh, Pa.; Jean Roadruck, Coshocton, Ohio; Lucille Shawk, Bucyrus, Ohio; Shirley Slattery, Lockport, N.Y.; Rita Walker, Fredricktown, Ohio; Phyllis Webber, Westfield, N.Y.; Florence Whitaker, Newark, N.J.; Evelyn Witchey, Columbus, Ohio; Marjorie Wolf, Pittsburgh, Pa.; Elizabeth Young, Hartford, Conn.; and Elizabeth Zuspan, Marion, Ohio.

As soon as rushing was completed, and we had a chance to rest, and get a little of that neglected homework done, we surprised seven of our girls by initiating them on October 25. The thrill of bringing new girls into active membership of Gamma Phi Beta is a thrill that can only be experienced, not written about. Our new initiates are Betty Baumgartner, Shaker Heights, Ohio; Adrienne Krepela, Manhasset, N.Y.; Helen Mesojedick, Bridgeport, Ohio; Mimi Zimmerman, Brooklyn, N.Y.; Hazel Barnett, Shaker Heights, Ohio; Clare Lehner, Columbus, Ohio; and Nancy Munson, Saugus, Mass.

Homecoming at Ohio Wesleyan was November 2, and it certainly was good to see our house filled with Gamma Phi alumnae. Mary Sutherland, '45, Carol Senseman, '46, Ellen Archea, '46, Marjorie Haas, '45, Marjorie Woodard, '45, Kay Baumgartner Holmes, '45, Virginia Powers Walker, '46, were some of the girls who came back to see us.

Pat Parkinson has been appointed chairman of a committee to plan the entertainment which Alpha Eta will present at the Chillicothe, Ohio, mental hospital, in the near future. The program will be under the sponsorship of the local unit of the Red Cross, which provides transportation each Sunday for a sorority group to travel to the hospital to entertain the men. Last year's trip was very successful, and the girls are eagerly looking forward to their return trip.

ANNA MARIE FISCHER

Engagement:

Phyllis Box, Alpha Eta, to John Woods, Miami University.

Marriages:

Marion Stull, Alpha Eta, to Donald Combs, August 10, 1946.

Virginia Powers, Alpha Eta, '46, to Russel Walker, Sigma Alpha Epsilon, Ohio Wesleyan, on July 14, 1946.

Joy Kearns, Alpha Eta, to Lawrence J. Wilson, Phi Delta Theta, Ohio Wesleyan University, June, 1946.

Marilyn Turnley, Alpha Eta '45, to Stanley Sommerville, September, 1946.

Olive Fuller, Alpha Eta, to Charles McDowell on October 25, 1946.

Jean Perkins, Alpha Eta, '45, to George Shaffer, on October 5, 1946.

Alpha Kappa University of Manitoba

Another successful year seems to be underway for Alpha Kappa. We welcome Betty-Lou Allen, Jeanne Beatty, Shirley Swail and Pamela Weiss, who were initiated on September 26, and we're proud over our eighteen new pledges.

On October 9, the day after our final reception, a formal pledging ceremony was held for Billie Baker, Barbara Copeland, Patricia Brock, Marjorie Bull, Helenae Crawford, Barbara Halls, Patti Highmoor, Mary MacKay, Marie McCrimmon, Virginia McMillan, Gail McNamara, Nancy Tooley, and Jocelyn Williams of Winnipeg; Helene Harris of Trail, B.C.; Muriel and Gwen Lipsey of Snow Lake, Manitoba; and Patricia Moynan and Joyce Palmer of Regina, Saskatchewan.

Alpha Kappa's officers for this year are: president, Mary McPhee; vice-president and social chairman, Ainslie Lee; treasurer, Margaret Livingston; rushing chairman, Patricia Gladstone; recording secretary, Joan Pert; corresponding secretary, Patricia Chesshire; and pledge trainer, Joan Sherman.

We are particularly proud of Jean Peters who, as president of the Women's Association, holds the highest student office available to a woman on the Manitoba campus.

Delighted as we are with our pledges, we miss the actives who left Alpha Kappa last year. Among those attending college elsewhere are Evelyn Dunfee, at the University of British Columbia, and our past president, Nancy Complin, now at Queen's University. Fellowship winner Catherine Stewart pursues her Master of Commerce degree at the University of Toronto.

KATHLEEN RICHARDSON

Engagement:

Kay Everett to Douglas Pennock.

Marriages:

Shirley Potter (Alpha Kappa '46) to Grant Jonson, May 17, in Winnipeg.

Kathleen Stewart (Alpha Kappa '45) to Alec Cupples, June 15.

Isabel Hamon (Alpha Kappa '46) to Donald Proctor, September 11, in Winnipeg.

Marcia Roblin (Alpha Kappa '43) to John Sales, October 20, in Winnipeg.

Alpha Lambda

University of British Columbia

Members of Alpha Lambda chapter, twenty-eight in number, returned to the campus September 23 to start a new term of work and social activities.

On March 5 the new executive was elected as follows: president, Joan Pratt; vice-president, Valerie Manning; recording secretary, Dorothy Moore; corresponding secretary, Dorothy Williams; treasurer, Deirdre Martin; rushing chairman, Mary Chambers.

The new and old executives spent that week-end at Audrey Buchanan's home at Crescent Beach, a week-end that has now become an annual event.

On March 12 at the inter-fraternity-sorority Song Fest held each year, Gamma Phi Beta came a close second to Alpha Phi but had to relinquish the cup which they donated and which they have held three times. The girls sang original words by Lorna Shields to the tune of the Whiffenpoof song.

On March 15 the annual sorority formal was held in the Mayfair room of the Hotel Vancouver. A dinner preceded the dancing.

After examinations we spent a week, May 4 to 11, at Saturna Island, the summer home of Mrs. A. R. Thomson. This is the 11th anniversary of our week at Saturna Island.

On May 21 the graduation banquet was held at the Brock Memorial Building in honor of our seven graduates: Nancy Belton, Audrey Buchanan, Sydney Flavell, Daphne Laird, Muriel Martin, Marita Robson and Lorna Shields.

Rushing started this year with a new plan increasing the functions held to three. Our Coke Party was held September 21 at Margaret Livingstone's house (Alpha Kappa) and our tea at Andree Blais on September 25. The closed party on October 3, took the form of the first Thanksgiving. Barbara Twizell's home became Plymouth Rock for the evening.

We were all pleased to welcome Evelyn Dunfee of Alpha Kappa to our chapter.

The War Memorial Gymnasium Fund is the main interest of all at U.B.C. and most functions are to raise money for this fund. The Vancouver alumnae chapter with the support of Alpha Lambda put on a Night Flight Cabaret on September 27 and gave \$1300 to the fund, the largest single donation from any sorority on the campus. We are all proud of our alumnae.

We were all glad to have a return visit from Mrs. Stevens, our Province Director.

Pledging was held October 11 at the home of Dorothy Williams and Alpha Lambda was thrilled to pledge twenty-one girls, the largest pledge class in our history: Rosemary Bryn, Helen Carmen, Mary Pat Crowe, Pauline Fairweather, Joanne Finning, Joan Hamilton, Tish McLeod, Joan O'Flaherty, Peggy Park, Marg Parkinson, Trudie Price, Eleanor Pye, Beverley Roberts, Madeline Ross, Nancy Rennie, Pat Scott, Marie Summers, Mary Tremaine, Doreen White, Shirley Woodward.

Marriage:

Elizabeth Dale Coughlan (Alpha Lambda) to Robert William Blair on September 28, 1946.

Births:

To Mr. and Mrs. Kenneth Beckett (Isabella Arthur) on August 27, a son, Kenneth Arthur.

To Mr. and Mrs. Robert Lightstone (Jo

Chenoweth) on September 25, a daughter Diane Jill.

To Mr. and Mrs. Donald Dennis (Mary Mulvin) on September 24, a daughter, Valerie Merle.

Alpha Mu Rollins College

This year marks the second year of the new rushing system instituted at Rollins by the Panhellenic Council, and all the members of Alpha Mu are hoping that this season will be as successful as the last. As usual, the freshman girls meet the upperclass women at the formal Panhellenic Coffee, held under the palms in the lonely Spanish patio of the Rollins Center. The season continued with a series of teas for further ice-breaking, and from then on we all tried to meet the girls on as friendly and natural a basis as possible. Though the new system is still on probation, many of us feel that when pledging takes place in mid-January, instead of in October, we shall all know one another much better and have a more congenial, united chapter right from the start of the pledge period.

This year's officers are: president, Patricia Dickinson; vice-president, Eleanor Seavey; recording secretary, Tenna Head; corresponding secretary, Patricia Wilder; treasurer, Mary Davidson; rush chairman, Shirley Evans; pledge trainer, Mary Hill; council representative, Janet Walker. Gamma Phi announces the pledging of Harriet Kirby, of Decatur, Ill., last spring.

During the summer vacation Connie Clifton played on the national tennis circuit, traveling from place to place in the brand-new, shiny blue Plymouth that her home town, New Smyrna, Fla., gave her on Connie Clifton Day, April 12, 1946, for her outstanding performance at college and on the tennis courts. During her senior year Connie was president of the Rollins Women's Athletic board, vice-president of the Rollins chapter of Pi Gamma Mu, a member of Librer, corresponding to Mortar Board on larger campuses, the Rollins Key Society, and one of the eleven students associated with the World Government Conference held at Rollins last March. Other Gamma Phis in the student group and belonging to the World Government Institute are Hannah France and Janet Haas.

JANET HAAS

Engagements:

Shirley Louise Evans, '47, to John Stewart.
Martha McCormick, '48, to Charles Van Pelt, Jr., Alpha Tau Omega.

Marriages:

Emily Cobb, '46, to John Owens Duffy.
Elizabeth Gerbrick, '46, to Robert Hanna.

Alpha Nu Wittenberg College

Alpha Nu pledged twenty girls October 2: Alis Anthony, Mary Ann Tehan, Kari Ann Zimmerman and Gertrude Giffin of Springfield, Ohio; also Gloria Link now of Springfield, who is a graduate of Trinity College, Washington, D.C.; Patricia Coyne and Helen Koester of Massillon, Ohio; Helen Miller, Nancy Leatherman, Diane Lebert and Doris Haughton of Dayton, Ohio; Carol Winn of Cincinnati, Ohio; June Becker of Snyder, N.Y.; Phyllis Kistler of Hamburg, Pa.; Corienne Wilson of Forest Hills, Long Island, N.Y.; Marian Stoneman of Chagrin Falls, Ohio; Barbara Koehler of Hamilton, Ohio; Jean Anderson of Palos Verdes Estates, Calif.; Marjorie Stamm of Bellerose, Long Island, N.Y.; and Kay Numer of Canton, Ohio.

Much credit for our successful rushing period goes to Geraldine Kistler and Gwen Myer, co-rush chairmen.

State and Province Rushing Chairmen

U.S.A.

Alabama	Mrs. Alton C. LeCroy, 1109-7th Ave., Birmingham, Ala.
Arizona	Mrs. Frank C. Armer, 525 W. Granada, Phoenix, Ariz.
Arkansas	Miss Jeanne McDuff, 812 W. 4th St., Apt. 5, Little Rock, Ark.
California	Mrs. Theo. Hoffman, 5021 Ambrose Ave., Los Angeles 27, Calif.
Colorado	Mrs. Clyde Hubbard, 1208 S. Williams Ave., Denver, Colo.
Connecticut	Mrs. Harris Bigelow, Lambert Rd., New Canaan, Conn.
Delaware	Mrs. J. D. Martone, 1508 Pennsylvania Ave., Wilmington, Del.
District of Columbia	Miss Nellie Greaves, 2803 Ridgeroad Dr., Alexandria, Va.
Florida	Mrs. Elmer Schellenberg, 752 Majoica Ave., Coral Gables, Fla.
Georgia	Miss Barbara Woolman, 2665 Northside Dr. N.W., Apt. 3, Atlanta, Ga.
Idaho	Mrs. Laurel E. Elam, 1415 Harrison St., Boise, Idaho
Illinois	Mrs. A. C. Daugherty, Box 343, Duplo, Ill. Assistant, Mrs. Lynn Sifford, 400 South St., Anna, Ill.
Indiana	Mrs. Chas. F. Price, 3537 N. Penn #15, Indianapolis, Ind.
Iowa	Mrs. Kenneth Burr, 1920 Grand Ave., Davenport, Iowa
Kansas	Mrs. Ellen McClean, 430 S. Belrose, Wichita, Kan.
Kentucky	Mrs. Harry B. Richardson, Box 500, Bowling Green, Ky.
Louisiana	Mrs. Nathaniel R. Spencer, 301 Park Ave., Monroe, La.
Maine	Mrs. Vincent Gepte, 263 Maine St., Calais, Me.
Maryland	Mrs. Norman Ely, 2801 Guilford Ave., Baltimore 18, Md.
Massachusetts	Miss Eleanor Simmons, 1112 Richmond St., Dorchester 24, Mass.
Michigan	Mrs. Bert Spurrier, 261 Kenwood Ct., Grosse Pointe 30, Mich.
Minnesota	Mrs. Bert Baston, 2108 Kenwood Pkwy., Minneapolis, Minn.
Mississippi	Miss Courtney Ward, 201 Elm St., Clarksdale, Miss.
Missouri	Mrs. John K. Stewart, 4106 Scarritt St., Kansas City, Mo.
Montana	Mrs. Allan H. Langfeldt, 1013 Bill Holt, Great Falls, Mont.
Nebraska	Mrs. Emmett Gillaspie, 2300 Smith St., Lincoln, Neb.
Nevada	Miss Kathleen Griffin, 1310 Humboldt St., Reno, Nev.
New Hampshire	Mrs. George Lord, 8 Dana Rd., Hanover, N.H.
New Jersey	Mrs. N. J. MacDonald, 21 Hickory Dr., Maplewood, N.J.
New Mexico	Mrs. Paul S. Meyer, Raton, N.M.
New York	Mrs. Chas. F. Payne, 93 W. Church St., Fairport, N.Y.
North Carolina	Miss Josephine Moore, P.O. Box 85, Southport, N.C.
North Dakota	Miss Joselyn Birch, 1110 9th St. So., Fargo, N.D.
Ohio	Mrs. H. E. MacArthur, 2313 Robinwood Ave., Toledo, Ohio
Oklahoma	Mrs. Frank Hall, 108 N.W. 32nd St., Oklahoma City, Okla.
Oregon	Mrs. Fred C. MacDonald, Jr., 5926 N.E. 32nd Pl., Portland 11, Ore.
Pennsylvania	Mrs. A. Wm. Engle, 726 W. College Ave., State College, Pa.
Rhode Island	Mrs. Chilton McLaughlin, 3161 W. Shore Rd., Opponaug, R.I.
South Carolina	Mrs. R. R. Scales, 10 Lanneau Dr., Greenville, S.C.
South Dakota	Miss Sally Matson, 201 W. 25th St., Sioux Falls, S.D.
Tennessee	Mrs. Fred B. Smith, 832 E. Clayton Ave., Nashville 4, Tenn.
Texas	Miss Lucille Crimmins, 4214 Hawthorne Ave., Dallas, Tex.
Utah	Miss Tacy Campbell, 2432 Van Buren #12, Ogden, Utah
Vermont	Miss Alice J. Dwindell, Orleans, Vt.
Virginia	Miss Marie Rogers, 1609 Laburnum Ave., Richmond, Va.
Washington	Miss Janet Hartman, 4408 Beach Dr., Seattle 6, Wash.
West Virginia	Miss Mary Winters, 11 Sigma Ave., Elm Grove, W.Va.
Wisconsin	Miss Louise Marston, 1 Langdon St., Madison, Wis.
Wyoming	Mrs. Kenneth Crow, 3005 Pioneer St., Cheyenne, Wyo.
Canada	
British Columbia	Miss Beth Evans, 3324 3rd Ave. W., Vancouver, B.C.
Manitoba	Miss Margaret Aldous, 238 Oxford St., Winnipeg, Man.

Chapter president, Joanne Feichter, was initiated into the national honorary journalism fraternity, Pi Delta Epsilon; Dorothy Lather, chapter treasurer, was elected to the position of secretary on the Wittenberg Student Council; chapter secretary, Nancy West, was initiated into the romance language national honorary, Phi Sigma Iota; Geraldine Kistler, was initiated into the freshman national scholastic honorary of Alpha Lambda Delta last spring; Relda Roth was initiated into Theta Alpha Phi, a national dramatic honorary fraternity; Carol Winn, was elected president last spring of Theta Chi Delta, a national honorary chemistry fraternity.

Last spring Alpha Nu won the tennis cup and also the bridge cup.

RELD A ROTH

Alpha Omicron North Dakota State College

We initiated six pledges in Spring term: Gloria Aas, Ethel Mathews, Betty Lewis, Beatrice Jones, Jean Wallerius and Jean Cosgriff.

Joyce Gunvaldson, was chosen "Dreamline Girl" of the local S.A.E. chapter, while her sister, Irene, took such honors as representative senior, member of Woman's Senate, a member of *Who's Who in American Colleges*. Dorothy Allen Amundson was also chosen to *Who's Who*. Both Dorothy and Irene were married just before spring term began.

Betty Lewis, a sophomore, besides being presented with a scholarship in Pharmacy, was given

Be An Arm Chair Santa Claus

And At The Same Time Help $\Gamma \Phi \text{B}$ s Endowment Fund



Do your Christmas shopping with a pen or pencil and be comfortable! Gamma Phi has come up with a great idea here of letting you do your Gift choosing without even stirring from your chair. You can address the envelope when you're up anyway. If your favorite magazine isn't on the list across the page, ask us about it: those listed here have **SPECIAL GIFT RATES**. Remember you can always count on magazines being up-to-the-minute and they come as monthly or weekly reminders of thoughtful donors.

ALWAYS REMEMBER TO SEND YOUR RENEWAL TO GAMMA PHI BETA—WE CAN SECURE A SUBSCRIPTION TO ANY AVAILABLE MAGAZINE ANYWHERE ANYTIME

Magazine Order Blank

$\Gamma \Phi \text{B}$ MAGAZINE AGENCY

PERIODICAL

	Amount Enclosed	How Long	Begin	New or Renewal

Subscriber Credit

Address Association or Chapter

City

Be SURE to give Donor's name and address. We provide attractive cards on request.

Donor's name Address

Send to your Local Chairman or

Send orders & check made to MRS. J. D. STUDLEY, Int. Chair. 604 Somerset Pl. N.W., Washington, D.C.

Christmas Gift Rates On Popular Magazines

	Price to Donor		Price to Donor		Price to Donor
ACE COMICS		ESQUIRE		PARENTS' MAGAZINE	
Each 1-year subscription	\$ 1.00	(Oct. 15 to Dec. 31)		One 1-year gift subscription	2.50
AMERICAN GIRL		One 1-year gift subscription	6.00	Three 1-year gift subscriptions	4.50
(Oct. 15 to Dec. 31)		Two 1-year gift subscriptions	11.00		
One 1-year gift subscription	2.00	Each additional 1-year gift	4.00	POPULAR MECHANICS	
Two 1-year gift subscriptions	3.00			(Good year round)	
Each additional 1-year gift	1.50	FLOWER GROWER		One 1-year gift subscription	2.50
AMERICAN HOME		(Nov. 1 to Dec. 31)		Each additional 1-year gift	2.00
(Effective Sept. 1)		One 1-year gift subscription	2.50	POPULAR PHOTOGRAPHY	
One 1-year gift subscription	1.50	Two 1-year gift subscriptions	4.00	(Nov. 1 to Dec. 31)	
Each additional 1-year gift	1.25	Each additional 1-year gift	1.50	One 1-year gift subscription	3.00
AMERICAN MAGAZINE		FORTUNE		Two 1-year gift subscriptions	5.00
Each 1-year gift subscription	3.00	(Sept. 1 to Dec. 31)		Each additional 1-year gift	2.00
ANTIQUES		(Donor's name and address must be given)		POPULAR SCIENCE	
(Nov. 1 to Dec. 31)		One 1-year gift subscription	10.00	(Nov. 1 to Dec. 31)	
One 1-year gift subscription	5.00	Each additional 1-year gift	8.00	One 1-year gift subscription	2.50
Two 1-year gift subscriptions	8.00	(Limit 10 subscriptions from one donor)		Two 1-year gift subscriptions	4.50
Three 1-year gift subscriptions	11.00	GOOD HOUSEKEEPING		Each additional 1-year gift	2.25
Each additional 1-year gift	3.00	Each 1-year subscription	3.50	READERS DIGEST	
ATLANTIC MONTHLY		GOURMET		(to Jan. 15, 1947)	
Each 1-year gift subscription	4.00	One 1-year gift subscription	3.50	One 1-year subscription	2.75
Donor's own 1-year subscription	5.00	Each additional 1-year gift	2.50	Two 1-year gift subscriptions	5.00
BETTER HOMES AND GARDENS		HARPER'S MAGAZINE		Each additional 1-year gift	2.25
Each 1-year gift subscription	1.50	One 1-year gift subscription	4.00	READERS DIGEST	
BOYS' LIFE		Each additional 1-year gift	3.00	(after Jan. 15, 1947)	
One 1-year gift subscription	2.00	HOLIDAY		One 1-year gift subscription	3.00
Two 1-year gift subscriptions	3.50	One 1-year gift subscription	5.00	Two 1-year gift subscriptions	5.00
Each additional 1-year gift	1.00	Two 1-year gift subscriptions	8.00	Each 1-year gift subscription	2.50
CALLING ALL GIRLS		Each additional 1-year gift	4.00	REDBOOK	
Each 1-year gift subscription	1.00	(Limit 10 Subscriptions from one donor)		Each 1-year gift subscription	2.50
CHILD LIFE		HOME GARDEN		SATURDAY EVENING POST	
(Sept. 1 to Jan. 15)		(Oct. 1 to Jan. 15, 1947)		(Renewals Only)	
One 1-year gift subscription	3.00	One 1-year gift subscription	3.00	One 1-year gift subscriptions	5.00
Two 1-year gift subscriptions	5.00	Two 1-year gift subscriptions	5.00	Two 1-year gift subscriptions	7.50
Three 1-year gift subscriptions	6.00	Each additional 1-year gift	2.00	Each additional 1-year gift	3.75
Each additional 1-year gift	2.00	JACK AND JILL		(Limit 10 subscriptions to any donor)	
CHILDREN'S ACTIVITIES		(Renewals only)		TIME	
Each 1-year gift subscription	3.00	One 1-year gift subscription	2.50	(to U.S., Canada and Newfoundland)	
CHILDREN'S PLAYMATE		Two 1-year gift subscriptions	4.00	(Sept. 1 to Dec. 10)	
(Nov. 1 to Dec. 31)		Each additional 1-year gift	2.00	(Donor's name and address must be given)	
One 1-year gift subscription	1.50	LADIES' HOME JOURNAL		One 1-year gift subscription	6.50
Two 1-year gift subscriptions	2.75	(Renewals only)		Each additional 1-year gift	5.00
Each additional 1-year gift	1.25	Each 1-year gift subscription	3.00	TIME	
COLLIER'S WEEKLY		LIFE		(Sept. 1 to Dec. 10)	
Each 1-year gift subscription	3.00	(Sept. 1 to Dec. 10)		(Donor's name and address must be given)	
CONSUMER REPORTS		(Donor's name and address must be given)		One 1-year gift subscription	6.50
(with Buying Guide)		One 1-year gift subscription	5.50	Each additional 1-year gift	5.00
One 1-year gift subscription	3.50	Each additional 1-year gift	4.25	UNITED STATES NEWS	
Two 1-year gift subscriptions	6.00	LOOK		One 1-year gift subscription	4.00
Each additional 1-year gift	2.50	Each 1-year gift subscription	2.50	Two 1-year gift subscriptions	7.00
CONSUMER REPORTS		McCALLS		Each additional 1-year gift	3.00
(with Buying Guide and Bread and Butter)		Each 1-year gift subscription	2.50	YACHTING	
One 1-year gift subscription	4.00	NEWSWEEK		(Nov. 1 to Dec. 31)	
Two 1-year gift subscriptions	7.00	(to Dec. 31, 1946 only)		One 1-year gift subscription	4.00
Each additional 1-year gift	3.00	Each 1-year gift subscription	4.25	Two 1-year gift subscriptions	7.00
CONSUMERS RESEARCH BULLETIN		OMNIBOOK		Three 1-year gift subscriptions	10.00
(to Jan. 15, 1947)		(Dec. 1 to Jan. 15, 1947)		YOUR LIFE	
One 1-year gift subscription	3.00	One 1-year gift subscription	5.00	(Sept. 15 to Jan. 15, 1947)	
Two 1-year gift subscriptions	5.00	Each additional 1-year gift	4.50	One 1-year gift subscription	3.00
Each additional 1-year gift	2.50	OPEN ROAD FOR BOYS		Two 1-year gift subscriptions	5.00
CORONET		(Sept. 1 to Jan. 15, 1947)		Each additional 1-year gift subscription	2.50
(Oct. 15 to Dec. 31)		One 1-year gift subscription	2.00	Always Include Donor's	
One 1-year gift subscription	2.75	Two 1-year gift subscriptions	3.00	Name and Address!	
Two 1-year gift subscriptions	5.00	Each additional 1-year gift	1.00		
Each additional 1-year gift	2.25	OUTDOOR LIFE			
COSMOPOLITAN		(Nov. 1 to Dec. 31)			
Each 1-year gift subscription	3.50	One 1-year gift subscription	2.00		
ELLERY QUEEN'S MYSTERY MAGAZINE		Two 1-year gift subscriptions	3.00		
(to Jan. 15, 1947)		Each additional 1-year gift	1.50		
One 1-year gift subscription	3.00	OUTDOORS			
Two 1-year gift subscriptions	5.00	One 1-year gift subscription	2.00		
Three 1-year gift subscriptions	7.00	Two 1-year gift subscriptions	3.00		
Each additional 1-year gift	2.00	Each additional 1-year gift subscription	1.00		

the feminine lead in our yearly musical, the *Bison Brevities*; this year the presentation being "H. M. S. Pinafore."

Jean Wallerius, a freshman, was associate editor of the *Spectrum*, the college weekly publication.

During spring quarter we pledged Meda Lou Sheffield.

To climax the term we initiated Dona Even-son, Loda Junge, Dona Christianson Spear, and Edith Arneson, just prior to our annual house-party at a near-by lake resort.

GWEN LEE SOLIEN

Alpha Sigma

Randolph-Macon Woman's College

Rushing season began this year at Randolph-Macon Woman's College on September 13. The chapter enjoyed having Mrs. Paul Johnson, our new province director, and Edith McChesney, an Alpha Chi alumna from Washington, D.C. with them. The new pledges are: Houston Alexander, Fairfield, Va.; Laura Battle, Rocky Mount, N.C.; Lulu Clements, Lynchburg, Va.; Kay Day, Batavia, N.Y.; Jo Meade, Birmingham, Ala.; Marian Rip-peteau, Kansas City, Mo.; Mariroselle Sparks, Jackson, Mich.

Hope Haggett is president of Greyfel, the riding club. Mary Jean Wellford as one of the honor students is a Junior usher, is the stage manager of the Junior Play, is on the Social Committee, and is president of Humbug, athletic society. Sally Lou McMurdo is on the decoration committee for the Panhellenic Dance, won a scholarship, and is on Dean's List. Patricia Thomas is also on Dean's List. Ruth Chapin was chairman of the customary Junior-Freshman party.

Jane Kiefer, chapter president, is also co-president of the Methodist Student Movement on campus. In athletics Angie Watson made All-Star Reserves in volleyball, and Mary Jean Wellford was the manager of the sophomore baseball team and made all-star in baseball. In the literary field we are proud of Betty Sewell who wrote an essay on insects for the *Randolph-Macon Prose and Verse*, a collection of undergraduate writings which was published this year for the first time. Eileen Wait became Art Editor of *The Tattler*, our literary magazine. Ruth Chapin recently became a member of Sock and Buskin, the dramatic club. Jean Bickle was on the props committee of the Senior Play, and Jane Kiefer worked on costumes for May Day.

Two of the Gamma Phi alumnae were back for week-end visits; they were Ann Trapnell '45 and Marie Walker '45.

Clair Bissell has moved to London, England with her family and will continue college in Switzerland this fall. Two other Gamma Phis, Pat Komora and Eileen Wait, spent the summer in Lima, Peru with Pat's family who are now residing in Lima.

NANCY EILEEN WAIT

Alpha Phi

Colorado College

After an informal rush week, Alpha Phi began the spring semester by pledging four girls. They were Mary Epler, Los Angeles; Jacquelyn Carmack, Rosenberg, Tex.; Pat Jensen, Glen Ellyn, Ill.; and Pat Kimball, Minneapolis.

Thirteen girls are wearing Gamma Phi pins after initiation held March 24 at Shove Chapel. This was followed by a formal banquet at the Acacia Hotel. Those initiated were Betty and Jane Braham, Joliet, Ill.; Jackie Burke, Waukegan, Ill.; Marilyn Dunlop, Ontario, Calif.; Lorry Ellis, Evanston, Ill.; Jane Ann Johnson, Aurora, Ill.; Rose Ann Kipp, Colorado Springs; Susie Sabin, Denver; Polly Studer, Chicago, Ill.; Doralee Swisher, Hotchkiss, Colo.; Mary Lou Thomp-

son, Waukegan, Ill.; Patty Willetts, Santa Monica, Calif.; and Shirley Woolfenden, Dearborn, Mich.

Among the five most outstanding senior women chosen this spring were two of our former presidents, Betty Van Valkenburgh and Jeanne Harrisberger. Jeanne is also a member of Phi Beta Kappa. Mary Lou Buckmaster was elected "Sweet-heart of Sigma Chi." Connie Stevens is president of the Quadrangle Association, while Jean Thayer and Sally Buckmaster hold the office of president of Loomis Hall and Gregg Hall respectively. Our treasurer, Rose Ann Kipp, serves as a counselor for the town girls, and Turza Briscoe is the treasurer of A.W.S. as well as president of our chapter.

After five days with as many parties, 22 girls are wearing the Gamma Phi Beta colors: Elizabeth Apeland, Waukegan, Ill.; Norma Bartizal, Glen Ellyn, Ill.; Prudence Boutin, Minneapolis, Minn.; Mary Catlett, Colorado Springs; Jessica Chalfont, Los Angeles, Calif.; Pat Chambers, Colorado Springs; Jean Chandler, Oak Park, Ill.; Jean Cooper, Evergreen, Colo.; Phyllis Foster, Colorado Springs; Jeanne Ham, River Forest, Ill.; Betty Jane Hanger, Bala-Cynwyd, Pa.; Peggy Hatch, Pacific Palisades, Calif.; Pat Hill, Waukegan, Ill.; Pat Martin, Los Angeles; Mary Helen Morrow, Johnson City, Tenn.; Jeanne Ramsey, Chicago; Mary Reddick, Rolling Hills, Calif.; LaVon Rouse, Chicago; Helen Stevenson, Oberlin, Ohio; Phyllis Traeger, Auburn, Wash.; Marjorie Walker, Niagara Falls, N.Y.; Carol Weigen, Chicago.

MARGARET BROWN

Marriages:

On July 11 at Colorado Springs, Jeanne Nelson '48 to Gene Clift.

On September 5 at Denver, Hope Sabin '44 to John Norman.

Carolyn Hunt '49 to Neal Munroe on September 16.

On September 12 Gloria Bradley '48 to Willard Millikan (Colorado College, Beta Theta Pi).

Birth:

To Lt. Cmdr. and Mrs. Samuel Kyle Taylor, Jr. (Pattie Menefee, '38) on October 27, 1945, a daughter, Susan Catherine Taylor.

Alpha Chi

College of William and Mary

Pledges are Jane Bryan, Norfolk, Va.; Phyllis DeHaven, Galax, Va.; Frances Hawley, Hilton Village, Va.; and Florence Hungerford, Richmond, Va. A buffet supper was given in their honor on Saturday, October 5, and the pledging ceremony was held the following Monday. In addition, we have a new active, Kay McCready, who was initiated last May.

Our new officers are: president, Lois Walker; vice-president, Mary Daffron; secretary, Rita Marriott; treasurer, Nancy MacLean; house president, Jean McCreight; pledge-trainer, Barbara Rommel, and song chairman, Martha Adams.

Among the girls with printer's ink in their veins, we find Barbara Simons, assistant make-up editor of the *Flat Hat*, and secretary of the Publications Committee, of which Mary Louise Hostetter and Jean McCreight are also members. Ruth Schank is on the class staff of the *Colonial Echo*.

Religious groups claim a large number of Gamma Phis. Barbara Rommel and Nancy MacLean are on the Council of the Westminster Fellowship; while Ruth Schank is the publicity chairman for the Wesley Foundation, and Barbara Simons is the Student Leader. Anne Beekley is choir chairman for the Canterbury Club, and Barbara Rommel is also Representative to the Student Religious Union.

Martha Adams is vice-president of H₂E, honorary Physical Education fraternity, and Student Leader in Swimming. She and Kay McCready

sing in the Choir. Many girls are in the Chorus, including Martha Lamborn and Mary Louise Hostetter, who are president and treasurer, respectively.

Barbara Simons, our representative to the Student Assembly, is also a member of Theta Alpha Phi, honorary dramatic organization.

Our president, Lois Walker, is archery manager as well. Jean McCreight is sororities' representative to the Y.W.C.A. Cabinet, and Barbara Rommel is service chairman of the "Y" Cabinet.

Kappa Chi Kappa, Girl Scout honorary sorority, has Bobbie Simons, secretary, Ruth Schank, Anne Beekley, Peggy Shaw and Betty Gall in its ranks.

Barbara Brink is in Chi Delta Phi, honorary literary fraternity, and Jane Bast is a member of the American Chemical Society.

In sports, in the various language and science club, we, the Gamma Phis are represented; interested and active members, who realize that college life is not all study.

Engagements:

Mary Ellen MacLean '45 to Robert Hall.

Frances Jean McCreight '47 to Clarence Emory Clark, Jr.

Marriages:

Helen Black '42 to Lt. Robert Truesdale, U.S.N.R.

Betty May Becan to Mr. Gaston.

Doris Gonzalez '47 to Lt. Boyd Edwards, U.S.N. Dorothy Grove '46 to Lt. j.g. Robert Lamber-ton, U.S.N.R. on June 10.

Rachel Lyne to William Sigurd Norgensen on August 24.

Jean Sayers '46 to Dr. Raymond N. Brown, U. S. Army on June 22.

Gayle Schwinn '47 to David O. Nyren on June 29.

Catherine Tomlinson '45 to Lt. j.g. Shirley Bartlett.

Betty Sue Wade '47 to William Lovell.

Dora Estelle Waring to Bertram McEwen.

Birth:

To Joy Bryan Longworth '46 of Norfolk, a daughter.

Alpha Psi

Lake Forest College

After a successful week of rushing parties, we are all pleased with the rushees who chose Gamma Phi: Cecil Boyle, Deerfield, Ill.; Barbara Burmaster, Elgin, Ill.; Patricia Cochran, Lake Forest, Ill.; Bonnie Corgreen, Plainfield, Ill.; Margery Davis, Pittsburgh, Pa.; Margaret Gunnerson, Lake Forest, Ill.; Barbara Hahn, Rockford, Ill.; Kay Hibbard, Chicago, Ill.; Sara Jane Irvin, Elmhurst, Ill.; Sally Kint, Rock Island, Ill.; Dolores Kolan, Fox Lake, Ill.; Marilyn Mann, Elgin, Ill.; Romaine Mostrom, Batavia, Ill.; Camille Pickett, Highland Park, Ill.; Barbara Prindle, Lake Villa, Ill.; Marilyn Randall, Brookfield, Ill.; Marguerite Tyler, Aurora, Ill.; and Nancy Jean Wallace, Wheaton, Ill.

Officers for this year are: Rose Marie Petty, president; Peggy Leith, vice-president; Gloria June Frank, recording secretary; Bee Morris, corresponding secretary; Betty Webster, treasurer; Judy Mitchell, rushing chairman; and Joan Hitchcock, pledge trainer.

The following girls were initiated October 9: Nancy Kuehn, Barbara Krich, Lee Smith, and Jean Walker. Present at the initiation were Mrs. R. E. Fitzgerald, Mrs. D. W. Bloodgood, Mrs. F. G. Rice, and Mrs. R. F. Coerper.

PAT DORSEY

Engagement:

Barbara Harris, '45 to Alton Swanson, president of Digamma Alpha Upsilon.

Marriages:

Barbara Giertz to Courtney W. Krich.
 Betty Jane Collins to Walter W. Witt, Digamma Alpha Upsilon.
 Dorothy Becker to Bruce Romer.
 Linda Nelson '45 to Richard Graham, Sigma Nu.
 Mary Helen Johnson '44 to Roger S. Snider, Digamma Alpha Upsilon.
 Virginia Searcy to William Cunningham.
 Mary Lou Mahoney to Lt. G. O'Brien, Sigma Chi.

Birth:

To Lt. Darrell Clemmer and Mrs. Clemmer (Gloria Moonert, '47)

Beta Alpha**University of Southern California**

New chapter officers are: president, Lucerne Sasine; vice-president, D. D. Dunton; recording secretary, Virginia Anderson; corresponding secretary, Mignon Wilson; treasurer, Mickey Hohl; pledge trainer, Betty Brock; rush chairman, Carol Moss; social mentor, Phyllis Tscharnier; house manager, Audrey Farrar; scholarship chairman, Pat Kraft; activities, Jeanne Robinson; literary exercises, Muriel Nell; publicity, Sharon Lee Williams.

The formal pledging of sixteen girls marked the close of a very successful rush season: June Anderson, Maxine Henderson, Joan Bleeker, Melissa Riggs, Mary Anna Mueller, Belle Mettler, Mary Ellen Miller, Patricia Fuqua, Janet Obear, Barbara Wallace, Mary Ransom, Betty Stoll, Audrey Young, and Jean Frazier.

Beta Alpha chapter initiated ten girls: Pat Neale, Mary Champ, Virginia Miles, Jenny Dietz, Peggy Painter, Denna Zepeda, Pat Lyman, Thelma King, Beverly Richter, and Gretchen Steffen.

SHARON LEE WILLIAMS

Engagements:

Peggy Painter to Jack Perry.
 Marjory Coffman to Lt. Roger Saevig, Sigma Chi.
 Phyllis Tscharnier to Jimmy Goldsberry, Sigma Chi.
 Kay Mattice to Art McBride.

Marriage:

Louise Coffman and Ensign Elmer McKeever, U.S.N., Sigma Phi Epsilon, in Las Vegas, Nevada. At home in Philadelphia.

Beta Beta**University of Maryland**

The Beta Betas had a bang up season last semester. May Day was the highlight of the year, and Marty Huges was selected May Queen for 1946. Presenting Marty with the crown was another Beta Beta, Romanoa Randall, who was elected chairman of May Day. Another honor was conferred on the chapter when Mortar Board was tapped, and it was found that two out of five new members were Gamma Phis! Also three were members of the honor guard.

Gamma Phi Beta seems to have a monopoly on queens, for recently one of our new pledges, Pat Taylor, was elected Pledge Queen.

Gamma Phi has just given an Open House. The little white house on the hill was turned into a night club, with soft lights, palm trees, and colored streamers.

Formal rushing at the beginning of the year gave us seven pledges, Pat Taylor, Helen Keith, Dorothy Thompson, Bobbie Hughes, Nancy Schroeder, Doris Crew, and Betty Aeber.

Among the new initiates this year were Bobbie

Gamma Phi Beta Directory**FOUNDERS**

HELEN M. DODGE (Mrs. J. V. Ferguson) Died 10-21-37
 FRANCES E. HAVEN (Mrs. C. M. Moss) Died 6-16-37
 E. ADELINE CURTIS (Mrs. Frank Curtis) Died 1-14-23
 MARY A. BINGHAM (Mrs. Edward S. Willoughby) Died 1-14-16

FOUNDED

November 11, 1874, Syracuse University

GRAND COUNCIL

Grand President MRS. G. M. SIMONSON
 20 Lorita Ave., Piedmont 11, Calif.
Vice-President and Alumnae Secretary MRS. RICHARD MARVIN
 93 Berrian Rd., New Rochelle, N.Y.
Chairman of Provinces MRS. KENNETH DUBACH
 6822 Cherry St., Kansas City, Mo.
N.P.C. Delegate MRS. WILLIAM A. OWEN
 241 Buckingham Ave., Syracuse 10, N.Y.
Chairman of Finance MRS. ROGER F. HOWE
 10214 S. Wood St., Chicago 43, Ill.
Secretary-Treasurer MISS EVELYN GOODING
 2230 Civic Opera Bldg., 20 N. Wacker Dr., Chicago 6, Ill.
Councilor MRS. R. E. FITZGERALD
 1556 Martha Washington Dr., Wauwatosa 13, Wis.
Historian MISS NINA GRESHAM
 807 W. Church St., Champaign, Ill.
Parliamentarian MRS. WM. M. DEHN
 2010 E. 50th St., Seattle 5, Wash.
Traveling Secretary
Expansion MRS. WILLIAM A. OWEN
 241 Buckingham Ave., Syracuse 10, N.Y.

Central Office of Gamma Phi Beta, Suite 2230, Civic Opera Bldg., 20 N. Wacker Dr., Chicago 6, Ill.

Secretary-Treasurer MISS EVELYN GOODING
Assistants { MISS MARJORIE HENNIG
 MISS SUZANNE GREENE
 Make checks payable to "Gamma Phi Beta" and send to Central Office.

THE CRESCENT

Editor-in-chief—MRS. ROY PINKERTON, Box 341, Route 1, Ventura, Calif.
Associate Editor: MRS. M. L. BRADFORD, 1224 Spruce, Denver 7, Colo.
Associate Editor: MRS. WM. BRANIT, L 12, Lake Lotawana, Lees Summit, Mo.
Associate Editor: MRS. JAMES J. MAREK, Waldron Rd., Kankakee, Ill.
Business Manager: MISS EVELYN GOODING, Room 2230, Civic Opera Bldg., 20 N. Wacker Dr.
 Send all alumnae contributions to MRS. PINKERTON; all active material to Mrs. Bradford. Send name and address changes to Central Office.
 Alumnae are requested to send all personal items (marriages, etc.) to their Greek-letter or alumnae chapters.

ENDOWMENT—CRESCENT BOARD

President: MISS MARJORY ETNYRE, Gamma, 5559 Kimbark Ave., Chicago, Ill.
Vice-President: MRS. F. L. BROWN, Lambda, 631 Forest Ave., Glen Ellyn, Ill.
Secretary: MRS. HALVOR C. EVANS, Epsilon, 1212 Lake Shore Dr., Chicago 10, Ill.
Treasurer: MISS ALICE MULRONEY, Rho, 500 West Barry, Chicago, Ill.
 MRS. G. M. SIMONSON, 20 Lorita Ave., Piedmont 11, Calif. (ex officio)
 MRS. ROGER F. HOWE, 10214 S. Wood St., Chicago 43, Ill. (ex-officio)

INTERNATIONAL COMMITTEES

Song: MRS. MARIUS LINDLOFF, 607 Storer St., Fayetteville, Ark.
Camp: MRS. ROBERT C. JOHNSTONE, 769 S. Corona St., Denver, Colo.
Ritual: MISS ANNE DUFFY, 3107 N. Hackett St., Milwaukee, Wis.
Education: MISS EVELYN GOODING, Acting, Room 2230, Civic Opera Bldg., 20 N. Wacker Dr., Chicago 6, Ill.
Magazines: MRS. JAMES D. STUDLEY, 604 Somerset Pl., Washington 11, D.C.
Recommendations: MRS. LESTER A. WHITE, 8149 Evans Ave., Chicago 19, Ill.
Rushing: MRS. A. C. DAUGHERTY, Box 343, Dupon, Ill.
Convention: MRS. C. W. KOTSREAN, 7117 Kingsbury Blvd., St. Louis, Mo.
Entertainment: MISS JOCELYN BIRCH, 1110 9th St. S., Fargo, N.D.
Standards: MRS. LEVI WILLCUTT, 39 Cottage Ave., Wellesley, Mass.
Scholarship: MRS. E. O. C. ORD, JR., 3015 Hillegass Ave., Berkeley, Calif.
Publicity: MRS. GEORGE J. THOMAS, 44 Strathmore Rd., Scarsdale, N.Y.

PROVINCE OFFICERS

- PROVINCE I—*Director*: MRS. RALPH HARLOW, 825 Ostrom Ave., Syracuse 10, N.Y.
Secretary-Treasurer: MRS. FOREST WITMEYER, 819 Ostrom Ave., Syracuse 10, N.Y.
- PROVINCE II (E)—*Director*: MRS. LESTER BERNHARD, 959 Harvard Blvd., Dayton 6, Ohio.
Secretary-Treasurer: MRS. MILTON WAGNER, JR., 213 Brydon Rd., Dayton 9, Ohio.
- PROVINCE II (W)—*Director*: MRS. STERLING F. TREMAYNE, 708 Hinman Ave., Evanston, Ill.
Secretary: MRS. JOSEPH J. STEFAN, JR., 1235 Marion Ave. W., Highland Park, Ill.
- PROVINCE III—*Director*: DR. DORIS PHELPS, Vanderbilt Medical School, Nashville 4, Tenn.
Secretary-Treasurer: MISS BETTY FREEMAN, H6, Woodmont Ter., Nashville, Tenn.
- PROVINCE IV—*Director*: MRS. SHERWOOD PHILLIPS, 1420 Mulberry, Muscatine, Iowa.
Secretary-Treasurer: MRS. ARTHUR HOWE, JR., 403 E. 9th St., Muscatine, Iowa.
- PROVINCE V (N)—*Director*: MRS. WM. J. WYATT, 355 Humboldt St., Denver 3, Colo.
Secretary-Treasurer: MRS. FRANK MESSENGER, 3600 E. 13th Ave., Denver 6, Colo.
- PROVINCE V (S)—*Director*: MRS. CARL SPRAGUE, 3445 Westminster Ave., Dallas, Tex.
Secretary-Treasurer: MRS. J. B. FINKS, JR., 3825 Bryn Mawr Ave., Dallas, Tex.
- PROVINCE VI—*Director*: MRS. CLARENCE J. STEVENS, E. 739 26th Ave., Spokane, Wash.
Secretary-Treasurer: MRS. THELMA E. BRADY, N. 3808 Calispee St., Spokane 12, Wash.
- PROVINCE VII—*Director*: MRS. EDWARD ARNOLD, JR., 602 N. 10th St., Burbank, Calif.
Secretary-Treasurer: MISS JEAN DE SPAIN, 229 S. Linden Dr., Beverly Hills, Calif.
- PROVINCE VIII—*Director*: MRS. PAUL E. JOHNSON, 2 Shenandoah Dr., Tauxemont, Alexandria, Va.
Secretary-Treasurer: MRS. JACK M. CURTIS, 4608 Brookview Dr., Washington 16, D.C.

ALPHABETICAL LIST OF CHAPTERS (With chapter house addresses)

- Alpha (A) Syracuse University 803 Walnut Ave., Syracuse 10, N.Y.
 Beta (B) University of Michigan 1520 S. University Ave., Ann Arbor, Mich.
 Gamma (Γ) University of Wisconsin 270 Langdon St., Madison, Wis.
 Delta (Δ) Boston University 131 Commonwealth Ave., Boston, Mass.
 Epsilon (Ε) Northwestern University 640 Emerson St., Evanston, Ill.
 Zeta (Ζ) Goucher College 2323 N. Charles St., Baltimore 18, Md.
 Eta (Η) University of California 2732 Channing Way, Berkeley 4, Calif.
 Theta (Θ) University of Denver 2280 S. Columbine St., Denver, Colo.
 Iota (Ι) Barnard College Founded Nov. 4, 1901 (inactive 1915)
 Kappa (Κ) University of Minnesota 311 10th Ave. S.E., Minneapolis, Minn.
 Lambda (Λ) University of Washington 4529 17th St. N.E., Seattle, Wash.
 Mu (Μ) Leland Stanford, Jr., University Founded January 9, 1905 (inactive 1944)
 Nu (Ν) University of Oregon 1021 Hilyard St., Eugene, Ore.
 Xi (Ξ) University of Idaho 1038 Blake St., Moscow, Idaho
 Omicron (Ο) University of Illinois 1110 W. Nevada St., Urbana, Ill.
 Pi (Π) University of Nebraska 415 N. 16th St., Lincoln, Neb.
 Rho (Ρ) University of Iowa 328 N. Clinton St., Iowa City, Iowa
 Sigma (Σ) University of Kansas 1339 W. Campus Rd., Lawrence, Kan.
 Tau (Τ) Colorado State College 1405 S. College Ave., Ft. Collins, Colo.
 Upsilon (Υ) Hollins College Founded June 1, 1916 (inactive 1929)
 Phi (Φ) Washington University Woman's Bldg., Washington Univ., St. Louis, Mo.
 Chi (Χ) Oregon State College 238 S. 8th St., Corvallis, Ore.
 Psi (Ψ) University of Oklahoma 602 W. Boyd St., Norman, Okla.
 Omega (Ω) Iowa State College 318 Pearson St., Ames, Iowa
 Alpha Alpha (Α Α) University of Toronto 10 Harbord St., Toronto, Ont.
 Alpha Beta (Α Β) University of North Dakota 3300 University Ave., Grand Forks, N.D.
 Alpha Gamma (Α Γ) University of Nevada 710 Sierra St., Reno, Nev.
 Alpha Delta (Α Δ) University of Missouri 808 Richmond St., Columbia, Mo.
 Alpha Epsilon (Α Ε) University of Arizona 1535 E. 1st St., Tucson, Ariz.
 Alpha Zeta (Α Ζ) University of Texas 2622 Wichita Ave., Austin, Tex.
 Alpha Eta (Α Η) Ohio Wesleyan University 24 N. Franklin St., Delaware, Ohio
 Alpha Theta (Α Θ) Vanderbilt University 2417 Kensington Pl., Nashville, Tenn.
 Alpha Iota (Α Ι) Univ. of Calif. at Los Angeles 616 Hilgard St., Los Angeles 24, Calif.
 Alpha Kappa (Α Κ) University of Manitoba 202 Oak St., Winnipeg, Man.
 Alpha Lambda (Α Λ) University of British Columbia Univ. of B.C., Vancouver, B.C.
 Alpha Mu (Α Μ) Rollins College Strong Hall, Winter Park, Fla.
 Alpha Nu (Α Ν) Wittenberg College 628 Woodlawn Ave., Springfield, Ohio
 Alpha Xi (Α Ξ) Southern Methodist Univ. Box 578, S.M.U., Dallas, Tex.
 Alpha Omicron (Α Ο) North Dakota State College State College Station, Fargo, N.D.
 Alpha Pi (Α Π) Univ. of W.Va. Founded April 19, 1930 (inactive Sept. 1937)
 Alpha Rho (Α Ρ) Birmingham-Southern College Birmingham-Southern College, Box 65, Birmingham, Ala.
 Alpha Sigma (Α Σ) Randolph-Macon Woman's College Box 189, R.-M.W.C., Lynchburg, Va.
 Alpha Tau (Α Τ) McGill University 3601 University Ave., Montreal, P.Q.
 Alpha Upsilon (Α Υ) Penn State College Woman's Bldg., State College, Pa.
 Alpha Phi (Α Φ) Colorado College 38 W. Cache la Poudre St., Colo. Springs, Colo.
 Alpha Chi (Α Χ) College of William and Mary Gamma Phi Beta House, Richmond Rd., Williamsburg, Va.
 Alpha Psi (Α Ψ) Lake Forest College Lois Durand Hall, Lake Forest, Ill.
 Alpha Omega (Α Ω) University of Western Ontario 639 Talbot St., London, Ont.
 Beta Alpha (Β Α) Univ. of Southern California 737 W. 28th St., Los Angeles, Calif.
 Beta Beta (Β Β) University of Maryland Γ Φ Β House, College Park, Md.
 Beta Gamma (Β Γ) Bowling Green State University Γ Φ Β House, Bowling Green, Ohio
 Beta Delta (Β Δ) Michigan State College 314 Evergreen, East Lansing, Mich.

Middleton, Mary Ann Karlowa, Doris Ann Miller, Mary Dyer, Pat Browning, Shirley Sacks, and Pat White.

Telling us all about convention at Bretton Woods when we came back to school was Louisa White, who was Beta Beta's delegate.

Also discussed at great lengths this semester was our trip to Ocean City which we took in a group. The Beta Betas stayed at the Roosevelt Hotel, just a few yards from the Ocean!

BARBARA SHERMAN

Beta Gamma

Bowling Green State College

During the first week the Beta Gamma chapter entertained all the women students new at the campus.

The following girls were pledged the first semester: Jeanette Davis, Celina; Virginia Dawe, Pontiac; Elaine Baddaker, Waukegan, Ill.; Magdalene Hecklinger, Toledo; Margaret Gramley, Pueblo, Colo.; Karis Baker, Toledo; Winifred Auble, Norwalk; Connie Moeller, Stow; Jean Goodfellow, Cleveland; Rae Clair Johnson, Cleveland; Roberta Hyde, Sylvania; Marian De Conick, Birmingham, Mich.; Jeanne Kennard, Cleveland; Carlotta Tuttle, Hecksville; Pat Peterson, Joliet, Ill.; Jean McDonald, Joliet, Ill.; Dolores Bonenberger, Detroit, Mich.; Anita Frank, Akron; Peggy Hitchens, Celina; Marjorie Henry, Mansfield; JoAnne Morse, Leipsic; and Grace Villhauer, Toledo.

The pledges of the second semester were Betty Jane Reese, Warren; Marilyn Hecklinger, Toledo and Beverly Davis, Cleveland.

Donna Grafton was entered in the Key, the annual Beauty Contest. Donna captured the most student votes and was sent to a renowned judge along with the other five finalists.

The chapter has been very active in charities this year on the campus of Bowling Green supporting the Red Cross Drive and took a part in the carnival that was held for W.S.S.F. In sports the Gamma Phis were represented on every all-star team. There were members on the Soccer All-Star Team, on the Hockey All-Star Team, and on the Basketball All-Star Team.

Beta Delta

Michigan State College

Many of the girls of Beta Delta were married during the summer, and those of us who returned to school and our new house are anxious to begin the new year. The first few weeks were spent in a turmoil of painters, paper hangers, carpenters, and movers. But at last we are comfortably settled. We wish to thank our alumnae for the many long hours of hard work they put in during the summer and fall, to make this house a reality rather than a dream.

We are proud to have had Joan Bowman elected president of Panhellenic this fall.

Char Forsythe and Joyce Westfall have been cast in the fall term play "Two on An Island." Char will portray the lead of Mary Ward.

Mrs. S. F. Tremayne, our province director, visited Beta Delta the middle of October, and was entertained at an alumnae tea.

Our chapter is happy to welcome, as new initiates, Alice Foster, Muskegon; Jackie Frost, Hudson; Marguerite Hamme, Bay City; Sally Miller, Detroit; Betty Richardson, Detroit; Marilyn Stein, Grosse Pointe; and Sally Swink, Grosse Pointe.

Right now we are busy making plans and preparations for our annual Homecoming, at which time we will welcome back all our alumnae.

ELAYNE FISHLEIGH



BALFOUR PRODUCTS



INSIGNIA

BADGES . . . Balfour badges—fashioned by master craftsmen—identify the fraternity man and woman throughout the country.

KEYS . . . Members of many organizations and clubs wear an official key. Standard keys and charms are also available for general use.

GUARDS . . . Serve a triple purpose—To identify the wearer with his chapter; to insure against loss of badge; and to complete a beautiful ensemble.

RECOGNITION PINS . . . Available in many styles.

PLEDGE BUTTONS are as carefully made as a Balfour badge.

LEATHER

BILLFOLDS . . . In cowhide, red or brown alligator calf, pigskin—many styles.

KEY CASES . . . Bright red cowhide, alligator calf, or pigskin; give durable wear.

JEWEL BOXES . . . Gold tooled in the old Florentine style.

COMPACTS . . . In beautifully soft and colorful leathers.

PAPER PRODUCTS

STATIONERY . . . Engraved stationery lends prestige to personal and chapter correspondence.

INVITATIONS . . . For formal dances, smokers, birthday or mother's day greetings, and for membership.

DANCE PROGRAMS . . . A treasured memento of your party that enhances your chapter reputation.

CERTIFICATES . . . Engraved certificates for membership, special awards, club use—the finest quality obtainable.

PLACE CARDS . . . Samples on request.

SCROLLS, MEMORIALS . . . Hand illuminated citations—like an old monk's manuscript—to honor distinguished service, to show appreciation, for honor rolls; scholarship scrolls.

FAVORS

A variety of beautiful gifts is available for selection for your party favors—bracelets, pendants, leather billfolds, photo frames, lapel pins. Social Chairmen are invited to write for

discounts, for quantity purchases with time allowance for manufacture.

AWARDS

MEDALS . . . For all athletic events.

PLAQUES . . . For wall decoration or awards. Mounted with bronze castings.

BRONZE MEMORIALS . . . Perpetuate the memory of those who served our country. Bronze alone is truly everlasting.

GIFTS

RINGS . . . Ruby and spinel stones now available in fine gold rings.

BRACELETS . . . Clever charm bracelets make interesting conversation pieces.

MEN'S ACCESSORIES . . . Sword tie clips, tie chain sets, belt buckles, vest chains, smoking accessories.

PENDANTS, LOCKETS, LAPEL PINS . . . See the beautiful lockets, and the "Famous Personalities" lapel pins—all shown in the 1947 BLUE BOOK.

1947 BALFOUR BLUE BOOK

A gala array of beautiful gifts, party favors, and personal accessories. Features the Heirloom Ring, the Lincoln Ring, saber tie chains, wedding and baby gifts of silver.

MAIL POST CARD FOR FREE COPY!

Official Jeweler to Gamma Phi Beta

L. G. BALFOUR COMPANY

FACTORIES: ATTLEBORO, MASSACHUSETTS

In CANADA . . . Contact your nearest BIRK'S Store.

