



THE CRESCENT

LINDSEY BARBEE, *Editor*

1410 Vine Street, Denver, Colorado

VOL. 31

MARCH, 1931

No. 1

37th Convention of Gamma Phi Beta

BIRCHMONT BEACH HOTEL, chosen by Gamma Phi Beta as the convention site for the 1931 convention, reflects a great deal of credit on the Convention Committee—it is a splendid choice. Birchmont's location is really ideal for a vacation, and it has especially fine facilities for a convention.

The Convention Committee, also, appointed the Chicago Burlington & Quincy Railroads as the official route to Bemidji, Minnesota, in conjunction with the Northern Pacific Railroad. Detailed train information will be found in the rear of this booklet.

You will note Gamma Phi Beta is to be the guest of the Minneapolis and St. Paul chapters all day June 27 until train departure at 6:30 P.M. An information booth will be established in the Minneapolis Depot for the convenience of all the visitors.

We urge everyone traveling from or via Chicago to arrange to be on the special leaving Chicago at 10:30 P.M., June 26. Upon arrival in Minneapolis the following morning you may leave your baggage in your Pullman. The Pullmans will be locked during the day, and we will use the same cars to Bemidji that night.

Of special interest to all is the Post-Convention Trip to Yellowstone National Park. This tour follows the most historic and interesting routes to Yellowstone, including the Famous Cody Road.

Return rail and Pullman reservations will be taken care of at Birchmont, a railroad representative will be at the Hotel to assist you.

Schedule of Special Train

Central Standard Time

Lv. Chicago (Union Station) via Burlington Route.....	10:30 P.M.	June 26
Ar. Minneapolis, Minn., via Burlington Route.....	9:00 A.M.	June 27
Day spent as guests of Minneapolis and St. Paul Chapters		
Lv. Minneapolis, Minn., via Northern Pacific R.R.....	6:30 P.M.	June 27
Ar. Bemidji, Minn., via Northern Pacific R.R.....	3:20 A.M.	June 28
(Occupy sleeper until 8:00 A.M.)		

ROUND-TRIP RAILROAD TICKET should be purchased at your home station. Be sure ticket is routed from Chicago to Minneapolis via the Burlington Railroad, and from Minneapolis to Bemidji via the Northern Pacific to Brainerd, Minnesota, and the M. & I., Brainerd to Bemidji.

All Pullman sleeping car reservations, which should be made as soon as possible, will be made in the Chicago Office of the Chicago, Burlington & Quincy Railroad, address Mr. S. J. Owens, General Agent, 179 W. Jackson Boulevard, Chicago. Check covering cost of Pullman tickets should accompany reservation request, which must be received not later than one week prior to departure of Special.

Pullman Fares Via Route of Special Train

Lower Berth, Chicago to Bemidji.....	\$ 8.00
Upper Berth, Chicago to Bemidji.....	6.40
Compartment, Chicago to Bemidji.....	23.00
Drawing Room, Chicago to Bemidji.....	29.00
Lower Berth, Minneapolis to Bemidji.....	3.63
Upper Berth, Minneapolis to Bemidji.....	2.90
Compartment, Minneapolis to Bemidji.....	10.25
Drawing Room, Minneapolis to Bemidji.....	13.00

Post-Convention Tour

THERE WILL BE a post-convention tour from Bemidji to Yellowstone National Park. The trip decided upon is most attractive—it covers Yellowstone Park very thoroughly, can be made in a short period of time without being rushed, and in a leisurely fashion. You are requested to indicate on the reservation blank whether or not you will join this Post-Convention Tour.

Itinerary of Tour

- Thursday, July 2:* Leave Bemidji, 11:30 P.M., via motor en route for Wadena, Minnesota, a few miles distant, where party will board the "Yellowstone Comet," Northern Pacific train.
- Friday, July 3:* En route through the Bad Lands of North Dakota and eastern Montana.
- Saturday, July 4:* Arrive Gardiner, Montana, Northern Entrance to Yellowstone National Park, and transfer to automobiles for an interesting ride along the Gardiner River on our way to Mammoth Hot Springs.
Luncheon, Dinner and overnight here.
Afternoon hiking trip with a Government Ranger to marvel at the wonderful tinted terraces and other strange phenomena.
- Sunday, July 5:* Through three famous geyser basins on the way to Old Faithful to realize probably the most eventful twenty-four hours that you will experience in many a year. Old Faithful Geyser erupting with clock-like regularity every 65 minutes; pools of boiling water exploding like bombs.
- Monday, July 6:* Leave Old Faithful at 1:50 P.M., motoring twice over the Continental Divide along the shores of Yellowstone Lake to the lake hotel or lodges. Overnight here.
- Tuesday, July 7:* Today we follow the Yellowstone River down to the World Famous Grand Canyon of the Yellowstone. It is here that we find the Yel-

lowstone Falls breaking over a towering cliff to fall a distance twice that of the Famed Niagara.

Wednesday, July 8: We leave the Grand Canyon in the morning, and start forth on the famous 90-mile scenic motor highway through the Buffalo Bill Country, known as "Cody Road"; thence, over the Absaroka Mountains through Sylvan Pass and the Shosone National Forest, arriving at Cody, Wyoming at 4:55 P.M. Those returning direct to Chicago, St. Paul, or Minneapolis will leave after dinner at 7:30 P.M. Those planning to visit Denver will stay overnight at the Cody Inn. We plan to terminate the tour at Cody. Undoubtedly there will be a good many returning over each of these several routes.

This tour will be operated on the "Pay As You Go Plan," rather than the all-expense arrangement. By that we mean everyone will pay his own expenses day by day as we travel along. Exclusive of your railroad ticket, this trip beginning at Bemidji and terminating at Chicago should cost about \$86 which is a generous figure. This estimate includes one lower berth all the way; all meals on and off trains; lodging at the lodges in Yellowstone, and all motor transportation.

Members traveling from or via Chicago intending to take the Post-Convention Tour should have their tickets routed C.B. & Q., Chicago to Minneapolis; Northern Pacific R.R., Minneapolis to Gardiner, Montana; C.B. & Q.R.R., Cody Wyoming, to Chicago. Side-trip from Brainerd, Minnesota, to Bemidji will be issued on the train for persons holding the above described tickets. (Cost of side-trip, \$3.41.) Very interesting illustrated books on Yellowstone, may be had by writing Mr. S. J. Owens, G.A.P.D. Burlington Route, 179 W. Jackson Blvd., Chicago, Illinois.

1921 · 1931

(Just a résumé of conventions in the last ten years)

1921. The Tavern at beautiful Lake Crescent—a fairy spot at the end of a journey up Puget Sound and through a wonder forest. Lambda and Seattle as hostesses. All kinds of festivities, ending with a banquet at the Boat Club.

ACHIEVEMENTS: Strengthening of central government. Song Book issued. Publication of the history of Gamma Phi Beta. First presentation of Memorial Service.

1924. Fiftieth anniversary of the founding of the sorority. Held at Lake Placid Club with Alpha and Syracuse as hostesses. The most memorable convention in the history of the sorority. The presence of the two living founders, the midnight initiation in the little chapel, the open air pageant, the marvelous banquet all combined to produce perfection.

ACHIEVEMENTS: Creating the office of Executive Secretary. Raising of fifty thousand dollar endowment fund. First display of chapter trophies and scrapbooks. First appearance of *Crescent Moon*. Naming of the Gamma Phi Beta Fellowship.

1929. Grand Hotel on Mackinac Island with Province Two as hostess. Silver winged sea gulls, lilacs wet with rain, a shimmering, glimmering lake, a wonderful setting. Many festivities climaxing with a spectacular banquet.

ACHIEVEMENTS: Authorization of a national survey for budget system.

1929. The Ambassador Hotel in Kansas City with Province Three as hostess.

High upon a roof top! Plenty of songs, plenty of pep, a record-breaking attendance, a series of events, and a charming visit to Sigma!

ACHIEVEMENTS: Adoption of Denver Camp as national enterprise. Authorization of Central Office in public building. Authorization of Committee upon Publications. Prize for best song offered in contest.

*When the last gay song has re-echoed,
When the last goodbye has been said,
When the last gay frolic has ended,
And the last crescent rays have been shed—
We shall rest, and faith we shall need it,
Lie down for a fortnight or two,
Till the thoughts of the next convention
Will set us to work anew!*

Railroad Rates to Convention

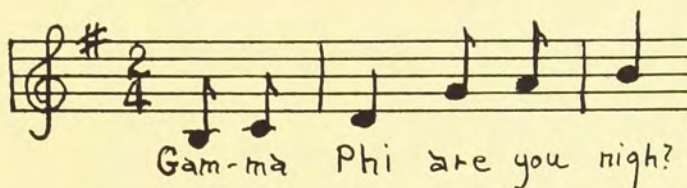
(Exclusive of Pullman Fares)

Ames, Iowa	\$*22.90	Milwaukee, Wis. (4)	\$*28.85
Ann Arbor, Mich.	*41.95	Minneapolis, Minn.	*10.70
Austin, Tex. (2)	76.60	Morgantown, W.Va. (2)	65.08
Baltimore, Md. (2)	79.90	Moscow, Idaho (7)	70.35
Birmingham, Ala.	*64.00	Nashville, Tenn.	*53.45
Boise, Idaho (2)	86.80	New York City (2)	87.77
Boston, Mass. (2)	97.11	Norman, Okla.	*53.25
Champaign, Ill. (2)	*36.15	Oakland, Calif. (1)	103.10
Chicago, Ill.	*30.05	Oklahoma City, Okla.	*51.95
Cleveland, Ohio	*46.45	Omaha, Neb.	*28.20
Columbia, Mo.	*34.40	Phoenix, Ariz. (1)	95.60
Columbus, Ohio	*45.05	Portland, Ore. (7)	75.60
Corvallis, Ore. (8)	76.60	Reno, Nev. (1)	98.10
Dallas, Tex. (2)	66.05	San Diego, Calif. (1)	103.10
Davenport, Iowa	*27.15	San Francisco, Calif. (1)	103.10
Delaware, Ohio	*43.86	Seattle, Wash. (1)	86.80
Denver, Colo. (1)	64.55	Spokane, Wash. (7)	70.35
Des Moines, Iowa	*23.75	Springfield, Ohio	*44.60
Detroit, Mich.	*43.15	St. Joseph, Mo.	*31.40
Eugene, Ore. (1)	91.65	St. Louis, Mo.	*36.20
Everett, Wash. (7)	75.60	Syracuse, N.Y. (2)	74.14
Fargo, N.D. (6)	5.84	Toronto, Can.	*57.85
Ft. Collins, Colo. (6)	65.20	Tucson, Ariz. (1)	103.10
Grand Forks, N.D. (6)	4.20	Tulsa, Okla.	*46.45
Iowa City, Iowa	*25.10	Urbana, Ill. (3)	*36.15
Kansas City, Mo.	32.20	Vancouver, Can. (7)	75.60
Lawrence, Kan.	*35.06	Washington, D.C. (2)	79.90
Lincoln, Neb.	*30.80	Wichita, Kan.	*44.50
Los Angeles, Calif. (1)	103.10	Winnipeg, Can. (6)	7.99
Lynchburg, Va. (2)	79.05	Winter Park, Fla.	*99.05
Madison, Wis. (2)	28.85		

* Short limit.

- (1) Season limit to St. Paul plus short limit to Bemidjii.
- (2) Season limit.
- (3) Short limit via Chicago.
- (4) Direct, not via Chicago.
- (6) One way fare via Great Northern.
- (7) S. T. fare to Duluth or to St. Paul—G. N. will honor via Bemidjii.
- (8) S. T. fare via Oregon Electric, \$70.10 via S. P. to Portland.

Convention Singing



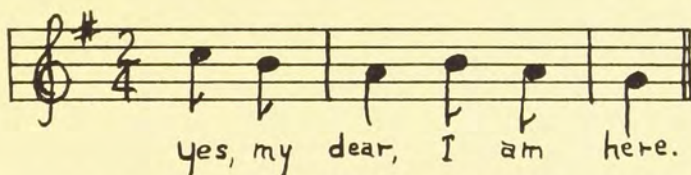
THUS WILL our clarion call ring out to every Gamma Phi both far and near. Will you be present to answer that summons?

So many attractive musical features are being planned that you simply cannot afford to miss them. The song contest, convention choir, stunt night—but *sh!* We must keep a few surprises in store for that last week in June.

The *one important thing* for you to remember is this: Be sure to *bring your new song book to convention*. You will use it constantly. This is going to be the "singin'est" convention on record, and we need your voice to swell the choir. So

*Come sisters come
If you can't sing, hum.
Sisters be you east or west
Sing the songs you love the best
Coast to coast and south to north
Let your happy songs ring forth
To lighten cares and soften sorrow
And beckon to a glad tomorrow.
Freshmen warble, seniors sing
Sophs and juniors in a ring.
Staid and dignified alums.
Contribute your melodious hums.
Chant in voices low and high
The qualities of Gamma Phi.*

H. R. H.



We shall be looking for you at Bemidji on the twenty-eighth of June, and we shall be listening, too, for your answer.

ELSIE FRISBIE NORMAN
National Chairman of Music

Social Program

ONLY A WORD about the social side of convention! There will be the usual services—Memorial, Crescent Moon, and the Model Initiation. On Sunday, we are to be the guests of Alpha Kappa and Winnipeg Alumnæ at a tea; on Tuesday evening, we are bidden to Stunt Night by the Iowa chapters, to which we are to go in fancy dress. There will be prizes for various costumes, and there will be an addition to the chapter house for the fortunate chapter to carry home. Prepare your stunt with care! On Wednesday, Gamma and Madison Alumnæ will entertain you with a picnic supper followed by a surprise on the hotel lawn—but that is a secret! On Thursday, there will be matches in golf and tennis; boat trips; and a motor trip to Itaska Park for those not athletic. Remember to bring your swimming suits and heavy coats. A delightful banquet has been arranged for Thursday evening by Milwaukee Alumnæ, with Alice Coerper as our toastmistress. And that brings to mind the glorious picture of Gamma Phi in evening dress.

We are expecting a large number, and we hope to make this a memorable convention.

FLORENCE S. SULLIVAN
Director of Province Four

What Program Shall We Have?

Golf.

Afternoon tea.

Model initiation.

Motor trip to Itaska Park.

A song contest.

Picnic supper.

Hotel festivities.

Interesting stunts.

Boat ride.

Every kind of sport.

Twin City Day.

A swimming and diving contest.

"Now You Listen"

IF YOU THINK it's not possible—from a point of view six months removed in Mr. Einstein's latest dimension (vulgarly known as "time")—to get all of a flutter over convention, then you've been off sticking your head in the sand with some ostrich or spending the winter hibernating with a bear in a sound-proof cave in one of Mr. Glacier's parks.

Because that convention—unseemly as it may be for "us as does it" to say it—is shaping itself up so fast into such a fascinating project that all Minneapolis, St. Paul, and Kappa have been spouting for weeks, and even the outermost stations in Province IV are doing a little broadcasting on their hookups.

It's this way. We got to working on the plans for Twin City Day and they're so polished up they're fairly dazzling. You will arrive in Minneapolis on Saturday morning, June 27. If you have not breakfasted on the train you may do so at the new Womans' Club where the Twin City Gamma Phis plan to have headquarters. Eva Kaye Rutherford (Mrs. Paul C.) is the chairman of the day with the able assistance of:

Daile Michelson (Mrs. Henry), Minneapolis

Virginia Little Stevens, Minneapolis

Alice Jean Hutt (Mrs. Frederick), St. Paul

Kate Kenny (Mrs. John), St Paul

Olive Walker, Kappa

Eleanor Evenson, Kappa

There's a bus ride to show you Minneapolis and St. Paul with luncheon at one of our lovely country clubs; and, in the late afternoon, tea at the chapter house. Then aboard for Bemidji, where we shall arrive early Sunday morning. Buses will take us to Birchmont Hotel. After breakfast, registration will begin. To be fair, fit, and fashionable you'll need:

As many sport outfits as you think you'll enjoy.

"Habits" for bathing, golf, and tennis.

A warm coat (It gets just cold enough in the evenings up there). Informal dinner dresses. (Sports frocks will be discarded, under pressure or otherwise, about six-thirty.)

A dress that will be able to stand affably the variety of activities we've planned for Twin City Day.

We are planning a jaunt to Itasca Park, the location of the headwaters of the Mississippi River and one of the most famous beauty spots in the "Land-of-Ten-Thousand-Lakes."

MILLICENT L. HOFFMAN

General Chairman

Financially Speaking

THE REGISTRATION FEE, which includes tipping, all entertainments, incidentals and the banquet, is five dollars. All guests of convention, including those at the Hotel, as well as those occupying private cottages, must pay this fee.

Five days at \$5.00 a day will be \$25. This includes room and meals for those living at the Hotel.

Single meals (for those not registered at the hotel): Breakfast, \$1.00; Luncheon, \$1.00; Dinner, \$1.50.

A special rate of \$1.00 per day has been arranged for the eighteen-hole golf course at the Bemidji Country Club. There is no charge for boating and tennis.

And on Wednesday Night . . . Stunts

IF YOU HAVE new pajama ensembles, prepare to don them, for Stunt Night is to be Pajama Night, and "a good time was had by all" will appear in the papers the following day.

Incidentally, we need entertainers for stunts, and stunts for entertainers. If you are not sending entertainers, send stunts—long and short, funny and serious; and if we can use them for rushing entertainment, better still. We know you are curious about our plans, but we are not at liberty to divulge them. We have magic concealed in our hats, and surprises up our sleeves. You just cannot afford to miss it! Last time, a province director danced the Hula. Need we say more?

We'll be seein' you!

LOUISE SALTMARSH BALTIMORE
National Chairman of Rushing

At Chicago

THE CHICAGO alumnae chapter has arranged for a special clubroom at the Allerton House for all Gamma Phi Beta delegates who will be changing trains in Chicago on their way to our National Convention at Birchmont, Bemidji, Minnesota. A room and bath will be available for those who want to rest. An information and mail service are offered by the Allerton, our official Chicago Alumnae headquarters. Address all inquiries or mail in care of Miss Opal M. Cannon, director of women, Allerton House, Chicago. We are anxious to help you enjoy a short stop-over in Chicago or if you plan to stay for a few days, single rooms at \$2.00 per day or double rooms at \$1.50 per person can be reserved at the Allerton.

CHICAGO ALUMNAE CLUB

Hostess of the 37th Convention - Province IV

Florence S. Sullivan, Director

Millicent L. Hoffman (Mrs. A. C.), General Chairman of Convention
Katharine Taney Silverson (Mrs. Chas.), Assistant Chairman of Convention

CONVENTION COMMITTEES

I. Hospitality

Chairman, Mrs. Arthur Sullivan, Gamma

Madison Alumnae Chapter

Mrs. Albert Tormey
Mrs. Ray McGuire
Mrs. Theodore Montague

Fargo Alumnae Chapter

Mrs. O. J. Hagan
Mrs. Charles Pollock
Miss Clara Pollock

St. Paul Alumnae Chapter

Mrs. C. J. MacDonald
Mrs. John Kenney

Grand Forks Alumnae Association

Mrs. Frank Smith
Mrs. S. Thorwaldson
Miss Marie Bowes

Milwaukee Alumnae Chapter

Mrs. Edward Hoffman
Mrs. David Bloodgood
Mrs. W. R. Dalton

Winnipeg Alumnae Association

Mrs. Donald Smith
Miss Meryl Marshall
Miss Helen Hamilton

Davenport Alumnae Association

Mrs. H. Lafferty

Ames Alumnae Association

Miss Winifred Tilden

Iowa City Alumnae Association

Mrs. F. Knight

And three members from each active chapter in Province IV.

II. Hotel Room Reservations

Chairman—Louise Durst Smith (Mrs. Norman), Gamma and Minneapolis Alumnae

Eunice Erdall (Mrs. A. C.), Minneapolis Alumnae

Ruth Lansing (Mrs. Donald), Minneapolis Alumnae

Coie Ensign (Mrs. Wilbur), Gamma and Minneapolis Alumnae

Margaret Taylor (Mrs. D. G.), Gamma and Minneapolis Alumnae

Helen Salzer (Mrs. Irvin), Kappa

III. Convention Registration

Chairman—Edna Elmer Smith (Mrs. E. S.), Minneapolis Alumnae

Elizabeth Young (Mrs. L. F.), St. Paul Alumnae

Helen Chalmers, Minneapolis Alumnae

Kenena McK. Kelley, Minneapolis Alumnae

Gertrude Ruhberg (Mrs. G. N.), St. Paul Alumnae

Mary Kennedy (Mrs. A. McO.), Minneapolis Alumnæ
 Helen Randall (Mrs. J. R.), Minneapolis Alumnæ
 Members from Madison, Milwaukee, and Ames (not yet named)

IV. Arrangements

Chairman—Carolyn McDowell, Minneapolis Alumnæ
 Ruby Baston (Mrs. Bert), Minneapolis Alumnæ
 Peg Burnham, Minneapolis Alumnæ
 Louise Huey (Mrs. Harold), Minneapolis Alumnæ
 Magdaline Birch (Mrs. Albert), Fargo Alumnæ
 Estelle Lillie (Mrs. C. C.), Grand Forks Alumnæ
 Mary Carpenter, Kappa

V. Publicity

Chairman—Jean Van Sant (Mrs. B. C.), Kappa
 Beatrice Brown, Omega
 Jean Pate, Alpha Omicron
 Margaret Burns, Alpha Kappa
 Mamie Lund, Alpha Beta
 Anne Bradfield, Rho
 Elna Mary Clausen, Gamma
 Doris Quaintance, Kappa

VI. Decorations

Chairman—Marian Blodgett (Mrs. Harold), St. Paul Alumnæ
 Gladys Albertus, Omega
 Sylvia Steele, Alpha Beta
 Rhoda Marr, Alpha Omicron
 Frances Statts, Rho
 Louise Halls, Alpha Kappa
 Susan Nash, Gamma

VII. Crescent Moon

Editor-in-chief—Rewey Belle Inglis, Minneapolis Alumnæ

Editors

Frances Fitzgerald, Omega	Clare Doupe, Alpha Kappa
Sally Hunkins, Alpha Omicron	Rhody Fisher, Rho
Katherine Breitwieser, Alpha	Eleanor Stearns, Gamma
Beta	Elaine Hovde, Kappa

Artists

Alice Boyd, Alpha Beta	Kathleen Hubbard, Kappa
Margaret Fleming, Alpha Omi- cron	Marjorie Gray, Kappa

VIII. Initiation

Chairman—Marie Moreland, St. Paul Alumnae
Assisted by Kappa Chapter.

IX. Bemidji

Chairman—Jessie Phillips Johnson (Mrs. E. W.), Kappa
Betty Rowland, Winnipeg Alumnae.

What Shall We Experience at Convention?

Good fellowship.
Actual achievement.
Many new friends.
Many old friends.
A knowledge of national affairs.

Problems wisely settled.
Happiest of associations.
Inspiration to carry on.

Broader viewpoint.
Expansion wisely handled.
Tradition revived and emphasized.
A renewed love and loyalty.

RESERVATIONS

Hotel room reservations for those wishing to attend convention should be in the hands of Mrs. Norman Smith, 2431 Humboldt Ave. South, Minneapolis, before June 1. Fill in the enclosed blank and mail it now.

.....
I wish to make reservations for the Gamma Phi Beta Convention, June 28-July 2, inclusive, at Birchmont Hotel, Bemidji.

Name, Chapter

Address Class

Indicate preference for roommate.

Reservation Blank

....., 1931

Mr. S. J. Owens
General Agent, C.B. & Q.R.R.
179 W. Jackson Blvd.
Chicago, Ill.

Please reserve on the GAMMA PHI BETA train leaving the Chicago Union Station at 10:30 P.M. (Central Standard Time), June 26, accommodations indicated below by "X":

Lower Berth
(Accommodating 1 or 2 persons)

Section
(Accommodating 1 to 4 persons)

Upper Berth
(Accommodating 1 or 2 persons)

Compartment
(Accommodating 2 to 4 persons)

Drawing Room
(Accommodating 2 to 5 persons)

Following are the names of those in my party:

..... Address.....

..... Address.....

..... Address.....

My name.....

Address.....

I will join the Special at.....

.....

.....

.....

I will (will not) take the Post-Convention Yellowstone Trip.

I wish to reserve the indicated space on the Post-Convention Special to Yellowstone Park, and am enclosing my check to cover.

Pullman rates, Wadena, Minn., to Gardiner, Mont.

Lower Berth.....\$10.13 Drawing Room...\$36.00

Upper Berth..... 8.10 Compartment 28.50

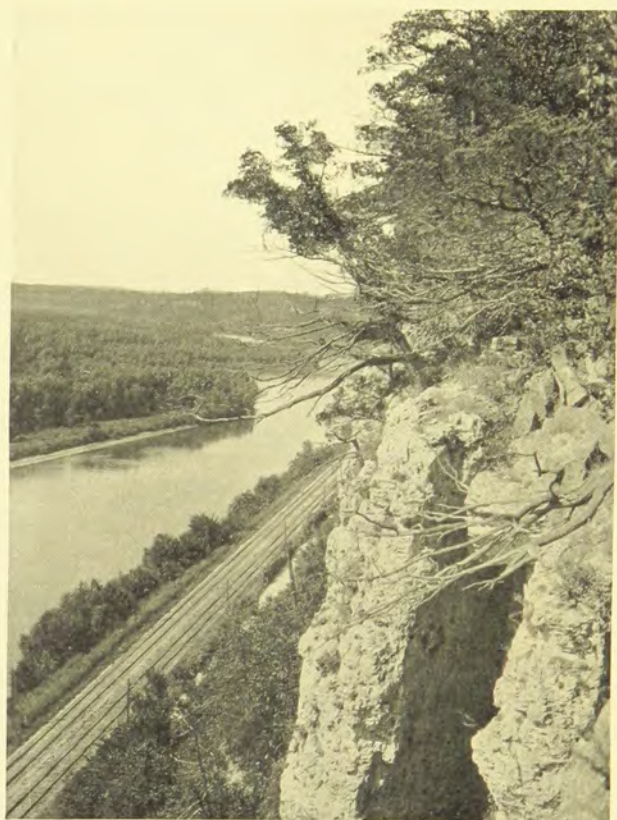
The following are in my party:

..... Address.....

..... Address.....

..... Address.....

Remarks



Along the Upper Mississippi
