

The CRESCENT OF GAMMA PHI BETA

FEBRUARY • 1940



Calendar

SEPTEMBER

Fiscal year begins September 1.

College calendars due Central Office, Province Director and Chairman of Inspection by September 15.

Audits for second half of previous year due Mrs. Keith September 15.

CRESCENT material and glossies for December issue due Mrs. Pinkerton October 1. (Greek-letter chapter letters and pledge lists regularly printed in this issue.)

Comparative scholarship rating of campus sororities for preceding year due Central Office October 1.

Publicity stories due Central Office October 1.

Pre-initiation and final initiation fees due Central Office within two weeks.

By October 1 of year preceding convention, send all proposed amendments and other business for convention consideration to Mrs. Dehn.

OCTOBER

Lists of chapter members and pledges (new and hold-overs) due Central Office and Province Director immediately after pledging (after college opens if chapter has second semester pledging).

Rushing report due Province Director immediately after pledging.

Order pledge manuals from Central Office immediately after pledging.

CRESCENT subscriptions (included in final fee for new subscribers) due Central Office by November 1 if they are to begin with next issue.

Pre-initiation and final fees due Central Office within two weeks.

Publicity stories due Central Office November 1.

NOVEMBER

First installment of Greek-letter chapter dues and \$4.00 for bound CRESCENTS due Central Office December 1.

Publicity stories due Central Office December 1.

Pre-initiation and final fees due Central Office within two weeks.

DECEMBER

CRESCENT material and glossies for February issue due Mrs. Pinkerton December 15. (Alumnæ chapter letters printed regularly in this issue.)

Alumnæ chapter dues and camp tax due Central Office January 1.

Publicity stories due Central Office January 1.

Pre-initiation and final fees due Central Office within two weeks.

JANUARY

CRESCENT subscriptions (included in final fee for new subscribers) due Central Office by January 15 if they are to begin with next issue.

Publicity stories due Central Office February 1.

Pre-initiation and final fees due Central Office within two weeks.

FEBRUARY

Lists of chapter members and pledges (new and hold-overs) due Central Office and Province Director by February 15.

Rushing report due Province Director immediately after pledging.

Order manuals from Central Office immediately after pledging.

Second installment of Greek-letter chapter dues due Central Office March 1.

Acknowledgement of bound CRESCENTS due Central Office February 15.

Publicity stories due Central Office March 1.

CRESCENT material and glossies for May issue due Mrs. Pinkerton March 1. (Greek-letter chapter letters printed regularly in this issue.) In convention year, send short biographical sketch of convention delegate and glossy for Greek-letter chapter delegate by March 10.

Pre-initiation and final fees due Central Office within two weeks.

MARCH

First semester audit due Mrs. Keith March 15.

Name and address of new rushing chairman (Greek-letter and alumnæ) due Central Office *not later than April 1*.

By April 1 or as soon thereafter as possible, send list of officers for ensuing year for Greek-letter chapter to Central Office, Province Director and Chairman of Inspection; for alumnæ chapter to Central Office, Province Director, and Vice President.

CRESCENT subscriptions (included in final fee for new subscribers) due Central Office April 1 if they are to begin with next issue.

Publicity stories due Central Office April 1.

Pre-initiation and final fees due Central Office within two weeks.

APRIL

Publicity stories due Central Office May 1.

Pre-initiation and final fees due Central Office within two weeks.

MAY

Report on pledge manual due Central Office May 15.

In convention year, send list of members (Greek-letter and alumnæ) who have died since preceding convention to Central Office by June 1.

Publicity stories due Central Office June 1.

Pre-initiation and final fees due Central Office within two weeks.

JUNE

List of Greek-letter chapter members who have acquired honors during preceding year, together with Scholarship blank No. 4, due Central Office July 1.

Greek-letter chapter history for preceding year due Central Office July 1.

List of graduates and members not returning to college due Central Office and Province Director July 1.

Pre-initiation and final fees due Central Office within two weeks.

Publicity stories due Central Office July 1.

Greek-letter chapter officers store instructions, equipment of office and supplies in safe place in chapter house before leaving for the summer.

CRESCENT material and glossies for September issue (including Greek-letter chapter members elected to honoraries preceding year) due Mrs. Pinkerton July 15. (Alumnæ chapter letters regularly printed in this issue.)

Publicity stories due Central Office August 1.

AUGUST

CRESCENT subscriptions (included in final fee for new subscribers) due Central Office August 15 if they are to begin with next issue.

Publicity stories due Central Office September 1.

Fiscal year closes August 31, ending period covered by annual taxes paid since preceding September 1.

The Crescent

of Gamma Phi Beta

Volume XL, Number 1

Contents for February, 1940

The Cover:

Springtime on the University of Denver campus where Theta chapter of Gamma Phi Beta was chartered December 28, 1897. Students are passing to the Mary Reed Library.

THE CRESCENT is published September 15, December 1, February 15 and May 1 by George Banta Publishing Company, Official Printer, 450-454 Ahnaip Street, Menasha, Wis. Entered as second-class matter, October 1, 1910, at the post office at Menasha, Wis., under the act of March 3, 1879. Acceptance for mailing at special rate of postage provided for in section 1103 of the Act of October 3, 1917, paragraph 4, section 429 P. L. and R., authorized July 18, 1918.

Subscription price \$1.50 a year, payable in advance. Forty Cents (\$0.40) a copy.

Address all material for publication to the Editor. Member of Fraternity Magazines Associated. All matters pertaining to national advertising should be directed to Fraternity Magazines Associated, 1618 Orrington Avenue, Evanston, Illinois.

CHARLOTTE ROBERTSON WHITE (Mrs. L. A.)

Executive Secretary

Gamma Phi Beta Central Office

55 East Washington Street

Chicago, Illinois

GAMMA PHI HAS BEEN LOYAL TO ME	3
WORKS WITH LONDON CHILDREN	4
FRIENDLY WITH NEMATODES	5
MCGILL, A ROYAL UNIVERSITY	7
INTRODUCES FIRST LADY	8
WE SHARE HER WITH DUKE	8
ALIVE WITH INTEREST IN PEOPLE	9
IN MEMORIAM	10
PANHELLENIC AIMS SUMMARIZED	11
WE MUST WORK TOGETHER	13
IDEAL CONVENTION SETTING	14
POST-CONVENTION TRIP TO NEW YORK	14
CONVENTION COMMITTEE PICTORIAL	15
WILLIAMSBURG, RESTORED	19
CONVENTION INFORMATION	19
PRE-CONVENTION VIRGINIA TOUR	20
CLOTHES FOR CONVENTION	21
IF YOU CAN'T SING, HUM!	21
CONVENTION R.R. RATES AND BLANKS	23
EDITORS PARTICIPATE IN N.P.C.	24
GAMMA PHI POETS ATTENTION	24
CHAPTER SCHOLARSHIP CHART	25
GAMMA PHI BETA BOOK NOOK	26
OUR FINEST TRADITIONS	27
WHAT ALUMNÆ CHAPTERS ARE DOING	28
GAMMA PHI BETA DIRECTORY	47

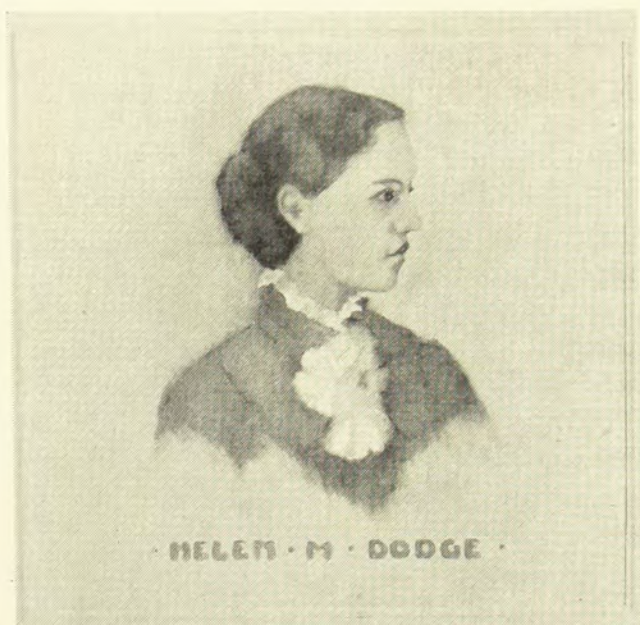
Editorial Staff:

AIRDRIE KINCAID PINKERTON, editor-in-chief, Box 341, Route 1, Ventura, Calif.

CHARLOTTE ROBERTSON WHITE, Associate Editor, Room 1216, 55 E. Washington St., Chicago.

LEILA STRAUB STAFFORD, Associate Editor, 1289 Fifteenth St., Eugene, Ore.

MISS LINDSAY BARBEE, Editor Emeritus, 1407 E. 10th Ave., Denver, Colo.



THESE OIL PORTRAITS of the founders of Gamma Phi Beta at the University of Syracuse in 1874 flank the mural (opposite page) in the dignified and beautiful chapter room of the Gamma Phi Beta house at Syracuse. They were done in oil in pastel colors by Jeanne Stauffer, Alpha '39, from old photographs and verbal descriptions given her by Mary Whitford, Alpha '81.



“Gamma Phi Has Been Loyal To Me”

By Mary Whitford

Alpha and Syracuse alumnæ

I HAVE often wondered why we who were among Gamma Phi Beta's first members have always felt she means as much to us, when we were so few in numbers and met in some room we just hired for the afternoon, as she does to the present girls, with all they have, and I think it was having our founders with us and knowing them as we did.

My name is 21st in Alpha's book of signatures. There were but 13 there in the summer of 1877 when Minnie Bingham and Fanny Cobb called and asked me to join. Fanny had just pledged. Of these 13 Helen Dodge was graduated in '76, Barbara Crane and Della Quincy in '77, Clara Worden had become Mrs. Wilcox and had left college as had Flora Humason and Ida Noble had died. The last two are the only members of Alpha I haven't known personally, until 1920 at least.

Six times during the college year of 1877-78 girls were initiated. First Bertha Booner, Fannie Cobb, Florence Palmer, and Adelaide Whithead, a junior in music; then Ella French, a music senior; later Jessie Decker, a music sophomore; then Carrie Hull and on March 22 Alice Bannister and I and last, Lucy Smith.

There were only six members left when college opened in September, 1878: Minnie Bingham, Addie

(So writes Mary Whitford, oldest living initiate of Alpha chapter who was present this year at Alpha's Founders' Day gathering.)

Curtis, Carrie Dingman and Kate Foster, seniors; Lizzie Haywood, a junior; and Mira Haven, a sophomore. The music courses had been added to the university that year and that is why so many advanced in music entered.

You speak of my loyalty to Gamma Phi Beta. It is Gamma Phi Beta that has been loyal to me. When I was prevented from attending meetings because of a serious accident and illness in 1913 the girls of the active chapter considered calling all their meetings special so my record of nearly 35 years of not missing a regular meeting of Alpha since initiation would not be broken. But wiser people made them realize how foolish that would be.

When Minnie Willoughby died our alumnæ chapter asked me to go to her funeral services in Utica. We had no central office then and no quick way of communicating with other chapters and Alpha's wreath was the only floral tribute from Gamma Phi.

When Addie Curtis died seven years later I was probably more impressed than anyone else with Gamma Phi Beta's growth in our national feelings for Lindsey Barbee and others had sent flowers.

I was a guest at the Lake Placid convention and roomed with Helen Ferguson. Mira Draper was there with Fannie Moss. During this convention at one of the dinners I was seated between Lillian Thompson and Lindsey Barbee. I had never met either of them before although I had corresponded with Lindsey and she had sent me a copy of our history that she had written. She asked me to describe our founders and I tried to find one word that would describe each and said:

"Helen was the *scholar*, Fannie the *artist*, Addie the *friend* and Minnie the *aristocrat*. These terms or their equivalents have been used to describe Gamma Phi Beta since."

I recently found a copy of the 1894 Gamma Phi Beta directory, which I think was our first. There was a card with it saying I was the directory committee. I remember I copied it from the alumni records of Syracuse University which Dr. Frank Smalley used to get out. It was Dr. Smalley who met some of our members the morning after our Beta chapter's founding was announced and said he presumed they felt very proud of being members of a sorority. That was the first time the word was ever used in that way. Dr. Smalley's only daughter, Carrie, was one of our choicest members, class of '03, a member of Phi Beta Kappa and died three months after her graduation. » » »

Works With London Children

CHRISTMAS toys for evacuated British children this year were miniatures of English war defenses, according to a letter received from London from Mrs. Nevlin Gaudin (Betty Davidson, Lambda), by her parents, Dr. and Mrs. Homer J. Davidson, Seattle, and a niece of Lucy Wallrich Davidson, Gamma.

Mrs. Gaudin, former University of Washington coed, who was graduated in 1937, is now doing child welfare work in an evacuation camp in South London.

"Ration books," she wrote, "are distributed weekly to the camps. Lists of available food, children's toys, address changes of the evacuated children and notes on blackout defenses are included in each edition.

"Every day's meal is planned according to the amount and type of food listed in the ration books," she explained in her letter. "Children's toys, such as dolls and cradles, and even light fiction books, are conspicuously absent. All toys for both boys and girls are



Betty Davidson Gaudin

miniature war machines, cannons, balloon barrages, battleships, tanks, and airplanes."

The London blackouts have proven more treacherous than the enemy planes overhead, Mrs. Gaudin's letter said. And "blackout defenses" have been demanded by Britishers. Luminous canes, tie pins, bobby pins and jewelry are carried by everyone as a guard against collisions in the midnight darkness of blacked-out London streets.

A humorous angle on the evacuation was included in her letter: Former London taxicabs have been equipped with crude ladders and are used in the fire auxiliary squads in evacuating camps. They certainly added a bizarre touch to drills, she wrote.

Mrs. Gaudin's husband is continuing his medical studies in London. They were married last July and left immediately on a honeymoon trip to England. Mrs. Gaudin said their present plans were to remain in Europe indefinitely.

Esther Hollebaugh, Omicron, has been named, for the second time, an "outstanding member" of the board of directors of the San Francisco Panhellenic.

Virginia Bosworth, mezzo soprano, member of Alpha Kappa chapter and resident of St. Paul appeared in her home city this fall in a recital with Ramona Gerhard, noted pianist.

Friendly With Nematodes

By Edna M. Buhrer

Goucher and Washington, D.C.

OFTEN have I heard doctors ladle out advice to career seekers by saying, in a final sort of way, "Well, don't go into medicine." And I've always thought to myself, "Aha, he doesn't mean that. He thinks a physician's work is the most fascinating there is. He's just saying that because he doesn't want the profession crowded." Now, here I am, switching over to the doctors' side—but for entirely different reasons than any doctor would propound. Say I, in a final sort of way, "Don't go into biology." And this is why, without any ahas thrown in: It simply doesn't make good dinner-table conversation! One cannot enliven a tea party by saying "I'm sure this watercress was infested with *Heterodera marioni*," or "You should have seen the 10,000 *Neoaplectana* sp. I dissected from a Japanese beetle today."

One sure way of throwing me into a perfect panic is to descend upon me with the words, "Your work must be so *very* interesting! Do tell me what you do!" I proceed to curdle inside, stutter outside, and go into a tail spin, for I simply do not know what answer to give some one who doesn't give a hoot about the excretory system of a nematode. Technical terminology is anathema, and there is no possible other way of saying that my Nematology is a branch of Parasitology, which is a branch of Zoology, which is a branch of Biology, than just that way. So I proceed to put us both on more agreeable footing, mutter nothingses, and say, "Oh it's all so detailed. Come down to my laboratory some time. It's easier to show you than to tell you. Let's talk about the weather."

And so, with these apologetic introductory remarks, I clear my throat and tell you that my work is research, at the U. S. Department of Agriculture, on a group of microscopic animals known as nematodes, or eelworms. (Shades of Biology I, which is often a required course and usually as popular as the mumps!) Now, boys and girls, there are many genera of nematodes which are not microscopic in size; the hookworm is one, and the trichina or pork-parasite, for protection against which you are always urged to cook your pork thoroughly, is another. But these are not in my field of endeavor. My

(A distinguished researcher in the Bureau of Plant Industry, U. S. Department of Agriculture, Washington, D.C., discusses the social and scientific aspects of her special line.)

niche lies in those nematodes that are parasitic in plant tissues, are pathogenic to insects, or are freelifing in the soil and marine waters. For the study and diagnosis



Edna M. Buhrer

of these, the microscope is as necessary as an introduction if you want to meet President Roosevelt. And so, when we go on field trips to investigate the cause and cure of some unusual occurrence of one of our pet diseases, we go armed with a pet microscope.

And when we go to Woods Hole, Massachusetts, we go armed with a flock of microscopes. For seven delightful summers I was very fortunate in being sent to assist in research at the biologist's mecca—or haven, or rodeo—on Cape Cod. The chief nematologist of the U. S. Bureau of Plant Industry, under whom I was working, was interested in the morphology, taxonomy, and physiology of marine nematodes. In May or June of those years, then, my car found its rear deck bulging with 12 or 13 microscope cases and its nose pointed north for a 4 or 5 months' stay.

Woods Hole is located on the tip of Cape Cod's elbow. It is rich in marine flora and fauna, a happy hunting ground for biologists, for there, where north-

ern and southern ocean currents meet, there can be found live specimens for study,—a much pleasanter and more profitable occupation than working with pickled, formaldehyde-soaked animals. (More shades of Biology I, II, III, etc.!) In addition, the cool salty ocean tang makes work and study a pleasure, especially when we contrasted it with Washington, D.C.'s proverbial summer temperatures.

There are three major biological institutions at Woods Hole. The Marine Biological Laboratory is a privately endowed institution, with a summer school and facilities for several hundred scientists doing private research; it offers such courses as invertebrate zoology, physiology, embryology, and botany, for which full college credit is given. The Oceanographic Institution, also privately endowed, is staffed by research workers in oceanography and allied subjects. The U. S. Bureau of Fisheries, through whose courtesy we were given laboratories, maintains a station for government investigations.

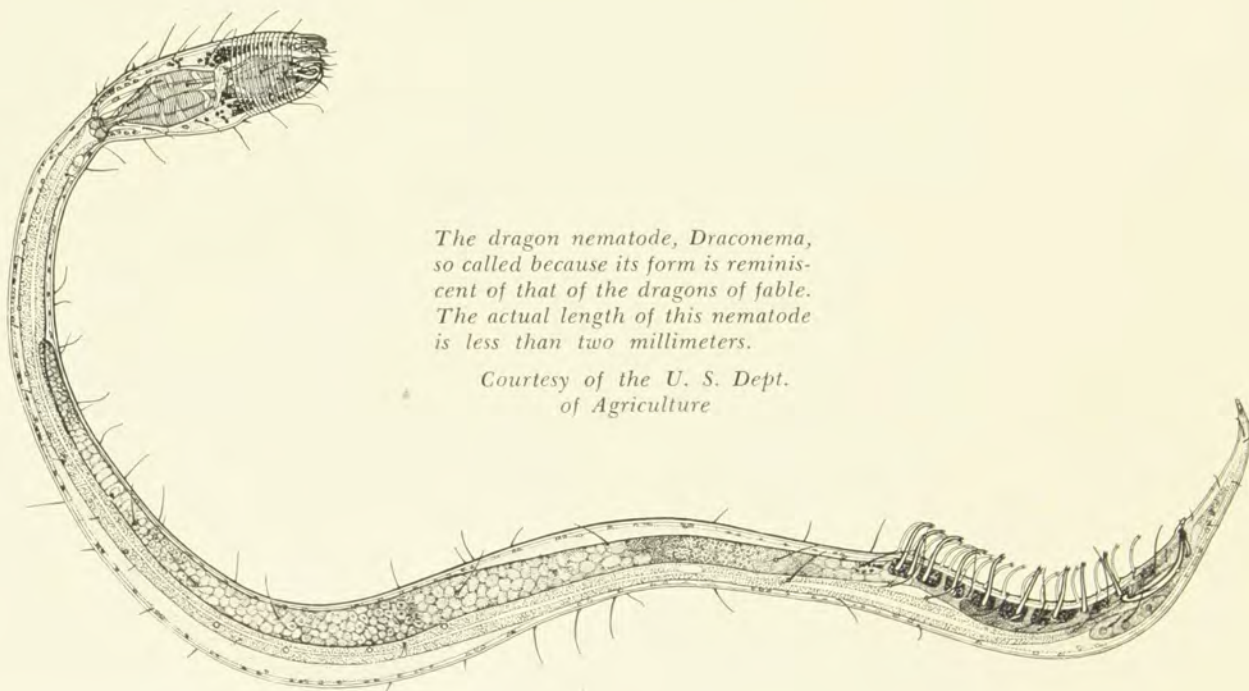
Believing firmly that all work and no play makes Jack a seedy scientist, we took full advantage of our play times there, and it is those play times that put a gleam in the eye when Woods Holers get together for a spot of reminiscing. It still seems sacrilegious to me to try to eat a lobster daintily from a dish in a restaurant. A lobster *must* be eaten with the aid of two rocks,—one to rest it on and one to knock it apart with,—and the ceremony must take place of a starry summer

night on the ocean shore, where a fire of dried seaweed and drift wood is brewing the coffee. Beach parties may mean minor delicacies such as steamed *Mytilus* or clams or other fixin's but lobster is king of them all. After such a binge of feasting there's no better way to wash your hands—and elbows and ears—of lobster than to take a moonlight swim in the phosphorescent water.

Canoe and motor boat trips to the many tiny islands that dot Buzzards Bay and Vineyard Sound are other highlights in our summer. Any lazy boat trip along the rocky shores around Woods Hole could become a real adventure in marine zoology and a chance to watch the private lives of starfish, sea urchins, scallops, barnacles, razor clams, horseshoe crabs, and myriad other tenants of the ocean.

Cape Cod is steeped in the traditions of New England's fishing and old whaling industries, and is very close to the famed whaling ports of colonial days. On the islands of Nantucket and Martha's Vineyard and in the city of New Bedford you can easily recall "Moby Dick" or "Down to the Sea in Ships" by wandering through their streets and looking at their charming old homes of sea captains, or by visiting their whaling museums. Perhaps once or twice during the summer a "square rigger" in full sail will find its way through the Sound,—a romantic reminder of the days when fishing vessels knew no steam or Diesel engines.

So—Woods Hole is a byword for where it is as well as what it is. D D D



The dragon nematode, Draconema, so called because its form is reminiscent of that of the dragons of fable. The actual length of this nematode is less than two millimeters.

Courtesy of the U. S. Dept. of Agriculture

McGill, A Royal University

By Helene L'Esperance

McGill University

ALPHA TAU chapter of Gamma Phi Beta is situated in Montreal at McGill University, one of the oldest and proudest of Canadian Universities. It is known in the United States chiefly through its medical faculty and research which have brought to it students from all over the world.

McGill has not been generously endowed, either by man or nature, and its facilities are far from extensive. But McGill students are proud of their campus with its beautiful trees and the fine old buildings of varied architecture on the educational march up Mount Royal. Because the college is situated immediately within the city of Montreal which of necessity separates the students and diversifies their interests, it has not developed the strictly collegiate traditions of many American universities. But McGill has one tradition of which every thinking student is deeply proud, and which was brought forcibly home to us in May of this year.

In the benighted days just after Quebec was won from the French, the British established the Royal Institution for the Advancement of Learning. In 1813 the Honorable James McGill, a leading merchant and prominent citizen of Montreal, died and left in his will a property of forty-one acres and a sum of ten thousand pounds to the Institution on condition that a university or college be erected upon the land and that the name McGill be perpetuated thereby. Thus the University of McGill College is a corporation, created by a royal charter, granted by the crown of the united kingdom. A general supervisory power is retained by the Crown and exercised by the Governor-General in his capacity as Visitor. The Governors of the University constitute the Royal Institution for the Advancement of Learning, and in them is vested the management of finance, the appointment of professors and other important duties.

All of which means that we at McGill have a special link with the Crown, a link whose significance was fully



Roddick Gates, which mark the entrance to the campus of McGill University, Montreal, Canada

revealed to us on the occasion of the Royal Visit. The Governor-General, Lord Tweedsmuir, had come to McGill on a tour of inspection earlier in the spring, accompanied by his charming wife, Lady Tweedsmuir, but this was the visit of the reigning monarch to his own institution and so a much greater thrill.

For weeks beforehand the authorities were busy with preparations, the erection of grandstands and the decoration of the campus. A general clean-up campaign was instituted throughout the grounds and never had they looked so lovely. Luckily spring co-operated in the most charming manner, and the campus was green and smooth and fresh. The decorations added to the effect. The prevailing color scheme was, of course, red and white, the university colors, but banners and heraldic displays were plentifully used.

As the King and Queen drove up Union Avenue they were greeted by a lovely sight. Garlanded with green, the grey old walls of the women's residence, the Royal Victoria College, proudly bore the arms of Queen Victoria and her consort. Around the statue of Good Queen Vicky, brilliant in their red and white uniforms, were grouped members of the college honorary ushering Societies—many of them Gamma Phis. The big

(Continued on page 22)

Introduces First Lady

LITA BANE, Omicron, and head of the department of Home Economics at the University of Illinois introduced Mrs. Eleanor Roosevelt to the convention of the Association of Land Grant Colleges held in the capital in November.

Miss Bane was chairman of the association's home economics section and heads the home economics department of the University of Illinois. She is a former associate editor of *The Ladies Home Journal*.

The First Lady said she received many letters asking why the spread is so great between farm and retail prices. She asked the President, she added, but wasn't satisfied with his answer and so was passing the question along to the experts represented at the gathering. » » »

Lita Bane introducing Mrs. Roosevelt at a convention of Land Grant Colleges held in Washington, D.C.



We Share Her With Duke

AN ANTI-CLIMAX to many started novels is finally complete for Lois Hutchinson of Alpha Gamma. During her four years at the University of Nevada and several years of teaching, Lois constantly dipped her pen into ink to create poetry and the start of novels. This year a real find came from her adventurous spirit, as a



Lois Hutchinson

freighter going through the canal took Lois east, where she accepted an assistantship at Duke University in the Psychology department.

Although born in St. Louis, Missouri, twenty-five years ago, Lois is a true Nevadan at heart because she has a real love for the desert sage and the vastness of her adopted state. Her room in North Carolina has its walls lined with pictures of her mountains covered with snow and her desert which are the source of her original writings.

While attending the University of Nevada she was an honor roll student, a member of Chi Delta Phi, and an organizer for Fine Arts. These well show her interests and hobbies—fine things! Alpha Gamma is happy to share Lois and her talents with Duke.

Alive With Interest In People

By Marguerite C. McPhee

Lincoln, Nebraska

ACTIVE and alumnæ chapters felt honored when on November 4 Pi chapter initiated Gretchen Hochdoerfer Rogers (Mrs. George H.) at the beautiful ceremony, conducted by Maxine Wertman, active president, in a faultless manner. They are happy to have as a member this gifted and charming young woman who has lived her life in a college environment.

Gretchen Hochdoerfer spent her undergraduate years at Wittenberg College where her father, Dr. Richard Hochdoerfer, a well-known scholar, was professor of Germanic languages and her mother taught French. From Wittenberg she received the A.B. degree and then went forth to be the very young teacher of girls in an exclusive boarding school in New England. She, however, had inherited from her scholarly parents scholastic tastes that urged her to further study. In response to this urge she entered the graduate college of the University of Illinois and received her Master's degree. Several years of teaching German in the University of Kansas followed. Then came advanced work at the University of Chicago pursued during summer vacations while she was a member of the faculty at the University of Nebraska. From Chicago she received the Ph.D. degree. During the year 1932-33 as associate professor of Germanic languages at Nebraska she served as acting chairman of the department while the professor whose position she filled was absent. In 1937 she resigned her position in the university to marry Mr. George H. Rogers of Lincoln, Nebraska. On their wedding trip they journeyed to Hawaii—a far cry from the cloistered halls of college.

Gretchen's blue eyes are warm with feeling and alive with interest in people. She has none of the earmarks of an erudite scholar. Her interest in intellectual subjects will always be first of course. At present she is a member of a number of literary clubs in Lincoln and is president of the Lincoln branch of the Association of University Women and serves on the advisory board of the University Young Womens Christian Association. She possesses the happy faculty of combining rather serious responsibilities with activities that offer pleasant recreation.

(Pi chapter welcomes into sisterhood
a charming new member, steeped in
scholastic traditions.)

The nineteenth century mansion-like house that has been the bachelor home of Mr. Rogers is a treasure house of beautiful works of art. This cultured gentleman is a connoisseur of lovely things. In his wife he has won a gracious hostess who is at home in lovely surroundings.

Gretchen possesses a sincere affection for college students. Her life has been lived among college students; she understands them, is fond of them. May it not have been this interest in college girls that opened the gate to her life for Pi chapter? Then, too, her mother, Mrs. Richard Hochdoerfer, was dean of women at Wittenberg when the group that later became Alpha Nu petitioned Gamma Phi Beta.

And so Pi chapter is proud and happy to introduce to you this distinguished new member. D D D



Gretchen Hochdoerfer
Rogers

HAWAII REACHES FULL QUOTA

Hawaii Alumnæ chapter is proud to announce that all of the active members of the chapter are now 100% Life Members of Gamma Phi Beta.

The group has made this mark by bestowing upon Betty Raymond Boycott, Nu, the corresponding secretary, the gift of a life membership paid in full by the chapter in appreciation of all she has done so faithfully during the two years that she has held the office.

"I am sending this item unknown to Betty, since it is an item of great importance to our group way out in the middle of the Pacific Ocean. Betty does not know of the gift yet and we expect to present her with the certificate when it arrives," writes Barbara Nicholl, Gamma, president of the chapter.

In Memoriam

NELL SMITH CASE

Gamma, 1889

In the passing of Nell Smith Case, Gamma chapter has lost one of her most brilliant alumnae. Being one of the first initiates she gave valuable service to the chapter during its early days. Later married to a civil engineer, she spent her life in various places. They lived for some time on the Pacific coast, then in the Philippines, later going to Paris and then New York City. Being versatile Mrs. Case readily adapted herself to the life of the community in which she lived and became a valuable member of its society. Being both brilliant and witty she was a charming conversationalist and her sunny smile, so indicative of her cheerful disposition, will long be remembered by the host of friends who knew her.

—By **CARRIE E. MORGAN**

LAURA EGGERT

Theta, 1926

The strength of gentleness—the example of patience—the beauty of self-effacement; all this we remember as we pay our tribute to Laura Eggert, so long a loved and loyal member of Theta of Gamma Phi Beta. Like Pippa in Browning's beautiful poem, she—unconsciously—influenced all those whose lives she touched.

We think of her as the wide-eyed, eager freshman who so early loved and served her chapter; as the beautiful bridesmaid of her best friend standing against a background of pink roses; as the gracious young hostess in her home; as a vital part of her alumnae group; as the ever cheerful invalid of these later years.

Entering the University of Denver in the class of 1926, Laura became a member of one of the finest pledge classes in the history of the chapter. An ideal pledge, she became a strong upper-classman, holding various positions of trust and proving capable and conscientious in every task committed to her. A part of her college work was taken at Northwestern University where she affiliated with the Epsilon girls.

When Denver alumnae made the momentous decision to sponsor a camp for underprivileged children, the first difficulty in the program was the proper site for the undertaking. It was then that Laura became the fairy godmother who made the wish come true. Daughter of the president of a large ice company, she suggested to her father that the various company houses in the vicinity of Crystal Lake be offered to the alumnae; and as a result Mr. Eggert made the generous proposition that gave the camp its definite start. From that day until this, he has aided the camp board in its various plans. From the very first, the camp became Laura's chief interest; and the proximity of the Eggert summer home gave her the opportunity to mingle with the children, to watch the growth of the camp, and to share its many activities. Whatever this altruistic work of Gamma Phi Beta may have achieved has been influenced in great part by Laura Eggert's determination to make the dream a reality.

And so we light for Laura Eggert the Gamma Phi Beta candles of Memory, Love and Influence. The memory—a happy memory—is of one who loved and was loved, whose influence extended beyond the boundaries of her own chapter, whose contribution to her sorority has been constructive, inspirational and far-reaching.

Oh Life Eternal, life apart,
Thy never-failing influence shed
Until within each human heart
There comes the truth, "There are no dead."
For Life shall ever Death defy
Within thy circle, Gamma Phi.

—By **LINDSEY BARBEE**

PAULINE IONE KUTZNER

Alpha Iota, 1928

Pauline Ione Kutzner died December 30 in Jamestown, New York, following an illness of six months. A native of Humboldt, Iowa, she graduated in 1928 from the University of California at Los Angeles where she was a member of Alpha Iota chapter.

She was confidential secretary to Kermit Roose-

(Continued on page 25)

Panhellenic Aims Summarized

By Mrs. Harold Hartman

Gamma Phi Beta Delegate to N.P.C.

THE Greenbrier at White Sulphur Springs, with its southern charm and friendliness, was a happy choice for the twenty-sixth meeting of National Panhellenic Congress, November 2 to 4. Delegates and alternates of the 23 member groups of N.P.C., met to review Panhellenic progress and formulate plans for the next biennium. One hundred five delegates and visitors attended the sessions.

Mrs. Franklin Gentry, Alpha Delta Theta, chairman of N.P.C., presided. Her charm and ability won the admiration of all those present. When one of the guest speakers asserted that the major concern of educators today was in seeing that the student gets a better education than the curriculum provides, Mrs. Gentry voiced the keynote of N.P.C. when she said that fraternities are the answer to the educator's prayer. For fraternities are doing just that; they are collectively aware of their responsibilities and possibilities in this field.

One important act of the Congress was to affirm its belief in the principle of limitation: the type of limitation and the chapter size to be determined by the College Panhellenics according to the needs of each campus. The College Panhellenic's committee reported that there is a favorable attitude toward limitation on the present-day campus.

The Committee on College Panhellenics is convinced that strong College Panhellenics are essential to an adequate rushing system and a spirit of friendliness and helpfulness among fraternities. They will continue in their effort to make them more effective by urging regular meetings, parliamentary procedure, adequate constitutions, trained officers who carry over from one year to the next, and program meetings. Regional conferences were considered successful and beneficial and will be continued.

Believing that discriminatory intersorority organizations defeat the general aims of Panhellenism, and that the inequalities implied are harmful, a motion was passed that all discriminatory interfraternity organizations be abolished.

Especially interesting was the decision to debate at the next Congress, the advisability of changing the



National officers at White Sulphur Springs, left to right: Mrs. T. Dayton Davies, president of Delta Delta Delta; Mrs. William Dehn, grand president of Gamma Phi Beta; Mrs. Harold Hartman, Panhellenic delegate from Gamma Phi Beta; Alice Miller, president of Phi Mu; and Mrs. Warren Smith, vice-president of Pi Beta Phi. All are residents of Seattle, Washington.

function and organization of N.P.C. from advisory to legislative.

The sale of badges and novelties by unofficial, unauthorized jewelers continues to be a major problem. The Committee on the protection of fraternity insignia reports that almost without exception, badges displayed in pawn shops are new unofficial pins which have been placed there by pirate jewelers. All N.P.C. fraternities were urged to inform their members of this practice and to redeem pins only when they are official badges.

Greater interest in City Panhellenics is evident. They will be urged to do all in their power to create in the public mind the true purpose of College Panhellenic fraternities and sponsor programs that will be mutually helpful to active and alumnae fraternity members.

Interfraternity co-operation is considered fundamental to the success of fraternity life. All groups were asked to work toward this end.

Of general interest was the report of the committee to formulate a ten-year program of progress for N.P.C., including prepared forum discussions on the function of fraternities on a campus.

Very interesting data was reported by the special rushing committee. Results from the questionnaires sent to all active chapter presidents, all alumnae presidents, all College Panhellenic presidents, and all deans of women were presented to the Congress. It was found that few College Panhellenics are strong or well organized. A large percentage are unable to enforce their rules and they lack the respect of the girls and faculty. The preferential bidding system is not understood on many campuses. The methods of handling bids is inadequate in many schools. Too few Panhellenics carry out the fine ideas N.P.C. has worked

out and recommended. It is evident that College Panhellenics must be made more effective if we would improve rushing conditions.

Girls in school like friendships made during rushing better than anything else, dislike "dirty rushing" more than any evil. Half of the chapter presidents said that co-operation was the most essential element of a desirable rushing system. The most common suggestion for alumnæ help was in better recommendations. Eighty per cent of the chapter presidents felt they got a good percentage of girls they wanted, but said they also got misfits. Two-thirds of the girls thought rushing fatiguing, the effect of rushing on scholarship, negligible. The majority considered rushing a worthy fraternity activity.

One-half of the answers felt that rushing has a harmful effect on the girls not pledged. Chapter presidents reported that sixty-eight per cent of the girls who wanted to pledge had the opportunity. The committee feels, therefore, that from the standpoint of the campus, a successful system is one wherein the greatest number of girls rushed are pledged.

Answers on deferred and early rush systems were divided. Most large campuses considered an early rush system quite successful, while smaller schools favored deferred rushing. The greatest advantage of the early rushing was that "it got it over with."

Rushing costs varied considerably, ranging from

\$1,000 to \$7, most of the costs, however, falling between \$200 and \$50. The cost per pledge averaged \$15. In most instances the girls and deans of women considered the cost of rushing reasonable.

Limitation of chapter size is heartily approved by all but a few N.P.C. groups. Alumnæ are definitely in favor of limitation, eighty per cent approving the plan.

One-fourth of the deans of women are openly opposed to rushing, another fourth tolerate it. Few deans felt that it accomplished its purpose or was very well managed. This indictment should be the major concern of N.P.C.

A study of the most successful systems offers valuable ideas for consideration. The use of an executive secretary or full time assistant during rushing is very helpful. The use of a "drop or release" list so there is an opportunity for other groups to know when a girl has been dropped from a chapter's rush list seems desirable. A well organized College Panhellenic is necessary for the success of any system. Every fraternity should do all in its power to educate its chapters in Panhellenic co-operation.

The social functions, the banquet with its interesting program and delightful entertainment were most enjoyable. The opportunity to know officers of other fraternities, to understand and appreciate their problems is one of the most enjoyable and worth while benefits of National Panhellenic Congress. D D D

Alpha Gamma's New House

Remodelled during the summer of 1939, the chapter house at the University of Nevada was ready for occupancy when the university opened in the fall and has been the center for Gamma Phi Beta activities in Reno during the current year. Formerly the home of former Gov. Bell of Nevada, the former white structure was one of the landmarks of the university community.



We Must Work Together

By Lois McBride Dehn

Grand President of Gamma Phi Beta

PERHAPS, at no time in the history of Fraternities and Sororities, has there been more sincere effort on the part of the leaders of these groups to co-operate with the administrations of our educational institutions to make Fraternity membership a significant factor in education. Many educators will agree that Greek-letter groups offer values in character and personnel development which the institution is unable to give. Our contributions to the problems of housing, freshman orientation and student control have long been granted. Our social and scholastic standards have proven fine incentives. Yet we are continually faced with publicity in pictorial magazines, rotogravure sections, movies, feature stories and fiction, which emphasizes the worst features of the fraternity system or entirely misrepresents chapter life as it really is.

It is self evident that those of us who spend a major portion of our time in Fraternity work are convinced of its enduring values. Yet we know that all Greek-letter groups must work together to present to the college world and the world at large, a much finer picture than they are now getting through the popular publicity channels, if we are to maintain our prestige.

You may say that fraternities have always faced the possibility of extinction. That is true, but in addition to the former criticisms we must now face other conditions which threaten our position. The availability of government funds has resulted in building dormitories whose luxury offers serious competition to chapter house living and at rates which are lower because of freedom from taxes. Financial strain has put the values of fraternity membership under searching scrutiny. Why should the student pay more to live in a less desirable house, especially if the night club atmosphere and Joe College attitudes of the pictorial magazines and the immorality described in a recent article by "one who knows," is all one is to get for membership? In the last biennium, 22 chapters of N.P.C. groups have lost their charters. On November 6, an entire sorority merged with another. This is an indication that Greek-letter membership is not so desired as it was some twenty or twenty-five years ago when several new nationals were organized.

There is some dispute as to the reasons for this un-

Mrs. Dehn points the way in combatting adverse forces working against the fraternity system; emphasizes the need for faith and praise in our enduring values if they are to be passed on to future college generations.

fortunate publicity. It may be merely the desire for sensationalism which makes scandal and crime the headliners of our daily papers. Some believe that those who are enemies of the fraternities are deliberately promoting this type of publicity in order to discredit us. Still others place the blame on individuals who are seeking personal publicity by having either their pictures or their stories published.

But whatever the cause, if we as members of Gamma Phi Beta, value our affiliation. If we want college girls of the future to have the privileges which were ours in the college chapter and the years which followed, talk about those values as you have never talked before! We all know that these same publicity agencies are not particularly interested in broadcasting our virtues but after all we do not need to depend on them. First of all we will have to be sure that when we hold the fabric of our chapter life up to the light, there will be no moth holes visible. We can not fool the moths by merely labelling our goods "cotton." Perhaps, we will need to do some repair weaving. Then lets follow the plan of some other campaigns of which I know. Organize the "WOMPS"—"word of mouth publicity." It has been successful—it will be again. » » »

Lucile Calvert, associate professor of speech at DePauw University, expects to make a tour of the South and Southwest this spring. A graduate of Lake Forest, where she was a member of Alpha Psi chapter, Miss Calvert is a dramatic artist and reader of ability and has great personal beauty and charm. She writes that she anticipates meeting Gamma Phis while she is on tour.

Ideal Convention Setting

WASHINGTON today is truly America's most interesting city. The increasingly intimate part which the Federal Government plays in the affairs of its citizens makes it essential that all individual and specific groups be acquainted with the mechanics of modern government and the vast sources of information which are available.

Add to this the proximity of the Nation's Capital to the centers of population, its transportation facilities, its wealth of historic appeal, its many points of interest, and its ideal convention headquarters, the Wardman Park Hotel, setting for Gamma Phi Beta's 1940 convention.

Situated in a large natural park, high up on the hills above Rock Creek Park, the Wardman Park Hotel commands a broad and beautiful view of the city itself. It is the permanent Washington residence of many of the leaders in official, social and diplomatic circles. Luxuriously appointed, it combines all the charm and attractions of a resort with the modern accoutrements of a metropolitan establishment. Free from the noises and confusion of the business district, it is only a few minutes removed from that district.

Reminiscent of the classic architecture of the time of Washington and Jefferson, the Colonial Dining Room features flawless service and unexcelled cuisine.

Spacious lobbies, a sun porch overlooking the tennis courts, an outdoor swimming pool, bridle paths and golf courses in the immediate vicinity, are some of the advantages of Washington's largest hotel. The Metro-



Out-of-door swimming pool, Wardman Park Hotel, setting for Gamma Phi Beta's convention, June 22-26, 1940, Washington, D.C.

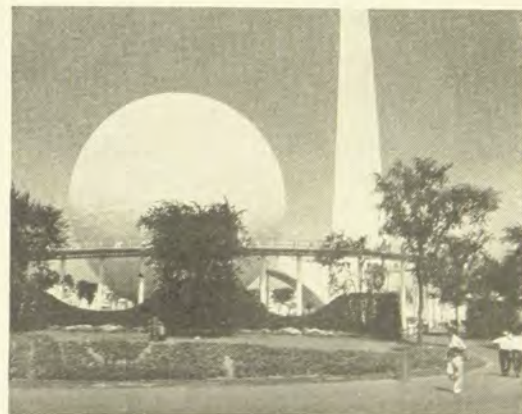
nome Room supper club just off the main lobby features excellent entertainment, together with the best dance music the city has to offer. Adjacent to the club is the Capitol Cocktail Lounge with its large murals of favorite local scenes.

Other special facilities are the large ballroom known to Washingtonians as the famous Continental Room, often the scene of brilliant social functions, with a seating capacity of 1,000 at banquets; the Dragon Room, authentic in its oriental setting and the Garden Room, secluded and intimate. » » »

Post-Convention Trip to New York

There will be a post-convention trip to New York with plenty of time to shop and see the shows. The party will stop at one of the famous hotels and the trip will include several sightseeing trips to interesting and historical places about New York. There will be a conducted tour of the World's Fair which should be the high point of the trip.

At this time we are not able to quote rates but the amount will be surprisingly low. This post-convention trip will be from Thursday morning (June 27) until Saturday night (June 29) but of course you can stay in New York as long as you wish. » » »



Theme Buildings of the New York World's Fair



ΓΦΒ's 1940 Convention Committee



Decorations Chairman. ELIZABETH BOUGHTON SNOW, Theta. Thrills come often her way. Falling in love with her captain, she married him in the Philippines. Representing the United States when the Albert Canal was opened, both were presented to the King of Belgium. In inverse order of importance, her hobbies—antiques, child and husband.

Banquet Committee. FLORENCE RUTH MATHIESON, Phi. Formerly president of Province VI. Music was her college major; then she supervised music in county schools of Idaho. Still west, she devoted her talents to rehabilitation work in Veterans' Hospital of Prescott, Arizona. Gamma Phi is her absorbing interest, except for her family and home.



Chairman of Convention. HELEN SALISBURY SUMMERS, Lambda. (Mrs. A. Burks Summers). She's chairman of Gamma Phi's 1940 convention. Life in Hawaii, travel through China, Europe and Mexico, contribute to her vivid personality. Like Justice, holding the true scales, she tests these experiences in her life balances. Husband, children and home outweigh everything else!

Secretary of Convention. ELLEN LORENA KREIDER, Kappa. She's really "mother" of Washington Alumnae and proud of her child! Letters she wrote assembled the first Gamma Phi group here. Her biggest thrill annually is the Kentucky Derby when the magnificent thoroughbreds win their ribbons. Photographs of racers from the Bluegrass are her unusual hobby.

Publicity Committee. WINIFRED WILLARD, Theta. She is two things professionally;—a ghost and a chameleon. Being the one, she has to be the other! Lightning changes are part of the game. Sometimes she is herself on paper. But in churchly phrase, she seems fore-ordained from all eternity to be a ghost!





3



4



5

ΓΦΒ Convention



2



1

(1) **Hospitality Committee.** EARNESTINE HALL ROLLS, Beta. One of the Washington Alumnæ Founders! Her special vocation is marriage and motherhood. Her three children lead her a wonderfully happy race in which she comes winningly under the wire. She is engrossed in Girl Scout and Parent-Teacher activities. Just now she adores raising white mice!

(2) **Registration Chairman.** MARY GREEN JOHNSON, Theta. Her initiation's big thrill came in wearing Lindsey Barbee's pin. Later in Washington, husband and four children are life's greatest satisfactions. One by one she takes the four abroad as a "special project." In September she and daughter hurried home, unboundedly grateful for native land at peace.

(3) **Decorations Committee.** VIRGINIA RAND BEERS, Alpha. Dramatics at Syracuse was her absorbing major. Following that, she has starred at the Civic Theater in Washington and taught Dramatic Art for a year at the University of Maryland. Then the scene changed; the wedding march pealed forth; and husband is now her leading man!

(4) **Printing Chairman.** HELEN E. BLISS, Omicron. She has "secretaried" high-ranking officials of high-sounding boards in government. Now she's strictly "legal." She paints, travels widely and for "busy work" is chairman of Gamma Phi's Province VIII Endowment Fund. For especially good measure, she is recording secretary of Washington Alumnæ chapter.

(5) **Properties Chairman.** ANITA BERTRAM CURTIS, Alpha Theta. She short-cut on her Ph.D. Married it! Recommends the method! Daughter Catherine, twelve weeks, is the world's glamor girl. She's joy a-plenty to change "mother" from gad-about to cook and nursemaid, secretary, chauffeur and hostess, all in one. Even so, bridge still has power to charm!



6



7



8

1940 Committee

(6) **Publicity Chairman.** ELMA DYKES DULANEY, Pi. Black hair, snappy eyes, and merry mouth! Eight years with husband and son, she “gypsied” through two Americas, the far islands of the sea and Europe. Five months were her longest “permanent” residence those years. Son Bill is her idol; the book-shop, her consuming hobby.

(7) **Convention Treasurer.** EDNA M. BUHRER, Zeta. Useless to mention her Nematology and Parasitology. They’re unpronounceable, belong to biology and she knows their meaning. She has been abroad, done the three Americas, loves travelling, horse-backing and needle point! She holds the money bags of Washington Alumnæ and is treasurer of Convention committee.

(8) **Reservations Chairman.** DORIS ERWIN, Omicron. In the state “where the tall corn grows” she specialized intensively in child development. Now she is assistant director of the Child Research Center, in Washington, a Nursery School. Her apartment, lovely with antiques, is her relaxation. And how she loves beefsteak broiled over an out-door grill!

(9) **Transportation Chairman.** RUTH FOLWELL STUDLEY, Rho and Lambda. Skipping across the continent, coast to coast, from Washington state to Washington city, graduating in between from the University of Iowa, she lives now in the nation’s capital—and loves it. Formerly treasurer of Chicago Alumnæ, she is pillar and prop to Gamma Phi.

(10) **Transportation Committee.** MARIAN WHITFORD HOSMER, Alpha. She “made”—Senior Woman’s Society, Presidency Student Government, Phi Beta Kappa. What she does—Three years of college teaching in Foochow, China, summer camps, Parent-Teacher Association and Y.W. work. Likes best, being her husband’s wife and her daughter’s mother.



9



10



Entertainment Chairman. FRANCES IDE, Zeta. Scholastically, she's English all through—Majored in English, Assistant Professor of English at University of Maryland. Earning her Ph.D. in English takes her to University of Minnesota next year. Her field is the novel. She hobbies in extraneous reading related to it. Incidentally like dogs and people.

Banquet Chairman. BARBARA WHITNEY, Alpha Beta. She looks the entrancing part. She's both poet and president of Washington Alumnæ. Her literary foundations were well laid with majoring in English and Public Speech. Then, fortunate lady, she married, moved to Washington, joined the proper professional societies and is busy the daily cycle round.



1940 Convention Committee



Model Initiation Chairman. ELIZABETH REINOEHL, Zeta. Modest, blue-eyed and a "brownette" she carries large responsibility as an "active," for the model initiation at Convention. A North Dakotan, her formal education was divided between Winnipeg, University of Manitoba and Goucher. Glee Club, many student offices and activities, attest her affinity for Gamma Phi ideals.



Convention Vice-Chairman. KATHERINE JOHNSON LIPSCOMB, Beta. A big, little person who as vice-regent of a D.A.R. chapter, with Girl Reserves, the American Association University Women and many Gamma Phi interests, reveals executive abilities. Lovely birds dine daily on her hospitable ledge and her home expresses her favorite flair for antiques.

Hospitality Chairman. HELEN CROUCH DOUGLASS, Alpha. She's "Aunt Sammy" on the air; radio interpreter of scientific home-making, representing His Honor, Uncle Sam. A member of the Department of Agriculture, blest with saving sense of humor, she makes a hit broadcasting her programs. Her home reflects brilliant Indian art of the Southwest.



Williamsburg, Restored

By Helen Codling Halsted

FROM 1699 to 1779, Williamsburg, Virginia, ranked with Boston, Philadelphia and New York as one of the greatest centers of colonial government, industry and culture. Through the efforts of Rev. W. A. R. Goodwin, rector of Bruton Parish Church, John D. Rockefeller, Jr., became interested in the restoration of Williamsburg and has given millions of dollars for this purpose. Work began in 1928, and research workers were sent to all parts of the world to collect information. One of the most thrilling discoveries came when one of the staff workers found a copper engraving of Williamsburg in the eighteenth century, in the Bodleian Library of Oxford University, England. Using this as a model the architects were able to make Williamsburg today the Williamsburg of two hundred years ago. Sixty-six colonial buildings have been restored, eighty-four have been rebuilt on their colonial foundations and over four hundred and fifty buildings of modern construction have been torn down or removed from the area. Two and a half miles of railroad track were moved, a Federal highway diverted and electric lights and telephone wires placed underground.

There are six exhibition buildings of paramount interest. The Old Court House, The Capitol, The Public Gaol (Jail), The Raleigh Tavern, The Ludwell-Paradise House and the Governor's Palace. The first three speak for themselves but no words could prepare you for the beauty and interest of the other buildings. They are presided over by gentlewomen dressed in colonial costumes with hooped skirts and fichus at

their neck. These ladies act as guides. At Raleigh Tavern, which was the center of social activity, they will show you beautiful panellings, old prints, priceless furniture and silver, china and linen. Some of the silver was copied from old pieces that were found when they excavated. In all the rooms you will find charming arrangements of locally grown flowers.

The Ludwell-Paradise House is one of the oldest and most pretentious Colonial residences of the city. The house now contains Mrs. John D. Rockefeller, Jr., Collection of American Folk Art.

The Governor's Palace was the executive mansion. At one time Patrick Hurley and Thomas Jefferson lived there. It is surrounded by The Salt House, The Smoke House, The Kitchen, a laundry, a canal and beautiful gardens. Old Southern mammies are seen hanging washing on the line. It is impossible to describe the beauty of the gardens. There is a boxwood garden, a real holly garden and a formal garden off the ballroom with tall red cedars clipped to simulate English Yew and a green garden with crape-myrtle among its glories. The Palace itself is filled with priceless things and the Supper room back of the ballroom is a superb room. The walls are done in pale blue Chinese wall paper with colored birds and there are crystal chandeliers and exquisite yellow draperies that will cause you sleepless nights.

The other things to see in Williamsburg are the lovely old houses that have been restored, the quaint streets, Bruton Parish Church, William and Mary College (where Phi Beta Kappa was founded). The Williamsburg Inn (considered to be the most perfect small inn in the U. S.). The Craft Shop where you can purchase furniture, paint, drapery material, etc., and the Gamma Phi Beta sorority house. » » »

Convention Information

PLACE—Wardman Park Hotel, Washington, D.C.

TIME—June 22 to June 26, 1940.

EXPENSES—Hotel Rates:

\$6.00 per person per day, single room and bath.

\$5.50 per person per day for two persons to a double room with twin beds and bath. These rates include three meals per day and apply to

members of your family, husband, or friends who may accompany you to convention.

Registration fee: \$6.00 (which includes dining room tips, a sight-seeing trip and Crescent Moon.)

Reservations should be made by May 25—sooner if possible, in order that assignment may be made and confirmation sent early.

Pre-Convention Virginia Tour

Skyline Drive

Charlottesville

Monticello

Richmond

Jamestown

Yorktown

Old Point

Potomac River

First day, Thursday, June 20.

9:00 A.M. Leave Wardman Park Hotel by special bus via Falls Church, Bull Run Battlefield and Warrenton—famous for beautiful estates, fine horses, and society horse shows—thence via Panorama over Skyline Drive in the Shenandoah National Park, the most scenic drive in the eastern U.S. From Swift Run Gap we go to Charlottesville.

LUNCH—SKYLINE DRIVE

In Charlottesville we visit the famed University of Virginia, founded in 1817 by Thomas Jefferson. From there we visit "Monticello," home of Jefferson, built 1770-1817. Returning via "Mitchie Tavern," built in 1740, one-time home of Patrick Henry.

4:00 P.M. Leave Charlottesville. We journey to Richmond via the James Madison Highway, passing many typical Virginia plantations and forests.

6:00 P.M. Arrive Richmond, Virginia.

DINNER AND LODGING AT THE JEFFERSON HOTEL.

Second Day, Friday, June 21

7:45 A.M. BREAKFAST AT HOTEL.

8:30 A.M. Tour Richmond: pass Edgar Allen Poe Shrine, White House of the Confederacy, Home of James Madison, Capitol Building, and Monument Avenue, stopping at St. John's Church to view the pew from which Patrick Henry made his famous "Give me liberty or give me death" speech.

9:30 A.M. Leave Richmond en route to Jamestown Island, site of James City, passing the Battlefield of Seven Pines, White Oak Swamp, and Malvern Hill. At Jamestown we visit the old church and Pocahontas and John Smith Memorials.

12:30 P.M. Arrive Williamsburg.

LUNCH AT WILLIAMSBURG LODGE.

After lunch we tour the city of Williamsburg, visiting the Colonial Capitol, Governor's Palace, Raleigh Tavern, William

and Mary College, and Bruton Parish Church.

3:30 P.M. Leave Williamsburg and tour over the new Colonial Parkway to Yorktown where we see the Battlefields and the buildings of the village where the "Redcoats" surrendered to the Continental Army.

4:30 P.M. Leave Yorktown for Fortress Monroe and Old Point Comfort, stopping en route at the Mariners' Museum near Newport News. This Museum is conceded to contain the finest collection of nautical subjects in the world.

6:00 P.M. Arrive Old Point Comfort where one may lounge on the spacious verandas of the Chamberlin Hotel or those desiring may, for a slight additional cost, take advantage of either the indoor or outdoor pools afforded by this hotel.

6:40 P.M. Board Norfolk and Washington Steamer for trip to Washington up the Chesapeake Bay and Historic Potomac River.

DINNER ON STEAMER.

Third Day, Saturday, June 22

In the early morning hours may be seen Mount Vernon, Fort Washington, Fort Foote, Gunston Hall and the beautiful sunrise over the hills of Virginia and Maryland, a most enchanting and glamorous memory to carry with you and a fitting end to your pilgrimage to Old Virginia.

BREAKFAST ON STEAMER.

7:00 A.M. Arrive Washington, D.C.

RATE FOR TOUR: \$24.75 per person, minimum of twenty persons. D D D

Again Alpha Tau is brought to the fore by the histrionic ability of her members: Cynthia Roblin, formerly of the chapter at the University of Manitoba, and Bunty Tom have leads in the McGill Players' Club forthcoming production of *Russet Mantel*.

The Toronto debutante chosen by the Woodbury Company as "most beautiful" is Phyllis Millen an Alpha Tau pledge.

Clothes For Convention

By Helen C. Halsted

Goucher and Washington, D.C.

SO YOU are going to convention? You will need clothes for traveling and sight-seeing as well as luncheons, teas and dinners. Washington in June may creep up on you with a temperature of ninety so you will need clothes that will give you a lighthearted sophisticated air and still be cool, won't wilt, and be easy to take care of. There is an outdoor swimming pool and tennis courts connected with the Wardman Park Hotel so you will need a bathing suit, slacks or shorts. If you have cotton dresses wearable in the country bring them, they will be useful in the mornings.

Just for fun, I am going to pretend that you are going to buy a new wardrobe to attend the convention, the World's Fair and that you will also want to do New York in a real high-handed way and still carry a minimum amount of luggage. I suggest that you purchase two sheer dresses with jackets, one plain colored, the other one with a small print. Navy blue and white have tremendous chic. A navy blue hat and a pastel hat preferably with brims and a white turban will change the appearance of both. You can wear navy blue shoes and gloves and bag for traveling and white gloves and a white bag when you want

to look elusive. A white pique jacket and a short pastel coat will be more than useful. If you don't like the idea of navy blue I would suggest Bamboo beige and dubonnet with accessories that would be interchangeable. Green, figured and plain, would be another combination that could be worked out in the same way. To this I would add a plain dinner dress and one eton jacket. The dress should be made of uncrushable crepe so you won't have to spend your odd moments pressing it over bureau tops and other inconvenient places. For the same reason I can't say enough about lace for your evening dress. You can wear the dinner dress one evening and then add the white pique jacket or the colored eton jacket and make it look quite different. The pastel box coat can be worn over your sheer suits, your dinner dress and still look quite elegant with your evening gown. A wardrobe of this kind will enable you to feel well dressed at all times with a minimum amount of tailoring. All kinds of clothes are worn in Washington with the possible exception of the sheer black dresses that are so prevalent in New York. White and pastel colored dresses are always worn but they demand cleaning and pressing at the most unexpected moments. If you have extra evening dresses do bring them along because you will have all kinds of opportunities to wear them.

» » »

If You Can't Sing, Hum!

AMONG the songs which will be sung at convention are the following familiar titles. Get out the song book and brush up on words and music so you won't be a "hummer" when Gamma Phi voices are singing. "Fidelity." Words by Sarah Eleanor Veeder, Alpha 1892.

Air: Forsaken

"Peanuts and Olives." Words by Bessie M. Cowles, Alpha 1895.

Air: From "Patience" by Gilbert and Sullivan

"I'm Satisfied." Arranged by Marian A. Wood, Alpha 1917.

"Sing Gamma Phi Beta to Me," verses 1 & 2 by Elizabeth Peach, Sigma 1930, 3 & 4 by Dorothy Dana and Louise Baltis, Sigma.

Air: When Johnny Comes Marching Home.

"Lady of the Moon." Words and music by Audrey

Miller, Omicron 1927.

"My Gamma Phi Sweetheart." Words and music by Floyd Poetzinger, Delta Sigma Pi.

Written in memory of Shirley Kinney, Rho, deceased.

"Gamma Phi History." Words by Mary Lois Ruppenthal, Sigma 1922.

Air: Polly Wolly Doodle

"Goodnight Song." Words and music by Betty Hudnall, Alpha Epsilon 1929.

"Serenade Song." Words by Florence Harkrader, Sigma 1919.

Air: Forget-me-not from Bird of Paradise

"Crescent Moon of Gamma Phi." Words and music by Louise Saltmarsh Baltis, Sigma Alumna 1930.

"Green Little Freshman." Words by Kappa Chapter.

Air: Rufus Rastus Johnson Brown » » »

McGill, A Royal University Bulletin Board

(Continued from page 7)

maroon car turned past the crowded and cheering grandstands, up through the Roddick gates. Swiftly it moved between the double row of red and white pillars with their fresh evergreen garlands, while the undergraduates, many of whom had been waiting since early morning, cheered lustily. The Arts Building, where the Principal, Mr. Lewis Douglas, and the Chancellor, Sir Edward Beatty, were waiting to greet Their Majesties, bore the Royal Heraldry and Insignia. A flash of powder blue, the King's salute, the Queen's sweet smile—and the visit was over.

It was a great day for a great college, and one that has left an abiding memory. Gamma Phis at McGill are loyal and loving to two great traditions, both inextricably bound up with their college life. They are bound by the deepest ties—first to the old ideal of the great British Empire, as represented by our founder and patron, the Crown—and equally to the sisterhood of Gamma Phi Beta, which is an expression of that spirit of internationalism and humanity so vital to the world today.

» » »

In the recent Red Cross drive Gamma Phis stood highest in the amount and the percentage of returns among all the sororities and women's fraternities on the McGill campus. Alpha Tau has joined the Canadian Red Cross as a unit and is going to spend a certain amount of time working for this cause.

Attention—SCRAPBOOK CHAIRMEN!

Your tireless efforts are to be rewarded. Bring your scrapbooks up-to-date as the hostess province at convention is offering a prize for the best one presented at the conclave in Washington, D.C., June 22-26, 1940.

» » »

Notice—CRESCENT CORRESPONDENTS!

Letters from ACTIVE chapters are due March 1. Brief sketch and glossy of active convention delegate for the May issue pre-convention number of THE CRESCENT must be sent to editor by March 10.

» » »



Pioneer Day is celebrated on the University of Denver campus each year, honoring its founding in 1864. Four of the Pioneer students are seen descending the steps of Mayo dressed as the students of 50 years ago.

Registration for Convention

Mrs. Pyke Johnson

3940 Morrison Street, N.W.

Washington, D.C.

(Miss

Name (Mrs.

(Maiden name

Home Address, Street

City

University Address (Actives only), Street

City Graduating class

Chapter (Greek Letter Official delegate

(Alumnæ Official delegate

(Yes or no)

Convention Railroad Rates and Fares

THERE are many routes by which to travel to Washington, D.C., this summer. We suggest therefore that you consult your local ticket agent and discuss with him the most interesting route. There will be no special train or cars but you may form your own groups if you wish. Reservations must be made early for such groups however so that you may secure the accommodations you desire.

It is too early in the season for the railroads to guarantee rates but the same rates will probably prevail that were in effect for the New York World's Fair last year. In any case we suggest that you purchase a round trip ticket to New York City via Washington with stopover privilege in Washington. Your local ticket agent will be able to suggest several routes into Washington and many ways for the return trip some of them possibly through Canada.

Convention Hi Jinks

Surprises in decorations and entertainment for Hi-Jinks night during convention are promised by members of Alpha Chi chapter, College of William and Mary, in charge of the affair.

A few approximate fares from cities in which Gamma Phi chapters are located are listed below. All are sixty day first class New York round trip rates with Pullman extra. Tourist rates west of Chicago are about fifteen per cent lower. (There is no tourist service east of Chicago.)

ROUND TRIP SUMMER RATES	
Chicago	\$ 49.05
Madison, Wis., and Urbana, Ill.	54.90
Iowa City, Iowa	59.75
Minneapolis	67.40
Lawrence, Kan.	72.00
Lincoln, Neb.	73.95
Fargo, N.D.	77.80
Denver and Colorado Springs	95.65
San Francisco, Los Angeles, Reno, Portland, Seattle, and Vancouver, B.C.	135.00

To Edit Crescent Moon

Alice Thomsen, Pi Beta Kappa and Theta Sigma Phi, and president of Alpha chapter in 1938-39 has been named editor of *The Crescent Moon*, newspaper issued daily during convention.

» » »

» » »

Room Reservation at Wardman Park Hotel

Miss Doris Erwin
3209 Highland Place, N.W.
Washington, D.C.

Please make reservations for me at the Gamma Phi Beta Convention.

(Miss

Name (Mrs.

Address

City

Official Delegate (yes or no)

Room Reservation for Single Room Double Room

Preference for roommate

Arrival date

Departure date

Editors Participate In N.P.C.

EDITORS of Panhellenic magazines met at The Greenbriar, White Sulphur Springs, West Virginia, during the regular N.P.C. sessions and exchanged ideas, renewed friendships and participated in a publicity round table during the closing hours of the Congress.

Jackie Martin, Delta Gamma, photographic editor of *The Washington Times* and *Washington Herald* gave an instructive craft talk to the editors at one dinner meeting. At the annual Brass Tacks luncheon, present trends and problems in magazine work were discussed by Wilma Leland, Alpha Omicron Pi editor; Helen MacMinn, Tri Delt editor and Florence Merdian, Phi Mu editor.

The publicity round table was presided over by Helen Bower, Kappa Kappa Gamma, secretary of the editors conference and was participated in by Mrs. Leland, Vivian Keltner, Alpha Delta Pi; Ruth Thomson, Alpha Phi, and Airdrie K. Pinkerton, Gamma



N.P.C. Editors Who Are Members of Theta Sigma Phi

Top row, standing: Shirley Krieg, Z T A; Frances Warren Baker, Σ K; Florence Merdian, Φ M; Lower row, Vivian Keltner, Α Δ Π; Jessie Pulcifer, Α Ξ Δ; Helen Bower, K K Γ; Airdrie Pinkerton, Γ Φ B.

Phi Beta.

Helen Bower is the chairman of the conference for the next two years with Christelle Ferguson, Chi Omega, secretary-treasurer. Alta Gwinn Saunders, Delta Gamma is the retiring chairman. » » »

Gamma Phi Poets Attention!

MEMBERS of the fraternity who have written verse are invited to contribute manuscripts for possible publication in an anthology of poetry by fraternity and sorority members now being prepared in New York City.

The anthology, to be entitled "The Greek Letter," is being edited by Helen Bryant, distinguished poet and critic, and will be published about June 1 by Henry Harrison, New York poetry publisher. It will be comprised entirely of poems by either undergraduate or alumni members of the various college fraternities and sororities and will be divided into sections bearing the name of each organization.

Manuscripts should be mailed as early as possible, and before the March 25 deadline, to Miss Bryant, South Boulevard, Nyack, New York. The poetry may have been previously published, or unpublished before. It may be of any length, in any style or on any subject. A self-addressed, stamped envelope for the return of unacceptable material must accompany all manuscripts. The name of the author's fraternity must be specified with each poem.

This offer is an opportunity for Gamma Phi's poets to make a showing of their talents in a volume which will also be of particular interfraternity interest.

» » »

Chapter Scholarship Chart

THE following scholarship chart is based on individual reports sent to Central Office in the fall. It shows the standing of each chapter on its own campus for the year 1938-39. Reports for the year 1939-40 to June 1940 will be given at the time of Convention in Washington.

If your standing is not what you would have it, each

member now has an opportunity of improving it by improving her own scholarship.

Congratulations to those chapters at the top, and an urgent request to those farther down the list to make an earnest effort to raise theirs.

JESSIE A. WEINER

Chairman of Inspection

	No. N.P.C. Groups on Campus	Gamma Phi Rank & Average	Highest Group & Average		No. N.P.C. Groups on Campus	Gamma Phi Rank & Average	Highest Group & Average
PROVINCE I				PROVINCE V			
A	17	6	1.625	Θ	11	10	1.590
Δ	8	4	3.95	T	6	3	1.539
*A A				Ψ	11	9	1.6459
*A T				A Z	13	7	16.64
A T	9	1	1.82	A Ξ	12	4	1.772
				A Φ	4	3	2.6495
PROVINCE II				PROVINCE VI			
B	18	11	2.56	Δ	19	3	2.639
E	17	2	4.468	N	No report		
A E	8	8	1.680	Ξ	7	3	4.730
A N	6	6	2.509	X	14	13	2.45
A Ψ	4	4	1.406				
A Ω	3	1	69.002	*A A			
PROVINCE III				PROVINCE VII			
O	22	2	3.7766	H	21	4	1.514
Π	14	2	2.664	M	9	3	2.69
Σ	9	5	1.62	A Γ	5	4	2.3382
Φ	10	8	1.565	A E	8	3	2.5198
A Δ	12	9	234.51	A I	21	3	1.4487
				B A	12	7	1.491
PROVINCE IV				PROVINCE VIII			
Γ	18	6	1.862	Z	8	1	3.42
K	19	8	1.341	*A M			
P	12	6	2.412	A Θ	5	1	1.7404
Ω	9	6	2.360	A P	7	2	1.4569
A B	8	7	1.5686	A Σ	12	9	1.361
*A K				A X	No report		
A O	No report						

* Grades not obtainable on these campuses.

In Memoriam

(Continued from page 10)

velt, vice-president of the United States Lines from 1929 until Mr. Roosevelt's resignation from the shipping company in July, 1938.

President of the New York alumnae chapter of Gamma Phi Beta in 1938, she was also a member of the Community club of St. Bartholomew's Protestant Episcopal Church in New York.

With her passing the New York alumnae chapter suffers a severe loss and Gamma Phi Beta loses a loyal and devoted worker.

Carrie Morgan, who took an active part in Gamma's Founders' Day celebration, finds herself busy in her home town of Appleton, Wisconsin, where, since her retirement from teaching she is chairman of the Appleton unit of the Wisconsin Anti-Tuberculosis Association and active in the Appleton League of Women Voters.

» » »

A tribute to Pauline Kutzner by Beatrice Smith will appear in the May issue.

Gamma Phi Beta Book Nook

Furnished by *The Booklist* of the American Library Association

Edited by ZAIDEE B. VOSPER, *Michigan and Chicago*

Can America Stay Neutral?

Allen W. Dulles and Hamilton Fish Armstrong

An examination of current proposals for insuring neutrality, and of our neutrality in the past.

The Pressure Boys

Kenneth G. Crawford

A sensational exposure of the methods used to influence legislators.

Ranging the Maine Coast

Alfred Fullerton Loomis

Two cruises along the Maine coast described with humor by a yachting enthusiast.

Words that Won the War

James R. Mock and Cedric Larson

How propaganda was managed by the Creel committee during the World War.

The Nazarene

Shalom Asch

A long novel telling of the last years of Jesus' life, as three contemporaries saw it.

Doctor's Oral

George Rippey Stewart

Life with the intelligentsia among graduate students and clashing faculty personalities adroitly presented.

Thoreau

Henry Seidel Canby

A well-written biography of the naturalist author.

Five Miles High

Robert H. Bates, editor

"The story of an attack on the second highest mountain in the world by the members of the first American Karakoram expedition."—*Subtitle*.

I'll Take the High Road

Wolfgang Langewiesche

An aviator tells with enthusiasm of his apprenticeship in flying.

Julius Rosenwald

Morris Robert Werner

The biography of a practical humanitarian.

Land Below the Wind

Agnes Newton Keith

An American woman's four years of homemaking in Borneo.

Capital City

Mari Sandoz

An impressive novel of political corruption and fascist force in a middle-western capital.

Alfred Adler

Phyllis Bottome

The life of the famous psychologist, told by an English friend.

Mrs. Norton of Mexico

Arthur Davison Ficke

Stories about a philosophical old Englishwoman who had lived for half a lifetime in Mexico.

To the Lost World

Paul A. Zahl

A scientist's search for giant ants in British Guinea.

After Seven Years

Raymond Moley

An intimate and rather embittered account of the early days of the New Deal.

Incredible Era

Samuel Hopkins Adams

"The life and times of Warren Gamaliel Harding."—*Subtitle*.

Encyclopedia of the Theatre

George Jean Nathan

A dramatic critic's caustic opinions about actors, playwrights, and matters theatrical.

Mary Austin

Helen MacKnight Doyle

A friend writes an intimate biography of the gifted author of the southwest.

Key Largo

Maxwell Anderson

A blank-verse play of a volunteer in the Spanish civil war who came back to expiate his cowardice.

Bonanza Inn

Oscar Lewis and Carroll D. Hall

The old Palace Hotel of San Francisco was a setting for the flamboyant society of an extravagant era.

World Without End

Stoyan Pribichevich

Well co-ordinated history of the Balkans, which includes the customs and characteristics of each state.

Waste Heritage

Irene Baird

Grim realism in a story of the unemployed in western Canada.

J. Pierpont Morgan

Herbert L. Satterlee

Financial history plays a large part in this detailed autobiography.

The Man Who Came to Dinner

George S. Kaufman and Moss Hart

A hilarious farce built around a well-known radio lecturer and drama critic.

Carolina Gardens

E. T. H. Shaffer

"The history, romance and tradition of many gardens of two states through more than two centuries."—*Subtitle*.

Our Finest Traditions

By *Penelope M. Simonson*

Grand Vice-President and Alumnae Secretary

OUR Founders' Day this year was much more than a birthday celebration. It was another proof that for 65 years Gamma Phi Beta has steadily held the faith and loyalty of her members, and that her strength and influence are constantly growing. Gamma Phis who had been away from alumnae or Greek letter affairs for years joined hands with loyal workers who have been in close contact with their chapters. There were no age barriers. Freshmen listened with eager interest to venerable tales of college in the gay '90s, and older members were all enthusiastic in expressing pride in their newest sisters. The grateful remembrance of Founders' Day is one of the finest traditions, and the success of this year's observance should inspire all Gamma Phis with the realization of the wisdom and vision of the four noble women who "founded on a rock" our present large organization.

From Carmel, California, where a small group of Gamma Phis gathered for the first time, across the continent to Pennsylvania State College where the girls of Alpha Upsilon wearing pink carnations, attended chapel in a body and gathered later to hear Mrs. Leffler tell of her association with Frances Haven Moss; from Vancouver, B.C., war tense, where fidelity to traditions drew members together, to Miami, Florida, where songs of Gamma Phi echoed; from the state of Oregon where nine groups, large and small met in widely scattered places to pledge anew allegiance, to Urbana, Illinois, where actives and alumnae beneath the portrait of Frances Haven Moss which hangs in the chapter house reviewed the ideals of the founders; the torch of Gamma Phi was held high in November to light a bright path onward.

POEMS WANTED for

THE GREEK LETTER, forthcoming anthology of fraternity verse. Send your 7 best poems, published or unpublished, any length, style or subject, with self-addressed, stamped envelope to Helen Bryant, editor, South Blvd., Nyack, N.Y. This book to be published by HENRY HARRISON of New York City.

Unique and successful, the Founders' Day banquet at Madison stands out for its thoughtfully planned program arranged by Hermine Haller Smith who took "Days of Our Years" as the theme and worked out the toasts in appropriate book titles, honoring Gamma's outstanding alumnae—women who have made good in various professions and brought honor to Gamma Phi Beta. Bernice Hunter Hoffman was toastmistress.

Titles included "A Tribute To Our Founders"; given by Elizabeth Ann O'Malley; "Present Indicative" with Nancy Bickelhaupt (Gamma Phi granddaughter), Ann Lawton (sister), Barbara Marshall (daughter) and Marjorie Tafel; "Reaching For The Stars," Alice Wieber Fitzgerald; "A Lantern In Her Hand," Carrie Morgan who gave a glowing tribute to the late Mary Clark Brittingham; "Noise Of Their Wings," which included tributes to Carrie Morgan, Eleanor Bliss Clausen, Beatrice Utman Smith, Gertrude Ross, Dr. Eleanor Scott, Annie Chapman, Laura Case Sherry, Louise Marston, Florence Stott Sullivan, Virginia Van Brunt, Helen Bunge, Ella K. Smith, Leora Chase Sherman and Ada Grandy.

"Mein Kampf," was a toast to the Gamma Corporation. The banquet closed on the notes of "Fidelity."

Highlights of other gatherings will be found in the following alumnae chapter letters. D D D

Dorothy Sinz, Alpha Xi, Travel Chairman for the Dallas (Texas) Alumnae chapter takes her job seriously as was demonstrated recently when Mrs. William Dehn, International President visited Dallas.

Assuring Mrs. Dehn she would see her at the station when she left, Dorothy armed with a cellophane box of flowers, dashed to the Union Station. After some minutes of wandering about the station and seeing no Gamma Phis in sight and being stopped by every porter with a "May I get your bags, Miss?" Dorothy wondered if perhaps she hadn't made a mistake.

With three trains leaving at exactly the same time and only one having a station stop in the suburbs of Dallas, Dorothy asked for and got a list of the pullman reservations. Sure enough, there was Mrs. Dehn's, so dashing down the steps just in time to catch the train as it was pulling out, she rode in the pullman and in the space reserved for Mrs. Dehn out to the Highland Park Station. Imagine the Gamma Phi's surprise when Dorothy stepped off the train as Mrs. Dehn was ready to step on.

What Alumnae Chapters Are Doing

Akron

The fall activities of the Akron alumnae began in September with an evening meeting at the home of Blanche Fasold Forster, our president. Plans for the year were discussed and it was decided to raffle a dollar gift at each meeting for the financial betterment of the chapter, the gifts to be donated by different members.

Janet Wray Bailey was hostess for the October meeting and we spent a busy evening making tallies for the Panhellenic meeting in October, at which we were joint hostesses with Alpha Gamma Delta and Pi Beta Phi.

Founders Day Dinner was held in November, at the Akron City Club.

The chapter has entertained on three other occasions since later summer. In August we joined with the undergraduates in giving a benefit bridge for the Camp Fund. It was held at the home of Betty Fouse, whose mother graciously opened her home for the affair. Betty is a senior this year at Ohio Wesleyan.

September found us once again joining with the undergraduates in giving a rushing party at the Portage Country Club. It was a delightful dessert bridge under the chairmanship of Ann Ramsdell Bridgewater of the Alumnae Chapter and Beatrice Knapp of the Active Chapter at Ohio Wesleyan.

On October 31 a lovely tea was held at the home of Mrs. Harlan D. Hibbard for the mothers of alumnae and undergraduates.

We are happy to welcome into our group the following newcomers: Mrs. J. D. Matlack (Dorothy Jasely, Rho); Mrs. R. G. Selden, Alpha Nu; Mary Jane Krumroy, Alpha Eta; and Jean Sigmond, Omega.

Mrs. Matlack has been busy these past few weeks making her costume for Akron's now famous Rubber Ball. Dorothy is a member of the Women's Art League which gives the Ball. She is also a member of College Club.

Grace Cardwill Lovewell is teaching handicapped children of high school age by taking the studies into their homes.

We are soon to lose one of our charter members, Mrs. A. M. O'Neal (Margaret Neutzenholzer, Alpha Nu) who will make her home in Clarksville, Tennessee, after the first of the year.

ISABEL CLARK BEESON, *Epsilon*

Births

To Mr. and Mrs. R. M. Cunningham (Jane Ulrich, Alpha Nu), a son, Richard Hugh, on April 7.

To Mr. and Mrs. Hoke Woodruff (Edna Baker, Alpha Nu), a daughter, Ellen Ann, on September 10.

Ann Arbor

Beta alumnae and actives gathered at the chapter house in Ann Arbor for Founders Day and to enjoy a buffet luncheon for 60 guests. This was followed by a recital of the Founders Day service by an active and talks by Mrs. G. M. Simonson, grand vice-president and Miss Alice Camerer, grand treasurer.

Our alumna adviser for rushing this year was Betty Lorch Bailey, assisted by Mrs. B. R. Wimer and Mrs. Everett S. Brown.

Our first supper meeting was held in October at the home of Mrs. Henry W. Douglas (aunt of Lloyd Douglas). She was assisted by Mrs. Betty Bailey, Mrs. Don P. Morris and Eileen Lay.

The annual rummage sale, always an hilarious adventure, ran for two days, clearing \$80 which was used as an award to the two outstanding active girls. The chairman Eileen Lay, was assisted by the president, Mildred Trick Sergeant and Misses Grace and Rose Anderson, as well as by the members of the alumnae and active chapters.

EILEEN LAY

Ames

Alumnae of Ames joined with the actives and pledges of Omega chapter for a Founders Day banquet. Approximately 80 attended the dinner which was held in Memorial Union on the Iowa State College campus. Phyllis Christy was chairman, and the theme for the affair was "Goals." Two out-of-town alumnae were present: Miss Minnie Rice of Des Moines, and Mrs. Miriam Daine Frush of Adel.

The Ames Alumnae aided Omega chapter in rushing by entertaining the local rushees at a buffet supper in September. We also assisted at the teas, dinners, and luncheons at the house during rush week. On pledge day a large group of desirable girls came to Gamma Phi, and the alumnae say "Congratulations, Omega chapter."

A luncheon at Madge Hill Bowers home started off our alumnae activities for the year. We were delighted to have Mrs. Sand, our province director, as guest of honor. Our November meeting was a dessert luncheon at the home of Florence Quist.

We welcome two new members—Kathryn

Rehder Wishart, Rho '38, and Dorothy Whitmore, Rho '33.

ELIZABETH YOUNG WRIGHT, *Kappa*

Austin, Texas

On the eve of Gamma Phi Beta Founders Day, approximately seventy Alpha Zeta actives and alumnae held their banquet at the Stephen F. Austin Hotel.

Alpha Zeta's new pledges provided the chief entertainment for the evening with a skit pertaining to the four original founders. Additional numbers were a song by Dixie Dummitt and a song by Ruth Darden. Bennie Bryan, recording secretary of the active chapter, acted as chairman of the banquet committee.

Feeling like Lilliputians beneath the high frescoed ceilings of the chapter president's room in the Victorian mansion which is Alpha Zeta's new home, the Austin Alumnae gathered for their first meeting around their fascinating honor guest, Mrs. D. E. Hodges of Oklahoma City, our new province director. She conferred with us concerning our plans for the coming year and made suggestions for new activities to be carried on by the group. We hope this visit may be repeated by many others.

Officers for the new season are as follows: president, Fenora Meyer, Alpha Zeta '37; vice-president, Mary Belle Mendell, Alpha Zeta '33; secretary-treasurer, Carrie Jane Mills, Alpha Zeta; rushing chairman, Polly Fertsch Eatman, Alpha Zeta '30; publicity chairman, Mary Bartelt, Alpha Zeta '38.

Austin alumnae are happy over the appointment of Kathryn Madden Votaw, Alpha Zeta, ex-'38, to the position of secretary to Miss Dorothy Gebauer, Dean of Women, of the University of Texas.

We welcome to our group one of the charter members of Alpha Zeta, Mary Steussy Gray, '22, who has returned from Harborside, Maine, and Mona Parkinson, Alpha Zeta '39, who served as president of the active chapter of Alpha Zeta last year.

Caught midway between the two Thanksgivings, the bi-monthly luncheon of the Austin alumnae chapter was held at the chapter house Saturday, November 25. In keeping with the Thanksgiving spirit, Mrs. Murphy, Alpha Zeta housemother, served the traditional turkey and dressing, cranberries, and pumpkin pie.

The actives living in the house were also present at this luncheon, and so, too, were the pledges who were to be initiated on the evening of the same day.

Out-of-town guests at this luncheon were Doris Lee Koontz of Bryan, Texas, and Ruth Baker of San Antonio.

MARY BARTELT

Baltimore

The Baltimore Alumnæ chapter celebrated Founders Day with a party for Zeta chapter at the home of Alvahn Holmes, who was assisted by Ann McCurley, Gertrude Redden, Elizabeth Rice and Virginia Costine as hostesses. The attendance of 56, including our 17 pledges, the spirited singing of the actives and the presence of our long-lost Nell Watts Clark (now of Seattle) all made for a lively and enthusiastic meeting. Whenever celebrating Gamma Phi Beta's proud beginning we naturally close with a thought of our future; and since Zeta's future is so closely linked with Goucher's welfare, it was with a great deal of interest that we heard Dr. Winslow of the Faculty Committee give a talk, illustrated with slides, on the plans for the buildings to be erected on Goucher's new campus.

Gamma Phi Beta alumnæ are playing an important part in Goucher's Alumnæ Building Fund Campaign with Hester C. Wagner in charge. Assisting her as chairmen of other cities are: Agnes Wilbon Bahlke, Chicago, Illinois; Charlotte Bush Failing, Detroit, Michigan; Frances Coventry, Lancaster, Pennsylvania; Madeline Clay von Seldeneck, Philadelphia, Pennsylvania; Anne McEwen Robinson, Williamsport, Pennsylvania; Frances Burkhalter, Savannah, Georgia.

As a result of the combined efforts of our president, Hester Wagner, the program chairman, Carolyn Denmead and the membership chairman, Thelma Riggs Thomson, the attendance of our meetings has almost doubled! Interesting meetings have been planned for the year with alumnæ as speakers on "Vacations, Vocations, and Avocations." The October meeting at Amelia Sutton's almost filled her house to capacity when we heard Mary Tom McCurley's graphic description of her return trip from England on the *Queen Mary's* first "black-out" trip, made as war was being declared; and then Emma Thomas's ludicrous account of "Her Western Career on Horseback." In December we met with Julia Merriken Chalfant in her fascinating home, an old house 150 years old, which she and Dr. Chalfant recently have restored in the most delightful Williamsburg style. Mary Bouis Peake gave an entertaining account of a typical day as a mother and a wife of a physician.

Marriages

Beth Rowe, Alpha, to Kendrick E. Brown, September 2. They are living in Washington, D.C.

Jean Richmond to Richard John Kilday, Jr., in September. Their address is Robert's

and Cooperstown Roads, Bryn Mawr, Pennsylvania.

Helen Richmond to Thomas Baldwin Prickett, in October. Their address is 226 Winding Way, Merion, Pennsylvania.

Mary Louise Steil to Miles Ross Carroll, Jr., September 12.

Birth

To Mr. and Mrs. James Merriken—Jean Kneip Merriken, October 29.

Berkeley

Twelve different chapters were represented when Berkeley alumnæ celebrated Founders Day with Rachel Colby as toastmistress and Anna Cole, Alpha '94 as honored guest. She had helped vote the charter for Eta as a member of Alpha chapter in 1894.

The theme was history with Lena Redington Carlton, '97, speaking on Ancient History; Ruth Wetmore Thompson, '20, on Mediaeval History; Margaret Yelland, '40, on Modern History; and Ann Wilder, '43 (president of Eta's pledges), on Future History.

Alumnæ functions this fall commenced in September at Ora Thelen's home, with a dessert bridge. Margaret Hatfield told of the new furnishings of the chapter house which had been acquired during the summer.

In October Leslie Lockwood gave a tea for our 17 new pledges and their mothers. In the latter part of October we were honored to have our distinguished grand president, Mrs. Dehn, here. Rachel Colby was hostess at a dinner in her honor at the Claremont Country Club.

We enjoyed the Christmas party which Rachel Colby gave at her home the Friday following Christmas. This is the revival of a custom much enjoyed in the past.

Marriages

Jeanne Smith-Willd, '36, to Richard Herman in Berkeley.

Barbara Pentecost, '38, to Wilson E. Cline in Piedmont.

EVELYN RATCLIFF

Boise, Idaho

Boise Alumnæ celebrated Founders' Day with a dinner at the Owyhee hotel. Places were set for 30 alumnæ, from Boise and surrounding towns.

Mrs. Gordon Burke of Vancouver, British Columbia, province director, was here on official visit and to act as installing officer of the Boise group as an active alumni chapter. The installation was the main event of the evening.

Saturday, Kathryn Smith, president of the chapter entertained the officers of the

group at a luncheon at her home in order that we might discuss with Mrs. Burke the problems of the chapter. In the afternoon, Kathryn entertained at a tea for the members of Panhellenic of Boise in honor of Mrs. Burke.

With summer vacation over we started the winter meetings discussing replenishing the treasury. It was decided that we would hold a rummage sale and also sell magazine subscriptions.

Our biggest news this year is that we have become an alumnæ chapter. We were happy to have Mrs. Gordon Burke, our province director here as installing officer. The Founders Day dinner at the Owyhee hotel was the scene of the installation, and the beautiful installation service brought back vivid memories to us all. Kathryn Smith entertained in honor of Mrs. Burke at a tea for the members of Panhellenic in Boise.

Everyone had a good time at a lovely Christmas dinner at which Kate MacNameyer and Thelma Filke were hostesses. The camp films were shown and we felt proud of such a worth while activity.

Under the leadership of Kathryn Smith, our president, the Boise group is assured of a successful year as she is so truly representative of the Gamma Phi spirit.

ELEANOR C. MULLINS

Marriages

Marion Graham, Xi, to William Giffin, graduate, University of Idaho and member of Phi Gamma Delta Fraternity.

Dora Baird, Xi, to Wilbur Ddwain Vincent, Jr., Alpha Tau Omega, University of Idaho.

Buffalo

"Heigh-O, It's off to camp we go," so started Lucille Winkler's rollicking account of Buffalo's Gamma Phi Beta 1939 summer camp. She should have closed with "Ho-Hum, it's home, dead tired, I come," for Lucille has been in Minneapolis since, recuperating from a nervous breakdown. We all greatly miss our vivacious Lucille and hope for her speedy return.

Mrs. Russell Callow, province director, spent October 31 with the Buffalo group. Fourteen members were present for the dinner and meeting held at McDowell's Tea Room. Blanche Robinson and Helen Hitchcock attended the Founders Day gathering at Syracuse this year.

We are happy to welcome Margaret Briggs to our group this fall. Margaret has a position with the Buffalo Museum and is devoting many of her spare moments to Girl Scout work.

FRANCES FOX

Champaign-Urbana

Alumnæ and actives met for Founders Day with Frances Quirke, '40 Omicron, as toastmistress to hear talks of the founders

and their ideals by Jennis Barry, and Nina Gresham. Margaret Rayner, '40, read a tribute to Frances Haven Moss written by Ruth Mathews.

Continuing a policy established last year to honor high scholarship in the chapter, at Founders Day banquet, Eleanor Cook, president of the alumnae chapter, presented cash prizes to the senior and junior actives who had made the greatest advance in scholarship during the last year. These awards were given to Betty Webber, '40, and to Louise Stiven, '41, both of Urbana. The three sophomores making Alpha Lambda Delta, June Mathews, Donna Jorden, and Helen Frese, were also honored.

In October we enjoyed the annual visit from our province director, Mrs. Sue Linscott of Kansas City. She was honored by Omicron at a tea for the other sororities, and was the guest of the alumnae chapter at their October meeting with Ruth Mathews in Urbana. Mrs. Linscott told us of her visits to the other chapters in the province and gave us help in many ways.

A number of girls from Beta chapter were with us at Homecoming time when Illinois won from Michigan in a most spectacular game. Many of the Omicron alumnae pronounced this our most successful homecoming in years. Shirley Wallace, who has recently done such outstanding work with our new California chapter, was the toastmistress.

At the time of our Dads' Day festivities, in November, Mrs. J. H. Weiner of California, international chairman of inspection, was our special guest and spoke to those present at the banquet held at the chapter house after the game. While here, Mrs. Weiner was entertained by both actives and alumnae and she endeared herself to all of us.

Our November alumnae meeting was held in the living room of the chapter house after the Founders Day dinner. We are happy to welcome to our chapter this year four members from other chapters, Margaret Rosbe, Epsilon, Sarah Finan, Zeta, Marjorie Schirmer, Alpha, and Berniece Best, Alpha Psi, and two members from Omicron's senior class of last year—Geraldine Nickell and Betty Woller both of Champaign. Betty is serving as chapter treasurer. We are also happy to have with us again after a year's leave of absence, Marie Hostetter, professor of Library Science.

Word from Mrs. Ida M. Staehl, who has been in Europe for the past two years, tells of her enjoying a prolonged visit with her daughter, Mrs. Underwood at their new home, Woodridge, near Bethlehem, Pennsylvania, and with Dorothy Underwood, Omicron '37.

Ruth Benedict of Urbana, a former officer of our alumnae chapter, is now located in Lincoln, Nebraska, as assistant to the secretary of the North Central Association

of Secondary Schools. She has visited with Bertha Enger Moulden, formerly of Urbana, in her Omaha home.

Jean Robinson, '37, president of Woman's League, Mortar Board, and prominent in all campus activities has accepted the position of women's editor and home economist for *The Southern Planter*, farm magazine in Richmond, Virginia. Jean wears the diamond ring of Spencer Gore, University of Illinois Alpha Kappa Lambda.

Another Omicron alumna now located in Richmond is Ruth Hibbs Hyland whose husband, Fred, is an architect. And Lita Banc, head of the home economics department at Illinois, attended a meeting of the Land Grant Colleges held in Washington where she introduced Mrs. Roosevelt as a speaker at one of the meetings.

One of the busiest of visitors on the campus at homecoming time was Virginia Hill, '35, secretary of her class and chairman of the reunion dance which was held with the class of '34 at the Urbana Country Club. Virginia's notes in the Illinois Alumni News for the class of '35 are always very interesting and often contain news of our Gamma Phi alumnae. Two other Omicron Gamma Phis, Astrid Dodge, '19, of New York City, and Mary Werts Beam, '25, of Oxford, Ohio, are also successful secretaries for the university alumni association.

In a recent issue of the Champaign-Urbana *News-Gazette* was a picture of Mrs. Frank B. Schirmer, Jr., seated before her harp. A talented newcomer to this community, where her husband is a member of the faculty of the chemistry department, Mrs. Schirmer has been giving of her talent and making many friends during her short residence here. She appeared in the annual Christmas carol program of the Tuesday Morning Musical Club, a delightful pre-Christmas event.

The active chapter contributed its share to the annual doll show of the Y.W.C.A. Pat Sullivan, one of our attractive pledges, won the poster contest for her doll show poster. The chapter entertained at a children's party for a group of youngsters from the Cunningham Home north of Urbana, and Omicron's annual formal dinner-dance was held in the spacious chapter house in December.

Martha Adolph, '41, has just been honored by being chosen as one of the four maids in the court of honor for the Junior Prom queen at Illinois. At homecoming time at the Dolphin water carnival, Gwen Muntz, '40, acted as one of the maids of honor for the coed who presided as queen of the carnival; Ronda Mann, another of Omicron's pledges, has been honored by being chosen to the freshman cabinet of the Y.W.C.A.

The University of Illinois campus is an unusually busy one and Omicron has many campus responsibilities, but her

scholastic average for the last semester was 3.7766, only .02 lower than the sorority ranking first. Our number of actives in the chapter is also the highest of any sorority.

NINA GRESHAM

Chicago

Chicago Alumnae's celebration was held in connection with Epsilon's pledge tea at the chapter house with the House board giving the tea and Mrs. Jay Campbell acting as hostess.

In honor of Founders Day the Chicago Alumnae chapter gave a tea in connection with Epsilon's pledge tea at the chapter house one Sunday in November. The Business Girls' group celebrated separately and enjoyed a talk given by Charlotte Robertson White of central office.

Rosalind Stuebe of Oak Park has been appointed magazine chairman for the chapter, succeeding Vesper Hagemann who has been appointed international magazine chairman.

Marion Bebb of the Business Girls' group has been re-elected treasurer of the International Endowment-Crescent Board. The Chicago chapter has selected Mary Richardson Dunn as its endowment chairman.

The North Shore group sponsored the Yale Puppeteers for the benefit of the camp and endowment funds. Some of the groups are doing Red Cross sewing at their monthly meetings. West Suburban is doing camp sewing and gathering medical supplies for the camps. Selling monogrammed tally pads and small hand-made articles is the choice of the Beverly Hills group to supplement its treasury. Oak Park collected old toys and filled Christmas bags for county hospital children.

Doris Blunt Wall of Oak Park is chairman of the rummage sale sponsored by the entire Chicago chapter to raise money to send a delegate to the international convention in June.

VIVIAN TRENARY RAYNER, Omicron

Births

To Mr. and Mrs. Roger Gath Townsend (Ann Mead, Epsilon), a son, Roger Gath, Jr., July 4.

To Mr. and Mrs. William Parr Wiseman (Mary Louise Fenton, Epsilon), a son, William Fenton.

To Mr. and Mrs. Bruce McBroom (Gwen Powers), a son, Bruce, Jr.

To Dr. and Mrs. Edward M. Kreiger (Jane Phelps), a son, Edward, Jr.

To Mr. and Mrs. Philip Winterbottom (Janice Maher), a son.

To Mr. and Mrs. Burton Smith (Eleanor Lawson, Epsilon), a daughter, Susan.

To Mr. and Mrs. Hammond Henderson (Isabel Van Kirk, Epsilon), a daughter, Nancy.

Colorado Springs

Our biggest and best news is this—alumnæ and actives, alike, are hoping to have a new house before the year is over. We have out-grown our present quarters, and plans have been drawn for remodeling the lodge which would combine the charm and intimacy of the present house with the impressive qualities of a larger building. All that remains is to finance it!

A successful project to swell the building fund was our benefit raffle for box seats at the National League professional football game in Colorado Springs, in December. The active chapter joined with us, and together we have achieved a fine "nest egg."

We are planning some interesting programs for our regular meetings each month. There will be a book review, talks by an architect, an interior decorator, a florist, a travel talk, and possibly a bridge. Our Christmas meeting was a dessert party with the actives; inexpensive gifts were hung on the tree, and later distributed to fill the stockings of needy and crippled children.

We were pleased that Mrs. D. E. Hodges, of Oklahoma, our province director, chose the college homecoming week-end for her official visit. She was the house guest of Lucy Moore Lennox, who entertained at tea on Sunday in honor of Mrs. Hodges and the pledge chapter. The active chapter tied for first place on their float in the homecoming parade on Saturday, and the open house for returning alumnæ after the game was one of the best we've ever had.

Founders Day was observed with a formal dinner at Lennox House on the college campus. It was one of the finest and loveliest of the year's sorority events with 60 Gamma Phis sitting down together and uniting afterward at the lodge in the special Founders Day services.

Ruth Carson Gilmore was specifically honored last June by P.E.O. in being chosen state organizer for Colorado. Since there are 48 chapters to visit, and new ones continually to organize, it takes Ruth from her home and from us a great deal; but we are proud that her ability is so widely recognized.

DOROTHY PRINTUP WING

Birth

To Mr. and Mrs. Homer H. Hahn (Harriett Kingsley, Alpha Phi), at Lincoln, Nebraska, on November 17, 1939, a son, Jerry Richard.

Columbus, Ohio

Columbus alumnæ activities started the new calendar year with a supper meeting at the home of Louise Wade. We welcomed several new members and we were happy to see some of the old members who hadn't been with us during the past

year. We also have the unusual pleasure of having three girls from Ohio State University in our alumnæ group. All three transferred Alpha Nu at Wittenberg, and they keep us active with the enthusiasm they have shown for the group.

In November we attended the annual City Panhellenic banquet. Although we haven't an active chapter on the local campus we are always glad to have this opportunity to have Gamma Phi Beta among those represented. Last year Marion Jones Johnston served as president of the organization and left a fine and lasting impression. This year, Mrs. Rader, national officer of Phi Mu sorority, and the main speaker of the evening, opened her address with fine compliments to Lillian Thompson and Gamma Phi Beta.

In December we drove up to the apartment of Jo Welch for our last meeting before the new year. We took canned food for the Christmas basket we gave to a family. Last summer we sent Barbara Wilson to the local Y.W.C.A. camp, and because they appreciated our efforts to help them we decided to help the whole family by sending them food for Christmas dinner.

VIRGINIA NEER

Dallas

Dallas Founders Day was a departure from the usual celebration as the chapter entertained with a Panhellenic Tea at the home of Christine Coffee.

Formal re-assembly of the Dallas chapter took place in September at the home of the president, Jessie Jones. The members had been gathering in small and large groups all summer, working on fall rushing plans in co-operation with Alpha Xi members. Time and effort were visibly rewarded with lovely rush parties and a fine group of pledges for the chapter.

The October meeting at Helen Lair's home was followed by an original talk by Marte Tenison on Modern Trends in Home Decoration, and by an open discussion on the subject.

During her too brief visit in Dallas, Mrs. William Dehn, grand president, was honor guest at the November meeting at Marian Storm's home.

Hazel Payne was hostess for the December meeting when Beth McCallon gave career sketches of twelve leading French couturiers.

At our annual Christmas party at the home of Miriam Mott each member brought a gift to be turned over to the local Mexican Mission.

One of the most interesting developments has been the formation of a night group of business girls with Dorothy Jackson as chairman. The members meet once a month for dinner, informal discussion and pleasure.

We have added two new members to our chapter roll, Mrs. R. S. Hall (Claudia Barbe, Alpha Zeta) and Mrs. A. T. Cook (Jane Marshall, Sigma).

FRANCES JACOBS FINKS

Magazine Subscribers!

Won't you place subscriptions to magazines your family usually takes through your sorority? Subscription prices are the same, but the commissions go to Gamma Phi Beta instead of to some agent who probably means nothing to you. Send your order, with check or money order for the customary straight or club rates, to the following district chairmen:

Miss Alice Dibble,
17837 Lake Rd.,
Lakewood, Ohio.

Mrs. Porter Butts,
Shorewood Hills
Madison, Wis.

Mrs. Wm. F. Hagerman,
1511 Goodrich Ave.,
St. Paul, Minn.

Mrs. Gerald Brennan
18287 Santa Rosa Ave.,
Detroit, Mich.

Miss Patricia Wyness,
3635 W. 20th Ave.,
Vancouver, B.C.

Mrs. Willis M. Kimball,
5117 Wooddale Glen,
Minneapolis, Minn.

Mrs. Oscar Payne,
1923 S. Evanston Ave.,
Tulsa, Okla.

Mrs. Robert L. Liston,
339 Arthur Ave.,
Liberty, Mo.

Miss Lois Klenze,
1 Thode Court,
Davenport, Iowa.

Miss Verna A. White,
P.O. Box 2401,
Tucson, Ariz.

Mrs. R. E. Leland,
1864 W. 22nd St.,
Los Angeles, Calif.

Mrs. William M. Hoad,
506 Dorset Ave.,
Chevy Chase, Md.

Mrs. Leonard Stuebe,
216 Iowa St.,
Oak Park, Ill.

Mrs. Emil J. N. Ott,
1700 3rd Ave.,
Sacramento, Calif.

Marriage

Martha Terrill, Alpha Xi, to Allen J. Terrill, Phi Delta Theta, University of Texas, on December 28.

Births

To Mr. and Mrs. Marshall Newcomb (Berna Louise Brightwell, Alpha Xi), a daughter, Nancy Louise, August 12.

To Mr. and Mrs. Joe R. Neeley (Mary Lib Simpson, Alpha Xi), a daughter, Claudia Elizabeth, October 11.

To Mr. and Mrs. Carl H. Hunt (Dolores Villareal, Phi), a daughter, Dolores, October 1939.

To Mr. and Mrs. B. B. Nethery (Eugenia Barnes, Alpha Zeta), a son, November 6.

To Mr. and Mrs. Robert V. Coe (Rosalind Hillman, Alpha Xi), a son, Robert Vernon, Jr., November 23.

Dayton, Ohio

We have such jolly informal times at our meetings for as hostesses we never know whether we will have five or twenty present.

In October we enjoyed a guest speaker at our meeting who talked on the cosmetic business. Our Founders Day program was postponed as many of our members, civic minded, sponsored a large civic dinner which inaugurated the local Community Chest drive. The November meeting was held late in the month at Troy and two new members from Piqua, Ohio, were present: Mrs. Don Herman (Nancy Marshall) and Betty De Weese. We are also welcoming Mrs. Harry Shilling (Janet Zimmerman) and Mrs. John Robbins (Elizabeth Curtiss).

LOIS S. DAVIES

Marriages

Nancy Marshall, Alpha Nu, to Don Herman, Wittenberg '38.

Maribel Adkins, Alpha Eta, to George Frederick Miller, November 23, 1939.

Births

To Mr. and Mrs. John Robbins (Elizabeth Lee Curtiss, Alpha Eta), a son, Christopher, June 3, in Troy, Ohio.

To Dr. and Mrs. Harry Shilling (Janet Zimmerman, Alpha Eta), a daughter, Sara Kay Shilling, October 6.

To Mr. and Mrs. Alfred W. Davies, Jr. (Lois Shilling, Alpha Eta), a son, Thomas John, September 7.

Denver

Denver alumnae of Theta and Tau met with Theta and Tau active chapters for Founders Day with a luncheon at the Park Lane Hotel in Denver. Ruth Brooks Reid and Dorothy Robinson were in charge of arrangements.

The 100 attending enjoyed hearing Lindsey Barbee speak informally about

our Founders Up-To-Date—what our founders might have said or done under present conditions.

Color was added to the event by Theta's actives' sale of yellow 'mums with red letters "DU" for the Homecoming football game with Fort Collins.

The first meeting of the year was held in October at the home of Mrs. Geoffrey Aldom. Plans are underway to increase the treasury and a financial ways and means committee has been organized, headed by Gertrude Palmer.

Through the unceasing efforts of Dorothy Bell Joyce, Denver Gamma Phis have an enviable reputation for contributions to the Needle Work Guild. The chapter is divided into groups according to year of graduation and meet at regular intervals to sew for the Guild. Others who have not time to sew make donations for the purchase of material.

We are proud, too, of Chellie Wright, who not only takes an active part in Gamma Phi but has just returned from the national P.E.O. convention at which she presided as president.

And our own Lindsey Barbee has starred again by being honored at the International A.A.U.W. Fellowship dinner held in Denver this summer.

We were happy to have Mrs. D. E. Hodges, province director, with us on her official visit. And Mrs. George Keith met with our house board association following her return from Grand Council meeting in November.

At our annual Alumnae-Pledge party in January we presented to the pledges Lindsey Barbee's well known play *When Greek Meets Greek*.

ANNE ROUSE

Marriages

Barbara Heaton to Gilbert Brown, September 22.

Gail Applegate to William Fritz, Phi Kappa Psi, September 16.

Charlotte Bundy to Ralph Waldo, Sigma Alpha Epsilon, June 12.

Marjorie Line to Leonard Powers, Kappa Sigma, August 4.

Births

To Mr. and Mrs. Frazier Gurd (Mary Lou Moore), a daughter, October 6.

To Mr. and Mrs. Carl Sunderland (Mary Barnes), a son, August 11.

To Mr. and Mrs. George Sprouse (Florence Galbraith), a son, August 17.

To Mr. and Mrs. Donald Sutherland (Hypatia Slusser), a daughter, June 10.

Denver-Tau

Since our installation as an alumnae chapter in June we have increased our membership as well as our enthusiasm. Our first fall meeting was held at the home of Jane Tracy.

Even though we are quite a distance from our active chapter we keep in touch with the members by letters and visits and a large group went to Homecoming and attended the dinner and entertainment at the chapter house.

We had the pleasure of a visit from Mrs. D. E. Hodges, our new province director at one of our meetings. She gave us an interesting talk on rushing rules, life membership and the raising of the endowment fund and we spent the evening sewing on Needlework Guild garments.

Theta chapter invited us to the Founders Day luncheon.

We sent silver candlesticks to the active chapter for Christmas. And we enjoy the guests who come to our meetings from other chapters as well as our own young members who come direct from the active chapter.

RUTH E. WAGNER

Marriages

Donna Hahn, Tau, to Durard Tomlin, August 15.

Ruth Shaw, Tau, to William Wagner, May 12.

Virginia Woods, Tau, to Albert Weppner; at home in Cheyenne, Wyoming.

Marian Woodward, Tau, to Jack Spittler; at home in Cleveland, Ohio.

Birth

To Mr. and Mrs. Robert McDougal (Roberta Pressey), a son, Robert Scott, May 3.

Des Moines, Iowa

Our fall season opened as usual with our Alumnae Tea for the girls from Des Moines who were going away to school. This year the tea was held at the home of Chloris Waterbury Straight and we were fortunate in having several active girls from Omega and Rho chapters to help us entertain.

Since we changed our monthly meeting from a Saturday luncheon to a Monday evening dinner, the attendance has grown by leaps and bounds. We regret losing Grace Dooley Mahoney who has moved to Schenectady, New York, and Betty Jo Niendorf Brisban, a recent bride, who is now living in Flushing, Long Island. However, we are glad to welcome Mrs. R. J. Denkhoff, Mrs. H. J. Poston, Mrs. Dwight Bovey, Mrs. C. H. McGinnis, and Terry Harms.

In October we were asked to join in making up a Panhellenic section for the Needlework Guild's In-gathering. We decided to participate and everyone was very generous. We were glad to hear that the 1939 In-gathering was the most successful one since the organization of the Needlework Guild in Des Moines.

At our November meeting, it was suggested that we should have something to

occupy us at our meetings, other than our conversation. A committee was instructed to find out just what is most needed at Camp and then we are to decide on our winter project (we think we can work and talk at the same time). To keep us busy until the committee reports, we are now hemming dish towels which will also be sent to camp.

In December we gave a tea in honor of the active girls and pledges who were home for the holidays.

MARGARET E. MOORE, *Rho*

Marriages

Mary Bell Nethercut, Gamma, to Glenn A. Kenderdine. At home in Des Moines.

Betty Jo Niendorf, Omega, to Richard Brisban, Sigma Alpha Epsilon, Iowa State College. At home in Flushing, Long Island.

Births

To Mr. and Mrs. T. R. Osborne (Mary Lou Moore, *Rho*), a son.

To Mr. and Mrs. Carl S. Brown (Elizabeth Hartwig, Alpha Delta), a daughter.

To Mr. and Mrs. Robert M. Underwood (Frances Dunlap, Omega), a son.

Fargo

Alumnæ of Fargo and Moorhead were hostesses to patronesses, active and pledge members, at dinner in the home of Dr. Elizabeth Rindlaub. Assisting Dr. Rindlaub with dinner plans were Mmes. George Comstock, Leslie Welter, Jr., Albert Birch, Lillian Brown and Dan Twitcheil and Misses Julia Brekke and Katherine O'Connor.

Mrs. W. H. Murfin and Mrs. Alf Skaret comprised the committee that arranged a candlelighting service, in which Mmes. Victor Anderson, Russell A. Sand, Charles M. Pollock, Birch, Emory Gestie, W. R. Haggart, alumnæ, and Miss Jeanne Paris, active member, appeared.

Mmes. Pollock, Birch, Gestie and Haggart represented our four founders. The octette of the active chapter, Margaret Calhoun, director, sang a group of sorority songs. Miss Mary See of the active chapter accompanied. Mrs. John A. Jardine and Misses Marjorie Rusch and Ann Brown are chapter patronesses. Mrs. John A. Jardine is a past national president of the Federated Music Clubs. Mrs. Sand, province inspector, was the guest of honor at this session.

Our two latest meetings have been marked with much festivity. In November we celebrated Founders Day and in December our Christmas party, which was held at Phyllis Krantz Hunter's home. Instead of bringing a gift to be put around the tree and exchanged with those present as in former years, we decided to bring money with which to buy gifts for the three girls whom we sent to camp last summer.

After dinner Clara Pollock led in carol singing and gave a few short remarks about each one, which greatly added to our personal interest and joy in singing these lovely Christmas melodies.

Margaret Kaiser directed the playing of games, which added to the gaiety.

Constance Brakke (Mrs. Ralph Brakke) and her husband have moved to Barnesville, Minnesota, so the actives have lost their efficient alumnæ adviser. Katherine O'Connor has been appointed to take her place with Helen Stokke as assistant.

An out of town guest at our Christmas party was Phyllis Marks Joy who was in town with her baby, visiting her mother.

Alpha Omicron's 10th birthday comes in February, so a committee is already making plans for a gala meeting to celebrate the event.

ANNE LOUISE CHRISTIANSON

Births

Phyllis Marks Joy (Mrs. Clifford), a daughter, New York.

Margaret Ballard Thompson (Mrs. Oscar), a son, Ortonville, Minnesota.

Gertrude Lee Euren (Mrs. William), a daughter, Hillsboro, North Dakota.

Fort Wayne

Fort Wayne Alumnæ held a Founders Day celebration at the home of Mrs. Richard Hartigan, in the form of a potluck dinner. The history of Gamma Phi Beta was presented by Marie Wurtenberger and the singing of sorority songs concluded the program.

Our chapter has two representatives on the Fort Wayne Panhellenic Council. Harriett Storm, Alpha Nu and Marie Wurtenberger, Alpha Nu, are serving as social chairman and secretary, respectively.

Barbara Warner, Alpha Nu, has moved to Evansville, Indiana.

Phyllis Graham, Epsilon has accepted the position of assistant to the Dean at Stephens College, Columbia, Missouri.

Mr. and Mrs. L. Park Dreyer have left Fort Wayne for a year's stay in Miami Beach, Florida.

Gamma Phi alumnæ united with other Panhellenic alumnæ groups in December, to entertain pledges and actives with a Christmas breakfast at the Fort Wayne Women's club.

MARIE WURTENBERGER, *Alpha Nu*

Birth

To Mr. and Mrs. James Gilbert (Marguerite Luecke, Epsilon), a son, James Martin, December 2.

Grand Forks

Actives and pledges joined the Grand Forks alumnæ to celebrate Founders Day with a banquet at the chapter house, carrying out "The March of Time" theme.

Sixty were in attendance. Elaine Johnson, active, was toastmistress, Joyce Shannon responded for the pledges, Marian Lynch for the new initiates, Cecily Henry for the actives and Carol Harm Powers for the alumnæ. A regular feature of the Founders Day banquet was the songs written and sung by the new initiates.

This has been a busy fall for us. We aided the girls with rushing as much as possible and are very pleased with their group of eleven pledges.

Homecoming meant the usual gathering of town and out-of-town alumnæ at the house where we were the guests of the active chapter at a buffet supper.

We were glad to have with us for Founders Day Valerie Sherlock Newton, returning to her home in Great Falls, Montana, from Philadelphia where she had gone to attend the national Girl Scout meeting and where she was made an executive board member.

We were hostesses at the chapter house at a bridge party and food sale early in December with Thelma Vaaler in general charge. The house looked lovely with its spruce and holly decorations and the affair was a social and financial success.

Our last social affair before Christmas was a party with our entire chapter, actives, pledges, alumnæ and patronesses present for the annual gathering. Small gifts were exchanged which later were turned over to the Santa Claus girls for distribution among the poor children.

BORGHILD M. WALDON, *Alpha Beta*

Hawaii

Hawaii chapter met at the Oahu Country Club, Honolulu, T.H., with Wenona Dyer as chairman and fifteen members renewed Gamma Phi Ties.

Hawaii chapter celebrated Founders Day again at the Oahu Country Club with a banquet and songs from the Gamma Phi Song Book.

Erma Black Wilkins and Martha Brigham Beamer both of Chi chapter as well as Gloria Osburne, Pi, and Barbara Hank Davis, Chi, have recently come to Hawaii and are now associated with our chapter.

We regret that Esther Phellis Brancher is not returning from her mainland trip, but will now make her home in Port Angeles, Washington.

In accordance with true Hawaiian custom, we haven't been doing much of anything except enjoying our regular monthly meetings. As we organized mainly to keep our Gamma Phi contacts alive without any great "purpose" other than a social one, we have no great deeds to report either individually or collectively.

Mele Kalikimaka Oe, Hauoli Makahiki Hau which simply means, A Very Merry Christmas and a Happy New Year. Aloha!

BETTY RAYMOND BOYCOTT

Iowa City, Iowa

The River Room of the Memorial Union was the setting for Iowa City's Founders Day banquet with out-of-town guests present from Cedar Rapids, Waterloo, and the Tri-Cities. The theme of the program was The Gamma Phi Bookshop with the following commentators taking part: Eleanor Minkel, pledge, "I'm a Stranger Here Myself"; Charline Saggou, active, "Reaching For the Stars"; Margaret Gardner, new alumna, "A Lantern In Her Hand"; and Mrs. Cora Carson, alumna, "All This, And Heaven Too!"

We met at Margaret Stoddard's home for our first fall meeting to discuss rushing prospects. We had as guests Virginia Carson Burt of Davenport, Iraneu Wyland Bone and Rose Mullen of Monticello.

Many of our members helped with fall rushing and we are proud of Rho's pledges.

We met with Erma Trick Scheppert in October and by welcoming ten new members made our membership the largest alumna group in Iowa City.

November was our star month in activity. We held our first-of-the-month meeting at the Hotel Jefferson, followed by a meeting at Nina Lewis's home. Then we entertained the pledges at a tea at Lucy Tait Gibsons. Late in the month we had a rummage sale which made us considerably wealthier.

Our annual Christmas meeting was held at Grace Sayre's home for a gift exchange and musicale.

GAY STICKFORD BUCHELE

Marriages

Wilma Jessen to Edward Kynig of Iowa City. At home in Estherville, Iowa.

Helen Witte to Dr. Fred L. Moore, Jr., of Cincinnati, Ohio.

Geraldine Jakway to Jack Haller of Iowa City.

Betty Hefferman to Nelson Earl Jones, August 10. At home in Beverly Hills.

Bernice Christiansen to Arnold Dickenson. At home in Rack Rapids.

Births

To Mr. and Mrs. Harold M. Schuppert (Erma Trick), a son, Stephen Michael, December 10.

To Mr. and Mrs. Sidney Miller (Dorothy Cooper), a daughter, Linda Ann.

Kansas City

Founders Day in November was celebrated with a meeting at Edna Oakes Burt's home and a delightful play, *And the Angels Sing*, written by two members of the alumna chapter, Mary Katherine Dorman and Virginia Rhed. Sue Linscott was enchanting as one of the Founders (cast as angels in the play) who descended to earth long enough to succumb to the

lure of the jitterbugs. But more of this later.

Since our last writing Kansas City Alumnae have been shocked and saddened by the sudden death of our vice-president, Margaret Lucille ("Ba be") Crane who died in Chicago, September 2, 1939. Rush week activities were dampened by the news of her death.

Our September meeting was held at the home of Helen Walters. A Halloween party was held in October, a barn dance, complete with fiddlers, square dancing, and even apple bobbing and a rummage sale was another activity.

When Betty Bichler deserted the ranks this fall, an interesting commentary appeared in the *Kansas City Star* in the About Town column:

"... Kansas City lost an actress when Betty Bichler was married Saturday. She played the leading feminine rôles in the Resident Theater production of the *Road to Fame*, and *The Devil Passes*. Perhaps she will decide to return to the footlights as Mrs. Richard P. Bulkeley. . . ."

Betty McDaniel is our new vice-president.

Kansas City was delighted to welcome Margaret Jane Swift of Psi in October as Queen of the American Royal. Press notices were very flattering to the distinguished Oklahoma member as to her "beauty, poise, and distinction." A tea in her honor was given at the home of Fanny Goodman Simonds by the Kansas City Alumnae.

At our December meeting members contributed toys for the Panhellenic Christmas charities.

We are delighted to welcome Josephine Lloyd, Epsilon, of Denver, to the Kansas City Alumnae chapter.

HELEN FLING

Marriages

Mary Anne Barber, Alpha Delta '29, to Mr. Karl Wagner, on September 2.

Mary Jane Roby, Sigma '35, to Mr. Carrol Milton Mickey, Sigma Nu, on September 6.

Jane Marshall, Sigma '36, to Mr. Albert Thomas Cook, Jr., on September 9.

Harriet Anne Shelden, Sigma '34, to Mr. William McDonald Ferguson, Jr., Sigma Alpha Epsilon, on September 12.

Betty Mary Bichler, Alpha Delta '29, to Mr. Richard Bulkeley, on September 30.

Lincoln

On the New Year schedule of Lincoln alumnae meetings is a party for the husbands to be given at the Pi chapter house. In December the children of Gamma Phi were guests at a party which they have come to consider an integral part of the Christmas season. Sisters and daughters of junior and senior high school age were dinner guests that same night.

We have few members from other chapters, but we were pleased to welcome two from out of the state at our last meeting, Mrs. Helen Kuhl who has moved here from Seattle and Ruth Benedict from Urbana, Illinois. Initiation by Pi chapter of Mrs. Gretchen Rogers adds to our alumnae group one whom we are most happy to claim.

Pi chapter alumnae are enjoying the reflected glory of the recognition given the active group at the city Panhellenic scholarship tea for ranking third on the campus.

A rummage sale netted \$40 this fall.

Seventy active and alumnae members gathered for the Founders Day banquet, Mary Brownson Reed from California, coming from the greatest distance. Monthly meetings are being held at members' homes in the evening, Ruth Tempel and Vera Skinner having had the group this fall and Clarice Hicks having opened her home for the buffet dinner at which the alumnae entertained the freshmen.

BELLE FARMAN

Marriage

Maxine Meyers, Pi, to Robert B. Mullins, October 26. At home at 2700 F street, Lincoln.

London, Canada

London met at the chapter house for a joint supper party with actives, pledges and alumnae.

After a round of Gamma Phi songs, four of our girls spoke briefly on the four founders of the sorority—Beth Forbes and Catherine Liddy (actives) and Shirley Summers and Olive Toten (grads). Marie Copeman then gave us news of Buffalo Camp, after which each group held its own business meeting.

Since our last alumnae letter went to press, Canada has declared war. Many alumnae remember only too well the World War. And now, again, war is upon us—a war of nerves this time, we've been told. Canadian women are keeping the home fires burning and are preparing for any and all emergencies.

Within our own chapter, the members are doing Red Cross work—knitting sweaters, socks and wristlets and taking home nursing and first aid courses. National Registration of Women took place early in November and Canadian women will not be found wanting.

With conditions so unsettled, it was thought advisable to cancel our September House Party at Oakwood Lodge, and also our plans for a Fashion Show. Early in the coming year, however, we hope to have a Red Cross benefit.

Our Patroness, Mrs. R. B. Liddy, after a month's holiday in England this summer, was caught in the War Zone in September, but has since made a safe return.

The famous 88 pound meteorite that blazed across the sky July 11 last and landed near Dresden, Ontario, has become the property of our University. Many Gamma Phis saw this astral visitor dive to earth. It is to repose in the new Cronyn Memorial Astronomical Observatory which will shortly be erected on the campus.

Dr. W. F. Tamblin and Head of Western's English Department, was recently presented with a handsome silver tray by the Board of Governors of the University—this in recognition of his services in compiling a history of Western entitled, "These Sixty Years."

The University of Western Ontario rugby team won the Senior Intercollegiate championship this year. Our own Beth Forbes, as popular as ever, continues as Drum Major of Western's famous band. The chapter house was, again this year, gaily festooned in purple and white for all the rugby games.

The Gamma Phi award in Secretarial Science, presented yearly at Fall Convocation, was this year won by one of our own girls—Mary Holmes, '40.

The Alumnae Executive entertained Mrs. Stuart Fox at the Surrey Coffee Shoppe on her recent inspection tour to London.

Vancouver Convention members of 1936 will be interested to learn that Dorothy Morgan entered the September nurses-in-training class this year at Victoria Hospital, London.

We welcome back to London chapter, Dorothy Upshall Richardson, who, for the past several years has been associated with the Detroit chapter.

The alumnae planned a Theatre Party for their Christmas get-together this year. Three executive members, Anne Armstrong, Blanche Cowley and Margaret Hughes, kindly loaned their cosy apartment for the rendezvous and refreshments afterwards. Leola Neal and Blanche Cowley assisted. We're remembering at Christmas, Margaret Giles, the recipient of our campship this summer.

Dr. Dorothy Snell who returned to us in August last upon her marriage to W. D. Smith, this city, has just accepted the chairmanship of our House Committee.

DOROTHY I. TAIT

Marriages

Hannah J. McKay, Embro, Ontario to Rev. John Stuart Wright, Elmira, Ontario, August 1.

Helen Tomlinson, '35, London, Ontario, to Donald F. Walker, Toronto, Ontario, September 31. Mr. and Mrs. Walker are residing on Kingston Road, Toronto.

Mary Millen, '33, South Woodslee, Ontario, to R. K. Ross, Barrister, St. Catharines, Ontario, October 31, 1939. Mr. and Mrs. Ross are residing at 50 Queen Street, Port Dalhousie, Ontario.

Mrs. D. Kelley, our housemother in 1938 and 1939, was married in October to Harry

Craddock, this city. Mr. and Mrs. Craddock are residing on Queen's Avenue, London.

Long Beach, Calif.

Fall activities began with the rushing season for Long Beach alumnae to sponsor Beta Alpha's traditional mother's and daughter's tea. Second semester, the tea is again scheduled to take place in the usual manner.

November 9 and 10 the members were busily engaged with their first rummage sale.

Officers were installed January 6. For the remainder of the year Mrs. Charles Bennett (Helen Vickers, Alpha Iota) will fill the vacancy left by Frances Farmer Guthrie as Panhellenic representative.

We have been especially pleased to have several visitors. Two former members, Mrs. John Wilkins (Marjorie Woods, Xi) of Athens, Georgia, and Mrs. W. R. Quinn (Lila Martin, Sigma) of Redlands, California. Mrs. Eugene Doty (Carolyn Kimball, Pi) of Monrovia, California, and Mrs. Ellery Botts (Inda Davis, Theta) of Pocatello, Idaho. Mrs. Botts has been a guest in the home of her sister and president Eva Davis Brown. Eva Brown also finds time to be chairman of the Mother's Troop Council of the Boy Scouts.

Four members are busy in the city school system. Ethel Babcock, Xi, is teaching oriental culture, an original idea which she has been authorized to develop.

Mrs. John Eikleman (Eva Wheeler, Chi) has been substituting in the high schools. Genevieve McKee, Tau, is teaching music and mathematics and Mrs. Roger Nisson (Lois Heartwell, Alpha Iota) is the li-

brarian in a junior high school and very interested in choral poetry for children.

Mrs. Ernest Smith (Doris Weaver, Pi) of Orange, California, and Mrs. Larry Johns (Frances Works, Kappa) we welcome as new members. Mrs. Johns is interested professionally in play reviews and is associated with the Long Beach Players Guild. Mrs. Bob Mathews (Corinna Fowler, Zeta) has returned from Annapolis and will be the hostess at the evening meeting to be held in February.

MILDRED MILLER

Marriages

On June 1, 1939, at Long Beach, California, Eleanor Cheroske, Eta, to Frank Mason Robinson (Lieutenant, junior grade, United States Navy). Lieutenant and Mrs. Robinson are stationed at Pensacola, Florida.

On December 2, 1939, at Long Beach, California, Frances Farmer, Mu '38, to William Lowry Guthrie (Lieutenant, junior grade, United States Navy). Lieutenant and Mrs. Guthrie will reside at 711 Seventh Street, Coronado, California.

Birth

To Mr. and Mrs. Dumont Kimmell (Geraldine Mills, Alpha Iota) on August 12, 1939, a son, Richard Hoffman.

Death

The chapter wishes to extend its deepest sympathy to Mary Elizabeth Kostalek, Xi, Katharine Kostalek, Xi, and Katharine Pitcairn Kendall, Xi, in the loss of their mother and sister Mrs. J. A. Kostalek (Helen Pitcairn, Xi) and former member of this chapter.

"Valued Members Are Informed Members"

Gamma Phi Beta Directory (1937 edition)50¢	<input type="checkbox"/>
Song Book	\$1.00	<input type="checkbox"/>
Life International Alumnae Dues	\$5.00	<input type="checkbox"/>
Annual Dues	\$1.00	<input type="checkbox"/>
Annual Camp Tax	\$1.00	<input type="checkbox"/>
The CRESCENT—Annual subscription	\$1.50	<input type="checkbox"/>

Alumnae Life Subscriptions

Ages		Ages	
25-35	\$20.00 Cash	45-55	\$10.00 Cash
35-45	15.00 Cash	55-	5.00 Cash

All checks payable to Alice Camerer. Mail checks to Central Office of Gamma Phi Beta, 55 E. Washington Street, Chicago, Illinois.

Your name

Address

Chapter

Los Angeles

Our Orchid Ball was held just prior to our Founders Day, so no other function was attempted.

Our celebration was a dinner dance held October 24 in the Florentine room of the Beverly Wilshire Hotel in Beverly Hills and was attended by about two hundred Gamma Phis and guests.

The dining room was not closed to the public, but we filled it so well that few others could squeeze in. However, several celebrities did join our party, among them Ruby Keeler and Al Jolson, Binnie Barnes, and "Jimmy" Roosevelt. It was a colorful party, with beautiful girls in beautiful orchids, Cobina Wright, Jr., to sing to us, and Ray Noble's incomparable orchestra to play for us.

Merchants were very generous with their cooperation. Many florists decorated windows at the time of the Ball, and furnished table centerpieces, and several department stores featured evening gowns in their windows in honor of the occasion. There were two prizes given to the girls selling the most tickets—the first being a fifteen dollar permanent, and the second a fine pair of shoes.

Elverdeen Wharton, Alpha Iota ex-'35, was chairman of the event.

Our official 1939-40 season had a hot opening—and I mean hot!! It was 105° the day the September meeting was held, and everyone must have hoped that Sadie Greening's house would be cooler than her own, for it was unusually well attended. Lila Nason, Alpha Iota ex-'27, took over the presidency, to replace Heloise Jacqua, Alpha Eta '28, who was forced by the stork to retire.

The October meeting was held at Eleanor Dickson's home, just preceding the Orchid Ball. Peggy Starke and her assistants from Bullocks' Collegienne, gave us a fashion show of evening gowns suitable for the Ball.

In November we lunched as the guests of the Helms Bakery. We made an inspection of the plant and enjoyed a delicious luncheon and an afternoon of bridge in their cheerful guest house. All proceeds from the sale of tickets are kept by the sorority.

The actives and pledges of Alpha Iota chapter entertained the alumnae with a charming tea in November, and we held our annual Christmas party at their house in December with members of Beta Alpha also present. That is always one of the most hilarious affairs of the year—a good buffet supper, and gay skits by the actives.

JUNE WALLACE SCHOOLEY, *Omega*

Marriage

Marjorie Morse, Alpha Iota '34, to Robert Dittmer Maas, Phi Kappa Psi, of Akron, Ohio.

Birth

Son, Jack Davis to Merritt E. and Heloise Davis Jacqua, born November 14.

Madison

With our successful Founders Day banquet still a pleasant memory, we Madison alumnae, energetic to the bitter end, are putting all our effort and enthusiasm into the sale of our grand cook books, compiled from the "very most favorite" recipes of our best cooks. Proceeds from the sale will be used to pay the camp tax for our alumnae chapter and to swell the Mary Clark Brittingham fund.

We really are bursting with pride over our cook books—they're going like wildfire. Alumnae of other sororities want to know the secret of our success!

Because Madison alumnae are so closely bound to the active chapter on the University of Wisconsin campus, we are glowing with pride over the fact that the chapter has added *seven* outstanding pledges to its original group of 16 prizes. The new ones are Alice Robinson of Milwaukee, Wisconsin; Rae Kimpel of Cleveland Heights, Ohio; Barbara Broun, Houston, Texas (a cousin of Ann Fred of Gamma); Jean Grinde, De Forest, Wisconsin; Mary Jane Peters, Lake Forest, Illinois; Ruth Keogh, Milwaukee, and Jane Harriet Hicks of Madison. Jane Harriet's father is Prof. John Donald Hicks, well known historian and head of the University of Wisconsin history department.

It is with sincere regret that we announce that Florence Stott Sullivan, Gamma's beloved "Daisy," has resigned her position as alumnae adviser to the active chapter. Loyal and an indefatigable worker, Daisy literally has devoted much of her life to guiding the active chapter, and it will be difficult to fill her place. However, Daisy is going to continue her many other Gamma Phi jobs and we do feel that it's only fair to her to help share the burden of work.

Madison alumnae were sorry to lose Margaret Kilbourn White to the Kansas City alumnae group. Margaret's husband, Stoughton, is taking his hospital internship in Kansas City and she has a laboratory position there, too. We also said a reluctant farewell to Maxine Schultz Luse who moved to St. Paul, Minnesota, in October. In the spring we will lose Betty Hart Davis, who also is moving to St. Paul.

We are delighted to welcome Margaret Jones Ritchie into our alumnae group. She, her husband, and young daughter, Cameron, have moved to Madison.

We recently enjoyed visits from Elizabeth Cool Kelly, now of Englewood, New Jersey, and Janet McCarthy Biersach, now of Evanston, Illinois. Many other alumnae

returned for the football games, Founders Day banquet, etc.

LOUISE MARSTON

Marriage

Marianne Grieves, Gamma '38, and Howard Duenk Huenink, Delta Kappa Epsilon, November 18 in Lacon, Illinois. They will be at home in Sheboygan Falls, Wisconsin.

Births

A son, Steven Baker, to Mr. and Mrs. Russell K. Luse, St. Paul, Minnesota (Maxine Schultz of Gamma), on November 19.

A daughter, Barbara Ann, on December 15 to Mr. and Mrs. Robert C. Kaska of Chicago (Rosemary Brigham, Gamma).

Miami

The Miami Alumnae held a Founders Day celebration at the home of Ruth Norton Natelson in Miami Beach. Sixteen members attended the buffet supper. Dorothy Stearns Mayer was in charge of the program based on the history and traditions of the Gamma Phi songs, followed by group singing. With the exception of the Rollins half-dozen, all members of the Miami group are from widely separated chapters, and it was interesting to note that entirely different songs are popular in the various sections of the country. We all echoed long and lustily, however, on "I'm Satisfied," though two different tunes for even *that* song were unearthed.

First of all we want to chorus our pride in our three grand pledges—Jane Balch who donned the buff and brown at Rollins, Martha Louise Sutton who took the plunge at Vanderbilt and Sidney Roche who pinned on the crescent at Michigan. They were guests of honor at the Christmas party at the home of Gertrude Henderson Schellenberg.

Despite the rush of the holiday season, our members continue to find time for a wide variety of activities. Virginia Dalton has been made field representative of National Park Seminary for the state of Florida. Incidentally, Virginia made a fetching fortune teller at the country fair sponsored by the Business and Professional Women's Club for the benefit of the tuberculosis ward at our county hospital.

Margaret Gillespie, our publicity chairman, is doing a thriving business in that line. She has been made a member of the publicity committee for the newly organized Miami Children's Theatre. A number

Gamma Phi offspring attended its first production, the opera, "Hansel and Gretel."

Dorothy Stearns Mayer was in charge

of the musical program for Panhellenic's annual Christmas party at the Biltmore Country Club.

Stella Tuttle won first prize in the lyric contest conducted by the Miami Branch of the National League of American Pen Women with her poem, "Of Love Immaculate."

Virginia Supple Stewart has been made manager of the new Wilshire Hotel at Miami Beach.

Lucille Pipkorn Neumann also confines her activities to the beach, but hers take the form of running the Mexican Mart, one of Lincoln Road's swankier shops.

Frances Arnold Cole had charge of the elementary Christmas program for Citrus Grove school here.

We're all out of breath, but before we sign off, let us remind you to look us up if you ever pass through the Magic City. Please!

STELLA TUTTLE

Milwaukee

Many new members joined the Milwaukee group this fall and with them have come varied interests and ideas for our alumnae chapter. As our membership grew, we increased our contributions to Gamma Phi camps, the local Panhellenic group, and our Community Fund; consequently, the ways and means of making money has been this season's project.

The pennies and dimes dropped merrily into the cigar-box cash registers of the Gamma Phi saleswomen at our rummage sale. Headed by Gretchen Koss Rosenberger, the one-day "stand" was a tremendous financial success. Margaret Schermerhorn Newcombe opened her lovely home to booklovers and their friends at a book sale, and she and her co-workers added dollar signs to the bank book. Bridge teas, magazine subscriptions, and even collecting tinfoil are money making possibilities yet to be considered.

The Founders Day banquet held at the chapter house in Madison starred our social calendar. In the fall, the alumnae group gave a tea at the home of Margaret Ryan McDonald for the girls planning to enter college in September. In November we had several tables at the Panhellenic Scholarship Bridge. On the third Tuesday of every month our alumnae graciously offer their homes for meetings.

The president's gavel now rests in the hands of Esther Schwartz Hansen, and Darlene Dearborn Berry wields the secretary's pen. Besides these new officers, we welcome as incoming members this fall: Melba Perry, Epsilon; Connie Martin Newton, Lambda; Thelma Uter Adair, Pi; Marion Knapp, Gamma; Bette Gunther Steinman, Gamma; Harriet Trippe Benz, Gamma; Florence Schroeder Cron, Gamma; Helen Braughton Sullivan, Gamma;

Jean Skogmo Gilkerson, Gamma; Frances Peterson Parker, Rho.

ELISE BOSSORT BELL

Births

To Mr. and Mrs. Robert L. Hall (Jessie Lou Davis, Gamma), a son, Robert Lindsley, August 8.

To Mr. and Mrs. John B. Henriksen (Betty Olson, Gamma), a son, John Boyd, September 6.

To Mr. and Mrs. A. Foster Sheller (Mynette Lomas, Omega), a daughter, Mary Ann, September 27.

Minneapolis

Our wonderful Founders would have been pleased had they been able to walk into the Gamma Phi House in Minneapolis, and seen the enthusiasm shown in paying homage to their tireless efforts and unending loyalty. Practically ninety alumnae including St. Paul joined forces with the large active chapter, to make this Founders Day one of the largest and finest in Kappa history.

Lucille Miller Winkler, Phi, chairman of the Buffalo Camp, who is taking some courses at the University of Minnesota, showed some colored films of that camp. We all enjoyed seeing them so much.

The pledge class, 28 strong, entertained us. Alice Phelps, of the active chapter, opened the program with a clever skit.

We feel our Founders Day was like a lovely rare old quilt—a bit of levity for a bright patch, some seriousness for the soft tones, and much friendliness for the mel-low basic background.

The first regular meeting was at Nell Halloran Feldman's in September. The afternoon was devoted to the rushing cards. With the usual enthusiasm and co-operation between actives and alumnae, and excellent functioning of the rushing chairmen, Helen Little Salzer of the alumnae, and Julie Field of the actives, Kappa again went to town! Twenty-eight grand pledges. They are: Jean Anderson, Marjorie Anderson, Josephine Bezoir (a niece), Mary Brennan, Janet Bronson, Justine Deutsche, Mary Lou Dolleff, Joan Erdall (a daughter), Ruth Josse, Priscilla Keyes (a daughter), Jean Leighton, Marjorie Mann, Nancy McLaren, Joan Monaghan, Donna Nelson, Mary Nelson, Evelyn Peterson, Virginia Petters, Eunice Rank, Sheila Scharling, Frances Sedgwick, Gail Skogmo (a sister), Frances Solem (a sister), Jay Smith, Evelyn Stuart, Mary Townsend (a daughter), Jane Williams and Dorothy Zimmerman.

In October the alumnae meeting was at Virginia Little Steven's home. It was a large meeting, quite informal, and we had two charming guests, our Province Director, Helen Solem Sand (her sister pledged Gamma Phi at Kappa this year),

and Gertrude Hegy Allen, who was here visiting from Brentwood, California. Trudy's daughter, Barbara, is a sophomore in the chapter. Helen Sand talked to us informally, and her ideas are always constructive and helpful.

Kappa celebrated Founders Day at the Gamma Phi House.

In December the Mother's club held a Bridge party at the House, and on December 9 there was a Panhellenic Bridge.

PEG WIEGAND BURNHAM, *Epsilon*

Marriages

On June 16, Catherine Wilkins, Kappa '39, to C. Ballou of Rochester.

On May 20, Jean Johnson, Kappa, to Belmont Magee, Beta.

On May 18, Audrey Beatty, Gamma, to John Walsh, University of Wisconsin boxing coach.

On July 15, Catherine Burnap, Kappa, to R. Bruce of Hollywood. Catherine was named a representative Minnesotan in '36.

On August 11, Elinor Watson, Kappa, to Dr. Porter Hoidale.

Rosemary Lee, Kappa, to Edward Moore.

On October 7, Ruth Bergquist, Kappa, to Alvin Leonard.

On October 14, Betty Vance, Kappa, to Earl Halvorson, Sigma Chi.

On September 22, Ellen Bache-Wiig, Kappa, to Ronald Christgau.

On October 29, Ruth Finch, Kappa '39, to Henry Lykken, Jr.

On October 12, Barbara Rich, Kappa, to Louis Dietrich.

Marie Sabor, Kappa, to Mr. Langman.

On November 8, Georgianna Adams, Kappa, to Thomas Dillon.

Montreal

Montreal Alumnae members have been directing most of their spare time and efforts to work for the Red Cross. At meetings they have been busily knitting socks, wrist bands, scarfs and gloves. Most entertainments have been either stopped altogether or made very simple because of the war.

The initiation banquet for the eight pledges was held, but the dance which usually follows was not.

The annual Christmas party took place at the sorority when presents were given to the chapter by both the actives and the alumnae.

Three Christmas baskets were sent to families who were in need of some food and a little good cheer, and Gamma Phis left for the holidays after the party which was preceded by a delicious turkey dinner.

GWEN M. MACRAE

New York

The Tree of Life room at Beekman Tower was the setting for the New York

Founders Day banquet with Mrs. William Dehn, grand president, among the 30 members present. Mrs. B. L. Spain, Delta, president of the Northeastern New Jersey Alumnae chapter, Betty Bigelow, of the Westchester Alumnae chapter, Lillian Thompson, Mrs. Mary Wing Phye, Mrs. Catherine Kingsbury, Edith Jennings, Mrs. Budinger and Mrs. Beatty were present also.

Mrs. George Bradley (Oenia Payne, Gamma) was hostess, assisted by Mrs. John Daniel (Helen Corbett, Lambda).

Mrs. Dehn spoke of the growth of Gamma Phi Beta; Mrs. Spain and Mrs. Bigelow of the worth and growth of their chapters; Miss Ruth Burgard, president of the New York chapter and toastmistress of the banquet told of the work of our chapter regarding camps and endowment fund.

The opening meeting of the year was a supper meeting held in the attractive Hudson View Garden apartment of Mrs. George Easterbrook (Mary Herold, Phi) in October with 23 members and guests present, including Lillian Thompson, Olive Beaver, Betty Furbeck, Stella Edwards Brevoort and Beatrice Utman Smith who came down from Danbury, Connecticut, to be with us.

After a buffet supper Ruth Burgard presided over the business meeting and at the informal party which followed each told of her work and vacation.

We are sorry to lose our able vice-president, Bess Vesey Neep, Theta, who has moved to Laramie, Wyoming. Margaret Arneson, Lambda, is the new vice-president.

Mrs. Frances Light Simpson, Epsilon, who is a past president of our chapter has returned to the United States after living in Bogota, Colombia and is living in White Plains, New York.

F. Aurille Bishop, Iota, of Oneonta, New York, is on a cruise to Mexico.

Mrs. Mary Calloway Parker, Mu, is spending the winter in Florida.

Our December meeting was held at Beekman Tower with Barbara Briggs Payne, Gamma, Jess G. Richardson, Alpha, and Margaret Samuela, Gamma, as hostesses. Plans were discussed for entertaining the convention guests next June.

Guests included Jane Stewart, Alpha Eta, and Edith Jennings who are studying at Katharine Gibbs school in New York, Mrs. Catherine Kingsbury and Beatrice Utman Smith who told us about her prize-winning Springer Spaniels.

VIRGINIA M. ATKINSON

Norfolk, Va.

We celebrated Founders Day with a dinner at the Town Club in Norfolk, followed by an installation service inducting the group as an alumnae chapter. Mary

Elizabeth Slater, Alpha Sigma, acted as installing officer.

The following were installed as officers: President, Marcia Smith, Alpha Chi; secretary-treasurer, Mrs. Charles M. Lovitt (Bernice Bradshaw, Alpha Sigma); vice-president, Mrs. Powhatan Moore (Jane Adams, Alpha Sigma).

MARY ELIZABETH SLATER, *Alpha Sigma*

Norman

The Norman Alumnae chapter was installed November 2, at the home of Mrs. Josh Lee with Miss Edith Mahier officiating as the installing officer. The service was beautiful and impressive in the setting of pink carnations and tall pink candles on a lace covered table. Renewed pledges for increased activity came with increased opportunity as Psi chapter had 29 pledges. We had begun the year with an inspiring meeting at the home of Mrs. Otto Walter, our president. She reported on her visit to Dallas where she accompanied the province director, Puella Hodges, to help with rush. We entertained at an Italian spaghetti supper for the pledges at the home of Frances Lindloff. This is the second time we have done this. The alumnae were present at a tea given by Psi honoring Mrs. J. R. Dempsey, the new house mother and were guests at the formal dinner given by Psi to honor Mrs. George R. Keith.

The December meeting was a Christmas party with a tree and presents. Lois Walter reviewed "The Mortal Storm" by Phyllis Bottome. For the next meeting Della Brunstetter showed the pictures she took of the Cherokee Indians in the Smoky Mountains of North Carolina last summer and conjugated a Cherokee verb for us.

We feel that we have able leadership this year in Mrs. Otto Walter (Lois Trueblood) '20. After Otto's death in New York in 1935 Lois and Wallace returned to Norman, built a lovely little English Colonial home at 824 Cruce Street, then she entered the University and worked out a B.S. in Library Science. She did some work in the Natrona County Library in Casper, Wyoming, this past summer. She is devoting a great deal of time to the Gamma Phi Beta alumnae chapter and is on the Soiree Committee of the Faculty Club.

Della Brunstetter plans to take a leave from the University the second semester to devote more time to her research work on the Cherokee language.

We have been happy to have Louise Gerlac Lee, wife of Senator Josh Lee with us this fall. Louise will return to Washington with Josh in January.

We are all enjoying Mrs. Walter Ratliff (Blanche Cooley). Blanche was a freshman queen of 1914 and a Sooner

beauty queen of 1917. After Walter died in Atlanta, Blanche returned to Norman with her three children. She has continued her interest in art and is auditing some of the art classes at the university. She painted figures of the zodiacal signs for the fortune-telling booth for the Faculty Club Halloween Soiree. At present she is working on a mural which is bringing forth a great deal of favorable comment from the professors in the Art Department.

Mrs. Marius Lindloff (Frances Atwater) made an interesting trip this fall as province president of Sigma Alpha Iota, honorary music fraternity.

We are looking forward to the return of Lucille Farmer Springer the second semester. Lucille and Suzanne were with Gene at Oxford, England, where he was studying mathematics. He has been studying at the Institute for Advanced Study at Princeton, New Jersey, since then.

Mrs. J. R. Dempsey (Mart Hart), who was initiated here in 1920 is the house-mother at Psi this year. Her vivaciousness and efficiency are making her popular with all the groups with which she is working.

The Founders Day banquet was held in the Union building at Norman. The theme of the program was clever with the Lady of the Moon holding an exposition which showed the progress made by Gamma Phi Beta, during the past year.

GLADYS LAFON

Northeastern New Jersey

Northeastern New Jersey held a Founders Day luncheon at the home of Mrs. Edward A. Plumer (Mabel Page, Delta) in Westfield, New Jersey. The members were happy and fortunate in having Mrs. Dehn, grand president, with us for a buffet luncheon. Mrs. Dehn delighted us with a talk on the growth and accomplishments of our sorority of which we can be justly proud.

This year the charter of the Northeastern New Jersey Alumnae chapter is displayed in the president's book, like a coat-of-arms.

A corn roast was held in October around Mrs. Ralph Pattison's out of door fireplace in Orange. Two new members, Mrs. R. E. Cooper (Catherine Madorie, Kansas) and Mrs. Charles Shafer (Doris Rever, Goucher) joined our chapter, and Mrs. Clifford Davis joined in November.

Mrs. C. L. Babcock was hostess for the December luncheon at her home in Montclair. Mrs. B. L. Spain, our president, told of the delightful time she had at the New York Alumnae chapter's Founders Day dinner when our grand president, Mrs. Dehn was guest of honor. We also welcomed back into the chapter Mrs. Kenneth Shedd (Jane Potter, Alpha) who had returned from a world cruise and a

new member, Mrs. Raymond Ward (Lillian Woermann, University of Illinois).

JEAN BARRICK CRANE, *Iota*

Oklahoma City

In September we assisted with rush at Norman and feel it was a great success, as Psi pledged the greatest number on the campus. We helped the girls initiate the lovely English garden just completed adjoining the house. Lila Blackeney and Janet Thompson deserve much praise in negotiating the purchase of the two 25 foot lots and the landscaping to match the style of the house. Our group completed it by giving the yard furniture in shades of yellow, blue and white. It is certainly an asset and will bring much profit and pleasure to Psi.

Our annual registration tea was held at the home of Kitty Blair. The Norman alumnae and Mrs. Mart Dempsey, the new hostess of Psi were guests. Mrs. Dempsey is one of our members and is doing a wonderful job in the role of hostess.

The November activities included our Founders Day banquet and state meeting held at the Union building at Norman in November. Rita Sanger and Mary Francis Graalman and their committees made it one of the unique and clever affairs of the year.

In November we had our first regular monthly luncheon at Ethel Sorey's home, with Margaret Hart, our new president in charge. We welcomed Helen Lohman Worley, Gene Carter Westbrook, Helen Hall and Lillian Foster as new members into our group. Puella Hodges, director of Province V, gave a résumé of her recent trip to the Texas chapters. She told of Lois Walters, of the Norman alumnae, Sara Marie Batten and Florence Deterick from the Oklahoma City alumnae accompanying her to Dallas for their rush. Also the manner in which they carry on their rush and how pleased she was with their chapter. Her description and history of the new chapter house at Austin and their progress was interesting.

The last of the month we had a visit from Mrs. George R. Keith, Chairman of the Finance Statistical Bureau, of Los Altos, California. The executive committee had a dinner and meeting in her honor at the Oklahoma club and then accompanied her to Norman for a visit there.

Among other events was a buffet supper in December at the home of Elizabeth Joyce.

RUTH OLMSTEAD SUESZ, *Psi*

Marriages

Florence Fuller, Psi '39, to Howard Card, Phi Delta Theta, living in Chickasha, Oklahoma.

Mildred Kennedy, Psi '32, to George McKenny, Delta Tau Delta, '29. They

were married at Corozal, in the Panama Canal Zone; living at Lawton, Oklahoma.

Anna Jo Card, Psi '39, to Dr. James McMurry; living at Sentinel, Oklahoma.

Births

To Mr. and Mrs. Frank Andrews (Doris Bitler), a son.

To Mr. and Mrs. Leslie Ford (Bobby Long), a son.

To Mr. and Mrs. U. S. Russel (Stella Grant), a son.

Omaha

We are stimulating ourselves mentally by having specific programs—on related current subjects. Our first one was Current Events, which stressed the war situation, the U.S.A.'s relation to it and our responsibility as voting citizens. We have several members active in community affairs and they bring interesting ideas to our meetings.

Several of us went down to Lincoln for rush week and felt pleased with the lovely pledges! Immediately following rush week our Province Director, Mrs. Linscott, paid us an informal visit we greatly enjoyed. Alice Buffet held "open house" and tea for her on a Sunday afternoon. On Founders Day six of us went down to Lincoln for a formal dinner at the Cornhusker Hotel. It was a happy meeting and many old friends were there! Our Christmas celebration is usually a luncheon and this year we asked the Gamma Phi mothers.

Our plans to help the active chapter, in any way we can, will go on as usual—

with our main financial or money making schemes for profit taking place in the spring.

Mae Lindquist Vickers (Mrs. Stewart), Pi, has moved from Omaha to Red Oak, Iowa.

Lucile Kelly Wyrens (Mrs. Ray), Pi, has returned to Omaha after living three years in Baltimore, Maryland.

Gloria Osborne, Pi, has left us for the sunny isle of Hawaii. She is living with her parents at the Scofield Barracks in Honolulu.

Gladys Dufford Hellner (Mrs. Fred), Rho, has returned to us after we thought we had lost her to California.

HENRIETTA BARNES, *Pi*

Pasadena

This letter introduces the Pasadena alumnae chapter to the CRESCENT. At the November meeting this year we received formal word that a charter had been granted us. Installation is to take place at the January meeting at the home of the president, Mrs. Joseph R. Jones (Carol Morse, Alpha Iota '27). Our group was formed seven years ago by a nucleus of girls who had been closely associated together in the Alpha Iota chapter and who were then living in the vicinity of Pasadena. The group has grown steadily. At the December meeting there were 40 members present. There are 96 active members representing 22 chapters.

Our outstanding annual affair is the Christmas Tea we have for the actives and alumnae of our two local chapters,

If You Have Moved Let Gamma Phi Beta Know of It

Many Gamma Phis change their Addresses and fail to notify the Central Office therefore do not receive their CRESCENTS because the Postal Department does not forward magazines.

If you have recently moved or changed your name

Tear Out and Send to Gamma Phi Beta Central Office, 55 E. Washington St.,
Chicago, Illinois.

Mailing lists close Aug. 15, Nov. 1, Jan. 15 and April 1.

Maiden Name
My
Married Name
My Active Chapter My Alumnae Chapter
My Old Address
.....
My New Address
My Present Chapter Office is
(President, vice-president, etc.)

Alpha Iota and Beta Alpha. This has proven popular as many of the alumnae who are not able to attend meetings make an effort to come to this yearly gathering and renew friendships and become acquainted with the actives. The tea this year was at the home of Mrs. Frederick W. Houser (Dorothy Bodinus, Alpha Iota '26) in Alhambra.

Our principal rushing activity is the Alpha Iota Mothers' and Daughters' tea that we assist with each September and February.

At the first meeting this season, Peggy Larsen Starke (Alpha Iota '25), fashion adviser of Bullock's Collegienne department, gave a fashion show. Her model was Louise Gulstrand, Alpha Iota president and campus representative for Bullock's.

At the November meeting, the president read the Founders Day exercises.

Mrs. Louis Lombardi (Angela Funae, Delta '20), gave an entertaining review of *Christ in Concrete* at the December meeting. Mrs. Lombardi is in demand as a book reviewer.

In the near future we are planning a benefit. This year it will probably be a theater benefit at the Pasadena Community Playhouse.

RUTH CHASE, *Alpha Iota and Lambda*

Marriages

On September 6, 1939, at Pasadena, California, Helen Ward, Alpha Iota and Eta '34, to Dr. John H. Maxson, California Institute of Technology '27; Assistant professor of geology at California Institute of Technology.

On April 30, 1939, Esther Friend, Alpha Iota '29, to Mr. Claude Gordon.

Births

To Mr. and Mrs. Raymond Dorn (Thuel Ross, Alpha Iota '28), on March 21, 1939, a son, Gareth Andrew.

To Mr. and Mrs. W. Melville Garton, Jr. (Mary Von Schrader, Alpha Iota '36), on August 25, 1939, a daughter, Alleyne Von Schrader.

Phoenix

Phoenix alumnae, in keeping with the holiday variance, jumped the gun and celebrated Founders Day the first Thursday in November. Twenty-five Phoenix and Salt River Valley alumnae attended a banquet at the Phoenix Country Club cleverly appointed by Inez Petty and Kathaleen Mueller. After the banquet the group adjourned to the home of Dora Best and chapter installation was held.

We were very fortunate at that time to have with us Mrs. Lucy Rawn, Director of Province VII, who occupied the chair during the installation services.

Becoming a chapter has enlivened the

group and we expect a year full of social and serviceable activities.

PAULINE HICKCOX

Births

Wesley Jay Mickle, born September 22 to Mr. and Mrs. Charles Wesley Mickle (Lois Gates, Alpha Epsilon '33), in Phoenix.

Glenn Gray Crabtree, Jr., born May 8, to Mr. and Mrs. Glenn Gray Crabtree (Ruth Steele, Alpha Epsilon '32).

Kenneth Marshall Adamson, born October 12 to Mr. and Mrs. Kenneth Edward Adamson (Catherine Griffith, Alpha Epsilon '35).

Pittsburgh

The Pittsburgh Alumnae celebrated Founders' Day at the Congress of Women's Clubs with a luncheon followed by a bridge party. Mrs. R. C. Skinkle was chairman.

The Pittsburgh alumnae chapter has been experimenting this fall to ascertain the best type of meeting. We have finally decided to affiliate with the Congress of Women's Clubs in Pittsburgh and hold luncheon meetings at their clubhouse. We decided, too, to form a series of programmes, both social and cultural. We helped the Pennsylvania State College chapter with their rushing during the Christmas holidays.

FRANCES HALLER

Portland

Alumnae met for a formal banquet at the home of Mrs. Paul Stark Seeley (Vernita Swezea, Lambda), when Ruth Joslyn Ewing, Chi, talked on the Founders of Gamma Phi and the group enjoyed Gamma Phi songs and later Mrs. Seeley showed two reels of motion pictures of the coronation of King George and Queen Elizabeth. One reel, in colors, was taken by Mrs. Seeley.

Portland alumnae chapter enjoyed a luncheon meeting in September at the home of Mrs. William Snook (Lilias Peltier, Chi).

In October, Mrs. Lee Patterson (Betty Masters, Mu and Nu), was hostess at a delightful evening meeting. About 55 were there. Beatrice Lilly Grout, Nu, who is on the Visiting Nurses board, showed a short motion picture of work done by the Visiting Nurses' Association and its connection with the Community Chest.

In November one of the local department stores again sponsored a table setting contest with national sorority alumnae groups competing for prizes. Gamma Phi won third prize on the first day. Mrs. Paul Stark Seeley (Vernita Swezea, Lambda), designed and decorated our table each day of the contest.

In December we held our annual Christmas luncheon for active and alumnae members. This is always a most enjoyable occasion and provides an opportunity for alumnae and actives to meet and exchange opinions and ideas.

Mrs. Gordon Burke, province director, visited in Portland on her way to visit the active chapters. A number of alumnae enjoyed the privilege of meeting her at a luncheon at the University Club and later at the home of Leta Kiddle Earl, Nu.

Old friends are enjoying seeing Mrs. Stanley Anderson (Marian Grebel) here from Australia.

DOROTHY CUMMINS HARRIS, *Chi*

Marriages

Phyllis Gould, Chi, to Mr. Allan Tweedale, in December.

Jane Carson, Chi, to Mr. Lloyd Jackson.

Mary Wright, Nu, to Mr. Norman Bay, in September.

Births

To Mr. and Mrs. G. Blissett (Elise Osburn, Chi), a daughter, Rahles Marie, August 23.

To Mr. and Mrs. P. D. Browne (Margaret Miller, Chi), a daughter, Judith Ellen, on October 20.

To Mr. and Mrs. B. F. Sawyer (Margaret Moore, Chi), a daughter, Carolyn Anne, on October 7.

To Mr. and Mrs. Scott Milne (Irene Hoech, Chi), a son, Alexander Scott, on November 2.

To Mr. and Mrs. William Barendrick (Elizabeth Wright, Nu), a son, on November 24.

Reno

Alpha Gamma alumnae and actives celebrated Founders Day with a fireside gathering at the new chapter house. Miss Florence Butler, active president, and Mrs. Thomas Doherty, alumnae president, conducted the ceremonies. The warm glow of a burning fire recalling the memories of the past formed the theme for the services. The affair which was attended by about 50 Gamma Phis was directed and planned by Mrs. Thomas Fisher (Dorothy Nason).

The alumnae chapter took an active part in rushing. Committees were formed to plan the menus and take care of the refreshments. This allowed the actives complete freedom for rushing. The chairmen for these committees were Miss Kathleen Griffin, Miss Louise Rawson, and Mrs. Edward Pine. In addition to this, Alpha Gamma gave Reno a treat by sponsoring an illustrated lecture by Father Hubbard, the glacier priest, at the civic auditorium. Mrs. Georgiana Kane directed the organization of the event and 800 people attended.

The alumnae in the immediate vicinity

attended a rushing party given by the alumnae of Carson City at the home of Mrs. N. C. Brown. The hostesses, in long dresses, graciously entertained the group with Gamma Phi facts. Miss Kathleen Griffin won the crested compact for the best answers in a Gamma Phi contest.

With a beautiful setting, Alpha Gamma presented their pledges in October. Mrs. Edward Pine, general chairman, Mrs. Douglas Bussey and Miss Margaret Rawson, chairmen of the decorations, managed one of the nicest social affairs of the season. Six hundred invitations were issued.

The alumnae again received the orchid for being the center of the spotlight. The annual dinner dance, directed by Miss Toby Bikker, given at the Riverside Hotel brought more requests for tickets than could be accommodated. The swish of formals, the soft laughter and the hum of voices spoke for the success of the evening.

A dessert bridge at the chapter house in December brought scores of guests to enjoy the hospitality of Gamma Phi. A true holiday spirit dominated the atmosphere.

MARGARET RAWSON

Sacramento

Sacramento Valley alumnae celebrated Founders Day with a breakfast at the Hotel Senator. Mrs. Frank A. Moore headed the committee and Margaret Griffith, chapter president, was toastmistress. The affair also marked the second anniversary of the chapter's charter. During the breakfast a group of Gamma Phi husbands met at a downtown restaurant for a stag breakfast.

The first meeting was held at the home of our vice-president, Mrs. Joseph M. Kane (Doris Kane, Alpha Gamma). She was assisted by Mrs. John W. Davis (Jane Umphred, Eta). Mrs. Frank A. Moore (Ferne Reymer, Chi), secretary, was appointed chairman for Founders Day, assisted by Mrs. Robert E. Murphy (Evelyn Berg, Chi), Mrs. Oliver B. Hayes (Mary McDermott, Chi), Doris Kane, and Mrs. William B. Upton, Jr. (Beatrice Porteous, Nu).

Mrs. William Rawn paid a visit to Sacramento in October. Mrs. Emil J. N. Ott, Jr. (Salome Riley, Alpha Gamma) was in charge of Founders Day for California. She is in charge of magazine subscriptions for the Valley, was last year's treasurer, and one of our charter life alumnae members.

In December we met at Margaret Griffith's, Eta, and were greeted by Margaret's sister, Mrs. Edward Allen of Elk Grove, and our new member, Mrs. Lyman R. Gillis (Burris Bly, Eta), a recent bride just moved to Sacramento. Our latest bride, Mrs. Philip J. Jacobs (Jean Tedford, Xi, corresponding secretary), was also

present and was presented with the chapter wedding gift.

Our Gamma Phi Beta Quilt is now nearing completion and we are to have an Invitational bridge party early in the spring in order to display the quilt and have the final drawing of the tickets at the close of the bridge games. The proceeds of the sale of the quilt and the bridge party will go entirely for convention expenses.

Mr. and Mrs. Oliver B. Hayes vacationed in Mexico in September.

Mr. and Mrs. John W. Davis had a December vacation in San Diego.

Mr. and Mrs. Frank A. Moore, and son, spent Christmas holidays with Mrs. Moore's family in Klamath Falls.

Mr. and Mrs. Claude Neff Hollister spent part of October in Portland and Eugene, Oregon, and the Christmas holiday in Carmel.

Mr. and Mrs. Robert E. Murphy are wintering in Miami, Florida.

FLORENCE HARTMAN HOLLISTER, Nu

Marriage

Jean Tedford, Xi, to Philip J. Jacobs, St. John's Church at Folsom, November 22. At home in Folsom, 807 Natoma.

Birth

To Mr. and Mrs. George I. Ellsworth (Edwina Reed Monro, Alpha), a son, Bradford Edwin Ellsworth, in February, Barnegat Ranch, Grass Valley.

San Diego

San Diego alumnae held its annual Founders Day banquet in the University Club. Mrs. Albert Jones, Mu, president of the group, presided as toastmistress.

During the dinner, Mrs. Charles Byrne, Alpha Iota, told of the founding of Gamma Phi Beta. Following dinner, Mrs. Tom J. Allen, Eta, showed colored films of her recent trip to South America. Highlight of the evening was the passing of candy by Margaret Barnum, Beta, announcing her approaching marriage (December 9, 1939) to Mr. Charles L. Gunthrop, who was graduated from the University of Arizona.

Miss Peggy Alberty, Sigma, and Mrs. Charles Byrne, Alpha Iota, were in charge of the arrangements.

The Christmas lights are fading and the sound of the carols echo faintly in our ears as we turn to another year, but "peace on earth, good will toward men" still rings loud and clear from our hearts. And so we wish for each of our sisters a joyous and prosperous New Year.

The most important single event in the San Diego alumnae chapter has occurred. We have been installed as a full-fledged chapter. Since last spring we have had the quota of members necessary to become a

chapter; on December 11, 1939, we were installed by Marie Shearer, Beta.

The installation was conducted by candlelight in the home of Mrs. Margaret Willard. During the ceremony Mrs. May Jones, president; Mrs. Kay Fladeland, vice-president; Mrs. Sue Byrne, treasurer; Mrs. Thelma McNary, secretary, and Miss Jane Grant, corresponding secretary, made their pledges to office before twenty-five members of the chapter.

Following the installation, each member chose a gift from the collection of "white elephants," donated by all, which had been wrapped in Christmas paper and placed under the tree.

We are happy to welcome into our group two girls from Denver, Babs Cooper and Virginia Flynn, Theta.

Now that the chapter has been formally installed, we are looking forward to an expanded membership and an active new year.

SUE CORNELL BYRNE

Marriage

On December 9, 1939, Margaret Barnum, Beta, was married to Mr. Charles L. Gunthrop in Saint Francis Chapel, San Diego. A graduate of the University of Arizona, Mr. Gunthrop is practicing law in Berkeley, where the young couple have made their home.

San Francisco

The San Francisco chapter celebrated Founders Day at a joint meeting with Mu chapter at the chapter house on the Stanford campus when 50 members were present for the installation of the new Palo Alto Alumnae chapter. Mrs. George Simonson, grand vice-president, officiated at the beautiful ceremony and San Francisco presented the chapter with the president's book and charter. Following the installation and Founders Day exercises was a dinner with Hester Proctor as mistress of ceremonies for the skits and entertainment which followed.

Our members gathered in September at the home of Mildred Long for a supper party and business meeting with Sarah Sproull, Sally Byrd and Margaret Sanford as co-hostesses.

The highlight of October was our annual Gamma Phi Night at the Mark Hopkins Hotel. With 500 tickets sold it was a social and financial success. Entertainment was provided by college talent from Stanford and California chapter members.

Carolyn Williams was hostess in October, assisted by Viola Gephart and Esther Dibble. Luncheon was served in the garden and at the conclusion Margaret Supple gave a summary of her daughters' impressions of her recent European tour.

November marked the start of our new sister group, the Palo Alto alumnae chap-

ter and among its member list are names which have long been symbols of loyal and constant Gamma Phi support.

Mrs. Morley Thompson was hostess at the annual Christmas party which combined dinner with a business meeting. Norma Walsh and Betty and Doris Barrett were co-hostesses. Each member had brought a gift which was distributed by the "grab-bag" method.

AUDREY LOWELL

Marriages

Beryl Randall, Mu, to Louis Phelps of San Francisco, October 14 in Grace Cathedral, San Francisco.

Burris Alene Bly, Eta, to Lyam Gillis, November 24 at St. Peters Church by the Golden Gate.

Births

To Mr. and Mrs. Pinckney Harral, a son Charles Pinckney, September 15.

To Mr. and Mrs. David Bardin, a daughter Sue Ann.

To Mr. and Mrs. Nathan Weston Blanchard, III, a son, Nathan Weston Blanchard, in September.

St. Louis

The year of 1939 has been a busy one for Gamma Phi alums in St. Louis. We've gone a bit farther afield in our efforts to contribute a fair share of support to the active chapter at Washington University.

In June, Phi chapter sponsored a benefit movie at the Shady Oak theater in Clayton, Missouri, and the alumnae turned out in a body. The proceeds went toward redecorating the Gamma Phi room in the Women's Building at Washington University.

In July, the St. Louis Gamma Phi alumnae sent a girl, for two weeks, to Sherwood Forest, a summer camp in Troy, Missouri, for underprivileged children between the ages of 12 and 16. In charge of this enterprise was Miss Ruth Weakly as chairman. She was assisted by five other members of the alumnae group and the girl to be sent to the camp was selected from a list of 30 names obtained from the Social Service Exchange in St. Louis.

The Gamma Phi room has been redecorated this summer by Lucks-Orwig, popular decorating firm in St. Louis and the room is completely transformed. Active in the project were Mrs. Chester Kotsrean, Gladys Hecker, Margaret Christmann, of the alumnae chapter and a committee made up of members of the active chapter. The attractiveness of the room has brought glowing comments from, not only members and rushees, but, also, from members of other sororities on the campus and faculty members.

MRS. JAMES LUMPP

St. Paul

The September supper meeting, held at the Christofferson home, was devoted to consideration of rushing and rushees. Jubilant over the results we celebrated in October with Jeannette Allen and co-hostesses and were delighted to have a delegation of visitors from Minneapolis, including Millicent Hoffman, Louise Smith and Eunice Erdall. The highlight of the evening was a reunion session with Gertrude Hagy Allen of Brentwood, California, whose main purpose in coming here was to see her daughter, Barbara, an active member of Kappa chapter.

St. Paul alumnae turned out in good numbers for the Founders Day gathering at the chapter house in lieu of a November meeting. This served as the first formal presentation of the pledges and from the clever program they put on we are expecting great things from this year's class.

Our December meeting had a Christmas motif, largely carried out by assembling gifts and contributions of money to provide a real Christmas for some family.

The merry little game of keeping the treasury sufficiently supplied to meet our obligations goes on, but we favor old tried and true methods rather than attempting any really spectacular. There is a campaign on now for the solid foundation of paid-up local memberships. The logic of this is obvious.

Our president this year is Frances Ellison who takes time out of her scant leisure from her main interest in selling lingerie for a leading store to direct our activities. The wit, humor and resourcefulness that serve her so well "on the job" carry over to chapter affairs.

Myrta (Mrs. D. S.) Simpson is chairman of the creative writing section of the St. Paul College Women's Club.

Gertrude (Mrs. G. N.) Ruhberg had three drawings hung at the Twin City Artists Exhibition in the Minneapolis Art Institute this fall.

KATHERINE S. SULLIVAN

Engagements

Elizabeth Ann Christofferson to H. Robert Diercks.

Linda Cook to Gordon Burklund, Buffalo, Minnesota, Delta Upsilon, University of Minnesota.

Seattle

Seattle Alumnae Founders Day gathering was at the chapter house with the alumnae hostesses to the actives at a buffet dinner. Mary Newlands Isaacson was in charge. The pledges introduced themselves after dinner by means of a clever fashion show illustrating what the tastefully dressed college girl wears to various college functions. Each girl was

described by a witty poem. Helen Carpenter Gorrill gave a talk in appreciation of our founders and their ideals. About 125 alumnae were present.

Our big project for the year was our Fair in December. We worked in units all Fall sewing and painting and otherwise preparing the results of our brilliant ideas for tempting the discriminating Christmas shopper. When the big day arrived, we had an impressive display of table linens, doll clothes, little girls' pinafores and dresses, children's peasant chairs, book-ends, aprons, stuffed animals and dolls, Christmas decorations, and a delicatessen with everything from fudge to cream puffs made by the sisters.

We served tea to the customers all afternoon and climaxed the affair with a dance in the evening. The results seemed to be highly satisfactory. Laurien Winn Willcox was in charge and deserves a medal or two for her efforts.

Our December alumnae meeting was held at the chapter house in the form of a dessert party to which we invited guests. Prof. Blankenship of the English department at the University of Washington gave an interesting talk on his personal views of the place fraternities and sororities have and should have on the campus of a large university. His best suggestion was the building up of really fine libraries within the houses, both as a matter of training and education and of convenience to the students.

DOROTHY LISTER

Marriages

Marjorie Hoag to John Emery.

Fay Meggee to James Roy Dailey.

Sioux City, Iowa

In this first CRESCENT message since receiving our charter the Sioux City alumnae group is happy to report that we number approximately twelve, that we have as our immediate aim the assisting of active chapters in Iowa with rushing, and that we enjoy meeting together the first Monday of each month. Our officers are as follows: Louise Perkins, Gamma, president; Kathleen Boas Mallory, Gamma, vice-president; Marion Allen Huff, Rho, treasurer; Kathryn Squier, Epsilon, publicity chairman; Dorothy Haley, Omega, recording and corresponding secretary.

On December 22, in Trinity Lutheran Church, Miss Haley became the bride of Mr. Paul Snyder. They will live at 617 18th Street in Sioux City.

PAULINE MEYER JONES, *Gamma*

Spokane

The Spokane chapter has been sailing full speed ahead since last September when we held our opening meeting for this

year. After contributing as much help as we could in rushing for our surrounding active chapters, we placed our efforts on completing our Doll House. Due to the originality and capable work of Harriet Hopkins and her committee, we are proud of our finished house which we had on display in Tull and Gibbs Store window. We sold chances on it late in December.

Among our philanthropic works, we sponsored a silver tea at the Washington Children's Home. Virginia Lee Coffin was chairman of this affair. From the proceeds of this tea, we were able to buy the home four dozen linen napkins, a table lamp, and a year's subscription to a magazine.

Another both socially and financially successful event was the Thanksgiving Dance which was held in the Italian Gardens of the Davenport Hotel.

We were sorry to lose one of our active members to the Coeur d'Alene, Idaho alumnae group. Mrs. William Olson (Julia Hunter, Xi) moved to the lake city. We, however, are happy to welcome two new members; Mrs. Howard Edwards (Kay Sheldon, Chi), and Mrs. Carl Lawson (Betty Ludington, Lambda).

MARCELLA GERAGHTY

Marriages

Miss Katherine West, Xi, to Mr. Ora Thompson in November.

Miss Dorothy Simmons, Xi, to Mr. R. C. Nutting in November.

Birth

To Mr. and Mrs. D. A. Turner (Carol Carman, Alpha Gamma), a daughter, on October 9, 1939.

Springfield

Fall activities for Springfield alumnae began in October when Ruth and Margaret Patterson entertained in their home. Rosemary Sundberg gave a thrilling account of her trip to Hawaii this summer. Mary Clauer and Lenore Ulery headed a committee in charge of a rummage sale in October. This helped to increase the treasury balance. At the November meeting in the home of Frances Johnson, plans were made for a 50-50 barn dance to make some money for our treasury. This dance was held December 1 at Folck's barn with a square dance band and a "caller" keeping all in step. It was well attended and everyone had a grand time "swinging his partner."

Our group has introduced "bank night" at its meetings to invite larger attendance. Half of this "kitty" goes to the lucky girl and half to the treasury. Another new activity this year is the alumnae bowling team which meets once a week and has Ruth Patterson for chairman.

In November the alumnae met with Alpha Nu at the Springfield Country Club for Founders Day banquet. After several toasts the pledges entertained the group with several "skits."

We were pleased to have Mrs. Stuart Fox, Province II director, at our December meeting, when we gathered at the sorority house with Alpha Nu actives and pledges as our guests. After a buffet supper a social get-together helped alumnae and actives to get better acquainted.

MARY ELLEN LOHNES, *Alpha Nu*

Marriages

Ruth Timmerman, Alpha Nu, to Mr. Tom Jones on September 18, 1939.

Maxine Rhoades, Alpha Nu, to Mr. Norman McGregor, on October 21, 1939.

Births

To Mr. and Mrs. Charles Crabill (Katherine Deaton, Alpha Nu), a daughter, in November.

To Mr. and Mrs. H. A. McFadden (Dorothy Beelman, Alpha Nu), a daughter, Jane Lynn, December 1, 1939.

To Mr. and Mrs. John McGregor (Jane Morrett, Alpha Nu), a daughter, Susan, December 2, 1939.

Syracuse

Syracuse Alumnae held the Founders Day supper at the chapter house with 115 actives and alumnae attending.

Frances Gowing, grandniece of the Chancellor and Mrs. Graham of Syracuse University and daughter of a Gamma Phi was master of ceremonies.

Marjorie McClure sang a solo accompanied by Catherine Fisher on the harp.

Dorothy and Helen Groner sang a duet. Janet McKain gave a reading.

Catherine Fisher rendered a harp selection.

Sally Rowe imitated an English woman returning to England after a visit to America.

Camp movies were shown and Gamma Phi songs were sung.

Mrs. Roy Pinkerton was both a welcomed and delightful guest of the chapter for the Founders Day celebration.

The Syracuse alumnae chapter held a successful covered dish supper and meeting at the home of Barbara Blanchard in December. About 50 alumnae were present and the program, which was in charge of Dorothy Acheson, Barbara Blanchard, and Jane Snyder Hubbard was well received. After the business meeting interesting games were played with small prizes going to the winners.

We have found that the covered dish supper meetings attract both the younger and older alumnae.

Several of our alumnae are prominent in

Syracuse activities. Mrs. Huntington B. Crouse was named to the board of trustees of Syracuse University on November 11. She will fill the vacancy created by the death of the late Mrs. Eloise Holden Nottingham. Mrs. Dorothy Olmsted Hommel, Alpha '25 is vice-chairman of the U.S. section of the Women's International League for Peace and Freedom. "What the W.I.L. is Doing in Europe" is the subject of one of her recent talks.

Miss Dorothy Foster, ex-'18, is president of the Commonweal Club of Syracuse and Dorothy Frisbie, '22 is secretary. The club's special interest is the Dunbar Center Nursery for Negro children.

MARIE LATTERNER PERSSE

Marriages

Grace Simpson, '38, to Charles M. Ellison, '38, Syracuse University on June 17.

Mary Elizabeth Rowe of Baltimore, Maryland, '35, to Kendrick Brown on September 2. They are living in Washington, D.C.

Nathalie Kyser, '32, to J. Ross Paltz on September 30.

Catherine Bartels, '31, to Franklin Witmer on December 2.

Births

Mr. and Mrs. Forrest Witmeyer (Annette Hastings), a daughter, August 29.

Mr. and Mrs. Hubert Stratton (Margaret Monro), a daughter, October 12.

Mr. and Mrs. Carroll Smith (Lois Cobb), a son, in October.

HERE'S WHERE YOU'LL MEET THE IMPORTANT MEN AND WOMEN YOU READ ABOUT

When you plan to visit New York, come to Beekman Tower, for invariably you will find several of the world's most successful men and women . . . most of them make this smart, convenient hotel their New York home.

DAILY from \$2.50
Special Weekly Rates



BEEKMAN TOWER HOTEL

3 MITCHELL PLACE
49th Street overlooking East River
NEW YORK

New York Headquarters of the
National Panhellenic Fraternities

Mr. and Mrs. Robert Baldwin (Elizabeth Thompson), a son, September 25.

Mr. and Mrs. William Perse (Marie Latterner), a son, September 28.

In Memoriam

Mrs. Bessie Cowles Gibson, Alpha '95, died on September 14, 1939 following an illness of several months. A woman of lovable character and high ideals, she had many friends who mourn her passing. She ever held in sweet memory her college associations, especially those of Gamma Phi, her sorority.

Mrs. Myrtle Stone McNeil, Alpha '03, died November 13 in Oxford, New York, after a life devoted to the civic and social affairs of that community. Those whose lives touched Myrtle McNeils' were stimulated by her vivid personality and alert and superior mind and many remain to mourn her death.

Topeka

Founders Day banquet was held at the University of Kansas, Sigma chapter house, Lawrence, Kansas, during homecoming week at the university. The Topeka alumnae decided to celebrate Founders Day with the Sigma chapter and drove to the university for the occasion.

Listen and you shall hear . . . 1940 . . . Topeka, Kansas, Gamma Phi alumnae chapter.

Clarice Sloan, Sigma, president, in December, guest soloist at the 25th Annual Musical, Trinity Church. Clarice is taking advanced work in piano and voice which will lead to her Master's Degree, University of Kansas.

Carolyn Crosby, Alpha Mu; and Christine Schermerhorn Munns, Sigma, elected in November, provisional members of Junior League. Grace Vaniman Russel, Sigma, Junior League, 1937.

Florence Fink Taggart, Theta, successful ticket chairman of Women's Committee, Topeka Symphony Society, active in the Cubs of the Girls Scouts.

Edith Senner Dickinson, Sigma, elected in November, Secretary of the Women's Panhellenic Association of Topeka, and was one of the Committee sponsoring the annual Panhellenic Bridge Benefit party.

Edith Earle Kellam, Mu, entertained us in November with motion pictures of her five months South American trip; most beautiful scenery and unusual views.

Our rumage sale in October . . . with proceeds we bought a new rug, and decorated the president's room, Sigma chapter.

Cleta Johnson Voiland, Sigma, active in the Topeka Woman's Club, and with her private class of pre-school and young pupils in instrumental music and recitals.

Life magazine pictorial, December 11, 1939. Gamma Phi Beta Stunt Night.

ALTA M. LUX, *Sigma*

Toronto

The Founders Day banquet of Alpha Alpha was held at the University Women's Club. This was the Toronto chapter's 20th Anniversary and we were very fortunate in having present 11 of the 25 charter members. Eileen Harris, president of our Alumnae chapter, presided and the evening was gay with Gamma Phi songs and speeches from each charter member. There were 59 present when the banquet closed.

Members of Alpha Alpha chapter are very excited over their new house. This is the first year they have been allowed to have a house, previously they have always had an apartment. Many hours were spent arranging and re-arranging the rooms until the desired effect was obtained.

It is conveniently located near the campus and there are six graduates living in it. Regular luncheons are held once a week for the active chapter and for alumnae who are able to attend. All fall open house was held every Saturday afternoon after the rugby game.

Rushing takes place in January and we are deep in plans for a series of gay parties. We feel confident that we will be more successful than ever this year.

The proceeds of our annual Subscription Dance were donated to the Red Cross. Many of the girls are actively engaged in various forms of war work aside from the work being done by the chapter as a whole. Gamma Phis throughout Canada are anxious to contribute their small share in this time of stress.

IRIS BULL

Marriages

Margaret Loomis, Alpha Tau, to W. H. Allport on May 17.

Doris Shiell, Alpha Alpha, to Charles H. Stacey, August 26.

Mary Simpson, Alpha Alpha, to Sydney Stevenson on October 7.

Carolyn Tucker, Alpha Alpha, to Byron Rich on October 14.

Marion Wallace, Alpha Alpha, to Philip C. Davidson on November 6; now living in Chicago.

Gwen Fleury, Alpha Alpha, to Reginald Bennett Jull, Montreal, November 4.

Mary Westbye, Alpha Alpha, to Wilmot B. Gordon, Peterboro, November 4.

Christine Copus, Alpha Alpha, to J. A. Norabell in September.

Leslie Somerville, Alpha Alpha, to Jack Moeser, July 28.

Jean MacKechnie, Alpha Alpha, to Jasper Moore, November 4.

Olive Snider, Alpha Alpha, to Nelson Joseph Rogers, September 18.

Leone Harris, Alpha Alpha, to W. R. B. Humphris on November 15.

Maxine Gillis, Alpha Alpha, to John Baird on October 7.

Jean Armstrong, Alpha Alpha, to Wilf Caulfield, on October 7 at Iroquois.

Births

To Dr. and Mrs. Robert Appleford (Edith Dowler), on October 30, a son.

To Mr. and Mrs. Hugh Wilson (Eleanor Wallace), on October 28, a son.

To Mr. and Mrs. Reg Jackson (Margaret Dods), on October 23, a daughter.

To Dr. and Mrs. Garnett Dixon (Elizabeth Stewart), on November 2, a son.

To Mr. and Mrs. Clarke Locke (Nora Henry), on December 2, a son.

Tri-City

Davenport, Iowa, Rock Island, Ill., and Moline, Ill.

Our Christmas tea, for all actives, pledges, and mothers of alumnae, actives, and pledges was in charge of the following committee: Janice Howes, chairman; Virginia Voss, Virginia Howell, Mim Naeckel, and Betty Lafferty.

Tri-City alumnae who motored to Iowa City for the Founders Day banquet were: Mrs. Carson, Virginia Burt, Jeanette Lee, Edna Gord, Betty Lafferty, and Lorraine McDowell. Mrs. Carson was the guest speaker of the evening, her subject being "All This and Heaven Too." (The banquet theme was carried out with titles of current fiction.) Locally Founders Day was observed at our regular meeting in November. Edna Gord, state chairman for Founders Day, arranged celebration of the day in various cities throughout the state.

We welcome into our group Helen McElhiney Jasper, Omicron '20, and bid goodbye to Mervyl Paul, whose husband has been transferred to Peoria, Illinois.

We are very proud to have the following Tri-City girls pledge Gamma Phi Beta: Mary Schmidt, Omega, Shirley Bieg, Rho, Jacqueline Goss, Rho, Margaret Foley, Epsilon, Eloise Pratt, Gamma.

Gamma Phis have been prominent in local activities—Virginia Burt was co-chairman of the Panhellenic dance held in November. This dance and a benefit bridge are annual affairs sponsored by the Association to raise money for the scholarship fund. Gamma Phi Beta was instrumental in local Panhellenic becoming affiliated with National Panhellenic Association.

Mim Naeckel, Irene Brubaker, and Virginia Burt were models in the style show sponsored by the Junior Board of the Visiting Nurses Association. Others active on Junior Board are Ilo Brown, Virginia Hanssen, and Edna Gord. Gretchen Desylvia was president of the Rock Island Junior Service League for the past year.

Ilo Brown was a captain in the recent Symphony drive.

Virginia Burt was a district chairman for the annual Red Cross roll call.

All in all we feel that we accomplished

a great deal during 1939, and already the year 1940 holds promise of even better things.

JEAN ORENDORFF BERNEY, *Rho*

Marriages

On July 20, 1939, Edith Vanderzyl Spradling, *Rho '30*, to Mr. Thomas Harris. Mr. and Mrs. Harris are at home in Burlington, Iowa.

On October 21, 1939, Elaine Cutler, *Omega*, to Mr. Dwight Bovey. Mr. and Mrs. Bovey are at home in Des Moines, Iowa.

On November 25, 1939, at Iowa City, Iowa, Virginia Mapes, *Rho '37*, to Mr. Bertel Roseberg. Mrs. Roseberg, a Spanish instructor in the Davenport High School, will continue teaching until the close of the present semester. Mr. Roseberg is enrolled in the College of Medicine at the University of Iowa.

Birth

To Dr. and Mrs. James Berney (Jean Orendorff, *Rho '37*), on August 17, 1939, a daughter, Carol Ann.

Deaths

Sympathy is extended to Margaret Decker and Irene Blackman Brubaker, whose fathers recently passed away.

Tucson

Active and alumnae members of Alpha Epsilon celebrated Founders Day with a formal banquet at the Pioneer Hotel.

Mrs. Fred Nave, Mrs. Clarence Falk, Miss Grace Eaton and Miss Wilma Kautz were in charge of arrangements for the banquet.

Entertainment consisted of short talks by Mrs. E. G. Bofferding, representing the alumnae group and Miss Mary Ward, representing the active chapter.

Mildred Wood, Charlotte Quint and Jean Tetreau, Gamma Phi Beta trio, sang a group of sorority songs.

Members of the building corporation, under the chairmanship of Minnie Mae Baldwin, spent a busy summer redecorating the chapter house and furnishing the guest room.

The committee felt well repaid for their efforts when the actives pledged eighteen outstanding girls at the close of fall rush-ing.

At the opening fall meeting held at the home of Clarissa Linton, Grace Sandon Archer (Mrs. C. M.) was elected as president to replace Marion Armer, who has moved to Prescott, Arizona.

In October, alumnae members honored the pledges with a picnic supper held in the patio of the home of Minnie Mae Baldwin. Pledge ribbons had just been pinned on one of the outstanding girls of the freshman class, Charlotte Quint.

In November our members attended a

lovely banquet held at the Pioneer Hotel in honor of Founders Day.

The Hostess Committee for December, headed by Clara Brown sponsored a Christmas party held at the home of the president, Grace Sandon Archer. Bridge and other games were played.

The president and her executive committee are inaugurating a new plan of holding separate board meetings in an endeavor to make the regular meetings more sociable and interesting.

Mrs. William Rawn was honored at a buffet supper in the sorority house to which alumnae members and the Mother's Club were invited during her visit in early November. Alumnae members also entertained Mrs. Rawn at a Spanish luncheon.

We are all proud of our very active Mother's Club. The club, headed by Mrs. J. P. Wood, meets at the homes of members for monthly luncheon meetings. They recently served over 250 plates at their annual Spanish dinner. The proceeds will be used to further their project of furnishing the town girl's room and for other useful things. The past summer the mothers added a new carpet and a number of other new furnishings to the town girl's room.

The Mother's Club and our alumnae chapter followed their annual custom of presenting the chapter house with Christmas gifts. The gift from the Mothers was a floor lamp. Two large silver sandwich trays and a nut bowl were presented by the alumnae group.

Personals

Ruth Rodee and Frances Davis spent an interesting three months aboard a freighter last summer visiting Japan, China and the Philippines. While in Shanghai they were guests of Pat Cashion Moller, '33. They also visited Jean Holderness in Manila.

Wanda Browning Falk was elected president of the Tucson Senior Woman's Club last fall to replace Mrs. Kirt Hart who resigned on account of illness.

Margaret Pearson, '39, is now taking a post-graduate course at the University of Arizona.

Grace Eaton, '39, is Assistant at the University of Arizona Museum.

Imogen Richey is teaching at the Safford Junior High School.

Gertrude Dossenbach, '39, is employed at KVOA radio broadcasting station.

Genevieve Hagan is playground supervisor of University Heights and Miles School. Last year she was high score girl, winning two cups for the best qualification as a leader in sports and for high point in sports.

ERDEAN T. PATTERSON

Marriages

Frances Davis on October 7 to Mr.

Charles Heflin, Sigma Alpha Epsilon, (U.C.L.A.).

Jean Holderness on August 3 to Lieutenant A. C. Miller, at home at Fort McKinley near Manila.

Mary Alice Alberthal, '35, on June 17, to Mr. Owen Watkins Prescott.

Elsie Lee Collier, '38, on September 23, to Mr. Lee Smith.

Marjorie Compton on September 11, to Mr. Sharp.

Eleanor Marquam, Omicron, to Mr. E. G. Bofferding, in August.

Beatrice Tetreau, '39, on October 29, to Hans Schou, '34, Michigan College of Mining Technology.

Dorothy Attaway Vialo, to Mr. William Maddock, in August.

Mary Lou Jordon on December 23, to Mr. Robert Smith.

Births

To Mr. and Mrs. Edwin J. Simonich, a daughter, Cecelia Anne, on July 13.

To Mr. and Mrs. H. A. Duwe, a son, Steven Arthur, on July 25.

To Mr. and Mrs. L. W. Roberson, a daughter, Sally Lee, on September 23.

To Lois Gates Mickle and husband, a son, on October 1, in Phoenix.

Tulsa

The Tulsa Alumnae chapter held its Founders Day luncheon at the Junior League tea room. The luncheon chairman was Louise Hanks and the toastmistress was Betty Payne. There were twenty-nine present and many old friends enjoyed a good chat, a good lunch, and a general good get-together. Old and new songs were sung and we had several interesting talks on building Gamma Phi Beta in Oklahoma.

Vancouver

Since our last letter a war has broken out and once more our Canadian sisters are involved in a whirlwind of war work. Although Vancouver may seem removed from the theater of war yet it is very real. A battalion of our young men is leaving soon for overseas and boys in the airforce are called anytime. For these Vancouver women are knitting, sewing and partying and Gamma Phis are doing their utmost to help.

Although the Alumnae Chapter has not officially attached itself to any definite war-work organization, the majority of the girls have individually joined such organizations as the I.O.D.E., the Red Cross Society, and various Women's Auxiliaries of the regiments.

Because of the war our functions so far this year have been of a more or less subdued nature. Despite this, our Founders Day banquet, though informal, was a decided success. Some 60 of the girls enjoyed a delightful dinner, arranged by Myrtle

Beatty, at the Dolphin Tea House. This annual dinner is a great reunion and the Gamma Phis make an effort to attend it.

Our informal dance for the pledges in November was also a marked success, perhaps one reason being our splendid pledges. Our Christmas party for both alumnae and actives was held again this year during Christmas week. We also had a Christmas party with a tree and presents for the children who were at the Boundary Bay Underprivileged Camp last summer.

Most Gamma Phis have been staying close to home but one has left for eastern Canada and a new position. Helen Trites has been transferred to Canadian Broadcasting Corporation's headquarters in Toronto where her radio work is even more interesting than in Vancouver.

At our alumnae meetings we have inaugurated a new idea of having prominent people speak on interesting, relative subjects. The first speaker, Miss Isobel Harvey, is the most prominent woman in social work in Vancouver and her tangy talk full of anecdotes was most interesting to the girls.

Marriages

On November 17, Elsie Stangland (Arts '38), to Rann Matthison (Phi Delta Theta).

On November 24, Marjorie Hill (Arts '37), to Edgar Armstrong (Phi Kappa Sigma).

Birth

On November 12, to Mr. and Mrs. Oenulf Aune (Luella Stangland), a son.
SHIRLEY LYNN

Westchester

Westchester Alumnae met for a Founders Day luncheon at the home of Aileen Tredwell in Bronxville, New York, with 26 Gamma Phis present. Lillian Thompson discussed the type of charitable activity of other national Greek letter sororities and reviewed for us the work of Gamma Phi Beta.

It seems like yesterday when I sat out in my garden on a broiling August day to write the last letter from Westchester. Since then we have had three luncheon meetings. The first, in October was at the home of our president, Grace Carroll in White Plains. We had a delightful time comparing notes on the summer and preparing plans for our year's activities.

Our next meeting was a lovely luncheon in November which was our Founders Day celebration. This was at the home of Aileen Tredwell in Bronxville, with a record attendance of 26 Gamma Phis present. Lillian Thompson talked about the various national charitable activities of other sororities and it was interesting to discover what wonderful things Greek letter women are doing and what a variety of activities they are engaged in throughout this country. This stimulated our interest in Gamma Phi's own enterprises

and made us proud of the work which Westchester alone has been doing this past year for the camp of the Westchester County Children's Association of which I wrote in my last letter.

Our third meeting was a Mexican luncheon at Helen Chapin's in New Rochelle. We were served many hot and tasty dishes and then tried to check them with the long Mexican names on our menus. It was a gay party and we started off by singing "South of the Border" to put us in the mood.

We miss one of our formerly active members. Bertha Harker, who has moved to Seattle but we are happy in having several new members in our chapter who have recently moved to Westchester.

ELIZABETH M. BIGELOW

Washington, D.C.

This fall sped by filled with many different and exciting days for the Washington group. After a rushing party for the girls going to William and Mary, Wisconsin, Northwestern, Texas, and many other colleges we settled down to individual projects that each member is carrying on for her convention fund pledge. As Convention time draws closer we work more furiously, each one on a committee besides working on her own individual project.

Alice Fitzgerald arrived in Washington and visited with us for a few days and we were happy to have her present for a monthly meeting. It is always inspiring to have the presence of the national officers and not only did we have Alice but after the meeting at White Sulphur we were able to entertain Lois Dehn and Airdrie Pinkerton at our Founders Day banquet. Founders Day should be an important event on the calendar of Gamma Phi, but this year will always remain an unusually important one for Washington. Ruamie Binns was here at the same time to give us news of the province and all thoughts ran to convention.

Not every event has been official business for Constance Etz's wedding brightened the social horizon. We are to lose her in the near future but other Gamma Phis will gain a valuable friend.

Elma Dulaney, Washington's ace publicity hound, has not enough to keep her busy so she now is owner of the Book and Gift Shop in the Shoreham Hotel. It is a charming place and so enticing that Gamma Phis in Washington, I vouch, will be the best read sisters above any. Do I hear challenges? But at least conventionites can see for themselves and if I know Elma, there will be a surprise at convention time.

Barbara Richmond—a real "nugget" from Randolph-Macon—is studying at the University of Maryland now and has inspired the alumnae group in Washington for now we have an *active* to foster.

Just after the December meeting we were shocked by the news of the sudden death of the father of Edna Buhrer. A deep warm spot is in everyone's heart for Edna and we suffered greatly with her.

When this letter is printed the holidays will be past but a greater holiday with enormous festivities looms ahead. When? Why, June!

Until then—

FRANCES A. IDE, *Zeta*

Wichita

Wichita gathered in the Colonial Room at Innes Tea Room for a dinner in charge of Elizabeth Apel, and Lucille Hildinger, founders of Sigma. Jean Clow was in charge of the program.

Sixteen attended representing seven chapters.

Out-of-town Gamma Phis attending were: Marion LeSeur Finchum and Laura Harkrader Campbell of Pratt. Marion was the first pledge of Sigma.

A short history of the sorority and "Fourteen Points for a Good Alumnae" were read. Following this "Professor Quiz" propounded questions on Gamma Phi subjects.

The final rush party of the season was a formal dinner held in the Crystal Room of the Allis Hotel. Louise Ryan and Reene Kiskadden were in charge. Out of town Gamma Phis attending were Ruth Limbird Walker and Lois Robinson Barrett of Anthony. Mary Eleanor Haskins Schumacker, Lillian Thiessen of Hutchinson; Betty Van de Venter of Wellington.

We are happy to announce the pledging of Mickey Mulconnery at the University of Washington. Mickey is one of Wichita's outstanding younger girls.

Jerry Lansdowne Rathbone was in charge of reservations for the annual Panhellenic dinner and book review held at Innes Tea Room in October.

The regular October meeting was in the home of our president Ruth Rhodes Hay.

Louise Ryan was chairman of our annual rummage sale in December.

We welcome the return to Wichita of Ruth Brandt Rothrock.

We are anticipating the arrival in the near future of Norma Pyle Bullene with her husband and children from Lawrence.

George and Rachel Spradling won the honors in the hound group at the Licensed Show of the American Kennel Club held in Wichita in September, with their dachshund, Faust of Blue Key.

Louise Little Ryan is busy pulling strings in a series of marionette shows which the Junior League is sponsoring.

Florence and Arthur Wolf and Merle and Bill Kahrs enjoyed a trip to Hot Springs, Arkansas. Merle has been active this fall in her capacity as vice-president of the Wichita Association of Attorney's wives.

The Christmas party was a dinner meet-

ing in the home of Mable Neal Fortier (Psi). Turkey and trimmings was served from a gaily decorated table. Following the business meeting "White Elephant" gifts were exchanged and the traditional fruit came into the possession of another happy (?) owner.

Rummage was collected for the sale which took place the following morning. The usual success attended the enterprise.

Alpha Chi Omega Alumnae Chapter entertained on Saturday, October 28, at the Wichita Country Club with a formal tea honoring their new International President, Ruth Winsor (Mrs. Carl). Ruth is a very popular Wichita woman and all local Panhellenic members are happy over her election and wish her success.

We extend congratulations to Marjory Chopin McCormick and husband, Bob, on the arrival of their son on December 6, at St. Francis Hospital.

MILDRED RULE OLSON

Winnipeg

The Winnipeg banquet was held in the Fort Garry Hotel and approximately 80 members attended. Our chairman was Allison Chown, Tim Hutchins proposed the toast to our alma mater, Eleanor Riley proposed the toast to Gamma Phi Beta and Sheila O'Grady replied. Of course, the speech of the evening was Mrs. Sand's and it was, as always interesting and helpful. Lorna Duval thanked Mrs. Sand for her speech.

Our 21 new pledges gave a very amusing skit entitled "Careers for Women" and the neophytes sang songs.

The first meeting of the Winnipeg Alumnae Chapter took place at the home of Margaret Aldous in October.

After a buffet dinner prepared by the years '27 and '37 we discussed our plans for the coming year. We were interested to hear that the Gamma Phi Beta scholarship was won by Marjorie Gilford, a non-sorority girl in third year home economics. We decided that we would plan to have another theater party night at the John Holden players to raise the money for this year's scholarship.

Our contribution to rushing this year was an evening party at the home of Betty Taylor. We had a Milk Bar and moving pictures were shown to the rushees of last year's graduation in color. These pictures were interesting and amusing and were run off by Barbara Sellers on her projector.

We are proud of our alumnae member Mary Lile Benham who won third honorable mention for her children's play "Pussycat Where Have You Been" in the competition for all the Associations of the Junior League.

Two of our most prominent members, Barbara Tarr and Kay Halls have left for the East.

MARY WREN

Gamma Phi Beta Directory

FOUNDERS

HELEN M. DODGE (Mrs. J. V. Ferguson)	Died 10-21-37
FRANCES E. HAVEN (Mrs. C. M. Moss)	Died 6-16-37
E. ADELINE CURTIS (Mrs. Frank Curtis)	Died 1-14-23
MARY A. BINGHAM (Mrs. Edward S. Willoughby)	Died 1-14-16

FOUNDED

November 11, 1874, Syracuse University

GRAND COUNCIL

(Address below name)

Grand President	MRS. WILLIAM DEHN
	2010 E. 50th St., Seattle, Wash.
Vice-president and Alumnae Secretary	MRS. G. M. SIMONSON
	20 Lorita Ave., Piedmont, Calif.
Treasurer	MISS ALICE CAMERER
	The Wardell, 15 Kirby East, Detroit, Mich.
Chairman of Inspection	MRS. JOSEPH H. WEINER
	1109½ Glenville Dr., Los Angeles, Calif.
National Panhellenic Delegate	MRS. HAROLD HARTMAN
	4408 Beach Dr., Seattle, Wash.
Chairman of Expansion	MRS. R. E. FITZGERALD
	1761 Church St., Wauwatosa, Wis.
Chairman of Finance Statistical Bureau	MRS. GEORGE R. KEITH
	Box 697-A, Los Altos, Calif.
Executive Secretary	MRS. L. A. WHITE
	Suite 1216, 55 E. Washington St., Chicago, Ill.

Councilor	MRS. ARTHUR C. HOFFMAN
	5035 Aldrich Ave. S., Minneapolis, Minn.
Historian	MRS. R. E. FITZGERALD
	1761 Church St., Wauwatosa, Wis.
Parliamentarian	MRS. WM. E. COLBY
	2901 Channing Way, Berkeley, Calif.
Central Office of Gamma Phi Beta	Suite 1216, 55 E. Washington St., Chicago, Ill.
Executive Secretary	MRS. L. A. WHITE
Assistants	MISS SUZANNE MAURER
	MISS JANE STRONG

THE CRESCENT

Editor-in-chief	MRS. ROY PINKERTON, Box 341, R.R. 1, Ventura, Calif.
Associate Editor	MRS. O. F. STAFFORD, 1289 E. 15th St., Eugene, Ore.
Associate Editor and Business Manager	MRS. L. A. WHITE, Room 1216, 55 E. Washington St., Chicago, Ill.
Editor Emeritus	MISS LINDSEY BARBEE, 1407 E. 10th Ave., Denver, Colo.
Office	Send all contributions to Mrs. Pinkerton. Send name and address changes to Central Office.
	Alumnae are requested to send all personal items (marriages, etc.) to their Greek-letter or alumnae chapters.

ENDOWMENT-CRESCENT BOARD

President:	MRS. FLOYD TREAT, Kappa, 6450 N. Albany Ave., Chicago, Ill.
Vice-president:	MISS MARJORIE ETNYRE, Gamma, 5557 Kenwood Ave., Chicago, Ill.
Secretary:	MISS HELEN NORTHROP, Epsilon, 1212 Lake Shore Dr., Chicago, Ill.
Treasurer:	MISS MARION BEBB, Omicron, 903 Hinman Ave., Evanston, Ill.
	MISS ALICE CAMERER, Rho, The Wardell, 15 Kirby East, Detroit, Mich. (ex-officio)
	MRS. GEORGE R. KEITH, Lambda, Box 697-A, Los Altos, Calif. (ex-officio)
	MRS. WILLIAM DEHN, Lambda, 2010 E. 50th St., Seattle, Wash. (ex-officio)
Address all requests for application blanks and information about loans to	Miss Northrop

INTERNATIONAL STANDING COMMITTEES

Camp:	MRS. HUBERT HARDY, 2645 Asbury Ave., Evanston, Ill.
Ritual:	MRS. WALTER P. SHIEL, 3715 47th Pl. N.E., Seattle, Wash.
Education:	MRS. L. A. WHITE, Room 1216, 55 E. Washington St., Chicago, Ill.
Magazines:	MRS. J. F. HAGEMANN, 536 Michigan Ave., Evanston, Ill.

Please refer to the September 1939 CRESCENT for a complete directory of chapter officers and to subsequent issues for corrections.

Corrections received since December 1, 1939:

Philadelphia: MRS. VIRGINIA HILDRETH
210 Meeting House Lane, Merion, Pa.
Omaha: MRS. REX B. STRATTON
818 S. 37th Ave., Omaha, Neb.
Milwaukee: MRS. WALTER HANSEN
6128 N. Bay Ridge Ave., Milwaukee, Wis.
St. Paul: MISS FRANCES ELLISON
622 Grand Ave., St. Paul, Minn.
Fargo: MRS. VICTOR ANDERSON
523 10th St., S., Moorhead, Minn.
Ft. Collins: MRS. DEVERE DELANEY
718 Remington Ave., Ft. Collins, Colo.
Los Angeles: MRS. M. E. JACQUA
217 S. Fuller Ave., Los Angeles, Calif.
Tucson: MRS. C. M. ARCHER
527 N. Campbell Ave., Tucson, Ariz.
Austin: MISS FENORA MEYER
1711 Pearl St., Austin, Tex.

POPULAR PUBLIC SPEAKER

Mrs. Earl W. Cranston (Mildred Welch, University of Illinois, '21) spoke to the graduating girls of the San Bernardino, Calif., high school recently. Her husband, Prof. Cranston is a member of the faculty of the University of Redlands, Calif.

A graduate of the University of Illinois, she received her master's and doctor's degrees in Boston and taught for a time in China. Since her marriage she has found time, in addition to making a home and becoming the mother of three children, to serve a term as the first and only woman member of the Redlands city council. She is active in Y.W.C.A. work and in child-guidance in Redlands and is in demand as a public speaker.

Virginia G. Cavendish (Michigan '18) maintains a landscape architect's office in Hunting, W.Va., and is a member of the American Society of Landscape Architects.

Ruth Urie (Illinois '38) is a watch tester at the Elgin Watch Building at the New York World's Fair, handling the technical work of testing visitors' watches to the exact degree.

Marie Wurtenberger, Alpha Nu at Wittenberg College was one of three college students presented with a silver cup for four years outstanding participation in debate. She served her chapter as president in 1938-39 and her name will be put on the senior chain as the most valuable senior.

PROVINCE OFFICERS

PROVINCE I—*Director:* MRS. RUSSELL CALLOW, 314 Kent Rd., Bala Cynwyd, Pa.
Secretary: MISS RUTH WAGNER, 2926 Berkley Rd., Ardmore, Pa.
PROVINCE II—*Director:* MRS. STUART FOX, 730 Forest Ave., Wilmette, Ill.
Secretary: MRS. C. T. AKRE, 1923 Lincoln St., Evanston, Ill.
PROVINCE III—*Director:* MRS. M. H. LINSKOTT, 6143 Cherry St., Kansas City, Mo.
Secretary: MRS. R. T. LISTON, 339 Arthur St., Liberty, Mo.
PROVINCE IV—*Director:* MRS. R. A. SAND, 1122 7th St. S., Fargo, N.D.
Secretary: MISS BARBARA BIBOW, 1305 S. 8th St., Fargo, N.D.
PROVINCE V—*Director:* MRS. D. E. HODGES, 209 Edgemere Court, Oklahoma City, Okla.
Secretary: MRS. CAROL INNES, 1021 W. 20th St., Oklahoma City, Okla.
PROVINCE VI—*Director:* MRS. GORDON BURKE, 3852 23rd Ave. W., Vancouver, B.C.
Secretary: MISS FLORENCE BROWN, 7970 Oak St., Vancouver, B.C.
PROVINCE VII—*Director:* MRS. WM. L. RAWN, 1035 Georgina Ave., Santa Monica, Calif.
Secretary: MRS. S. E. WRIGHT, 8802 Rindge Ave., Venice, Calif.
PROVINCE VIII—*Director:* MRS. JAMES BINNS, 1251 Peachtree St. N.E., Atlanta, Ga.
Secretary: MRS. JACK MAY, 1430 Peachtree Dr. N.W., Atlanta, Ga.

NEW ALUMNÆ CHAPTERS:

Pasadena: MRS. JOSEPH R. JONES, 2745 Carlaris Rd., San Marino, Calif.
Palo Alto: MRS. E. L. CLARK, Box 216, Los Altos, Calif.

ALPHABETICAL LIST OF CHAPTERS

(With chapter house addresses)

Alpha (A) Syracuse University.....803 Walnut St., Syracuse, N.Y.
Beta (B) University of Michigan.....1520 S. University Ave., Ann Arbor, Mich.
Gamma (Γ) University of Wisconsin.....270 Langdon St., Madison, Wis.
Delta (Δ) Boston University.....131 Commonwealth Ave., Boston, Mass.
Epsilon (Ε) Northwestern University.....640 Emerson St., Evanston, Ill.
Zeta (Ζ) Goucher College.....3 W. 23rd St., Baltimore, Md.
Eta (Η) University of California.....2732 Channing Way, Berkeley, Calif.
Theta (Θ) University of Denver.....2280 S. Columbine St., Denver, Colo.
Iota (Ι) Barnard College.....Founded Nov. 4, 1901 (inactive 1915)
Kappa (Κ) University of Minnesota.....311 10th Ave. S.E., Minneapolis, Minn.
Lambda (Λ) University of Washington.....4529 17th St. N.E., Seattle, Wash.
Mu (Μ) Leland Stanford, Jr., University.....Box 1337, Stanford University, Calif.
Nu (Ν) University of Oregon.....1021 Hilyard St., Eugene, Ore.
Xi (Ξ) University of Idaho.....1038 Blake St., Moscow, Idaho
Omicron (Ο) University of Illinois.....1110 W. Nevada St., Urbana, Ill.
Pi (Π) University of Nebraska.....415 N. 16th St., Lincoln, Neb.
Rho (Ρ) University of Iowa.....328 N. Clinton St., Iowa City, Iowa
Sigma (Σ) University of Kansas.....1339 W. Campus Dr., Lawrence, Kan.
Tau (Τ) Colo. Agricultural College.....1405 S. College St., Ft. Collins, Colo.
Upsilon (Υ) Hollins College.....Founded June 1, 1916 (inactive 1929)
Phi (Φ) Washington University.....Woman's Bldg., Washington Univ., St. Louis, Mo.
Chi (Χ) Oregon State College.....238 S. 8th St., Corvallis, Ore.
Psi (Ψ) University of Oklahoma.....602 W. Boyd St., Norman, Okla.
Omega (Ω) Iowa State College.....318 Pearson St., Ames, Iowa
Alpha Alpha (Α Α) University of Toronto.....10 Harbord St., Toronto, Ont.
Alpha Beta (Α Β) University of North Dakota.....3300 University Ave., Grand Forks, N.D.
Alpha Gamma (Α Γ) University of Nevada.....710 Sierra St., Reno, Nev.
Alpha Delta (Α Δ) University of Missouri.....808 Richmond St., Columbia, Mo.
Alpha Epsilon (Α Ε) University of Arizona.....1535 E. 1st St., Tucson, Ariz.
Alpha Zeta (Α Ζ) University of Texas.....2610 Whitis Ave., Austin, Tex.
Alpha Eta (Α Η) Ohio Wesleyan University.....24 N. Franklin St., Delaware, Ohio
Alpha Theta (Α Θ) Vanderbilt University.....2417 Kensington Pl., Nashville, Tenn.
Alpha Iota (Α Ι) Univ. of Calif. (Southern Branch).....616 Hilgard St., W. Los Angeles, Calif.
Alpha Kappa (Α Κ) University of Manitoba.....2 Ruskin Row, Winnipeg, Man.
Alpha Lambda (Α Λ) University of British Columbia.....Univ. of B.C., Vancouver, B.C.
Alpha Mu (Α Μ) Rollins College.....570 Osceola Ave., Winter Park, Fla.
Alpha Nu (Α Ν) Wittenberg College.....628 Woodlawn Ave., Springfield, Ohio
Alpha Xi (Α Ξ) Southern Methodist Univ.....Box 317 S.M.U., Dallas, Tex.
Alpha Omicron (Α Ο) North Dakota State College.....1343 13th St. N., Fargo, N.D.
Alpha Pi (Α Π) Univ. of W.Va.....Founded April 19, 1930 (Inactive Sept. 1937)
Alpha Rho (Α Ρ) Birmingham-Southern College.....Birmingham-Southern Coll., Birmingham, Ala.
Alpha Sigma (Α Σ) Randolph-Macon Woman's College.....R.-M.W.C., Lynchburg, Va.
Alpha Tau (Α Τ) McGill University.....3601 University Ave., Montreal, P.Q.
Alpha Upsilon (Α Υ) Pa. State College.....Woman's Bldg., State College, Pa.
Alpha Phi (Α Φ) Colorado College.....38 W. Cache la Poudre St., Colo. Springs, Colo.
Alpha Chi (Α Χ) College of William and Mary.....Gamma Phi Beta House, Williamsburg, Va.
Alpha Psi (Α Ψ) Lake Forest College.....Lois Durand Hall, Lake Forest, Ill.
Alpha Omega (Α Ω) University of Western Ontario.....931 Richmond St., London, Ont.
Beta Alpha (Β Α) University of Southern California.....2715 Portland Ave., Los Angeles, Calif.

INSIGNIA PRICE LIST

1. Replace the misplaced badge.
2. Mail post card for Your Insignia Price List.

STATIONERY

Crested stationery is impressive. Club together for quantity orders to get 75c (or less) boxed stationery. Write for Free Samples.

INVITATIONS—PROGRAMS

Maintain your high social rating for parties. Select different and unique invitations and programs by Balfour. Write for Free Samples.

FAVORS AND LEATHER

Favor to fit your budget and put your party over. Leather is the thing this year. Write for Free Copy of the Blue Book.

FOR BETTER SERVICE

please give us full information:
(1) Quantity. (2) Kind of merchandise. (3) Idea for which to be used—such as party motif. (4) Quality. (5) Budget.

1940 BLUE BOOK

New and distinctive gifts and favors are brought to you in all their colorful appeal. Fine rings, lockets, bracelets, gifts, favors. Paste Coupon Below on penny post-card and mail to us today.

★ CLIP THIS COUPON ★

..... date

L. G. Balfour Company
Attleboro, Massachusetts

Gentlemen:

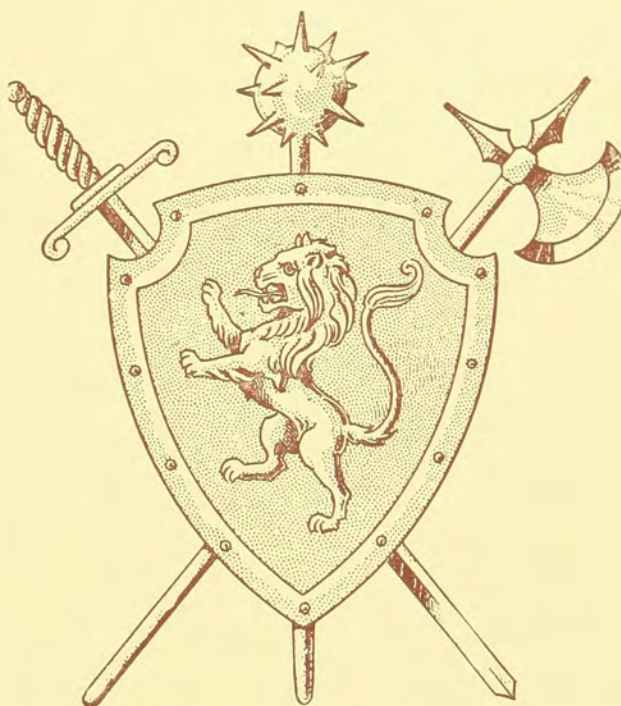
Please send me the following:

<input type="checkbox"/>	Badge Price List	Fraternity
<input type="checkbox"/>	Stationery Samples	
<input type="checkbox"/>	Invitation Samples	
<input type="checkbox"/>	Program Samples	
<input type="checkbox"/>	1940 BALFOUR BLUE BOOK	
<input type="checkbox"/>	Have a salesman call	

Name

No. Street

City-State



PROTECTION ANCIENT AND MODERN

The ancient shields hang on the walls of the old castles—symbolic of the protection given in bygone days.

Today protection is provided for those things which we hold dear, by constant vigilance and cooperation. Your insignia stands as the proud emblem of your membership in Gamma Phi Beta. In it has been built the symbolism of ideals exemplified in your initiation.

As your official jeweler, it is our privilege and duty to protect this insignia—first, by the maintenance of quality and price; and, second, to keep it from falling into hands of non-members.

During the dark days of 1918, we maintained insignia specifications and prices at great sacrifices. The price of gold zoomed, Government restrictions drastically curtailed supplies, taxes multiplied—and again today, we are faced with the same problem. Yet badge prices are lower now than twenty years ago.

Protection must be carried further in order to discourage indiscriminate manufacture of your insignia. You are urged to make purchases only through the channels set up by the officers whom you have selected.

BUY ONLY FROM YOUR OFFICIAL JEWELER

L. G. **BALFOUR**
COMPANY

ATTLEBORO, MASSACHUSETTS

In Canada . . . Write or visit your nearest BIRK'S store.

