

*The Crescent*  
*of*  
*Gamma Phi Beta*

Mar 11

*Freshman*  
*Number*





Volume XI

MARCH, 1911

No. 2

# THE CRESCENT OF GAMMA PHI BETA

A QUARTERLY MAGAZINE  
THE OFFICIAL ORGAN OF GAMMA PHI BETA

Published by  
GEO. BANTA, MENASHA, WIS.  
Official Publisher and Printer to Gamma Phi Beta  
LINDSEY BARBEE, Managing Editor  
Denver, Colorado

# GAMMA PHI BETA SORORITY

FOUNDED NOVEMBER 11, 1874

---

## Sorority Council

### EXECUTIVE BOARD.

PRESIDENT, . . . . . Miss Mabel E. Stone  
410 University Ave., Syracuse, N. Y.  
SECRETARY, . . . . . Miss Marion D. Dean  
78 Madison Avenue, Newtonville, Mass.  
TREASURER, . . . . . Mrs. O. Y. Harsen  
53 Arthur Street, Yonkers, N. Y.

### ADVISORY BOARD.

Mrs. Edward L. Shannon, . . . . . 1201 Race Street, Denver, Colo.  
Mrs. F. S. Baldwin, . . . . . West Allis, Wis.  
Miss Eleanor Sheldon, 110 Malcolm Avenue, S. E., Minneapolis, Minn.  
Mrs. Rachel V. Colby, . . . . . 2901 Channing Way, Berkeley, Cal.  
Mrs. Alice Smalley McKinney, . . 7104 Lowe Avenue, Chicago, Ill.

---

## Roll of Chapters

### GREEK LETTER CHAPTERS.

ALPHA . . . . . Syracuse University, Syracuse, N. Y.  
BETA . . . . . University of Michigan, Ann Arbor, Mich.  
GAMMA . . . . . University of Wisconsin, Madison, Wis.  
DELTA . . . . . Boston University, Boston, Mass.  
EPSILON . . . . . Northwestern University, Evanston, Ill.  
ZETA . . . . . Goucher College, Baltimore, Md.  
ETA . . . . . University of California, Berkeley, Cal.  
THETA . . . . . University of Denver, Denver, Col.  
IOTA . . . . . Barnard College, of Columbia University, New York City  
KAPPA . . . . . University of Minnesota, Minneapolis, Minn.  
LAMBDA . . . . . University of Washington, Seattle, Wash.  
MU . . . . . Leland Stanford, Jr., University, Cal.  
NU . . . . . University of Oregon, Eugene, Oregon  
XI . . . . . University of Idaho, Moscow, Idaho

### ALUMNAE CHAPTERS.

CHICAGO	MILWAUKEE
SYRACUSE	SAN FRANCISCO
BOSTON	DENVER
NEW YORK	MINNESOTA

# THE CRESCENT

## Editorial Board

### Managing Editor

LINDSEY BARBEE,  
Denver, Colorado.

### Alumnae Editor

BERTHA WHITE,  
Omaha, Neb.

### Associate Editors

ALPHA.	Edna Brand, 201 Euclid Ave., Syracuse, N. Y.
BETA.	Bessie Smurthwaite, Gamma Phi Beta House, Ann Arbor, Mich. ✓
GAMMA.	Marion Spencer, 428 Sterling Court, Madison, Wis. ✓
DELTA.	E. Celia Marshall, 71 Summer Street, Everett, Mass. ✓
EPSILON.	Zita Murphy, 1038 Byron Street, Chicago, Ill. ✓
ZETA.	Mathilda Omwake, Goucher College, Baltimore, Md. ✓
ETA.	Ora Emily Muir, 2616 Channing Way, Berkeley, Cal. ✓
THETA.	Eda Burkhalter, 4 Logan Street, Denver, Colo. ✓
IOTA.	Alice M. O'Gorman, 318 W. 108th Street, New York City, N. Y.
KAPPA.	Margaret Nachtrieb, 905 Sixth Street, S. E., Minneapolis, Minn. ✓
LAMBDA.	Lavina Wilson, 4524 17th Avenue, N. E., Seattle, Wash. ✓
MU.	Edith G. Engelhard, Box 776, Leland Stanford Jr., University, Cal. ✓
NU.	Florence Cleveland, Gamma Phi Beta House, Eugene, Oregon. ✓
XI.	Kahryn M. Smith, Moscow, Idaho. ✓
CHICAGO.	Mrs. Ernest Davidson, 1819 Orrington Avenue, Evanston, Ill.
SYRACUSE.	Mrs. Ernest I. Edgecomb, 708 University Ave., Syracuse, N. Y. ✓
BOSTON.	Marion E. West, 308 Highland Avenue, Wollaston, Mass. ✓
NEW YORK.	Sara Rome, 334 Schermerhorn Street, Brooklyn, N. Y. ✓
MILWAUKEE.	Mrs. Alfred Kieckhefer, 2325 Grand Avenue, Milwaukee, Wis. ✓
SAN FRANCISCO.	Alice Gardner Hoyt, 407 Fairmont Avenue, Oakland, Cal.
DENVER.	Mrs. W. F. Denious, 675 Humboldt Street, Denver, Colo. ✓
MINNESOTA.	Sara Morrow Preston, 49 North 15th Street, Minneapolis, Minn. ✓

### Secretary of National Pan Hellenic Association

Miss Marguerite B. Lake, Delta Gamma, Crannog, Forestville, Md.

### Gamma Phi Beta Delegate

LAURA HUTCHINS, Sheldon, Ill.

# CONTENTS

---

	PAGE
The Freshman Speaks For Herself . . . . .	105
Freshman Songs . . . . .	112
Freshman Honors . . . . .	116
Concerning the Freshmen . . . . .	118
The First Installation . . . . .	121
"When Clubs Are Trumps" . . . . .	123
Program of Theta's Annual Play . . . . .	124
"Rushing Scene" from Theta Play . . . . .	125
Editorials . . . . .	131
Announcements . . . . .	133
Chapter Letters . . . . .	134
Personals . . . . .	153
Births . . . . .	157
Engagements . . . . .	157
Marriages . . . . .	158
Deaths . . . . .	159
Our Contemporaries in Black and White . . . . .	160

## ILLUSTRATIONS

Groups of Gamma Phi Beta Freshmen:

Alpha, Beta, Upsilon, Eta, Theta,  
Kappa, Lambda, Mu, Nu, Xi.

Gamma Phi Beta Chapter Houses:

Alpha, Beta, Gamma, Theta,  
Lambda, Mu, Nu, Xi.

---

Entered as second class matter October 1, 1910, at the postoffice at Menasha, Wisconsin, under the act of March 3, 1879.

---

GEO. BANTA PUBLISHING CO.  
MENASHA, WIS.



# ALPHA



Freshman, Reading from left to right—Upper Row—Ruby Beckley, May Loveland, Marion Weaver, Henrietta Bidwell  
 Middle Row—Isabel Brown, Gertrude Shaver, Hazel Peck, Esther Potter, Mildred Fish  
 Bottom Row—Lydia Rhodes, Laura Beecher, Helen Stevens

# THE CRESCENT

VOL. XI

MARCH, 1911

No. 2

---

THE CRESCENT is published regularly the 15th of October, 1st of January, 15th of March and 1st of June, by Geo. Banta, 165-167 Main Street, Menasha, Wis. Subscription price per year, One Dollar, payable in advance. Thirty Cents (\$.30) per copy.

Address all material for publication to the Editor.

Copy for the next issue must be in the Editor's hands May. 1.

THE CRESCENT,  
1575 Lafayette Street, Denver, Colo.

---

## THE FRESHMAN SPEAKS FOR HERSELF

FROM THE FRESHMAN STANDPOINT.

The freshmen of all the colleges are alike in many respects. Theirs is the unhappy position of "goat," and upon their shoulders, willing or otherwise, are laid the disagreeable duties and the unpleasant indignities that, it seems, must be inflicted on some one.

We of Alpha chapter however, have never felt so imposed upon; our upper classmen have never overstepped the boundaries of the greatest politeness and consideration for the youngest members. By this, I do not mean that we have been exempt from the duties that freshmen are glad to perform and take pride in doing well, but that no unjust tyranny has been imposed upon us.

On the contrary, we have been made to feel our importance in the life of the chapter—the absolute necessity of strength in the freshman class. Ours is the largest class in the chapter, and it is only natural that we take great pride in keeping up its already high standard—the reputation of Gamma Phi Beta on the "Hill."

In all college activities, we freshmen are doing our level best to be worthy of the honor that has been conferred upon us. I doubt if any Gamma Phis have ever felt more keenly than we twelve girls

of the class of 1914, the greatness of the trust placed in us by our sisters in Gamma Phi. We are striving as a class and as individuals to brighten the fame and glory of our chapter. This is by no means rendered difficult for us by the attitude of the other girls, but on the other hand we are helped and inspired at every turn. There is not a girl in the chapter who is not glad and proud to help and encourage the freshmen; we are most willing and anxious to acknowledge all that has been done for us, for it is our highest ambition to be considered representative Gamma Phis.

HELEN STEVENS, '14, Alpha.

#### THE FRESHMAN'S IDEALS.

When as a freshman class we were taken into Beta chapter of Gamma Phi Beta, we formed many ideals which we always hope to keep. Undoubtedly the greatest is that of living up to the high standard of life which the Gamma Phi sorority has always set. We want to be "all round" girls,—girls who can obtain high grades in their classes and still partake of college life in a social and pleasurable way. We hope that our freshman class will fulfill all expectations and will be respected by professors and friends with whom we may come in contact during our college career. We wish to be loved by all of our sisters and as freshmen to do every possible service for our upper classmen. We hope to promote the welfare of our chapter by pledging strong capable girls who in their turn will aid in the advancement of our sorority. We shall strive not to look down upon our outside sorority friends and the non-sorority girls whom we will meet, for there are many grand women in the world and the best in everyone can be discovered if we only try.

With these ideals firmly fixed in our minds we have been initiated into Gamma Phi Beta and with these ideals still firm and unyielding, we hope to end our college days at Michigan.

BESSIE SMURTHWAITE, '14, Beta.

#### THE TRIALS OF A FRESHMAN.

The Epsilon chapter of Gamma Phi Beta has been known to me for about five months, and from my association with its members

# BETA, FRESHMAN



Left to Right, Top Row—Edith Benson, Marguerite Melvin, Maleta Moore, Wanda Sieman  
Bottom Row—Elizabeth Bostwick, Elizabeth Kneeland, Bessie Smurthwaite, Pauline Kleinstuck, Hermina Haller



I have come to the conclusion that sororities without freshmen would be indeed destitute. What would the lives of the upper classmen be without us? Who would amuse them? Who would carry water when they thirst, run errands when they are fatigued, prepare their spreads, clean frat-halls, and meekly transport their books about the campus?

It is our duty to serve in any capacity whatever if by doing so we make the older girls happier. Let us be servants, scrubwomen, messengers, cateresses, moving book-stands, and body-guards if necessary. Let us calmly subject ourselves to the will of our superiors, and let us endlessly toil for their welfare until, if need be, we become weak and drop in our tracks.

The older girls expect this of us; their expectations must be realized lest the unexpected breed contempt.

If we freshmen are wide-awake to our own best interests, as well as to those of our sisters, we would listen to the advice and wise counsel of the upper class girls—with feigned interest at least—for by so doing not only their opinion of themselves becomes exalted, but we rise in their estimation. This is a much desired state of affairs. I do not ordinarily advocate flattery, but no doubt all freshmen will agree with me that this is an extraordinary time of life.

What would be a greater help to Gamma Phi than to preserve the sweet dispositions of her members? It seems altogether likely that the freshmen have influence in that direction. Let us never wilfully incur their displeasure, but rather put them on pedestals, and look up to them as demigods.

To freshmen, this life of homage and of servitude is perhaps a trial, but it is no more than right that sacrifices be made on our part. So let us strive toward the goal, where we will suffer no more, although many times we might cry out, "Ye Gods, how long must we endure this?"

JESSIE M. VAWTER, '14, Epsilon.

## WHAT THE FRESHMAN EXPECTS OF THE ALUMNA.

How often we hear the senior lamenting that soon her college days will be o'er and the tender ties and associations of college life will be fading! She fears she will lose interest in her former activities and that they will lose interest in her.

Does a college education mean to us simply four years of life in a college town, four years of study in the college halls, four years of friendship on the college campus? Why do we spend these years in gaining a broader education, if afterward we allow one of its most important functions to drop out of our lives?

Why should a Gamma Phi even consider such a misfortune! If sisters once, we must be sisters always and "no man is useless while he has a friend." Surely the links in the chain of our sisterhood are too firmly welded to break so soon; surely the rays of light from our crescent are too widely cast to dim so quickly. Then why does our alumna say: "We don't know the active girls any more."

It remains for us younger girls to make it a point that they do get acquainted with us and to prove that we, really and truly long to be friends with them. We possess the credential which entitles us to each other's friendship through our sisterhood in Gamma Phi Beta. Then we should take advantage of this credential and prove its enduring validity.

What excitement is manifest in the chapter house when we receive the glad tidings that an alumna is to be our guest,—whether she be from our own chapter or another! How happy we are made by a letter or indeed a postal from a member far away! Our hearts are gladdened, we feel the crescent's kindly beams when we greet our older sisters upon our threshold!

This is what we need, this is what we want; to greet the alumnae in our mutual home, to meet them in our daily life, to become and to remain acquainted with them. Then when they say: "We don't know the active girls any more," let us answer: "Still upon the evening breezes you can hear sweet voices cry: 'Come you back again to college, for you're still a Gamma Phi.'"

E. NADJY ROST, '14, Eta.

# EPSILON



Left to right, Upper Row—Beulah Truitt, Freda Reicher, Ruth Warrington, Jessie Vawter, Helen Paddock  
 Lower Row—Irene Dimmick, Cleo Cozzens, Gladys Whitman, Florence Hildebrand, Ruth Huntington



## OUR PLEDGE.

"If every sorority in the world should beg me, beseech me, implore me to join, I'd take Kappa Psi above them all!" So felt the freshmen of the fictitious sorority in the play, which Theta presented this year. So every Gamma Phi Beta freshman feels, for joining a sorority is one of the most important things which comes in a life time. And neither the key, nor the kite nor the arrow could have tempted us to change our preference for the crescent.

What does Gamma Phi mean to us? First it means unity,—unity with every other Gamma Phi, whether in our own chapter or in a chapter two thousand miles away,—unity in the desire to bring out higher and nobler ideals. For we all are working for better scholarship, better social ideals, a better understanding and sympathy with each other, and last but not least, the privilege of being a help to others. Second, it means friendship. For Gamma Phi gives us the best friends we can possibly have, not only in college but out of college; friends who strive to bring out the best in us, not only for the uplift of the standard of Gamma Phi, but also for the general uplift of humanity; who although they criticize us when we need it, still love us. Gamma Phi broadens each one of us. For it will not let us spend all our time in books, nor all our time in play, but insists on a fitting proportion of each.

May we ever be loyal to Gamma Phi Beta, and so to all that is best and truest. For our initiation teaches us the beauty of our sisterhood and the sacredness of our pledge.

CARLOTA ROOSE, '14, Theta.

## WHAT THE FRESHMAN EXPECTS OF THE UPPER CLASSMEN.

The freshman expects no more of the upper classmen than she is receiving every day in fullest measure—patience with her many faults, a helping hand over the rough places in her first college year, an example of kindness to the college world at large, none of this year's freshmen, knew the meaning of the word friendship until she was helped to an understanding of it by the older girls. Most of us, before our college days, had a very vague and shadowy idea of upper classmen. The very word was apt to conjure up

pictures of learned, awe-inspiring young ladies who lived in a rarified atmosphere of their own; who majored in Greek; and who thought sciences were trifles, to be taken between meals with the same joy that one would eat chocolate creams or candy sticks. Our first few college days helped to dissipate at least a part of that impression. The learned young ladies were there, but the awe-inspiring upper classmen proved to be the kindest, most tactful, and patient of friends; it was a case of "we came, we saw, and we were conquered." It is our earnest hope that, when we are in the upper classes, we may be able to play our part so well that we will inspire other freshmen with the same love, respect, and loyalty to Gamma Phi Beta which is now being instilled in us.

LUCILE BABCOCK, '14, Kappa.

#### THE GAMMA PHI FRESHMAN IN THE COLLEGE WORLD.

The college world is full of people. We may or may not care very much for all of them, but we must recognize the fact that they are here. The greatest mistake any Gamma Phi freshman can make is to cut herself off entirely from external influences. The habit once established of dropping old friends because they are in other crowds or in no crowd at all, will grow until we narrow our circle to our own sisters. They, of course, are closest and dearest to us, but acquaintances every girl should have. These can be found only outside of Gamma Phi, and every freshman will hold to the girls who are not wearers of the crescent shaped pin.

Ambition is a part of every true Gamma Phi, and especially should it be a characteristic of the freshmen. In our first year we try our hand at the various activities in college life—athletic, literary, religious, dramatic—and all these should have representatives from the freshman members of our sisterhood. Nothing is too hard or too high for us to attempt, for we are all proud of the pin we wear and we long to do it honor. The world is looking at us, and is watching each one of us to see if she truly fulfills the expectations of her sorority. Let us as freshmen keep the highest aims and greatest ambitions; let us be guided by the kindly rays of the crescent; let us endeavor so to grow in strength and usefulness

FRESHMAN CLASS OF ETA OF GAMMA PHI BETA



Lower row, from left to right: E. Nadiy Rost, Lurita Stone, Thoda Cockroft, Genevieve Atkinson.  
Upper row, from left to right: Harriet Pasmore, May Atkinson, Pauline Davis, Jean Ross.



that hereafter we may shape the minds of other freshmen who will enter our college life.

RUTH K. SHOW, '14, Mu.

#### FRESHMAN RESPONSIBILITIES.

The full acceptance of responsibilities by freshmen is one of the most important steps in their college life, for responsibility educates and walks hand in hand with capacity and power.

The prime responsibility of all freshmen is scholarship, but especially is this true of sorority freshmen. If the scholarship of a sorority is not good, one of its chief reasons for existence is gone. This responsibility rests in a large measure on the freshmen, for they are new, untried units; they must yet prove to the sorority and its friends,—to its enemies also,—that they do not intend to lower the standard of their order.

One responsibility that freshmen are prone to shirk is participation in sorority work. In every chapter there are wearisome details to be performed and freshmen often seek to escape these duties on the plea of inexperience. Again each freshman should feel responsible for her share in college activities. Class and school honors entail hardships and study perhaps—but should we not endeavor to be a part of it all, for the glory of Gamma Phi?

It is very important that the freshmen should cultivate the social side of college life, since it is nearly always in that light that a sorority girl is first judged. Personal appearances and habits should be most closely watched. These things, seemingly so small must be counted among the foremost responsibilities.

Every freshman from Alpha to Xi considers herself loyal to Gamma Phi Beta; each one of us should feel the responsibility of closely applying this loyalty; since loyalty consists not alone in outward actions and words but in the true fidelity of every inmost thought.

GLADYS COLLINS, '14, Xi.

## FRESHMAN SONGS

## EPSILON

*Tune*—SWEET ITALIAN LOVE.

Everyone talks about her sorority—  
Thinks it is the very best that there can be,  
But there is one that outshines all the rest—  
And it's the dearest one to me.  
Alpha Phi and Tri-Delta too  
D. G. and Kappa may talk  
But Gamma Phi Beta is the one for me,  
The only one I see—so—

## CHORUS.

Dear old Gamma Phi,  
Sweet old Gamma Phi,  
You are the one that we love the best,  
You are the one that will stand the test,  
Dear old Gamma Phi  
Sweet old Gamma Phi,  
We will love you forever—  
And forget you, no, never—  
Dear old Gamma Phi!

## THETA.

## I.

*Air*—THE LOW BACKED CAR.

When freshmen go to college,  
'Tis true they lack some knowledge;  
Of Anglo-Saxon, Latin, Greek,  
And yet they're most discreet;  
For when the "bids" are sent around,  
And flowers and "comps" abound,  
Each freshman sighs and sadly cries  
For a "bid" to Gamma Phi.  
There's the arrow, the kite, and the key,

# THETA



Upper Row—Ada Tucker, Ethel Rankin  
 Middle Row—Jean Mentzer, Frances Hoop, Carlota Roose  
 Lower Row—Elizabeth Hessler, Irene Seltzer



But the Crescent is fairest, you see,  
Never stain on the name, ever glories the fame  
Of the Crescent of Gamma Phi!

When seniors come from college,  
Criteria of knowledge,  
Of learned lore, they've quite a store,  
Of judgment even more;  
For when the question passes 'round  
No senior e'er is found  
Who does not swear, none can compare,  
With the girls of Gamma Phi.  
O, they're jolly, and loyal, and true,  
Clever and brilliant too,  
They have charm, they have grace;  
Not one girl's commonplace  
Who's a member of Gamma Phi!

## II.

*Tune*—WHY DON'T YOU TRY.

There are those who wear the arrow,  
There are those who wear the key;  
While some prefer the anchor,  
And some go Alpha Phi.  
But we freshmen boast the crescent—  
Dearest pledge of college ties  
Do you ask us why we're happy?  
We're Gamma Phi's! We're Gamma Phi's!

## III.

*Tune*—BLIND FIG.

C-r-t Cra and z-y!  
That spells crazy you and I!  
Just as crazy as can be—  
Over what? Well wait and see,  
For when we tell them people smile,

Yet they think that it's worth while  
That we're crazy, you and I—  
About our dear old Gamma Phi!

*Tune*—HARRIGAN.

G-a double m-a P-h-i spells Gamma Phi  
Our crescent pin is sure to win us glory  
Our colors dear will tell the same sweet story  
G-a double m-a P-h-i you see—  
'Tis a name just the same winning fame for our varsity  
Gamma Phi that's me!

V.

*Tune*—DIXIE.

A freshman once from college did flee,  
Firmly determined not to be  
A Greek! A Greek! A Greek,  
But a Barb.

But in this she was not in the right,  
And now she wears the crescent bright  
Of a Greek! Of a Greek! Of a Greek,  
Not a Barb.

Who won her from the other Phis?  
Gamma Phi, Gamma Phi!  
Who won her from the other Phis?  
Why, Theta of Gamma Phi Beta!  
Gamma Phi! Gamma Phi!  
Why, Theta of Gamma Phi Beta!

KAPPA.

WORDS BY MARIE ALLEN.

*Tune*—DR. TINKER-TINKER.

CHORUS.

I'm a lonely freshman of Gamma Phi,  
My lot's so hard it makes me sigh;

# KAPPA



Top Row—Lucile Babcock, Gertrude Moore, Frances Works, Harriet Ahlers  
 Bottom Row—Alice Ames, Blanche Wilcox, Mary Rhoades, Marie Allen, Grace Wilcox



Down on my knees  
Have to say please  
Now don't you tease  
Oh, what a freeze  
I'm a lonely pledgeman of Gamma Phi  
My lot's so hard it makes me sigh  
Everything's wrong  
But that won't last long  
When I'm a Gamma Phi.

## XI.

## DREAMS OF GAMMA PHI.

*Tune*—THE VALE OF DREAMS.

When night lets down her curtains  
And shows the crescent fair,  
Of Gamma Phi we dream then,  
And the girls we love so dear.  
And the girls we love so dear.

## CHORUS.

Gamma Phi, we'll dream of thee  
In the twilight hour,  
How the crescent ever gleams dear,  
Spreading radiance and power.  
When in memory we'll recall  
Happy days gone by  
Then comes sweetest thoughts of all,  
Thoughts of Gamma Phi.

Though parted we'll be drifting,  
Our hearts will call to thee  
We'll welcome thee in dreams dear  
When memory lends the key.

## FRESHMAN HONORS

## ETA

There is little opportunity during the first year of our college life to gain honors. Here class honors for freshmen are not counted. The first year is merely a trying out period to prove our efficiency and willingness to serve. During the first and second years we get acquainted and are prepared for the honors of the last two years. We are given no responsibilities but may have a chance to show our worth.

The freshman may try out for the *Occident* and the *Pelican*, our two college magazines. She is never put on the staff but if unusual ability is shown she will be remembered and the probability of her later being one of the staff is assured. One of our new freshmen, Lurita Stone is writing a poem for the next issue of the *Occident*.

Two of our freshmen, Nadjy Rost and Harriet Pasmore were successful in the Treble Clef tryouts this semester. Margaret Hodgen, one of our sophomores was also made a member of this society. There were only six new members taken into this organization this semester and we feel quite proud that two of them were Gamma Phi freshmen.

We have not done much in dramatics yet for the freshmen are seldom cast for the big college plays. Harriet Pasmore took an important part in "The Kleptomaniac," a little farce given by the Associated Women Students at their Open House last semester. As a student of junior French she has also taken part in one of the French Club plays.

Our two new freshmen, Thoda Cockroft and Lurita Stone, have both had much experience in dramatics at their preparatory schools—a fact which makes prophesy on our part quite excusable.

## THETA

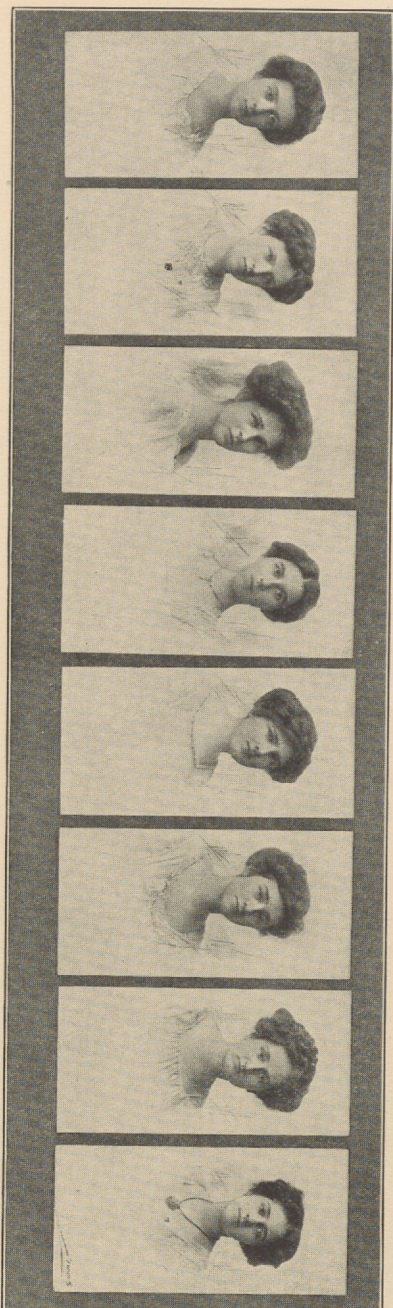
We Theta freshmen stand abashed—

We hang our heads with shame;

We have no honors to recount,

No laurel wreath of fame.

LAMBDA



From left to right—Virginia Hadley, Frances Markey, Florence Jones, Ethel McGinnis, Orpha Meacham, Leah Miller, Esther White, Ruth Allen



We've joined no club, we've gained no prize  
And yet it's understood,  
In spite of being dowerless  
We're beautiful and good.  
We're working hard for Gamma Phi,  
We do our level best  
In scholarship—in social ways—  
In college—and the rest.  
We proudly wear the crescent shield,  
We wave the double brown;  
And maybe, when we're seniors staid  
We'll win that laurel crown!

## KAPPA

Francis Works has been admitted to the Euterpean Club, the girls' glee club and is also secretary of the freshman class. In the play "Trelawney of the Wells," to be produced February 15, she will play the second lead.

Gertrude Moore is secretary of the freshman inter-sorority club, Alpha Epsilon.

Lucile Babcock has been elected to membership in the musical club, Mu Phi Delta and in the French club, Fleur de Lys.

## XI

Three of our girls have been made chairman of committees for the Freshman Glee, the annual dance of the freshman class. Georgia Kaufman is chairman of the decoration committee, Maud Bonham of the program committee and Marguerite Allen of the refreshment committee. The accompanist of the College Orchestra, Mabel Wilson, is also one of our freshmen.

Maud Bonham has recently been elected secretary of Y. W. C. A. for the ensuing semester.

## CONCERNING THE FRESHMEN

## ETA

In Eta we always have certain things that have been handed down from class to class, year to year.

First, let me tell you of the senior advisory system. Every girl in the chapter is included in this. The underclassmen, that is the freshmen and sophomores, each have an upperclassman as an advisor. The underclassmen are privileged to choose their own advisors. The work of the advisor is to convey to her underclassman any suggestions or corrections from any other member. Such a "court of arbitration" is one link in our claim of perfect harmony.

One of the most anticipated functions of the year is the annual "jinks" given by the freshmen to the upper classmen. This is a general jollification of the chapter at the expense of the freshmen.

Along this same line is the entertaining of all the other sorority freshmen. This form of entertainment is usually an informal tea, which puts us in closer touch with the other sororities.

The big freshman affair during the year is the inter-sorority dinner dance. It is given by the girls of each sorority. This is a progressive dinner, a course being given at each house, ending with a large dance. Each girl is allowed to ask a man to the dance. This custom has proved to be a most pleasant way of underclassmen getting acquainted.

Of course, there are many smaller customs that are kept up such as the answering of the telephone, serving when necessary, and the like. Each girl has a certain day that she is responsible for the appearance of the living rooms.

After dinner we are supposed to stay down stairs for fifteen minutes, to aid in general merriment. Callers can not remain after half past ten. No freshman is allowed to go out after dark without either an upperclassman's permission or an upperclassman accompanying her. All freshmen are required to take an active interest in all college activities.

Almost every year seems to bring forth some new custom that will

DELTA CHAPTER FRESHMEN



MU



Left to right—Edith Ireland, Helen Batchellor,  
Emilie Steel, Ruth Show, Lyette Hayes, Cordelia  
Smith, Edith Hutchinson



be handed down. And so the joys of the freshmen are ever increasing.

### THETA

A week before her initiation, the Theta freshman is required to appear at the lodge where active and alumnae members "put her through" an examination upon chapter roll sorority matters and Theta history. Before this audience she sings her own little song which she is forced to compose, in addition to any Gamma Phi song the examiners may request. From the time of her pledging to the end of the college year, it is her duty to see that the lodge is in order, the fire ready and the "eats" prepared.

At Christmas time the freshmen have a tree which bears appropriate gifts for all other members of the chapter. At this time "revenge is sweet" and all kinds of sly thrusts and jokes are indulged in, at the expense of the upper classmen.

On Valentine's Day, when the annual donation party to the lodge occurs, the freshmen always lead with a generous gift. One year they papered the lodge, and another time a fine new linen chest with the monogram in shining letters made its appearance. The following account of this year's Christmas party is given:

Perhaps, it is a traditional right of upperclassmen in Gamma Phi Beta throughout the United States to regard their freshmen as knowledgeless babes and yet to accord them gigantic tasks of Herculean proportions in the way of manual labor. If so, the freshmen of Theta extend a sympathetic, all-comprehending greeting to their freshmen sisters.

Being relegated to this youthful ensemble we decided during Christmas week to give a Baby Party and thereby flaunt our lowly lot with keenest enjoyment.

The invitations written on children's note paper beautifully bordered with chubby brownies read as follows:

"With joy and admiration,  
Not unmixed with hesitation,  
The Freshmen Delegation,  
Of green and verdant vegetation,  
Invite you to their jollification."

## GAMMA PHI BETA LODGE,

December 17, 1910.

Our upperclassmen were unnecessarily early, as perhaps, you fellow freshmen have noticed during social festivities of which you were hostesses, but Mrs. Santa Claus had just arrived—we were forced to content ourselves with the gentle lady as our Dean of Women disapproves of men calling at sorority houses—so the “Theta Babies” in their short skirts, baby hoods and half socks led their august sisters to the Christmas tree.

Mrs. Santa Claus distributed the gifts—take-offs with explaining rhyme—and remained for several hours participating in our youthful frolics and partaking of the refreshments dear to the heart of a freshman—stick-candy, animal cookies, and pop corn.

## KAPPA

The freshman class always gives a party to the active chapter usually soon after initiation—I suppose to show gratitude over successfully surviving it. Since we have had a house, the freshmen considerably give it a present during the first year.

## XI

The Xi freshmen have their places at table changed every few days. It has not been determined whether this custom is for the amusement of the upper classmen or for the opportunity of hearing ourselves think.

Xi has some customs brought from the local of Alpha Delta Phi into Gamma Phi Beta. Among them is, the week of work and silence which precedes initiation. During this week the freshmen have to conform to rules drawn up by the upperclassmen. Another of these customs which has grown dear to us is that of holding a “silent supper” the night before initiation. During this supper the initiates, gowned in black, with half masked faces speak no word. The freshmen are given bread and milk while the sisters silently pass enticing sweets.



Left to right—Grace Bean, Ruth Beach, Alsea Hawley, Esther Carson, Flora Dunham, Marie Zimmerman



## THE FIRST INSTALLATION

(A freshman may do great things for her sorority; her part in the chapter life need not be a passive one. Kate Gardner Cooke, Alpha '86, now an "illustrious alumna" was just such a freshman; hear her story of the installation of Beta chapter.—ED.)

When in our high school days we were laboriously translating Virgil's Aeneid and came to the passage "All of which things I saw and a great part of which things I was," we felt that Aeneas was taking a good deal to himself. If I seem to say "I" too much in this article you will bear with me, for our Editor has asked me to tell you about the installation of Beta Chapter, and in truth "A great part of which things I was." In the heart of every properly constituted Gamma Phi freshman there lies the desire to do something special to help the sorority that is doing so much for her, and this was particularly true in Gamma Phi's younger days when more than now she needed help.

During the earlier part of my freshman year I had become very tired of having Gamma Phi referred to as "local" by others who had recently emerged from a similar condition. With what would now be considered unpardonable assurance on the part of a freshman, I wrote to a friend at the University of Michigan asking if there was a suitable opening for a "Girl's Society" (as we were then called) at that institution. At the same time a man from Syracuse University wrote to a friend at Ann Arbor asking the same question. My friend replied that she had just joined a similar organization, but there was ample opportunity for another "Society" and sent me a list of six girls which, by a strange coincidence, exactly corresponded to a list sent by the man in Ann Arbor to his friend here. Not until then did I tell the chapter what I had done and suggest that Gamma Phi become a national organization. Correspondence was begun with Isadore Thompson, whose name appeared first on the list; the others were Delia Rood, Minnie Hamilton, Jane Emerson, Elizabeth Cornell and Jessica Thompson. They were all desirous to become charter members of a chapter of Gamma Phi Beta whose aims and ideals they felt were their own. Ella French,

in whose judgment we all had the utmost confidence, and myself were sent to Ann Arbor to investigate conditions, to become acquainted with the girls and, if we decided it was for the society's best interests, to initiate them.

As you know, we did decide; on the evening of June 7, 1882 the Beta Chapter was installed, and

"Next morn triumphant did appear  
Six maids who felt a little queer."

Up to that time our pin had been practically unknown outside New York State, but now from the Atlantic to the Pacific, in far away Japan and Siam and even in South Africa are women who point to the crescent and sing with love and pride

"G-a- double m-a a P-h-i, you see;

\* \* \* \* \*

Gamma Phi! That's me!"



Marguerite Allen  
Gladys Collins  
Ida Walker

Maud Bonham  
Elizabeth Hays  
Gladys Lessinger

Harriet Bolger  
Georgie Kaufman  
Mabel Wilson



## "WHEN CLUBS ARE TRUMPS"

Oh the diamond is for Senior and the heart for Sophomore  
And the junior claims the spade with which to dig out ancient lore;  
But the fullest words of praise  
And the pleasantest of ways  
Are for happy Freshman days—

When clubs are trumps.

Then it is that arts and crafts of upper classmen are displayed—  
Then it is that every pleasure greets the bashful Freshman maid—  
For the rushers madly rush,  
And the gushers gladly gush,  
And the Freshman sometimes—hush!

When clubs are trumps.

For 'tis clubs that are triumphant when we rush for Gamma Phi—  
And 'tis clubs we would be using when the hostile force is nigh—  
Yet when doughty foes beguile  
We are pleasant all the while,  
We *would* fight—but we must smile

When clubs are trumps.

And should Freshman maiden gain the mystic shining crescent pin—  
Still the club must be her mascot when the Freshman woes begin;  
She must never dream of flight,  
She must battle for her right,  
Oh those Freshman days of fight—

When clubs are trumps.

Let the Senior flash her diamond, let the Soph'more lose her heart,  
Let the Junior wave her dusky spade—what care we for their art?  
For—from east to western coast,  
Freshman maidens are our boast,  
Present—and to-be—we toast—

When clubs are trumps.

(Toast given at the 1909 Convention with Eta by Carolyn Wolfe,  
Denver Alumnæ.)

## PROGRAM OF THETA'S ANNUAL PLAY

*(Woman's Club Building, Friday Evening, Feb. 10, 1911.)*

## "A TRIAL OF HEARTS"

A four-Act Comery written by Miss Lindsey Barabee, presented by  
THETA OF GAMMA PHI BETA

*Cast of Characters**(Named in Order of Appearance.)*

GRETCHEN VAN ANTWERP, a first year Prep.....	<i>Eunice Robinson</i>
JERRY JONES, her pal .....	<i>Harold Hickey</i>
BESS.....	} Kappa Psi Pledges {
BETTY.....	
MARIE, a maid .....	<i>Muriel Steele</i>
ELINOR DEAN, a Kappa Psi.....	<i>Frances Hoop</i>
ROGER FAIRFAX .....	<i>Joseph Weiner</i>
JOSEPHINE JOYCE.....	} Kappa Psi's {
LOUISE SAFFORD.....	
PATRICIA PATTERSON, Leader of Kappa Psis.....	<i>Jean Mentzer</i>
BARBARA LYNN, a very popular Freshman.....	<i>Marie Hostetter</i>
TEDDY VAN ANTWERP, an adherent of Kappa Psi.....	<i>Dana Burkhalter</i>
PRISCILLA PRESCOTT, Leader of the Delta Chis.....	<i>Edith Hoop</i>
LUCILE SEYMOUR.....	} Delta Chis {
JEAN NEAL.....	
IRENE MERRILL.....	
DOROTHY DILLON, an alumna of Delta Chi.....	<i>Jessie Austin</i>
JACK HARDING, an adherent of Delta Chi.....	<i>Ralph Burgess</i>
MRS. VAN ANTWERP, of great importance.....	<i>Harriette Brown</i>
PHILIP VIVIAN, Dudley's best friend.....	<i>Archibald Brusse</i>
DUDLEY VAN ANTWERP .....	<i>Clarence Bailey</i>
HONOR, his wife.....	<i>Elizabeth Stephenson</i>
VIRGINIA RANDOLPH, Dudley's former sweetheart	<i>Grace McDonough</i>
MRS. PUTNAM, Chaperone of Kappa Psi.....	<i>Irene Seltzer</i>

## SYNOPSIS

Act I.—Upper hall in Mrs. Van Antwerp's home. (Opening of the college year).

Act II.—Living Room in the Kappa Psi Sorority House. (One week later.)

Act III.—Library in the Van Antwerp home. (Five months later.)

Act IV.—Reunion Day on the Campus. (Three and a half years later.)

Play coached by Miss Edna May Sprague.

Managed by Miss Eda Burkhalter and Miss Belle St. Clair.

---

## “RUSHING SCENE” FROM THETA PLAY

The “Rushing Scene” from the sub-plot of Theta's annual play “A Trial of Hearts.”

(The Kappa Psi's—Elinor, Josephine, Louise, with the pledges Bess and Betty are in the upper hall of Mrs. Van Antwerp's home. Enter Patricia.)

*Patsy*—Girls! I've something serious to say to you.

*Louise* (excitedly)—Who is the man?

*Jo*—Why it's the coach—or maybe that medic—Tom Sutherland;

*Louise*—No, it can't be—for—Pat's too much of a girl for him—perfect cipher *he* is with the rim rubbed out. *He's* more the style of Betty and Bess.

*Bess*—We're extremely obliged.

*Elinor*—Show us your ring. Who is he?

*Patsy*—He *isn't*! Such a humilitating confession to make, but it proves the truth of the statement that there's only one thing that women think about. *My* news is more important. *I've discovered a new girl!* (Great excitement). Listen. This letter is from Gertrude Torrance—'04 you know—(reads)

"DEAR PATSY:—

Keep your eyes open for Barbara Lynn, who will be in the dormitory. She hails from the next town to mine and will be a bright star to add to your galaxy of brilliants. I can vouch for the family—it's all right, and while I don't know the girl personally, I'm strong for her. Good luck to you, and may many paragons of freshmen fall to the lot of Kappa Psi."

*Patsy*—Girls, I received this by the afternoon mail. I went directly to the dormitory where the Dean said that Miss Lynn would not be there until Monday. Right away I said—"There's a nigger in the wood-pile somewhere" and—

*Elinor*—Don't tell me those old Delta Chis had her!

*Patsy*—My dear, considering the fact that the Delta Chi house is directly opposite ours, we are amazingly slow of observation, for they have been keeping that child for the last three days—stuffing her physically and mentally.

*Elinor*—How on earth did you find out?

*Patsy*—The mighty convolutions of my brain, etc. Well, I knew that *we* couldn't do anything, so I bethought myself of Teddy Van Antwerp—and Teddy acted like a little man.

*Betty*—*Freshman!*

*Patsy*—Never mind his nationality. We surmised that she was at the Delta Chi house; well, Teddy knows of a fellow who lives in the same town as this girl, and this gave him an excuse—mutual friend, etc. (He really didn't know whether the man knew her, but he *risked* it—sent up his card, saw her, and since it is his mother who is giving the party tonight, invited her to go with him. Teddy's done his part—may the saints preserve him—and now it's up to us!

*Josephine*—Oh, isn't it all just like a political campaign—the platform, the candidates, the stump speeches, the torchlight processions, and finally the returns—oh girls we *must* win!

*Patsy*—*Win!* For Kappa Psi there is no such word as *fail!* *Listen!* Louise, you're to have her to luncheon; Elinor, invite some people to the house tomorrow night for a rabbit.

*Elinor*—But I have another engagement.

*Patsy*—That makes no difference whatever—break it!

*Elinor*—(Meekly) Just as you say.

*Patsy*—Jo, have you anything on for Monday afternoon?

*Jo*—Several things. I'm duly grateful for your consideration in asking me, but don't let my comfort and convenience—

*Patsy*—Not in the least. You will take her out in your motor then (turning to Bess and Betty). And you pledges—you must play your part *well*. You must exult all day. Let drop carelessly, that you never considered the bids of any other sorority.

*Betty*—We can say that with perfect truth.

*Patsy*—Bess, be fully up on the history of the society. Keep the main idea to the front—conservatism—quality not quantity—and *impress* it. Betty, you are to tell about our grand and illustrious alumnæ. That won't be hard, for everybody who has done anything at all, has been a Kappa Psi. Now listen—all of you! *When she comes I shall escort her to the dressing room.* (To Louise and Josephine) You girls take off your wraps—hurry for I expect her every minute, and we must all be here.

(The two girls hasten into the dressing room, and appear again immediately.)

*Louise*—My, But we're a good looking lot! Don't you wonder how a freshman can even hesitate?

(Enter Barbara preceded by Marie. She hesitates—glances at the girls.)

*Patsy* (with a surprised air). Oh, this is Miss Lynn, is it not? I am Patricia Patterson—I was just going in to remove my wraps. (As they go into the dressing-room). Now, how do you like college? Are you at the dormitory, and—

*Josephine*—Isn't she a peach? My, but I want her! Do you think she looked impressed? I suppose we ought to appear unconcerned.

(Door opens—Patsy coughs—girls catch each other round the waist, and sing.)

*Patsy*—Girls, I do want you all to meet Miss Lynn. This is Miss Dean—our Senior. Miss Joyce, the jolliest girl on the campus; Miss Safford, who sings like a nightingale. These are the

Heavenly Twins—Bess and Betty—who are freshmen themselves, and can pilot you any place you want to go.

*Elinor*—Now, Miss Lynn, tomorrow night I am to have a few friends for a rabbit—can you come? I'd love to have you.

*Barbara*—Thank you—I'll be pleased to—

*Josephine*—And have you seen the Merry Widow at the Broadway this week? (Barbara shakes her head) No? It's simply great! Won't you go with me tomorrow afternoon?

*Barbara*—Why, I believe I can—if I have no other—

*Louise*—Well, come first and take luncheon with me, then we can all go on together. Won't you?

*Barbara* (dazed)—Why—why—yes—only I'm afraid I'll get the dates mixed.

*Josephine*—Oh, we won't let you. Can't you go out in my motor with me next Monday? You really ought to see Myrtle Hill and Petersburg and Littleton—they are such beautiful suburbs. Now, don't say no—but promise me.

*Barbara*—Oh, I'd love to go—(fervently) Oh, everybody is *so good* to me—I'm having such a good time here. I didn't know anyone when I came—and now I know so many. Oh, I think it's *splendid* of you to take such an interest in me.

*Patsy*—My dear, we want to know you better—and—

*Barbara*—Oh I think it's beautiful, and I'll never be able to show you just how much I appreciate it all.

(Enter Teddy.)

*Teddy*—Oh, here you are, Miss Lynn. I thought maybe you were lost, and I'd better look you up. Have you met all these people? That's good! (rushing to Bess and Betty) Got your colors on? Congratulations! I tell you, you've gone the only way. Gee! but I'm glad—let's shake again. (Turning to Barbara) Shall we go down? I want to meet my mother.

(All follow Bess and Betty in the rear.)

*Louise*—With whom did you children come?

*Betty* (mournfully)—Nobody it seems.

(Exeunt all.)

(Enter Priscilla, Lucile, Jean—in a mad rush.)

*Priscilla*—Did you see her? Did you? With that crowd of Kappa Psis? How did they ever learn of her existence? I'll warrant that Patsy Patterson is at the bottom of it all! Mercy! Something's got to be done, and right away! (Walks up and down, throwing off her wraps as she walks.)

*Lucile*—What *can* be done? She is virtually in the hands of the enemy, and we'll have to risk our chances. Nobody can take her from Patsy's clutches—she holds on like grim death.

*Jean*—Pris, can't we have a meeting right away—this is a crisis—for if we take the fatal step—Oh dear! Why doesn't Irene come? Don't you think we ought to bid her tonight?

(As Irene enters) Oh, here you are!

*Pris.*—Don't stop to take off your wraps—drop right here—listen! The Kappa Psis have discovered Barbara—she's here tonight—how, nobody known—trust Patsy for dark and dangerous schemes. They will have her dates for days ahead, and we can only watch our chances and bide our time. We've had her with us three days—time enough for us all to know one another. We want her—that's assured. Therefore, the question is—isn't it better to ask her now—before she falls under the influence of the Kappa Psis, than to wait until a time that would not be so propitious? Oh, I'm sure you will see it as I do—nobody objects, does she?

*Irene*—Oh no, no—don't wait a minute.

*Jean*—That's all right, but how are we going to get hold of her? Experience has taught me that Patsy is better left unmolested.

*Irene*—Listen—I have it! We can't manage to get her off tonight, but I know who will—Jack Harding.

*Beatrice*—The very one. It'll be sport to see him tackle Teddy Van Antwerp. Then we'll bid her—is it settled?

*Pris.*—It *is*. Lucile will you bid her? Irene will you see Jack, and the three of you arrange matters? Oh, there's something else too before we go down—just a minute. It's important, and there's no time like the present. Today I saw Louise Safford with that other new girl Mary Ward, and it's simply a matter of

time until they discover Georgia Wyatt. Now what shall we do about these girls, for it isn't right to go on rushing them if we don't intend to take them—and we haven't discussed them at length. What about Mary Ward?

*Beatrice*—She's too boisterous.

*Pris.*—Better boisterous than boy-struck.

*Beatrice*—Granted, but we don't want either; and Oh, I should hate to see a Delta Chi pin on her. I don't believe I could ever kiss her, and that's such a test.

*Jean*—I don't like the way she does her hair; and her hat is home-made. Oh yes it is—I investigated. I'd *never* vote for her.

*Pris.*—Then let her go. What do you think of Georgia Wyatt?

*Lucile*—Oh, let's not have her.

*Beatrice*—She's a combination of ineffectual hair-pins and struggling belt. In other words, she has left undone the things she ought to have done.

*Irene*—And she's just the kind that likes dark corners. Oh, if she puts on a Delta Chi pin, I take mine off.

*Pris.*—Well, then, there's no use in bothering ourselves any longer. I rather like Mary, but I see there isn't the slightest chance for her. But girls, now we're in for it—now is the time for us to show our mettle. Be tactful, close mouthed, politic. "Smile and Rush!" Remember that we must win. Don't let the enemy see your hand, but keep them guessing. Onward to the fray! Do your best; above all be honorable. And then—may our stars be lucky ones; may the gods be with us. (Exeunt.)



ALMOST the time of singing birds, opening flowers and ambitious poets! From the very threshold of Winter's icy palace, Spring dances toward us—a laughing, blossom-crowned, exquisite maiden bearing in her joyous presence a hint of the summer that is to be. You too, our freshman, are bringing spring into the life of Gamma Phi Beta—for you vivify with your gladness, your youth and your unrestrained enthusiasm; you promise even in your inexperience a glorious maturity. We are loyal subjects, Your Majesty! For we realize that the sceptre of power is in your hands—that you can either make or mar the little kingdom we have entrusted to you. Remember your good heritage—and rule as wisely as those who have preceded you; glory in the present, and help to make each day the best that Gamma Phi Beta has ever known; trust in the future—and may it be all that is beautiful, bright and inspiring. So—take our blessing—in the well-known words—“May you live long and prosper!”

---

THE story is told of a malicious creature who desired to take revenge upon a bitter enemy. After thinking over the various methods of punishment, she decided to send the object of her hatred a chain letter. Those of us who have been assailed with this particular brand of annoyance, recognize its possibilities. Yet, from the editorial standpoint the plan has its advantages. If each one of our subscribers should feel prompted to write to some Gamma Phi whose name does not appear on the mailing list—and should be successful in gaining her support for the magazine, wouldn't it help? Is such interest, enthusiasm and co-operation on the part of the alumnae too much to expect? If this be offered as a suggestion—aye, even as

a plea—which chapter will be first in its endeavor to increase the list of subscribers to THE CRESCENT?

---

“IT’S a symbolical thing, this pin you’ve given me to wear,” said the Freshman as she stood idly by the window—“but I wonder if I quite understand all that Gamma Phi expects of me—all that I should do to bring her honor.”

The Senior rose, took a small glass prism, held it in the sunlight; and lo—the room was filled with rainbow rays!

“Upon your college life,” she said, “has been shed the strong white light of sisterhood—this light must be refracted into the seven beautiful hues that make up the perfect whole. There will be the ray of *patience*—patience in the solving of your own particular problems, patience with the short comings of those who have chosen you to be one of their number. There will be *cheerfulness* through all the little trials and tribulations; *helpfulness* for all—not only your sisters but those outside your circle; *unselfishness* in your daily tasks and daily duties—for the true Gamma Phi will efface herself in service for others; *charity* toward all—for who are we that we should judge? *Endeavor*—endless endeavor—for your chapter, for the greater life of the sorority, and for humanity. Lastly, there will be a true and tender *love* that will grow deep and strong enough to love and pity all the world. And then—Gamma Phi will be satisfied!”

---

It seems almost disloyal to say that we are trying to make both ends of THE CRESCENT meet when we have been content with its appearance for so many years. Yet we are striving to do that very thing—and it would be loyalty on your part to aid us in our efforts. How can you help? By sending that subscription long since overdue.

---

THE baby chapter Xi is deserving of a little paragraph all to itself—for not only did its material arrive on time but it conscientiously replied to all editorial requests in regard to contributions, facts and photographs. Let its punctuality, reliability and courtesy be a shining example to its elder sisters.



EXTERIOR AND INTERIOR OF ALPHA CHAPTER HOUSE  
Syracuse, N. Y.



## ANNOUNCEMENTS

Will correspondents be punctual? The publisher has agreed to issue our magazine on specified dates, and therefore our material *must* be on time. Send all contributions, chapter letters and personals to the editors by *May first*.

---

The October number of THE CRESCENT was sent to the graduates of 1910—but the January issue has been withheld until notice of their desire to subscribe. The first year out of college should not isolate you from Gamma Phi life; more than ever you need your magazine to keep you in touch with the activities of your sorority. Help the national life by continuing your enthusiasm and interest; help your magazine to be self-supporting.

---

The June CRESCENT will appropriately be Senior Number—and the editors should not lack material. Send the pictures of your seniors, your Phi Beta Kappas; write us all their achievements, their plans—in short, help us to produce a number worthy of the class of 1911.

---

Take a peep into some of the Gamma Phi homes and be glad that the door is always open to you! Take another look at the freshmen that the college year has given, listen to their words of wisdom, and be proud to claim them. For the help of those chapters who had interest in the compilation of this "Freshman Number," the editor is very grateful.

---

Through ignorance on the part of the editor, extra CRESCENTS for filing in the chapter records have not been sent. Unfortunately, the October issue is exhausted but a copy of the January number will be forwarded to each active chapter.

---

The prompt notice of change of address and of failure to receive the magazine will be appreciated.



MISS BERTHA WHITE, Alumnae Editor, 1010 Park Avenue, Omaha, Neb.

Send all Chapter Letters and Personals to Miss White.  
Next letter must be in her hands May 1.

#### ALPHA (SYRACUSE UNIVERSITY)

Dear Sisters: Our second semester has hardly begun, and already we are in the midst of senior week. Studies don't seem to count for much now, so that the professors have given up all hopes of getting any other answer than "not prepared this morning," given in a very sleepy tone.

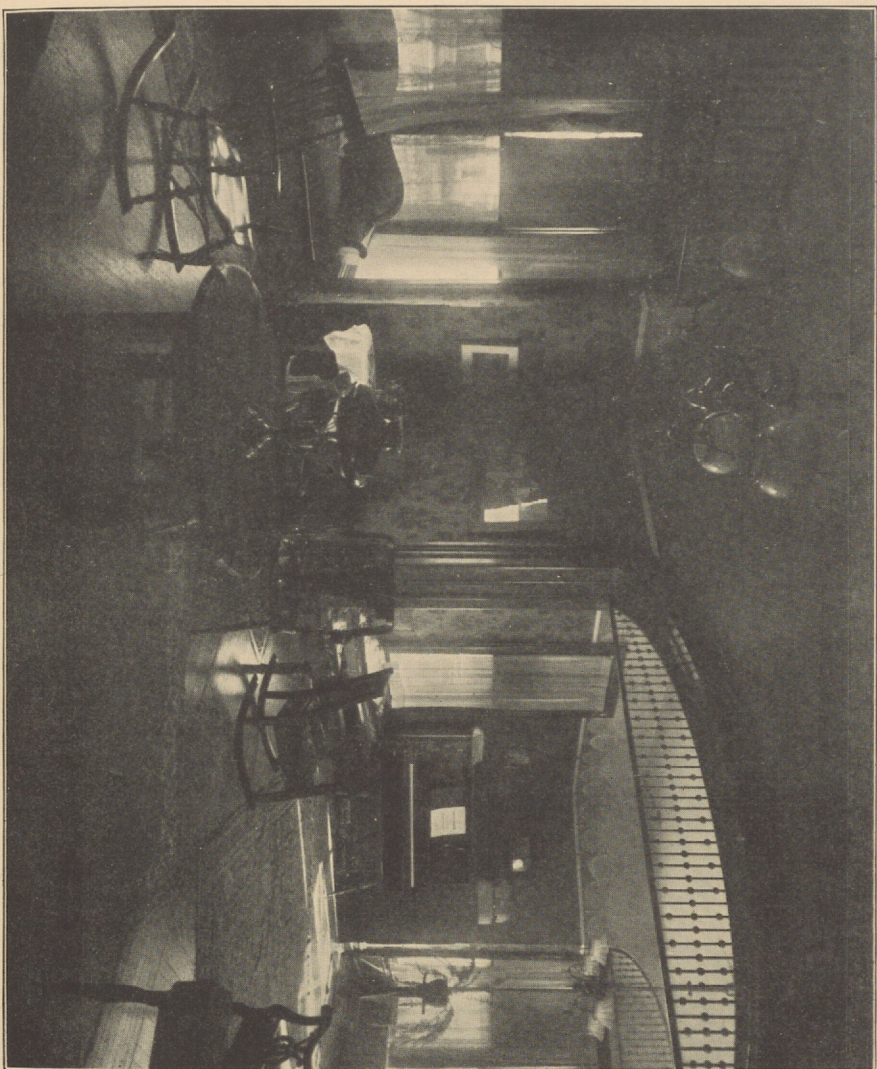
The week started in with the very successful play, "Mice and Men," which was presented by the Boar's Head society at the Wieting theatre. The enthusiastic audience was greatly pleased with the manner in which the play was acted. Other features of the week were the formal dances given by many of the fraternities, and the concert given by the Women's Glee and Instrumental clubs in Crouse College Auditorium.

The senior ball is yet to come. It promises to be a very brilliant affair this year. The gymnasium is to be decorated to resemble an English garden, the walls and ceiling being hung with pale blue, sparkling with lights, to give the effect of the sky. The effect of the garden is to be carried out in the fraternity boxes, which are to be decorated with flowers and plants. There is also to be a unique feature in the shape of a fountain, upheld by three cherubs.

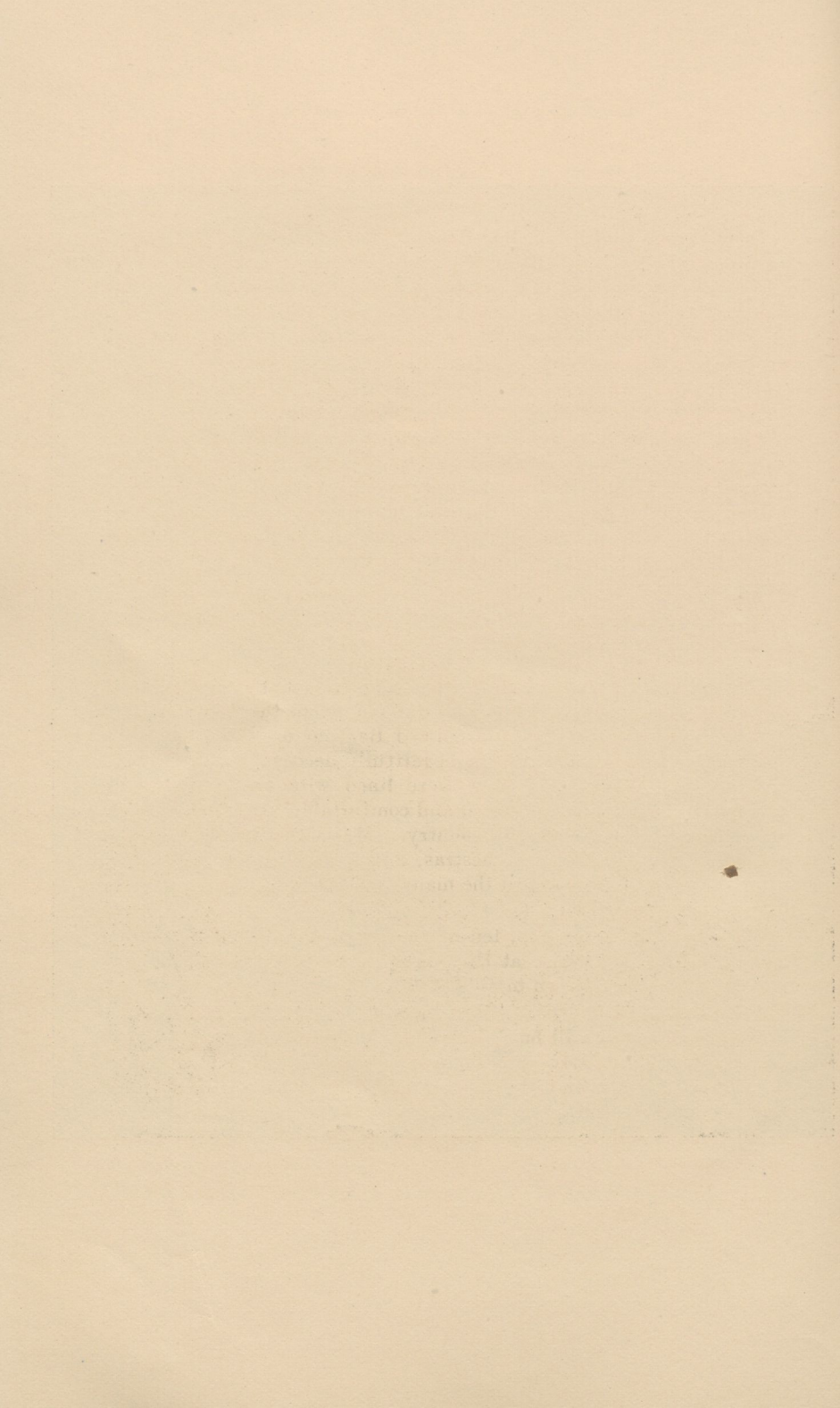
Our spring rushing season is to commence next week with a party for the sub-freshmen at the home of Emily Price. Next week the freshmen will also hold a small informal dance at the chapter house, on Washington's birthday.

Alpha takes great pleasure in announcing the pledging of Hilda Grossman, '12, of Syracuse.

We send our hearty good wishes to all the sister chapters.



LIVING ROOM OF BETA CHAPTER HOUSE, ANN ARBOR



## BETA (UNIVERSITY OF MICHIGAN)

*(Written by a Freshman)*

Dear Sisters in Gamma Phi Beta: The freshmen of Beta chapter now feel like real Gamma Phi Betas, for only yesterday, (February 11) we received our own pins, which we have been waiting for so long. Our upper-classmen have been most kind, and have allowed us to wear their pins ever since initiation in November, but we have wanted our own, and now that we have them we are perfectly happy, and are rejoicing again that we are Gamma Phis.

We also feel that we are actually entered in our university careers, for last week we had our final semester examinations, and now we can say that we study Rhetoric II., in place of Rhetoric I., which brings our diplomas a little nearer to us. Five of the freshmen gained honors in one of the hardest history courses in the university, and so were excused from taking half of the final examination. We feel that it is indeed a great honor to have so many freshmen win places on this honor list.

Many of the girls are now attending the junior hop house parties, and we are anxiously waiting for them to return so we can hear about their good times. However, we have already heard about the hop itself, the beautiful decorations, the banquet, and the gowns, from the girls who attended it but who did not go to the house parties. No one could possibly have recognized Barbour or Waterman gymnasium, for they were both very beautifully decorated with festoons of bunting and flowers. They were lined with fraternity booths which were beautifully decorated and comfortably arranged. Guests were there from all over the country. Many feature dances were played by the two large orchestras, and a picture was taken just after the grand march, when the many lines of dancers were formed into a large block "M."

The night after the hop, ten of the active girls of Beta chapter gave a dinner and dance at the house. At seven o'clock the girls and their guests sat down to an elaborate dinner, and at nine the ten couples began to dance.

The freshmen are all busily planning and working for the Washington's birthday party, for it is customary for them to entertain the upper-classmen and alumnae on that day. Our aim is to make this Washington's birthday party the most amusing as well as pleasurable one that the freshmen have ever given. On Valentine's day we are to have a formal dinner for all of the active girls, and one of the features is to give valentines. Each girl *makes* three for those whose names she has drawn, and they are thus intentionally

applicable to the individual girls. All of the girls are entering into the spirit of it, and we hope to have many jokes.

All of the sorority freshmen at Michigan are members of a card club, and since we are the oldest sorority here, we are going to be the first to entertain this year, and are planning a "crazy party." Every one must come in some ridiculous custom, and we will play amusing games, and then have an auction sale and dance. These parties make it possible for all of the freshmen to become acquainted, and they make the girls broader and much more democratic.

By the time the next number of the CRESCENT is published, the snow will be gone and the spring will be here. Until then we wish all of our sisters in Gamma Phi Beta the greatest success in their work, and in their college life generally.

#### GAMMA (UNIVERSITY OF WISCONSIN)

Dear Sisters in Gamma Phi Beta: If you should happen to find this letter generously interspersed with quotations from the classics, or a few French verbs, don't wonder, for we are in the dreadful condition of gaining culture while you wait, in other words, working for examinations. This is, of course, all engrossing at present, but Prom, which is the next thing on the program, is, we must admit, much more pleasant. This year it occurs February 17, and about twenty-five of our girls are planning to attend the various house parties.

We were very sorry to find that several of our girls were unable to return after Christmas this year. Verona Pratt, '12, was obliged to remain at home on account of the illness of her mother, and Dorothy Deming and Cora Ellis, both freshmen, were also detained at home on account of illness in the family, but hope to return for the second semester. If these were surprises, there was a superlative to that feeling, when we learned that Moselle Weld, ex-'12, instead of returning to graduate, was to be married in the spring.

Dramatics have not been so very insistent this year, and the junior play is almost the first thing of interest in this line. Alice Ringling represents us there in one of the leading parts, and we know from past experience how well she will do it. Elizabeth Perry also had a part in the play produced by the Modern Drama Club. The play presented was *The Intruder*, by Maeterlinck, and was the first of several to be given. This movement is purely altruistic, admission being only sufficient for expenses.

Gamma is also trying a little altruism herself. This year we have started an annual scholarship fund of \$100.00, to be given by



MU CHAPTER HOUSE, STANFORD UNIVERSITY



GAMMA CHAPTER HOUSE, MADISON, WIS.



a committee to some girl in the university. The money is raised by subscription among the girls of the active chapter.

Just one more of our plans and then we will stop. Instead of the usual inter-scholastic rushing party which we feel to be unsatisfactory for both sides, we have decided to give just a big Gamma Phi affair. We have invited all of the Gamma Phis from the nearby chapters, Beta, Epsilon, and Kappa, and are hoping that a goodly number from each will come. We wish they could all come from every chapter, and that we could know them all, but in this case our hearts are much bigger than our house.

Gamma sends best wishes to all, and hopes some day to have visitors from our more distant chapters.

#### DELTA (BOSTON UNIVERSITY)

Dear Sisters: In the last number of the CRESCENT, we read with envious eyes, the list of freshmen from almost every chapter, for we cannot introduce ours to you as yet. But sooner or later we are confident we shall have some very dear freshmen.

We have just come back to college for the second semester. Mid-year exams are over, and also mid-year recess, and the girls were pretty well scattered during this vacation. Many went to their homes, while several others took advantage of the vacation to go visiting.

But I suppose I should go back a little farther, and tell you about our Christmas party which our kind alumnae gave us. It was during the Christmas vacation, at the very pleasant home of Mabel Robbins in North Weymouth. These annual Christmas reunions give us such a good chance to become acquainted with our alumnae.

During the month of January we were so busy preparing for examinations that we had no parties except our regular spreads after fraternity meeting. Several of our alumnae came in to those. Another reason for our not having parties is that we are thinking of everything in connection with freshmen, and are planning good times and parties for them the minute they jump into Gamma Phi. We have been kept from rushing so long that we are full of bottled-up enthusiasm.

We must not leave out of this letter the honors Gamma Phi has. Rachel Rice is president of the sophomore class, Mabel Page has been elected chairman of the junior play committee, Belle Dalto, '11, is president of the historical club, and Maude Hodges is senior proctor. Besides this several of the girls serve on executive and other committees, and some are members of the Y. W. C. A. cabinet.

We have heard from Helen Osgood who is studying at Washington University, St Louis. She is having a very pleasant time, part of which is due to the cordiality of the Pi Phis there, and she expressed great appreciation of this kindness.

Some of the chapters will be interested to know of the student conference held at Boston University on February 11. It includes New England, New York, and New Jersey, thus making some of our sisters vitally interested in it.

#### EPSILON (NORTHWESTERN UNIVERSITY)

Dear Sisters in Gamma Phi Beta: Semester examinations are just past, and every one is trying to recover from the "thirst of knowledge," which we attempt to quench at this time. Things which happened before seem vague and far away, but very vivid is the remembrance of our Christmas tree and freshman dinner. The former we celebrated at the home of Helen Paddock. Each girl received appropriate gifts, after which we sang the good old Gamma Phi songs, followed by "original compositions" of the freshmen. A week or so later these same freshmen entertained us at a formal dinner which was a complete surprise, as we all expected theatricals.

On February 10 occurred our informal at Kenelworth club, and for the occasion we had two new pledges, Ruth Hunting and Marguerite Robinson. The next morning Dorothy Winchell entertained the chapter at an eleven o'clock breakfast which lasted well on into the afternoon.

We are all looking forward to initiation which will take place February twenty-second, and by the next letter we will have seven brand new Gamma Phis.

#### ZETA (GOUCHER COLLEGE)

Dear Sisters in Gamma Phi Beta: Our last letter to CRESCENT was sent in the midst of the anxiety and excitement of rushing season. We are happy to announce as the result of that time of rushing six splendid Gamma Phis, Irene Blank, '11, of Greensburg, Pennsylvania, Aleda Hier and Margaret Martsolf of New Brighton, Pennsylvania, Margery Sawyer of Glens Falls, New York, Grace Atkinson of Lansdown, Pennsylvania, and Marian Jones of Baltimore. Owing to the new Pan-Hellenic rules concerning the amount of work to be completed by a freshman before her initiation, we were not able to initiate our pledges until the eleventh of February.

The initiation was held at the home of Marie Ohle, '13, after which we had our usual initiation banquet at the Rennert Hotel.

The room was prettily decorated with red carnations and red candles. The banquet was most informal and the twenty Gamma Phis present had a thoroughly good time. Heretofore our banquets have been quite formal affairs, and we all enjoyed the change. The chapter is very proud of the enthusiastic loyalty on the part of the freshmen, and we feel sure that they will develop into ideal Gamma Phis.

All of the Zeta girls are busy just now with their different class functions, the seniors with senior dramatics which we are all eagerly waiting for to take place, the juniors with the Japanese play which they are going to give to the freshmen, and the sophomores and freshmen with their respective "stunts" to the seniors and juniors. Zeta has been particularly fortunate this year in holding so many offices and taking so active a part in college life.

This year the fraternity expects to have two house parties, one during spring vacation for those of us who are not going home for the holidays, and also the regular summer house party at the seashore right after commencement. In four weeks we shall be off on our two weeks vacation and we hope that all of our Gamma Phi sisters may enjoy their spring recesses as much as we expect to enjoy ours.

#### ETA (UNIVERSITY OF CALIFORNIA)

Dear Sisters in Gamma Phi Beta: Had greetings been sent to you from Eta but two days ago, you would perhaps have received a rhapsody on that time-honored subject, the weather. Nor was it a hackneyed theme at the beginning of the week, when every Gamma Phi was joyous, and each student at our alma mater, experiencing no fancied feeling of elation; for Jupiter Pluvius had after an interminable visit, gracefully made his obeisance and retired before the tardy sun. Would that we could send you as tangible proof of our love a whiff of fire and encalyptus from the slopes about the Greek theater, a glimpse of our Berkeley hills, their round soft curves answering with subtle shades of green to the movement of each passing cloud, a single poppy come before its fellows, or the evening picture which fronts our library steps of sunset glories crowning the Golden Gate, while the twilight moon rides high in a deep blue sky. But alas! perfect mid-winter days cannot last even in California. The soft, persistent rain has come again to keep the brown from our hills all the longer.

Eta is very happy after one month of work this semester. Lurita Stone and Thoda Cockroft were duly initiated and make her a fond mother. Of her younger children Margaret Hodgen, '13, Harriet Pasmore, '14, and Elizabeth Nadgy Rost, '14, were three of six

elected to the woman's glee club—Treble Clef. Gertrude Comfort, one of her sophomores, who is an eager student of architecture, has received two notable prizes in a competition open to all university members. The one was for a design for the sophomore hop, and the second is a permanent design for the Interscholastic track meet.

Washington's birthday on the California campus has for a long time been given over entirely to the women's merry making. On that day the college publications, *The Occident*, *The Pelican*, and the *Daily California* appear, managed, edited, and written entirely by the women students; and an entertainment takes place in the evening. For the general arrangements of the occasion Ora Muir, '12, is one of the three managers, and two sophomores, Margaret Hodgen and Dorothy Brown are on the literary staff of the *Occident*.

Eta's annual Christmas tree was held on the evening of January twenty-seventh; many alumnae were present and the house was almost embarrassed by the goodly number of useful and attractive gifts received from thoughtful mothers, the alumnae and the active girls themselves.

On Saturday, February eleventh, Mrs. Maude Allen entertained the alumnae and the active chapter at tea in her charming home in San Francisco. Miss Lucy Stebbins who has recently come to us from Radcliff as assistant dean of women was our guest.

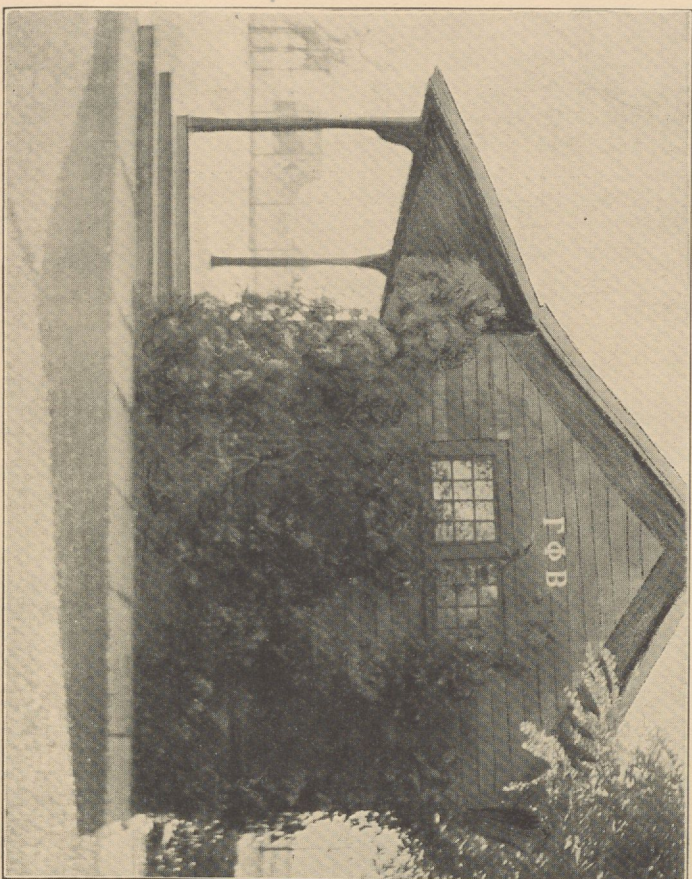
For the following week Eta is planning to give a small dance to which she has asked representative girls from all the other sororities as well as her friends in college.

#### THETA (UNIVERSITY OF DENVER)

Dear Gamma Phi Sisters: Theta wishes to introduce two new pledges, both of the freshman class—Marie Hostetter and Ethel Lee Rankin. They are both Denver girls, and we are very proud of them.

Our New Year's reception was held on January 2, at the house of Grace McDonough. The rooms were beautifully decorated with Christmas greens and red and white lights, and elaborate refreshments were served. After receiving hours a few specially invited guests remained for a dancing party.

For the last four weeks we have all been very busy with our play. Lindsey Barbee has always written our plays, but her mother has been quite ill this winter, so she was unable to write a new one. "A Trial of Hearts" given four years ago was remodeled and met with great success. It tells of the marriage of a little western girl



THETA LODGE, DENVER



and a wealthy college man from the east, of her reception in his home—her failure to accommodate herself to the conventionalities of his life—of her life at college unknown to his family and of her return a clever, brilliant, beautiful woman. We were fortunate in having an unusually large crowd, and we hope to add materially to our building fund from the proceeds.

We are planning a party for Valentine's day when we will entertain our alumnae. Instead of valentines for the girls, each one brings some little thing for the lodge—a pillow, a picture, or things for our kitchen. In this way we receive many things we really need and have all the fun besides.

Our second semester exams are only two weeks off, and we have begun to get ready for them, so good-bye.

#### IOTA (BARNARD UNIVERSITY)

*(By a Freshman in the Fraternity)*

Dear Sisters in Gamma Phi Beta: This is the first time I have had the privilege of thus addressing you, as I am one of this year's initiates, and will have to leave a detailed description of them to some later letter. There were four of them, Louise Cones, and Varian White of Hackensack, N. Y., Sophia Lingg of Staten Island, N. Y., and Constance Shook of Greencastle, Pa. We were pledged December the fifth, and on the seventeenth were conducted with beating hearts to the home of Frances Rogers, in Babylon, L. I., where initiation was held. That evening we boarded the train for New York wearing precious Gamma Phi Beta pins—at last.

While we were still pledged, Iota held its first dance in Hotel St. Andrews on December ninth. Everyone enjoyed it immensely and none more so than the pledges. Ruth Hakes, '11, entertained the sorority just before the holidays at her home on Riverside Drive. Bridge was the order of the evening and all entered heartily into it except Laura Bennett, '11, but we forgave her this, for, during the evening, she composed a new Gamma Phi Beta song which is quite a gem. Our second dance was held after the Christmas holidays in Brinckerhoff Theatre, Barnard College. It was a success, and we quite won the hearts of our masculine friends by allowing them a superabundance of ice cream.

During examination week all frivolities were laid aside, and we fasted as it were, our diet being cramming. Now that this intellectual lent is over, we will stop studying, as one girl put it, until spring. Ethel Richardson will give a card party on February the eleventh. We are also planning a shower for Katherine Fancher,

whose engagement has been previously announced, if we can persuade that young lady to leave her dressmakers, milliners, dreams, aircastles, and her fiancé, long enough to come to it.

We had but one engagement to announce in this number but judging from appearances it can safely be said, "after this, the deluge." For when this last engagement was announced, one of the girls exclaimed, "well, who of us isn't engaged?"

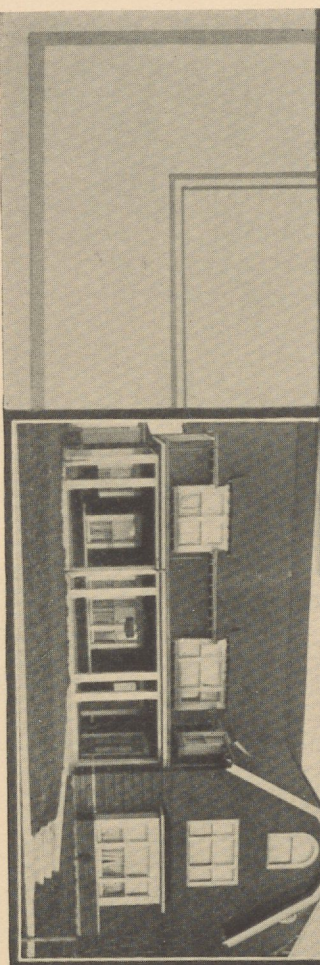
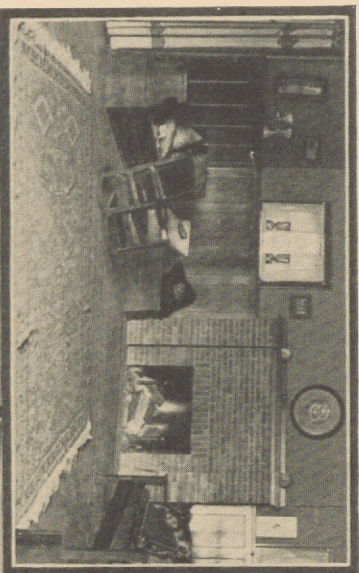
We are now turning our attention to the freshman class which contains some fine material. Since rushing has been abolished all we can do is become acquainted with the new girls, and I can say from recent experience, when Gamma Phi starts to become acquainted with you, you've found the ideal environment in college at last.

#### KAPPA (UNIVERSITY OF MINNESOTA)

Dear Sisters: Why is it that the busier we are the less we have to write about? As we look over the past three months not one large completed thing draws our attention, except the first semester, only a host of over-crowded days stuns us. It is like not being able to see the forest because of the trees that are in it.

Hidden away in the middle of January, the thirteenth, we do see something more than worthy of mention. That afternoon and evening the Enterpean club entertained and instructed a great portion of the college public with *O Hanu-San*, an operetta in two acts. The best reason for mentioning it is that Margaret Menzel sang the role of O Kitu-San. Perhaps you wonder why I said "instructed?" There was a man, the only one, a real Japanese, who played the part of the "Mikado," and, for a climatical thriller, rendered a dissertation on the birds and trees in his native tongue and tune. Thus we heard something new and understood—oh, the operetta was a great success.

As was intimated before, everyone is busy laying the foundations for future glories; most of us are planning for the big May Fete—time undecided; some are dreaming about the junior ball on the twenty-first of February; others are hoping for the doubtful girls' gymnasium, and all are working for a good start in the new semester. Those who have influence are using it to start an all-university council which will have charge of student activities and crystallize student sentiment. We have a student council in the academic college which has proved itself so efficient since its establishment, a year ago, that the professional colleges wish to unite with it. No definite action has been taken yet, but it is a movement towards the co-operation and unity we idealize.



ONE END OF OUR LIVING ROOM

LAMBDA CHAPTER HOUSE, SEATTLE



Since repetition is frowned on by all critics you will have to visit the freshman parlors in the front part of the establishment for further information concerning Kappa's activities.

#### LAMBDA (UNIVERSITY OF WASHINGTON)

Dear Sisters in Gamma Phi Beta: The second semester of our college year is well started and we are busy with a two weeks' rushing. According to new Pan-Hellenic rushing rules for this semester, we do not find such strenuous work as heretofore. The rules are very limited, consisting of luncheon and dinner dates only. The luncheon date lasts from twelve until two and dinner from six to nine o'clock. No communication with a rushee is allowed except during those hours. Our date book rule is the same as last semester, dates being made for only one week on the first day. The second week date books were given out the Friday of the first week. The session closes Saturday, February the eighteenth, when the written bids are sent out through the dean of women. On the following Monday the rushees go to the house of the sorority whose bid she accepts.

As soon as rushing is over we will begin to initiate our last semester freshmen.

On the eighteenth of March we are making plans to hold a large reception.

We were all very proud when Sallie Hill, '11, was elected secretary of the Woman's League.

We are very sorry that one of our freshmen was compelled to leave college this semester and go south on account of her father's illness. We are proud to say however that she has kept up her college work by correspondence, and has made her required hours and can be initiated when she returns.

#### MU (LELAND STANFORD JUNIOR UNIVERSITY)

Dear Sisters in Gamma Phi Beta: This semester has started in a much quieter way than last, since we do not have such strenuous rushing the middle of the year. In fact there were so few freshmen registered this January, owing to the limited number of girls, that we have done practically no rushing. The girls are therefore more interested in outside activities, and are "trying out" for the college daily, athletics, and clubs of different kinds. Helen Batchellor, in this connection, has been elected captain of the freshman tennis and basket-ball teams. Bertha Masters was elected into the

Schubert club, Hazel Gilbert has a solo part in the junior opera, and Ruth Hutchinson and Grace Childs are also to take part.

We were all pleased to have San Francisco chosen as the city for the 1915 exposition, for although that seems a long time from now, we hope that many Gamma Phis will begin planning a western trip for that year, and since Stanford is only an hour's ride from "the city" that will mean many visitors for Mu. They will certainly be welcomed by all of us who live in the state, even if we have graduated by that time.

This last week the English club at Stanford gave two very interesting performances of three miracle plays, two from the Chester and one from the Townley cycle. The plays were admirably presented, quaint and following the minutest detail in production. One instance of this can be illustrated in the contemporary music used. The minstrels' song was attributed to Henry VIII, and another martial tune was composed by Cornish of the Chapel Royal of Henry VII and VIII. These miracle plays attracted much attention not only from college people, but a great many parties came from the city and the small towns around the university to attend them.

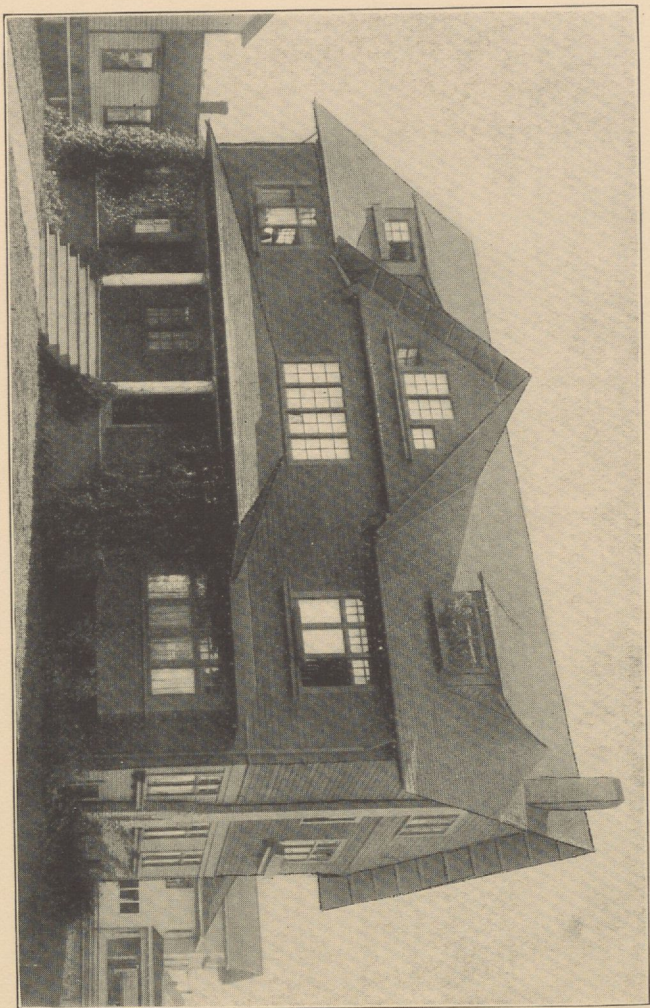
With the exception of dinners for outside girls and for the faculty, we have done practically no entertaining this semester. Invitations will be sent out this week however, for our formal dance in April, and we have also planned an informal masquerade for the end of this month.

Best wishes for a splendid spring term to all the chapters from Mu.

#### NU (UNIVERSITY OF OREGON)

Dear Sisters in Gamma Phi Beta: Nu chapter at Oregon is just emerging from a siege of examinations, which, since they are the ones freshest in our minds, naturally seem to be the worst we've ever experienced. We are relieved to find we have all survived, and are ready and anxious to commence the work for the new semester, which begins February the thirteenth. Some of the girls have gone home for the few days between semesters, while others have stayed at college, where several informal parties have been arranged for them.

During the Christmas holidays we were fortunate enough to get together for a few informal affairs, although we were all exceedingly busy. Caroline Benson entertained for us and a few rushees, one afternoon. We also had luncheon at the Portland Hotel, and an Orpheum party with tea at Lenora Hansen's afterwards. Since Christmas, we have entertained but little, as there is always some-



NU CHAPTER HOUSE, EUGENE, OREGON



what of a lull in social gatherings after the holidays, and before examinations begin. The first Sunday night we were back, we had company, and the freshmen prepared supper for us. This is the first time they have entertained the house as a whole, and we all felt proud to see them excel in the culinary art, as they have done otherwise.

There are few students who enter Oregon the second semester, so there is, comparatively speaking, no rushing. We have one new pledge since September, Flora Dunham, of Portland. Flora makes the seventh freshman this year, all of whom have been doing us honor. Alsea Hawley was elected vice-president of the freshman class; Ruth Beach has been appointed chairman of the freshman Y. W. C. A. committee; Flora Dunham is a member of the finance committee; Helen Beach, '11, has been elected president of the Dramatic Club, and Florence Cleveland was chosen secretary of the sophomore class.

Nu sends best wishes to all the chapters, and extends a cordial invitation to all the Gamma Phis who may be in this vicinity, this spring, to come and get better acquainted with us, since we are one of the newer chapters.

#### XI (UNIVERSITY OF IDAHO)

Dear Girls: Xi has been more than busy for the last two weeks. First came the semester examinations which, of course, necessitated a great deal of "cramming," and then the excitement of mid-year rushing. We were successful with our one bid, and now we are glad to tell you that Corinne Robertson of Coeur d' Alene, Idaho, has pledged herself to Gamma Phi Beta.

We have not initiated yet because of our rule that each freshman must make twelve college credits before becoming a real Gamma Phi. Each one now has her credits, so that by the end of this week we will have ten more dear girls with us in our loved circle.

Since our last letter the girls of Phi Alpha Epsilon of Washington state college at Pullman, Washington, have entertained the girls of Xi chapter very delightfully. They gave a very pretty reception and dance to our seniors, and to Miss Prosch of Lambda and Miss Woodcock of Nu. These two visited us before going back to their chapters and we were glad they could be here if it were for only a short time.

Just before the Christmas holidays we entertained representatives from Kappa Sigma and from Phi Delta Theta at dinner parties. Soon after college opened we entertained in honor of Imogene

Mitchum, a Delta Gamma of Washington, who has been here at college for this semester and who is leaving for Seattle to finish her work.

We are delighted to have Louise Richardson of Olympia, Washington, with us this semester. She is from Lambda and has had three semesters of work there. We are sure she can help us in lots of ways, and will give us ideas which will make us a stronger and better chapter.

The first of this week we were honored by having Miss Michi Kawai, a foreign secretary of the Y. W. C. A. and a very bright and interesting little Japanese woman, with us for dinner. She wore her national costume, and told us many incidents which were novel and of great interest to us all.

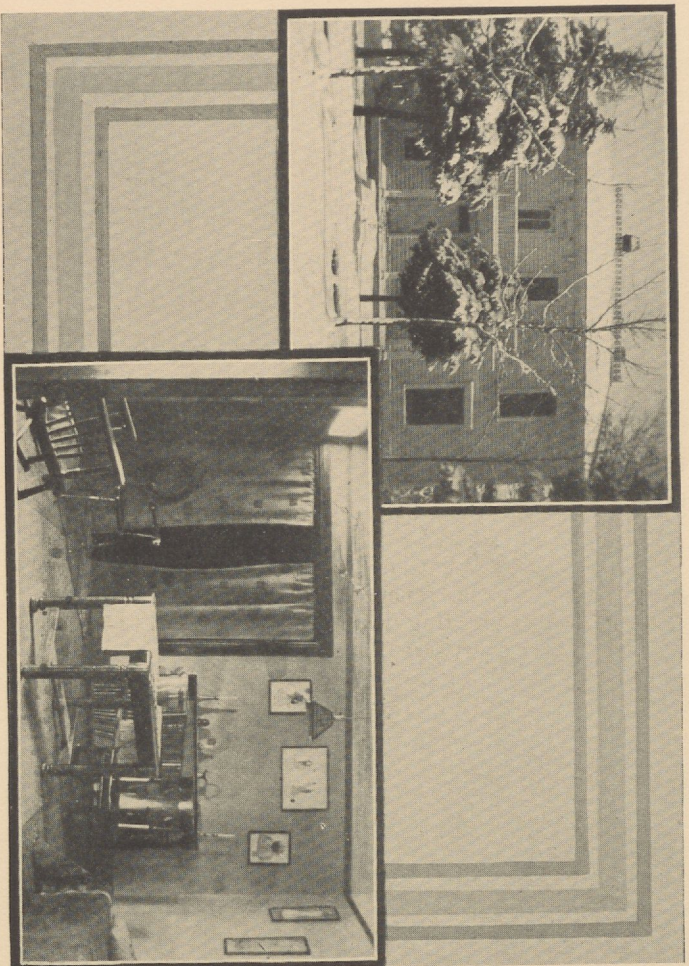
The last number of the CRESCENT was delightful. We enjoyed knowing, through our paper, the numerous Gamma Phis, who have distinguished themselves and we are looking forward to reading about our very newest girls, the freshmen.

#### CHICAGO

Dear Sisters: I am glad to report that the Chicago alumnae has a host of new members, and every meeting adds one or two more to our list. We are scattered all over Chicago and in the various suburbs, but a trip of twenty-five miles or so is nothing when one has a Gamma Phi alumnae luncheon at the end.

Our December meeting was at the home of Mrs. Fred Kraft, (Epsilon, '06), in Rogers Park. We had a delightful luncheon, and loads of Christmas presents were finished during the afternoon. We met on January 14th with Mrs. Robert Corlett, (Olive Foster, Epsilon, '92), and it seemed that everyone had started the new year in a proper manner, by resolving to attend all alumnae meetings during the year. Their good resolutions have held out remarkably so far, for there were only six members absent when they met last Saturday, February 11 with your correspondent in Evanston. She was delighted to have four visitors at the meeting and two of them, Mrs. E. B. Rose, (Barbara Curtis, Gamma, '04), and Mrs. W. W. Chickering, (Dorothy Curtis, Gamma, '00), have promised to become members of this alumnae chapter. We were glad to welcome Clara Barkhausen, (Gamma, '03), and Gretchen Leydecker, (Beta); the latter recalled old convention joys to me.

We want all visitors in the city to feel free to come to our luncheons which occur the second Saturday in each month, and can assure them the warmest kind of a welcome if they will just drop the



XI CHAPTER HOUSE AT MOSCOW, IDAHO

INTERIOR OF XI CHAPTER HOUSE



secretary a card, or telephone any member of Chicago alumnae chapter.

#### SYRACUSE

The Christmas meeting of the Syracuse alumnae association, to which every Gamma Phi in the city, active and alumnae, is invited, was held with Alvia Horton Fish. There was a large attendance and a most enjoyable time reported. Many of the active girls in town were present and a number of out-of-town alumnae and those who are studying or teaching out of the city. Among these were Edith Hamlin, Louise Klock French of Utica and both of our Betty Brooks.

Our last meeting was held in the new home of Isabel Gage Dibble. Isabel has just gone to housekeeping for the first time since her marriage, in a most charming and dainty apartment on Ostrom Avenue, and the Gamma Phis undertook to be among her first guests. Everybody had an unusually pleasant time. There was read on this occasion an announcement from the active chapter to all alumnae that the active girls were hereafter to be at home on Sunday afternoons and glad to see any one who might call.

#### BOSTON

To her sisters in Gamma Phi Beta Boston alumnae chapter sends most cordial greetings, and hopes that the New Year has treated them all as well as it has her.

It seems a bit late, perhaps, to tell of Christmas affairs but I am going to tell you about our Christmas spread just the same, because it was such a good time for all who were able to go. Every year the alumnae chapter gives a Christmas spread to the active girls, and this year it was held at the home of Mabel Robbins, in North Weymouth. You do not all know Mabel—but I assure you she is a dear and a most ardent Gamma Phi. She lives with her three aunts, who are most charming women and made us feel quite at home. North Weymouth is a bit out of the way, so not quite as many were there as usually come to the Christmas reunions, but those of us who did go felt fully repaid. We had a good old Gamma Phi sing before we came home, a thing that always “warms you ’round the heart,” doesn’t it?

We are looking forward now to pledge day, which is not far distant, when we hope—and fully expect to hear that the active girls have been wholly successful under this new system of rushing, and have won for Gamma Phi the *best* of the freshman class.

We are holding our meetings regularly now at the home of the

active chapter, 1100 Boylston Street, on the first Saturday of each month. We eat a little, work a little, and talk a great deal. If any of you happen to be near the "Hub" around the first of the month—be sure to call on us.

Best wishes to you all and good-bye until we meet again in the next number of the CRESCENT.

#### NEW YORK

Dear Sisters in Gamma Phi: Since our last letter we made a pilgrimage to the home of Mrs. Harsen in Yonkers, and sixteen girls have returned with enthusiastic reports of the beautiful river view, the lovely fresh air, and last, but not least, of the young Harsen baby.

In January, we had our meeting at the apartment of Isabelle White on Pacific Street in Brooklyn, and noticed that two girls can make as real a home as can be desired.

This winter has been a notable one for New Yorkers in general, and for Gamma Phis in particular, when there have been so many plays presented that are delightful for ourselves, and profitable for our little ones as well.

"*The Piper*," Miss Peabody's prize play, is now having a long run at the new theatre, with Miss Matthison in the title role. Man's greed, woman's attention to what the neighbors say, the intolerance of the church, and the sordidness of the town, are condemned in this new play, as in the old legend, but the comforting part of the ending is that the children come back to gladden the homes.

Alternating with this symbolic play, Maeterlinck's dream-play "*The Blue Bird*," comes once or twice a week. With breathless interest we follow the adventures of *Mytyl* and *Tytyl* through the Palace of the Night, the Kingdoms of the Past and the Future, and discover with them that the Bluebird of Happiness was in their own home. How the children love Mr. Bread, who gave them slices of himself, when they were hungry, and Mr. Sugar, who broke off bits of his fingers when they wanted sweets!

"*Rebecca of Sunnybrook Farm*" has been fascinating young and old for the past four months, and bids fair to continue for the rest of the season. The quaint charm of the story has lost nothing by the staging, and we live through the escapades of *Rebecca* and her mates with the same interest if we are thirteen or thirty.

In the realm of grand opera even, the child nature has come to its own, for in "*Die Königskinder*," we watch the sad fortunes of the exiled prince and princess, and weep sadly when the poor children succumb to the poison given them by their enemy.

The child welfare exhibit has also been of interest to all good Gamma Phis, for the precautionary measures urged by the authorities showed, in a very tangible way, the efforts made to protect our little ones in the great city, where there are so many dangers of all kinds.

On February 25, we will meet with Miss Emma Loud, 3609 Broadway, and on April 8, Edna Stitt will entertain us at luncheon at her home, 156 West 93rd Street. Every Gamma Phi knows a magic password that will admit her, if she is a stranger in a strange land, so come one, come all, and eat peanuts and olives with us as you used to do in your undergraduate days.

#### MILWAUKEE

Dear Sisters: Since our last letter we have had two very enjoyable luncheons at the Milwaukee Athletic Club, the attendance averaging about twelve at each meeting. These luncheons have proved very popular, as at this time of the year every one is so busy and has so many social engagements, and then too nearly all of us are members of the Association of Collegiate Alumnae and see each other the first Saturday of each month at these meetings. At our next luncheon, February 18, we are expecting the Burlington alumnae to join us, and hope too to have some of the active girls from Madison with us who may be in town between semesters. We only wish more Gamma Phis would remember the dates of our meetings—the third Saturday of the month—and would make it a point to be in Milwaukee at the Athletic Club at that time.

We are very proud of the honor that has just been awarded Laura Case Sherry, who was elected first vice-president of National Drama League at their meeting in Chicago a few weeks ago. Mary Lafflin Jones has a dear little baby girl, born last December, whom we are so glad to welcome into the ranks of Gamma Phi babies. Gertrude Ross spent Christmas in Sioux City, Iowa, with her sister who was married only recently. A few of us had the opportunity of seeing Gertrude Wright, Gamma, '09, when she made a brief visit here last month at the home of Grace Steiner Lindsay. Allison More Kieckhefer and her husband are planning to chaperone the house party at the Sigma Chi house at the Madison Junior "Prom" this month.

The secretary wishes she were better equipped for writing a chapter letter, but she has been ill for some time, and so has not been able to keep in close touch with the members; however she promises to do better next time.

## SAN FRANCISCO

Dear Gamma Phis: Our annual meeting—that must be mentioned first. Heretofore, it has been the custom to have the annual meeting in the form of a “jinks,” held at the chapter house, and attended only by alumnae. The active girls were always very curious as to what went on at that secret session! But I have not yet found out, for this year was the first occasion on which I could attend, being a ‘10-er, and they didn’t have a “jinks!” You see the “jinks” were held in the evening, and although they were extremely popular with those who could be present, there were always a good many who found it almost impossible to be away from home in the evening, or who lived too far away to come. So it was decided to make an innovation, and have a luncheon. Consequently, on Saturday, December 31st, about twenty-five girls gathered about the tables to “break bread” together—the “bread,” by the way, being delicious hot biscuit!

Just before luncheon, we had a brief business meeting for the election of officers, and after luncheon, we played “bridge.” The affair was voted such a success, that we feel sure that the “innovation” will soon become “custom.”

On Monday evening, January 30th, we went to Berkeley for the Christmas celebration. These festivities are always exceedingly enthusiastic. Each gift, as it is held up to view of the girls by the one appointed to be “Santa Claus,” is greeted with shouts of approval, clapping, and a song to the giver. The alumnae were not as numerous this year as might be desired, for it was a very stormy night. But those of us who were there enjoyed every minute of the evening. The active girls make delightful hostesses, and there is such an air of comradeship about the house and the girls, that no alumna feels strange or “out of it.”

In former letters, you have probably read of our “alumnae teas,” held about once a month at the different girls’ homes. Our last one had for its scene the home in San Francisco, of Mrs. Lewis Allen, ‘96-’97, and was given on Saturday, February 11. Mrs. Allen has been in her new house but a few months, and it was a treat to be able to see it. She herself is charming, and made us all feel at home, although many of us did not know her before. The afternoon was stormy, but there were more girls present than at almost any other. Mrs. Allen lost everything in the fire of 1906, and since that time has collected a great many exquisite oriental things, and her home is most attractive and artistic.

I don’t want to close without telling the good news about our long-worked-for “new home.” The debt on our lot is almost entirely

cleared, and the board of directors is soon to issue bonds to put up the house—so that it begins to look as though we might really live to see the chapter established in a home of its own.

#### DENVER

Dear Gamma Phi Sisters: Already a goodly portion of the new year has slipped away, and Lent, with all its hints of spring, is upon us. The fusing of time is called to mind by each new number of the CRESCENT; and to some of us it is very forcibly emphasized, now and then, by a startled awakening to the fact that a CRESCENT letter must be in Omaha by next Tuesday!

To give you all the news of our chapter, late and recent, I shall have to go back to Christmas time, when we turned one of our meetings into a party with a tree and a Santa Claus spread for our babies. I could not do justice to the beauty and charm of our guests at that function; only it is lucky that no prize was offered for the prettiest, the sweetest, or the finest baby there; for such a trophy would have needed duplicating and re-duplicating until we'd all received the prize!

A rest of three weeks gave us a chance to recover from holiday excesses, and then came a large and delightful meeting at Lucia Pattison Young's. The headliner at this performance was in the shape of "letters from old girls," and among those who sent us missives were Beulah Steele Jenness, Theta, and Isabelle White, originally of Delta, but so long and so well loved by Denver girls that we feel as if we had always owned her.

At our next meeting we held a friendly little reception to Sigma Kappa and Chi Omega. We are glad to say that our sister Greeks came to see us in the most gratifying fashion, so that we felt the Hellenic tie very strongly.

An item of interest of all lovers of Denver University, whether Gamma Phis, Pi Phis, or independents, under-graduate or alumnae, was the announcement of the engagement of Tom Barry as athletic coach to the college. Barry is a player of national standing; he captained Brown University in 1902, and was chosen by Walter Camp for an all-American tackle. He has coached the winning Badger team for the past two years, and we hope next season to see Denver University "eat 'em up."

Even more important to Gamma Phis than football news just now is the "play;" the play written as always by Miss Barbee, and acted by Theta for the benefit of her building fund. The play,—a fresh one each year, of course,—is an annual occurrence, increas-

ingly successful. The 1911 product deserves a special article all to itself, so I will only state that its name was "A Trial of Hearts;" that it treated of the marital experiences of a western girl and an eastern man; that it extended college spirit, and had a sparkling rushing scene; and that it was thought just as good as "The College Widow" by those of us who did not think it better.

#### MINNESOTA

Dear Sisters in Gamma Phi Beta: The first occurrence of interest in Minnesota's simple annals since the last chapter letter was written was the Christmas party at the house. This took place on the twenty-ninth of December, and brought together many girls who are away from us for the greater part of the year. The stories they had to tell of pedagogical victories, domestic trials, and the varied incidents of travel would add materially to the gayety of nations, could they be inserted here; but regard for that dear guiding principle of unity forbids my wandering! Suffice it to say that we sat on the floor and talked and laughed so hard as to scandalize the active sisters who were with us. No actual business was transacted at this meeting, however; that was left for the next one, late in January. Financial cares hung heavy over us on this occasion, for the active girls have a large house on their hands and need many things in the way of furniture "and fixings." We appropriated money to buy rugs, for one thing; so that now three really beautiful orientals cover the nakedness of the living room and hall floors. For another thing, and one inspired by the same motive, we planned a series of bridge teas, at which each player contributes a small sum for the privilege of giving the party, the sum thus gathered to help still further in beautifying the house. As we are quite devoted to bridge, the plan is proving both delightful and successful.

We have enjoyed but two meetings since Christmas, so there is little more that is distinctly of the chapter to tell. We live so near together and see each other so often that our intercourse is made up largely of small things that cover little space in print. Among the items of interest at the present are Pearl's wonderful small daughter, Ethel Works' brilliant appearance in the part of Aileel the poet in the college woman's club play "The Twig of Thorn," Lora's wedding, and—but these things are personals, and the directions say must be taken in a dose by themselves! So let us bid you a brief farewell, dear sisters, and good luck.

## PERSONALS

## ALPHA

Helen Hitchcock was entertained during junior week at the Cerebrus lodge at Cornell.

Ruth King recently spent several days at the home of friends in Watertown.

Anna Janet Morrison spent Junior week at the Delta Upsilon house, Cornell.

Doris Oakley, '10, who has been taking work for advanced standing, has been obliged to leave college on account of the serious illness of her mother.

Genevieve Joy, '12, and Edna Brand, '12, were guests at the house party given by Theta Xi during junior week at Cornell.

## DELTA

Elizabeth and Anna Putnam sailed on February 2, for Bermuda, where they will spend a short time.

Mrs. Frank Allen (Helen Flanders) has gone to Fall River where she will make her home at 83 Madison Street.

## EPSILON

Alice Jenks, Mabel Sell, Nell Ade, Lillian Paulson, and Florence Wallace spent a few days with us in February.

Carolyn McCarty, '12, spent Thanksgiving with her sister, Laura McCarty Vance, Epsilon, in Columbus, Ohio.

Louise Stolp, '10, visited the chapter on her way back to Oakfield, after Christmas.

Epsilon is glad to meet Alice Boyle, Theta, who is attending Chicago University this year.

Mary Palmer Babcock, who has been living in Berlin, Germany, for several years, expects to be in Boston after October first. Mr. Babcock will be associated with the Boston branch of the university bureau of foreign travel, whose representative he has been in Berlin.

## ETA

Elizabeth Bridge, ex-'12, has gone to New York City to take a two years' course in Domestic Science at the Teacher's College.

## THETA

Ruth Drake Drysdale, now of New Plymouth, Idaho, spent the Christmas holidays in quarentine, her two year old son, Robert,

being very ill with scarlet fever. The baby made a complete recovery.

Eleanor Reynolds, '11, is taking a course at St. Luke's Training School for Nurses in Chicago.

Edith Hoop will enter college next semester, to graduate with her class in June.

Alice Boyle, '11, has gone to Chicago on account of the illness of her mother.

#### IOTA

Helen Boyer, pledged to Epsilon at Northwestern University last year, is now at Columbia University, N. Y.

Helen Worrall, '10, will go to Bermuda February 16, for two weeks.

Elizabeth Bridge, Eta, has just come to Columbia University to study domestic science.

#### KAPPA

Irene Dimmick, '14, from Epsilon, visited friends in Minneapolis during Christmas vacation. We were very glad to have her with us at our Christmas party.

Maud Hart, ex-'14, is spending the winter with her grandmother in San Diego, California.

Julia Hoppin, ex-'12, has gone to Medford, Oregon, to be with her parents on their fruit ranch.

Hazel Strong, ex-'12, will spend the spring months traveling in California.

#### LAMBDA

Theresa Preston, ex-'11, is spending the winter months in southern California.

Florence Lewis, ex-'10, is traveling for a month in California.

Adelaide Allmond, ex-'11, is traveling in the east. She will visit Gamma Phi Beta chapters in various colleges.

Louise Richardson, ex-'12, is attending the University of Idaho this semester. She is living at the chapter house.

Mrs. Alexander, formerly Verna Abott, ex-'11, has returned to her home in Pendleton, Oregon, after visiting here for a number of weeks.

#### MU

Norine Graves Little, ex-'10, is visiting on the campus for a few days.

Ethel Palmer, '10, and Florence Forbes, '09, are now on their way to the Orient.

Della Barnhart, ex-'10, is here for a short visit.

Ruth Gilbert, '06, who is teaching in Indianapolis at present, expects to return home in the spring.

Gertrude Brainerd, '10, is attending normal school in Los Angeles.

Helen Thoburn, Pauline Gertzmann, and Elise Owen, all of the class of '07, are planning a reunion at Stanford next month.

Eunice Gray, who helped to install Mu chapter, spent last week end with us. She came from San José for the miracle play.

#### NU

Ruth Hansen, '10, is teaching in Salem High School.

Pearl McKenna will not return to college this year, as a result of a severe attack of typhoid fever.

Gertrude Holmes has completed her college work, and will be at her home in Portland, this spring.

Anne McMicken has returned to college this semester, after several months absence, on account of illness.

#### XI

Helen Riheldaffer, Kappa, '09, was in Moscow a few days attending to Y. W. C. A. work.

Mary Belle Meldrum, '10, has visited our chapter several times during the last month.

Sadie Stockton, '10, has returned to take a second degree in college. She will be with us in the house this year.

We entertained Miss Lucy Hopkins, Northwestern secretary of the Y. W. C. A., at dinner, during her recent visit to Moscow.

Marie Kettenbach, from Lambda, spent three days in Moscow while on her way to Lewiston for her Christmas vacation.

Constance Henderson, '10, has recently gone to Hood River, Oregon, which will be her future home.

#### SYRACUSE

We are deeply sorry to report the recent severe illness of Helen Graves Sprague, but we are also happy to be able to add that she is now rapidly improving and will leave the hospital in a few days.

Mrs. S. T. Ford, otherwise Lou Palmer, whose husband is the pastor of the Englewood Baptist church in Chicago, one of the largest churches in the city, has just returned home after a visit to her sister.

Cora Frederick and Mabel Stone have recently returned from a short visit to Louise Klock French of Utica.

Emogene Day and Miriam Ernhout Barnes, accompanied by the twins, spent a day last week with Lona Noyes of Rochester.

Florence Dale, who is teaching in Erieville, N. Y. this winter, spent the holidays with Mr. and Mrs. LeRoy Dale (née Mildred F. Webb) of New Brunswick, N. J.

#### NEW YORK

Sara Rome, Iota, '09, is studying architecture at the School of Applied Design this winter.

Among the Gamma Phis who attended the installation of Dean Gildersleeve at Barnard on February 16 were Jeanette Seivert, Laura Van Cise, Helen Aignier, and Linda Savitz Thomson.

Sara Rome represented New York Alumnae at the 1912 junior ball at the Plaza, on February 17.

Hazel Platta, Iota, '06, attended the evening meeting of Iota this month.

All Alpha girls who know Katherine Parkhurst, '09, will be very sad to learn of the death of her husband, Mr. Frederick Wilbor, in October last. Mrs. Wilbor has returned to her parents' home in Hornell, New York.

#### SAN FRANCISCO

Alma Eastin, '08, visited in San Francisco and Berkeley during the Christmas holidays and it was a pleasure to have her at the annual meeting.

Florence Hincks, ex-'10, has been ill for some time, but is now recovering, we are glad to report.

Tallulah Leconte, '04, is in New York.

Esto Dunbar Linscott, '08, has gone to Yreka to join her husband.

Evelyn Glenn Johnson, '99-'01, was an unexpected and most welcome guest at the Eta initiation on February 3. Mrs. Johnson lives in Fresno, and it isn't often that we see her.

## BIRTHS

Florence Bailey Crouse, Alpha, is receiving congratulations on the arrival of a son, Huntington Beard Crouse, Jr.

Born to Mr. and Mrs. E. D. L. Linscott (Esto Dunbar, Eta, '08) a daughter, Esto Dunbar, on December 14th, at Oakland.

Born to Mr. and Mrs. Thomas Hutchins (Alice Senger, Eta, ex-'08) a daughter, Lucy Alice, on February 11th, at Berkeley.

Born to Mr. and Mrs. Orin Fletcher Stafford (Mary Straub, Nu, '01) a son, Charles Howard, in December, at Eugene.

Born to Sarah Reed Hammond, Nu, ex-'09, a son, in December, at Gold Hill, Oregon.

Born to Pearl Weston Hall, Kappa, '09, a daughter, Katherine Dickinson, on January 7th.

Born to Clara Cook Stoddart, Iota, a son, Harold Coburn, on January 9th, 1911, at State College, Pennsylvania.

Born to Mary Laffin Jones, Gamma, a daughter, on December 17th, 1910.

Born to Gertrude Bundy Parker, Beta, a son.

Born to Dorothea Curtis Chickering, Gamma, '00, a daughter, on December 9th.

Born to Ruth Palmer Sheperd, Epsilon, ex-'10, a daughter, in February.

Born to Mr. and Mrs. William L. T. Duffy, (Ellen O'Gorman, Iota, '08) a son, on February 8th.

---

ENGAGEMENTS

During the holidays announcement was made of the engagement of Sara Morrow Preston, Kappa, '07, to Mr. Joseph Edward Finley, Jr., of Minneapolis. The wedding will take place late in April.

Marion Dickinson, Beta, has announced her engagement to Mr. Wilford Shaw of Ann Arbor, the editor of *The Alumnus*. The marriage will take place in the summer, and will be followed by a European trip.

Announcement has been made of the engagement of Moselle Weld, Gamma, to Dr. Olaf Haugen, of Morehead, Minnesota.

The engagement of Meda Sheldon, Beta, '10, to Mr. Harry L. Arnold, Nu Sigma Nu, was announced during the Christmas holidays.

Announcement has been made of the engagement of Florence Rose, Iota, '10, to Mr. George Friend.

## MARRIAGES

Lillian Eisenbeis, Lambda, ex-'05, was married to Mr. George Welch on January 18th, at her home in Port Townsend, Washington.

Bessie Bigelow, Beta, '09, was married to Mr. Alfred J. Moore, Sigma Alpha Epsilon, at the home of her parents, Mr. and Mrs. R. P. Bigelow, at Owosso, Michigan, on Wednesday, December 28th. Mr. and Mrs. Moore are living in Detroit.

Hellen Welles, Beta, '11, was married to Mr. Lawrence Thackwell, Delta Upsilon, at her home in Denver, Colorado. Mr. and Mrs. Thackwell reside in Gunnison, Colorado.

The marriage of Lulu Liesemer, Beta, '07, to Mr. Edwin White, of Ispeming, Michigan, took place on January 7th.

Madge Miller, Beta, '08, was married to Mr. Clement Smoot, Sigma Phi, in Chicago, on January 21st. Mr. and Mrs. Smoot are at home in Beaumont, California.

Vera Lay, Beta, '06, was married to Mr. Arno R. Shorer, of New York City, on January 30th.

The marriage of Helen Hicks, Beta, '08, to Mr. Edward Stimson, formerly of Detroit, will take place on February 17th. Their home will be in Chicago.

The marriage of Janet Newkirk, Theta, '07, to Mr. Charles Birkins took place on February 7th.

Grace Lasher, Epsilon, '06, was married to Mr. Herbert Moore Boice of Chicago, on December 10th. They are at home at 427 Kensington Ave., North La Grange, Illinois.

Ella LaMont, Epsilon, ex-'13, was married to Mr. Roy Dodge, on February 7th.

The marriage of Ethel Clark, Gamma, '09, to Mr. Carl Bichel, Sigma Alpha Epsilon, of McGregor, Iowa, took place on February 7th.

Bertha L. Junkins, Delta, '98, was married to Mr. Frank Elmore Kneeland, in Brooklyn, on December 24th. Their home for three months is at 126 Sterling Place, Brooklyn.

Mary Drake Sawyers, Zeta, '07, was married to Mr. William Baker, Jr., of Baltimore, on February 1st. Belle Baker, '05, and Bess McCaim, ex-'04, both of Zeta chapter, were her bridesmaids. After March 15th, Mr. and Mrs. Baker will be at home in Baltimore at the Belvedere.

On February 8th, Lora Gooding, Kappa, '08, was married to Mr. Clarence L. Tanner, Phi Gamma Delta. The wedding was a beautiful home affair. Kathleen Cutting, Beta, who was Miss Gooding's room mate at Wellesley, was maid of honor, and three Minneapolis

Gamma Phis were in the bridal party. After six weeks in the south and east Mr. and Mrs. Tanner will be at home in Winnipeg, Manitoba.

---

## IN MEMORIAM

FLORENCE BROWNELL, Beta

*Whereas*, in the providence of God, our sister, Florence Brownell, of the class of 1905, has been taken from us, be it

*Resolved*, that we, Beta chapter of Gamma Phi Beta, do hereby express to her bereaved ones our heartfelt sympathy, and be it

*Resolved*, that we in token of our sorrow, drape our badges for the period of thirty days. And be it

*Resolved*, that a copy of these resolutions be sent to the family, and inserted in the CRESCENT, our sorority magazine.

LORA HALL,  
GLADYS LEWIS,  
RUTH BURDSAL.

## OUR CONTEMPORARIES IN BLACK AND WHITE

FOR DECEMBER—*The Circle of Zeta Psi; The Adelphean of Alpha Delta Phi; The Lamp of Delta Zeta; The Record of Sigma Alpha Epsilon; The Shield of Phi Kappa Psi; The Delta Chi Quarterly; The Key of Kappa Kappa Gamma; The Caduceus of Kappa Sigma; The Delta Upsilon Quarterly; The Phi Gamma Delta.*

FOR JANUARY—*The Circle of Zeta Psi; The Kappa Alpha Theta; The Anchora of Delta Gamma; The Record of Sigma Alpha Epsilon; The Arrow of Pi Beta Phi; The Caduceus of Kappa Sigma; The Lyre of Alpha Chi Omega; The Beta Theta Pi; The Scroll of Phi Delta Theta; The Alpha Phi Quarterly; The Rainbow of Delta Tau Delta; The Phi Chi Quarterly.*

FOR FEBRUARY—*The Trident of Delta Delta Delta; The Kappa Alpha Journal; Themis of Zeta Tau Alpha; Sigma Kappa Triangle.*

To *The Key* of Kappa Kappa Gamma we are indebted for the following:

Are we taking the proper care of our Freshmen? Surely they had our attention during rushing season; but do we give them the thought and care they should have since rushing days are over and they are wearing the little Sigma in Delta, or perhaps by this time the Key?

Of course we feel much nearer to them now, and are very proud of our new freshmen. We are hoping for success for them, and not only for them but for the fraternity through them. But perhaps we do not realize the importance of our influence in the making of their success and that of the fraternity.

It sometimes happens that the freshmen are not close enough in their relations to the upper classmen. That the freshmen should chum together is not surprising, for their work is much the same and their interests similar. Then, too, they are to be in school together when the upper classmen have left.

But we are too apt to let the freshmen shift for themselves. We look out for their social welfare. We give a reception and introduce them to our friends. We are glad to see them invited into the social world. We remark with satisfaction on the popularity of a girl.

All this is good, but our interest may stop there. We are not broad enough. It is individual attention that our freshmen need. There are so many ways to help and so many reasons why we should help.

Each girl has her individual problems which are often very big ones for freshmen and are discouraging to her. A little help from an upper classman, or at least a little interest, is not going to lessen her independence.

It is only natural that a freshman should often over-estimate the unimportant things in her college life, and it is a very easy thing for an older girl to set her straight.

Grades are to be kept up, not only for the fraternity but for the girl herself, for her success, and for her peace of mind as well, and the interest of a senior or a junior will go far to keep up a proper standard. A little personal interest in the commonest things of a freshman's life is going a long way in the development of the big Kappa spirit that begins with the little blue Sigma in Delta.

Our chapter of the future is dependent upon our freshmen of today and our freshmen of today are at least strongly influenced by us of more experience. It is for us to teach our new girls Kappa's meaning, Kappa's standards, and Kappa's love.

Our new freshmen are with us. They are enthusiastic and alert to our inward organization. If we wish them to develop into the strong sorority women we should impress them with this feeling of responsibility. No matter if the position or office of the girl is a comparative minor one she should feel it her duty to do her part as thoroughly as the holder of a more important office. The small inner workings of a chapter largely determine the outward standing of the chapter and sorority as a whole.

The Pan-Hellenic Conference strongly urged the Sophomore pledge day. There is always plenty of material in the entering class. Why not give them time to decide sanely? Then mistakes both on the part of the chapter and the individual are unavoidable. Fewer girls will go "for just one year to a sorority." It is the girl who shows up well at the end of the year who will receive a bid and not the one who takes you by storm at the first.—*The Lamp of Delta Zeta*.

Rushing and pledging over, school-work and the hum-drum of every day life begins in earnest. The freshman finds it rather commonplace after a week of parties.

In the sorority in which you find yourself are contrasting types of girls to form a congenial unit. A freshman will learn to know

them, to understand them and to appreciate them to the extent that she makes herself agreeable.

It has been said many times that the first year is the "golden one." If it is, it must largely be accomplished by yourself. A freshman is continually criticized and her record is established the first year.

It is not a question of the deference other people show you but how much you show to others. This holds good from the matron of the house to the teachers under whom you study. There are many ways to make good; in lessons, in the fraternity and in relation to outsiders.

A great deal of ambition added to the willingness to have mistakes corrected and to begin all over again will make a firm foundation for a freshman.—*The Anchora* of Delta Gamma.

Hear what other journals have to say about our Gamma Phi babies!

Sorority historians must have an awful time keeping track of members, what with the sometime frequent change of names of members and more than frequent change of addresses. While generally somewhat forward in feminine movements, one, Gamma Phi Beta, seems to encourage the stork, the last issue of the *Crescent* containing a composite of nine "Gamma Phi Babies." An advanced feature, however is that the male parents, identity is entirely ignored.—*Kappa Alpha Journal*.

"Gamma Phi Babies" occupy several pages in the October *Crescent* of Gamma Phi Beta. Two of them will be Kappa Sigmas when they grow up: Dayton Denious and George Boughton Denious, who already address the Worthy Grand Master of Ceremonies with the sign of distress at any hour of the night they choose.—*The Caduceus* of Kappa Sigma.

Three cheers for the Gamma Phi Beta baby! May its yowl never grow less!—*The Delta Upsilon Quarterly*.

Freshmen and freshmen customs are always interesting. We quote from a number of exchanges:

The end of October and all of November are busy times at Barnard. In the first place, it is the custom for every class to entertain the freshmen, at least once. The sophomores have their own special mode of entertainment, which goes by the name of the "Mysteries," this year, instead of the usual "hazing" process, the

sophomores presented a very pretty little sketch, in which wicked class spirit was vanquished, after a hard-fought battle, by college spirit, the chosen priestess of Alma Mater. The traditional green badges, which the freshmen must wear for a certain length of time, were, however, still in evidence—and we all felt very glad of this fact, for the new “Mysteries” were a disappointment to most of us. Every one feels, however, that this is a step in the right direction, for of late years, the “hazing” has not been any too dignified!

The junior entertainment to the freshmen was in the form of a wedding, such as 1910 gave, when 1912 was “young and green.” In the presence of the junior and freshman classes, 1914 promised to “love, honor and obey” 1912, all through college.—*Barnard chapter letter in Arrow* of Pi Beta Phi.

I like the customs prevailing in some fraternities of encouraging members to take an active part in student life. Some of the men's societies have chapter by-laws compelling each initiate to express a preference for some feature of college life, and, with the approval of an upper-class committee, to become indented there-with. Some compel their members to join the organization to which all students are eligible. One society I know of has had the custom of asking each neophyte to fill out a card expressing a preference for certain activities and a desire to enter certain fields. The society has then arranged to give the freshmen whatever opportunities it could for work along those lines.—*A Φ Quarterly*. Quoted in *To Drama* of Alpha Omicron Pi.

Our new freshmen sisters decided late in November to give their older sisters a party, just to show us what they could do. We were entertained at the home of Grace Leck, and one of their stunts was a little three act comedy in which we saw ourselves as they had seen us. The first act was, “The Tri-Delts in Chapel,” the second, “The Tri Delts on the Campus,” and the third was “The Tri Delts at meeting.” During the long ways between acts, we regaled ourselves with delightful music on our side-combs.—*Minnesota chapter letter in Trident* of Delta Delta Delta.

California freshmen are allowed, except on special occasions, to go out only two evenings a week, and these two must be chosen from Friday, Saturday and Sunday evenings. They must also be in their rooms and studying by eight o'clock every evening. On the wall in the second floor hall is a chart with the names, and schedule of recitations of all the freshmen and sophomores, and whenever they

are caught cutting a class, or in any way failing in any of their hundreds of duties, they are chalked down with a "tubbing" by an upper classman.—*Kappa Alpha Journal*. Quoted in *Eleusis* of Chi Omega.

In a recent article on the life of a sorority girl, three aims were named which should be made foremost in her college career. They were. 1. To maintain a scholarship which is a credit to herself and to her chapter (excluding the narrow-minded "grind"); 2. To be aggressive and ever ready to support all college affairs by doing active work in the various college organizations; 3. To develop true traits of character, such as unselfishness, generosity, and a true spirit of forgiveness.—*Anchora* of  $\Delta \Gamma$ . Quoted in *To Dragma* of Alpha Omicron Pi.

It has been proposed to debar freshmen from fraternity membership at the University of Wisconsin and to have a scholarship standard for sophomore eligibility. It is said that twenty-two per cent of fraternity freshmen were dropped last year on account of poor work, while only about half as large a per cent of non-fraternity freshmen were dropped. *The Record* of Sigma Alpha Epsilon.

Gamma Kappa this year purposes to require that all the freshmen shall be required to go out for some line of student activity, and also that they shall use their utmost endeavors to stand high in their school work. The freshmen are to be made to adopt the axiom that, "He serves his chapter best who serves his college best."—A chapter letter of  $\Delta T \Delta$ . Quoted in *The Lyre* of Alpha Chi Omega.

The annual freshman stunt occurred on Hallowe'en eve this year. It was a mock-wedding and they were all there from the gallant usher to the tall, slim groom with a black moustache. The wedding cake consisted of a huge pumpkin pie of which they served us generously.—*Nebraska chapter letter* in *The Trident* of Delta Delta Delta.

As soon as a girl is pledged she is assigned to the care of an upper class girl who is her adviser and guide in both her college and fraternity life. The little details of personal conduct, dress, and general deportment come under the supervision of this girl, who is playfully called her Chapter mother.—*Anchora* of  $\Delta \Gamma$ . Quoted in *Eleusis* of Chi Omega.

Last year we founded a new tradition of which we are already very proud. We bought a large silver loving-cup and each year the freshman who earns the highest scholastic average above eighty-five, is to have her name engraved upon it.—Correspondent in *Kappa Alpha Theta*.

The freshmen are working on their *Katsup* to be given December 5th before the older girls and the alumnæ. This old Kappa custom every freshmen class must observe, entertaining for one evening with a farce.—Kansas chapter letter in *Kappa Alpha Theta*.

A couple of days before initiation we tried an experiment upon the freshmen and it worked so beautifully that some of the other chapters may desire to adopt our plan. The active chapter assembled with much dignity and solemnity in one room and placed the freshmen in another with orders not to talk or make any noise, and they were absolutely obedient. They were brought before us, one by one, and questioned as to their attitude toward joining Kappa, in such a way as to prompt a good deal of serious thought. It helped the older girls, too, for we couldn't help wanting to be better and more worthy of Kappa after we had listened to the ideas of those splendid freshmen.—*Northwestern Chapter Letter*—Key of K K Γ. Quoted in *To Dragma* of Alpha Omicron Pi.

Our freshmen pledges have certainly been busy and energetic this term. They formed an organization, which has a meeting and a spread for the upperclassmen once a week. They also invited the older girls to a chicken dinner party, which they gave at a large country home, reached by means of an interurban car and hay wagon.—Butler chapter letter in *Kappa Alpha Theta*.

The following quoted from *The Lyre* of Chi Omega appeared originally in an article "If I were a Freshman again," published in the *Epworth Herald* and written by Rockwell D. Hunt, professor in the University of Southern California:

What ever else I did or did not, if I were entering college in this year of grace, six things I would earnestly strive to do:

(1) I would care for my health. Perfect health involves a sufficient supply of suitable food, the complete absence of all deteriorating elements, an adequate amount of sleep regularly taken, and systematic physical exercise, preferably under expert direction.

(2) I would place study above politics. The average freshman

has little sense of the perspective of the multifarious activities of the campus; he should allow himself time to take his bearings. Therefore, during the first college year I would endeavor to establish habits of punctuality and regularity, and strive to meet every exact requirement to the letter. I would be keen to observe and to study, but deliberate about entering college "politics."

(3) I would do more than minimum requirement. The special point of emphasis here is that during the freshman year I would wish by taking somewhat more than the minimum course to acquire a momentum that might be a grateful boon in a later year. Thousands have failed to graduate with honor, or to graduate at all, because the freshman year yielded them no reserve power.

(4) I would choose my friends wisely. I have found that no friends are quite like college chums. Since wisest choices cannot be made off hand, I would take ample time to deliberate, not only in the matter of a personal chum, but also in considering membership in a fraternity or other college organization. I would need true perspective.

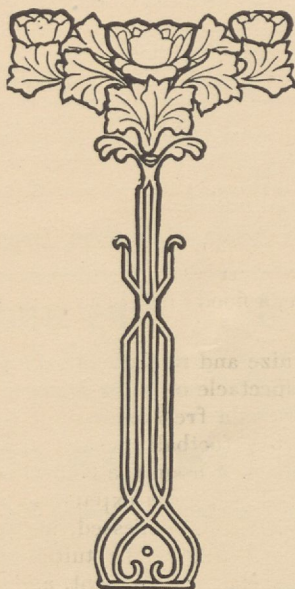
(5) I would be alert concerning my future profession. Not that my profession must necessarily be chosen before going to college, for a premature decision is very likely to be an unwise one; but if my mind is truly alert while I am laying broadly the foundations for liberal culture, a flood of light will be shed upon this fundamental question.

(6) I would recognize and nurture my religious nature. I have observed the pathetic spectacle of a good boy and dutiful son going off to college; and there as a freshman, while growing up into manhood, he has joined the football team, been initiated into his favorite fraternity, embarked upon the boundless sea of wordly wisdom, and felt exultant pride in his expanding powers and splendid liberty. But, sadly must it be confessed, his religious nature, once strong and bright did not receive the tuition commensurate to his bodily and mental and social development, and in spite of his pride of power and splendid liberty he made shipwreck of life.

If I were a freshman once more I would make the most of myself while in the morning of life's day. I would not quench the inner light. I would listen attentively to the call of the age. I would choose a worthy vocation, then fit myself to be a positive factor for the more abundant life.—Syracuse *Daily Orange*.

## FRATERNITY EXTENSION

Delta Upsilon.....	University of Washington
Kappa Delta.....	University of Kentucky
Delta Zeta.....	Ohio State University



THE 1908 EDITION OF

# The Songs of Gamma Phi Beta

OLD SONGS—POPULAR SONGS—NEW SONGS

Price \$1.50, postpaid

Send your check to MISS EMMA F. LOWD

3609 Broadway

NEW YORK CITY

---

## SUCCESSFUL COLLEGE PLAYS!

Life-like characters, delightful humor, splendid plots which ring with true college spirit and loyalty.

**AFTER THE GAME**—Two acts, one masculine and nine feminine characters. Time  $1\frac{1}{4}$  hours. Two interior scenes. Price, 25 Cents.

**THE KINGDOM OF HEART'S CONTENT**—Three acts, six masculine and twelve feminine characters. Time  $2\frac{1}{4}$  hours. One exterior and one interior scene. Price, 25 Cents.

**AT THE END OF THE RAINBOW**—Three acts, six masculine and fourteen feminine characters. Time  $2\frac{1}{4}$  hours. Three interior scenes. Price, 25 Cents.

These plays were written by Miss Lindsey Barbee for the Gamma Phi Beta Sorority at Denver where they were first produced with great success and have since proved equally successful in all parts of the country.

We publish a large line of Plays and Entertainment Books suitable for all occasions. Send for large, descriptive, illustrated catalogue. FREE.

T. S. DENISON & CO., Publishers, Dept. 80, Chicago

---

## Gamma Phi Beta Pins and Stationery

Send for Samples and Prices We also manufacture CLASS PINS, and shall be pleased to forward illustrations and give quotations.

### BUNDE & UPMAYER COMPANY

Official Jewelers to Gamma Phi Beta

75 Mack Block

MILWAUKEE, WISCONSIN

---

## J. F. NEWMAN

Official Jeweler

Highest Quality Gamma Phi Beta Badges, Specialties in Fine Grade Diamond, Pearl, Opal, Ruby and Emerald Jeweling

—Official Pledge Pin—

11 JOHN STREET

NEW YORK



