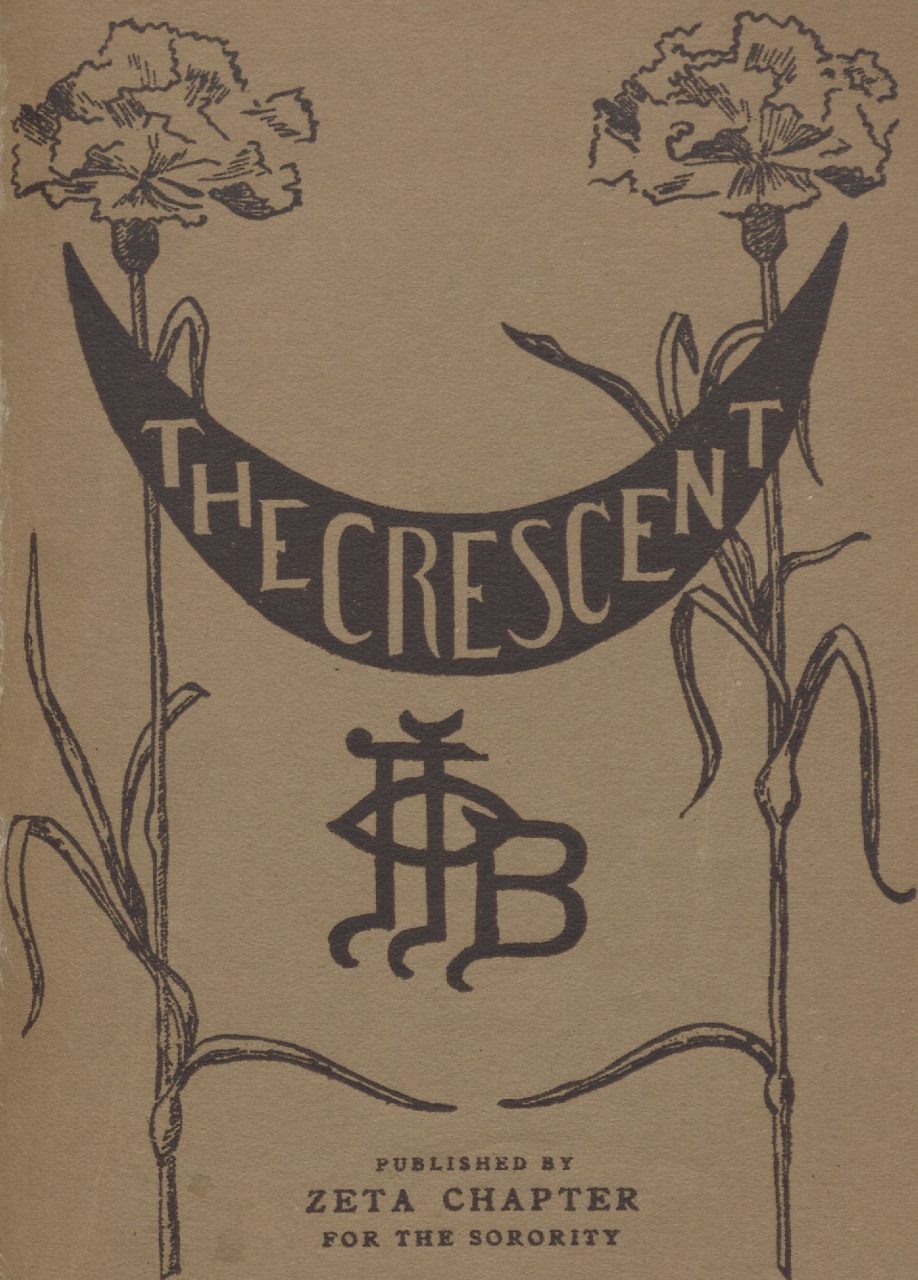


DIRECTORY NUMBER



JUNE

1905

CONTENTS

	PAGE
With Lambda at the University of Washington—by Zoe Kincaid.....	113
Book Review	124
What Is Your Greek to Me?	125
Mrs. Jane Lathrop Stanford.....	128
The Taste of the Pottage—by Louise L. Putnam, Delta.....	130
Fatty—by Bess Brown, Zeta	132
The Masterpiece—by Katharine Davis Hardwick, Delta	135
A Pan-Hellenic Banquet.....	139
Editorials	140
Song—by Lindsey Barbee, Theta.....	143
Chapter Letters	144
Births	159
Engagements	159
Marriages	159
Personal	160
Our Contemporaries in Black and White.....	162

ILLUSTRATIONS

Lambda Chapter ..	114
Lambda's Chapter House	115
Mt. Rainier from the Campus	115
Hall on Second Floor	117
Interior of Lambda's House.....	117
Shore at Lake Washington	118
Armory	118
Administration Building.....	119
Science Hall	121
By the Lake Side—University of Washington.....	123

THE CRESCENT is published regularly the first of November, January, March and June. All matter for publication should be in the hands of the Editor the fifteenth of the month preceding the month of publication.

The Crescent is sent to subscribers until ordered discontinued and until arrearages are paid.

Subscription price per year, One Dollar, payable in advance. Thirty Cents (\$.30) per copy.

For advertising rates address the Editor.

Send all subscriptions and address all communications to

THE CRESCENT,

26 N. 4th St., Columbus, Ohio.

Entered as Second Class Matter December 17, 1903, at the Postoffice at Columbus, Ohio, under the Act of Congress of March 3, 1879.

THE CRESCENT

Editorial Board

Editor

ANNA MORRI DIMMICK, Zeta
Columbus, Ohio

Associate Editors

- ALPHA. Martha A. Gowing, 802 Turtle Street, Syracuse, N. Y.
BETA. Jessie Herman, 1331 Washtenaw Avenue, Ann Arbor, Mich.
GAMMA. Loretta Carey, 257 Langdon Street, Madison, Wis.
DELTA. Katharine D. Hardwick, 62 Spear Street, Quincy, Mass.
EPSILON. Alice B. Lyons, Willard Hall, Evanston, Ill.
ZETA. M. Louise Powell, The Woman's College, Baltimore.
ETA. Zoe Riley, 2301 Bancroft Way, Berkeley, Cal.
THETA. Margaret S. Carman, 1154 Corona Street, Denver, Col.
IOTA. Una A. Winterburn, 105 Riverside Drive, New York City.
KAPPA. Agnes S. Ives, 1126 Fifth Street, S. E., Minneapolis, Minn.
LAMBDA. Lillian Eisenbeis, University of Washington, Seattle, Wash.
MU. Ruth Gilbert, Leland Stanford, Jr., University, California.
CHICAGO. Lillian Thompson, 326 Sixty-first Place, Chicago, Ill.
SYRACUSE. Mrs. Chas. E. Hopkins, 808 Bellows Avenue, Syracuse, N. Y.
BOSTON. Mrs. Marguerite Slater Bartlett, 70 Emmons Street, Franklin, Mass.
NEW YORK. F. Louise Warr, 103 West 86th Street, New York City.
MILWAUKEE. Mrs. Frederick B. Peterson, 344 Walker Street, Milwaukee, Wis.
SAN FRANCISCO. Elizabeth Senderson, 2310 Washington Street, San Francisco, Cal.

Volume V

JUNE, 1905

No. 3

THE CRESCENT
OF
GAMMA PHI BETA

A QUARTERLY MAGAZINE
THE OFFICIAL ORGAN OF GAMMA PHI BETA SORORITY

Published by
ZETA CHAPTER
ANNA MORRIS DIMMICK, Editor
26 North Fourth Street
Columbus, Ohio

GAMMA PHI BETA SORORITY

FOUNDED NOVEMBER 11, 1874

Executive Board

PRESIDENT,	Miss Elizabeth P. Putnam
	86 La Fayette Park, Lynn, Mass.
VICE PRESIDENT,	Mrs. Florence C. Savage
	1118 Twenty-fifth Street, Washington, D. C.
SECRETARY,	Miss Gertrude C. Ross
	2904 State Street, Milwaukee, Wis.
TREASURER,	Miss Amy Louise Phelan
	1128 Tenth Street, Sacramento, Cal.
ADVISORY,	Mrs. Gertrude B. Parker
	624 Sheridan Square, Evanston, Ill.
ADVIORY,	Miss Mabel E. Stone
	410 University Avenue, Syracuse, N. Y.

Roll of Chapters

GREEK LETTER CHAPTERS

— ALPHA	Syracuse University, Syracuse, N. Y.
BETA	University of Michigan, Ann Arbor, Mich.
✓ GAMMA	University of Wisconsin, Madison, Wis.
DELTA	Boston University, Boston, Mass.
— EPSILON	Northwestern University, Evanston, Ill.
ZETA	Woman's College, Baltimore, Md.
ETA	University of California, Berkeley, Cal.
THETA	University of Denver, Denver, Col.
IOTA	Barnard College, of Columbia University, New York City
KAPPA	University of Minnesota, Minneapolis, Minn.
✓ LAMBDA	University of Washington, Seattle, Wash.
— MU	Leland Stanford, Jr., University, Cal.

ALUMNAE CHAPTERS

CHICAGO
SYRACUSE
BOSTON

NEW YORK
MILWAUKEE
SAN FRANCISCO

With Lambda at the University of Washington

BY ZOE KINCAID.

AGAINST the primrose-tinted western sky, the jagged peaks of the Olympic mountains are purple. It is towards sunset on a June evening, and a group of Lambda girls are sitting on the steps of the chapter house.

Link your arm in that of a sorority sister, and she will lead you over the campus, while the crescent moon, and the evening star hang low in the west, and the pale gold and rose of sunset lingers among the trees.

Through the heart of the forest you will go,—by the Pli Delt path. Shafts of golden light fall across the way, touching the tall, tremulous ferns, the gray trunks of the firs, and bathing stretches of cool green moss. The crumbling logs by the wayside are hidden by vines and lickers, and the snow of blackberry blossoms. The glossy leaves of Oregon grape, and sallal berry form a thicket, above which rise the alders and dogwoods, and over all stand the firs and cedars as sentinels. You will hear the song of a bird, watch a squirrel run up a tree, and catch the gleam of spider webs.

Winding in and out, the path will suddenly bring you to an opening in the density of greenness and you will find yourself by the white stone Administration building, with the sloping lawn stretching around it, and borders and beds of flowers, and roses growing in profusion everywhere.

The green sward forms an oval around which the buildings are grouped. On the one hand is the science hall commanding a view of Lake Union as it lies in a silver crescent, its surface reflecting the sunset hues. In the opposite direction you

LAMBDA CHAPTER



Bess Bogle
Winifred Johnson

Jessie Jackson

Florence Coffman
Lillian Eisenbeis

Helen Wetzel
Carrie Atkinson

Katharine Edwards

Jennie Hausman
Beatrice Prosch

Margaret Brown
Helen Russell

Amy Wheeler

Elizabeth Kaufman

Leila Knapp
Ethlyn Coffman

Myra Smith

Helen MacDonald
Myrn Cosgrove



LAMBDA'S CHAPTER HOUSE



MT. RAINIER FROM THE CAMPUS

will see the two dormitories overlooking Lake Washington, and across the athletic field is the armory, its cream walls half hidden by climbing roses, ivy and creepers, and surrounded by flower beds and winding walks among the trees.

But the most inspiring view that the Washington campus can boast is from the Administration building. It is the outlook over Lake Washington, a body of fresh water some twenty-five miles in length. Above its shores are the undulating foothills, then the white Cascade range, and crowning the whole is Mount Rainier, one of North America's peerless mountains. To see its cone burning red with the light of departing day, through the giant trees of the campus is a sight that calls for the highest admiration.

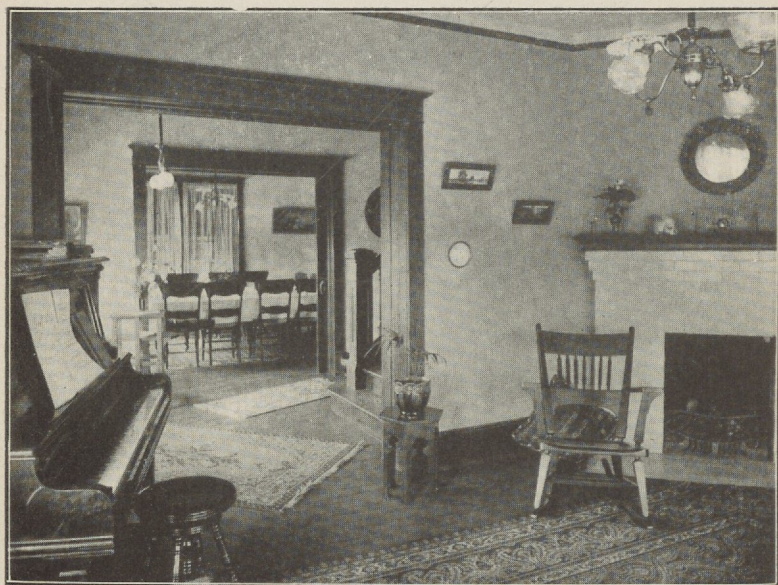
Perhaps your companion will take you by woodland paths to the lake-side where the canoes are out among the lily pads and reeds,—or you will wander down the lane over the 355 acres of the campus to the Portage where a short canal joins Lake Union and Lake Washington. You may stand for a moment looking into the open air amphitheatre,—or rest by the gray stone observatory, but wherever you go there will be a vista, the natural beauty of which will lift you above the narrow things of life.

After all it is of the campus as Stewart Edward White says of the forest: "One cannot imprison the ocean in a vial of sea water, one cannot imprison the forest inside the covers of a book."

And as you stand in the stillness of the woods, breathing in the balsamy odors of the forest, the conversation is of college affairs. You will listen to stories of the "open dorm" when the young women are at home to their friends; of football games, athletic meets, glee club concerts and intercollegiate debates. Your guide will discourse of commencements, balls and junior proms, of the celebration of campus day, and of junior day; college annual and class farce. Interwoven with these events of college life will be romance and tradition.



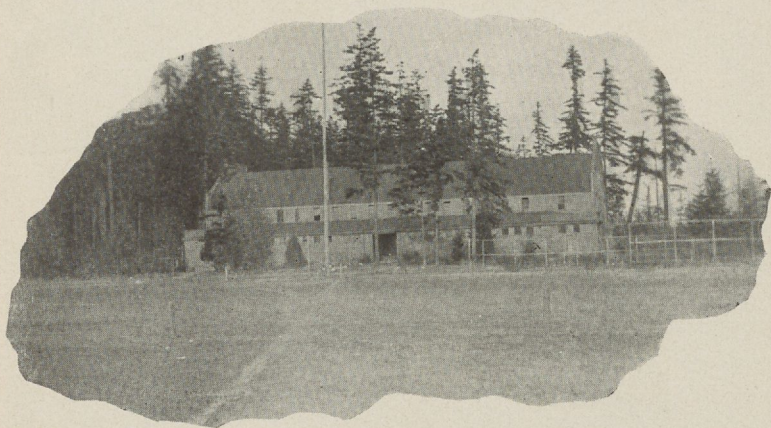
HALL ON SECOND FLOOR



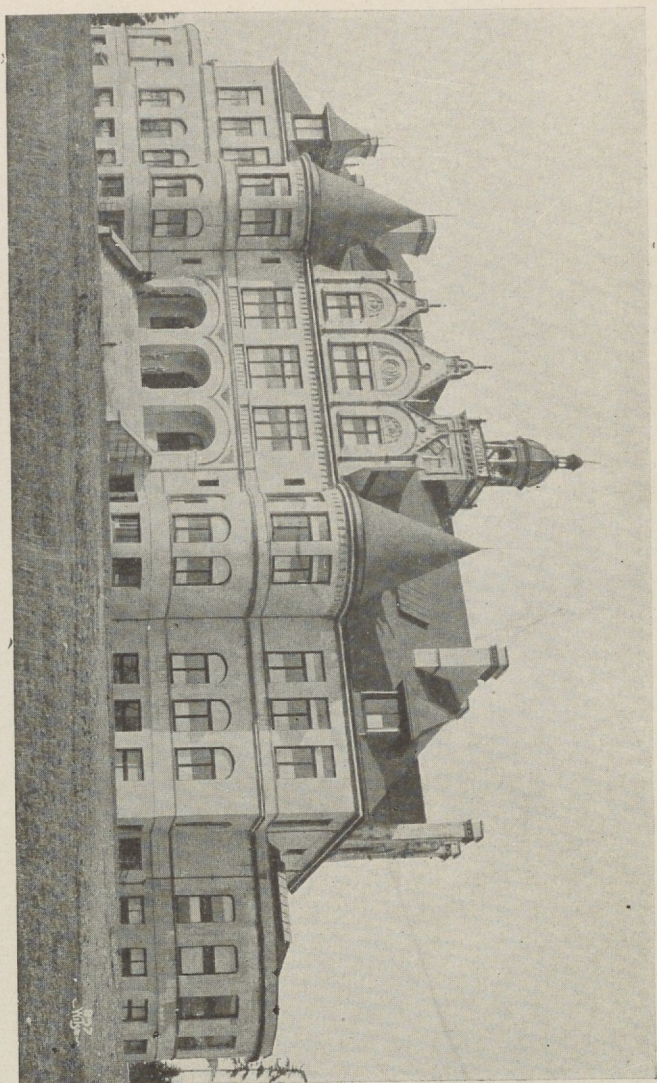
INTERIOR OF LAMBDA'S HOUSE



SHORE AT LAKE WASHINGTON



ARMORY



ADMINISTRATION BUILDING

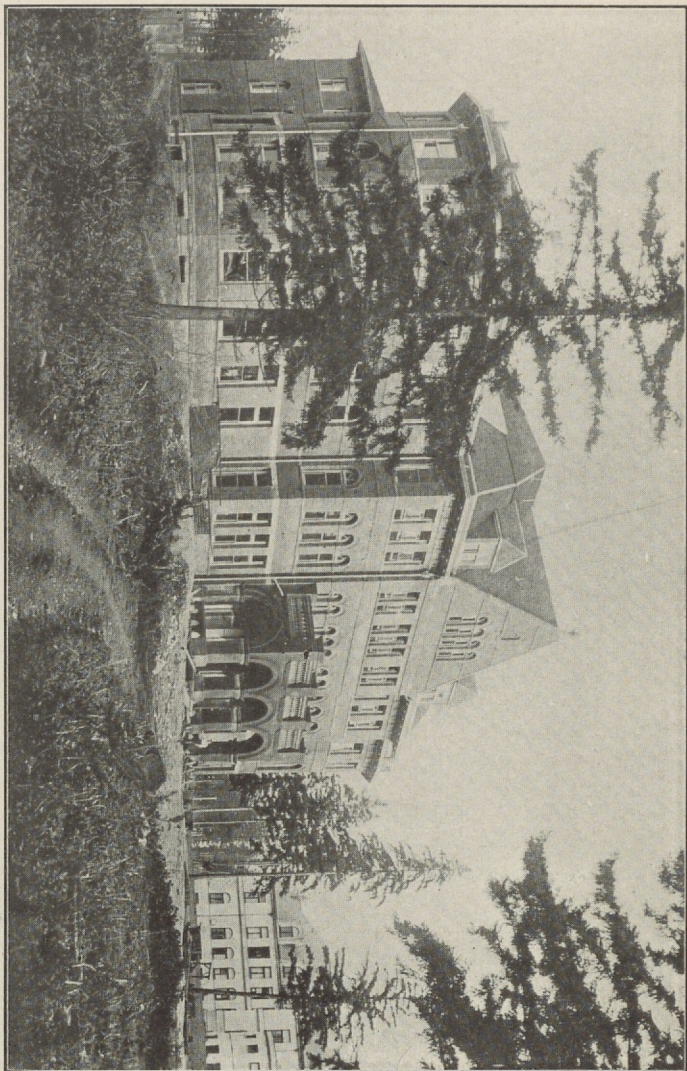
Then if you ask somewhat of the university's history, it will be told to you that the state university of Washington was founded in territorial days, in 1862. It was not until 1895 that the present buildings were erected, and the university entered upon its true era of progress. Each year sees a larger attendance, additional buildings and a more beautiful campus.

The greatest hope, however, for this young university, is in the spirit of the northwest,—a spirit that is dauntless. It seems to be in the atmosphere,—faith in the country's progress; energy to accomplish things; a realization of its boundless opportunities; and above all, an appreciation for its mild climate and wonderful scenery.

As you turn homeward, your Lambda friend will dwell lovingly upon the founding of Lambda. She will tell you again of the twelve girls who were the first adventuresome spirits to found a local Greek letter society in the university, and how after four long years of waiting and working they became Lambda of Gamma Phi Beta. Moreover, she will tell you that all save one of these original twelve are alumna of the university, and their interest is still fresh, and will remain so in spite of the oncoming years.

Of the Lambda girls, the largest number have been born in the east, or south or middle west. There are few native daughters in Lambda's ranks. The far northwest is not Owen Wister's west or that of Remington. It is a west all of its own,—a region that has not been made known to the world by the novelist. To understand this most northwesterly portion of the United States, washed as it is by the mild Pacific, and indented by a wonderful inland sea,—it is necessary to view it, and as a matter of course you will fall in love with it. Lambda's turn to hold convention will come, and then she hopes that many of her sisters will travel the long way across the continent to visit her.

Strolling along you reach the Administration building, the night has settled down, and the stars are out in the sky. Flash-



SCIENCE HALL

ing in the distance over Lake Washington are the countless lights of Seattle, to remind you that civilization is not far away.

Yet as you enter the Phi Delt path, the charm of the moonlight, and the hush of the woods is upon you. But the spell is broken as you emerge and cross over to the house, where the girls are noisy in their welcome.

And you will go with them as they lead the way into the bright interior, and Myrn will sit down at the piano, and soon you will hear your favorite Gamma Phi songs sung,—and you will shut your eyes and almost believe you are at home in your own chapter house.

Notice to all Gamma Phi Betas

who expect to attend

The Epworth League Convention

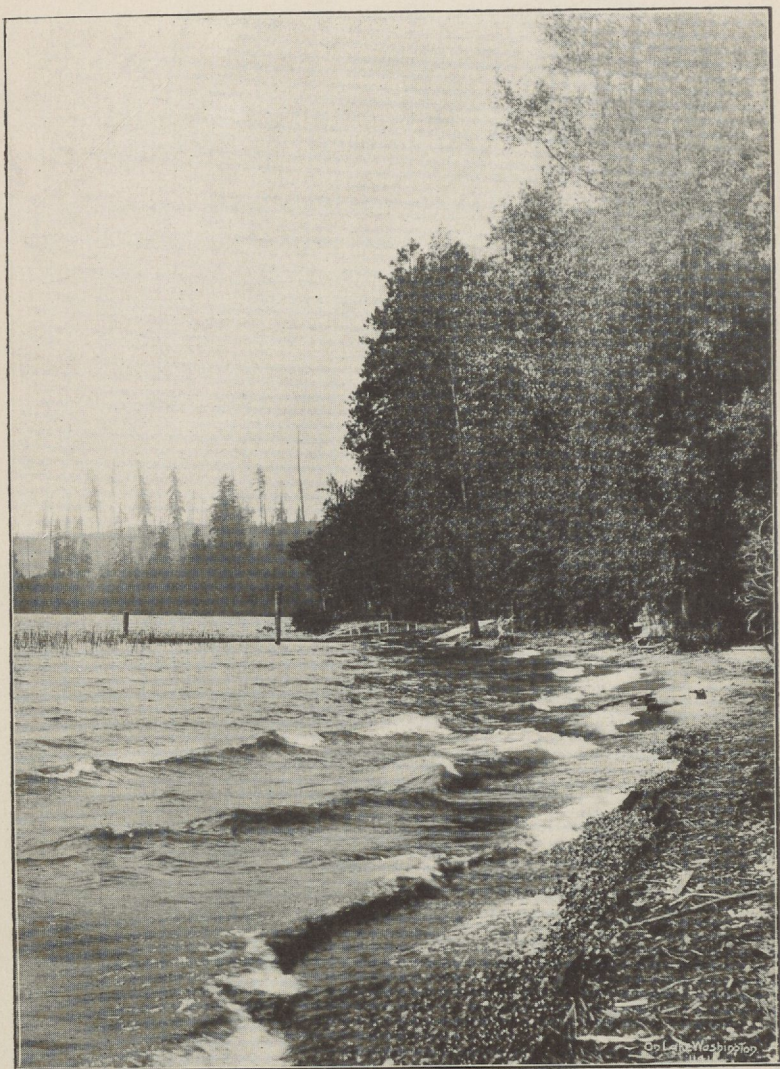
that is to be held in

Denver, Colorado, from July 5th to 9th, 1905

Will you kindly send your name and address to Mrs. Howard B. Young, 3933 Cass Street, Denver, Colorado, before June 29th if possible

The Denver Gamma Phis

wish to have the pleasure of inviting you to an informal reception they are planning to give at that time.



BY THE LAKE SIDE—UNIVERSITY OF WASHINGTON

Book Review

THE INDIFFERENCE OF JULIET. By Grace Smith Richmond. Illustrated by Henry Hutt. 12mo. New York: Doubleday, Page and Company. \$1.50.

In these days of apartment houses, boarding houses and hotel life, it is not only most apropos and suggestive but delightfully interesting as well to read of the home-making of the real, original, old-fashioned variety of Juliet and Anthony Robeson. No doubt Mrs. Richmond meant to tell a pretty story with a moral not so much seen as felt, and she has succeeded admirably in her attractive story, but, although we know it is not very good form to thrust the moral of a tale at one's readers, we would like to put a special emphasis upon the moral pointed in this book,—what is home in a boarding house? As for the story itself, it is a charming tale, well told. Juliet's indifference to the former pleadings of Anthony is not proof against the test of furnishing a home for the man she loved and another girl who was found to be fictitious in the end. When the little home is completed it is in reality a triumph of Juliet's artistic sense over Anthony's small purse and strict economy and it becomes to all their friends an ideal spot to spend days of pure enjoyment. In the process of their home making they aid and abet several other lovers and home makers.

We are introduced also to Anthony Robeson, Jr., whose training is an important part of the ideal home life of his mother and father. We are very proud of the success of this latest book of our sister from Alpha and hope for more such interesting things from her pen. We have been very much interested in the many stories that have appeared in the monthly and weekly magazines and would wish her most heartily a large share of success.

What is Your Greek to Me?

The following article was written as a toast for a fraternity, but it being equally as applicable to sorority as to fraternity members, we were glad to have the privilege of giving it to our readers in part.—EDITOR.

THE Greek Fraternity movement has come to such maturity and such imposing strength that it must fill a wider mission than afford good fellowship to the membership within its charmed circle. If the Greeks of the present are to fill the larger place which they have made for themselves they must take their advanced place in the college world.

The college faculty, that with stinging sarcasm, ask of you, "What is your Greek to us?" must be blind to the real service the fraternities are rendering to the college life. We have come to that place in the evolution of education when the Greek fraternities must be reckoned with by the officers of our colleges. On the other hand the college authorities have rightful claims upon the fraternities in their midst. If I were at the head of a college I should invite the fraternities into such relations to the college government as that they would be allies to its administration. The fraternities to be of such service must hold aloft the highest ideals of scholarship and character. Within their own membership they should attend to all matters of discipline and never defend a weak or insubordinate member. Every fraternity should insist that as to its members there must not be possible the necessity of discipline by the faculty. Fraternity men should be models for the entire student body as to scholarship and manliness.

We hear much about some students being ruined through the influence of fraternities. There are fraternity men who are a disgrace to the Greek fraternities. In most of these cases these degenerate frat men would be degenerates out of fraternities. All disreputable college men are not in fraternities. It is with fraternities as with the church, there are un-

worthy members, but no sane person attributes this to the influence of the church upon their lives.

There is another side to this question. How many men have the fraternities really made? Note the large number of fraternity men who hold high positions in the state, society and the church. There are many more college fraternity men in prominent places than non-fraternity men. It is a significant recognition of the good that is in fraternities that the college faculties and outside world have come to expect more from fraternity men than from the body of non-fraternity men. There seems to be surprise when a fraternity man falls and the fraternity to which he belongs is held responsible for his misfortune, but if a non-frat man lapses in morals the body of non-frat men is not censured for his sins, and this according to a law in ethics, that where there is a possibility to do wrong there must be the corresponding possibility to do right. The reason that there is so much ado made when a fraternity man falls is because it is a surprise that one surrounded with such helpful influence as the fraternities afford should step aside from the path of rectitude.

Acknowledgment must be made of the influence of fraternities in unifying the colleges of the land. The need of unity is felt by college authorities, therefore they have their college presidents, organization, etc., but these are not as effectual in bringing about a spirit of unity as is the mingling of college men from these various colleges in just such gatherings as this one. If there are any asperities between the authorities of the colleges represented here tonight, or between the student bodies, what member of this body would bring these into this meeting, and are we not, independent of such matters, in reality brethren? Just so is the family first and the state second in one's fidelity. Every college where there are fraternities, owes another debt of large proportions, in their influence to hold the alumni to their Alma Mater. It is the greeting of

the active members of one's fraternity that makes one feel at home when he returns at commencement time.

The influence of the fraternities in the college world is very potential. An international fraternity with more than a half hundred chapters in as many of the leading colleges of the land, will give to any college where it installs a new chapter commendation of that college's standing. The careful scrutiny given to colleges by fraternities as to their worth or worthlessness is more trustworthy than that made by any other agency. Any college into which the leading fraternities would refuse to go, or any from which they would withdraw because of the inferior standing of the college would just about receive its death blow. The truth is that the great fraternities give the institutions of learning more nearly their true standing than any other one thing.

This larger mission of the modern Greek fraternity is not confined wholly to the college world. It is no piece of impertinence for the men out in the common walks of life to inquire of us our credentials for the claims we make of the highest brotherhood.

If we are true fraters we will continue to be such in our relations to each other and to the fraternity in the years of active life. If we have the true spirit of brotherhood built upon the foundation of the highest type of intelligent manhood we should present to the world the finest type of fraternity life. Indeed the college fraternity should be the ideal fraternity. Our fraternity life during our college days should make us prophets of the universal brotherhood. Greek fraternity men are not to be clannish, selfish or exclusive.

There is no better way for us to make the charmed circle of our brotherhood of largest good and most actually real to us than by sharing its spirit with humanity. Greek art, the finest the world has ever had, was not produced by the people, but its elevating influence was for all the people. Raphael painted his immortal frescoes where the throngs looking up at them

might be elevated in thought and feeling by them. Michael Angelo hung the dome over St. Peter's so that the peasants could see it from far distances and be inspired to worship by it. The stronger and more genuine the fraternity spirit is in a man the more he becomes a true brother to the race.

The man who loves his home and family most and holds the family secret sacred is by this made the more brotherly to the outside world.

"For he that feeds men serveth few,
He serves all who dare be true."

This seems to me to be the open door that gives the Greek fraternities entrance to a higher life and to a larger field. We are to fill our places not by the sufferance of college authorities, but by compelling them to recognize in us indispensable factors for noblest work in the educational world.

This then is the theater on which our beloved fraternity is to exert its influence. Do not misunderstand me. I would not have you less a band of brothers, but I invite you as a band of brothers to come to this larger place of life and action. To this greater service to the cause of education and the world I call you, coming from your sacred shrines anointed with the true spirit of loyalty, go forth to fill your mission in this greater field which you have opened for yourselves. And may our good God speed your going and give you largest measure of success.

Mrs. Jane Lathrop Stanford

BORN, AUGUST 25, 1828, IN ALBANY, N. Y.

DIED, FEBRUARY 28, 1905, IN HONOLULU, H. I.

THE death of Mrs. Jane Lathrop Stanford, wife of Senator Leland Stanford, and joint founder with him of Leland Stanford Junior University, has called forth expressions of universal regret. The press and pulpit of the entire country has voiced its appreciation of Mrs. Stanford's character and life.

To the Stanford students her death brings a sense of personal loss. Through all their busy happy days she has been working with them and for them, her gracious presence and kindly face will be gratefully remembered by the students of "the first decade."

Through the generosity and magnanimity of the Stanfords thousands of men and women will have the opportunities of education, and education itself has received tremendous possibilities for growth. The need of the future may not be finely equipped university buildings, but whatever the need, the foresight and liberality of Mr. and Mrs. Stanford will be a guide to the use of wealth.

But to one who has seen Mrs. Stanford's untiring devotion and loyalty to her trust, the keynote of her life seems to be her mother love, by daily service she built an unselfish memorial to her only son, and has showed all women how loyal, how faithful, how loving a woman can be to the memory of a husband and a son.

May the memory of her life engender a like faithfulness in every Stanford woman's heart.


EUNICE T. GRAY.

The long, low surf is racing to the sand of Waikiki.
The lone palm yearns to the mystery of the silver, circling sea;
Like spirits of a snowdrift, the fleecy clouds adorn
The verdant, sea-girt valleys, and the ridges, lava-born.

O land of mist and melody!
Island of love and languid liberty!
You gave her once a merry song to make her children gay,
But now you send unbidden words to take our songs away.
The chapel chimes were ringing, the careless crowd ran by,
The chapel chimes have ended now in silence and a sigh.

Not for a name we love, nor for any creed she led,
But the simple gift of giving, and the pain she comforted.
Fitting that in a sunlit isle her sunlit spirit fled,—
So faithful to the living, and so loyal to her dead.

(Quoted from Stanford Alumnus for April, 1905.)



The Taste of the Pottage

BY LOUISE L. PUTNAM, DELTA.

IMAGINE those who like the term "bachelor maid" are thinking of Lilian Bell's declaration that "more women would have the courage to remain unmarried, were there so euphonious a title awaiting them as bachelor. Bachelor has a jaunty sound implying that its owner *could* have married, oh, several times over if he had wished; while both spinster and old maid have narrow, restricted attributes, which to say the least, imply doubt as to past opportunities." That is Lilian Bell's opinion; to *my* mind the term bachelor has always brought visions of a bald and very shiny pate, while

"As for *my* hair,
I'm glad it's all there,
I'll be awfully sad when it goes."

No, I don't want to be a bachelor maid, thank you. The French, "*vieille fille*," is not bad, old girl. Howells says somewhere, "She was not less sweetly a girl because she would never see thirty-nine again."

But after all, *vieille fille* is French, and I am Anglo-Saxon. Then, too, I have observed in my married friends a disposition to regard me and all my kind as idlers who toil not, neither do we spin; so for the etymological activity implied in the term, I choose the good old English *spinster*.

Being a spinster, what shall I do? First, take the advice of the spinster poetess who sang:

"Ah, well, as a general thing we fret
About the one we didn't get;
But I think we needn't make a fuss
If the one we didn't want, didn't get us."

Yet as it has been so beautifully expressed:

"'Tis better to be wed and bossed,
Than never to be wed at all."

How can I approximate this condition? One old maid who was asked why she never married, retorted, "Why, should I? I have a parrot that swears, a cat that stays out all night, and a monkey that chews tobacco and spits." Another added to this list a lamp chimney that smoked and a dog that growled when she spoke to him. The combination, she declared, was so much like a man about the house, she never found out the difference.

But this is the matrimony that halves one's joys and doubles one's sorrows. I'll none of it. I will be a contented spinster and start "an old maids' corner." One of the great advantages of these corners is their portability. In this respect they bear about the same relation to the home of a wife and mother that a dress suit-case does to a Saratoga. I suppose the dramatic unities require tea in the old maids' corner. Well, it can be flavored to taste. A generous slice of lemon for the tart spinster, sugar and milk for the insipid variety, and one lump of sugar, but no milk for the placid, even temperament.

To this class belongs Mary Wilkins's "New England Nun" who broke her fifteen years' old engagement a week before marriage. Do you remember how "she gloated over her orderly bureau drawers with their exquisitely folded contents redolent with lavender and sweet clover and very purity?" How "she had visions so startling that she half repudiated them as indelicate, of coarse, masculine belongings strewn about in endless litter?" How happy she was the morning after she had made the break! If she "had sold her birthright, she did not know it, the taste of the pottage was so delicious and had been her sole satisfaction for so long."

Ah, that's the trouble with us; we love the pottage. It may be an acquired taste like that for olives, but the pottage is even more attractively put up. It comes with gilt labels bearing the legend, "Liberty to travel"; with red ones saying, "Freedom from responsibility, drown dull care"; and most seductive of all to the New England conscience, with modish brown wrappers marked, "Charities, Clubs, and Causes." To be obtained at all colleges; ask your public library for it.

Fatty

BESS BROWN, ZETA.

I.

HE was a big awkward country boy, with sandy hair and a freckled face, and it was quite evident that his hands and feet sadly troubled him. Before him stretched the base ball diamond of Hale College, where numerous blue and white clad figures were busily practicing with might and main, for might not any one of them, by some piece of good fortune, some day make the 'varsity team and be the proud wearers of the H of their beloved college? A crowd of idlers lounged on a nearby fence, now yelling a word of praise or more often jeering an awkward scrub, as they all the while puffed luxuriously at big black cigars, for were they not Seniors and such a Senior privilege was not one to be disdained; not for them were mere pipes or cigarettes, when admiring underclassmen were around.

As the sandy-haired boy approached, the group greeted him with derisive yells of "Hello, Fatty!" "Fatty, you'll make a fine base ball player, you will!" "Did you ever see such nerve?" "Never knew he had any, but I guess he has it with him all right." The boy shrank back and his face grew as red as fire. Ever since he had entered college in the fall, a farmer's lad fresh from the field, it seemed to him his life had been made a misery. He was older than most of the Freshmen, for his college preparatory studies had been accomplished in the brief moments of leisure, snatched from a hard day's work; sometimes he had sat far into the night solving a difficult problem. At last he had been able to enter, but the city butt of every Freshman prank and joke. Sometimes he thought his heart would break; how he did long for the touch of one welcoming hand, one slap of good fellowship on his back, one friendly glance, but none came. His classmates thought it a huge joke, he should try for the class nine, but the Freshman

manager had simply said the field was open to all who cared to try, so Fatty had today summoned up courage to appear.

II.

As the spring advanced, Fatty worked untiringly and the jeers of the idlers grew less and less. He was slow as a runner and a very poor batter, being usually struck out at once, but as a catcher Fatty shone. If a ball could be caught by any human agency, he was always there to catch it and once his iron fist had closed upon it, there it stayed and then also his bulky form and quiet nerve steadied the pitcher. Slowly the sentiment against him changed and he began to be regarded by experts as extremely promising material. The manager of the 'Varsity nine turned contemplative eyes toward him and one day, the happiest but one in his college life, the manager told him he was to be taken on the spring trip to play in some of their minor games. Poor Fatty pinched himself to see if he were really awake. Could it be true that he the despised was to have such an honor?

"Come, old fellow; you're awake all right," the manager laughingly said. "Come round to my rooms and have a drink with me to your future success."

At the thought of such familiarity with so illustrious a being Fatty's head swam all the more and he was now more than ever persuaded he was only dreaming.

III.

It was the day of the big annual fight for the championship between Calvin and Hale. All morning the crowds had been pouring in by the trainload until at last the big stands built to accommodate twenty-five thousand people were filled to overflowing. Bands played, pretty girls with the blue or red banners of Hale or Calvin chattered excitedly, while from both ends of the field rose the lusty shouts of the rival cheering sections, each striving to outdo the other in energy and enthusiasm. Suddenly there is a hush, the opposing teams en-

ter; one last burst of enthusiastic applause and then quiet—the game has begun.

Calvin has first chance at the bat as the visiting team, but in the first inning neither side scored and so it goes on for five innings. In the sixth inning Calvin takes a spurt, a lucky hit puts a man on second base, the next man gets a base on balls. The man at second attempts a steal and reaches third in safety. A base-hit and Calvin has three men on bases and no hands out. The Calvin rooters are mad with excitement, their cheers rend the air, but the next man fails to make a hit and strikes out. So does the next. Hale begins to wake up. Perhaps Calvin will make no runs after all, but the next man lets fly a two-bagger and two runs are in, though the batter is put out at second.

Hale comes to the bat, but can do nothing. In the seventh inning no runs are made. Hale is powerless and its catcher becomes rattled and catches wildy. Fatty is substituted and the game goes on. In the eighth inning Hale does desperate work and gets two runs. The score is tied.

The ninth inning comes. Calvin fails to score and now Hale's team is at the bat. The rooters can sit still no longer. They rise with hope and fear tugging at their hearts. The first man makes a two-base hit. Now break out the words of Hale's grand old song which has brought victory out of many a seeming defeat; louder and louder swell the inspiring words. In vain. The first man sends a foul high up in the air—it's caught and he is out. The next strikes out and Fatty comes to the bat. He stands tense and rigid. Twice he hits at the ball in vain. Three strikes out! Fuller and fuller swells the strain, inspiring to mighty deeds for the sake of one's beloved college. It reaches Fatty's ears; he makes one last despairing effort as the ball comes toward him. Crash! Across the fields it flies; Fatty reaches third base in safety and the other man reaches home. The next batter is put out, but who cares? The day is won. Across the field rush a shrieking,

howling mob. They raise a sandy-haired, freckle-faced boy on their shoulders and bear him away in triumph.

The crowd moves slowly away. To their ears from a distant corner of the campus, a rollicking tune is borne,

“Oh, he’s a jolly good fellow,
He’s a jolly good fellow.”

A hush and then a fresh young voice: “Say fellows, what’s the matty with Fatty?” And then a mighty volume of voices gives back the old reply: “He’s all right! Who’s all right? Fatty!”

The Masterpiece

BY KATHARINE DAVIS HARDWICK, DELTA.

THE last lingering rays of the winter sun melted away and twilight fell. The man at the easel threw down his brushes and contemplated his work through half-closed eyes. As yet it was only a rough sketch, but as he gazed the artist saw it in its completed beauty. A woman’s face, pale and passionate, the dark eyes glowing with a hidden light half tender, half mocking; the red lips curved in a cruel smile and on the forehead half hidden by the silken hair a faint scar, jagged like one made by a dull knife.

The clock on the mantel struck the hour. The artist rose and half reluctantly covered the picture. Taking his coat and hat from a chair he left the room with a backward glance at the covered canvas.

A few minutes later he entered a small studio. At the window stood a girl her delicately perfect profile toward the artist. Her hair, shining like burnished copper, caught the last rays of dying light and made a shadowy halo about her small, well-poised head.

“Virginia,” said the artist softly.

“Ronald,” the girl cried and raised her gray eyes to his, clear and sweet with the light of love shining steadfastly within them.

To the artist she seemed a divine being—too pure and holy for this world—and he touched her hand gently and reverently.

"How goes the masterpiece, little one?" he queried.

"Not well, Ronald," Virginia answered and the sweet mouth drooped pathetically. "I get tired so soon, Ronald," she added plaintively.

"Don't work too hard, sweetheart," cautioned Ronald, softly stroking her shining hair. "Soon I shall paint my masterpiece. Then I will marry you and we shall live happily ever after like the fairy tale folks."

With much laughter and many jests Ronald helped Virginia prepare the light supper and they ate together, chattering merrily of their work.

When the pale moon rose high Ronald took his leave. But as he stooped to kiss Virginia good-night a woman's passionate face came between them—a pale, passionate face with glowing dark eyes, mocking red lips and on the forehead half hidden by the silken hair a jagged scar. The artist started back and with an incoherent good-night went hurriedly away.

For a long time after he had gone Virginia stood motionless. The moon peeped in at her window and threw its beams,—pure and holy like herself,—upon the silent figure. But Virginia did not see them only, as if in a dream, she saw a woman's face, the red lips curved in a cruel smile, the dark eyes glowing with a mocking light and on the forehead half hidden by the silken hair a faint scar—jagged like one made by a dull knife.

At early dawn Ronald rose from a restless sleep and uncovered the canvas. He seized his brushes and set to work. The hours flew by—still he painted with feverish haste. Daylight faded. He lit a candle and worked on far into the night. At last he threw himself on the couch and slept heavily. At early light he was up and at work again. So days passed. When his strength began to desert him he ate—when he could see no longer he slept. He thought seldom of the outside world—never of Virginia. Night and day his companion was the image

of the beautiful woman. At first he loved her unconsciously as the flowers love the sunlight and the rain. Now he loved her wildly, madly, passionately—drawn to her irresistibly as the gull to the lighthouse when he circles round and round—nearer and nearer—till at last in his mad flight he dashes against it and falls—wounded unto death.

Day by day the picture grew until to Ronald it became a living personality. At times the eyes were very tender and he smiled the cruel smile and was happy. But very often the dark eyes mocked and Ronald gazed long at them—at the cruelly smiling lips and was wretched.

Days lengthened into weeks. At last the picture was done. The artist threw down his brushes, staggered across the room and sank into a chair. For a long time he sat—his gaze fixed on the canvas. The beautiful woman smiled at him—tenderly with her eyes—mockingly with her lips.

"It is the masterpiece," he murmured, and fell asleep from sheer exhaustion.

And as he slept she came to him—the woman of the picture. A tender light glowed in those dark eyes, but the red lips still curved in a mocking smile. The faint, jagged scar seemed to throb and pulsate. She leaned over him. Closer and closer came her face to his—softly her lips—those cruel, smiling lips—touched his and she kissed him.

With a cry the artist awoke and jumped to his feet. A strange, sweet perfume filled the air—sweet and subtle as the perfume of roses in June. In the morning light he could see the picture plainly. The tender eyes—the mocking lips—the jagged scar. He drew nearer to it—the perfume grew stronger—stronger—

Suddenly a clear sweet voice called his name, softly—tenderly—beseechingly:

"Ronald—Ronald."

The perfume of the roses grew overpowering. The artist put his hand to his head—he reeled.

As the mist from the mountain tops fades before the summer sun, so at that faint cry the veil of forgetfulness fell from the artist's clouded brain.

"Virginia," he cried, "Virginia."

He gazed wildly about him, there was no one there. Closely the beautiful woman smiled at him, mocking and triumphant.

In sudden fury Ronald seized the paint knife and with a single stroke rent the canvas. Then hatless in his stained and paint-spattered coat he rushed from the room—to Virginia.

Outside her door he paused. A stillness lay over all, a solemn hush. The faint perfume of roses hovered in the air. He pushed the door open noiselessly.

"Virginia," he gasped.

An old woman kneeling by a narrow cot rose and came to him.

"Virginia is dead," she said gently. "For weeks she has worked night and day upon a picture—her masterpiece. Last night it was finished and for the first time in many days she slept quietly. A few minutes ago she awoke and cried out twice: 'Ronald—Ronald!' and then her soul slipped away—to Heaven." The old woman's voice ceased and she began to weep softly to herself.

Silently—only half comprehending—Ronald gazed at Virginia lying calm and peaceful, smiling tranquilly; then, drawn by some irresistible force his eyes sought the covered canvas in the opposite corner.

The perfume of roses grew stronger and stronger, the artist's brain reeled. Blindly he crossed the room and lifted the covering from Virginia's masterpiece. One glance and an inarticulate cry escaped his lips. On the canvas before him he saw a woman's face—pale and passionate, the dark eyes glowing with a hidden light half tender, half mocking, the red lips curved in a cruel smile and on the forehead half hidden by the silken hair a faint scar, jagged like one made by a dull knife.

A Pan-Hellenic Banquet

THAT the new Pan-Hellenic Association of the Ohio State University of Columbus has taken definite form was strongly evinced by the fact that one hundred and fifteen sat down to the banquet table at the Hotel Lincoln on Saturday evening, May 13. It was the first affair held by this association and it proved a great success. There were large representations from the active and alumnæ chapters of the four Sororities having chapters at the University, viz.: Kappa Alpha Theta, Kappa Kappa Gamma, Pi Beta Phi and Delta Delta Delta. In addition the editor and Miss Alice Dimmick represented Gamma Phi Beta. The occasion was full of good spirit, and interfraternity fellowship.

Following the splendid banquet the toastmistress, Mrs. Cassius Clay Corner, Kappa Kappa Gamma, called for the following toasts:

"Pan-Hellenic," Miss Grace Eagleson, Kappa Alpha Theta.

"Once a Greek, Always a Greek," Miss Minna Weaver, Delta Delta Delta.

"Looking Backward," Miss Earnestine Ball, Pi Beta Phi.

"Greek Maidens," Miss Catherine Andrews, Kappa Alpha Theta.

"Wishes," Mrs. Arthur C. Johnson, Pi Beta Phi.

"Why?" Miss Edith Rees, Delta Delta Delta.

"?," Miss Mary Hunt, Kappa Kappa Gamma.

After which the editor responded to an informal toast, bringing greetings from Gamma Phi Beta.



THESE words come from Mrs. Minnie Dinsmore which will tell us all of her sufferings during the past few months: "I am at home again, after a long and trying separation. My operation was far more serious than we had anticipated and my suffering almost to human endurance, but I have come through it all with the hope and expectation that returning strength will also bring health, and that will be above price and estimation to me and mine. We feel very grateful to the Heavenly Father for all that he has done."

It is our highest wish that Mrs. Dinsmore may gain such strength and health as she has never known and that speedily.

A WORD of encouragement, with kindly suggestions, comes in a letter which should be shared by all who in any way help to make our quarterly:

THE CRESCENT:

Here is my dollar for subscription this year, for I do not want to lose this pleasant reminder of college days. Each number is like a touch of spring that makes one feel young again, as the new yet familiar flowers and leaves come to view, so messages from the chapters, from the new girls, renew our interest in Gamma Phi and college, make the baby chapter a reality to us, and words concerning our own "old girls" and friends from other chapters broaden our thoughts, lift our aspirations and waken dear memories.

Many of the literary efforts, too, I enjoy, and am most moved to try my own hand at it.

In the March number I am sorry to have no message from —.

My sister is visiting in —, and from her I have this word of — girls:

"I met the chapter girls, with whom I am more than pleased. I don't know that we ever had a finer lot of girls and everyone seems to think the same." And that is a good deal for an old girl ('97) to say, since mostly we are inclined to say "none so fine as our old crowd."

With love to all the girls and best wishes for our magazine and her loyal publishers.



IT frequently occurs that the active chapters long for a sympathetic interest from their alumnæ. They may want not only financial aid to bridge them over a trying financial difficulty, but a word of suggestion and help. But whatever the nature of the help desired it will come in the best form as the result of the interest which they may have. How can this be kept alive? With each year there goes from the chapter the Seniors. Will they cease to be interested? A very effective means of keeping this alive is afforded by THE CRESCENT. Solicit their patronage for the quarterly and you have greatly strengthened their future loyalty to the active chapter from which they go forth.



THE report of the committee appointed by the Intersorority Conference to investigate the social customs in coeducational institutions has been received. It not only shows a vast amount of painstaking work, but much thought and consideration of this subject which is an important one and one well worthy of the attention of this conference. The points which received the study of this committee were: (1) The rules governing social life in sorority houses. (2) The rules governing social life in dormitories. (3) The constitution of the women's leagues, if there was one. (4) Suggestions from the dean as to social customs which needed changing, and ways in which sororities could help to bring about the desired changes.

That the large body of Sorority women are trying to coöperate with the deans of the colleges in raising the standard of social customs, is indicative of the sororities meeting one of

their highest duties. Like the Greeks of old, we are the elect, and from us much should be expected of the highest qualities of character and the influence radiating therefrom.

"The Committee knows that any changes in social customs must come through changes in public opinion; and as public opinion is best aroused by discussions of facts presented, and questions suggested, it hopes the report may at least start discussion in the various Pan-Hellenics, and lead to clearer ideas of the best there is both as to form and spirit in college social life. At present there seems to be some diversity of opinion as to what are the best social customs; and the only thing this report can do is to show that diversity, and urge discussion of the value of the different customs, both those which are common, and those which are struggling for recognition."

The pages of THE CRESCENT are open for the discussion of this subject and it is hoped that the members of Gamma Phi Beta will avail themselves of this.



IN this issue we are presenting to you Lambda with her environments. She is to be congratulated upon the success which she has made in obtaining her new house. This chapter has done some splendid, almost marvelous things, in a financial way, and their experience and methods would no doubt be helpful to all who have to meet these responsibilities. From what we read, Gamma Phi Beta is assured of a cordial welcome and of ample provision when Lambda's turn comes to entertain convention. Until then we may have to long to know more of this young and prosperous chapter, but with that event will come the fulfillment of these wishes.



THE Alumnæ Chapters extend to all Gamma Phi Betas, at any time visiting in the cities where these chapters are located, an urgent invitation to attend their meetings. To

obtain the needed information as to the time and place of the meetings, kindly write to the correspondents of THE CRESCENT.



IT is with great pleasure that we review a new book of our sister, Mrs. Grace Smith Richmond, Alpha, in this issue of our quarterly. We will all have a double interest in the clever book, one for its value and another for the author.



IN the advertising pages will be found an announcement of the new manual of college fraternities which has recently been issued by Mr. William Raymond Baird. These manuals should be in every chapter, and it is hoped that none will fail to obtain at least one copy. Kindly send your order to THE CRESCENT.



Song

Tune—"All Through the Night."

BY LINDSEY BARBEE, THETA.

Humbly at thy shrine we're kneeling,
Dear Gamma Phi.

All our hearts deep love revealing,
Dear Gamma Phi.

Thou our goddess, loyal, tender,
Thou our ever true defender,
Joyful praise to thee we render,
Dear Gamma Phi.

Ever in thy love abiding,
Dear Gamma Phi.

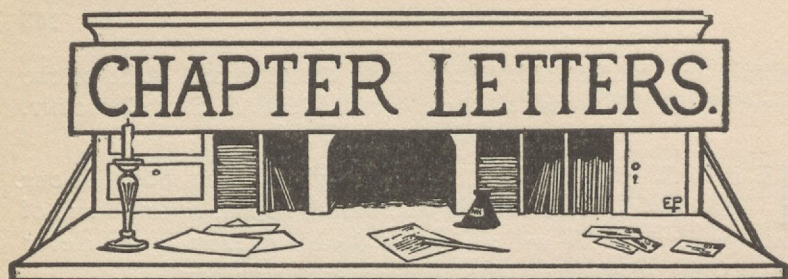
Ever 'neath thy crescent's guiding,
Dear Gamma Phi.

Gladly, all our love confessing,
Gratefully thy care possessing,
Rev'rently we seek thy blessing,
Dear Gamma Phi.

Be our stay in care and sadness,
Dear Gamma Phi.

Be our source of joy and gladness,
Dear Gamma Phi.

Naught from thee our lives shall sever,
Help us all in each endeavor,
Be our inspiration ever,
Dear Gamma Phi.



ALPHA

DEAR Sisters in Gamma Phi: The festivities which mark the close of the college year are near at hand. At Syracuse, "Moving-up Day" is, you might say, the beginning of the end. On this day the Seniors for the first time assume the cap and gown. They form in line and march from the gymnasium to the chapel, where they take the Freshmen seats. The Freshmen meanwhile have "moved-up" to the Sophomore seats, the Sophomores to the Junior seats and the Juniors to the Senior seats. After the usual chapel exercises the president of the Senior class, as master of ceremonies, calls for speeches from representatives of each class, from members of the faculty and from the alumni. After the speeches all rise and sing the Alma Mater while the Seniors march out. Thus ends the dignified part. The rest of the program is in the hands of the undergraduates, who have spent many hours in decorating the campus and dormitories with college and class banners. Some of the Freshmen see to it that the green cap, with its orange button, which they have so faithfully worn, is buried, while others with solemn rites put all Math. books forever from their sight. Then comes the most unique feature of the day—the parade, complete in every detail. Everything of interest to the student is caricatured. The line of march is not only across the campus but also through the city, in order to let people know that it's "Moving-up Day" on the hill. After the parade the students gather on the slope of the hill and enjoy a "sing" until dinner time.

This year there will be several new features at commencement time. There will be an Ivy Day. The Seniors will present the Juniors with a silver trowel, which the Juniors will lend to the Sophomores. The underclassmen, with appropriate ceremonies, will then plant the ivy. Another new feature will be an informal reception and spread given by the Junior girls to the Senior girls.

Although we Alpha girls look forward to the summer's rest we can not help regretting that the college year must close. It is then

that those who have grown so dear to us as our wise counselors must leave us. How truly it has been said, "Tis hard to part when friends are dear." As Juniors and underclassmen we have honored our Seniors, but we realize that we can not fully appreciate their endeavors until we too assume the responsibilities of Seniors. Those to whom we must say good-bye are: Hazel King, Nina Ostrander, Louise Knapp, Ruth Gordon, Elizabeth Brooks, Edith Hedges and Ruth Piatt.

And now, a jolly and restful vacation to you all, sister chapters, and may you meet again in the fall, ready to carry on the good work with renewed vigor.



BETA

BETA has been busy as usual since our last letter to you. After the big formal party, the Junior hop, we had one or two parties in the house which we all enjoyed very much. One was a St. Valentine's dinner, with very pretty decorations of red hearts and candy cupids; and then, last but scarcely least, we had our valentines, which were of course for the most part friendly little jokes from one girl to another. The poetry of these was the greatest fun. Soon after came our annual fancy-dress party on Washington's birthday, and that was a great success. In this the girls' fancies always run wild; ridiculous or beautiful, one can be what one pleases, and this year's result was as much fun as ever.

Now we have had our second semester initiation and there are two more Gamma Phis in Ann Arbor—Caroline Johnston of Alphena and Adalaide Davis of Fenton. Their Gamma Phi Beta life was shadowed at the very first by the death of one of our charter members—Anna May Sout. For her we are still wearing our pins draped and of course during this time Beta will not entertain in any way. Therefore of social affairs in the house there are none for the present.

Outside, however, the Freshmen banquet took place on March 24. Many of the girls went and Madge Miller gave the girls' toast, the subject of which is always the same, "To the Boys." The toast is given by the toastmaster to the sorority of his choice. Of course there are always many enjoyable informal parties also. Grace Breakey, Beta, who lives here, entertained our chapter informally on April Fool's night. Bessie Larrabee, who is attending Chicago University, and Edith Kimball, who is teaching in Detroit, were with us on that night. Esther Braley also entertained us informally to meet Fanny Goodman Symons, who has been visiting here.

Quite a number of Beta girls attended the wedding of Mary Symonds at Saginaw on April the 5th, and also many are looking forward to Kate Ballantine's wedding, which takes place the last of April in Port Huron. To those who don't see each other at these weddings, and in fact to all Beta girls, Beta chapter extends a most urgent invitation to be sure to come to reunion in June.



GAMMA

GREETINGS from Gamma to you all. Since the last publication of THE CRESCENT we have been watching the development of spring, bringing with it serenades, boat rides and country strolls.

Gamma has an extensive program before her from now until commencement. On May 12 we have our formal party, which brings with it many guests from out of town. May 27 is our inter-scholastic meet, at which time Gamma expects to take advantage of the concession allowed her by the Pan-Hellenic council, and pledge girls for next year. On June 17 we have our twentieth annual banquet, and as usual expect many of our alumnae with us. There will be a double attraction for them, as our new chapter house will be well under way.

Class elections have taken up a good deal of our past time. Elsie Minn, one of our Sophomores, has been recently elected to the '07 Badger Board, and Jeannette Scott, '07, is representing us on the Self-Government Board.

A Freshmen Club, "The Mystic Circle," has lately been organized, to which three of our Freshmen—Philena Yutzy, Maizie Wilson and Marjorie Durkee—have been elected.

Gamma is fortunate this year, in that she loses but two Seniors, Florence Stott and Clara Kemler.

With the bright prospects which Gamma sees before her in her new home, with but a few changes in the chapter and some very good pledglings coming, she has every reason to be happy and wishes to you all the same bright future.



DELTA

"WHY, my dear, I'm more than glad to see you. Come straight up to my room. What have I been doing since I saw you last? And how is Delta? O, everyone is just as grand as ever, and—I tell you, let me get out my memorabilia book—that will show you just what I've been doing. Are you quite comfortable there—yes, do help yourself to the caramels.

Let's see, the last you saw were my valentines. Where—O, here. There are the souvenirs of the party we gave Beta Theta Pi. We had it at Helen Flander's the night before George Washington's birthday. O, but Helen has just the *grandest* house to entertain in! We gave them a little "show" upstairs in the billiard room. Esther Bates adapted the play to the occasion. Made the man a Beta and the girls Gamma Phis, you know. Here's the caste of characters all decorated with flags—looks real patriotic, doesn't it? These hatchets we matched off with and the cherries I cut off a hemlock tree. Yes, it was something of a feat when you had to walk the length of a big hall blindfolded to find the tree.

And here's the little program I got the evening Theta Delta Chi entertained us at their chapter house. We had a real jolly evening.

All this literature is about the freshman play—talk about Harvard's bloody Monday. It can't be compared with the night before the Boston University freshman play. One of our girls was in the play and carried off her part, too, in spite of the attempts of the Sophomores to prevent her.

This—O, yes—a notice of class day election. You knew Harriet Fisk got the valedictory, didn't you? My! we were proud of her, though.

Here's a souvenir of the mother's tea. We had *such* a fine time that day. We girls all went home feeling surer than ever that mothers in general, and Gamma Phi mothers in particular are the very best things in the world.

This page is vacation souvenirs. You knew we had a week's vacation this year, didn't you? Yes, college closed at five Tuesday and opened at nine the next Tuesday. We'd have had Patriots' day and Good Friday, anyway—to say nothing of Saturday and Sunday. Where did the vacation come in? O, that's what we wondered!

The week of April 24th was Junior week. Almost all our Juniors were on some committee or other.

Monday night the play came. Esther Bates was on the committee and Carlotta Brant had an important part in the caste.

Then Tuesday was Junior day. You'll have to take the Junior girls' word for it that it was the happiest day of the week.

Yes, that program is awfully swell—that was for the musicale. Why, of course, that is our Eleanor Leonard who sang.

Isn't this a dear little dance order. Got that at the prom. Friday. You knew Methodist Boston University has had a prom. and dance for two years now, didn't you?

Well, that's all the souvenirs.? We've all settled down to study now. Do you realize that its just a month to final exams and commencement?

Well, there's always one consolation that right after commencement comes the house party. Of course, we're going on one this year. We're making our plans so soon. It'll be at Marblehead Neck this summer, I guess.

But just think of losing our three dear Seniors. Whatever shall we do without them. It makes me feel positively "teary round the lashes" to think of it.

What, going so soon? And I haven't told you any news about the girls themselves yet. You'll come again soon, won't you? Well, good-bye, my dear. O, but, say—wait a minute. You'll surely come to the spring banquet, won't you? Its coming the twentieth. Now, don't forget the date. Goodbye, again. Goodbye."



EPSILON

DEAR Sisters in Gamma Phi: Epsilon sends love and greetings to you all again and hopes that every Gamma Phi will have a delightful vacation this summer, and will come back to college next fall with renewed vigor and enthusiasm for the sorority. To the Seniors we wish to extend our best wishes for the future, and to tell them what a void they are leaving in the charmed circle, where they have been members so long. We shall miss their sunny presence, stately dignity and worthy advice; their places will be hard to fill. Our four Seniors have had an active part in social and class affairs during their four years; one of them was elected business manager of the womans' edition of the college paper this spring.

With the glorious spring days has come an epidemic of "spring fever"; our beautiful campus and lake shore sometimes prove a strong temptation. We have planned several little picnics into the woods north of Evanston as soon as the trees and flowers are really out in all their summer array, for here are some ideal spots for a group of picnickers.

The social side of college life has been very active this spring, every sorority and fraternity give one large formal party, besides some informal ones, and at them all Gamma Phi has been exceedingly well represented. We give our party June 9, and coming as it does so late, we are hoping to have a number of the alumna back for it. We will end up our year with the spring banquet, June 12. We are looking forward to it most enthusiastically and are anticipating an unusually delightful time, with a great many of the girls back.

ZETA

COLLEGE closes the 7th of June, so Zeta is thinking and planning for the banquet. Three of our outgoing Senior class live in the city and so will not leave sorority life.

Zeta is delighted over the appointment of Dr. Dobbins to Grace Church, Baltimore, as Imogene Dobbins is an old Zeta girl and will be a help during rushing season and a welcome addition to our circle.

Miss Bess McCain, Zeta, who graduated from Vassar last year, visited here for a couple of weeks.

We are looking forward to having Edna Borcharding with us at commencement time. Miss Borcharding was a Zeta girl for three years, but graduated from Grant University, Chattanooga, Tenn.

The calendar of college events is so full now that our gatherings will be less frequent, but the Seniors of the sorority are planning to entertain with a trip down the bay later in the month.

We hope before the opening of another rushing season to have our cozy corner, "the den," completely refurnished. Nearly all the Zeta alumna have sent contributions and we think we can give new comers and visiting Sisters a better reception.



ETA

DEAR Sisters in Gamma Phi Beta: Eta Chapter presents the names of two new members, Mary Underhill, '05, and Sue Ross, '05.

March and April have flown by us since we last greeted you, and we find ourselves ready to welcome May almost before we realize it. And this means studying and examinations, with class day at the end with all its gaiety. Happily we do not lose any of our Seniors this year, for those who belong to the class of 1905 will graduate next Christmas.

In the first week of April Eta gave a shower to her two brides, Florence Senger and True Aiken. Both girls brought some of their old belongings and these were auctioned off to the highest bidder. The prices we paid were gifts with verses accompanying them. We had a very merry time.

On Wednesday, April 26, at half-past seven, Florence Senger was married to Mr. Dudley Saeltzer at the First Unitarian Church. Three Gamma Phi Betas were bridesmaids—Wanda Muir, Pearl Pitcher and Greta Augustine. Alice Senger was maid of honor. The Eta girls

all sat together in the front of the church. The wedding present given by the chapter was a Gamma Phi Beta pin set in diamonds.

The spring banquet was held on April 15, at the "St. Dunstan" in San Francisco, and was a great success. Thirty-five attended. We invited our Stanford Sisters to join with us in celebrating our founding and a goodly number of them responded. We appreciate our new chapter more and more.

Marin Waterhouse came in upon us unexpectedly the other day, when we thought she was still in New York City. She expects to stay with us until September.

We hope these long vacation days that are coming will be full of benefit and pleasure to every member of Gamma Phi Beta.



THETA

WE of Theta are beginning to realize that spring has surely come at last, and with it come budding hopes of loftier places of life, and tender aspirations toward higher and nobler thoughts. We are feeling now more deeply than ever the strength of unity and the joy that comes from true, loving sisterhood.

So many things have been "doing" since our last talk with our sister chapters that we hardly know where to begin to enumerate our joys. The play, I think, comes first. Way back in the fall term some one suggested that we give a play for the benefit of athletics. As most of you know, Lindsay Barbee, our dear active alumna, has been very successful in a literary line, and she promised to write the play for us. So last term, on the 14th of April, we gave it! And oh, girls! it was perfectly fine! In the first place it was a very cleverly written piece of true college life, with many hits on the faculty and students; then the girls worked hard on it, and certainly did Gamma Phi Beta credit. The chancellor and faculty were very much pleased with it. They actually said it was the best thing ever given at the college! A great many outsiders complimented us on it, and we have been asked to repeat it down town. Besides all our fame and glory, we cleared one hundred dollars for the Athletic Association. Of course there is nothing like blowing your own horn, but really, don't we deserve, a little, to be proud of ourselves?

Then parties! You know they say there's no rest for the wicked, and if that is true Theta must be very bad. Beside the ordinary social engagements of each girl there have been fraternity parties, etc. Kappa Sigma entertained us royally at a very swell dance the last of March.

Since then Sigma Alpha Epsilon has given us a beautiful party, and indeed we feel very proud to be so handsomely treated. Now it is our turn to pay them back in like kind, and we can see nothing but parties stretching away into the future. It is surely "linked sweetness long drawn out"—but ask the committee! Next week we give a rush party at the Lodge. We have asked some of the desirable girls from the High Schools, and as it is to be an informal tea, the boys from school have been asked to call. We think this quite a good plan for rushing and hope to give one or two more before school closes.

Well, dear Sisters, we Thetas hope to see many of you before the summer is over, and indeed we will welcome you warmly to our beautiful "Queen City of the West." To one and all we send our loving wishes for a very happy and profitable vacation.



IOTA

DEAR Sisters in Gamma Phi Beta: We hope the joy and sunshine of the springtime rest with you all.

That the present college term has almost ended, is shown by the posting of our final examinations. And with the advent of June, six of our members pass through the red-letter day of graduation into the higher university of life. We know that they will still be with us in spirit, and for their past help and love we bid them God speed.

Our season of festivity will end with a play, an informal tea to our sister sororities and a dance.

A word might be said with regard to the time of pledge day next year. The Pan-Hellenic Association is at present considering the advisability of holding pledge day after the final examinations, instead of at the earlier date of this year. The objects of such a change would be, in the first place, to reduce rushing to a minimum and thereby allow the Freshmen to give undivided attention to their college duties; and secondly, to allow the contracting parties on both sides to become more intimately acquainted, and appreciate exactly what each one is doing. It is hoped the ultimate decision will soon be reached and prove beneficial both to the sororities and the college.

Wishing you all the happiest summer of your lives, we bid you farewell until September.



KAPPA

DEAR Sisters in Gamma Phi Beta: Kappa sends greetings to all of her sister chapters. Although our thoughts have been so full

of convention, still we have taken time to attend to our other duties, both college and social.

On April 27 we gave as our formal party a dinner dance at the Minnikahda Club House. The regular dance program was preceded by a german of six figures, and we all had a glorious time.

Our banquet is to take place on May 20, and we are looking forward to it as the culminating joy of the year, for it is here that we always feel closer to each other than ever before.

Gamma Phi has been represented in both of the plays given this year by the Dramatic Club. In the play given last week, Ibsen's "Pillars of Society," Sadie Preston had one of the leading parts and acquitted herself nobly. In "A Pair of Spectacles," presented by the club last fall, she played the leading rôle, and we are justly proud of our Sophomore sisters.

We have also been active in college affairs, and in the carnival given recently by the Woman's League, the Japanese booth, of which Gamma Phis were in charge, received the prize, so we felt repaid for any work connected with it.

Now I suppose you are anxious to hear something about convention. There is not a great deal to tell as yet for the details cannot be arranged so far in advance. The dates, however, are definitely fixed and we give them to you now so that you may all plan to come. Convention opens on Tuesday, the 7th of November, and the banquet is to take place on Friday the 10th.

We shall be waiting for all our sisters with open arms, and let no one stay away in the fear that there will not be room. We will make room for as many as wish to come. As the time draws nearer, we begin to realize more fully that we are soon to have you all with us and we long to welcome you to our chapter and meet you face to face as well as in spirit.

If any of you desire further information, you can communicate with Eleanor Sheldon, 110 Malcolm avenue, Minneapolis, and she will be glad to solve any difficulty for you.

It is said with truth that oftentimes those who feel the most say the least, so Kappa in closing this brief epistle, wishes only to repeat her earnest invitation to you all and to assure you that she will be waiting to receive you with open heart and hand.



LAMBDA

NOW has come commencement, and the parting of the ways. Lambda's two Seniors, Katharine Edwards of Everett, Wash., and Helen Wetzels of Spokane, Wash., are members of the graduating

class. Katharine has been prominent in athletic circles since her entrance to the university. She has been captain of the basket ball team this year and was vice president of her class in her Junior year. Helen is vice president of the Senior class and has been an earnest Y. W. C. A. worker. She was president of the local college society of Y. W. C. A. and has attended two conventions of that body in California. It seems difficult to fill their places in the chapter.

Since Lambda has been comfortably settled in her new home she has given several informal entertainments and has saved the first Wednesday of each month as a day at home. The alumna among other presents gave the house a handsome rug for the reception room.

One of the most interesting events in sorority circles at the University of Washington was the installation of Kappa Kappa Gamma, which as a local sorority was organized in the university after Alpha, the society upon which Lambda was established. The new chapter, Beta Pi of Kappa Kappa Gamma, held a large reception after their initiation at their chapter house. Lambda sent congratulations with a gift of flowers.

With pleasant anticipation Lambda is looking forward to her annual banquet to the alumnae, June 10. The menu cards will be the handiwork of Claudia Mowery of Lambda, who is at present residing in Chicago. This is the greatest occasion of the year to Lambda, as it brings back many of the older members of the chapter.

Lambda wishes to acknowledge in this letter the kind hospitality offered Helen Wetzel and Elizabeth Kaufman by Eta and Mu while the two Lambda girls were recently in California to attend the Y. W. C. A. convention. It is the wish of the Washington chapter that she may return this courtesy at an early date.

A pledge made during the second term of college is Claire Morrow of Waitsburg, Wash. She is quite an addition to the pleasant life of the house and will be initiated the coming college year.

Throughout the year THE CRESCENT has brought us to know each other better, widely scattered though we may be. It is hard to say good-bye to your college friends, to your pleasant chapter life, and THE CRESCENT will be missed in the summer months, but vacation calls, and so to you all farewell, until we meet again in the chapter letters.



MU

DEAR Sisters in Gamma Phi Beta: Mu has had her first initiation and now is very proud to introduce to you her new Sister,

Elise Owen, a Sophomore from Stockton, Cal. We also have our first affiliate, Margaret Hill, who came to us from Eta, and who is taking advanced work at Stanford. She is a fine, strong girl and we are very grateful to Eta for the present of her.

This month we have enjoyed visits from three of the Lambda girls: Bess Kaufmann, Helen Wetzel and Laila Knapp. Meeting these girls has made us realize more than ever the close tie by which all Gamma Phis are bound together, and we hope that we may have many more such visits, not only from the Lambda girls, but also from some of the more distant chapters.

On April 16, Eta's birthday was celebrated by a banquet held in San Francisco, which was attended by most of the Mu girls. It was quite an event for us, and it will be long before we forget the toasts and merry songs, and the joy of all being together.

The University has been in mourning for the greater part of this semester on account of Mrs. Stanford's death, so that there have been few social events.

On April 24 the Kappa Alpha Thetas gave a Pan-Hellenic tea at which we were entertained. We all went very informally after classes and had a thoroughly good time.

During the Easter vacation we had new hardwood floors laid in our house, and on the 29th of April our underclassmen celebrated the event by an underclassman dance, which was in every way a great success.

One of our girls, Jeraldine Brown, had the leading part in the Junior opera, and also a part in the English Club play, "Every Man in His Humor."

The final rush of work before commencement has begun and we realize how near the time is when we must lose our Seniors, and how hard it will be for us.

Mu sends best wishes to all Gamma Phis for a happy commencement.



CHICAGO

DEAR Sisters in Gamma Phi: Going to chapter meetings in Chicago has something of the excitement attendant upon the exploration of new countries, and even at the present strike crisis, something of the danger to life and limb. Everyone in Chicago moves every year—almost—so when your notice comes, saying that Mrs. — will entertain the chapter at such a street and number, there is a delicious uncertainty in your mind as to where that house may be. For our March meeting we took one of these flights into the unknown,

to lunch with Augusta Flinterman. When I rang the bell of the number given on my invitation, a tall, athletic looking boy opened the door. No such person should inhabit Mrs. Flinterman's house, I knew, for her son could hardly have grown to such proportions since I saw him last in dresses. To my inquiry for Mrs. Flinterman he replied that she did not live there. I drew out my card and showed him the number—the same which stared boldly forth from the front door. Then it developed that that erratic street began to number in the middle of its length at a railroad track. So I had to retrace my steps and arrived at last—late. We had a delightful meeting, however, entirely social this time, and heard more about those new houses Mrs. Flinterman and Mrs. Reilley are to have in the near future, not far from the street of the double numbers.

For our April meeting we went to Hull House, and took luncheon at the Coffee House. Most of us had never been there before on our own responsibility, and as we came straggling in, each had some tale to tell of her adventures in getting there, and of encounters with policemen, car conductors and fellow passengers, called upon to assist in showing the way. A friendly southern lady piloted me, and beguiled the time with tales of hair-breadth escapes on the Halstead street cars (on which we were riding), and "odious" comparisons of the treatment of women on street cars in the North and South.

The Coffee House is very pleasant. The walls are brick, the floor mosaic, and the woodwork, chairs and tables Flemish oak. Everything has a clean, fresh, sanitary look, very comforting after the neighborhoods we passed through in getting there. When we had finished our excellent luncheon we went all over the settlement buildings; we saw the music rooms, club rooms, reception rooms, gymnasium and theatre, all beautifully furnished, especially as regards pictures, yet all having that air of being used and enjoyed which makes any place home-like. There was not much of the typical life of Hull House to be seen. In one room some little girls were having a dancing lesson. In the Museum of Labor several women were weaving cloth or rugs on big looms. But the gymnasium was empty, the big new Woman's Club House was just being seated with comfortable looking chairs, and the printing press, the potter's wheel and the domestic science department were all clean and orderly, but not in use. We saw enough, however, to show us the extent and variety of the work done there, and we felt the friendly, helpful atmosphere of the place very pleasantly as we talked with the obliging young lady who showed us through the veritable labyrinth of rooms and buildings.

I wish some of our Sisters from far away could have been with us. Come to Chicago and we will take you over there some day.

SYRACUSE

THE Syracuse Alumnae Chapter sends greeting to all. Our April meeting we held with Nettie Fuller Leet and were pleased to have with us several of our out of town alumnae; also Miss Colt of Iota.

Later in the month we carried our supper and spent the afternoon sewing with Laura Page Flick. We have had such good times at previous parlor basket picnics that we are glad of any excuse to hold one, so when Mrs. Flick consented to our helping(?) her with children's clothing we jumped at the chance to carry our basket supper also. We had a fine time and are so rash as to hope that some of the garments were fit to wear.

In April the alumna entertained the active chapter at Kate Miller Cobb's. Different corners of the rooms were named for popular local resorts and paper butterflies, each bearing the name of one resort, were given to each one present. Then the lunches were brought in, in a large basket, each one wrapped in a paper napkin, tied with a ribbon; and the guests enjoyed their lunch at the resort named on her butterfly.

We are to meet on May 6 with Mrs. Florence Palmer Baker, and our June meeting, either banquet or luncheon, we hold with Mrs. Clara Wilcox.

BOSTON

DEAR Sisters, more especially those of the alumna who share with Boston Chapter the duties of a quarterly letter, and who do not always find events for public record as numerous or of such entrancing interest as do our busier active chapters, prepare your sympathy. After spending a quarter of an hour in solemn thought at last an item of real live news appeared, needing no imaginative touches to enhance its brilliance, no forswearing of early pious training in veracity to lend it charm! This crisp tid-bit of reality, prepared to serve *au naturel*, must needs be burned to the blackness of a—confession. Embarrassing, is it not? Attend! Boston Chapter was about to relate with official dignity that the last meeting of the season had successfully been held and a postponement of further meetings decided upon until autumn. At that moment there arrived from the editor

an innocent request to forward Boston Chapter's address. Now, as the early adjournment was due principally to our being without a permanent place of abode, in truth homeless for a month past, and so dangerously approaching the condition of that sum of social approbrium—the tramp—any mention of an exchange of cards came at a somewhat inopportune time. The reasons for our distressing state are these—our confession is manifest: Delta, in whose sorority rooms Boston Chapter is generously allowed to assemble, has been obliged to move owing to the extension of the college scientific department to include the building in which she was domiciled. Hence the unsettled condition of her beneficiary. However, we were kindly sheltered in April at the home of Katharine Whiting, who has more than once proved rescuer in an emergency. As soon as Delta is in possession of her new quarters Boston Chapter will once more return to a local habitation and respectability, even though her immediate presence will be wanting until this alluring season out of doors is over, and our travelers at home and in foreign lands are returned to begin another year in the interests of Gamma Phi Beta.

To all our Sisters good wishes for a restful summer and a happy rendezvous in November through THE CRESCENT.



NEW YORK

SISTERS in Gamma Phi: The New York Alumna devoted considerable time at their last meeting to admiration of THE CRESCENT and voted it a success from the cover all the way in. Not a member but had something to say for her pleasure during the past year in our sorority magazine.

We have divided ourselves into two classes, as householders and boarders, there being some objection on the part of the latter to being called the homeless ones. By this arrangement two entertain together and responsibility and expense are alike shared by two hostesses.

On Saturday, May 6, we were entertained at a luncheon by Mrs. Eugene Smith and Miss Warr at the home of the former. Fifteen were present and enjoyed the usual good time of a reunion of Gamma Phis. Our next meeting will be held on the first Saturday in October. It was a little early to learn much of summer plans, but there was considerable talk of possibilities.

Gertrude Hulse Beakes has already left the city for her home in Middletown.

Anna Louise Cole, who is secretary of the Womans' Foreign Missionary Society at 150 Fifth avenue, will spend the month of August in Cazenovia.

Blanche Shove Palmer expects to accompany Dr. Palmer to Karlsbad.

Abbie Benson Slawson will take her family to Lake Mahopac, N. Y.

Bertha Junkins will spend her vacation in Searsport, Me.

Su Smith Dawson goes in July to Mr. Dawson's camp in the Adirondacks on Lake Chateaugay.

Beginning with the autumn letter, Grace Howard Smith, 36 Park street, Montclair, N. J., will write THE CRESCENT letter for the New York Alumna.



MILWAUKEE

NEITHER lack of time nor of interest in my task must needs make my letter a short one, but, alas, lack of stirring events. Our meetings this spring have been most irregular and the attendance, I am sorry to say, has not been what it might have been. One reason though that excuses many is that several of the meetings have been arranged on the spur of the moment, and where we are scattered on all sides of the city it is hard indeed for the busy ones to get away on short notice. The meetings have been full of interest to old Gamma girls, in that the one topic has been that wonderful "House."

Mrs. Brittingham of Madison spent one afternoon with us at Miss Laffin's, bringing with her the plans, which we studied over with greatest enthusiasm. Mrs. Minnie Knox Kreutzer of Warsaw was also a guest that same afternoon. Several of us expect to attend Gamma's June banquet and so get a glimpse of the foundation of Gamma's future home.

Mrs. Laura Case Sherry has promised us a summer meeting at her beautiful country home which she has recently built at Fox Point, a delightful spot on the shore of Lake Michigan.

Although summer finds us starting off in many directions, we hope that this last meeting will be a regular old time Gamma Phi gathering with every one present.

A pleasant summer to you all.



SAN FRANCISCO

(No Letter.)

Births

Born to Josephine Ross Fischer, Gamma, a daughter, in March.

Born to Abigail Hubbard Corley, Beta, a daughter, Emily Holland Corley.

Born to Louise White Haller, Epsilon, on February 9, a daughter.

Born to Gertrude Birdsall Arnold, Beta, on April 28, a daughter.



Engagements

The engagement of Clara M. Morgan, Alpha, to Dr. Lewis of Providence, R. I., has been announced.

The engagement of Caroline Colver, Beta, to Nathan Potter of Jackson, Mich., has been announced.

The engagement has been announced of Harriet Durham, Epsilon, '03, to Dr. Ansel V. Coffman, Delta Tau Delta.



Marriages

The marriage of Marie Bennett, Epsilon, to Mr. Leon Denison of Cairo, Ill., will take place June 14 at Litchfield, Ill.

Ruby Lincoln Brown, Lambda, '02, was married last December to Mr. J. R. Rucker of Everett, Wash. Mrs. Rucker is a founder of Lambda. The honeymoon was spent in the Philippines and China, and at present Mr. and Mrs. Rucker are in Japan, where they will remain some time before returning to their home in Everett.

The marriage of Julia Esmond, Lambda, to Mr. Benjamin Crane of Montesano, Wash., took place May 17. Mrs. Crane was one of Lambda's first initiates and left college to carry on large business interests left in her hands at the death of her father. A number of Gamma Phi Betas were in attendance at the wedding.

Meta Veldora Becker, Lambda, '04, and Dr. Frank Winfield Hergert will be married at the home of the bride in Seattle, June 1. The wedding will be strictly a Gamma Phi affair. Rosa Wald, Lambda, '04, will be the maid of honor, and duties have been assigned to each and every member of Lambda. A number of informal entertainments have been held in honor of Miss Becker by both active and alumnae of Lambda. The bride and groom will leave after the wedding for a trip through California and Oregon and will take up their residence in Seattle upon their return.

Mary J. Monroe, Alpha, and Mr. Phillip Will of Rochester were married at six o'clock on May 1. Miss Monroe is a graduate of Syra-

cuse University. Mr. Will is a mining engineer, having spent some time in Mexico. He is a graduate of Cornell and Columbia.

The wedding of Florence Senger, ex-'05, to Mr. Dudley Saeltzer was solemnized on April 26 at half-past seven at the First Unitarian Church, Berkeley.



Personal

Maude Hicks Haidle, Beta, is visiting in Ann Arbor.

Kate McGraw, Beta, has been visiting in Ann Arbor.

Mary Colt, Iota, was the guest of Alpha for several days.

Kate Kinnaird, Epsilon, '03, spent Easter in Evanston.

Caroline Parker, Beta, has been visiting the Beta Chapter.

Winifred Morse of Alpena is visiting Beta for a short time.

Alice Coats Mott, Alpha, has returned to Syracuse to live.

Grace Foulds, Eta, is enjoying a two months' voyage to Japan.

Louise Williams, Epsilon, has been spending the winter in Florida.

Myra Smith, Lambda, will spend part of the summer at Seward, Alaska.

Cornelia Steketee Holst visited Beta during the Schoolmasters Club sessions.

Ruth Woodbury, an Epsilon pledge this year, is visiting in Memphis, Tenn.

Ella K. Smith, Gamma, '99, is teaching in the Menasha, Wisconsin, High School.

Carmel Riley, Eta, '07, was initiated into the Prytanean Society of the university.

Fanny Goodman Symons, Beta, of Kansas City has been visiting in Ann Arbor.

Gamma Chapter was very glad to see Anne McLenegan for a few days last month.

Helen Gowing, ex-Alpha, has returned from Chicago, where she spent two months.

Florence Brownell, Beta, of Kalamazoo visited in Ann Arbor the last days of March.

Florence Coffman, Lambda, has left the university and is at her home in Chehalis, Wash.

Jessie Margaret Horton, Beta, attended the wedding of Mary Symonds, Beta, in Saginaw.

Mabelle Leonard Douglas, Beta, attended Mary Symonds' wedding in Saginaw on April the 5th.

Laura Fenton, Alpha, '08, has gone to a sanitarium at Adams, where she will be treated for tuberculosis.

Cora Willard Frederick, Alpha, of Buffalo was visiting her mother and met with the alumnae in April.

Olive Morehead Beckwith, Alpha, was the guest of her mother in April and attended the alumnae meeting.

Epsilon enjoyed a very pleasant visit with Miss Lund of Christiana, Norway, a Gamma Phi pledge at Alpha Chapter.

Alice Smalley, Gamma, who was compelled to leave school because of her health, is with her brother in Louisville, Ky.

Marin Waterhouse, Eta, returned to Berkeley on April 29 from New York City, where she has been spending the winter.

Lulu Leismer, formerly of Ann Arbor, now at Smith, visited friends in Syracuse and was Alpha's guest for a short time.

On April 11 Elise Scott, ex-Delta, and Dora Clapp, Delta, 1900, sailed for Europe, where they will travel until autumn.

The Hon. G. S. Cosgrove, father of Myrn Cosgrove, Lambda, has recently been appointed a regent at the University of Washington.

Hazel Milverstedt and Irene Hurlburt, two of Gamma's pledglings, were with us at the time of the Alpha Delta Phi dance on April 28.

Mary Palmer Babcock, Epsilon, who has been living abroad since her marriage, is spending the summer with her father in Chicago Heights, Ills.

Mrs. Margaret Douglas Bement, Beta, is living at Stanford University. Mr. Bement is doing graduate work in the Stanford English Department.

Janet Kevand, ex-Alpha, was the guest of Alpha for a few days. Miss Kevand will take up her residence with her brother, Dr. Kevand, in Syracuse.

Leila Knapp, Lambda, has recently returned to California from a trip to Honolulu. She forwarded to her chapter a gift of mats made in the Hawaiian Islands.

Genevieve Pendleton, Gamma, called at the Mu Chapter House, Stanford University, as she was passing through Palo Alto. She has been spending the winter in California.

Jeanette Perry, one of Lambda's first initiates, will graduate from Smith in June. She will return to Seattle after an absence of two years and will reside permanently in the city.

Louise Wetzel and Pansy Olney of Lambda will visit their chapter during commencement week and will return to their home in Spokane with a party of Lambda girls by way of the Portland fair.

Alma Delaney, '08, Lambda, has recently returned from California, where occurred the sad loss of her father, Judge Delaney of Juneau, Alaska. She has taken up her residence in Seattle with her sister.

On Monday, February 27, Miss Florence M. Marshall, '99, described before the Mothers' and Fathers' Club of Boston the work and scope of the Trade School for Girls, of which she is a director.—From Bostonia.

Mrs. Genevieve Sylvester Allen, Gamma, '99, has been in Germany during the past year. Mr. Allen is doing research work in the Zoology Department in University of Bonn. A letter from her recently was written on the Bay of Naples, Mr. Allen having been detailed to do some special work in the laboratory there.

Boston Chapter wishes to acknowledge through these columns the receipt of the valuable report of the Inter-Sorority Conference on Social Customs.



Our Contemporaries in Black and White

WE acknowledge the receipt of the following quarterlies, and ask that exchanges be sent to the following:

Miss Elizabeth Putnam, 86 Lafayette Park, Lynn, Mass.

Miss M. Louise Powell, the Woman's College, Baltimore, Md.

Miss Anna M. Dimmick, 26 N. Fourth street, Columbus, Ohio.

The Alpha Phi Quarterly, The Arrow, The Anchora, Kappa Alpha Theta, The Trident, The Lyre, Themis of Zeta Tau Alpha, The Rainbow, Beta Theta Pi, The Record, The Delta Upsilon Quarterly, The Phi Gamma Delta, Kappa Alpha Journal, The Scroll, The Sigma Chi Quarterly, The Shield.



Gamma Phi Beta Sorority

DIRECTORY—1905

ALPHA—SYRACUSE UNIVERSITY

IRENE COPLEY ALBRIGHT (Mrs. R. P.), 1904.....	607 Tallman St., Syracuse, N. Y.
FLORENCE WORSTER ALLEN (Mrs. C. L.), 1891.....	Utica, N. Y.
JULIA CHAMBERLAIN ALLEY (Mrs. W. S.), 1881.....	16 Elm Ave., Rosedale, Toronto, Canada.
GERTRUDE L. ANDREWS, 1897.....	106 E. Castle St., Syracuse, N. Y.
JEANNETTE E. ATWELL, 1887-88.....	711 S. Crouse Ave., Syracuse, N. Y.
AGNES H. AVERY, 1907.....	Groton, N. Y.
HELEN F. AVERY NOBLE (Mrs. Elbert), 1899.....	1407 Spring St., Syracuse, N. Y.
SARAH OSTRANDER AVERY, 1898.....	1509 Park St., Syracuse, N. Y.
KATE GRAY AVLING (Mrs. Chas.), 1887.....	601 University Ave., Syracuse, N. Y.
LUCY BABCOCK, 1903.....	917 W. Main St., Kalamazoo, Mich.
FLORENCE PALMER BAKER (Mrs. Seth D.), 1877-79.....	201 Onondaga Ave., Syracuse, N. Y.
MARCIA BALDWIN, 1902.....	520 Oak St., Syracuse, N. Y.
JENNIE REALS BALTZEL (Mrs. Wm. H.), 1878-79.....	Lyons, N. Y.
KATHERINE URSULA BARKER, 1900.....	Died April 29, 1901.
GERTRUDE HULSE BEAKES (Mrs. C. J.), 1897.....	113 W. Main St., Middletown, N. Y.
MINNIE MASON BEEBE (Mrs. T. O.), 1887-1890.....	1007 E. Adams St., Syracuse, N. Y.
OLIVE MOORHEAD BECKWITH (Mrs. A. E.), 1892.....	21 Lincoln Ave., Norwich, Conn.
BERTHA BENEDICT, 1906.....	Montrose, Pa.
MARY A. BINGHAM, 1905.....	Lockwood, N. Y.

ELLA COLE BOHR, 1904.....Waterville, N. Y.
 BESSIE BOWE, 1908.....323 Deleware St., Syracuse, N. Y.
 ELIZABETH NELSON BROOKS, 1905.....1013 E. Adams St., Syracuse, N. Y.
 BERTHA BOOMER BROOKS (Mrs. F. B.), 1881.....206 Green St., Syracuse, N. Y.
 L. FRANK COLLINS BROWN (Mrs. C. C.), 1900.....1904 S. State St., Syracuse, N. Y.
 CORNELIA L. BROWN, 1884.....7 William St., Auburn, N. Y.
 JENNIE COX BROWN (Mrs. F. S.), 1883.....St. Thomas, Ontario, Canada.
 ROSITA MUNRO BROWN (Mrs. S. E.), 1905.....1610 E. Genesee St., Syracuse, N. Y.
 EMMA NORTON BROWNE (Mrs. W. E.), 1882.....Morrisville, N. Y.
 BERTHA BANNISTER BUCKMAN (Mrs. E. E.), 1893..335 Wyoming Ave., Kingston, Pa.
 LOUISE BRYAN BURGESS (Mrs. Wm. H.), 1897.....302 W. Delavan Ave., Buffalo, N. Y.
 MARGARET E. CALDWELL, 1887.....24 Jefferson St., Bradford, Pa.
 GEORGIANA TAYLOR CARPENTER (Mrs. B. H.), 1894..35 N. Franklin St., Wilkesbarre, Pa.
 CORA JACKSON CARSON (Mrs. R. N.).....1421 Grand Ave., Davenport, Iowa.
 JESSIE JONES CARSON (Mrs. W. A.), 1892.....Rushville, N. Y.
 MARTHA CELETTE CARTER, 1892.....143 Main St., Oneida, N. Y.
 FANNIE L. CASE, 1891.....1 Thayer St., Rochester, N. Y.
 OLIVE STRAYER CAUGHEY (Mrs. J. L.), 1895.....18 Ormond St., Rochester, N. Y.
 ELLEN F. CHAMBERLAYNE, 1887.....Pittsford, N. Y.
 MARTHA SCHULTZE CHANDLER (Mrs. G.), 1887-88..Kingston, N. Y.
 GRACE HOBART CLARK (Mrs. A. H.), 1893-97.....5 Westlake Ave., Auburn, N. Y.
 MYRTLE DELPHINE CLARK, 1893-97.....132 E. Fourth St., Oswego, N. Y.
 BERTHA ELIZABETH COATES, 1899.....708 Liberty St., Erie, Pa.
 LYDIA AURELIA COBB, 1903.....Ulysses, Pa.
 KATE MILLER COBB (Mrs. D. R.), 1891.....403 University Place, Syracuse, N. Y.
 ANNA LOUISA COLE, 1894.....371 W. 119th St., New York City.
 CLARA BINGHAM COLLINS (Mrs. H. M.), 1899.....18 Clinton Ave., Cortland, N. Y.
 MABEL B. COOK, 1894.....285 Pennsylvania St., Buffalo, N. Y.

NETTIE HOAG COOK (Mrs. John B.), 1883.....Died June 5, 1884.
 KATE GARDNER COOKE (Mrs. A. R.), 1886.....1105 Harrison St., Syracuse, N. Y.
 ELLEN A. CORSE, 1891.....Died November, 1902.
 BERTHA OVIATT COX, 1890.....3578 Superior St., Cleveland, O.
 LOUISE JONES CROOKER (Mrs. E. H.), 1887....."The Waldorf," Minneapolis, Minn.
 FLORENCE BAILEY CROUSE (Mrs. H. B.), 1899.....104 Liberty St., Syracuse, N. Y.
 JENE CROUSE, 1902.....Broad Albin, N. Y.
 EUNICE ADELINE CURTIS CURTIS (Mrs. F. L.), 1878..1412 E. Genesee St., Syracuse, N. Y.
 FLORABEL CURTIS, 1882.....Died December 15, 1885.
 MARY WESTCOIT CURTISS (Mrs. E. F.), 1891.....Geneseo, N. Y.
 EMILY CUSHING, 1898.....Despatch, N. Y.
 MARY SAFFORD CUYKENDALL (Mrs. E. F.), 1887....129 W. Kennedy St., Syracuse, N. Y.
 BLANCHE STEVENS DAMAN (Mrs. C. N.), 1885-86....621 E. Genesee St., Syracuse, N. Y.
 LULU SMITH DAUSON (Mrs. H. J.), 1877-80.....424 W. 144th St., New York City.
 HARRIET LUTHER DAVIS (Mrs. C. L.), 1898.....216 N. Clinton St., Olean, N. Y.
 MARY EMOGENE DAY, 1900.....604 University Ave., Syracuse, N. Y.
 JESSIE Z. DECKER, 1880.....116 Burnet Ave., Syracuse, N. Y.
 A. CLARA DE YOE, 1908.....Goshen, N. Y.
 ISABEL GAGE DIBBLE (Mrs. W. W.), 1903.....Vernon Center, N. Y.
 MAUDE WHITNEY DUNMAN (Mrs. Henry), 1890....67 Palace Arcade, Buffalo, N. Y.
 MINNIE CURTISS DINSMORE (Mrs. T. H.), 1883....61 S. Oxford St., Brooklyn, N. Y.
 AMELIA MORGAN DORR (Mrs. C. E.), 1900.....200 W. Castle St., Syracuse, N. Y.
 MIRA HAVEN DRAPER (Mrs. G. F.), 1879.....363 Westcott St., Syracuse, N. Y.
 VERNE WESTON DRIVER (Mrs. D. M.), 1904.....2028 Brandywine St., Philadelphia, Pa.
 RUTH ETHEL DRYER.....Rochester, N. Y.
 MARGARET LITTLE DUNHAM (Mrs. Wm. H.), 1892..1133 Judson Ave., Evanston, Ill.
 JULIA BABCOCK DUNKLEY (Mrs. M. E.), 1904.....94 Michigan Ave., South Haven, Mich.
 GRACE EATON, 1907.....Eaton, N. Y.

MAY HAMBLÉN EATON (Mrs. F. C.), 1885.....Warren, Pa.
CLARA M. EASTMAN, 1889-90.....Died January 21, 1895.
GRACE WEBB EDGECOMB (Mrs. E. I.), 1893.....708 University Ave., Syracuse, N. Y.
MARY EDSON, 1893.....520 Norwood Ave., Buffalo, N. Y.
MARION EDWARDS, 1907.....Madison St., Syracuse, N. Y.
MERIAM ERNHOUT, 1900.....731 Euclid Ave., Syracuse, N. Y.
CLARA S. FAY, 1902.....Westfield, N. Y.
MARY FULLER FEARON (Mrs. H. D.), 1886.....205 Main St., Oneida, N. Y.
LAURA E. FENTON, 1908.....Broadalbin, N. Y.
HELEN DODGE FERGUSON (Mrs. J. V.), 1876.....90 Brinckerhoff Ave., Utica, N. Y.
ALVIA HORTON FISH (Mrs. A.), 1892.....138 Holland St., Syracuse, N. Y.
LAURA PAGE FLICK (Mrs. A. C.), 1898.....108 Waverly Ave., Syracuse, N. Y.
MYRA PALMER FORD (Mrs. S. T.), 1886.....187 Nesmith St., Lowell, Mass.
CORA WILLARD FREDRICK (Mrs. W. J.), 1881.....228 Summer St., Buffalo, N. Y.
ELLA IRENE FRENCH, 1878.....Died June 24, 1904.
JOSEPHINE FRISBEE, 1902.....Williamsport, Pa.
GERTRUDE DADA FULLER (Mrs. Wm. B.), 1885.....704 University Ave., Syracuse, N. Y.
ALICE ELIZA GAGGIN, 1898.....241 W. Fifth St., Erie, Pa.
GERTRUDE HALL GAGGIN, 1899.....241 W. Fifth St., Erie, Pa.
ELIZABETH BRICKFORD GALE (Mrs. H. L.), 1887.....Died October 28, 1894.
MINA DEWEY GALLUP (Mrs. A. O.), 1888-89.....Yonkers, N. Y.
MARY FRENCH GARDINER (Mrs. W. F.), 1879-80.....94 Prospect Park West, Brooklyn, N. Y.
ALICE OLIVER GERE (Mrs. G. E.), 1897.....593 Laurel Ave., St. Paul, Minn.
BESSIE COWLES GIBSON (Mrs. G. F.).....Clyde, N. Y.
MARY THATCHER GIBSON (Mrs. E. W.), 1879-81.....98 Piquette Ave., Detroit, Mich.
AUSTIANA E. TAYLOR GORETH (Mrs. F. W.), 1892.....East Orange, N. J.
RUTH HOLLING GORDON, 1905.....Williamson, N. Y.
HELEN LOUISE GOWING, 1900.....608 Danforth St., Syracuse, N. Y.

MARTHA ANNE GOWING, 1906.....802 Turtle St., Syracuse, N. Y.
 CORA DODSON GRAHAM (Mrs. W.), 1894.....504 University Place, Syracuse, N. Y.
 ALICE REED GRAVES, 1898.....807 Comstock Ave., Syracuse, N. Y.
 CARRIE E. GREEN, 1882.....Rushville, N. Y.
 FLORENCE EUGENIE HAANEL, 1895.....250 Waverly St., Ottawa, Ont.
 GRACE DARLING HAANEL, 1894.....250 Waverly St., Ottawa, Ont.
 EDITH WALTON HAMLIN, 1890.....1511 Girard Ave., Philadelphia, Pa.
 LYSBETH AILEEN HARD, 1901.....Perry, N. Y.
 IRMA WALTON HARD, 1903.....Oneida, N. Y.
 EDITH WALLACE HARRISON (Mrs. Ralph).....Care War Department, Washington, D. C.
 MARY BECK HARVEY (Mrs. W. K.), 1884.....16 Steuben Park, Utica, N. Y.
 KATE BENNETT HATHAWAY.....North Tonawanda, N. Y.
 KATE CUSHING HATMAKER, 1887.....2010 Union Ave., Schenectady, N. Y.
 ELIZABETH HAYWOOD HAVEN, 1879.....Died January 1, 1880.
 HELEN WARDELL HAWKINS (Mrs. D. E.), 1888.....310 Walnut Place, Syracuse, N. Y.
 LAURA CONGDON HEBARD.....158 Center St., Rochester, N. Y.
 FLORENCE HEERMANS, 1899.....114th St., near 7th Ave., New York City.
 EDITH I. HEDGES, 1905.....Cornwall-on-Hudson, N. Y.
 GRACE MCINTYRE HEINZE (Mrs. O. R.), 1893.....27 Bank St., Batavia, N. Y.
 JANE AVERY HENDERSON, 1901.....Weedsport, N. Y.
 LOUISE ADELIA HILL, 1903.....Corning, N. Y.
 MILICENT A. HINKLEY, 1894.....715 Irving Ave., Syracuse, N. Y.
 LIVONIA MAY HITCHCOCK, 1892.....Died December 25, 1895.
 MABEL BOOMER HODDER (Mrs. W. C.), 1895.....314 Gifford St., Syracuse, N. Y.
 JESSIE HURLBURT HODGE (Mrs. W. B.), 1895.....Glenside, Pa.
 MARGARET GRAVES HOOKE (Mrs. J. H.), 1901.....513 N. Washington St., Rome, N. Y.
 MARY SMITH HOPKINS (Mrs. C. E.), 1890.....808 Bellevue Ave., Syracuse, N. Y.
 THEO PRICE HOUGH (Mrs. L. P.), 1887.....1060 Josephine St., Denver, Col.

ELLA BOOMER HOWARD (Mrs. F. H.), 1883.....314 Gifford St., Syracuse, N. Y.
 ANNA SHELDON HOWE (Mrs. L. M.), 1885.....2043 Hillside Ave., Indianapolis, Ind.
 MABEL VAN WINKLE HOYT (Mrs. G. W.), 1899.....729 S. Crouse Ave., Syracuse, N. Y.
 ANNA LOOMIS HUMPHREY (Mrs. I. E.), 1892.....Canandaigua, N. Y.
 HELEN A. HURLBURT, 1895-96.....Glenside, Pa.
 LEOLA JERMY, 1903.....Oneida, N. Y.
 MABEL JACOBY JOHNSON (Mrs. L.), 1899.....115 Comstock Ave., Syracuse, N. Y.
 JANET L. KEVAND, 1901.....Weedsport, N. Y.
 HAZEL EVERTSON KING, 1905.....14 Benedict Ave., Ilion, N. Y.
 ALMA LOUISE KLOCK, 1895.....Oneida, N. Y.
 ANNA M. KNAPP, 1892.....247 Court St., Binghamton, N. Y.
 CLARA BLANCHE KNAPP, 1899.....Fairmount, N. Y.
 LOUISE KNAPP, 1905.....247 Court St., Binghamton, N. Y.
 LAURA MILLS LATIMER, 1900.....95 Elm St., Malone, N. Y.
 RUTH A. LAYCOCK, 1908.....206 Kirk Ave., Syracuse, N. Y.
 GERTRUDE M. LEETE, 1895.....39 Tracy St., Utica, N. Y.
 NETTIE FULLER LEETE (Mrs. F. D.), 1889.....907 Harrison St., Syracuse, N. Y.
 M. CORINNE LEWIS, 1898.....1721 W. Genesee St., Syracuse, N. Y.
 JENNIE OLIVIA LEWIS, 1902.....1721 W. Genesee St., Syracuse, N. Y.
 JESSIE WHEELER LEWIS (Mrs. F. Z.), 1896t.....172 Ralph Ave., Brooklyn, N. Y.
 LILIAN B. LEWIS, 1898.....23 Grove Ave., Auburn, N. Y.
 ELIZABETH LEYDEN, 1887.....48 Mt. Pleasant Ave., Newark, N. J.
 LUCIA SEDGWICK LOCKWOOD (Mrs. Harry), 1901.....Phelps Place, Syracuse, N. Y.
 MARY COLLINS LOGAN (Mrs. E. W.), 1887-88.....Lyons, N. Y.
 MABELLE LUTHER, 1902.....314 N. Clinton St., Olean, N. Y.
 CAROLINE B. LYNCH, 1892-93.....Athens, Pa.
 DEIRDRE F. MACE, 1908.....127 College Place, Syracuse, N. Y.
 LUCY YATES MANNING (Mrs. W. S.).....Orchard Road, Solvay, N. Y.

GRACE FEATHERLY MAROT (Mrs. Wm.), 1895.....107 Euclid Ave., Montrose, Solvay.
 ORAMELIA TACKABURY MARVIN (Mrs. H. N.), 1883. 340 Riverside Drive, New York City.
 MARY ELIZABETH MASON, 1902.....Geneseo, N. Y.
 M. LUELLA MASTERS, 1892.....Foochow, China, Methodist Missionary.
 LAURA E. MATHEWS, 1905.....36 Kearney St., Newark, N. J.
 ELLA LAWRENCE MATHEWS (Mrs. Wm.).....Dover Bay, O.
 MAY LOUISE MCCHESENEY, 1901.....200 Walnut Ave., Syracuse, N. Y.
 MARY CROTHERS MCCOY (Mrs. Wm. K.), 1893.....223 Oneida St., Utica, N. Y.
 NELLA GRAY MCINTYRE, 1889.....27 Bank St., Batavia, N. Y.
 STELLA E. MCINTYRE, 1892.....254 Mt. Pleasant Ave., Newark, N. Y.
 GERTRUDE HAMLIN MCKEE (Mrs. J. A.), 1890.....7441 Devon St., Philadelphia, Pa.
 ALMA I. McMATH, 1887.....97 East Ave., Rochester, N. Y.
 ARTE V. MEADE, 1904.....Lyons, N. Y.
 HARRIET MAUD MILLER, 1891.....705 Irving Ave., Syracuse, N. Y.
 GENEVIEVE WILSON MIXER (Mrs. C. T.), 1904.....Salt Lake City, Utah.
 BERGITTA K. MORAN, 1906.....Lyons, N. Y.
 CLARA MARIE MORGAN, 1902.....Auburn, N. Y.
 FRANCIS E. HAVEN MOSS (Mrs. C. M.), 1877.....806 S. Mathews Ave., Urbana, Ill.
 KATE MORGAN, 1882-84.....Died January 25, 1889.
 CLARA REED MORGAN (Mrs. Wm. L.), 1896.....106 Chester Ave., Newark, N. J.
 ALICE COATES MOTT (Mrs. F. A.), 1898.....140 Holland St., Syracuse, N. Y.
 MARY J. MUNRO, 1901.....813 W. Genesee St., Syracuse, N. Y.
 FLORENCE REED MUNRO (Mrs. E. K.), 1902.....Camillus, N. Y.
 EDITH WILSON MURDOCK (Mrs.), 1899.....
 MARY REED MURRAY (Mrs. E. W.), 1899.....493 Summer Ave., Newark, N. J.
 LUCY LINCOLN NESBITT (Mrs. J. S.), 1880-81.....Address not known.
 GRACE G. NOBLE, 1900.....Died November, 1904.
 IDA R. NOBLE, 1875-76.....Died August 24, 1877.

LUA CHAMBERLAIN NOYES, 1900.....283 Alexander St., Rochester, N. Y.
 CHRISTINA VAN ALLEN OAKLEY, 1899.....73 Grand St., Newburgh, N. Y.
 EUGENIA OLIVER, 1904.....34 Elmwood Ave., Geneva, N. Y.
 ELIZABETH OPP, 1907.....Plymouth, Pa.
 ETHELWYN OSBORNE, 1896.....81 Oxford St., Cambridge, Mass.
 FLORENCE FARNHAM OSGOOD (Mrs. E. G.).....7 Hapgood St., Bellows Falls, Vt.
 NINA OSTRANDER, 1905.....Cornwall, N. Y.
 JESSIE M. PAGE, 1908.....108 Waverly Ave., Syracuse, N. Y.
 ALICE HOYT PALMER (Mrs. W. E.), 1891.....281 Pavonia Ave., Jersey City, N. J.
 BLANCHE SHOVE PALMER (Mrs. E. J.), 1878-80.....103 W. 86th St., New York City.
 GRACE LESLIE PALTZ (Mrs. A. J.), 1894-96.....214 E. Onondaga St., Syracuse, N. Y.
 MARY CLARK PATCHELL (Mrs. C. T.), 1883.....Bay City, Mich.
 GERTRUDE PENNIMAN, 1904.....110 Flower Ave. East, Watertown, N. Y.
 RUTH PECK PLATT, 1904.....Tunkhannock, Pa.
 GENEVIEVE OSTRANDER PORTER (Mrs. W. W.), 1886..1717 W. Genesee St., Syracuse, N. Y.
 ISABELLA YATES PORTER (Mrs. L. D.), 1888-89.....Orchard Road, Solway, N. Y.
 GRACE DE KAY PRATT (Mrs. W. H.), 1900.....Died November, 1904.
 GEORGINA ATWOOD PRATT (Mrs. M.), 1891.....Died ____.
 ELIZABETH PEARSALÉ.....76 Philadelphia St., Saratoga, N. Y.
 ALICE BANNISTER RACE (Mrs. J. H.), 1881.....Grant University, Chattanooga, Tenn.
 AGNES RAINES, 1898.....8 Amherst St., Rochester, N. Y.
 LENA SCHREUDER RANKIN (Mrs. S. C.), 1893.....49 Fir St., Akron, O.
 GRACE DOUGLASS RATHBUN (Mrs. A. S.), 1896.....171 Main St., Oneida, N. Y.
 EVA POTTER REMINGTON (Mrs. F.), 1888.....275 West Ave., Rochester, N. Y.
 HELEN C. REYMON, 1884.....Died September 2, 1894.
 KATHARINE SMITH REYNOLDS (Mrs. C. E.), 1883..110 Cortland Ave., Syracuse, N. Y.
 INA MERCER RICE (Mrs. L. H.), 1892.....4 Wellington Terrace, Brookline, Mass.
 JESSIE GROAT RICHARDSON (Mrs. R. S.), 1897.....387a McDonough St., Brooklyn, N. Y.

GRACE SMITH RICHMOND (Mrs. N. G.), 1888.....74 E. Main St., Fredonia, N. Y.
 CARRIE HULL ROBIE (Mrs. J. C.), 1880.....11 N. Campbell St., Bath, N. Y.
 MARY WILCOX ROBINSON (Mrs. W. H.), 1883-84.....1497 Lemon St., Riverside, Cal.
 TACIE ADKINSON ROCKWELL (Mrs. G. H.), 1901.....1617 S. State St., Syracuse, N. Y.
 ALICE YOUNG ROCKWELL (Mrs. E. I.), 1885.....411 W. Adams St., Los Angeles, Cal.
 MYRTA KENASTON RUSSELL (Mrs. T. A.), 1888.....The "Melton Manor," Buffalo, N. Y.
 RUTH ALVA RUSSUM, 1903.....16 Washington St., Rensselaer, N. Y.
 NETTIE M. SADLER, 1900.....907 University Ave., Syracuse, N. Y.
 JENNIE COOPER SAGER (Mrs. F. W.), 1891.....1412 S. State St., Syracuse, N. Y.
 HELEN M. SAXTON, 1896.....Clyde, N. Y.
 EMMA HEERMANS SCOON (Mrs. W. A.), 1890.....Bellona, Yates Co., N. Y.
 HELEN ANGELL SEAMANS (Mrs. J. C.), 1889.....Died October, 1902.
 FLORENCE C. SEELY, 1885.....8 Joselyn Place, Rochester, N. Y.
 LILLIAN SEELY, 1878-79.....8 Joselyn Place, Rochester, N. Y.
 EVA ADELAIDE SEYMOUR, 1885.....112 McLennan Ave., Syracuse, N. Y.
 LIBBIE CLARK SHARP (Mrs. F. W.), 1882.....1711 Woodland Ave., Des Moines, Ia.
 GRACE KLOCK SCHAUFFLER (Mrs. A. T.), 1893.....101 Corto St., El Paso, Texas.
 LULU SHEARMAN, 1906.....105 Crosby St., Jamestown, N. Y.
 FLORA HUMASON SHEARMAN (Mrs. R. C.), 1876.....Fredonia, N. Y.
 FANNY A. SHELDON, 1888-89.....Astral Br. B. P. L., Franklin St., Brooklyn, N. Y.
 FRANCES C. SHOE CRAFT.....Indianapolis, Ind.
 GERTRUDE TRIPP SHOEMAKER, 1904.....Wyoming, Pa.
 IRMA SCHOEPFLIN, 1903.....Hamburg, N. Y.
 ANNA SHEARMAN SCHULTZ (Mrs. C. E.), 1898.....4 Bennett St., Hornellsville, N. Y.
 ELLA LEWIS SKEEL (Mrs. W. G.), 1884-85.....905 University Ave., Syracuse, N. Y.
 EMILY WELLS SIMMONS (Mrs. F. M.), 1898.....1408 Lawrence Ave., Chicago, Ill.
 ABBY BENSON SLAWSON (Mrs. J. W.), 1902.....604 W. 115th St., New York City.
 CARRIE ELIZABETH SMALLEY, 1903.....Died September 10, 1903.

ETHEL OSTRANDER SMITH (Mrs. Burnett), 1903.....Skaneateles, N. Y.
 GRACE HOWARD SMITH (Mrs. E. R.), 1898.....36 Park St., Montclair, N. J.
 JENNIE WILSON SMITH (Mrs. L. P.), 1896.....Camden, N. Y.
 LILLIAN SCONSBY SMITH, 1891.....360 W. Clinton St., Elmira, N. Y.
 SUSAN SMITH, 1908.....Owego, N. Y.
 JEAN M. SNYDER, 1907.....1956 Bailey Ave., Buffalo, N. Y.
 KATE FOSTER SORNBERGER (Mrs. S. J.), 1878.....34 N. Church St., Cortland, N. Y.
 HELEN GRAVES SPRAGUE (Mrs. Russell), 1901.....200 Rich St., Syracuse, N. Y.
 GERTRUDE COOPER SQUIERS (Mrs. A. L.), 1893.....665 St. Marks Ave., Brooklyn, N. Y.
 DELLA QUINCY STABLER (Mrs. W. J.), 1877.....Noblesville, Ind.
 ALGENIA HOWELL STANTON (Mrs. O. H.), 1883.....Died November 19, 1891.
 FRANCIS COBB STEPHENSON (Mrs. F. H.), 1880.....708 James St., Syracuse, N. Y.
 EDWINA BENEDICT STONE (Mrs. E. H.).....Hamilton, N. Y.
 MABEL E. STONE, 1893-94.....410 University Ave., Syracuse, N. Y.
 MYRTLE COSETTE STONE, 1903.....Oxford, N. Y.
 MARY SUPPLEE, 1907.....W. Ninth St., Erie, Pa.
 EMMA PORTER SUTHERLAND.....5502 Fourteenth Ave., Seattle, Wash.
 ANTOINETTE BROWN STRICKLAND (Mrs. F. L.).....Bay Shore, Long Island.
 ANNIE TANNER, 1880-83.....Died September 11, 1887.
 FLORENCE E. TAYLOR, 1908.....407 W. Sullivan St., Olean, N. Y.
 LIDA FRENCH THURSTON (Mrs. E. E.), 1898.....134 Fage Ave., Syracuse, N. Y.
 LILLIAN M. TITSWORTH, 1906.....Montrose, Pa.
 EMILIE G. TREADWAY, 1908.....Lewis St., Binghamton, N. Y.
 FLORENCE E. TROWBRIDGE, 1894.....1804 Genesee St., Syracuse, N. Y.
 FLORA CRANE VAN WAGONER (Mrs. C.), 1877.....21 Spruce St., Bloomfield, N. J.
 SARAH E. VEEDER, 1896.....Lyons, N. Y.
 HATTIE DINGMAN VAN KLOSTER (Mrs. J. C.), 1878..Died May 12, 1904.
 HARRIET BUDD WADLEIGH (Mrs. L. O.), 1891.....706 University Ave., Syracuse, N. Y.

F. LOUISE WARR, 1894 49 E. 21st St., New York City.
 MARY TROWBRIDGE WATKINS (Mrs. F. H.), 1892 Gilbertsville, N. Y.
 MILDRED F. WEBB, 1907 902 James St., Syracuse, N. Y.
 ETHEL M. WELLS, 1906 Wilkesbarre, Pa.
 NELLIE MORGAN WELLS (Mrs. E. M.), 1890 1415 E. Genessee St., Syracuse, N. Y.
 MABEL WELLS, 1902 Wilcox, Pa.
 HATTIE BALDWIN WELLMAN (Mrs. A. M.), 1887 Friendship, Alle Co., N. Y.
 ADELAIDE WHITREAD WHITE (Mrs. H. S.), 1879 4 Hamilton Flats, Syracuse, N. Y.
 LOUISE BLAINE WHITE (Mrs. E. D.), 1886 Ellensburg, N. Y.
 ANNA TERRY WHITFORD (Mrs. N. E.), 1889 11 Lexington Ave., Albany, N. Y.
 LIZZIE WHITFORD, 1883 202 Kirk ave., Syracuse, N. Y.
 MARY WHITFORD, 1881 202 Kirk Ave., Syracuse, N. Y.
 MABEL FULLER WHITMARSH (Mrs. H. D.), 1897 122 Oak St., Binghamton, N. Y.
 LAURA A. WILBUR, 1907 700 S. Crouse Ave., Syracuse, N. Y.
 IDA SAXTON WILCOX (Mrs. A. H.), 1893 10 Brighton St., Rochester, N. Y.
 CLARA WORDEN WILCOX (Mrs. F. Z.), 1876 122 W. Castle St., Syracuse, N. Y.
 ELIZABETH S. WILDMAN, 1906 Perry, Wyoming Co., N. Y.
 IRMA WILLARD, 1908 Riverside, Cal.
 GERTRUDE S. WATERS, 1908 Watertown, Conn.
 MARY BINGHAM WILLOUGHBY (Mrs. E. A.), 1878 1581½ Park Ave., Utica, N. Y.
 NELLIE M. WILMOT, 1889 2428 N. Calvert St., Baltimore, Md.
 JEANNETTE L. WILMOT 2428 N. Calvert St., Baltimore, Md.
 HELEN M. WOOD, 1892 444 Central Park West, New York City.
 MARIELE RUTH WOOD, 1898 Savannah, N. Y.
 GRACE H. ZIMMERLIN, 1906 Lyons, N. Y.

BETA—UNIVERSITY OF MICHIGAN

ELSIE GRACE ANDERSON, 1893.....	618 Hill St., Ann Arbor, Mich.
ROSETTA ANDERSON, 1893.....	618 Hill St., Ann Arbor, Mich.
ISABELLA ANDREWS TALLEY (Mrs. J. E.), 1889.....	5602 Lansdowne Ave., Philadelphia, Pa.
FANNY ATKINS CAXTON (Mrs.).....	666 N. Meridian St., Indianapolis, Ind.
EMMA BALLENTINE HINCHEMAN (Mrs. T.), 1891.....	Detroit, Mich.
KATHERINE BALLENTINE HEAVENRICH (Mrs. T.), 1897.....	Port Huron, Mich.
MARTHA W. BANCER, 1897.....	Jackson, Mich.
FRANCES REILLY BECK, 1895.....	Died, September, 1898.
ALICE BECKWITH THOMPSON (Mrs.), 1895.....	538 Church St., Ann Arbor, Mich.
FRILLIE G. BECKWITH, 1894.....	538 Church St., Ann Arbor, Mich.
MAUDE BEDELL SHERWOOD (Mrs. M. J.), 1893.....	422 East Ohio St., Marquette, Mich.
SARA DEN BLEYKER VAN DEMAN (Mrs. W. H.).....	324 Eighteenth St., Toledo, O.
ESTHER BRALEY, 1898.....	603 South State St., Ann Arbor, Mich.
EUGENIA M. BRAY, 1906.....	Grosse Pointe Farms, Mich.
FRANCES BROWN, 1907.....	320 South Third St., Rockford, Ill.
J. MARION BROWNELL, 1905.....	1208 Lake St., Kalamazoo, Mich.
FLORENCE BROWNELL, 1903.....	1208 Lake St., Kalamazoo, Mich.
GERTRUDE BUNDY PARKER (Mrs. L. M.), 1902.....	624 Sheridan Road, Evanston, Ill.
EDNAH DRANE BURINGTON, 1896.....	Coneant, Ohio.
RUTH HAYWARD BURINGTON, 1900.....	Coneant, Ohio.
MARGARET CAHILL BARTHOLAMEW (Mrs. H.), 1891.....	101 Main St., Lansing, Mich.
JUNE CARPENTER GREELEY (Mrs. A.), 1894.....	Jacksonville, Fla.
MAY CARPENTER TAYLOR (Mrs. J. M.), 1893.....	Port Huron, Mich.
LILLIAN FELCH COLE, 1896.....	63 West Ninety-sixth St., New York City.
GRACE COLLINS BREAKLEY (Mrs. J. F.), 1895.....	727 South State St., Ann Arbor, Mich.
CAROLINE B. COLVER, 1900.....	Sandusky, Ohio.
MARY COLVER WEST (Mrs. Geo.), 1893.....	Sandusky, Ohio.

ELIZABETH G. CORNELL, 1884.....Died 1894.
 JOSEPHINE DANIELS, 1896.....Oied 1897.
 NETTIE DANIELS, 1886.....Gregory, Mich.
 GRACE DARLING MADDENS (Mrs. John), 1883.....523 Seventh Ave., Ashland, Wis.
 CLARA M. DAVIS, 1904.....322 Townsend St., Lansing, Mich.
 HARRIETTE DAVIS WEYERHAEUSER (Mrs. F.).....St. Paul, Minn.
 LUCY CORBETTE DAVIS, 1898.....322 Townsend St., Lansing, Mich.
 MARION DICKINSON, 1905.....Three Rivers, Mich.
 ELIZABETH JEANNE DODDS, 1907.....1021 Capital Ave., Lansing, Mich.
 MARGARET NORA DODDS, 1902.....1021 Capital Ave., Lansing, Mich.
 HELEN LOUISE DOUGLAS, 1896.....509 East Washington St., Ann Arbor, Mich.
 MARGARET DOUGLAS BEMENT (Mrs. J. H.), 1895.....Palo Alto, Cal.
 DENNIE A. DOWLING, 1885.....Muskegon, Mich.
 AUGUSTA DURFEE FLINTERMAN (Mrs. R. F.), 1893.....2627 North Ashland Ave., Chicago, Ill.
 JENNIE EMERSON MILLER (Mrs. W.), 1884.....Stanford University, Cal.
 HELEN M. FELLOWS, 1886.....967 West Munroe St., Chicago, Ill.
 EMILIE FLINTERMAN, 1898.....Holyoke College, South Hadley, Mass.
 GRACE FORD TODD (Mrs. W. W.), 1890.....115 Seymour St., Jackson, Mich.
 MARY FORD ARMSTRONG (Mrs. S. C.), 1889.....Hampton, Va.
 ADA GILBERT CLOSE (Mrs. F. B.), 1890.....Tucson, Arizona.
 IRENE WENTWORTH GILBERT, 1905.....1224 Washtenaw Ave., Ann Arbor, Mich.
 GRACE GOODMAN SYMONDS (Mrs. P. A.), 1898.....4020 Warwick Boulevard, Kansas City, Mo.
 MARIE GOODMAN, 1895.....1400 Warwick Boulevard, Kansas City, Mo.
 ESTELLE GUPPY, 1887.....San Jose, Cal.
 M. RUTH GUPPY, 1887.....Annie Wright Seminary, Tacoma, Wash.
 MINNIE HAMILTON GROSVENOR (Mrs. E. O.), 1883.....Munroe, Mich.
 ROB HANSEN HYDE (Mrs. H. M.), 1893.....137 Pine St., Chicago, Ill.
 CORNELIA FRANCES HARRISON, 1908.....Atlanta, Ga.

SARAH SAGER HARDY, 1904.....1333 Washtenaw Ave., Ann Arbor, Mich.
 FAITH HELMER PARKS (Mrs. S.), 1890.....Lander, Wyoming.
 JESSIE RAY HERMAN, 1906.....Caro, Michigan.
 MAUDE HICKS HAEDLE (Mrs. Wm.), 1893.....Negannee, Mich.
 HELEN B. HICKS, 1908.....Alpena, Mich.
 EVA HILL LEWIS (Mrs. Herbert), 1898.....Apartabo 71B, Mexico City, Mexico D. F.
 EDNA M. HOLBROOK, 1897.....Plymouth, Mich.
 IDA HOLDEN ANDERSON (Mrs. N. K.), 1901.....252 East Sixty-second St., Chicago, Ill.
 ISABELLE HOSIE MACKEY (Mrs. J.), 1895.....44 Ferry Avenue West, Detroit, Mich.
 CLARA MAY HOSIE, 1902.....Wayne, Mich.
 JESSIE M. HORTON, 1901.....1026 Longwood Ave., Chicago, Ill.
 ALICE HOSMER PREBLE (Mrs. R. B.), 1888.....479 Dearborn Ave., Chicago, Ill.
 HELEN HOOVER, 1905.....1816 Linwood Boulevard, Kansas City, Mo.
 ABIGAIL HUBBARD COOLEY (Mrs. T.), 1896.....502 Forest Ave., Ann Arbor, Mich.
 MARIAN L. HUBBARD, 1904.....Sandusky, Ohio.
 WINIFRED ALICE HUBBELL, 1899.....915 Jackson St., Saginaw, Mich.
 MILLICENT HUNT HEATON (Mrs. J.), 1890.....683 Brush St., Detroit, Mich.
 CAROLINE JOHNSTON, 1908.....Alpena, Mich.
 VIOLET JAYNE SCHMIDT (Mrs. E.), 1887.....Wellsville, N. Y.
 EDITH M. KIMBALL, 1896.....75 Warren Ave. East, Detroit, Mich.
 ESTER KINNE, 1894.....Twenty-seventh and Ridgeroad, Des Moines, Ia.
 VERA LAY, 1906.....607 Elm St., Kalamazoo, Mich.
 MABELE LEONARD DOUGLASS (Mrs. H. W.), 1901.....506 Jefferson Ave., Ann Arbor, Mich.
 ETHELWYNNE CROSSLEY LEWIS, 1904.....2712 California St., San Francisco, Cal.
 LULIE LIESEMER, 1906.....South Twelfth St., Ann Arbor, Mich.
 KATE WILLARD MCGRAW, 1904.....Ann Arbor, Mich.
 MARGARET MCGREGORY, 1903.....721 South Rose St., Kalamazoo, Mich.
 ELSIE McLAIN, 1906.....5190 Maple Ave., St. Louis, Mo.

EMMA J. MACMOWAN, 1896.....2409 Military Ave., Port Huron, Mich.
 GERTRUDE MILLER SHERWOOD (Mrs. B. P.), 1903.....Grand Haven, Mich.
 MABELLE M. MILLER, 1901.....1533 Olive St., Kansas City, Mo.
 MADGE MILLER, 1908.....Muskegon, Mich.
 JEANNE MITCHELL, 1902.....116 Elmwood Ave., Peoria, Ill.
 GEORGIENE MOGFORD, 1896.....Ypsilanti, Mich.
 WINIFRED L. MORSE, 1903.....Alpena, Mich.
 MARION J. MOULTON, 1905.....245 Collins St., Hartford, Conn.
 ALICE HORTON NEWMAN, 1903.....Jackson, Mich.
 ELEANOR OLIVER, 1902.....Westfield, N. J.
 KATHARIN OSTRANDER, 1907.....717 Capital Ave., Lansing, Mich.
 ALICE PARKER HINCHILWOOD (Mrs. A.), 1891.....726 Republic St., Cleveland, Ohio.
 CAROLINE PARKER, 1904.....Central High School, Detroit, Mich.
 ACHSA S. PARKER, 1888.....1405 Ninth Ave., Greeley, Ohio.
 FRANC PETIT, 1899.....501 North East St., Greenfield, Ind.
 SADIE PLATT GREENING (Mrs. B.), 1900.....Eleventh, Minn.
 MYRA POLLARD, 1884.....464 Berkeley Ave., Chicago, Ill.
 MARY B. PUTNAM, 1885.....314 Forest Ave., Ypsilanti, Mich.
 MABELLE L. RANDALL, 1887.....Coldwater, Mich.
 HELEN RANDALL KIDDER (Mrs. C. B.), 1893.....Coldwater, Mich.
 MABELLE F. RANDOLPH, 1892.....1212 Madison St., Toledo, Ohio.
 LOUISE RANDOLPH GAY (Mrs. E. F.), 1892.....Cambridge, Mass.
 FEE REILLEY BECK (Mrs. E.).....Died 1899.
 ESTHER RICH REILLY (Mrs. Leigh), 1893.....137 Pine St., Chicago, Ill.
 ELIZABETH RIDER SYMONS (Mrs. S.), 1893.....1028 Hoyt Ave., Saginaw, Mich.
 DELIA ROOD DOTT (Mrs. R. M.), 1882.....1910 George St., Sioux City, Iowa.
 MARJORIE SHEEL ROSING, 1904.....Ravina, Ill.
 SADIE SATTERTHWAITE LESLIE (Mrs. F. A.), 1886.....Toledo, Ohio.

JENNIE E. SCRANTON Died July, 1885.
 MARY SANBORN RICHARDSON (Mrs. S.), 1891..... Brookline, Mass.
 L. LORETTE SHERMAN, 1900..... 127 Peck St., Muskegon, Mich.
 JANE B. SHERZER, 1893..... Franklin, Ohio.
 MARGARET DESHLER SHEARER, 1905..... 534 South State St., Ann Arbor, Mich.
 HONTA SMALLEY BREDIN (Mrs. E. A.), 1888..... 123 West Gorham St., Madison, Wis.
 ANNA MAY SOULE, 1886..... Died March, 1905.
 ZAYDE SPENCER MOLITOR (Mrs. F.), 1894..... Lansing, Mich.
 CORNELIA STEKETEE HULST (Mrs. H.), 1889..... 88 Fountain St., Grand Rapids, Mich.
 ELSA GARDINER STANLEY, 1906..... 1410 Hill St., Ann Arbor, Mich.
 EDITH STEVENS FITZGERALD (Mrs. S. H.), 1889..... Niles, Mich.
 GERTRUDE STEVENS LEWIS (Mrs. W.), 1887..... Berrien Springs, Mich.
 LUELLA WOOSTER STONE, 1897..... 143 Bleecker St., Gloversville, N. Y.
 RUBY SUNDERLIN HAGGETT (Mrs. A.)..... University Heights, Seattle, Wash.
 RUTH SUNDERLIN HODGE (Mrs. J. E.), 1894..... 810 Irving Ave., Minneapolis, Minn.
 MARY SYMONS HOGG (Mrs. K.), 1903..... 143 Keap St., Brooklyn, N. Y.
 HARRIETT TAYLOR SUMMERS (Mrs. B. S.), 1896..... Military St., Port Huron, Mich.
 ISADORE THOMPSON SCOTT (Mrs. F. W.), 1884..... 1351 Washtenaw Ave., Ann Arbor, Mich.
 JESSICA THOMPSON WASHBURN (Mrs. A.), 1889..... San Jose, Cal.
 LILLIAN THOMPSON, 1893..... 326 Sixty-first St., Englewood, Ill.
 ZAIDEE BELLE VASPER, 1904..... Ionia, Michigan.
 MARY ELOISE WALKER, M. D., 1896..... House of Refuge, Hudson, N. Y.
 CONSTANCE WEBBER WAITE (Mrs. H. H.)..... 2611 Twenty-second St., Lincoln, Neb.
 MARY WEIDEMAN, 1892..... 723 Cass Ave., Detroit, Mich.
 AGNES WELLS, 1903..... Michigan Ave., Saginaw W. I., Mich.
 CLARA WEIR STOCKLEY (Mrs. D. R.), 1883..... 809 Greenleaf St., Evanston, Ill.
 LORRAINE WESTBROOK CORY (Mrs. G. B.), 1884..... 314 Elm St., Kalamazoo, Mich.
 IRMA WHEELER THAYER (Mrs. R. C.), 1895..... Colorado Springs, Cal.

ANNE WILEY BELLHOUSE (Mrs. T.), 1894.....Amherstburg, Can.
 MARCIA WILKINS
 BERTHA WEATHEREE, 1899.....Cass Ave., Detroit, Mich.
 MABELLE WING, 1901Dixon, Cal.
 LEONORE YEAGER GORDON (Mrs. C.), 1897.....1600 East Eighth St., Kansas City, Mo.
 ANNA YESTON MILLER (Mrs. H. G.), 1887.....Amona, Wis.
 MARY YOUNG DE GROATE (Mrs. F. H.), 1898.....Superior, Wis.

GAMMA—UNIVERSITY OF WISCONSIN

GENEVIEVE SYLVESTER ALLEN (Mrs. C. E.), 1899.....810 West Johnston St., Madison, Wis.
 JOSEPHINE H. ALLEN, 1906.....Lake Geneva, Wis.
 RUTH ALICE ALLEN, 1908.....Lake Geneva, Wis.
 ETHEL DOW ANDERSON (Mrs. E. S.), 1898.....Stoughton, Wis.
 LUCY CHURCHILL BALDWIN (Mrs. F. S.), 1891.....West Allis, Wis.
 TU RI OSBORNE BARBER (Mrs. M. C.), 1898.....Schullsburg, Wis.
 LILLIAN BARKHAUSEN, 1905.....822 Pine St., Green Bay, Wis.
 CLARA BARKHAUSEN822 Pine St., Green Bay, Wis.
 MARTHA BAKER BARNES (Mrs. C. L.), 1893.....1054 Eighth St., San Diego, Cal.
 J. CORA BENNETT, 1896.....East High School, Cleveland Ohio.
 LAURA BOOGE BENT (Mrs. E. M.), 1899.....Cody, Big Horn County, Wyo.
 HELEN RICHARDSON BERRYMAN (Mrs. M. J.), 1902..Dodgeville, Wis.
 ALICE J. BEVANS, 1903.....901 West Macon St., Decatur, Ill.
 MABEL HELEN BRADLEY, 1898.....Beloit, Wis.
 MARY PRATT BRIGHT (Mrs. E.), 1896.....711 Stowell Ave., Milwaukee, Wis.
 MARY CLARK BRITTINGHAM (Mrs. T. E.), 1889.....640 North Henry St., Madison, Wis.
 LAURA SPARKS BROOKS (Mrs. P. C.), 1896.....741 Harrison Ave., Beloit, Wis.
 KATE DANA BUCKMAN, 1894.....1104 Douglas St., Sioux City, Iowa.

BERTHA KELLET BUNN (Mrs. J. M.), 1894..... East 41 Euclid Ave., Spokane, Wash.
 ALICE BUNTING, 1895..... 1102 State St., La Crosse, Wis.
 MARY BUNTING, 1904..... 1102 State St., La Crosse, Wis.
 HELEN BAKER CADY (Mrs. S. H.), 1895..... 920 Cass St., Green Bay, Wis.
 LORETTA HELEN CARY, 1907..... 819 Tenth St., Sioux City, Iowa.
 HELEN SMITH CASE (Mrs. J. F.), 1889..... Care Chief Engineer's Office, Manila, P. I.
 WILHELMINA G. CASE, 1902..... Prairie du Chien, Wis.
 FLORA BARNES CASKEY (Mrs. W. G.), 1894..... 460 East College St., Oberlin, Ohio.
 ANNIE TURNER CHAPMAN, 1890..... Williamsburg, Va.
 DOROTHEA CURTIS CHICKERING (Mrs. W. W.), 1900. 849 Park Ave., Beloit, Wis.
 ELEANOR BLISS CLAUSEN (Mrs. F. H.), 1898..... Horicon, Wis.
 FLORA BELLE COUNTRYMAN, 1899..... Lindenwood, Ill.
 BARBARA CURTIS, 1904..... 505 Francis St., Madison, Wis.
 JENNIE BELLE DAVIS, 1899..... 404 North Carroll St., Madison, Wis.
 NELLIE PERKINS DAWSON (Mrs. Allan), 1891..... 315 West Ninety-Seventh St., New York City.
 DAISY DEAN, 1906..... South Farwell, Eau Claire, Wis.
 BONNIE BURTON DENISON (Mrs. E. D.), 1904..... Lake Geneva, Wis.
 KATHERINE HARDY DICKSON (Mrs. C. A.), 1892..... 414 Sixteenth St., Sioux City, Iowa.
 HELEN DORSET, 1899..... 330 Sixth St. S., La Crosse, Wis.
 MAY DOUGLAS, 1907..... 164 West Fifth St., Winona, Minn.
 DERNICE DOW, 1906..... 629 West Wilson St., Madison, Wis.
 ILLA DOW, 1905..... 629 West Wilson St., Madison, Wis.
 GEORGIA VIRGIN DREW..... Died May 18, 1903.
 HAZEL DRIVER, 1908..... 4539 Indiana Ave., Chicago, Ill.
 MARJORIE DURKEE, 1908..... Lake Geneva, Wis.
 MAY LOUISE DURST, 1906..... Monroe, Wis.
 INEZ ETTER, 1907..... Monroe, Wis.
 NELLIE ETTER, 1904..... Monroe, Wis.

MILDRED EVENSON, 1908 Sparta, Wis.
 HENRIETTA FINDEISON, 1904 Berwyn, Wis.
 JOSEPHINE ROSS FISHER (Mrs. C. B.), 1902 229 Sixty-fifth St., Chicago, Ill.
 LILIAN FITCH, 1904 Beacon, Mich.
 MINNIE L. FORSYTH Died August, 1892.
 FLOY VAN DUSEN GALE (Mrs. C. I.), 1891 Prentice, Wis.
 NELLIE GALUSHA, 1902 Monroe, Wis.
 ALICE GAMBLE, 1900 2326 West Ninth St., Los Angeles, Cal.
 EDITH VAN SLYKE GIBSON, 1899 202 West Gilman St., Madison, Wis.
 HOPE WOODBURY GIBSON (Mrs. E. Y.), 1900 226 Lake St., Evanston, Ill.
 GRACE ALICE GILSON, 1903 Harvey, Ill.
 ELLA DAVIS GOODYEAR (Mrs. A. S.), 1893 Tomah, Wis.
 GRACE GRAHAM, 1890 Tomah, Wis.
 ADAH GEORGIANA GRANDY, 1902 2829 Nebraska St., Sioux City, Iowa.
 CLARA M. GRAY Died April 8, 1891.
 EUNICE THOMPSON GRAY, 1899 South Tenth St., San Jose, Cal.
 MARY GRAY, 1892 2225 Bellevue, Los Angeles, Cal.
 EDITH MITCHELL HAMBRIGHT (Mrs. H. G.), 1904 1434 Main St., Racine, Wis.
 INA JUDGE HANKS (Mrs. S. C.), 1894 23 Mendota Court, Madison, Wis.
 ANNA SPENCER HARRINGTON (Mrs. N. S.), 1892 200 Palmer Ave., E. Detroit, Mich.
 GERTRUDE BARRON HARRISON (Mrs. H. H.), 1890 Douglas, Mich.
 FLORENCE BAKER HAYS (Mrs. J. A.), 1891 507 Jefferson St., Boise City, Idaho.
 LENORE HORAN, 1908 610 Wisc St., Eau Claire, Wis.
 BESSIE M. HORLICK, 1899 Racine, Wis.
 ELLA HUBBARD, 1895 809 Sixth St., Sioux City, Iowa.
 BERENICE HUNTER, 1906 Ft. Atkinson, Wis.
 HELEN MOOERS HYLAND (Mrs. F. G.), 1903 Portage, Wis.
 CLARA LOUISE IRWIN, 1900 256 Twenty-fourth St., Milwaukee, Wis.

ETHEL HOUSER JACKMAN (Mrs. R. W.), 1900..... 1210 Sherman Ave., Madison, Wis.
 MINNIE JACOBS, 1899..... 405 West Fifty-seventh St., New York City.
 LULU JAMES, 1900..... Tunnel City, Wis.
 ANNE RADFORD JOHNSON (Mrs. H. F.), 1898..... 5722 Howell St., Pittsburg, Pa.
 HATTIE JOHNSON, 1904..... 100 Upper Broadway, Decorah, Iowa.
 HILDA JOHNSON, 1904..... 100 Broadway, Decorah, Iowa.
 CLARA KEMLER, 1905..... Platteville, Wis.
 EURETTA KIMBALL, 1906..... 151 South Main St., Janesville, Wis.
 LILLIAN GAMBLE KIRKWOOD (Mrs. J. M.), 1900..... Harrison, Okla.
 MARY KNOX KREUTZER (Mrs. A. L.), 1887..... 508 Franklin St., Wausau, Wis.
 ETTA SMITH LAFLIN (Mrs. H.), 1894..... 3431 Sycamore St., Milwaukee, Wis.
 MARY LAFLIN, 1897..... 240 Twenty-seventh St., Milwaukee, Wis.
 ADDIE W. LOEPER, 1896..... Prairie du Chiene, Wis.
 HATTIE LUDLOW, 1906..... Monroe, Wis.
 ANNE MARTIN, 1908..... Darlington, Wis.
 BERTHA VAN DUSEN MATTHEWS (Mrs. G. A.)..... Brookings, South Dakota.
 MARJORIE McCAWLEY, 1904..... Lancaster, Wis.
 CORINNE GARLICHs McDANIEL (Mrs. W. B.), 1893..... 4421 Sansom St., Philadelphia, Pa.
 NELLE MILLER, 1904..... Monroe, Wis.
 ELSIE MINN, 1907..... 840 Twenty-seventh St., Milwaukee, Wis.
 MOLLIE BERTLES MINAHAN (Mrs. J. R.), 1897..... 626 South Quincy St., Green Bay, Wis.
 LEONE SMITH MONTGOMERY (Mrs. J. R.), 1897..... 1503 Figner St., Los Angeles, Cal.
 CARRIE E. MORGAN, 1886..... 790 Harris St., Appleton, Wis.
 KATHRYN MATHEWSON MOSS (Mrs. M. C.), 1894..... 230 Twenty-sixth St., Milwaukee, Wis.
 MARY BELLE NETHERCUT, 1908..... Lake Geneva, Wis.
 AGNES McDONNELL, 1906..... 1031 Sheridan Road, Evanston, Ill.
 GRACE McDONNELL, 1906..... 1031 Sheridan Road, Evanston, Ill.
 VIOLET McDONOUGH, 1906..... Oakwood, Eau Claire, Wis.

MARY GRAY McKEE (Mrs. C. H.), 1902.....336 East Berry St., Ft. Wayne, Ind.
 ANNTIE S. McLENEGAN, 1897.....Beloit, Wis.
 JULIA RICHARDSON McLENEGAN (Mrs. A. R.), 1895-689 Stowell Ave., Milwaukee, Wis.
 HELEN STEENSLAND NIELSON (Mrs. S. A.), 1889....1030 Sherman Ave., Madison, Wis.
 ETHEL VIRGIN O'NEIL (Mrs. G. E.), 1899.....Platteville, Wis.
 EFFIE CHASE PAGE (Mrs. H. E.), 1896.....2583 North Robey St., Ravenswood, Ill.
 CORA CLEMENS PARSONS.....Died February 26, 1902.
 GENEVIEVE PENDLETON, 1898.....3203 Jackson St., Sioux City, Iowa.
 MARY LUCY PENDLETON, 1895.....1005 West Nineteenth St., Sioux City, Iowa.
 ELIZABETH McNANEY PETERSON (Mrs. F. B.), 1897-344 Walker St., Milwaukee, Wis.
 ALICE PIERCE, 1896.....Point Loma Homestead, San Diego, Cal.
 CAROL POLLARD, 1904.....703 Tenth St., Sioux City, Iowa.
 GRACE PRITCHARD, 1903.....Monitowoc, Wis.
 MOLLIE PRITCHARD, 1903.....Monitowoc, Wis.
 INO PROCTOR, 1897.....550 Woodward Ave., Detroit, Mich.
 HENRIETTA PYRE, 1901.....Madison, Wis.
 AMELIA PYRE, 1903.....Madison, Wis.
 MARY REED, 1908.....Ida Grove, Iowa.
 PAULINE RICHARDSON, 1893.....264 Pleasant St., Milwaukee, Wis.
 ELIZABETH PYRE ROETZ (Mrs. F. P.), 1904.....Wingra Park, Madison, Wis.
 GERTRUDE ROSS, 1895.....2904 State St., Milwaukee, Wis.
 MARY WALDO ROSS (Mrs. E. H.), 1894.....Mansfield, Pa.
 MAE ROWE, 1897.....Plymouth, Wis.
 LORENA FREEBORN SANBORN (Mrs. R.), 1899.....3236 Doven St., Chicago, Ill.
 JEANNETTE SCOTT, 1907.....Hudson, Wis.
 SARAH SUBER, 1902.....Waterloo, Wis.
 FLORENCE M. SHAW, 1902.....915 West Fourteenth St., Sioux City, Iowa.
 BLANCHE SHEARERDied July 6, 1904.

LOUISE DALZIEL SHEARER, 1898..... 108 Mineral Pt. Ave., Janesville, Wis.
 LEORA CHASE SHERMAN (Mrs. V. C.), 1887..... 1512 Eighth Ave., N., Minneapolis, Minn.
 LAURA CASE SHERRY (Mrs. E. P.), 1894..... 262 Knapp St., Milwaukee, Wis.
 ALICE SMALLEY, 1907..... Madison, Wis.
 ALMEDA MARION SMITH..... Died Sept. 6th, 1901.
 ELLA K. SMITH, 1899..... New Richmond, Wis.
 HARRIET SMITH, 1893..... 1498 Newport Ave., Chicago, Ill.
 FLORENCE DAISY STOTT, 1905..... 277 East Fourth St., Winona, Wis.
 KATHARINE SWINT, 1907..... 14 West Johnson St., Madison, Wis.
 CORA A. THOMPSON, 1897..... 643 Bluff St. Beloit, Wis.
 LILLIAN JOHNSON THORSON (Mrs. F. A.), 1899..... 400 Sixth St., S. E., Minneapolis, Minn.
 CARRIE WOOLSTON VAN VALZAH (Mrs. R. J.), 1889.. 6536 Peoria St., Chicago, Ill.
 DAISY DEAN VIRGIN, 1898..... 6327 Stewart Ave., Englewood, Ill.
 FLORA WOOD WALDO, 1889..... Manitowoc, Wis.
 MABEL EMMA WALKER, 1899..... Racine, Wis.
 ELIZABETH DAY WHITNEY, 1906..... 78 Chestnut St., Dubuque, Iowa.
 MAIZIE WILSON, 1908..... Cherokee, Iowa.
 ZERLENA KNOX WINTON (Mrs. W. C.), 1889..... 1599 East First St., Duluth, iMnn.
 JESSIE BELL WOODARD (Mrs. G. L.), 1889..... 1587 Broadway, Beaumont, Texas.
 PHILENA YUTZY, 1908..... 901 Seventh St., Sioux City, Iowa.

DELTA—BOSTON UNIVERSITY

EDITH EASTERBROOK WHITTEMORE (Mrs. F. E.), 1890. South Hadley Falls, Mass.
 CLARA HELEN WHITMORE, 1889..... Holland Place, New Brighton, L. I.
 LOUISE LANCASTER PUTNAM, 1889..... 86 Lafayette Park, Lynee, Mass.
 MABEL INEZ DYER, 1889..... 107 Newtonville Ave., Newton, Mass.
 MARY JANE WELLINGTON, 1897..... 247 Concord St., Manchester, N. H.

EMMA FULLER LOUD, 1897.....419 West 118th St., New York City.
 MIRA L. SANBORN.....Died November 20, 1893.
 LIZZIE LIVINGSTON DAMON.....3 Hudson St., Malden, Mass.
 MARY CASS REYNOLDS (Mrs. A. W.), 1897.....91 Morrison St., W. Somerville Mass.
 AUGUSTA NEWHALL PUTNAM, 1891.....86 Lafayette Park, Lynn, Mass.
 HARRIET LESLIE GOODRIDGE, 1891.....109 Lawton Ave., Lynn, Mass.
 MARY LOUISE BRIGHT, 1890.....North Adams, Mass.
 HELEN SMITH JOHNSON (Mrs. A. S.), 1891.....Wellesley St., Weston, Mass.
 ANNIE EVELYN BOARDMAN, 1891.....8 Pembroke St., Medford, Mass.
 MABEL L. ROBBINS, 1891.....174 North St., North Weymouth, Mass.
 FLORENCE GERTRUDE WENTWORTH, 1891.....9 Essex St., Cambridgeport, Mass.
 JENNIE GREENWOOD CHIPMAN (Mrs. E. D.).....Waterbury, Conn.
 MARY TROUT, 1890.....302 East Chestnut St., Lancaster, Ohio.
 HELEN E. ANDREWS, 1892.....Died October, 1901.
 M. ELMA DAME.....399 Broadway, Cambridge, Mass.
 EVA KENNERSON CADY (Mrs. F. E.), 1891.....Monson, Mass.
 MARY LAVINIA LAMPREY, 1892.....Ames Free Library, N. Easton, Mass.
 LETA ALBERTA LODGER, 1890.....1622 Second St., Seattle, Wash.
 SARAH FRANCES CARTER, 1892.....Died August 2, 1904.
 CLARE BODGE DAMON (Mrs. R. H.), 1892.....35 Orchard St., Leominster, Mass.
 JESSIE LOUISE ADAMS, 1902.....35 Lindhurst St., Dorchester, Mass.
 EDITH WILDER WHITAKER (Mrs. S. E.), 1892.....Bancroft St., Portland, Me.
 HENRIETTA NOBLE BROWN, 1893.....Mrs. Durkee, Tuft's College, Mass.
 ANNIE LUND MERIAM (Mrs. M. E.), 1893.....Chico, Cal.
 HARRIETTA M. HATHAWAY, 1892.....12 Marlborough St., Providence, R. I.
 MAUD WILLIAMS SMITH (Mrs. W. A.), 1891.....Goshen, Mass.
 CLARIBEL MOULTONSpringfield High School, Springfield, Mass.
 MINNIE NICHOLS MORRIS (Mrs. T. B.), 1893.....Died 1903.

ELLEN LANGFORD PRIEST (Mrs. G. W.), 1893.....90 Warban Park, Newton, Mass.
 ISABELLA DIXON WHITE, 1894.....201 West First Ave., Denver, Col.
 ANNIE MERRIAM PUTNAM.....86 Lafayette Park, Lynn, Mass.
 LILY FRANCES TUCKER, 1894.....Quincy High School, Quincy, Mass.
 FLORENCE CLIFFORD SAVAGE (Mrs. S. A.), 1894.....185 Washington Ave., Chelsea, Mass.
 GRACE McHENRY MOORE (Mrs. W. S.), 1894.....134 Maple St., Wabash, Ind.
 NINA ROGERS SWEETSER (Mrs. G. A.), 1894.....Abbot Road, Wellesley Hills, Mass.
 HARRIETTE STONE TOWNSEND (Mrs. W. M.), 1895.....166 Franklin St., Melrose, Mass.
 MARY INGRAHAM WREN (Mrs. F.), 1896.....Professor's Row, Tuft's College, Mass.
 EDITH REDMAN HAMLIN (Mrs. C. R.), 1896.....College St., Canton Centre, Conn.
 ELIZA BETTINSON LEWIS, 1896.....New Bedford, Mass.
 LILLIAN ADDIE BRAGDON, 1897.....5 Falcon St., Boston, Mass.
 EMMA VELLA SHAW (Mrs. L.), 1897.....6 Virginia Ave., Poughkeepsie, N. Y.
 LOUISE WOOSTER GAFFNEY (Mrs. Chas.), 1897.....
 GRACE ETHEL G. WARD, 1897.....25 Arlington St., Lynn, Mass.
 ELIZABETH P. PUTNAM, 1897.....86 Lafayette Park, Lynn, Mass.
 MAY GARLAND MONSON, 1897.....6 Haskell St., Gloucester, Mass.
 LAURA HENDERSON EISENBECK (Mrs. C. A.), 1897.....
 MAE TRIPP RECCORD (Mrs. A. P.), 1895.....207 State St., Springfield, Mass.
 WILHEMINA C. HANSCOM, 1898.....Springfield, Mass.
 MABEL A. FITZ, 1898.....335 Broadway, Somerville, Mass.
 AGNES MORSE JACKSON (Mrs. W. P., 1898.....80 Mills St., Westboro, Mass.
 ELIZA LEWIS HARRIS, 1898.....Barnstable, Mass.
 FLORENCE LOUISE SHERMAN, 1898.....Barnstable, Mass.
 BESSIE LOUISE NICHOLS, 1898.....Amherst, Nova Scotia.
 MABEL ROBINSON, 1898.....Reading, Mass.
 MARGARET EATON WHITING (Mrs. Fred), 1898.....Mt. Vernon St., Boston, Mass.
 HELEN J. EDSON.....Yarmouth, Mass.

ANNIE JOSLIN GRAY, 1898..... Hinsdale, N. H.
 KATHARINE ALDRICH WHITING, 1898..... 26 Concord Square, Boston, Mass.
 BESSIE LITTLE NEWHALL, 1899..... 489 Lynnfield St., Lynn, Mass.
 MERIAM PARKER RICE (Mrs. A. H.), 1899..... 230 Upland Road, Cambridge, Mass.
 GRACE GARLAND NEWHALL, 1899..... 489 Lynnfield St. Lynn Mass.
 MABEL LOUISE MOSES, 1899..... Putnam St., Newtonville, Mass.
 ROSE D. LANPHEAR, 1901..... East Foster St., Melrose, Mass.
 ELIZABETH MOULTON THORNDIKE (Mrs. D. L.) 528 West 123rd St., New York City.
 EDITH EVERETT, 1900..... 3 Aspen St., Roxbury, Mass.
 RUTH COLLINS Mt. Vernon, Iowa.
 THEODORA CLAPP, 1900..... 334 Commonwealth Ave., Boston, Mass.
 VIOLA RUSSELL ROBINSON (Mrs. E. W.), 1900..... 26 High St., Webster, Mass.
 FLORENCE M. OPDYKE, 1898..... Ried and Jersey Sts., Elizabeth, N. J.
 FLORENCE M. MARSHALL, 1898..... Riverbank Court, Cambridge Mass.
 MARY SMITH JONES (Mrs. C. D.)..... 24 Florence St. Malden Mass.
 MINERVA MILLS BEMIS (Mrs. F. E.) 21 French St., Fall River, Mass.
 GRACE I. FOX, 1896..... Monadnock St., Dorchester, Mass.
 HELEN M. DAME, 1896..... 28 Shepherd St., Lynn, Mass.
 BERTHA LOUISE JENKINS, 1898..... 44 Seventh Ave., Brooklyn, N. Y.
 BERTHA B. MANSFIELD Saugus Center, Mass.
 CAIRA DOUGLASS HANKES, 1894..... 17 Warland St., Cambridgeport, Mass.
 KATHARINE DAME, 1894..... 109 Summit Ave., Ithaca, N. Y.
 ANNIE MOULTON HAYWOOD, 1893..... 34 Harvard St., Lynn, Mass.
 NELLIE MAY CHICK, 1892..... 1106 Powell Ave., Evansville, Ind.
 LILLIE J. ECKFORD, 1892..... 343 Essex St., Salem, Mass.
 GRACE BLACKWELLE AYER (Mrs. C. W.), 1895..... 6 Cleveland St., Cambridge, Mass.
 SARA CHICK DENTON (Mrs. G. K.), 1895..... 1106 Powell Ave., Evansville, Ind.
 EDNA HILTON, 1895..... 3113 Freemont Ave., Minneapolis, Minn.

SUSAN SAWYER EMERSON (Mrs. J. W.), 1895.....1 Orchard St., Cambridge, Mass.
 MARY SISCOM HOLMAN (Mrs. B. P.), 1901.....West Nutley, N. J.
 ALICE E. WARD, 1900.....25 Arlington St., Lynn, Mass.
 ANNIE GERTRUDE CURTIS, 1901.....601 Congress St. Portland Me.
 SUSAN BROWN, 1901.....Rutland, Vermont.
 HELEN MAY BALCOM, 1901.....Saratoga Springs, N. Y.
 ELIZABETH ENGLISH RYAN (Mrs. J.), 1901.....216 Pearl St., Newton, Mass.
 EDNA DUNNING MILLER, 1901.....8 Humboldt Ave., Roxbury, Mass.
 ELSIE DAVIS SMITH (Mrs. F. E.), 1901.....Winchester, Mass.
 CAROLINE BROWN, 1902.....263 Farrington, St., Wolloston, Mass.
 EDITH PAIGE KIMBALL (Mrs. F. W.), 1902.....Dedham, Mass.
 GRACE L. DURGIN.....Wollaston, Mass.
 HELEN E. BEMIS, 1902.....31 Atlantic St., Atlantic Mass.
 L. RUTH CLARKE, 1902.....50 Walnut St. Somerville Mass.
 MARGUERITE SLATER BARTLETT (Mrs. R. S.), 1902...Franklin Mass.
 ATTOSIA B. THOMAS, 1903.....106 Warren St., Roxbury, Mass.
 LILLIAN LAKE.....Leominster, Mass.
 MARY E. SHEPHERD, 1903.....80 Gardner St., Lynn, Mass.
 ELINOR TUPPER GEORGE, 1903.....40 Chase St., Newton Center, Mass.
 ELISE E. SCOTT.....Chester Hill, Mass.
 AGNES JOHNSON, 1903.....30 Summer St., Dorchester, Mass.
 GRACE BIGELOW, 1902.....202 Lafayette St., Salem, Mass.
 FRANCE VINTON, 1903.....Bedford, N. Y.
 LOUISE BARBOUR CAPIN (Mrs. R.), 1902.....Died March, 1904.
 FLORENCE BROWN BACON (Mrs. C. M.), 1904.....Middletown, Conn.
 AGNES M. FISKE, 1904.....17 Montrose St., Roxbury, Mass.
 MARION D. DEAN, 1904.....17 Florence St., Melrose, Mass.
 ALICE M. RICHARDSON, 1903.....40 High St., Springfield, Mass.

FLORINE M. COURTWRIGHT GRABOW (Mrs. E.), 1904. The Buckminster, Boston, Mass.
 HARRIET TRACY ROSS, 1904..... Wollaston, Mass.
 EMILY LODD BUTLER (Mrs. C. M.), 1903..... Medford, Mass.
 EDITH J. PRESCOTT, 1903..... Mattapan, Mass.
 BESSIE GORDON, 1904..... Broadway, Lynn, Mass.
 MARTHA HERSOM, 1905..... 11 Highland Ave., Somersworth, N. H.
 A. VIVIAN THYNG, 1905..... Chippewa Place, Lynn Mass.
 EDNA O. SPINNY, 1903..... South Common St., Lynn, Mass.
 MAISIE B. WHITING, 1904..... Franklin, Mass.
 HELEN EAGER DE VIGNER (Mrs. R.), 1907..... Hopedale, Mass.
 ESTHER F. LEONARD, 1907..... 9 Prospect St., Taunton, Mass.
 JEAN BRUCE Transferred to Iota.
 BESSIE M. DREW, 1906..... Wollaston, Mass.
 FRANCES W. SANDERS, 1905..... 292 Beall St., Wollaston, Mass.
 HARRIET STORER FISK, 1905..... 29 Fern St., Auburndale, Mass.
 ESTHER W. BATES, 1905..... 20 Huntington Ave., Roslindale, Mass.
 ELEANOR C. LEONARD, 1905..... 56 Paul St., Newton Centre, Mass.
 GRACE W. HOOPER, 1906..... 335 Broadway, Somerville Mass.
 HELEN BURGESS FLANDERS, 1906..... 29 Auburn St., Brookline, Mass.
 ANNIE RACHEL BEASON, 1906..... 15 Superior St., Lynn, Mass.
 FLORENCE SHERWOOD GREEN, 1906..... 63 Gay St., Quincy, Mass.
 CARLOTTA MAY BRANT, 1906..... Massachusetts Ave., Cambridge, Mass.
 HANNAH O. LITCHFIELD, 1907..... Quincy St., Quincy, Mass.
 HELEN OSGOOD, 1907..... 33 Friend St. Place, Lynn, Mass.
 EDITH LESLIE RIGGS, 1907..... 6 Gould St., Newport, R. I.
 KATHARINE D. HARDWICK, 1907..... 62 Spear St., Quincy, Mass.
 ANNIE GRACE GOODSSELL..... 15 Harris St., Brookline, Mass.
 JENNIE LEONA CHANDLER, 1908..... 39 Sprague St., Malden, Mass.

ELSIE EMMA HATCH, 1908.....27 Essex St., Clifondale, Maass.
 LAURA ELIZABETH MERRILL, 1908.....Salem Mass.
 SUSAN PHILBROOK, 1908.....30 Red Rock St., Lynn, Mass.
 MARY MCANDY POOR, 1908.....32 Falmouth St., Haverhill, Mass.
 MARION H. SQUIRE, 1908.....27 Johnson St., Lynn, Mass.

EPSILON—NORTHWESTERN UNIVERSITY

ELA BUTLERS ANDERSON (Mrs. B.), 1892.....Grand Marais, Mich.
 ELIZABETH THOMPSON APPLEBY (Mrs. C. W.), 1894.....Conneaut, Ohio.
 HELEN LOUISE ALBAN, 1893.....Rheinlander, Wis.
 GERTRUDE BURDSAL ARNOLD (Mrs. D. D.).....Three Rivers, Mich.
 KATHERINE AMMAN, 1905.....3211 East Ninth St. Kansas City, Mo.
 CAROLINE CLIFFORD BURBANK, 1890.....30 West Seventeenth St., Des Moines, Ia.
 FANNIE M. BUTCHER, 1890.....Baldwin, Wis.
 ELVA BARBER BAILEY (Mrs. N. B.), 1894.....
 LAURA BARBER, 1891.....
 HARRIET BARNETT, 1893.....
 GRACE LASHER BERRY (Mrs. T. L.), 1899.....1019 Hinman Ave., Evanston, Ill.
 IDA B. BROOKE, 1897.....Burlington, Wis.
 NELLY DANELY BROOKER (Mrs. A. S.), 1897.....503 West Green St., Urbana, Ill.
 MARIE E. BENNETT, 1899.....Litchfield, Ill.
 MARY PALMER BABCOCK (Mrs. C.), 1899.....Ithaca, N. Y.
 IVY BELLE BERRY, 1906.....Savannah, Ill.
 MARY ELEANOR BIERER, 1907.....Hiawatha, Kansas.
 CHARLOTTE LYFORD BOYD (Mrs. J. M.), 1889.....Galva, Ill.
 OLIVE FOSTER CORLETT (Mrs. R.), 1892.....Evanston, Ill.
 CLARA ECKERT COBB (Mrs. W. C.), 1895.....Onawa, Ill.

MARION K. CLARKSON.....Winfield, Kansas.
 HELEN COWLES, 1908.....672 Seventeenth St., Des Moines, Ia.
 KITTIE MCKENZIE CHURCHILL (Mrs. Chas.).....Lancaster, Ill.
 MARY LYONS DIBBLE (Mrs. C. C.), 1900.....733 Twentieth St., Milwaukee, Wis.
 HARRIETT B. DURHAM, 1903.....Onargo, Ill.
 FLORENCE G. ECKERT, 1897.....Northwood, Iowa.
 Z. AILEMA A. FULBUR.....
 LOUISE DUNLAP FALL (Mrs. J. H.), 1895.....1400 Judson Ave., Evanston, Ill.
 MARY R. PETERSON GILBERT (Mrs. B.), 1897.....Iowa City, Iowa.
 VICCI E. GAZZOLA, 1901.....95 Astor Place, Chicago, Ill.
 LOULU MANN GRAY (Mrs. H.), 1901.....Des Moines, Iowa.
 GRACE M. GILBERT, 1903.....Monona, Iowa.
 BEULAH HOUSTON, 1903.....Wheaton, Ill.
 MARY BELL HOLDERMAN, 1891.....Morris, Ill.
 ELLA HOLDERMAN, 1892-93.....Morris, Ill.
 HARRIET HOLDERMAN, 1892-93.....Morris, Ill.
 FRIEDERICA C. HAUSEN, 1898.....207 Sixth St., Sioux City, Iowa.
 WINIFRED HARRIS, 1898.....Beardstown, Ill.
 LOUISE WHITE HALER (Mrs. F. H.), 1898.....Ironwood, Mich.
 DORA SWAN HUBER (Mrs. W.), 1899.....2016 East Superior St., Duluth, Minn.
 LAURA BELL HUTCHINS, 1903.....Sheldon, Ill.
 SIDNEY HALL, 1905.....Danville, Ky.
 ALICE AILEEN HIGGINS, 1904.....Perry, Ill.
 HELEN R. JACKSON, 1908.....900 Court St., Saginaw, Mich.
 LIVONIA R. KAY, 1891.....Watseka, Ill.
 LOIS MILES JACKSON (Mrs. W.), 1903.....Villisca, Iowa.
 EDITH PATTERSON KING (Mrs. Chas.), 1896.....Waukegan, Ill.
 M. IMOGENE KEAN, 1900.....1815 Chicago Ave., Evanston, Ill.

KATE CLIVE KINNAIRD, 1903.....	McGregor, Iowa.
LOIS BELL KEEFER, 1900-01.....	Warrensburg, Ill.
FRED KRAFT (Mrs.), 1906.....	1694 Pemberton St., Chicago, Ill.
MARY A. LYFORD.....	
BESSIE B. LARRABEE, 1896.....	McGregor, Iowa.
ALICE B. LYONS, 1906.....	Ludington, Mich.
GRACE E. LASHER, 1906.....	2422 Orington Ave., Evanston, Ill.
LAURA ANNIS McCABE (Mrs.), 1894.....	Osage, Iowa.
JESSIE ROSS MOON (Mrs. F. A.), 1899.....	Lemont, Ill.
HELEN GODFREY MORTON (Mrs. H. G.), 1898.....	Wauvatora, Wis.
MABEL JOHNSON McCREARY (Mrs. E.), 1902.....	Lincoln, Nebraska.
ANNIE McCLELLAND, 1903.....	Monona, Iowa.
MAUDE M. MARTIN, 1904.....	Neuton, Ill.
LAURA FROST McCARTY, 1908.....	Tuscala, Ill.
MINNIE L. PATTERSON, 1896.....	Burlington, Wis.
FLORENCE M. PATTERSON, 1898.....	Burlington, Wis.
IDA CAMPBELL POWELL (Mrs.), 1902.....	St. Louis, Mo.
EDWINA LYDIA POPE, 1908.....	627 Hamlin St., Evanston, Ill.
SARA CORNELIUS PARKER (Mrs. A.).....	Indianapolis, Ind.
HELEN G. READ, 1894.....	Iowa State College, Iowa.
THEKLA ROMPEL, 1905.....	2438 Magnolia Ave., Chicago, Ill.
JOSEPHINE S. RUSSEL, 1906.....	42 Statford Place, Chicago, Ill.
JENNIE WICKS RICE (Mrs. E. S.), 1890-91.....	Golden City, Mo.
JESSIE WHITE RYAN (Mrs. Fred), 1903.....	Lincoln, Nebraska.
LUCY M. SCOTT.....	
ANTOINETTE E. SHYROCK, 1890-91.....	The "Sheridan," Evanston, Ill.
LAURA CASE SHERRY (Mrs. E. P.).....	285 Knapp St., Milwaukee, Wis.
IDA SIMONSON	De Kalb, Ill.

FLORENCE MITCHELL SMITH (Mrs. H. J.), 1895-97... 820 Mildred Ave., Chicago, Ill.
 LOUISE WINDLE SKINNER (Mrs. L.), 1904..... Valpariso, Ind.
 SUSAN SWEENEY, 1905..... Rushville, Ill.
 JEANETTE E. SCHMOLDT, 1906..... Beardstown, Ill.
 SARAH CARLETON SHUTE, 1907..... Coon Rapids, Iowa.
 RUTH PHILLIPPI SPALLING (Mrs.), 1899..... 502 South Twenty-seventh St., Omaha, Neb.
 DILLA H. TIBBLES, 1888-1900..... Rochelle, Ill.
 BERTHA U. SHORPE, 1896-93.....
 MYRTIE U. WHITNEY, 1891.....
 ELLA WELLS, 1892-93.....
 BERTHA WHITE, 1902..... 1010 Park Ave., Omaha, Neb.
 MARY E. WELLS, 1903..... 303 Marim St., Elkhart, Ind.
 LILLIAN WHITE, 1903..... Lincoln, Neb.
 MARY ICKES WATSON (Mrs. J. B.), 1905..... 304 East Fifty-sixth St., Chicago, Ill.
 RUTH E. WORK, 1905..... Elkhart, Ind.
 LAURA WILBERTON, 1906..... Winona, Minn.
 FLORENCE U. WALLACE, 1907..... Chicago Heights, Ill.
 LOUISE WILLIAMS, 1895..... 1216 Hinman Ave., Evanston, Ill.
 BLANCHE ECKERT ZOLLINGER (Mrs. M. A.), 1898... Northwood, Iowa.

ZETA—WOMAN'S COLLEGE

HELEN MARGARET ARMOR, 1907.....	128 W. State St., Harrisburg, Pa.
MARGARET RANDOLPH AXSON, 1902.....	Princeton, N. J.
MARY BELL BAKER, 1905.....	3442 Auchentoroly Terrace, Baltimore, Md.
ELIZABETH SILL BANNARD (Mrs. W. H.), 1897.....	Asbury Park, N. J.
EDNA BORCHERING, 1904.....	638 Douglos St., Chattanooga, Tenn.
FLORENCE HERMAN BRESSLER (Mrs. C. O.), 1898.....	Lebanon, Pa.
ELIZABETH ADELE BROWN, 1903.....	2104 Charles St. N., Baltimore, Md.
HELEN ELIZABETH BROWN, 1905.....	Bay View Ave., Atlantic Highlands, N. J.
AIDA BELL BURCHFIELD, 1902-04.....	2014 W. Tuscarawas St., Canton, O.
RUTH BROCKWAY BULLARD (Mrs. F. E.), 1899-01.....	530 Acklin Ave., Toledo, O.
ETHEL LEE CARR, 1904.....	Durham, N. C.
FRANCIS ROWLAND CONNER, 1902.....	14 E. 16th St., New York City.
BLANCHE McCABE CONNER, 1904.....	1226 Twelfth Ave., Altoona, Pa.
MARY BINNIX DEMMING (Mrs. B. W.).....	Died 1899.
ALICE SLOANE DIMMICK, 1896-97.....	26 N. Fourth St., Columbus, O.
ANNA M. DIMMICK, 1899.....	26 N. Fourth St., Columbus, O.
ALMA GROVES COOKMAN (Mrs. C. H.), 1896.....	Middletown, N. Y.
MARY BROAD DINGLE, 1897-99.....	105 E. Castle St., Baltimore, Md.
HELEN DINGLE, 1904.....	105 E. Castle St., Baltimore, Md.
MARY IMOGENE DOBBINS, 1900-02.....	134 Park St., Montclair, N. J.
BESSIE T. ENGLISH, 1899-1900.....	206 Bellevue Ave., Upper Montclair, N. J.
EDITH CONANT FISHER, 1904.....	101 Forrest Ave., Atlanta, Ga.
EMELINE STUART GEARHART, 1893-96.....	Danville, Pa.
JESSIE STILLWELL GORE, 1901.....	1006 Madison Ave., Baltimore, Md.
LILLIAN TEFFT GRUBER (Mrs.), 1897.....	Los Angeles, Cal.
MARIAN THEODORA HADDOCK, 1900-02.....	304 Center St., Auburndale, Mass.

EMMA BEULAH HAYES, 1901.....10 E. 43d St., New York City.
 MARY CONNOR HAYES (Mrs. W. V.), 1900.....17 E. 38th St., New York City.
 HELEN BRIGGS HOORNBECK (Mrs. J. M.), 1897.....Ellenville, N. Y.
 LILLIAN HORSEY, 1905.....Chrisfield, Md.
 LAURA BELLE HUTCHINS, 1903.....Sheldon, Ill.
 MYRTLE LELIA HUTCHINS, 1904.....Sheldon, Ill.
 MARGARET ELLA JAMIESON, 1900-01.....
 MARY MARGARET LEE, 1903.....Preston St., Baltimore, Md.
 MYRA ROSS MANIFOLD, 1905.....663 Linden Ave., York, Pa.
 MARY HOWE MAXIM, 1904.....84 Howe Ave., Passaic, N. J.
 BESS NOX MCCAIN, 1900-01.....Kittanning, Pa.
 MARY CHURCHILL MELLEN (Mrs. F. S.), 1897.....1026 E. Cervantes St., Pensacola, Fla.
 ADELIA BAWDEN MCMURTRIE (Mrs. H. J.), 1897.....87 Broad St., Freehold, N. J.
 OLIVE HARPER MEDDERS (Mrs. Wm.), 1893-94.....Still Pond, Md.
 MARY CRARY MOORE (Mrs. H. W.), 1896-97.....1410 High St., Denver, Col.
 ANNA LOUISE MOORE, 1895-96.....Boise City, Idaho.
 MABEL MUDGE, 1895-97.....6 Newbern St., Jamaica Plains, Mass.
 HELEN MURRAY, 1899.....Clearfield, Pa.
 FLORENCE MOORE OEHM, 1905.....1721 Linden Ave., Baltimore, Md.
 ETHELYN PHIPPS, 1899.....Pikesville, Md.
 ANNA REED PALMER, 1892-94.....Clyde, N. Y.
 MAY LOUISE PALMER, 1892-95.....Clyde, N. Y.
 HELEN PETERS, 1897-99.....68 S. Yellow Springs St., Springfield, Ohio.
 EDITH MARIA POWELL, 1903.....344 Carey Ave., Wilkesbarre, Pa.
 MARGARET BROWNELL POWELL (Mrs. L. S.), 1897.....Alhambra, Cal.
 MARY LOUISE POWELL, 1906.....344 Carey Ave., Wilkesbarre, Pa.
 NELLIE WILLARD POWELL, 1898.....344 Carey Ave., Wilkesbarre, Pa.
 FANNIE EUGENIA RICHARDS, 1893-95.....219 First Ave., Asbury Park, N. J.

LUCILE REILLY, 1908.....Charlotte, N. C.
 ELSIE WOLCOTT ROBBINS, 1903-04.....1815 Edmondson Ave., Baltimore, Md.
 FRANCES BELL ROBBINS, 1900-02.....1815 Edmondson Ave., Baltimore, Md.
 MARY DRAKE SAWYERS, 1907.....Centerville, Iowa.
 ETHEL HUNDLEY SHRINER, 1907.....2121 St. Paul St., Baltimore, Md.
 LETITIA WILLIS SIMONS, 1900.....393 Westchester Ave., Portchester, N. Y.
 CAROLINE BLANCHE SMITH, 1907.....203 W. Market St., York, Pa.
 BLANCHE McNEAL SMITH (Mrs. H. F.), 1898.....826 N. Third St., Harrisburg, Pa.
 RUTH TRUAX NAGLE (Mrs. G. A.), 1897-99.....Chicago, Ill.
 JANE McDONALD SMART, 1904.....701 Abercorn St., Savannah, Ga.
 EMILY BELLE BOOS SOBER, 1894-95.....Sinking Springs, Pa.
 FLORENCE POND STARK (Mrs. S.), 1897-98.....Mt. Hermon, Mass.
 JOSEPHINE STONE, 1908.....Battlecreek, Mich.
 NELLIE MAY TALLEY, 1903.....454 N. Seventh St., Terre Haute, Ind.
 FIELDING TURNER CHASE (Mrs. J. B.), 1899.....11 Back Ledge Road, Newton Highlands, Mass.
 ELEANOR OGIER STREETT, 1899.....Bel Air, Md.
 NELLIE SNOWDEN WATTS, 1905.....1015 Harlem Ave., Baltimore, Md.
 CORNELIA WEBB, 1900-03.....Bell Buckle, Tenn.
 MARY GILLESPIE WEBB, 1905.....Bell Buckle, Tenn.
 ADELINE WEBB, 1901.....Bell Buckle, Tenn.
 SARAH WEBB, 1901-04.....Bell Buckle, Tenn.
 JESSIE WOODROW WILSON, 1908.....Bell Buckle, Tenn.
 ANN WILLIAMS, 1908.....Princeton, N. J.
 MARGARET WILSON, 1907.....2345 Fillmore St., San Francisco, Cal.
 CHARLOTTE MEARS YOCUM, 1896.....Princeton, N. J.
Lewistown, Pa.

ETA—UNIVERSITY OF CALIFORNIA

MAUDE ALLEN ALLEN (Mrs. Louis), 1896-97.....	1900	Devisadero St., San Francisco.
LILLIAN PARKER ALLEN (Mrs. A. H.), 1899.....	2429	Channing Way, Berkeley, Cal.
GRETA DUTTON AUGUSTINE, 1902-05.....		San Rafael, Cal.
MARY BOWERS BRAY (Mrs. E. I.), 1899.....	156	South Seventh St., San Jose, Cal.
ALMA MASY BROWN, 1898-1901.....	1387	Alice St., Oakland, Cal.
MARION BYBEE, 1894-96.....		
MARGUERITE ELEANOR CAMPBELL, 1903.....	110	South Eastern Ave., Joliet, Ill.
CORA MOTT CHICK (Mrs. Guy H.), 1896.....	1833	Arch St., Berkeley, Cal.
EDNA WARNER COCKERILL (Mrs. F.), 1898-1900...		Fresno, Cal.
RACHEL VROOMAN COLBY (Mrs. Wm.), 1895.....	2341	Larkin St., San Francisco, Cal.
ALICE REED COLLIER, 1903.....		Riverside, Cal.
GERTRUDE PEARL CURTIS, 1904.....		Napa, Cal.
INEZ SHIPPEE DAM (Mrs. F. H.), 1903.....	2394	Post St., San Francisco.
MARGUERITE DANIELS, 1908.....	2416 1-2	Durant Ave., Berkeley, Cal.
JULIA DIXON, 1900-03.....		Merced, Cal.
SUE HODGDON DUNBAR, 1903.....	445	Hawthorne St., Oakland, Cal.
ESTO PHOEBE DUNBAR, 1908.....	445	Hawthorne St., Oakland, Cal.
ALMA EASTIN, 1908.....		Nevada City, Cal.
MARIETTA ROSE EDWARDS, 1903.....	2546	Dana St., Berkeley, Cal.
FLORENCE NIGHTINGALE EWING, 1899.....	2221	Scott St., San Francisco, Cal.
GRACE EMILY FISH, 1901.....		Martinez, Cal.
BLANCH ELLEN FISH, 1903.....		Martinez, Cal.
GRACE PAULINE FOULDS, 1904.....	2331	Bancroft Way, Berkeley, Cal.
EDITH LINWOOD FURREY, 1902-03.....	1103	Ingraham St., Los Angeles, Cal.
E. IONE GARNETT, 1908.....		Dixon, Cal.
EDNA GEARHART, 1901.....	18	West California St., Pasadena, Cal.
FRANCES HAMMEL GEARHART, 1900.....	18	West California St., Pasadena, Cal.

MAY BESS GRAHAM, 1901.....	St. Helena, Cal.
SYDNEY BALDWIN GRAY, 1908.....	923 Linden St., Oakland, Cal.
CECIL ADELAIDE HAROLD, 1907.....	1341 Twenty-sixth Ave., Fruitvale, Cal.
ETHEL HARTSON, 1900-02.....	Napa, Cal.
MARGARET HENDERSON, 1904.....	1257 West Fourth St., Los Angeles, Cal.
HELEN ANDROS HENGSTLER (Mrs. L. T.), 1896.....	1920 Broadway, San Francisco, Cal.
HELEN COLLIER HILL (Mrs. J. M.), 1900.....	1641 West Twenty-fifth St., Los Angeles, Cal.
MARGARET FRANCES HILL, 1901.....	Mountain View, Santa Clara County, Cal.
CHARLOTTE MIGNON HOFFMAN, 1899.....	518 Twenty-seventh St., Oakland, Cal.
HARRIET HARAGTHY HUNT (Mrs. G. H.), 1896-98.....	1124 Bush St., San Francisco, Cal.
EVELYN GLENN JOHNSON (Mrs.), 1899-1901.....	2425 Calaveras St., Fresno, Cal.
NELLIE MOTT JONES (Mrs. G. P.), 1896.....	Nevada City, Cal.
LOUISE KELLOGG, 1901.....	1253 Grove St., Oakland, Cal.
BERTHA DEIL KNOX, 1897.....	958 Fourteenth St., Oakland, Cal.
TALULAH LE CONTE, 1904.....	2501 Piedmont Ave., Berkeley, Cal.
MARY ROBERDEAN LE CONTE, 1906.....	2501 Piedmont Ave., Berkeley, Cal.
REBECCA SHARON MAC NAIR, 1907.....	Glendora, Cal.
HELEN LOUISE MARTIN, 1901.....	1511 Spring St., Berkeley, Cal.
LULA OVERTON MINOR, 1907.....	2719 Dwight Way, Berkeley, Cal.
ANNIE STRENZEL MUIR, 1905.....	Martinez, Cal.
EDITH BYXBEE NOTT (Mrs. Chas. P.), 1897.....	Mountain View, Santa Clara Co., Cal.
ANNA LANDSTROM OSTERHOUT (Mrs. W. J.).....	Garber St., Berkeley, Cal.
CORA ANN PATTON, 1900-02.....	1901 University Ave., Berkeley, Cal.
ELIZABETH JANE PATTON, 1906.....	1901 University Ave., Berkeley, Cal.
AMY LOUISE PHELAN, 1898.....	1128 Tenth St., Sacramento, Cal.
HAZEL ELIZA PIERCE, 1907.....	1389 Harrison St., Oakland Cal.
PEARL FLORENCE PITCHER, 1904.....	2831 Laguna St., San Francisco, Cal.
MARY LUELLA PORTER, 1902-03.....	Santa Barbara, Cal.

MARY RANDALL, 1900-03.....2617 College Ave., Berkeley, Cal.
 VIDA REDINGTON, 1895.....1668 Tenth St., Oakland, Cal.
 LENA MARTHA REDINGTON, 1897.....1668 Tenth St., Oakland, Cal.
 ZOE M. RILEY, 1907.....2513 Hillside Way, Berkeley, Cal.
 CARMELITA DOLORES RILEY, 1907.....2513 Hillside Way, Berkeley, Cal.
 SUE ADELIE ROSS, 1906.....Santa Rosa, Cal.
 ELIZABETH ROTHERMEL, 1899.....721 Oak St., San Francisco, Cal.
 FLORENCE SENGEL SAELTZER (Mrs. D. V.), 1901-04...Redding, Cal.
 ELIZABETH SANDERSON, 1897.....2310 Washington St., San Francisco, Cal.
 CHARLOTTE SANDERSON, 1898.....2310 Washington St., San Francisco, Cal.
 ALICE LOUISE SENGEL, 1906.....1429 Spruce St., Berkeley, Cal.
 VIDA LOUISE SHERMAN, 1897.....Piedmont, Alameda Co., Cal.
 KATHERINE STACK, 1899.....412 Ashbury St., San Francisco, Cal.
 ANGELINE HARDCASTLE STANSBURY, 1907.....Chico, Cal.
 TRUE AIKEN STERN (Mrs. F. L.), 1900-03.....Eureka, Cal.
 FLORENCE WILCOX STONE, 1899.....1212 Harrison St., Oakland, Cal.
 GERTRUDE THAYER, 1900-03.....San Rafael, Cal.
 AGNES HELM THOMAS (Mrs.), 1897.....8023 Fresno St., Fresno, Cal.
 LIDA BALDWIN THOMPSON (Mrs. G. T.), 1895.....2157 Clinton Ave., Alameda, Cal.
 MARY REBECCA UNDERHILL, 1905.....1403 Leroy Ave., Berkeley, Cal.
 BESSIE GASKILL WALDRON (Mrs.), 1893-94.....Hillside Ave., Piedmont, Cal.
 MARIN CONSTANCE WATERHOUSE, 1902-05.....6 East Forty-seventh St., New York City.
 MARGARET WEBB, 1899.....2131 Bancroft Way, Berkeley, Cal.
 ZENA ALLISON WEST, 1898-01.....San Rafael, Cal.
 DELLA ELIZABETH WEST, 1906.....San Rafael, Cal.
 INEZ ELEANOR WHIPPLE, 1906.....Decoto, Cal.
 MABEL LUCINDA WILLIAMS, 1900.....2723 Sacramento St., San Francisco.
 KATHERINE V. WILLIS, 1903.....1630 G St., Sacramento, Cal.

GRACE DARLING WILSON, 1895.....817 Harrison St., Oakland, Cal.
 GIRLIE ELLSTON WYCKOFF (Mrs. A. C.), 1895-96.....2529 Benvenue Ave., Berkeley, Cal.
 EDNA FAITH WYCKOFF, 1902.....2529 Benvenue Ave., Berkeley, Cal.

THETA—UNIVERSITY OF DENVER

CLARA ALTER, 1907.....Hilltop, Col.
 EDITH PLESTED AVERY (Mrs. H. W.), 1901.....Ledyard, N. Y.
 ETHEL AVERY, 1900-1902.....Fort Collins, Col.
 MARY LINDSEY BARBEE, 1899.....922 E. Sixteenth Ave., Denver, Col.
 VASSA WILLARD BAYLEY (Mrs. D. S.), 1892-93.....Died August, 1901.
 EFFIE MAE BEHM, 1906.....1355 Lafayette St., Denver, Col.
 EDITH JEAN BOUGHTON, 1904.....105 Irvington Place, Denver, Col.
 ORA LEE BOWMAN, 1908.....3160 Stout St., Denver, Col.
 EDNA ILIFF BRIGGS (Mrs. A. H.), 1893.....Newark, Cal.
 MARGARET SELLECK CARMAN, 1908.....1154 Corona St., Denver, Col.
 WINIFRED MARGARET CHASE, 1903-1904.....Pueblo, Col.
 JOSEPHINE MARY CLAWSON, 1898-1900.....Chicago, Ill.
 SAIDA BAECHTOLD CROSBY (Mrs. S. H.), 1901.....Chicago, Ill.
 DAISY MARJORIE DILLON, 1905.....Petersburg, Ind.
 ESTHER DOLL, 1901-1903.....2510 Welton St., Denver, Col.
 RUTH ANGELL DRAKE, 1907.....208 S. Lincoln Ave., Denver, Col.
 MABEL WALKER EDWARDS (Mrs. J. S.), 1892-1893.....The Colonnade Flats, Denver, Col.
 FLORENCE MAY FREULER, 1901.....Died September, 1904.
 MAMIE SINSABAUGH GALLUP, 1908.....1580 Vine St., Denver, Col.
 HELEN GENET GARRIQUES, 1902.....1429 Eighth St., Greeley, Col.
 BEATRICE BROWN HANKS (Mrs. R. H.), 1902-1903.....Salida, Col.
 MILDRED AMELIA HANSEN, 1908.....15 Corona Apartments, Denver, Col.

BLOSSOM LIDA HENRY, 1907.....Ft. Logan, Col.
 ETHEL THOMAS HOLDEN (Mrs. E. McP.), 1899.....St. Anthony, Idaho.
 GERTRUDE HOLMAN, 1891-1894.....Paonia, Col.
 LOUISE ILIFF, 1895-96.....University Park, Col.
 BEULAH STEELE JENNESS (Mrs. J. F.), 1900.....Campbell, Col.
 JESSIE C. KUNKELEY, 1902.....1540 Fillmore St., Denver, Col.
 EMMA SOPHIE LAUBMAN, 1902-04.....Russell, Kan.
 EDNA MASON, 1899-1902.....2737 Franklin St., Denver, Col.
 MARGARET McNEIL, 1904.....177 Byers St., Denver, Col.
 EDNA BELLE MYERS, 1902.....Salida, Col.
 FANNIE LOUISE MARKS, 1907.....Ft. Lupton, Col.
 FERN DOROTHY MITCHELL, 1906.....1421 Corona St., Denver, Col.
 LUCY SOUTHWICK MOORE, 1908.....2420 E. Eleventh Ave., Denver, Col.
 JANET NEWKIRK, 1907.....1427 Clarkson St., Denver, Col.
 EDITH MAY REESE, 1904.....169 E. Second St., Corning, N. Y.
 INEZ ANNA RIDGWAY, 1902-03.....1646 Grant Ave., Denver, Col.
 GRACE SLATER RODGERS (Mrs. V. U.), 1901.....Telluride, Col.
 HARRIETTE SHATTUCK ROGERS, 1903.....Warren, Pa.
 ELLA JAMIESON SANDERSON (Mrs. H. F.), 1898-00.....1916 Grant Ave., Denver, Col.
 MAY SCHIFFER, 1907.....109 Grant Ave., Denver, Col.
 GRACE EVANS SHANNON (Mrs. E. L.), 1896.....1201 Race St., Denver, Col.
 MARY WHEELER SHATTUCK (Mrs. O. F.), 1892.....250 Grant Ave., Denver, Col.
 MABEL NAOMI SHORT, 1902-03.....1535 Gilpin St., Denver, Col.
 FLORENCE ETHEL SLOCUMB, 1902.....756 Kentucky St., Denver Col.
 CLARA SHEPARD SPERRY, 1907.....The Adams, Denver, Col.
 LELA LORENA STINGLEY, 1904.....1080 Third St., Salt Lake City, Utah.
 EMMA STOVER, 1904.....Ft. Collins, Col.
 JENNIE GERTRUDE SWEET, 1897-1898.....Died March 22, 1903.

LUCILE ELIZABETH TIMBERLAKE, 1903.....Sterling, Col.
 MARY GRACE TWOMBLY, 1905.....Brush, Col.
 MARY UZZELL, 1903-04.....2731 Forest St., Dener, Col.
 MARIAN SAFFORD VAN DYNE, 1902.....Greeley, Col.
 EDITH BEATRICE WALLACE, 1898.....932 Corona St., Denver, Col.
 RUTH E. WALLACE, 1904.....932 Corona St., Denver, Col.
 LILIAN WINIFRED WILLARD, 1899.....The Plymouth, Denver, Col.
 CAROLYN EMMA WOLFE, 1907.....1438 Franklin St., Denver, Col.
 NELLIE WOODWARD, 1907.....Pueblo, Col.
 MARY ELIZABETH Woy, 1907.....1415 Josephine St., Denver, Col.
 CHELLIE STEVENS WRIGHT (Mrs. F. R.), 1902.....515 Pennsylvania Ave., Denver, Col.
 LUCIA PATTISON YOUNG (Mrs. H. B.), 1896.....1360 Vine St., Denver, Col.

IOTA—BARNARD COLLEGE, OF COLUMBIA UNIVERSITY

FLORENCE BEECH.....Ottawa, Kan.
 FLORENCE BEERS, 1905.....174 Shelton Ave., Jamaica, N. Y.
 JEAN MAY BRUCE, 1906.....250 W. 84th St., New York City.
 LULU CARPENTER.....Portchester, N. Y.
 ANNE CARROLL, 1907.....Warwick, Orange Co., N. Y.
 HELEN CARTER, 1907.....138 W. 129th St., New York City.
 EMMA COLE, 1907.....371 W. 119th St., New York City.
 MARY COLT.....419 Crescent Ave., Buffalo, N. Y.
 GRACE M. CONOVER, 1905.....10 E. 130th St., New York City.
 HARRIET DANIELS.....1230 Amsterdam Ave., New York City.
 OLIVE DUTCHER.....Mt. Holyoke College, South Hadley, Mass.
 AUGUSTINE ELLEAN.....16 Stratford Place, Newark, N. J.
 EMMA ENRIGHT.....Freehold, N. J.

WILLA MAY FRECKE, 1906.	431	Riverside Drive, New York City.
MRS. MABELLE GRAY FREEMAN.	269	Union St., Brooklyn, N. Y.
HELEN YOUNG GRAY, 1908.	246	Fourteenth St., Brooklyn, N. Y.
MARY GOULD GRAY, 1905.	246	Fourteenth St., Brooklyn, N. Y.
SADIE HOLT		Waverly, Mass.
LOUISE KIMBALL	58	W. 105th St., New York City.
ETHEL MAY KNOX, 1906.	256	W. 123d St., New York City.
LAURA E. MATHEWS, 1905.	36	Kearney St., Newark, N. J.
OLIVE V. McDOWELL	1719	Hinman Ave., Evanston, Ill.
HELEN F. McKELVERY (Mrs.)		Sidney St., Spuyten-Duyvil, N. Y.
FLORENCE I. NYE, 1905.	306	W. 94th St., New York City.
ELLEN K. O'GORMAN, 1908.	318	W. 108th St., New York City.
VINA PETERS	24	Ryerson Ave., Newton, N. J.
HAZEL H. PLATE, 1906.	316	W. 112th St., New York City.
ELVA L. PORTER, 1907.	439	Manhattan Ave., New York City.
ANNA M. RAE, 1906.	453	W. 123d St., New York City.
JEANNETTE SEIBERT	453	W. 123d St., New York City.
EDNA W. STITT, 1906.	156	W. 93d St., New York City.
LINDA BELLE SAVITZ, 1908.		Westfield, N. J.
CLARA COOK STODDARD (Mrs.)		Denver, Col.
LAURA VAN CISE.		Summit, N. J.
MARION WAUGH	49	Southmoor Road, Oxford, England.
UNA WINTERBURN	105	Riverside Drive, New York City.

KAPPA—UNIVERSITY OF MINNESOTA

ALICE ANDREWS, 1903-04.....	833 Goodrich Ave., St. Paul, Minn.
E. W. BACKUS (Mrs.), 1902-04.....	75 Oakwood St., Minneapolis, Minn.
RACHAEL BEARD, 1908.....	1940 Penn Ave., Minneapolis, Minn.
MARGARET GEORGE BELL, 1905.....	914 Chicago Ave., Minneapolis, Minn.
ELLEN R. BROOKS, 1908.....	432 Ridgewood Ave., Minneapolis Minn.
OLIVE MAY BROOKS, 1902-03.....	432 Ridgewood Ave., Minneapolis Minn.
GEORGIA CAMPBELL, 1906.....	Princeton, Minn.
J. F. DOWNEY (Mrs.), 1902-03.....	825 Fifth St. S. E., Minneapolis, Minn.
ELEANOR GRACE EATON, 1906.....	1891 Tayton Ave., St. Paul, Minn.
EDNA ELMER, 1906.....	718 East Seventeenth St., Minneapolis, Minn.
GRACE FOSTER, 1906.....	Marion, Iowa.
E. M. FREEMAN (Mrs.), 1904-05.....	220 Church St. S. E., Minneapolis, Minn.
LORA GOODING, 1908.....	811 Irving Ave. N., Minneapolis, Minn.
HELEN GRIFFITH, 1904.....	1304 Fourth Ave. S., Minneapolis, Minn.
ETHEL COLLINGWOOD HALL, 1903.....	981 Bayless Ave., St. Paul, Minn.
JULIA MAY HENDRIX, 1896.....	2022 Blaisdell Ave., Mineapolis, Minn.
HELEN ROZETTE HENDRIX, 1903.....	2022 Blaisdell Ave., Mineapolis, Minn.
MILDRED HUNTER, 1905.....	Tracy, Minn.
ALICE MAUDE HYSER, 1904.....	1 Orlin Ave. S. E., Minneapolis, Minn.
REEVEY BELLE INGLIS, 1907.....	2436 Bryant Ave. S., Minneapolis, Minn.
AGNES SHERWIN IVES, 1905.....	1126 Fifth St. S. E., Minneapolis, Minn.
MARY IVES, 1905.....	1126 Fifth St. N. E., Minneapolis, Minn.
EDITH TODD JONES (Mrs. H. S.), 1901.....	Hill City, S. Dakota.
MARION ISABELLE JONES, 1904.....	3033 Pleasant Ave., Minneapolis, Minn.
GRACE MARION KINGSLEY, 1907.....	2322 Bryant Ave. S., Minneapolis, Minn.
MILDRED LAUDERDALE, 1905.....	75 Royalston Ave., Minneapolis, Minn.
LORENA MAC FARLANE, 1903.....	Biwabik, Minn.

SARA THOMPSON MARSHALL, 1907.....27 East Fourteenth St., Minneapolis, Minn.
 FLORENCE DECKER MILLSPAUGH, 1907.....Little Falls, Minn.
 GRACE ELEANOR MORELAND, 1908.....692 Fairmount Ave., St. Paul, Minn.
 MARIE FOOTNER MORELAND, 1906.....692 Fairmount Ave., St. Paul, Minn.
 H. S. NACHTRIEB (Mrs.), 1903-04.....905 Sixth St. S. E., Minneapolis, Minn.
 RUTH SPEAR NEWKIRK (Mrs. H.), 1903.....Wolverton, Minn.
 THEODATE NOWELL, 1906.....Rochester, Minn.
 ELEANOR PARODY, 1899.....Zumbra Heights, Lake Minnetonka, Minn.
 CORDELIA PAINE, 1908.....8 Regent Circle, Brookline, Mass.
 ELLEN PAINE, 1908.....8 Regent Circle, Brookline, Mass.
 MARY GRAY PECK, 1889.....2412 Harriet Ave., Minneapolis, Minn.
 SARA MORROW PRESTON, 1907.....33 Tell Place, Minneapolis, Minn.
 ALICE WILLIAMS REDFIELD, 1905.....2637 Portland Ave., Minneapolis, Minn.
 LILA GERTRUDE ROOT, 1908.....1904 Marshall Ave. St. Paul Minn.
 CARL SCHLENKEN (Mrs.), 1902-03.....312 Union St. S. E., Minneapolis, Minn.
 ELEANOR SHELTON, 1904.....110 Malcolm Ave. S. E., Minneapolis, Minn.
 FLORENCE ELIZABETH SNOOK, 1901-03.....3013 Aldrich Ave. S., Minneapolis, Minn.
 MARY NORTON SUDDUTH (Mrs. W. H.), 1904.....2526 Portland Ave., Minneapolis, Minn.
 CORA TANNEY, 1907.....128 St. Albans St., St. Paul, Minn.
 KATHERINE MELINDA TANNEY, 1906.....128 St. Albans St., St. Paul, Minn.
 BERNICE WORKS, 1905.....1937 Orrington Ave., Evanston, Ill.
 F. ETHEL WORKS, 1905.....1937 Orrington Ave., Evanston, Ill.
 HATTIE MAY YOUNG, 1906.....756 Tayton Ave., St. Paul Minn.

LAMBDA—UNIVERSITY OF WASHINGTON

CARRIE ATKINSON, 1908.....	1735 Sixteenth Ave., Seattle, Wash.
META BEEKER, 1903	Fremont Station, Seattle, Wash.
CHARLA BLODGETT, 1902	Bellingham, Wash.
BESS BOGLE, 1908	Seventeenth Ave. and Aloha St., Seattle, Wash.
MARGARET BROWN, 1906.....	Rockerfeller Ave., Everett, Wash.
ETHELYN COFFMAN, 1907	Chehalis, Wash.
FLORENCE COFFMAN, 1907	Chehalis, Wash.
MRS. HARRY C. COFFMAN (Augusta Williams), 1899	University Station, Seattle, Wash.
MYRN COSGROVE, 1907	Pomroy, Wash.
ALMA DELANEY, 1903	Juneau, Alaska.
ALVA DODSON, 1903	Bellingham, Wash.
KATHARINE EDWARDS, 1905	3128 Colby Ave., Everett, Wash.
LILLIAN EISENBEIS, 1906.....	Port Townsend, Wash.
JULIA ESMOND, 1904	Montesano, Wash.
FLORENCE FINCH, 1907.....	193 Palmer Ave., Detroit, Mich.
MRS. JOHN FINLEY (Edith Adams), 1906.....	Mesa Lodge, Colorado Springs, Col.
ELIZABETH FRYE, 1899	Madison and Summit Aves., Seattle, Wash.
ALICE GARDINER, 1902	Grand Ave., Everett, Wash.
MRS. FRANK L. HORSFALL (Jessie Ludden), 1904.....	921 Fourteenth Ave., Seattle, Wash.
JEANNE HAUSMAN, 1907.....	549 Seventeenth Ave., Seattle, Wash.
JESSIE JACKSON, 1907	Portland, Ore.
WINIFRED JOHNSON, 1907.....	317 Harvard Ave., Seattle, Wash.
BESS KAUFMAN, 1907	Spokane, Wash.
ZOE KINCAID, 1901	University Station, Seattle, Wash.
LULU KNAPP, 1907	University Station, Seattle, Wash.
MRS. FRED MARVIN (Helen McCurdy), 1906.....	Seattle, Wash.

HELEN McDONALD, 1908.....5722 Green Lake Boulevard, Seattle, Wash.
 MRS. THAD MCGLENN (Ethel White), 1900.....Bellingham, Wash.
 JESSIE MOSGROVE, 1907.....Walla Walla, Wash.
 CLAUDIA MOWREY, 1906.....5225 Washington Ave., Chicago, Ill.
 PANSY OLNEY, 1907.....625 Superior Ave., Spokane, Wash.
 JEANNETTE PERRY, 1904.....322 Thirtieth Ave., Seattle, Wash.
 BERTHA POWERS, 1906.....3128 Oakes Ave., Everett, Wash.
 BEATRICE PROSCH, 1908.....621 Ninth Ave., Seattle, Wash.
 EDITH PROSCH, 1901.....621 Ninth Ave., Seattle, Wash.
 B. J. RUEKER, Mrs. (Ruby Brown), 1902.....Everett, Wash.
 MILDRED ROBERTSON, 1905.....University Station, Seattle, Wash.
 HELEN RUSSEL, 1907.....1617 Pacific Ave., Spokane, Wash.
 MYRA SMITH, 1907.....1801 Second Ave., Seattle, Wash.
 EMILY SUMNER, 1902.....2330 Cleveland Ave., Everett, Wash.
 ALICE TAGGART, 1905.....Station H, Seattle, Wash.
 ROSA WALD, 1904.....1802 Bellevue Ave., Seattle, Wash.
 HELEN WETZEL, 1905.....1611 Eighth Ave., Spokane, Wash.
 LOUISE WETZEL, 1905.....1611 Eighth Ave., Spokane, Wash.
 AMY WHEELER, 1907.....Station B, Seattle, Wash.
 BLANCHE WINSOR, 1902.....305 Nineteenth Ave., Seattle, Wash.

MU—LELAND STANFORD, JR.

JESSICA BIRD, 1908	Banning, Cal.
EDNA JERALDINE BROWN, 1904	96 S. Tenth St., San Jose, Cal.
EMMA EULALIE CHARLEBOIS, 1906	Ventura, Cal.
MABEL GLADYS CROW, 1908	Alhambra, Cal.
HELEN DORRANCE, 1905	Carpenteria, Cal.
PAULINE GARTZMANN, 1907	Song Beach, Cal.
RUTH HUGHES GILBERT, 1906	Palo Alto, Cal.
WINIFRED GILBERT, 1908	Palo Alto, Cal.
MABEL SABRINA GRAY, 1908	Albany, N. Y.
GEORGIA MULLIN, 1908	Cedar Rapids, Iowa.
HAZEL MOORE PATTERSON, 1905	1436 S. Flower St., Los Angeles, Cal.
HELEN MOLYNEAUX SALISBURY, 1905	1000 W. Seventh St., Los Angeles, Cal.
HELEN THOBURN, 1907	Palo Alto, Cal.
MILOLA JOY WARD, 1906	450 Tenth St., Portland, Ore.

Addenda

Addenda